

1
2
3
4
5
6
7
8
9
10
11
12
13
14
15
16
17
18
19
20
21
22
23
24
25

Title Page

Predictors of survival in patients with ischemic stroke and active cancer: A prospective, multicenter, observational study

Authors' names and affiliations:

Yasufumi Gon, MD, PhD¹; Manabu Sakaguchi, MD, PhD^{1,2}; Hiroshi Yamagami, MD, PhD³; Soichiro Abe, MD⁴; Hiroyuki Hashimoto, MD, PhD⁵; Nobuyuki Ohara, MD⁶; Daisuke Takahashi, MD⁷; Yuko Abe, MD, PhD⁸; Tsutomu Takahashi, MD, PhD⁹; Takaya Kitano, MD, PhD¹; Shuhei Okazaki, MD, PhD¹; Kenichi Todo, MD, PhD¹; Tsutomu Sasaki, MD, PhD¹; Satoshi Hattori, PhD¹⁰; and Hideki Mochizuki, MD, PhD¹; on behalf of the SCAN Study Investigators

Institutional Information

¹ Department of Neurology, Osaka University Graduate School of Medicine, Osaka, Japan
² Department of Neurology, Osaka General Medical Center, Osaka, Japan
³ Department of Neurology, National Hospital Organization Osaka National Hospital, Osaka, Japan
⁴ Department of Neurology, National Cerebral and Cardiovascular Center, Osaka, Japan
⁵ Department of Neurology, Osaka Rosai Hospital, Osaka, Japan
⁶ Department of Neurology, Kobe City Medical Center General Hospital, Hyogo, Japan
⁷ Department of Neurology, National Hospital Organization Osaka Minami Medical Center, Osaka, Japan
⁸ Department of Neurology, Yodogawa Christian Hospital, Osaka, Japan
⁹ Department of Neurology, Hoshigaoka Medical Center, Osaka, Japan

26 ¹⁰ Department of Integrated Medicine, Biomedical Statistics, Osaka University of Graduate
27 School of Medicine, Osaka, Japan

28

29 **Short title:** Prognosis in ischemic stroke with active cancer

30 **Corresponding author:**

31 Yasufumi Gon, MD, PhD.

32 Department of Neurology, Osaka University Graduate School of Medicine, 2-2 Yamada-oka,
33 Suita, Osaka 565-0871, Japan.

34 Phone: +81-6-6879-3571; Fax: +81-6-6879-3579

35 E-mail address: gon@neurolog.med.osaka-u.ac.jp

36 **Total word count:** 6,520

37

38 **Abstract**

39 **Background:** Patients with ischemic stroke and active cancer have a poor prognosis; however,
40 supporting evidence remains limited.

41 **Methods:** We conducted a prospective, multicenter, observational study in Japan including
42 patients with acute ischemic stroke and active cancer to investigate the prognostic factors. We
43 followed up the patients for 1 year after stroke onset. The patients were divided into two groups
44 according to cryptogenic stroke and known etiologies (small vessel occlusion, large artery
45 atherosclerosis, cardioembolism, other determined etiology) and survival was compared. The
46 hazard ratios (HRs) and 95% confidence intervals (CIs) for mortality were calculated using
47 Cox regression models.

48 **Results:** We identified 135 eligible patients (39% women; median age, 75 years). Of these,
49 51% had distant metastasis. A total of 65 (48%) and 70 (52%) patients had cryptogenic stroke
50 and known etiologies, respectively. Patients with cryptogenic stroke had significantly shorter
51 survival than those with known etiologies (HR [95% CI], 3.11 [1.82–5.25]). The multivariate
52 Cox regression analysis revealed that distant metastasis, plasma D-dimer levels, deep venous
53 thrombosis and/or pulmonary embolism complications at stroke onset were independent
54 predictors of mortality after adjusting for potential confounders. Cryptogenic stroke was
55 associated with prognosis in univariate analysis but not significant in multivariate analysis. The
56 plasma D-dimer levels stratified the prognosis of patients with ischemic stroke and active
57 cancer.

58 **Conclusions:** The prognosis of patients with acute ischemic stroke and active cancer varies
59 considerably depending on stroke mechanism, distant metastasis, and coagulation
60 abnormalities. Coagulation abnormalities are crucial in determining the prognosis of such
61 patients.

62 **Key Words:** ischemic stroke, active cancer, D-dimer, cryptogenic stroke, distant metastasis

63 **What Is New?**

- 64 ● **We conducted a prospective, multicenter, observational study in Japan to determine**
65 **the prognostic survival factors in patients with acute ischemic stroke and active**
66 **cancer.**
- 67 ● **Distant metastasis, plasma D-dimer levels, deep venous thrombosis and/or**
68 **pulmonary embolism were independent predictors of mortality after adjusting for**
69 **potential confounders.**
- 70 ● **Patients with known stroke etiologies and mild coagulation abnormalities had a**
71 **favorable prognosis, whereas those with cryptogenic stroke and severe coagulation**
72 **abnormalities had a poor outcome.**

73

74 **What Are the Clinical Implications?**

- 75 ● **The prognosis of patients with acute ischemic stroke and active cancer varies**
76 **considerably depending on stroke mechanism, distant metastasis, and coagulation**
77 **abnormalities.**
- 78 ● **Patients with known stroke etiologies and mild coagulation abnormalities often have**
79 **a favorable prognosis; therefore, we should not stop stroke therapy because of active**
80 **cancer.**
- 81 ● **Patients with cryptogenic stroke and severe coagulation abnormalities often have**
82 **poor outcomes; consequently, we should thoroughly discuss with the oncologist to**
83 **determine a treatment plan.**

84

85 **Non-standard Abbreviations and Acronyms**

86	HR	Hazard ratio
87	CI	Confidence interval
88	SCAN	Ischemic Stroke in Patients with Cancer and Neoplasia
89	NIHSS	National Institute of Health Stroke Scale
90	DVT	Deep venous thrombosis
91	PE	Pulmonary embolism
92	mRS	modified Rankin Scale
93	rt-PA	Recombinant-tissue plasminogen activator
94	hsCRP	High-sensitivity C-reactive protein
95	TOAST	Trial of Org 10172 in Acute Stroke Treatment
96	IQR	Interquartile range
97	AIC	Akaike's information criterion

98

99 **Introduction**

100 Patients with cancer are at increased risk of cerebrovascular diseases [1,2]. Stroke is a
101 significant concern for patients with cancer since it can interrupt cancer treatments and worsen
102 survival outcomes [1–5]. Management of cancer and stroke is an important aspect of clinical
103 practice.

104 Patients with ischemic stroke and active cancer experience poor survival outcomes.
105 Lee et al. investigated 268 patients with ischemic stroke and active cancer using data from the
106 OASIS-Cancer study and reported a median survival of 109 days [6]. Navi et al. analyzed 263
107 patients with ischemic stroke and active cancer and found a median survival of 84 days for 230
108 patients with complete follow-up [7]. Shin et al. investigated 93 patients with cryptogenic
109 stroke and active cancer and showed a median survival of 62 days [8]. Other studies compared
110 ischemic stroke outcomes in patients with and without active cancer, suggesting that ischemic
111 stroke patients with active cancer have poorer outcomes than those without [9–14]. Overall,
112 patients with ischemic stroke and active cancer are known to have poor survival outcomes.
113 However, most of these studies are retrospective [7–12,14], and limited data are available
114 concerning prospective studies [6,13].

115 The prognostic indicators of survival are poorly understood in patients with ischemic
116 stroke and active cancer [15]. Previous studies have suggested that distant metastasis, diabetes
117 mellitus, plasma D-dimer levels, cryptogenic stroke, and pre-stroke modified Rankin Scale
118 (mRS) were associated with mortality [8,16–18]. Among these factors, cryptogenic stroke is a
119 common ischemic stroke subtype in patients with active cancer [16,19–21]. It is also known
120 that plasma D-dimer levels are high in cancer patients with cryptogenic stroke [19,20]. Thus,
121 the fact that both cryptogenic stroke and plasma D-dimer levels predict prognosis may reflect
122 underlying coagulation abnormalities. However, the relationship between cryptogenic stroke

123 and plasma D-dimer levels in predicting cancer-related stroke prognosis has been
124 underexplored.

125 Based on this background, we conducted a prospective, multicenter, observational
126 study of patients with ischemic stroke and with cancer (ischemic Stroke in patients with
127 CAncer and Neoplasia [SCAN]) in Japan. The SCAN study was designed to assess the clinical
128 characteristics of cancer-related strokes. In the present study, we analyzed the survival of
129 patients with acute ischemic stroke and active cancer according to the stroke subtype, using
130 data from the SCAN study.

131

132 **Methods**

133 *Data Availability*

134 The data that support the findings of this study are available from the corresponding author
135 upon reasonable request.

136 *Standard Protocol Approvals, Registrations, and Patient Consents*

137 This study complied with the Declaration of Helsinki for investigations involving humans and
138 was approved by the Institutional Review Board of Osaka University Hospital (approval
139 number: 15346-10). Written informed consent was obtained from all study patients.

140 *Study Design and Population*

141 The SCAN study is a prospective, multicenter, observational study conducted at nine hospitals
142 in Japan, between June 2016, and December 2021 (Osaka University Hospital, Osaka General
143 Medical Center, National Cerebral and Cardiovascular Center Hospital, National Hospital
144 Organization Osaka National Hospital, Osaka Rosai Hospital, Kobe City Medical Center
145 General Hospital, National Hospital Organization Osaka Minami Medical Center, Yodogawa
146 Christian Hospital, and Hoshigaoka Medical Center). All hospitals included the SCAN study
147 function as regional stroke centers. The inclusion criteria were as follows: (1) acute ischemic

148 stroke within 14 days following symptom onset, (2) age ≥ 20 years, and (3) active cancer at
149 stroke onset. Active cancer was defined as a diagnosis of cancer, either treated in the last six
150 months before admission or untreated, or metastatic disease. The SCAN study aimed to enroll
151 approximately 250 patients over a 5-year study period, with a 1-year follow-up from the
152 enrollment date to investigate the prognosis of patients with acute ischemic stroke and active
153 cancer.

154 *Clinical Variables*

155 The following baseline variables were obtained from the SCAN database: age, sex,
156 hypertension, dyslipidemia, diabetes mellitus, smoking, atrial fibrillation, past stroke, time
157 from symptom onset to admission, antithrombotic (antiplatelet and/or anticoagulant)
158 medication before and after stroke onset, stroke subtype, National Institute of Health Stroke
159 Scale (NIHSS), pre-stroke mRS, deep venous thrombosis and/or pulmonary embolism
160 (DVT/PE) complications at stroke onset, infarct pattern of brain imaging, use of
161 recombinant-tissue plasminogen activator (rt-PA), mechanical thrombectomy, and
162 cancer-related data including cancer type, distant metastasis, adenocarcinoma, and cancer
163 treatment (cancer surgery, chemotherapy, and radiotherapy). We also collected the recurrent
164 stroke and major bleeding information during the observation period. Stroke recurrence was
165 defined as a new neurological deficit together with corresponding evidence of acute ischemia
166 or hematoma on brain imaging (computed tomography and/or magnetic resonance imaging).
167 Major bleeding was defined as clinically overt bleeding that was accompanied by one or more
168 of the following: a decrease in hemoglobin levels of at least 2 g/dL or the requirement of a
169 transfusion with at least 2 units of packed red blood cells; symptomatic bleeding requiring
170 immediate treatment that occurred at a critical site, such as intracranial, intraocular, intraspinal,
171 intra-articular, intramuscular with compartment syndrome, pericardial or retroperitoneal; or
172 bleeding that was fatal. Blood samples were collected immediately after admission before any

173 treatment started, and plasma D-dimer and high sensitivity C-reactive protein (hsCRP) levels
174 were quantified.

175 Subtypes of ischemic stroke were classified according to the Trial of Org 10172 in
176 Acute Stroke Treatment (TOAST) criteria: small vessel occlusion, large artery atherosclerosis,
177 cardioembolism, other determined etiology, and stroke of undetermined etiology [24]. All the
178 patients underwent blood tests, 24-hour electrocardiographic monitoring at least 7 days after
179 admission, carotid ultrasonography, and brain imaging (computed tomography and/or
180 magnetic resonance imaging). Transthoracic and transesophageal echocardiography was
181 performed as necessary. We determined that patients had a cryptogenic stroke if the cause
182 could not be determined with any degree of confidence [24]. Patients with no apparent cause of
183 ischemic stroke other than malignancies were categorized as having a cryptogenic stroke.

184 ***Follow Up Duration and Outcomes***

185 The observation period was one year after the diagnosis of ischemic stroke. All the patients
186 were followed-up via telephone or outpatient visits. The incidence of death, stroke recurrence,
187 and major bleeding were investigated.

188 ***Statistical Analyses***

189 Descriptive statistics were presented using the median and interquartile range (IQR) for
190 continuous variables and as proportions and counts for categorical variables.

191 First, we summarized the baseline characteristics of the cohort. Next, we divided the
192 patients into two groups based on the cryptogenic stroke and known etiologies (small vessel
193 occlusion, large artery atherosclerosis, cardioembolism, and other determined etiology) and
194 verified the survival rates against previously reported findings [7,8]. Survival rates for
195 all-cause mortality were calculated using the Kaplan-Meier method. Finally, we estimated
196 hazard ratios (HRs) and 95% confidence intervals (CIs) for mortality using univariate and
197 multivariate Cox proportional hazard models. Based on clinical experience, we selected the

198 following variables as potential confounders: age, sex, hypertension, dyslipidemia, diabetes
199 mellitus, atrial fibrillation, pre-mRS ≤ 2 , NIHSS score, distant metastasis, cryptogenic stroke,
200 recurrent stroke, major bleeding, past stroke, pre-stroke antithrombotic use, pre-stroke cancer
201 treatment status, DVT/PE complications at stroke onset, and plasma D-dimer levels. In the
202 multivariate analysis, we developed two models to identify independent predictors of
203 prognosis: the forced entry method for all potential confounders (Model 1) and the stepwise
204 selection method to address the possibility of multicollinearity (Model 2). Since we were
205 interested in cryptogenic stroke as a prognostic marker for survival, the stroke mechanism was
206 forced to be included in Model 2, and other factors were selected using a stepwise procedure
207 with Akaike's information criterion (AIC) [25]. Recurrent stroke and major bleeding were
208 treated as time-varying variables. Plasma D-dimer levels were divided into quartiles, and the
209 first quartile was used as a reference.

210 The cumulative incidence of recurrent stroke and major bleeding during the
211 observation period was calculated using the Fine and Gray model [26], with death as a
212 competing risk. The incidence was compared with the use of antithrombotic medications.

213 Statistical analysis was performed using the R software (<https://cran.r-project.org/>).
214 The level of significance was set at $P < 0.05$. All tests were two tailed.

215

216 **Results**

217 *Study Population and Characteristics of the Patients according to Stroke Subtypes*

218 A total of 135 patients were included in the analysis. **Table 1** lists the cancer types of the
219 included patients and whether distant metastasis were present. The most common types of
220 cancers were lung (16%), colorectal (14%), pancreatic (13%), prostate (9%), and gastric (8%)
221 cancers. Distant metastasis was observed in 51% (n = 69) of the patients.

222 **Table 2** summarizes the characteristics of the study cohort. Overall, the median (IQR)

223 age was 75 (69–81) years, and 39% of the patients were women. The median (IQR) time from
224 symptom onset to admission was 0 (0–2) days. Antithrombotic medications were used in 30%
225 of the patients before stroke and 82% after ischemic stroke (breakdown of antithrombotic
226 medications after stroke is shown in **Table S1**). Cryptogenic stroke was the most common
227 stroke subtype (48%), and other determined etiology was the least common (7%). The median
228 NIHSS (IQR) score was 4 (2–10). Ten patients (7%) had DVT/PE at stroke onset.
229 Thrombolysis by rt-PA and mechanical thrombectomy were performed in 7% and 10% of the
230 patients, respectively. The frequency of the patients undergoing cancer treatment was 76%, and
231 approximately half of them received chemotherapy. The median (IQR) levels of plasma
232 D-dimer and hsCRP were 3.65 (1.41–11.72) $\mu\text{g/mL}$ and 1.06 (0.18–3.95) mg/dL , respectively.

233 Compared to the patients with known etiologies, those with cryptogenic stroke were
234 more frequent in women, infarcts in multiple vascular territories, DVT/PE complications at
235 stroke onset, and distant metastasis, while less frequent in those with hypertension, atrial
236 fibrillation, past stroke, cancer treatment, and antiplatelet medication after stroke. Pre-stroke
237 functional status was worse in patients with cryptogenic stroke compared with those with
238 known etiologies (pre-mRS [IQR], 1 [0–3] vs. 0 [0–2], $P = 0.039$). The cryptogenic stroke
239 group had higher plasma D-dimer levels (10.35 [3.59–22.38] $\mu\text{g/mL}$ vs. 1.76 [0.83–3.73]
240 $\mu\text{g/mL}$, $P < 0.001$) and serum hsCRP levels (2.50 [0.44–5.97] mg/dL vs. 0.44 [0.12–2.56]
241 mg/dL , $P < 0.001$) compared to the known etiologies group.

242 ***Survival Outcomes and Prognostic Factors***

243 Among the 135 patients enrolled, 133 had completed 1-year follow-up: two cases were
244 censored at the end of the follow-up. The median (IQR) survival time for all patients was 365
245 (71–365) days. The survival rates (95% CI) at 3 and 12 months were 70 (62–78) % and 54 (46–
246 63) %, respectively. **Figure 1** shows the difference in survival rates between patients with
247 cryptogenic stroke and known etiologies. Patients with cryptogenic stroke had shorter survival

248 times than those with known etiologies (113 [43–365] days vs. 365 [204–365] days, $P < 0.001$;
249 HR [95% CI], 3.11 [1.82–5.25]).

250 **Table 3** summarizes the Cox regression analyses. Univariate analysis revealed that
251 hypertension, atrial fibrillation, cryptogenic stroke, NIHSS score, DVT/PE complications at
252 stroke onset, distant metastasis, pre-stroke cancer treatment, recurrent stroke, and plasma
253 D-dimer levels were associated with survival outcomes. Multivariate analysis revealed that
254 DVT/PE complications at stroke onset and distant metastasis were significantly associated
255 with mortality in Model 1, the forced entry method for all potential confounders. In Model 2,
256 which selected variables using a stepwise procedure with AIC, DVT/PE complications at
257 stroke onset, distant metastasis, and plasma D-dimer levels were independent predictors of
258 prognosis. Cryptogenic stroke was associated with outcomes in univariate analysis but not
259 significant in multivariate analysis. These results suggest a strong relationship between cancer
260 progression, the degree of cancer-associated coagulopathy, and prognosis in patients with
261 ischemic stroke and active cancer.

262 ***Recurrent Stroke and Major Bleeding during the Observation Period***

263 The cumulative incidence (95% CI) of recurrent stroke and major bleeding were 10
264 (5–15) % and 7 (3–12) %, respectively. **Figure 2** shows the cumulative incidence of recurrent
265 stroke between the groups treated with and without antithrombotic medications after stroke.
266 The recurrent stroke was significantly lower in the group with antithrombotic agents than in
267 those without (7 [3–13] % vs. 21 [8–39] %, $P = 0.04$; HR [95% CI], 0.32 [0.11–0.97]). **Figure**
268 **3** shows the cumulative incidence of major bleeding between the groups. There was no
269 significant difference in major bleeding between the groups treated with and without
270 antithrombotic medications (8 [1–23] % vs. 6 [3–12] %, $P = 0.86$; HR [95% CI], 0.87 [0.18–
271 4.10]).

272 ***Survival Estimate Using Distant Metastatic Status, Stroke Subtype, and Plasma D-Dimer***

273 **Levels**

274 Our analysis revealed that stroke mechanism, coagulation abnormalities, and cancer
275 progression contributed to predict the prognosis in patients with ischemic stroke and active
276 cancer. To investigate the usefulness of plasma D-dimer levels, we examined the relationship
277 between plasma D-dimer levels and survival outcomes, stratified by distant metastasis and
278 stroke subtypes.

279 **Figure 4** shows the distribution of the plasma D-dimer levels according to distant
280 metastasis and cryptogenic stroke status. Plasma D-dimer levels were significantly higher in
281 patients with metastasis than those with non-metastasis (**Figure 4A**, 8.51 [2.20–20.72] $\mu\text{g/mL}$
282 vs. 1.91 [0.79–6.71] $\mu\text{g/mL}$, $P < 0.001$). As already shown in **Table 2**, patients with
283 cryptogenic stroke had significantly higher plasma D-dimer levels than those with known
284 etiologies (**Figure 4B**, 10.35 [3.59–22.38] $\mu\text{g/mL}$ vs. 1.76 [0.83–3.73] $\mu\text{g/mL}$, $P < 0.001$).

285 **Figure 5A** shows the survival curves based on distant metastatic status and median
286 plasma D-dimer levels of each group. As shown in **Figure 4A**, the median plasma D-dimer
287 levels were 1.91 $\mu\text{g/mL}$ for the group with non-metastasis and 8.51 $\mu\text{g/mL}$ for the group with
288 metastasis; therefore, we divided the patients into four groups based on distant metastasis
289 status and median plasma D-dimer levels. The 1-year survival rates were 12% in patients with
290 distant metastasis and high plasma D-dimer levels and 84% in patients with non-metastasis and
291 low plasma D-dimer levels. **Figure 5B** shows the survival curves based on stroke subtype and
292 median plasma D-dimer levels of each group. As shown in **Figure 4B**, the median plasma
293 D-dimer levels were 1.76 $\mu\text{g/mL}$ for the known etiologies group and 10.35 $\mu\text{g/mL}$ for the
294 cryptogenic stroke group; therefore, we divided the patients into four groups based on the
295 stroke subtype and median plasma D-dimer levels. The 1-year survival rates were 20% in
296 patients with cryptogenic stroke and high plasma D-dimer levels and 81% in patients with
297 known stroke etiologies and low plasma D-dimer levels. These results suggest that plasma

298 D-dimer levels on admission provide relevant information for predicting the prognosis of
299 patients with ischemic stroke and active cancer.

300

301 **Discussion**

302 We investigated the prognosis of patients with ischemic stroke and active cancer using data
303 from the SCAN study, a prospective, multicenter, observational study in Japan. Patients with
304 cryptogenic stroke had shorter survival times than those with known etiologies. Distant
305 metastasis, plasma D-dimer levels, and DVT/PE complications at stroke onset were
306 independently associated with mortality after adjusting for potential confounders. Furthermore,
307 plasma D-dimer levels stratified the prognosis of patients with distant metastasis and
308 cryptogenic stroke. The current study suggests that there is a strong relationship between the
309 degree of cancer-associated coagulopathy and the prognosis of patients with ischemic stroke
310 and active cancer.

311 Previous studies have examined the prognosis of patients with ischemic stroke and
312 active cancer. The median survival of these patients, considering all stroke subtypes, ranged
313 from 84 to 109 days [6,7]. In our study, survival time was favorable compared with that in
314 previous reports. The differences in survival among studies could owe to differences in the
315 patients' backgrounds. For example, the proportion of distant metastasis was 66% in the study
316 by Lee et al., and 69% in the study by Navi et al., and 51% in our study. Additionally,
317 cryptogenic stroke, a predictor of poor outcome in patients with ischemic stroke and active
318 cancer, accounted for 72% in the study by Lee et al., and 51% in the study by Navi et al., and
319 48% in our study. Thus, differences in cancer progression and stroke subtypes may influence
320 patients' survival.

321 In our cohort, patients with cryptogenic stroke had shorter survival times than those
322 with known etiologies. This result confirmed the finding from a previous retrospective study

323 by Navi et al [8]. There are several possible explanations for this finding. First, patients with
324 cryptogenic stroke and active cancer often have cancer-related coagulation abnormalities,
325 resulting in poor outcomes [27]. This is supported by the finding that plasma D-dimer levels
326 were significantly higher in patients with cryptogenic stroke than those with known etiologies
327 [19–21]. Second, distant metastasis was more common in the cryptogenic stroke group, leading
328 to poor prognosis. These backgrounds are associated with high mortality in patients with
329 cryptogenic stroke and active cancer. The current study also demonstrated that patients with
330 cryptogenic stroke had higher serum hsCRP levels than those with known etiologies.
331 Cancer-related chronic inflammation could be associated with cryptogenic stroke and a poor
332 prognosis [28].

333 Cryptogenic stroke has been reported as an independent predictor of mortality in
334 patients with ischemic stroke and active cancer [8]. Other studies have shown plasma d-dimer
335 levels to be also associated with poor prognosis [12,17,18]. Of note, plasma D-dimer levels are
336 reportedly high in patients with cryptogenic stroke and active cancer [19–21]; hence, these
337 findings may reflect underlying coagulation abnormalities. The present study examined the
338 prognostic impact of cryptogenic stroke and plasma D-dimer levels using the multivariate
339 model. Cryptogenic stroke was associated with poor prognosis in univariate analysis but was
340 not significant in multivariate analysis. As mentioned earlier, plasma D-dimer levels were
341 higher in patients with cryptogenic stroke than in those with known etiologies; therefore, the
342 result that cryptogenic stroke was associated with death may be the effect of coagulation
343 abnormalities. Interestingly, among patients with distant metastasis and/or cryptogenic stroke,
344 those with high plasma D-dimer levels had poorer prognosis than those without. This finding
345 supports the notion that the degree of cancer-associated coagulation abnormalities is related to
346 prognosis. In clinical practice, it would be very helpful to use plasma D-dimer levels, in
347 addition to distant metastasis and cryptogenic stroke, to predict the prognosis.

348 Regarding stroke subtypes, this study classified cryptogenic strokes as patients whose
349 cause could not be confidently identified or had no apparent cause other than malignancy.
350 However, the etiologic classification for patients with cancer-associated hypercoagulability is
351 debatable. This is due to the diversity of cancer-associated stroke phenotypes. For example, if
352 marantic endocarditis, also known as non-bacterial endocarditis, is detected by
353 echocardiography in the cancer population, it would be classified as cardioembolism [24]. If
354 blood tests confirm disseminated intravascular coagulation, it will be categorized as another
355 determined etiology [24]. There are also cases of tumors or air embolisms [29,30]. Meanwhile,
356 even if these causes were not found by screening, they may have gone undetected. If blood tests
357 are incomplete, disseminated intravascular coagulation may not be diagnosed. Therefore,
358 consensus about the etiologic classification for patients with cancer-associated
359 hypercoagulability will be needed.

360 Patients with known etiologies and low D-dimer levels had a better prognosis than
361 those with cryptogenic stroke and severe coagulation abnormalities. This means those with
362 clear traditional stroke etiologies are likely cancer-independent strokes and have a much better
363 prognosis than those with cancer-related strokes. This is presumably because cancer-associated
364 coagulation abnormalities do not affect morbidity and mortality. In other words, patients with
365 active cancer just happened to develop an ischemic stroke, and it is unlikely that
366 cancer-associated hypercoagulability is related to the development of strokes. These results can
367 be a message that clinicians should not deny stroke therapy based on a cancer history, where
368 there is no reason to think cancer caused the stroke.

369 Hemorrhagic complications are among the most significant concerns in the
370 antithrombotic treatment of ischemic stroke patients with active cancer [31]. In our analysis,
371 antithrombotic therapy significantly reduced recurrent stroke and did not increase major
372 bleeding. Because the SCAN study was observational, the indication for antithrombotic

373 medications was left to the attending physician's judgment. Therefore, it is likely that
374 antithrombotic treatment was not given to patients at high risk of bleeding. However, our data
375 prove that antithrombotic medications should be given to patients whose physicians determine
376 they can use antithrombotic drugs. Further studies are needed to determine the pros and cons of
377 antithrombotic therapy in stroke patients with active cancer.

378 The strength of this study resides in its prospective and multicenter design. However,
379 this study had several limitations. First, although we tried to enroll as many patients as possible,
380 we could not obtain consent from all the patients to participate in the study. It is possible that
381 consent was not obtained from patients with advanced cancer and a selection bias could exist.
382 Second, this study did not evaluate whether lowering plasma D-dimer levels with
383 antithrombotic therapy improves prognosis. A recent study has reported that decreasing plasma
384 D-dimer levels with antithrombotic use are associated with prognosis [18]. Third, events, such
385 as stroke recurrence and major bleeding, were collected based on the history provided by the
386 patient or family. Thus, the events may have been underestimated if they were not reported by
387 the participants. Lastly, this study was limited to Japanese patients, so our findings may not
388 generalize to other stroke populations.

389 In conclusion, this study analyzed the survival of patients with ischemic stroke and
390 active cancer, using data from the SCAN study. The prognosis of ischemic stroke patients with
391 active cancer varies considerably depending on distant metastasis, venous thromboembolism
392 complications, and coagulation abnormalities. Based on this information, clinicians can decide
393 how to treat patients with ischemic stroke and active cancer.

394

395 **Acknowledgements**

396 We would like to thank all investigators for their efforts in conducting the SCAN study.

397 **Sources of funding**

398 This work was supported by JSPS KAKENHI [grant Number: JP15K08915].

399

400 **Disclosures**

401 Dr. Gon: lecturer fees from Eisai, Kyowa Kirin, and Pfizer unrelated to this study.

402 Dr. Sakaguchi: lecturer fees from Bayer, Chugai, CSL Behring, Daiichi Sankyo, Eisai, Kyowa

403 Kirin, Ono, Otsuka, Takeda, and UCB Japan unrelated to this study.

404 Dr. Yamagami: Grants from Bristol-Myers Squibb and lecturer fees from Bayer,

405 Bristol-Myers Squibb, Daiichi Sankyo, Medtronic, Otsuka, and Stryker unrelated to this

406 study.

407 Dr. Todo: lecturer fees from Amgen, AstraZeneca, Bayer, Bristol-Myers Squibb, Daiichi

408 Sankyo, Kyowa Kirin, Medtronic, Otsuka, Pfizer, Stryker, and Takeda unrelated to this study.

409 The authors declare that they have no conflicts of interest.

410 **References**

- 411 1. Navi BB, Reiner AS, Kamel H, Iadecola C, Okin PM, Elkind MSV, Panageas KS,
412 DeAngelis LM. Risk of Arterial Thromboembolism in Patients With Cancer. *J Am Coll*
413 *Cardiol.* 2017;70:926–938.
- 414 2. Mulder FI, Horváth-Puhó E, van Es N, Pedersen L, Büller HR, Bøtker HE, Sørensen HT.
415 Arterial Thromboembolism in Cancer Patients: A Danish Population-Based Cohort Study.
416 *JACC CardioOncol.* 2021;3:205–218.
- 417 3. Grilz E, Königsbrügge O, Posch F, Schmidinger M, Pirker R, Lang IM, Pabinger I, Ay C.
418 Frequency, risk factors, and impact on mortality of arterial thromboembolism in patients
419 with cancer. *Haematologica.* 2018;103:1549–1556.
- 420 4. Gon Y, Sasaki T, Kawano T, Okazaki S, Todo K, Takeda T, Matsumura Y, Mochizuki H.
421 Impact of stroke on survival in patients with cancer. *Thromb Res.* 2023;222:109–112.
- 422 5. Gon Y, Zha L, Sasaki T, Morishima T, Ohno Y, Mochizuki H, Sobue T, Miyashiro I. Stroke
423 mortality in cancer survivors: A population-based study in Japan. *Thromb Res.*
424 2023;222:140–148.
- 425 6. Lee MJ, Chung JW, Ahn MJ, Kim S, Seok JM, Jang HM, Kim GM, Chung CS, Lee KH,
426 Bang OY. Hypercoagulability and Mortality of Patients with Stroke and Active Cancer:
427 The OASIS-CANCER Study. *J Stroke.* 2017;19:77–87.
- 428 7. Navi BB, Singer S, Merkler AE, Cheng NT, Stone JB, Kamel H, Iadecola C, Elkind MS,
429 DeAngelis LM. Recurrent thromboembolic events after ischemic stroke in patients with
430 cancer. *Neurology.* 2014;83:26–33.
- 431 8. Shin YW, Lee ST, Jung KH, Kim DY, Park CK, Kim TM, Choi SH, Chu K, Lee SK.
432 Predictors of survival for patients with cancer after cryptogenic stroke. *J Neurooncol.*
433 2016;128:277–284.
- 434 9. Zhang YY, Chan DK, Cordato D, Shen Q, Sheng AZ. Stroke risk factor, pattern and

- 435 outcome in patients with cancer. *Acta Neurol Scand.* 2006;114:378–383.
- 436 10. Sorgun MH, Kuzu M, Ozer IS, Yilmaz V, Ulukan C, Cotur Levent H, Tezcan S, Rzayev S,
437 Rawandi A, Bakırarar B, et al. Risk Factors, Biomarkers, Etiology, Outcome and
438 Prognosis of Ischemic Stroke in Cancer Patients. *Asian Pac J Cancer Prev.* 2018;19:649–
439 653.
- 440 11. Seystahl K, Hug A, Weber SJ, Kapitzka S, Gramatzki D, Wanner M, Katan M, Luft AR,
441 Rohrman S, Wegener S, et al. Cancer is associated with inferior outcome in patients with
442 ischemic stroke. *J Neurol.* 2021;268:4190–4202.
- 443 12. Gon Y, Kabata D, Kawano T, Kanki H, Todo K, Sasaki T, Shintani A, Mochizuki H.
444 Hematological Abnormalities and Malnutrition Mediate Pathway between Cancer and
445 Outcomes in Ischemic Stroke Patients. *J Stroke Cerebrovasc Dis.* 2020;29:104943.
- 446 13. Verschoof MA, Groot AE, de Bruijn SFTM, Roozenbeek B, van der Worp HB, Dippel
447 DWJ, Emmer BJ, Roosendaal SD, Majoie CBLM, Roos YBWEM, et al. Clinical Outcome
448 After Endovascular Treatment in Patients With Active Cancer and Ischemic Stroke: A MR
449 CLEAN Registry Substudy. *Neurology.* 2022;98:e993-e1001.
- 450 14. Tanimura J, Yamamoto T, Hashimoto T. Clinical features and prognostic factors in
451 patients with cancer-associated multiple ischemic stroke: A retrospective observational
452 study. *J Stroke Cerebrovasc Dis.* 2022; 31;106813.
453 <https://doi.org/10.1016/j.jstrokecerebrovasdis.2022.106813>
- 454 15. Salazar-Camelo RA, Moreno-Vargas EA, Cardona AF, Bayona-Ortiz HF. Ischemic stroke:
455 A paradoxical manifestation of cancer. *Crit Rev Oncol Hematol.* 2021;157:103181.
- 456 16. Navi BB, Singer S, Merkler AE, Cheng NT, Stone JB, Kamel H, Iadecola C, Elkind MS,
457 DeAngelis LM. Cryptogenic subtype predicts reduced survival among cancer patients with
458 ischemic stroke. *Stroke.* 2014;45:2292–2297.
- 459 17. Nam KW, Kim CK, Kim TJ, An SJ, Oh K, Mo H, Kang MK, Han MK, Demchuk AM, Ko

- 460 SB, et al. Predictors of 30-day mortality and the risk of recurrent systemic
461 thromboembolism in cancer patients suffering acute ischemic stroke. *PLoS One*.
462 2017;12:e0172793.
- 463 18. Nakajima S, Kawano H, Yamashiro K, Tanaka R, Kameda T, Kurita N, Hira K, Miyamoto
464 N, Ueno Y, Watanabe M, et al. Post-Treatment Plasma D-Dimer Levels Are Associated
465 With Short-Term Outcomes in Patients With Cancer-Associated Stroke. *Front Neurol*.
466 2022;13:868137.
- 467 19. Gon Y, Okazaki S, Terasaki Y, Sasaki T, Yoshimine T, Sakaguchi M, Mochizuki H.
468 Characteristics of cryptogenic stroke in cancer patients. *Ann Clin Transl Neurol*.
469 2016;3:280–287.
- 470 20. Schwarzbach CJ, Schaefer A, Ebert A, Held V, Bolognese M, Kablau M, Hennerici MG,
471 Fatar M. Stroke and cancer: the importance of cancer-associated hypercoagulation as a
472 possible stroke etiology. *Stroke*. 2012;43:3029–3034.
- 473 21. Kim SG, Hong JM, Kim HY, Lee J, Chung PW, Park KY, Kim GM, Lee KH, Chung CS,
474 Bang OY. Ischemic stroke in cancer patients with and without conventional mechanisms: a
475 multicenter study in Korea. *Stroke*. 2010;41:798–801.
- 476 22. Ay C, Dunkler D, Pirker R, Thaler J, Quechenberger P, Wagner O, Zielinski C, Pabinger I.
477 High D-dimer levels are associated with poor prognosis in cancer patients. *Haematologica*.
478 2012;97:1158–64.
- 479 23. Dirix LY, Salgado R, Weytjens R, Colpaert C, Benoy I, Huget P, van Dam P, Prové A,
480 Lemmens J, Vermeulen P. Plasma fibrin D-dimer levels correlate with tumour volume,
481 progression rate and survival in patients with metastatic breast cancer. *Br J Cancer*.
482 2002;86:389–95.
- 483 24. Adams HP Jr, Bendixen BH, Kappelle LJ, Biller J, Love BB, Gordon DL, Marsh EE 3rd.
484 Classification of subtypes of acute ischemic stroke. Definitions for use in a multicenter

- 485 clinical trial. TOAST. Trial of Org 10172 in Acute Stroke Treatment. *Stroke*. 1993;24:35–
486 41.
- 487 25. Chowdhury MZI, Turin TC. Variable selection strategies and its importance in clinical
488 prediction modelling. *Fam Med Community Health*. 2020;8(1):e000262.
- 489 26. Fine JP, Gray RJ. A proportional hazard model for the subdistribution of a competing risk.
490 *J Am Stat Assoc*. 1999;94:496–509.
- 491 27. Caine GJ, Stonelake PS, Lip GY, Kehoe ST. The hypercoagulable state of malignancy:
492 pathogenesis and current debate. *Neoplasia*. 2002;4:465–73.
- 493 28. Coussens LM, Werb Z. Inflammation and cancer. *Nature*. 2002;420:860–867.
- 494 29. Takasugi J, Sakaguchi M, Oyama N, Gon Y, Terasaki Y, Sasaki T, Nakahara S, Ohshima K,
495 Hori Y, Morii E, Mochizuki H. Recurrent Stroke Due to Metastatic Pulmonary Tumor
496 Emboli as an Important Clinical Entity. *J Stroke Cerebrovasc Dis*. 2017;26:e108–e110.
- 497 30. Miyamoto S, Mashimo Y, Horimatsu T, Ezoe Y, Morita S, Muto M, Chiba T. Cerebral air
498 embolism caused by chemoradiotherapy for esophageal cancer. *J Clin Oncol*.
499 2012;30:e237–8.
- 500 31. Navi BB, Kasner SE, Elkind MSV, Cushman M, Bang OY, DeAngelis LM. Cancer and
501 Embolic Stroke of Undetermined Source. *Stroke*. 2021;52:1121–1130.
- 502

503 **Tables**

504 **Table 1.** Index of cancer

Site of cancer	Total (N = 135)	Distant metastasis (N = 69)
Lung	16% (22)	68% (15)
Colorectal	14% (19)	47% (9)
Pancreas	13% (18)	94% (17)
Prostate	9% (12)	33% (4)
Gastric	8% (11)	45% (5)
Breast	7% (10)	30% (3)
Lip, oral, and pharynx	7% (9)	67% (6)
Esophagus	4% (6)	17% (1)
Bladder	4% (6)	33% (2)
Liver	4% (5)	20% (1)
Gallbladder	3% (4)	75% (3)
Malignant lymphoma	2% (3)	67% (2)
Other*	7% (10)	14% (1) [†]

505 NA, not assigned. Data are presented as % (n).

506 * Include uterus (n = 2), myeloproliferative disorder (n = 2), ovarian (n = 1), renal (n = 1),

507 thyroid (n = 1), leukemia (n = 1), vulvar (n = 1), and soft tissue malignancies (n = 1).

508 [†] The percentage of the seven solid tumors is shown.

509

510 **Table 2.** Characteristics of the patients according to stroke subtypes

Variables	Total (N = 135)	Cryptogenic stroke (N = 65)	Known etiologies (N = 70)	P value[‡]
Age, years, median (IQR)	75 (69–81)	75 (68–82)	75 (70–80)	0.87
Women	39% (52)	48% (31)	30% (21)	0.035
Hypertension	62% (83)	52% (34)	70% (49)	0.035
Dyslipidemia	34% (46)	31% (20)	37% (26)	0.43
Diabetes mellitus	22% (30)	22% (14)	23% (16)	0.85
Smoking	19% (25)	15% (10)	21% (15)	0.37
Atrial fibrillation	22% (30)	5% (3)	37% (26)	<0.001
Past stroke	19% (25)	11% (7)	26% (18)	0.026
Time from symptom onset to admission, days, median (IQR)	0 (0–2)	0 (0–2)	0 (0–1)	0.39
Pre-stroke Antithrombotics use	30% (41)	25% (16)	36% (25)	0.16
Antiplatelets	21% (28)	18% (12)	23% (16)	0.24
Anticoagulants	13% (17)	11% (7)	14% (10)	0.54
Stroke subtypes				
SVO	8% (11)			
LAA	15% (20)			
CES	22% (29)			
Other	7% (10)			

	Cryptogenic	48% (65)			
	NIHSS, median (IQR)	4 (2–10)	5 (2–10)	3 (2–10)	0.47
	Pre-mRS, median (IQR)	0 (0–2)	1 (0–3)	0 (0–2)	0.039
	Infarcts in multivascular territories	45% (61)	64% (41)	29% (20)	<0.001
	DVT/PE Complications at stroke onset	7% (10)	14% (9)	1% (1)	0.006
	Rt-PA	7% (9)	8% (5)	6% (4)	0.65
	MT	10% (14)	8% (5)	13% (9)	0.33
	Distant metastasis	51% (69)	65% (42)	39% (27)	0.002
	Adenocarcinoma*	56% (55)	59% (27)	53% (28)	0.56
	Pre-stroke Cancer treatment	76% (103)	67% (43)	86% (60)	0.011
	Cancer surgery	28% (38)	17% (11)	39% (27)	0.006
	Chemotherapy	47% (64)	52% (33)	44% (31)	0.40
	Radiotherapy	11% (15)	9% (6)	13% (9)	0.52
	Antithrombotics after stroke onset	82% (111)	85% (55)	80% (56)	0.48
	Antiplatelets	32% (43)	17% (11)	45% (32)	<0.001
	Anticoagulants	68% (92)	77% (50)	60% (42)	0.11
	Recurrent stroke	10% (13)	12% (8)	7% (5)	0.31
	Major bleeding	7% (10)	11% (7)	4% (3)	0.15
	D-dimer, µg/mL, median (IQR)[†]	3.65 (1.41–11.72)	10.35 (3.59–22.38)	1.76 (0.83–3.73)	<0.001

High sensitivity C-reactive protein, mg/dL, median (IQR)	1.06 (0.18–3.95)	2.50 (0.44–5.97)	0.44 (0.12–2.56)	<0.001
---	------------------	------------------	------------------	--------

511 Data are presented as % (N) or median and interquartile ranges (IQR).

512 * Pathological findings were not available for 36 patients (19 with cryptogenic stroke and 17
513 with known etiologies); therefore, the results were analyzed for 99 patients.

514 † Plasma D-dimer levels were not available in three patients (one with cryptogenic stroke and
515 two with known etiologies).

516 ‡ Comparisons between the patients with cryptogenic stroke and known etiologies.

517 IQR, interquartile ranges; SVO, small vessel occlusion; LAA, large artery atherosclerosis; CES,
518 cardioembolism; NIHSS, National Institute of Health Stroke Scale; mRS, modified Rankin
519 Scale; DVT, deep venous thrombosis; PE, pulmonary embolism; Rt-PA, Recombinant tissue
520 plasminogen activator; MT, mechanical thrombectomy.

521

522 **Table 3. Hazard ratios for mortality using Cox regression model (univariate and**
 523 **multivariate)**

	Univariate	Multivariate	
		Model 1	Model 2
Variables	HR (95% CI)	HR (95% CI)	HR (95% CI)
Age, per 1-year increase	1.00 (0.98–1.02)	1.00 (0.98–1.03)	–
Women	0.93 (0.56–1.57)	0.81 (0.40–1.64)	–
Hypertension	0.49 (0.30–0.81) [†]	0.65 (0.30–1.43)	0.57 (0.31–1.04)
Dyslipidemia	0.75 (0.44–1.29)	0.68 (0.31–1.49)	–
Diabetes mellitus	1.29 (0.73–2.28)	1.34 (0.67–2.70)	–
Atrial fibrillation	0.45 (0.21–0.94) [†]	0.62 (0.23–1.70)	–
Past stroke	0.46 (0.21–1.01)	0.60 (0.23–1.52)	–
Pre-stroke antithrombotic use	0.67 (0.37–1.19)	0.56 (0.27–1.16)	0.55 (0.28–1.06)
Cryptogenic stroke	3.11 (1.82–5.32) [‡]	0.72 (0.32–1.62)	0.87 (0.44–1.68)
NIHSS, per 1-score increase	1.03 (1.00–1.06) [†]	1.01 (0.96–1.07)	–
Pre-mRS ≤2	0.72 (0.40–1.23)	0.83 (0.41–1.70)	–
DVT/PE Complications	4.82 (2.33–9.98) [‡]	3.16 (1.26–7.95)*	3.16 (1.45–6.85) [†]
Distant metastasis	5.50 (3.02–10.00) [‡]	3.22 (1.54–6.74)*	3.24 (1.56–6.73) [†]
Pre-stroke Cancer treatment	0.50 (0.29–0.86)*	0.51 (0.22–1.18)	0.57 (0.25–1.30)
Recurrent Stroke	3.31 (1.69–6.48) [‡]	1.94 (0.52–7.22)	1.86 (0.53–6.54)
Major bleeding	2.33 (0.93–5.81)	1.60 (0.27–9.65)	–
Plasma D-dimer levels			
<25 th	(Ref)	(Ref)	(Ref)
≥25 th and <50 th	4.24 (1.39–12.90)*	1.72 (0.44–6.63)	2.12 (0.57–7.83)
≥50 th and <75 th	7.56 (2.59–22.10) [‡]	3.31 (0.89–12.37)	3.55 (1.07–11.75)*
≥75 th	11.22 (3.86–32.60) [‡]	3.16 (0.79–12.58)	3.90 (1.17–12.99)*

524 Model 1 was developed using the forced entry method for all potential confounders. In Model
525 2, cryptogenic stroke was forced in and the other factors were selected using a stepwise
526 method with Akaike's information criterion.

527 * $P < 0.05$; † $P < 0.01$; ‡ $P < 0.001$

528 HR, hazard ratio; CI, confidence interval; NIHSS, National Institute of Health Stroke Scale;
529 mRS, modified Rankin Scale; DVT, deep venous thrombosis; PE, pulmonary embolism

530 **Figure Legends**

531 **Figure 1.** Kaplan-Meier survival curves by stroke mechanism

532

533 **Figure 2.** Cumulative incidence of recurrent stroke by antithrombotic agents use

534 HR, hazard ratio; CI, confidence interval

535

536 **Figure 3.** Cumulative incidence of major bleeding by antithrombotic agent use

537 HR, hazard ratio; CI, confidence interval

538

539 **Figure 4.** The distribution of plasma D-dimer levels by (A) distant metastasis and (B) stroke
540 subtypes

541 (A) The median plasma D-dimer levels for patients with metastasis was 8.51 $\mu\text{g/mL}$
542 (interquartile range of 2.20–20.72 $\mu\text{g/mL}$), and that for patients with non-metastasis was 1.91
543 (interquartile range of 0.79–6.71 $\mu\text{g/mL}$). (B) The median plasma D-dimer levels for patients
544 with cryptogenic stroke was 10.35 $\mu\text{g/mL}$ (interquartile range of 3.59–22.38 $\mu\text{g/mL}$), and that
545 for patients with known etiologies was 1.76 (interquartile range of 0.83–3.73 $\mu\text{g/mL}$).

546

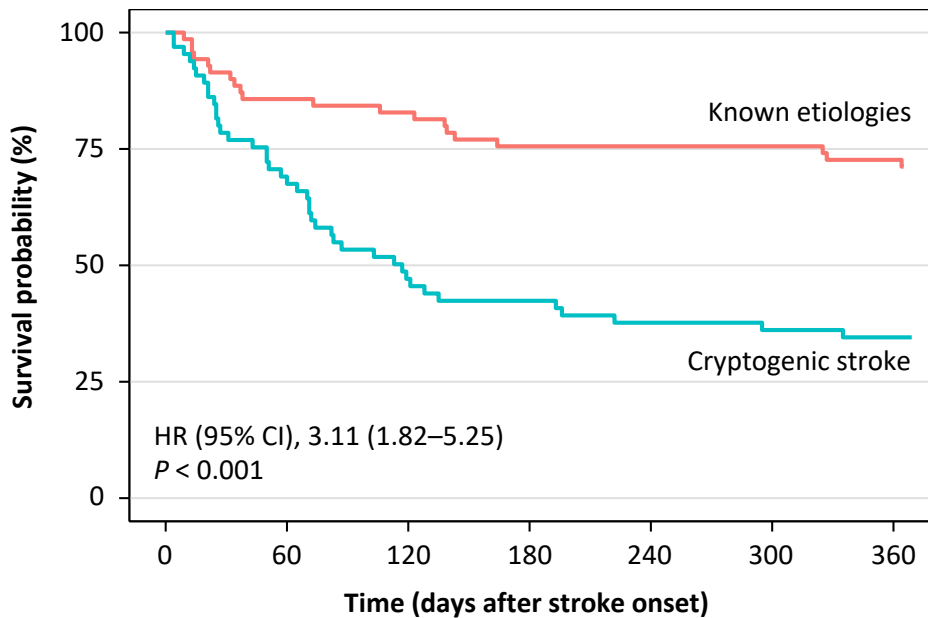
547 **Figure 5.** Kaplan-Meier survival curves stratified by (A) distant metastasis and (B) stroke
548 subtype based on quartiles of plasma D-dimer levels

549 We analyzed the survival rates of 132 patients since the plasma D-dimer levels on admission
550 were not available for three patients. (A) The median plasma D-dimer levels were 1.91 $\mu\text{g/mL}$
551 for the group with non-metastasis and 8.51 $\mu\text{g/mL}$ for the group with metastasis; therefore, we
552 divided the patients into four groups based on distant metastasis status and median plasma
553 D-dimer levels. (B) The median plasma D-dimer levels were 1.76 $\mu\text{g/mL}$ for the known
554 etiologies group and 10.35 $\mu\text{g/mL}$ for the cryptogenic stroke group; therefore, we divided the

555 patients into four groups based on stroke subtype and median plasma D-dimer levels. Plasma
556 D-dimer levels provide additional prognostic information for patients with distant metastasis
557 and stroke subtype.

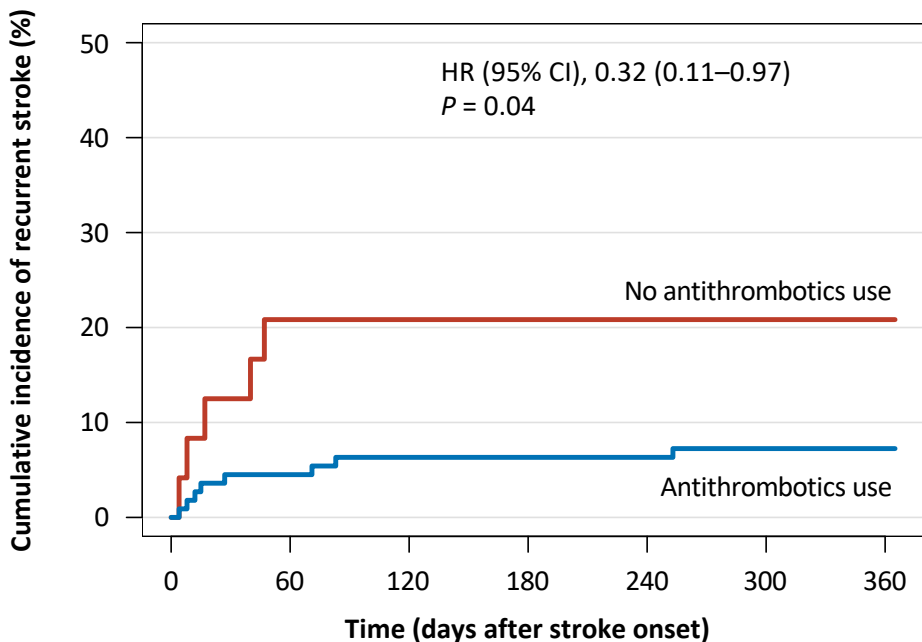
558

559



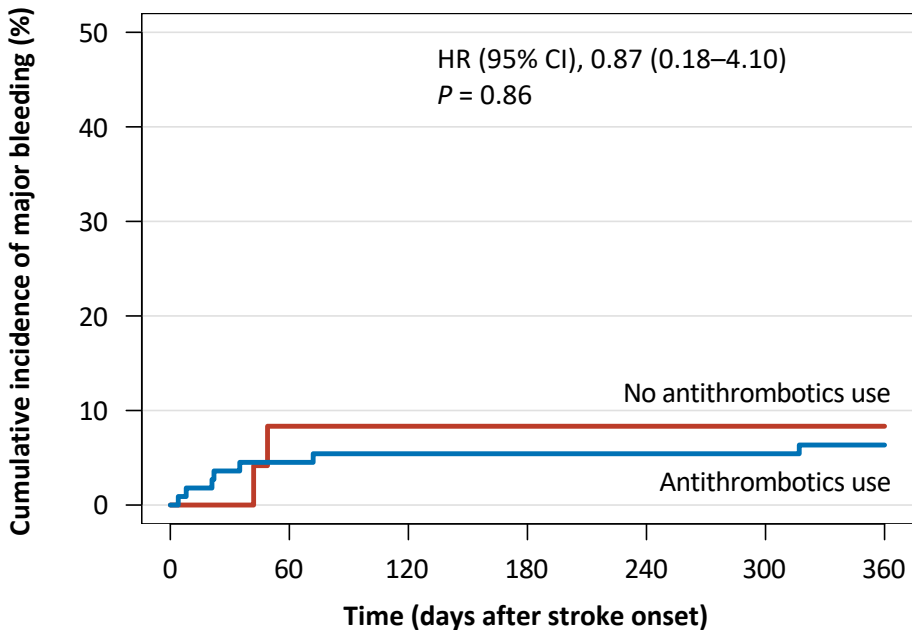
No. at risk

Known etiologies	70	60	57	52	52	52	50
Cryptogenic stroke	65	44	30	27	24	23	22



No. at risk

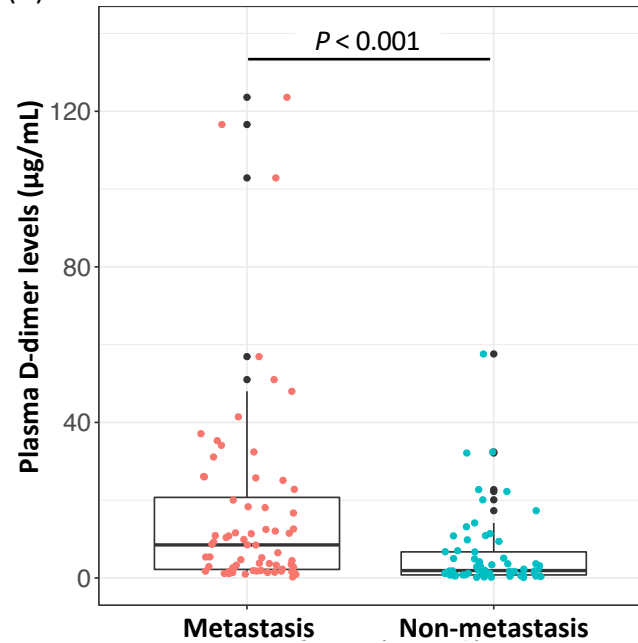
No antithrombotics use	24	11	9	9	8	7	6
Antithrombotics use	111	87	75	69	67	66	64



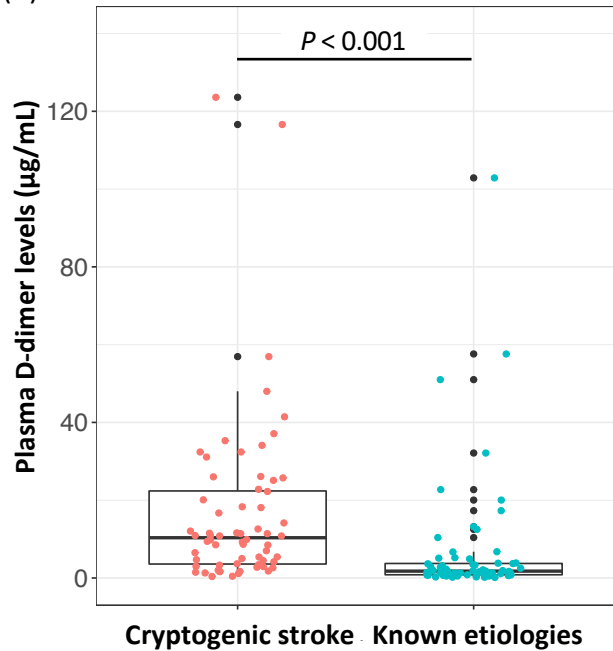
No. at risk

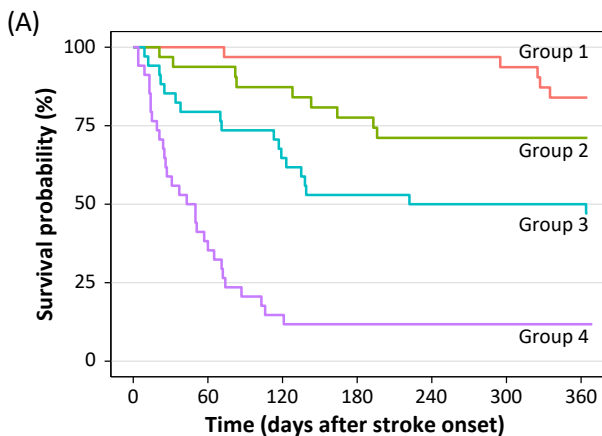
No antithrombotics use	24	11	9	9	8	7	6
Antithrombotics use	111	87	75	69	67	66	64

(A)



(B)

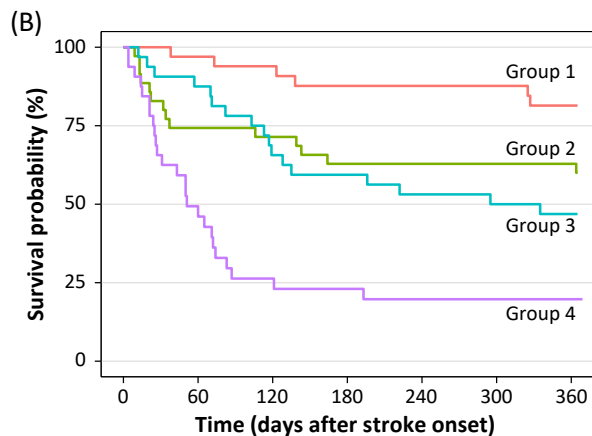




No. at risk

Group 1	32	32	30	30	30	29	26
Group 2	32	29	27	24	22	22	22
Group 3	34	27	22	18	17	17	17
Group 4	34	13	5	4	4	4	4

- Group 1: Metastasis (-) and D-dimer <math>< 1.91 \mu\text{g/mL}</math>
- Group 2: Metastasis (-) and D-dimer $\geq 1.91 \mu\text{g/mL}$
- Group 3: Metastasis (+) and D-dimer $< 8.51 \mu\text{g/mL}$
- Group 4: Metastasis (+) and D-dimer $\geq 8.51 \mu\text{g/mL}$



No. at risk

Group 1	33	32	30	28	28	28	26
Group 2	35	26	25	22	22	22	22
Group 3	32	28	21	19	17	16	15
Group 4	32	15	8	7	6	6	6

- Group 1: Known etiologies and D-dimer $< 1.76 \mu\text{g/mL}$
- Group 2: Known etiologies and D-dimer $\geq 1.76 \mu\text{g/mL}$
- Group 3: Cryptogenic stroke and D-dimer $< 10.35 \mu\text{g/mL}$
- Group 4: Cryptogenic stroke and D-dimer $\geq 10.35 \mu\text{g/mL}$