

1 **Remote Monitoring of AF Recurrence using mHealth Technology (REMOTE-AF)**

2 Adasuriya G¹, Barsky A^{3,4}, Kralj-Hans I¹, Mohan S¹, Gill S³, Chen Z¹, Jarman J¹, Jones D¹,
3 Valli H¹, Gkoutos G^{3,4}, Markides V¹, Hussain W¹, Wong T^{1,2,6}, Kotecha, D^{3,5}, Haldar S¹, on
4 behalf of the REMOTE-AF and CASA-AF trial groups, the cardA/c team and the
5 BigData@Heart Consortium*

6

7 1. Heart Rhythm Centre, Royal Brompton and Harefield Hospitals, Guy's and St
8 Thomas' NHS Foundation Trust, London, UK.

9 2. National Heart and Lung Institute, Imperial College London, London, United
10 Kingdom

11 3. Health Data Research UK Midlands, University Hospitals Birmingham NHS
12 Foundation Trust, Birmingham, UK

13 4. Institute of Cancer and Genomic Sciences, University of Birmingham, Birmingham,
14 UK

15 5. Institute of Cardiovascular Sciences, University of Birmingham, Birmingham, UK.

16 6. Kings College Hospital, London, UK.

17 ***See acknowledgements.**

18

19 **Short Title:**

20 REMOTE-AF

21

22 **Corresponding Author:**

23 Dr Shouvik Haldar

24 Harefield Hospital

25 Hill End Road

26 Uxbridge, UB9 6JH

27 Email: s.haldar@rbht.nhs.uk

28

29 **Study Registration:**

30 ClinicalTrials.gov Identifier: NCT05037136

31 <https://clinicaltrials.gov/ct2/show/NCT05037136>

32

33 **Total Word Count (Excluding Tables and Figures)**

34 4605

35

36

37

38

39

40

41

42

43

44

45

46

47

48

49

50

51 **Abstract**

52 **Background:**

53 Atrial Fibrillation (AF) detection tools have rapidly developed over the last decade alongside
54 the evolution of mobile health (mHealth) monitoring. mHealth wearable technologies have
55 been hypothesised to be a potential non-invasive and near continuous modality for long term
56 detection and monitoring of atrial arrhythmias. We conducted a proof-of-concept study to
57 evaluate changes in heart rate obtained from a consumer wearable device and compare
58 against implanted loop recorder (ILR)-detected recurrence of AF and atrial tachycardia (AT)
59 after AF ablation.

60

61 **Methods:**

62 REMOTE-AF (Remote Monitoring of AF Recurrence Using mHealth Technology;
63 NCT05037136) was a prospectively designed sub study of the CASA-AF randomised
64 controlled trial (NCT04280042). Participants without a permanent pacemaker had an ILR
65 implanted at their index ablation procedure (catheter vs thoracoscopic) for longstanding
66 persistent AF. Heart rate (HR) and step count were continuously monitored using a wrist-
67 worn wearable device connected to a smartphone. Photoplethysmography (PPG) recorded
68 HR data was pre-processed with noise filtration and episodes at 1 -minute intervals over 30
69 minutes of HR elevations (Z -score = 2) were compared to corresponding ILR data.
70 Arrhythmias detected by ILR were validated by an independent cardiac physiologist. The AF
71 Effect on Quality of Life (AFEQT) questionnaire was completed by participants at baseline
72 and at the conclusion of the study.

73

74

75

76 **Results:**

77 Thirty-five patients were enrolled, with mean age 70.3 +/- 6.8 yrs, 12 (34%) women, and
78 median follow-up 10 months (IQR 8-12 months). ILR analysis revealed 17 out of 35 patients
79 (49%) had recurrence of AF/AT. Compared with ILR recurrence, wearable-derived
80 elevations in HR \geq 110 beats per minute had a sensitivity of 95.3%, specificity 54.1%,
81 positive predictive value (PPV) 15.8%, negative predictive value (NPV) 99.2% and overall
82 accuracy 57.4%. With PPG recorded HR elevation spikes (non-exercise related), the
83 sensitivity was 87.5%, specificity 62.2%, PPV 39.2%, NPV 92.3% and overall accuracy
84 64.0% in the entire patient cohort. In the AF/AT recurrence only group, sensitivity was
85 87.6%, specificity 68.3%, PPV 53.6%, NPV 93.0% and overall accuracy 75.0%.

86

87 **Conclusion:**

88 Consumer wearable devices have the potential to contribute to arrhythmia detection after AF
89 ablation, but further work is needed to improve and validate new composite detection
90 algorithms.

91

92 **Non Standard Abbreviations and Acronyms:**

93

94 AF – atrial fibrillation

95 AFEQT – atrial fibrillation effect on quality of life

96 AI – artificial intelligence

97 API – application programming interface

98 AT – atrial tachycardia

99 AWS – amazon web services

100 EHRA – european heart rhythm association

101 ESC – european society of cardiology

102 EGM - electrogram

- 103 HCP – healthcare professional
- 104 HR – heart rate
- 105 HRS – heart rhythm society
- 106 HRV – heart rate variability
- 107 ILR – implantable loop recorder
- 108 IQR – interquartile range
- 109 LSPAF – long standing persistent atrial fibrillation
- 110 mHealth – mobile health
- 111 NICE – national institute for health and care excellence
- 112 NPV – negative predictive value
- 113 PHE – public health england
- 114 PPG - photoplethysmography
- 115 PPV – positive predictive value
- 116 RADAR-base – remote assessment of disease and relapses
- 117 SD – standard deviation
- 118
- 119
- 120
- 121
- 122
- 123
- 124
- 125
- 126
- 127
- 128

129 **Clinical Perspectives**

130 **What is New?**

- 131 • We have utilised a new composite of data obtained from wearable devices in a
132 predominantly older cohort of patients > 65 years old to detect AF/AT recurrence in a
133 long-standing persistent AF (LSPAF) patient population who have undergone AF
134 ablation.
- 135 • We introduce a novel concept of the ‘spike score’, defined as the rate of change in HR
136 over a consecutive two-minute period to detect AF/AT recurrence.
- 137 • This is the first study to have achieved this in a post AF ablation cohort of LSPAF
138 compared to the gold standard ILR.

139

140 **Clinical Implications**

- 141 • The use of wearable devices to look for recurrence of atrial arrhythmias in post ablation
142 cohorts may enable a more rapid time to detection for more timely interventions.
- 143 • Data composites recorded from wearables may be used alongside the PPG waveform
144 to further improve accuracy in detecting atrial arrhythmias.
- 145 • AF/AT recurrence detected via wearable devices and associated smart mobile
146 applications can encourage risk factor modification through lifestyle interventions and
147 improve health literacy.

148

149

150

151

152

153

154 **Introduction**

155 Atrial Fibrillation (AF) is one of the leading causes of cardiovascular morbidity and
156 mortality, increasing the risk of thromboembolism, heart failure and confers a five times
157 increased risk of stroke.¹ Over 37 million people globally have a diagnosis of AF with its
158 prevalence expected to double by 2060 leading to a significant economic burden.² Given the
159 anticipated increasing health burden of AF, it is a public health priority to identify patients
160 with AF and those with atrial arrhythmia recurrence post intervention.³ The European Society
161 of Cardiology (ESC) AF 2020 guidelines advocate for an integrated care model to be utilised
162 in the diagnosis and management of AF.¹ A key component of this model requires the use of
163 digital technology and mobile health (mHealth) solutions, to support both health care
164 professionals (HCPs) and patients in the comprehensive and personalised management of
165 health conditions.⁴

166

167 Modern and technologically advanced mHealth devices, specifically wearables, have
168 emerged as a new-age, ubiquitous and increasingly accurate solution to monitor
169 cardiovascular biometrics.⁵ However, there is insufficient evidence to demonstrate their
170 utility in current clinical practice. Many published studies lack quality control and are
171 suboptimal in their design, exposing high risk for both selection and publication bias.⁶
172 Nonetheless, this shift from physician to patient-driven monitoring using data from
173 personable wearable devices demonstrates potential and provides a unique opportunity to
174 identify clinically significant arrhythmias in post intervention patient cohorts. Many of these
175 wearable devices utilise photoplethysmography (PPG) to monitor heart rate and
176 accelerometers to assist with signal processing to filter noise artefact. PPG leverages an
177 optical technique to passively detect pulsatile volumetric changes in blood volume within the
178 peripheral microcirculation to derive a waveform which correlates with the cardiac cycle.^{7,8}

179 Hence, artificial intelligence (AI) systems have been programmed into wearable devices to
180 accurately predict and detect atrial arrhythmias from PPG waveforms.⁹

181

182 In August 2020, the Heart Rhythm Society (HRS) in conjunction with the European Heart
183 Rhythm Association (EHRA) recognised the potential in the use of mHealth devices in
184 cardiovascular disease evaluation and designated it an important frontier in arrhythmia
185 management.¹⁰ In addition, the European Society of Cardiology (ESC) has led the way in
186 incorporating the use of single lead ECG diagnosis of AF from mHealth devices into their
187 2020 guidelines for diagnosis and management of AF.¹ However, the National Institute of
188 Clinical Excellence (NICE) in the United Kingdom has not yet recommended the use of
189 wearables in their recent AF diagnosis and management guideline (NG196) despite Public
190 Health England (PHE) sponsoring initiatives to promote the use of wearable technologies.¹¹

191

192 A multitude of research studies have assessed the ability of PPG to screen for asymptomatic
193 or index AF, however there is a paucity of data identifying recurrence of AF post rhythm
194 control intervention. Our study sought to evaluate the correlation between a novel composite
195 of wearable device recorded data with ILR (Reveal LINQ™) detected AF/AT recurrence in a
196 cohort of patients who had undergone an AF ablation procedure for LSPAF.

197

198 **Methods:**

199 *Study Design*

200 The REMOTE-AF study is a single arm, dual-centre, clinical study (NCT05037136)
201 exploring the validity of PPG recorded heart rate data being used in combination with
202 accelerometer derived step count data to predict the recurrence of atrial arrhythmias in a post
203 ablation patient population. We labelled this combination as non-exercise related elevations

204 in HR, defined as a step count < 500 over a continuous 30-minute period. The literature does
205 not define ‘non-exercise’ in relation to step count, however a previous study accepted 100
206 steps per minute as ‘moderate intensity’ exercise and 2500 per day as a sedentary lifestyle.¹²
207 The study was approved by the UK NRES ethical review board (20/NI/0089). Participants
208 were recruited from the Long Term Outcomes in CASA-AF study (RfPB NIHR200595,
209 ClinicalTrials.gov: NCT04280042) (Figure 1).¹³ This was an extension of the CASA-AF trial,
210 where 120 adults with symptomatic LSPAF, naïve to previous interventions, EHRA symptom
211 score > 2 and left ventricular ejection fraction ≥ 40 were recruited between September 2015
212 and June 2018 and randomised to receive either radiofrequency catheter or thoracoscopic
213 surgical ablation for LSPAF. At the index procedure patients had an ILR (Reveal LINQ™)
214 implanted which provided continuous cardiac monitoring with CARELINK remote
215 monitoring to assess arrhythmia recurrence over an initial 12 month follow up period which
216 was subsequently extended to 36 months.¹⁴ The ILR had validated detection algorithm for
217 AF/AT.¹⁵

218

219 *Study Participants*

220 We remotely recruited thirty-five patients, and all provided informed consent. Six eligible
221 participants who met the inclusion criteria (Table 1) declined to take part. Thirty-three
222 patients had ILRs in situ; two patients had dual chamber pacemakers instead of ILRs. Each
223 participant was fitted with a wearable device (Fitbit Charge 2) and provided with a
224 smartphone (Samsung A2) at least 21 months after their index procedure. The remote
225 assessment of disease and relapse (RADAR-base) data collection software and Fitbit mobile
226 application was pre-installed onto the smartphone to allow seamless integration with the Fitbit
227 Charge 2 device sensors. The RADAR-base platform streamed data from the wearable,
228 mobile application and smartphone to a central location.¹⁶ This platform was installed on a

229 virtual machine hosted on Amazon Web Services (AWS) in the AWS Europe (London)
230 region. Researchers were granted access to the Fitbit intraday developer application which
231 allowed automated data collection for registered participants through the RADAR-base
232 platform.

233

234 The A MEMS 3-axis accelerometer sensor enabled tracking of motion patterns and physical
235 activity whilst the optical wrist-based PPG sensor allowed tracking of heart rate. Participants
236 were encouraged to wear the wearable continuously, removing only during charging and
237 exposure to water, and to connect the Bluetooth enabled smartphone to the internet at least
238 once a day to allow synchronisation of data with the RADAR-base servers. At weekly
239 intervals, participants were reminded via text message to synchronise data if uploads had not
240 occurred and ad-hoc virtual meetings allowed troubleshooting of technical aspects.

241 Participants were asked to report any adverse effects (skin irritation, health anxiety or stress)
242 related to the use of the wearable. Data was not collected beyond 31st January 2022.

243

244 *Data Analysis*

245 Heart rate and step count data recorded by the wearable were transmitted to the smartphone
246 mobile application via Bluetooth. PPG recorded HR data underwent signal processing and
247 was filtered for motion artefact using two accelerometer sensors. The RADAR-base
248 application was programmed to allow access to the Fitbit developer intraday application and
249 subsequently passively collected data and synchronised directly to a secure, encrypted cloud-
250 based web server. At the conclusion of the study, data was downloaded from the cloud server
251 onto a local server for analysis. The data included heart rate and step count time series
252 gathered from wearable devices and pooled at one-minute intervals. Mean heart rate data
253 was calculated for each individual participant at one-minute intervals over the duration of

254 follow up. We developed a method to detect sequences potentially suggestive of atrial
255 arrhythmia recurrence for each patient at thirty-minute overlapping intervals where heart rate
256 was at least two standard deviations (Z score ≥ 2) above their mean for at least twenty
257 minutes and later excluded those that were exercise related. We extracted all of the available
258 tagged thirty-minute sequences for each patient (a total of 3208 sequences across our cohort)
259 and associated within these sequences heart-rate data with step data counterparts at the same
260 time points. Sequences were kept only where heart rate and step-count were both available
261 for the duration of the thirty-minute window. Each of these sequences were then stratified
262 into subcategories where corresponding step count values were denoted at 500 step intervals,
263 with further sub categorisation based on heart rate delta change. We used a simple yet reliable
264 method to identify time points where a participant's HR spiked. Across each sequence, we
265 searched for the greatest increase in HR across a two-minute interval and recorded the size of
266 that increase (in BPM). We termed this novel composite the "spike score". To compare
267 across patients, we computed the normalised spike score (or spike z-score), which is this
268 figure divided by the standard deviation of the patient's heart rate. We also computed
269 the normalised downward spike score for each sequence, which is the largest two-
270 minute decrease in a patient's heart rate that occurred after the upward spike. Normalised
271 spike scores ≥ 0.75 were taken to be indicators of sudden and significant heart rate elevation.
272 Each data sequence within each subcategory was compared to ILR data to denote if
273 recurrence of an atrial arrhythmia had occurred.

274

275 For our analysis, a positive finding was recorded when our novel composite method for
276 AF/AT recurrence correlated with ILR detected electrogram (EGM) episodes showing
277 arrhythmia recurrence. If a text only episode of AF/AT was recorded by the ILR, we sought a
278 confirmatory EGM episode within a 24-hour period. ILR detected recurrences of atrial

279 arrhythmia for at least 30 seconds were validated by a blinded senior cardiac physiologist.
280 One patient with no ILR detected AF/AT recurrence provided only three minutes of wearable
281 device data and therefore was excluded from our analysis.

282

283 *Study Outcomes*

284 Our primary endpoint is the correlation between a composite of mHealth recorded heart rate
285 (PPG) and physical activity as denoted by step count and AF/AT recurrence as detected by
286 ILR. We analysed this in a stepwise manner:

287

288 A) PPG recorded HR elevations (z score ≥ 2) correlating with AF/AT recurrence as
289 detected by ILR.

290 B) PPG recorded HR elevations (z score ≥ 2) combined with physical activity
291 correlating with AF/AT recurrence as detected by ILR.

292 C) PPG recorded HR elevations (z score ≥ 2) ≥ 110 beats per minute with normalised
293 spike score ≥ 0.75 combined with physical activity correlating with AF/AT
294 recurrence as detected by ILR.

295

296 Our secondary endpoint is the correlation between quality-of-life metrics as measured by the
297 AF quality-of-life questionnaire (AFEQT) score and ILR-detected AF/AT recurrence.

298

299 *Statistical Analysis*

300 The sensitivity, specificity, NPV, PPV and accuracy and associated 95% confidence intervals
301 for detection of correlated atrial arrhythmias in individual study participants were calculated
302 using Microsoft Excel (Office 365, Microsoft Corporation, Washington, USA) with a

303 significance level of 0.05. Missing data from the wearable, defined as lack of HR and step
304 count data for the entire 30-minute duration of identified sequences using the method
305 described above, were excluded from the extraction process and not included in final data
306 analysis.

307

308 **Results:**

309 The mean [SD] age of recruited patients was 70.3 [±6.8] years with median 10 months [IQR
310 8-12] follow up (Table 2). Twenty-five patients completed at least six months follow up with
311 eight of these patients completing the full 15 month follow up. In total, 236,871 hours of data
312 were recorded via the wearable which amounts to a mean [SD] of 282 [±3.6] days per
313 participant. On average, participants recorded data during 80.6% of daytime hours (8am and
314 8pm) and 71.1% of night-time hours (8pm-8am). Implantable loop recorder analysis showed
315 48.6% (17/35 patients) had recurrence of AF/AT. The average AF Quality of Life Survey
316 (AFEQT)¹⁷ score for patients in the non-AF/AT recurrence group was 48.9 at the beginning
317 of the study and 32.3 at the end of the follow up period, an improvement of 20% compared to
318 the AF/AT recurrence group who had scores of 45.0 pre study and 40.6 post study.

319

320 Analysis of our data in a stepwise manner showed PPG- recorded HR correlating with AF/AT
321 recurrence had a sensitivity of 95.3% (95%CI, 71-99); specificity 54.1% (95%CI, 50-59);
322 PPV 15.8% (95%CI, 4-27); NPV 99.2% (95%CI, 99-100) and accuracy 57.4% (95%CI,
323 52-63) (Table 3). Combining PPG- recorded heart rate and step count with AF/AT recurrence
324 yielded a sensitivity of 93.2% (95%CI,68–99%); specificity 54.9% (95%CI, 49-60%), PPV
325 19.1% (95%CI, 6-18%); NPV 98.6% (95%CI, 97-99%) and accuracy 58.7% (95%CI, 52-
326 65%) (Table 3) (Figure 2 and 3). PPG recorded HR sequences identified by a normalised
327 spike score of 0.75 or above over 2 minutes for both onset of heart rate \geq 110 and cessation

328 below 110 over the same time period produced a sensitivity of 87.5% (95%CI, 63-99%);
329 specificity 62.2% (95%CI, 56-69%); PPV 39.2% (95%CI, 24-54%); NPV 92.3% (95%CI,
330 89-96%) and accuracy 64.0% (95%CI, 56-71%) (Table 3) (Figure 4). Focused assessment of
331 the latter in the AF/AT recurrence group as defined by ILR led to a sensitivity of 87.6
332 (95%CI, 65-99%); specificity 68.3% (95%CI, 60-76%); PPV 53.6% (95%CI, 38-69%); NPV
333 93.0% (95%CI, 88-98%) and accuracy 74.0% (95%CI, 66-82%) (Table 3).

334

335 No adverse events such as skin irritation from wearable devices, health anxiety or stress were
336 reported by any of the 35 participants. Three wearable devices required strap replacement and
337 resulted in 9 follow-up days lost.

338

339 **Discussion:**

340 REMOTE-AF evaluated the correlation between wearable device derived heart rate and
341 AF/AT recurrence. Current physician prescribed non-continuous rhythm monitoring tools
342 (ambulatory Holter monitors) which assess for arrhythmias at set time intervals are known to
343 have low detection yields.¹⁸ In symptomatic patients with suspected arrhythmias, a 24-hour
344 ambulatory Holter monitor has a diagnostic yield of 7% compared to 47% with a 7-day
345 monitor.¹⁹ At present, the gold standard for detection of atrial arrhythmias is continuous
346 monitoring via the implantable loop recorder (ILR). mHealth wearable devices can bridge the
347 gap between intermittent time limited Holter monitoring and invasive and costly ILR
348 monitoring.

349

350 To analyse our data, we adopted a stepwise approach to sequentially combine parameters
351 from the wearable device. We saw an increase in PPV from 15.8% to 39.2% and
352 improvement in accuracy from 57.4% to 64.0% when using our novel composite HR spike

353 score method compared to using PPG recorded HR alone to detect AF/AT recurrence. This is
354 because, the spike score is more likely to represent true arrhythmia rather than physiological
355 HR increase and hence more accurately differentiate between sinus tachycardia and
356 pathological recurrences of AF/AT. In patients with known AF/AT recurrence as detected by
357 ILR, our novel composite methodology utilising spike score resulted in the highest accuracy
358 in identifying AF/AT recurrence in a post ablation cohort when compared with ILR.
359 Irrespective of sequential improvements in accuracy, using this method results in 5 out of 10
360 episodes being misclassified as AF/AT. Further work with larger patient populations is
361 needed to improve the diagnostic accuracy of our method. Our results yielded a high NPV
362 and low PPV, likely due to our small sample size with low prevalence of AF/AT recurrence.
363 In clinical practice, this supports the use of wearables in high risk patient populations with
364 known diagnoses of atrial arrhythmias rather than for use in screening in low risk patient
365 populations (global AF prevalence of 0.51%).² Our results also show that our novel
366 composite method in its current form, appropriately classifies non-recurrence of AF/AT but
367 occasionally misclassifies recurrence. Within the current consumer market, the diversity in
368 the accuracy and quality of PPG embedded in wearable devices limits the potential of
369 integrating these data safely into the clinician's decision-making process.^{5,20} Extensive
370 research and funding has been dedicated to assessing the accuracy of PPG enabled wearables
371 in detecting atrial arrhythmias, predominantly AF screening but there remains a lack of data
372 in post AF intervention populations. Products developed by multi-billion-dollar global
373 technology giants have shown promise that wearable devices could become a viable
374 alternative in diagnosing and monitoring arrhythmias. The Apple Watch (Apple Inc,
375 Cupertino, CA, USA), Fitbit (Google LLC, Mountain View, CA, USA) and Huawei
376 Smartwatch (Huawei Technologies Co Ltd, Shenzhen, China) have been assessed in non-

377 randomised but large-scale prospective clinical trials, reporting accuracy of 95-97% in
378 detecting AF and modest positive predictive values (PPV).²¹⁻²³

379

380 Our statistical analysis revealed a PPV significantly lower (Figure 5) than figures reported by
381 these landmark PPG detected arrhythmia studies, however these large-scale studies were
382 based on AF screening and not recurrence as in our cohort. Based on a recent meta-analysis,
383 these figures are likely to be unrealistically elevated, therefore our results are likely to be
384 more representative of the accuracy of PPG in detecting AF/AT recurrence.⁶ Given there is
385 limited published data, predominantly case reports,²⁴⁻²⁷ documenting wearable use in rhythm
386 monitoring after catheter ablation we are unable to make a direct comparison of PPG enabled
387 wearables in this patient cohort. The reported clinical metric in the landmark studies only
388 analysed PPG HR waveforms intermittently whilst stationary, with the majority at night. We
389 reported results for all data both during active daytime hours and whilst ambulatory, where
390 clinically significant arrhythmias are more likely. Overall, our data provides greater real-
391 world analysis, and highlights the issue of lower diagnostic yields and challenges related to
392 sensitivity and specificity of data from wearable devices during periods of activity.

393 Conducting this study during a global pandemic also produced its own challenges but further
394 advanced the necessity and accessibility for remote monitoring strategies, not just for western
395 populations but worldwide, to ensure health equity.

396

397 Recurrence of paroxysmal and persistent atrial arrhythmias which are rate -controlled are
398 likely to be misclassified as non-recurrence by our novel composite method. However, our
399 NPV consistently being above 90% for all analysed groups shows that this had a minimal
400 effect on our results. Our secondary endpoint showed that in patients with recurrence of atrial

401 arrhythmia, patients described a poorer quality of life as evidenced by a higher AFEQT score
402 when compared to the non-recurrence group. Consequently, our results demonstrate promise
403 in identifying atrial arrhythmia recurrence by combining PPG- recorded, non-exercise related
404 elevations in heart rate with quality-of-life data. As a result, there is potential to avoid the
405 invasive nature of ILR insertion as well as labour and cost intensive follow up to achieve
406 long-term cost-effective monitoring. With further improvement in diagnostic accuracy, this
407 could lead to an electronic point- of- care notification being sent via a smart device to assist
408 pill in the pocket arrhythmia and anticoagulation management strategies as well as timely
409 interventions (DCCV or redo catheter ablation) in patients experiencing recurrence of atrial
410 arrhythmias.^{28,29} Lastly, due to our recruitment resulting in a homogenous population, more
411 heterogeneity with regards to ethnicity and gender is required to draw more specific
412 conclusions.

413

414 To our knowledge, our study is the first to utilise a novel PPG derived HR spike score
415 methodology to detect AF/AT recurrence using gold- standard ILR technology as a
416 comparator. The ILR (Reveal LINQ™) used in this study was found to have an AF detection
417 sensitivity of 97.4%; specificity 97.0%; PPV 92.5%; NPV 99.0% and was able to detect AF
418 burden with a sensitivity of 98.4%.¹⁵ Therefore, the ILR serves as an excellent comparator.

419

420 The use of mHealth wearables to detect atrial arrhythmia recurrence is gaining traction and to
421 our knowledge REMOTE-AF is one of two studies, to report results for atrial arrhythmia
422 recurrence in patients with a known history of AF, utilising PPG enabled wearable
423 technology. The other study utilised a smart ring to detect atrial arrhythmia recurrence in a
424 patient cohort post DCCV.³⁰ Currently active is the SMART-ALERT clinical trial which will
425 also use the ILR as a comparator for PPG -detected AF from a wearable device, both a

426 smartwatch and smart ring. Data from this study can be used to further support or refute the
427 use of PPG based wearables to detect atrial arrhythmias.³¹

428

429 Another study in progress is the SAFER (ISRCTN72104369)³² trial which will evaluate
430 evidence to support the tolerability and feasibility of screening patients > 65 years old using
431 PPG- enabled wearables. Our REMOTE-AF cohort with a mean age of 70.3 years and
432 median follow up at 10 months, has already clearly demonstrated acceptability and
433 tolerability in an older patient cohort. We recorded good compliance with device use and a
434 roughly equal proportion of use during day-time and night-time hours. Alongside results
435 reported by the eBRAVE-AF trial (NCT04250220)²⁹ which screened for AF using
436 smartphone PPG sensors, this leads to greater confidence that digital wearable technology
437 can safely be used for not just screening but monitoring of known arrhythmia patients in the
438 cohort at greatest risk of AF and its complications. Limited economic analyses demonstrate
439 affordability and cost-savings associated with AF detection using wearables, specifically in
440 over-65s, further highlighting their potential to improve health outcomes as measured by
441 quality-adjusted-life-years by enhancing primary and primordial prevention.^{33,34}

442

443 Incorporating heart rate variability (HRV) into our novel composite method would likely
444 have further improved our PPV as significant changes to HRV have been shown to correlate
445 with AF.³⁵ The Fitbit application programming interface (API) integrating HRV data was not
446 open to researchers at the commencement of the study therefore REMOTE-AF study team
447 did not have access to this data.

448

449 Future work requires more extensive investigation of PPG- enabled wearable devices and
450 arrhythmia detection tools in real-world clinical settings with the design of larger trials

451 including randomised clinical studies to report major adverse cardiovascular event (MACE)
452 outcomes. A reduction in time to detection of AF/AT recurrence would allow for more
453 responsive implementation of treatment strategies and lifestyle modifications to reduce
454 disease burden and improve quality of life. Consumer mHealth devices can also act to further
455 health literacy by facilitating patient understanding of disease progression and encourage
456 positive behaviour change to modify their risk profile. As PPG technology continues to
457 evolve, we can cautiously begin to consider this technology as an asset to improve clinical
458 outcomes and guide treatment decisions.

459

460 We believe this proof- of- concept study can provide a foundation for further research and to
461 develop this method in conjunction with sophisticated algorithmic development tools to
462 inform a comprehensive diagnostic method to detect atrial arrhythmias with precision.

463

464 *Limitations*

465 PPG technology itself has many limitations with the most prominent being motion artefact
466 and noise interference, which can disrupt arrhythmia detection algorithms and signal quality,
467 affecting the accuracy of heart rate measurements.^{7,36} The devices used in the study were 2
468 years old with manufacturer recommended battery life of 4-5 days, however due to the
469 lithium polymer battery life, gradual deterioration resulted in patients charging devices every
470 2-3 days which inevitably resulted in reduced compliance and more frequent interruptions to
471 monitoring. The Fitbit Charge 2 is also only able to store data for 7 days before overwriting.
472 To minimise data loss, we sent weekly text reminders to participants whose data did not
473 synchronise in the past 7 days, however an automatic bi-weekly in-app notification would
474 likely have increased adherence. A similar data upload issue was noted with the ILR. The
475 Reveal LINQ™ device can store EGM data for 27 minutes of patient activated episodes and

476 30 minutes of automatic detected episodes,³⁷ hence if multiple episodes are recorded over this
477 time period without being downloaded to the base device, data is overwritten.

478

479 A further major limitation of the study was the small sample size and that all participants
480 were Caucasian, potentially limiting the generalisability of our results. Sample size
481 limitations prevented us from being able to power our study to derive statistical significance
482 or draw wider conclusions applicable to a more diverse population. Given the exploratory
483 nature of our study, our pilot data shows promise for further work to be undertaken with a
484 sufficiently powered population size. Interruptions to ILR data upload via the CARELINK
485 remote monitoring software is also acknowledged as a major limitation. Dependent on the
486 frequency of arrhythmia recurrence, a more intensive download of ILR data would have been
487 required to capture all EGM episodes of detected AF/AT recurrence (that are then able to be
488 validated) rather than text only episodes. Our method of using text only episodes to confirm
489 ILR detected AF/AT recurrence is likely to have affected the sensitivity of our results and is
490 acknowledged as a significant limitation. In the two patients where we used pacemaker
491 rhythm recording capabilities instead of ILR, we may have missed several episodes of AF/AT
492 recurrence as episodes not documented on pacing reports at three monthly device
493 interrogations had to be excluded. Furthermore, assessment of ILR EGMs was undertaken
494 by a single reviewer therefore we recognise possible misclassifications may have occurred.
495 Finally, the research team did not have access to raw PPG waveform or HRV data which
496 possibly led to a lower PPV. Applying the normalised spike score to raw PPG waveforms or
497 incorporating HRV data into our novel composite method may have led to improvements in
498 PPV.

499

500 Future studies that use a large variety of data modalities, similar to those recorded in
501 REMOTE-AF, will need specific expertise in data handling and advanced data science due to
502 the complexity of data acquired from wearables. With appropriate training and education for
503 HCPs, it will enable a stepwise framework to incorporate high-value AI into routine
504 cardiovascular care.³⁸

505

506 **Conclusion:**

507 Our novel composite of wearable device data (PPG recorded heart rate data, HR spike score
508 and step count) is a promising and modest predictor of AF/AT recurrence, in a post-ablation
509 cohort compared to the gold standard ILR. Further work is required to determine whether
510 consumer wearables integrating HR and step count with advanced algorithmic detection tools
511 can improve AF/AT detection and guide treatment strategies.

512

513 **Acknowledgements:**

514 We would like to thank the CASA-AF research team at the Royal Brompton and Harefield
515 Hospitals and the cardA/c team at the University of Birmingham/University Hospitals
516 Birmingham NHS Foundation Trust for set up of the study, as well as Grace Augustine
517 (senior cardiac physiologist at Kettering General Hospital NHS Foundation Trust) for helping
518 with the validation using ILR. We would also like to thank Julia Kurps, Joris Borgdorff and
519 Nivethika Mahasivam at the Hyve (Utrecht, The Netherlands) for providing technology
520 support, the RADAR-base team (Richard Dobson, Amos Folarin, Yatharth Ranjan, Pauline
521 Conde, Callum Stewart and Zulqarnain Rashid at King's College London, UK) and the
522 BigData@Heart Consortium (Lead: Diederick E Grobbee, University Medical Centre
523 Utrecht, The Netherlands; Scientific Coordinator: Folkert W Asselbergs, University of
524 Amsterdam, The Netherlands).

525 **Sources of Funding:**

526 REMOTE-AF study did not receive formal funding. Smart devices and the technology used
527 in the trial were provided by the University of Birmingham as part of funding from an
528 Innovative Medicines Initiative European Union Horizon 2020 grant under agreement
529 number 116074 (BigData@Heart; <https://www.bigdata-heart.eu/>); supported by the European
530 Union's Horizon 2020 research and innovation programme and European Federation of
531 Pharmaceutical Industries and Associations. The cardAIc team at the University of
532 Birmingham/University Hospitals Birmingham NHS Foundation Trust have received funding
533 from the National Institute for Health Research (NIHR) Birmingham Biomedical Research
534 Centre (NIHR203326), MRC Health Data Research UK (HDRUK/CFC/01), NHS Data for
535 R&D Subnational Secure Data Environment programme, and a British Heart Foundation
536 Accelerator Award (AA/18/2/34218). The funders had no role in considering the study design
537 or in the collection, analysis, interpretation of data, writing of the report, or decision to
538 submit the article for publication. The opinions expressed in this study are those of the
539 authors and do not represent the EU, NIHR, UK Department of Health and Social Care, or
540 any of the listed institutions.

541

542 **Disclosures:**

543 SG reports funding through the BigData@Heart Innovative Medicines Initiative [grant no.
544 116074]. AB reports funding from the BigData@Heart Innovative Medicines Initiative [grant
545 no. 116074] during the conduct of the study. DK reports grants from the National Institute for
546 Health Research (NIHR CDF-2015-08-074 RATE-AF; NIHR130280 DaRe2THINK;
547 NIHR132974 D2T-NeuroVascular; NIHR203326 BRC), the British Heart Foundation
548 (PG/17/55/33087, AA/18/2/34218 and FS/CDRF/21/21032), the EU/EFPIA Innovative
549 Medicines Initiative (BigData@Heart 116074), EU Horizon (HYPERMARKER 101095480),

550 UK National Health Service -Data for R&D- Subnational Secure Data Environment
551 programme, and the European Society of Cardiology supported by educational grants from
552 Boehringer Ingelheim/BMS-Pfizer Alliance/Bayer/Daiichi Sankyo/Boston Scientific, the
553 NIHR/University of Oxford Biomedical Research Centre and British Heart
554 Foundation/University of Birmingham Accelerator Award (STEEER-AF). In addition, he
555 has received research grants and advisory board fees from Bayer, Amomed and Protherics
556 Medicines Development; all outside the submitted work. GG reports support from the NIHR
557 Birmingham Experimental Cancer Medicine Centre, NIHR Birmingham Surgical
558 Reconstruction and Microbiology Research Centre, Nanocommons H2020-EU (731032), and
559 the MRC Health Data Research UK (HDRUK/CFC/01). SH reports speaker fees from
560 Alivercor, consultancy fees from BMS, a research grant from Abbott and the NIHR grants
561 (CASA and LOTO).

562 GA, IKH, ZC, JJ, DJ, VM, WH and TW have no relevant disclosures.

563

564 **References:**

- 565 1. Hindricks G, Potpara T, Dagres N, Arbelo E, Bax JJ, Blomström-Lundqvist C, et al.
566 2020 ESC Guidelines for the diagnosis and management of atrial fibrillation developed
567 in collaboration with the European Association for Cardio-Thoracic Surgery (EACTS).
568 Eur Heart J 2021;42:373–498. doi:10.1093/eurheartj/ehaa612.
- 569 2. Lippi G, Sanchis-Gomar F, Cervellin G. Global epidemiology of atrial fibrillation: An
570 increasing epidemic and public health challenge. International Journal of Stroke
571 2021;16:217–221. doi:10.1177/1747493019897870.

- 572 3. Hart RG, Pearce LA, Aguilar MI. Meta-analysis: antithrombotic therapy to prevent
573 stroke in patients who have nonvalvular atrial fibrillation. *Ann Intern Med*
574 2007;146:857–867. doi:10.7326/0003-4819-146-12-200706190-00007.
- 575 4. Hermans ANL, Gawalko M, Dohmen L, van der Velden RMJ, Betz K, Duncker D, et
576 al. Mobile health solutions for atrial fibrillation detection and management: a
577 systematic review. *Clin Res Cardiol* 2022;111:479–491. doi:10.1007/s00392-021-
578 01941-9.
- 579 5. Adasuriya G, Haldar S. Remote Monitoring of Cardiac Arrhythmias Using Wearable
580 Digital Technology: Paradigm Shift or Pipe Dream? *Eur J Arrhythm Electrophysiol*
581 2022;8:7. doi:10.17925/EJAE.2022.8.1.7.
- 582 6. Gill S, Bunting K V, Sartini C, Cardoso VR, Ghoreishi N, Uh H-W, et al. Smartphone
583 detection of atrial fibrillation using photoplethysmography: a systematic review and
584 meta-analysis. *Heart* 2022;108:1600–1607. doi:10.1136/heartjnl-2021-320417.
- 585 7. Castaneda D, Esparza A, Ghamari M, Soltanpur C, Nazeran H. A review on wearable
586 photoplethysmography sensors and their potential future applications in health care. *Int*
587 *J Biosens Bioelectron* 2018;4:195–202. doi:10.15406/ijbsbe.2018.04.00125.
- 588 8. Piwek L, Ellis DA, Andrews S, Joinson A. The Rise of Consumer Health Wearables:
589 Promises and Barriers. *PLoS Med* 2016;13:e1001953.
590 doi:10.1371/journal.pmed.1001953.
- 591 9. Conroy T, Guzman JH, Hall B, Tsouri G, Couderc J-P. Detection of atrial fibrillation
592 using an earlobe photoplethysmographic sensor. *Physiol Meas* 2017;38:1906–1918.
593 doi:10.1088/1361-6579/aa8830.

- 594 10. Nielsen JC, Lin Y-J, de Oliveira Figueiredo MJ, Sepehri Shamloo A, Alfie A, Boveda
595 S, et al. European Heart Rhythm Association (EHRA)/Heart Rhythm Society
596 (HRS)/Asia Pacific Heart Rhythm Society (APHRs)/Latin American Heart Rhythm
597 Society (LAHRS) expert consensus on risk assessment in cardiac arrhythmias: use the
598 right tool for the right outcome,. EP Europace 2020;22:1147–1148.
599 doi:10.1093/europace/euaa065.
- 600 11. Briosa e Gala A, Pope MT, Leo M, Lobban T, Betts TR. NICE atrial fibrillation
601 guideline snubs wearable technology: a missed opportunity? Clin Med (Lond)
602 2022;22:77–82. doi:10.7861/clinmed.2021-0436.
- 603 12. Tudor-Locke C, Ducharme SW, Aguiar EJ, Schuna JM, Barreira T V., Moore CC, et
604 al. Walking cadence (steps/min) and intensity in 41 to 60-year-old adults: the
605 CADENCE-adults study. International Journal of Behavioral Nutrition and Physical
606 Activity 2020;17:137. doi:10.1186/s12966-020-01045-z.
- 607 13. Wong T, Halder SK. Long-term Outcomes in Long Standing Persistent Atrial
608 Fibrillation (LoTO_CASA_AF) (Identifier NCT04280042). ClinicaltrialsGov 2020.
609 <https://clinicaltrials.gov/ct2/show/NCT04280042> (accessed September 22, 2022).
- 610 14. Halder S, Khan HR, Boyalla V, Kralj-Hans I, Jones S, Lord J, et al. Catheter ablation
611 vs. thoracoscopic surgical ablation in long-standing persistent atrial fibrillation:
612 CASA-AF randomized controlled trial. Eur Heart J 2020;41:4471–4480.
613 doi:10.1093/eurheartj/ehaa658.
- 614 15. Sanders P, Pürerfellner H, Pokushalov E, Sarkar S, Di Bacco M, Maus B, et al.
615 Performance of a new atrial fibrillation detection algorithm in a miniaturized insertable
616 cardiac monitor: Results from the Reveal LINQ Usability Study. Heart Rhythm
617 2016;13:1425–1430. doi:10.1016/j.hrthm.2016.03.005.

- 618 16. Ranjan Y, Rashid Z, Stewart C, Conde P, Begale M, Verbeeck D, et al. RADAR-Base:
619 Open Source Mobile Health Platform for Collecting, Monitoring, and Analyzing Data
620 Using Sensors, Wearables, and Mobile Devices. *JMIR Mhealth Uhealth*
621 2019;7:e11734. doi:10.2196/11734.
- 622 17. St. Jude Medical. The AF Effect on Quality of Life Survey (AFEQT). St Jude Medical,
623 Inc 2023. /<http://www.afeqt.org/> (accessed January 13, 2023).
- 624 18. Kotecha D, Breithardt G, Camm AJ, Lip GYH, Schotten U, Ahlsson A, et al.
625 Integrating new approaches to atrial fibrillation management: the 6th AFNET/EHRA
626 Consensus Conference. *EP Europace* 2018;20:395–407. doi:10.1093/europace/eux318.
- 627 19. Chua S-K, Chen L-C, Lien L-M, Lo H-M, Liao Z-Y, Chao S-P, et al. Comparison of
628 Arrhythmia Detection by 24-Hour Holter and 14-Day Continuous Electrocardiography
629 Patch Monitoring. *Acta Cardiol Sin* 2020;36:251–259.
630 doi:10.6515/ACS.202005_36(3).20190903A.
- 631 20. Xintarakou A, Sousonis V, Asvestas D, Vardas PE, Tzeis S. Remote Cardiac Rhythm
632 Monitoring in the Era of Smart Wearables: Present Assets and Future Perspectives.
633 *Front Cardiovasc Med* 2022;9. doi:10.3389/fcvm.2022.853614.
- 634 21. Perez M V., Mahaffey KW, Hedlin H, Rumsfeld JS, Garcia A, Ferris T, et al. Large-
635 Scale Assessment of a Smartwatch to Identify Atrial Fibrillation. *New England Journal*
636 *of Medicine* 2019;381:1909–1917. doi:10.1056/NEJMoa1901183.
- 637 22. Guo Y, Wang H, Zhang H, Liu T, Liang Z, Xia Y, et al. Mobile
638 Photoplethysmographic Technology to Detect Atrial Fibrillation. *J Am Coll Cardiol*
639 2019;74:2365–2375. doi:10.1016/j.jacc.2019.08.019.

- 640 23. Lubitz SA, Faranesh AZ, Atlas SJ, McManus DD, Singer DE, Pagoto S, et al.
641 Rationale and design of a large population study to validate software for the
642 assessment of atrial fibrillation from data acquired by a consumer tracker or
643 smartwatch: The Fitbit heart study. *Am Heart J* 2021;238:16–26.
644 doi:10.1016/j.ahj.2021.04.003.
- 645 24. Aljuaid M, Marashly Q, AlDanaf J, Tawhari I, Barakat M, Barakat R, et al.
646 Smartphone ECG Monitoring System Helps Lower Emergency Room and Clinic
647 Visits in Post–Atrial Fibrillation Ablation Patients. *Clin Med Insights Cardiol*
648 2020;14:117954682090150. doi:10.1177/1179546820901508.
- 649 25. Wu S, Li C, Lin J, Weng C, Lin W, Hsieh Y. Detecting supraventricular tachycardia
650 with smartwatches facilitates the decision for catheter ablation: A case series. *Pacing*
651 *and Clinical Electrophysiology* 2022;45:157–159. doi:10.1111/pace.14388.
- 652 26. Siddeek H, Fisher K, McMakin S, Bass JL, Cortez D. AVNRT captured by Apple
653 Watch Series 4: Can the Apple watch be used as an event monitor? *Annals of*
654 *Noninvasive Electrocardiology* 2020;25. doi:10.1111/anec.12742.
- 655 27. Kasai Y, Kasai J, Sekiguchi Y, Asano S, Fukunaga H, Nagase T, et al. Apple Watch®
656 facilitates single-session catheter ablation of coexisting atrioventricular nodal reentrant
657 tachycardia and atrioventricular reentrant tachycardia. *Clin Case Rep* 2021;9.
658 doi:10.1002/ccr3.4702.
- 659 28. Passman R. “Pill-in-Pocket” Anticoagulation for Atrial Fibrillation: Fiction, Fact, or
660 Foolish? *Circulation* 2021;143:2211–2213.
661 doi:10.1161/CIRCULATIONAHA.121.053170.

- 662 29. Rizas KD, Freyer L, Sappler N, von Stülpnagel L, Spielbichler P, Krasniqi A, et al.
663 Smartphone-based screening for atrial fibrillation: a pragmatic randomized clinical
664 trial. *Nat Med* 2022;28:1823–1830. doi:10.1038/s41591-022-01979-w.
- 665 30. Kwon S, Choi EK, Lee SR, Ahn HJ, Lee B, Oh S, et al. Atrial fibrillation detection in
666 ambulatory patients using a smart ring powered by deep learning analysis of
667 continuous photoplethysmography monitoring. *Eur Heart J* 2022;43.
668 doi:10.1093/eurheartj/ehac544.415.
- 669 31. Betts T. Continuous Rhythm Monitoring With Implantable Cardiac Monitors And
670 Wearable Devices With Real-time Smartphone Alerts During AF Episodes (SMART-
671 ALERT). *ClinicalTrialsGov* 2023.
672 <https://www.clinicaltrials.gov/ct2/show/NCT05207150> (accessed January 11, 2023).
- 673 32. Williams K, Modi RN, Dymond A, Hoare S, Powell A, Burt J, et al. Cluster
674 randomised controlled trial of screening for atrial fibrillation in people aged 70 years
675 and over to reduce stroke: protocol for the pilot study for the SAFER trial. *BMJ Open*
676 2022;12:e065066. doi:10.1136/bmjopen-2022-065066.
- 677 33. Andrade JG, Shah A, Godin R, Lanitis T, Kongnakorn T, Brown L, et al. Cost-
678 effectiveness of atrial fibrillation screening in Canadian community practice. *Heart*
679 *Rhythm* 2022. doi:10.1016/j.hrroo.2022.11.003.
- 680 34. Chen W, Khurshid S, Singer DE, Atlas SJ, Ashburner JM, Ellinor PT, et al. Cost-
681 effectiveness of Screening for Atrial Fibrillation Using Wearable Devices. *JAMA*
682 *Health Forum* 2022;3:e222419. doi:10.1001/jamahealthforum.2022.2419.
- 683 35. Kim SH, Lim KR, Seo J-H, Ryu DR, Lee B-K, Cho B-R, et al. Higher heart rate
684 variability as a predictor of atrial fibrillation in patients with hypertension. *Sci Rep*
685 2022;12:3702. doi:10.1038/s41598-022-07783-3.

686 36. Fine J, Branan KL, Rodriguez AJ, Boonya-ananta T, Ajmal, Ramella-Roman JC, et al.
 687 Sources of Inaccuracy in Photoplethysmography for Continuous Cardiovascular
 688 Monitoring. *Biosensors (Basel)* 2021;11:126. doi:10.3390/bios11040126.

689 37. Chokesuwattanaskul R, Safadi AR, Ip R, Waraich HK, Hudson OM, Ip JH. Data
 690 Transmission Delay in Medtronic Reveal LINQ Implantable Cardiac Monitor: Clinical
 691 Experience in 520 Patients. *J Biomed Sci Eng* 2019;12:391–399.
 692 doi:10.4236/jbise.2019.128030.

693 38. Gill SK, Karwath A, Uh H-W, Cardoso VR, Gu Z, Barsky A, et al. Artificial
 694 intelligence to enhance clinical value across the spectrum of cardiovascular healthcare.
 695 *Eur Heart J* 2023;44:713–725. doi:10.1093/eurheartj/ehac758.

697 **Tables:**

698 **Table 1: Inclusion and exclusion criteria for REMOTE-AF.**
 699 LoTO in CASA LSPAF = Long term outcomes in long standing persistent atrial fibrillation RCT
 700 (ClinicalTrials.gov Identifier: NCT04280042). ILR = implantable loop recorder.

| Inclusion Criteria | Exclusion Criteria |
|--|--|
| <ul style="list-style-type: none"> Participants in LoTO in CASA LSPAF with working ILRs or implanted devices capable of continuous rhythm monitoring. | <ul style="list-style-type: none"> Participants in LoTO in CASA LSPAF without working ILRs or implanted devices capable of continuous rhythm monitoring. Recurrence of Persistent AF. Lack of weekly access to internet or charging facilities. |

701 **Table 2. Baseline characteristics of REMOTE-AF study participants**
 702 AF, atrial fibrillation; AFEQT, AF quality of life survey; BMI, body mass index; CHA₂DS₂VASc, congestive heart failure, high blood pressure, Age 75, Diabetes, previous Stroke or clot, Vascular disease, Age 65–74, Sex; HASBLED, hypertension; Abnormal liver/renal function, Stroke history, Bleeding history or predisposition, Labile INR (international normalized ratio), Elderly, Drug/alcohol usage; IQR, interquartile range; SD, standard deviation; TIA, transient ischaemic attack.

| | All | | |
|---|-------------------|---------------------|------------------------|
| Characteristics | (n = 35) | Recurrence (n = 17) | No recurrence (n = 18) |
| Age (years), mean (SD) | 71 (6.8) | 71 (6.31) | 69 (7.2) |
| >= 75, n (%) | 10 (28.6) | 5 (29.4) | 5 (27.8) |
| 65-74 | 18 (51.4) | 7 (41.2) | 11 (61.1) |
| 55-64 | 6 (17.1) | 4 (23.5) | 2 (33.3) |
| 40-54 | 1 (2.9) | 1 (5.9) | 0 (0) |
| Male sex, n (%) | 23 (65.7) | 9 (52.9) | 14 (77.8) |
| BMI (kg/m ²), median (IQR) | 30.4 (25.3–33.27) | 26.9 (25–33) | 30.9 (28.5–33.3) |
| Ethnicity, n (%) | | | |
| White | 35 (100) | 17 (100) | 18 (100) |
| Ejection fraction (%), mean (SD) | 56.9 (8.9) | 55.2 (8.9) | 58.8 (8.7) |
| Left atrial diameter (mm), mean (SD) | 44.6 (5.9) | 44.6 (6) | 44.7 (5.8) |
| Index procedure, n (%) | | | |
| Thoracoscopic surgical ablation | 16 (45.7) | 7 (41.2) | 9 (50) |
| Radiofrequency catheter ablation | 19 (54.3) | 10 (58.8) | 9 (50) |
| Time from index procedure (months), mean (SD) | 34 (7.8) | 33 (5.5) | 37 (6.5) |
| AFEQT score, mean (SD) | 46 (21) | 44 (15) | 48 (25) |
| Medical history, n (%) | | | |
| Hypertension | 13 (37.1) | 8 (47.1) | 5 (27.8) |
| Diabetes | 3 (8.6) | 1 (5.9) | 2 (11.1) |
| Coronary artery disease | 2 (5.7) | 1 (5.9) | 1 (5.6) |
| Stroke, TIA, Thromboembolism | 3 (8.6) | 2 (11.8) | 1 (5.6) |
| Heart Failure | 3 (8.6) | 2 (11.8) | 1 (5.6) |
| CHA ₂ DS ₂ -VASc score, n (%) | | | |
| 0 | 2 (5.7) | 1 (5.9) | 1 (5.6) |
| 1 | 10 (28.6) | 5 (29.4) | 5 (27.8) |
| 2 | 11 (31.4) | 5 (29.4) | 6 (33.3) |
| ≥3 | 12 (34.3) | 6 (35.3) | 6 (33.3) |
| HASBLED score, n (%) | | | |
| 0 | 1 (2.9) | 0 (0) | 1 (5.6) |
| 1 | 9 (25.7) | 6 (35.3) | 3 (16.7) |
| 2 | 22 (62.9) | 10 (58.9) | 12 (66.7) |
| ≥3 | 3 (8.6) | 1 (5.9) | 2 (11.1) |

727

Table 3: Results table showing sensitivity, specificity, positive predictive value (PPV), negative predictive value (NPV) and accuracy for each stepwise combination of wearable device data.

| | Sensitivity (%) | Specificity (%) | PPV (%) | NPV (%) | Accuracy (%) |
|---|---------------------------|---------------------------|-------------------|-------------------|------------------------|
| Heart Rate | 95.3 | 54.1 | 15.8 | 99.2 | 57.4 |
| Heart Rate and Step Count | 93.2 | 54.9 | 19.1 | 98.6 | 58.7 |
| Heart Rate spike score and Step Count | 87.5 | 62.2 | 39.2 | 92.3 | 64.0 |
| HR spike score and Step Count in recurrence group | 87.6 | 68.3 | 53.6 | 93.0 | 74.0 |

747 **Figures:**

748 **Figure 1. Schematic showing the stepwise process undertaken for patients recruited to**
749 **REMOTE-AF.**

749 LoTO CASA LSAPF = Long-term outcomes in long standing persistent atrial fibrillation. PIS =
750 Patient information sheet. CF = Consent form. AFEQT = AF quality of life survey. RADAR =
750 Remote assessment of diseases and relapses.

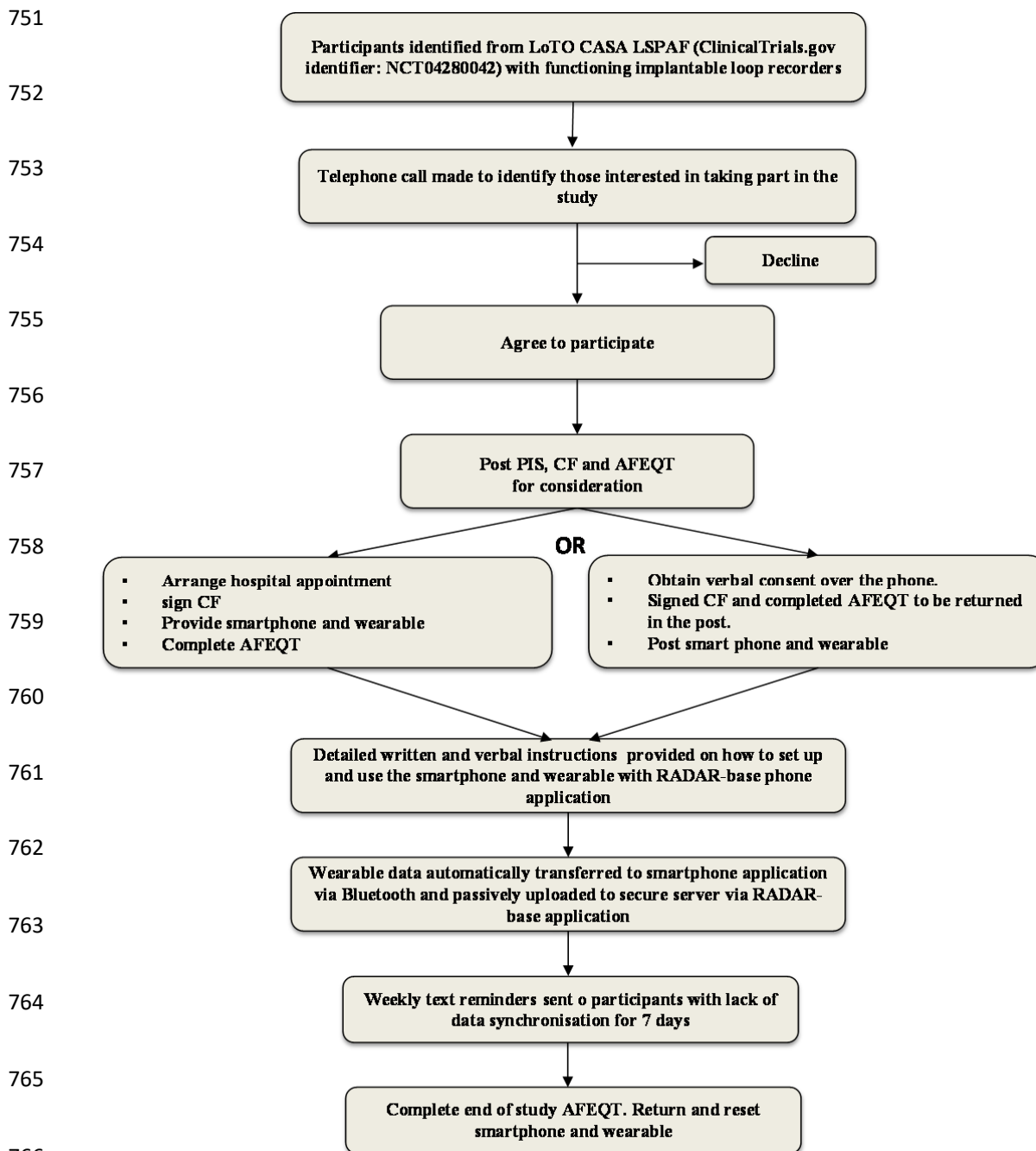


Figure 2. Transition from normal sinus rhythm to atrial tachycardia in a patient with AT

recurrence. Heart rate and step count as recorded by a PPG and accelerometer-enabled wrist-worn device demonstrate a period of fixed maximum rate tachycardia and increased beat-to-beat variability, which correlates with ILR-confirmed paroxysmal AT.

767

768

A. ILR electrogram showing normal sinus rhythm

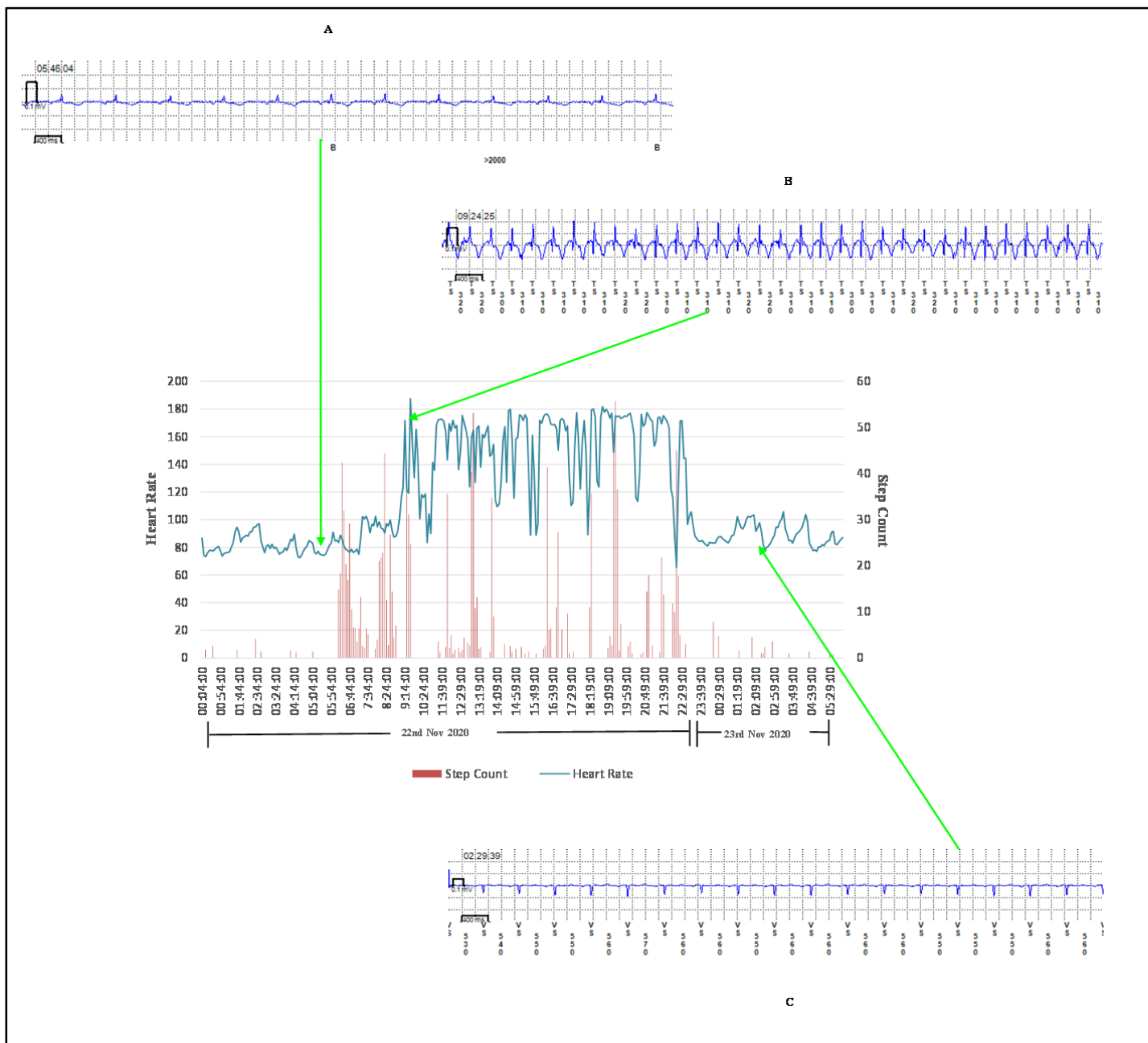
769

B. ILR electrogram showing atrial tachycardia

770

C. ILR electrogram showing cardioversion back to normal sinus rhythm.

771



786

Page

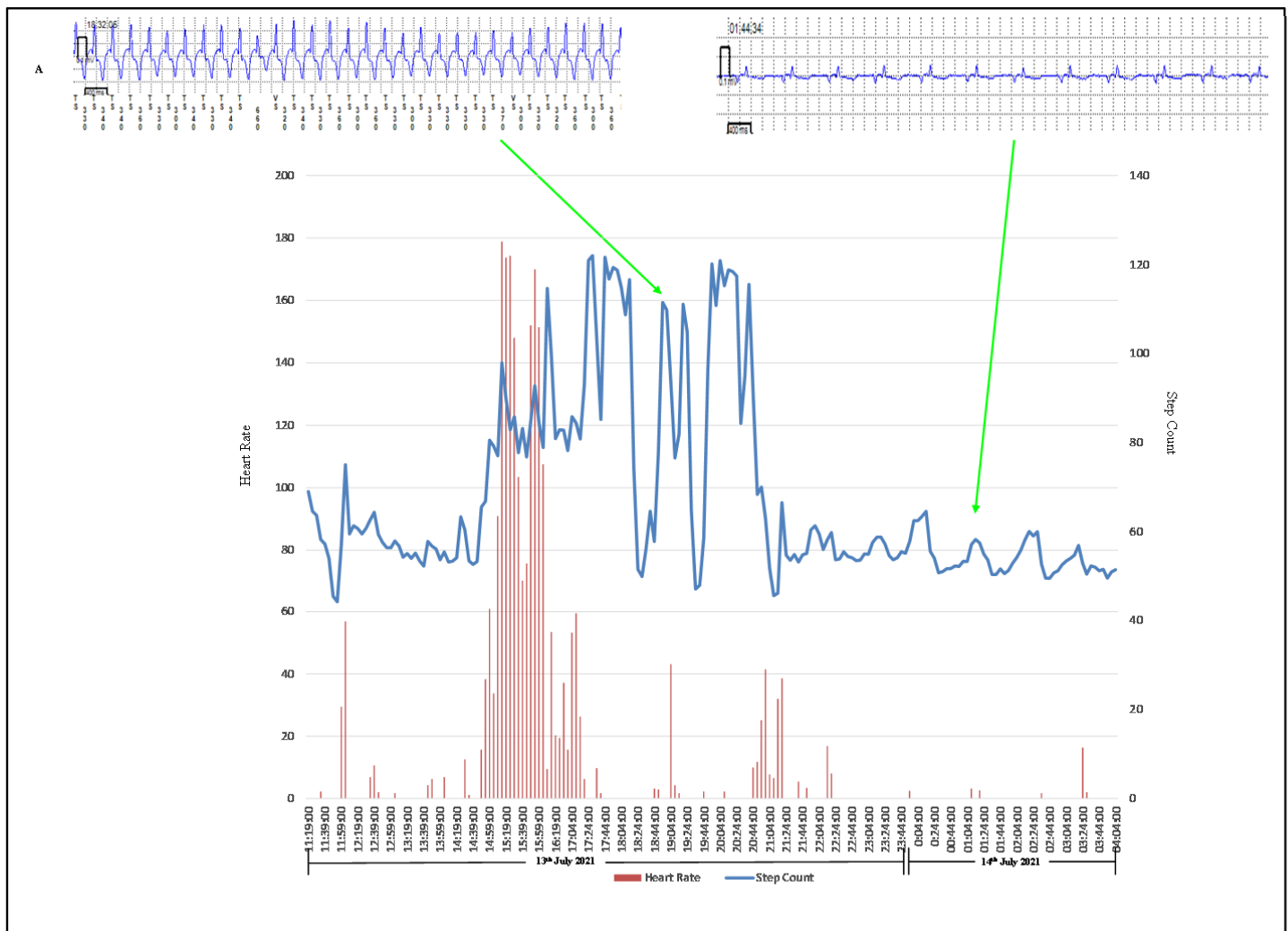
Figure 3. Transition from normal sinus rhythm to atrial fibrillation in a patient with AF

recurrence. Heart rate and step count as recorded by a PPG and accelerometer-enabled wrist-worn device demonstrate a period of variable rate tachycardia and increased beat-to-beat variability, which correlates with ILR-confirmed paroxysmal AF.

A. ILR electrogram showing atrial fibrillation

B. ILR electrogram showing normal sinus rhythm

790



802

803

804

805

806

Figure 4. Demonstration of our underlying composite method to detect AF/AT recurrence by utilising matching onset and offset for HR delta change (spike score) and subsequent arrhythmia recurrence as detected by ILR. A normalised spike score ≥ 0.75 for both onset and offset of tachycardia is more likely to represent an episode of atrial arrhythmia recurrence due to a sudden increase in HR rather than exercise induced tachycardia with a gradual increase in HR.

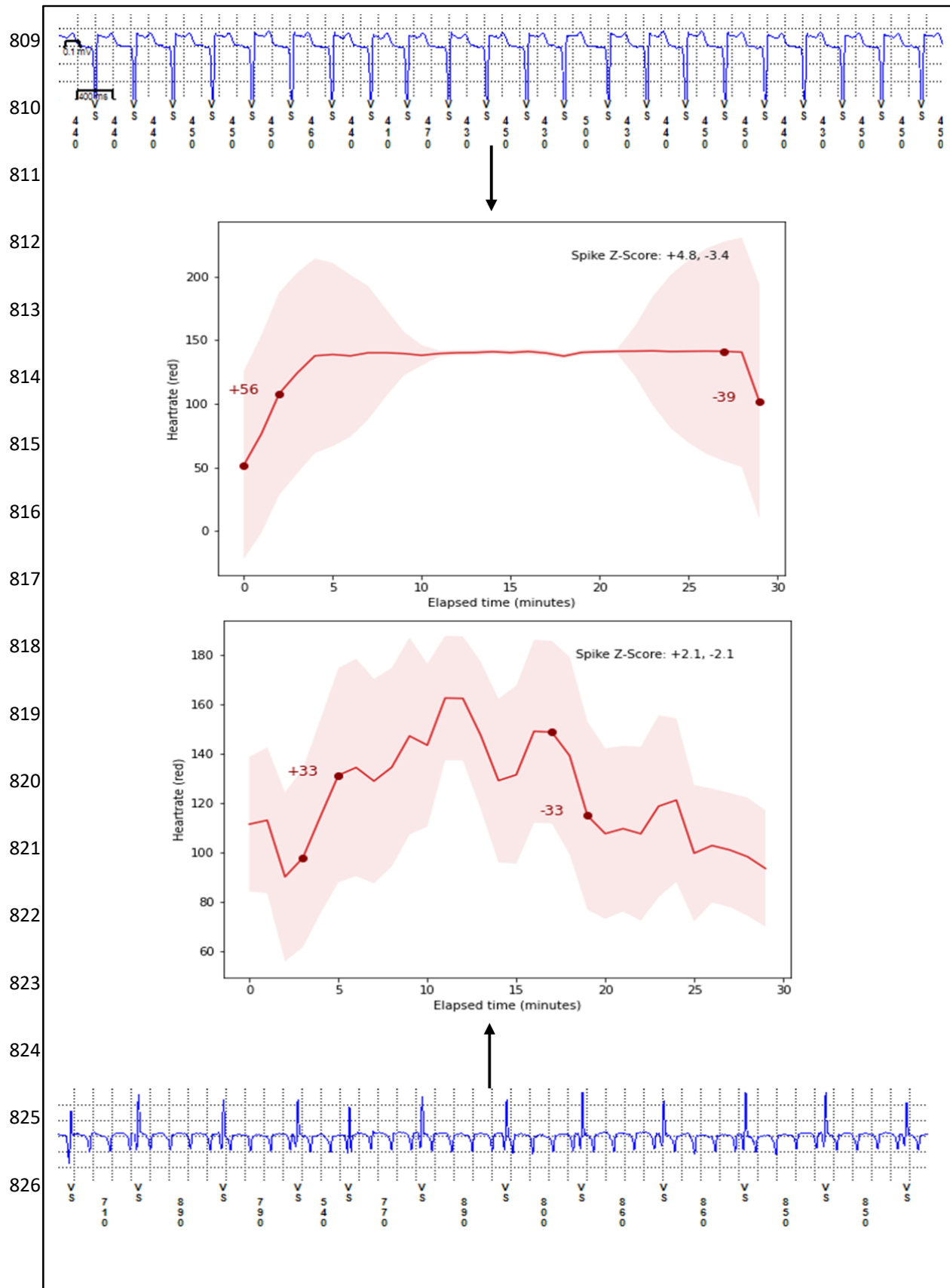


Figure 5: Illustration to show sensitivity, specificity and PPV of smart devices in detecting recurrence of atrial arrhythmias in post intervention patient cohorts compared with gold standard ILR compared to our data.

A. REMOTE-AF data from 35 patients. **B.** ECG based detection post ablation in study of 99 patients.²⁴ **C.** Smart ring-based detection of atrial arrhythmia post DCCV in study of 35 patients.³⁰

ILR = implantable loop recorder. DCCV = direct current cardioversion.

