

1 Title Page

2

3 **Carboxypeptidase B2 gene polymorphisms in the donor associate with kidney allograft loss.**

4 Felix Poppelaars<sup>\*,†</sup>, Siawosh K. Eskandari<sup>\*</sup>, Jeffrey Damman<sup>‡</sup>, Ashley Frazer-Abel<sup>§</sup>, V. Michael Holers<sup>†</sup>,

5 Bradley P. Dixon<sup>¶</sup>, Mohamed R. Daha<sup>\*,\*\*</sup>, Jan-Stephan F. Sanders<sup>\*</sup>, Marc A. Seelen<sup>\*</sup>, Bernardo Faria<sup>\*,††</sup>,

6 Mariana Gaya da Costa<sup>\*,‡‡</sup>, Joshua M. Thurman<sup>†</sup>

7

8 <sup>\*</sup> Department of Internal Medicine, Division of Nephrology, University Medical Center Groningen, University  
9 of Groningen, Groningen, The Netherlands.

10 <sup>†</sup> Department of Medicine, University of Colorado School of Medicine, Aurora, Colorado, USA.

11 <sup>‡</sup> Department of Pathology, Erasmus Medical Center, University Medical Center, Rotterdam, The Netherlands.

12 <sup>§</sup> Exsera BioLabs, University of Colorado School of Medicine, Aurora, Colorado, USA.

13 <sup>¶</sup> Departments of Pediatrics & Medicine, University of Colorado School of Medicine, Aurora, Colorado, USA.

14 <sup>\*\*</sup> Department of Nephrology, University of Leiden, Leiden University Medical Center, Leiden, The  
15 Netherlands.

16 <sup>††</sup> Nephrology and Infectious Disease R&D Group, INEB, Institute of Investigation and Innovation in Health  
17 (i3S), University of Porto, Porto, Portugal.

18 <sup>‡‡</sup> Department of Anesthesiology, University of Groningen, University Medical Center Groningen,  
19 Groningen, The Netherlands.

20

21 Running head: Genetic variants in *CPB2* associate with graft loss

22 Keywords: carboxypeptidase, complement, transplantation, nephrology, genetics.

23

24 Word Title: 12 words

25 Running head: 50

26 Word count abstract 250 words

27 Word count body: 4.286 words

28 Number of figures/tables: 8

29 References: 60

30

**NOTE: This preprint reports new research that has not been certified by peer review and should not be used to guide clinical practice.**

1 **Address for Correspondence:**

2 Felix Poppelaars, M.D./Ph.D.

3 University Medical Center Groningen

4 Department of Internal Medicine, Division of Nephrology, AA53

5 Postbus 196

6 9700 AD Groningen, The Netherlands

7 Phone: +31 50 3610544

8 Fax: +31 50 3619320

9 E-Mail: [f.poppelaars@umcg.nl](mailto:f.poppelaars@umcg.nl)

10

1 **Abbreviations**

2	<i>C3</i>	Complement protein C3 gene
3	<i>C5</i>	Complement protein C5 gene
4	CPB2	Carboxypeptidase B2
5	<i>CPB2</i>	Carboxypeptidase B2 gene
6	<i>Cpb2<sup>-/-</sup></i>	Genetic deficiency of CPB2 in mice
7	CPN	Carboxypeptidase N
8	<i>Cpn<sup>-/-</sup></i>	Genetic deficiency of CPN in mice
9	C statistic	Concordance statistic
10	C-terminus	Carboxy-terminus
11	HLA	Human leukocyte antigen
12	HR	Hazard ratio
13	IDI	Integrated discrimination improvement
14	proCPB2	Procarboxypeptidase B2
15	SNP	Single-nucleotide polymorphism
16	TAFI	Thrombin-activatable fibrinolysis inhibitor
17		

## 1 **Essentials**

- 2 • Carboxypeptidase B2 (CPB2) is a metalloprotease with anti-fibrinolytic and anti-inflammatory  
3 properties.
- 4 • We investigated the impact of *CPB2* polymorphisms on graft loss after kidney transplantation.
- 5 • The rs3742264-A SNP in the donor, linked to higher CPB2 levels, decreased the risk of graft loss.
- 6 • CPB2 could have a protective effect on graft survival by inactivating complement anaphylatoxins.
- 7

1 **Abstract**

2

3 **Introduction**

4 Plasma carboxypeptidase B2 (CPB2) is an enzyme that cleaves C-terminal amino acids from proteins,  
5 thereby regulating their activities. CPB2 has anti-inflammatory and anti-fibrinolytic properties and can  
6 therefore be protective or harmful in disease. We explored the impact of functional carboxypeptidase  
7 B2 gene (*CPB2*) polymorphisms on graft survival following kidney transplantation.

8 **Methods**

9 We performed a longitudinal cohort study to evaluate the association of functional *CPB2* polymorphisms  
10 (rs2146881, rs3742264, rs1926447, rs3818477) and complement polymorphisms (rs2230199, rs17611)  
11 with long-term allograft survival in 1,271 kidney transplant pairs from the University Medical Center  
12 Groningen in The Netherlands.

13 **Results**

14 The high-producing *CPB2* rs3742264 polymorphism in the donor was associated with a reduced risk of  
15 graft loss following kidney transplantation (hazard ratio, 0.71 for the A-allele; 95%-CI, 0.55–0.93;  
16  $P=0.014$ ). In fully adjusted models, the association between the *CPB2* polymorphism in the donor and  
17 graft loss remained significant. The protective effect of the high-producing *CPB2* variant in the donor  
18 could be mitigated by the hazardous effect of gain-of-function complement polymorphisms. Additionally,  
19 we compiled a genetic risk score of the four *CPB2* variants in the recipients and donors, which was  
20 independently associated with long-term allograft survival. Furthermore, this genetic risk score  
21 substantially improved risk prediction for graft loss beyond currently used clinical predictors.

22 **Conclusion**

23 Kidney allografts from deceased donors possessing a high-producing *CPB2* polymorphism are at a  
24 lower risk of graft loss after kidney transplantation. Furthermore, our findings suggest that *CPB2* might  
25 have a protective effect on graft loss through its ability to inactivate complement anaphylatoxins.

## 1 Introduction

2 Transplantation is the best treatment option for patients with kidney failure due to its association with  
3 reduced mortality, the risk attenuation of cardiovascular disease and improvement of quality of life.[1–  
4 4] In recent decades, surgical advances and improved immunosuppressive regimens have drastically  
5 lengthened graft survival from months to years, whereas the long-term outcomes after kidney  
6 transplantation have not improved at the same rate.[5] A critical driver of poor long-term outcomes is  
7 the damage incurred by the kidney allografts prior to, during, and after transplantation as a consequence  
8 of donor conditions (i.e., brain death), ischemia-reperfusion, and allosensitization. A growing body of  
9 evidence implicates the innate immune system as well as the coagulation cascades as a major driver  
10 of graft injury, since they are independently associated with long-term transplant outcome.[6,7] Notably,  
11 the cross-talk between these two systems is increasingly recognized as an vital contributor to graft loss  
12 and is, therefore, seen as a potential therapeutic target in transplantation.[8]

13 As enzymes with both anti-fibrinolytic and anti-inflammatory qualities, carboxypeptidases are a  
14 target of interest within this scope. Carboxypeptidases are a family of zinc-containing proteolytic  
15 enzymes that cleave carboxy-terminus (C-terminus) amino acids from biologically active proteins,  
16 thereby regulating their activities.[9] These enzymes can be soluble or membrane-bound and have a  
17 preference for either hydrophobic or basic amino acids.[9,10] Carboxypeptidase B2 (CPB2), also known  
18 as thrombin-activatable fibrinolysis inhibitor (TAFI), is synthesized by the liver and is one of only two  
19 carboxypeptidases present in plasma (Fig. 1A).[10] CPB2 circulates as an inactive proenzyme  
20 (proCPB2) and is predominantly activated by plasmin bound to glycosaminoglycans or by the thrombin–  
21 thrombomodulin complex (Fig. 1B).[11] Since there are no known physiological inhibitors, CPB2 activity  
22 is assumed to be regulated by its very short half-life of 8 – 15 minutes at 37 °C.[12] Once activated,  
23 CPB2 inhibits fibrinolysis by cleaving C-terminal lysine residues from partially degraded fibrin, thereby  
24 preventing the binding of fibrinolytic components (Fig. 1C – D).[13–16] Besides the anti-fibrinolytic  
25 activity during fibrin clot formation, CPB2 can also exert anti-inflammatory properties.[10,17–20] More  
26 specifically, a number of studies have demonstrated that complement anaphylatoxins C3a and C5a are  
27 physiological substrates of CPB2.[10] CPB2 cleaves the C-terminal arginine residue of C3a and C5a,  
28 generating the metabolites C3adesArg and C5adesArg and limiting the pro-inflammatory effects of these  
29 anaphylatoxins (Fig. 1C and E).[10]

1           While CPB2 circulates in plasma at a concentration of around approximately 75 nM, it is  
2 characterized by a wide reference range in healthy individuals (50–250 nM).[21,22] Although no  
3 individuals with a complete CPB2 deficiency have been identified to date, genetic polymorphisms are  
4 thought to explain around 25% of the variation in plasma CPB2 levels.[23] CPB2 gene (*CPB2*)  
5 polymorphisms have not been investigated in the transplant context; however, since CPB2 has anti-  
6 inflammatory as well as anti-fibrinolytic properties, altered circulating CPB2 levels could hypothetically  
7 protect or predispose the graft to injury depending on the context.[24–26] Furthermore, considering the  
8 contribution of complement activation to allograft injury and dysfunction in kidney transplantation, CPB2  
9 is of further interest because of its modulatory effect on this system.[6,27]

10           Here, we employed a large cohort of 1,271 renal transplant donors and recipients and leveraged  
11 human genetics to determine the role of CPB2 in kidney transplantation. Looking at functional *CPB2*  
12 polymorphisms in donor-recipient pairs, and also evaluating potential effect modification by other  
13 relevant complement system polymorphisms, we investigated the association between these  
14 polymorphisms and long-term graft survival to assess the role of CPB2 on graft survival in kidney  
15 transplantation.

## 1 **Methods**

2

### 3 **Study design and subjects**

4 For this longitudinal cohort study, transplant recipients were enrolled who received a single kidney  
5 allograft between March 1993 until February 2008 at the University Medical Center Groningen, as  
6 described previously.[28–31] Exclusion criteria were: Lack of DNA, re-transplantation, technical  
7 complications during surgery, and loss of follow-up. In brief, a total of 1,271 out of 1,430 donor-recipient  
8 kidney transplant pairs were included. All subjects provided written informed consent. The Institutional  
9 Review Board approved the study protocol (METc 2014/077), which adhered to the Declaration of  
10 Helsinki. The endpoint of our study was graft loss during follow-up with a maximum of 15 years. Graft  
11 loss was defined as the need for dialysis or re-transplantation.

12

### 13 **DNA extraction and genotyping**

14 Peripheral blood mononuclear cells were isolated from blood or splenocytes that were collected from  
15 both the donor and recipient. DNA was extracted with a commercial kit as instructed by the manufacturer  
16 and stored at -80°C. Genotyping of the SNPs was determined via the Illumina VeraCode GoldenGate  
17 Assay kit (Illumina, San Diego, CA, USA), according to the manufacturer's instructions. The promoter  
18 of *CPB2* contains several polymorphisms, of which the rs2146881 G > A *CPB2* SNP is the most  
19 extensively studied. The minor allele of this polymorphism has been associated with lower plasma levels  
20 of *CPB2*. [32–35] In addition, we chose the rs3742264 G > A (505 G/A, Ala147Thr) and the rs1926447  
21 C > T (1040 C/T, Thr325Ile) *CPB2* SNPs. The minor allele of the rs3742264 is associated with higher  
22 plasma levels, whereas the minor allele of the rs1926447 is linked to lower *CPB2* levels. [32–35] Lastly,  
23 we included the rs3818477 A > C (i4 + 164) *CPB2* SNP, of which the minor allele has previously been  
24 shown to associate with lower *CPB2* levels as well. [32] Additionally, we genotyped two common  
25 functional polymorphism in the C3 and C5 gene: (i) The rs2230199 C>G (Gly102Arg) C3 SNP and (ii)  
26 The rs17611 G>A (2404 G/A, Val802Ile) C5 SNP. [36,37] We assessed the combinations of the A-allele  
27 of the *CPB2* rs3742264 (referred to as the *CPB2*<sub>high</sub> variant) with the GG-genotype of the C3 SNP  
28 (referred to as C3<sub>102G</sub> variant) or the AA-genotype of the C5 SNP (referred to as C5<sub>V802</sub> variant).  
29 Genotype clustering and calling were performed using BeadStudio Software (Illumina).

30



## 1 **Genetic risk score**

2 We compiled a polygenic CPB2 risk score for graft loss based on the presence of the four *CPB2*  
3 polymorphisms in the donor and the recipient. To account for the strength of the association of the *CPB2*  
4 polymorphisms with graft loss, the score for the presence of a single *CPB2* variant was multiplied by the  
5 regression coefficient (that is the logarithm of the hazard ratio) creating a weighted risk score.[38] A  
6 regression coefficient is negative when a *CPB2* variant decreases the risk of graft loss and positive  
7 when a *CPB2* variant increases the risk of graft loss. The total sum of the protective and hazardous  
8 *CPB2* polymorphisms in the donor and recipient combined constitute the value of the CPB2 genetic risk  
9 score.

10

## 11 **Statistical analysis**

12 The data are displayed as mean  $\pm$  standard deviation, median [interquartile ranger (IQR)], or as the total  
13 number of patients with percentage [n (%)]. For a two-group comparison, the Mann-Whitney U test, the  
14 Student t-test, or the  $\chi^2$  test was used. *CPB2* genotypes were tested for associations with 15-year death-  
15 censored graft survival by Kaplan-Meier analysis with log-rank testing. Associations of *CPB2* genotypes  
16 with graft loss were further examined by Cox proportional hazards regression analysis with stepwise  
17 adjustments for other relevant clinical variables. The models for graft loss included adjustment for  
18 recipient demographics (model 2), donor demographics (model 3) or transplant characteristics (model  
19 4). Furthermore, Cox regression models were built with a stepwise forward selection including all  
20 variables that significantly associated with graft loss in univariable analysis. Lastly, associations of *CPB2*  
21 genotypes with graft loss were verified in subgroups by Cox proportional hazards regression analysis.  
22 For continuous variables the subgroups were based on below versus above the median or mean.

23 We determined Harrell's concordance statistic (C statistic) to test how well a model distinguished  
24 between transplant recipients who developed graft loss and those who did not, additionally taking follow-  
25 up into account.[39] As our outcome variable graft loss is dichotomous, the Harrell's C statistic  
26 corresponds to the area under the ROC curve.[40] A value of "1" indicates perfect discrimination, while  
27 a value of "0.5" indicates a performance equal to chance. The added value of the *CPB2* genetic risk  
28 score to predictive models for graft loss was tested by the integrated discrimination improvement (IDI).  
29 The IDI indicates the ability of the new model to improve average sensitivity without decreasing average  
30 specificity.[39,41] Statical testing was two-tailed and  $P < 0.05$  was regarded as significant. Statistical

- 1 analyses were performed using SPSS software version 25 (SPSS Inc, Chicago, IL, USA) and STATA
- 2 Statistical Software: Release 17 (StataCorp., College Station, TX, USA).
- 3

## 1 Results

2

### 3 Patient population

4 The baseline demographics of the 1,271 donor-recipient pairs, including transplant characteristics are  
5 provided in [Table 1](#). During a mean follow-up period of  $6.2 \pm 4.2$  years, 215 kidney transplant recipients  
6 lost their grafts (16.9%), whereas 191 recipients died with a functioning graft (15.0%). Deceased donor  
7 kidney transplantation, absence of cyclosporin and corticosteroids for immunosuppression, as well as  
8 donor and recipient blood type AB were significantly more prevalent in patients who progressed to graft  
9 loss. Furthermore, on average patients who developed graft loss were younger, while their donors were  
10 typically older, and both cold as well as warm ischemia times were significantly longer. Lastly, delayed  
11 graft function occurred more frequently in patients who experienced graft loss. The above-mentioned  
12 clinical characteristics were all significantly associated with graft loss in univariable analyses ([Table 1](#)).

13 We genotyped four common polymorphisms of the *CPB2* ([Fig. 1F – I](#)): (i) the rs2146881 G > A  
14 in the promoter region at position ~438 ([Fig. 1F](#)), (ii) the rs3742264 G > A encoding for a Thr to Ala  
15 substitution at position 147 ([Fig. 1G](#)), (iii) the rs1926447 C > T resulting in a Thr to Ile substitution at  
16 position 325 ([Fig. 1H](#)), and (iv) rs3818477 A > C in intron 4 ([Fig. 1I](#)). The observed genotypic frequencies  
17 are shown in [Table 1](#). For the *CPB2* rs2146881 G > A SNP, the frequency of the minor allele was  
18 significantly lower in recipients compared to donors ( $P < 0.0001$ ) and to the European cohort of the 1000  
19 genomes project ( $P < 0.0001$ , [supplementary data](#)). Furthermore, the frequencies of the *CPB2*  
20 rs3818477 A > C SNP in the donors significantly differed from those reported by the European cohort of  
21 the 1,000 genomes project ( $P = 0.02$ ), but not compared to recipients ( $P = 0.39$ , [supplementary data](#)).  
22 No differences were seen in genotypic frequencies between the donors, recipients, and the European  
23 cohort of 1,000 genomes project for the other *CPB2* polymorphisms ([supplementary data](#)). The  
24 distribution of all four polymorphisms was in Hardy–Weinberg equilibrium.

25

### 26 A high-producing *CPB2* variant associates with graft loss after kidney transplantation

27 We first examined whether polymorphisms in *CPB2* associated with graft loss after kidney  
28 transplantation. Of all the assessed *CPB2* genetic variants, only the rs3742264 polymorphism in the  
29 donor significantly associated with 15-year death-censored graft survival ( $P = 0.022$ ). Kaplan–Meier  
30 survival analysis revealed that the minor allele of the *CPB2* rs3742264 SNP in the donor was associated

1 with a lower risk of graft loss after transplantation (Fig. 2A,  $P=0.044$ ). The cumulative incidence of graft  
2 loss after 15 years of follow-up was 19.9% in the reference GG-genotype group, 14.6% in the GA-  
3 genotype group, and 13.3% in the AA-genotype group, respectively. For further analysis the GA- and  
4 AA-genotype were combined to one group (Fig. 2B,  $P=0.013$ ), since the incidence of graft loss was not  
5 significantly different between these genotypes. In univariable analysis, the minor allele of the *CPB2*  
6 rs3742264 SNP in the donor was significantly associated with improved 15-year death-censored graft  
7 survival (HR, 0.71; 95%-CI, 0.55 – 0.93;  $P=0.014$ ). Multivariable models were constructed using a  
8 stepwise forward selection procedure including all variables that were significantly associated with graft  
9 loss in the univariable analysis (Table 2). In the final model, the *CPB2* rs3742264 SNP in the donor,  
10 recipient age, the occurrence of delayed graft function, recipient blood type, and donor age were  
11 included. After adjustment, the minor allele of the *CPB2* rs3742264 SNP in the donor was significantly  
12 associated with a reduced risk of graft loss (HR, 0.67; 95% CI: 0.51 – 0.88,  $P=0.004$ ).

13 Furthermore, we performed a subgroup analysis for the donor type, since deceased organ  
14 donors are often characterized by coagulopathies.[42] Kaplan-Meier curves demonstrated that the  
15 association remained significant between the *CPB2* rs3742264 SNP in the donor and long-term graft  
16 survival for kidney allografts from deceased donors (Fig. 2C,  $P=0.012$ ). The association, however, lost  
17 statistical significance for kidney allografts from living donors (Fig. 2D,  $P=0.84$ ). Taken together, our  
18 results show that the high-producing *CPB2* rs3742264 polymorphism in deceased organ donors is  
19 associated with a reduced risk of graft loss after kidney transplantation.

## 21 ***CPB2* associates with graft loss potentially through inactivation of complement anaphylatoxins**

22 Next, we investigated if the association between the high-producing *CPB2* rs3742264 SNP and long-  
23 term graft survival was mediated via *CPB2* ability to inactivate complement anaphylatoxin C3a and C5a.  
24 On this basis, we tested the combined effect of the high-producing *CPB2* variant with gain-of-function  
25 complement polymorphisms on graft loss after kidney transplantation.

26 First, we combined the high-producing *CPB2* polymorphism with a common functional  
27 polymorphism in C3 gene (*C3*) rs2230199 resulting in a glycine to arginine substitution at position 102.  
28 The minor allele of this polymorphism results in a *C3* variant (*C3*<sub>102G</sub>) that is less well inhibited, leading  
29 to increased C3 activation and higher C3a formation.[43] Next, donor-recipient pairs were separated  
30 into four groups according to the presence or absence of the *C3* and *CPB2* polymorphism in the donor.

1 Kaplan–Meier survival analyses showed a significant difference in graft failure rates among the four  
2 groups ( $P = 0.022$ , Fig. 3A). Kidney allografts possessing the  $CPB2_{high}$  variant and the reference  $C3_{102R}$   
3 variant had the best outcome (15-year death-censored graft survival: 77.2%), whereas kidney allografts  
4 possessing the  $C3_{102G}$  variant and the reference  $CPB2_{normal}$  variant had the worst outcome (15-year death-  
5 censored graft survival: 50.2%). Moreover, kidney allografts possessing either both variants or no  
6 variants showed similar outcomes, suggesting that the protective effect of the  $CPB2_{high}$  variant could be  
7 mitigated by the hazardous effect of the  $C3_{102R}$  variant.

8 Next, we combined the high-producing  $CPB2$  polymorphism with a common functional  
9 polymorphism in  $C5$  gene ( $C5$ ) rs17611 resulting in a valine to isoleucine substitution at position 802.  
10 The G-allele of this polymorphism results in a  $C5$  variant ( $C5_{V802}$ ) that is more susceptible to cleavage,  
11 leading to enhanced  $C5a$  production.[44] Once again, donor-recipient pairs were separated into four  
12 groups according to the presence or absence of the  $C5$  and  $CPB2$  polymorphism in the donor. Kaplan–  
13 Meier survival analyses showed a significant difference in graft failure rates among the four groups ( $P$   
14 = 0.009, Fig. 3B). Kidney allografts possessing the  $CPB2_{high}$  variant and the reference  $C5_{802}$  variant had  
15 the best outcome (15-year death-censored graft survival: 78.7%), whereas kidney allografts possessing  
16 the  $C5_{V802}$  variant and the reference  $CPB2_{normal}$  variant had the worst outcome (15-year death-censored  
17 graft survival: 53.2%). Moreover, kidney allografts possessing either both variants or no variants  
18 experienced similar outcomes, suggesting once again the protective effect of the  $CPB2_{high}$  variant could  
19 be mitigated by the hazardous effect of the  $C5_{V802}$  variant. In conclusion, our data implies that the  
20 association of the high-producing  $CPB2$  rs3742264 SNP with graft loss is possibly mediated via  $CPB2$ 's  
21 ability to inactivate complement anaphylatoxin  $C3a$  and  $C5a$ .

22

### 23 **A $CPB2$ genetic risk score improves risk prediction for graft loss**

24 In addition to analyzing the  $CPB2$  polymorphisms separately, we also compiled a genetic risk score of  
25 the four  $CPB2$  variants in both the recipients and donors. Each polymorphism was weighted based on  
26 its hazard ratio, creating a positive coefficient for hazardous SNPs and a negative one for protective  
27 SNPs. Overall, a genetic risk score below zero indicates the presence of more protective  $CPB2$  SNPs  
28 in the donor-recipient renal transplant pairs, while a genetic risk score above zero alludes to more  
29 hazardous  $CPB2$  SNPs in a transplant pair.

1           The CPB2 genetic risk score significantly associated with 15-year death-censored graft survival  
2 in univariable analysis (HR, 1.30; 95%-CI, 1.14 – 1.49;  $P < 0.001$  per SD increase). Multivariable analysis  
3 was performed with stepwise adjustments for additional relevant clinical variables (Table 3), including  
4 recipient characteristics (model 2), donor characteristics (model 3), and transplant variables (model 4).  
5 In Cox regression analysis, the CPB2 genetic risk score remained significantly associated with graft loss  
6 independent of potential confounders. Thereafter, we investigated whether the CPB2 genetic risk score  
7 (including the *CPB2* rs3742264 SNP) was a better predictor of graft loss than the *CPB2* rs3742264 SNP  
8 in the donor alone by multivariable regression with a stepwise forward selection (supplementary data).  
9 In the final model, the CPB2 genetic risk score containing the *CPB2* rs3742264 SNP was included,  
10 whereas the single *CPB2* rs3742264 SNP in the donor was excluded. After adjustment, the CPB2  
11 genetic risk score was associated with graft loss with a hazard ratio of 1.31 per SD increase (95%-CI:  
12 1.14 – 1.50;  $P < 0.001$ ). In addition, the hazard ratio of the CPB2 genetic risk score was consistent and  
13 remained significant in subgroup analyses (Figure 3); except for living donors and in female recipients.  
14 The 95%-CI of the various subgroups had substantially overlapped with the general hazard ratio,  
15 signifying the consistency of the impact of the CPB2 genetic risk score across the subgroups.

16           Finally, the performance of the CPB2 genetic risk score for the prediction of graft loss was also  
17 assessed (Table 4). The CPB2 genetic risk score had a Harrell's C of 0.59 (95% CI: 0.55 – 0.63).  
18 Moreover, when added to a model of the *CPB2* rs3742264 SNP in the donor (c-statistic, 0.55; 95%-CI,  
19 0.51 – 0.59), the CPB2 genetic risk score significantly improved the Harrell's C (c-statistic increase,  
20 0.035; 95%-CI, 0.005 – 0.066;  $P = 0.02$ ). As additional variables were included and the discriminative  
21 accuracy to predict graft loss of the model improved. The Harrell's C of the models with the recipient,  
22 donor and transplant characteristics significantly increased with the addition of the CPB2 genetic risk  
23 score (Model 3 – 5), while only a trend was seen in the model with all variables that were significantly  
24 associated with graft loss in multivariable regression analysis (Model 6). Lastly, the CPB2 genetic risk  
25 score significantly increased the predictive value of the models according to the IDI.

26

## 1 Discussion

2 Here, we report that kidney transplantation from allografts possessing a high-producing *CPB2*  
3 polymorphism results in a significantly attenuated risk of graft failure. We propose that the higher survival  
4 rate could be explained by the ability of CPB2 to inactive complement anaphylatoxins (i.e., C3a and  
5 C5a), since the protective effect of the *CPB2* polymorphism on graft loss could be reversed by gain-of-  
6 function polymorphisms in complement genes (i.e. C3 and C5). Furthermore, we demonstrated that a  
7 genetic risk score based on four *CPB2* polymorphisms in the donor as well as the recipient was a  
8 important determinant of long-term graft survival. The present data also proposes *CPB2* as a novel  
9 potential therapeutic strategy to improve kidney transplantation outcomes, especially since therapeutic  
10 strategies informed by human genetic evidence are more than twice as likely to lead to approved  
11 therapeutics.[45,46]

12 *CPB2*, because of its anti-fibrinolytic activity, has predominantly been studied in cardiovascular  
13 disease and thrombotic disorders.[22] Increased levels of *CPB2* are anticipated to induce a  
14 hypofibrinolytic state and thereby represent a potential risk factor for various coagulation disorders.  
15 Accordingly, thrombus formation was shown to be ameliorated in mice that are deficient in *CPB2* (*Cpb2*  
16 <sup>-/-</sup>) upon ferric chloride (FeCl<sub>3</sub>)-induced vena cava thrombosis.[47] Numerous studies have subsequently  
17 used human genetics to investigate the role of *CPB2* in thromboembolic diseases by evaluating the  
18 association between *CPB2* polymorphisms and disease risk.[22] Recently, a meta-analysis of 23 studies  
19 investigated the impact of *CPB2* variants on the risk of cardiovascular disease, failing to confirm a  
20 significant association.[48] Nevertheless, in sub-analyses an increased risk of cardiovascular disease  
21 was detected with a certain *CPB2* polymorphisms, suggesting an intricate relationship between *CPB2*  
22 and thrombotic disease.

23 Apart from having anti-fibrinolytic activity during clot formation, *CPB2* also has an anti-  
24 inflammatory role.[10] These anti-inflammatory properties are mediated through the cleavage of C-  
25 terminal arginine from pro-inflammatory mediators such as complement anaphylatoxins, bradykinin,  
26 osteopontin, and vascular endothelial growth factor-A.[10,17–20] Recent *In-vivo* evidence by Song *and*  
27 *collaegues*, demonstrates that *CPB2* dampened inflammation in autoimmune arthritis.[49] After the  
28 induction of anti-collagen antibody-induced arthritis, *Cpb2*<sup>-/-</sup> mice exhibited more severe arthritis,  
29 whereas *C5*<sup>-/-</sup> mice were protected against arthritis.[49] Intriguingly, an anti-C5 antibody prevented the  
30 development of severe arthritis in *Cpb2*<sup>-/-</sup> mice. In line with these results, *Cpb2*<sup>-/-</sup> mice also had a greater

1 complement-mediated influx of inflammatory cells in a model of zymosan-induced peritonitis [49].  
2 Furthermore, rheumatoid arthritis patients carrying a *CPB2* variant, resulting in a longer half-life of CPB2,  
3 were also less likely to develop severe disease.[49] Altogether, these studies reveal the profound ability  
4 of CPB2 to reduce inflammation, especially through the inactivation of complement anaphylatoxins.

5 To our knowledge, our study is the first to explore the role of CPB2 in kidney transplantation in  
6 relation to graft survival. Plasma levels of CPB2 have previously been reported to be elevated in kidney  
7 transplant recipients compared to healthy controls.[50,51] Consequently, CPB2 has been postulated to  
8 contribute to the hypofibrinolysis seen in this patient population, thereby negatively impacting transplant  
9 outcome. Micro-thrombi are frequently formed within the graft during kidney transplantation, which can  
10 then lead to poor initial kidney graft function.[42,52,53] Despite these conjectures, however, we found  
11 that the rs3742264 *CPB2* polymorphism in kidney allografts reduced the risk of graft failure. Particularly,  
12 this *CPB2* variant has previously been associated with higher levels.[32–35] Hence, we hypothesized  
13 that the association found was mediated by CPB2 ability to inactivate C3a and C5a, especially since  
14 complement anaphylatoxins are known to impact graft outcome in kidney transplantation.[6,36,54–57]  
15 To test this, we looked at the combined impact of the *CPB2* variant with C3 or C5 polymorphisms that  
16 have been reported to lead to higher C3a and C5a levels.[43,44] In line with our hypothesis, we found  
17 kidney allografts possessing the CPB2 variant as well as a complement gain-of-function had almost  
18 identical outcomes compared to kidney allografts carrying neither variant. We, therefore, propose that  
19 in kidney transplantation, high CPB2 levels improve graft survival by reducing complement-mediated  
20 inflammation.

21 CPN and CPB2 are the only two carboxypeptidases present in plasma.[10] The current  
22 paradigm is that carboxypeptidase N (CPN) is the main regulator of C3a and C5a, whereas CPB2 would  
23 be primarily involved in fibrinolysis. However, *in-vitro* experiments revealed the ability of CPB2 to  
24 inactivate C3a and C5a.[19] Moreover, CPN is less efficient in cleaving C5a into C5a<sub>DesArg</sub> than CPB2,  
25 whereas for C3a both enzymes were equally efficient.[19] Moreover, studies using *Cpb2*<sup>-/-</sup> mice  
26 confirmed that inactivation of complement anaphylatoxins is regulated by CPB2 *in-vivo*. In a model of  
27 hemolytic uremic syndrome (HUS), the disease was exacerbated in *Cpb2*<sup>-/-</sup> mice, compared to both  
28 controls and *Cpr*<sup>-/-</sup> mice.[17] In addition, *Cpb2*<sup>-/-</sup> mice presented with the clinical HUS triad of  
29 thrombocytopenia, uremia, and microangiopathic hemolytic anemia.[17] The exacerbated disease in  
30 *Cpb2*<sup>-/-</sup> mice was attenuated by the treatment with an anti-C5 antibody, and survival after treatment was



1 comparable to wild-type mice.[17] Altogether, our study adds to a growing body of evidence that shows  
2 that implicates CPB2 as a chief regulator of C3a and C5a.

3       Regarding donor-recipient nuances, we found an association between a *CPB2* polymorphism  
4 in donors with the risk of graft loss, but not recipients. These results reveal that it is not CPB2 production  
5 by the recipient, but instead the local CPB2 production by the donor kidney that positively impacts graft  
6 survival in kidney transplantation. Furthermore, when we performed a subgroup analysis for donor type,  
7 we observed a significant association between the CPB2 polymorphism in deceased donors and graft  
8 loss. Although a similar protective effect was seen for the CPB2 polymorphism in living donor, this was  
9 not significant. Donor kidneys from deceased organ donors have inferior outcomes and lower graft  
10 survival rates than kidneys retrieved from living donors.[58] These discrepancies are attributed to the  
11 immunological activation, systemic inflammation, and coagulopathies seen in deceased organ  
12 donors.[6,27,42] It is therefore not surprising that the protective effect of CPB2 may be stronger in  
13 deceased organ donors, especially since C5a levels are higher in these donors compared to their living  
14 counterparts.[54,59] Our findings also suggest that donor pre-treatment with CPB2 might be a promising  
15 strategy to increase graft function and survival. Recently, a recombinant homolog of CPB2 was shown  
16 to alleviate vascular cell damage by decreasing C3a- and C5a-induced neutrophil extracellular trap  
17 formation and suggested as an early intervention for COVID-19.[60] Conversely, donor pre-treatment  
18 with CBP2 would not be possible until it is known whether other donor organs (i.e., the liver, heart, and  
19 lungs) would also benefit from this. Alternatively, rather than enhancing CPB2 levels, blocking the  
20 generation of C3a and C5a through a complement inhibitor could be a better approach.[55–57] Lastly,  
21 our findings stress the potential importance of early complement inhibition as a potential mitigation factor,  
22 as well as that the inhibition needs to be able to get into the kidney allograft given the importance of  
23 donor genotypes.

24       Several limitations of this study warrant consideration. First and foremost, although the  
25 associations found are expected to be causal, this cannot be proven by our study because it is  
26 observational in nature. Further studies will therefore be needed to confirm that the observed  
27 associations are indeed causal. Second, the relationship between polymorphisms and systemic levels  
28 of CPB2 could not be determined in our cohort because of a lack of samples, as well as the relationship  
29 of CPB2 levels with C3a and C5a concentrations. However, it is important to note, that current available  
30 assays can not differentiate between the anaphylatoxin (C3a or C5a) and its metabolite (C3adesArg or

1 C5adesArg). In contrast, crucial strengths of our study are the analysis of four functional polymorphisms  
2 in a large sample size of donor-recipient pairs, the clinically meaningful endpoint, and the 15-year follow-  
3 up time.

4 In conclusion, we found that patients receiving a donor kidney carrying the A-allele of the *CPB2*  
5 polymorphism rs3742264 have a lower risk of late graft loss. Considering the A-allele is a high-producing  
6 *CPB2* variant, our findings imply a beneficial effect of *CPB2* on long-term allograft survival in renal  
7 transplantation.

8

1    **Disclosure**

2    FP owns stock in Appellis, Iveric Bio, InflaRx and Omeros. AFA is a consultant for Ionis Pharmaceuticals  
3    and CSL Behring. JMT and VMH are consultants for Q32 Bio, Inc., a company developing complement  
4    inhibitors. Both also hold stock and may receive royalty income from Q32 Bio, Inc. BPD has served as  
5    a consultant for Apellis Pharmaceuticals, Alexion AstraZeneca Rare Disease, Novartis Pharmaceuticals,  
6    and Arrowhead Pharmaceuticals. The remaining authors of this paper declare that they have no  
7    competing interests.

8

9    **Acknowledgment**

10   The authors thank the members of the REGaTTA cohort (REnal GeneTics TrAnsplantation; University  
11   Medical Center Groningen, University of Groningen, Groningen, the Netherlands): S. J. L. Bakker, J.  
12   van den Born, M. H. de Borst, H. van Goor, J. L. Hillebrands, B. G. Hepkema, G. J. Navis and H. Snieder.  
13   The illustrations of Figure 1 were made by Siawosh K. Eskandari.

14

## 1   **References**

- 2   1    Sørensen VR, Heaf J, Wehberg S, Sørensen SS. Survival Benefit in Renal Transplantation  
3        Despite High Comorbidity. *Transplantation* Lippincott Williams and Wilkins; 2016; **100**: 2160–7.
- 4   2    Meier-Kriesche HU, Schold JD, Srinivas TR, Reed A, Kaplan B. Kidney transplantation halts  
5        cardiovascular disease progression in patients with end-stage renal disease. *Am J Transplant*  
6        Am J Transplant; 2004; **4**: 1662–8.
- 7   3    Lentine KL, Rey LAR, Kolli S, Bacchi G, Schnitzler MA, Abbott KC, Xiao H, Brennan DC.  
8        Variations in the risk for cerebrovascular events after kidney transplant compared with  
9        experience on the waiting list and after graft failure. *Clin J Am Soc Nephrol* Clin J Am Soc  
10       Nephrol; 2008; **3**: 1090–101.
- 11  4    Jansz TT, Bonenkamp AA, Boereboom FTJ, Reekum FE van, Verhaar MC, Jaarsveld BC van.  
12        Health-related quality of life compared between kidney transplantation and nocturnal  
13        hemodialysis. *PLoS One* Public Library of Science; 2018; **13**: e0204405.
- 14  5    Wekerle T, Segev D, Lechler R, Oberbauer R. Strategies for long-term preservation of kidney  
15        graft function. *Lancet* 2017; **389**: 2152–62.
- 16  6    Jager NM, Poppelaars F, Daha MR, Seelen MA. Complement in renal transplantation: The  
17        road to translation. *Mol Immunol* 2017; .
- 18  7    Damman J, Bloks VW, Daha MR, van der Most PJ, Sanjabi B, van der Vlies P, Snieder H,  
19        Ploeg RJ, Krikke C, Leuvenink HGDD, Seelen M a. Hypoxia and Complement-and-Coagulation  
20        Pathways in the Deceased Organ Donor as the Major Target for Intervention to Improve Renal  
21        Allograft Outcome. *Transplantation* 2014; **99**: 1.
- 22  8    Stallone G, Pontrelli P, Rascio F, Castellano G, Gesualdo L, Grandaliano G. Coagulation and  
23        Fibrinolysis in Kidney Graft Rejection. *Frontiers in Immunology*. Frontiers; 2020. p. 1807.
- 24  9    Arolas J, Vendrell J, Aviles F, Fricker L. Metalloproteinases: Emerging Drug Targets in  
25        Biomedicine. *Curr Pharm Des* Curr Pharm Des; 2007; **13**: 349–66.
- 26  10   Leung LLK, Morser J. Carboxypeptidase B2 and carboxypeptidase N in the crosstalk between  
27        coagulation, thrombosis, inflammation, and innate immunity. *J Thromb Haemost* 2018; **16**:  
28        1474–86.
- 29  11   Plug T, Meijers JCM. Structure-function relationships in thrombin-activatable fibrinolysis  
30        inhibitor. *J Thromb Haemost* 2016; **14**: 633–44.

- 1 12 Schneider M, Boffa M, Stewart R, Rahman M, Koschinsky M, Nesheim M. Two naturally  
2 occurring variants of TAFI (Thr-325 and Ile-325) differ substantially with respect to thermal  
3 stability and antifibrinolytic activity of the enzyme. *J Biol Chem* 2002; **277**: 1021–30.
- 4 13 Redlitz A, Tan AK, Eaton DL, Plow EF. Plasma carboxypeptidases as regulators of the  
5 plasminogen system. *J Clin Invest* American Society for Clinical Investigation; 1995; **96**: 2534–  
6 8.
- 7 14 Walker JB, Nesheim ME. A Kinetic Analysis of the Tissue Plasminogen Activator and DSPA $\alpha$ 1  
8 Cofactor Activities of Untreated and TAFI $\alpha$ -treated Soluble Fibrin Degradation Products of  
9 Varying Size. *J Biol Chem* Elsevier; 2001; **276**: 3138–48.
- 10 15 Wang W, Boffa MB, Bajzar L, Walker JB, Nesheim ME. A study of the mechanism of inhibition  
11 of fibrinolysis by activated thrombin-activable fibrinolysis inhibitor. *J Biol Chem* J Biol Chem;  
12 1998; **273**: 27176–81.
- 13 16 Sakharov D V., Plow EF, Rijken DC. On the mechanism of the antifibrinolytic activity of plasma  
14 carboxypeptidase B. *J Biol Chem* Elsevier; 1997; **272**: 14477–82.
- 15 17 Morser J, Shao Z, Nishimura T, Zhou Q, Zhao L, Higgins J, Leung LLK. Carboxypeptidase B2  
16 and N play different roles in regulation of activated complements C3a and C5a in mice. *J*  
17 *Thromb Haemost* 2018; **16**: 991–1002.
- 18 18 Shao Z, Nishimura T, Leung LLK, Morser J. Carboxypeptidase B2 deficiency reveals opposite  
19 effects of complement C3a and C5a in a murine polymicrobial sepsis model. *J Thromb*  
20 *Haemost* 2015; **13**: 1090–102.
- 21 19 Myles T, Nishimura T, Yun TH, Nagashima M, Morser J, Patterson AJ, Pearl RG, Leung LLK.  
22 Thrombin Activatable Fibrinolysis Inhibitor, a Potential Regulator of Vascular Inflammation. *J*  
23 *Biol Chem* J Biol Chem; 2003; **278**: 51059–67.
- 24 20 Sharif SA, Du X, Myles T, Song JJ, Price E, Lee DM, Goodman SB, Nagashima M, Morser J,  
25 Robinson WH, Leung LLK. Thrombin-activatable carboxypeptidase B cleavage of osteopontin  
26 regulates neutrophil survival and synoviocyte binding in rheumatoid arthritis. *Arthritis Rheum*  
27 *Arthritis Rheum*; 2009; **60**: 2902–12.
- 28 21 Van Tilburg NH, Rosendaal FR, Bertina RM. Thrombin activatable fibrinolysis inhibitor and the  
29 risk for deep vein thrombosis. *Blood* American Society of Hematology; 2000; **95**: 2855–9.
- 30 22 Claesen K, Mertens JC, Leenaerts D, Hendriks D. Carboxypeptidase U (CPU, TAFI $\alpha$ , CPB2) in

- 1 thromboembolic disease: What do we know three decades after its discovery? *International*  
2 *Journal of Molecular Sciences*. 2021.
- 3 23 Frère C, Morange PE, Saut N, Tregouet DA, Grosley M, Beltran J, Juhan-Vague I, Alessi MC.  
4 Quantification of thrombin activatable fibrinolysis inhibitor (TAFI) gene polymorphism effects on  
5 plasma levels of TAFI measured with assays insensitive to isoform-dependent artefact. *Thromb*  
6 *Haemost Thromb Haemost*; 2005; **94**: 373–9.
- 7 24 Bruno NE, Yano Y, Takei Y, Gabazza EC, Qin L, Nagashima M, Morser J, D'alessandro-  
8 Gabazza CN, Taguchi O, Sumida Y. Protective role of thrombin activatable fibrinolysis inhibitor  
9 in obstructive nephropathy-associated tubulointerstitial fibrosis. *J Thromb Haemost J Thromb*  
10 *Haemost*; 2008; **6**: 139–46.
- 11 25 Asai S, Sato T, Tada T, Miyamoto T, Kimbara N, Motoyama N, Okada H, Okada N. Absence of  
12 Procarboxypeptidase R Induces Complement-Mediated Lethal Inflammation in  
13 Lipopolysaccharide-Primed Mice. *J Immunol The American Association of Immunologists*;  
14 2004; **173**: 4669–74.
- 15 26 Asai S, Kimbara N, Tada T, Imai M, Campbell W, Okada H, Okada N. Procarboxypeptidase R  
16 deficiency causes increased lethality in concanavalin A-induced hepatitis in female mice. *Biol*  
17 *Pharm Bull Biol Pharm Bull*; 2010; **33**: 1256–9.
- 18 27 Poppelaars F, Seelen MA. Complement-mediated inflammation and injury in brain dead organ  
19 donors. *Mol Immunol Elsevier Ltd*; 2016; .
- 20 28 Poppelaars F, Gaya da Costa M, Eskandari SK, Damman J, Seelen MA. Donor genetic  
21 variants in interleukin-6 and interleukin-6 receptor associate with biopsy-proven rejection  
22 following kidney transplantation. *Sci Rep Cold Spring Harbor Laboratory Press*; 2021; **11**:  
23 2021.04.17.21255669.
- 24 29 Poppelaars F, Costa MG da, Faria B, Eskandari SK, Seelen MA, Damman J. Tumor necrosis  
25 factor- $\alpha$  gene polymorphism is associated with short- and long-term kidney allograft outcomes.  
26 *medRxiv Cold Spring Harbor Laboratory Press*; 2021; : 2021.07.28.21261294.
- 27 30 Poppelaars F, Gaya da Costa M, Faria B, Eskandari SK, Damman J, Seelen MA. A functional  
28 TGFB1 polymorphism in the donor associates with long-term graft survival after kidney  
29 transplantation. *Clin Kidney J Oxford University Press (OUP)*; 2021; .
- 30 31 Eskandari SK, Gaya da Costa M, Faria B, Petr V, Azzi JR, Berger SP, Seelen MAJ, Damman

- 1 J, Poppelaars F. An interleukin 6-based genetic risk score strengthened with interleukin 10  
2 polymorphisms associated with long-term kidney allograft outcomes. *Am J Transplant* 2022;  
3 **22**: 45–57.
- 4 32 Meltzer ME, Doggen CJM, De Groot PG, Meijers JCM, Rosendaal FR, Lisman T. Low thrombin  
5 activatable fibrinolysis inhibitor activity levels are associated with an increased risk of a first  
6 myocardial infarction in men. *Haematologica* 2009; **94**: 811–8.
- 7 33 Morange PE, Tregouet DA, Frere C, Luc G, Arveiler D, Ferrieres J, Amouyel P, Evans A,  
8 Ducimetiere P, Cambien F, Tiret L, Juhan-Vague I. TAFI gene haplotypes, TAFI plasma levels  
9 and future risk of coronary heart disease: The PRIME Study. *J Thromb Haemost* 2005; **3**:  
10 1503–10.
- 11 34 Brouwers G-J, Vos HL, Leebeek FWG, Bulk S, Schneider M, Boffa M, Koschinsky M, van  
12 Tilburg NH, Nesheim ME, Bertina RM, Gómez García EB. A novel, possibly functional, single  
13 nucleotide polymorphism in the coding region of the thrombin-activatable fibrinolysis inhibitor  
14 (TAFI) gene is also associated with TAFI levels. *Blood* American Society of Hematology; 2001;  
15 **98**: 1992–3.
- 16 35 Martini CH, Brandts A, De Bruijne ELE, Van Hylckama Vlieg A, Leebeek FWG, Lisman T,  
17 Rosendaal FR. The effect of genetic variants in the thrombin activatable fibrinolysis inhibitor  
18 (TAFI) gene on TAFI-antigen levels, clot lysis time and the risk of venous thrombosis. *Br J*  
19 *Haematol* Br J Haematol; 2006; **134**: 92–4.
- 20 36 Damman J, Daha MR, Leuvenink HG, van Goor H, Hillebrands JL, Dijk MC van, Hepkema BG,  
21 Snieder H, Born J van den, de Borst MH, Bakker SJ, Navis GJ, Ploeg RJ, Seelen MA.  
22 Association of complement C3 gene variants with renal transplant outcome of deceased  
23 cardiac dead donor kidneys. *Am J Transplant* 2012; **12**: 660–8.
- 24 37 Toy CR, Song H, Nagaraja HN, Scott J, Greco J, Zhang X, Yu CY, Tumlin JA, Rovin BH,  
25 Hebert LA, Birmingham DJ. The Influence of an Elastase-Sensitive Complement C5 Variant on  
26 Lupus Nephritis and Its Flare. *Kidney Int Reports* Elsevier Inc.; 2021; **6**: 2105–13.
- 27 38 de Haan HG, Bezemer ID, Doggen CJM, Le Cessie S, Reitsma PH, Arellano AR, Tong CH,  
28 Devlin JJ, Bare LA, Rosendaal FR, Vossen CY. Multiple SNP testing improves risk prediction  
29 of first venous thrombosis. *Blood* 2012; **120**: 656–63.
- 30 39 Pencina MJ, D'Agostino RB, D'Agostino RB, Vasan RS. Evaluating the added predictive ability

1 of a new marker: From area under the ROC curve to reclassification and beyond. *Stat Med*  
2 *Stat Med*; 2008; **27**: 157–72.

3 40 Austin PC, Steyerberg EW, Steyerberg E, Steyerberg E, Vickers A, Cook N, Gerds T, Gonen  
4 M, Obuchowski N, Harrell F, Hanley J, McNeil B, Bamber D, Demler O, Pencina M, D’Agostino  
5 R, Royston P, Altman D, Royston P, Thompson S, et al. Interpreting the concordance statistic  
6 of a logistic regression model: relation to the variance and odds ratio of a continuous  
7 explanatory variable. *BMC Med Res Methodol* BioMed Central; 2012; **12**: 82.

8 41 Steyerberg EW, Vickers AJ, Cook NR, Gerds T, Gonen M, Obuchowski N, Pencina MJ, Kattan  
9 MW. Assessing the performance of prediction models: a framework for traditional and novel  
10 measures. *Epidemiology* 2010; **21**: 128–38.

11 42 Lisman T, Leuvenink HGD, Porte RJ, Ploeg RJ. Activation of hemostasis in brain dead organ  
12 donors: an observational study. *J Thromb Haemost* J Thromb Haemost; 2011; **9**: 1959–65.

13 43 Heurich M, Martinez-Barricarte R, Francis NJ, Roberts DL, Rodriguez de Cordoba S, Morgan  
14 BP, Harris CL. Common polymorphisms in C3, factor B, and factor H collaborate to determine  
15 systemic complement activity and disease risk. *Proc Natl Acad Sci* 2011; **108**: 8761–6.

16 44 Giles JL, Choy E, van den Berg C, Morgan BP, Harris CL. Functional analysis of a complement  
17 polymorphism (rs17611) associated with rheumatoid arthritis. *J Immunol* J Immunol; 2015; **194**:  
18 3029–34.

19 45 King EA, Wade Davis J, Degner JF. Are drug targets with genetic support twice as likely to be  
20 approved? Revised estimates of the impact of genetic support for drug mechanisms on the  
21 probability of drug approval. *PLoS Genet* Public Library of Science; 2019; **15**: e1008489.

22 46 Nelson MR, Tipney H, Painter JL, Shen J, Nicoletti P, Shen Y, Floratos A, Sham PC, Li MJ,  
23 Wang J, Cardon LR, Whittaker JC, Sanseau P. The support of human genetic evidence for  
24 approved drug indications. *Nat Genet* Nature Publishing Group; 2015; **47**: 856–60.

25 47 Wang X, Smith PL, Hsu MY, Tamasi JA, Bird E, Schumacher WA. Deficiency in thrombin-  
26 activatable fibrinolysis inhibitor (TAFI) protected mice from ferric chloride-induced vena cava  
27 thrombosis. *J Thromb Thrombolysis* J Thromb Thrombolysis; 2007; **23**: 41–9.

28 48 Shi J, Zhi P, Chen J, Wu P, Tan S. Genetic variations in the thrombin-activatable fibrinolysis  
29 inhibitor gene and risk of cardiovascular disease: a systematic review and meta-analysis.  
30 *Thromb Res* Thromb Res; 2014; **134**: 610–6.



- 1 49 Song JJ, Hwang I, Cho KH, Garcia MA, Kim AJ, Wang TH, Lindstrom TM, Lee AT, Nishimura  
2 T, Zhao L, Morser J, Nesheim M, Goodman SB, Lee DM, Bridges SL, Gregersen PK, Leung  
3 LL, Robinson WH. Plasma carboxypeptidase B downregulates inflammatory responses in  
4 autoimmune arthritis. *J Clin Invest* 2011; **121**: 3517–27.
- 5 50 Hryszko T, Malyszko J, Malyszko JS, Brzosko S, Pawlak K, Mysliwiec M. A possible role of  
6 thrombin-activatable fibrinolysis inhibitor in disturbances of fibrinolytic system in renal  
7 transplant recipients. *Nephrol Dial Transplant* 2001; **16**: 1692–6.
- 8 51 Malyszko J, Malyszko JS, Hryszko T, Mysliwiec M. Thrombin activatable fibrinolysis inhibitor in  
9 hypertensive kidney transplant recipients. *Transplant Proc* 2006; **38**: 105–7.
- 10 52 van den Berg TAJ, van den Heuvel MC, Wiersema-Buist J, Adelmeijer J, Nieuwenhuijs-Moeke  
11 GJ, Lisman T, Bakker SJL, van Goor H, Annema-de Jong JH, Berger SP, Blokzijl J, Bodewes  
12 FAJA, de Boer MT, Damman K, De Borst MH, Diepstra A, Dijkstra G, Douwes RM, Eisenga  
13 MF, Erasmus ME, et al. Aggravation of fibrin deposition and microthrombus formation within  
14 the graft during kidney transplantation. *Sci Rep Sci Rep*; 2021; **11**.
- 15 53 DiRito JR, Hosgood SA, Reschke M, Albert C, Bracaglia LG, Ferdinand JR, Stewart BJ,  
16 Edwards CM, Vaish AG, Thiru S, Mulligan DC, Haakinson DJ, Clatworthy MR, Saltzman WM,  
17 Pober JS, Nicholson ML, Tietjen GT. Lysis of cold-storage-induced microvascular obstructions  
18 for ex vivo revitalization of marginal human kidneys. *Am J Transplant Am J Transplant*; 2021;  
19 **21**: 161–73.
- 20 54 van Werkhoven MB, Damman J, van Dijk MCRF, Daha MR, de Jong IJ, Leliveld A, Krikke C,  
21 Leuvenink HG, van Goor H, van Son WJ, Olinga P, Hillebrands J-L, Seelen MAJ. Complement  
22 mediated renal inflammation induced by donor brain death: role of renal C5a-C5aR interaction.  
23 *Am J Transplant* 2013; **13**: 875–82.
- 24 55 Poppelaars F, van Werkhoven MB, Kotimaa J, Veldhuis ZJ, Ausema A, Broeren SGM,  
25 Damman J, Hempel JC, Leuvenink HGD, Daha MR, van Son WJ, van Kooten C, van Os RP,  
26 Hillebrands J-L, Seelen MA. Critical role for complement receptor C5aR2 in the pathogenesis  
27 of renal ischemia-reperfusion injury. *FASEB J* 2017; : fj.201601218R.
- 28 56 Peng Q, Li K, Smyth LA, Xing G, Wang N, Meader L, Lu B, Sacks SH, Zhou W. C3a and C5a  
29 promote renal ischemia-reperfusion injury. *J Am Soc Nephrol American Society of Nephrology*;  
30 2012; **23**: 1474–85.

1 57 Li Q, Peng Q, Xing G, Li K, Wang N, Farrar CA, Meader L, Sacks SH, Zhou W. Deficiency of  
2 C5aR prolongs renal allograft survival. *J Am Soc Nephrol* 2010; **21**: 1344–53.

3 58 Terasaki PI, Cecka JM, Gjertson DW, Takemoto S. High survival rates of kidney transplants  
4 from spousal and living unrelated donors. *N Engl J Med* 1995; **333**: 333–6.

5 59 van Werkhoven MB, Damman J, Daha MR, Krikke C, van Goor H, van Son WJ, Hillebrands J-  
6 L, van Dijk MCRF, Seelen MAJ. Novel insights in localization and expression levels of C5aR  
7 and C5L2 under native and post-transplant conditions in the kidney. *Mol Immunol* 2013; **53**:  
8 237–45.

9 60 Zhang Y, Han K, Du C, Li R, Liu J, Zeng H, Zhu L, Li A. Carboxypeptidase B blocks ex vivo  
10 activation of the anaphylatoxin-neutrophil extracellular trap axis in neutrophils from COVID-19  
11 patients. *Crit Care BioMed Central Ltd*; 2021; **25**: 1–11.

12  
13

## 1 Tables

### 2 Table 1: Baseline characteristics of the donors and recipients.

		All Patients (n = 1271)	Functioning graft (n = 1056)	Graft loss (n = 215)	P-value*	HR	P-value#
<b>Recipient</b>							
<b>CPB2 rs2146881 polymorphism</b>	GG, n (%)	1221 (96.2)	1017 (96.5)	204 (94.9)	0.26		0.17
	GA, n (%)	48 (3.8)	37 (3.5)	11 (5.1)			
	AA, n (%)	0 (0)	0 (0)	0 (0)			
<b>CPB2 rs3742264 polymorphism</b>	GG, n (%)	571 (44.9)	465 (44.0)	106 (49.3)	0.36		0.26
	GA, n (%)	569 (44.8)	481 (45.5)	88 (40.9)			
	AA, n (%)	131 (10.3)	110 (10.4)	21 (9.8)			
<b>CPB2 rs1926447 polymorphism</b>	CC, n (%)	618 (48.8)	513 (48.8)	105 (48.8)	0.06		0.68
	TC, n (%)	547 (43.2)	455 (43.3)	92 (42.8)			
	TT, n (%)	101 (8.0)	83 (7.9)	18 (8.4)			
<b>CPB2 rs3818477 polymorphism</b>	AA, n (%)	493 (38.8)	405 (38.4)	88 (40.9)	0.66		0.45
	AC, n (%)	608 (47.8)	507 (48.0)	101 (47.0)			
	CC, n (%)	170 (13.4)	144 (13.6)	26 (12.1)			
Female sex, n (%)		532 (41.9)	449 (42.5)	83 (38.6)	0.29		0.21
Age, years		47.9 ± 13.5	48.5 ± 13.4	45.0 ± 13.2	<0.001	0.99	0.027
Dialysis vintage, weeks		172 [91 – 263]	174 [87 – 261]	168 [109 – 270]	0.15		0.10
<b>Blood group Donor</b>							
Type O, n (%)		567 (44.6)	474 (44.9)	93 (43.3)	0.004	0.46	0.002
Type A, n (%)		536 (42.2)	448 (42.4)	88 (40.9)		0.46	0.002
Type B, n (%)		113 (8.9)	98 (9.3)	15 (7.0)		0.35	0.002
Type AB, n (%)		55 (4.3)	36 (3.4)	19 (8.8)		Ref	0.008
<b>Immunosuppression</b>							
Anti-CD3 Moab, n (%)		19 (1.5)	14 (1.3)	5 (2.3)	0.27		0.51
ATG, n (%)		103 (8.1)	79 (7.5)	24 (11.2)	0.07		0.14
Azathioprine, n (%)		72 (5.7)	53 (5.0)	19 (8.8)	0.027		0.29
Corticosteroids, n (%)		1201 (94.5)	1002 (94.9)	199 (92.6)	0.17	0.51	0.01
Cyclosporin, n (%)		1085 (85.4)	911 (86.3)	174 (80.9)	0.044	0.66	0.016
Interleukin-2 RA, n (%)		199 (15.7)	163 (15.4)	36 (16.7)	0.63		0.12
Mycophenolic acid, n (%)		907 (71.4)	775 (73.4)	132 (61.4)	<0.001		0.06
Sirolimus, n (%)		38 (3.0)	33 (3.1)	5 (2.3)	0.53		0.54
Tacrolimus, n (%)		97 (7.6)	77 (7.3)	20 (9.3)	0.31		0.39
<b>Donor</b>							
<b>CPB2 rs2146881 polymorphism</b>	GG, n (%)	680 (54.8)	556 (54.0)	124 (58.5)	0.47		0.19
	GA, n (%)	478 (38.5)	402 (39.1)	76 (35.8)			
	AA, n (%)	83 (6.7)	71 (6.9)	12 (5.7)			
<b>CPB2 rs3742264 polymorphism</b>	GG, n (%)	577 (45.5)	462 (43.8)	115 (53.5)	0.033	0.78	0.022
	GA, n (%)	574 (45.2)	490 (46.5)	84 (39.1)			
	AA, n (%)	118 (9.3)	102 (9.7)	16 (7.4)			
<b>CPB2 rs1926447 polymorphism</b>	CC, n (%)	617 (48.6)	516 (48.9)	101 (47.2)	0.38		0.92
	TC, n (%)	538 (42.4)	440 (41.7)	98 (45.8)			
	TT, n (%)	114 (9.0)	99 (9.4)	15 (7.0)			
<b>CPB2 rs3818477 polymorphism</b>	AA, n (%)	459 (36.2)	389 (36.9)	70 (32.6)	0.30		0.16
	AC, n (%)	637 (50.2)	527 (50.0)	110 (51.2)			
	CC, n (%)	172 (13.6)	137 (13.0)	35 (16.3)			
Female sex, n (%)		626 (49.3)	521 (49.3)	105 (48.8)	0.89		0.96
Age, years		44.4 ± 14.4	44.1 ± 14.6	46.1 ± 13.4	0.044	1.02	<0.001
<b>Donor type</b>							
Living, n (%)		282 (22.2)	257 (24.3)	25 (11.6)	<0.001	Ref	0.002
Deceased, n (%)		989 (77.8)	642 (75.7)	190 (88.4)		1.94	
<b>Blood group</b>							
Type O, n (%)		642 (50.6)	541 (51.3)	101 (47.2)	0.033	0.39	0.004
Type A, n (%)		502 (39.6)	414 (39.3)	88 (41.1)		0.42	0.01
Type B, n (%)		97 (7.6)	82 (7.8)	15 (7.0)		0.36	0.012
Type AB, n (%)		27 (2.1)	17 (1.6)	10 (4.7)		Ref	0.035
<b>Transplantation</b>							
Highest PRA, in %		10.1 ± 23.6	9.98 ± 23.7	10.9 ± 25.0	0.54		0.75
Total HLA mismatches		2 [1 – 3]	2 [1 – 3]	2 [1 – 3]	0.48		0.11
CIT, in hours		17.7 [10.9 – 23.0]	17.0 [8.6 – 23.0]	20.0 [15.3 – 25.0]	<0.001	1.03	0.001
WIT, in minutes		37.0 [31 – 45]	37.0 [30 – 45]	38.0 [32 – 45]	0.12	1.02	0.003
DGF, n (%)		415 (32.7)	289 (27.4)	126 (58.6)	<0.001	3.79	<0.001

1 The baseline demographics of all donor-recipient transplant pairs as well as subgroup analysis for graft  
2 loss after 15 years of follow-up. Data are displayed as mean  $\pm$  standard deviation, median [IQR] and the  
3 total number of patients with percentage.

4 Abbreviations: *ATG*, Anti-thymocyte globulin; *CD3*, cluster of differentiation 3; *CIT*, cold ischemia time;  
5 *CPB2*, *Carboxypeptidase B2*; *DGF*, delayed graft function; *HLA*, human leukocyte antigen; *PRA*, panel-  
6 reactive antibody; *RA*, receptor antagonist; *WIT*, warm ischemia time. Bold *P-values* indicate *P-values*  
7 that are statistically significant ( $P$ -value < 0.05).

8 *P-value*\* shows the *P-value* for the differences in baseline demographics among the groups, tested  
9 by Mann–Whitney U test or Student's *t*-test for continuous variables, and  $\chi^2$  test for categorical variables.

10 *P-value*# shows the *P-value* for univariable analysis for graft loss after 15 years of follow-up.

11

1 **Table 2: Multivariable analysis of 15-year death-censored graft survival.**

Variables not in the equation		Variables in the equation		
<i>Variables</i>	<i>P-value</i>	<i>Variables</i>	<i>P-value</i>	<i>Hazard Ratio</i>
Warm ischemia time (minutes)	0.07	rs3742264 in the donor (G versus A)	0.004	0.67 (1.21 – 3.82)
Corticosteroids	0.09	Recipient age (years)	<0.001	0.98 (0.97 – 0.99)
Cold ischemia time (hours)	0.11	Delayed graft function (yes versus no)	<0.001	4.02 (3.03 – 5.32)
Donor type (living versus deceased)	0.13	Recipient blood type (ABO versus other)	0.001	
Cyclosporin	0.35	Donor age (years)	0.002	1.02 (1.01 – 1.03)
Donor blood type (ABO versus other)	0.98			

2  
3 Multivariable cox regression was performed with a stepwise forward selection. Only variables that with  
4 a *P*-value < 0.05 in the univariate analysis were included. Data are presented as hazard ratio with 95%  
5 confidence interval (CI) and *P*-value. In the final model, the *CPB2* SNP (rs3742264-T) in the donor,  
6 recipient age, the occurrence of delayed graft function, recipient blood type, and donor age were  
7 included, whereas warm ischemia time, use of corticosteroids, cold ischemia time, donor type, use of  
8 cyclosporin, and donor blood type were not.

9

1 **Table 3: Associations of CPB2 genetic risk score with graft loss.**

<b>CPB2 genetic risk score</b>			
	<i>Hazard ratio</i>	<i>95% CI</i>	<i>P-value</i>
	<i>(per SD)</i>		
<b>Model 1</b>	1.302	1.140 – 1.488	<0.001
<b>Model 2</b>	1.309	1.139 – 1.505	<0.001
<b>Model 3</b>	1.279	1.118 – 1.463	<0.001
<b>Model 4</b>	1.268	1.102 – 1.458	0.001

9 *Data are presented as the hazard ratio with a 95% confidence interval (CI) and P-value.*

10 **Model 1:** *Crude model.*

11 **Model 2:** *Adjusted for model 1 plus recipient characteristic's: recipient age, recipient sex, recipient blood*  
 12 *type and dialysis vintage.*

13 **Model 3:** *Adjusted for model 1 plus donor characteristic's: donor age, donor sex, donor blood type, and*  
 14 *donor origin.*

15 **Model 4:** *Adjusted for model 1 plus transplant characteristic's: cold and warm ischemia time, the total*  
 16 *HLA-mismatches, and the occurrence of delayed graft function (DGF).*

17

1 **Table 4: Additive value of the CPB2 genetic risk score for the prediction of graft loss**

	Harrell's C (95% CI)		Change (95%-CI)*	P-value	IDI (%)	P-value
	Without the CPB2 genetic risk score	with the CPB2 genetic risk score				
<b>Model 1</b>	0.500	0.588 (0.546 – 0.629)	N/A	N/A	N/A	N/A
<b>Model 2</b>	0.550 (0.514 – 0.586)	0.585 (0.544 – 0.626)	0.035 (0.005 – 0.066)	0.02	0.7	0.003
<b>Model 3</b>	0.566 (0.525 – 0.607)	0.615 (0.575 – 0.656)	0.051 (0.016 – 0.086)	0.004	1.2	0.001
<b>Model 4</b>	0.623 (0.587 – 0.660)	0.645 (0.608 – 0.682)	0.028 (0.003 – 0.053)	0.03	1.0	0.003
<b>Model 5</b>	0.704 (0.668 – 0.740)	0.722 (0.685 – 0.759)	0.021 (0.000 – 0.042)	0.06	1.0	0.005
<b>Model 6</b>	0.734 (0.700 – 0.769)	0.744 (0.711 – 0.777)	0.012 (-0.001 – 0.025)	0.08	1.1	0.007

2

3 *Data are presented as Harrell's concordance statistic (Harrell's C) with a 95% confidence interval (CI)*  
 4 *and integrated discrimination improvement (IDI) with P-value. \*Change in C-statistics compared to the*  
 5 *model without the CPB2.*

6 **Model 1:** *Crude model.*

7 **Model 2:** *CPB2 rs3742264 polymorphism in the donor*

8 **Model 3:** *Adjusted for recipient characteristic's: recipient age, recipient sex, recipient blood type and*  
 9 *dialysis vintage.*

10 **Model 4:** *Adjusted for donor characteristic's: donor age, donor sex, donor blood type, and donor origin.*

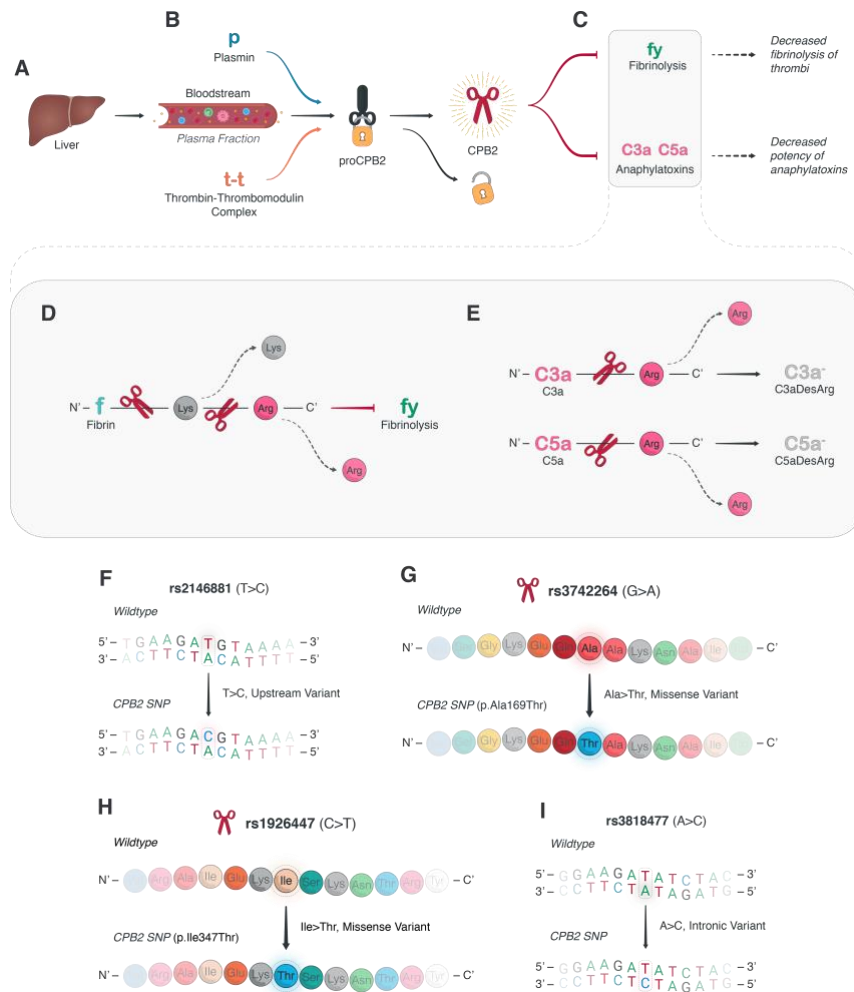
11 **Model 5:** *Adjusted for plus transplant characteristic's: cold and warm ischemia time, the total HLA-*  
 12 *mismatches, and the occurrence of delayed graft function.*

13 **Model 6:** *Adjusted for the occurrence of delayed graft function, recipient blood type, donor age and use*  
 14 *of corticosteroids.*

15

## 1 Figures

### 2 Figure 1: Illustration of the CPB2 pathway and examined CPB2-related polymorphisms.



3

4 (A) A precursor form of CPB2 (proCPB2) is produced in the liver and released into the plasma fraction

5 of the blood. (B) There, it can interact with plasmin and the thrombin-thrombomodulin complex to gain

6 its enzymatic, carboxypeptidase activity as mature CPB2. (C – E) The main effects of CPB2 are exerted

7 on (C) fibrinolysis and anaphylatoxin. (D) The effect on fibrinolysis is mediated through fibrin by CPB2-

8 dependent removal of C-terminal lysine and arginine residues, thus thrombus resorption by fibrinolytic

9 mechanisms. (E) The neutralization of anaphylatoxins such as C3a and C5a is mediated by C-terminal

10 lysis of arginine residues, creating C3aDesArg and C5aDesArg variants with decreased inflammatory

11 potency, resulting in anti-inflammatory effects. (F – I) In this study, we assessed the associations of four

12 single-nucleotide polymorphisms (SNPs) in kidney allograft donors and recipients on graft survival.

13 These SNPs were (F) rs2146881 (G>A), (G) rs3742264 (p.Ala169Thr), (H) rs1926447 (p.Ile347Thr),

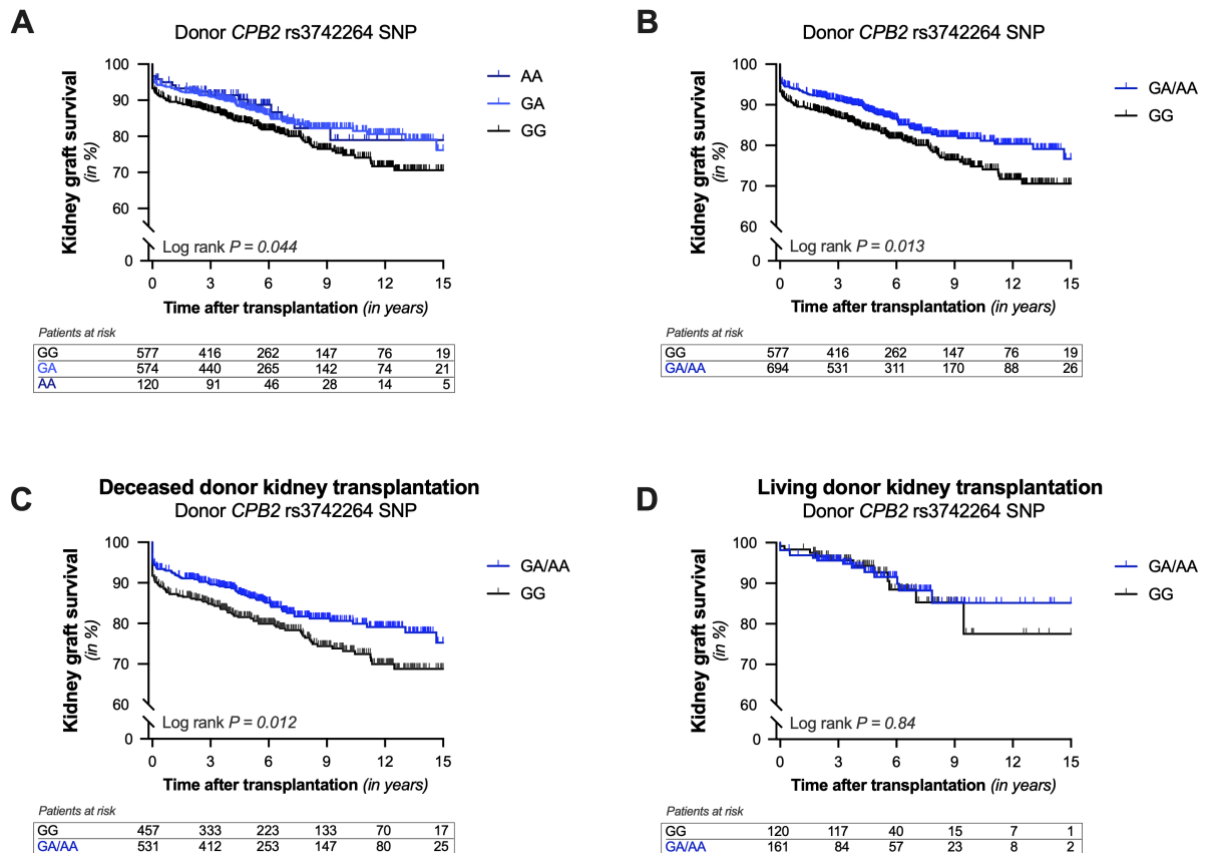
14 and (I) rs3818477 (A>C). (pro)CPB2, (pro)carboxypeptidase B2; C3a, complement 3a; C5a,

15 complement 5a; fbrn, fibrin; fysis, fibrinolysis;

16

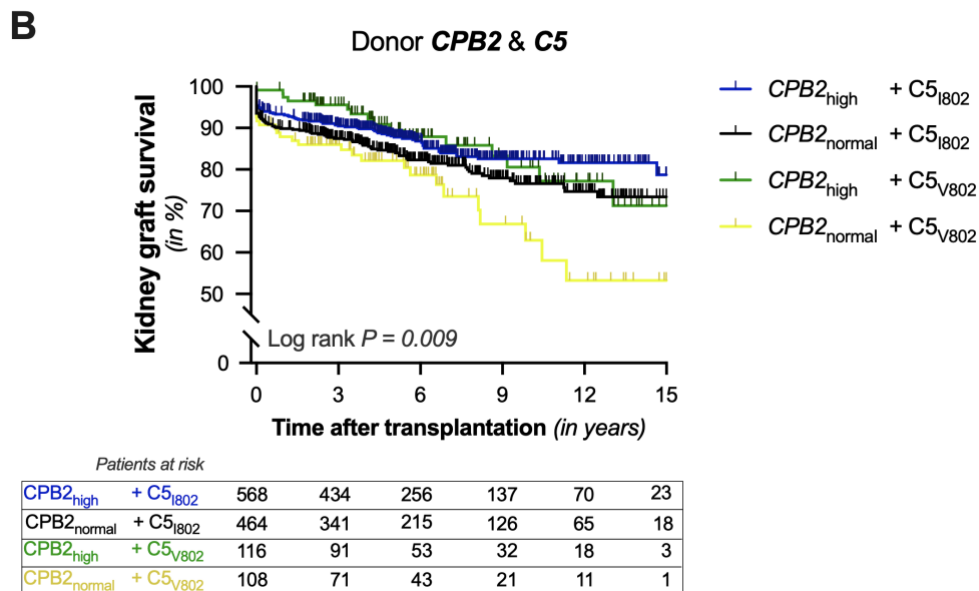
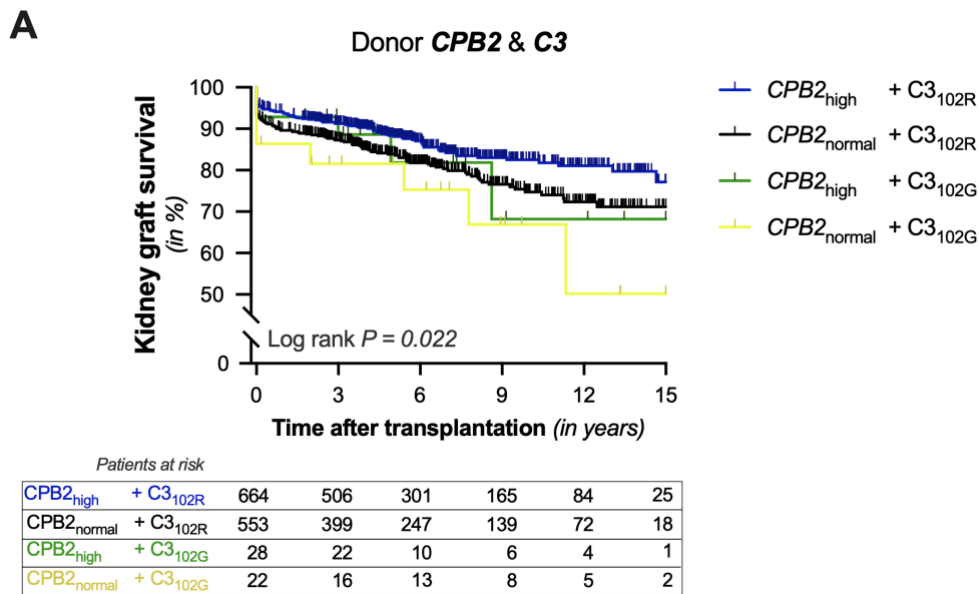


1 **Figure 2: Kaplan-Meier curves for 15-year death-censored kidney graft survival according to the**  
 2 **presence of a carboxypeptidase B2 gene polymorphism in the donor.**



3  
 4 **(A)** Cumulative 15-year death-censored kidney graft survival with the rs3742264 G>A polymorphism in  
 5 the carboxypeptidase B2 gene (*CPB2*) in the donor. **(B)** Next, the GA- and AA-genotype were combined  
 6 in one group since the graft loss incidence did not significantly differ between these genotypes. A  
 7 subgroup analysis for donor type was performed. Cumulative 15-year death-censored kidney graft  
 8 survival with the rs3742264 G>A polymorphism in **(C)** deceased kidney donors and **(D)** living kidney  
 9 donors. The Log-rank test was used to compare the graft loss incidence between the different groups.

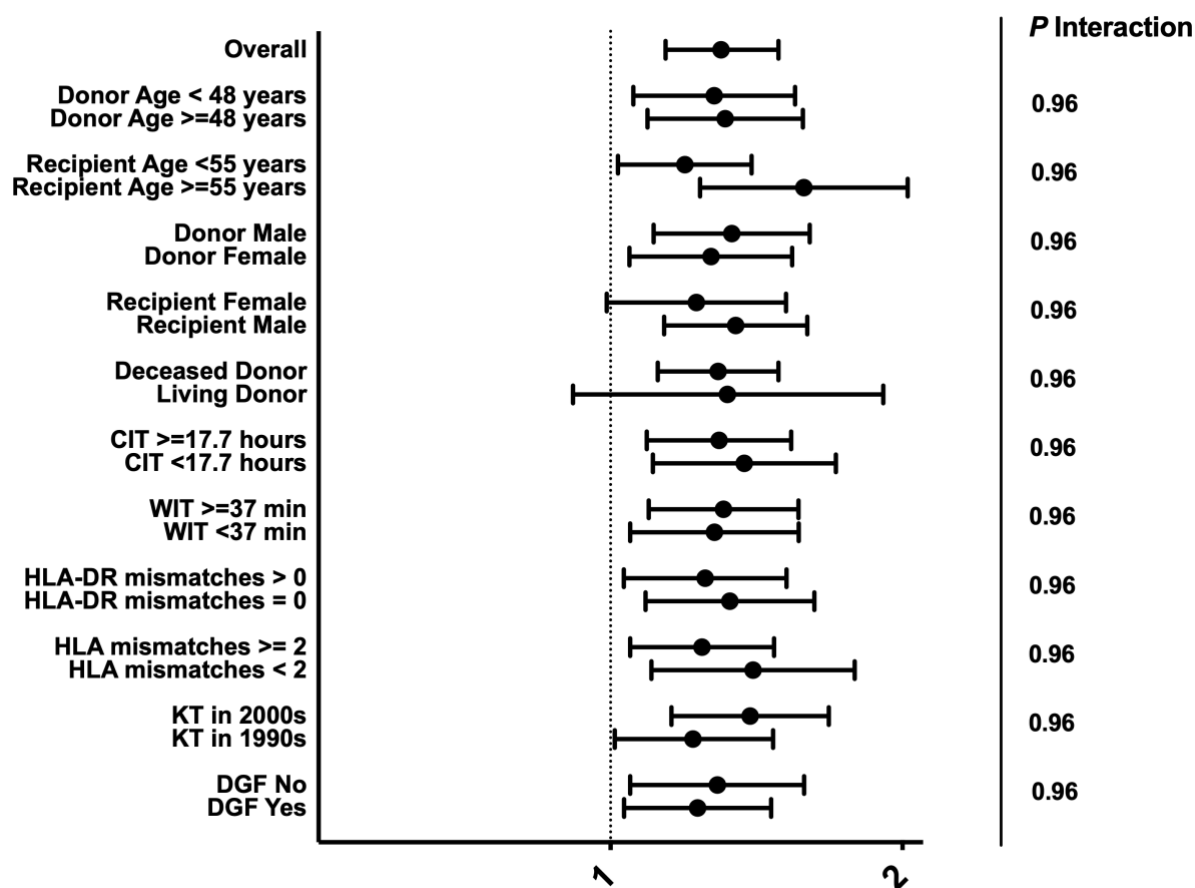
1 **Figure 3: Kaplan-Meier curves for 15-year death-censored kidney graft survival according to the**  
 2 **presence of a carboxypeptidase B2, C3 and C5 gene polymorphism in the donor.**



3  
 4 **(A)** Cumulative 15-year death-censored kidney graft survival according to the presence of the  
 5 rs3742264 G>A polymorphism in the carboxypeptidase B2 gene (*CPB2*) and the rs2230199 C > G  
 6 polymorphism in the C3 gene (*C3*). Pairs were divided into four groups according to the absence (black  
 7 line), presence of the CPB2 variant (blue line), presence of the C3 variant (yellow line) or both (green  
 8 line). **(B)** Cumulative 15-year death-censored kidney graft survival according to the presence of the  
 9 rs3742264 G>A polymorphism in the carboxypeptidase B2 gene (*CPB2*) and the rs17611 G > A  
 10 polymorphism in the C5 gene (*C5*). Pairs were divided into four groups according to the absence (black  
 11 line), presence of the CPB2 variant (blue line), presence of the C5 variant (yellow line) or both (green  
 12 line). Log-rank test was used to compare the incidence of graft loss between the groups.

13

1 **Figure 4: Hazard ratios for CPB2 genetic risk score among subgroups.**



2  
 3 Forest plot of CPB2 genetic risk score sub-analyses, demonstrating consistency of the hazard ratios for  
 4 graft loss in the different subgroups with the exception of donor origins of the kidney allografts and  
 5 recipient sex. The association between the CPB2 genetic risk score and graft loss was not observed in  
 6 kidney transplants from living donors or in female recipients. No significant interaction was seen  
 7 between the CPB2 genetic risk score and the various clinical variables of the subgroups.

8

1 **Supplementary Data**

2 **Table S1: Genotypic frequencies of CPB2 polymorphisms in donors and recipients**

<b>CPB2</b>		<b>Donor</b>	<b>Recipient</b>	<b>P-value<sup>a</sup></b>	<b>1000 genome project</b>	<b>P-value<sup>b</sup></b>	<b>P-value<sup>c</sup></b>
<i>rs2146881</i>	GG	54.8 (680)	96.2 (1221)	<b>&lt;0.0001</b>	57.1 (287)	0.62	<b>&lt;0.0001</b>
	GA	38.5 (478)	3.8 (48)		37.2 (187)		
	AA	6.7 (83)	0 (0)		5.8 (29)		
<i>rs3742264</i>	CC	45.5 (577)	44.9 (571)	0.69	44.3 (223)	0.37	0.75
	CT	45.2 (574)	44.8 (569)		44.1 (222)		
	TT	9.3 (118)	10.3 (131)		11.5 (58)		
<i>rs1926447</i>	GG	48.6 (617)	48.8 (618)	0.65	48.1 (242)	0.60	0.22
	GA	42.4 (538)	43.2 (547)		41.4 (208)		
	AA	9.0 (114)	8.0 (101)		10.5 (53)		
<i>rs3818477</i>	AA	36.2 (459)	38.8 (493)	0.39	41.0 (206)	<b>0.02</b>	0.10
	AC	50.2 (637)	47.8 (608)		42.7 (215)		
	CC	13.6 (172)	13.4 (170)		16.3 (82)		

3  
4 1271 donor-recipient renal transplant pairs were analyzed for the presence of genetic variants in the  
5 carboxypeptidase B2 gene (*CPB2*). The frequencies of these polymorphisms were compared to those  
6 reported by the European cohort of the 1000 genomes project. Genotype frequencies are displayed as  
7 percentages with the corresponding total number of patients [% (n)].

8 <sup>a</sup> P-value for the Pearson Chi-square test for differences in the genotype frequency between donors and  
9 recipients.

10 <sup>b</sup> P-value for the Pearson Chi-square test for differences in the genotype frequency between donors and  
11 the European cohort of the 1000 genome project.

12 <sup>c</sup> P-value for the Pearson Chi-square test for differences in the genotype frequency between recipients  
13 and the European cohort of the 1000 genome project.

14

1 **Table S2: Competitive analysis of clinical factor associations with graft loss.**

Variables not in the equation		Variables in the equation		
Variables	P-value	Variables	P-value	Hazard Ratio
Cold ischemia time (in hours)	0.10	CPB2 genetic risk score (per SD)	<0.001	1.31 (1.14 – 1.50)
Warm ischemia time (in minutes)	0.14	Recipient age (in years)	<0.001	0.98 (0.97 – 0.99)
Donor type (living versus deceased)	0.17	Delayed graft function (yes versus no)	<0.001	3.80 (2.86 – 5.05)
rs3742264 in the donor (T versus C)	0.35	Recipient blood type (ABO versus other)	0.001	
Cyclosporin	0.83	Donor age (in years)	0.007	1.01 (1.00 – 1.02)
Donor blood type (ABO versus other)	0.99	Corticosteroids	0.035	0.56 (0.33 – 0.96)

2  
3 Multivariable cox regression was performed with a stepwise forward selection. Only variables that with  
4 a P-value < 0.05 in the univariate analysis were included. Data are presented as hazard ratio with 95%  
5 confidence interval (CI) and P-value. In the final model, the CPB2 genetic risk score, recipient age,  
6 occurrence of delayed graft function, recipient blood type, donor age and use of corticosteroids were  
7 included, whereas cold ischemia time, warm ischemia time, donor type, CPB2 SNP (rs3742264-T) in  
8 the donor, use of cyclosporin, and donor blood type were not.