

1 **Title:** A text messaging intervention to support patients with chronic pain during prescription  
2 opioid tapering: protocol for a double-blind randomised controlled trial

3

4 **Running Title:** Text messaging support for chronic pain

5

6 **Word Count:** 4517 (main manuscript only, excluding title page, abstract, references, figures,  
7 tables, acknowledgments).

8

### 9 **Authors and Affiliations**

10 Ali Gholamrezaei <sup>1</sup>, MD, PhD; Email: [ali.gholamrezaei@sydney.edu.au](mailto:ali.gholamrezaei@sydney.edu.au)

11 Michael R Magee <sup>1</sup>, MA; Email: [mmag9080@uni.sydney.edu.au](mailto:mmag9080@uni.sydney.edu.au)

12 Amy G McNeilage <sup>1</sup>, BA; Email: [amy.mcneilage@sydney.edu.au](mailto:amy.mcneilage@sydney.edu.au)

13 Leah Dwyer <sup>2</sup>, BA; Email: [k Leahwesley@gmail.com](mailto:k Leahwesley@gmail.com)

14 Hassan Jafari <sup>3</sup>, MSc, PhD; Email: [hassan.jafari@kcl.ac.uk](mailto:hassan.jafari@kcl.ac.uk)

15 Alison Sim <sup>1</sup>, MA; Email: [alisonsim213@gmail.com](mailto:alisonsim213@gmail.com)

16 Manuela L Ferreira <sup>4</sup>, BPTH, MSc, PhD; Email: [manuela.ferreira@sydney.edu.au](mailto:manuela.ferreira@sydney.edu.au)

17 Beth D Darnall <sup>5</sup>, PhD; Email: [bdarnall@stanford.edu](mailto:bdarnall@stanford.edu)

18 Paul Glare <sup>1</sup>, MBBS, FRACP, MM; Email: [paul.glare@sydney.edu.au](mailto:paul.glare@sydney.edu.au)

19 Claire E Ashton-James <sup>1</sup>, PhD Email: [claire.ashton-james@sydney.edu.au](mailto:claire.ashton-james@sydney.edu.au)

20

21 <sup>1</sup> Pain Management Research Institute, Kolling Institute, The University of Sydney, St

22 Leonards NSW, Australia

23 <sup>2</sup> Consumer Advisory Group, Painaustralia, Deakin ACT, Australia

24 <sup>3</sup> Department of Biostatistics and Health Informatics, Institute of Psychiatry, Psychology and

25 Neuroscience, King's College London, United Kingdom

1 <sup>4</sup> Sydney Musculoskeletal Health, Kolling Institute, Faculty of Medicine and Health, The  
2 University of Sydney, St Leonards NSW, Australia

3 <sup>5</sup> Department of Anaesthesiology, Perioperative and Pain Medicine, Stanford University  
4 School of Medicine, Stanford, CA, United States

5

6 **Correspondence Author**

7 A/Prof. Claire E Ashton-James.

8 Postal address: Pain Management Research Centre, Ground Floor Douglas Building, Royal  
9 North Shore Hospital, St Leonards, NSW, Australia, 2065.

10 Email: [claire.ashton-james@sydney.edu.au](mailto:claire.ashton-james@sydney.edu.au)

11

12

13

14

15

16

1 **Abstract**

2 **Introduction** Increases in pain and interference with quality of life is a common concern  
3 among people with chronic non-cancer pain (CNCP) who are tapering opioid medications.  
4 Research indicates that access to social and psychological support for pain self-management  
5 may help people to reduce their opioid dose without increasing pain and interference. This  
6 study evaluates the efficacy of a text messaging intervention designed to provide people with  
7 CNCP with social and psychological support for pain self-management while tapering long-  
8 term opioid therapy (LTOT) under the guidance of their prescriber.

9 **Methods and analysis** A double-blind randomised controlled trial will be conducted.  
10 Patients with CNCP ( $n = 220$ ) who are tapering LTOT will be enrolled from across Australia.  
11 Participants will continue with their usual care while tapering LTOT under the supervision of  
12 their prescribing physician. They will randomly receive either a psycho-educational video  
13 and supportive text messaging (two SMS per day) for 12 weeks or the video only. The  
14 primary outcome is the pain intensity and interference assessed by the Pain, Enjoyment of  
15 Life and General Activity scale. Secondary outcomes include mood, self-efficacy, pain  
16 cognitions, opioid dose reduction, withdrawal symptoms, and acceptability, feasibility, and  
17 safety of the intervention. Participants will complete questionnaires at baseline and then  
18 every four weeks for 12 weeks and will be interviewed at week 12. This trial will provide  
19 evidence for the efficacy of a text messaging intervention to support patients with CNCP who  
20 are tapering LTOT. If proven to be efficacious and safe, this low-cost intervention can be  
21 implemented at scale.

22 **Ethics and dissemination** The study protocol was reviewed and approved by the Northern  
23 Sydney Local Health District (Australia). Study results will be published in peer-reviewed  
24 journals and presented at scientific and professional meetings.

25

1 **Trial registration number** ACTRN12622001423707.

2

3 **KEYWORDS:** Opioid, pain, tapering, digital health, mHealth, mobile health

4

5 **Strengths and limitations of this study**

6 1. This protocol describes a double-blind randomised controlled trial in which patients,  
7 clinicians, investigators, outcome assessors, and statistician will all be blind to group  
8 allocation.

9 2. The intervention was co-designed with input from both patients and clinicians and  
10 further refined based on feedback received during a pilot study of the intervention.

11 3. The design and procedures of this trial were informed by the feasibility and potential  
12 efficacy measures of a pilot trial.

13 4. By using a broad community-based sample, this study aims to conduct more inclusive  
14 pain research and investigate the barriers and facilitators of implementing digital  
15 support on a larger scale.

16 5. Designing a sham or placebo control that is completely identical to the intervention is  
17 a challenge for a digital intervention. The active control may provide benefits to its  
18 recipients, potentially leading to an underestimation of the actual effect size of the  
19 digital support.

20

## 1 **Introduction**

## 2 **Background and rationale**

3 Chronic pain conditions are among the leading causes of disability worldwide.<sup>1</sup> Whilst opioid  
4 medications are commonly prescribed for the management of chronic non-cancer pain  
5 (CNCP),<sup>2</sup> prescribing guidelines have changed recently due to evidence of limited benefits  
6 and dose-related harms associated with long-term opioid therapy (LTOT).<sup>3</sup> Consequently,  
7 patients with CNCP are increasingly being advised to gradually reduce the dose or  
8 discontinue LTOT (i.e., tapering) under clinical supervision.<sup>4</sup>

9 Systematic reviews suggest that, on average and over the long term, tapering opioids for  
10 patients with CNCP is not associated with increased pain and can be associated with  
11 improved functioning and quality of life.<sup>5 6</sup> However, patients' experiences of opioid tapering  
12 vary widely.<sup>7</sup> Opioid dose reduction can lead to unpleasant withdrawal symptoms and  
13 negatively impact mood and pain.<sup>7 8</sup> Recent retrospective studies have also raised concerns  
14 about the risk of overdose and serious harm associated with opioid tapering.<sup>9</sup> Several studies  
15 indicate that the trajectory of patients' experiences during tapering LTOT may depend on  
16 their access to various forms of support, including pain education, routine monitoring, a  
17 strong patient-provider relationship, and strategies for managing pain and withdrawal  
18 symptoms.<sup>5 7 10 11</sup> However, access to these forms of support is often a pervasive challenge.<sup>8 12</sup>

19 <sup>13</sup>

20 Digital health technologies using mobile phones (mobile health or mHealth) are emerging  
21 as a solution to the global challenge of providing patients with access to support for health  
22 behaviour change.<sup>14 15</sup> They can be a cost-effective way to deliver healthcare services on a  
23 large scale, particularly when they are used to address chronic conditions, and can be readily  
24 adapted to the needs of diverse demographic groups and health conditions.<sup>14 16 17</sup> A recent  
25 systematic review found that digital health interventions can help to improve pain

1 interference and severity, psychological distress, and health-related quality of life in people  
2 with chronic pain.<sup>18</sup> However, evidence for the effectiveness of digital health interventions to  
3 support patients with CNCP during tapering LTOT is limited but promising.<sup>19</sup>

4 Our previous research has shown that people with CNCP have generally positive attitudes  
5 towards using digital health technologies, particularly mobile text messaging (SMS), to  
6 support them with opioid tapering.<sup>20</sup> Studies have also shown that educational videos may be  
7 an effective means of providing patients with information about chronic pain, pain self-  
8 management, and opioid tapering,<sup>21-23</sup> and can increase the opioid-tapering self-efficacy of  
9 people currently on LTOT for chronic pain.<sup>21</sup> Based on this foundational research, we co-  
10 designed a digital intervention (video and mobile text messaging) for patients with CNCP  
11 who are tapering prescription opioids under clinical supervision.<sup>24</sup> Patients and clinicians  
12 have rated this program as appropriate, useful, and likely to be effective in supporting  
13 patients during opioid tapering.<sup>24</sup> A pilot randomised controlled trial (RCT) has been  
14 conducted, demonstrating the feasibility, acceptability, and potential efficacy of this  
15 intervention in patients referring to public and private outpatient pain management clinics.<sup>25</sup>

16 <sup>26</sup>

17 Therefore, in this study, we aim to evaluate the efficacy (primary objective) of our text  
18 messaging intervention to improve patients' outcomes in a larger and more diverse  
19 population in Australia. To conduct more inclusive pain research,<sup>27</sup> this study will use a broad  
20 community sample rather than merely recruiting through specialist pain clinics which are not  
21 easily accessible to most patients.<sup>28</sup> Using a community sample will also enable us to  
22 investigate the barriers and facilitators of implementing this digital support on a large scale  
23 and to prepare strategies accordingly. Since, compared to our pilot RCT, the study setting and  
24 population have changed in this RCT and some aspects of the intervention have been  
25 modified (e.g., duration and content), we will re-evaluate the feasibility, acceptability, and

1 safety of the intervention (secondary objectives). If found to be feasible, acceptable, safe, and  
2 efficacious, this digital health support can be evaluated in future cost-  
3 effectiveness/implementation trials as a solution to improve outcomes and reduce the harms  
4 of LTOT in patients with CNCP.

## 5 **Objectives**

6 The primary objective of this RCT is to evaluate the efficacy of a text messaging intervention  
7 in reducing pain intensity and interference (as measured by the Pain, Enjoyment of Life and  
8 General Activity (PEG) scale)<sup>29</sup> in patients with CNCP during tapering LTOT. Secondary  
9 objectives are A) to evaluate the efficacy of the intervention in reducing the severity of  
10 anxiety and depression symptoms, increasing opioid tapering self-efficacy and pain self-  
11 efficacy, reducing pain catastrophising, reducing the opioid dose, and reducing withdrawal  
12 symptoms, B) to evaluate the feasibility, acceptability, and safety of the intervention, C) to  
13 explore mechanisms of action and predictors of response to the intervention, and D) to  
14 identify barriers and facilitators of future implementation of the intervention at large-scale.

15

## 16 **Methods and analysis**

17 This report is prepared according to the Standard Protocol Items: Recommendations for  
18 Interventional Trials (SPIRIT, see Appendix 1 for the SPIRIT checklist).

## 19 **Patient and public involvement**

20 The development of this mHealth intervention was in response to previous research  
21 conducted by our team, as well as others, on patients' experiences and needs during tapering  
22 opioid medications,<sup>7 8 12</sup> and their perspectives on receiving support via mHealth  
23 interventions.<sup>20</sup> As described previously, the mHealth intervention prototype was developed  
24 in close collaboration with clinician-researchers and a consumer representative.<sup>24</sup> It was  
25 revised in response to feedback from panels of consumers and clinical experts, and then was

1 tested in a pilot study.<sup>25</sup> The intervention content and delivery were further improved based  
2 on the feedback received from those who participated in the pilot study.<sup>26</sup> Similarly, the  
3 design (procedures and measures) of the pilot trial<sup>25</sup> as well as the current, more definitive  
4 trial was developed in close collaboration with clinician-researchers and a consumer  
5 representative. Moreover, feasibility data and feedback received from those who participated  
6 in the pilot study were considered in designing this trial.<sup>26</sup>

## 7 **Study design**

8 This is a double-blind RCT with two parallel arms (Figure 1) to test the primary hypothesis  
9 which is the superiority of receiving an educational video followed by daily text messages  
10 (SMS) compared with receiving an educational video alone, both in addition to usual care, in  
11 reducing pain intensity/interference.

12 [To place *Figure 1 Study flow diagram* approximately here]

13 There is currently no gold-standard ‘placebo’ control for digital health interventions and  
14 designing a sham condition for such interventions is challenging. Using an active control  
15 condition (i.e., educational video) together with ‘limited disclosure’ in the current study (see  
16 *Blinding/Masking*) will allow us to achieve blinding (masking) while complying with the  
17 national standards on ethical conduct in human research.<sup>30</sup>

## 18 **Study setting**

19 Participants will be recruited from across Australia. Flyers (Appendix 2) will be used to  
20 identify potential participants via social media, newspapers, public notice boards, community  
21 events, websites, and email lists.

## 22 **Participants, screening, and recruitment procedures**

23 The study flyers contain a link to the study webpage (Appendix 2) which provides brief  
24 information about the study and access to the Participant Information Sheet (PIS, Appendix



- 1 3) and an online self-report screening form (Appendix 4) to check eligibility (Table 1). Those  
2 who are eligible will be requested to consent online (Appendix 3).  
3

**Table 1: Eligibility criteria <sup>a</sup>**

**Inclusion criteria**

- A resident of Australia,
- Age 18 years or older,
- Having a chronic ( $\geq 3$  months) non-cancer pain condition,<sup>31</sup>
- Using opioid analgesics for at least four weeks before enrolment,<sup>3 b</sup>
- Has started or is starting to reduce opioid dose under the supervision of a physician (e.g., General Practitioner),
- Willing to provide contact details of their physician,
- Able to understand written and spoken English well,
- Owns a mobile phone that can receive text messages,
- Has access to the internet via their mobile phone (Data or Wi-Fi),
- Able to give written informed consent and comply with the study procedures.

**Exclusion criteria**

- Having opioid or other substance use disorder,
- Having a poorly controlled or unstable mental illness,
- Suicidal ideation or attempt in the past 12 months,
- Major surgery in the past 6 months or scheduled in the next 3 months such as surgery to the organs of the head, chest, and abdomen,
- Participation in another clinical trial concurrently,
- Pregnancy.

<sup>a</sup> Eligibility is checked using an online self-administered screening form (Appendix 4)

<sup>b</sup> The National Real Time Prescription Monitoring system<sup>32</sup> will be used for verification

1

2

### 3 **Interventions**

#### 4 *Usual care*

5 In this study, usual care is defined as any care that each participant receives at the discretion  
6 of their prescriber (e.g., their General Practitioner), which may or may not include  
7 multidisciplinary care. Participants in the current study are those who are tapering their  
8 opioid medications under the supervision of their prescribing physician. This physician is  
9 responsible for the monitoring and management of withdrawal symptoms and other possible  
10 adverse events during opioid tapering. Importantly, participation in this clinical trial does not  
11 involve clinical decisions around reducing opioids, the rate of dose reduction, or any other  
12 care that participants may be receiving. Participation in this study lasts for a total duration of  
13 12 weeks.

#### 14 *Intervention group*

15 After signing the consent form and completing baseline questionnaires, participants will be  
16 randomised (1:1) into two groups (Figure 1). Participants in the intervention group will  
17 receive a welcoming message and a message with a link to a psycho-educational video to  
18 watch (day 1) followed by daily text messages on their mobile phones for 12 weeks. The  
19 video and library of the messages were developed based on a co-design study, driven by the  
20 Social Cognitive Theory (with emphasis on the self-efficacy construct) and direct feedback  
21 from consumers and clinicians.<sup>24</sup> The contents have been revised further based on feedback  
22 received during a pilot RCT.<sup>25</sup> The psycho-educational video is composed of narrated,  
23 animated PowerPoint slides with a duration of 11 minutes providing information about pain,  
24 opioid tapering, and pain self-management strategies as well as socioemotional support in the

1 form of testimonials. The content of the text messages serves to reinforce and remind people  
2 about the content of the psycho-educational video as well as messages of support and  
3 reassurance (see examples in Table 2 and Appendix 5).<sup>25</sup> Starting from day 2, participants  
4 will receive daily text messages (2 SMS/day, 7 days/week) for 12 weeks (135 unique  
5 messages, 20% repeated messages, and 5 messages for assessment notifications). The text  
6 messaging duration for this study is based on patients' feedback in the pilot study.<sup>25</sup>

7

**Table 2: Examples of SMS text messages**

**Pain management information**

*“Pain flare ups are like bad moods. Sometimes they come on for no clear reason. They will often pass if you distract yourself. Try doing or thinking about something you enjoy.”*

*“Slow, deep breathing can help manage stress and pain. Breathe in deeply for about 4 counts - feel your stomach expand. Hold that breath for 2 counts and then breath out slowly for 4 counts. Notice the relaxation spread through your body. Try this for a few minutes.”*

**Opioid tapering information**

*“Opioid medication becomes less effective over time. It might be surprising but after a gradual reduction many people say their pain is more manageable and less distressing.”*

*“Hi [first name], sometimes it takes our body time to adjust to changes in medication. Withdrawal symptoms while reducing your opioid medication are temporary and will pass.”*

**Socioemotional support/reassurance**

*“It's normal to feel irritable or low while reducing opioids. It's a big change and your body needs time to adjust. Try to be kind to yourself.”*

*“[first name], you are doing your best in a challenging situation. Be proud of yourself.”*

1

2       Message delivery will be managed by Twilio (Twilio Inc, San Francisco, California) and  
3 will be one-way (i.e., recipients cannot reply directly to messages). Messages will be sent  
4 over Australian telephone networks at no cost to individual participants. Messages will be  
5 sent at ~10 AM and ~4 PM (local time). The messages sent to the participants are  
6 standardised in their content and delivery (by day of study and by the time of day; AM/PM).  
7 Participants' first names are used in a selection of messages to increase engagement (e.g., "Hi  
8 John...").

9       Before watching the educational video and receiving the first daily text messages,  
10 participants in the intervention group will receive an information sheet (Appendix 6)  
11 outlining the digital support they will receive (i.e., the educational video and daily text  
12 messages). Participants will be informed that the text messages are one-way. They can cease  
13 receiving text messages by emailing or calling the research team. Participants will be asked  
14 whether they are willing to receive daily text messages (i.e., the second consent step). If they  
15 do not agree to receive daily text messages, they can continue with just watching the  
16 educational video (see *Statistical Methods* for sensitivity analysis).

#### 17 *Control group*

18 Participants in the control group similarly will receive a link to an educational video (i.e.,  
19 active control) to watch after randomisation (day 1) but will not receive daily text messages.  
20 The content of the video is identical to the video in the intervention group except that it does  
21 not include information/testimonials about receiving daily text messages and the duration is  
22 10 minutes (see *Blinding Arrangements*). Before watching the educational video, participants  
23 in the control group will also receive an information sheet (Appendix 6) outlining the digital  
24 support they will receive (i.e., the educational video).

#### 25 **Outcomes**

- 1 The study primary and secondary outcomes are selected based on the recommendations of the
- 2 Initiative on Methods, Measurement, and Pain Assessment in Clinical Trials (IMMPACT)<sup>33,34</sup>
- 3 To minimise participant burden, we will use short-form versions of previously validated
- 4 questionnaires as described below and at the times specified in Table 3.
- 5
- 6

	Description	Baseline	Week 4	Week 8	Week 12
Demographics – Clinical data	Age, Gender, Socioeconomic, Pain, Medications, Current care, Tapering history	X			
Decision	Single-item CPSPost	X			
Social support	OSSS-3	X			
Pain	3-item PEG scale	X	X	X	X
Opioid dose, OME	Self-report, prescription history	X	X	X	X
Emotional functioning	PHQ-2 and GAD-2	X	X	X	X
Self-efficacy in tapering	Single-item OTSEQ <sup>a</sup>	X	X	X	X
Pain cognitions	CAP-6 and PSEQ-2	X	X	X	X
Withdrawal symptoms	Open-ended question		X	X	X
Current care	Self-report visits for pain	X	X	X	X
Global improvement	PGIC scale				X
Adverse events	NEQ				X
Acceptability	Feedback survey, interview				X

Feasibility	Recruitment, dropout, delivery				X
Abbreviations: PEG: Pain Enjoyment of life General activity scale; PGIC: Patient Global Impression of Change; CPSPost: Control Preferences Scale; PHQ-2: Patient Health Questionnaire-2; GAD-2: Generalized Anxiety Disorder-2; OME: Oral Morphine Equivalents; CAP-6: Concerns about Pain Scale; PSEQ-2: Pain Self-Efficacy Questionnaire; OSSS-3: Oslo Social Support Scale. <sup>a</sup> OTSEQ will be repeated after watching the video.					

1

2 *Primary outcome*

3 The primary outcome in this study is the PEG scale score at 12 weeks after enrolment.<sup>29</sup> The  
4 3-item PEG scale is a subset of the Brief Pain Inventory scale<sup>35</sup> and has an 11-point NRS for  
5 each of the three domains of pain intensity, pain interference with general activity (physical  
6 interference), and pain interference with enjoyment of life (affective interference).<sup>36</sup> Ratings  
7 are from 0 ('no pain'/'does not interfere') to 10 ('pain as bad as you can  
8 imagine'/'completely interferes'). The total score is the average of the 3 items (ranging from  
9 0 to 10). The minimal clinically important difference (MCID) in the PEG scale has been  
10 evaluated in several studies and is reported from 1 to 2.5 points (out of 10). We will consider  
11 at least 1 point difference between the two groups in the PEG scale to be a clinically  
12 important difference in this study.<sup>29 37 38</sup>

13 *Secondary outcome measures*

14 • Emotional functioning 12 weeks after enrolment: We will measure the severity of *anxiety*  
15 and *depression* symptoms with the Generalised Anxiety Disorder-2 (GAD-2)<sup>39</sup> and the  
16 Patient Health Questionnaire-2 (PHQ-2),<sup>40</sup> respectively. Each questionnaire contains 2 items  
17 on anxiety/depression symptoms and the responses range from 0 ('Not at all') to 3 ('Nearly  
18 every day'). Total score is the sum of the scores for each questionnaire and ranges from 0 to

- 1 6. A cut-point score of 3 or greater in each scale is generally used for screening  
2 depression/anxiety.<sup>39 40</sup>
- 3 • Participant's rating of global improvement 12 weeks after enrolment: We will measure  
4 global improvement using the Patient Global Impression of Change (PGIC) scale, a 7-point  
5 Likert scale with ratings ranging from 'Very much improved' to 'Very much worse'.<sup>41</sup>
  - 6 • Cumulative incidence of withdrawal symptoms 12 weeks after enrolment: We will  
7 evaluate the experience of withdrawal-like symptoms every 4 weeks during the study period  
8 using a binary question (Yes/No) followed by an open-ended prompt for patients to explain  
9 the experienced symptoms.<sup>42</sup>
  - 10 • Percentage of opioid dose reduction 12 weeks after enrolment: To measure opioid dose  
11 reduction, we will use two sources of information: 1) participants' self-reports of their current  
12 medication (i.e., drug names, doses, regimen) at baseline and then every 4 weeks; 2)  
13 prescription history obtained from The National Real Time Prescription Monitoring system  
14 (RTPM). The RTPM is a nationally implemented system in Australia that collects prescribing  
15 and dispensing information about monitored medicines via electronic prescription exchange  
16 services. The National Data Exchange component of the RTPM captures information from  
17 state and territory regulatory systems, prescribing and dispensing software, and a range of  
18 external data sources.<sup>32</sup> The total daily dose (TDD) of opioids will be converted to mg of oral  
19 morphine equivalents (OME) and the percentage of reduction from baseline will be  
20 calculated.<sup>43</sup>
  - 21 • Self-efficacy 12 weeks after enrolment: We will measure pain self-efficacy using the 2-  
22 item Pain Self-Efficacy Questionnaire (PSEQ-2) which assesses confidence in the ability to  
23 do tasks and activities despite pain with ratings ranging from 0 ('not at all confident') to 6  
24 ('completely confident') and the total sum score ranging from 0 to 12.<sup>44</sup> In addition, we will  
25 measure self-efficacy in reducing opioid medications using the Opioid Tapering Self-Efficacy

1 Questionnaire (OTSEQ) which we developed based on Bandura’s self-efficacy theory.<sup>45</sup> The  
2 OTSEQ measures self-efficacy to taper prescription opioids in the presence of chronic pain  
3 using one item (general self-efficacy). Participants rate their confidence by selecting a  
4 number from 0 (‘not at all confident’) to 100 (‘completely confident’). The face validity of  
5 the questionnaire has been evaluated by a panel of clinicians during the co-design process and  
6 cognitive debriefing was conducted by interviewing six patients with CNCP who had  
7 experienced opioid tapering.

- 8 • Concerns about pain 12 weeks after enrolment: Pain catastrophising cognitions will be  
9 measured using the 2-item Concerns About Pain scale (CAP-6).<sup>46</sup> Ratings range from 1  
10 (‘never’) to 5 (‘always’) and the total sum score ranges from 6 to 30.
- 11 • Acceptability of digital support will be measured using a survey at the end of the study  
12 period. The survey design was based on previous studies,<sup>47</sup> including our pilot RCT,<sup>25</sup> and  
13 contains Likert scales and open-ended questions about the usefulness, readability, and  
14 acceptability of the digital support. We will also conduct a semi-structured interview at the  
15 end of the study period in both groups to gain a deeper understanding of participants’  
16 experiences and views of the content and delivery of the digital support.
- 17 • Feasibility of digital support will be evaluated at the end of the study according to the  
18 *number* of messages delivered/not delivered which will be recorded automatically by the text  
19 message system. Moreover, *participant disposition* will be reported according to the  
20 IMMPACT recommendation<sup>33</sup> including the recruitment process, adherence, and study  
21 completion data, the use of concomitant care (e.g., healthcare visits), and any protocol  
22 deviations. This information will be extracted from the data collection software (Research  
23 Electronic Data Capture, REDCap).<sup>48</sup>
- 24 • Potentially adverse and unwanted events 12 weeks after enrolment: Participants will  
25 complete the 20-item Negative Effects Questionnaire at the end of the study. This is a tool



1 commonly used to examine potential adverse and unwanted events in psychological  
2 treatments.<sup>49</sup>

3 *Other study measures:*

4 Demographic (age, gender), socioeconomic (education, employment, marital status, language  
5 and English proficiency, state, place of usual residence), and clinical data (pain condition and  
6 duration, current care, tapering history) will be collected at the beginning of the study using a  
7 self-administered questionnaire. To further explore the factors that may be associated with  
8 treatment response, patient involvement in the decision to taper opioids will be measured  
9 using the single-item Control Preferences Scale (CPS<sub>Post</sub> version) which evaluates *perceived*  
10 role position after consultation with ratings from 1 ('I made my decision alone') to 5 ('My  
11 doctor made the decision').<sup>50</sup> The Oslo Social Support Scale (OSSS-3) will be used for  
12 measuring perceived social support.<sup>51</sup>

### 13 **Assignment of interventions**

14 *Allocation*

15 We will use the REDCap system for managing enrolment, randomisation, and data  
16 collection.<sup>48</sup> Participants will be enrolled in the study by a Research Assistant (RA). After  
17 completing the baseline questionnaires, the RA will use REDCap to randomly allocate the  
18 participant to a study group based on the randomisation table embedded in REDCap. The  
19 randomisation table will be generated at the beginning of the study by an independent  
20 member of our Clinical Trial Unit using Research Randomizer  
21 (<https://www.randomizer.org/>). Access to this table in REDCap will be limited for the  
22 research team members. The RA can only see the assigned group after (but not before) the  
23 allocation (concealed allocation) as this is required for managing the delivery of  
24 interventional text messages via the text message system.

25 *Blinding/Masking*

1 Participants, their clinicians, data collectors, research team members (except the RA who  
2 manages the text messaging system), and statisticians are all blinded to the group allocation.  
3 Participants will be informed by the PIS (Appendix 3) that they will be randomly allocated  
4 into two groups and that both groups will receive ‘digital health support’. They will be  
5 informed that the study's aim is to evaluate whether digital health support can improve health  
6 outcomes in patients with chronic pain during reducing opioid medications. This *limited*  
7 *disclosure* of the study aim is required to maintain blinding (masking) but does not involve  
8 deception.<sup>30</sup> This method is recommended for “Improving Blinding Integrity and Reporting  
9 in Psychotherapy Trials”.<sup>52</sup> After randomisation and before receiving the digital support,  
10 participants in both groups will become aware of the details of the digital support that they  
11 will receive but will not become aware of the other group (Appendix 6). Participants will be  
12 asked not to discuss the details of the digital health support they receive with the clinician  
13 supervising their opioid tapering for the duration of the study.<sup>52</sup> The study RA will not be  
14 blinded to the group allocation but will not be involved in data collection after randomisation.  
15 Questionnaires will be completed online (self-administered). For other data (e.g., feasibility  
16 data) groups are not known to the data collectors.

### 17 **Data collection and management**

18 Participants will complete questionnaires developed in REDCap and delivered online at the  
19 time points specified in Table 3. The link to the REDCap surveys will be sent to the  
20 participant’s email address and text messages will be sent to their mobile phone as a  
21 notification and, if needed, as a reminder to complete the surveys.<sup>53</sup> Semi-structured  
22 interviews will be conducted over the phone at the end of the study (week 12). The interviews  
23 will be audio-recorded and transcribed. Participants will be invited for interview,  
24 consecutively as they finish the study until a diverse range of in-depth experiences are  
25 captured.<sup>54</sup> Feasibility data including the number of messages delivered will be extracted

1 from the SMS software. Data including enrolment, refusals, drop-outs, and withdrawal from  
2 the study will be extracted from REDCap records.

### 3 **Statistical methods**

#### 4 *Sample size*

5 With a 2-sided  $\alpha$  level of 0.05, a study power of 0.8, a standard deviation (SD) of 2.5 points  
6 in the PEG scale score (primary outcome measure), and assuming a 10% drop-out rate, we  
7 require 220 participants in total to detect 1 point difference (MCID of PEG, Cohen's  $d = 0.4$ )  
8 between the two study groups in mean PEG score after 12 weeks.

#### 9 *Statistical analysis*

10 Researchers conducting analyses will be blinded to the group status. Our primary outcome is  
11 the PEG scale total score at 12 weeks post-randomisation. The study primary hypothesis (H1)  
12 is that the PEG scale total score at 12 weeks after randomisation is lower in the intervention  
13 compared to the control group. To test this hypothesis, a linear mixed model containing fixed  
14 effects of treatment group, time, and time x group interaction as well as baseline values of the  
15 outcome, will be used. A planned contrast (i.e., the between-group difference at week 12)  
16 will be used to test the study primary hypothesis. We will also include the measures of the  
17 PEG scale at 4 and 8 weeks after randomisation in our primary analysis model, so that in the  
18 case of missingness at 12 weeks, the model can use these data to obtain a better estimate  
19 despite the missingness by applying maximum likelihood methods (i.e., including the random  
20 effect of participants and fixed effect of time). This approach provides valid inferences under  
21 the assumption that the mechanism of missing data is ignorable (or Missing At Random). To  
22 account for the correlation between repeated measures at 4, 8, and 12 weeks, a random  
23 intercept will be included at the subject level. We will explore if the baseline adjusted model  
24 (i.e., including baseline values of the dependent variable in the model as a covariate) can  
25 improve the precision of the estimates based on the fit statistics and residual distribution.

1 Normal distribution of the residuals will be tested. If departing from normality, first we will  
2 look for a more appropriate distribution shape and data will be transformed if appropriate to  
3 approximate residuals to normality.

4 Similarly, a linear mixed model will be used to analyse the study secondary outcomes  
5 with repeated measures after randomisation (e.g., emotional functioning). To analyse  
6 continuous clinical secondary outcomes, we will use the same model as the primary analysis.  
7 This involves linear mixed models that incorporate outcome measures at all available time  
8 points, along with a group x time interaction term that enables estimation of the difference  
9 between arms at each time point. For binary secondary outcomes, we will employ a logistic  
10 mixed effects model, again including the outcome at all available time points and with two  
11 levels. The statistical significance will be defined as  $P < 0.05$  (two-sided) and the effect  
12 estimates will be reported with corresponding Confidence Intervals (CIs). Cohen's  $d$  (effect  
13 size) will be calculated based on the estimates and standard errors. Analyses will be  
14 conducted using SAS software (v 9.4, SAS Institute Inc., Cary, NC, USA).

#### 15 *Explorative analysis*

16 The PEG scale total score is the primary outcome measure to test the efficacy of the  
17 intervention according to the pre-specified MCID for this measure. However, each of the  
18 PEG scale items will also be analysed and reported separately with explorative aims.  
19 Explorative analyses will be done to investigate trends of change in outcomes within- and  
20 between-group (i.e., group x time interaction effect) and potential moderating and mediating  
21 factors.<sup>55</sup> Model statement and parameters (i.e., estimation method, covariance structure) will  
22 be determined based on the fit statistics and residuals' distribution. In addition to marginal  
23 linear mixed models (where time is a categorical variable), linear mixed models (where time  
24 is a continuous variable) with random intercept and random slope will also be conducted.  
25 Pairwise contrasts will be done to compare the outcomes between the two groups at weeks 4

1 and 8. In these explorative analyses,  $P$  value adjustment will be done to account for multiple  
2 comparisons according to the Holm–Bonferroni method.<sup>56</sup>

### 3 *Sensitivity analyses and missing data imputation*

4 Sensitivity analyses will be done with both per-protocol and intention-to-treat (ITT) analyses  
5 based on drop-outs and missing data, as well as based on participants' compliance (e.g.,  
6 refusing to receive SMS if allocated to).<sup>57</sup> For the analyses where all levels of the repeated  
7 measures are included in the model as the dependent variable, missing data will be imputed  
8 by the mixed-model analysis without any further ad hoc imputation unless when only a  
9 baseline value is available.<sup>58</sup> In such a case, selective imputation will be done using the  
10 baseline observation carried forward method.<sup>57</sup>

### 11 *Qualitative analysis*

12 For feasibility and acceptability outcomes, a mixed-method analysis will be conducted on  
13 quantitative-qualitative data. Transcripts and digital notes will be entered into NVivo (version  
14 12, QSR International). Thematic analysis using an inductive approach will be followed. The  
15 Consolidated Framework for Implementation Research will be used to organise  
16 implementation barriers and facilitators into major constructs.<sup>59</sup>

## 17 **Ethics and dissemination**

### 18 *Research ethics approval and protocol*

19 This study has approval from the Northern Sydney Local Health District Research Ethics and  
20 Governance (2022/ETH01795, 2022/STE02938). The initially approved protocol version was  
21 1.02 (dated 11 October 2022). The protocol has been revised before enrolment (version 1.3  
22 dated 19 January 2023). The trial was prospectively registered at the Australian New Zealand  
23 Clinical Trials Registry (ACTRN: ACTRN12622001423707).

### 24 *Dissemination*

1 Study results will be published in peer-reviewed journals and presented at scientific and  
2 professional meetings.

3

#### 4 **Discussion**

5 This study describes the protocol for a double-blind RCT to test the efficacy of a co-designed  
6 digital health intervention to support people with CNCP during tapering LTOT. Other  
7 outcomes include feasibility, acceptability, and safety of the intervention. The intervention  
8 content and the trial protocol have been co-designed in collaboration with patients with  
9 chronic pain and clinicians specialising in pain management. If proven to be efficacious, this  
10 digital support can be a low-cost intervention to be implemented at a large scale.

11 There are limitations in the design of this trial that should be acknowledged. We  
12 acknowledge that there may be substantial variation in opioid dose changes attempted by  
13 participants over the 12-week study period, and there is likely to be significant variation in  
14 participants' satisfaction, engagement with, and adherence to the 'usual care'. However,  
15 heterogeneity in participants' opioid tapering schedules and usual care will allow us to  
16 capture potential feasibility challenges. Moreover, it would be impractical and potentially not  
17 beneficial to the principle of patient-centred care to standardise 'usual care' or standardise  
18 opioid tapering schedules.<sup>10</sup> We also acknowledge that our calculation for the percentage of  
19 opioid dose reduction is based on self-report of opioid consumption, which is prone to bias.  
20 This method of assessment reflects the reality of clinical care delivered in the current study  
21 setting (Australia), where patients' adherence to opioid prescribing and tapering advice is not  
22 enforced or closely supervised but relies on patient self-report. To minimise potential bias,  
23 we will collect prescribed/dispensed opioid medication data from electronic monitoring  
24 systems as a second source of information. Also, to minimise the risk of social desirability  
25 effects on opioid dose reporting, participants are reminded that their assessments, including

1 medication reporting, will be confidential and not reported back to their clinician. We also  
2 acknowledge the study limitation regarding the control condition. Designing a sham or  
3 placebo digital health is challenging for this study. Therefore, we used an active control  
4 condition (an educational video) and the *limited disclosure* method to achieve masking.  
5 However, the educational video is likely to provide benefits to the participants as it has been  
6 shown to improve proximal outcomes including perceived tapering effectiveness and tapering  
7 self-efficacy,<sup>21</sup> and can promote health behaviour change.<sup>22</sup> This may lead to an  
8 underestimation of the actual effect size of the digital support.

9

## 10 **Acknowledgements**

11 We acknowledge the Ernest Heine Family Foundation for supporting this study with a  
12 philanthropic gift to the University of Sydney. MLF holds an NHMRC Investigator Grant.

13

## 14 **References**

- 15 1. Blyth FM, Huckel Schneider C. Global burden of pain and global pain policy-creating a purposeful  
16 body of evidence. *Pain* 2018;159 Suppl 1:S43-S48. doi: 10.1097/j.pain.0000000000001311  
17 [published Online First: 2018/08/17]
- 18 2. Black-Tiong S, Gonzalez-Chica D, Stocks N. Trends in long-term opioid prescriptions for  
19 musculoskeletal conditions in Australian general practice: a national longitudinal study using  
20 MedicinesInsight, 2012-2018. *BMJ Open* 2021;11(4):e045418. doi: 10.1136/bmjopen-2020-  
21 045418 [published Online First: 2021/04/09]
- 22 3. Dowell D, Ragan KR, Jones CM, et al. CDC Clinical Practice Guideline for Prescribing Opioids for  
23 Pain - United States, 2022. *MMWR Recomm Rep* 2022;71(3):1-95. doi:  
24 10.15585/mmwr.rr7103a1 [published Online First: 2022/11/04]
- 25 4. Bohnert ASB, Guy GP, Jr., Losby JL. Opioid Prescribing in the United States Before and After the  
26 Centers for Disease Control and Prevention's 2016 Opioid Guideline. *Ann Intern Med*  
27 2018;169(6):367-75. doi: 10.7326/M18-1243 [published Online First: 2018/09/01]
- 28 5. Frank JW, Lovejoy TI, Becker WC, et al. Patient Outcomes in Dose Reduction or Discontinuation of  
29 Long-Term Opioid Therapy: A Systematic Review. *Ann Intern Med* 2017;167(3):181-91. doi:  
30 10.7326/M17-0598 [published Online First: 2017/07/18]
- 31 6. Fishbain DA, Pulikal A. Does Opioid Tapering in Chronic Pain Patients Result in Improved Pain or  
32 Same Pain vs Increased Pain at Taper Completion? A Structured Evidence-Based Systematic  
33 Review. *Pain Med* 2019;20(11):2179-97. doi: 10.1093/pm/pny231 [published Online First:  
34 2019/01/01]
- 35 7. McNeilage AG, Avery NS, Holliday S, et al. A qualitative trajectory analysis of patients' experiences  
36 tapering opioids for chronic pain. *Pain* 2022;163(2):e246-e60. doi:  
37 10.1097/j.pain.0000000000002336 [published Online First: 2021/05/15]

- 1 8. Henry SG, Paterniti DA, Feng B, et al. Patients' Experience With Opioid Tapering: A Conceptual  
2 Model With Recommendations for Clinicians. *J Pain* 2019;20(2):181-91. doi:  
3 10.1016/j.jpain.2018.09.001 [published Online First: 2018/09/24]
- 4 9. Agnoli A, Xing G, Tancredi DJ, et al. Association of Dose Tapering With Overdose or Mental Health  
5 Crisis Among Patients Prescribed Long-term Opioids. *JAMA* 2021;326(5):411-19. doi:  
6 10.1001/jama.2021.11013 [published Online First: 2021/08/04]
- 7 10. Darnall BD, Ziadni MS, Stieg RL, et al. Patient-Centered Prescription Opioid Tapering in  
8 Community Outpatients With Chronic Pain. *JAMA Intern Med* 2018;178(5):707-08. doi:  
9 10.1001/jamainternmed.2017.8709 [published Online First: 2018/02/21]
- 10 11. Nicholas MK, Asghari A, Sharpe L, et al. Reducing the use of opioids by patients with chronic pain:  
11 an effectiveness study with long-term follow-up. *Pain* 2020;161(3):509-19. doi:  
12 10.1097/j.pain.0000000000001763 [published Online First: 2019/11/26]
- 13 12. Frank JW, Levy C, Matlock DD, et al. Patients' Perspectives on Tapering of Chronic Opioid  
14 Therapy: A Qualitative Study. *Pain Med* 2016;17(10):1838-47. doi: 10.1093/pm/pnw078  
15 [published Online First: 2016/05/22]
- 16 13. Kennedy LC, Binswanger IA, Mueller SR, et al. "Those Conversations in My Experience Don't Go  
17 Well": A Qualitative Study of Primary Care Provider Experiences Tapering Long-term Opioid  
18 Medications. *Pain Med* 2018;19(11):2201-11. doi: 10.1093/pm/pnx276 [published Online  
19 First: 2017/11/11]
- 20 14. Fiordelli M, Diviani N, Schulz PJ. Mapping mHealth research: a decade of evolution. *J Med*  
21 *Internet Res* 2013;15(5):e95. doi: 10.2196/jmir.2430 [published Online First: 2013/05/24]
- 22 15. Marcolino MS, Oliveira JAQ, D'Agostino M, et al. The Impact of mHealth Interventions:  
23 Systematic Review of Systematic Reviews. *JMIR Mhealth Uhealth* 2018;6(1):e23. doi:  
24 10.2196/mhealth.8873 [published Online First: 2018/01/19]
- 25 16. Haskins BL, Lesperance D, Gibbons P, et al. A systematic review of smartphone applications for  
26 smoking cessation. *Transl Behav Med* 2017;7(2):292-99. doi: 10.1007/s13142-017-0492-2  
27 [published Online First: 2017/05/21]
- 28 17. Rinaldi G, Hijazi A, Haghparast-Bidgoli H. Cost and cost-effectiveness of mHealth interventions  
29 for the prevention and control of type 2 diabetes mellitus: A systematic review. *Diabetes Res*  
30 *Clin Pract* 2020;162:108084. doi: 10.1016/j.diabres.2020.108084 [published Online First:  
31 2020/02/18]
- 32 18. Slattery BW, Haugh S, O'Connor L, et al. An Evaluation of the Effectiveness of the Modalities  
33 Used to Deliver Electronic Health Interventions for Chronic Pain: Systematic Review With  
34 Network Meta-Analysis. *J Med Internet Res* 2019;21(7):e11086. doi: 10.2196/11086  
35 [published Online First: 2019/07/19]
- 36 19. Ashton-James CE, Glare P, Darnall BD. Out of office hours: scalable, on-demand, digital support  
37 for patients tapering prescription opioids. *Pain* 2020;161(10):2252-54. doi:  
38 10.1097/j.pain.0000000000001947 [published Online First: 2020/06/06]
- 39 20. Magee MR, McNeilage AG, Avery N, et al. mHealth Interventions to Support Prescription Opioid  
40 Tapering in Patients With Chronic Pain: Qualitative Study of Patients' Perspectives. *JMIR*  
41 *Form Res* 2021;5(5):e25969. doi: 10.2196/25969 [published Online First: 2021/05/19]
- 42 21. Feng B, Malloch YZ, Kravitz RL, et al. Assessing the effectiveness of a narrative-based patient  
43 education video for promoting opioid tapering. *Patient Educ Couns* 2021;104(2):329-36. doi:  
44 10.1016/j.pec.2020.08.019 [published Online First: 2020/09/10]
- 45 22. Henry SG, Feng B, Verba S, et al. The story vs the storyteller: Factors associated with the  
46 effectiveness of brief video-recorded patient stories for promoting opioid tapering. *Health*  
47 *Expect* 2021;24(3):991-99. doi: 10.1111/hex.13243 [published Online First: 2021/04/10]
- 48 23. Darnall BD, Ziadni MS, Krishnamurthy P, et al. "My Surgical Success": Effect of a Digital Behavioral  
49 Pain Medicine Intervention on Time to Opioid Cessation After Breast Cancer Surgery-A Pilot  
50 Randomized Controlled Clinical Trial. *Pain Med* 2019;20(11):2228-37. doi:  
51 10.1093/pm/pnz094 [published Online First: 2019/05/16]



- 1 24. Magee MR, Gholamrezaei A, McNeilage AG, et al. A Digital Video and Text Messaging  
2 Intervention to Support People With Chronic Pain During Opioid Tapering: Content  
3 Development Using Co-design. *JMIR Form Res* 2022;6(11):e40507. doi: 10.2196/40507  
4 [published Online First: 2022/11/11]
- 5 25. Magee M, Gholamrezaei A, McNeilage AG, et al. Evaluating acceptability and feasibility of a  
6 mobile health intervention to improve self-efficacy in prescription opioid tapering in patients  
7 with chronic pain: protocol for a pilot randomised, single-blind, controlled trial. *BMJ Open*  
8 2022;12(4):e057174. doi: 10.1136/bmjopen-2021-057174 [published Online First:  
9 2022/04/28]
- 10 26. Gholamrezaei A, Magee RM, McNeilage AG, et al. Acceptability and feasibility of a mobile health  
11 intervention to support patients with chronic pain during opioid tapering: a pilot randomised  
12 controlled trial. Presented at: Digital Health Week. Sydney, Australia, 2023 Feb 7-9.
- 13 27. Janevic MR, Mathur VA, Booker SQ, et al. Making Pain Research More Inclusive: Why and How. *J*  
14 *Pain* 2022;23(5):707-28. doi: 10.1016/j.jpain.2021.10.004 [published Online First:  
15 2021/10/23]
- 16 28. Hogg MN, Kavanagh A, Farrell MJ, et al. Waiting in Pain II: An Updated Review of the Provision of  
17 Persistent Pain Services in Australia. *Pain Med* 2021;22(6):1367-75. doi:  
18 10.1093/pm/pnaa374 [published Online First: 2020/10/28]
- 19 29. Krebs EE, Lorenz KA, Bair MJ, et al. Development and initial validation of the PEG, a three-item  
20 scale assessing pain intensity and interference. *J Gen Intern Med* 2009;24(6):733-8. doi:  
21 10.1007/s11606-009-0981-1 [published Online First: 2009/05/07]
- 22 30. National Statement on Ethical Conduct in Human Research 2007 (Updated 2018). The National  
23 Health and Medical Research Council, the Australian Research Council and Universities  
24 Australia. Commonwealth of Australia, Canberra. 2018.
- 25 31. Treede RD, Rief W, Barke A, et al. A classification of chronic pain for ICD-11. *Pain*  
26 2015;156(6):1003-07. doi: 10.1097/j.pain.000000000000160 [published Online First:  
27 2015/04/07]
- 28 32. Australian Government - Department of Health and Aged Care. National Real Time Prescription  
29 Monitoring (RTPM) [Available from: [https://www.health.gov.au/our-work/national-real-](https://www.health.gov.au/our-work/national-real-time-prescription-monitoring-rtpm)  
30 [time-prescription-monitoring-rtpm](https://www.health.gov.au/our-work/national-real-time-prescription-monitoring-rtpm).]
- 31 33. Turk DC, Dworkin RH, Allen RR, et al. Core outcome domains for chronic pain clinical trials:  
32 IMMPACT recommendations. *Pain* 2003;106(3):337-45. doi: 10.1016/j.pain.2003.08.001  
33 [published Online First: 2003/12/09]
- 34 34. Gewandter JS, Smith SM, Dworkin RH, et al. Research approaches for evaluating opioid sparing in  
35 clinical trials of acute and chronic pain treatments: Initiative on Methods, Measurement, and  
36 Pain Assessment in Clinical Trials recommendations. *Pain* 2021;162(11):2669-81. doi:  
37 10.1097/j.pain.0000000000002283 [published Online First: 2021/04/18]
- 38 35. Cleeland CS, Ryan KM. Pain assessment: global use of the Brief Pain Inventory. *Ann Acad Med*  
39 *Singap* 1994;23(2):129-38. [published Online First: 1994/03/01]
- 40 36. Walton DM, Beattie T, Putos J, et al. A Rasch analysis of the Brief Pain Inventory Interference  
41 subscale reveals three dimensions and an age bias. *J Clin Epidemiol* 2016;74:218-26. doi:  
42 10.1016/j.jclinepi.2015.10.022 [published Online First: 2016/01/16]
- 43 37. Chen CX, Kroenke K, Stump T, et al. Comparative Responsiveness of the PROMIS Pain  
44 Interference Short Forms With Legacy Pain Measures: Results From Three Randomized  
45 Clinical Trials. *J Pain* 2019;20(6):664-75. doi: 10.1016/j.jpain.2018.11.010 [published Online  
46 First: 2018/12/12]
- 47 38. Krebs EE, Bair MJ, Damush TM, et al. Comparative responsiveness of pain outcome measures  
48 among primary care patients with musculoskeletal pain. *Med Care* 2010;48(11):1007-14. doi:  
49 10.1097/MLR.0b013e3181eaf835 [published Online First: 2010/09/22]

- 1 39. Kroenke K, Spitzer RL, Williams JB, et al. Anxiety disorders in primary care: prevalence,  
2 impairment, comorbidity, and detection. *Ann Intern Med* 2007;146(5):317-25. doi:  
3 10.7326/0003-4819-146-5-200703060-00004 [published Online First: 2007/03/07]
- 4 40. Kroenke K, Spitzer RL, Williams JB. The Patient Health Questionnaire-2: validity of a two-item  
5 depression screener. *Med Care* 2003;41(11):1284-92. doi:  
6 10.1097/01.MLR.0000093487.78664.3C [published Online First: 2003/10/30]
- 7 41. Scott W, McCracken LM. Patients' impression of change following treatment for chronic pain:  
8 global, specific, a single dimension, or many? *J Pain* 2015;16(6):518-26. doi:  
9 10.1016/j.jpain.2015.02.007 [published Online First: 2015/03/10]
- 10 42. Dworkin RH, Turk DC, Farrar JT, et al. Core outcome measures for chronic pain clinical trials:  
11 IMMPACT recommendations. *Pain* 2005;113(1-2):9-19. doi: 10.1016/j.pain.2004.09.012  
12 [published Online First: 2004/12/29]
- 13 43. Australian and New Zealand College of Anaesthetists. Opioid Dose Equivalence Calculation Table  
14 2021 [Available from: [https://www.anzca.edu.au/getattachment/6892fb13-47fc-446b-a7a2-  
15 11cdfc9902/PS01\(PM\)-\(Appendix\)-Opioid-Dose-Equivalence-Calculation-Table](https://www.anzca.edu.au/getattachment/6892fb13-47fc-446b-a7a2-11cdfc9902/PS01(PM)-(Appendix)-Opioid-Dose-Equivalence-Calculation-Table) accessed  
16 14 Dec 2021.
- 17 44. Nicholas MK. The pain self-efficacy questionnaire: Taking pain into account. *Eur J Pain*  
18 2007;11(2):153-63. doi: 10.1016/j.ejpain.2005.12.008 [published Online First: 2006/02/01]
- 19 45. Bandura A. Guide for Constructing Self-Efficacy Scales. In: Pajares F, Urdan TC, eds. *Self-Efficacy  
20 Beliefs of Adolescents*. Greenwich, Conn: Information Age Publishing 2006:307-37.
- 21 46. Amtmann D, Bamer AM, Liljenquist KS, et al. The Concerns About Pain (CAP) Scale: A Patient-  
22 Reported Outcome Measure of Pain Catastrophizing. *J Pain* 2020;21(11-12):1198-211. doi:  
23 10.1016/j.jpain.2020.03.004 [published Online First: 2020/06/17]
- 24 47. Fritsch CG, Ferreira PH, Prior JL, et al. TEXT4myBACK - The Development Process of a Self-  
25 Management Intervention Delivered Via Text Message for Low Back Pain. *Arch Rehabil Res  
26 Clin Transl* 2021;3(2):100128. doi: 10.1016/j.arrct.2021.100128 [published Online First:  
27 2021/06/29]
- 28 48. Harris PA, Taylor R, Thielke R, et al. Research electronic data capture (REDCap)--a metadata-  
29 driven methodology and workflow process for providing translational research informatics  
30 support. *J Biomed Inform* 2009;42(2):377-81. doi: 10.1016/j.jbi.2008.08.010 [published  
31 Online First: 2008/10/22]
- 32 49. Rozental A, Kottorp A, Forsstrom D, et al. The Negative Effects Questionnaire: psychometric  
33 properties of an instrument for assessing negative effects in psychological treatments. *Behav  
34 Cogn Psychother* 2019;47(5):559-72. doi: 10.1017/S1352465819000018 [published Online  
35 First: 2019/03/16]
- 36 50. Kasper J, Heesen C, Kopke S, et al. Patients' and observers' perceptions of involvement differ.  
37 Validation study on inter-relating measures for shared decision making. *PLoS One*  
38 2011;6(10):e26255. doi: 10.1371/journal.pone.0026255 [published Online First: 2011/11/02]
- 39 51. Kocalevent RD, Berg L, Beutel ME, et al. Social support in the general population: standardization  
40 of the Oslo social support scale (OSSS-3). *BMC Psychol* 2018;6(1):31. doi: 10.1186/s40359-  
41 018-0249-9 [published Online First: 2018/07/19]
- 42 52. Mataix-Cols D, Andersson E. Ten Practical Recommendations for Improving Blinding Integrity and  
43 Reporting in Psychotherapy Trials. *JAMA Psychiatry* 2021;78(9):943-44. doi:  
44 10.1001/jamapsychiatry.2021.1419 [published Online First: 2021/06/24]
- 45 53. Langenderfer-Magruder L, Wilke DJ. The Use of Text Message Reminders to Increase Completion  
46 of Web-Based Surveys: Results of Two Randomized Control Trials. *Journal of Technology in  
47 Human Services* 2020;38(1):22-37. doi: 10.1080/15228835.2019.1583154
- 48 54. Braun V, Clarke V. To saturate or not to saturate? Questioning data saturation as a useful  
49 concept for thematic analysis and sample-size rationales. *Qualitative Research in Sport,  
50 Exercise and Health* 2021;13(2):201-16. doi: 10.1080/2159676X.2019.1704846

- 1 55. Lee H, Cashin AG, Lamb SE, et al. A Guideline for Reporting Mediation Analyses of Randomized  
2 Trials and Observational Studies: The AGReMA Statement. *JAMA* 2021;326(11):1045-56. doi:  
3 10.1001/jama.2021.14075 [published Online First: 2021/09/22]  
4 56. Aickin M, Gensler H. Adjusting for multiple testing when reporting research results: the  
5 Bonferroni vs Holm methods. *Am J Public Health* 1996;86(5):726-8. doi:  
6 10.2105/ajph.86.5.726 [published Online First: 1996/05/01]  
7 57. Twisk JW, Rijnhart JJ, Hoekstra T, et al. Intention-to-treat analysis when only a baseline value is  
8 available. *Contemp Clin Trials Commun* 2020;20:100684. doi: 10.1016/j.conctc.2020.100684  
9 [published Online First: 2020/12/16]  
10 58. Chakraborty H, Gu H. A Mixed Model Approach for Intent-to-Treat Analysis in Longitudinal  
11 Clinical Trials with Missing Values. A Mixed Model Approach for Intent-to-Treat Analysis in  
12 Longitudinal Clinical Trials with Missing Values. Research Triangle Park (NC)2009.  
13 59. Damschroder LJ, Aron DC, Keith RE, et al. Fostering implementation of health services research  
14 findings into practice: a consolidated framework for advancing implementation science.  
15 *Implement Sci* 2009;4:50. doi: 10.1186/1748-5908-4-50 [published Online First: 2009/08/12]

16

### 17 **Authors Contributions**

18 PG and CEAJ conceptualized the interventions and acquired funding and should be  
19 considered joint senior author. All authors contributed to the design of the study protocol. AG  
20 drafted the study protocol and manuscript. All authors critically reviewed and edited the  
21 manuscript and approved its final version.

22

### 23 **Funding**

24 This research was supported by a philanthropic gift to The University of Sydney from the  
25 Ernest Heine Family Foundation.

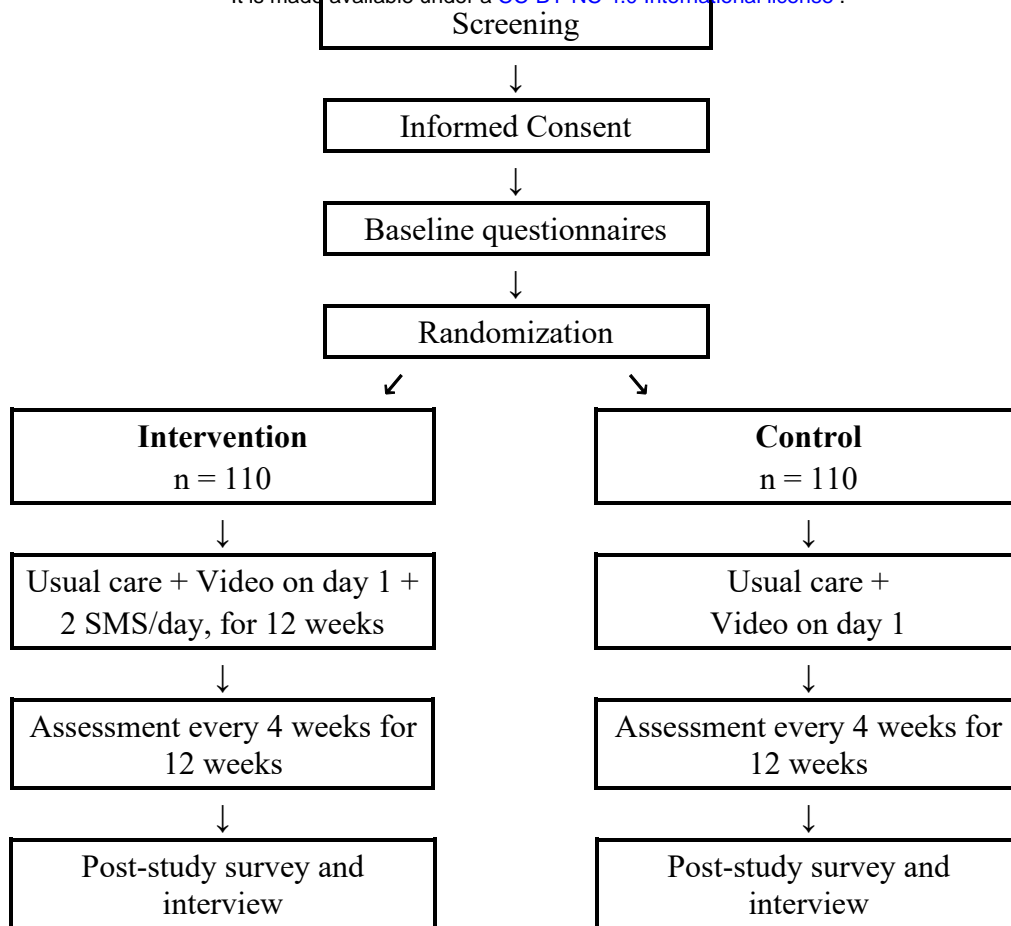
26

### 27 **Competing interests**

28 None declared.

29

- 1 **Figure legends:**
- 2 Figure 1: Study Flow Diagram
- 3
- 4 **Supplementary Materials**
- 5 Appendix 1 - The SPIRIT checklist.
- 6 Appendix 2 - Study Advertisement Materials.
- 7 Appendix 3 - Participant Information Statement and Consent Form.
- 8 Appendix 4 - Screening form.
- 9 Appendix 5 - Text messages and Video script.
- 10 Appendix 6 - Instruction For Digital Health Support.
- 11



**Figure 1: Study Flow Diagram**