

1 **Benchmarking CRISPR-BP34 for point-of-care melioidosis detection in LMIC: a**
2 **molecular diagnostics study**

3
4 Sukripong Pakdeerat¹ Bsc; Phumrapee Boonklang¹ Bsc; Kesorn Angchagun¹ Bsn; Chalita
5 Chomkatekaew¹ Msc; Yaowaret Dokket¹ Bsc, Areeya Faosap¹ Bsc, Gumphol Wongsuwan¹ Msc;
6 Vanaporn Wuthiekanun¹ Bsc, Panatda Aramrueung² Msc; Phadungkiat Khamnoi³ Bsc; Hathairat
7 Thananchai⁴ DPhil; Suwattiya Siriboon⁵ MD; Parinya Chamnan^{5,6} PhD; Sharon J Peacock⁷ PhD;
8 Nicholas PJ Day^{1,8} DM; Nicholas R Thomson⁹ PhD; Chayasith Uttamapinant¹⁰ PhD; Somsakul
9 Pop Wongpalee⁴ PhD*; Claire Chewapreecha^{1,9,11} PhD*

10 **Affiliations:**

- 11 1. Mahidol-Oxford Tropical Medicine Research Unit (MORU), Faculty of Tropical
12 Medicine, Mahidol University, Bangkok, Thailand
13 2. Central Laboratory, Sunpasitthiprasong Regional Hospital, Ubon Ratchathani, Thailand
14 3. Diagnostic Laboratory, Maharaj Nakorn Chiang Mai Hospital, Chiang Mai, Thailand
15 4. Department of Microbiology, Faculty of Medicine, Chiangmai University, Chiang Mai,
16 Thailand
17 5. Department of Infectious Medicine, Sunpasitthiprasong Regional Hospital, Ubon
18 Ratchathani, Thailand
19 6. Cardiometabolic Research Group, Department of Social Medicine, Sunpasitthiprasong
20 Regional Hospital, Ubon Ratchathani, Thailand
21 7. Department of Medicine, University of Cambridge, UK
22 8. Centre for Tropical Medicine and Global Health, Nuffield Department of Medicine,
23 University of Oxford, Oxford, UK
24 9. Parasites and Microbes Programme, Wellcome Sanger Institute, Hinxton, UK
25 10. School of Biomolecular Science and Engineering, Vidyasirimedhi Institute of Science
26 and Technology (VISTEC), Rayong, Thailand
27 11. Department of Clinical Tropical Medicine, Faculty of Tropical Medicine, Mahidol
28 University, Bangkok, Thailand

29
30 *Indicates equal contribution and corresponding authors: somsakul.w@cmu.ac.th
31 (+66(0)924483033) and claire@tropmedres.ac (+66(0)952743357)

32 **Summary**

33 **Background**

34 Melioidosis is a grossly neglected but often-fatal tropical disease. The disease is named “a great
35 mimicker” after its broad clinical manifestations, which makes disease diagnosis challenging and
36 time-consuming. To improve diagnosis, we developed and evaluated the performance of the
37 CRISPR-Cas12a system called “CRISPR-BP34” to detect *Burkholderia pseudomallei* DNA
38 across clinical specimens from patients suspected to have melioidosis.

39 **Methods**

40 We documented time taken for diagnosis, antibiotics prescribed during the waiting period, and
41 infection outcomes in 875 melioidosis patients treated in a hospital in northeast Thailand
42 between October 2019 and December 2022. In the last six months, we performed CRISPR-BP34
43 detection on clinical specimens (blood, urine, respiratory secretion, pus and other body fluids)
44 collected from 330 patients with suspected melioidosis and compared its performance to the
45 current gold-standard culture-based method. Discordant results were validated by three
46 independent qPCR tests.

47 **Findings**

48 A window of 3-4 days was required for gold-standard culture diagnosis, which resulted in
49 delayed treatment. 199 [22.7%] of 875 patients died prior to diagnosis results while 114 [26.3%]
50 of 433 follow-up cases had been diagnosed, treated, but died within 28 days of admission. A
51 shorter sample-to-diagnosis time of less than 4 hours offered by CRISPR-BP34 technology could
52 lead to faster administration of correct treatment. We demonstrated an improved sensitivity of
53 CRISPR-BP34 (106 [93.0%] of 114 positive cases, 95% CI 86.6 - 96.9) compared to the culture
54 approach (76 [66.7%] of 114 positive cases, 95% CI 57.2 - 75.2); while maintaining similar
55 specificity (209 [96.8%] of 216 negative cases, 95% CI 93.4-98.7) to the culture (216 [100 %] of
56 216 negative cases, 95% CI 98.3-100.0).

57 **Interpretation**

58 The sensitivity, specificity, speed, window of clinical intervention, and ease of operation offered
59 by the CRISPR-BP34 support its use as a point-of-care diagnostic for melioidosis.

60 **Funding**

61 Chiang Mai University Thailand and Wellcome Trust UK

62 **Research in context**

63 **Evidence before this study**

64 Melioidosis is an often-severe infectious disease caused by the bacterium *Burkholderia*
65 *pseudomallei*. It is estimated to affect 165,000 individuals annually worldwide, of which 89,000
66 cases are fatal. The disease diagnosis is challenging due to diverse clinical presentations, low
67 awareness, limited diagnostic options, or even a lack of diagnostic tests. A PubMed search
68 conducted from the database inception to 6 May 2023, using the terms “melioidosis” AND
69 “diagnosis test,” yielded 207 results, 40 of which presented clinical evaluations of rapid
70 melioidosis diagnostic tests. Antigen-based diagnostic tests, which detect the presence of *B.*
71 *pseudomallei*, reported high specificity (median = 98.6%, IQR 94.0 - 100.0), but low sensitivity
72 (median = 57.1%, IQR = 44.3 - 82.5). The test sensitivity suffers from the often-low
73 concentration of the bacterial antigens in patients' samples, which can vary by specimen type and
74 stage of infection. Antibody-based diagnostic tests that detect host antibodies against *B.*
75 *pseudomallei* typically exhibit satisfactory specificity (median = 94.5%, IQR = 88.6 - 96.2) but
76 poor sensitivity (median = 80.2%, IQR = 71.0 - 88.1). These tests are often impacted by
77 variations in antibody responses to *B. pseudomallei* and the duration required for antibody
78 production. Furthermore, standardisation remains challenging due to the influence of different
79 serum titres on sensitivity and background of the tests. Likewise, quantitative PCR exhibits a
80 high degree of specificity (median = 99.8%, IQR = 91.6-100.0), but an observed low sensitivity
81 for melioidosis (median = 77.1%, IQR = 20.8-97.8), which is likely attributed to the genetic
82 heterogeneity of *B. pseudomallei* genomes. Additionally, these studies consistently reported a
83 demand for improved speed and ease of implementation in resource-limited settings where
84 melioidosis is endemic. With the limitations of current diagnostic methods, a culture-confirmed
85 approach with 60% sensitivity, 100% specificity, and a diagnosis time of 2-7 days still stands as
86 the gold standard for melioidosis diagnosis.

87 **Added value of this study**

88 To date, no study has measured the impact of delayed diagnosis on melioidosis. We assessed the
89 number of deaths occurring prior to culture-confirmed diagnosis (22.7%) and those after
90 diagnosis but within 28 days post-admission (26.3%), highlighting the urgent need for prompt
91 action. To address this, we developed the CRISPR-BP34 test, which utilises isothermal
92 amplification of a nucleic acid target followed by site-specific detection using a CRISPR-Cas12a

93 enzyme. We successfully implemented this assay in a resource-limited setting in northeast
94 Thailand, where the disease prevalence is among the highest in the world. The assay achieved a
95 diagnostic sensitivity and specificity of 93.0% and 96.8%, respectively, with a limit of detection
96 ranging from 50-250 cfu/mL. Early diagnosis can be achieved within four hours of patient
97 admission, which is significantly faster than the gold-standard test that typically takes several
98 days. Moreover, the ultrasensitivity of the CRISPR-BP34 assay enabled the detection of low
99 levels of *B. pseudomallei* in hemoculture bottles, which could be missed due to mixed infections,
100 poor aseptic technique, or other causes, leading to undiagnosed melioidosis.

101 **Implications of all available evidence**

102 The CRISPR-BP34 assay holds great promise for the management and control of melioidosis. Its
103 minimal setup and shallow learning curve make it well-suited for resource-limited settings.
104 Additionally, its speed and high sensitivity enable early diagnosis and treatment, which are
105 crucial for saving patients' lives.

106 INTRODUCTION

107 Melioidosis is a neglected tropical disease with a high case-fatality (10-50%) even when
108 appropriately treated¹. The global disease burden expressed in disability-adjusted life-years
109 (DALYs) is 4.64 million, 99% of which is accounted for by years of life lost (YLL)². High
110 mortality may be explained by the disease disproportionately affecting rural populations in low-
111 and middle-income countries (LMICs)³, many of which have poor socioeconomic conditions and
112 often present to healthcare facilities in a terminal or critical phase of the disease⁴. Melioidosis is
113 caused by *Burkholderia pseudomallei*, an environmental bacterium in soil and water across the
114 tropical regions of Asia Pacific⁵, South⁶ and Southeast Asia⁷. However, the disease remains
115 largely underreported due to its non-specific clinical manifestations that can “mimic” several
116 other diseases. A lack of disease awareness in clinics and communities as well as the paucity of
117 diagnostic facilities leads to missed or delayed diagnosis. With early diagnosis and appropriate
118 treatment the mortality rate from melioidosis can be decreased to less than 10%⁵.

119
120 Clinical specimens from patients with suspected melioidosis are typically screened for the
121 presence of *B. pseudomallei* using microbial culture, which has been the gold standard diagnostic
122 method for the last three decades. This method is imperfect, with a specificity of 100% but a
123 sensitivity of 60%⁸. *B. pseudomallei* grows more slowly in the laboratory compared with other
124 pathogens⁹, which can lead to over-growth by other bacteria or fungi present in the sample as
125 part of a mixed infection and/or contamination. This can result in failure to detect *B.*
126 *pseudomallei*. If cultured successfully, *B. pseudomallei* colonies can be easily misinterpreted as
127 environmental contaminants, and correct identification requires an expert microbiologist.
128 Moreover, a combined time to grow and identify *B. pseudomallei* may take up to 7 days, which
129 inevitably delays the disease diagnosis⁸. Culture-free antigen-based and nucleic acid-based tests
130 such as a lateral flow immunoassay (LFI)¹⁰, an immunofluorescence assay (IFA)¹¹, polymerase
131 chain reaction (PCR)¹²⁻¹⁴, or 16S rRNA sequencing¹⁵ have been developed for the diagnosis of
132 melioidosis. However, the heterogeneity in bacterial concentrations^{16,17} across clinical specimens
133 leads to a limited sensitivity of 58.2% (95% CI, 34.1 – 78.9%) for LFI¹⁸ and 63.8% (45.6 –
134 78.7%) for IFA¹⁸; whilst tests that offer higher sensitivity require thermal cyclers or sequencing
135 machines¹⁵, which are rarely available in rural settings.

136

137 An improved sensitive and specific detection of *B. pseudomallei* DNA in a range of sample types
138 using field-deployable equipment has the potential to improve the diagnosis of melioidosis. This
139 can be achieved by first amplifying DNA of the pathogen using recombinase polymerase
140 amplification (RPA), followed by sequence-specific recognition of clustered regularly
141 interspaced short palindromic repeats (CRISPR)-Cas12a endoribonuclease at the DNA target.
142 This approach has been applied to other bacterial pathogens including *Mycobacterium*
143 *tuberculosis*¹⁹ and has been demonstrated to improve diagnosis and treatment responses. We
144 previously described a robust CRISPR-based detection of genomic DNA of *B. pseudomallei* *in*
145 *vitro*²⁰. Here, we addressed the issues surrounding delayed diagnosis of melioidosis, established
146 a diagnostic protocol for our recently developed CRISPR-Cas12a system (here-after termed
147 CRISPR-BP34)²⁰, and determined its diagnostic sensitivity and specificity. Our results showed
148 higher sensitivity and shortened diagnostic time of the CRISPR-BP34 detection compared with
149 the gold standard culture.

150

151 **METHODS**

152 **Study design and patients**

153 Two related studies were conducted and reported here. Study 1 quantified the time taken to
154 diagnose melioidosis based on culture and patient outcome, and Study 2 evaluated the diagnostic
155 performance of the CRISPR-BP34 assay (Figure 1).

156

157 Study 1 was a prospective observational cohort study of patients with culture-confirmed
158 melioidosis at Sunpasitthiprasong Hospital, a tertiary care hospital in Ubon Ratchathani,
159 Thailand between October 2019 and December 2022 (Figure 1A, appendix p 3). Study objectives
160 were to assess the disease prevalence, the time taken to reach a diagnosis of melioidosis, the
161 empirical antibiotics prescribed prior to diagnostic confirmation, and patient survival during 28-
162 day follow-up from the admission date. Routine clinical practice was to obtain blood, urine,
163 respiratory secretions and fluid (sputum, tracheal suction, pleural fluid), and other body fluid and
164 tissue as available (pus, limb tissue, and synovial fluid) for culture from patients with suspected
165 melioidosis. All samples were collected according to WHO guidelines²¹. The standard culture
166 methods used for each specimen type are outlined in the appendix (p 5). All patients with
167 culture-confirmed melioidosis were identified through the hospital computer. The length of time

168 between sampling and culture result was recorded for each patient. Cases who remained alive
169 when the culture result become available were visited to obtain written consent to collect clinical
170 information. 875 culture-confirmed melioidosis cases were identified, of whom 433 were alive at
171 the time of culture confirmation and gave written consent to obtain and use clinical information
172 on antibiotic treatment and 28-day outcome (Figure 2). The study received ethical approval from
173 the Sunpasitthiprasong Hospital Ethical Review Board (015/62C) and the Oxford Tropical
174 Research Ethics Committee (OxTREC, 25-19). This study is registered with Thai Clinical Trial
175 Registry (TCTR20190322003).

176
177 Study 2 was a diagnostic evaluation of the sensitivity and specificity of a CRISPR-BP34
178 prototype assay²⁰ conducted at Sunpasitthiprasong Hospital between May 2022 and December
179 2022 (Figure 1B). Minimal sample size was determined using the formula $n = z^2 p(1-p) / d^2$ where
180 "z" is the 95% confidence interval at 1.96; "p" is the prevalence at 0.5; and "d" represents the
181 margin of error at 0.1. At least 96 melioidosis and 96 non-melioidosis patients were required for
182 the CRISPR-BP34 diagnostic test. Specimens were collected from patients with suspected
183 melioidosis (appendix p 4) at the time of hospital presentation for culture identification. 1 mL of
184 leftover sample from the culture was obtained from the hospital microbiology laboratory and
185 stored at -20 °C for CRISPR-BP34 screening. Once the culture results arrived (appendix p 5), a
186 head-to-head CRISPR-BP34 assay (appendix pp 7-9 & 10-16) was performed. In total, the study
187 examined 114 melioidosis and 216 non-melioidosis patients, which were sampled across four
188 different specimen types: blood (41 and 74 samples), respiratory secretions and fluids (52 and 54
189 samples); urine (27 and 71 samples), and other body fluids and tissues (15 and 30 samples) from
190 melioidosis and non-melioidosis patients, respectively. The study received ethical approval from
191 the Ethical Review Board of Sunpasitthiprasong Hospital (029/65C) and received ethical
192 exemption from Chiang Mai University (9190/2565).

193
194 **Determining the molecular sensitivity of CRISPR-BP34 assay *in vitro***

195 To determine the limit of detection of the CRISPR-BP34 assay, we conducted *in vitro*
196 experiments by inoculating genetically modified *Escherichia coli* that harbors a target DNA of
197 the CRISPR-BP34 in its genome (appendix p 6) into blood and urine samples from a single
198 healthy donor at different concentration ranging from 0, 10, 50, 100, 250, 500, 2500 and 5000

199 cfu/mL. Two to five biological replicates were performed for each experiment. CRISPR-BP34
200 detection was performed on blood as described in the appendix (pp 7-8). Blood and urine were
201 selected to represent the most common types of clinical specimens processed from patients with
202 suspected melioidosis. The use of the modified *E. coli* as a surrogate for *B. pseudomallei* was to
203 circumvent laboratory safety requirement.

204

205 **Clinical evaluation of CRISPR-BP34 assay**

206 Different types of clinical sample require specific sample preparation due to the variable
207 amounts of target bacterial cells¹⁶, host cells and inhibitors present in each sample. Further
208 details of how the assay was performed on each sample type is described in the appendix (pp 7-
209 8). For each clinical sample, human cells were first depleted using a simple buffer system to
210 selectively lysed human cells, leaving a pellet of bacterial cells. Bacterial genomic DNA was
211 then extracted from the pellet using either hot alkaline lysis or a spin column, depending on the
212 pellet size. *B. pseudomallei* DNA was amplified in an RPA reaction, and the resulting amplicons
213 were added into a 50- μ L CRISPR reaction, comprising of CRISPR RNA (crBP34)²⁰, LbCas12a
214 protein and FAM-biotin probes. This reaction was incubated at 37 °C for 60 minutes, after which
215 a HybriDetect lateral flow dipstick (TwistDx, UK) was directly immersed into the reaction and
216 allowed to develop for 5 minutes before reading by eye. A positive result was defined as the
217 appearance of an upper band (anti-IgG) on the dipstick. The assay was performed in a batch of
218 10 samples with each batch comprising of culture positive and negative samples to avoid batch
219 effect. For all batches, *B. pseudomallei* positive sample and distilled water were used as positive
220 and negative controls, respectively. The sample-to-result time was recorded. The CRISPR-BP34
221 results were interpreted by three different readers who were blinded to the patient disease status
222 and culture results.

223

224 Not every sample cultured from a melioidosis patient yields positive result, a scenario driven by
225 different local concentration of *B. pseudomallei*. Discordant results between culture and the
226 CRISPR assay were tested by quantitative PCR (qPCR) using three primer sets listed in the
227 appendix (pp 9, 19-20). Given a large discrepancy in reported diagnostic sensitivity of PCR
228 primers¹⁸ and a high sequence diversity of *B. pseudomallei*, the use of primer combinations

229 ensured an increased coverage of the detection. The qPCR cycle threshold (ct) values were
230 recorded and used as a proxy for bacterial loads.

231
232 **Statistical analysis**

233 All numerical data was summarised using medians, interquartile ranges (IQR), and proportion.
234 For comparison with non-parametric distribution, Wilcoxon signed-rank tests were used with
235 Benjamini-Hochberg correction for multiple testing. The culture and CRISPR-BP34 results from
236 the same specimen were compared against the patient's disease status. Sensitivity and specificity
237 were defined as TP/ (TP + FN) and TN/ (TN + FP), respectively. "TP" and "FN" represent the
238 number of cases that tested positive and negative in the disease group, respectively. "TN" and
239 "FP" are the number of cases that tested negative and positive in the non-disease group,
240 respectively. The sensitivity and specificity were separately calculated for culture and CRISPR
241 by sample type (grouped into four categories: blood; urine; respiratory secretion; and pus, tissue
242 and other body fluid), and by total specimens. For a patient who had multiple samples taken,
243 only the earliest sample was included for sensitivity and specificity calculations. The exact 95%
244 confidence interval was estimated using Clopper-Pearson Binomial assumption³⁰.

245
246 **RESULTS**

247 **Time to diagnosis, empirical antibiotic treatment, and outcomes**

248 Of 875 culture-confirmed melioidosis patients admitted or referred to Sunpasitthiprasong
249 Hospital during October 2019 to December 2022, 199 died before the culture results arrived
250 (Figure 1A). Among 433 patients who survived to culture results and consented to participate in
251 our study, 114 patients died within 28 days after first presentation to Sunpasitthiprasong hospital.
252 The minimum fatality of 35.8% based on the combined data is consistent with 35% mortality
253 reported in Thailand²². A relatively high fatality reported in this setting could be attributed to
254 socioeconomic disparity² which impacted mostly agricultural workers (272 [62.8%] of 433
255 patients) who lived on average 65 km (IQR 40 – 100 km) from the culture-confirmed diagnosis
256 facility (Table 1). Melioidosis patients displayed diverse clinical manifestations with persistent
257 fever being the most common symptom (Table 1, appendix p 18. Patients experienced symptoms
258 for a median of seven days (IQR 3 -14 days) before seeking medical care at the local or central
259 health-care centres, which subsequently referred them to Sunpasitthiprasong hospital within one

260 day (IQR 0 – 4 days). Multiple samples were collected from patients for culture diagnosis upon
261 first admitted or referred, and during their stay at Sunpasitthiprasong hospital as clinically
262 indicated. The median duration between the first sample collection and the first positive culture
263 result was four days (IQR 3 - 5 days), at which point melioidosis diagnosis was confirmed.
264 Notably, the time from symptom onset to diagnosis averaged 16 days (IQR 9 – 27 days),
265 although this differed significantly between patients who died (12 days, IQR 7 – 19 days) and
266 those who survived (18 days, IQR 10 – 31 days, Wilcoxon test p-value = 5.62×10^{-5}),
267 underscoring the need for prompt clinical intervention to avert fatal outcomes.

268
269 In Thailand, patients suspected of having melioidosis are recommended to receive empiric
270 treatment with intravenous ceftazidime or a carbapenem antibiotics, such as meropenem or
271 imipenem, for initial intensive monotherapy²³. Antibiotic administration data was available for
272 433 patients of which 49 (11.3%) and 54 (12.5%) respectively received ceftazidime or a
273 carbapenem monotherapy upon their first presentation to Sunpasitthiprasong hospital (Figure 2A,
274 Table 1). The remainder received other treatments including a monotherapy or combinations of
275 antibiotics known to be ineffective in treating melioidosis such as lincosamides²⁴,
276 macrolides^{24,25}, penicillin²⁵ and first- and second-generation cephalosporin^{24,26}, and ineffective
277 third-generation cephalosporins such as ceftriaxone²⁷; an inevitable practice to cover the broad
278 spectrum of infection when the causative agents were unknown (Figure 2B & C). A lower
279 mortality (5 [10.2%] of 49) was observed in patients who received ceftazidime monotherapy than
280 in patients who received other types of treatments (109 [28.5%] of 382; Fisher's exact p-value
281 5.42×10^{-3} , Table 1). To increase the use of ceftazidime monotherapy at first presentation from
282 11.3% to 100%, a more rapid diagnosis will be necessary.

283
284 **Clinical evaluation of the CRISPR-BP34 assay**
285 We developed the CRISPR-BP34 assay to detect *B. pseudomallei* DNA, which demonstrated
286 high sensitivity and specificity *in vitro*²⁰. We tested the limit of detection of the CRISPR-BP34
287 by spiking blood and urine samples and found it to be 250 cfu/mL and 50 cfu/mL, respectively
288 (Figure 3A & B). To determine whether CRISPR-BP34 test is sufficiently sensitive to detect the
289 bacterium across various clinical samples, we enumerated the numbers of *B. pseudomallei*
290 recovered from different specimen types using both new experiments and previous datasets^{16,17}

291 (Figure 3C). Our results showed that the number of *B. pseudomallei* detected in most common
292 specimens such as urine (median = 2.6×10^4 cfu/mL, sputum (median = 8.8×10^7 cfu/mL), pus
293 and other body fluids (median = 5.4×10^7 cfu/mL) were greater than the CRISPR-BP34 limit of
294 detection. Since direct blood samples had a lower *B. pseudomallei* concentration (median = 1.5
295 cfu/mL) than the limit of detection, we substituted direct blood samples with hemoculture
296 positive samples (median = 7.3×10^7 cfu/mL) to ensure sufficient bacterial concentration.
297 Hemoculture positive samples are blood samples that have been incubated in a culture medium
298 to allow the bacterium to grow, but at this point, the bacterium's identity remained unknown
299 (Figure 3D).

300
301 We tested the hypothesis that CRISPR-BP34 assay would be more sensitive and faster than
302 culture-confirmed approach in clinical samples collected from 114 melioidosis and 216 non-
303 melioidosis patients. Of these, 20 melioidosis and 12 non-melioidosis patients had samples
304 collected across multiple specimen types (Figure 4A), while 94 melioidosis and 204 non-
305 melioidosis patients had a single sample type collected (Figure 4B). Using first sample available
306 from each patient, we estimated the overall diagnostic sensitivity and specificity of both
307 methods. Our findings showed an overall sensitivity of CRISPR-BP34 of 93.0% (106 of 114
308 samples, 95% CI 86.6 – 96.9), higher than the sensitivity of culture at 66.7% (76 of 114 samples,
309 95% CI 57.2 - 75.2) (Figure 4C, Table 2). The overall specificity of the CRISPR-BP34 was
310 96.8% (209 of 216 samples, 95% CI 93.4 - 98.7), compared to 100% (216 of 216 samples, 95%
311 CI 98.3 - 100) for culture (Figure 4D, Table 2). Sensitivity of CRISPR-BP34 versus culture for
312 individual sample types was generally higher for CRISPR-BP34, as follows: hemoculture at
313 100% (41 of 41 samples) vs 58.5% (24 of 41 samples); urine at 70.4% (19 of 27 samples) vs
314 51.9% (14 of 27 samples); respiratory secretions and fluids at 94.2% (49 of 52 samples) vs
315 84.6% (44 of 52 samples); and other body fluids and tissue at 100% (15 of 15 samples) vs
316 73.3% (11 of 15 samples) in CRISPR-BP34 (Figure 4C and Table 2). Specificity of CRISPR-
317 BP34 versus culture for individual sample types was equivalent or slightly lower for CRISPR-
318 BP34, as follows: hemoculture at 94.6% (70 of 74 samples) vs 100% (74 of 74 samples); urine at
319 98.6% (70 of 71 samples) vs 100% (71 of 71 samples); respiratory secretions and fluids at 98.2%
320 (53 of 54 samples) vs 100% (54 of 54 samples); and other body fluid and tissue at 98.67% (29 of

321 30 samples) vs 100% (30 of 30 samples) in CRISPR-BP34 and culture assay, respectively
322 (Figure 4D and Table 2).

323
324 In addition, the CRISPR-BP34 assay provided faster results and significantly reduced the
325 turnaround time for all sample types compared to culture approach (Figure 5A, Wilcoxon test p-
326 value $< 2.2 \times 10^{-16}$ for all sample types). For culture positive samples, the median sample-to-
327 result time was 2.5 days (IQR 1.8 – 3.3 days) for hemoculture, and 3.9 days (IQR 3.7 – 4.1 days)
328 for urine, respiratory secretion and fluids, as well as other body fluids and tissues. In contrast, the
329 average sample-to-result time for the positive CRISPR-BP34 assay was 1.1 days (IQR 0.7 – 1.5
330 days) for hemoculture, 2.3 hours (IQR 2.3 – 2.4 hours) for urine, and 3.3 hours (IQR 3.1 – 3.4
331 hours) for respiratory secretion, and fluids, as well as other body fluids and tissues.

332
333 **Potential use case**

334 20 of 114 melioidosis patients had multiple sample types, as well as multiple numbers of samples
335 per type collected over time (Figure 4A, Figure 5), enabling investigation of how each patient
336 was diagnosed and treated in the real world. Early specimens were collected on the first or within
337 a few days of admission or referral to aid disease diagnosis, while late specimens were taken at
338 3-, 5- or 7-days intervals following antibiotic prescription to assess response to the treatment. A
339 proportion of early specimens taken from patients who were later confirmed to have melioidosis
340 were culture negative. This could be either attributed to the concentration of *B. pseudomallei*
341 being lower than the culture limit of detection, or contamination of the samples with other fast-
342 growing bacterial species (Figure 5B to D). One striking example was a hemoculture bottle from
343 a melioidosis case presented in Figure 5C, which was contaminated with coagulase-negative
344 staphylococci, a skin commensal. The CRISPR-BP34 assay, however, reported *B. pseudomallei*
345 positive from this contaminated blood bottle, consistent with subsequent qPCR experiments
346 confirming the presence of *B. pseudomallei* DNA and with patient's final diagnosis. We
347 observed a high cycle threshold (ct) score of *B. pseudomallei* in the contaminated hemoculture
348 bottle and other contaminated samples (median = 32.3, IQR 30.5 - 35.9), compared to average ct
349 values detected in *B. pseudomallei* positive hemoculture (median = 14.0, IQR 13.4 - 14.9,
350 appendix p 17). This likely indicates that the *B. pseudomallei* population was outcompeted by
351 contaminant species. Cross-contamination incidents like this are not uncommon in laboratories

352 with limited resources such as in rural Thailand which could result in an underestimation of the
353 true incidence of melioidosis²⁸. Regardless, for all cases being followed, CRISPR-BP34 provided
354 earlier identification of *B. pseudomallei* than the culture method (Figure 5B to D).

355

356 **DISCUSSION**

357 The first part of our study documented the time taken from first melioidosis symptom-to-
358 diagnosis, the empirical treatment patients received during diagnosis uncertainty, and death that
359 occurred prior or after the arrival of culture-confirmed diagnosis result. We noted that many
360 severely ill patients died before we could reach them, thereby introducing survival bias in our
361 study. Nevertheless, our findings echo the problems of delayed disease diagnosis, and imperfect
362 treatment during diagnosis uncertainty, which may separately, or collectively contribute to death.
363 To improve the appropriate and timeous initiation of melioidosis treatment, we developed an
364 easy to implement point-of-care CRISPR-BP34 assay (appendix pp 7-16), tested the sample-type
365 specific protocols (Figure 3D), and evaluated the test performance (Figure 4) in the second part
366 of our study.

367

368 To our knowledge, a lower limit of detection at the range of 50 – 250 cfu/mL is the highest
369 among reported melioidosis rapid diagnosis tests without requiring extensive equipment such as
370 a qPCR machine or a UV microscope. For common clinical specimens with high bacterial loads
371 (over 10³ cfu/mL) such as hemoculture samples, genitourinary fluids, respiratory secretions, and
372 pus and other body fluids; CRISPR-BP34 could be used on DNA extracted from these direct
373 samples. This resulted in high level of sensitivity of the CRISPR-BP34 test of 93.0% compared
374 to 66.7% sensitivity for overall samples of culture approach (Figure 4C). Although CRISPR-
375 BP34 could detect the presence of *B. pseudomallei* at the concentration as low as 50 cfu/mL, the
376 miniscule volume of specimens utilised by the CRISPR approach means that the test can be
377 skewed by inaccurate pipetting or handling errors. Thus, for direct blood samples, we
378 recommend using CRISPR-BP34 on DNA extracted from hemoculture (enriched media) instead
379 of direct blood samples to maintain high sensitivity.

380

381 We also observed a slight drop in the CRISPR test specificity being 96.8% compared to 100%
382 specificity of culture approach across all sample types (Figure 4D). Some of the “false” positives

383 could be “true” but “missed” diagnosis cases as result of current imperfect diagnosis techniques
384 including culture-confirmed approach⁸ and qPCR¹⁸ with suboptimal primers. Some “false”
385 positives may arise when high copy numbers of genetic materials or RPA amplicons were mixed
386 or handled in a confined bench setting, which is sometimes unavoidable in crowded space of
387 resource-limited laboratories. Alternatively, the CRISPR-BP34 complex may mistakenly target
388 other DNA sequences, resulting in false positives. However, the latter is likely mitigated by the
389 double-layered specificity provided by RPA primers and CRISPR RNA; each of which were
390 carefully designed using the genomic database of over 40,000 bacterial and human DNA²⁰. To
391 ensure robust test, suggestions to minimise the DNA cross-contamination which could generate
392 false positives were fully documented in the appendix (p 9).

393
394 In summary, the CRISPR-BP34 test has exhibited higher sensitivity and comparable specificity
395 to the gold standard culture-confirmed method, with more rapid detection capabilities across
396 various types of clinical specimens. Our findings provide evidence to support the use of the
397 CRISPR-BP34 test as a point-of-care diagnostic tool. Its implementation could lead to prompt
398 initiation of lifesaving treatment (Figure 5B to E), with use cases discussed and positively
399 received by Ministry of Public Health Thailand and regional health authorities²⁹.

400 **Contributors**

401 CChe and SPW conceived the study and secured funding. PC, SS, CU, HT, CChe and SPW,
402 designed the study. SP, PB, KA, YD, AF, GW, PA, PK, VW, and CCho were involved in study
403 implementation under CChe and SPW supervision. CChe and SPW did the analysis. CChe,
404 SPW, PC, SJP, NPJD, NRT, and CU interpreted the data. CChe and SPW wrote the first draft.
405 All authors read and approved the manuscript.

406

407 **Data sharing**

408 Deidentified participant data that underlie the results reported in the article will be made
409 available upon request. Proposals should be directed to the corresponding author,
410 claire@tropmedres.ac. Proposals will be reviewed and approved by the sponsor on the basis of
411 compliance with the informed consent and scientific merit.

412

413 **Acknowledgements**

414 SPW was funded by TSRI Fundamental Fund 2022, Chiang Mai University (grant number
415 65A104000009) and Faculty of Medicine Research Fund, Chiang Mai University (grant number
416 MIC-2562-06372). CCho was funded by Wellcome International Master Fellowship
417 (221418/Z/20/Z). CChe was funded by Wellcome International Intermediate Fellowship
418 (216457/Z/19/Z) and Sanger International Fellowship. This research was funded in whole, or in
419 part, by the Wellcome Trust. For the purpose of Open Access, the author has applied a CC BY
420 public copyright licence to any Author Accepted Manuscript version arising from this
421 submission.

422

423 **Role of the funding source**

424 The funders of the study had no role in study design, data collection, data analysis, data
425 interpretation, or writing of the report.

426 **Figure legends**

427 **Figure 1: Study design:** **A** summarises the mortality of melioidosis patients who were admitted
428 or referred to Sunpasitthiprasong Hospital between October 2019 and December 2022. All cases
429 were identified by culture-confirmed diagnosis, which commonly arrived on day 4. A substantial
430 number of patients died prior to the arrival of the gold-standard test result. **B** presents our case-
431 control study to evaluate the use of CRISPR-BP34 as an alternative rapid diagnostic test. Here,
432 specimens were frozen upon arrival to enable subsequent screening with the CRISPR-BP34 test
433 and head-to-head comparison with culture method.

434

435 **Figure 2: Burden of delayed diagnosis on melioidosis treatments and outcomes:** **A** an UpSet
436 plot summarises the antibiotic prescription when patients were first presented to
437 Sunpasitthiprasong either as a monotherapy or combination therapy. **B** a histogram presents the
438 number of patients who remained undiagnosed at a daily interval following their first
439 presentation or referral to Sunpasitthiprasong Hospital during October 2019 to December 2022.
440 Black arrow denotes the date when a culture-confirmed melioidosis result was available for most
441 patients. **C** summarises choices of antibiotics being prescribed to patients who remained
442 undiagnosed for melioidosis each day following their admission or referral date. Prescription of
443 ceftazidime or carbapenem drugs either as monotherapy or combination therapy are highlighted
444 in blue, with black arrow marking first day presentation.

445

446 **Figure 3: Limit of detection of the CRISPR-BP34 assay and its proposed diagnostic**
447 **pipeline**

448 **A** and **B** present the limit of the CRISPR-BP34 test detection in blood and urine samples which
449 are the two most common specimens, respectively. The dipsticks were shown as two biological
450 replicates with LOD of urine (50 cfu/mL) and blood (250 cfu/mL). **C** summarises the number of
451 *Burkholderia pseudomallei* that can be recovered from different type of specimens. Green bar
452 indicates the range of limit of detection of the CRISPR test. **D** presents an overview of CRISPR-
453 BP34 diagnosis based on clinical samples including blood, genitourinary fluid, respiratory
454 secretion, pus and other body fluid that were routinely collected from patients suspected of
455 melioidosis. Bacterial pathogen in blood is typically enriched for growth to the detectable
456 threshold (250 cfu/mL) through hemoculture process.

457

458 **Figure 4 Sensitivity and specificity of the culture and the CRISPR approaches**

459 **A** present combined panels of diagnostic results from 32 patients with multiple specimen types.
460 Top to bottom panels summarise results from hemoculture, genitourinary fluid, respiratory
461 secretion, and pus or other body fluids, respectively. For patients with multiple samples per each
462 sample type, only the first sample was presented. Rows in each panel display results from
463 different diagnostic tests including the gold-standard culture, IFA, latex agglutination, and the
464 CRISPR-BP34 test (top to bottom). Each column corresponds to data from each patient with
465 disease status marked as melioidosis (black) or non-melioidosis (grey). **B** summarises findings
466 from 298 patients with single specimen type with results from hemoculture, genitourinary fluid,
467 respiratory secretion and pus or other body fluids presented in the same order as in (**A**). **C** and **D**
468 compare the sensitivity and specificity of the gold-standard culture and the CRISPR-BP34
469 approach, respectively. Dots indicate the actual sensitivity or specificity values while the 95%
470 confidence interval are represented by dotted line (culture) and solid line (CRISPR-BP34).

471

472 **Figure 5 Time taken for the culture and the CRISPR-BP34 approaches, and case examples**

473 **A** illustrates the diagnostic time required for the culture and the CRISPR approaches on the log
474 10 scale. **B** to **E** highlighted selected cases (4 of 20 melioidosis cases) where both multiple
475 sample types and multiple specimens per sample type were available (vertical axis). The
476 horizontal axis represents time in days from the date of admission or referral to
477 Sunpasitthiprasong hospital. Circles mark the dates when samples were taken, while rectangles
478 and triangles present the time when the culture-confirmed results and the CRISPR-BP34 results
479 arrived, respectively. For both culture- and CRISPR-BP34 approaches; black denotes negative
480 result, grey highlights detection of other bacterial species than *B. pseudomallei*, while pink
481 (hemoculture), orange (urine), purple (respiratory secretion) and blue (pus, tissue, and other body
482 fluids) present *B. pseudomallei* positive result from each sample type.

483 **Table 1 Demographic of melioidosis patients admitted or referred to Sunpasitthiprasong hospital and**
 484 **survived to culture results during October 2019 to December 2022**

485 Significant terms following Benjamini-Hochberg correction for multiple testing were marked with asterisks

	Survive (n = 317)	Died (n = 114)	Total (n=433)	raw p-val	BH _{adj} p-val
Age: median (IQR)					
Age in years	53 (45.0 - 61.0)	55 (45.3 - 61.8)	54.00 (45.0 - 61.0)	0.24	0.48
Sex: counts (%)					
Male	223 (70.3%)	81 (71.1%)	306 (70.7%)	1.00	1.00
Occupations: counts (%)					
	Survive	Died	Total	raw p-val	BH_{adj} p-val
Agriculture	201 (63.4%)	70 (61.4%)	272 (62.8%)	0.74	0.85
Private sector	55 (17.4%)	21 (18.4%)	76 (17.6)	0.78	0.86
Homemaker	38 (12.0%)	15 (13.2%)	53 (12.3%)	0.74	0.85
Monk	5 (1.6%)	2 (1.8%)	7 (1.6%)	1.00	1.00
Police and Military	4 (1.2%)	2 (1.8%)	6 (1.4%)	0.66	0.85
Distance from patient home to Sunpasitthiprasong hospital in km: median (IQR)					
	Survive	Died	Total	raw p-val	BH_{adj} p-val
travel distance	65 (40 - 100)	70 (40 - 100)	65 (40 - 100)	0.17	0.45
Symptoms: counts (%)					
	Survive	Died	Total	raw p-val	BH_{adj} p-val
Fever	203 (64.0%)	71 (62.3%)	278 (64.2%)	0.87	0.93
Cough	95 (30.0%)	43 (37.7%)	140 (32.3%)	0.13	0.36
Dyspnea	47 (14.8%)	22 (19.3%)	70 (16.1%)	0.27	0.48
GI disturbance	66 (20.8%)	32 (28.1%)	98 (22.6%)	0.11	0.35
Urinary symptoms	24 (7.6%)	12 (10.5%)	36 (8.3%)	0.33	0.57
Joint pain	26 (8.2%)	3 (2.6%)	29 (6.7%)	0.04	0.19
Muscle pain	44 (13.9%)	13 (11.4%)	57 (13.1%)	0.50	0.74
Local swollen, mass or abscess	34 (10.7%)	5 (4.4%)	39 (9.0%)	0.04	0.19
Weight loss	20 (6.3%)	1 (0.9%)	21 (4.8%)	0.02	0.13
Time to melioidosis diagnosis in days: median (IQR)					
	Survive	Died	Total	raw p-val	BH_{adj} p-val
Symptom onset to approaching healthcare* refer system	9.0 (4.0 - 20.0)	6.5 (3.0 - 11.75)	7.0 (3.0 - 14.0)	5.53x10 ⁻⁴	8.57x10 ⁻³
sample to culture-diagnosis*	4.0 (3.0 - 6.0)	3.0 (2.0 - 5.0)	4.0 (3.0 - 5.0)	6.24x10 ⁻³	0.048
Symptom onset to culture-	18.0	12.0 (7.0 - 19.0)	16.0 (9.0 - 27.0)	5.62x10 ⁻⁵	1.74x10 ⁻³

diagnosis* (10-0 - 31-0)

Antibiotics prescription on first presentation to Sunpasitthiprasong: counts (%)

A group of recommended empirical treatment

	Survive	Died	Total	raw p-val	BH_{adj} p-val
ceftazidime alone*	44 (13.9%)	5 (4.4%)	49 (11.3%)	5.42x10 ⁻³	0.048
carbapenem alone	37 (11.7%)	17 (14.9%)	54 (12.5%)	0.41	0.68
Ceftazidime or carbapenem or both	87 (27.4%)	24 (21.1%)	111 (25.6%)	0.21	0.48
ceftazidime or carbapenem but with other antibiotics	222 (70.0%)	83 (72.8%)	306 (70.7%)	0.63	0.85
no ceftazidime or carbapenem	95 (30.0%)	31 (27.2%)	127 (29.3%)	0.63	0.85

Other antibiotics prescribed on first presentation

	Survive	Died	Total	raw p-val	BH_{adj} p-val
ceftriaxone alone or in combination with other antibiotics	70 (22.1%)	34 (29.8%)	100 (23.1%)	0.10	0.35
penicillin alone or in combination with other antibiotics	36 (11.4%)	10 (8.8%)	46 (10.6%)	0.49	0.75
lincosamide alone or in combination with other antibiotics	77 (24.3%)	34 (29.8%)	112 (25.9%)	0.26	0.48
macrolide alone or in combination with other antibiotics	59 (18.6%)	30 (26.3%)	90 (20.8%)	0.10	0.35
nitroimidazole alone or in combination with other antibiotics	27 (8.5%)	14 (12.3%)	41 (9.4%)	0.26	0.48

486
487

488 **Table 2 Clinical sensitivity and specificity of culture and CRISPR-based methods.**

Sample types	Disease status		Culture-based approach		CRISPR-BP34	
	Melioidosis cases	Non-melioidosis controls	Sensitivity (Percent, 95% CI)	Specificity (Percent, 95% CI)	Sensitivity (Percent, 95% CI)	Specificity (Percent, 95% CI)
Overall	114	216	76 of 114 (66.7%, CI 57.2 – 75.2%)	216 of 216 (100%, CI 98.3 – 100.0%)	106 of 114 (93.0%, CI 86.6 – 96.9%)	209 of 216 (96.8%, CI 93.4 – 98.7%)
Hemoculture	41	74	24 of 41 (58.5%, CI 42.1 – 73.7%)	74 of 74 (100%, CI 95.1 – 100.0%)	41 of 41 (100.0%, CI 91.40 – 100.0%)	70 of 74 (94.6%, CI 86.7 – 98.5%)
Genitourinary fluid	27	71	14 of 27 (51.9%, CI 32.0 – 73.3%)	71 of 71 (100%, CI 94.9 – 100.0%)	19 of 27 (70.4%, CI 49.8 – 86.3%)	70 of 71 (98.6%, CI 92.4 – 100%)
Respiratory secretion	52	54	44 of 52 (84.6%, CI 71.9 – 93.1%)	54 of 54 (100%, CI 93.4 – 100.0%)	49 of 52 (94.2%, CI 84.1-98.8%)	53 of 54 (98.2%, CI 90.1-99.6%)
Pus, tissue and other body fluids	15	30	11 of 15 (73.3%, CI 44.9-92.2%)	30 of 30 (100%, CI 88.4 -100.0%)	15 of 15 (100%, CI 78.2 – 100.0%)	29 of 30 (96.67%, CI 82.8-99.9%)

489

490 **References**

- 491 1 Wiersinga WJ, Virk HS, Torres AG, *et al.* Melioidosis. *Nat Rev Dis Primer* 2018; **4**: 17107.
- 492 2 Birnie E, Virk HS, Savelkoel J, *et al.* Global burden of melioidosis in 2015: a systematic review and data
493 synthesis. *Lancet Infect Dis* 2019; **19**: 892–902.
- 494 3 Limmathurotsakul D, Golding N, Dance DAB, *et al.* Predicted global distribution of *Burkholderia pseudomallei*
495 and burden of melioidosis. *Nat Microbiol* 2016; **1**: 15008.
- 496 4 Savelkoel J, Dance DAB, Currie BJ, Limmathurotsakul D, Wiersinga WJ. A call to action: time to recognise
497 melioidosis as a neglected tropical disease. *Lancet Infect Dis* 2022; **22**: e176–82.
- 498 5 Currie BJ, Mayo M, Ward LM, *et al.* The Darwin Prospective Melioidosis Study: a 30-year prospective,
499 observational investigation. *Lancet Infect Dis* 2021; **21**: 1737–46.
- 500 6 Mohapatra PR, Mishra B. Burden of melioidosis in India and South Asia: Challenges and ways forward. *Lancet*
501 *Reg Health - Southeast Asia* 2022; **2**: 100004.
- 502 7 Chantratita N, Phunpang R, Yarasai A, *et al.* Characteristics and one year outcomes of melioidosis patients in
503 Northeastern Thailand: A prospective, multicenter cohort study. *Lancet Reg Health - Southeast Asia* 2023; **9**:
504 100118.
- 505 8 Limmathurotsakul D, Jamsen K, Arayawichanont A, *et al.* Defining the True Sensitivity of Culture for the
506 Diagnosis of Melioidosis Using Bayesian Latent Class Models. *PLoS ONE* 2010; **5**: e12485.
- 507 9 Peeters M, Ombelet S, Chung P, *et al.* Slow growth of *Burkholderia pseudomallei* compared to other pathogens in
508 an adapted blood culture system in Phnom Penh, Cambodia. *J Med Microbiol* 2019; **68**: 1159–66.
- 509 10 Houghton RL, Reed DE, Hubbard MA, *et al.* Development of a Prototype Lateral Flow Immunoassay (LFI)
510 for the Rapid Diagnosis of Melioidosis. *PLoS Negl Trop Dis* 2014; **8**: e2727.
- 511 11 Tandhavanant S, Wongsuvan G, Wuthiekanun V, *et al.* Monoclonal Antibody-Based Immunofluorescence
512 Microscopy for the Rapid Identification of *Burkholderia pseudomallei* in Clinical Specimens. *Am J Trop Med Hyg*
513 2013; **89**: 165–8.
- 514 12 Lowe W, March JK, Bunnell AJ, O'Neill KL, Robison RA. PCR-based Methodologies Used to Detect and
515 Differentiate the *Burkholderia pseudomallei* complex: *B. pseudomallei*, *B. mallei*, and *B. thailandensis*. *Curr*
516 *Issues Mol Biol* 2014; **16**: 23–54.
- 517 13 Price EP, Dale JL, Cook JM, *et al.* Development and Validation of *Burkholderia pseudomallei*-Specific
518 Real-Time PCR Assays for Clinical, Environmental or Forensic Detection Applications. *PLoS ONE* 2012; **7**:
519 e37723.
- 520 14 Novak RT, Glass MB, Gee JE, *et al.* Development and Evaluation of a Real-Time PCR Assay Targeting
521 the Type III Secretion System of *Burkholderia pseudomallei*. *J Clin Microbiol* 2006; **44**: 85–90.
- 522 15 Gee JE, Sacchi CT, Glass MB, *et al.* Use of 16S rRNA Gene Sequencing for Rapid Identification and
523 Differentiation of *Burkholderia pseudomallei* and *B. mallei*. *J Clin Microbiol* 2003; **41**: 4647–54.
- 524 16 Wongsuvan G, Limmathurotsakul D, Wannapasni S, Chierakul W, Teerawattanasook N, Wuthiekanun V.
525 Lack of correlation of *Burkholderia pseudomallei* quantities in blood, urine, sputum and pus. *Southeast Asian J*
526 *Trop Med Public Health* 2009; **40**: 781–4.
- 527 17 Wuthiekanun V, Limmathurotsakul D, Wongsuvan G, *et al.* Quantitation of *B. Pseudomallei* in clinical
528 samples. *Am J Trop Med Hyg* 2007; **77**: 812–3.

- 529 18 Fairley L, Smith S, Maisrikrod S, Henning L. Systematic review and meta-analysis of diagnostic tests for
530 diagnosis of melioidosis. *Acta Trop* 2021; **214**: 105784.
- 531 19 Huang Z, LaCourse SM, Kay AW, *et al.* CRISPR detection of circulating cell-free *Mycobacterium*
532 *tuberculosis* DNA in adults and children, including children with HIV: a molecular diagnostics study. *Lancet*
533 *Microbe* 2022; **3**: e482–92.
- 534 20 Wongpalee SP, Thananchai H, Chewapreecha C, *et al.* Highly specific and sensitive detection of
535 *Burkholderia pseudomallei* genomic DNA by CRISPR-Cas12a. *PLoS Negl Trop Dis* 2022; **16**: e0010659.
- 536 21 WHO. Guidelines for the collection of clinical specimens during field investigation of outbreaks. 2000.
537 <https://apps.who.int/iris/handle/10665/66348>.
- 538 22 Hinjoy S, Hantrakun V, Kongyu S, *et al.* Melioidosis in Thailand: Present and Future. *Trop Med Infect Dis*
539 2018; **3**: 38.
- 540 23 Dance D. Treatment and prophylaxis of melioidosis. *Int J Antimicrob Agents* 2014; **43**: 310–8.
- 541 24 Karunakaran R, Puthuchery SD. *Burkholderia pseudomallei*: In vitro susceptibility to some new and old
542 antimicrobials. *Scand J Infect Dis* 2007; **39**: 858–61.
- 543 25 Hii SYF, Tandhavanant S, Phunpang R, *et al.* Antibiotic Susceptibility of Clinical *Burkholderia*
544 *pseudomallei* Isolates in Northeast Thailand from 2015 to 2018 and the Genomic Characterization of β -Lactam-
545 Resistant Isolates. *Antimicrob Agents Chemother* 2021; **65**: e02230-20.
- 546 26 Jenney AWJ, Lum G, Fisher DA, Currie BJ. Antibiotic susceptibility of *Burkholderia pseudomallei* from
547 tropical northern Australia and implications for therapy of melioidosis. *Int J Antimicrob Agents* 2001; **17**: 109–13.
- 548 27 Chaowagul W, Simpson AJ, Suputtamongkol Y, White NJ. Empirical cephalosporin treatment of
549 melioidosis. *Clin Infect Dis Off Publ Infect Dis Soc Am* 1999; **28**: 1328.
- 550 28 Rhodes J, Jorakate P, Makprasert S, *et al.* Population-based bloodstream infection surveillance in rural
551 Thailand, 2007–2014. *BMC Public Health* 2019; **19**: 521.
- 552 29 An academic meeting to reduce high mortality from melioidosis in the 10th Public Health Region,
553 Thailand. 2023; published online March 2.
- 554

Figure 1

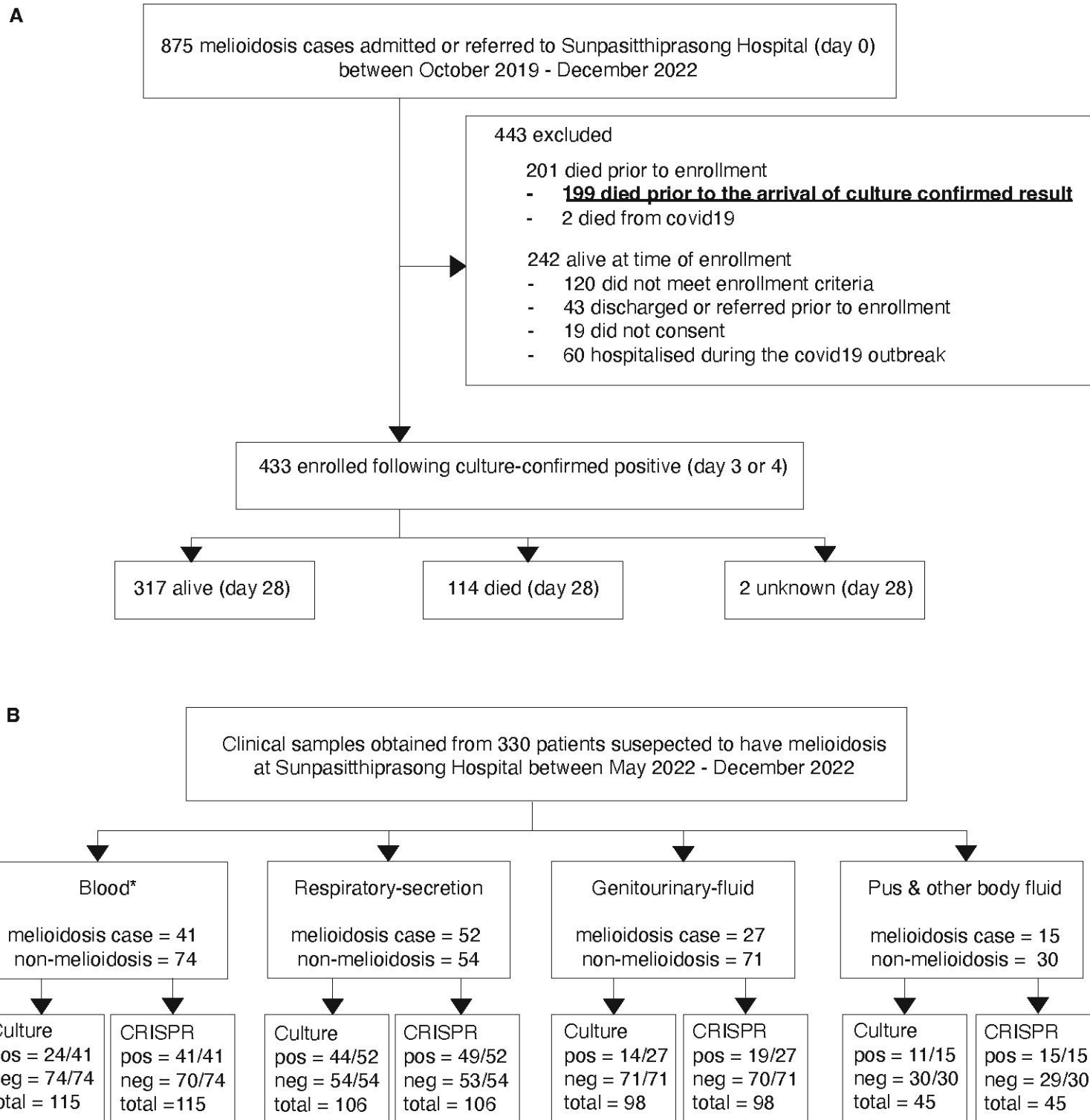
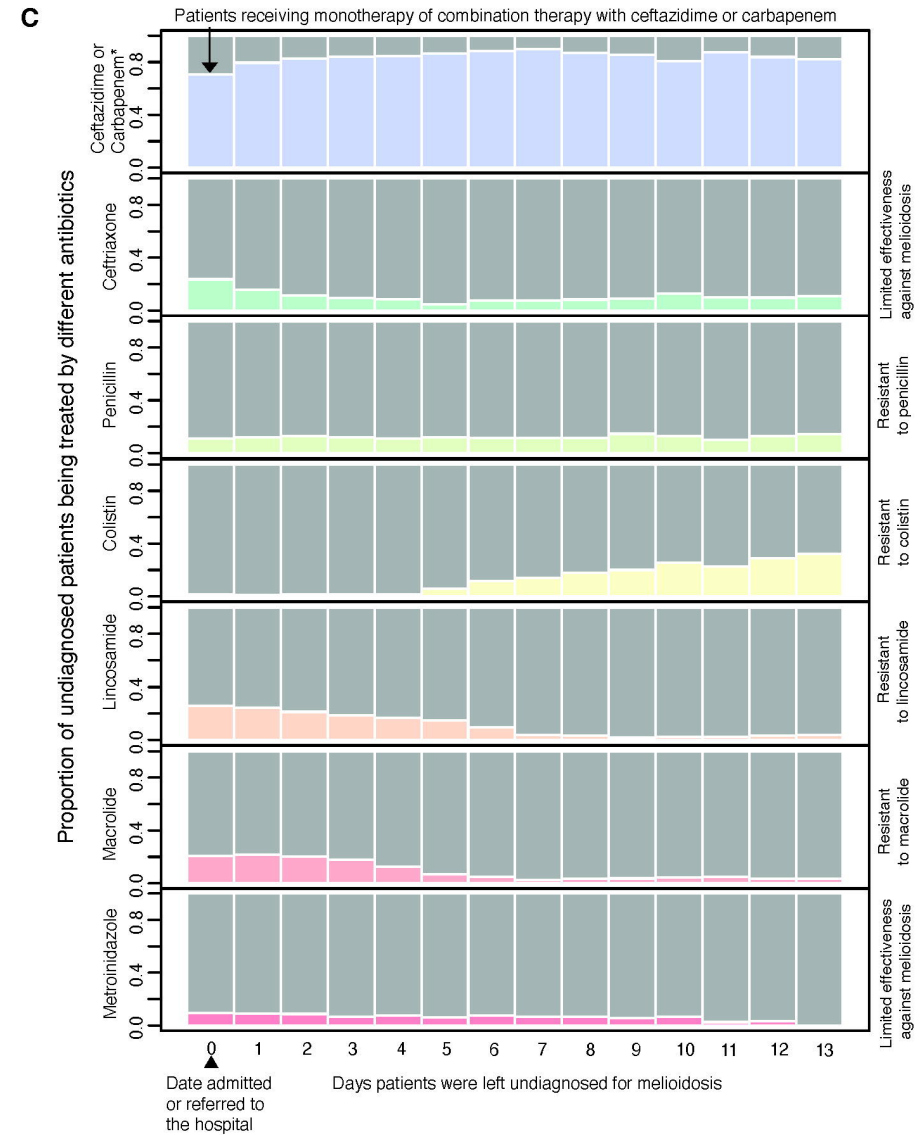
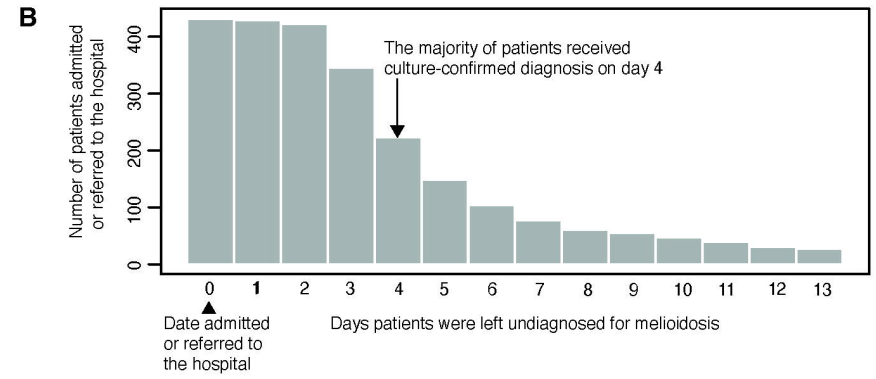
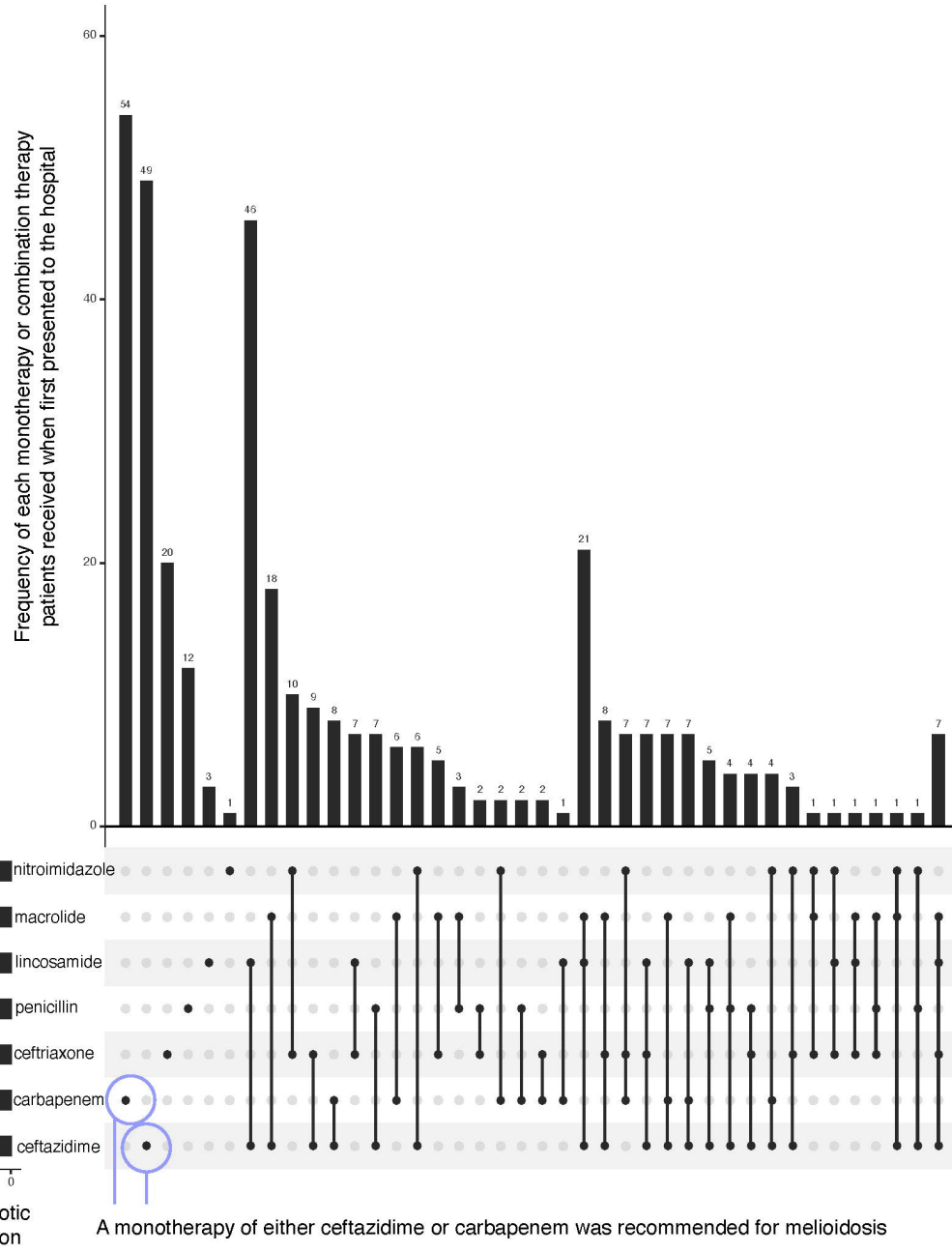
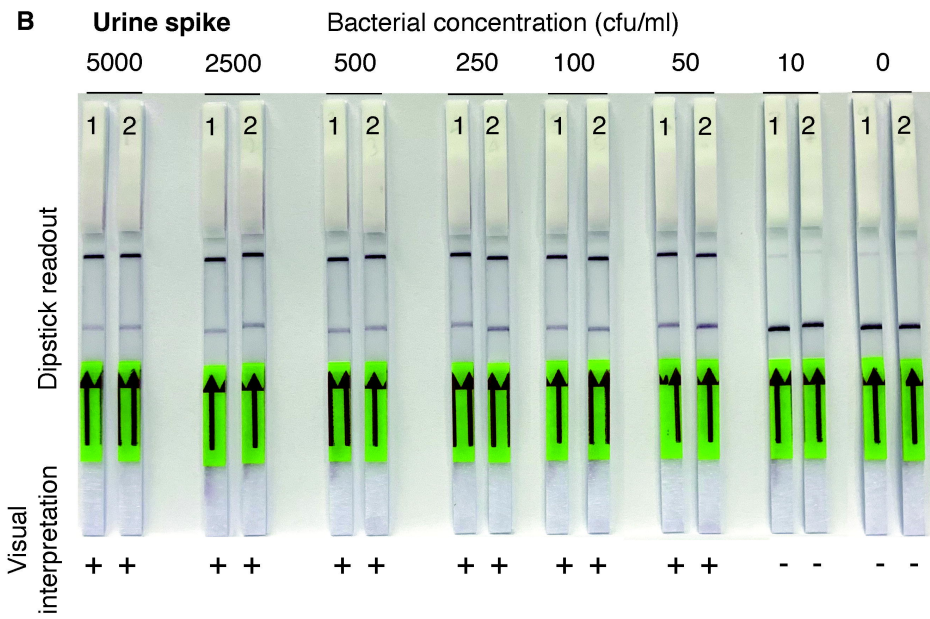
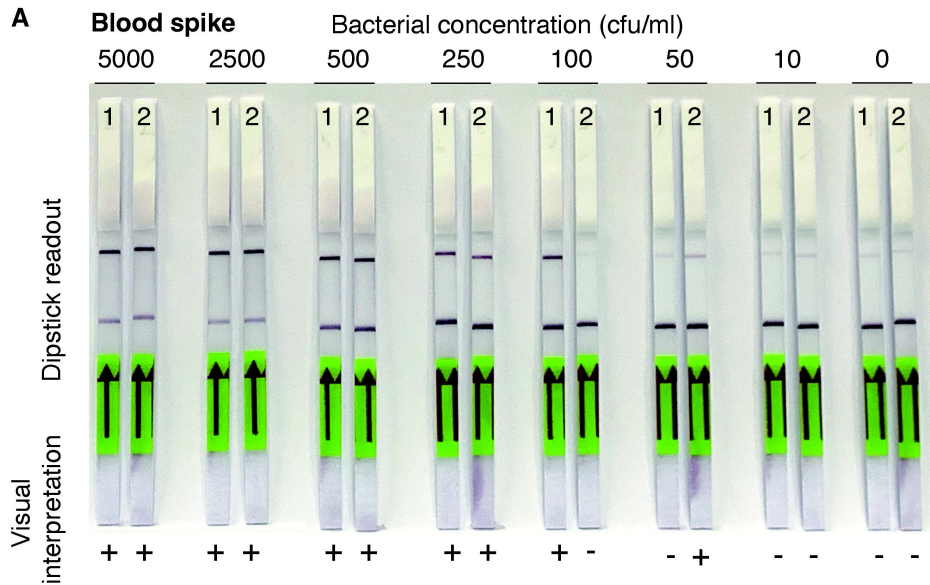


Figure 2

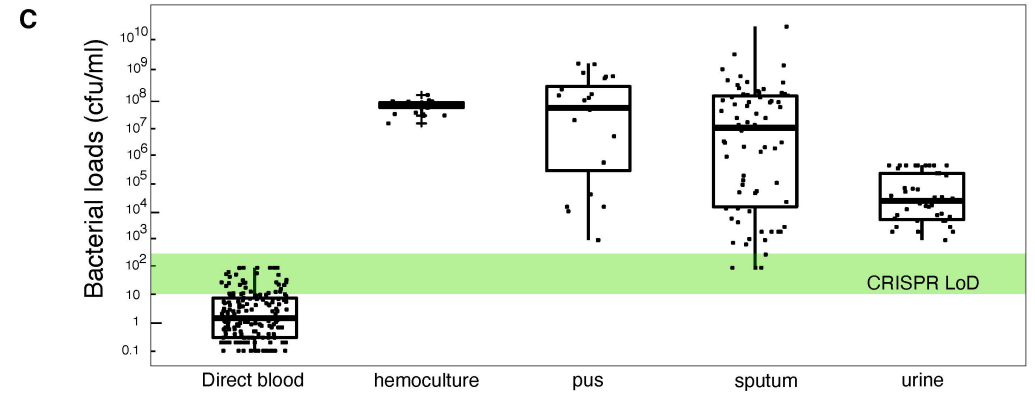
A Treatments prescribed on first presentation when culture-confirmed result was not available



CRISPR-cas limit of detection in complex samples



Number of bacterial cells recovered from each specimen type



D Alternative CRISPR-cas12a diagnosis scheme for patient with suspected melioidosis

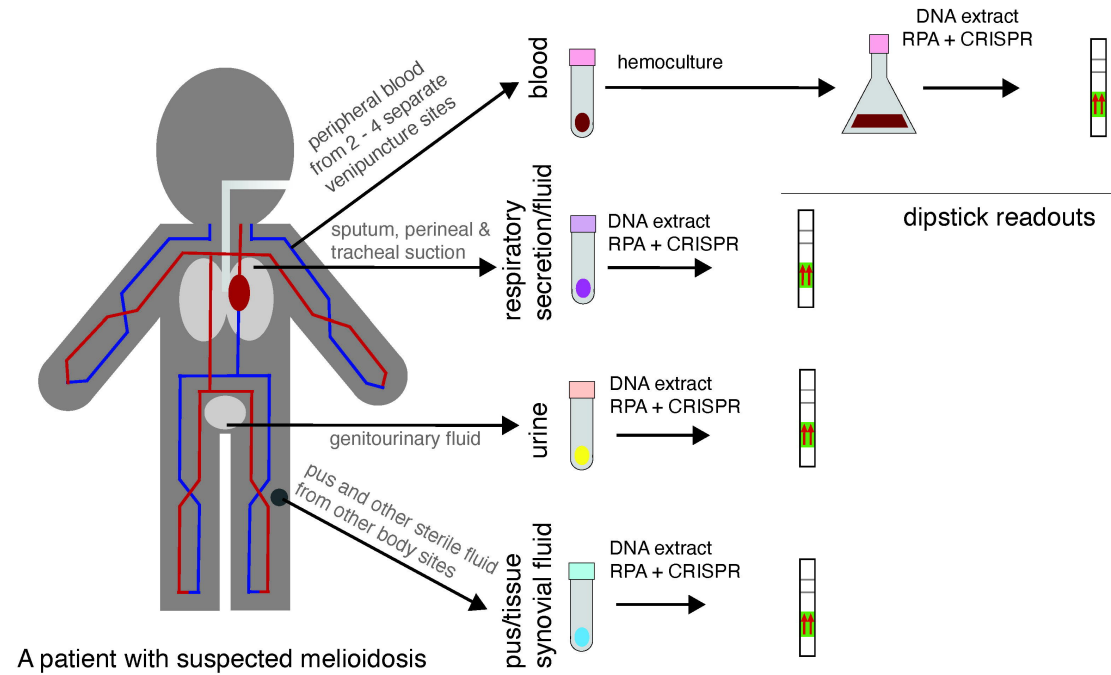
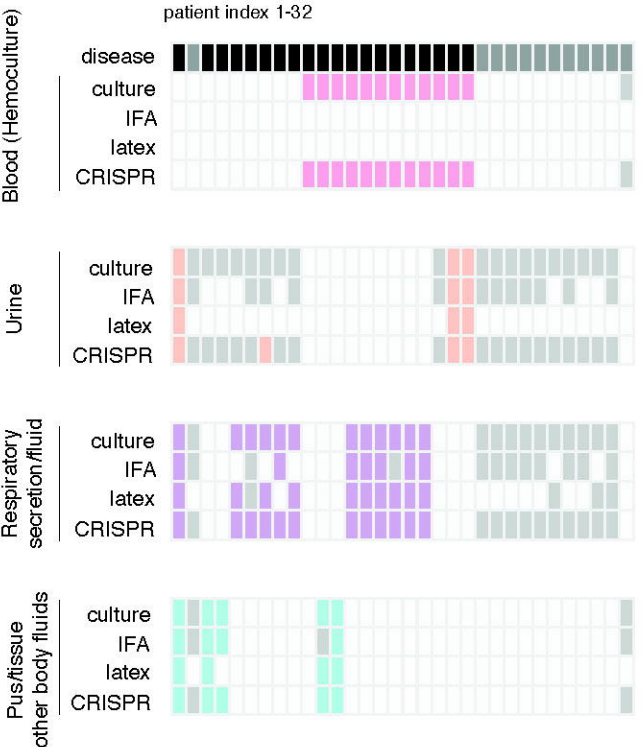
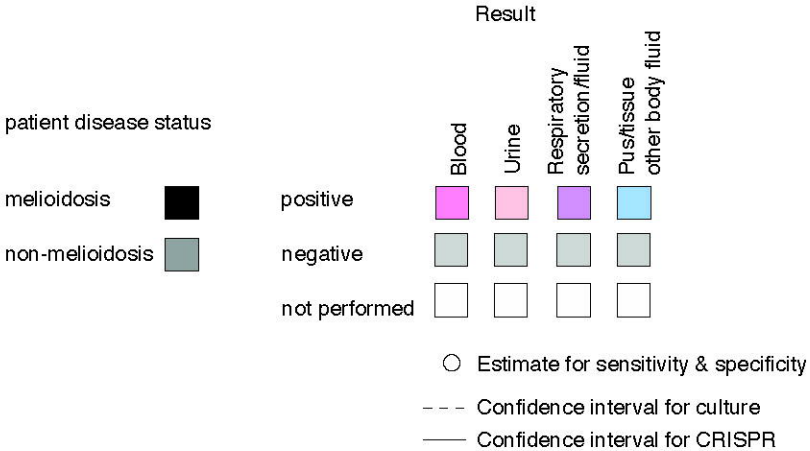
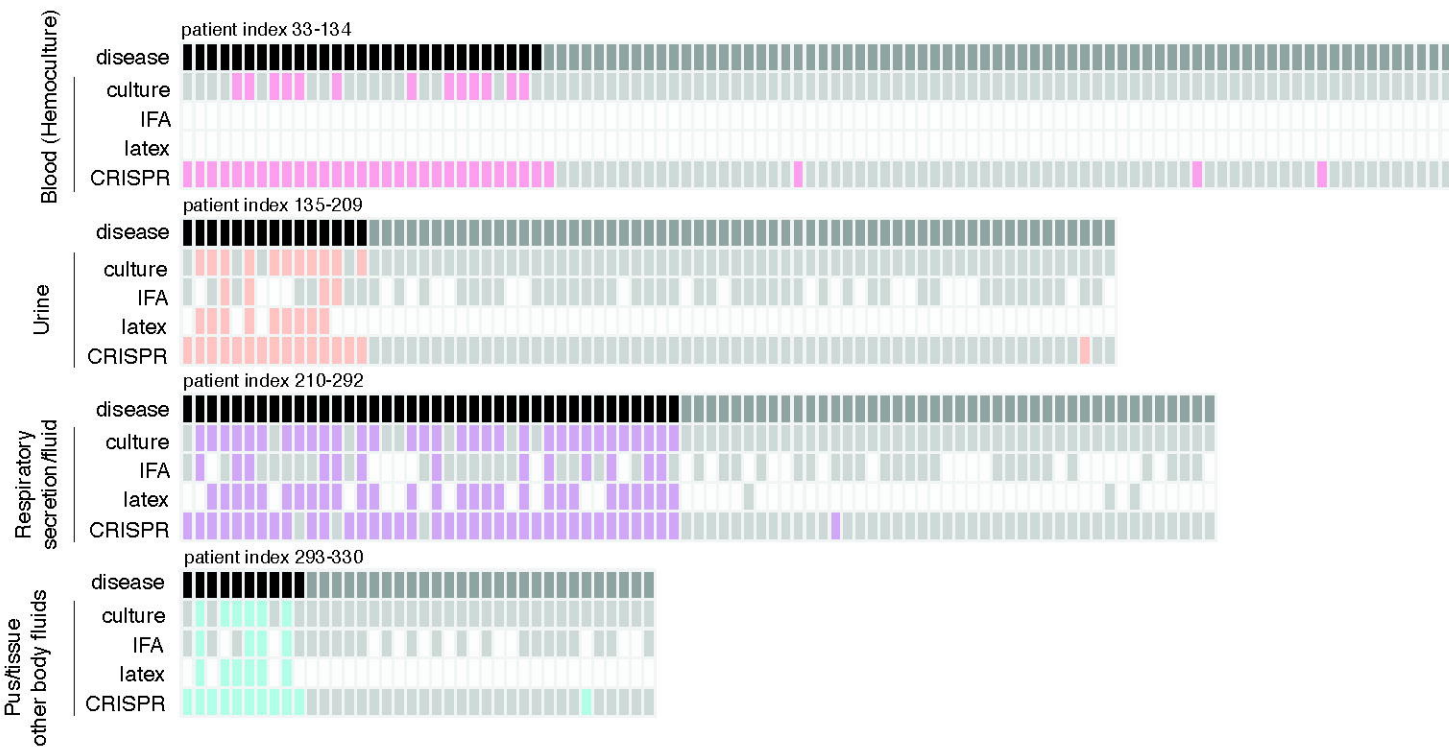


Figure 4

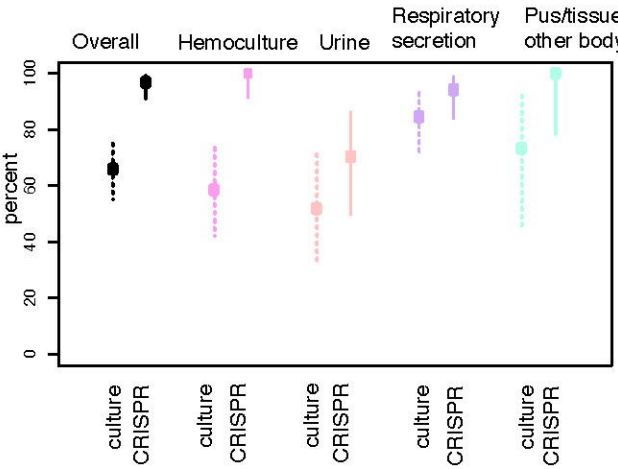
A Patients with multiple specimen types (index 1-32)



B Patients with single specimen type (index 33 - 330)



C Sensitivity



D Specificity

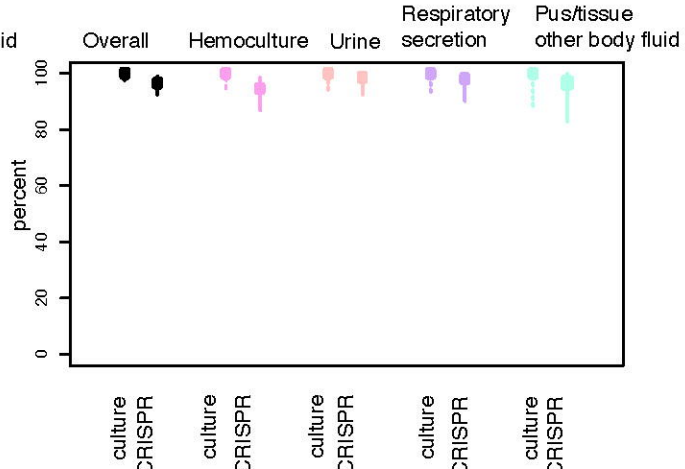


Figure 5

