

1 **Title:** Success in vaccination programming through community health workers: A case
2 study of Nepal, Senegal, and Zambia

3 **Authors:** Emily Ogutu^a and Anna S. Ellis^a, Kyra A. Hester^a, Katie Rodriguez^a, Zoe
4 Sakas^a, Chandni Jaishwal^a, Chenmua Yang^a, Sameer Dixit^b, Anindya S. Bose^e, Moussa
5 Sarr^d, William Kilembe^c, Robert A. Bednarczyk^a, Matthew C. Freeman^a

6 **Affiliations:**

7 ^a Rollins School of Public Health, Emory University, Atlanta, GA, USA

8 ^b Center for Molecular Dynamics Nepal, Kathmandu, Nepal

9 ^c Center for Family Health Research in Zambia, Lusaka, Zambia

10 ^d Institut de Recherche en Santé de Surveillance Epidemiologique et de Formation
11 (IRESSEF), Dakar, Senegal

12 ^e WHO Nepal Immunization Preventable Disease Division

13 * Corresponding author: Matthew C. Freeman; matthew.freeman@emory.edu |

14 www.FreemanResearchGroup.org

15

16 **Contributions:** KAH, ASE, SD, MCF, MS, RAB: project conceptualization and
17 methodology; KAH, KR, ASE, MCF, WK, MS, SD, RAB, ASB: investigation and data
18 curation; ASE, EO, KAH, KR, ZS, CJ, CY, MCF, RAB: formal analysis; EO, ASE, KAH, KR,
19 ZS, CJ, CY: writing - original; EO, ASE, KAH, KR, ZS, CY, MCF, SD, MS, RAB, ASB:
20 writing – review and editing; all authors provided approval of the submitted version.

21

22 Abstract

23 **Introduction:** Community health workers are essential to frontline health outreach
24 throughout low- and middle-income countries, including programming for early
25 childhood immunization. The World Health Organization estimates a projected shortage
26 of 18 million health workers by 2030. Understanding how community health workers are
27 engaged for successful early childhood vaccination among countries who showed success
28 in immunization coverage would support evidence-based policy guidance across contexts.
29 To that end, we identified factors of community health worker programs that contributed
30 to improved vaccination coverage in Nepal, Senegal, and Zambia.

31 **Methods:** We conducted interviews and focus group discussions at the national,
32 regional, district, health facility, and community levels of the health systems of Nepal,
33 Senegal, and Zambia, and used thematic analysis to investigate contributing factors of
34 community health worker programming that supported early childhood immunization
35 within each country and across contexts. We developed a model that could be used for
36 assessment and adaptation based on lessons learned.

37 **Findings:** Across all countries, implementation of vaccination programming relied
38 principally on the 1) organization, 2) motivation, and 3) trust of community health
39 workers. Organization was accomplished by expanding cadres of community health
40 workers to carry out their roles and responsibilities related to vaccination. Motivation of
41 community health workers was supported by intrinsic and extrinsic incentives. Trust was
42 expressed by communities due to community health worker respect and value placed on
43 work.

44 **Conclusion:** Improvements in immunization coverage followed successful community
45 health worker programs, facilitated by diversification of cadres, roles and responsibilities,
46 motivation, and trust. With the continued projection of health worker shortages,
47 especially in low-income countries, community health workers bridged the equity gap in
48 access to vaccination services by enabling wider reach to minority populations and
49 populations in hard-to-reach areas. Although improvements in vaccination programming
50 were seen in all three countries - including government - commitment to addressing
51 human resource deficits, training and remuneration; workload, low and inconsistent
52 compensation, inconsistency in training duration and scope, and supervision are still
53 major challenges to immunization programming. Vaccination and health decision-
54 makers should consider organization, motivation, and trust of community health workers
55 to improve the implementation of immunization programming.

56

57 Key Words: Community Health Volunteer; Routine Immunization; Exemplars in Global
58 Health; remuneration

59

60 Introduction

61 Despite efforts to increase early childhood immunization over the past 20 years, many
62 countries continue to report excessive morbidity and mortality from vaccine-preventable
63 diseases. Maintaining high vaccination coverage is of economic benefit by preventing
64 early childhood disease, improving health outcomes, and reducing expenditure on

65 treatment[1, 2]. The Immunization Agenda 2030 (IA2030) aims to maintain hard-won
66 gains in immunization by leaving no one behind at any stage of life through increasing
67 equitable access and use of new and existing vaccines, and strengthening immunization
68 within primary healthcare. Through this strategy, countries define their own targets and
69 timelines to achieve IA2030 goals[3]. Achieving this goal requires strategizing to address
70 multiple inefficiencies, including health system strengthening, infrastructural
71 development and increased human resources.

72 The 2030 targets for the Global Strategy for Human Resources for Health, developed for
73 low and middle-income countries, are to create, fill, and sustain at least 10 million
74 additional jobs in the health and social care sectors to address unmet needs for the
75 equitable and effective coverage of health services[4]. The World Health Organization
76 (WHO) estimates a projected shortage of 18 million health workers by 2030, mostly in
77 low- and lower-middle-income countries[5]. Estimates include the need for 44.5 basic
78 health workers (e.g., doctors, nurses, and midwives) per 10,000 population; however,
79 only half of the WHO member states have that level at present, with Southeast Asia and
80 sub-Saharan Africa having the greatest absolute shortage of health workers[4].
81 Community health workers (CHWs)- are community members who volunteer to serve as
82 frontline healthcare workers in underserved communities to bridge the human resource
83 deficit[6]. Continued expansion of the numbers, functions, training, and support of
84 CHWs and provision of financial packages commensurate to their job demands and
85 workload could bridge the gap because of the feasibility of CHWs deployment and
86 effectiveness[7, 8].

87 As frontline health workers, CHWs play a critical role in routine vaccination programming
88 by generating demand for childhood vaccination; connecting community members to the
89 formalized health care system; and working closely with and in communities, schools, and
90 religious facilities[9, 10]. A concurrent analysis of our research showed that CHWs played
91 a crucial role in demand generation in Nepal, Senegal, and Zambia[11-14]. The WHO
92 health policy guidelines for CHWs program (2018) recommends the following: 1)
93 community engagement in selection, 2) training, 3) remuneration, and 4) supervision.
94 Coupled with other strategies, this policy aims to increase the efficiency and productivity
95 of CHWs towards service delivery[8]. Yet, despite these recommendations, frontline
96 health workers in many countries – the vast majority of which are women - remain unpaid
97 and are provided minimal training and supervision[15]. Evidence suggests that scaling up
98 and sustaining CHW programs requires effective program design and management,
99 including adequate training, supervision, motivation and funding, community
100 acceptability, and support from political leaders and other healthcare providers[16].

101 The purpose of this analysis was to identify factors of volunteer community health worker
102 programming that successfully contributed to vaccination initiatives in Nepal, Senegal,
103 and Zambia. We describe 1) CHW programming organization- cadres, roles and
104 responsibilities, 2) CHW motivation- recognition, tangible incentives, capacity building,
105 empathy and compassion; and, 3) trust- positive social capital, mutual trust- through
106 community engagement and knowledge sharing. We discuss how these factors have
107 contributed to success in service delivery and increased routine immunization coverage
108 in the context of the three countries. Program implementation strategies involving active

109 engagement of CHWs in Nepal, Senegal, and Zambia may offer insight into what are
110 critical contributors to immunization access and intent to vaccination.

111 Methods

112 We applied a multiple case study design to explore critical success factors of vaccine
113 delivery systems in three countries with high vaccination rates: Nepal, Senegal, and
114 Zambia[17]. This analysis is nested within the Vaccine Delivery project within the
115 Exemplars in Global Health program[17, 18]. We employed a qualitative analysis to
116 investigate factors that contributed to high and sustained vaccination coverage through
117 key informant interviews (KIIs) and focus group discussions (FGDs) at the national,
118 regional, district, health facility, and community levels of the health system. We
119 triangulated these findings with quantitative analyses using publicly available data.

120 In this analysis, we selected three themes- organization, motivation, and trust as they
121 relate to CHWs and how these contributed to increased immunization coverage in Nepal,
122 Senegal, and Zambia. We provide operational definitions of the themes and some specific
123 examples of the components as they emerged from data (Table 1). The protocol of the
124 primary analysis, along with individual case studies of countries and a synthesis case
125 study, are published separately[12-14, 17].

126 ***Table 1. Definitions of themes as derived from data***

Domain	Definition and Examples
--------	-------------------------

<p>1. Organization</p>	<p>Expansion of CHWs with different cadres, and roles and responsibilities; may be based on the scope of work, reimbursement, qualifications, language, education level, geographic region, and their distinct roles and responsibilities. These CHWs work together to improve community health and increase vaccination rates.</p>
<p>1.A. Cadre</p>	<p>Specialized types of CHW providing immunization-related services in the communities</p> <ul style="list-style-type: none">• Female Community Health Volunteers, Mother groups, Village Development Committees (Nepal)• <i>Agents de Santé Communautaire, Matrones, Dispensateur de Soins à Domicile, Bajenu Gox, Relais</i> (Senegal)• Neighborhood Health Committees, Safe Motherhood

	<p>Action Groups, Growth</p> <p>Monitoring Promoters (Zambia)</p>
1.B. Roles and responsibilities	<p>Work and functions of CHWs related to immunizations activities, based on specific age ranges of the CHWs, ethnicities, language skills and qualifications, including:</p> <ul style="list-style-type: none"> • Defaulter tracing which involves finding children who missed their scheduled immunization. • Outreach planning • Data collection and reporting • Community mobilization • Public awareness and education
2. Motivation	<p>The reason, desire (e.g., empathy, compassion), or willingness of a volunteer community health worker to do their work [19-21].</p>
2.A. Recognition	<p>Identification of CHWs by the communities and healthcare workers as integral members of healthcare team due to their knowledge and close</p>

	<p>understanding of the communities they serve. Examples include:</p> <ul style="list-style-type: none">• Respect by community members• Support from community• Value placed on the work of CHWs• National, regional or local celebrations
<p>2.B. Tangible incentives</p>	<p>Factors - direct or indirect, financial or non-financial - that increase motivation to engage and perform well, which include specific forms of reward[22].</p> <p>Examples include:</p> <ul style="list-style-type: none">• Money, including salary and remuneration for specific training• Food, usually staples of diet• Childcare• Harvesting assistance• Bicycles, uniforms, raincoats, stationary• Certificates, including-training completion• Free healthcare services

<p>2.C. Capacity building</p>	<p>Includes training and supervision of CHWs and the downward impact on the community, including:</p> <ul style="list-style-type: none">• Increased self-efficacy to perform responsibilities• Increased knowledge of diseases, diagnoses, treatment, and facilitation• Contribution to program planning and decision-making
<p>2.D. Empathy and compassion</p>	<p>The ability to understand and share the feelings of others, show concern for the suffering or misfortune of others, and prioritize the needs of other community members - all of which motivated CHWs to perform their roles.</p>
<p>3. Trust</p>	<p>Positive social capital or social relationship, as an element of truth telling, empowering others through knowledge.</p>

<p>3.A. Community engagement</p>	<p>The involvement of communities in decision making and in planning, design, governance and delivery of services[23].</p> <ul style="list-style-type: none">• Community members involvement in selection of CHWs• CHW as residents of their respective communities• CHWs speak the same language as community members• CHWs relaying health information to community members and sharing feedback from the community to healthcare workers
<p>3.B. Knowledge sharing</p>	<p>Activities through which information and skills are shared between individuals or groups can include frequent interaction, social relationships between CHWs, communities, and health workers[24].</p>

128 2.1. Study settings

129 Nepal, Senegal, and Zambia were selected based on their success at achieving high and
130 sustained growth in early childhood vaccination, based on historical (i.e., 2000-2018, up
131 to the point of starting this project) DTP1 and DTP3 coverage estimates. Details are
132 explained elsewhere [17]. Three regions within each country were identified in
133 consultation with national stakeholders and available data[12-14]. Ministry of Health
134 (MoH) officials and in-country partner organizations facilitated site selection and data
135 collection activities. Each country has a slightly different name for their Ministry of
136 Health (e.g., Ministry of Health and Population in Nepal; Ministry of Health and Social
137 Action in Senegal), but all will be referred to as “MoH” throughout for simplicity.

138 2.3. Qualitative data collection and analysis

139 Qualitative data were collected at the national, regional, district, health facility, and
140 community levels. Data collection was from August 2019 to April 2021. The interview
141 guides were informed by the Consolidated Framework for Implementation Research
142 (CFIR) and the Context and Implementation of Complex Interventions (CICI)
143 frameworks [25, 26]. KII and FGD guides were translated into national and regional
144 languages by research assistants, piloted before use, and adjusted iteratively throughout
145 data collection. An initial list of KIIs was developed with local research partners and MoH
146 officials; snowball sampling was used to identify additional key informants. Caregivers
147 and CHWs were recruited for FGDs from health facility catchment areas with the
148 assistance of local health staff. The duration of KIIs and FGDs averaged one and a half
149 hours. KIIs and FGDs were audio-recorded with the permission of participants. Research

150 files, recordings, and transcriptions were de-identified, password protected, and kept on
 151 a secure server. The activities are summarized in Table 2.

152 **Table 2. Summary of countries, partner organizations, regions, districts and**
 153 **data Collection Activities**[27]

Country	Nepal		Senegal		Zambia	
In Country Research Partner	Center for Molecular Dynamics, Nepal		Institut de Recherche en Santé de Surveillance, de Surveillance Epidémiologique et de Formation (IRESSEF)		Center for Family Health Research in Zambia	
Data collection period (MM/YYYY)	8/2019 – 12/2019		12/2020 - 4/2021		10/2019 – 02/2020	
Regions and Districts						
Region 1	Madhes*	Dhanusha, Bara, Mahottari	Ziguinchor	Ziguinchor, Oussouye, Diouloulou	Lusaka	Lusaka, Rufunsa, Chongwe
Region 2	Bagmati	Makwanpur, Dolakha, Kathmandu	Dakar	Rufisque, Mbao, Keur Massar	Central	Chibombo, Chitambo, Serenje
Region 3	Gandaki Pradesh	Kaski, Myagdi, Nawalparasi	Tambacounda	Tambacoun da, Koumpentoum, Goudiry	Luapula	Chipili, Nchelenge, Samfya
Key Informant Interviews						
<i>Key: Number of KIIs (Participants)</i>	79 (79)		62 (63)		66 (85)	
National level government staff	11 (11)		5 (5)		11 (12)	
Partner organization staff	8 (8)		4 (4)		11 (15)	

Regional health staff	5 (5)	7 (7)	6 (8)
District health staff	15 (15)	38 (38)	10 (19)
Health facility staff	23 (23)	6 (6)	7 (10)
Community leaders	15 (15)	2 (2)	10 (10)
Community health workers **	2 (2)	-	11 (11)
Focus Group Discussions			
<i>Key: Number of FGDs</i>	30 (191)	19 (128)	22 (132)
<i>(Participants)</i>			
Community health workers **	9 (60)	10 (65)	10 (60)
Mothers	9 (60)	9 (63)	8 (48)
Fathers	6 (36)	-	1 (6)
Grandparents	6 (35)	-	3 (18)
Total (per country)	109 (270)	81 (191)	88 (217)
Total (across countries)	-	-	278 (678)

154 *Includes female community health volunteers (FCHV) in Nepal, vaccinators, bajenu gox, Agents de Santé
 155 Communautaire (ASCs) in Senegal, and volunteer community health workers and neighborhood health
 156 committee members in Zambia.

157

158 2.4. Ethical approval

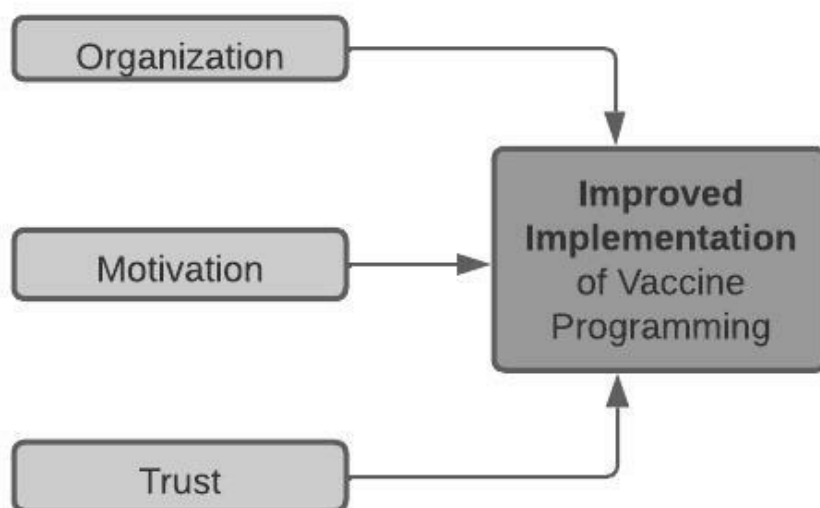
159 The study was considered exempt by the Institutional Review Board committee of Emory
 160 University, Atlanta, Georgia, USA (IRB00111474), and was approved by the National
 161 Health Research Committee (NHRC; Reg. no. 347/2019) in Kathmandu, Nepal; the
 162 National Ethical Committee for Health Research (CERNS; Comité National d’Ethique
 163 pour la Recherche en Santé) in Dakar, Senegal (00000174); the University of Zambia
 164 Biomedical Research Ethics Committee (Federal Assurance No. FWA00000338, REF.
 165 No. 166-2019); and the National Health Research Authority in Zambia. All participants

166 provided informed consent, either written or with their thumbprint, in the presence of a
167 witness.

168 Findings

169 We analyzed strategies and delivery methods of voluntary CHWs and how they
170 contributed to routine vaccination programming in Nepal, Senegal, and Zambia. First, we
171 developed a framework specific to CHWs and their involvement in vaccine delivery and
172 uptake. We included aspects of our general research framework and other scales and
173 frameworks specific to CHWs[28, 29]. We found that CHWs' contribution to
174 improvement in healthcare delivery and utilization in different settings aligned with the
175 broad domains around cultural congruence, social support, mutual trust, and others[20,
176 28, 29]. We then focused on the themes of organization, trust, and motivation (Fig. 1) to
177 compare success factors across these countries.

178 **Fig. 1. Summary figure of CHW domains that shaped vaccination in Nepal,**
179 **Senegal, and Zambia**



180

181 For this analysis, we chose to focus on the roles of volunteer CHWs, recognizing that in
182 all countries, at least one of the cadres (e.g., *bajenu gox*) was more trusted by
183 communities and was instrumental in the vaccination programming (Table 3). CHWs
184 capitalized on their strong community role to educate community members, combat
185 misinformation, conduct outreach and provide personalized service to caregivers.
186 Themes around 1) organization, 2) motivation, and 3) trust were derived from the data
187 and contributed to improvements in vaccination program implementation (Table 1).
188 Organization through expansion of CHW types motivated CHWs to carry out their roles
189 and responsibilities related to vaccination. Trust that communities and healthcare
190 workers expressed to CHWs through respect and value placed on work contributed to
191 CHWs' motivation resulting in the improved implementation of vaccination
192 programming.

193 3.1. Organization

194 In all three countries, key informants reported that recently introduced cadres and
195 diversification of roles and responsibilities improved implementation of vaccination
196 programming. The roles and responsibilities of CHWs shifted and often expanded, and
197 this was subsequent with increased funding and focus on health services strengthening.
198 Governments created more positions/cadres, defined, and aligned responsibilities with
199 specific qualifications, which bolstered frontline health outreach and services (Table 3).
200 Current volunteer CHW's roles across the countries required specific qualifications,
201 training, and responsibilities. CHW roles included generating public awareness,
202 dispelling misinformation, defaulter tracking, and data collection.

203 **3.1.1 Cadre.** Each country had different types of CHWs who played specific roles in
204 immunization programming. These cadres were created to distribute the heavy workload,
205 assign specific roles and responsibilities to specialized staff, and improve overall
206 coordination and delivery of services. In Nepal, FCHVs played a major role in
207 immunization, they created awareness on immunization, and linked the communities to
208 the healthcare facilities. Senegal had five different cadres (Table 3) involved in different
209 aspects of immunization. In Zambia, neighborhood health committees, safe motherhood
210 action groups and growth monitoring promoters played a critical role in improving
211 vaccination coverage through the roles and responsibilities they held as discussed in the
212 next section.

213 The specific characteristics and detailed elaboration of each cadre of the CHWs in Nepal,
214 Senegal, and Zambia are outlined in Table 3.

216 **Table 3: Community Health Workers cadres, roles, recruitment requirements, training and**
 217 **remuneration by Country**

	Cadre title	Established	Roles and responsibilities	Key Requirements	Reported Training	Remuneration*
Nepal	Female Community Health Volunteers (FCHVs)	<ul style="list-style-type: none"> Initiated in 1988, played critical role since 1991, established in 75 districts, 52,000 FCHVs throughout the 	<ul style="list-style-type: none"> Treatment of acute diarrhea and respiratory infections, nutrition, pre-natal care, distribution of family planning commodities Outreach services: coordination and attendance, support national campaigns Door-to-door follow up of left out children Reminders on outreach or vaccine days Lead mother health group meetings and disseminate health information Defaulter tracing 	<ul style="list-style-type: none"> Selected by local community – mother health groups Married and reside in wards where they serve Preference for literacy No other income- 	<ul style="list-style-type: none"> Initial training (18 days) Refresher training yearly 	<ul style="list-style-type: none"> Receive 10,000 rupees from the government upon retirement

		country.[30]	<ul style="list-style-type: none"> • Report data on births & vaccinations 	<p>generating activities</p> <ul style="list-style-type: none"> • Willing to volunteer 		
Senegal	<i>Agents de santé communautaires</i> (ASCs) [31]	<ul style="list-style-type: none"> • Since the 1950s 	<ul style="list-style-type: none"> • Reproductive, sexual health, maternal child health, antenatal care, adolescent health, family planning, nutrition, malaria, HIV/AIDs • Education on vaccines • Support outreach strategies • Referral of clients to health posts • Supervised by nurse in charge 	<ul style="list-style-type: none"> • 17-47 years of age • Read and write in French • Speak local language • From and selected by local community • Willing to volunteer 	<ul style="list-style-type: none"> • Initial training (30+ days, 10 days practice) 	<ul style="list-style-type: none"> • Inconsistent - depends on project /responsibilities • Determined by CDS or NGOs

Matrones[31]	<ul style="list-style-type: none"> • Not clear when this was established 	<ul style="list-style-type: none"> • Reproductive and sexual health, maternal child health, antenatal care, adolescent health, nutrition, delivery • Education on vaccines • Support outreach strategies • Administer medicine for post-partum hemorrhage • Referrals of clients to health posts • Supervised by nurse in charge 	<ul style="list-style-type: none"> • Age: 25-50 years • Education: at least 4th grade in primary school • From and selected by local community • Willing to volunteer 	<ul style="list-style-type: none"> • Initial training (30+ days, 10 days practice) 	<ul style="list-style-type: none"> • Inconsistent - depends on project • Determined by CDS or NGO
Home-based care providers (<i>Dispensaire de Soins à Domicile</i> ; DSDOMs)	<ul style="list-style-type: none"> • Created in 2008 [31] 	<ul style="list-style-type: none"> • Integrated management of childhood illnesses: malaria treatment and prevention, diarrhea treatment and prevention, acute respiratory infection treatment <ul style="list-style-type: none"> ○ In remote communities 	<ul style="list-style-type: none"> • Able to read • From and selected by local community • Willing to volunteer 	<ul style="list-style-type: none"> • Initial training (30+ days, 10 days practice) 	<ul style="list-style-type: none"> • Inconsistent - depend on project • Determined by CDS or NGO

			<ul style="list-style-type: none"> • Referrals of clients to <i>Agents de santé communautaires</i> (ASCs) • Supervised by nurse in charge 			
	<i>Bajenu Gox</i>	<ul style="list-style-type: none"> • Launched in 2009 [32] 	<ul style="list-style-type: none"> • Promote reproductive, maternal, newborn and child health interventions- pre- and post-natal care, infant child nutrition, female and adolescent health, family planning and child vaccination • Outreach services: coordination and attendance • Door-to-door activities and referrals of clients to ASCs • Defaulter tracing and reminders to parents of outreach days 	<ul style="list-style-type: none"> • Proven leader • Female • From and selected by local community • Willing to volunteer 	<ul style="list-style-type: none"> • Initial training (40-55 days) 	<ul style="list-style-type: none"> • Inconsistent - depend on project /responsibilities • Determined by CDS or NGO

			<ul style="list-style-type: none"> • Supervised by NGO employees, community development agents and head nurse 			
	<i>Relais communautaires</i>	<ul style="list-style-type: none"> • Not clear when this was established 	<ul style="list-style-type: none"> • Education and behavior change strategies: Maternal neonatal child health, integrated management of childhood illnesses topics, water, sanitation and hygiene (WASH) • Outreach services: coordination and attendance • Defaulter tracing • Door-to-door services • Text reminders to parents of vaccine days • Referrals of clients to ASCs • Supervised by nurse in charge 	<ul style="list-style-type: none"> • From and selected by local community • Willing to volunteer 	<ul style="list-style-type: none"> • Initial training (40-55 days) 	<ul style="list-style-type: none"> • Inconsistent - depend on project /responsibilities • Determined by CDS or NGO

Zambia	Neighborhood Health Committees (NHCs)	<ul style="list-style-type: none"> • Introduced in the late 1990s 	<ul style="list-style-type: none"> • Supervise other CHWs • Review reports • Contribute to action planning • Identify and address barriers • Hold monthly meetings with village leaders • Provide education on vaccines • Conduct follow-up visits • Conduct head count children aged 0-11 months and 1-5 years 	<ul style="list-style-type: none"> • Willing to volunteer • Influential community member • Community appointed 	<ul style="list-style-type: none"> • Receive one-week training from health center nurse in charge • Can be both CHW and NHC 	<ul style="list-style-type: none"> • Volunteer
	Safe Motherhood Action Groups	<ul style="list-style-type: none"> • Established in 2003 [33] 	<ul style="list-style-type: none"> • Education on pre-natal and infant immunizations • Identify maternal and newborn complications during pregnancy, delivery and post-natal period 	<ul style="list-style-type: none"> • Community appointed • Must be respected, trusted and 	<ul style="list-style-type: none"> • Standard 5 days training [34] 	<ul style="list-style-type: none"> • Inconsistent - shift responsibilities depending

		<ul style="list-style-type: none"> • Refer women with complications to health facilities • Persuade husbands to support their wives during pregnancy and accompany them for ante-natal care visits 	<ul style="list-style-type: none"> accepted by community • Willing to volunteer 		<ul style="list-style-type: none"> on incentives • Volunteer
Growth Monitoring Promoters	<ul style="list-style-type: none"> • Introduced in the 1980s[35] 	<ul style="list-style-type: none"> • Education on nutrition for children aged 0 to 5 years • Promotes childhood immunizations 	<ul style="list-style-type: none"> • Willing to volunteer 	<ul style="list-style-type: none"> • 4 days training; retrained every six months 	<ul style="list-style-type: none"> • Volunteer

218 * Renumeration was dependent on the district, CDS (Senegal), or external partner managing each cadre, and not based
219 on the cadre itself.

220 3.1.2 Roles and Responsibilities. In the three countries, at least one CHW cadre exists. In
221 Senegal and Zambia where more than one CHW cadre existed, most of CHWs performed
222 similar roles. The lack of defined roles and localized training led to overlapping or
223 deficient coverage of health services by cadres in Zambia and Senegal.

224 In Nepal, while vaccinations are carried out by salaried health workers, key informants
225 indicated that FCHVs, “the backbone of the health system,” receive the most credit
226 nationwide for improved immunization coverage. With the increase of paid frontline
227 health workers in 2010, the responsibilities of FCHVs shifted to building awareness of
228 available health services and their benefits at different community levels, including local
229 mothers’ groups (Table 3).

230 *“FCHVs and the mothers’ group provide information regarding immunization*
231 *campaigns or [the] regular immunization program. For new vaccines, it needs to*
232 *[be] discussed with FCHVs and [the] mothers’ group - unless there is support and*
233 *involvement in the program, it will not be successful because they are the one who*
234 *build awareness and give knowledge and information to the people in the grass*
235 *root level.” (Ministry, National level, Nepal)*

236 In Senegal, *relais* and *bajenu gox* conduct more targeted vaccine outreach although the
237 five cadres of CHWs serve complementary roles in delivering frontline health services
238 (Table 3). KIIs and the literature identified the *relais* and the *bajenu gox* as critical to the
239 success of the vaccination program, and mothers referred to them as “real fighters” for
240 the health of children. Community promotion actors are mobile, focusing on visiting
241 communities, neighborhood organizations, and homes to promote awareness of and

242 create demand for disease prevention and health promotion activities, including
243 vaccinations. Community members lauded the mobilization and the motivation these
244 actors inspired which contributed to the improvement of vaccination programming.

245 *“The involvement of community actors helps them a lot because the community*
246 *actors live with the populations and know the families. Today, even after the*
247 *counting, they cannot determine the house of someone or they are given the*
248 *wrong telephone number. But with the involvement of community actors, they*
249 *go into the neighborhoods to bring back the children.” (Community health*
250 *worker, community level, Senegal)*

251 In Zambia, key informants discussed the Neighborhood Health Committees (NHCs)
252 extensively. NHCs are community-appointed volunteers whose primary role is to
253 coordinate and manage other CHWs on behalf of health facility staff, including CHW
254 recruitment, training, and attrition. NHCs also ensure that CHWs accurately report
255 monthly activities and represent both CHWs and community members in annual action
256 planning. NHCs’ responsibilities have increased in the last two decades to accommodate
257 the increasing number of CHW roles across multiple health sectors, bridge the gap in
258 human resources, and institutionalize the link between communities and the health
259 system. Many individuals who hold NHCs role also hold another CHW position so as to
260 receive training and other incentives through disease-specific initiatives.

261 *"A long time ago, as I said, we [community members] used to come in numbers*
262 *here at the [health] center. It was difficult because we [the community] did not*
263 *have enough [health facility] staff, so that’s how this [the NHC] program started.*

264 *And they [NHCs] started talking to people so that we [NHCs] help each other*
265 *because members of staff were few. We [NHCs] are grateful they trained us, and*
266 *we are working." (NHC member, community level, Zambia)*

267 The NHCs in Zambia were involved in action planning, identifying annual priorities,
268 setting objectives, selecting strategies, determining indicators to monitor and evaluate
269 activities, and estimating required activity resources and budget. Through their
270 involvement, the NHCs indicated ownership over these responsibilities, which were
271 formalized in the Reaching Every District (RED) program manuals.

272 **3.2. Motivation**

273 Community health workers in all three countries emphasized the meaning and value they
274 found in their work. This was through recognition of their effort, incentives, and
275 knowledge gained through training. CHWs in all the countries received training, which
276 increased their knowledge on vaccinations and the present vaccine challenges. However,
277 training varied and was sometimes inconsistent within specific countries. Supervision
278 was done to ensure that CHWs performed their roles well; though, inconsistency in
279 supervision was experienced in all countries, with key informants indicating workload
280 and insufficient human resources as the barriers. Beyond the individual level, CHWs were
281 motivated through the declaration and celebration of their villages by the national
282 government as fully immunized, and successfully reaching all children in their villages
283 through the implementation of Reaching Every Child (REC)/Reaching Every District
284 (RED) strategies in Nepal, Senegal and Zambia, respectively.

285 3.2.1. Recognition. In all three countries, CHWs stated that recognition for their
286 contributions and their status in the community were motivating factors. Communities,
287 districts, and regions recognized the efforts and successes of CHWs through ceremonies,
288 certificates, and media recognition. Community selection showed recognition and respect
289 for the individual chosen to be a CHW. Particularly for women, CHWs gained stature
290 through imparting valued knowledge, supporting caregivers, and contributing to positive
291 health outcomes.

292 *“Our motivation is we have respect through this work. Everyone praises our*
293 *work. They praise our contribution towards work for pregnant women, children*
294 *and delivery of pregnant women.” (FCHV, Nepal)*

295 In Nepal, FCHVs appreciated the recognition for their role in increasing vaccine coverage.
296 Some FCHVs received certificates. Villages, districts and provinces were declared fully
297 immunized and celebrated by the national government through the Full Immunization
298 Declaration (FID) Program in a bottom-up approach, and this motivated community
299 workers and volunteers, and facilitated community buy in to immunization. Children who
300 are fully vaccinated receive an official vaccination card with complete information on
301 vaccines received from their health post for documentation. Increased public awareness
302 and FCHV activities support the success of the Full Immunization Program (FIP) – which
303 promotes urgency and action among all key players, including caregivers, religious and
304 community leaders, and teachers.

305 *“We are all working together so that the children won’t miss vaccines. We can*
306 *assure you that every child in our area have got vaccines.” (FCHV, Nepal)*

307 3.2.2. Incentives. In all countries, incentives were crucial to engage and motivate CHW
308 volunteers. Though inconsistently distributed, tangible extrinsic resources - including
309 money, food, bicycles, uniforms, stationary, childcare, and harvesting assistance -
310 motivated CHWs and could reduce any intra-household tensions caused by absences due
311 to the program. When CHWs areas of jurisdiction reported low vaccination coverage,
312 especially in comparison to other districts or regions, their motivation to improve
313 outcomes increased.

314 *“We do recognize them [FCHVs]. We do a public audit and take decisions on*
315 *whom we should give credit; that is recognized by the community and system so*
316 *that they become more motivated.” (Regional Director, Nepal)*

317 Intrinsic incentives were reported as critical motivators, particularly for those in Nepal
318 and Senegal. CHWs highly respected their communities, and they served voluntarily
319 because of the mutual respect between community and CHW. Seeing children in their
320 communities protected from diseases and growing up healthy was additional motivation.
321 FCHVs had pride and expressed happiness if all the children within their catchment areas
322 were fully vaccinated. A FCHV in Nepal stated that “they worked for the good of the
323 community.”

324 However, even with efforts to recognize CHW contributions, CHWs in all countries felt
325 underappreciated by the national government. They expressed that the appreciation they
326 received was more evident in the community than by the government. In all countries,
327 CHWs felt they lacked commensurate compensation for their labor; they were required
328 to commit to being a volunteer. Retention suffered because in some instances, CHWs were

329 forbidden to engage in income-generating activities, and compensation was often
330 inconsistent. CHWs families often expected them to complete household labor even
331 though they were engaged in volunteer responsibilities. Community health volunteers
332 often supported and contributed to the work of paid CHWs and head nurses, resulting in
333 additional workloads without appropriate compensation. Additionally, countries'
334 projections for labor were unmet, leading to heavy responsibilities for CHWs.

335 **3.2.3. Capacity building.** CHW's knowledge increased through training and supportive
336 supervision; in many cases, the opportunity to learn new skills and knowledge promoted
337 self-value and enhanced their capacity to support the communities in the three countries.
338 CHWs received formalized training through national health programs, NGOs, and multi-
339 lateral partners; however, the length, breadth, and depth of training differed by country
340 and trainer (Table 3). Key informants valued NGO and multilateral training, which
341 provided financial incentives. Some FCHVs and *bajenu gox* reported the benefits of CHW
342 literacy promoting groups. In all countries, CHW utilized their community knowledge to
343 contribute to decision-making, which ultimately contributed to planning at higher levels.
344 CHWs had frequent interactions with the local population, as they resided in those
345 communities. This facilitated their deeper understanding of the community's needs,
346 which they escalated during planning meetings. The frequent interactions between CHWs
347 and community members enhanced community empowerment, enabling development
348 and maintenance of social norms related to vaccination.

349 Supervision of CHWs occurred in all countries. Supportive supervision increased CHWs
350 self-confidence through cross-learning and skills sharing facilitated teamwork, and
351 enhanced relationships with healthcare workers. In Senegal, *bajenu gox* received

352 supportive supervision while working in communities. Their supervisors recorded field
353 visit results on a standardized checklist, and sent supervision reports to the district
354 medical offices for review. However, supervision in the field may be rare due to a lack of
355 human resources. In Zambia, the NHCs have a supervisory position over CHW reporting,
356 and play an essential role in data collection and evidence-based decision-making. NHCs
357 were motivated by these responsibilities because they elevated the NHC's position, and
358 described the emphasis on community-driven strategies to combat health challenges.
359 Health facility staff and supervisors from the districts include NHCs in meetings which
360 provide encouragement. According to national policy, by encouraging the possession and
361 responsibility of data, the frontline workers review their performance against their stated
362 goal, identify gaps that exist, and discuss ways to improve vaccination coverage.

363 *“There is the NHC that spearheads all community activities because all the*
364 *CBVs, all community volunteers, they report through the NHC.” (District*
365 *Nursing Officer, Zambia)*

366 Although CHWs in all countries desired consistent and increased opportunities for
367 training; these differed significantly depending on the location and human, financial, and
368 material resources.

369 **3.2.4 Empathy and compassion.** CHWs expressed being motivated by their sense of
370 empathy and compassion for their communities in all three countries. CHWs understood
371 and shared the feelings of their fellow community members and showed concern for their
372 suffering and misfortune. This motivated CHWs to perform their roles well since they felt
373 invested in the health of the community at large in addition to children's health. CHWs

374 understand the lived experiences of the community members and have compassion for
375 the potential morbidity and mortality of children when not immunized against vaccine-
376 preventable diseases. This increased their effort to focus on improving the health and
377 wellbeing of children in their communities.

378 *“Vaccine prevent from many diseases that is also why people bring their children*
379 *for vaccination. There were more Pneumonia cases and diarrheal diseases before*
380 *but nowadays there are very less children who suffer from Pneumonia and*
381 *Diarrhea. If we hear that some children have suffered from diseases then we feel*
382 *very worried. We also feel responsible towards those children.” (FCHV, Nepal)*

383

384 3.3. Trust

385 CHWs increased community members’ trust in the formalized health system. CHWs were
386 respected members of the community, with some individuals regarded as opinion leaders;
387 this trust was facilitated by the selection of CHWs from the communities in which they
388 lived. CHWs connected with the community by promoting and prompting vaccination. In
389 Senegal and Zambia, CHWs facilitated the adaptation of REC/RED strategy to local
390 context, ensuring community buy-in. These strategies required frequent interaction with
391 community members - providing education, action planning, conducting surveys, and
392 tracking vaccination records. Through such interactions, social relationships were built,
393 which strengthened community trust in CHWs and the activities they carried out within
394 these communities. Although all CHW cadres had roles they served towards improving
395 the health and well-being of the communities, respondents identified a cadre of CHW that

396 they most trusted and felt they had the most investment in their health and their
397 children's health (Table 3).

398 **3.3.1 Community engagement.** Communities in all three countries were involved in
399 decision making, planning, design, governance and delivery of services. In Nepal, FCHVs
400 are required to work in the communities they reside in; CHWs reported that this
401 generated trust and promoted culturally and contextually appropriate messaging to
402 diverse stakeholders. FCHVs educate community members in mothers' health groups
403 (MHG), ensuring the group's integration into their assigned communities to share health
404 information with community members. As FCHVs were embedded in the communities
405 where they conducted outreach, their messaging incorporated differences in religion,
406 tribe or caste, ethnicity, and language.

407 *"I: How much do community members trust the sources of Vaccination*
408 *information? //P4: Yes, they have trust. //All at a time: yes, we believe on them.*
409 *//P5: Because they will also learn some information from here and provides us*
410 *other information. // P4: They will learn from here and teach us."* (Mothers,
411 *Nepal)*

412 To address the lack of necessary human resources for community health outreach and
413 support in Senegal, the Ministry of Health, under a USAID-funded community health
414 plan, instituted the *bajenu gox* (godmothers) program in 2009. The *bajenu gox* were
415 trusted older women - "proven female leaders" - living in the community who capitalized
416 on their age and social role to support pregnant women and their families in pre- to post-
417 natal health, including immunizations (Table 3). *Bajenu gox* duties were specifically

418 targeted at building relationships of trust with community members. Many mothers
419 specifically praised the *bajenu gox* for taking the time to explain diseases that
420 vaccinations targeted, when vaccinations were happening, follow-up and individualized
421 planning.

422 *“There are criteria that really push us to choose bajenu gox who are listened to,*
423 *who are considered wise individuals, who have influence, who have a voice that*
424 *carries when it comes to the health of the population.” (EPI Focal Point, Senegal)*

425 *“Special mention to our bajenu gox. We are all women, and we see the support*
426 *they give us; they are our mothers and at the same time our bajenu gox. They*
427 *leave all their activities to follow us and our children...each time there is a*
428 *vaccination to be given; they identify the people concerned and accompany them*
429 *to be vaccinated. Because vaccination is very important, before we said that*
430 *without it, we could catch all kinds of diseases such as measles and others, but*
431 *now we have more vaccines and thank God we have fewer diseases, and all our*
432 *children are protected.” (Mothers, Senegal)*

433 Trust between the health workers and the *bajenu gox* was enhanced through supportive
434 supervision. NGO employees, community development agents, and head nurses were
435 intended to provide supportive supervision for *bajenu gox* while they were working in
436 communities, record field visit results on a standardized checklist, and send supervision
437 reports to the district medical offices for review. This allowed for confidence and trust
438 with service delivery among *bajenu gox*, the communities, and health care workers.

439 3.3.2 Knowledge sharing. In all countries, information and skills are shared between
440 individuals or groups, and this included frequent interaction, and social relationships
441 between CHWs, communities, and health workers. CHWs were involved in providing
442 health education at facilities, thus creating awareness about immunization. In Nepal,
443 health and immunization education were presented in monthly meetings; content was
444 selected and tailored depending on literacy, misinformation, and cultural norms. In
445 women's savings groups (groups of women who come together to save, and lend, money
446 to members), FCHVs emphasized the link between children's health and future
447 educational and occupational opportunities. FCHVs also approached caregivers
448 individually, discussing potential barriers to immunization, addressing specific
449 information caregivers lacked, and encouraging immunization access.

450 *“FCHV sisters also help us and teach us about [health]. They also teach and train*
451 *us to get vaccination for the children... We trust [the information] and it is for our*
452 *children. It is better not to suffer from any diseases. First, we need to have proper*
453 *information about it and only then trust it.” (Female Community Health*
454 *Volunteer, Nepal)*

455 *“From the time of pregnancy till the birth of the child, the people trust us in this*
456 *process. People trust us more than their family members and come to take*
457 *suggestions from us if they face problems. Also, they do as we suggest.” (Female*
458 *Community Health Volunteer, Nepal)*

459 In Senegal, the *bajenu gox* included multiple family members in educational outreach on
460 vaccinations and maternal and child health. *Bajenu gox* held education groups for

461 adolescent girls in addition to women of all ages to target misinformation and mediate
462 between different age groups. In recent years, *Bajenu gox* have also conducted outreach
463 with fathers' groups, aiding in full family approval of childhood vaccinations. In Zambia,
464 NHCs played a prominent role in community sensitization, outreach, and vaccine
465 education in most of our research communities in Zambia. NHCs were a trusted source
466 of information for community members since they were recruited by community leaders
467 and worked closely with health facility staff to coordinate outreach sessions. Consistent
468 follow-through of outreach sessions contributed to community members' trust in NHCs
469 and, by extension, the health system. NHCs also worked to dispel myths and
470 misconceptions about vaccinations by educating parents on the benefits. For example, if
471 the barrier to access were due to a parent's competing priorities, the NHC member would
472 escort the child to the outreach event.

473 *"There is some time on the radio, and they call the NHC to come and talk about*
474 *health issues. They encourage, especially in the village. They announce that next*
475 *week, 'do not delay the children to come for vaccinations.' Yes, because of the*
476 *community radio, they let anyone talk. Yes, especially the NHC, they talk a lot on*
477 *encouraging other vaccines."* (Head Woman, Zambia)

478 CHWs were involved in ensuring an accurate community registry (organization), had
479 knowledge of communities and children's vaccination status (trust), and a drive to
480 conduct specialized outreach to increase coverage (motivation).

481 Discussion

482 We conducted a qualitative study to assess factors that motivated or inhibited
483 engagement of the CHW programs in three countries between 2000 and 2019 - Nepal,
484 Senegal and Zambia. Our findings suggest three domains behind community health
485 workers - organization, motivation, and trust - strongly contributed to improve the
486 implementation of health programming and may have positively influenced vaccination
487 during our targeted time period. Organization through expansion of CHW types
488 motivated CHWs to carry out their roles and responsibilities related to vaccination. Trust
489 between communities, healthcare workers, and CHWs contributed to CHWs' motivation
490 - resulting in the improved implementation of vaccination programming. Our findings
491 are policy relevant for other countries looking to expand vaccination through CHW
492 platforms; however, those looking to apply these findings should be mindful that
493 adaptation to local context is crucial.

494 Organization

495 Distinct cadres of CHWs had specific roles and responsibilities assigned to them in the
496 three countries, which aligned with strategies implemented in other countries[36].
497 Diversification of roles increased the sense of responsibility, confidence and commitment
498 of CHWs to their work. This study, however, pointed out insufficiency in CHWs
499 supervision, like findings from other studies within similar contexts[16, 37]. Since CHWs
500 in middle and low-income countries are not healthcare professionals, increased
501 supportive supervision may increase and enhance retention of knowledge, thus increasing
502 their confidence. CHWs working together with other health workers and receiving

503 required supervision could increase their confidence in work, and their motivation to
504 work harder, thus improving their performance.

505 Motivation

506 Motivation of CHWs was increased through extrinsic “work for the good of the
507 community” and intrinsic incentives- certificates, recognition, stipends, and trust. Social
508 cohesion- the “capacity of society to ensure wellbeing of all its members by minimizing
509 disparities and avoiding marginalization” in regard to the health and wellbeing of children
510 was seen in the three countries [38]. Capacity building, public awareness, involvement of
511 CHWs and communities in different health programs, and the recognition of childhood
512 vaccination as a human right enhanced a generational shift in existing norms - hence
513 communities increasingly embracing vaccination. In Asia and Africa, a multiple case
514 study found that extrinsic motivation to improved CHW work, similar to the findings of
515 this study. Organization and cultural context shaped the motivation of CHWs, as
516 individual beliefs, pleasure and happiness drawn from wellbeing of children in the
517 communities was also motivating [39]. In Zambia, safe motherhood action groups
518 expressed happiness with their work because they helped saved women’s lives [40]. In
519 Nepal, Senegal and Zambia, CHWs were part of the communities they served, increasing
520 their sense of belonging and trust, therefore increasing their motivation to dispense their
521 duties.

522 CHWs are often the backbone of the frontline health systems in many parts of the world.
523 Yet, this workforce, most of whom are women, remain unpaid, often resulting in undue
524 psychosocial stress, food insecurity, and time burdens[41, 42]. Unpaid work, including
525 the roles of female CHWs, leave CHWs time poor, being unable to meet their basic needs,

526 or participate in social or political activities - contributing to the widening equity gap and
527 expanding the poverty cycle[43]. CHWs' great contributions to healthcare delivery is
528 evident; however, limited attention has been placed on their remuneration. Nevertheless,
529 payment of living wages to CHWs is a fundamental right[44]. WHO now recommends
530 remunerating practicing CHWs for their work with financial package commensurate with
531 job demands, complexity, number of hours, training and roles and responsibilities[8].
532 Nepal, Senegal and Zambia provide incentives to CHWs; however, this is
533 incommensurate with their work[22]. Similarly, countries like Sierra Leone and Liberia
534 have policies that guide the remuneration of CHWs, but CHWs from these countries
535 expressed dissatisfaction with remunerations in place, highlighting the need to consider
536 contextual factors and roles and responsibilities when planning and budgeting for CHW
537 remuneration[45]. Although consistency in the incentivization of FCHVs was observed
538 due to integration, and the financing of CHW programming at the national level in Nepal,
539 Senegal and Zambia reported inconsistencies. In low- and lower-middle-income
540 countries, CHWs are not adequately remunerated, even with long service to the
541 community and numerous contributions to elimination of diseases, reducing the menace
542 of diseases, and increasing the reach of immunization programmes. Furthermore, the
543 roles of CHWs are deemed to fit into the other domestic activities, which are mostly done
544 by women [46].

545 Nevertheless, the incentivization of CHWs in all countries was associated with higher
546 motivation to create public awareness and conduct community mobilization. Countries
547 with clear financial management systems that include budgets for CHWs have seen great
548 contributions of CHWs in general healthcare service delivery. Ethiopia and, Bangladesh,

549 among others, successfully implemented a CHW strategy which has seen their vaccination
550 coverage increase [36]. However, CHWs remuneration varies between countries, because
551 of limited political will, targeted funding, and historical underpinnings and addressing
552 these challenges may improve CHW performance and retention - thus sustainability - of
553 CHW programming[22, 47]. Lack of consistent income could fail to overcome intra-
554 household pressures, address competing priorities at the household level, and ultimately
555 lead to decreased morale and retention of CHWs. Standardizing CHWs compensation
556 within different settings may be of value, which could be done through governments
557 setting aside a funding stream dedicated to CHWs and considering other sources of
558 funding to supplement existing sources. These strategies may reduce the financial
559 challenges experienced by the CHWs within these countries.

560 Trust

561 Trust and community ownership were generated through the CHWs selection process,
562 which increased their motivation to provide immunization-related services to the
563 communities in Nepal, Senegal and Zambia. CHWs shared information on vaccination in
564 local languages and reached hard-to-reach areas and minority communities. Being
565 dependable, accountable, and respected members of the community, CHWs understand
566 the contexts of the communities they serve [16, 48]. This generates trust and enhances
567 accountability through 1) CHW closeness to the community and local healthcare facilities,
568 2) uptake of information provided, and 3) ease in community entry, and that of the health
569 workers thus reducing child vaccination gaps especially among the illiterate mothers[49].
570 Trust between caregivers and CHWs resulted in adequate knowledge and compliance with
571 vaccination recommendations.

572 Changes in healthcare, including introduction of new vaccines and emerging epidemics,
573 add another layer of work to CHWs and can be addressed through different cadres with
574 specific responsibilities. The recent COVID-19 pandemic highlights the contribution of
575 CHWs in creating demand for vaccination through addressing vaccine hesitancy,
576 leveraging on their existing trust within communities [50]. Strategic approaches that
577 allow for expanding CHW cadres are necessary to bridge the gap in human resources, and
578 provide vaccination services to disadvantaged populations [51].

579 Governments have committed to addressing some of the issues that CHWs have voiced;
580 to combat shortages of community health workers in Zambia, the central government
581 committed to increasing the number of community health workers, investing in training,
582 and retaining more workers. The Zambia National Health Strategic Plans and the 2010
583 and 2019-2021 National Community Health Worker strategies instituted guidelines to
584 formalize and harmonize the roles of frontline workers to decrease overlap in
585 responsibilities, as well as uniform incentives. The government committed to bringing
586 30,000 more workers on board and increasing specialization of cadres and workers. In
587 2018, Senegal's government committed to creating more formalized training for different
588 cadres. The 2019-2021 CHW Strategy identified disharmonized incentives as a challenge
589 and allocated the district health office to coordinate and oversee CHW incentives (such as
590 lunch and transport reimbursement), supplies (like protective clothing), orientation and
591 training, and involvement in national campaigns. In Nepal, FIP worked well to motivate
592 service providers, community workers, volunteers, and parents.

593 Limitations

594 This study has several limitations. First, the research tools focused on the factors that
595 drove catalytic change and did not focus on interventions or policies that were
596 unsuccessful. Second, using qualitative methods to understand historical events was
597 challenging; interviewees often spoke about current experiences rather than discussing
598 historical factors. However, research assistants probed respondents to reflect on
599 longitudinal changes in the immunization program. Third, the scope of our study was
600 extensive, and CHWs were only one component of our research. Fourth, some policy
601 documents – including national-level strategic plans - were not available for our review.
602 And finally, the COVID-19 pandemic impacted data collection in Senegal, with a focus on
603 response and safety taking priority over data collection.

604 Conclusion

605 This study highlighted essential qualities of community health worker programs in
606 countries with high vaccination coverage – namely, organization, motivation, and trust.
607 Each country had distinct CHW cadres involved in the implementation of vaccination
608 programming. Additionally, CHWs were selected from their communities - which
609 generated trust among community members and healthcare staff. CHWs bridge the
610 equity gap in access to vaccination services through involvement of female volunteers,
611 and CHWs enabled wider reach of vaccination services to minority populations and
612 populations in hard-to-reach areas who otherwise could not be easily reached by
613 healthcare workers. Although improvements in vaccination programming were seen in all
614 three countries, CHWs faced challenges in providing adequate services in their

615 communities. Workload, low and inconsistent compensation, inconsistency in training
616 duration and scope, and supervision resulted in demotivation and high turnover of CHWs
617 in all countries. While plans for changes in the CHW programming report increased
618 duties and responsibilities for CHWs, the governments in all countries still need to
619 adequately address issues related to the recognition of CHWs, especially their
620 compensation. Based on their contexts, countries should focus more on ways of
621 addressing such challenges, and country-specific research on strategies to ensure
622 consistent funding for CHWs would be beneficial.

623 Acknowledgements

624 We thank Center for Molecular Dynamics, Nepal (CMDN), the Institut de Recherche en
625 Santé de Surveillance Epidémiologique et de Formation (IRESSEF) in Dakar, Senegal and
626 the Center for Family Health Research in Zambia for their partnership in this study. We
627 gratefully acknowledge the participants who gave their time and insights to help us better
628 understand the vaccine delivery system in Nepal, Senegal, and Zambia, along with
629 facilitators from the Ministry of Health and Population, Department of Health Services,
630 and the Family Welfare Division of Nepal, Ministry of Health and Social Action in
631 Senegal, and the Ministry of Health in Zambia for supporting this research. We thank
632 Chin-En (King) Ai, Lauren Harper, Allison Wray from Emory University and Saad Omer
633 from Yale University for their contribution to this project. In addition, we thank Sarah
634 Chesemore, Anna Rapp, Tove Ryman, and Ethan Wong from the Bill and Melinda Gates
635 Foundation; Kate Buellesbach, Nancy Fullman, Nathaniel Gerthe, Gloria Ikilezi, Caitlyn
636 Mason, David Phillips, and Oliver Rothschild, Jordan-Tate Thomas, and Angela Wang
637 from Gates Ventures for technical support; and the Vaccine Exemplars Research Advisory

638 Group for their insights, specifically Agnes Binagwaho, Laura Crow, Carolina Danovaro,
639 Anuradha Gupta, Heidi Larson, Penelope Masumbu, Kate O'Brien, Helen Rees, Lora
640 Shimp, and Aaron Wallace.

641 References

- 642 1. Orenstein WA, Ahmed R. Simply put: Vaccination saves lives. National Acad Sciences; 2017. p.
643 4031-3.
- 644 2. Rodrigues CM, Plotkin SA. Impact of vaccines; health, economic and social perspectives.
645 Frontiers in microbiology. 2020;11:1526.
- 646 3. WHO. Immunization Agenda 2030: A Global Strategy To Leave No One Behind. 2020.
- 647 4. WHO. Global strategy on human resources for health: workforce 2030. 2016.
- 648 5. WHO. Health workforce 2021 [cited 2022].
- 649 6. Love MB, Gardner K, Legion V. Community health workers: who they are and what they do.
650 Health Education & Behavior. 1997;24(4):510-22.
- 651 7. Masis L, Gichaga A, Zerayacob T, Lu C, Perry HB. Community health workers at the dawn of a
652 new era: 4. Programme financing. Health Research Policy and Systems. 2021;19(3):1-17.
- 653 8. WHO. WHO guideline on health policy and system support to optimize community health
654 worker programmes: World Health Organization; 2018.
- 655 9. Pérez LM, Martínez J. Community health workers: social justice and policy advocates for
656 community health and well-being. American journal of public health. 2008;98(1):11-4.
- 657 10. Patel AR, Nowalk MP. Expanding immunization coverage in rural India: A review of evidence for
658 the role of community health workers. Vaccine. 2010;28(3):604-13.
- 659 11. Hester KA, Sakas Z, Ogutu EA, Dixit S, Ellis AS, Yang C, et al. Critical interventions for demand
660 generation in Zambia, Nepal, and Senegal with regards to the 5C psychological antecedents of
661 vaccination. medRxiv. 2022.
- 662 12. Hester KA, Sakas Z, Ellis AS, Bose AS, Darwar R, Gautam J, et al. Critical success factors for high
663 routine immunization performance: A case study of Nepal. Vaccine: X. 2022;12:100214.
- 664 13. Sakas Z, Hester KA, Rodriguez K, Diatta SA, Ellis AS, Gueye DM, et al. Critical success factors for
665 high routine immunization performance: A case study of Senegal. medRxiv. 2022:2022.01.25.22269847.
- 666 14. Micek K, Hester KA, Chanda C, Darwar R, Dounebaine B, Ellis AS, et al. Critical success factors for
667 routine immunization performance: A case study of Zambia 2000 to 2018. Vaccine: X. 2022:100166.
- 668 15. WGH. Subsidizing Global Health: Women's unpaid work in Health Systems. 2022.
- 669 16. Pallas SW, Minhas D, Pérez-Escamilla R, Taylor L, Curry L, Bradley EH. Community health workers
670 in low- and middle-income countries: what do we know about scaling up and sustainability? Am J Public
671 Health. 2013;103(7):e74-82.
- 672 17. Bednarczyk R, Hester K, Dixit S, Ellis A, Escoffery C, Kilembe W, et al. Protocol: Identification and
673 evaluation of critical factors in achieving high and sustained childhood immunization coverage in
674 selected low- and lower-middle income countries 2021.
- 675 18. Exemplars. Exemplars in Global Health: Making Better Decisions in Global Health: Understand
676 Positive Outliers to Inform Policy and Practice. 2021 [Available from: <https://www.exemplars.health/>].
- 677 19. Gottert A, McClair TL, Hossain S, Dakouo SP, Abuya T, Kirk K, et al. Development and validation
678 of a multi-dimensional scale to assess community health worker motivation. J Glob Health.
679 2021;11:07008.

- 680 20. Agarwal S, Sripad P, Johnson C, Kirk K, Bellows B, Ana J, et al. A conceptual framework for
681 measuring community health workforce performance within primary health care systems. *Human*
682 *resources for health*. 2019;17(1):1-20.
- 683 21. Franco LM, Bennett S, Kanfer R. Health sector reform and public sector health worker
684 motivation: a conceptual framework. *Soc Sci Med*. 2002;54(8):1255-66.
- 685 22. Colvin CJ, Hodgins S, Perry HB. Community health workers at the dawn of a new era: 8.
686 Incentives and remuneration. *Health Research Policy and Systems*. 2021;19(3):106.
- 687 23. O'Mara-Eves A, Brunton G, Oliver S, Kavanagh J, Jamal F, Thomas J. The effectiveness of
688 community engagement in public health interventions for disadvantaged groups: a meta-analysis. *BMC*
689 *Public Health*. 2015;15(1):129.
- 690 24. Rohman A, Eliyana A, Purwana D, Hamidah H. Individual and organizational factors' effect on
691 knowledge sharing behavior. *Entrepreneurship and Sustainability Issues*. 2020;8(1):38.
- 692 25. Pfadenhauer LM, Gerhardus A, Mozygemba K, Lysdahl KB, Booth A, Hofmann B, et al. Making
693 sense of complexity in context and implementation: the Context and Implementation of Complex
694 Interventions (CICI) framework. *Implementation science*. 2017;12(1):1-17.
- 695 26. Damschroder LJ, Aron DC, Keith RE, Kirsh SR, Alexander JA, Lowery JC. Fostering implementation
696 of health services research findings into practice: a consolidated framework for advancing
697 implementation science. *Implementation science*. 2009;4(1):1-15.
- 698 27. Sakas Z, Hester KA, Ellis AS, Ogutu EA, Rodriguez K, Bednarczyk RA, et al. Critical success factors
699 for high routine immunization performance: A multiple case study analysis of Nepal, Senegal, and
700 Zambia. *medRxiv*. 2022:2022.11.08.22282076.
- 701 28. Katigbak C, Van Devanter N, Islam N, Trinh-Shevrin C. Partners in health: a conceptual
702 framework for the role of community health workers in facilitating patients' adoption of healthy
703 behaviors. *American journal of public health*. 2015;105(5):872-80.
- 704 29. Sripad P, McClair TL, Casseus A, Hossain S, Abuya T, Gottert A. Measuring client trust in
705 community health workers: A multi-country validation study. *J Glob Health*. 2021;11:07009.
- 706 30. Khatri RB, Mishra SR, Khanal V. Female Community Health Volunteers in Community-Based
707 Health Programs of Nepal: Future Perspective. *Frontiers in Public Health*. 2017;5.
- 708 31. Kristen Devlin KFE, and Tanvi Pandit-Rajani. . *Community Health Systems Catalog*
709 *Country Profile: Senegal*. Arlington, VA: Advancing Partners & Communities. 2016.
- 710 32. Cothran D. Senegal's community-based health System model: structure, strategies, and learning.
711 2019.
- 712 33. Ensor T, Green C, Quigley P, Badru AR, Kaluba D, Kureya T. Mobilizing communities to improve
713 maternal health: results of an intervention in rural Zambia. *Bulletin of the World Health Organization*.
714 2013;92:51-9.
- 715 34. Jacobs C, Michelo C, Moshabela M. Implementation of a community-based intervention in the
716 most rural and remote districts of Zambia: a process evaluation of safe motherhood action groups.
717 *Implementation science* : IS. 2018;13(1):74-.
- 718 35. Zulu C, Michelo C, Mubita-Ngoma C. Evaluation of Training and Implementation Program for
719 Community-Based Child Growth Monitors and Promoters in Zambia. 2017;1:34-9.
- 720 36. Perry H. A brief history of community health worker programs. *Developing and strengthening*
721 *community health worker programs at scale: a reference guide and case studies for program managers*
722 *and policymakers, USAID, MCHIP*. 2013.
- 723 37. Phiri SC, Prust ML, Chibawe CP, Misapa R, van den Broek JW, Wilmink N. An exploration of
724 facilitators and challenges in the scale-up of a national, public sector community health worker cadre in
725 Zambia: a qualitative study. *Human Resources for Health*. 2017;15(1):40.

- 726 38. COUNCIL OE. Towards an active, fair and socially cohesive Europe. Report of high level task force
727 on social cohesion. TFSC (2007); 2008.
- 728 39. Olaniran A, Madaj B, Bar-Zeev S, Banke-Thomas A, van den Broek N. Factors influencing
729 motivation and job satisfaction of community health workers in Africa and Asia-A multi-country study.
730 Int J Health Plann Manage. 2022;37(1):112-32.
- 731 40. Sialubanje C, Massar K, Horstkotte L, Hamer DH, Ruiter RAC. Increasing utilisation of skilled
732 facility-based maternal healthcare services in rural Zambia: the role of safe motherhood action groups.
733 Reproductive Health. 2017;14(1):81.
- 734 41. Kasteng F, Settumba S, Källander K, Vassall A. Valuing the work of unpaid community health
735 workers and exploring the incentives to volunteering in rural Africa. Health Policy Plan. 2016;31(2):205-
736 16.
- 737 42. Panjabi R. Community Health Workers Are Vital; Governments Should Be Paying Them. TIME.
738 2019.
- 739 43. Coffey C, Espinoza Revollo P, Harvey R, Lawson M, Parvez Butt A, Piaget K, et al. Time to Care:
740 Unpaid and underpaid care work and the global inequality crisis: Oxfam; 2020.
- 741 44. Maes K. The Lives of Community Health Workers: Local Labor and Global Health in Urban
742 Ethiopia. New York Routledge 2016. 188 p.
- 743 45. Raven J, Wurie H, Idriss A, Bah AJ, Baba A, Nallo G, et al. How should community health workers
744 in fragile contexts be supported: qualitative evidence from Sierra Leone, Liberia and Democratic
745 Republic of Congo. Human Resources for Health. 2020;18(1):58.
- 746 46. Central C. Gender and Community Health Workers: Three focus areas for programme managers
747 and policy makers 2018 [Available from: [https://chwcentral.org/twg_article/gender-and-community-
748 health-workers-three-focus-areas-for-programme-managers-and-policy-makers/](https://chwcentral.org/twg_article/gender-and-community-health-workers-three-focus-areas-for-programme-managers-and-policy-makers/)].
- 749 47. Ballard M, Westgate C, Alban R, Choudhury N, Adamjee R, Schwarz R, et al. Compensation
750 models for community health workers: Comparison of legal frameworks across five countries. Journal of
751 global health. 2021;11:04010-.
- 752 48. Kane S, Kok M, Ormel H, Otiso L, Sidat M, Namakhoma I, et al. Limits and opportunities to
753 community health worker empowerment: A multi-country comparative study. Soc Sci Med.
754 2016;164:27-34.
- 755 49. Lee H-Y, Oh J, Heo J, Abraha A, Perkins JM, Lee J-K, et al. Association between maternal literacy
756 and child vaccination in Ethiopia and southeastern India and the moderating role of health workers: a
757 multilevel regression analysis of the Young Lives study. Global Health Action. 2019;12(1):1581467.
- 758 50. Dixit SM, Sarr M, Gueye DM, Muther K, Yarnko TR, Bednarczyk RA, et al. Addressing disruptions
759 in childhood routine immunisation services during the COVID-19 pandemic: perspectives from Nepal,
760 Senegal and Liberia. BMJ Global Health. 2021;6(7):e005031.
- 761 51. Schleiff MJ, Aitken I, Alam MA, Damtew ZA, Perry HB. Community health workers at the dawn of
762 a new era: 6. Recruitment, training, and continuing education. Health Research Policy and Systems.
763 2021;19(3):1-28.

764

Figure 1. Summary figure of CHW domains that shaped vaccination in Nepal, Senegal and Zambia

