

1 Full Title: Colonic mucosal associated invariant T cells in Crohn's disease have a diverse and  
2 non-public T cell receptor beta chain repertoire

3  
4 Short Title: T cell receptors and phenotypes of colonic mucosal associated invariant T cells in  
5 Crohn's disease

6  
7 Authors: Andrew J Konecny<sup>1,2</sup>, Donna M Shows<sup>1</sup>, James D Lord, MD, PhD<sup>1\*</sup>

8 <sup>1</sup>Benaroya Research Institute, Translational Research Program, Seattle, WA, USA

9 <sup>2</sup>University of Washington, Department of Immunology, Seattle, WA, USA

10

11 \*Corresponding Author: James D Lord, MD, PhD

12 Benaroya Research Institute, 1201 Ninth Ave., Seattle, WA 98101, U.S.A.

13 Phone #: 206-2871088

14 Email: [jlord@benaroyaresearch.org](mailto:jlord@benaroyaresearch.org)

15

16

17 **Abstract:**

18 Objectives: Mucosal-Associated Invariant T (MAIT) cells are T cells with a semi-invariant T cell  
19 receptor (TCR), recognizing riboflavin precursors presented by a non-polymorphic MR1  
20 molecule. As these precursors are produced by the gut microbiome, we characterized the  
21 frequency, phenotype and clonality of MAIT cells in human colons with and without Crohn's  
22 disease (CD). Methods: The transcriptome of MAIT cells sorted from blood and intestinal lamina  
23 propria cells from colectomy recipients were compared with other CD8<sup>+</sup> T cells. Colon biopsies  
24 from an additional ten CD patients and ten healthy controls (HC) were analyzed by flow  
25 cytometry. TCR genes were sequenced from individual MAIT cells from these biopsies and  
26 compared with those of MAIT cells from autologous blood. Results: MAIT cells in the blood and  
27 colon showed a transcriptome distinct from other CD8 T cells, with more expression of the IL-23  
28 receptor. MAIT cells were enriched in the colons of CD patients, with less NKG2D in inflamed  
29 versus uninfamed segments. Regardless of disease, most MAIT cells expressed integrin  $\alpha E\beta 7$   
30 in the colon but not in the blood, where they were enriched for  $\alpha 4\beta 7$  expression. TCR  
31 sequencing revealed heterogeneity in the colon and blood, with few public sequences  
32 associated with cohorts. Conclusion: MAIT cells are enriched in the colons of CD patients and  
33 disproportionately express molecules (IL-23R, integrin  $\alpha 4\beta 7$ ) targeted by CD therapeutics, to  
34 suggest a pathogenic role for them in CD. Public TCR sequences were neither common nor  
35 sufficiently restricted to a cohort to suggest protective or pathogenic antigen-specificities.

36

37

## 38 INTRODUCTION

39 Mucosal-Associated Invariant T (MAIT) cells are a predominantly CD8<sup>+</sup>[1, 2] sub-population of  
40  $\alpha\beta$  T cells that were first identified for their invariant use of T cell receptor (TCR) alpha genes  
41 TRAV1-2 (TCRV $\alpha$ 7.2) and TRAJ33.[3] MAIT cells usually represent about 1-10% of circulating  
42 CD3<sup>+</sup> lymphocytes in humans, and are enriched in mucosal tissues of the lung, liver,  
43 genitourinary tract, and gastrointestinal tract.[4]:[5] MAIT cell TCRs do not recognize MHC-  
44 bound peptides, but rather riboflavin precursors[6] presented by the genetically non-polymorphic  
45 major histocompatibility complex class-1 related protein 1 (MR1).[7] These riboflavin precursors  
46 are not synthesized by mammalian cells but are instead produced by certain bacteria and yeast,  
47 many of which are common to the commensal flora of the gastrointestinal tract. In this way  
48 MAIT cells can monitor a diverse array of microbiota through their metabolic products[6]..  
49 Perhaps as a consequence, MAIT cells are central to early antimicrobial immunity at mucosal  
50 barriers and specifically have been shown to mount an immune response to *Mycobacterium*  
51 *tuberculosis* independent of prior infection.[8] Circulating MAIT cells are also reduced in  
52 individuals with active *Mycobacterium tuberculosis*,[8-10] *Vibrio cholerae* O1,[11] as well as  
53 *Salmonella typhi* infections,[12] viral infections,[1, 13-16] and severe bacterial infections  
54 resulting in sepsis.[17] It is hypothesized that MAIT cell depletion from the blood is a direct  
55 result of their recruitment to tissues where they combat active infections.[8, 18]  
56  
57 A similar decrease in peripheral MAIT cells is found in patients with Multiple Sclerosis (MS),[19]  
58 systemic lupus erythematosus (SLE) and rheumatoid arthritis (RA),[20] Sjögren's syndrome,[21]  
59 Type 1[22] and 2[23, 24] Diabetes, celiac disease,[25] ulcerative colitis (UC) and Crohn's  
60 disease (CD).[26-29] A reciprocal increase of MAIT cells was observed in the synovial fluid of  
61 RA patients[20] and accumulation of MAIT cells in central nervous system lesions and  
62 peripheral nerves of MS patients suggesting that MAIT cells are recruited to inflamed tissues in

63 these settings of autoimmunity.[19, 30-33] However, histological reports differ as to whether  
64 MAIT cells are increased[28, 29] or decreased[26] in the bowel in CD. In two studies, MAIT  
65 cells in blood were reported to be more activated in CD, with more Ki67, BTLA, and NKG2D  
66 expression [28] as well as more expression of the cytokines TNF and IL-17A,[29] suggesting  
67 they are also qualitatively more pro-inflammatory in CD. However, in another study, MAIT cells  
68 expressed more activated caspases in CD, suggesting they are more prone to apoptosis,[26] in  
69 which case their elimination could be pathogenic if they normally play an immunoregulatory role,  
70 or limit the activity of microbes that may contribute to disease.

71  
72 CD is an idiopathic inflammatory bowel disease (IBD) whose pathophysiology shares certain  
73 features with the immune response to tuberculosis, such as the formation of granulomas in  
74 tissue[34] and vulnerability to TNF blockade.[35] Indeed, this has led some to hypothesize that  
75 an unknown mycobacterial infection could underlie CD,[36] as genetic susceptibility factors for  
76 CD show striking overlap with those for mycobacterial infections in genome-wide association  
77 studies.[37] Given their role in mycobacterial infections, MAIT cells may likewise be central to  
78 CD immunopathology.

79  
80 MAIT cells share many properties with Th17 cells, an IL-17A-producing CD4<sup>+</sup> population of T  
81 cells that has been much more extensively studied than MAIT cells in IBD,[38, 39] and has been  
82 implicated in the pathogenesis of multiple autoimmune diseases and disease models.[40-42]  
83 Like Th17's, MAIT cells are described as “effector/memory” being CD45RA<sup>-</sup>, CCR7<sup>-</sup>, and  
84 CD62<sub>low</sub>. [8, 43] In addition, they both express the transcription factor RAR-related orphan  
85 receptor gamma (RORγt),[43, 44] the natural killer (NK) cell markers CD161 and CD26;[8, 45]  
86 tissue homing receptors CCR2, CCR5, CCR6, CXCR6, and CCR9;[1, 8, 46-49] cytokine/effector  
87 molecules TNF, IL-17A, and IL-22,[8, 10, 43] and receptors for such cytokines as IL-7 and 23.[1,  
88 50-53] Th17 cells require the cytokine IL-23 for differentiation and survival,[6, 54, 55] and CD

89 has been strongly associated with genetic polymorphisms of the IL-23 receptor,[56] including a  
90 rare coding mutation that protects people from developing CD.[57] Furthermore, multiple trials  
91 of humanized antibodies blocking IL-23 have successfully treated CD,[58-61] making IL-23  
92 blockade a major FDA-approved treatment strategy for CD. While the dependence of Th17  
93 cells upon IL-23 for survival suggests that these cells are thus central to CD, there has been  
94 little to no data demonstrating that Th17 cells are depleted by anti-IL-23 therapy,[62, 63] despite  
95 the latter having been in clinical use for psoriasis for more than a decade.[64, 65] However,  
96 MAIT cells have also been shown to respond to IL-23, which augments their antigen-dependent  
97 production of IL-17A.[66-68] Thus, both the genetic and pharmacological data implicating IL-23  
98 in CD pathogenesis may just as well support a role for MAIT cells as Th17's.

99

100 We describe a more detailed analysis of MAIT cells in CD than has previously been published,  
101 including both flow cytometry and full genome transcriptome profiling of these cells in the  
102 intestinal mucosa. Furthermore, we describe paired TCR alpha and beta chain gene sequences  
103 in individual MAIT cells from colon biopsies, paired with TCR beta sequences from autologous  
104 blood MAIT cells, to report on the clonality, diversity, and potentially public nature of these semi-  
105 invariant cells in the GI tract in health and disease.

106

107

## 108 **MATERIALS AND METHODS**

### 109 Patient specimens:

110 All human cells were obtained from a biorepository at the Benaroya Research Institute, to which  
111 deidentified, consenting donors had previously contributed under a protocol authorized by our  
112 institutional review board (IRB), in compliance with the Declaration of Helsinki. For  
113 transcriptome profiling of intestinal MAIT and CD8<sup>+</sup> T cells, frozen vials of colon lamina propria  
114 mononuclear cells (LPMC) were obtained, which had previously come from the surgical  
115 resections of six CD patients, six UC patients, and six patients without IBD as the indication for  
116 surgery. The resected tissue was inflamed in four of the CD patients, and not inflamed in one  
117 CD patient and all six patients without IBD. In the sixth CD patient and all six UC patients, both  
118 inflamed and uninfamed samples of colon were both available to be analyzed independently.

119  
120 For flow cytometry analyses of colon MAIT cells, as well as single cell sorting for TCR  
121 sequencing, vials containing frozen colonoscopic biopsies were obtained from ten healthy  
122 screening colonoscopy recipients and ten CD patients. Biopsies from inflamed and uninfamed  
123 colon were retrieved in separate vials for each of the CD patients. Frozen vials of peripheral  
124 blood mononuclear cells (PBMC) were also available for analysis from eight of subjects in each  
125 of these cohorts. Clinical and demographic details about these donors are presented in  
126 Supplementary table 1.

127

### 128 Specimen processing:

129 Surgically resected colon specimens were processed for homogenized lamina propria (LP) cells  
130 and frozen as previously described.[69] Colonoscopic jumbo forceps biopsies were placed into  
131 bovine calf serum (BCS) at the bedside and promptly transported to the laboratory on ice where  
132 an equal amount of 14% DMSO in BCS was added for a final concentration of 7% DMSO for  
133 cryopreservation. Biopsies were frozen slowly in freezing jars (-70° C) following transfer into

134 liquid nitrogen storage (-120° C) until use. PBMC were isolated using Lymphoprep™ (Axis-  
135 Shield, Oslo, Norway) density gradient, suspended in 7% DMSO in BCS, and frozen in the  
136 same manner.

137

#### 138 MAIT FACS and RNAseq:

139 Homogenized LP and PBMC were thawed and stained extracellularly with UV Green or Blue  
140 Live/Dead Dye (Invitrogen, Waltham, MA, USA) and antibodies to CD3 (clone SK7, BioLegend,  
141 San Diego, CA, USA), CD4 (clone RPA-T4, BioLegend), CD8α (clone RPA-T8, eBioscience,  
142 San Diego, CA, USA), CD45RA (clone HI-100, BioLegend), CD103 (clone Ber-ACT8,  
143 BioLegend), CD161 (clone HP-3G10, BioLegend), CD314 (NKG2D, clone 1D11, BioLegend),  
144 TCRγδ (clone B1, BioLegend), and TCR Vα7.2 (clone 3C10, Biolegend). For PBMC, antibodies  
145 to integrin α4 (CD49d, clone 9F10, BD Biosciences, NJ, USA) and β7 (clone FIB504,  
146 eBioscience) and a fluorophore-conjugated version of the anti-integrin α4β7 biopharmaceutical  
147 vedolizumab (Takeda, Tokyo, Japan) were also included. Cells were then immediately sorted  
148 live using a BD FACSAria Fusion. MAIT cells were defined by singlets, lymphocytes, live (Green  
149 Live/Dead negative), CD3<sup>+</sup>, CD4<sup>-</sup>, TCRγδ<sup>-</sup>, and TCR Vα7.2<sup>+</sup>, CD161<sup>high</sup> and compared to CD8  
150 effector T cells defined as singlets, lymphocytes, live (Green Live/Dead negative), CD3<sup>+</sup>, CD4<sup>-</sup>,  
151 CD8<sup>+</sup>, and CD45RA<sup>-</sup>, from which MAIT cells, above, had already been excluded. One thousand  
152 CD8 effector T cells and MAIT cells were sorted into lysis buffer and processed for bulk RNA  
153 sequencing using the SMARTseq v4 platform (Takara Bio, Kusatsu, Japan). Flow cytometry  
154 data was analyzed with FlowJo Software (BD Biosciences). Representative gating strategies  
155 are shown in Supplementary figures 1-3.

156

#### 157 TCR sequencing:

158 Intact biopsies from HC and CD patients (with paired inflamed and non-inflamed colon  
159 specimens from the latter only) were thawed and enzymatically digested in RPMI supplemented

160 with HEPES, PSG, BCS, MgCl<sub>2</sub>, CaCl<sub>2</sub>, Collagenase Type 1, and 0.011% DNase for 30 minutes  
161 at 37° C. Cells were then pelleted, resuspended, and mechanically digested by passing the  
162 suspension through an 8-gauge needle and filtered through a 100-µm screen. Cells were  
163 again pelleted, stained as above, and immediately sorted using the BD FACS Fusion. Live  
164 single MAIT cells were sorted into a 96-well plate and their TCR alpha and beta chain amplified  
165 using a nested-PCR protocol.[70] PCR products were Sanger sequenced by a commercial third  
166 party (GeneWiz; now Azenta Life Sciences, Chelmsford, MA) using primers specific to the  
167 common region of the TCR alpha or beta gene, and TCR alignment was performed using the  
168 IMGT HighV-quest tool. For blood TCR analyses, up to 50,000 MAIT cells were sorted by FACS  
169 as above from thawed PBMC. DNA extracted from sorted MAIT cells was then sent for  
170 comprehensive TCR beta chain sequencing by a commercial third party (Adaptive  
171 Biotechnologies, Seattle, WA), with data thus generated retrieved from and analyzed on the  
172 latter's proprietary online ImmunoSEQ Analyser software.

173

#### 174 Bulk RNA-seq experiments and analysis:

175 Cells were sorted directly into lysis buffer from the SMART-Seq v4 Ultra Low Input RNA Kit for  
176 sequencing (Takara). Cells were then lysed, and cDNA was synthesized and amplified per the  
177 manufacture's instruction. After amplification, sequencing libraries were constructed using the  
178 NexteraXT DNA sample preparation kit with unique dual indexes (Illumina, San Diego, CA) to  
179 generate Illumina-compatible barcoded libraries. Libraries were pooled and quantified using a  
180 Qubit Fluorometer (Life Technologies, Carlsbad, CA). Sequencing of pooled libraries was  
181 carried out on a NextSeq 2000 sequencer (Illumina) with paired-end 59-base reads, using a  
182 NextSeq P2 sequencing kit (Illumina) with a target depth of 5 million reads per sample.

183



184 Base calls were processed to FASTQs on BaseSpace (Illumina), and a base call quality-  
185 trimming step was applied to remove low-confidence base calls from the ends of reads. Reads  
186 were processed using workflows managed on the Galaxy platform. Reads were trimmed by 1  
187 base at the 3' end then trimmed from both ends until base calls had a minimum quality score of  
188 at least 30. Any remaining adapter sequence was removed as well. To align the trimmed reads,  
189 STAR aligner (v2.4.2a) was used with the GRCh38 reference genome and gene annotations  
190 from ensembl release 91. Gene counts were generated using HTSeq-count (v0.4.1). Quality  
191 metrics were compiled from PICARD (v1.134), FASTQC (v0.11.3), Samtools (v1.2), and  
192 HTSeq-count (v0.4.1).

193  
194 A quality filter was applied to retain libraries in which the fraction of aligned reads examined  
195 compared to total FASTQ reads was > 70%, the median coefficient of variation of coverage was  
196 less than 0.85, and the library had at least 1 million reads. All analyzed samples passed these  
197 quality filters. Non-protein coding genes and genes expressed at less than 1 count per million in  
198 fewer than 10% of samples were filtered out. Expression counts were normalized using the  
199 TMM algorithm. For differential gene expression analysis, the linear models for microarray data  
200 (Limma) R package after Voom transformation was used; this approach either outperforms or is  
201 highly concordant with other published methods. Linear models were generated, and donor  
202 identity was included as a random effect. For differential gene expression comparisons, genes  
203 with a false discovery rate (FDR) of less than or equal to 0.05 and an absolute expression fold-  
204 change greater than or equal to 1 were considered differentially expressed.

205

#### 206 Statistical analysis:

207 Analyses were performed with Prism software (GraphPad). Comparisons between groups of  
208 flow cytometry data and other continuous variables did not presume a Gaussian distribution.  
209 Therefore, analysis of variance used a Kruskal-Wallis test for unpaired data and a Friedman test

210 for paired comparisons. Two-way comparisons were performed using a Mann-Whitney *U*-test  
211 for unpaired comparisons and a Wilcoxon signed-rank test where data points could be paired  
212 (e.g. were from the same donor). Specific tests employed are specified in figures and/or their  
213 legends. Given the exploratory nature of these analyses, *P*-values were not adjusted for  
214 multiple comparisons.

215

## 216 **RESULTS**

217 Transcriptome analysis of MAIT cells in colon and blood: To compare the gene expression of  
218 MAIT (CD3<sup>+</sup>, CD4<sup>-</sup>, CD161<sup>+</sup>, TCRV $\alpha$ 7.2<sup>+</sup>) cells to that of CD8<sup>+</sup> effector (CD3<sup>+</sup>, CD4<sup>-</sup>, CD8a<sup>+</sup>,  
219 CD45RA<sup>-</sup>) T cells from which these MAIT cells were excluded, cDNA was analyzed by RNAseq  
220 from each of these two populations after they were sorted by FACS from patient specimens.  
221 Although MAIT cells in blood can also be identified with MR1 tetramers, these were not  
222 employed because we have found tetramers to poorly label T cells from collagenase-treated  
223 colon (data not shown). Thus, a small subpopulation of CD4<sup>+</sup> MAIT cells could not be defined  
224 by CD161 and TCRV $\alpha$ 7.2, due to CD161 also being expressed by Th17 cells which are  
225 enriched in the colon. All CD4<sup>+</sup> T cells were therefore excluded from these and subsequent  
226 analyses of MAIT cells. Cells were sorted from the cryopreserved PBMC of 6 CD patients, 6 UC  
227 patients, and 3 patients without IBD, all of whom were undergoing surgical resection of colon.  
228 Additionally, from among the above PBMC donors, these two T cell populations were sorted  
229 from cryopreserved LPMC isolated from the surgically resected colonic tissue of 1 non-IBD  
230 patient (who underwent sigmoid colon resection as part of a rectopexy procedure for rectal  
231 prolapse), 1 CD patient with inflamed colon, 1 CD patient with non-inflamed colon, 1 CD patient  
232 with both inflamed and non-inflamed colon in separate specimens, 1 UC patient with non-  
233 inflamed colon, and 3 UC patients with both inflamed and non-inflamed colon in separate  
234 specimens. Both CD4<sup>-</sup> MAIT and CD8<sup>+</sup> effector populations from all 27 of the above specimens  
235 produced good-quality libraries, resulting in 2.5 to 12 million reads each, with at least 70% gene

236 alignment and a CV of coverage < 0.8 in all cases. Principal component (PC) analyses divided  
237 specimens according to location (blood versus colon) in PC1 and PC2 (Fig 1a), while dividing  
238 them by cell type (CD4<sup>-</sup> MAIT vs effector CD8 T cells) in PC3 and PC4 (Fig 1b). These cohort  
239 sizes were obviously too small to make multivariate comparisons between diseases or the  
240 presence of inflammation, so data was pooled for all colon specimens in the subsequent  
241 analyses.

242

243 **Fig 1: Blood and mucosal CD4<sup>-</sup> MAIT cells have a transcriptome distinct from**  
244 **other CD8 T cells.** Full transcriptome sequencing was performed on mRNA isolated  
245 from CD4<sup>-</sup> MAIT or non-MAIT CD8<sup>+</sup> T cells sorted from the blood or surgically resected  
246 colonic lamina propria of patients with or without IBD as an indication for surgery.  
247 Principal component (PC) analysis was performed on transcriptome profiles, separating  
248 anatomic source of cells in PCs 1 and 2 (a), and sorted cell phenotype in PCs 3 and 4  
249 (b). Volcano plots of gene transcripts preferentially expressed in CD4<sup>-</sup> MAIT cells  
250 (green) versus conventional CD8 T cells (red) are shown for cells sorted from blood (c)  
251 or colon (d). Dotted lines denote the threshold for significance, and the most  
252 differentially expressed genes are labeled by name. (e) Venn diagram showing the  
253 number of gene transcripts significantly more (“\_Up”) or less (“\_Down”) expressed in  
254 CD4<sup>-</sup> MAIT cells relative to other CD8 T cells from PBMC (“Blood”) and/or colon  
255 (“Tissue”). (f) Normalized mRNA expression levels of the IL23R gene compared  
256 between CD4<sup>-</sup> MAIT cells and non-MAIT CD8<sup>+</sup> T cells isolated from blood (PBMC) or  
257 colon lamina propria (LPMC) by Mann-Whitney test.

258

259 Differential gene expression from normalized raw counts from all subjects revealed a number of  
260 genes up- or down-regulated in CD4<sup>-</sup> MAIT cells relative to other CD8 cells in the blood (Fig 1c)  
261 or intestine (Fig 1d). A greater difference in gene expression was seen between CD4<sup>-</sup> MAIT and

262 other CD8 T cells in the blood than in the colon, both in terms of fold-change and significance,  
263 with the greatest difference observed in LTK, a receptor tyrosine kinase with no known ligand.  
264 Other genes up-regulated in CD4<sup>+</sup> MAIT cells in this comparison encode several markers and  
265 factors known to be associated with both MAIT cells and Th17 cells, such as *RORC* (*ROR $\gamma$ t*),  
266 *KLRB1* (CD161), *CCR6*, as well as the MAIT-associated gene *SLC4A10* (coding for NCBE, a  
267 sodium bicarbonate transporter). Components of the receptors for interleukins 18 (*IL18R1*,  
268 *IL18RAP*), 12 (*IL12RB2*) and 23 (*IL23R*) were also expressed more by CD4<sup>+</sup> MAIT cells than  
269 other CD8 T cells. In contrast, CD4<sup>+</sup> MAIT cells in the blood expressed comparatively less of  
270 the immunologically relevant *CD8B*, *CCR4*, *CCR7*, *VCAM1*, *KLRK1* (*NKG2D*), *GPR15*, *IFNG*,  
271 *CXCR3*, *GZMH* and *TIGIT* genes than other CD8 T cells.

272  
273 In the colon, more genes were significantly up- then down-regulated in CD4<sup>+</sup> MAIT cells relative  
274 to other CD8 T cells, with 202 of the up-regulated genes in the colon shared with those up-  
275 regulated by CD4<sup>+</sup> MAIT cells in the blood (Fig 1e). The most significantly up-regulated colonic  
276 CD4<sup>+</sup> MAIT gene was *NTN4*, encoding netrin 4, a laminin-related protein involved in neurite  
277 growth and migration, but with no known role in immunology. As in the blood, *IL23R* was  
278 among the more prominent genes differentially expressed in colonic CD4<sup>+</sup> MAIT cells (Fig 1f),  
279 and other genes likewise associated with both MAIT cells and Th17 cells (*RORC*, *KLRB1* and  
280 *CCR6*) were again up-regulated, as in blood CD4<sup>+</sup> MAIT cells. In contrast to blood, the cytokine  
281 receptor genes *IL18R1* and *IL12RB2* were not significantly more expressed by CD4<sup>+</sup> MAIT cells  
282 in the colon, although this may simply reflect the smaller sample size of colonic MAIT cell  
283 transcriptomes.

284

285 Only 25 genes were up-regulated in CD4<sup>-</sup> MAIT cells in the colon while being down-regulated in  
286 the blood, relative to other CD8 T cells. Of these, three have well-described immunological  
287 roles: *IL7* (the cytokine interleukin-7), *IL2RA* (CD25, the alpha chain of the receptor for  
288 interleukin-2), and *IFNGR2* (a non-ligand-binding beta chain of the gamma interferon receptor).  
289 Additionally, a more pronounced MAIT-specific expression of *IL1R1* (CD121a, the receptor for  
290 interleukin-1) was seen in the colon relative to blood, as was the gene encoding its signal  
291 transducing protein, *IRAK2*. Curiously, genes encoding some of the proteins involved in signal  
292 transduction by the B cell receptor (*BANK1*, *BLNK*) were also selectively up-regulated in CD4<sup>-</sup>  
293 MAIT cells in the colon, while another (*BLK*) was MAIT-specific in both blood and colon.  
294  
295 Full transcriptome analysis is provided in Supplementary tables 2 and 3, and the normalized  
296 log<sub>2</sub> counts in Supplementary table 4.

297  
298 Colonic MAIT cell immunophenotypes: Flow cytometry was performed on colonoscopic  
299 biopsies from 10 CD patients on no pharmaceutical treatment for CD (separately sampling both  
300 inflamed and uninfamed colonic segments from each) and 10 HC (screening colonoscopy  
301 recipients). Peripheral blood lymphocytes were also available for analyses from 16 of these  
302 subjects (8 per cohort).

303  
304 We and others have previously reported that MAIT cells are less common in the blood of CD  
305 than HC subjects.[28, 71] In contrast, colonic CD3<sup>+</sup>, CD4<sup>-</sup>, CD161<sup>+</sup>, TCRVa7.2<sup>+</sup> MAIT cells  
306 were a greater fraction of CD4-negative T cells in the colon in CD relative to HC, even if  
307 comparing only grossly uninfamed colon segments ( $P = 0.015$ , Fig 2a). Indeed, by paired  
308 analysis, there was no correlation between inflammation and this frequency of CD4<sup>-</sup> MAIT cells  
309 in the colons of CD patients ( $P > 0.99$ ). The presence of inflammation did, however, correlate

310 with less NKG2D expression by CD4<sup>-</sup> MAIT cells (Wilcoxon  $P = 0.004$ , Fig 2b), which also runs  
311 contrary to what has been described in blood.[28, 71] Regardless of inflammation and disease,  
312 CD4<sup>-</sup> MAIT cells from the colon were predominantly CD8<sup>+</sup> and CD103<sup>+</sup> (Fig 2c, d). As the latter  
313 is the E-cadherin ligand which is mostly expressed in the epithelium, it suggests that most  
314 intestinal CD4<sup>-</sup> MAIT cells, like many mucosal CD8<sup>+</sup> T cells, are intra-epithelial lymphocytes  
315 (IEL). NKG2D and CD103 expression by conventional CD8<sup>+</sup> T cells from these biopsies is  
316 shown for comparison (Fig 2e, f).

317

318 **Fig 2: Frequency and phenotype of colonic CD4<sup>-</sup> MAIT cells.** (a) CD4<sup>-</sup> MAIT cells  
319 from colon biopsies were quantified by flow cytometry as a percent of CD4<sup>-</sup> negative T  
320 cells and found to be more common in biopsies from ten Crohn's disease (CD) patients  
321 relative to ten healthy controls (HC), regardless of whether biopsied colon was inflamed  
322 (CDIC) or uninfamed (CDNC). The percent of colonic CD4<sup>-</sup> MAIT cells expressing  
323 NKG2D (b), CD8 (c), or CD103 (d) and the percent of colonic CD8<sup>+</sup> conventional T cells  
324 expressing NKG2D (e) or CD103 (f) on their surface was quantified by flow cytometry. A  
325 Kruskal-Wallis test for variance was performed for each parameter, and if it revealed a  
326  $P$ -value less than 0.05, two-way paired (Wilcoxon) or unpaired (Mann-Whitney) non-  
327 parametric comparisons were performed as indicated between autologous or allogeneic  
328 specimens, respectively.

329

330 In contrast, CD103 (integrin  $\alpha E\beta 7$ ) expression by circulating CD4<sup>-</sup> MAIT cells was rare, being  
331 significantly less common among circulating CD4<sup>-</sup> MAIT cells than other antigen-experienced  
332 CD8<sup>+</sup> T cells (Fig 3a). Conversely, CD4<sup>-</sup> MAIT cells expressed significantly more of the gut-  
333 homing integrin  $\alpha 4\beta 7$  than any other antigen-experienced T cells, as previously described,[7]  
334 with no difference between CD and HC cohorts (Fig 3b).

335

336 **Fig 3: Frequency and phenotype of blood CD4<sup>+</sup> MAIT cells.** The percent of blood  
337 CD4<sup>+</sup> MAIT or other T cell subsets (as indicated on x-axes) expressing CD103 (a) or  
338 integrin  $\alpha 4\beta 7$  (b) on their surface was quantified by flow cytometry. Pooling data from all  
339 cohorts,  $\alpha 4\beta 7$  expression showed highly significant variance between T cell subsets by  
340 paired analysis (Friedman test), with the most expression among CD4<sup>+</sup> MAIT cells, which  
341 were significantly more  $\alpha 4\beta 7^+$  (b) and less CD103<sup>+</sup> (a) than other CD8 T cells by paired  
342 two-way (Wilcoxon) comparison. No differences in CD103 (a) or  $\alpha 4\beta 7$  expression (b)  
343 were seen between CD (black dots) and HC (open squares).

344

345 Colonic MAIT cell TCR sequences: To assess the clonality of MAIT cells in the colon, we FACS  
346 sorted each of up to 80 individual CD4<sup>+</sup> MAIT cells per biopsy into its own well for paired  
347 TCR)alpha and beta chain sequencing from the above colonoscopic biopsies. Perhaps because  
348 CD161 expression is more ubiquitous in the colon than blood, flow cytometry alone did not  
349 produce a pure MAIT population, as less than half of the sorted cells had a canonical MAIT TCR  
350 alpha rearrangement of TRAV1-2/TRAJ12/20/33,[2-4, 72, 73] with TRAJ33 predominating in all  
351 (Supplementary table 5). Therefore, only productive paired TCR rearrangements of TRAV1-2  
352 and TRAJ12/20/33 alpha chains were considered in further clonotype analysis. These alpha  
353 chains showed a consensus CDR3 amino acid sequence (CAV[M/R]DSNYQLIW) that was  
354 present in a majority of canonical MAIT cells (Fig 4a), while no clear consensus was evident in  
355 the CDR3 sequences of MAIT TCR beta chains. As described in the literature,[2-4, 72, 73] we  
356 observed a consistent selection of TCR beta variable genes in colonic CD4<sup>+</sup> MAIT cells with  
357 TRBV6-4 or TRBV20-1 present in over half of CD4<sup>+</sup> MAIT TCRs sequenced, as previously  
358 noted,[3] but regardless of disease or inflammation (Fig 4b). Additionally, in all cohorts we often  
359 found distinct cells with the same TCR alpha and beta chains (clonotypes) in a given biopsy, or

360 common to both of two biopsies from different anatomic locations in the same person (i.e. both  
361 the inflamed and uninfamed biopsies from a CD patient) (Supplementary table 6 and Fig 5).  
362 Despite these TCRs being restricted to a finite range of molecular antigens presented by a  
363 genetically non-polymorphic molecule (MR1), there were few “public” TCRs seen in more than  
364 one person, none of which were from HC. Only two separate pairs of CD patients had any  
365 MAIT TCRs in common, indicating that convergent or pathogenic public clonotypes are not  
366 common in this disease.

367

368 **Fig 4: Colonic CD4<sup>+</sup> MAIT cell TCR sequences.** Full TCR alpha and beta chain gene  
369 transcripts were sequenced from individual CD4<sup>+</sup> MAIT cells sorted from colon biopsies  
370 of the ten CD and ten HC subjects in Fig 2. Cells lacking the canonical MAIT TRAV1.2  
371 sequence from their alpha chain were deemed contaminants and excluded from  
372 analyses. (a) Of all the remaining cells, a consensus sequence was observed in the  
373 TCR alpha chain CDR3 region. (b) The fraction of these CD4<sup>+</sup> MAIT cells expressing  
374 different J-regions from the TCR alpha locus and different V, D, and J regions from the  
375 TCR beta locus is shown as a pie chart for inflamed or uninfamed colon biopsies from  
376 CD patients, or biopsies from healthy screening colonoscopy recipients.

377

378 **Fig 5: Colonic CD4<sup>+</sup> MAIT cell clonality and overlap.** Each individual CD4<sup>+</sup> MAIT cell  
379 from Fig 3 with a canonical TRAV1.2 is shown as a point on the radius of this circos plot.  
380 Each individual from whom these MAIT cells were sorted is shown as a different color on  
381 the outer circle. The inner circle denotes whether MAIT cells were sorted from the colon  
382 biopsy of a HC (green) or a biopsy from the inflamed (red) or uninfamed (blue) colon of  
383 a CD patient. Any two MAIT cells with the exact same TCR alpha and beta sequences  
384 are connected by a thin line, colored to reflect their tissue of origin as in the inner circle



385 (or purple, if cells from inflamed and uninflamed colon biopsies from CD patients have  
386 the same TCR).  
387  
388 CD4<sup>+</sup> MAIT cells were also sorted from the PBMC of these patients, and total TCR beta chain  
389 CDR3 sequencing was performed on their DNA (Adaptive Biotechnologies). TCR diversity of  
390 circulating CD4<sup>+</sup> MAIT cells in IBD was not significantly different in CD compared to HC (Fig 6a).  
391 The overlap in TCR repertoires between blood CD4<sup>+</sup> MAIT cells was generally low, with little  
392 difference in overlap among or between CD and HC cohorts (Fig 6b, c). However, because up  
393 to 50,000 MAIT cells were analyzed per PBMC sample, we were able to identify 428 unique  
394 TCR beta chain CDR3 amino acid sequences that appeared in blood CD4<sup>+</sup> MAIT cells from  
395 more than one person (Supplementary table 7), 103 of which were uniquely found among CD  
396 patients, and 39 of which were uniquely found in HC (the remaining 284 sequences being  
397 present in at least one person from each cohort).

398

399 **Fig 6: Blood CD4<sup>+</sup> MAIT cell diversity and clonal overlap.** CD4<sup>+</sup> MAIT cells were  
400 sorted from the PBMC of eight Crohn's disease (CD) patients or eight healthy controls  
401 (HC) at the time of colonoscopy from which they donated biopsies used in Figs 2-4, and  
402 their TCR beta chain CDR3 regions were sequenced. (a) The TCR beta repertoire  
403 diversity in each sample is plotted on a log scale, and the difference in Simpson's  
404 diversity index (in which 1 denotes monoclonality and 0 means every cell has a different  
405 TCR beta sequence) between CD and HC samples shows no significance by unpaired  
406 non-parametric analysis (Mann-Whitney). (b) The Morisita index of overlap between  
407 TCR repertoires (in which 1 denotes complete overlap and 0 denotes no overlap) from  
408 each possible combination of any two of the 16 PBMC donors was calculated, and the  
409 overlap between every possible pairing is plotted on a log scale. The overlap between

410 any two HC (HC vs HC), any two CD patients (CD vs CD) or any one HC and any one  
411 CD patient (HC vs CD) is shown, with unpaired non-parametric analysis (Kruskal-Wallis  
412 test) revealing no significant variance. (c) Actual Morisita indices of diversity plotted in  
413 (b) for each possible comparison between two CD (red border) and/or HC (blue border)  
414 subjects are shown and color coded on a grid.

415  
416 Approximately half of the unique MAIT TCR beta sequences we found in biopsies were also  
417 found in CD4<sup>+</sup> MAIT cells sorted from blood, with the vast majority of this overlap being between  
418 autologous samples from the same person. However, 13% of colonic CD4<sup>+</sup> MAIT TCR beta  
419 sequences could also be found in the blood of another person, regardless of whether or not  
420 both the blood and colon biopsy donor had CD (Table 1). Thus, expanding our search of  
421 colonic CD4<sup>+</sup> MAIT TCR beta sequences to also include blood revealed more colonic CD4<sup>+</sup>  
422 MAIT TCR beta CDR3 sequences to be public (Supplementary table 8), but again did not find  
423 enrichment of these within a cohort to suggest pathogenic or protective clonotypes.

424

**Table 1: Number of colonic MAIT cell TCRB sequences found, and their overlap with blood MAIT cells**

Biopsy	unique TCR $\beta$ CDR3 amino acid sequences				% of total unique sequences		
	Total in colon	in both colon & blood	autologous overlap	allogeneic overlap	in both colon & blood	autologous overlap	allogeneic overlap
HC	59	32	32	7	54%	54%	12%
CD all	155	78	71	20	50%	46%	13%
CD NC	78	47	41	16	60%	53%	21%
CD IC	87	37	33	7	43%	38%	8%
total	214	109	103	27	51%	48%	13%

425 Abbreviations: TCR: T cell receptor, CDR: complementarity determining region, HC: healthy  
426 control, CD: Crohn's disease, NC: non-inflamed colon, IC: inflamed colon  
427

## 428 DISCUSSION

429 As their name would imply, mucosal-associated invariant T cells are part of the adaptive  
430 immune system at mucosal surfaces, with a function resembling the innate immune system.  
431 MAIT cells are known to respond to metabolite antigens produced by bacteria. Thus, as one of  
432 the largest mucosal surfaces in the human body, in contact with the highest density and  
433 diversity of bacteria in the human body, the intestinal mucosa is an organ whose MAIT cells  
434 warrant characterization. Given their similarity to Th17 cells, implicated in autoimmunity, MAIT  
435 cells may be of particular importance in spontaneous intestinal inflammation, such as CD.  
436 Indeed, two of the most effective treatment strategies for CD involve targeting integrin  $\alpha 4\beta 7$  and  
437 signaling through the IL-23 receptor, both of which we find highly enriched on CD4<sup>-</sup> MAIT cells.  
438 We therefore compared gene expression in CD4<sup>-</sup> MAIT cells to that of other CD8<sup>+</sup> T cells in the  
439 intestines, as well as the blood, and compared blood and intestinal CD4<sup>-</sup> MAIT surface protein  
440 immunophenotypes and TCR sequences in CD patients and HC.  
441  
442 Reciprocal to evidence that MAIT cells are a smaller fraction of T cells in the blood of CD  
443 patients, we corroborated evidence that these cells are enriched in their colons.[26-29] This  
444 suggests that MAIT cells are being sequestered from the blood to the intestinal mucosa in CD,  
445 as has been proposed to happen in the lungs with pulmonary tuberculosis.[8-10] We found an  
446 increased frequency of CD4<sup>-</sup> MAIT cells in the intestinal mucosa of CD patients to be present  
447 even in uninfamed tissue, suggesting that MAIT cells predispose to inflammation, rather than  
448 being a consequence thereof. While this conflicts with an existing report finding MAIT cells to  
449 only be enriched in inflamed colon,[29] that study pooled data from CD and UC patients, and  
450 also was unable to examine biopsies with more than mild inflammation, which could have  
451 overlapped with specimens deemed endoscopically uninfamed in our study. Furthermore, it did  
452 not exclude CD4<sup>+</sup> T cells, from which a high frequency of CD161<sup>+</sup> Th17 cells present in the  
453 intestinal mucosa[69]could contaminate MAIT cells. In contrast, the fraction of intestinal CD4<sup>-</sup>

454 MAIT cells expressing NKG2D was lower in inflamed than uninfamed colon, suggesting that  
455 inflammation leads to its down-regulation. This is consistent with IL-15-driven NKG2D  
456 expression by memory CD8 T (including MAIT) cells being inhibited by TCR activation.[74]  
457 While it is possible that a relative lack NKG2D on MAIT cells could be a cause rather than an  
458 effect of local intestinal inflammation, this hypothesis would run contrary to the observation that  
459 NKG2D blockade reduced CD clinical activity by week 12 in a randomized trial.[75]

460

461 We also found that the vast majority of mucosal CD4<sup>+</sup> MAIT cells express CD103 (integrin  
462  $\alpha E\beta 7$ ), which adheres to the E-cadherin molecule expressed by intestinal epithelial cells.[76]  
463 Although analyses of histological morphology were outside the scope of this study, the CD103<sup>+</sup>  
464 phenotype of intestinal MAIT cells suggests that they are intra-epithelial lymphocytes (IEL), in  
465 close proximity to the intestinal lumen, and thus the gut microbiome. A thick layer of mucous  
466 produced by the intestinal mucosa limits exposure of the gut epithelium to much of the  
467 microbiome itself. However, the riboflavin precursors uniquely recognized by MAIT cells are  
468 small organic molecules which may more readily diffuse across mucous than an intact  
469 microorganism or its protein antigens. Thus, as IEL, MAIT cells would be uniquely suited to  
470 monitor the microbiome through its metabolic products.

471

472 Although human MAIT cell clonal diversity has been studied previously in the blood,[3, 72, 73,  
473 77] little is known about it at the human colonic mucosal barrier, where TCR diversity is much  
474 narrower.[69] We therefore had hypothesized that intestinal MAIT cells would be pauciclonal.  
475 Furthermore, because they are restricted by the genetically non-polymorphic MR1 molecule,[7]  
476 and recognize a finite range of riboflavin precursors.[6] we hypothesized that such pauciclonality  
477 would include a large number of “public” TCR sequences common to multiple individuals. If so,  
478 the presence or absence of specific TCR sequences in the colons of CD patients relative to HC  
479 would suggest that specific MR1-restricted antigens are either pathogenic or protective,

480 respectively, in IBD. While the antigens recognized by the colonic CD4<sup>+</sup> MAIT cells studied in  
481 this report are unknown, the consensus amino acid motif of the TCR alpha chain CDR3s we  
482 report (CAV[M/R]DSNYQLIW) most resembles a sequence (CAVRDS[N/D]Y[K/Q]L[S/I])  
483 reported for peripheral blood MAIT cells that respond *in vitro* to *Candida albicans* antigens.[77]  
484 Although not known to be related to disease pathogenesis, *C. albicans* is an immunogen for the  
485 anti-Saccharomyces cerevisiae antibody (ASCA)[78] that has been sufficiently associated with  
486 CD to serve as a clinical marker of disease since the 1990's[79] and may predict a more  
487 aggressive disease course.[80] Thus, further comparison of MAIT TCR sequences between CD  
488 patients with and without high ASCA titers may reveal an immunophenotypic difference between  
489 these IBD patient cohorts.

490

491 After restricting analyses to T cells containing the canonical alpha chains with which MAIT cells  
492 are defined, we found the corresponding beta chains to be surprisingly diverse, with more than  
493 half of all colonic CD4<sup>+</sup> MAIT cells analyzed containing a unique TCR beta chain CDR3  
494 hypervariable sequence. Of those colonic MAIT sequences found in more than one cell, only a  
495 small minority were shared between different individuals (i.e. "public"), and never among the HC  
496 subjects we analyzed. Those few "public" TCR beta sequences we identified between colon  
497 biopsies from different CD patients could suggest potentially pathogenic antigen specificities,  
498 but none of them were shared between more than two patients, so any hypothesized  
499 pathogenic specificity would not be a widespread characteristic of this disease. In individual CD  
500 patients, the same TCR beta sequence could often be found in MAIT cells that were harvested  
501 from both the inflamed and uninfamed colon, suggesting that their antigen specificity is not  
502 correlated with tissue inflammation.

503

504 "Public" TCR beta chain CDR3 sequences were also uncommon in the peripheral blood, but  
505 more readily found due to the much larger number of MAIT cells that could be sorted from blood

506 than biopsies. More than twice as many unique public sequences were exclusive to CD  
507 patients as were exclusive to HC. However, more than half of all public sequences were seen  
508 in both CD and HC cohorts, suggesting that the observed exclusivity was more a consequence  
509 of random chance than any proof that pathogenic (i.e. CD-exclusive) or protective (i.e. HC-  
510 exclusive) MAIT clonotypes exist. Indeed, many of the unique colonic CD4<sup>+</sup> MAIT TCR beta  
511 chain CDR3 sequences seen exclusively in CD patients could also be found in the peripheral  
512 blood of HC, and vice versa. Given that the diversity of CD4<sup>+</sup> MAIT TCR beta chain sequences  
513 appears to greatly exceed the diversity of small, organic molecules in the riboflavin synthesis  
514 pathway that can be recognized by MAIT cells, categorization of these beta chain sequences by  
515 their ability to bind specific MR1-presented antigens may better clarify similarities and  
516 differences between CD and HC. Another possibility that explains the vast TCR  $\beta$ -chain  
517 repertoire is that there is little requirement for a particular  $\beta$ -chain to recognize the same antigen  
518 with most of the recognition being provided by the TCR  $\alpha$ -chain.

519

520 In summary, we evaluated CD4<sup>+</sup> MAIT cells from the blood and colon of people with and without  
521 CD, by flow cytometry, mRNA expression, and TCR sequencing. We found CD4<sup>+</sup> MAIT cells to  
522 be concentrated in the colon in CD relative to HC, regardless of whether or not they came from  
523 an inflamed colon segment. Indeed, we found that CD4<sup>+</sup> MAIT cells in the blood express more  
524 of the gut-homing integrin  $\alpha 4\beta 7$  than other CD8 T cells, indicating a tropism for the intestinal  
525 mucosa. As integrin  $\alpha 4\beta 7$  has become a major therapeutic target in the treatment of IBD, it  
526 remains to be seen how a response to anti-integrin therapy affects, or may even be predicted  
527 by, MAIT cells. Likewise, we report that colonic CD4<sup>+</sup> MAIT cells express much more of the IL-  
528 23 receptor than do other CD8 T cells. As IL-23 blockade is also now a major treatment  
529 strategy for IBD, a study of MAIT cells before and during anti-IL-23 therapy could also identify  
530 biomarkers with which to optimize treatment or predict its efficacy. While colonic CD4<sup>+</sup>

531 MAIT cells proved far more polymorphic at the TCR/clonal level than anticipated, with few public  
532 TCR sequences to correlate with health or disease, we did observe considerable MAIT TCR  
533 repertoire overlap between different anatomic locations within an individual, suggesting an  
534 individual would likely also show overlap in their MAIT repertoire at different time points.  
535 Longitudinally tracking MAIT TCR repertoire over time in an individual, such as before and  
536 during anti-integrin or anti-IL-23 therapy, would provide further insight into how IBD therapeutics  
537 work, correlate MAIT cell specificity with disease course, and hence reveal novel insights into  
538 the pathogenesis of IBD.  
539  
540  
541

542 Acknowledgements:

543 We thank Kassidy Benoscek for subject recruitment, Adam Wojno for assistance with flow  
544 cytometry, Hannah DeBerg for assistance with R programming, and Brenda Norris, Virginia  
545 Greene, and Taylor Lawson for assistance with manuscript preparation.

546

547 **REFERENCES**

548 1. Billerbeck E, Kang YH, Walker L, Lockstone H, Grafmueller S, Fleming V, et al. Analysis  
549 of CD161 expression on human CD8+ T cells defines a distinct functional subset with tissue-  
550 homing properties. *Proc Natl Acad Sci U S A*. 2010;107(7):3006-11. Epub 2010/02/06. doi:  
551 10.1073/pnas.0914839107. PubMed PMID: 20133607; PubMed Central PMCID:  
552 PMCPMC2840308.

553 2. Gherardin NA, Souter MN, Koay HF, Mangas KM, Seemann T, Stinear TP, et al. Human  
554 blood MAIT cell subsets defined using MR1 tetramers. *Immunol Cell Biol*. 2018;96(5):507-25.  
555 Epub 2018/02/14. doi: 10.1111/imcb.12021. PubMed PMID: 29437263; PubMed Central  
556 PMCID: PMCPMC6446826.

557 3. Tilloy F, Treiner E, Park SH, Garcia C, Lemonnier F, de la Salle H, et al. An invariant T  
558 cell receptor alpha chain defines a novel TAP-independent major histocompatibility complex  
559 class Ib-restricted alpha/beta T cell subpopulation in mammals. *J Exp Med*. 1999;189(12):1907-  
560 21.

561 4. Porcelli S, Yockey CE, Brenner MB, Balk SP. Analysis of T cell antigen receptor (TCR)  
562 expression by human peripheral blood CD4-8- alpha/beta T cells demonstrates preferential use  
563 of several V beta genes and an invariant TCR alpha chain. *J Exp Med*. 1993;178(1):1-16. doi:  
564 10.1084/jem.178.1.1. PubMed PMID: 8391057; PubMed Central PMCID: PMCPMC2191070.

565 5. D'Souza C, Pediongco T, Wang H, Scheerlinck JY, Kostenko L, Esterbauer R, et al.  
566 Mucosal-Associated Invariant T Cells Augment Immunopathology and Gastritis in Chronic  
567 *Helicobacter pylori* Infection. *J Immunol*. 2018;200(5):1901-16. Epub 2018/01/31. doi:  
568 10.4049/jimmunol.1701512. PubMed PMID: 29378910.

569 6. Kjer-Nielsen L, Patel O, Corbett AJ, Le NJ, Meehan B, Liu L, et al. MR1 presents  
570 microbial vitamin B metabolites to MAIT cells. *Nature*. 2012;491(7426):717-23. doi: nature11605  
571 [pii];10.1038/nature11605 [doi].

572 7. Treiner E, Duban L, Bahram S, Radosavljevic M, Wanner V, Tilloy F, et al. Selection of  
573 evolutionarily conserved mucosal-associated invariant T cells by MR1. *Nature*.  
574 2003;422(6928):164-9. doi: 10.1038/nature01433 [doi];nature01433 [pii].

575 8. Dusseaux M, Martin E, Serriari N, Peguillet I, Premel V, Louis D, et al. Human MAIT  
576 cells are xenobiotic-resistant, tissue-targeted, CD161hi IL-17-secreting T cells. *Blood*.  
577 2011;117(4):1250-9. doi: blood-2010-08-303339 [pii];10.1182/blood-2010-08-303339 [doi].



- 578 9. Coulter F, Parrish A, Manning D, Kampmann B, Mendy J, Garand M, et al. IL-17  
579 Production from T Helper 17, Mucosal-Associated Invariant T, and gammadelta Cells in  
580 Tuberculosis Infection and Disease. *Front Immunol.* 2017;8:1252. Epub 2017/10/28. doi:  
581 10.3389/fimmu.2017.01252. PubMed PMID: 29075255; PubMed Central PMCID:  
582 PMCPMC5641565.
- 583 10. Gold MC, Cerri S, Smyk-Pearson S, Cansler ME, Vogt TM, Delepine J, et al. Human  
584 mucosal associated invariant T cells detect bacterially infected cells. *PLoS Biol.*  
585 2010;8(6):e1000407. doi: 10.1371/journal.pbio.1000407 [doi].
- 586 11. Kennedy-Nasser AA, Ku S, Castillo-Caro P, Hazrat Y, Wu MF, Liu H, et al. Ultra low-  
587 dose IL-2 for GVHD prophylaxis after allogeneic hematopoietic stem cell transplantation  
588 mediates expansion of regulatory T cells without diminishing antiviral and antileukemic activity.  
589 *Clin Cancer Res.* 2014;20(8):2215-25. doi: 1078-0432.CCR-13-3205 [pii];10.1158/1078-  
590 0432.CCR-13-3205 [doi].
- 591 12. Salerno-Goncalves R, Luo D, Fresnay S, Magder L, Darton TC, Jones C, et al.  
592 Challenge of Humans with Wild-type *Salmonella enterica* Serovar Typhi Elicits Changes in the  
593 Activation and Homing Characteristics of Mucosal-Associated Invariant T Cells. *Front Immunol.*  
594 2017;8:398. Epub 2017/04/22. doi: 10.3389/fimmu.2017.00398. PubMed PMID: 28428786;  
595 PubMed Central PMCID: PMCPMC5382150.
- 596 13. Leeansyah E, Ganesh A, Quigley MF, Sonnerborg A, Andersson J, Hunt PW, et al.  
597 Activation, exhaustion, and persistent decline of the antimicrobial MR1-restricted MAIT-cell  
598 population in chronic HIV-1 infection. *Blood.* 2013;121(7):1124-35. Epub 2012/12/18. doi:  
599 10.1182/blood-2012-07-445429. PubMed PMID: 23243281; PubMed Central PMCID:  
600 PMCPMC3575756.
- 601 14. Khaitan A, Kilberg M, Kravietz A, Ilmet T, Tastan C, Mwamzuka M, et al. HIV-Infected  
602 Children Have Lower Frequencies of CD8+ Mucosal-Associated Invariant T (MAIT) Cells that  
603 Correlate with Innate, Th17 and Th22 Cell Subsets. *PLoS One.* 2016;11(8):e0161786. Epub  
604 2016/08/26. doi: 10.1371/journal.pone.0161786. PubMed PMID: 27560150; PubMed Central  
605 PMCID: PMCPMC4999196.
- 606 15. Hengst J, Strunz B, Deterding K, Ljunggren HG, Leeansyah E, Manns MP, et al.  
607 Nonreversible MAIT cell-dysfunction in chronic hepatitis C virus infection despite successful  
608 interferon-free therapy. *Eur J Immunol.* 2016;46(9):2204-10. Epub 2016/06/15. doi:  
609 10.1002/eji.201646447. PubMed PMID: 27296288.
- 610 16. Bolte FJ, O'Keefe AC, Webb LM, Serti E, Rivera E, Liang TJ, et al. Intra-Hepatic  
611 Depletion of Mucosal-Associated Invariant T Cells in Hepatitis C Virus-Induced Liver  
612 Inflammation. *Gastroenterology.* 2017;153(5):1392-403 e2. Epub 2017/08/07. doi:  
613 10.1053/j.gastro.2017.07.043. PubMed PMID: 28780074; PubMed Central PMCID:  
614 PMCPMC5669813.
- 615 17. Grimaldi D, Le Bourhis L, Sauneuf B, Dechartres A, Rousseau C, Ouaz F, et al.  
616 Specific MAIT cell behaviour among innate-like T lymphocytes in critically ill patients with severe  
617 infections. *Intensive Care Med.* 2014;40(2):192-201. Epub 2013/12/11. doi: 10.1007/s00134-  
618 013-3163-x. PubMed PMID: 24322275.

- 619 18. Hannaway RF, Wang X, Schneider M, Slow S, Cowan J, Brockway B, et al. Mucosal-  
620 associated invariant T cells and Vdelta2(+) gammadelta T cells in community acquired  
621 pneumonia: association of abundance in sputum with clinical severity and outcome. *Clin Exp*  
622 *Immunol.* 2020;199(2):201-15. Epub 2019/10/07. doi: 10.1111/cei.13377. PubMed PMID:  
623 31587268; PubMed Central PMCID: PMC6954682.
- 624 19. Miyazaki Y, Miyake S, Chiba A, Lantz O, Yamamura T. Mucosal-associated invariant T  
625 cells regulate Th1 response in multiple sclerosis. *Int Immunol.* 2011;23(9):529-35. doi: dxr047  
626 [pii];10.1093/intimm/dxr047 [doi].
- 627 20. Berglin L, Bergquist A, Johansson H, Glaumann H, Jorns C, Lunemann S, et al. In situ  
628 characterization of intrahepatic non-parenchymal cells in PSC reveals phenotypic patterns  
629 associated with disease severity. *PLoS One.* 2014;9(8):e105375. doi:  
630 10.1371/journal.pone.0105375 [doi];PONE-D-14-20860 [pii].
- 631 21. Wang JJ, Macardle C, Weedon H, Beroukas D, Banovic T. Mucosal-associated invariant  
632 T cells are reduced and functionally immature in the peripheral blood of primary Sjogren's  
633 syndrome patients. *Eur J Immunol.* 2016;46(10):2444-53. Epub 2016/07/28. doi:  
634 10.1002/eji.201646300. PubMed PMID: 27461134.
- 635 22. Witte E, Witte K, Warszawska K, Sabat R, Wolk K. Interleukin-22: a cytokine produced  
636 by T, NK and NKT cell subsets, with importance in the innate immune defense and tissue  
637 protection. *Cytokine Growth Factor Rev.* 2010;21(5):365-79. Epub 2010/09/28. doi:  
638 10.1016/j.cytogfr.2010.08.002. PubMed PMID: 20870448.
- 639 23. Magalhaes I, Pingris K, Poitou C, Bessoles S, Venteclef N, Kias B, et al. Mucosal-  
640 associated invariant T cell alterations in obese and type 2 diabetic patients. *J Clin Invest.*  
641 2015;125(4):1752-62. Epub 2015/03/10. doi: 10.1172/JCI78941. PubMed PMID: 25751065;  
642 PubMed Central PMCID: PMC4396481.
- 643 24. Carolan E, Tobin LM, Mangan BA, Corrigan M, Gaoatswe G, Byrne G, et al. Altered  
644 distribution and increased IL-17 production by mucosal-associated invariant T cells in adult and  
645 childhood obesity. *J Immunol.* 2015;194(12):5775-80. Epub 2015/05/17. doi:  
646 10.4049/jimmunol.1402945. PubMed PMID: 25980010.
- 647 25. Dunne MR, Elliott L, Hussey S, Mahmud N, Kelly J, Doherty DG, et al. Persistent  
648 changes in circulating and intestinal gammadelta T cell subsets, invariant natural killer T cells  
649 and mucosal-associated invariant T cells in children and adults with coeliac disease. *PLoS One.*  
650 2013;8(10):e76008. Epub 2013/10/15. doi: 10.1371/journal.pone.0076008. PubMed PMID:  
651 24124528; PubMed Central PMCID: PMC3790827.
- 652 26. Hiejima E, Kawai T, Nakase H, Tsuruyama T, Morimoto T, Yasumi T, et al. Reduced  
653 Numbers and Proapoptotic Features of Mucosal-associated Invariant T Cells as a Characteristic  
654 Finding in Patients with Inflammatory Bowel Disease. *Inflamm Bowel Dis.* 2015;21(7):1529-40.  
655 Epub 2015/05/07. doi: 10.1097/MIB.0000000000000397. PubMed PMID: 25946569.
- 656 27. Haga K, Chiba A, Shibuya T, Osada T, Ishikawa D, Kodani T, et al. MAIT cells are  
657 activated and accumulated in the inflamed mucosa of ulcerative colitis. *J Gastroenterol Hepatol.*  
658 2016;31(5):965-72. Epub 2015/11/22. doi: 10.1111/jgh.13242. PubMed PMID: 26590105.

- 659 28. Serriari NE, Eoche M, Lamotte L, Lion J, Fumery M, Marcelo P, et al. Innate mucosal-  
660 associated invariant T (MAIT) cells are activated in inflammatory bowel diseases. *Clin Exp*  
661 *Immunol.* 2014;176(2):266-74. doi: 10.1111/cei.12277 [doi].
- 662 29. Tominaga K, Yamagiwa S, Setsu T, Kimura N, Honda H, Kamimura H, et al. Possible  
663 involvement of mucosal-associated invariant T cells in the progression of inflammatory bowel  
664 diseases. *Biomed Res.* 2017;38(2):111-21. doi: 10.2220/biomedres.38.111. PubMed PMID:  
665 28442662.
- 666 30. Willing A, Leach OA, Ufer F, Attfeld KE, Steinbach K, Kursawe N, et al. CD8(+) MAIT  
667 cells infiltrate into the CNS and alterations in their blood frequencies correlate with IL-18 serum  
668 levels in multiple sclerosis. *Eur J Immunol.* 2014;44(10):3119-28. Epub 2014/07/22. doi:  
669 10.1002/eji.201344160. PubMed PMID: 25043505.
- 670 31. Salou M, Nicol B, Garcia A, Baron D, Michel L, Elong-Ngono A, et al. Neuropathologic,  
671 phenotypic and functional analyses of Mucosal Associated Invariant T cells in Multiple Sclerosis.  
672 *Clin Immunol.* 2016;166-167:1-11. Epub 2016/04/07. doi: 10.1016/j.clim.2016.03.014. PubMed  
673 PMID: 27050759.
- 674 32. Annibaldi V, Ristori G, Angelini DF, Serafini B, Mechelli R, Cannoni S, et al.  
675 CD161(high)CD8+T cells bear pathogenetic potential in multiple sclerosis. *Brain.* 2011;134(Pt  
676 2):542-54. Epub 2011/01/11. doi: 10.1093/brain/awq354. PubMed PMID: 21216829.
- 677 33. Abrahamsson SV, Angelini DF, Dubinsky AN, Morel E, Oh U, Jones JL, et al. Non-  
678 myeloablative autologous haematopoietic stem cell transplantation expands regulatory cells and  
679 depletes IL-17 producing mucosal-associated invariant T cells in multiple sclerosis. *Brain.*  
680 2013;136(Pt 9):2888-903. Epub 2013/07/19. doi: 10.1093/brain/awt182. PubMed PMID:  
681 23864273; PubMed Central PMCID: PMC3754461.
- 682 34. Price AB, Morson BC. Inflammatory bowel disease: the surgical pathology of Crohn's  
683 disease and ulcerative colitis. *Hum Pathol.* 1975;6(1):7-29. Epub 1975/01/01. doi:  
684 10.1016/s0046-8177(75)80107-9. PubMed PMID: 1089084.
- 685 35. Ehlers S. Why does tumor necrosis factor targeted therapy reactivate tuberculosis? *J*  
686 *Rheumatol Suppl.* 2005;74:35-9. Epub 2005/03/03. PubMed PMID: 15742463.
- 687 36. Agrawal G, Aitken J, Hamblin H, Collins M, Borody TJ. Putting Crohn's on the MAP: Five  
688 Common Questions on the Contribution of *Mycobacterium avium* subspecies paratuberculosis  
689 to the Pathophysiology of Crohn's Disease. *Dig Dis Sci.* 2021;66(2):348-58. Epub 2020/10/23.  
690 doi: 10.1007/s10620-020-06653-0. PubMed PMID: 33089484; PubMed Central PMCID:  
691 PMC37577843.
- 692 37. Jostins L, Ripke S, Weersma RK, Duerr RH, McGovern DP, Hui KY, et al. Host-microbe  
693 interactions have shaped the genetic architecture of inflammatory bowel disease. *Nature.*  
694 2012;491(7422):119-24. doi: nature11582 [pii];10.1038/nature11582 [doi].
- 695 38. Brand S. Crohn's disease: Th1, Th17 or both? The change of a paradigm: new  
696 immunological and genetic insights implicate Th17 cells in the pathogenesis of Crohn's disease.  
697 *Gut.* 2009;58(8):1152-67. Epub 2009/07/14. doi: 10.1136/gut.2008.163667. PubMed PMID:  
698 19592695.

- 699 39. Galvez J. Role of Th17 Cells in the Pathogenesis of Human IBD. *ISRN Inflamm.*  
700 2014;2014:928461. Epub 2014/08/08. doi: 10.1155/2014/928461. PubMed PMID: 25101191;  
701 PubMed Central PMCID: PMC4005031.
- 702 40. Yasuda K, Takeuchi Y, Hirota K. The pathogenicity of Th17 cells in autoimmune  
703 diseases. *Semin Immunopathol.* 2019;41(3):283-97. Epub 2019/03/21. doi: 10.1007/s00281-  
704 019-00733-8. PubMed PMID: 30891627.
- 705 41. Han L, Yang J, Wang X, Li D, Lv L, Li B. Th17 cells in autoimmune diseases. *Front Med.*  
706 2015;9(1):10-9. Epub 2015/02/06. doi: 10.1007/s11684-015-0388-9. PubMed PMID: 25652649.
- 707 42. Maddur MS, Miossec P, Kaveri SV, Bayry J. Th17 cells: biology, pathogenesis of  
708 autoimmune and inflammatory diseases, and therapeutic strategies. *Am J Pathol.*  
709 2012;181(1):8-18. doi: S0002-9440(12)00336-7 [pii];10.1016/j.ajpath.2012.03.044 [doi].
- 710 43. Huang S, Martin E, Kim S, Yu L, Soudais C, Fremont DH, et al. MR1 antigen  
711 presentation to mucosal-associated invariant T cells was highly conserved in evolution. *Proc*  
712 *Natl Acad Sci U S A.* 2009;106(20):8290-5. Epub 2009/05/07. doi: 10.1073/pnas.0903196106.  
713 PubMed PMID: 19416870; PubMed Central PMCID: PMC2688861.
- 714 44. Koay HF, Gherardin NA, Enders A, Loh L, Mackay LK, Almeida CF, et al. A three-stage  
715 intrathymic development pathway for the mucosal-associated invariant T cell lineage. *Nat*  
716 *Immunol.* 2016;17(11):1300-11. Epub 2016/10/21. doi: 10.1038/ni.3565. PubMed PMID:  
717 27668799.
- 718 45. Bengsch B, Seigel B, Flecken T, Wolanski J, Blum HE, Thimme R. Human Th17 cells  
719 express high levels of enzymatically active dipeptidylpeptidase IV (CD26). *J Immunol.*  
720 2012;188(11):5438-47. Epub 2012/04/28. doi: 10.4049/jimmunol.1103801. PubMed PMID:  
721 22539793.
- 722 46. Brozova J, Karlova I, Novak J. Analysis of the Phenotype and Function of the  
723 Subpopulations of Mucosal-Associated Invariant T Cells. *Scand J Immunol.* 2016;84(4):245-51.  
724 Epub 2016/07/31. doi: 10.1111/sji.12467. PubMed PMID: 27474379.
- 725 47. Mpina M, Maurice NJ, Yajima M, Slichter CK, Miller HW, Dutta M, et al. Controlled  
726 Human Malaria Infection Leads to Long-Lasting Changes in Innate and Innate-like Lymphocyte  
727 Populations. *J Immunol.* 2017;199(1):107-18. Epub 2017/06/04. doi:  
728 10.4049/jimmunol.1601989. PubMed PMID: 28576979; PubMed Central PMCID:  
729 PMC5528886.
- 730 48. Leeansyah E, Loh L, Nixon DF, Sandberg JK. Acquisition of innate-like microbial  
731 reactivity in mucosal tissues during human fetal MAIT-cell development. *Nat Commun.*  
732 2014;5:3143. Epub 2014/01/24. doi: 10.1038/ncomms4143. PubMed PMID: 24452018; PubMed  
733 Central PMCID: PMC3916833.
- 734 49. Brahmer JR, Drake CG, Wollner I, Powderly JD, Picus J, Sharfman WH, et al. Phase I  
735 study of single-agent anti-programmed death-1 (MDX-1106) in refractory solid tumors: safety,  
736 clinical activity, pharmacodynamics, and immunologic correlates. *J Clin Oncol.*  
737 2010;28(19):3167-75. doi: JCO.2009.26.7609 [pii];10.1200/JCO.2009.26.7609 [doi].

- 738 50. Leeansyah E, Svard J, Dias J, Buggert M, Nystrom J, Quigley MF, et al. Arming of MAIT  
739 Cell Cytolytic Antimicrobial Activity Is Induced by IL-7 and Defective in HIV-1 Infection. PLoS  
740 Pathog. 2015;11(8):e1005072. Epub 2015/08/22. doi: 10.1371/journal.ppat.1005072. PubMed  
741 PMID: 26295709; PubMed Central PMCID: PMC4546682.
- 742 51. Tang XZ, Jo J, Tan AT, Sandalova E, Chia A, Tan KC, et al. IL-7 licenses activation of  
743 human liver intrasinusoidal mucosal-associated invariant T cells. J Immunol. 2013;190(7):3142-  
744 52. doi: jimmunol.1203218 [pii];10.4049/jimmunol.1203218 [doi].
- 745 52. Ussher JE, Bilton M, Attwod E, Shadwell J, Richardson R, de Lara C, et al. CD161++  
746 CD8+ T cells, including the MAIT cell subset, are specifically activated by IL-12+IL-18 in a TCR-  
747 independent manner. Eur J Immunol. 2014;44(1):195-203. Epub 2013/09/11. doi:  
748 10.1002/eji.201343509. PubMed PMID: 24019201; PubMed Central PMCID:  
749 PMCPMC3947164.
- 750 53. Sattler A, Dang-Heine C, Reinke P, Babel N. IL-15 dependent induction of IL-18  
751 secretion as a feedback mechanism controlling human MAIT-cell effector functions. Eur J  
752 Immunol. 2015;45(8):2286-98. Epub 2015/06/06. doi: 10.1002/eji.201445313. PubMed PMID:  
753 26046663.
- 754 54. Zhou L, Ivanov, II, Spolski R, Min R, Shenderov K, Egawa T, et al. IL-6 programs T(H)-  
755 17 cell differentiation by promoting sequential engagement of the IL-21 and IL-23 pathways. Nat  
756 Immunol. 2007;8(9):967-74. Epub 2007/06/22. doi: 10.1038/ni1488. PubMed PMID: 17581537.
- 757 55. McGeachy MJ, Cua DJ. The link between IL-23 and Th17 cell-mediated immune  
758 pathologies. Semin Immunol. 2007;19(6):372-6. Epub 2008/03/06. doi:  
759 10.1016/j.smim.2007.10.012. PubMed PMID: 18319054.
- 760 56. Duerr RH, Taylor KD, Brant SR, Rioux JD, Silverberg MS, Daly MJ, et al. A genome-  
761 wide association study identifies IL23R as an inflammatory bowel disease gene. Science.  
762 2006;314(5804):1461-3. doi: 1135245 [pii];10.1126/science.1135245 [doi].
- 763 57. Dubinsky MC, Wang D, Picornell Y, Wrobel I, Katzir L, Quiros A, et al. IL-23 receptor (IL-  
764 23R) gene protects against pediatric Crohn's disease. Inflamm Bowel Dis. 2007;13(5):511-5.  
765 doi: 10.1002/ibd.20126 [doi].
- 766 58. Sandborn WJ, Gasink C, Gao LL, Blank MA, Johanns J, Guzzo C, et al. Ustekinumab  
767 induction and maintenance therapy in refractory Crohn's disease. N Engl J Med.  
768 2012;367(16):1519-28. doi: 10.1056/NEJMoa1203572 [doi].
- 769 59. Feagan BG, Sandborn WJ, D'Haens G, Panes J, Kaser A, Ferrante M, et al. Induction  
770 therapy with the selective interleukin-23 inhibitor risankizumab in patients with moderate-to-  
771 severe Crohn's disease: a randomised, double-blind, placebo-controlled phase 2 study. Lancet.  
772 2017;389(10080):1699-709. doi: 10.1016/S0140-6736(17)30570-6. PubMed PMID: 28411872.
- 773 60. Sands BE, Chen J, Feagan BG, Penney M, Rees WA, Danese S, et al. Efficacy and  
774 Safety of MEDI2070, an Antibody Against Interleukin 23, in Patients With Moderate to Severe  
775 Crohn's Disease: A Phase 2a Study. Gastroenterology. 2017;153(1):77-86 e6. doi:  
776 10.1053/j.gastro.2017.03.049. PubMed PMID: 28390867.



- 777 61. Almradi A, Hanzel J, Sedano R, Parker CE, Feagan BG, Ma C, et al. Clinical Trials of IL-  
778 12/IL-23 Inhibitors in Inflammatory Bowel Disease. *Biodrugs*. 2020;34(6):713-21. Epub  
779 2020/10/27. doi: 10.1007/s40259-020-00451-w. PubMed PMID: 33105016.
- 780 62. Tsuda K, Yamanaka K, Kondo M, Matsubara K, Sasaki R, Tomimoto H, et al.  
781 Ustekinumab improves psoriasis without altering T cell cytokine production, differentiation, and  
782 T cell receptor repertoire diversity. *PLoS One*. 2012;7(12):e51819. Epub 2012/12/20. doi:  
783 10.1371/journal.pone.0051819. PubMed PMID: 23251632; PubMed Central PMCID:  
784 PMCPCMC3522598.
- 785 63. Jack C, Mashiko S, Arbour N, Bissonnette R, Sarfati M. Persistence of interleukin (IL)-  
786 17A+ T lymphocytes and IL-17A expression in treatment-resistant psoriatic plaques despite  
787 ustekinumab therapy. *Br J Dermatol*. 2017;177(1):267-70. Epub 2016/09/07. doi:  
788 10.1111/bjd.15029. PubMed PMID: 27599204.
- 789 64. Leonardi CL, Kimball AB, Papp KA, Yeilding N, Guzzo C, Wang Y, et al. Efficacy and  
790 safety of ustekinumab, a human interleukin-12/23 monoclonal antibody, in patients with  
791 psoriasis: 76-week results from a randomised, double-blind, placebo-controlled trial (PHOENIX  
792 1). *Lancet*. 2008;371(9625):1665-74. Epub 2008/05/20. doi: 10.1016/S0140-6736(08)60725-4.  
793 PubMed PMID: 18486739.
- 794 65. Papp KA, Langley RG, Lebwohl M, Krueger GG, Szapary P, Yeilding N, et al. Efficacy  
795 and safety of ustekinumab, a human interleukin-12/23 monoclonal antibody, in patients with  
796 psoriasis: 52-week results from a randomised, double-blind, placebo-controlled trial (PHOENIX  
797 2). *Lancet*. 2008;371(9625):1675-84. Epub 2008/05/20. doi: 10.1016/S0140-6736(08)60726-6.  
798 PubMed PMID: 18486740.
- 799 66. Chiba A, Tajima R, Tomi C, Miyazaki Y, Yamamura T, Miyake S. Mucosal-associated  
800 invariant T cells promote inflammation and exacerbate disease in murine models of arthritis.  
801 *Arthritis Rheum*. 2012;64(1):153-61. doi: 10.1002/art.33314 [doi].
- 802 67. Guggino G, Di Liberto D, Lo Pizzo M, Saieva L, Alessandro R, Dieli F, et al. IL-17  
803 polarization of MAIT cells is derived from the activation of two different pathways. *Eur J*  
804 *Immunol*. 2017;47(11):2002-3. Epub 2017/08/18. doi: 10.1002/eji.201747140. PubMed PMID:  
805 28815578.
- 806 68. Wang H, Kjer-Nielsen L, Shi M, D'Souza C, Pediongco TJ, Cao H, et al. IL-23  
807 costimulates antigen-specific MAIT cell activation and enables vaccination against bacterial  
808 infection. *Sci Immunol*. 2019;4(41). Epub 2019/11/17. doi: 10.1126/sciimmunol.aaw0402.  
809 PubMed PMID: 31732518.
- 810 69. Lord J, Chen J, Thirlby RC, Sherwood AM, Carlson CS. T-cell receptor sequencing  
811 reveals the clonal diversity and overlap of colonic effector and FOXP3+ T cells in ulcerative  
812 colitis. *Inflamm Bowel Dis*. 2015;21(1):19-30. Epub 2014/12/02. doi:  
813 10.1097/MIB.0000000000000242. PubMed PMID: 25437819; PubMed Central PMCID:  
814 PMCPCMC4526221.
- 815 70. Dash P, Wang GC, Thomas PG. Single-Cell Analysis of T-Cell Receptor alphabeta  
816 Repertoire. *Methods Mol Biol*. 2015;1343:181-97. doi: 10.1007/978-1-4939-2963-4\_15. PubMed  
817 PMID: 26420718.

- 818 71. Lord JD, Shows DM. Thiopurine use associated with reduced B and natural killer cells in  
819 inflammatory bowel disease. *World J Gastroenterol.* 2017;23(18):3240-51. doi:  
820 10.3748/wjg.v23.i18.3240. PubMed PMID: 28566883; PubMed Central PMCID:  
821 PMCPMC5434429.
- 822 72. Reantragoon R, Corbett AJ, Sakala IG, Gherardin NA, Furness JB, Chen Z, et al.  
823 Antigen-loaded MR1 tetramers define T cell receptor heterogeneity in mucosal-associated  
824 invariant T cells. *J Exp Med.* 2013;210(11):2305-20. doi: jem.20130958  
825 [pii];10.1084/jem.20130958 [doi].
- 826 73. Lepore M, Kalinichenko A, Colone A, Paleja B, Singhal A, Tschumi A, et al. Parallel T-  
827 cell cloning and deep sequencing of human MAIT cells reveal stable oligoclonal TCRbeta  
828 repertoire. *Nat Commun.* 2014;5:3866. Epub 2014/05/17. doi: 10.1038/ncomms4866. PubMed  
829 PMID: 24832684.
- 830 74. Kim J, Chang DY, Lee HW, Lee H, Kim JH, Sung PS, et al. Innate-like Cytotoxic  
831 Function of Bystander-Activated CD8(+) T Cells Is Associated with Liver Injury in Acute  
832 Hepatitis A. *Immunity.* 2018;48(1):161-73 e5. Epub 20180102. doi:  
833 10.1016/j.immuni.2017.11.025. PubMed PMID: 29305140.
- 834 75. Allez M, Skolnick BE, Wisniewska-Jarosinska M, Petryka R, Overgaard RV. Anti-NKG2D  
835 monoclonal antibody (NNC0142-0002) in active Crohn's disease: a randomised controlled trial.  
836 *Gut.* 2017;66(11):1918-25. Epub 2016/08/05. doi: 10.1136/gutjnl-2016-311824. PubMed PMID:  
837 27489241.
- 838 76. Cepek KL, Shaw SK, Parker CM, Russell GJ, Morrow JS, Rimm DL, et al. Adhesion  
839 between epithelial cells and T lymphocytes mediated by E-cadherin and the alpha E beta 7  
840 integrin. *Nature.* 1994;372(6502):190-3. Epub 1994/11/10. doi: 10.1038/372190a0. PubMed  
841 PMID: 7969453.
- 842 77. Gold MC, McLaren JE, Reistetter JA, Smyk-Pearson S, Ladell K, Swarbrick GM, et al.  
843 MR1-restricted MAIT cells display ligand discrimination and pathogen selectivity through distinct  
844 T cell receptor usage. *J Exp Med.* 2014;211(8):1601-10. Epub 2014/07/23. doi:  
845 10.1084/jem.20140507. PubMed PMID: 25049333; PubMed Central PMCID:  
846 PMCPMC4113934.
- 847 78. Standaert-Vitse A, Jouault T, Vandewalle P, Mille C, Seddik M, Sendid B, et al. *Candida*  
848 *albicans* is an immunogen for anti-*Saccharomyces cerevisiae* antibody markers of Crohn's  
849 disease. *Gastroenterology.* 2006;130(6):1764-75. Epub 2006/05/16. doi:  
850 10.1053/j.gastro.2006.02.009. PubMed PMID: 16697740.
- 851 79. McKenzie H, Main J, Pennington CR, Parratt D. Antibody to selected strains of  
852 *Saccharomyces cerevisiae* (baker's and brewer's yeast) and *Candida albicans* in Crohn's  
853 disease. *Gut.* 1990;31(5):536-8. Epub 1990/05/01. doi: 10.1136/gut.31.5.536. PubMed PMID:  
854 2190866; PubMed Central PMCID: PMCPMC1378569.
- 855 80. Forcione DG, Rosen MJ, Kisiel JB, Sands BE. Anti-*Saccharomyces cerevisiae* antibody  
856 (ASCA) positivity is associated with increased risk for early surgery in Crohn's disease. *Gut.*  
857 2004;53(8):1117-22. Epub 2004/07/13. doi: 10.1136/gut.2003.030734. PubMed PMID:  
858 15247177; PubMed Central PMCID: PMCPMC1774147.





**Table 1: Number of colonic MAIT cell TCR $\beta$  sequences found, and their overlap with blood MAIT cells**

Biopsy	unique TCR $\beta$ CDR3 amino acid sequences				% of total unique sequences		
	Total in colon	in both colon & blood	autologous overlap	allogeneic overlap	in both colon & blood	autologous overlap	allogeneic overlap
HC	59	32	32	7	54%	54%	12%
CD all	155	78	71	20	50%	46%	13%
CD NC	78	47	41	16	60%	53%	21%
CD IC	87	37	33	7	43%	38%	8%
total	214	109	103	27	51%	48%	13%

Table 1

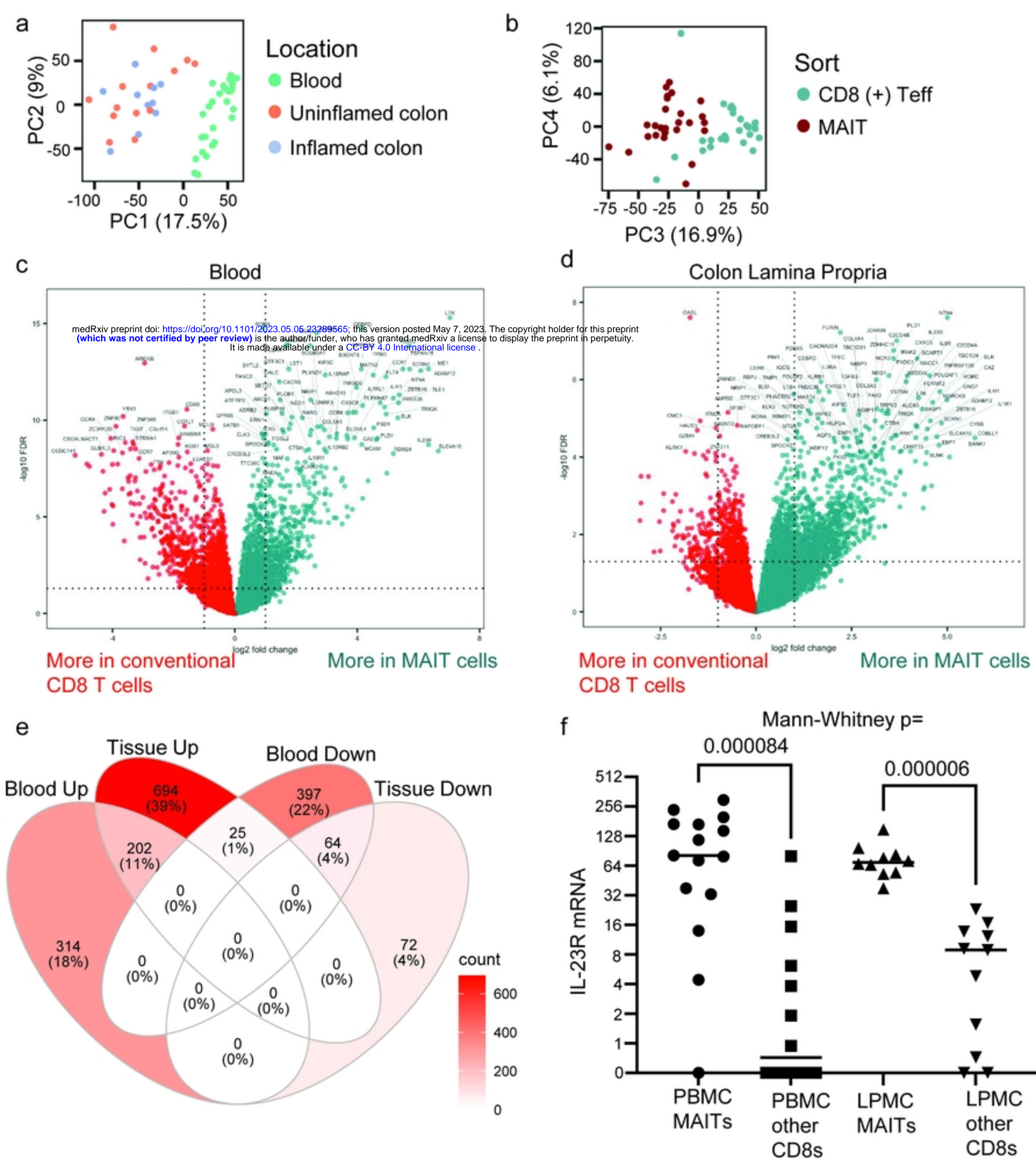


Figure 1

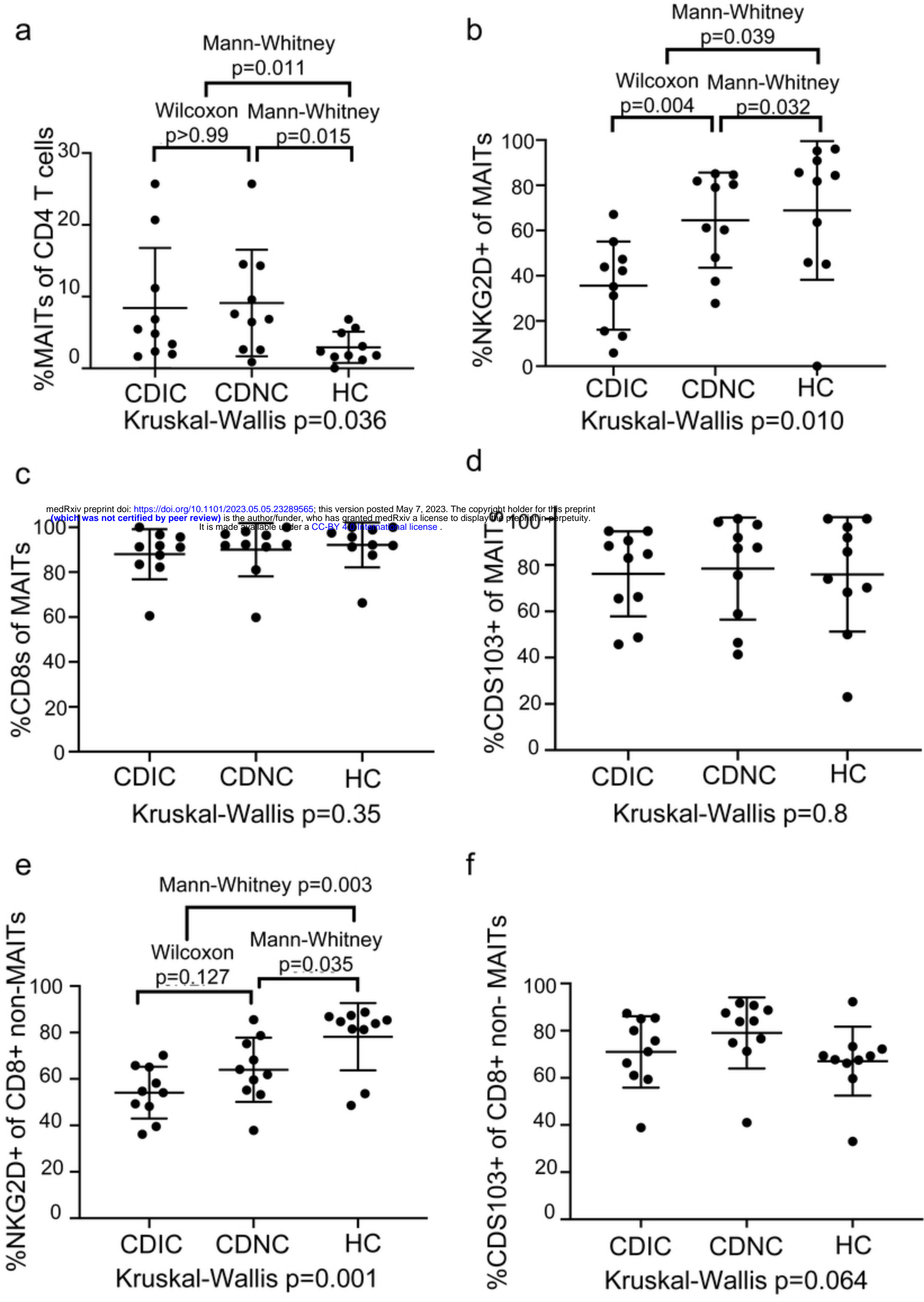


Figure 2

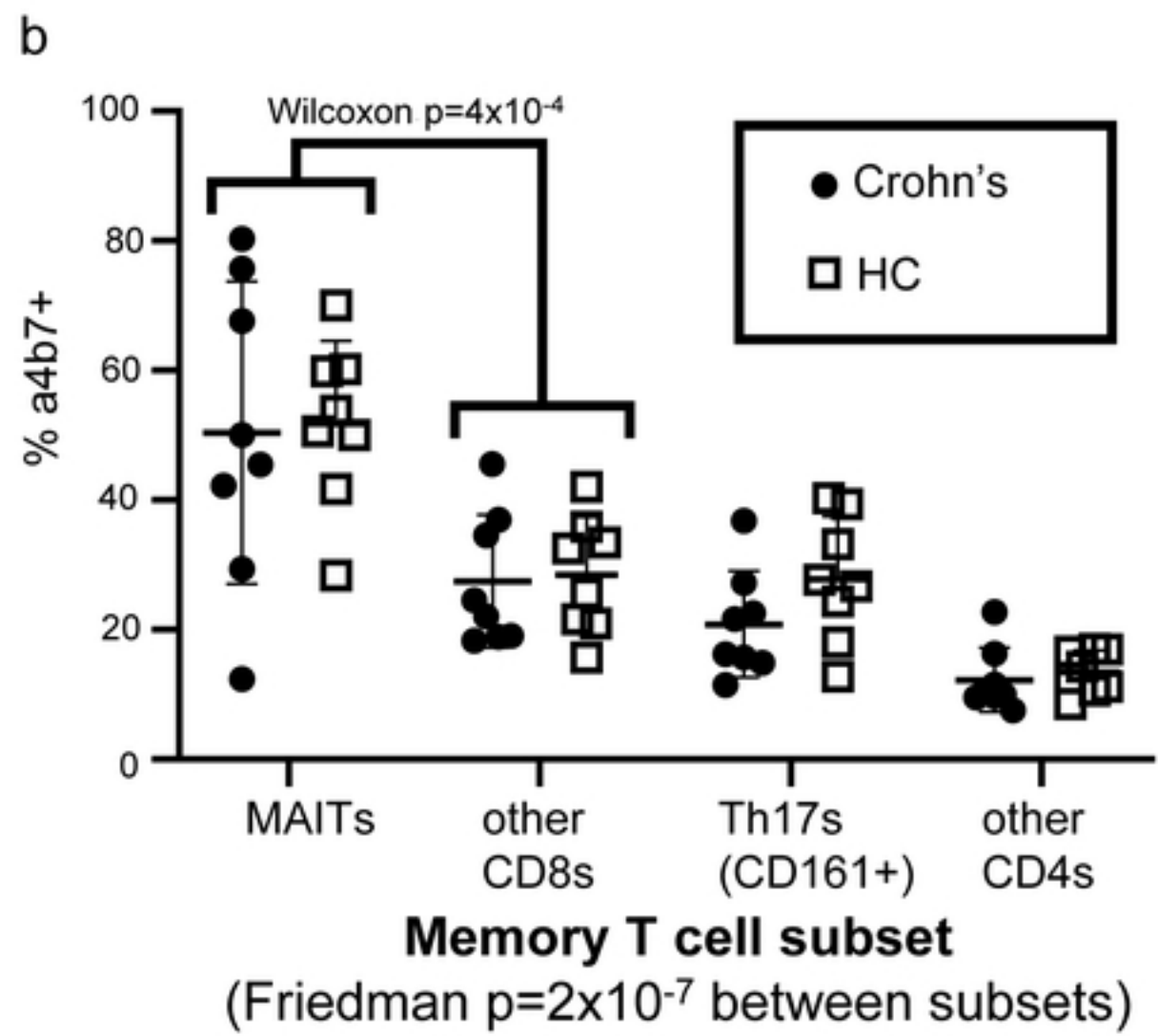
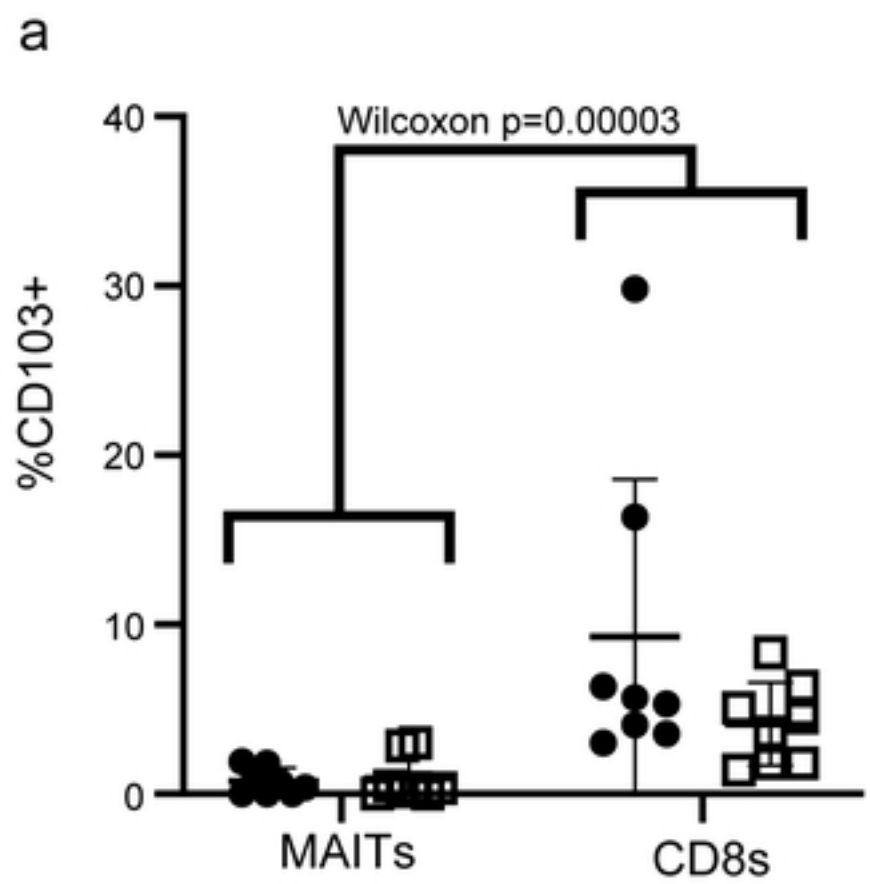


Figure 3



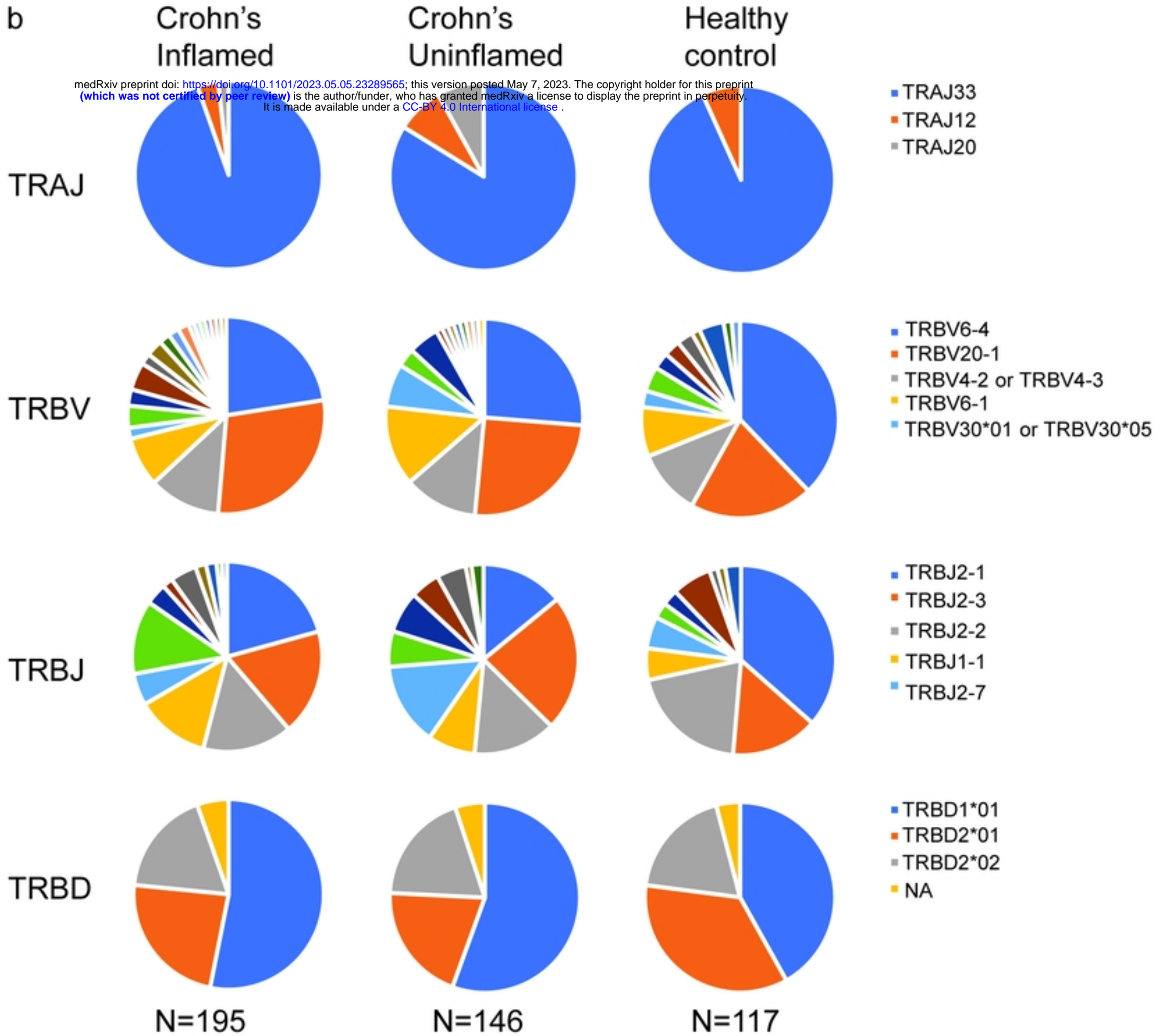


Figure 4

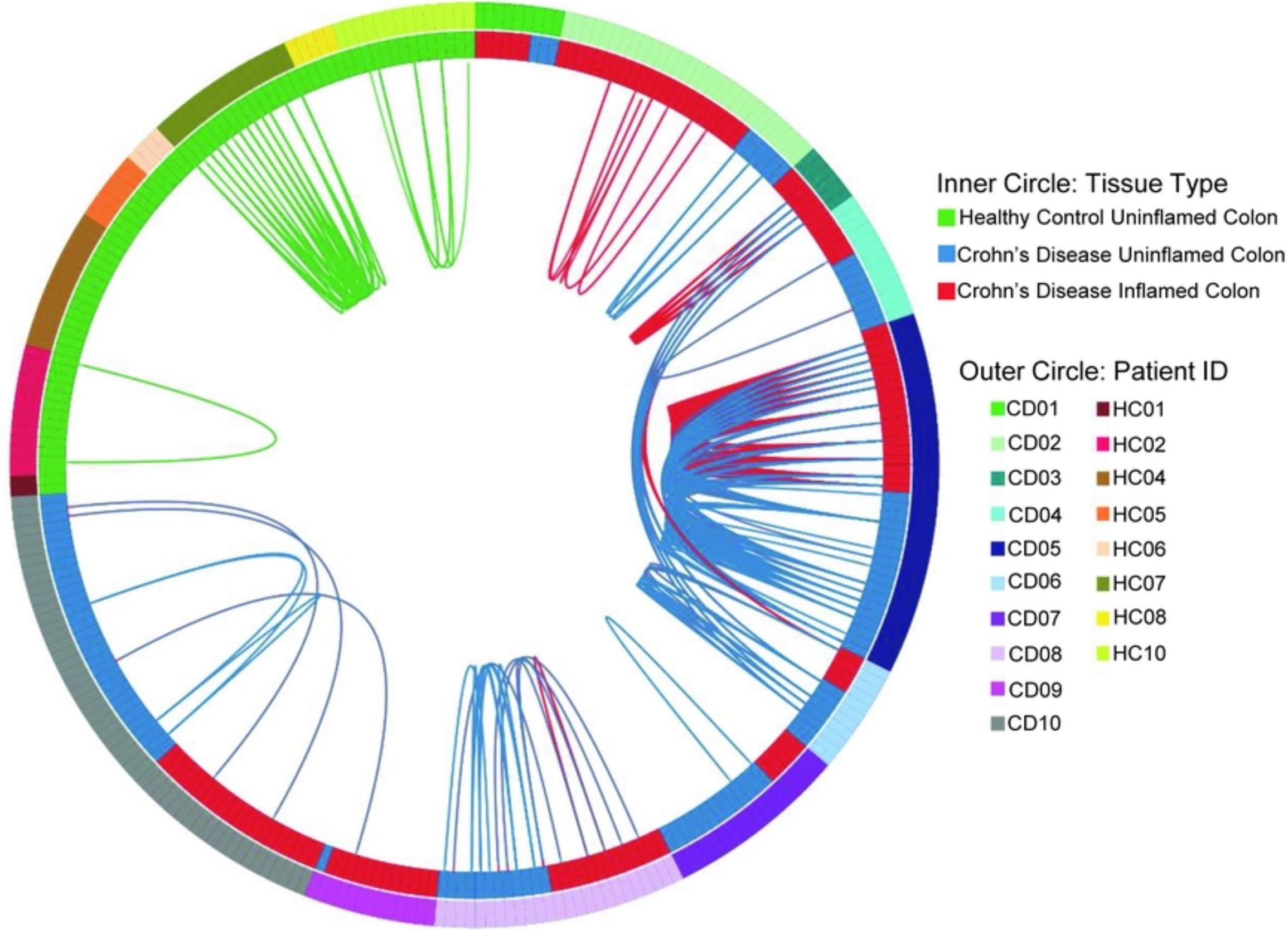
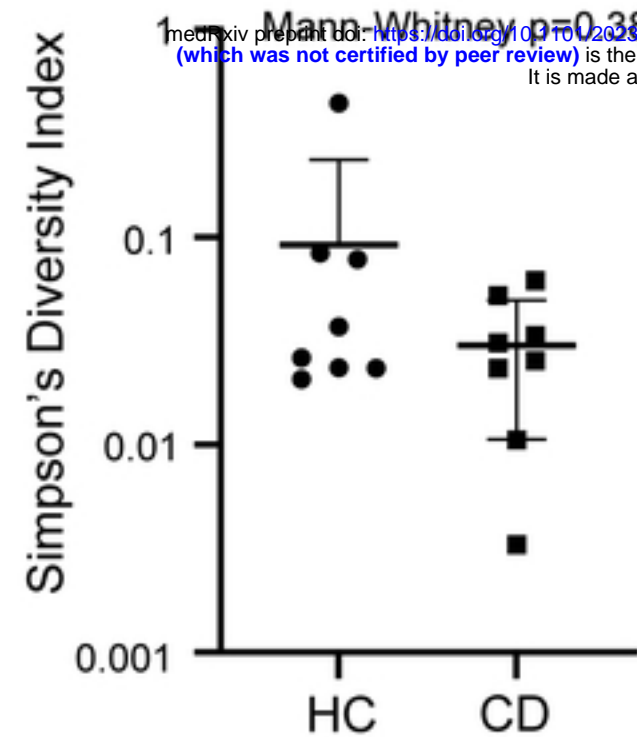


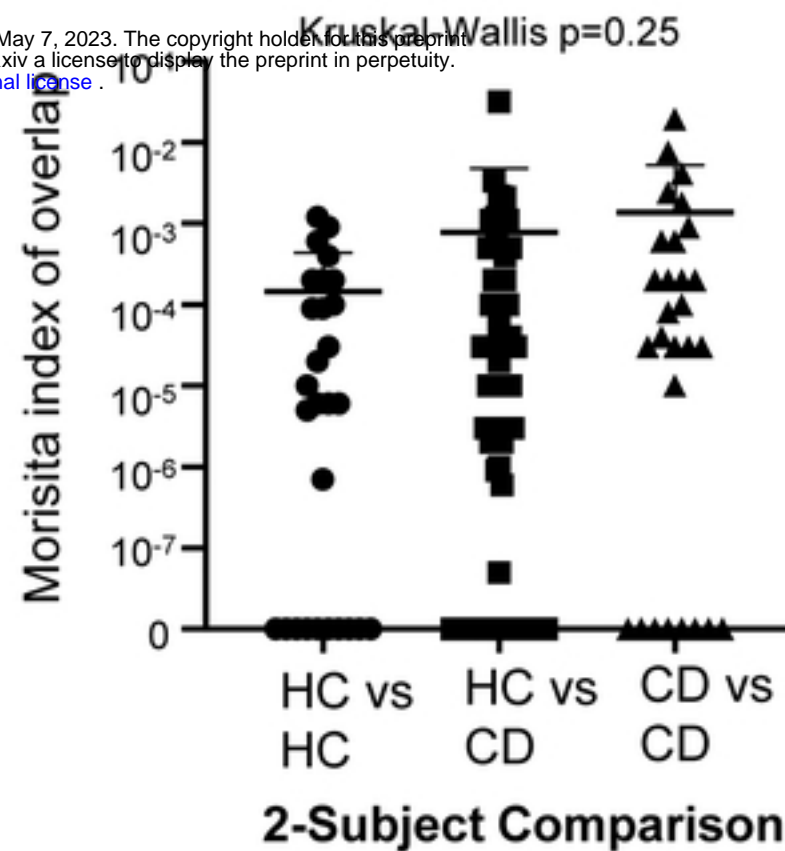
Figure 5



a



b



c

	Dx	CD	CD	CD	CD	CD	CD	CD	CD	HC	HC	HC	HC	HC	HC	HC	HC
Dx	Sample	SM10	SM12	SM14	SM16	SM2	SM4	SM6	SM8	SM11	SM13	SM15	SM1	SM3	SM5	SM7	SM9
CD	SM10	NA	0	0	1E-05	4E-05	0.0002	1E-04	3E-05	0	9E-07	0	0.0004	2E-06	0	3E-05	4E-05
CD	SM12	0	NA	3E-05	0.0041	0.0194	3E-05	0.0006	0.0024	0.0021	4E-05	3E-05	0	0.0005	2E-05	0.0011	1E-05
CD	SM14	0	3E-05	NA	0.0006	0	0	3E-05	0.0002	4E-05	6E-07	3E-06	0	0.0001	0	0.0001	3E-06
CD	SM16	1E-05	0.0041	0.0006	NA	0	8E-05	0.0002	0.0076	0.0002	3E-06	0.001	0	0.0022	1E-05	0.0012	0.0005
CD	SM2	4E-05	0.0194	0	0	NA	0	0.0018	0.0002	3E-05	0	0	0	1E-05	0	1E-05	0
CD	SM4	0.0002	3E-05	0	8E-05	0	NA	0	0	0	2E-06	0	6E-05	0.0002	0	1E-04	0.0001
CD	SM6	1E-04	0.0006	3E-05	0.0002	0.0018	0	NA	0.0009	1E-05	1E-06	0	0.0005	0.0005	0	0.0008	0.0002
CD	SM8	3E-05	0.0024	0.0002	0.0076	0.0002	0	0.0009	NA	2E-06	5E-08	0.0033	3E-05	0.0319	0	0.0011	0.0013
HC	SM11	0	0.0021	4E-05	0.0002	3E-05	0	1E-05	2E-06	NA	3E-05	9E-05	0	9E-05	0	0.0002	6E-06
HC	SM13	9E-07	4E-05	6E-07	3E-06	0	2E-06	1E-06	5E-08	3E-05	NA	0	6E-06	6E-06	0	5E-06	7E-07
HC	SM15	0	3E-05	3E-06	0.001	0	0	0	0.0033	9E-05	0	NA	0	0.0006	0	0.0002	1E-05
HC	SM1	0.0004	0	0	0	0	6E-05	0.0005	3E-05	0	6E-06	0	NA	0	0	0.0004	0.0002
HC	SM3	2E-06	0.0005	0.0001	0.0022	1E-05	0.0002	0.0005	0.0319	9E-05	6E-06	0.0006	0	NA	2E-05	0.0012	0.0009
HC	SM5	0	2E-05	0	1E-05	0	0	0	0	0	0	0	0	2E-05	NA	0	0
HC	SM7	3E-05	0.0011	0.0001	0.0012	1E-05	1E-04	0.0008	0.0011	0.0002	5E-06	0.0002	0.0004	0.0012	0	NA	0.0001
HC	SM9	4E-05	1E-05	3E-06	0.0005	0	0.0001	0.0002	0.0013	6E-06	7E-07	1E-05	0.0002	0.0009	0	0.0001	NA

Figure 6