

1 Using comprehensive disease modeling to assess the burden of
2 substandard and falsified oxytocin in Kenya

3 *Authors and affiliations:*

4 **Sabra Zaraa**, PharmD, MPH, School of Pharmacy, University of Washington, Seattle, WA,
5 USA. szaraa@uw.edu. (206)468-9262: **Corresponding author**

6 **Josh Carlson**, PhD, MPH, School of Pharmacy, University of Washington, Seattle, WA, USA.
7 carlojj@uw.edu

8 **Elisabeth Vodicka**, PhD, MHA, School of Pharmacy, University of Washington, Seattle, WA,
9 USA and PATH, 2201 Westlake Avenue, Suite 200, Seattle, WA 98109, USA.
10 evodicka@gmail.com

11 **Andy Stergachis**, PhD, MS, BPharm, School of Pharmacy and School of Public Health,
12 University of Washington, Seattle, WA, USA. stergach@uw.edu

13 ABSTRACT

14 **BACKGROUND** Substandard and falsified (SF) oxytocin threatens the health of pregnant
15 patients, resulting in prolonged illness and severe avertable disease outcomes. Additionally, SF
16 oxytocin leads to an economic burden on the healthcare system and society due to increased
17 treatment costs and productivity losses from sickness and premature death. While oxytocin is
18 widely accessible, there are concerns about its quality and the burden of SF oxytocin remains
19 understudied.

20 **OBJECTIVE**

21 To develop an impact model to estimate the health and economic burden of SF oxytocin in
22 Kenya. This paper presents the methodology and the findings of assessing SF oxytocin in Kenya.

23 **METHODS**

24 A decision tree model was developed to compare health outcomes and costs with and without SF
25 oxytocin from a healthcare sector and societal perspective. This model incorporates healthcare
26 seeking behavior, epidemiological parameters, medicine quality, health outcomes and costs. The
27 main assumption of the model is that lower active pharmaceutical ingredient (API) percentage
28 results in lower medicine efficacy. Sensitivity analyses were performed to evaluate parameter
29 uncertainty.

30 **FINDINGS**

31 For 1.1 million pregnant patients delivering in a healthcare facility in Kenya and a 7%
32 prevalence of oxytocin with 75%-90% API, the model estimates that the presence of SF oxytocin
33 in Kenya is associated with 1,484 additional cases of mild PPH, 583 additional cases of severe PPH,
34 15 hysterectomies, 32 deaths, 633 DALYs accrued, 560 QALYs lost, and 594 years of life lost
35 yearly. The economic burden of SF oxytocin was \$1,970,013 USD from a societal perspective,

36 including \$1,219,895 from the healthcare sector perspective. Productivity losses included \$12,069
37 due to missed days of work and \$725,979 due to premature death.

38 CONCLUSIONS

39 By providing local estimates on the burden of SF medicines, the model can inform key policy
40 makers on the magnitude of their impact and support initiatives that facilitate greater access to
41 quality medicines.

42 **Health and economic burden of substandard and falsified oxytocin in Kenya**

43 1. INTRODUCTION

44
45 Maternal mortality is a major global health concern, especially in low- and middle-income
46 countries (LMICs).(1) Although global maternal mortality declined by 38% between 2000 and 2017,
47 it still remains alarmingly high. Each year, nearly 295,000 women die during and following
48 pregnancy and childbirth with 94% of these deaths occurring in LMICs.(1) In Kenya, the death rate
49 for pregnancy-related causes is 355 per 100,000 live births.(2) This equals approximately 5,000 girls
50 and women dying annually of pregnancy and childbirth complications, most of which could be
51 prevented.(3)

52 Postpartum hemorrhage (PPH), defined as a blood loss of 500mL or more following
53 childbirth, is a leading direct cause of maternal mortality globally, accounting for 27.1% of all
54 maternal deaths.(4) Over 14 million women experience PPH every year causing 70,000 maternal
55 deaths due to bleeding complications related to pregnancy and childbirth.(5) Women who survive
56 PPH are at subsequent risk for severe maternal morbidities including organ dysfunctions and long-
57 term disabilities.(6,7) When PPH occurs, early identification and management of bleeding using
58 evidence-based guidelines can prevent most PPH-related severe complications and deaths.(8)
59 According to guidelines, the use of uterotonics is key for both the prevention and management of
60 PPH. Specifically, oxytocin is recommended by the World Health Organization (WHO) as the drug
61 of choice for preventing and treating PPH. (9) Oxytocin is included in the WHO Essential Medicines
62 list and in the United Nations Commission on Life-Saving commodities for Women and Children
63 list. (9–11)

64 While oxytocin is widely accessible, there are concerns about its quality in LMICs.
65 (10,12,13) A systematic review of the literature reported a median prevalence of 45.6% (range 0-

66 80%) of substandard and falsified (SF) oxytocin in LMICs mainly due to inadequate levels of active
67 pharmaceutical ingredients (API) among tested samples. (13) One study conducted in Ghana
68 reported that 74% of oxytocin purchased at private pharmacies did not meet manufacturer
69 specifications for percentage of API.(14) Due to lack of sufficient reporting on medication quality,
70 inconsistencies in study sampling methods and variability in product testing, the estimates of SF
71 oxytocin prevalence have limitations and are likely “just a small fraction of the total problem”.(15)

72 Research groups have estimated the health and economic impact of selected SF medicines
73 especially antimalarials and antibiotics. However, the burden of SF oxytocin remains an
74 understudied problem.(16,17) A review of specific causes of maternal deaths in Kenya showed that
75 PPH is an issue that needs to be addressed and that over 80% of maternal deaths are attributed to
76 poor quality of care. (18,19) In recognition of the need to combat the threat of SF medicines and to
77 improve the quality of PPH care, we developed a comprehensive disease model to generate country-
78 specific evidence on the health and economic burden of SF oxytocin used for the prevention and
79 treatment of PPH among pregnant women from the first stage of labor until discharge or maternal
80 death. This paper describes the methodology of the model and findings for Kenya.

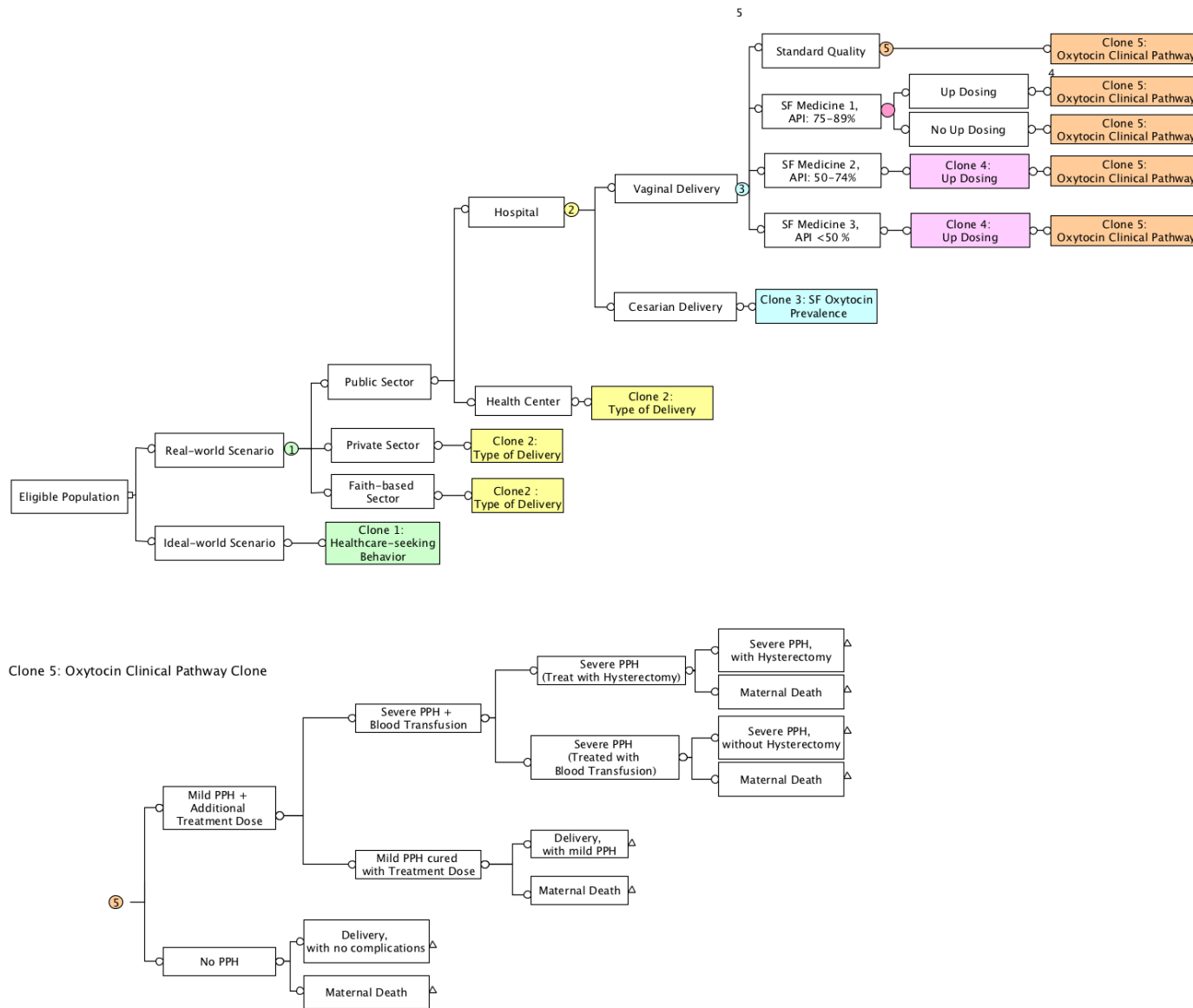
81 2. MATERIALS AND METHODS

82 *Model Structure*

83 A decision tree model was developed based on previous SF burden models, economic
84 evaluations of uterotonics in the prevention and treatment of PPH, and a review of clinical practice
85 guidelines. (20–26) The model estimates the health and economic burden of SF oxytocin from a
86 healthcare sector and societal perspective over a lifetime horizon using Microsoft Excel software
87 (Microsoft Corp., Redmond, WA, USA). To estimate the incremental health outcomes and costs of
88 SF oxytocin, our model compares two mutually exclusive scenarios: a real-world scenario based on

89 the estimated prevalence of SF oxytocin and an ideal-world scenario where the prevalence of SF
90 oxytocin is zero.
91 Figure 1 shows the schematic representation of the model structure and model inputs.

92 *Figure 1 Decision tree model to estimate the health and economic burden of SF oxytocin*



94 A cohort of pregnant women of mean childbearing age, i.e., 28 years old, going into first
95 stage of labor at a healthcare facility enters the model and delivers at a private, public or faith-based
96 healthcare.(27) The cohort of women is divided into two groups: vaginal deliveries and cesarean
97 deliveries. In the model, each group receives a prophylactic dose of oxytocin as recommended by
98 the WHO for PPH prevention. (9)

99 *Model Inputs*

100 There are four quality categories of oxytocin based on the percentage of the active pharmaceutical
101 ingredient (API):

- 102 • Standard quality: 90 -110% of the API as defined by the United States Pharmacopeia (USP)
103 (28)
- 104 • Substandard quality and falsified level 1 (SF1): 75 – 89% of the API required by the USP
105 standard (28)
- 106 • Substandard quality and falsified level 2 (SF2): 50 – 74% of the API required by the USP
107 standard (21)
- 108 • Substandard quality and falsified level 3 (SF3): < 50% of the API required by the USP
109 standard (21)

110 A proportion of providers are expected to increase the dose (up dose) category SF1, SF2 or SF3
111 drugs based on a study that found that 41% of the healthcare providers at a healthcare facility in
112 Nigeria doubled the WHO-recommended dose and 10% used two to six vials instead of one to
113 achieve the desired outcome.(29)

114 After the initial prophylactic dose, a woman can either have an adequate response to the treatment
115 and is discharged or she can experience mild PPH (blood loss <500mL) (9,30) and is given another
116 dose of oxytocin as a first line of PPH treatment following WHO and UK guidelines.(31–33) After

117 a treatment dose of oxytocin, bleeding either stops and the woman is discharged, or the woman
118 does not respond to the treatment and severe PPH persists, in which case, she typically receives
119 intrauterine balloon tamponade, exploration of uterine cavity, uterine compression sutures and a
120 blood transfusion.(34,35) After treatment for persistent severe PPH, the bleeding stops and the
121 woman is discharged; or the treatment fails and a hysterectomy is performed.(35) After the
122 hysterectomy, the two outcomes modeled are either maternal survival with secondary infertility or
123 maternal death.

124 Each branch in the pathway is associated with costs and health outcomes, which are accumulated
125 over the time horizon of the model, i.e., lifetime, and are discounted at 3%. Incremental cases of
126 mild PPH, severe PPH, hysterectomies and deaths were obtained by multiplying branch probabilities
127 for each health outcome for the real-world scenario and for the ideal-world scenario and the
128 difference was calculated.

129 The decision tree incorporates the following health states:

- 130 1- Delivery, with no complications
- 131 2- Delivery, with mild PPH
- 132 3- Severe PPH without hysterectomy
- 133 4- Severe PPH with hysterectomy
- 134 5- Maternal death

135 Each of these health states was associated with a utility and a disability weight. Utility weights were
136 obtained from a cost-effectiveness study comparing oxytocin and carbetocin where EQ-5D-5L was
137 used to collect primary data on vaginal and cesarian deliveries with and without PPH that was then
138 converted to utility scores.(36) Utility weights for hysterectomy and secondary infertility were
139 obtained from cost-effectiveness studies examining the treatment of heavy menstrual bleeding and

140 menorrhagia.(37,38) Based on the Briones et al. economic evaluation for PPH prophylaxis, we
141 assumed that delivery with no complications, delivery with mild PPH and severe PPH without
142 hysterectomy and severe PPH with hysterectomy lasted 6 weeks. After the six weeks, we assumed
143 that the utility weight returned to 1, i.e., “perfect health”, for all the aforementioned health states,
144 except for severe PPH with hysterectomies, where the utility weight for secondary infertility was
145 assigned for the remaining of the woman’s lifetime.(38)

146 We estimated YLLs associated with each health state then and QALYs and DALYs were calculated
147 by multiplying the number of years that the women were expected to be alive (converted from the
148 six-week cycle length used in the analysis) by utility scores and disability weights, respectively.

149 Six categories of model inputs were included: health-seeking behavior, epidemiological parameters,
150 medicine quality, treatment efficacy, outcome measures and costs. Health-seeking behavior inputs
151 consist of the percentage of women who have a healthcare facility delivery in the private, public or
152 faith-based sector. Epidemiological parameters include the annual number of pregnant women
153 delivering in healthcare facilities, percentage of hospitals and health centers and/or clinics in the
154 public and private sector, probability of hysterectomy if severe PPH occurs, probability of PPH-
155 related mortality and probability of dying by age (using life tables). Medicine quality inputs include
156 the percentage of standard quality medicines and percentage of SF medicines depending on their
157 levels of API. Treatment efficacy included oxytocin treatment effects, probabilities of mild and
158 severe PPH with and without oxytocin, and outcomes measures included health state utilities and
159 disability weights.

160 We gathered these inputs from peer-reviewed literature, public institutions, recent Kenya
161 Demographics and Health Surveys data (DHS) and secondary data collection from in-country
162 stakeholders in Kenya.(2) The secondary data was obtained through Kenyan subject matter experts

163 in the field of medicine quality and maternal health. The prevalence of SF medicines specifically
 164 was the best available estimate provided by them; however, it is based on a small sample size for the
 165 entire country, which makes the input highly uncertain.

166 As for cost inputs, using healthcare sector and societal perspectives, direct and indirect costs were
 167 considered in the analysis. The direct medical costs included were drug costs, labor costs
 168 (corresponding to time spent by healthcare providers) and hospital costs associated with
 169 hospitalizations, operating units, blood transfusions, invasive procedures, and hysterectomy costs.
 170 Direct medical costs were either derived from the literature or secondary data collection from a
 171 Kenyan technical working group. Indirect costs consisted of productivity losses incurred by patients
 172 due to days missed at work or premature maternal death. Productivity losses were estimated using
 173 the human capital approach based on gross domestic product (GDP) per capita, duration of lost
 174 productivity, and rate of employment. Productivity losses due to premature death were also estimated
 175 using the human capital approach, life of years lost and employment rate.⁽³⁹⁾ All monetary units
 176 were converted from Kenyan Shillings (KES) to US Dollars (USD) using the average annual
 177 exchange rate for 2022 (1 USD = 122.935 KES) and were rounded to the nearest thousands. ⁽⁴⁰⁾
 178 Base case inputs were identified as the “most likely” estimates for each data input. For each
 179 parameter, we also identified an uncertainty range to capture potential variation from base case
 180 values. Uncertainty ranges were either formal estimates of variance when available (e.g., 95%
 181 confidence intervals), an evidence-based assumption or a $\pm 10\%$ variation from the base case.

182 All model inputs, low and high range estimates and distributions are shown in Table 1.

183 Table 1 Model inputs: base-case values, uncertainty ranges, distributional forms and sources

Parameters	Base-case Value	Uncertainty range (low, high)	Distribution	Sources
<i>Population and health-seeking behavior in Kenya</i>				
Eligible population: Number of pregnant people at	1,599,306	(1,507,450,	Normal	(41)

third stage of labor		1,723,692)		
Percentage of healthcare facility delivery	75%	(67, 79)	Beta	(41)
Percentage of home delivery	25%	(21, 33)	Beta	(41)
Percentage of pregnant people who deliver in the public sector	70%	(69, 74)	Beta	(41)
Percentage of pregnant people who deliver in the private sector, i.e., private hospital	17%	(15, 18)	Beta	(41)
Percentage of pregnant people who deliver in “Other” sector, if any	13%	(11, 14)	Beta	(41)
Proportion of Hospitals in Public Sector	40%	(36,44)	Beta	(42)
Proportion of Public Health Centers in Public Sector	60%	(54,66)	Beta	(42)
Percentage of people who have vaginal delivery	83.6%	(81, 97.9)	Beta	(41)
Percentage of people who have cesarian delivery	16.4%	(2.1, 19)	Beta	(41)
Percentage of healthcare providers who up dose oxytocin	41%	(45.9, 56.1)	Beta	
Number of doses used to compensate for SF oxytocin during up dosing approach				
SF medicines with 75-89% API	2	(1, 3)	Normal	(29)
SF medicines with 50-74% API	3	(1, 5)	Normal	(29)
SF medicines with less than 50% API	6	(1, 6)	Normal	(29)
Medicine Quality (National Average)				
Prevalence of standard quality medicines (API 90% - 110%)	93%	(86, 100)	Beta	(43)
Prevalence of SF1 medicines (API ≥ 75 - <90%)	7%	(0, 14)	Beta	(43)
Prevalence of SF2 medicines (API ≥ 50 - <75%)	0%	N/A	Beta	(43)
Prevalence of SF3 medicines (API <50%)	0%	N/A	Beta	(43)
Model assumption: SF medicine efficacy reduction				
Efficacy reduction (75–90% API)	30%	(15, 45) Error! Bookmark not defined.	Beta	(21)
Efficacy reduction (50–75% API)	60%	(45, 75) Error! Bookmark not defined.	Beta	(21)
Efficacy reduction <50%	100%	N/A	Beta	(21)
Health outcomes				
Vaginal delivery: Probability parameters				
Probability of mild PPH occurrence /needing additional uterotonics with oxytocin	0.122	(0.089, 0.172)	Beta	(44)
Probability of mild PPH occurrence/needing additional uterotonics without oxytocin	0.239	(0.174, 0.337) Error!	Beta	(44)

		Bookmark not defined.		
Probability of severe PPH occurrence / needing transfusion with oxytocin	0.029	(0.02, 0.041)	Beta	(44)
Probability of severe PPH occurrence /needing transfusion without oxytocin	0.048	(0.033,0.069)	Beta	(44)
Probability of hysterectomy if severe PPH	0.016	(0.144, 0.0176)	Beta	(45)
Probability of maternal death if hysterectomy	0.00292	(0.0006, 0.00378)	Beta	(46)
Cesarian delivery				
Probability of mild PPH occurrence with oxytocin	0.442	(0.247, 0.791)	Beta	(47)
Probability of mild PPH occurrence without treatment	0.7	(0.39, 0.8)	Beta	(48)
Probability of severe PPH occurrence / needing additional uterotonics with oxytocin	0.374	(0.272, 0.524)	Beta	(47)
Probability of severe PPH occurrence / needing additional uterotonics without oxytocin	0.598	(0.4352, 0.8384)	Beta	(48)
Probability of hysterectomy if severe PPH	0.027	(0.0243, 0.0297)	Beta	(49)
Probability of maternal deaths if severe PPH/hysterectomy	0.054	(0.021, 0.13)	Beta	(50,51)
Vaginal and C-section deliveries				
Numbers of days missed at work due to mild PPH	2.98	(2.94, 3.08)	Normal	(52)
Number of days missed at work due to severe PPH	3.67	(3.56, 3.78)	Normal	(52)
Numbers of days missed at work due to hysterectomy	7.8	(0.4, 28)	Normal	(53,54)
Quality of life parameters				
Utility weight in vaginal delivery, no complication (6 weeks)	0.85	N/A	Beta	(36)
Utility weight, mild PPH episode (7 days)	0.59	N/A	Beta	(55)
Utility weight, severe PPH episode (21 days)	0.47	N/A		(55)
Utility weight in cesarian delivery, no complications (6 weeks)	0.83	N/A	Beta	(55)
Utility weight hysterectomy, short term (21 days)	0.42	N/A	Beta	(55)
Utility weight hysterectomy, long term	0.88	N/A	Beta	(38)
Disability weight in vaginal delivery, no complication	0.002	N/A	Gamma	(55)
Disability weight for maternal hemorrhage (less than 1L blood loss)	0.114	(0.078, 0.159)	Gamma	(56)
Disability weight for maternal hemorrhage	0.324	(0.220, 0.442)	Gamma	(56)

(Greater than 1L blood loss)				
Disability weight hysterectomy	0.274	N/A	Gamma	(55)
Disability weight in cesarian delivery, no complication	0.004	N/A	Gamma	(55)
Disability weight of secondary infertility after hysterectomy (Proxy weight of infertility due to puerperal sepsis)	0.005	(0.002, 0.011)	Gamma	(56)
Utility weight in vaginal delivery, with PPH episode	0.59	0.03	Beta	(36)
Utility weight in cesarian delivery, no complications	0.47	0.02	Beta	(36)
Utility weight in cesarian delivery, with PPH episode	0.83	0.15	Beta	(36)
Utility weight hysterectomy, short term	0.42	(0.49, 0.74)	Beta	(37)
Utility weight hysterectomy, long term	0.88	(0.75, 0.95)	Beta	(38)
Disability weight in vaginal delivery, no complication	0.41	(0.219, 0.451)	Gamma	(55)
Disability weight for maternal hemorrhage (less than 1L blood loss)	0.114	(0.078, 0.159)	Gamma	(56)
Disability weight for maternal hemorrhage (Greater than 1L blood loss)	0.324	(0.220, 0.442)	Gamma	(56)
Disability weight hysterectomy	0.58	(0.522, 0.638)	Gamma	(55)
Disability weight in cesarian delivery, no complication	0.58	(0.522, 0.638)	Gamma	(55)
Disability weight of secondary infertility after hysterectomy (Proxy weight of infertility due to puerperal sepsis)	0.005	(0.002, 0.011)	Gamma	(56)
Population characteristics				
Mother's mean childbearing age	28.6	(14, 50)	Normal	(27,57)
Employment Rate	49.9%	(29.4, 61.6)	Beta	(58)
Costs (\$)				
Cost of oxytocin per treatment (\$), national average	0.39	(0.03-1.35)	Gamma	(59-61)
Cost of oxytocin per treatment (\$), public sector	0.029	(0.0232, 0.0348)	Gamma	(61)
Cost of oxytocin per treatment (\$), private sector	1.354	(1.0832, 1.6248)	Gamma	(61)
Cost of oxytocin per treatment (\$), faith-based sector	0.672	(0.16-1.354)	Gamma	(60)
Cost of additional oxytocin and mild PPH management (Public sector)	77.61	(50-500)	Gamma	(34,59)
Cost of additional oxytocin and mild PPH management (Private sector)	400	(320, 480)	Gamma	(34,59)

Cost of additional oxytocin and mild PPH management (Faith-based sector)	238.8	(77.61, 400)	Gamma	(34,59)
Cost of Cost of severe PPH management (public)	1,343	(77.61-1,611)	Gamma	(34,59)
Cost of Cost of severe PPH management (private)	2,686	(77.61-3,223)	Gamma	(34,59)
Cost of Cost of severe PPH management (faith based)	2,014	(77.61-2,417)	Gamma	(34,59,62)
Cost of hysterectomy (public)	662	(640, 2,074) Error! Bookmark not defined.	Gamma	(59,63)
Cost of hysterectomy (private)	2,074	(1,659, 2,489) Error! Bookmark not defined.	Gamma	(34)
Cost of hysterectomy (faith based)	1,368	(1,094, 1,642) Error! Bookmark not defined.	Gamma	(59,62)
Discount rate	3%	(0, 5)		(64)

184

185 *Model Outcomes*

186 The primary outputs of the model are estimates of the health and economic burden based on the
 187 increased morbidity and mortality due to SF oxytocin.

188 *a. Health outcomes*

189 Health outcomes estimated by the model are incremental cases of mild PPH, severe PPH,
 190 hysterectomies, deaths, years of life lost (YLLs), additional DALYs incurred and QALYs los due to
 191 the presence of SF oxytocin.

192 *b. Economic outcomes*

193 Economic outcomes in the model are estimated from a healthcare sector and societal perspective
 194 and included total costs for the real-world scenario with presence of SF oxytocin, total costs for the
 195 ideal-world scenario without SF oxytocin and incremental costs due to the presence of SF oxytocin.

196 *Assumptions*

197 The main assumption in this model is the relationship between the API percentage and medicine
198 efficacy, based on a burden model developed by Bath et al. (21) This assumption states that standard
199 quality medicines have 100% medicine efficacy. Medicines in the SF level 1 category with API
200 between 75 and 89%, have a 30% efficacy reduction. Medicines in the SF 2 category with API
201 between 50 and 74%, have a 60% efficacy reduction and medicines in the SF 3 category with API
202 less than 50%, have 100% efficacy reduction, i.e., equivalent to not receiving treatment.
203 Additionally, we assumed that oxytocin was the only uterotonic used for the prevention and
204 management of PPH and that the background risk factors for PPH were comparable among women
205 in the real-world scenario and ideal-world scenario.

206 *Sensitivity analyses*

207 To quantify the impact of parametric uncertainty on model results, a one-way sensitivity
208 analysis (OWSA) and a probabilistic sensitivity analysis (PSA) were performed.
209 For each outcome, an OWSA assessed the influence of uncertainty in individual model parameters
210 on model results. This was achieved by varying each fixed parameter around the maximum and
211 minimum of its uncertainty interval and plotting the model results in a Tornado diagram.

212 The PSA was conducted to evaluate the range of plausible outcomes given joint uncertainty
213 in all inputs. We used Monte Carlo simulations with 10,000 iterations, where inputs were randomly
214 and simultaneously generated within a specific distribution.(65) Epidemiological inputs were
215 assumed to be normally distributed. Probabilities and percentages were assumed to have a beta
216 distribution for binomial data inputs or a Dirichlet distribution for multinomial data inputs. Cost
217 inputs were assumed to have a gamma distribution.

218 *Model Validation*

219 A model validation was performed to evaluate how well the model represents the health and
220 economic burden of SF oxytocin and whether the results of the analysis can serve as a basis for
221 decision making. (66) First, we verified that the model was parsimonious and sufficient to answer
222 the research question by incorporating the main assumptions about SF medicines and the current
223 care of disease progression and treatment strategies.(67) Because there are no other model that
224 examined SF oxytocin specifically, this was performed by comparing our model characteristics and
225 structure to existing models and approaches that estimated the impact of SF medicines and economic
226 evaluations of different uterotonics for the prophylaxis and treatment of PPH during third stage of
227 labor.

228 We assessed internal validity and consistency by checking that the mathematical equations,
229 calculations and code were accurate and consistent with the specifications of the model.

230 We performed external validation and consistency, whereby we compared the model outputs for the
231 real-world scenario with current in-country maternal outcomes to ensure that the model adequately
232 reflects the current situation in Kenya. This was performed by comparing the existing estimates of
233 number of PPH episodes, hysterectomies and PPH-related deaths in Kenya as a benchmark for our
234 model predictions.

235 Three technical working group meetings were held with key stakeholders from Kenya between
236 January and December 2021 to gather subject matter experts' opinion on data inputs for the model
237 and assumptions. All data inputs and uncertainty ranges were reviewed and discussed by local
238 experts and policymakers

239 from public health and public policy agencies and universities to reach consensus on the most locally
240 representative and recent data to be used in the model.

241 3. RESULTS

242 *Deterministic base case results*

243 The health and economic outcomes for the real-world and ideal-world scenario for SF
 244 oxytocin burden are presented in Tables 2 and 3. For an annual cohort of pregnant women and a
 245 prevalence of 7% SF oxytocin, the model estimates that the presence of SF oxytocin in Kenya is
 246 associated with 1,484 additional cases of mild PPH, 583 additional cases of severe PPH, 15
 247 hysterectomies, 32 deaths, 633 DALYs accrued, 560 QALYs lost, and 594 years of life lost per year
 248 compared to the ideal-world scenario without SF oxytocin.

249

250 Table 2 Results describing the health burden of SF oxytocin in Kenya for an annual cohort of
 251 pregnant women

	Life Years (discounted)	QALYs (discounted)	DALYs (discounted)	Deaths	Mild PPH	Severe PPH	Hysterectomies
Presence of SF	22,601,637	18,983,693	14,766,130	1,931	174,703	35,714	950
No SF	22,602,231	18,984,253	14,765,497	1,900	173,219	35,132	935
Increment	(594)	(560)	633	32	1,484	583	15

252

253 In addition to the health burden, these health outcomes contributed to a total estimated economic
 254 burden of \$1,970,013 USD in Kenya from a societal perspective over a lifetime horizon.
 255 Approximately 37% of the economic burden (\$738,049) was due to productivity losses. These
 256 productivity losses included \$12,069 due to missed days at work as a result of care seeking and
 257 convalescence, and \$725,979 economic losses due to premature death. The remaining 63% of the
 258 economic burden (\$1,219,895) was due to direct medical costs from a healthcare sector perspective.
 259 The direct medical costs included drug costs (\$11,645), mild PPH management costs (\$227,675),
 260 severe PPH management costs (\$965,395) and hysterectomy management costs (\$15,180). Costs

- 261 and health outcomes occurring in the first 6 weeks were not discounted. QALYs, DALYs, life years
- 262 and costs due to productivity loss due to premature death were discounted at 3%

263

264 Table 3 Results describing the economic burden of SF oxytocin in Kenya for an annual cohort of pregnant women

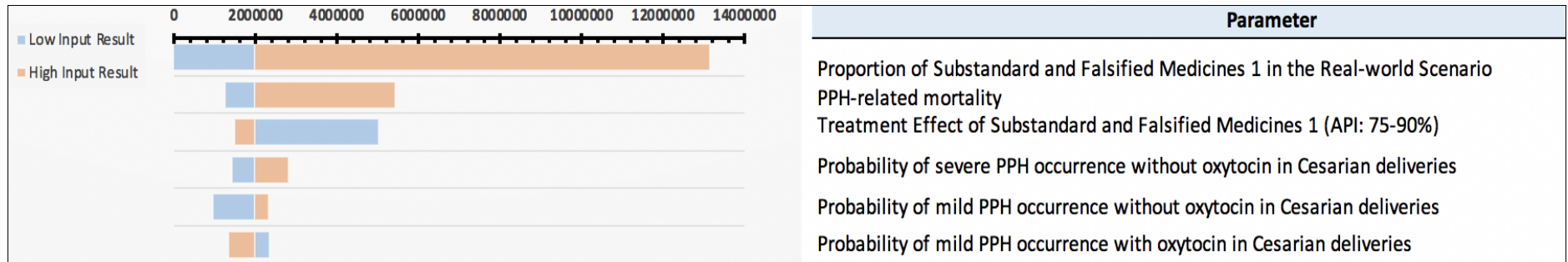
	Type of costs	Cost of drugs	Mild PPH	Severe PPH	Hysterectomy	Premature deaths (discounted)	Total Direct Medical Costs	Total Indirect Costs	Total Costs
<i>Presence of SF</i>	Direct Medical Costs	\$ 417,381	\$ 26,794,431	\$ 59,168,490	\$ 944,167	N/A	\$ 87,324,468	N/A	\$ 91,079,370
	Productivity Loss	N/A	\$ 321,596	\$ 396,060	\$ 22,392	\$ 44,495,750	N/A	\$ 50,966,394	\$ 50,966,394
	Total	\$ 417,381	\$ 27,116,027	\$ 59,564,550	\$ 966,559	\$ 44,495,750	\$ 87,324,468	\$ 50,966,394	\$ 142,045,763
<i>No SF</i>	Direct Medical Costs	\$ 405,736	\$ 26,566,755	\$ 58,203,094	\$ 928,987		\$ 86,104,573	N/A	\$ 86,104,573
	Productivity Loss	N/A	\$ 316,349	\$ 389,598	\$ 22,032	\$ 43,769,771	N/A	\$ 48,041,209	\$ 48,041,209
	Total	\$ 405,736	\$ 26,883,105	\$ 58,592,692	\$ 951,019	\$ 43,769,771	\$ 86,104,573	\$ 48,041,209	\$ 134,145,782
<i>Incremental</i>	Direct Medical Costs	\$ 11,644	\$ 227,675	\$ 965,396	\$ 15,180	N/A	\$ 1,219,895	N/A	\$ 4,974,797
	Productivity Loss	N/A	\$ 5,247	\$ 26,462	\$ 360	\$ 725,979	N/A	\$ 2,925,185	\$ 2,925,185
	Total	\$ 11,645	\$ 232,922	\$ 971,858	\$ 15,540	\$ 725,979	\$ 1,219,895	\$ 2,925,185	\$ 7,899,981

265

266 **Sensitivity Analysis**267 *One-way sensitivity analysis*

268 The impact of a one-way sensitivity analysis on incremental societal costs are presented in a tornado diagram (Figure 2). The analysis
 269 found that the most sensitive variables were the proportion of SF 1 in the real-world scenario followed by PPH-related mortality and
 270 treatment effect of SF 1, i.e., efficacy reduction. s

271 *Figure 2 Tornado Diagram for the total costs due to SF oxytocin using oxytocin-specific model*



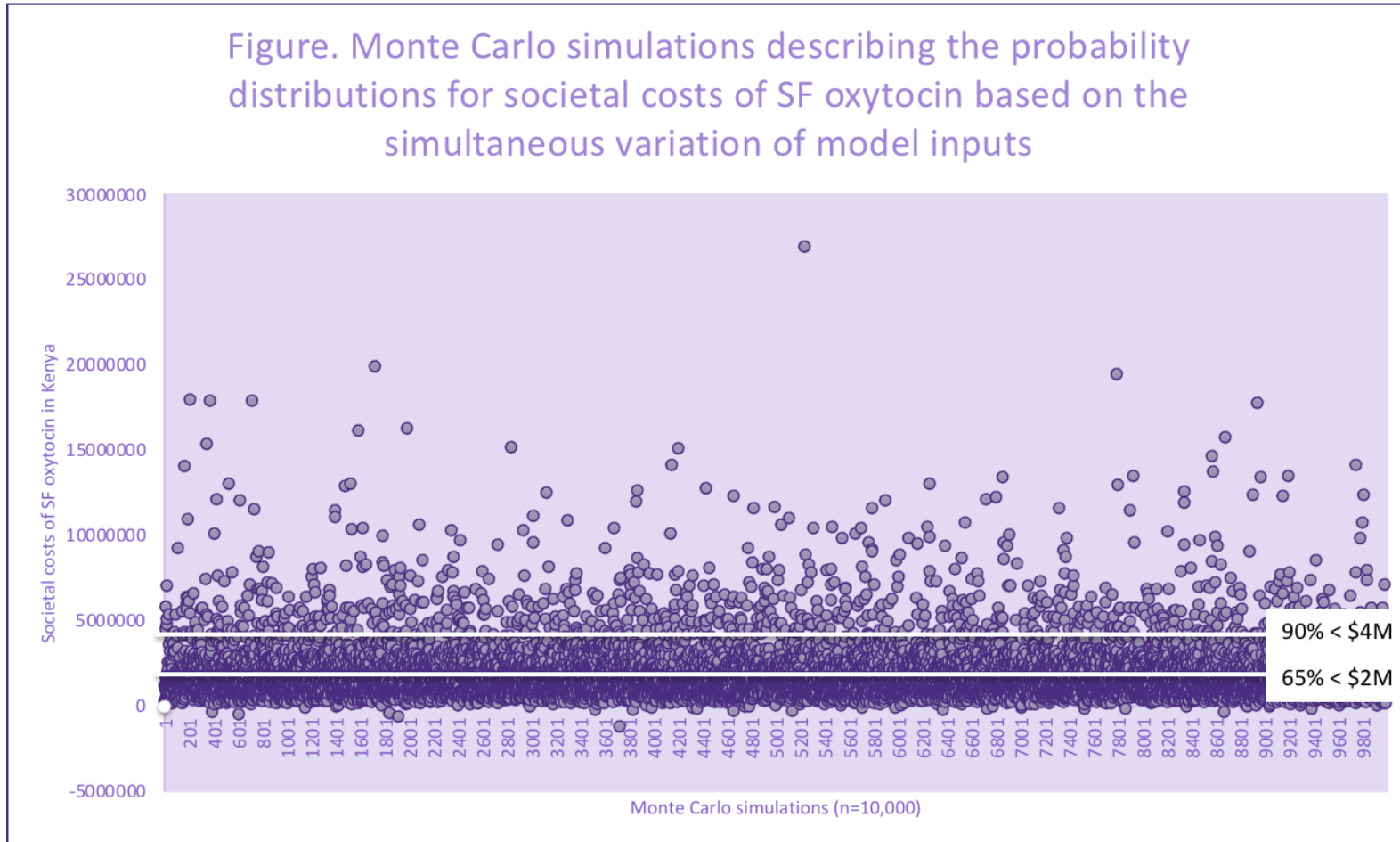
272
 273 In the event of higher prevalence of SF oxytocin with API between 75% and 89% (SF1) that we used in our base case analysis, significant
 274 increases in morbidity and costs would occur. With 14% prevalence of SF1 medicine, SF oxytocin can be associated with up to an additional
 275 15,094 cases of mild PPH, 3,625 cases of severe PPH, 96 cases of hysterectomies and 196 deaths compared to base case results where we
 276 assumed 7% prevalence. The economic burden can also vary between \$0 and \$ 13,133,145 USD from a societal perspective.

277 *Probabilistic sensitivity analysis*

278 A probabilistic sensitivity analysis (PSA) was also performed and the results of 10,000 runs are plotted in Figure 3 for societal costs. We
 279 notice that 65% of the simulations are below \$2M and 90% of simulations are below \$4M. Across all simulations, SF oxytocin was found

280 to be associated with a mean societal cost of \$2M and resulted in a mean increase of 1,482 mild PPH cases, 596 severe PPH cases, 16
281 hysterectomies and 33 deaths.

282 Figure 3 Monte Carlo simulations describing the probability distributions for societal costs of SF oxytocin based on the simultaneous
283 variation of model inputs



284

286 4. DISCUSSION

287 The decision tree model can be used to estimate the health and economic burden of SF
288 oxytocin in Kenya from the healthcare sector and societal perspectives. The model follows a cohort
289 of pregnant women of mean childbearing age in a real-world scenario where SF oxytocin is
290 compared to an ideal-world scenario without SF oxytocin. In both scenarios, the model incorporates
291 women's care-seeking behaviors, their mode of delivery, the progression from first to third stage of
292 labor and its management, the treatment outcomes, and associated costs.

293 Our findings indicate that every year, the presence of 7% SF oxytocin with API between
294 75% and 89% in Kenya contributes to the burden of PPH, the leading cause of maternal mortality in
295 the country, with a total of 10,580 episodes of severe bleeding due to SF oxytocin under base case
296 assumptions. A recent study using the Kenyan Confidential Enquiry into Maternal Deaths (CEMD),
297 a database that includes all maternal deaths reported through the District Health Information system
298 (DHIS2), recently estimated that between 2014 and 2017, 728 deaths of a total of 2,292 maternal
299 deaths were due to PPH, or an average of 182 PPH-related death, annually.(68) Data frames and
300 time periods are different, so comparison should be cautious, but contrasting these findings with our
301 model estimates of 105 deaths due to PPH per year indicates that SF oxytocin may be contributing
302 significantly to annual PPH-related maternal mortality in Kenya. (68) That is particularly important
303 as the 7% prevalence of SF is highly uncertain and may not be representative of exposures across
304 the country. This input was based on the Kenyan technical group's expertise and not empirical
305 studies. The samples collected for medicine quality assessments by the Pharmacy and Poison Board
306 are typically small (n=100s) for the entire country and across many different pharmaceutical
307 categories. Because our findings are based on the assumed prevalence of 7% SF oxytocin, it is
308 important to interpret the findings of this study cautiously. Uncertainty was incorporated in the

309 OWSA with a low value of 0% and a high value of 14%, and SF oxytocin prevalence was found to
310 have the most effect on the health and economic burden of SF oxytocin which varies drastically if
311 the prevalence was significantly higher or lower. The economic burden of SF oxytocin is also
312 substantial as our model estimates that almost USD \$8 million are expended on direct and indirect
313 costs every year due to SF medications. In our analysis, the main cost drivers are the management
314 of severe PPH, followed by productivity losses due to premature deaths. Despite the common
315 practice of updosing in Kenya, our model estimated that drug costs constituted only 0.5% of the
316 total cost of PPH management. These findings align with a study conducted in the United Kingdom
317 that found that drug costs also only accounted for 0.5% of the total cost of PPH management,
318 suggesting that the bulk of direct costs is allocated to medical procedures and to staff labor
319 necessary to stop severe PPH. (69)

320 Our model builds upon previous efforts by Bath et al. and Ozawa et al. that estimated the
321 health and economic burden of antimalarials and antibiotics. (21,70) For example, the efficacy
322 reduction assumption utilized in these models are comparable to the assumptions we use. However,
323 there are several limitations in our model. Our model uses decision tree modeling and cannot account
324 for national, regional and patient-specific variations, i.e., heterogeneity within the cohort of pregnant
325 women. However, we can change the mean age and the number of pregnancies of a cohort. Several
326 studies found that hypertension, prolonged labor, advanced maternal age, multiple pregnancies were
327 among the most common risk factors for PPH. (71–73) Because the same population is entering the
328 model in two different scenarios, i.e., real-world and ideal-world scenario, the distribution of risk
329 factors for PPH among women is similar; therefore, these factors are not accounted for in the model.
330 Another limitation of our analysis is that we assumed that oxytocin was the only uterotonic used for
331 the management of third stage labor, as it is WHO's recommendation for the prevention and

332 management of PPH. We are not accounting for women who may be receiving other uterotonic
333 such as misoprostol, carbetocin or ergometrin. With this approach, we may be overestimating the
334 cost of maternal healthcare as oxytocin is more expensive to acquire, store and handle than some of
335 the other uterotonic used for the same purpose. Oxytocin may also not always be the best option
336 especially for women with pre-existing conditions or complications such as hypertension, heart
337 disease or allergies so we may also be overestimating maternal health outcomes. Lastly, the quality
338 of the data inputs inherently limits the findings of our model. We performed an extensive literature
339 search to ensure the most recent and highest quality peer-reviewed data were used. We also held
340 three meetings with subject matter experts from Kenya to validate all data inputs and their ranges to
341 ensure local relevance and performed a OWSA and a PSA with wide ranges to address uncertainty.
342 Our oxytocin-specific model can be used in Kenya and other countries where maternal mortality
343 is high to provide country-specific estimates of avertable health outcomes and costs due to SF
344 oxytocin or to evaluate the impact of interventions combatting SF oxytocin. The findings can be
345 leveraged by policy makers to respond with an evidence-based strategy to combat SF oxytocin at
346 the country level.

347 5. CONCLUSIONS

348
349 The Kenyan government's efforts over the last decade to invest in maternal health led to a 30-percent
350 decline from 488 deaths per 100,000 live births in 2010 to 342 deaths per 100,000 live births in 2017
351 but the maternal mortality ratio still remains high compared to the Sustainable Development Goal
352 to reduce the global maternal mortality ratio to less than 70 per 100,000 live births, with no country
353 having a maternal mortality ratio exceeding twice the global average.(1,74,75) The majority of
354 maternal deaths are due to PPH and can be prevented if access to high quality care and oxytocics
355 during and after childbirth is available. Our study demonstrates that SF oxytocin contributes

356 significantly to the health and economic burden of maternal morbidity and mortality and emphasizes
357 the importance of reducing the health and economic burden of SF oxytocin through providing access
358 to better quality medications.

359 [Acknowledgements](#)

360 We thank the members of the technical working group in Kenya led by Edward Abwao, Karim
361 Wanga and Zahida Qureshi for their support with secondary data collection and the contributions
362 from the PQM+ program (Leslie Rider-Araki and Souly Phanouvang) for facilitating country
363 engagement with Kenya.

364 BIBLIOGRAPHY

- 365 1. World Health Organization. Trends in maternal mortality 2000 to 2017: estimates by
366 WHO, UNICEF, UNFPA, World Bank Group and the United Nations Population
367 Division: executive summary [Internet]. 2019 [cited 2023 Jan 15]. Available from:
368 <https://apps.who.int/iris/handle/10665/327596>
- 369 2. Kenya National Bureau of Statistics (KNBS) and ICF Macro. Kenya Demographic and
370 Health Survey 2008-09 [Internet]. [cited 2022 Oct 7]. Available from:
371 <https://dhsprogram.com/methodology/survey/survey-display-566.cfm>
- 372 3. World Health Organization. Maternal mortality [Internet]. 2019 [cited 2023 Jan 15].
373 Available from: <https://www.who.int/news-room/fact-sheets/detail/maternal-mortality>
- 374 4. Say L, Chou D, Gemmill A, Tunçalp Ö, Moller AB, Daniels J, et al. Global causes of
375 maternal death: A WHO systematic analysis. *Lancet Glob Heal* [Internet]. 2014 [cited
376 2021 Feb 11];2(6). Available from: <https://pubmed.ncbi.nlm.nih.gov/25103301/>
- 377 5. World Health Organization. HRP Project Brief. WHO postpartum haemorrhage (PPH)
378 summit [Internet]. 2022 Sep [cited 2023 Jan 27]. Available from:
379 [https://www.who.int/publications/m/item/who-postpartum-haemorrhage-\(pph\)-summit](https://www.who.int/publications/m/item/who-postpartum-haemorrhage-(pph)-summit)
- 380 6. Khan KS, Wojdyla D, Say L, Gülmezoglu AM, Van Look PF. WHO analysis of causes of
381 maternal death: a systematic review. *Lancet* (London, England) [Internet]. 2006 Apr 1
382 [cited 2023 Jan 15];367(9516):1066–74. Available from:
383 <https://pubmed.ncbi.nlm.nih.gov/16581405/>
- 384 7. Say L, Chou D, Gemmill A, Tunçalp Ö, Moller AB, Daniels J, et al. Global causes of
385 maternal death: a WHO systematic analysis. *Lancet Glob Heal* [Internet]. 2014 [cited
386 2023 Jan 5];2(6). Available from: <https://pubmed.ncbi.nlm.nih.gov/25103301/>
- 387 8. Bohren MA, Lorencatto F, Coomarasamy A, Althabe F, Devall AJ, Evans C, et al.
388 Formative research to design an implementation strategy for a postpartum hemorrhage
389 initial response treatment bundle (E-MOTIVE): study protocol. *Reprod Health* [Internet].
390 2021 Dec 1 [cited 2023 Jan 23];18(1). Available from:
391 <https://pubmed.ncbi.nlm.nih.gov/34261508/>
- 392 9. Dept. of Reproductive Health and Research W. WHO recommendations for the prevention
393 and treatment of postpartum haemorrhage. *World Heal Organ* [Internet]. 2012 [cited 2023
394 Jan 15];41. Available from:
395 http://www.who.int/reproductivehealth/publications/maternal_perinatal_health/9789241548502/en/
- 396 8502/en/
- 397 10. UNFPA. UN Commission on Life-Saving Commodities for Women and Children
398 [Internet]. 2012 [cited 2023 Jan 15]. Available from:
399 <https://www.unfpa.org/publications/un-commission-life-saving-commodities-women-and-children>
- 400 children
- 401 11. World Health Organization. WHO Model Lists of Essential Medicines [Internet]. 2021
402 [cited 2023 Jan 23]. Available from: <https://www.who.int/groups/expert-committee-on-selection-and-use-of-essential-medicines/essential-medicines-lists>
- 403 essential-medicines-lists
- 404 12. Ammerdorffer A, Rushwan S, Timms R, Wright P, Beeson L, Devall AJ, et al. Quality of
405 oxytocin and tranexamic acid for the prevention and treatment of postpartum hemorrhage
406 in Kenya, Nigeria, South Africa, and Tanzania. *Int J Gynaecol Obstet* [Internet]. 2022 Jun
407 1 [cited 2023 Jan 23];158 Suppl 1(S1):46–55. Available from:
408 <https://europepmc.org/articles/PMC9543376>

- 409 13. Torloni MR, Freitas CG, Kartoglu UH, Gülmezoglu AM, Widmer M. Quality of oxytocin
410 available in low- and middle-income countries: A systematic review of the literature
411 [Internet]. Vol. 123, BJOG: An International Journal of Obstetrics and Gynaecology.
412 Blackwell Publishing Ltd; 2016 [cited 2021 Feb 11]. p. 2076–86. Available from:
413 <https://pubmed.ncbi.nlm.nih.gov/27006180/>
- 414 14. Stanton C, Koski A, Cofie P, Mirzabagi E, Grady BL, Brooke S. Uterotonic drug quality:
415 an assessment of the potency of injectable uterotonic drugs purchased by simulated clients
416 in three districts in Ghana. *BMJ Open* [Internet]. 2012 [cited 2023 Jan 15];2(3). Available
417 from: [/pmc/articles/PMC3346944/](https://pubmed.ncbi.nlm.nih.gov/27006180/)
- 418 15. WHO | WHO Global Surveillance and Monitoring System for substandard and falsified
419 medical products. WHO [Internet]. 2019 [cited 2020 Dec 23]; Available from:
420 <http://www.who.int/medicines/regulation/ssffc/publications/gsms-report-sf/en/>
- 421 16. Ozawa S, Evans DR, Higgins CR, Laing SK, Awor P. Development of an agent-based
422 model to assess the impact of substandard and falsified anti-malarials: Uganda case study.
423 *Malar J* [Internet]. 2019 Jan 9 [cited 2022 Jul 12];18(1). Available from:
424 <https://pubmed.ncbi.nlm.nih.gov/30626380/>
- 425 17. Ozawa S, Higgins CR, Nwokike JI, Phanouvong S. Modeling the Health and Economic
426 Impact of Substandard and Falsified Medicines: A Review of Existing Models and
427 Approaches. *Am J Trop Med Hyg* [Internet]. 2022 Jul 1 [cited 2022 Sep 21];107(1):14–
428 20. Available from: <https://pubmed.ncbi.nlm.nih.gov/35895357/>
- 429 18. Kagia JW. Maternal Mortality Causality a Kenyan Experience. *Linacre Q* [Internet]. 2011
430 May [cited 2023 Jan 15];78(2):211. Available from: [/pmc/articles/PMC6027029/](https://pubmed.ncbi.nlm.nih.gov/30626380/)
- 431 19. UNFPA Kenya. Maternal Health [Internet]. 2023 [cited 2023 Jan 27]. Available from:
432 <https://kenya.unfpa.org/en/topics/maternal-health-16>
- 433 20. Zaraa Sabra, Carlson Josh, Abwao Edward, Qureshi Zahida, Wanga Karim, Vodicka
434 Elisabeth, Phanouvong Souly, Stergachis Andy ... Estimating the health and economic
435 burden of substandard and falsified medicines: Oxytocin case study. *Submitt to MDM*
436 *Journal*. 2023;
- 437 21. World Health Organization. A study on Public Health and Socio-economic Impact of
438 Substandard and Falsified Medical Products [Internet]. World Health Organization 2017.
439 2017 [cited 2022 Jul 11]. Available from: <http://apps.who.int/bookorders>.
- 440 22. Caceda SI, Ramos RR, Saborido CM. Pharmacoeconomic study comparing carbetocin
441 with oxytocin for the prevention of hemorrhage following cesarean delivery in Lima,
442 Peru. *J Comp Eff Res* [Internet]. 2018 Jan 1 [cited 2023 Jan 15];7(1):49–55. Available
443 from: <https://pubmed.ncbi.nlm.nih.gov/29264934/>
- 444 23. Gil-Rojas Y, Lasalvia P, Hernández F, Castañeda-Cardona C, Rosselli D. Cost-
445 effectiveness of Carbetocin versus Oxytocin for Prevention of Postpartum Hemorrhage
446 Resulting from Uterine Atony in Women at high-risk for bleeding in Colombia. *Rev Bras*
447 *Ginecol Obstet* [Internet]. 2018 May 1 [cited 2023 Jan 15];40(5):242–50. Available from:
448 <https://pubmed.ncbi.nlm.nih.gov/29913541/>
- 449 24. Henríquez-Trujillo AR, Lucio-Romero RA, Bermúdez-Gallegos K. Analysis of the cost-
450 effectiveness of carbetocin for the prevention of hemorrhage following cesarean delivery
451 in Ecuador. *J Comp Eff Res* [Internet]. 2017 [cited 2023 Jan 15];6(6):529–36. Available
452 from: <https://pubmed.ncbi.nlm.nih.gov/28884585/>
- 453 25. Higgins L, Mechery J, Tomlinson AJ. Does carbetocin for prevention of postpartum
454 haemorrhage at caesarean section provide clinical or financial benefit compared with

- oxytocin? J Obstet Gynaecol [Internet]. 2011 [cited 2023 Jan 15];31(8):732–9. Available from: <https://pubmed.ncbi.nlm.nih.gov/22085065/>
26. Luni Y, Borakati A, Matah A, Skeats K, Eedarapalli P. A prospective cohort study evaluating the cost-effectiveness of carbetocin for prevention of postpartum haemorrhage in caesarean sections. J Obstet Gynaecol [Internet]. 2017 Jul 4 [cited 2023 Jan 15];37(5):601–4. Available from: <https://pubmed.ncbi.nlm.nih.gov/28317421/>
27. Kenya: mean age of childbearing 2010-2021 | Statista [Internet]. [cited 2022 Oct 7]. Available from: <https://www.statista.com/statistics/1281232/mean-age-of-childbearing-in-kenya/>
28. The 2003 Edition of the United States Pharmacopeia and National Formulary (USP-NF) [Internet]. 2013 [cited 2022 Jul 12]. Available from: <https://www.newhope.com/supply-news-amp-analysis/2003-edition-united-states-pharmacopeia-and-national-formulary-usp-nf-avail>
29. Ejekam CS, Okafor IP, Anyakora C, Ozomata EA, Okunade K, Oridota SE, et al. Clinical experiences with the use of oxytocin injection by healthcare providers in a southwestern state of Nigeria: A cross-sectional study. PLoS One [Internet]. 2019 Oct 1 [cited 2022 Sep 21];14(10):e0208367. Available from: <https://journals.plos.org/plosone/article?id=10.1371/journal.pone.0208367>
30. Anderson JM, Etches D. Prevention and Management of Postpartum Haemorrhage. BJOG An Int J Obstet Gynaecol [Internet]. 2017 Apr 1 [cited 2023 Jan 15];124(5):e106–49. Available from: <https://onlinelibrary.wiley.com/doi/full/10.1111/1471-0528.14178>
31. Philippine Obstetrical and Gynecological Society (POGS). Clinical Practice Guidelines [Internet]. [cited 2023 Jan 15]. Available from: <https://pogsinc.org/clinical-practice-guidelines/>
32. Royal College of Obstetricians and Gynaecologists (RCOG). Prevention and Management of Postpartum Haemorrhage (Green-top Guideline No. 52) [Internet]. 2016 [cited 2023 Jan 15]. Available from: <https://www.rcog.org.uk/guidance/browse-all-guidance/green-top-guidelines/prevention-and-management-of-postpartum-haemorrhage-green-top-guideline-no-52/>
33. Gallos ID, Williams HM, Price MJ, Merriel A, Gee H, Lissauer D, et al. Uterotonic agents for preventing postpartum haemorrhage: a network meta-analysis. Cochrane database Syst Rev [Internet]. 2018 Apr 25 [cited 2022 Oct 3];4(4). Available from: <https://pubmed.ncbi.nlm.nih.gov/29693726/>
34. Kenya Technical Working Group, Subject Matter Experts.
35. Kayem G, Dupont C, Bouvier-Colle MH, Rudigoz RC, Deneux-Tharaux C. Invasive therapies for primary postpartum haemorrhage: a population-based study in France. BJOG [Internet]. 2016 Mar 1 [cited 2023 Jan 15];123(4):598–605. Available from: <https://pubmed.ncbi.nlm.nih.gov/26113356/>
36. Briones JR, Talungchit P, Thavorncharoensap M, Chaikledkaew U. Economic evaluation of carbetocin as prophylaxis for postpartum hemorrhage in the Philippines. BMC Health Serv Res [Internet]. 2020 Dec 1 [cited 2023 Feb 3];20(1). Available from: <https://pubmed.ncbi.nlm.nih.gov/3427804/>
37. Roberts TE, Tsourapas A, Middleton LJ, Champaneria R, Daniels JP, Cooper KG, et al. Hysterectomy, endometrial ablation, and levonorgestrel releasing intrauterine system (Mirena) for treatment of heavy menstrual bleeding: cost effectiveness analysis. BMJ [Internet]. 2011 Apr 30 [cited 2023 Jan 15];342(7804). Available from: <https://pubmed.ncbi.nlm.nih.gov/21111111/>

- 501 <https://pubmed.ncbi.nlm.nih.gov/21521730/>
- 502 38. Hurskainen R, Teperi J, Rissanen P, Aalto AM, Grenman S, Kivelä A, et al. Clinical
503 outcomes and costs with the levonorgestrel-releasing intrauterine system or hysterectomy
504 for treatment of menorrhagia: randomized trial 5-year follow-up. *JAMA* [Internet]. 2004
505 Mar 24 [cited 2023 Jan 15];291(12):1456–63. Available from:
506 <https://pubmed.ncbi.nlm.nih.gov/15039412/>
- 507 39. Vos T, Allen C, Arora M, Barber RM, Brown A, Carter A, et al. Global, regional, and
508 national incidence, prevalence, and years lived with disability for 310 diseases and
509 injuries, 1990–2015: a systematic analysis for the Global Burden of Disease Study 2015.
510 *Lancet* [Internet]. 2016 Oct 8 [cited 2023 Jan 15];388(10053):1545–602. Available from:
511 <http://www.thelancet.com/article/S0140673616316786/fulltext>
- 512 40. CEIC Data. Kenya Exchange Rate against USD, 1957 – 2023 | [Internet]. 2022 [cited
513 2023 Jan 30]. Available from: [https://www.ceicdata.com/en/indicator/kenya/exchange-](https://www.ceicdata.com/en/indicator/kenya/exchange-rate-against-usd)
514 [rate-against-usd](https://www.ceicdata.com/en/indicator/kenya/exchange-rate-against-usd)
- 515 41. District Health Information System(DHIS2) – Kenya Ministry of Health [Internet]. [cited
516 2022 Sep 30]. Available from: [https://www.health.go.ke/district-health-information-](https://www.health.go.ke/district-health-information-systemdhis2/)
517 [systemdhis2/](https://www.health.go.ke/district-health-information-systemdhis2/)
- 518 42. Kenya Ministry of Health. Kenya Master Health Facility List: [Internet]. [cited 2022 Oct
519 7]. Available from: <http://kmhfl.health.go.ke/#/home>
- 520 43. Post Marketing Surveillance - Kenya. Pharmacy and Poisons Board [Internet]. [cited 2022
521 Oct 7]. Available from:
522 <https://m.facebook.com/profile.php?id=110132515672042&v=feed&filter=2>
- 523 44. Salati JA, Leathersich SJ, Williams MJ, Cuthbert A, Tolosa JE. Prophylactic oxytocin for
524 the third stage of labour to prevent postpartum haemorrhage. *Cochrane Database Syst Rev*
525 [Internet]. 2019 Apr 29 [cited 2022 Oct 3];2019(4). Available from:
526 </pmc/articles/PMC6487388/>
- 527 45. Pettersen S, Falk RS, Vangen S, Nyfløt LT. Peripartum hysterectomy due to severe
528 postpartum hemorrhage: A hospital-based study. *Acta Obstet Gynecol Scand* [Internet].
529 2022 Jul 1 [cited 2023 Jan 15];101(7):819–26. Available from:
530 <https://pubmed.ncbi.nlm.nih.gov/35388907/>
- 531 46. Wingo PA, Huerdo CM, Rubin GL, Ory HW, Peterson HB. The mortality risk associated
532 with hysterectomy. *Am J Obstet Gynecol* [Internet]. 1985 [cited 2023 Jan 15];152(7 Pt
533 1):803–8. Available from: <https://pubmed.ncbi.nlm.nih.gov/4025434/>
- 534 47. Borruto F, Treisser A, Comparetto C. Utilization of carbetocin for prevention of
535 postpartum hemorrhage after cesarean section: a randomized clinical trial. *Arch Gynecol*
536 *Obstet* [Internet]. 2009 Nov [cited 2023 Jan 15];280(5):707–12. Available from:
537 <https://pubmed.ncbi.nlm.nih.gov/19229549/>
- 538 48. Stålberg V, Josefsson A, Bladh M, Lilliecreutz C. The risk of postpartum hemorrhage
539 when lowering the oxytocin dose in planned cesarean section, a pilot study. *Sex Reprod*
540 *Healthc* [Internet]. 2021 Sep 1 [cited 2023 Jan 15];29. Available from:
541 <https://pubmed.ncbi.nlm.nih.gov/34174496/>
- 542 49. Huque S, Roberts I, Fawole B, Chaudhri R, Arulkumaran S, Shakur-Still H. Risk factors
543 for peripartum hysterectomy among women with postpartum haemorrhage: analysis of
544 data from the WOMAN trial. *BMC Pregnancy Childbirth* [Internet]. 2018 May 29 [cited
545 2023 Jan 15];18(1). Available from: <https://pubmed.ncbi.nlm.nih.gov/29843627/>
- 546 50. Tiruneh B, Fooladi E, McLelland G, Plummer V. Incidence, mortality, and factors

- 547 associated with primary postpartum haemorrhage following in-hospital births in northwest
548 Ethiopia. PLoS One [Internet]. 2022 Apr 1 [cited 2022 Sep 30];17(4):e0266345. Available
549 from: <https://journals.plos.org/plosone/article?id=10.1371/journal.pone.0266345>
- 550 51. Ngwenya S. Postpartum hemorrhage: incidence, risk factors, and outcomes in a low-
551 resource setting. Int J Womens Health [Internet]. 2016 Nov 2 [cited 2023 Feb 10];8:647.
552 Available from: [/pmc/articles/PMC5098756/](https://pubmed.ncbi.nlm.nih.gov/28502758/)
- 553 52. Marshall AL, Durani U, Bartley A, Hagen CE, Ashrani A, Rose C, et al. The impact of
554 postpartum hemorrhage on hospital length of stay and inpatient mortality: a National
555 Inpatient Sample-based analysis. Am J Obstet Gynecol [Internet]. 2017 Sep 1 [cited 2022
556 Sep 30];217(3):344.e1-344.e6. Available from:
557 <https://pubmed.ncbi.nlm.nih.gov/28502758/>
- 558 53. Jing Chen, Hong Cui, Quan Na, Qiuling Li, Caixia Liu. Analysis of emergency obstetric
559 hysterectomy: the change of indications and the application of intraoperative
560 interventions. Zhonghua Fu Chan Ke Za Zhi [Internet]. 2015 Mar [cited 2022 Sep
561 30];50(3):177–82. Available from: <https://pubmed.ncbi.nlm.nih.gov/26268406/>
- 562 54. Chawla J, Arora CD, Paul M, Ajmani SN. Emergency Obstetric Hysterectomy: A
563 Retrospective Study from a Teaching Hospital in North India over Eight Years. Oman
564 Med J [Internet]. 2015 [cited 2022 Sep 30];30(3):181–6. Available from:
565 <https://pubmed.ncbi.nlm.nih.gov/26171124/>
- 566 55. Fawsitt CG, Bourke J, Greene RA, Everard CM, Murphy A, Lutomski JE. At What Price?
567 A Cost-Effectiveness Analysis Comparing Trial of Labour after Previous Caesarean
568 versus Elective Repeat Caesarean Delivery. PLoS One [Internet]. 2013 Mar 6 [cited 2023
569 Jan 15];8(3):e58577. Available from:
570 <https://journals.plos.org/plosone/article?id=10.1371/journal.pone.0058577>
- 571 56. Institute for Health Metrics and Evaluation. Global Burden of Disease Study 2017 (GBD
572 2017) Data Resources | GHDx. Thee Lancet [Internet]. 2017 [cited 2023 Jan 15];1–7.
573 Available from: <https://ghdx.healthdata.org/gbd-2017>
- 574 57. Eurostat. Mean age of women at first birth [Internet]. [cited 2022 Oct 7]. Available from:
575 [https://ec.europa.eu/eurostat/statistics-
576 explained/index.php?title=Glossary:Mean_age_of_women_at_first_birth](https://ec.europa.eu/eurostat/statistics-explained/index.php?title=Glossary:Mean_age_of_women_at_first_birth)
- 577 58. Kenya National Bureau of Statistics (KNBS). Labor Force Basic Report [Internet]. 2020
578 [cited 2023 Mar 21]. Available from: [https://www.knbs.or.ke/publications/?wpdmc=2020-
579 quarterly-labour-force-reports](https://www.knbs.or.ke/publications/?wpdmc=2020-quarterly-labour-force-reports)
- 580 59. Widmer M, Piaggio G, Nguyen TMH, Osoti A, Owa OO, Misra S, et al. Heat-Stable
581 Carbetocin versus Oxytocin to Prevent Hemorrhage after Vaginal Birth. N Engl J Med
582 [Internet]. 2018 Aug 23 [cited 2022 Sep 30];379(8):743–52. Available from:
583 <https://pubmed.ncbi.nlm.nih.gov/29949473/>
- 584 60. Kibira D, Ooms GI, Van Den Ham HA, Namugambe JS, Reed T, Leufkens HGM, et al.
585 Access to oxytocin and misoprostol for management of postpartum haemorrhage in
586 Kenya, Uganda and Zambia: A cross-sectional assessment of availability, prices and
587 affordability. BMJ Open [Internet]. 2021 Jan 7 [cited 2022 Sep 30];11(1). Available from:
588 [https://www.researchgate.net/publication/348317240_Access_to_oxytocin_and_misoprost
589 ol_for_management_of_postpartum_haemorrhage_in_Kenya_Uganda_and_Zambia_a_cro
590 ss-sectional_assessment_of_availability_prices_and_affordability](https://www.researchgate.net/publication/348317240_Access_to_oxytocin_and_misoprostol_for_management_of_postpartum_haemorrhage_in_Kenya_Uganda_and_Zambia_a_cross-sectional_assessment_of_availability_prices_and_affordability)
- 591 61. Oladapo OT. Misoprostol for preventing and treating postpartum hemorrhage in the
592 community: a closer look at the evidence. Int J Gynaecol Obstet [Internet]. 2012 [cited

- 593 2022 Sep 30];119(2):105–10. Available from: <https://pubmed.ncbi.nlm.nih.gov/22968139/>
594 62. Theunissen F, Cleps I, Goudar S, Qureshi Z, Owa OO, Mugerwa K, et al. Cost of hospital
595 care of women with postpartum haemorrhage in India, Kenya, Nigeria and Uganda: a
596 financial case for improved prevention. *Reprod Health* [Internet]. 2021 Dec 1 [cited 2022
597 Oct 3];18(1). Available from: [/pmc/articles/PMC7821537/](https://pubmed.ncbi.nlm.nih.gov/37821537/)
598 63. Kenyatta National Hospital - COMPREHENSIVE CONTRACT (PUBLIC HEALTH
599 CARE PROVIDER) FOR THE PROVISION OF HEALTHCARE SERVICES TO
600 BENEFICIARIES OF THE NATIONAL HEALTH INSURANCE FUND 2022-2024
601 [Internet]. [cited 2022 Oct 7]. Available from: [https://www.tuko.co.ke/423633-kenyatta-](https://www.tuko.co.ke/423633-kenyatta-hospital-maternity-charges-private-wing-contacts-visiting-hours.html)
602 [hospital-maternity-charges-private-wing-contacts-visiting-hours.html](https://www.tuko.co.ke/423633-kenyatta-hospital-maternity-charges-private-wing-contacts-visiting-hours.html)
603 64. Neumann PJ, Sanders GD, Russell LB et al. *Cost-Effectiveness in Health and Medicine*.
604 New York, NY: Oxford University Press, Oxford Scholarship Online; 2016.
605 65. Briggs AH. Handling uncertainty in cost-effectiveness models. *Pharmacoeconomics*
606 [Internet]. 2000 [cited 2023 Jan 23];17(5):479–500. Available from:
607 <https://pubmed.ncbi.nlm.nih.gov/10977389/>
608 66. Vemer P, Corro Ramos I, van Voorn GAK, Al MJ, Feenstra TL. AdViSHE: A Validation-
609 Assessment Tool of Health-Economic Models for Decision Makers and Model Users.
610 *Pharmacoeconomics* [Internet]. 2016 Apr 1 [cited 2022 Jul 12];34(4):349–61. Available
611 from: <https://pubmed.ncbi.nlm.nih.gov/26660529/>
612 67. Akehurst R, Anderson P, Brazier J, Brennan A, Briggs A, Buxton M, et al. Decision
613 analytic modelling in the economic evaluation of health technologies.
614 *Pharmacoeconomics* [Internet]. 2000 Sep 21 [cited 2023 Feb 6];17(5):443–4. Available
615 from: [https://link-springer-com.offcampus.lib.washington.edu/article/10.2165/00019053-](https://link-springer-com.offcampus.lib.washington.edu/article/10.2165/00019053-200017050-00003)
616 [200017050-00003](https://link-springer-com.offcampus.lib.washington.edu/article/10.2165/00019053-200017050-00003)
617 68. Ameh CA, Meka RJ, West F, Dickinson F, Allott H, Godia P. A synthesis of clinical and
618 health system bottlenecks to implementing new WHO postpartum hemorrhage
619 recommendations: Secondary data analysis of the Kenya Confidential Enquiry into
620 Maternal Deaths 2014–2017. *Int J Gynecol Obstet* [Internet]. 2022 Jun 1 [cited 2023 Feb
621 7];158(S1):14–22. Available from:
622 <https://onlinelibrary.wiley.com/doi/full/10.1002/ijgo.14270>
623 69. van der Nelson HA, Draycott T, Siassakos D, Yau CWH, Hatswell AJ. Carbetocin versus
624 oxytocin for prevention of post-partum haemorrhage at caesarean section in the United
625 Kingdom: An economic impact analysis. *Eur J Obstet Gynecol Reprod Biol* [Internet].
626 2017 Mar 1 [cited 2023 Jan 15];210:286–91. Available from:
627 <https://pubmed.ncbi.nlm.nih.gov/28088109/>
628 70. Ozawa S, Evans DR, Higgins CR, Laing SK, Awor P. Development of an agent-based
629 model to assess the impact of substandard and falsified anti-malarials: Uganda case study.
630 *Malar J* [Internet]. 2019 Jan 9 [cited 2020 Dec 21];18(1):5. Available from:
631 <https://malariajournal.biomedcentral.com/articles/10.1186/s12936-018-2628-3>
632 71. Ngwenya S. Postpartum hemorrhage: incidence, risk factors, and outcomes in a low-
633 resource setting. *Int J Womens Health* [Internet]. 2016 Nov 2 [cited 2022 Sep 30];8:647–
634 50. Available from: <https://pubmed.ncbi.nlm.nih.gov/27843354/>
635 72. Tsu VD. Postpartum haemorrhage in Zimbabwe: a risk factor analysis. *Br J Obstet*
636 *Gynaecol* [Internet]. 1993 [cited 2023 Feb 10];100(4):327–33. Available from:
637 <https://pubmed.ncbi.nlm.nih.gov/8494833/>
638 73. Nyfløt LT, Sandven I, Stray-Pedersen B, Pettersen S, Al-Zirqi I, Rosenberg M, et al. Risk

- 639 factors for severe postpartum hemorrhage: a case-control study. *BMC Pregnancy*
640 *Childbirth* [Internet]. 2017 Jan 10 [cited 2023 Feb 10];17(1). Available from:
641 [/pmc/articles/PMC5223545/](https://pubmed.ncbi.nlm.nih.gov/3123545/)
- 642 74. World Health Organization. SDG Target 3.1: Reduce the global maternal mortality ratio to
643 less than 70 per 100,000 live births [Internet]. [cited 2023 Jan 22]. Available from:
644 [https://www.who.int/data/gho/data/themes/topics/topic-details/GHO/sdgtarget3-1-reduce-](https://www.who.int/data/gho/data/themes/topics/topic-details/GHO/sdgtarget3-1-reduce-maternal-mortality)
645 [maternal-mortality](https://www.who.int/data/gho/data/themes/topics/topic-details/GHO/sdgtarget3-1-reduce-maternal-mortality)
- 646 75. Owolabi O, Riley T, Juma K, Mutua M, Pleasure ZH, Amo-Adjei J, et al. Incidence of
647 maternal near-miss in Kenya in 2018: findings from a nationally representative cross-
648 sectional study in 54 referral hospitals. *Sci Reports* 2020 101 [Internet]. 2020 Sep 16
649 [cited 2023 Jan 15];10(1):1–10. Available from: [https://www.nature.com/articles/s41598-](https://www.nature.com/articles/s41598-020-72144-x)
650 [020-72144-x](https://www.nature.com/articles/s41598-020-72144-x)
651