

1 **Monocyte to Lymphocyte ratio is highly specific in diagnosing latent tuberculosis and declines**  
2 **significantly following tuberculosis preventive therapy: a cross-sectional and nested prospective**  
3 **observational study**

4 Jonathan Mayito<sup>1</sup>, David B. Meya<sup>1</sup>, Akia Miriam<sup>1</sup>, Flavia Dhikusooka<sup>1</sup>, Joshua Rhein<sup>2</sup>, Christine Sekaggya-  
5 Wiltshire<sup>1</sup>

6 1. Infectious Diseases Institute, Makerere University College of Health Sciences, Kampala, Uganda

7 2. Division of Infectious Diseases and International Medicine, Department of Medicine, University of  
8 Minnesota, Minneapolis, Minnesota, United States of America

9 **Abstract**

10 Interferon-gamma release assay and tuberculin skin test use is limited by costly sundries and cross-  
11 reactivity with non-tuberculous mycobacteria and Bacille Calmette-Guérin (BCG) vaccination respectively.  
12 We investigated the Monocyte to Lymphocyte ratio (MLR) as a biomarker to overcome these limitations  
13 and for use in monitoring response to tuberculosis preventive therapy (TPT). We conducted a cross-  
14 sectional and nested prospective observational study among asymptomatic adults living with Human  
15 Immuno-deficiency Virus (HIV) in Kampala, Uganda. Complete blood count (CBC) and QuantiFERON-TB®  
16 Gold-plus were measured at baseline and CBC repeated at three months. Multivariate logistic regression  
17 was performed to identify factors associated with a high MLR and decline in MLR. We recruited 110 adults  
18 living with HIV and on antiretroviral therapy, of which 82.5% (85/110) had suppressed viral loads, 71.8%  
19 (79/110) were female, and 73.6% (81/110) had a BCG scar. The derived MLR diagnostic cut-off was 0.35,  
20 based on which the MLR sensitivity, specificity, positive predictive value, and negative predictive value  
21 were 12.8%, 91.6%, 45.5%, and 65.7% respectively. The average MLR declined from 0.212 (95% CI: 0.190  
22 – 0.235) at baseline to 0.182 (95% CI: 0.166 – 0.198) after three months of TPT. A viral load of >50  
23 copies/ml (aOR, 5.67 [1.12-28.60]) was associated with a high MLR while that of <50 copies/ml (aOR, 0.07  
24 [0.007-0.832]) was associated with a decline in MLR. MLR was highly specific in diagnosing latent TB and  
25 declined significantly following three months of TPT. Implications of a high MLR and decline in MLR after  
26 TPT need further evaluation in a larger cohort.

27 Key words: Monocyte to Lymphocyte ratio, MLR, latent tuberculosis diagnosis, tuberculosis preventive  
28 therapy.

29 **Background**

30 Identification and preventive treatment of individuals with *Mycobacterium tuberculosis* (*M. tuberculosis*)  
31 infection are critical in achieving the World Health Organization's (WHO) ambition to end the tuberculosis  
32 pandemic by 2035 [1]. The Interferon Gamma Release Assay (IGRA) has a high specificity and negative  
33 predictive value (NPV) for diagnosis of latent tuberculosis (TB), however, its use is limited by the  
34 requirement for sophisticated laboratory equipment, skilled human resources, and the inherent high cost  
35 of supplies required to carry out the test [2]. While on the other hand, the Tuberculin Skin Test's (TST)  
36 cross-reactivity with the Bacillus Calmette-Guérin (BCG) vaccination and non-tuberculous mycobacteria,  
37 leads to a low specificity of TST, which has been reported as low as 57% [3]. The above factors have limited  
38 the deployment of IGRA and TST in resource-limited settings, which has led to the majority of clinicians  
39 providing TB preventive therapy (TPT) to all individuals living with HIV with no evidence of active TB,

40 excluded by a negative WHO TB symptom screen. Moreover, it has been demonstrated that TPT is more  
41 beneficial for people who have a positive latent TB test [4], hence targeting TPT to individuals who are  
42 more likely to benefit from it would prevent unwanted exposure to TPT and be more economical.

43 The WHO four symptom screen with absence of cough, weight loss, night sweats, and fever excludes  
44 active TB in individuals targeted for TPT [5]. Although a meta-analysis by Hamada *et al* showed that the  
45 symptom screen had a fairly good sensitivity when used to exclude active TB in antiretroviral therapy  
46 (ART) naïve people living with HIV (89.4%), the specificity was very low (28.1%) [6]. The sensitivity was  
47 however lower (51%) in patients on ART and in other conditions like pregnancy [6]. The sensitivity in  
48 patients on ART improved to 84.6% with the addition of the chest x-ray (CXR) but at the expense of  
49 specificity, which dropped from 55.5% to 29.8% [6]. The low specificity is of particular concern because of  
50 the dire consequences of exposure to inappropriate treatment, including driving the emergence of drug  
51 resistance [6]. The limitations of the IGRA, TST and the symptom-based screen necessitate alternative  
52 tools to improve the screening for latent TB and determining response to TPT.

53 There is currently no bacteriological, molecular, or radiological tool used to monitor response to TPT.  
54 Clinical monitoring for TB reactivation is the only available tool because IGRA and TST may not revert to  
55 negative following TPT [7, 8], due to the persistence of effector memory cells in absence of any continuing  
56 antigen stimulation. Based on the above dilemmas, there have been some attempts to develop alternative  
57 biomarkers for the diagnosis of latent TB and monitoring response to preventive therapy. *Mycobacterium*  
58 *tuberculosis* DNA in peripheral blood mononuclear cells has been evaluated as a biomarker for TB  
59 infection and monitoring response to TPT. A recent study described that the proportion of participants in  
60 whom *M. tuberculosis* DNA was detectable at baseline declined by 42% following TPT [9]. Despite their  
61 promise, *M. tuberculosis* DNA-based biomarkers still need further evaluation, and like IGRA, may not  
62 easily be deployed in limited resource settings.

63 Monocytes replenish macrophages [10], which are the primary effector cells against *M. tuberculosis*  
64 infection [11]. In addition, through the interferon-gamma (IFN- $\gamma$ ) signaling, *M. tuberculosis* biases  
65 hematopoiesis towards the proliferation of the myeloid hematopoietic stem cells (HSCs) rather than  
66 lymphoid cells, which include monocytes to propagate infection [12-14]. IFN- $\gamma$  signaling activates the  
67 expression of interferon regulatory factors (IRF), which promote differentiation towards the myeloid  
68 lineage [12]. This leads to a higher Monocyte to Lymphocyte Ratio (MLR) in active TB compared to latent  
69 TB or healthy donors [15, 16]. The MLR, is a rapid and affordable biomarker that has the ability to discern  
70 latent TB from active TB, given that a higher MLR is seen in adults and children with active TB compared  
71 to latent TB ([16, 17]. An MLR cut-off of 0.38 in Kenyan children living with HIV had a sensitivity of 77%,  
72 specificity of 78%, positive predictive value (PPV) of 24%, and NPV of 97%, for the diagnosis of active TB  
73 [16]. A lower cut-off (0.29) in Italian HIV-uninfected adults had high sensitivity, 91%, and specificity, 94%  
74 [16]. Besides being useful in diagnosis, the MLR was also useful in monitoring treatment of active TB in  
75 children living with HIV with confirmed TB, in whom it declined significantly from 0.41 before treatment  
76 to 0.11 after treatment [18].

77 We, therefore, sought to compare the performance of the MLR versus IGRA in the diagnosis of latent TB,  
78 and to measure the change in MLR after three months of TPT among Ugandan adults living with HIV, in  
79 whom TB had been excluded using a negative WHO symptom screen [5]. The results from the study could  
80 bridge the gaps in diagnosing latent TB and monitoring the response to TB preventive therapy, where  
81 resources are limited.

82

### 83 **Methodology**

84 This was a prospective observational study carried out between May and November 2021 at the Infectious  
85 Diseases Institute (IDI), Makerere University in Kampala, Uganda. The current standard of care is the  
86 provision of TPT to all people living with HIV and a negative TB symptom screen. We consecutively enrolled  
87 people living with HIV of 18 years and above, with no prior TB treatment, and a negative TB symptom  
88 screen, which included exclusion of patients with a cough, weight loss, fevers, and night sweats. A  
89 thorough physical examination for respiratory system abnormalities, lymphadenopathy, enlarged liver,  
90 spleen, and other relevant clinical features to exclude those with features suggestive of TB, was also  
91 performed. Participants with a negative symptom screen and no clinical findings suggestive of TB, were  
92 consented and administered the study questionnaire. The sample size was derived using the formula for  
93 diagnostic studies and a sample size of 105 participants gave an 80% chance of delineating the diagnostic  
94 performance of the MLR versus IGRA in diagnosing latent tuberculosis. The final sample size was 115,  
95 considering a 10% loss to follow up.

96 Individuals living with HIV were invited to give written consent to participate in the study after being  
97 briefed about the study. Consenting participants gave social demographic information, which was  
98 collected using the study questionnaire. Only authors who were part of the recruiting study team had  
99 access to the patient personal identifying data, which was kept as logs separate from the case record  
100 forms, under double local storage system. Information was collected on history of contact with an index  
101 pulmonary TB patient, smoking status, alcohol intake, BCG immunization status, and last HIV viral load  
102 results. Formal employment, private business, casual laborer, peasant, farmer, and others were the  
103 subcategories assessed for occupation. Given the need to have higher-powered subcategory numbers,  
104 the above were re-categorized according to the risk for *M. tuberculosis* infection, including congestion  
105 and other risky working and living conditions like ventilation and exposure to silica. Due to comparable  
106 risks posed, formal employment and private business were categorized as non-casual employment, while  
107 the rest were classified as casual employment or unemployment. Education was categorized as no  
108 education, primary and post primary education. To minimize bias, recruitment was spread over three  
109 months, calibrated instruments used to measure weight and height, and only the question on history of  
110 contact with an index pulmonary TB patient required remote recall. The outcome variables included a  
111 high or low MLR and a positive or negative IGRA.

112 Isoniazid 300 mg plus 25 mg pyridoxine daily for six months was initiated after intensive adherence  
113 counselling. Participants received three monthly drug refills and adherence support was provided through  
114 daily reminders by the next of kin and monthly phone call reminders by the study team.

115 Participants donated 5 ml of blood, of which 4 ml was used for IGRA and 1 ml for baseline complete blood  
116 count (CBC) testing. Another 1 ml of blood was collected after three months of TPT for the follow-up CBC.  
117 Absolute monocyte and lymphocyte counts were derived from these to calculate the MLR. The CBC was  
118 analyzed immediately using the Beckman Coulter Ac•T 5diff AL (Autoloader) Hematology Analyzer. Blood  
119 for IGRA testing was collected at baseline in specialized QuantiFERON tubes and transported to the  
120 laboratory at room temperature within 16 hours. The IGRA samples were incubated at 37°C for 16 to 24  
121 hours, centrifuged at 3000g for 10 minutes, and the serum stored at -80°C until analysis, which followed  
122 the standard operating procedure provided by the Qiagen Company, the makers of the QuantiFERON kits.  
123 A positive IGRA was taken as a TB1 or TB2 antigen value minus the Nil sample value  $\geq 0.35$  and  $\geq 25\%$  of

124 Nil and vice versa for the negative IGRA if the Mitogen value was  $\geq 0.5$ , and if it was  $< 0.5$  the result was  
125 taken to be intermediate. The IGRA and CBC tests were performed in the IDI Translation Research  
126 Laboratory and the IDI Makerere University-John Hopkins University (MUJHU) laboratory respectively.

127 Ethical approval was obtained from the Makerere University School of Biomedical Sciences Institutional  
128 Review Board, reference number SBS 794. Written informed consent was obtained from all participants  
129 before any study-related procedures were conducted. The study did not include minors or vulnerable  
130 groups.

### 131 **Statistical analysis**

132 For descriptive analysis, continuous variables were reported as means with standard deviation (SD) for  
133 normally distributed data or median and interquartile range (IQR) for non-normally distributed data while  
134 categorical variables were reported as proportions in terms of frequencies and percentages. The MLR was  
135 derived from the ratio of the absolute monocyte count to the absolute lymphocyte count while the  
136 diagnostic cut-off for MLR was determined using the discriminant function analysis performed in excel. A  
137 function was generated from a sample of known positive and known negative cases based on the IGRA  
138 test. The function was then applied to the results of test diagnostic test (MLR) to classify them as positive  
139 or negative. Results of the discriminant analysis displayed a discriminant score and predicted group  
140 membership for each case. A value lower than the cut-off score represented a low MLR while the one  
141 above represented a high MLR. IGRA was used as the gold standard for diagnosis of latent TB. The  
142 sensitivity, specificity, PPV and NPV were determined from a 2X2 table of MLR and IGRA. A receiver  
143 operator curve (ROC) curve was plotted using sensitivity (y-axis) and 1-specificity (x-axis). A paired sample  
144 t-test was used to determine whether there was a statistically significant difference between mean MLR  
145 at baseline and that at follow up, while, a multivariate logistic regression analysis with forward stepwise  
146 logit function was employed to identify independent correlates of a high MLR and decline in MLR. Age,  
147 gender, BCG scar, viral load, body mass index (BMI), and IGRA status were included in the regression  
148 analysis based on the biological plausibility. A  $P < 0.05$  was considered statistically significant. Missing data  
149 including that, which was due to loss to follow up, was not included in the analysis.

## 150 **Results**

### 151 **Study participant characteristics**

152 Participant socio-demographic characteristics are shown in Table 1. Of the 110 people living with HIV  
153 recruited, 71.8% (79/110) were female and had a median age of 43 years (interquartile range (IQR), 30 -  
154 51). The majority of the participants (49/110, 44.6%) were over the age of 45 years. Of these participants,  
155 73.6% (81/110) had a BCG scar - suggesting previous TB vaccination and 82.5% (85/110) had a suppressed  
156 viral load. All participants were receiving ART and they all received isoniazid for six months but the follow-  
157 up CBC measurement was at three months. Twenty-one percent (23/110) of participants did not complete  
158 follow-up and therefore did not have follow-up CBC data.

### 159 **Diagnostic performance**

160 We derived an MLR cut-off of 0.35 for the diagnosis of latent TB, indicating the presence of latent TB  
161 infection in individuals who scored above this value, i.e. high MLR. Based on this cut-off, the sensitivity,  
162 specificity, PPV, and NPV were 12.8% (95% CI: 6.6% - 19.1%), 91.6% (95% CI: 86.4% - 96.8%), 45.5% (95%

163 CI: 36.2% - 54.8%), and 65.7% (95% CI: 56.8% - 74.5%) respectively. The area under the curve was 0.45,  
164 *figure 1*.

### 165 **Effect of 3-month IPT on MLR**

166 A total of 87/110 participants with both baseline and three month follow-up MLR results were included  
167 in the analysis of the effect of isoniazid-based TPT on MLR. The average MLR for all participants  
168 significantly decreased from 0.212 (95% CI: 0.190 – 0.235) at baseline to 0.182 (95% CI: 0.166 – 0.198) at  
169 3 months of TPT, representing a decline of 0.030 (95% CI: 0.007 – 0.053), *table 2*. We found that 52/87  
170 (59.8%) of the participants had a decrease in MLR following three months of TPT, majority of which were  
171 >45 years (27/52, 51.9%), were female (35/52, 67.3%), had a BCG scar (39/52, 75.0%), were IGRA negative  
172 (34/53, 65.4%), and had a viral load of < 50 copies/ml (41/48, 85.4%), *table 4*.

### 173 **Factors associated with a high MLR at baseline and declining MLR**

174 At bivariate analysis, only female gender (unadjusted odds ratio (OR), 0.28 [0.08-1.00]) was associated a  
175 high MLR, while, only an HIV viral load of >50 copies/ml (adjusted OR (aOR), 5.67 [1.12-28.60]) was  
176 associated with a high MLR at multivariate analysis, *table 3*. Only an HIV viral load of <50 copies/ml (aOR,  
177 0.07 [0.007-0.832]) was associated with a decline in MLR, at multivariate analysis, *table 4*.

### 178 **Discussion**

179 We have demonstrated a high specificity (91.6%) of MLR for diagnosis of latent TB using a cut off of 0.35,  
180 which is comparable to IGRA's (90%) [19] in people living with HIV. Based on this cut off, MLR had a lower  
181 sensitivity than IGRA (12.8% vs 64%) [20] in people living with HIV. To our knowledge, this is the first study  
182 demonstrating a low sensitivity but high specificity of MLR in diagnosing latent TB. Although MLR's limited  
183 sensitivity would prevent it from being used as a major diagnostic test for latent TB, its high specificity  
184 positions it as an inexpensive and simple biomarker that could be used to improve TB screening with the  
185 WHO symptom screen.

186 The ability of MLR to monitor response to TB treatment has been observed in active TB, where there was  
187 a significant decline in MLR after six months of TB therapy and a persisting high MLR was associated with  
188 treatment failure [21]. We have demonstrated for the first time that MLR declined during TPT in the  
189 majority of participants. This could lead to a paradigm shift in the monitoring of response to TPT.  
190 Currently, there is no laboratory or radiological test to monitor response to TPT. Given that TST and IGRA  
191 have low reversion rates following TPT [22, 23], clinical absence of active TB during and after TPT is  
192 currently the measure of effectiveness of TPT. Our results suggest that MLR is a potential TPT monitoring  
193 biomarker that can overcome the limitations of the current tests.

194 Among the factors studied, only HIV viral load was associated with a high MLR and a decline in MLR after  
195 TPT. Participants with viral loads >50 copies/ml had a higher risk of having a high baseline MLR than those  
196 with a viral load of <50 copies/ml, while, participants with a viral load of <50 copies/ml were more likely  
197 to have a decline in MLR than those with a viral load >50 copies/ml. Due to the impaired immunological  
198 response towards opportunistic infections, ongoing HIV replication, as indicated by a high viral load, is an  
199 independent risk factor for *M. tuberculosis* infection [24]. On the other hand, a suppressed viral load is  
200 linked to immunological restoration and improved bacilli burden control, which aids response to TPT [25].



201 Our study had some limitations. First, the sample size was powered to study the diagnostic utility of the  
202 MLR and not the factors associated with a high MLR. This could have limited our ability to clearly describe  
203 factors associated with a high baseline MLR. Secondly, only 87 of the 110 participants had a complete pair  
204 of baseline and follow-up MLR, which may have affected the evaluation of the factors associated with a  
205 decline in MLR. Thirdly, the effect of IPT was assessed after 3-months of isoniazid-based TPT rather than  
206 six months, which may have underestimated the effect of TPT on the MLR. It also still needs to be clarified  
207 what impact the one-month TPT regimen would have on the MLR response.

208

## 209 **Conclusion**

210 The MLR had high a specificity in the diagnosis of latent TB and declined significantly in the majority of  
211 patients following TPT. These data if validated in larger cohorts, could improve the screening of latent TB  
212 using the WHO four symptom screen and avail a biomarker that could monitor the response to TPT.

## 213 **Recommendation**

214 Larger studies are needed to further evaluate the effect of TPT on MLR and the implication of a high MLR  
215 before and after TPT.

## 216 **Author contribution**

217 Jonathan Mayito, Conceptualization, Investigation, Methodology, Project Administration, Writing –  
218 Original Draft Preparation

219 David B. Meya, Conceptualization, Investigation, Methodology, Resources, Supervision, Writing – Review  
220 & Editing

221 Miriam Akia, conduct of the study procedures, Writing – Review & Editing

222 Flavia Dhikusooka, statistical analysis, Review and Editing

223 Joshua Rhein, Conceptualization, Investigation, Methodology, Supervision, Writing – Review & Editing

224 Christine Sekaggya-Wiltshire, Conceptualization, Investigation, Methodology, Supervision, Writing –  
225 Review & Editing

## 226 **Conflict of interest**

227 All authors report no conflict of interest

## 228 **Financial disclosure**

229 Research reported in this publication was supported by the Fogarty International Center of the National  
230 Institutes of Health under grant #D43TW009345 awarded to the Northern Pacific Global Health Fellows  
231 Program. In addition, this research was funded in part, by the Wellcome Trust 107742/Z/15/Z and the UK  
232 Foreign, Commonwealth & Development Office, with support from the Developing Excellence in  
233 Leadership, Training and Science in Africa (DELTA Africa) program. For the purpose of open access, the  
234 author has applied a CC BY public copyright license to any Author Accepted Manuscript version arising  
235 from this submission.

236 The funders had no role in study design, data collection and analysis, decision to publish, or preparation  
237 of the manuscript.

238

## 239 References

- 240 1. WHO, *The END TB Strategy*. [Internet], 2015.
- 241 2. Geneva: World Health Organization, *Use of Tuberculosis Interferon-Gamma Release Assays*  
242 *(IGRAs) in Low- and Middle- Income Countries: Policy Statement*. [Internet], 2011.
- 243 3. Adams S, et al., *Evaluating Latent Tuberculosis Infection Test Performance Using Latent Class*  
244 *Analysis in a TB and HIV Endemic Setting*. Int J Environ Res Public Health, 2019 Aug. **16**(16): p.  
245 2912.
- 246 4. Den Boon S, et al., *Continuous isoniazid for the treatment of latent tuberculosis infection in*  
247 *people living with HIV*. AIDS, 2016 Mar. **30**(5): p. 797-801.
- 248 5. WHO, *WHO TB KNOWLEDGE SHARING PLATFORM: WHO-recommended four-symptom screen*.  
249 [Internet], 2021.
- 250 6. Hamada Y, et al., *Sensitivity and specificity of WHO's recommended four-symptom screening rule*  
251 *for tuberculosis in people living with HIV: a systematic review and meta-analysis*. Lancet HIV,  
252 2018 Sep. **5**(9): p. e515-e523.
- 253 7. Esmail H, Barry CE, and W. RJ, *Understanding latent tuberculosis: the key to improved diagnostic*  
254 *and novel treatment strategies*. Drug Discov Today, 2012 May. **17**(9-10): p. 514-21.
- 255 8. Tapaninen P, et al., *Effector memory T-cells dominate immune responses in tuberculosis*  
256 *treatment: antigen or bacteria persistence?* Int J Tuberc Lung Dis, 2010 Mar. **14**(3): p. 347-55.
- 257 9. Belay M, et al., *Detection of Mycobacterium tuberculosis complex DNA in CD34-positive*  
258 *peripheral blood mononuclear cells of asymptomatic tuberculosis contacts: an observational*  
259 *study*. The Lancet Microbe, 2021 Jun. **2**(6): p. E267-E275.
- 260 10. Hume DA, Irvine KM, and Pridans C, *The Mononuclear Phagocyte System: The Relationship*  
261 *between Monocytes and Macrophages* Trends in Immunology, 2019 Feb. **40**(2).
- 262 11. Kaufmann SHE, *Protection against tuberculosis: cytokines, T cells, and macrophages*. Annals of  
263 the Rheumatic Diseases, 2002. **61**: p. ii54-ii58.
- 264 12. de Bruin AM, et al., *IFN $\gamma$  induces monopoiesis and inhibits neutrophil development during*  
265 *inflammation*. Blood, 2012. **119**: p. 1543-1554.
- 266 13. Morales-Mantilla DE and K. KY, *The Role of Interferon-Gamma in Hematopoietic Stem Cell*  
267 *Development, Homeostasis, and Disease*. Curr Stem Cell Rep, 2018. **4**(3): p. 264-271.
- 268 14. Baldrige MT, et al., *Quiescent haematopoietic stem cells are activated by IFN- $\gamma$  in response to*  
269 *chronic infection*. Nature 2010 June. **465**: p. 793-797.
- 270 15. Naranbhai V, et al., *Ratio of monocytes to lymphocytes in peripheral blood identifies adults at*  
271 *risk of incident tuberculosis among HIV-infected adults initiating antiretroviral therapy*. J Infect  
272 Dis, 2014 Feb. **209**(4): p. 500-9.
- 273 16. La Manna MP, et al., *Quantitative and qualitative profiles of circulating monocytes may help*  
274 *identifying tuberculosis infection and disease stages*. PLOS ONE 2017 Feb **12**(2): p. e0171358.
- 275 17. Naranbhai V, et al., *Distinct transcriptional and anti-mycobacterial profiles of peripheral blood*  
276 *monocytes dependent on the ratio of monocytes: lymphocytes*. EBioMedicine, 2015. **2**(11): p.  
277 1619±26.
- 278 18. Choudhary RK, et al., *Monocyte-to-Lymphocyte Ratio Is Associated With Tuberculosis Disease*  
279 *and Declines With Anti-TB Treatment in HIV-Infected Children*. J Acquir Immune Defic Syndr,  
280 2019 Feb. **80**(2): p. 174-181.

281 19. Kussen GMB, et al., *Interferon-gamma release assay versus tuberculin skin test for latent*  
 282 *tuberculosis infection among HIV patients in Brazil*. Braz J Infect Dis, 2016 Jan-Feb. **20**(1).  
 283 20. Chen H, et al., *Diagnostic accuracy of the interferon-gamma release assay in acquired*  
 284 *immunodeficiency syndrome patients with suspected tuberculosis infection: a meta-analysis*.  
 285 *Infection*, 2022. **50**: p. 597–606.  
 286 21. Adane T, et al., *Accuracy of monocyte to lymphocyte ratio for tuberculosis diagnosis and its role*  
 287 *in monitoring anti-tuberculosis treatment: Systematic review and meta-analysis*. *Medicine*, 2022.  
 288 **101**: p. 44(e31539).  
 289 22. Zwerling A, et al., *Interferon-gamma release assays for tuberculosis screening of healthcare*  
 290 *workers: a systematic review*. *Thorax*, 2012. **67**: p. 62-70.  
 291 23. Johnson DF, et al., *Tuberculin Skin Test Reversion following Isoniazid Preventive Therapy Reflects*  
 292 *Diversity of Immune Response to Primary Mycobacterium tuberculosis Infection*. *PLoS ONE*,  
 293 2014. **9**(5): p. e96613.  
 294 24. Fenner L, et al., *HIV viral load as an independent risk factor for tuberculosis in South Africa:*  
 295 *collaborative analysis of cohort studies*. *J Int AIDS Soc*, 2017. **20**(1): p. 21327.  
 296 25. Karo B, et al., *Immunological recovery in tuberculosis/HIV co-infected patients on antiretroviral*  
 297 *therapy: implication for tuberculosis preventive therapy*. *BMC Infect Dis*, 2017. **17**: p. 517.

298

299

300

301

302

303

304

305

306

307

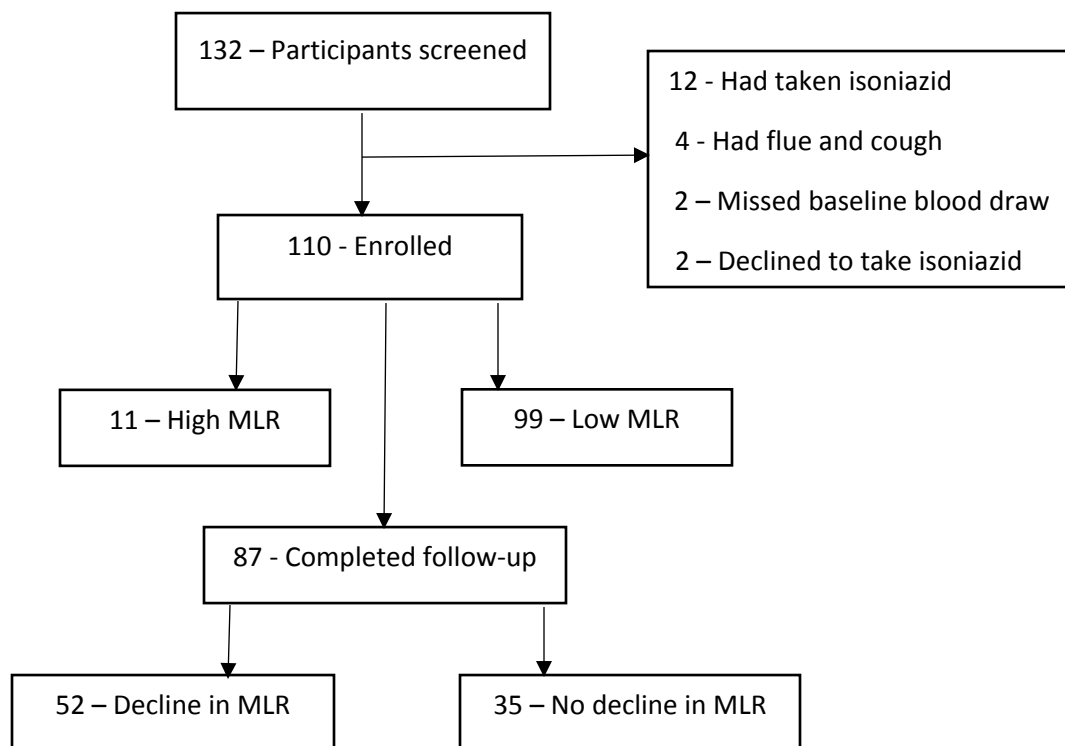
308

309

310

311

312



313 Figure 1: Study flow chart

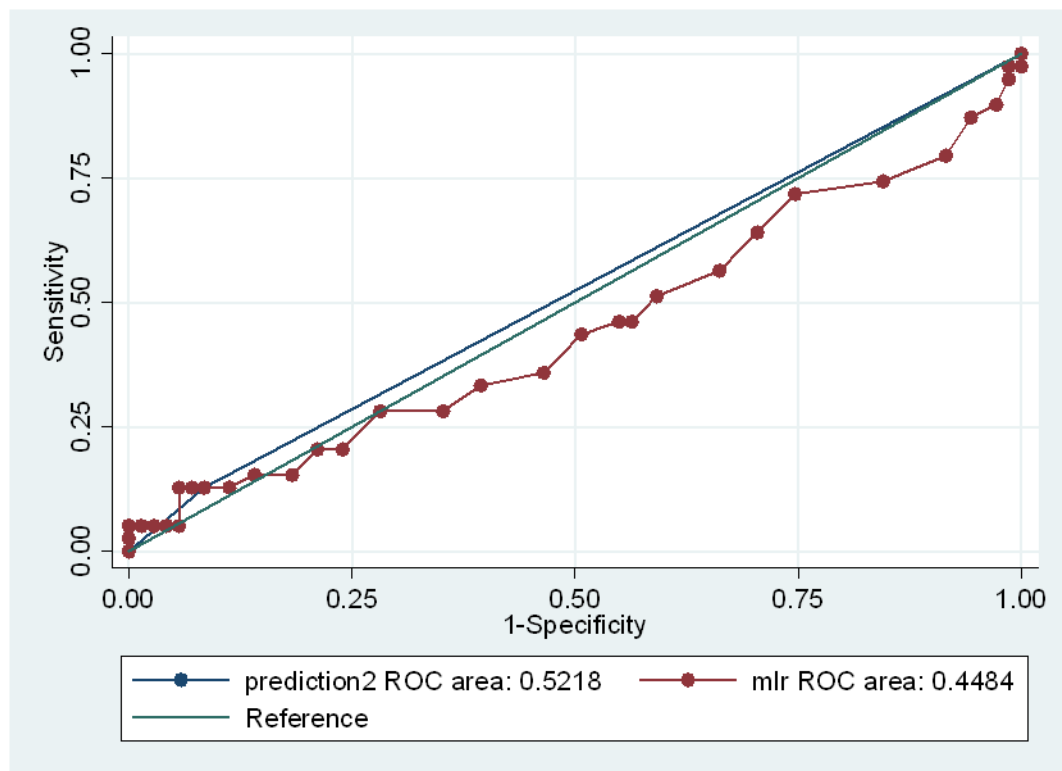
314 **Table1: Socio-demographic characteristics**

Variable	Frequency	Percentage (%)
Age (years)		



<b>Below 25</b>	16	14.55
<b>25-45</b>	45	40.91
<b>&gt;45</b>	49	44.55
<b>Education</b>		
<b>No education</b>	4	3.67
<b>Post Primary</b>	70	64.22
<b>Primary</b>	35	32.11
<b>Employment</b>		
<b>Non casual</b>	57	51.82
<b>Casual</b>	53	48.18
<b>Alcohol</b>		
<b>No</b>	87	79.09
<b>Yes</b>	23	20.91
<b>Smoking history</b>		
<b>Never smoked</b>	106	96.36
<b>Current smoker</b>	4	3.64
<b>BCG Status</b>		
<b>No</b>	29	26.36
<b>Yes</b>	81	73.64
<b>IGRA test</b>		
<b>Negative</b>	71	64.55
<b>Positive</b>	39	35.45
<b>HIV Viral load (copies/ml)</b>		
<b>&lt;50</b>	85	82.52
<b>&gt;50</b>	18	17.48

315



316

317 **Figure 1: The Receiver Operative Curve for the diagnostic utility of MLR**

318

319 **Table 2: Effect of IPT on MLR**

Variable	Obs	Mean	Std. Err.	Std. Dev.	[95% Conf. Interval]
Baseline MLR	87	0.2121839	0.011318	0.105571	0.1896837 0.234684
Follow-up MLR	87	0.182069	0.007846	0.073186	0.166471 0.197667
Difference	87	0.0301149	0.011742	0.109518	0.0067735 0.053456

320

321 **Table 3: Factors associated with a high MLR**

Variable	Category	Proportion with high MLR	Bivariate analysis		Multivariate analysis	
			Unadjusted odds ratios	P-values	Adjusted odds ratios	p-values
Age	<25	1(11.11%)	Ref		Ref	
	25-45	1(11.11%)	0.15[0.01-3.09]	0.21	0.13[0.01-2.05]	0.148
	>45	7(77.78%)	1.05[0.09-11.82]	0.968	1.27[0.17-9.1]	0.809
Gender	Male	6(54.55%)	Ref	Ref		

	Female	5(45.45%)	0.28[0.08-1.00]	0.040	0.33[0.08-1.5]	0.148
<b>1 Education</b>	None	0	1		1	
	Post-primary	7(87.50%)	Ref		Ref	
	Primary	1(12.50%)	0.25[0.028-2.211]	0.211	0.09[0.003-2.80]	0.168
<b>BCG scar</b>	Yes	7(77.78%)	Ref		Ref	
	No	2(22.22%)	0.83[0.15-4.62]	0.833	2.23[0.40-12.32]	0.358
<b>Viral load</b>	<50	5(62.50%)	Ref		Ref	
	>50	3(37.50%)	3.76[0.94-15.06]	0.061	5.67[1.12-28.60]	0.036
<b>IGRA status</b>	Negative	5(55.56%)	Ref		Ref	
	Positive	4(44.44%)	1.66[0.38-7.15]	0.68	1.76[0.38-8.09]	0.470
<b>BMI</b>	N/A	N/A	1[0.91-1.09]	0.943	1[0.91-1.07]	0.703
<b>Employment</b>	Non-casual	4(44.44%)	Ref			
	Casual	5(55.56%)	1.43[0.34-6.10]	0.623	N/A	N/A
<b>2 Alcohol intake</b>	No	6(66.67%)	Ref			
	Yes	3(33.33%)	1.65[0.35-7.82]	0.528	N/A	N/A

322 Employment (1) and alcohol intake (2) were not significant at bivariate analysis and did not fit in the final  
323 multivariate model. N/A = Not applicable

324

325 Table 4: Factors associated with a decline in MLR

Variable	Category	Proportion with decline in MLR	Bivariate analysis		Multivariate analysis	
			Unadjusted odds ratios	P-values	Adjusted odds ratios	p-values
<b>Age</b>	<25	21 (40.38%)	Ref		Ref	
	25-45	4 (7.69%)	0.15[0.01-3.09]	0.21	0.2[0.015-2.65]	0.222
	>45	27 (51.92%)	1.05[0.09-11.82]	0.968	1	
<b>Gender</b>	Male	17 (32.69%)	Ref		Ref	
	Female	35 (67.31%)	0.31[0.071-1.352]	0.119	0.28[0.04-2.04]	0.210
<b>BCG scar</b>	Yes	39 (75.00%)	Ref		Ref	
	No	13 (25.00%)	0.83[0.15-4.62]	0.833	1.28[0.13-12.93]	0.836
<b>Viral load</b>	<50	41 (85.42%)	0.19[0.03-1.08]	0.061	0.07[0.007-0.832]	0.035
	>50	7 (14.58%)	Ref			
<b>IGRA status</b>	Negative	34 (65.38%)	Ref		Ref	
	Positive	18 (34.62%)	1.66[0.38-7.15]	0.68	0.79[0.09-6.59]	0.828
<b>BMI</b>	N/A	N/A	1[0.91-1.09]	0.943	1.04[0.93-1.16]	0.524
<b>1 Education</b>	None	2 (3.92%)	1		N/A	N/A
	Post-primary	33 (64.71%)	Ref		N/A	N/A
	Primary	16 (31.37%)	0.25[0.028-2.211]	0.211	N/A	N/A

2 <b>Employment</b>	Non-casual	25 (48.08%)	Ref		Ref	
	Casual	27 (51.92%)	1.43[0.34-6.10]	0.623	N/A	N/A
3 <b>Alcohol intake</b>	No	39 (75%)	Ref		N/A	N/A
	Yes	13 (25%)	1.65[0.35-7.82]	0.528	N/A	N/A

326 Education (1), employment (2), and alcohol intake (3) were not significant at bivariate analysis and did not  
 327 fit in the final multivariate model. N/A = Not applicable