

1 Combined assessment of *KRAS* mutational status and tumor size has no  
2 impact on prognosis in early-stage non-small cell lung cancer  
3  
4

5 Ella A. Eklund<sup>1,2,3</sup>, Ali Mourad<sup>1,2</sup>, Clotilde Wiel<sup>1</sup>, Sama I. Sayin<sup>3</sup>, Henrik Fagman<sup>4,5</sup>,  
6 Andreas Hallqvist<sup>3,7</sup>, Volkan I. Sayin<sup>1,2</sup>  
7

8 <sup>1</sup>Department of Surgery, Institute of Clinical Sciences, Sahlgrenska Center for Cancer  
9 Research, University of Gothenburg, Gothenburg, Sweden

10 <sup>2</sup>Wallenberg Centre for Molecular and Translational Medicine, University of  
11 Gothenburg, Gothenburg, Sweden

12 <sup>3</sup>Department of Oncology, Sahlgrenska University Hospital, Gothenburg, Sweden;

13 <sup>4</sup>Department of Laboratory Medicine, Institute of Biomedicine, University of  
14 Gothenburg, Gothenburg, Sweden

15 <sup>5</sup>Department of Clinical Pathology, Sahlgrenska University Hospital, Gothenburg,  
16 Sweden

17 <sup>6</sup>Department of Microbiology and Immunology, Institute for Biomedicine, Sahlgrenska  
18 Academy, University of Gothenburg, Gothenburg, Sweden

19 <sup>7</sup>Department of Oncology, Institute of Clinical Sciences, University of Gothenburg,  
20 Gothenburg, Sweden  
21  
22  
23  
24

25 Correspondence to:  
26 [volkan.sayin@gu.se](mailto:volkan.sayin@gu.se)  
27

28 Keywords: lung cancer, *KRAS*, tumor size, stage I and II, clinical outcome

29 Abbreviations:<sup>1</sup>

30 Word count: 3024

31 Number of main figures: 4

32 Number of tables: 2  
33

---

<sup>1</sup>NOTE: This preprint reports new research that has not been certified by peer review and should not be used to guide clinical practice.  
<sup>1</sup>CT: Computed Tomography; ECOG: Eastern Cooperative Oncology Group; HR: Hazard Ratio; NSCLC: Non-Small Cell Lung Cancer; NGS: Next Generation Sequencing; PS: Performance Status; OS: Overall Survival;

34 **Abstract**

35

36 **Background:** *KRAS* mutation status, stage and tumor size at the time of diagnosis are well-  
37 established independent prognostic factors in non-small cell lung cancer (NSCLC). Here, we  
38 investigate the prognostic value of combining survival data on *KRAS* mutation status and  
39 tumor size in early-stage NSCLC.

40

41 **Methods:** We studied the combined impact of *KRAS* mutational status and tumor size on  
42 overall survival (OS) and risk of death in patients with stage I-II NSCLC. We performed a  
43 retrospective study including 310 consecutively diagnosed patients with early (stage I-II)  
44 NSCLCs. All consecutive patients molecularly assessed and diagnosed between 2016-2018  
45 with stage I-II NSCLC in the Västra Götaland region of western Sweden were included in this  
46 multi-center retrospective study. The primary study outcome was OS and risk of death (hazard  
47 ratio).

48

49 **Results:** Out of 310 patients with stage I-II NSCLC, 37% harbored an activating mutation in  
50 the *KRAS* gene. Our study confirmed staging and tumor size as prognostic factors. However,  
51 *KRAS* mutational status was not found to impact OS and there was no difference in the risk of  
52 death when combining *KRAS* mutational status and primary tumor size.

53

54 **Conclusions:** In our patient cohort, *KRAS* mutations in combination with primary tumor size  
55 are not associated with a worse prognosis in stage I-II NSCLC.

## 56 Introduction

57 Non-small cell lung cancer (NSCLC) is the second most common cancer worldwide with 2.1  
58 million new cases annually and the highest mortality rate with 1.8 million deaths. [1] Staging  
59 is a crucial aspect of NSCLC management, as it is one of the most important predictors of  
60 survival. The TNM staging system describes key tumor characteristics such as size, location,  
61 and whether the disease has spread to lymph nodes and/or distant organs [2-5]. There are  
62 four main stages in NSCLC (stage I-IV), with stage IV having the worst prognosis. Pathological  
63 stage is considered the most important prognostic factor for resected patients, with 5-year  
64 survival rates, gradually decreasing across stages, of 83% for stage IA, 71% for IB, 57% for  
65 IIA, 49% for IIB, 36% for IIIA, and 23% for IIIB [4].

66  
67 The most frequent oncogenic driver in NSCLC is the Kirsten rat sarcoma viral oncogene  
68 (*KRAS*), which is present in up to 40% of all cases, with the most common mutations being  
69 *G12C*, *G12V*, and *G12D* [6]. *KRAS* mutations are associated with worse outcomes after  
70 chemotherapy and radiotherapy, with shorter OS in stage III and IV patients [7-14]. In early-  
71 stage NSCLC, however, while several studies have shown that *KRAS* mutations negatively  
72 influence the prognosis [15-17], others have shown no significant effect [18]. Most recently, it  
73 was reported that *KRAS G12C* mutation (but not other *KRAS* mutations or with no mutation in  
74 *KRAS*) significantly increased risk of disease recurrence in stage I surgically resected lung  
75 adenocarcinomas [19]. However, while the study found this in two distinct local cohorts of IRE-  
76 LUAD (Rome, Italy) and MSK-LUAD (New York, USA), data extracted from The Cancer  
77 Genome Atlas (TCGA) showed no significant difference. Hence, the debate about the  
78 prognostic value of *KRAS* mutational status in early NSCLC is ongoing [20, 21]. In fact, given  
79 the lack of consensus regarding its effects on prognosis, testing for *KRAS* mutations for  
80 resectable stage I and II tumors is currently not recommended in clinical guidelines [22]. In  
81 addition, several inhibitors that specifically bind *KRAS-G12C* have been investigated in clinical  
82 trials, with sotorasib becoming the first treatment to gain approval for adults with stage IV  
83 NSCLC harboring a *KRAS-G12C* mutation as second-line therapy [23-27]. However,  
84 treatment with sotorasib is not currently recommended for patients with early-stage NSCLC  
85 due to lack of evidence showing positive outcomes of treatment in this group.

86  
87 Therefore, further investigations are warranted to identify potential subgroups in Stage I-III  
88 disease who may still have to gain from effective and well-established treatments, and to add  
89 to the pool of clinical data required to study this further. One strategy is to stratify patients  
90 according to *KRAS* mutational status together with other key prognostic factors, such as tumor  
91 size. Primary tumor size is an established prognostic factor in NSCLC, with larger tumors  
92 being associated with poorer survival [21, 28-31]. The reason for this association is not yet  
93 fully understood but larger tumors may be more resistant to therapy due to having poorer blood  
94 supply, differential metabolism, and potentially a higher likelihood of micrometastatic disease  
95 compared to smaller tumors [32-35]. Further research is needed to elucidate the underlying  
96 mechanisms. However, when considering primary tumor size, the grouping as early (I-II),  
97 advanced (III), and metastasized (IV) NSCLC can be argued to be more clinically relevant due  
98 to that stage I-II is primarily based on tumor size whereas a spread to the lymph nodes, a  
99 negative prognostic factor, is more common in stage III [3, 21].

100  
101 To our knowledge, no one has investigated the combined impact of primary tumor size and  
102 *KRAS* mutational status on OS and risk of death in stage I-II NSCLC. However, in Sweden,  
103 reflex testing for targetable alterations in NSCLC, including *KRAS* mutational status, has been  
104 widely implemented since 2015 for all stages. By including all consecutive patients diagnosed  
105 with stage I-II NSCLC and molecularly assessed between 2016-2018 in Västra Götaland, the  
106 second largest county in Sweden with a population of 1.7 million, the current retrospective  
107 cohort study provides a unique real-world dataset for assessing the impact of combining *KRAS*  
108 mutations with primary tumor size.

109  
110 To summarize, primary tumor size is a key determinant of prognosis especially in the early  
111 stages of NSCLC. At the same time, the prognostic value of *KRAS* mutational status in early  
112 disease stages remains unclear. Hence patients diagnosed at an early stage are not

113 automatically tested for *KRAS* mutations and recommended treatment with *KRAS*-targeted  
114 therapy. Here, we investigate whether there is prognostic value in combining *KRAS* mutational  
115 status with tumor size to aid in clinical stratification of potentially treatment-responsive  
116 subgroups in early-stage NSCLC.

117

118

## 119 **Materials and Methods**

120

### 121 ***Patient population***

122 We conducted a multi-center retrospective study including all consecutive NSCLC patients  
123 diagnosed with stage I-II NSCLC and molecular assessment performed between 2016-2018  
124 in Västra Götaland, Sweden ( $n = 310$ ). Further inclusion criteria included the availability of  
125 tumor size from CT scanning or a pathology report as well as follow-up data. Patients were  
126 excluded if diagnosed before 2016, had no digitally accessible patient charts, no tumor  
127 measurements noted in the patient charts, or had recurrent disease.

128

129 Patient demographics (age, sex, Eastern Cooperative Oncology Group [ECOG] performance  
130 status [PS], and smoking history), cancer stage, pathological details (histology, mutational  
131 status including *KRAS* mutational status and subtype), first-line treatment and outcome data  
132 were retrospectively collected from patient charts and the Swedish Lung Cancer Registry.  
133 Clinical staging was based on TNM staging guidelines 7<sup>th</sup> edition [4]. TNM staging 8<sup>th</sup> edition  
134 released in 2017 was introduced in Swedish guidelines in 2018, and full implementation was  
135 reached in 2019. Ethical approval was obtained from the Swedish Ethical Review Authority  
136 prior to study commencement (Dnr 2019-04771 and 2021-04987). No informed consent was  
137 required due to all data presented in a de-identified form according to the Swedish Ethical  
138 Review Authority.

139

### 140 ***Mutational status***

141 Patients were assessed with next-generation sequencing (NGS) for mutational status on DNA  
142 from formalin-fixed paraffin-embedded (FFPE) blocks or cytological smears using the Ion  
143 AmpliSeq™ Colon and Lung Cancer Panel v2 from Thermo Fisher Scientific as part of the  
144 diagnostic workup process at the Department of Clinical Pathology at Sahlgrenska University  
145 Hospital, assessing hotspot mutations in *EGFR*, *BRAF*, *KRAS*, and *NRAS*. Until June 2017,  
146 *ALK*-fusions were assessed with immunohistochemistry (IHC), and with fluorescence in situ  
147 hybridization (FISH) if positive or inconclusive IHC. *ROS1* was analyzed upon request with  
148 FISH. Thereafter, *ALK*, *ROS1*, and *RET* fusions were assessed on RNA using the OncoPrint  
149 Solid Tumor Fusion Panel from Thermo Fisher Scientific.

150

### 151 ***Tumor size***

152 To obtain the most recent and accurate untreated primary tumor size, measurements were  
153 collected from the radiology report of computed tomography (CT) performed before a final  
154 diagnosis of NSCLC was established; this is referred as clinical staging. In patients who  
155 underwent surgical resection, the actual primary tumor size was also collected from the  
156 pathology report, also referred as pathological staging (PAD). The largest tumor diameter was  
157 collected and reported in millimeters.

158

### 159 ***Study objectives***

160 The primary outcome of this study was OS and risk of death, defined as the interval between  
161 the date of first treatment and the date of death from any cause. Patients alive or lost to follow-  
162 up at the cut-off date were censored at last contact. Median follow-up time was estimated  
163 using the reverse Kaplan-Meier method. We compared OS and risk of death stratified by  
164 *KRAS* mutational status, i.e., with no mutation in *KRAS* (wildtype, *KRAS*<sup>WT</sup>), all *KRAS*  
165 mutations (*KRAS*<sup>MUT</sup>), *KRAS* G12C mutations (*KRAS*<sup>MUT G12C</sup>) and all *KRAS* mutations other  
166 than G12C (*KRAS*<sup>MUT not G12C</sup>).

167

168

169

## 170 **Statistical analysis**

171 Clinical characteristics were summarized using descriptive statistics and evaluated with  
172 univariate analysis in table form. Survival was estimated using the Kaplan-Meier method. The  
173 log-rank test was used to assess significant differences in OS between  $KRAS^{WT}$  and  $KRAS^{MUT}$   
174 groups. To evaluate if there was a significant difference in primary tumor size between  
175  $KRAS^{MUT}$  and  $KRAS^{WT}$ , the Mann-Whitney U test was used. Cox proportional hazard  
176 regression was conducted to measure the influence of tumor size on the risk of death (hazard  
177 ratio [HR]) stratified by  $KRAS$  mutational status. We defined an interaction term between tumor  
178 size (largest diameter in mm) and  $KRAS$  mutational status to assess the combined impact on  
179 the risk of death (HR). Statistical significance was set at  $p < 0.05$  and no adjustments were  
180 made for multiple comparisons. Data analysis was conducted using IBM SPSS Statistics  
181 version 27 and GraphPad Prism version 9.

182

## 183 **Results**

184

### 185 **Patients and tumor characteristics**

186 A total of 310 consecutive patients, who were diagnosed with stage I-II NSCLC during 2016-  
187 2018 in Västra Götaland, Sweden and for whom genetic data was available, were included in  
188 this retrospective cohort study (Fig. 1). In the total population, majority of patients were female  
189 (187, 60.3%), with a median age of 70 years, and most were current or former smokers (267,  
190 86%) (Table 1). Most patients had good PS with ECOG 0-1 at diagnosis (285, 92%) and the  
191 proportion of N1 was low (18, 5.8%). NSCLC was predominantly adenocarcinoma of the lung  
192 (281, 90.6%), while squamous cell carcinoma incidence was relatively low (11, 3.5%), which  
193 was expected due to the selection of histological type for NGS assessment. Of included  
194 patients, over a third (115, 37%) had a  $KRAS$  mutation (Table 1). This percentage matches  
195 what has been previously reported [9], showing good representativeness of the patient group  
196 studied here. When comparing the baseline characteristics of  $KRAS^{WT}$  with  $KRAS^{MUT}$  patients,  
197 a greater proportion of those with  $KRAS^{MUT}$  were female and current or former smokers. There  
198 were no cases of squamous cell carcinoma in the  $KRAS^{MUT}$  group. The most common  $KRAS$   
199 mutation was G12C (47%). In the total population, majority of patients underwent surgical  
200 resection (273, 88%; Table 2). Three patients did not receive any treatment and were excluded  
201 from further survival analyses. Median follow-up time was 63 months (95% CI, 59.7-68.3) and  
202 the data cut-off date was 31 October 2022.

203

204

### 205 **No significant difference in survival for all patients stratified by $KRAS$ mutations**

206 When comparing OS for all (stage I-II) patients stratified by  $KRAS$  mutational status, no  
207 significant difference was detected with a mean OS (median not reached) of 74 months for  
208  $KRAS^{WT}$  vs 63 months for  $KRAS^{MUT}$  ( $p = 0.847$ ; Fig 2A). Further stratification of the  $KRAS$   
209 mutated group by the G12C mutation also did not significantly change survival: 74 months for  
210  $KRAS^{WT}$ , 61 months for  $KRAS^{MUT \text{ not G12C}}$  and 63 months for  $KRAS^{MUT \text{ G12C}}$  ( $p = 0.834$ ; Fig 2D).

211

212

### 213 **No significant difference in survival for patients in Stage I or Stage II disease combined 214 with $KRAS$ mutations**

215 There were also no significant differences according to  $KRAS$  mutational status in stage I (Fig  
216 2B, 2E) or Stage II (Fig 2C, 2F). Similarly in resected patients, no significant difference was  
217 observed with a mean OS (median not reached) of 78 months for  $KRAS^{WT}$  vs 65 months for  
218  $KRAS^{MUT}$  ( $p = 0.856$ ; Supplemental Fig. 1A), or between the subgroups of  $KRAS^{MUT}$  ( $p = 0.471$ ;  
219 Supplemental Fig.1B).

220

221 Next, we stratified by stage and found mean OS (median not reached) of 79 months for stage  
222 I vs 50 months for stage II (Fig. S2A). We then conducted the analysis separately according  
223 to  $KRAS$  mutational status. For  $KRAS^{WT}$ , the mean OS (median not reached) was 78 months  
224 for stage I vs 46 months for stage II (Fig. S2B), and for  $KRAS^{MUT}$ , 65 months for stage I vs 53  
225 months for stage II (Fig. S2C).

226

227

## 228 **No significant difference in survival for patients with TNM-stage T1, T2 or T3 disease** 229 **combined with *KRAS* mutations**

230 Next, we stratified patients using T-staging and studied OS according to *KRAS* mutational  
231 status. Among those with T1 disease, *KRAS*<sup>WT</sup> had 83 months while *KRAS*<sup>MUT</sup> had 66 months  
232 OS ( $p = 0.751$ ; Fig 3A). Further, *KRAS*<sup>MUT not G12C</sup> patients had survival of 70 months and  
233 *KRAS*<sup>MUT G12C</sup> had 61 months ( $p = 0.344$ ; Fig 3D). In the T2 group, *KRAS*<sup>WT</sup> had 53 months  
234 while *KRAS*<sup>MUT</sup> had 59 months OS ( $p = 0.495$ ; Fig 3B). *KRAS*<sup>MUT not G12C</sup> patients had survival  
235 of 51 months and *KRAS*<sup>MUT G12C</sup> had 66 months ( $p = 0.389$ ; Fig 3E). Similarly, in the T3 group,  
236 *KRAS*<sup>WT</sup> had 47 months while *KRAS*<sup>MUT</sup> had 50 months OS ( $p = 0.966$ ; Fig 3C). *KRAS*<sup>MUT not</sup>  
237 <sup>G12C</sup> patients had survival of 50 months and *KRAS*<sup>MUT G12C</sup> had 53 months ( $p = 0.984$ ; Fig 3F).

238

239 We further analyzed the impact of T stage on survival and found that it correlated as expected  
240 with mean OS of 82 months for T1, 55 months for T2, and 46 months for T3 ( $p < 0.001$ ; Fig.  
241 S3A). The same trend was observed when separately analyzing *KRAS*<sup>WT</sup> with a mean OS  
242 (median not reached) of 83 months for T1, 53 months for T2, and 45 months for T2 ( $p < 0.001$ ;  
243 Fig. S3B), and *KRAS*<sup>MUT</sup> with a mean OS of 65 months for T1, 58 months for T2, and 48  
244 months for T3 ( $p < 0.023$ ; Fig. S3C).

245

246

## 247 ***KRAS* mutations are associated with smaller tumor size measured from CT scans, but** 248 **not resection specimens/PAD**

249 To evaluate differences between primary tumor size from CT scans at diagnosis stratified by  
250 *KRAS* mutational status, we used the Mann-Whitney U test. The test revealed that *KRAS*<sup>MUT</sup>  
251 primary tumors were significantly smaller at diagnosis, with a median size of 20 mm ( $n = 115$ )  
252 vs *KRAS*<sup>WT</sup> primary tumors with a median size of 25 mm ( $n = 190$ ) ( $p = 0.043$ ; Fig. 4A).  
253 However, when looking at tumor size as assessed in resected specimens, there were no  
254 differences; *KRAS*<sup>WT</sup> median size 22 mm ( $n = 171$ ) vs *KRAS*<sup>MUT</sup> median size 21 mm ( $n = 102$ )  
255 ( $p = 0.16$ ; Fig. 4B).

256

257

## 258 **Larger tumor size measured from resection specimens/PAD, but not CT scans, is** 259 **associated with a higher risk of death**

260 We found that increase in primary tumor size determined from CT scans did not have a  
261 significant effect on risk of death (HR, 1.006; 95% CI, 0.922-1.021;  $p > 0.5$ ) (Fig 4C). However,  
262 when testing the correlation between primary tumor size as assessed in resection specimens,  
263 we found a significantly increased risk of death (HR, 1.029; 95% CI, 1.012-1.046;  $p < 0.001$ )  
264 (Fig 4D). The risk of death increases with 2.9% for every mm increase of size.

265

## 266 **The combination of *KRAS* mutational status and tumor size does not impact the risk of** 267 **death**

268 To test if the combination of tumor size and *KRAS* mutational status impacts the risk of death,  
269 we defined an interaction term including both variables. For primary tumor size from CT scans  
270 and *KRAS* mutational status, no significant difference in the risk of death was detected (HR,  
271 1.008; 95% CI, 0.988-1.030;  $p > 0.5$ ) (Fig 4C). Similarly, there were no significant differences  
272 for primary tumor size and *KRAS* mutational status when measured in resection specimens  
273 (HR, 1.002; 95% CI, 0.978-1.027;  $p = 0.807$ ) (Fig 4D).

274

275

## 276 **Discussion**

277

278 In this study, we assessed the prognostic value of combining *KRAS* mutational status with  
279 tumor size in early-stage NSCLC. We found that combining these variables had no significant  
280 effect on overall survival or the risk of death.

281

282 In alignment with previous findings, we found in our patient cohort that later disease stage and  
283 larger primary tumor size is associated with worse survival. Interestingly, we found that these

284 correlations are sustained independent of *KRAS* mutational status. Importantly, the  
285 established literature on how *KRAS* mutations affect outcomes in early-stage NSCLC is  
286 varying between worse survival and no significant difference. Here, we find as the latter, that  
287 *KRAS* mutational status alone does not significantly impact OS or risk of death in patients with  
288 stage I-II NSCLC. Patients harboring a *KRAS* G12C mutation did not have a worse OS. Taken  
289 together, these findings show good representativeness of this well-defined patient cohort.

290  
291 Our study included only patients with stage I-II disease due to the focus on primary tumor size  
292 and to limit the prognostic impact of local invasion and regional lymph node involvement. Only  
293 5.8% of the patients had N1 disease that could affect the prognosis. The major portion of the  
294 patients had tumor resection and more than 90% of tumors were adenocarcinoma. During this  
295 period, patients diagnosed with squamous cell carcinoma were molecularly assessed to a  
296 lesser extent, thus our study is more representative of adenocarcinoma. Even though most  
297 tumors were classified according the TNM staging guidelines 7<sup>th</sup> edition, changes included in  
298 the 8<sup>th</sup> edition, mainly covering substages that were not analyzed in this study, do not alter our  
299 findings [4].

300  
301 When combining tumor size and *KRAS* mutational status there was no increased risk of death.  
302 No significant differences were observed when comparing OS for all stage I-II patients  
303 stratified by *KRAS* mutational status. However, the mean OS was 11 months shorter for  
304 *KRAS*<sup>MUT</sup> patients. The same trend was observed when looking at resected patients with a 13-  
305 month shorter mean survival for *KRAS*<sup>MUT</sup> patients. In this case, our results could differ from  
306 former studies due to earlier studies not being corrected for tumor size [15, 16]. Our cohort  
307 could be used as a historical reference if, in the future, sotorasib would be approved for  
308 adjuvant treatment for patients harboring *KRAS* G12C mutation.

309  
310 Outcome variables other than survival such as recurrence rates and progression-free survival  
311 were not examined here. In addition, there remain confounders that were not include in the  
312 analyses such as the effect of different treatment methods on survival. Further, we use the T  
313 descriptor of the TNM staging system for tumor size even though the descriptor also includes  
314 invasion status and or intrapulmonary metastasis. We found that larger tumor size measured  
315 from resection specimens, but not CT scans, is associated with a higher risk of death.  
316 However, one confounder here is that non-resected patients are included in the CT group but  
317 not in the PAD group, which biases towards worse prognosis.

318  
319 Going forward, much remains to be explored on the role of *KRAS* mutation in early NSCLC.  
320 In the age of precision medicine, our study contributes towards the detailed level clinical data  
321 that is required for future pooled analysis of prognosis assessments that can help guide clinical  
322 decisions.

323  
324 In conclusion, we confirm the importance of primary tumor size and stage as a prognostic  
325 factor for survival in stage I-II NSCLC. *KRAS* mutations were not found to impact OS and no  
326 difference in the risk of death was observed when combining *KRAS* mutations and primary  
327 tumor size.

328  
329  
330

### 331 **Declarations**

### 332 **Acknowledgments**

333 We thank Sayin lab members and Nesrin Vurgun, Scientific editor at the Institute of Clinical  
334 Sciences, University of Gothenburg for a critical review of the manuscript. In addition, we thank  
335 members of the Swedish Lung Cancer Registry and the continuous reporting by Swedish  
336 healthcare employees.

### 337 338 **Authors' contributions**

339 Conceptualization, E.A.E., H.F., A.H. and V.I.S.; Data curation, E.A.E., A.M., H.F.; Formal  
340 analysis, E.A.E., A.M. and C.W.; Funding acquisition, E.A.E., C.W., H.F., A.H. and V.I.S.;

341 Methodology, E.A.E.; Resources, H.F.; Supervision, A.H. and V.I.S.; Visualization, E.A.E.,  
342 S.I.S., C.W. and V.I.S.; Writing—original draft, E.A.E., S.I.S and V.I.S.; Writing—review &  
343 editing, E.A.E., S.I.S, C.W., H.F., A.H. and V.I.S., Project coordination, V.I.S. All authors have  
344 read and agreed to the published version of the manuscript.

345

#### 346 **Funding**

347 This work was supported by the Swedish Research Council (2018-02318 and 2022-00971 to  
348 VIS, 2021-03138 to CW), the Swedish Cancer Society (23-3062 to VIS, 22-0612FE to CW),  
349 the Gothenburg Society of Medicine (2019; 19/889991 to EAE), Assar Gabrielsson Research  
350 Foundation (to EAE, CW, and VIS), the Swedish state under the agreement between the  
351 Swedish government and the county councils, the ALF-agreement (to HF), Department of  
352 Oncology, Sahlgrenska University Hospital (to EAE and AH), the Swedish Society for Medical  
353 Research (2018; S18-034 to VIS), the Knut and Alice Wallenberg Foundation, and the  
354 Wallenberg Centre for Molecular and Translational Medicine (to VIS).

355

#### 356 **Declaration of potential conflict of interest**

357 The authors declare no conflicts of interest.

358

#### 359 **Institutional Review Board Statement**

360 Approval from the Swedish Ethical Review Authority (Dnr 2019-04771 and 2021-04987) was  
361 obtained prior to the commencement of the study. No informed consent was required due to  
362 all data presented in a de-identified form according to the Swedish Ethical Review Authority.

363

364

#### 365 **Consent for publication**

366 Not applicable. Patient consent statements were not required due to the retrospective nature  
367 of this study. No informed consent was required due to all data presented in a de-identified  
368 form according to the Swedish Ethical Review Authority.

369

370

#### 371 **Data Availability Statement**

372 The datasets used and/or analysed during the current study available from the corresponding  
373 author on reasonable request.

374



## 375 References

- 376 1. World Health Organization, International Agency for Research on Cancer. *Globocan 2020: Lung Cancer*. International Agency for Research on Cancer. Available at  
377 <http://qco.iarc.fr/today/data/factsheets/cancers/15-Lung-fact-sheet.pdf>. Accessed: March 2,  
378 2021.
- 379
- 380 2. Amin, M.B., et al., *The Eighth Edition AJCC Cancer Staging Manual: Continuing to build a*  
381 *bridge from a population-based to a more "personalized" approach to cancer staging*. CA  
382 Cancer J Clin, 2017. **67**(2): p. 93-99.
- 383 3. Detterbeck, F.C., *The eighth edition TNM stage classification for lung cancer: What does it*  
384 *mean on main street?* J Thorac Cardiovasc Surg, 2018. **155**(1): p. 356-359.
- 385 4. Goldstraw, P., et al., *The IASLC Lung Cancer Staging Project: Proposals for Revision of the*  
386 *TNM Stage Groupings in the Forthcoming (Eighth) Edition of the TNM Classification for Lung*  
387 *Cancer*. J Thorac Oncol, 2016. **11**(1): p. 39-51.
- 388 5. Wankhede, D., *Evaluation of Eighth AJCC TNM Stage for Lung Cancer NSCLC: A Meta-analysis*.  
389 Ann Surg Oncol, 2021. **28**(1): p. 142-147.
- 390 6. Tartarone, A., et al., *Beyond Conventional: The New Horizon of Targeted Therapy for the*  
391 *Treatment of Advanced Non Small Cell Lung Cancer*. Front Oncol, 2021. **11**: p. 632256.
- 392 7. Brady, A.K., et al., *Survival outcome according to KRAS mutation status in newly diagnosed*  
393 *patients with stage IV non-small cell lung cancer treated with platinum doublet*  
394 *chemotherapy*. Oncotarget, 2015. **6**(30): p. 30287-94.
- 395 8. Eklund, E.A., et al., *KRAS Mutations Impact Clinical Outcome in Metastatic Non-Small Cell*  
396 *Lung Cancer*. Cancers (Basel), 2022. **14**(9).
- 397 9. Goulding, R.E., et al., *KRAS mutation as a prognostic factor and predictive factor in*  
398 *advanced/metastatic non-small cell lung cancer: A systematic literature review and meta-*  
399 *analysis*. Cancer Treat Res Commun, 2020. **24**: p. 100200.
- 400 10. Hallqvist, A., et al., *Mutated KRAS Is an Independent Negative Prognostic Factor for Survival*  
401 *in NSCLC Stage III Disease Treated with High-Dose Radiotherapy*. Lung Cancer Int, 2012.  
402 **2012**: p. 587424.
- 403 11. Hames, M.L., et al., *Correlation between KRAS mutation status and response to*  
404 *chemotherapy in patients with advanced non-small cell lung cancer* ☆. Lung Cancer, 2016.  
405 **92**: p. 29-34.
- 406 12. Marabese, M., et al., *KRAS mutations affect prognosis of non-small-cell lung cancer patients*  
407 *treated with first-line platinum containing chemotherapy*. Oncotarget, 2015. **6**(32): p. 34014-  
408 22.
- 409 13. Mellema, W.W., et al., *KRAS mutations in advanced nonsquamous non-small-cell lung cancer*  
410 *patients treated with first-line platinum-based chemotherapy have no predictive value*. J  
411 Thorac Oncol, 2013. **8**(9): p. 1190-5.
- 412 14. Rodenhuis, S., et al., *Mutational activation of the K-ras oncogene and the effect of*  
413 *chemotherapy in advanced adenocarcinoma of the lung: a prospective study*. J Clin Oncol,  
414 1997. **15**(1): p. 285-91.
- 415 15. Meng, D., et al., *Prognostic value of K-RAS mutations in patients with non-small cell lung*  
416 *cancer: a systematic review with meta-analysis*. Lung Cancer, 2013. **81**(1): p. 1-10.
- 417 16. Kadota, K., et al., *KRAS Mutation Is a Significant Prognostic Factor in Early-stage Lung*  
418 *Adenocarcinoma*. Am J Surg Pathol, 2016. **40**(12): p. 1579-1590.
- 419 17. Izar, B., et al., *The prognostic impact of KRAS, its codon and amino acid specific mutations, on*  
420 *survival in resected stage I lung adenocarcinoma*. J Thorac Oncol, 2014. **9**(9): p. 1363-9.
- 421 18. D'Angelo, S.P., et al., *Distinct clinical course of EGFR-mutant resected lung cancers: results of*  
422 *testing of 1118 surgical specimens and effects of adjuvant gefitinib and erlotinib*. Journal of  
423 Thoracic Oncology, 2012. **7**(12): p. 1815-1822 %@ 1556-0864.
- 424 19. Gallina, F.T., et al., *KRAS G12C mutation and risk of disease recurrence in stage I surgically*  
425 *resected lung adenocarcinoma*. Lung Cancer, 2023. **181**: p. 107254.
- 426 20. Ihle, N.T., et al., *Effect of KRAS oncogene substitutions on protein behavior: implications for*  
427 *signaling and clinical outcome*. J Natl Cancer Inst, 2012. **104**(3): p. 228-39.

- 428 21. Garinet, S., et al., *Updated Prognostic Factors in Localized NSCLC*. Cancers (Basel), 2022.  
429 **14(6)**.
- 430 22. Remon, J., J.C. Soria, and S. Peters, *Early and locally advanced non-small-cell lung cancer: An*  
431 *update of the ESMO Clinical Practice Guidelines focusing on diagnosis, staging, systemic and*  
432 *local therapy*. Annals of Oncology, 2021. **32(12)**: p. 1637-1642 %@ 0923-7534.
- 433 23. Addeo, A., G.L. Banna, and A. Friedlaender, *KRAS G12C Mutations in NSCLC: From Target to*  
434 *Resistance*. Cancers (Basel), 2021. **13(11)**.
- 435 24. Burns, T.F., et al., *Targeting KRAS-Mutant Non-Small-Cell Lung Cancer: One Mutation at a*  
436 *Time, With a Focus on KRAS G12C Mutations*. J Clin Oncol, 2020. **38(35)**: p. 4208-4218.
- 437 25. Indini, A., et al., *Targeting KRAS in Solid Tumors: Current Challenges and Future*  
438 *Opportunities of Novel KRAS Inhibitors*. Pharmaceutics, 2021. **13(5)**.
- 439 26. Mathieu, M., et al., *KRAS G12C fragment screening renders new binding pockets*. Small  
440 GTPases, 2021: p. 1-14.
- 441 27. Skoulidis, F., et al., *Sotorasib for Lung Cancers with KRAS p.G12C Mutation*. N Engl J Med,  
442 2021.
- 443 28. Chen, Y., et al., *Prognostic factors of survival in patients with non-small cell lung cancer: a*  
444 *competing risk model using the SEER database*. Transl Cancer Res, 2022. **11(11)**: p. 3974-  
445 3985.
- 446 29. Gerber, D.E., et al., *Baseline tumour measurements predict survival in advanced non-small*  
447 *cell lung cancer*. Br J Cancer, 2013. **109(6)**: p. 1476-81.
- 448 30. Okada, M., et al., *Effect of tumor size on prognosis in patients with non-small cell lung*  
449 *cancer: the role of segmentectomy as a type of lesser resection*. J Thorac Cardiovasc Surg,  
450 2005. **129(1)**: p. 87-93.
- 451 31. Zhang, J., et al., *Relationship between tumor size and survival in non-small-cell lung cancer*  
452 *(NSCLC): an analysis of the surveillance, epidemiology, and end results (SEER) registry*. J  
453 Thorac Oncol, 2015. **10(4)**: p. 682-90.
- 454 32. Goldie, J.H. and A.J. Coldman, *A mathematic model for relating the drug sensitivity of tumors*  
455 *to their spontaneous mutation rate*. Cancer treatment reports, 1979. **63(11-12)**: p. 1727-  
456 1733.
- 457 33. Skipper, H.E., *Thoughts on Cancer Chemotherapy and Combination Modality Therapy*  
458 *(1974)*. JAMA, 1974. **230(7)**: p. 1033-1035.
- 459 34. Jain, R.K., *Physiological Barriers to Delivery of Monoclonal Antibodies and Other*  
460 *Macromolecules in Tumors1*. Cancer Research, 1990. **50(3\_Supplement)**: p. 814s-819s.
- 461 35. Trédan, O., et al., *Drug Resistance and the Solid Tumor Microenvironment*. JNCI: Journal of  
462 the National Cancer Institute, 2007. **99(19)**: p. 1441-1454.  
463  
464

465 **Figure legends**

466

467 **Table 1** Characteristics of the total cohort as well as stratified by  $KRAS^{WT}$  and  $KRAS^{MUT}$ . Data  
468 are presented as n (%).

469 ECOG PS, Eastern Cooperative Oncology Group Performance Status. T, Tumor. N, Nodulus.

470

471 **Table 2** Summary of first-line treatments in the total cohort as well as stratified by  $KRAS^{WT}$   
472 and  $KRAS^{MUT}$ . Data are presented as n (%).

473

474 **Figure 1. Patient selection**

475 Flow chart showing patient selection for the study.

476

477 **Figure 2. Impact of  $KRAS$  mutational status on overall survival in Stage I and II NSCLC.**

478 Kaplan-Meier estimates comparing overall survival between (A, D) all patients, (B, E) Stage I  
479 and (C, F) Stage II patients with no mutation in  $KRAS$  (wildtype,  $KRAS^{WT}$ ), with all  $KRAS$   
480 mutations ( $KRAS^{MUT}$ ), only  $KRAS$ -G12C mutations ( $KRAS^{MUT\ G12C}$ ) and  $KRAS$  mutations other  
481 than G12C ( $KRAS^{MUT\ not\ G12C}$ ).

482

483 **Figure 3. Impact of  $KRAS$  mutational status on overall survival across TNM-stages in  
484 NSCLC**

485 Kaplan-Meier estimates comparing overall survival between (A, D) T1, (B, E) T2 and (C, F)  
486 T3 patients with no mutation in  $KRAS$  (wildtype,  $KRAS^{WT}$ ), with all  $KRAS$  mutations  
487 ( $KRAS^{MUT}$ ), only  $KRAS$ -G12C mutations ( $KRAS^{MUT\ G12C}$ ) and  $KRAS$  mutations other than  
488 G12C ( $KRAS^{MUT\ not\ G12C}$ ).

489

490 **Figure 4.  $KRAS$  mutations are associated with smaller tumor size at diagnosis**

491 Primary tumor size from (A) CT scans and (B) resection specimens (PAD) in patients with no  
492 mutation in  $KRAS$  (wildtype,  $KRAS^{WT}$ ) or with  $KRAS$  mutations ( $KRAS^{MUT}$ ). Forest plot of  
493 multivariate COX regression analysis for patients with tumor size from (C) CT scan and (D)  
494 resection specimens (PAD).

495

496 **Supplemental Figure 1**

497 Kaplan-Meier estimates of overall survival for resected Stage I-II NSCLC patients stratified by  
498  $KRAS$  mutational status. (A) No mutation in  $KRAS$  (wildtype,  $KRAS^{WT}$ ), with all  $KRAS$   
499 mutations ( $KRAS^{MUT}$ ). (B) Only  $KRAS$ -G12C mutations ( $KRAS^{MUT\ G12C}$ ),  $KRAS$  mutations other  
500 than G12C ( $KRAS^{MUT\ not\ G12C}$ ).

501

502

503 **Supplemental Figure 2**

504 Kaplan-Meier estimates comparing overall survival for (A) all patients, (B) patients with no  
505 mutation in  $KRAS$  (wildtype,  $KRAS^{WT}$ ), and (C) with all  $KRAS$  mutations ( $KRAS^{MUT}$ ), stratified  
506 by Stages I and II.

507

508 **Supplemental Figure 3**

509 Kaplan-Meier estimates comparing overall survival for (A) all patients, (B) patients with no  
510 mutation in  $KRAS$  (wildtype,  $KRAS^{WT}$ ), and (C) with all  $KRAS$  mutations ( $KRAS^{MUT}$ ), stratified  
511 by TNM-stages T1, T2 and T3.

512

513

514

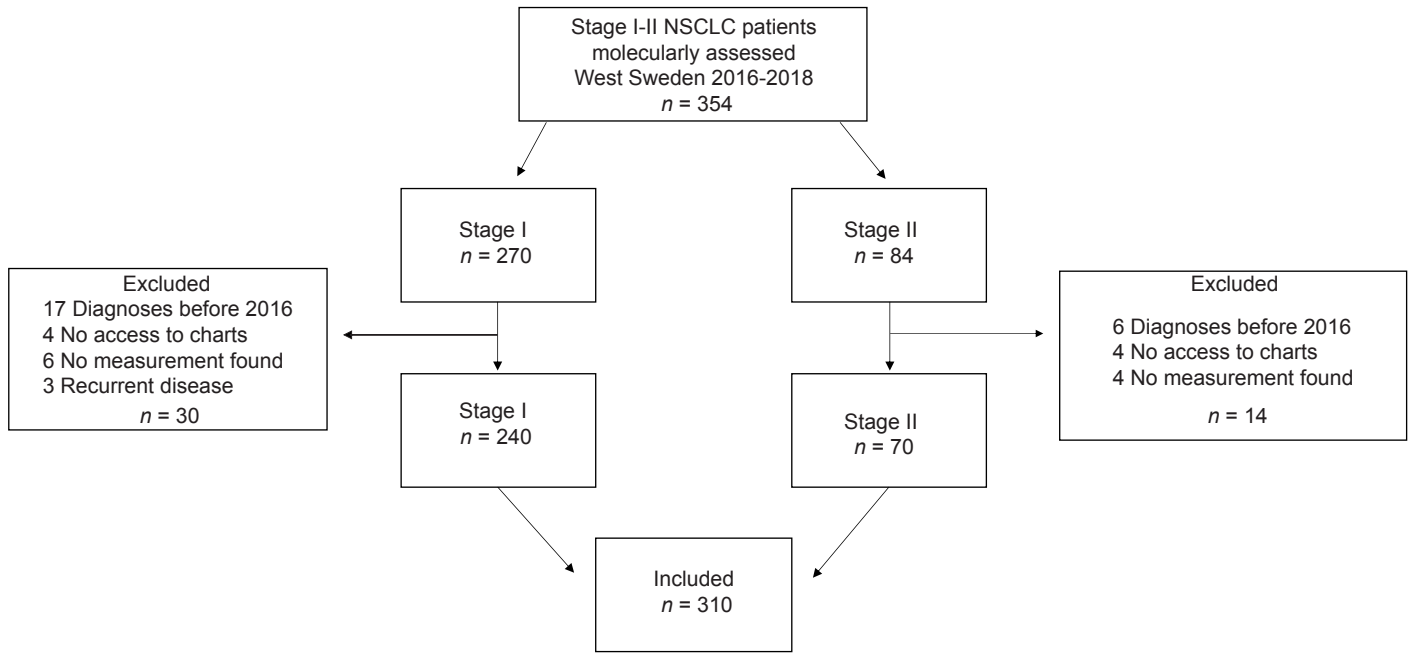
**Table 1. Characteristics all patients stage I-II NSCLC**

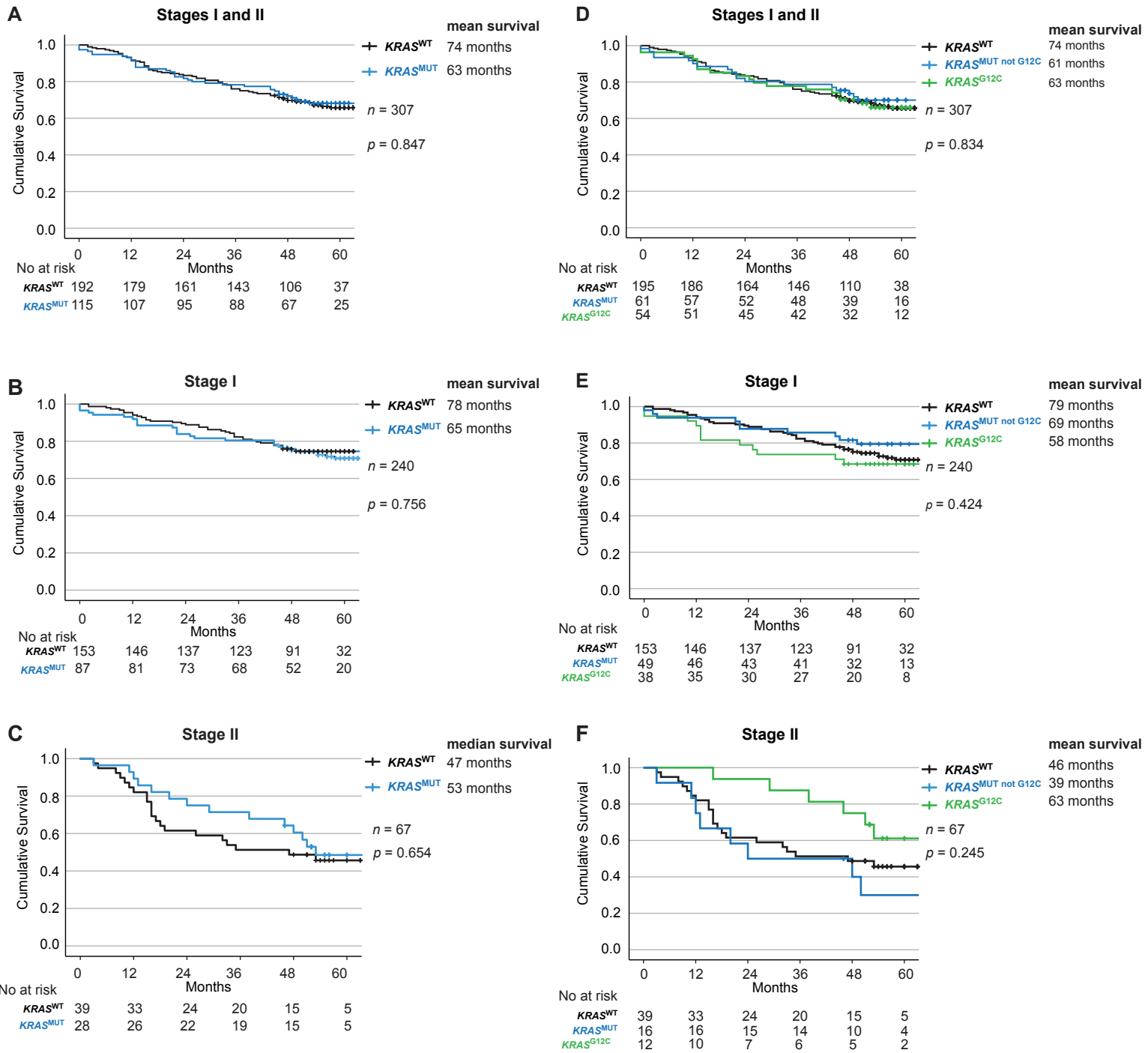
	<b>Total</b>	<b>KRAS WT</b>	<b>KRAS MUT</b>
	n (%)	n (%)	n (%)
Total	310 (100)	195 (63.0)	115 (37.0)
Age in years, median (range)	70 (35-85)	70 (35-85)	70 (48-84)
<b>Sex</b>			
Male	123 (39.7)	88 (45.1)	35 (30.4)
Female	187 (60.3)	107 (54.9)	80 (69.6)
<b>Smoking history</b>			
Current smoker	99 (31.9)	51 (26.2)	48 (41.7)
Former smoker	168 (54.2)	106 (54.4)	62 (53.9)
Never smoker	43 (13.9)	38 (19.5)	5 (4.3)
<b>Performance status</b>			
ECOG 0	144 (46.5)	82 (42.1)	62 (53.9)
ECOG 1	141 (45.5)	96 (49.2)	45 (39.1)
ECOG 2	24 (7.7)	16 (8.2)	8 (7.0)
ECOG 3	1 (0.3)	1 (0.5)	0
ECOG 4	0	0	0
<b>Histology</b>			
Adenocarcinoma	281 (90.6)	168 (86.2)	113 (98.3)
Squamous cell carcinoma	11 (3.5)	11(5.6)	0
NCSLC NOS	18 (5.9)	16 (8.2)	2 (1.7)
<b>Mutation status</b>			
None known	124 (40.2)	124 (63.6)	
KRAS	115 (37.0)	0	
EGFR	54 (17.4)	54 (27.7)	
BRAF	6 (1.9)	6 (3.1)	
ALK	4 (1.3)	4 (2.1)	
ROS1	3 (1.0)	3 (1.5)	
RET	1 (0.3)	1 (0.5)	
Other	3 (1.0)	3 (1.5)	
<b>KRAS submutation</b>			
G12A			9 (7.8)
G12C			54 (47.0)
G12D			15 (13.0)
G12V			26 (22.6)
Other			11 (9.6)
<b>TNM</b>			
T1a	99 (31.9)	55 (28.2)	44 (38.3)
T1b	76 (24.5)	54 (27.7)	22 (19.1)
T1c	12 (3.9)	7 (3.6)	5 (4.3)
T2a	67 (21.6)	46 (23.6)	21 (18.3)
T2b	28 (9.0)	15 (7.8)	13 (11.3)
T3	28 (9.0)	18 (9.2)	10 (8.7)
N0	292 (94.2)	185 (94.9)	107 (93.0)
N1	18 (5.8)	10 (5.1)	8 (7.0)
<b>Measurement modality</b>			
CT-scan (mm)	305 (98.4)	190 (97.4)	115 (100)
PAD	273 (88.0)	171 (88.7)	102 (88.7)
<b>At last follow up 31/10-2022</b>			
Alive	206 (66.5)	128 (65.6)	78 (67.8)
Deceased	104 (33.5)	67 (34.4)	37 (32.2)
<b>Survival</b>			
Mean survival (months)	63	62	64

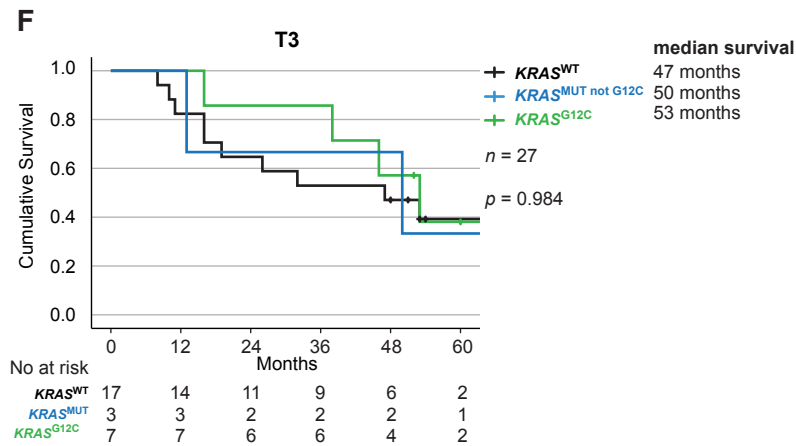
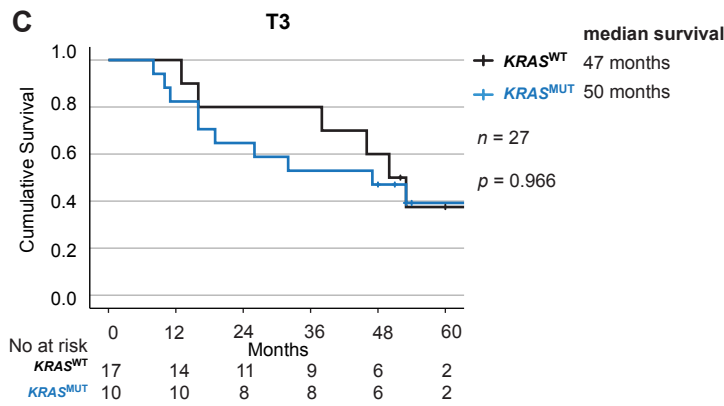
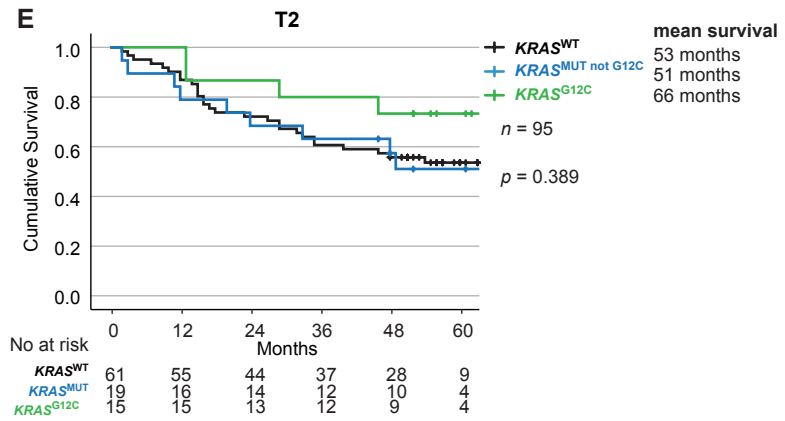
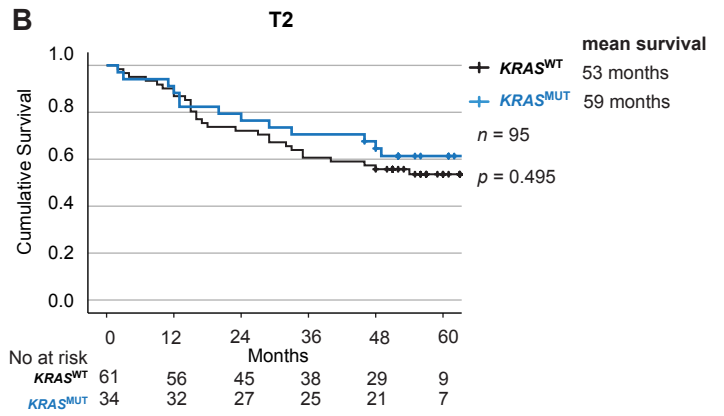
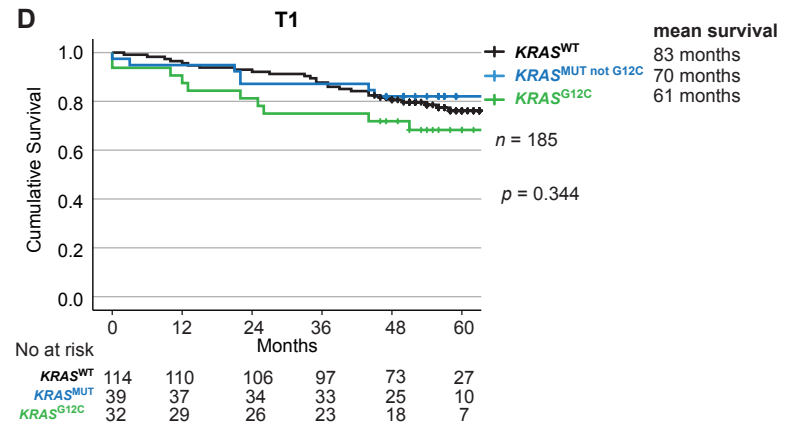
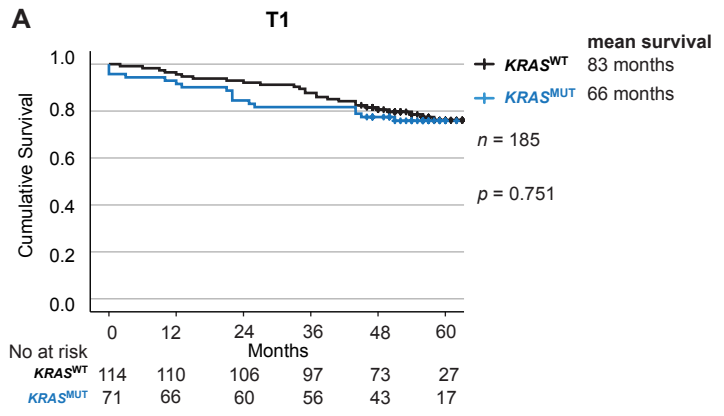
**Table 2. Treatment table all patients stage I-II NSCLC**

	<b>Total</b>	<b>KRAS WT</b>	<b>KRAS MUT</b>
	n (%)	n (%)	n (%)
Total	310 (100)	195 (63.0)	115 (37.0)
Surgery	273 (88.0)	171 (87.7)	102 (88.7)
Curative chemoradiotherapy	7 (2.3)	6 (3.1)	1 (0.9)
Medical treatment	2 (0.6)	1 (0.5)	1 (0.9)
Stereotactic radiotherapy	11 (3.5)	11 (5.6)	0 (0)
Radiotherapy	14 (4.5)	3 (1.5)	11 (9.6)
No treatment	3 (1.0)	3 (1.5)	0 (0)

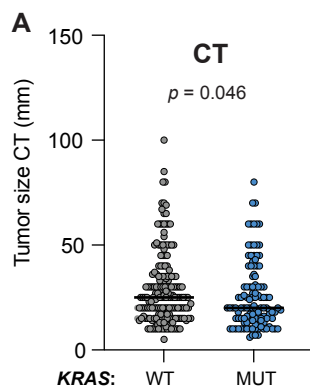
517



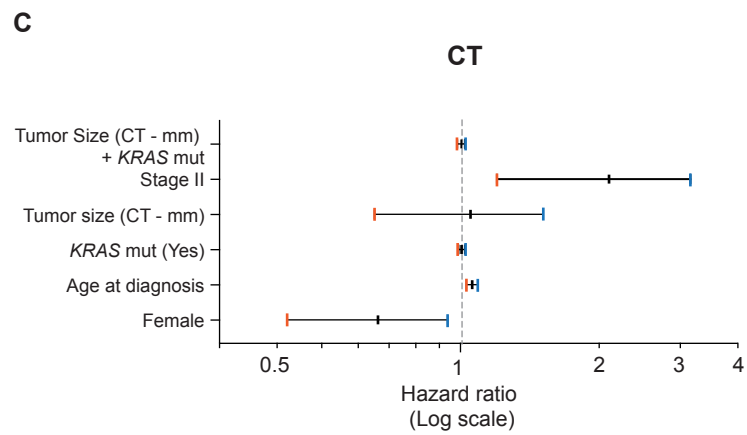




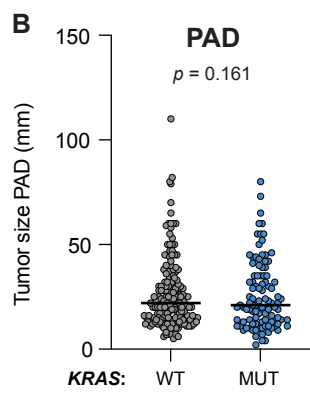




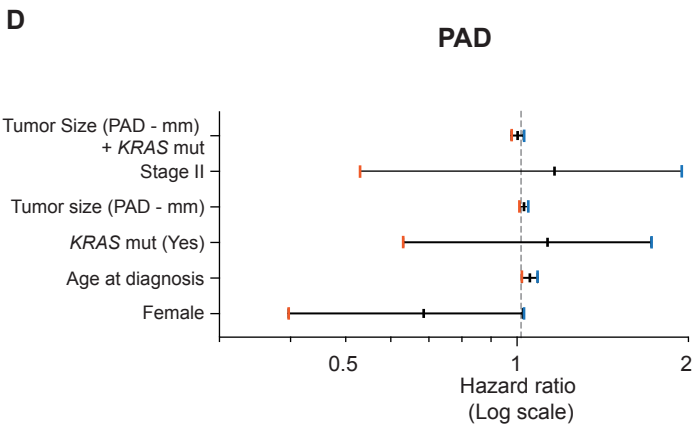
**KRAS<sup>WT</sup>**  $n = 190$  Median: 25 mm  
**KRAS<sup>MUT</sup>**  $n = 115$  Median: 20 mm



	HR	[95% CI]	<i>p</i> value
Tumor Size (CT - mm) + <i>KRAS</i> mut	1.008	[0.986, 1.021]	0.493
Stage II	1.947	[1.201, 3.155]	0.007
Tumor size (CT - mm)	1.006	[0.922, 1.021]	0.398
<i>KRAS</i> mut (Yes)	0.993	[0.651, 1.513]	0.973
Age at diagnosis	1.060	[1.031, 1.091]	< 0.001
Female	0.628	[0.421, 0.938]	0.023



**KRAS<sup>WT</sup>**  $n = 171$  Median: 22 mm  
**KRAS<sup>MUT</sup>**  $n = 102$  Median: 21 mm



	HR	[95% CI]	<i>p</i> value
Tumor Size (PAD - mm) + <i>KRAS</i> mut	1.002	[0.978, 1.027]	0.843
Stage II	1.015	[0.530, 1.947]	0.963
Tumor size (PAD - mm)	1.029	[1.012, 1.046]	< 0.001
<i>KRAS</i> mut (Yes)	1.042	[0.631, 1.722]	0.872
Age at diagnosis	1.043	[1.020, 1.087]	0.002
Female	0.637	[0.397, 1.023]	0.062