

24 **Background:**

25 Identification of long-term calcium channel blocker (CCB) responders with acute
26 vasodilator challenge is critical in the evaluation of patients with pulmonary arterial
27 hypertension. Currently there is no standardized approach for use of supplemental
28 oxygen during acute vasodilator challenge.

29 **Methods:**

30 Retrospective analysis of patients identified as acute vasoresponders, treated with
31 CCBs. All patients had hemodynamic measurements in three phases: 1) at baseline; 2)
32 with 100% fractional inspired oxygen; and 3) with 100% fractional inspired oxygen plus
33 inhaled nitric oxide (iNO). Patients were divided into two cohorts. Those meeting the
34 definition of acute vasoresponsiveness from phase 2 to phase 3 were labeled “iNO
35 Responders.” Those who did not reach the threshold of acute vasoresponsiveness from
36 phase 2 to phase 3 but did meet the definition from phase 1 to phase 3 were labeled
37 “Oxygen Responders.” Survival, hospitalization for decompensated right heart failure,
38 duration of CCB monotherapy, and functional data were collected.

39 **Results:**

40 iNO Responders, when compared to Oxygen Responders, had superior survival (100%
41 vs 50.1% 5-year survival, respectively), fewer hospitalizations for acute decompensated
42 right heart failure (0% vs 30.4% at 1 year, respectively), longer duration of CCB
43 monotherapy (80% versus 52% at 1 year, respectively), and superior six-minute walk
44 distance.

45 **Conclusion:**

46 Current guidelines for acute vasodilator testing do not standardize oxygen
47 coadministration with iNO. This study demonstrates that adjusting for the effects of
48 supplemental oxygen before assessing for acute vasoresponsiveness identifies a cohort
49 with superior functional status, tolerance of CCB monotherapy, and survival while on
50 long-term CCB therapy.

51 Pulmonary arterial hypertension (PAH) is a progressive disease of the small pulmonary
52 arteries characterized by increased pulmonary vascular resistance and eventual right
53 heart failure (1). Despite advancements in treatment, PAH is a life-limiting and often
54 terminal disease (2, 3). A subset of 5 – 10% of PAH patients demonstrate excellent
55 response to long-term calcium channel blockers (CCB) therapy (4). Recognition of long-
56 term CCB responders is essential for selection of appropriate therapy and
57 prognostication as these patients have less severe functional impairments, improved
58 hemodynamics, and significantly prolonged life span on CCB monotherapy (5, 6).
59 However, in unresponsive patients, CCB use is contraindicated and can cause
60 hemodynamic decompensation and increased mortality (6), making correct identification
61 of this population imperative.

62
63 Long-term CCB responders are identified by acute vasodilator challenge during right
64 heart catheterization (RHC) as part of the initial workup of PAH (7). Identification of
65 acute vasoresponders requires a reduction in mean pulmonary arterial pressure
66 (mPAP) of ≥ 10 mmHg reaching an absolute mPAP ≤ 40 mmHg without a decrease in
67 cardiac output (CO) in response to an acute vasodilatory agent (6, 8). Inhaled nitric
68 oxide (iNO) is an endogenous vasodilator produced by vascular endothelial cells and is
69 frequently used to assess acute vasoreactivity in PAH (9, 10). iNO can be delivered at
70 variable concentrations and is often co-administered with supplemental oxygen,
71 however there is significant variability in the use of supplemental oxygen during acute
72 vasodilator challenge, ranging from maintenance of fractional inspired oxygen (FiO₂) of
73 21% to use of 100% FiO₂ administered with iNO (11-15). The effects of supplemental

74 oxygen are not inert, as alveolar hypoxia has long been understood to induce
75 pulmonary vasoconstriction and subsequent elevation in mPAP (16-18) and increased
76 alveolar oxygen tension reduces mPAP (19, 20) and pulmonary vascular resistance
77 (PVR) (21) in PAH patients.

78
79 In this study, we evaluated the long-term tolerance of CCBs amongst two cohorts –
80 “iNO Responders,” who meet the definition of acute vasoresponsiveness only after first
81 adjusting for the effects of supplemental oxygen, and “Oxygen Responders,” who meet
82 the definition of acute vasoresponsiveness without adjusting for the vasodilatory effects
83 of oxygen. For each cohort, we follow tolerance of CCB monotherapy, mortality,
84 hospitalization for decompensated right heart failure, and functional status following the
85 initiation of CCB.

86

87 **Materials and Methods:**

88 *Study group*

89 We retrospectively evaluated medical records of all patients, aged 18 or older, referred
90 to a large regional tertiary pulmonary hypertension care center (PHCC) for management
91 of their PAH from January 2010 to October 2021. The study was approved by the
92 Colorado Multiple Institutional Review Board (COMIRB Protocol #: 07-0953).

93

94 PAH was defined by an mPAP \geq 25 mmHg with a pulmonary capillary wedge pressure
95 (PCWP) of $<$ 15 mmHg and pulmonary vascular resistance (PVR) $>$ 3 Woods units in
96 the absence of chronic thromboembolic pulmonary hypertension or significant chronic

97 respiratory disease (22). All PAH patients were evaluated and patients were identified
98 as vasoresponders if they 1) met the definition of acute vasoresponsiveness, with a
99 reduction in mPAP \geq 10 mmHg and a final mPAP \leq 40 mmHg (23); 2) were initially
100 treated with CCB monotherapy for their PAH; and 3) acute vasodilator challenge
101 included a dedicated measurement of mPAP during an “oxygen phase” at 100% FiO₂, in
102 addition to hemodynamic measurements at baseline and “vasodilator phase” with 100%
103 FiO₂ and 40ppm iNO. In accordance with the American College of Chest Physicians
104 recommendations (24) for evaluation of acute vasoreactivity in pulmonary hypertension,
105 all World Health Organization (WHO) Group I patients (25) were eligible for enrollment
106 including: idiopathic PAH (iPAH), familial PAH (FPAH) and PAH associated with
107 connective tissue disease, portopulmonary hypertension, toxins, congenital heart
108 disease, and HIV. We also performed a subgroup analysis of patients diagnosed with
109 iPAH, FPAH, and toxin-mediated PAH, in line with the 6th World Symposium on
110 Pulmonary Hypertension (WSPH) and European Society of Cardiology and European
111 Respiratory Sociate (ECS/ERS) recommendations (26, 27) for acute vasoreactivity
112 challenge. WHO class was determined by a clinician expert in the treatment of
113 pulmonary vascular disease and re-adjudicated by two authors (MR, TB).

114

115 *Right heart catheterization and acute vasodilator challenge*

116 All right heart catheterizations were performed using standard technique as previously
117 described (13). Baseline hemodynamic measurements including right atrial pressure
118 (RAP), mPAP, PWCP, and CO were first recorded on ambient room air. If the patient
119 had chronic oxygen requirements, baseline measurements were recorded at their home

120 supplemental oxygen dose with a goal saturation of peripheral oxygen (SpO₂) of 90-
121 94%. mPAP was recorded during an intermediate “oxygen phase,” using 100%
122 supplemental oxygen via non-rebreather face mask for 2 minutes. Finally, complete
123 hemodynamic measurements were repeated during a final “vasodilator phase,”
124 following administration of 40 ppm of iNO and 100% supplemental oxygen for 5
125 minutes.

126

127 *Responder definitions, CCB administration, and monitoring*

128 Patients were designated as “iNO Responders” if they met the definition of acute
129 vasoresponsiveness from the effects of iNO after first normalizing for the effects of
130 supplemental oxygen. If patients met the definition of acute vasoresponsiveness only
131 through a combination of the effects of oxygen and iNO, they were labeled “Oxygen
132 Responders” (*Figure 1*).

133

134 Selection and titration of a CCB agent was performed at the discretion of the treating
135 pulmonary hypertension provider. CCB monotherapy was discontinued if the patient did
136 not have favorable functional response: improvement to NYHA FC I or II, a lack of
137 improvement in 6MWD, or if they had evidence of worsening mPAP or right ventricular
138 function on transthoracic echocardiogram or RHC. NYHA functional status and 6MWD
139 were collected by chart review at baseline, 1-, and 3-year follow-up. Hospitalizations for
140 acute decompensated right heart failure within the first year of initiation of CCB were
141 observed. Additionally, time on CCB monotherapy and mortality from time of initiation of
142 CCB were collected.

143

144 *Statistical analysis*

145 For demographic variables, we presented summary statistics stratified by
146 vasoresponsive status alongside non-parametric statistical tests (Kruskal-Wallis tests
147 for continuous variables, Fisher's exact test for categorical variables). For time-to-event
148 outcomes, we presented stratified Kaplan-Meier estimates of event-free probabilities, as
149 well as P values from log-rank tests. We computed restricted means for each event time
150 for additional descriptive statistics as the median event time was not observed for all
151 outcomes. For the longitudinal outcome of 6MWD, we presented summary statistics and
152 visualizations of means and standard deviations stratified by vasoresponsive status.
153 Differences at each time were assessed using a linear mixed model with subject-level
154 random intercepts and fixed effects for time, vasoresponsive status, and their
155 interaction. Using the mixed model for 6MWD, group-level differences at each time were
156 tested using t-tests with the Kenward-Roger approximation for degrees of freedom,
157 while differences in NYHA classification were tested separately at each time point using
158 Fisher's Exact tests.

159

160 **Results:**

161 Two hundred sixty eight consecutive PAH patients were identified. Of these, 91 patients
162 (30.3%) had iPAH, 3 (1.0%) had familial PAH, and 206 (68.7%) had associated PAH. A
163 total of 33 acute vasoresponders were identified. Amongst these, 10 were "iNO
164 Responders" and 23 were "Oxygen Responders". Average duration of follow up was 4.5
165 years. Basic demographic characteristics and rates of comorbid systemic hypertension,

166 type 2 diabetes mellitus, and smoking history were similar between the two cohorts.
167 Eight iNO Responders and 16 Oxygen Responders had chronic oxygen requirements
168 (80% versus 69.6%, respectively, $P = 0.037$). Amongst iNO Responders, 7 (70.0%) had
169 iPAH, 2 (20.0%) had CTD-associated PAH, and 1 (10.0%) had FPAH. Amongst Oxygen
170 Responders, 6 (26.1%) had iPAH and 17 (73.9%) had associated PAH, including 8
171 (34.8%) with CTD, 4 (17.4%) toxin associated, 3 (13.0%) with congenital heart disease.
172 2 (8.7%) with portopulmonary disease (*Table 1*).

173

174 *Hemodynamics:*

175 Baseline hemodynamic measurements between iNO Responders and Oxygen
176 Responders revealed similar baseline RAP, mPAP, PCWP, and PVR. Amongst iNO
177 Responders, there was lower mean baseline CO than Oxygen Responders (4.0 +/- 1.1
178 versus 5.6 +/- 2.1 L/min, respectively, $P = 0.010$). Oxygen Responders trended towards
179 lower mPAP than iNO Responders during oxygen phase (35.8 versus 44.3 mmHg,
180 respectively, $P = 0.057$) and both iNO Responders and Oxygen Responders had similar
181 mPAP during vasodilator phase (30.0 +/- 7.7 versus 29.8 +/- 7.4 mmHg, $P = 0.89$).
182 (*Table 2*). Oxygen Responders had a greater reduction in mPAP from baseline to
183 oxygen phase than iNO Responders (8.0 versus 4.3 mmHg, respectively, $P = 0.021$)
184 and iNO Responders' reduction in mPAP was similar to that seen in the overall cohort of
185 268 PAH patients (3.9 mmHg). iNO Responders had a greater reduction in mPAP from
186 oxygen phase to vasodilator phase than Oxygen Responders (14.4 versus 6.0 mmHg,
187 respectively, $P < 0.001$) (*Figure 2*).

188

189 *Survival, hospital free survival, CCB monotherapy:*

190 iNO Responders had superior survival and hospital-free survival relative to Oxygen
191 Responders (*Figure 3*). There were no deaths within 10 years of initiation of CCB
192 amongst iNO Responders. Amongst Oxygen Responders, survival was 87.0% at one
193 year, 71.6% at 3 years, and 50.1% at 5 years from initiation of CCB. Additionally, there
194 were no hospitalizations for acute decompensated right heart failure within a year of
195 initiation of CCB amongst iNO Responders as compared to 7 (30.4%) amongst Oxygen
196 Responders. iNO Responders had greater tolerance of CCB monotherapy compared to
197 Oxygen Responders (*Figure 4*). At one year follow up, 80% of iNO Responders were
198 still on monotherapy as compared to 52% of Oxygen Responders. Restricted 10-year
199 mean time of CCB monotherapy was 6.0 years versus 2.8 years in iNO Responders
200 and Oxygen Responders, respectively (log rank $P = 0.0085$).

201

202 A subgroup analysis of patients with iPAH, FPAH, and toxin-mediated PAH
203 demonstrated that iNO Responders had longer survival time ($P = 0.009$) and hospital-
204 free survival time ($P = 0.013$) than Oxygen Responders (*Figure 5*). Additionally, iNO
205 Responders had longer time on monotherapy than Oxygen responders (7.4 versus 1.5
206 years, respectively, $P = 0.085$).

207

208 *Functional status:*

209 The 6MWD of iNO Responders and Oxygen Responders were 423 versus 352 meters
210 at baseline ($P = 0.45$), 409 versus 292 meters at 1-year ($P = 0.21$), and 454 versus 224
211 meters at 3-years, respectively ($P = 0.017$) (*Figure 6*). iNO Responders trended towards

212 superior functional class at 1- and 3-year follow up, although this did not reach the
213 threshold for statistical significance (*Table 3*).

214

215 **Discussion:**

216 Accurate identification of long-term CCB responders is a critical step in the evaluation of
217 patients with PAH (7, 28). Correct identification with acute vasodilator challenge selects
218 for patients with improved functional status and decreased mortality (4-6). Incorrect
219 identification can lead to deleterious effects from CCB therapy including decreased
220 cardiac output, decreased systemic mean arterial pressure, decompensated functional
221 status, and increased mortality (6). Due to the potential hemodynamic instability caused
222 by acute vasoresponse testing with short-acting CCBs (29-31), other agents are
223 preferentially used. iNO is a safe, well-tolerated, and frequently utilized vasodilator
224 agent in acute vasodilator challenge (10). iNO is delivered at variable concentrations
225 and is often co-administered with oxygen, although there is significant variability in how
226 oxygen is utilized (11-15). At present, there is no standardized protocol for the utilization
227 of oxygen or the interpretation of the effects of oxygen on changes in mPAP during
228 acute vasodilator challenge. In this study, we demonstrate that defining acute
229 vasoresponsiveness after first adjusting for the effects of oxygenation identifies a group
230 which has excellent long-term responsiveness to CCBs. Conversely, treating patients
231 who primarily respond to oxygen, without a significant additional response to iNO, with
232 calcium channel blockers may result in harm and delay appropriate treatment.

233

234 During acute vasodilator challenge, both iNO Responders and Oxygen Responders had
235 a similar overall change in mPAP from baseline to vasodilator phase. However, when
236 the effects of oxygen are isolated, two distinct patterns of response emerge. Amongst
237 Oxygen Responders, over half (56.1%) of their overall decrease in mPAP occurred due
238 to the effects of oxygenation alone. Conversely, iNO Responders had 77% of their
239 overall reduction in mPAP from oxygen phase to vasodilator phase. The reduction in
240 mPAP from oxygen phase to vasodilator phase was nearly 2.5 times greater in iNO
241 Responders than in Oxygen Responders (mean decrease in mPAP of 14.4 versus 6
242 mmHg, respectively). The relationship between alveolar oxygen tension and pulmonary
243 arterial vascular tone is well described (16-18) and hyperoxia has been shown to
244 modulate mPAP (19, 20) and PVR (21) in PAH patients. Our overall cohort of 268 PAH
245 patients had a reduction in mPAP of 3.8 mmHg, similar reduction in mPAP to other trials
246 (19, 20). Without adjusting for the known vasodilatory effects oxygen, it is possible to
247 incorrectly attribute vasoresponsiveness to iNO.

248

249 There was a particularly striking difference in mortality between the two cohorts. The
250 iNO Responder cohort had no deaths in a 10-year period. Amongst Oxygen
251 Responders, the mortality rate at 5 years exceeded 50%. Six of the 8 deaths that
252 occurred in this cohort were from progressive right heart failure and all patients were on
253 a multi-drug regimen for management of their PAH prior to their death. Subgroup
254 analyses restricted to patients recommended to undergo acute vasoreactivity testing by
255 the WSPH and ECS/ERS guidelines (26, 27) – iPAH, FPAH, and toxin-mediated PAH –
256 yielded similar results. In this WSPH and ECS/ERS cohort, no deaths were observed in

257 the iNO Responder group and the mortality amongst the Oxygen Responders was
258 100% at 5 years. This robust survival benefit observed amongst iNO Responders is in
259 keeping with the excellent long-term prognosis described in long-term CCB responders
260 (4, 6, 8). The accelerated mortality seen amongst Oxygen Responders is also
261 consistent with prior cohorts of non-CCB responders who received initially CCB therapy
262 (6). The 10-year restricted mean duration of CCB monotherapy was 6.0 in iNO
263 Responders versus 2.8 in Oxygen Responders and nearly half of Oxygen Responders
264 had failed CCB monotherapy after one year. Subgroup analysis of iPAH, FPAH, and
265 toxin-mediated PAH demonstrated similar monotherapy tolerance for iNO Responders
266 and Oxygen Responders (7.4 versus 1.5 years, respectively, $P = 0.085$). Additionally, 7
267 of the 23 (30.4%) Oxygen Responders had acute decompensated right heart failure
268 within a year of initiation of CCB therapy while no iNO Responders had decompensated
269 right heart failure within a year of CCB initiation.

270

271 Overall, iNO Responders and Oxygen Responders had similar baseline functional
272 characteristics. However, at 1- and 3-year follow up, iNO Responders had an overall
273 increase in their 6MWD while Oxygen Responders had a progressive decline in over
274 this time period. At baseline, there were no significant differences in NYHA functional
275 status. During follow up at 1 and 3 years, the proportion of iNO Responders who were
276 NYHA I or II versus NYHA III or IV remained higher than in Oxygen Responders, though
277 this never reached the threshold of statistical significance.

278

279 It is interesting to note that a significant difference exists between the proportion of
280 patients with idiopathic and associated PAH amongst the two cohorts. However, there
281 were no significant differences in survival or tolerance of monotherapy amongst patients
282 with iPAH versus associated PAH in the Oxygen Responder cohort. Additionally, if both
283 iNO Responders and Oxygen Responders are considered, there is a higher-than-
284 expected rate of vasoresponsiveness amongst both associated PAH patients (9.2%
285 vasoresponsive) and iPAH patients (14.3% vasoresponsive). If we consider iNO
286 Responders alone, the rates are more aligned with expected values, with 1.0% of all
287 associated PAH patients and 7.7% of all iPAH patients meeting the definition of acute
288 vasoresponders. This demonstrates that, without correcting for oxygen, we likely
289 decrease the specificity of acute vasodilator challenge and over diagnose acute
290 vasoresponsiveness.

291
292 It is also notable that the study is from a pulmonary hypertension center which is located
293 at an altitude of 5,280 feet above sea level. The phenomenon of reduced mPAP in PAH
294 patients following administration of supplemental oxygen has been described at other
295 altitudes. Both the average reduction in mPAP (~ 4 mmHg) and distribution (upper
296 quartile of responders with ≥ 6 mmHg of mPAP reduction) in our overall cohort of 268
297 PAH patients is consistent with other studies of PAH patients exposed to 100% FiO₂ at
298 lower altitudes (19, 20). This suggests that the response to oxygen in our cohort is
299 neither unique nor disproportionate in magnitude or distribution to that of PAH patients
300 at other altitudes. Additionally, our protocol of collecting baseline hemodynamic
301 measurements at patients' home oxygen requirement with SpO₂ between 90%-94%

302 should ameliorate the effects of altitude-related hypoxemia. It is also interesting to note
303 that the rates of chronic oxygen requirement were higher amongst the iNO Responders
304 than the Oxygen Responders, suggestive that preexisting chronic oxygen requirement
305 is not a driving factor in oxygen responsiveness. During the course of this study, a new
306 definition was proposed for pulmonary hypertension, using mPAP \geq 20 mmHg as the
307 threshold for diagnosis rather than the traditional definition of mPAP \geq 25 mmHg (8). It
308 remains unclear how inclusion of patients with mPAP from 20 – 24 mmHg will affect the
309 incidence or prognosis of long-term CCB response. However, a standardized approach
310 to the workup of PAH patients will remain imperative.

311

312 **Interpretation:**

313 The results of our study suggest that consideration of effects of oxygen during acute
314 vasodilator challenge is critical for proper identification of long-term CCB responders.
315 Stepwise evaluation of the effects of supplemental oxygen and iNO revealed a subset of
316 patients with an exaggerated response to supplemental oxygenation. Failure to correct
317 for the effects of oxygen on mPAP in the interpretation of acute vasodilator challenge
318 with iNO selects for a patient population with inferior long-term response to CCBs,
319 higher rates of decompensated right heart failure, and decreased survival. Those
320 patients who demonstrate vasoresponsiveness to iNO independent from the effects
321 oxygen have excellent long-term response to CCB monotherapy, superior functional
322 status, and increased survival. These findings should be validated across a variety of
323 settings. Ultimately, a standardized approach for the use of supplemental oxygen during
324 acute vasodilator challenge with iNO is necessary.

325 Guarantor statement:

326 Matthew Rockstrom, MD is the guarantor of all content of the manuscript including data
327 and analysis.

328

329 Author contributions:

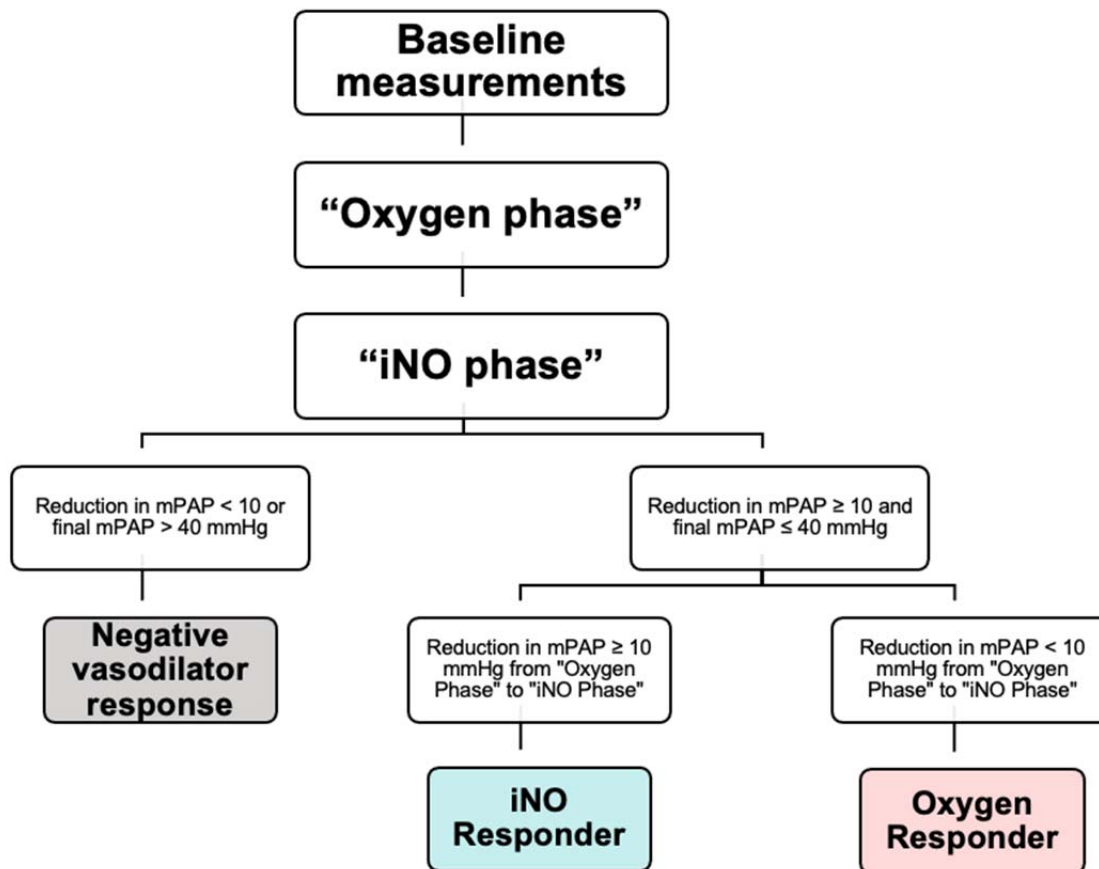
330 All listed authors met ICMJE qualifications for authorship.

331

332 Financial/Nonfinancial disclosures:

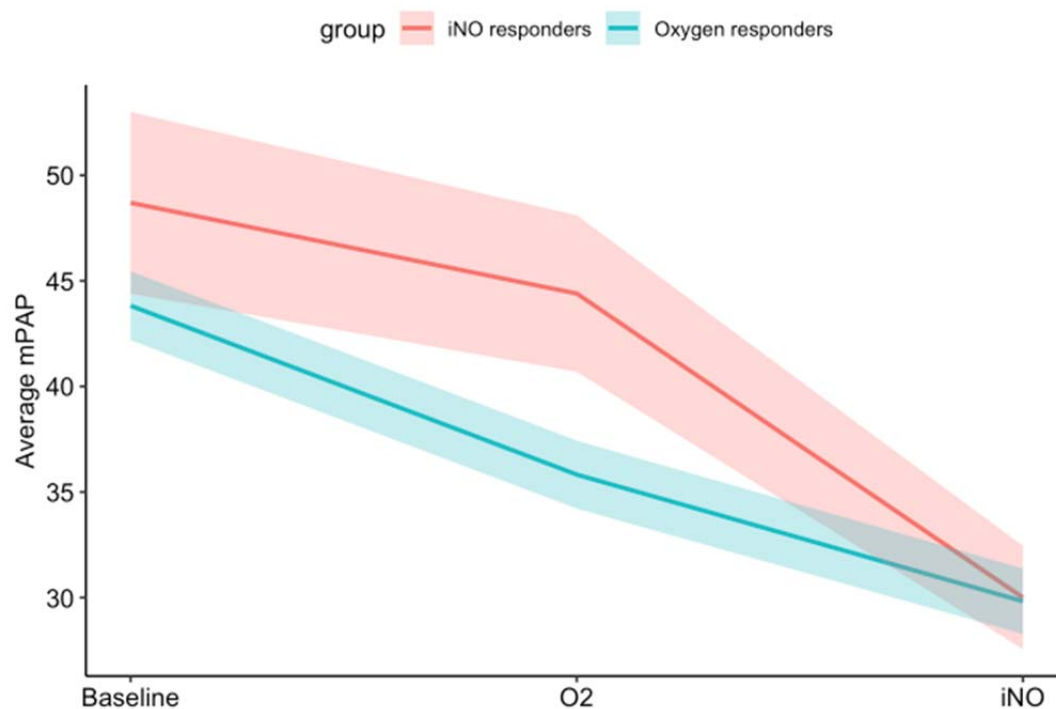
333 We have no financial disclosures or conflicts of interest to report

334 **Tables and Figures**



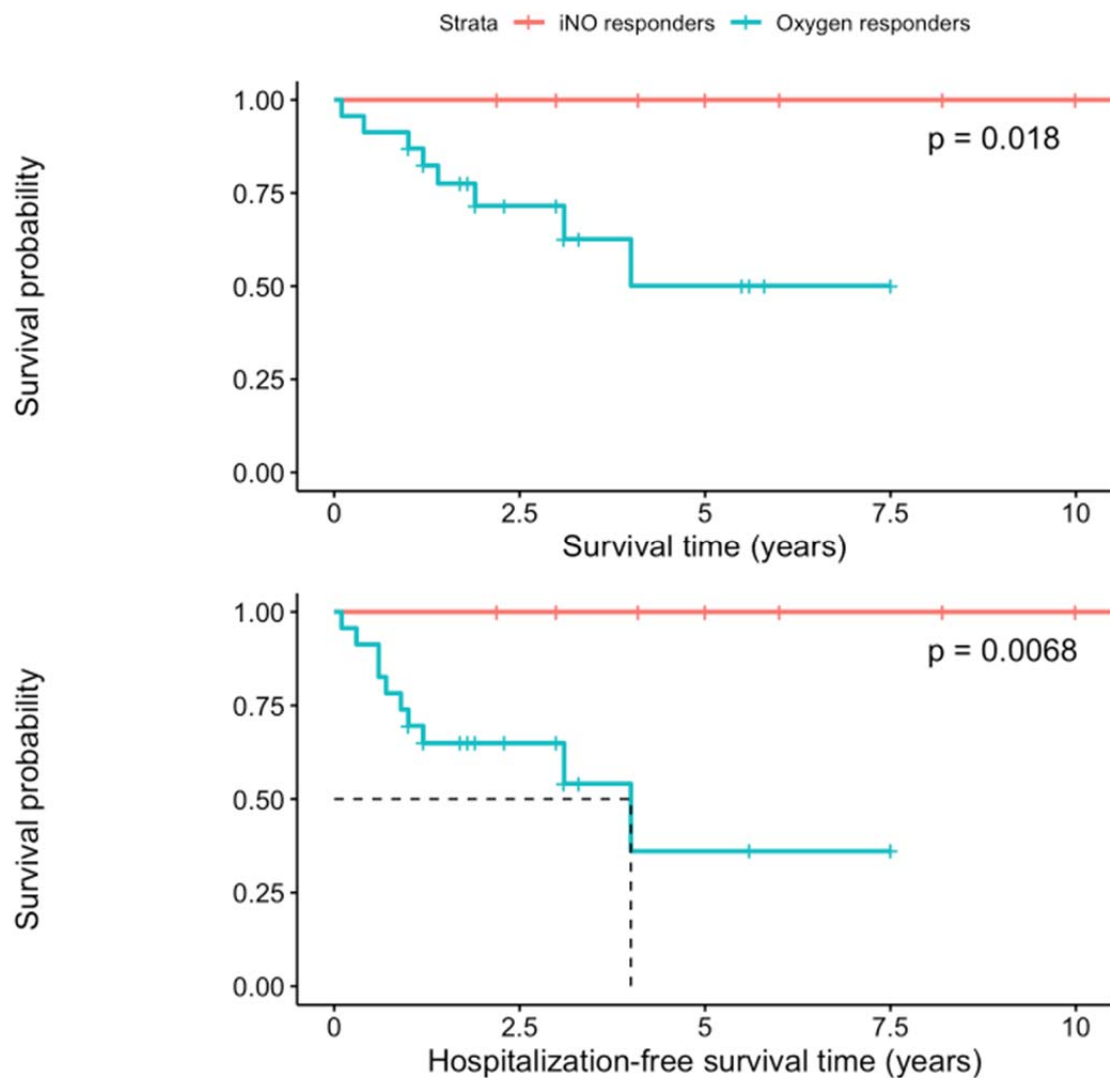
335

336 *Fig 1: Definitions of iNO and Oxygen Responders. Mean pulmonary arterial pressure (mPAP) was*
337 *measured at baseline (ambient room air or patient's chronic home oxygen requirement, if applicable),*
338 *after 2 min at 100% fractional inspired oxygen ("Oxygen Phase"), and after 5 min at 100% FiO₂ + 40 ppm*
339 *inhaled nitric oxide ("Vasodilator Phase"). Both iNO and Oxygen responders had a reduction of ≥ 10*
340 *mmHg from baseline to Vasodilator Phase with a final mPAP ≤ 40 mmHg. "iNO Responders" had a ≥ 10*
341 *mmHg reduction in mPAP from Oxygen Phase to Vasodilator Phase. "Oxygen Responders" had a < 10*
342 *mmHg reduction in mPAP from Oxygen Phase to Vasodilator Phase.*
343



344

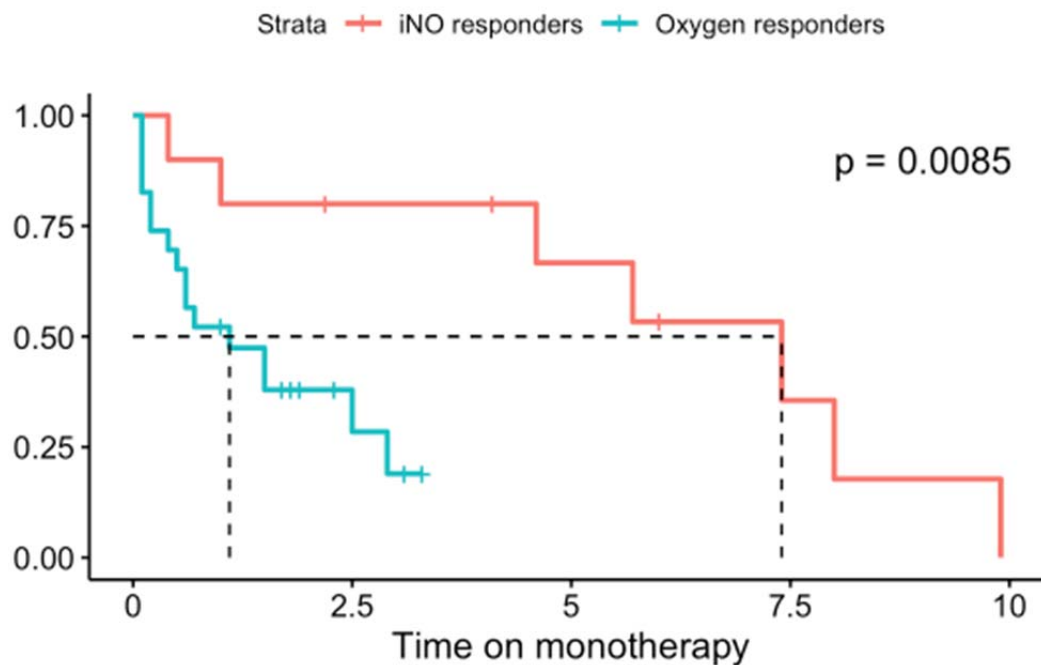
345 *Fig 2. Mean pulmonary arterial pressure (mPAP) for iNO Responders (shown in red) and Oxygen*
346 *Responders (shown in blue) measured at baseline, following administration of 100% FiO₂ (indicated as*
347 *“O2”), and following administration of 100% FiO₂ with 40 ppm iNO (indicated as “iNO”). Ribbons represent*
348 *the average mPAP +/- 1 standard error, calculated separately from data at each time point*
349



350

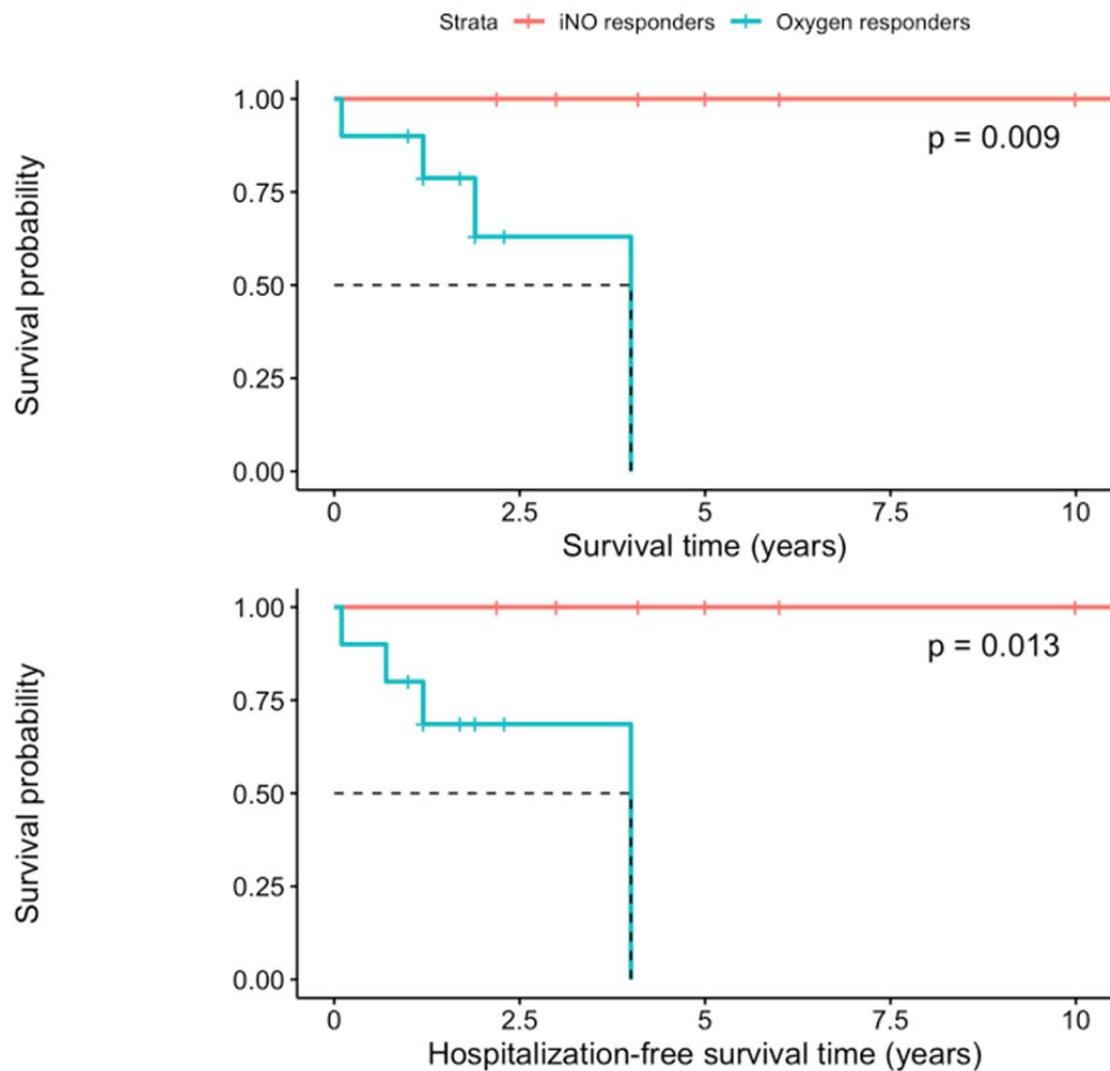
351

352 Fig 3. Kaplan-Meier curves for survival (above) and hospitalization-free survival (below) following initiation
353 of calcium channel blocker therapy for 33 patients, subdivided into iNO Responders ($n = 10$ at initiation,
354 shown in red) and Oxygen Responders ($n = 23$ at initiation, shown in blue). Dotted lines indicate mean
355 survival time and hospitalization-free survival time, respectively. Restricted mean 10-year survival time
356 amongst Oxygen Responders was 8.59 years and was 6.71 years for hospitalization-free survival. All
357 relationships were statistically significant.



358

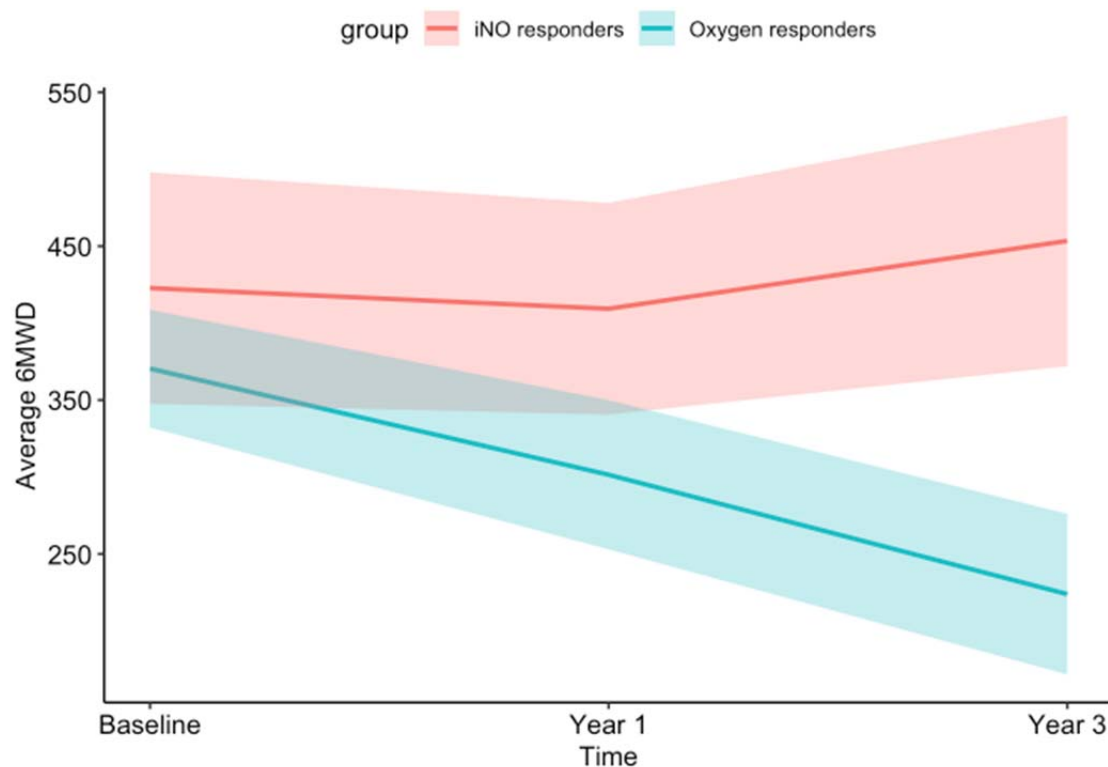
359 *Fig 4. Kaplan-Meier curve for calcium channel blocker monotherapy amongst 33 patients, subdivided into*
360 *iNO Responders (n = 10 at initiation) and Oxygen Responders (n = 23 at initiation). Dotted lines indicate*
361 *mean duration of monotherapy for both cohorts. Restricted mean 10-year duration of monotherapy for*
362 *iNO Responders was 6.01 years and for Oxygen Responders was 2.76 years.*
363



364

365
366
367
368
369
370
371
372
373

Fig 5. Kaplan-Meier curves for survival (above) and hospitalization-free survival (below) following initiation of calcium channel blocker therapy for subgroup analysis of patients meeting recommendations for acute vasoreactivity screening per 6th World Symposium of Pulmonary Hypertension (WSPH) and European Society of Cardiology/European Respiratory (ESC/ERS) guidelines. Dotted lines indicate mean survival time and hospitalization-free survival time, respectively.



374

375 *Fig 6. Average six-minute walk distance (6MWD) in meters at time of initiation of calcium channel blocker*
376 *(Baseline) as well as 1-year and 3-year follow up for iNO Responders and Oxygen Responders. Baseline,*
377 *1-year, and 3-year 6MWD for iNO Responders were 423 m, 409 m, 454 m, respectively and for Oxygen*
378 *Responders were 352 m, 292 m, and 224 m, respectively. Ribbons indicate the average 6MWD +/- 1*
379 *standard error, calculated separately from data at each time point.*
380

381 **Table 1: Baseline Clinical Characteristics and Calcium Channel Blocker Use of**
 382 **Study Cohort**
 383

	iNO Responders (N=10)	Oxygen Responders (N=23)	Total (N=33)	P value
Baseline Characteristics				
Age at Index (SD)	57.6 (17.3)	52.9 (17.0)	54.3 (16.9)	0.505
Sex (%)	3 (30.0)	5 (21.7)	8 (24.2)	0.673
BMI (SD)	24.0 (4.3)	26.7 (7.1)	25.9 (6.5)	0.337
Comorbidities				
COPD (%)	2 (20.0)	2 (8.7)	4 (12.1)	0.567
Systemic HTN (%)	3 (30.0)	7 (30.4)	10 (30.3)	1.000
T2DM (%)	2 (20.0)	2 (8.7)	4 (12.1)	0.567
Ever smoker (%)	2 (20.0)	7 (30.4)	9 (27.3)	0.686
PAH Subtype				
Idiopathic (%)	7 (70.0)	6 (26.1)	13 (39.4)	0.026
Familial (%)	1 (10.0)	0 (0.0)	1 (3.0)	0.303
Associated (%)				1.000
CHD	0 (0.0)	2 (11.8)	2 (10.5)	
CTD	2 (100.0)	8 (47.1)	10 (52.6)	
Multi	0 (0.0)	1 (5.9)	1 (5.3)	
Other	0 (0.0)	1 (5.9)	1 (5.3)	
Portopulmonary	0 (0.0)	1 (5.9)	1 (5.3)	
Toxins	0 (0.0)	4 (23.5)	4 (21.1)	
CCB				
Amlodipine (%)	6 (60.0)	20 (87.0)	26 (78.8)	0.161
Diltiazem (%)	4 (40.0)	3 (13.0)	7 (21.2)	0.161

384
 385
 386 *BMI: body mass index (kg/m²), COPD: chronic obstructive pulmonary disease, HTN: hypertension, T2DM:*
 387 *type 2 diabetes mellitus, PAH: pulmonary arterial hypertension, CTD: connective tissue disease, CCB:*
 388 *calcium channel blocker*
 389

390 **Table 2: Hemodynamic Data for Study Cohort during Right Heart Catheterization**
 391

	iNO Responders (N=10)	Oxygen Responders (N=23)	P value
Baseline			
RAP, mmHg (SD)	5.10 (3.54)	5.78 (3.00)	0.568
mPAP, mmHg (SD)	48.70 (13.62)	43.83 (7.82)	0.398
PCWP, mmHg (SD)	7.90 (3.67)	9.52 (3.70)	0.243
CO,TD L/min (SD)	3.97 (1.11)	5.61 (2.15)	0.010
CO,Fick L/min (SD)	4.04 (1.06)	4.91 (1.15)	0.051
PVR, WU (SD)	11.03 (5.85)	8.14 (3.47)	0.177
Oxygen Phase			
mPAP, mmHg (SD)	44.40 (11.72)	35.83 (7.72)	0.057
Vasodilator Phase			
RAP, mmHg (SD)	4.60 (2.91)	4.83 (3.20)	0.735
mPAP, mmHg (SD)	30.00 (7.73)	29.83 (7.43)	0.890
PCWP, mmHg (SD)	8.00 (3.86)	10.61 (4.12)	0.051
CO,TD L/min (SD)	4.17 (1.22)	5.10 (1.77)	0.183
PVR, WU (SD)	5.55 (2.49)	3.89 (2.07)	0.044

392
 393
 394 *All figures listed with standard deviations in parentheses; RAP: right atrial pressure; mPAP: mean*
 395 *pulmonary arterial pressure; PCWP: pulmonary capillary wedge pressure; CO: cardiac output; TD:*
 396 *thermodilution; PVR: pulmonary vascular resistance; WU: Woods Units*
 397 *“Oxygen Phase” with hemodynamic measurements taken after 100% supplemental oxygen for 2 minutes;*
 398 *“Vasodilator Phase” with hemodynamic measurements take after 100% supplemental oxygen + 40 ppm*
 399 *iNO for 5 min*
 400

401 **Table 3: New York Heart Association Functional Class for Studied Cohort at**
 402 **Baseline, 1-year, and 3-year Follow Up**
 403

	iNO Responders (N=10)	Oxygen Responders (N=23)	P value
Baseline			0.678
I	1 (11.1%)	3 (16.7%)	
II	7 (77.8%)	9 (50.0%)	
III	1 (11.1%)	5 (27.8%)	
IV	0 (0.0%)	1 (5.6%)	
Year 1			1.000
I	2 (40.0%)	1 (20.0%)	
II	2 (40.0%)	2 (40.0%)	
III	1 (20.0%)	2 (40.0%)	
Year 3			0.679
I	2 (40.0%)	0 (0.0%)	
II	2 (40.0%)	1 (33.3%)	
III	1 (20.0%)	2 (66.7%)	

404
 405 *New York Heart Association classes I – IV (indicated as I, II, III, and IV) recorded at time of right heart*
 406 *catheterization and again at one-year and three-year follow up*

- 407 1. Rubin LJ. Primary pulmonary hypertension. *Chest*. 1993;104(1):236-50.
- 408 2. Benza RL, Miller DP, Barst RJ, Badesch DB, Frost AE, McGoon MD. An evaluation of long-
409 term survival from time of diagnosis in pulmonary arterial hypertension from the REVEAL
410 Registry. *Chest*. 2012;142(2):448-56.
- 411 3. Hoeper MM, Kramer T, Pan Z, Eichstaedt CA, Spiesshoefer J, Benjamin N, et al. Mortality
412 in pulmonary arterial hypertension: prediction by the 2015 European pulmonary hypertension
413 guidelines risk stratification model. *Eur Respir J*. 2017;50(2).
- 414 4. Rich S, Kaufmann E, Levy PS. The effect of high doses of calcium-channel blockers on
415 survival in primary pulmonary hypertension. *N Engl J Med*. 1992;327(2):76-81.
- 416 5. Rich S, Brundage BH. High-dose calcium channel-blocking therapy for primary
417 pulmonary hypertension: evidence for long-term reduction in pulmonary arterial pressure and
418 regression of right ventricular hypertrophy. *Circulation*. 1987;76(1):135-41.
- 419 6. Sitbon O, Humbert M, Jais X, Iosifescu V, Hamid AM, Provencher S, et al. Long-term response
420 to calcium channel blockers in idiopathic pulmonary arterial hypertension. *Circulation*.
421 2005;111(23):3105-11.
- 422 7. Hassoun PM. Pulmonary Arterial Hypertension. *N Engl J Med*. 2021;385(25):2361-76.
- 423 8. Simonneau G, Montani D, Celermajer DS, Denton CP, Gatzoulis MA, Krowka M, et al.
424 Haemodynamic definitions and updated clinical classification of pulmonary hypertension. *The*
425 *European respiratory journal*. 2019;53(1):1801913.
- 426 9. Hill NS, Preston IR, Roberts KE. Inhaled Therapies for Pulmonary Hypertension. *Respir*
427 *Care*. 2015;60(6):794-802; discussion -5.
- 428 10. Sitbon O, Humbert M, Jagot JL, Taravella O, Fartoukh M, Parent F, et al. Inhaled nitric
429 oxide as a screening agent for safely identifying responders to oral calcium-channel blockers in
430 primary pulmonary hypertension. *Eur Respir J*. 1998;12(2):265-70.
- 431 11. Apitz C, Hansmann G, Schranz D. Hemodynamic assessment and acute pulmonary
432 vasoreactivity testing in the evaluation of children with pulmonary vascular disease. Expert
433 consensus statement on the diagnosis and treatment of paediatric pulmonary hypertension.
434 The European Paediatric Pulmonary Vascular Disease Network, endorsed by ISHLT and DGPK.
435 *Heart*. 2016;102 Suppl 2:ii23-9.
- 436 12. Frantz RP, Leopold JA, Hassoun PM, Hemnes AR, Horn EM, Mathai SC, et al. Acute
437 vasoreactivity testing during right heart catheterization in chronic thromboembolic pulmonary
438 hypertension: Results from the pulmonary vascular disease phenomics study. *Pulm Circ*.
439 2023;13(1):e12181.
- 440 13. Hunt JM, Risbano MG, Messenger JC, Carroll J, Badesch D, Lowes BD, et al. Timed
441 response to inhaled nitric oxide in pulmonary hypertension. *Pulm Circ*. 2014;4(1):103-9.
- 442 14. Kumar S, Memon D, Raj M, Sen AC, Jayasankar JP, Leeladharan SP, et al. Comparison of
443 intravenous sildenafil with inhaled nitric oxide for acute vasodilator testing in pulmonary
444 arterial hypertension. *Pulm Circ*. 2022;12(4):e12180.
- 445 15. Sitbon O, Brenot F, Denjean A, Bergeron A, Parent F, Azarian R, et al. Inhaled nitric oxide
446 as a screening vasodilator agent in primary pulmonary hypertension. A dose-response study
447 and comparison with prostacyclin. *Am J Respir Crit Care Med*. 1995;151(2 Pt 1):384-9.
- 448 16. Bradford JR, Dean HP. The Pulmonary Circulation. *J Physiol*. 1894;16(1-2):34-158 25.

- 449 17. Dunham-Snary KJ, Wu D, Sykes EA, Thakrar A, Parlow LRG, Mewburn JD, et al. Hypoxic
450 Pulmonary Vasoconstriction: From Molecular Mechanisms to Medicine. *Chest*.
451 2017;151(1):181-92.
- 452 18. Euler U, Liljestrand G. Observations on the Pulmonary Arterial Blood Pressure in the Cat.
453 *Acta Physiologica Scandinavica*. 1946;12(4):301-20.
- 454 19. Carta AF, Lichtblau M, Berlier C, Saxer S, Schneider SR, Schwarz EI, et al. The Impact of
455 Breathing Hypoxic Gas and Oxygen on Pulmonary Hemodynamics in Patients With Pulmonary
456 Hypertension. *Front Med (Lausanne)*. 2022;9:791423.
- 457 20. Groth A, Saxer S, Bader PR, Lichtblau M, Furian M, Schneider SR, et al. Acute
458 hemodynamic changes by breathing hypoxic and hyperoxic gas mixtures in pulmonary arterial
459 and chronic thromboembolic pulmonary hypertension. *Int J Cardiol*. 2018;270:262-7.
- 460 21. Leuchte HH, Baezner CJ, Baumgartner RA, Mernitz P, Neurohr C, Behr J. Acute
461 hemodynamic responses to supplemental oxygen and their prognostic implications in
462 pulmonary hypertension. *Respiration*. 2013;85(5):400-7.
- 463 22. Simonneau G, Gatzoulis MA, Adatia I, Celermajer D, Denton C, Ghofrani A, et al.
464 Updated clinical classification of pulmonary hypertension. *J Am Coll Cardiol*. 2013;62(25
465 Suppl):D34-41.
- 466 23. McLaughlin VV, Archer SL, Badesch DB, Barst RJ, Farber HW, Lindner JR, et al. ACCF/AHA
467 2009 expert consensus document on pulmonary hypertension: a report of the American College
468 of Cardiology Foundation Task Force on Expert Consensus Documents and the American Heart
469 Association: developed in collaboration with the American College of Chest Physicians,
470 American Thoracic Society, Inc., and the Pulmonary Hypertension Association. *Circulation*.
471 2009;119(16):2250-94.
- 472 24. Klinger JR, Elliott CG, Levine DJ, Bossone E, Duvall L, Fagan K, et al. Therapy for
473 Pulmonary Arterial Hypertension in Adults: Update of the CHEST Guideline and Expert Panel
474 Report. *Chest*. 2019;155(3):565-86.
- 475 25. Prins KW, Thenappan T. World Health Organization Group I Pulmonary Hypertension:
476 Epidemiology and Pathophysiology. *Cardiol Clin*. 2016;34(3):363-74.
- 477 26. Galie N, Humbert M, Vachiery JL, Gibbs S, Lang I, Torbicki A, et al. 2015 ESC/ERS
478 Guidelines for the diagnosis and treatment of pulmonary hypertension: The Joint Task Force for
479 the Diagnosis and Treatment of Pulmonary Hypertension of the European Society of Cardiology
480 (ESC) and the European Respiratory Society (ERS): Endorsed by: Association for European
481 Paediatric and Congenital Cardiology (AEPC), International Society for Heart and Lung
482 Transplantation (ISHLT). *Eur Respir J*. 2015;46(4):903-75.
- 483 27. Galie N, McLaughlin VV, Rubin LJ, Simonneau G. An overview of the 6th World
484 Symposium on Pulmonary Hypertension. *Eur Respir J*. 2019;53(1).
- 485 28. Simonneau G, Montani D, Celermajer DS, Denton CP, Gatzoulis MA, Krowka M, et al.
486 Haemodynamic definitions and updated clinical classification of pulmonary hypertension. *Eur*
487 *Respir J*. 2019;53(1).
- 488 29. Aromatorio GJ, Uretsky BF, Reddy PS. Hypotension and sinus arrest with nifedipine in
489 pulmonary hypertension. *Chest*. 1985;87(2):265-7.
- 490 30. Farber HW, Karlinsky JB, Faling LJ. Fatal outcome following nifedipine for pulmonary
491 hypertension. *Chest*. 1983;83(4):708-9.

492 31. Partanen J, Nieminen MS, Luomanmaki K. Death in a patient with primary pulmonary
493 hypertension after 20 mg of nifedipine. N Engl J Med. 1993;329(11):812; author reply -3.
494