

# 1 **Researching COVID to enhance recovery** 2 **(RECOVER) autopsy tissue pathology study protocol:** 3 **Rationale, objectives, and design**

## 4 5 **Short Title: RECOVER-Autopsy study protocol**

6 Andrea B. Troxel<sup>1\*</sup>; Marie-Abele C. Bind<sup>2¶</sup>; Thomas J. Flotte<sup>3</sup>; Carlos Cordon-Cardo<sup>4</sup>; Lauren  
7 A. Decker<sup>5</sup>; Alope V. Finn<sup>6</sup>; Robert F. Padera<sup>7</sup>; R. Ross Reichard<sup>3</sup>; James R. Stone<sup>8</sup>; Natalie L.  
8 Adolphi<sup>9</sup>; Faye Victoria C. Casimero<sup>8</sup>; John F. Crary<sup>10</sup>; Jamie Elifritz<sup>11</sup>; Arline Faustin<sup>12</sup>; Saikat  
9 Kumar B. Ghosh<sup>13</sup>; Amanda Krausert<sup>4</sup>; Maria Martinez-Lage<sup>8</sup>; Jonathan Melamed<sup>14</sup>; Roger A.  
10 Mitchell, Jr.<sup>15</sup>; Barbara A. Sampson<sup>4</sup>; Alan C. Seifert<sup>16</sup>; Aylin Simsir<sup>12</sup>; Cheryle Adams<sup>15</sup>;  
11 Stephanie Haasnoot<sup>10</sup>; Stephanie Hafner<sup>3</sup>; Michelle A. Siciliano<sup>7</sup>; Brittany B. Vallejos<sup>17</sup>; Phoebe  
12 Del Boccio<sup>1</sup>; Michelle F. Lamendola-Essel<sup>18</sup>; Chloe E. Young<sup>18</sup>; Deepshikha Kewlani<sup>18</sup>;  
13 Precious A. Akinbo<sup>1</sup>; Brendan Parent<sup>1</sup>; Alicia Chung<sup>1</sup>; Teresa C. Cato<sup>1</sup>; Praveen C. Mudumbi<sup>1</sup>;  
14 Shari Esquenazi-Karonika<sup>1</sup>; Marion J. Wood<sup>1</sup>; James Chan<sup>2</sup>; Jonathan Monteiro<sup>2</sup>; Daniel J.  
15 Shinnick<sup>2</sup>; Tanayott Thaweethai<sup>2</sup>; Amber N. Nguyen<sup>2</sup>; Megan L. Fitzgerald<sup>19</sup>; Alice A.  
16 Perlowski<sup>20</sup>; Lauren E. Stiles<sup>21</sup>; Moira L. Paskett<sup>14</sup>; Stuart D. Katz<sup>18&</sup>; Andrea S. Foulkes<sup>2&</sup> on  
17 behalf of the RECOVER Initiative<sup>^</sup>

18  
19 <sup>1</sup> Department of Population Health, New York University Grossman School of Medicine, New  
20 York, NY, USA.

21 <sup>2</sup> Department of Biostatistics, Massachusetts General Hospital, Boston, MA, USA.

22 <sup>3</sup> Department of Laboratory Medicine and Pathology, Mayo Clinic Rochester, Rochester, MN,  
23 USA.

24 <sup>4</sup> Department of Pathology, Molecular and Cell-Based Medicine, Mount Sinai Health System,  
25 New York, NY, USA.

26 <sup>5</sup> Department of Pathology, University of New Mexico Health Sciences Center, Albuquerque,  
27 NM, USA.

28 <sup>6</sup> Department of Pathology, CVPath Institute, Gaithersburg, MD, USA.

29 <sup>7</sup> Department of Pathology, Brigham and Women's Hospital, Boston, MA, USA.

30 <sup>8</sup> Department of Pathology, Massachusetts General Hospital, Boston, MA, USA.

31 <sup>9</sup> Office of the Medical Investigator, University of New Mexico School of Medicine,  
32 Albuquerque, NM, USA.

33 <sup>10</sup> Department of Pathology, Icahn School of Medicine at Mount Sinai Hospital, New York, NY,  
34 USA.

35 <sup>11</sup> Departments of Radiology and Pathology, University of New Mexico, Albuquerque, NM,  
36 USA.

37 <sup>12</sup> Department of Pathology, New York University Grossman School of Medicine, New York,  
38 NY, USA.

39 <sup>13</sup> Department of Molecular Biology and Genomics, CVPath Institute, Gaithersburg, MD, USA.

40 <sup>14</sup> Department of Anatomical Pathology, NYU Langone Hospital - Long Island, Mineola, NY,  
41 USA.

42 <sup>15</sup> Department of Pathology, Howard University College of Medicine, Washington DC, USA.

43 <sup>16</sup> Biomedical Engineering and Imaging Institute, Department of Radiology, Graduate School of  
44 Biomedical Sciences, Icahn School of Medicine at Mount Sinai, New York, NY, USA.

45 <sup>17</sup> Office of the Medical Investigators, Department of Research, University of New Mexico,  
46 Albuquerque, NM, USA.

47 <sup>18</sup> Department of Medicine, New York University Grossman School of Medicine, New York,  
48 NY, USA.

49 <sup>19</sup> Patient-Led Research Collaborative on COVID-19, Washington DC, USA.

50 <sup>20</sup> Blooming Magnolia, Los Angeles, CA, USA.

51 <sup>21</sup> Department of Neurology, Stony Brook University Renaissance School of Medicine, Stony  
52 Brook, NY, USA.

53 \*Corresponding Author

54 [Andrea.Troxel@nyulangone.org](mailto:Andrea.Troxel@nyulangone.org)

55 ¶These authors contributed equally to this work and are co-lead authors.

56 &These authors also contributed equally to this work and are co-senior authors.

57 Authorship has been determined in accord with ICMJE recommendations

58 ^Membership of the RECOVER Initiative is provided in the Acknowledgements

## 59 **Funding**

60 This research was funded by the National Institutes of Health (NIH) Agreement OTA  
61 OT2HL161847-01 as part of the Researching COVID to Enhance Recovery (RECOVER)  
62 research Initiative.

## 63 **Competing interests**

64 Brendan Parent reports receiving a research gift from United Therapeutics. The remaining co-  
65 authors have no competing interest to declare.

66 List of Institutions

67 Funding Source: NIH 1OT2HL161847-01

68

## 69 **Abstract**

70 **Importance:** SARS-CoV-2 infection can result in ongoing, relapsing, or new symptoms or organ  
71 dysfunction after the acute phase of infection, termed Post-Acute Sequelae of SARS-CoV-2  
72 (PASC), or long COVID. The characteristics, prevalence, trajectory and mechanisms of PASC  
73 are poorly understood. The objectives of the Researching COVID to Enhance Recovery  
74 (RECOVER) Tissue Pathology Study (RECOVER-Pathology) are to: (1) characterize prevalence  
75 and types of organ injury/disease and pathology occurring with PASC; (2) characterize the  
76 association of pathologic findings with clinical and other characteristics; (3) define the  
77 pathophysiology and mechanisms of PASC, and possible mediation via viral persistence; and (4)  
78 establish a post-mortem tissue biobank and post-mortem brain imaging biorepository.

79 **Methods:** RECOVER-Pathology is a cross-sectional study of decedents dying at least 15 days  
80 following initial SARS-CoV-2 infection. Eligible decedents must meet WHO criteria for  
81 suspected, probable, or confirmed infection and must be aged 18 years or more at the time of  
82 death. Enrollment occurs at 7 sites in four U.S. states and Washington, DC. Comprehensive  
83 autopsies are conducted according to a standardized protocol within 24 hours of death; tissue  
84 samples are sent to the PASC Biorepository for later analyses. Data on clinical history are  
85 collected from the medical records and/or next of kin. The primary study outcomes include an  
86 array of pathologic features organized by organ system. Casual inference methods will be  
87 employed to investigate associations between risk factors and pathologic outcomes.

88 **Discussion:** RECOVER-Pathology is the largest autopsy study addressing PASC among US  
89 adults. Results of this study are intended to elucidate mechanisms of organ injury and disease  
90 and enhance our understanding of the pathophysiology of PASC.

91 **Keywords:** SARS-CoV-2; autopsy study; decedents; tissue pathology; COVID-19

92 **Clinicaltrials.gov number: NCT05292274**

93

## 94 **Introduction**

### 95 **Background information**

96 The severe acute respiratory syndrome coronavirus 2 (SARS-CoV-2) is a novel coronavirus  
97 strain that emerged at the end of 2019. This strain primarily spreads through aerosols in  
98 expiratory gasses in infected individuals with and without symptoms, resulting in the highly  
99 contagious coronavirus disease 2019 (COVID-19) and a global pandemic. As of December 2022,  
100 approximately 653 million people were infected with COVID-19, with at least 6.7 million deaths  
101 globally <sup>1</sup>.

102 Ongoing, relapsing or new symptoms and organ dysfunction after the acute phase of SARS-  
103 CoV-2 infection ( $\geq 30$  days) are now termed post-acute sequelae of SARS-CoV-2 infection  
104 (PASC), often referred to as Long COVID <sup>2</sup>. The underlying pathophysiology of persistent  
105 symptoms after SARS-CoV-2 infection is unknown but may be attributable to mechanisms such  
106 as viral persistence, reactivation of other viruses such as Epstein-Barr virus, vascular endothelial  
107 activation and thrombosis, autonomic nerve damage, neuroinflammation in the central nervous  
108 system, immune dysregulation including activation of auto-immunity, and/or organ damage  
109 caused by hyper-inflammatory response during the acute phase of the disease <sup>3,4</sup>. Other  
110 contributing causes may include complications of critical illness related to prolonged intubation,  
111 prolonged bed rest, and malnutrition, and disruptions of health care access. The role of  
112 sociodemographic, clinical, and biological factors is likely to be complex and multifaceted.

113 This study is part of the NIH Researching COVID to Enhance Recovery (RECOVER) Initiative,  
114 which seeks to understand, treat, and prevent the post-acute sequelae of SARS-CoV-2 infection  
115 (PASC). For more information on RECOVER, visit <https://recovercovid.org/>. The goals of the

116 RECOVER tissue pathology study (RECOVER-Pathology) are to identify, evaluate, and  
117 characterize the clinical manifestations of PASC by comparing decedents with prior SARS-CoV-  
118 2 infection who died with and without PASC and the risk factors associated with the severity of  
119 these clinical manifestations. This cross-sectional study focuses on the pathologic manifestations  
120 of SARS-CoV-2 infection, while explicitly considering sex as a biological variable and the  
121 impact of racial and ethnic disparities on autopsy findings. Data acquired from this study will  
122 provide accurate and quantifiable measures for PASC symptoms in selected populations to allow  
123 for comparisons among groups and, together with the adult and pediatric cohort studies, will  
124 provide insights into mechanisms related to pathogenesis of PASC and its underlying biology.  
125 Autopsies are valuable for elucidating the pathophysiologic mechanisms of novel and poorly  
126 understood diseases by enabling deep phenotyping of tissues throughout the body <sup>5</sup>. Autopsies  
127 played a critical role in understanding the pathologic changes in patients dying from acute  
128 COVID-19. In this setting, the lungs often showed diffuse alveolar damage and pulmonary  
129 thrombi <sup>6,7</sup>; extra-pulmonary changes were also identified. Microthrombi and ischemic changes  
130 were identified in organs throughout the body <sup>6,8-11</sup>. Chronic inflammatory infiltrates and  
131 occasionally myocarditis were identified in the heart <sup>6,8-11</sup>. Hypoxic-ischemic changes, infarcts,  
132 and white matter hemorrhagic lesions were identified in the brain; these may be mediated by  
133 immune complexes and complement-activating endothelial cells and platelets <sup>12,13, 14</sup>. *Ex vivo*  
134 magnetic resonance imaging performed on brain tissue of deceased children showed  
135 abnormalities such as white matter signal hyperintensity, which corresponded to mineralization  
136 <sup>15</sup>. In some patients with acute COVID-19, the peripheral nerves showed neuritis, and the  
137 skeletal muscle demonstrated changes such as type 2 atrophy, necrotizing myopathy, and  
138 myositis <sup>16</sup>. Similarly, autopsies on patients with PASC helped elucidate the underlying



139 pathologic changes, specifically whether any of the pathologic features observed during acute  
140 infection persisted after the initial infection in survivors. In addition, autopsies provided some  
141 answers to the clinical challenges of unexpected and sudden clinical decompensation by showing  
142 the macro- and microvascular thrombotic manifestations of the disease and endothelial injury.  
143 Scientific investigation of autopsy tissues bolstered the clinical suspicions of cytokine  
144 interactions with both the innate and adaptive immune system.<sup>17</sup>

## 145 **Study rationale**

146 PASC is a profound public health crisis, one that may be with us for many years, with symptoms  
147 that can be incapacitating, prevent people from working, and increase the risk of mortality in  
148 both adults and children. As of December 2022, there were over 101 million diagnosed cases of  
149 COVID-19 in the United States, certainly an underestimate because of undertesting,  
150 underreporting, and home testing, particularly in children<sup>18,19</sup>. Given the estimated total number  
151 of cases, even a low incidence of PASC would affect millions. The incidence, prevalence,  
152 phenotypes, risk factors, mechanisms, and etiology of PASC are currently unknown, limiting  
153 opportunities for prevention and treatment<sup>18</sup>. Therefore, autopsy studies are urgently needed.  
154 The RECOVER-Pathology study will enhance the knowledge of the effects of SARS-CoV-2  
155 infection and define and characterize the clinical spectrum of PASC in decedents. Ultimately, we  
156 expect these data to elucidate potential mechanisms to inform future preventive and treatment  
157 studies.

## 158 **Study objectives**

159 The overall scientific objectives of this ongoing study are:

160 1. To enhance knowledge of the effects of SARS-CoV-2 infection;

- 161           2. To define and categorize the clinical spectrum of PASC;
- 162           3. To elucidate potential mechanisms to inform future preventive and treatment
- 163           studies.

164 The following specific aims are proposed to achieve these objectives.

165 **Aim 1.** Characterize the prevalence and types of organ injury/disease, pathological features, and

166 distinct phenotypes in decedents with acute SARS-CoV-2 infection (dying 15-60 days after

167 initial infection), and in decedents with prior SARS-CoV-2 infection (dying >60 days after initial

168 infection) with and without symptoms of PASC.

169 **Aim 2.** Characterize the association of pathological findings with clinical measures of disease

170 severity and associated risk factors in decedents with prior SARS-CoV-2 infection (dying > 60

171 days after initial SARS-CoV-2 infection) with and without PASC.

172 *2a.* Characterize the association of COVID-19 disease severity and treatment with pathological

173 findings in decedents with prior SARS-CoV-2 infection with and without PASC.

174 *2b.* Determine whether pre-infection and peri-infection risk and resiliency factors (e.g.,

175 demographic, biological factors, and preexisting clinical comorbidities) are associated with

176 pathological findings in decedents with prior SARS-CoV-2 infection with and without PASC.

177 **Aim 3.** Define the pathophysiology of and mechanisms associated with pathological findings,

178 including the direct and indirect causal effects of clinical risk factors (e.g., comorbidities,

179 infection severity, hospitalization, intubation, steroids or other treatments) on pathological

180 findings (e.g., inflammation, thrombosis, fibrosis, necrosis) via viral persistence (investigated

181 systematically via molecular methods), in decedents with and without PASC.

182 **Aim 4.** Contribute biospecimens to the RECOVER Biorepository, including post-mortem tissue  
183 samples and post-mortem brain imaging, from decedents with prior SARS-CoV-2 infection, with  
184 and without PASC. The primary goal of the brain imaging is to find and characterize lesions in  
185 the CNS via image-directed sampling of identified lesions. A secondary goal is to correlate the  
186 decedent's MRI findings with those observed in pre-mortem neuroimaging.

## 187 **Methods**

### 188 **Study design overview**

189 RECOVER-Pathology is a cross-sectional study of decedents enrolled in the tissue pathology  
190 cohort at varying stages after infection with SARS-CoV-2 (Figure 1). This study is conducted in  
191 the United States and decedents are enrolled through interaction with families of the deceased at  
192 inpatient, outpatient, and community-based settings. Study data including demographics, pre-  
193 infection laboratory tests and imaging with medical history, vaccination history, acute SARS-  
194 CoV-2 infection records, overall health and physical function, and PASC symptoms are collected  
195 from the electronic health record (EHR) or from family reports of patient medical history using a  
196 case report form.

### 197 **Fig 1. Recruitment Sources for RECOVER-Pathology**

198

### 199 **Setting**

200 RECOVER-Pathology enrollment sites are located in four states (Massachusetts, Minnesota,  
201 New Mexico, New York), and the District of Columbia and serve both urban and rural areas with  
202 racial and ethnic diversity.

### 203 **Study participants**

204 RECOVER-Pathology enrolls decedents after SARS-CoV-2 infection, defined as probable,  
205 suspected, or confirmed according to the WHO guideline<sup>17</sup>, at varying intervals after infection.  
206 Some tissue pathology sites are linked with a clinical RECOVER site and may perform autopsies  
207 on RECOVER decedents. Additional decedents from extant cohorts and clinical cohorts at these

208 sites and at other RECOVER Initiative tissue pathology cohort sites who are not enrolled in  
209 RECOVER, but who have relevant clinical data collected, may be identified for enrollment in the  
210 tissue pathology cohort. All RECOVER-Pathology sites select decedents for protocol autopsies  
211 according to the inclusion criteria detailed below.

## 212 **Cohort subgroups**

213 The RECOVER-Pathology study comprises two distinct subgroups:

### 214 **Post-acute cohort:**

- 215 ● Decedents with prior SARS-CoV-2 infection over the age of 18, with and without current  
216 or prior PASC-like symptoms, including infected individuals with Multisystem  
217 Inflammatory Syndrome in Adults (MIS-A), who die at least 30 days following initial  
218 infection.

### 219 **Acute cohort:**

- 220 ● SARS-CoV-2 infected decedents who die between 15 and 30 days following initial  
221 infection.

222 If available, relevant retrospective data prior to enrollment are extracted from the electronic  
223 health record, existing extant and clinical cohort data, and obtained from next of kin. Decedents  
224 contribute to aims according to their SARS-CoV-2 infection/PASC history and progression.

## 225 **Inclusion criteria**

226 Decedents aged 18 years and older at the time of death are eligible for inclusion. Previously  
227 infected individuals must have suspected, probable, or confirmed SARS-CoV-2 infection as  
228 defined by WHO criteria within 24 months of enrollment<sup>20</sup>. Decedents are eligible regardless of  
229 biological sex, race/ethnicity, geography, nationality, severity of disease, underlying health

230 conditions, history of MIS-A or MIS-C (Multisystem Inflammatory Syndrome in Children), or  
231 history of SARS-CoV-2 vaccination; those with recurrent and/or post-vaccination (breakthrough)  
232 SARS-CoV-2 infections are eligible.

### 233 **Classification of PASC**

234 Decedents who die more than 30 days following initial infection are initially categorized as  
235 having or not having symptoms of PASC according to the WHO definition<sup>20</sup>, published by the  
236 World Health Organization (WHO) on October 6, 2021. They defined PASC as a condition  
237 occurring “in individuals with a history of probable or confirmed SARS-CoV-2 infection,  
238 usually 3 months from the onset of COVID-19 with symptoms that last for at least 2 months and  
239 cannot be explained by an alternative diagnosis. Common symptoms include fatigue, shortness  
240 of breath, cognitive dysfunction, and others and generally have an impact on everyday  
241 functioning. Symptoms may be new onset following initial recovery from an acute COVID-19  
242 episode or may persist from the initial illness. Symptoms may also fluctuate or relapse over time.

### 243 **Exclusion criteria**

244 Decedents under the age of 18 at the time of death are not eligible. Decedents dying within 14  
245 days of their initial SARS-CoV-2 infection are not eligible. Decedents in whom the postmortem  
246 interval (PMI) is greater than 24 hours are not eligible. Decedents with any indications of  
247 criminal investigation at time of death are not eligible, nor are those decedents with signs of  
248 decomposition and trauma.

### 249 **Enrollment targets**

250 To enhance generalizability of findings, a diverse population of decedents will be enrolled.  
251 Enrollment is stratified by age group, sex, and race/ethnicity to promote sufficient inclusion of

252 non-Hispanic Blacks, Hispanic/Latinx, Asian Americans, Native Hawaiians, and Pacific  
253 Islanders with approximately equal distribution between male and female populations.

## 254 **Stratified recruitment**

255 Recruitment will occur across sites (described in section 3.2). Recruitment of SARS-CoV-2  
256 infected decedents will be targeted at:

- 257 • 50% female decedents,
- 258 • 53% non-Hispanic White, 16% non-Hispanic Black, 27% Hispanic/Latinx, and 4% Asian  
259 Americans, Native Hawaiians, Pacific Islanders, American Indians, and Native Alaskan  
260 decedents,
- 261 • 57% post-acute decedents with PASC, 29% post-acute decedents without PASC, and  
262 14% acute decedents.

263 Note that the autopsy sites will frequently communicate with RECOVER Clinical Sciences Core  
264 (CSC) and Data Resource Core (DRC) to maintain adherence with recruitment targets, and to  
265 promote balance in decedents with and without PASC with respect to characteristics (e.g., age,  
266 sex, race / ethnicity).

## 267 **Study procedures**

### 268 **Study organizational structure and study management**

269 Scientific leadership for the study and oversight of participating sites is provided by the  
270 RECOVER Clinical Science Core (CSC) at the NYU Grossman School of Medicine. The  
271 RECOVER CSC collaborates with the RECOVER Data Resource Core at Massachusetts  
272 General Hospital for data management and data storage, and the RECOVER Biorepository at  
273 Mayo Clinic for biospecimen storage. The activities of the RECOVER cohort studies are  
274 overseen by a Steering Committee, an Executive Committee, a RECOVER Senior Oversight

275 Committee, and an Observational Study Monitoring Board (OSMB) that monitors the study data  
276 and makes recommendations to correct any problems with the study that may arise. The  
277 membership composition for each of these committees can be viewed at  
278 <https://recovercovid.org/leadership>.

### 279 **Site selection**

280 RECOVER-Pathology sites were selected by the National Institutes of Health following a  
281 competitive application process in May 2021; these sites were invited to participate in Phase I  
282 activities in summer 2021. The group worked together to collaboratively develop the draft study  
283 protocols, outline the modified gross autopsy procedure, identify primary endpoints, and specify  
284 tissues to be sampled. Phase I sites were approved as Phase II enrolling sites by winter 2021.

### 285 **Ethical standards and oversight**

286 All procedures conducted as part of this protocol follow the principles outlined in the report of  
287 The Committee for the Oversight of Research Involving the Dead.<sup>18</sup> These include, but are not  
288 limited to, dignity, requirement for reasonable scientific validity, confidentiality, consent, non-  
289 interference with organ procurement for donation, and protection from harm.

290 The investigators will ensure that this study is conducted in full conformity with guidance taken  
291 from the Code of Federal Regulations (45 CFR 46.102(f)), which states that “research involving  
292 deceased persons is not considered human subjects research and does not require IRB oversight,  
293 unless the research involves both living and deceased individuals”<sup>21</sup>.



## 294 **Enrollment**

295 To facilitate the difficult conversation with decedents' legal next of kin concerning participation  
296 in RECOVER-Pathology, the CSC developed an information sheet and consent form that  
297 describes the study in plain language. Study personnel meet with families to discuss the research  
298 and answer any questions, stressing that participation in the study does not prohibit normal  
299 funeral and burial practices. Families interested in learning whether a loved one may qualify for  
300 the study can evaluate enrollment eligibility at <https://recovercovid.org>.

301 The RECOVER-Pathology study also recognizes the importance of engagement with  
302 communities and families who may be under-represented in research by partnering with other  
303 federal programs such as the Community Engagement Alliance (CEAL), and the Community  
304 Engagement Alliance Consultative Resource (CEACR) to extend outreach to a wide variety of  
305 potential participants.

## 306 **Study follow-up**

307 Upon request, the decedent's next of kin can receive the standard clinical autopsy report with a  
308 final anatomic diagnosis (FAD). This report will normally be available to next of kin within 60  
309 working days. Next of kin do not receive any research results from the RECOVER-Pathology  
310 study. However, aggregated study results will be made available.

## 311 **Data sources and measurement**

312

**Table 1. RECOVER-Pathology Data**

Operational Data Types	Structured or Unstructured	Examples
Electronic Health Record (EHR) Data	Unstructured	
EHR data	Structured, complex	

Claims data	Structured, complex	
Biorepository inventory data	Structured, complex	Biospecimens Slides
Biorepository asset data	Structured, complex	
Advanced imaging data	Unstructured	Computer Tomography (CT), Magnetic resonance Imaging (MRI)
Vaccination status data	Structured	
Physical examination and gross findings	Structured, complex	
Whole slide imaging data	Unstructured	Section cut, stained with H&E and scanned (40X resolution)
Autopsy visceral sites digital droplet polymerase chain reaction (ddPCR) for SARS-CoV-2 virus	Structured, complex	
Immunoassays and 'omics data	Structured, complex	Genomics, Proteomics, Transcriptomics, Metabolomics, Meta- genomics microbiome, Epigenetics

313

314 Data may be obtained from multiple sources: directly from the decedent's next of kin, from  
 315 existing research records (if participating in an ongoing research study, e.g., RECOVER, extant  
 316 cohorts, clinical cohorts), from the decedent's electronic health record or existing registries, or  
 317 from insurance claims data.

318 Pre-existing EHR data will be extracted electronically where possible or abstracted and recorded  
 319 on structured electronic case report forms (eCRFs). Prior to data use, a Health Insurance  
 320 Portability and Accountability Act of 1996 (HIPAA) authorization is obtained from next of kin,  
 321 subject to the special provisions that apply post-mortem, which allow for special disclosure  
 322 provisions that are relevant to deceased individuals <sup>21</sup>. De-identified data collected from any

323 source are recorded in the RECOVER-Pathology study database, with electronic Case Report  
324 Forms (eCRFs).

## 325 **Study size**

326 The RECOVER-Pathology study aims to enroll 700 decedents, including 100 with acute SARS-  
327 CoV-2 infection dying 15-60 days after infection, and 600 with prior SARS-CoV-2 infection  
328 (dying >60 days after infection); of these 600, we anticipate 400 with PASC and 200 without  
329 PASC. These numbers provide adequate power to evaluate the multiple hypotheses associated  
330 with our aims (**Table 2**).

**Table 2. Sample size for the RECOVER Tissue Pathology Study by PASC status**

	PASC status		Total
	Without PASC	With PASC	
Post-acute decedents (dying > 60 days after SARS-CoV-2 infection)	200	400	600
Acute decedents (dying 15-60 days from SARS-CoV-2 infection)	100		100
Total	300	400	700

## 331 **Statistical methods**

### 332 **Power considerations**

333 To address Aim 1, row 6 in Table 3 provides detectable effect sizes and detectable differences in  
334 proportions between PASC+ and PASC- decedents for quantitative and dichotomous  
335 pathological features. Results are given without and with a multiple comparison adjustment  
336 (assuming 50 tests, alpha=0.001 conservative control).

337

**Table 3. Detectable effect measures**

Total sample size (not including acute decedents)	Number of post-acute decedents with PASC	Number of post-acute decedents without PASC	<b>Detectable standardized effect size</b> for 80% power, alpha=0.05, 0.001 (i.e., without and with multiple comparison adjustment), based on two independent group, two-sided comparison of means	<b>Detectable difference in proportion</b> between groups of post-acute decedents with and without PASC with 80% power, alpha=0.05, 0.001 (i.e., without and with multiple comparison adjustment), based on two independent groups, two-sided comparison of proportions	
				Proportion with feature = 0.2 in PASC-individuals	Proportion with feature = 0.4 in PASC-individuals
300	150	150	0.32, 0.48	0.14, 0.22	0.16, 0.24
300	200	100	0.34, 0.51	0.15, 0.24	0.17, 0.25
400	200	200	0.28, 0.42	0.13, 0.19	0.14, 0.21
400	267	133	0.30, 0.44	0.13, 0.20	0.15, 0.22
600	300	300	0.23, 0.34	0.10, 0.15	0.12, 0.17
600	400	200	0.24, 0.36	0.11, 0.16	0.12, 0.18

339 To address Aim 2, a sample size of 400 within one group (e.g., post-acute decedents with PASC)  
340 will have greater than 80% power to detect a small effect size, i.e., Cohen's  $d=0.28$  between  
341 individuals with and without the risk factor, assuming 50% of individuals have the risk factor (i.e.,  
342 200 with and 200 without the risk factor; row 3 in Table 3).

343 To address Aim 3 and characterize the detectable effect sizes from the subset of decedents who  
344 undergo brain imaging, for example, please see the first row of Table 3. A sample size of 300  
345 provides 80% power to detect a moderate effect size of  $d=0.32$  between individuals with and  
346 without the risk factor (within the specified group), assuming 50% of individuals have the risk  
347 factor. These calculations are based on a two-group, two-sided comparison of means, and  
348 controlling type 1 error at 0.05.

349

---

## 350 **Methods of data collection**

351 The majority of the study data are collected at autopsy according to the standardized autopsy  
352 protocol described in the appendix\*\* These data include structured fields for the gross autopsy  
353 findings. The microscopic findings are captured as text fields, and will later be coded into  
354 approved terms using SNOMED (Systematized Nomenclature of Medicine) codes; these clinical  
355 terminology codes will be finalized following review by the responsible pathologist. Similarly,  
356 the FAD will be coded using a standard set of approved terms. Additional EHR and other  
357 research data are extracted and entered into eCRFs.

358 Biospecimen collection is handled in two ways, depending on stability of the sample:

359 1) Samples for analytes that require rapid freezing are processed locally and sent to the  
360 central RECOVER biorepository on dry ice;

361 2) Other samples are fixed in formalin and shipped directly to the centralized RECOVER  
362 biorepository for processing.

### 363 **Primary endpoints**

364 Our statistical analyses will examine a number of primary pathological outcomes including, but  
365 not limited to, those described in Table 4.

366 **Table 4: Primary pathological outcomes.**

<b>Cardiovascular system</b> <ul style="list-style-type: none"><li>● fibrosis</li><li>● non-ischemic inflammation</li><li>● acute ischemic injury</li><li>● infarct</li><li>● atherosclerosis / arteriosclerosis</li><li>● thrombosis</li><li>● presence of SARS-CoV-2</li></ul>	<b>Lung</b> <ul style="list-style-type: none"><li>● fibrosis</li><li>● inflammation</li><li>● thrombosis</li><li>● presence of SARS-CoV-2</li></ul>	<b>Liver</b> <ul style="list-style-type: none"><li>● fibrosis</li><li>● inflammation</li><li>● thrombosis</li><li>● presence of SARS-CoV-2</li></ul>
<b>Brain</b> <ul style="list-style-type: none"><li>● inflammation</li><li>● infarct</li><li>● thrombosis</li><li>● hemorrhages (non-traumatic)</li><li>● atherosclerosis / arteriosclerosis</li><li>● vasculitis</li><li>● vascular malformation / aneurysm</li><li>● neurodegenerative disease</li><li>● presence of SARS-CoV-2</li></ul>	<b>Lymph node / spleen</b> <ul style="list-style-type: none"><li>● Hemophagocytosis</li><li>● reactive lymph nodes</li><li>● presence of SARS-CoV-2</li></ul>	<b>Kidney</b> <ul style="list-style-type: none"><li>● fibrosis</li><li>● inflammation</li><li>● thrombosis</li><li>● presence of SARS-CoV-2</li></ul>

367

## 368 **Causal inference methods**

369 We will assess the overlap and balance in covariate distributions (e.g., sex, age, race/ethnicity,  
370 hospitalization status) between comparative groups (i.e., acute decedents vs. post-acute decedents  
371 without PASC, and post-acute decedents with vs. without PASC) using the empirical distributions  
372 of the estimated propensity scores<sup>22, 23, 24</sup>. If there is evidence of covariate imbalance, we will use  
373 matched-sampling techniques to improve balance<sup>25, 22</sup>.

374 We will test sharp null hypotheses and report unadjusted and adjusted for multiple comparison<sup>26</sup>  
375 Fisher p-values based on the assumed, hypothetical exposure assignment mechanism implied by  
376 the data and the matched-sampling strategy<sup>24, 27</sup>. Following the advice of Wasserstein et al.<sup>28</sup>, we  
377 will “not base our conclusions solely on whether an association or effect was found to be  
378 ‘statistically significant’ (i.e., the p-value passed some arbitrary threshold such as  $p < 0.05$ )”, but  
379 rather also explore Fisherian intervals<sup>23</sup> and consider model-based inference (e.g., Neymanian /  
380 Frequentist, Bayesian), i.e., we will define an estimand of interest and provide a point estimate and  
381 a corresponding two-sided uncertainty interval (e.g., 95% confidence interval – CI) for that  
382 estimand.

## 383 **Autopsy protocol**

384 Development of the autopsy protocol was based upon the standard (“hospital”) autopsy practice  
385 in which all the major organs are grossly and microscopically evaluated, additional tissue  
386 sampling and specimen collection for ancillary testing is performed routinely, and special  
387 research protocols are common. Autopsy pathologists with expertise in COVID and PASC  
388 worked, along with patient and caregiver representatives, to develop a broad sampling protocol  
389 that could address current and future questions about PASC. To ensure specimen integrity  
390 across autopsy sites, the postmortem interval (PMI) between death and autopsy is established at

391 24 hours or less, which includes transportation of the decedent and other elements (e.g., family  
392 time with decedent, consenting for autopsy).

393 A systematic documentation process for the accurate tracking and transfer of specimens to the  
394 biobank is critical and was developed collaboratively by the consortium. Upon completion of the  
395 autopsy, the samples are logged into a database for tracking and shipping to the PASC  
396 Biorepository Core (PBC). Once the autopsy report is finalized, the relevant clinical information  
397 and diagnostic findings are entered into a structured database. The database was developed with  
398 input and subject matter expertise by the cohort pathologists, working in tandem with the CSC  
399 and DRC.

## 400 **Biorepository**

401 The centralized PBC was established at the Mayo Clinic to standardize the collection of samples  
402 from RECOVER-Pathology, as well as to catalog, store and distribute samples. The PBC  
403 provides training in sample collection, a manual of procedures, and kits for supplies with sample  
404 return mailing containers. The biospecimen collection process is summarized in Table 5.

405



406

**Table 5: Biospecimen collections**

Collection Container	# of Container(s)	Collection tube Volume (mL)	Fraction	Aliquot Volume
Blood Spot Card	1	N/A	Whole Blood	One card with 4 blood spots
Serum Separator Tube (SST)	2	8.5	Serum	10 x 1 mL
Cerebrospinal Fluid (CSF)	10	N/A	CSF	10 x 1 mL
Bronchial Swab	1	N/A	Cells	Entire tube
Stool	1	25	Stool	25 mL
56 Tissues (In duplicate)	112	Cryosette™	Snap Frozen Tissue	17 mm diameter, not to exceed 4 mm in thickness x 2
56 Tissues	56	Standard Tissue Cassette	FFPE Tissue	2 x 2 x 0.4 cm

407 The PBC tissue specimen list for each tissue site sampled in the RECOVER-Pathology protocol  
 408 is outlined in Table 6.

409

**Table 6: PBC Tissue Specimen Table**

Block #	Tissue Description		Block #	Tissue Description
01	Sural nerve		27	Lung, lesional tissue
02	Peroneal nerve		28	Spleen
03	Skin, calf including subcutis		29	Bone marrow (rib squeeze)
04	Muscle, gastrocnemius		30	Pancreas
05	Muscle, psoas		31	Liver, right lobe (central)
06	Duodenum		32	Mesenteric fat
07	Ileum		33	Kidney, right or left
08	Colon, right		34	Renal lesional
09	Colon, descending/sigmoid		35	Testis
10	Adrenal		36	Ovary
11	Aorta, ascending		37	Fallopian tube
12	Right ventricle, Posterior		38	Olfactory bulb
13	Left ventricle, lateral		39	Frontal cortex with leptomeninges
14	Left ventricle, basal		40	Basal ganglia
15	Right atrium/SVC (near SA node)		41	Thalamus
16	Left atrium		42	Hippocampus
17	Coronary artery, right		43	Occipital cortex
18	Coronary artery, left		44	Amygdala
19	Cardiac lesional tissue		45	Pons

20	Hilar/mediastinal lymph nodes		46	Choroid plexus
21	Trachea		47	Medulla (area postrema)
22	Right upper lobe, with pleura		48	Cerebellum with dentate
23	Right middle lobe		49	Dura with sinus
24	Right lower lobe		50	Spinal cord (thorax)
25	Left upper lobe, with pleura		51	Sympathetic chain with ganglia
26	Left lower lobe		56	Dorsal root ganglia

411 Tissue samples are collected in triplicate, one sample for formalin-fixed, paraffin embedding  
412 (FFPE) and two snap-frozen samples. Tissue is collected from fifty-two specified sites (see  
413 Figure 2 and Table 6). The autopsy prosectors have the option of selecting four additional tissue  
414 sites to document findings at autopsy that are not included in the specified sample sites.

## 415 **Fig 2: Specified Tissue Collection Sites**

416  
417 The collection sites process the tissue into FFPE and snap-frozen blocks at their site and send  
418 these blocks to the PBC. At the PBC, the blocks are sectioned, stained for hematoxylin and  
419 eosin, and the whole slide is imaged at 40x. The slides are reviewed to confirm that they are from  
420 the specified sites. The images are transferred to an image repository. The slides and blocks are  
421 stored at the PBC.

## 422 **Role of the Study Coordinator**

423 In the RECOVER workstream, site coordinators play an important role in screening, consenting,  
424 data entry, and assisting the pathology team by conducting specimen procurement procedures.

425 Hundreds of decedents may be screened daily to find qualified candidates. Workflows and alerts  
426 developed by the coordinators streamline and facilitate the screening process. Candidates are  
427 identified and eligibility is assessed through review of the decedent's medical history in Epic,  
428 other electronic health records (EHRs), or via other available medical records, and coordinators  
429 routinely query EHRs for clinical notes and reach out to next of kin to collect as much clinical  
430 data as possible. When decedents are deemed eligible for the study, the site coordinator assists  
431 the attending clinician with contacting the legal next of kin to obtain consent. The CSC works  
432 with site coordinators to facilitate timely and accurate data collection. To ensure that ethical and  
433 legal requirements are met, staff are trained on communication and recruitment language  
434 strategies. Recruitment materials designed with the goal of informing and comforting the  
435 families are provided during the consenting process. Once consent is given, site coordinators  
436 arrange transfer of the decedent to the autopsy suite. Each coordinator strives to ensure that the  
437 transport process allows the family time with their deceased loved one, while maintaining control  
438 of the timeline to ensure compliance with the 24-hour PMI requirement. If any urgent issues  
439 occur, staff are prepared to offer support to help address the issue and facilitate enrollment of  
440 decedents. The CSC also assists by routine monitoring of enrolling sites, to ensure that sites  
441 maintain target goals, good documentation, and operational procedures.

## 442 **Discussion**

443 In contrast to most autopsies, the RECOVER-Pathology protocol comprehensively samples  
444 tissues with and without any gross or microscopically identifiable pathology. The extensive  
445 specimen collection and snap freezing require a team approach, and the efficiency is driven by  
446 each team member's knowledge of the protocol and associated specimen processing. The

447 protocol has been implemented across a range of autopsy practices and will provide a rich  
448 resource for future research.

449 Another distinct feature of this protocol is that the autopsy pathologists routinely seek  
450 information regarding SARS-CoV-2 infection from multiple outside sources on all cases. Both  
451 medical examiners and hospital-based autopsy pathologists will then seek permission for the  
452 study and the autopsy from the decedent's next of kin. This exemplifies a new and expanding  
453 role for autopsy pathologists as monitors of infectious disease throughout the entire population of  
454 the recently deceased.

455 Pathological changes, including persistence of virus within tissues, have been identified in  
456 autopsies of patients dying from acute SARS-CoV-2 infection, as well as in patients who have  
457 recovered from COVID-19. Persistent viral shedding of SARS-CoV-2 was detected by PCR in  
458 the stool up to 210 days after the onset of disease <sup>30</sup>, in small bowel biopsies up to 173 days from  
459 the onset of disease <sup>31</sup>, in gastrointestinal biopsy specimens 7 months after the onset of disease  
460 and associated with gastrointestinal symptoms and symptoms of PASC <sup>32</sup>. Virus has also been  
461 detected by PCR in the cerebrospinal fluid of a patient 114 days after the onset of disease <sup>33</sup>, and  
462 in lung tissue up to 108 days after the onset of disease <sup>34</sup>. SARS-CoV-2 was found during  
463 autopsy in heart tissue by in-situ hybridization and RNA profiling up to 48 days from the onset  
464 of disease <sup>35</sup>. These studies raise the question of whether viral persistence may be an underlying  
465 cause of PASC. Previous single-cell RNA profiling from infected lung tissue from autopsies  
466 demonstrated that the virus is able to enter diverse cell types <sup>26</sup>. The RECOVER-Pathology  
467 protocol will enable the determination of whether a reservoir of proliferating virus exists in  
468 patients with PASC and which tissues and cell types are involved. While a definitive timeline for  
469 development of PASC remains elusive, the definition of PASC will be refined in real time by

470 data obtained from all of the RECOVER cohort studies; the RECOVER-Pathology protocol will  
471 be amended to reflect these changes. RECOVER-Pathology will make important contributions to  
472 our understanding of the mechanisms of PASC, and may lead to additional discoveries and  
473 therapeutic interventions.

## 474 **Disclaimer statement**

475 This content is solely the responsibility of the authors and does not necessarily represent the  
476 official views of the RECOVER Program, the NIH or other funders. This research was funded by  
477 the National Institutes of Health (NIH) Agreement OTA OT2HL161847 (contract number 646-  
478 501-3654) as part of the Researching COVID to Enhance Recovery (RECOVER) research  
479 program.

## 480 **Acknowledgements**

481 We would like to thank the National Community Engagement Group (NCEG), all patient,  
482 caregiver and community representatives, and the families who gave permission for their loved  
483 ones to participate in this autopsy study; we honor the contributions of all participants enrolled in  
484 the RECOVER Initiative.

## 485 **Supporting information**

486 The supporting information is provided in a supplemental appendix file.

## References

1. Worldometer. (2022). Coronavirus Cases. Retrieved 03 Aug 2022, from <https://www.worldometers.info/coronavirus/>
2. Callard F, Perego E. How and why patients made Long Covid. *Soc Sci Med*. 2021 Jan;268:113426. doi: 10.1016/j.socscimed.2020.113426. Epub 2020 Oct 7. PMID: 33199035; PMCID: PMC7539940.
3. Baker SR, Halliday G, Ząbczyk M, Alkarithi G, Macrae FL, Undas A, Hunt BJ, Ariëns RAS. Plasma from patients with pulmonary embolism show aggregates that reduce after anticoagulation. *Commun Med (Lond)*. 2023 Jan 28;3(1):12. doi: 10.1038/s43856-023-00242-8. PMID: 36709220; PMCID: PMC9883810.
4. Nalbandian A, Sehgal K, Gupta A, et al. Post-acute COVID-19 syndrome. *Nature Medicine* 2021; **27**(4): 601-15.
5. Basso C, Stone JR. Autopsy in the Era of Advanced Cardiovascular Imaging. *European Heart Journal* 2022; **43**(26): 2461-8.
6. Bryce C, Grimes Z, Pujadas E, et al. Pathophysiology of SARS-CoV-2: the Mount Sinai COVID-19 autopsy experience. *Modern Pathology* 2021; **34**(8): 1456-67.
7. Jackson NR, Zeigler K, Torrez M, et al. New Mexico's COVID-19 experience. *American Journal of Forensic Medicine and Pathology* 2021; **42**(1): 1-8.
8. Basso C, Leone O, Rizzo S, et al. Pathological features of COVID-19-associated myocardial injury: A multicentre cardiovascular pathology study. *European Heart Journal* 2020; **41**(39): 3827-35.

9. Rapkiewicz AV, Mai X, Carsons SE, et al. Megakaryocytes and platelet-fibrin thrombi characterize multi-organ thrombosis at autopsy in COVID-19: A case series. *EClinicalMedicine* 2020; **24**:100434.
10. Pellegrini D, Kawakami R, Guagliumi G, et al. Microthrombi as a major cause of cardiac injury in COVID-19: A pathologic study. *Circulation* 2021; **143**(10):1031-42.
11. Bearnse M, Hung YP, Krauson AJ, et al. Factors associated with myocardial SARS-CoV-2 infection, myocarditis, and cardiac inflammation in patients with COVID-19. *Modern Pathology* 2021; **34**(7): 1345-57.
12. Lee MH, Perl DP, Steiner J, Pasternack N, Li W, Maric D, Safavi F, Horkayne-Szakaly I, Jones R, Stram MN, Moncur JT, Hefti M, Folkerth RD, Nath A. Neurovascular injury with complement activation and inflammation in COVID-19. *Brain*. 2022 Jul 29;145(7):2555-2568. doi: 10.1093/brain/awac151. PMID: 35788639; PMCID: PMC9278212.
13. Solomon IH, Normandin E, Bhattacharyya S, et al. Neuropathological features of Covid-19. *New England Journal of Medicine* 2020; **383**(10): 989992.
14. Reichard RR, Kashani KB, Boire NA, Constantopoulos E, Guo Y, Lucchinetti CF. Neuropathology of COVID-19: A spectrum of vascular and acute disseminated encephalomyelitis (ADEM)-like pathology. *Acta Neuropathologica* 2020; **140**(1): 1-6.
15. Stram MN, Seifert AC, Cortes E, et al. Neuropathology of pediatric SARS-CoV-2 infection in the forensic setting: Novel application of ex vivo imaging in analysis of brain microvasculature. *Frontiers in Neurology*. 2022; **13**: 894565.



16. Suh J, Mukerji SS, Collens SI, Padera RF Jr, Pinkus GS, Amato AA, Solomon IH. Skeletal muscle and peripheral nerve histopathology in COVID-19. *Neurology* 2021; **97**(8): e849-58.
17. Maiese A, Manetti AC, La Russa R, et al. Autopsy findings in COVID-19-related deaths: a literature review. *Forensic Sci Med Pathol* 2021; **17**(2): 279-96.
18. Stokes EK ZL, Anderson KN, et al. Coronavirus Disease 2019 Case Surveillance — United States, CDC, January 22–May 30, 2020.
19. CDC. United States COVID-19 Cases, Deaths, and Laboratory Testing (NAATs) by State, Territory, and Jurisdiction. August 3, 2022. [https://covid.cdc.gov/covid-data-tracker/#cases\\_casesper100klast7days](https://covid.cdc.gov/covid-data-tracker/#cases_casesper100klast7days) (accessed August 3rd, 2022).
20. World Health Organization. (2021). A clinical case definition of post COVID-19 condition by a Delphi consensus, 6 October 2021.
21. Health information of deceased individuals: Guidance portal. Health Information of Deceased Individuals | Guidance Portal. (n.d.). Retrieved September 03, 2022, from <https://www.hhs.gov/guidance/document/health-information-deceased-individuals>
22. Stuart, Elizabeth A. “Matching methods for causal inference: A review and a look forward.” *Statistical science : a review journal of the Institute of Mathematical Statistics*, vol. 25,1 (2010).
23. Imbens, G, & Rubin, D. *Causal Inference for Statistics, Social, and Biomedical Sciences: An Introduction*. Cambridge: Cambridge University Press (2015).
24. Bind M-AC, Rubin DB. Bridging observational studies and randomized experiments by embedding the former in the latter. *Statistical Methods in Medical Research*, 28, 7, Pp. 1958-1978 (2019).

25. Rosenbaum P and Rubin DB. The central role of the propensity score in observational studies for causal effects, *Biometrika*, 70, 41–55 (1983)
26. Lee, J, Forastiere L, Miratrix L, and Pillai N. More Powerful Multiple Testing in Randomized Experiments with Non-Compliance. arXiv:1605.07242 (2016)
27. Branson Z. Randomization tests to assess covariate balance when designing and analyzing matched datasets. *Observational studies* 7, 1-36 (2021)
28. Wasserstein R, Schirm A, Lazar N. Moving to a World Beyond “ $p < 0.05$ ”. *The American Statistician*, 73, 1-19 (2019)
29. DeVita MA, Wicclair M, Swanson D, Valenta C, Schold C. Research involving the newly dead: an institutional response. *Crit Care Med* 2003; **31**(5 Suppl): S385-90.
30. Batra A, Clark JR, Kang AK, et al. Persistent viral RNA shedding of SARS-CoV-2 is associated with delirium incidence and six-month mortality in hospitalized COVID-19 patients. *Geroscience* 2022; **44**(3): 1241-54.
31. Natarajan A, Zlitni S, Brooks EF, et al. Gastrointestinal symptoms and fecal shedding of SARS-CoV-2 RNA suggest prolonged gastrointestinal infection. *Medicine (New York)* 2022; **3**(6): 371-87.
32. Gaebler C, Wang Z, Lorenzi JCC, et al. Evolution of antibody immunity to SARS-CoV-2. *Nature* 2021; **591**(7851): 639-44.
33. Zollner A, Koch R, Jukic A, et al. Postacute COVID-19 is Characterized by gut viral antigen persistence in inflammatory bowel diseases. *Gastroenterology* 2022; **163**(2): 495-506.

34. Viszlayová D, Sojka M, Dobrodenková S, et al. SARS-CoV-2 RNA in the cerebrospinal fluid of a patient with long COVID. *Therapeutic Advances in Infectious Disease* 2021; **8**:20499361211048572.
35. Caniego-Casas T, Martínez-García L, Alonso-Riaño M, et al. RNA SARS-CoV-2 persistence in the lung of severe COVID-19 patients: A case series of autopsies. *Frontiers in Microbiology* 2022; **13**:824967.
36. Delorey TM, Ziegler CGK, Heimberg G, et al. COVID-19 tissue atlases reveal SARS-CoV-2 pathology and cellular targets. *Nature* 2021; **595**(7865):107-13.

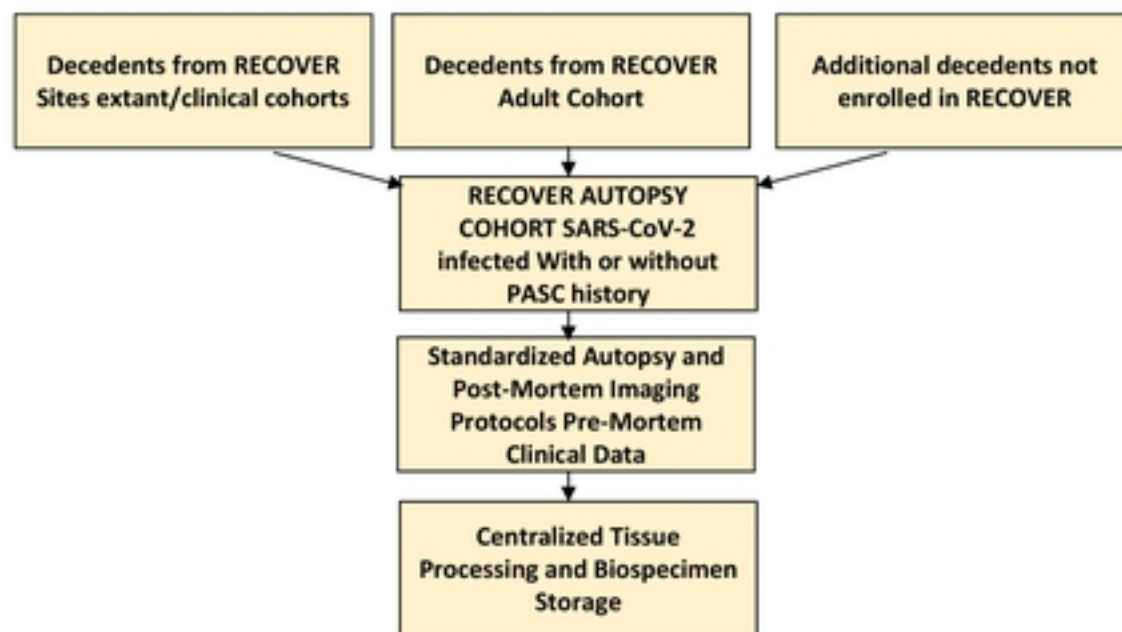


Fig 2

Figure. SPIRIT schedule for the RECOVER-Autopsy Study

TIMEPOINT**	STUDY PERIOD			
	Enrollment	Autopsy	Data entry	Post-mortem MRI
	0	1	2	3
<b>Enrollment</b>				
Eligibility screen	X			
Informed consent	X			
<b>Autopsy</b>		X		
<b>Data entry</b>		X	X	X
<b>Post-mortem MRI</b>				X

medRxiv preprint doi: <https://doi.org/10.1101/2023.04.27.23289234>; this version posted May 3, 2023. The copyright holder for this preprint (which was not certified by peer review) is the author/funder, who has granted medRxiv a license to display the preprint in perpetuity. It is made available under a [CC-BY 4.0 International license](https://creativecommons.org/licenses/by/4.0/).

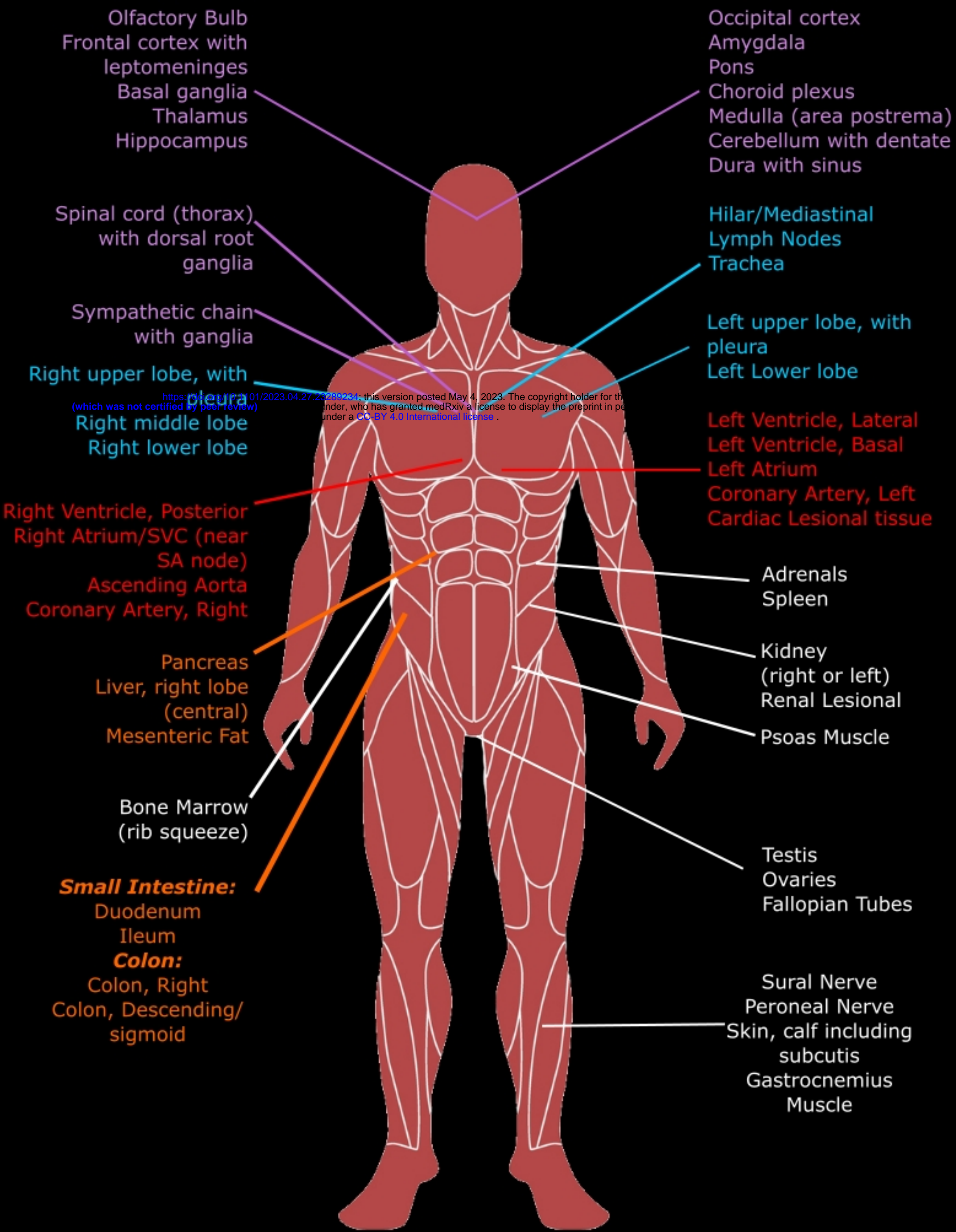


Fig 3