

# 1 Evaluation of the Pilot Wastewater Surveillance for SARS-CoV-2 in Norway,

2 June 2022 – March 2023

3 Ettore Amato<sup>1\*</sup>, Susanne Hyllestad<sup>1</sup>, Petter Heradstveit<sup>1</sup>, Petter Langlete<sup>1</sup>, Line Victoria Moen<sup>2</sup>,  
4 Andreas Rohringer<sup>2</sup>, João Pires<sup>1,3</sup>, Jose Antonio Baz Lomba<sup>1</sup>, Karoline Bragstad<sup>2</sup>, Siri Laura Feruglio<sup>1</sup>,  
5 Preben Aavitsland<sup>4,5</sup>, and Elisabeth Henie Madslie<sup>1</sup>

6

7 <sup>1</sup> Department of Infection Control and Preparedness, Norwegian Institute of Public Health, Norway

8 <sup>2</sup> Department of Virology, Norwegian Institute of Public Health, Norway

9 <sup>3</sup> ECDC Fellowship Programme, Public Health Microbiology path (EUPHEM), European Centre for  
10 Disease Prevention and Control (ECDC), Stockholm, Sweden

11 <sup>4</sup> Norwegian Institute of Public Health, Norway

12 <sup>5</sup> Pandemic Centre, University of Bergen, Bergen, Norway

13

14 \*Correspondence: [ettore.amato@fhi.no](mailto:ettore.amato@fhi.no), Department of Infection Control and Preparedness,  
15 Norwegian Institute of Public Health, Norway

16

## 17 Abstract

18 **Background:** During the COVID-19 pandemic, wastewater-based surveillance gained great  
19 international interest as an additional tool to monitor SARS-CoV-2. In autumn 2021, the Norwegian  
20 Institute of Public Health decided to pilot a national wastewater surveillance (WS) system for SARS-  
21 CoV-2 and its variants between June 2022 and March 2023. We evaluated the system to assess if it  
22 met its objectives and its attribute-based performance.

23 **Methods:** We adapted the available guidelines for evaluation of surveillance systems. The evaluation  
24 was carried out as a descriptive analysis and consisted of the following three steps: (i) description of  
25 the WS system, (ii) identification of users and stakeholders, and (iii) analysis of the system's

26 **NOTE:** This preprint reports new research that has not been certified by peer review and should not be used to guide clinical practice. attributes and performance including sensitivity, specificity, timeliness, usefulness,

27 representativeness, simplicity, flexibility, stability, and communication. Cross-correlation analysis was  
28 performed to assess the system's ability to provide early warning signal of new wave of infections.

29 **Results:** The pilot WS system was a national surveillance system using existing wastewater  
30 infrastructures from the largest Norwegian municipalities. We found that the system was sensitive,  
31 timely, useful, representative, simple, flexible, acceptable, and stable to follow the general trend of  
32 infection. Preliminary results indicate that the system could provide an early signal of changes in  
33 variant distribution. However, challenges may arise with: (i) specificity due to temporary fluctuations  
34 of RNA levels in wastewater, (ii) representativeness when downscaling, and (iii) flexibility and  
35 acceptability when upscaling the system due to limited resources and/or capacity.

36 **Conclusions:** Our results showed that the pilot WS system met most of its surveillance objectives.  
37 The system was able to provide an early warning signal of 1-2 weeks, and the system was useful to  
38 monitor infections at population level and complement routine surveillance when individual testing  
39 activity was low. However, temporary fluctuations of WS values need to be carefully interpreted. To  
40 improve quality and efficiency, we recommend to standardise and validate methods for assessing  
41 trends of new waves of infection and variants, evaluate the WS system using a longer operational  
42 period particularly for new variants, and conduct prevalence studies in the population to calibrate  
43 the system and improve data interpretation.

44

45 **Keywords:** Surveillance evaluation; Wastewater; COVID-19; SARS-CoV-2; Norway

46

## 47 **Background**

48 The concept of wastewater surveillance (WS) for infectious diseases is based on the evidence that  
49 some infectious agents are being excreted through urine and faeces from infected persons, including  
50 before start of symptoms and from asymptomatic cases. Therefore, WS could provide the first signal  
51 of change in disease trends as it is also at the lower level of the surveillance pyramid (1). During the  
52 COVID-19 pandemic, wastewater-based epidemiology gained great international interest as an

53 additional tool to detect signals of SARS-CoV-2 transmission in communities and monitor trends in  
54 defined population areas to inform COVID-19 testing policies and mitigation measures (2, 3). WS has  
55 also been applied in the monitoring of SARS-CoV-2 trends and variants among travellers at  
56 international airports, passenger aircraft and cruise ships (4, 5, 6, 7). Moreover, several studies have  
57 demonstrated that community-wide molecular analysis of wastewater samples can be used to track  
58 SARS-CoV-2 variants and support the identification of potential new emerging variants (8, 9, 10).  
59 Following the European Commission's recommendation to the Member States in spring 2021, several  
60 EU member countries have initiated, implemented, or established monitoring of SARS-CoV-2 and its  
61 variants in wastewater (11, 12).

62 In Norway, surveillance of COVID-19 has largely been based on registration of all individual test  
63 results in the Norwegian Surveillance System for Communicable Diseases (MSIS). However, a change  
64 in testing strategy (from PCR-based to self-testing using antigenic tests) in autumn 2021 resulted in a  
65 considerable proportion of test results not being registered in MSIS and raised the need to  
66 strengthen the national surveillance systems for SARS-CoV-2 (13). Consequently, the Norwegian  
67 Institute of Public Health (NIPH) decided to pilot a national WS system for SARS-CoV-2 to assess its  
68 usefulness and performance as a complementary tool to monitor SARS-CoV-2 and its variants.  
69 This is the first time that WS has been tested by national health authorities in Norway as an  
70 operational monitoring system in connection with outbreaks or epidemics. Therefore, a thorough  
71 evaluation of the system's quality and performance is relevant to identify learning points and assess  
72 potential for future use. Moreover, despite the increasing number of publications and reviews, there  
73 is still a lack of studies evaluating the usefulness and performance of WS systems (14).

74 Therefore, the aim of this study was to evaluate the pilot WS system for SARS-CoV-2 in Norway in  
75 order to assess the performance of the pilot WS in relation to the public health-specific objectives of  
76 the system and describe the advantages and challenges of WS compared to existing national  
77 surveillance systems.

## 78 **Methods**

## 79 **Study design**

80 We adapted the guidelines for evaluation of surveillance systems given by the European Centre for  
81 Disease Prevention and Control (ECDC) (15) and the U.S. Centers for Disease Prevention and Control  
82 (CDC)(16) to evaluate the performance of the pilot WS system in Norway. The evaluation was carried  
83 out as a descriptive analysis and consisted of the following three steps: (i) description of the WS  
84 system, (ii) identification of end-users and stakeholders and (iii) analysis of the system's attributes  
85 and performance (sensitivity, specificity, timeliness, usefulness, representativeness, simplicity,  
86 flexibility, stability, and communication).

## 87 **Description of the wastewater surveillance system**

88 We described the WS system in terms of pilot surveillance objectives, project timeline, WS structure  
89 and network, and participating wastewater sampling sites and municipalities.

## 90 **Identification of end-users and stakeholders**

91 End-users and stakeholders were categorized in the following 3 groups: (i) wastewater treatment  
92 plants and operators at local level, (ii) public health authorities at local level, and (iii) public health  
93 authorities including risk assessors and managers at national level. In addition, the national authority  
94 responsible for wastewater legislation and environmental monitoring was consulted.

## 95 **Analysis of the system's attributes and performance**

96 The evaluation of the WS system focused on the attributes described below (Table 1). The attributes  
97 definitions were adapted from the ECDC and CDC guidelines (15, 16) to fit the purpose of the WS  
98 system. Our evaluation was based on descriptive comparison of results obtained from the WS with  
99 other relevant clinical indicators available during the pilot period (June 2022 – March 2023), and  
100 feedback from end-users, stakeholders and NIPH's experts. Cross-correlation analysis was performed  
101 to assess the wastewater systems' ability to provide early warning signal of new waves of infection.  
102 The analysis was performed using time series data. The time series included data from the main wave  
103 (from week 33, 2022 to week 10, 2023) which was divided into periods of increasing and decreasing  
104 trends, respectively.

105

106 **Table 1.** Wastewater surveillance attributes and their definitions as used in this study, adapted from

107 ECDC and CDC guidelines

<b>Attribute</b>	<b>Definition</b>
Sensitivity	The proportion of waves of infection or new virus variants that are captured by the WS system.
Specificity	The system's ability to avoid false warnings about new waves of infection or new virus variants (false positives)
Timeliness	The ability of the WS to deliver timely results and to provide an early warning signal compared to other surveillance systems.
Usefulness	The extent to which the system has benefited the end-users and led to specific public health actions, either in the form of assessments or measures.
Representativeness	The proportion of the population covered by the WS. The concordance between the geographical area covered by the WS and the geographical unit for clinical surveillance considered for other indicators is evaluated.
Simplicity	The structure/organization of the system and its ease of operation, including logistics from sampling to reporting of results.
Flexibility	The ability of the system to adapt to changes over time being able to be scaled up, scaled down or expand if necessary.
Acceptability	The extent to which end-users and stakeholders were willing to participate in the pilot WS and in the future.
Stability	The ability to collect samples and produce results without deviation or failure.
Communication	The ability of the system to deliver information and data in a clear and distinct manner.

108

109 **Sources used for the surveillance evaluation**

110 **Survey collecting feedback from end-users and stakeholders**

111 A questionnaire was developed and sent to involved stakeholders and participants of the pilot WS in

112 February 2023 (Section A, Supplementary information). The questions were adapted to each end-

113 user category and covered topics such as cooperation, communication, future areas of use and

114 surveillance attributes. The information was collected, aggregated, and analysed based on feedback

115 received. Experiences from NIPH's project team and experts were also collected to describe the pilot  
116 wastewater system and its technical performance.

### 117 **NIPH's wastewater surveillance weekly reports**

118 The weekly WS reports (17) included information and results produced by the WS system such as  
119 quantitative determination of SARS-CoV-2 using reverse transcription-quantitative polymerase chain  
120 reaction (RT-qPCR) and variant screening including results from both RT-PCR for specific variant  
121 mutations and from deep-sequencing analysis on parts of the Spike protein using Nanopore  
122 technology. These reports included data from the wastewater surveillance, the Emergency  
123 Preparedness Register for COVID-19 (Beredt C19) including MSIS and national registries on intensive  
124 care unit (ICU) and hospitalizations. The ratio between the concentration of genetic material (gene  
125 copies) for SARS-CoV-2 and the reference control pepper mild mottle virus (PMMoV) from  
126 wastewater samples was calculated. The results for each sample point were weighted according to  
127 the population size that belonged to the wastewater plant in an average at national level.

### 128 **NIPH weekly reports on COVID-19, influenza, and other respiratory diseases**

129 These reports included results reporting signals from other clinical indicators used by NIPH for the  
130 COVID-19 surveillance (13). The sources used for these reports included sequence data from the  
131 National Virological SARS-CoV-2 Surveillance Program and the clinical surveillance data from the  
132 Emergency Preparedness Register for COVID-19 (Beredt C19) which collects data from MSIS and the  
133 national registries on ICU and hospitalizations.

134

## 135 **Results**

### 136 **Description of the pilot wastewater surveillance system**

137 The pilot WS system is a national surveillance system, which aims to provide information on the  
138 occurrence and circulation of SARS-CoV-2 and its variants in a defined population.

### 139 **Surveillance objectives**

140 The public health-specific objectives of the WS system for SARS-CoV-2 in Norway were to (i) describe  
141 trends of virus circulation, including its variants in the population over time and space, (ii) provide an  
142 early detection of change in infection trends in the population compared to other national COVID-19  
143 surveillance systems and indicators, and (iii) detect and monitor emerging variants of public health  
144 relevance.

#### 145 **Pilot Wastewater Surveillance timeline**

146 The pilot WS system was operational from 1<sup>st</sup> June 2022, with a tentative trial period of 6 months. In  
147 December 2022, the pilot surveillance was extended in a scaled-down version until March 2023 to  
148 gather additional experience covering the winter season and data useful to perform an evidence-  
149 based evaluation of the surveillance and its performance.

#### 150 **Wastewater Surveillance structure and network**

151 The system used existing municipal wastewater infrastructures. A network of reference contact  
152 persons was established for (i) the managers of enrolled wastewater treatment plants, (ii) the  
153 municipal doctors in participating municipalities and iii) an outsourced private laboratory (contract  
154 laboratory) for the RT-qPCR analysis of wastewater samples. The contract laboratory was responsible  
155 for the logistics and initial analysis of the wastewater samples, including quantitative detection of  
156 SARS-CoV-2 RNA, quantitative detection of Pepper Mild Mottle Virus RNA (PMMoV) and PCR  
157 screening for a pre-defined set of mutations frequently observed in known Variants of Concern  
158 (VOCs). Frozen samples containing extracted nucleic acids were then shipped to the national  
159 reference laboratory at NIPH for further variant analysis and deep-sequencing of the Spike protein.  
160 The results from the contract laboratory were shared through an online platform and then processed  
161 by NIPH before being compared to other surveillance systems data and indicators. The municipal  
162 doctors in the participating municipalities (Oslo, Bergen, Trondheim, Tromsø, and Oslo airport area)  
163 were involved in the coordination, sharing of results and communication at the local level. NIPH was  
164 responsible for the overall administration and coordination of the project, analysis and interpretation  
165 of data and communication and reporting at national and European level.

166 **Sampling procedure and sites included in the pilot wastewater surveillance**

167 From June to November 2022, wastewater treatment plants in the largest urban municipalities  
168 representing each region participated in the pilot WS. These include wastewater treatment plants  
169 placed in Oslo (n=2), Bergen (n=4), Trondheim (n=2), and Tromsø (n=3). In addition to the largest  
170 urban municipalities representing for each Norwegian region, the Oslo airport area (the airport with  
171 the highest international influx in Norway) was included to detect new variants of public health  
172 relevance. From December 2022 to March 2023, the pilot surveillance was downscaled from 12 to 5  
173 wastewater treatment plants placed in Oslo (n=2), Bergen (n=1), Trondheim (n=1) municipalities and  
174 Oslo airport area (n=1). Sampling was carried out one to two times per week by the wastewater  
175 treatment plants' personnel. All samples were collected from untreated water at the inlet of the  
176 plant. Most samples (68%) were collected using 24-72h flow-proportional composite samples, 19%  
177 were collected using time-proportional composite samples and 13% were collected by grab sampling.  
178 Sample material was transferred to 1L bottles and shipped cooled on ice to the contract laboratory.

179

180 **Identification of end-users and stakeholders**

181 The list of identified end-users and stakeholders for each category is presented in Table 2.

182

183 **Table 2.** Identified end-user and stakeholders for each category of the pilot wastewater surveillance.

Category	Identified end-users and stakeholders
Wastewater treatment plants	Contact persons from participating wastewater treatment plants
Local public health authorities	Municipal doctors from the 5 participating municipalities
National public health authorities and experts on infection control and preparedness	The Directorate of Health and the Norwegian Institute of Public Health
National authority responsible for wastewater legislation and environmental monitoring	The Norwegian Environment Agency

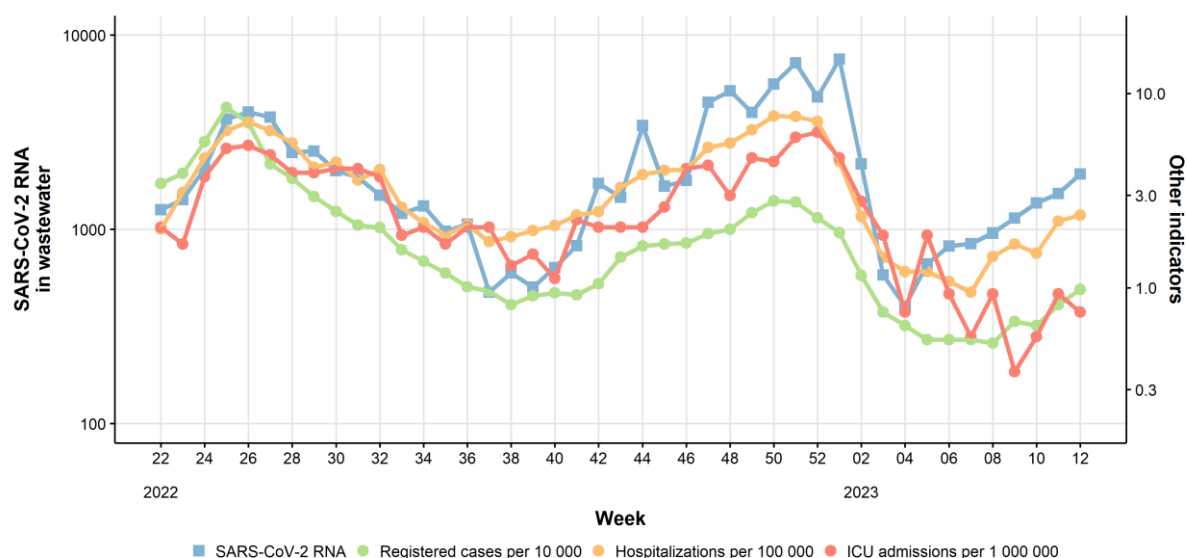
184

185 **Analysis of the surveillance system's attributes and performance**

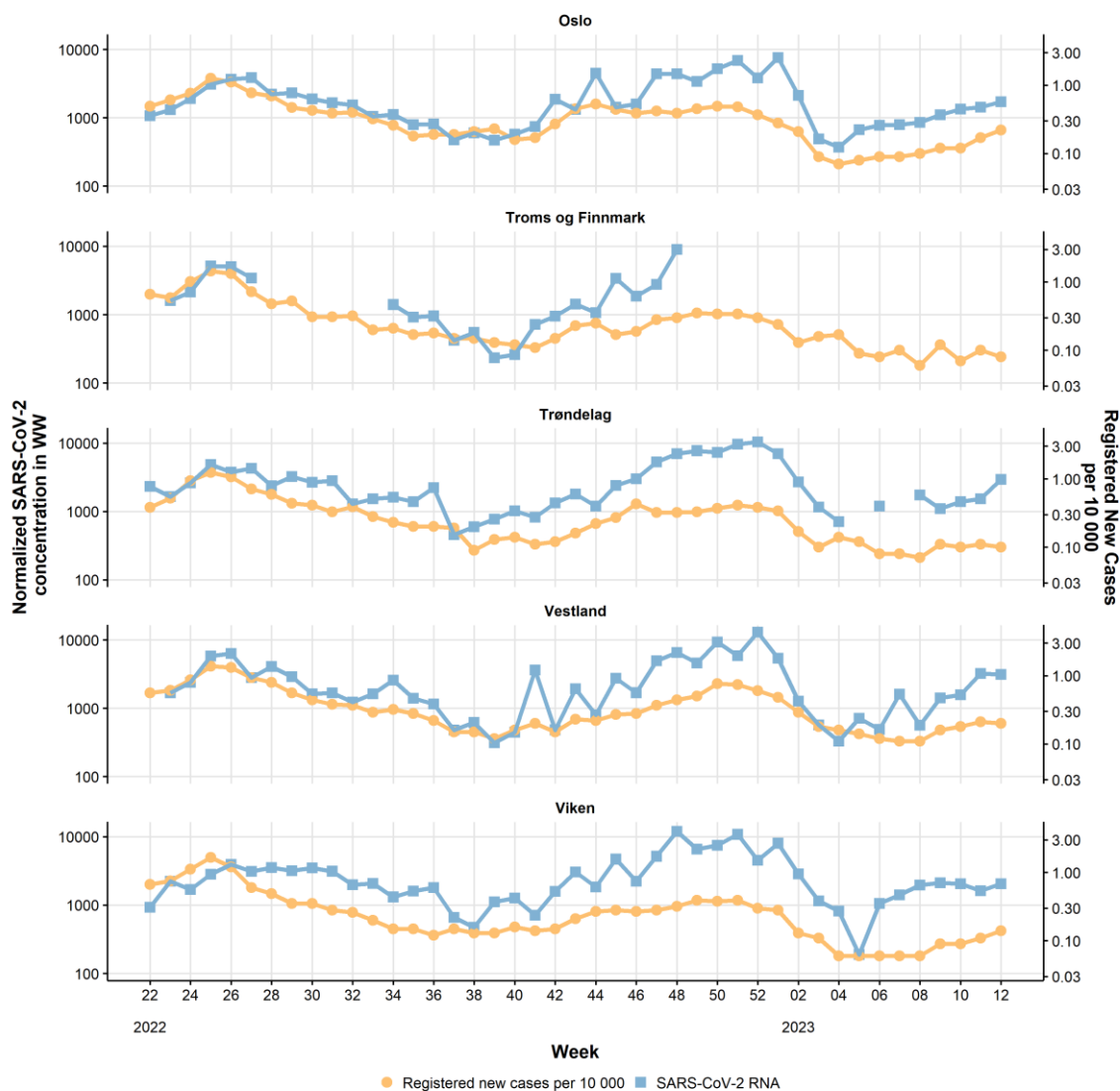


186 **Sensitivity - waves of infection**

187 During the pilot period (June 2022 - March 2023), we observed two waves of infection in Norway and  
188 the beginning of a third wave (Figure 1). The first wave from week 22 to week 38 (2022) and the  
189 second wave was recorded from approximately week 40 (2022) to week 4 (2023), while the  
190 beginning of a third wave started around week 5 (2023). Comparing with clinical indicators (such as  
191 registered COVID-19 cases, hospitalizations, and ICU admissions), all waves were captured by the WS  
192 system, indicating that the system had a similar sensitivity compared to other surveillance systems  
193 both at national and local level (Figure 1 and 2).  
194



195  
196 **Figure 1.** Weekly level of SARS-CoV-2 RNA detected in wastewater in Norway (blue line), compared  
197 with clinical indicators for COVID-19. SARS-CoV-2 RNA levels in wastewater are population-weighted  
198 and PMMoV-normalized. Note: the wastewater data are based on results of samples taken at  
199 selected locations, while the clinical indicators are based on data from national registries (Beredt-  
200 C19).  
201



202

203 **Figure 2.** Weekly concentration of SARS-CoV-2 RNA in wastewater (blue) compared to weekly  
 204 registered cases expressed as incidence per 10,000 inhabitants (orange). SARS-CoV-2 RNA levels in  
 205 wastewater are population-weighted and PMMoV-normalized. Note: the wastewater data are based  
 206 on results of samples taken at selected locations, while the data on registered cases are based on  
 207 national registries (Beredt C19).

208

209 **Specificity - waves of infection**

210 Compared to the Beredt C19 clinical indicators, we observed that the WS system gave signals of  
 211 temporary fluctuations over the weeks that were not otherwise captured. These fluctuations made

212 the interpretation of the wastewater signals challenging, since it was unclear in a real-time situation  
213 whether a weekly increased value represented a real increase or was a consequence of random  
214 fluctuations, or measurement errors which could occur at different stages of the process from  
215 sampling to final result.

216

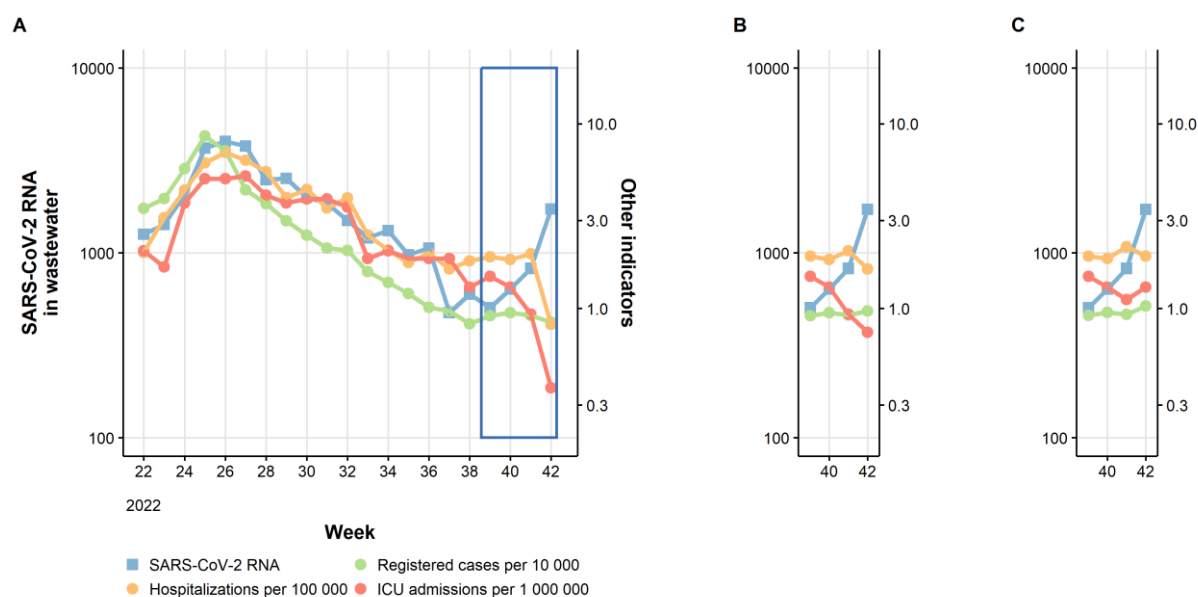
#### 217 **Timeliness - waves of infection**

218 The results provided by the WS system correlated with clinical indicators related to this wave but did  
219 not give an early signal of downward trend compared to registered clinical cases. During the autumn  
220 of 2022, we observed the beginning of a new wave of infection (Figure 1). In the NIPH's COVID-19  
221 weekly report for weeks 37 and 38 (18, 19), a "slightly decreasing or flat trend" was generally  
222 reported, while the WS system reported a slightly increasing trend. In the following weeks 39 and 40,  
223 the COVID-19 report (20, 21) was on "stable" spread of infection, while the WS system reported a  
224 "tendency to increase". The WS system gave an earlier warning of the new wave of infection than  
225 clinical indicators. During increasing trends, we found the highest correlation between the  
226 wastewater data and the clinical indicators at a lead time of 1-2 weeks (Figure 1S, Section B,  
227 Supplementary material). During the decreasing trends the correlation was highest at a lead time  
228 around zero (Figure 2S, Section B, Supplementary material).

229

230 Results were published through weekly reports using different communication channels. Overall,  
231 completeness of weekly results from the WS system was 1-7 days earlier compared to the clinical  
232 registry-based surveillance systems. In Figure 5, we show an example of surveillance results from  
233 different systems updated routinely during a week, particularly how the results would be updated on  
234 Mondays (A), Wednesdays (B) and Fridays (C).

235



236 **Figure 5.** Timeliness of gathering complete results by different surveillance systems over a defined  
237 week: A) WS data updated on Mondays (blue), B) hospitalizations (yellow) and registered cases  
238 (green) data updated on Wednesdays and C) ICU admissions (red) data updated on Fridays.

239

#### 240 **Sensitivity, specificity and timeliness of wastewater surveillance for variants detection**

241 While mutational PCR screening was performed by the contract laboratory and reported for the  
242 entire study period, reporting of sequencing results started only at a late stage (week 47). Overall,  
243 mutational PCR screening results showed concordance with the signals generated from the clinical  
244 variants surveillance (13, 17). However, the PCR screening method did not have sufficient  
245 discriminatory power to detect and identify specific variants over time. Preliminary sequencing data,  
246 both real-time and retrospective data (Supplementary Figures S3), suggest that signals of new key-  
247 mutations and changes in variant distribution from the WS system preceded signals from clinical  
248 variant surveillance approximately by 1-2 weeks.

249 However, additional data would be needed to conduct a proper evaluation of the WS systems' real-  
250 time performance in terms of sensitivity, specificity, and timeliness for new variants of public health  
251 relevance.

252

253 **Usefulness**

254 The overall opinion reported by end-users through the evaluation survey was that the WS system  
255 was useful to follow the general trend of infections, both at national and local level. Surveys results  
256 showed that all end-users at municipal level would have benefited from the WS system if it had  
257 started earlier in the pandemic, e.g., to monitor the rate of transmission, especially in periods with  
258 extensive use of self-tests, or to inform potential easing or strengthening of measures at population  
259 level.

260 Three out of five municipalities reported that the results were used to assess the epidemiological  
261 situation or need for infection control measures, one out of five indicated that the results could have  
262 been more useful if the system had started earlier during the pandemic and the last believed that it  
263 could be relevant to use this system in an assessment of measures if the situation had changed in a  
264 negative direction. The overall feedback from national authorities and stakeholders was that the  
265 results of the pilot WS were used as one of several indicators to assess the infection situation  
266 nationally. It was considered particular useful in a phase of the pandemic where testing activity, and  
267 hence the reliability of traditional surveillance systems, has been significantly lower than earlier in  
268 the pandemic. Several end-users addressed the importance of being able to monitor other pathogens  
269 to increase the future usefulness of the system. Signals from the WS have varied from week to week,  
270 which increases the risk of misjudgement of the trends. For the future, it will be relevant to identify  
271 sources of these variations and how to minimize them, as well as establish standardized guidelines  
272 for assessing and communicating trends and uncertainties.

273 **Representativeness**

274 The selected 12 wastewater treatment plants included in the pilot's first phase (June-November  
275 2022) covered approximately 30% of the Norwegian population. The scaled down phase of the pilot  
276 (December 2022-March 2023) included only five wastewater treatment plants with a coverage of  
277 around 25% of the population. We have simulated a further scale down of the pilot including only  
278 Oslo municipality and the airport area with a coverage of around 22%. The trend analysis considering

279 these three scale down situations showed that the national trend is similar in all scenarios, but the  
280 results were less reliable at the local level (data not shown).

### 281 **Simplicity**

282 The WS system required the involvement of external actors. For this reason, coordination was  
283 required to establish collaborations and run the system together with actors not usually involved in  
284 traditional clinical surveillance systems. Considering the scale of the pilot system, the operations  
285 were manageable both in terms of coordination, resource allocation and communication between  
286 stakeholders and end-user. Handling of data and processing of results was largely automated. The  
287 complexity could increase in an upscaling scenario due to the increased number of wastewater  
288 treatment plants or municipalities involved.

### 289 **Flexibility**

290 The system was flexible to the extent that the number of sampling locations and sampling frequency  
291 can be scaled up and down when needed. During the operational period of the pilot, we were able to  
292 test the ability to scale down, which proceeded without major challenges. Scaling up requires that  
293 the treatment plants and the laboratory have sufficient capacity. Feedback from operators of the  
294 treatment plants suggested that capacity-related challenges may arise for several of them if there is a  
295 need for upscaling. Shortages of personnel, logistics and time pressure were mentioned as the  
296 biggest possible challenge. Different end-users expressed interest in using the WS system to monitor  
297 other pathogens in addition to SARS-CoV-2 in the future

### 298 **Acceptability**

299 Both local health authorities and the wastewater treatment plants' operators largely expressed a  
300 willingness to continue contributing to the WS system, taking into account their available resources  
301 and capacity. One of the municipalities participating in the pilot did not have the capacity to  
302 participate further.

### 303 **Stability**

304 The system showed stability in terms of delivering regular results for assessment of national trends.  
305 However, we occasionally experienced deviations. Deviations could occur for several reasons and at  
306 different stages in the WS system. The most important reasons we have registered were: (i)  
307 sampling, such as lack of capacity to take samples, which sometimes resulted in one sample per week  
308 instead of two. Capacity challenges were often linked to holiday closures and public holidays, (ii)  
309 logistics such as delays and deviations in connection with the collection and transport of samples. (iii)  
310 analysis deviations such as inhibition of the PCR analysis.

### 311 **Communication**

312 All end-users and stakeholders reported that the results were clearly presented and the content  
313 sufficient for their needs. As additional feedback, end-users suggested adding more information on  
314 virus variants and proposed to include an indicator of the burden on the primary healthcare service,  
315 together with the hospital's admission figures. End-users of the system at municipal level suggested  
316 that direct reporting to the municipal contact person was the preferred channel for communicating  
317 and accessing results rather than visiting the NIPH's website to check the published reports. The  
318 frequency of reporting, once per week, was considered adequate during the study period.

### 319 **Discussion**

320 Our study provides a detailed evaluation of the pilot WS system for SARS-CoV-2 including its  
321 performance in Norway during the study period (June 2022 - March 2023). The Norwegian SARS-CoV-  
322 2 WS system was established at a late stage of the pandemic where individual clinical testing activity  
323 captured by COVID-19 national surveillance systems was decreasing due to a change of national  
324 testing strategy. Thus, there was a need to implement new systems to strengthen the national  
325 surveillance of SARS-CoV-2.

326 When a new surveillance system is implemented or established, periodic evaluation of such system is  
327 useful to ensure that the system fulfils its public health surveillance objectives and to identify areas  
328 of improvement (16) . Guidelines for the evaluation of surveillance systems are available but largely  
329 tailored for evaluating clinical data and indicators using an attribute-oriented approach (15).

330 Evaluation guidelines adapted to wastewater-based public health surveillance systems are currently  
331 lacking. In this study, we share our experience in adapting the available ECDC and CDC guidelines to a  
332 pilot wastewater-based surveillance system of SARS-CoV-2 in Norway and assess the performance of  
333 this system during the study period.

334 Our assessment on the sensitivity, specificity and timeliness attributes was performed through  
335 descriptive analysis of WS data and comparison with relevant clinical indicators that were used for  
336 COVID-19 surveillance purposes during the pilot period in Norway. The definition on sensitivity and  
337 specificity were adapted for event-based surveillance, where we considered a new wave of infection  
338 or the introduction of a new virus variant as the “event” (15) . While for timeliness we specifically  
339 evaluated the ability of the system to deliver timely and complete results and to provide an early  
340 warning signal to reflect the speed between steps in public health surveillance (15). Since the pilot  
341 was performed during the late phase of the pandemic where no major infection control measures  
342 were applied to the Norwegian population at national or local level, it was not possible to evaluate  
343 the reactivity of the system which reflects the delay before public health actions were initiated (15).

344 During the autumn 2022, Norway experienced a new wave of infection. In this case, the WS system  
345 gave an approximately 1-2 weeks early warning signal for the new wave of infection compared with  
346 NIPH’s clinical surveillance indicators. This is also in line with the early warning window reported in  
347 literature (14). However, we did not find that the WS system could detect an early signal on steady  
348 state or declining trends, which could have been useful to forecast decrease in COVID-19 related  
349 illness, medical consultations, and hospitalizations (22). Although the WS system was able to capture  
350 national waves of infection and trends similarly to other indicators, some fluctuations were observed  
351 during the study period. Therefore, it is important to interpret weekly results carefully and further  
352 investigate the factors influencing these deviations to reduce uncertainties, such as population  
353 dynamics, in-network characteristics, sampling strategy and sample analysis (23). For example,  
354 simulations from a recent Danish study reported that a large variation in the viral concentration per  
355 gram of faeces between infected individuals results in a large variability in the concentrations found



356 in wastewater, especially when the number of shedders is low (24). Increasing sampling frequency  
357 would presumably lower the impact of random fluctuations in RNA levels, however this would  
358 demand more resources.

359 Regarding PCR-screening of signature mutations of VOCs, the analysis of pooled samples from each  
360 municipality carried out by the contract laboratory showed concordance with variant results from  
361 the National Virological SARS-CoV-2 Surveillance Program. This analysis gives a preliminary indication  
362 of whether certain known signature mutations are present or absent in the population. These results  
363 could be useful to provide an early signal of changes in known variants given that the selection of  
364 mutations that are targeted are relevant and can be continuously and timely adapted according to  
365 the evolving needs. However, the method has a very low discriminatory power in terms of providing  
366 information on which variants are present and their relative distribution, and the results should  
367 therefore be carefully interpreted and complemented by sequencing analysis, especially to detect  
368 also unknown variants. Thus, as a stand-alone method, PCR-based mutational screening of  
369 wastewater samples is not suitable for determining the true variant prevalence or assessing variant  
370 shifts over time.

371 Sequencing results of pooled samples from each municipality became available after week 47 (2022)  
372 and relative prevalence of variants after week 5 (2023) due to extensive work in developing and  
373 establishing suitable methods for analysing SARS-CoV-2 variant distribution in wastewater samples.

374 Preliminary sequencing results suggest that signals on new mutations and variants were detected  
375 approximately 1-2 weeks earlier than observed through the National Virological SARS-CoV-2  
376 Surveillance Program. However, additional data would be needed to perform a thorough evaluation  
377 of the system's performance in terms of its variant surveillance objectives. Variant classification (e.g.  
378 using the Pango system) (25) from wastewater samples was proven to be difficult, especially when  
379 only including part of the Spike protein for the sequencing analysis. The development and validation  
380 of sequencing methodology and robust bioinformatic pipelines suitable for complex wastewater

381 samples could be resource-intensive and needs to be considered when planning or establishing the WS  
382 system, particularly to be able to detect unknown future mutations.

383 All end-users at municipal level reported that the system has been useful during the pilot phase, and  
384 they would have also benefited from it if it had started earlier in the pandemic. However, while  
385 objective thresholds for clinical indicators were used to implement infection control measures both  
386 at national and municipal level during the earlier phase of the pandemic (e.g., COVID-19 incidence of  
387 positive cases at national and municipal level or hospitalization and intensive care unit occupancy  
388 rate) (26), there is still a need for guidelines on how to identify control measures' thresholds for WS.  
389 Therefore, interpreting surveillance data and integrating different data sources considering each  
390 system's limitation is essential from the public perspective to provide accurate advice and implement  
391 proportionate control measures, particularly when those have a high social and economic impact on  
392 the population.

393 Regarding representativeness, we evaluated how the WS system described the occurrence of a  
394 health-related event over time and its distribution in the population by place. An evaluation of the  
395 distribution by person was not possible due to the pooled nature of wastewater samples. We also  
396 evaluated the concordance of results from different systems considering the geographical area  
397 covered by the WS and the one used for other clinical indicators. The WS pilot study aimed at  
398 covering the highest percentage of the Norwegian population representative for each region  
399 considering also available resources within a framework of the surveillance needs at the national  
400 level. Our results showed that the disease trends over time were similar in different down-scaled  
401 scenarios, however the system lost its regional geographical representativeness which was not in line  
402 with the surveillance objectives.

403 Moreover, the catchment area of wastewater treatment plants rarely corresponds to the municipal  
404 or county boundaries. These aspects need to be considered when implementing WS for  
405 epidemiological purposes to integrate and compare results with clinical indicators, particularly at  
406 local level. Although, it is worth noting that results from WS are independent of individual testing or

407 reporting of symptoms. Therefore, the WS system can be considered an unbiased source of  
408 information compared to register-based clinical surveillance to follow-up the infection transmission  
409 at population level over time, particularly in case of low individual testing or change of national  
410 testing strategies. The interpretation of results from the WS system would probably have been  
411 improved if we had been able to compare them to results from a study of infection prevalence in the  
412 same geographical areas. Unfortunately, no such studies were performed in Norway.  
413 Although the system proved to be simple, flexible, acceptable, and stable by end-users and  
414 stakeholders during the pilot phase, some resource-related challenges might arise in a possible  
415 upscale scenario. These challenges are relevant when establishing or implementing WS systems,  
416 particularly in high demand situations (e.g., during the acute phase of a pandemic).  
417 Our results also highlighted the importance of timely and direct communication with end-users and  
418 stakeholders involved in the pilot WS system, as well as the usefulness of interpreting the  
419 epidemiological situation using multiple data sources.

420

### 421 **Regulatory framework of wastewater surveillance for public health purposes**

422 Sampling of wastewater for monitoring diseases in the population is not directly regulated in the  
423 Norwegian legislation. In October 2022, changes were proposed to the EU Directive for "Urban  
424 wastewater treatment" with a new section (Article 17- Urban wastewater surveillance) which deals  
425 with the use of wastewater for public health purposes (27). The proposal, if it is adopted, entails,  
426 among other things, that the EU/EEA countries must have established a coordinating structure  
427 (between environmental and health authorities) for monitoring public health parameters in  
428 wastewater (covering 70% of the population) by 1 January 2025. The Norwegian Environment Agency  
429 is responsible for following up the proposed wastewater directive in Norway.

430

### 431 **Outlook**

432 This evaluation has identified the need for an update of the international guidelines used for the  
433 evaluation of surveillance systems for public health purposes which should include both clinical and  
434 environmental indicators. Moreover, standardized analytical methods used for WS and a harmonized  
435 approach for surveillance evaluations would be useful to compare the results, performance and  
436 added value of WS in different countries. This aspect is considered particularly relevant when results  
437 are shared through international platforms and dashboards. In addition, further studies exploring the  
438 sustainability and use of WS for other emerging or relevant public health threats can add to the  
439 discussion on the usefulness of WS for public health purposes, particularly when the surveillance is  
440 focusing on aspects related to the interphase between animal, human and environmental health,  
441 using the ‘One Health’ approach.

442

#### 443 **Limitations of the surveillance evaluation**

444 Although this study can be a valuable example when planning an evaluation for WS system for public  
445 health purposes, we have identified several limitations that must be addressed to improve the  
446 quality of such evaluations in the future. First, a more thorough statistical analysis was not possible  
447 due to the lack of a ‘gold standard’ indicator on the incidence of the disease in the population during  
448 the pilot period. Secondly, the pilot started at a time when a new wave of infections was already in  
449 the starting phase (week 22/2022). Therefore, it was not possible to assess if the system would have  
450 warned of this first wave earlier than the Beredt C19 indicators. Third, although additional questions  
451 in the survey could have increased the knowledge of the WS system’s performance, we have limited  
452 those questions to ensure a good response rate from end-users and stakeholders. In addition, we did  
453 not perform a cost-benefit analysis since this would require a different study design and evaluation  
454 method which was outside our scope. It was also not possible to evaluate the laboratory testing  
455 capacity in case of an upscaling scenario, since we have outsourced the laboratory responsible for  
456 testing the wastewater samples under specific contract requirements. Moreover, the variant’s  
457 sequencing analysis was operational only during the last weeks of the pilot, therefore it was not

458 possible to thoroughly evaluate the sensitivity, specificity and timeliness for the surveillance of  
459 variants. Finally, the evaluation is limited to the pilot settings and does not include experiences from  
460 local surveillance initiated by individual small municipalities. We have also evaluated the  
461 performance of the WS system based on its routine sampling and analysis procedures, however  
462 adjustment of these factors could increase or decrease the performance of WS system and  
463 surveillance' attributes.

464

## 465 **Conclusions and recommendations**

466 As result of this surveillance evaluation, we observed that: (i) the WS system met most of its  
467 surveillance objectives, (ii) the WS system provided an early warning signal of 1-2 weeks for a new  
468 wave of infection compared to other clinical indicators, (iii) temporary fluctuations of wastewater  
469 values can cause noisy signals that makes the interpretation of trends challenging and increasing the  
470 risk of false alert, iv) preliminary results indicate that the WS system sequencing of wastewater  
471 samples could provide an early signal of selected SARS-CoV-2 key mutations and changes in variant  
472 distribution over time compared to the clinical SARS-CoV-2 variants surveillance system (National  
473 Virological SARS-CoV-2 Surveillance Program), but additional data would be needed to conduct a  
474 proper evaluation of the WS systems' real-time performance for variants' detection and (v) the  
475 system is seen as a useful tool by local and national health authorities to monitor the infections at  
476 population level when individual testing activity is low and complement other surveillance systems.  
477 Based on these results, the WS system has been extended beyond its pilot phase in Norway and its  
478 future use will be evaluated based on continuous assessments of national public health needs and  
479 available resources.

480

481 To improve the quality and efficiency of the WS system, we would recommend to standardize and  
482 validate methods for assessing trends of new waves or virus variants, evaluate the WS system for  
483 sensitivity, specificity and timeliness for variants using a longer surveillance operational period,

484 identify the causes of trend fluctuation to minimize the challenges in the interpretation of WS  
485 signals, and conduct prevalence studies in the population to calibrate WS data and improve the  
486 interpretation of data.

487

## 488 **Abbreviations**

489 **WS** – Wastewater surveillance

490 **MSIS** – The Norwegian surveillance system for communicable diseases

491 **NIPH** – Norwegian Institute of Public Health

492 **ECDC** – European Centre for Disease Prevention and Control

493 **CDC** – U.S. Centers for Disease Control and Prevention

494 **PCR** – Polymerase Chain Reaction

495 **RT-PCR** – Reverse Transcription Polymerase Chain Reaction

496 **RT-qPCR** – Quantitative Reverse Transcription Polymerase Chain Reaction

497 **Beredt C19** – Emergency Preparedness Register for COVID-19

498 **ICU** – Intensive Care Unit

499 **PMMoV** – Pepper Mild Mottle Virus

500 **VOC** – Variant of Concern

501 **EU** – European Union

502 **EEA** – European Economic Area

503

## 504 **Acknowledgements**

505 We thank the municipal doctors and personnel at the wastewater treatment plants for their  
506 willingness to participate in the Norwegian wastewater surveillance pilot and for their valuable  
507 contributions and feedback during the evaluation study. We also thank Rasmus Kopperud Riis and  
508 Ignacio Garcia Llorente (NIPH) for their technical skills in developing a unique pipeline for wastewater  
509 genomics surveillance useful to produce virus variants data from wastewater samples, and Astrid

510 Louise Løvlie (NIPH) and Aftab Jasir (EPIET/EUPHEM ECDC Fellowship Programme) for reviewing the  
511 manuscript. We also acknowledge Lasse Dam Rasmussen and Kristina Træholt Franck at Statens  
512 Serum Institut (SSI) in Denmark for valuable guidance during the start-up of the pilot, and Matthew  
513 Wade at the UK Health Security Agency for discussions during the planning phase of the WS  
514 evaluation.

#### 515 **Author's contributions**

516 EA, SH, and EM designed the study. PH helped to develop the survey and correspondence with end-  
517 users and stakeholders. PL, LVM, AR, KB analysed and helped in interpreting the data from the  
518 surveillance systems. JP and JABL helped with technical inputs from the scientific literature. JP  
519 prepared and harmonized the figures. SLF and PA helped in interpreting the surveillance evaluation  
520 results under the preparedness and public health perspective. EA and EM drafted the manuscript. All  
521 co-authors revised the manuscript and have approved the final version.

#### 522 **Funding**

523 The pilot project has been approved and financed by NIPH. One of the co-authors was financially  
524 supported by the European Programme for Public Health Microbiology Training (EUPHEM), ECDC.  
525 The funder had no role in study design, data collection and interpretation, or the decision to submit  
526 the work for publication. There was no additional funding for this study.

#### 527 **Availability of data and materials**

528 The dataset analysed in the study contains individual-level data from various central health registries  
529 or laboratory databases. Only fully anonymized data (i.e., data that are neither directly nor  
530 potentially indirectly identifiable) are permitted to be shared publicly. Therefore, legal restrictions  
531 prevent the researchers from publicly sharing the dataset used in the study. However, external  
532 researchers are freely able to request access to data as per normal procedure for conducting health  
533 research in line with national and European regulations concerning data protection.

#### 534 **Ethics approval and consent to participate**

535 Approval was obtained from the Regional Committee for medical and healthcare research ethics (REK  
536 454077) based on the Norwegian Health Research Act.

### 537 **Consent for publication**

538 Not applicable.

### 539 **Competing interest**

540 None.

541

## 542 **References**

- 543 1. World Health Organization. Environmental surveillance for SARS-CoV-2 to complement public  
544 health surveillance - Interim Guidance. [https://www.who.int/publications/i/item/WHO-HEP-ECH-](https://www.who.int/publications/i/item/WHO-HEP-ECH-WSH-2022.1)  
545 WSH-2022.1. 2022. Accessed 27 Apr 2023.
- 546 2. Medema G, Been F, Heijnen L, Petterson S. Implementation of environmental surveillance for  
547 SARS-CoV-2 virus to support public health decisions: Opportunities and challenges. *Curr Opin Environ*  
548 *Sci Health*. 2020;17:49.
- 549 3. Centers for Disease Control and Prevention. National Wastewater Surveillance System  
550 (NWSS). <https://www.cdc.gov/nwss/wastewater-surveillance.html>. 2021. Accessed 27 Apr 2023.
- 551 4. Ahmed W, Bertsch PM, Angel N, Bibby K, Bivins A, Dierens L, et al. Detection of SARS-CoV-2  
552 RNA in commercial passenger aircraft and cruise ship wastewater: a surveillance tool for assessing  
553 the presence of COVID-19 infected travellers. *J Travel Med*. 2020;27(5).
- 554 5. Medema G HL, Elsinga G, Italiaander R, Brouwer A. Presence of SARS-Coronavirus-2 RNA in  
555 Sewage and Correlation with Reported COVID-19 Prevalence in the Early Stage of the Epidemic in The  
556 Netherlands. *Environ Sci Technol Lett*. 2020.
- 557 6. Farkas K, Williams R, Alex-Sanders N, Grimsley JMS, Pântea I, Wade MJ, et al. Wastewater-  
558 based monitoring of SARS-CoV-2 at UK airports and its potential role in international public health  
559 surveillance. *PLOS Glob Public Health*. 2023;3(1):e0001346.
- 560 7. Agrawal S, Orschler L, Tavazzi S, Greither R, Gawlik BM, Lackner S. Genome Sequencing of  
561 Wastewater Confirms the Arrival of the SARS-CoV-2 Omicron Variant at Frankfurt Airport but Limited  
562 Spread in the City of Frankfurt, Germany, in November 2021. *Microbiol Resour Announc*.  
563 2022;11(2):e0122921.
- 564 8. Kirby AE, Welsh RM, Marsh ZA, Yu AT, Vugia DJ, Boehm AB, et al. Notes from the Field: Early  
565 Evidence of the SARS-CoV-2 B.1.1.529 (Omicron) Variant in Community Wastewater - United States,  
566 November-December 2021. *MMWR Morb Mortal Wkly Rep [Internet]*. 2022 2022/01//; 71(3):103.
- 567 9. Izquierdo-Lara R, Elsinga G, Heijnen L, Munnink BBO, Schapendonk CME, Nieuwenhuijse D, et  
568 al. Monitoring SARS-CoV-2 Circulation and Diversity through Community Wastewater Sequencing,  
569 the Netherlands and Belgium. *Emerg Infect Dis*. 2021;27(5):1405.
- 570 10. Tiwari A, Adhikari S, Zhang S, Solomon TB, Lipponen A, Islam MA, et al. Tracing COVID-19  
571 Trails in Wastewater: A Systematic Review of SARS-CoV-2 Surveillance with Viral Variants. *Water*  
572 *[Internet]*. 2023; 15(6).
- 573 11. European Commission. Commission recommendation of 17.3.2021 on a common approach  
574 to establish a systematic surveillance of SARS-CoV-2 and its variants in wastewaters in the EU.  
575 <https://eur-lex.europa.eu/legal-content/EN/TXT/PDF/?uri=CELEX:32021H0472>. 2021. Accessed 27  
576 Apr 2023.



- 577 12. European Commission. EU Sewage Sentinel System for SARS-CoV-2, Digital European  
578 Exchange Platform (EU4S-DEEP). <https://wastewater-observatory.jrc.ec.europa.eu/#/dashboards/2>.  
579 Accessed 27 Apr 2023.
- 580 13. Norwegian Institute of Public Health. Weekly reports on COVID-19, Influenza and other  
581 respiratory infections. <https://www.fhi.no/publ/2020/koronavirus-ukerapporter/>. Accessed 27 Apr  
582 2023.
- 583 14. Hyllestad S, Myrmel M, Lomba JAB, Jordhøy F, Schipper SK, Amato E. Effectiveness of  
584 environmental surveillance of SARS-CoV-2 as an early warning system during the first year of the  
585 COVID-19 pandemic: a systematic review. *J Water Health*. 2022;20(8):1223.
- 586 15. European Centre for Disease Prevention and Control. Data quality monitoring and  
587 surveillance system evaluation - A handbook of methods and applications.  
588 [https://www.ecdc.europa.eu/en/publications-data/data-quality-monitoring-and-surveillance-](https://www.ecdc.europa.eu/en/publications-data/data-quality-monitoring-and-surveillance-system-evaluation-handbook-methods-and)  
589 [system-evaluation-handbook-methods-and](https://www.ecdc.europa.eu/en/publications-data/data-quality-monitoring-and-surveillance-system-evaluation-handbook-methods-and). 2014. Accessed 27 Apr 2023.
- 590 16. German RR, Lee LM, Horan JM, Milstein RL, Pertowski CA, Waller MN. Updated guidelines for  
591 evaluating public health surveillance systems: recommendations from the Guidelines Working Group.  
592 *MMWR Recomm Rep*. 2001;50(Rr-13):1.
- 593 17. Norwegian Institute of Public Health. Results from wastewater surveillance.  
594 [https://www.fhi.no/en/hn/statistics/overvaking-smittsomme-sykdommer-i-avløpsvann/results-from-](https://www.fhi.no/en/hn/statistics/overvaking-smittsomme-sykdommer-i-avløpsvann/results-from-wastewater-surveillance/)  
595 [wastewater-surveillance/](https://www.fhi.no/en/hn/statistics/overvaking-smittsomme-sykdommer-i-avløpsvann/results-from-wastewater-surveillance/). Accessed 27 Apr 2023.
- 596 18. Norwegian Institute of Public Health. Results from SARS-CoV-2 wastewater surveillance.  
597 Week 37. [https://www.fhi.no/contentassets/de5043048b0445f98feef0f7e215ff83/vedlegg/2022---](https://www.fhi.no/contentassets/de5043048b0445f98feef0f7e215ff83/vedlegg/2022---uke-22-37-resultater-avlopsovervakingen.pdf)  
598 [uke-22-37-resultater-avlopsovervakingen.pdf](https://www.fhi.no/contentassets/de5043048b0445f98feef0f7e215ff83/vedlegg/2022---uke-22-37-resultater-avlopsovervakingen.pdf). Accessed 27 Apr 2023.
- 599 19. Norwegian Institute of Public Health. Results from SARS-CoV-2 wastewater surveillance.  
600 Week 38. [https://www.fhi.no/contentassets/de5043048b0445f98feef0f7e215ff83/vedlegg/2022---](https://www.fhi.no/contentassets/de5043048b0445f98feef0f7e215ff83/vedlegg/2022---uke-22-38-resultater-avlopsovervakingen.pdf)  
601 [uke-22-38-resultater-avlopsovervakingen.pdf](https://www.fhi.no/contentassets/de5043048b0445f98feef0f7e215ff83/vedlegg/2022---uke-22-38-resultater-avlopsovervakingen.pdf). Accessed 27 Apr 2023.
- 602 20. Norwegian Institute of Public Health. Results from SARS-CoV-2 wastewater surveillance.  
603 Week 39. [https://www.fhi.no/contentassets/de5043048b0445f98feef0f7e215ff83/vedlegg/2022---](https://www.fhi.no/contentassets/de5043048b0445f98feef0f7e215ff83/vedlegg/2022---uke-22-39-resultater-avlopsovervakingen.pdf)  
604 [uke-22-39-resultater-avlopsovervakingen.pdf](https://www.fhi.no/contentassets/de5043048b0445f98feef0f7e215ff83/vedlegg/2022---uke-22-39-resultater-avlopsovervakingen.pdf). Accessed 27 Apr 2023.
- 605 21. Norwegian Institute of Public Health. Results from SARS-CoV-2 wastewater surveillance.  
606 Week 40. [https://www.fhi.no/contentassets/de5043048b0445f98feef0f7e215ff83/vedlegg/2022---](https://www.fhi.no/contentassets/de5043048b0445f98feef0f7e215ff83/vedlegg/2022---uke-22-40-resultater-avlopsovervakingen.pdf)  
607 [uke-22-40-resultater-avlopsovervakingen.pdf](https://www.fhi.no/contentassets/de5043048b0445f98feef0f7e215ff83/vedlegg/2022---uke-22-40-resultater-avlopsovervakingen.pdf). Accessed 27 Apr 2023.
- 608 22. Schenk H, Heidinger P, Insam H, Kreuzinger N, Markt R, Nägele F, et al. Prediction of  
609 hospitalisations based on wastewater-based SARS-CoV-2 epidemiology. *Sci Total Environ*.  
610 2023;873:162149.
- 611 23. Wade MJ, Lo Jacomo A, Armenise E, Brown MR, Bunce JT, Cameron GJ, et al. Understanding  
612 and managing uncertainty and variability for wastewater monitoring beyond the pandemic: Lessons  
613 learned from the United Kingdom national COVID-19 surveillance programmes. *J Hazard Mater*.  
614 2022;424(Pt B):127456.
- 615 24. Nauta M, McManus O, Træholt Franck K, Lindberg Marving E, Dam Rasmussen L, Raith  
616 Richter S, et al. Early detection of local SARS-CoV-2 outbreaks by wastewater surveillance: a  
617 feasibility study. *Epidemiol Infect*. 2023;151:e28.
- 618 25. Centers for Disease Control and Prevention. SARS-CoV-2 Variant Classifications and  
619 Definitions. <https://www.cdc.gov/coronavirus/2019-ncov/variants/variant-classifications.html>.  
620 Accessed 27 Apr 2023.
- 621 26. Norwegian Institute of Public Health. Handbook for detection, assessment and handling of  
622 COVID-19 outbreaks in the municipality. Chapter 4. Risk assessment.  
623 [https://www.fhi.no/nettpub/overvaking-vurdering-og-handtering-av-covid-19-epidemien-i-](https://www.fhi.no/nettpub/overvaking-vurdering-og-handtering-av-covid-19-epidemien-i-kommunen/ti-trinn2/4-risikovurdering/)  
624 [kommunen/ti-trinn2/4-risikovurdering/](https://www.fhi.no/nettpub/overvaking-vurdering-og-handtering-av-covid-19-epidemien-i-kommunen/ti-trinn2/4-risikovurdering/). Accessed 27 Apr 2023.
- 625 27. European Commission. Proposal for a DIRECTIVE OF THE EUROPEAN PARLIAMENT AND OF  
626 THE COUNCIL concerning urban wastewater treatment. [https://eur-lex.europa.eu/legal-](https://eur-lex.europa.eu/legal-content/EN/TXT/HTML/?uri=CELEX:52022PC0541)  
627 [content/EN/TXT/HTML/?uri=CELEX:52022PC0541](https://eur-lex.europa.eu/legal-content/EN/TXT/HTML/?uri=CELEX:52022PC0541). Accessed 27 Apr 2023.
- 628