

Title: Statistical Analysis Plan for the Blood Pressure Postpartum (BP²) study

Authors: Bronwyn K Brew¹, Georgina M Chambers¹, Damian Kotevski¹, Amanda Henry,^{2,3,4} on behalf of the BP² Steering Committee

1 = National Perinatal Epidemiology and Statistics Unit, Centre for Big Data Research in Health and School of Clinical Medicine, Faculty of Medicine and Health, University of New South Wales, Sydney, Australia

2 = Discipline of Women's Health, School of Clinical Medicine, Faculty of Medicine and Health, University of New South Wales, Sydney, Australia

3 = Department of Women's and Children's Health, St George Hospital, Kogarah, Australia

4 = The George Institute for Global Health, UNSW Medicine and Health, Sydney, Australia

Corresponding Author: Associate Professor Amanda Henry

amanda.henry@unsw.edu.au

Abstract

Background: Hypertensive Disorders of Pregnancy (HDP) complicate 5-10% of pregnancies globally: 2-5% preeclampsia, 3% gestational hypertension, and 0.5-2% chronic hypertension. It is epidemiologically well established that adverse health effects of HDP do not end with the pregnancy: these conditions are associated with increased lifetime cardiovascular disease (CVD) risks. However, intervention trial data in the early years postpartum after HDP, focussed on early intervention to reduce women's ongoing CVD risks after HDP, is sparse.

Methods: The Blood Pressure Postpartum Trial (BP²) is a 3-arm randomised controlled trial investigating three different methods of follow-up and lifestyle behaviour change in the first 12 months postpartum following a pregnancy affected by HDP. The trial was prospectively registered on the Australian and New Zealand Clinical trials registry (registration: ACTRN12618002004246) and the study protocol has previously been published (Henry A et al, Pregnancy Hypertension 2020; 22: 1-6). This manuscript details the pre-analysis, pre-specified Statistical Analysis Plan.

Keywords: Preeclampsia, gestational hypertension, chronic hypertension, cardiovascular disease, randomised trial, postpartum, statistical analysis plan

Statistical Analysis Plan

TRIAL FULL TITLE	BP² (Blood Pressure Postpartum) study: a 3-arm, randomized trial of follow-up and lifestyle behaviour change strategies in the first 12 months after hypertensive disorders of pregnancy
SAP VERSION	1.0
SAP VERSION DATE	21 st April 2023
TRIAL STATISTICIAN	Bronwyn K Brew and Damian Kotevski
Protocol Version (SAP associated with)	V5_with COVID19 modifications April 2020
TRIAL PRINCIPAL INVESTIGATOR	Amanda Henry
SAP AUTHOR(s)	Bronwyn K Brew, Amanda Henry, Damian Kotevski, Lynne Roberts

SAP Signatures

I give my approval for the attached SAP entitled BP² dated 21st April 2023.

Statistician (Author)

Name: Bronwyn Brew and Damian Kotevski

Signature: _____

Date: 24th April 2023

Statistician Reviewer (As applicable)

Name: Georgina Chambers

Signature: _____

Date: 25th April 2023

Principal Investigator

Name: Amanda Henry

Signature: _____

Date: 21st April 2023

Table of Contents

Contents

SAP Signatures	2
Table of Contents	2
1 Abbreviations and Definitions	5
1 Introduction	5
1.1 Preface	5
1.2 Scope of the analyses.....	5
2 Study Objectives and Endpoints	6
2.1 Study Objectives.....	6
2.2 Endpoints	6
3 Study Methods	7
3.1 General Study Design and Plan	7
3.2 Inclusion-Exclusion Criteria and General Study Population.....	7
3.3 Randomization and Blinding	10
3.4 Study Assessments	10
3.4.1 Timing of assessments	10
3.4.2 Analysis time windows.....	11
3.4.3 Variables.....	11
4 Sample Size	19
5 General Analysis considerations	19
5.1 Timing of Analyses	19
5.2 Analysis Populations	20
5.2.1 Intention to Treat Population	20
5.2.2 Per Protocol Population	20
5.2.3 Sensitivity Analysis	Error! Bookmark not defined.
5.3 Covariates and Subgroups	20
5.3.1 Multi-centre Studies	21
5.4 Missing Data.....	21
5.5 Multiple Testing	21
6 Summary of Study Data	22
6.1 Subject Disposition.....	22
6.2 Derived variables.....	22
6.3 Protocol Deviations (COVID-19 pandemic)	22
6.4 Demographic and Baseline Variables.....	23
6.5 Concurrent Illnesses and Medical Conditions.....	23
6.6 Compliance.....	23
7 Statistical Analyses	23

7.1	Primary outcome Analysis.....	23
7.2	Secondary outcomes Analyses.....	24
7.3	Secondary Analyses of primary and secondary endpoints	24
8	Safety Analyses	24
8.1	Adverse Events.....	24
8.2	Clinical Laboratory Evaluations	24
8.3	Prior and Concurrent Medications (As applicable).....	Error! Bookmark not defined.
9	Reporting Conventions	24
10	Quality Assurance of Statistical Programming	25
11	Summary of Changes to the Protocol	25
12	References	25
13	Listing of Tables, Listings and Figures	27

1 Abbreviations and Definitions

BP ²	Blood Pressure Postpartum Study
CH	Chronic hypertension
CH+PE	Chronic hypertension with superimposed preeclampsia
CRP	C-reactive protein
CVD	Cardiovascular disease
eGFR	Estimated glomerular filtration rate
GH	Gestational hypertension
GHS	Get Healthy Service
GP	General Practitioner
HDP	Hypertensive disorders of pregnancy
HOMA	Homeostatic assessment (of insulin resistance)
hsCRP	High-sensitivity C-reactive protein
PE	Preeclampsia
PP	Postpartum
SAP	Statistical Analysis Plan
SD	Standard Deviation
UNSW	University of New South Wales

2 Introduction

2.1 Preface

Hypertensive Disorders of Pregnancy (HDP) complicate 5–10% of pregnancies globally: 2–5% preeclampsia (PE), 3% gestational hypertension (GH), and 0.5–2% chronic hypertension (CH). It is well established that HDP's adverse health effects do not end with the pregnancy: these conditions are associated with increased lifetime cardiovascular disease (CVD) risks. After HDP, women not only have a 3–4 times increased risk of chronic hypertension within 15 years, but a 2–3 times increased risk of CVD. This relationship is strongest for PE and CH but also exists for GH. Intervention data specific to the HDP population remain scarce. There has not yet been a randomised trial of specialised follow-up after HDP versus usual care, nor a sufficiently powered RCT after HDP to assess effect of lifestyle behaviour change strategies on presumed markers of later cardiovascular risk such as blood pressure and weight.

2.2 Scope of the analyses

The Blood Pressure Postpartum study (BP²) will provide evidence regarding the feasibility and effectiveness of postpartum lifestyle behaviour change interventions and structured clinical follow-up in improving cardiovascular health markers after HDP. This SAP applies to the 12-month follow up.

3 Study Objectives and Endpoints

3.1 Study Objectives

In women who have had a hypertensive disorder of pregnancy, to compare the effect of three postpartum (PP) management strategies at 1 year PP, with further observational follow-up at 3 years PP (note that in this SAP we are referring to the 1 year/12 month follow from now on). We will compare the effects of:

- 1) **Optimised Usual Care:** Standard postpartum care after HDP, with the addition of information packages sent to both women and their primary healthcare practitioners prior to a 6-months postpartum visit with the primary healthcare practitioner
- 2) **Brief Education Intervention:** One-off cardiovascular risk assessment and diet/exercise education in a dedicated clinic 6 months postpartum
- 3) **Extended Lifestyle Intervention:** Cardiovascular risk assessment and diet/exercise education in a dedicated clinic 6 months postpartum, followed by an individualised dietary and exercise lifestyle program of six months duration (from 6-12 months PP)

on

- *Maternal blood pressure (BP)*
- *Maternal positive lifestyle behaviour change*
- *Other maternal clinical cardiovascular risk indicators*
- *Non-invasive maternal measures of vascular structure and function*
- *Women's health-related quality of life measures*
- *Infant growth and weight trajectories*
- *Healthcare costs, taking into account projected long-term savings*

3.2 Endpoints

Hypotheses

One year postpartum, the Extended Lifestyle Intervention will, compared to Brief Education Intervention and Usual Care:

- 1) significantly reduce maternal BP
- 2) result in superior maternal positive lifestyle behaviour change (as measured by BMI, waist circumference, physical activity and vegetable and fruit intake)
- 3) improve maternal clinical CVD risk indicators including lipid profile, cardiovascular risk score, HOMA [insulin resistance] score
- 4) improve maternal vascular structure and function as measured through non-invasive central arterial pressure, velocity and stiffness measures (with additional pilot subgroup investigation of utility of brachial Flow-Mediated dilatation, carotid Intima-Medial Thickness, hsCRP and other serum inflammatory markers). Note: COVID-19 pandemic and

suspension of these measures means sample-size underpowered to test this hypothesis, vascular structure and function will be analysed as a separate substudy/exploratory data.

5) result in improved maternal health-related quality of life

6) demonstrate cost-effectiveness when long-term healthcare costs are considered

7) result in a more desirable infant growth trajectory and adiposity (by weight, length and BMI centiles)

Additional hypothesis: The effects observed in Hypotheses 1-7 will continue to be observed at 3 years postpartum for mothers and infants.

4 Study Methods

4.1 General Study Design and Plan

(ICH E3;9)

Study configuration and experimental design: three-arm, multicentre, randomized controlled trial with participants allocated 1:1:1 to control group, Brief Education Intervention and Extended Lifestyle Intervention.

PROBE design: Prospective Randomized Open Blinded Endpoint.

Type of Comparison: Superiority of intervention groups versus control

Type of control: optimized usual care

Level and method of blinding: Open blind, patients and clinicians will not be blinded, however clinicians taking outcome measurements and analyst team will be blinded to group allocation.

Method of treatment assignment: Randomization with stratification by study hospital, parity and body mass index (see Section 4.3).

4.2 Inclusion-Exclusion Criteria and General Study Population

(ICH E3;9.3. ICH E9;2.2.1)

General Study population: Australian teaching hospitals providing maternity care where staffing includes specialist obstetricians, physicians, paediatricians and anaesthetists/critical care specialists and >1500 births per year.

Inclusion criteria:

- Aged ≥18 years
- Given birth at one of the study hospitals (St George Public Hospital, Royal Prince

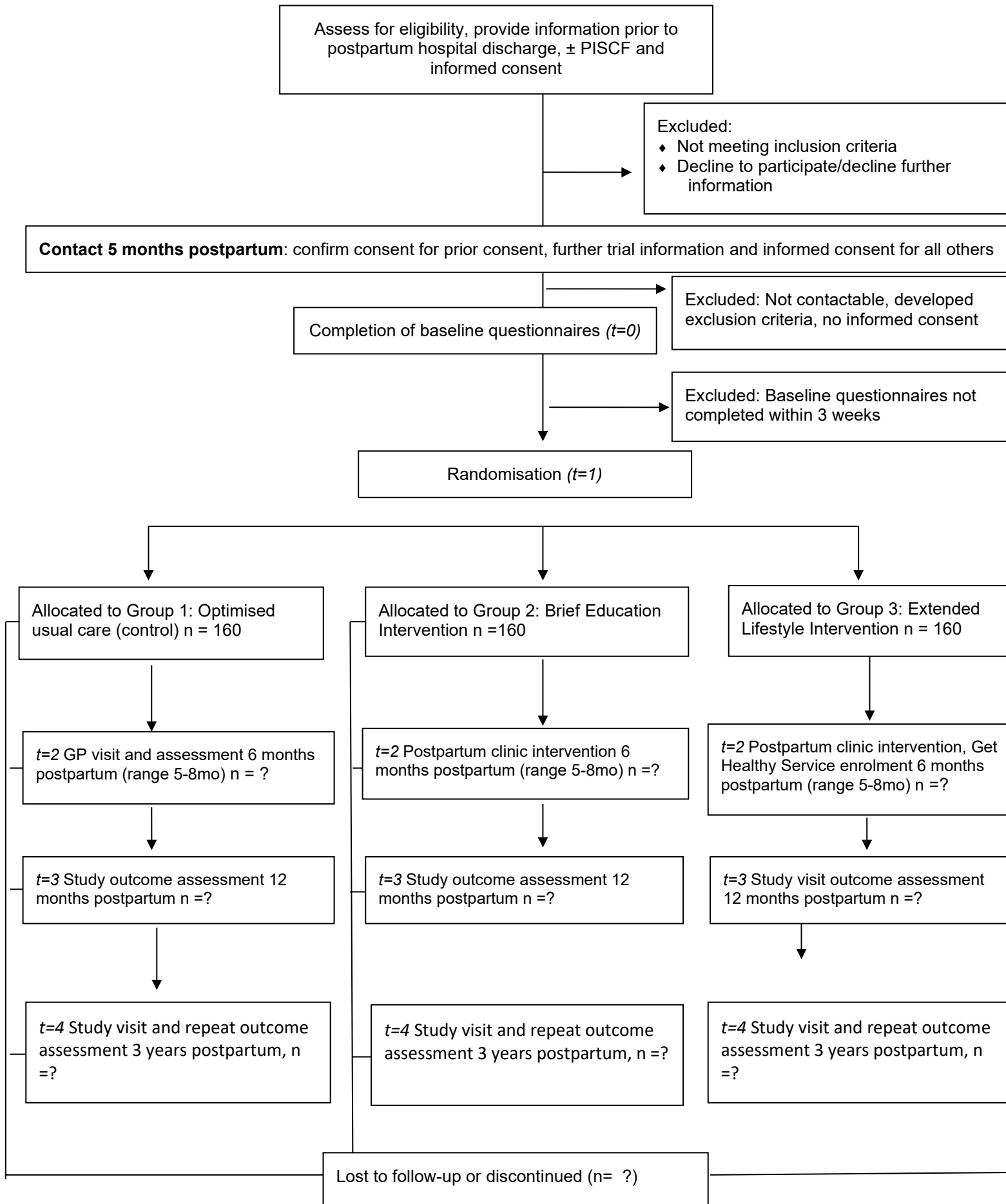
Alfred Hospital, Liverpool Hospital, Campbelltown hospital, Royal Hospital for Women, Westmead Hospital) during the study period

- The index pregnancy was complicated by a hypertensive disorder of pregnancy (HDP): preeclampsia (PE), gestational hypertension (GH), chronic hypertension (CH) , chronic hypertension plus superimposed preeclampsia (CH+PE)

Exclusion criteria:

- Stillbirth or neonatal death from HDP pregnancy
- Planning to move out of study area/unavailable for follow up during study period
- Active severe mental health condition or developmental disability precluding informed consent.

Participant Flow Diagram



4.3 Randomization and Blinding

(ICH E3; 9.4.3, 9.4.6. ICH E9; 2.3.1, 2.3.2)

Participants will be randomly assigned to Group 1, 2 or 3 with a 1:1:1 allocation as per a computer-generated randomisation schedule using REDCap software. Randomisation will be stratified by site, parity (1 versus >1) and body mass index (<=30 versus 30+), using blocks. Details relating to block randomisation will be kept in a separate document not available to anyone who is involved in trial recruitment. Block size will be revealed after analysis. Allocation concealment is ensured, as the randomisation code will not be released until after baseline questionnaires have been completed and the study researcher then accesses REDCap for randomisation to Group 1, 2 or 3.

All participants who give consent for participation and who complete the baseline questionnaires within the scheduled 3 week timeframe will be randomised. Randomisation will be performed in REDCap by staff responsible at each study site for recruitment, which will usually be the study nurse/midwife at that site. This staff member will then organise information package and instructions regarding GP follow-up (Group 1) or for information package and postpartum clinic visit (Groups 2 and 3). This staff member will not be involved in outcome assessment in postpartum clinic at 6 month, 12 month or subsequent visits.

Due to the nature of the intervention, neither postpartum clinic staff nor participants can be blinded to allocation. Regarding analysis, a PROBE design (prospective randomised open blinded endpoint) is adopted, with analysis occurring blinded to group allocation (Ford & Norrie, 2016). After all participant data including outcome data is entered by study staff, it will be exported with group allocation concealed for blinded analysis by the trial statistician and trial health economist as applicable.

4.4 Study Assessments

(ICH E3; 9.5.1. ICH E9; 2.2.2)

4.4.1 Timing of assessments

Visit	Baseline (t0)	12 months (t1)	3 years
Target month of visit	6 months postpartum	12	36
Maternal and neonatal birth outcomes	x		
Maternal Blood pressure (systolic and diastolic)	x	x	x
Maternal Height/Weight/BMI/waist circumference	x	x	x
Infant Blood pressure (systolic and diastolic)	x	x	
Infant Height/Weight/	x	x	height and

head circumference/ abdominal circumference			weight only
Maternal blood biochemistry	x	x	x
Maternal urinary biochemistry	x	x	x
Lifestyle behaviour questionnaire (NSW Pop Health Survey)	x	x	
Infant feeding questionnaire	x	x	
Health related quality of life (EQ-5D-5L)	x	x	x
Maternal mental health screening (Edinburgh Perinatal Depression Score, EPDS; and General Anxiety Disorder, GAD-7)	x	x	X
PROM NSW Health Survey	x	x	X
PREM questionnaire		x	X
International Physical Activity questionnaire			X
Australian Eating Survey			X

4.4.2 Analysis time windows

Visit (target month)	Lower bound	Upper bound
Baseline (6 months)	5 months	8 months
12 months	12 months	15 months
36 months	36 months	48 months

To allow flexibility for this pragmatic trial during the COVID-19 pandemic, trial entry was relaxed from upper bound of 7 months postpartum to 8 months postpartum, and collection of 12-month outcome data upper bound of 14 months to 15 months. Time between entry and collection of primary outcome data to be minimum of 5 months. Data outside the time windows is not accepted for use in analysis.

4.4.3 Variables

Variable measurements

Variable	Type of Variable	Range/categories
Descriptives	(for Table 1)	
Maternal age	Continuous (from hospital info)	
Maternal Country of Birth	Categorical (baseline information)	1= Australia 2 =New Zealand 3 =Asia 4 =Europe and United Kingdom

		5 =Middle East/North Africa 6 =Africa 7 =North America 8 =South America 9 =Other
Maternal ethnicity	categorical (Baseline questionnaire)	1 Caucasian 2 Asian 3 Aboriginal or Torres Strait Islander 4 Polynesian 5 European 6 Middle Eastern 7 African 8 other
Maternal highest Education level	Categorical (baseline questionnaire)	1 Secondary School 2 Trade/Cert/Diploma 3 University
Gravidity	Categorical (hospital info)	1 2 or more
Parity	Categorical (hospital info) Categorical	1 2 3 or more
Plurality	Categorical (hospital info)	1 2 (twins)
Smoker during pregnancy	Binomial (hospital info)	0 no 1 yes
Current Smoker at 6 months	Binomial (lifestyle questionnaire or Postpartum clinic questionnaire)	0 no 1 yes
Pregnancy systolic blood pressure at booking	Continuous (hospital info) Ordinal	Continuous mmHg 1= <120mmHg 2= 120-129mmHg 3= 130-139mmHg 4 = 140mmHg or above
Pregnancy diastolic blood pressure at booking	Continuous (hospital info) Ordinal	Continuous mmHg 1 = <80mmHg 2= 80-84 mmHg 3= 85-89mmHg 4= 90mmHg or above
Systolic Blood pressure at baseline (t0)	Continuous Ordinal	Continuous mmHg 1= <120mmHg 2= 120-129mmHg 3= 130-139mmHg

		4 = 140mmHg or above
Diastolic Blood pressure at baseline (t0)	Continuous (hospital info) Ordinal	Continuous mmHg 1 = <80mmHg 2= 80-84 mmHg 3= 85-89mmHg 4= 90mmHg or above
Weight at baseline (t0)	Continuous (kg)	
Waist circumference at baseline (t0)	Continuous (cm)	
BMI at baseline (t0)	1) Categorical 2) Continuous	1 <30 kg/m ² 2 ≥ 30 kg/m ² Extended categorical: 1 Underweight (BMI <18.5 kg/m ²) 2 Normal weight (BMI 18.5-24.9 kg/m ²) 3 Overweight (BMI 25.0-29.9 kg/m ²) 4 Obesity Class I-II (BMI 30.0-39.9 kg/m ²) 5 Obesity Class III/severe obesity (BMI 40 kg/m ² or greater) BMI in kg/m ²
Type of hypertension during pregnancy	Categorical (hospital info)	1 chronic hypertension 2 gestational hypertension 3 preeclampsia 4 preeclampsia and chronic hypertension
Other pregnancy complications during the index pregnancy (gestational diabetes, Cervical suture, cholestasis, antepartum haemorrhage, fetal growth restriction, preterm premature rupture of members, threatened premature labour, spontaneous preterm labour, other)	Binomial (hospital info)	0 no 1 yes
Gestational diabetes (GDM)	Binomial (hospital info)	0 no 1 yes
Obstetric and fetal Complications (threatened preterm labour, antepartum haemorrhage, fetal, growth restriction)	Binomial (hospital info)	0 no 1 yes
Other Medical complications of pregnancy (cholestasis, pyelonephritis)	Binomial (hospital info)	0 no 1 yes
History of hypertension, diabetes, renal disease or cardiac disease	Binomial (hospital info and baseline questionnaire)	0 no 1 yes

History of hypertension	Binomial (hospital info and baseline questionnaire)	0 no 1 yes
History of diabetes (GDM, T1D, T2D)	Binomial (hospital info and baseline questionnaire)	0 no 1 yes
History of renal disease	Binomial (hospital info and baseline questionnaire)	0 no 1 yes
History of cardiac disease	Binomial (hospital info and baseline questionnaire)	0 no 1 yes
Hypertensive Medication at baseline	Categorical	0 no 1 yes
Mode(s) of Birth	Categorical (hospital info)	1= unassisted vaginal birth 2= breech vaginal birth 3= assisted vaginal birth (vacuum and/or forceps) 4= elective caesarean section 5= emergency caesarean section
Infant sex	Binomial (hospital info)	1= male 2= female
Infant birth weight	Continuous (grams) (hospital info)	
Gestational age at birth	Continuous (weeks) Ordinal	Continuous 1= Term (37+0 weeks or more) 2= Late preterm (34+0- 36+6 weeks) 3= Moderately preterm (32+0-33+6 weeks) 4= Very preterm (28+0- 31+6 weeks) 5= Extremely preterm (<28+0 weeks)
Maternal Intensive Care or High Dependency/Acute Care admission during the birth admission	Binomial (hospital info)	0= no 1= yes
Infant neonatal intensive care or special care nursery admission	Categorical (hospital info)	0= no 1 = yes
Current infant feeding at baseline (t0)	Binomial (baseline questionnaire)	1 = Breastfeeding (exclusive or mixed) 0 = No breastfeeding (Bottle/artificial feeding

		only)
Primary outcomes		
Change in Systolic Blood pressure (12m -6m)	Continuous Average of 3 readings to be used Measured with blood pressure machine	
Composite threshold primary outcome (12m -6m)	Binomial (change in body weight or waist circumference)	0 = change in body weight <4kg AND change in waist circumference <2cm 1= change in body weight ≥ 4kg AND/OR change in waist circumference ≥ 2cm
Secondary Outcomes		
Lifestyle Behaviour changes		
Self-rated general health baseline (t0)	Ordinal	1 Excellent 2 Very Good 3 Good 4 Fair 5 Poor 6 Very Poor X Don't know R Refused
Self-rated general health 12m	Ordinal	As above
Self-rated mental health baseline (t0)	Ordinal	As above
Self-rated mental health 12m	Ordinal	As above
Self-rated wellbeing baseline (t0)	Ordinal	1 Delightful 2 Pleased 3 Mostly satisfied 4 Mixed 5 Mostly dissatisfied 6 Unhappy 7 Terrible X Don't know R Refused
Self-rated wellbeing 12m	Ordinal	As above
Change in Alcohol Frequency days per month (12m-6m)	Continuous – number of days in a month (Calculate from ALC1 questions on days/week, days/month)	

Change in Average serves of vegetables per day (12m-6m)	Continuous- number of vegetable serves per day (Calculate from NUT1 questions on vegetable serves each week and day)	
Change in Average serves of fruit per day (12m-6m)	Continuous- number of fruit serves per day (Calculate from NUT2 questions on vegetable serves each week and day)	
Change in Average moderate-vigorous physical activity per week (12m-6m)	Continuous- number of hours per week (Calculate adding PAC2/b (walking) + PAC4a/b (vigorous chores) + PAC 6a/b (gardening) + PAC 8a/b (vigorous physical activity) + PAC10a/b (moderate exercise) + PAC11a/b (muscle strengthening)	
Change in Smoking status (12m-6m)	Binomial	0= (never smoked, tried a few times but not regularly, previous smoker) 1= Smokes daily or occasionally
Following a healthy lifestyle at 12 months	Binomial (12 month survey)	1 yes 0 no
Confident that diet and exercise changes will be permanent	Ordinal (12 month survey)	1 not at all 2 slightly 3 somewhat 4 quite a bit 5 extremely
Signed up for any GHS by 12m	binomial	0 = no 1= yes
Maternal Clinical		

Hypertensive Medication (12m)	Categorical (questionnaire 12m)	0 No 1 Yes
Projected cardiovascular risk at 12m	Ordinal: number of risk factors above the reference range: Systolic BP (≥ 120) Diastolic BP (≥ 80) BMI (≥ 25.0) LDL cholesterol (>4.0) Homeostatic assessment (HOMA) score (> 3.0) Urinary albumin:creatinine ratio (> 2.0) Current Smoker (yes)	0 = none 1= 1 cardiovascular risk factor 2 = >1 cardiovascular risk factors
Change in Weight (12m-6m)	Continuous (kg) Clinic/GP measures to be used when available Self-report when clinic/GP values not available	
Change in Diastolic BP (12m-6m)	Continuous	
Systolic blood pressure 12m	Ordinal	1= <120 mmHg 2= 120-129mmHg 3= 130-139mmHg 4 = 140mmHg or above
Diastolic blood pressure 12m	Ordinal	1 = <80 mmHg 2= 80-84 mmHg 3= 85-89mmHg 4= 90mmHg or above
Change mean arterial pressure (MAP) 12m-6m	Continuous (mmHg)	
Change in waist circumference (12m-6m)	Continuous (cm) Measured following Get Healthy NSW online written instructions Clinic/GP measures to be used when available Self-report when clinic/GP values not available	
Change in BMI (12m-6m)	Continuous	

BMI category at 12m	Ordinal	1 Underweight (BMI <18.5 kg/m ²) 2 Normal weight (BMI 18.5-24.9 kg/m ²) 3 Overweight (BMI 25.0-29.9 kg/m ²) 4 Obesity Class I-II (BMI 30.0-39.9 kg/m ²) 5 Obesity Class III/severe obesity (BMI 40 kg/m ² or greater)
Change in waist:height ratio (12m-6m)	Continuous	
CV risk baseline	Categorical (calculated using Heart Foundation online calculator, uses gender, smoking status, age, systolic BP, total cholesterol, HDL cholesterol, diabetic status) https://www.cvdcheck.org.au/	1= low risk 2= moderate risk (10-15% chance CVD in next 5 years) 3= high risk (>15% in next 5 years)
CV risk 12 months	As above	As above
Maternal Biochemical		
Change in HOMA score (12m-6m)	Continuous	
Change in fasting Insulin (12m-6m)	Continuous	
Change in fasting glucose (12m-6m)	Continuous	
Change in low density lipoprotein cholesterol (12m-6m)	Continuous	
Change in high density lipoprotein cholesterol (12m-6m)	Continuous	
Change in triglyceride cholesterol (12m-6m)	Continuous	
Change in hsCRP (12m-6m)	Continuous	
Change in urinary albumin: creatinine ratio (12m-6m)	Continuous	
Change in serum creatinine (12m-6m)	Continuous	
Change in eGFR (12m-6m)	Continuous	
Change in AST Transaminase (12m-6m)	Continuous	

Change in ALT Transaminase (12m-6m)	Continuous	
Change in haemoglobin concentration (12m-6m)	Continuous	
Change in platelet concentration (12m-6m)	Continuous	
Infant Measures		
Change in weight centile (12m-6m)	Continuous	Z scores based on WHO Child Growth Standards for infants ≥ 6 months, and 21 st Intergrowth Preterm Postnatal Growth Standards for infants < 6 months (corrected age) at 6 month visit
Infant feeding at 12m	Binomial	1 = Breastfeeding (exclusive or mixed) 0 = No breastfeeding (Bottle/artificial feeding only)

5 Sample Size

(ICH E3; 9.7.2. ICH E9; 3.5)

The proposed sample size is 480 women total (160 women in each arm). This sample size will power the trial (80% with two tailed, alpha of 0.05) to detect, for the co-primary outcomes, *either*

1) A difference of 15% in the proportion of women who achieve a 4 kg weight loss and/or 2 cm waist circumference reduction, from 70% in Group 1 to 85% in Group 2 or 3

OR

2) 4 mmHg difference in systolic BP between groups at 12 months postpartum (with baseline measures taken at 6 months postpartum). These calculations assume for Usual Care (Group 1), average weight 75 kg with standard deviation (SD) 19 kg, waist circumference 97 cm (SD 15 cm), and systolic BP 114 mmHg with SD 10 mmHg (values derived from our P4 cohort). Dropout rate is calculated at 3% from randomisation at 5.5 months to main outcome assessment at 12 months. This is based on loss to follow-up rate of only 4% between 6 months postpartum and 2 years postpartum for our existing P4 cohort study, and the high safety/low side effect potential of the interventions and the outcome assessment, meaning dropout and loss to follow-up in the short term is likely to be low.

6 General Analysis considerations

6.1 Timing of Analyses

The final analysis will be performed when:

- All randomised subjects have either completed the 12 month visit or dropped out of the study prior to 12 months.

- The data for analysis meets the cleaning and approval requirements of the main analyst:
 - Attributing baseline levels to any missing 12 month data
 - Checking missing data values for validity and consistency
 - Checking data dictionary matches with dataset
 - Removal of Group 3 GHS compliance questions (and any other questions that are only answered by one of the randomized groups)
 - Removal of group names, randomisation of groups with numbers or letters so analyst is blinded
 - Check for invalid entries eg birthweight of 1g and either fix or set to missing
- After the finalization and approval of this SAP document by the analyst, the principal investigator and the study coordinator.

6.2 Analysis Populations

(ICH E3; 9.7.1, 11.4.2.5. ICH E9; 5.2)

6.2.1 Intention to Treat Population

Primary outcomes

All participants who were randomized at 6 months with baseline measures are included in the analysis. Primary outcome data for those lost to follow-up at 12 months will be handled by one of the following approaches:

1. Single imputation: participants will be assumed to have returned to baseline (6 months) and given their baseline measures for the primary outcomes.
2. Complete cases analysis: only participants with data at both baseline and 12 months will be included in the analysis.
3. Multiple imputation: a subset of the dataset will be used to impute the missing 12-month outcome data.

Secondary Outcomes

Full Analysis Set. Those with data at both baseline and 12 months for the outcome of interest. Number and missing to be reported for each outcome.

6.2.2 Per Protocol Population

No per protocol analysis to be done.

6.3 Covariates and Subgroups

(ICH E3; 9.7.1, 11.4.2.1. ICH E9; 5.7)

Covariates: adjust analyses for hospital.

Subgroup analysis for the stratified randomisation and pre-specified groups (below).

Primary and secondary outcomes to be assessed (secondary results will go in supplement). Significance of the treatment*subgroup interaction term in the regression model at a level of $p \leq 0.01$ will be required to conclude there exists heterogeneity of treatment effect.

- Parity (1 v >1)
- BMI (<30 v ≥ 30 at baseline)
- Type of hypertensive disorder of pregnancy (chronic hypertension, gestational hypertension, preeclampsia, preeclampsia superimposed on chronic hypertension)

6.3.1 Multi-centre Studies

(ICH E3;9.7.1, 11.4.2.4. ICH E9; 3.2)

This study includes participants from 6 hospitals (St George, Royal Hospital for Women, Royal Prince Alfred, Liverpool, Westmead and Campbelltown). All analyses will be adjusted for hospital.

6.4 Missing Data

(ICH E3; 9.7.1, 11.4.2.2. ICH E9;5.3. EMA Guideline on Missing Data in Confirmatory Clinical Trials)

End of recruitment: discussion with study management team and project statistician to discuss the proportion of missing data and strategies to minimise missing data prior to final data cleaning and analysis.

Missing data will be assessed to determine whether the 12-month outcome data is missing at random. Strategies to deal with missingness will depend on the nature of missingness and could include:

1. Baseline data: impute a value of 0 for missing covariates, and then include a missing-indicator variable for the covariate as an additional covariate in the regression model [White and Thompson (2005)].
2. Outcome data: where GP, clinic-based measures are missing e.g. waist circumference, weight, then self-report measures can be used.
3. Lost to follow up: as specified with Intention to Treat, there are three possible approaches to handling the missing 12-month. Using baseline measures for primary outcomes in those who drop out is the best way to mimic real world practice where people do not continue with an intervention, however it has the potential to bias the results towards the null especially if there is a large loss to follow up, therefore, we will consider multiple imputation of missing data based on the nature of missingness.

Reporting: proportion of missing data at baseline and loss to follow up will be reported as well as methods to deal with both issues.

6.5 Multiple Testing

(ICH E3; 9.7.1, 11.4.2.5. ICH E9; 2.2.5)

The primary analysis compares 12 months (outcome, $t=1$) and 6 months (baseline, $t=0$),

therefore only two points in time. Subsequent analyses at later times may include 12 month data and longitudinal analysis accounting for multiple time points, but that is not the focus of the current analysis.

However, in the initial analysis given that there are a number of primary and secondary outcomes this increases the risk of Type 1 error due to multiple hypothesis testing. This will be dealt with one of two methods: 1) by controlling for the false discovery rate (FDR) as proposed by Benjamini & Hochberg 1995 (J R Statistic Soc: 57; 289) or controlling for the familywise error rate (FWER) proposed by Hothorn, Bretz & Westfall 2008 (Biometric J:50; 346) through the R package multcomp. The Hothorn, Bretz & Westfall approach allows simultaneous inferences to be made over both parametric models and all relevant hypotheses, while accounting for correlation between the test statistics and allowing for stepwise testing procedures.

For the analysis of primary outcomes the type 1 error rate for either multiplicity testing method will be set to $\alpha = 0.05$ and for the secondary outcomes $\alpha = 0.01$.

7 Summary of Study Data

All continuous variables will be summarized using the following descriptive statistics: n, mean, standard deviation, median, maximum and minimum. The frequency and percentages of observed levels will be reported for all categorical measures. All summary tables will be structured with a column for each treatment in the order (Usual care, Brief Intervention, Extended Lifestyle Intervention, All participants) and will be annotated with the total population size relevant to that table/treatment, including any missing observations.

7.1 Subject Disposition

As shown in the Participant Flowchart above (page 9).

7.2 Derived variables

As shown in the 4.4.3 variable list.

7.3 Protocol Deviations (COVID-19 pandemic)

Due to the COVID-19 pandemic essential clinical and outcome measures (blood pressure, weight, and blood/urine tests) 6 and 12 months postpartum were performed, depending on LHD/site policy (a) by the research midwife, with visits kept to <15 minutes, and separate from antenatal/outpatient clinic spaces (i.e. no waiting time and woman able to maintain social distancing) (b) where possible via the woman's GP, to coincide with necessary visits of her infant (for 6 and 12 month check and vaccinations).

Women were reminded that they and their baby must be well/asymptomatic of COVID-19 to be attending such visits. Therefore, there may be some missing data due to COVID-19

infections. These women will be treated as outlined in section 6.4 after consideration of the amount of missingness.

In addition, due to pandemic restrictions one of the secondary outcomes- maternal vascular structure and function was not measured. As this is a secondary outcome and the amount of missing data will be considerable this outcome will not be included in the primary analysis.

7.4 Demographic and Baseline Variables

As shown in Section 4.4.3 'Variables' under '**Descriptives**'. Presented as outlined in Section 7 'Summary of study data' and Table 1 Section 14.

7.5 Concurrent Illnesses and Medical Conditions

As shown in Section 4.4.3 'Variables' under '**Descriptives**'. Presented as outlined in Section 7 'Summary of study data' and Table 1 Section 14.

7.6 Compliance

For groups 1 and 2 all participants will be considered to have complied, as baseline (6 months visit) data cannot be obtained without participants having been compliant to this allocation. For group 3, participants will be considered (a) non-compliant if they did not sign up to the extended intervention (Get Healthy Service) and have at least one assessment with GHS (b) partially compliant if there is a record of GHS sign-up and initial assessment/engagement (c) fully compliant if they are noted as having graduated from the GHS program.

8 Statistical Analyses

8.1 Primary outcome Analysis

There are six primary hypotheses resulting from an all-pairwise comparison of the three study groups (two intervention groups and control) in the two primary outcomes of

- 1) maternal systolic blood pressure decrease
- 2) binary threshold on maternal weight (≥ 4 kg reduction) and/or waist circumference (≥ 2 cm reduction)
change from 6-12 months postpartum.

The three pairwise hypotheses relating to primary outcome 1 (BP) will be incorporated into an ANOVA model, and the three pairwise hypotheses relating to outcome 2 (composite measure) incorporated into a logistic regression model. The model fit statistics (F -test and χ^2 -test) from each of the models will be used to determine (with a threshold of $\alpha = 0.05$) whether the relevant individual pairwise hypotheses should be evaluated. If the threshold is met, one of the multiple testing methods described in Section 6.5 will be applied. All (three or six) tests that pass to the second stage of testing will be considered to be one family of tests and tested as two-sided and based on a null hypothesis of no treatment effect. A

multiplicity adjusted p -value of less than 0.05 will be considered significant in any of the tests for the primary outcomes.

Analyses will be adjusted for hospital site.

Subgroup analysis will occur as stipulated in Section 6.3.

8.2 Secondary outcomes Analyses

Analysis of the secondary outcomes will proceed in a similar manner to the primary outcomes, with tests for differences across groups performed as a first step using ANOVA testing for continuous outcomes and chi-squared test (from a logistic regression model) for categorical outcomes. For ordinal outcomes we will first do an ordinal regression to compare 12m and 6m categories within treatment groups, we will then compare groups. However, there will be a reduction in the required significance level to $\alpha = 0.01$. Where there is evidence of differences amongst groups in the secondary outcomes, the same multiple testing method will be used to determine between which groups the differences exist, while controlling the familywise type I error rate at $\alpha = 0.01$.

Analyses will be adjusted for hospital site.

Subgroup analysis will occur as stipulated in Section 6.3.

8.3 Secondary Analyses of primary and secondary endpoints

Use of the Get Healthy Service (GHS) will be analysed in a secondary analysis of both primary and secondary endpoints comparing women with GHS usage ≥ 4 phone calls versus no evidence of signing up to GHS. Analyses will be adjusted for randomisation group to assess whether outcomes are associated with GHS usage independently of the effect of the intervention.

9 Safety Analyses

9.1 Adverse Events

We don't expect any adverse events for these interventions.

9.2 Clinical Laboratory Evaluations

Laboratories are accredited by NATA and use the same reference ranges. Evaluation is not needed.

10 Reporting Conventions

P -values ≥ 0.001 will be reported to 3 decimal places; p -values less than 0.001 will be reported as " <0.001 ". The mean, standard deviation, and any other statistics other than quantiles, will be reported to one decimal place greater than the original data.

Quantiles, such as median, or minimum and maximum will use the same number of decimal places as the original data. Estimated parameters, not on the same scale as raw observations (e.g. regression coefficients) will be reported to 3 significant figures.

11 Quality Assurance of Statistical Programming

To provide high quality code that is understandable and allows reproduction of the analysis the following points will be followed:

Any outputs will have the

- date and time included
- the name of the code file that produced the analysis
- the author

At the start of any code file there will be a set of comments that give

- the author
- the date and time of writing
- references to inputs and outputs
- reference to any parent code file that runs the child code file

12 Summary of Changes to the Protocol

There are some minor changes to analyses compared to the original protocol:

- Addition of an alternative method to deal with multiple testing (see Section 6.5) to allow more flexibility about which statistical programs will be employed (R, SAS, Stata)
- Addition of hospital site as covariate for adjusting models and testing for interaction to account for differences in hospital practices (Section 6.3.1)
- Addition of Full analysis set secondary analyses, may help to provide more understanding about the effect of the intervention if the main analysis is null (Sections 6.2.2 and 6.2.3)

13 References

Benjami & Hochberg (1995). Controlling the false discovery rate: a practical and powerful approach to multiple testing. *Journal of the Royal Statistical Society. Series B (Methodological)*, 57, 289-300.

Hothorn, Bretz, Westfall (2008). Simultaneous inference in general parametric models. Technical Report Number 019, University of Munick, Institute for Statistics.

Ford I, Norrie J. Pragmatic trials. *NEJM*. 2016;375(5):454-63.

White IR and Thompson SG (2005). Adjusting for partially missing baseline measurements in randomized trials. *Statistics in Medicine*, 24, 993-1007

14 Draft Tables and Figures

Table 1. Descriptive characteristics of BP² Study Population, index births and mothers

	Control group N= 160 n (%)	Brief Education Intervention N=160 n (%)	Extended Lifestyle Intervention N=160 n (%)
Maternal age (mean, SD)			
Maternal country of birth			
Australia			
New Zealand			
Asia			
Europe and United Kingdom			
Middle East/North Africa			
Africa			
North America			
South America			
Other			
Maternal ethnicity			
Caucasian			
Asian			
Indigenous			
Polynesian			
European			
Middle Eastern			
African			
Other			
Maternal Education level			
Secondary School			
<2 years post-secondary			
Tertiary			
Gravidity			
1			
≥ 2			
Parity			
1			
2			
≥ 3			
Plurality			
Singleton			
Twins			
Mother smoked during pregnancy			
Maternal smoking at baseline			
Systolic Pregnancy BP (mean, SD)			
Diastolic Pregnancy BP (mean, SD)			
Maternal hypertension type			

Chronic			
Gestational			
Preeclampsia			
Preeclampsia and chronic			
Hypertensive medication at baseline			
Other maternal pregnancy complications			
Any			
GDM			
Obstetric complications			
Maternal history of hypertension, diabetes, renal disease or cardiac disease			
Any			
Hypertension			
Diabetes			
Renal Disease			
Cardiac Disease			
Infant sex			
Male			
Female			
Infant birth weight (mean (g), SD)			
Gestational age (mean (wks). SD)			
Mode of Birth			
Unassisted vaginal			
Breech vaginal			
Assisted vaginal			
Elective caesarean section			
Emergency caesarean section			
Maternal Intensive care/High Dependency/Acute care admission			
Infant neonatal intensive care or special care			

Table 2. Primary outcome ITT analysis. Changes from baseline (6 months after birth) to end of intervention period (12 months after birth) in BP2.

	Group 1 N= 160		Group 2 N=160		Group 3 N=160		All 3 groups comparison (ANOVA/logistic regression)* F value, χ^2 , p value	Pairwise Comparison* Group 1 & 2 (difference and p value)/(OR, 95% CI)	Pairwise Comparison* Group 2 & 3 (difference and p value)/(OR, 95% CI)	Pairwise Comparison* Group 1 & 3 (difference and p value)/(OR, 95% CI)
	6m	12m	6m	12m	6m	12m				
Blood pressure (systolic) (mean, SD)	N=160									
Composite threshold (\geq 4kg reduction in weight or \geq 2cm reduction in waist circumference) (n, %)										

* adjusted for hospital site

Table 3. Secondary outcome analysis- Lifestyle Behaviour changes

	Group 1 N= 160		Group 2 N=160		Group 3 N=160		All 3 groups comparison (ANOVA/logistic regression)* F value, χ^2 , p value	Pairwise Comparison* Group 1 & 2 (difference and p value)/(OR, 95% CI)	Pairwise Comparison* Group 2 & 3 (difference and p value)/(OR, 95% CI)	Pairwise Comparison* Group 1 & 3 (difference and p value)/(OR, 95% CI)
	6m	12m	6m	12m	6m	12m				
Self-rated health (mean, SD)										
Self-rated mental health (mean,SD)										
Self-rated wellbeing (mean, SD)										
Alcohol frequency (mean days per month, SD)										
Vegetable intake (mean serves per day, SD)										
Fruit intake (mean serves per day, SD)										
Moderate-vigorous physical activity (mean hours per week, SD)										
Current smoker (n,%)										
Self-rated Healthy lifestyle at 12 months (n, %)										
Confidence that diet and exercise changes will be permanent (mean, SD)										
Signed up for any GHS by 12m										

Table 4. Secondary outcome analysis – Maternal Clinical changes

	Group 1 N= 160		Group 2 N=160		Group 3 N=160		All 3 groups comparison (ANOVA/logistic regression)* F value, χ^2 , p value	Pairwise Comparison* Group 1 & 2 (difference and p value)/(OR, 95% CI)	Pairwise Comparison* Group 2 & 3 (difference and p value)/(OR, 95% CI)	Pairwise Comparison* Group 1 & 3 (difference and p value)/(OR, 95% CI)
	6m	12m	6m	12m	6m	12m				
Systolic Blood Pressure (mean mmHg, SD)										
Systolic Blood Pressure (n, %)										
<120mmHg										
120-129mmHg										
130-139mmHg										
≥140mmHg										
Diastolic blood pressure (mean, SD)										
Diastolic blood pressure (n, %)										
<80mmHg										
80-84mmHg										
85-89mmHg										
≥90mmHg										
Mean arterial pressure (mean, mmHg, SD)										
Waist Circumference (mean cm, SD)										
Weight (mean kg, SD)										
BMI (mean., SD)										
BMI (n, %)										
<18.5 kg/m ²										
18.5-24.9 kg/m ²										
25-29.9 kg/m ²										
30-39.9 kg/m ²										
≥ 40 kg/m ²										
Waist:height ratio (mean, SD)										
CV Risk (n, %)										
Low risk										

Moderate risk										
High risk										
Projected CV risk at 12m										
No risk										
1 Cardiovascular risk factor										
>1 cardiovascular risk factor										
Hypertensive medication (n, %)										

Table 5. Secondary outcome analysis - Maternal Biochemical changes

	Group 1 N= 160		Group 2 N=160		Group 3 N=160		All 3 groups comparison (ANOVA/logistic regression)* F value, χ^2 , p value	Pairwise Comparison* Group 1 & 2 (difference and p value)	Pairwise Comparison* Group 2 & 3 (difference and p value)	Pairwise Comparison* Group 1 & 3 (difference and p value)
	6m	12m	6m	12m	6m	12m				
HOMA score (mean, SD)										
Fasting Insulin (mean, SD)										
Fasting glucose (mean, SD)										
Low density lipoprotein cholesterol (mean, SD)										
Low density lipoprotein cholesterol (mean, SD)										
triglyceride cholesterol (mean, SD)										
hsCRP (mean, SD)										
Urinary albumin: creatinine ratio (mean, SD)										
Serum creatinine (mean, SD)										
eGFR (mean, SD)										
AST transaminase (mean, SD)										
Haemoglobin concentration (mean, SD)										
Platelet concentration (mean, SD)										

Table 6. Secondary outcome analysis- Infant changes

	Group 1 N= 160		Group 2 N=160		Group 3 N=160		All 3 groups comparison (ANOVA/logistic regression)* F value, χ^2 , p value	Pairwise Comparison* Group 1 & 2 (difference and p value)/(OR, 95% CI)	Pairwise Comparison* Group 2 & 3 (difference and p value)/(OR, 95% CI)	Pairwise Comparison* Group 1 & 3 (difference and p value)/(OR, 95% CI)
	6m	12m	6m	12m	6m	12m				
Weight centile (mean, SD)										
Any breastfeeding (n, %)										