

Title: Data-driven extraction of unstructured electronic health records to evaluate glioblastoma treatment patterns

Authors:

Name	Degree, Affiliation, Email
Akshay Swaminathan*	BA; Stanford University School of Medicine, Stanford, CA; Cerebral Inc., San Francisco, CA. Email: akshay325@gmail.com
Alexander L. Ren	BA; Stanford University School of Medicine, Stanford, CA. Email: alexren@stanford.edu
Janet Y. Wu	BA, BM; Stanford University School of Medicine, Stanford, CA. Email: jntwu@stanford.edu
Aarohi Bhargava-Shah	BA; Stanford University School of Medicine, Stanford, CA. Email: aarohi@stanford.edu
Ivan Lopez	MS; Stanford University School of Medicine, Stanford, CA; Cerebral Inc., San Francisco, CA. Email: ivlopez@stanford.edu
Ujwal Srivastava	Department of Computer Science, Stanford University, Stanford, CA. Email: ujwal@stanford.edu
Vassilis Alexopoulos	Department of Electrical Engineering; Stanford University, Stanford, CA. Email: valex@stanford.edu
Rebecca Pizzitola	Department of Symbolic Systems, Stanford University, Stanford, CA. Email: rpizzit@stanford.edu
Brandon Bui	Department of Human Biology, Stanford University, Stanford, CA. Email: bbui@stanford.edu
Layth Alkhani	Department of Materials Science and Engineering, Stanford University, Stanford, CA. Email: lalkhani@stanford.edu
Susan Lee	Department of Computer Science, Stanford University, Stanford, CA. Department of Psychology, Stanford University, Stanford, CA. Email: leesusan@stanford.edu
Nathan Mohit	Department of Computer Science, Human Biology, Stanford University, Stanford, CA. Email: mohitn@stanford.edu
Noel Seo	Department of Sociology, Stanford University, Stanford, CA. Email: noelseo@stanford.edu

Nicholas Macedo	Department of Biology, Stanford University, Stanford, CA; Department of Radiology, Stanford University School of Medicine, Stanford, CA. Email: nmacedo@stanford.edu
Winson Cheng	Department of Chemistry, Department of Computer Science, Stanford University, Stanford, CA. Email: winsonc@stanford.edu
William Wang	Department of Biology, Stanford University, Stanford, CA; Department of Bioengineering, Stanford University, Stanford, CA. Email: wwang28@stanford.edu
Edward Tran	Department of Computer Science, Stanford University, Stanford, CA; Department of Management Science, and Engineering, Stanford University, Stanford, CA. Email: edwardt3@stanford.edu
Reena Thomas	MD, PhD; Stanford University School of Medicine; Stanford, CA. Email: reenat@stanford.edu
Olivier Gevaert	PhD; Stanford Center for Biomedical Informatics Research (BMIR), Dept of Medicine and Dept of Biomedical Data Science. Email: ogevaert@stanford.edu

***Corresponding Author:** Akshay Swaminathan

Funding Statement: No funding was obtained

COI Statement: AS reports stock ownership in Roche (RHHVF).

Author Contributions: AS, RT, and OG conceived the idea. AS and IL performed data verification. AS, IL, WW, ET, US, ABS, JYW, AR, BB, LA, SL, NM, NS, NM, WC, and CL carried out data acquisition. IL, AS, US, and VA performed data analysis and interpretation. AS, AR, US, VA, ABS, JYW, and RP wrote the draft of the manuscript and made critical revisions. OG, and RT supervised the project. All authors have read and approved the manuscript.

Data Availability: All data needed to evaluate the conclusions are present in the paper and in the Supplementary Materials. The datasets generated analyzed during the current study are not publicly available due to patient privacy but are available from the corresponding author (AS) on reasonable request.

Keywords: glioblastoma, treatment patterns, unstructured data, natural language processing, abstraction

Abstract

Background

Data on lines of therapy (LOTs) for cancer treatment is important for clinical oncology research, but LOTs are not explicitly recorded in EHRs. We present an efficient approach for clinical data abstraction and a flexible algorithm to derive LOTs from EHR-based medication data on patients with glioblastoma (GBM).

Methods

Non-clinicians were trained to abstract the diagnosis of GBM from EHRs, and their accuracy was compared to abstraction performed by clinicians. The resulting data was used to build a cohort of patients with confirmed GBM diagnosis. An algorithm was developed to derive LOTs using structured medication data, accounting for the addition and discontinuation of therapies and drug class. Descriptive statistics were calculated and time-to-next-treatment analysis was performed using the Kaplan-Meier method.

Results

Treating clinicians as the gold standard, non-clinicians abstracted GBM diagnosis with sensitivity 0.98, specificity 1.00, PPV 1.00, and NPV 0.90, suggesting that non-clinician abstraction of GBM diagnosis was comparable to clinician abstraction. Out of 693 patients with a confirmed diagnosis of GBM, 246 patients contained structured information about the types of medications received. Of those, 165 (67.1%) received a first-line therapy (1L) of temozolomide, and the median time-to-next-treatment from the start of 1L was 179 days.

Conclusions

We also developed a flexible, interpretable, and easy-to-implement algorithm to derive LOTs given EHR data on medication orders and administrations that can be used to create high-quality datasets for outcomes research. We also showed that the cost of chart abstraction can be reduced by training non-clinicians instead of clinicians.

Importance of the study

This study proposes an efficient and accurate method to extract unstructured data from electronic health records (EHRs) for cancer outcomes research. The study addresses the limitations of manual abstraction of unstructured clinical data and presents a reproducible, low-cost workflow for clinical data abstraction and a flexible algorithm to derive lines of therapy (LOTs) from EHR-based structured medication data. The LOT data was used to conduct a descriptive treatment pattern analysis and a time-to-next-treatment analysis to demonstrate how EHR-derived unstructured data can be transformed to answer diverse clinical research questions. The study also investigates the feasibility of training non-clinicians to perform abstraction of GBM data, demonstrating that with detailed explanations of clinical documentation, best practices for chart review, and quantitative evaluation of abstraction performance, similar data quality to abstraction performed by clinicians can be achieved. The findings of this study have important implications for improving cancer outcomes research and facilitating the analysis of EHR-derived treatment data.

Introduction

One of the biggest impediments to cancer outcomes research is extracting data from unstructured clinical documents¹. Unstructured data refers to free-form text, prose, or data that does not follow a consistent format when entered into the electronic health record (EHR). In cancer research, several critical variables are often found exclusively as unstructured data, such as diagnosis confirmation, date of diagnosis, biomarker test date, biomarker status, oral chemotherapies, clinical trial drugs, tumor recurrence and progression, tumor response, date of death, and more²⁻⁵.

Manual abstraction or chart review is a common method to extract unstructured data whereby humans — often clinicians — read through EHRs and record values of interest. Not only is this process slow and costly, but best practices for manual abstraction are often not implemented, leading to poor data quality and wasted effort⁶. While technological solutions to partially or completely automate chart review have been explored⁷⁻⁹, they still face substantial limitations in accuracy, generalizability, and interpretability, suggesting that manual abstraction will remain an important part of the research process for the foreseeable future^{4,9-12}. Therefore, more efficient processes for chart abstraction are needed.

EHR-derived medication data plays an important role in clinical research. In clinical oncology, tracking the chronology of medication administrations and corresponding patient outcomes is critical for making treatment decisions. The chronology of a patient's treatment can be captured in a "line of therapy" (LOT) – a specific treatment regimen administered to patients between defined start and end dates¹³. In practice, the precise start and end dates of LOTs may be blurred; clinicians may make changes to patients' treatment plans based on translational medical advances, side effects of therapy, and novel therapeutic strategies. In research, however, defining precise start and end dates for LOTs is critical for conducting rigorous analyses of treatment patterns. Defining LOTs using EHR data for clinical research can be difficult because 1) start and end dates for LOTs are not explicitly documented in EHRs, 2) EHR-derived medication data typically requires substantial pre-processing to organize into LOTs, and 3) it is up to the discretion of clinical researchers on how to deal with clinical edge cases such as the addition or discontinuation of drugs to a regimen and treatment interruptions.

To address the limitations of manual abstraction of unstructured clinical data and to facilitate the analysis of EHR-derived treatment data, we developed a flexible algorithm to organize medication data for patients with glioblastoma multiforme (GBM) into LOTs and use the resulting LOT data to characterize GBM treatment patterns. GBM is the most common central nervous system malignancy, with an incidence of 3.23 cases per 100,000 people¹⁴. GBM patients have a median survival of only 8 months, and despite standard-of-care treatment comprising surgical resection, radiation, and chemotherapy, the cancer inevitably recurs¹⁴⁻¹⁶. Consequently, current treatments are targeted towards slowing GBM progression, reducing symptoms, and improving patients' quality of life. With this focus on GBM disease management, there is a marked heterogeneity in treatment patterns for GBM, particularly in recurrent disease¹⁷. Therefore, it is

imperative to develop methods for efficiently extracting LOT data on patients with GBM from EHRs.

The data used for our analysis were collected using a rigorous abstraction workflow where we trained non-clinicians (undergraduate and medical students) to perform abstraction of GBM data. We investigated whether a training program comprising detailed explanations of clinical documentation, best practices for chart review, and quantitative evaluation of abstraction performance could yield similar data quality to abstraction performed by clinicians. Taken together, we present a reproducible, low-cost workflow for clinical data abstraction and a flexible algorithm to derive LOTs from EHR-based medication data. We use the resulting dataset to conduct a descriptive treatment pattern analysis and a time-to-next-treatment analysis to demonstrate how EHR-derived unstructured data can be transformed to answer diverse clinical research questions.

Methods

Data source

This study was a retrospective analysis of EHR data collected at Stanford Hospital, Stanford, CA. This dataset included any patient treated at Stanford from 1998-2022. Ethics approval was granted through Stanford University IRB (#50031).

Study design and patient population

Patients with a confirmed diagnosis of glioblastoma were identified using a combination of manual chart abstraction and machine learning. Detailed methodology is described in prior work¹⁸. Briefly, a cohort of 1195 patients with suspected GBM were identified by filtering pathology reports for the word “glioblastoma.” Patients younger than 18 at the date of the pathology report that contained the word “glioblastoma” were excluded. From these, confirmed GBM cases were determined through manual abstraction. This set of confirmed cases were used as training data for a machine learning model to predict confirmation of GBM diagnosis in patients’ pathology reports. The resulting machine learning model had high performance¹⁸: sensitivity 0.96, specificity 0.96, PPV 0.98, NPV 0.9. The modeling workflow used selective prediction, which allowed the model to identify patients whose GBM status was ambiguous — these patients were subsequently manually abstracted. In total, 693 patients with confirmed GBM diagnosis were identified. Of these, 168 patients with documented structured treatment data (medication orders and administrations) were included in the final analytic dataset. The abstraction workflow used to develop the machine learning model is described below.

Abstraction workflow

Preliminary chart review

Of the 1195 patients that met the initial inclusion criteria, 637 patients (including 102 patients whose GBM status was deemed ambiguous by the machine learning model) were selected for manual abstraction to collect training data for the NLP models (Figure 1). The variables to abstract were primary diagnosis of GBM and GBM primary diagnosis date. After defining the variables and inclusion criteria, the medical student abstraction team leads (ABS & JYW) reviewed a random sample of eligible charts in parallel with the clinical lead (RT). By initially reviewing the charts internally, we developed a sense of what navigation, chart characteristics, and common language were prevalent to inform subsequent development of abstraction instructions. We then consulted our clinician lead to walk through a variety of cases, both standard and atypical, to discuss the key features that need to be addressed and captured to correctly abstract the variable of interest.

Developing abstraction instructions

After determining key considerations for clear and accurate abstractions, we created a comprehensive set of instructions designed for someone with no clinical expertise. First, we wrote a document with background information to help the non-clinical abstractor understand the disease and concepts relevant to the variable. We then defined an objective and described how to access the data and data entry tool (REDCap). Using screenshots of the data access tool and REDCap survey, the instructions explained how to navigate to the correct chart database and filter for the relevant types of pathology reports for that variable. Depending on the nature of the variable, multiple pathology reports of varying types may be present for each patient, including from procedures done at Stanford (“Surgical Procedure”) and those done externally but reviewed at Stanford (“Outside Review”). Cases with different numbers or types of charts were considered separately. The section of the chart most likely to contain the diagnosis was delineated.

Creating a standardized abstraction data collection tool

A REDCap survey was developed to systematically collect abstracted data using yes/no questions and drop-down menus as much as possible (SI Figure 2). This approach was utilized to maximize structured data collection, whether for the variables currently of interest or future variable abstraction. The survey included a “flag chart” function that, when selected, let abstractors choose which field in the survey was difficult to confirm. The only free-form response in the entire survey was also in this section, where we required them to elaborate on why the specific field in the survey was uncertain.

Pilot and revision

Student leads piloted this abstraction process, where each team member abstracted 50 charts with a 20% duplication rate for a total of 200 unique charts. The allocation and abstraction workflow otherwise followed what is described below.

This pilot round was instrumental in our abstraction development process. It illuminated inadequacies in our abstraction instructions, survey, and overall workflow. More specifically, we identified errors in our initial approach to abstracting dates of diagnosis for “outside slide review” pathology reports. Through the pilot abstraction round, we realized that the dates in the system corresponded to the dates of upload for pathology reports. These dates corresponded to surgical resection or biopsy dates on surgical pathology reports, which are accurate diagnosis dates, but for outside slide reviews, the date of specimen collection, sometimes found within the unstructured report, was instead the true diagnosis date. Discovering this error in our process to identify diagnosis dates allowed us to significantly revise our abstraction process, instructions, and REDCap survey. This step was therefore instrumental to the accuracy and quality of our abstraction process, which contributed to our creation of a more accurate dataset.

Abstractor training

Undergraduate abstractors were provided with basic background information on the most common types of primary central nervous tumors, grading, definitions of primary versus secondary glioblastoma, histological features of glioblastoma, and recurrence and standard of care treatment of the disease. All abstractors were required to read and familiarize themselves with this material and the extraction instructions before proceeding to the next stage of training. Subsequently, each undergraduate abstractor was assigned eight common charts (collectively referred to hereafter as a “problem set”) which they abstracted using the standardized REDCap abstraction form. These charts were specifically chosen to expose abstractors to examples of some of the most frequently encountered cases of charts that were positive or negative for confirmation of GBM diagnosis. Additionally, these charts had already been abstracted by the medical student abstraction team leads and determined to have been done so accurately by the clinician lead. Once the abstractors had completed the problem set, the medical student abstraction team leads (ABS & JYW) “graded” the submissions and then met individually with each abstractor one-on-one to walk through the solutions in detail and clarify any questions or points of confusion. ABS and JYW also created a detailed “answer key” to the problem set consisting of annotated visual diagrams of relevant chart sections, which they used both during one-on-one training sessions and subsequently provided to abstractors to use as a reference moving forward.

Chart allocation and abstraction

Each undergraduate abstracted 48 charts in round one with a 50% duplication rate for quality assessment. Thus, with seven undergraduate abstractors, we had 224 unique charts abstracted, with 112 duplicated. Abstractors were given one week to complete abstraction. Afterward, the two medical student leads resolved flagged charts (in consultation with the clinician lead when necessary) to complete this first round of abstraction fully. During abstraction, non-clinicians had the option to “flag” charts where the result was uncertain. Flagged charts were reconciled by collaborative review, and uncertain cases were reviewed with a clinician.

This second round of abstraction consisted of charts that the model could not accurately predict. These remaining charts were evenly distributed among undergraduate abstractors. Abstractors

were again given one week to complete their assignment, and medical student leads resolved any flagged charts.

Development and validation of line of therapy rules

An algorithm was developed to transform structured medication orders and administration data (one row per administration or order) into LOTs (one row per LOT). Raw structured medication data contained a unique patient identifier, the name of the drug, the date of drug administration, the date of drug order, and the expected start date of the drug. The desired data model for the resulting LOT table contained a unique patient identifier, the LOT number, the treatments included in the LOT, and the start and end dates of the LOT (SI Figure 1).

We adapted previously proposed rules for deriving LOTs from EHR data¹⁹. All antineoplastic drugs with a documented administration or order after the date of GBM diagnosis were included in the LOT table. Here, we define antineoplastic as including all chemotherapy, biologic, targeted therapy, or immunotherapy agents used in cancer treatment. We defined the drug use date as the first non-missing value of either the administration date, expected start date, or order date (Figure 2).

The start of the first LOT (1L) was defined as the first antineoplastic drug use date. The second LOT (2L) start date was defined as the first drug use date of a new antineoplastic not administered during the first 28 days of 1L. The 1L end date was defined as the day before 2L start. The same logic was applied to subsequent LOTs. LOTs that are not followed by another LOT were not assigned an end date. We also defined a treatment gap rule — a rule that triggers the start of a new line when at least 90 days pass between drug uses. After applying these rules to generate a LOT table, the resulting output was reviewed by a neuro-oncologist (RT) to ensure alignment with expected treatment patterns.

Statistical analysis

Analysis of abstractor performance

Inter-rater reliability for abstraction of GBM diagnosis (y/n) was calculated among 112 charts duplicate-abstracted by non-clinicians using Fleiss' kappa. Fleiss' kappa is a measure of inter-rater reliability for a fixed number of raters classifying items, with a kappa of 1 indicating complete agreement, and a kappa ≤ 0 indicating no agreement among raters beyond what would be expected beyond chance. A kappa of ≥ 0.8 was considered superior reliability. In addition, the performance of non-clinician abstractors was compared to that of clinician abstractors using sensitivity, specificity, negative predictive value, and positive predictive value, treating clinician abstractors as the gold standard.

Treatment patterns analysis

Descriptive statistics including most common LOTs were calculated. In the overall population, median time to next treatment (TTNT) was estimated using the Kaplan Meier estimator. The

index date was the date of treatment initiation (1L), and the event date was defined as the start date of the subsequent LOT (2L). Patients who only had one LOT were censored at their last drug use date or their date of death, whichever was later.

Results

Cohort abstraction

A total of 659 charts were manually abstracted by non-clinicians, of which 118 were duplicate-abstracted by non-clinicians and 54 were duplicate-abstracted by clinicians. Inter-rater reliability analysis yielded a Fleiss' Kappa of 0.869 (p-value < 0.001), indicating excellent reliability (CITE Fleiss Kappa interpretation) among non-clinicians. Treating clinicians as the gold standard, non-clinicians abstracted GBM diagnosis with sensitivity 0.98, specificity 1.00, PPV 1.00, and NPV 0.90, suggesting that non-clinician abstraction of GBM diagnosis was comparable to clinician abstraction.

Cohort Description of Lines-of-Therapy

Following our model-assisted abstraction process, we assembled a cohort of 693 patients with a confirmed diagnosis of glioblastoma. From that group, 246 patient charts contained structured information about the types of medications received. Using medication data, we generated lines of therapy using a custom set of rules, specifically filtering for antineoplastic drugs (Table 1). Of the 246 patients, 165 (67.1%) received a first-line therapy (1L) of temozolomide, 33 patients (13.4%) received bevacizumab alone and 14 patients (5.7%) received a combination of bevacizumab and temozolomide.

Among the 246 patients with a documented 1L, 165 patients (67.1%) progressed on to a second-line therapy (2L). Progression from 1L to 2L was analyzed for each type of treatment in a Sankey diagram (Figure 3). 165 patients received temozolomide in 1L compared to 40 patients in 2L. 33 patients received bevacizumab in 1L compared to 55 patients in 2L. 14 patients received a combination of temozolomide and bevacizumab in 1L compared to 22 patients in 2L.

Time-to-Next-Treatment Analysis for First-Line and Second-Line Therapies

The median time-to-next-treatment (TTNT) for all 1L treatments was 179 days (95% CI 149-225) (Table 2). Among the 165 patients who received 1L temozolomide, the median TTNT was 174 days (95% CI 117-227). Among the 33 patients who received 1L bevacizumab, median TTNT was 171 days (95% CI 111-NA). Among the 14 patients who received 1L temozolomide and bevacizumab combined, median TTNT was 419 days (95% CI 217-NA). The median TTNT across all 2L treatments was 195 days (95% CI 146-242). Among patients who received 2L temozolomide, median TTNT was 206 days (95% CI 113-445). Among patients who received 2L

bevacizumab, median TTNT was 195 days (95% CI 122-823). Among patients who received 2L temozolomide and bevacizumab combined, median TTNT was 225 days (95% CI 163-874).

Discussion

Unstructured EHR data contains valuable information for outcomes research, but is difficult to analyze in its raw form. Often, highly trained human abstractors (e.g. clinicians) are required to manually extract unstructured data from EHR records, which is expensive and time-consuming. Here, we presented two methods of extracting and processing unstructured clinical data. First, we described a rigorous approach to train non-clinician abstractors to extract clinical data on patients with GBM, and showed that the accuracy of non-clinician abstractors was comparable to that of clinician abstractors. This approach could be used to reduce the cost of abstraction by leveraging non-clinicians instead of clinicians. Second, we developed a flexible, interpretable, and easy to implement algorithm to derive LOTs given EHR data on medication orders and administrations.

Our analysis of the derived LOTs showed that our cohort's treatment patterns aligned with the typical standard of care for GBM. We compared our cohort to other GBM cohorts with well-described treatment patterns and found that our cohort had similar characteristics in terms of LOT agents and durations. For instance, Girvan et al. assembled a cohort of 503 GBM patients using an online chart abstraction process conducted by 160 participating oncologists. Their cohort predominantly received 1L temozolomide monotherapy (76.5%) and 2L bevacizumab monotherapy (58.1%), and the median 2L duration was 130 days²⁰. In comparison, the most common 1L and 2L in our cohort were temozolomide monotherapy (67.1% of patients receiving 1L therapy) and bevacizumab monotherapy (33.3% of patients receiving 2L therapy), and the median 2L duration was 195 days. However, we note that all patients included in the Girvan cohort received at least two LOTs, whereas only 67.1% of patients in our cohort received 2L therapy. Another cohort of 750 GBM patients assembled by Annavarapu et al. showed that the majority of patients received 1L radiation concurrent with temozolomide (90.1%), bevacizumab was the most common 2L therapy (73.4% of patients receiving 2L therapy), and the median 1L duration was 135.1 days²¹. Annavarapu et al. defined treatment duration as the interval between the date of LOT initiation and the date of last administration, which therefore does not account for the date of initiation for the subsequent LOT. Given that our GBM cohort's treatment features were broadly similar to those of other published cohorts, we believe that our abstraction process and LOT algorithm reasonably reflected GBM patients' treatment journeys.

Our approach has some limitations. First, since our GBM cohort was assembled in part using a machine learning model, there could have been false positives (patients who did not truly have GBM) in the cohort. However, this would have been a rare occurrence given the strong performance of the machine learning model on a naive test set. Second, the sample size used for the LOT analysis was small due to the limited number of patients with documented treatment in the EHR. Third, our LOT algorithm uses a simple set of rules that may not capture all clinical

nuances in lines of therapy. Further work may build upon this initial algorithm by conducting more in depth validation and expanding the rule set to account for more clinical nuances.

Overall, our workflow for unstructured data extraction using non-clinician abstractors and the customizable LOT algorithm are important contributions that can be applied to a wide range of clinical research scenarios. Utilizing LOTs from a large dataset of GBM treatments as a tool for determining outcomes of these different treatment options can pave the way for identifying the most effective regimens that maximize patient survival. LOT analysis can provide insights into the overall survival, progression-free survival, and time to next treatment of specific regimens and their corresponding modalities. Such information will be crucial towards formulating new standards of care that utilize every available resource to improve patient outcomes.

Figures and Tables

Table 1: Demographic and clinical characteristics of the 246 patients receiving treatment for GBM.

Characteristic	N = 246 ¹
Gender	
Female	93 (38%)
Male	153 (62%)
Race	
Asian	30 (12%)
Black	4 (1.6%)
Native American	2 (0.8%)
Other	41 (17%)
Pacific Islander	1 (0.4%)
Unknown	9 (3.7%)
White	159 (65%)
Ethnicity	
Hispanic/Latino	27 (11%)
Non-Hispanic	208 (85%)
Unknown	11 (4.5%)
Age at diagnosis	
	58 (49, 64)
Unknown	103
N lines of therapy	
1	81 (33%)
2	65 (26%)
3+	100 (41%)

¹ n (%); Median (IQR)

Table 2. Descriptive statistics of TTNT analysis for primary 1L and 2L treatments. Median TTNT (duration) for bevacizumab and temozolomide combination is much greater than other regimens for first and second LOTs. Nonetheless, temozolomide is the most common 1L treatment while bevacizumab is the most common 2L.

Line	Treatment	N	%	Median duration (days)	95% LCL	95% UCL
1L	All Treatments	246	100%	179	149	225
1L	temozolomide	165	67.1%	174	117	227
1L	Other	34	13.8%	183	92	NA
1L	bevacizumab	33	13.4%	171	111	NA
1L	bevacizumab + temozolomide	14	5.7%	419	217	NA
2L	All Treatments	165	100%	195	146	242
2L	bevacizumab	55	33.3%	195	122	823
2L	Other	48	29.1%	119	80	267
2L	temozolomide	40	24.2%	206	113	445
2L	bevacizumab + temozolomide	22	13.3%	225	163	874

Figure 1: Schematic of abstraction process, starting from defining cohort inclusion criteria to performing quality assessment of abstracted data.

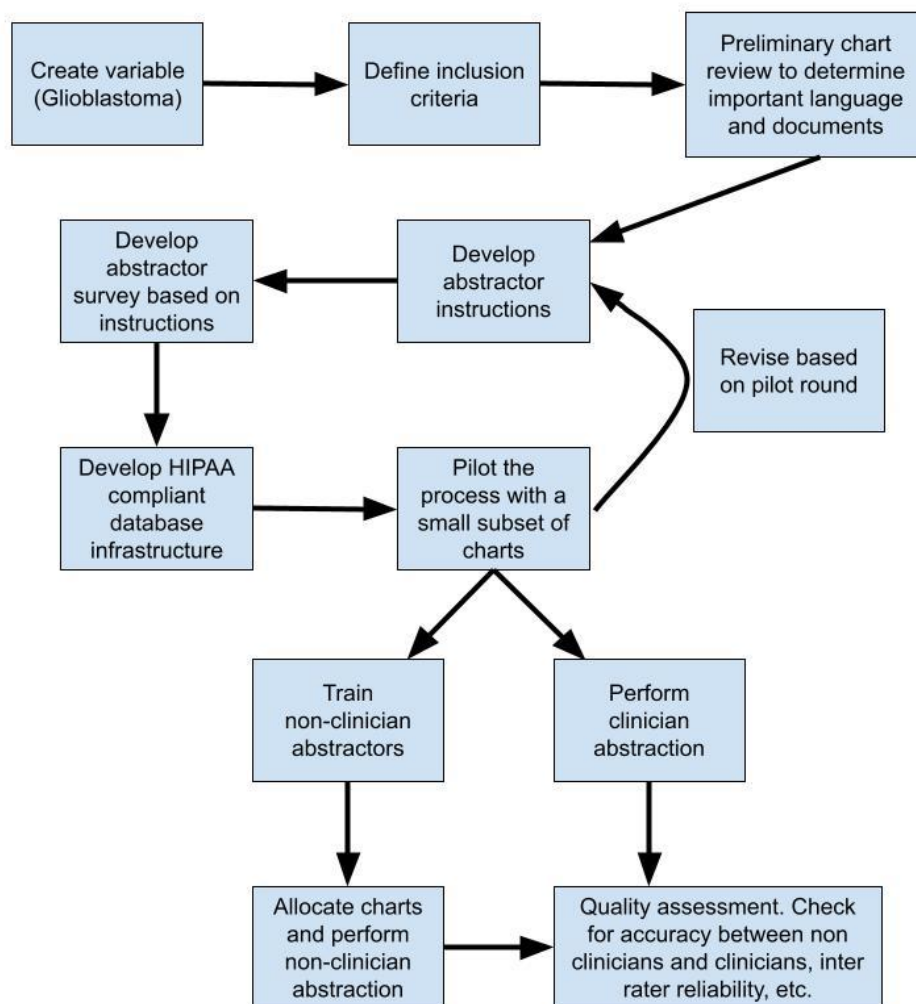


Figure 2: Schematic showing the definition of lines of therapy (LOT) from uses of antineoplastic drugs for an example patient. The start date of each LOT was determined based on the use date of the antineoplastic drugs, with the end date of a LOT defined as the day before the start date of the subsequent LOT. The start of the first LOT (1L) was defined as the first antineoplastic drug use date. The second LOT (2L) start date was defined as the first drug use date of a new antineoplastic not administered during the first 28 days of 1L. The 1L end date was defined as the day before 2L start.

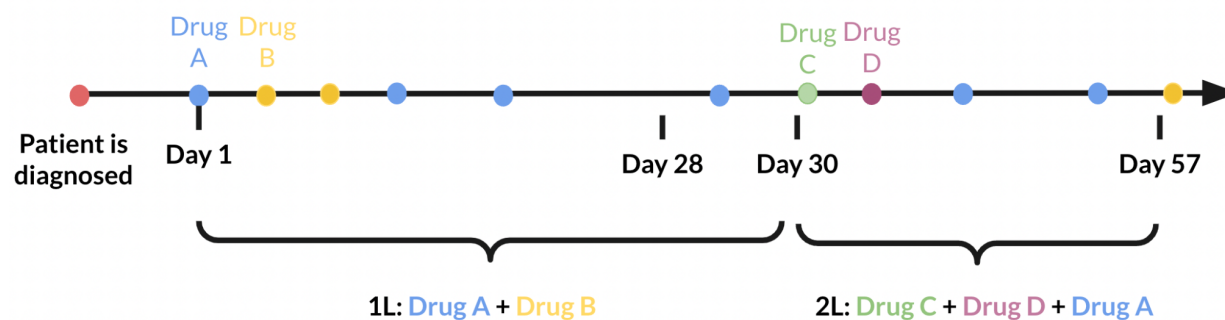


Figure 3: Sankey diagram showing the progression of 1L to 2L treatments.

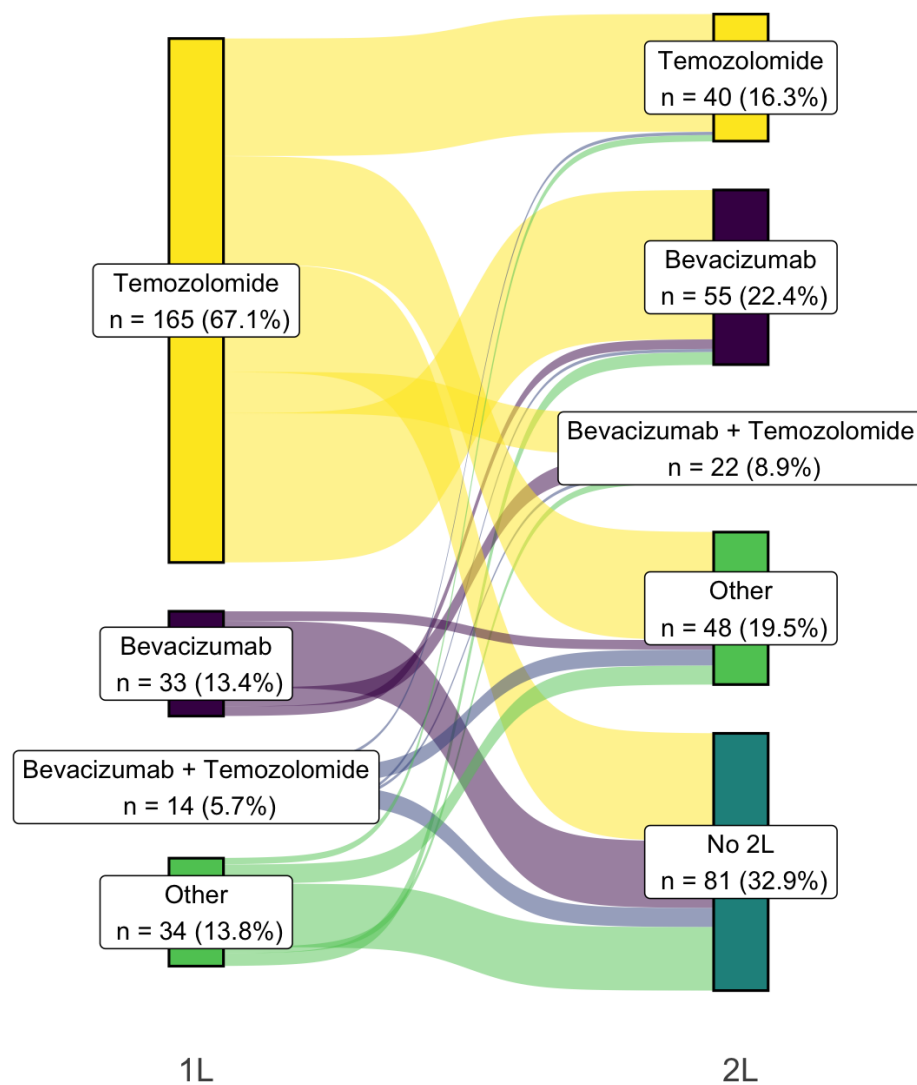
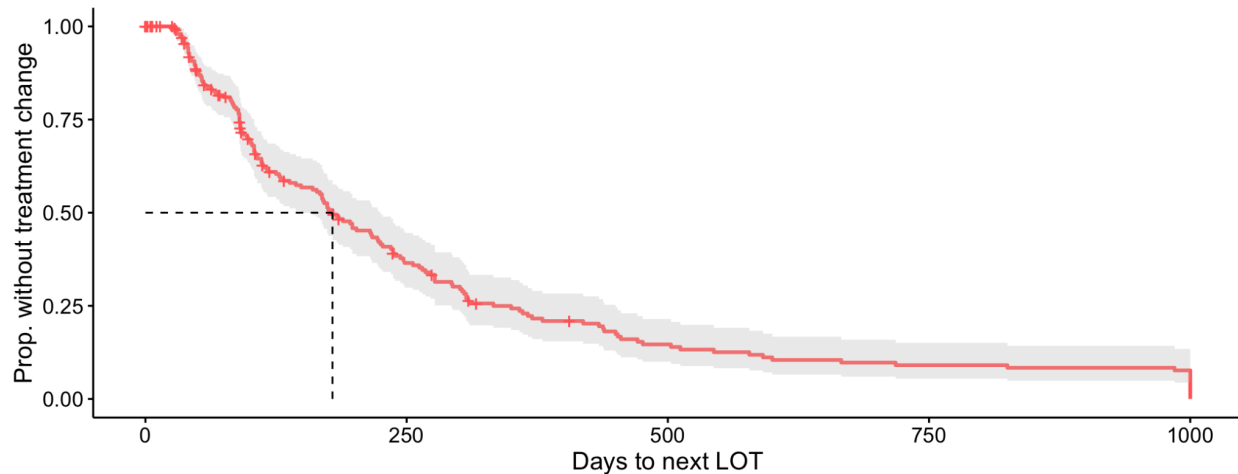
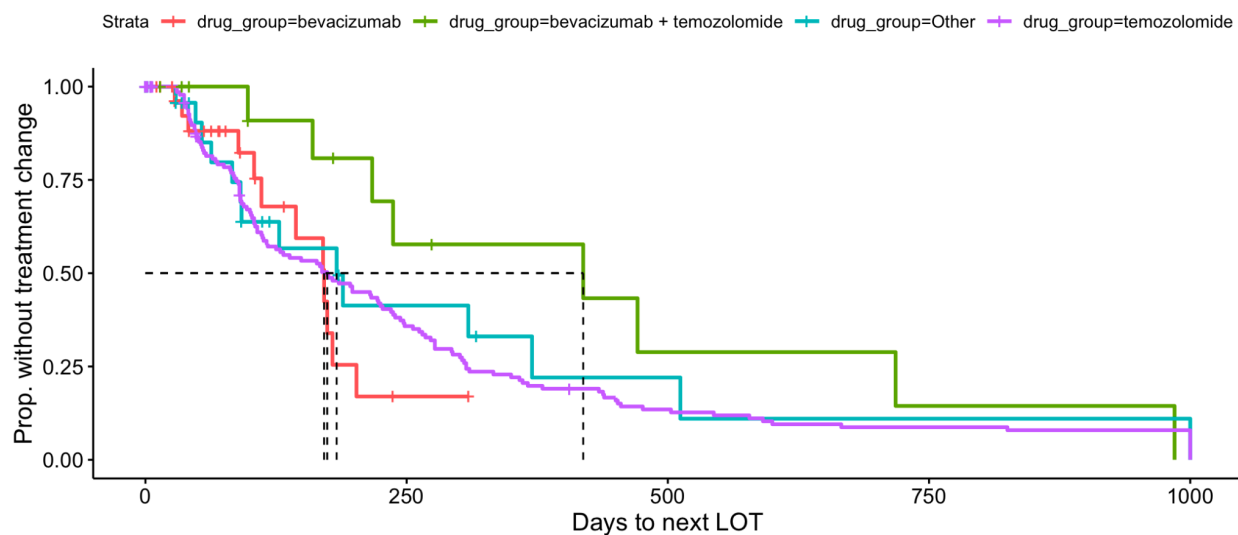


Figure 4. Kaplan Meier curves plotting time-to-next-treatment (TTNT) for the entire cohort of 246 GBM patients and their 1L treatment regimens (**Panel A**), as well as comparisons between 1L Temozolomide, 1L Bevacizumab, 1L Bevacizumab + Temozolomide and all other treatments (**Panel B**). Y-axis represents proportion of patients continuing current treatment and x-axis represents days since treatment initiation. Grey and multicolored dotted regions represent 95% confidence intervals (where available).

A



B



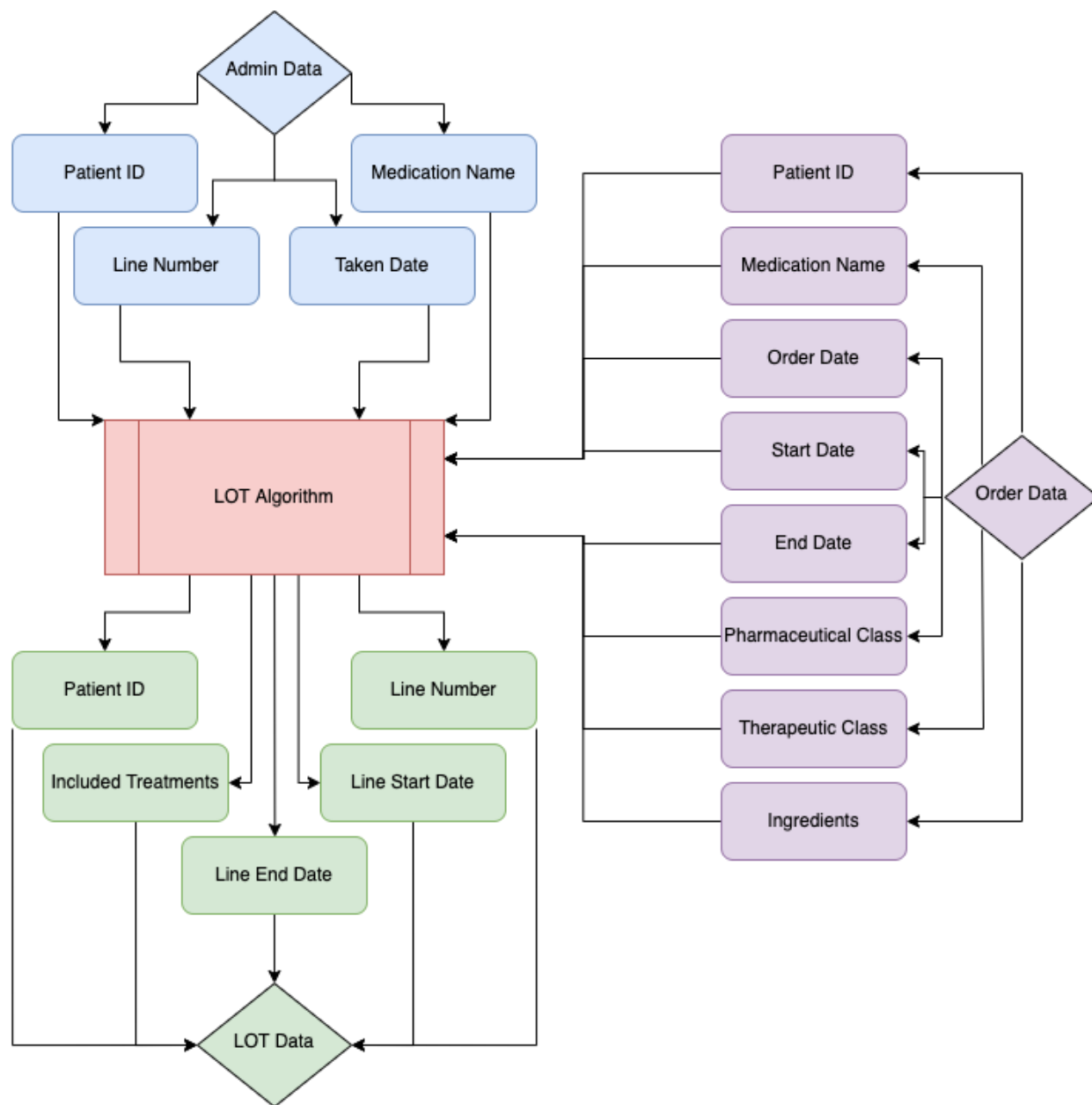
References

1. Penberthy LT, Rivera DR, Lund JL, Bruno MA, Meyer A. An overview of real-world data sources for oncology and considerations for research. *CA Cancer J Clin*. 2022;72(3):287-300. doi:10.3322/caac.21714
2. Kehl KL, Elmarakeby H, Nishino M, et al. Assessment of Deep Natural Language Processing in Ascertaining Oncologic Outcomes From Radiology Reports. *JAMA Oncol*. 2019;5(10):1421. doi:10.1001/jamaoncol.2019.1800
3. Lindvall C, Deng CY, Agaronnik ND, et al. Deep Learning for Cancer Symptoms Monitoring on the Basis of Electronic Health Record Unstructured Clinical Notes. *JCO Clin Cancer Inform*. 2022;(6):e2100136. doi:10.1200/CCI.21.00136
4. Li Y, Luo YH, Wampfler JA, et al. Efficient and Accurate Extracting of Unstructured EHRs on Cancer Therapy Responses for the Development of RECIST Natural Language Processing Tools: Part I, the Corpus. *JCO Clin Cancer Inform*. 2020;(4):383-391. doi:10.1200/CCI.19.00147
5. Demner-Fushman D, Chapman WW, McDonald CJ. What can natural language processing do for clinical decision support? *J Biomed Inform*. 2009;42(5):760-772. doi:10.1016/j.jbi.2009.08.007
6. Vassar M, Matthew H. The retrospective chart review: important methodological considerations. *J Educ Eval Health Prof*. 2013;10:12. doi:10.3352/jeehp.2013.10.12
7. Wang Y, Wang L, Rastegar-Mojarad M, et al. Clinical information extraction applications: A literature review. *J Biomed Inform*. 2018;77:34-49. doi:10.1016/j.jbi.2017.11.011
8. Jensen K, Soguero-Ruiz C, Oyvind Mikalsen K, et al. Analysis of free text in electronic health records for identification of cancer patient trajectories. *Sci Rep*. 2017;7(1):46226. doi:10.1038/srep46226
9. Zeng J, Banerjee I, Henry AS, et al. Natural Language Processing to Identify Cancer Treatments With Electronic Medical Records. *JCO Clin Cancer Inform*. 2021;(5):379-393. doi:10.1200/CCI.20.00173
10. Meystre SM, Savova GK, Kipper-Schuler KC, Hurdle JF. Extracting Information from Textual Documents in the Electronic Health Record: A Review of Recent Research. *Yearb Med Inform*. 2008;17(01):128-144. doi:10.1055/s-0038-1638592
11. Yim W wai, Yetisgen M, Harris WP, Kwan SW. Natural Language Processing in Oncology: A Review. *JAMA Oncol*. 2016;2(6):797. doi:10.1001/jamaoncol.2016.0213
12. Fu S, Chen D, He H, et al. Clinical concept extraction: A methodology review. *J Biomed Inform*. 2020;109:103526. doi:10.1016/j.jbi.2020.103526
13. Saini KS, Twelves C. Determining lines of therapy in patients with solid cancers: a proposed new systematic and comprehensive framework. *Br J Cancer*. 2021;125(2):155-163. doi:10.1038/s41416-021-01319-8
14. Ostrom QT, Cioffi G, Waite K, Kruchko C, Barnholtz-Sloan JS. CBTRUS Statistical Report: Primary Brain and Other Central Nervous System Tumors Diagnosed in the United States in 2014–2018. *Neuro-Oncol*. 2021;23(Supplement_3):iii1-iii105. doi:10.1093/neuonc/noab200
15. Stupp R, Mason WP, van den Bent MJ, et al. Radiotherapy plus Concomitant and Adjuvant Temozolomide for Glioblastoma. *N Engl J Med*. 2005;352(10):987-996. doi:10.1056/NEJMoa043330
16. Birzu C, French P, Caccese M, et al. Recurrent Glioblastoma: From Molecular Landscape to New Treatment Perspectives. *Cancers*. 2020;13(1):47. doi:10.3390/cancers13010047
17. Nabors LB, Portnow J, Ahluwalia M, et al. Central Nervous System Cancers, Version


- 3.2020, NCCN Clinical Practice Guidelines in Oncology. *J Natl Compr Canc Netw*. 2020;18(11):1537-1570. doi:10.6004/jnccn.2020.0052
18. Swaminathan A, Lopez I, Wang W, et al. *Selective Prediction for Extracting Unstructured Clinical Data*. Health Informatics; 2022. doi:10.1101/2022.11.15.22282368
19. Hess LM, Li X, Wu Y, Goodloe RJ, Cui ZL. Defining treatment regimens and lines of therapy using real-world data in oncology. *Future Oncol*. 2021;17(15):1865-1877. doi:10.2217/fon-2020-1041
20. Girvan A, Carter G, Lin L, et al. Glioblastoma treatment patterns, survival, and healthcare resource use in real-world clinical practice in the USA. *Drugs Context*. 2015;4:1-12. doi:10.7573/dic.212274
21. Annavarapu S, Gogate A, Pham T, Davies K, Singh P, Robert N. Treatment patterns and outcomes for patients with newly diagnosed glioblastoma multiforme: a retrospective cohort study. *CNS Oncol*. 2021;10(3):CNS76. doi:10.2217/cns-2021-0007

Supplementary Information

SI Fig. 1. Schematic diagram of line of therapy (LOT) algorithm inputs and outputs.




SI Figure 2: Screenshots of the abstraction data collection tool

 **Stanford**
MEDICINE | Unstructured Data Project
Primary Cancer Diagnosis Survey

AAA
⊕ ⊖

Primary Cancer Diagnosis Data Collection Tool

This is a data collection tool for patient information on primary cancer diagnosis.

Reviewer's SUNet ID <small>* must provide value</small>	<input type="text" value="janetwu8"/>
STARR ID <small>* must provide value</small>	<input type="text"/>
Confirm Primary Cancer Diagnosis of Glioblastoma Multiforme (GBM) <small>* must provide value</small>	<input checked="" type="radio"/> Yes <input type="radio"/> No reset
Date of GBM Initial Diagnosis Available <small>* must provide value</small>	<input checked="" type="radio"/> Yes <input type="radio"/> No reset
GBM Initial Diagnosis Date <small>* must provide value</small>	<input type="text" value=""/> MM-DD-YYYY Today M-D-Y
Are you having trouble extracting a variable from this chart?	<input type="radio"/> Flag Chart reset
<p>Submit and</p> <div style="border: 1px solid black; padding: 5px; display: inline-block;"> Submit survey and progress to the next patient.</div> <p>– or –</p> <div style="border: 1px solid gray; padding: 5px; display: inline-block; background-color: #f0f0f0;">Submit</div>	

Primary Cancer Diagnosis Data Collection Tool

This is a data collection tool for patient information on primary cancer diagnosis.

Reviewer's SUNet ID <small>* must provide value</small>	<input type="text" value="janetwu8"/>
STARR ID <small>* must provide value</small>	<input type="text"/>
Confirm Primary Cancer Diagnosis of Glioblastoma Multiforme (GBM) <small>* must provide value</small>	<input type="radio"/> Yes <input checked="" type="radio"/> No reset
Why was "no" selected in "Confirm Primary Cancer Diagnosis of Glioblastoma Multiforme (GBM)"? <small>* must provide value</small>	<input type="radio"/> Non-glioblastoma cancer diagnosis <input type="radio"/> Molecular testing only (MGMT or IDH-1) <input type="radio"/> Recurrent/residual glioblastoma without any information of prior diagnosis <input type="radio"/> No relevant tissue specimen <input type="radio"/> No diagnosis section <input type="radio"/> Secondary/transformed glioblastoma reset
Are you having trouble extracting a variable from this chart?	<input type="radio"/> Flag Chart reset
Submit and <input type="button" value="🔄 Submit survey and progress to the next patient."/> - or - <input type="button" value="Submit"/>	

Primary Cancer Diagnosis Data Collection Tool

This is a data collection tool for patient information on primary cancer diagnosis.

Reviewer's SUNet ID

* must provide value

janetwu8

STARR ID

* must provide value

Confirm Primary Cancer Diagnosis of Glioblastoma
Multiforme (GBM)

* must provide value

Yes

No

reset

Are you having trouble extracting a variable from this
chart?

Flag Chart

reset

Which field(s) are giving you trouble?

* must provide value

Confirm Primary Cancer Diagnosis of GBM

Date of GBM Initial Diagnosis Available

GBM Initial Diagnosis Date

I have another question/concern related to
this chart

Please elaborate on why you selected the above
choice(s) for this chart:

* must provide value

Expand

Submit and

 **Submit survey and progress to the next patient.**

- or -

Submit