

1 **Metabolite Signature of Life's Essential 8 and Risk of Coronary Heart Disease among**
2 **Low-Income Black and White Americans**

3
4 Kui Deng¹, Deepak K. Gupta², Xiao-Ou Shu¹, Loren Lipworth¹, Wei Zheng¹, Victoria E.
5 Thomas², Hui Cai¹, Qiuyin Cai¹, Thomas J. Wang³, Danxia Yu¹

6
7 ¹ Division of Epidemiology, Department of Medicine, Vanderbilt University Medical Center,
8 Nashville, TN, USA

9 ² Vanderbilt Translational and Clinical Cardiovascular Research Center and Division of
10 Cardiovascular Medicine, Department of Medicine, Vanderbilt University Medical Center,
11 Nashville, TN, USA

12 ³ Department of Internal Medicine, University of Texas Southwestern Medical Center, Dallas,
13 Texas, USA

14
15 **Correspondence:** Danxia Yu, Division of Epidemiology, Vanderbilt University Medical
16 Center, 2525 West End Avenue, Nashville, TN, USA 37203, Phone: (+1) 615-936-7389, Fax:
17 (+1) 615-343-5938, Email: danxia.yu@vumc.org

18 **Abstract**

19 **Background and Aims:** Life's Essential 8 (LE8) is a comprehensive construct of
20 cardiovascular health. Yet, little is known about LE8 score, its metabolic correlates, and their
21 predictive implications among Black Americans and low-income individuals.

22 **Methods:** In a nested case-control study of coronary heart disease (CHD) among 598 Black
23 and 596 White low-income Americans, we estimated LE8 score, conducted untargeted
24 plasma metabolites profiling, and used elastic net with leave-one-out cross-validation to
25 identify metabolite signature (MetaSig) of LE8. Associations of LE8 score and MetaSig with
26 incident CHD were examined using conditional logistic regression. Mediation effect of
27 MetaSig on the LE8-CHD association was also examined. The external validity of MetaSig
28 was evaluated in another nested CHD case-control study among 598 Chinese adults.

29 **Results:** Higher LE8 score was associated with lower CHD risk [standardized OR (95%
30 CI)=0.61 (0.53-0.69)]. The identified MetaSig, consisting of 133 metabolites, showed strong
31 correlation with LE8 score ($r=0.61$) and inverse association with CHD risk [OR (95%
32 CI)=0.57 (0.49-0.65)], robust to adjustment for LE8 score and across participants with
33 different sociodemographic and health status (ORs: 0.42-0.69; all $P<0.05$). MetaSig mediated
34 a large portion of the LE8-CHD association: 53% (32%-80%) ($P<0.001$). Significant
35 associations of MetaSig with LE8 score and CHD risk were found in validation cohort
36 [$r=0.49$; OR (95% CI)=0.57 (0.46-0.69)].

37 **Conclusions:** Higher LE8 score and its MetaSig were associated with lower CHD risk among
38 low-income Black and White Americans. Metabolomics may offer an objective and
39 comprehensive measure of LE8 score and its metabolic phenotype relevant to CHD

40 prevention among diverse populations.

41

42 **Keywords:** Life's Essential 8; Cardiovascular Health; Coronary Heart Disease; Multi-racial

43 Population; Metabolomics

44 **Introduction**

45 Coronary heart disease (CHD) is a leading cause of morbidity and mortality in the United
46 States (US) and worldwide, with significant and persistent sociodemographic disparities^{1,2}.
47 To reduce the burden and life lost due to CHD and other cardiovascular disease (CVD), the
48 American Heart Association (AHA) has recently proposed Life's Essential 8 (LE8) to assess
49 and promote cardiovascular health (CVH) in individuals and populations³. LE8 includes 4
50 health behaviors (healthy diet, participation in physical activity, avoidance of nicotine, and
51 healthy sleep [a new component of LE8]) and 4 health factors (weight, blood lipids, glucose,
52 and blood pressure), and has a new scoring system with continuous scale to better reflect
53 inter-individual differences. While a higher LE8 score has been recently associated with
54 lower CVD incidence and mortality⁴⁻⁷, few studies have evaluated LE8 score and its
55 association with incident CVD among Black and White Americans who have low
56 socioeconomic status (SES) and face disproportionate CVD burdens. In addition, although
57 some potential mechanisms have been identified (e.g., reduced inflammation and
58 atherosclerosis)^{8,9}, beyond those known CVD risk pathways, mechanisms and inter-
59 individual differences underlying the cardioprotective effects of LE8 and its included health
60 behaviors and health factors are not fully understood.

61

62 Metabolite profiling ("metabolomics") comprehensively measures small-molecule
63 metabolites (including substrates, intermediates, and end products) in biological samples and
64 represents a powerful tool for mechanistic investigation, novel biomarker discovery, and
65 precision medicine^{10,11}. Metabolite profiling of blood samples may improve assessments of

66 individuals' alignment with LE8, particularly for behavioral factors that are prone to survey
67 and recall biases. In addition, circulating metabolites related to LE8 may capture varied
68 individual metabolic responses to LE8, providing novel mechanistic insights into its
69 cardioprotective effects and informing precision medicine. While previous studies have
70 identified metabolites related to the components of LE8, including diet¹²⁻¹⁶, physical
71 activity¹⁷⁻¹⁹, tobacco exposure²⁰⁻²², sleep²³⁻²⁶, and body mass index (BMI)^{27,28}, to our
72 knowledge, no study has applied untargeted plasma metabolomics to identify a
73 comprehensive metabolite signature (MetaSig) for LE8 to enable studies with incident CHD.
74 Given that those health behaviors and factors often correlate and interact with each other,
75 investigating whether plasma metabolomics could provide a good objective assessment of
76 individuals' alignment with and metabolic responses to overall LE8 and uncovering potential
77 pathways linking LE8 to incident CHD is highly warranted.

78

79 Here, leveraging a case-control study of CHD nested within the Southern Community
80 Cohort Study (SCCS) involving 598 Black Americans and 596 White Americans, we
81 assessed the LE8 score and its MetaSig and examined their relations to incident CHD. The
82 results were further replicated in another nested CHD case-control study of racially and
83 geographically different population: 598 Chinese adults from the Shanghai Women's Health
84 Study and Shanghai Men's Health Studies (SWMHS). In addition, we identified MetaSigs for
85 the health behaviors and health factors recommended in the LE8 and evaluated their
86 associations with incident CHD.

87

88 **Methods**

89 **Study participants**

90 This study was based on a nested case-control study of CHD within the SCCS²⁹. Briefly,
91 the SCCS enrolled 84,735 primarily low-income, uninsured/underinsured Black and White
92 Americans aged 40-79 years from 12 southeastern US states between 2002-2009, with >50%
93 having household income less than \$15,000/y and ~86% were uninsured or underinsured²⁹.
94 Participants were surveyed for a wide range of information at baseline and followed up
95 regularly for morbidity and mortality outcomes. Venous blood samples were collected at
96 baseline, and plasma samples were aliquoted and stored at -80°C for long-term use. A nested
97 case-control study of CHD within SWMHS was used as the validation cohort, which enrolled
98 74,940 women, aged 40-70 years, and 61,480 men, aged 40-74 years, from Shanghai, China
99 between 1996–2000 and 2002–2006, respectively^{30,31}. These cohort studies were approved by
100 the Institutional Review Boards of the Vanderbilt University Medical Center, Meharry
101 Medical College, and/or Shanghai Cancer Institute. Informed consent was obtained from all
102 enrolled participants.

103
104 For the nested case-control studies, participant inclusion criteria were 1) no history of
105 CHD, stroke, heart failure, cancer, or end-stage renal disease at baseline; 2) available baseline
106 plasma samples and data on fasting time and in SCCS, time between sample collection and
107 lab processing; 3) no use of antibiotics nor cold/flu in last 7 days before blood collection. In
108 addition, to facilitate CHD case identification and adjudication, in SCCS, participants were
109 eligible for Centers for Medicare & Medicaid Services (CMS) and had ≥ 2 claims after cohort

110 enrollment; in SWMHS, participants' medical records were accessible for our study. In
111 SCCS, nonfatal CHD cases were identified through CMS, including acute myocardial
112 infarction, coronary revascularization, and other acute CHD, and CHD deaths were identified
113 through the National Death Index. In SWMHS, CHD cases were first identified by self-
114 reported diagnoses during follow-up visits and then confirmed by medical records. In each
115 race (Black, White, or Chinese) and gender (male or female), 150 incident CHD cases were
116 randomly selected and 1:1 matched with controls who had no CHD, heart failure, stroke, nor
117 cancer at the time of case diagnosis, by enrollment age (± 2 years), fasting time (± 2 hours),
118 and time between sample collection and lab processing (± 4 hours, for SCCS samples; all
119 SWMHS samples were processed within 6 hours after collection). After excluding eight
120 plasma samples that did not pass the metabolite profiling quality control, a total of 1792
121 participants, including 597 pairs of CHD cases and controls in SCCS (299 pairs of Black
122 Americans and 298 pairs of White Americans), and 299 pairs of Chinese adults in SWMHS
123 were included in the present study (**Fig. 1**).

124

125 **Life's Essential 8**

126 We constructed each LE8 component metric and total LE8 score (ranging from 0 to 100)
127 according to AHA guidelines^{3,32}, with some modifications based on the characteristics of our
128 data, as shown in **Table S1**. Briefly, dietary quality was assessed by the Dietary Approaches
129 to Stop Hypertension (DASH) score³³⁻³⁵. Physical activity was measured by total minutes of
130 leisure-time moderate and vigorous physical activity per week, with each minute of vigorous
131 physical activity counted as 2 minutes toward the total minutes. Nicotine exposure was

132 assessed by active tobacco smoking and secondhand smoking exposure. Sleep health was
133 measured by average self-reported sleep hours per day. BMI was calculated as weight
134 (kg)/height (m)². Blood lipids component was assessed by non-HDL cholesterol (mg/dL)
135 (plasma total cholesterol minus HDL cholesterol). Because concentrations of fasting glucose
136 and HbA1c were not measured in our study, blood glucose component was scored based on
137 diabetes diagnosis and medications and relative abundance of plasma glucose measured
138 simultaneously with other metabolites (see following metabolite profiling methods). Blood
139 pressure was unavailable in SCCS, thus blood pressure component was scored based on
140 hypertension status and medications. Total LE8 score was obtained by calculating the
141 arithmetic mean of individual component scores. We also calculated scores reflecting
142 alignment with health behaviors and health factors.

143

144 **Metabolite profiling**

145 Baseline plasma samples of selected CHD case-control pairs were retrieved and placed
146 adjacently in the same assay batch. Laboratory persons were blinded to the case-control status
147 of samples. Untargeted metabolite profiling was performed using ultra-high-performance
148 liquid chromatography (UHPLC) coupled with tandem mass spectrometry (MS) by
149 Metabolon Inc. (Morrisville, NC, USA) following a standard assay protocol³⁶. Briefly,
150 plasma samples were extracted with methanol and split into four aliquots for analysis by
151 UHPLC-MS/MS in both positive and negative ion modes using a combination reverse phase
152 and HILIC chromatography methods. Metabolites were identified by automated comparison
153 of mass spectra features to a reference library of >4,000 authenticated standard compounds

154 followed by visual inspection for quality control. Peaks were quantified using area-under-the-
155 curve. A total of 1502 metabolites were detected in our samples. The majority of metabolites
156 (>80%) were annotated based on internal standards. Metabolites that were annotated only by
157 a match to a known MS spectrum or chemical formula were marked by ‘*’ and ‘**’,
158 respectively. We excluded metabolites detected in <10% of participants, resulting in 1322
159 metabolites. Metabolites with missing values were imputed by half of the minimal value in
160 the non-missing samples. The values of all metabolites were log-transformed and
161 standardized to mean 0 and unit variance.

162

163 **Statistical analysis**

164 The characteristics of the study participants were presented as mean (standard deviation
165 [SD]) for continuous variables and frequency (percentage) for categorical variables.
166 *Spearman* correlations between LE8 score and individual component scores were assessed.
167 Elastic net regression was used to identify metabolites associated with LE8^{12,14,37}, with
168 hyperparameters determined via a ten-repeated tenfold cross-validation framework, using R
169 package *caret* (version: 6.0-88)³⁸ and *glmnet* (version: 4.1-3)^{37,39}. The MetaSig was calculated
170 through a leave-one-out cross-validation approach. In addition, we externally validated the
171 identified signature in SWMHS using weights of the selected metabolites from SCCS. We
172 calculated *Spearman* correlations between LE8 score and MetaSig among all participants and
173 by race, sex, age (≥ 60 y/ <60 y), incident CHD status, diabetes status, hypertension status,
174 dyslipidemia status, and fasting status.

175

176 We then examined the associations of LE8 and its MetaSig with risk of CHD using
177 conditional logistic regression, adjusting for age, education, income, alcohol intake, and
178 family history of CHD. We also included LE8 score and MetaSig in the same model to assess
179 their independent associations with CHD and potential mediating effect of MetaSig on LE8-
180 CHD association. The potential multicollinearity was assessed by variance inflation factor
181 (VIF) using R package car (version: 3.1-0) with VIF >10 indicating multicollinearity among
182 variables. The ranges of VIF for LE8 score and its MetaSig were 1.08-1.37, confirming no
183 multicollinearity. The mediation analysis was performed using R package mediation (version:
184 4.5.0)⁴⁰. Subgroup analyses to evaluate the associations of LE8 and MetaSig with incident
185 CHD were performed by race, age group, sex, education, household income, diabetes status,
186 hypertension status, and dyslipidemia status, with *P* value for interaction obtained from the
187 corresponding interaction term in the model.

188

189 The same methods were used to identify MetaSigs for health behaviors and health factors
190 included in LE8 and evaluate their associations with incident CHD, potential mediation
191 effects, and their external validity. Mutual adjustments of health behaviors and health factors
192 score were performed in corresponding statistical models. All analyses were performed using
193 R (version 4.1.1). Two-sided *P* < 0.05 was considered statistically significant. An overview of
194 our study design is presented in **Fig. 1**.

195

196 **Results**

197 **Baseline characteristics of study participants**

198 The mean age at baseline (blood collection) was 55 years in our study participants (**Table**
199 **1**). The mean (SD) of LE8 score was 48.1 (12.3) in Black women, 50.0 (13.6) in Black men,
200 48.1 (13.4) in White women, and 48.5 (14.4) in White men. The median follow-up time for
201 incident CHD cases was 5 (interquartile range: 3-8) years in SCCS. Incident CHD cases had
202 significantly lower total LE8 score, health behaviors score, and health factors score than
203 controls (all $P < 0.05$). The characteristics of participants in SWMHS (mean age: 61 years;
204 mean LE8 score: 57.2 in women and 50.7 in men) are shown in **Table S2**. There were
205 moderate correlations between total LE8 score and individual component scores (r ranged
206 from 0.22 with smoking to 0.47 with BMI and blood pressure scores in SCCS; **Fig. S1**).

207

208 **Metabolite signature of LE8**

209 We identified 133 metabolites related to LE8 (top 30 are shown in **Fig. 2A**; the full list
210 can be found in **Table S3**). The MetaSig was strongly correlated with LE8 score ($r = 0.61$,
211 $P < 0.001$; **Fig. 2B**), meanwhile variations in MetaSig were observed among individuals with
212 the same LE8 score, demonstrating interindividual difference in metabolic phenotype of LE8.
213 MetaSig was also correlated with LE8 score in SWMHS ($r = 0.49$, $P < 0.001$; **Fig. 2C**).
214 Stratified analyses showed that correlations between LE8 score and MetaSig were consistent
215 regardless of age, sex, race, fasting status, diabetes status, hypertension status, dyslipidemia
216 status, and incident CHD status (r ranged from 0.54 to 0.64; **Table S4**), suggesting the
217 robustness of our identified LE8 metabolite signature across participants with different

218 sociodemographic backgrounds and metabolic disease status.

219

220 **Associations with incident CHD**

221 Higher LE8 score and its MetaSig were significantly associated with lower risk of CHD:

222 standardized multivariable-adjusted odds ratio (OR) = 0.61 (95% CI: 0.53-0.69) for LE8

223 score and 0.57 (0.49-0.65) for MetaSig; both $P < 0.001$ (**Table 2**). Sensitivity analysis

224 showed that the MetaSig-CHD associations did not change after excluding any individual

225 metabolites from the signature (**Table S5**). After further adjusting for LE8 score, the

226 MetaSig-CHD association was only slightly attenuated [OR (95% CI) = 0.66 (0.55-0.78);

227 $P < 0.001$; **Table 2**], suggesting circulating metabolites may complement LE8 assessment and

228 contribute to CHD risk beyond LE8 score. On the other hand, the LE8-CHD association was

229 moderately attenuated after adjusting for MetaSig [OR (95% CI) = 0.78 (0.66-0.92),

230 $P = 0.003$]. Mediation analysis showed that MetaSig mediated a large portion of the LE8-CHD

231 association [53% (32%-80%); $P_{\text{mediation}} < 0.001$; **Fig. 2D**].

232 Both LE8 and its MetaSig were inversely associated with CHD risk in subpopulations by

233 race, age group, education, income, diabetes status, hypertension status, and dyslipidemia

234 status ($P_{\text{interaction}} > 0.05$; **Fig. 3**), with stronger associations observed in women than in men [for

235 LE8, OR (95% CI) = 0.53 (0.42-0.66) in women and 0.66 (0.55-0.80) in men, $P_{\text{interaction}} =$

236 0.017; for MetaSig, 0.48 (0.38-0.6) in women and 0.65 (0.54-0.78) in men, $P_{\text{interaction}} = 0.016$].

237 The association of MetaSig with incident CHD was replicated in SWMHS (**Table 2**),

238 with OR (95% CI) = 0.57 (0.46-0.69) and 0.69 (0.55-0.86) after further adjusting for LE8

239 score (both $P < 0.001$). The MetaSig also mediated a considerable portion of the LE8-CHD

240 association in SWMHS [27.4% (10%-47%); $P_{\text{mediation}} < 0.001$; **Fig. 2E**].

241

242 **Metabolite signatures of health behaviors and health factors and associations with CHD**

243 We further identified MetaSigs for health behaviors (**Fig. S2A**) and health factors in

244 SCCS (**Fig. S3A**; full lists of metabolites are shown in **Table S3**), which showed strong

245 correlations with health behaviors score ($r = 0.59$, $P < 0.001$; **Fig. S2B**) and with health factors

246 score ($r = 0.76$, $P < 0.001$; **Fig. S3B**). Significant correlations were also found among

247 participant subgroups (**Table S4**), suggesting the robustness of identified metabolite

248 signatures for health behaviors and health factors. In addition, there were significant inverse

249 associations of health behaviors score, health factors score, and their related signatures with

250 risk of CHD (all $P < 0.001$; **Table 2**). Specifically, standardized OR (95% CI) was 0.73 (0.63-

251 0.85) for health behaviors MetaSig and 0.57 (0.49-0.66) for health factors MetaSig. Similarly,

252 metabolites mediated large portions of the health behaviors-CHD association [43.9% (13.9%-

253 101%), $P = 0.004$; **Fig. S2D**] and health factors-CHD association [53.2% (24.8%-89%),

254 $P_{\text{mediation}} < 0.001$; **Fig. S3D**]. Further, all results on health behaviors MetaSig and health factors

255 MetaSig were replicated in SWMHS (**Table 2**, **Fig. S2**, and **Fig. S3**).

256

257 **Discussion**

258 Leveraging untargeted plasma metabolites data in a nested case-control study among

259 low-income Black and White Americans, we identified a metabolite signature that could

260 reflect LE8 score and was associated with incident CHD, even after adjusting for LE8 and

261 among participants with varied sociodemographic and metabolic health status, suggesting

262 that circulating metabolite profiling may be used to help assess LE8 alignment across diverse
263 populations and offer additional information on CVH (e.g., inter-individual metabolic
264 phenotypes related to LE8). We also identified MetaSigs for health behaviors and health
265 factors and found consistent results showing that circulating metabolites could reflect the
266 alignment with those recommendations and underlying metabolic phenotypes, which were
267 further linked to incident CHD across diverse populations. All the results were further
268 replicated in another nested case-control study of CHD among Chinese adults. Our findings
269 demonstrate the potential utility of blood metabolomics to improve the assessment of LE8
270 and its underlying metabolic variations that are linked to incident CHD among
271 sociodemographically diverse populations, towards advancing precision medicine and
272 addressing disparities in CVH.

273

274 LE8 is the American Heart Association's updated and enhanced guideline to measure and
275 promote CVH for individuals and populations³. The beneficial associations of following the
276 LE8 with lower risks of CHD, CVD, and related mortality have been demonstrated in recent
277 studies⁴⁻⁷. However, multi-racial/ethnic populations with low SES remain underrepresented in
278 research studies, even though they have persistently experienced worse CVH and CVD
279 outcomes, as well as systemic disadvantages to improve CVH, than White and middle-class
280 Americans^{2,41-43}. Leveraging resources from SCCS, a large cohort of predominantly low-
281 income Black and White Americans (in the present study: ~65% with household income
282 <\$15,000/y and ~95% with household income <\$25,000/y), our study assessed CVH based
283 on LE8 and evaluated the association of LE8 score with incident CHD. We found that higher

284 LE8 score (per SD increase) was associated with ~40-50% lower risk of CHD among Black
285 Americans and individuals with low SES. While LE8 provides a comprehensive approach to
286 quantify CVH, its assessment involves a series of procedures such as questionnaires,
287 anthropometric and blood pressure measures, and blood draw. Particularly, health behaviors
288 (diet, physical activity, smoking, and sleep) are usually assessed by questionnaires, which are
289 time-consuming and prone to measurement errors and low compliance (particularly in the
290 clinical setting). Also, LE8 score cannot capture varied individual metabolic responses to
291 lifestyle exposures. Hence, we incorporated untargeted plasma metabolomics data, and for
292 the first time, identified a robust metabolite signature of LE8 and then examined its
293 association with incident CHD.

294
295 Metabolomics has been demonstrated as a powerful tool for improving exposure
296 assessment and identifying potential novel biomarkers and mechanistic pathways in
297 population studies, given its high-throughput characterization of thousands of metabolites in a
298 small amount of biological samples⁴⁴. Our study provides new evidence that plasma
299 metabolite profiling may provide objective and comprehensive measures of LE8 and CVH
300 among racially and geographically diverse populations. The identified metabolite signature
301 may complement LE8 scores, improve the precision to stratify individuals with different
302 future CHD risk, and potentially facilitate personalized CHD prevention strategies.

303
304 Our identified MetaSig consists of metabolites reflecting participants' alignment with
305 LE8 health behaviors and metabolic health status, majority of which are lipids and amino

306 acids, and many of them have been linked to diet¹²⁻¹⁶, physical activity¹⁷⁻¹⁹, smoking²⁰⁻²²,
307 sleep²³⁻²⁶, obesity^{27,28,45}, or composite lifestyles scores⁴⁶⁻⁴⁹ in previous studies. For example,
308 (2,4 or 2,5)-dimethylphenol sulfate, tartronate, and ethyl beta-glucopyranoside are derived
309 from plant-based foods; cotinine is the major metabolite of nicotine from tobacco smoking;
310 cholesterol, sphingomyelin, cortisol, and 1-palmitoleoylglycerol are related to blood
311 lipids; mannose, metformin, and fructosyllysine are related to prevalent diabetes and blood
312 glucose. Particularly, drug metabolites including hydrochlorothiazide and metformin reflect
313 antihypertensive and antidiabetic medications defined in LE8. Nevertheless, the associations
314 of MetaSig with LE8 score and incident CHD were consistent among participants with or
315 without history of hypertension or diabetes (**Fig. 3** and **Table S4**), and the MetaSig-CHD
316 association did not change after excluding those drug metabolites from the MetaSig [OR
317 (95% CI)=0.55 (0.48-0.64); $P<0.001$]. Moreover, excluding 29 unknown metabolites (X-
318 from the MetaSig also did not change the MetaSig-CHD association [OR (95% CI)=0.58
319 (0.50-0.66); $P<0.001$]. Notably, the MetaSig also contains microbial metabolites, e.g.,
320 maltotetraose, anthranilate, indolebutyrate, and bile acids (taurohyocholate,
321 glycodeoxycholate 3-sulfate, 3b-hydroxy-5-cholenoic acid, and glycohyocholate), suggesting
322 the role of gut microbiome in host's CVH, which cannot be captured by questionnaires or
323 measurements of glucose, cholesterol, or blood pressure. Moreover, several metabolic
324 pathways related to CVH and CVD development were highlighted. For example, anthranilate,
325 indolebutyrate, picolinate, and serotonin are members of tryptophan metabolism pathway⁵⁰⁻⁵²;
326 taurohyocholate, glycodeoxycholate 3-sulfate, 3b-hydroxy-5-cholenoic acid, and
327 glycohyocholate belong to secondary bile acid metabolism pathway^{53,54}; alpha-tocopherol,

328 delta-tocopherol, and gamma-tocopherol/beta-tocopherol are vitamin E derivatives through
329 tocopherol metabolism pathway^{55,56}.

330

331 Importantly, the MetaSig was related to future CHD risk regardless of participants' age,
332 sex, race, SES, metabolic disease history, and even after adjustment for LE8. Further analyses
333 indicated that circulating metabolites could play a substantial mediating role linking LE8 and
334 reduced CHD risk. Moreover, our findings were replicated in a racially and geographically
335 different population, suggesting external validity and potential generalizability of our
336 findings. Taken together, our findings demonstrated that circulating metabolites could
337 complement LE8 to improve the precision of CVH assessment and predict CHD risk among
338 sociodemographically and geographically diverse populations.

339

340 To our knowledge, this is the first study that assessed the LE8 score, constructed its
341 metabolite signature, and associated LE8 score and its MetaSig with incident CHD in Black
342 and White Americans with low SES. Besides its novelty and inclusion of populations facing
343 socioeconomic challenges and health disparities, other strengths of our study include its
344 prospective design, comprehensive profiling of >1500 blood metabolites for a broad coverage
345 and improved ability to construct metabolite signature for LE8, and robustness of results
346 across populations with different sociodemographic and health status. Meanwhile, several
347 limitations of our current study need to be acknowledged. First, as MetaSig of LE8 was
348 identified using cross-sectional data from baseline blood samples, we cannot be certain as to
349 the directionality of LE8-MetaSig association, and mediation analysis assumed that LE8

350 score preceded MetaSig. Although several population- or animal-based studies have shown
351 the causal effects of LE8 components on blood metabolites^{21,26,57-60}, given that blood
352 metabolites might precede some LE8 components, the longitudinal association between LE8
353 adherence and circulating metabolites should be investigated. Second, given the observational
354 nature of our study, the causality is unable to be confirmed. However, the prospective design
355 reduces the concern of reverse causation for the LE8/MetaSig-CHD association. Third, we
356 cannot rule out the influence of residual confounding on the LE8/MetaSig-CHD association,
357 although we have adjusted for and stratified by major CHD risk factors. Fourth, the
358 concentrations of fasting glucose and HbA1c and SBP and DBP were not measured in SSCS;
359 thus, glucose score and blood pressure score were defined based on history of diabetes or
360 hypertension and use of medications, which may influence the accuracy of LE8 score.
361 Finally, the nested case-control design may overestimate the predictive ability of the LE8
362 score and its MetaSig. Therefore, our results should be further validated in other prospective
363 cohort studies.

364

365 In summary, our study assessed the LE8 score and identified MetaSig of LE8 among
366 low-income Black and White Americans. We found that both LE8 score and its MetaSig were
367 inversely associated with risk of CHD, consistently among participants with varied
368 sociodemographic and metabolic health status. Our identified metabolite signature may
369 provide an objective and comprehensive measure of LE8 and its metabolic underpinning,
370 which may help improve the precision of CVH assessment and facilitate more effective and
371 personalized CHD prevention strategies in diverse populations. Further examination of our

372 identified metabolites may improve understanding of biological mechanisms as how
373 following LE8 benefits CHD prevention.

374 **Acknowledgments**

375 The authors thank the study participants of the SCCS and the SWMHS.

376

377 **Funding**

378 The Southern Community Cohort Study is funded by U01 CA202979, the Shanghai Women's

379 Health Study is funded by UM1 CA182910, and the Shanghai Men's Health Study is funded

380 by UM1 CA173640 from the National Cancer Institute (NCI) at the National Institutes of

381 Health (NIH). Biospecimens of these three cohort studies are managed by the Survey and

382 Biospecimen Shared Resource, which is supported in part by the Vanderbilt-Ingram Cancer

383 Center (P30 CA68485). This study is supported by R01 HL149779 from the National Heart,

384 Lung, and Blood Institute (NHLBI) at the NIH. The content is solely the responsibility of the

385 authors and does not necessarily represent the official views of the National Institutes of

386 Health.

387

388 **Conflict of interest**

389 The authors declared no conflict of interest.

390 **References**

- 391 1. Global burden of 369 diseases and injuries in 204 countries and territories, 1990-2019: a
392 systematic analysis for the Global Burden of Disease Study 2019. *Lancet* 2020;**396**:1204-1222.
393 doi: 10.1016/s0140-6736(20)30925-9
- 394 2. Tsao CW, Aday AW, Almarzooq ZI, *et al.* Heart Disease and Stroke Statistics-2023 Update:
395 A Report From the American Heart Association. *Circulation* 2023. doi:
396 10.1161/cir.0000000000001123
- 397 3. Lloyd-Jones DM, Allen NB, Anderson CA, *et al.* Life's essential 8: updating and
398 enhancing the American Heart Association's Construct of Cardiovascular Health: a presidential
399 advisory from the American Heart Association. *Circulation* 2022;**146**:e18-e43. doi:
- 400 4. Wang X, Ma H, Li X, *et al.* Association of Cardiovascular Health With Life Expectancy
401 Free of Cardiovascular Disease, Diabetes, Cancer, and Dementia in UK Adults. *JAMA Intern*
402 *Med* 2023. doi: 10.1001/jamainternmed.2023.0015
- 403 5. Isiozor NM, Kunutsor SK, Voutilainen A, Laukkanen JA. Life's Essential 8 and the risk of
404 cardiovascular disease death and all-cause mortality in Finnish men. *Eur J Prev Cardiol* 2023.
405 doi: 10.1093/eurjpc/zwad040
- 406 6. Jin C, Li J, Liu F, *et al.* Life's Essential 8 and 10-Year and Lifetime Risk of Atherosclerotic
407 Cardiovascular Disease in China. *Am J Prev Med* 2023. doi: 10.1016/j.amepre.2023.01.009
- 408 7. Yi J, Wang L, Guo X, Ren X. Association of Life's Essential 8 with all-cause and
409 cardiovascular mortality among US adults: A prospective cohort study from the NHANES
410 2005-2014. *Nutr Metab Cardiovasc Dis* 2023. doi: 10.1016/j.numecd.2023.01.021
- 411 8. Xanthakis V, Enserro DM, Murabito JM, *et al.* Ideal cardiovascular health: associations

- 412 with biomarkers and subclinical disease and impact on incidence of cardiovascular disease in
413 the Framingham Offspring Study. *Circulation* 2014;**130**:1676-1683. doi:
- 414 9. Gaye B, Tafflet M, Arveiler D, *et al.* Ideal cardiovascular health and incident
415 cardiovascular disease: heterogeneity across event subtypes and mediating effect of blood
416 biomarkers: the prime study. *Journal of the American Heart Association* 2017;**6**:e006389. doi:
- 417 10. Després JP. Predicting longevity using metabolomics: a novel tool for precision lifestyle
418 medicine? *Nat Rev Cardiol* 2020;**17**:67-68. doi: 10.1038/s41569-019-0310-2
- 419 11. Clish CB. Metabolomics: an emerging but powerful tool for precision medicine. *Molecular*
420 *Case Studies* 2015;**1**:a000588. doi:
- 421 12. Li J, Guasch-Ferré M, Chung W, *et al.* The Mediterranean diet, plasma metabolome, and
422 cardiovascular disease risk. *Eur Heart J* 2020;**41**:2645-2656. doi: 10.1093/eurheartj/ehaa209
- 423 13. Chen L, Zhernakova DV, Kurilshikov A, *et al.* Influence of the microbiome, diet and
424 genetics on inter-individual variation in the human plasma metabolome. *Nat Med* 2022. doi:
425 10.1038/s41591-022-02014-8
- 426 14. Wang F, Baden MY, Guasch-Ferré M, *et al.* Plasma metabolite profiles related to plant-
427 based diets and the risk of type 2 diabetes. *Diabetologia* 2022;**65**:1119-1132. doi:
428 10.1007/s00125-022-05692-8
- 429 15. Chen GC, Chai JC, Xing J, *et al.* Healthful eating patterns, serum metabolite profile and
430 risk of diabetes in a population-based prospective study of US Hispanics/Latinos. *Diabetologia*
431 2022;**65**:1133-1144. doi: 10.1007/s00125-022-05690-w
- 432 16. Shah RV, Steffen LM, Naylor M, *et al.* Dietary metabolic signatures and cardiometabolic
433 risk. *European Heart Journal* 2022. doi:

- 434 17. Kempainen SM, Fernandes Silva L, Lankinen MA, Schwab U, Laakso M. Metabolite
435 Signature of Physical Activity and the Risk of Type 2 Diabetes in 7271 Men. *Metabolites*
436 2022;**12**. doi: 10.3390/metabo12010069
- 437 18. Kujala UM, Mäkinen VP, Heinonen I, *et al.* Long-term leisure-time physical activity and
438 serum metabolome. *Circulation* 2013;**127**:340-348. doi: 10.1161/circulationaha.112.105551
- 439 19. Ding M, Zeleznik OA, Guasch-Ferre M, *et al.* Metabolome-Wide Association Study of the
440 Relationship Between Habitual Physical Activity and Plasma Metabolite Levels. *Am J*
441 *Epidemiol* 2019;**188**:1932-1943. doi: 10.1093/aje/kwz171
- 442 20. Tan Y, Barr DB, Ryan PB, *et al.* High-resolution metabolomics of exposure to tobacco
443 smoke during pregnancy and adverse birth outcomes in the Atlanta African American maternal-
444 child cohort. *Environ Pollut* 2022;**292**:118361. doi: 10.1016/j.envpol.2021.118361
- 445 21. Xu T, Holzapfel C, Dong X, *et al.* Effects of smoking and smoking cessation on human
446 serum metabolite profile: results from the KORA cohort study. *BMC Med* 2013;**11**:60. doi:
447 10.1186/1741-7015-11-60
- 448 22. Gu F, Derkach A, Freedman ND, *et al.* Cigarette smoking behaviour and blood
449 metabolomics. *Int J Epidemiol* 2016;**45**:1421-1432. doi: 10.1093/ije/dyv330
- 450 23. Bos MM, Goulding NJ, Lee MA, *et al.* Investigating the relationships between
451 unfavourable habitual sleep and metabolomic traits: evidence from multi-cohort multivariable
452 regression and Mendelian randomization analyses. *BMC Med* 2021;**19**:69. doi:
453 10.1186/s12916-021-01939-0
- 454 24. Fritz J, Huang T, Depner CM, *et al.* Sleep duration, plasma metabolites, and obesity and
455 diabetes: A metabolome-wide association study in US women. *Sleep* 2022. doi:

- 456 10.1093/sleep/zsac226
- 457 25. Topriceanu CC, Tillin T, Chaturvedi N, Joshi R, Garfield V. The association between
458 plasma metabolites and sleep quality in the Southall and Brent Revisited (SABRE) Study: A
459 cross-sectional analysis. *J Sleep Res* 2021;**30**:e13245. doi: 10.1111/jsr.13245
- 460 26. Huang T, Zeleznik OA, Poole EM, *et al.* Habitual sleep quality, plasma metabolites and
461 risk of coronary heart disease in post-menopausal women. *Int J Epidemiol* 2019;**48**:1262-1274.
462 doi: 10.1093/ije/dyy234
- 463 27. Pan XF, Chen ZZ, Wang TJ, *et al.* Plasma metabolomic signatures of obesity and risk of
464 type 2 diabetes. *Obesity (Silver Spring)* 2022. doi: 10.1002/oby.23549
- 465 28. Ottosson F, Smith E, Ericson U, *et al.* Metabolome-Defined Obesity and the Risk of Future
466 Type 2 Diabetes and Mortality. *Diabetes Care* 2022;**45**:1260-1267. doi: 10.2337/dc21-2402
- 467 29. Signorello LB, Hargreaves MK, Blot WJ. The Southern Community Cohort Study:
468 investigating health disparities. *J Health Care Poor Underserved* 2010;**21**:26-37. doi:
469 10.1353/hpu.0.0245
- 470 30. Zheng W, Chow WH, Yang G, *et al.* The Shanghai Women's Health Study: rationale, study
471 design, and baseline characteristics. *Am J Epidemiol* 2005;**162**:1123-1131. doi:
472 10.1093/aje/kwi322
- 473 31. Shu XO, Li H, Yang G, *et al.* Cohort Profile: The Shanghai Men's Health Study. *Int J*
474 *Epidemiol* 2015;**44**:810-818. doi: 10.1093/ije/dyv013
- 475 32. Lloyd-Jones DM, Ning H, Labarthe D, *et al.* Status of Cardiovascular Health in US Adults
476 and Children Using the American Heart Association's New "Life's Essential 8" Metrics:
477 Prevalence Estimates From the National Health and Nutrition Examination Survey (NHANES),

- 478 2013 Through 2018. *Circulation* 2022;**146**:822-835. doi: 10.1161/circulationaha.122.060911
- 479 33. Mellen PB, Gao SK, Vitolins MZ, Goff DC. Deteriorating dietary habits among adults with
480 hypertension: DASH dietary accordance, NHANES 1988-1994 and 1999-2004. *Archives of*
481 *internal medicine* 2008;**168**:308-314. doi:
- 482 34. Chang RS, Xu M, Brown SH, *et al.* Relation of the Dietary Approaches to Stop
483 Hypertension Dietary Pattern to Heart Failure Risk and Socioeconomic Status (from the
484 Southern Community Cohort Study). *Am J Cardiol* 2022;**169**:71-77. doi:
485 10.1016/j.amjcard.2021.12.043
- 486 35. Yu D, Zhang X, Xiang YB, *et al.* Adherence to dietary guidelines and mortality: a report
487 from prospective cohort studies of 134,000 Chinese adults in urban Shanghai. *Am J Clin Nutr*
488 2014;**100**:693-700. doi: 10.3945/ajcn.113.079194
- 489 36. Evans AM, DeHaven CD, Barrett T, Mitchell M, Milgram E. Integrated, nontargeted
490 ultrahigh performance liquid chromatography/electrospray ionization tandem mass
491 spectrometry platform for the identification and relative quantification of the small-molecule
492 complement of biological systems. *Anal Chem* 2009;**81**:6656-6667. doi: 10.1021/ac901536h
- 493 37. Zou H, Hastie T. Regularization and variable selection via the elastic net. *Journal of the*
494 *royal statistical society: series B (statistical methodology)* 2005;**67**:301-320. doi:
- 495 38. Kuhn M. Building predictive models in R using the caret package. *Journal of statistical*
496 *software* 2008;**28**:1-26. doi:
- 497 39. Friedman J, Hastie T, Tibshirani R. Regularization paths for generalized linear models via
498 coordinate descent. *Journal of statistical software* 2010;**33**:1. doi:
- 499 40. Tingley D, Yamamoto T, Hirose K, Keele L, Imai K. Mediation: R package for causal

500 mediation analysis. 2014. doi:

501 41. Huffman MD, Capewell S, Ning H, *et al.* Cardiovascular health behavior and health factor
502 changes (1988-2008) and projections to 2020: results from the National Health and Nutrition
503 Examination Surveys. *Circulation* 2012;**125**:2595-2602. doi:
504 10.1161/circulationaha.111.070722

505 42. Pilkerton CS, Singh SS, Bias TK, Frisbee SJ. Changes in Cardiovascular Health in the
506 United States, 2003-2011. *J Am Heart Assoc* 2015;**4**:e001650. doi: 10.1161/jaha.114.001650

507 43. Haynes N, Kaur A, Swain J, Joseph JJ, Brewer LC. Community-Based Participatory
508 Research to Improve Cardiovascular Health Among US Racial and Ethnic Minority Groups.
509 *Curr Epidemiol Rep* 2022;**9**:212-221. doi: 10.1007/s40471-022-00298-5

510 44. Wishart DS. Emerging applications of metabolomics in drug discovery and precision
511 medicine. *Nature reviews Drug discovery* 2016;**15**:473-484. doi:

512 45. Cirulli ET, Guo L, Leon Swisher C, *et al.* Profound Perturbation of the Metabolome in
513 Obesity Is Associated with Health Risk. *Cell Metab* 2019;**29**:488-500.e482. doi:
514 10.1016/j.cmet.2018.09.022

515 46. Delgado-Velandia M, Gonzalez-Marrachelli V, Domingo-Relloso A, *et al.* Healthy
516 lifestyle, metabolomics and incident type 2 diabetes in a population-based cohort from Spain.
517 *Int J Behav Nutr Phys Act* 2022;**19**:8. doi: 10.1186/s12966-021-01219-3

518 47. Rothwell JA, Murphy N, Bešević J, *et al.* Metabolic Signatures of Healthy Lifestyle
519 Patterns and Colorectal Cancer Risk in a European Cohort. *Clin Gastroenterol Hepatol*
520 2022;**20**:e1061-e1082. doi: 10.1016/j.cgh.2020.11.045

521 48. Assi N, Gunter MJ, Thomas DC, *et al.* Metabolic signature of healthy lifestyle and its

- 522 relation with risk of hepatocellular carcinoma in a large European cohort. *Am J Clin Nutr*
523 2018;**108**:117-126. doi: 10.1093/ajcn/nqy074
- 524 49. Si J, Li J, Yu C, *et al.* Improved lipidomic profile mediates the effects of adherence to
525 healthy lifestyles on coronary heart disease. *Elife* 2021;**10**. doi: 10.7554/eLife.60999
- 526 50. Wirleitner B, Rudzite V, Neurauter G, *et al.* Immune activation and degradation of
527 tryptophan in coronary heart disease. *European journal of clinical investigation* 2003;**33**:550-
528 554. doi:
- 529 51. Mangge H, Stelzer I, Reininghaus E, *et al.* Disturbed tryptophan metabolism in
530 cardiovascular disease. *Current medicinal chemistry* 2014;**21**:1931-1937. doi:
- 531 52. Liu G, Chen S, Zhong J, Teng K, Yin Y. Crosstalk between tryptophan metabolism and
532 cardiovascular disease, mechanisms, and therapeutic implications. *Oxidative Medicine and*
533 *Cellular Longevity* 2017;**2017**. doi:
- 534 53. Fan Y, Pedersen O. Gut microbiota in human metabolic health and disease. *Nat Rev*
535 *Microbiol* 2021;**19**:55-71. doi: 10.1038/s41579-020-0433-9
- 536 54. Agus A, Clément K, Sokol H. Gut microbiota-derived metabolites as central regulators in
537 metabolic disorders. *Gut* 2021;**70**:1174-1182. doi: 10.1136/gutjnl-2020-323071
- 538 55. Dietrich M, Traber MG, Jacques PF, *et al.* Does γ -tocopherol play a role in the primary
539 prevention of heart disease and cancer? A review. *Journal of the American College of Nutrition*
540 2006;**25**:292-299. doi:
- 541 56. Mathur P, Ding Z, Saldeen T, Mehta JL. Tocopherols in the prevention and treatment of
542 atherosclerosis and related cardiovascular disease. *Clinical cardiology* 2015;**38**:570-576. doi:
- 543 57. Würtz P, Wang Q, Kangas AJ, *et al.* Metabolic signatures of adiposity in young adults:

- 544 Mendelian randomization analysis and effects of weight change. *PLoS Med* 2014;**11**:e1001765.
545 doi: 10.1371/journal.pmed.1001765
- 546 58. Lauterbach MA, Latz E, Christ A. Metabolomic Profiling Reveals Distinct and Mutual
547 Effects of Diet and Inflammation in Shaping Systemic Metabolism in Ldlr(-/-) Mice.
548 *Metabolites* 2020;**10**. doi: 10.3390/metabo10090336
- 549 59. Sato S, Dyar KA, Treebak JT, *et al*. Atlas of exercise metabolism reveals time-dependent
550 signatures of metabolic homeostasis. *Cell Metabolism* 2022;**34**:329-345. e328. doi:
- 551 60. Cruickshank-Quinn CI, Mahaffey S, Justice MJ, *et al*. Transient and persistent
552 metabolomic changes in plasma following chronic cigarette smoke exposure in a mouse model.
553 *PloS one* 2014;**9**:e101855. doi:
554

555 **Figure legends**

556 **Fig. 1. Overview of the current study.** This study involved two nested case-control
557 metabolomics studies within Southern Community Cohort Study (SCCS, primary cohort) and
558 Shanghai Women's and Men's Health Studies (SWMHS, validation cohort). In the follow-up
559 visits, participants with incident coronary heart disease (CHD) were identified and matched
560 with controls by enrollment age, sex, race, fasting time, and time between sample collection
561 and lab processing. After excluding 8 samples that did not pass metabolomics quality control,
562 1194 SCCS participants and 598 SWMHS participants were included. Metabolite signature of
563 Life's Essential 8 (LE8) were identified using elastic net regression with leave-one-out cross-
564 validation in SCCS. The associations of LE8 score and its metabolite signature with risk of
565 CHD were evaluated by conditional logistic regression adjusted for confounders. Mediation
566 analysis was performed to assess the potential mediating role of metabolite signature on the
567 LE8-CHD association. External validity of the identified metabolite signature related to LE8
568 score and CHD risk was investigated in SWMHS.

569 **Abbreviations:** SCCS, Southern Community Cohort Study; SWMHS, Shanghai Women's
570 and Men's Health Studies; CHD, coronary heart disease; LE8, Life's Essential 8; MetaSig,
571 metabolite signature.

572

573 **Fig. 2. The metabolite signature of LE8 and its association with risk of CHD.** (A) Top 30
574 metabolites selected by elastic net regression in SCCS. Metabolites were ranked by the
575 absolute value of regression coefficients. (B) *Spearman* correlation between MetaSig and
576 LE8 score in SCCS. The dashed line denotes median LE8 score. (C) *Spearman* correlation

577 between MetaSig and LE8 score in SWMHS. **(D)** The mediation effect of MetaSig on the
578 association between LE8 score and risk of CHD in SCCS. **(E)** The mediation effect of
579 MetaSig on the association between LE8 score and risk of CHD in SWMHS.

580 **Abbreviations:** SCCS, Southern Community Cohort Study; SWMHS, Shanghai Women's
581 and Men's Health Studies; LE8, Life's Essential 8; MetaSig, metabolite signature; ACME,
582 average causal mediation effects; ADE, average direct effects; CHD, coronary heart disease.

583

584 **Fig. 3. Subgroup analyses for the associations of LE8 score and its metabolite signature**
585 **with risk of CHD in SCCS. (A)** Subgroup analysis for the association between LE8 score
586 and risk of CHD. **(B)** Subgroup analysis for the association between MetaSig and risk of
587 CHD. Conditional logistic regression models were used, adjusted for potential confounders.
588 For income, lower income denotes low income and higher income denotes middle and high
589 income.

590 **Abbreviations:** SCCS, Southern Community Cohort Study; MetaSig, metabolite signature;
591 CHD, coronary heart disease; LE8, Life's Essential 8; OR, odds ratio; CI, confidence interval.

592 **Table 1. Characteristics of study participants in the Southern Community Cohort Study**

	Black participants (N=598)		White participants (N=596)	
	CHD (N=299)	Control (N=299)	CHD (N=298)	Control (N=298)
Age, years	54.9 (8.8)	54.7 (8.7)	55.2 (8.7)	55.1 (8.6)
Male, n (%)	149 (49.8)	149 (49.8)	148 (49.7)	148 (49.7)
Education, n (%)				
Less than high school	120 (40.1)	109 (36.5)	108 (36.2)	84 (28.2)
Completed high school	107 (35.8)	108 (36.1)	118 (39.6)	118 (39.6)
Vocational school or some college	57 (19.1)	60 (20.1)	52 (17.4)	54 (18.1)
College or graduate school	15 (5.0)	22 (7.4)	20 (6.7)	42 (14.1)
Income, n (%)*				
Low	194 (64.9)	185 (61.9)	196 (65.8)	167 (56.0)
Middle	100 (33.4)	104 (34.8)	92 (30.9)	111 (37.2)
High	5 (1.7)	10 (3.3)	10 (3.4)	20 (6.7)
Alcohol intake, n (%)**				
None	154 (51.5)	140 (46.8)	175 (58.7)	140 (47.0)
Moderate	94 (31.4)	107 (35.8)	98 (32.9)	129 (43.3)
Heavy	51 (17.1)	52 (17.4)	25 (8.4)	29 (9.7)
Family history of CHD, n (%)	107 (35.8)	89 (29.8)	168 (56.4)	142 (47.7)
History of diabetes, n (%)	116 (38.8)	56 (18.7)	96 (32.2)	40 (13.4)
History of dyslipidemia, n (%)	102 (34.1)	91 (30.4)	155 (52.0)	108 (36.2)
History of hypertension, n (%)	210 (70.2)	179 (59.9)	177 (59.4)	133 (44.6)
LE8 score	45.9 (11.9)	52.2 (13.2)	45.0 (13.5)	51.5 (13.5)
LE8 score category, n (%)***				
High (80-100)	0 (0)	7 (2.3)	3 (1.0)	10 (3.4)
Moderate (50-79)	114 (38.1)	174 (58.2)	100 (33.6)	148 (49.7)
Low (0-49)	185 (61.9)	118 (39.5)	195 (65.4)	140 (47.0)
Health behaviors score	43.8 (18.4)	47.4 (20.5)	42.0 (19.2)	46.3 (21.0)
Health factors score	47.2 (20.4)	56.7 (21.3)	48.0 (20.7)	56.2 (20.1)
Diet score	39.8 (32.2)	41.6 (30.6)	36.9 (30.3)	40.8 (32.3)
Physical activity score	22.8 (39.8)	24.2 (40.5)	19.9 (38.8)	21.3 (39.1)
Smoking score	43.0 (42.2)	47.8 (42.5)	40.0 (40.3)	46.5 (42.0)
Sleep score	72.3 (29.2)	77.1 (26.6)	71.2 (29.7)	78.1 (26.6)
BMI score	50.0 (34.5)	56.9 (35.3)	50.4 (34.1)	57.7 (34.2)
Blood lipids score	36.8 (32.8)	44.6 (31.8)	25.8 (28.7)	27.9 (27.6)
Blood glucose score	54.3 (34.3)	69.6 (30.0)	60.9 (34.0)	73.3 (26.7)
Blood pressure score	47.7 (35.1)	55.8 (37.3)	54.9 (38.3)	65.9 (38.9)

593 Data were mean (standard deviation) or n (%) as indicated.

594 *Annual household income <\$15,000, \$15,000 to <\$25,000, and ≥\$25,000 for low, middle, and high levels of
595 income, respectively.

596 **Alcohol intake was grouped as none, moderate (>0 to ≤2 drinks per day in men or >0 to ≤1 drink per day in
597 women; 1 drink = 14 g ethanol), and heavy drinking (>2 drinks per day in men or >1 drink per day in women).

598 ***The cutoffs were provided by the American Heart Association (Lloyd-Jones *et al.*, 2022).

599 Abbreviations: CHD, coronary heart disease; LE8, Life's Essential 8; BMI, body mass index.

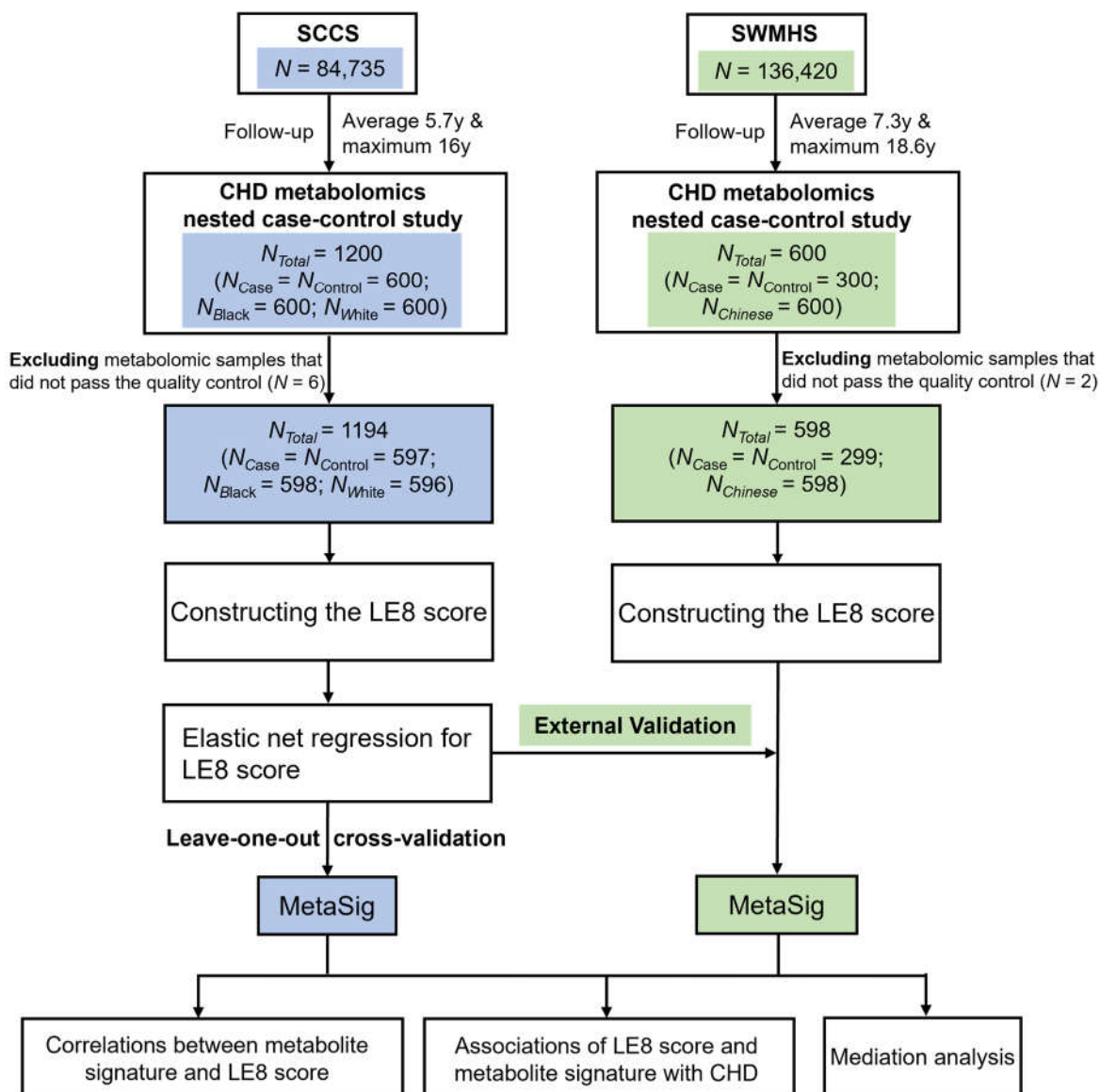
600 **Table 2. The associations of LE8 score, health behaviors score, health factors score and**
 601 **their related metabolite signatures with risk of CHD***

		OR (95% CI)	P
SCCS			
LE8	LE8 score	0.61 (0.53-0.69)	< 0.001
	MetaSig	0.57 (0.49-0.65)	< 0.001
	MetaSig (adjusting for LE8 score)	0.66 (0.55-0.78)	< 0.001
Health behaviors	Health behaviors score	0.77 (0.67-0.88)	< 0.001
	MetaSig	0.73 (0.63-0.85)	< 0.001
	MetaSig (adjusting for health behaviors score)	0.79 (0.67-0.94)	0.007
Health factors	Health factors score	0.61 (0.53-0.7)	< 0.001
	MetaSig	0.57 (0.49-0.66)	< 0.001
	MetaSig (adjusting for health factors score)	0.68 (0.55-0.84)	< 0.001
SWMHS			
LE8	LE8 score	0.52 (0.42-0.65)	< 0.001
	MetaSig	0.57 (0.46-0.69)	< 0.001
	MetaSig (adjusting for LE8 score)	0.69 (0.55-0.86)	< 0.001
Health behaviors	Health behaviors score	0.73 (0.59-0.9)	0.003
	MetaSig	0.69 (0.55-0.87)	0.001
	MetaSig (adjusting for health behaviors score)	0.77 (0.59-0.99)	0.043
Health factors	Health factors score	0.5 (0.4-0.62)	< 0.001
	MetaSig	0.57 (0.47-0.7)	< 0.001
	MetaSig (adjusting for health factors score)	0.80 (0.62-1.04)	0.093

602 * For associations of LE8 score and its related metabolite signature with risk of CHD, we used the conditional
 603 logistic regression, adjusted for age, education, income, alcohol intake, family history of CHD. For
 604 associations of health behaviors score and health factors score and their related metabolite signatures with
 605 risk of CHD, we used the conditional logistic regression, adjusted for age, education, income, alcohol intake,
 606 family history of CHD, and mutual adjustments of health factors score/health behaviors score.
 607 Abbreviations: SCCS, Southern Community Cohort Study; SWMHS, Shanghai Women's and Men's Health
 608 Studies; CHD, coronary heart disease; LE8, Life's Essential 8; MetaSig, metabolite signature; OR, odds ratio; CI,
 609 confidence interval.

610

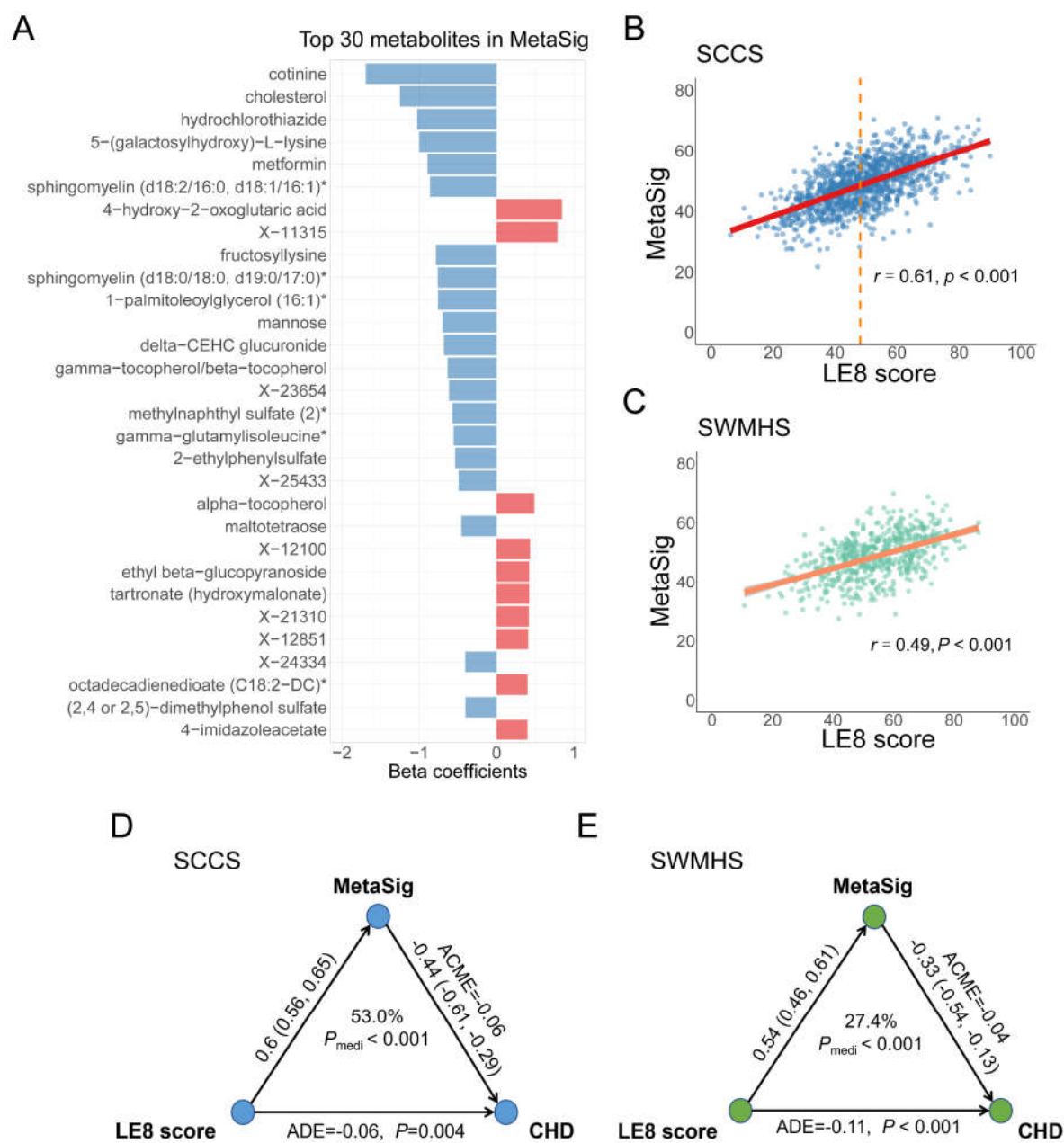
611 **Fig. 1. Overview of the current study**



612

613

614 **Fig. 2. The metabolite signature of LE8 and its association with risk of CHD**



615

616

617 **Fig. 3. Subgroup analyses for the associations of LE8 score and its metabolite signature**
 618 **with risk of CHD in SCCS**

