

1 **Clinical features and outcomes of hospitalised patients with COVID-19 and**  
2 **Parkinsonian disorders: a multicentre UK-based study**

3  
4 Lexy Sorrell<sup>1\*</sup> and Valentina Leta<sup>2,3†</sup>, Anton Barnett<sup>1</sup>, Kara Stevens<sup>4</sup>, Angela King<sup>1</sup>, Jemma  
5 Inches<sup>1,5</sup>, Christopher Kobylecki<sup>6,7</sup>, Richard Walker<sup>8,9</sup>, K Ray Chaudhuri<sup>2,3</sup>, Hannah Martin<sup>10</sup>,  
6 Jane Rideout<sup>11</sup>, J Robert Sneyd<sup>11</sup>, Sarah Campbell<sup>1</sup>, Camille Carroll<sup>1,5</sup> on behalf of the  
7 COVID-19 PD UK study team<sup>^</sup>

- 8  
9 1. University of Plymouth, Plymouth, United Kingdom.  
10 2. King's College London, Institute of Psychiatry, Psychology & Neuroscience, Department  
11 of Basic and Clinical Neuroscience; London, United Kingdom.  
12 3. Parkinson's Foundation Centre of Excellence, King's College Hospital; London, United  
13 Kingdom.  
14 4. Exploristics Ltd, Belfast, Northern Ireland, United Kingdom.  
15 5. University Hospitals Plymouth NHS Trust, Plymouth, United Kingdom.  
16 6. Division of Neuroscience and Experimental Psychology, Manchester Academic Health  
17 Science Centre, University of Manchester, Manchester, United Kingdom.  
18 7. Department of Neurology, Manchester Centre for Clinical Neurosciences, Northern Care  
19 Alliance NHS Foundation Trust, Stott Lane, Salford, United Kingdom.  
20 8. Department of Medicine, North Tyneside Hospital, Northumbria Healthcare NHS  
21 Foundation Trust, Rake Lane, North Shields, United Kingdom.  
22 9. Population Health Science Institute, Newcastle University, Newcastle, United Kingdom.  
23 10. University Hospitals Coventry and Warwickshire NHS Trust, United Kingdom.

24 11. Expert by Experience

NOTE: This preprint reports new research that has not been certified by peer review and should not be used to guide clinical practice.

25 \* Corresponding Author

26 Email: [lexy.sorrell@plymouth.ac.uk](mailto:lexy.sorrell@plymouth.ac.uk) (LS)

27 ¶These authors are to be considered joint first authors.

28 ^A complete list of the COVID-19 PD UK study team is provided in S1 Supporting information.

## 29 **Abstract**

30 *Background:* Parkinson's disease has been identified as a risk factor for severe Coronavirus  
31 disease 2019 (COVID-19) outcomes. However, whether the significant high risk of death from  
32 COVID-19 in people with Parkinson's disease is specific to the disease itself or driven by other  
33 concomitant and known risk factors such as comorbidities, age, and frailty remains unclear.

34 *Objective:* To investigate clinical profiles and outcomes of people with Parkinson's disease and  
35 atypical parkinsonian syndromes who tested positive for COVID-19 in the hospital setting in  
36 a multicentre UK-based study.

37 *Methods:* A retrospective cohort study of Parkinson's disease patients with a positive COVID-  
38 19 test admitted to hospital between February 2020 and July 2021. An online survey was used  
39 to collect data from clinical care records, recording patient, Parkinson's disease and COVID-  
40 19 characteristics. Associations with time-to-mortality and severe outcomes were analysed  
41 using either the Cox proportional hazards model or logistic regression models, as appropriate.

42 *Results:* Data from 552 admissions were collected: 365 (66%) male; median (inter-quartile  
43 range) age 80 (74-85) years. The 34-day mortality rate was 38.4%; male sex, increased age and  
44 frailty, Parkinson's dementia syndrome, requirement for respiratory support and no vaccination  
45 were associated with increased mortality risk. Community-acquired COVID-19 and co-morbid  
46 chronic neurological disorder were associated with increased odds of requiring respiratory  
47 support. Hospital-acquired COVID-19 and delirium were associated with requiring an increase  
48 in care level post-discharge.

49 *Conclusions:* This first, multicentre, UK-based study on people with Parkinson's disease or  
50 atypical parkinsonian syndromes, hospitalised with COVID-19, adds and expands previous  
51 findings on clinical profiles and outcomes in this population.

- 52 **Keywords:** Parkinson's disease, parkinsonism, parkinsonian disorders, COVID-19, inpatients,  
53 comorbidity, mortality, length of stay.

## 54 **Introduction**

55 The Coronavirus disease 2019 (COVID-19) pandemic caused by severe acute respiratory  
56 syndrome coronavirus 2 (SARS-CoV-2) has spread worldwide since early 2020 with  
57 unprecedented speed (1). Clinical risk prediction models have been developed to identify risks  
58 of poor short-term outcomes due to the SARS-CoV-2 infection (mortality and hospital  
59 admission) and offer guidance to public health policymakers for clinical decision-making  
60 processes, prioritisation for vaccination, and targeted recruitment for clinical trials. Among  
61 them, the QCovid and the more recently developed QCovid3 risk algorithms, have identified  
62 Parkinson's disease (PD) as a risk factor for severe COVID-19 outcomes, despite vaccination  
63 (adjusted cause-specific hazard ratios for COVID-19 death after vaccination of 2.23 (1.79 to  
64 2.78)) (2, 3). Advanced age, frailty and impaired cough reflex are commonly observed in  
65 people with PD (PwP) and might contribute to their susceptibility to developing severe acute  
66 respiratory syndrome (4). A variety of studies have investigated mortality in PwP and COVID-  
67 19 with figures ranging from 5% to 100% (5); the wide range reflects the heterogeneity of  
68 methodologies used (case report, series, surveys, retrospective or prospective cohort studies)  
69 and cohort analysed (home-based vs hospitalised patients, early vs advanced patients, etc.) (6-  
70 18). However, whether the significant high risk of death from COVID-19 in PwP is specific to  
71 PD itself or driven by other concomitant and known risk factors such as comorbidities  
72 (hypertension, diabetes, pulmonary disease, obesity, immunosuppression, and dementia), older  
73 age (>60 years), and frailty remains unclear (5). The COVID-19 PD study is the first to  
74 investigate the association of demographic, co-morbidity, COVID-19 and PD-specific factors  
75 with mortality and severe outcomes of inpatients with PD and atypical parkinsonian syndromes  
76 (APS) who tested positive for COVID-19 admitted to a UK NHS trust hospital.

## 77 **Methods**

### 78 **Study design and population**

79 The COVID-PD UK study was a retrospective cohort study across 21 acute care settings in  
80 England funded by Parkinson's UK (Ref: G-2001). Approvals were obtained from the  
81 University of Plymouth Faculty Research Ethics and Integrity Committee (Ref: 2269) and the  
82 Health Research Authority (IRAS ID 285686). Members of the project team included PwP who  
83 were involved in all aspects of protocol and study development.

84 The study consisted of patients with a clinical diagnosis of PD, APS (including progressive  
85 supranuclear palsy, multiple system atrophy) or Parkinson's dementia syndrome (Parkinson's  
86 disease dementia (PDD) or dementia with Lewy bodies (DLB)) admitted to participating  
87 hospitals between 5<sup>th</sup> February 2020 and 31<sup>st</sup> July 2021, with a positive polymerase chain  
88 reaction (PCR) test. Exclusion criteria were patients with a diagnosis of vascular parkinsonism  
89 and a COVID-19 positive test over 2 weeks prior to admission or at any time following  
90 discharge.

91 Clinical care teams completed an online survey on JISC (<https://www.onlinesurveys.ac.uk/>)  
92 using patients' clinical care records, extracting information from admission to at least 28-days  
93 following admission. Retrospective data collection began in February 2021 and the online  
94 survey closed on the 31<sup>st</sup> July 2021. Individuals were pseudo-anonymised by sites to allow for  
95 data clarification where required.

96 Data included patient, PD and COVID-19 related characteristics along with details of  
97 admission, discharge and participation in a COVID-19 related clinical trial. Comorbidities were  
98 chosen to allow comparison with the International Severe Acute Respiratory and emerging  
99 Infection Consortium (ISARIC) study of hospitalised COVID-19 patients in the UK (19).  
100 Patient characteristics included age, sex, ethnicity, index of multiple deprivation (IMD),

101 location pre-admission and clinical frailty score (CFS) (20). PD related features captured  
102 included those considered neurological risk features in UK national guidance (21), such as  
103 significant cognitive impairment or psychosis, bulbar symptoms, significant respiratory  
104 compromise, significant autonomic neuropathy, as well as marked motor fluctuations and  
105 Hoehn and Yahr (H&Y) stage. PD features and comorbidities could be entered as unknown by  
106 site staff on the JISC survey. No imputation of missing data was performed, however, sites  
107 were asked to address unexpected responses and missing data during the querying process.

108 The wave of positive COVID-19 test was identified. Wave one: 23/03/2020 to 30/05/2020,  
109 corresponding to wild-type SARS-CoV2, and wave two: 07/09/2020 to 22/05/2021 (22)  
110 corresponding to the emergence of alpha and delta variants in the (23).

111 Patients were classified as vaccinated if their positive COVID-19 test was over 14 days  
112 following their first vaccine dose. COVID-19 was classified as hospital-acquired if the positive  
113 COVID-19 test was more than 5 days following admission; otherwise, COVID-19 was  
114 classified as community-acquired.

115 COVID-19 and non-COVID-19 symptoms at admission were recorded as free text and  
116 subsequently grouped by the research team into categories including altered mental state  
117 (delirium, confusion, obtundation, reduced oral intake), COVID-19 (pyrexia, cough, anosmia)  
118 and other respiratory symptoms. Symptoms were summarised for the community- and hospital-  
119 acquired COVID-19 patients separately.

120 The primary outcome of the study was death within 28-days of a COVID-19 positive test. Date  
121 of death was recorded as the Sunday following death to preserve anonymity. We therefore used  
122 death within 34-days as a proxy outcome; this assumption was explored in a sensitivity  
123 analysis. Secondary outcomes included the requirement for respiratory support, an increase in  
124 the level of care post-discharge and change in levodopa equivalent daily dose (LEDD).

## 125 **Statistical methods**

126 A summary of the data is presented using frequency and percentages for categorical variables  
127 of the non-missing sample, while means, standard deviations, medians and ranges are presented  
128 for continuous variables. Values entered as ‘unknown’ were coded to missing to ease the  
129 comparison between presence and absence of characteristics and due to the small group sizes  
130 of some unknown categories.

131 Survival within 34-days of a COVID-19 positive test was analysed using univariable and  
132 multivariable Cox proportional hazards models, using Schoenfeld’s test to assess the  
133 assumption of proportional hazards. The requirement for respiratory support and an increase in  
134 care were modelled using univariable and multivariable logistic regression models. Model  
135 selection for the final multivariable models was conducted using backward elimination, whilst  
136 including variables of clinical interest: sex, age, ethnicity, diagnosis, wave of COVID-19  
137 positive test and where COVID-19 was acquired, regardless of their statistical significance. For  
138 each outcome, the first-order interaction of wave and where COVID-19 was acquired was  
139 examined for statistical significance. In the multivariable models, site was included as a random  
140 effect to account for potential differences in practice and COVID-19 severity between UK  
141 regions during the pandemic.

142 Change in LEDD was found to occur in less than 25% of discharged individuals and was  
143 therefore analysed descriptively.

144 Sensitivity analyses were conducted for all outcomes using individuals with a positive COVID-  
145 19 test in wave two, sites that comprehensively selected their patients to enter over waves one  
146 and two and for the survival outcome, censoring at 28-days.



147 All analyses are presented with 95% confidence intervals and all tests are two-sided, where a  
148 p-value of  $< 0.05$  is considered statistically significant. All analyses were conducted using R  
149 version 4.1.3 (24) using packages including survival (25), glmmTMB (26) and forester (27).

## 150 **Results**

151 Site staff from 21 hospitals entered 627 individual data sets; of these 17 were duplicates, 38  
152 were excluded due to unverifiable data and 20 were excluded due to meeting the exclusion  
153 criteria. The final number of individual admission data sets included in the COVID-19 PD  
154 study was 552 comprising 385 community-acquired and 167 hospital-acquired COVID-19  
155 infection episodes; the timing of these admissions is shown in Figure 1. Six sites entered data  
156 comprehensively over waves one and two ( $n=242$ ), while due to resource constraints, the other  
157 sites submitted data for one of the two waves or entered data from a selection of patients.

158 *Figure 1: Positive COVID-19 cases captured in the COVID-19 PD study (red bar chart, left*  
159 *y-axis) by month, overlaid by UK daily COVID-19 hospital admissions (28) (blue line graph,*  
160 *right y-axis). Grey regions reflect COVID-19 wave one (23/03/2020 – 30/05/2020) and wave*  
161 *two (07/09/2020 – 22/05/2021) in the UK.*

## 162 **Demographics and comorbidities**

163 Patient demographics and diagnosis of parkinsonian syndrome details are presented in Table  
164 1. The majority of the patients had PD (349/552 (63.2%)), with 170/552 (30.8%) having  
165 PDD/DLB. Only 33 (6.0%) of patients had APS. The median (interquartile range (IQR)) age  
166 at admission was 80 (74-85) years with 73.6% of patients over the age of 75 years; APS patients  
167 were younger (median (IQR) 75 (70-78) years), while 365/552 (66.1%) were male. The  
168 majority of patients were White British (476/552 (86.2%)); further details of the sample  
169 ethnicity can be found in Table S2.1 (see S2 Supporting information). Thirty-two patients were  
170 enrolled into COVID-19 therapeutic clinical trials, including 21 in the RECOVERY trial (29).

171 Further information on Parkinson's and COVID-19 characteristics is provided in Tables S2.1  
172 to S2.3 (see S2 Supporting information).

173 *Table 1: Patient demographics by diagnosis of Parkinson's disease (n=349), Parkinson's dementia*  
 174 *syndrome (n=170) and Atypical Parkinsonian syndrome (n=33). For further breakdown of ethnicity,*  
 175 *see Table S2.1 (see S2 Supporting information). Abbreviations: Levodopa equivalent daily dose*  
 176 *(LEDD), Index of multiple deprivation (IMD).*

		<b>Parkinson's disease</b>	<b>Parkinson's dementia syndrome</b>	<b>Atypical parkinsonian syndrome</b>	<b>Total</b>
	N (% of total)	349 (63.2)	170 (30.8)	33 (6.0)	552 (100.0)
<b>Age at admission (years)</b>	N	349	170	33	552
	Median (IQR)	81 (74-86)	81 (76-85)	75 (70-78)	80 (74-85)
	[Min., Max.]	[43, 99]	[65, 101]	[45, 98]	[43, 101]
<b>Disease duration (years)</b>	N	339	168	33	540
	Median (IQR)	5 (3-9)	5 (3-9)	2 (1-4)	5 (2-9)
	[Min., Max.]	[0, 27]	[0, 29]	[0, 11]	[0, 29]
<b>LEDD (mg)</b>	N	340	169	33	542
	Median (IQR)	450 (300-653)	375 (150-575)	200 (0-400)	400 (243-615)
	[Min., Max.]	[0, 2313]	[0, 2300]	[0, 800]	[0, 2313]
<b>Sex</b>	N	349	170	33	552
Male	N (%)	224 (64.2)	120 (70.6)	21 (63.6)	365 (66.1)
Female		125 (35.8)	50 (29.4)	12 (36.4)	187 (33.9)
<b>Ethnicity</b>	N	349	170	33	552
White British	N (%)	298 (85.4)	152 (89.4)	26 (78.8)	476 (86.2)
Asian/British Asian (Indian)		10 (2.9)	3 (1.8)	2 (6.1)	15 (2.7)
White (any other background)		10 (2.9)	2 (1.2)	1 (3.0)	13 (2.4)
Asian/British Asian (Pakistani)		5 (1.4)	1 (0.6)	0 (0.0)	6 (1.1)
Other		26 (7.4)	12 (7.1)	4 (12.0)	42 (7.6)
<b>Hoehn and Yahr</b>	N	322	167	32	521
1-2	N (%)	49 (15.2)	5 (3.0)	0 (0.0)	54 (10.4)
2.5-3		125 (38.8)	41 (24.6)	8 (25.0)	174 (33.4)
4-5		148 (46.0)	121 (72.5)	24 (75.0)	293 (56.2)
<b>Clinical frailty score</b>	N	345	167	33	545
<5	N (%)	75 (21.6)	3 (1.8)	3 (9.1)	81 (14.8)
5-6		170 (49.3)	71 (42.5)	14 (42.4)	255 (46.8)
7-9		100 (29.0)	93 (55.7)	16 (48.5)	209 (38.3)
<b>Location pre-admission</b>	N	349	170	33	552
Local/community hospital	N (%)	3 (0.9)	3 (1.8)	1 (3.0)	7 (1.3)
Own Home/private residence		268 (76.8)	97 (57.1)	24 (72.7)	389 (70.5)
Residential or nursing home		78 (22.3)	70 (41.2)	8 (24.2)	156 (28.3)
<b>IMD decile</b>	N	349	170	33	552
1-2	N (%)	63 (18.1)	28 (16.5)	5 (15.2)	96 (17.4)
3-4		77 (22.1)	23 (13.5)	4 (12.1)	104 (18.8)
5-6		77 (22.1)	37 (21.8)	9 (27.3)	123 (22.3)
7-8		69 (19.8)	38 (22.4)	8 (24.2)	115 (20.8)
9-10		63 (18.1)	44 (25.9)	7 (21.2)	114 (20.7)

177

178 More patients hospitalised with positive COVID-19 tests had community-acquired rather than  
179 hospital-acquired COVID-19 in both wave one (153/190 (80.5%)) and wave two (220/343  
180 (64.1%)).

181 509/552 (92.2%) had at least one reported co-morbidity at admission, the most frequently  
182 reported being hypertension (251/542, 46.3%), dementia (218/535 (40.7%)), chronic cardiac  
183 disease (193/539 (35.8%)) and chronic kidney disease (117/535 (21.9%)) (see Table S2.1, S2  
184 Supporting information).

### 185 **Parkinsonian syndrome-related features**

186 349/552 (63.2%) patients had PD, 170/552 (30.8%) had PDD/DLB and 33/552 (6.0%) patients  
187 had an atypical parkinsonian syndrome. Overall, 251/535 (46.9%) of the cohort had significant  
188 cognitive impairment and 154/493 (31.2%) had marked motor fluctuations. Bulbar symptoms  
189 were most common in APS patients (16/32 (50.0%) vs. 49/331, (14.8%) and 33/160 (20.6%)  
190 for PD and PDD/DLB, respectively) (see Figure 2 and Table S2.2, S2 Supporting information).  
191 Patients with PDD/DLB and APS more often had pre-morbid Hoehn and Yahr stages 4-5  
192 (121/167 (72.5%) and 24/32 (75.0%), respectively) compared to PD patients (148/322 (46.0%).

193 *Figure 1: Clinical features of Parkinson's as a proportion by diagnosis of Parkinson's disease.*  
194 *X-axis: proportion of feature within diagnosis. Abbreviations: Parkinson's disease (PD),*  
195 *Parkinson's dementia syndrome (PDD/DLB) and atypical parkinsonian syndrome (APS).*

### 196 **Symptoms of COVID-19**

197 The frequency of altered mental state and classical COVID-19 or respiratory symptoms for  
198 community- and hospital-acquired COVID-19 patients are presented in Figures 3A and 3B,  
199 respectively. Of patients with community-acquired COVID-19, 7.0% (27/385) had neither  
200 altered mental state nor classical COVID-19 or respiratory symptoms. This was the case in  
201 25.1% (42/167) of the hospital-acquired COVID-19 patients. Altered mental state was the only

202 feature of COVID-19 infection in 15/385 (3.9%) of community-acquired and 16/167 (9.6%) of  
203 hospital-acquired cases.

204 *Figure 3: Frequency of altered mental state and classic COVID-19 or respiratory symptoms*  
205 *by where COVID-19 was acquired. A: The frequency of community acquired COVID-19*  
206 *patients (total n=385) by symptoms of altered mental state, classic COVID-19 or other*  
207 *respiratory symptoms during admission). B: The frequency of hospital acquired COVID-19*  
208 *patients (total n=167) with the symptoms of altered mental state and classic COVID-19 or*  
209 *respiratory symptoms (mild symptoms or respiratory support) associated with their COVID-*  
210 *19 infection.*

## 211 **Length of stay**

212 The time from positive test to discharge of patients who acquired COVID-19 in the community  
213 was shorter compared to those who acquired COVID-19 in hospital **Error! Reference source**  
214 **not found.**(median (IQR) of 12 (7-21) and 16 (5-28) days, respectively). For those discharged,  
215 84% of community-acquired patients were discharged by day 28 compared to 75% of hospital-  
216 acquired patients (Figure 4). Time until discharge was longer for those with bulbar symptoms  
217 (median (IQR) of 17 (8-27) compared to 13 (6-23)), a chronic neurological disorder (19 (10-  
218 31) compared to 12 (6-22)), those in wave two compared to wave one (15 (6-27) and 12 (7-  
219 19), respectively) and those with delirium (15 (7-29) compared to 12 (6-21)). Time until  
220 discharge for further patient, COVID-19 and PD characteristics are detailed in Table S2.4 (see  
221 S2 Supporting information).

222 *Figure 4: Density plot of time to discharge or death from first positive COVID-19 test by place*  
223 *of COVID-19 acquisition (community or hospital). Two patients that remained in hospital*  
224 *following the study period have been omitted.*

## 225 **Outcomes**

## 226 *Mortality*

227 Details of patient outcomes and discharge are provided in Table S2.5 (see S2 Supporting  
228 information). Of the 552 patients in the COVID-19 PD study, 212 (38.4%) died within 34-days  
229 of a COVID-19 positive test. Of these patients, 85.4% (181/212) died in hospital, 9.0%  
230 (19/212) died following discharge and 5.7% (12/212) died having been discharged to end-of-  
231 life care.

232 Univariable and multivariable results of the Cox models for mortality are provided in Table  
233 S3.1 (see S3 Supporting information), along with the results from each sensitivity analysis. The  
234 results of the multivariable Cox proportional hazards model are presented in a forest plot in  
235 Figure 5. Increased risk of mortality within 34-days was associated with increased age (hazard  
236 ratio (HR) 1.05, with a 95% confidence interval (CI) 1.03 to 1.07) and PDD/DLB (HR 1.59  
237 with 95% CI 1.14 to 2.20, reference: PD), after adjustment. Decreased risk of mortality was  
238 associated with female sex (HR 0.54, with a 95% CI 0.39 to 0.75), a pre-morbid CFS of <5  
239 (HR 0.62, with a 95% CI 0.44 to 0.85, reference: 7-9), being vaccinated (HR 0.36, with a 95%  
240 CI 0.13 to 0.99) and having asymptomatic or mild respiratory COVID-19 symptoms (HR and  
241 95% CI: 0.22, 0.12 to 0.39 and 0.27, 0.18 to 0.41, respectively, reference: respiratory support).  
242 No association was found after adjustment between mortality within 34-days and any other PD  
243 or COVID-19 features.

244 *Figure 5: Forest plot of the multivariable Cox proportional hazards model of mortality*  
245 *within 34-days of a COVID-19 positive test. Abbreviations: confidence interval (CI).*

246 As the date of the Sunday following death was captured during the study as a proxy for date of  
247 death, all patients included in the primary analysis have been censored at 34-days, with eight  
248 patients dying between days 28 and 34. We have conducted a sensitivity analysis investigating

249 the effect of 28-day censoring; all sensitivity analyses found no substantial changes to the final  
250 mortality model (see Table S3.1, S3 Supporting information).

### 251 *Requirement for respiratory support*

252 Nine patients (1.6%) in the study were admitted to high-dependency care (HDU) or intensive  
253 care units (ICU). Over half of patients received respiratory support while in hospital (291/552,  
254 52.7%) with the majority of these (266/291, 91%) receiving oxygen supplementation; 28.3%  
255 (156/552) had mild symptoms not requiring support and 19.0% (105/552) were asymptomatic  
256 from a respiratory perspective. Patients with asymptomatic and mild symptoms were combined  
257 to compare the odds of requiring respiratory support.

258 A forest plot presenting the results of the multivariable model is shown in Figure 6 (details of  
259 univariable and sensitivity analyses in Table S3.2, S3 Supporting information). Increased odds  
260 of requiring respiratory support were found to be associated with presence of a co-morbid  
261 chronic neurological disorder (odds ratio (OR) 1.81, with a 95% CI 1.06 to 3.09) and  
262 community-acquired COVID-19 (OR of hospital-acquired 0.54, with a 95% CI 0.36 to 0.81,  
263 reference: community) after adjustment. Sex, age, ethnicity and Parkinsonian syndrome  
264 diagnosis were not found to be associated with requiring respiratory support. Sensitivity  
265 analyses found no substantial changes to the multivariable model.

266 *Figure 6: Forest plot of the multivariable logistic regression model of the requirement for*  
267 *respiratory support. Abbreviations: confidence interval (CI).*

### 268 *Increase in care requirement post-discharge*

269 Increase in care was determined by change in location between admission and discharge,  
270 calculated for patients living at home prior to admission who were discharged from hospital.  
271 Of these 264 patients, 115 individuals (43.6%) had an increase in care and 149 (56.4%)  
272 remained at their pre-admission location at discharge. Results of the analysis are provided in

273 Table S3.3 (see S3 Supporting information), while a forest plot of the multivariable results is  
274 provided in Figure 7. Increase in level of care post-discharge was associated with delirium  
275 associated with COVID-19 infection (OR 2.07, with a 95% CI 1.48 to 3.86) and hospital-  
276 acquired COVID-19 (OR 2.01, with a 95% CI 1.10 to 3.65).

277 *Figure 7: Forest plot of the multivariable logistic regression model of an increase in care*  
278 *post-discharge for patients admitted from their own home. Delirium is considered as delirium*  
279 *associated with COVID-19 infection. Abbreviations: confidence interval (CI).*

280 *Change in levodopa equivalent daily dose*

281 Change in LEDD (mg) was calculated for the 359 individuals who were discharged and had  
282 both admission and discharge medication documented. There was no change in LEDD between  
283 admission and discharge for 76.0% of individuals (273/359), while 13.4% (48/359) had a  
284 decrease in LEDD and 10.6% (38/359) had an increase in LEDD. We observed no indication  
285 of an association between variables of clinical interest, diagnostic category and change in  
286 LEDD.



## 287 **Discussion**

288 This is the first multicentre UK-based study to investigate demographics, comorbidities,  
289 clinical profiles and outcomes of PwP and APS who tested positive for COVID-19 in the  
290 hospital setting. The most common clinical presentations of COVID-19 in PwP and APS with  
291 community- and hospital-acquired COVID-19 were classic COVID-19 or respiratory  
292 symptoms and altered mental state. Comorbidities frequently reported were hypertension,  
293 dementia, chronic cardiac disease, and chronic kidney disease with an overall 34-day mortality  
294 rate of 38.4%. Increased age, male sex and diagnosis of PDD/DLB were associated with  
295 increased risk of mortality, while low pre-morbid CFS (<5), being vaccinated, and  
296 asymptomatic COVID-19 or mild respiratory symptoms were associated with reduced risk of  
297 mortality. Finally, while increased risk of requiring respiratory support was associated with  
298 presence of a co-morbid chronic neurological disorder and community-acquired COVID-19,  
299 patients with hospital-acquired COVID-19 and delirium required a higher level of care at  
300 discharge. Overall, our study extends previous findings on clinical features and outcomes of  
301 hospitalised PwP and APS with COVID-19.

302 In relation to demographics, our cohort of parkinsonian patients had a median age at admission  
303 of 80 years which was higher than one of the cohorts of hospitalised non-parkinsonian patients  
304 with COVID-19 (19). Of note, 73.4% (256/349) of our cohort of PD patients were over the age  
305 of 75 years compared to 56.3% of the estimated PD population in England (30). Our cohort  
306 included more male (66.1%) than female (33.9%) patients. Overall, these results are in line  
307 with known increased prevalence of PD in the elderly and in men (11, 12, 31, 32), as well as  
308 older age and male sex being risk factors for hospitalisation with COVID-19 generally (19,  
309 33).

310 PD patients in our study were more frequently in the advanced motor phases of the disease  
311 (46% H&Y 4-5) than the general PD population (16.4% H&Y 4-5 (34)), although with similar

312 prevalence of significant cognitive impairment (23.0% vs 24-31% in PD in the community  
313 (35)) and marked motor fluctuations (27.5% vs 29% in PD in the community (36)). In relation  
314 to frailty, which is known to be strongly associated with PD and mortality (37, 38), 78.3% of  
315 PD patients in our study were pre-morbidly frail (CFS  $\geq$  5), which is higher than a previously  
316 reported proportion of PwP with frailty in an ambulant community PwP population (33%) (39).  
317 Our finding is similar to previously reported levels of frailty in hospitalised PwP, where it has  
318 been found to predict mortality (40). Patients within our study were found to have an increased  
319 level of frailty compared to the reported cohorts of patients hospitalised with COVID-19  
320 generally (41-43).

321 Irrespective of the modality of infection (hospital or community-acquired), the most common  
322 clinical presentations in our cohort of hospitalised parkinsonian patients with COVID-19 were  
323 classic COVID-19 symptoms including fever, shortness of breath, hyposmia and cough or  
324 respiratory symptoms in agreement with previous findings in the general population and in  
325 PwP (12, 19). However, we found 49.6% of community-acquired and 38.3% of hospital-  
326 acquired COVID-19 infections in our cohort also had altered mental state, with no respiratory  
327 symptoms in 3.9% and 9.6% respectively. Patients with altered mental state associated with  
328 COVID-19 were more likely to require increased care on discharge in our study. This aligns  
329 with findings from a single-centre study on hospitalised patients with COVID-19, where  
330 patients with delirium were less likely to be discharged home, and more frequently discharged  
331 to other hospitals, nursing homes or rehabilitation institutes (44). Inconsistent results on the  
332 contribution of delirium to mortality in COVID-19 have been published (45), and our data  
333 supports a lack of association. Although altered mental state is a common neurological  
334 manifestation of COVID-19 in hospitalised patients in general (up to 32%) (46-48), our data  
335 suggests that hospitalised PwP or APS and COVID-19 present more frequently with altered  
336 mental state than the general population, in line with previous findings and as expected in a

337 population of patients with known central nervous system neurodegeneration (11). Cognitive  
338 impairment is frequently observed in PwP and APS and represents a well-known risk factor for  
339 development of delirium (49).

340 In our study, the most frequently reported comorbidities at admission were hypertension  
341 (46.3%), dementia (40.6%), chronic cardiac disease (35.8%), and chronic kidney disease  
342 (21.9%). These results only partly mirror those of the ISARIC study (19), which was based on  
343 UK hospitalised patients with COVID-19, where only 13.5% of patients were reported with  
344 dementia. This discrepancy might be due to the fact that cognitive impairment is an intrinsic  
345 feature of PD and APS as previously mentioned (49); in addition, our cohort included 170  
346 patients with PDD/DLB who present with dementia as per diagnostic criteria (50). It is also  
347 worth mentioning that most PwP are non-smokers, which can partly explain the lower  
348 prevalence of chronic pulmonary disease in our cohort of patients than in the ISARIC study  
349 (51).

350 In relation to length of stay, the median time from positive test to discharge in our study was  
351 12 and 16 days for patients with community- and hospital-acquired COVID-19, respectively,  
352 which is longer than data from other UK, US and Iranian cohorts (median hospital stay of 5,  
353 10 and 7 days, respectively) (8, 11, 52) reflecting possible differences in study methodology,  
354 health care settings, spatial and temporal spread of the pandemic as well as intrinsic features  
355 of the study populations.

356 Our study showed an overall 34-day mortality rate of 38.4% which is in line with data deriving  
357 from other US and European cohorts of hospitalised PD patients with COVID-19 of 35.8% and  
358 35.4%, respectively (12, 53). These mortality rates appear to be higher compared with data  
359 from the general population with COVID-19 hospitalised over the same period (overall  
360 mortality rate of 25%) (54), adding to the evidence that PwP have a significant risk of poor

361 outcomes (5). Risk factors for increased mortality in our study were increased age, male sex  
362 and diagnosis of PD dementia while protective factors were low CFS (<5), being vaccinated,  
363 and COVID-19 with no or mild respiratory symptoms, in agreement with the literature on the  
364 general population and PD patients (3, 12, 19).

365 PwP/APS were more likely to require respiratory support if they had community-acquired  
366 COVID-19 or a co-morbid chronic neurological disorder. In our study, requirement for  
367 respiratory support was collected as a measure of severity of respiratory COVID-19. This might  
368 have unintentionally excluded individuals with worse respiratory COVID-19 than mild  
369 symptoms but did not have respiratory support available to them. Alternatively, there may have  
370 been individuals with mild symptoms that did not require respiratory support but received it as  
371 a precaution.

372 We found that patients with hospital-acquired COVID-19 and delirium had increased risk of a  
373 requiring a higher level of care at discharge (residential or nursing home or a local hospital).  
374 Development of delirium can signpost the presence of an underlying cognitive impairment  
375 which might become manifest during the infection and hospitalisation and, ultimately, have a  
376 detrimental effect on autonomy in performing activities of daily living (55).

377 Limitations of the study include the retrospective nature of the survey, perhaps contributing to  
378 the level of unknown or missing responses. Limited data on patients from diverse ethnicities  
379 were available and, therefore, we were unable to compare risks of poor COVID-19 outcomes  
380 between specific ethnic groups. The small number of APS patients limited our ability to  
381 evaluate outcomes within this group. COVID-19 testing policy in the UK changed during the  
382 course of the study and testing of asymptomatic patients and routine testing of hospital in-  
383 patients was uncommon during wave one; however, to account for the change in testing we

384 have adjusted for wave in each model and conducted sensitivity analyses focused on wave two  
385 only, where we observed no substantial changes to any outcomes.

## 386 **Conclusion**

387 In this first, multicentre, UK-based study we found that, compared with published data on  
388 COVID-19 admissions, PwP or APS hospitalised with COVID-19 have increased mortality  
389 and are more likely to require an increase in care level post-discharge. These findings may be  
390 attributable to an increased proportion of PwP/APS having dementia and cardiovascular co-  
391 morbidities, with COVID-19-associated delirium. PwP admitted with COVID-19 were older  
392 than community-dwelling PwP/APS, with more advanced Parkinson's and higher pre-morbid  
393 frailty. Our study expands previous findings on clinical profiles and outcomes of hospitalised  
394 PwP and APS with COVID-19.

## 395 **Acknowledgements**

396 The views expressed are those of the authors and not necessarily those of the NHS, NIHR or  
397 Department of Health. The authors acknowledge the support of Parkinson's UK who funded  
398 the study, the sponsor and the clinical and research teams who contributed to the study.

## 399 **References**

- 400 1. Wang C, Horby PW, Hayden FG, Gao GF. A novel coronavirus outbreak of global health  
401 concern. *Lancet*. 2020;395(10223):470-3.
- 402 2. Clift AK, Coupland CAC, Keogh RH, Diaz-Ordaz K, Williamson E, Harrison EM, et al.  
403 Living risk prediction algorithm (QCOVID) for risk of hospital admission and mortality from  
404 coronavirus 19 in adults: national derivation and validation cohort study. *BMJ*. 2020;371:m3731.
- 405 3. Hippisley-Cox J, Coupland CA, Mehta N, Keogh RH, Diaz-Ordaz K, Khunti K, et al. Risk  
406 prediction of covid-19 related death and hospital admission in adults after covid-19 vaccination:  
407 national prospective cohort study. *BMJ*. 2021;374.
- 408 4. Sulzer D, Antonini A, Leta V, Nordvig A, Smeyne RJ, Goldman JE, et al. COVID-19 and  
409 possible links with Parkinson's disease and parkinsonism: from bench to bedside. *NPJ Parkinsons Dis*.  
410 2020;6:18.
- 411 5. Fearon C, Fasano A. Prevalence and outcomes of Covid-19 in Parkinson's disease: Acute  
412 settings and hospital. *Int Rev Neurobiol*. 2022;165:35-62.
- 413 6. Antonini A, Leta V, Teo J, Chaudhuri KR. Outcome of Parkinson's Disease Patients Affected  
414 by COVID-19. *Mov Disord*. 2020;35(6):905-8.

- 415 7. Fasano A, Elia AE, Dallochio C, Canesi M, Alimonti D, Sorbera C, et al. Predictors of  
416 COVID-19 outcome in Parkinson's disease. *Parkinsonism Relat Disord.* 2020;78:134-7.
- 417 8. Fathi M, Taghizadeh F, Mojtahedi H, Zargar Balaye Jame S, Markazi Moghaddam N. The  
418 effects of Alzheimer's and Parkinson's disease on 28-day mortality of COVID-19. *Rev Neurol (Paris).*  
419 2022;178(1-2):129-36.
- 420 9. Hainque E, Grabli D. Rapid worsening in Parkinson's disease may hide COVID-19 infection.  
421 *Parkinsonism Relat Disord.* 2020;75:126-7.
- 422 10. Kobylecki C, Jones T, Lim CK, Miller C, Thomson AM. Phenomenology and Outcomes of  
423 In-Patients With Parkinson's Disease During the Coronavirus Disease 2019 Pandemic. *Mov Disord.*  
424 2020;35(8):1295-6.
- 425 11. Nwabuobi L, Zhang C, Henschcliffe C, Shah H, Sarva H, Lee A, et al. Characteristics and  
426 Outcomes of Parkinson's Disease Individuals Hospitalized with COVID-19 in a New York City  
427 Hospital System. *Mov Disord Clin Pract.* 2021;8(7):1100-6.
- 428 12. Parihar R, Ferastraoar V, Galanopoulou AS, Geyer HL, Kaufman DM. Outcome of  
429 Hospitalized Parkinson's Disease Patients with and without COVID-19. *Mov Disord Clin Pract.*  
430 2021;8(6):859-67.
- 431 13. Sainz-Amo R, Baena-Álvarez B, Pareés I, Sánchez-Díez G, Pérez-Torre P, López-Sendón JL,  
432 et al. COVID-19 in Parkinson's disease: what holds the key? *J Neurol.* 2021;268(8):2666-70.
- 433 14. Salari M, Zali A, Ashrafi F, Etemadifar M, Sharma S, Hajizadeh N, et al. Incidence of  
434 Anxiety in Parkinson's Disease During the Coronavirus Disease (COVID-19) Pandemic. *Mov Disord.*  
435 2020;35(7):1095-6.
- 436 15. Vignatelli L, Zenesini C, Belotti LMB, Baldin E, Bonavina G, Calandra-Buonaura G, et al.  
437 Risk of Hospitalization and Death for COVID-19 in People with Parkinson's Disease or Parkinsonism.  
438 *Mov Disord.* 2021;36(1):1-10.
- 439 16. Xu Y, Surface M, Chan AK, Halpern J, Vanegas-Arroyave N, Ford B, et al. COVID-19  
440 manifestations in people with Parkinson's disease: a USA cohort. *J Neurol.* 2022;269(3):1107-13.
- 441 17. Zhai H, Lv Y, Xu Y, Wu Y, Zeng W, Wang T, et al. Characteristic of Parkinson's disease  
442 with severe COVID-19: a study of 10 cases from Wuhan. *J Neural Transm (Vienna).* 2021;128(1):37-  
443 48.
- 444 18. Zhang Q, Schultz JL, Aldridge GM, Simmering JE, Narayanan NS. Coronavirus Disease  
445 2019 Case Fatality and Parkinson's Disease. *Mov Disord.* 2020;35(11):1914-5.
- 446 19. Docherty AB, Harrison EM, Green CA, Hardwick HE, Pius R, Norman L, et al. Features of  
447 20 133 UK patients in hospital with covid-19 using the ISARIC WHO Clinical Characterisation  
448 Protocol: prospective observational cohort study. *BMJ.* 2020;369:m1985.
- 449 20. Rockwood K, Song X, MacKnight C, Bergman H, Hogan DB, McDowell I, et al. A global  
450 clinical measure of fitness and frailty in elderly people. *Cmaj.* 2005;173(5):489-95.
- 451 21. The ABN Executive in association with subspecialist Advisory Groups. Association of British  
452 Neurologists Guidance on COVID-19 for people with neurological conditions, their doctors and  
453 carers. 2020 9 April 2020.
- 454 22. Office for National Statistics. Coronavirus (COVID-19) latest insights: Comparisons 2022  
455 [Available from:  
456 [https://www.ons.gov.uk/peoplepopulationandcommunity/healthandsocialcare/conditionsanddiseases/a](https://www.ons.gov.uk/peoplepopulationandcommunity/healthandsocialcare/conditionsanddiseases/articles/coronaviruscovid19latestinsights/overview)  
457 [rticles/coronaviruscovid19latestinsights/overview](https://www.ons.gov.uk/peoplepopulationandcommunity/healthandsocialcare/conditionsanddiseases/articles/coronaviruscovid19latestinsights/overview).
- 458 23. Office for National Statistics. Coronavirus (COVID-19) latest insights: Infections 2022  
459 [Available from:  
460 [https://www.ons.gov.uk/peoplepopulationandcommunity/healthandsocialcare/conditionsanddiseases/a](https://www.ons.gov.uk/peoplepopulationandcommunity/healthandsocialcare/conditionsanddiseases/articles/coronaviruscovid19latestinsights/infections)  
461 [rticles/coronaviruscovid19latestinsights/infections](https://www.ons.gov.uk/peoplepopulationandcommunity/healthandsocialcare/conditionsanddiseases/articles/coronaviruscovid19latestinsights/infections).
- 462 24. R Development Core Team. R: A language and environment for statistical computing.  
463 Vienna, Austria: R Foundation for Statistical Computing; 2022.
- 464 25. Therneau T. A package for Survival Analysis in R. 3.2-13 ed2021.
- 465 26. Brooks ME, Kristensen K, van Benthem KJ, Magnusson A, Berg CW, Nielsen A, et al.  
466 glmmTMB Balances Speed and Flexibility Among Packages for Zero-inflated Generalized Linear  
467 Mixed Modeling. *The R Journal.* 2017;9(2):378-400.
- 468 27. Boyes R. Forester: An R package for creating publication-ready forest plots 0.3.0 ed2021.



- 469 28. UK Health Security Agency. Coronavirus (COVID-19) in the UK 2022 [Available from:  
470 <https://coronavirus.data.gov.uk/details/healthcare>.  
471 29. Nuffield Department of Population Health. RECOVERY Trial 2023 [Available from:  
472 <https://www.recoverytrial.net/>.  
473 30. Parkinson's UK. The prevalence and incidence of Parkinson's in the UK. 2017.  
474 31. Van Den Eeden SK, Tanner CM, Bernstein AL, Fross RD, Leimpeter A, Bloch DA, et al.  
475 Incidence of Parkinson's disease: variation by age, gender, and race/ethnicity. *Am J Epidemiol*.  
476 2003;157(11):1015-22.  
477 32. Scherbaum R, Kwon EH, Richter D, Bartig D, Gold R, Krogias C, et al. Clinical Profiles and  
478 Mortality of COVID-19 Inpatients with Parkinson's Disease in Germany. *Mov Disord*.  
479 2021;36(5):1049-57.  
480 33. Chaturvedi R, Lui B, Aaronson JA, White RS, Samuels JD. COVID-19 complications in  
481 males and females: recent developments. *J Comp Eff Res*. 2022;11(9):689-98.  
482 34. Zhao YJ, Wee HL, Chan YH, Seah SH, Au WL, Lau PN, et al. Progression of Parkinson's  
483 disease as evaluated by Hoehn and Yahr stage transition times. *Mov Disord*. 2010;25(6):710-6.  
484 35. Aarsland D, Zaccai J, Brayne C. A systematic review of prevalence studies of dementia in  
485 Parkinson's disease. *Mov Disord*. 2005;20(10):1255-63.  
486 36. Schrag A, Quinn N. Dyskinesias and motor fluctuations in Parkinson's disease. A community-  
487 based study. *Brain*. 2000;123 ( Pt 11):2297-305.  
488 37. Blomaard LC, van der Linden CMJ, van der Bol JM, Jansen SWM, Polinder-Bos HA,  
489 Willems HC, et al. Frailty is associated with in-hospital mortality in older hospitalised COVID-19  
490 patients in the Netherlands: the COVID-OLD study. *Age Ageing*. 2021;50(3):631-40.  
491 38. McMillan JM, Michalchuk Q, Goodarzi Z. Frailty in Parkinson's disease: A systematic review  
492 and meta-analysis. *Clin Park Relat Disord*. 2021;4:100095.  
493 39. Ahmed NN, Sherman SJ, Vanwyck D. Frailty in Parkinson's disease and its clinical  
494 implications. *Parkinsonism Relat Disord*. 2008;14(4):334-7.  
495 40. Torsney KM, Romero-Ortuno R. The Clinical Frailty Scale predicts inpatient mortality in  
496 older hospitalised patients with idiopathic Parkinson's disease. *J R Coll Physicians Edinb*.  
497 2018;48(2):103-7.  
498 41. Martí-Pastor A, Moreno-Perez O, Lobato-Martínez E, Valero-Sempere F, Amo-Lozano A,  
499 Martínez-García M, et al. Association between Clinical Frailty Scale (CFS) and clinical presentation  
500 and outcomes in older inpatients with COVID-19. *BMC Geriatr*. 2023;23(1):1.  
501 42. Andrés-Esteban EM, Quintana-Díaz M, Ramírez-Cervantes KL, Benayas-Peña I, Silva-  
502 Obregón A, Magallón-Botaya R, et al. Outcomes of hospitalized patients with COVID-19 according  
503 to level of frailty. *PeerJ*. 2021;9:e11260.  
504 43. Aw D, Woodrow L, Ogliairi G, Harwood R. Association of frailty with mortality in older  
505 inpatients with Covid-19: a cohort study. *Age Ageing*. 2020;49(6):915-22.  
506 44. Wilke V, Sulyok M, Stefanou MI, Richter V, Bender B, Ernemann U, et al. Delirium in  
507 hospitalized COVID-19 patients: Predictors and implications for patient outcome. *PLoS One*.  
508 2022;17(12):e0278214.  
509 45. White L, Jackson T. Delirium and COVID-19: a narrative review of emerging evidence.  
510 *Anaesthesia*. 2022;77 Suppl 1:49-58.  
511 46. Liotta EM, Batra A, Clark JR, Shlobin NA, Hoffman SC, Orban ZS, et al. Frequent  
512 neurologic manifestations and encephalopathy-associated morbidity in Covid-19 patients. *Ann Clin*  
513 *Transl Neurol*. 2020;7(11):2221-30.  
514 47. Attia AS, Hussein M, Aboueisha MA, Omar M, Youssef MR, Mankowski N, et al. Altered  
515 mental status is a predictor of poor outcomes in COVID-19 patients: A cohort study. *PLoS One*.  
516 2021;16(10):e0258095.  
517 48. Kenerly MJ, Shah P, Patel H, Racine R, Jani Y, Owens C, et al. Altered mental status is an  
518 independent predictor of mortality in hospitalized COVID-19 patients. *Ir J Med Sci*. 2022;191(1):21-  
519 6.  
520 49. Aarsland D, Batzu L, Halliday GM, Geurtsen GJ, Ballard C, Ray Chaudhuri K, et al.  
521 Parkinson disease-associated cognitive impairment. *Nat Rev Dis Primers*. 2021;7(1):47.

- 522 50. Emre M, Aarsland D, Brown R, Burn DJ, Duyckaerts C, Mizuno Y, et al. Clinical diagnostic  
523 criteria for dementia associated with Parkinson's disease. *Mov Disord.* 2007;22(12):1689-707; quiz  
524 837.
- 525 51. Ritz B, Lee PC, Lassen CF, Arah OA. Parkinson disease and smoking revisited: ease of  
526 quitting is an early sign of the disease. *Neurology.* 2014;83(16):1396-402.
- 527 52. Ellis PK, Davies ML, Gray WK, Barber M, Bolnykh I, Sadler M, et al. The Cause and  
528 Duration of Emergency Admissions to Hospital in People with Idiopathic Parkinson's Disease, Under  
529 the Care of a UK Service, During the First Year of the COVID-19 Pandemic. *J Parkinsons Dis.*  
530 2022;12(6):1833-40.
- 531 53. Scherbaum R, Kwon EH, Richter D, Bartig D, Gold R, Krogias C, et al. Clinical Profiles and  
532 Mortality of COVID-19 Inpatients with Parkinson's Disease in Germany. *Movement Disorders.*  
533 2021;36(5):1049-57.
- 534 54. Gray WK, Navaratnam AV, Day J, Wendon J, Briggs TWR. COVID-19 hospital activity and  
535 in-hospital mortality during the first and second waves of the pandemic in England: an observational  
536 study. *Thorax.* 2022;77(11):1113-20.
- 537 55. Green S, Perrott SL, McCleary A, Sleeman I, Maple-Grødem J, Counsell CE, et al. First  
538 delirium episode in Parkinson's disease and parkinsonism: incidence, predictors, and outcomes. *NPJ*  
539 *Parkinsons Dis.* 2021;7(1):92.

## 540 **Supporting information**

541 **S1 Supporting information. Members of the COVID-19 PD UK study team.**

542 **S2 Supporting information. Tables of summary statistics.** Patient, Parkinson's and COVID-19  
543 characteristics, length of stay and a summary of outcomes.

544 **S3 Supporting information. Results of the regression analyses.** Univariable, multivariable and  
545 sensitivity analyses for the outcomes of mortality, requirement of respiratory support and increase  
546 in care.

547



medRxiv preprint doi: <https://doi.org/10.1101/2023.04.24.23289022>; this version posted April 25, 2023. The copyright holder for this preprint (which was not certified by peer review) is the author/funder, who has granted medRxiv a license to display the preprint in perpetuity. It is made available under a [CC-BY 4.0 International license](https://creativecommons.org/licenses/by/4.0/).

Frequency of positive COVID-19 tests in COVID-19 PD

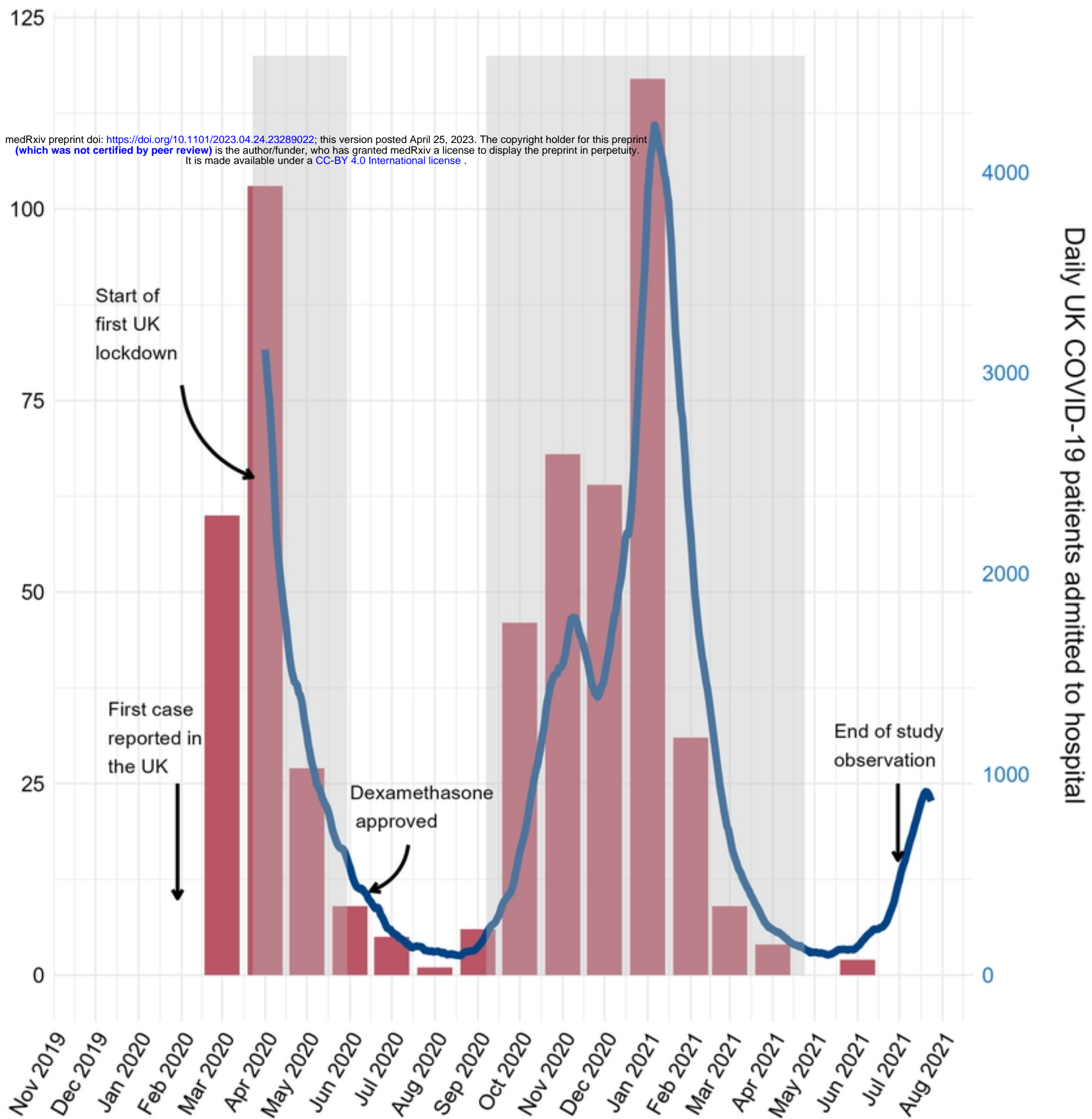


Figure 1

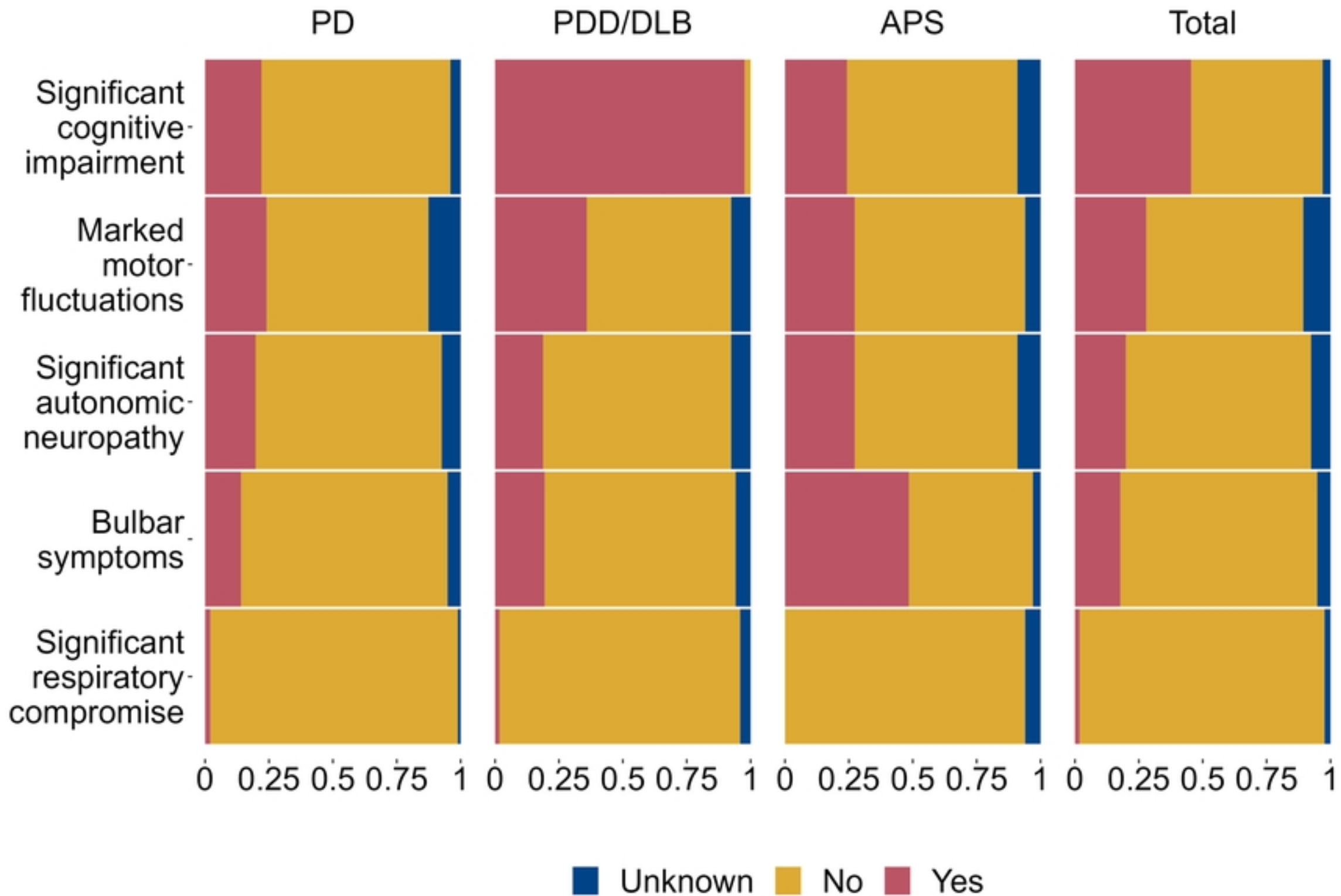


Figure 2

**A**

Altered mental state  
(191/385, 49.6%)

Classic COVID-19  
or respiratory  
symptoms  
(343/385, 89.1%)

**B**

Altered mental state  
(64/167, 38.3%)

Classic COVID-19  
or respiratory  
symptoms  
(109/167, 65.3%)

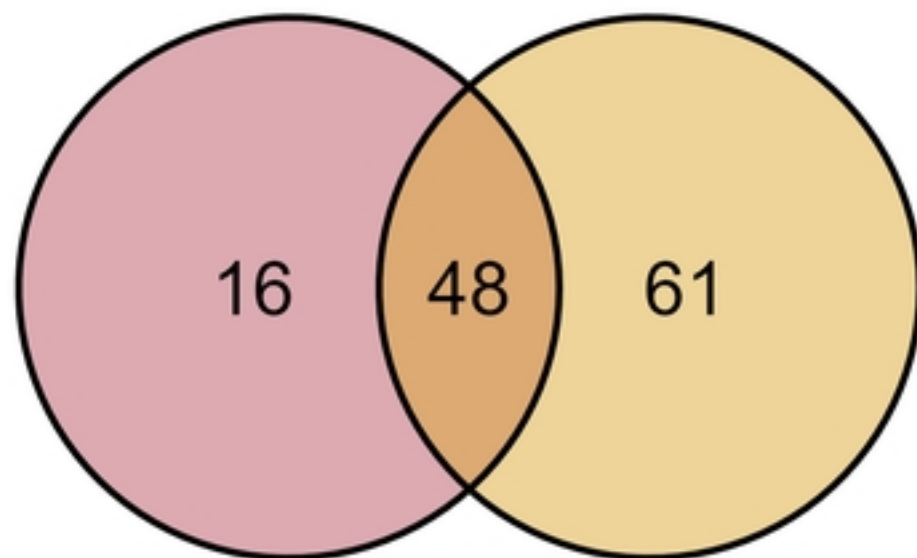


Figure 3

Acquired COVID-19 ■ Community ■ Hospital

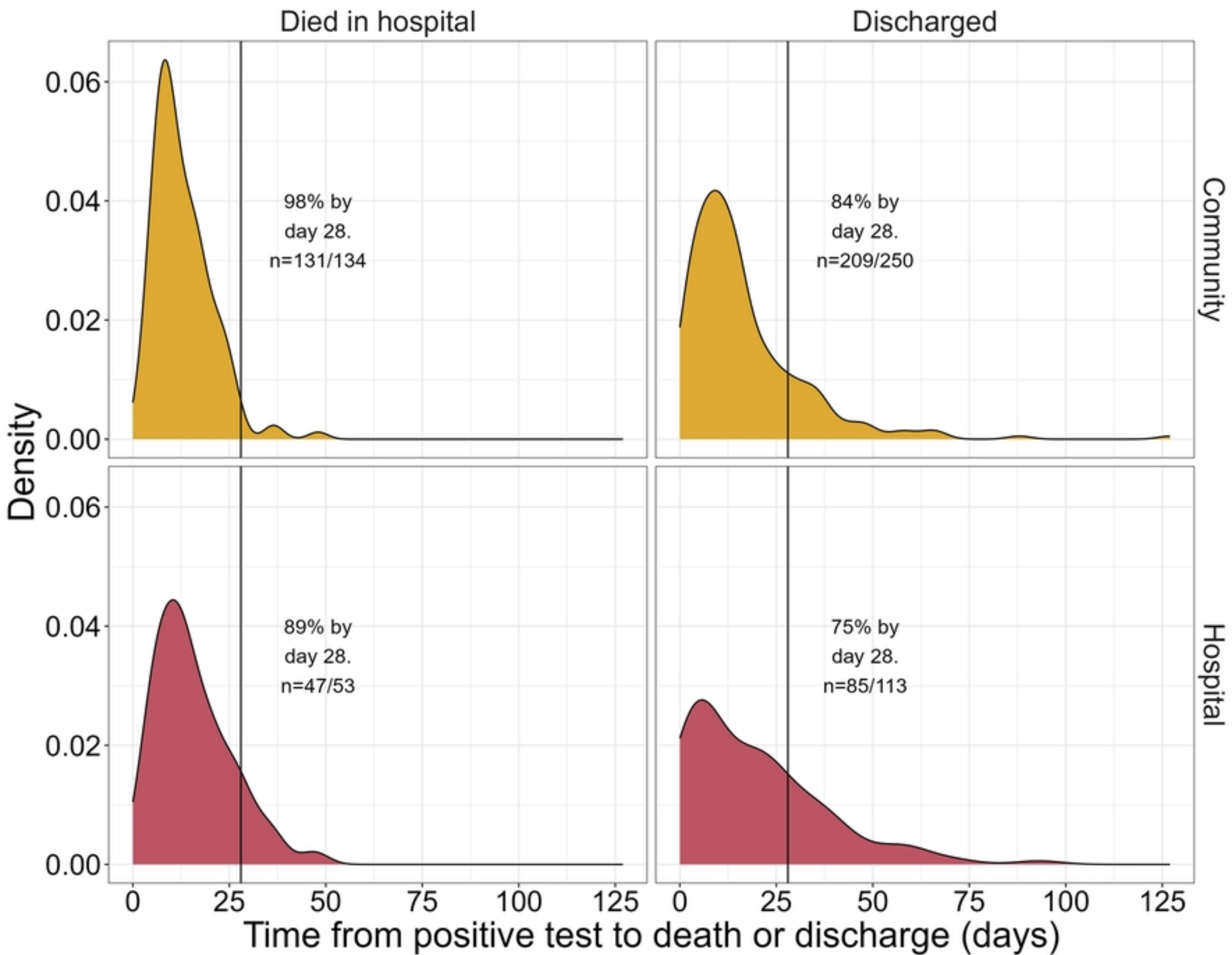


Figure 4

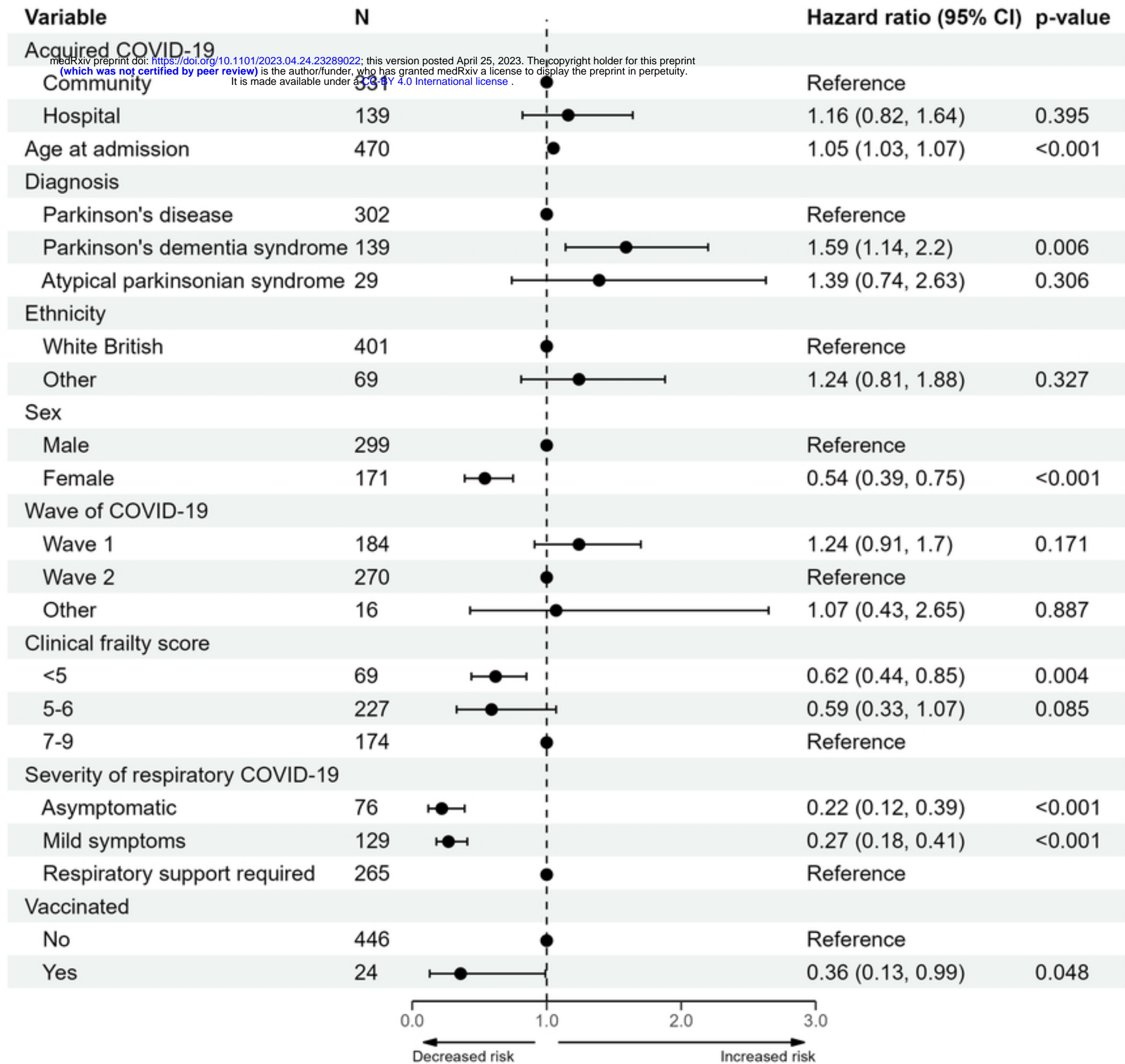


Figure 5



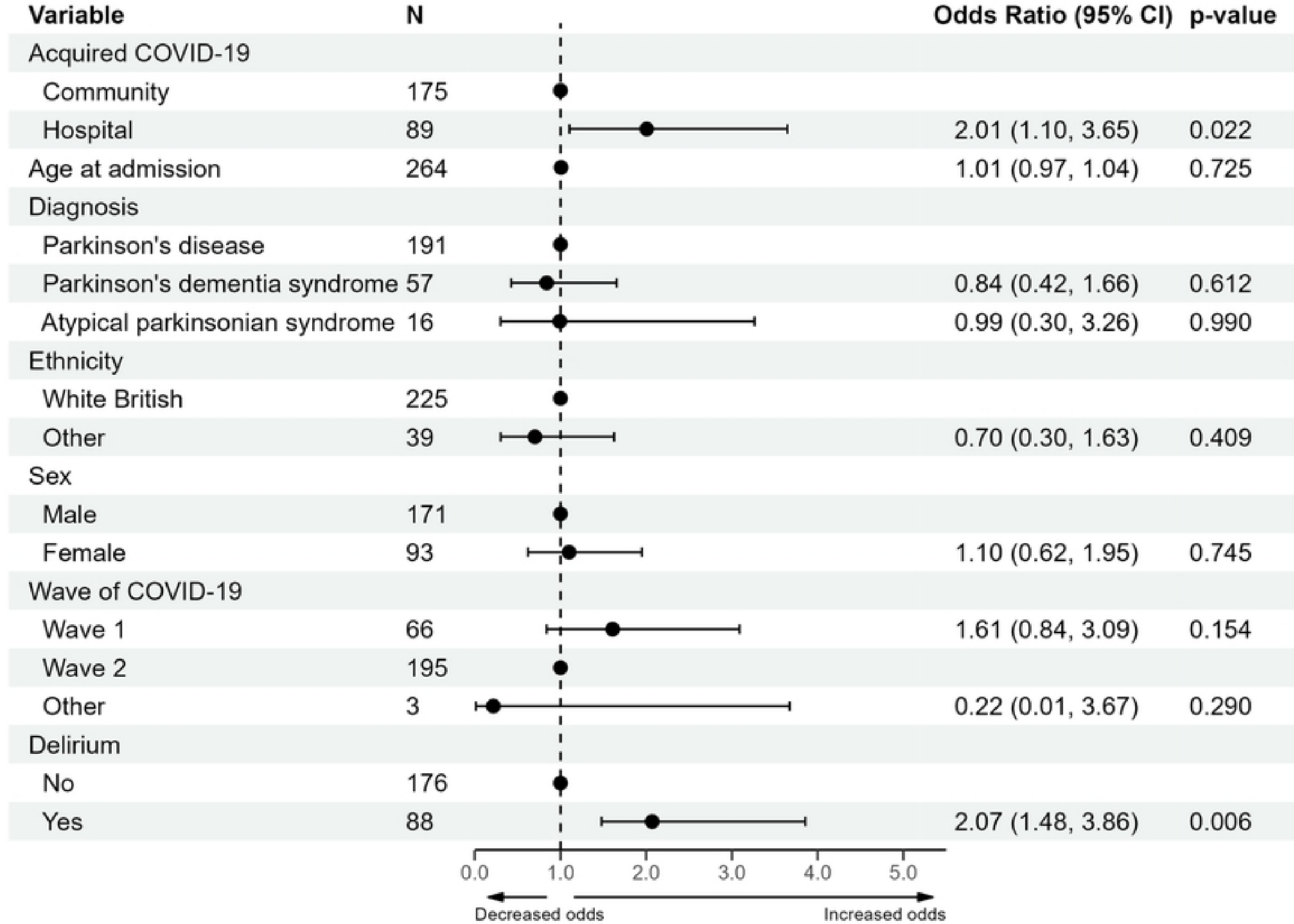


Figure 6

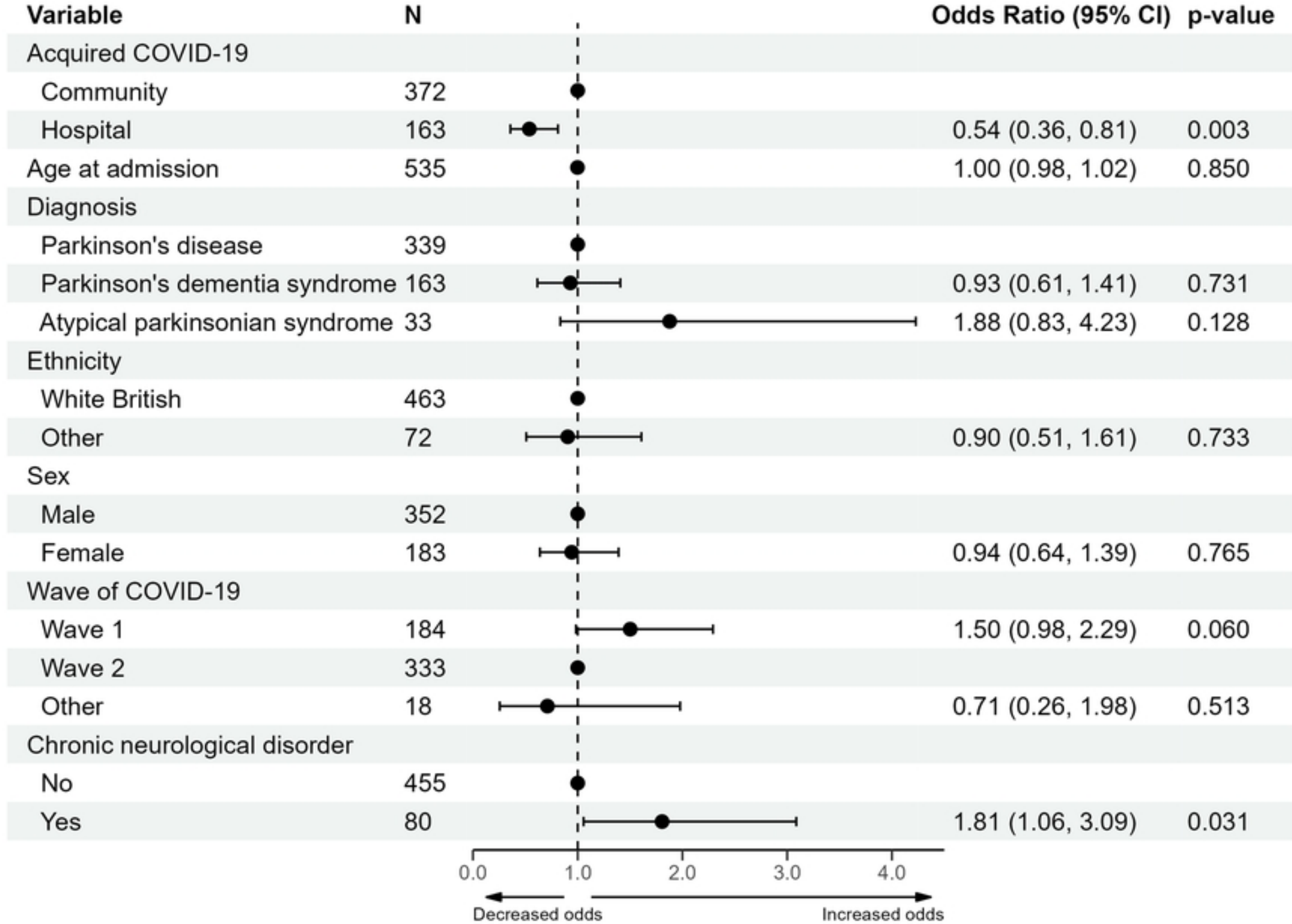


Figure 7