

5 Role of the exercise professional in metabolic and bariatric surgery

VERSION 2

[PREPRINT – This manuscript has not been peer reviewed yet.]

10

Matthew A. Stults-Kolehmainen, Ph.D. ^{a, b, *}, Dale S. Bond, Ph.D. ^c, Laura A. Richardson, Ph.D. ^d,
Louisa Y. Herring, Ph.D. ^{e, f}, Bethany Mulone, R.N., B.S.N., M.S.H.A. ^a, Carol Ewing Garber, Ph.D. ^b,
John Morton, M.D. ^g, Saber Ghiassi, M.D. ^g, Andrew J. Duffy, M.D. ^g, Ethan Balk, Ph.D., R.D. ^{a, h},
15 Charles J. Abolt, Ph.D. ⁱ, Matt C. Howard, Ph.D. ^j, Garrett I. Ash, Ph.D. ^{k, l}, Susannah Williamson,
Ph.D. ^{m, n}, Emilian Rejane Marcon, Ph.D. ^o, Melissa De Los Santos, M.S., R.D. ^b, Samantha Bond,
M.S. ^p, Janet Huehls, M.S. ^q, Osama Alowais, M.S. ^b, Nina Brojan Heyman, M.S. ^b, and Bruno
Gualano, Ph.D. ^r

20 ^a Center for Weight Management, Division of Digestive Health, Yale New Haven Hospital, New
Haven, CT, United States

^b Department of Biobehavioral Sciences, Teachers College – Columbia University, New York, NY,
United States

25 ^c Departments of Surgery and Research, Hartford Hospital/HealthCare, Hartford, CT, United
States

^d School of Kinesiology, University of Michigan, Ann Arbor, MI, United States

^e University Hospitals of Leicester NHS Trust, Infirmary Square, Leicester, England, United
Kingdom

30 ^f NIHR Leicester Biomedical Research Centre, Leicester Diabetes Centre, Leicester General
Hospital, Leicester, England, United Kingdom

^g Division of Bariatric and Minimally Invasive Surgery, Department of Surgery, Yale University
School of Medicine, New Haven, CT, United States

^h Department of Nutrition and Food Studies, New York University, New York, NY, United States

35 ⁱ Earth and Environmental Sciences Division, Los Alamos National Laboratory, Los Alamos, NM,
United States

^j Department of Marketing & Quantitative Methods, University of South Alabama, Mobile, AL,
United States

^k Center for Medical Informatics, Yale School of Medicine, New Haven, CT, United States

40 ^l Center for Pain, Research, Informatics, Medical Comorbidities and Education Center (PRIME),
VA Connecticut Healthcare System, West Haven, CT, United States

^m Center for Military Psychiatry and Neuroscience, Walter Reed Army Institute of Research
(WRAIR), Silver Spring, MD, United States

ⁿ Army Educational Outreach Program, Rochester Institute of Technology, United States

^o Department of Bariatric Surgery, Hospital de Clínicas de Porto Alegre, Porto Alegre, Brazil

45 ^p College of Applied Health Sciences, University of Illinois at Chicago, Chicago, IL, United States
^q UMass Memorial Weight Center, UMASS Memorial Medical Center, Worcester, MA, United States
^r Applied Physiology & Nutrition Research Group, School of Medicine, University of São Paulo, São Paulo, Brazil

50

Running head: Exercise professional in bariatric surgery

***Correspondence:** Matthew A. Stults-Kolehmainen, Ph.D., Center for Weight Management, Division of Digestive Health, Yale New Haven Hospital, 8 Divine Street, North Haven, CT, United States. 06473. E-mail address: matthew_stults@yahoo.com

55

60

ABSTRACT

65 **Background:** Physical activity (PA) is important for the long-term health and weight management of patients who undergo metabolic and bariatric surgery (MBS). However, the roles of exercise professionals in MBS settings have not been systematically determined.

70 **Objectives:** To investigate: (1) who are the professionals implementing PA programming in MBS clinical settings; and (2) what patient-centric tasks do they perform?

Setting: Clinical and academic exercise settings worldwide.

75 **Methods:** This multimethod study included a scoping review of PA programs in MBS described in the research literature. Data about job tasks were extracted and provided to 10 experts to sort into categories. Cluster analysis was utilized to find the hierarchical structure of tasks. A Delphi process was used to agree on a final model.

80 **Results:** The majority of PA professionals were exercise physiologists in the USA and physiotherapists or other types of exercise professionals elsewhere. Forty-three tasks were identified, the most reported being: supervision of exercise, fitness testing, and exercise prescription. Seven higher-order categories were determined: (1) Exercise-related health assessment, (2) Body composition and physical fitness assessment, (3) Lifestyle physical activity and sedentary behavior assessment, (4) Education, instruction, and prescription, (5) Exercise monitoring, (6) Behavioral counseling and psychosocial support, and (7) Dietary support. The following statements were rated an average of 9.0, classifying them as “imperative”: 1) “Pre- and post-operative PA/exercise guidelines for MBS patients are needed”, 2) “MBS programs need to include PA/exercise as part of multidisciplinary care”.

90 **Conclusions:** The expert group reached a consensus on 7 major classifications of job tasks for the exercise professional. It is important for governing medical associations across the world to formally recognize experienced exercise professionals as playing pivotal roles in continuing, multidisciplinary care for MBS patients. These findings also provide evidence-based information in the effort to solidify these positions within the greater context of healthcare.

95 **Keywords:** Metabolic and bariatric surgery, physical activity, implementation, exercise prescription, mixed methods, qualitative

100

Highlights

1. Results identified 43 patient-centered job tasks, which divided into 7 major categories.
2. The most common tasks were exercise prescription, supervision, and fitness testing.
3. Job tasks performed varied marginally by the type of exercise professional.
4. Including exercise in MBS patient care was deemed “imperative” by the Expert Group.

105

Introduction

110 Metabolic and bariatric surgery (MBS) yields profound weight loss and health
improvements, although there is substantial variability in the amount and trajectories of these
outcomes ⁽¹⁾. Some of this variability may be attributed to the physical activity behaviors of
patients who had MBS. In this population, more moderate-to-vigorous intensity PA, less
sedentary behavior, and more steps are associated with greater weight loss, better weight
115 maintenance, better bone health, and improvements in cardiometabolic health parameters ⁽²⁻⁶⁾.
However, patients overall do not become spontaneously active after surgery. Indeed, an average
patient is insufficiently active before surgery and makes only small changes in activity behaviors
after surgery, thus remaining insufficiently active ⁽⁷⁾. In the absence of exercise, several important
benefits of MBS (e.g., improvements in insulin resistance, inflammatory markers, endothelial
120 function) are reversed, even in a short period of time, as has been demonstrated in a recent trial
⁽⁸⁾.

The difficulties that patients experience in making substantial changes in their activity
behaviors suggest that they need additional information, intervention, and support to make such
changes ⁽⁹⁾. Indeed, structured exercise and physical activity programming in combination with
dietary counseling may help to optimize and sustain MBS outcomes ^(4-6, 10). Unfortunately, it is
125 likely that such programs are infrequently provided in real-world, clinical settings ^(9, 11). Likewise,
there is some data suggesting that even simple exercise guidance is not routinely provided in
MBS health services worldwide ^(9, 12). This may partly be because while established exercise
guidelines currently exist for hypertension, diabetes, and other chronic conditions ⁽¹³⁾, there are
no specific guidelines for exercise with MBS. Furthermore, effectively translating exercise
130 programs from clinical trials into clinical practice is difficult to achieve ^(3, 14-16). Despite these
shortcomings, insurance companies often require the provision of exercise counselling as a
condition for surgical approval ⁽¹⁷⁾. For instance, the current Aetna policy refers to the exercise
physiologist as one professional qualified to supervise a "multicomponent behavioral
intervention program"⁽¹⁸⁾.

135 In the effort to translate physical activity research into clinical practice, Koorts and
colleagues ⁽¹⁹⁾ developed the PRACTIS Model. According to this framework, several major
considerations must be initially targeted, including the clinical population, context/place,
intervention characteristics and the people conducting the implementation – the interventionist.
While the first parts have been widely discussed in the literature ⁽²⁰⁾, the last component has been
140 infrequently addressed across the medical literature ^(16, 21, 22). Key questions surrounding exercise
personnel include: a) who delivers the intervention, b) what skills, education, and qualifications
should they hold, and c) how are they trained and supported? While this critical component of
the PRACTIS Model has been addressed in primary care ^(22, 23), it has not received adequate
attention in the context of MBS. Typically, this is not the physician or surgeon, who usually lacks
145 the time and training ⁽²⁴⁾, but it may include an exercise professional (EP) working as part of a
multidisciplinary team ⁽²⁵⁾.

Exercise professionals comprise a large and diverse group of individuals all aiming to
improve health of patients through physical activity ⁽²⁶⁾. Unfortunately, only recently have
guidelines been established to report this information in the scholarly literature ⁽²⁷⁾, and
150 researchers are just beginning to conform to this initiative ⁽²⁸⁾. To fill these important knowledge
gaps, the major objective of the current study was to utilize a rigorous multimethod approach

(29), including a scoping review and thematic analysis, to answer two main questions: 1) Who are the exercise professionals conducting PA programming in MBS? (e.g., exercise physiologists vs physiotherapists/physical therapists), and 2) What are the prominent clinical exercise job tasks conducted by EPs in an MBS setting? In this effort, we secondarily aimed to describe: a) the qualifications, training, and/or background of the professionals who are delivering the interventions and b) if skills of the exercise professional varied by field. Lastly, we aimed to address issues pertinent to the implementation of PA programming in MBS (e.g., guidelines, reimbursement).

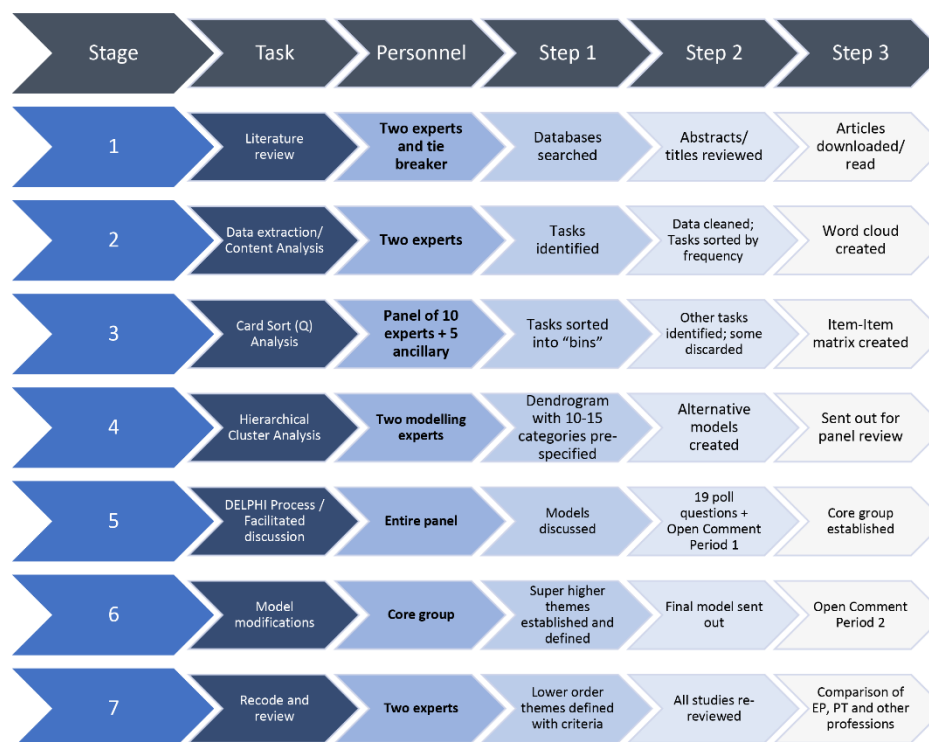
160

Methods

To appropriately address the research questions, we utilized a blend of qualitative and quantitative methods – The Systematic Clinical/Organizational Role Evaluation (SCORE) technique, which integrates the: AGREE model (30), inductive thematic analysis (31), Card sort (Q) analysis (32), Hierarchical cluster analysis (33), and the Delphi process (34). The AGREE Model for clinical decision making, which has been used for other exercise clinical decisions, like the Physical Activity Readiness-Questionnaire (PAR-Q) (35), was modified for the current task. See Figure 1.

165

Systematic Clinical/Organizational Role Evaluation (SCORE) technique



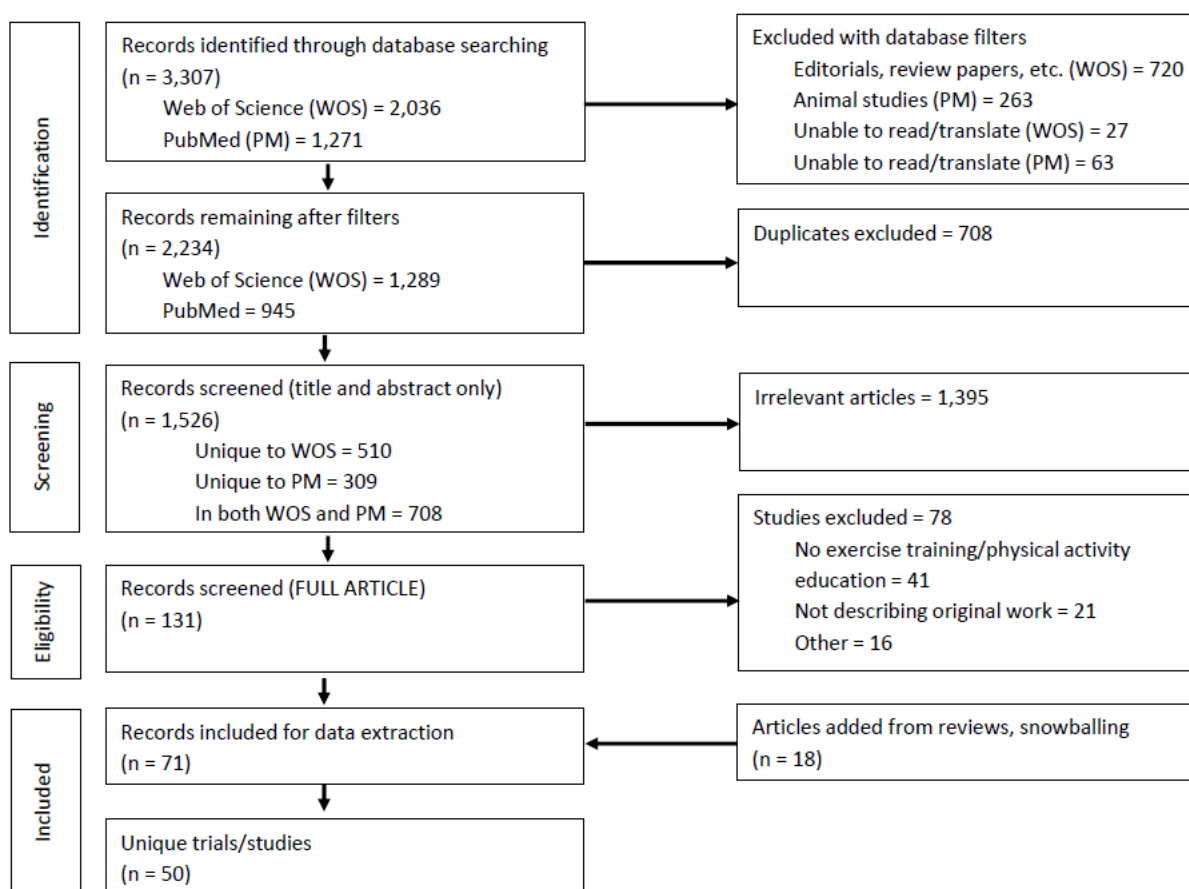
170

Figure 1. Systematic Clinical/Organizational Role Evaluation (SCORE) technique used in the current study

175 Literature review

Per the AGREE model ⁽³⁰⁾, we started with a scoping review of the literature (Stage 1) that took place between June, 2021 and January, 2022 in the Web of Science (Core Collection) and PubMed databases. PRISMA guidelines were followed ⁽³⁶⁾. The review included peri-operative MBS literature from the United States and globally to capture a wider lens of therapeutic exercise interventions. Titles and abstracts were searched, with the first term being “bariatric” and the second term being “exercise” or “physical activity”. Database results were filtered by language (English and Portuguese only), use of human subjects and studies publishing original data (e.g., eliminating comments, reviews, guidelines, editorials). Duplicate studies were then eliminated. During screening of titles and abstracts, studies were required to describe exercise and physical activity training and/or education programs (e.g., not just observe participants’ PA over time). Refer to Supplement 1. Some articles were obtained by scanning: a) review papers, b) personal archives (i.e., relevant articles already in authors’ possession), and c) reference lists from all studies obtained, and d) Google Scholar alerts for “Bariatric” and “exercise”. Full text articles were obtained and read for eligibility. See the PRISMA checklist in Supplement 2.

190



Supplement 1. Prisma CONSORT diagram demonstrating the literature search.

[SUPPLEMENT 2 NOT INCLUDED IN THIS DOCUMENT]

195 Data extraction

Two investigators (MSK and MD) extracted data related to patient-centered (clinical) exercise and physical activity program tasks completed by the exercise professional (Stage 2). An initial list of job tasks was identified through methods described in Supplement 3.

Supplement 3. Data extraction protocol

Two investigators (MSK and MD) performed the data extraction (Stage 2), which first proceeded for information related to the “who” of the exercise program (i.e., type of exercise professional who delivered physical activity programming). Any information regarding education, clinical training, credentialing, and affiliation of the exercise professional was also noted. Gathering this type of data presents some difficulty, because: a. most research articles do not directly state what provider/person completed each aspect of the study, b. authorship lists on most studies represent individuals from diverse academic backgrounds, c. not all study personnel are acknowledged, d. the term used to describe exercise professionals varies across geographical regions, such as: exercise physiologist, physical therapist, exercise specialist, trainer, health educator, etc., and e. missing information due to journal space constraints. Consequently, for studies going back to 2010, the corresponding author in each study’s byline was emailed by the first author with follow up questions.

These same investigators then extracted data related to patient-centered (clinical) exercise and physical activity program tasks completed by the exercise professional. To accomplish this, we decided to use a more inductive approach – relying on the bariatric exercise literature itself and not depending, a priori, on definitions of job tasks as stated by documents from various professional organizations about the role of exercise practitioners (1-4), which may or may not be applicable, or may be inaccurate or insufficient in this setting. By “clinical” or “patient-centered”, it is meant that we did not attempt to focus on tasks related to basic science questions (e.g., laboratory assays), administration, or other activities not directly related to patient contact.

An initial list of job tasks was identified through three means. First, by identifying instances where the role of the exercise professional were directly stated (usually as preceded by strong action verbs) (i.e., created the exercise program, screened patients, completed assessments, supervised/monitored training, provided counseling). Second, in studies conducted entirely by exercise physiologists, one would presume that all activities were conducted by these exercise professionals. Third, a corresponding author declared such actions in a personal communication. Two investigators systematically evaluated and interpreted publications independently to minimize bias (MSK and MD).

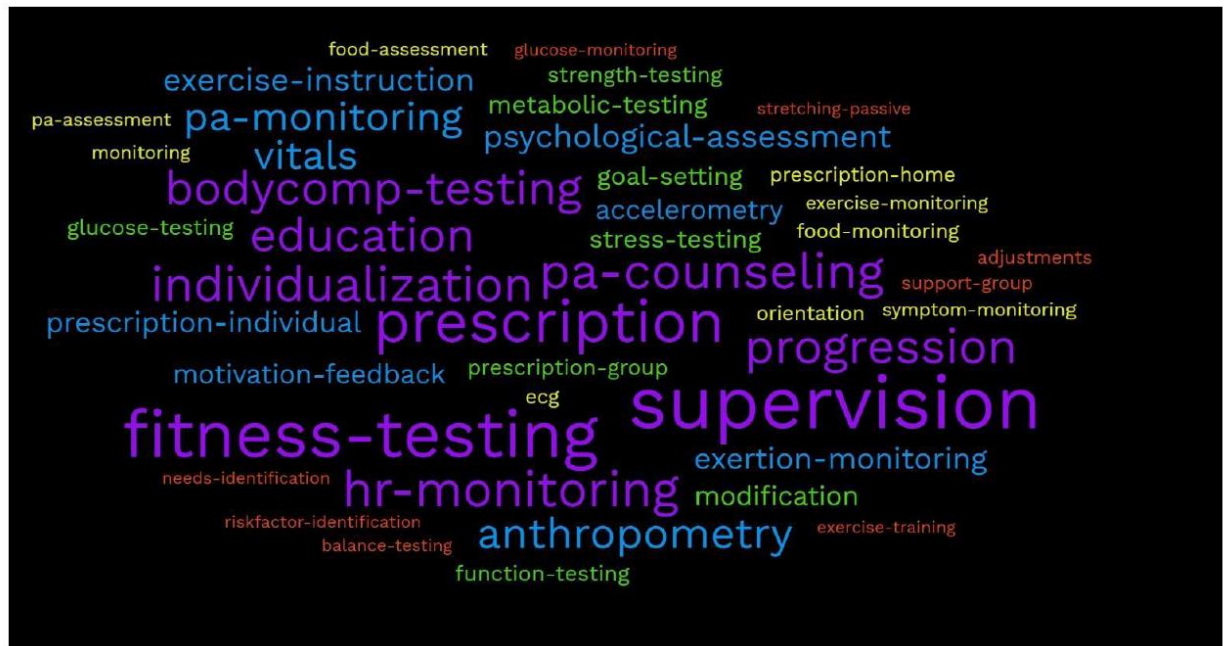
References

1. American Physical Therapy Association. About Physical Therapists and Physical Therapist Assistants 2023 [Available from: <https://www.choosept.com/why-physical-therapy/about-physical-therapists-and-physical-therapist-assistants>].
2. American College of Sports Medicine. ACSM Certified Exercise Physiologist: Exam Content Outline 2023 [Available from: https://www.acsm.org/docs/default-source/certification-documents/acsmep_examcontentoutline_2020.pdf?sfvrsn=d413f75_16].
3. Froment FP, Olson KA, Hooper TL, Shaffer SM, Sizer PS, Woodhouse LJ, et al. Large variability found in musculoskeletal physiotherapy scope of practice throughout WCPT and IFOMPT affiliated countries: An international survey. *Musculoskeletal Science and Practice*. 2019;42:104-19. doi: <https://doi.org/10.1016/j.msksp.2019.04.012>
4. World Confederation for Physical Therapy. Description of physical therapy: Policy statement. 2019.

200 Thematic and Card Sort (Q) Analysis

In the third stage, these data were categorized with a mixed inductive thematic analysis⁽²⁹⁾ and card sort (Q) analysis⁽³²⁾. Data were systematically reduced by MSK and MD, who conducted cleaning and recoding. This included nominalization of verbs. Data were examined: a) first as multiple words (e.g., “heart rate monitoring”) and then, b) connected/adjoined with a hyphen (e.g., “HR-monitoring”) to facilitate visualization. Tasks were then compared for overlap and agreement between investigators. Unique job tasks were entered into a free word cloud program (freewordcloudgenerator.com, Salt Lake City, UT) to visually inspect (black background, rainbow color pattern font), categorize by word frequency, and provide labels⁽³⁷⁾. See Supplement 4.

210



Supplement 4. Word cloud illustrating common exercise job tasks presented to the research team for the bin sort assignment.

215 An expert group of bariatric clinicians, exercise practitioners, and scientists were invited to complete the sort task. The Delphi process requires 8-10 people, but due to final exams, summer holidays, we did not expect that all people would respond. Therefore, we over-sampled (15) so at least 8 would be involved at each stage. Ten had complete and valid responses submitted on time. The remainder did not respond in required timeframe (3), had incomplete responses (1) or completed the form erroneously (1). Those analyzed included four
220 exercise physiologists, two registered dietitians (RDs), one advanced practice registered nurse, one surgeon, and two exercise scientists). Four were exercise practitioners in MBS clinics, each with a minimum of 9 years of practice in the area, for a total of 66 years (MSK, LR, JH, RM). Those not responding at this stage continued to follow the process, evaluate data, and more

actively participate in later stages. These individuals independently inspected the data, identified related tasks and sorted/categorized these into “bins”/clusters starting with the most frequent job tasks observed. To prevent author word choice from hiding findings (e.g., “body composition testing” vs. “analysis of body composition”), high frequency words were collapsed with similar words and then re-analyzed. The initial goal was 10-15 bins or clusters, based on Hsieh & Shannon⁽³¹⁾. Respondents could elect to discard items or suggest new ones. Responses from these ten experts were included into an Item-by-Item matrix, which was used to determine *distance* of each item from the others⁽³²⁾.

Hierarchical Cluster Analysis (HCA)

In Stage 4, a hierarchical cluster analysis was then utilized (Matlab v R2022a)⁽³³⁾ to create Dendrogram models based on distance between word items. Two alternative Dendrogram models were generated for group consideration. Both lower order and higher order themes were detected from the dendrograms. To identify higher-order themes (HOTs) (to generate the a priori, 10-15 themes) a *distance threshold* was set to 7. To identify 7 super-higher-order themes (SHOTs), a distance threshold was set to 9.

DELPHI Process/ Issues in bariatric exercise survey

In Stage 5, a process of reaching consensus among the expert group was initiated to determine a final list of job task categories and to address related issues, based on the Delphi Technique⁽³⁴⁾. This included 2 group discussion sessions (both in June, 2022) to: a) review the HCA, b) consider adding, deleting and/or merging tasks, c) consider ranking and ordering items, etc. Then a survey developed by a Core Group (MSK, DB, LR and LH) with 19 open and closed questions (in 4 sections) was sent to all respondents. Section 4 included 4 statements about issues in bariatric exercise - rated on a 0 (no importance) to 9 (imperative) scale. An example (the first statement) is, “Pre- and postoperative PA/exercise guidelines for bariatric surgery patients are needed”. Another two weeks were permitted to respond. “Consensus” was defined by > 80% agreement for the first 3 sections of questions and inter-quartile range (≤ 2) for section 4. As part of this process, voting permitted the Core Group to later make minor clarifications to the model (Stage 6). A final model was presented to the entire panel, with an additional open comment period of two weeks ensuring representation of emerged categories.

In Stage 7, four authors (MSK, MD, OA, LR) established specific criteria to define each HOT⁽²⁹⁾, as seen in Supplement 5. These criteria defined what explicitly and implicitly constituted each higher-order category, what explicitly was *not* part of each category. A new form/template was then created to re-screen the searchable pdf of all manuscripts for tasks and their properties (e.g., program delivery mode: in-person, home line; format: 1-on-1, group) in each category. The re-review and recode using these forms were completed by two authors (MSK, OA). In some cases, emails were sent to corresponding authors for clarification on study details.

Supplement 5. Criteria for task identification and classification.					
	Task Category from Table 2	Does NOT include	Explicit (X symbol)	Implicit (/ symbol) suggesting strongly that it was conducted	Notes and search criteria
1	Risk Factor and needs identification	Does not include: Limitations due to age, weight status and various eligibility factors. Signed approval from PCP/surgeon for exercise	1. Exercise health & musculoskeletal screening, 2. determination of contraindications 3. Needs identification Includes: PAR-Q,	Inclusion/ exclusion criteria suggestive that a clinical screening was conducted.	Search for words: RISK / SCREENING / NEEDS / CONTRAINDICATIONS In some studies, no additional exercise-related health screening was conducted (e.g., Parikh; Rothwell)
2	Exercise-related health assessment	Does not include: Functional testing, like 6-minute walk tests	physical by a sports physician Vitals (Blood pressure) – e.g., Funderburk Bruce protocols Modified-Bruce protocols	VO2max data or similar was reported	
3	Body Composition Assessment	Does not include: Does not include simple weight, height and BMI.	Tests of percent body fat and resting metabolic rate and waist and hip circumferences.	Data suggestive of test completion	
4	Fitness testing	Does not include: “Perceived” fitness	Other non-graded exercise tests, like the 6MWT or the Cooper Test.	Data suggestive of test completion	
5	Lifestyle physical activity and sedentary behaviors assessment	Does not include: Gym attendance	Accelerometry (i.e., Actigraph); Fitness trackers (i.e., Fitbits) Pedometry Diaries / logs of activity	Step data included	Search for words: STEPS
6	Fitness and Health Education	Does not include: Information about the program	Structured exercise curriculum	Evidence of curriculum (e.g., table of contents)	

			Includes “exercise guidelines” as provided in a control group for a RCT. Exercise instructions for home.		
7	Physical Activity Instruction	Does not include: Structured exercise program	Includes: Familiarization Dumbbells, resistance bands, bands,	List of exercises that would infer that patient would need instruction	
8	Exercise Prescription	Does not include: Outside physical activity that a patient would routinely conduct on their own. Exercise counseling about exercise Exercise or PA education	Any exercise outside of the structured/supervised training program, as provided by the exercise professional. Includes access to facility during non-training times	Text highly suggestive that a home program was being conducted	Search for words: HOME, OUTSIDE
			Prescribed exercise training program defined by exercise variables, such as: Minutes/time (duration) Frequency of exercise Type/Mode Etc. Early ambulation program	Text highly suggestive that a standardized program was being conducted.	
9	Personalization	Does not include: General guidelines are given to all/most patients Different guidelines/instructions for two or more different groups	Customization, individualization and/or modification based on needs/ health status Modifications based on pain and tolerance Implied if they use heart rate % to prescribe the exercise. “Optimization” of exercise program	Heart rate zone provision If a case study, it is assumed to be individualized for the patient.	Search for words: Individualization, Modification, Customization
		Does not include: Standardized exercise prescription that does not change over time.	Weekly, bi-weekly or monthly changes based on a variety of factors, like improvements in fitness or less limitations.	Adjustments made but the criteria by which the adjustments are made is not clear, or it is not applicable for all patients (only some were progressed).	Search for words: Progression Increment*
10	Metabolic Assessment	Does not include: HR prescription only	Also includes BP and SPO2 and glucose	Data suggestive	Search for words: Heart rate

			Additional action if parameters are out-of-expected range.		Glucose Blood sugar
11	Monitoring	Does not include: Any activities in which patients were not within sight.	Includes orientation and familiarization and training to ensure safety and low abdominal pressure Supervision / Supervised exercise training, including instruction, guiding and feedback Teaching the Borg exertion scale to self-monitor	Text highly suggestive that feedback was being provided.	In many studies, it is not clear if some monitoring was passive or strictly active (i.e., passive monitoring from a desk/station at a gym vs. continuous supervision of each patient.
12	Counseling Technique	Does not include: Education Passing out guidelines General advice	Instructions on goal setting, motivational interviewing or other techniques Contingency planning (“if this happens, do this...”) Strategies to build confidence through experiences	Evidence of strategies (e.g., from a table)	
13	Psychosocial Support	Does not include: Therapy Other services necessitating psychiatry licenses	Onward Referral Support of Psycho/Social Worker	Tables with psychological data in it in methods or results, information in regards to psychosocial assessments	
14	Dietary Support	Does not include: Therapy Other treatments necessitating licensing of dieticians	Education of basic consulting on bariatric dietary basics per-post surgery, (PPO, Supplements, Macros, Importance of vitamins); energy balance Assessment Onward referral	Lists of information about macronutrients, etc.	

RESULTS

265 A total of 63 studies were found describing exercise programs in MBS, representing
50 unique interventions (many studies had more than one published report). A further search to
include all articles related to these interventions increased the total to 71 with 57% published
after 2015. Over half of the studies were from just two countries – the USA (39%) and Brazil
(14%). Exercise programs were mainly conducted in teaching hospitals (38%). The majority of
270 articles were “proof of concept” (i.e., addressing the question of whether exercise is beneficial
for weight loss) as opposed to implementation. The main component of these programs was
supervised exercise training (65%). Later article additions increased this total to 83, which were
analyzed later. See the Tables and reference list in Supplement 6.

275 Supplement 6 with citations (see below)

Table 1A. Details of studies from the USA													
Studies #	First author	Year	Included in data extraction (co-authors MSK and MD)	Study Type	Study Name	Country of corresponding author	Setting	Program Type	Program length	Mode of exercise training	Patient contact frequency	Exercise professional	Training/education/credentialing (if noted)
1	Berggren	2008	X	Prospective intervention	None	USA	University laboratory	Supervised exercise training	10 consecutive days	Endurance training	Daily	Masters-level graduate student	American College of Sports Medicine (ACSM)
2-4	Bond; Bond; Bond	2015 a; 2015 b; 2017	X	RCT	Bari-Active	USA	University hospital, at home	Behavioral intervention, counseling, physical activity tracking	6 weeks	Home-based walking	1x/ week (weekly)	Doctoral-level graduate student	Master's in physical activity-related studies
5	Brandenberg	2005	X	Retrospective	None	USA	University hospital	Behavioral intervention,	6 weeks	Behavior modification	1x/ week (weekly)	Exercise specialist;	Not noted

				analysis				supervised liquid supplement diet		component (non-exercise)		psychologist	
6-10	Carnero; Coen; Coen; Lopez; Woodlief	2017; 2015 a; 2015 b; 2017; 2015	X	RCT	None	USA	Public hospital; university	Semi-supervised exercise training	26 weeks	Aerobic exercise (stationary cycling or walking)	3-5x/ week with at least one directly supervised session per week	Masters-level exercise physiologist	Master's in exercise physiology (EP)
11	Coleman	2016		RCT	None	USA	Private hospital, at home	Supervised exercise training, phone counseling, daily pedometer, reading program curriculum, recording daily physical activities	26 weeks	Resistance training, aerobic exercise, flexibility training	2x / week with 3x/ week of self-directed exercise	Not specified	Not specified
12	Creel	2016	X	RCT	None	USA	Clinic	Exercise counseling with a pedometer	26 weeks	Walking	3x/ week (2 weekdays and 1 weekend day)	Not specified	Not specified
13	Daniels	2018	X	RCT	None	USA	University laboratory	Supervised exercise training	12 weeks	Resistance training	3x/ week	Doctoral-level graduate student	ACSM EP and Certified Personal Trainer (CPT), NSCA Certified Strength

													th and Condi oning Specia list (CSCS)
14	Funderb urk	2010	X	Quasi- experi mental	None	USA	University hospital	Supervised exercise training	12 weeks	Aquatic exercise	2x/ week	Recreational therapist	Licens ed and nation ally certifie d
15	Gilberts on	2020		Pilot study	None	USA	At home	Unsupervised exercise training with exercise diary and activity tracker	30 days	Aerobic exercise (walking)	5x/ week	Not specifie d	Not specifi ed
16- 18	Gill; Powell; Powell	2018; 2018; 2020	X	Qualit ative; prospe ctive interve ntion	BELT progra m; FLOW	USA	University, hospital	Supervised exercise training; behavioral change intervention	12 weeks; 16 weeks	Aerobic exercise, resistance training	3x/ week	Doctoral- level, register ed clinical exercise physiologist (RCEP), Doctoral- level graduate students; assistant professor	ACSM , NASM
19- 21	Halperin ;	2014; 2017;	X	RCT; review	Why WAIT; SLIMM- T2D	USA	Clinic; university hospital	Supervised exercise training; unsupervised exercise training	12 weeks	Aerobic exercise, resistance training,	3-4x/ week (Weeks 1-4); 5x/ week (Weeks 5-8); 6x/ week	RCEP	Master s in kinesio logy and

	Panosia n; Hamdy	2018								flexibility training	(Weeks 9-12); Weekly		nutritio n
22	Hickey	1999	X	Prospective intervention	None	USA	University laboratory	Supervised exercise training	7 days	Aerobic exercise (treadmill and cycle ergometer)	Daily	Masters-level graduate student	ACSM
23	Huck	2015	X	Quasi-experimental	None	USA	University laboratory, private community-based training facility	Supervised exercise training	12 weeks	Aerobic exercise, resistance training, stretching	2x/ week (Weeks 1-6); 3x/ per week (Weeks 6-12)	Graduate professor; CSCS, CPT	PhD
24	Kalarchian	2013	X	RCT	None	USA	University hospital, bariatric clinic	Physician-supervised diet and exercise training	26 weeks	Participants were given a goal of 30 minutes of physical activity (PA) at least 5 days per week (non-exercise)	12 individual, face-to-face sessions and 12 telephone contacts	Non-exercise professionals	Not specified
25	Kelley	2006	X	Editorial	Exercise Right	USA	Hospital	Unsupervised exercise training	6 weeks	Not specified	Not specified other than post evaluation and quarterly or semiannual basis follow-up assessments	Exercise physiologist	Bachelor's degree
26	Kerrigan	2012	X	Case study	None	USA	Hospital, bariatric center	Unsupervised exercise training	8 weeks	Aerobic exercise (walking, treadmill, recumbent)	3-4x/ week	Clinical exercise physiologist	Not specified

										stepper, swimming), chair aerobics			
27	Klasnja	2020	X	Pilot study	BariFit	USA	Public hospital	Mobile health intervention	16 weeks	Adaptive step goals	Daily	Research specialist	Not specified
28	Parikh	2012	X	RCT	None	USA	University hospital	Medically supervised weight management, nutrition, physical activity education, individualized behavior modification counseling	26 weeks	Not specified	Monthly	Dietitian	Not specified
39	Shah	2011	X	RCT	None	USA	University hospital fitness center	Semi-supervised exercise training with exercise diaries and heart rate monitors	12 weeks	Aerobic exercise	5x/ week (with 1-2 days at the fitness center)	Exercise physiologist	PhD
30	Zagarins	2011	X	Descriptive	None	USA	Hospital, at home	Supervised exercise training	12 weeks	Aerobic exercise (walking, treadmills, recumbent exercise bicycles, ellipticals), resistance training	1x/ week (weekly)	Exercise physiologist ; CPT	Not specified
* Various trials/studies resulted in multiple publications, which were combined.													

** National Strength and Conditioning Association (NSCA), Certified Strength and Conditioning Specialist (CSCS)

Table 1B. Details of studies from outside the USA													
Studies #	First author	Year	Included in data extraction (co-authors MSK and MD)	Study Type	Study Name	Country of corresponding author	Setting	Program type	Program length	Mode of exercise training	Patient contact frequency	Exercise professional	Training/ education/ credentialing (if noted)
1-4	Auclair; Lemieux-Simard; Pettigrew; Tardif	2020; 2021; 2019; 2020	Auclair – X LS – NO Pettigrew - NO Tardif - X	RCT	ACTIVE	Canada	University hospital	Supervised exercise training	12 weeks	Aerobic exercise, strength training	3x/ week	Clinical Exercise Specialist (CES)	ACSM
5-8	Baillot; Baillot; Baillot; Baillot	2013; 2016; 2016; 2018	X	Pilot study; RCT	PreSET; TelePreSET	Canada	Hospital; at home	In-person and virtual semi-supervised exercise training	12 weeks	Endurance training, strength training, Aquagym	2-3x /week on site (+ sessions at home if missed)	Doctoral-level kinesiologist	Not specified
9	Brown	2016	X	Prospective intervention	None	Australia	University hospital	Virtual behavioral education	1 year	Not specified	3x/ week	Nurse manager	Not specified
10	Brun	2019		Longitudinal study	None	France	University hospital	Supervised exercise training	5 years	Endurance training	3x/ week	Not specified	Not specified

11	Campanha- Versiani	2017	X	Quasi-experimental	None	Brazil	University hospital	Supervised exercise training and unsupervised training	36 weeks; 1 year	Weight-bearing exercise, aerobic exercise	2x / week	Not specified	Not specified
12-13	Castello; Castello-Simões	2011; 2013	X	RCT	None	Brazil	University laboratory	Supervised exercise training	12 weeks	Aerobic exercise	3x / week	Doctoral-level physiotherapist	Not specified
14-18	Dantas; Dantas; Gil; Gil; Murai	2018; 2020; 2021A; 2021B; 2019	Dantas – X Dantas – X Gil – NO Murai – NO	RCT	None	Brazil	University laboratory; hospital	Supervised exercise training	26 weeks	Aerobic exercise, resistance training	3x / week	Doctoral-level graduate student in exercise physiology	Not specified
19	Da Silva	2015	X	Case report	None	Brazil	Clinic; laboratory	Supervised exercise training	26 weeks	Resistance training exercises, aerobic exercise, flexibility training	3x/ week	Physical education teacher with specialization in exercise physiology	Doctoral level
20	de Oliveira	2016	X	RCT	None	Brazil	University hospital	Supervised exercise training	30 days	Customized program of walking, breathing exercises,	2x/ week	Physiotherapist	Not specified

										some resistance exercises (1kg), and stretching			
21-22	Egberts; Egberts	2010; 2011	X	RCT	None	Australia	University hospital	Supervised exercise training	12 weeks	Not specified	Not specified	Certified Personal Trainer (CPT)	Not specified
23	González-Cutre	2019	X	Qualitative	None	Spain	University laboratory	Motivational physical activity program	26 weeks	Endurance training, resistance training with machines, games, directed activities, dance, body expression, core-training	2x/ week (Months 1 & 2); 3/ week (Months 3 & 4); 4x/ week (Months 5 & 6)	Sports science professional instructors	Master's degree
24	Hanvold	2019	X	RCT	None	Norway	University hospital	Group-based lifestyle intervention with supervised exercise training	2 years	Measurements of body weight, lecture on given topic, group work and/or assignment, 30-minute supervised physical activity	16 group meetings over 2 years	Clinical dietitians	PhD and master's students
25	Hassannejad	2017	X	RCT	None	Iran	University laboratory	Unsupervised exercise training	12 weeks	Walking, resistance training	3-5x/ week (Weeks 5-12)	No supervision	Sports medicine specialist

26	Herrera	2020		RCT	None	Chile	Public hospital	Supervised exercise training	16 weeks	Moderate-intensity continuous training (MICT), high-intensity interval training (HIIT)	2x/ week	Physical therapist	Not specified
27	Herring	2017	X	RCT	None	United Kingdom	University hospital; at home	Supervised exercise training	12 weeks	Aerobic exercise, resistance training	3x/ week	Exercise and sports science professional / REPS Gym instructor/ exercise physiologist	PhD physical activity, lifestyle and bariatric surgery; MSc clinical exercise science; REPS
28	Jassil	2015	X	Pilot study	None	United Kingdom	University hospital; at home	Supervised exercise training; lifestyle education; nutritional/behavioral intervention	8 weeks	Circuit training	Weekly; 5x/ week	Physiotherapist, Exercise specialist	Not specified
29	Jiménez-Loaisa	2020	X	Quasi-experimental	None	Spain	University public fitness center	Motivational physical activity intervention (MPAI)	26 weeks	Aerobic exercise, resistance training with machines, body expression, dance, directed activities,	2x/ week (Months 1 & 2); 3x/ week (Months 3 & 4); 4x/ week (Months 5 & 6)	Exercise and sports science professionals	Degree in sports science; master's degree in physical

										swimming, core training			al activity and health
30-31	Marc-Hernández ; Marc-Hernández	2019; 2020	2019 – X 2020 – NO	Prospective intervention; RCT	EFIBAR RCT	Spain	University laboratory; university hospital	Supervised exercise training	12 weeks; 20 weeks	Endurance training, resistance training, HIIT training, flexibility training	3x/ week; 2x/ week (Weeks 1-4); 3x/ week (Weeks 5-8); 4x/ week (Weeks 9-16)	Supervised by undergradu ate students in exercise science	PhD in exerci se scienc e create d the progra m; not certifie d by major creden tialing bodies
32	Marchesi	2015	X	Prospective intervention	None	Italy	University hospital	Supervised and unsupervised exercise training	43 weeks	Indoor or outdoor road running	3x/ week	Sports physician (MD), CPT	Not specifi ed
33-34	Marcon; Marcon	2011; 2017	X	Case series; RCT	PESO III	Brazil	University; hospital	Supervised and unsupervised exercise training	26 weeks; 16 weeks	Aerobic exercise, walking, stretching	1x/ week; 2x/ week	PhD researcher/ physical education teacher	Master s/PhD level
35	Morana	2018	X	Pilot study	None	France	Physical therapy clinic	Supervised exercise training; functional rehabilitation	10 weeks	Endurance training, rowing, core exercises, proprioception work, coordination	2x/ week	Physiothera pist	Not specifi ed

36-40	Mundbjerg; Mundbjerg; Stolberg; Stolberg; Stolberg	2018; 2018; 2018; 2018; 2018	X	RCT	None	Denmark	Public fitness center	Supervised exercise training	26 weeks	Endurance training, resistance training	2x/ week	Physiotherapist	Not specified
41	Muschitz	2015	X	RCT	BABS	Austria	University hospital	Unsupervised exercise training with diary monitoring	2 years	Nordic walking, strength perseverance, equipment training	3x/ week (Nordic walking), 2x/ week (strength perseverance, equipment training)	Physical medicine expert	Not specified
42	Ng	2015	X	Prospective intervention	LIFE	Singapore	Hospital	Semi-supervised exercise training	12 weeks	Not specified	Monthly	PhD physiotherapist/exercise physiologist, masters-level physiotherapist/exercise physiologist, therapy assistants	All with bachelors degree (or higher) in physiotherapy. 3 with Masters. 1 with PhD.
43	Onofre	2017	X	Pilot study	None	Brazil	University laboratory	Supervised exercise training	12 weeks	Aerobic exercise, resistance	3x/ week	Physiotherapist	Trained in cardiac and

										training, stretching			metabolic rehabilitation
43	Picó-Sirvent	2019	X	Pilot study	None	Spain	University laboratory	Supervised exercise training	26 weeks	Aerobic exercise, resistance training, HIIT training	2x/ week (Month 1), 3x/ week (Month 2), 4x/ week (Months 3-6)	Supervised undergraduate students in exercise science	Not specified
44	Proulx	2018	X	Prospective intervention	None	Canada	University fitness center	Supervised exercise training	12 weeks	Aerobic exercise, resistance training	3x/ week	Certified clinical exercise specialist	Not specified
46	Ricci	2020	X	RCT	None	Brazil	University laboratory	Supervised exercise training	6 weeks	Whole-body electromyostimulation, dynamic exercise	5x/ week	Physiotherapist	Not specified
47	Rojhani-Shirazi	2016	X	RCT	None	Iran	University laboratory	Supervised exercise training	4 weeks	Balance training	4x/ week	Physical therapist	Master's degree
48	Rothwell	2015	X	Retrospective review	BandFit	Australia	Private hospital, at home	Supervised and unsupervised exercise training	1 year; 3 years	"BandFit", a personal trainer-led education and participant exercise program	Variable (0, 1, or more than 1 sessions)	CPT	Not specified
49	Stegen	2011	X	Pilot study	None	Belgium	University hospital	Supervised exercise training	12 weeks	Endurance training, resistance training	3x/ week	Movement and rehabilitation expert	Master's degree

50	Soriano-Maldonado	2020	X	RCT	EMOVAR	Spain	University fitness center	Supervised exercise training	16 weeks	Aerobic exercise, resistance training	3x/ week	CPT	Grade in physical activity and sports sciences, and either a master's degree in personal training or >2 years' experience training obese people
51-52	Villa-González ; Artero	2019; 2021	VG – X Artero – NO	RCT	EFIBAR	Spain	University fitness center	Supervised exercise training	16 weeks	Aerobic exercise, resistance training	3x/ week	CPT	Bachelor's degree
53	Wiklund	2015	X	RCT	None	Sweden	University hospital	Supervised exercise training	1 week	Walking with step counter	Daily	Nurse, Physiotherapist	Not specified
* Various trials/studies resulted in multiple publications, which were combined.													

--

280 REFERENCES

Studies found initially (1-71) and added later (72-83). See results section of manuscript for more details.

1. Zagarins SE, Allen NA, Skinner SS, Kemper AJ, Welch G. Improved exercise behaviors associated with a comprehensive structured exercise program following bariatric surgery. *Bariatric Nursing and Surgical Patient Care*. 2011;6(2):85-90. doi: 10.1089/bar.2011.9971
- 285 2. Woodlief TL, Carnero EA, Standley RA, Distefano G, Anthony SJ, Dubis GS, et al. Dose response of exercise training following roux-en-Y gastric bypass surgery: A randomized trial. *Obesity (Silver Spring)*. 2015;23(12):2454-61. doi: 10.1002/oby.21332
3. Wiklund M, Sundqvist E, Olsén MF. Physical Activity in the Immediate Postoperative Phase in Patients Undergoing Roux-en-Y Gastric Bypass-a Randomized Controlled Trial. *Obesity Surgery*. 2015;25(12):2245-50. doi: 10.1007/s11695-015-1690-y
- 290 4. Villa-González E, Barranco-Ruiz Y, Rodríguez-Pérez MA, Carretero-Ruiz A, García-Martínez JM, Hernández-Martínez A, et al. Supervised exercise following bariatric surgery in morbid obese adults: CERT-based exercise study protocol of the EFIBAR randomised controlled trial. *BMC Surgery*. 2019;19(1):127. doi: 10.1186/s12893-019-0566-9
5. Tardif I, Auclair A, Piché M-E, Biertho L, Marceau S, Hould F-S, et al. Impact of a 12-Week Randomized Exercise Training Program on Lipid Profile in Severely Obese Patients Following Bariatric Surgery. *Obesity Surgery*. 2020;30(8):3030-6. doi: 295 10.1007/s11695-020-04647-5
6. Stolberg CR, Mundbjerg LH, Funch-Jensen P, Gram B, Bladbjerg E-M, Juhl CB. Effects of gastric bypass surgery followed by supervised physical training on inflammation and endothelial function: A randomized controlled trial. *Atherosclerosis*. 2018;273:37-44. doi: 10.1016/j.atherosclerosis.2018.04.002
7. Stolberg CR, Mundbjerg LH, Funch-Jensen P, Gram B, Bladbjerg E-M, Juhl CB. Reply to: "Replicability of exercise programs following bariatric surgery". *Atherosclerosis*. 2018;278:332-3. doi: 10.1016/j.atherosclerosis.2018.09.028
- 300 8. Stolberg CR, Mundbjerg LH, Bladbjerg E-M, Funch-Jensen P, Gram B, Juhl CB. Physical training following gastric bypass: effects on physical activity and quality of life-a randomized controlled trial. *Quality of Life Research*. 2018;27(12):3113-22. doi: 10.1007/s11136-018-1938-9
9. Stegen S, Derave W, Calders P, Laethem CV, Pattyn P. Physical fitness in morbidly obese patients: effect of gastric bypass surgery and exercise training. *Obesity Surgery*. 2011;21(1):61-70. doi: 10.1007/s11695-009-0045-y
- 305 10. Soriano-Maldonado A, Martínez-Forte S, Ferrer-Márquez M, Martínez-Rosales E, Hernández-Martínez A, Carretero-Ruiz A, et al. Physical Exercise following bariatric surgery in women with Morbid obesity. *Medicine (Baltimore)*. 2020;99(12). doi: 10.1097/MD.00000000000019427
11. Silva TLTBd, Fontes MT, Mariano RD, Mota MM. Effects of the program of supervised exercise on body composition after bariatric surgery: case report. *Revista Brasileira de Obesidade, Nutrição e Emagrecimento*. 2015;9(52). doi: 310
12. Shah M, Snell PG, Rao S, Adams-Huet B, Quittner C, Livingston EH, et al. High-volume exercise program in obese bariatric surgery patients: a randomized, controlled trial. *Obesity (Silver Spring)*. 2011;19(9):1826-34. doi: 10.1038/oby.2011.172
13. Rothwell L, Lilian Kow JT. Effect of a post-operative structured exercise programme on short-term weight loss after obesity surgery using adjustable gastric bands. *Obesity Surgery*. 2015;25(1):126-8. doi: 10.1007/s11695-014-1323-x

- 315 14. Rojhani-Shirazi Z, Mansoriyan SA, Hosseini SV. The effect of balance training on clinical balance performance in obese patients aged 20–50 years old undergoing sleeve gastrectomy. *European Surgery*. 2016;48:105-9. doi: 10.1007/s10353-015-0379-8
15. Ricci PA, Thommazo-Luporini LD, Jürgensen SP, André LD, Haddad GF, Arena R, et al. Effects of Whole-Body Electromyostimulation Associated with Dynamic Exercise on Functional Capacity and Heart Rate Variability After Bariatric Surgery: a Randomized, Double-Blind, and Sham-Controlled Trial. *Obesity Surgery*. 2020;30(10):3862-71. doi: 10.1007/s11695-020-04724-9
- 320 16. Proulx É, Auclair A, Piché M-E, Harvey J, Pettigrew M, Biertho L, et al. Safety of Blood Glucose Response Following Exercise Training After Bariatric Surgery. *Obesity Surgery*. 2018;28(12):3976-83. doi: 10.1007/s11695-018-3449-8
17. Powell SM, Fasczewski KS, Gill DL, Davis PG. Go with the FLOW: Implementation of a psychological skills intervention in an exercise program for post-bariatric surgery patients. *Journal of Health Psychology*. 2020;25(13-14):2260-71. doi: 10.1177/1359105318793182
- 325 18. Powell SM, Fasczewski KS, Gill DL, Davis PG. Go with the FLOW: Implementation of a psychological skills intervention in an exercise program for post-bariatric surgery patients. *Journal of Health Psychology*. 2018:1-12. doi: 10.1177/1359105318793182
19. Picó-Sirvent I, Aracil-Marco A, Pastor D, Moya-Ramón M. Effects of a Combined High-Intensity Interval Training and Resistance Training Program in Patients Awaiting Bariatric Surgery: A Pilot Study. *Sports (Basel)*. 2019;7(3):72. doi: 10.3390/sports7030072
- 330 20. Parikh M, Dasari M, McMacken M, Ren C, Fielding G, Ogedegbe G. Does a preoperative medically supervised weight loss program improve bariatric surgery outcomes? A pilot randomized study. *Surgical Endoscopy*. 2012;26:853-61. doi: 10.1007/s00464-011-1966-9
21. Onofre T, Carlos R, Oliver N, Felismino A, Fialho D, Corte R, et al. Effects of a Physical Activity Program on Cardiorespiratory Fitness and Pulmonary Function in Obese Women after Bariatric Surgery: a Pilot Study. *Obesity Surgery*. 2017;27(8):2026-33. doi: 10.1007/s11695-017-2584-y
- 335 22. Oliveira JJJd, Freitas ACTd, Almeida AAd. Postoperative effect of physical therapy related to functional capacity and respiratory muscle strength in patients submitted to bariatric surgery. *Arquiox Brasileios de Cirurgia Digestiva*. 2016;28:43-7. doi: 10.1590/0102-6720201600S10012
23. Ng DP, McClements KE, Yeo A, Chen X, Png EK, Ng C. Efficacy of supervised exercise training in patients post bariatric surgery. *Physiotherapy*. 2015;101:E1083-E4. doi: <https://doi.org/10.1016/j.physio.2015.03.1973>
- 340 24. Muschitz C, Kocijan R, Haschka J, Zendeli A, Pirker T, Geiger C, et al. The Impact of Vitamin D, Calcium, Protein Supplementation, and Physical Exercise on Bone Metabolism After Bariatric Surgery: The BABS Study *Journal of Bone and Mineral Research*. 2016;31(3):672-82. doi: 10.1002/jbmr.2707
25. Mundbjerg LH, Stolberg CR, Cecere S, Bladbjerg E-M, Funch-Jensen P, Gram B, et al. Supervised Physical Training Improves Weight Loss After Roux-en-Y Gastric Bypass Surgery: A Randomized Controlled Trial. *Obesity (Silver Spring)*. 2018;26(5):828-37. doi: 10.1002/oby.22143
- 345 26. Mundbjerg LH, Stolberg CR, Bladbjerg E-M, Funch-Jensen P, Juhl CB, Gram B. Effects of 6 months supervised physical training on muscle strength and aerobic capacity in patients undergoing Roux-en-Y gastric bypass surgery: a randomized controlled trial. *Clinical Obesity*. 2018;8(4):227-35. doi: 10.1111/cob.12256

- 350 27. Morana C, Collignon M, Nocca D. Effectiveness of a Functional Rehabilitation Program After Bariatric Surgery: a Pilot Study. *Obesity Surgery*. 2018;28(8):2321-6. doi: 10.1007/s11695-018-3154-7
28. Marcon ER, Gus I, Neumann CR. Impact of a minimum program of supervised exercises in the cardiometabolic risk in patients with morbid obesity. *Arquivos Brasileiros de Endocrinologia e Metabologia*. 2011;55(5):331-8. doi: 10.1590/s0004-27302011000500006
- 355 29. Marcon ER, Baglioni S, Bittencourt L, Lopes CLN, Neumann CR, Trindade MRM. What Is the Best Treatment before Bariatric Surgery? Exercise, Exercise and Group Therapy, or Conventional Waiting: a Randomized Controlled Trial. *Obesity Surgery*. 2017;27:763-73. doi: 10.1007/s11695-016-2365-z
30. Marchesi F, Sario GD, Reggiani V, Tartamella F, Giammaresi A, Cecchini S, et al. Road Running After Gastric Bypass for Morbid Obesity: Rationale and Results of a New Protocol. *Obesity Surgery*. 2015;25(7):1162-70. doi: 10.1007/s11695-014-1517-2
- 360 31. Marc-Hernández A, Ruiz-Tovar J, Aracil A, Guillén S, Moya-Ramón M. Impact of Exercise on Body Composition and Cardiometabolic Risk Factors in Patients Awaiting Bariatric Surgery. *Obesity Surgery*. 2019;29(12):3891-900. doi: 10.1007/s11695-019-04088-9
32. Lopez YON, Coen PM, GoodpasteR BH, Seyhan AA. Gastric bypass surgery with exercise alters plasma microRNAs that predict improvements in cardiometabolic risk. *International Journal of Obesity*. 2017;41(7):1121-30. doi: 10.1038/ijo.2017.84
- 365 33. Klasnja P, Rosenberg DE, Zhou J, Anau J, Gupta A, Arterburn DE. A quality-improvement optimization pilot of BariFit, a mobile health intervention to promote physical activity after bariatric surgery. *Translational Behavioral Medicine*. 2020:1-10. doi: 10.1093/tbm/ibaa040
34. Kerrigan DJ, Loduca-Duhaime A, Carlin AM, Szymanski W, Genaw J. A trans-disciplinary approach to weight loss in the super super morbidly obese. *Journal of Clinical Exercise Physiology*. 2012;1(1):30-4. doi:
- 370 35. Kelley W. Medically integrated exercise: Florida hospital celebration health bariatric program. *ACSM's Health & Fitness Journal*. 2006;10(6):28-30. doi:
36. Kalarchian MA, Marcus MD, Courcoulas AP, Cheng Y, Levine MD. Preoperative lifestyle intervention in bariatric surgery: initial results from a randomized, controlled trial. *Obesity (Silver Spring)*. 2013;21(2):254-60. doi: 10.1002/oby.20069
- 375 37. Jiménez-Loaisa A, González-Cutre D, Beltrán-Carrillo VJ, Alcaraz-Ibáñez M. Changes in Bariatric Patients' Physical Activity Levels and Health-Related Quality of Life Following a Postoperative Motivational Physical Activity Intervention. *Obesity Surgery*. 2020;30(6):2302-12. doi: 10.1007/s11695-020-04489-1.
38. Jassil FC, Manning S, Lewis N, Steinmo S, Kingett H, Lough F, et al. Feasibility and Impact of a Combined Supervised Exercise and Nutritional-Behavioral Intervention following Bariatric Surgery: A Pilot Study. *Journal of Obesity*. 2015;2015:12. doi: <https://doi.org/10.1155/2015/693829>
- 380 39. Huck CJ. Effects of supervised resistance training on fitness and functional strength in patients succeeding bariatric surgery. *Journal of Strength and Conditioning Research*. 2015;29(3):589-95. doi: 10.1519/JSC.0000000000000667
40. Hickey MS, Gavigan KE, McCammon MR, Tyndhall GL, Pories WJ, Israel RG, et al. Effects of 7 days of exercise training on insulin action in morbidly obese men. *Clinical Exercise Physiology*. 1999;1(1):24-8. doi:

41. Herring L, Stevinson C, Carter P, Biddle S, Bowrey D, Sutton C, et al. The effects of supervised exercise training 12-24 months after bariatric surgery on physical function and body composition: a randomised controlled trial. *International Journal of Obesity*. 2017;41:909-16. doi: 385
42. Hassannejad A, Khalaj A, Mansournia MA, Tabesh MR, Alizadeh Z. The Effect of Aerobic or Aerobic-Strength Exercise on Body Composition and Functional Capacity in Patients with BMI ≥ 35 after Bariatric Surgery: a Randomized Control Trial. *Obesity Surgery*. 2017;27(11):2792-801. doi: 10.1007/s11695-017-2717-3
43. Hanvold SE, Vinknes KJ, Løken EB, Hjartåker A, Klungsoyr O, Birkeland E, et al. Does Lifestyle Intervention After Gastric Bypass Surgery Prevent Weight Regain? A Randomized Clinical Trial. *Obesity Surgery*. 2019;29(11). doi: 10.1007/s11695-019-04109-7
44. Hamdy O, Ashrafzadeh S, Mottalib A. Weight Management in Patients with Type 2 Diabetes: a Multidisciplinary Real-world Approach. *Current Diabetes Reports*. 2018;18(9). doi: 10.1007/s11892-018-1030-4
45. Halperin F, Ding S-A, Simonson DC, Panosian J, Goebel-Fabbri A, Wewalka M, et al. Roux-en-Y gastric bypass surgery or lifestyle with intensive medical management in patients with type 2 diabetes: feasibility and 1-year results of a randomized clinical trial. *JAMA Surgery*. 2014;149(7):716-26. doi: 10.1001/jamasurg.2014.514
46. Gonzalez-Cutre D, Jimenez-Loaisa A, Romero-Elias M, Beltran-Carrillo VJ. Exploring bariatric patients' need for novelty in a motivational physical activity program: a qualitative study. *European Journal of Human Movement*. 2019;43:1-12. doi: 395
47. Gill DL, Fasczewski KS, Reifsteck EJ, Rothberger SM, Davis PG. Evaluation of an exercise programme for post-bariatric surgery patients: views of participants. *Obesity Science & Practice*. 2018;4(3):259-67. doi: 10.1002/osp4.165
48. Funderburk JA, Callis S. Aquatic intervention effect on the quality of life prior to obesity surgery: a pilot study. *Annual in Therapeutic Recreation*; 2010.
49. Egberts KJ, Brown W, O'Brien PE. Optimising lifestyle factors to achieve weight loss in surgical patients. *Obesity Research & Clinical Practice*. 2010;4:S13. doi: <https://doi.org/10.1016/j.orcp.2010.09.026>
50. Egberts K, Brown W, O'Brien P. Optimising lifestyle factors to achieve weight loss in surgical patients. *Surgery for Obesity and Related Diseases*. 2011;7:368. doi: 405
51. Dantas WS, Roschel H, Murai IH, Gil S, Davuluri G, Axelrod CL, et al. Exercise-Induced Increases in Insulin Sensitivity After Bariatric Surgery Are Mediated By Muscle Extracellular Matrix Remodeling. *Diabetes*. 2020;69(8):1675-91. doi: 10.2337/db19-1180
52. Dantas WS, Gil S, Murai IH, Costa-Hong V, Peçanha T, Merege-Filho CAA, et al. Reversal of Improved Endothelial Function After Bariatric Surgery Is Mitigated by Exercise Training. *Journal of the American College of Cardiology*. 2018;72(18):2278-9. doi: 410 10.1016/j.jacc.2018.07.094
53. Daniels P, Burns RD, Brusseau TA, Hall MS, Davidson L, Adams TD, et al. Effect of a randomised 12-week resistance training programme on muscular strength, cross-sectional area and muscle quality in women having undergone Roux-en-Y gastric bypass. *Journal of Sports Sciences*. 2018;36(5):529-35. doi: 10.1080/02640414.2017.1322217
54. Creel DB, Schuh LM, Reed CA, Gomez AR, Hurst LA, Stote J, et al. A randomized trial comparing two interventions to increase physical activity among patients undergoing bariatric surgery. *Obesity (Silver Spring)*. 2016;24(8):1660-8. doi: 415 0.1002/oby.21548

- 420 55. Coen PM, Tanner CJ, Helblin NL, Dubis GS, Hames KC, Xie H, et al. Clinical trial demonstrates exercise following bariatric surgery improves insulin sensitivity. *Journal of Clinical Investigation*. 2015;125(1):248-57. doi: 10.1172/JCI78016
56. Coen PM, Menshikova EV, Distefano G, Zheng D, Tanner CJ, Standley RA, et al. Exercise and Weight Loss Improve Muscle Mitochondrial Respiration, Lipid Partitioning, and Insulin Sensitivity After Gastric Bypass Surgery. *Diabetes*. 2015;64(11):3737-50. doi: 10.2337/db15-0809
- 425 57. Castelo-Simões V, Simões RP, Beltrame T, Bassi D, Catai AM, Arena R, et al. Effects of aerobic exercise training on variability and heart rate kinetic during submaximal exercise after gastric bypass surgery – a randomized controlled trial. *Disability and Rehabilitation*. 2013;35(4):334-42. doi: 10.3109/09638288.2012.694575
58. Castelo V, Simões RP, Bassi D, Catai AM, Arena R, Borghi-Silva A. Impact of aerobic exercise training on heart rate variability and functional capacity in obese women after gastric bypass surgery. *Obesity Surgery*. 2011;21(11):1739-49. doi: 10.1007/s11695-010-0319-4
- 430 59. Carnero EA, Dubis GS, Hames KC, Jakicic JM, Houmard JA, Coen PM, et al. Randomized trial reveals that physical activity and energy expenditure are associated with weight and body composition after RYGB. *Obesity (Silver Spring)*. 2017;25(7):1206-16. doi: 10.1002/oby.21864
60. Campanha-Versiani L, Pereira DAG, Ribeiro-Samora GA, Ramos AV, Diniz MFHdS, Marco LAD, et al. The Effect of a Muscle Weight-Bearing and Aerobic Exercise Program on the Body Composition, Muscular Strength, Biochemical Markers, and Bone Mass of Obese Patients Who Have Undergone Gastric Bypass Surgery. *Obesity Surgery*. 2017;27(8):2129-37. doi: 10.1007/s11695-017-2618-5
- 435 61. Brown WA, Burton PR, Shaw K, Smith B, Maffescioni S, Comitti B, et al. A Pre-Hospital Patient Education Program Improves Outcomes of Bariatric Surgery. *Obesity Surgery*. 2016;26(9):2074-81. doi: 10.1007/s11695-016-2075-6
62. Brandenburg D, Kotlowski R. Practice makes perfect? Patient response to a prebariatric surgery behavior modification program. *Obesity Surgery*. 2005;15(1):125-32. doi: 10.1381/0960892052993594
- 440 63. Bond DS, Vithianathan S, Thomas JG, Trautvetter J, Unick JL, Jakicic JM, et al. Bari-Active: a randomized controlled trial of a preoperative intervention to increase physical activity in bariatric surgery patients. *Surgery for Obesity and Related Diseases*. 2015;11(1):169-77. doi: 10.1016/j.soard.2014.07.010
64. Bond DS, Thomas JG, King WC, Vithianathan S, Trautvetter J, Unick JL, et al. Exercise improves quality of life in bariatric surgery candidates: results from the Bari-Active trial. *Obesity Journal*. 2015;23(3):536-42. doi: 10.1002/oby.20988
- 445 65. Bond D, Thomas J, Vithianathan S, Unick J, Webster J, Roye G, et al. Intervention-related increases in preoperative physical activity are maintained 6-months after Bariatric surgery: results from the bari-active trial. *International Journal of Obesity*. 2017;41:467-70. doi: 10.1038/ijo.2016.237
66. Berggren JR, Boyle KE, Chapman WH, Houmard JA. Skeletal muscle lipid oxidation and obesity: influence of weight loss and exercise. *Am J Physiol Endocrinol Metab*. 2008(294):E726-E32. doi: 10.1152/ajpendo.00354.2007
- 450 67. Baillot A, Vallée C-A, Mampuya WM, Dionne IJ, Comeau E, Méziat-Burdin A, et al. Effects of a Pre-surgery Supervised Exercise Training 1 Year After Bariatric Surgery: a Randomized Controlled Study. *Obesity Surgery*. 2018;28(4):955-62. doi: 10.1007/s11695-017-2943-8

68. Baillot A, Mampuya WM, Dionne sJ, Comeau E, Méziat-Burdin A, Langlois M-F. Impacts of Supervised Exercise Training in Addition to Interdisciplinary Lifestyle Management in Subjects Awaiting Bariatric Surgery: a Randomized Controlled Study. *Obesity Surgery*. 2016;26(11):2602-10. doi: 10.1007/s11695-016-2153-9
69. Baillot A, Mampuya WM, Comeau E, Méziat-Burdin A, Langlois MF. Feasibility and impacts of supervised exercise training in subjects with obesity awaiting bariatric surgery: a pilot study. *Obesity Surgery*. 2013;23(7):882-91. doi: 10.1007/s11695-013-0875-5
70. Baillot A, Boissy P, Tousignant M, Langlois M-F. Feasibility and effect of in-home physical exercise training delivered via telehealth before bariatric surgery. *Journal of Telemedicine and Telecare*. 2016;23(5):529-35. doi: 10.1177/1357633X16653511
71. Audrey Auclair, Harvey J, Leclerc J, Pich M-E, Kim O'Connor M, Nadreau É, et al. Determinants of Cardiorespiratory Fitness After Bariatric Surgery: Insights From a Randomised Controlled Trial of a Supervised Training Program. *Canadian Journal of Cardiology*. 2020;37(2):251-9. doi: 10.1016/j.cjca.2020.03.032
72. Coleman KJ, Caparosa SL, Nichols JF, Fujioka K, Koebnick C, McCloskey KN, et al. Understanding the Capacity for Exercise in Post-Bariatric Patients. *Obesity Surgery*. 2017;27(1):51-8. doi: 10.1007/s11695-016-2240-y
73. Gilbertson NM, Gaitán JM, Osinski V, Rexrode EA, Garmey JC, Mehaffey JH, et al. Pre-operative aerobic exercise on metabolic health and surgical outcomes in patients receiving bariatric surgery: A pilot trial. *PLoS One*. 2020;15(10). doi: 10.1371/journal.pone.0239130
74. Panosian J, Ding S-A, Wewalka M, Simonson DC, Goebel-Fabbri A, Foster K, et al. Physical activity in obese type 2 diabetes after gastric bypass or medical management. *The American Journal of Medicine*. 2017;130(1):83-92. doi: 10.1016/j.amjmed.2016.07.019
75. Lemieux-Simard C, Pettigrew M, Auclair A, Piche ME, Biertho L, Marceau S, et al. Impact of a 12-week supervised exercise program on weight loss trajectory, daily physical activity levels and sedentary behaviors after bariatric surgery. *European Heart Journal*. 2021;42. doi: 10.1093/eurheartj/ehab724.2605
76. Pettigrew M, Auclair A, Harvey J, Marceau S, Biertho L, Poirier P. Daily physical activity level after bariatric surgery and a 12-week supervised exercise program: Are they active enough? *Canadian Journal of Cardiology*. 2019;35(10). doi:
77. Brun J-F, Lasteurie V, Hammoudi L, Nocca D, Ghanassia E, Noirez P, et al. Exercise targeted at the level of maximal lipid oxidation (LIPOXmax) improves weight loss, decreases orexigenic pulsions and increases satiety after sleeve gastrectomy. *Global Journal of Obesity, Diabetes and Metabolic Syndrome*. 2019;6(2):17-21. doi: 10.17352/2455-8583.000037
78. Gil S, Kirwan JP, Murai IH, Dantas WS, Merege-Filho CAA, Ghosh S, et al. A randomized clinical trial on the effects of exercise on muscle remodelling following bariatric surgery. *Journal of Cachexia, Sarcopenia, and Muscle*. 2021;12(6):1440-55. doi: 10.1002/jcsm.12815
79. Gil S, Peçanha T, Dantas WS, Murai IH, Merege-Filho CAA, Sá-Pinto ALd, et al. Exercise Enhances the Effect of Bariatric Surgery in Markers of Cardiac Autonomic Function. *Obesity Surgery*. 2021;31(3):1381-6. doi: 10.1007/s11695-020-05053-7
80. Murai IH, Roschel H, Dantas WS, Gil S, Merege-Filho C, Cleva Rd, et al. Exercise Mitigates Bone Loss in Women With Severe Obesity After Roux-en-Y Gastric Bypass: A Randomized Controlled Trial. *Journal of Clinical Endocrinology and Metabolism*. 2019;104(10):4639-50. doi: 10.1210/jc.2019-00074
81. Herrera A, Tabach A, Andaur K, Zamuner A. Effect of physical exercise in bariatric surgery patients: protocol of a randomized controlled clinical trial. *Trials*. 2020;22. doi: <https://doi.org/10.1186/s13063-021-05056-4>

- 490 82. Marc-Hernández A, Ruiz-Tovar J, Aracil A, Guillén S, Moya-Ramón M. Effects of a High-Intensity Exercise Program on Weight Regain and Cardio-metabolic Profile after 3 Years of Bariatric Surgery: A Randomized Trial. *Scientific Reports*. 2020;10(1):3123. doi: 10.1038/s41598-020-60044-z
- 495 83. Artero EG, Ferrez-Márquez M, Torrente-Sánchez MJ, Martínez-Rosales E, Carretero-Ruiz A, Hernández-Martínez A, et al. Supervised Exercise Immediately After Bariatric Surgery: the Study Protocol of the EFIBAR Randomized Controlled Trial. *Obesity Surgery*. 2021;31(10):4227-35. doi: 10.1007/s11695-021-05559-8

Classification and qualifications of exercise professionals

500 The exercise professional delivering the PA programming was firstly an exercise
physiologist in the USA (28%; person with graduate degree in EP and /or certification) and a
physiotherapist/physical therapist in the rest of the world (43%). A number of other exercise
professionals (e.g., physical educators, coaches, personal trainers) were also involved.
Qualifications and credentials were difficult to ascertain due to underreporting. However, it was
discovered (through details in studies and/or email inquiries) that 6 studies used bachelor's-level
505 exercise professionals, 9 used Masters-level, 9 used PhD, 2 used medical doctors (MD). In seven
cases, exercise physiologists were specifically credentialed by the American College of Sports
Medicine (ACSM) and in one case by the National Strength and Conditioning Association (NSCA).

Task data extraction

510 Data extraction resulted in 385 tasks across all studies, 43 of which were unique. The 5
most common tasks were: real-time supervision of exercise (36 studies), fitness testing (31),
[exercise] prescription (27), heart rate monitoring (21), and physical activity counseling (21). Less
commonly described in the literature were: exercise prescription for home, exercise behavioral
counseling, and metabolic testing.

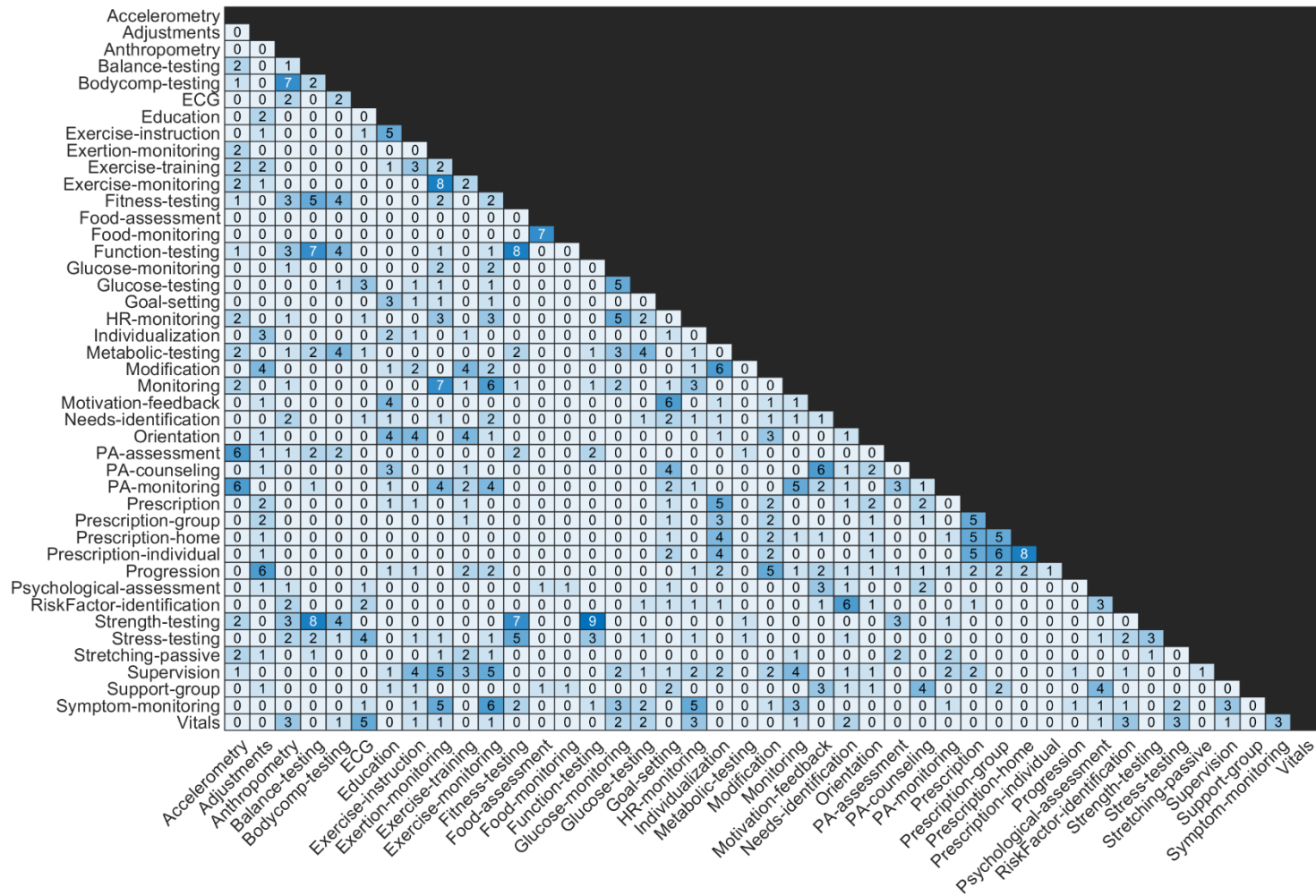
515 Content analysis / Card sort

Respondents sorted tasks into an average of 11.8 bins, each bin had an average of 3.6
items, and there was an average of 1.8 items deleted per respondent. Respondents suggested 34
items to add (3.4/respondent). Unique items were considered in later rounds. See Supplement
7.

520

Supplement 7. Summary of bin sort per analyst.											
Rater #	1	2	3	4	5	6	7	8	9	10	Average
Analyst initials	DB	CG	EB	BG	MSK	LR	JH	LH	RM	MD	
Bins completed (#)	12	14	10	11	14	11	10	11	10	15	11.8
Bins w/ 8 items	0	1	1	0	0	0	1	0	0	0	0.3
Bins w/ 7 items	0	1	1	0	0	0	1	0	0	0	0.3
Bins w/ 6 items	0	0	0	1	0	3	1	3	2	1	1.1
Bins w/ 5 items	5	0	1	2	1	0	1	2	3	1	1.6
Bins w/ 4 items	1	1	2	2	2	2	1	0	2	4	1.7
Bins w/ 3 items	3	5	3	1	5	4	2	2	2	1	2.8
Bins w/ 2 items	1	3	2	2	4	0	1	3	1	5	2.2
Bins w/ 1 items	2	3	0	3	1	2	2	1	0	3	1.7
Items to discard	0	0	2	7	3	2	2	2	0	0	1.8
Ave items/bin*	3.5	3.1	4.1	3.3	2.9	3.7	4.1	3.7	4.3	2.9	3.6
Items missing to add	0	14	0	7	0	5	6	0	2	0	3.4
* ([# items – discarded items]/bins completed)											

525 A heat map of the associations of the original 43 exercise professional job tasks is provided in Supplement 8. The items with the strongest association (9 out of 10 raters agreed) were strength testing and physical function testing. Eight out of 10 raters indicated that the following 3 tasks were paired: strength testing/balance testing, fitness testing/function testing, prescription for home/ prescription-individual. Seven raters agreed on 5 pairs, 6 raters - 10 pairs, 5 raters -17 pairs, etc.

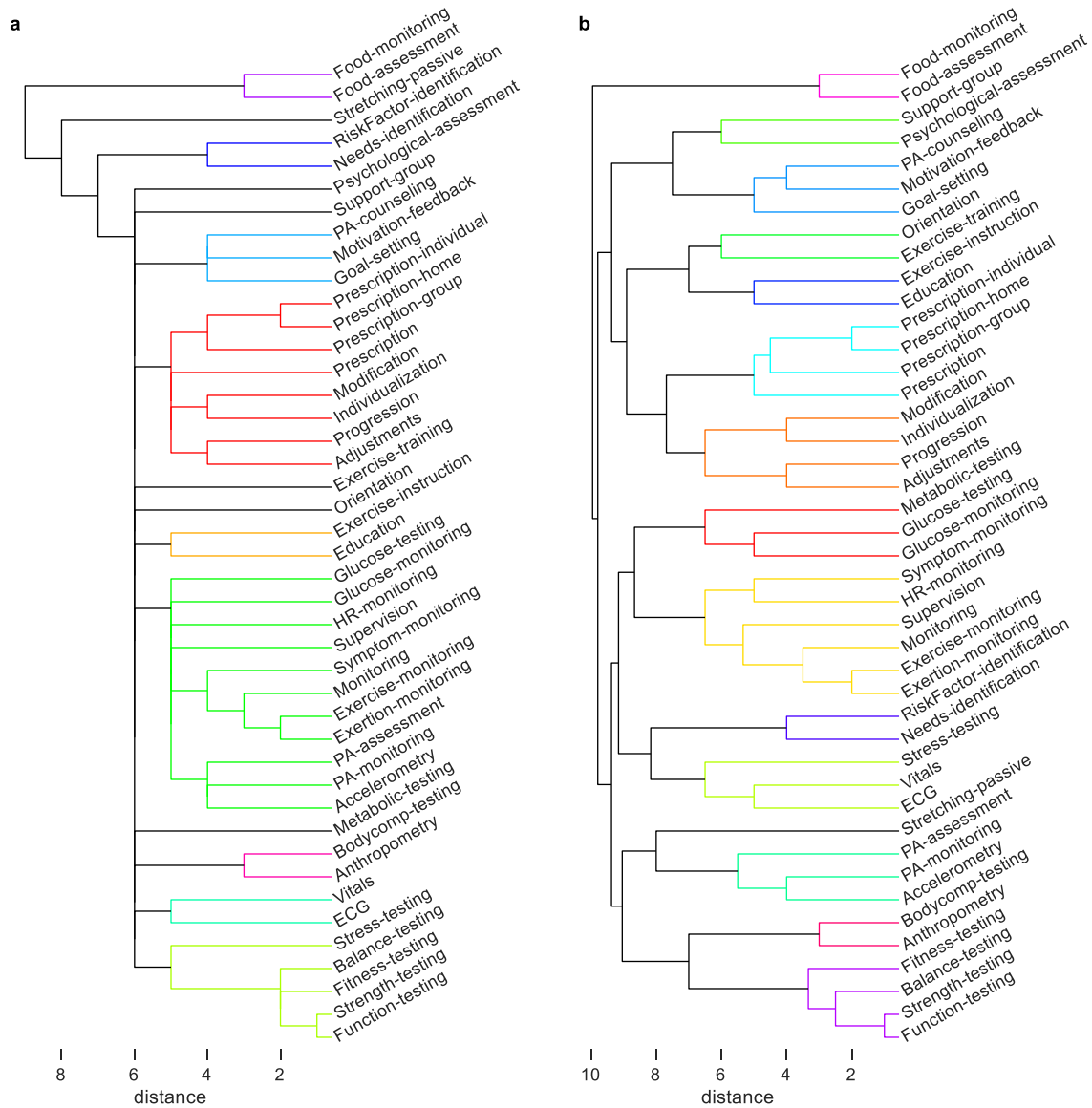


530

Supplement 8. Heat map demonstrating task associations within sorting bins.

535 The hierarchical cluster analysis based on this matrix generated two models, which are shown in Supplement 9. Model B had a better fit index than Model A, as quantified by the cophenetic correlation coefficient ($c = 0.85$ and 0.50 , respectively), a common statistic that measures the faithfulness with which the similarities between individual items in the original matrix were represented visually in the final dendrogram.

540



Supplement 9. Alternative models (A and B) generated by the hierarchical cluster analysis and deliberated in the Delphi process.

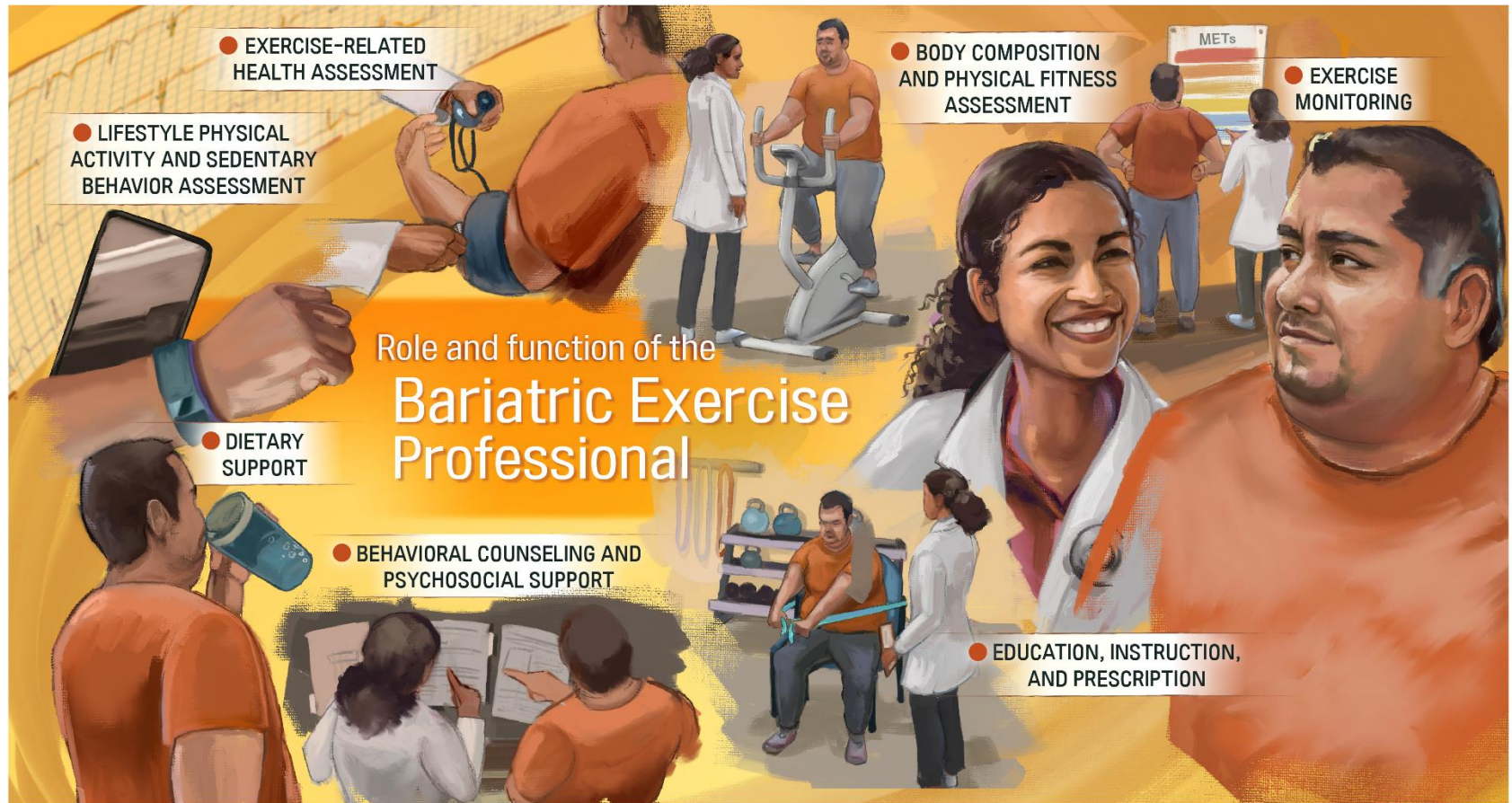
545

Delphi process / Core Group

550 Respondents approved Model B. They indicated that “Passive stretching” should be eliminated and “exercise prescription adherence” should be included. The Core Group eliminated the general “prescription” task. Therefore, the final model included 42 patient-centered exercise tasks (i.e., lower order themes), which divided into 14 higher order themes and 7 SHOTs. The final SHOTs were: (1) Exercise-related health assessment, (2) Body composition and physical fitness assessment, (3) Lifestyle physical activity and sedentary behavior assessment, (4) Education, instruction, and prescription, (5) Exercise monitoring, (6) Behavioral counseling and psychosocial support, (7) Dietary support. The final model passed with a unanimous final vote. 555 See Table 1, Figure 2, and Supplements 10-11 for the final model, with descriptions of the SHOTs. Task categories were not ranked, per group consensus, but were further sorted by temporal precedence in a clinical setting (starting with basic assessments).

Table 1. Final model with descriptions of the Super Higher Order Task (SHOT) themes						
Super higher order task theme (SHOT) #	Super higher order task theme (SHOT)	SHOT Description / Interpretation	Higher order task theme (HOT) #	Higher order task theme (HOT)	Lower Order Task Theme (LOT) #	Lower Order Task Theme (LOT)
1	Exercise-related health assessment	Perform pre-participation screening, and identify comorbidities. Conduct baseline assessments of vitals. Utilize established and valid protocols to determine aerobic fitness and cardiac risk. Interpret data and track progress.	1	Risk factor and needs identification	1	Risk factor identification
			2	Exercise-related health assessment	2	Needs assessment
					3	Stress testing
					4	Vitals
					5	ECG & other cardiopulmonary assessments
2	Body composition and physical fitness assessment	Assess fat and lean mass. Evaluate muscular strength, endurance & power, balance, and other indicators of physical fitness and function. Interpret data to utilize for prescription and as indicators of program effectiveness.	3	Body composition assessment	6	Body composition testing
			4	Fitness testing	7	Anthropometry
					8	Fitness testing
					9	Balance testing
					10	Strength testing
3	Lifestyle physical activity and sedentary behavior assessment	Assess 24-hour, free-living physical activity behavior, including sedentary behavior, light, moderate and vigorous activity. Evaluate for baseline and tracking over time with validated surveys, wearables and/or accelerometry. Measure steps, sitting time and caloric expenditure. Interpret data to utilize for prescription and as indicators of program effectiveness.	5	Lifestyle physical activity and sedentary behavior assessment (same as SHOT)	11	Physical function testing
			6	Fitness and health education	12	PA/Sedentary assessment
					13	PA/Sedentary monitoring
					14	Accelerometry
					4	Education, instruction, and prescription
7	Physical activity instruction	16	Orientation			
		17	Exercise training			
		18	Exercise instruction			
		19	Prescription-individual (in clinic)			
5	Exercise monitoring	Supervise group and/or individual exercise training. Monitor hemodynamic and metabolic responses, signs and symptoms with both subjective/self-report and objective (both active and passive) instruments, including wearables, continuous glucose monitoring (CGM) and other digital assessments.	8	Exercise prescription	20	Prescription-home (free living)
			9	Personalization	21	Prescription-group (in clinic)
					22	Modification
					23	Individualization
					24	Progression
6	Behavioral counseling and psychosocial support	Promote physical activity with basics of behavior change, such as goal setting, social support, and reinforcement, within scope of profession. Demonstrate encouragement and follow up for continued success. Reinforce and support psychosocial recommendations from licensed psychology and social work professionals. Refer to these professionals when indicated/necessary.	10	Metabolic assessment	25	Adjustments
			11	Monitoring	26	Metabolic testing
					27	Glucose testing (clinic / lab)
					28	Glucose monitoring (peri-exercise)
					29	Symptom monitoring
7	Dietary support	Reinforce and support dietary recommendations from licensed nutrition professionals. Support nutrition basics, such as energy balance and exercise-related nutrient monitoring, within scope of	12	Counseling techniques	30	HR monitoring
			13	Psychosocial support	31	Supervision (group)
					32	Monitoring (individual)
					33	Exercise monitoring
					34	Effort/Exertion monitoring
5	Exercise monitoring	Supervise group and/or individual exercise training. Monitor hemodynamic and metabolic responses, signs and symptoms with both subjective/self-report and objective (both active and passive) instruments, including wearables, continuous glucose monitoring (CGM) and other digital assessments.	11	Monitoring	35	PA/sedentary counseling
			12	Counseling techniques	36	Motivation & feedback
					37	Goal setting
					38	Exercise prescription adherence
					39	Support group
6	Behavioral counseling and psychosocial support	Promote physical activity with basics of behavior change, such as goal setting, social support, and reinforcement, within scope of profession. Demonstrate encouragement and follow up for continued success. Reinforce and support psychosocial recommendations from licensed psychology and social work professionals. Refer to these professionals when indicated/necessary.	13	Psychosocial support	40	Psychosocial assessment
			14	Dietary support (same as SHOT)	41	Food monitoring
					42	Food assessment

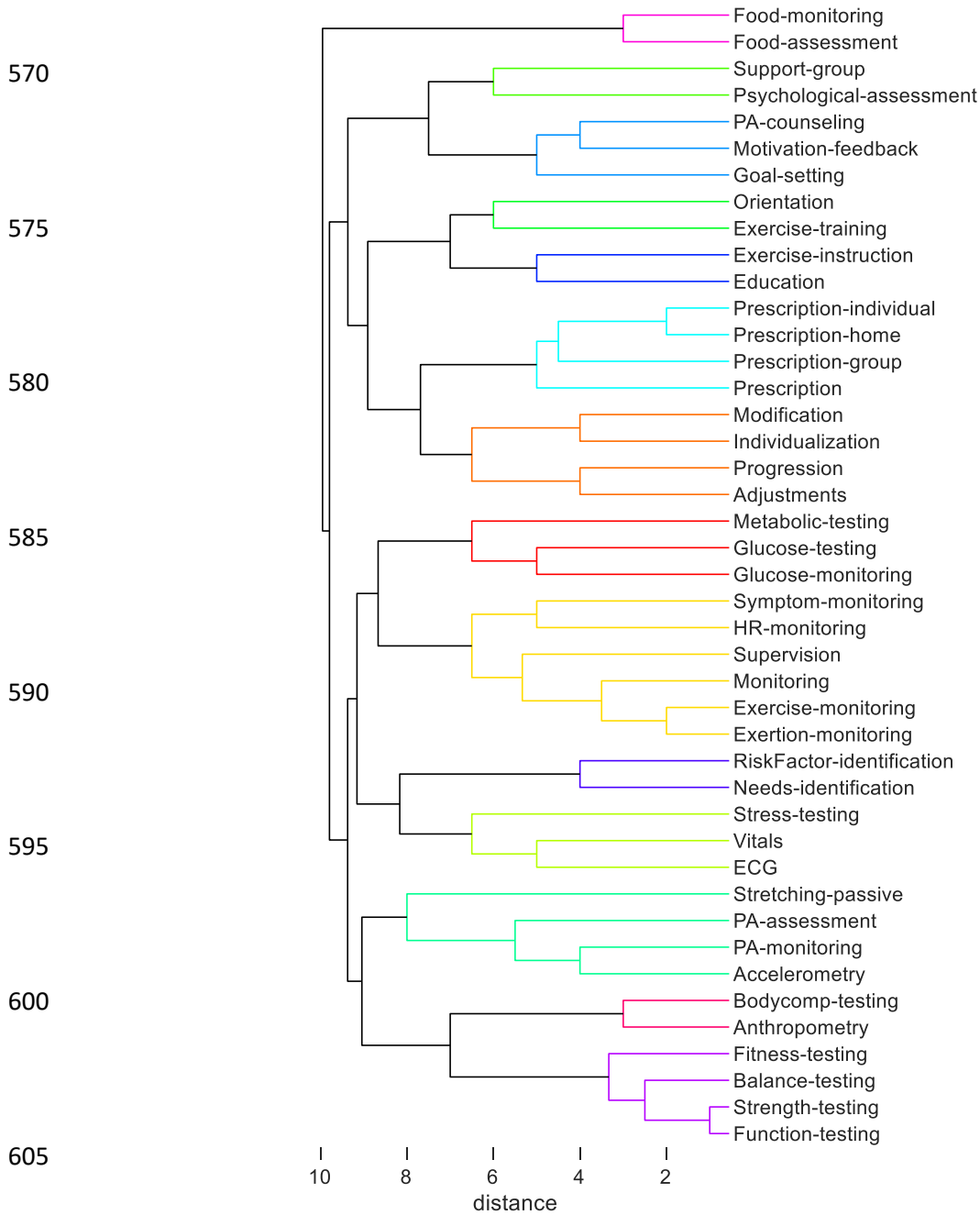
		profession. Refer to nutrition professionals when indicated/necessary.				
--	--	--	--	--	--	--



560

Figure 2. Illustrated final model (Version B) for clinical use. Note: Certain aspects of tasks may be outside the scope of training for some specific exercise professions, and patients with multiple comorbidities would be better served seeing a clinical exercise physiologist as opposed to a personal trainer.

565



610

Supplement 10. Final hierarchical cluster analysis model approved in the Delphi process



Supplement 11. Illustrated final model (Version A) for clinical use.

Image by Osama Alowais, M.S., Teachers College – Columbia University, NY, NY

615 Copyright – The Authors (Stults-Kolehmainen et al., 2023). Use of figure permitted with Authors permission.

Survey: Issues in Bariatric Exercise

620 The following statements were rated an average of 9.0, indicating “imperative” was rated
by all 10 respondents: 1) “Pre- and post-operative PA/exercise guidelines for metabolic and
bariatric (MBS) patients are needed”, 2) “MBS programs need to include PA/exercise as part of
multidisciplinary care”. The following questions were rated by USA respondents, also receiving
625 unanimous agreement that they are “imperative”: 1) MBS patients should receive customized
and individualized PA/exercise guidance from credentialed exercise professionals with expertise
in PA prescription and intervention, 2) Exercise services in MBS settings should be standardized
and reimbursed.

Re-review

630 The higher order tasks most represented in the literature were “Real-time monitoring,
instruction and feedback” at 73%. The task HOT least represented was “stress testing” at 34%.
In the review of differences in tasks performed by profession, two higher-order task categories
(HOTs) were different. Exercise physiologists were determined to perform both Psychosocial
support (HOT 13) and Dietary support (HOT 14) to a greater degree. See Supplement 12.

635

640

645

650

655

660

Supplement 12a. Patient-care-related tasks completed by the exercise professional for each study: Recode and re-review for 14 higher-order themes (HOTs) within 7 super higher-order themes (SHOTs) ^{1,2,3}

	EXERCISE-RELATED HEALTH ASSESSMENT		BODY COMPOSITION AND PHYSICAL FITNESS ASSESSMENT		LIFESTYLE PHYSICAL AND SEDENTARY BEHAVIOR ASSESSMENT	EDUCATION, INSTRUCTION, AND PRESCRIPTION				EXERCISE MONITORING		BEHAVIORAL COUNSELING AND PSYCHOSOCIAL SUPPORT		51 DIETARY SUPPORT
Citation; (+) primary citation for study series	1- Risk factor and	2- Exercise-Related Health	3. Body Composition	4. Fitness Testing	5. Lifestyle physical activity and sedentary behavior assessment	6. Exercise and Fitness Education	7. Physical Activity Instruction	8. Exercise Prescription	9. Personalization	10. Metabolic Assessment	11. Monitoring	12. Counseling Techniques	13. Psychosocial Support	14. Dietary Support
Auclair, 2020 Lemiux, 2021 Simard, 2019 Pettigrew, 2020 Tardif, 2020	X	X	X	X			X	X		X	X			
Berggren, 2008	/	X	X	X			X-1:1	X-1:1		X	X			X
Bond, 2015a Bond, 2015 b Bond, 2017	X	X	X	X		X-1:1i	X:1-1i	X-H	X		X	X		
Carnero, 2017 Coen, 2015a Coen, 2015b Lopez, 2017 Woodlief, 2015	X	X	X	X	X			X	X	X	X			
Daniels, 2018	X	X	X	X		X		X:1		X	X	X	X	
Dantas, 2020 Dantas, 2018 Gil, 2021a Gil, 2021b Murai, 2019	X	X	X	X	X			X		X	X			
Gill, 2018 Powell, 2018 Powell, 2020	X	X	X	X	X	X	X	X-G			X	X		X
Halparin, 2014a Halparin, 2015b Panosian, 2017 Hamdy, 2018	X	X	X	/	X	X	/	X-G / X-1:1i	X	X	X	X	X	X
Hickey, 1999	X	X	X	X	/	X	/	X-1:1i		X	X			
Huck, 2015	X	X	X	X	X		X	X		X	X	X		
Kelley, 2006	X	X	X	X	X	X	/	X	X	X	X	/		X
Kerrigan, 2012	X	X	X	X	X	X	/	X-1:1i	X		X	X		X
Morana, 2018	X	X	X	X	X			X:1-1i	X	X	X			
Shah, 2011	X	X	X	X	X	X		X / X-1:1i		X	X	X		X
Zagarins, 2011	X	X	/	X	X	X	X	X-1:1	X		X	X		X
	15/15; 5;	15/15; ;	15/15; 100%	15/15; 100%	11/15; 73%	9/15; 60%	11/15; 73%	15/15; 100%	7/15; 47%	11/15; 73%	15/15; 100%	9/15; 60%	2/15; 13%	7/15; 47%
	100%	100%												
Castello, 2011	X	X	X	X	/		X	X: 1-1i	X	X	X			

Castello-Simoes, 2013														
de Oliveira, 2016	X	X	X	X			X	X:1-1i / X:Hi			X	X		
Herrera, 2020	X	X	X	X	X	X	X	X-G		X	X			
Jassil, 2015	X	/	X	/	X	X		X	X	X	X	X		X
Morana, 2018	X	X	X	X	X			X:1-1i	X	X	X			
Mundbjerg, 2018 Mundbjerg, 2018 Stolberg, 2018 Stolberg, 2018 Stolberg, 2018	X		X				X	/	X	X	X	X	X	X
Onofre, 2017	X	X	X	X				X	X	X	X			
Rojhani-Shirazi, 2016	X	/	X	X	X			/			X			
Ricci, 2020	X	X	X	X			X	X			X			
Wiklund, 2015	X	/	X		X	X		/	X		X			
	10/10; 0%	9/10; 90%	10/10; 100%	8/10; 80%	6/10; 60%	4/10; 40%	5/10; 50%	10/10; 100%	6/10; 60%	6/10; 60%	10/10; 10%	3/10; 30%	0/10; 0%	2/10; 20%
	100%													
Baillot, 2013 Baillot, 2016 Baillot, 2016 Baillot, 2016	X	X	X	X	X			X-G / X-1:1	X	X	X	X		X
Brandonberg, 2005	X	/	X		X	/	X				X	X		X
Brown, 2016	X		X									X		X
Brun, 2019	X	X	X	X				X	X	X				
Campanha-Versiani 2017	X	/	X	X	/			X	X	X	X			X
Coleman, 2016	X	X	X	X			X	X			X			
Creel, 2016	X	X	X	X	X			X			X	X		X
DaSilva, 2015								X						
Egberts, 2010 Egberts, 2011	X		/							X	/			
Funderburk, 2010	X	X		X	X			X-G		X		X		
Gilbertson, 2020	X	X	X	X				X-H		X	X	X		X
Gonzalez-Cutre, 2020	X		X		X		X	X			X	X		
Hanvold, 2019	X	X	X		X			X		X	X	X	X	X
Hassannejad, 2017	X	X	X	X	X		X	X			X	X		X
Herring, 2017	X	X	X	X	X		X	X-G	X	X	X	X		X
Huck, 2015	X	X	X	X	X		X	X-1:1i	X	X	X	X		X
Jimenez-Loasia, 2020	X	X	X	X	X	X	X				X			
Kalarchian, 2013	X	X	X		X			X			X	X		X
Klasnja, 2020	X	/	X		/						X	X		X

Marc-Hernandez, 2019	X	X	X	X	X	X	X	X		X	X			
Marc-Hernandez 2020														
Marchesi, 2015	X	X	X	X			X	X	X	X	X	X	X	X
Muschitz, 2015	X	X	X			X	X	X	X	X	X	X		X
Parikh, 2012	X	X	X		X	X		X		X	X	X	X	X
Pico-Sirvent, 2019	X	X	X	X			X	X	X	X	X			X
Proulx, 2018	X		X		X			X	X	X	X	X		X
Rothwell, 2015	X		X			X	X	X-H			X			
Soriano-Maldonado, 2020	X	X	X	X	X			X		X	X			X
Stegen, 2011	X	X	X	X			X	X	X	X	X			
Villa-González, 2019	X		X				X	X	X	X	X	X		X
Artero, 2021														
	28/29; 97%	22/29; 76%	27/29; 93%	16/29; 55%	17/29; 59%	6/29; 21%	14/29; 48%	24/29; 83%	11/29; 38%	18/29; 62%	25/29; 86%	18/29; 62%	3/29; 10%	19/29; 34%
GRAND TOTAL	53/54; 98%	46/54; 85%	52/54; 96%	39/54; 72%	34/54; 63%	19/54; 35%	30/54; 56%	49/54; 91%	24/54; 44%	35/54; 65%	50/54; 93%	30/54; 56%	5/54; 9%	28/54; 44%
¹ : Hamdy (2018) was not included because it was a review paper. ² : See Table 2b for coding ³ : GREEN = EX PHYSIOLOGISTS; PHYSIOTHERAPISTS IN PEACH;														

665

Supplement 12b: Coding for Table 2a					
	X: Explicitly stated /: Implied	Setting	Standardized vs Individualized	Example format	Note
X-G	Explicitly stated;	Group setting	Standardized, by definition!	classroom setting; clinic; hospital	
X-1:1	Explicitly stated;	1-on-1 training	Standardized	Exam room at clinic, hospital recovery	
X-1:1i	Explicitly stated;	1-on-1 training	Individualized	Exam room at clinic, hospital recovery	
X-O	Explicitly stated	Online (independent- without the exercise professional present)	Standardized	Video tutorials	
X-Oi	Explicitly stated	Online	Individualized	Interactive/automated digital systems	None of the studies may have this
X-H	Explicitly stated	Home (independent- without the exercise professional present)	Standardized	Ex Rx they are given to do at home, same for everyone (similar to InfoSheet, below)	
X-Hi	Explicitly stated	Home (independent- without the exercise professional present)	Individualized	Home Exercise Program (HEP) given at discharge, similar to what physical therapists give	
X-T	Explicitly stated	telephone or video-conferencing	Standardized	Zoom group	
X-Ti	Explicitly stated	telephone or video-conferencing	individualized	Zoom one-on-one	
X-IS	Explicitly stated	Info sheet	Standardized, by definition!	Just informational, not a program, per se, like above.	

DISCUSSION

670 Increased PA, including exercise, is essential for the long-term success of patients
undergoing MBS and helps to maintain health improvements even in the short-to-medium term
(4-6, 8, 38). However, many patients do not become active after surgery. Supports that could offset
this inactivity (e.g., PA prescription, counseling, supervised exercise programs) are often not
675 provided as part of clinical care. While there is a clear need for exercise professionals in the
multidisciplinary care of patients undergoing MBS, the specifics of their professional background
and tasks they perform in a bariatric setting are unclear. To better clarify the roles and rationale
for exercise professionals in MBS, we conducted a unique and rigorous multimethod analysis of
all exercise programs peri-MBS. We extracted tasks of the exercise professional, submitted these
680 to an expert group of clinicians for sorting into themes, used a sophisticated analysis to create a
hierarchical model of these job tasks, and further consulted the expert group for their unique
perspectives.

Overall, our study found exercise professionals perform a large set of job tasks related to
the clinical care of the patient. Forty-three identified tasks were classified into 14 higher order
themes and then seven super-higher order themes. These seven included: (1) Exercise-related
685 health assessment, (2) Body composition and physical fitness assessment, (3) Lifestyle physical
activity and sedentary behavior assessment, (4) Education, instruction, and prescription, (5)
Exercise monitoring, (6) Behavioral counseling and psychosocial support, and (7) Dietary support.
The most common skills reported in the literature were: supervision of exercise, fitness testing,
exercise prescription, heart rate monitoring, and physical activity counseling. However, the
690 expert group decided to not rank tasks or their categories by commonality but treat them as
relatively equal in importance to avoid overlooking other key functions of the exercise
professional. Tasks conducted by exercise professionals in bariatric treatment align closely with
similar practice in other clinical settings. For instance, our seven SHOT categories overlapped
considerably with core components categories from cardiac rehabilitation (e.g., Psychosocial
695 Management, PA Counseling, Exercise Training Evaluation) (39, 40) and with performance domains
from the American College of Sports Medicine (ACSM) clinical exercise physiology credential
(e.g., Exercise Testing, Exercise Prescription, Exercise Training and Leadership, Education and
Behavior Change) (41). The expert group noted that some tasks should not be included, such as
post-operative PA clearance (frequently provided by an advanced practice registered nurse
700 [APRN], physician's assistant or surgeon). The group also indicated it might be worthwhile
including other psychosocial support factors as well, including lessening stigmatization, which
may contribute to PA/exercise avoidance in bariatric patients (42, 43). Overall, the results indicate
that the exercise professional may have skills and abilities to provide a larger role than that
suggested by Mechanick (44) and others (45), which appear to limit tasks to "lifestyle medicine
705 evaluation", physical activity counseling, monitoring adherence to PA guidelines and supervising
exercise sessions.

How exercise professionals are classified ostensibly varies by country. Research reviewed
in this study, demonstrated the exercise professional was most often an exercise physiologist in
the USA, and a physiotherapist/physical therapist outside the USA, the two professions noted by
710 the ASMBS Integrated Health Section (46). It is possible that physical therapists are frequently
utilized due to reimbursement issues, but we were unable to determine this in the current
analysis. It is important to note that in Australia, Canada and the United Kingdom, like the USA,

715 exercise physiologists work independent of physical therapists ^(47, 48), and in some countries, like Singapore, they may work together. In Brazil, the exercise professional was typically a physical educator. Regardless, our analysis determined that the job tasks exercise professionals conducted in MBS differed on only two dimensions (i.e., Psychosocial support, Dietary support). The expert group did not make any specific recommendations regarding profession, credentialing, or qualifications, but it is clear that credentials of the exercise professional (e.g., exercise physiologist [EP] versus clinical exercise physiologist [CEP]) should match the clinical complexity characteristics of the patients. Moreover, the experts rated as “imperative” that bariatric patients should have customized exercise guidance from credentialed exercise professionals (regardless of whether the professional is an exercise physiologist, physical therapist, or other qualified professional), which and exercise services in the MBS setting should be incorporated into the reimbursable services of care.

725 The current study has several notable strengths, the first of which is the broad, robust methodological approach used to address the topic, which provided several levels of confirmative evidence for the results. The process was inductive, starting with the literature, and the tasks identified were categorized and refined by an expert group that included a multidisciplinary team of exercise practitioners, scientists, nurses, surgeons, and dietitians from multiple nations. Moreover, the bariatric exercise practitioners involved have several decades of combined experience in this area.

735 This investigation had some limitations. Studies in the review were predominantly research- and not clinical-focused. As a consequence, most of the patients in these articles were higher functioning – excluding individuals with mobility problems, heart issues, and mental health problems and thus limiting the generalizability of the findings. Thus, one might presume that the literature does not describe a true clinical sample, which may have had implications for the tasks of the exercise professional. To check our model of tasks, a full-scale survey of exercise professionals in MBS across the world should be done as a next step. While highly qualified and experienced, the expert group was a convenience sample, with the implication that there is likely some bias in the analysis. Lastly, a majority of studies provided insufficient reporting of exercise-related tasks. The notable exceptions of this were from a group in Spain ^(49, 50) and the USA ⁽⁵¹⁾. However, we aimed to compensate for this by including as many studies as possible on the topic. Furthermore, we contacted numerous authors of the included publications, and their responses are included in these data. Despite these great efforts, it is possible that we missed some important tasks, such as program development or promotion of a physically active environment.

740 The results of this study have important clinical implications. First, these models will provide a clearer understanding of the role the exercise professional in the MBS setting and the value they bring to a multidisciplinary surgery team ^(46, 52, 53). More practically, findings provide practical and useful information that could contribute in four major areas: 1) describing the roles and responsibilities exercise professionals are able to fill, helping create job descriptions, 2) developing CPT/billing codes for reimbursement (aligning with how cardiac rehab was developed), helping to spur other funding for positions, 3) credentialing exercise professionals in bariatric care and development of “core competencies” ⁽⁴⁰⁾ and 4) helping to coordinate care from clinical exercise personnel, perhaps in a system of coordinated exercise care. Future needs include PA guidelines for patients undergoing MBS, perhaps similar to those from Exercise and Sports Science Australia ⁽³⁾ or those recently established for type 2 diabetes. ⁽⁵⁴⁾ To this end, it is

important to generate more experimental data from well-designed studies on the greater role of PA/exercise in the maintenance of body mass after surgery, as well as other outcomes, and to clarify the ideal type, duration, intensity, progression of such exercise. There also needs to be better reporting of roles and tasks performed by the exercise professional in surgery, as outlined by the CERT guidelines ^(49, 50).

Future work should also describe: 1) important knowledge, skills, and competencies (e.g., identifying appropriate exercise protocols based on various health conditions and physical limitations, monitoring blood pressure during exercise and testing, resting and exercise ECG, etc.) ⁽⁵⁵⁾, 2) how tasks vary with surgical benchmarks (pre, post and long-term after surgery) and types of programming (e.g., supervised exercise training versus physical activity counseling, 3) scope of practice, and 4) how exercise professionals collaborate as a member of the multidisciplinary team commonly comprised of nurses, dietitians, psychologists, and other providers. For instance, it is likely the case that some tasks described in our model are not solely the responsibility of the exercise professional. More studies are needed to describe the translation and implementation of bariatric and medical weight management PA programs for standardization, reproducibility and to strengthen the case for the role of the exercise professional in MBS and even the greater realm of healthcare.

775 **CONCLUSION**

To our knowledge, this is the first study to systematically investigate the role of the exercise professional in a metabolic and bariatric surgery (MBS) setting. Exercise is regarded as an important facet of multidisciplinary surgical care, but has been poorly implemented, and many programs do not have an exercise professional within their team. It is also important to note that patients want access to exercise professionals before and after their surgery ⁽⁵⁶⁾, which, altogether underpins why we completed the first systematic and multimethod investigation of the exercise professional in MBS. We searched for and analyzed every published bariatric exercise/PA program from inception to 2022. Our expert group of bariatric exercise professionals, allied clinicians, and scientists reached a consensus on seven major classifications of patient-centric job tasks for the exercise professional. Tasks varied marginally by the specific field of the exercise professional (e.g., exercise physiologist, physiotherapist/physical therapist, others). Results from our study provide convergent validity with other exercise professional credentialing bodies. We believe that data from this rigorous and unique analysis helps to fill an important gap, enabling continued progress to solidify these positions, while informing new and more precise recommendations on supporting and standardizing comprehensive exercise treatment for obesity. It is also important for governing medical associations across the world to formally recognize experienced exercise professionals as playing pivotal roles in the overall multidisciplinary healthcare for patients undergoing MBS surgery.

795 **ACKNOWLEDGEMENTS**

The authors wish to thank Jessie Moore, R.N., A.P.R.N. (Yale New Haven Hospital), Jennifer Guan, D.P.T., Edd Taylor, Ph.D. (University of Colorado) and Amanda Divin, Ph.D. (Texas A&M University - Commerce) for thoughtful critiques and technical assistance. Rebecca Lamberti, R.N., B.S.N., M.S.N., D.N.P. (Yale New Haven Hospital) and Diana Rivera, R.N., B.S.N., C.N.M.L.

800 (Yale New Haven Hospital) provided strategic administrative and logistical support. Raw data is available upon reasonable request to the corresponding author.

Laura Richardson is past president of the Clinical Exercise Physiology Association (CEPA) and is credentialed as a registered clinical exercise physiologist (RCEP) and ACSM-CEP. Carol Garber Ewing is a past president and current Treasurer of the ACSM and is credentialed as a RCEP and ACSM-CEP. John Morton is the past president of the American Society of Metabolic and Bariatric Surgery (ASMBS) and is the present chair of the American College of Surgeons, Metabolic and Bariatric Surgery Accreditation and Quality Improvement Program. Saber Ghiassi is the current president of the Connecticut Chapter of ASMBS. Janet Huehls is credentialed as RCEP and ACSM-CEP. Matthew Stults-Kolehmainen, Susannah Williamson, and Nina Brojan Heyman are credentialed by the ACSM as certified exercise physiologists (ACSM-EP). Dale Bond is associate editor for the Integrative Health section of SOARD.

COMPETING INTERESTS

815 None

AUTHOR CONTRIBUTIONS

The concept was developed by MSK, DB, SG, and BG. MSK, DB, LR and LH formed the Core Group. The Expert Group and advisory panel consisted of MSK, LR, JH, CEG, MD, EB, BM, AD, DB, LH, BG, ERM, GA, JM, OA, SW and SG. The literature review was conducted by MSK. Data extraction was conducted by MSK, MD, OA, and SW. CA conducted the statistical modelling. Statistical consulting was provided by MH. MSK, DB, BG, LR, and LH wrote the manuscript. SB created the artwork. OA provided additional illustration support. NBH was the study auditor. All authors read and critiqued the paper and provided final approval of the manuscript.

825

FUNDING

Bruno Gualano is supported by FAPESP, CNPq and CAPES. LH is supported by the National Institute for Health and Care Research (NIHR) - Leicester Biomedical Research Centre (BRC). [The views expressed are those of the author(s) and not necessarily those of the NIHR or the Department of Health and Social Care.] GA was supported by American Heart Association Grant #852679 (GA, 2021–2024), and the National Institute of Diabetes, Digestive, and Kidney Diseases of the National Institutes of Health under a mentored research scientist development award (K01DK129441).

835 DATA AVAILABILITY STATEMENT

All data produced in the present study are available upon reasonable request to the authors.

840 REFERENCES

1. Grover BT, Morell MC, Kothari SN, Borgert AJ, Kallies KJ, Baker MT. Defining Weight Loss After Bariatric Surgery: a Call for Standardization. *Obesity Surgery*. 2019;29(11):3493-9.

2. Garber CE. The Health Benefits of Exercise in Overweight and Obese Patients. *Curr Sports Med Rep.* 2019;18(8):287-91.
- 845 3. Johnson NA, Sultana RN, Brown WJ, Bauman AE, Gill T. Physical activity in the management of obesity in adults: A position statement from Exercise and Sport Science Australia. *Journal of Science and Medicine in Sport.* 2021;24(12):1245-54.
4. Herring LY, Stevinson C, Carter P, et al. The effects of supervised exercise training 12-24 months after bariatric surgery on physical function and body composition: A randomised controlled trial. *Int J Obes (Lond).* 2017;41(6):909-16.
- 850 5. Bond DS, Manuel KM, Wu Y, et al. Exercise for counteracting weight recurrence after bariatric surgery: A systematic review and meta-analysis of randomized controlled trials. *Surgery for Obesity and Related Diseases.* 2022; 19(6):641-650.
6. King WC, Hinerman AS, White GE, Courcoulas AP, Saad MAB, Belle SH. Associations between physical activity and changes in weight across 7 years after roux-en-Y gastric bypass surgery: A multicenter prospective cohort study. *Annals of surgery.* 2022;275(4):718-26.
- 855 7. Zabatiero J, Smith A, Gucciardi DF, Hamdorf Am JM, Taylor SF, Hill K. Patterns of Change in Device-Based Physical Activity and Sedentary Time Following Bariatric Surgery: A Longitudinal Observational Study. *Obesity Surgery.* 2021;31(7):3015-25.
- 860 8. Dantas WS, Gil S, Murai IH, et al. Reversal of Improved Endothelial Function After Bariatric Surgery Is Mitigated by Exercise Training. *Journal of the American College of Cardiology.* 2018;72(18):2278-9.
9. Baillot A, Chenail S, Barros Polita N, et al. Physical activity motives, barriers, and preferences in people with obesity: A systematic review. *PLoS One.* 2021;16(6):e0253114.
- 865 10. Martin-Fernandez KW, Creel DB, Schuh LM. Psychosocial and behavioral correlates of weight loss 12 to 15 years after bariatric surgery. *Journal of Behavioral Medicine.* 2022;45(2):252-9.
11. Peacock JC, Sloan SS, Cripps B. A qualitative analysis of bariatric patients' post-surgical barriers to exercise. *Obes Surg.* 2014;24(2):292-8.
12. Yang K, Zhou Y, Wang M, Shen M, Zhang X, Wang Y. Status of the Field of Bariatric Surgery: A National Survey of China in 2018. *Obesity Surgery.* 2019;29(6):1911-21.
- 870 13. Kanaley JA, Colberg SR, Corcoran MH, et al. Exercise/physical activity in individuals with type 2 diabetes: A consensus statement from the American College of Sports Medicine. *Medicine and Science in Sports and Exercise.* 2022; 54(2):353-368.
14. Duijzer G, Haveman-Nies A, Jansen SC, ter Beek J, Hiddink GJ, Feskens EJM. Feasibility and potential impact of the adapted SLIM diabetes prevention intervention in a Dutch real-life setting: The SLIMMER pilot study. *Patient Education and Counseling.* 2014;97(1):101-7.
- 875 15. Aziz Z, Absetz P, Oldroyd J, Pronk NP, Oldenburg B. A systematic review of real-world diabetes prevention programs: Learnings from the last 15 years. *Implementation Science.* 2015;10(1):172.
16. Hansen D, Decroix L, Devos Y, et al. Towards Optimized Care After Bariatric Surgery by Physical Activity and Exercise Intervention: A Review. *Obesity Surgery.* 2020;30(3):1118-25.
- 880 17. Gasoyan H, Tajew G, Halpern MT, Sarwer DB. Reasons for underutilization of bariatric surgery: The role of insurance benefit design. *Surgery for Obesity and Related Diseases.* 2019;15(1):146-51.
18. Aetna. Obesity Surgery: Medical Clinical Policy Bulletins Hartford, CT2023 [Available from: https://www.aetna.com/cpb/medical/data/100_199/0157.html].
- 885 19. Koorts H, Eakin E, Estabrooks P, Timperio A, Salmon J, Bauman A. Implementation and scale up of population physical activity interventions for clinical and community settings: The PRACTIS guide. *International Journal of Behavioral Nutrition and Physical Activity.* 2018;15(1):51.
20. Sarmiento Alarcón A, Troncoso-Ortiz EJ, Machado CA, Fernández Paniura A. Implementation of Controlled Physical Activity Programs. In: Ruiz-Tovar J, Marc-Hernandez A, editors. *Physical Activity and Bariatric Surgery.* Cham: Springer International Publishing; 2023. p. 139-53.
- 890

21. Jansen SC, Haveman-Nies A, Duijzer G, Ter Beek J, Hiddink GJ, Feskens EJM. Adapting the SLIM diabetes prevention intervention to a Dutch real-life setting: joint decision making by science and practice. *BMC Public Health*. 2013;13(1):457.
22. Laddu D, Ma J, Kaar J, et al. Health Behavior Change Programs in Primary Care and Community Practices for Cardiovascular Disease Prevention and Risk Factor Management Among Midlife and Older Adults: A Scientific Statement From the American Heart Association. *Circulation*. 2021;144(24):e533-e49.
23. McElwaine KM, Freund M, Campbell EM, Bartlem KM, Wye PM, Wiggers JH. Systematic review of interventions to increase the delivery of preventive care by primary care nurses and allied health clinicians. *Implement Sci*. 2016;11:50.
24. Clark RE, McArthur C, Papaioannou A, et al. "I do not have time. Is there a handout I can use?": Combining physicians' needs and behavior change theory to put physical activity evidence into practice. *Osteoporos Int*. 2017;28(6):1953-63.
25. Hanapi NHM, Yuliawiratman BS, Lai LL, Halil H, Koo JG, Suhaimi A. Optimising the Bariatric Patients' Outcome through Cardiac Rehabilitation Approach. *Obesity Surgery*. 2018;28(7):2130-4.
26. Gallo PM. The United States Registry for Exercise Professionals: How it Works and Ways it Can Advance the Fitness Profession. *ACSMS Health Fit J*. 2023;27(2):51-3.
27. Slade SC, Dionne CE, Underwood M, Buchbinder R. Consensus on Exercise Reporting Template (CERT): Explanation and Elaboration Statement. *Br J Sports Med*. 2016;50(23):1428-37.
28. Villa-González E, Barranco-Ruiz Y, Rodríguez-Pérez MA, et al. Supervised exercise following bariatric surgery in morbid obese adults: CERT-based exercise study protocol of the EFIBAR randomised controlled trial. *BMC Surgery*. 2019;19(1):127.
29. Morse JM. Principles of mixed methods and multimethod research design. In: Tashakkori A, Teddlie C, editors. *Handbook of Mixed Methods in Social and Behavioral Research*. Newbury Park, CA: Sage; 2003. p. 189–208.
30. AGREE Collaboration. Development and validation of an international appraisal instrument for assessing the quality of clinical practice guidelines: The AGREE project. *Qual Saf Health Care*. 2003;12(1):18-23.
31. Hsieh H-F, Shannon SE. Three approaches to qualitative content analysis. *Qualitative health research*. 2005;15(9):1277-88.
32. Righi C, James J, Beasley M, et al. Card sort analysis best practices. *J Usability Studies*. 2013;8(3):69–89.
33. Rokach L, Maimon O. Clustering Methods. In: Maimon O, Rokach L, editors. *Data Mining and Knowledge Discovery Handbook*. Boston, MA: Springer US; 2005. p. 321-52.
34. Rauch W. The decision Delphi. *Technological Forecasting and Social Change*. 1979;15(3):159-69.
35. Jamnik VK, Warburton DE, Makarski J, et al. Enhancing the effectiveness of clearance for physical activity participation: Background and overall process. *Appl Physiol Nutr Metab*. 2011;36 Suppl 1:S3-13.
36. Page MJ, McKenzie JE, Bossuyt PM, et al. Updating guidance for reporting systematic reviews: Development of the PRISMA 2020 statement. *Journal of Clinical Epidemiology*. 2021;134:103-12.
37. Heimerl F, Lohmann S, Lange S, Ertl T. Word Cloud Explorer: Text Analytics Based on Word Clouds. *Proceedings of the 2014 47th Hawaii International Conference on System Sciences: IEEE Computer Society*; 2014. p. 1833–42.
38. Gualano B, Kirwan JP, Roschel H. Exercise Is Key to Sustaining Metabolic Gains After Bariatric Surgery. *Exerc Sport Sci Rev*. 2021;49(3):197-204.
39. Balady GJ, Williams MA, Ades PA, et al. Core components of cardiac rehabilitation/secondary prevention programs: 2007 update: A scientific statement from the American Heart Association Exercise, Cardiac Rehabilitation, and Prevention Committee, the Council on Clinical Cardiology; the

- Councils on Cardiovascular Nursing, Epidemiology and Prevention, and Nutrition, Physical Activity, and Metabolism; and the American Association of Cardiovascular and Pulmonary Rehabilitation. *Circulation*. 2007;115(20):2675-82.
40. Hamm LF, Sanderson BK, Ades PA, et al. Core Competencies for Cardiac Rehabilitation/Secondary Prevention Professionals: 2010 Update: Position Statement of the American Association of Cardiovascular and Pulmonary Rehabilitation. *Journal of Cardiopulmonary Rehabilitation and Prevention*. 2011;31(1):2-10.
41. American College of Sports Medicine. ACSM Certified Exercise Physiologist: Exam Content Outline 2023 [Available from: https://www.acsm.org/docs/default-source/certification-documents/acsmep_examcontentoutline_2020.pdf?sfvrsn=d413f75_16].
42. Stults-Kolehmainen MA, Sinha R. The effects of stress on physical activity and exercise. *Sports Medicine*. 2014;44(1):81-121.
43. Han S, Agostini G, Brewis AA, Wutich A. Avoiding exercise mediates the effects of internalized and experienced weight stigma on physical activity in the years following bariatric surgery. *BMC Obesity*. 2018;5:18.
44. Mechanick JI, Apovian C, Brethauer S, et al. Clinical practice guidelines for the perioperative nutrition, metabolic, and nonsurgical support of patients undergoing bariatric procedures – 2019 update: Cosponsored by American Association of Clinical Endocrinologists/American College of Endocrinology, The Obesity Society, American Society for Metabolic & Bariatric Surgery, Obesity Medicine Association, and American Society of Anesthesiologists. *Surgery for Obesity and Related Diseases*. 2020;16(2):175-247.
45. Bellicha A, Ciangura C, Poitou C, Portero P, Oppert J-M. Effectiveness of exercise training after bariatric surgery—A systematic literature review and meta-analysis. *Obesity Reviews*. 2018;19(11):1544-56.
46. American Society for Metabolic and Bariatric Surgery. About the ASMBS Integrated Health Section 2023 [Available from: <https://asmbs.org/integrated-health/about>].
47. Allied Health Professions Australia. Allied Health Professions: Exercise Physiology 2023 [Available from: <https://ahpa.com.au/allied-health-professions/exercise-physiology/>].
48. Smart NA, Williams A, Lyndon K. The Role and Scope of Accredited Exercise Physiologists in the Australian Healthcare System. *Journal of Clinical Exercise Physiology*. 2016;5(2):16-20.
49. Artero EG, Ferrez-Márquez M, Torrente-Sánchez MJ, et al. Supervised Exercise Immediately After Bariatric Surgery: The Study Protocol of the EFIBAR Randomized Controlled Trial. *Obesity Surgery*. 2021;31(10):4227-35.
50. Villa-González E, Barranco-Ruiz Y, Rodríguez-Pérez MA, et al. Supervised exercise following bariatric surgery in morbid obese adults: CERT-based exercise study protocol of the EFIBAR randomised controlled trial. *BMC Surgery*. 2019;19(1):127.
51. Panosian J, Ding S-A, Wewalka M, et al. Physical activity in obese type 2 diabetes after gastric bypass or medical management. *The American Journal of Medicine*. 2017;130(1):83-92.
52. Wulkan ML, Walsh SM. The multi-disciplinary approach to adolescent bariatric surgery. *Seminars in Pediatric Surgery*. 2014;23(1):2-4.
53. Garneau P, Glazer S, Jackson T, et al. Guidelines for Canadian bariatric surgical and medical centres: A statement from the Canadian Association of Bariatric Physicians and Surgeons. *Can J Surg*. 2022;65(2):E170-e7.
54. Davies MJ, Aroda VR, Collins BS, et al. Management of Hyperglycemia in Type 2 Diabetes, 2022. A Consensus Report by the American Diabetes Association (ADA) and the European Association for the Study of Diabetes (EASD). *Diabetes Care*. 2022;45(11):2753-86.
55. Brawner CA, Berry R, Harding AW, et al. Clinical Exercise Physiologists in Cardiac Rehabilitation and Clinical Exercise Testing. *Journal of Clinical Exercise Physiology*. 2023;12(2):38-45.

56. Tolvanen L, Svensson Å, Hemmingsson E, Christenson A, Lagerros YT. Perceived and Preferred Social Support in Patients Experiencing Weight Regain After Bariatric Surgery—A Qualitative Study. *Obesity Surgery*. 2021;31(3):1256-64.

990