

1 Mendelian randomisation analysis using GWAS and eQTL data to  
2 investigate the relationship between chronotype and neuropsychiatric  
3 disorders and their molecular basis

4  
5 Shane Crinion<sup>1</sup>, Cathy A. Wyse<sup>2</sup>, Gary Donohoe<sup>1</sup>, Lorna M. Lopez<sup>2¶</sup>, Derek W. Morris<sup>1¶\*</sup>

6  
7 1. Centre for Neuroimaging, Cognition and Genomics, School of Biological and Chemical  
8 Sciences and School of Psychology, University of Galway, Galway, Ireland.

9 2. Department of Biology, Maynooth University, Maynooth, Ireland.

10

11 \* Corresponding author

12 Email: [derek.morris@universityofgalway.ie](mailto:derek.morris@universityofgalway.ie) (DWM)

13

14 ¶These authors contributed equally to this work.

15

16

17

## 18 Abstract

19 A wide range of comorbidities have been observed with neuropsychiatric disorders, of which  
20 sleep disturbances are one of the most common. Chronotype, a self-reported measurement of  
21 an individual's preference for earlier or later sleep timing, is a proxy sleep measure that has  
22 been linked to neuropsychiatric disorders (NPDs). By investigating how chronotype influences  
23 risk for neuropsychiatric disorders and, vice versa, how risk for neuropsychiatric disorders  
24 influences chronotype, we may identify modifiable risk factors for each phenotype. By  
25 investigating the specific genetic mechanisms that are common to the risk of evening  
26 chronotype and the risk of NPDs, we may gain further understanding of the relationship and  
27 causal direction in these phenotypes. Here we use Mendelian randomisation (MR), a method  
28 used to explore causal effects, to 1) study the causal relationships between neuropsychiatric  
29 disorders and chronotype and 2) characterise the genetic components of these phenotypes.  
30 Firstly, we investigated if a causal role exists between six neuropsychiatric disorders and  
31 chronotype using the largest genome-wide association studies (GWAS) available. Secondly, we  
32 integrated data from expression quantitative trait loci (eQTLs) to investigate the role of gene  
33 expression alterations on these phenotypes. We also used colocalization to validate that the  
34 same variant is causal for gene expression and each outcome. We identified that the evening  
35 chronotype is causal for increased risk of schizophrenia and autism spectrum disorder and, in  
36 the opposite direction, that insomnia and schizophrenia are causal for a tendency towards  
37 evening chronotype. We identified twelve eQTLs where gene expression changes in brain or  
38 blood were causal for one of the tested phenotypes (bipolar disorder, chronotype and  
39 schizophrenia). These findings provide important evidence for the complex, bidirectional  
40 relationship that exists between these sleep and neuropsychiatric disorders, and use gene  
41 expression data to identify causal roles for genes at associated loci.

42

## 43 Author Summary

44 Sleep disturbances are commonly observed features of neuropsychiatric disorders. Chronotype,  
45 a behavioural manifestation of an individual's preference for early or late sleep timing i.e.  
46 morning chronotype means a preference for earlier sleep and wake times, has been used as a  
47 behavioural marker of underlying circadian function. Here, we used data from the largest  
48 genetic studies available to test the causal relationship between chronotype and risk for  
49 neuropsychiatric disorders. We found that individuals with the evening chronotype have greater  
50 risk for schizophrenia or autism spectrum disorder. In the other direction, we found insomnia or  
51 schizophrenia diagnosis is causal for a tendency towards evening chronotype. We searched for  
52 DNA variants that influence chronotype or risk for neuropsychiatric disorders through alterations  
53 of gene expression in blood and brain tissues. We found twelve DNA variants with a significant  
54 effect on chronotype or risk of either bipolar disorder or schizophrenia. These results  
55 demonstrate that sleep and neuropsychiatric disorders have a complex bidirectional relationship  
56 and that the causal role of some genes is due to variants that alter gene expression.

57

## 58 Introduction

59 Neuropsychiatric disorders include the adult-onset disorders of bipolar disorder (BD), major  
60 depressive disorder (MDD) and schizophrenia (SZ), and the child-onset conditions of attention  
61 deficit hyperactivity disorder (ADHD) and autism spectrum disorder (ASD). These disorders are  
62 multifactorial, caused by polygenic inheritance of many genetic variants in combination with  
63 various environmental factors (1). Symptoms of NPD are varied and include changes in  
64 behaviour, brain function and cognition, that can be episodic or continuous and range from mild  
65 to severe. Diagnosis of NPD is based on clinical evaluation of highly variable changes in  
66 behaviour and the heterogeneous nature of these disorders along with the significant overlap  
67 between diagnoses makes the identification of risk factors and molecular mechanisms difficult.

68  
69 Sleep-related disorders are one of the most common comorbidities with neuropsychiatric  
70 disorders and typically individuals with a neuropsychiatric diagnosis experience some degree of  
71 difficulty sleeping (2). Insomnia is classed as a neuropsychiatric disorder and a sleep disorder  
72 and is one of the most common comorbidities of each neuropsychiatric disorder listed above (3).  
73 Evidence from genetic studies support an association between chronotype and changes in risk  
74 for neuropsychiatric disorders (4). Chronotype is a behavioural manifestation of an individual's  
75 underlying circadian rhythm e.g. having the morning chronotype means having a preference to  
76 wake up and go to sleep earlier in the 24 hour day while having the evening chronotype means  
77 to prefer to wake up and go to sleep later .

78  
79 It is often time-consuming, expensive or unethical to conduct randomised controlled trials (RCT)  
80 that could estimate the causal role of risk factors for neuropsychiatric disorders. An RCT cannot  
81 be used to investigate the causal relationship between sleep disorders and NPD, as patients  
82 could not be randomly allocated to sleep disruption groups. In such cases, Mendelian

83 randomisation (MR) is a powerful complementary approach that can be applied to estimate the  
84 causal effect of an exposure on an outcome using instrumental variants (IVs) (5). For example,  
85 genome-wide significant (GWS) SNPs for chronotype can be used as IVs to estimate the causal  
86 effect of chronotype (exposure) on risk for a neuropsychiatric disorder (outcome). MR can be  
87 applied bidirectionally, i.e., using GWS SNPs for neuropsychiatric disorders to estimate the  
88 causal effect of neuropsychiatric disorders on chronotype.

89  
90 To investigate the complex relationship between sleep and risk for neuropsychiatric disorders,  
91 we apply MR here to investigate the role of the modifiable risk factor chronotype in risk for  
92 neuropsychiatric disorders and predict the contribution of the genetic component to lifetime risk  
93 for both phenotypes on each other. MR studies have identified a causal relationship between  
94 four neuropsychiatric disorders (ADHD, BD, MDD and SZ) and sleep-related phenotypes (3, 6,  
95 7, 8) and, in the opposite direction, a causal relationship between five sleep-related phenotypes  
96 (daytime napping, insomnia, morning person, long sleep duration and sleep duration) and  
97 changes in risk for neuropsychiatric disorders (3, 4, 6, 7). Our study here builds on previous  
98 work by using the largest GWAS available to date to explore causal relationships between  
99 chronotype and neuropsychiatric disorders. Our study also implements the new MR Pleiotropy  
100 RESidual Sum and Outlier (MR-PRESSO) method, which uses simulation to detect and remove  
101 horizontal pleiotropy (9). This may identify new causal associations or provide additional  
102 evidence for the chronotype-neuropsychiatric disorder relationship.

103  
104 MR analysis can be extended to study the biological mechanisms that are individually involved  
105 in chronotype and risk for neuropsychiatric disorders. In this approach, expression quantitative  
106 trait loci (eQTLs) are used as IVs to estimate the causal effect of gene expression (exposure) on  
107 genetically-based outcomes, e.g., eQTLs are used to estimate the causative effect of changes  
108 in gene expression (exposure) on risk for a neuropsychiatric disorder or chronotype (outcome).

109 MR and colocalization are used together as an approach to provide evidence for the association  
110 between a genetic variant and disease risk (10). Previously this method has been implemented  
111 to link changes in gene expression to psychiatric and neurodevelopmental disorders and identify  
112 potential drug targets (11).

113  
114  
115 Overall, this study had two major objectives. The first was to investigate the causal relationship  
116 between chronotype and neuropsychiatric disorders using MR with GWAS summary statistics.  
117 To do this we used GWAS-based IVs associated with chronotype to investigate its effect on risk  
118 of neuropsychiatric disorders (ADHD, ASD, BD, MDD, Insomnia and SZ) and we used GWAS-  
119 based IVs associated with neuropsychiatric disorders to investigate their effect on chronotype.  
120 The second objective was to investigate the causal relationship between genetic variants  
121 associated with changes in gene expression and chronotype and/or neuropsychiatric disorders  
122 using MR with eQTL and GWAS summary statistics. The eQTL data employed was from  
123 PsychENCODE (<http://resource.psychencode.org/>) and GTEx (<https://gtexportal.org/home/>) for  
124 a range of brain tissues (hippocampus, hypothalamus and prefrontal cortex) plus whole blood.

125  
126

## 127 Materials & Methods

128 These methods follow the guidelines outlined in Strengthening the Reporting of Observational  
129 Studies in Epidemiology using Mendelian Randomization (STROBE)-MR which was developed  
130 to assist researchers to report MR studies in a clear and transparent way (12). STROBE-MR  
131 provides guidelines to improve the quality and assessment of MR studies. The checklist  
132 includes 20 items, of which the first three items have been addressed in the Title and  
133 Introduction of this manuscript (1: indicating MR as the study design, 2: explaining the scientific  
134 background and rationale of the study and justifying use of MR, and 3: stating specific  
135 objectives). The remaining items are addressed in the Materials and Methods (items 4-9),  
136 Results (items 10-13) and Discussion (items 14-20). The complete checklist and the relevant  
137 text from the manuscript for each point is outlined in [Supplementary Table 1](#) (for first objective;  
138 bi-directional MR study of chronotype and neuropsychiatric disorders) and [Supplementary Table](#)  
139 [2](#) (for second objective; MR study of changes in gene expression on chronotype and risk of  
140 neuropsychiatric disorders). The tables highlight the implementation of the STROBE-MR  
141 guidelines throughout the manuscript.

142

### 143 **Objective 1: Bi-directional two-sample MR analysis of chronotype and neuropsychiatric** 144 **disorders**

145 To investigate causal relationships between neuropsychiatric disorders and chronotype, we  
146 performed a bi-directional two-sample MR analysis using genetic variants for each trait from  
147 GWAS data. We obtained summary statistics from the Psychiatric Genomics Consortium (PGC)  
148 for six neuropsychiatric disorders (ADHD, ASD, BD, MDD, Insomnia and SZ) (3, 7, 13, 14, 15,  
149 16) and from the UK Biobank for chronotype (4). Chronotype was selected due to it being the  
150 sleep-related phenotype that has been subjected to the largest GWAS in terms of sample size

151 and statistical power to detect associations of small effect. A description of the GWAS data used  
152 for neuropsychiatric disorders and chronotype is available in [Supplementary Table 3](#).

153  
154 To maximise power, we used the largest GWAS available for each phenotype. For each  
155 neuropsychiatric disorder, the individuals were classified as cases and controls based on the  
156 reported diagnoses in each GWAS. To prevent bias due to variation in the underlying sample  
157 population, all individuals included in these GWAS were of European ancestry. For SZ, the  
158 PGC had performed a multi-ancestry integration analysis (80% European + 20% East Asian;  
159 14) so we obtained summary statistics for an entirely European ancestry sample. To avoid  
160 sample overlap, GWAS summary statistics that excluded UK Biobank samples were used, when  
161 available. Data for 403,195 participants was available from the UK Biobank for the morning  
162 chronotype. The measurement of chronotype refers to self-reported “morning person” as  
163 identified through the UK Biobank (n=449,734). A case for the morning person chronotype is a  
164 participant who, for the question “*Do you consider yourself to be:*”, answered “*Definitely a*  
165 *morning person*” or “*More a morning than an evening person*” whereas a control is a participant  
166 who answered with “*Definitely an ‘evening’ person*” and “*More an ‘evening’ than a ‘morning’*  
167 *person*” in the UK Biobank data (4). All included studies reported a SNP as GWS if it reached  
168 the significance threshold ( $p < 5 \times 10^{-8}$ ) and each study performed LD clumping on results to  
169 identify independent GWS loci ( $r^2 < 0.1$ ). The range of clumping distance between SNPs in each  
170 of the selected GWAS ranged from 250 - 3,000 kb ([Supplementary Table 3](#)).

171  
172 During MR analysis we used genetic variants as a proxy for a trait and therefore it is important  
173 to ensure that the selected IVs are high quality and can accurately predict causality. There are  
174 three core IV assumptions that generally must hold in order for the MR study to be valid: 1) IVs  
175 are robustly associated with the risk factor; the relevance assumption. 2) IVs are not associated  
176 with any confounders; the independence assumption. 3) IVs have no association with the



177 outcome that is not mediated through the risk factor; the exclusion restriction assumption (17).

178 We address the relevance assumption by only using genetic instruments that were identified as

179 GWS loci for each phenotype, providing evidence of a strong association with the phenotype.

180

181

182 We address the independence and exclusion restriction assumptions by using several MR

183 methods to estimate causal effect and correct for bias due to horizontal pleiotropy. Inverse-

184 variance weighted (IVW) meta-analysis was selected as the primary analysis for causal

185 estimate due to its ability to provide maximum power possible. This method combines effect

186 estimates for all genetic instruments to provide the greatest valid causal estimates, under the

187 assumption of balanced pleiotropy (17). IVW MR was implemented using the `mr_ivw` function

188 from the TwoSampleMR R package on the default settings (18). By default, the IVW random-

189 effects model is performed, allowing overdispersion in the weighted linear regression (the

190 residual standard error is not fixed to be one, but is not allowed to take values below one). We

191 also selected that a minimum of four IVs were required to ensure a robust causal estimate was

192 being produced in the MR model. We utilised the MR-PRESSO test to identify and remove

193 outliers via a simulation approach that uses observed and expected distributions of tested

194 variants to detect horizontal pleiotropy (9).

195

196 We additionally used the MR-PRESSO global test, which detects bias among all IVs by

197 comparing the observed distance of all variants to the regression line, to detect horizontal

198 pleiotropy and the MR-PRESSO distortion test to test for significant distortion before correction

199 (9). These functions were implemented using the `mr_presso` function from the R package

200 MRPRESSO. We also implemented a Bonferroni significance threshold to correct for multiple-

201 testing (i.e.,  $P < 0.05/12$  tests for bidirectional analysis of 6 phenotypes).

202

203 Causal estimates were also made using MR-Egger regression (19), which corrects for average  
204 pleiotropic effects, and median-based estimate (20), which assumes >50% of instruments are  
205 valid. The effect estimates from these methods were compared to results from IVW. The MR-  
206 Egger intercept test was also used to estimate bias caused by horizontal pleiotropy (19).  
207 Heterogeneity was also measured using Cochran's Q statistic (21). The additional MR methods  
208 were also implemented using the TwoSampleMR R package on the default settings. A number  
209 of plots were also generated to evaluate the degree of causal effects and identify bias. Forest  
210 plots were generated to visualise and compare causal odds ratio estimates and confidence  
211 intervals for each exposure and outcome pair identified. Scatter plots were also generated  
212 which plots the SNP-outcome association against the SNP-exposure association to visualise the  
213 causal estimate obtained from the MR analysis (22).

214  
215 We extended the analysis to examine multiple exposures concurrently to further evaluate the  
216 degree of bias that may be introduced in causal estimates due to genetically similar phenotypes.  
217 We performed a multi-trait MR, which is implemented to correct when IVs for exposure 1 ( $E_1$ )  
218 also have a significant effect on additional exposures ( $E_2 \rightarrow E_n$ ). The IVs for  $E_1$  are selected and  
219 the effect estimates are extracted for these IVs from  $E_n$  and integrated into the MR model. Due  
220 to prior knowledge of the significant genetic similarities between the psychiatric disorders (e.g.  
221 BD, MDD and SZ) (23), we employed multi-trait MR to investigate the effect of bias due to  
222 genetic similarities on each psychiatric disorder. We assessed the role of psychiatric disorders  
223 (SZ, BD and MDD) on chronotype by performing three multi-trait MR analyses, to assess each  
224 psychiatric disorder assigned as  $E_1$  and extract the corresponding IVs to test the effect on  
225 chronotype, i.e., MR analysis to investigate the effect of schizophrenia ( $E_1$ =SZ,  $E_2$ =BD and  
226  $E_3$ =MDD) on chronotype. We did not perform multi-trait MR for ADHD and ASD due to the low  
227 number of instrumental variants available for analyses. This was also implemented using the  
228 MR-PRESSO R package (9). We also utilised results from genetic correlation studies,

229 generated using GWASatlas, to assess the direction of effect and to compare to results from  
230 MR (24).

231  
232 We performed the MR analysis using the R version 4.0.2 (The R Foundation of Statistical  
233 Computing). The software used to perform this MR analysis was the R packages  
234 TwoSampleMR (<https://github.com/MRCIEU/TwoSampleMR>) and MR-PRESSO  
235 (<https://github.com/rondolab/MR-PRESSO>) and all plots were generated using the R packages  
236 ggplot2 (<https://ggplot2.tidyverse.org/>) and TwoSampleMR.

237  
238 **Objective 2: MR analysis to assess the role of SNPs associated with changes in gene**  
239 **expression as risk factors for neuropsychiatric disorders and chronotype**

240  
241 This analysis uses MR to identify gene expression alterations that contribute to chronotype  
242 and/or neuropsychiatric disorders. This analysis was unidirectional and investigated the effect of  
243 gene expression (exposure) on neuropsychiatric disorders and chronotype (outcome) by  
244 integrating eQTL data with GWAS data within a MR framework to investigate the genetic basis  
245 of both neuropsychiatric disorders and chronotype, including overlap between them. Each  
246 phenotype was investigated separately with the aim of contributing to current knowledge on the  
247 genetic basis of each phenotype, validating previous findings from GWAS and other genomic  
248 analysis methods, and/or finding previously unidentified variants or genes that link  
249 neuropsychiatric disorders and chronotype.

250  
251 To strengthen the evidence of a causal relationship, we followed up the MR analysis by  
252 performing colocalization on the top findings. MR and colocalization can be used together to  
253 validate that the variant in a genomic region has been identified as causal for both the exposure  
254 and the outcome through MR. In this analysis, MR assessed the association of an exposure

255 (eQTLs) with an outcome (neuropsychiatric disorders and/or chronotype). Evidence of an  
256 association indicated that the eQTLs were causal for gene expression alterations that contribute  
257 to the outcome phenotype. Colocalization was then performed where strong evidence for an  
258 association between an exposure and outcome is found through MR and assessed whether  
259 each is caused by the same or distinct variants (10). This analysis was motivated by the  
260 approach taken by Baird et al. (2021) to perform two-sample MR using eQTLs as instruments to  
261 predict effects on neuro-phenotypes (11)

262  
263 We used eQTL summary statistics from blood and the brain. We selected brain regions based  
264 on their relevance in the context of neuropsychiatric disorders and sleep phenotypes such as a  
265 overlapping relevance to both phenotypes ([Supplementary Table 4](#)). Prefrontal cortex data from  
266 PsychENCODE data was included as the largest dataset of brain eQTLs available (n=1387),  
267 while GTEx whole blood was included as the largest dataset of eQTLs from GTEx (n=670) and  
268 as a proxy for brain tissue. The specific brain regions that were selected were based on their  
269 relevance to neuropsychiatric disorders, circadian rhythm or both and these were cortex  
270 (n=205), hippocampus (n=165) and hypothalamus (n=170).

271  
272 For each of the selected tissues, we obtained gene expression data from cis-eQTL summary  
273 statistics provided by the Genotype-Tissue Expression (GTEx) project version 8  
274 (<https://gtexportal.org/>) (25) and the PsychENCODE consortium  
275 (<https://psychencode.synapse.org/>) (26). The number of samples per tissue is outlined in  
276 [Supplementary Table 4](#) and ranged from 165 samples (GTEx, hippocampus) to 1,387 samples  
277 (PsychENCODE, prefrontal cortex). Information on the measurement, QC and selection of  
278 genetic variants is available in the respective studies.

279

280 Study participants were primarily of European ancestry. eQTL summary statistics from  
281 PsychENCODE were generated using data from samples of European ancestry. eQTL  
282 summary statistics from GTEx consisted of 84.6% white, 12.9% African American and 1.3%  
283 Asian participants.

284  
285 Similar to the first analysis, we used the beta coefficient to report the strength of the effect of the  
286 exposure (gene expression from eQTL summary statistics) on each of the seven outcomes (six  
287 neuropsychiatric disorders and chronotype) individually. The IVs for gene expression were  
288 selected by using a statistical significance threshold of  $p < 5 \times 10^{-8}$  and LD clumping was  
289 performed by the `clump_data` function from the `TwoSampleMR` R package on the default  
290 settings, to obtain a set of independent eQTL instruments. SNPs were also filtered to include  
291 only those available in the 1000 Genomes EUR population with  $r^2 > 0.001$  and all SNPs within  
292 clumping distance of 10,000kb window of the top hit were removed. This resulted in a total of  
293 4,374 unique SNPs and 6,315 genes to study using MR analysis ([Supplementary Table 4](#)). As  
294 in our first analysis, we implemented the MR analyses using the `TwoSampleMR` R package,  
295 using the `mr_wald_ratio` function.

296  
297 The causal estimate was obtained using the single instrument Wald ratio, that divides the gene-  
298 outcome association by the gene-exposure association (27). Similarly to the analysis performed  
299 using the `SMR` package, developed by [Zhu et al. \(2016\)](#), we apply MR to assess gene  
300 expression on complex traits and exploit the Wald ratio in conjunction with a colocalization  
301 method (28). Colocalization analysis was performed to support evidence from MR where a  
302 statistically significant causal effect was found between an eQTL and a neuropsychiatric  
303 disorder and/or chronotype. Colocalization analysis validates that the same eQTLs are causal  
304 for changes in gene expression and the neuropsychiatric disorder and/or chronotype. A non-  
305 zero result from colocalization analysis indicates that the same variants are causal in both

306 GWASs and eQTL studies, due to either causality or pleiotropy. We performed colocalization  
307 using the coloc.abf function from the coloc R package (29). This function calculates posterior  
308 probabilities (PP) using Bayes factors to assess the association of a SNP with two traits and  
309 calculates a PP for four hypotheses, of which hypothesis 4 (PP4) > 0.7 is considered evidence  
310 that a common causal variant is found between the two traits. We also undertook to validate the  
311 IV assumptions by only using eQTL instruments found to have a strong effect on the exposure,  
312 based on the statistical significance threshold of P-value <  $5 \times 10^{-8}$ .

313

314 We calculated a beta effect size, standard error and p-value from each Wald test to test the null  
315 hypothesis that gene expression alterations were not correlated with risk of neuropsychiatric  
316 disorders and/or chronotype. The test for causal effect from MR analysis showed a statistically  
317 significant association if the statistical result passed the Bonferroni correction threshold of  $p <$   
318  $0.05/7$  (correcting for testing of six neuropsychiatric disorders plus chronotype).

319

320

## 321 Results

### 322 **Bi-directional two-sample MR analysis of chronotype and neuropsychiatric** 323 **disorders**

324

#### 325 **Causal effects of chronotype on neuropsychiatric disorders**

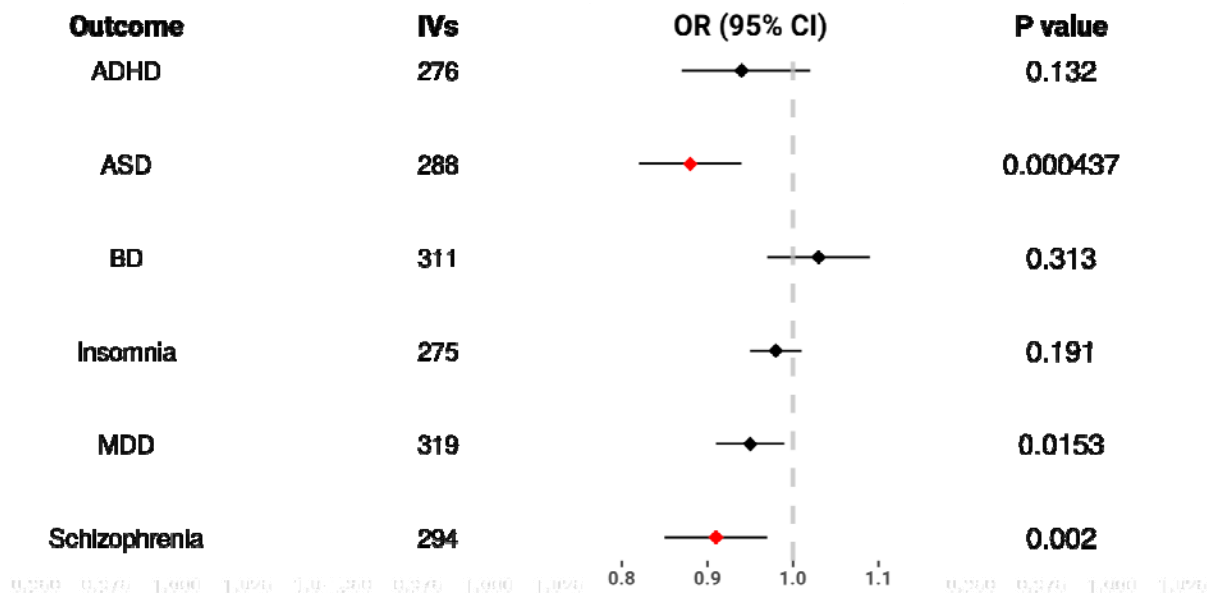
326 Our two-sample MR analysis demonstrated that the morning chronotype is causal for lower risk  
327 of two neuropsychiatric disorders (**Figure 1**). This includes an association between morning  
328 chronotype and reduced risk for ASD (OR = 0.88, CI = 0.82-0.94, IVW P =  $4.37 \times 10^{-4}$ ) and  
329 reduced risk for schizophrenia (OR = 0.91, CI = 0.95-0.97, IVW P =  $2.19 \times 10^{-3}$ ). We also  
330 detected an association between morning chronotype and reduced risk for MDD (OR = 0.95, CI  
331 = 0.91-0.99, IVW P =  $1.53 \times 10^{-2}$ ), however the estimate was not statistically significant after  
332 correcting for multiple tests ([Supplementary Table 5](#)).

333

334 To investigate the accuracy of the MR IVW method for causal effect estimates, a series of  
335 additional MR analyses were performed. We calculated causal effect estimates using MR-  
336 PRESSO, MR Egger and the median-based MR estimates and by comparing across methods,  
337 we found similar beta effect sizes albeit with wider confidence intervals ([Supplementary Table](#)  
338 [5](#)). **Figure 2** shows that there is consistency across numerous MR methods in terms of effect  
339 size and direction for the two statistically significant results, ASD (**Figure 2a**) and SZ (**Figure**  
340 **2b**). We also performed IV outlier removal by using the MR-PRESSO outlier test which  
341 determines which IVs may be confounding results by a simulation approach. The results  
342 indicated that 27 outliers for SZ and no outliers for ASD were observed and subsequently these  
343 were removed from the MR analysis, resulting in stronger associations identified between the  
344 significant exposure-outcome pairs.

345

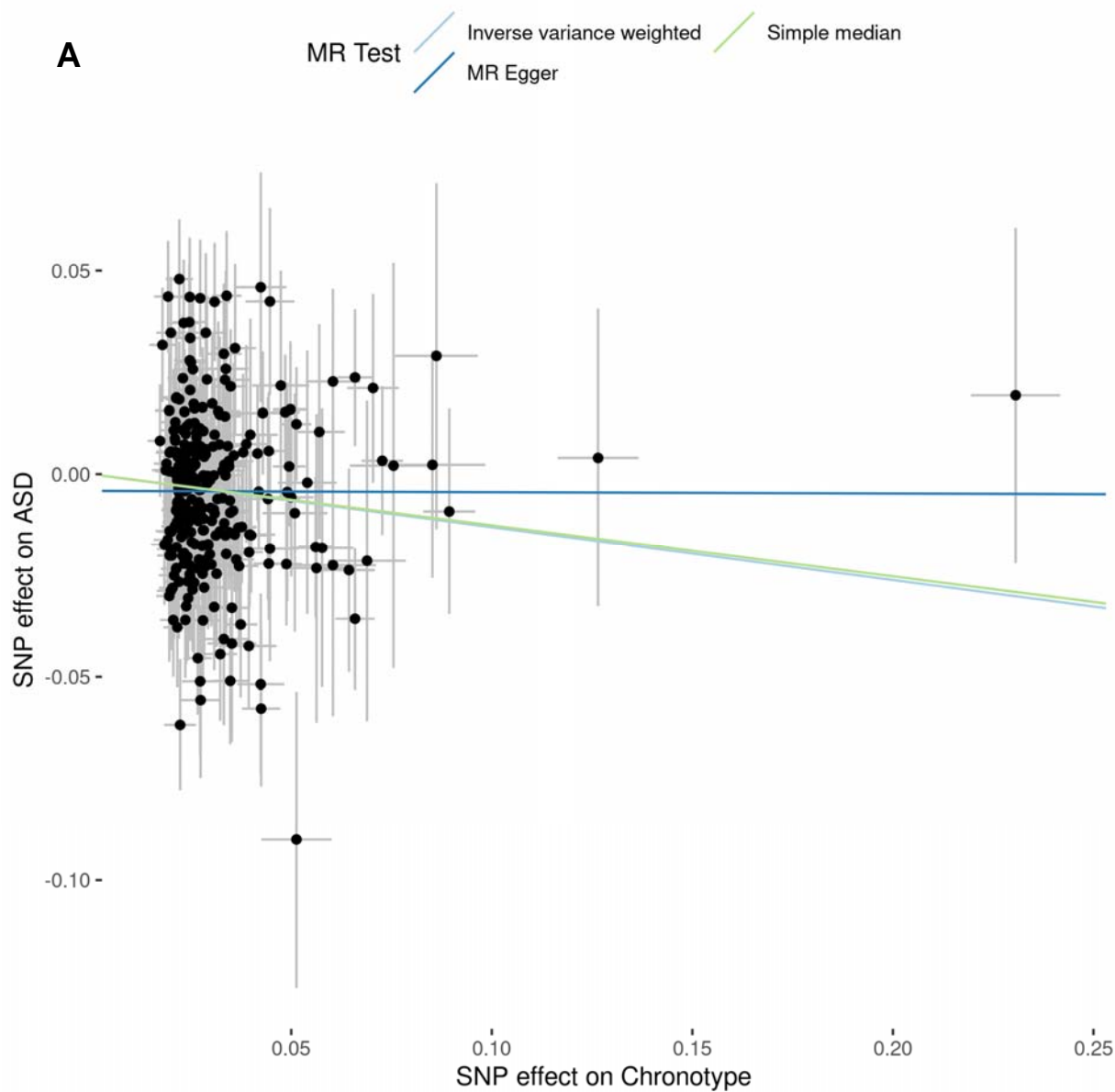
346  
347  
348



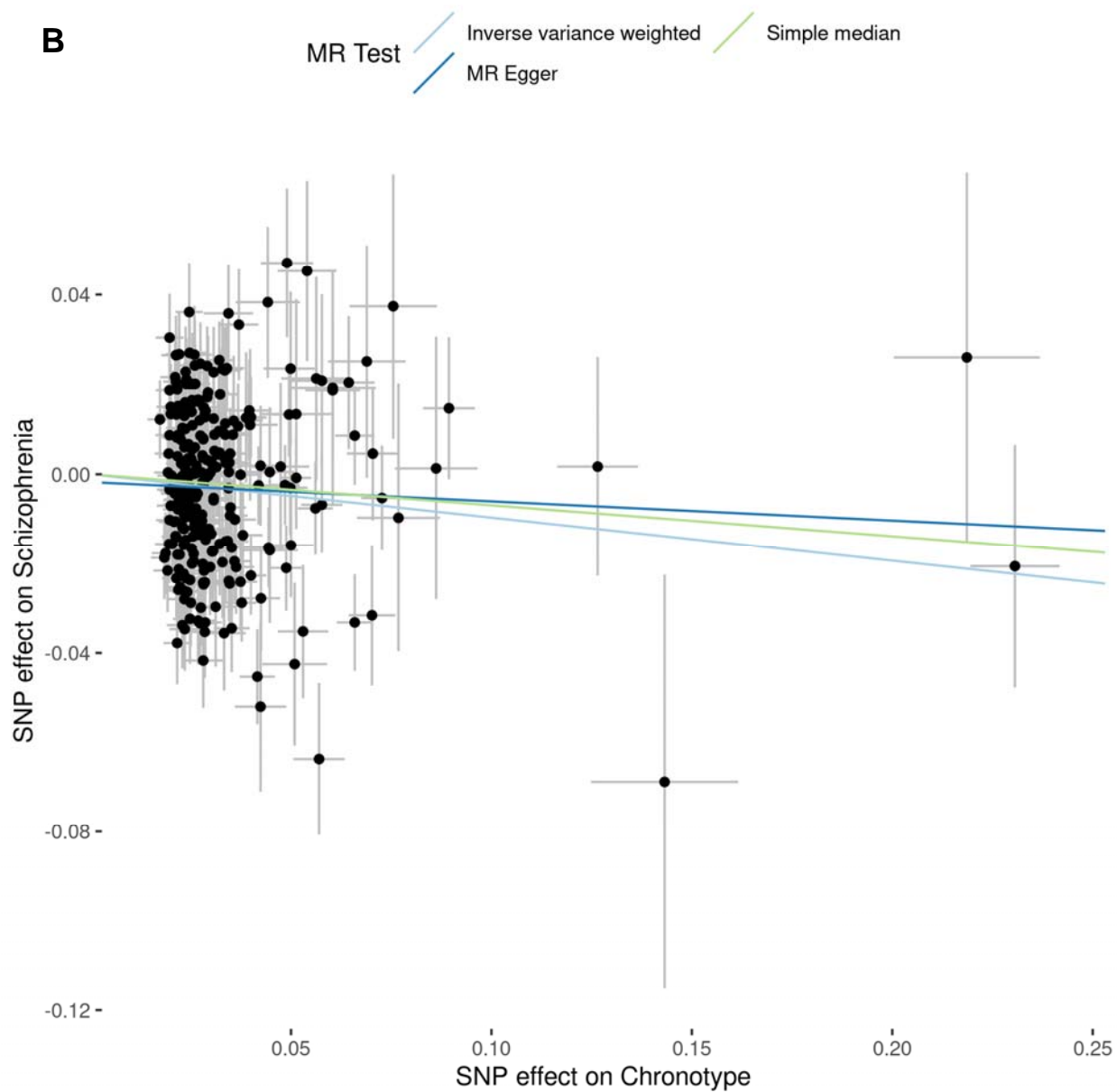
349  
350  
351  
352  
353  
354  
355  
356  
357  
358  
359  
360  
361  
362

**Figure 1. MR forest plot of chronotype (exposure) vs. neuropsychiatric disorder (outcomes).** Plot showing MR IVW meta-analysis effect estimates (OR). OR above 1 indicate a tendency towards the morning chronotype and OR below 1 indicate a tendency towards the evening chronotype. Each line represents CI and red dots identify associations that reach the Bonferroni-corrected significance threshold. ADHD, attention-deficit hyperactivity disorder; ASD, autism spectrum disorder; BD, bipolar disorder; CI, confidence intervals; IVs, instrumental variants (#GWS SNPs for the exposure (chronotype)); MDD, major depressive disorder.





363  
364



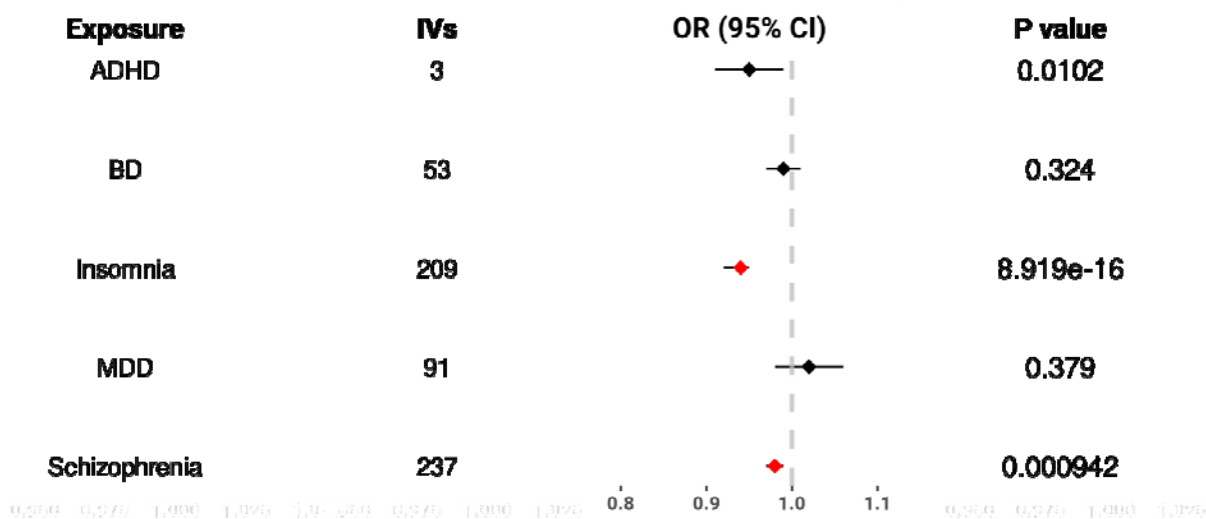
365  
366 **Figure 2. MR scatter plot of chronotype (exposure) vs neuropsychiatric disorders risk (outcome).** This plot  
367 shows the effect size comparison (beta) for each instrumental variant used in the MR analysis. The x-axis indicates  
368 effect estimate for each SNP on morning chronotype while the y-axis indicates the effect estimate for the SNP on  
369 ASD (**Figure 2A**) and SZ (**Figure 2B**). Error bars at each point indicate the standard error for each IV in a single-  
370 variant MR analysis. The slopes from each coloured line represents the results from meta-analysis across multiple  
371 MR methods performed and the slope represents the degree of association.

372  
373  
374  
375  
376  
377

### Causal effects of neuropsychiatric disorders on chronotype

378 Our results of two-sample MR analysis demonstrated a greater genetic risk for insomnia (OR =  
 379 0.95, CI = 0.92-0.95 and IVW P =  $8.92 \times 10^{-6}$ ) and SZ (OR = 0.88, CI = 0.82-0.94, IVW P =  $5 \times 10^{-4}$ )  
 380 <sup>4</sup>) is causal for tendency towards the evening chronotype (**Figure 3**). We calculated causal  
 381 effect estimates using MR-PRESSO, MR Egger and the median-based estimate and by  
 382 comparing across methods. We found similar beta effect sizes albeit with wider confidence  
 383 intervals ([Supplementary Table 5](#)). **Figure 4** shows that there is consistency across the various  
 384 MR methods performed for effect size and direction for the two statistically significant results,  
 385 insomnia (**Figure 4a**) and SZ (**Figure 4b**). We also performed IV outlier removal by using the  
 386 MR-PRESSO outlier test. The results indicated that 24 outliers for insomnia and 14 outliers for  
 387 SZ were observed and subsequently these were removed from the MR analysis  
 388 ([Supplementary Table 5](#)), resulting in stronger associations identified between the significant  
 389 exposure-outcome pairs.

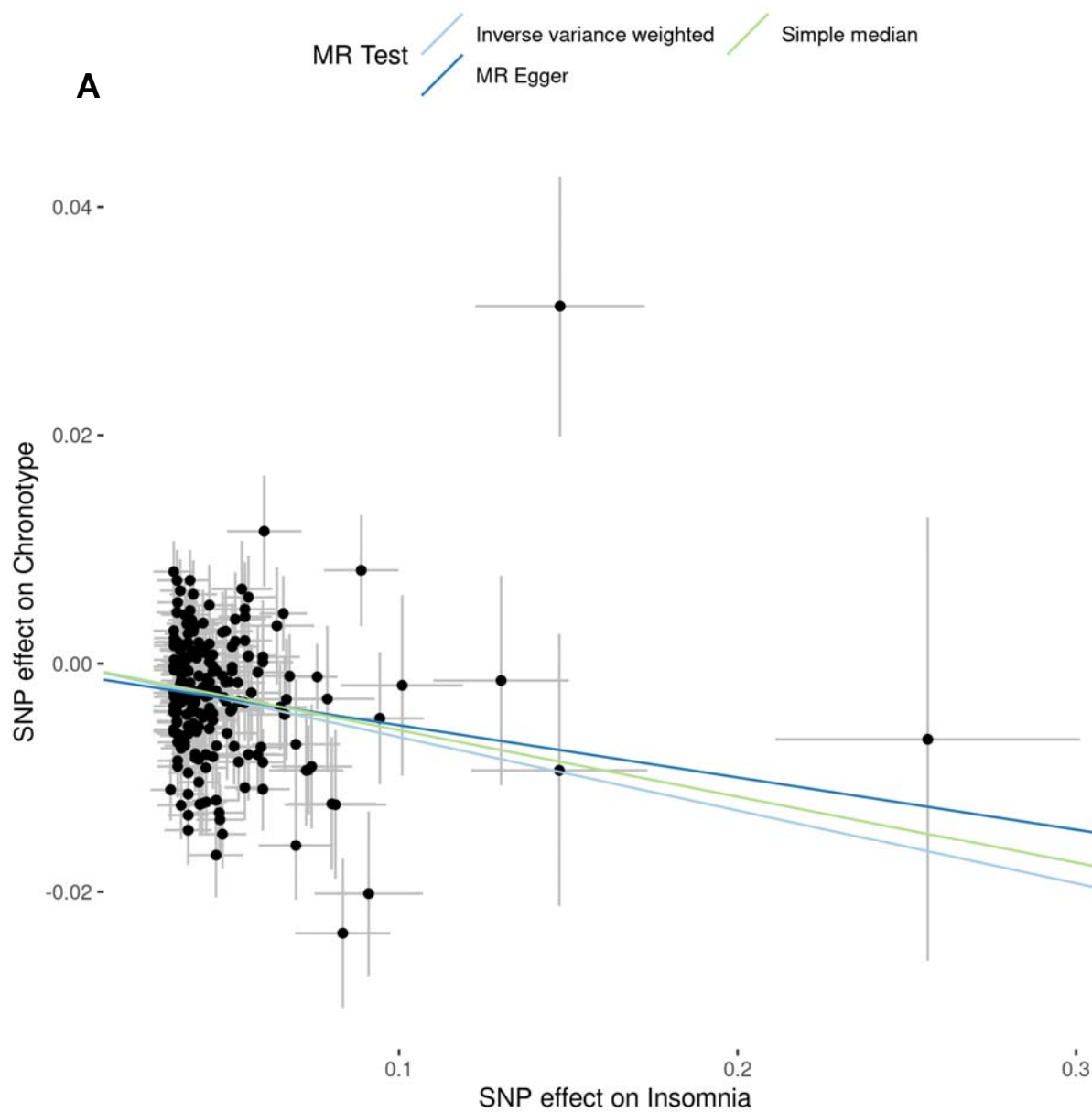
390  
 391  
 392



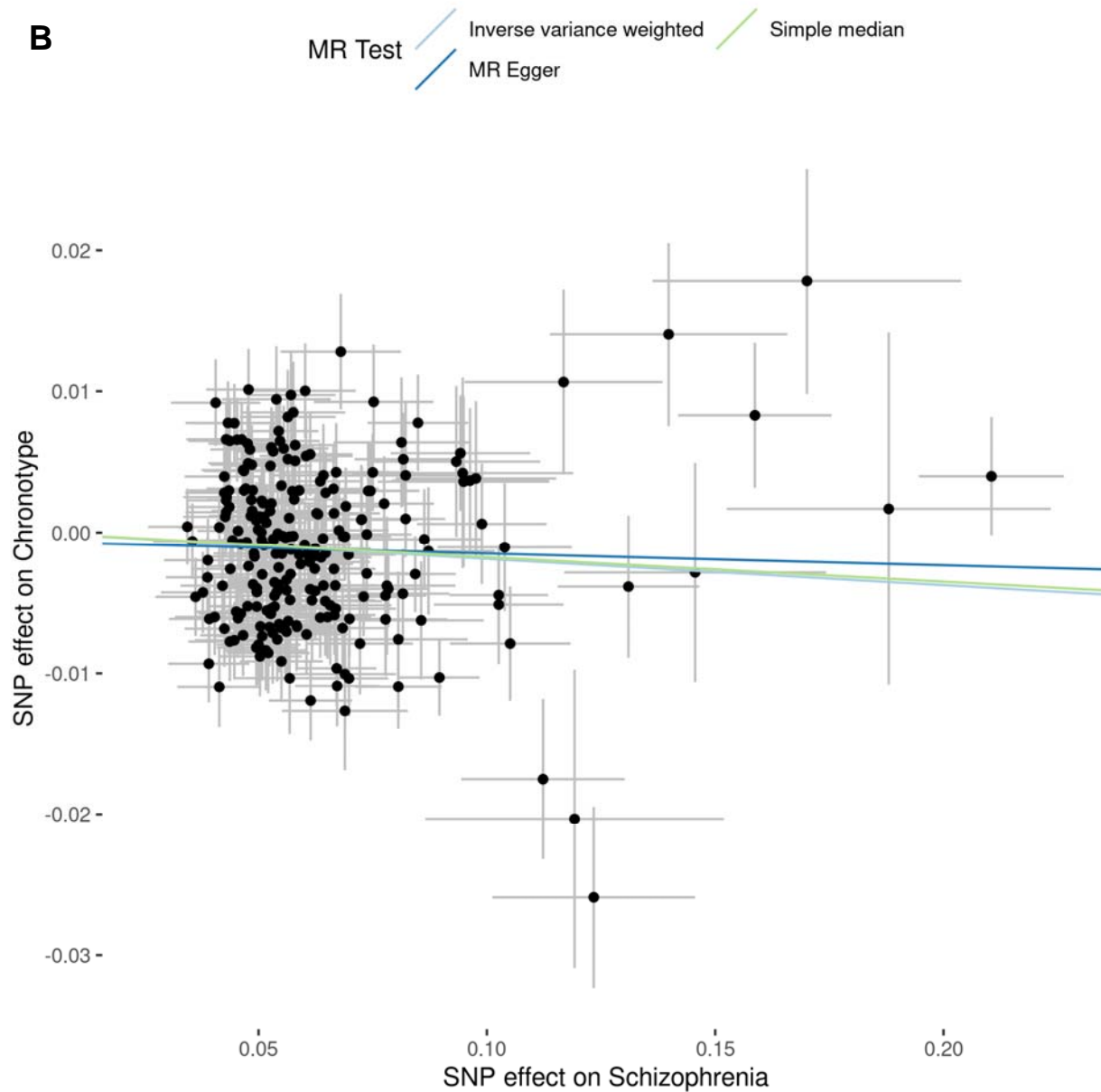
393  
 394 **Figure 3.** MR forest plot of neuropsychiatric disorder (exposure) vs. chronotype (outcome). Plot showing MR IVW  
 395 meta-analysis effect estimates (OR). OR above 1 indicate a tendency towards the morning chronotype and OR  
 396 below OR indicate a tendency towards the evening chronotype. Each line represents CI and red point colours identify  
 397 associations that reach the Bonferroni-corrected significance threshold. ADHD, attention-deficit hyperactivity disorder;  
 398 BD, bipolar disorder; CI, confidence intervals; IVs, instrumental variants (#GWS SNPs for the exposures (five  
 399 neuropsychiatric disorders)); MDD, major depressive disorder.

400  
 401

402  
403  
404



405  
406  
407



408  
409 **Figure 4. MR scatter plot of neuropsychiatric disorders risk (exposure) vs chronotype (outcome).** This plot  
410 shows the effect size comparison (beta) for each instrumental variant used in the MR analysis. The x-axis indicates  
411 the effect estimate for each SNP on insomnia (**Figure 4a**) and SZ (**Figure 4b**) while the y-axis indicates the effect  
412 estimate for the SNP on the morning chronotype. Error bars at each point indicate the standard error for each IV in a  
413 single-variant MR analysis. The slopes from each coloured line represents the results from meta-analysis across  
414 multiple MR methods performed and the slope represents the degree of association.  
415

416  
417 A similar pattern of results was observed for a number of sensitivity tests in either direction of  
418 MR analysis. Cochran's Q statistic found evidence for SNP effect sizes heterogeneity however  
419 we showed through consistency in the causal effect and direction, as predicted in sensitivity

420 tests, it is unlikely to introduce bias from horizontal pleiotropy. As we are using MR for complex  
421 traits, which consist of many SNPs with very small effect sizes across numerous genes and  
422 biological functions, we expect that many of the SNPs used as IVs will have wide variability in  
423 their estimated effect size. We also found no significant results from the MR Egger intercept test  
424 ( $p > 0.05$ ), suggesting that no bias due to horizontal pleiotropy was observed. This is also  
425 supported by the individual SNP tests (leave-one-out analyses), where no individual SNP-  
426 exposure association was found to dominate the estimate of the causal effect (30). Full details  
427 on the sensitivity tests of the bidirectional MR analyses are available in [Supplementary Table 5](#).

428  
429 The results from multi-trait MR also show good support for these findings. We assessed the  
430 causal effect of psychiatric disorders (BD, MDD and SZ) on chronotype using three MR analysis  
431 designs and found that the predicted effect sizes and standard errors correlated with those  
432 generated in the uni-trait MR analyses. Statistical significance also remained for the effect of SZ  
433 on chronotype and a number of outlier IVs were no longer removed, due to accounting for the  
434 bias introduced from BD and MDD ([Supplementary Table 6](#)).

435  
436 We also compared the results of MR analysis with results from genetic correlation, generated  
437 using GWASatlas. We verified that similar results were obtained using genetic correlations and  
438 showed that the direction of effect is in line with our results, indicating that chronotype is  
439 negatively correlated with risk of all the neuropsychiatric disorders that we investigated using  
440 MR. A similar pattern was found where a significant genetic correlation was found between  
441 chronotype and ASD, MDD and SZ ([Supplementary Figure 1](#)).

442  
443 Finally, in order to assess the effect of heterogeneity due to sample population variation, we  
444 calculated causal effects between chronotype and a mixed ancestry SZ sample (20% East

445 Asian + 80% European) and demonstrated that similar effect estimates were obtained by  
446 comparing the results from the European ancestry study ([Supplementary Table 4](#)).

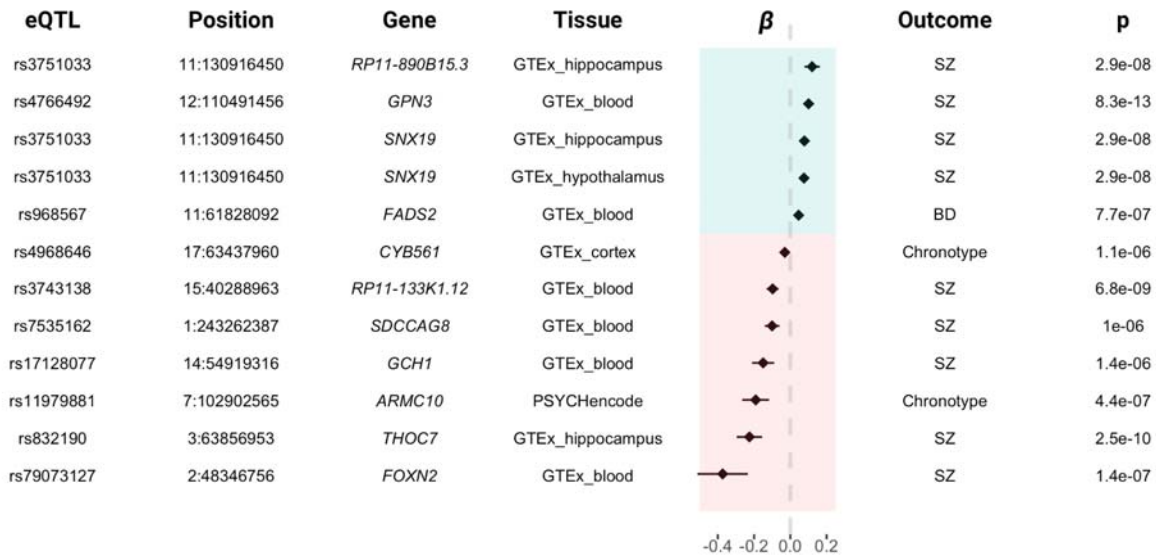
447  
448  
449 **MR analysis to assess the role of SNPs associated with changes in gene**  
450 **expression as risk factors for neuropsychiatric disorders and chronotype**

451 We analysed the effect of changes in gene expression on outcomes by performing two-sample  
452 MR using beta effect estimates for IVs for gene expression from eQTL summary statistics and  
453 extracting beta effect sizes for neuropsychiatric disorders and chronotype from GWAS data  
454 ([Supplementary Table 7](#)). We used a Wald ratio to estimate causal effects of 36,530 eQTL-gene  
455 pairs, based on the number of unique eQTL-gene pairs passing LD clumping that had a  
456 statistically significant association in blood or brain tissue. Bonferroni correction was performed  
457 by tissue specific thresholds (outlined in [Supplementary Table 8](#)) that were used to determine  
458 the significance of the causal effects found through MR and revealed 175 significant causal  
459 effects where an outcome was mediated through gene expression alterations. These results  
460 were from 66 unique eQTLs across 161 unique genes ([Supplementary Table 7](#)).

461  
462 We found a significant impact of gene expression alterations, mediated through eQTLs, in  
463 numerous genes for all of the outcomes that we analysed (ASD: 10 genes, ADHD: 2, BD: 34,  
464 Insomnia: 2, MDD: 2, SZ: 105 and chronotype: 20, [Supplementary Table 8](#)). We then used  
465 colocalization, an established method used to provide complementary evidence to predict  
466 causal relationships between gene expression and complex traits, and found that strong  
467 evidence for a causal effect remained for twelve of these associations, with  $PP4 > 0.7$   
468 ([Supplementary Table 7](#)). **Figure 5** shows these twelve eQTLs with a significant causal role in  
469 neuropsychiatric disorders or chronotype. [Supplementary Table 7](#) includes the effect estimates ( $\beta$ )

470 and statistical significance (P) measured for each instrumental variant in the original eQTL ( $\beta_{\text{exp}}$  and  
 471  $P_{\text{exp}}$ ) and GWAS ( $\beta_{\text{out}}$  and  $P_{\text{out}}$ ).

472  
 473  
 474



475  
 476  
 477 **Figure 5. Forest plot for significant associations found from MR analysis and colocalization of the causal**  
 478 **effect of gene expression on chronotype or neuropsychiatric disorders.** For each eQTL SNP, the beta ( $\beta$ ) represents  
 479 the effect size of gene expression alterations in the respective gene for the corresponding outcome and tissue. The point and  
 480 lines at each row represent the strength of effect and confidence intervals for each comparison. The vertical dashed line  
 481 represents beta = 0. Results with beta shaded in blue indicate that increased gene expression is associated with the increased  
 482 risk for neuropsychiatric disorders or increased tendency for the morning chronotype. Results with beta shaded in red  
 483 indicate that decreased gene expression is associated with increased risk for the phenotype. The p-value indicates  
 484 the strength of the effect on the outcome and the tissue column indicates the source of the eQTL. Each result passed  
 485 the MR test for causal effect estimate and colocalization for the same causal variant.

486  
 487 Six of twelve associations were blood-mediated and nine of twelve associations were for SZ. It  
 488 is notable that for the rs3751033 eQTL, we demonstrated a pleiotropic effect on *RP11-890B15*  
 489 in the hippocampus and on *SNX19* in the hippocampus and hypothalamus (**Figure 5**).

490  
 491 As we were interested in finding supporting evidence for the causal effects of the twelve eQTLs,  
 492 we investigated if the associated eQTLs or genes have been previously linked to  
 493 neuropsychiatric disorders and/or chronotype. *CYB561* was not previously implicated in  
 494 chronotype. The result for rs4968646 and chronotype indicates that the causal effect at this



495 locus can be attributed to altered expression of *CYB561* and not the *TANC2* gene, which has  
496 previously been reported to contain a SNP (rs17682747) that is in high LD with rs4968646 and  
497 associated with chronotype (31). MR analysis provided further evidence for the association of  
498 *RP111-890B15*, *GPN3* and *SNX19* with SZ, and *FADS2* with BD. For rs4968646, rs17128077  
499 and rs79073127, no published evidence was found for the association of an eQTL/gene with the  
500 phenotype however results from PheWAS analysis, accessed through Open Targets Genetics,  
501 show evidence of an association between numerous eQTLs and phenotypes (Supplementary  
502 Table 9). Other eQTLs (rs3751033, rs4766492, rs832190, rs79073127) were previously  
503 reported in the literature and MR provides further validation of these associations here.

504  
505 The tool LDlink proved useful for investigating the phenotypes that were linked to a SNP by  
506 proxy through a SNP in high LD. In most cases, the eQTL that was identified as causal through  
507 MR analysis, for a given phenotype, was in high LD with a SNP that was previously linked to  
508 that phenotype. For one eQTL (rs11979881 in *ARMC10* which was linked to chronotype through  
509 MR), neither the SNP or any SNP in high LD was previously linked to chronotype, indicating that  
510 we may have identified new evidence for the link between the eQTL rs11989881 and gene  
511 *ARMC10*. MR analysis also validates previously known links between sleep phenotypes and  
512 neuropsychiatric disorders (*FOXP2*, *GCH1*, *CYB561*). More details on each of the findings and  
513 a conclusion on the importance of each eQTL can be found in the [Supplementary Table 9](#).

514  
515

## 516 Discussion

517 We identified a causal effect of chronotype on risk for SZ and ASD, indicating that an individual  
518 with the morning chronotype is at lower risk of developing either disorder. [Jones et al. \(2019\)](#)  
519 and Sun et al. (2019) did previously report a causal effect of chronotype on SZ but that was  
520 using a smaller sized SZ GWAS dataset (4, 32). Our finding of a causal effect of chronotype on  
521 ASD has not been previously reported through MR but the direction of effect is consistent with  
522 previous findings using measures of genetic correlation (14). In the opposite direction, we found  
523 that insomnia and SZ both have a causal effect on chronotype, i.e., a genetic predisposition to  
524 insomnia or SZ is causal for tendency towards the evening chronotype. The causal effect of  
525 insomnia on chronotype is consistent with observations in individuals with insomnia i.e. those  
526 with insomnia will typically wake and sleep later. These findings align widely with findings from  
527 other studies on the relationship between chronotype and neuropsychiatric disorders, whereby  
528 the evening chronotype is linked to increased risk and the morning chronotype is linked to lower  
529 risk for neuropsychiatric disorders (6, 7, 33). We built upon the analyses performed in previous  
530 studies by including the MR-PRESSO method, which allowed a new approach to identify and  
531 correct for outliers contributing to horizontal pleiotropy. In addition, we employed the MR-  
532 STROBE method to deliver a clear and transparent MR analysis.

533  
534 The validity of these results was tested through a number of sensitivity tests, to assess that the  
535 fundamental assumptions of MR were met: 1) Relevance assumption: The instrumental  
536 variables were selected based on p-value, as reported in the respective GWAS; 2)  
537 Independence assumption and 3) Exclusion restriction: The causal effect estimates were also  
538 created using MR-Egger, weighted median and mode-based methods (19, 20). The effect  
539 estimates yielded were similar to those in the IVW method. The MR-Egger intercept was also  
540 used and found no evidence that results deviated from 0, indicating little evidence for directional

541 genetic pleiotropy. Additionally, the multi-trait MR was used to account for confounding that may  
542 exist due to other existing neuropsychiatric disorders (BD and MDD), with overlapping features.  
543 These sensitivity tests gave sufficient evidence that MR analysis would produce reliable  
544 estimates for causal effects.

545  
546 The bidirectional relationship between SZ and chronotype can be interpreted as the morning  
547 chronotype has a protective effect against SZ and, in the opposite direction, SZ can be a  
548 contributing factor in someone having the evening chronotype. This bidirectional causal  
549 relationship we identified between SZ and chronotype indicates that the evening chronotype can  
550 be both a cause and effect of the SZ. This suggests that there may be a type of positive  
551 feedback occurring whereby the disruption to sleep can initiate onset of SZ or perhaps make  
552 symptoms worse. An individual with SZ may also then experience further sleep disruptions  
553 which may lead to further disadvantageous symptoms of the disorder. The bidirectional  
554 relationship may be due to the heterogenous and polygenic nature of SZ and sleep-based  
555 phenotypes. Improved definition of sleep phenotypes and endophenotypes of SZ, and a better  
556 understanding of their genetic basis, are required to further assess the complex relationship  
557 between sleep and SZ.

558  
559 Our second analysis was a unidirectional MR using eQTL and GWAS data, and was  
560 combined with colocalization to investigate the causal effects for alterations in gene expression  
561 on chronotype and six neuropsychiatric disorders. We found twelve instances where a unique  
562 eQTL-gene association was causal for either chronotype, BD or SZ. In some cases, these data  
563 support previously reported findings that have been identified through GWAS and PheWAS  
564 analyses such as the association of *SNX19* with SZ, which has been reported in multiple studies  
565 (Supplementary Table 9). In other cases, our data provides new evidence for the effect of SNP-  
566 mediated gene expression on risk of chronotype and neuropsychiatric disorders. The genes that

567 have been identified may potentially inform on the biological mechanisms that could drive the  
568 genetic component of these phenotypes, e.g. intracellular vesicle trafficking is mediated by  
569 *SNX19* (34), and subsequently this process may be linked to SZ risk. Here we have used the  
570 MR framework to understand in part how gene expression alterations influence neuropsychiatric  
571 disorders and chronotype.

572  
573 There are a number of strengths and weaknesses for each analysis. A major strength of the  
574 study is the application of the MR-STROBE method, which provided valuable guidance on the  
575 necessary information and additional analyses required to ensure robust analysis. For the first  
576 study, the framework was useful for planning, selecting the sensitivity tests and selecting figures  
577 and allowed us to perform analyses with reliable results through a proven method. We found  
578 that when applied to the second study the MR-STROBE method needed some modifications to  
579 be applicable in a multi-omic setting where additional methods such as colocalization are  
580 typically integrated into the analysis. Nevertheless, MR-STROBE remained useful for identifying  
581 the required study design components and methods to ensure that the second study was  
582 robust.

583  
584 In our first analysis, we estimated causal effects using multiple sensitivity analyses (MR-  
585 PRESSO, MR Egger and median based estimates) to test for horizontal pleiotropy or bias due  
586 to potential confounders. We also made efforts to prevent bias due to sample heterogeneity by  
587 using only European samples and performing LD pruning to prevent correlation between SNPs  
588 used as genetic instruments. We utilised the MR-PRESSO outlier test to identify and remove  
589 pleiotropic outliers and ensure robustness of our study design. We also compared the results to  
590 those from studies of genetic correlation to validate that the directions of effect were consistent  
591 with our findings.

592

593 There are a number of limitations to the first analysis. While we have demonstrated significant  
594 evidence for a number of causal relationships, the biological basis of cause and effect remains  
595 to be elucidated. This relates to the difficulty in interpreting the results of MR studies when we  
596 use MR to study causal relationships of complex traits. When we perform MR using a single  
597 instrument with a clearly defined biological mechanism, we can design and guide treatments  
598 using this as a target. However due to the nature of complex traits, where we are dealing with  
599 many SNPs that have very low effect size, the biological impact of the individual SNPs is low  
600 and MR can only be used for epidemiological purposes.

601  
602 Another limitation to this analysis is that we perform MR using only European ancestry samples.  
603 While two sample MR requires that the same underlying population is used, we believe that the  
604 development of multi-ancestry MR methods will be important to fully utilise newer GWAS that  
605 are beginning to include samples from numerous ancestry groups. Expansion of GWASs across  
606 diverse populations will lead to sample sizes that are large enough to detect SNPs that can be  
607 used as strong IVs in MR and identify new biological functions implicated in sleep and  
608 neuropsychiatric disorders. Finally, it is important to consider that chronotype is a self-reported  
609 measurement that may be biased due to individual subjectivity and differences between  
610 individuals in terms of their stage of life and environment (35).

611  
612 The second analysis had a number of strengths including integrating functional data from  
613 PsychENCODE and GTEx. The integration of eQTL data allows us to determine that the effect  
614 of a SNP on the phenotype is mediated through gene expression alterations. The method also  
615 indicates the degree of effect size, which can be valuable for prioritising genes. Another strength  
616 is that we have extended to integrating colocalization analysis, meaning that we find evidence to  
617 support the causal effect found through MR by coupling with evidence for the same causal  
618 variant implicated in the phenotype and gene expression. The results of colocalization

619 demonstrated that, while a non-zero result can be obtained from MR, the result can lack  
620 evidence for a causal effect.

621  
622 Further limitations of this analysis are that we used eQTLs detected in a relatively small number  
623 of brain samples and the decision to only include brain subregions that we deemed most  
624 relevant to our studied phenotypes. One other limitation found in this case is the lack of  
625 developmental stage-specific eQTLs, which may inform on varying effects of SNPs on gene  
626 expression levels during various stages of development. The effect sizes are also small and  
627 spread across numerous genes, meaning that feasibility for clinical application is limited. Finally,  
628 it is surprising that we did not achieve more significant findings from PsychENCODE, which was  
629 the largest source of eQTL data that we had available.

630  
631 Overall, our MR analysis validated previous findings and provided new evidence for the  
632 biological aetiology of our neuropsychiatric disorders, chronotype and their complex  
633 relationship. We demonstrated that chronotype and neuropsychiatric disorders have a direct  
634 causal effect on each other, and that chronotype and risk for neuropsychiatric disorders (BD and  
635 SZ) are influenced by gene expression alterations in the blood and/or specific brain regions  
636 (hippocampus, cortex and hypothalamus). We identify a number of genes that are implicated in  
637 both chronotype and neuropsychiatric disorders that give important insight into the overlapping  
638 biology that is known to exist between neuropsychiatric disorders and sleep phenotypes. Future  
639 analyses may focus on diversifying the sources and types of GWAS and multi-omic data to  
640 integrate data on additional sleep phenotypes, regulatory function and brain regions that may  
641 mediate the links between neuropsychiatric disorders and chronotype. Integration of trans-eQTL  
642 data may provide further insights into the genetic basis of these phenotypes. Follow-up studies  
643 may also include a complete comparison to results from other methods that integrate  
644 expression data which include TWAS and S-PrediXcan. Interventions such as light therapy,

645 which can manipulate an individual's sleep timing (36), are available to influence chronotype.  
646 Given our study findings that evening chronotype is causally associated with risk of NPDs, these  
647 interventions may be useful to alter sleep timing towards the morning chronotype and reduce  
648 risk of NPDs.

649  
650  
651 **Funding** This research was funded by Science Foundation Ireland (SFI) through the SFI  
652 Centre for Research Training in Genomics Data Science under Grant number 18/CRT/6214.

653  
654 **Bioinformatics Resources** The sources used in the literature search included GWAScatalog  
655 (37, <https://www.ebi.ac.uk/gwas/home>), Open Targets Genetics (38,  
656 <https://genetics.opentargets.org>), ClinVar (39, <https://www.ncbi.nlm.nih.gov/clinvar>), SNPedia  
657 (40, <https://www.snpedia.com>) and dbSNP (41, <https://www.ncbi.nlm.nih.gov/projects/SNP>).

658  
659 **Data and data sharing** We deposited the full scripts for our MR analysis on GitHub  
660 (**Objective 1** available at [shanecrinion/causal-inference](https://github.com/shanecrinion/causal-inference) and **Objective 2** available at  
661 [shanecrinion/mendelian-randomisation-qt1](https://github.com/shanecrinion/mendelian-randomisation-qt1)).

662  
663 **Conflict of Interest** The authors declare that they have no competing financial interests in  
664 relation to the work described here.

665  
666  
667

## 668 References

- 669 1. Bray NJ, O'Donovan MC. The genetics of neuropsychiatric disorders. *Brain and*  
670 *Neuroscience Advances*. 2018 Jan;2:239821281879927.
- 671  
672
- 673 2. Alachkar A, Lee J, Asthana K, Vakil Monfared R, Chen J, Alhassen S, et al. The hidden link  
674 between circadian entropy and mental health disorders. *Translational Psychiatry*. 2022 Jul  
675 14;12(1).
- 676  
677
- 678 3. Jansen PR, Watanabe K, Stringer S, Skene N, Bryois J, Hammerschlag AR, et al. Genome-  
679 wide analysis of insomnia in 1,331,010 individuals identifies new risk loci and functional  
680 pathways. *Nature Genetics*. 2019 Feb 25;51(3):394–403.
- 681  
682
- 683 4. Jones SE, Lane JM, Wood AR, van Hees VT, Tyrrell J, Beaumont RN, et al. Genome-wide  
684 association analyses of chronotype in 697,828 individuals provides insights into circadian  
685 rhythms. *Nature Communications*. 2019 Jan 29;10(1).
- 686  
687
- 688 5. Davey Smith G, Ebrahim S. 'Mendelian randomization': can genetic epidemiology  
689 contribute to understanding environmental determinants of disease?\*. *International Journal of*  
690 *Epidemiology*. 2003 Feb;32(1):1–22.
- 691  
692
- 693 6. Carpena MX, Bonilla C, Matijasevich A, Martins-Silva T, Genro JP, Hutz MH, et al. Sleep-  
694 related traits and attention-deficit/hyperactivity disorder comorbidity: shared genetic risk factors,  
695 molecular mechanisms, and causal effects [Internet]. Cold Spring Harbor Laboratory; 2020 Sep  
696 [cited 2023 Feb 11]. Available from: <http://dx.doi.org/10.1101/2020.09.13.20193813>
- 697  
698
- 699 7. Mullins N, Forstner AJ, O'Connell KS, Coombes B, Coleman JRI, Qiao Z, et al. Genome-  
700 wide association study of more than 40,000 bipolar disorder cases provides new insights into  
701 the underlying biology. *Nature Genetics*. 2021 May 17;53(6):817–29.



702

703

704 8.Dashti HS, Jones SE, Wood AR, Lane JM, van Hees VT, Wang H, et al. Genome-wide  
705 association study identifies genetic loci for self-reported habitual sleep duration supported by  
706 accelerometer-derived estimates. *Nature Communications*. 2019 Mar 7;10(1).

707

708

709 9.Verbanck M, Chen CY, Neale B, Do R. Detection of widespread horizontal pleiotropy in  
710 causal relationships inferred from Mendelian randomization between complex traits and  
711 diseases. *Nature Genetics*. 2018 Apr 23;50(5):693–8.

712

713

714 10.Zuber V, Grinberg NF, Gill D, Manipur I, Slob EAW, Patel A, et al. Combining evidence  
715 from Mendelian randomization and colocalization: Review and comparison of approaches. *The*  
716 *American Journal of Human Genetics*. 2022 May;109(5):767–82.

717

718

719 11.Baird DA, Liu JZ, Zheng J, Sieberts SK, Perumal T, Elsworth B, et al. Identifying drug  
720 targets for neurological and psychiatric disease via genetics and the brain transcriptome. *PLOS*  
721 *Genetics*. 2021 Jan 8;17(1):e1009224.

722

723

724 12.Skrivankova VW, Richmond RC, Woolf BAR, Davies NM, Swanson SA, VanderWeele TJ,  
725 et al. Strengthening the reporting of observational studies in epidemiology using mendelian  
726 randomisation (STROBE-MR): explanation and elaboration. *BMJ*. 2021 Oct  
727 26;375(2233):n2233.

728

729

730 13.Demontis D, Walters RK, Martin J, Mattheisen M, Als TD, Agerbo E, et al. Discovery of the  
731 first genome-wide significant risk loci for attention deficit/hyperactivity disorder. *Nature Genetics*.  
732 2018 Nov 26;51(1):63–75.

733

734

735 14.Grove J, Ripke S, Als TD, Mattheisen M, Walters RK, Won H, et al. Identification of

736 common genetic risk variants for autism spectrum disorder. *Nature Genetics*. 2019 Feb  
737 25;51(3):431–44.

738  
739

740 15.Howard DM, Adams MJ, Clarke TK, Hafferty JD, Gibson J, Shirali M, et al. Genome-wide  
741 meta-analysis of depression identifies 102 independent variants and highlights the importance  
742 of the prefrontal brain regions [Internet]. Cold Spring Harbor Laboratory; 2018 Oct [cited 2023  
743 Apr 12]. Available from: <http://dx.doi.org/10.1101/433367>

744  
745

746 16.Trubetsky V, Pardiñas AF, Qi T, Panagiotaropoulou G, Awasthi S, Bigdeli TB, et al.  
747 Mapping genomic loci implicates genes and synaptic biology in schizophrenia. *Nature*. 2022 Apr  
748 8;604(7906):502–8.

749  
750

751 17.Burgess S, Butterworth A, Thompson SG. Mendelian Randomization Analysis With  
752 Multiple Genetic Variants Using Summarized Data. *Genetic Epidemiology*. 2013 Sep  
753 20;37(7):658–65.

754  
755

756 18.Hemani G, Zheng J, Elsworth B, Wade KH, Haberland V, Baird D, et al. The MR-Base  
757 platform supports systematic causal inference across the human phenome. *eLife*. 2018 May  
758 30;7.

759  
760

761 19.Bowden J, Davey Smith G, Burgess S. Mendelian randomization with invalid instruments:  
762 effect estimation and bias detection through Egger regression. *International Journal of*  
763 *Epidemiology*. 2015 Apr 1;44(2):512–25.

764  
765

766 20.Bowden J, Davey Smith G, Haycock PC, Burgess S. Consistent Estimation in Mendelian  
767 Randomization with Some Invalid Instruments Using a Weighted Median Estimator. *Genetic*  
768 *Epidemiology*. 2016 Apr 7;40(4):304–14.

769

770

771 21.Greco M FD, Minelli C, Sheehan NA, Thompson JR. Detecting pleiotropy in Mendelian  
772 randomisation studies with summary data and a continuous outcome. *Statistics in Medicine*.  
773 2015 May 7;34(21):2926–40.

774

775

776 22.Bowden J, Spiller W, Del Greco M F, Sheehan N, Thompson J, Minelli C, et al. Improving  
777 the visualization, interpretation and analysis of two-sample summary data Mendelian  
778 randomization via the Radial plot and Radial regression. *International Journal of Epidemiology*.  
779 2018 Jun 28;47(4):1264–78.

780

781

782 23.Cardno AG, Owen MJ. Genetic Relationships Between Schizophrenia, Bipolar Disorder,  
783 and Schizoaffective Disorder. *Schizophrenia Bulletin*. 2014 Feb 24;40(3):504–15.

784

785

786 24.Watanabe K, Stringer S, Frei O, Umićević Mirkov M, de Leeuw C, Polderman TJC, et al. A  
787 global overview of pleiotropy and genetic architecture in complex traits. *Nature Genetics*. 2019  
788 Aug 19;51(9):1339–48.

789

790

791 25.Aguet F, Anand S, Ardlie KG, Gabriel S, Getz GA, Graubert A, et al. The GTEx  
792 Consortium atlas of genetic regulatory effects across human tissues. *Science*. 2020 Sep  
793 11;369(6509):1318–30.

794

795

796 26.Akbarian S, Liu C, Knowles JA, Vaccarino FM, Farnham PJ, Crawford GE, et al. The  
797 PsychENCODE project. *Nature Neuroscience*. 2015 Nov 25;18(12):1707–12.

798

799

800 27.Burgess S, Small DS, Thompson SG. A review of instrumental variable estimators for  
801 Mendelian randomization. *Statistical Methods in Medical Research*. 2015 Aug 17;26(5):2333–  
802 55.

803

804

805 28.Zhu Z, Zhang F, Hu H, Bakshi A, Robinson MR, Powell JE, et al. Integration of summary  
806 data from GWAS and eQTL studies predicts complex trait gene targets. *Nature Genetics*. 2016  
807 Mar 28;48(5):481–7.

808

809

810 29.Giambartolomei C, Vukcevic D, Schadt EE, Franke L, Hingorani AD, Wallace C, et al.  
811 Bayesian Test for Colocalisation between Pairs of Genetic Association Studies Using Summary  
812 Statistics. *PLoS Genetics*. 2014 May 15;10(5):e1004383.

813

814

815 30.Burgess S, Davey Smith G, Davies NM, Dudbridge F, Gill D, Glymour MM, et al.  
816 Guidelines for performing Mendelian randomization investigations. *Wellcome Open Research*.  
817 2020 Apr 28;4:186.

818

819

820 31.Kichaev G, Bhatia G, Loh PR, Gazal S, Burch K, Freund MK, et al. Leveraging Polygenic  
821 Functional Enrichment to Improve GWAS Power. *The American Journal of Human Genetics*.  
822 2019 Jan;104(1):65–75.

823

824

825 32.Sun X, Liu B, Liu S, Wu DJH, Wang J, Qian Y, et al. Sleep disturbance and psychiatric  
826 disorders: a bidirectional Mendelian randomisation study. *Epidemiology and Psychiatric  
827 Sciences*. 2022;31.

828

829

830 33.O'Loughlin J, Casanova F, Jones SE, Hagenaars SP, Beaumont RN, Freathy RM, et al.  
831 Using Mendelian Randomisation methods to understand whether diurnal preference is causally  
832 related to mental health. *Molecular Psychiatry*. 2021 Jun 8;26(11):6305–16.

833

834

835 34.Harashima S ichi, Horiuchi T, Wang Y, Notkins AL, Seino Y, Inagaki N. Sorting nexin 19 regulates the  
836 number of dense core vesicles in pancreatic  $\beta$ -cells. *Journal of Diabetes Investigation*. 2011 Jun  
837 28;3(1):52–61.

838

839

840 35.Gentry NW, Ashbrook LH, Fu YH, Ptáček LJ. Human circadian variations. Journal of  
841 Clinical Investigation. 2021 Aug 16;131(16).

842

843

844 36.Canazei M, Bassa D, Jimenez P, Papousek I, Fink A, Weiss E. Effects of an adjunctive,  
845 chronotype-based light therapy in hospitalized patients with severe burnout symptoms - a pilot  
846 study. Chronobiology International. 2019 May 9;36(7):993–1004.

847

848

849 37.Sollis E, Mosaku A, Abid A, Buniello A, Cerezo M, Gil L, et al. The NHGRI-EBI GWAS  
850 Catalog: knowledgebase and deposition resource. Nucleic acids research. 2023 Jan  
851 6;51(D1):D977–85.

852

853

854 38.Ghousaini M, Mountjoy E, Carmona M, Peat G, Schmidt EM, Hercules A, et al. Open  
855 Targets Genetics: systematic identification of trait-associated genes using large-scale genetics  
856 and functional genomics. Nucleic Acids Research. 2020 Oct 12;49(D1):D1311–20.

857

858

859 39.Landrum MJ, Lee JM, Benson M, Brown GR, Chao C, Chitipiralla S, et al. ClinVar:  
860 improving access to variant interpretations and supporting evidence. Nucleic Acids Research.  
861 2017 Nov 20;46(D1):D1062–7.

862

863

864 40.Cariaso M, Lennon G. SNPedia: a wiki supporting personal genome annotation,  
865 interpretation and analysis. Nucleic Acids Research. 2011 Dec 2;40(D1):D1308–12.

866

867

868 41.Sherry ST, Ward MH, Kholodov M, Baker J, Phan L, Smigielski EM, et al. dbSNP: the  
869 NCBI database of genetic variation. Nucleic Acids Research. 2001 Jan 1;29(1).

870

