

Outcomes of non-hospitalized isolation service during COVID-19 pandemic

Amarit Tansawet^{1,2}, Pongsakorn Atiksawedparit³, Pongsathorn Piebpie⁴, Patratorn Kunakorntham⁴,
Unyaporn Suthutvoravut⁵, Vanlapa Arnuntasupakul⁶, Pawin Numthavaj², Atiporn Ingsathit², Oraluck
Pattanastrateep², Ammarin Thakkinstant²

¹ Department of Surgery, Faculty of Medicine Vajira Hospital, Navamindradhiraj University, Bangkok, Thailand

² Department of Clinical Epidemiology and Biostatistics, Faculty of Medicine Ramathibodi Hospital, Mahidol University, Bangkok, Thailand

³ Department of Emergency Medicine, Chakri Naruebodindra Medical Institute, Mahidol University, Bangkok, Thailand

⁴ Information Technology Department, Faculty of Medicine Ramathibodi Hospital, Mahidol University, Bangkok, Thailand

⁵ Department of Family Medicine, Faculty of Medicine Ramathibodi Hospital, Mahidol University, Bangkok, Thailand

⁶ Department of Anesthesiology, Faculty of Medicine Ramathibodi Hospital, Mahidol University, Bangkok, Thailand

Corresponding author

Amarit Tansawet

Department of Surgery, Faculty of Medicine Vajira Hospital, Navamindradhiraj University
681 Samsen Road, Dusit, Bangkok, Thailand 10300

Tel: +6622443282

Fax: +6622443281

Email: amarit@nmu.ac.th

Abstract

Background: Severe acute respiratory syndrome coronavirus 2 (SARS-CoV-2) infection or COVID-19 affected more than 500 million patients worldwide and overwhelmed hospital resources. Rapid increase of new cases forced patient isolation to be conducted outside the hospital where many strategies have been implemented. This study aimed to compare outcomes among non-hospitalized isolation services.

Methods: A retrospective cohort study was conducted in asymptomatic and mildly symptomatic adult patients who were allocated to home isolation, community isolation, and hospital (i.e., hotel isolation) under service of Ramathibodi Hospital and Chakri Naruebodindra Medical Institute. Variables including patients' characteristics, comorbidities, symptoms, and medication were retrieved for use in inverse-probability-weighted regression adjustment model. Risks and risk differences (RDs) of death, oxygen requirement, and hospitalization were estimated from the model afterward.

Results: A total of 3869 patients were included in the analysis. Mean age was 41.8 ± 16.5 years. Cough was presented in 62.2% of patients, followed by hyposmia (43.7%), runny nose (43.5%), sore throat (42.2%), and fever (38.6%). Among the isolation strategies, hospital yielded the lowest risks of death (0.3%), oxygen requirement (4.5%), and hospitalization (3.3%). Hospital had significantly lower oxygen requirements and hospitalization rates compared with home isolation with the RDs (95% CI) of -0.016 (-0.029, -0.002) and -0.025 (-0.038, -0.012), respectively. Death rates did not differ among isolation strategies.

Conclusion: Non-hospitalized isolation is feasible and could ameliorate hospital demands. Given the lowest risks of death, hospitalization, and oxygen requirement, hospital might be the best isolation strategy.

Keywords: COVID-19; Isolation; Hospitalization

Introduction

COVID-19 is infection of the severe acute respiratory syndrome coronavirus 2 (SARS-CoV-2) which mainly affects to respiratory system. Severity of symptoms ranged from asymptomatic, running nose, cough to respiratory failure. Pneumonia could develop in 5-10% of the cases.¹ Currently, the pandemic of COVID-19 affected more than five hundred million patients worldwide with approximately 6% death rate.^{2, 3} Since 2020, there were approximately 4.5 million confirm cases in Thailand with 30,000 deaths. In 2021, the incidence obviously increased during July 2021 to November 2021 with 5000 to 22,000 cases/day. Moreover, rapid increase of incidences was observed in early 2022 with incidence 28,000 cases/day. However, these rates subsequently declined in May 2022.^{2, 4} COVID-19 pandemic do not affect only individual patient, it also overwhelmed hospital resources (e.g., hospital staff, medication and medical equipment, etcetera). And this leads to delayed treatment of other diseased which required hospitalization.

Apart from medication and medical equipment and based on limited evidences, isolating of confirmed cases from the others was the initially effective recommendation to control the pandemic.⁵⁻⁷ In Thailand, hospitalization of all confirmed cases has been implemented since the first confirmed case was found.⁸ However, the vast influx of confirmed cases during early 2020 overwhelmed hospital resources. And this led to, very insufficient hospital space and man power (i.e., health care provider and non-health care provider). To reserve hospital facilities, several

strategies, including prioritizing patient based on severity and allocating patient to appropriate level of care, has been deployed.⁹⁻¹¹

Once COVID-19 is confirmed, clinical symptoms and risk factors of pneumonia were used to prioritize patients into mild (green), moderate (yellow) and severe (red) groups. Only red group were initially hospitalized, whereas green and yellow are allocated to isolation at home (home isolation), at public shelter (community isolation), or modified hotel (hospital).¹² Thus, non-hospitalized isolation service was crucial for ameliorating hospitalization and sparing hospital beds for severe cases.

Currently, 3%-6% hospital admission after home monitoring program were reported.¹³⁻¹⁵ Ramathibodi Hospital and Chakri Naruebodindra Medical Institute, medical schools under Mahidol University, established non-hospitalized services targeting asymptomatic or mildly symptomatic COVID-19 patients. The non-hospitalized services included hospital (i.e., the temporary hospital set up in the hotel), home isolation, and community isolation. Although, there were evidences determine safe, decreasing admission rate and cost reduction of hotel and home-based isolation, however direct comparison their efficiencies are limited.^{13, 16, 17} Therefore, this study aimed to compare the outcomes following non-hospitalized services regarding oxygen requirement, hospitalization, and death among 3 strategies.

Material and methods

Data of COVID-19 patients treated from April to November 2021 at Ramathibodi Hospital and Chakri Naruebodindra Medical Institute were retrieved for analysis after approval of the ethics committee. Patients would be eligible if asymptomatic or mildly symptomatic and aged 15 years or older. Only data from patients with a complete record of symptoms and

comorbidities required for adjustment in the treatment effect (TE) model, were used. The outcomes of interest included hospitalization, oxygen requirement, and death.

Triage and Service types

After Covid-19 infection is confirmed, clinical symptoms and risk factors of pneumonia are assessed by hospital staffs via telephone. Triage level and their criteria was described in [Table 1](#).¹⁸ Green and yellow groups were assigned to non-hospitalized service which was divided into three types (i.e., home isolation, community isolation, and hospital) depended on patient's family or community supports availability. During isolation, clinical monitoring, communicating with health care providers, and treatments (i.e., antiviral agents, supportive medications, and oxygen therapy) were delivered. Details of each service are shown in [Table 2](#). Twenty-four hours infectious disease specialists' consultation were also available for all type of isolation; but routine infectious disease specialist's round was provided only in hospital. Chest X-ray was not available for home isolation.

Statistical analysis

Baseline characteristics, symptoms, and antiviral medications were described by frequency and percentage except for age which was described by the mean and standard deviation (SD). Categorical data were compared among service types using chi-square or Fisher's exact test. Analysis of variance (ANOVA) was used for age comparison.

This study used the TE model with inverse-probability-weighted regression adjustment (IPWRA) to estimate effect size. This TE-IPWRA model consisted of two sub-models: the treatment (i.e., isolation types) assignment model applying multinomial logistic regression and

the outcome model applying logistic regression. The inverse probability of being in the observed care service, obtained from the treatment assignment model, was a weight further applied in the outcome model. For covariates selection in each model (i.e., treatment assignment and outcome models), univariate analysis was performed first, followed by a multivariate model with backward elimination. The treatment (i.e., isolation types) assignment model retained only covariates significantly associated with service type allocation and the outcomes. Likewise, only covariates significantly associated with the outcome remained in the outcome model. Subsequently, the risk of the outcome occurrence (or potential-outcome mean) and risk difference (RD, or average treatment effect) between service types was estimated from the TE-IPWRA model for each outcome of interest. The conditional independence and overlap assumptions, needed for treatment effect estimation, were checked by demonstrating covariate balance among isolation strategies and adequate overlap of the probability of being assigned to each service, respectively. STATA 17 was the statistical program used throughout the analysis. A p-value < 0.05 was considered significance.

Results

From 7478 patients, data were electronically available for analysis using TE-IPWRA in 3869 patients. The mean age (SD) was 41.8 (16.5) years. Forty-four percent of patients were male. Obesity, chronic obstructive pulmonary diseases, and cardiovascular diseases were observed in 7.6%, 2.9%, and 19.9%, respectively. Among isolation types, most of the comorbidities did not differ. Cough was presented in 62.2% of patients, followed by hyposmia (43.7%), runny nose (43.5%), sore throat (42.2%), and fever (38.6%). All symptoms, but diarrhea, significantly differed among service types, see [Table 3](#). Apart from other supportive

medicines, favipiravir was the most used medication in each service: 31.2%, 41.0%, and 45.5% in home isolation, community isolation, and hospital, respectively. Andrographolide, a Thai herbal medicine, was used in 13.3% of patients. Few patients (2.7%) received both favipiravir and andrographolide before this combination was abandoned due to an increase in liver toxicity.

Among isolation types, hospitel yielded the lowest risks of death (0.3%), oxygen requirement (4.5%), and hospitalization (3.3%), see [Figure 1](#). The highest risks of death and oxygen requirement belonged to community isolation, corresponding with the risks of 0.6% and 6.5%, respectively. The highest risk of hospitalization (5.8%) was observed in home isolation.

Among comparison, only hospitel had significantly lower oxygen requirements and hospitalization risks compared with home isolation. The RDs (95% CI) were -0.016 (-0.029, -0.002) and -0.025 (-0.038, -0.012), respectively, see [Table 4](#). In other words, hospitel has sixteen fewer oxygen requirements and twenty-five fewer hospitalizations for every 1000 patients than home isolation. Even though hospitel has twenty fewer oxygen requirements and six fewer hospitalizations for every 1000 patients than community isolation, the difference was not statistically significant. Two and three fewer deaths were observed for every 1000 patients admitted to hospitel compared with home and community isolation. However, the risk of death did not significantly differ in every comparison. No significant difference was observed in comparing community versus home isolation.

Discussion

This study indicated that for asymptomatic and mildly symptomatic COVID-19 patients, hospitel was the best strategy to avoid oxygen requirement and death, followed by home and community isolation. Again, hospitel is the best considering hospitalization. Community

isolation was better than home isolation in hospitalization avoidance. However, this study failed to demonstrate a significant difference in most comparisons.

With the rapid increase of new cases, the healthcare system would be collapsed, and less formal systems set up outside the hospital were inevitable. Isolation, combined with quarantine, contact tracing, and large-scale screening, has been proven effective in disease spreading control.⁵⁻⁷ In addition, isolation, integrated with non-hospitalized care service, could ameliorate hospital demand.

In the early days of the outbreak, hospitel was set up for asymptomatic patients, while mildly and severely symptomatic were hospitalized. But as the number of critically ill patients increased, hospitel was subsequently adapted to be able to care for both asymptomatic and mildly symptomatic cases. At the peak of the outbreak, even hospitel was insufficient, and other isolation strategies (i.e., home and community isolation) were later deployed.

Home isolation depended on telemedicine and logistics. The advantage of home isolation is cost-saving and better quality of life.^{19, 20} This strategy is perfect for patients whose household infrastructure is not a problem. However, an overcrowded community where many people live together in a small accommodation required another solution²¹ that was either hospitel or community isolation. Community isolation was set up using public places in those communities and operated by medical personnel and volunteers. Both home and community isolation strategies were intended for treating asymptomatic and mildly symptomatic patients. Unfortunately, many severe cases were unavoidably treated during the outbreak's peak.

Even though death was not statistically differed among isolation strategies, 0.3%, 0.5 %, and 0.6% death rates were observed from the patients initially triaged as asymptomatic or mildly symptomatic and allocated to the hospitel, home isolation, and community isolation,

respectively. These findings might reflect the burden of pandemics, which all resources were consumed, including man powers, hospital beds, and medication supplies. During the peak of outbreak, patient monitoring might be far from flawlessness. Due to its fixed capacity, hospital could achieved a closer and more effective monitoring than the others. Therefore, its death rate was the lowest.

The highest death and oxygen requirement in the community isolation group might be explained by difference care process and patient assessment which possibly resulted in delayed detection of severe disease. In community isolation, the care process was mostly operated by volunteers, and the patients' self-report via mobile phone application was a primary route of daily assessment. These results also suggested that criteria used for allocation to different isolation strategies might require revision. Perhaps, only asymptomatic cases should be allocated to the community isolation.

Hospitalization, ranged from 3.3% to 5.8 %, did not contradict other studies.¹³⁻¹⁵ The highest hospitalization rate was observed in the home isolation patients. The hypothesis is that the patients isolated at their home might feel insecure and require more medical attention when their symptoms altered.

The ideal study design for treatment strategy evaluation should be a randomized control trial (RCT). However, numerous factors could intervene during the pandemic, and conducting RCT is a challenging task. This study used real-world data with the appropriate statistical model to emulate RCT. By balancing covariates among service allocation, results should be valid.

Nevertheless, this study has some limitations. First, a chest x-ray was not performed on every asymptomatic or mildly symptomatic patient, especially in the home isolation group, which made ascertainment of pneumonia uncertain. Hence, this study did not investigate

pneumonia outcomes. Second, some asymptomatic or mildly symptomatic patients progressed to severe COVID-19 pneumonia, or their comorbidities worsened during isolation. However, all facilities were fully occupied during the outbreak's peak, precluding patients from oxygen supplements and hospitalization. Oxygen requirements and hospitalization rates might be spurious low. Even that death rate should reflect the actual disease burden among isolation strategies. Third, the number of patients in the community isolation was relatively low; this group's estimate was less precise. Low precision might explain why significant results were not reached in comparing hospital versus community isolation. Finally, this study did not examine the cost of each isolation strategy. No information was provided on whether hospital was more cost-effective than the others. Economic evaluation should be further conducted.

In conclusion, hospital resulted in the lowest risk of hospitalization, oxygen requirements, and death. Hospital had a significantly lower risk of hospitalization and oxygen requirements than home isolation but not community isolation. No difference was observed comparing community and home isolation. Because a delta viral strain predominated during 2021, extrapolation from these findings for subsequent pandemics has to be done with caution. Moreover, cost-effectiveness of isolation strategies should be further investigated.

References

1. Salzberger B, Buder F, Lampl B, Ehrenstein B, Hitzenbichler F, Holzmann T, et al. Epidemiology of SARS-CoV-2. *Infection*. 2021;49(2):233-9.
2. Organization WH. WHO Coronavirus (COVID-19) Dashboard 2022 [Available from: <https://covid19.who.int/region/searo/country/th>].
3. Organization WH. WHO Coronavirus (COVID-19) Dashboard [Available from: <https://covid19.who.int/>].
4. (Thailand) Doph. [Available from: <https://ddc.moph.go.th/covid19-dashboard/>].
5. Girum T, Lentiro K, Geremew M, Migora B, Shewamare S. Global strategies and effectiveness for COVID-19 prevention through contact tracing, screening, quarantine, and isolation: a systematic review. *Tropical Medicine and Health*. 2020;48(1):91.
6. Kucharski AJ, Klepac P, Conlan AJK, Kissler SM, Tang ML, Fry H, et al. Effectiveness of isolation, testing, contact tracing, and physical distancing on reducing transmission of SARS-CoV-2 in different settings: a mathematical modelling study. *The Lancet Infectious Diseases*. 2020;20(10):1151-60.
7. Nam NH, Tien PTM, Truong LV, El-Ramly TA, Anh PG, Hien NT, et al. Early centralized isolation strategy for all confirmed cases of COVID-19 remains a core intervention to disrupt the pandemic spreading significantly. *PLOS ONE*. 2021;16(7):e0254012.
8. Clinical practice guideline for diagnosis, treatment and prevention of COVID-19: version 1 May, 2020: Department of Medical Service; 2020 [Available from: https://covid19.dms.go.th/Content/Select_Landding_page?contentId=69].
9. Al Dhamen MA, Alhashim AF, Alqattan HH, Pottoo FH. COVID-19: An Update on Pathogenesis and Treatment. *Curr Pharm Des*. 2021;27(32):3454-61. doi: 10.2174/1381612826666201222161312.
10. Guideline for set up cohort ward, isolation room and field hospital for COVID-19 pandemic: Department of Medical Service; 2020 [Available from: https://covid19.dms.go.th/Content/Select_Landding_page?contentId=108].
11. Clinical practice guideline for diagnosis, treatment and prevention of COVID-19: version 17 April, 2021: Department of Medical Service; 2020 [Available from: https://covid19.dms.go.th/Content/Select_Landding_page?contentId=119].
12. Clinical practice guideline for diagnosis, treatment and prevention of COVID-19: version 18 May, 2022: Department of Medical Service; 2020 [Available from: https://covid19.dms.go.th/Content/Select_Landding_page?contentId=172]. .

13. Ayaz CM, Dizman GT, Metan G, Alp A, Unal S. Out-patient management of patients with COVID-19 on home isolation. *Infez Med.* 2020;28(3):351-6.
14. Al-Tawfiq JA, Kheir H, Al-Dakheel T, Al-Qahtani S, AlKhadra H, Sarhan A, et al. COVID-19 home monitoring program: Healthcare innovation in developing, maintaining, and impacting the outcome of SARS-CoV-2 infected patients. *Travel Med Infect Dis.* 2021;43:102089.(doi):10.1016/j.tmaid.2021.102089. Epub 2021 Jun 2.
15. Li H, Peng YY, Lu JP. Investigation and Analysis of 108 Cases of Home Isolated Patients With Mild COVID-19. *Disaster Med Public Health Prep.* 2021;15(6):e8-e11. doi: 0.1017/dmp.2020.296. Epub Aug 12.
16. Fuchs JD, Carter HC, Evans J, Graham-Squire D, Imbert E, Bloome J, et al. Assessment of a Hotel-Based COVID-19 Isolation and Quarantine Strategy for Persons Experiencing Homelessness. *JAMA Netw Open.* 2021;4(3):e210490. doi: 10.1001/jamanetworkopen.2021.0490.
17. van Herwerden MC, van Steenkiste J, El Moussaoui R, den Hollander JG, Helfrich G, I JAMV. [Home telemonitoring and oxygen therapy in COVID-19 patients: safety, patient satisfaction, and cost-effectiveness]. *Ned Tijdschr Geneeskd.* 2021;165:D5740.
18. Guideline for traige COVID-19 patient: 19 April, 2564: Department of Medical Service; 2020 [Available from: https://covid19.dms.go.th/Content/Select_Landding_page?contentId=120].
19. Doke P, Oswal JS, Padalkar DA, Jain MP. Feasibility of the home isolation programme for adults and children with COVID-19. *International Journal of Advances in Medicine;* Vol 7, No 11 (2020): November 2020. 2020.
20. Bhardwaj P, Joshi NK, Gupta MK, Goel AD, Saurabh S, Charan J, et al. Analysis of Facility and Home Isolation Strategies in COVID 19 Pandemic: Evidences from Jodhpur, India. *Infect Drug Resist.* 2021;14:2233-9.
21. López M, Gallego C, Abós-Herrándiz R, Tobella A, Turmo N, Monclús A, et al. Impact of isolating COVID-19 patients in a supervised community facility on transmission reduction among household members. *J Public Health (Oxf).* 2021;43(3):499-507.

Table 1. Triage categories and their criteria.

Colors	Criteria
Green	Asymptomatic or mild symptoms (i.e., fever, cough, running nose, red eye, anosmia, sore throat, rash, diarrhea)
Yellow	Mild symptom with risk factors of severe COVID-19 as the following: <ol style="list-style-type: none"> 1. > 60 years old 2. Chronic lung diseases (e.g., COPD and asthma) 3. Chronic kidney disease 4. Cardiovascular disease 5. Diabetic mellitus 6. Cirrhosis 7. Obesity (body weight > 90 kilograms) 8. Immunocompromised hose
Red	Severe symptom including: <ol style="list-style-type: none"> 1. Dyspnea or dyspnea on exertion 2. Evidence of pneumonia 3. SPO2 < 96% 4. Exercise induced hypoxemia

Table 2. Characteristics of non-hospitalized isolation and care service

	Home isolation	Community isolation	Hospital
Number of beds	Unlimited (maximum ~ 300 cases)	~ 200	~ 400
Health care providers	5-10 Physicians/shift + Nurses	2 Physicians/shift + Nurses	3-5 Physicians/shift + Nurse, Pharmacists, X-ray technicians
Symptom assessment	By telephone 2 times/day	Self-report via application	By telephone, CCTV
Assessment for emergency condition	By video call or sending an ambulance for onsite assessment	By onsite volunteer with telephone consultants	By onsite health care providers (Defibrillator and resuscitation drugs – available)
ID specialist consultation	On call	On call	Daily onsite consultation + On call
Chest x-ray	Not available	Available	Available
Oxygen therapy	Available	Available	Available
Antiviral drug	Available	Available	+ High-flow nasal cannula
Steroid	Available	Available	Available
PE prophylaxis	Not available	Not available	Available

Table 3. Baseline characteristics, COVID-19 symptoms, and medication used

	Home isolation (N = 2062)	Community isolation (N = 366)	Hospital (N = 1441)	p-value
Age (years), mean \pm SD	42.2 \pm 16.6	42.3 \pm 18.3	41.2 \pm 16.0	0.171
Sex (male), N (%)	922 (44.7)	175 (47.8)	604 (41.9)	0.077
Comorbidity, N (%)				
Obesity	163 (7.9)	26 (7.1)	104 (7.2)	0.705
COPD	57 (2.8)	11 (3.0)	43 (3.0)	0.917
CVS	350 (21.9)	64 (17.5)	264 (18.3)	0.022
Hypertension	322 (15.6)	59 (16.1)	233 (16.2)	0.899
Diabetes	94 (4.6)	19 (5.2)	75 (5.2)	0.650
ESRD	46 (2.2)	2 (0.6)	28 (1.9)	0.101
Liver diseases	40 (1.9)	8 (2.2)	35 (2.4)	0.616
Stroke	29 (1.4)	4 (1.1)	23 (1.6)	0.752
Cancer	101 (4.9)	9 (2.5)	81 (5.6)	0.044
HIV	6 (0.3)	3 (0.8)	2 (0.1)	0.092
Tuberculosis	9 (0.4)	2 (0.6)	20 (1.4)	0.007
Symptom, N (%)				
Fever	704 (34.1)	151 (41.3)	637 (44.2)	< 0.001
Cough	1191 (57.8)	276 (75.4)	941 (65.3)	< 0.001
Sore throat	704 (34.1)	174 (47.5)	755 (52.4)	< 0.001
Runny nose	741 (35.9)	190 (51.9)	750 (52.1)	< 0.001
Hyposmia	785 (38.1)	231 (63.1)	673 (46.7)	< 0.001
Dyspnea	177 (8.6)	29 (7.9)	90 (6.3)	0.037
Fatigue	172 (8.3)	59 (16.1)	149 (10.3)	< 0.001
Myalgia	323 (15.7)	109 (29.8)	231 (16.0)	< 0.001
Headache	351 (17.0)	110 (30.1)	251 (17.4)	< 0.001
Diarrhea	266 (12.9)	55 (15.0)	226 (15.7)	0.059
Medication, N (%)				

Favipiravir	644 (31.2)	150 (41.0)	656 (45.5)	< 0.001
Andrographolide	354 (17.2)	89 (24.3)	71 (4.9)	
Both	45 (2.2)	25 (6.8)	35 (2.4)	
None	1019 (49.4)	102 (27.9)	679 (47.1)	

Table 4. Risk difference of each outcome among isolation strategies

Comparison	RD (95% CI)		
	Hospitalization	Oxygen requirements	Death
Hospital vs	-0.025	-0.016	-0.002
Home isolation	(-0.038, -0.012)	(-0.029, -0.002)	(-0.008, 0.005)
Community isolation vs	-0.019	0.005	0.001
Home isolation	(-0.042, 0.005)	(-0.023, 0.033)	(-0.005, 0.007)
Hospital vs	-0.006	-0.020	-0.003
Community isolation	(-0.029, 0.016)	(-0.048, 0.007)	(-0.010, 0.005)

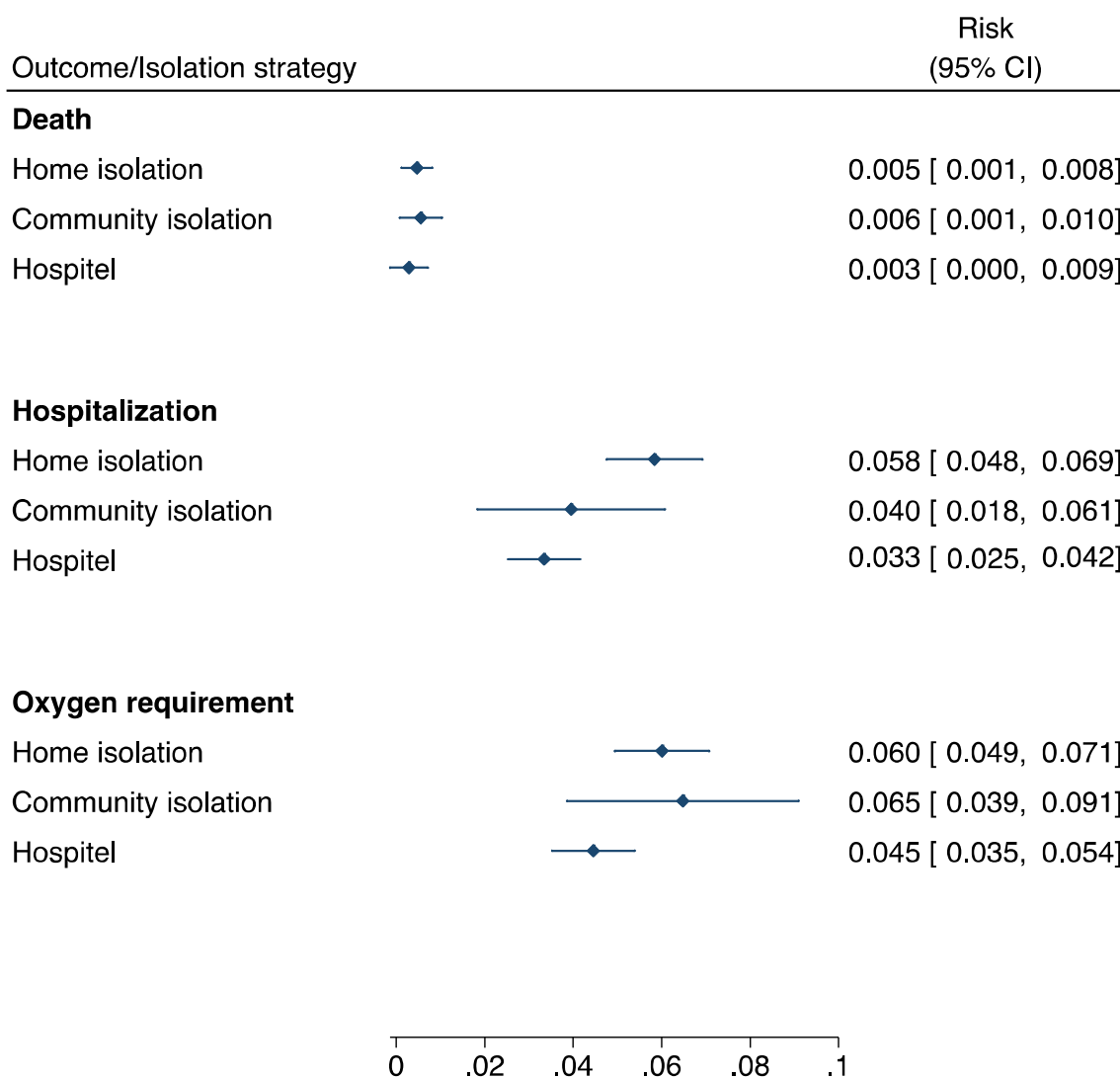


Figure 1. Risk of each outcome regarding isolation strategy