

1 **Association of Free Triiodothyronine with Long-Term Prognosis in Hypertrophic**
2 **cardiomyopathy patients with HFpEF: A Dual center research study**

3 Xiangbin Meng^{1*}; Jing-Jia Wang^{1*}; Jun Gao^{1*}; Kuo Zhang^{2*}; Wen Jun²; Xu-Liang Wang¹;
4 Yuan-Geng-Shuo Wang¹; Ji-Lin Zheng²; Yu-Peng Liu³; Jing-Jing Song²; Jie Yang¹; Yi-Tian
5 Zheng¹; Chen Li¹; Wen-Yao Wang^{1#}; Chunli Shao^{1#}; Yi-Da Tang^{1#}

6 ¹Department of Cardiology and Institute of Vascular Medicine, Peking University Third
7 Hospital, Key Laboratory of Molecular Cardiovascular Science, Ministry of Education,
8 Beijing, China.

9 ²Department of Cardiology, State Key Laboratory of Cardiovascular Disease, Fuwai Hospital,
10 National Center for Cardiovascular Diseases, Chinese Academy of Medical Sciences and
11 Peking Union Medical College, Beijing 100037, China.

12 ³Department of Cardiology, Guangdong Provincial People's Hospital (Guangdong Academy
13 of Medical Sciences), Southern Medical University, Guangzhou, China

14 * These authors contributed equally to this study.

15 ***Corresponding to: Yi-Da Tang, MD, PhD, Chunli Shao, MD, PhD, and Wen-Yao Wang***

16 ***MD, PhD***

17 ***Abbreviated Title:*** Free T3 and Prognosis in HCM Patients with HFpEF: A Dual Center Study

18 ***Key words:*** HFpEF, prognosis, FT3 levels, prognostic factors, all-cause mortality and cardiac
19 transplantation.

20 ***Word count:*** 198 (abstract); 3501 (excluding abstract, figure legends, and references)

21 ***Number of figures and tables:*** 5

22 ***Conflict of interest statement***

23 The authors have no potential conflict of interest to declare.

24 **Corresponding to: Yi-Da Tang, MD, PhD, Chunli Shao, MD, PhD, and Wen-Yao Wang,**

25 **MD, PhD**

26 **Yi-Da Tang, MD, PhD,** Department of Cardiology and Institute of Vascular Medicine, Peking

27 University Third Hospital; Key Laboratory of Molecular Cardiovascular Science, Ministry of

28 Education, Beijing, China. No.49 Huayuanbei Road, Beijing 100191, China (Email:

29 tangyida@bjmu.edu.cn).

30 **Chunli Shao, MD, PhD,** Department of Cardiology and Institute of Vascular Medicine, Peking

31 University Third Hospital; Key Laboratory of Molecular Cardiovascular Science, Ministry of

32 Education, Beijing, China. No.49 Huayuanbei Road, Beijing 100191, China (Email:

33 chunlishao@126.com).

34 **Wen-Yao Wang, MD, PhD,** Department of Cardiology and Institute of Vascular Medicine,

35 Peking University Third Hospital; Key Laboratory of Molecular Cardiovascular Science,

36 Ministry of Education, Beijing, China. No.49 Huayuanbei Road, Beijing 100191, China (Email:

37 wangwy@bjmu.edu.cn).

38

39

40

41

42

43

44

45

46 **Abstract**

47 **Objective:** The objective of this study was to identify prognostic factors in Hypertrophic
48 cardiomyopathy patients with HFpEF, with a particular focus on the role of FT3 levels.

49 **Research Design and Methods:** We conducted a retrospective cohort study of 992 patients
50 with HFpEF who were admitted to our two medical centers between 2009 and 2019. We
51 collected demographic and clinical data, including FT3 levels, and conducted univariate and
52 multivariate Cox analyses, KM survival curve analysis, and RSC curve analysis to identify
53 prognostic factors and evaluate the non-linear predictive value of FT3.

54 **Results:** We found that age, atrial fibrillation, and NT-proBNP levels were all significant
55 prognostic factors in patients with heart failure. Additionally, FT3 levels were a significant
56 independent predictor of all-cause mortality and cardiac transplantation. Patients with lower
57 FT3 levels had worse long-term prognoses, and the critical value of FT3 was 2.885.

58 **Conclusions:** Our findings suggest that FT3 levels are an important prognostic factor in
59 patients with heart failure and should be considered when evaluating patient outcomes.
60 Clinicians should monitor FT3 levels and consider interventions to maintain or improve
61 thyroid function in patients with heart failure.

62 **Key words:** heart failure, prognosis, FT3 levels, prognostic factors, all-cause mortality,
63 cardiac transplantation

64 **Article Highlights:**

65 • FT3 levels are a significant independent predictor of all-cause mortality and cardiac
66 transplantation in Hypertrophic cardiomyopathy patients with HFpEF

67 • Patients with hypertrophic cardiomyopathy combined with HFpEF have a poorer

- 68 long-term prognosis with lower FT3 levels, with a critical FT3 value of 2.885
- 69 • Age, atrial fibrillation, and NT-proBNP levels were also significant prognostic factors in
- 70 Hypertrophic cardiomyopathy patients with HFpEF
- 71 • Clinicians should monitor FT3 levels and consider interventions to maintain or improve
- 72 thyroid function in Hypertrophic cardiomyopathy patients with HFpEF.

73 **1.Introduction**

74 Heart failure (HF) is a chronic and progressive condition in which the heart is unable to pump
75 enough blood to meet the body's needs. It is a major cause of morbidity and mortality
76 worldwide, with an estimated prevalence of 1-2% in the general population. The prognosis of
77 HF is highly variable, and identifying prognostic factors is critical for guiding clinical
78 decision-making and improving patient outcomes. The importance of identifying prognostic
79 factors in HF cannot be overstated. Such factors can help clinicians stratify patients according
80 to their risk of adverse outcomes, tailor treatment plans to individual patients, and monitor
81 disease progression over time. However, despite extensive research in this area, there is still a
82 need to identify new prognostic markers that can improve risk prediction and guide treatment
83 decisions.

84 HF with preserved ejection fraction (HFpEF) is a specific type of HF in which the ejection
85 fraction, or the percentage of blood that is pumped out of the heart with each beat, is normal
86 or only slightly reduced. Patients with HFpEF typically present with symptoms such as
87 shortness of breath, fatigue, and exercise intolerance, and the prevalence of HFpEF is
88 increasing due to the aging population and the high prevalence of comorbidities such as
89 hypertension and diabetes.

90 Hypertrophic cardiomyopathy (HCM) is a genetic disorder characterized by abnormal
91 thickening of the heart muscle, which can lead to various clinical manifestations including
92 arrhythmias, heart failure, and sudden cardiac death. Previous studies have shown that the
93 prevalence of HFpEF is high in patients with HCM, and HFpEF has been shown to be an
94 independent predictor of adverse outcomes in this population.

95 Thyroid hormones are known to have important effects on the cardiovascular system,
96 including the regulation of heart rate, contractility, and vascular tone. Thyroid hormone
97 profile acts as a fundamental regulator in cardiovascular homeostasis in both physiological
98 conditions and pathological processes ^[1,2]. Abnormal thyroid hormone levels, such as
99 hypothyroidism or hyperthyroidism, have been associated with various cardiovascular
100 diseases including HF. Our previous study, together with other clinical evidence, indicated
101 that thyroid hormone levels, particularly the level of free triiodothyronine (FT3), correlate
102 with exacerbated cardiac function ^[3-6] and hypothyroid status was an independent risk factor
103 of adverse events in patients with cardiovascular diseases. The potential mechanism
104 underlying the influence of thyroid hormone levels on cardiovascular disease involves the
105 regulation of gene expression and signaling pathways involved in cardiac hypertrophy,
106 fibrosis, and inflammation^[7,8]. FT3 is a thyroid hormone that plays a critical role in regulating
107 cardiac function, and previous studies have suggested that low FT3 levels are associated with
108 poor outcomes in patients with HF^[8]. However, the relationship between FT3 and prognosis
109 of patients with HCM and HFpEF is still not well understood, and further research is needed
110 to elucidate this relationship and identify optimal cutoff values for risk stratification.

111 Given the high prevalence of HFpEF in patients with HCM and the potential role of thyroid
112 hormones in cardiovascular disease, there is a need to identify diagnostic factors that may
113 help predict outcomes in this population. In this study, we aimed to investigate the prognostic
114 value of thyroid hormone levels in patients with HCM and HFpEF, and to explore the
115 potential mechanism underlying this association.

116 **2. Research Design and Methods**

117 **2.1 Ethics statement**

118 The study was in accordance with the ethical guidelines of the declaration of Helsinki and
119 China's regulations and guidelines on good clinical practice and was approved by the Ethics
120 Committee of the Peking University Third Hospital. Before the start of the study, we received
121 written informed consents from all participants.

122 **2.2 Design, patients, and outcome measure**

123 **2.2.1 Study Patients**

124 This study was a two-center, retrospective cohort study. All patients in this study were
125 evaluated at two medical centers: the Peking University Third Hospital, and Fuwai Hospital
126 (National Center of Cardiovascular Diseases, China). Between October 1, 2009, and
127 December 31, 2019, a total of 2802 patients (age \geq 16 years) were diagnosed with HOCM.
128 Among them, 187 patients with EF<50% were excluded from this study. In the end, 992
129 patients with hypertrophic cardiomyopathy diagnosed with HFpEF were included in this study.
130 Patients were divided into three groups according to the FT3 levels: Tertile 1: (FT3<2.77
131 pg/mL, n=336), Tertile 2 : (2.77 pg/mL \leq FT3 \leq 3.09 pg/mL, n=335), Tertile 3 (FT3>3.10
132 pg/mL, n=321).

133 **2.2.2 Diagnosis of HOCM**

134 The diagnosis of HOCM was based on ^[9-11]: 1, wall thickness \geq 15 mm in one or more LV
135 myocardial segments, as measured by any imaging technique (echocardiography, cardiac
136 magnetic resonance imaging, or computed tomography); 2, wall thickness (13-14mm) with
137 family history, non-cardiac symptoms and signs, electrocardiogram(ECG) abnormalities,
138 laboratory tests, and multi-modality cardiac imaging; 3, patients with LV outflow tract

139 obstruction (LVOTO) were based on: dynamic LVOT obstruction due to systolic anterior
140 motion of the mitral valve, with an LVOT gradient ≥ 30 mmHg at rest or during physiological
141 provocation such as Valsalva maneuver, standing, and exercise. Significant dynamic LVOT
142 obstruction was documented by 2-dimensional and Doppler echocardiography or, in those
143 cases where echocardiography was insufficient, by invasive hemodynamic catheterization
144 with provocation.

145 **2.2.3 Diagnosis of HFpEF**

146 In our study, the diagnosis of HFpEF was determined by evaluating a combination of
147 symptoms, signs, left ventricular ejection fraction (LVEF), and concentrations of NT-proBNP.
148 Specifically, we followed the 2017 American Heart Association (AHA) criteria for
149 diagnosis^[12], which categorizes patients with LVEF $\geq 50\%$, NT-proBNP ≥ 800 pg/mL, and
150 symptoms or signs of heart failure as having HFpEF. Those who did not meet these criteria
151 were classified as non-HF.

152 **2.2.4 Thyroid function test**

153 Thyroid function was assessed after heart failure symptoms were controlled with regular oral
154 medication prior to discharge, rather than during the acute phase. The thyroid function test
155 was conducted at a median of 10 days after hospital admission. Blood samples were drawn
156 after a 12-hour fast and the serum levels of thyroid hormone and thyroid stimulating hormone
157 were measured using radioimmunoassay (Immulite 2000; Siemens, Germany).

158 **2.3 Follow-up and endpoints.**

159 Follow-up started at the time of the patient's first clinic contact after October 1, 2009. At
160 baseline, all patients were evaluated for the following characteristics: age, sex, NYHA

161 functional class, maximum left ventricular wall thickness (LVWT), maximum (Provo cable)
162 LVOT gradient, left ventricular function, atrial fibrillation, and conventional risk factors for
163 cardiac death.

164 The primary endpoints of this study were all-cause mortality and cardiac transplantation
165 during long-term follow-up. Mortality and adverse events were retrieved from hospital patient
166 records at the center where follow-up occurred, from civil service population registers, and
167 information provided by patients themselves and/or their general practitioners. Patients lost to
168 follow-up were censored upon the last contact with them. If no events occurred during
169 follow-up, the administrative censoring date was set for December 31, 2019.

170 **2.4 Data Analysis**

171 Statistical analysis was assessed with SPSS 27.0 statistical package for Windows, and R
172 software version 4.2.2 (R Foundation for Statistical Computing). All continuous variables are
173 presented as means \pm SD and analysis of variance was used to compare means across multiple
174 groups. The relationships between parametric variables were assessed by multiple linear
175 regression analysis. Initial differences in baseline characteristics between achieved treatment
176 groups were sought in bivariable analysis by using χ^2 tests, Fisher exact tests, Student *t* tests,
177 and Kruskal-Wallis analysis of variance. Cox proportional hazards model was used to
178 estimate the hazard ratio (HR). Kaplan-Meier analysis was used to study the cumulative
179 survival of different groups. A P-value less than 0.05 was considered statistically significant.

180 Restricted cubic spline (RCS) is a statistical method used to model nonlinear relationships
181 between a continuous predictor variable and an outcome variable. It is an extension of the
182 linear regression model and allows for flexible modeling of the relationship by using cubic

183 polynomial functions. In our study, we use the RCS method provides a flexible and powerful
184 way to model nonlinear relationships in R. We chose to use four knots, placed at the 10th,
185 50th, and 90th percentiles of the distribution of FT3 in our study population, to allow for a
186 flexible yet parsimonious modeling of the non-linear relationship between FT3 and
187 cardiovascular events. We assessed the overall fit of the model using the likelihood ratio test
188 and examined the shape of the spline function using graphical displays.

189 **2.5 Data and Resource Availability Statement**

190 The datasets generated during and/or analyzed in the current study are available from the
191 corresponding author upon reasonable request.

192 **3.Results**

193 The study population consisted of 992 HCM patients with HFpEF, with an average age of
194 53.60 ± 13.83 years. The majority of patients were male (58.2%). Atrial fibrillation was present
195 in 22.5% of patients, while 21.0% had unexplained syncope. The mean NT-proBNP level was
196 2278.18 ± 1743.44 fmol/mL, and the mean FT3 level was 2.94 ± 0.58 pg/mL.

197 Table 1. It shows the baseline clinical characteristics of the study population divided into the
198 three tertiles based on the level of FT3. The total number of participants in the study was 992,
199 with Tertile 1 having 336 participants, Tertile 2 having 335 participants, and Tertile 3 having
200 321 participants. The mean age of the total population was 53.60 ± 13.83 years, with Tertile 1
201 being the oldest at 57.21 ± 13.84 years and Tertile 3 being the youngest at 50.00 ± 13.49 years
202 ($p < 0.001$). Male participants made up the majority of the study population at 58.2%, with
203 Tertile 3 having the highest proportion of male participants at 76.0% ($p < 0.001$). There were
204 no significant differences in body mass index (BMI), systolic and diastolic blood pressures,

205 and LV end-diastolic diameter among the three tertiles. However, participants in Tertile 3 had
206 a significantly higher level of FT3 than those in Tertile 1 and Tertile 2 ($p < 0.001$). Regarding
207 comorbidities, atrial fibrillation was more prevalent in Tertile 3 than in Tertile 1 and Tertile 2
208 ($p < 0.001$). On the other hand, NYHA Class III or IV was more common in Tertile 1 than in
209 Tertile 2 and Tertile 3 ($p < 0.001$). In terms of medications, the use of beta-blockers,
210 ACEI/ARB, diuretics, and calcium antagonists did not differ significantly among the three
211 tertiles.

212 Table 2 shows the results of the univariate Cox analysis for all-cause mortality and cardiac
213 transplantation. The hazard ratios (HR) and 95% confidence intervals (CI) are reported for
214 each variable, along with the corresponding p-value. The results indicate that higher levels of
215 FT3 are associated with a lower risk of all-cause mortality and cardiac transplantation, with a
216 HR of 0.206 and a p-value of less than 0.001. Older age is associated with a higher risk of
217 mortality and transplantation, with a HR of 1.085 and a p-value of less than 0.001. Male
218 gender does not appear to be significantly associated with the risk of mortality and
219 transplantation, with a HR of 0.593 and a p-value of 0.108. Higher levels of NT-proBNP are
220 associated with a higher risk of mortality and transplantation, with a HR of 1.026 and a
221 p-value of less than 0.001. A history of atrial fibrillation is associated with a significantly
222 higher risk of mortality and transplantation, with a HR of 4.240 and a p-value of less than
223 0.001. A history of unexplained syncope does not appear to be significantly associated with
224 the risk of mortality and transplantation, with a HR of 1.460 and a p-value of 0.287. The
225 interventricular septal thickness does not appear to be significantly associated with the risk of
226 mortality and transplantation, with a HR of 1.001 and a p-value of 0.979.

227 In Table 3, two different models are presented: Model 1 and Model 2. Both models are
228 multivariate Cox regression models that examine the association between various factors and
229 all-cause mortality and cardiac transplantation. In Model 1, the factors included age, atrial
230 fibrillation, NT-proBNP (per 100 fmol/mL), and FT3 (pg/mL). The hazard ratio (HR) for age
231 was 1.062 (95% CI: 1.029, 1.096), indicating that for every one year increase in age, the risk
232 of all-cause mortality and cardiac transplantation increased by 6.2%. The HR for atrial
233 fibrillation was 2.142 (95% CI: 1.084, 4.234), indicating that patients with atrial fibrillation
234 had a 2.1 times higher risk of all-cause mortality and cardiac transplantation compared to
235 those without atrial fibrillation. The HR for NT-proBNP was 1.021 (95% CI: 1.007, 1.035),
236 indicating that for every 100 fmol/mL increase in NT-proBNP, the risk of all-cause mortality
237 and cardiac transplantation increased by 2.1%. The HR for FT3 was 0.374 (95% CI: 0.178,
238 0.788), indicating that for every 1 pg/mL increase in FT3, the risk of all-cause mortality and
239 cardiac transplantation decreased by 62.6%. In Model 2, the same factors were included as in
240 Model 1, but FT3 was analyzed as a categorical variable (tertiles). The reference group was
241 FT3 Tertial 3, and the HR for FT3 Tertial 2 was 0.480 (95% CI: 0.214, 1.074), indicating that
242 patients in the second tertile of FT3 levels had a 52.0% lower risk of all-cause mortality and
243 cardiac transplantation compared to those in the reference group. The HR for FT3 Tertial 1
244 was 0.336 (95% CI: 0.114, 0.988), indicating that patients in the first tertile of FT3 levels had
245 a 66.4% lower risk of all-cause mortality and cardiac transplantation compared to those in the
246 reference group. In addition, the HR for age, atrial fibrillation, and NT-proBNP remained
247 significant in Model 2. The HR for age was 1.040 (95% CI: 1.002, 1.079), indicating that for
248 every one year increase in age, the risk of all-cause mortality and cardiac transplantation

249 increased by 4.0%. The HR for atrial fibrillation was 3.399 (95% CI: 1.356, 8.517), indicating
250 that patients with atrial fibrillation had a 3.4 times higher risk of all-cause mortality and
251 cardiac transplantation compared to those without atrial fibrillation. The HR for NT-proBNP
252 was 1.023 (95% CI: 1.005, 1.041), indicating that for every 100 fmol/mL increase in
253 NT-proBNP, the risk of all-cause mortality and cardiac transplantation increased by 2.3%.

254 In Fig1, based on the KM survival curve, it seems that Group 1 had the worst long-term
255 prognosis, and there was a statistically significant difference in prognosis among the three
256 groups (log-rank test, $p < 0.001$). It is important to note that the KM survival curve is a
257 graphical representation of the survival probability over time, and it allows for the
258 comparison of survival between different groups. In this case, it appears that patients with
259 lower FT3 levels had a worse prognosis than those with higher FT3 levels.

260 In Fig2, we used restricted cubic splines to model the relationship between the FT3 and the
261 risk of cardiovascular events. We chose to use four knots, placed at the 10th, 50th, and 90th
262 percentiles of the distribution of the FT3 in our study population, to allow for flexible yet
263 parsimonious modeling of the non-linear relationship between the FT3 and cardiovascular
264 events. We assessed the overall fit of the model using the likelihood ratio test and examined
265 the shape of the spline function using graphical displays. The RSC curve analysis showed a
266 non-linear relationship between FT3 levels and prognosis. The RSC curve analysis revealed
267 an "L" shape, indicating that as the FT3 level decreased, the prognosis of the patient gradually
268 deteriorated. The critical value of FT3 was 2.885 pg/mL.

269 **4. Discussion**

270 Summary of the main findings This study investigated the prognostic value of FT3 in

271 Hypertrophic cardiomyopathy patients with HFpEF. The study found that lower FT3 levels
272 were associated with a higher risk of all-cause mortality and cardiac transplantation. The
273 multivariate analysis showed that FT3 was an independent prognostic factor after adjusting
274 for other clinical factors. The KM survival curve analysis showed that patients with lower
275 FT3 levels had worse long-term prognosis. Additionally, the RSC curve analysis showed an
276 "L" shaped relationship between FT3 levels and prognosis, with a critical value of
277 FT3=2.885.

278 Comparison with previous studies Our findings are consistent with previous studies that
279 have reported an association between low FT3 levels and poor outcomes in patients with heart
280 failure^[13,14]. However, our study is unique in that it used a large sample size, included various
281 clinical factors in the analysis, and used RSC curve analysis to explore the non-linear
282 relationship between FT3 and prognosis.

283 Interpretation of the results the results suggest that FT3 is a valuable prognostic factor
284 for patients with heart failure. Lower FT3 levels are associated with worse outcomes and may
285 be used to identify high-risk patients who require closer monitoring and more aggressive
286 treatment. The non-linear relationship between FT3 and prognosis suggests that a critical
287 value of FT3 may exist, below which the risk of adverse outcomes significantly increases.

288 Clinical implications and potential applications the identification of FT3 as a prognostic
289 factor has important clinical implications for the management of heart failure. Clinicians
290 should consider measuring FT3 levels in patients with heart failure to assess their risk of
291 adverse outcomes. Additionally, our findings suggest that interventions to optimize FT3 levels
292 may improve the prognosis of patients with heart failure.

293 There is growing evidence suggesting that thyroid hormones play a critical role in
294 regulating cardiovascular function. In particular, thyroid hormone deficiency, also known as
295 hypothyroidism, has been associated with a variety of cardiovascular diseases, including heart
296 failure. Conversely, excess thyroid hormone, or hyperthyroidism, has also been linked to
297 adverse cardiovascular outcomes, such as atrial fibrillation and sudden cardiac death.

298 The exact mechanisms by which thyroid hormones influence cardiovascular function are
299 complex and not fully understood. It is known that thyroid hormones affect almost every
300 aspect of cardiac function, including cardiac contractility, heart rate, and rhythm, as well as
301 the structure and function of the blood vessels^[15,16]. Thyroid hormones also have profound
302 effects on the metabolism of lipids and carbohydrates, which can further impact
303 cardiovascular health^[17].

304 One of the proposed mechanisms by which thyroid hormones affect the prognosis of
305 heart failure is through their influence on the sympathetic nervous system^[18]. Thyroid
306 hormones are known to enhance sympathetic activity, which can increase heart rate and blood
307 pressure, as well as promote cardiac hypertrophy and remodeling. These changes can
308 ultimately lead to the development and progression of heart failure^[19].

309 Another possible mechanism is the effect of thyroid hormones on the
310 renin-angiotensin-aldosterone system (RAAS), which is a key regulator of blood pressure and
311 fluid balance in the body^[18]. Thyroid hormones have been shown to stimulate the RAAS,
312 which can lead to sodium and water retention and exacerbate the symptoms of heart failure.

313 In addition, thyroid hormones have been shown to directly affect the expression of genes
314 involved in cardiac remodeling and fibrosis. In particular, excess thyroid hormone has been

315 associated with increased expression of genes involved in collagen synthesis and deposition,
316 which can lead to the development of myocardial fibrosis and impaired cardiac function.

317 Overall, the underlying mechanisms by which thyroid hormones influence the prognosis
318 of heart failure are complex and multifaceted. Further research is needed to fully elucidate
319 these mechanisms and to identify potential therapeutic targets for improving the outcomes of
320 patients with heart failure.

321 **Limitations of the study**

322 This study has several limitations. It was a retrospective study and subject to biases
323 inherent in such studies. Future directions for research Future research should explore the
324 mechanisms by which FT3 affects the prognosis of patients with heart failure. Additionally,
325 prospective studies with larger sample sizes and multiple centers are needed to validate our
326 findings and determine the optimal cut-off value for FT3 in identifying high-risk patients.
327 Finally, interventional studies are needed to investigate the effect of interventions to optimize
328 FT3 levels on the prognosis of patients with heart failure.

329 **Clinical recommendations**

330 Based on our findings, it is recommended that clinicians assess FT3 levels in Hypertrophic
331 cardiomyopathy patients with HFpEF, in addition to other established prognostic factors such
332 as age, atrial fibrillation, and NT-proBNP. Patients with low FT3 levels should be closely
333 monitored for adverse outcomes and may benefit from targeted interventions to improve their
334 thyroid function. Additionally, our study highlights the importance of identifying and
335 addressing potentially modifiable factors, such as thyroid dysfunction, in the management of
336 Hypertrophic cardiomyopathy patients with HFpEF.

337 **Conclusion**

338 In conclusion, our study found that FT3 is an independent prognostic factor in Hypertrophic
339 cardiomyopathy patients with HFpEF, and the non-linear predictive value of FT3 for
340 prognosis is presented in an "L" shape, with a critical value of FT3=2.885. These findings are
341 important for clinicians to identify high-risk patients and adjust treatment strategies
342 accordingly. These findings have important implications for identifying high-risk patients
343 who may benefit from early intervention and monitoring. Clinicians should consider
344 measuring FT3 levels in patients with heart failure and monitoring them closely for adverse
345 outcomes. Future research should explore the underlying mechanisms linking FT3 levels and
346 adverse cardiovascular outcomes and evaluate the effectiveness of interventions aimed at
347 improving thyroid hormone levels in patients with heart failure.

348 However, this study has several limitations, including the relatively small sample size,
349 the lack of information on potential confounding factors, and the limited generalizability of
350 the results. Future studies with larger sample sizes, more comprehensive data, and more
351 diverse populations are needed to further validate our findings and explore the underlying
352 mechanisms. Overall, our study highlights the importance of considering FT3 as a prognostic
353 factor in Hypertrophic cardiomyopathy patients with HFpEF and provides new insights into
354 the management of this condition.

355 **Consent for publication**

356 All authors have approved the final manuscript for publication.

357 **Availability of data and materials.**

358 Not applicable.

359 **Funding.**

360 This work was supported by: National Key R&D Program of China (2020YFC2004705), National
361 Natural Science Foundation of China (81825003, 91957123, 82270376), CAMS Innovation Fund
362 for Medical Sciences (2022-I2M-C&T-B-119, 2021-I2M-5-003), Beijing Nova Program from
363 Beijing Municipal Science & Technology Commission(Z201100006820002), CSC Special Fund
364 for Clinical Research (CSCF2021A04).

365 **Author Contributions.** X.B conducted statistical analyses and collaborated on drafting the
366 manuscript. X.B, J.G, K.Z, W.X.L, W.Y.W, C.S and Y.D.T reviewed and edited the manuscript and
367 contributed to the discussion. W.Y.W, C.S and Y.D.T. obtained funding, conceived the research,
368 and drafted the manuscript. All authors approved the final version of the manuscript. X.B is the
369 guarantor of this work and, as such, had full access to all of the data in the study and takes
370 responsibility for the integrity of the data and the accuracy of the data analysis.

371 **Acknowledgments.**

372 The authors thank all the investigators and subjects who participated in this project.

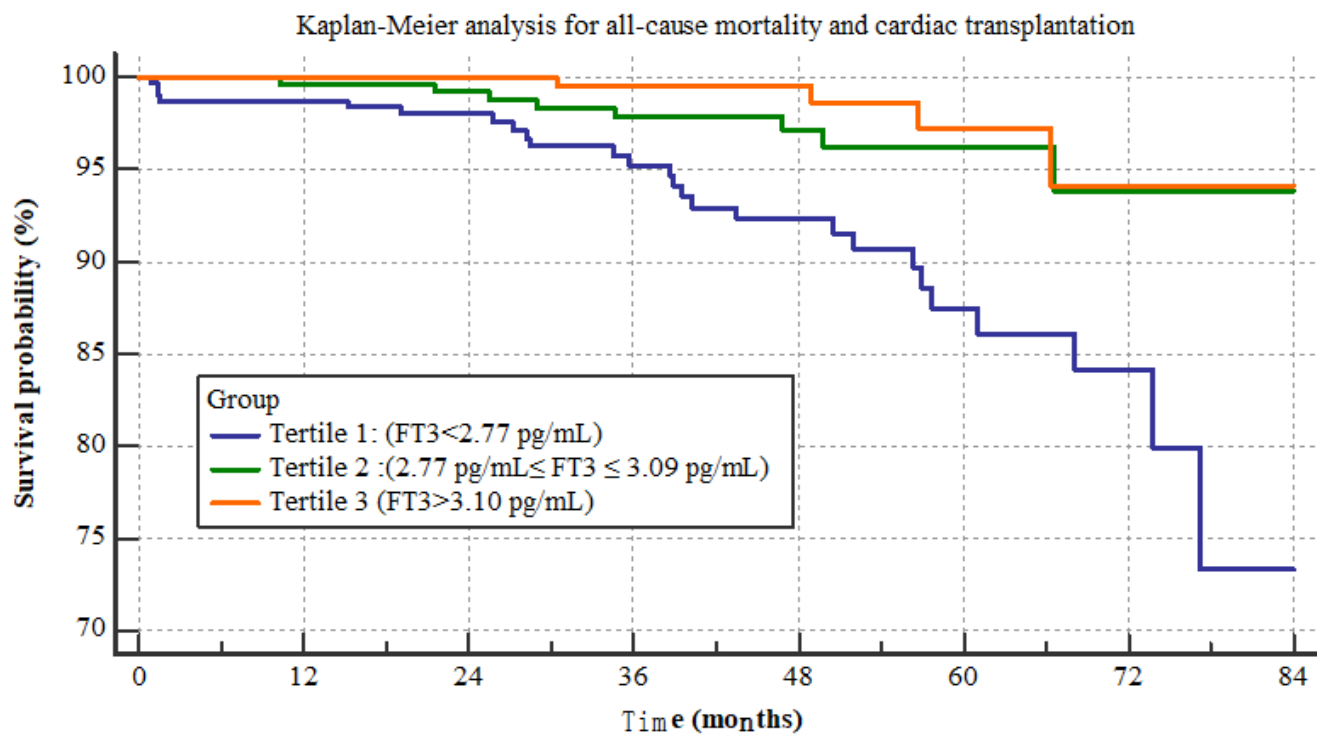
373

374 **References :**

- 375 [1] Gerdes AM, Ojamaa K. Thyroid Hormone and Cardioprotection[J]. Compr Physiol,
376 2016, 6(3): 1199-1219. doi: 10.1002/cphy.c150012
- 377 [2] Fukuyama K, Ichiki T, Imayama I, et al. Thyroid hormone inhibits vascular remodeling
378 through suppression of cAMP response element binding protein activity[J]. Arterioscler
379 Thromb Vasc Biol, 2006, 26(9): 2049-2055. doi:
380 10.1161/01.ATV.0000233358.87583.01
- 381 [3] Wang JJ, Zhuang ZH, Shao CL, et al. Assessment of causal association between
382 thyroid function and lipid metabolism: a Mendelian randomization study[J]. Chin Med J
383 (Engl), 2021, 134(9): 1064-1069. doi: 10.1097/cm9.0000000000001505

- 384 [4] Wang WY, Tang YD, Yang M, et al. Free triiodothyronine level indicates the degree of
385 myocardial injury in patients with acute ST-elevation myocardial infarction[J]. *Chin*
386 *Med J (Engl)*, 2013, 126(20): 3926-3929. doi:
387 10.3760/cma.j.issn.0366-6999.20130087
- 388 [5] Zhang K, Meng X, Wang W, et al. Prognostic Value of Free Triiodothyronine Level in
389 Patients With Hypertrophic Obstructive Cardiomyopathy[J]. *J Clin Endocrinol Metab*,
390 2018, 103(3): 1198-1205. doi: 10.1210/jc.2017-02386
- 391 [6] Wang W, Guan H, Gerdes AM, et al. Thyroid Status, Cardiac Function, and Mortality in
392 Patients With Idiopathic Dilated Cardiomyopathy[J]. *J Clin Endocrinol Metab*, 2015,
393 100(8): 3210-3218. doi: 10.1210/jc.2014-4159
- 394 [7] Dillmann W. Cardiac hypertrophy and thyroid hormone signaling[J]. *Heart Fail Rev*,
395 2010, 15(2): 125-132. doi: 10.1007/s10741-008-9125-7
- 396 [8] Ojamaa K. Signaling mechanisms in thyroid hormone-induced cardiac hypertrophy[J].
397 *Vascul Pharmacol*, 2010, 52(3-4): 113-119. doi: 10.1016/j.vph.2009.11.008
- 398 [9] Gersh BJ, Maron BJ, Bonow RO, et al. 2011 ACCF/AHA guideline for the diagnosis
399 and treatment of hypertrophic cardiomyopathy: a report of the American College of
400 Cardiology Foundation/American Heart Association Task Force on Practice
401 Guidelines[J]. *Circulation*, 2011, 124(24): e783-831. doi:
402 10.1161/CIR.0b013e318223e2bd
- 403 [10] Authors/Task Force m, Elliott PM, Anastakis A, et al. 2014 ESC Guidelines on
404 diagnosis and management of hypertrophic cardiomyopathy: the Task Force for the
405 Diagnosis and Management of Hypertrophic Cardiomyopathy of the European Society
406 of Cardiology (ESC)[J]. *Eur Heart J*, 2014, 35(39): 2733-2779. doi:
407 10.1093/eurheartj/ehu284
- 408 [11] Maron BJ, Desai MY, Nishimura RA, et al. Diagnosis and Evaluation of
409 Hypertrophic Cardiomyopathy: JACC State-of-the-Art Review[J]. *J Am Coll Cardiol*,
410 2022, 79(4): 372-389. doi: 10.1016/j.jacc.2021.12.002
- 411 [12] Chow SL, Maisel AS, Anand I, et al. Role of Biomarkers for the Prevention,
412 Assessment, and Management of Heart Failure: A Scientific Statement From the
413 American Heart Association[J]. *Circulation*, 2017, 135(22): e1054-e1091. doi:
414 10.1161/cir.0000000000000490
- 415 [13] De Matteis G, Covino M, Burzo ML, et al. Prognostic role of hypothyroidism and low
416 free-triiodothyronine levels in patients hospitalized with acute heart failure[J]. *Intern*
417 *Emerg Med*, 2021, 16(6): 1477-1486. doi: 10.1007/s11739-020-02582-y

- 418 [14] Sato Y, Yoshihisa A, Kimishima Y, et al. Low T3 Syndrome Is Associated With High
419 Mortality in Hospitalized Patients With Heart Failure[J]. *J Card Fail*, 2019, 25(3):
420 195-203. doi: 10.1016/j.cardfail.2019.01.007
- 421 [15] Grais IM, Sowers JR. Thyroid and the heart[J]. *Am J Med*, 2014, 127(8): 691-698. doi:
422 10.1016/j.amjmed.2014.03.009
- 423 [16] Cappola AR, Desai AS, Medici M, et al. Thyroid and Cardiovascular Disease
424 Research Agenda for Enhancing Knowledge, Prevention, and Treatment[J].
425 *Circulation*, 2019. doi: 10.1161/circulationaha.118.036859
- 426 [17] Yamakawa H, Kato TS, Noh JY, et al. Thyroid Hormone Plays an Important Role in
427 Cardiac Function: From Bench to Bedside[J]. *Front Physiol*, 2021, 12: 606931. doi:
428 10.3389/fphys.2021.606931
- 429 [18] Martinez F. Thyroid hormones and heart failure[J]. *Heart Fail Rev*, 2016, 21(4):
430 361-364. doi: 10.1007/s10741-016-9556-5
- 431 [19] Borovac JA, D'Amario D, Bozic J, et al. Sympathetic nervous system activation and
432 heart failure: Current state of evidence and the pathophysiology in the light of novel
433 biomarkers[J]. *World J Cardiol*, 2020, 12(8): 373-408. doi: 10.4330/wjc.v12.i8.373
- 434



Number at risk

Group: Tertile 1: (FT3 < 2.77 pg/mL)

336	295	242	183	124	64	28	1
-----	-----	-----	-----	-----	----	----	---

Group: Tertile 2: (2.77 pg/mL ≤ FT3 ≤ 3.09 pg/mL)

335	293	240	185	121	65	28	1
-----	-----	-----	-----	-----	----	----	---

Group: Tertile 3: (FT3 > 3.10 pg/mL)

321	285	239	169	111	59	23	3
-----	-----	-----	-----	-----	----	----	---

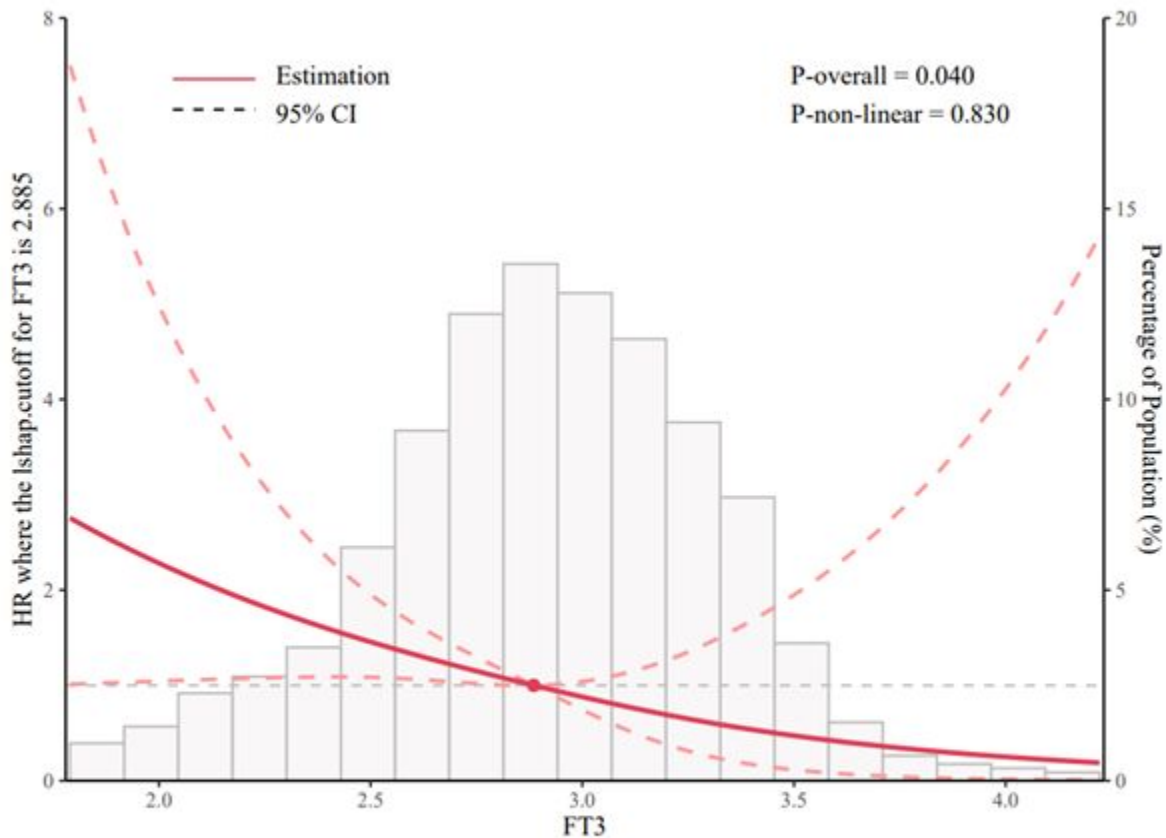


Fig2. Restricted Cubic Splines (RCS) of the relationship between the FT3 and the risk of all-cause mortality and cardiac transplantation.

Table 1. Baseline clinical characteristics of the study population divided into the three tertiles based on the level of FT3.

	Total (n=992)	Tertile 1 (n=336)	Tertile 2 (n=335)	Tertile 3 (n=321)	P-value
Age, y	53.60±13.83	57.21±13.84	53.60±13.30	50.00±13.49	<0.001
Male, n (%)	577 (58.2%)	132 (39.3%)	201 (60.0%)	244 (76.0%)	<0.001
BMI (kg/m ²)	25.42±4.25	25.01±3.59	25.51±4.92	25.72±4.07	0.177
Systolic BP (mmHg)	121.58±18.47	122.17±18.06	120.84±19.27	121.79±18.05	0.716
Diastolic BP (mmHg)	74.12±12.27	73.97±11.98	74.01±13.15	74.37±11.59	0.927
NT-proBNP (fmol/mL)	2278.18±1743.44	2760.72±2024.43	2153.81±1610.95	1930.14±1454.51	<0.001
FT3 (pg/mL)	2.94±0.58	2.456±0.29	2.93±0.09	3.44±0.69	<0.001
Atrial fibrillation, n (%)	223 (22.5%)	55 (16.4%)	21 (6.2%)	31 (9.7%)	<0.001
Non- sustained ventricular tachycardia, n (%)	52 (5.2%)	19 (5.7%)	15 (4.5%)	18(5.6%)	0.742
NYHA Class III or IV, n (%)	128 (12.9%)	63 (18.8%)	35 (10.4%)	30 (9.4%)	<0.001
Unexplained syncope, n (%)	208(21.0%)	57(17.0%)	91(27.2%)	60(18.7%)	0.002
Echocardiography					
Interventricular septal thickness (mm)	20.23±5.19	19.51±4.86	20.57±5.68	20.56±4.90	0.038
LV end-diastolic diameter (mm)	42.92±5.91	42.86±5.80	42.64±6.33	43.30±5.53	0.464
LV ejection fraction (%)	64.55±6.10	63.97±6.58	64.38±6.00	65.30±5.65	0.054

LV outflow tract gradient, at rest (mmHg)	51.00±13.42	46.17±15.48	52.73±12.59	53.96±12.29	0.090
Medications					
Beta-blocker, n (%)	603 (60.8%)	205 (61.0%)	199 (59.4%)	199 (61.9%)	0.465
ACEI/ARB, n (%)	170 (17.1%)	63 (18.8%)	60 (17.9%)	47 (14.6%)	0.449
Diuretic, n (%)	148 (19.0%)	72 (21.4%)	55 (16.4%)	61 (19.0%)	0.120
Calcium antagonist, n (%)	205 (20.7%)	84 (25.0%)	58 (17.3%)	63 (19.6%)	0.091

Values are mean ± SD or n (%).

Abbreviation: BMI, body mass index; NT-proBNP, N-terminal pro-brain natriuretic peptide; BP, blood pressure; NYHA, New York Heart Association; LV, left ventricle; ACEI/ARB, angiotensin-converting enzyme inhibitor/angiotensin receptor blocker.

Table 2. Univariate Cox Analysis for All-Cause Mortality and Cardiac transplantation

	HR (95% CI)	P value
FT3 (pg/mL)	0.206 (0.106, 0.402)	<0.001
Age, y	1.085(1.053, 1.118)	<0.001
Male, n (%)	0.593(0.314, 1.122)	0.10.8
NT-proBNP (per 100 fmol/mL)	1.026(1.015, 1.037)	<0.001
Atrial fibrillation, n (%)	4.240 (2.235, 8.044)	<0.001
Unexplained syncope, n (%)	1.460(0.724, 2.944)	0.290
Interventricular septal thickness (mm)	1.001 (0.948, 1.056)	0.980

Abbreviations are listed in Table 1.

Table 3. Multivariate Cox Analysis for All-Cause Mortality and Cardiac transplantation

	Model 1		Model 2	
	HR (95% CI)	P value	HR (95% CI)	P value
Age, y	1.062 (1.029, 1.096)	<0.001	1.040 (1.002, 1.079)	0.037
Atrial fibrillation	2.142 (1.084, 4.234)	0.028	3.399 (1.356, 8.517)	0.009
NT-proBNP (per 100 fmol/ml)	1.021 (1.007, 1.035)	0.003	1.023 (1.005,1.041)	0.012
FT3 ((pg/mL)	0.374 (0.178, 0.788)	0.010	--	--
FT3 Tertial 3	--	--	1 (reference)	
FT3 Tertial 2	--	--	0.480 (0.214, 1.074)	0.074
FT3 Tertial 1	--	--	0.336(0.114, 0.988)	0.048

Multivariate Cox model selected by a stepwise method with factors that were significant in the univariate analysis and established risk factors for prognosis (age, Atrial fibrillation , NT-proBNP). Model 1 was constructed based on inclusion of FT3 as continuous variable; Model 2 was constructed based on inclusion of FT3 as Categorical variable.