

1 Do people with disabilities experience  
2 disparities in cancer care?  
3 A systematic review

4

5 Irene Tosetti<sup>1¶\*</sup>, Hannah Kuper<sup>2¶</sup>

6

7 <sup>1</sup> M.Sc. Public Health, London School of Hygiene & Tropical Medicine, London,  
8 United Kingdom

9 <https://orcid.org/0000-0001-5800-9153>

10

11 <sup>2</sup> International Centre for Evidence in Disability, London School of Hygiene &  
12 Tropical Medicine, London, United Kingdom

13 <https://orcid.org/0000-0002-8952-0023>

14

15 \* Corresponding Author

16 E-mail: [lonit5@student.london.ac.uk](mailto:lonit5@student.london.ac.uk)

## 17 **Abstract**

18 Background: Over 1.3 billion people, or 16% of the world's population, live with some  
19 form of disability. Recent studies have reported that people with disabilities (PwD)  
20 might not be receiving state-of-the-art treatment for cancer as their non-disabled  
21 peers; our objective was to systematically review this topic.

22 Methods: A systematic review was undertaken to compare cancer outcomes and  
23 quality of cancer care between adults with and without disabilities (NIHR Prospero  
24 register ID number: CRD42022281506). A search of the literature was performed in  
25 July 2022 across five databases: EMBASE, Medline, Cochrane Library, Web of  
26 Science and CINAHL databases. Peer-reviewed quantitative research articles,  
27 published in English from 2000 to 2022, with interventional or observational study  
28 designs, comparing cancer outcomes between a sample of adult patients with  
29 disabilities and a sample without disabilities were included. Studies focused on  
30 cancer screening and not treatment were excluded, as well as editorials,  
31 commentaries, opinion papers, reviews, case reports, case series under 10 patients  
32 and conference abstracts. Studies were evaluated by one reviewer for risk of bias  
33 based on a set of criteria according to the SIGN 50 guidelines. A narrative synthesis  
34 was conducted according to the Cochrane SWiM guidelines, with tables  
35 summarizing study characteristics and outcomes. This research received no external  
36 funding.

37 Results: Thirty-one studies were included in the systematic review. Compared to  
38 people without disabilities, PwD had worse cancer outcomes, in terms of poorer  
39 survival and higher overall and cancer-specific mortality. There was also evidence  
40 that PwD received poorer quality cancer care, including: lower access to state-of-the-

41 art care or curative-intent therapies, treatment delays, undertreatment or excessively  
42 invasive treatment, worse access to in-hospital services, less specialist healthcare  
43 utilization, less access to pain medications and inadequate end-of-life quality of care.

44 Discussion: Limitations of this work include the exclusion of qualitative research, no  
45 assessment of publication bias, selection performed by only one reviewer, results  
46 from high-income countries only, no meta-analysis and a high risk of bias in 15% of  
47 included studies. In spite of these limitations, our results show that PwD often  
48 experience severe disparities in cancer care with less guideline-consistent care and  
49 higher mortality than people without disabilities. These findings raise urgent  
50 questions about how to ensure equitable care for PwD; in order to prevent avoidable  
51 morbidity and mortality, cancer care programs need to be evaluated and urgently  
52 improved, with specific training of clinical staff, more disability inclusive research,  
53 better communication and shared decision-making with patients and elimination of  
54 physical, social and cultural barriers.

55

56

## 57 Introduction

58 Cancer is a leading cause of death worldwide, resulting in nearly ten million deaths  
59 in 2020 according to WHO data.(1) In spite of this enormous burden of disease, late-  
60 stage presentation and lack of diagnosis and treatment remain common, leading to  
61 much higher mortality rates.(2) Each cancer type requires a different treatment  
62 regimen, so a correct diagnosis is essential to receiving the best treatment and  
63 reducing mortality.(1-3)(1) Good quality of care can also improve quality of life (e.g.  
64 through pain management), even when cure is no longer possible. Access to  
65 appropriate treatment is therefore of crucial importance, but inequalities in access  
66 have been observed for several groups, including PwD.(4–10)  
67 Over 1.3 billion people, or 16% of the world's population, live with some form of  
68 disability, according to the 2022 World Report on Disability. (11) This figure is  
69 expected to grow further in the coming decades, as the population ages and chronic  
70 health conditions increase globally. On average, PwD are more likely to experience  
71 poor health, because of their underlying health condition/impairment and their socio-  
72 economically excluded position in society. (14-15) They also face a range of barriers  
73 to accessing care, including long waiting times, high costs, ableist discrimination by  
74 health professionals, inaccessible buildings, inconvenient locations, and lack of  
75 communication among different parts of the healthcare team. (12) As a  
76 consequence, unmet healthcare needs are greater for PwD, contributing towards  
77 poorer health and higher mortality. (11) This general pattern of disability-related  
78 healthcare exclusion is reflected in known disparities in the use of cancer prevention  
79 services, as PwD have lower cancer screening rates than those without disabilities.  
80 (13–18) This gap may also exist with respect to cancer care, as several studies have

81 recently reported that patients with disabilities might not be receiving state-of-the-art  
82 treatment standards for their cancers. (19–23) Furthermore, several studies suggest  
83 that cancer may be diagnosed at a later stage in patients with disabilities, and that  
84 they experience treatment disparities resulting in higher cancer-specific mortality  
85 rates. (24,25) A recent meta-analysis from the USA showed that women with  
86 disabilities have 0.78 (95% CI: 0.72-0.84) lower odds of attending breast cancer  
87 screening and have 0.63 (95% CI: 0.45-0.88) lower odds of attending cervical cancer  
88 screening, compared to women without disabilities. A recent study from Taiwan  
89 reported that the probability of receiving colorectal cancer screening in people in the  
90 four categories of disability (intellectual and developmental disability, dementia,  
91 multiple disabilities, and moving functional limitation; OR = 0.53, 0.55, 0.62 and 0.81,  
92 respectively) was significantly lower than that in the general population. (25,26) Two  
93 recent scoping reviews found that patients with intellectual disabilities may be at risk  
94 of experiencing inequities at various points during cancer clinical pathways, which as  
95 a consequence could have an impact on their overall and cancer-specific mortality  
96 and quality of life; it is thus of the outmost importance to identify and address these  
97 disparities. (24,35) Consequently, the aim of this study is to conduct a systematic  
98 literature review to compare cancer outcomes and quality of cancer care between  
99 adults with and without disabilities.

100

## 101 **Materials and methods**

102 A systematic review of the literature was conducted describing differences in cancer-  
103 related care between patients with and without disabilities, according to the PRISMA  
104 reporting guidelines; the study was recorded on the NIHR Prospero register of

105 systematic reviews with ID number CRD42022281506 . (27, 28)

## 106 **Search Strategy**

107 We used a systematic literature review to achieve our aim and objectives. The  
108 review was performed on July 1<sup>st</sup> 2022, across 5 databases: EMBASE, Medline,  
109 Cochrane Library, Web of Science and CINAHL databases. We included search  
110 terms on: disability (physical, sensory, psychological, communication and/or  
111 cognitive disability; measured clinically or through self-report); and cancer treatment  
112 (surgery, radiotherapy, chemotherapy, palliative care for any type of cancer), limited  
113 to the past 22 years (2000-June 2022), and to English language because of resource  
114 challenges with respect to costs, time, and expertise in non-English languages. The  
115 full search strategy can be found in the supporting information S1 file.

116 Eligible studies included quantitative studies (observational or interventional),  
117 conducted in adults aged 18+, allowing comparison of cancer outcomes between  
118 PwD (of any type) and those without disabilities. The disability definition had to be in  
119 agreement with the International Classification of Functioning, Disability and Health  
120 (ICF) framework (i.e. including impairment, activity limitations or participation  
121 restriction due to an underlying health condition in interaction with personal and  
122 environmental barriers).(29) Studies had to include one or more measures of  
123 outcomes along the cancer clinical pathway of diagnosis, treatment, and follow-up or  
124 end-of-life care. Eligible outcomes were overall mortality after cancer diagnosis,  
125 cancer-related mortality, survival, access to state-of-the-art treatment (defined as  
126 intent-to-cure treatment when feasible or guideline-consistent stage-appropriate  
127 treatment), type of treatment received (medical vs surgical vs radiation vs.  
128 hormonal), invasiveness of treatment, delay of treatment, specialist care utilization,

129 access to pain control prescription and end-of-life hospital use for palliative care.  
130 Studies focused on screening for cancer were not eligible, as this question was  
131 recently reviewed(33-36) There were no geographic restrictions.

132 Types of study excluded were editorials, commentaries, opinion papers, reviews,  
133 case reports, case series under 10 patients and conference abstracts. Studies with  
134 patients under age 18 in a pediatric setting, studies without a measure of disability,  
135 studies that did not include a sample of patients with disabilities and a sample of  
136 patients without disabilities and studies without outcome measures for cancer care  
137 were also excluded. According to these criteria, studies with ineligible design,  
138 comparator, population, outcomes, intervention or setting were excluded. (Figure 1)

139

## 140 **Study selection**

141 All studies identified through the searches were exported to a Mendeley bibliographic  
142 database for deduplication and to Covidence software for screening. One author (IT)  
143 screened studies by title and abstract and full text to determine eligibility. Decisions  
144 to include were made according to inclusion criteria.

145

## 146 **Data extraction and analysis:**

147 A table was created for data extraction (Table 1 in Supplement1) listing authors, year  
148 of publishing, country where the study was undertaken, study design, type of cancer,  
149 type of disability, type of outcome, population size and overall risk of bias. One  
150 author (IT) extracted the data. A summary of study characteristics can be found in

151 Table 1.

152 We also created a table with a summary of primary and secondary outcomes of each  
153 study (Table 2); where possible, odds or prevalence ratios as a measure of  
154 association or  $p$ -values comparing measures in people with and without disabilities  
155 were extracted. Each study was also classified as “better”, “worse” or “null”, when  
156 outcomes respectively showed a better, worse or equal situation in quality of cancer  
157 care for PwD in comparison to people without disabilities.

158 A narrative synthesis was conducted according to the Cochrane SWiM guidelines.

159

## 160 **Determining risk of bias:**

161 Studies were evaluated for risk of bias based on a set of criteria according to the  
162 SIGN 50 (Scottish Intercollegiate Guidelines Network) checklists as explained in  
163 Supplement 1. (37)

164 Overall Ratings were summarised as follows (figure 2) with RobVis tool:(38)

165- Low risk of bias: all or almost all of the above criteria were fulfilled, and those that  
166 were not fulfilled were thought unlikely to alter the conclusions of the study;

167- Medium risk of bias: some of the above criteria were fulfilled, and those not fulfilled  
168 were thought unlikely to alter the conclusions of the study;

169- High risk of bias: few or no criteria were fulfilled, and those that were not fulfilled  
170 were thought likely or very likely to alter the conclusions of the study.

171 We did not perform tests to measure publication bias.(39)



172 **Ethical Considerations**

173 Approval for the review was given by LSHTM MSc Ethics Board (internal ref. 26741).

174 There were no ethical concerns for this literature review.

175 **Financial support and Competing Interests**

176 The Authors declare no competing interests; there are no known conflicts of interest

177 associated with this publication and there has been no significant financial support

178 for this work that could have influenced its outcome.

179 .

180

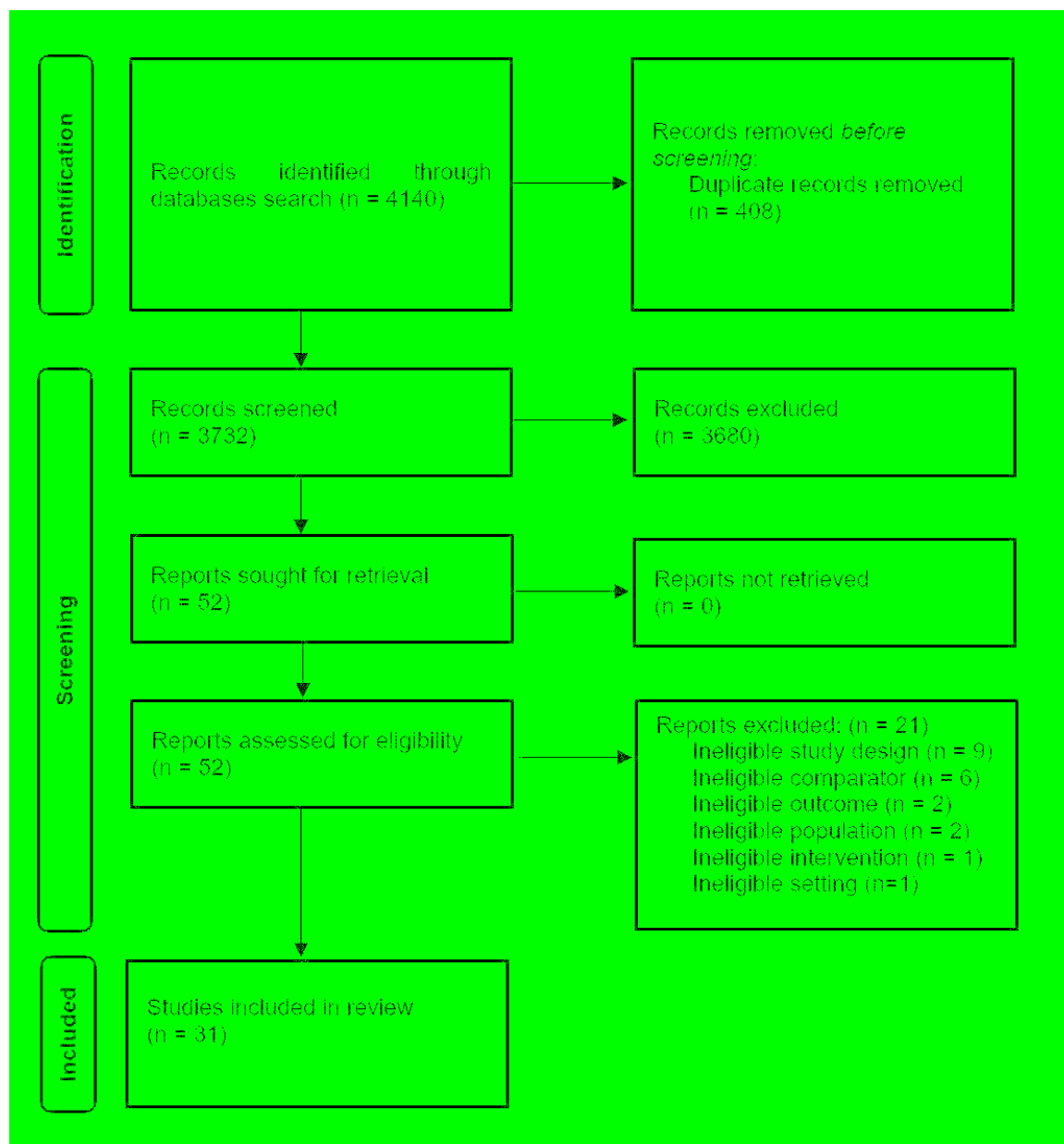
181

182

## 183 **Results**

184 The search was conducted on July 13<sup>th</sup>, 2022 resulting in 4140 titles identified  
185 (Figure 1). After removal of 408 duplicates, 3732 titles and abstracts were screened,  
186 and 3680 ineligible studies were excluded. Next, 52 full texts were retrieved and 21  
187 were excluded because of ineligible study design, comparator, patient population,  
188 outcomes, intervention or setting. Finally, 31 studies were identified as eligible for the  
189 systematic review.

190



191

192

193

194

195 **Figure 1. PRISMA Flowchart**

196

## 197 **Study Characteristics**

198 Table 1 shows a summary of the characteristics of the 31 studies included in the  
199 systematic review. All the studies were conducted in high-income countries, with the  
200 greatest proportion coming from the USA (29% of the studies, n=9), followed by  
201 South Korea (19%, n=9), Japan (13%, n=4), France (10%, n=3), then by the UK,  
202 Netherlands and Sweden with two studies each, and by Belgium, Taiwan and  
203 Germany with one study each. Twenty studies (65%) were published after 2018,  
204 showing a marked growth in research interest on this topic in the past few years;  
205 only 11 eligible studies were published earlier, between 2000 and 2017.

206 A more detailed table of study characteristics is included in Supplement 1.

207

208

209

210

211

212

213

214

215

216

217 Table 1. Summary of characteristics of included studies.

218

|                                       |   | N    | %   |
|---------------------------------------|---|------|-----|
| REGION (as per WHO classification)    | Western Pacific   | 14   | 45% |
|                                       | European  | 11   | 36% |
|                                       | Americas  | 9    | 29% |
|                                       | African   | 0    | 0   |
|                                       | South East Asian  | 0    | 0   |
|                                       | Eastern Mediterranean   | 0    | 0   |
| STUDY DESIGN                          | Retrospective cohort  | 27   | 87% |
|                                       | Prospective cohort  | 3    | 10% |
|                                       | Cross-sectional   | 1    | 3%  |
| DISABILITY TYPE                       | Visual  | 0    | 0%  |
|                                       | Hearing   | 0    | 0%  |
|                                       | Physical  | 0    | 0%  |
|                                       | Intellectual-cognitive  | 9    | 29% |
|                                       | Psychosocial  | 13   | 42% |
|                                       | All types   | 9    | 29% |
| SAMPLE SIZE OF PEOPLE WITH DISABILITY | Smallest  | 46   | n/a |
|                                       | 25th percentile   | 523  | n/a |
|                                       | Median  | 1016 | n/a |
|                                       | 75th percentile   | 4077 | n/a |
| TYPE OF CANCER                        | Any   | 7    | 23% |
|                                       | Breast  | 9    | 29% |
|                                       | Stomach and colorectal  | 4    | 13% |
|                                       | Lung  | 3    | 10% |
|                                       | Prostate  | 2    | 6%  |
|                                       | Others (Testicular, Multiple Myeloma, Acute Myeloid Leukaemia, Bladder, Oral) | 5    | 16% |
|                                       | All types   | 1    | 3%  |
| RISK OF BIAS                          | Low   | 12   | 39% |
|                                       | Medium  | 14   | 45% |
|                                       | High  | 5    | 16% |

Table 2, Outcomes of studies and type of disability

219

## 220 **Study Design**

221 Twenty-seven of the 31 studies used a retrospective cohort study design, with data  
222 either from a single center (n= 2) or from a national or multi-center health insurance  
223 and disability database (n=25), while three studies used a prospective cohort design,  
224 one from a single center and two from multi-center hospital networks. One study only  
225 used a cross-sectional design with a survey performed among patients of a network  
226 of cancer centers.

## 227 **Types of Disabilities**

228 Over a third of the eligible studies focused on people with psychosocial disability  
229 (42%, n=13) defined as a previous diagnosis of psychiatric or mental health issues.  
230 (38–53) Nine studies (29%, n=9) focused on intellectual, learning disabilities,  
231 cognitive impairment or dementia(54–62)Nine other studies (29%, n=9) considered  
232 all disability in general or grouped into subcategories (e.g.  
233 physical/communication/mental/internal organ/others). (19,22-23,63–68) Few studies  
234 differentiated by severity of impairment. (19,22,64-69)

235

## 236 **Types of Cancer**

237 Seven studies (23%) were about any type of malignancy, while almost a third (29%,  
238 n=9) were about breast cancer. There were 4 studies (13%) regarding stomach and  
239 colorectal malignancies, 3 (10%) on lung cancer, 2 (6%) on prostate cancer, and 1  
240 study each for testicular, multiple myeloma (MM), acute myeloid leukaemia (AML),

241 bladder and oral cancer. Finally, one study included patients of breast, prostate and  
242 colorectal cancers (Table 1).

243

## 244 **Types of outcome**

245 The majority of papers (65%, n=20) included a measure of survival or mortality after  
246 cancer diagnosis as primary or secondary outcome. Seventeen studies (55%)  
247 included an outcome of access to state-of-the-art cancer treatment, measured as  
248 type of treatment received (guidelines consistent according to disease stage) or  
249 invasiveness of surgery or treatment delay. Four (13%) studies described access to  
250 quality of end-of-life care, defined as access to appropriate pain control and end-of-  
251 life hospital use for palliative care. One study included access to pain medications as  
252 an outcome.

253

## 254 **Risk of Bias**

255 Almost half of the 31 studies (45%, n=14) had a medium risk of bias, while 12  
256 studies had a low risk of bias (39%, n=12). Finally, 5 papers were marked as having  
257 a high risk of bias. A summary of the assessment of risk of bias, was created with  
258 RobVis tool. (38) (Figure 2)

| Study            | Risk of bias domains |    |    |    |    | Overall |
|------------------|----------------------|----|----|----|----|---------|
|                  | D1                   | D2 | D3 | D4 | D5 |         |
| Afshar           | +                    | +  | -  | +  | +  | -       |
| Chang            | +                    | +  | -  | +  | -  | -       |
| Cuypers a        | +                    | +  | -  | -  | +  | -       |
| Cuypers b        | +                    | +  | -  | -  | +  | -       |
| Fond             | -                    | +  | -  | +  | +  | -       |
| Fried            | +                    | +  | +  | +  | +  | +       |
| Gross            | -                    | -  | -  | -  | -  | X       |
| Gupta            | +                    | +  | -  | +  | -  | -       |
| Iezzoni          | +                    | +  | -  | +  | +  | +       |
| Iglay            | +                    | +  | -  | +  | -  | -       |
| Ishikawa         | +                    | +  | +  | +  | -  | +       |
| Kaneshiro        | +                    | -  | -  | +  | -  | X       |
| Kashyap          | +                    | +  | +  | +  | +  | +       |
| Kim              | +                    | +  | +  | +  | +  | +       |
| Kwon a           | +                    | +  | +  | +  | +  | +       |
| Kwon b           | +                    | +  | +  | +  | +  | +       |
| Lawrence         | +                    | +  | -  | -  | +  | -       |
| Libert           | -                    | +  | +  | +  | -  | -       |
| Mahabaleshwarkar | +                    | +  | -  | +  | -  | -       |
| Martin           | +                    | +  | +  | -  | -  | -       |
| Park             | +                    | +  | -  | +  | +  | +       |
| Robb             | +                    | -  | -  | +  | -  | X       |
| Sathianaten      | -                    | +  | -  | +  | +  | -       |
| Sato             | -                    | -  | -  | -  | -  | X       |
| Segerlantz a     | +                    | +  | +  | +  | +  | +       |
| Segerlantz b     | +                    | +  | +  | +  | +  | +       |
| Shin a           | +                    | +  | +  | +  | +  | +       |
| Shin b           | +                    | +  | +  | +  | +  | +       |
| Shinden          | -                    | -  | -  | +  | -  | X       |
| Tran             | +                    | +  | -  | +  | -  | -       |
| Viprey           | -                    | +  | +  | -  | +  | -       |

259

260 **Figure 2. Risk of Bias** (in alphabetic order)

261

262 D1=Selection bias D2=Information bias D3=Misclassification bias; D4=Confounding D5=Missing data;

263 Green=Low Yellow=Medium Red=High

Made with Robvis tool. (38)



## 264 **Outcome Results**

265 Outcomes are summarized in Table 2. Nineteen studies that included a measure of  
266 survival or mortality all showed, invariably, a direction of effect towards worse  
267 outcomes for PwD; this was often worsened by the degree of severity of  
268 disability.(19,22,41,54-55,62) Only one study found no difference in overall survival or  
269 disease-free survival between patients with and without disabilities. (49) Among  
270 psychosocial disabilities, schizophrenia had generally the worst prognosis.  
271 (41,47,51,66,70) In studies that examined survival in cancer patients with all types of  
272 disability, there seemed to be far worse outcomes for those with severe disabilities  
273 and with intellectual impairment. In one study results showed that patients with  
274 schizophrenia had a cancer specific mortality rate 50% higher than patients without  
275 disabilities. (50) In another study about bladder cancer, the risk of cancer specific  
276 death was 35% higher for patients with severe mental illness compared to people  
277 without disabilities. (69)

278 In a large study about gastric cancer patients in South Korea, PwD were more likely  
279 not to  
280 receive proper staging tests to establish an appropriate treatment plan. Observing  
281 subgroups by disability type, the fact of not receiving treatment was more common  
282 for people with communication impairment (36.9%  
283 in severe and 31.4% in mild communication disability); the authors concluded that  
284 disability itself should not be a  
285 contraindication for receiving cancer treatment. (16) Another study about patients  
286 with leukaemia described how the treatment rate was lowest in those with major  
287 internal organ and communication disabilities; while for patients with major internal

288 organ disabilities it is understandable to have a low treatment rate due to vital  
289 functions often lacking functional reserve, communication disabilities are not directly  
290 related  
291 to vital functions and the decision not to treat was hence not based solely on medical  
292 factors. (67)

293

294

295

296

297

298

299

300

301

302

303

304

305

Table 2, Outcomes of studies and type of disability

| AUTHOR      | TYPE OF DISABILITY                        | PRIMARY OUTCOME                           | MEASURE IN PWD  | MEASURE IN PEOPLE WITHOUT DISABILITIES                | EFFECT MEASURE  | SECONDARY OUTCOME                    | MEASURE IN PWD            | MEASURE IN PEOPLE WITHOUT DISABILITIES | EFFECT MEASURE   | TREND FOR PWD                                       |
|-------------|---|---|---|---|---|--------------------------------------|---------------------------|--|--|---|
| Afshar(53)  | Intellectual (learning disability)        | 10-yr survival rate                       | 77.6% (95% CI = 72.2–83.3%)                           | 89.9% (95% CI = 89.4–90.3%)                           | 10-yr survival relative rate: 12.3% lower for PwD   | 5-yr survival rate                   | 84% (95% CI = 79.9–88.4%) | 92.2% (95% CI = 91.8–92.5%)            | 5-yr survival relative rate: 8.2% lower for PwD                                    | WORSE   |
| Chang(51)   | Psychosocial (mental illness)             | Access to state-of-the-art treatment      | 68% received surgery                                  | 82% received surgery                                  | Adjusted OR of receiving surgery for PwD = 0.47 (95% CI = 0.34–0.65; P=0.001)   | 5-yr survival rate                   | 50.50%                    | 68.10%                                 | Adjusted relative risk of death 1.58 higher for PwD (95% CI = 1.30–1.93; P,0.001). | WORSE   |
| Cuypers(56) | Intellectual                              | Cancer-specific mortality                 | not mentioned   | not mentioned   | SMR= 1.48; (95% CI = 1.42-1.54) for PwD   | n/a                                  | n/a                       | n/a                                    | n/a  | WORSE   |
| Cuypers(70) | Intellectual                              | Insurance claims for cancer hospital care | IR = 28.9 per 1000 person/year                        | IR = 45.3 per 1000 person/year                        | IRR = 0.64 (95% CI = 0.62-0.66) in PwD  | n/a                                  | n/a                       | n/a                                    | n/a  | WORSE   |
| Fond (40)   | Psychosocial (Severe psychiatric disease) | End-of-life treatment access              | Incidence of palliative in month before death = 81.3% | Incidence of palliative in month before death = 75.2% | more trips to palliative care in last month of life (aOR 1.32, 95%CI [1.15–1.51], p<0.001) in last month of life in PwD | Overall survival time (days)         | 886                       | 918                                    | p value = 0.21   | NULL for mortality, WORSE for end-of-life treatment |
| Fried(41)   | Psychosocial (Severe mental illness)      | Cancer-specific mortality 5-yr            | not mentioned   | not mentioned   | HR = 1.39 (95% CI: 1.04-1.84) for PwD   | Access to state-of-the-art treatment | 12.8% received surgery    | 21.8% received surgery                 | OR = 0.66 (95% CI: 0.49-0.89) for PwD of receiving surgery                         | WORSE   |

|             |                               |                           |  |  |   |                                      |                        |                        |  |       |
|-------------|-------------------------------|---------------------------|--|--|---|--------------------------------------|------------------------|------------------------|--|-------|
| Gross(63)   | Any                           | Screening results         | not mentioned                                  | not mentioned                                  | PwD less often diagnosed for cancer through a mammography screening (OR for patients with physical impairment = 0.70; $p < 0.05$ ; OR for Sensory Impairment = 0.58; $p < 0.05$ ) than patients without disability. | Invasiveness of treatment            | not mentioned          | not mentioned          | PwD less likely to receive breast conserving treatment (OR 0.58; $p < 0.05$ ) and more likely to have a mastectomy without reconstruction (OR = 1.96; $p < 0.05$ ) than those without disabilities | WORSE |
| Gupta(71)   | Cognitive (Dementia)          | Stage diagnosis at        | 8.4% diagnosed on autopsy or death certificate | 1.9% diagnosed on autopsy or death certificate | aOR = 2.31 (95% CI 1.79–3.00) for PwD to have colon cancer reported only after death (i.e., from autopsy or death certificate)  | Access to state-of-the-art treatment | not mentioned          | not mentioned          | aOR =0.43 (95% CI 0.33–0.70) for PwD to receive surgery; aOR =0.21 (95% CI 0.13–0.36) for PwD to receive adjuvant chemo  | WORSE |
| lezzoni(62) | Any                           | Cancer-specific mortality | not mentioned                                  | not mentioned                                  | HR=1.37 (95% CI, 1.24 –1.51) of cancer specific mortality for PwD   | Access to state-of-the-art treatment | 68.5% received surgery | 82.2% received surgery | aRR 0.84 (95% CI 0.79-0.89) for PwD to receive surgery   | WORSE |
| Iglay(43)   | Psychosocial (Mental illness) | Treatment delay           | 8.60%  | 8.70%  | aRR 1.36 (95% CI 1.06, 1.74) for PwD subgroup with severe mental illness of initial treatment delay at 60 days relative to controls   | Diagnosis delay                      | 34.90%                 | 34.80%                 | aRR 1.11 (95% CI 1.00, 1.23) for PwD subgroup with comorbid anxiety and depression relative to controls  | WORSE |

|               |                               |                                      |   |   |   |  |   |                               |   |       |
|---------------|-------------------------------|--------------------------------------|---|---|---|--|---|-------------------------------|---|-------|
| Ishikawa(42)  | Psychosocial (Schizophrenia)  | Overall in-hospital mortality        | 4.20%   | 1.80%   | OR = 1.35; (95% CI 1.04–1.75, P=0.026) for pwd  | Stage at diagnosis and access to state-of-the-art treatment    | 33.9% stage IV; 56.5% surgery                         | 18.1% stage IV; 70.2% surgery | RR 1.86 (95% CI 1.72–2.00; P<0.001) of higher stage at diagnosis and OR = 0.77 (95% CI 0.69–0.85, P=0.001) for access to surgical or endoscopic treatment for PwD | WORSE |
| Kaneshiro(44) | Psychosocial (Schizophrenia)  | Incidence of invasive surgery        | 84.3% mastectomy                                | 63.2% mastectomy                                | (P = 0.002)   | Access to state-of-the-art treatment                           | 56% received radiotherapy                             | 75% received radiotherapy     | (P = 0.078).  | WORSE |
| Kashyap(45)   | Psychosocial (Mental illness) | End of life Emergency Department use | 15.6% with access to ED in last 30 days of life | 13.3% with access to ED in last 30 days of life | p < 0.01  | Impact of outpatient mental health treatment in mental illness | not mentioned   | not mentioned                 | aOR 0.82 (95% confidence interval 0.78–0.87) for mental health patients on outpatient mental health treatment to have multiple end-of-life ED visits              | WORSE |
| Kim(22)       | Any                           | Mortality                            | 125.2 per 1000                                  | 104.3 per 1000                                  | aHR=1.18 (95% CI: 1.14–1.21) for PWD and aHR = 1.62 (95% CI: 1.56–1.69) for severe disability group | Mortality in patients who received surgery                     | not mentioned   | not mentioned                 | aHR 1.21 (95% CI: 1.16–1.27), even higher in severe disability group (aHR 1.69, 95% CI: 1.57–1.81),   | WORSE |
| Kwon(19)      | Any                           | Median overall survival              | 36.8 months                                     | 51.2 months                                     | p < 0.001   | Access to state-of-the-art treatment                           | 37.5% received transplant                             | 43.7% received transplant     | p=0.072   | WORSE |
| Kwon(68)      | Any                           | Median overall survival              | 10.8 months                                     | 17.1 months                                     | p=0.02  | Access to state-of-the-art treatment                           | chemo 71.2% vs 77.1%, P = .0031, and transplant 17.5% | chemo 77.1%; transplant 26.9% | p = 0.0031 and p=0.002  | WORSE |

|                   |                                      |   |                  |               |   |                          |               |               |  |       |
|-------------------|--------------------------------------|---|------------------|---------------|---|--------------------------|---------------|---------------|--|-------|
| Lawrence(67)      | Psychosocial (Severe mental illness) | All-cause and cancer-specific mortality | not mentioned    | not mentioned | all-cause mortality HR=1.36; (95% CI 1.18, 1.57) and cancer-specific mortality HR=1.21 (95% CI 1.03, 1.44) for women with SMI compared to controls                      | 10-year overall survival | 73.10%        | 78.30%        | not mentioned  | WORSE |
| Libert(61)        | Cognitive                            | Overall mortality                       | 12.3% at 2 years | 2% at 2 years | HR = 6.13 (95% CI = 2.07–18.09; p = 0.001) for people with cognitive impairment; HR = 3.06; (95% CI = 1.31–7.11, p=0.009) for people with loss of instrumental autonomy | n/a                      | n/a           | n/a           | n/a  | WORSE |
| Mahabaleshwar(47) | Psychosocial (mental illness)        | Access to state-of-the-art treatment    | not mentioned    | not mentioned | aOR= 0.79 (95% CI= 0.65–0.97) of receiving guideline-consistent breast cancer treatment for PwD   | Healthcare utilization   | not mentioned | not mentioned | aIRR= 0.92 (95% CI = 0.89–0.94) for breast-cancer related outpatient visits; aIRR = 0.84 (95% CI = 0.71– 0.99) for breast-cancer related ER visits for PwD | WORSE |

|                  |                               |  |                                |   |   |   |   |  |  |       |
|------------------|-------------------------------|--|--------------------------------|---|---|---|---|--|--|-------|
| Martin(54)       | Cognitive                     | Overall mortality  | not mentioned                  | not mentioned                               | HR 1.39 (95% CI =1.09, 1.78, p>0.01) for PwD  | Access to state-of-the-art treatment      | 22.3% with mild, 35.6% with moderate and 51.8% with severe cognitive impairment received primary endocrine therapy (NOT state of the art) | 12.4% women with normal cognition received PET | p <0.001   | WORSE |
| Park(66)         | Any                           | Long-term all-cause mortality of 5-year cancer survivors | not mentioned                  | not mentioned                               | Male PwD HR = 1.48 (95% CI 1.33–1.66) and female PwD HR= 1.53 (95% CI, 1.28–1.83) compared with controls  | Short-term (<5 years) all-cause mortality | not mentioned   | not mentioned                                  | male with impaired communication HR= 1.24 (95% CI, 1.07–1.44), female with internal organ disability HR, 2.20 (95% CI, 1.42–3.42)  | WORSE |
| Robb(57)         | Cognitive                     | Median overall survival                                  | 23.0 months (0.2–140.7 months) | 72.6 months for controls (0.9–135.5 months) | p < 0.001   | n/a                                       | n/a   | n/a  | n/a  | WORSE |
| Sathianathen(69) | Psychosocial (Mental illness) | Access to state-of-the-art treatment                     | not mentioned                  | not mentioned                               | OR 0.55 (95% CI 0.37–0.81) for patients with severe mental illness and OR 0.71 (95%CI 0.58–0.88) for those with depression of receiving curative treatment. | Cancer-specific mortality                 | not mentioned   | not mentioned                                  | severe mental illness patients had HR 1.35 (95% CI1.14–1.61) in both the NMIBC (HR 1.48, 95% CI 1.15–1.92) and MIBC (HR1.37, 95% CI 1.10–1.72) subgroups, compared with controls | WORSE |
| Sato(64)         | Any                           | Access to state-of-the-art treatment                     | not mentioned                  | not mentioned                               | difference not significant  | n/a                                       | n/a   | n/a  | n/a  | NULL  |

|                |              |                                      |   |  |  |   |   |   |  |       |
|----------------|--------------|--------------------------------------|---|--|--|---|---|---|--|-------|
| Segerlantz(59) | Intellectual | Pain control prescription            | 36%   | 60%  | RR 0.61 (95% CI 0.54-0.69) for PwD to have prescription of COX inhibitors, RR 0.63 (95% CI 0.53-0.73) for weak opioids   | Prescription of other drugs                     | 36% on antidepressants; 47% on anxiolytics  | 17% on antidepressants; 16% on anxiolytics  | RR 2.09 (95% CI 1.74–2.51) for PwD to be prescribed antidepressants; RR 2.84 (2.39–3.38) for PwD to be prescribed anxiolytics  | WORSE |
| Segerlantz(58) | Intellectual | Healthcare utilization               | 1.5 visits per person in final year of life | 1.75 visits per person in final year of life | RR 0.90 (95% CI 0.87–0.93) for PwD to be less likely than controls to have >1 visit in specialist inpatient care during last year of life;                                   | Quality of end-of-life care                     | 31% accessed advanced hospital care         | 55% accessed advanced hospital care         | RR 0.57 (95%CI 0.51–0.64) for PwD to have access to advanced hospital care   | WORSE |
| Shin(68)       | Any          | Overall mortality                    | 531.2 per 1000                              | 463.1 per 1000                               | aHR 1.08, (95% CI: 1.06–1.11) for PwD, and subgroup with severe disability HR =1.20 (95% CI: 1.16–1.24)  | Access to state-of-the-art treatment            | 19.8% surgery; 42.3% chemo; 26.4% radiation | 21.9% surgery; 46.1% chemo; 27.6% radiation | aOR Surgery=0.82, (95% CI 0.77–0.86), aOR chemo =0.80, (95% CI: 0.77–0.84), aOR radiotherapy =0.92 (95% CI: 0.88–0.96) for PwD   | WORSE |
| Shin(65)       | Any          | Access to state-of-the-art treatment | Surgery 33.1% ; ADT 57.9%                   | Surgery 38.6%; ADT 55%                       | Surgery aOR=0.79, (95% CI 0.74-0.84); ADT aOR =1.10 (95% CI1.04-1.16) for PwD. For severe disability, surgery aOR=0.60 (95% CI, 0.54-0.67), ADT aOR=1.29 (95% CI, 1.18-1.42) | Overall mortality and cancer-specific mortality | 57.3 per 1000; 26.7 per 1000                | 43.7 per 1000; 21.7 per 1000                | Overall mortality aHR, 1.20 (95% CI, 1.15-1.25) for PwD; with severe disability aHR 1.47 (95% CI 1.37-1.57). Cancer-specific mortality aHR 1.11 for pwd (1.04-1.18), but no difference | WORSE |



|             |                               |  |  |  |   |                             |  |  |   |   |
|-------------|-------------------------------|--|--|--|---|-----------------------------|--|--|---|---|
|             |                               |  |  |  |   |                             |  |  | when PwD had same access to surgery.  |   |
| Shinden(49) | Psychosocial (Mental illness) | Access to state-of-the-art treatment       | total mastectomy 78%, postoperative adjuvant chemo 0%, radiation 2%          | total mastectomy: 59%; postoperative adjuvant chemo 19%; radiation 18%       | p <0.05 for all the mentioned outcomes  | Overall survival            | not mentioned  | not mentioned  | no difference   | NULL for mortality, WORSE for treatment |
| Tran(50)    | Psychosocial (Schizophrenia)  | Overall mortality and All-cancer-mortality | not mentioned  | not mentioned  | 4-fold higher all-cause mortality for schizophrenia. Cancer SMR = 1.5 (95% CI: 1.2-1.9).  | Mortality by cancer type    | not mentioned  | not mentioned  | Male PwD and lung SMR = 2.2 (95% CI, 1.6-3.3); female PwD and breast SMR = 2.8 (95% CI, 1.6-4.9) compared to controls   | WORSE                                   |
| Viprey(46)  | Psychosocial (Schizophrenia)  | Access to state-of-the-art treatment       | early palliative care: 77%; end-of-life chemo: 10%; end of life surgery: 17% | early palliative care: 72%; end-of-life chemo: 15%; end of life surgery: 20% | aOR for early palliative care= 1.27 (95% CI=1.03;1.56; p=0.04) , aOR for end-of-life chemo=0.53 (0.41-0.70, p<0.0001), aOR end-of-life surgery =0.73 (0.59;0.90, p<0.01) for PwD. | Quality of end-of-life care | Hospitalization in acute care unit the month before death 33%; median length of last hospital stay 13 days; deaths in the ICU/ED 10% | Hospitalization in acute care unit the month before death 24%; median length of last hospital stay 10 days; deaths in the ICU/ED 11% | aOR for hospitalization in acute care unit the month before death = 1.41 (95% CI=1.18;1.67; p<0.001); longer length of last hospital stay (Beta=1.22, SD=0.05; p<0.0001); aOR for deaths in the ICU/ED = 0.74 | WORSE                                   |

|  |  |  |  |  |  |  |  |  |   |  |
|--|--|--|--|--|--|--|--|--|---|--|
|  |  |  |  |  |  |  |  |  | (95% CI = 0.56;0.97; p = 0.04) for PwD. |  |
|--|--|--|--|--|--|--|--|--|---|--|

306

307 LEGEND OF ABBREVIATIONS for Table2:

308 yr = year; CI = Confidence Interval; OR = Odds Ratio; SMR = Standardized Mortality Ratio; IR = Incidence Rate; IRR = Incidence Rate Ratio; aOR = adjusted Odds Ratio; HR = Hazard Ratio; PWD  
309 = PwD; aRR = adjusted Risk Ratio; ED = Emergency Department; aHR = adjusted Hazard Ratio; SMI = Severe Mental Illness; aIRR = adjusted Incidence Rate Ratio; PET = Primary Endocrine  
310 Therapy; NMIBC = non-muscle invasive bladder cancer; MIBC = muscle invasive bladder cancer; COX = cyclooxygenase; RR = Relative Risk; ADT = Androgen Deprivation Therapy; ICU =  
311 Intensive Care Unit



313 There were 16 studies showing lower chance in receiving state-of-the-art cancer  
314 treatment for PwD, and only one study with high risk of bias showed no difference,  
315 but data about gender and degree of disability was missing. (64)

316 The studies showed that cancer treatment was suboptimal for PwD in many ways,  
317 and in particular that they had a lower likelihood of undergoing guideline-consistent  
318 surgery when indicated. (22,23,48,52,61,63,66,70) Several studies showed that when  
319 PwD were correctly treated with guideline-consistent surgery, their mortality was  
320 similar or only slightly higher than controls. (62,66)PwD were also more likely to face  
321 diagnosis and treatment delays - but not when access to screening was optimal,  
322 underlining the importance of good screening access. (22,42,43,56,57,71) PwD  
323 were also less likely to receive curative-intent transplants for blood cancers, and  
324 more likely to receive inappropriate radical mastectomy instead of guideline-  
325 consistent minimally invasive procedures for breast cancer (19,44,63,67)

326 As for end-of-life and palliative care, 4 studies showed a direction of effect towards  
327 worse outcomes for PwD (40,45,46,58). One of this studies, with low risk of bias,  
328 showed an association between receiving outpatient treatment from a mental health  
329 professional and having less end-of-life ED visits, suggesting the importance of  
330 access to mental health services to improve end-of-life care. (45) One study showed  
331 an association between disability and worse access to prescriptions for pain  
332 treatment during cancer care, a situation likely to severely compromise quality of life.  
333 (59) Finally, a study reported that patients over age 55 with intellectual disability were  
334 more likely than controls to have worse access to specialist care in the last year of  
335 life. (58)

336 Regarding other factors contributing to worse outcomes, one study showed an  
337 association between worse access to screening programs (for breast, colon and  
338 cervix cancers) and higher cancer specific mortality, underlining the inequality in  
339 screening practices. (56) Two other studies highlighted an association between  
340 barriers to screening and worse outcomes for gastric and breast cancer in PwD.  
341 (22,44) Two studies detected even worse disparities in access to state-of-the-art  
342 treatment or end-of-life care related to ethnicity and age, with young disabled non-  
343 white men having the worst outcomes. (45, 62) One study of people with intellectual  
344 disabilities with any type of cancer suggested worse underdiagnosis for older  
345 females, while another focusing on breast cancer detected an association between  
346 physical disability and inappropriate invasiveness of treatment. (55, 63) In a study of  
347 non-small cell lung cancer patients, those with respiratory or nervous system  
348 disabilities had the lowest chance of receiving guideline-appropriate surgery, while  
349 another paper on lung cancer recorded the worst access to treatment among people  
350 with communication or neurologic disabilities. (23, 62) A study about stomach cancer  
351 and patients with all kinds of disabilities also found an association between worse  
352 outcomes and severe intellectual impairment. (22)

353 Finally, three studies showed an association between worse outcomes of treatment  
354 access and poverty among people with cancer. (19, 46, 68)

355

## 356 **Discussion**

357 In our review, compared to people without disabilities, PwD were found to have  
358 worse survival, higher overall and cancer-specific mortality, loss of chance for

359 access to state-of-the-art care or curative-intent therapies, treatment delays,  
360 undertreatment or excessively invasive treatment, worse access to in-hospital  
361 services, less specialist healthcare utilization, more difficult access to pain  
362 medications and inadequate end-of-life quality of care. Only one eligible study found  
363 no difference in overall survival or disease-free survival between patients with and  
364 without disabilities; it was a small paper with a high risk of bias, with a cohort  
365 including only operable breast cancer in a small number of patients, and it still  
366 showed an association between disability and excessively invasive breast surgery  
367 without any clear cancer-related clinical reason. Furthermore, the incidence of  
368 disability in its retrospective cohort was inexplicably only half of the known national  
369 incidence, suggesting severe misclassification bias. (49)These finding suggest that  
370 differences in frequency of appropriate treatment appear to explain the higher  
371 cancer-specific mortality for this vulnerable population, with higher mortality likely  
372 due to loss of chance and unequal clinical care. Even if sometimes treatment  
373 decisions for PwD can be clinically complex, such as the above-mentioned case of  
374 cognitive impairment with legal consent or non-compliance issues, or when  
375 confronted with a disability-related shortened life expectancy or frailty for some  
376 syndromes, there is no plausible medical justification for such a wide disparity  
377 compared to patients without disabilities, and these results raise severe concerns  
378 about equality in cancer care.(25-26,70-74)

379 The results of this study are consistent with those of other recent literature reviews,  
380 showing that PwD experience inequities at several points throughout the cancer care  
381 pathway. (12,24,26,73-74) Screening disparities have been known and documented  
382 for years: they can vary by disability type, severity, healthcare offer and social or  
383 demographic situations, with some differences across countries, but globally there is

384 a largely similar trend of major barriers to screening for people with disability,  
385 showing a clear need to improve the inclusiveness of these early-diagnosis  
386 services.(12, 71-75)

387 Providing equitable cancer care has to start early in the cancer clinical pathway,  
388 because delays in receiving a diagnosis tend to lead to late access to treatment and  
389 worse outcomes.(70-74) A frequently observed issue is that new signs and  
390 symptoms tend to be attributed to often to the underlying disability, a clinical mistake  
391 called “diagnostic overshadowing”. (72-76) A recent scoping review about cancer  
392 outcomes in adults with intellectual and developmental disabilities has described  
393 disparities at every step of the way, from screening, to staging, to treatment and  
394 survival outcomes, recognizing how these experiences do not originate simply from a  
395 gap in early diagnosis, but from larger structural issues that ultimately hinders quality  
396 of the entire cancer care pathway. (74,77) Another review of cancer treatments for  
397 people with intellectual disabilities highlighted possible themes that might interfere  
398 with treatment, such as genetic syndrome frailty that might render certain drug  
399 treatments too dangerous, the issue of behavioral non-compliance in a subgroup of  
400 patients, and problems related to legal capacity and obtainment of informed consent.  
401 Still, these three factors should not represent an insurmountable barrier because  
402 with appropriate arrangements (e.g. pharmacology consults, procedural sedation,  
403 legal assistance) it should still be possible to offer guideline-consistent treatment to  
404 patients.(25-26) With physical disabilities clinical decisions can sometimes be  
405 objectively more difficult than in people without disabilities, because of concerns  
406 about baseline performance status or competing health risks due to invasive or toxic  
407 treatments that might result in further dramatic loss of function (e.g. possible loss of  
408 postoperative upper limb function after breast surgery in patients with previous spinal

409 cord injury and lower limb paralysis); this has been described as a compelling reason  
410 to move towards better cooperation between cancer care clinicians and disability  
411 specialists who have been in charge of the patient well before their oncology  
412 episode, and also as one of the fundamental facts that make shared decision making  
413 with patients (or sometimes their families or caregivers) of the utmost  
414 importance.(12)

415 This clear evidence of inequities emphasizes the very urgent need for better cancer  
416 care for PwD. Furthermore, disparity in healthcare for PwD is not unique to oncology,  
417 as research about the recent Covid-19 pandemic has clearly proven. (77-82) During  
418 the pandemic, PwD have died in disproportionate numbers – almost three times as  
419 much globally than people without disabilities - and have been excluded from the  
420 decision-making process, because their needs have been ignored; they have ended  
421 up facing an increasing amount of psychological distress, lack of social support,  
422 extreme isolation, food insecurity, disparities in health care access and even  
423 discrimination at work. In many cases, government response has compromised the  
424 human rights of disabled people, having exposed and magnified existing structural  
425 failings and inequalities.(80-85)

426 Recently, the second report of the Missing Billion Initiative has called for reimagining  
427 health systems with a vision of inclusive health informed by diverse perspectives of  
428 PwD, who are still facing worse health outcomes across SDG3 indicators  
429 (Sustainable Development Goal 3 by the WHO, i.e. ensure healthy lives and  
430 promote well-being for all at all ages), globally and with all sort of impairment  
431 types. (84) The first Missing Billion report had highlighted a substantial life  
432 expectancy gap of 10-20 years for PwD, with all-cause mortality rates

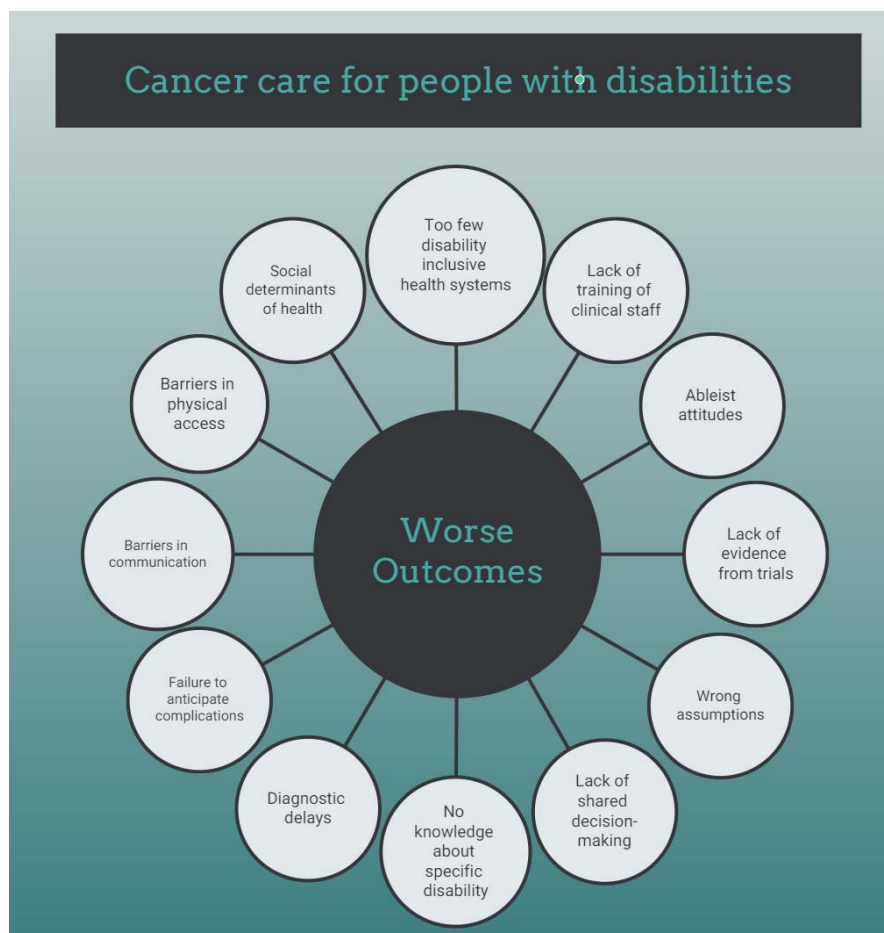


433 approximately twice as high as those of people without disabilities.(83) Closing this  
434 gap is now a priority, but it requires long-term investments to design from the start  
435 health systems that expect, accept and connect PwD, with sufficient earmarked  
436 funds, dedicated leadership and clear governance based on data and evidence  
437 disaggregated by disability. Ideally service delivery should aim at affordability,  
438 autonomy of patients, accessibility, specific workforce skillsets and availability of  
439 rehabilitation services. (82-86) The multiple barriers experienced by PwD during  
440 their cancer care (Figure 3) are hence a reflection of a broader process of  
441 discrimination and disadvantage, mirrored in structural failings of current healthcare  
442 systems, within networks of intersecting factors that ultimately influence cancer  
443 outcomes. (24, 82-87)

444

445 **Figure 3: Barriers experienced by PwD during cancer care**

446



447

448 Healthcare workers need to receive evidence-based and appropriate training about  
449 disabilities, directly involving PwD and using a monitoring system to measure cultural  
450 progress and outcome improvement. This could help foster a change to move away  
451 from the ableist attitudes that are too often still observed, contributing to wrong  
452 assumptions and subsequent mistakes of diagnostic overshadowing or failure to  
453 anticipate specific complications (12,75,86-88). In a very recent qualitative study from  
454 the USA, interviewed physicians, mostly middle-aged white males, felt inadequately  
455 reimbursed for accommodations required by the 1990 Americans with Disabilities  
456 Act; according to some of these doctors, these concerns simply led them to  
457 discharge patients with disabilities. (86) Many physicians openly spoke about the  
458 lack of accessibility in their clinics without any plans to improve it, and several

459 demonstrated a complete lack of disability knowledge about how to manage very  
460 basic issues – even stating that they were regularly sending patients to a zoo, cattle  
461 processing plant or supermarket to obtain a weight if a patient was in a wheelchair  
462 and unable to stand; several doctors admitted that they rarely spoke to these  
463 patients, regardless of the patients' ability to communicate, and that information was  
464 almost exclusively obtained from the caregiver. This confirms findings from previous  
465 qualitative research, that had described a lack of skills by healthcare workers to feel  
466 empathy for the embodied experience of living with a disability, with an obstinate  
467 resistance to adapting their habitual practice to these patients. (10)

468 The importance of inclusive clinical trials to close the evidence gap about what works  
469 to improve cancer care for PwD cannot be overemphasized (86-90). There is still too  
470 little evidence about how to treat cancer in the population with disabilities, which is  
471 very diverse and can have widely different therapeutic needs (hence existing  
472 services must be offered in a flexible, respectful, inclusive and accessible way to be  
473 relevant for this patient population). Thus it is of the utmost importance to include  
474 PwD in clinical trials in oncology - both for curative-intent interventions and for  
475 palliative treatments; yet, historically they have been left out of studies, due to many  
476 factors such as ableist prejudice, or multiple barriers such as accessibility of  
477 research facilities and access to transportation, or lack of caregivers' engagement.  
478 (87-92) Unfortunately, in clinical trials pre-existing conditions are often excluded,  
479 even if the conditions have little bearing on the treatment being tested or the  
480 outcome of the trial. Excluding disabled individuals from a study can result in a study  
481 population that does not even represent the general population, since disability often  
482 correlates with other inequalities (such as poverty and unemployment). The  
483 importance of targeting the recruitment of disabled individuals into clinical trials, as

484 well as considering the unique barriers and motivations of this population, needs to  
485 be highlighted. A person with a disability may have difficulty traveling to a trial site;  
486 moreover, healthcare organizations should consider their audiences' digital literacy  
487 and the accessibility of their communications. Funds should be allocated to improve  
488 healthcare communication, adapting multiple formats, using captions and alt-text or  
489 pictorial representations of concepts as appropriate for the specific context. In  
490 addition, disabled individuals appear to be underrepresented as investigators in  
491 scientific research.(89-93) Despite 19% of the UK's general population identifying as  
492 disabled, only 4% of academic, research, and teaching staff do. Even if 25% of  
493 American adults live with a disability, in 2020 only 4% of US STEM PhDs were  
494 awarded to people with impaired hearing or vision, and just 1% to people with a  
495 mobility limitation. More disability-confident schemes and unconscious bias training  
496 could at least partially mitigate hiring discrimination, creating an academic workforce  
497 that better reflects the community in which it is based.(90-94) Recent evidence-  
498 based recommendations to promote inclusion in clinical trials include improving  
499 culture and sensitivity of staff through continuous education, receiving ongoing  
500 feedback from a community advisory panel during studies and increasing staff  
501 diversity to make sure underprivileged groups are represented. (91-94)

502 Physicians and PwD should be able to collaborate along care pathways with shared-  
503 decision making, an approach based not only on clinical technical advice but on the  
504 life experience of patients, their caregivers and families, according to the principle of  
505 “Nothing About Us Without Us”.(12) In the clinical setting, barriers in physical access  
506 should be removed to avoid unacceptable delays in diagnosis and treatment.(10, 91-  
507 94) Barriers in communication should be eliminated at several levels, from  
508 overcoming communication obstacles (not only for the hearing or visually impaired

509 patients, but also with special-needs assistance for intellectual disability), to  
510 improving education of patients, clinicians and caregivers about cancer and the  
511 importance of screening, to training healthcare workers about the emotional and  
512 physical needs of PwD, enhancing cooperation with other specialists caring for them,  
513 in cross-functional teams, to anticipate and possibly reduce the impact of  
514 complications, with the goal of a patient-centred pathway. (93-94) Good  
515 communication is the foundation of achieving quality patient-centered care:  
516 assumptions about preferences can pose a risk like inaccurate information leading to  
517 medical errors and misdiagnoses. A recent qualitative study in the USA has shown  
518 that, in spite of healthcare workers trying their best, there are still many unsolved  
519 issues at this level and even many situations where physicians' preferences go  
520 against patients' wishes.(91-94)

521 The strengths of this study include having followed PRISMA and ICM50 guidelines  
522 for systematic reviews; furthermore, the search strategy was based on a list of  
523 proven disability-specific terms and applied to the five largest medical databases  
524 analysing a twenty-year span of publications. This work has several limitations:  
525 firstly, the search strategy, limited to five databases and to English language only,  
526 might not be fully comprehensive; we did not include studies published in non-  
527 English languages because of resource challenges with respect to costs, time, and  
528 expertise in non-English languages, but their inclusion would have likely increased  
529 generalizability and reduced the overall risk of bias. Furthermore all the eligible  
530 papers were from high-income countries, limiting the generalizability of the results,  
531 even if there is no reason why the situation should be very different in low and  
532 middle-income countries., Qualitative papers and grey literature were not included in  
533 the search strategy, hence the views and opinions of PwD about their cancer care

534 were not investigated. Study selection was performed by only one reviewer, which  
535 implies a lack of independent screening. We also did not perform tests to measure  
536 publication bias due to the high heterogeneity of the eligible studies; although  
537 methods exist for simultaneous assessment of heterogeneity and publication bias,  
538 and potential differential publication bias, they require very large meta-analysis to  
539 reliably disentangle their effects.(39) Moreover, only one reviewer evaluated papers  
540 for risk of bias. Finally, the findings were very diverse hence it was not possible to  
541 conduct a meta-analysis, and approximately 15% of the studies had a high risk of  
542 bias. Almost half (45%) of the eligible studies had a medium risk of bias, mostly due  
543 to possible misclassification bias for inclusion of PwD based on disability records  
544 (that have a tendency to miss mild cases) CIT or missing data like details about  
545 cancer treatment goals, behavioral factors or date of diagnosis. Approximately 15%  
546 of the studies had a high risk of bias due to factors such as having a very small  
547 sample size, a short follow-up, low data quality, a biased cohort or using a self-  
548 reporting survey. (44,49,57,63,64)There are still gaps in knowledge about quality of  
549 cancer care for people with disability that remain unanswered based on our findings,  
550 such as whether certain subgroups of disabilities or cancer types experience more  
551 significant disparities, or how other social determinants of health might come into  
552 play (as many PwD are caught in a cycle of poverty and deprivation); more data is  
553 needed on these topics to allow disaggregated analyses. Further research is also  
554 needed to evaluate the effectiveness of specific training of healthcare workers on  
555 quality of care for these patients.

556 In conclusion, PwD often experience severe disparities in cancer care compared to  
557 people without disabilities; physical and cultural barriers at different levels must be  
558 eliminated to ensure they receive equitable care. There is an urgent need for a

559 robust health policy effort by governments, reimagining health systems with a vision  
560 of inclusive health and a sustained commitment, building on decades of progress on  
561 disability rights and engaging the participation of PwD at all levels.

562

## 563 **Acknowledgments**

564 I.T. would like to thank Danae Rodriguez Gatta, for assistance with disability search  
565 terms, and Dr. Meena Cherian, for many fruitful discussions about health systems  
566 and development goals.

567

## 568 **References**

569

- 570 1. World Health Organisation. Cancer Fact Sheet [Internet]. 2022 [cited 2022 Apr 13].  
571 Available from: <https://www.who.int/news-room/fact-sheets/detail/cancer>
- 572 2. WHO, International Agency for Research on Cancer. Globocan 2020 - Incidence and  
573 mortality statistics (all cancers excl. non-melanoma skin cancer). 2020.
- 574 3. WHO. Cancer - Screening and early detection [Internet]. [cited 2022 Oct 30].  
575 Available from: [https://www.who.int/europe/news-room/fact-sheets/item/cancer-](https://www.who.int/europe/news-room/fact-sheets/item/cancer-screening-and-early-detection-of-cancer)  
576 [screening-and-early-detection-of-cancer](https://www.who.int/europe/news-room/fact-sheets/item/cancer-screening-and-early-detection-of-cancer)
- 577 4. Olusola P, Banerjee HN, Philley J V., Dasgupta S. Human Papilloma Virus-  
578 Associated Cervical Cancer and Health Disparities. *Cells*. 2019 Jun 21;8(6):622.

- 579 5. Manz CR, Odayar VS, Schrag D. Disparities in cancer prevalence, incidence, and  
580 mortality for incarcerated and formerly incarcerated patients: A scoping review.  
581 *Cancer Med.* 2021 Oct 1;10(20):7277–88.
- 582 6. Williams AD, Buckley M, Ciocca RM, Sabol JL, Larson SL, Carp NZ. Racial and  
583 socioeconomic disparities in breast cancer diagnosis and mortality in Pennsylvania.  
584 *Breast Cancer Res Treat.* 2022 Feb 1;192(1):191–200.
- 585 7. Lee RJ, Madan RA, Kim J, Posadas EM, Yu EY. Disparities in Cancer Care and the  
586 Asian American Population. *Oncologist.* 2021 Jun 1;26(6):453–60.
- 587 8. Davies A, Gurney J, Garvey G, Diaz A, Segelov E. Cancer care disparities among  
588 Australian and Aotearoa New Zealand Indigenous peoples. *Curr Opin Support Palliat*  
589 *Care.* 2021 Sep 1;15(3):162–8.
- 590 9. Ellis L, Canchola AJ, Spiegel D, Ladabaum U, Haile R, Gomez SL. Racial and Ethnic  
591 Disparities in Cancer Survival: The Contribution of Tumor, Sociodemographic,  
592 Institutional, and Neighborhood Characteristics. *J Clin Oncol.* 2018 Jan 1;36(1):25–  
593 33.
- 594 10. Sakellariou D, Anstey S, Gaze S, Girt E, Kelly D, Moore B, et al. Barriers to accessing  
595 cancer services for adults with physical disabilities in England and Wales: an  
596 interview-based study. *BMJ Open.* 2019;9(6):e027555.
- 597 11. WHO. Global report on health equity for persons with disabilities [Internet]. World  
598 Health Organization., editor. WHO; 2021 [cited 2023 Feb 19]. Available from:  
599 <https://www.who.int/publications/i/item/9789240063600>
- 600 12. Iezzoni LI. Cancer detection, diagnosis, and treatment for adults with disabilities.  
601 *Lancet Oncol.* 2022 Apr 1;23(4):e164–73.
- 602 13. Steele CB, Townsend JS, Courtney-Long EA, Young M. Prevalence of Cancer  
603 Screening Among Adults With Disabilities, United States, 2013. *Prev Chronic Dis.*  
604 2017 Jan;14:E09.
- 605 14. Horner-Johnson W, Dobbertin K, Iezzoni LI. Disparities in receipt of breast and  
606 cervical cancer screening for rural women age 18 to 64 with disabilities. *Womens*  
607 *Health Issues.* 2015;25(3):246–53.



- 608 15. Abrams MT, Myers CS, Feldman SM, Boddie-Willis C, Park J, McMahon RP, et al.  
609 Cervical cancer screening and acute care visits among Medicaid enrollees with  
610 mental and substance use disorders. *Psychiatr Serv*. 2012 Aug 1;63(8):815–22.
- 611 16. Kim YJ, Shin DW, Kim HW, Jung JH, Han K, Cho IY, et al. Disparities in gastric  
612 cancer screening among people with disabilities: a national registry-linkage study in  
613 South Korea. *Gastric Cancer*. 2020 May 1;23(3):497–509.
- 614 17. Horner-Johnson W, Dobbertin K, Andresen EM, Iezzoni LI. Breast and cervical cancer  
615 screening disparities associated with disability severity. *Women's Health Issues*. 2014  
616 Jan;24(1).
- 617 18. Courtney-Long E, Armour B, Frammartino B, Miller J. Factors associated with self-  
618 reported mammography use for women with and women without a disability. *J*  
619 *Womens Health (Larchmt)*. 2011 Sep 1;20(9):1279–86.
- 620 19. Kwon J, Kim SY, Yeob KE, Han HS, Lee KH, Shin DW, et al. The Effect of Disability  
621 on the Diagnosis and Treatment of Multiple Myeloma in Korea: A National Cohort  
622 Study. *Cancer Res Treat*. 2020 Jan;52(1):1–9.
- 623 20. Bergamo C, Sigel K, Mhango G, Kale M, Wisnivesky JP. Inequalities in lung cancer  
624 care of elderly patients with schizophrenia: an observational cohort study. *Psychosom*  
625 *Med*. 2014;76(3):215–20.
- 626 21. Huang HK, Wang YW, Hsieh JG, Hsieh CJ. Disparity of end-of-life care in cancer  
627 patients with and without schizophrenia: A nationwide population-based cohort study.  
628 *Schizophr Res*. 2018;195:434–40.
- 629 22. Kim HW, Shin DW, Yeob KE, Cho IY, Kim SY, Park SM, et al. Disparities in the  
630 diagnosis and treatment of gastric cancer in relation to disabilities. *Clin Transl*  
631 *Gastroenterol*. 2020 Oct 1;11(10):1–12.
- 632 23. Shin DW, Cho JH, Noh JM, Han H, Han K, Park SH, et al. Disparities in the Diagnosis  
633 and Treatment of Lung Cancer among People with Disabilities. *J Thorac Oncol*. 2019  
634 Feb;14(2):163–75.
- 635 24. M S, A A, H OK, J H, S S, C K, et al. A scoping review documenting cancer outcomes  
636 and inequities for adults living with intellectual and/or developmental disabilities. *Eur J*  
637 *Oncol Nurs*. 2021 Oct;54:102011.

- 638 25. Andiwijaya FR, Davey C, Bessame K, Ndong A, Kuper H. Disability and Participation  
639 in Breast and Cervical Cancer Screening: A Systematic Review and Meta-Analysis.  
640 Int J Environ Res Public Health [Internet]. 2022 Aug 1 [cited 2023 Jul 24];19(15).  
641 Available from: [/pmc/articles/PMC9368105/](https://pubmed.ncbi.nlm.nih.gov/39368105/)
- 642 26. Liao CM, Huang WH, Kung PT, Chiu LT, Tsai WC. Comparison of colorectal cancer  
643 screening between people with and without disability: a nationwide matched cohort  
644 study. [cited 2023 Jul 24]; Available from: <https://doi.org/10.1186/s12889-021-11105-z>
- 645 27. Page MJ, McKenzie JE, Bossuyt PM, Boutron I, Hoffmann TC, Mulrow CD, et al. The  
646 PRISMA 2020 statement: an updated guideline for reporting systematic reviews. BMJ  
647 [Internet]. 2021 Mar 29 [cited 2023 Feb 19];372. Available from:  
648 <https://www.bmj.com/content/372/bmj.n71>
- 649 28. Tosetti I, Kuper H.  
650 [https://www.crd.york.ac.uk/prospero/display\\_record.php?RecordID=281506](https://www.crd.york.ac.uk/prospero/display_record.php?RecordID=281506). 2022.
- 651 29. International Classification of Functioning, Disability and Health (ICF) [Internet]. [cited  
652 2022 Oct 20]. Available from:  
653 [https://www.who.int/standards/classifications/international-classification-of-](https://www.who.int/standards/classifications/international-classification-of-functioning-disability-and-health)  
654 [functioning-disability-and-health](https://www.who.int/standards/classifications/international-classification-of-functioning-disability-and-health)
- 655 30. Iezzoni LI, Rao SR, Agaronnik ND, El-Jawahri A. Associations between Disability and  
656 Breast or Cervical Cancers, Accounting for Screening Disparities. Med Care. 2021  
657 Feb 1;59(2):139–47.
- 658 31. Andresen EM, Peterson-Besse JJ, Krahn GL, Walsh ES, Horner-Johnson W, Iezzoni  
659 LI. Pap, mammography, and clinical breast examination screening among women  
660 with disabilities: A systematic review. Women's Health Issues. 2013 Jul;23(4).
- 661 32. A systematic review of the barriers and facilitators influencing the cancer screening  
662 behaviour among people with intellectual disabilities - ScienceDirect [Internet]. [cited  
663 2023 Feb 19]. Available from:  
664 <https://www.sciencedirect.com/science/article/abs/pii/S1877782121002010>
- 665 33. Connolly J. Barriers to access to cancer screening for people with learning disabilities:  
666 a review. The Lancet. 2013 Nov;382:S29.

- 667 34. Andiwijaya FR, Davey C, Bessame K, Ndong A, Kuper H. Disability and Participation  
668 in Breast and Cervical Cancer Screening: A Systematic Review and Meta-Analysis.  
669 Int J Environ Res Public Health. 2022 Aug 1;19(15).
- 670 35. Chan DNS, Law BMH, Au DWH, So WKW, Fan N. A systematic review of the barriers  
671 and facilitators influencing the cancer screening behaviour among people with  
672 intellectual disabilities. Cancer Epidemiol. 2022 Feb 1;76:102084.
- 673 36. Steele CB, Townsend JS, Courtney-Long EA, Young M. Prevalence of Cancer  
674 Screening Among Adults With Disabilities, United States, 2013. Prev Chronic Dis.  
675 2019;14.
- 676 37. Healthcare Improvement Scotland. SIGN 50. 2011;
- 677 38. McGuinness LA, Higgins JPT. Risk-of-bias VISualization (robvis): An R package and  
678 Shiny web app for visualizing risk-of-bias assessments. Res Synth Methods. 2021  
679 Jan 1;12(1):55–61.
- 680 39. Peters JL, Sutton AJ, Jones DR, Abrams KR, Rushton L, Moreno SG. Assessing  
681 publication bias in meta-analyses in the presence of between-study. Vol. 173, Source:  
682 Journal of the Royal Statistical Society. Series A (Statistics in Society). 2010.
- 683 40. Baumstarck K, Viprey M, Auquier P, Fond G, Pauly V, Duba A, et al. End of life breast  
684 cancer care in women with severe mental illnesses. Sci Rep [Internet].  
685 2021;11(1):10167. Available from:  
686 <http://ovidsp.ovid.com/ovidweb.cgi?T=JS&PAGE=reference&D=emexa&NEWS=N&AN=635041696>  
687 N=635041696
- 688 41. D.A. F, H. SN, D. G, S. Z, W. H, S.H. G, et al. Impact of serious mental illness on the  
689 treatment and mortality of older patients with locoregional high-grade (nonmetastatic)  
690 prostate cancer: retrospective cohort analysis of 49 985 SEER-Medicare patients  
691 diagnosed between 2006 and 2013. Cancer Med [Internet]. 2019;8(5):2612–22.  
692 Available from: [http://onlinelibrary.wiley.com/journal/10.1002/\(ISSN\)2045-7634](http://onlinelibrary.wiley.com/journal/10.1002/(ISSN)2045-7634)
- 693 42. H. I, H. Y, H. M, K. F. Differences in cancer stage, treatment and in-hospital mortality  
694 between patients with and without schizophrenia: Retrospective matched-pair cohort  
695 study. British Journal of Psychiatry [Internet]. 2016;208(3):239–44. Available from:  
696 <http://bjp.rcpsych.org/content/208/3/239.full-text.pdf+html>

- 697 43. Iglay K, Santorelli ML, Rhoads GG, Demissie K, Hirshfield KM, Williams JM, et al.  
698 Diagnosis and treatment delays among elderly breast cancer patients with pre-  
699 existing mental illness. *Breast Cancer Res Treat* [Internet]. 2017;166(1):267–75.  
700 Available from: <http://www.wkap.nl/journalhome.htm/0167-6806>
- 701 44. K. K, M. K, M. T, M. Y, Y. S, M. K, et al. Current Status and Problems of Breast  
702 Cancer Treatment with Schizophrenia. *Clin Breast Cancer* [Internet].  
703 2022;22(4):e399–406. Available from: [http://www.journals.elsevier.com/clinical-breast-](http://www.journals.elsevier.com/clinical-breast-cancer)  
704 [cancer](http://www.journals.elsevier.com/clinical-breast-cancer)
- 705 45. M. K, J.P. H, D.T. C, Pollom E.L. AO - Kashyap Daniel T.; ORCID:  
706 <http://orcid.org/0000-0003-2760-1554> AO - Pollom, Erqi L.; ORCID:  
707 <http://orcid.org/0000-0003-2908-6293> AO - Harris, Jeremy P.; ORCID:  
708 <http://orcid.org/0000-0001-7603-0263> MO <http://orcid.org/0000-0002-7336-1056>  
709 AOC. Impact of mental illness on end-of-life emergency department use in elderly  
710 patients with gastrointestinal malignancies. *Cancer Med* [Internet]. 2021;10(6):2035–  
711 44. Available from: [http://onlinelibrary.wiley.com/journal/10.1002/\(ISSN\)2045-7634](http://onlinelibrary.wiley.com/journal/10.1002/(ISSN)2045-7634)
- 712 46. M. V, V. P, S. S, K. B, V. O, P.-M. L, et al. Palliative and high-intensity end-of-life care  
713 in schizophrenia patients with lung cancer: results from a French national population-  
714 based study. *Eur Arch Psychiatry Clin Neurosci* [Internet]. 2021;271(8):1571–8.  
715 Available from: <https://www.springer.com/journal/406>
- 716 47. R. M, R. K, B. B, D. WS, Y. Y. Impact of preexisting mental illnesses on receipt of  
717 guideline-consistent breast cancer treatment and health care utilization. *Popul Health*  
718 *Manag* [Internet]. 2015;18(6):449–58. Available from:  
719 <http://www.liebertonline.com/loi/pop>
- 720 48. N.J. S, Y. F, S.L. J, I. K, C.J. W, S. V, et al. Disparities in Bladder Cancer Treatment  
721 and Survival Amongst Elderly Patients with a Pre-existing Mental Illness. *Eur Urol*  
722 *Focus* [Internet]. 2020;6(6):1180–7. Available from:  
723 <http://www.journals.elsevier.com/european-urology-focus>
- 724 49. Shinden Y, Kijima Y, Hirata M, Nakajo A, Tanoue K, Arigami T, et al. Clinical  
725 characteristics of breast cancer patients with mental disorders. *Breast*. 2017  
726 Dec;36:39–43.
- 727 50. Tran E, Rouillon F, Loze JY, Casadebaig F, Philippe A, Vitry F, et al. Cancer mortality  
728 in patients with schizophrenia: an 11-year prospective cohort study. *Cancer* [Internet].

- 729 2009;115(15):3555–62. Available from:  
730 [http://ovidsp.ovid.com/ovidweb.cgi?T=JS&PAGE=reference&D=med7&NEWS=N&AN](http://ovidsp.ovid.com/ovidweb.cgi?T=JS&PAGE=reference&D=med7&NEWS=N&AN=19548261)  
731 [=19548261](http://ovidsp.ovid.com/ovidweb.cgi?T=JS&PAGE=reference&D=med7&NEWS=N&AN=19548261)
- 732 51. T.-S. C, S.-J. H, Y.-C. S, L.-F. C, H.-C. H, M.-S. L, et al. Disparities in Oral Cancer  
733 Survival among Mentally Ill Patients. *PLoS One* [Internet]. 2013;8(8):e70883.  
734 Available from: <http://www.plosone.org/article/fetchObjectAttachment.action>
- 735 52. W.R. L, M.G. K, A.S. H, M.C. L, X. Z, W. Z, et al. Association between preexisting  
736 mental illnesses and mortality among medicaid-insured women diagnosed with breast  
737 cancer. *Soc Sci Med* [Internet]. 2021;270:113643. Available from:  
738 <http://www.elsevier.com/locate/socscimed>
- 739 53. Afshar M, O'Neill T, Patel HRH, De-Santis M, Tanner JR, Evison F, et al. Do Learning  
740 Disabilities Affect Testicular Cancer Survival: A National Cohort Study Between 2001  
741 and 2015. *Eur Urol Oncol* [Internet]. 2020;3(6):773–9. Available from:  
742 <https://www.journals.elsevier.com/european-urology-oncology>
- 743 54. C. M, A. S, J. M, M. B, E. H, M. B, et al. Treatment choices for older women with  
744 primary operable breast cancer and cognitive impairment: Results from a prospective,  
745 multicentre cohort study. *J Geriatr Oncol* [Internet]. 2021;12(5):705–13. Available  
746 from:  
747 [http://www.elsevier.com/wps/find/journaldescription.cws\\_home/723463/description#de](http://www.elsevier.com/wps/find/journaldescription.cws_home/723463/description#description)  
748 [scription](http://www.elsevier.com/wps/find/journaldescription.cws_home/723463/description#description)
- 749 55. Cuypers M, Schalk BWM, Boonman AJN, Naaldenberg J, Leusink GL. Cancer-related  
750 mortality among people with intellectual disabilities: A nationwide population-based  
751 cohort study. *Cancer*. 2022;128(6):1267–74.
- 752 56. Cuypers M, Tobi H, Huijsmans CAA, van Gerwen L, Ten Hove M, van Weel C, et al.  
753 Disparities in cancer-related healthcare among people with intellectual disabilities: A  
754 population-based cohort study with health insurance claims data. *Cancer Med*. 2020  
755 Sep;9(18):6888–95.
- 756 57. Robb C, Boulware D, Extermann M, Overcash J. Patterns of care and survival in  
757 cancer patients with cognitive impairment. *Crit Rev Oncol Hematol* [Internet].  
758 2010;74(3):218–24. Available from:  
759 [http://ovidsp.ovid.com/ovidweb.cgi?T=JS&PAGE=reference&D=emed11&NEWS=N&](http://ovidsp.ovid.com/ovidweb.cgi?T=JS&PAGE=reference&D=emed11&NEWS=N&AN=50622380)  
760 [AN=50622380](http://ovidsp.ovid.com/ovidweb.cgi?T=JS&PAGE=reference&D=emed11&NEWS=N&AN=50622380)

- 761 58. Segerlantz M, Axmon A, Ahlström G. End-of-life care among older cancer patients  
762 with intellectual disability in comparison with the general population: a national  
763 register study. *J Intellect Disabil Res.* 2020 May;64(5):317–30.
- 764 59. Segerlantz M, Axmon A, Gagnemo Persson R, Brun E, Ahlström G. Prescription of  
765 pain medication among older cancer patients with and without an intellectual  
766 disability: a national register study. *BMC Cancer.* 2019 Nov;19(1):1040.
- 767 60. S.K. G. Patterns of presentation, diagnosis, and treatment in older patients with colon  
768 cancer and comorbid dementia. *J Am Geriatr Soc.* 2004;52(10):1681–7.
- 769 61. Slachmuylder JL, Libert Y, Dubrulle S, Borghgraef C, Merckaert I, Paesmans M, et al.  
770 Vulnerabilities in older patients when cancer treatment is initiated: Does a cognitive  
771 impairment impact the two-year survival? *PLoS One* [Internet]. 2016;11(8):e0159734.  
772 Available from:  
773 <http://journals.plos.org/plosone/article/asset?id=10.1371%2Fjournal.pone.0159734>.P  
774 DF
- 775 62. Iezzoni LI, Ngo LH, Li D, Roetzheim RG, Drews RE, McCarthy EP. Treatment  
776 disparities for disabled medicare beneficiaries with stage I non-small cell lung cancer.  
777 *Arch Phys Med Rehabil.* 2008 Apr;89(4):595–601.
- 778 63. Gross SE, Pfaff H, Swora M, Ansmann L, Albert US, Gross-Kunkel A. Health  
779 disparities among breast cancer patients with/without disabilities in Germany. *Disabil*  
780 *Health J.* 2020;13(2).
- 781 64. Sato S, Tanimoto A, Yanagimura N, Suzuki C, Takumi Y, Nishiyama A, et al. Multi-  
782 institutional survey of cancer disparities in disabled patients in the region of  
783 northwestern Japan. *Int J Clin Oncol* [Internet]. 2021;26(6):1009–14. Available from:  
784 <http://link.springer.de/link/service/journals/10147/index.htm>
- 785 65. Shin DW, Park J, Yeob KE, Yoon SJ, Jang S nang, Kim SY, et al. Disparities in  
786 prostate cancer diagnosis, treatment, and survival among men with disabilities:  
787 Retrospective cohort study in South Korea. *Disabil Health J.* 2021 Oct 1;14(4).
- 788 66. Park SM, Son KY, Park JH, Cho B. Disparities in short-term and long-term all-cause  
789 mortality among Korean cancer patients with and without preexisting disabilities: a  
790 nationwide retrospective cohort study. *Support Care Cancer.* 2012 May;20(5):963–70.

- 791 67. Kwon J, Kim SY, Yeob KE, Han HS, Lee KH, Shin DW, et al. Differences in diagnosis,  
792 treatment, and survival rate of acute myeloid leukemia with or without disabilities: A  
793 national cohort study in the Republic of Korea. *Cancer Med*. 2020 Aug 1;9(15):5335–  
794 44.
- 795 68. Shin DW, Cho JH, Noh JM, Han H, Han K, Park SH, et al. Disparities in the Diagnosis  
796 and Treatment of Lung Cancer among People with Disabilities. *Journal of Thoracic*  
797 *Oncology*. 2019 Feb 1;14(2):163–75.
- 798 69. Sathianathen NJ, Fan Y, Jarosek SL, Konety I, Weight CJ, Vinogradov S, et al.  
799 Disparities in Bladder Cancer Treatment and Survival Amongst Elderly Patients with a  
800 Pre-existing Mental Illness. *Eur Urol Focus [Internet]*. 2020 Nov;6(6):1180–7.  
801 Available from: <http://www.journals.elsevier.com/european-urology-focus>
- 802 70. Cuypers M, Tobi H, Huijsmans CAA, van Gerwen L, ten Hove M, van Weel C, et al.  
803 Disparities in cancer-related healthcare among people with intellectual disabilities: A  
804 population-based cohort study with health insurance claims data. *Cancer Med*. 2020  
805 Sep 1;9(18):6888–95.
- 806 71. Gupta SK, Lamont EB. Patterns of presentation, diagnosis, and treatment in older  
807 patients with colon cancer and comorbid dementia. *J Am Geriatr Soc [Internet]*.  
808 2004;52(10):1681–7. Available from:  
809 [http://ovidsp.ovid.com/ovidweb.cgi?T=JS&PAGE=reference&D=med5&NEWS=N&AN](http://ovidsp.ovid.com/ovidweb.cgi?T=JS&PAGE=reference&D=med5&NEWS=N&AN=15450045)  
810 [=15450045](http://ovidsp.ovid.com/ovidweb.cgi?T=JS&PAGE=reference&D=med5&NEWS=N&AN=15450045)
- 811 72. Reeves C, Collingridge D. Improving cancer care for people with disabilities. *Lancet*  
812 *Oncol*. 2022 Apr 1;23(4):446–7.
- 813 73. Boonman AJ, Cuypers M, Leusink GL, Naaldenberg J, Bloemendal HJ. Cancer  
814 treatment and decision making in individuals with intellectual disabilities: a scoping  
815 literature review. *Lancet Oncol*. 2022 Apr;23(4):e174–83.
- 816 74. Andiwijaya FR, Davey C, Bessame K, Ndong A, Kuper H. Disability and Participation  
817 in Breast and Cervical Cancer Screening: A Systematic Review and Meta-Analysis.  
818 *Int J Environ Res Public Health*. 2022 Aug 1;19(15).
- 819 75. Shefer G, Henderson C, Howard LM, Murray J, Thornicroft G. Diagnostic  
820 overshadowing and other challenges involved in the diagnostic process of patients  
821 with mental illness who present in emergency departments with physical symptoms--a  
822 qualitative study. *PLoS One*. 2014 Nov 1;9(11).



- 823 76. Stirling M, Anderson A, Ouellette-Kuntz H, Hallet J, Shooshtari S, Kelly C, et al. A  
824 scoping review documenting cancer outcomes and inequities for adults living with  
825 intellectual and/or developmental disabilities. *EUROPEAN JOURNAL OF*  
826 *ONCOLOGY NURSING*. 2021;54.
- 827 77. Hillgrove T, Blyth J, Kiefel-Johnson F, Pryor W. A synthesis of findings from ‘rapid  
828 assessments’ of disability and the COVID-19 pandemic: Implications for response and  
829 disability-inclusive data collection. *Int J Environ Res Public Health*. 2021 Sep  
830 1;18(18).
- 831 78. Shakespeare T, Ndagire F, Seketi QE. Triple jeopardy: disabled people and the  
832 COVID-19 pandemic. *Lancet*. 2021 Apr 10;397(10282):1331–3.
- 833 79. Banks LM, Davey C, Shakespeare T, Kuper H. Disability-inclusive responses to  
834 COVID-19: Lessons learnt from research on social protection in low- and middle-  
835 income countries. *World Dev*. 2021 Jan 1;137.
- 836 80. Williamson EJ, McDonald HI, Bhaskaran K, Walker AJ, Bacon S, Davy S, et al. Risks  
837 of covid-19 hospital admission and death for people with learning disability: population  
838 based cohort study using the OpenSAFELY platform. *BMJ*. 2021 Jul 14;374.
- 839 81. Bosworth ML, Ayoubkhani D, Nafilyan V, Foubert J, Glickman M, Davey C, et al.  
840 Deaths involving COVID-19 by self-reported disability status during the first two waves  
841 of the COVID-19 pandemic in England: a retrospective, population-based cohort  
842 study. *Lancet Public Health*. 2021 Nov 1;6(11):e817–25.
- 843 82. Shakespeare T, Watson N, Brunner R, Cullingworth J, Hameed S, Scherer N, et al.  
844 Disabled people in Britain and the impact of the COVID-19 pandemic. *Soc Policy*  
845 *Adm*. 2022 Jan 1;56(1):103–17.
- 846 83. Danos C, Heydt Hannah Kuper London P, Burbach M, Rotenberg S, Seghers F,  
847 Miner E, et al. Reimagining health systems that expect, accept and connect 1 billion  
848 people with disabilities. 2022 Oct.
- 849 84. Kuper, Hannah; Heydt P. *The Missing Billion: access to health services for 1 billion*  
850 *people with disabilities*. London; 2019.
- 851 85. Iezzoni LI, Rao SR, Ressler J, Bolcic-Jankovic D, Agaronnik ND, Donelan K, et al.  
852 Physicians’ perceptions of people with disability and their health care. *Health Aff*.  
853 2021 Feb 1;40(2):297–306.



- 854 86. Lagu T, Haywood C, Reimold K, DeJong C, Walker Sterling R, Iezzoni LI. 'I Am Not  
855 The Doctor For You': Physicians' Attitudes About Caring For People With Disabilities.  
856 <https://doi.org/10.1377/hlthaff.202200475>. 2022 Oct 3;41(10):1387–95.
- 857 87. Edwards DJ, Sakellariou D, Anstey S. Barriers to, and facilitators of, access to cancer  
858 services and experiences of cancer care for adults with a physical disability: A mixed  
859 methods systematic review. *Disabil Health J*. 2020 Jan 1;13(1).
- 860 88. Schwartz JK, Unni E. Inclusion of People with Disabilities in Research to Improve  
861 Medication Adherence: A Systematic Review. *Patient Prefer Adherence*.  
862 2021;15:1671.
- 863 89. Younossi Alexandria, Sanhai W, Shah S, Chang C. Enhancing diversity in clinical  
864 trials | Deloitte Insights.
- 865 90. Meeting report: summary of Day 2 of the 2021 ISMPP European Meeting [Internet].  
866 [cited 2022 Nov 1]. Available from:  
867 [https://thepublicationplan.com/2021/02/10/meeting-report-summary-of-day-2-of-the-](https://thepublicationplan.com/2021/02/10/meeting-report-summary-of-day-2-of-the-2021-ismpp-european-meeting/)  
868 [2021-ismpp-european-meeting/](https://thepublicationplan.com/2021/02/10/meeting-report-summary-of-day-2-of-the-2021-ismpp-european-meeting/)
- 869 91. Employing disabled people and people with health conditions - GOV.UK [Internet].  
870 [cited 2022 Nov 1]. Available from:  
871 [https://www.gov.uk/government/publications/employing-disabled-people-and-people-](https://www.gov.uk/government/publications/employing-disabled-people-and-people-with-health-conditions/employing-disabled-people-and-people-with-health-conditions)  
872 [with-health-conditions/employing-disabled-people-and-people-with-health-conditions](https://www.gov.uk/government/publications/employing-disabled-people-and-people-with-health-conditions/employing-disabled-people-and-people-with-health-conditions)
- 873 92. Agaronnik N, Campbell EG, Ressalam J, Iezzoni LI. Communicating with Patients  
874 with Disability: Perspectives of Practicing Physicians. *J Gen Intern Med* [Internet].  
875 2019 Jul 15 [cited 2023 Jul 23];34(7):1139. Available from:  
876 </pmc/articles/PMC6614249/>
- 877 93. Agaronnik ND, El-Jawahri A, Lindvall C, Iezzoni LI. Exploring the Process of Cancer  
878 Care for Patients With Pre-Existing Mobility Disability. *JCO Oncol Pract*. 2021  
879 Jan;17(1):e53–61.
- 880 94. Marlow NM, Samuels SK, Jo A, Mainous AG. Patient-provider communication quality  
881 for persons with disabilities: A cross-sectional analysis of the Health Information  
882 National Trends Survey. *Disabil Health J*. 2019 Oct 1;12(4):732–7.

883

# Cancer care for people with disabilities

medRxiv  
(preprint)



2023. The copyright holder for this preprint  
ense to display the preprint in perpetuity.  
se .