

Racial disparities, environmental exposures, and SARS-CoV-2 infection rates: A racial map study in the USA

Wenyan Xu ^{a,b,†}, Bin Jiang ^{a,b,c,*,†}, Chris Webster ^a, William C. Sullivan ^d, Yi Lu ^e,
Na Chen ^f, Zhaowu Yu ^g, Bin Chen ^{b,c,h,i*}

Affiliations:

^a Urban Environments & Human Health Lab, HKUrbanLabs, Faculty of Architecture, The University of Hong Kong, Hong Kong SAR

^b Division of Landscape Architecture, Department of Architecture, The University of Hong Kong, Hong Kong SAR

^c Urban Systems Institute, The University of Hong Kong, Hong Kong SAR

^d Department of Landscape Architecture, University of Illinois at Urbana-Champaign, Illinois

^e Department of Architecture and Civil Engineering, City University of Hong Kong, Hong Kong SAR

^f School of Architecture & Planning, Hunan University, Changsha, Hunan province, China

^g Department of Environmental Science and Engineering, Fudan University, Shanghai, China

^h Future Urbanity & Sustainable Environment (FUSE) Lab, HKUrbanLabs, Faculty of Architecture, The University of Hong Kong, Hong Kong SAR

ⁱ HKU Musketeers Foundation Institute of Data Science, The University of Hong Kong, Hong Kong SAR

[†]The authors contributed equally to this work.

***Corresponding authors:**

Bin Jiang

Postal Address: 614 Knowles Building, Pokfulam Road, The University of Hong Kong, Hong Kong SAR

Email: jiangbin@hku.hk

Bin Chen

Postal Address: Division of Landscape Architecture, Faculty of Architecture, The University of Hong Kong, Hong Kong SAR

Email: binley.chen@hku.hk

Abstract

Since the onset of the COVID-19 pandemic, researchers mainly examined how socio-economic, demographic, and environmental factors are related to disparities in SARS-CoV-2 infection rates. However, we don't know the extent to which racial disparities in environmental exposure are related to racial disparities in SARS-CoV-2 infection rates. To address this critical issue, we gathered black vs. white infection records from 1416 counties in the contiguous United States. For these counties, we used 30m-spatial resolution land cover data and racial mappings to quantify the racial disparity between black and white people's two types of environmental exposure, including exposures to various types of landscape settings and urban development intensities. We found that racial disparities in SARS-CoV-2 infection rates and racial disparities in exposure to various types of landscapes and urban development intensities were significant and showed similar patterns. Specifically, less racial disparity in exposure to forests outside park, pasture/hay, and urban areas with low and medium development intensities were significantly associated with lower racial disparities in SARS-CoV-2 infection rates. Distance was also critical. The positive association between racial disparities in environmental exposures and racial disparity in SARS-CoV-2 infection rates was strongest within a comfortable walking distance (approximately 400m).

Highlights

- Racial dot map and landcover map were used for population-weighted analysis.
- Racial disparity in environmental exposures and SARS-CoV-2 infection were linked.
- Forests outside park are the most beneficial landscape settings.
- Urban areas with low development intensity are the most beneficial urban areas.
- Landscape and urban exposures within the 400m buffer distances are most beneficial.

1 **1 Introduction**

2 **1.1 Background**

3 Racial disparity in health outcomes is a critical challenge in the United States and many
4 other countries (Braveman et al., 2011). Many studies suggest that socio-economic and
5 demographic disparities can lead to environmental disparities which then lead to human
6 health disparities (Song et al., 2021; World Health Organization, 2010). A handful of studies
7 have suggested that racial disparities in SARS-CoV-2 infection rates have a significant
8 relationship with the racial disparities in environmental exposure to various landscape and
9 urban settings; However, there is still much we do not know (Lu, Chen, et al., 2021). This
10 study investigates the relationships among racial disparities in landscape and urban
11 environment exposure and disparities in SARS-CoV-2 infection rates. This research may help
12 governments prioritize resources to provide more equitable access to supportive natural and
13 urban settings to reduce racial disparities in health outcomes for current COVID-19 pandemic
14 and similar public health crisis in the future.

15 Generally, previous studies exploring the disparities between environmental exposures and
16 SARS-CoV-2 infection rates has considered four types of relationships although those studies
17 have many limitations in research design and measurements:

- 18 (1) The relationship between landscape exposure and SARS-CoV-2 infection rates;
- 19 (2) The relationship between racial disparity in landscape exposure and racial disparity
20 in SARS-CoV-2 infection rates;
- 21 (3) The relationship between exposure to urban settings or various urban densities and
22 SARS-CoV-2 infection; and
- 23 (4) The relationship between racial disparity in exposure to urban settings and urban
24 densities and racial disparities in SARS-CoV-2 infection rates.

25 **1.2 Landscape exposure and SARS-CoV-2 infection**

26 Landscape exposure can be defined as passive or active contact with various types of
27 green space. A growing number of studies have explored the relationship between landscape
28 exposure and SARS-CoV-2 infection rates. Generally, these studies suggest that higher levels
29 of landscape exposure are associated with a lower risk of SARS-CoV-2 infection. One study
30 found that county-level SARS-CoV-2 infection rates decreased for every 1% increase in tree
31 canopy, suggesting green spaces' protective effect (Klompaker et al., 2021). Greater access
32 to green spaces was associated with lower transmission speed of COVID-19 (Alidadi &
33 Sharifi, 2022), and total green space was negatively associated with SARS-CoV-2 infection
34 rate (Jiang et al., 2022) and mortality rate (Yang et al., 2022). In contrast, higher density of
35 public landscape settings in a high-density city was associated with higher rates of COVID-
36 19 morbidity during the early stages of the COVID-19 pandemic, perhaps because of
37 increased social contact with other people elicited by those settings (You et al., 2020).

38 **1.3 Racial disparity in landscape exposure and racial disparity in SARS-CoV-2 infection**

39 Although studies exploring racial disparity in landscape exposure and racial disparity in
40 SARS-CoV-2 infection rates are scarce, more general studies exploring disparities in
41 landscape exposure and disparities in public health outcomes suggest a positive relationship.
42 Researchers have found positive causal and correlational associations between disparities in
43 landscape exposure and disparities in health outcomes. In a natural experiment study, patients
44 with more visual contact with green landscapes had a better recovery from a standard surgery
45 (Ulrich, 1984). In an onsite experimental study, adding renovated green spaces to
46 neighborhoods reduced incidences of gun violence, crimes, and sense of fear (Branas et al.,
47 2018). A statewide study in the United States found that a lower disparity in greenness in
48 residential environments was linked to lower cardiovascular mortality disparities between
49 black and white men (Iyer et al., 2020). A nationwide study in England found that, in greener

50 areas, lower disparities in all-cause mortality and mortality from circulatory diseases were
51 observed among different income groups (Mitchell & Popham, 2008).

52 A handful of studies suggest that greater racial disparity in landscape exposure may lead to
53 a greater disparity in SARS-CoV-2 infection, but these studies have research design and
54 measurement limitations. For example, one recent study found that a higher ratio of green
55 spaces was linked to lower racial disparity in SARS-CoV-2 infection rates for the 135 most
56 urbanized counties in the United States (Lu, Chen, et al., 2021). However, this study did not
57 investigate the relationship in less urbanized counties. It also did not control for the spatial
58 distribution of racial populations and green spaces in the statistical analysis. Another study
59 found that racial disparity in access to greenness was associated with a lower incidence of
60 COVID-19 infection in the United States (Spotswood et al., 2021). However, the study
61 examined only 17 states and used Normalized Difference Vegetation Index (NDVI) to
62 measure greenness, which cannot fully represent the nationwide association and differentiate
63 the contributions of distinct types of landscape settings. Lastly and most importantly, both
64 studies did not consider the spatial distribution of different green spaces and the spatial
65 distribution of different racial populations, which make the findings vulnerable to a possible
66 ecological fallacy. An ecological fallacy is a logical error that occurs when the characteristics
67 of a group are attributed to an individual; individual attributes cannot be deduced from
68 statistical inferences of the group to which such individuals belong (Firebaugh, 2001;
69 Woodruff et al., 2018).

70 **1.4 Urban exposure and SARS-CoV-2 infection**

71 Urban exposure can be defined as daily exposure to urban settings with low, moderate, or
72 high development intensity. Many studies have shown that exposure to settings with different
73 levels of urbanicity can produce different impacts on public health (e.g., McMichael, 2000;
74 Son et al., 2020). Studies have found that exposure to more urbanized environments is

75 generally more harmful for both mental and physical health due to lack of access to green
76 spaces (Das et al., 2008; Jiang et al., 2022; Luo & Jiang, 2022; Venkatramana & Reddy,
77 2002). However, other studies have found that developed urban environments have higher
78 levels of social security, collaboration, and vitality, which may collectively promote residents'
79 general health (Jauho & Helén, 2022; Mouratidis & Poortinga, 2020). Few studies have
80 explored how exposure to urban settings is related to airborne infectious disease rates.
81 Moreover, whether and to what extent the collinearity effect does exist between landscape
82 and urban exposures should be investigated so we can fully understand their effects on
83 SARS-CoV-2 infection rates (Jiang et al., 2022; Paköz & Işık, 2022).

84 The few published studies investigating the relationship between various indicators of
85 urbanicity and risk of SARS-CoV-2 infection show significant positive correlations between
86 urban density and the number of SARS-CoV-2 infection or mortality rates (e.g., Jamshidi et
87 al., 2020; Lin et al., 2020; Zhang & Schwartz, 2020). Less dense urban areas may have a
88 lower risk of SARS-CoV-2 infection because they provide open spaces that allow for safer
89 social distances and reduced density of ambient particles that convey the virus (Jiang et al.,
90 2022; Lin et al., 2020; Wang et al., 2021). However, further investigation beyond the general
91 linear association is necessary to fully understand the relationship. For example, a county or
92 census tract may contain numerous parcels with different levels of development intensity and
93 land cover types. A simple linear association may fail to describe the complex relationship.

94 **1.5 Racial disparity in urban exposure and racial disparity in SARS-CoV-2 infection**

95 To our best knowledge, very few studies have investigated the relationship between racial
96 disparity in urban exposure and racial disparity in SARS-CoV-2 infection. One study
97 investigated this issue for the most urbanized counties in the US, and three measures of urban
98 exposure were removed due to the collinearity problem (Lu, Chen, et al., 2021). This study
99 did not explore the relationship for areas with a much larger range of urban exposure.

100 Another study exploring the relationship used NDVI to measure greenness, but NDVI can
101 only roughly indicate the level of urban development intensity. More accurate measures are
102 needed (Spotswood et al., 2021). Lastly and most importantly, both studies did not consider
103 the spatial distribution of land parcels with different levels of development intensity and the
104 spatial distribution of different racial populations, which make the findings may have a high
105 risk of ecological fallacy.

106 **1.6 Critical knowledge gaps**

107 In our understanding of the relationship between racial disparity in landscape and urban
108 exposure and racial disparity in SARS-CoV-2 infection rates, five gaps remain.

109 First, previous studies do not consider the spatial distribution of racial populations. This
110 makes it difficult to differentiate their exposure to nearby landscape and urban settings and
111 leaves the findings vulnerable to ecological fallacy.

112 Second, previous cross-sectional studies on racial disparity issues do not adopt a within-
113 county comparison between races. A within county comparison between racial populations
114 may reduce the probability of ecological fallacy by mitigating bias caused by a wide variety
115 of distinct conditions among different zones (Lu, Chen, et al., 2021).

116 Third, previous studies use NDVI or total greenness as measures of landscape exposure
117 and are unable to differentiate the effects of different types of green spaces.

118 Fourth, few studies have comprehensively measured urban exposure, leading to a gap in
119 our understanding of the association between urban exposure (exposure to different levels of
120 development intensity) and racial disparity in SARS-CoV-2 infection rates.

121 Last, previous studies have only examined highly urbanized counties or a few regions.
122 These findings may fail to describe the relationship between racial disparity in landscape and
123 urban exposure and racial disparity in SARS-CoV-2 infection rates on a nationwide scale or
124 in countries with various levels of urban density.

125 **1.7 Research questions**

126 To address these knowledge gaps, we conducted a one-year nationwide study by
127 adopting high-resolution land cover and racial population maps. We asked the following five
128 questions:

- 129 (1) Whether and to what extent did black and white people have significant differences in
130 SARS-CoV-2 infection rates?
- 131 (2) Whether and to what extent did black and white people have significant differences in
132 landscape and urban exposures?
- 133 (3) Whether and to what extent were landscape and urban exposures significantly associated
134 with infection rates for black and white people?
- 135 (4) Whether and to what extent was the racial disparity in landscape and urban exposures
136 significantly associated with racial disparity in SARS-CoV-2 infection rates?
- 137 (5) Whether and how did the association between racial disparity in landscape and urban
138 exposures and SARS-CoV-2 infection rates change as the buffer distance changed?

139

140 **2 Method**

141 We adopted a within-county research design with 1416 counties in the contiguous United
142 States (US). The COVID-19 case data were collected from January 1, 2020, to December 31,
143 2020. In this study, the racial disparities were measured as the difference in environmental
144 exposures and infection rates between black and white populations in the same county. The
145 methods included defining study areas; calculating SARS-CoV-2 infection rates, landscape
146 and urban exposures, and socio-economic and demographic characteristics; and finally
147 conducting statistical analysis.

148 **2.1 Study areas**

149 We used counties, the fundamental administrative unit in the United States, as the basic
150 unit of analysis. Using publicly available data from the US Centers for Disease Control and
151 Prevention (Centers for Disease Control and Prevention, 2021), we collected infection case
152 data and associated race and ethnicity information from a total of 3,108 counties. We
153 excluded 1,691 counties that did not have race records for black and/or white groups (452
154 counties had no records for white groups, 1691 counties had no records for black groups, and
155 452 counties had no records for both black and white groups). We also excluded La Salle
156 County in Texas because of a data collection error. 1416 counties were included in the study.

157 1223 of the 1416 selected counties (86.4%) had at least 2% black population (1633 of the
158 3142 counties in the US have more than 2% black population). Most of the unselected
159 counties (those that did not have race records for black and/or white groups) contained too
160 low of a ratio of black people. In addition, all selected 1416 counties had more than 6% white
161 people.

162 To further evaluate whether the chosen 1416 counties are representative of the contiguous
163 United States, we applied a random selection strategy based on geographic spatial
164 distribution to select sample counties for sensitivity analysis. The country was divided into

165 nine divisions by the United States Census Bureau. The average rate of sample availability
166 (1416/3142) was set as the threshold to randomly select samples in each of the nine divisions.
167 If the available counties in the division were less than the threshold, all the available counties
168 were selected. Otherwise, we used random sampling methods with the threshold value. We
169 applied this random selection strategy five times to generate five sample groups. Then, we
170 analyzed the data from these five groups of counties to answer the research questions and
171 found high agreement in our results. Detailed findings can be found in Appendix B.
172 Therefore, we argue that the sample pool of 1416 counties is representative enough for us to
173 analyze the relationship between racial disparity in landscape and urban exposure and racial
174 disparity in SARS-CoV-2 infection rate in the contiguous United States.

175 **2.2 SARS-CoV-2 infection rates**

176 To calculate the SARS-CoV-2 infection rate for black and white people, we retrieved the
177 total white and black population counts for each county, retrieved from 2019 census data
178 (United States Census Bureau, 2020). The racial disparity in SARS-CoV-2 infection rates
179 was calculated as the difference between the infection rate in black individuals and the
180 infection rate in white individuals for the same county.

181 **2.3 Landscape and urban exposures: Land cover & racial population mapping**

182 **2.3.1 Landscape settings and urban areas with different levels of development intensity**

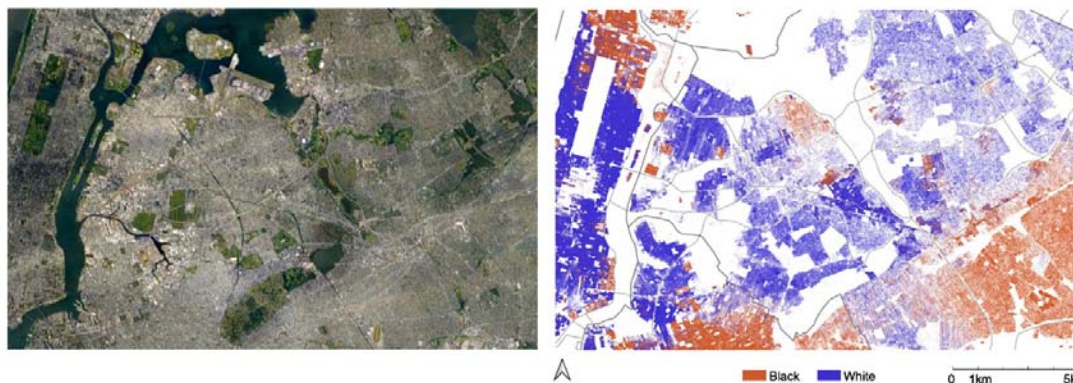
183 The National Land Cover Database (NLCD) is an operational land cover monitoring
184 program providing updated land cover and related information for the US. Using the NLCD
185 2019 dataset (<https://www.mrlc.gov>), we extracted two major types of land cover: landscape
186 settings (green spaces) and urban areas with different levels of development intensity. The
187 following land-cover types were classified as landscape settings: a) developed open space; b)
188 deciduous forest, evergreen forest, and mixed forest (combined into one forest category); c)
189 grassland and herbaceous; and d) pasture and hay. Urban areas were classified according to

190 low, medium, or high development level based on the proportion of constructed material and
191 vegetation (Yang et al., 2018) . Low development intensity is typified by mostly vegetation
192 (20–49% impervious surfaces), medium development intensity by single-family homes (50–
193 79% impervious surfaces), and high development intensity by frequently traversed areas (80–
194 100% impervious surfaces).

195 **2.3.2 Mapping racial populations in the United States**

196 We used racial data collected and shared by SocScape (Social Landscape) to map the black
197 and white populations in the United States at a high resolution (30m grids) (Figure 1)
198 SocScape is a research project which aims to provide mapping resources to visualize and
199 analyze residential segregation and racial diversity in the conterminous United States and
200 United States metropolitan areas (<http://www.socscape.edu.pl/>). It shows 30m grids of seven
201 race/ethnicity sub-populations: non-Hispanic whites, non-Hispanic blacks, non-Hispanic
202 Asians, non-Hispanic American Indians, non-Hispanic Native Hawaiians and Other Pacific
203 Islanders, non-Hispanic other races, and Hispanics. The racial dot map of non-Hispanic
204 whites and non-Hispanic blacks was used in this study (Figure 1). The 30m grids have been
205 developed using dasymetric modeling, which has a high accuracy of gridded population data
206 over commonly used Census tract/blocks-aggregated data (Dmowska & Stepinski, 2019;
207 Dmowska et al., 2017).

208



209

210 **Figure 1.** Left: The Google Earth image of an area in the New York City, USA; Right: The black-white racial
211 dot map of the same area.

212 2.3.3 Exposure to landscape settings

213 The four types of landscape settings with predominant natural elements were assessed at
214 30m resolution. We divided developed open space and forest by park boundaries into inside
215 and outside park factors (Ersi, 2021). We calculated black-white population-weighted green
216 space exposure for varying buffer distances in each county to identify the impact of different
217 landscape settings on racial disparity in infection rates. The population-weighted exposure
218 assessment incorporated the spatial distribution of population footprint into landscape
219 exposure estimates by giving proportionally greater weight to landscape settings near areas
220 with higher densities of human residents.

221 Race population-weighted green space exposure was calculated with the Google Earth
222 Engine (GEE) using NLCD 2019. The 30m resolution NLCD, 2019 Landsat imagery
223 matched well with the 30m spatial resolution of the racial map in GEE. This enabled the
224 population-weighted landscape exposure within various buffer sizes in each county. The race
225 population-weighted landscape exposure for different buffer sizes in each county is defined in
226 Equation (1) (Chen, Song, Jiang, et al., 2018; Chen, Song, Kwan, et al., 2018; Chen et al.,
227 2022),

$$GE^d = \frac{\sum_{i=1}^N P_i \times G_i^d}{\sum_{i=1}^N P_i}$$

228

229 where P_i is the black or white population of the i th grid, G_i^d is the green space of the i th grid
230 at a buffer size of b meters, N is the total number of grids for a given county, and GE is the
231 estimated landscape exposure level for the given county. We calculated landscape exposure
232 levels by varying the buffer size from 100m to 5km (the maximum appropriate walking
233 distance in the United States, based on Yang & Diez-Roux, 2012) to examine the association
234 between different proximities to landscape settings and the infection disparity between black
235 and white people. The relative exposure difference between black and white people of these
236 areas was calculated as explanatory variables in the generalized linear mixed model to
237 examine their contribution to mitigating racial disparity of infection rates.

238 **2.3.4 Exposure to areas with different levels of development intensity**

239 The dominant land-cover types in the areas with different levels of development were also
240 considered. We calculated the exposure ratio using the same methods we used for landscape
241 settings. Urban areas with three levels of development intensity from NLCD 2019 were
242 categorized as urban areas with low, medium, and high development intensity (Appendix
243 Table S1(a)). The exposure difference between black and white people in these areas was
244 also calculated using buffer sizes from 100m to 5km.

245 **2.4 Socio-economic and demographic characteristics as covariates**

246 Previous studies have shown that socioeconomic and demographic characteristics are
247 important predictors of SARS-CoV-2 infection risk and racial disparity in infection rates
248 (Abedi et al., 2020; Figueroa et al., 2020). Thus, we adjusted for the potential confounding
249 factors of black or white people's socioeconomic and demographic characteristics. The
250 descriptive statistics for each variable are presented in Table 1 and Appendix Table S1 (b).

251 **Table 1.** Descriptive statistics of socio-demographic characteristics of 1320 counties (96 counties without the
252 information)

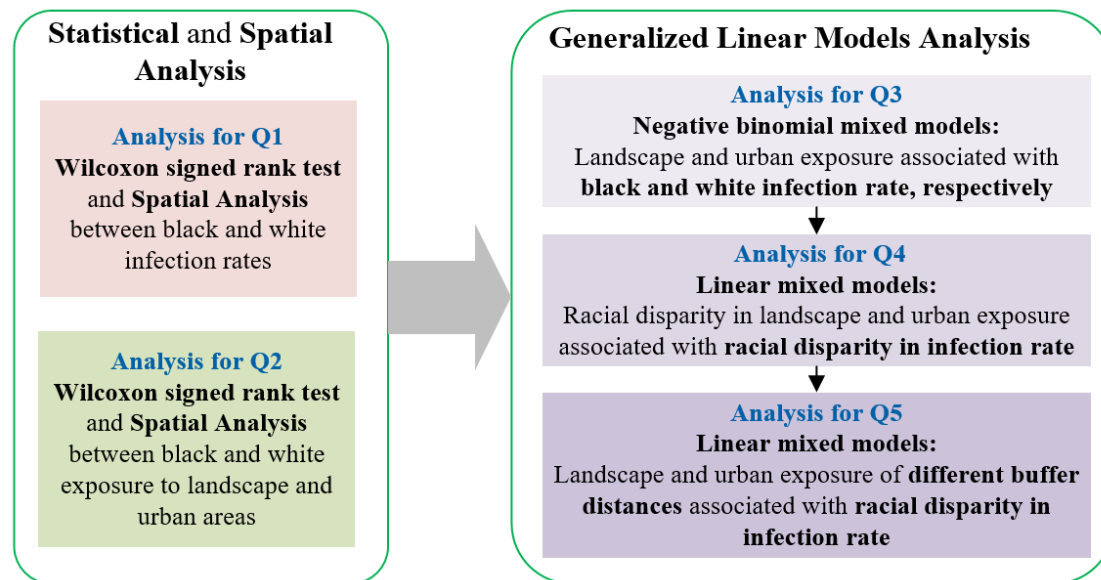
Variables	Min	Max	Mean	SD
Median household income of the Black	2499	250001	39673.900	17873.990
Median age of the Black	15.700	57.400	34.480	5.821
Percentage of the Black	0.003	0.872	0.173	0.170
Percentage of the Black in labor force	0.001	0.944	0.637	0.142
Percentage of the Black in poverty	0	0.730	0.265	0.111
The Black of attained less than high school diploma	0	0.519	0.176	0.081
The Black of high school graduate or equivalency	0	0.673	0.351	0.095
The Black of attained some college or associate's degree	0	0.839	0.309	0.081
The Black of attained bachelor's degree or higher	0	0.800	0.164	0.102
Percentage of the Black less than 18 years	0	0.557	0.237	0.063
Percentage of the Black 65 years and over	0	0.364	0.113	0.049
Percentage of the Black male	0.250	0.985	0.524	0.091
Percentage of the Black female	0.015	0.750	0.476	0.091
Percentage of married Black	0.030	0.585	0.299	0.086
Median household income of the Non-Hispanic White	26071	149087	61594.500	17225.490
Median age of the Non-Hispanic White	25.300	69.000	43.970	5.141
Percentage of the Non-Hispanic White	0.061	0.969	0.685	0.182
Percentage of the Non-Hispanic White in labor force	0.396	0.889	0.721	0.071
Percentage of the Non-Hispanic White in poverty	0.010	0.296	0.116	0.045
The Non-Hispanic White of attained less than high school diploma	0.008	0.274	0.099	0.047
The Non-Hispanic White of high school graduate or equivalency	0.043	0.545	0.316	0.080
The Non-Hispanic White of Attained some college or associate's degree	0.089	0.457	0.308	0.050
The Non-Hispanic White of attained bachelor's degree or higher	0.088	0.860	0.278	0.124
Percentage of the Non-Hispanic White less than 18 years	0.017	0.329	0.191	0.030
Percentage of the Non-Hispanic White 65 years and over	0.085	0.638	0.206	0.049
Percentage of the Non-Hispanic White male	0.429	0.643	0.494	0.017
Percentage of the Non-Hispanic White female	0.357	0.571	0.506	0.017
Percentage of married Non-Hispanic White	0.276	0.743	0.532	0.052

253

254

255 2.5 Statistical analysis

256 The main statistical analysis framework is presented in Figure 2. It includes five
257 components. Each component aims to answer one research question proposed in Section 1.7.



258

259 **Figure 2.** The framework of statistical analysis includes five components. Each component aimed to answer one
260 of five proposed research questions.

261 First, we used the Wilcoxon signed rank test to examine whether there was a significant
262 difference in SARS-CoV-2 infection rates between black and white people in the same
263 county. We examined whether there was a significant difference between black and white
264 people's exposure to landscape settings and urban areas with different development
265 intensities in the same county. Second, we applied negative binomial regression models to
266 investigate associations between landscape and urban exposures and people's SARS-CoV-2
267 infection rates. In the models, black infection rates and white infection rates were dependent
268 variables, and socio-economic and demographic characteristics were covariates.

269 We also included a random intercept for states to account for the non-independence of
270 data from the same state. Third, we adopted generalized linear mixed models to explore the
271 extent to which the disparity of population landscape and urban exposure is related to racial
272 disparity in SARS-CoV-2 infection rates, after accounting for covariates. In the models, the

273 relative differences between black and white infection rates were the dependent variables,
274 and exposures to various landscape settings and urban areas between black and white people
275 were the independent variables, while difference of socioeconomic and demographic
276 characteristics between the two groups were included as covariates. We also included a
277 random intercept by state to account for a potential correlation in counties within the same
278 state.

279 A buffer distance of 400m was used to measure population-weighted landscape and urban
280 exposure in all above models, since this buffer distance can be regarded as a convenient
281 distance for most walking trips for people in the United States (Yang & Diez-Roux, 2012),
282 and a common walking distance between residential locations (300m to 500m) and landscape
283 settings, recommended by the World Health Organization (2016).

284 To address the issue of spatial autocorrelation in these models, we built additional
285 simultaneous autoregressive models (SAR) to validate the results of these generalized linear
286 models. In the first, we confirmed the presence of spatial autocorrelation in the models and
287 then used a SAR model to adjust for the presence of spatial autocorrelation. We used the
288 queen criteria to build the neighbors matrix and model selection with Akaike information
289 criterion (AIC) to compare three potential structures for where the spatial autoregressive
290 process is believed to occur. These potential structures include: a spatial error model, where
291 spatial dependence is assumed to occur in the error term; a spatial lag model, where spatial
292 dependence is assumed to occur in the response variable; and a mixed or Durbin model,
293 where spatial dependence is assumed to influence both the response and explanatory
294 variables.

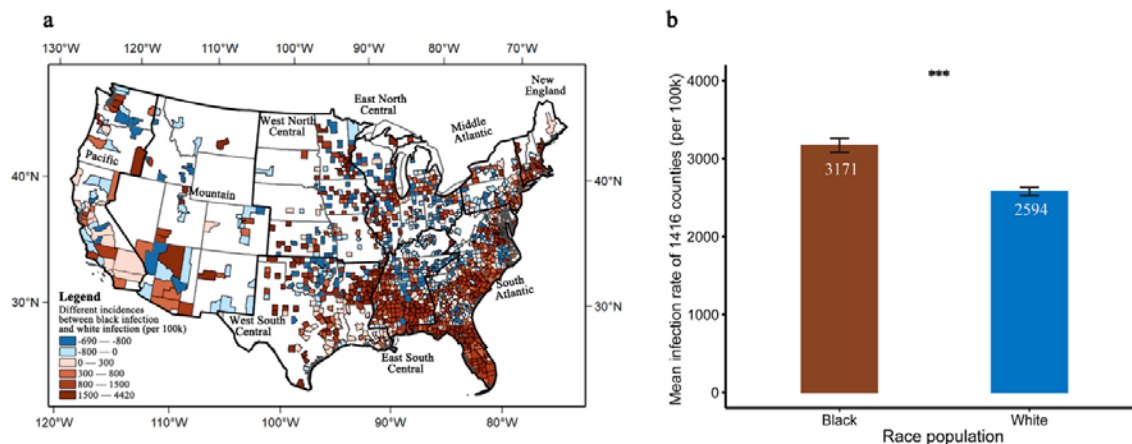
295 Finally, we used a series of generalized linear mixed models to explore the relationship
296 between the difference of black and white infection rates and varying buffer distances to
297 landscape settings and urban areas with different levels of development intensity. Apart from

298 100m, the buffer distances varied from 200m to 1800m by intervals of 200m. For buffer
299 distances between 2km and 5km, we used intervals of 500m. We performed negative
300 binomial mixed models and generalized linear mixed analyses using R v4.1.1 with built-in
301 ‘glmer.nb’, and ‘lmer’ function, respectively (R Core Team, 2020). The inclusive variables
302 for all models were refined with the variance inflation factor criterion (VIF) ≥ 4 , to remove
303 multicollinearity from the regression (O’Brien, 2007). The model coefficient estimates,
304 standard errors, degree of freedom, t-values, and p-values for coefficient estimates were
305 reported.
306

307 3 Results

308 3.1 Whether and to what extent did a racial disparity in infection rates exist?

309 As of Dec. 31, 2020, there were a total of 4,370,477 cases among black and white people
310 in the 1,416 sample counties of the United States (Figure 3a). The county average
311 infection rate for white individuals was 2,579 persons per 100,000, whereas the infection rate
312 for black individuals was 3,171 per 100,000 (Figure 3b). The average black-white difference
313 in infection rate was 592 persons per 100,000 population. White individuals had a higher
314 infection rate than black individuals in only 483 out of the 1416 counties. As expected, a
315 Wilcoxon signed rank test revealed that the difference in infection rates between black and
316 white people was significant, $p < 0.001$.



317

318 Figure 3. Difference in SARS-CoV-2 infection rates between black and white people.

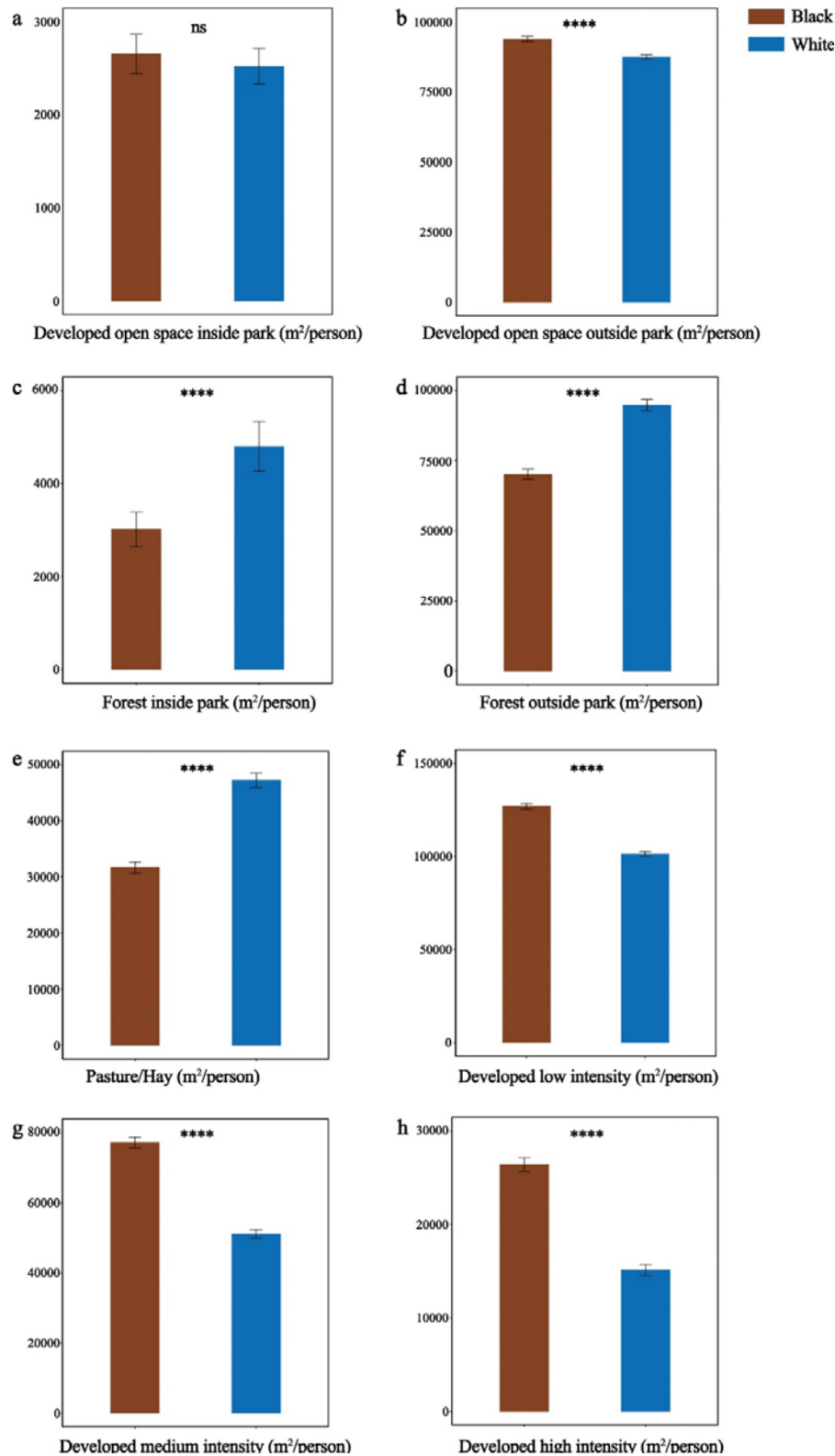
319 a. Difference in infection rates between black and white people within counties (per 100k population). Blue
320 color indicates that white people have a higher infection rate than black people, and red color indicates that
321 black people have a higher infection rate than white people.

322 b. The mean SARS-CoV-2 infection rates between black and white population groups. The significant
323 difference is identified at $p < 0.001$ using Wilcoxon signed rank test. The error bar represents standard error of
324 the mean.

325

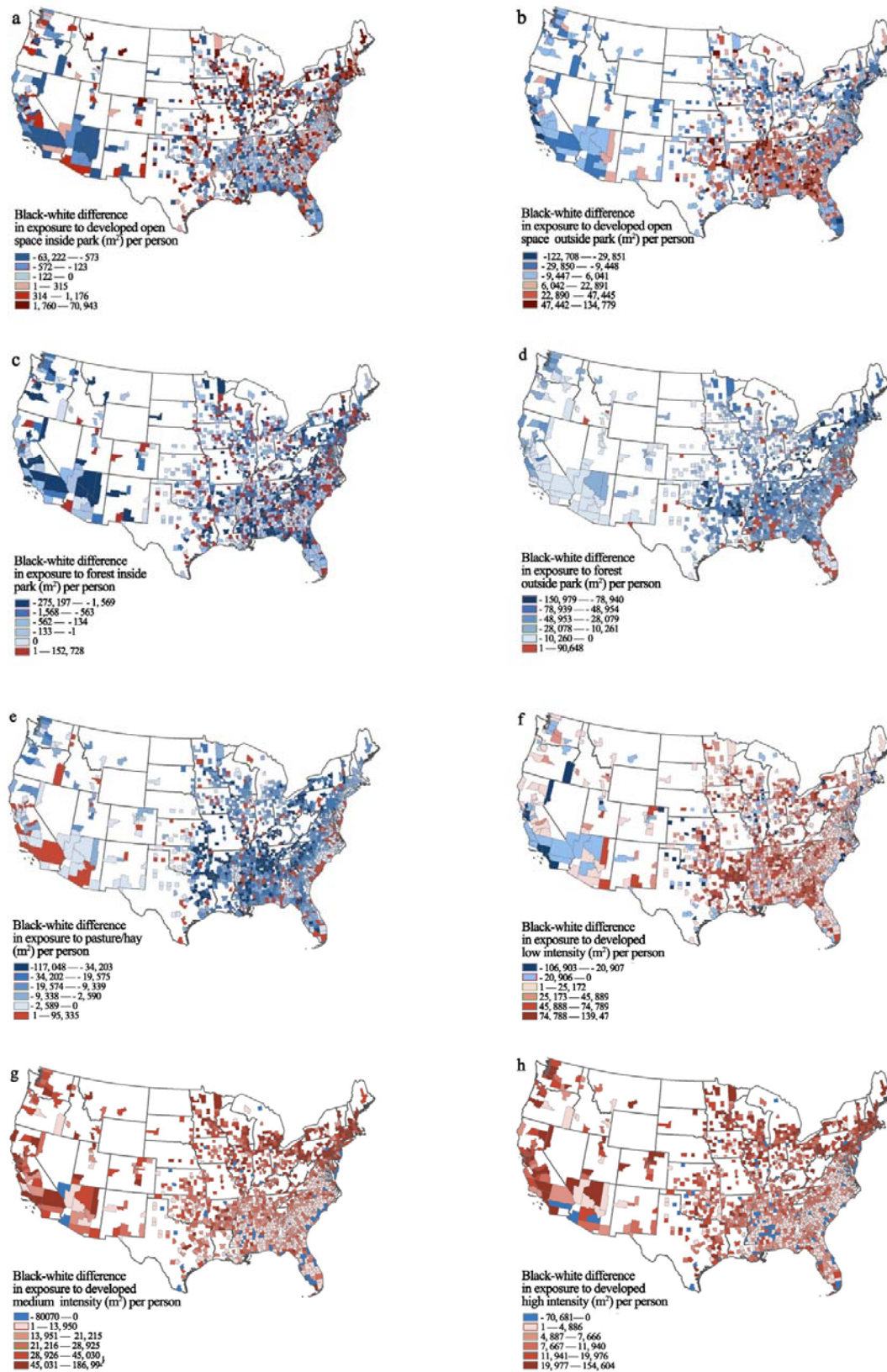
326 **3.2 Whether and to what extent did racial disparities in landscape and urban exposures**
327 **exist?**

328 The Wilcoxon two-sample test found that, comparing with white people, black people had
329 significantly lower exposure to multiple types of landscape settings, including forests,
330 grassland/herbaceous, and pastures/hay. Additionally, black people had significantly higher
331 exposure to urban areas with three different levels of development intensity (Figure 4 &
332 Figure 5). The findings confirmed that there were significant and large racial disparities in
333 landscape and urban exposure.



334

335 **Figure 4.** Comparisons of landscape and urban exposure between black and white people (within the 400 m
336 buffer distance). A Wilcoxon two-sample test was used to compare eight types of landscape and urban exposure.
337 The histogram shows mean values of exposure for black and white people in 1416 counties. The error bar
338 represents standard error of the mean. '****' $p < 0.0001$, 'ns' $p \geq 0.1$.



339

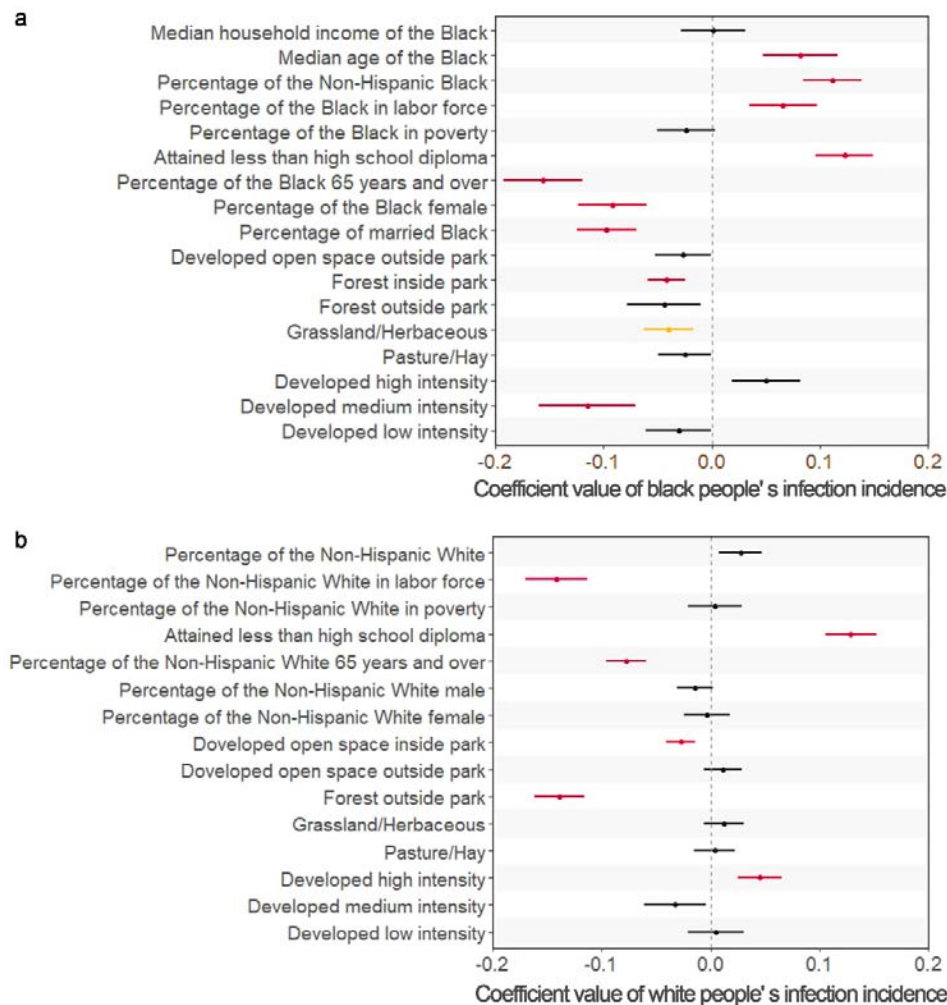
340

341

Figure 5. Within-county racial difference in landscape and urban exposure for each of 1416 counties (within the 400m buffer distance).

342 **3.3 Whether and to what extent were landscape and urban exposures significantly**
 343 **associated with SARS-CoV-2 infection rates?**

344 As shown in Figure 6, we identified several significant associations between landscape
 345 and urban exposure and SARS-CoV-2 infection rates for each race. For black people, both
 346 forest inside park and urban areas with medium development intensity yielded a significant
 347 and negative association with infection rates ($p < 0.05$). For white people, forest outside park
 348 yielded a significant and negative association with infection rates ($p < 0.05$). Urban areas
 349 with high development intensity yielded a significant and negative association with infection
 350 rates ($p < 0.05$) (see detailed results in Supplementary Table S2).



351
 352

353 **Figure 6.** Coefficient values represent effect sizes from a negative binomial mixed effects model for the
354 relationship between rates of COVID-19 black (a) or white (b) cases per 100,000 people, landscape exposure,
355 urban exposure, and socioeconomic and demographic factors. The landscape and urban exposures were
356 measured within the 400m buffer for each race.

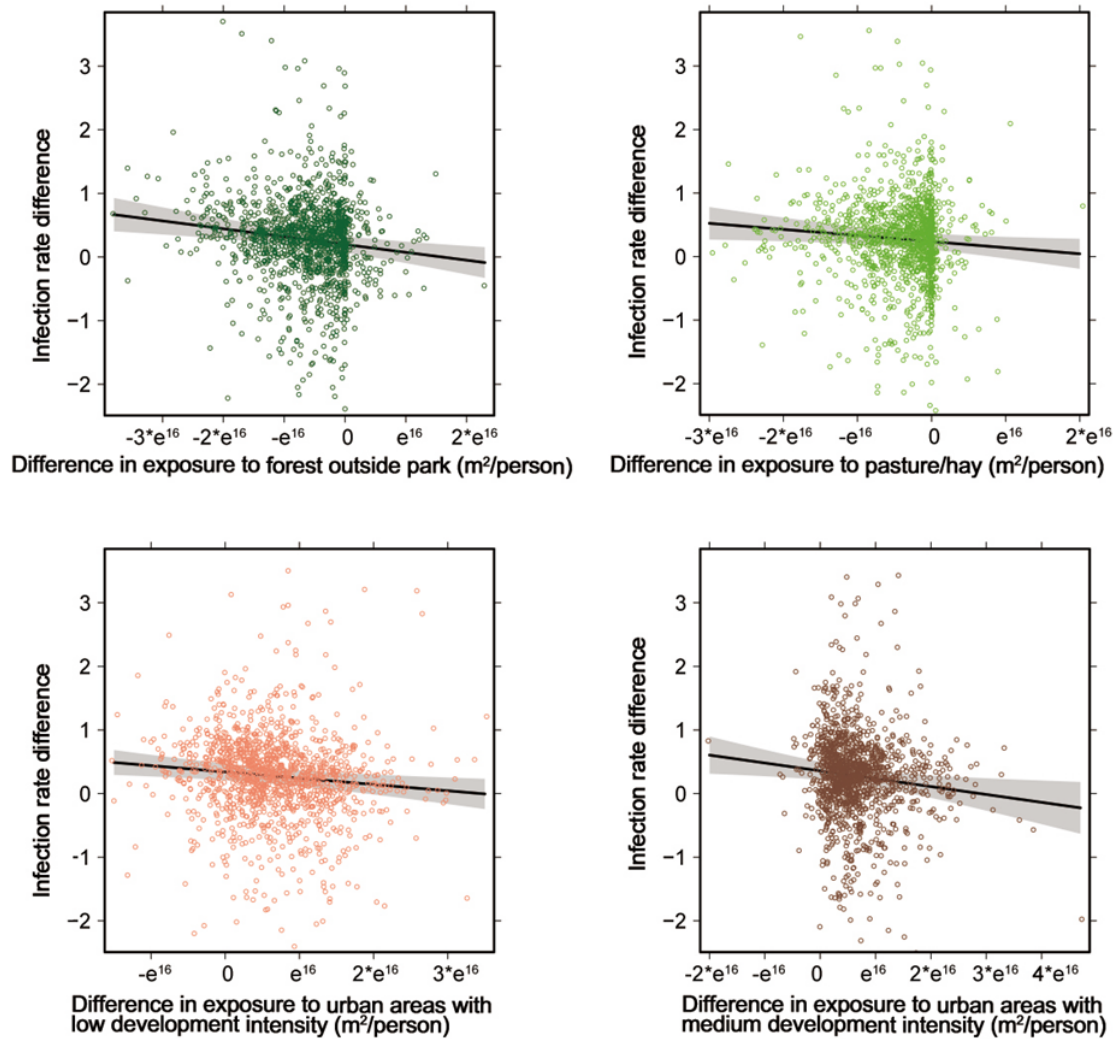
357 Coefficient values (dots and bars) represent 95% CIs. Significant variables are shown in red ($p < 0.05$), and
358 marginally significant in yellow ($p < 0.1$) to present associations between black or white exposure to green
359 spaces and areas with different levels of development intensity, and black or white infection rate.

360

361 **3.4 Whether and to what extent were racial disparities in landscape and urban**

362 **exposures significantly associated with racial disparity in infection rates?**

363 The generalized linear mixed effects model revealed a significantly negative correlation
364 between exposure to forest outside park and pasture and racial disparity in COVID-19 cases.
365 As shown in Table 2 & Figure 7, we identified a strong association between greenspace
366 exposure and racial disparity of SARS-CoV-2 infection rates. A unit difference of forests
367 outside parks between black and white populations had a significant association with a
368 decrease of 8.83% in the racial disparity in infection rates ($p < 0.001$). We found that the
369 significant association of pasture/hay was associated with a decrease of 5.34% in the racial
370 disparity in infection rates ($p < 0.05$). The difference in exposure to development intensity
371 exerted a mediating effect on SARS-CoV-2 infection rates decided by the levels of intensity.
372 Overall, population exposure to developed urban areas with low ($\beta = -0.073$, $p < 0.01$) and
373 medium intensities ($\beta = -0.073$, $p < 0.05$) was significantly associated with low racial
374 disparity of infection rates (Figure 7).



375

376

377

378

Figure 7. Green spaces and developed urban areas with developed intensities that have significant negative correlation with racial disparity of infection rate. The relative difference of infection rate between black and white population was calculated as $\ln(\text{black cases}/100\text{k}) - \ln(\text{white cases}/100\text{k})$.

379 **Table 2.** Model results from the generalized linear mixed effects model.

	VIF	Estimate	Std. Error	df	t value	Pr(> t)
(Intercept)		0.264	0.06	38.15	4.18	<0.001***
Diff. in median household income	1.49	-0.046	0.02	1298	-2.19	0.029*
Diff. in median age	2.68	0.085	0.03	1311	2.70	0.007**
Diff. in percentage of population	1.29	0.194	0.02	1319	8.32	<0.001***
Diff. in percentage of population in labor force	2.28	0.087	0.03	1295	2.60	0.009**
Diff. in percentage of the population in poverty	1.47	-0.007	0.02	1299	-0.31	0.76
Diff. in attained less than high school diploma	1.34	0.100	0.02	1303	4.16	<0.001***
Diff. in percentage of the population 65 years and over	2.7	-0.126	0.03	1310	-3.80	<0.001***
Diff. in percentage of female	2.36	0.017	0.04	1311	0.48	0.634
Diff. in percentage of married population	1.61	-0.041	0.02	1312	-1.68	0.093
Diff. in developed open space inside park	1.36	-0.007	0.02	1281	-0.35	0.728
Diff. in developed open space outside park	1.67	-0.034	0.03	1288	-1.33	0.183
Diff. in Forest inside park	1.35	0.005	0.03	1284	0.16	0.87
Diff. in Forest outside park	1.92	-0.088	0.03	1317	-3.37	<0.001***
Diff. in Grassland/Herbaceous	1.15	-0.019	0.02	1319	-0.82	0.412
Diff. in Pasture/Hay	1.62	-0.053	0.02	1311	-2.21	0.027*
Diff. in high development intensity	1.64	0.034	0.03	1312	1.30	0.195
Diff. in medium development intensity	1.93	-0.073	0.03	1315	-2.49	0.013*
Diff. in low development intensity	1.94	-0.073	0.03	1305	-2.74	0.006**

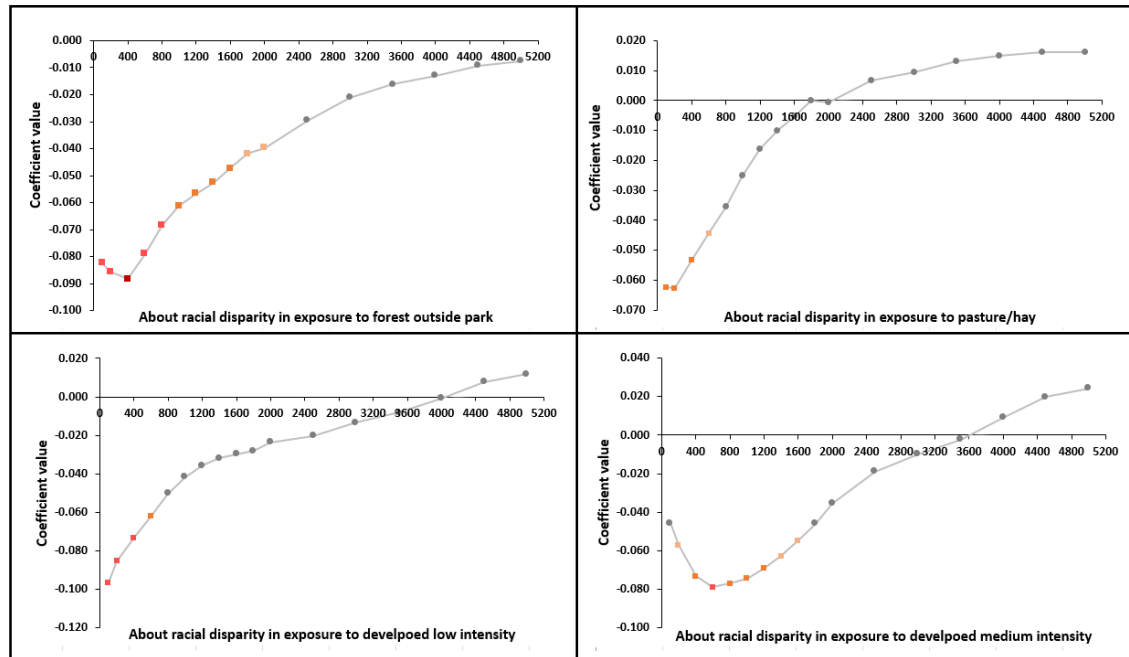
380 Note: Diff. means difference between black and white population. Both landscape exposure and urban exposure
 381 were measured within the 400 m buffer distance for each race.

382 **3.5 Whether and how did the association between racial disparity in landscape and**
 383 **urban exposures and SARS-CoV-2 infection rates change as the buffer distance**
 384 **changed?**

385 The results of sensitivity analysis of the four significant exposures found in 3.4 are shown
 386 in Figure 8 and Table 3. For the racial disparity in exposure to forest outside park, the buffer
 387 distance of best efficacy is 400m. The efficacy remains significant up until 1600m. For the
 388 racial disparity in exposure to pasture/hay, the buffer distance of best efficacy is 200m. The
 389 efficacy remains significant up until 400m. For the racial disparity in exposure to developed
 390 low intensity area, the buffer distance of best efficacy is 100m. The efficacy remains
 391 significant up until 600m. For the racial disparity in exposure to urban areas with moderate
 392 development intensity, the buffer distance of best efficacy is 600m, and the efficacy remains
 393 significant up until 1200m.

394 In total, all measures achieve a significant efficacy when the buffer distance is within

395 400m, which proves the validity of choosing 400m as the buffer distance for analysis in
 396 previous sections. Moreover, the beneficial associations gradually diminish as buffer distance
 397 increases. All become nonsignificant when the buffer distance is greater than 1600m.



398
 399 **Figure 8.** Coefficient values describing the associations between racial disparity in landscape and urban
 400 exposure within multiple buffer distances (100m-5km) and racial disparity in SARS-CoV-2 infection rates.
 401 Coefficient values are represented as dots with different colors. The gray color indicates nonsignificant
 402 associations, $p \geq 0.1$. Strong to light red colors indicate significant associations at different levels, $p < 0.001$, $p <$
 403 0.01 , $p < 0.05$, and $p < 0.1$ (see detailed numbers in Table 3).

404 **Table 3.** Coefficient values describing the associations between racial disparity in landscape and urban exposure
 405 within multiple buffer distances (100m-5km) and racial disparity in SARS-CoV-2 infection rates. Significant
 406 levels are at ^{ns} $p \geq 0.1$, [†] $p < 0.1$, ^{*} $p < 0.05$, ^{**} $p < 0.01$, and ^{***} $p < 0.001$.

Buffer distance (meter)	Landscape exposure		Urban exposure	
	Forest outside park	Pasture/hay	Medium development intensity	Low development intensity
100	-0.082**	-0.062*	-0.046	-0.097**
200	-0.086**	-0.063*	-0.057†	-0.085**
400	-0.088***	-0.053*	-0.073*	-0.073**
600	-0.079**	-0.044†	-0.079**	-0.062*
800	-0.068**	-0.035	-0.077*	-0.050†
1000	-0.061*	-0.025	-0.074*	-0.042
1200	-0.057*	-0.016	-0.069*	-0.036
1400	-0.053*	-0.010	-0.063†	-0.032
1600	-0.047*	-0.005	-0.055†	-0.030
1800	-0.042†	0.000	-0.046	-0.028
2000	-0.040†	-0.001	-0.036	-0.024
2500	-0.030	0.007	-0.019	-0.020
3000	-0.021	0.010	-0.010	-0.013
3500	-0.016	0.013	-0.002	-0.008
4000	-0.013	0.015	0.009	-0.001
4500	-0.009	0.016	0.020	0.008
5000	-0.008	0.016	0.024	0.012

407 **4 Discussion**

408 We present three major findings: (1) Racial disparity is profound: racial disparity in
409 SARS-CoV-2 infection rates and racial disparity in landscape and urban exposure were
410 significant and showed similar patterns. (2) Landscape and urban exposures impact racial
411 disparity in SARS-CoV-2 infection rates. Less racial disparity in exposure to forests outside
412 park and pasture/hay and urban areas with low and medium development intensities were
413 significantly associated with lower racial disparities in SARS-CoV-2 infection rates. (3)
414 Distance is critical: landscape and urban exposure within walking distance (around 400m)
415 was significantly associated with racial disparity in SARS-CoV-2 infection rates.

416 The following discussion provides interpretations and implications of these major findings.
417 We report limitations and recommend opportunities for future research.

418 **4.1 Why was less racial disparity in landscape exposure associated with less racial** 419 **disparity in infection rates?**

420 **We describe four mechanisms that may explain the association.** First, less racial
421 disparity in landscape exposure may lead to less disparity in air pollution exposure, which
422 may contribute to lower racial disparity in infection rates. Recent studies have shown that air
423 pollution is positively associated with higher COVID-19 mortality rates (Wu et al., 2020) and
424 COVID-19 infection rates (Zhu et al., 2020) because COVID-19 is an airborne disease
425 (Klompas et al., 2020). Studies found that a higher density of PM_{2.5}, PM₁₀, NO₂, or O₃ in
426 the air was linked to a higher SARS-CoV-2 infection rate (Zhu et al., 2020). Less racial
427 disparity in landscape exposure may reduce racial disparity in air pollution threats, thereby
428 contributing to a lower racial disparity in SARS-CoV-2 infection rates (Mitchell & Popham,
429 2008; Wolch et al., 2014).

430 Second, less racial disparity in landscape exposure may lead to less racial disparity in
431 engagement of outdoor physical activities, thereby contributing to a lower racial disparity in

432 SARS-CoV-2 infection rates (Lu, Chen, et al., 2021). A large number of studies have
433 reported that landscape exposure encourages physical activity (Cox et al., 2017; Lu, Zhao, et
434 al., 2021). More frequent physical activity can reduce the risk of obesity (Knobel et al., 2021;
435 Kuo, 2013), cardiovascular diseases (Lanki et al., 2017), stroke (Wilker et al., 2014),
436 systematic inflammation (Bikomeye et al., 2022), and promote immune functioning (da
437 Silveira et al., 2021), making them less vulnerable to SARS-CoV-2 infection (Jiang et al.,
438 2022).

439 Third, less racial disparity in landscape exposure may lead to less racial disparity in mental
440 stress, thereby contributing to a lower racial disparity in SARS-CoV-2 infection rates. Many
441 studies have shown that landscape exposure significantly reduces mental stress (Jiang et al.,
442 2016; Sullivan & Li, 2021), and stress reduction boosts immune functioning (Kuo, 2015;
443 Segerstrom & Miller, 2004). Studies report that landscape exposure boosts immune
444 functioning by increasing the number of Natural Killer (NK) cells, lymphocytes, and
445 enhanced human NK activities (Li et al., 2010; Li et al., 2008).

446 Fourth, less racial disparity in landscape exposure may lead to less racial disparity in
447 outdoor social activities, thereby contributing to a lower racial disparity in SARS-CoV-2
448 infection rates. People with access to nearby landscapes can more easily engage in social
449 activities while remaining at a safe social distance. Compared to indoor settings, outdoor
450 landscape settings allow people to socialize with others at a much lower risk of contracting
451 SARS-CoV-2. Outdoor settings provide high levels of air circulation and more room for
452 social distancing (Leclerc et al., 2020; Miao et al., 2021; Vos et al., 2022).

453 **4.1.2 Why did racial disparity in forest exposure yield the strongest beneficial** 454 **association with racial disparity in infection rates?**

455 Among all the landscape settings we analyzed, we found that lower racial disparity in
456 population-level exposure to forests was most closely associated with a lower racial disparity

457 in SARS-CoV-2 infection rates. There are two possible explanations. First, forests (including
458 trees along neighborhood streets) are more prevalent than other types of green spaces and
459 distributed more evenly across urban and rural areas in the US (Yang et al., 2018). The
460 relatively even distribution of forests among different neighborhoods provides both black and
461 white population groups more opportunities for nature exposure.

462 Second, exposure to forests are more effective at reducing mental stress and negative
463 emotions than exposure to other types of landscape (Beil & Hanes, 2013; Jiang et al., 2016),
464 which may make them more effective at improving immune functioning and reducing
465 systematic inflammation, further contributing to a stronger resistance to infection (Kuo, 2015;
466 Li et al., 2010). Third, forests can more effectively capture particulate pollutants than
467 grassland and shrubs because they have a more vertical and complex profile of foliage
468 (Beckett et al., 2000). Exposure to forests is significantly associated with lower incidences of
469 acute respiratory symptoms (Nowak et al., 2006; Nowak et al., 2018) and SARS-CoV-2
470 infection (Jiang et al., 2022; Lovasi et al., 2008). Lastly, compared to lawn, grassland, and
471 open spaces, forests typically have more dense tree canopy, trunks, and narrow paths, which
472 may encourage social distancing (Jiang et al., 2022). Previous studies have noted that the
473 beneficial impacts of open spaces on SARS-CoV-2 infection (e.g., reduced air pollution and
474 mental stress, enhanced physical activities) may be significantly offset by their detrimental
475 impacts (e.g., increased social contact if people congregate in the open space). This impact
476 may be more profound in dense urban areas (Yang et al., 2022).

477 **4.1.3. Compared to forest inside parks, why does the racial disparity in forests outside**
478 **parks have a stronger association with racial disparity in infection rates?**

479 There are several possible reasons. Previous studies argue that green spaces mediate health
480 disparities among black and white people due to differences in how these groups interact with
481 green spaces (Iyer et al., 2020). Compared to white people, black people in the US may use
482 parks differently because they have historically been excluded from parks, especially
483 moderate or large parks in suburban and rural areas (Byrne & Wolch, 2009; Wolch et al.,
484 2014). Recent surveys of park users in the US report that black people often cite greater
485 difficulties in using parks than white users, including feeling unwelcome, lacking free time,
486 lacking a private vehicle, and financial stress caused by long-distance travel (Iyer et al., 2020;
487 Wolch et al., 2014). Although black people may have a greater access than white people to
488 urban parks in downtown areas, they experience more obstacles to accessing moderate and
489 large parks in suburban and rural areas. Due to these obstacles, forests inside park may have a
490 weaker impact on infection rates than forest outside park (Larson et al., 2021). In contrast,
491 forests outside parks provide similar access to both black and white people, which allows the
492 positive effect of forests on the SARS-CoV-2 infection can be equally applied to both black
493 and white people.

494 Moreover, the area of forest outside parks for both races is much larger than the area of
495 forest inside parks (Fig. 3: c and d). This may allow more people to maintain a safe social
496 distance, which may lead to reduced infection (Jiang et al., 2022).

497 **4.1.4 Why is lower racial disparity in low and medium intensity urban areas associated**
498 **with a lower racial disparity in infection rates?**

499 We found that a higher racial disparity in low or medium development intensity areas
500 were significantly associated with a lower racial disparity in infection rates while high
501 development intensity areas did not yield a significant association with the racial disparity in

502 infection rates. There are several possible explanations for this finding.

503 First, many studies note that people living in high urban intensity areas have a higher risk
504 of contracting viruses (Acuto et al., 2020; Teller, 2021). People living in these areas are often
505 in close contact with people who may be infected, leading to a greater risk of exposure
506 (Jamshidi et al., 2020; Kokubun & Yamakawa, 2021). Second, studies suggest that people in
507 low and medium urban intensity areas are more likely to engage in outdoor activity than
508 people in high intensity areas, thereby enhancing their immune functioning (Wang et al.,
509 2021). Third, people living in high urban intensity areas have higher levels of stress (Luo &
510 Jiang, 2022). People suffering from stress often have higher levels of cortisol, which can
511 inhibit the production of lymphocytes, which are a type of white blood cell that can help
512 people resist viruses, including SARS-CoV-2 (Jiang et al., 2014; Maydych et al., 2017;
513 Ryden et al., 2009). Lastly, people living in high urban intensity areas may have lower levels
514 of social capital (e.g., Eriksson & Rataj, 2019; Rupasingha et al., 2006). Social capital has
515 been proven to negatively correlate with SARS-CoV-2 infection rates and population density
516 (Kokubun & Yamakawa, 2021). People living in low or moderate density areas may have
517 more equitable access to public spaces and facilities where they can socialize and collaborate.
518 Social capital is critical for actions that require residents to work together to reduce the
519 severity of pandemic, such as wearing masks and social distancing (Watanabe et al., 2022).

520 **4.2 Implications**

521 Our findings suggest four major landscape and urban planning implications. First, this
522 study found significant and large racial disparities in both SARS-CoV-2 infection rates and
523 landscape and urban exposures. Furthermore, we found a high level of agreement between
524 the two types of racial disparity. To address this racial disparity, governments should allocate
525 public resources to add vegetation and improve access to natural landscapes in areas with
526 higher concentrations of minority populations. City planners should also work to design less

527 crowded urban environments in these areas to reduce racial disparity in public health
528 outcomes.

529 Second, we found that different landscape settings and urban development intensities had
530 different associations with SARS-CoV-2 infection rates and with racial disparity in SARS-
531 CoV-2 infection rates. These findings suggest that we should not treat all landscape and
532 urban development types the same when allocating public resources. City administrators,
533 planning and design professionals, and public health professionals need to understand what
534 types of landscape settings and urban development intensities may significantly reduce the
535 risk of SARS-CoV-2 infection.

536 Third, this study suggests that distance to landscape settings and urban areas impacts their
537 association with SARS-CoV-2 infection. The beneficial effects of forest outside park,
538 pasture/hay, and urban areas with low and moderate development intensity are greatest when
539 they are within a comfortable walking distance (radius buffer under 400m). The effects
540 diminish as distance increases, eventually becoming nonsignificant. These findings suggest
541 that governments should allocate more resources to preserve and develop natural landscapes
542 and areas with low and moderate development intensity within walking distance.

543 Fourth, this study calls for interdisciplinary cooperation between urban planners and
544 landscape architects. Previous studies typically examine either landscape settings or urban
545 areas because these two types of environments might be essentially complementary, so it is
546 not necessary to examine their effects in the same study, but we found, after controlling for
547 multicollinearity, that both landscape exposure and urban exposure yielded significant
548 associations. Planners should consider landscape and urban exposure as two equally
549 important tools to alleviate risk of SARS-CoV-2 infection and other airborne infectious
550 diseases.

551 **4.3 Limitations and future research**

552 This study has two major limitations, which suggest opportunities for future study. First,
553 because we used aggregated SARS-CoV-2 infection data, this study was essentially
554 vulnerable to the ecological fallacy. To largely reduce the risk of ecological fallacy, we used
555 fine-scaled racial map data, population-weighted analysis for landscape and urban exposure
556 at a fine scale, and a within-county comparison of racial disparities in environmental
557 exposures and infection rates. Nevertheless, the environmental exposures and infection rates
558 data at the individual level can improve the accuracy of the findings and should be
559 encouraged to be used in future studies when those data are available.

560 Moreover, this study identifies a correlational relationship between the racial disparity of
561 landscape and urban exposure and the racial disparity of infection rates. Theoretical and
562 empirical findings from previous studies suggest that there may be a causal relationship. We
563 suggest that future researchers should consider conducting natural experimental studies,
564 environmental intervention studies, or cohort studies to explore more of the possible causal
565 relationship (Jiang et al., 2021).

566 **Conclusion**

567 The philosopher Georg Hegel said, “The only thing that we learn from history is that we
568 learn nothing from history.” Although many people believe the COVID-19 pandemic is over,
569 we haven’t fully understood it and we haven’t learned enough from it. This nationwide study
570 provides evidence to guide landscape and urban planning to alleviate racial disparities in
571 landscape and urban exposure and SARS-CoV-2 infection rates. Governments, urban
572 planners, landscape planners, and public health professionals should work together to provide
573 more equitable access to certain types of landscape settings and urban areas to reduce risk of
574 infections for all races. In all, we are positive that our findings can contribute to solve similar
575 public health and social crisis in the near or far future.

576 **References**

- 577 Abedi, V., Olulana, O., Avula, V., Chaudhary, D., Khan, A., Shahjouei, S., Li, J., & Zand, R. (2020).
578 Racial, Economic and Health Inequality and COVID-19 Infection in the United States.
579 *medRxiv : the preprint server for health sciences*, 2020.2004.2026.20079756.
580 <https://doi.org/10.1101/2020.04.26.20079756>
- 581 Acuto, M., Larcom, S., Keil, R., Ghojeh, M., Lindsay, T., Camponeschi, C., & Parnell, S. (2020).
582 Seeing COVID-19 through an urban lens. *Nature Sustainability*, 3(12), 977-978.
583 <https://doi.org/10.1038/s41893-020-00620-3>
- 584 Alidadi, M., & Sharifi, A. (2022). Effects of the built environment and human factors on the spread of
585 COVID-19: A systematic literature review. *Science of The Total Environment*, 158056.
- 586 Beckett, K. P., Freer-Smith, P., & Taylor, G. (2000). Particulate pollution capture by urban trees: effect
587 of species and windspeed. *Global Change Biology*, 6(8), 995-1003.
- 588 Beil, K., & Hanes, D. (2013). The Influence of Urban Natural and Built Environments on Physiological
589 and Psychological Measures of Stress-A Pilot Study [Article]. *International Journal of*
590 *Environmental Research and Public Health*, 10(4), 1250-1267.
591 <https://doi.org/10.3390/ijerph10041250>
- 592 Bikomeye, J. C., Beyer, A. M., Kwarteng, J. L., & Beyer, K. M. M. (2022). Greenspace, Inflammation,
593 Cardiovascular Health, and Cancer: A Review and Conceptual Framework for Greenspace in
594 Cardio-Oncology Research. *Int J Environ Res Public Health*, 19(4).
595 <https://doi.org/10.3390/ijerph19042426>
- 596 Branas, C. C., South, E., Kondo, M. C., Hohl, B. C., Bourgois, P., Wiebe, D. J., & MacDonald, J. M.
597 (2018). Citywide cluster randomized trial to restore blighted vacant land and its effects on
598 violence, crime, and fear [10.1073/pnas.1718503115]. *Proceedings of the National Academy*
599 *of Sciences*. <http://www.pnas.org/content/early/2018/02/20/1718503115.abstract>
- 600 Braveman, P. A., Kumanyika, S., Fielding, J., LaVeist, T., Borrell, L. N., Manderscheid, R., &
601 Troutman, A. (2011). Health disparities and health equity: the issue is justice. *American*
602 *journal of public health*, 101(S1), S149-S155. <https://doi.org/10.2105/Ajph.2010.300062>
- 603 Byrne, J., & Wolch, J. (2009). Nature, race, and parks: past research and future directions for
604 geographic research. *Progress in human geography*, 33(6), 743-765.
605 <https://doi.org/10.1177/0309132509103156>
- 606 Centers for Disease Control and Prevention, C.-R. (2021). COVID-19 Response. COVID-19 Case
607 Surveillance Data Access, Summary, and Limitations (version date: June 21, 2021).
- 608 Chen, B., Song, Y., Jiang, T., Chen, Z., Huang, B., & Xu, B. (2018). Real-time estimation of
609 population exposure to PM_{2.5} using mobile-and station-based big data. *International Journal*
610 *of Environmental Research and Public Health*, 15(4), 573.
- 611 Chen, B., Song, Y., Kwan, M.-P., Huang, B., & Xu, B. (2018). How do people in different places
612 experience different levels of air pollution? Using worldwide Chinese as a lens. *Environmental*
613 *pollution*, 238, 874-883.
- 614 Chen, B., Tu, Y., Wu, S., Song, Y., Jin, Y., Webster, C., Xu, B., & Gong, P. (2022). Beyond green

- 615 environments: Multi-scale difference in human exposure to greenspace in China. *Environ Int*,
616 166, 107348.
- 617 Cox, D. T., Shanahan, D. F., Hudson, H. L., Fuller, R. A., Anderson, K., Hancock, S., & Gaston, K. J.
618 (2017). Doses of Nearby Nature Simultaneously Associated with Multiple Health Benefits. *Int*
619 *J Environ Res Public Health*, 14(2). <https://doi.org/10.3390/ijerph14020172>
- 620 da Silveira, M. P., da Silva Fagundes, K. K., Bizuti, M. R., Starck, É., Rossi, R. C., & de Resende, E.
621 S. D. T. (2021). Physical exercise as a tool to help the immune system against COVID-19: an
622 integrative review of the current literature. *Clin Exp Med*, 21(1), 15-28.
623 <https://doi.org/10.1007/s10238-020-00650-3>
- 624 Das, M., Pal, S., & Ghosh, A. (2008). Rural urban differences of cardiovascular disease risk factors in
625 adult Asian Indians. *American Journal of Human Biology*, 20(4), 440-445.
626 <https://doi.org/10.1002/ajhb.20757>
- 627 Dmowska, A., & Stepinski, T. F. (2019). Racial Dot Maps Based on Dasymmetrically Modeled Gridded
628 Population Data. *Social Sciences*, 8(5), 157. <https://www.mdpi.com/2076-0760/8/5/157>
- 629 Dmowska, A., Stepinski, T. F., & Netzel, P. (2017). Comprehensive framework for visualizing and
630 analyzing spatio-temporal dynamics of racial diversity in the entire United States. *PLOS ONE*,
631 12(3), e0174993. <https://doi.org/10.1371/journal.pone.0174993>
- 632 Eriksson, R., & Rataj, M. (2019). The geography of starts-ups in Sweden. The role of human capital,
633 social capital and agglomeration. *Entrepreneurship & Regional Development*, 31(9-10), 735-
634 754.
- 635 Figueroa, J. F., Wadhera, R. K., Lee, D., Yeh, R. W., & Sommers, B. D. (2020). Community-Level
636 Factors Associated With Racial And Ethnic Disparities In COVID-19 Rates In Massachusetts.
637 *The New York Times*, 39(11), 1984-1992. <https://doi.org/10.1377/hlthaff.2020.01040>
- 638 Firebaugh, G. (2001). Ecological Fallacy, Statistics of. In N. J. Smelser & P. B. Baltes (Eds.),
639 *International Encyclopedia of the Social & Behavioral Sciences* (pp. 4023-4026). Pergamon.
640 <https://doi.org/https://doi.org/10.1016/B0-08-043076-7/00765-8>
- 641 Iyer, H. S., Valeri, L., James, P., Chen, J. T., Hart, J. E., Laden, F., Holmes, M. D., & Rebbeck, T. R.
642 (2020). The contribution of residential greenness to mortality among men with prostate cancer:
643 a registry-based cohort study of Black and White men. *Environmental Epidemiology*, 4(2).
- 644 Jamshidi, S., Baniasad, M., & Niyogi, D. (2020). Global to USA County Scale Analysis of Weather,
645 Urban Density, Mobility, Homestay, and Mask Use on COVID-19. *International Journal of*
646 *Environmental Research and Public Health*, 17(21), 7847.
647 <https://doi.org/10.3390/ijerph17217847>
- 648 Jauho, M., & Helén, I. (2022). Citizenship by vitality: rethinking the concept of health citizenship.
649 *Distinktion: Journal of Social Theory*, 1-21. <https://doi.org/10.1080/1600910X.2022.2057561>
- 650 Jiang, B., Chang, C.-Y., & Sullivan, W. C. (2014). A dose of nature: Tree cover, stress reduction, and
651 gender differences. *Landscape and Urban Planning*, 132(0), 26-36.
652 <https://doi.org/http://dx.doi.org/10.1016/j.landurbplan.2014.08.005>
- 653 Jiang, B., Li, D. Y., Larsen, L., & Sullivan, W. C. (2016). A Dose-Response Curve Describing the

- 654 Relationship Between Urban Tree Cover Density and Self-Reported Stress Recovery.
655 *Environment and Behavior*, 48(4), 607-629. <https://doi.org/10.1177/0013916514552321>
- 656 Jiang, B., Xu, W. Y., Ji, W. Q., Kim, G., Pryor, M., & Sullivan, W. C. (2021). Impacts of nature and built
657 acoustic-visual environments on human's multidimensional mood states: A cross-continent
658 experiment. *Journal of Environmental Psychology*, 77, 101659.
659 <https://doi.org/10.1016/j.jenvp.2021.101659>
- 660 Jiang, B., Yang, Y., Chen, L., Liu, X., Wu, X., Chen, B., Webster, C., Sullivan, W. C., Larsen, L.,
661 Wang, J., & Lu, Y. (2022). Green spaces, especially nearby forest, may reduce the SARS-
662 CoV-2 infection rate: A nationwide study in the United States. *Landscape and Urban Planning*,
663 228, 104583. <https://doi.org/10.1016/j.landurbplan.2022.104583>
- 664 Knobel, P., Maneja, R., Bartoll, X., Alonso, L., Bauwelinck, M., Valentin, A., Zijlema, W., Borrell, C.,
665 Nieuwenhuijsen, M., & Dadvand, P. (2021). Quality of urban green spaces influences
666 residents' use of these spaces, physical activity, and overweight/obesity. *Environmental*
667 *pollution*, 271, 116393.
- 668 Kokubun, K., & Yamakawa, Y. (2021). Social Capital Mediates the Relationship between Social
669 Distancing and COVID-19 Prevalence in Japan. *INQUIRY: The Journal of Health Care*
670 *Organization, Provision, and Financing*, 58, 00469580211005189.
671 <https://doi.org/10.1177/00469580211005189>
- 672 Kuo, F. E. M. (2013). Nature-deficit disorder: evidence, dosage, and treatment. *Journal of Policy*
673 *Research in Tourism, Leisure and Events*, 5(2), 172-186.
674 <https://doi.org/10.1080/19407963.2013.793520>
- 675 Kuo, M. (2015). How might contact with nature promote human health? Promising mechanisms and a
676 possible central pathway. *Frontiers in psychology*, 1093.
- 677 Lanki, T., Siponen, T., Ojala, A., Korpela, K., Pennanen, A., Tiittanen, P., Tsunetsugu, Y., Kagawa, T.,
678 & Tyrväinen, L. (2017). Acute effects of visits to urban green environments on cardiovascular
679 physiology in women: A field experiment. *Environmental Research*, 159, 176-185.
680 <https://doi.org/10.1016/j.envres.2017.07.039>
- 681 Larson, L. R., Zhang, Z., Oh, J. I., Beam, W., Ogletree, S. S., Bocarro, J. N., Lee, K. J., Casper, J.,
682 Stevenson, K. T., Hipp, J. A., Mullenbach, L. E., Carusona, M., & Wells, M. (2021). Urban
683 Park Use During the COVID-19 Pandemic: Are Socially Vulnerable Communities
684 Disproportionately Impacted? [Original Research]. *Frontiers in Sustainable Cities*, 3(103).
685 <https://doi.org/10.3389/frsc.2021.710243>
- 686 Leclerc, Q., Fuller, N., Knight, L., null, n., Funk, S., & Knight, G. (2020). What settings have been
687 linked to SARS-CoV-2 transmission clusters? [version 2; peer review: 2 approved]. *Wellcome*
688 *Open Research*, 5(83). <https://doi.org/10.12688/wellcomeopenres.15889.2>
- 689 Li, Q., Kobayashi, M., Inagaki, H., Hirata, Y., Li, Y. J., Hirata, K., Shimizu, T., Suzuki, H., Katsumata,
690 M., Wakayama, Y., Kawada, T., Ohira, T., Matsui, N., & Kagawa, T. (2010). A day trip to a
691 forest park increases human natural killer activity and the expression of anti-cancer proteins
692 in male subjects. *J Biol Regul Homeost Agents*, 24(2), 157-165.

- 693 Li, Q., Morimoto, K., Kobayashi, M., Inagaki, H., Katsumata, M., Hirata, Y., Hirata, K., Suzuki, H., Li, Y.,
694 J., Wakayama, Y., Kawada, T., Park, B. J., Ohira, T., Matsu, N., Kagawa, T., Miyazak, Y., &
695 Krensky, A. M. (2008). Visiting a forest, but not a city, increases human natural killer activity
696 and expression of anti-cancer proteins. *International Journal of Immunopathology and*
697 *Pharmacology*, 21(1), 117-127. <Go to ISI>://WOS:000254686700013
- 698 Lin, C., Lau, A. K. H., Fung, J. C. H., Guo, C., Chan, J. W. M., Yeung, D. W., Zhang, Y., Bo, Y.,
699 Hossain, M. S., Zeng, Y., & Lao, X. Q. (2020). A mechanism-based parameterisation scheme
700 to investigate the association between transmission rate of COVID-19 and meteorological
701 factors on plains in China. *Science of The Total Environment*, 737, 140348.
702 <https://doi.org/10.1016/j.scitotenv.2020.140348>
- 703 Lovasi, G. S., Quinn, J. W., Neckerman, K. M., Perzanowski, M. S., & Rundle, A. (2008). Children
704 living in areas with more street trees have lower prevalence of asthma. *Journal of*
705 *Epidemiology & Community Health*, 62(7), 647-649.
- 706 Lu, Y., Chen, L., Liu, X., Yang, Y., Sullivan, W. C., Xu, W., Webster, C., & Jiang, B. (2021). Green
707 spaces mitigate racial disparity of health: A higher ratio of green spaces indicates a lower
708 racial disparity in SARS-CoV-2 infection rates in the USA. *Environ Int*, 152, 106465.
709 <https://doi.org/10.1016/j.envint.2021.106465>
- 710 Lu, Y., Zhao, J., Wu, X., & Lo, S. M. (2021). Escaping to nature during a pandemic: A natural
711 experiment in Asian cities during the COVID-19 pandemic with big social media data. *Science*
712 *of The Total Environment*, 777, 146092. <https://doi.org/10.1016/j.scitotenv.2021.146092>
- 713 Luo, L., & Jiang, B. (2022). From oppressiveness to stress: A development of Stress Reduction
714 Theory in the context of contemporary high-density city. *Journal of Environmental Psychology*,
715 101883. <https://doi.org/https://doi.org/10.1016/j.jenvp.2022.101883>
- 716 Maydych, V., Claus, M., Dychus, N., Ebel, M., Damaschke, J., Diestel, S., Wolf, O. T., Kleinsorge, T.,
717 & Watzl, C. (2017). Impact of chronic and acute academic stress on lymphocyte subsets and
718 monocyte function. *Plos One*, 12(11), e0188108.
719 <https://doi.org/10.1371/journal.pone.0188108>
- 720 McMichael, A. J. (2000). The urban environment and health in a world of increasing globalization:
721 issues for developing countries. *Bulletin of the world Health Organization*, 78, 1117-1126.
- 722 Miao, J., Zeng, D., & Shi, Z. (2021). Can neighborhoods protect residents from mental distress during
723 the COVID-19 pandemic? Evidence from Wuhan. *Chinese Sociological Review*, 53(1), 1-26.
- 724 Mitchell, R., & Popham, F. (2008). Effect of exposure to natural environment on health inequalities: an
725 observational population study. *Lancet*, 372(9650), 1655-1660. [https://doi.org/10.1016/s0140-](https://doi.org/10.1016/s0140-6736(08)61689-x)
726 [6736\(08\)61689-x](https://doi.org/10.1016/s0140-6736(08)61689-x)
- 727 Mouratidis, K., & Poortinga, W. (2020). Built environment, urban vitality and social cohesion: Do
728 vibrant neighborhoods foster strong communities? *Landscape and Urban Planning*, 204,
729 103951. <https://doi.org/https://doi.org/10.1016/j.landurbplan.2020.103951>
- 730 Nowak, D. J., Crane, D. E., & Stevens, J. C. (2006). Air pollution removal by urban trees and shrubs
731 in the United States. *Urban Forestry and Urban Greening*, 4(3-4), 115-123.

- 732 <http://www.scopus.com/inward/record.url?eid=2-s2.0->
733 [33746240855&partnerID=40&md5=9709d937f0a077a0d2ecb6220e504415](https://doi.org/10.1101/2023.04.17.23288622)
- 734 Nowak, D. J., Hirabayashi, S., Doyle, M., McGovern, M., & Pasher, J. (2018). Air pollution removal by
735 urban forests in Canada and its effect on air quality and human health. *Urban Forestry &*
736 *Urban Greening*, 29, 40-48. <https://doi.org/10.1016/j.ufug.2017.10.019>
- 737 O'brien, R. M. (2007). A caution regarding rules of thumb for variance inflation factors. *Quality &*
738 *quantity*, 41(5), 673-690.
- 739 Paköz, M. Z., & Işık, M. (2022). Rethinking urban density, vitality and healthy environment in the post-
740 pandemic city: The case of Istanbul. *Cities*, 124, 103598.
741 <https://doi.org/10.1016/j.cities.2022.103598>
- 742 Rupasingha, A., Goetz, S. J., & Freshwater, D. (2006). The production of social capital in US counties.
743 *The Journal of Socio-Economics*, 35(1), 83-101. <https://doi.org/10.1016/j.socec.2005.11.001>
- 744 Ryden, M., Hedback, B., & Jonasson, L. (2009). Does Stress Reduction Change the Levels of Cortisol
745 Secretion in Patients With Coronary Artery Disease? [Article]. *Journal of Cardiopulmonary*
746 *Rehabilitation and Prevention*, 29(5), 314-317. <Go to ISI>://000270599400007
- 747 Segerstrom, S. C., & Miller, G. E. (2004). Psychological stress and the human immune system: a
748 meta-analytic study of 30 years of inquiry. *Psychological bulletin*, 130(4), 601.
- 749 Son, J.-Y., Lane, K. J., Miranda, M. L., & Bell, M. L. (2020). Health disparities attributable to air
750 pollutant exposure in North Carolina: Influence of residential environmental and social factors.
751 *Health & place*, 62, 102287.
- 752 Song, Y., Chen, B., Ho, H. C., Kwan, M.-P., Liu, D., Wang, F., Wang, J., Cai, J., Li, X., Xu, Y., He, Q.,
753 Wang, H., Xu, Q., & Song, Y. (2021). Observed inequality in urban greenspace exposure in
754 China. *Environ Int*, 156, 106778. <https://doi.org/10.1016/j.envint.2021.106778>
- 755 Spotswood, E., Benjamin, M., Stoneburner, L., Wheeler, M., Beller, E., Balk, D., McPhearson, T., Kuo,
756 M., & McDonald, R. (2021). Nature inequity and higher COVID-19 case rates in less-green
757 neighbourhoods in the United States. *Nature Sustainability* (4), 1092–1098.
758 <https://doi.org/10.1038/s41893-021-00781-9>
- 759 Sullivan, W. C., & Li, D. (2021). Nature and Attention. In A. R. Schutte, J. C. Torquati, & J. R. Stevens
760 (Eds.), *Nature and Psychology : Biological, Cognitive, Developmental, and Social Pathways*
761 *to Well-being* (pp. 7-30). Springer International Publishing. [https://doi.org/10.1007/978-3-030-](https://doi.org/10.1007/978-3-030-69020-5_2)
762 [69020-5_2](https://doi.org/10.1007/978-3-030-69020-5_2)
- 763 Teller, J. (2021). Urban density and Covid-19: towards an adaptive approach. *Buildings and Cities*,
764 2(1), 150-165.
- 765 Ulrich, R. (1984). View through a window may influence recovery from surgery. *Science*, 224.
766 <https://doi.org/10.1126/science.6143402>
- 767 Venkatramana, P., & Reddy, P. C. (2002). Association of overall and abdominal obesity with coronary
768 heart disease risk factors: comparison between urban and rural Indian men. *Asia Pacific*
769 *Journal of Clinical Nutrition*, 11(1), 66-71. [https://doi.org/DOI 10.1046/j.1440-](https://doi.org/10.1046/j.1440-6047.2002.00250.x)
770 [6047.2002.00250.x](https://doi.org/10.1046/j.1440-6047.2002.00250.x)

- 771 Vos, S., Bijmens, E. M., Renaers, E., Croons, H., Van Der Stukken, C., Martens, D. S., Plusquin, M., &
772 Nawrot, T. S. (2022). Residential green space is associated with a buffering effect on stress
773 responses during the COVID-19 pandemic in mothers of young children, a prospective study.
774 *Environmental research*, 208, 112603. <https://doi.org/10.1016/j.envres.2021.112603>
- 775 Wang, J., Yang, Y., Peng, J., Yang, L., Gou, Z., & Lu, Y. (2021). Moderation effect of urban density on
776 changes in physical activity during the coronavirus disease 2019 pandemic. *Sustainable*
777 *Cities and Society*, 72, 103058. <https://doi.org/10.1016/j.scs.2021.103058>
- 778 Watanabe, J.-i., Kimura, T., Nakamura, T., Suzuki, D., Takemoto, T., & Tamakoshi, A. (2022).
779 Associations of social capital and health at a city with high aging rate and low population
780 density. *SSM - Population Health*, 17, 100981. <https://doi.org/10.1016/j.ssmph.2021.100981>
- 781 Wilker, E. H., Wu, C. D., McNeely, E., Mostofsky, E., Spengler, J., Wellenius, G. A., & Mittleman, M. A.
782 (2014). Green space and mortality following ischemic stroke. *Environ Res*, 133, 42-48.
783 <https://doi.org/10.1016/j.envres.2014.05.005>
- 784 Wolch, J. R., Byrne, J., & Newell, J. P. (2014). Urban green space, public health, and environmental
785 justice: The challenge of making cities 'just green enough'. *Landscape and Urban Planning*,
786 125, 234-244. <https://doi.org/10.1016/j.landurbplan.2014.01.017>
- 787 Woodruff, S., Vitro, K. A., & BenDor, T. K. (2018). 2.11 - GIS and Coastal Vulnerability to Climate
788 Change. In B. Huang (Ed.), *Comprehensive Geographic Information Systems* (pp. 236-257).
789 Elsevier. <https://doi.org/https://doi.org/10.1016/B978-0-12-409548-9.09655-X>
- 790 World Health Organization. (2010). *World health statistics 2010*. World Health Organization.
791 <https://www.who.int/publications-detail-redirect/9789241564021>
- 792 World Health Organization. (2016). *Urban green spaces and health - a review of evidence*
793 [http://www.euro.who.int/data/assets/pdf_file/0005/321971/Urban-green-spacesand-health-](http://www.euro.who.int/data/assets/pdf_file/0005/321971/Urban-green-spacesand-health-review-evidence.pdf?ua=1)
794 [review-evidence.pdf?ua=1](http://www.euro.who.int/data/assets/pdf_file/0005/321971/Urban-green-spacesand-health-review-evidence.pdf?ua=1)
- 795 Wu, X., Nethery, R. C., Sabath, M. B., Braun, D., & Dominici, F. (2020). Air pollution and COVID-19
796 mortality in the United States: Strengths and limitations of an ecological regression analysis.
797 *Science advances*, 6(45), eabd4049. <https://doi.org/10.1126/sciadv.abd4049>
- 798 Yang, L., Jin, S., Danielson, P., Homer, C., Gass, L., Bender, S. M., Case, A., Costello, C., Dewitz, J.,
799 Fry, J., Funk, M., Granneman, B., Liknes, G. C., Rigge, M., & Xian, G. (2018). A new
800 generation of the United States National Land Cover Database: Requirements, research
801 priorities, design, and implementation strategies. *ISPRS journal of photogrammetry and*
802 *remote sensing*, 146, 108-123. <https://doi.org/10.1016/j.isprsjprs.2018.09.006>
- 803 Yang, Y., & Diez-Roux, A. V. (2012). Walking Distance by Trip Purpose and Population Subgroups.
804 *Am J Prev Med*, 43(1), 11-19. <https://doi.org/10.1016/j.amepre.2012.03.015>
- 805 Yang, Y., Lu, Y., & Jiang, B. (2022). Population-weighted exposure to green spaces tied to lower
806 COVID-19 mortality rates: A nationwide dose-response study in the USA. *Science of The*
807 *Total Environment*, 851, 158333.
808 <https://doi.org/https://doi.org/10.1016/j.scitotenv.2022.158333>
- 809 Zhang, C. H., & Schwartz, G. G. (2020). Spatial Disparities in Coronavirus Incidence and Mortality in

- 810 the United States: An Ecological Analysis as of May 2020. *J Rural Health*, 36(3), 433-445.
811 <https://doi.org/10.1111/jrh.12476>
- 812 Zhu, Y., Xie, J., Huang, F., & Cao, L. (2020). Association between short-term exposure to air pollution
813 and COVID-19 infection: Evidence from China. *Sci Total Environ*, 727, 138704.
814 <https://doi.org/10.1016/j.scitotenv.2020.138704>
- 815