

1

2

**Ultrasound-detected accelerated fat deposition in the vastus medialis as a marker**

3

**for early knee osteoarthritis**

4

5

Atsushi Hoki, PT<sup>1</sup>, Ella D'Amico, MD<sup>2</sup>, Fabrisia Ambrosio, PhD, MPT<sup>3,4</sup>,

6

Yoshikazu Matsuda, MD<sup>5,6</sup>, \*Hiroataka Iijima, PhD, PT<sup>7,8</sup>

7

8

<sup>1</sup>Department of Physical Therapy, Matsuda Orthopedic Clinic, Saitama, Japan

9

<sup>2</sup>Department of Physical Medicine and Rehabilitation, University of Pittsburgh, Pittsburgh,

10 PA

11

<sup>3</sup>Department of Physical Medicine and Rehabilitation, Spaulding Rehabilitation Hospital and

12

Harvard Medical School, Boston, MA

13

<sup>4</sup>Discovery Center for Musculoskeletal Recovery, Schoen Adams Research Institute at

14

Spaulding, Boston, MA

15

<sup>5</sup>Department of Orthopedic Surgery, Matsuda Orthopedic Clinic, Saitama, Japan

16

<sup>6</sup>Department of Pharmacy, Josai University, Saitama, Japan

17

<sup>7</sup>Institute for Advanced Research, Nagoya University, Nagoya, Japan

18

<sup>8</sup>Biomedical and Health Informatics Unit, Department of Integrated Health Science, Graduate

19

School of Medicine, Nagoya University, Nagoya, Japan

20

21

22 \*Corresponding author:

23

Hiroataka Iijima, PhD, PT

24

Institute for Advanced Research, Nagoya University, Furo-Cho, Chikusa-ku, Nagoya, Aichi,

25

464-8601, Japan

26

Email address: [ijjima@met.nagoya-u.ac.jp](mailto:ijjima@met.nagoya-u.ac.jp)

27 **KEY POINTS**

28 **Question:**

29 Does ultrasonography identify distinct declines in quadriceps muscle quality related to age  
30 and knee osteoarthritis (KOA)?

31 **Findings:**

32 A hybrid approach of network meta-analysis (1,794 participants) followed by ultrasound  
33 assessment revealed that KOA significantly accelerated aging-induced fat infiltration in  
34 muscle. This study suggests that the 10-year rate of decline in quadriceps muscle quality in  
35 KOA is greater than in healthy aging. Furthermore, these changes can sensitively be assessed  
36 by ultrasonography.

37 **Meaning:**

38 Fatty infiltration in the quadriceps muscle over the course of natural aging is accelerated in  
39 the setting of KOA. Such trajectories are assessable using ultrasonography, a valuable  
40 approach to identify adults at risk for KOA.

41 **ABSTRACT**

42 **Importance:**

43 The absence of a reliable marker of early-stage knee osteoarthritis (KOA) represents a missed  
44 opportunity to develop interventions that restore joint integrity. The use of ultrasonography  
45 (US) to measure fat infiltration of muscle, which has been associated with incidence and  
46 progression of KOA, is one possible solution. Summarizing the trajectory of fatty infiltration  
47 during natural aging and KOA processes and establishing US-implementation as a tool for the  
48 early diagnosis of KOA represent essential first steps.

49 **Objective:**

50 (1) To summarize the alterations in quadriceps muscle quality during healthy aging (young vs.  
51 older) and in the setting of KOA (older vs. KOA) using computational approaches, and (2) to  
52 validate and translate these findings by applying US assessment of muscle quality in a  
53 clinical setting.

54 **Design, Setting, Participants:**

55 Systematic review with network meta-analysis integrated with a subsequent case-control  
56 validation study in an orthopedic clinic. Both analyses evaluated three groups: healthy young,  
57 healthy older, and individuals with KOA.

58 **Main outcome and Measures:**

59 Quadriceps muscle quality assessed by US.

60 **Results:**

61 Data from a total of 718 healthy aging individuals (young, n = 336; old, n = 382) and 1,046  
62 individuals with KOA (old, n = 625; KOA, n = 421) were synthesized for meta-analyses. As  
63 determined by US, older adults displayed poor quadriceps muscle quality compared to young;

64 this decline was significantly exacerbated when individuals had KOA. The network meta-  
65 analysis revealed that the presence of KOA significantly accelerated muscle fatty infiltration  
66 compared to natural aging. Notably, US findings were comparable to gold-standard imaging  
67 modalities of both MRI and CT for fat infiltration in skeletal muscle. The findings from these  
68 computational analyses were supported by an US-implemented validation study in a clinical  
69 setting, which also identified the vastus medialis as the most sensitive quadricep muscle to  
70 predict both the onset and development of KOA.

71 **Conclusions and Relevance:**

72 This study established accelerated fat deposition in the vastus medialis as a distinct marker  
73 for early KOA, as reliably identified by US. These findings expand opportunities for the early  
74 diagnosis and treatment for KOA in a clinical setting given the increased cost-efficiency and  
75 accessibility of the US system compared to MRI or CT.

76 **Trial registration:**

77 PROSPERO Identifier: CRD 42022380856

## 78 INTRODUCTION

79 As individuals are living longer than ever before, an enhanced understanding of how to  
80 effectively promote healthy aging and prevent age-related diseases in older adults becomes  
81 increasingly important. One of the most pervasive age-related diseases is knee osteoarthritis  
82 (KOA).<sup>1</sup> Between 1990 to 2019, the number of years lived with KOA-induced disability  
83 increased by 39%,<sup>2</sup> and in 2019, KOA represented the 15th leading cause of disability  
84 worldwide.<sup>2</sup> Escalating clinical interest is focused on the development of accurate diagnosis  
85 and efficacious intervention early in the disease and prior to the onset of major structural  
86 damage and debilitating symptoms.<sup>3</sup>

87 One candidate for disease screening is quantification of early-stage alterations in  
88 quadriceps muscle composition. In 2022, Øiestad *et al* published a systematic review that  
89 included a meta-analysis of longitudinal studies concluding that quadriceps muscle weakness  
90 increased the odds of KOA incidence.<sup>4</sup> While quadriceps muscle weakness in individuals  
91 with KOA is often attributed to decreased muscle mass, muscle quality also plays a critical  
92 physiologic role in force production and metabolism.<sup>5</sup> Accumulated fat in the muscle secretes  
93 adipokines, which are thought to mediate adipose-cartilage crosstalk and ultimately  
94 contribute to the pathogenesis of KOA.<sup>6,7</sup> A recent animal study showed that the knee joints  
95 of lipodystrophic mice, which lack adipose tissue and, thus, adipokine signaling, were  
96 protected from spontaneous or posttraumatic KOA, despite having body weights and  
97 systemic inflammatory levels similar to high fat mice.<sup>8</sup> Supporting the role of the adipose-  
98 cartilage axis in the development of KOA, previous studies have shown that the accumulation  
99 of non-contractile (i.e., adipose) tissue in quadriceps muscle is increased in individuals with  
100 KOA<sup>9</sup> and is associated with KOA progression, independent of a change in muscle mass and

101 strength.<sup>10</sup>

102 Muscle quality is reliably quantified by the studies that assess the correlation between  
103 intramuscular adipose tissue and radiographic and/or symptomatic KOA using magnetic  
104 resonance imaging (MRI) and computed tomography (CT),<sup>9</sup> which are two gold standard  
105 methods to assess muscle fat infiltration at a research stage. If signs of progression are  
106 accurately detected at an earlier stage of KOA, interventions such as therapeutic exercise and  
107 self-management (e.g., educational intervention for coping and self-efficacy skills)<sup>11</sup> can be  
108 more effective in preventing and/or delaying KOA progression.<sup>12</sup> However, these imaging  
109 modalities are not typically used for screening of adults at risk of KOA in clinical practice  
110 owing to their financial and time burden.<sup>13,14</sup>

111 To overcome the barriers of MRI and CT, the use of diagnostic ultrasound, or  
112 ultrasonography (US), is increasingly appreciated as a potential alternative to detect subtle  
113 changes in muscle quality seen with early KOA. For the assessment of muscle quality, US is  
114 an accessible and low cost tool compared to MRI and CT, and reliable equivalent to these  
115 gold standard methods,<sup>15,16,17</sup> that would allow for bedside diagnosis. A comprehensive  
116 systematic review of US characterizing the alterations in muscle quality during natural aging  
117 compared to KOA is a logical first step to address this existing gap and establish US as a tool  
118 to diagnose early KOA.

119 Here, we thoroughly summarized the existing evidence on quadriceps muscle quality  
120 in the context of aging and KOA as assessed by US. We also compared our findings to those  
121 observed by MRI and CT. First, we assessed differences in quadriceps muscle quality  
122 between healthy young and older adults to define changes seen with natural aging. Next, we  
123 characterized pathology-related changes in quadriceps muscle quality by comparing people  
124 with KOA to healthy age-matched adults. Using a network meta-analysis approach, we

125 summarized the decline in quadriceps muscle quality associated with healthy aging (i.e.,  
126 healthy young vs healthy older adults) and the pathological KOA process (i.e., healthy young  
127 vs individuals with KOA) to delineate the trajectory of quadriceps muscle quality decline  
128 within each cohort. Finally, the findings from these computational analyses were cross-  
129 checked by a case-control study comparing differences in muscle quality evaluated by US  
130 between healthy young, healthy older and individuals with KOA. This proof-of-concept trial  
131 also sought to identify differences by target muscle and by KOA severity. We anticipate these  
132 findings can be used to establish US assessment of muscle quality as a means of identifying  
133 individuals at high risk of KOA in the clinical setting.

134

## 135 **RESULTS**

136 A systematic search summarizing age- and KOA-related decline in muscle quality  
137 identified a total of 287 articles from electronic databases, of which 22 met our inclusion  
138 criteria (14 studies for young vs. older [718 participants]; 8 studies for older vs. KOA [1,046  
139 participants]; **Figure S1**). **Table 1** summarizes characteristics of the included studies.  
140 Individuals with KOA displayed mild to severe disease (KL grade 1-4) and mild to moderate  
141 clinical symptoms (**Table S1**). **Table S2** shows a summary of measurement methods. Five out  
142 of eight (62.5%) MRI studies used intramuscular fat volume as an outcome, as calculated by  
143 chemical shift-based water-fat separation method known as the Dixon technique.<sup>18</sup> Two thirds  
144 (66.7%) of CT studies adopted Hounsfield Unit (HU), a marker of intramuscular fat  
145 content.<sup>19</sup> All studies with US adopted echo intensity as an outcome, which represents  
146 intramuscular adipose and fibrous tissue<sup>20</sup>. Echo intensity was additionally modified in some  
147 studies for the attenuation of ultrasound waves due to subcutaneous fat tissue.<sup>15</sup> Intra- and  
148 inter-rater reliability (intra-rater or inter-rater) of US was good to excellent but lower than CT

149 and MRI due to a wide confidence interval (**Table S2**). **Table S3** summarizes the main  
150 outcomes. Notably, target muscles of US assessments showed high inter-trial variability. The  
151 majority of studies targeted either the vastus medialis (VM) or a combination of two or more  
152 individual quadriceps muscles (RF, VM, vastus lateralis [VL], or vastus intermedius [VI]).  
153 However, a few studies targeted the rectus femoris (RF) muscle only. Most of the studies in  
154 young vs. older individuals used US (9 [64.3%] studies) and those in older vs. KOA used  
155 MRI (4 [50.0%] studies).

156

157 *US identified the age- and KOA-related decline in quadriceps muscle quality in a manner*  
158 *comparable to MRI and CT*

159 We first sought to assess change in muscle quality over the course of natural aging. A  
160 meta-analysis of 18 studies (MRI/CT: 7 studies, US: 11 studies) revealed that older adults  
161 displayed poor quadriceps quality when compared to young counterparts (**Figure 1A**). When  
162 studies reported results separately according to participants' characteristics (e.g., sex) and  
163 disease severity (e.g., KL grade), data were pooled separately in the analysis to consider their  
164 potential confounding effects on fat deposition in skeletal muscle. When comparing across  
165 the different imaging modalities, we observed no difference between gold standard methods  
166 (i.e., MRI/CT) versus US in the identification of altered quadriceps muscle quality ( $p = 0.41$ ,  
167  $I^2 = 0\%$ ), indicating that the age-related decline in muscle quality can be reliably detected by  
168 US (**Figure 1A**). Inter-study heterogeneity was high in the US studies ( $I^2 = 69\%$ ,  $p=0.0003$ ).  
169 Meta-regression and subgroup analyses identified no variables that could significantly  
170 explain the high extent of heterogeneity in the age-related decline in quadriceps muscle  
171 quality (**Table S4-S5**). However, leave-one-out analysis revealed that the high heterogeneity,  
172 defined as  $I^2 > 50\%$ , was significantly improved (from 69% to 35%) by omitting one study<sup>21</sup>  
173 (**Table S6**). This finding suggests that this study was largely responsible for the high inter-



174 study heterogeneity in our data. Nevertheless, participants' characteristics and disease  
175 severity in this study<sup>21</sup> were similar to the other included studies, suggesting the existence of  
176 unknown confounders.

177 We next performed a meta-analysis of the 9 available studies that included healthy  
178 individuals versus individuals with KOA (MRI/CT: 6 studies, US: 3 studies) in order to  
179 determine whether osteoarthritic pathological processes aggravate the age-induced decline in  
180 quadriceps muscle quality. As expected, people with KOA displayed poorer quadriceps  
181 muscle quality compared to age-matched older adults (**Figure 1B**). Similar to the observed  
182 age-related decline in quadriceps muscle quality, US had a discriminative ability to identify  
183 OA-related decline in quadriceps muscle quality that was comparable to MRI and CT ( $p =$   
184  $0.56, I^2 = 0\%$ ) (**Figure 1B**).

185 Since US offers advantages in clinical practice, including improved cost-efficiency  
186 and accessibility, we sought to determine whether US assessment for the aging- and KOA-  
187 related altered quadriceps muscle quality was reliable according to the quality of evidence by  
188 the Grades of Recommendation, Assessment, Development, and Evaluation (GRADE)  
189 system. The GRADE determined that publication bias is possible in the US-based  
190 comparison of older vs. KOA due to the small number of studies included (i.e., <10 studies;  
191 **Table 2**). As such, more research is needed to characterize KOA-related alterations in  
192 quadriceps muscle quality in order to establish US as a reliable means of identifying adults at  
193 high risk of KOA in the clinic.

194

### 195 ***Fat deposition in vastus medialis muscle predicted both the onset and development of KOA***

196 To more comprehensively describe the relationship between age- and KOA-related  
197 decline in quadriceps muscle quality, we performed a network meta-analysis. Network meta-  
198 analysis allows for analysis of the results across multiple independent studies. This analysis

199 method utilizes evidence from direct comparisons (e.g., trials directly comparing treatment A  
200 and B) and indirect comparisons (e.g., the combination of trials comparing A with C and trials  
201 comparing B with C).<sup>22</sup> In this study, muscle quality in young adults was set as the control  
202 group so that network meta-analysis can be used to directly compare the decline in muscle  
203 quality with aging (i.e., healthy young vs healthy older) and in the setting of KOA (i.e.,  
204 healthy young vs. KOA). Results revealed that the decline in muscle quality in the setting of  
205 KOA (SMD:2.07, 95% CI:1.86, 2.27) is significantly faster than with healthy aging  
206 (SMD:1.53, 95% CI:1.39, 1.66). This finding supports our meta-analysis demonstrating that  
207 the decline in quadriceps muscle quality seen during healthy aging is aggravated by  
208 osteoarthritic pathological changes in the knee (**Figure 2A, 2B**).

209 Finally, to validate and translate the findings of the network meta-analysis to a  
210 clinical setting, we performed a case-control trial of muscle quality assessments using US.  
211 The case-control trial was designed to address two key questions that could not be assessed  
212 by the meta-analysis: 1) *which of the target quadriceps muscles should be selected for*  
213 *analysis, and 2) does the degree of fatty infiltration in skeletal muscle vary with disease*  
214 *severity?*

215 Based on the calculated required sample size (see Supplemental method), this trial  
216 initially recruited 28 participants. According to pre-determined exclusion criteria  
217 (Supplemental method), of the 28 participants, three (10.7%) healthy young or older adults  
218 were excluded due to intense low back pain (one healthy young adult) and the presence of  
219 knee symptoms (two healthy older adults). Thus, 25 participants that met pre-defined  
220 inclusion criteria were ultimately included (healthy young: n = 8, average age: 25.9 years,  
221 63% women; healthy older: n = 8, average age: 69 years, 75% women; individuals with  
222 KOA: n = 8, average age: 69.1 years, 67% women; see **Table S7** for details). A generalized  
223 linear mixed model revealed that corrected echo intensity of VM was lowest (i.e., greatest

224 muscle quality) in the healthy young individuals, followed by healthy older individuals, and  
225 then lastly in individuals with KOA ( $p=0.001$ , 95% CI: 7.42, 24.07). On the other hand, this  
226 relationship was not significantly observed in the RF ( $p=0.193$ , 95% CI: -3.56, 18.56). With  
227 the US measurement setting used in the current study (see Supplementary Methods), a  
228 decline in muscle quality with aging and in the setting of pathology related to KOA (7.3 a.u.  
229 [95% CI: 6.6, 8.1] per 10 years) was significantly greater than that observed with healthy  
230 aging (4.6 a.u. [95% CI: 3.8, 5.3] per 10 years) (**Figure 3A**). This correlation was consistent  
231 with the network meta-analysis shown above.

232 To gain further insight into the decline in muscle quality associated with KOA, we  
233 performed a subgroup analysis of our case-control study that aimed to determine whether  
234 individuals with an increased severity of KOA displayed a greater decline in quadriceps  
235 muscle quality. Among the sub-population of KOA, individuals with greater disease severity  
236 assessed by KL grade displayed poorer quality in the VM muscle (14.4 a.u. [95% CI: 8.12,  
237 21.85] per additional KL grade) (**Figure 3A**), a value greater than 10 years change in the  
238 natural aging process. Taken together, these studies suggested that VM muscle quality, which  
239 is a suitable target in assessing KOA, not only decline in natural aging process, but accelerate  
240 with the onset as well as development of KOA (**Figure 3B**).

241

242

## 243 **DISCUSSION**

244 This systematic review with network meta-analysis showed that KOA exacerbates  
245 the age-related decline in quadriceps muscle quality over time. Notably, a series of subgroup  
246 analyses indicated that the decline in muscle quality was adequately identified by US. Further,  
247 US outcomes were largely comparable to MRI or CT, two gold standard methods to assess

248 muscle quality. To our knowledge, this is the first comprehensive meta-analysis summarizing  
249 the trajectory in muscle quality change during healthy aging and in the setting of KOA  
250 (**Figure 3B**). The findings from the meta-analyses were validated by the case-control study.  
251 The study also addressed the existing gap uncovered by the meta-analyses by providing the  
252 first evidence that VM is the most appropriate quadriceps muscle for US-based assessment of  
253 muscle quality over time, and that radiographic disease severity displayed a greater impact on  
254 fatty infiltration than aging. In this case-control study, we provided reference values for the  
255 qualitative changes in VM muscle associated with natural aging and KOA, as quantified by  
256 US.

257         Here, we focused on fat infiltration as an indicator of the decline in muscle  
258 quality.<sup>23,24</sup> Indeed, inter-and intra-muscular fat has an endocrine role implicated in the  
259 pathogenesis of OA via the secretion of adipokines,<sup>6,7</sup> but the role of adipokines is only one  
260 piece of the inflammatory picture of KOA. Once previously thought to be a mechanical  
261 disease of wear and tear,<sup>25</sup> KOA is now recognized as a complex metabolic and inflammatory  
262 condition driven by factors including adipokines. In the context of obesity-induced KOA, the  
263 impact of obesity extends beyond excessive joint loading, and also involves persistent low-  
264 grade inflammation due to adipokines secreted from adipose tissue (e.g., leptin and IL-6).  
265 Serum levels of leptin are associated with reduced cartilage thickness,<sup>26</sup> while serum-levels of  
266 IL-6 are associated with joint space narrowing and cartilage loss in older adults.<sup>27</sup> These  
267 processes likely contribute to the critical role of intramuscular fat in the onset and progression  
268 of KOA.<sup>7,28</sup> It is additionally thought that acute swelling, pain, and inflammation in people  
269 with KOA may lead to decreased mobility, resulting in fat accumulation within the  
270 muscle.<sup>29,30</sup> This bidirectional interaction between fat infiltration and osteoarthritis changes  
271 about the knee is an area of interest for future longitudinal studies.

272         In the present study, the findings from meta-analyses implicate that US can

273 adequately identify increased fat infiltration of the quadriceps in the clinical setting in a  
274 manner comparable to MRI and CT. Intriguingly, the results of the subsequent case-control  
275 study suggested that the VM muscle is more sensitive in the identification of decline of  
276 muscle quality compared to the RF muscle, which is also frequently targeted in US  
277 assessment as indicated by our systematic review. Our case-control study supports previous  
278 longitudinal MRI studies demonstrating that fatty infiltration in the VM muscle, but not the  
279 other individual quadriceps (RF, VL, and VI), was significantly associated with structural  
280 abnormalities in people with KOA, such as cartilage loss and bone marrow lesions.<sup>31</sup> As such,  
281 early detection of VM muscle quality decline may be a valuable tool to identify older adults  
282 at high risk or early stages of the disease, given the growing evidence that changes in muscle  
283 quality may precede a loss of muscle mass, ultimately leading to functional weakness.<sup>32,33,34</sup>  
284 Our case-control study proposed reference values of VM muscle quality decline assessed by  
285 US (**Figure 3A**), which builds a foundation towards establishment of an US-based system to  
286 predict adults at risk for KOA progression.

287         Although this study provides a new perspective for the decline in quadricep muscle  
288 quality during healthy and pathological aging related to KOA, it has some limitations. Firstly,  
289 in the current meta-analysis, a limited number of studies were included for comparison of  
290 KOA and age-matched healthy older adults, thereby decreasing the quality of evidence as  
291 assessed by GRADE. Secondly, because the majority of participants were women in the  
292 meta-analysis and case-control study, the interpretation may not necessarily be generalizable  
293 to males.<sup>35</sup> Lastly, lower inter/intra-rater reliability of US assessment may limit the  
294 application in the clinic, particularly for longitudinal follow-up among different assessors.  
295 This study calls for future studies following up the muscle quality changes with standardized  
296 US procedure.

297         Taken together, these studies suggest that US is a promising tool to identify early

298 KOA given its capacity to reliably assess accelerated fatty infiltration in the VM muscle.  
299 These findings bring us one step closer towards establishing the way to identify adults at risk  
300 for KOA in clinical practice.

301

## 302 **METHODS**

### 303 *Systematic review, meta-analysis, and network meta-analysis*

304 The full methodology for systematic review with meta-analysis is provided in the  
305 supplemental file and includes information on: eligibility criteria, literature search, study  
306 selection, data collection, determining inclusion, data extraction, meta-analysis, network  
307 meta-analysis, and quality of evidence (GRADE). Briefly, a systematic review identified  
308 articles studying age- and KOA-related change in quadriceps muscle quality according to  
309 clinically available imaging techniques (i.e., ultrasound, MRI, or CT). Summary results were  
310 obtained through pairwise meta-analysis and network meta-analysis. The protocol of this  
311 meta-analysis has been registered in PROSPERO (CRD42022380856).

### 312 *US-implemented case-control study*

313 The full methodology for case-control study conducted for validation purpose is  
314 provided in the supplemental file. Briefly, this study included participants with healthy young,  
315 healthy older, and individuals with KOA group, based on required sample size ( $n = 24$ )  
316 calculated *priori*. Echo intensity of VM and RF muscle, an indicator for fatty infiltration, was  
317 assessed with B-mode ultrasound images,<sup>36</sup> and represented using grayscale corrected by  
318 subcutaneous fat thickness.<sup>15</sup> A generalized linear mixed model was used to assess alterations  
319 in quadriceps muscle during healthy aging (young vs. older) and pathological aging related to  
320 KOA (young vs. KOA).

321

322 **Acknowledgements**

323 This study was supported in part by a JSPS KAKENHI (Grant-in-Aid for Early-Career  
324 Scientists; Grant Number: 18045240) from the Japan Society for the Promotion of Science  
325 (<https://www.jsps.go.jp/>). The funders had no role in study design, data collection and  
326 analysis, decision to publish, or preparation of the manuscript.

327

328 **Competing Interests**

329 The authors have no conflicts of interest to declare.

330 **References**

- 331 1. Cui A, Li H, Wang D, Zhong J, Chen Y, Lu H. Global, regional prevalence,  
332 incidence and risk factors of knee osteoarthritis in population-based studies.  
333 *EClinicalMedicine*. 2020;29-30:100587. doi:10.1016/J.ECLINM.2020.100587
- 334 2. Global Burden of Disease Collaborative Network. Global Burden of Disease Study  
335 2019 (GBD 2019). Accessed October 8, 2022. [https://vizhub.healthdata.org/gbd-](https://vizhub.healthdata.org/gbd-results/)  
336 [results/](https://vizhub.healthdata.org/gbd-results/)
- 337 3. Mahmoudian A, Lohmander LS, Mobasher A, Englund M, Luyten FP. Early-stage  
338 symptomatic osteoarthritis of the knee — time for action. *Nat Rev Rheumatol* 2021  
339 1710. 2021;17(10):621-632. doi:10.1038/s41584-021-00673-4
- 340 4. Øiestad BE, Juhl CB, Culvenor AG, Berg B, Thorlund JB. Knee extensor muscle  
341 weakness is a risk factor for the development of knee osteoarthritis: an updated  
342 systematic review and meta-analysis including 46 819 men and women. *Br J Sports*  
343 *Med*. 2022;56(6):349-355. doi:10.1136/BJSPORTS-2021-104861
- 344 5. Correa-de-Araujo R, Harris-Love MO, Miljkovic I, Fragala MS, Anthony BW,  
345 Manini TM. The Need for Standardized Assessment of Muscle Quality in Skeletal  
346 Muscle Function Deficit and Other Aging-Related Muscle Dysfunctions: A  
347 Symposium Report. *Front Physiol*. 2017;8(FEB):87.  
348 doi:10.3389/FPHYS.2017.00087/BIBTEX
- 349 6. Krishnasamy P, Hall M, Robbins SR. The role of skeletal muscle in the  
350 pathophysiology and management of knee osteoarthritis. *Rheumatology*.  
351 2018;57(suppl\_4):iv22-iv33. doi:10.1093/RHEUMATOLOGY/KEX515
- 352 7. Chang J, Liao Z, Lu M, Meng T, Han W, Ding C. Systemic and local adipose tissue  
353 in knee osteoarthritis. *Osteoarthr Cartil*. 2018;26(7):864-871.  
354 doi:10.1016/J.JOCA.2018.03.004
- 355 8. Collins KH, Lenz KL, Pollitt EN, et al. Adipose tissue is a critical regulator of  
356 osteoarthritis. *Proc Natl Acad Sci U S A*. 2020;118(1).  
357 doi:10.1073/PNAS.2021096118/SUPPL\_FILE/PNAS.2021096118.SAPP.PDF
- 358 9. Pedroso MG, Castilho De Almeida A, Jéssica , et al. Fatty infiltration in the thigh  
359 muscles in knee osteoarthritis: a systematic review and meta-analysis. *Rheumatol Int*.  
360 2019;39:627-635. doi:10.1007/s00296-019-04271-2
- 361 10. Kemnitz J, Wirth W, Eckstein F, Culvenor AG. The role of thigh muscle and adipose  
362 tissue in knee osteoarthritis progression in women: data from the Osteoarthritis  
363 Initiative. *Osteoarthr Cartil*. 2018;26(9):1190-1195. doi:10.1016/j.joca.2018.05.020
- 364 11. McKnight PE, Kastle S, Going S, et al. A comparison of strength training, self-



- 365 management, and the combination for early osteoarthritis of the knee. *Arthritis Care*  
366 *Res (Hoboken)*. 2010;62(1):45-53. doi:10.1002/ACR.20013
- 367 12. Kanamoto T, Mae T, Yokoyama T, Tanaka H, Ebina K, Nakata K. Significance and  
368 definition of early knee osteoarthritis. *Ann Jt*. 2020;5(0):4-4.  
369 doi:10.21037/AOJ.2019.09.02
- 370 13. Andronis L, Atwell C, Brealey S, et al. Cost-effectiveness of magnetic resonance  
371 imaging of the knee for patients presenting in primary care. *Br J Gen Pract*.  
372 2008;58(556):e10-e16. doi:10.3399/BJGP08X342660
- 373 14. Runge VM, Richter JK, Heverhagen JT. Speed in Clinical Magnetic Resonance.  
374 *Invest Radiol*. 2017;52(1):1-17. doi:10.1097/RLI.0000000000000330
- 375 15. Young HJ, Jenkins NT, Zhao Q, Mccully KK. Measurement of intramuscular fat by  
376 muscle echo intensity. *Muscle Nerve*. 2015;52(6):963-971. doi:10.1002/mus.24656
- 377 16. Akima H, Hioki M, Yoshiko A, et al. Intramuscular adipose tissue determined by T1-  
378 weighted MRI at 3 T primarily reflects extramyocellular lipids. *Magn Reson Imaging*.  
379 2016;34(4):397-403. doi:10.1016/j.mri.2015.12.038
- 380 17. Watanabe Y, Ikenaga M, Yoshimura E, Yamada Y, Kimura M. Association between  
381 echo intensity and attenuation of skeletal muscle in young and older adults: A  
382 comparison between ultrasonography and computed tomography. *Clin Interv Aging*.  
383 2018;13:1871-1878. doi:10.2147/CIA.S173372
- 384 18. Glover GH, Schneider E. Three-point dixon technique for true water/fat  
385 decomposition with B0 inhomogeneity correction. *Magn Reson Med*.  
386 1991;18(2):371-383. doi:10.1002/MRM.1910180211
- 387 19. Goodpaster BH, Kelley DE, Thaete FL, He J, Ross R. Skeletal muscle attenuation  
388 determined by computed tomography is associated with skeletal muscle lipid content.  
389 *J Appl Physiol*. 2000;89(1):104-110.  
390 doi:10.1152/JAPPL.2000.89.1.104/ASSET/IMAGES/LARGE/DG0700010005.JPEG
- 391 20. Pillen S, Tak RO, Zwarts MJ, et al. Skeletal Muscle Ultrasound: Correlation  
392 Between Fibrous Tissue and Echo Intensity. *Ultrasound Med Biol*. 2009;35(3):443-  
393 446. doi:10.1016/J.ULTRASMEDBIO.2008.09.016
- 394 21. Fukumoto Y, Ikezoe T, Yamada Y, et al. Age-Related ultrasound changes in muscle  
395 quantity and quality in women. *Ultrasound Med Biol*. 2015;41(11):3013-3017.  
396 doi:10.1016/J.ULTRASMEDBIO.2015.06.017
- 397 22. Thorlund K, Mills EJ. Sample size and power considerations in network meta-  
398 analysis. *Syst Rev*. 2012;1(1):1-13. doi:10.1186/2046-4053-1-41/TABLES/4
- 399 23. Goodpaster BH, Carlson CL, Visser M, et al. Attenuation of skeletal muscle and

- 400 strength in the elderly: The health ABC study. *J Appl Physiol*. 2001;90(6):2157-2165.  
401 doi:10.1152/JAPPL.2001.90.6.2157/ASSET/IMAGES/LARGE/DG0610761004.JPEG  
402 G
- 403 24. Putz C, Block J, Gantz S, et al. Structural changes in the thigh muscles following  
404 trans-femoral amputation. *Eur J Orthop Surg Traumatol*. 2017;27(6):829-835.  
405 doi:10.1007/S00590-017-1929-5
- 406 25. Thijssen E, Van Caam A, Van Der Kraan PM. Obesity and osteoarthritis, more than  
407 just wear and tear: pivotal roles for inflamed adipose tissue and dyslipidaemia in  
408 obesity-induced osteoarthritis. *Rheumatology*. 2015;54(4):588-600.  
409 doi:10.1093/RHEUMATOLOGY/KEU464
- 410 26. Stannus OP, Cao Y, Antony B, et al. Cross-sectional and longitudinal associations  
411 between circulating leptin and knee cartilage thickness in older adults. *Ann Rheum*  
412 *Dis*. 2015;74(1):82-88. doi:10.1136/ANNRHEUMDIS-2013-203308
- 413 27. Stannus O, Jones G, Cicuttini F, et al. Circulating levels of IL-6 and TNF- $\alpha$  are  
414 associated with knee radiographic osteoarthritis and knee cartilage loss in older  
415 adults. *Osteoarthr Cartil*. 2010;18(11):1441-1447. doi:10.1016/J.JOCA.2010.08.016
- 416 28. Xie C, Chen Q. Adipokines: New Therapeutic Target for Osteoarthritis? *Curr*  
417 *Rheumatol Rep*. 2019;21(12). doi:10.1007/S11926-019-0868-Z
- 418 29. Marcus RL, Addison O, Kidde JP, Dibble LE, Lastayo PC. SKELETAL MUSCLE  
419 FAT INFILTRATION: IMPACT OF AGE, INACTIVITY, AND EXERCISE. *J Nutr*  
420 *Health Aging*. 2010;14(5):362. doi:10.1007/S12603-010-0081-2
- 421 30. Rice DA, McNair PJ, Lewis GN. Mechanisms of quadriceps muscle weakness in  
422 knee joint osteoarthritis: The effects of prolonged vibration on torque and muscle  
423 activation in osteoarthritic and healthy control subjects. *Arthritis Res Ther*.  
424 2011;13(5):1-10. doi:10.1186/AR3467/FIGURES/5
- 425 31. Kumar D, Link TM, Jafarzadeh SR, LaValley MP, Majumdar S, Souza RB.  
426 Association of Quadriceps Adiposity With an Increase in Knee Cartilage, Meniscus,  
427 or Bone Marrow Lesions Over Three Years. *Arthritis Care Res (Hoboken)*.  
428 2021;73(8):1134-1139. doi:10.1002/ACR.24232
- 429 32. Visser M, Study for the HA, Goodpaster BH, et al. Muscle Mass, Muscle Strength,  
430 and Muscle Fat Infiltration as Predictors of Incident Mobility Limitations in Well-  
431 Functioning Older Persons. *Journals Gerontol Ser A*. 2005;60(3):324-333.  
432 doi:10.1093/GERONA/60.3.324
- 433 33. Goodpaster BH, Park SW, Harris TB, et al. The loss of skeletal muscle strength,  
434 mass, and quality in older adults: the health, aging and body composition study. *J*  
435 *Gerontol A Biol Sci Med Sci*. 2006;61(10):1059-1064.

- 436 doi:10.1093/GERONA/61.10.1059
- 437 34. Ismail C, Zabal J, Hernandez HJ, et al. Diagnostic ultrasound estimates of muscle  
438 mass and muscle quality discriminate between women with and without sarcopenia.  
439 *Front Physiol.* 2015;6(OCT):302. doi:10.3389/FPHYS.2015.00302/BIBTEX
- 440 35. Jackson AS, Stanforth PR, Gagnon J, et al. The effect of sex, age and race on  
441 estimating percentage body fat from body mass index: The Heritage Family Study.  
442 *Int J Obes* 2002 266. 2002;26(6):789-796. doi:10.1038/sj.ijo.0802006
- 443 36. Valera-Calero JA, Ojedo-Martín C, Fernández-de-las-Peñas C, Cleland JA, Arias-  
444 Buría JL, Hervás-Pérez JP. Reliability and Validity of Panoramic Ultrasound  
445 Imaging for Evaluating Muscular Quality and Morphology: A Systematic Review.  
446 *Ultrasound Med Biol.* 2021;47(2):185-200.  
447 doi:10.1016/J.ULTRASMEDBIO.2020.10.009
- 448 37. Berger J, Bunout D, Barrera G, et al. Rectus femoris (RF) ultrasound for the  
449 assessment of muscle mass in older people. *Arch Gerontol Geriatr.* 2015;61(1):33-38.  
450 doi:10.1016/J.ARCHGER.2015.03.006
- 451 38. Kennedy P, Barnhill E, Gray C, et al. Magnetic resonance elastography (MRE)  
452 shows significant reduction of thigh muscle stiffness in healthy older adults.  
453 *GeroScience.* 2020;42(1):311-321. doi:10.1007/s11357-019-00147-2
- 454 39. Bali AU, Harmon KK, Burton AM, et al. Muscle strength, not age, explains unique  
455 variance in echo intensity. *Exp Gerontol.* 2020;139:111047.  
456 doi:10.1016/j.exger.2020.111047
- 457 40. Farrow AC, Gonzales JU, Agu-Udemba CC, Sobolewski EJ, Thompson BJ, Palmer  
458 TB. Effects of age on vertical jump performance and muscle morphology  
459 characteristics in females. *J Sports Med Phys Fitness.* 2020;60(8):1081-1088.  
460 doi:10.23736/S0022-4707.20.10724-2
- 461 41. Strasser EM, Draskovits T, Praschak M, Quittan M, Graf A. Association between  
462 ultrasound measurements of muscle thickness, pennation angle, echogenicity and  
463 skeletal muscle strength in the elderly. *Age (Omaha).* 2013;35(6):2377-2388.  
464 doi:10.1007/S11357-013-9517-Z
- 465 42. Azzabou N, Hogrel JY, Carlier PG. NMR based biomarkers to study age-related  
466 changes in the human quadriceps. *Exp Gerontol.* 2015;70:54-60.  
467 doi:10.1016/j.exger.2015.06.015
- 468 43. Giuliani HK, Shea NW, Gerstner GR, Mota JA, Blackburn JT, Ryan ED. The  
469 Influence of Age and Obesity-Altered Muscle Tissue Composition on Muscular  
470 Dimensional Changes: Impact on Strength and Function. *Journals Gerontol - Ser A*  
471 *Biol Sci Med Sci.* 2020;75(12):2286-2294. doi:10.1093/GERONA/GLAA206

- 472 44. Mota JA, Stock MS. Rectus Femoris Echo Intensity Correlates with Muscle Strength,  
473 but Not Endurance, in Younger and Older Men. *Ultrasound Med Biol*.  
474 2017;43(8):1651-1657. doi:10.1016/J.ULTRASMEDBIO.2017.04.010
- 475 45. Nishihara K, Kawai H, Hayashi H, et al. Frequency analysis of ultrasonic echo  
476 intensities of the skeletal muscle in elderly and young individuals. *Clin Interv Aging*.  
477 2014;9:1471-1478. doi:10.2147/CIA.S67820
- 478 46. Paris MT, Bell KE, Avrutin E, Mourtzakis M. Ultrasound image resolution  
479 influences analysis of skeletal muscle composition. *Clin Physiol Funct Imaging*.  
480 2020;40(4):277-283. doi:10.1111/CPF.12636
- 481 47. Chambers TL, Burnett TR, Raue U, et al. Skeletal muscle size, function, and  
482 adiposity with lifelong aerobic exercise. *J Appl Physiol*. 2020;128:368-378.  
483 doi:10.1152/jappphysiol.00426.2019.-We
- 484 48. Beattie KA, MacIntyre NJ, Ramadan K, Inglis D, Maly MR. Longitudinal changes in  
485 intermuscular fat volume and quadriceps muscle volume in the thighs of women with  
486 knee osteoarthritis. *Arthritis Care Res*. 2012;64(1):22-29. doi:10.1002/ACR.20628
- 487 49. Conroy MB, Kwok CK, Krishnan E, et al. Muscle strength, mass, and quality in  
488 older men and women with knee osteoarthritis. *Arthritis Care Res*. 2012;64(1):15-21.  
489 doi:10.1002/ACR.20588
- 490 50. Kumar D, Karampinos DC, MacLeod TD, et al. Quadriceps intramuscular fat  
491 fraction rather than muscle size is associated with knee osteoarthritis. *Osteoarthr*  
492 *Cartil*. 2014;22(2):226-234. doi:10.1016/j.joca.2013.12.005
- 493 51. Liikavainio T, Lyytinen T, Tyrväinen E, Sipilä S, Arokoski JP. Physical Function  
494 and Properties of Quadriceps Femoris Muscle in Men With Knee Osteoarthritis. *Arch*  
495 *Phys Med Rehabil*. 2008;89(11):2185-2194. doi:10.1016/J.APMR.2008.04.012
- 496 52. Taniguchi M, Fukumoto Y, Kobayashi M, et al. Quantity and Quality of the Lower  
497 Extremity Muscles in Women with Knee Osteoarthritis. *Ultrasound Med Biol*.  
498 2015;41(10):2567-2574. doi:10.1016/j.ultrasmedbio.2015.05.014
- 499 53. Ikeda S, Tsumura H, Torisu T. Age-related quadriceps-dominant muscle atrophy and  
500 incident radiographic knee osteoarthritis. *J Orthop Sci*. 2005;10(2):121-126.  
501 doi:10.1007/S00776-004-0876-2
- 502 54. Maly MR, Calder KM, MacIntyre NJ, Beattie KA. Relationship of intermuscular fat  
503 volume in the thigh with knee extensor strength and physical performance in women  
504 at risk of or with knee osteoarthritis. *Arthritis Care Res (Hoboken)*. 2013;65(1):44-52.  
505 doi:10.1002/ACR.21868
- 506 55. Teoli A, Martel-Pelletier J, Abram F, Pelletier JP, Robbins SM. Vastus medialis

507 intramuscular fat is associated with reduced quadriceps strength, but not knee  
508 osteoarthritis severity. *Clin Biomech.* 2022;96:105669.  
509 doi:10.1016/J.CLINBIOMECH.2022.105669

510 **Table 1.** Summary of study participants in the included articles

	Author, Year	No. of subject	Young			BMI	No. of subject	Older		
			Age (mean ± SD)	% women				Age (mean ± SD)	% women	BMI
Young vs. older	Akima H (2016) <sup>16</sup>	15	20.9±0.3	46.7	-	15	70.7±3.8	53.3	-	
	Fukumoto Y (2015) <sup>21</sup>	28	21.5±2.6	100	21.0±1.8	49	69.8±2.8	100	22.7±2.6	
	Berger J (2015) <sup>37</sup>	female 27 male 27	female 32.4±7.1 male 34.6±6.7	50	female 24±3 male 26.9±3.7	female 26 male 25	female 70.6±11.1 male 74.5±6.5	51	female 30.4±4.3 male 27.6±3.4	
	Kennedy P (2020) <sup>38</sup>	8	23 (22-29)	0	25.6±1.3	6	83.5 (79-87)	33.3	23.8±3.3	
	Bali A (2020) <sup>39</sup>	25	female 21±2 male 23±4	53.6	female 22.1±2.8 male 23.1±3.7	28	female 70±5 male 73±6	60	female 26.2±2.5 male 26.6±3.9	
	Farrow A (2020) <sup>40</sup>	26	21.6±2.2	100	22.9	23	71.4±5.2	100	23	
	Strasser EM (2013) <sup>41</sup>	26	24.2±3.7	-	22.5±3.0	26	67.8±4.8	-	26.6±3.3	
	Azzabou N (2015) <sup>42</sup>	34	19-27	44	-	63	69-80	51	-	
	Giuliani H (2020) <sup>43</sup>	24	21.7±2.1	0	22.4±1.2	22	69.4±2.1	0	23.3±1.5	
	Mota J (2017) <sup>44</sup>	12	26±3 (21-30)	0	-	13	74±6 (65-88)	0	-	
	Nishihara K (2014) <sup>45</sup>	19	22.0±1.5	26.3	22.1±2.4	19	73.0±3.2	26.3	23.2±2.6	
	Paris M (2020) <sup>46</sup>	female 15 male 11	29.0±6.8	57.7	24.9±2.2	female 15 male 11	72.8±5.0	57.7	26.3±3.0	
Watanabe Y (2018) <sup>17</sup>	19	22.7±1.5	52.6	21.4±2.0	21	70.6±4.8	38.1	23.0±2.4		
Chambers (2020) <sup>47</sup>	female 10 male 10	female 25±1	50	female 21±1 male 23±1	female 10 male 10	75±1	50	female 27±1 male 28±1		
			Older				KOA			
	Author, Year	No. of subject	Age (mean ± SD)	% women	BMI	No. of subject	Age (mean ± SD)	% women	BMI	

<b>Older vs. KOA</b>	Beattie K (2012) <sup>48</sup>	41	60.7±7.6	100	25.6±4.8	45	64.5±6.7	100	29.0±4.9
	Conroy M (2012) <sup>49</sup>	334	73.3±2.7	58	26.4±4.3	170	74.1±3.1	59	30.1±4.8
	Kumar D (2014) <sup>50</sup>	66	50.7 (48.4-53.1)	57.6	24.1	30	57.7 (54.3-61.1)	50	26.9
	Liikavainio T (2008) <sup>51</sup>	53	59.2±4.7	0	27.1±3.1	54	59.0±5.3	0	29.7±4.7
	Taniguchi M (2015) <sup>52</sup>	23	60.7±7.9	100	22.7±3.4	severe:13 mild:8	severe: 66.8±7.9 mild: 62.3±6.5	100	severe: 26.4±4.3 mild: 22.1±2.5
	Ikeda S (2005) <sup>53</sup>	11	63.8±3.2	100	21.4±3.1	6	65.1±1.8	100	20.3±1.8
	Maly R (2013) <sup>54</sup>	52	60.7±7.1	100	26.4±5.0	73	64.6±6.7	100	29.1±4.7
	Teoli A (2022) <sup>55</sup>	22	4.3±2.2	73	27.0±4.6	22	6.3±4	73	29.6±7.5

511 Abbreviations: BMI, body mass index; KL, Kellgren and Lawrence grading scale; No, number; KOA, knee osteoarthritis; SD, standard  
512 deviation.

513 **Table 2.** Summary of the body of evidence according to the GRADE's approach

	<b>SMD (95% CI)</b>	<b>Study Design</b>	<b>Sample Size</b>	<b>Downs and Black Scale</b>	<b>Heterogeneity</b>	<b>Publication bias</b>	<b>Level of Evidence (GRADE)</b>
<b>Meta-analysis in US study</b>							
<b>Young vs. Older</b>	-1.54 [-1.91, -1.16]	11 × Case-control study	Young: n = 240 Older: n = 257	3.7 ± 0.7 (4 [3-5]) points	$I^2 = 69\%$	- (Egger's test $p = 0.34$ )	⊕ ⊕ ⊕ ⊕ <b>Very Low</b> <sup>†</sup>
<b>Older vs. KOA</b>	-0.64 [-0.96, -0.32]	3 × Case-control study	Older: n = 99 KOA: n = 75	4.0 ± 1.4 (4 [3-5]) points	$I^2 = 0\%$	+	⊕ ⊕ ⊕ ⊕ <b>Very Low</b> <sup>§</sup>
<b>Meta-analysis in US study + omit one study</b>							
<b>Young vs. Older</b>	-1.37 [-1.64, -1.10]	10 × Case-control study	Young: n = 212 Older: n = 208	3.6 ± 0.7 (4 [3-5]) points	$I^2 = 35\%$	- (Egger's test $p = 0.11$ )	⊕ ⊕ ⊕ ⊕ <b>Low</b>
<b>Older vs. KOA</b>	-0.64 [-0.96, -0.32]	3 × Case-control study	Older: n = 99 KOA: n = 75	4.0 ± 1.4 (4 [3-5]) points	$I^2 = 0\%$	+	⊕ ⊕ ⊕ ⊕ <b>Very Low</b> <sup>§</sup>
514	“Low” quality: further research is very likely to have an important impact on our confidence in the estimate of effect and is likely to change						
515	the estimate.						
516	“Very Low” quality: very low confidence that the estimated effect and the true effect are likely to be substantially different from the effects						
517	estimate.						
518	†Downgraded for inconsistency (results were heterogeneous across the included studies [ $I^2 > 50\%$ ] and any pre-specified factors could not						
519	explain the inconsistency of results).						
520	§Downgraded for publication bias (unable to determine because of a few included studies [ $< 10$ data set])						
521	<i>Abbreviations: 95% CI, 95% confidence interval; GRADE, Grades of Recommendation, Assessment, Development, and Evaluation system;</i>						
522	<i>KOA, knee osteoarthritis; SMD, Standardized mean difference. US: ultrasonography.</i>						



523 **Figure 1.** Forest plot of subgroup analysis in measuring devices for young vs older (A) and  
524 older vs. KOA (B)

525 The black diamond represents the pooled effect size. The vertical solid line at 0 represents  
526 no difference.

527 *Abbreviations: 95%CI, 95% confidence interval; CT, computed tomography; KOA, knee*  
528 *osteoarthritis; MRI, magnetic resonance imaging; SMD, standard mean difference; US,*  
529 *ultrasonography.*

530 **Figure 2.** Network meta-analysis comparing healthy aging and pathological aging related to  
531 KOA

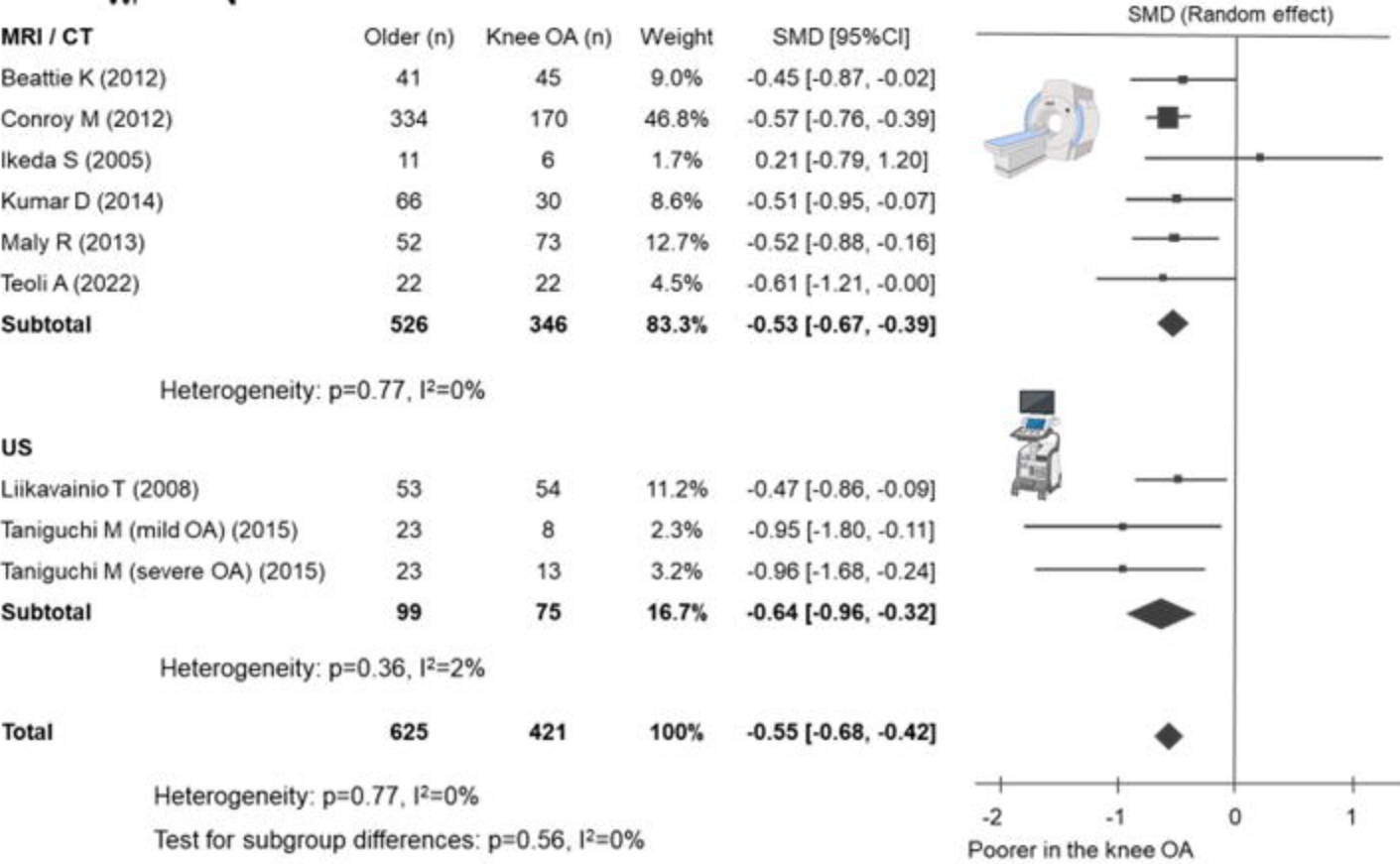
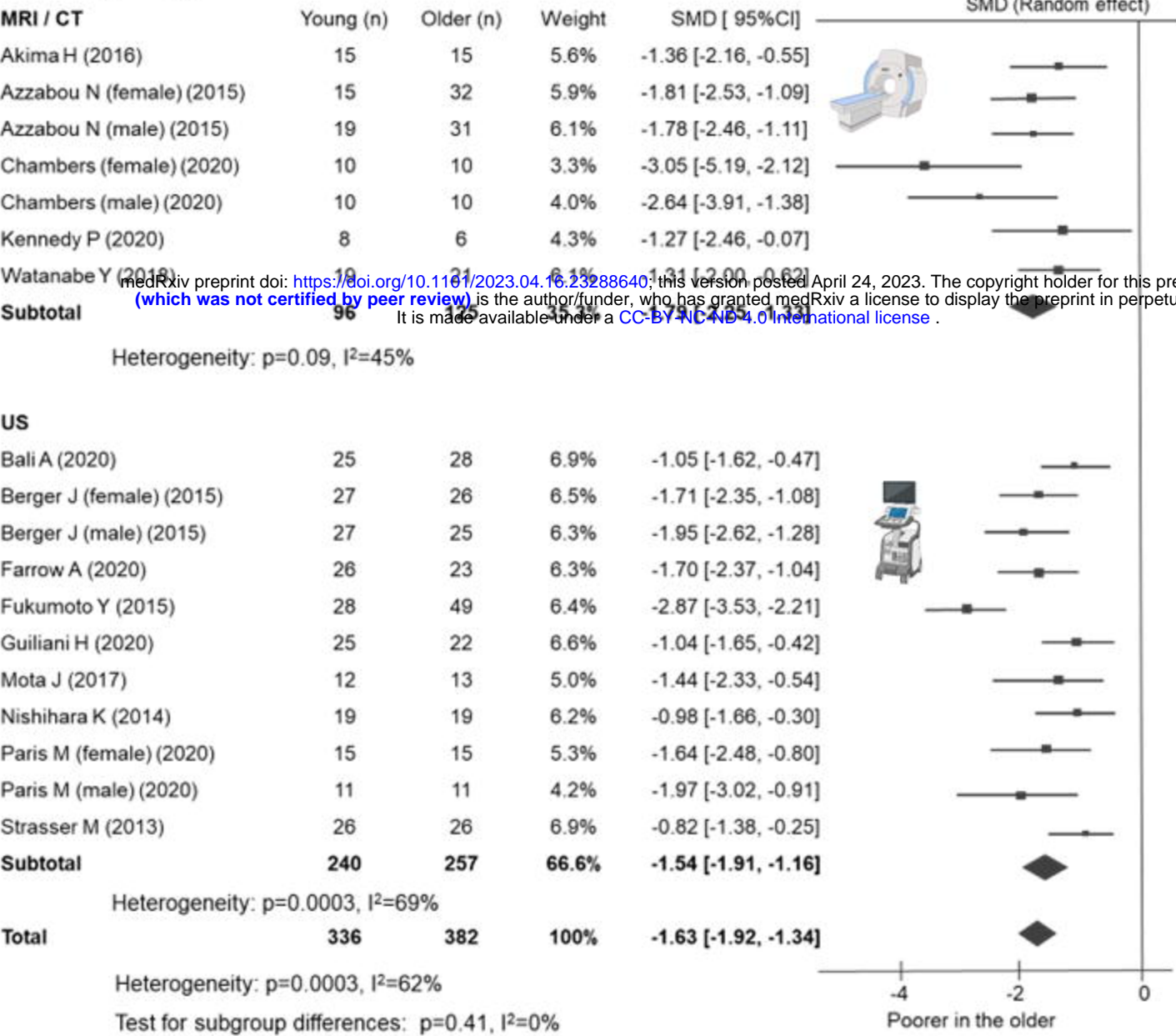
532 **A,** A decline in quadriceps muscle quality during pathological aging related to KOA was  
533 greater than healthy aging. Healthy young adults were set as controls. **B,** Network diagram  
534 showing the comparison of number of participants and studies. Each node represents the  
535 group (young, older, and KOA). Size of node and edge represents the number of  
536 participants and studies, respectively (young vs. older, 18 studies with 718 participants;  
537 older vs. KOA, 9 studies with 1,046 participants).

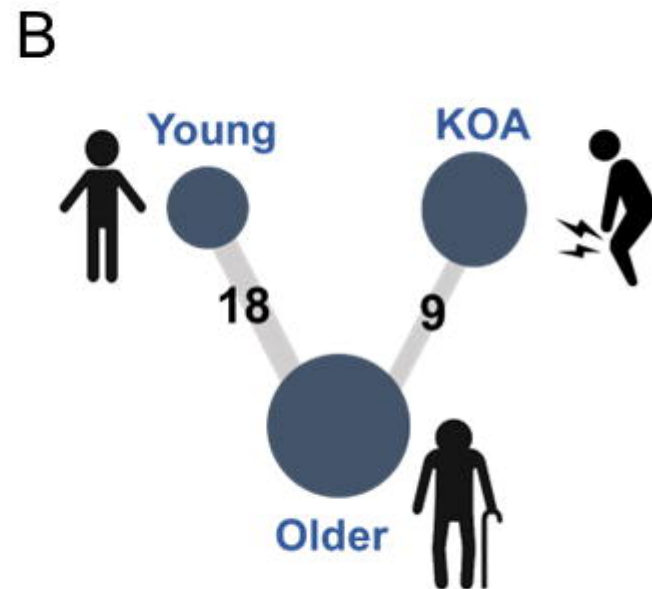
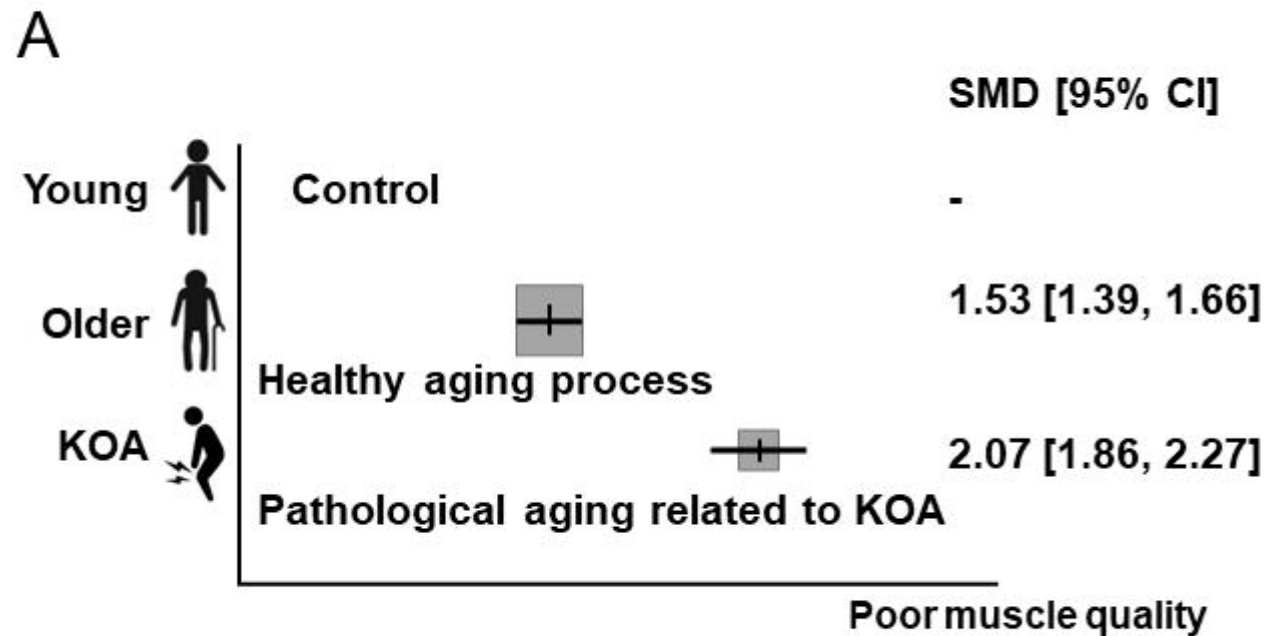
538 *Abbreviations: 95% CI, 95% confidence interval; KOA, knee osteoarthritis; SMD, standard*  
539 *mean difference;.*

540 **Figure 3.** Validation case-control study characterizing quadriceps muscle quality alterations  
541 during healthy aging versus pathological aging relating to KOA as assessed by  
542 ultrasonography

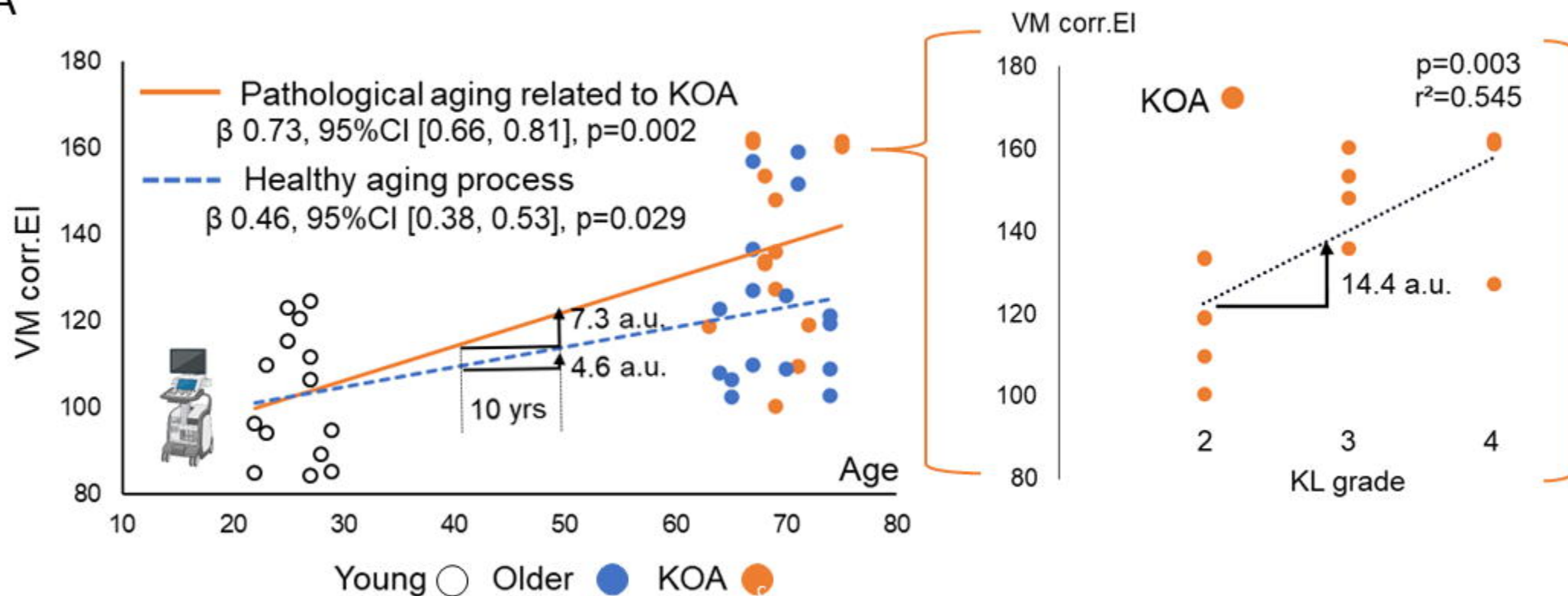
543 **A,** Scatter plot of VM corrected EI in healthy young (8 participants, 14 knees), healthy  
544 older (8 participants, 16 knees), or people with KOA (9 participants, 14knees). Knees with  
545 a history of injury were excluded from analysis. Corrected EI of VM increased in healthy  
546 aging process ( $\beta$ : 0.73,  $p=0.002$ ) and pathological aging related to KOA ( $\beta$ : 0.46,  $p=0.029$ ),  
547 which was much higher with increasing KL grade. Regression line and p-value were  
548 calculated by generalized linear mixed model with age as a dependent variable. Under the  
549 conditions of the present measurement, corrected EI of VM increased at a rate of 4.6 a.u. per  
550 10 years in healthy aging process and 7.3 a.u. per 10 years in pathological aging related to  
551 KOA. **B,** Graphical abstract summarizing the findings of the proof-of-concept trial. Fatty  
552 infiltration in VM muscle with natural aging process is accelerated with KOA. These  
553 trajectory differences may be clinically assessable by ultrasonography, a useful approach to  
554 identify the adult with high risk of KOA.

555 *Abbreviations: 95% CI, 95% confidence interval; a.u., arbitrary unit;  $\beta$ , regression*  
556 *coefficient; Corr.EI, corrected echo intensity; KOA, knee osteoarthritis; VM, vastus*  
557 *medialis; yrs, years.*





A



B

