

1           **Symptom persistence and biomarkers in post-COVID-19/chronic fatigue**  
2           **syndrome – results from a prospective observational cohort**

3   A. F. Legler<sup>1,2,+</sup>, L. Meyer-Arndt<sup>1,2,3,+</sup>, L. Mödl<sup>4</sup>, C. Kedor<sup>5</sup>, H. Freitag<sup>5</sup>, E. Stein<sup>5</sup>, U.  
4   Hoppmann<sup>1,2,3</sup>, R. Rust<sup>1,2</sup>, Frank Konietzschke<sup>4</sup>, A. Thiel<sup>6,7</sup>, F. Paul<sup>1,2,+</sup>, C. Scheibenbogen<sup>5,+</sup>, J.  
5   Bellmann-Strobl<sup>1,2,+,\*</sup>

6  
7   <sup>1</sup> Charité – Universitätsmedizin Berlin, corporate member of Freie Universität Berlin, Humboldt Universität zu  
8   Berlin and Berlin Institute of Health, Max Delbrück for Molecular Medicine, Experimental and Clinical Research  
9   Center, 13125 Berlin, Germany

10   <sup>2</sup> Charité – Universitätsmedizin Berlin, corporate member of Freie Universität Berlin, Humboldt Universität zu  
11   Berlin and Berlin Institute of Health, NeuroCure Research Center, 10117 Berlin, Germany

12   <sup>3</sup> Charité – Universitätsmedizin Berlin, corporate member of Freie Universität Berlin, Humboldt Universität zu  
13   Berlin and Berlin Institute of Health, Department for Neurology with Experimental Neurology, 10117 Berlin,  
14   Germany

15   <sup>4</sup> Charité - Universitätsmedizin Berlin, corporate member of Freie Universität Berlin and Humboldt-Universität  
16   zu Berlin and Institute of Biometry and Clinical Epidemiology, 10117 Berlin, Germany

17   <sup>5</sup> Charité – Universitätsmedizin Berlin, corporate member of Freie Universität Berlin, Humboldt Universität zu  
18   Berlin and Berlin Institute of Health, Institute of Medical Immunology, 13353 Berlin, Germany

19   <sup>6</sup>Charité - Universitätsmedizin Berlin, corporate member of Freie Universität Berlin, Humboldt-  
20   Universität zu Berlin, and Berlin Institute of Health, Regenerative Immunology and Aging, BIH Center for  
21   Regenerative Therapies, 13353 Berlin, Germany

22   <sup>7</sup>Si-M / “Der Simulierte Mensch” a science framework of Technische Universität Berlin and Charité -  
23   Universitätsmedizin Berlin, 10117 Berlin, Germany

24

25

26   <sup>+</sup> Equal contribution

27   <sup>\*</sup> Corresponding author

28   Contact information: Dr. Judith Bellmann-Strobl, email address [judith.bellmann-](mailto:judith.bellmann-strobl@charite.de)  
29   [strobl@charite.de](mailto:judith.bellmann-strobl@charite.de)

## 30 Abstract

31 Introduction: Post-COVID-19 syndrome (PCS) is characterized by a wide range of symptoms,  
32 predominantly fatigue and exertional intolerance. While disease courses during the first year post  
33 infection have been repeatedly described, little is known about long-term health consequences.

34 Methods: We assessed symptom severity and various biomarkers at three time points post infection  
35 (3-8 months (mo), 9-16mo, 17-20mo) in 106 PCS patients with moderate to severe fatigue and  
36 exertional intolerance. A subset of patients fulfilled diagnostic criteria of myalgic  
37 encephalomyelitis/chronic fatigue syndrome (PCS-ME/CFS) based on the Canadian Consensus  
38 Criteria.

39 Results: While PCS-ME/CFS patients showed persisting symptom severity and disability up to 20mo  
40 post infection, PCS patients reported an overall health improvement. Inflammatory biomarkers  
41 equally decreased in both groups. Lower hand grip force at onset correlated with symptom  
42 persistence especially in PCS-ME/CFS.

43 Discussion: Debilitating PCS may persist beyond 20mo post infection, particularly in patients fulfilling  
44 diagnostic criteria for ME/CFS.

45

46

## 47 Introduction

48 Post-COVID-19 syndrome (PCS) is worldwide recognized as sequela of coronavirus disease 19 (COVID-  
49 19) caused by severe acute respiratory syndrome coronavirus type 2 (SARS-CoV-2)<sup>1</sup>. There is a  
50 worrying number of patients with various persistent symptoms following mild or moderate COVID-19  
51 mainly presenting as fatigue, exertion intolerance, headache, myalgia, neurological and cognitive  
52 deficits as well as orthostatic disturbances, which can severely impact the patients' quality of life.<sup>2-7</sup>  
53 Reports estimate a proportion of 2%-10% of all COVID-19 patients to be impaired one year after  
54 infection.<sup>2,3,8</sup>

55 More than two years into the SARS-CoV-2 pandemic, the WHO led the way to standardize the  
56 definition of PCS as part of the WHO International Classification of Diseases (ICD-10)<sup>4</sup>: The post-  
57 COVID condition occurs within three months after a probable SARS-CoV-2 Infection, lasts for at least  
58 two months with an impact on everyday functioning and cannot be explained by alternative  
59 diagnoses. Acknowledging the post-COVID condition was a crucial first step towards recognizing and  
60 improving the health care situation of the patients affected. While the short- and medium-term  
61 clinical presentations of PCS between 3 and 9 months after SARS-CoV-2 infection have been concisely  
62 described,<sup>3,5,9</sup> little is known to date about potential long-term health consequences that may prevail  
63 beyond 12 months.

64 We reported previously on the first results of our ongoing prospective observational cohort study  
65 initiated in August 2020 in order to characterize patients with persisting debilitating fatigue and

66 exertion intolerance following COVID-19.<sup>9</sup> Our first analyses revealed that a subset of PCS patients  
67 developed the full scope of myalgic encephalomyelitis/chronic fatigue syndrome (ME/CFS) 6 months  
68 after initial infection<sup>9</sup>. ME/CFS is a complex multisystemic disease with an estimated pre-pandemic  
69 worldwide prevalence of 0.2 to 0.8%. Approximately 3 million people were diagnosed with ME/CFS in  
70 Europe alone by 2020.<sup>10,11</sup> It is characterized by pronounced fatigue and post exertional malaise  
71 (PEM), cognitive impairment, orthostatic intolerance, pain and sleep disturbance while lacking  
72 evidence of macroscopic organ damage. The key symptom of ME/CFS is an intolerance to mental and  
73 physical exertion, which triggers PEM.<sup>12</sup> Infections with various pathogens may cause ME/CFS such as  
74 Epstein-Barr virus (EBV), enteroviruses, human herpes virus (HHV)-6, dengue viruses, intracellular  
75 bacteria and SARS-CoV-1.<sup>13</sup> The pathomechanism is still only partially elucidated: Infection-triggered  
76 autoimmunity, viral mimicry, latent virus reactivation, and autonomous dysfunction including a  
77 dysregulation in  $\beta$ 2-adrenergic vasoconstriction are concepts currently debated.<sup>14</sup> Specifically for  
78 PCS-ME/CFS, studies have provided first evidence that autoantibodies to G protein-coupled  
79 receptors and endothelial dysfunction may play a role.<sup>15</sup> Of interest, reactivation of EBV during  
80 COVID-19 frequently occurs and is considered a risk factor for developing PCS. As infectious  
81 mononucleosis caused by late primary EBV infection is a well-established trigger of ME/CFS, it is  
82 tempting to speculate that in a subset of PCS EBV may trigger the disease.<sup>13,16-19</sup> Here we present the  
83 follow-up data up to 20 months after SARS-CoV-2 infection and identify predictive factors for the  
84 disease course. We hypothesized that the subgroup of PCS-ME/CFS patients develops a chronic  
85 condition with distinct clinical and paraclinical features.

86

## 87 Results

### 88 Cohort and symptom characteristics

89 We examined a total of 106 patients suffering from persistent moderate to severe fatigue and  
90 exertion intolerance 6 months post COVID-19 at up to two follow-up time points (9-16 months, and  
91 17-20 months) after SARS-CoV-2 infection (**Supp. 1 Fig. 1**). 55 patients fulfilled the Canadian  
92 Consensus Criteria (CCC) for ME/CFS and are referred to as PCS-ME/CFS; the remaining 51 patients  
93 are referred to as PCS. For demographic characteristics see **Table 1**. Symptoms frequently reported  
94 by both post-COVID-19 and ME/CFS patients are shown in **Table 2** assessing symptom prevalence,  
95 severity, and evolution over time for both cohorts in detail.

96

## 97 Fatigue and PEM remain key symptoms in PCS-ME/CFS after 18 months

98 Fatigue and PEM are among the key symptoms of PCS and indispensable for the diagnoses of  
99 ME/CFS. Patients diagnosed with PCS-ME/CFS were significantly more affected by fatigue than PCS  
100 patients over the entire study period. At baseline, PCS patients presented on average lower Chalder  
101 Fatigue Scale (CFQ) scores than PCS-ME/CFS patients with 33 % of PCS and 55% of PCS-ME/CFS  
102 reporting severe ( $\geq 28$  points) fatigue (**Fig. 1a and Supp. 1 Table 1**). While CFQ scores remained on a  
103 similarly high level in the PCS-ME/CFS cohort, they significantly decreased in PCS patients. At follow-  
104 up 2, only 3% of PCS but 46 % of PCS-ME/CFS patients still reported CFQ scores  $\geq 28$  points. The  
105 course of symptom severity was similar for the Chalder sub-score of physical fatigue (**Fig. 1b**), the  
106 Short Form (36) (SF-36) Health Questionnaire fatigue score (**Fig. 1c**) and the fatigue score of the  
107 quantitative CCC (qCCC; **Supp. 1 Fig. 2a**). Mental fatigue slightly improved also in PCS-ME/CFS over  
108 time (**Fig. 1d**).

109 PEM duration, severity and frequency were all significantly higher in PCS-ME/CFS compared to PCS  
110 patients at baseline and remained at a higher level up to follow-up 2 (**Fig. 2a-c**). However, neither of  
111 the two cohorts experienced a reduction of PEM duration over time but an improvement in PEM  
112 frequency and severity. Remarkably, in the PCS-ME/CFS cohort, PEM duration decreased below 10  
113 hours in 7 individuals (17%) at follow-up 2 (thus no longer fulfilling CCC) (**Fig. 2a**). Five of these seven  
114 individuals showed an equally strong improvement in PEM severity and frequency.

115

## 116 Reduced functional disability in both cohorts over time

117 At baseline, both PCS and PCS-ME/CFS patients had a low median Bell disability score of 40 with 4/55  
118 PCS-ME/CFS patients and 1/51 PCS patients reporting an inability to leave the house (Bell score 20;  
119 **Fig. 3a**). 53 of 55 PCS-ME/CFS and 43 of 51 PCS reported that they are unable to work full- or part-  
120 time (Bell score  $< 70/100$ ). At follow-up 2, Bell score remained at 40 in PCS-ME/CFS but increased to  
121 60 in PCS with only 12% of PCS-ME/CFS (5/41) but 43% of PCS patients reporting a Bell score  $\geq 70$ .  
122 Patient reports on performance capacity as assessed with the qCCC confirmed this course (**Supp. 1**  
123 **Fig. 2b**). Again, the seven PCS-ME/CFS patients who reported less PEM duration over time also  
124 considerably improved on the Bell score (**Fig. 3a**).

125 Various sub-scores of the SF-36 were lower in PCS-ME/CFS compared to PCS at baseline (**Supp. 1**  
126 **Table 1**) and group differences increased over time, mainly due to higher scores in PCS at both  
127 follow-ups (**Fig. 3a-d**). Specifically, perception of physical functioning (SF-36) was more reduced in  
128 PCS-ME/CFS compared to PCS patients from the beginning with only minor improvement at follow-  
129 up 2 in PCS-ME/CFS (median 45-50) and moderate in PCS (median 55-70) (**Fig. 3c**). Despite group  
130 differences in fatigue (**Fig. 1a-c**), PEM (**Fig. 2a-c**) and (perception of) functional disability (**Fig. 3a, c**),



131 overall health perception as measured by the SF-36 was equally reduced to levels below 50% in both  
132 cohorts at baseline (**Fig. 3d**). Taken together, while PCS reported improved health perception up to  
133 follow-up 2, PCS-ME/CFS patients stagnated at their initial level.

134

#### 135 Emotional well-being improves in PCS patients only

136 Perception of emotional well-being as measured by the SF-36 was equally reduced by 50% in both  
137 cohorts at baseline (**Fig. 4a**). Further, no differences in the Patient Health Questionnaire 9 (PHQ9),  
138 which is used as a screening tool for affective disorders, was found at baseline (**Fig. 4b**). Seven  
139 patients (6 PCS-ME/CFS; 1 PCS) reached more than 20 points on the PHQ9 score at baseline, which  
140 suggests a PCS-associated affective burden. However, the PHQ9 includes symptoms of fatigue,  
141 cognition and sleep and thus has a low specificity for depression in PCS and ME/CFS. Impairment  
142 according to the PHQ9 improved in PCS patients from baseline to follow-up 2 but remained largely  
143 unchanged in the PCS-ME/CFS cohort (**Fig. 4a and b**). Together, these scores indicate a considerable  
144 emotional burden due to illness, which over time improves in PCS patients while PCS-ME/CFS  
145 patients remain severely impaired.

146

#### 147 PCS-ME/CFS remain more severely affected by pain than PCS

148 According to the SF-36 pain score, PCS-ME/CFS patients were more affected by pain than PCS  
149 patients at all time points and improved in the PCS cohort from baseline to follow-up 2 while there  
150 was just a minor improvement among PCS-ME/CFS patients (**Fig. 5a**). In detail, muscle pain (qCCC)  
151 was reported by 85% of PCS-ME/CFS patients and 78% of PCS patients at baseline while joint pain  
152 (qCCC) was reported by 64% of PCS-ME/CFS patients and 69% of PCS patients (**Table 2, Supp. 1 Fig.**  
153 **2c and d**). None of these symptoms improved significantly over time in either of the two cohorts:  
154 Both patient groups reported joint and muscle pain with a severity of more than 5/10 up to follow-up  
155 2. Headaches were mentioned by 82% PCS and 93% PCS-ME/CFS patients at baseline with a  
156 decreasing severity over time in both cohorts (**Supp. 1 Fig. 2e**).

157

#### 158 Prevalence of neurological symptoms remains at a high level in both cohorts

159 At baseline, the prevalence of cognitive symptoms such as concentration (**Supp. 1 Fig. 2f**) and  
160 memory/wordfinding difficulties (**Table 2**), mental fatigue (**Supp. 1 Fig. 2g**), and difficulties while  
161 reading (**Table 2**) was comparable in both cohorts. Assessing symptom evolution over time, overall  
162 cognitive impairment as summarized in the qCCC (**Supp. 1 Fig. 2h**) ameliorated solely in PCS patients.

163 Hypersensitivities to noise, light and temperature, which are characteristic symptoms in ME/CFS  
164 were more frequent in PC-ME/CFS (**Table 2**) and all of them were more pronounced in PCS-ME/CFS  
165 at second follow-up. High median symptom severity scores at follow-up 2 indicated a continuous  
166 burden from neurological impairment despite overall improvement (**Table 2**).

167

168

### 169 Clinical signs of ongoing inflammation persist in PCS-ME/CFS patients

170 Patients suffering from postinfectious fatigue syndromes often state persisting flu-like symptoms,  
171 painful lymph nodes and a sore throat, which can be signs of ongoing inflammation. These symptoms  
172 were here summed up as qCCC immune score (**Supp. 1 Fig. 2i**), which was equally elevated in both  
173 cohorts at baseline. However, symptoms significantly decreased in PCS patients but persisted in PCS-  
174 ME/CFS patients (**Supp. 1 Fig. 2i**).

175

### 176 Regression of autonomic dysfunctions in both PCS and PCS-ME/CFS patients

177 Autonomic dysfunction is a common feature of postinfectious fatigue syndromes. At baseline, PCS  
178 and PCS-ME/CFS patients showed comparable signs of autonomic dysfunction reflected by a  
179 Composite Autonomic Symptom Score 31 (COMPASS 31) overall score indicative of moderate to  
180 severe complaints. Despite an improvement of this overall score over time in both cohorts, PCS-  
181 ME/CFS patients were more affected at second follow-up than PCS (**Fig. 5b and Supp. 1 Tab. 1**).  
182 Gastrointestinal complains only improved in PCS patients with an almost unchanged level of  
183 impairment in PCS-ME/CFS at follow-up (**Fig. 5c and Supp. 1 Fig. 2j**). On a similar note, PCS-ME/CFS  
184 patients continued to suffer from more severe sleep disturbances compared to PCS (qCCC; **Supp. 1**  
185 **Fig. 2k**).

186 To further characterize autonomic dysfunction in our patients and investigate potential clinical  
187 implications, we measured the adaption of blood pressure and pulse to postural change. At baseline,  
188 7% (5/42) of PCS and 11% (5/44) of PCS-ME/CFS patients showed signs of postural tachycardia  
189 syndrome (POTS) and 4% (2/42) of PCS and 6% (3/44) of PCS-ME/CFS showed signs of orthostatic  
190 hypotension (OH). Up to follow-up 2, none of the PCS patients continued to show signs of POTS or  
191 OH (but two patients showed newly emerged symptoms of OH or POTS at follow-up 1). In contrary,  
192 6% (3/44) of PCS-ME/CFS presented POTS symptoms also at follow-up 2 suggesting a persistent  
193 autonomic dysfunction in this cohort (one patient showed new signs of OH).

194

## 195 Persistent diminished HGS but improvement of muscle fatigability over time

196 Hand grip strength (HGS), a reliable parameter to quantify frailty and mortality, was evaluated in in  
197 two consecutive sessions at baseline (for female patients only to avoid gender bias and due to an  
198 insufficient number of male patients, n=35 PCS, n=49 PCS-ME/CFS) and follow-up 1 (n=25 PCS, n=37  
199 PCS-ME/CFS; **Fig. 6**) and results were compared to age-dependent reference values as reported by  
200 Jäkel et al.<sup>29</sup> We found no significant differences in mean (fmean) and maximum force (fmax)  
201 between PCS and PCS-ME/CFS and no changes in HGS over time in either cohort. A remarkable  
202 number of PCS (63%) and PCS-ME/CFS patients (67%) showed measurements below their respective  
203 cut-offs, i.e., for mean force in the second session (fmean2) at baseline and follow-up 1 (PCS 40%;  
204 PCS/ME/CFS 67 %; **Fig. 6a and b**).

205 The fatigue ratio (fmax/fmean) was determined for each session as a correlate for muscle fatigability  
206 with higher values indicating a stronger decline in force (**Fig. 6e and f**).<sup>29</sup> PCS-ME/CFS patients  
207 showed higher fatigue ratios at baseline (session 2) and at follow-up (session 1) than PCS patients.  
208 The fatigue ratio decreased over time in both cohorts. No changes over time (or group differences)  
209 were found for the recovery ratio, which serves as marker for muscle strength recovery after an hour  
210 (**Fig. 6g**).<sup>29</sup>

211

## 212 Reduction of inflammation markers over time in both cohorts

213 We investigated a range of biomarkers linked to postinfectious fatigue in a subset of patients (PCS  
214 n=35; PCS-ME/CFS n=31). Previous studies have found that the proinflammatory and neutrophil-  
215 recruiting interleukin 8 (IL-8, CXCL8), antinuclear antibodies (ANA) and ferritin were associated with  
216 the post-COVID condition.<sup>20-22</sup> Among these patients, IL-8, which was determined after erythrocyte  
217 lysis to reflect its level of production for a duration of up to 3 months, was equally elevated in almost  
218 half of both patient cohorts at baseline.<sup>23</sup> Over time, IL-8 levels decreased significantly in both groups  
219 (**Fig. 7a**). Consistently, ferritin, another inflammatory marker, was equally increased in almost a third  
220 of all patients at baseline, but again decreased in both cohorts until follow-up 2 (**Fig. 7b**). Antinuclear  
221 antibodies (ANA) were detected in 25% (8/32) of PCS patients and 26% (8/30) PCS-ME/CFS patients  
222 at baseline without significant changes over time (**Fig. 7c**). Furthermore, 35% of all patients were  
223 deficient of serum phosphate (PO<sub>4</sub>) at baseline, which is associated with increased mortality in  
224 COVID-19.<sup>24</sup> Up to follow-up 1, this deficiency receded in most PCS patients while persisting in PCS-  
225 ME/CFS (**Fig. 7e**).

226

227 Initial hand grip strength is associated with symptom burden at follow-up in PCS-  
228 ME/CFS

229 As disease courses and outcomes vary between individual patients, we aimed at identifying an  
230 objective marker, which could be used to estimate disease prognosis. We found HGS to be  
231 diminished in PCS-ME/CFS and to be associated with disease severity.<sup>25</sup> In line with this, we observed  
232 HGS baseline measurements at baseline to strongly correlate with symptom burden in PCS-ME/CFS  
233 patients at follow-up 1: Low HGS mean and maximum force at baseline correlated with increased  
234 fatigue (CFQ), PEM, functional disability, pain, sleep disturbance and emotional impairment at follow-  
235 up 1. Consistently, a high HGS fatigue ratio indicating faster fatiguability at baseline correlated with  
236 increased fatigue (CFQ) and functional disability at follow-up 1, and low HGS recovery ratios at  
237 baseline with increased fatigue (CFQ) and disability at follow-up 2 (**Fig. 8a**). In PCS patients, we found  
238 fewer and weaker correlations of some HGS parameters at baseline with symptom outcomes at  
239 follow-up (**Fig. 8b**).

240 Next, we evaluated potential associations between biomarkers at baseline and persisting disease  
241 burden. In the PCS-ME/CFS cohort, high IL-8 levels at baseline were associated with decreased social  
242 functioning at follow-up 1 and high PEM severity at follow-up 2. High ferritin levels correlated with  
243 increased cognitive impairment at both follow-ups as well as with poor health perception and more  
244 limitation due to physical health at follow-up 1. Further, elevated ANA levels correlated with high  
245 symptom severity at follow-up 1 and 2 and low serum PO4 levels were linked to reduced social  
246 functioning and increased gastrointestinal complaints at follow-up 2. Surprisingly, in PCS patients,  
247 high IL-8 levels at baseline correlated with high total symptom scores (qCCC) at follow-up 2 but  
248 improved physical functioning and less physical fatigue (CFQ) at follow-up 1. Likewise, reduced serum  
249 PO4 was associated with low total symptom scores (qCCC) at follow-up 1 while at follow-up 2 (in line  
250 with PCS-ME/CFS) the link was to decreased health perception and health change. High MBL levels  
251 were associated with less fatigue symptoms (CFQ) at follow-up 2.

252

253

## 254 Discussion

255 We here provide a comprehensive longitudinal characterization of the post-COVID-19 condition in  
256 patients with pronounced fatigue and exertion intolerance over a period of 20 months following  
257 COVID-19. All patients suffered from PCS, with a subgroup fulfilling the CCC for ME/CFS.

258 While both PCS and PCS-ME/CFS patients continued to report post-COVID-19 symptoms throughout  
259 the observation period<sup>26,27</sup>, clinical improvement was observed to variable degrees and mostly

260 restricted to the non-ME/CFS sub-cohort. This is in line with Tran et al. (37) who monitored symptom  
261 evolution in patients with persisting symptoms after acute COVID-19 based on an online survey over  
262 a 12-month period. The proportion of patients with persisting symptoms in their cohort was about  
263 85%. After an initial decrease, symptoms plateaued 6 to 8 months after onset.<sup>8</sup> Consistently, Seeßle  
264 et al. (38) reported that neurocognitive deficits following COVID-19 can persist beyond 12 months  
265 and lead to a marked reduction of quality of life.<sup>28</sup>

266 We here showed that patients fulfilling criteria for ME/CFS continued to be more affected than PCS  
267 patients by a wide range of symptoms including fatigue, physical disability, impaired social  
268 functioning, and emotional well-being. Importantly, exertion intolerance and PEM as the hallmark of  
269 post-infectious fatigue syndromes remained more pronounced in PCS-ME/CFS up to 20 months after  
270 initial infection. However, the extent of PEM did not improve in either cohort. Considering this  
271 persistence of PEM in most PCS patients, our study provides evidence that in ME/CFS, despite early  
272 diagnosis, prognosis is poor for most patients. Accordingly, its management by determining  
273 individual activity limits and balancing rest and activity (i.e., pacing) gains in importance. All patients  
274 in this study were seen in our specialist outpatient clinics and received recommendations for  
275 symptomatic treatment and self-management strategies. However, symptomatic therapy in ME/CFS  
276 requires prompt clinical follow-ups, which have not been available for most patients due to a lack of  
277 knowledge among most primary physicians.<sup>29</sup> We are currently evaluating in a clinical trial if  
278 comprehensive care and close monitoring can improve physical function and well-being in ME/CFS  
279 patients.

280 The degree of fatigue and functional disability as evaluated by Chalder and Bell scales and hand grip  
281 strength and fatiguability were found to discriminate best between PCS and PCS-ME/CFS patients 16  
282 to 20 months post infection. POTS was found only in PCS-ME/CFS patients at a prevalence of 6%  
283 consistent with other reports. Given these characteristic features and distinct disease course of the  
284 PCS-ME/CFS sub-group, classification of patients with the post-COVID condition based on the CCC is  
285 useful for further diagnostics and treatment. 16 of the 51 PCS patients not fulfilling the CCC would  
286 have fulfilled the IOM (Institute of Medicine) criteria for ME/CFS as these criteria do not predefine  
287 the length of PEM and require only fatigue, sleep disturbance and cognitive or orthostatic symptoms  
288 as mandatory symptoms. In line with other studies, patients fulfilling the CCC were more impaired  
289 and more symptomatic.<sup>30</sup>

290 The majority of patients reported newly emerged affective symptoms and poor emotional well-being  
291 after COVID-19 diagnosis, which were thus directly related to their post-COVID-19 condition. These  
292 symptoms improved only in PCS patients along with their overall clinical condition and therefore

293 must rather be considered a consequence of the burdening disease impacting PCS-ME/CFS patients'  
294 quality of life. Consequently, psychological support should be integrated into PCS management.

295 We found baseline HGS to be linked to persisting disease severity, particularly in the PCS-ME/CFS  
296 cohort. PCS-ME/CFS patients with initially reduced HGS were more likely to experience high disease  
297 burden up to 20 months after infection. Specifically, higher hand grip force correlated with a lower  
298 amount of fatigue, exertion intolerance, physical functioning and disability, the characteristic  
299 hallmarks of chronic postinfectious fatigue syndromes. In PCS patients, links of HGS to these  
300 symptom measures were not found or were much less pronounced than in PCS-ME/CFS. We thus  
301 assume that HGS is a more valuable prognostic parameter for patients with PCS-ME/CFS.  
302 Consequently, HGS measurements could serve as an easy to perform method to estimate prognosis  
303 of PCS-ME/CFS patients. However, these correlations should be considered observational as we could  
304 not control for potential confounding variables due to the limited number of participants. Therefore,  
305 these results need to be validated in further studies.

306 We observed a distinct improvement of symptoms (fatigue, PEM, and disability) in 7 out of 55 PCS-  
307 ME/CFS patients. These patients initially presented with severe symptoms and fulfilled the Canadian  
308 Consensus diagnostic criteria for ME/CFS. At follow-up 2, their Bell scores were improved above a  
309 value of 60 points. 5 of them also demonstrated improved hand grip strength over time. We were  
310 unable to identify common characteristics that could explain this improvement in this sub-group.

311 Our evaluation of biomarkers associated with post-infectious fatigue supports the presumption of  
312 ongoing inflammation in post COVID-19. The pro-inflammatory, neutrophil-recruiting cytokine IL-8  
313 and ferritin were elevated in a subgroup of patients 6 months after infection. IL-8 levels decreased  
314 towards 12 months after SARS-CoV-2 infection. Further, we observed elevated ANA titers in 25% of  
315 patients. This is consistent with other studies that found elevated ANA titers at 12 months post-  
316 COVID, which correlated with persisting symptoms and inflammation in PCS patients. This indicates  
317 that ANA could be a relevant marker for autoimmunity in PCS.<sup>31</sup> Hypophosphatemia was found in  
318 one third of patients at baseline and interestingly persisted only in the ME/CFS cohort. The etiology  
319 of hypophosphatemia is complex and potential causes are mitochondrial dysfunction with depletion  
320 of adenosine triphosphate (ATP), insulin resistance, and respiratory alkalosis.<sup>24</sup> Complications of  
321 hypophosphatemia include impaired cellular ATP metabolism and increased affinity of hemoglobin to  
322 oxygen in red blood cells, which may exacerbate fatigue as well as neurologic, cardiovascular and  
323 muscle dysfunction. Thus, the effect of phosphate supplementation should be evaluated in ME/CFS.  
324 In acute COVID, results on supplementation approaches are still inconsistent.<sup>32</sup>

325 A limitation of this study is the participant drop-out during the study period. Approximately 78% of  
326 dropouts were diagnosed with PCS at baseline, the remaining dropouts with PCS-ME/CFS. As PCS

327 patients were overall more likely to experience clinical improvement, they may have regarded  
328 further participation in the study as unbeneficial. Hence, their clinical improvement during follow-up  
329 could not be documented, which may bias the PCS cohort towards the more affected individuals.  
330 However, a great strength of this study is the comprehensive disease evaluation including an  
331 extensive and interdisciplinary set-up of questionnaires and on-site clinical examinations and  
332 functional and laboratory tests. Furthermore, more clinically less affected PCS patients would have  
333 only emphasized the discriminatory effect observed between our two patient groups.

334 Taken together, the post-COVID-19 condition may develop into a chronic syndrome with long-lasting  
335 symptoms and impairment. In patients fulfilling the CCC, the chance of relevant improvement by  
336 symptomatic therapy is low. Against the backdrop of over 675 million documented SARS-CoV-2  
337 infections worldwide (status February 2023), these results suggest that the post-COVID-19 syndrome  
338 continues to present a heavy burden for those affected as well as on healthcare systems. Further  
339 studies on the pathomechanism and therapy approaches are urgently needed.

340

## 341 Methods

### 342 Study design and cohort characteristics

343 This work's data was collected as part of the Pa-COVID study of the Charité – Universitätsmedizin  
344 Berlin and approved by the ethics committee of the Charité in accordance with the 1964 Declaration  
345 of Helsinki and its later amendments (EA2/006/20). The current manuscript analyses follow-up data  
346 from a prospective observational cohort study of patients with severe fatigue and exertion  
347 intolerance post COVID-19 diagnosis.<sup>33</sup> Patients were recruited via the Charité's Fatigue outpatient  
348 clinic's website and the post-COVID consultation of the outpatient clinic of Charité's Experimental  
349 and Clinical Research Center. From a total of 250 patients who were seen between July 2020 and  
350 February 2022, 171 fulfilled the inclusion criteria of (**Supp. Fig. 1a**): (1) confirmed previous diagnosis  
351 of mild to moderate COVID-19 according to WHO criteria I or II, (2) persistent moderate to severe  
352 fatigue according to the CFQ and PEM, (3) absence of COVID-19-related organ dysfunction in case of  
353 indicative symptoms and 4) absence of preexisting fatigue or relevant cardiac, respiratory,  
354 neurological, or psychiatric comorbidities according to the European Network on ME/CFS  
355 (EUROMENE) guidelines.<sup>10</sup> COVID-19 diagnose was confirmed by SARS-CoV-2 polymerase chain  
356 reaction or anti-SARS-CoV-2 IgG serology (only prior to vaccination). To exclude COVID-19-related  
357 organ dysfunction, patients with severe headache or cognitive impairment were evaluated by a  
358 neurologist, patients with respiratory problems underwent comprehensive pulmonological  
359 examination including chest computer tomography and pulmonary function tests with diffusing  
360 capacity and patients with chest pain, postural tachycardia, palpitations, or elevated NT-pro BNP had

361 a cardiological examination and were assessed by electrocardiogram (ECG), 24h ECG and  
362 echocardiography. Baseline assessment was conducted 3 to 8 months post COVID-19 manifestation.  
363 Follow-up visits were scheduled 9 to 16 months (follow-up 1) and 17 to 20 months (follow-up 2) post  
364 COVID-19 diagnosis (see **Supp. Fig. 1b**). All visits included questionnaires as well as functional and  
365 laboratory tests (see **Supp. Fig. 1b**). An additional questionnaire-based assessment was conducted 9  
366 months post COVID-19 to standardize diagnoses of patients with baseline visits at months 3 and 4  
367 post infection as ME/CFS can only be diagnosed after symptom persistence of more than 6 months.  
368 These assessments were not used for analysis. 65 patients (n=51 PCS, n=14 PCS-ME/CFS) dropped  
369 out during the study resulting in 106 patients with complete datasets from at least two different  
370 assessments timepoints (baseline and one follow-up).

371

## 372 Diagnosis and symptom assessment

373 PCS was diagnosed based on fatigue, PEM and, optionally, additional key symptoms following COVID-  
374 19 persisting for at least 3 months and impairing daily live according to the WHO “clinical case  
375 definition of post-COVID-19 condition”.<sup>4</sup> The diagnosis of PCS-ME/CFS was based on the CCC and  
376 PEM lasting until the next day. The minimum PEM duration required for diagnosis was set at 14  
377 hours as this cut-off value has been shown to be reliable in distinguishing ME/CFS fatigue from  
378 fatigue associated with other diseases.<sup>34</sup> In contrary, patients with PCS did not fulfill all CCC criteria  
379 and most presented with PEM less than 14 hours.

380 Post-COVID-19 cardinal symptoms and their severity were assessed (on a scale from 1-10, no  
381 symptoms to extreme symptoms) using the qCCC (2003).<sup>35</sup> Symptom complexes were summed up  
382 respectively: Fatigue, impaired performance, need for rest and post exertional malaise were  
383 summarized as qCCC fatigue score. Painful lymph nodes, sore throat and flu-like symptoms were  
384 summed up as qCCC immune score. Concentration impairment, memory/wordfinding problems and  
385 mental fatigue were summerzied as qCCC mental score. The CFQ is a broadly recognized measuring  
386 tool for the diagnosis of ME/CFS fatigue and contains 11 items on an ordinal scale of 0 to 3 with a  
387 minimal total score of 0 (no fatigue) to a maximum total score of 33 (strong fatigue).<sup>36,37</sup> The two  
388 subscales are rated as follows: mental fatigue (CFQA) contains 4 items with a range of 0 to 12 and  
389 physical fatigue (CFQB) 7 items with a range of 0 to 21. Frequency, severity and duration of PEM  
390 symptoms were assessed according to Cotler et al. (range 0 to 46, no PEM to frequent, severe or  
391 long-lasting PEM).<sup>34</sup> Impairment in daily life due to chronic fatigue was rated based on the Bell  
392 disability scale with increasing impairment from 100 (no symptoms present) to 50 (moderate  
393 symptoms at rest and moderate to severe symptoms with exercise or activity; unable to perform  
394 strenuous duties, but able to perform light duty or desk work 4-5 hours a day) and 0 points (unable



395 to get out of bed independently).<sup>38</sup> Physical and social dysfunction, bodily pain, emotional well-being,  
396 general health perception and health change were evaluated by the SF-36, which is used as a generic  
397 measurement tool to assess health perception, disease progression and experienced impairment  
398 through illness.<sup>39</sup> Its score ranges from 0 (greatest possible health limitation) to 100 (no relevant  
399 health limitation) points. The subitems orthostatic intolerance and gastrointestinal function of the  
400 COMPASS 31 were used to detect symptoms of autonomic dysfunction often reported by PCS  
401 patients with a minimum total score of 0 (no symptoms) and a maximum total score of 100 (strong  
402 autonomic dysfunction).<sup>40</sup> Furthermore, we used the PHQ9, a questionnaire to screen for depressive  
403 symptoms<sup>26</sup>: Due to the overlap of several PCS symptoms with depressive disorders, the PHQ9 score  
404 was used descriptively only.

405

#### 406 Functional tests and biomarker assessment

407 POTS, OH and diminished HGS were used as clinical markers to comprehensively characterize the  
408 broad variety of symptoms and their severity seen in PCS patients. POTS and OH describe different  
409 phenotypes of autonomic dysfunction and are often seen in ME/CFS patients.<sup>41-43</sup> For evaluation,  
410 blood pressure and heart rate were measured in seated position, immediately after standing up and  
411 after 2, 5 and 10 minutes (standing). Orthostatic intolerance was defined as increase of more than 30  
412 bpm or above 120 bpm within 10 minutes after standing up.<sup>43,44</sup> OH was defined as decrease of  
413 systolic pressure of more than 20 mmHg or diastolic pressure of more than 10 mmHg at any  
414 measurement.<sup>43</sup> HGS, which is a meaningful marker for evaluation of muscle exertion and fatigability  
415 in fatigue patients, was assessed using an electronic dynamometer.<sup>25</sup> In detail, patients gripped the  
416 measuring device 10 times with maximum force with their leading hand. This procedure was  
417 repeated after 60 minutes. Maximum (fmax1, fmax2) and mean (fmean1, fmean 2) force of each  
418 session were determined in kg. Previous studies by Jäkel et al. identified reference values in healthy  
419 females (fmean1=25.6; fmean2=25.9; fmax1=28.2; fmax2=28.7) and determined cut-off values for  
420 the diagnosis of ME/CFS in patients 20-39 years and 40-59 years respectively.<sup>25</sup> Furthermore, we  
421 calculated the fatigue ratio as correlates of decreased force after repeated measurements and the  
422 recovery ratio indicating lower force during the second measurement.<sup>25</sup> We decided to investigate  
423 multiple laboratory parameters, which have previously been associated with postinfectious fatigue  
424 syndromes including ferritin (reference range 13-150 µg/l), IL-8 in erythrocytes (reference <150  
425 pg/ml), MBL (reference >50 ng/ml), ANAs (reference negative 1:0 dilution) and PO4 (reference range  
426 0.87-1.45 mmol/l).<sup>45</sup> They were determined at the Charité diagnostics laboratory (Labor Berlin  
427 GmbH, Berlin, Germany).

## 428 Statistical analysis

429 Study data were collected and managed using REDCap, an electronic data collection system, and last  
430 accessed on December 13, 2022. Non-parametric rank-based ANOVA tests for factorial longitudinal  
431 data were used for data analysis. These tests are a generalization of the Wilcoxon-Mann-Whitney  
432 test for longitudinal data. We tested for group effects, time effects, and an interaction effect  
433 between these two effects. A group effect corresponds to a significant difference in the distribution  
434 of data between the PCS and the PCS-ME/CFS cohort, a time effect to a significant change in the data  
435 distribution over time, and an interaction effect to a temporal trend difference between the PCS and  
436 the PCS-ME/CFS cohort. Note that the reported effect sizes are relative (i.e., the probability of  
437 observing larger values for a given group at a given time). In a subsequent post-hoc analysis,  
438 Wilcoxon-Mann-Whitney tests were used to analyze group differences at individual time periods. The  
439 corresponding p-values were adjusted according to the Holm-Bonferroni correction. Correlation  
440 analyses were performed using Kendall's Tau correlation. In general, p-values < 0.05 were considered  
441 statistically significant. Statistical testing was done in Prism version 9 and R version 4.2.1 with the  
442 packages tidyverse version 1.3 and nparLD version 2.2.

443

## 444 References

- 445 1. Nalbandian A, Sehgal K, Gupta A, et al. Post-acute COVID-19 syndrome. *Nat Med*.  
446 2021;27(4):601-615. doi:10.1038/s41591-021-01283-z
- 447 2. Augustin M, Schommers P, Stecher M, et al. Post-COVID syndrome in non-hospitalised  
448 patients with COVID-19: a longitudinal prospective cohort study. *The Lancet Regional Health -*  
449 *Europe*. 2021;6:100122. doi:10.1016/j.lanep.2021.100122
- 450 3. Sudre CH, Murray B, Varsavsky T, et al. Attributes and predictors of long COVID. *Nat Med*.  
451 2021;27(4):626-631. doi:10.1038/s41591-021-01292-y
- 452 4. Soriano JB, Murthy S, Marshall JC, Relan P, Diaz JV. A clinical case definition of post-COVID-19  
453 condition by a Delphi consensus. *The Lancet Infectious Diseases*. Published online December  
454 2021:S1473309921007039. doi:10.1016/S1473-3099(21)00703-9
- 455 5. Crook H, Raza S, Nowell J, Young M, Edison P. Long covid—mechanisms, risk factors, and  
456 management. *BMJ*. Published online July 26, 2021:n1648. doi:10.1136/bmj.n1648
- 457 6. Davis HE, Assaf GS, McCorkell L, et al. Characterizing long COVID in an international cohort: 7  
458 months of symptoms and their impact. *EClinicalMedicine*. 2021;38:101019.  
459 doi:10.1016/j.eclinm.2021.101019
- 460 7. Goërtz YMJ, Herck MV, Delbressine JM, et al. Persistent symptoms 3 months after a SARS-  
461 CoV-2 infection: the post-COVID-19 syndrome? *ERJ Open Research*. 2020;6(4).  
462 doi:10.1183/23120541.00542-2020
- 463 8. Tran VT, Porcher R, Pane I, Ravaud P. Course of post COVID-19 disease symptoms over time  
464 in the ComPaRe long COVID prospective e-cohort. *Nat Commun*. 2022;13(1):1812.  
465 doi:10.1038/s41467-022-29513-z

- 466 9. Kedor C, Freitag H, Meyer-Arndt L, et al. A prospective observational study of post-COVID-19  
467 chronic fatigue syndrome following the first pandemic wave in Germany and biomarkers associated  
468 with symptom severity. *Nat Commun.* 2022;13(1):5104. doi:10.1038/s41467-022-32507-6
- 469 10. Nacul L, Authier FJ, Scheibenbogen C, et al. European Network on Myalgic  
470 Encephalomyelitis/Chronic Fatigue Syndrome (EUROMENE): Expert Consensus on the Diagnosis,  
471 Service Provision, and Care of People with ME/CFS in Europe. *Medicina.* 2021;57(5):510.  
472 doi:10.3390/medicina57050510
- 473 11. Carruthers BM, van de Sande MI, De Meirleir KL, et al. Myalgic encephalomyelitis:  
474 International Consensus Criteria. *J Intern Med.* 2011;270(4):327-338. doi:10.1111/j.1365-  
475 2796.2011.02428.x
- 476 12. Jason LA, Sunnquist M, Brown A, Reed J. Defining Essential Features of Myalgic  
477 Encephalomyelitis and Chronic Fatigue Syndrome. *Journal of Human Behavior in the Social  
478 Environment.* 2015;25(6):657-674. doi:10.1080/10911359.2015.1011256
- 479 13. Sotzny F, Blanco J, Capelli E, et al. Myalgic Encephalomyelitis/Chronic Fatigue Syndrome –  
480 Evidence for an autoimmune disease. *Autoimmunity Reviews.* 2018;17(6):601-609.  
481 doi:10.1016/j.autrev.2018.01.009
- 482 14. Loebel M, Grabowski P, Heidecke H, et al. Antibodies to  $\beta$  adrenergic and muscarinic  
483 cholinergic receptors in patients with Chronic Fatigue Syndrome. *Brain, Behavior, and Immunity.*  
484 2016;52:32-39. doi:10.1016/j.bbi.2015.09.013
- 485 15. Sotzny F, Filgueiras IS, Kedor C, et al. Dysregulated autoantibodies targeting vaso- and  
486 immunoregulatory receptors in Post COVID Syndrome correlate with symptom severity. *Front  
487 Immunol.* 2022;13:981532. doi:10.3389/fimmu.2022.981532
- 488 16. Brodin P, Casari G, Townsend L, et al. Studying severe long COVID to understand post-  
489 infectious disorders beyond COVID-19. *Nat Med.* Published online April 5, 2022:1-4.  
490 doi:10.1038/s41591-022-01766-7
- 491 17. Haffke M, Freitag H, Rudolf G, et al. Endothelial dysfunction and altered endothelial  
492 biomarkers in patients with post-COVID-19 syndrome and chronic fatigue syndrome (ME/CFS). *J  
493 Transl Med.* 2022;20(1):138. doi:10.1186/s12967-022-03346-2
- 494 18. Su Y, Yuan D, Chen DG, et al. Multiple early factors anticipate post-acute COVID-19 sequelae.  
495 *Cell.* 2022;185(5):881-895.e20. doi:10.1016/j.cell.2022.01.014
- 496 19. Swank Z, Senussi Y, Manickas-Hill Z, et al. Persistent Circulating Severe Acute Respiratory  
497 Syndrome Coronavirus 2 Spike Is Associated With Post-acute Coronavirus Disease 2019 Sequelae.  
498 *Clinical Infectious Diseases.* 2023;76(3):e487-e490. doi:10.1093/cid/ciac722
- 499 20. Son K. Circulating anti-nuclear autoantibodies in COVID-19 survivors predict long-COVID  
500 symptoms. :37.
- 501 21. Phetsouphanh C, Darley DR, Wilson DB, et al. Immunological dysfunction persists for 8  
502 months following initial mild-to-moderate SARS-CoV-2 infection. *Nat Immunol.* 2022;23(2):210-216.  
503 doi:10.1038/s41590-021-01113-x
- 504 22. Pasini E, Corsetti G, Romano C, et al. Serum Metabolic Profile in Patients With Long-Covid  
505 (PASC) Syndrome: Clinical Implications. *Frontiers in Medicine.* 2021;8. Accessed November 2, 2022.  
506 <https://www.frontiersin.org/articles/10.3389/fmed.2021.714426>

- 507 23. Reinsberg J, Dembinski J, Dorn C, Behrendt D, Bartmann P, van Der Ven H. Determination of  
508 total interleukin-8 in whole blood after cell lysis. *Clin Chem*. 2000;46(9):1387-1394.
- 509 24. Wang R, He M, Kang Y. Hypophosphatemia at Admission is Associated with Increased  
510 Mortality in COVID-19 Patients. *Int J Gen Med*. 2021;14:5313-5322. doi:10.2147/IJGM.S319717
- 511 25. Jäkel B, Kedor C, Grabowski P, et al. Hand grip strength and fatigability: correlation with  
512 clinical parameters and diagnostic suitability in ME/CFS. *Journal of Translational Medicine*.  
513 2021;19(1):159. doi:10.1186/s12967-021-02774-w
- 514 26. Gräfe K, Zipfel S, Herzog W, Löwe B. Screening psychischer Störungen mit dem  
515 "Gesundheitsfragebogen für Patienten (PHQ-D)": Ergebnisse der deutschen Validierungsstudie.  
516 [Screening for psychiatric disorders with the Patient Health Questionnaire (PHQ). Results from the  
517 German validation study.]. *Diagnostica*. 2004;50(4):171-181. doi:10.1026/0012-1924.50.4.171
- 518 27. Pawlikowska T, Chalder T, Hirsch SR, Wallace P, Wright DJ, Wessely SC. Population based  
519 study of fatigue and psychological distress. *BMJ*. 1994;308(6931):763-766.  
520 doi:10.1136/bmj.308.6931.763
- 521 28. Seeßle J, Waterboer T, Hippchen T, et al. Persistent Symptoms in Adult Patients 1 Year After  
522 Coronavirus Disease 2019 (COVID-19): A Prospective Cohort Study. *Clin Infect Dis*. 2022;74(7):1191-  
523 1198. doi:10.1093/cid/ciab611
- 524 29. Froehlich L, Hattesoehl DBR, Jason LA, Scheibenbogen C, Behrends U, Thoma M. Medical Care  
525 Situation of People with Myalgic Encephalomyelitis/Chronic Fatigue Syndrome in Germany. *Medicina*  
526 (*Kaunas*). 2021;57(7):646. doi:10.3390/medicina57070646
- 527 30. Jason LA, McManimen S, Sunnquist M, Newton JL, Strand EB. Clinical Criteria Versus a  
528 Possible Research Case Definition in Chronic Fatigue Syndrome/Myalgic Encephalomyelitis. *Fatigue*.  
529 2017;5(2):89-102. doi:10.1080/21641846.2017.1299077
- 530 31. Son K, Jamil R, Chowdhury A, et al. Circulating anti-nuclear autoantibodies in COVID-19  
531 survivors predict long COVID symptoms. *European Respiratory Journal*. 2023;61(1).  
532 doi:10.1183/13993003.00970-2022
- 533 32. Fakhrolmobasheri M, Vakhshoori M, Heidarpour M, Najimi A, Mozafari AM, Rezvanian H.  
534 Hypophosphatemia in Coronavirus Disease 2019 (COVID-19), Complications, and Considerations: A  
535 Systematic Review. *Biomed Res Int*. 2022;2022:1468786. doi:10.1155/2022/1468786
- 536 33. Kedor C, Freitag H, Meyer-Arndt L, et al. *Chronic COVID-19 Syndrome and Chronic Fatigue*  
537 *Syndrome (ME/CFS) Following the First Pandemic Wave in Germany – a First Analysis of a Prospective*  
538 *Observational Study*. *Infectious Diseases (except HIV/AIDS)*; 2021. doi:10.1101/2021.02.06.21249256
- 539 34. Cotler J, Holtzman C, Dudun C, Jason LA. A Brief Questionnaire to Assess Post-Exertional  
540 Malaise. *Diagnostics (Basel)*. 2018;8(3):66. doi:10.3390/diagnostics8030066
- 541 35. Carruthers BM, Jain AK, De Meirleir KL, et al. Myalgic Encephalomyelitis/Chronic Fatigue  
542 Syndrome. *Journal of Chronic Fatigue Syndrome*. 2003;11(1):7-115. doi:10.1300/J092v11n01\_02
- 543 36. Jackson C. The Chalder Fatigue Scale (CFQ 11). *Occupational Medicine*. 2015;65(1):86.  
544 doi:10.1093/occmed/kqu168
- 545 37. Morriss R, Wearden A, Mullis R. Exploring the validity of the Chalder fatigue scale in chronic  
546 fatigue syndrome. *Journal of Psychosomatic Research*. 1998;45(5):411-417. doi:10.1016/S0022-  
547 3999(98)00022-1

- 548 38. Bell DS. *The Doctor's Guide to Chronic Fatigue Syndrome Understanding, Treating, and Living*  
549 *with CFIDS*. Addison-Wesley; 1995.
- 550 39. Ware JE, Sherbourne CD. The MOS 36-item short-form health survey (SF-36). I. Conceptual  
551 framework and item selection. *Med Care*. 1992;30(6):473-483.
- 552 40. Sletten DM, Suarez GA, Low PA, Mandrekar J, Singer W. COMPASS 31: A Refined and  
553 Abbreviated Composite Autonomic Symptom Score. *Mayo Clin Proc*. 2012;87(12):1196-1201.  
554 doi:10.1016/j.mayocp.2012.10.013
- 555 41. Hoad A, Spickett G, Elliott J, Newton J. Postural orthostatic tachycardia syndrome is an under-  
556 recognized condition in chronic fatigue syndrome. *QJM*. 2008;101(12):961-965.  
557 doi:10.1093/qjmed/hcn123
- 558 42. Shanks L, Jason LA, Evans M, Brown A. Cognitive impairments associated with CFS and POTS.  
559 *Front Physiol*. 2013;4:113. doi:10.3389/fphys.2013.00113
- 560 43. Natelson BH, Lin JMS, Blate M, Khan S, Chen Y, Unger ER. Physiological assessment of  
561 orthostatic intolerance in chronic fatigue syndrome. *J Transl Med*. 2022;20(1):95.  
562 doi:10.1186/s12967-022-03289-8
- 563 44. Haensch CA, Wagner C, Mallien J, Isenmann S. Posturales Tachykardiesyndrom.  
564 *Nervenheilkunde*. 2013;32(4):199-204. doi:10.1055/s-0038-1628499
- 565 45. Son K, Jamil R, Chowdhury A, et al. Circulating anti-nuclear autoantibodies in COVID-19  
566 survivors predict long-COVID symptoms. *European Respiratory Journal*. Published online January 1,  
567 2022. doi:10.1183/13993003.00970-2022

568

## 569 Acknowledgements

570 We thank Elena Steinle, Gritt Stoffels and Anja Hagemann for patient care and data management.  
571 We thank all patients who gave us their consent to publish their data in this study. We thank all  
572 members of the PaCOVID-19 collaborative study group.

573

## 574 Funding

575 This work is supported by a grant from the Weidenhammer-Zoebele Foundation. The work of F. K.  
576 was supported by the Volkswagen Foundation.

577

## 578 Data availability

579 Data is available upon reasonable request. Furthermore, the manuscript's guarantor affirms that the  
580 paper is honest, accurate, and transparent; that no important aspects of the study have been  
581 omitted; and that any discrepancies from the study as planned have been explained. Dissemination  
582 to participants and related patient and public communities is encouraged by open access publication  
583 and citing the study on our site <https://cfs.charite.de/>. We are engaging with print and internet  
584 press, television, radio, news, and documentary program makers. All items of the STROBE checklist  
585 are covered in the paper.

586

## 587 Author Contributions

588 C.S, C.K., and F.P. developed the concept of the study. L.M.-A. gave important input into study  
589 concept and objectives. A.F.K. and L.M.-A. were responsible for data curation and analyses of data.  
590 C.K., U.H., C.S., J.B.-S., L.M.-A., F.P. were involved in clinical investigation. A.F.L was involved in data  
591 transfer, data management and collection of further information for revision. H.F. was also involved  
592 in data transfer. C.K., J.B.-S. and C.S. validated the data. L.M. performed statistical analyses. A.F.L and  
593 L.M. were involved in data visualization. A.F.L and L.M.-A wrote the original draft of the paper. C.S.  
594 and J.B.-S. reviewed and edited the paper. All authors revised and approved the paper. The  
595 corresponding author attests that all listed authors meet authorship criteria and that no others  
596 meeting the criteria have been omitted. C.S. is the guarantor.

597

## 598 Competing Interest Statements

599 The authors declare no competing interests.

600

## 601 Figure legends

602 **Fig. 1: Fatigue.** **a**, Chalder Fatigue Total Score, ranging from 0 (no fatigue) to 33 (severe fatigue); **b**, Chalder Fatigue Physical  
603 Score (range 0-21); **c**, SF-36 Energy/Fatigue, ranging from 0 (most impaired) to 100 (no impairment); **d**, Chalder Fatigue  
604 Mental Score (range 0-12). Dots represent absolute score values (red for PCS, blue for PCS-ME/CFS) as quantified on the left  
605 Y axis. Bars depict group medians. Lines (red for PCS, blue for PCS-ME/CFS) depict main relative time, group, and interaction  
606 effects as quantified on the right Y axis.  $p \leq 0.05 = *$ ,  $p \leq 0.01 = **$ ,  $p \leq 0.001 = ***$ ,  $p \leq 0.0001 = ****$ .

607 **Fig. 2: PEM.** **a**, PEM duration (in hours), **b**, frequency (stated as occurring: never, rarely, half of the time, most of the time,  
608 always), and **c**, severity (stated as: not at all, mild, moderate, severe, very severe) of exhaustion experienced post exertion.  
609 Dots represent absolute score values (red for PCS, blue for PCS-ME/CFS) as quantified on the left Y axis. Bars depict group  
610 medians. Lines (red for PCS, blue for PCS-ME/CFS) depict main relative time, group and interaction effects as quantified on  
611 the right Y axis.  $p \leq 0.05 = *$ ,  $p \leq 0.01 = **$ ,  $p \leq 0.001 = ***$ ,  $p \leq 0.0001 = ****$ .

612 **Fig. 3: General health and functional impairment.** **a**, Bell score assessing disability due to chronic fatigue from 100 (no  
613 symptoms present) to 50 (moderate symptoms at rest and moderate to severe symptoms with exercise or activity) to 0  
614 points (unable to get out of bed independently); **b**, SF-36 social functioning; **c**, SF-36 physical functioning; **d**, SF-36 health  
615 perception, 0 points (greatest possible health limitation) - 100 points (no health limitation). Dots represent absolute score  
616 values (red for PCS, blue for PCS-ME/CFS) as quantified on the left Y axis. Bars depict group medians. Lines (red for PCS, blue  
617 for PCS-ME/CFS) depict main relative time, group, and interaction effects as quantified on the right Y axis.  $p \leq 0.05 = *$ ,  $p \leq$   
618  $0.01 = **$ ,  $p \leq 0.001 = ***$ ,  $p \leq 0.0001 = ****$ .

619 **Fig. 4: Emotional impairment.** **a**, SF-36 emotional well-being, 0 points (greatest possible health limitation) - 100 points (no  
620 health limitation); **b**, Patient Health Questionnaire 9 (PHQ9), minimal depressive symptoms (1-4), mild depressive  
621 symptoms (5-9), moderate depressive symptoms (10-14), moderately severe depressive symptoms (15-19), or severe  
622 depressive symptoms (20-27). Dots represent absolute score values (red for PCS, blue for PCS-ME/CFS) as quantified on the  
623 left Y axis. Bars depict group medians. Lines (red for PCS, blue for PCS-ME/CFS) depict main relative time, group, and  
624 interaction effects as quantified on the right Y axis.  $p \leq 0.05 = *$ ,  $p \leq 0.01 = **$ ,  $p \leq 0.001 = ***$ ,  $p \leq 0.0001 = ****$ .

625 **Fig. 5: Pain and autonomic dysfunction.** **a**, SF-36 pain score, 0 points (greatest possible health limitation) - 100 points (no  
626 health limitation); **b**, COMPASS 31 overall score, 0 (no symptoms) - 100 (severe autonomic dysfunction); **c**, COMPASS 31  
627 gastrointestinal score (range 0-25). Dots represent absolute score values (red for PCS, blue for PCS-ME/CFS) as quantified  
628 on the left Y axis. Bars depict group medians. Lines (red for PCS, blue for PCS-ME/CFS) depict main relative time, group, and  
629 interaction effects as quantified on the right Y axis.  $p \leq 0.05 = *$ ,  $p \leq 0.01 = **$ ,  $p \leq 0.001 = ***$ ,  $p \leq 0.0001 = ****$ .

630 **Fig. 6: Hand grip strength.** **a-d**, mean (**a and b**) and maximum (**c and d**) force in kg of all 10 measurements per session for  
631 session 1 (**a and c**) and 2 (**b and d**) for baseline and follow-up 1; **e and f**, fatigue ratio (fmax/fmean) per session for session 1  
632 (**e**) and 2 (**f**) and for baseline and follow-up 1; **g**, recovery ratio (fmean2/fmean1) for baseline and follow-up 1. Triangle data  
633 points depict patients <40 years. Age-dependent cut-offs are depicted according to Jäkel et al.<sup>29</sup> Red dots represent PCS  
634 cohort, white dots PCS-ME/CFS cohort. Bars depict group medians with a 95% confidence interval.  $p \leq 0.05 = *$ ,  $p \leq 0.01 = **$ ,  
635  $p \leq 0.001 = ***$ ,  $p \leq 0.0001 = ****$ . Abbreviations: BL = baseline, FU1 = follow-up 1, se\_1 = session 1, se\_2 = session 2.

636 **Fig. 7: Inflammatory biomarkers associated with postinfectious fatigue.** a) interleukin 8 (IL-8) after erylysis, reference <150  
637 pg/ml, b, ferritin, reference range 13-150 µg/l, c, antinuclear antibodies (ANA), negative reference 1:0 dilution, d, serum  
638 phosphate (PO4), reference range 0.87-1.45 mmol/l, for baseline and follow-up 1 respectively. Dots represent absolute  
639 score values (red for PCS, blue for PCS-ME/CFS) as quantified on the left Y axis. Bars depict group medians. Lines (red for  
640 PCS, blue for PCS-ME/CFS) depict main relative time, group, and interaction effects as quantified on the right Y axis.  $p \leq 0.05$   
641 = \*,  $p \leq 0.01$ =\*\*,  $p \leq 0.001$ =\*\*\*,  $p \leq 0.0001$ =\*\*\*\*.

642 **Fig. 8: Correlations of initial symptom severity, HGS and biomarkers with longitudinal symptom severity in a, PCS-ME/CFS**  
643 **patients and b, PCS patients.** Markers at baseline are shown on the x axis, parameters at follow-up 1 and 2 on the y axis.  
644 Blue coloring indicates negative correlations, red coloring indicates positive correlations, see color legend below the plot;  $p$   
645  $\leq 0.05$  = \*,  $p \leq 0.01$ =\*\*,  $p \leq 0.001$ =\*\*\*,  $p \leq 0.0001$ =\*\*\*\*.

646

## 647 Tables

	PCS (n=51)		PCS-ME/CFS (n=55)		Total (n=106)	
	Median	Range	Median	Range	Median	Range
Sex (m/f)	15/36		6/49		21/85	
Age	43	19-66	43	20-62	40	19-66
BMI	25	18-40	24	15-35	24	15-40

### 648 Table 1

649 **Table 1:** Demographic participant characteristics. Median and range are reported for both cohorts separately as well as all  
650 participants together.

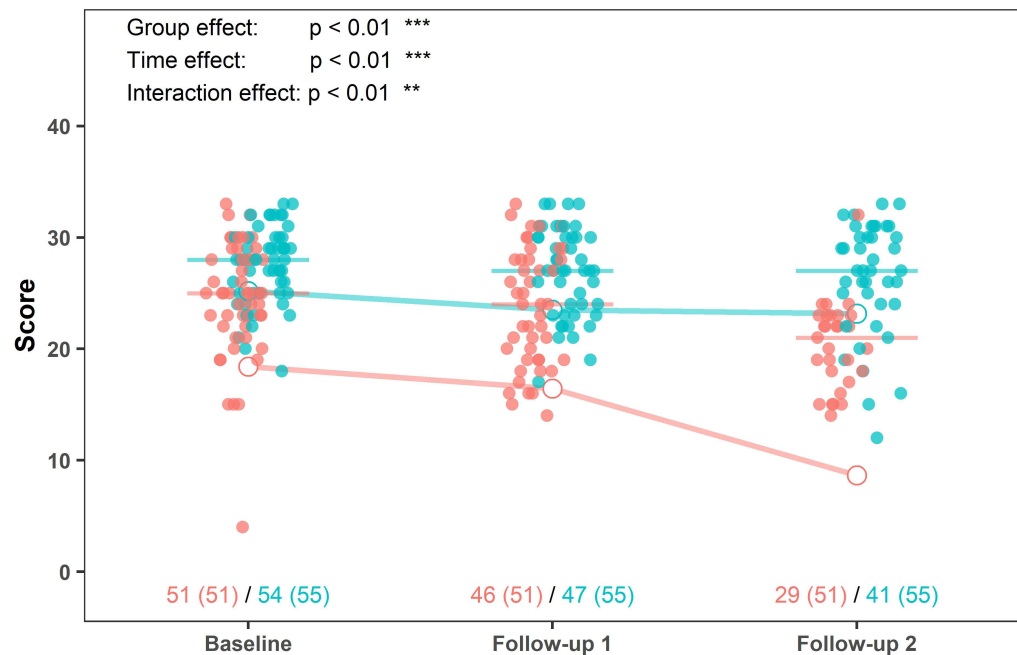
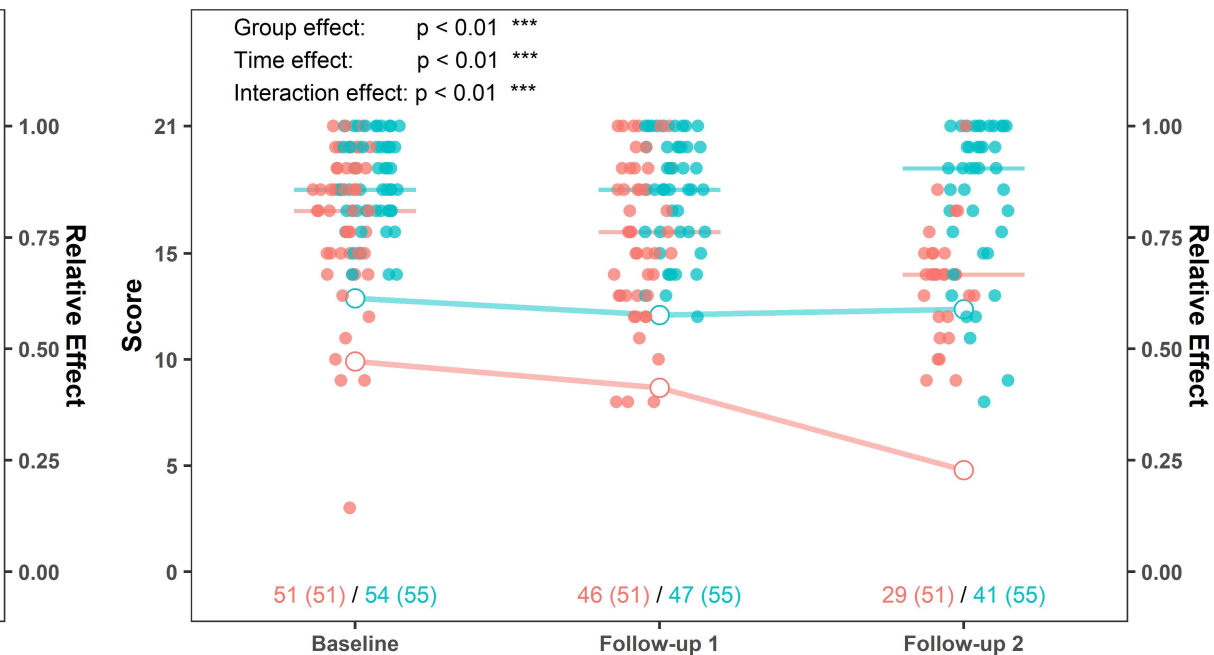
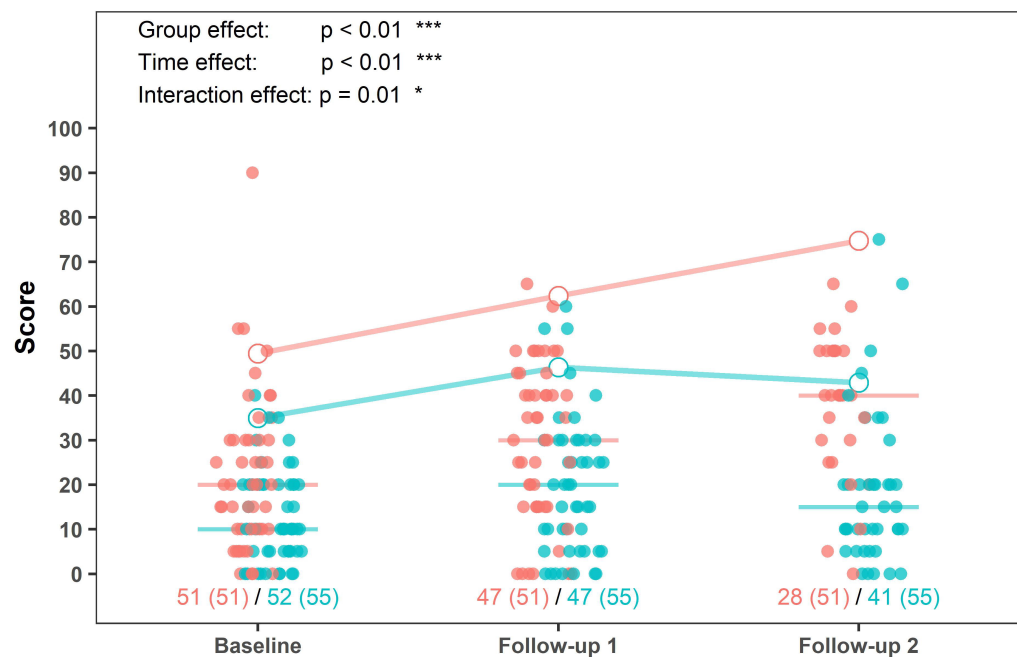
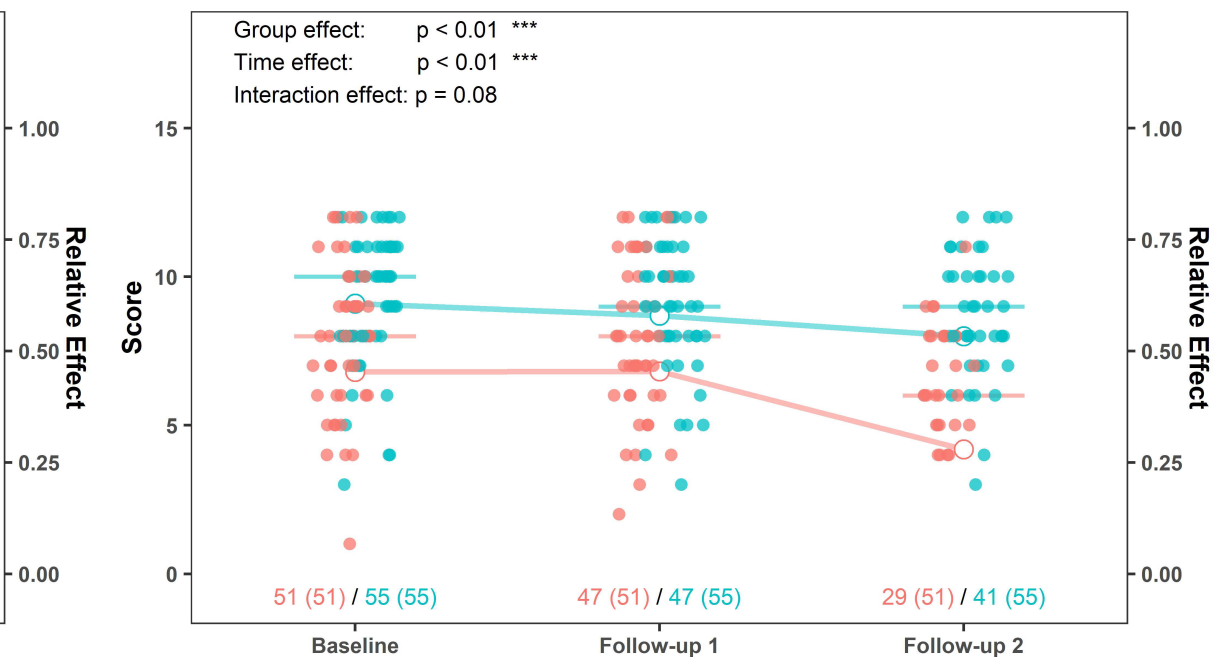
Canadian Consensus Criteria quantified (CCCq)	Baseline				Follow-up 1				Follow-up 2				PCS time effect*	PCS-CFS/ME time effect*			
	PCS		PCS-ME/CFS		P-value between groups	PCS		PCS-ME/CFS		P-value between groups	PCS				PCS-ME/CFS		P-value between groups
	Median	%	Median	%		Median	%	Median	%		Median	%			Median	%	
Fatigue	7	<b>100</b>	8	<b>100</b>	0.18	6	<b>98</b>	8	<b>100</b>	< 0.01	5	<b>100</b>	8	<b>100</b>	< 0.01	<0.01	0.58
PEM	7	<b>88</b>	8	<b>100</b>	< 0.01	6	<b>98</b>	8	<b>100</b>	< 0.01	5	<b>96</b>	8	<b>98</b>	< 0.01	<0.01	<b>0.04</b>
Need for rest	8	<b>96</b>	8	<b>100</b>	0.13	7	<b>87</b>	8	<b>100</b>	< 0.01	6	<b>100</b>	8	<b>100</b>	< 0.01	<0.01	0.51
Impaired performance	8	<b>98</b>	8	<b>100</b>	0.20	6	<b>89</b>	8	<b>100</b>	< 0.01	6	<b>96</b>	8	<b>96</b>	0.07	<0.01	0.18
Stress intolerance	8	<b>94</b>	8	<b>98</b>	< 0.01	7	<b>97</b>	8	<b>100</b>	< 0.01	6	<b>100</b>	8	<b>98</b>	< 0.01	<b>0.04</b>	0.97
Muscle pain	5	<b>78</b>	6	<b>85</b>	0.10	4	<b>98</b>	6	<b>83</b>	0.10	3	<b>79</b>	6	<b>90</b>	<b>0.01</b>	0.60	0.91
Headache	5	<b>82</b>	6	<b>93</b>	0.16	4	<b>83</b>	5	<b>96</b>	0.16	4	<b>77.7</b>	5	<b>98</b>	<b>0.01</b>	<0.01	0.19
Joint pain	4	<b>69</b>	5	<b>64</b>	0.29	2	<b>63</b>	5	<b>77</b>	0.29	3	<b>59</b>	5	<b>65</b>	0.29	0.75	0.75
Memory/word finding problems	5	<b>88</b>	5	<b>98</b>	0.72	5	<b>91</b>	5	<b>91</b>	0.91	3	<b>83</b>	6	<b>88</b>	0.15	<0.01	0.46
Concentration impairment	6	<b>94</b>	7	<b>100</b>	0.60	6	<b>93</b>	7	<b>98</b>	0.60	5	<b>86</b>	7	<b>98</b>	< 0.01	<0.01	0.62
Mental Fatigue	7	<b>96</b>	7	<b>100</b>	0.92	6	<b>95</b>	7	<b>100</b>	0.16	5	<b>100</b>	8	<b>97</b>	< 0.01	<0.01	0.86
Visual disturbance	3	<b>66</b>	3	<b>67</b>	1	2.5	<b>71</b>	3	<b>64</b>	1	2	<b>69</b>	2	<b>66</b>	0.90	0.81	0.81
Mood change	5	<b>88.2</b>	5	<b>89</b>	0.79	5	<b>89</b>	5	<b>85</b>	0.79	4	<b>79</b>	5	<b>88</b>	0.36	<0.01	0.73
Reading concentration	5	<b>90</b>	6	<b>100</b>	0.19	5	<b>91</b>	6	<b>96</b>	0.19	3	<b>86</b>	6	<b>90</b>	<b>0.01</b>	<0.01	0.81
Palpitations	3	<b>65</b>	3	<b>89</b>	0.08	2.5	<b>74</b>	5	<b>85</b>	0.07	3	<b>76</b>	5	<b>80</b>	<b>0.04</b>	0.49	0.49
Standing up dizziness	4	<b>75</b>	5	<b>76</b>	1	3	<b>71</b>	3	<b>74</b>	1	2	<b>65</b>	3	<b>69</b>	0.42	<b>0.05</b>	0.40
Walking dizziness	2	<b>63</b>	4	<b>76</b>	0.36	2	<b>65</b>	3	<b>74</b>	0.62	2	<b>59</b>	4	<b>66</b>	0.08	0.29	0.29
Sleep disturbance	7	<b>86</b>	7	<b>91</b>	1	6	<b>82</b>	6	<b>89</b>	1	5	<b>76</b>	7	<b>90</b>	< 0.01	<0.01	0.68
Temperature hypersensitivity	4	<b>57</b>	5	<b>84</b>	0.33	4	<b>66</b>	5	<b>82</b>	0.33	3	<b>65</b>	6	<b>90</b>	<b>0.01</b>	0.42	0.16
Light hypersensitivity	2	<b>63</b>	4	<b>65</b>	0.19	2	<b>56</b>	3	<b>83</b>	0.06	2	<b>65</b>	5	<b>66</b>	<b>0.02</b>	0.52	0.52
Noise hypersensitivity	5	<b>73</b>	6	<b>91</b>	0.27	6	<b>76</b>	6	<b>94</b>	0.41	4	<b>96</b>	7	<b>90</b>	0.06	0.43	0.55
Breathing difficulty	5	<b>72.5</b>	6	<b>80</b>	0.34	3	<b>65</b>	5	<b>76</b>	0.25	4	<b>82</b>	5	<b>78</b>	0.32	0.06	0.15
Irritable bowel	4	<b>55</b>	5	<b>74</b>	0.51	3	<b>64</b>	4	<b>80</b>	0.51	2	<b>51.8</b>	4	<b>66</b>	<b>0.01</b>	<b>0.02</b>	0.66
Fever	1	<b>20</b>	1	<b>16</b>	0.76	1	<b>17</b>	1	<b>25</b>	0.66	1	<b>10</b>	1	<b>23</b>	0.47	0.50	0.50
Painful lymph nodes	1	<b>30</b>	1	<b>27</b>	1	1	<b>20</b>	1	<b>28</b>	1	1	<b>14</b>	1	<b>42</b>	<b>0.04</b>	0.18	0.18
Sore throat	2	<b>55</b>	2	<b>62</b>	0.50	1	<b>39</b>	3	<b>62</b>	0.13	1	<b>31</b>	3	<b>68</b>	< 0.01	<b>0.01</b>	0.29
Flu-like symptoms	4	<b>74.5</b>	6	<b>83</b>	<b>0.04</b>	2	<b>52</b>	5	<b>71</b>	< 0.01	1.5	<b>50</b>	5	<b>85</b>	< 0.01	<0.01	0.30
Symptom severity	7	<b>88.2</b>	8	<b>91</b>	<b>0.02</b>	6	<b>97</b>	7	<b>100</b>	<b>0.01</b>	5	<b>100</b>	7	<b>100</b>	< 0.01	<0.01	0.29

651 **Table 2**

652 **Table 2:** Frequency (in %) and severity (median scores) of symptoms as quantified by the Canadian Consensus Criteria  
 653 (qCCC) for all three time periods. Group differences are reported as p-values and significant results (< 0.05) are marked in  
 654 bold.

655

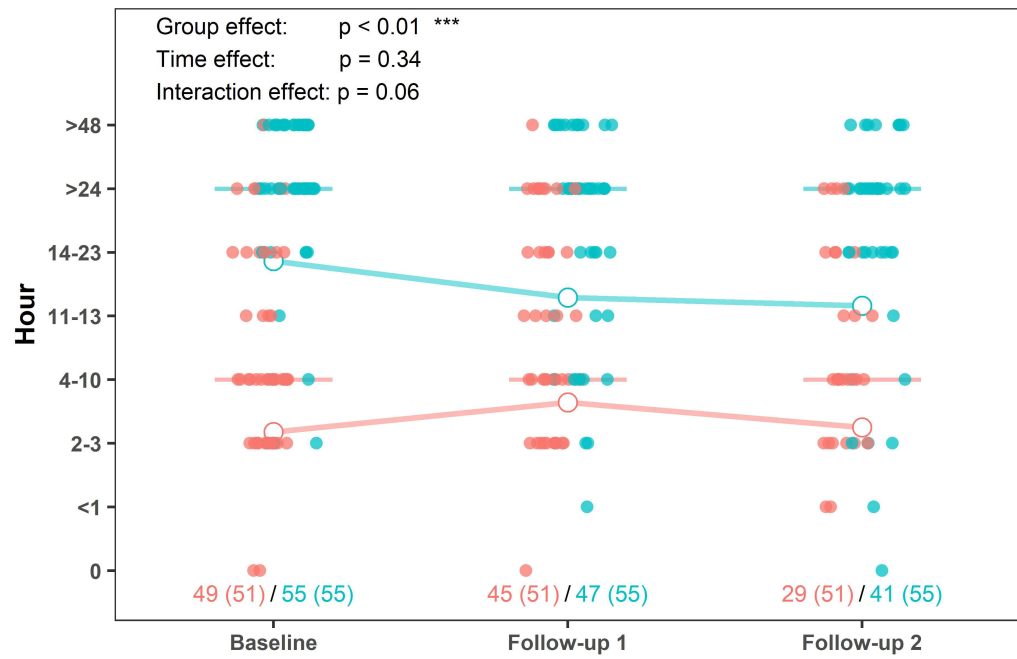


**Figure 1****A Chalder Total Score****B Chalder Physical Score****C SF-36 Energy/Fatigue****D Chalder Mental Score**

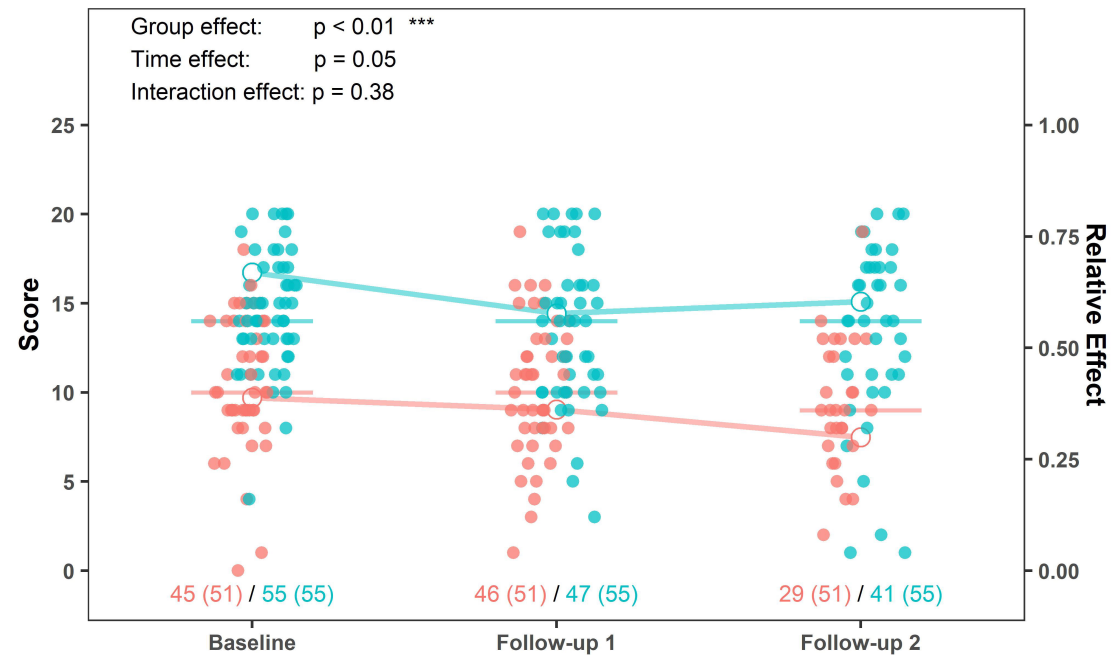
● PCS ● PCS-ME/CFS

**Figure 2**

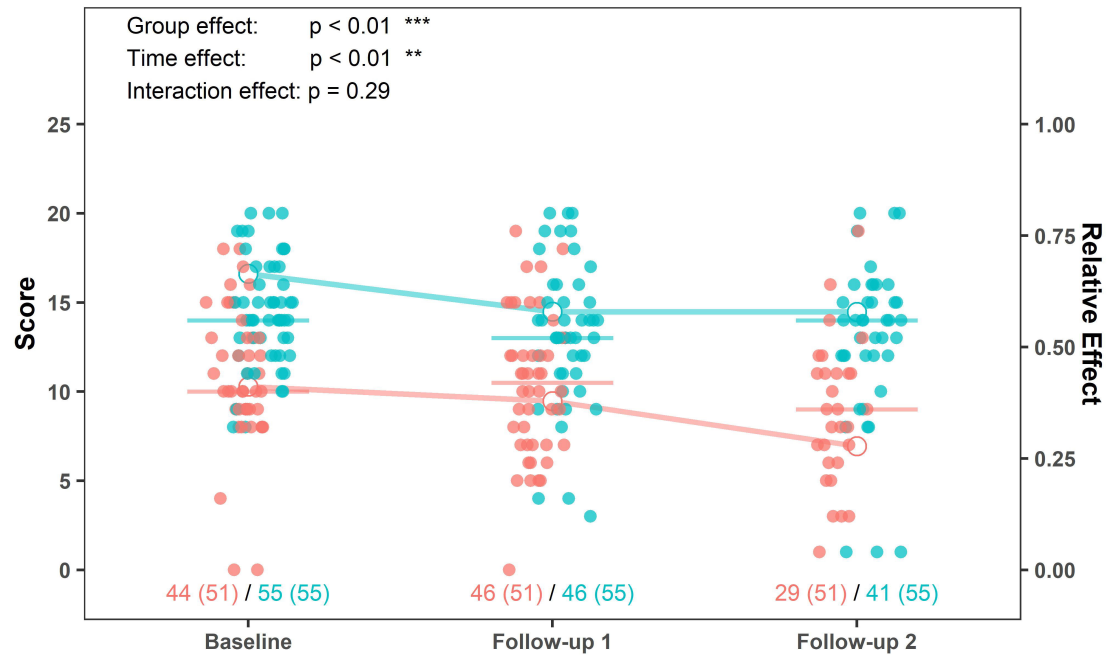
**A PEM Duration**



**B PEM Frequency**



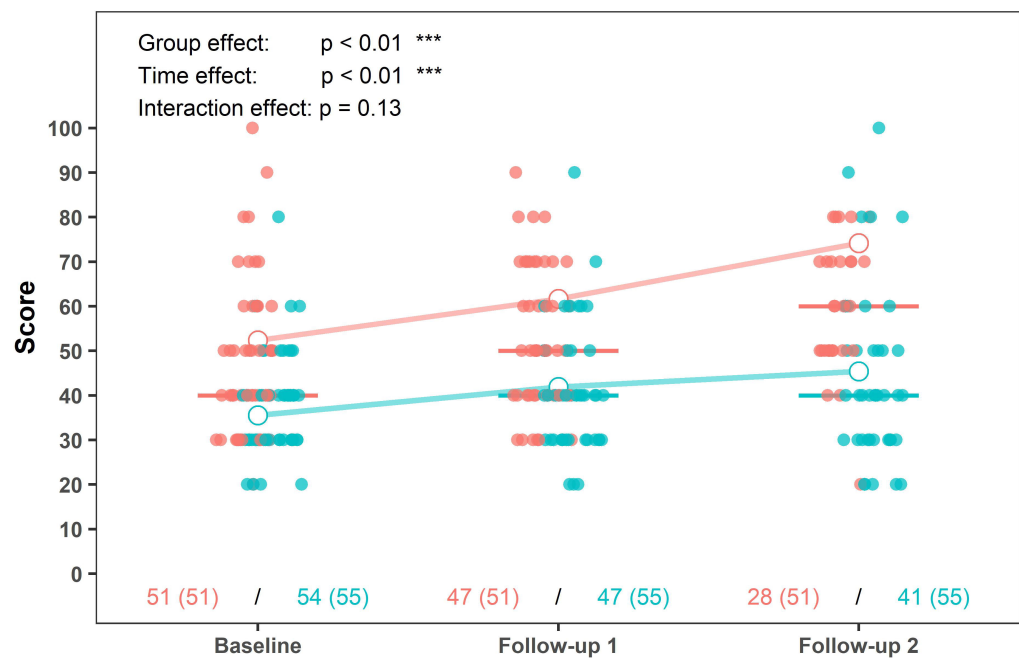
**C PEM Severity**



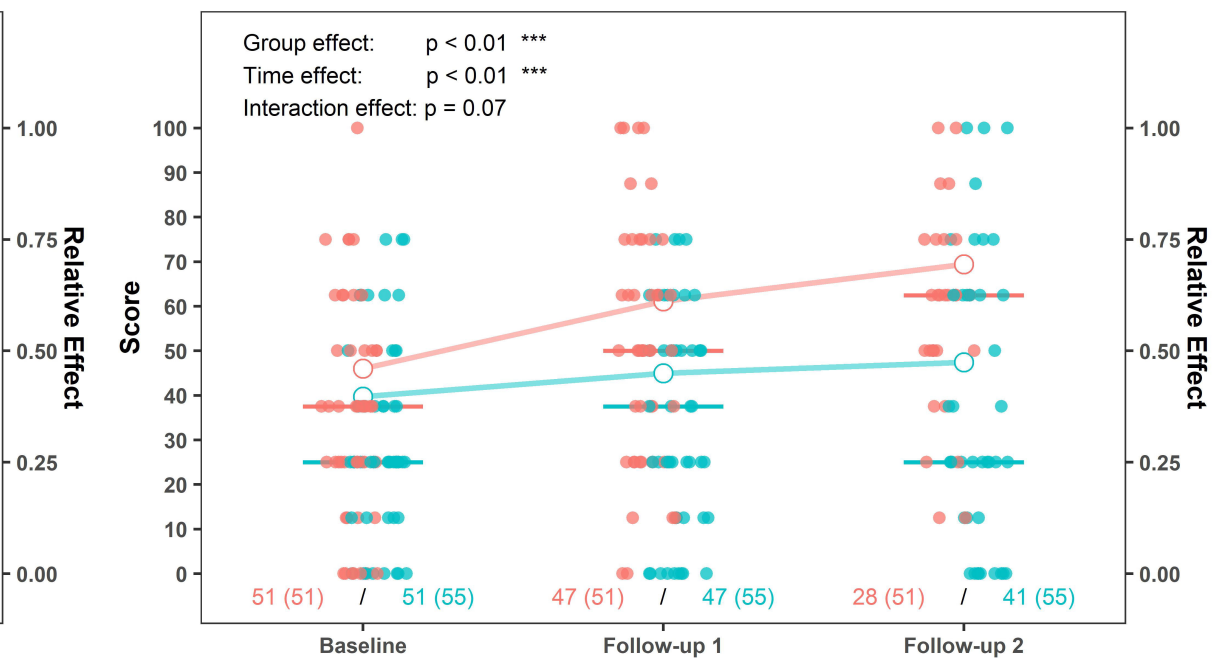
● PCS    ● PCS-ME/CFS

**Figure 3**

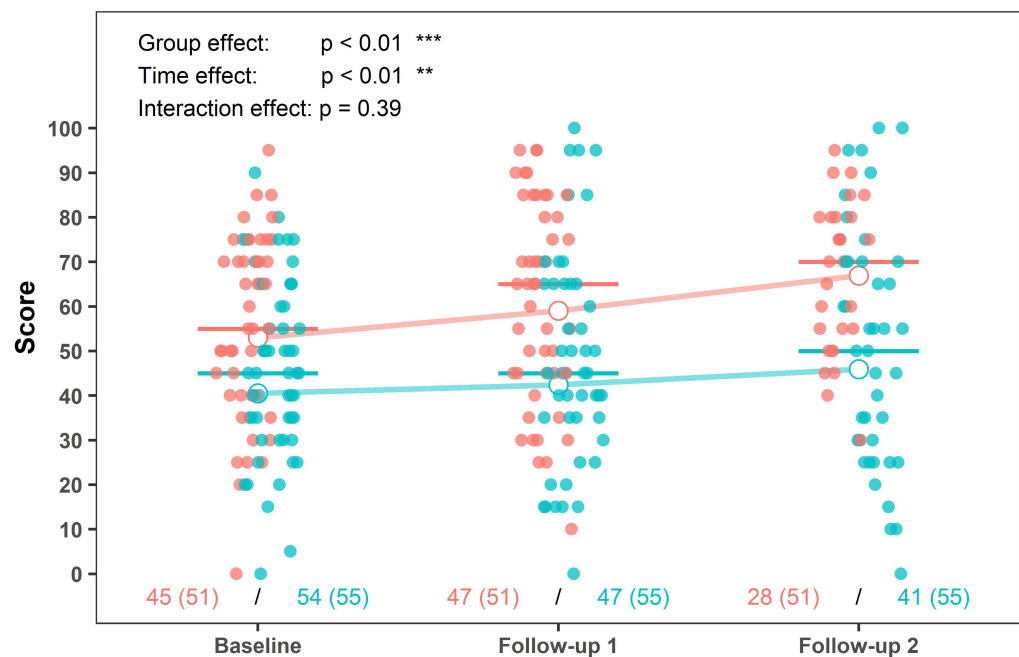
**A Bell Total Score**



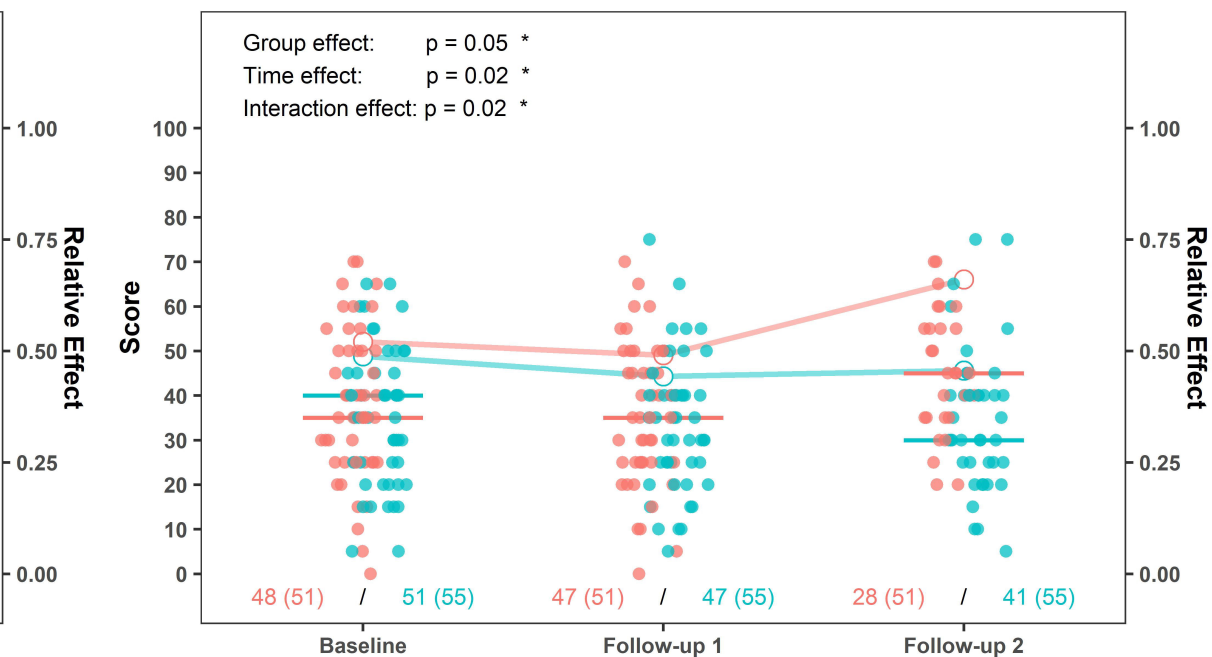
**B SF-36 Social functioning**



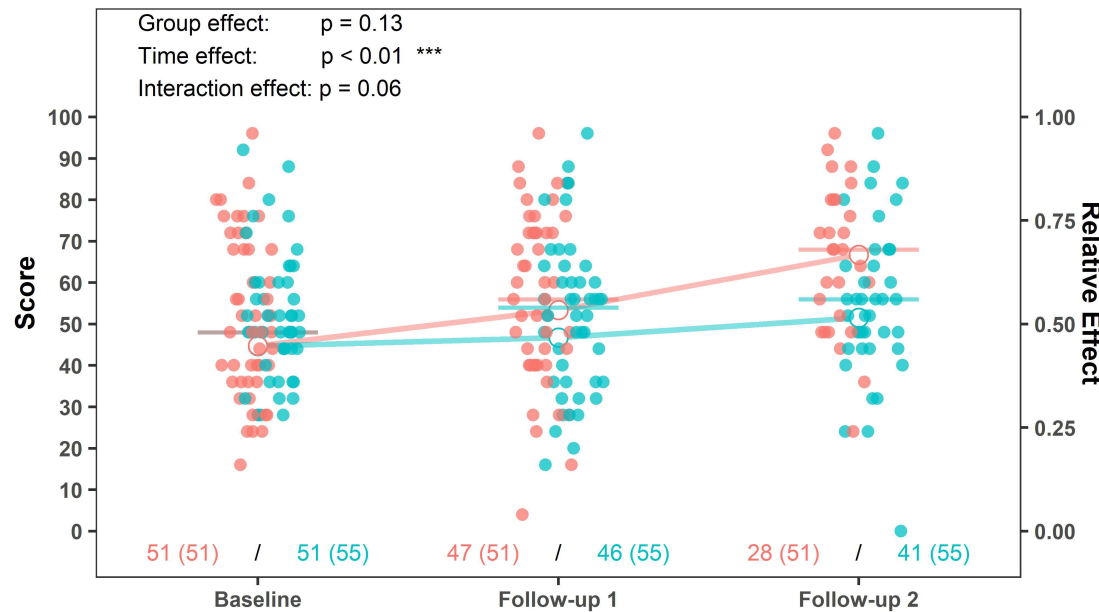
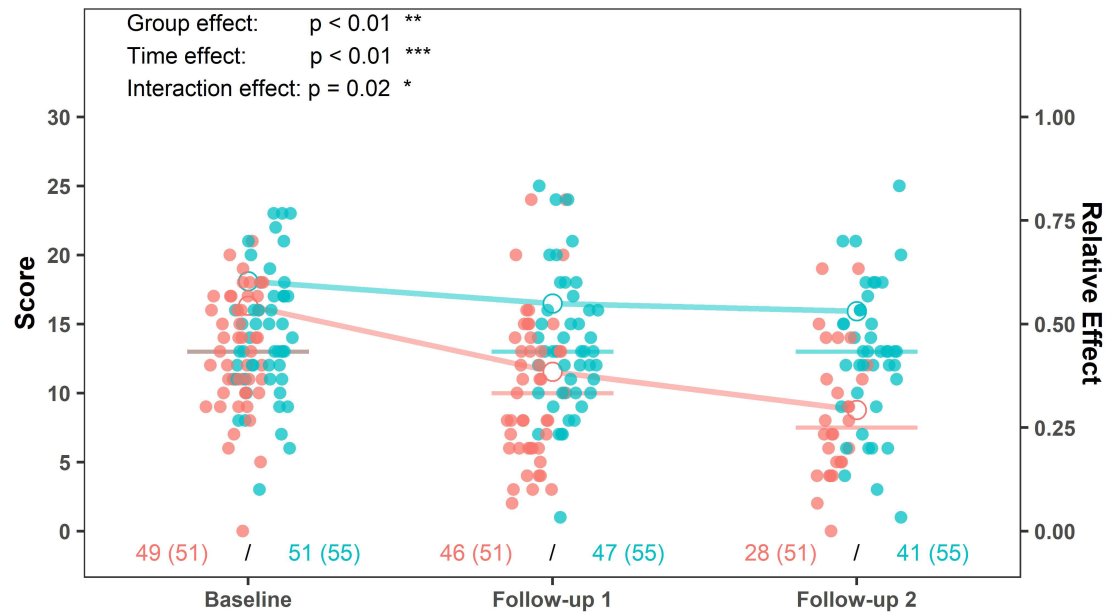
**C SF-36 Physical functioning**



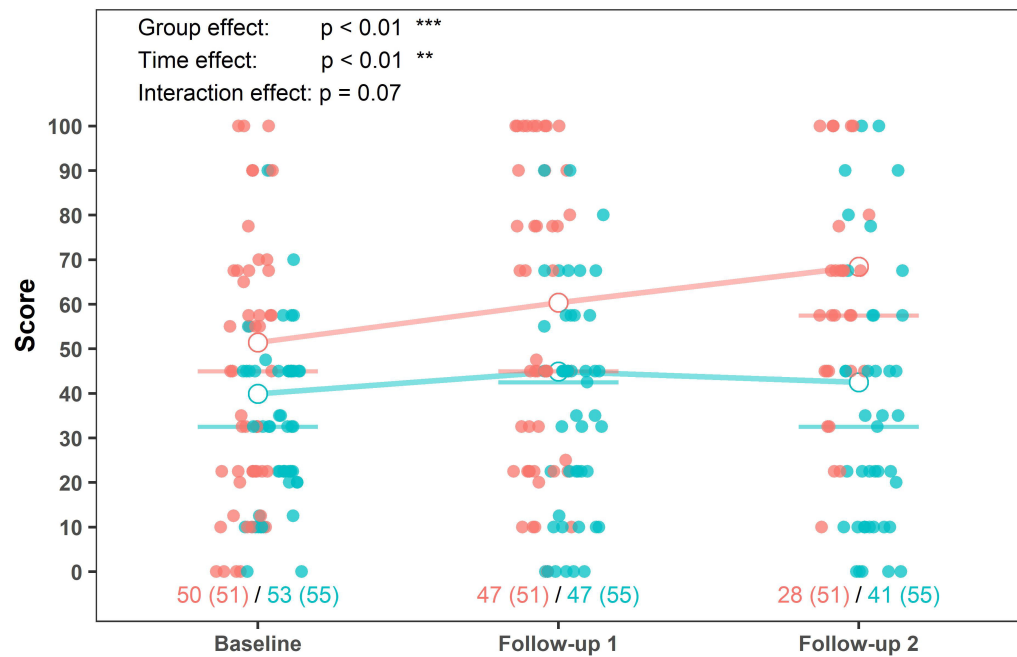
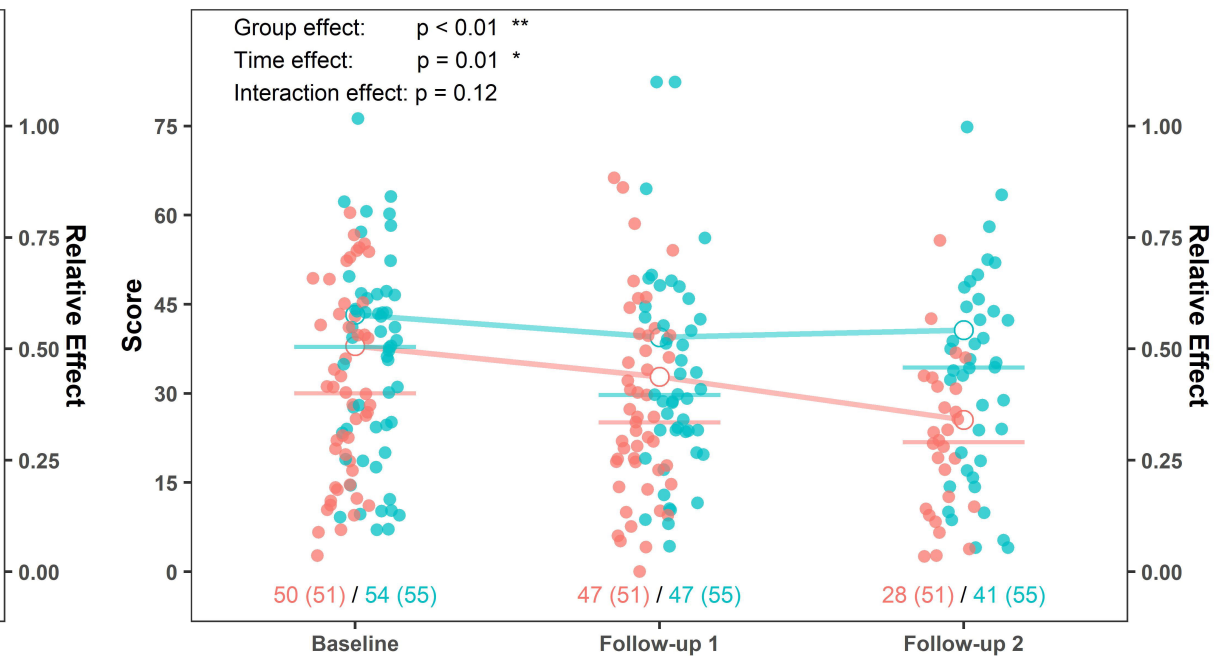
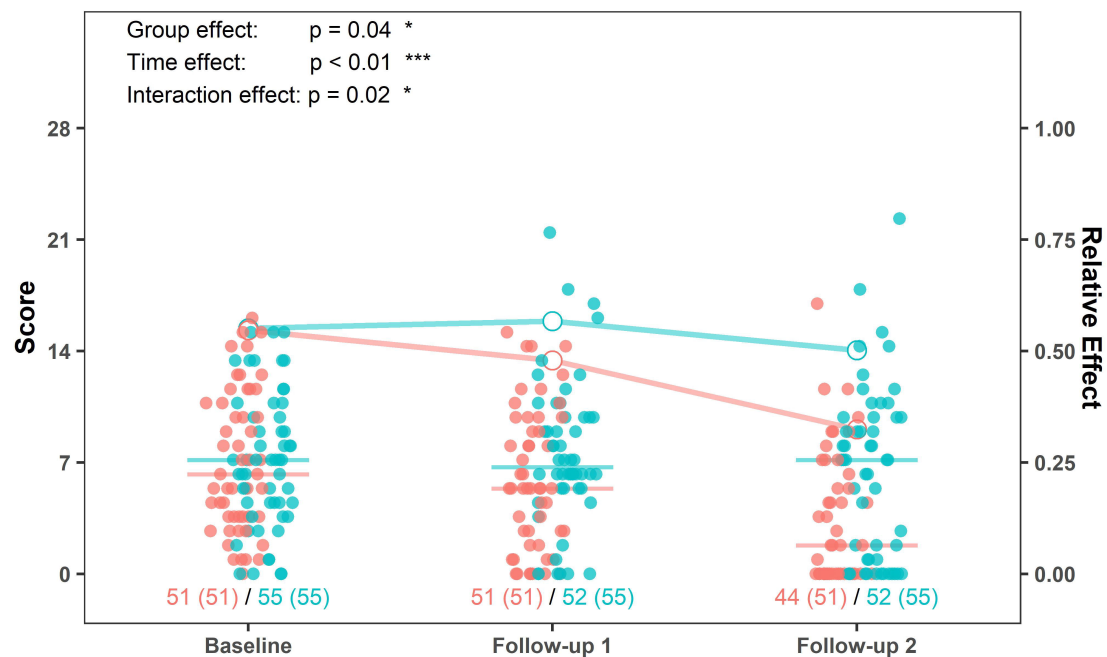
**D SF-36 Health perception**



● PCS    ● PCS-ME/CFS

**Figure 4****A SF-36 Emotional well-being****B PHQ9 Affective symptoms**

● PCS    ● PCS-ME/CFS

**Figure 5****A SF-36 Pain Score****B COMPASS 31 Overall Score****C COMPASS 31 Gastrointestinal Score**

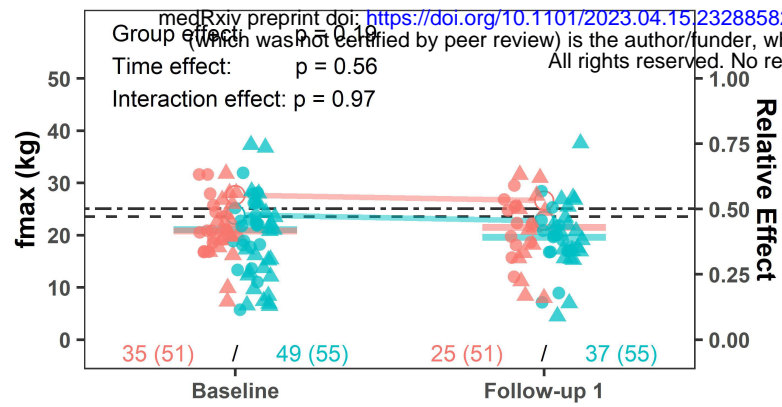
● PCS    ● PCS-ME/CFS



**Figure 6**

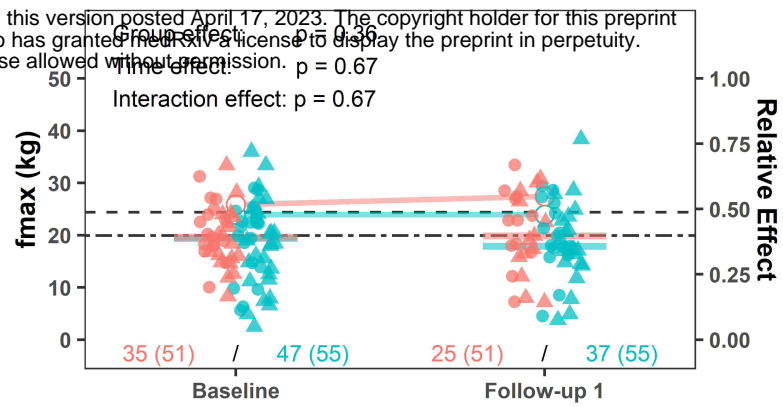
**A HGS fmax**

**Session 1**



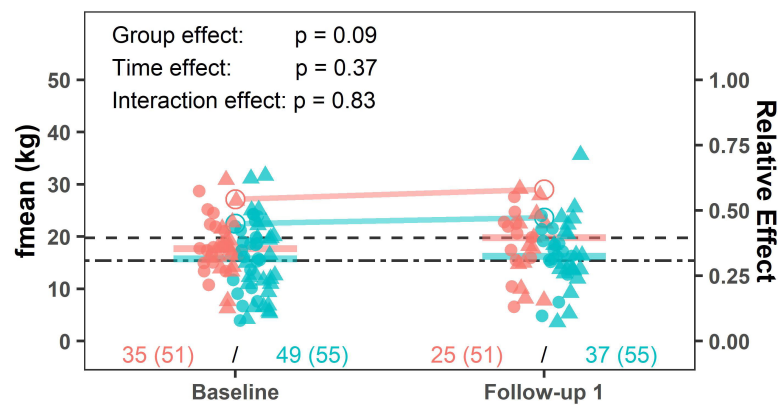
**B HGS fmax**

**Session 2**



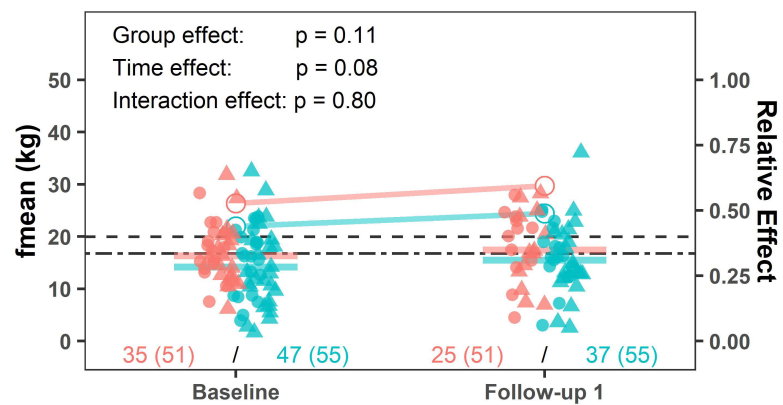
**C HGS fmean**

**Session 1**



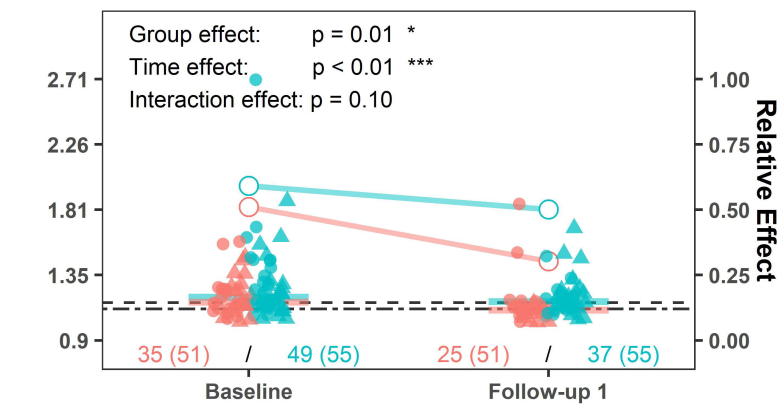
**D HGS fmean**

**Session 2**



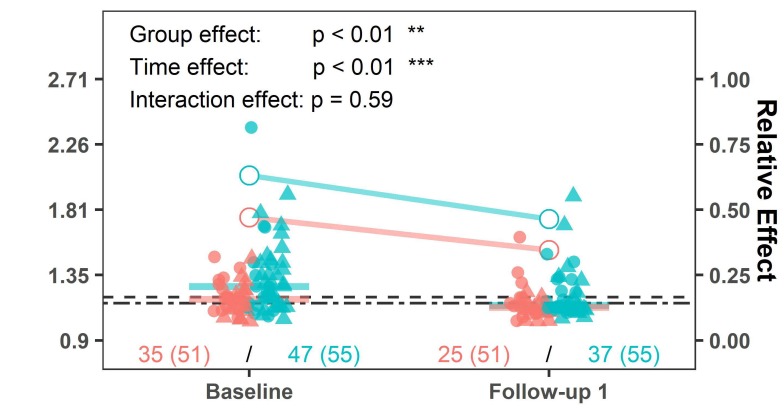
**E HGS Fatigue Ratio**

**Session 1**



**F HGS Fatigue Ratio**

**Session 2**



**G HGS Recovery Ratio**

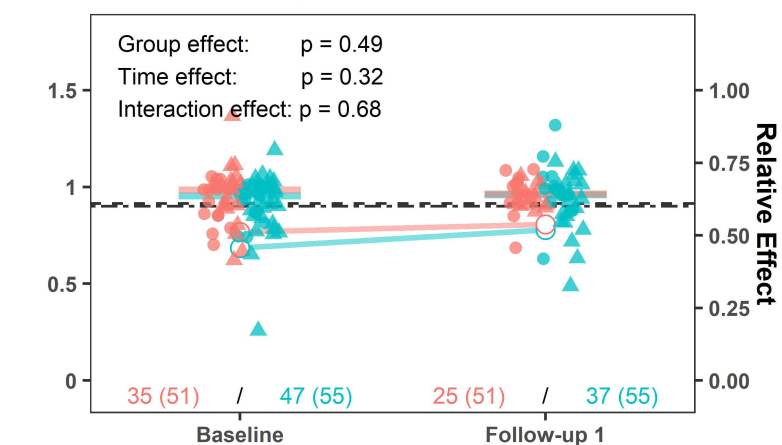
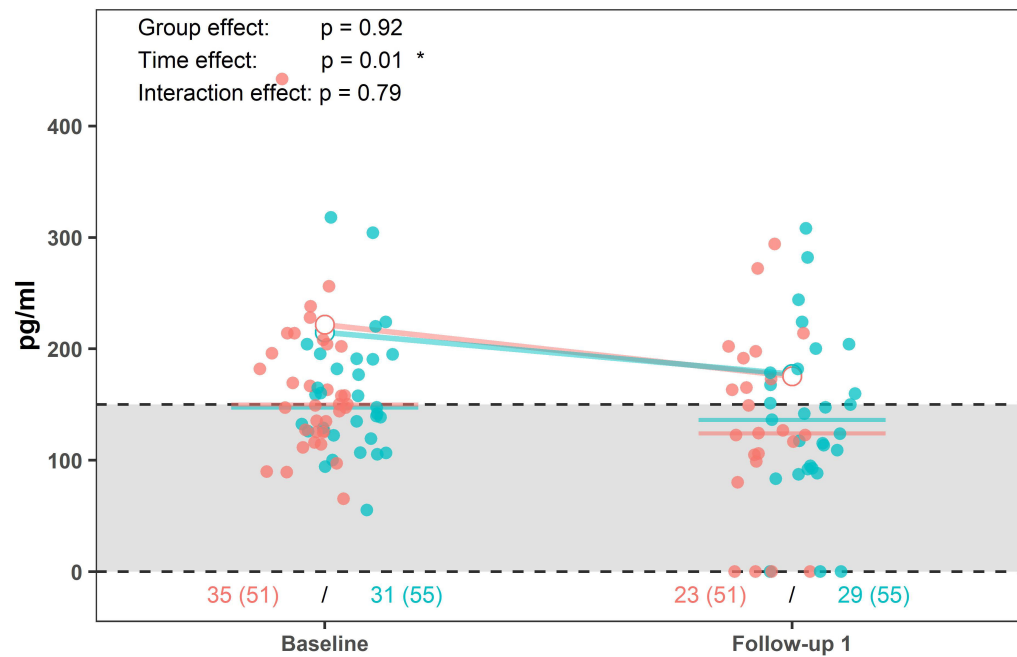
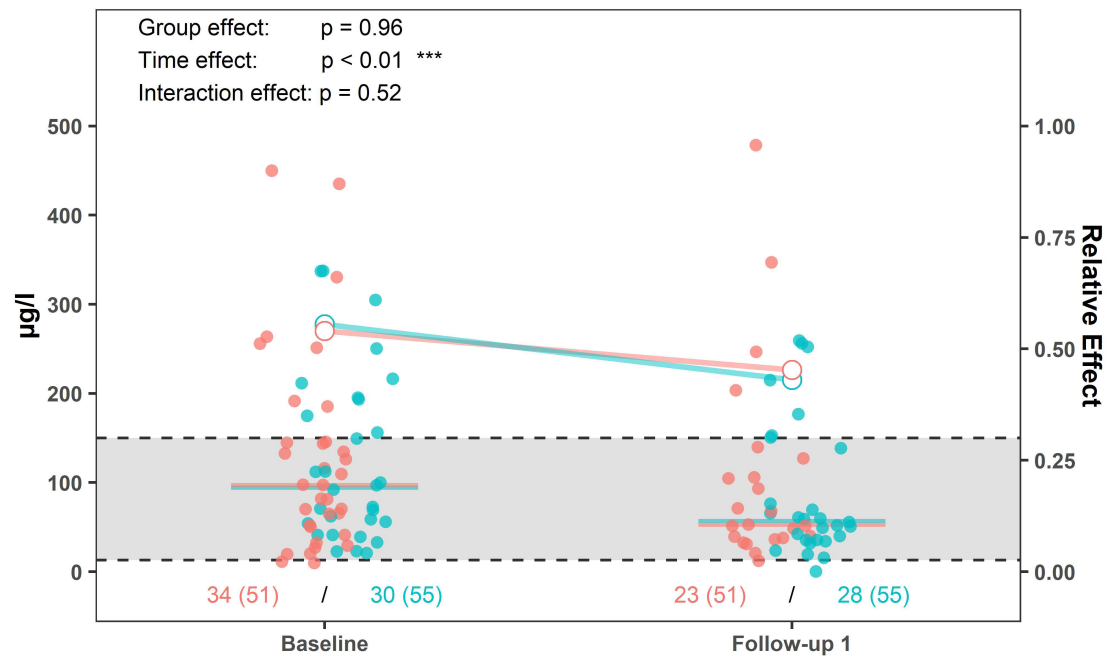


Figure 7

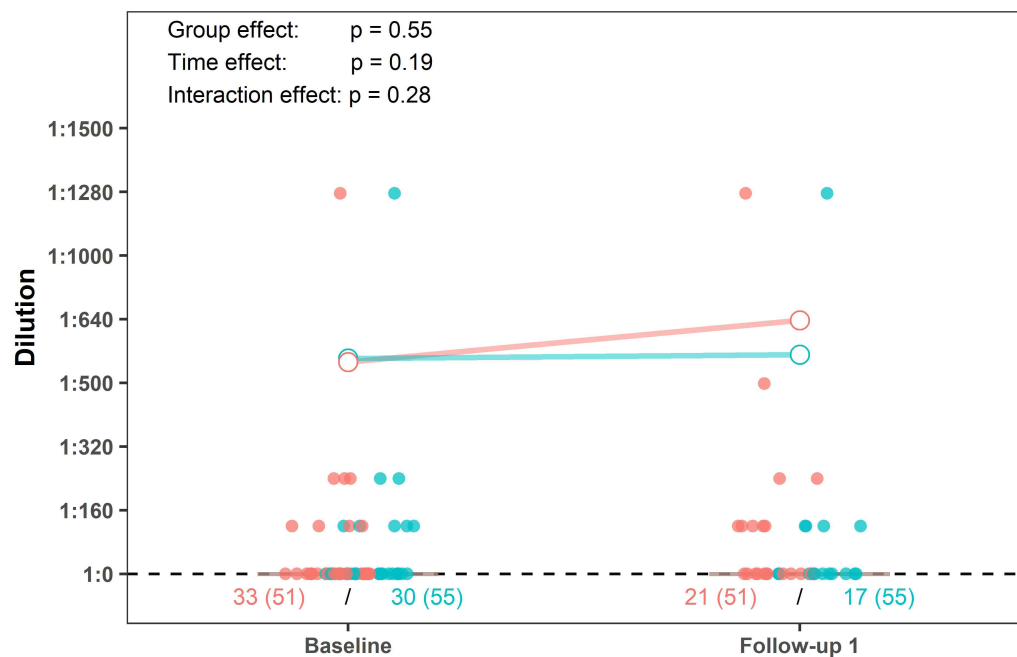
**A Interleukin-8 after erylysis**



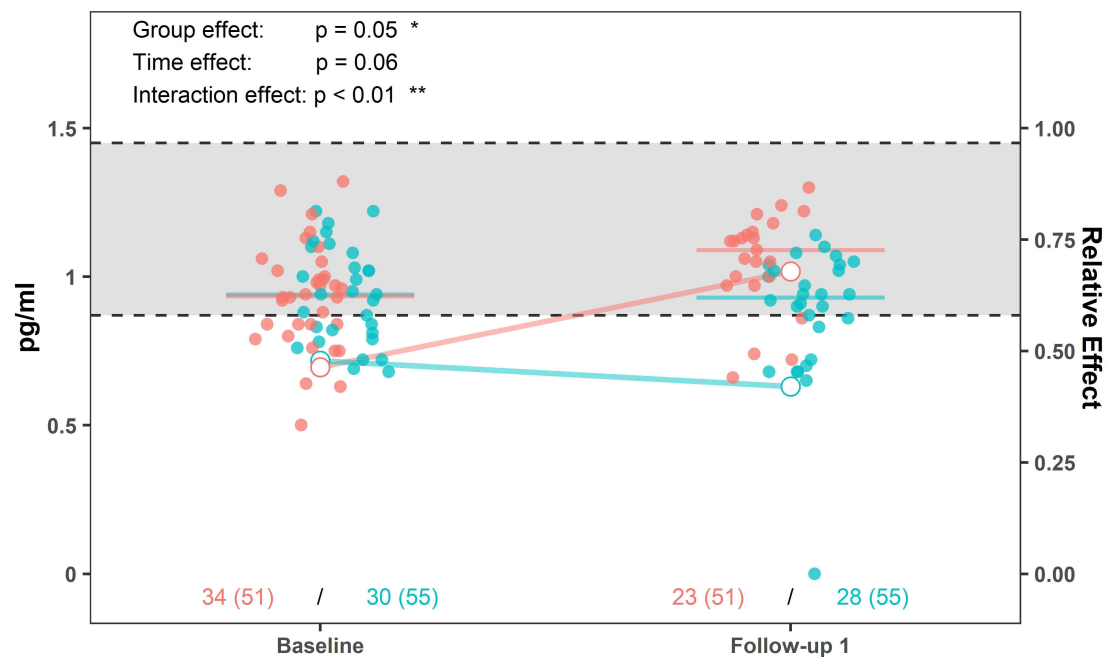
**B Ferritin**



**C ANA (Hep-2) IFT**



**D Serum phosphate**



● PCS ● PCS-ME/CFS

Figure 8 A

# Correlations PCS-ME/CFS Cohort

Baseline

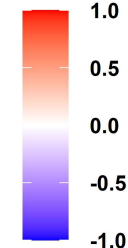
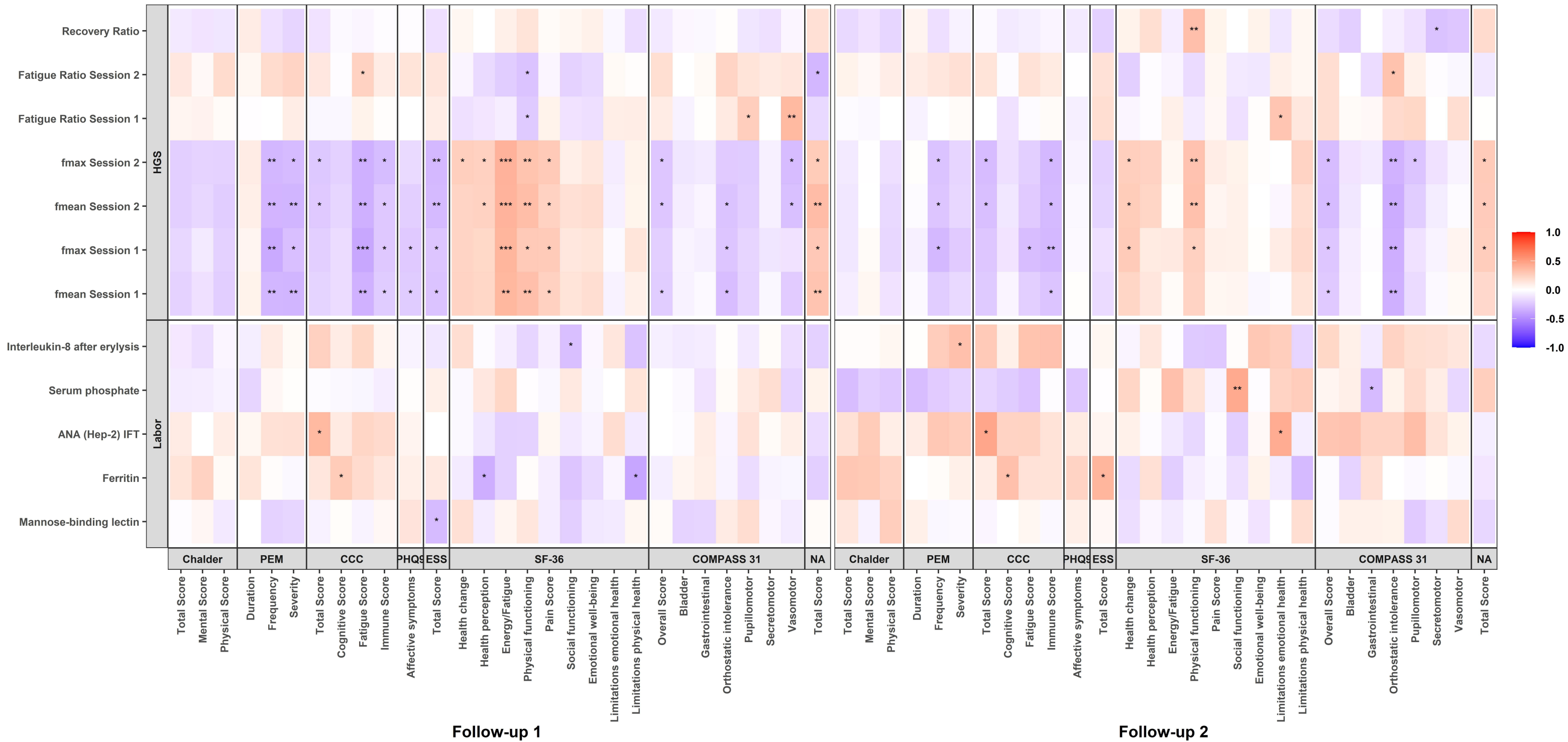




Figure 8 B

# Correlations PCS Cohort

