

1 **Title**

2 Systematic mediation and interaction analyses of kidney function genetic loci in a general
3 population study.

4

5 **Authors**

6 Dariush Ghasemi-Semeskandeh^{1,2,3*}, David Emmert¹, Eva König¹, Luisa Foco¹, Martin Gögele¹,
7 Laura Barin¹, Ryosuke Fujii^{1,4,5}, Christian Fuchsberger¹, Dorien J.M. Peters², Peter P.
8 Pramstaller¹, Cristian Pattaro^{1*}

9

10 **Affiliations**

11 ¹ Institute for Biomedicine, Eurac Research, Bolzano, Italy

12 ² Department of Human Genetics, Leiden University Medical Center, Leiden, The Netherlands

13 ³ Health Data Science Centre, Human Technopole, Milan, Italy

14 ⁴ Department of Preventive Medical Sciences, Fujita Health University School of Medical
15 Sciences, Toyoake, Japan

16 ⁵ Department of Preventive Medicine, Nagoya University Graduate School of Medicine, Nagoya,
17 Japan

18

19 *** Corresponding authors**

20 Dariush Ghasemi-Semeskandeh
21 Human Technopole, Health Data Science Centre
22 V.le Rita Levi-Montalcini, 1, Milan 20157, Italy.
23 email: ghasemi.dariush@yahoo.com

24

25 Cristian Pattaro
26 Eurac Research Institute for Biomedicine,
27 Via Volta 21, 39100 Bolzano, Italy
28 Tel. +39 0471 055 527
29 email: cristian.pattaro@eurac.edu

30

31 **Abstract**

32 Chronic kidney disease (CKD) is a complex disease affecting >10% of the global population,
33 with large between- and within-continent variability reflecting major environmental effects. To
34 identify molecular targets for treatment, genome-wide association study meta-analyses
35 (GWAMAs) of CKD-defining traits have identified hundreds of genetic loci in aggregated
36 populations. However, while GWAMAs estimate the average allelic effect across studies, single
37 population studies may be relevant to unravel specific mechanisms. To assess whether an
38 individual study from a specific population could extend existing knowledge on kidney function
39 genetics, we selected 147 kidney function relevant loci identified by a large GWAMA, assessing
40 their association with the glomerular filtration rate estimated from serum creatinine (eGFR_{crea})
41 in the Cooperative Health Research In South Tyrol (CHRIS) study (n=10,146), conducted in an
42 Alpine region where thyroid dysfunction is common. We replicated associations with single
43 nucleotide polymorphisms (SNPs) at 11 loci, showing up-to-5.4 times larger effect sizes than in
44 the corresponding GWAMA, not explainable by minor allele frequency differences. Systematic
45 mediation analysis across 70 quantitative traits identified serum magnesium and the activated
46 partial thromboplastin time as partial mediators of the eGFR_{crea} associations at *SHROOM3*
47 and *SLC34A1*, respectively. Given that free triiodothyronine and thyroxine were effect modifiers
48 across all loci, we conducted SNP-by-thyroid stimulating hormone (TSH) interaction analyses,
49 identifying significant interactions at *STC1*: SNPs had larger effects on eGFR_{crea} at higher TSH
50 levels, possibly reflecting stanniocalcin-1 autocrine and paracrine role. Individual population
51 studies can help characterize genetic associations. The interplay between phenotypes at
52 *SHROOM3* and *SLC34A1* and the role of thyroid function as a genetic effect modifier warrant
53 further investigations.

54 Introduction

55 Chronic kidney disease (CKD) is a common complex disease that increases the risk of kidney
56 failure, cardiovascular mortality, and all-cause mortality¹. CKD is predicted to become the 5th
57 leading cause of death by 2040². While affecting >10% of the population globally, CKD
58 prevalence shows marked variability across countries, both between and within continents³.
59 Between-continent variability is likely guided by combinations of environmental and genetic
60 differences, such as is the case with sickle cell trait and albuminuria⁴. Within-continent variability
61 could be more related to environmental differences, including lifestyle, public health policies,
62 and assessment methods^{4,5}.

63 To unravel the genetic basis of CKD, several genome-wide association study meta-
64 analyses (GWAMAs) were conducted that analyzed the CKD-defining marker glomerular
65 filtration rate (GFR) estimated from serum creatinine (eGFR_{crea})⁶. More than 400 associated
66 loci have been identified to date⁷. While GWAMAs estimate the average allelic effect across
67 studies, evidence shows that individual population studies may be extremely relevant to
68 advance discoveries not only in the field of rare diseases⁸ but also with regard to markers of
69 common chronic diseases such as triglycerides and low density lipoprotein (LDL) cholesterol⁹,
70 age at diabetes onset¹⁰, and mood disorders¹¹. The evidence accumulated so far suggests that
71 there is no general rule and that the contribution of an individual study to the dissection the
72 biological basis of common phenotypes can only be assessed on a case-by-case basis and
73 depends on study-specific characteristics.

74 Here we analyzed genetic associations with eGFR_{crea} in the Cooperative Health
75 Research In South Tyrol (CHRIS) study, a general population study conducted in a
76 mountainous region of central Europe¹². A sample from this same population was previously
77 instrumental to identify genetic linkage of serum creatinine with the *APOL1-MYH9* locus¹³ and to
78 replicate common variants associated with eGFR_{crea}¹⁴. Characteristics of the geographical
79 region where the study was conducted include the demographic stability over time¹⁵, the rural
80 environment, and a high frequency of hypothyroidism, typical of mountainous regions¹⁶. Aim of
81 our analysis was to assess whether this particular study sample could provide information that
82 extend current knowledge on kidney function genetics, by leveraging on local specific
83 characteristics.

84 For a given single population study, with a relatively limited sample size, to help expand
85 knowledge on loci already identified by a large consortium, it is necessary and appropriate to
86 limit investigation to the subset of loci associated with the phenotype of interest in the given

87 study. Thus, we first identified which, among 147 loci found to be associated with kidney
88 function in a large GWAMA from the CKDGen Consortium¹⁷, were associated with eGFRcrea in
89 the CHRIS study. We take it for granted that the identified loci are relevant for kidney function.
90 This was demonstrated by Wuttke et al.¹⁷ through the combined analysis of eGFRcrea and
91 blood urea nitrogen (BUN).

92 CKDGen loci were tested for replication in the CHRIS study. The purpose of this
93 replication analysis was to identify those loci for which a study of limited size can try to
94 contribute new information. The replication analysis should not be understood as a
95 demonstration of the validity of the analyzed loci: in fact, they should already be considered as
96 validated, as they were identified through a large meta-analysis on more than 760,000
97 individuals and replicated in an independent study on more than 280,000 individuals¹⁷.

98 The features of the replicated loci were then assessed against corresponding European
99 ancestry CKDGen GWAMA results. Given that several replicated loci showed larger effects in
100 CHRIS than in the European ancestry CKDGen GWAMA, we examined the possible reasons of
101 such larger effects and conducted extensive mediation analyses across 70 quantitative
102 biochemical and anthropometric traits, reflecting multiple health conditions. Further, after
103 observing a systematic modification of the genetic association with eGFRcrea when adjusting
104 for thyroid-related traits, we conducted SNP-by-thyroid function interaction analyses. The aims
105 of the mediation and the interaction analyses were to identify the presence of intermediate
106 phenotypes and effect modifiers, respectively, that were specific of the study sample.

107

108

109 **Methods**

110 *Study sample*

111 The present analyses were based on 10,146 individuals with complete genotype data who
112 participated to the CHRIS study, a population-based study conducted in South Tyrol, Italy,
113 between 2011 and 2018, which has been extensively described elsewhere^{12,18}. Briefly,
114 participants underwent blood drawing, urine collection, anthropometric measurements, and
115 clinical assessments early in the morning, after an overnight fast. Medical history was
116 reconstructed through interviewer- and self-administered standardized questionnaires. Drug
117 treatment was identified via barcode scan of the drug containers that participants were

118 instructed to bring at the study center visit, with the drug code linked to an official drug
119 databank¹².

120

121 *eGFRcrea estimation*

122 Serum creatinine (SCr) was measured with a colorimetric assay on Roche Modular PPE
123 (n=4,176) and Abbott Diagnostic Architect c16000 (n=5,970) instrumentations. According to
124 previous analyses¹⁸, SCr was normalized by instrument (fixed effect) and participation period
125 (random effect) using a linear mixed model implemented in the 'lme4' R package¹⁹. To reflect
126 the same methods used in the CKDGen Consortium meta-analysis¹⁷, eGFRcrea was estimated
127 using the 2009 CKD-EPI equation²⁰ implemented in the R package 'nephro' v1.2²¹ and
128 winsorized at 15 and 200 ml/min/1.73m². Finally, the natural logarithm transformation was
129 applied.

130

131 *Genotype imputation*

132 Genotyping was performed in two batches using genotyping array chips based on the Illumina
133 Human Omni Microarray platform. Following quality control analysis, the two data batches were
134 merged, phased with SHAPEIT2 v2.r837, using the duoHMM method (--duohmm -W 5) with 800
135 states and 30 rounds²², and imputed based on the TOPMed r2 standard reference panel on the
136 Michigan Imputation Server²³. We obtained 34,084,280 SNPs with minimum imputation quality
137 index Rsq ≥ 0.3 and minor allele count (MAC) ≥ 1 , aligned with human genome assembly
138 GRCh38. A genetic relatedness matrix (GRM) was obtained from the autosomal genotyped
139 SNPs using EPACTS v3.2.6 modified for compatibility with assembly GRCh38. Genetic principal
140 components (PCs) were estimated based on the genotyped variants data with minor allele
141 frequency (MAF) > 0.05 using GCTA²⁴.

142

143 *GWAS and replication of CKDGen results*

144 We conducted a GWAS of age- and sex-adjusted residuals of ln(eGFRcrea) using the EMMAX
145 method²⁵ implemented in EPACTS v3.2.6, including the GRM to model the sample structure.
146 After the analysis, we removed variants with minor allele frequency (MAF) < 0.005 , leaving
147 10,158,100 SNPs for further characterization. Genomic inflation was assessed on this set of
148 SNPs by estimating the genomic control factor λ ²⁶.

149 Summary statistics from the CKDGen GWAMA¹⁷ were downloaded from the publicly
150 available repository at <https://ckdgen.imbi.uni-freiburg.de>. Given a subset of 4661 samples from
151 the CHRIS study was previously included in the CKDGen GWAMA, we removed CHRIS data
152 from the CKDGen GWAMA summary statistics using MetaSubtract v1.60²⁷. After this process,
153 the 147 variants remained genome-wide significant in CKDGen. We lifted the CKDGen genomic
154 positions from the GRCh37 to the GRCh38 map, using CrossMap v0.5.3²⁸.

155 Given small-sample bias can cause large effect estimate fluctuations and given it is not
156 uncommon to observe small studies with opposite effect directions compared to the meta-
157 analysis results in large GWAMAs, to ensure consistency of the effect direction, replication of
158 the 147 loci in CHRIS was assessed based on a one-sided test, following common practice²⁹.
159 Statistical significance for replication was set at the Bonferroni-corrected level of 0.00034
160 (0.05/147), for any variant in strong linkage disequilibrium (LD) ($r^2 > 0.8$) with a lead CKDGen
161 variant. LD was estimated using emeraLD v0.1³⁰. The total number of SNPs within the 147 loci
162 was 6337. Adjustment for 147 independent tests covers 98% of the SNP's cumulative variance
163 (Suppl. Fig. S1).

164 We compared the variance of $\ln(\text{eGFR}_{\text{crea}})$ explained by SNPs in CHRIS versus
165 CKDGen European Ancestry analysis as $b^2 \times 2 \times p \times (1-p) / \text{var}(y)$,¹⁷ where y is the age- and
166 sex-adjusted $\ln(\text{eGFR}_{\text{crea}})$, b is the estimated SNP effect on y , and p is the SNP allele
167 frequency. For comparison with CKDGen, we used a common estimate of $\text{var}(y)$.

168

169 *Mediation analysis*

170 Replicated $\ln(\text{eGFR}_{\text{crea}})$ -SNP associations were submitted to mediation analysis across 70
171 quantitative anthropometric, blood pressure and biochemical traits (listed in Supplementary
172 Table S1), following the flowchart represented in Fig. 1. SCr was included as a positive control.
173 To prevent potential measurement instrument effects¹⁸, we applied quantile normalization to
174 each trait (Supplementary Methods). Mediation analysis was conducted for each *trait* following
175 the established 4-step framework and fitting linear regression models throughout:

- 176 1. $\ln(\text{eGFR}_{\text{crea}}) = \beta_1 \text{SNP} + \sum_i^K \theta_i X_i + \varepsilon_1$
- 177 2. $\ln(\text{eGFR}_{\text{crea}}) = \beta_2 \text{SNP} + \gamma_2 \text{trait} + \sum_i^K \theta_i X_i + \varepsilon_2$
- 178 3. *trait* = $\beta_3 \text{SNP} + \sum_i^K \theta_i X_i + \varepsilon_3$
- 179 4. *trait* = $\beta_4 \text{SNP} + \delta_4 \ln(\text{eGFR}_{\text{crea}}) + \sum_i^K \theta_i X_i + \varepsilon_4$

180 where ε_1 to ε_4 refer to Gaussian error terms, and $\sum_i^K \theta_i X_i$ indicate the inclusion of K covariates,
181 namely age, sex, the first 10 genetic PCs and an intercept. Fitting PC-adjusted simple linear
182 models came for practical reasons after observing substantial equivalence with kinship-adjusted
183 linear mixed models obtained with EMMAX (Suppl. Fig. S2). Step 1 corresponds to the GWAS
184 results: given we investigated the replicated variants, the estimate of β_1 (b_1) was always
185 significant. We defined two criteria that must be satisfied in order for a trait to be considered at
186 least a partial mediator of the $\ln(\text{eGFRcrea})$ -SNP relation: (i) evidence of a substantial alteration
187 of the SNP effect on $\ln(\text{eGFRcrea})$ when adjusting for the trait (step 2) and (ii) the SNP is also
188 associated with the trait (step 3) at a multiple-testing corrected level of 6.5×10^{-5} (corresponding
189 to $0.05 / (70 \text{ traits} \times 11 \text{ independent loci})$). Criterion (i) was assessed by analyzing the
190 distribution of the estimate of β_2 (b_2): for a specific trait, b_2 was classified as an outlier according
191 to the rule $b_2 < P_{10} - 1.5 (P_{75} - P_{25})$ or $b_2 > P_{90} + 1.5 (P_{75} - P_{25})$, where P_{10} , P_{25} , P_{75} , and P_{90}
192 indicate the 10th, 25th, 75th, and 90th percentile of the distribution of b_2 across all traits. This is
193 essentially a more stringent version of the Tukey's rule for outlier detection.

194 To support associations in step 3 and assess whether lack of mediation evidence might
195 have been due to lack of power in the CHRIS study, we interrogated the SNP-trait associations
196 that passed the mediation analysis step 2 on the PhenoScanner v2³¹
197 (<http://www.phenoscaner.medschl.cam.ac.uk/>, interrogated on 31-Jan-2023), GWAS Catalog³²
198 (<https://www.ebi.ac.uk/gwas/docs/api>; 24-Feb-2023), and the ThyroidOmics Consortium
199 summary statistics³³ (<https://www.thyroidomics.com>), for associations at $P < 5.0 \times 10^{-8}$.

200

201 *Interaction with thyroid function phenotypes*

202 Free triiodothyronine (FT3) and thyroxine (FT4) did not qualify as mediators but caused a major
203 departure of b_2 from its expected distribution (see Results). These traits may reflect thyroid
204 gland issues. Given the relevance of hypothyroidism in the region, we analyzed these traits in
205 detail. Because FT3 and FT4 levels were measured only when the thyroid stimulating hormone
206 (TSH) level was < 0.4 or > 3.8 $\mu\text{UI/mL}$, we started with a series of sensitivity analyses to exclude
207 the presence of underlying sample stratification. First, we tested whether the distribution of the
208 genotypes was different between individuals with and without measured FT3 and FT4, using a
209 two-sided Wilcoxon test at a significance level of 0.05. Second, to verify whether there was any
210 geographical cluster of individuals with extreme TSH levels (and so measured FT3 and FT4

211 levels), which might have implicated population stratification, we further adjusted the
212 ln(eGFR_{crea})-SNP association model in step 1 for municipality of residence.

213 After excluding the presence of sample stratification, we tested the interaction between
214 the SNPs and TSH levels, which were measured in the whole sample. We excluded 416
215 individuals reporting any condition among thyroid cancer (n=16), kidney cancer (n=1), goiter
216 (n=277), having undergone surgery to the thyroid gland (n=312), or having both missing TSH
217 measurement and therapy information (n=4), leaving 9730 individuals for the interaction
218 analysis. Regression models included both the main and the interaction effect terms and were
219 adjusted for the same covariates used in the step 1 model. In addition to quantitative TSH
220 levels, we also tested interaction with broadly defined hyper- and hypothyroidism.
221 Hyperthyroidism was defined as a TSH level of <0.4 µUI/mL or use of thiamazole (n=3) or
222 propylthiouracil (n=1). Hypothyroidism was defined as TSH levels >3.8 µUI/mL or reported use
223 of levothyroxine sodium (n=512). No other thyroid-related treatment was reported. The
224 statistical significance level for interaction testing was set at 0.0045=0.05/11 loci.

225

226 *Ethical statement*

227 The CHRIS study was approved by the Ethical Committee of the Healthcare System of the
228 Autonomous Province of Bozen/Bolzano, protocol no. 21/2011 (19 Apr 2011). All participants
229 provided written informed consent. All the methods were performed in strict accordance with the
230 approved protocol.

231

232

233 **Results**

234 In the study sample, the median age was 46.5 years (interquartile range, IQR: 32.8, 57.6),
235 females were 55%, and the median eGFR_{crea} level was 92.2 (IQR: 81.3, 103.2) ml/min/1.73m²
236 (Table 1; additional clinical characteristics are reported in Supplementary Table S1). The
237 genomic inflation factor λ was 1.02 (Supplementary Fig. S3), supporting appropriate modeling of
238 the sample structure. In the CHRIS study, we replicated 11 of the 147 CKDGen loci (1-sided P-
239 value between 3.34×10^{-4} and 4.51×10^{-7} ; Table 2; Supplementary Table S2). For each replicated
240 locus we retained all variants in LD ($r^2 > 0.8$) with the lead SNP, totaling 163 variants over the 11
241 loci (Supplementary Table S3). The replicated loci displayed very similar LD pattern in CHRIS

242 as in CKDGen (Supplementary Fig. S4). Among the replicated loci, variants' effect magnitude at
243 *CASZ1*, *DDX1*, *PIP5K1B*, *GAB2*, and *IGF1R* was significantly larger in CHRIS than in CKDGen
244 (Fig. 2; Table 2). Replicated loci explained a larger proportion of $\ln(\text{eGFR}_{\text{crea}})$ variance (Fig.
245 3A). For them, the CHRIS-to-CKDGen effect ratio varied between 1 and 5.4 and was not
246 entirely explained by MAF differences (Fig. 3B; Supplementary Table S3). Three broad
247 groupings characterized by MAF and effect size differences could be distinguished:

- 248 1. at *PDILT*, *SLC34A1* and *SHROOM3*, we observed similar effect magnitude,
249 regardless whether MAF was similar or lower in CHRIS, consistent with the fact that
250 these loci were amongst the ones identified by the earliest GWAS thanks to their
251 large effects, counterbalancing the still relatively limited sample sizes and the
252 coarser genomic imputation^{34,35};
- 253 2. at *DAB2*, *TMEM60*, *PIP5K1B*, *GAB2*, and *IGF1R*, MAF was similar or slightly larger
254 in CHRIS (effects in CHRIS were 1.3-to-5 times larger than in CKDGen);
- 255 3. at *STC1*, *DDX1*, and *CASZ1*, we observed lower MAF in CHRIS and about 1.8-to-5.4
256 times larger effects in CHRIS.

257

258 *Mediation analysis*

259 To identify possible reasons for observed larger effects, we conducted mediation
260 analysis of the association between $\text{eGFR}_{\text{crea}}$ and each of the 163 variants at the 11 loci
261 across 70 quantitative health traits available in CHRIS (Supplementary Table S1). Adjusting the
262 $\text{eGFR}_{\text{crea}}$ -SNP association for each trait in turn (step 2 of the mediation analysis; see Methods)
263 resulted in a substantial change of the $\text{eGFR}_{\text{crea}}$ -SNP association coefficient in between 4 and
264 12 variant-trait associations per locus (Fig. 4). As expected, adjustment for the positive control
265 SCr resulted in the nearly complete knockdown of the SNP effect at all loci (effect sizes toward
266 null). Often, the effect change happened when adjusting for traits closely related to kidney
267 function such as urate (*GAB2*, *IGF1R*, *PIP5K1B*, *SHROOM3*, and *STC1*), urinary creatinine
268 (*SHROOM3*), and urinary albumin (*IGF1R*). Serum electrolytes such as magnesium
269 (*SHROOM3*), corrected calcium (*PIP5K1B*), and sodium (*DDX1*, *GAB2*, *RSBN1L*, *SLC34A1*,
270 and *STC1*) were also widely involved. Of note was the widespread effect of FT3, FT4, and the
271 activated partial thromboplastin time (aPTT) across all loci. When adjusting for FT3 and FT4,
272 the SNP effect on $\ln(\text{eGFR}_{\text{crea}})$ was often completely altered. This behavior across all loci may
273 suggest the presence of either a measurement artifact or a general related condition affecting
274 the underlying population.

275 In the 3rd mediation analysis step, we evaluated whether the traits identified as effect
276 modifiers in step 2 were associated with the SNP of which they modified the association with
277 eGFRcrea (Table 3; Supplementary Table S4): SNP rs3812036 at *SLC34A1* was associated
278 with aPTT levels ($P=3.54\times 10^{-6}$) and five SNPs at *SHROOM3* were associated with serum
279 magnesium levels (P -values between 5.33×10^{-5} and 6.12×10^{-5}). Three of our associations
280 reproduce previously reported associations found using Phenoscanner: at *SLC34A1*, Tang *et*
281 *al.*³⁶ reported association of rs3812036 with aPTT ($P=2.88\times 10^{-18}$), and at *SHROOM3*, Meyer *et*
282 *al.*³⁷ reported associations of magnesium with rs4859682 ($P=2.39\times 10^{-9}$) and rs13146355
283 ($P=6.27\times 10^{-13}$).

284 All SNP-trait associations that successfully passed the 2nd mediation analysis step were
285 also interrogated against the Phenoscanner, GWAS Catalog, and ThyroidOmics consortium
286 results (Methods) to identify associations that might have been missed by the 3rd step of the
287 mediation analysis in CHRIS due to lack of power (Supplementary Table S4). This analysis
288 provided additional support for our findings at *SHROOM3* and *SLC34A1*. It also showed
289 associations between variants at *IGF1R* and serum urate, unraveling how this additional
290 mediation was likely missed by our study due to lack of power.

291 In summary, aPTT and serum magnesium qualified as partial mediators of eGFRcrea
292 associations at *SLC34A1* and *SHROOM3*, respectively. At *SLC34A1*, the partial mediation of
293 aPTT corresponded to a 21% larger effect of the SNP on $\ln(\text{eGFRcrea})$; at *SHROOM3*, the
294 partial mediation of serum magnesium corresponded to an effect attenuation of about 11%
295 (Table 3).

296

297 *Interaction with thyroid dysfunction*

298 Despite the pervasive effect change caused by FT3 and FT4 in step-2 analysis, these
299 two traits did not result in significant step-3 associations and so did not qualify as mediators.
300 However, motivated by the fact that hypothyroidism is amongst the leading causes of
301 hospitalization in the region³⁸, thyroid problems are common in Alpine areas, and the FT3 and
302 FT4 adjustment affected the SNP-eGFRcrea association at all 11 loci, we considered it
303 reasonable to evaluate a potential role of thyroid dysfunction as a modifier of the SNP-
304 eGFRcrea relation.

305 Preliminarily, given that in the CHRIS study FT3 and FT4 were measured only in
306 individuals with TSH levels above or below specific thresholds, we first conducted sensitivity

307 analyses to exclude the presence of artifacts. We did not observe any genotype stratification by
308 measured versus unmeasured FT3 and FT4 levels (Supplementary Table S5). Adjustment for
309 municipality of residence, to exclude the presence of local clusters of thyroid dysfunction, did
310 not alter the results (Supplementary Fig. 3).

311 We then tested for the presence of linear interaction with TSH levels, which identified a
312 significant interaction at *STC1* SNPs rs819185 ($P=0.00177$) and rs819196 ($P=0.00154$) both
313 below the multiple testing threshold of 0.05/11 loci (Fig. 5; Supplementary Table S6). Since for
314 most loci the adjustment both for FT3 and for FT4 were causing an increase of the effect
315 magnitude, we also postulated a U-shaped interaction model, with the SNP effects on
316 $\ln(\text{eGFR}_{\text{crea}})$ being larger both in hyper- and in hypothyroidism. We classified individuals as
317 healthy (88.5%), with hypothyroidism (9.8%) or with hyperthyroidism (1.7%; Table 1). Our
318 results did not support the presence of interaction with these two conditions at any locus after
319 multiple testing control, despite nominally significant P -values observed for interaction between
320 hyperthyroidism and SNPs in *SHROOM3* ($P=0.03$) and between hypothyroidism and SNPs in
321 *PIP5K1B* ($P=0.03$) and *GAB2* ($P=0.04$; Supplementary Table S7).

322

323

324 Discussion

325 Out of 147 loci known for their association with kidney function, our analysis identified 11 that
326 were more strongly associated with $\text{eGFR}_{\text{crea}}$ in the CHRIS study sample than in average
327 European-ancestry population samples. Observed differences in effect magnitude could not be
328 explained by MAF differences. Extensive mediation analysis identified serum magnesium and
329 aPTT as partial mediators of the association of $\text{eGFR}_{\text{crea}}$ with variants at *SHROOM3* and
330 *SLC34A1*, respectively. SNP-by-TSH interaction analysis highlighted that the effect of variants
331 at *STC1* on $\text{eGFR}_{\text{crea}}$ would vary by TSH levels.

332 *PDILT*, *SHROOM3*, and *SLC34A1* explained the same fraction of $\text{eGFR}_{\text{crea}}$ variance in
333 CHRIS and CKDGen. In fact, for these loci, a relatively small sample size proved to be sufficient
334 for their detection.^{34,35} For all other replicated loci, the replication was due to an interplay
335 between allele frequency differences and effect estimate differences. Figures 3A and 3B show
336 that the effect difference was probably more relevant than the allele frequency differences. But
337 the question remains as to why precisely these and no other loci showed such large effects in
338 CHRIS. SNPs may show larger effects at lower MAF. This situation was observed at just *DDX1*

339 and *CASZ1*, whose effects got larger as the CHRIS-to-CKDGen MAF ratio got smaller.
340 However, the MAF difference was unrelated to the larger effects observed at *GAB2*, *TMEM60*,
341 *PIP5K1B*, and *IGF1R*: in these cases, MAF was similar or even smaller in CKDGen than in
342 CHRIS (Fig. 2). The presence of un-modeled sample structure causing genomic inflation can be
343 excluded as relatedness was appropriately modeled. We can also exclude the presence of
344 genetic admixture as the CHRIS study was conducted in a small area, on a local population of
345 homogeneous ancestry^{15,39-41}. Differences in LD structure between the local and the overall
346 population can also be excluded as regional association plots showed similar shapes between
347 CHRIS and CKDGen. Epistatic gene-gene interaction would be a further possibility that cannot
348 be easily verified. The most plausible remaining reasons would be the presence of local effect
349 modifiers or gene-by-environment interaction.

350 Mediation analysis based on commonly measured biochemical and anthropometric traits
351 provided limited answers in this respect but highlighted relevant mechanisms at three loci. The
352 first finding was the identified presence of partial mediation of serum magnesium levels on the
353 association of eGFRcrea with the *SHROOM3* locus. Genetic variants at *SHROOM3* have been
354 associated with CKD^{8,9}, reduced eGFRcrea⁹, increased albumin-to-creatinine ratio¹⁰, and low
355 serum magnesium levels¹¹. *SHROOM3* is necessary to maintain the glomerular filtration barrier
356 integrity⁴². Variants in this gene have been shown to be associated with increased risk of CKD⁴³,
357 likely through disruption of the transcription factor TCF7L2 in podocyte cells. At the same locus,
358 *FAM47E* is highly expressed in the human glomeruli and its transcription levels were associated
359 with eGFRcrea⁴⁴. Additional genes in this locus include *STBD1* and *CCDC158*, for which no
360 connection with kidney function was demonstrated. The kidney is one of the primary regulators
361 of serum magnesium concentration. It has been suggested that *SHROOM3* might increase
362 serum magnesium levels through decreased renal magnesium excretion⁴⁵. At the *SHROOM3*
363 rs13146355 SNP, a previous GWAS on serum magnesium showed that the allele related with
364 lower magnesium levels was associated with higher eGFRcrea levels³⁷. The authors observed
365 that the rs13146355 association with magnesium did not change when adjusting for eGFRcrea,
366 suggesting pleiotropic independent effects. In our analysis, the effect of rs13146355 on
367 eGFRcrea was reduced by 11% when adjusting for magnesium, suggesting partial mediation
368 and thus the presence of partially overlapping mechanisms. Deeper analyses at the molecular
369 level are warranted to identify the relevant mechanism.

370 A similar situation was observed at *SLC34A1* which, in addition to eGFRcrea³⁵, was also
371 previously associated with aPTT in a GWAMA of 9240 European ancestry individuals³⁶

372 including participants from the same areas where the CHRIS study was sampled. By quantifying
373 the clotting time from the activation of factor XII (*F12*) until the formation of a fibrin clot, aPTT is
374 a measure of the integrity of the intrinsic and common coagulation pathways⁴⁶. The observed
375 mediation, in which adjustment for aPTT increases the SNP-eGFR_{crea} association by 21%, is
376 likely related to the proximity between *SLC34A1* and the coagulation factor gene *F12*. The LD at
377 this locus is compatible with the presence of common haplotypes tagging both genes, inducing
378 pleiotropic independent effects on eGFR_{crea} and aPTT.

379 An additional relevant finding was the presence of an interaction between two SNPs at
380 *STC1* and TSH levels. *STC1* is chiefly expressed in the thyroid gland
381 (<https://gtexportal.org/home/gene/STC1>). It is also highly expressed in the kidney, where it is
382 exclusively expressed in the collecting duct⁴⁷. *STC1* is also associated with urate and urea
383 levels and is involved in the physiological response to dehydration and protein-rich diet⁴⁷. The
384 *STC1*-encoded protein, stanniocalcin-1, is involved in phosphate reabsorption in the kidney
385 proximal tubules and in multiple pathophysiological mechanisms including ischemic kidney
386 injury⁴⁸. Stanniocalcin-1 behaves like an endocrine hormone, with both autocrine and paracrine
387 functions. Our observation of a SNP effect on eGFR_{crea} depending on TSH levels would
388 suggest that altered thyroid function levels might affect Stanniocalcin-1 levels with consequent
389 effect on kidney function phenotypes. While intriguing, this hypothesis should be verified by
390 appropriate studies.

391 Our study had both strengths and limitations. The exploitation of a local homogeneous
392 population sample was at the same time the most relevant strength and limitation of our study.
393 While homogeneity may enhance the identification of specific genetic associations, it may also
394 hinder the possibility to explain the underlying reasons of the observed larger effects compared
395 to the average European ancestry population. The availability of a very large number of clinical
396 parameters has allowed us to conduct an exhaustive and unbiased screening on potential
397 mediation mechanisms. However, the analyzed traits lacked molecular specificity to identify
398 underlying mechanisms. Given eGFR_{crea} might also reflect creatinine metabolism in addition to
399 kidney function, another limitation of our study was the lack of additional kidney function
400 markers such as cystatin C or BUN. For this reason, we limited our analyses to loci whose
401 kidney function relevance was already demonstrated by previous studies¹⁷. Assessment of
402 environmental exposures may also be a tool to explain the observed larger effects and would be
403 ground for further research. Finally, our choice of adjustment for multiple testing is also worth a
404 brief reflection. We have considered 147 loci that were already validated by at least one

405 previous study through discovery and independent replication¹⁷, with several of the same loci
406 being already reported previously^{35,49,50}. As such, they wouldn't need further validation and a
407 nominal significance level would be commonly accepted for statistical testing. However, the aim
408 of our analysis was to identify loci with substantially large effect in the CHRIS study to further
409 conduct meaningful mediation analyses. For this reason, we choose to penalize the significance
410 level by the number of independent loci. To us, this seems to be a sensible choice also by the
411 fact that 147 independent tests covered 98% of the total variability of the 6337 SNPs in strong
412 LD observed overall.

413 In conclusion, our study has identified loci that have particularly large effect on kidney
414 function in the specific Alpine population sample considered in this study, namely *CASZ1*,
415 *IGF1R*, *GAB2*, and *DDX1*. Allele frequency and LD analyses did not explain the observed larger
416 effects nor did the extensive mediation analyses conducted. On the other hand, we showed that
417 the effects of *SHROOM3* and *SLC34A1* on eGFR_{crea} are partially mediated by serum
418 magnesium and aPTT, respectively. Finally, the observed *STC1*-TSH interaction implicates
419 thyroid function involvement, which might have been favored by the high burden of thyroid-
420 related diseases in the region. Further investigations are warranted to link the identified loci to
421 environmental and molecular characteristics of specific population samples that may elucidate
422 mechanisms not otherwise identifiable in large genetic meta-analyses.

423

424

425 **Acknowledgements**

426 The CHRIS study is a collaborative effort between the Eurac Research Institute for Biomedicine
427 and the Healthcare System of the Autonomous Province of Bozen/Bolzano. We thank all study
428 participants, the general practitioners, the personnel of the Hospital of Schlanders/Silandro, the
429 field study team and the personnel of the CHRIS Biobank (BRIF code BRIF6107) for their
430 support and collaboration. Extensive acknowledgement is reported at
431 <https://translationalmedicine.biomedcentral.com/articles/10.1186/s12967-015-0704-9>.

432

433 **Funding**

434 The CHRIS study was funded by the Department of Innovation, Research and University of the
435 Autonomous Province of Bolzano-South Tyrol. This work was carried out within the TrainCKDis

436 project, funded by the European Union's Horizon 2020 research and innovation programme
437 under the Marie Skłodowska-Curie grant agreement H2020-MSCA-ITN-2019 ID:860977
438 (TrainCKDis).

439

440 **Author contributions**

441 Conceptualization of the research project: C.P., D.G.

442 Recruitment and study management: M.G., P.P.P., C.P.

443 Bioinformatics: D.G., E.K., D.E., C.F.

444 Data quality control and harmonization: M.G., L.B., L.F.

445 Statistical Analysis: D.G.

446 Results interpretation: D.G., C.P., C.F., D.E., M.G., L.F., R.F.

447 Manuscript drafting: D.G., C.P.

448 Manuscript critical revision: D.E., E.K., R.F., L.F., L.B., M.G., D.J.M.P., P.P.P., C.F., D.G., C.P.

449

450

451 **Competing interests**

452 The authors declare no competing financial interests.

453

454 **Data availability**

455 The data used in the current analyses can be requested with an application to

456 access.request.biomedicine@eurac.edu at the Eurac Research Institute for Biomedicine.

457 **References**

458

- 459 1 Eckardt, K. U. *et al.* Evolving importance of kidney disease: from subspecialty to
460 global health burden. *Lancet* **382**, 158-169, doi:10.1016/s0140-6736(13)60439-0
461 (2013).
- 462 2 Foreman, K. J. *et al.* Forecasting life expectancy, years of life lost, and all-cause
463 and cause-specific mortality for 250 causes of death: reference and alternative
464 scenarios for 2016-40 for 195 countries and territories. *Lancet* **392**, 2052-2090,
465 doi:10.1016/s0140-6736(18)31694-5 (2018).
- 466 3 Global, regional, and national burden of chronic kidney disease, 1990-2017: a
467 systematic analysis for the Global Burden of Disease Study 2017. *Lancet* **395**,
468 709-733, doi:10.1016/s0140-6736(20)30045-3 (2020).
- 469 4 Naik, R. P. *et al.* Association of sickle cell trait with chronic kidney disease and
470 albuminuria in African Americans. *Jama* **312**, 2115-2125,
471 doi:10.1001/jama.2014.15063 (2014).
- 472 5 Brück, K. *et al.* CKD prevalence varies across the European general population.
473 *Journal of the American Society of Nephrology* **27**, 2135,
474 doi:10.1681/ASN.2015050542 (2016).
- 475 6 Köttgen, A. & Pattaro, C. The CKDGen Consortium: ten years of insights into the
476 genetic basis of kidney function. *Kidney Int* **97**, 236-242,
477 doi:10.1016/j.kint.2019.10.027 (2020).
- 478 7 Stanzick, K. J. *et al.* Discovery and prioritization of variants and genes for kidney
479 function in >1.2 million individuals. *Nature Communications* **12**, 4350,
480 doi:10.1038/s41467-021-24491-0 (2021).
- 481 8 Chong, Jessica X. *et al.* The Genetic Basis of Mendelian Phenotypes:
482 Discoveries, Challenges, and Opportunities. *The American Journal of Human*
483 *Genetics* **97**, 199-215, doi:<https://doi.org/10.1016/j.ajhg.2015.06.009> (2015).
- 484 9 Montasser, M. E. *et al.* Genetic and functional evidence links a missense variant
485 in B4GALT1 to lower LDL and fibrinogen. *Science* **374**, 1221-1227,
486 doi:10.1126/science.abe0348 (2021).
- 487 10 Hamet, P. *et al.* PROX1 gene CC genotype as a major determinant of early onset
488 of type 2 diabetes in slavic study participants from Action in Diabetes and
489 Vascular Disease: Preterax and Diamicon MR Controlled Evaluation study. *J*
490 *Hypertens* **35 Suppl 1**, S24-s32, doi:10.1097/hjh.0000000000001241 (2017).
- 491 11 Humphries, E. M. *et al.* Genome-wide significant risk loci for mood disorders in
492 the Old Order Amish founder population. *Mol Psychiatry*, doi:10.1038/s41380-
493 023-02014-1 (2023).
- 494 12 Pattaro, C. *et al.* The Cooperative Health Research in South Tyrol (CHRIS)
495 study: rationale, objectives, and preliminary results. *Journal of Translational*
496 *Medicine* **13**, 348, doi:10.1186/s12967-015-0704-9 (2015).
- 497 13 Pattaro, C. *et al.* Genome-wide linkage analysis of serum creatinine in three
498 isolated European populations. *Kidney International* **76**, 297-306,
499 doi:<https://doi.org/10.1038/ki.2009.135> (2009).
- 500 14 Pattaro, C. *et al.* A meta-analysis of genome-wide data from five European
501 isolates reveals an association of COL22A1, SYT1, and GABRR2 with serum

- 502 creatinine level. *BMC Medical Genetics* **11**, 41, doi:10.1186/1471-2350-11-41
503 (2010).
- 504 15 Gögele, M., Pattaro, C., Fuchsberger, C. & Pramstaller, P. P. Fertility pattern and
505 family structure in three Alpine settlements in South Tyrol (Italy): marriage
506 cohorts from 1750 to 1949. *J Biosoc Sci* **41**, 697-701,
507 doi:10.1017/s0021932009003423 (2009).
- 508 16 Bolzano, A. o. t. P. o. *Prevalence of the Chronic Diseases*,
509 <[https://www.provincia.bz.it/salute-benessere/osservatorio-salute/diffusione-](https://www.provincia.bz.it/salute-benessere/osservatorio-salute/diffusione-delle-malattie-croniche.asp)
510 [delle-malattie-croniche.asp](https://www.provincia.bz.it/salute-benessere/osservatorio-salute/diffusione-delle-malattie-croniche.asp)> (2019).
- 511 17 Wuttke, M. *et al.* A catalog of genetic loci associated with kidney function from
512 analyses of a million individuals. *Nat Genet* **51**, 957-972, doi:10.1038/s41588-
513 019-0407-x (2019).
- 514 18 Noce, D. *et al.* Sequential recruitment of study participants may inflate genetic
515 heritability estimates. *Hum Genet* **136**, 743-757, doi:10.1007/s00439-017-1785-8
516 (2017).
- 517 19 Bates, D., Mächler, M., Bolker, B. & Walker, S. Fitting Linear Mixed-Effects
518 Models Using lme4. *Journal of Statistical Software* **67**, 1 - 48,
519 doi:10.18637/jss.v067.i01 (2015).
- 520 20 Levey, A. S. *et al.* A new equation to estimate glomerular filtration rate. *Ann*
521 *Intern Med* **150**, 604-612, doi:10.7326/0003-4819-150-9-200905050-00006
522 (2009).
- 523 21 Pattaro, C. *et al.* Estimating the glomerular filtration rate in the general population
524 using different equations: effects on classification and association. *Nephron Clin*
525 *Pract* **123**, 102-111, doi:10.1159/000351043 (2013).
- 526 22 O'Connell, J. *et al.* A general approach for haplotype phasing across the full
527 spectrum of relatedness. *PLoS Genet* **10**, e1004234,
528 doi:10.1371/journal.pgen.1004234 (2014).
- 529 23 Das, S. *et al.* Next-generation genotype imputation service and methods. *Nat*
530 *Genet* **48**, 1284-1287, doi:10.1038/ng.3656 (2016).
- 531 24 Yang, J., Lee, S. H., Goddard, M. E. & Visscher, P. M. GCTA: a tool for genome-
532 wide complex trait analysis. *Am J Hum Genet* **88**, 76-82,
533 doi:10.1016/j.ajhg.2010.11.011 (2011).
- 534 25 Kang, H. M. *et al.* Variance component model to account for sample structure in
535 genome-wide association studies. *Nat Genet* **42**, 348-354, doi:10.1038/ng.548
536 (2010).
- 537 26 Devlin, B. & Roeder, K. Genomic control for association studies. *Biometrics* **55**,
538 997-1004 (1999).
- 539 27 Nolte, I. M. Metasubtract: an R-package to analytically produce leave-one-out
540 meta-analysis GWAS summary statistics. *Bioinformatics* **36**, 4521-4522,
541 doi:10.1093/bioinformatics/btaa570 (2020).
- 542 28 Zhao, H. *et al.* CrossMap: a versatile tool for coordinate conversion between
543 genome assemblies. *Bioinformatics* **30**, 1006-1007,
544 doi:10.1093/bioinformatics/btt730 (2014).
- 545 29 Gögele, M. *et al.* Methods for Meta-Analyses of Genome-wide Association
546 Studies: Critical Assessment of Empirical Evidence. *American Journal of*
547 *Epidemiology* **175**, 739-749, doi:10.1093/aje/kwr385 (2012).

- 548 30 Quick, C. *et al.* emeraLD: rapid linkage disequilibrium estimation with massive
549 datasets. *Bioinformatics* **35**, 164-166, doi:10.1093/bioinformatics/bty547 (2019).
- 550 31 Kamat, M. A. *et al.* PhenoScanner V2: an expanded tool for searching human
551 genotype-phenotype associations. *Bioinformatics* **35**, 4851-4853,
552 doi:10.1093/bioinformatics/btz469 (2019).
- 553 32 Sollis, E. *et al.* The NHGRI-EBI GWAS Catalog: knowledgebase and deposition
554 resource. *Nucleic Acids Res* **51**, D977-d985, doi:10.1093/nar/gkac1010 (2023).
- 555 33 Teumer, A. *et al.* Genome-wide analyses identify a role for SLC17A4 and AADAT
556 in thyroid hormone regulation. *Nature Communications* **9**, 4455,
557 doi:10.1038/s41467-018-06356-1 (2018).
- 558 34 Köttgen, A. *et al.* Multiple loci associated with indices of renal function and
559 chronic kidney disease. *Nat Genet* **41**, 712-717, doi:10.1038/ng.377 (2009).
- 560 35 Köttgen, A. *et al.* New loci associated with kidney function and chronic kidney
561 disease. *Nat Genet* **42**, 376-384, doi:10.1038/ng.568 (2010).
- 562 36 Tang, W. *et al.* Genetic associations for activated partial thromboplastin time and
563 prothrombin time, their gene expression profiles, and risk of coronary artery
564 disease. *Am J Hum Genet* **91**, 152-162, doi:10.1016/j.ajhg.2012.05.009 (2012).
- 565 37 Meyer, T. E. *et al.* Genome-wide association studies of serum magnesium,
566 potassium, and sodium concentrations identify six Loci influencing serum
567 magnesium levels. *PLoS Genet* **6**, doi:10.1371/journal.pgen.1001045 (2010).
- 568 38 Volpato, C. B. *et al.* Linkage and association analysis of hyperthyrotropinaemia in
569 an Alpine population reveal two novel loci on chromosomes 3q28-29 and 6q26-
570 27. *J Med Genet* **48**, 549-556, doi:10.1136/jmg.2010.088583 (2011).
- 571 39 Pattaro, C. *et al.* The genetic study of three population microisolates in South
572 Tyrol (MICROS): study design and epidemiological perspectives. *BMC Med*
573 *Genet* **8**, 29, doi:10.1186/1471-2350-8-29 (2007).
- 574 40 Gögele, M. *et al.* Heritability analysis of life span in a semi-isolated population
575 followed across four centuries reveals the presence of pleiotropy between life
576 span and reproduction. *J Gerontol A Biol Sci Med Sci* **66**, 26-37,
577 doi:10.1093/gerona/glq163 (2011).
- 578 41 Riegler, A., Marroni, F., Pattaro, C., Gueresi, P. & Pramstaller, P. P. Isolation and
579 marriage patterns in four South Tyrolean villages (Italy) during the nineteenth
580 century. *J Biosoc Sci* **40**, 787-791, doi:10.1017/s0021932007002568 (2008).
- 581 42 Yeo, N. C. *et al.* Shroom3 contributes to the maintenance of the glomerular
582 filtration barrier integrity. *Genome Res* **25**, 57-65, doi:10.1101/gr.182881.114
583 (2015).
- 584 43 Prokop, J. W. *et al.* Characterization of Coding/Noncoding Variants for
585 SHROOM3 in Patients with CKD. *J Am Soc Nephrol* **29**, 1525-1535,
586 doi:10.1681/asn.2017080856 (2018).
- 587 44 Ledo, N. *et al.* Functional genomic annotation of genetic risk loci highlights
588 inflammation and epithelial biology networks in CKD. *J Am Soc Nephrol* **26**, 692-
589 714, doi:10.1681/asn.2014010028 (2015).
- 590 45 Larsson, S. C., Drca, N. & Michaëlsson, K. Serum Magnesium and Calcium
591 Levels and Risk of Atrial Fibrillation. *Circulation: Genomic and Precision*
592 *Medicine* **12**, e002349, doi:doi:10.1161/CIRCGEN.118.002349 (2019).

593 46 Kitchen, S., McCraw, A. & Echenagucia, M. Diagnosis of hemophilia and other
594 bleeding disorders. *World Federation of Hemophilia* (2010).
595 47 Park, J. *et al.* Single-cell transcriptomics of the mouse kidney reveals potential
596 cellular targets of kidney disease. *Science* **360**, 758-763,
597 doi:10.1126/science.aar2131 (2018).
598 48 Zhao, F. *et al.* Expression, function and clinical application of stanniocalcin-1 in
599 cancer. *J Cell Mol Med* **24**, 7686-7696, doi:10.1111/jcmm.15348 (2020).
600 49 Pattaro, C. *et al.* Genome-Wide Association and Functional Follow-Up Reveals
601 New Loci for Kidney Function. *PLOS Genetics* **8**, e1002584,
602 doi:10.1371/journal.pgen.1002584 (2012).
603 50 Pattaro, C. *et al.* Genetic associations at 53 loci highlight cell types and biological
604 pathways relevant for kidney function. *Nature Communications* **7**, 10023,
605 doi:10.1038/ncomms10023 (2016).
606

607 **Tables**

608 **Table 1.** Main characteristics of the 10,146 study individuals. Additional clinical characteristics
 609 are described in Supplementary Table 1.

Participants' characteristics	Median (IQR) or N (%)
Age, years	46.5 (32.8 – 57.6)
Females	5,585 (55.1%)
eGFR _{crea} , ml/min/1.73 m ² (n=10,141)	92.2 (81.3 – 103.2)
Mg, mg/dl (n=10,143)	2.0(1.9 – 2.1)
aPTT, seconds (n=6,369)	29.9 (28.6 – 31.4)
TSH, μ UI/mL (n=10,142)	1.38 (0.98 – 1.93)
FT3, pg/ml (n=466)	3.00 (2.70 – 3.30)
FT4, ng/dl (n=469)	0.98 (0.87 – 1.08)
Hyperthyroidism (TSH < 0.4 or drug treatment)	172 (1.7%)
Normal (0.4 < TSH < 3.8 and no drug treatment)	8,972 (88.5%)
Hypothyroidism (TSH > 3.8 or drug treatment)	998 (9.8%)

610 Abbreviations: IQR, Interquartile range; TSH, Thyroid-stimulating hormone; FT3, Free triiodothyronine;
 611 FT4, Free thyroxine; Mg, serum magnesium; aPTT, activated partial thromboplastin time.

612 **Table 2.** The 11 loci identified from the CKDGen Consortium GWAS that showed significant effects in CHRIS. Loci were considered
613 replicated if any variant in strong LD with the CKDGen lead variant was significantly associated with ln(eGFRcrea) in CHRIS.
614 Consequently, for each locus, reported are either the results on the CKDGen lead variant or the results of the replicated variant in the
615 locus when the lead variant did not replicate itself (see Methods).

Locus (gene name)	CKDGen lead SNP	Chr:Pos (build 38)	EA/OA	CKDGen Trans-Ethnic ¹			CKDGen EUR ¹			CHRIS			
				EAF	b(SE)*	P-value	EAF	b(SE)*	P-value	EAF	b(SE)	1-sided P- value	2-sided P- value
CASZ1	rs74748843	1:10,670,853	T/C	0.071	-0.00480 (0.00078)	7.84×10 ⁻¹⁰	0.021	-0.00598 (0.00123)	1.09×10 ⁻⁶	0.016	-0.02776 (0.00806)	2.85×10 ⁻⁴	5.70×10 ⁻⁴
DDX1	rs807624	2:15,642,347	G/T	0.580	-0.00320 (0.00029)	8.28×10 ⁻²⁸	0.660	-0.00338 (0.00035)	1.70×10 ⁻²¹	0.701	-0.00886 (0.00221)	3.00×10 ⁻⁵	5.99×10 ⁻⁵
SHROOM3	rs28817415	4:76,480,299	T/C	0.400	-0.00730 (0.00029)	3.17×10 ⁻¹³⁷	0.440	-0.00744 (0.00034)	7.32×10 ⁻¹⁰⁹	0.428	-0.00840 (0.00214)	4.21×10 ⁻⁵	8.42×10 ⁻⁵
DAB2	rs10062079*	5:39,393,631	A/G	0.039	-0.00480 (0.00029)	2.07×10 ⁻⁶⁰	0.430	-0.00549 (0.00035)	6.19×10 ⁻⁵⁶	0.453	-0.00721 (0.00211)	3.24×10 ⁻⁴	6.49×10 ⁻⁴
SLC34A1	rs3812036	5:177,386,403	T/C	0.260	-0.00650 (0.00039)	2.96×10 ⁻⁶²	0.260	-0.00687 (0.00040)	2.31×10 ⁻⁶⁷	0.240	-0.00836 (0.00245)	3.27×10 ⁻⁴	6.55×10 ⁻⁴
TMEM60	rs57514204*	7:77,714,744	T/C	0.380	-0.00340 (0.00029)	3.53×10 ⁻³¹	0.410	-0.00332 (0.00034)	1.48×10 ⁻²²	0.439	-0.00723 (0.00212)	3.34×10 ⁻⁴	6.67×10 ⁻⁴
STC1	rs819196*	8:23,885,208	T/A	0.410	-0.00410 (0.00029)	1.47×10 ⁻⁴⁴	0.450	-0.00406 (0.00034)	1.43×10 ⁻³³	0.437	-0.00718 (0.00210)	3.21×10 ⁻⁴	6.41×10 ⁻⁴
PIP5K1B	rs2039424	9:68,817,258	G/A	0.360	-0.00440 (0.00029)	4.75×10 ⁻⁵¹	0.380	-0.00483 (0.00035)	1.12×10 ⁻⁴²	0.421	-0.01042 (0.00212)	4.51×10 ⁻⁷	9.01×10 ⁻⁷
GAB2	rs7113042*	11:78,324,786	A/G	0.740	-0.00270 (0.00039)	4.62×10 ⁻¹²	0.830	-0.00271 (0.00045)	1.86×10 ⁻⁹	0.823	-0.01096 (0.00286)	6.41×10 ⁻⁵	1.28×10 ⁻⁴
IGF1R	rs59646751	15:98,733,292	T/G	0.300	-0.00230 (0.00029)	3.97×10 ⁻¹⁵	0.310	-0.00203 (0.00036)	2.47×10 ⁻⁸	0.321	-0.00909 (0.00223)	2.32×10 ⁻⁵	4.63×10 ⁻⁵
PDILT	rs77924615	16:20,381,010	G/A	0.800	-0.00980 (0.00039)	4.38×10 ⁻¹³⁹	0.800	-0.00958 (0.00044)	1.52×10 ⁻¹⁰⁴	0.826	-0.01030 (0.00281)	1.27×10 ⁻⁴	2.53×10 ⁻⁴

616 ¹Trans-ethnic and European ancestry CKDGen results after subtracting the effect of 4661 CHRIS participants included in the
617 CKDGen meta-analysis.

618 Abbreviations: Chr, chromosome; Pos, position; EA, effect allele; OA, other allele; EAF, effect allele frequency; b, coefficient of
619 association; SE, standard error of b.

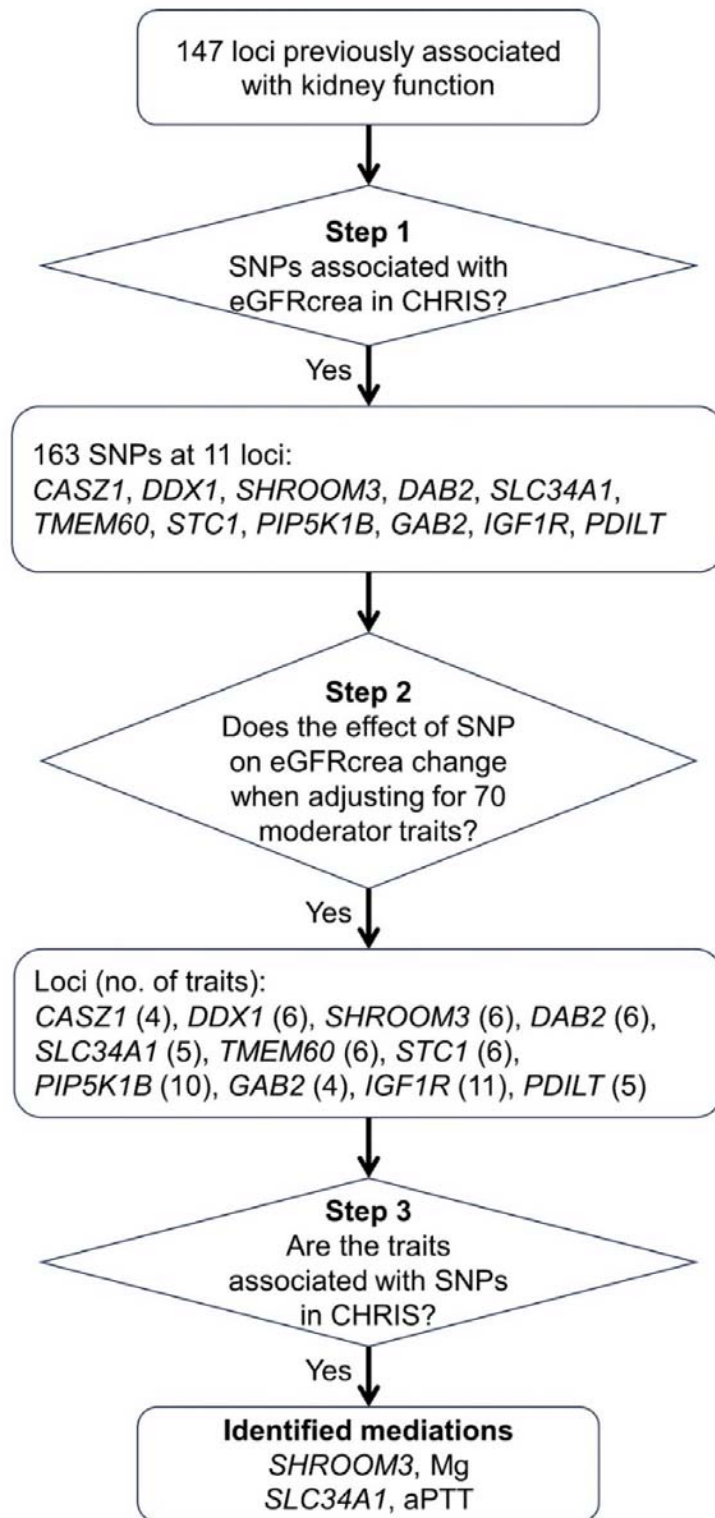
620 *Replication of a variant in strong LD with the CKDGen lead variant: in these cases, the replicated and not the CKDGen lead variant
621 is reported. See Supplementary Table S2 for lead variant comparisons.

622 **Table 3** Results of the mediation analysis at *SHROOM3* and *SLC34A1*. Extensive mediation analysis results for all loci and all traits
 623 are reported in Supplementary Table S4.

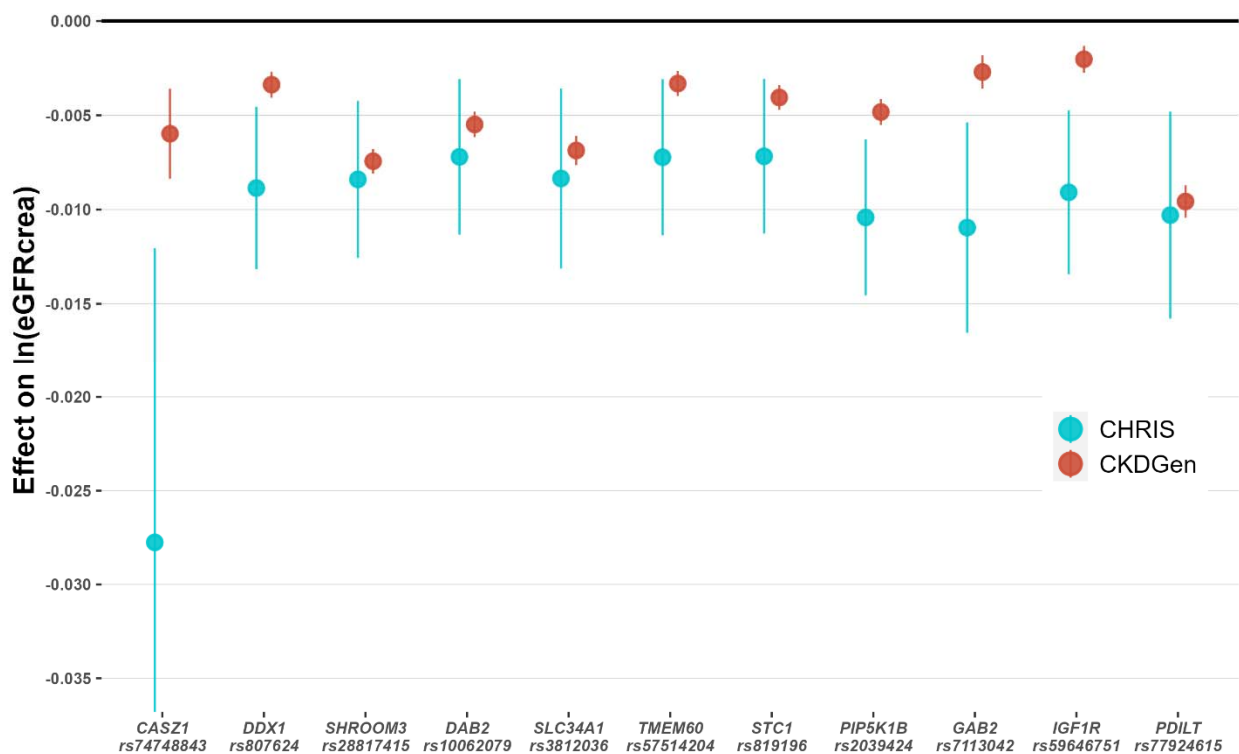
Locus (gene name)	rsID	Chr:Pos (build 38)	GWAS Step 1: association with ln(eGFRcrea)			Step 2: association with ln(eGFRcrea) adjusted for the mediator				Step 3: association with mediator in this study		Step 4: association with mediator adjusted for ln(eGFRcrea)	
			EA/OA	b(SE)	P	Trait	b(SE)	P	Change %	b(SE)	P	b(SE)	P
<i>SHROOM3</i>	rs28394165	4:76472865	C/T	-0.00841 (0.00214)	8.35×10 ⁻⁵	Mg	-0.00744 (0.00196)	1.51×10 ⁻⁴	-12	0.00826 (0.00204)	5.33×10 ⁻⁵	0.00773 (0.00204)	1.54×10 ⁻⁴
<i>SHROOM3</i>	rs10025351	4:76472942	T/C	-0.00840 (0.00214)	8.51×10 ⁻⁵	Mg	-0.00743 (0.00196)	1.53×10 ⁻⁴	-12	0.00823 (0.00204)	5.73×10 ⁻⁵	0.00769 (0.00204)	1.65×10 ⁻⁴
<i>SHROOM3</i>	rs28817415	4:76480299	T/C	-0.00840 (0.00214)	8.42×10 ⁻⁵	Mg	-0.00744 (0.00196)	1.51×10 ⁻⁴	-12	0.00823 (0.00204)	5.68×10 ⁻⁵	0.00770 (0.00204)	1.64×10 ⁻⁴
<i>SHROOM3</i>	rs4859682	4:76489165	A/C	-0.00840 (0.00210)	6.59×10 ⁻⁵	Mg	-0.00750 (0.00193)	1.02×10 ⁻⁴	-11	0.00812 (0.00201)	5.49×10 ⁻⁵	0.00758 (0.00201)	1.63×10 ⁻⁴
<i>SHROOM3</i>	rs13146355	4:76490987	A/G	-0.00840 (0.00214)	8.38×10 ⁻⁵	Mg	-0.00749 (0.00196)	1.33×10 ⁻⁴	-11	0.00819 (0.00204)	6.12×10 ⁻⁵	0.00765 (0.00204)	1.77×10 ⁻⁴
<i>SLC34A1</i>	rs3812036	5:177386403	T/C	-0.00836 (0.00245)	6.55×10 ⁻⁴	aPTT	-0.01013 (0.00269)	1.64×10 ⁻⁴	21	-0.23110 (0.04980)	3.54×10 ⁻⁶	-0.23046 (0.04986)	3.88×10 ⁻⁶

624 Abbreviations: Chr, chromosome; Pos, position; EA, effect allele; OA, other allele; b, coefficient of association; SE, standard error of
 625 b; Mg, Magnesium; aPTT, activated Partial Prothrombin Time.

626 **Figures**

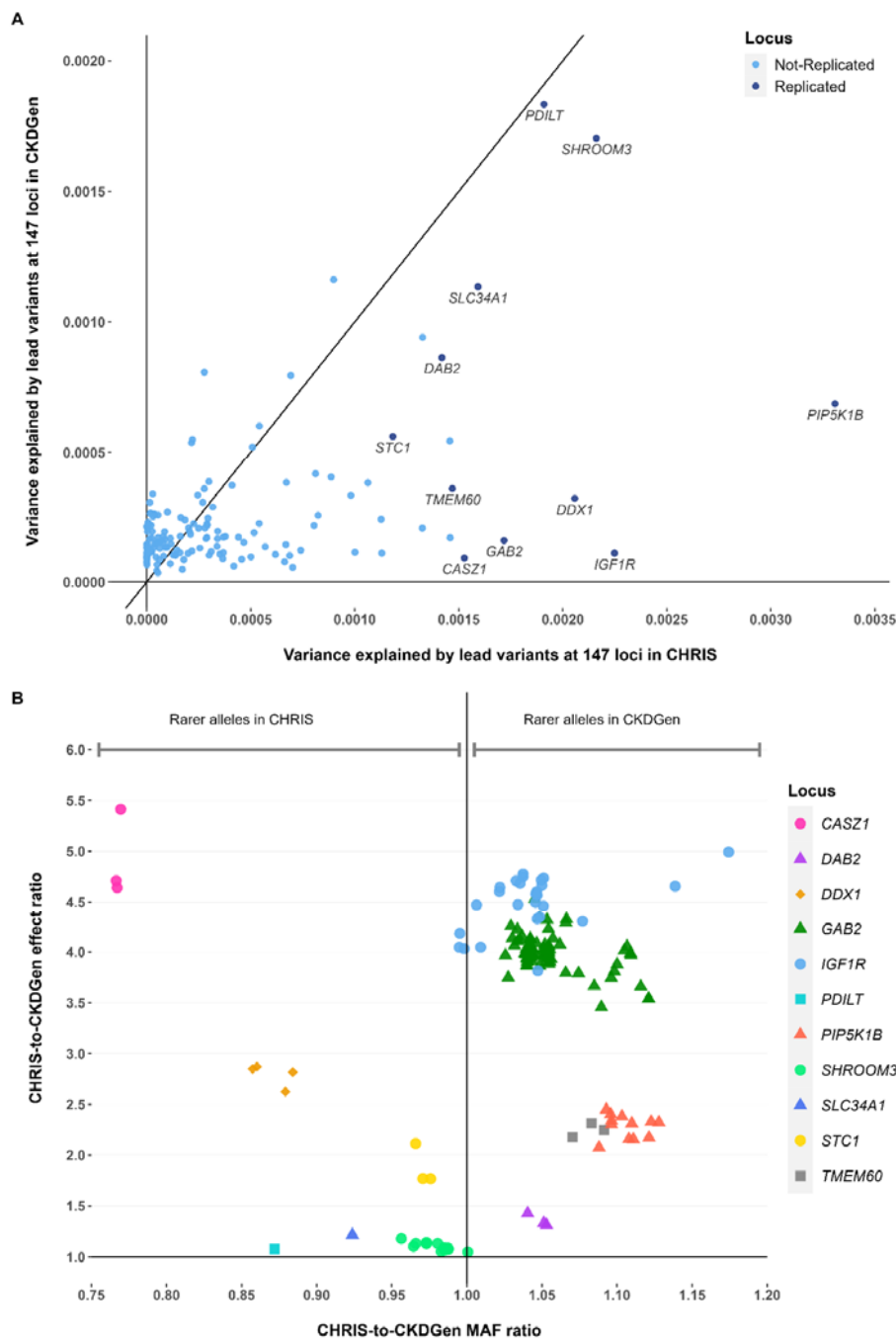


627
628 **Figure 1. Flowchart of the mediation analysis.** Abbreviations: Mg, serum magnesium; aPTT,
629 activated partial thromboplastin time.



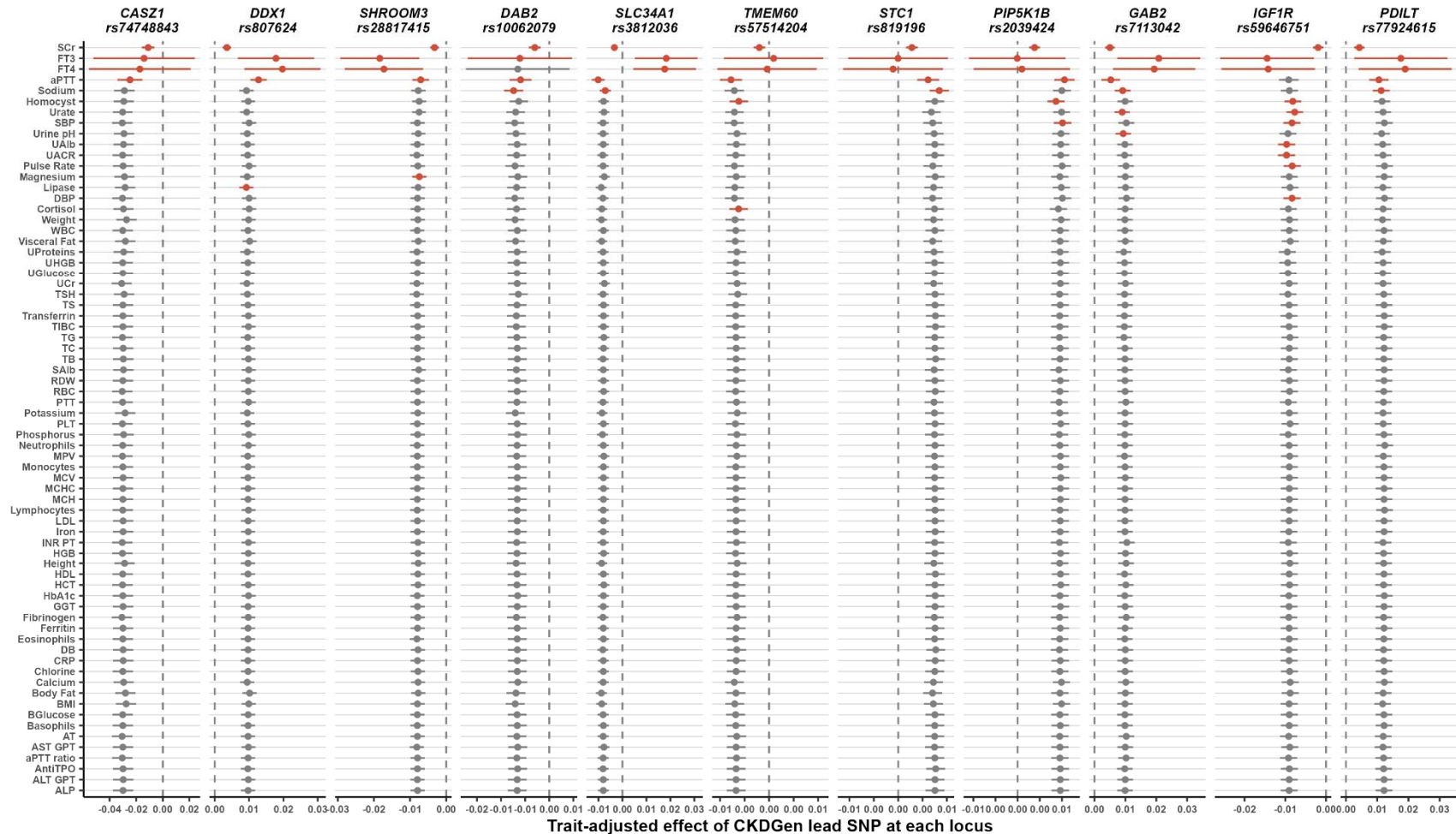
630

631 **Figure 2. Effect sizes with 95% confidence intervals for the most associated variants at**
632 **each locus in CKDGen and CHRIS following harmonization to the eGFRcrea-lowering**
633 **allele.** The effect is meant per copy of the effect allele on the natural logarithm of eGFRcrea in
634 ml/min/1.73m² (y-axis). For *CASZ1*, *DDX1*, *PIP5K1B*, *GAB2*, and *IGF1R* the magnitude of the
635 effect in CHRIS was larger than in CKDGen.



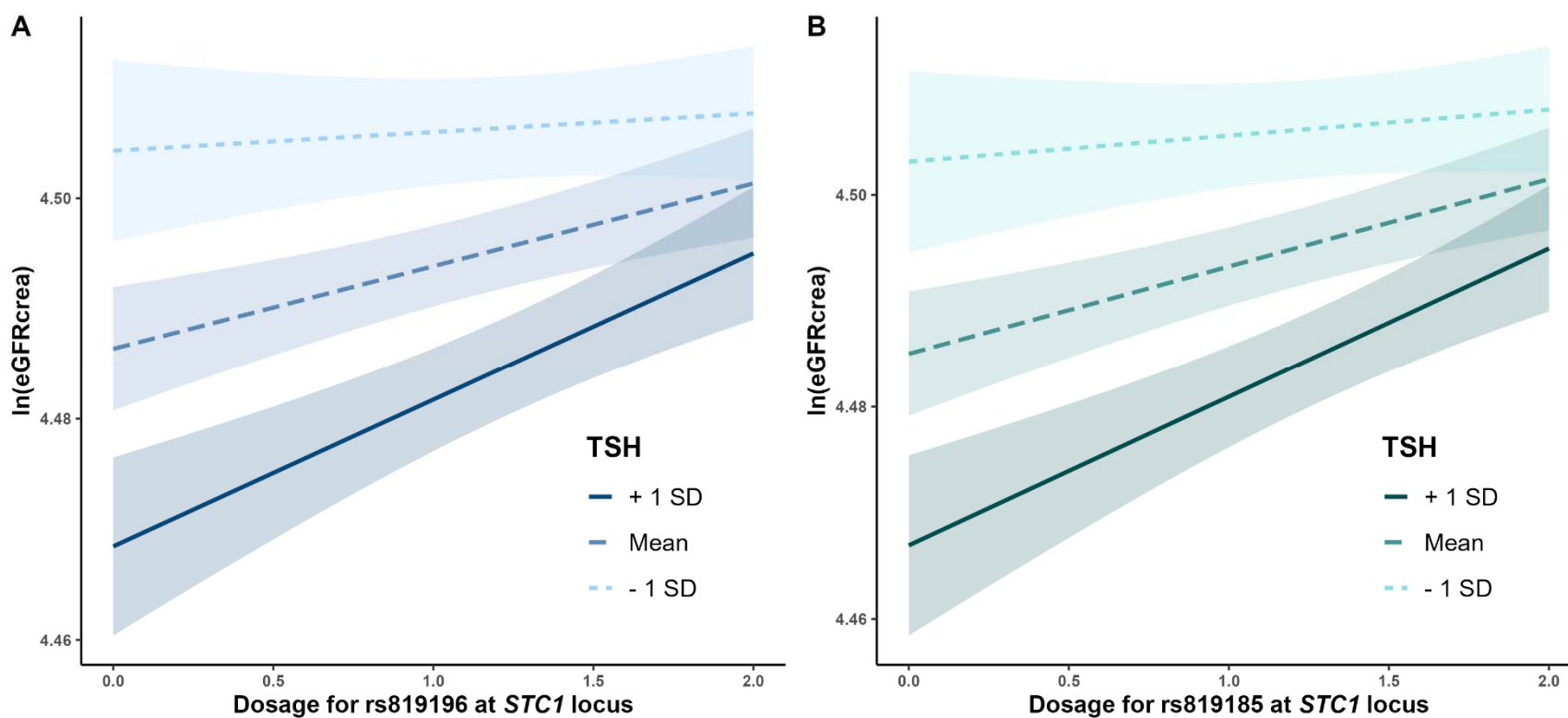
636

637 **Figure 3. Comparison of the characteristics of all 163 variants in the 11 replicated loci in**
 638 **CKDGen versus CHRIS after alignment of the effect alleles. Panel A:** Variance of age- and
 639 sex-adjusted $\ln(eGFR_{crea})$ in CHRIS versus CKDGen EUR explained by the lead variants at
 640 each of the 147 loci. Replicated loci are labeled with the locus name. **Panel B:** The ratio
 641 between CHRIS and CKDGen minor allele frequencies (MAF, x-axis) is plotted against the ratio
 642 between CHRIS and CKDGen effect estimates (y-axis). Effects are expressed in terms of
 643 change of the natural logarithm of $eGFR_{crea}$ in $ml/min/1.73m^2$ per copy of the effect allele.



644

645 **Figure 4. Results of the 2nd step of the mediation analysis for the most associated variants at each locus.** SNP effect size and
 646 their 95% confidence intervals are reported. Effects are expressed in terms of change of the natural logarithm of eGFRcrea in
 647 ml/min/1.73m² per copy of the effect allele. Large departures from the expected effect size ('outlier', see Methods) are indicated in
 648 red. The vertical dashed lines identify the null. Large effect size changes were observed when adjusting for SCr (positive control; all
 649 loci), FT3 (all loci) and FT4 (10 loci), aPTT (10 loci), sodium (5 loci), homocysteine (3 loci), SBP (2 loci), urate (2 loci), and cortisol,
 650 DBP, lipase, magnesium, pulse rate, UACR, urinary albumin and urine pH (1 locus each).



651

652 **Figure 5. Interaction of ln(eGFRcrea)-associated variants with TSH levels.** Effects of *STC1* SNPs rs819185 (P=0.00177; **Panel**
653 **A**) and rs819196 (P=0.00154; **Panel B**) are larger at lower TSH levels.

654 **Supplementary Material**

655 **Table of Contents**

656	Supplementary method. Quantile normalization of the 70 health traits used in the mediation	
657	analysis.....	29
658	Supplementary Figure S1. Cumulative variance of 6337 variants over 147 loci explained by	
659	principal components in the CHRIS study. Adjusting for 147 independent tests covers 98% of	
660	the cumulative variance (red dot).....	30
661	Supplementary Figure S2. Fitting PC-adjusted simple linear models came for practical reasons	
662	after observing substantial equivalence with kinship-adjusted linear mixed models obtained with	
663	EMMAX.....	31
664	Supplementary Figure S3. Quantile-quantile (QQ) plot of the P-values from the GWAS of	
665	ln(eGFRcrea) in the CHRIS study.....	32
666	Supplementary Figure S4. Regional association plots for the 11 replicated loci. Highlighted in	
667	purple is the most associated SNP in the CKDGen GWAS meta-analysis. All SNP positions are	
668	referred to the NCBI Build 38. Plots were generated with LocusZoom version 1.4 (.....	33
669	Supplementary Figure S5. Comparison of effect size and standard error ratio for the variants in	
670	the model regressing ln(eGFRcrea) on age, sex, FT3 (or FT4), genetic variants with and without	
671	adjusting for municipality.....	39
672		
673		

674 **Supplementary method.** Quantile normalization of the 70 health traits used in the mediation
675 analysis.

676 We used *normalize2Reference* function in the *caret* R package version 6.0-34 (the function is
677 available in the later versions here: <https://github.com/topepo/caret/tree/master/deprecated>).

678 Each trait was measured partially with an older method and partially with a newer, most recent
679 method. The observations from the newer method (method = 1) were set as the reference to
680 derive the quantiles of the trait distribution on which to standardize the observations from the
681 older method (method = 0). We then replaced the observation from the older method with the
682 standardized ones and included together with the values from the newer method.

683 **Notation:**

- 684 - **trait:** the quantitative variable to which quantile normalization was applied;
- 685 - **method:** the newer method for measuring the trait (1); the older method (0);
- 686 - **df:** dataframe; the data in which the trait of interest is available

687

```
688 library(caret)
689 quantile_norm <- normalize2Reference(
690   data = df[df$method == 0, "trait"],
691   refData = quantile(
692     df[df$method == 1, "trait"],
693     probs = seq(0, 1, length.out = length(df[df$method == 0,
694 "trait"])),
695     na.rm = TRUE,
696     names = TRUE,
697     type = 7,
698     digits = 7),
699   ties = TRUE)
```

700

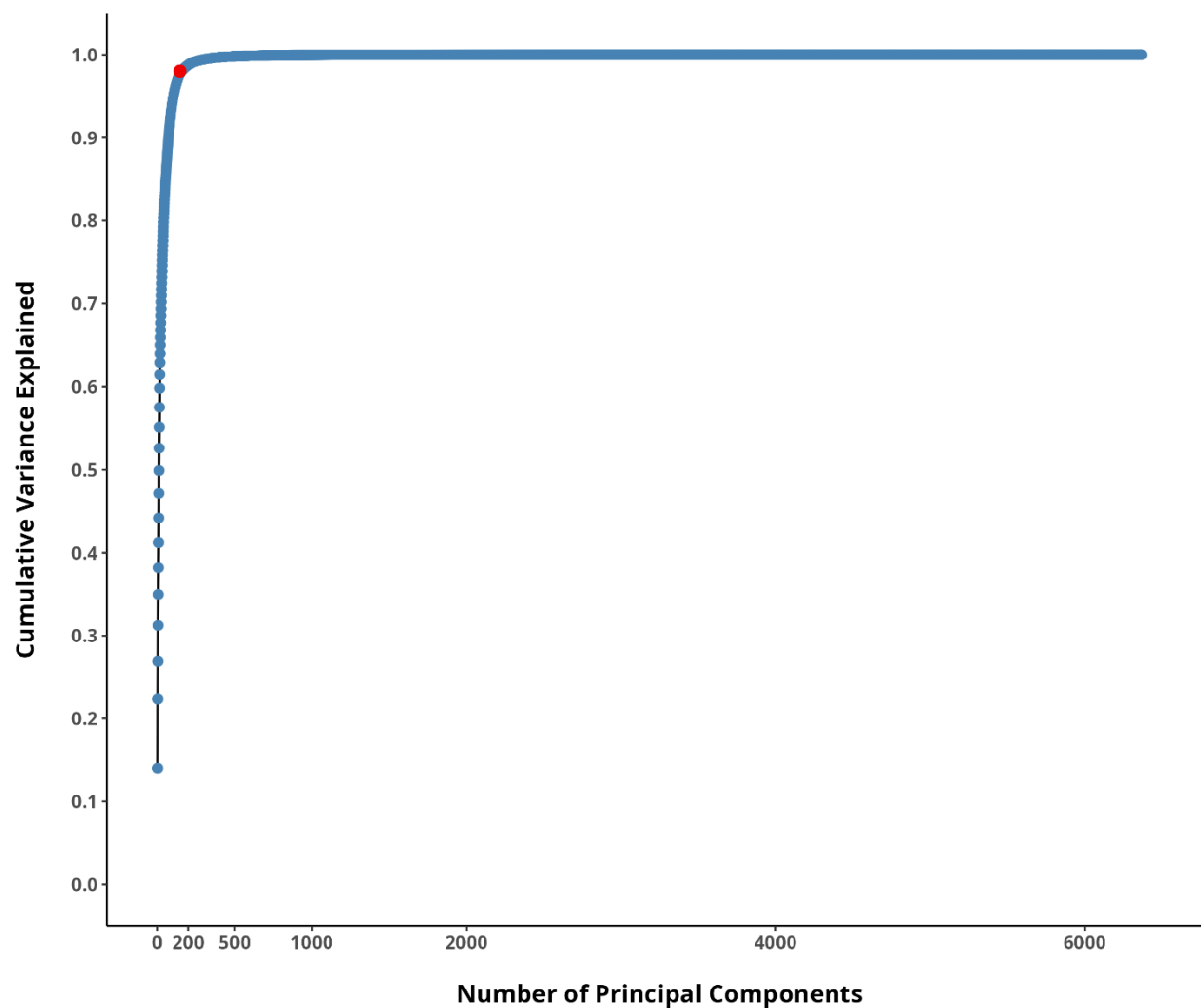
701 # Creating a new variable for the quantile normalized trait

```
702 df$trait_std <- df$trait
```

703 # Replacing non-transformed values with the quantile-normalized values

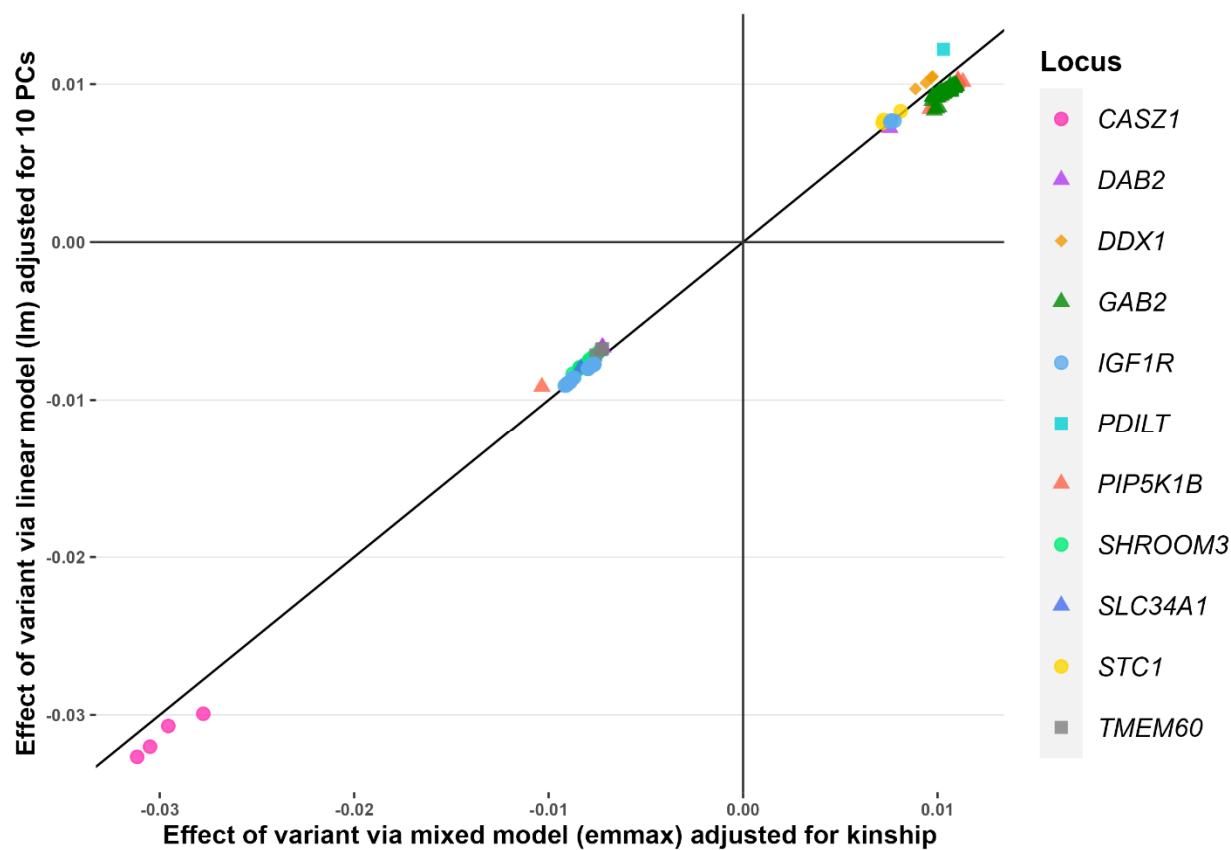
```
704 df[df$method == 0, "trait_std"] <- quantile_norm
```

705 **Supplementary Figure S1.** Cumulative variance of 6337 variants over 147 loci explained by
706 principal components in the CHRIS study. Adjusting for 147 independent tests covers 98% of
707 the cumulative variance (red dot).



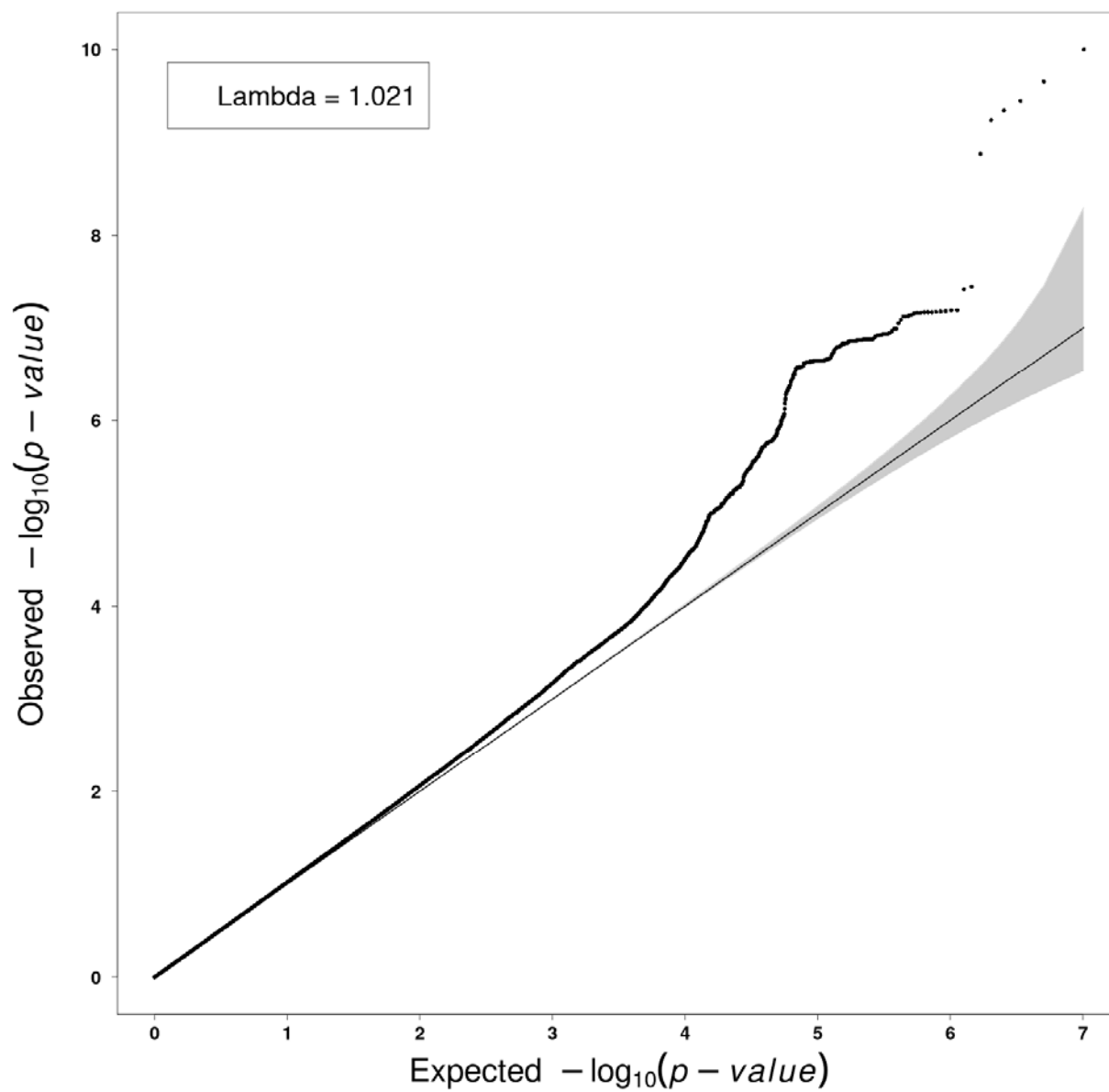
708

709 **Supplementary Figure S2.** Fitting PC-adjusted simple linear models came for practical reasons
710 after observing substantial equivalence with kinship-adjusted linear mixed models obtained with
711 EMMAX.



712

713 **Supplementary Figure S3.** Quantile-quantile (QQ) plot of the P-values from the GWAS of
714 $\ln(\text{eGFR}_{\text{crea}})$ in the CHRIS study.



715

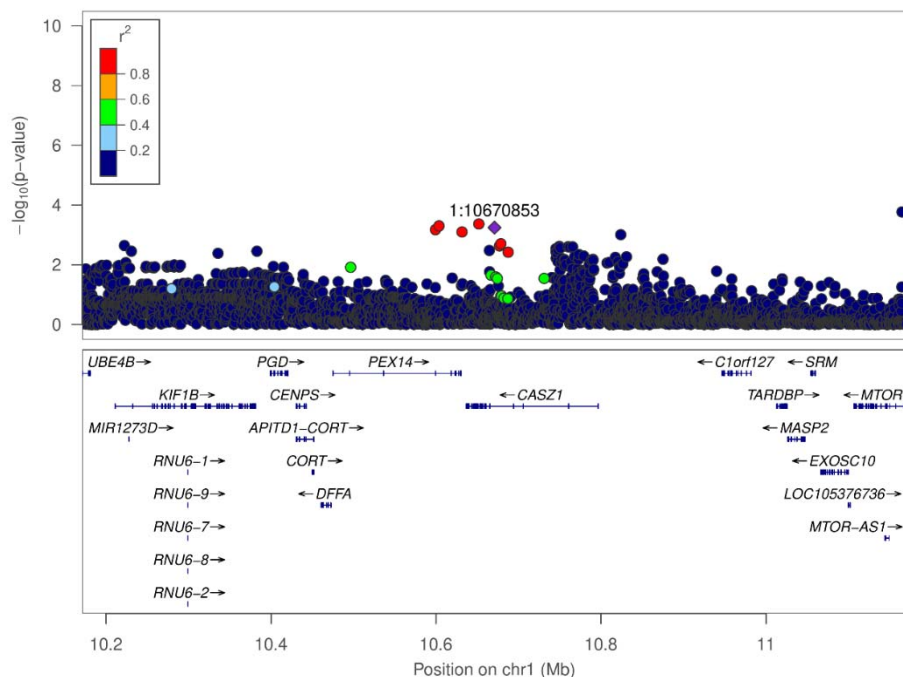
716 **Supplementary Figure S4.** Regional association plots for the 11 replicated loci. Highlighted in
717 purple is the most associated SNP in the CKDGen GWAS meta-analysis. All SNP positions are
718 referred to the NCBI Build 38. Plots were generated with LocusZoom version 1.4 (Pruim RJ, et
719 al., Bioinformatics, 2010. 26(18): 2336-7).

720 * indicates cases where not the CKDGen lead SNP but a proxy of it was replicated in the CHRIS
721 study.

722

723

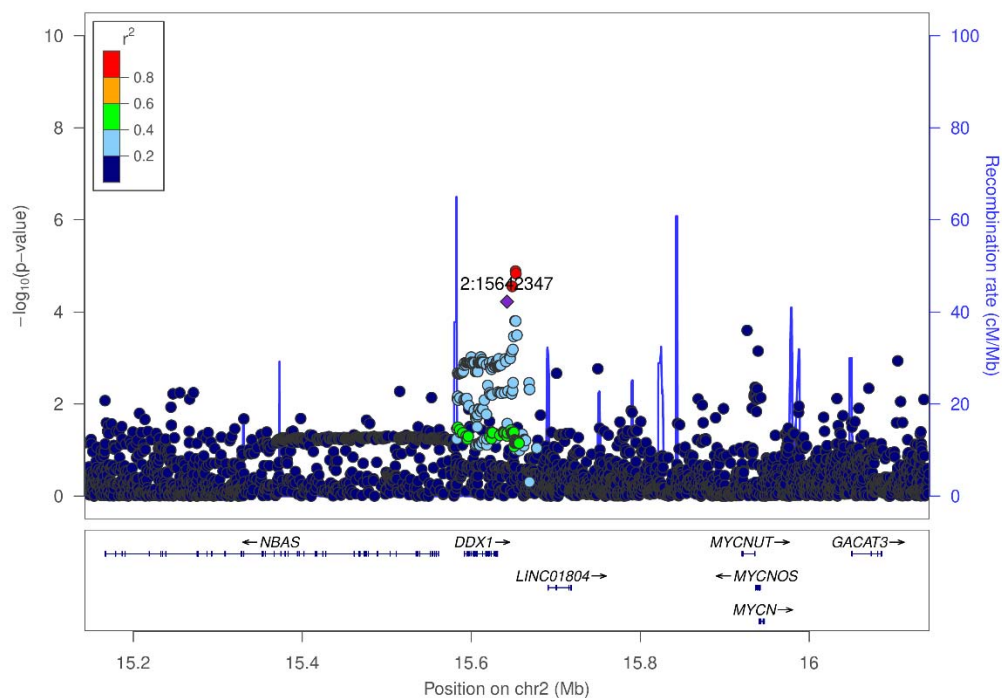
Top CHRIS SNP: rs74748843 (1:10,670,853) at **CASZ1**



724

725

Top CHRIS SNP: rs807624 (2:15,642,347) at **DDX1**

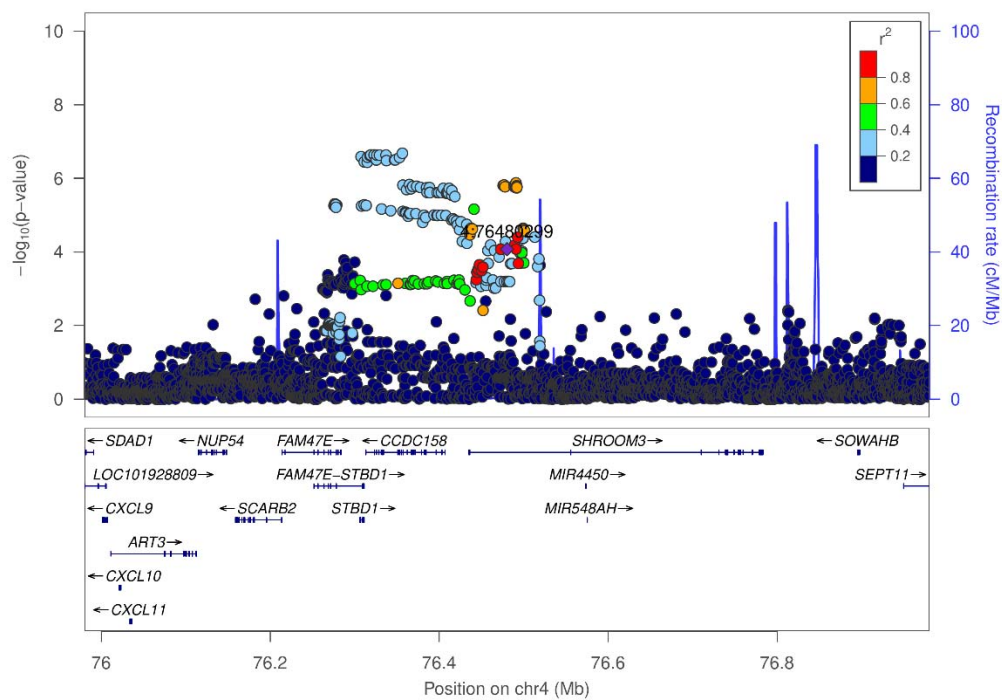


726

727

728

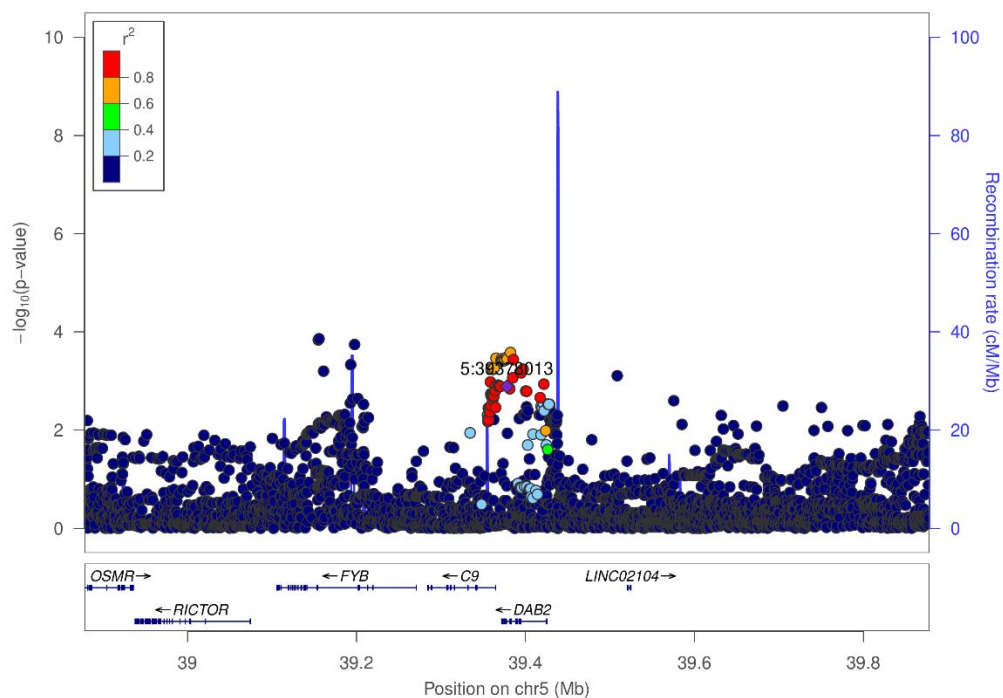
Top CHRIS SNP: rs28817415 (4:76,480,299) at **SHROOM3**



729

730

Top CHRIS SNP: rs1362800* (5:39,378,013) at **DAB2***

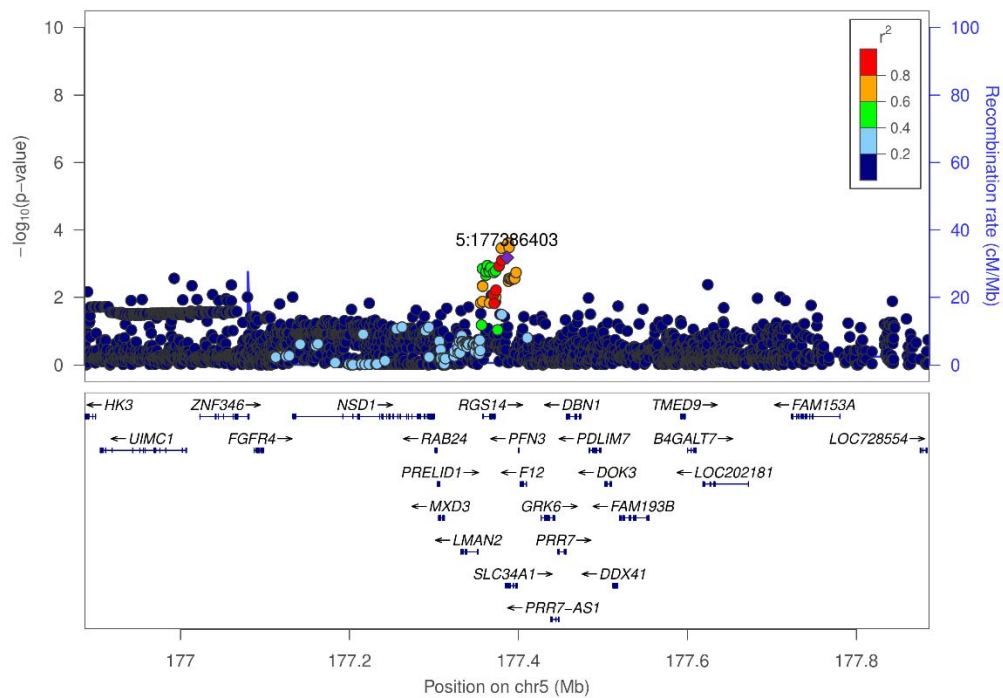


731

732

733

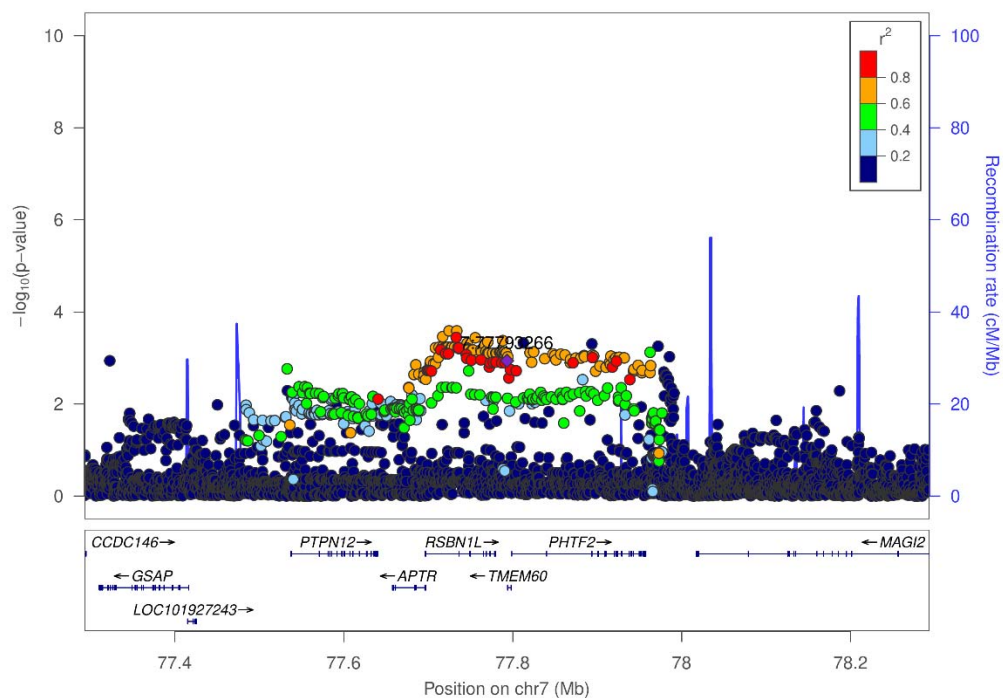
Top CHRIS SNP: rs3812036 (5:177,386,403) at **SLC34A1**



734

735

Top CHRIS SNP: rs6973656* (7:77,793,266) at **TMEM60***

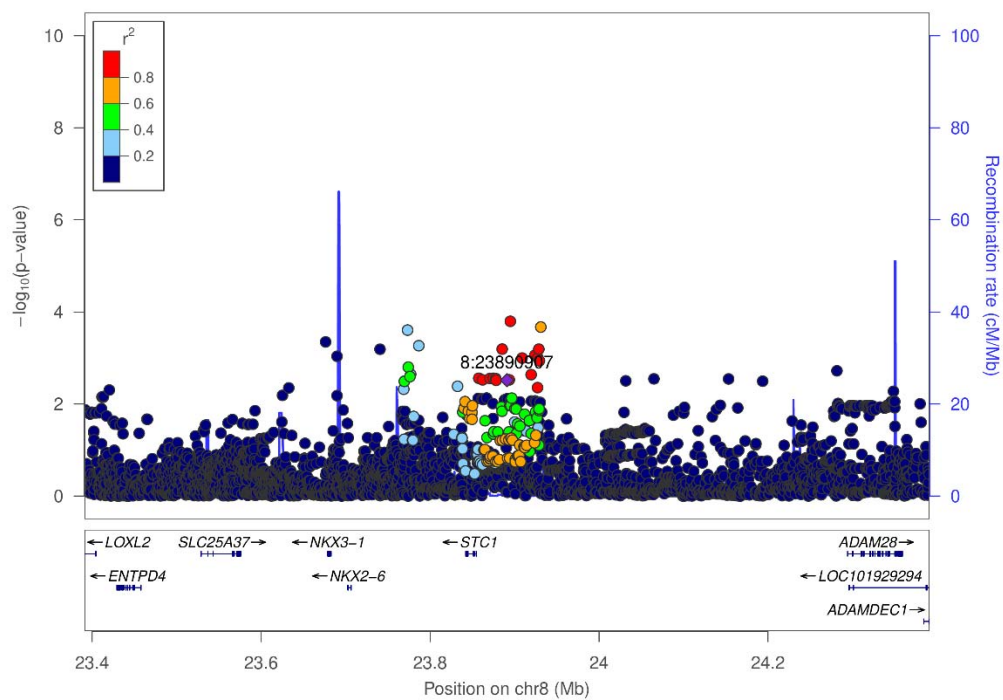


736

737

738

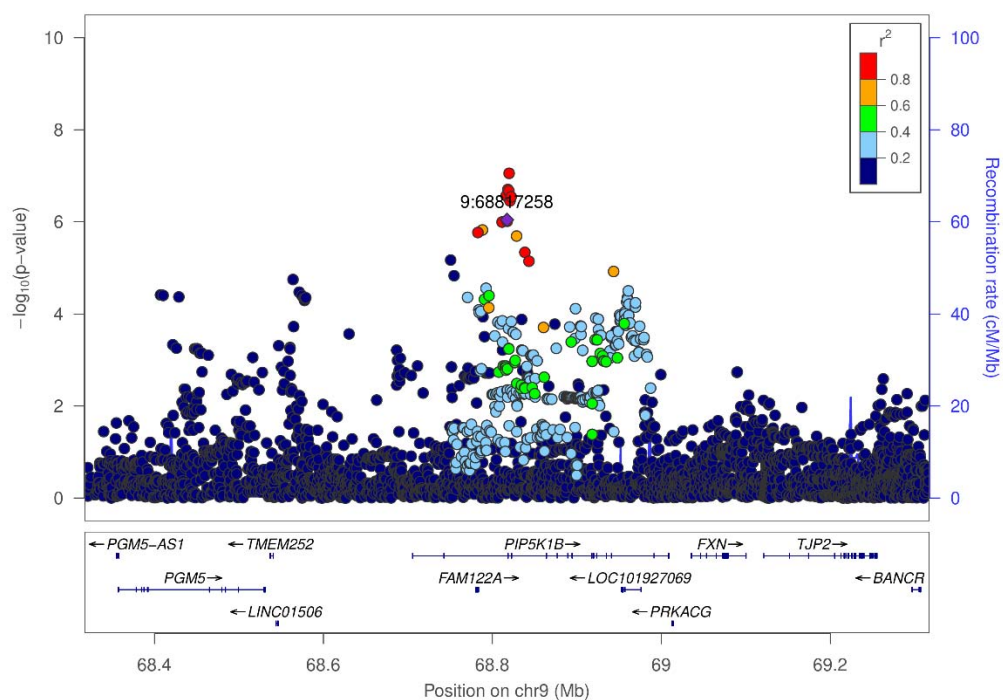
Top CHRIS SNP: rs34861762* (8:23,890,907) at **STC1***



739

740

Top CHRIS SNP: rs2039424 (9:68,817,258) at **PIP5K1B**

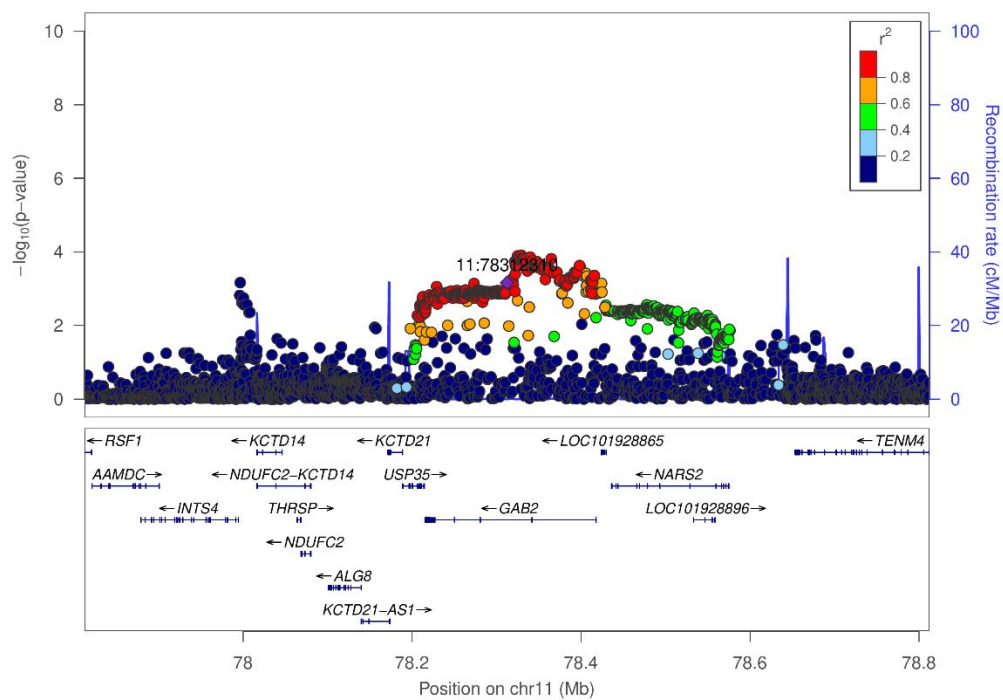


741

742

743

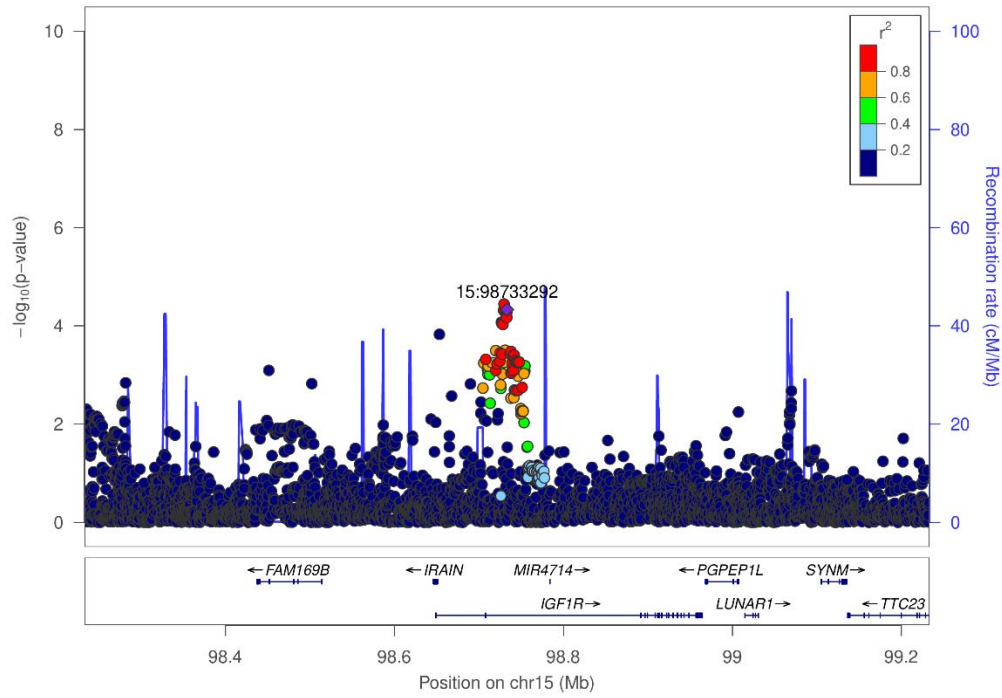
Top CHRIS SNP: rs11237450* (11:78,312,310) at **GAB2***



744

745

Top CHRIS SNP: rs59646751 (15:98,733,292) at **IGF1R**

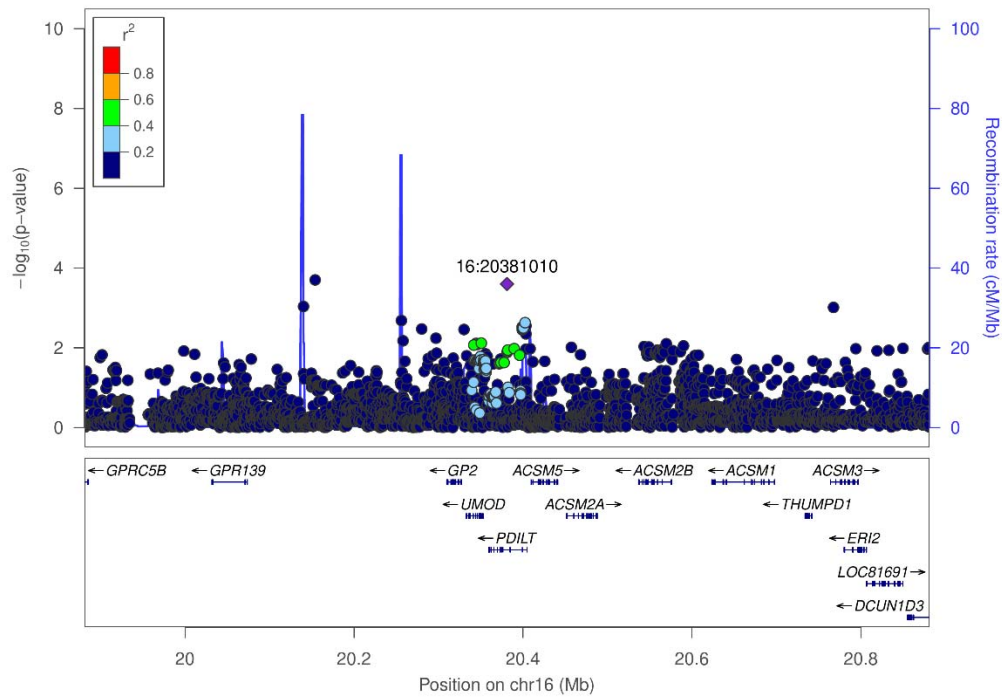


746

747

748

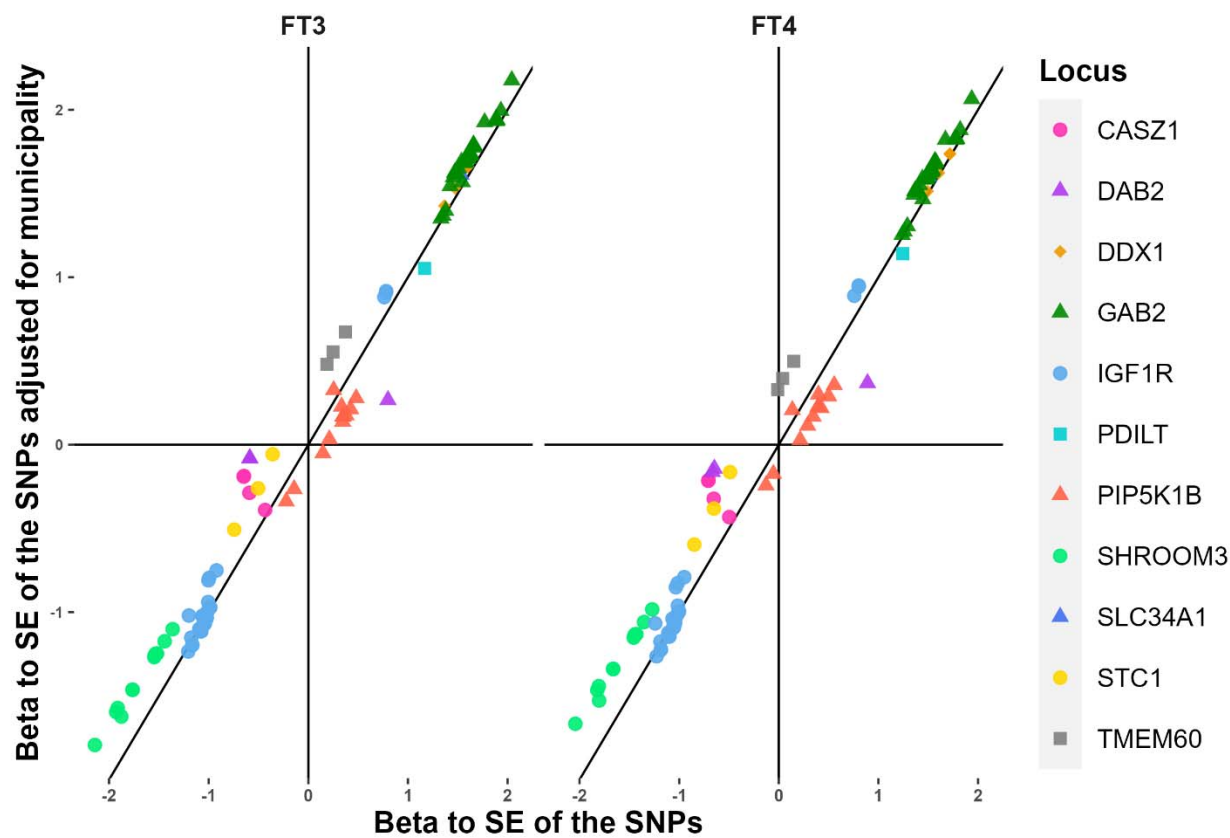
Top CHRIS SNP: rs77924615 (16:20381010) at **PDILT**



749

750 **Supplementary Figure S5.** Comparison of effect size and standard error ratio for the variants
751 in the model regressing $\ln(\text{eGFR}_{\text{crea}})$ on age, sex, FT3 (or FT4), genetic variants with and
752 without adjusting for municipality.

753



754