

1 **Enhanced Peer-Group strategies to support prevention of Mother-to-Child HIV**  
2 **transmission leads to increased retention in care in Uganda: A Randomized controlled**  
3 **trial**

4 §Alexander Amone<sup>1</sup>, §Grace Gabagaya<sup>1</sup>, Priscilla Wavamunno<sup>1</sup>, Gordon Rukundo<sup>1</sup>, Joyce  
5 Namale-Matovu<sup>1</sup>, Samuel S. Malamba<sup>2</sup>, Irene Lubega<sup>1</sup>, Jaco Homsy<sup>3</sup>, Rachel King<sup>3</sup>,  
6 Clemensia Nakabiito<sup>1</sup>, Zikulah Namukwaya<sup>1</sup>, Mary Glenn Fowler<sup>1,4</sup> and Philippa Musoke<sup>1,5</sup>

7  
8 <sup>1</sup> *Makerere University-Johns Hopkins University Research Collaboration, Kampala, Uganda*

9 <sup>2</sup> *Uganda Virus Research Institute, Entebbe, Uganda*

10 <sup>3</sup> *Institute for Global Health Sciences, University of California, San Francisco, CA, USA*

11 <sup>4</sup> *Department of Pathology, Johns Hopkins University School of Medicine, Baltimore, MD,*

12 *USA*

13 <sup>5</sup> *Department of Pediatrics and Child Health, Makerere University College of Health Sciences,*

14 *Kampala, Uganda*

15 §Corresponding author: Alexander Amone, Makerere University - Johns Hopkins University

16 Research Collaboration, P.O. Box 23491, Kampala, Uganda; Tel/Fax: +256 200 404100 /

17 +256 414 541044.

18 Email: [aamone@mujhu.org](mailto:aamone@mujhu.org)

19

20 §These authors have contributed equally to the work.

21 Trial registration: [ClinicalTrials.gov](https://clinicaltrials.gov)

22 Key words: HIV; Adherence; Peer support; Option B+; antiretroviral therapy; Retention in

23 care

24 Word count:

NOTE: This preprint reports new research that has not been certified by peer review and should not be used to guide clinical practice.

25 Abstract: 352

26 Main text: 3571/3500

## 27 **Abstract**

28 **Introduction:** Despite scale up of Option B+, long-term retention of women in HIV care  
29 during pregnancy and the postpartum period remains an important challenge. We compared  
30 adherence to clinic appointments and antiretroviral therapy (ART) at different follow-up time  
31 points between enrolment and 24 months postpartum among pregnant women living with HIV  
32 and initiating Option B+ randomized to a peer group support, community-based drug  
33 distribution and income-generating intervention called “Friends for Life Circles” (FLCs)  
34 versus the standard of care (SOC).

35 **Methods:** Between 16 May 2016 and 12 September 2017, 540 ART-naïve pregnant women  
36 living with HIV at urban and rural health facilities in Uganda were enrolled in the study.  
37 Participants were randomized 1:1 to the FLC intervention or SOC and assessed for adherence  
38 to prevention of mother to child HIV transmission (PMTCT) clinic appointments at 6 weeks,  
39 12 and 24 months postpartum, self-reported adherence to ART at 6 weeks, 6 and 24 months  
40 postpartum validated by plasma HIV-1 RNA viral load (VL) measured at the same time points,  
41 and HIV status and HIV-free survival of infants at 18 months postpartum. We used Log-rank  
42 and Chi-Square p-values to test the equality of Kaplan-Meier survival probabilities and hazard  
43 rates (HR) for failure to retain in care for any reason by study arm.

44 **Results:** There was no significant difference in adherence to PMTCT clinic visits or to ART  
45 or in median viral loads between FLC and SOC arms at any follow-up time points. Retention  
46 in care through the end of study was high in both arms but significantly higher among  
47 participants randomized to FLC (86.7%) compared to SOC (79.3%),  $p=0.022$ . The adjusted  
48 HR of visit dropout was 2.5 times greater among participants randomized to SOC compared to  
49 FLC (aHR=2.498, 95% CI: 1.417 – 4.406,  $p=0.002$ ). Median VL remained < 400 copies/ml in  
50 both arms at 6 weeks, 6 and 24 months postpartum.

51 **Conclusions:** Our findings suggest that programmatic interventions that provide group  
52 support, community based ART distribution and income-generation activities may contribute  
53 to retention in PMTCT care, HIV-free survival of children born to women living with HIV,  
54 and to the elimination of mother to child HIV transmission (MTCT).

## 55 INTRODUCTION

56 Prevention of mother-to-child HIV transmission (PMTCT) remains a pillar in the global fight  
57 against HIV/AIDS. “Option B+” for PMTCT recommends lifelong triple ART for all pregnant  
58 and breastfeeding women living with HIV regardless of immune status. Option B+ also  
59 recommends protecting these women’s newborns with daily Nevirapine or Zidovudine from  
60 birth through 4-6 weeks of age, regardless of the infant feeding method (1).

61 In April 2012, the World Health Organisation (WHO) recommended Option B+ as the PMTCT  
62 treatment option which would provide the highest clinical benefits and programmatic  
63 advantages for both the care and treatment of mothers living with HIV and perinatal HIV  
64 prevention (1). Compared to previous proven PMTCT regimens, Option B+ was easier to  
65 deliver and more effective in reducing mother-to-child HIV transmission (MTCT) (2-4). Based  
66 on these recommendations, a number of low-income countries including Uganda adopted  
67 Option B+ as standard of care with the aim to eliminate MTCT of HIV.

68 Despite this progress and the proven efficacy of Option B+ (5), poor adherence to lifelong ART  
69 and low retention in care of pregnant and postpartum women living with HIV has remained an  
70 important programmatic challenge to the implementation of Option B+ especially in low  
71 resource settings (6-11). A review of studies done between 2000-2020 identified barriers to  
72 taking ART among pregnant women that included financial constraints limiting access to food  
73 and transport, and side effects of the therapy (12). Additionally, high dropout rates from  
74 PMTCT care have been documented after delivery and at two years of follow-up among  
75 mothers living with HIV (13-15), suggesting that service integration and linking mothers to  
76 routine ART services were important determinants of retention in care. These findings  
77 highlighted the critical need for innovative interventions to promote retention in HIV care and  
78 adherence to ART for the successful implementation of option B+.

79 In Uganda, adherence counseling by clinic-based midwives trained in counseling and the use  
80 of “buddies” as well as family involvement are recommended by the Ministry of Health (MOH)  
81 to support maternal ART adherence and retention in care (16). However, there is limited focus  
82 on the use of community-based support interventions. Studies in other resource-limited settings  
83 have shown better PMTCT intervention adherence with the use of community-based  
84 counseling, support groups and home visits (17-20). Additionally, studies in Kenya have  
85 demonstrated that peer support from community-based mentor mothers to improve ART  
86 adherence and retention in care was well accepted among women living with HIV (21, 22).

87 Given these challenges, we conducted a randomized controlled trial (RCT) to compare  
88 adherence to PMTCT clinic appointments and ART at different time points within 24 months  
89 of postpartum follow-up among women started on ART while pregnant and randomized to an  
90 enhanced peer group support intervention including community-based drug distribution and  
91 income-generating activities called “Friends for Life Circles” (FLCs) versus the MOH standard  
92 of care (SOC).

93

## 94 **METHODS**

95 We conducted an open-label RCT between 16 May 2016 and May 2020 at Mulago National  
96 Referral Hospital and two health centers (HCs III & IV) in Kampala, the capital city of Uganda;  
97 and at rural Mityana District Hospital (74 kms northwest of Kampala) as well as five HCs III  
98 and IV in Mityana district. Participants were recruited from 16 May 2016 to 12 September  
99 2017 and follow up was completed on 26 May 2020. The selected HCs represent different  
100 levels of maternal health care offered in Uganda. The study was implemented and coordinated  
101 by the Makerere University–Johns Hopkins University (MUJHU) Research Collaboration  
102 based at Mulago Hospital in Kampala.

### 103 **Enrollment and randomization procedures**

104 We enrolled pregnant women living with HIV initiated on PMTCT Option B+ who were:  $\geq 18$   
105 years old, confirmed pregnant by urine dipstick, confirmed HIV-positive by rapid HIV testing  
106 as per National PMTCT Guidelines, being ART-naïve and beginning Option B+ ART within  
107 30 days of enrolment into the study, residing within 20 km of the study clinic, not planning to  
108 move out of the clinic catchment area within 2 years, agreeing to be home visited, and providing  
109 written informed consent.

110 Pregnant women testing HIV-positive through the routine National PMTCT Program and  
111 starting Option B+ were referred to study counselors by the clinic PMTCT counselors for  
112 prescreening and scheduled to return to the study clinics for consent procedures within one  
113 month of starting once daily Option B+ ART. HIV rapid testing followed the national and  
114 WHO algorithms (23) using three sequential antibody rapid tests: Abbott Determine Rapid HIV  
115 1 Test, Abbott Laboratories, USA; Stat Pak Rapid HIV-1 Test, Chembio Diagnostic Systems,  
116 USA; and Unigold HIV Rapid Test, Trinity Biotech, Ireland.

117 Eligible and consenting women were then randomized 1:1 irrespective of the study sites to  
118 SOC control arm or FLC intervention arm. The randomization list was computer-generated by  
119 the data manager based at MUJHU using random-sized block groups that included consecutive  
120 intervention numbers with corresponding random intervention assignments. Each pregnant  
121 woman was assigned unique participant identification number and authors had no access to  
122 information that could identify individual participants during or after data collection

123 After randomization, participants were assessed for socioeconomic status, ARV drug  
124 adherence and stigma. A questionnaire addressing participants' experiences with  
125 stigmatization and discrimination at family and community levels was administered at baseline,  
126 12 months post-enrolment and at end of study. An additional needs assessment questionnaire

127 was administered to participants enrolled in the FLC arm at enrolment, 1-year post enrolment  
128 and every 6 months thereafter until the end of study. This was to assess individuals'  
129 achievements and to document challenges related to group activities and participation in  
130 income-generating activities (IGAs) and its benefits, skills acquired and training needs.

### 131 **FLC Intervention and SOC controls**

132 The FLC intervention (hereafter 'FLC') included community-based enhanced peer group  
133 support, IGAs and community-based drug distribution. Participants in the FLC arm formed  
134 dynamic peer support groups based on women's home addresses documented by Geographical  
135 Positioning System (GPS). Groups consisted of 8-10 participants who attended monthly  
136 meetings in their communities. Sustainable livelihood study assistants and study counselors  
137 participated in and documented FLC group activities. Each FLC group was supported by one  
138 peer mother who had similar social background and/or life experiences as FLC participants.

139 During monthly FLC group meetings, study counselors distributed ART and Cotrimoxazole  
140 and offered psychosocial support on follow-up clinic visits and drug adherence through  
141 individual and group counseling while emphasizing peer support among participants.

142 FLC groups also offered skills building in a variety of IGAs such as goat rearing, bakery, crafts  
143 making, liquid soap making, book binding and charcoal briquette making. These were chosen  
144 by the participants and implemented as a group or as individuals with the guidance of a study  
145 IGA Advisor. All FLC groups were linked to local government bodies for sustainability,  
146 registration and access to Community Development Driven grants funded by the District Local  
147 Government to support the implementation of livelihood projects for community-based groups.

148 SOC arm participants received counseling from clinic PMTCT counselors and collected their  
149 drug refills on an individual basis from the PMTCT clinics where they were enrolled as per



150 MOH guidelines (16). SOC arm participants participated voluntarily in family support groups  
151 whenever available at their respective health facility as recommended by the MOH (16).

## 152 **Follow-up procedures**

153 At each study site, all study participants were followed at a dedicated clinic for all scheduled  
154 and unscheduled visits and were given transport reimbursement for scheduled study visits.  
155 Scheduled visits included a first visit within the initial four weeks post-enrolment, then monthly  
156 thereafter until delivery, at delivery, at 6 and 14 weeks postpartum, and quarterly thereafter  
157 from 6 months through 24 months postpartum (end of follow-up). At each of these visits, FLC  
158 participants were counseled by study counselors on drug adherence and family planning while  
159 SOC participants were counseled by PMTCT counselors. Study counselors administered  
160 questionnaires on ART adherence, stigma, and socio-economic status to all participants at each  
161 scheduled clinic visit.

162 Participants were terminated from the study if they missed four or more consecutive scheduled  
163 study visits, withdrew consent, relocated outside study area, or died.

164

## 165 **Infant procedures**

166 All infants born to study participants were enrolled in the study and received daily Nevirapine  
167 syrup from birth up to 6 weeks of age regardless of the infant feeding method. Infants were  
168 tested routinely at 6 weeks of age for HIV by DNA PCR and at 18 months of age by rapid HIV  
169 antibody test as part of the National Early Infant HIV Diagnosis Program (23).

## 170 **Outcomes and measures**

171 The primary outcomes of interest included adherence to PMTCT clinic appointments at 6  
172 weeks, 12 and 24 months postpartum and adherence to Option B+ ART at 6 weeks, and 6 and  
173 24 months postpartum.

174 Complete adherence to visits was defined as having attended the 4 scheduled quarterly visits  
175 at the end of each of the first and second years of postpartum follow-up as defined by the MOH  
176 (16). Scheduled visits were determined to have been adhered to on the basis of a completed  
177 visit within a 3-week window on either side of the scheduled visit date.

178 Retention in care was defined as the proportion of participants who were not terminated from  
179 the study prior to the end of follow-up (24 months postpartum). Causes for termination  
180 included participant relocation out of the study area, withdrawal from the study, loss to  
181 follow-up, miscarriage, referral outside the study facility, and death. The study defined loss  
182 to follow-up as not attending 3 consecutive scheduled study visits. Retention in care was  
183 calculated as 1 minus the proportion of women terminated for any such reason before the end  
184 of follow-up.

185 As a second primary outcome, we compared maternal ART adherence using self-report at 6  
186 weeks and 6 and 24 months postpartum among all study participants. We validated self-  
187 reports by comparing VL measurements for all participants at 6 weeks, 6 and 24 months  
188 postpartum.

189 All participants were asked to self-assess the number of complete ART doses they missed in  
190 the past three days. Self-reported ART adherence was then calculated as 1 minus the  
191 proportion of self-reported doses missed in the past 3 days.

192 Laboratory measures of ARV adherence were used to validate self-reports using viral  
193 suppression below 400 copies/mL. At the time of writing the study protocol, this limit was  
194 considered as viral suppression by Uganda MOH (16). VL measurements were performed at  
195 the Infectious Diseases Institute (IDI) Core Laboratory, Kampala, Uganda, a central laboratory  
196 certified by the American College of Pathologists. Nucleic acids were extracted and tested for  
197 HIV-1 RNA using the COBAS® AmpliPrep/ COBAS® TaqMan® HIV-1 Test procedure

198 following the manufacturer's instructions (Roche Molecular Systems, Inc., Branchburg, NJ,  
199 08876 USA) (25).

200 Virological failure was defined as median viral load persistently above 1000 copies/ml for  
201 two consecutive viral load measurements within a three-month interval after at least 6 months  
202 of initiating ART. The final drug adherence variable at each time point was dichotomized as  
203 'not adhering' if viral load was  $\geq 400$  copies/ml irrespective of the level of self-reported  
204 adherence, or as 'adhering' if self-reported adherence in the last 3 days was  $\geq 95\%$  and viral  
205 load was  $< 400$  copies /ml.

206 Lastly, the HIV status and the HIV-free survival of children born to study participants were  
207 assessed at their 6 week and 18-month postpartum visits as per the National PMTCT program  
208 recommendation and practice.

209

## 210 **Statistical Analyses**

211 We estimated a target sample size of at least 270 women living with HIV needed to be enrolled  
212 in each of the study arms to provide 90% power at 5% significance level to detect a difference  
213 of 15% or more in adherence to visits and drugs or in virological suppression between the  
214 intervention and control arms. Follow-up time was calculated in person-years, with each  
215 participant contributing time in years from enrolment to censoring at the date when a participant  
216 was lost to follow-up, died or reached the end of study.

217 We compared participants' baseline characteristics in the FLC and SOC arms by testing for  
218 differences in proportions using Fisher's exact p-values. Maternal adherence to at least 4  
219 scheduled PMTCT clinic appointments at the end of each year of postpartum follow-up,  
220 adherence to ART and retention in care, as well as the HIV status of children were also  
221 summarized using proportions and chi-square p-values. We used the Wilcoxon-Breslow-

222 Gehan test to assess the difference in HIV-free survival of participants' children between the  
223 FLC and SOC arms. Log rank and Chi-Square p-values were used to test the equality of  
224 Kaplan-Meier survival probabilities and hazard rates for failure to retain in care for any reason  
225 by study arm. Cox Proportional Hazard regression model adjusted for unbalanced baseline  
226 variables was used to estimate the hazard rate ratio of failing to retain participants in care with  
227 95% confidence intervals between the FLC and the SOC arms.

### 228 **Ethical and regulatory considerations**

229 The study was approved by Uganda's National Council of Science and Technology (UNCST),  
230 the Joint Clinical Research Centre (JCRC) Institutional Review Board (IRB), as well as the  
231 IRBs of Johns Hopkins University (JHU) and the University of California San Francisco  
232 (UCSF). Written informed consent was obtained from all study participants by study  
233 counselors in the presence of an impartial witness before enrolment in the study.

## 234 **RESULTS**

235 Between May 2016 and September 2017, a total 1192 HIV-positive pregnant women were  
236 assessed for study eligibility. Of these, 45 % (540/1192) were found eligible and randomized  
237 1:1 to either the intervention or the control arm until each arm accrued 270 participants across  
238 all study sites (Fig 1).

### 239 **Figure 1 – Trial Profile**

240

### 241 **Baseline demographic characteristics**

242 Table 1 provides the number of participants, clinic visits made, and person-years of follow-up  
243 by baseline socio-demographic characteristics of the study population stratified by study arm.  
244 These results show that despite randomization, there were significant differences between the

245 two study arms in participants' educational level, gravidity, HIV status disclosure to partner  
246 and monthly income.

247 **Table 1. Baseline socio-demographic characteristics of study population (N=540)**

248

249 **Adherence to PMTCT clinic appointments**

250 There was no statistically significant difference between the intervention and control arms in  
251 the number of women who started or completed their postpartum visits at 6 weeks postpartum  
252 or in the first or second year of follow-up (Table 2).

253 **Table 2. Adherence to PMTCT clinic appointments**

254

255 **Retention in care**

256 Overall, retention in care was high across both study arms with 83.0% of all participants  
257 remaining in care at the end of follow-up (Table 3). Significantly, more women were retained  
258 in care at the end of follow-up in the FLC arm (86.7%) compared to the SOC arm (79.3%,  $p=$   
259  $0.0221$ ). Also, more women were terminated before the end of follow-up due to relocation in  
260 the SOC arm ( $n=27$ , 10.0%) compared to the FLC arm ( $n=12$ , 4.4%).

261 **Table 3. Retention in care by study arm at the end of study**

262

263 There was a significant difference between the Kaplan-Meier survival functions for failure to  
264 remain in care until the end of study (24 months postpartum visit) between the control and  
265 intervention arms (Wilcoxon-Breslow test for equality of survivor functions  $\text{Chi}^2(1) = 11.94$ ,  
266  $p\text{-value} = 0.0005$ ) (Figure 2). Overall, the estimated proportion of participants retained in care  
267 was high, with 87.0% of all participants remaining in care until the end of the study.

268 **Figure 2. Kaplan-Meier survival curves for retention in care up to 24 months**  
269 **postpartum.**

270

271 **Adherence to ART**

272 Table 4 shows that participants self-reported optimal adherence to taking >95% of their ART  
273 medication in the last 3 days at their 6 weeks, 6 and 24 months postpartum visits. There was  
274 no statistically significant difference in optimal adherence to ART between the arms. The  
275 median viral loads of participants at each of these time points were <100 copies/ml with no  
276 statistically significant differences between the two arms.

277 **Table 4. Adherence to Option B+ ART by study arm**

278

279

280 **Predictors of retention in care**

281 Cox-proportional hazard regression models were used to assess the effect measure of  
282 intervention on being retained in care. All baseline variables with  $p < 0.1$  at the univariate level  
283 were included in the multivariate model and using a backward elimination method, only those  
284 variables with  $p < 0.05$  were kept in the final model.

285

286 **Table 5: Multivariate Cox proportional hazard model for failure to remain in care**

287

288 Table 5 shows that the rate of dropout from care was 2.5 times greater among participants  
289 randomized to the SOC arm versus the FLC arm (aHR=2.498, 95% CI: 1.417 – 4.406,  
290  $p=0.002$ ). Participants enrolled from rural health facilities and those aged 15-24 years were  
291 also significantly less likely to be retained in care compared to their urban ( $p=0.021$ ) or their

292 older counterparts ( $p=0.035$ ) respectively. Educational level, gravidity, disclosure status and  
293 income were not significant predictors of retention in care and were not included for analysis  
294 in the final model.

### 295 **HIV-free survival of children**

296 Of 492 women with a visit at 18 months postpartum, 8 of their 431 (1.9%) tested infants tested  
297 positive for HIV. Most (7/8) of these infants had tested positive to HIV by the 6th week  
298 postpartum visit. The proportion of HIV-positive children born to mothers enrolled in the FLC  
299 arm (1.4%) was not significantly different from that observed in the SOC arm (2.4%)  
300 ( $p=0.472$ ).

301 By the 18-month postpartum visit, the HIV-free survival of children born to mothers in the  
302 FLC arm was 93.8% [95% CI: 89.9 – 96.2] compared to 83.0% [95% CI: 75.9 – 87.7] among  
303 children born to mothers in the SOC arm. The difference between the two arms was significant  
304 ( $p=0.0031$ ).

305

### 306 **Discussion**

307 In this RCT, we found that there was no statistical difference through 24 months of postpartum  
308 follow-up in adherence to PMTCT clinic visits or ART among pregnant and postpartum women  
309 started on Option B+ ART during pregnancy and randomized to the FLC intervention or the  
310 MOH SOC services. We however found that women in the FLC arm were statistically  
311 significantly more likely to have remained in PMTCT care through 2 years postpartum  
312 compared to the SOC arm.

313 This is comparable to the study by Masereka et al, which found that 87.9% of women were  
314 retained in care after being initiated on Option B+ in Uganda (26). Our data is also consistent

315 with a study from Malawi which found that at 24 months after initiation of Option B+ ART,  
316 retention in the peer group models was 80% and 83% in the facility-based and community-  
317 based arms respectively, compared with 60% in the standard of care arm (17). This may explain  
318 the absence of a statistically significant difference between the intervention and control arm  
319 when it came to adherence to PMTCT clinic appointments.

320 In both arms of this RCT, 87% or more participants self-reported optimal adherence to taking  
321 their ART at 6 weeks, 6- and 24-months postpartum and the median viral load levels of  
322 participants were under 100 copies/ml at each of these time points with no significant difference  
323 between the FLC and SOC arms. We did not find fluctuations in longitudinal adherence during  
324 the postpartum period.

325 A systematic review by Wubneh et al in Ethiopia found that the pooled estimate of good  
326 adherence to Option B+ ART among 1852 pregnant and lactating women was 84% (27), which  
327 is comparable to our finding. Our finding is also consistent with a cohort study done in Malawi  
328 that found 90%-100% adherence to ART among women on Option B+ observed from 4 to 21  
329 months postpartum (28). That study used pharmacy records to measure adherence as opposed  
330 to self-reports and VL validation which may limit comparisons with our study.

331 Although we found high self-reported adherence to ART that corroborated with low median  
332 viral loads, we did not find significant differences in these outcomes between the FLC and  
333 SOC arms at any follow-up time points. The close correlation between these outcomes echo  
334 the findings of a study among 452 women on PMTCT care and treatment in South Africa where  
335 it was found that a raised viral load was consistently associated with lower median adherence  
336 scores (29). However, the lack of a more distinct outcome from the FLC intervention may result  
337 from a study effect or still a ‘contamination’ between the FLC and SOC arms among both study  
338 staff and participants in the study facilities (30).



339 Few children were found infected with HIV postnatally and most of them were likely infected  
340 *in utero* or at birth given the timing of their positive test result. However, our finding that HIV-  
341 free survival of children born to mothers in the FLC arm was significantly higher than those in  
342 the SOC arm is noteworthy as it implies that more children died of non-HIV causes in the latter  
343 arm. Many factors may have accounted for this outcome but peer support, less variation in drug  
344 adherence and increased economic security (through IGAs) and thus the ability of mothers to  
345 better feed and care for their babies all are plausible explanations supported by an ample  
346 literature (31-37).

### 347 **Limitations**

348 Our study's main limitation is that our RCT was individually and not cluster randomized, which  
349 may have resulted in cross-contamination between the FLC and the SOC arms in the same  
350 clinics over the long-term follow-up period. Contamination could have also occurred when  
351 study staff attended to both FLC and SOC participants at the same clinic. Additionally, all  
352 study participants were given transport reimbursement for their study visits which may have  
353 positively influenced adherence to study visits. Lastly, the feasibility of our intervention would  
354 depend on its cost and cost-effectiveness, which we did not assess.

### 355 **Conclusions**

356 Our study found that the FLC intervention significantly increased retention in care and HIV-  
357 free survival of children of pregnant mothers living with HIV through 24 months postpartum.  
358 These findings are encouraging and suggest that programmatic interventions such as the FLC  
359 may contribute to the goal of eliminating MTCT of HIV in Uganda. We recommend scaling  
360 up peer group support, community drug distribution and income-generation intervention  
361 strategies in the context of PMTCT.

362

363

364 **Conflict of Interest Statement**

365 The authors declare that they have no conflict interests.

366 **Authors' contributions**

367 JNM, IL, RK, JH, CN, ZN, MN, MGF and PM contributed to the conception and design of the  
368 study. AA and GG wrote the original draft. GR contributed to data curation. SM carried out  
369 statistical analysis. AA, GG, JH, PW, SM, RK, SM, CN and PM reviewed and edited the  
370 manuscript. All authors approved the final manuscript.

371 **Acknowledgements**

372 We would like to thank the FLC for Option B+ study team who were vital in the collection of  
373 this data and the study participants without whom this study would not have been possible.

374 **Funding:**

375 The Friends for Life Circles for Option B+ study which was funded by NIH/Eunice Kennedy  
376 Shriver National Institute of Child Health and Human Development (NICHD) grant #  
377 IR01HD080476-01.

378

## 379 **References**

- 380 1. World Health Organization. (2012). Programmatic update: use of antiretroviral drugs for  
381 treating pregnant women and preventing HIV infection in infants: Executive Summary.  
382 World Health Organization. <https://apps.who.int/iris/handle/10665/70892>
- 383 2. World Health Organization. Consolidated guidelines on the use of antiretroviral drugs for  
384 treating and preventing HIV infection: recommendations for a public health approach.  
385 World Health Organization; 2016.
- 386 3. DiCarlo, A.L., Gachuhi, A.B., Mthethwa-Hleta, S., Shongwe, S., Hlophe, T., Peters, Z.J.,  
387 Zerbe, A., Myer, L., Langwenya, N., Okello, V. and Sahabo, R., 2019. Healthcare  
388 worker experiences with Option B+ for prevention of mother-to-child HIV transmission  
389 in eSwatini: findings from a two-year follow-up study. BMC health services  
390 research, 19(1), pp.1-12 PMID: 30940149 PMCID: PMC6444445
- 391 4. Muyunda, B., Musonda, P., Mee, P., Todd, J. and Michelo, C., 2020. Effectiveness of  
392 lifelong ART (Option B+) in the prevention of mother-to-child transmission of HIV  
393 programme in Zambia: observations based on routinely collected health data. Frontiers in  
394 Public Health, p.401. PMID: 32010656 PMCID: PMC6978742
- 395 5. Fowler MG, Qin M, Fiscus SA, Currier JS, Flynn PM, Chipato T, et al. Benefits and  
396 risks of antiretroviral therapy for perinatal HIV prevention. N Engl J Med. 2016  
397 Nov;375(18):1726–37. PMID: 27806243 PMCID: PMC5214343
- 398 6. Haas AD, Tenthani L, Msukwa MT, Tal K, Jahn A, Gadabu OJ, Spoerri A,  
399 Chimbwandira F, van Oosterhout JJ, Keiser O. Retention in care during the first 3 years  
400 of antiretroviral therapy for women in Malawi's option B+ programme: an observational  
401 cohort study. The Lancet HIV. 2016 Apr 1;3(4):e175-82.

- 402 7. Atanga PN, Ndetan HT, Fon PN, Meriki HD, Muffih TP, Achidi EA, Hoelscher M,  
403 Kroidl A. Using a composite adherence tool to assess ART response and risk factors of  
404 poor adherence in pregnant and breastfeeding HIV-positive Cameroonian women at 6  
405 and 12 months after initiating option B+. *BMC pregnancy and childbirth*. 2018  
406 Dec;18(1):1-0.
- 407 8. Gamell A, Luwanda LB, Kalinjuma AV, Samson L, Ntamatungiro AJ, Weisser M, et al.  
408 Prevention of mother-to-child transmission of HIV Option B+ cascade in rural Tanzania:  
409 The One Stop Clinic model. Charpentier C, editor. *PLoS One*. 2017 Jul;12(7):e0181096.  
410 PMID: 28704472 PMCID: PMC5507522
- 411 9. Ritchie LM, van Lettow M, Pham B, Straus SE, Hosseinipour MC, Rosenberg NE, Phiri  
412 S, Landes M, Cataldo F. What interventions are effective in improving uptake and  
413 retention of HIV-positive pregnant and breastfeeding women and their infants in  
414 prevention of mother to child transmission care programmes in low-income and middle-  
415 income countries? A systematic review and meta-analysis. *BMJ open*. 2019 Jul  
416 1;9(7):e024907.
- 417 10. Mukosha M, Chiyesu G, Vwalika B. Adherence to antiretroviral therapy among HIV  
418 infected pregnant women in public health sectors: a pilot of Chilenje level one Hospital  
419 Lusaka, Zambia. *The Pan African Medical journal*. 2020;35.
- 420 11. Mukose AD, Bastiaens H, Makumbi F, Buregyeya E, Naigino R, Musinguzi J, Van Geertruyden  
421 JP, Wanyenze RK. What influences uptake and early adherence to Option B+ (lifelong  
422 antiretroviral therapy among HIV positive pregnant and breastfeeding women) in Central  
423 Uganda? A mixed methods study. *PloS one*. 2021 May 5;16(5):e0251181.
- 424 12. Mwamba Kalungwe, Scovia Nalugo Mbalinda, Thamary Karonga, Niza Rean Simwanza,  
425 Catherine M. Mumba Mtambo, Mathew Nyashanu. *Exploring barriers to antiretroviral*

- 426 *therapy adherence among pregnant women: A scoping literature review. Gyn &*  
427 *Obstetrics* 2022, 159(2):343-350. <https://doi.org/10.1002/ijgo.14130>
- 428 13. Knettel BA, Cichowitz C, Ngocho JS, Knippler ET, Chumba LN, Mmbaga BT, et al.  
429 Retention in HIV Care during Pregnancy and the Postpartum Period in the Option B+  
430 Era: Systematic Review and Meta-Analysis of Studies in Africa. Vol. 77, *Journal of*  
431 *Acquired Immune Deficiency Syndromes*. Lippincott Williams and Wilkins; 2018. p.  
432 427–38. PMID: 29287029 PMCID: PMC5844830
- 433 14. Kiragu K, Collins L, Von Zinkernagel D, Mushavi A. Integrating PMTCT into maternal,  
434 newborn, and child health and related services: Experiences from the global plan priority  
435 countries. *J Acquir Immune Defic Syndr*. 2017;75:S36–42. PMID: 28398995
- 436 15. Mushamiri I, Belai W, Sacks E, Genberg B, Gupta S, Perry HB. Evidence on the  
437 effectiveness of community-based primary health care in improving HIV/AIDS  
438 outcomes for mothers and children in low- and middle-income countries: Findings from  
439 a systematic review. *J Glob Health*. 2021 Jul 10;11:11001. doi: 10.7189/jogh.11.11001.  
440 PMID: 34327001; PMCID: PMC8284540
- 441 16. Ministry of Health- Uganda. Consolidated Guidelines on the prevention and treatment of  
442 HIV and AIDS in Uganda. 2018;(September):327
- 443 17. Rosenberg NE, van Lettow M, Tweya H, Kapito-Tembo A, Bourdon CM, Cataldo F,  
444 Chiwaula L, Sampathkumar V, Trapence C, Kayoyo V, Kasende F. Improving PMTCT  
445 uptake and retention services through novel approaches in peer-based family-supported  
446 care in the clinic and community: a three-arm cluster randomized trial (PURE Malawi).  
447 *Journal of acquired immune deficiency syndromes*. 2014 Nov 1;67(0 2):S114.
- 448 18. Phiri S, Tweya H, Van Lettow M, Rosenberg NE, Trapence C, Kapito-Tembo A, et al.  
449 Impact of facility- and community-based peer support models on maternal uptake and

- 450 and retention in Malawi's option B+ HIV prevention of mother-to-child transmission  
451 program: A 3-arm cluster randomized controlled trial (PURE Malawi). *J Acquir Immune*  
452 *Defic Syndr.* 2017;75:S140–8. PMID: 28498183
- 453 19. Lyatuu GW, Naburi H, Mwashemele S, Lyaruu P, Urrio R, Simba B, Philipo E, Kibao A,  
454 Kajoka D, Sando D, Orsini N. Effect of peer-mother interactive programme on  
455 prevention of mother-to-child HIV transmission outcomes among pregnant women on  
456 anti-retroviral treatment in routine healthcare in Dar es Salaam, Tanzania. *PLOS Global*  
457 *Public Health.* 2022 Mar 9;2(3):e0000256.
- 458 20. Pugh LE, Roberts JS, Viswasam N, Hahn E, Ryan S, Turpin G, Lyons CE, Baral S,  
459 Hansoti B. SYSTEMATIC REVIEW OF INTERVENTIONS AIMED AT IMPROVING  
460 HIV ADHERENCE TO CARE IN LOW-AND MIDDLE-INCOME COUNTRIES.  
461 *Journal of Infection and Public Health.* 2022 Aug 28.
- 462 21. Helova A, Onono M, Abuogi LL, Hampanda K, Owuor K, Odwar T, Krishna S,  
463 Odhiambo G, Odeny T, Turan JM. Experiences, perceptions and potential impact of  
464 community-based mentor mothers supporting pregnant and postpartum women with HIV  
465 in Kenya: a mixed-methods study. *Journal of the International AIDS Society.* 2021  
466 Nov;24(11):e25843.
- 467 22. Wanga I, Helova A, Abuogi LL, Bukusi EA, Nalwa W, Akama E, Odeny TA, Turan JM,  
468 Onono M. Acceptability of community-based mentor mothers to support HIV-positive  
469 pregnant women on antiretroviral treatment in western Kenya: a qualitative study. *BMC*  
470 *pregnancy and childbirth.* 2019 Dec;19(1):1-2.
- 471
- 472 23. Ministry of Health- Uganda. National HIV Testing Services Policy and Implementation  
473 Guidelines

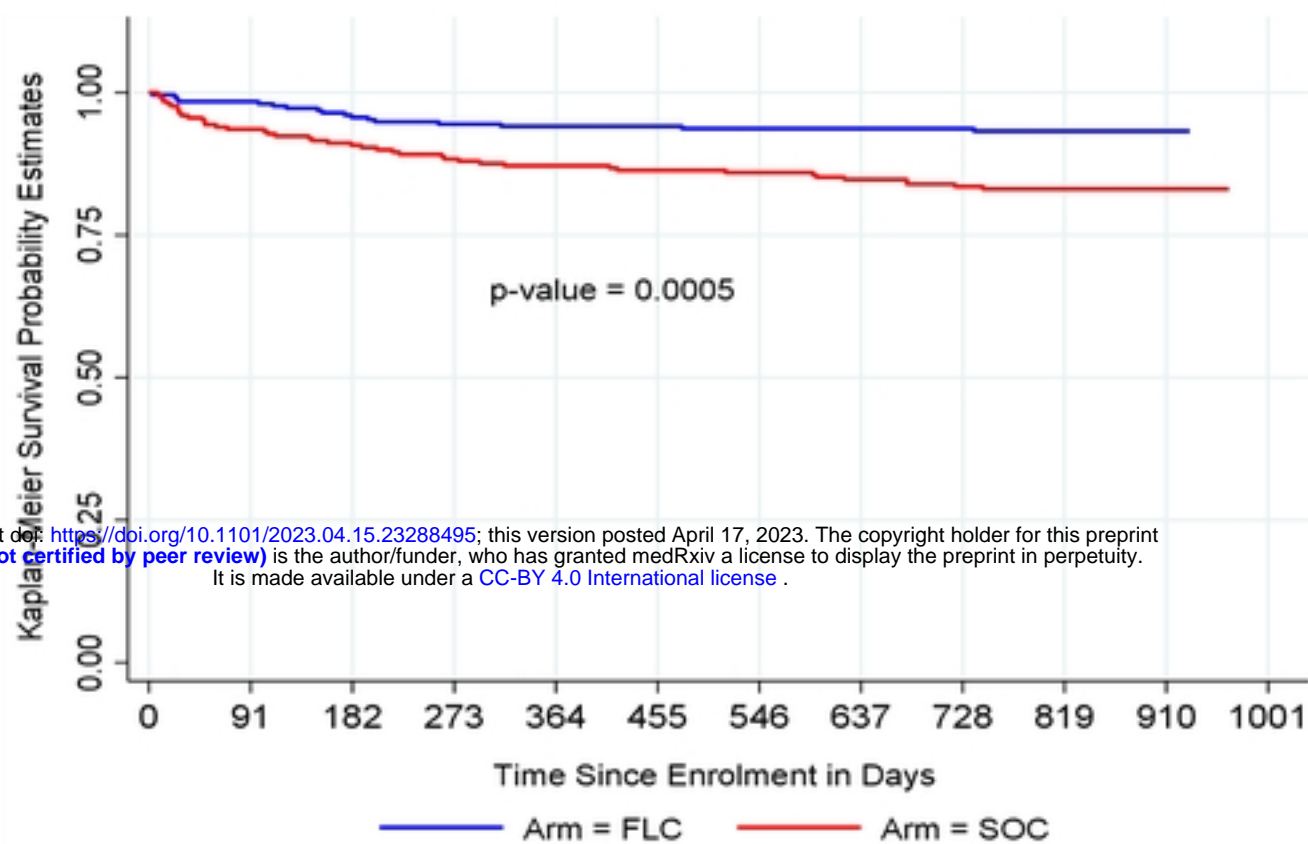
- 474 24. Omonaiye O, Nicholson P, Kusljic S, Manias E. A meta-analysis of effectiveness of  
475 interventions to improve adherence in pregnant women receiving antiretroviral therapy in  
476 sub-Saharan Africa. *International Journal of Infectious Diseases*. 2018 Sep 1;74:71-82.
- 477 26. .
- 478 25. Roche Diagnostics. COBAS ® AmpliPrep/COBAS ® TaqMan ® HIV-1 Test package  
479 insert. :1–36.
- 480 26. Masereka EM, Ngabirano TD, Osingada CP, Wiltshire CS, Castelnuovo B, Kiragga AN.  
481 Increasing retention of HIV positive pregnant and breastfeeding mothers on option-b  
482 plus by upgrading and providing full time HIV services at a lower health facility in rural  
483 Uganda. *BMC public health*. 2019 Dec;19(1):1-6.
- 484 27. Wubneh CA, Mekonnen BD, Delelegn MW, Atalell KA. Adherence to option B+ and its  
485 association with disclosure status and counseling among HIV-positive pregnant and  
486 lactating women in Ethiopia: systematic review and meta-analysis. *Public Health*. 2022  
487 Oct 1;211:105-13.
- 488 28. Haas AD, Msukwa MT, Egger M, Tenthani L, Tweya H, Jahn A, Gadabu OJ, Tal K,  
489 Salazar-Vizcaya L, Estill J, Spoerri A. Adherence to antiretroviral therapy during and  
490 after pregnancy: cohort study on women receiving care in Malawi's option B+ program.  
491 *Clinical infectious diseases*. 2016 Nov 1;63(9):1227-35.
- 492 29. Phillips T, Brittain K, Mellins CA, Zerbe A, Remien RH, Abrams EJ, Myer L, Wilson  
493 IB. A Self-Reported Adherence Measure to Screen for Elevated HIV Viral Load in  
494 Pregnant and Postpartum Women on Antiretroviral Therapy. *AIDS Behav*. 2017  
495 Feb;21(2):450-461. PMID: 27278548; PMCID: PMC5145763

- 496 30. Magill N, Knight R, McCrone P, Ismail K, Landau S. A scoping review of the problems  
497 and solutions associated with contamination in trials of complex interventions in mental  
498 health. *BMC medical research methodology*. 2019 Dec;19(1):1-3.
- 499 31. Berg RC, Page S, Øgård-Repål A. The effectiveness of peer-support for people living  
500 with HIV: A systematic review and meta-analysis. *PLoS One*. 2021 Jun  
501 17;16(6):e0252623.
- 502 32. Yotebieng M, Thirumurthy H, Moracco KE, Edmonds A, Tabala M, Kawende B, Wenz  
503 LK, Okitolonda EW, Behets F. Conditional cash transfers to increase retention in  
504 PMTCT care, antiretroviral adherence, and postpartum virological suppression: a  
505 randomized controlled trial. *Journal of acquired immune deficiency syndromes (1999)*.  
506 2016 Aug 1;72(Suppl 2):S124.
- 507 33. Liu JX, Shen J, Wilson N, Janumpalli S, Stadler P, Padian N. Conditional cash transfers  
508 to prevent mother-to-child transmission in low facility-delivery settings: evidence from a  
509 randomised controlled trial in Nigeria. *BMC pregnancy and childbirth*. 2019  
510 Dec;19(1):1-2.
- 511 34. Camlin CS, Marson K, Ndyabakira A, Getahun M, Emperador D, Byamukama A,  
512 Kwarisiima D, Thirumurthy H, Chamie G. Understanding the role of incentives for  
513 achieving and sustaining viral suppression: A qualitative sub-study of a financial  
514 incentives trial in Uganda. *Plos one*. 2022 Jun 24;17(6):e0270180.
- 515 35. Imbaya CL, Odhiambo-Otieno GW, Okello-Agina BM. Adherence levels to antenatal  
516 regimens of NVP and AZT among HIV+ women receiving PMTCT treatment at  
517 Pumwani Maternity Hospital in Nairobi, Kenya. *AIDS 2008 - XVII International AIDS*  
518 *Conference: Abstract no MOPE05192008*



- 519 36. Chime OH, Arinze-Onyia SU, Obionu CN. Do peer support groups have an effect on  
520 medication adherence? A study among people living with HIV/AIDS in Enugu State,  
521 Nigeria. Proc Singapore Health Conference. 2018;27(4):256–64.
- 522 37. Fahey CA, Njau PF, Katabaro E, Mfaume RS, Ulenga N, Mwenda N, Bradshaw PT,  
523 Dow WH, Padian NS, Jewell NP, McCoy SI. Financial incentives to promote retention in  
524 care and viral suppression in adults with HIV initiating antiretroviral therapy in  
525 Tanzania: a three-arm randomised controlled trial. The Lancet HIV. 2020 Nov  
526 1;7(11):e762-71.
- 527

**Figure 2. Kaplan-Meier survival curves for retention in care over time up to 24 months postpartum.**



Number at risk

FLC	249	242	240	239	239	233	231	228	223	89
SOC	233	228	222	219	217	216	212	208	202	98

medRxiv preprint doi: <https://doi.org/10.1101/2023.04.15.23288495>; this version posted April 17, 2023. The copyright holder for this preprint (which was not certified by peer review) is the author/funder, who has granted medRxiv a license to display the preprint in perpetuity. It is made available under a [CC-BY 4.0 International license](https://creativecommons.org/licenses/by/4.0/).

**Table 2. Adherence to PMTCT clinic appointments**

Adherence to PMTCT clinic appointments <i>Primary outcomes measure (A)</i>	At 6 Weeks Postpartum visit		Number attended at least 4 quarterly visits in the 1 <sup>st</sup> year postpartum measured at the 12 Months Postpartum visit		Number attended at least 4 quarterly visits in the 2 <sup>nd</sup> year postpartum measured at the 24 Months Postpartum visit	
	FLC ARM	SOC ARM	FLC ARM	SOC ARM	FLC ARM	SOC ARM
<u>Intention To Treat analysis</u> Includes all women who started the time window of interest (6 weeks postpartum, the first or the second year of postpartum follow-up)	242/270 (89.6%)	231/270 (85.6%)	223/262 (85.1%)	197/247 (79.8%)	187/245 (76.3%)	168/224 (75.0%)
Fisher's Exact p-values	P=0.192		P=0.129		P=0.748	
<u>As treated analysis:</u> Includes all women who completed the time window of interest (6 weeks postpartum, the first or the second year of postpartum follow-up)	242/262 (92.4%)	231/247 (93.5%)	223/245 (91.0%)	197/224 (87.9%)	187/229 (81.7%)	168/207 (81.2%)
Fisher's Exact p-values	P=0.730		P=0.294		P=0.903	

PP = postpartum

<sup>a</sup> Women who attended  $\geq 4$  quarterly visits in the 1<sup>st</sup> year PP

<sup>b</sup> Women who attended  $> 4$  quarterly visits in the 2<sup>nd</sup> year PP

**Table 3. Retention in care by study arm at the end of study**

Follow-up status at end of study	Study Arm, n (%)		
	FLC=270 n (column %)	SOC=270 n (column %)	Total=540 n (column %)
<b>Terminated before end of follow-up</b>	<b>36 (13.3%)</b>	<b>56 (20.7%)</b>	<b>92 (17.0%)</b>
Terminated due to relocation	12 (4.4%)	27 (10.0%)	39 (7.2%)
Lost to follow-up	3 (1.1%)	3 (1.1%)	6 (1.1%)
Withdrawn from study	15 (5.5%)	17 (6.3%)	32 (5.9%)
Termination due to death	1 (0.4%)	6 (2.2%)	7 (1.3%)
Other - Miscarriage/Referred/No time	2 (0.7%)	3 (1.1%)	5 (0.9%)
No information	3 (1.1%)	0 (0.0%)	3 (0.6%)
<b>Missed last 24 months PP visit</b>	<b>0 (0.0%)</b>	<b>6 (2.2%)</b>	<b>6 (1.1%)</b>
<b>Completed follow-up</b>	<b>234 (86.7%)</b>	<b>208 (77.0%)</b>	<b>442 (81.9%)</b>
<b>Retention in care</b>	<b>1 - (36/270) (86.7%)</b>	<b>1 - (56/270) (79.3%)</b>	<b>1 - (92/540) (83.0%)</b>
<b>p-value<sup>†</sup></b>	<b>0.0221</b>		

medRxiv preprint doi: <https://doi.org/10.1101/2023.04.15.23288495>; this version posted April 17, 2023. The copyright holder for this preprint (which was not certified by peer review) is the author/funder, who has granted medRxiv a license to display the preprint in perpetuity. It is made available under a [CC-BY 4.0 International license](https://creativecommons.org/licenses/by/4.0/).

n = Number of individuals; PP = Postpartum

<sup>†</sup> Chi-square (1) = 8.453

**Table 4. Adherence to Option B+ ART by study arm**

Adherence to Option B+ ART	6 weeks postpartum		6 months postpartum		24 months postpartum	
	FLC	SOC	FLC	SOC	FLC	SOC
Self-reported						
Proportion of doses missed in past 3 days*	11/242 <b>(4.6%)</b>	9/232 <b>(3.9%)</b>	29/225 <b>(12.9%)</b>	34/216 <b>(15.7%)</b>	22/223 <b>(9.9%)</b>	20/200 <b>(10.0%)</b>
Adherence to taking ARV for option B+ **	1 - 4.6% <b>(95.4%)</b>	1 - 3.9% <b>(96.1%)</b>	1 - 12.9% <b>(87.1%)</b>	1 - 15.7% <b>(84.3%)</b>	1 - 9.9% <b>(90.1%)</b>	1 - 10.0% <b>(90.0%)</b>
p-values	p=0.718		p=0.122		p=0.644	
Viral load (VL)	FLC	SOC	FLC	SOC	FLC	SOC
Median log <sub>10</sub> VL (IQR) †	1.80 (1.30-2.61)	1.86 (1.34-2.78)	1.64 (1.30-2.66)	1.52 (1.30-3.79)	1.30 (1.30-2.77)	1.30 (1.30-2.83)
Median copies/mL (IQR) †	63 cp/ml (20-407)	72 cp/ml (22-603)	44 cp/ml (20-457)	33 cp/ml (20-6,166)	20 cp/ml (20-589)	20 cp/ml (20-676)

\* No. of women with sub-optimal adherence in the past 3 days prior to clinic visit / Total number of women visiting the clinic and responding to the past 3 days adherence questions at each visit of interest (6 weeks pp, 6 months and 24 months pp). These results have accounted for the validation of self-reported adherence using viral load measures (Self-reported adherence with a viral load <400 copies/ml was classified as Adherent and self-reported adherence with a viral load ≥400 copies/ml was classified as non-adherent)

\*\* 1 minus the proportion of women self-reported as sub-optimally taking their medication in the past 3 days

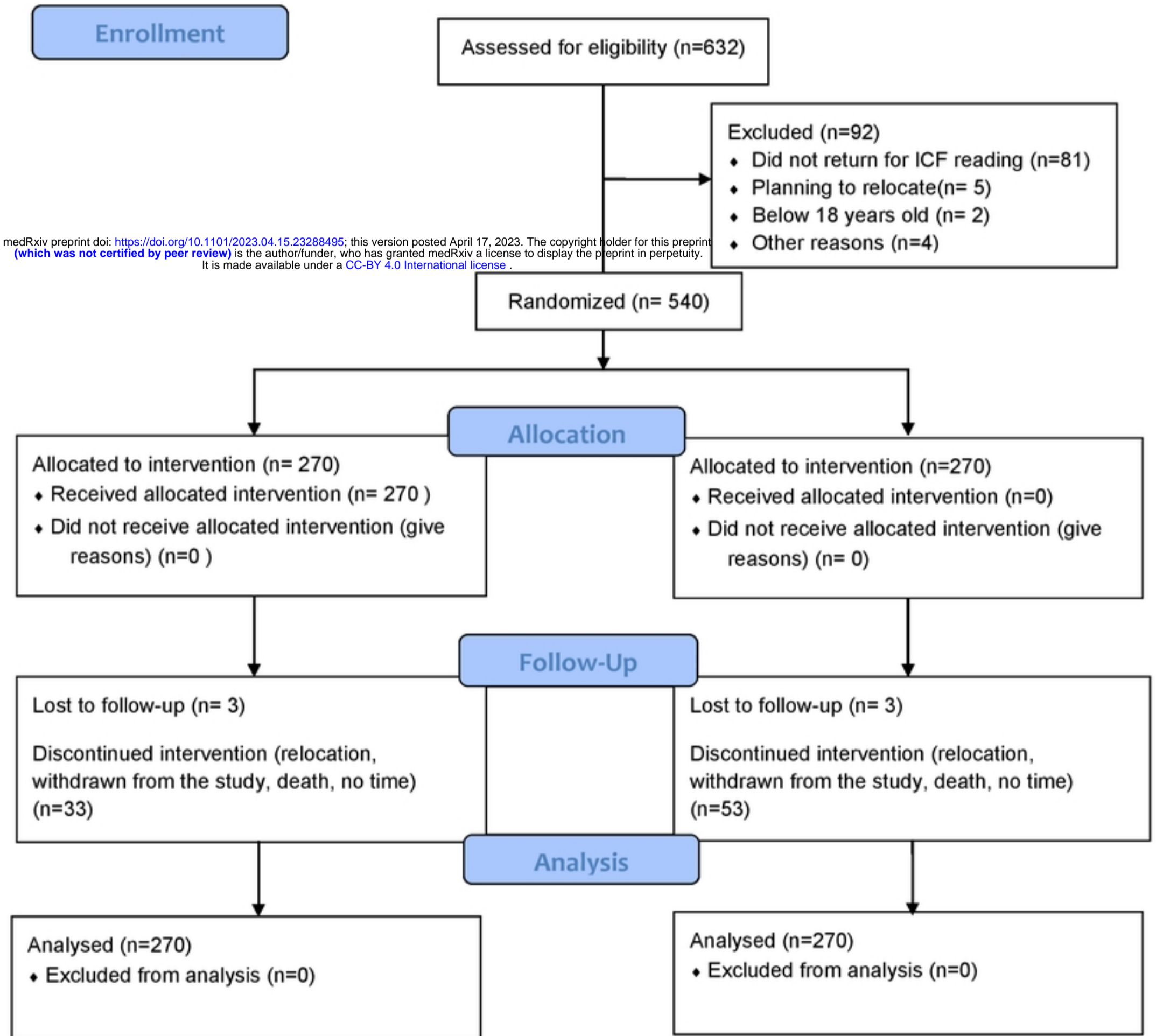
† At 6 weeks postpartum, we used VL test results for samples taken at delivery. Samples taken at 6 weeks were stored for analysis at a later time

**Table 5: Multi-variable Cox Proportional Hazard model for failure to remain in care**

Variables		N=540	Hazard Ratio (HR)	[95% Conf. Interval]	p-value
<b>Study arm</b>	FLC	270	1.000		
	SOC	270	2.498	1.417 – 4.406	<b>0.002</b>
<b>Urban status</b>	Urban	401	1.000		
	Rural	139	0.412	0.195 – 0.868	<b>0.020</b>
<b>Age</b>	15-24 years	259	1.000		
	25-34 years	241	0.546	0.311 – 0.959	<b>0.035</b>
	35+ years	40	0.585	0.179 – 1.906	0.373
<b>Tribe</b>	Non-Ganda	239	1.000		
	Ganda	301	0.625	0.374 – 1.044	0.073

medRxiv preprint doi: <https://doi.org/10.1101/2023.04.16.23286498>; this version posted April 17, 2023. The copyright holder for this preprint (which was not certified by peer review) is the author/funder, who has granted medRxiv a license to display the preprint in perpetuity. It is made available under a [CC-BY 4.0 International license](https://creativecommons.org/licenses/by/4.0/).

# Trial Profile



Figure

**Table 1. Baseline socio-demographic characteristics of study population (N=540)**

Socio-demographic characteristics at baseline	Intervention (FLC Arm)				Control (SOC Arm)				p-value
	Person-years of follow-up [PYFU] for ALL visits		Total no. of women in FLC Arm		Person-years of follow-up [PYFU] for ALL visits		Total no. of women in SOC Arm		
	Visits	PYFU	N	col %	Visits	PYFU	N	col %	
<b>Enrolment Sites</b>									
Kampala-Urban	2455	392.9	200	74.1	2271	354.1	201	74.4	0.922
Mityana-Rural	907	144.5	70	25.9	912	142.8	69	25.6	
<b>Marital Status</b>									
Married/Co-habiting	2607	418.2	209	77.4	2565	399.0	217	80.4	0.655
Never Married	502	77.4	40	14.8	389	61.1	33	12.2	
Separated/Divorced/Widowed	253	41.8	21	7.8	229	36.8	20	7.4	
<b>Age</b>									
18-24 years	1415	222.9	116	43.0	1659	257.0	143	53.0	0.068
25-34 years	1654	267.7	130	48.2	1318	206.5	111	41.1	
35+ years	293	46.8	24	8.9	286	33.3	16	5.9	
<b>Educational level</b>									
Tertiary	194	30.9	16	5.9	116	17.9	9	3.3	0.021*
Secondary	1429	227.3	113	41.9	1810	282.4	145	53.7	
Primary	1611	260.2	131	48.5	1140	176.8	103	38.2	
No education	128	18.9	10	3.7	117	19.7	13	4.8	
<b>Religion</b>									
Catholic	1185	188.0	93	34.4	1100	169.8	93	34.4	0.615
Protestant	858	139.8	69	25.6	724	115.4	57	21.1	
Moslem	676	106.0	56	20.7	688	110.4	60	22.2	
SDA/Pentecostal/others	643	103.6	52	19.3	671	101.3	60	22.2	
<b>Tribe</b>									
Non-Ganda	1495	240.7	123	45.6	1292	202.0	116	43.0	0.543
Ganda	1867	296.6	147	54.4	1891	294.9	154	57.0	

medRxiv preprint doi: <https://doi.org/10.1101/2023.04.15.23288495>; this version posted April 17, 2023. The copyright holder for this preprint (which was not certified by peer review) is the author/funder, who has granted medRxiv a license to display the preprint in perpetuity. It is made available under a [CC-BY 4.0 International license](https://creativecommons.org/licenses/by/4.0/).



<b>Gravidity</b>										
	1	613	96.1	51	18.9	630	96.6	54	20.0	<b>0.016*</b>
	2	663	106.2	54	20.0	1011	159.7	84	31.1	
	3	943	151.1	75	27.8	684	106.9	60	22.2	
	4+	1143	184.0	90	33.3	858	133.7	72	26.7	
<b>Disclosure to partner</b>										
	Yes	1270	200.5	100	37.0	1396	214.6	118	43.7	<b>0.040*</b>
	No	2036	328.1	165	61.1	1640	259.3	140	51.9	
	No partner	56	8.8	5	1.9	147	23.0	12	4.4	
<b>Disclosure to relatives</b>										
	Yes	1539	212.6	106	39.3	1179	186.6	97	35.9	0.423
	No	2029	324.7	164	60.7	2004	310.3	173	64.1	
<b>Monthly Income (USD)*</b>										
	1.35-40.5	591	94.2	46	17.1	772	121.2	65	24.1	<b>0.046*</b>
	>40.5-135.1	946	149.5	75	27.8	627	96.5	51	18.9	
	>135.1	602	99.0	48	17.8	589	90.4	47	17.4	
	Don't know	1223	194.7	101	37.4	1195	188.8	107	39.6	
<b>TOTAL No. of Participants</b>		<b>3362</b>	<b>538.4</b>	<b>270</b>	<b>50.0</b>	<b>3183</b>	<b>497.2</b>	<b>270</b>	<b>50.0</b>	
TOTAL No. of All visits				3362	51.4			3183	48.6	
No. of Scheduled PP visits				2017	83.0			1854	76.3	

Legend: PP = postpartum; \* significant difference (p<0.05)

† 1 USD =3,650 UG Shillings (UGX) at the time of enrolment

PYFU= Person Years of Follow Up. Follow-up time was calculated in person-years, with each participant contributing time in years from enrolment to censoring at either: the date of death, or the date loss to follow-up was reported, or end of follow-up date (24-month postpartum visit)