

1
2
3
4
5
6
7
8
9
10
11
12
13
14
15
16
17
18
19
20
21
22
23
24
25
26
27
28
29
30

Updating reproduction number estimates for mpox in the Democratic Republic of Congo using surveillance data

Kelly Charniga^{1*}, Andrea M. McCollum¹, Christine M. Hughes¹, Benjamin Monroe¹, Joelle Kabamba², Robert Shongo Lushima³, Toutou Likafi⁴, Beatrice Nguete⁴, Elisabeth Pukuta⁵, Elisabeth Muyamuna⁵, Jean-Jacques Muyembe Tamfum⁵, Stomy Karhemere⁵, Didine Kaba⁴, Yoshinori Nakazawa¹

¹Division of High-Consequence Pathogens and Pathology, National Center for Emerging and Zoonotic Infectious Diseases, U.S. Centers for Disease Control and Prevention, Atlanta, Georgia, USA

²U.S. Centers for Disease Control and Prevention, Kinshasa, Democratic Republic of Congo

³Ministry of Health, Kinshasa, Democratic Republic of Congo

⁴Kinshasa School of Public Health, Kinshasa, Democratic Republic of Congo

⁵Institut National de Recherche Biomédicale, Kinshasa, Democratic Republic of Congo

Number of figures: 1

Number of tables: 2

Supplementary materials: Appendix

Word count: Abstract – 250; text – 3,596.

Key words: outbreak analysis; DRC; orthopoxvirus; infectious diseases; transmissibility; modeling

*Address: 1600 Clifton Rd, Building 18, Floor 1, Atlanta, Georgia 30329 USA. Email: ruq7@cdc.gov.

Phone: +1 (248) 873-8678

NOTE: This preprint reports new research that has not been certified by peer review and should not be used to guide clinical practice.

REPRODUCTION NUMBER ESTIMATES FOR MONKEYPOX IN THE DRC

31 **Abstract**

32 Incidence of human mpox has been increasing in West and Central Africa, including in the Democratic
33 Republic of Congo (DRC), where monkeypox virus (MPXV) is endemic. Most estimates of the pathogen's
34 transmissibility in DRC are based on data from the 1980s. Amid the global 2022 mpox outbreak, new
35 estimates are needed to characterize the virus' epidemic potential and inform outbreak control
36 strategies. We used the R package *vimes* to identify clusters of laboratory-confirmed mpox cases in
37 Tshuapa Province, DRC. Cases with both temporal and spatial data were assigned to clusters based on
38 the disease's serial interval and spatial kernel. We used the size of the clusters to infer the effective
39 reproduction number, R_t , and the rate of zoonotic spillover of MPXV into the human population. Out of
40 1,463 confirmed mpox cases reported in Tshuapa Province between 2013 and 2017, 878 had both date
41 of symptom onset and a location with geographic coordinates. Results include an estimated R_t of 0.82
42 (95% CI: 0.79 – 0.85) and a rate of 132 (95% CI: 122 – 143) spillovers per year assuming a reporting rate
43 of 0.25. This estimate of R_t is larger compared to most previous estimates. One potential explanation for
44 this result is that R_t could have increased in DRC over time due to declining population-level immunity
45 conferred by smallpox vaccination, which was discontinued around 1982. R_t could be overestimated if
46 our assumption of one spillover event per cluster does not hold. Our results are consistent with
47 increased transmissibility of MPXV in Tshuapa Province.

48

49

50

51

52

53

54

REPRODUCTION NUMBER ESTIMATES FOR MONKEYPOX IN THE DRC

55 **Introduction**

56 Mpx (formerly known as monkeypox) is a zoonotic disease that has been endemic in Africa for
57 at least half a century.¹ The disease is caused by monkeypox virus (MPXV), an orthopoxvirus in the
58 family *Poxviridae*.² The virus is related to variola virus, which causes smallpox,³ and is divided into two
59 clades, clade I and clade II. Clade I has historically been found in the Congo Basin, while clade II has
60 historically been found in West Africa.⁴ Vaccination against smallpox using vaccinia virus provides
61 protection against other orthopoxvirus infections; however, routine smallpox immunization ended with
62 the eradication of the disease in 1980. In unvaccinated persons, clade I has an estimated case fatality
63 rate of 11%³ compared to <3% for clade II.⁵ The clinical presentation of mpx is similar to that of
64 smallpox with the exception of the presence of lymphadenopathy in the majority of mpx cases.
65 Classical symptoms begin with a prodrome consisting of fever, headache, muscle aches, fatigue, and
66 lymphadenopathy.⁶ One to three days later, a rash develops, which progresses through several stages
67 over the course of 2 – 4 weeks. Complications from the disease include scarring, permanent corneal
68 scarring leading to loss of vision, bronchopneumonia, encephalitis, and sepsis.⁶

69 Transmission of MPXV from infected animals to humans occurs via scratches or bites⁷ and may
70 occur while hunting and preparing wild game or contact with infectious fomites (e.g., environmental
71 contamination).⁸ While the animal reservoir(s) is unknown, small mammals including rodents are
72 thought to play a role in the maintenance and spread of the virus.³ Following one or more spillover
73 events from the reservoir, human-to-human transmission can occur through close contact with
74 infectious material from skin lesions, respiratory secretions during prolonged face-to-face contact, and
75 fomites such as linens and bedding.⁹ Prior to 2022, human transmission chains as long as seven
76 generations had been observed.¹⁰

77 Since 2010, the U.S. Centers for Disease Control and Prevention (CDC) and Kinshasa School of
78 Public Health have been providing support for enhanced surveillance of mpx in Tshuapa Province.

REPRODUCTION NUMBER ESTIMATES FOR MONKEYPOX IN THE DRC

79 Tshuapa Province is located in a rural, forested area of the Congo Basin in the Democratic Republic of
80 Congo (DRC). It has an area of approximately 133,000 km² and a population of approximately 2 million¹¹
81 spread across 12 health zones. The climate is equatorial, with a rainy and a dry season.¹² The region is
82 characterized by poor infrastructure and widespread poverty.¹³ Much of the population relies on wild
83 game for protein.¹⁴

84 A key epidemiological parameter used to understand the transmission potential of infectious
85 diseases is the reproduction number. The reproduction number is defined as the average number of
86 secondary infections generated by a single infected individual.¹⁵ If the value is above 1, an epidemic is
87 growing, whereas a value below 1 suggests an epidemic is shrinking.¹⁶ The reproduction number
88 depends on contact patterns, demographic rates, and population-level immunity, among other factors.¹⁷
89 If a pathogen is introduced into a population with immunity from vaccination or infection, the
90 reproduction number is considered an effective reproduction number, R_t .¹⁸ Monitoring R_t for emerging
91 and re-emerging infectious diseases is important for global health security as increases could precede
92 epidemics or pandemics.

93 There is evidence that incidence of mpox has increased in Central^{19, 20, 21} and West Africa²². Most
94 published estimates of R_t for MPXV in DRC are based on data from the 1980s and range from
95 approximately 0.3 – 0.5.^{23, 24, 25, 26} In 2022, a global outbreak of mpox caused more than 85,000 cases in
96 all regions of the world, disproportionately affecting gay, bisexual, and men who have sex with men.^{27, 28}
97 ²⁹ Given the changing epidemiology of mpox, updated estimates of the virus' transmissibility are needed
98 in historically affected countries. The aim of this study was to identify clusters of mpox cases from
99 surveillance data in Tshuapa Province, DRC and use the cluster sizes to estimate R_t and the rate at which
100 MPXV spills over into the human population.

101 **Materials and Methods**

REPRODUCTION NUMBER ESTIMATES FOR MONKEYPOX IN THE DRC

102 **Overview.** The model framework implemented in the R package *vimes* combines various data types
103 (e.g., temporal, spatial, genetic) to identify clusters of cases in an outbreak. Input data types can include
104 anything for which a pairwise distance can be calculated (e.g., days between symptom onset). *Vimes*
105 connects all cases on a graph for each data type provided. The graph's edges are weighted by the
106 pairwise distance between cases. Distances greater than specified cutoffs are removed (or "pruned").
107 The graphs are merged by intersection, with the resulting graph representing clusters of related cases
108 based on all data types. The size of the clusters can then be used to quantify the pathogen's
109 transmissibility.

110 **Mpox data.** From 2010 – 2019, trained surveillance officers completed paper-based case report forms
111 and collected clinical specimens during investigations of suspected mpox cases in Tshuapa Province (not
112 all suspected cases were investigated). Case report forms include questions about basic demographic
113 information (e.g., age, race/ethnicity, residence), skin lesion characteristics, general signs and
114 symptoms, and exposure history. Lesion swabs, lesion crusts, or blood were tested at the Institut
115 National de Recherche Biomédicale (INRB) in Kinshasa, DRC and CDC in Atlanta, USA Sample processing
116 and laboratory diagnostic methods have been described elsewhere.³⁰ Case definitions are provided in
117 Supplementary methods.

118 We extracted information from line list data on the timing (date of fever or rash onset) and
119 location (village of residence during the last 12 months or village in which rash onset occurred or
120 neighborhood) of infection for laboratory-confirmed mpox cases to identify clusters of disease
121 (Supplementary methods). Cases with missing symptom onset date or missing location were not
122 analyzed.

123 We calculated the pairwise distance between all cases. For temporal data, the distance was
124 calculated as the difference in days between symptom onset dates of all case pair combinations. For
125 spatial data, the geographic distance between cases was calculated using the Vincenty inverse formula

REPRODUCTION NUMBER ESTIMATES FOR MONKEYPOX IN THE DRC

126 for ellipsoids (implemented using the `gdist` function in the R package `lmap`),³¹ given the large area
127 covered by Tshuapa Province.

128 **Epidemiological parameters.** To run *vimes*, we needed one key parameter for each data type: the serial
129 interval distribution for temporal data and the spatial kernel for spatial data. The serial interval
130 distribution is the time between symptom onset in a primary case and symptom onset in a secondary
131 case infected by the primary case.³² We used a gamma-distributed serial interval with mean 16.0 days
132 and standard deviation of 3.7 days based on smallpox data³³ (Supplementary methods). The spatial
133 kernel is the distribution of geographical distances between primary and secondary cases.³² We
134 estimated the mean transmission distance of 0.13 km for MPXV using active contact tracing data
135 collected by the World Health Organization (WHO) between 1970 – 1986 (Supplementary methods) and
136 assumed a Rayleigh distribution.

137 **Cutoffs.** Choosing appropriate cutoffs is an important part of using *vimes* as it affects the number of
138 edges kept in the pruning step and the resulting size of clusters.³² Cutoffs are informed by prior
139 knowledge on the distribution of distances between cases (i.e., the epidemiological parameters
140 described above). For a particular data type, the cutoff can be defined as a quantile of the input
141 distribution. Two cases are considered unrelated if the distance between them is larger than the cutoff.

142 **Underreporting.** The reporting rate is the percentage of infections that are ultimately reported as
143 suspected or confirmed cases of the disease.³⁴ When reporting is low, intermediate cases are missed,
144 and the distance between observed cases can increase. *Vimes* accounts for underreporting by defining
145 the cutoff as $f^{n,\pi}$ where f^n is the probability density function or probability mass function of expected
146 distances between a primary and secondary case for data type, n , and π is the probability of a geometric
147 distribution that describes the number of unobserved intermediate cases between two observed cases.
148 The method assumes surveillance and reporting are stable over the estimation period and that the
149 probability of being reported is the same for all cases. Further details can be found in Cori et al.³²

REPRODUCTION NUMBER ESTIMATES FOR MONKEYPOX IN THE DRC

150 Nolen et al. found a reporting rate of 41% in a household study following a 2013 mpox outbreak
151 in Bokungu Health Zone.¹⁰ We adjusted this reporting rate for partially missing data (cases that were
152 missing symptom onset date or location). We considered the surveillance effort for mpox in Tshuapa
153 Province to be relatively stable from 2013 – 2017, based on the total number of suspected mpox cases
154 investigated and the percentage of investigated cases that were confirmed by year and health zone.

155 **Estimation of R_t and spillover rate.** We estimated R_t and the rate of spillover of MPXV using the R
156 package *branchr*.³⁵ The method assumes one zoonotic spillover event per cluster. Further details can be
157 found in Supplementary methods.

158 **Sensitivity analyses.** We repeated the analysis by year and by health zone as sensitivity analyses. We
159 also examined the impact of the cutoffs (quantiles) and assumption regarding reporting rates on our
160 estimates, including the use of a shorter serial interval (Supplementary methods).

161 **Simulations.** As recommended by Cori et al.,³² we performed simulations to find the optimal cutoffs for
162 the specific context of mpox in Tshuapa Province and check that the method can correctly identify mpox
163 clusters as well as accurately estimate R_t and the spillover rate.

164 **Validation.** We searched the Program for Monitoring Emerging Diseases (ProMED) and Google Scholar
165 for documentation of any outbreaks of mpox in Tshuapa Province that may have occurred during the
166 study period. To further evaluate the plausibility of identified clusters, we compared the calculated
167 pairwise differences by data type and cluster³⁶ for singletons and clusters with 10 or more cases. We
168 would expect clusters to have smaller pairwise distances compared to the distribution of pairwise
169 distances for singletons.

170 We checked the assumption of one spillover event per cluster using exposure history. If
171 reporting were perfect and our assumption were correct, we would expect that patients assigned to
172 larger clusters would report contact with an ill person prior to symptom onset more frequently than
173 singletons (cases not linked to any other cases).

REPRODUCTION NUMBER ESTIMATES FOR MONKEYPOX IN THE DRC

174 **Ethics statement.** Surveillance was conducted in agreement with Congolese national guidelines. The
175 activity was determined to not be research by a CDC human subjects advisor (project determination RD-
176 071811MR).

177 **Availability.** All analyses were conducted in R version 4.1.1. Simulation code is available on GitHub
178 (https://github.com/kcharniga/mpox_in_drc). The mpox line list and geographic data associated with
179 cases are owned by the DRC Ministry of Health. The decision to release these data rests with the
180 Ministry of Health.

181 **Results**

182 **Mpox surveillance and reporting.** From 2010 – 2019, a total of 2,993 suspected cases were investigated
183 for mpox in Tshuapa Province (Table 1). Of the investigated cases, 43 (1%) were excluded from the
184 analysis due to inconclusive or missing laboratory results, 2,019 (67%) tested positive for *Orthopoxvirus*
185 or MPXV, and 931 (31%) tested negative for *Orthopoxvirus* or MPXV. On average, 299 (range 11 – 526)
186 suspected cases were investigated for mpox in Tshuapa Province each year (Table 1). The number of
187 investigated mpox cases increased nonmonotonically from 2010 – 2016 and declined each year after
188 2016. The percentage of investigated mpox cases that were confirmed was low for the first three years
189 (mean 36%) before stabilizing for the last seven years (mean 76%, range 70% – 80%).

190 During the period of stable reporting from 2013 – 2017, there were 1,568 laboratory-confirmed
191 cases of mpox reported in Tshuapa Province (Table 2). Of those, 934 (60%) had complete information on
192 symptom onset and geographic location. There were 477 male cases (51%) out of 932 with available
193 data. The mean age of cases was 16 (range 0 – 79) years (12 cases were missing age). During this period,
194 the number of suspected mpox cases that were investigated ranged from 40 in Monkoto to 300 in Djolu
195 (Table 2). The percentage of investigated cases that were confirmed ranged from 65% in Mondombe to
196 90% in Wema, and the percentage of confirmed mpox cases with complete temporal and spatial
197 information ranged from 41% in Ikela to 81% in Djolu.

REPRODUCTION NUMBER ESTIMATES FOR MONKEYPOX IN THE DRC

198 **Cluster identification and parameter estimation.** We identified 334 clusters, 161 (48%) of which were
199 singletons (Figure 1 and Figure S2). The largest cluster size was 30, and the mean cluster size was 2.8.
200 We estimated an R_t of 0.82 (95% confidence interval [CI]: 0.79 – 0.85) and an annual spillover rate of
201 MPXV into the human population of 132 (95% CI: 122 – 143) (Table S1). We obtained these results
202 assuming a reporting rate of 25% (41% from Nolen et al.¹⁰ times 60% of confirmed cases with complete
203 data) and a cutoff corresponding to the 95%^{1/3} (or 98.3%) quantile of the input distributions. These
204 cutoffs correspond to 233 days and 0.7 km.

205 **Sensitivity analyses.** As expected, using higher cutoffs led to fewer, larger clusters in sensitivity analyses.
206 Using cutoffs ranging from the 90% and 98.3% quantiles of the input distributions, the mean cluster
207 sizes ranged from 2.2 – 3.6, and the maximum cluster size was stable (between 29 and 30). Other
208 summary statistics can be found in Table S5. Higher cutoffs also led to higher estimates of both R_t and
209 spillover rate (Figure S6). The estimated R_t for the most extreme combinations considered (90%
210 quantile/50% reporting rate and 98.3% quantile/10% reporting rate) was 0.67 (95% CI: 0.63 – 0.71) and
211 0.92 (95% CI: 0.90 – 0.94) respectively, and the estimated annual spillover rate was 123 (95% CI: 116 –
212 130) and 151 (95% CI: 136 – 168) respectively. Using cutoffs corresponding to a shorter serial interval
213 estimated during the global mpox outbreak did not have a major impact on results; however, setting the
214 distance cutoff to 10 km increased the estimated R_t to 0.89 (95% CI: 0.86 – 0.93) (Supplementary results,
215 Figure S8, and Table S7). Results of the analysis by year and health zone can be found in Supplementary
216 results (Figures S10 – S13, Tables S2 – S3). While R_t was not different across years or health zone (the CIs
217 overlapped), there was heterogeneity in the annual spillover rate by year and health zone (some CIs did
218 not overlap).

219 **Simulations.** Our simulation study showed that the optimal cutoff for mpox in Tshuapa Province is
220 defined by the 98.3% quantile (Figure S15). Further simulation study results can be found in
221 Supplementary results and Figure S16.

REPRODUCTION NUMBER ESTIMATES FOR MONKEYPOX IN THE DRC

222 **Validation.** We found two reports of potential mpox outbreaks in Tshuapa Province during the study
223 period. Details can be found in Supplementary results.

224 The calculated pairwise differences by data type and cluster for singletons and clusters with 10
225 or more cases are shown in Figure S17. As expected, we found that the median pairwise differences
226 were significantly lower on the temporal and spatial dimensions in all clusters compared to those
227 dimensions in the singletons. In Figure S18, we present the epidemiologic curves associated with these
228 clusters. While cases occur sporadically over the time series for some clusters, others have
229 uninterrupted incidence.

230 We evaluated exposure information for the 934 mpox patients included in our cluster analysis to
231 check the assumption of one spillover event per cluster. Nearly half of patients with available data
232 reported contact with a person or persons presenting with similar symptoms in the three weeks prior to
233 symptom onset, nearly half reported having touched a wild animal during three weeks prior to symptom
234 onset, and 13% reported both types of contact (Supplementary results). The distribution of patients who
235 reported contact with ill people or animals was similar regardless of cluster type (singleton vs cluster
236 with size > 1, Figure S3). We found some statistically significant differences in the proportion of mpox
237 patients who reported contact with ill people or animals by health zone (Figure S4).

238 **Discussion**

239 We found that R_t for MPXV in rural DRC has increased compared to previous decades and is
240 consistent with estimates from a study published in 2020.³⁷ Increases in R_t since the 1980s^{23, 24, 25, 26}
241 could be attributed to declining population-level immunity conferred by smallpox vaccination, behavior
242 change, including increased movement of people, ecological and environmental changes, and/or
243 changes that may predispose the virus to spread more easily between humans. Spatial heterogeneity in
244 the annual spillover rate could be explained by different levels of exposure to potential animal reservoirs
245 of MPXV across health zones.

REPRODUCTION NUMBER ESTIMATES FOR MONKEYPOX IN THE DRC

246 We assumed surveillance of mpox was relatively stable from 2013 – 2017 based on the total
247 number of suspected cases that were investigated. However, an Ebola outbreak in Tshuapa Province
248 may have affected mpox reporting in the second half of 2014, when 69 cases of Ebola virus disease were
249 reported in Boende Health Zone near the border with Wema.³⁸ Consequently, all specimen collection for
250 non-Ebola virus disease in Tshuapa Province was halted for at least six months. Also, from 2012 – 2015,
251 epidemiological studies of mpox were conducted in Djolu, Busanga, and Bokungu, which may have
252 increased the rate of case investigations.

253 The cutoff we used for spatial distance (0.7 km) is conservative, and the mean transmission
254 distance informing this cutoff is likely underestimated. We assumed within-village transmission in the
255 WHO data occurred over a distance of 0 km; if case pairs belonged to different households, the pairwise
256 distance would be non-zero. Also, we were not able to find geographic coordinates for the villages of six
257 case pairs with mismatching villages. Although the estimated transmission distance is based on data
258 collected in the 1970s and 80s, the transportation infrastructure in the region has not changed
259 substantially since then.

260 The serial interval estimate we used to inform the temporal cutoff agreed with the historical
261 range observed for MPXV in DRC³⁹ but ultimately was based on data for variola virus.³³ The serial
262 interval has been estimated for MPXV using data from the 2022 global outbreak by several groups.^{40, 41,}
263 ⁴² For example, Madewell et al. reported an estimated mean serial interval of 8.5 days (95% credible
264 interval [CrI]: 7.3 – 9.9) in the U.S.⁴⁰ Slightly longer serial intervals were reported from Europe, with
265 mean 9.5 days (95% CrI: 7.4 – 12.3) reported in the U.K.⁴² and mean 10.1 days (95% CI: 6.6 – 14.7)
266 reported in the Netherlands.⁴¹ However, these estimates could differ from those in rural DRC due to
267 viral genetic differences, including different clades, and the route and intensity of exposure. According
268 to data from the 2003 mpox outbreak in the U.S., which was linked to the exotic pet trade, people who
269 were exposed to MPXV by non-invasive routes, such as petting an infected animal, experienced slower

REPRODUCTION NUMBER ESTIMATES FOR MONKEYPOX IN THE DRC

270 illness progression and longer incubation period than those with complex exposures, such as a bite or
271 scratch from an infected animal.⁷ Because the serial interval and incubation periods are correlated, we
272 would expect longer incubation periods (and therefore, longer serial intervals) in rural DRC, where
273 human-to-human transmission seems driven by household exposures,¹⁰ compared to the global
274 outbreak. Nevertheless, using an estimated serial interval from the global outbreak did not have a large
275 impact on results.

276 The gold standard for validating clusters of disease is an epidemiological link between cases.³⁶
277 Although some mpox case report forms in our study list contacts, identifying those contacts is
278 challenging. The identification of mpox clusters in our study could be improved with more available data
279 types, such as social, ecological, and genetic data. *Vimes* is flexible in that it can use any measure of
280 distances between cases. Genetic data were only available for a small proportion of mpox cases in
281 Tshuapa Province.

282 We did not find published reports about several large clusters of mpox cases identified in our
283 study, including one consisting of 30 patients from the village of Mbotolongo in Djolu in 2017. While
284 outbreaks of Ebola, a viral hemorrhagic fever disease, in DRC often garner international media
285 coverage^{43, 44} and resources,⁴⁵ outbreaks of other diseases, such as mpox,⁴⁶ measles,⁴⁷ and yellow
286 fever,^{48, 49} receive less attention. At the same time, we were not able to capture at least one large
287 outbreak (consisting of 13 cases from October – November 2016) in our study because the geographic
288 coordinates of the village (Bowe in Wema Health Zone) were unknown.

289 The high proportion of confirmed mpox cases in Tshuapa Province with missing location data highlights
290 the need to collect better geographic data in the country. These data could be used to improve other
291 public health programs, such as routine childhood immunizations.⁵⁰ Although not required for this
292 analysis, demographic data for DRC are limited. Current population estimates are projections based on
293 the last national census, which was conducted nearly four decades ago.⁵¹

REPRODUCTION NUMBER ESTIMATES FOR MONKEYPOX IN THE DRC

294 One limitation of our study is that we used a reporting rate estimated from one health zone at
295 one time point.¹⁰ We do not know to what extent the reporting rate varied between health zones or
296 across years during the study period. We do know that reporting was low, especially at the national
297 level. Hoff et al. estimated that suspected mpox cases in DRC were 5 – 15 times higher than what was
298 reported (i.e., reporting rates of 7% – 20%) in 2013.⁵²

299 An additional limitation is that fever may not be accurately recalled by cases¹⁰ as several other
300 febrile diseases are common in DRC. Alternatively, we could have used date of rash onset in our study
301 but wanted to capture the earliest date of symptom onset, which is usually marked by fever. Another
302 limitation is the timeliness of the data. Data for 2020 – 2022 were incomplete at the time of writing.
303 Delays can be attributed to lack of equipment and infrastructure, the need for confirmatory testing at
304 CDC, and the use of paper forms for data collection, among others. Finally, using exposure information
305 to check the assumption of one spillover event per cluster was complicated by large underreporting and
306 the fact that many people are exposed to both sick people and animals in and around their homes. R_t
307 could be overestimated if this assumption does not hold. Future studies should continue to characterize
308 the relationship between humans and potential animal reservoirs of MPXV in Central Africa.

309 **Acknowledgements**

310 We thank all the medical and public health professionals involved in investigating and reporting mpox
311 cases in Tshuapa Province. Thanks to Pierre Nouvellet for helpful comments on the manuscript.

312 **Disclosures**

313 We declare no conflicts of interest.

314 **Disclaimer**

315 The findings and conclusions in this report are those of the authors and do not necessarily represent the
316 official position of the Centers for Disease Control and Prevention, U.S. Department of Health and
317 Human Services.

REPRODUCTION NUMBER ESTIMATES FOR MONKEYPOX IN THE DRC

318 **Author contributions**

319 Conceptualization (KC, AMM, YN), methodology (KC), software (KC), validation (KC), formal analysis (KC),
320 investigation (KC), data curation (all authors), writing – original draft (KC), writing – review & editing (all
321 authors), visualization (KC), supervision (YN, AMM).

322 **Co-Author Contact Information**

323 Kelly Charniga, Andrea M. McCollum, Christine M. Hughes, Benjamin Monroe, and Yoshinori Nakazawa,
324 Poxvirus and Rabies Branch, Division of High-Consequence Pathogens and Pathology, National Center
325 for Emerging and Zoonotic Infectious Diseases, U.S. Centers for Disease Control and Prevention, Atlanta,
326 Georgia, USA, E-mails: ruq7@cdc.gov, azv4@cdc.gov, bvp6@cdc.gov, ihd2@cdc.gov, inp7@cdc.gov.

327 Joelle Kabamba, U.S. Centers for Disease Control and Prevention, Kinshasa, Democratic Republic of
328 Congo, E-mail: jlz7@cdc.gov. Robert Shongo Lushima, Ministry of Health, Kinshasa, Democratic Republic

329 of Congo, E-mail: robert_shongo@yahoo.fr. Toutou Likafi, Beatrice Nguete, and Didine Kaba, Kinshasa
330 School of Public Health, Kinshasa, Democratic Republic of Congo, E-mails: toutoulikafi@gmail.com,

331 beata_pamela@yahoo.fr, and didine.kaba@unikin.ac.cd. Elisabeth Pukuta, Elisabeth Muyamuna, Jean-
332 Jacques Muyembe Tamfum and Stomy Karhemere, Institut National de Recherche Biomédicale,

333 Kinshasa, Democratic Republic of Congo, E-mails: elisepukuta@gmail.com, lizmuyamuna@yahoo.fr,
334 jjmuyembet@gmail.com, and stomy_karhem@yahoo.fr.

335 **References**

- 336 1. Ladnyi I, Ziegler P, Kima E, 1972. A human infection caused by monkeypox virus in Basankusu
337 Territory, Democratic Republic of the Congo. Bull World Health Organ 46: 593-7.
- 338 2. World Health Organization, 2022. Monkeypox. Available at: [https://www.who.int/news-](https://www.who.int/news-room/fact-sheets/detail/monkeypox)
339 [room/fact-sheets/detail/monkeypox](https://www.who.int/news-room/fact-sheets/detail/monkeypox). Accessed December 29, 2022.
- 340 3. McCollum A, Damon I, 2014. Human Monkeypox. Clinical Infectious Diseases 58: 260-267.
- 341 4. Happi C, Adetifa I, Mbala P, Njouom R, Nakoune E, Happi A, Ndodo N, Ayansola O, Mboowa G,
342 Bedford T, 2022. Urgent need for a non-discriminatory and non-stigmatizing nomenclature for
343 monkeypox virus. PLoS Biol 20: e3001769.
- 344 5. Beer E, Rao B, 2019. A systematic review of the epidemiology of human monkeypox outbreaks
345 and implications for outbreak strategy. PLoS Negl Trop Dis 13: e0007791.

REPRODUCTION NUMBER ESTIMATES FOR MONKEYPOX IN THE DRC

- 346 6. Jezek Z, Szczeniowski M, Paluku K, Mutombo M, 1987. Human Monkeypox: Clinical Features of
347 282 Patients. *The Journal of Infectious Diseases* 156: 293-298.
- 348 7. Reynolds M, Yorita K, Kuehnert M, Davidson W, Huhn G, Holman R, Damon I, 2006. Clinical
349 Manifestations of Human Monkeypox Influenced by Route of Infection. *The Journal of Infectious*
350 *Diseases* 194: 773-780.
- 351 8. Simpson K, Heymann D, Brown C, Edmunds W, Elsgaard J, Fine P, Hochrein H, Hoff N, Green A,
352 Ihekweazu C, Jones T, 2020. Human monkeypox – After 40 years, an unintended consequence of
353 smallpox eradication. *Vaccine* 38: 5077-5081.
- 354 9. World Health Organization Regional Office for Europe and European Centre for Disease
355 Prevention and Control, 2022. Interim advice for public health authorities on summer events
356 during the monkeypox outbreak in Europe, 2022. Available at:
357 [https://www.ecdc.europa.eu/sites/default/files/documents/Interim-advice-for-public-health-](https://www.ecdc.europa.eu/sites/default/files/documents/Interim-advice-for-public-health-authorities-on-summer-events-mpx.pdf)
358 [authorities-on-summer-events-mpx.pdf](https://www.ecdc.europa.eu/sites/default/files/documents/Interim-advice-for-public-health-authorities-on-summer-events-mpx.pdf). Accessed June 15, 2022.
- 359 10. Nolen L, Osadebe L, Katomba J, Likofata J, Mukadi D, Monroe B, Doty J, Hughes C, Kabamba J,
360 Malekani J, 2016. Extended Human-to-Human Transmission during a Monkeypox Outbreak in
361 the Democratic Republic of the Congo. *Emerg Infect Dis* 22: 1014-21.
- 362 11. Institut National de la Statistique, 2015. *Annuaire Statistique 2015*. Available at:
363 <https://www.ins.cd/wp-content/uploads/2021/04/Annuairestatistique-2015-Web.pdf>. Accessed
364 October 27, 2020.
- 365 12. U.S. Central Intelligence Agency, Congo, Democratic Republic of the. Available at:
366 [https://www.cia.gov/the-world-factbook/countries/congo-democratic-republic-of-the/#people-](https://www.cia.gov/the-world-factbook/countries/congo-democratic-republic-of-the/#people-and-society)
367 [and-society](https://www.cia.gov/the-world-factbook/countries/congo-democratic-republic-of-the/#people-and-society). Accessed January 12, 2023.
- 368 13. Guagliardo S, Reynolds M, Kabamba J, Nguete B, Lushima R, Wemakoy O, McCollum A, 2018.
369 Sounding the alarm: Defining thresholds to trigger a public health response to monkeypox. *PLoS*
370 *Negl Trop Dis* 12: e0007034.
- 371 14. Monroe B, Doty J, Moses C, Ibata S, Reynolds M, Carroll D, 2015. Collection and Utilization of
372 Animal Carcasses Associated with zoonotic Disease in Tshuapa District, the Democratic Republic
373 of the Congo, 2012. *J Wildl Dis* 51: 734-8.
- 374 15. Anderson R, May R, 1991. *Infectious diseases of humans: dynamics and control*: Oxford
375 University Press.
- 376 16. Van Kerkhove M, Bento A, Mills H, Ferguson N, Donnelly C, 2015. A review of epidemiological
377 parameters from Ebola outbreaks to inform early public health decision-making. *Nature*
378 *Scientific Data* 2: 150019.
- 379 17. Keeling M, Rohani P, 2008. *Modeling Infectious Diseases in Humans and Animals*. Princeton,
380 New Jersey, USA: Princeton University Press.
- 381 18. O'Driscoll M, Harry C, Donnelly C, Cori A, Dorigatti I, 2021. A comparative analysis of statistical
382 methods to estimate the reproduction number in emerging epidemics, with implications for the
383 current coronavirus disease 2019 (COVID-19) pandemic. *Clinical Infectious Diseases* 73: e215-
384 e223.
- 385 19. Whitehouse E, Bonwitt J, Hughes C, Lushima R, Likafi T, Nguete B, Kabamba J, Monroe B, Doty J,
386 Nakazawa Y, 2021. Clinical and Epidemiological Findings from Enhanced Monkeypox Surveillance
387 in Tshuapa Province, Democratic Republic of the Congo During 2011–2015. *J Infect Dis* 223:
388 1870-1878.
- 389 20. Rimoin A, Mulembakani P, Johnston S, Lloyd-Smith J, Kisalu N, Kinkela T, Blumberg S, Thomassen
390 H, Pike B, Fair J, Wolfe N, 2010. Major increase in human monkeypox incidence 30 years after
391 smallpox vaccination campaigns cease in the Democratic Republic of Congo. *PNAS* 107: 16262-
392 16267.

REPRODUCTION NUMBER ESTIMATES FOR MONKEYPOX IN THE DRC

- 393 21. Hoff N, Doshi R, Colwell B, Kebela-Illunga B, Mukadi P, Mossoko M, Spencer D, Muyembe-
394 Tamfum J, Okitolonda-Wemakoy E, Lloyd-Smith J, Rimoin A, 2017. Evolution of a Disease
395 Surveillance System: An Increase in Reporting of Human Monkeypox Disease in the Democratic
396 Republic of the Congo, 2001-2013. *International Journal of Tropical Disease & Health* 25:
397 IJTDH.35885.
- 398 22. Yinka-Ogunleye A, Aruna O, Dalhat M, Ogoina D, McCollum A, Disu Y, Mamadu I, Akinpelu A,
399 Ahmad A, Burga J, 2019. Outbreak of human monkeypox in Nigeria in 2017–18: a clinical and
400 epidemiological report. *The Lancet Infectious Diseases* 19: 872-879.
- 401 23. Ambrose M, Kucharski A, Formenty P, Muyembe-Tamfum J, Rimoin A, Lloyd-Smith J, 2019.
402 Quantifying transmission of emerging zoonoses: Using mathematical models to maximize the
403 value of surveillance data. *bioRxiv*.
- 404 24. Blumberg S, Lloyd-Smith J, 2013. Inference of R0 and Transmission Heterogeneity from the Size
405 Distribution of Stuttering Chains. *PLoS Comput Biol* 9: e1002993.
- 406 25. Fine P, Jezek Z, Grab B, Dixon H, 1988. The Transmission Potential of Monkeypox Virus in Human
407 Populations. *International Journal of Epidemiology* 17: 643-650.
- 408 26. Lloyd-Smith J, Schreiber S, Kopp P, Getz W, 2005. Superspreading and the effect of individual
409 variation on disease emergence. *Nature* 428: 355-359.
- 410 27. Philpott D, Hughes C, Alroy K, Kerins J, Pavlick J, Asbel L, Crawley A, Newman A, Spencer H,
411 Feldpausch A, 2022. Epidemiologic and Clinical Characteristics of Monkeypox Cases — United
412 States, May 17–July 22, 2022. *MMWR* 71: 1018-1022.
- 413 28. Spicknall I, Pollack E, Clay P, Oster A, Charniga K, Masters N, Nakazawa Y, Rainisch G, Gundlapalli
414 A, Gift T, 2022. Modeling the impact of sexual networks in the transmission of Monkeypox virus
415 among gay, bisexual, and other men who have sex with men — United States, 2022. *MMWR* 71:
416 1131-1135.
- 417 29. U.S. Centers for Disease Control and Prevention, 2022 Mpox Outbreak Global Map. Available at:
418 <https://www.cdc.gov/poxvirus/monkeypox/response/2022/world-map.html>. Accessed January
419 6, 2023.
- 420 30. Hughes C, Liu L, Davidson W, Radford K, Wilkins K, Monroe B, Metcalfe M, Likafi T, Lushima R,
421 Kabamba J, 2021. A Tale of Two Viruses: Coinfections of Monkeypox and Varicella Zoster Virus in
422 the Democratic Republic of Congo. *Am J Trop Med Hyg* 104: 604-611.
- 423 31. Wallace J, 2010. R Package 'lmap'. CRAN.
- 424 32. Cori A, Nouvellet P, Garske T, Bourhy H, Nakouné E, Jombart T, 2018. A graph-based evidence
425 synthesis approach to detecting outbreak clusters: An application to dog rabies. *PLoS Comput*
426 *Biol* 14: e1006554.
- 427 33. Nishiura H, Eichner M, 2007. Infectiousness of smallpox relative to disease age: estimates based
428 on transmission network and incubation period. *Epidemiology & Infection* 135: 1145-1150.
- 429 34. Gibbons C, Mangen M, Plass D, Havelaar A, Brooke R, Kramarz P, Peterson K, Stuurman A,
430 Cassini A, 2014. Measuring underreporting and under-ascertainment in infectious disease
431 datasets: a comparison of methods. *BMC Public Health* 14: 147.
- 432 35. Nouvellet P, Jombart T, 2018. *branchr*: R Estimation from Cluster Sizes: R Epidemics Consortium.
- 433 36. Soetens L, Backer J, Hahné S, van Binnendijk R, Gouma S, Wallinga J, 2019. Visual tools to assess
434 the plausibility of algorithm-identified infectious disease clusters: an application to mumps data
435 from the Netherlands dating from January 2009 to June 2016. *Euro Surveill* 24: pii=1800331.
- 436 37. Grant R, Nguyen LL, Breban R, 2020. Modelling human-to-human transmission of monkeypox.
437 *Bull World Health Organ* 98: 638-640.
- 438 38. Maganga G, Kapetshi J, Berthet N, Illunga B, Kabange F, Kingebeni P, Mondonge V, Muyembe J-J,
439 Bertherat E, 2014. Ebola Virus Disease in the Democratic Republic of Congo. *N Engl J Med* 371:
440 2083-2091.

REPRODUCTION NUMBER ESTIMATES FOR MONKEYPOX IN THE DRC

- 441 39. Fenner F, Henderson D, Arita I, Jezek Z, Ladnyi I, 1988. Smallpox and its Eradication: World
442 Health Organization.
- 443 40. Madewell Z, Charniga K, Masters N, Asher J, Fahrenwald L, Still W, Chen J, Kipperman N, Bui D,
444 Shea M, Saathoff-Huber L, 2023. Serial interval and incubation period estimates of monkeypox
445 virus infection in 12 U.S. jurisdictions, May – August 2022. *Emerg Infect Dis*.
- 446 41. Miura F, Backer J, van Rijckevorsel G, Bavalia R, Raven S, Petrignani M, Ainslie K, Wallinga J,
447 Dutch Mpox Response Team, 2022. Time scales of human mpox transmission in the
448 Netherlands. *medRxiv*.
- 449 42. Ward T, Christie R, Paton R, Cumming F, Overton C, 2022. Transmission dynamics of monkeypox
450 in the United Kingdom: contact tracing study. *BMJ* 379: e073153.
- 451 43. Belluz J, 2018. Why the Ebola outbreak in DRC is so difficult to contain. *Vox*.
- 452 44. Jones R, 2019. Life amid an Ebola outbreak: Combating mistrust—and saving lives. *National*
453 *Geographic*.
- 454 45. Mindaoudou A, Lusenge J, Bocoum D, Doucet C, Coulibaly M, 2021. Final Report of the
455 Independent Commission on the review of sexual abuse and exploitation during the response to
456 the 10th Ebola virus disease epidemic in DRC: World Health Organization.
- 457 46. Cohen J, 2022. Monkeypox is a new global threat. African scientists know what the world is up
458 against. *Science News: American Association for the Advancement of Science*.
- 459 47. Kagumire R, Bolombo F, 2020. Analysis: DRC's deadly, but ignored, measles epidemic. *Aljazeera*:
460 *Al Jazeera Media Network*.
- 461 48. Ingelbeen B, Weregemere N, Noel H, Tshapenda G, Mossoko M, Nsio J, Ronsse A, Ahuka-
462 Mundeke S, Cohuet S, Kebela B, 2018. Urban yellow fever outbreak—Democratic Republic of the
463 Congo, 2016: Towards more rapid case detection. *PLoS Negl Trop Dis* 12: e0007029.
- 464 49. Schnirring L, 2016. WHO says yellow fever 'serious concern' but not emergency. *CIDRAP News*.
465 Minneapolis, MN: Center for Infectious Disease Research & Policy at the University of
466 Minnesota.
- 467 50. Sinai C, Hoff N, 2016. Mapping unmapped villages with Congo's National Vaccination Program.
468 Available at: [https://mapforenvironment.org/story/Mapping-unmapped-villages-with-Congo's-](https://mapforenvironment.org/story/Mapping-unmapped-villages-with-Congo's-National-Vaccination-Program/12)
469 [National-Vaccination-Program/12](https://mapforenvironment.org/story/Mapping-unmapped-villages-with-Congo's-National-Vaccination-Program/12). Accessed January 31, 2023.
- 470 51. Institut National de la Statistique, 2021. *Annuaire Statistique RDC 2020*. Kinshasa, RDC.
- 471 52. Hoff N, Kebela-Illunga B, Eckhoff P, Mukadi P, Mossoko M, Muyembe-Tamfum J-J, Okitolonda-
472 Wemakoy E, Doshi R, Rimoin A, 2015. A descriptive and quantitative analysis of potential
473 underestimation of human monkeypox cases in the passive surveillance system in the
474 Democratic Republic of Congo. *American Journal of Tropical Medicine and Hygiene* 93: 242.

475

476

477

478

479

480

481

482 **Tables**

483 **Table 1.** Human mpox reporting by year from surveillance in Tshuapa Province, DRC, 2010 – 2019.

| Year | Confirmed mpox cases with symptom onset and geographic location (% of confirmed) | Confirmed mpox cases (% of investigated) | Total mpox cases investigated* |
|--------------|---|---|---------------------------------------|
| 2010 | 3 (60) | 5 (45) | 11 |
| 2011 | 29 (46) | 63 (28) | 224 |
| 2012 | 77 (69) | 112 (34) | 326 |
| 2013 | 228 (69) | 330 (78) | 422 |
| 2014 | 143 (61) | 233 (75) | 309 |
| 2015 | 171 (53) | 324 (77) | 419 |
| 2016 | 205 (54) | 381 (72) | 526 |
| 2017 | 187 (62) | 300 (77) | 388 |
| 2018 | 87 (53) | 164 (70) | 235 |
| 2019 | 55 (51) | 107 (80) | 133 |
| Total | 1,185 (59) | 2,019** (67) | 2,993 |

484 *Total mpox cases investigated includes individuals that tested positive or negative for monkeypox virus
485 as well as those that had indeterminate laboratory results. Forty-three individuals had indeterminate
486 laboratory results from 2010-2019.

487 **30 confirmed mpox cases were missing symptom onset dates.

488 **Table 2.** Human mpox reporting by health zone from surveillance in Tshuapa Province, DRC, 2013 –
 489 2017.

| Health zone | Confirmed mpox cases with symptom onset and geographic location (% of confirmed) | Confirmed mpox cases (% of investigated) | Total investigated | Estimated population size* (2016) |
|-----------------|--|--|--------------------|-----------------------------------|
| Befale | 32 (44) | 72 (73) | 99 | 177,864 |
| Boende | 59 (53) | 111 (70) | 158 | 272,699 |
| Bokungu | 80 (54) | 147 (74) | 198 | 201,658 |
| Busanga | 152 (73) | 208 (76) | 272 | 100,372 |
| Djolu | 166 (81) | 206 (69) | 300 | 235,873 |
| Ikela | 60 (41) | 148 (77) | 191 | 198,471 |
| Lingomo | 99 (55) | 179 (85) | 210 | 135,617 |
| Mompono | 106 (78) | 136 (85) | 160 | 142,956 |
| Mondombe | 59 (48) | 122 (65) | 189 | 173,630 |
| Monkoto | 16 (59) | 27 (68) | 40 | 139,186 |
| Wema | 39 (42) | 92 (90) | 102 | 114,787 |
| Yalifafu | 66 (55) | 120 (83) | 145 | 174,973 |
| Total | 934 (60) | 1,568 (76) | 2,064 | 2,068,084 |

490 *We used population data for Tshuapa Province from 2015 (Annuaire Statistique 2015, Institut National
 491 de la Statistique, DRC) and applied these to demographic estimates for each health zone (unpublished,
 492 Division Provinciale de la Santé, Tshuapa). Data for 2016 were extrapolated assuming an annual growth
 493 of 3.3%.
 494

495
 496
 497
 498
 499
 500
 501
 502
 503

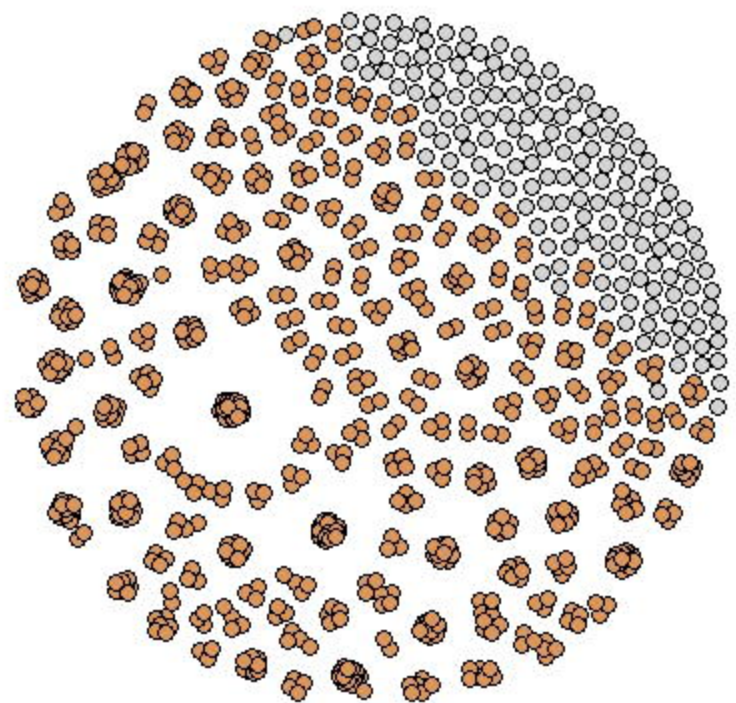
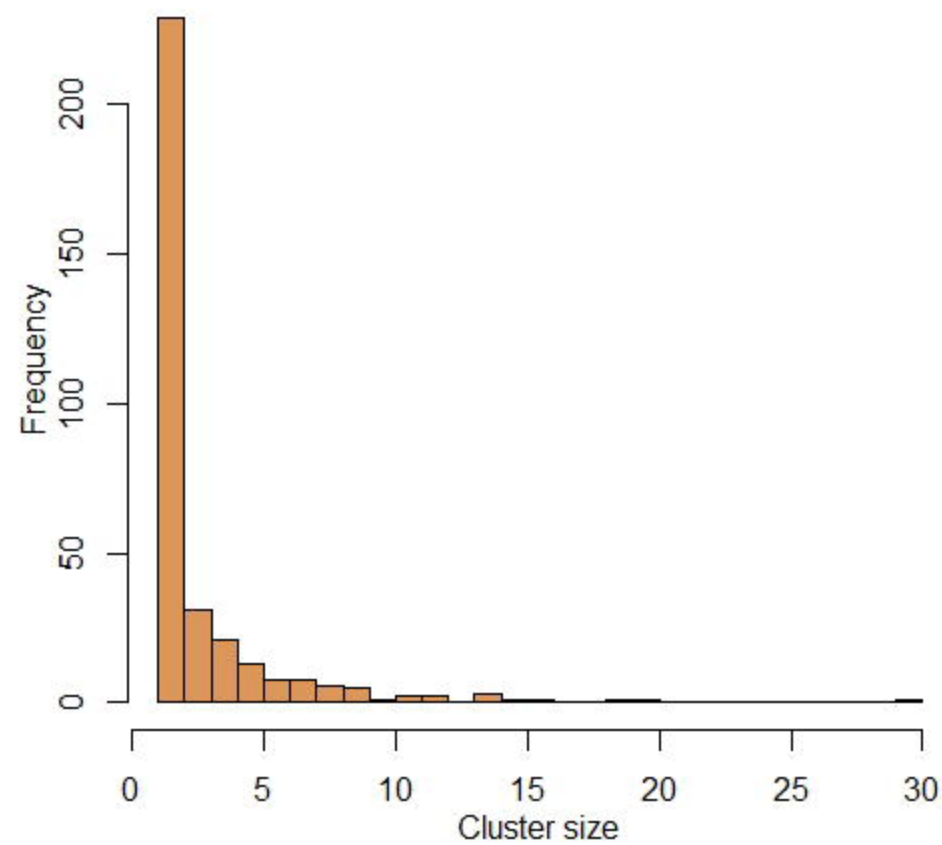
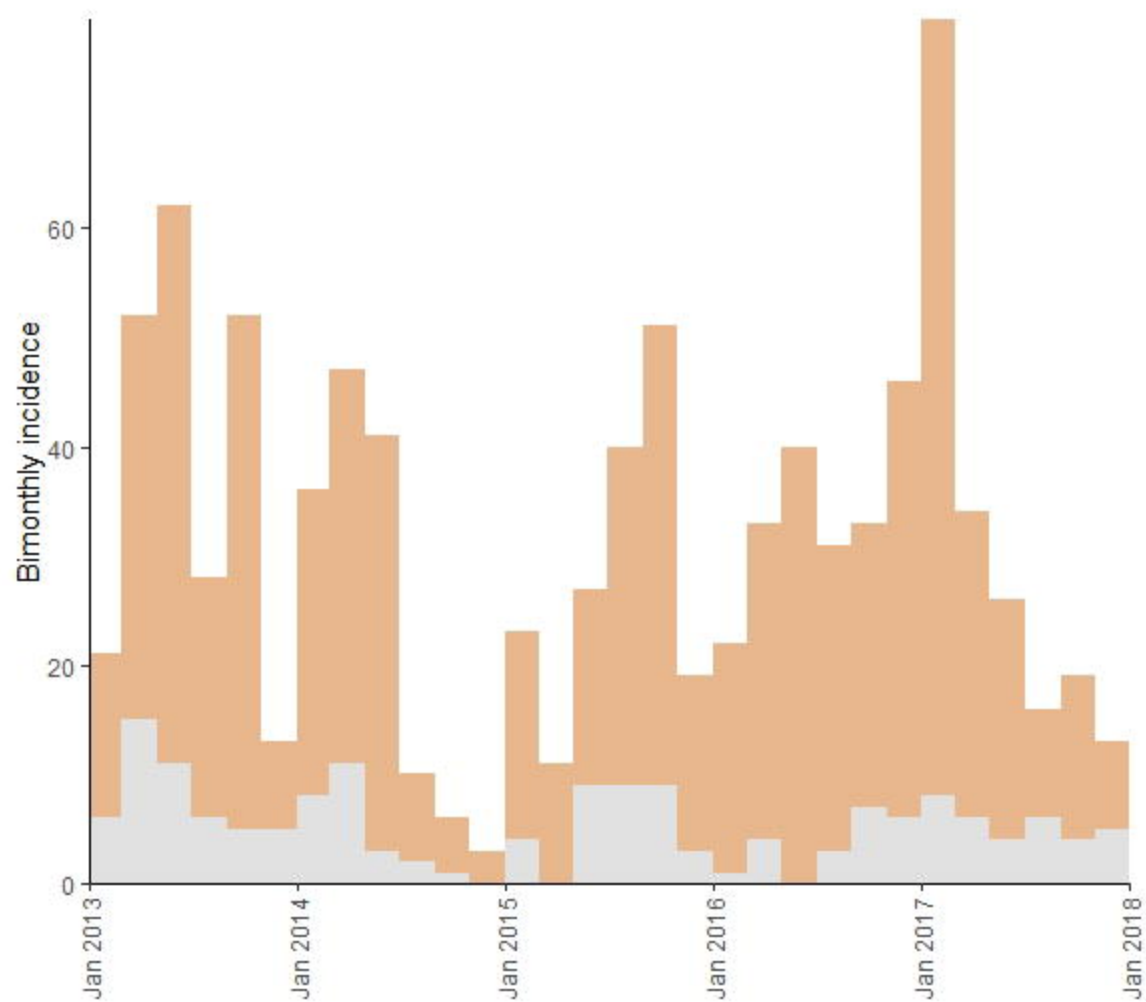
REPRODUCTION NUMBER ESTIMATES FOR MONKEYPOX IN THE DRC

504 **Figures**

505 **Figure 1.** (A) Clusters of human mpox cases in Tshuapa Province, DRC, 2013 - 2017. Nodes represent
506 cases, while edges represent possible epidemiological links. (B) Frequency of cluster sizes. (C) Bimonthly
507 incidence of human mpox cases by date of symptom onset. Mpox reporting tends to decline in
508 December/January each year, likely due to the holidays and healthcare worker trainings. (D) Map of
509 Tshuapa Province showing the geographic locations of human mpox cases. We adjusted the
510 transparency of the points to improve visualization but overplotting still occurs for some villages. We
511 assumed a reporting rate of 25% and used pruning cutoff distances associated with the 98.3% quantiles
512 of the input distance distributions. For (A), (C), and (D), cases in orange belong to clusters containing two
513 or more cases, while cases in gray are not connected to other cases, using both temporal and spatial
514 data. For (D), we downloaded shapefiles of health zones in DRC from the Humanitarian Data Exchange.
515 The shapefiles were prepared by the American Red Cross and are available under an Open Database
516 License (ODC-ODbL).

A

medRxiv preprint doi: <https://doi.org/10.1101/2023.04.14.23288572>; this version posted April 17, 2023. The copyright holder for this preprint (which was not certified by peer review) is the author/funder, who has granted medRxiv a license to display the preprint in perpetuity. This article is a US Government work. It is not subject to copyright under 17 USC 105 and is also made available for use under a CC0 license.

**B****C****D**