

1
2
3
4
5
6
7
8
9
10
11
12
13
14
15
16
17
18
19
20
21
22
23
24
25
26
27
28
29
30
31
32
33
34
35
36
37
38
39

Sleep Regularity and Mortality: A Prospective Analysis in the UK Biobank

Lachlan Cribb* (MEpi),¹ Ramon Sha* (BSc)¹, Stephanie Yiallourou* (Ph.D.)¹, Natalie A Grima (DPsyc),¹
Marina Cavuoto (Ph.D.)^{1,2}, Andree-Ann Baril¹ (Ph.D.)³, Matthew P. Pase¹ (Ph.D.)^{1,4}

¹Turner Institute for Brain and Mental Health, Monash University, Melbourne Australia;

²National Ageing Research Institute, Melbourne, Australia;

³Douglas Mental Health University Institute, McGill University, Montreal, QC, Canada;

⁴Harvard T.H. Chan School of Public Health, Harvard University, MA, USA.

[*Joint first authors](#)

Correspondence to: Matthew Pase, 18 Innovation Walk, Room 617, Monash University, Clayton, VIC, Australia, 3800. Phone: (+61)401267924. [email – matthewpase@gmail.com](mailto:matthewpase@gmail.com).

Word Count: 2716

40
41
42
43
44
45
46
47
48
49
50
51
52
53
54
55
56
57
58
59
60
61
62
63
64
65
66
67
68
69
70
71
72
73
74
75
76
77
78
79

ABSTRACT

Background Irregular sleep-wake timing may cause circadian disruption leading to several chronic age-related diseases. We examined the relationship between sleep regularity and risk of all-cause, cardiovascular disease (CVD), and cancer mortality in 88,975 participants from the prospective UK Biobank cohort.

Methods The sleep regularity index (SRI) was calculated as the probability of an individual being in the same state (asleep or awake) at any two time points 24 hours apart, averaged over 7-days of accelerometry (range 0-100, with 100 being perfectly regular). The SRI was related to the risk of mortality in time-to-event models.

Findings The mean sample age was 62 years (SD, 8), 56% were women, and the median SRI was 60 (SD, 10). There were 3010 deaths during a mean follow-up of 7.1 years. Following adjustments for demographic and clinical variables, we identified a non-linear relationship between the SRI and all-cause mortality hazard (p [global test of spline term] < 0.001). Hazard Ratios, relative to the median SRI, were 1.53 (95% confidence interval [CI]: 1.41, 1.66) for participants with SRI at the 5th percentile (SRI = 41) and 0.90 (95% CI: 0.81, 1.00) for those with SRI at the 95th percentile (SRI = 75), respectively. Findings for CVD mortality and cancer mortality followed a similar pattern.

Conclusions Irregular sleep-wake patterns are associated with higher mortality risk.

Funding National Health and Medical Research Council of Australia (GTN2009264; GTN1158384), National Institute on Aging (AG062531), Alzheimer's Association (2018-AARG-591358), and the Banting Fellowship Program (#454104).

80

INTRODUCTION

81 Circadian rhythms are endogenous cycles in physiological, hormonal, and behavioral processes largely
82 synchronized to the external 24-hour light-dark cycle. The sleep-wake cycle is perhaps the most notable
83 biological process that follows the 24-hour circadian rhythm.¹ The timing of light exposure is the primary
84 external driver of circadian rhythms. Therefore, rapid changes in sleep timing can cause circadian misalignment
85 through fluctuating light-dark exposure.²

86

87 Circadian misalignment is associated with several age-related diseases, including cancer and cardiovascular
88 disease (CVD).³⁻⁵ However, the health impacts of irregular sleep wake timing are still emerging. This remains an
89 important area of study since modern societal and lifestyle trends, including exposure to artificial and blue light
90 at night, longer work hours, shift work, and the 24-7 lifestyle have blurred the distinction between day and
91 night, increasing the propensity for circadian disruption.⁶ The present study assessed the relationship between
92 sleep regularity and the risk of incident all-cause mortality, cancer mortality, and CVD mortality in the UK
93 Biobank (UKB). We measured sleep regularity via accelerometry to calculate the sleep regularity index (SRI), a
94 new metric sensitive to differences in sleep-wake timing on a circadian timescale.

95

96

METHODS

Participants

98 Over 500,000 adults aged 40 to 69 years were recruited to the UKB cohort between 2006 and 2010 across 22
99 assessment centers. Participants were invited by the UK National Health Service patient registers, resulting in a
100 5.5% participation rate. Respondents were more likely to be older, female, and less likely to live in
101 socioeconomically deprived areas than the general population.⁷ Baseline demographics, medical history,
102 lifestyle, vitals, and blood samples were collected. A total of 106,053 participants completed a 7-day wrist-worn
103 accelerometer study through random selection between February 2013 and December 2015.

104

Measurement of sleep regularity

106 Accelerometry data were collected using a wrist-worn device (Axivity AX3, United Kingdom) over a 7-
107 day/night period. Estimated sleep status (awake or asleep) at a given time was calculated using the open-source
108 R package GGIR version 2.7-1,⁸ using available algorithms.^{9,10} Accelerometry data of low quality were
109 removed using established UKB criteria (Appendix 1, pg. 3). In total, 88,975 (84%) participants provided valid
110 SRI data and were included in the study.

111

112 The SRI captures the probability of a participant being in the same state (asleep or awake) at any two time
113 points 24 hours apart.¹¹ An individual who sleeps and wakes at precisely the same time each day would have an
114 index of 100, whereas an individual who sleeps and wakes at entirely random times would have an index of 0.
115 Each participant provided $k-1$ SRI measurements (where k is the number of valid 24-hour periods), one for each
116 contiguous two-day pair. These SRI measurements were averaged using a linear mixed effects model with a
117 random intercept for the participant and fixed effects for the day of the week and daylight savings transition. The
118 average SRI was standardized over the day of the week and daylight savings transitions, so all SRI results were
119 comparable.

120

121 *Mortality ascertainment*

122 Mortality occurrence was identified through linkage with NHS Digital for participants from England and Wales
123 and the NHS Central Register for participants from Scotland, with complete records available until January
124 2022. Death records included the date of death and the ICD-10 code for the primary cause. ICD-10 codes I00-
125 I99 and C00-C97 defined CVD and cancer mortality, respectively.

126

127 *Ascertainment of prevalent disease at baseline*

128 Prevalent cancer (ICD-10 codes D00-D09 and D37-D48), diabetes (codes E10-E14), mental and behavioral
129 disorders (codes F00-F99), nervous system disorders (codes G00-G99), and CVD (codes I00-I99) at the time of
130 the accelerometry study were ascertained through self-report at the UKB baseline session and through linkage
131 with hospital inpatient records using the above ICD-10 codes. Linkage with hospital inpatient records was also
132 used to identify disease occurrence between the UKB baseline session and the time of the accelerometry study.

133

134 *Data Analysis*

135 Data analysis was performed using R version 4.2.1. Cox proportional hazards models were used to examine
136 associations between the SRI and incident all-cause mortality, CVD mortality, and cancer mortality.
137 Surveillance for mortality commenced from the time of accelerometry (2013-2015) until the end of follow-up
138 (January 2022), with a median follow-up time of 7.1 years (Q1, Q3: 6.6, 7.6). Non-events were censored at the
139 last date they were known to be alive. For CVD and cancer mortality, deaths from competing causes were
140 censored at the time of death. The SRI and all continuous confounders were modeled with restricted cubic
141 splines with knots at the 10th, 50th, and 90th percentiles to allow for departures from linearity. Missing data
142 were infrequent (< 2%) for most confounder variables and were imputed (10 imputations) by predictive mean
143 matching using the `aregImpute` function of R package *Hmisc*.¹²

144

145 In addition to Cox models, discrete-time hazards models, including an interaction between SRI and time
146 (aggregated into 3-month intervals and modeled with a restricted cubic spline with knots at the 5th, 35th, 65th, and
147 95th percentiles), were fitted to determine whether Hazard Ratios (HRs) varied over time.¹³ Time-varying HRs
148 were then displayed visually. In cases where HRs showed clear time-variation (i.e., hazards were non-
149 proportional), we nonetheless present HRs from the Cox models as these can be interpreted as a weighted
150 average of the time-varying HRs.¹⁴ The discrete-time hazards model for all-cause mortality was also used to
151 estimate standardized cumulative incidence (risk) across levels of SRI, with confidence intervals obtained by
152 bootstrapping.¹⁵ To reduce computation demand, only single imputation was used for the discrete-time hazards
153 models.

154

155 All models were adjusted for the following variables that were selected using a directed acyclic graph
156 (Appendix, Figure S1): age, sex, ethnicity (White, Asian, mixed race, Black, or other), Townsend deprivation
157 index, retirement status (retired vs. all other work arrangements), shift work (shift worker vs. non-shift worker),
158 sick or disabled (self-reported employment category), household income (ordinal with 5 levels), highest level of

159 education (ordinal with 6 levels), smoking status (current, former, never), smoking (pack years), and use of
160 sedative, antidepressant, or antipsychotic medication.

161

162 *Sensitivity analyses*

163 We fitted a second statistical model to determine whether the observed associations were independent of sleep
164 time and disruption. Therefore, Model 2 included additional adjustments for overnight sleep duration and wake
165 after sleep onset (WASO), averaged across accelerometry days (plus primary model covariates). In the second
166 sensitivity analysis (Model 3), we adjusted for prevalent disease at baseline (cancer, CVD, mental and
167 behavioural disorders, nervous system disorders, diabetes), in addition to the variables in the primary model.
168 These variables were included as part of a sensitivity analysis as it is unclear whether they may be mediators or
169 confounders of the SRI-mortality relationship. Long-standing irregular sleep may lead to prevalent disease at
170 baseline and influence disease risk factors,¹⁶⁻¹⁹ indicating that prevalent disease variables may play a mediating
171 role (and consequently should not be adjusted). Conversely, prevalent disease may have effects disruptive to
172 regular sleep and these variables may therefore confound the SRI-mortality relationship. Disease risk factor
173 variables body mass index (BMI), moderate and vigorous physical activity (accelerometry-derived), systolic
174 blood pressure (BP), and use of BP lowering medication, in addition to the variables in Model 3, were included
175 in a final sensitivity analysis (Model 4), as it is similarly unclear whether they may confound or mediate the
176 SRI-mortality relationship.

177

178 *Comparison of SRI with other regularity measures*

179 Preliminary reports which identified irregular sleep as a potential CVD risk factor measured sleep regularity as
180 the amount of deviation in sleep patterns from an individual's average (i.e., the standard deviation [SD] of
181 nocturnal sleep duration and sleep onset time).^{20,21} To contrast these SD-based metrics with the SRI, we fitted
182 independent Cox models (each with primary model covariates) and estimated HRs for all-cause mortality for
183 each of the three measures. Additionally, we added the SRI to a model containing both SD-based regularity
184 measures (alongside primary model covariates) to test whether the SRI contained additional mortality risk
185 information beyond that captured by the two SD metrics.

186

187

188

RESULTS

189 **Table 1** displays sample characteristics. The final sample size was 88,975. There were 3010 all cause deaths
190 during a median follow-up of 7.1 years (Q1, Q3: 6.6, 7.6). The most common primary cause of death was
191 cancer (n = 1701, 57%) followed by CVD (n = 616, 20%).

192

193 *SRI and all-cause mortality*

194 We identified a non-linear association between the SRI and all-cause mortality hazard (p [global test of spline
195 term] < 0.001) (**Figure 1**). Compared to the sample median (SRI = 61), mortality rates were highest among
196 those with the most irregular sleep and decreased almost linearly as SRI approached its median, after which the
197 decrease began to plateau (**Figure 1**). HRs, relative to the median SRI, were 1.53 (95% CI: 1.41, 1.66) for
198 participants with SRI at the 5th percentile (SRI = 41) and 0.90 (95% CI: 0.81, 1.00) for those with SRI at the 95th

199 percentile (SRI = 75), respectively. Standardized cumulative incidence curves for all-cause mortality are
200 displayed for the SRI at the 5th percentile, median, and 95th percentile in **Figure 2**.

201

202 There was evidence of non-proportionality of hazards across levels of SRI in the discrete-time hazards model (p
203 [time x SRI interaction] < 0.001). Time-varying HRs for the 5th and 95th SRI percentiles compared to the median
204 are displayed in the appendix (Figure S2). For the 5th percentile relative to the median, HRs were greatest in the
205 earliest period of follow-up (HRs > 2), declining until approximately 2.5 years, after which they remained
206 approximately stable with a HR of around 1.5. There was no clear time variation in the HR for the 95th
207 percentile of SRI vs. the median.

208

209 *CVD-specific mortality*

210 The SRI was associated with CVD-specific mortality in the primary model (p [global] < 0.001; **Figure 1**). HRs,
211 relative to the median SRI, were 1.88 (95% CI: 1.61, 2.21) and 0.93 (95% CI: 0.73, 1.20) for the 5th and 95th
212 percentiles, respectively. There was no evidence of non-proportional hazards in the discrete-time hazards model
213 (p [time x SRI interaction] = 0.57).

214

215 *Cancer-specific mortality*

216 The SRI was associated with cancer mortality in the primary model (p [global] < 0.001). HRs, relative to the
217 median SRI, were 1.36 (95% CI: 1.22, 1.53) and 0.89 (95% CI: 0.77, 1.02) for the 5th and 95th percentiles,
218 respectively. There was strong evidence of non-proportional hazards in the cancer-mortality discrete-time
219 hazards model (p [time x SRI interaction] < 0.001). HRs, for the 5th percentile vs. the median, were large at the
220 beginning of follow-up (HRs > 2) and declined until approximately four years, after which they were small (~
221 1.05) and compatible with the null (Appendix, Figure S3). There was no indication that HRs for the 95th SRI
222 percentile relative to the median varied over follow-up.

223

224 *Sensitivity analyses*

225 Sensitivity analyses are displayed in the appendix (Figures S4-6). Overall, results were similar and not
226 meaningfully altered following adjustments for sleep time and WASO (Model 2) or prevalent baseline disease,
227 including cancer and CVD (Model 3). The SRI remained associated with mortality after further adjustments for
228 prevalent diseases, BMI, systolic BP, BP treatment, and physical activity (Model 4), though effect sizes were
229 attenuated. For example, when comparing the 5th percentile to the median, HRs were 1.22 (95% CI: 1.07, 1.39)
230 for all-cause, 1.43 (95% CI: 1.21, 1.69) for CVD, and 1.15 (95% CI: 1.01, 1.29) for cancer mortality.

231

232 *Comparison of SRI with sleep duration SD and sleep onset time SD*

233 **Figure 3** displays HRs, relative to the median, for the SRI, sleep duration SD, and sleep onset time SD. For each
234 measure, greater sleep irregularity (i.e., lower SRI or higher SD representing more day-to-day variability) was
235 associated with an increased all-cause mortality rate in independent models (all p [global] < 0.001). HRs, for
236 low regularity compared to the median, were largest for the SRI (**Figure 3**). The addition of the SRI to a model
237 containing both SD metrics (alongside primary model covariates) improved model fit (p [likelihood ratio test] <

238 0·001). Conversely, the addition of sleep duration SD and sleep onset time SD to a model containing the SRI
239 (and primary model covariates) did not meaningfully improve model fit (p [likelihood ratio test] = 0·10).

240

241

242

DISCUSSION

243 Among 88,975 individuals followed for a median of 7·1 years, there was a non-linear association between sleep
244 regularity and the risk of mortality; mortality rates were highest in persons with the most irregular sleep and
245 decreased approximately linearly as sleep regularity approached its median, after which the decrease began to
246 plateau. Our findings were independent of prevalent illness (including cancer and CVD at baseline), sleep
247 duration, sleep fragmentation, and other confounding factors. Overall, these data indicate a relationship between
248 sleep regularity and longevity in a large community-based cohort.

249

250 Physiological processes associated with CVD and cancer are under circadian control. Mutations or deletions to
251 circadian clock genes such as *CLOCK*, *PER*, and *BMAL1* influence BP, endothelial function, and glucose
252 homeostasis.²²⁻²⁵ Both major (e.g., chronic shift work) and minor (e.g., daylight savings transitions) stressors to
253 the circadian system have been associated with a higher risk of CVD.^{3,5} Similarly, circadian misalignment has
254 also been implicated in the pathogenesis of cancer. For example, circadian clocks are critical to the orchestration
255 of cell division²⁶, and altered clock function can precipitate aberrant cell proliferation²⁷ as well as growth and
256 DNA damage in cancer cells.²⁸ Many systems are under circadian influence, including the sleep-wake cycle, and
257 less clear has been the extent to which differences in sleep regularity are related to negative health outcomes. We
258 extend this research by demonstrating that differences in sleep regularity are associated with the risk of mortality
259 from both CVD and cancer.

260

261 Whereas sleep regularity has not been examined with respect to incident cancer or mortality, the current findings
262 extend research showing that greater sleep-wake variability, as measured by the SD of sleep onset or duration,
263 was independently associated with a higher risk of incident CVD in the multi-ethnic study of atherosclerosis but
264 not the UK Biobank.^{20,21} We demonstrate that the SRI contains information about mortality risk beyond that
265 contained in the SD of sleep duration and onset, whereas the converse was not the case. The SRI may be
266 superior to the SD-based metrics because the SRI captures rapid changes in sleep patterns across consecutive
267 days, as compared to the SD-based metrics which only calculate deviation from an individual's average. Rapid
268 changes in sleep timing have been hypothesised as being principally challenging for the circadian system to
269 accommodate¹¹ which may, in turn, produce negative health outcomes.

270

271 We found evidence that hazard rates across levels of SRI were non-proportional (i.e., varied across the follow-
272 up period) for all-cause and cancer mortality (which accounted for most deaths), though not for CVD mortality.
273 For cancer mortality, HRs for low SRI compared to the median were largest in the earliest follow-up period and
274 decreased thereafter. One plausible interpretation of this finding is that irregular sleep may be a manifestation of
275 the underlying physiological processes of cancer itself or of cancer treatment (i.e., the SRI-cancer mortality
276 association may be due to reverse causation). However, this thesis is challenged by the fact that associations
277 between the SRI and cancer mortality remained similar after adjusting for prevalent cancer at baseline. In the

278 case of CVD mortality, no such evidence of a decline in HRs over follow-up time was evident; a potential causal
279 role of irregular sleep on CVD death cannot be easily ruled out.

280

281 Sleep of insufficient or excessive duration is associated with many adverse health outcomes, including increased
282 mortality risk.²⁹ As of 2022, sleep duration was included by the American Heart Association in their Essential
283 Eight guidelines for CVD prevention.³⁰ However, sleep is far more complex than its habitual duration and
284 quality, with sleep regularity receiving comparatively little attention. As sleep-tracking wearables become more
285 accessible, objective measurement of sleep regularity has the potential for public and clinical use. Much like
286 sleep duration, replicating the current findings across different samples will be necessary for establishing
287 population norms and clinical targets.

288

289 Our study is not without limitations. Firstly, the study was observational. We are, therefore, unable to establish
290 cause and effect. Although we performed extensive analyses to control for confounding, we cannot exclude the
291 possibility that our results are explained by residual confounding. As such, although therapies exist for
292 improving sleep regularity, it's not clear if these interventions are able to extend the lifespan. Second, sleep and
293 wake were estimated through activity patterns from accelerometry. As compared to polysomnography, there is
294 the potential to misclassify sleep and wake, although accelerometry is more suited to estimate circadian patterns
295 over several days; there are several strengths to using accelerometry (e.g., days of continuous recording,
296 minimal technical apparatus affecting sleep quality), making it the recommended clinical tool for assessing
297 circadian rhythms.³¹

298

299 Circadian rhythms have a major influence on health and disease. Although sleep wake timing is under circadian
300 control, research on sleep regularity as a risk factor for mortality was equivocal. These data suggest sleep
301 regularity as an important correlate of longevity, independent of sleep duration, fragmentation, and quality.
302 Future work is needed to determine the underlying mechanisms to inform possible interventions to extend the
303 lifespan.

304

305

FUNDING

306 Dr. Pase is supported by a National Health and Medical Research Council of Australia Investigator Grant
307 (GTN2009264) with sleep research funding from the National Health and Medical Research Council of
308 Australia (GTN1158384), National Institute on Aging (R01 AG062531) and Alzheimer's Association (2018-
309 AARG-591358). Dr. Baril is funded by the Banting Fellowship Program (#454104). The funders of the study
310 had no role in study design, data collection, data analysis, data interpretation, or writing of the report.

311

312

313

ACKNOWLEDGMENTS

314 This research has been conducted using the UK Biobank Resource.

315

316

DATA SHARING

317 Data from the UK Biobank are available, pending application approval from: <https://www.ukbiobank.ac.uk/>

318

REFERENCES

- 319 1. Zee PC, Vitiello MV. Circadian Rhythm Sleep Disorder: Irregular Sleep Wake
320 Rhythm Type. *Sleep Med Clin* 2009; **4**(2): 213-8.
- 321 2. Zeitzer JM, Dijk DJ, Kronauer R, Brown E, Czeisler C. Sensitivity of the human
322 circadian pacemaker to nocturnal light: melatonin phase resetting and suppression. *J Physiol*
323 2000; **526 Pt 3**(Pt 3): 695-702.
- 324 3. Torquati L, Mielke GI, Brown WJ, Kolbe-Alexander T. Shift work and the risk of
325 cardiovascular disease. A systematic review and meta-analysis including dose-response
326 relationship. *Scand J Work Environ Health* 2018; **44**(3): 229-38.
- 327 4. International-Agency-for-Research-on-Cancer. Painting, firefighting, and shiftwork.
328 *IARC Monographs on the Evaluation of Carcinogenic Risks to Humans* 2010; **98**: 804.
- 329 5. Janszky I, Ljung R. Shifts to and from Daylight Saving Time and Incidence of
330 Myocardial Infarction. *New England Journal of Medicine* 2008; **359**(18): 1966-8.
- 331 6. Walker WH, Walton JC, DeVries AC, Nelson RJ. Circadian rhythm disruption and
332 mental health. *Translational Psychiatry* 2020; **10**(1): 28.
- 333 7. Fry A, Littlejohns TJ, Sudlow C, et al. Comparison of Sociodemographic and Health-
334 Related Characteristics of UK Biobank Participants With Those of the General Population.
335 *Am J Epidemiol* 2017; **186**(9): 1026-34.
- 336 8. Migueles JH, Rowlands AV, Huber F, Sabia S, van Hees VT. GGIR: a research
337 community-driven open source R package for generating physical activity and sleep
338 outcomes from multi-day raw accelerometer data. *Journal for the Measurement of Physical*
339 *Behaviour* 2019; **2**(3): 188-96.
- 340 9. Van Hees VT, Sabia S, Anderson KN, et al. A novel, open access method to assess
341 sleep duration using a wrist-worn accelerometer. *PloS one* 2015; **10**(11): e0142533.
- 342 10. van Hees VT, Sabia S, Jones SE, et al. Estimating sleep parameters using an
343 accelerometer without sleep diary. *Scientific reports* 2018; **8**(1): 1-11.
- 344 11. Phillips AJ, Clerx WM, O'Brien CS, et al. Irregular sleep/wake patterns are associated
345 with poorer academic performance and delayed circadian and sleep/wake timing. *Scientific*
346 *reports* 2017; **7**(1): 1-13.
- 347 12. Harrell Jr FE, Harrell Jr MFE. Package 'hmisc'. *CRAN2018* 2019; **2019**: 235-6.
- 348 13. Singer JD, Willett JB. Applied Longitudinal Data Analysis: Modeling Change and
349 Event Occurrence: Oxford University Press; 2003.
- 350 14. Stensrud MJ, Hernán MA. Why Test for Proportional Hazards? *JAMA* 2020; **323**(14):
351 1401-2.
- 352 15. Hernán MA, Robins JM. Causal inference. CRC Boca Raton, FL; 2010.
- 353 16. Fritz J, Phillips AJK, Hunt L, et al. Cross-sectional and prospective associations
354 between sleep regularity and metabolic health in the Hispanic community Health Study/Study
355 of Latinos. *Sleep* 2021; **44**(4): zsa218.
- 356 17. Huang T, Redline S. Cross-sectional and prospective associations of actigraphy-
357 assessed sleep regularity with metabolic abnormalities: the multi-ethnic study of
358 atherosclerosis. *Diabetes care* 2019; **42**(8): 1422-9.
- 359 18. Huang W-C, Chang S-H, Hsueh M-C, Liao Y. Relationship of sleep regularity with
360 device-based sedentary behavior time and physical activity time in working adults. *Sleep*
361 *Health* 2022.
- 362 19. Zuraikat FM, Makarem N, Redline S, Aggarwal B, Jelic S, St-Onge M-P. Sleep
363 regularity and cardiometabolic health: is variability in sleep patterns a risk factor for excess
364 adiposity and glycemic dysregulation? *Current diabetes reports* 2020; **20**(8): 1-9.
- 365 20. Nikbakhtian S, Reed AB, Obika BD, et al. Accelerometer-derived sleep onset timing
366 and cardiovascular disease incidence: a UK Biobank cohort study. *European Heart Journal -*
367 *Digital Health* 2021; **2**(4): 658-66.

- 368 21. Huang T, Mariani S, Redline S. Sleep Irregularity and Risk of Cardiovascular Events:
369 The Multi-Ethnic Study of Atherosclerosis. *J Am Coll Cardiol* 2020; **75**(9): 991-9.
- 370 22. Viswambharan H, Carvas JM, Antic V, et al. Mutation of the Circadian Clock Gene
371 *Per2* Alters Vascular Endothelial Function. *Circulation* 2007; **115**(16): 2188-95.
- 372 23. Curtis AM, Cheng Y, Kapoor S, Reilly D, Price TS, Fitzgerald GA. Circadian
373 variation of blood pressure and the vascular response to asynchronous stress. *Proc Natl Acad*
374 *Sci U S A* 2007; **104**(9): 3450-5.
- 375 24. Anea CB, Zhang M, Stepp DW, et al. Vascular disease in mice with a dysfunctional
376 circadian clock. *Circulation* 2009; **119**(11): 1510-7.
- 377 25. Rudic RD, McNamara P, Curtis AM, et al. BMAL1 and CLOCK, two essential
378 components of the circadian clock, are involved in glucose homeostasis. *PLoS Biol* 2004;
379 **2**(11): e377.
- 380 26. Reddy AB, Wong GK, O'Neill J, Maywood ES, Hastings MH. Circadian clocks:
381 neural and peripheral pacemakers that impact upon the cell division cycle. *Mutat Res* 2005;
382 **574**(1-2): 76-91.
- 383 27. Wang Q, Ao Y, Yang K, Tang H, Chen D. Circadian clock gene *Per2* plays an
384 important role in cell proliferation, apoptosis and cell cycle progression in human oral
385 squamous cell carcinoma. *Oncol Rep* 2016; **35**(6): 3387-94.
- 386 28. Gery S, Komatsu N, Baldjyan L, Yu A, Koo D, Koeffler HP. The circadian gene *per1*
387 plays an important role in cell growth and DNA damage control in human cancer cells. *Mol*
388 *Cell* 2006; **22**(3): 375-82.
- 389 29. Cappuccio FP, D'Elia L, Strazzullo P, Miller MA. Sleep duration and all-cause
390 mortality: a systematic review and meta-analysis of prospective studies. *Sleep* 2010; **33**(5):
391 585-92.
- 392 30. Lloyd-Jones DM, Allen NB, Anderson CAM, et al. Life's Essential 8: Updating and
393 Enhancing the American Heart Association's Construct of Cardiovascular Health: A
394 Presidential Advisory From the American Heart Association. *Circulation* 2022; **146**(5): e18-
395 e43.
- 396 31. Smith MT, McCrae CS, Cheung J, et al. Use of Actigraphy for the Evaluation of Sleep
397 Disorders and Circadian Rhythm Sleep-Wake Disorders: An American Academy of Sleep
398 Medicine Systematic Review, Meta-Analysis, and GRADE Assessment. *J Clin Sleep Med*
399 2018; **14**(7): 1209-30.

400

401

402

403

404

405

406

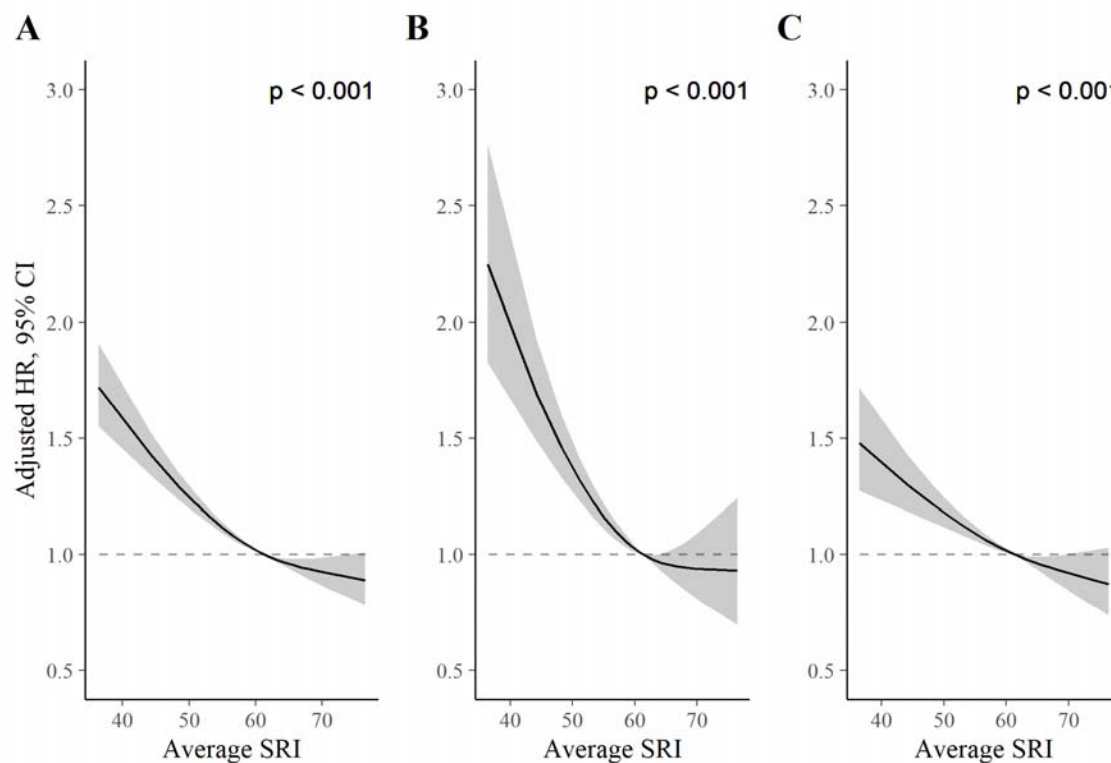
407 **Table 1:** Sample characteristics (n = 88,975)

Variable	Summary
Sex (male), n (%)	38,868 (44)
Age (years)	61.9 (7.8)
BMI	26.7 (4.5)
Ethnicity, n (%)	
Asian	3,423 (4)
Black	342 (0.4)
Mixed race	2,513 (3)
White	81,902 (92)
Other	507 (1)
Townsend deprivation index (score units), median (Q1-Q3)	-2.44 (-3.81, -0.17)
Household income* (thousands), n (%)	
<18	11,784 (15)
18-30	19,340 (24)
31-50	22,936 (29)
51-100	19,984 (25)
>100	5,786 (7)
Retired, n (%)	27,893 (31)
Shift worker, n (%)	3,927 (4)
Smoking status, n (%)	
Current	6,104 (7)
Former	31,910 (36)
Never	50,718 (57)
Sedative medication, n (%)	781 (<1)
Antidepressant medication, n (%)	5,145 (6)
Prevalent cancer, n (%)	11,638 (13)
Prevalent CVD, n (%)	36,279 (41)
Prevalent diabetes, n (%)	3,759 (4)
Prevalent neurological disease, n (%)	10,793 (12)
Prevalent mental and behavioural disorder, n (%)	8,187 (9)
Average night time sleep duration (hours; actigraphy-derived)	6.57 (8.33)
Average night time wake after sleep onset (hours; actigraphy-derived)	0.79 (0.27)
Sleep duration SD, hours	1.13 (0.57)
Sleep onset time SD, hours	1.02 (0.85)
SRI, score units	60.1 (10.2)

408 Data are mean (SD), unless specified otherwise. *pounds. SRI = sleep regularity index; CVD = cardiovascular
409 disease.

410

411



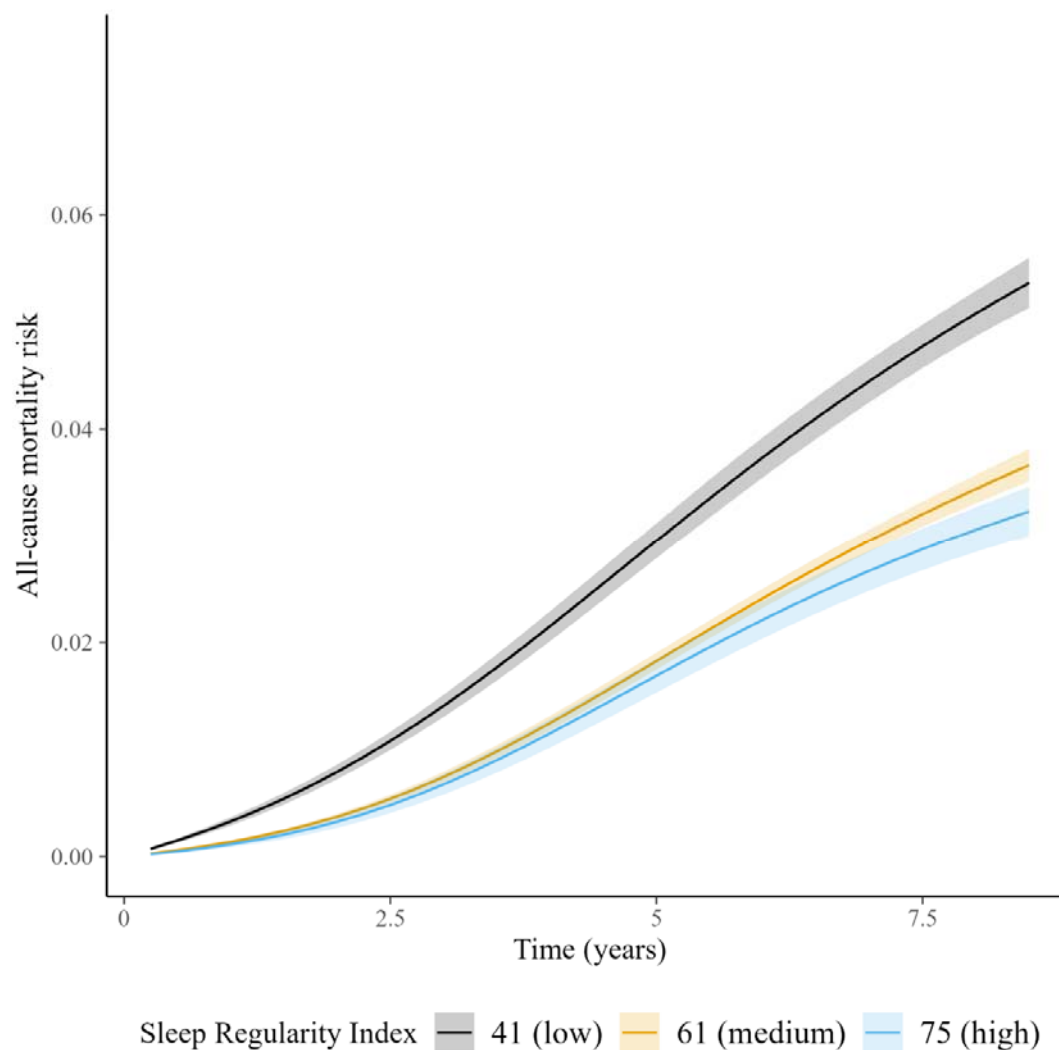
412

413 **Figure 1. Adjusted hazard ratios for all-cause (A), CVD (B), and cancer (C) mortality.**

414 *P* values from global (2 degree of freedom) test of spline term. Hazard ratios (HR) are relative to the median
415 SRI (SRI = 60). HRs for all-cause mortality, CVD mortality, and cancer mortality were estimated using Cox
416 proportional hazards models, adjusted for age, Townsend deprivation index, sex, antidepressant, antipsychotic,
417 and sedative medication, ethnicity, household income, education, smoking status (former, current, never),
418 smoking pack years, shift work, retirement status, and sick or disabled (self-reported employment category). All
419 continuous confounders and the SRI were modeled with restricted cubic splines (knots at 10th, 50th, and 90th
420 percentiles) to allow for departures from linearity.

421

422



423

424 **Figure 2. Cumulative incidence of all-cause mortality across SRI.**

425 Standardized cumulative incidence of all-cause mortality for SRI at 41 (5th percentile), 61 (median), and 75 (95th

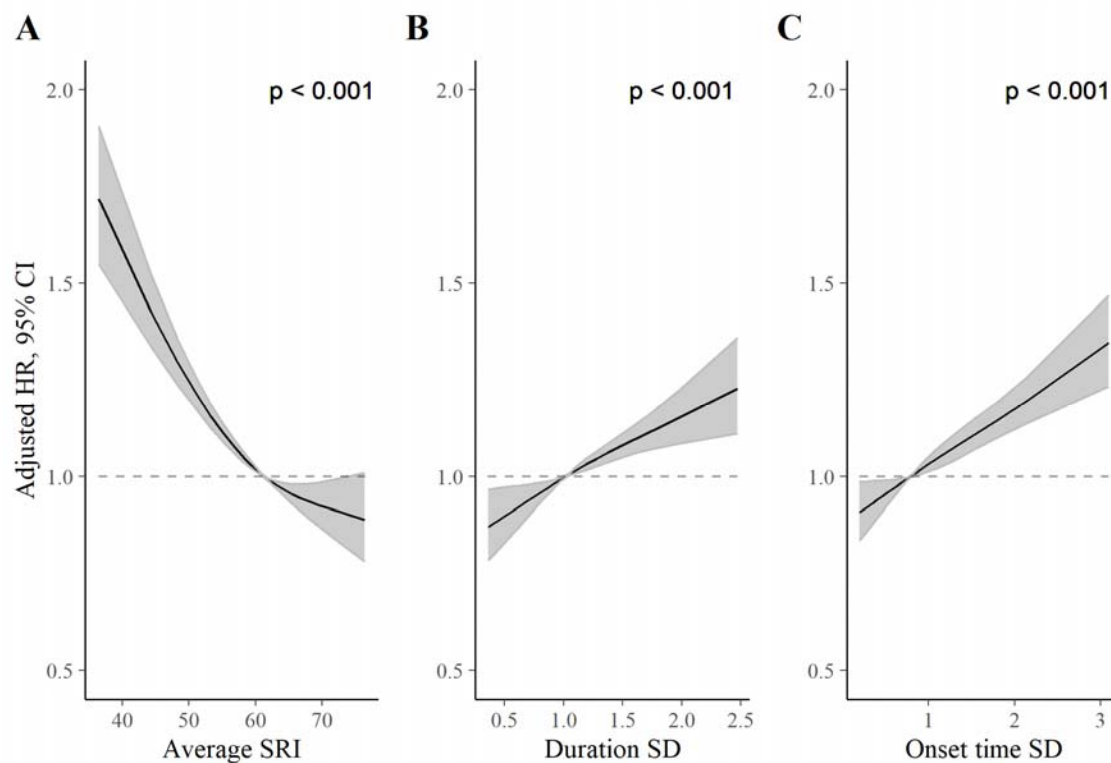
426 percentile). Estimates from a discrete-time hazards models including an interaction between SRI and time

427 (aggregated into 3-month intervals and modeled with a restricted cubic spline with knots at the 5th, 35th, 65th, and

428 95th percentiles) and primary model covariates. Confidence intervals were obtained by bootstrapping.

429

430



431

432 **Figure 3. Adjusted hazard ratios for all-cause mortality for the SRI (A), sleep duration SD (B), and sleep**
433 **onset SD (C) measures.**

434 *P* values from global (2 degree of freedom) test of exposure spline term. Hazard ratios (HR) are relative to the
435 median SRI (SRI = 60). HRs were estimated using Cox proportional hazards models, adjusted for age,
436 Townsend deprivation index, sex, antidepressant, antipsychotic, and sedative medication, ethnicity, household
437 income, education, smoking status (former, current, never), smoking pack years, shift work, retirement status,
438 and sick or disabled (self-reported employment category). All continuous confounders and the sleep regularity
439 metrics were modeled with restricted cubic splines (knots at 10th, 50th, and 90th percentiles) to allow for
440 departures from linearity.

441 **Supplementary appendix**

442 Supplement to: Cribb, Sha, Yiallourou, et al. Sleep Regularity and Mortality: A Prospective Analysis in the UK

443 Biobank

444

445

446

447

448

449

450

451

452

453

454

455

456

457

458

459

460

461

462

463

464

465

466

467

468

469

470

471

472

473

474

475

476

477 **Appendix**

478 **Table of Contents**

479 Appendix 1: Removal of low-quality accelerometer data

480 Appendix 2: STROBE checklist

481 Figure S1. Directed acyclic graph for identification of adjustment variables

482 Figure S2. Time-varying HRs for 5th and 95th percentiles of SRI (relative to median) for all-cause mortality

483 Figure S3. Time-varying HRs for 5th and 95th percentiles of SRI (relative to median) for cancer-mortality

484 Figure S4. SRI and all-cause mortality in sensitivity analyses

485 Figure S5. SRI and CVD-mortality in sensitivity analyses

486 Figure S6. SRI and cancer-mortality in sensitivity analyses

487

488

489

490

491

492

493

494

495

496

497

498

499

500

501

502

503

504

505

506

507

508

509

510

511

512

513

514

515

516

517 **Appendix 1: Methods. Removal of low-quality accelerometer data**

518 Accelerometry data of low quality were removed using established UKB criteria;
519 incongruity of self-reported wear time and accelerometer wear time data (5%); insufficient wear time (< 72
520 hours; 5%); and poorly calibrated data (<1%). Lastly, data were removed for participants in which GGIR was
521 unable to determine a sleep window (5%) and for participants providing less than two valid SRI measurements
522 (i.e., 2 24-hour wear periods; <1%). In total, 88,975 (84%) participants provided valid sleep regularity index
523 data and were included in the study.
524

525 **Appendix 2: STROBE Statement—Checklist of items that should be included in reports of *cohort studies***

	Item No	Recommendation
Title and abstract	1	(a) Indicate the study’s design with a commonly used term in the title or the abstract (see title) (b) Provide in the abstract an informative and balanced summary of what was done and what was found (see pg 2)
Introduction		
Background/rationale	2	Explain the scientific background and rationale for the investigation being reported (pg 3)
Objectives	3	State specific objectives, including any prespecified hypotheses (pg 3)
Methods		
Study design	4	Present key elements of study design early in the paper (Pg 3)
Setting	5	Describe the setting, locations, and relevant dates, including periods of recruitment, exposure, follow-up, and data collection (Pg 3)
Participants	6	(a) Give the eligibility criteria, and the sources and methods of selection of participants. Describe methods of follow-up (Pg 3-4) (b) For matched studies, give matching criteria and number of exposed and unexposed NA
Variables	7	Clearly define all outcomes, exposures, predictors, potential confounders, and effect modifiers. Give diagnostic criteria, if applicable (Pg 4)
Data sources/ measurement	8*	For each variable of interest, give sources of data and details of methods of assessment (measurement). Describe comparability of assessment methods if there is more than one group (Pg 3-4)
Bias	9	Describe any efforts to address potential sources of bias (pg 5)
Study size	10	Explain how the study size was arrived at (pg 3 and appendix)
Quantitative variables	11	Explain how quantitative variables were handled in the analyses. If applicable, describe which groupings were chosen and why (pg 5)
Statistical methods	12	(a) Describe all statistical methods, including those used to control for confounding (pg 4-5, Figure S1) (b) Describe any methods used to examine subgroups and interactions NA (c) Explain how missing data were addressed (pg 4-5) (d) If applicable, explain how loss to follow-up was addressed (e) Describe any sensitivity analyses (pg 5)
Results		
Participants	13*	(a) Report numbers of individuals at each stage of study—eg numbers potentially eligible, examined for eligibility, confirmed eligible, included in the study, completing follow-up, and analysed (Pg 3) (b) Give reasons for non-participation at each stage (c) Consider use of a flow diagram Not considered necessary but can be created upon request
Descriptive data	14*	(a) Give characteristics of study participants (eg demographic, clinical, social) and information on exposures and potential confounders Table 1 (b) Indicate number of participants with missing data for each variable of interest Missing data were infrequent, as described in methods (c) Summarise follow-up time (eg, average and total amount) (pg 5)
Outcome data	15*	Report numbers of outcome events or summary measures over time (pg 5)
Main results	16	(a) Give unadjusted estimates and, if applicable, confounder-adjusted estimates and their precision (eg, 95% confidence interval). Make clear which confounders were adjusted for and why they were included Figures and Appendix figures (b) Report category boundaries when continuous variables were categorized NA (c) If relevant, consider translating estimates of relative risk into absolute risk for a meaningful time period Figure 2

Other analyses	17	Report other analyses done—eg analyses of subgroups and interactions, and sensitivity analyses (pg 6)
Discussion		
Key results	18	Summarise key results with reference to study objectives (pg 7)
Limitations	19	Discuss limitations of the study, taking into account sources of potential bias or imprecision. Discuss both direction and magnitude of any potential bias (pg 8)
Interpretation	20	Give a cautious overall interpretation of results considering objectives, limitations, multiplicity of analyses, results from similar studies, and other relevant evidence (pg 8)
Generalisability	21	Discuss the generalisability (external validity) of the study results (pg 7-8)
Other information		
Funding	22	Give the source of funding and the role of the funders for the present study and, if applicable, for the original study on which the present article is based (pg 8)

526

527 *Give information separately for exposed and unexposed groups.

528

529 **Note:** An Explanation and Elaboration article discusses each checklist item and gives methodological
530 background and published examples of transparent reporting. The STROBE checklist is best used in conjunction
531 with this article (freely available on the Web sites of PLoS Medicine at <http://www.plosmedicine.org/>, Annals of
532 Internal Medicine at <http://www.annals.org/>, and Epidemiology at <http://www.epidem.com/>). Information on the
533 STROBE Initiative is available at <http://www.strobe-statement.org>.

534

535

536

537

538

539

540

541

542

543

544

545

546

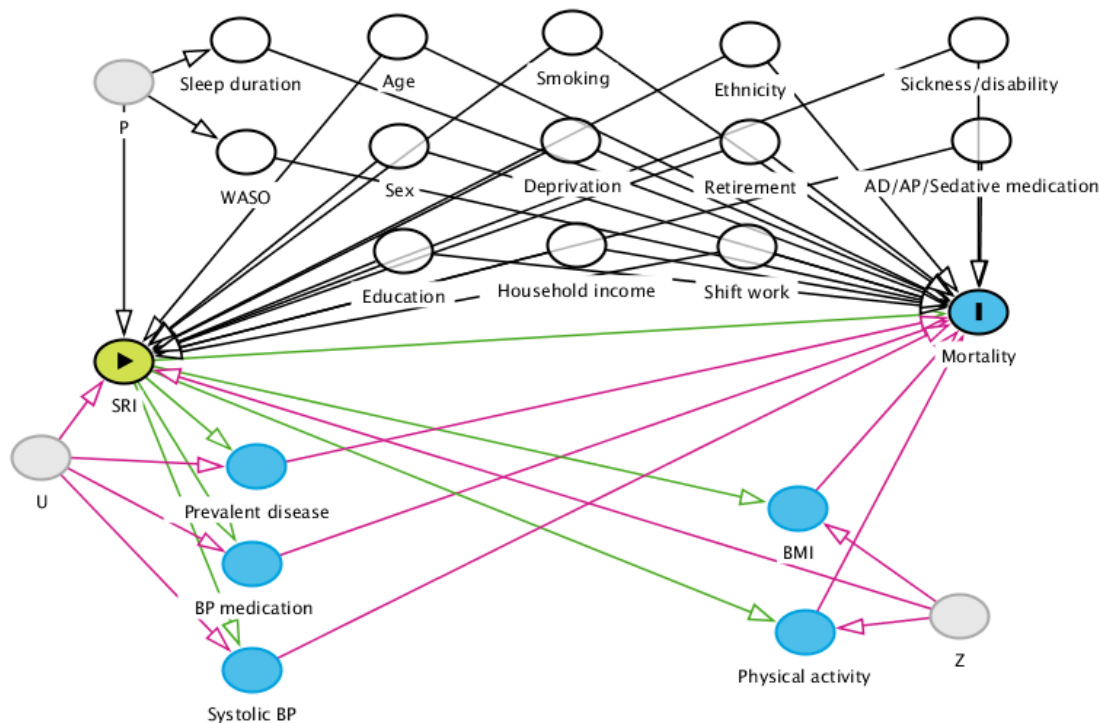
547

548

549

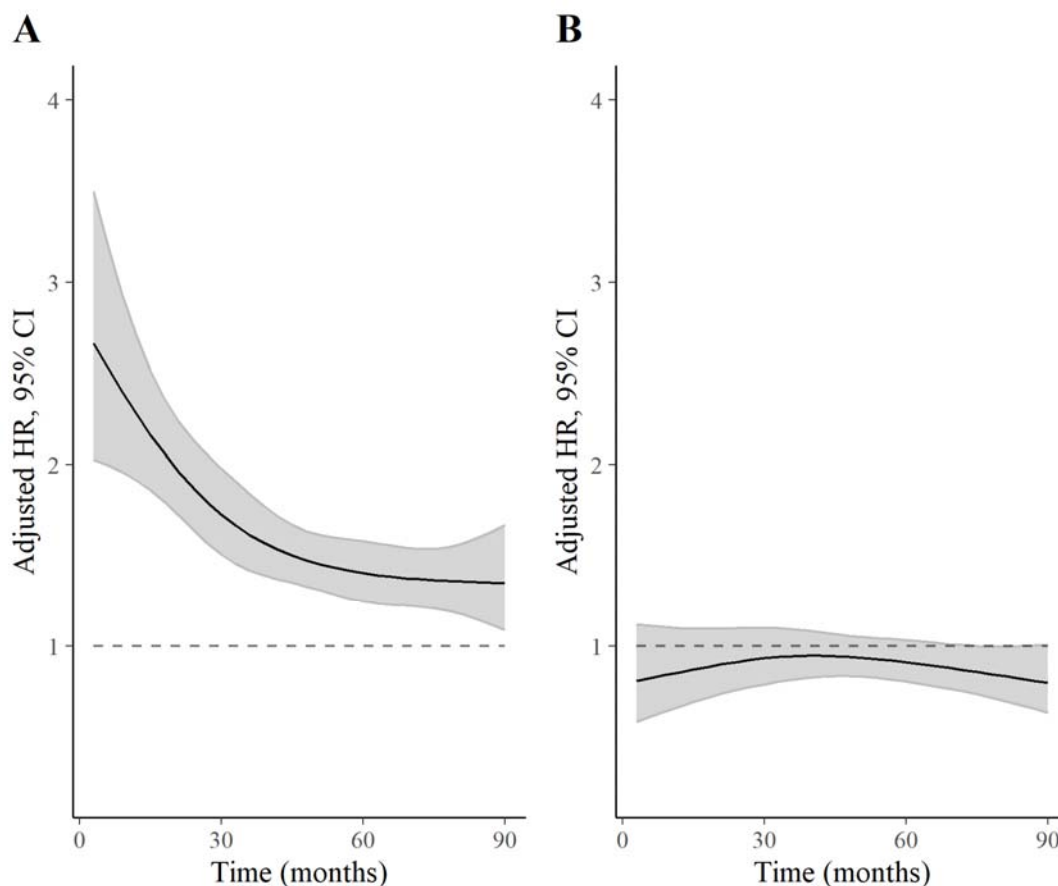
550

551



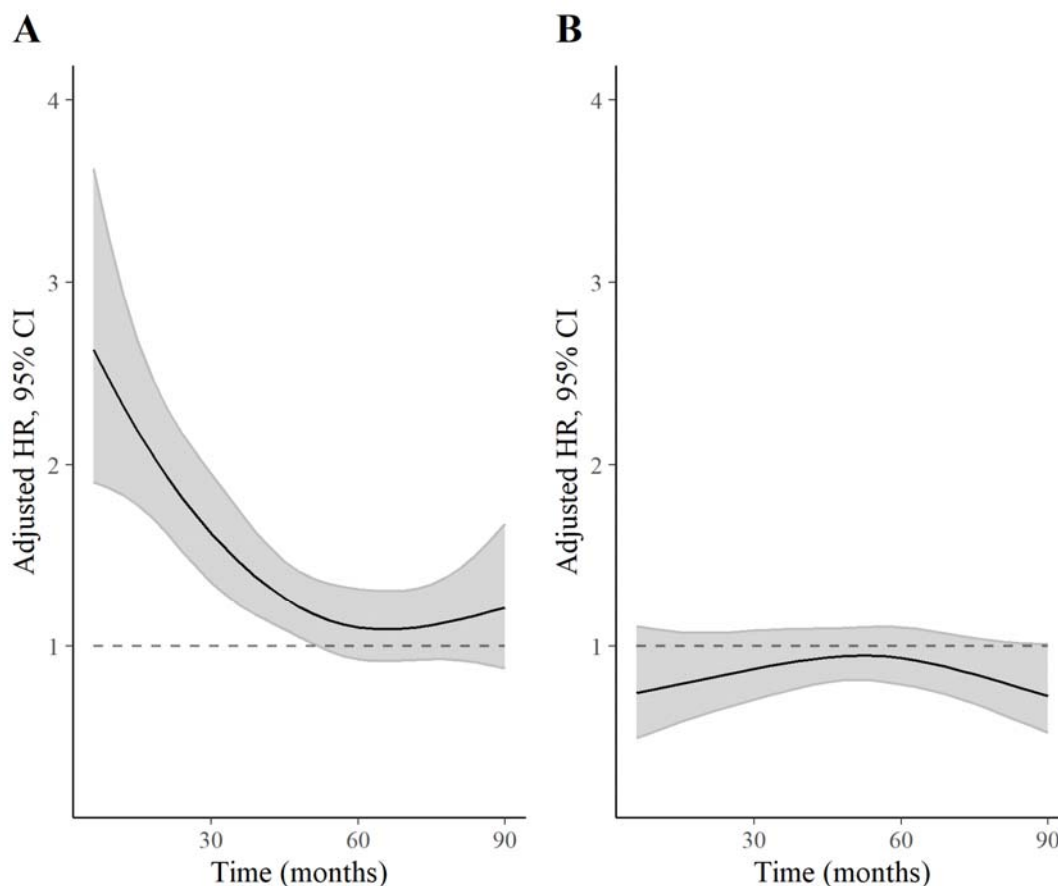
552

553 **Figure S1. Directed acyclic graph for identification of adjustment variables.** The green node indicates the
 554 exposure variable (*SRI*), and the blue node (*Mortality*) is the outcome variable. Pale grey nodes indicate
 555 unobserved variables; white nodes indicate a variable which has been conditioned on (by regression adjustment
 556 or restriction). Paths in red are biasing paths. Arrows indicate the direction of causal effect between two nodes.
 557 *P* is an unobserved variable representing unmeasured causes of sleep habits (e.g., genetics). *U* is an unobserved
 558 variable representing unmeasured causes of disease and cardiovascular dysfunction (e.g., genetics, biological
 559 ageing). *Z* is an unobserved variable representing unmeasured causes of health behaviours (e.g., personality
 560 factors, genetics). Green paths from *SRI* to *Prevalent disease*, *BP medication*, *Systolic BP*, *BMI*, and *Physical*
 561 *activity* and from these nodes to *Mortality* represent potential mediation of an *SRI* effect. Conversely, red paths
 562 indicate potential sources of confounding (e.g., a backdoor path from *Mortality* to *Prevalent disease* to *SRI* via
 563 *U*). Given the current evidence base, we are unable to determine whether and to what extent variables such as
 564 *Prevalent disease* act as mediators or confounders (via *U*) of the *SRI*-mortality association; AD = anti-psychotic;
 565 AD = antidepressant; BMI = body mass index; BP = blood pressure; CVD = cardiovascular disease; Deprivation
 566 = the Townsend deprivation index; *SRI* = sleep regularity index; WASO = wake after sleep onset.



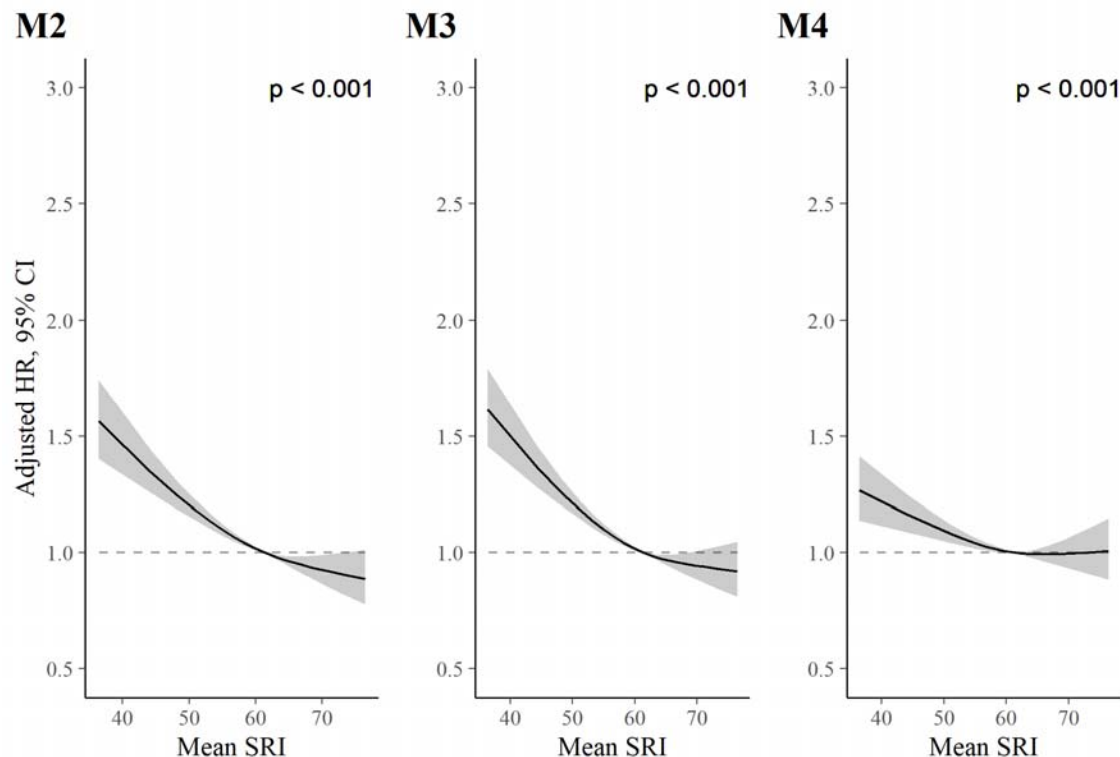
567
568
569
570
571
572
573
574
575
576
577
578
579
580
581
582
583
584
585
586
587
588
589
590

Figure S2. Time-varying HRs for 5th and 95th percentiles of SRI (relative to median) for all-cause mortality. **A:** Hazard ratios for 5th percentile vs median SRI; **B:** Hazard ratios for 95th percentile vs median SRI. Discrete time hazards model including time (aggregated into 3-month intervals and modelled with a restricted cubic spline with knots at the 5th, 35th, 65th, and 95th percentiles), SRI, and an SRI by time interaction. Adjusted for age, Townsend deprivation index, sex, antidepressant, antipsychotic, and sedative medication, ethnicity, household income, education, smoking status (former, current, never), smoking pack years, shift work, retirement status, and sick or disabled (self-reported employment category). All continuous confounders and the SRI were modelled with restricted cubic splines (knots at 10th, 50th, and 90th percentiles) to allow for departures from linearity. There was strong evidence of an interaction between time and SRI (p [interaction] < 0.001).



591
592
593
594
595
596
597
598
599
600
601
602
603
604
605
606
607
608
609

Figure S3. Time-varying HRs for 5th and 95th percentiles of SRI (relative to median) for cancer-mortality. **A:** Hazard ratios for 5th percentile vs median SRI; **B:** Hazard ratios for 95th percentile vs median SRI. Discrete time hazards model including time (aggregated into 3-month intervals and modelled with a restricted cubic spline with knots at the 5th, 35th, 65th, and 95th percentiles), SRI, and an SRI by time interaction. Adjusted for age, Townsend deprivation index, sex, antidepressant, antipsychotic, and sedative medication, ethnicity, household income, education, smoking status (former, current, never), smoking pack years, shift work, retirement status, and sick or disabled (self-reported employment category). All continuous confounders and the SRI were modelled with restricted cubic splines (knots at 10th, 50th, and 90th percentiles) to allow for departures from linearity. There was strong evidence of an interaction between time and SRI (p [interaction] < 0.001).



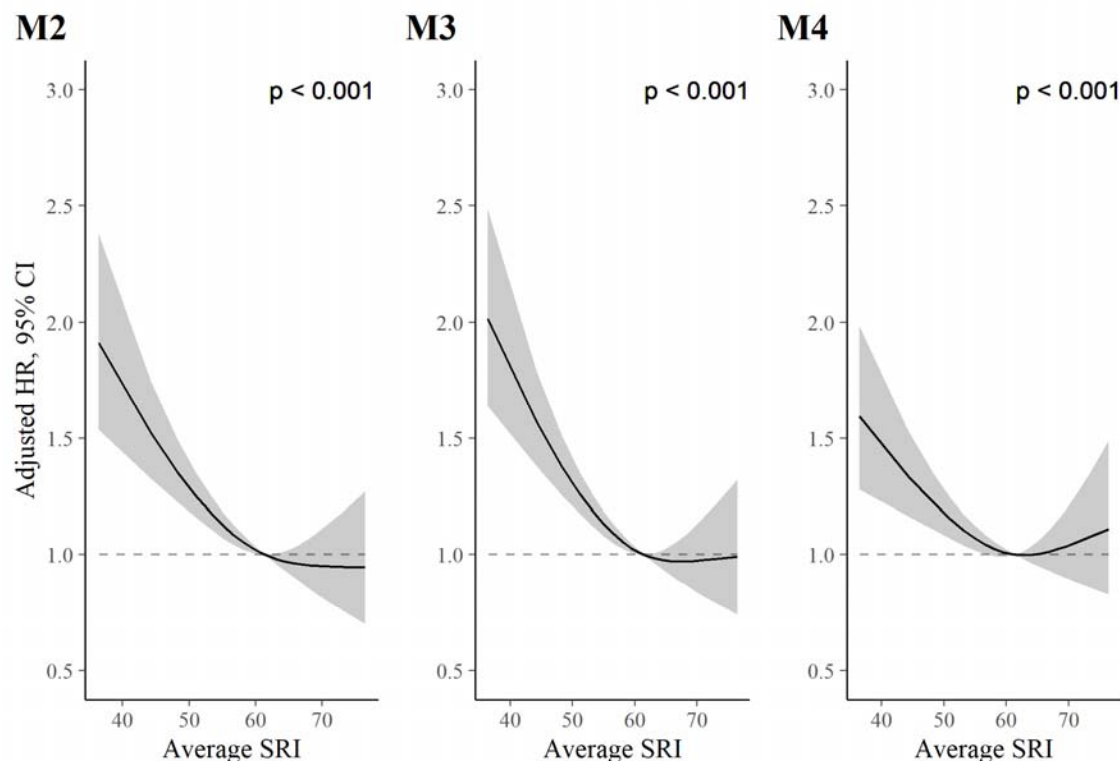
610
611
612
613
614
615
616
617
618
619
620
621
622
623
624
625
626
627
628
629
630
631

Figure S4. SRI and all-cause mortality in sensitivity analyses. *P* values from global (2 degree of freedom) test of spline term. Hazard ratios are relative to the median SRI (SRI = 60).

Model 2 (M2) adjustments: Adjusted for age, Townsend deprivation index, sex, antidepressant, antipsychotic, and sedative medication, ethnicity, household income, education, smoking status (former, current, never), smoking pack years, shift work, retirement status, and sick or disabled (self-reported employment category), average sleep time, and average wake after sleep onset time. **M2 results:** HRs, relative to the median SRI, were 1.42 (95% CI: 1.31, 1.55) and 0.90 (95% CI: 0.80, 1.00) for SRI at the 5th and 95th percentiles, respectively.

Model 3 (M3) adjustments: Adjusted for age, Townsend deprivation index, sex, antidepressant, antipsychotic, and sedative medication, ethnicity, household income, education, smoking status (former, current, never), smoking pack years, shift work, retirement status, and sick or disabled (self-reported employment category), and prevalent diabetes, cancer, mental and behavioural disorder, neurological illness, and cardiovascular illness. **M3 Results:** HRs, relative to the median SRI, were 1.46 (95% CI: 1.35, 1.58) and 0.93 (95% CI: 0.83, 1.03) for the 5th and 95th percentiles of SRI, respectively.

Model 4 (M4) adjustments: Model 3 with additional adjustment for BMI, moderate and vigorous physical activity, systolic blood pressure, and blood pressure medication. **M4 results:** HRs, relative to the median SRI, were 1.20 (95% CI: 1.11, 1.31) and 1.00 (95% CI: 0.90, 1.12) for the 5th and 95th percentiles, respectively.



632

633

Figure S5. SRI and CVD-mortality in sensitivity analyses. *P* values from global (2 degree of freedom) test of spline term. Hazard ratios are relative to the median SRI (SRI = 60).

634

635

636

Model 2 (M2) adjustments: Adjusted for age, Townsend deprivation index, sex, antidepressant, antipsychotic, and sedative medication, ethnicity, household income, education, smoking status (former, current, never), smoking pack years, shift work, retirement status, and sick or disabled (self-reported employment category), average sleep time, and average wake after sleep onset time. **M2 results:** HRs were 1.66 (95% CI: 1.40, 1.96) and 0.95 (95% CI: 0.73, 1.22) for the 5th and 95th percentile vs. the median SRI, respectively.

640

641

Model (M3) adjustments: Adjusted for age, Townsend deprivation index, sex, antidepressant, antipsychotic, and sedative medication, ethnicity, household income, education, smoking status (former, current, never), smoking pack years, shift work, retirement status, and sick or disabled (self-reported employment category), and prevalent diabetes, cancer, mental and behavioural disorder, neurological illness, and cardiovascular illness. **M3 results:** HRs were 1.73 (95% CI: 1.47, 2.02) and 0.99 (95% CI: 0.77, 1.26) for the 5th and 95th percentiles, respectively.

646

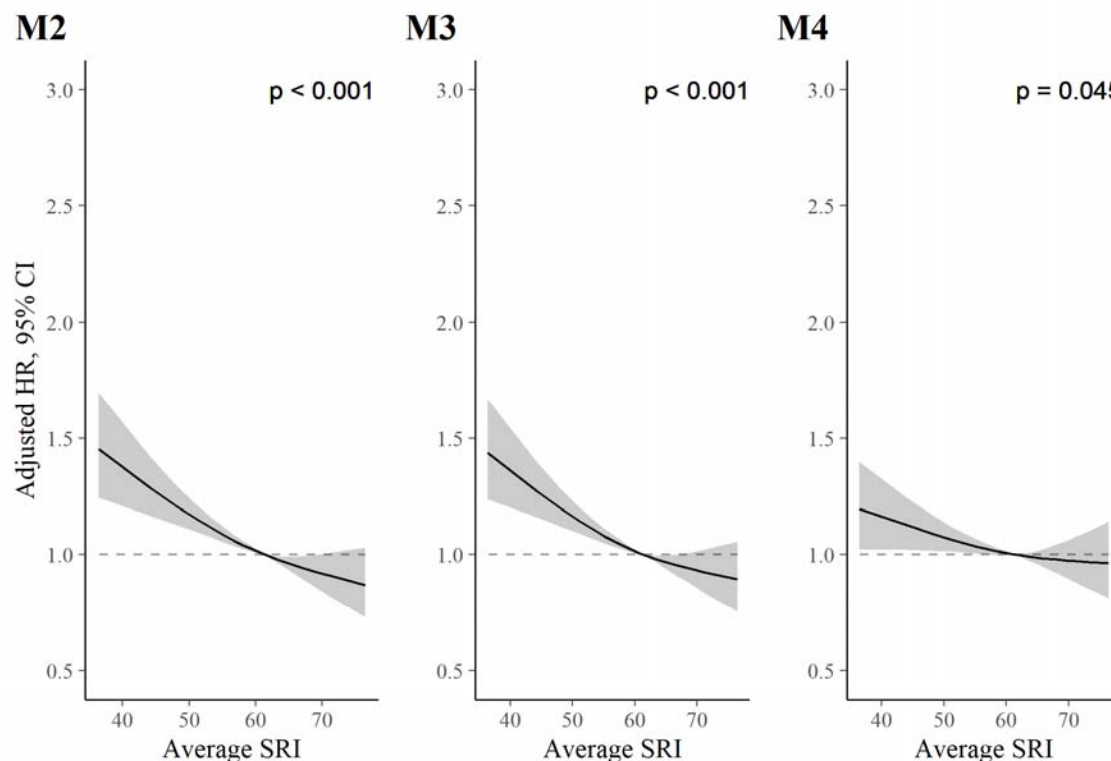
647

Model 4 (M4) adjustments: Model 3 with additional adjustment for BMI, moderate and vigorous physical activity, systolic blood pressure, and blood pressure medication. **M4 results:** HRs were somewhat attenuated: 1.43 (95% CI: 1.21, 1.69) and 1.09 (95% CI: 0.85, 1.40), for the 5th and 95th percentiles, respectively.

649

650

651



652

653

654

655

656

657

658

659

660

661

662

663

664

665

666

667

668

669

670

671

Figure S6. SRI and cancer-mortality in sensitivity analyses. *P* values from global (2 degree of freedom) test of spline term. Hazard ratios are relative to the median SRI (SRI = 60).

Model 2 (M2) adjustments: Adjusted for age, Townsend deprivation index, sex, antidepressant, antipsychotic, and sedative medication, ethnicity, household income, education, smoking status (former, current, never), smoking pack years, shift work, retirement status, and sick or disabled (self-reported employment category), average sleep time, and average wake after sleep onset time. **M2 results:** HRs were 1.35 (95% CI: 1.20, 1.52) and 0.88 (95% CI: 0.76, 1.02) for the 5th and 95th percentile vs. the median SRI, respectively.

Model 3 (M3) adjustments: Adjusted for age, Townsend deprivation index, sex, antidepressant, antipsychotic, and sedative medication, ethnicity, household income, education, smoking status (former, current, never), smoking pack years, shift work, retirement status, and sick or disabled (self-reported employment category), and prevalent diabetes, cancer, mental and behavioural disorder, neurological illness, and cardiovascular illness. **M3 results:** HRs were 1.33 (95% CI: 1.19, 1.49) and 0.90 (95% CI: 0.78, 1.04) for the 5th and 95th percentiles, respectively.

Model 4 (M4) adjustments: Model 3 with additional adjustment for BMI, moderate and vigorous physical activity, systolic blood pressure, and blood pressure medication. **M4 results:** HRs were 1.15 (95% CI: 1.02, 1.30) and 0.97 (95% CI: 0.84, 1.12) for the 5th and 95th percentiles, respectively.