

Empagliflozin for COVID-19

1
2
3
4
5
6
7
8
9
10
11
12
13
14
15
16
17
18
19
20
21
22
23
24
25
26
27

Empagliflozin in patients admitted to hospital with COVID-19 (RECOVERY): a randomised, controlled, open-label, platform trial

Running title: Empagliflozin for COVID-19

RECOVERY Collaborative Group*

*The writing committee and trial steering committee are listed at the end of this manuscript and a complete list of collaborators in the Randomised Evaluation of COVID-19 Therapy (RECOVERY) trial is provided in the Supplementary Appendix.

Correspondence to: Prof Peter W Horby and Prof Martin J Landray, RECOVERY Central Coordinating Office, Richard Doll Building, Old Road Campus, Roosevelt Drive, Oxford OX3 7LF, United Kingdom.

Email: recoverytrial@ndph.ox.ac.uk

Word count:

Abstract – 255 words

Main text – 2846 words

References – 25

Tables & Figures – 2+3

Empagliflozin for COVID-19

28 **SUMMARY**

29 **Background:** Empagliflozin has been proposed as a treatment for COVID-19 on the
30 basis of its anti-inflammatory, metabolic and haemodynamic effects.

31 **Methods:** In this randomised, controlled, open-label trial, several possible treatments are
32 compared with usual care in patients hospitalised with COVID-19. Eligible and consenting
33 adults were randomly allocated in a 1:1 ratio to either usual standard of care alone or
34 usual standard of care plus empagliflozin 10mg once daily for 28 days or until discharge
35 using web-based simple (unstratified) randomisation with allocation concealment. The
36 primary outcome was 28-day mortality. On 3 March the independent data monitoring
37 committee recommended that the investigators review the data and recruitment was
38 consequently stopped on 7 March. The trial is registered with ISRCTN (50189673) and
39 clinicaltrials.gov (NCT04381936).

40 **Findings:** Between 8 July 2021 and 6 March 2023, 4271 patients were randomly
41 allocated to receive either empagliflozin (2113 patients) or usual care alone (2158
42 patients). Overall, 289 (14%) patients allocated to empagliflozin and 307 (14%) patients
43 allocated to usual care died within 28 days (rate ratio 0.96; 95% confidence interval [CI]
44 0.82-1.13; $p=0.64$). There was no evidence of significant differences in duration of
45 hospitalisation (median 8 days vs. 8 days) or the proportion of patients discharged from
46 hospital alive within 28 days (79% vs. 78%; rate ratio 1.03; 95% CI 0.96-1.10; $p=0.44$).
47 Among those not on invasive mechanical ventilation at baseline, there was no evidence
48 of a significant difference in the proportion meeting the composite endpoint of invasive
49 mechanical ventilation or death (16% vs. 17%; risk ratio 0.95; 95% CI 0.84-1.08; $p=0.44$).

Empagliflozin for COVID-19

50 **Interpretation:** In adults hospitalised with COVID-19, empagliflozin was not associated
51 with reductions in 28-day mortality, duration of hospital stay, or risk of progressing to
52 invasive mechanical ventilation or death.

53 **Funding:** UK Research and Innovation (Medical Research Council) and National Institute
54 of Health Research (Grant ref: MC_PC_19056), and Wellcome Trust (Grant Ref:
55 222406/Z/20/Z).

56 **Trial registration:** ClinicalTrials.gov NCT04381936

57 <https://clinicaltrials.gov/ct2/show/NCT04381936>

58 ISRCTN50189673 <http://www.isrctn.com/ISRCTN50189673>

59 **Keywords:** COVID-19, empagliflozin, clinical trial.

60

Empagliflozin for COVID-19

61 INTRODUCTION

62 Patients with cardiometabolic diseases (such as heart failure, diabetes and chronic kidney
63 disease) are at increased risk of hospitalization and death from COVID-19. Sodium
64 glucose co-transporter 2 inhibitors (SGLT2i) have been shown to reduce cardiovascular
65 and kidney events in patients with cardiometabolic diseases.¹ The precise mechanisms
66 of such benefit are not known, but SGLT2i appear to favourably modify some pathways
67 that are dysregulated in acute illnesses like COVID-19.

68 Inflammation is a key feature of severe COVID-19. Markedly raised levels of inflammatory
69 markers such as C-reactive protein, ferritin, interleukin-6 (IL-6) and other cytokines are
70 observed in severe cases and are associated with poor outcomes.^{2,3} Corticosteroids, IL-
71 6 inhibitors and Janus kinase (JAK) inhibitors have been shown to reduce mortality in
72 patients with severe COVID-19.⁴⁻⁶ Together these results show that inflammation is
73 modifiable and anti-inflammatory therapy can improve clinical outcomes. SGLT2i can
74 reduce inflammation,^{7,8} including via attenuation of the nucleotide binding domain (NOD)-
75 like pyrin domain 3 (NLRP3) inflammasome, which correlates with disease severity in
76 COVID-19.^{9,10} A meta-analysis of 26 trials in patients with type 2 diabetes mellitus showed
77 a reduced risk of pneumonia and septic shock among patients allocated SGLT2i.¹¹ In
78 addition, SGLT2i inhibit glycolysis and stimulate lipolysis which may create a less
79 favourable energetic environment for viruses like COVID-19,¹²⁻¹⁴ and improve endothelial
80 function.¹⁵

81 The DARE-19 trial compared dapagliflozin 10mg once daily with placebo in 1250 patients
82 hospitalised with COVID-19 who had at least one cardiometabolic risk factor but were not

Empagliflozin for COVID-19

83 critically ill.¹⁶ The primary outcome of new or worsened organ dysfunction or death
84 occurred in 70 (11%) of the dapagliflozin group versus 86 (14%) in the placebo group
85 (hazard ratio [HR] 0.80, 95% CI 0.58-1.10). The dual primary outcome of improvement in
86 clinical status by day 30 was also not significantly affected (win ratio 1.09, 95% CI 0.97-
87 1.22). Dapagliflozin was well-tolerated and appeared safe (with fewer serious adverse
88 events reported in the dapagliflozin group compared to placebo). Here we report the
89 results of a large randomised controlled trial of empagliflozin in patients hospitalised with
90 COVID-19.

91 **METHODS**

92 **Study design and participants**

93 The Randomised Evaluation of COVID-19 therapy (RECOVERY) trial is an investigator-
94 initiated, individually randomised, controlled, open-label, adaptive platform trial to
95 evaluate the effects of potential treatments in patients hospitalised with COVID-19.
96 Details of the trial design and results for other possible treatments (dexamethasone,
97 hydroxychloroquine, lopinavir-ritonavir, azithromycin, tocilizumab, convalescent plasma,
98 colchicine, aspirin, casirivimab plus imdevimab, baricitinib, and high-dose corticosteroids
99 in hypoxic patients not requiring ventilatory support) have been published previously.^{6,17-}
100 ²⁶ The trial is underway at hospital organisations in the United Kingdom supported by the
101 National Institute for Health and Care Research Clinical Research Network, as well as in
102 South and Southeast Asia and Africa. Of these, 118 hospitals in the UK, 5 in Nepal, 4 in
103 Indonesia, 2 in Vietnam, 4 in South Africa, 1 in Ghana and 5 in India enrolled participants
104 in the evaluation of empagliflozin (appendix pp 2-31). The trial is coordinated by the

Empagliflozin for COVID-19

105 Nuffield Department of Population Health at University of Oxford (Oxford, UK), the trial
106 sponsor. The trial is conducted in accordance with the principles of the International
107 Conference on Harmonisation–Good Clinical Practice guidelines and approved by the UK
108 Medicines and Healthcare products Regulatory Agency (MHRA) and the Cambridge East
109 Research Ethics Committee (ref: 20/EE/0101). The protocol, statistical analysis plan, and
110 additional information are available on the study website www.recoverytrial.net.

111 Patients admitted to hospital were eligible for the study if they had clinically suspected or
112 laboratory confirmed SARS-CoV-2 infection and no medical history that might, in the
113 opinion of the attending clinician, put the patient at significant risk if they were to
114 participate in the trial. Children (age <18 years) and pregnant women were not eligible for
115 randomisation due to limited data on use of empagliflozin in these groups such that it was
116 not possible to make an evidence-based benefit-risk assessment. Patients with type 1
117 diabetes mellitus (or post-pancreatectomy diabetes), a history of ketoacidosis or type 2
118 diabetes mellitus with ketosis at the time of recruitment were ineligible for the comparison
119 of empagliflozin vs. usual care (further details in appendix pp 32-33). Written informed
120 consent was obtained from all patients, or a legal representative if patients were too
121 unwell or unable to provide consent.

122 **Randomisation and masking**

123 Baseline data were collected using a web-based case report form that included
124 demographics, level of respiratory support, major comorbidities, suitability of the study
125 treatment for a particular patient, SARS-CoV-2 vaccination status, and treatment
126 availability at the study site (appendix pp 43-45). For some patients, empagliflozin was

Empagliflozin for COVID-19

127 unavailable at the hospital at the time of enrolment or was considered by the managing
128 physician to be either definitely indicated or definitely contraindicated. These patients
129 were excluded from the randomised comparison between empagliflozin and usual care.
130 Eligible and consenting adult patients were assigned in a 1:1 ratio to either usual standard
131 of care or usual standard of care plus empagliflozin using web-based simple (unstratified)
132 randomisation with allocation concealed until after randomisation (appendix pp 41-43).
133 Patients allocated to empagliflozin were to receive 10mg orally daily for 28 days in total
134 or until discharge, whichever occurred earlier. Investigators were instructed how to
135 identify and manage ketosis that may develop during treatment with empagliflozin
136 (appendix p 32-33).

137 As a platform trial, and in a factorial design, patients could be simultaneously randomised
138 to other treatment groups: i) baricitinib versus usual care, ii) higher-dose corticosteroids
139 versus usual care, iii) sotrovimab versus usual care, iv) molnupiravir versus usual care,
140 and v) nirmatrelvir-ritonavir versus usual care (appendix pp 41-42). Participants and local
141 study staff were not masked to the allocated treatment. Other than members of the Data
142 Monitoring Committee, all individuals involved in the trial were masked to aggregated
143 outcome data while recruitment and 28-day follow-up were ongoing.

144

145 **Procedures**

146 A single online follow-up form was completed when participants were discharged, had
147 died or at 28 days after randomisation, whichever occurred earliest (appendix pp 47-55).
148 Information was recorded on adherence to allocated study treatment, receipt of other

Empagliflozin for COVID-19

149 COVID-19 treatments, duration of admission, receipt of respiratory or renal support, and
150 vital status (including cause of death). In addition, in the UK, routine healthcare and
151 registry data were obtained including information on vital status (with date and cause of
152 death), discharge from hospital, receipt of respiratory support, or renal replacement
153 therapy. For sites outside the UK a further case report form (appendix pp 56-57) collected
154 vital status at day 28 (if not already reported on follow-up form).

155 **Outcomes**

156 Outcomes were assessed at 28 days after randomisation, with further analyses specified
157 at 6 months. The primary outcome was all-cause mortality at 28 days. Secondary
158 outcomes were time to discharge from hospital, and, among patients not on invasive
159 mechanical ventilation at randomisation, invasive mechanical ventilation (including extra-
160 corporal membrane oxygenation) or death. Prespecified subsidiary clinical outcomes
161 were use of non-invasive respiratory support, time to successful cessation of invasive
162 mechanical ventilation (defined as cessation of invasive mechanical ventilation within,
163 and survival to, 28 days), use of renal dialysis or haemofiltration, cause-specific mortality,
164 bleeding events, thrombotic events, major cardiac arrhythmias, thrombotic and bleeding
165 events, other infections and metabolic complications (including ketoacidosis). Information
166 on suspected serious adverse reactions was collected in an expedited fashion to comply
167 with regulatory requirements.

168

169 **Sample size and role of the independent Data Monitoring Committee**

Empagliflozin for COVID-19

170 The intention for this comparison was to continue recruitment until sufficient primary
171 outcomes had accrued to have 90% power to detect a proportional risk reduction of 20%
172 at a two-sided significance level of 0.01.

173 The independent Data Monitoring Committee reviewed unblinded analyses of the study
174 data and any other information considered relevant to the trial at intervals of around 2-3
175 months (depending on speed of enrolment) and was charged with determining if, in their
176 view, the randomised comparisons in the study provided evidence on mortality that was
177 strong enough (with a range of uncertainty around the results that was narrow enough)
178 to affect national and global treatment strategies (appendix p 58).

179 On 3 March 2023, the Data Monitoring Committee recommended that the investigators
180 review the unblinded data from the empagliflozin comparison (appendix p 59).
181 Consequently, recruitment to the empagliflozin comparison was closed on 7 March 2023.

182

183 **Statistical Analysis**

184 The primary analysis for all outcomes was by intention-to-treat comparing patients
185 randomised to empagliflozin with patients randomised to usual care but for whom
186 empagliflozin was both available and suitable as a treatment. For the primary outcome of
187 28-day mortality, the hazard ratio from an age- and respiratory status-adjusted Cox model
188 was used to estimate the mortality rate ratio. We constructed Kaplan-Meier survival
189 curves to display cumulative mortality over the 28-day period. We used the same Cox
190 regression method to analyse time to hospital discharge and successful cessation of

Empagliflozin for COVID-19

191 invasive mechanical ventilation, with patients who died in hospital right-censored on day
192 29. Median time to discharge was derived from Kaplan-Meier estimates. For the pre-
193 specified composite secondary outcome of progression to invasive mechanical ventilation
194 or death within 28 days (among those not receiving invasive mechanical ventilation at
195 randomisation), and the subsidiary clinical outcomes of receipt of ventilation and use of
196 haemodialysis or haemofiltration, the precise dates were not available and so a log-
197 binomial regression model was used to estimate the risk ratio adjusted for age and
198 respiratory status.

199 Prespecified subgroup analyses were performed for the primary outcome using the
200 statistical test of interaction (test for heterogeneity or trend), in accordance with the
201 prespecified analysis plan, defined by the following characteristics at randomisation: age,
202 sex, ethnicity, level of respiratory support, days since symptom onset, and use of
203 corticosteroids (appendix p 139).

204 Estimates of rate and risk ratios are shown with 95% confidence intervals. All p-values
205 are 2-sided and are shown without adjustment for multiple testing. The full database is
206 held by the study team which collected the data from study sites and performed the
207 analyses at the Nuffield Department of Population Health, University of Oxford (Oxford,
208 UK).

209 Analyses were performed using SAS version 9.4 and R version 3.4. The trial is registered
210 with ISRCTN (50189673) and clinicaltrials.gov (NCT04381936).

211 **Role of the funding source**

Empagliflozin for COVID-19

212 Neither the funders of the study nor Boehringer Ingelheim, which supplied empagliflozin
213 for sites outside the UK, had any role in study design, data collection, data analysis, data
214 interpretation, or writing of the report. The corresponding authors had full access to all the
215 data in the study and had final responsibility for the decision to submit for publication.

216

217 **RESULTS**

218 Between 8 July 2021 and 6 March 2023, 4271 (74%) of 5740 patients enrolled into the
219 RECOVERY trial were eligible to be randomly allocated to empagliflozin (i.e.
220 empagliflozin was available in the hospital at the time and the attending clinician was of
221 the opinion that the patient had no known indication for or contraindication to
222 empagliflozin, figure 1). The characteristics of the 1469 patients enrolled into the
223 RECOVERY trial during this period but not included in the empagliflozin comparison are
224 shown in webtable 1. 2113 patients were randomly allocated to empagliflozin and 2158
225 were randomly allocated to usual care. The mean age of study participants in this
226 comparison was 61.5 years (SD 16.4) and the median time since symptom onset was 8
227 days (IQR 5 to 11 days). At randomisation, 3842 (90%) patients were receiving
228 corticosteroids, about one-quarter were receiving remdesivir and about one-quarter had
229 received tocilizumab (table 1).

230 The follow-up form was completed for 2089 (99%) patients in the empagliflozin group and
231 2138 (99%) patients in the usual care group. Among patients with a completed follow-up
232 form, 1889 (90%) allocated to empagliflozin received at least one dose and, of these,
233 1321 (70%) received it on most ($\geq 90\%$) days of their admission (or until 28 days after

Empagliflozin for COVID-19

234 randomisation if not discharged sooner) (figure 1; webtable 2). By comparison, <1% of
235 those allocated to usual care alone received any dose of empagliflozin. Use of other
236 treatments for COVID-19 was similar among patients allocated empagliflozin and among
237 those allocated usual care (webtable 2).

238 Primary and secondary outcome data are known for >99% of randomly assigned patients.
239 There was no evidence of a significant difference in the proportion of patients who met
240 the primary outcome of 28-day mortality between the two randomised groups (289 [14%]
241 patients in the empagliflozin group vs. 307 [14%] patients in the usual care group; hazard
242 ratio 0.96; 95% confidence interval [CI], 0.82-1.13; $p=0.64$; figure 2). We observed similar
243 results across all pre-specified sub-groups (figure 3), except among the small group of
244 patients not requiring oxygen at baseline or not receiving corticosteroids among whom
245 there were very few (about 20) events.

246 The median time to discharge from hospital alive was 8 days in both groups and there
247 was no evidence of a significant difference in the probability of being discharged alive
248 within 28 days (79 vs. 78%, rate ratio 1.03, 95% CI 0.96 to 1.10, $p=0.44$) (table 2). Among
249 those not on invasive mechanical ventilation at baseline, the number of patients
250 progressing to the pre-specified composite secondary outcome of invasive mechanical
251 ventilation or death was similar in both groups (16% vs. 17%, risk ratio 0.95, 95% CI 0.84
252 to 1.08, $p=0.44$). Similar results were seen in all pre-specified subgroups of patients
253 (webfigure 1, webfigure 2).

254 We found no evidence of significant differences in the prespecified subsidiary clinical
255 outcomes of cause-specific mortality (webtable 3), use of ventilation or successful

Empagliflozin for COVID-19

256 cessation of invasive mechanical ventilation (table 2). We found no evidence of a
257 significant difference in the incidence of acute kidney injury (defined as an increase in the
258 pre-randomisation creatinine concentration of at least 50%), or need for renal dialysis or
259 haemofiltration (table 2, webtable 4). The incidence of new cardiac arrhythmias, bleeding
260 events, and non-coronavirus infections was also similar in the two groups (webtable 4).
261 There were fewer thrombotic events among patients allocated empagliflozin compared to
262 placebo (2.5% vs. 3.9%, absolute difference -1.4% [-0.4 to -2.5]; webtable 4). The
263 incidence of metabolic complications were similar in the two groups, with reported
264 ketoacidosis in 5 vs. 2 patients. There were two reports of a serious adverse reaction
265 believed to be related to empagliflozin: both were ketosis without acidosis (including one
266 patient without diabetes) and resolved rapidly on cessation of the drug.

267

268 **DISCUSSION**

269 In this large, randomised trial involving over 4000 patients from 7 countries and nearly
270 600 deaths, allocation to empagliflozin was not associated with reductions in mortality,
271 duration of hospitalisation, or the risk of being ventilated or dying for those not on
272 ventilation at baseline. These results were consistent across prespecified subgroups of
273 age, sex, race and duration of symptoms prior to randomisation.

274 The benefits of immunomodulatory therapies in patients with moderate to severe COVID-
275 19 demonstrates the importance of inflammation in this patient group and empagliflozin
276 was proposed as a treatment for COVID-19 partly based on its anti-inflammatory activity
277 as well as purported benefits on endothelial function and cellular energy metabolism. The

Empagliflozin for COVID-19

278 lack of evidence of benefit from empagliflozin in this large well-powered trial suggests that
279 these properties of empagliflozin are either insufficient to produce a meaningful reduction
280 in mortality risk or are not affecting the relevant pathways in moderate to severe COVID-
281 19. There is weak evidence that there may be some benefit on 28-day mortality in patients
282 not receiving a corticosteroid or not requiring oxygen, which are largely the same patients.
283 However, this observation is based on a very small number of events, marginally
284 significant tests for heterogeneity or trend, and is not supported by either of the secondary
285 outcomes.

286 Only one other trial of an SGLT2i in COVID-19 has been reported to date. The DARE-19
287 trial recruited 1250 patients hospitalised (but not critically ill) with COVID-19 and with at
288 least one cardiometabolic risk factor (i.e. hypertension, type 2 diabetes mellitus,
289 atherosclerotic cardiovascular disease, heart failure or chronic kidney disease).¹⁶ There
290 was no significant effect of dapagliflozin on either of the two dual primary outcomes (new
291 or worsened organ function or death, and change in clinical status by day 30), although
292 there were numerically fewer poor outcomes in dapagliflozin group, including 41 deaths
293 compared to 54 in the placebo group. However, DARE-19 was not large enough to detect
294 plausibly moderate benefits of treatment. Meta-analysing the results on mortality from
295 DARE-19 and RECOVERY yields a summary relative risk of 0.93 (0.80-1.08). Trials of
296 SGLT2i in chronic disease setting have found consistent evidence of a reduction in acute
297 kidney injury (AKI): a meta-analysis of 13 large placebo-controlled trials including over
298 2000 AKI events reported a reduction of nearly one-quarter (relative risk 0.77, 95% CI
299 0.70-0.84) in this outcome.¹ The RECOVERY trial did not find evidence of benefit (or

Empagliflozin for COVID-19

300 harm) of empagliflozin on the risk of developing AKI in the acute setting where AKI may
301 have already begun prior to randomisation.

302 Strengths of this trial included that it was randomised, had a large sample size, broad
303 eligibility criteria, was international and more than 99% of patients were followed up for
304 the primary outcome. However, detailed information on laboratory markers of
305 inflammation and immune response was not collected, nor was information on
306 radiological or physiological outcomes. Although this randomised trial is open label (i.e.,
307 participants and local hospital staff are aware of the assigned treatment), the outcomes
308 are unambiguous and were ascertained without bias through linkage to routine health
309 records in the large majority of patients.

310 The RECOVERY trial only studied patients who had been hospitalised with COVID-19
311 and, therefore, is not able to provide any evidence on the safety and efficacy of
312 empagliflozin used in other patient groups. Due to the recommendation that empagliflozin
313 be taken orally (and not via a gastric feeding tube), there were few patients recruited
314 requiring invasive mechanical ventilation. Nevertheless, the reassuring safety findings in
315 RECOVERY suggest that SGLT2i can be safely used in the acute setting and do not need
316 to be routinely discontinued if there is an appropriate indication. These results show that
317 the key risk of ketoacidosis can be safely mitigated with simple monitoring and advice to
318 managing physicians.

319 In summary, the results of this large, randomised trial do not support the use of
320 empagliflozin as a treatment for adults hospitalised with COVID-19.

321

Empagliflozin for COVID-19

322 **Contributors**

323 This manuscript was initially drafted by the RH, PWH and MJL, further developed by the
324 Writing Committee, and approved by all members of the trial steering committee. PWH
325 and MJL vouch for the data and analyses, and for the fidelity of this report to the study
326 protocol and data analysis plan. PWH, JKB, MB, MK, SNF, TJ, EJ, KJ, WSL, AMo, AMuk,
327 AMum, JN, KR, GT, MM, RH, and MJL designed the trial and study protocol. MM, MC, G
328 P-A, LP, RKJ, DG, JD, FH, AK, PT-T, JW, CG, PD, RS, the Data Linkage team at the
329 RECOVERY Coordinating Centre, and the Health Records and Local Clinical Centre staff
330 listed in the appendix collected the data. NS and JRE did the statistical analysis. All
331 authors contributed to data interpretation and critical review and revision of the
332 manuscript. PWH and MJL had access to the study data and had final responsibility for
333 the decision to submit for publication.

334

Empagliflozin for COVID-19

335 **Writing Committee (on behalf of the RECOVERY Collaborative Group):**

336 Peter W Horby, Natalie Staplin, Leon Peto, Jonathan R Emberson, Mark Campbell,
337 Guilherme Pessoa-Amorim, Buddha Basnyat, Louise Thwaites, Rogier van Doorn, Raph
338 L Hamers, Jeremy Nel, John Amuasi, Roshan Kumar Jha, Dipansu Ghosh, Jonathan
339 Douse, Fergus Hamilton, Anthony Kerry, Pinky Thu-Ta, John Widdrington, Christopher A
340 Green, Purav Desai, Richard Stewart, Nguyen Thanh Phong, J Kenneth Baillie, Maya
341 Buch, Saul N Faust, Thomas Jaki, Edmund Juszcak, Katie Jeffery, Marian Knight, Wei
342 Shen Lim, Alan Montgomery, Aparna Mukherjee, Andrew Mumford, Kathryn Rowan, Guy
343 Thwaites, Marion Mafham, Richard Haynes, Martin J Landray.

344 **Data Monitoring Committee**

345 Peter Sandercock, Janet Darbyshire, David DeMets, Robert Fowler, David Lalloo,
346 Mohammed Munavvar, Janet Wittes.

347 **Declaration of interests**

348 The authors have no conflict of interest or financial relationships relevant to the submitted
349 work to disclose. No form of payment was given to anyone to produce the manuscript. All
350 authors have completed and submitted the ICMJE Form for Disclosure of Potential
351 Conflicts of Interest. The Nuffield Department of Population Health at the University of
352 Oxford has a staff policy of not accepting honoraria or consultancy fees directly or
353 indirectly from industry (see [https://www.ndph.ox.ac.uk/files/about/ndph-independence-](https://www.ndph.ox.ac.uk/files/about/ndph-independence-of-research-policy-jun-20.pdf)
354 [of-research-policy-jun-20.pdf](https://www.ndph.ox.ac.uk/files/about/ndph-independence-of-research-policy-jun-20.pdf)).

355 **Data sharing**

Empagliflozin for COVID-19

356 The protocol, consent form, statistical analysis plan, definition & derivation of clinical
357 characteristics & outcomes, training materials, regulatory documents, and other relevant
358 study materials are available online at www.recoverytrial.net. As described in the protocol,
359 the Trial Steering Committee will facilitate the use of the study data and approval will not
360 be unreasonably withheld. Deidentified participant data will be made available to bona
361 fide researchers registered with an appropriate institution within 3 months of publication.
362 However, the Steering Committee will need to be satisfied that any proposed publication
363 is of high quality, honours the commitments made to the study participants in the consent
364 documentation and ethical approvals, and is compliant with relevant legal and regulatory
365 requirements (e.g. relating to data protection and privacy). The Steering Committee will
366 have the right to review and comment on any draft manuscripts prior to publication. Data
367 will be made available in line with the policy and procedures described at:
368 <https://www.ndph.ox.ac.uk/data-access>. Those wishing to request access should
369 complete the form at
370 https://www.ndph.ox.ac.uk/files/about/data_access_enquiry_form_13_6_2019.docx
371 and e-mailed to: data.access@ndph.ox.ac.uk
372

373 **Acknowledgements**

374 Above all, we would like to thank the thousands of patients who participated in this trial.
375 We would also like to thank the many doctors, nurses, pharmacists, other allied health
376 professionals, and research administrators at NHS hospital organisations across the
377 whole of the UK, supported by staff at the National Institute of Health Research (NIHR)
378 Clinical Research Network, NHS DigiTrials, Public Health England, Department of Health

Empagliflozin for COVID-19

379 & Social Care, the Intensive Care National Audit & Research Centre, Public Health
380 Scotland, National Records Service of Scotland, the Secure Anonymised Information
381 Linkage (SAIL) at University of Swansea, and the NHS in England, Scotland, Wales and
382 Northern Ireland.

383 The RECOVERY trial is supported by grants to the University of Oxford from UK Research
384 and Innovation (UKRI) and NIHR (MC_PC_19056), the Wellcome Trust (Grant Ref:
385 222406/Z/20/Z) through the COVID-19 Therapeutics Accelerator, and by core funding
386 provided by the NIHR Oxford Biomedical Research Centre, the Wellcome Trust, the Bill
387 and Melinda Gates Foundation, the Foreign, Commonwealth and Development Office,
388 Health Data Research UK, the Medical Research Council Population Health Research
389 Unit, the NIHR Health Protection Unit in Emerging and Zoonotic Infections, and NIHR
390 Clinical Trials Unit Support Funding. TJ is supported by a grant from UK Medical
391 Research Council (MC_UU_0002/14). WSL is supported by core funding provided by
392 NIHR Nottingham Biomedical Research Centre. Boehringer-Ingelheim supplied
393 empagliflozin free of charge for use in this trial in countries outside the UK. Boehringer
394 Ingelheim was given the opportunity to review the manuscript for medical and scientific
395 consistency as it relates to Boehringer Ingelheim substances, as well as intellectual
396 property considerations.

397 The views expressed in this publication are those of the authors and not necessarily those
398 of the NHS, the NIHR, or the UK Department of Health and Social Care.

399 **Conflicts of interest**

Empagliflozin for COVID-19

400 RH and MJL are named on grants to the University of Oxford from Boehringer-Ingelheim
401 for other research projects. No form of payment was given to anyone to produce the
402 manuscript. All authors have completed and submitted the ICMJE Form for Disclosure of
403 Potential Conflicts of Interest. The Nuffield Department of Population Health at the
404 University of Oxford has a staff policy of not accepting honoraria or consultancy fees
405 directly or indirectly from industry (see [https://www.ndph.ox.ac.uk/files/about/ndph-](https://www.ndph.ox.ac.uk/files/about/ndph-independence-of-research-policy-jun-20.pdf)
406 [independence-of-research-policy-jun-20.pdf](https://www.ndph.ox.ac.uk/files/about/ndph-independence-of-research-policy-jun-20.pdf)).

407

Empagliflozin for COVID-19

408 References

- 409 1. Nuffield Department of Population Health Renal Studies Group and the SGLT2
410 inhibitor Meta-Analysis Cardio-Renal Trialists' Consortium. Impact of diabetes on the
411 effects of sodium glucose co-transporter-2 inhibitors on kidney outcomes: collaborative
412 meta-analysis of large placebo-controlled trials. *Lancet*. Nov 19 2022;400(10365):1788-
413 1801. doi:10.1016/S0140-6736(22)02074-8
- 414 2. Huang C, Wang Y, Li X, et al. Clinical features of patients infected with 2019
415 novel coronavirus in Wuhan, China. *Lancet*. Feb 15 2020;395(10223):497-506.
416 doi:10.1016/S0140-6736(20)30183-5
- 417 3. Wang JH, Chen RD, Yang HK, et al. Inflammation-associated factors for
418 predicting in-hospital mortality in patients with COVID-19. *J Med Virol*. May
419 2021;93(5):2908-2917. doi:10.1002/jmv.26771
- 420 4. W. H. O. Rapid Evidence Appraisal for COVID-19 Therapies Working Group,
421 Sterne JAC, Murthy S, et al. Association Between Administration of Systemic
422 Corticosteroids and Mortality Among Critically Ill Patients With COVID-19: A Meta-
423 analysis. *Jama*. Oct 6 2020;324(13):1330-1341. doi:10.1001/jama.2020.17023
- 424 5. Group WHOREAfC-TW, Shankar-Hari M, Vale CL, et al. Association Between
425 Administration of IL-6 Antagonists and Mortality Among Patients Hospitalized for
426 COVID-19: A Meta-analysis. *Jama*. Aug 10 2021;326(6):499-518.
427 doi:10.1001/jama.2021.11330
- 428 6. Group RC. Baricitinib in patients admitted to hospital with COVID-19
429 (RECOVERY): a randomised, controlled, open-label, platform trial and updated meta-
430 analysis. *Lancet*. Jul 30 2022;400(10349):359-368. doi:10.1016/S0140-6736(22)01109-
431 6
- 432 7. Maayah ZH, Ferdaoussi M, Takahara S, Soni S, Dyck JRB. Empagliflozin
433 suppresses inflammation and protects against acute septic renal injury.
434 *Inflammopharmacology*. Feb 2021;29(1):269-279. doi:10.1007/s10787-020-00732-4
- 435 8. Bonnet F, Scheen AJ. Effects of SGLT2 inhibitors on systemic and tissue low-
436 grade inflammation: The potential contribution to diabetes complications and
437 cardiovascular disease. *Diabetes & metabolism*. Dec 2018;44(6):457-464.
438 doi:10.1016/j.diabet.2018.09.005
- 439 9. Rodrigues TS, Keyla SG, Ishimoto AY, et al. Inflammasome activation in COVID-
440 19 patients. *medRxiv*. 2020;doi:<https://doi.org/10.1101/2020.08.05.20168872>
- 441 10. Kim SR, Lee SG, Kim SH, et al. SGLT2 inhibition modulates NLRP3
442 inflammasome activity via ketones and insulin in diabetes with cardiovascular disease.
443 *Nat Commun*. May 1 2020;11(1):2127. doi:10.1038/s41467-020-15983-6

Empagliflozin for COVID-19

- 444 11. Li H-L, Tse Y-K, Chandramouli C, et al. Sodium-Glucose Cotransporter 2
445 Inhibitors and the Risk of Pneumonia and Septic Shock. *The Journal of Clinical*
446 *Endocrinology & Metabolism*. 2022;107(12):3442-3451. doi:10.1210/clinem/dgac558
- 447 12. Daniele G, Xiong J, Solis-Herrera C, et al. Dapagliflozin Enhances Fat Oxidation
448 and Ketone Production in Patients With Type 2 Diabetes. *Diabetes care*. Nov
449 2016;39(11):2036-2041. doi:10.2337/dc15-2688
- 450 13. Icard P, Lincet H, Wu Z, et al. The key role of Warburg effect in SARS-CoV-2
451 replication and associated inflammatory response. *Biochimie*. Jan 2021;180:169-177.
452 doi:10.1016/j.biochi.2020.11.010
- 453 14. Codo AC, Davanzo GG, Monteiro LB, et al. Elevated Glucose Levels Favor
454 SARS-CoV-2 Infection and Monocyte Response through a HIF-1 α /Glycolysis-
455 Dependent Axis. *Cell Metab*. Sep 1 2020;32(3):437-446.e5.
456 doi:10.1016/j.cmet.2020.07.007
- 457 15. Solini A, Giannini L, Seghieri M, et al. Dapagliflozin acutely improves endothelial
458 dysfunction, reduces aortic stiffness and renal resistive index in type 2 diabetic patients:
459 a pilot study. *Cardiovasc Diabetol*. Oct 23 2017;16(1):138. doi:10.1186/s12933-017-
460 0621-8
- 461 16. Kosiborod MN, Esterline R, Furtado RHM, et al. Dapagliflozin in patients with
462 cardiometabolic risk factors hospitalised with COVID-19 (DARE-19): a randomised,
463 double-blind, placebo-controlled, phase 3 trial. *Lancet Diabetes Endocrinol*. Sep
464 2021;9(9):586-594. doi:10.1016/S2213-8587(21)00180-7
- 465 17. RECOVERY Collaborative Group, Horby P, Lim WS, et al. Dexamethasone in
466 Hospitalized Patients with Covid-19. *N Engl J Med*. Feb 25 2021;384(8):693-704.
467 doi:10.1056/NEJMoa2021436
- 468 18. RECOVERY Collaborative Group, Horby P, Mafham M, et al. Effect of
469 Hydroxychloroquine in Hospitalized Patients with Covid-19. *N Engl J Med*. Nov 19
470 2020;383(21):2030-2040. doi:10.1056/NEJMoa2022926
- 471 19. RECOVERY Collaborative Group, Horby PW, Mafham M, et al. Lopinavir-
472 ritonavir in patients admitted to hospital with COVID-19 (RECOVERY): a randomised,
473 controlled, open-label, platform trial. *Lancet*. Oct 5 2020;396(10259):1345-52.
474 doi:10.1016/S0140-6736(20)32013-4
- 475 20. RECOVERY Collaborative Group. Azithromycin in patients admitted to hospital
476 with COVID-19 (RECOVERY): a randomised, controlled, open-label, platform trial.
477 *Lancet*. Feb 13 2021;397(10274):605-612. doi:10.1016/S0140-6736(21)00149-5
- 478 21. RECOVERY Collaborative Group. Tocilizumab in patients admitted to hospital
479 with COVID-19 (RECOVERY): a randomised, controlled, open-label, platform trial.
480 *Lancet*. May 1 2021;397(10285):1637-1645. doi:10.1016/S0140-6736(21)00676-0

Empagliflozin for COVID-19

- 481 22. RECOVERY Collaborative Group, Horby PW, Estcourt L, et al. Convalescent
482 plasma in patients admitted to hospital with COVID-19 (RECOVERY): a randomised,
483 controlled, open-label, platform trial. *medRxiv*. 2021:2021.03.09.21252736.
484 doi:10.1101/2021.03.09.21252736
- 485 23. Group RC. Colchicine in patients admitted to hospital with COVID-19
486 (RECOVERY): a randomised, controlled, open-label, platform trial. *Lancet Respir Med*.
487 Dec 2021;9(12):1419-1426. doi:10.1016/S2213-2600(21)00435-5
- 488 24. Group RC. Aspirin in patients admitted to hospital with COVID-19 (RECOVERY):
489 a randomised, controlled, open-label, platform trial. *Lancet*. Jan 8 2022;399(10320):143-
490 151. doi:10.1016/S0140-6736(21)01825-0
- 491 25. Group RC. Casirivimab and imdevimab in patients admitted to hospital with
492 COVID-19 (RECOVERY): a randomised, controlled, open-label, platform trial. *Lancet*.
493 Feb 12 2022;399(10325):665-676. doi:10.1016/S0140-6736(22)00163-5
- 494 26. RECOVERY Collaborative Group. Higher dose corticosteroids in hospitalised
495 COVID-19 patients with hypoxia but not requiring ventilatory support (RECOVERY): a
496 randomised, controlled, open-label, platform trial. *MedRxiv*.
497 2023;doi:<https://doi.org/10.1101/2022.12.16.22283578>
498
- 499

Empagliflozin for COVID-19

500 **Table 1: Baseline characteristics**

	Treatment allocation	
	Empagliflozin (n=2113)	Usual care (n=2158)
Age, years	61.1 (16.3)	61.8 (16.4)
<70	1412 (67%)	1393 (65%)
≥70 to <80	434 (21%)	479 (22%)
≥80	267 (13%)	286 (13%)
Sex		
Male	1326 (63%)	1339 (62%)
Female*	787 (37%)	819 (38%)
Country		
Ghana	2 (<0.5%)	2 (<0.5%)
India	24 (1%)	19 (1%)
Indonesia	68 (3%)	68 (3%)
Nepal	139 (7%)	119 (6%)
South Africa	10 (<0.5%)	14 (1%)
Vietnam	40 (2%)	53 (2%)
UK	1830 (87%)	1883 (87%)
Race		
White	1557 (74%)	1607 (74%)
Black, Asian, and minority ethnic	361 (17%)	330 (15%)
Unknown	195 (9%)	221 (10%)
Number of days since symptom onset	8 (5-11)	8 (5-12)
Number of days since hospitalisation	2 (1-3)	2 (1-3)
Respiratory support received		
None	255 (12%)	260 (12%)
Simple oxygen	1317 (62%)	1383 (64%)
Non invasive ventilation	512 (24%)	500 (23%)
Invasive mechanical ventilation	29 (1%)	15 (1%)
Biochemistry		
C-reactive protein, mg/L	83 (39-148)	85 (38-151)
Creatinine, umol/L	75 (62-94)	78 (63-96)
Previous diseases		
Diabetes	333 (16%)	356 (16%)
Heart disease	471 (22%)	455 (21%)
Chronic lung disease	533 (25%)	508 (24%)
Tuberculosis	9 (<0.5%)	7 (<0.5%)
HIV	21 (1%)	13 (1%)
Severe liver disease†	20 (1%)	21 (1%)
Severe kidney impairment‡	66 (3%)	80 (4%)
Any of the above	1014 (48%)	1039 (48%)
SARS-CoV-2 PCR test result		
Positive	2046 (97%)	2097 (97%)
Negative	12 (1%)	10 (<0.5%)
Unknown	55 (3%)	51 (2%)
Received a COVID-19 vaccine	1412 (67%)	1453 (67%)
Use of other treatments		
Corticosteroids	1910 (90%)	1932 (90%)
Remdesivir	541 (26%)	547 (25%)
Tocilizumab	504 (24%)	491 (23%)
Plan to use tocilizumab within the next 24 hours	208 (10%)	240 (11%)

Empagliflozin for COVID-19

	Treatment allocation	
	Empagliflozin (n=2113)	Usual care (n=2158)
Other randomly assigned treatments		
Baricitinib	554 (26%)	591 (27%)
High dose steroids	160 (8%)	161 (7%)
Sotrovimab	185 (9%)	194 (9%)
Molnupiravir	143 (7%)	133 (6%)
Nirmatrelvir-ritonavir	19 (1%)	28 (1%)

Results are count (%), mean \pm standard deviation, or median (inter-quartile range). *Includes 0 pregnant women.
†Defined as requiring ongoing specialist care. ‡Defined as estimated glomerular filtration rate <30 mL/min/1.73m²

501

502

Empagliflozin for COVID-19

503 **Table 2: Effect of allocation to empagliflozin on key study outcomes**

	Treatment allocation		RR (95% CI)	p value
	Empagliflozin (n=2113)	Usual care (n=2158)		
Primary outcome:				
28-day mortality	289 (14%)	307 (14%)	0.96 (0.82-1.13)	0.64
Secondary outcomes:				
Median time to being discharged alive, days	8 (5 to 19)	8 (5 to 20)		
Discharged from hospital within 28 days	1678 (79%)	1677 (78%)	1.03 (0.96-1.10)	0.44
Receipt of invasive mechanical ventilation or death*	338/2084 (16%)	371/2143 (17%)	0.95 (0.84-1.08)	0.44
Invasive mechanical ventilation	130/2084 (6%)	133/2143 (6%)	0.97 (0.77-1.21)	0.77
Death	274/2084 (13%)	302/2143 (14%)	0.96 (0.84-1.11)	0.59
Subsidiary clinical outcomes				
Receipt of ventilation†	245/1567 (16%)	259/1641 (16%)	1.00 (0.85-1.17)	0.97
Non-invasive ventilation	237/1572 (15%)	252/1643 (15%)	0.99 (0.84-1.16)	0.90
Invasive mechanical ventilation	51/1567 (3%)	49/1641 (3%)	1.09 (0.74-1.60)	0.66
Successful cessation of invasive mechanical ventilation‡	10/29 (35%)	6/15 (40%)	0.67 (0.24-1.85)	0.44
Renal replacement therapy§	45/2103 (2%)	44/2146 (2%)	0.96 (0.64-1.45)	0.86

RR=Rate Ratio for the outcomes of 28-day mortality and hospital discharge, and risk ratio for the outcome of receipt of invasive mechanical ventilation or death (and its subcomponents). CI=confidence interval. *Analyses exclude those on invasive mechanical ventilation at randomization. †Analyses exclude those on any form of ventilation at randomisation. ‡Analyses restricted to those on invasive mechanical ventilation at randomisation. §Analyses exclude those on haemodialysis or haemofiltration at randomisation.

504

505

Empagliflozin for COVID-19

506 **Figures**

507 **Figure 1: Trial profile**

508 ITT=intention to treat. * Number recruited overall during period that adult participants
509 could be recruited into empagliflozin comparison. Of the 4271 randomised to
510 empagliflozin vs usual care, 1145 were additionally randomised to baricitinib vs usual
511 care (554 [26%] of the empagliflozin group vs 591 [27%] of the usual care group); 321
512 were additionally randomised to higher-dose corticosteroids vs usual care (160 [8%] of
513 the empagliflozin group vs 161 [7%] of the usual care group); 379 were additionally
514 randomised to sotrovimab vs usual care (185 [9%] of the empagliflozin group vs 194
515 [9%] of the usual care group); 276 were additionally randomised to molnupiravir vs
516 usual care (143 [7%] of the empagliflozin group vs 133 [6%] of the usual care group);
517 and 47 patients were additionally randomised to nirmatrelvir-ritonavir vs usual care (19
518 [1%] of the empagliflozin group vs 28 [1%] of the usual care group).

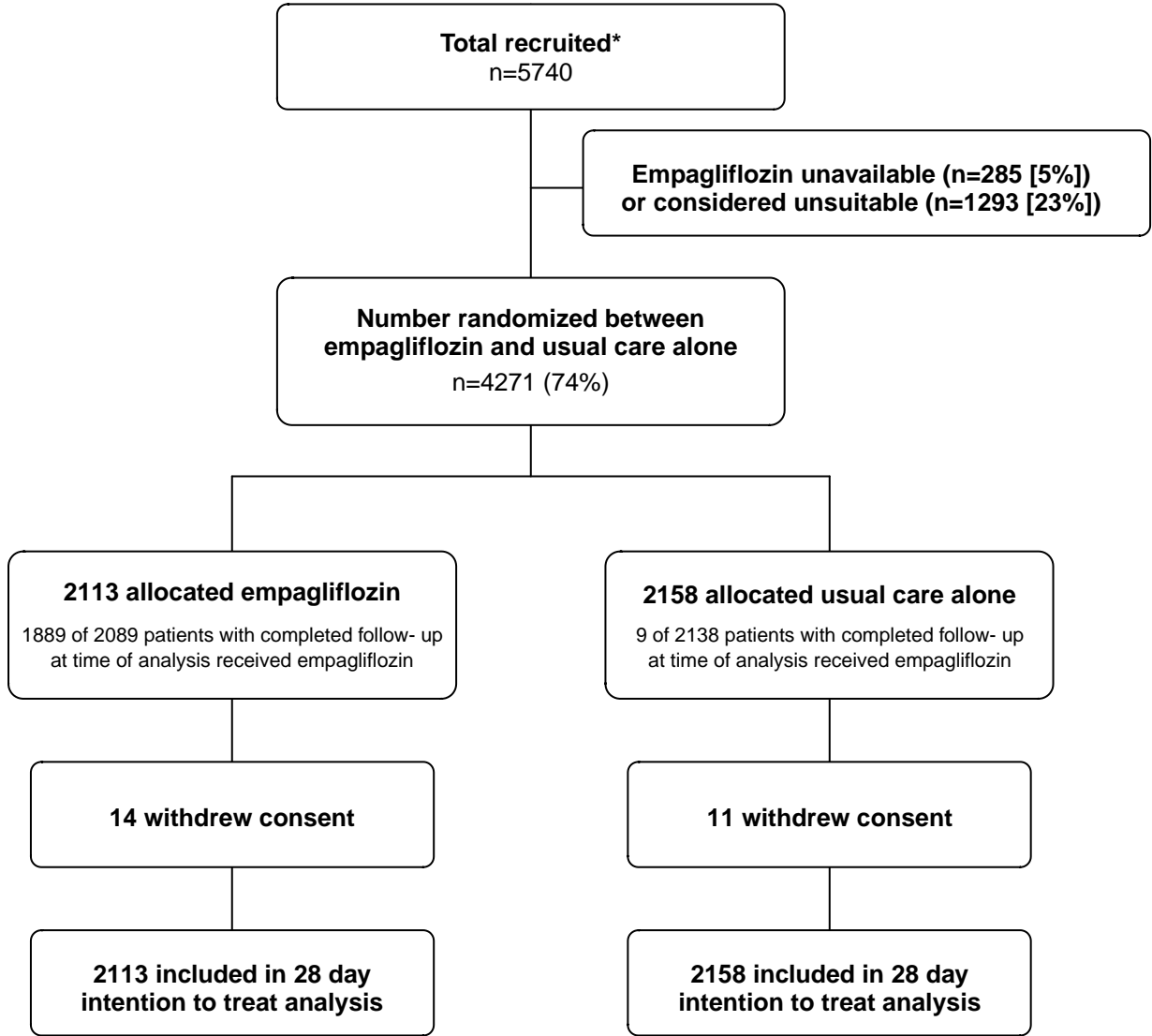
519 **Figure 2: Effect of allocation to empagliflozin on 28-day mortality**

520 **Figure 3: Effect of allocation to empagliflozin on 28-day mortality by baseline** 521 **characteristics**

522 Subgroup-specific rate ratio estimates are represented by squares (with areas of the
523 squares proportional to the amount of statistical information) and the lines through them
524 correspond to the 95% CIs. The ethnicity, days since onset and use of corticosteroids
525 subgroups exclude those with missing data, but these patients are included in the overall
526 summary diamond.

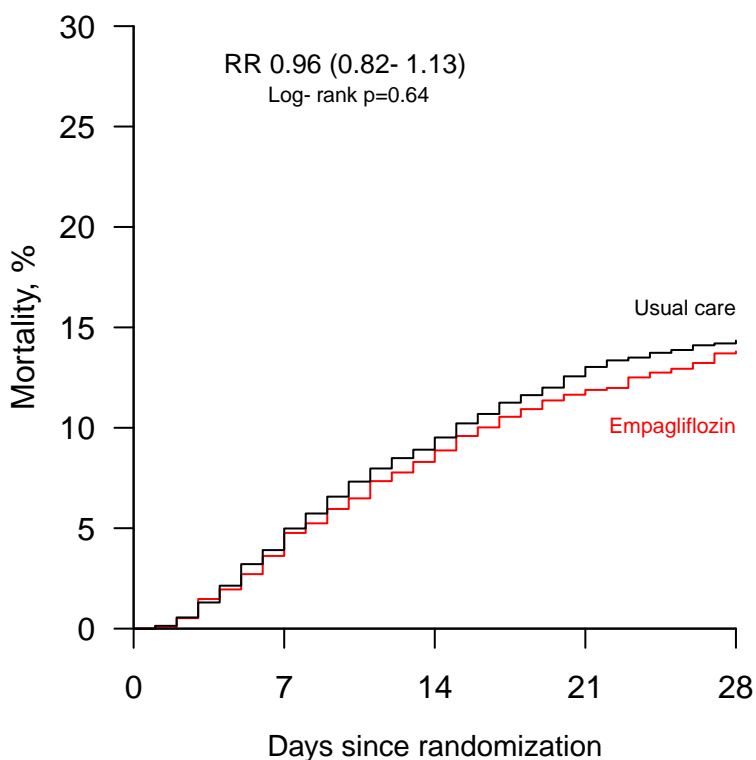
Figure 1: Trial profile

medRxiv preprint doi: <https://doi.org/10.1101/2023.04.13.23288469>; this version posted April 19, 2023. The copyright holder for this preprint (which was not certified by peer review) is the author/funder, who has granted medRxiv a license to display the preprint in perpetuity. It is made available under a [CC-BY 4.0 International license](https://creativecommons.org/licenses/by/4.0/).



ITT=intention to treat. *Number recruited overall during period that adult participants could be recruited into empagliflozin comparison.

Figure 2: Effect of allocation to empagliflozin on 28- day mortality
 medRxiv preprint doi: <https://doi.org/10.1101/2023.04.13.23288499>; this version posted April 19, 2023. The copyright holder for this preprint (which was not certified by peer review) is the author/funder, who has granted medRxiv a license to display the preprint in perpetuity. It is made available under a [CC-BY 4.0 International license](https://creativecommons.org/licenses/by/4.0/).



Days since randomization	0	7	14	21	28
Empagliflozin	2113	1995	1907	1841	1800
Control	2158	2035	1933	1856	1828

Figure 3: Effects of allocation to empagliflozin on 28-day mortality by baseline characteristics

