

# The Role of Age and Sex in Non-linear Dilution Adjustment of Spot Urine Arsenic

THOMAS CLEMENS CARMINE MD  
PRAXIS DR CARMINE

**NOTE: This preprint reports new research that has not been certified by peer review and should not be used to guide clinical practice.**

# The Role of Age and Sex in Non-linear Dilution Adjustment of Spot Urine Arsenic

## Contents

<b>THE ROLE OF AGE AND SEX IN NON-LINEAR DILUTION ADJUSTMENT OF SPOT URINE ARSENIC.....</b>	<b>1</b>
<b>ABSTRACT .....</b>	<b>3</b>
<b>ABBREVIATIONS .....</b>	<b>4</b>
<b>THE ROLE OF AGE AND SEX IN NON-LINEAR DILUTION ADJUSTMENT OF SPOT URINE ARSENIC.....</b>	<b>5</b>
<b>1. INTRODUCTION .....</b>	<b>5</b>
1.1. Variable Power Functional Creatinine Correction (V-PFCRC).....	5
1.2. Sex Differences in Osmoregulation, Urinary Dilution, and Creatinine.....	6
1.3. Sex Differences in Renal Arsenic Excretion.....	7
1.4. Influence of Age on Renal Function and Fluid Balance .....	7
1.4.1. Glomerular Hemodynamics in Aging .....	8
1.4.2. Age- and Sex-Related Decline of the Glomerular Filtration Rate (GFR).....	8
1.4.3. Tubular System Changes.....	8
1.4.4. Impact of Aging on Renal Vascular Function .....	8
1.4.5. Creatinine Clearance and Creatinine in Serum and Urine .....	9
1.5. Influence of Age on Renal Arsenic Excretion.....	9
1.6. Influence of Kidney Function on Arsenic Excretion .....	10
<b>2. METHODOLOGY.....</b>	<b>11</b>
2.1. Study Population.....	11
2.2. Treatment of Arsenic Values Below the Detection Limit .....	13
2.3. Sample Collection, Preservation, Transportation, and Storage Procedures.....	13
2.3.1. Urine.....	13
2.3.2. Blood .....	13
2.4. Sample Preparation and Analysis Procedures .....	13
2.4.1. Inductively Coupled Plasma-Mass Spectrometry (ICP-MS) Measurements of Arsenic.....	13
2.4.2. Creatinine Measurement .....	13
2.5. Normalization of Arsenic to Urinary Concentrations of 1 g/L CRN.....	14
2.6. Statistical Analysis.....	14
2.6.1 Analysis of Age- and Sex-Effects on Arsenic in Blood and Urine.....	15
2.6.2. Determination of Age and Sex-specific V-PFCRC-Formulae.....	15
2.6.3. Validation of Standardization Efficacy in Separate Age Groups.....	15
<b>3. RESULTS .....</b>	<b>16</b>
3.1. Effects of Age and Sex on CRN and Urinary Arsenic .....	16
3.2. Comparison of the Effects of Age and Sex on Urinary and Blood Arsenic .....	17
3.3. Differential Effects of Aging on Arsenic in Blood and Urine .....	19
3.4. Age-Specific Sex Ratios of Quartile Limits 1-3.....	20
3.5. Effects of Age and Sex on V-PFCRC Equations .....	21
3.6. Validation of V-PFCRC by Age- and Sex-Stratified Power Functional Regression Analysis.....	22
<b>4. DISCUSSION AND CONCLUSION .....</b>	<b>24</b>
4.1. Sex- and Age-related Differences in Arsenic Excretion and V-PFCRC Formulae .....	24
4.2. Summary of Key Findings.....	25
4.2.1. Impact of Age and Sex on Creatinine Levels .....	25
4.2.2. Impact of Age and Sex on Urine Arsenic Levels .....	25
4.2.3. Comparison of Urinary and Blood Arsenic Levels .....	25
4.2.4. Age and Sex-Specific V-PFCRC Equations.....	25
4.2.5. Further Validation of V-PFCRC .....	25
4.3. Physiological, Hormonal, and Toxicokinetic Considerations.....	26
4.3.1. Sex Differences in Urine and Blood .....	26

4.3.2. Influence of Age .....	27
4.3.2.1 Variations in Arsenic Levels in Urine and Blood .....	27
4.3.2.2 Role of Common Tubular Transport for Opposing Age Trends of CRN and Arsenic .....	27
4.3.2.3 Variation of Urinary Species Proportions with Age .....	28
4.3.2.4 Need for Further Age-Adjustment in Assessment of Arsenic Exposure .....	28
4.4. Variations of V-PFCRC Formulae Related to Age and Sex.....	29
4.4.1. Pivotal Role of Osmoregulation in Age- and Sex-Variations of V-PFCRC Functions .....	29
4.4.2. Mechanistic Explanation of ATII/AVP-Mediated Effects on the Exponent <i>b</i> .....	29
4.5. Conclusions.....	32
<b>5. ACKNOWLEDGEMENTS .....</b>	<b>33</b>
<b>6. AUTHOR CONTRIBUTION .....</b>	<b>33</b>
<b>7. CONFLICT OF INTEREST .....</b>	<b>33</b>
<b>8. ETHICS.....</b>	<b>33</b>
<b>9. FUNDING.....</b>	<b>33</b>
<b>10. REFERENCES .....</b>	<b>34</b>
<b>11. SUPPLEMENTARY MATERIAL .....</b>	<b>52</b>

# The Role of Age and Sex in Non-linear Dilution Adjustment of Spot Urine Arsenic

## Abstract

### *Background*

Previous research introduced V-PFCRC as an effective spot urinary dilution adjustment method for various metal analytes, including the major environmental toxin arsenic. V-PFCRC normalizes analytes to 1 g/L creatinine (CRN) by adopting more advanced power-functional corrective equations accounting for variation in exposure level. This study expands on previous work by examining the impacts of age and sex on corrective functions.

### *Methods*

Literature review of the effects of sex and age on urinary dilution and the excretion of CRN and arsenic. Data analysis included a Data Set 1 of 5,752 urine samples and a partly overlapping Data Set 2 of 1,154 combined EDTA blood and urine samples. Both sets were classified into age bands, and the means, medians, and interquartile ranges for CRN and TWuAs in uncorrected (UC), conventionally CRN-corrected (CCRC), simple power-functional (S-PFCRC), sex-aggregated (V-PFCRC SA), and sex-differentiated V-PFCRC SD modes were compared. Correlation analyses assessed residual relationships between CRN, TWuAs, and age. V-PFCRC functions were compared across three numerically similar age groups and both sexes. The efficacy of systemic dilution adjustment error compensation was evaluated through power-functional regression analysis of residual CRN and the association between arsenic in blood and all tested urinary result modes.

### *Results*

Significant sex differences in UC and blood were neutralized by CCRC and reduced by V-PFCRC. Age showed a positive association with blood arsenic and TWuAs in all result modes, indicating factual increments in exposure. Sex-differentiated V-PFCRC best matched the sex-age kinetics of blood arsenic. V-PFCRC formulas varied by sex and age and appeared to reflect urinary osmolality sex-age-kinetics reported in previous research. V-PFCRC minimized residual biases of CRN on TWuAs across all age groups and sexes, demonstrating improved standardization efficacy compared to UC and CCRC arsenic.

### *Interpretation*

Sex differences in UC and CCRC arsenic are primarily attributable to urinary dilution and are effectively compensated by V-PFCRC. While the sex and age influence on V-PFCRC formulas align with sex- and age-specific urinary osmolality and assumed baseline vasopressor activities, their impact on correction validity for entire collectives is minimal.

### *Conclusion*

The V-PFCRC method offers a robust correction for urinary arsenic dilution, significantly reducing systemic dilution adjustment errors. Its application in various demographic contexts enhances the accuracy of urinary biomarker assessments, benefiting clinical and epidemiological research. V-PFCRC effectively compensates for sex differences in urinary arsenic. Age-related increases in TWuAs are exposure-related and should be additionally accounted for by algebraic normalization, covariate models, or standard range adjustments.

**Keywords:** Non-linear dilution adjustment, spot urine, biomarkers, arsenic, sex-age differences, exposure studies.

## Abbreviations

ATII	Angiotensin II
AVP	Arginine vasopressin (= Adiuretin, ADH)
CCRC	Conventional Creatinine Correction
CKD	Chronic Kidney Disease
CRN	Creatinine
DMA	Dimethylarsinic acid
E	Estrogen
FGF23	Fibroblast Growth Factor 23
GCHP	Glomerular Capillary Hydrostatic Pressure
GFR	Glomerular Filtration Rate
iAs	Inorganic Arsenic (iAs <sub>III</sub> + iAs <sub>V</sub> )
%iAs	Percentage of iAs in Total weight arsenic
iAs <sub>III</sub>	Trivalent Arsenite
iAs <sub>V</sub>	Pentavalent Arsenate
ICP-MS	Inductively Coupled Plasma Mass Spectrometry
MATE1	Multidrug and Toxin Extrusion Protein 1
m-KL	Proteohormone transmembrane Klotho
MMA	Monomethylarsonic acid
NaPi-IIa	Sodium-coupled PO <sub>4</sub> <sup>-</sup> Co-Transporters
NT-proBNP	N-terminal pro B-type Natriuretic Peptide
oAs	Organic Arsenic (Sum of DMA + MMA, Arsenobetaine, Arseno-sugars, -lipids, and -choline)
OCT2	Organic Cation Transporter 2
uOsm	Urinary Osmolality
P	Progesterone
PO <sub>4</sub> <sup>-</sup>	Phosphate
RAAS	Renin-Angiotensin-Aldosterone System
RPF	Renal Plasma Flow
SAMe	S-Adenosyl-Methionine
S-PFCRC	Simple Power Functional Creatinine Correction using fixed exponents
T	Testosterone
TuAs	Sum of iAs and methylated primary metabolites of iAs (iAs + DMA + MMA)
TWuAs	Total Weight Urinary Arsenic = all ICP-MS detectable forms of inorganic and organic arsenic (measured in this study)
AS <sub>UC</sub>	Uncorrected TWuAs in µg/L
uAs <sub>C</sub>	Conventionally Creatinine-corrected TWuAs
uAs <sub>N</sub>	Urinary Total Weight Arsenic, normalized to 1 g/L CRN by V-PFCRC SD
UC	Uncorrected urinary result mode (in µg/L for Arsenic)
uOsm	Urinary Osmolality
V-PFCRC	Variable Power Functional Creatinine Correction (all forms)
V-PFCRC SA	Sex-Aggregated Variable Power Functional Creatinine Correction using identical analyte-specific coefficients c and d for both sexes
V-PFCRC SD	Sex-Differentiated Variable Power Functional Creatinine Correction using sex-specific coefficients c and d

# The role of age and sex in non-linear dilution adjustment of spot urine arsenic

Thomas C. Carmine MD

## 1. Introduction

### 1.1. Variable Power Functional Creatinine Correction (V-PFCRC)

Urinary biomarkers are essential for medical, epidemiological, and environmental research. However, variations in hydration and urine dilution can significantly affect these biomarkers. Traditional dilution adjustment methods that relate biomarker concentrations to creatinine (CCRC), osmolality, or specific gravity have limitations due to confounders such as age, sex, and muscle mass, as well as complex biochemical interactions.<sup>1-3</sup>

One significant limitation of the creatinine (CRN) method is that the excretion of creatinine varies with diuresis in a manner different from most analytes. This discrepancy can lead to misinterpretations, particularly at the extremes of dilution, necessitating restrictions to the accepted dilution range.<sup>2,3</sup>

Previous studies on dilution adjustment of arsenic and various metals demonstrated substantial neutralization of these errors by power functional modifications of the traditional ratio formations between analytes and their correctors.<sup>2</sup> This led to the development of the Variable Power-Functional Creatinine Correction (V-PFCRC) method, which, in contrast to previous power-functional adjustments, further accounts for variations in corrective exponents with analyte levels.<sup>3</sup> It standardizes urinary analytes to 1 g/L CRN by combining uncorrected analyte concentrations and two analyte-specific coefficients *c* and *d* according to the general V-PFCRC formula:

$$A_N = A_{UC} / CRN^{[c \times \ln(A_{UC}) + c] / [c \times \ln(CRN) + 1]}$$

$uA_N$  = normalized analyte to 1g/L CRN

$uA_{UC}$  = uncorrected analyte

*c* and *d*: numerically derived analyte-specific coefficients

The innovative V-PFCRC formula has shown promising spot urinary adjustment results for the top priority environmental toxin arsenic, four other metals (cesium, molybdenum, strontium, zinc), and iodine. It effectively neutralized residual bias and improved correlations between blood and urine findings, indicating its potential for medical, forensic, and environmental applications.

Beyond the mathematically tangible systemic dilution adjustment error (SDAE) caused by differential diuresis dependencies, there are further non-linear, exposure-differentiated skews addressed by V-PFCRC. These include complex metabolic and excretion-related interactions between analytes and CRN. For instance, arsenic may limit CRN synthesis, and both may interact through the methyl donor S-Adenosyl Methionine (SAME).<sup>4</sup> Additionally, common renal tubular transport mechanisms for CRN and arsenic, such as Multidrug and Toxin Extrusion protein 1 (MATE1) or P-glycoprotein 1/Multidrug Resistance Protein 1 (PGP1/MDR1), add to the complexity, underscoring the need for innovative approaches to address these challenges.<sup>3-6</sup>

While the V-PFCRC method can minimize these non-linear errors, other confounders like age, sex, and lean muscle mass, which V-PFCRC does not compensate, remain and can still influence concentrations of correctors and analytes.<sup>2,3</sup> The main goal of this study was to assess whether and how far additional adjustments based on age and sex are necessary for

V-PFCRC formulas or reference ranges for urinary arsenic. To accomplish this objective, the following steps were undertaken:

1. **Literature Review:** Existing literature was reviewed to understand the extent of age- and sex-specific variability in total weight arsenic urine samples and their physiological, pathological, and hormonal backgrounds.
2. **Influence of Age and Sex:** The influence of age and sex on various result modes of arsenic spot urine samples was investigated on a large dataset (Set 1) comprising 5,725 samples previously utilized to develop V-PFCRC formulas.
3. **Total Weight Arsenic Analysis in Blood and Urine:** The effects of sex and age on total weight arsenic in 1,154 urine and parallel blood samples (Set 2), substantially overlapping with Set 1, were studied.
4. **Quartile Comparison:** The blood quartile limits (1-3) and different urinary result modes were compared to assess the alignment of gender ratios and age-related changes relative to younger individuals.
5. **V-PFCRC Formula Assessment:** The age- and sex-specific influences on the coefficients of the V-PFCRC formulas were explored to evaluate the need for potential modifications.
6. **Validation:** The study further validated the variable power-functional CRN dilution correction determined in previous work by comparing residual CRN-biases of different result modes within age- and sex-specific subgroups. This rigorous validation process ensures the reliability and accuracy of the novel V-PFCRC method.

Aging and sex influence fluid balance and the metabolism of creatinine, toxins, and their respective urinary biomarkers through interconnected structural and functional changes in the kidneys and other organs. Understanding these factors is crucial for accurately adjusting spot urine samples for dilution, ensuring reliable and meaningful exposure estimates.

## 1.2. Sex Differences in Osmoregulation, Urinary Dilution, and Creatinine

Sex differences in urinary dilution and their hormonal-physiological backgrounds are summarized and referenced in Supplements 1-7. Women tend to produce higher weight-adjusted 24-hour urine volumes and display higher water turnover and natriuresis (sodium excretion).<sup>7-9</sup> They typically have lower urinary concentration, osmolality (uOsm), total excreted osmotic load, and creatinine (CRN) levels than men.<sup>7,10-12</sup>

Sex hormones influence CRN in several ways. Androgens (male hormones) increase lean muscle mass and energy metabolism, producing nitrogenous waste products like urea, uric acid, and CRN.<sup>13</sup> Men compensate for the excess CRN production mainly through increased glomerular filtration, proportional to plasma concentrations of freely filtrable CRN and renal plasma flow. Additionally, androgens enhance tubular secretion of CRN by upregulating its primary transporters, Organic Cation Transporter 2 (OCT2), for its basolateral uptake and MATE1 for its apical excretion, while estrogens inhibit these transporters.<sup>5,10,14-16</sup> Male hormones also enhance the actions of the Renin-Angiotensin-Aldosterone System (RAAS) and Arginine-Vasopressin (AVP), both crucial for osmoregulation.<sup>7,8,10,17-25</sup> Androgens further increase the sensitivity of AVP-immunoreactive neurons and the number of renal AVP-binding sites.<sup>26,27</sup> This promotes water and sodium reabsorption, resulting in higher general urinary concentration and CRN levels.<sup>7,10</sup> Conversely, female hormones inhibit these effects, either directly on the hypothalamic-pituitary axis and kidneys or through the stimulation of renal prostaglandins and NT-proBNP, which act as natural antagonists to the renal fluid-retaining actions of AVP.<sup>20,25,28,29</sup> This results in higher water turnover,<sup>8</sup> increased natriuresis,<sup>30,31</sup> more dilute urine,<sup>7,14</sup> and lower extracellular volumes in women.<sup>19,20,32,33</sup>

### 1.3. Sex Differences in Renal Arsenic Excretion

Several studies have underscored the superior methylation capacity in women, a critical factor in the metabolic biotransformation of arsenic.<sup>34-36</sup> This finding suggests that sex differences in arsenic metabolism may contribute to the generally lower female arsenic toxicity. The process involves a complex interplay of hormonal, enzymatic, and renal tubular transport factors. Women tend to dispose of higher levels of S-adenosylmethionine (SAME), the essential methyl donor in the oxidative methylation of arsenic. This may be partially due to estrogen-dependent upregulation of choline synthesis, a critical cofactor in SAME production,<sup>35</sup> besides the lower female lean muscle mass implicating reduced SAME consumption for creatinine synthesis. Furthermore, women exhibit higher expression of antioxidative protective enzymes such as Endothelial Nitric Oxide Synthase (eNOS), Metallothionein, Manganese Superoxide Dismutase (MnSOD), and Carbonic Anhydrase, which may further enhance the oxidative methylation of inorganic arsenic.<sup>10,37,38</sup>

Consistently, several sex-comparative studies reported significantly higher urinary proportions of methylated dimethylarsinic acid (%DMA) with lower inorganic arsenic (%iAs) and monomethylarsonic acid (%MMA) in women.<sup>34,36,39-43</sup> In contrast to the evident sex-differentiate proportions of iAs, MMA, and DMA,<sup>44</sup> no significant differences in covariate dilution-adjusted total weight arsenic and non-toxic arsenobetaine ('fish-arsenic') between males and females were found in a recent sizeable Korean study.<sup>34</sup>

The complexity of sex differences in arsenic excretion is highlighted by the male-dominant baseline expression of sodium-coupled phosphate cotransporter II (NaPi-IIa). This transporter primarily facilitates sodium reabsorption in the proximal tubule using phosphate ( $\text{PO}_4^-$ ) as the primary co-transported anion, with inorganic arsenate ( $\text{iAs}_\text{V}$ ) able to substitute for  $\text{PO}_4^-$ .<sup>34,45</sup> However, the cellular tubular processing of these anions differs. Plasma  $\text{PO}_4^-$  levels increase with NaPi-IIa upregulation, indicating excess  $\text{PO}_4^-$  reabsorption.<sup>46</sup> In contrast, arsenate is partly converted to arsenite ( $\text{iAs}_\text{III}$ ) within the tubule cells, which is then either excreted in the urine or reabsorbed into the blood.<sup>47,48</sup> Trivalent arsenite undergoes more efficient methylation than pentavalent arsenate in liver and kidney cells.<sup>47,49-52</sup> The increased uptake of arsenate and its subsequent conversion to arsenite may lead to enhanced net methylation of excreted arsenic. This is supported by the observation of higher urinary %DMA levels in postmenopausal women, older individuals, and people with chronic kidney disease, all of whom show increased NaPi-IIa activity due to reduced expression of the proteohormone transmembrane Klotho (m-Kl).<sup>4,39,53-61</sup> Estrogen inhibits NaPi-IIa transporters via upregulation of m-Kl, thus enhancing the excretion of  $\text{PO}_4^-$  and  $\text{iAs}_\text{V}$ .<sup>62,63</sup> However, the expected sex difference in NaPi-IIa activity does not reflect in lower female serum  $\text{PO}_4^-$  levels in younger adults.<sup>53,54</sup> Only after menopausal estrogen decline does serum  $\text{PO}_4^-$  become female-dominant. Testosterone and other factors could play more age-constant roles in inhibiting  $\text{PO}_4^-$  reabsorption in males or counterbalancing the estrogen effects in females.<sup>64</sup> Postmenopausal changes, including a sharper estrogen decline in women compared to testosterone in men in addition to the above-mentioned female methylation advantages, may explain higher serum phosphate and %DMA, along with lower %iAs in women.<sup>53,54</sup>

### 1.4. Influence of Age on Renal Function and Fluid Balance

Aging induces complex changes in renal function and fluid balance due to an interrelated combination of normal organ aging, toxic build-up, and degenerative diseases like diabetes, hypertension, atherosclerosis, and congestive heart disease.<sup>65-68</sup> The combination of these factors induces specific changes in the kidney, known as nephrosclerosis. Arteriosclerotic fibro-intimal hyperplasia of afferent arterioles is the expected initial pathogenetic step of nephrosclerosis. This condition encompasses four primary aspects:

1. Arteriosclerosis, 2. Glomerulosclerosis, 3. Tubular Atrophy, and 4. Interstitial Fibrosis.



Age-related progressive nephrosclerosis reduces kidney mass, renal plasma flow (RPF), number of functioning nephrons, filtration membrane area, and glomerular capillary permeability. Therefore, the glomerular filtration rate (GFR) usually declines with age.<sup>66-69</sup>

#### 1.4.1. Glomerular Hemodynamics in Aging

In the early stages of kidney damage, reduced vascular resistance in the afferent arterioles and increased responsiveness of the efferent arterioles to vasoconstrictive signals lead to elevated glomerular capillary hydrostatic pressure (GCHP).<sup>66</sup> Despite the increased GCHP, the reactive reduction of glomerular capillary ultrafiltration coefficients prevents a corresponding increase in filtration efficiency and glomerular filtration rate (GFR). Initially, hyperfiltration may occur, but over time, the reduction in ultrafiltration coefficients and increased vasoconstriction of afferent arterioles also impair capillary filtration efficiency and GFR.<sup>66,70</sup>

#### 1.4.2. Age- and Sex-Related Decline of the Glomerular Filtration Rate (GFR)

The GFR is low at birth and increases to adult levels by the age of two years. It remains stable until around 40 and gradually decreases by about 5%–10% per decade.<sup>68</sup> This decline is mainly due to the progressive loss of functioning nephrons. Women typically have lower GFR than men until around the sixth decade, when sex- disparities diminish and may reverse due to a faster decline in male GFR (1.20 vs. 0.96 ml/min per 1.73 m<sup>2</sup> per year).<sup>71</sup> This phenomenon is attributed to higher blood pressure and earlier arteriosclerotic cardiovascular disease in men.<sup>68,71-76</sup> Hormonal factors additionally contribute to the gender difference in GFR decline as estrogens exert renoprotective effects by inhibiting the RAAS and facilitating advantages in methylation and antioxidation.<sup>10,67,68,77,78</sup>

By contrast, testosterone tends to increase potentially harmful RAAS activity, and androgen receptors mediate cellular aging by telomere shortening and induction of tubular cell apoptosis (Supplements 3 and 6).<sup>10,77,78</sup> Consistently, experimental estrogen therapy and androgen deprivation could be demonstrated to mitigate the progression of chronic kidney disease (CKD).<sup>66</sup>

In advanced stages, the decline in GFR is accompanied by increased permeability of the glomerular basement membrane to macromolecules, facilitating the urinary excretion of significant amounts of albumin and other proteins.<sup>66,79</sup>

#### 1.4.3. Tubular System Changes

Aging also affects the tubular system, leading to tubulointerstitial fibrosis and impairing the secretion and reabsorption of various urinary components. The loop of Henle gradually loses control over salt reabsorption, and the decreased sensitivity of distal tubules and collecting ducts to aldosterone and arginine vasopressin (AVP) results in increased urinary dilution and further reductions in urinary creatinine (CRN).<sup>23,80,81</sup>

#### 1.4.4. Impact of Aging on Renal Vascular Function

As individuals age, renal vascular function progressively declines due to atherosclerosis and altered hormonal vasoregulation. Enhanced responses to vasoconstrictors and reduced reactions to vasodilators in various resistance vessels increase total renal vascular resistance and reduce renal plasma flow (RPF), especially in hypertension and albuminuria.<sup>82</sup> These changes result from increased vasoconstrictive activities of AVP and the renin-angiotensin-aldosterone system (RAAS) besides decreased nitric oxide (NO) activity, amplifying renal vasoconstriction, sodium retention, matrix production, and mesangial fibrosis.<sup>66,68,82-86</sup>

#### 1.4.5. Creatinine Clearance and Creatinine in Serum and Urine

The decline in GFR with age leads to decreased creatinine clearance and lower 24-hour urinary CRN. However, spot urine measurements of CRN are unreliable estimates for creatinine clearance due to their strong dependence on hydration status. Similarly, serum creatinine is not a sensitive marker of renal function in seniors, as their lower lean muscle mass reduces the renal excretory creatinine load, preventing a rise in serum CRN despite moderately reduced GFR and creatinine clearance.<sup>50,66,87</sup>

#### 1.5. Influence of Age on Renal Arsenic Excretion

Numerous studies have investigated how age affects the renal excretion of arsenic. These studies have focused on measuring total weight urinary arsenic (TWuAs), including arsenobetaine, and the sum of inorganic arsenic and its primary metabolites, MMA and DMA (total urinary arsenic, TuAs), excluding arsenobetaine. Additionally, they have examined the concentration of individual arsenic species in urine in absolute terms and relative to total weight arsenic.<sup>34,39,55,88-90</sup> A significant challenge in interpreting these studies is the issue of adequate dilution adjustment. Older adults generally exhibit lower CRN, urinary osmolality, and specific gravity due to reduced renal urine concentration capacity and muscle mass.<sup>91</sup> This can lead to inaccuracies, with uncorrected urine values being lower due to higher dilution, while classically corrected values may be inadequately high due to the smaller corrective denominators.<sup>2,3</sup>

In a Korean study, arsenic urine levels of 1,507 participants were standardized using a covariate-adjusted method that accounted for the influences of age, sex, and BMI on CRN.<sup>1,34,44</sup> This advanced approach revealed significant positive associations between age and TWuAs or arsenobetaine in adults over 18. Positive trends for iAs, MMA, and DMA were observed in adults over 65 but did not reach statistical significance. Another study of 904 participants in Nevada, which included CRN as an independent covariate in a multiple linear regression model, found that age significantly negatively influenced iAs and %iAs while showing positive but non-significant trends for MMA, DMA, %DMA, and TuAs.<sup>55</sup> Age was positively associated with methylation capacity, significantly affecting the primary (PMI = MMA/iAs) and marginally affecting the secondary methylation index (SMI = DMA/MMA). These findings align with previous studies showing increased methylation of urinary arsenic in adults, with lower %iAs and higher %DMA.<sup>39,88</sup>

The reduction in %iAs with age may also be influenced by declines in the proteohormone transmembrane Klotho (m-KI) associated with aging or chronic kidney disease (CKD).<sup>56,92-94</sup> As an essential cofactor of fibroblast growth factor 23 (FGF23), m-KI assists the urinary excretion of iAs<sub>v</sub> by inactivating the apical tubular sodium-phosphate cotransporters NaPi-IIa (and NaPi-IIc) mentioned above.<sup>95-97</sup> Lower activity of m-KI in CKD increases the reabsorption of iAs<sub>v</sub> and its cellular conversion into iAs<sub>III</sub> and subsequent methylation. Dehydration, common in older adults, exacerbates this effect by activating AVP and ATII, which further reduces the excretion of PO<sub>4</sub><sup>-</sup> and iAs<sub>v</sub>.<sup>98,99</sup> Serum levels of m-KI are higher in females throughout life and are positively correlated with estrogen, testosterone, and SHBG in men.<sup>57,58</sup>

Contrary results were observed in Taiwan's hyperendemic arseniasis area,<sup>42</sup> where older individuals exhibited increased %iAs and decreased %DMA, suggesting regional differences in age-dependent urinary arsenic composition due to diverse exposure sources or genetic differences in methylation efficiency.<sup>40</sup> A study in Bangladesh involving children found lower primary (PMI) and higher secondary methylation indices (SMI) in children than adults, further supporting age-dependent differences in methylation efficiency and potentially explaining the absence of arsenic-induced skin lesions in children.<sup>89</sup>

In individuals over 90, there may be a reversal in age-related inorganic arsenic (iAs) reabsorption, inferred from observed drops in serum phosphate (PO<sub>4</sub><sup>-</sup>) levels in this age

group, which tend to increase from the third decade of life.<sup>53</sup> Age-related declines in renal concentrating ability and calcitriol (vitamin D3) formation lead to higher renal losses and reduced intestinal absorption of calcium.<sup>57,58</sup> This increases plasma parathyroid hormone (PTH), potentially facilitating renal hyperexcretion of  $\text{PO}_4^-$  and  $\text{iAs}_v$  via downregulating NaPi-IIa transporters.<sup>56,92-94</sup> While in younger seniors, these effects are overcompensated by the age-related decline in membrane-Klotho (m-KL), in the very old, these processes may prevail and lead to increased  $\text{PO}_4^-$  and  $\text{iAs}_v$  excretion. However, the biotransformation and renal handling of arsenic in this age group remains to be studied in more detail.<sup>53</sup>

### 1.6. Influence of Kidney Function on Arsenic Excretion

Chronic kidney disease (CKD) has a well-established association with urinary arsenic levels.<sup>4,59,62</sup> Several studies have shown significant negative correlations between the estimated glomerular filtration rate (eGFR) and total urinary arsenic (TuAs), including inorganic arsenic and its primary metabolites, MMA and DMA.<sup>4,64,100</sup> Additionally, there have been positive associations between TuAs and serum cystatin C,<sup>101</sup> albuminuria, or proteinuria.<sup>62</sup> Moreover, there are positive correlations between TuAs and urinary markers for tubular damage, such as  $\beta$ 2-microglobulin and N-acetyl- $\beta$ -D-glucosaminidase (NAG),<sup>4,100</sup> and in various populations, CKD mortality rates consistently increase with rising TuAs levels.<sup>4,102,103</sup>

Studies investigating the influence of renal function on arsenic excretion, akin to those on age (Section 1.4), indicate a decrease in the percentage of inorganic arsenic (%iAs) alongside concurrent elevations of the percentage of dimethylarsinic acid (%DMA) as glomerular filtration declines.<sup>60,61</sup> Furthermore, there is evidence for impaired excretion of inorganic arsenic from blood to urine in dysfunctional kidneys, as the corresponding elevation of urinary %iAs is diminished with reduced GFR for a given increase in blood %iAs.<sup>60</sup>

These findings support the interpretation as 'reverse causation,' where reduced GFR is understood as a causal factor for impaired renal excretion of inorganic arsenic.<sup>61</sup> Prolonged retention of inorganic arsenic in the blood may facilitate its further methylation, leading to eventual excretion as dimethylarsinic acid. Biochemical evidence supports this notion. Specifically, the downregulation of membrane-Klotho (m-KL) results in higher reabsorption and lower excretion of phosphate and inorganic arsenic in chronic kidney disease (CKD) (See Section 1.4 and Supplement 3).<sup>104</sup> In CKD, increased renal angiotensin II (ATII), due to renin release in response to reduced renal plasma flow, inhibits m-KL. The pharmacological blockade of ATII consistently upregulates m-KL expression,<sup>105</sup> thereby counteracting the inhibitory influence of m-KL depletion on renal inorganic arsenic excretion.<sup>106</sup>

In advanced chronic kidney disease, the effects of m-KL reduction on total urinary arsenic (TuAs) composition may be augmented by concurrent tubular dysfunction. This may result in further shifts from inorganic arsenic (%iAs) to dimethylarsinic acid (%DMA) due to disproportionate alterations in the net excretion of various total urinary arsenic constituents.<sup>3</sup>

However, the concept of reverse causation in the observed associations between glomerular filtration rate and urinary arsenic and its methylated forms is challenged. A higher percentage of dimethylarsinic acid (%DMA) and a lower percentage of inorganic arsenic (%iAs) in CKD could potentially induce kidney damage rather than result from it.<sup>4</sup> This is because the oxidative methylation of inorganic arsenic to dimethylarsinic acid generates more toxic intermediates, such as MMAIII or DMAIII, which have been inconsistently found to negatively correlate with the estimated glomerular filtration rate (eGFR).<sup>4,107-110</sup>

This study utilized a comprehensive dataset from diverse populations to elucidate the intricate influence of sex- and age-related variability of the metabolism of arsenic and CRN, kidney function, and fluid balance on arsenic levels in both blood and urine across various dilution adjustment modes.

## 2. Methodology

### 2.1. Study Population

The study was based on anonymized data of  $n = 5,752$  spot urine samples (Set 1) collected between January 2014 and August 2022 from the Institute for Medical Diagnostics Berlin-Potsdam, Germany (IMD), as used in previous research for V-PFRC formula generation.<sup>3</sup> The data included information on sex, age, CRN, and total weight of urinary arsenic, which was part of multi-element metal screening panels in the urine of diverse populations in Germany, Switzerland, and Austria. These panels were conducted as routine preventive and diagnostic

SET 1	Age	CRN	UC	CCRC	S-PFRCR SD	V-PFRCR SA	V-PFRCR SD
All (F+M), n = 5752	(years)	(g/L)	( $\mu\text{g/L}$ )	( $\mu\text{g/g CRN}$ )	( $\mu\text{g/1g CRN}$ )	( $\mu\text{g/1g CRN}$ )	( $\mu\text{g/1g CRN}$ )
Mean	51	0.98	23.8	26.1	24.5	25.3	23.8
Std. Deviation	15.7	0.71	99.1	89.0	87.8	88.4	81.2
Minimum	0	0.03	0.49	0.67	0.71	0.73	0.64
Maximum	94	5.84	5763	5100	5170	5073	4879
Quartile 1	42	0.42	4.0	5.6	5.4	5.5	5.5
Quartile 2 (Median)	52	0.81	8.5	10.8	10.0	10.1	10.1
Quartile 3	61	1.37	20.3	24.9	22.8	23.7	22.5
Interquartile Range	19	0.95	16.3	19.2	17.5	18.2	17.0
Females, n = 3086	Age	CRN	UC	CCRC	S-PFRCR SD	V-PFRCR SA	V-PFRCR SD
Mean	51.4	0.8	18.0	25.6	22.7	24.2	21.4
Std. Deviation	14.6	0.62	43.6	60.2	53.8	59.5	45.6
Minimum	0	0.04	0.49	0.67	0.71	0.73	0.64
Maximum	91	5.84	1219	2102	1875	2121	1397
Quartile 1	42	0.33	3.2	5.9	5.4	5.5	5.6
Quartile 2 (Median)	53	0.62	7.0	11.0	9.7	10.0	9.8
Quartile 3	61	1.1	16.2	24.0	21.0	22.2	20.3
Interquartile Range	19	0.77	13.0	18.1	15.7	16.7	14.7
Males, n = 2666	Age	CRN	UC	CCRC	S-PFRCR SD	V-PFRCR SA	V-PFRCR SD
Mean	50.6	1.19	30.5	26.7	26.6	26.5	26.6
Std. Deviation	16.7	0.75	137.5	113.5	115.3	112.9	108.6
Minimum	0	0.03	0.51	0.81	0.85	0.89	0.92
Maximum	94	5.52	5763	5100	5170	5073	4879
Quartile 1	41	0.62	5	5.4	5.4	5.4	5.4
Quartile 2 (Median)	52	1.08	10.6	10.6	10.4	10.5	10.4
Quartile 3	62	1.59	26.4	25.4	25.1	25.1	25.2
Interquartile Range	21	0.97	21.4	20.0	19.7	19.7	19.8

**Table 1: Basic statistics of Set 1.** Sex-aggregated and -differentiated data are given for age, CRN, and urinary arsenic of the five result modes detailed in Table 3: Uncorrected (UC), Conventional CRN-correction (CCRC), Sex-differentiated simple power functional CRN correction (S-PFRCR SD), Sex-aggregated (V-PFRCR SA) and Sex-differentiated variable power functional CRN correction (V-PFRCR SD).

medical screening procedures, ensuring a comprehensive and generally demographically representative dataset. Apart from sex and age, no further health-related clinical information was available from the Institute for Medical Diagnostics.

A further dataset (Set 2) of 1,170 samples was investigated to compare urinary results with blood, where total weight arsenic was detected in parallel in EDTA whole blood and urine. The samples of Set 2 were obtained and analyzed by IMD between April 2014 and March 2024. The original 1,175 samples were trimmed for CRN < 3.5 g/L and age ≤ 85. Of the remaining 1,154 samples, 70.4% were part of the first dataset, while 29.6% were collected later. The key statistics of Set 1 and Set 2 are summarized in Tables 1 and 2. Histograms comparing data distributions of both sets are depicted in Supplements 8-13. It can be assumed that the samples represent the combined background exposure of inorganic and organic arsenic, as there was no specific suspicion of arsenic contamination in drinking water leading to the multi-element metal screening. The recommended WHO limit of 10 µg/L arsenic in drinking water is enforced and generally met in the sample collection areas.<sup>111-114</sup> Any significant elevations of total weight arsenic levels in these regions are most commonly attributable to arsenobetaine, mainly from marine food, considering the quantitative predominance of this organic source.<sup>49,115</sup>

SET 2	Age	CRN	UC	CCRC	S-PFCRC SD	V-PFCRC SA	V-PFCRC SD	EDTA Blood
All (F+M), n = 1170	(years)	(g/L)	(µg/L)	(µg/g CRN)	(µg/1g CRN)	(µg/1g CRN)	(µg/1g CRN)	(µg/L)
Mean	51.6	1.12	33.2	29.8	29.1	29.2	28.5	1.7
Std. Deviation	14.21	0.77	112.0	79.8	81.4	79.1	74.9	3
Minimum	5.6	0.04	0.4	0.8	0.8	0.9	0.9	0.08
Maximum	87.9	5.84	3176	2146	2241	2133	1917	44
Quartile 1	42.3	0.54	4.3	5.3	5.2	5.2	5.3	0.4
Quartile 2 (Median)	52.2	0.96	10.2	10.8	10.6	10.6	10.5	0.8
Quartile 3	60.4	1.53	26.4	29.5	27.9	28.8	26.9	1.8
Interquartile Range	18.1	0.99	22.1	24.2	22.7	23.6	21.6	1.4
Females, n = 596	Age	CRN	UC	CCRC	S-PFCRC SD	V-PFCRC SA	V-PFCRC SD	EDTA Blood
Mean	51.5	0.95	22.7	26.3	24.5	25.0	24.0	1.4
Std. Deviation	14.2	0.72	52.3	51.6	49.9	50.3	49.4	2.9
Minimum	5.7	0.04	0.4	1.1	1.2	1.1	1.0	0.10
Maximum	84.8	5.84	778	778	778	778	778	44
Quartile 1	42.4	0.4	3.3	5.2	4.8	4.9	5.0	0.3
Quartile 2 (Median)	51.8	0.78	7.7	9.6	9.1	9.4	9.1	0.7
Quartile 3	59.7	1.3	19.3	26.4	22.7	23.1	21.9	1.5
Interquartile Range	17.3	0.9	16.0	21.2	18.0	18.2	16.9	1.2
Males, n = 574	Age	CRN	UC	CCRC	S-PFCRC SD	V-PFCRC SA	V-PFCRC SD	EDTA Blood
Mean	51.8	1.29	44.2	33.4	33.8	33.6	33.1	2.0
Std. Deviation	14.3	0.78	150.0	101.0	104.4	100.6	94.1	3.1
Minimum	5.6	0.12	0.6	0.8	0.8	0.9	0.9	0.08
Maximum	87.9	4.48	3176	2146	2241	2132	1917	29
Quartile 1	42.2	0.67	5.5	5.6	5.7	5.8	5.7	0.5
Quartile 2 (Median)	53.1	1.19	13.0	12.1	11.9	11.9	11.9	1.0
Quartile 3	60.8	1.73	37.6	33.5	32.9	32.9	33.3	2.3
Interquartile Range	18.6	1.06	32.1	27.9	27.2	27.1	27.6	1.8

**Table 2: Basic statistics of the entire Set 2.** Sex-aggregated and -differentiated data are given for age, CRN, and arsenic in EDTA blood and urine in the five result modes detailed in Table 3.

## 2.2. Treatment of Arsenic Values Below the Detection Limit

The 116 female and 32 male samples displaying uncorrected urinary arsenic levels below the ICP-MS detection limit of 1 µg/L were assumed to range between 0.5 and 0.99 µg/L due to prevalent arsenic exposure rendering values 0.5µg/L improbable. Values below the detection limit were estimated considering the apparent strong positive association of uncorrected arsenic and CRN using the formulas:

- Females: estimated  $uAs_{UC} = 0.92 + 0.17 \times \ln(\text{CRN g/L})$
- Males: estimated  $uAs_{UC} = 0.99 + 0.20 \times \ln(\text{CRN g/L})$

This method distributed samples within the 0.5-0.99 µg/L range, averaging 0.62 µg/L for females and 0.72 µg/L for males. This approach provided more plausible distributions than omitting values or using the usual fixed substitutions like half the detection limit (0.5 µg/L) or the limit divided by  $\sqrt{2}$  (0.71 µg/L). For the 69 blood samples below the 0.2 µg/L detection limit, values were estimated based on the strong association of CRN-corrected urinary with blood arsenic using the unisex formula:

- Estimated blood Arsenic =  $0.082 + 0.028 \times \ln(\text{V-PFCRC SD Arsenic})$

This approach distributed blood values between 0.08 and 0.19 µg/L, averaging 0.12 µg/L (60% of the detection limit).

## 2.3. Sample Collection, Preservation, Transportation, and Storage Procedures

### 2.3.1. Urine

Urine samples were collected in neutral monovettes (Sarstedt) and shipped to the laboratory at room temperature within 24 hours for immediate CRN measurement. They were then stored at 4°C for 1-4 days before ICP-MS measurement.

### 2.3.2. Blood

Venous whole blood was collected in tubes with EDTA for anticoagulation (Sarstedt) and transported to the laboratory overnight or by surface mail. The stability of elements in these specimens was validated over 14 days at room temperature.

## 2.4. Sample Preparation and Analysis Procedures

### 2.4.1. Inductively Coupled Plasma-Mass Spectrometry (ICP-MS) Measurements of Arsenic

The total weight of arsenic in anticoagulated whole blood and urine was determined using ICP-MS. Arsenic species were not analyzed. For ICP-MS analysis, urine samples were diluted 1:10 in 1% HNO<sub>3</sub> (Suprapur, Supelco), and serum and anticoagulated whole blood samples were diluted 1:20 in 0.1% NH<sub>3</sub> (Suprapur, Supelco) and 0.02% Lutrol F88 (AppliChem). Metals were analyzed in collision/reaction cell mode using the ICapQ ICP-MS system (Thermo Fisher), with external and internal standard calibration (Elemental Scientific). Results are the means of three measurements.

### 2.4.2. Creatinine Measurement

Creatinine analysis was performed enzymatically using the Alinity assay (Abbott Laboratories).

## 2.5. Normalization of Arsenic to Urinary Concentrations of 1 g/L CRN

The standardization of CRN-corrected urine measurements to 1g/L CRN and the process of V-PFCRC formula generation are explained in detail in previous work.<sup>3</sup> Two general forms of power-functional correction can be distinguished:

1. The simple power functional CRN-correction (S-PFCRC) employing a fixed exponent B in the corrective formula:

$$uAs_N = uAs_{UC} / CRN^b$$

$uAs_N$  = urinary arsenic normalized to 1g/L CRN

$uAs_{UC}$  = uncorrected urinary arsenic ( $\mu\text{g/L}$ )

Uncorrected and conventionally CRN-corrected (CCRC) results can be seen as particular cases of S-PFCRC, with the uncorrected results taking the exponent b as 0 and the CCRC as 1.

2. The variable power functional correction (V-PFCRC) using two analyte-specific coefficients, c, and d, allowing the calculation of a variable exponent b depending on the concentration of the analyte and CRN:

$$uAs_N = uAs_{UC} / CRN^{[c \times \ln(uAs_{UC}) + d] / [c \times \ln(CRN) + 1]}$$

Both the simple and variable power functional correction formulae were adopted from the previous study.<sup>3</sup> The simple formula was tested in a sex-differentiated mode, using separate exponents b for males and females. The variable formula was tested in sex-differentiated and sex-aggregated modes, using identical c and d values in both sexes. For all power-functional modes tested in this paper, the asymmetrical distribution of CRN values was compensated as described in the previous study, as asymmetry-compensation improved the accuracy of V-PFCRC.<sup>3</sup> Table 3 summarizes the exponents b (for S-PFCRC) and the coefficients c and d (for V-PFCRC) used.

Result Mode	Sex-differentiate or aggregate SD / SA	Exponent b (S-PFCRC)		Coefficient c (V-PFCRC)		Coefficient d (V-PFCRC)	
		Female	Male	Female	Male	Female	Male
Uncorrected	–	0		–		–	
CCRC	–	1		–		–	
V-PFCRC	SD	–		– 0.11	0.79	1.05	0.69
	SA	–		0.03		0.78	
S-PFCRC	SD	0.79	0.889	–		–	

**Table 3: Exponents and coefficients used in corrective formulas.<sup>3</sup>**

## 2.6. Statistical Analysis

Data were analyzed using Excel and Datatab.net software. Results were expressed as mean  $\pm$  standard error, medians, and quartile limits (Q1 and Q3). The normality of data distribution was evaluated using the Kolmogorov–Smirnov and Q-Q plots. For data with normal or near-normal distribution, 2-sided Student's t-tests and Pearson correlation analysis were used. Mann-Whitney U-tests were applied to test the significance of non-normally distributed

data, and Spearman rank correlation was used for analysis. A p-value of <0.05 was considered statistically significant.

### 2.6.1 Analysis of Age- and Sex-Effects on Arsenic in Blood and Urine

For the age and gender-stratified analysis, urine results from 5,752 samples in set 1 and urine and blood results from 1,154 samples in set 2 were analyzed for their association with age and residual dependence on CRN using Spearman correlation (r and p-value). For urine findings from set 2, Spearman correlations were also determined for corresponding EDTA blood arsenic. The Spearman ranking method was chosen due to the non-normal distribution of all linear and log-transformed data sets (CRN, blood, and urine values).

To assess the age effect independently of the asymmetrical age distribution, samples in set 1 were divided into nine ten-year age bands. Each band was percentile ranked separately for both sexes, excluding the top and bottom 5% of values to limit outlier distortion. The remaining 5,166 samples (2,773 female and 2,393 male) were analyzed age stratified. Basic statistics (number, mean, standard deviation, standard error, minimum, maximum, and quartiles 1-3) for age, creatinine, and all urinary outcome modes, as summarized in Table 3, were calculated separately for each ten-year age band. Results are provided in the Supplementary Excel file, and age kinetics of all outcome modes are visualized in Figure 1 using mean values and standard errors. The significance of sex differences was determined using a two-sided Student's t-test on near-normally distributed logarithmized data sets.

Similar evaluation procedures were performed for Set 2. Due to a substantially lower sample number than Set 1 and insufficient samples for the youngest and oldest patients, samples from patients aged 21 to 80 were divided into four 15-year bands, each trimmed to the 5-95 percentile. Urine and blood findings (uncorrected, CCRC, and the most effective sex-differentiated V-PFCRC SD mode) were evaluated analog to Set 1.

To illustrate the effects of age on arsenic concentrations in blood and urine result modes (UC, CCRC, and V-PFCRC-SD), the percentage deviations of quartiles 1-3 for the three older age groups from the values of the youngest age group in Set 2 were calculated. The results were presented in sex-differentiated and -aggregated bar charts.

### 2.6.2. Determination of Age and Sex-specific V-PFCRC-Formulae

To investigate the impact of age and gender on the formulas, the sample population was divided into age groups: 18-45, 46-60, and 61-85. Vital statistical data for these groups are summarized in the Supplementary Excel file. For each age group and both sexes, the relationship between the exponents (b) and the V-PFCRC-normalized arsenic value (uAsN) was examined separately to determine analyte-specific coefficients (c and d), as described in the initial study.<sup>3</sup> To minimize the impact of extreme values, the top 1% of CRN-stratified TWuAs values were excluded from determining V-PFCRC formulae. Due to the comparatively small number of samples, CRN asymmetry compensation was not performed. Instead, the concentration range was restricted to CRN values less than 3 g/L. This restriction was based on previous findings, resulting in significant alignment of the uncorrected and the asymmetry-compensated curves.<sup>3</sup> The six age-sex-specific log-linear regression curves obtained were plotted and compared within and between both sexes, as shown in Figure 6.

### 2.6.3. Validation of Standardization Efficacy in Separate Age Groups

The V-PFCRC and S-PFCRC formulas used in this study were initially developed for a broad age group ranging from 14 to 82 years. To evaluate and compare their age-specific standardization efficacy, study Set 1 was divided into seven age bands: 0-10, 11-20, 21-35, 36-50, 51-65, 66-80, and over 80. A power functional regression analysis of the type  $\text{Arsenic} = a \times \text{CRN}^b$  was performed for each age band to determine the relationship between



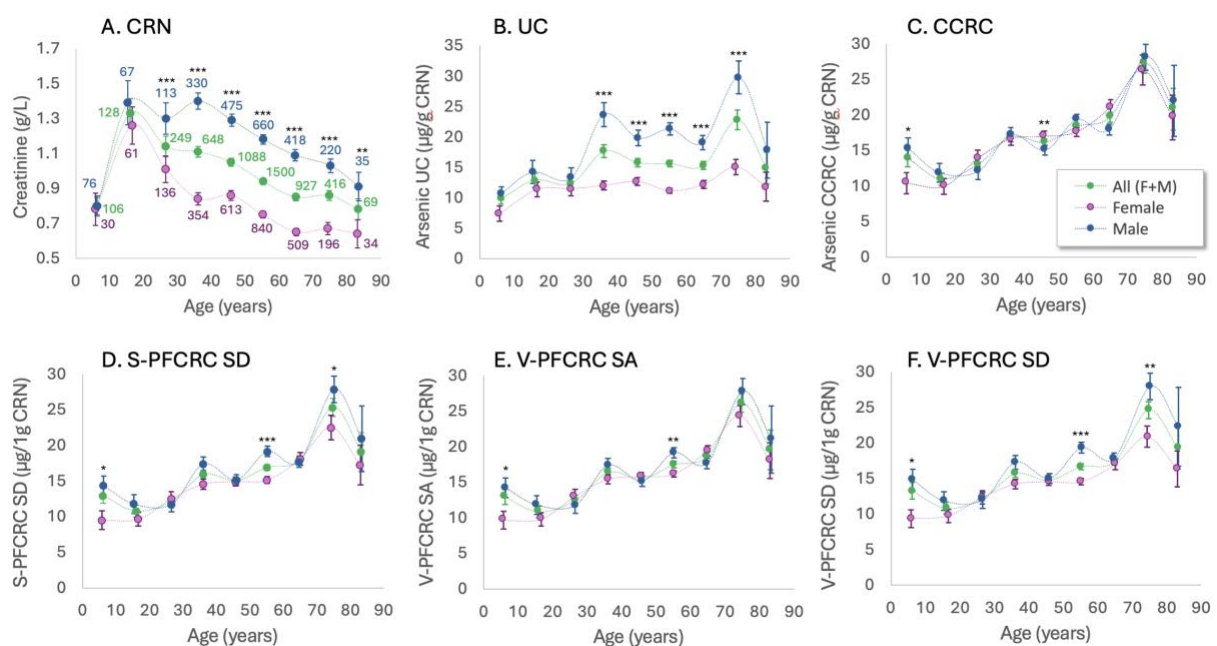
creatinine (CRN) and urinary arsenic. The slopes (b) and  $R^2$  values of the resulting regression curves were used to measure the residual dependence on CRN for the five outcome modes detailed in Table 3. Lower values in both metrics indicated higher CRN independence, suggesting better equalization efficiency. These regression results were separately compared using bar charts for each age group and aggregated for the entire Set 1. Additional age-aggregated analyses were conducted for both sexes separately.

Similarly, the same five outcome modes from Set 2 were analyzed to evaluate the agreement between blood and urine results. The coefficients of determination ( $R^2$ ) of the regression curves of the power function between the EDTA blood values and the respective urine results were calculated for the five age groups: 0-20, 21-35, 36-50, 51-65, and 66-80. Additionally, the mean  $R^2$  values of these five groups were calculated, and the total population of Set 2, aged 5-85, was analyzed. A high  $R^2$  in this context indicates a strong correlation between the arsenic levels in blood and urine, demonstrating effective dilution adjustment of the urine results. A 66-year-old patient with implausibly low urine values and very high blood arsenic concentrations was excluded from this analysis. The statistics of Sets 1 and 2 age groups are summarized in the Supplementary Excel file.

### 3. Results

#### 3.1. Effects of Age and Sex on CRN and Urinary Arsenic

Figures 1a-f illustrate how age and sex influence CRN and urinary arsenic levels across five result modes in Set 1. Creatinine levels increase steadily in children and adolescents due to growing lean muscle mass, peak in early adulthood, and gradually diminish with age. This age decline is more pronounced in males ( $r = -0.14$ ) than in females ( $r = -0.1$ ), starting later in males between the second and third decades. For females, the decrease begins shortly after puberty, influenced by generally lower lean muscle mass and the sex hormonal influence on fluid metabolism outlined in Section 1.2.



**Figure 1: Sex-Differentiated Influence of Age on CRN and Urinary Arsenic across five result modes in Set 1.** Means  $\pm$  standard errors are plotted for nine 10-year age bands. Outliers above the 95% and below the 5% percentile of each age band were not analyzed. Post-outlier exclusion sample sizes are listed in Graph A. Urinary result modes are detailed in Section 2.5. Group statistics are provided in the Supplementary Excel file. Significance levels of sex differences (2-sided t-test) : \*  $0.05 \geq p > 0.025$ , \*\*  $0.025 \geq p > 0.01$ , \*\*\*  $p < 0.001$ .

Set 1 / 21-94 Years								
All (F+M)	n = 5488	Age	CRN	UC	CCRC	S-PFCRC SD	V-PFCRC SA	V-PFCRC SD
Age	Correlation		-0.11	0.04	0.11	0.11	0.1	0.1
	p		<.001	0.004	<.001	<.001	<.001	<.001
CRN (g/L)	Correlation	-0.11		0.53	-0.12	0.01	-0.01	0.01
	p	<.001		<.001	<.001	0.591	0.625	0.522
Female	n = 2983	Age	CRN	UC	CCRC	S-PFCRC SD	V-PFCRC SA	V-PFCRC SD
Age	Correlation		-0.1	0.02	0.09	0.08	0.08	0.08
	p		<.001	0.405	<.001	<.001	<.001	<.001
CRN (g/L)	Correlation	-0.1		0.56	-0.13	0.03	-0.01	0.03
	p	<.001		<.001	<.001	0.08	0.713	0.154
Male	n = 2505	Age	CRN	UC	CCRC	S-PFCRC SD	V-PFCRC SA	V-PFCRC SD
Age	Correlation		-0.14	0.06	0.14	0.13	0.13	0.13
	p		<.001	0.002	<.001	<.001	<.001	<.001
CRN (g/L)	Correlation	-0.14		0.46	-0.11	-0.04	-0.01	-0.03
	p	<.001		<.001	<.001	0.065	0.516	0.185

**Table 4: Correlations between Age, CRN, and all urinary arsenic result modes of Set 1.** Spearman coefficients  $r$  and significances  $p$  are given for non-normally distributed data.

In contrast, arsenic levels show an age-related rise for both sexes across all urine result modes, indicating actual age-related exposure increments beyond the effects of declining urinary CRN. The correlation with age for CRN-corrected arsenic levels is weak but significant: overall  $r = 0.11$ – $0.12$ , females  $r = 0.09$ – $0.11$ , and males  $r = 0.13$ – $0.14$ . Linear regression analysis indicates an average annual increase in V-PFCRC arsenic from puberty to the mid-seventies of  $0.23 \mu\text{g/g}$  CRN for males and  $0.16 \mu\text{g/g}$  CRN for females.

In CCRC urine, the lower CRN levels in females computationally amplify the apparent increase in arsenic more than in males, effectively narrowing the gender gap observed in uncorrected urinary arsenic (see Figures 1b and c). The effect is less pronounced in the power-functional CRN corrections, particularly in the sex-differentiated V-PFCRC SD, which retains a significant male bias in urinary arsenic. This residual gender difference in simple and variable PFCRC reflects a more accurate representation of actual exposure, as this gap is also present in the EDTA blood of Set 2 (Figure 2b). Consequently, the evidence supports the use of V-PFCRC SD and, to a lesser extent, the other two power-functional correction modes as providing more accurate estimations of exposure compared to CCRC.

Males consistently exhibit higher creatinine levels across all adult age groups, a disparity not seen in younger children and adolescents. Corresponding sex differences in uncorrected arsenic ( $uAs_{UC}$ ) lag those of CRN and are partly confounded by the generally higher urine concentration of males explained in Section 1.2. The sex differences in  $uAs_{UC}$  emerge in young adulthood and peak in the mid-forties due to steeper increases in males generating significantly higher  $uAs_{UC}$  across all adult age bands except the third decade. Consistently low but significant positive correlations for  $uAs_{UC}$  are observed in sex-aggregated and male data but not in females (overall  $r = 0.05$ , males  $r = 0.08$ ).

Notably, both sexes experience steep increases in arsenic levels between the seventh and eighth decades. This late-life urinary arsenic flush, in the absence of corresponding drops in CRN, suggests actual overexposure to arsenic in this age group. This finding is supported by the highest arsenic levels in EDTA blood in both sexes at older ages, likely due to the redistribution of stored arsenic from internal sources.

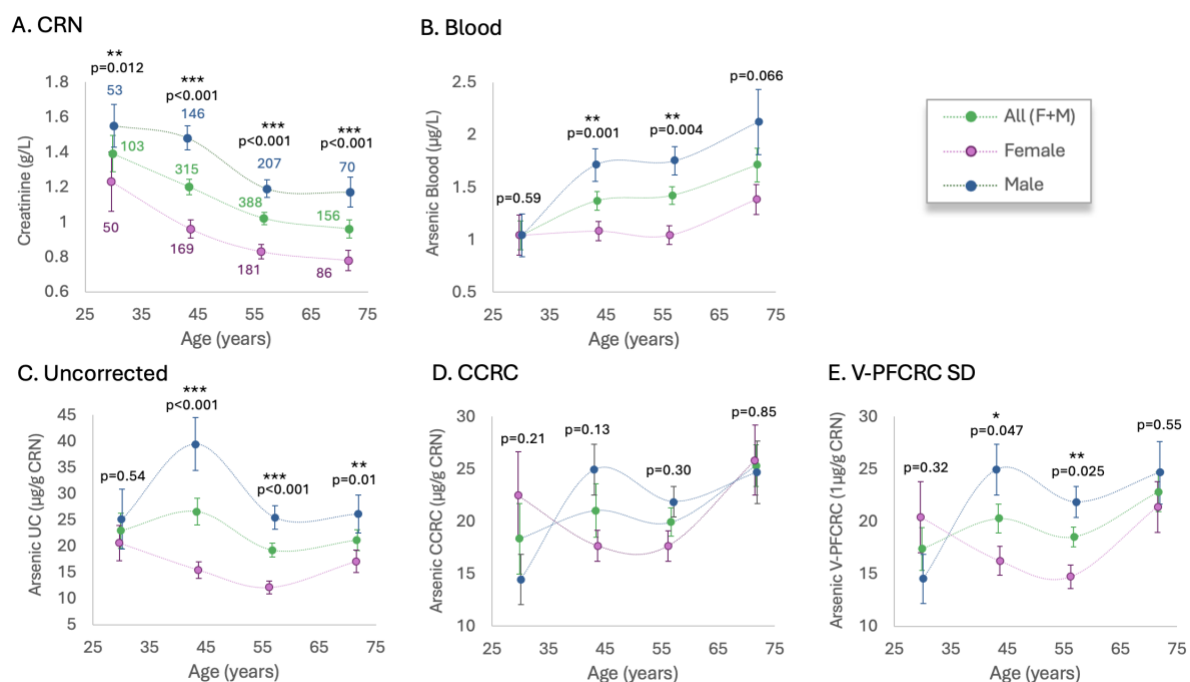
### 3.2. Comparison of the Effects of Age and Sex on Urinary and Blood Arsenic

The relationship between age and arsenic levels in blood and urine was analyzed using a smaller dataset (Set 2), which included limited samples from patients under 20 and over 80.

Therefore, the age range of 20 to 80 was divided into four 15-year intervals. In line with previous research,<sup>116,117</sup> average arsenic levels in blood were substantially lower than in urine, with V-PFCRC urine concentrations being 17.5 times higher in women and 16.6 times higher in men compared to EDTA whole blood. For women, blood arsenic levels remained stable across the first three age groups, increasing significantly only in the oldest group. Conversely, men showed a more continuous increase in blood arsenic levels from the youngest to the oldest age group, leading to significant male-dominated gender differences in the three older groups.

Both uncorrected and V-PFCRC results in Set 2 widely reflect the gender asymmetry and age dependence seen in Set 1. At the same time, CCRC adjustment consistently reduced this gender disparity to insignificance in both sets. Unlike the age-increasing kinetic of Set 1, women in Set 2 exhibited a trough-shaped trend in urinary arsenic levels, with an initial decrease in the younger age bands followed by an increase in the sixth decade of life. Men displayed an initial increase between the first and second groups, a decrease between the second and third groups, and a subsequent rise towards the oldest group. These discontinuous trends resulted in positive correlations between age and urinary arsenic, though less pronounced than those in Set 1 or those between age and blood arsenic, as detailed in Tables 4 and 5.

Figure 2 shows that the V-PFCRC age-sex dynamics align more closely with blood arsenic levels than the CCRC.



**Figure 2: Sex-Differentiated Influence of Age on CRN, Urine, and Blood Arsenic in Set 2**

Analogous representation to Figure 1 for Data Set 2, including arsenic values in EDTA blood determined in parallel with urine of three result modes in four 15-year-age bands (21–35, 36–50, 51–65, and 66–80 years). Means  $\pm$  standard errors for the remaining 486 female and 476 male samples are plotted. Significance level of sex-difference (2-sided t-tests): \*  $0.05 > p > 0.025$ , \*\*  $0.025 \geq p > 0.01$ , \*\*\*  $p < 0.001$ .

Set 2 / 21-88 Years									
All (F+M)	n = 1144	Age	CRN	uAsUC	uAsC	S-PFCRC SD	V-PFCRC SA	V-PFCRC SD	Blood
Age	Correlation		<b>-0.15</b>	<b>-0.01</b>	<b>0.08</b>	<b>0.06</b>	<b>0.07</b>	<b>0.06</b>	<b>0.1</b>
	p		<.001	0.724	0.009	0.033	0.027	0.03	<.001
CRN (g/L)	Correlation	<b>-0.15</b>		<b>0.5</b>	<b>-0.09</b>	<b>0.03</b>	<b>0.01</b>	<b>0.02</b>	<b>-0.03</b>
	p	<.001		<.001	0.003	0.374	0.706	0.449	0.373
Blood	Correlation	<b>0.1</b>	<b>-0.03</b>	<b>0.67</b>	<b>0.81</b>	<b>0.81</b>	<b>0.81</b>	<b>0.81</b>	
	p	<.001	0.373	<.001	<.001	<.001	<.001	<.001	
Female	n = 582	Age	CRN	uAsUC	uAsC	S-PFCRC SD	V-PFCRC SA	V-PFCRC SD	Blood
Age	Correlation		<b>-0.13</b>	<b>-0.02</b>	<b>0.08</b>	<b>0.06</b>	<b>0.06</b>	<b>0.06</b>	<b>0.1</b>
	p		0.002	0.662	0.064	0.156	0.125	0.152	0.013
CRN (g/L)	Correlation	<b>-0.13</b>		<b>0.52</b>	<b>-0.16</b>	<b>0</b>	<b>-0.05</b>	<b>-0.02</b>	<b>-0.12</b>
	p	0.002		<.001	<.001	0.954	0.271	0.65	0.003
Blood	Correlation	<b>0.1</b>	<b>-0.12</b>	<b>0.58</b>	<b>0.79</b>	<b>0.77</b>	<b>0.78</b>	<b>0.78</b>	
	p	0.013	0.003	<.001	<.001	<.001	<.001	<.001	
Male	n = 562	Age	CRN	uAsUC	uAsC	S-PFCRC SD	V-PFCRC SA	V-PFCRC SD	Blood
Age	Correlation		<b>-0.19</b>	<b>-0.02</b>	<b>0.07</b>	<b>0.06</b>	<b>0.06</b>	<b>0.06</b>	<b>0.1</b>
	p		<.001	0.71	0.093	0.147	0.155	0.128	0.022
CRN (g/L)	Correlation	<b>-0.19</b>		<b>0.44</b>	<b>-0.05</b>	<b>0.01</b>	<b>0.03</b>	<b>0.02</b>	<b>-0.02</b>
	p	<.001		<.001	0.273	0.764	0.463	0.701	0.598
Blood	Correlation	<b>0.1</b>	<b>-0.02</b>	<b>0.73</b>	<b>0.84</b>	<b>0.84</b>	<b>0.83</b>	<b>0.83</b>	
	p	0.022	0.598	<.001	<.001	<.001	<.001	<.001	

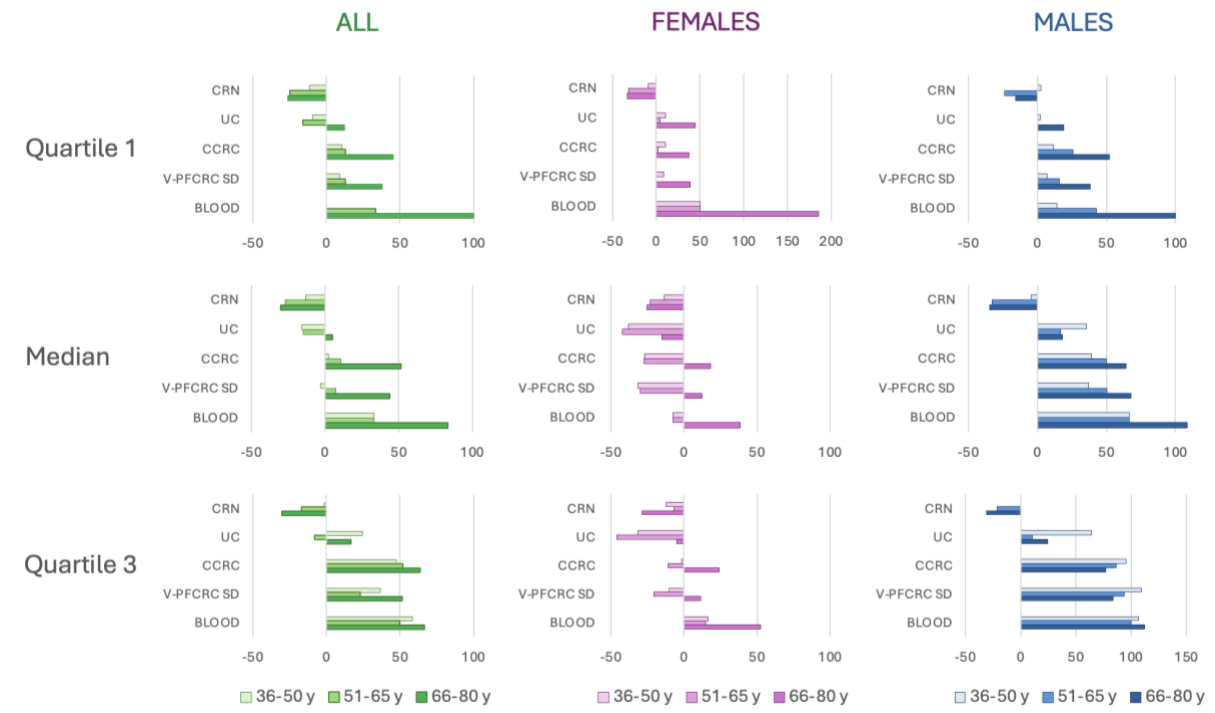
**Table 5: Spearman Correlations and significances between age and arsenic in all urinary arsenic result modes and blood of Set 2.**

### 3.3. Differential Effects of Aging on Arsenic in Blood and Urine

As shown in the previous section, mean arsenic concentrations in blood and urine increase with age in both sexes, though the kinetics vary depending on sex, test medium, and result mode. Figure 3 illustrates the relative age changes of three older groups compared to the youngest group (21-35 years). Differentiation according to quartile limits allows for investigating the influence of arsenic exposure on age-related changes in arsenic levels. In blood, the oldest age group shows the most significant increase in arsenic concentrations for both sexes and across all quartiles compared to the younger reference group. This increase in

older age is quantitatively stronger than the corresponding increase in all three urine modes and higher than the increases observed in the two middle-aged groups.

Uncorrected urine shows the most significant discrepancies from blood regarding age-related changes in both sexes. However, CCRC and V-PFCRC exhibit more robust agreement with blood values across all quartiles except for the female Q1. The alignment between urine and blood age kinetics, being generally more robust in men, improves in both sexes from quartile 1 through the median to quartile 3. Women show consistent age-related increases in quartile 1 across all groups. In contrast, the median and Q3 values of the two middle-aged groups even show a reduction in arsenic levels compared to the youngest group. This suggests that gender differences in arsenic metabolism and excretion may be more pronounced at higher exposures. These findings highlight the complex interplay between age, sex, and arsenic metabolism, underscoring the importance of considering these factors in assessing arsenic exposure.

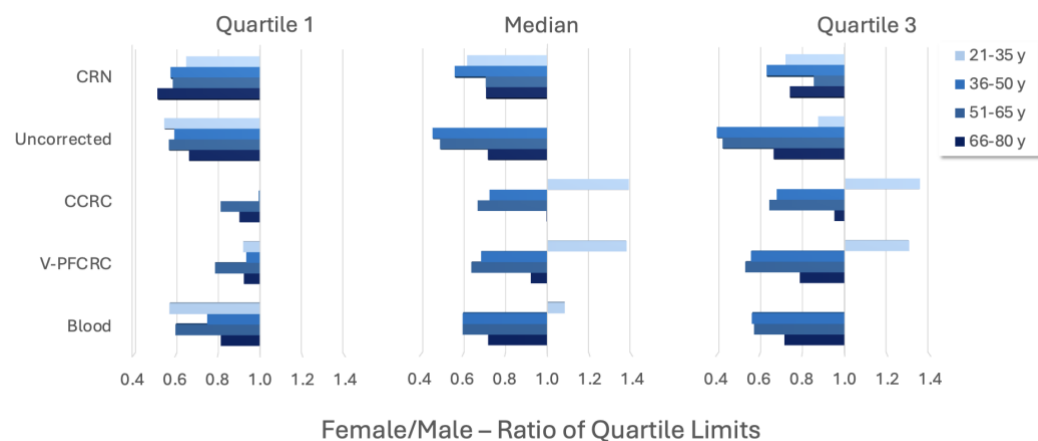


**Figure 3: Comparison of Age Effects on Arsenic Concentrations in Blood and Urine**

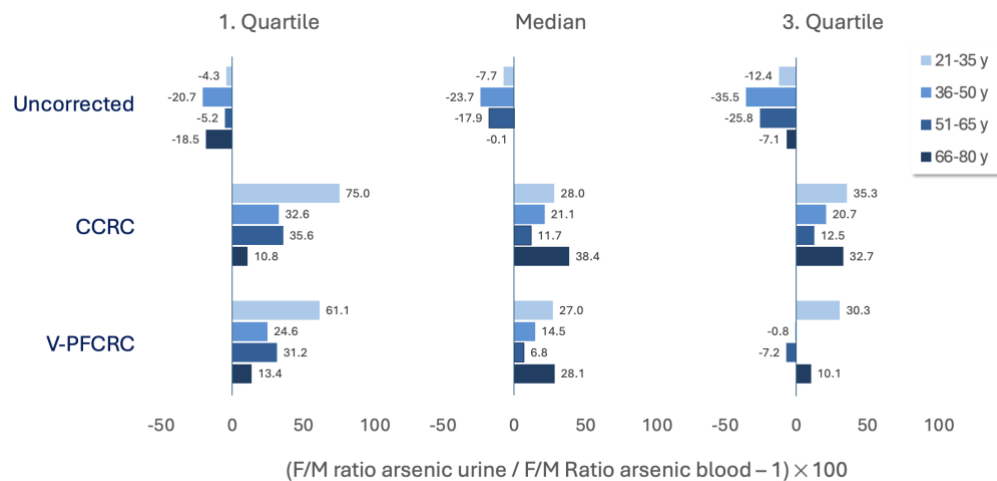
The median and quartile limits (Q1 and Q3) of arsenic concentrations in blood and urine across different age groups are plotted. Data is presented as percentage deviations from the quartile limits of the youngest age group (21-35 years). The age groups are 36-50, 51-65, and 66-80. Urine arsenic levels were analyzed in UC, CCRC, and V-PFCRC mode.

### 3.4. Age-Specific Sex Ratios of Quartile Limits 1-3

To investigate the extent to which the sex ratios in the individual urine result modes correspond to the blood ratios, the sex ratios of the arsenic quartile limits 1-3 for blood and the three urine modes of Set 2 (UC, CCRC, and V-PFCRC SD) were calculated and compared. Figure 4 illustrates the higher arsenic levels in males across most age groups and parameters. Significant exceptions are observed in the group of 21-35-year-olds, where the female CCRC and V-PFCRC urine values for the medians and quartile 3 are significantly higher than those of the males, and sex disparities in quartile 1 are broadly neutralized. The robustness of this inversion of sex ratios is supported by its consistent presence in the 20 to 30-year-old group (but not in the 31-40-year-olds) of the more extensive Set 1, as shown in Figure 1 and the detailed group statistics provided in the Supplementary Excel File.



**Figure 4: Sex-Ratios of Quartile Limits for CRN, Blood- and Urine Arsenic.**



**Figure 5: Percentual deviations of urinary from blood sex ratios of Arsenic Quartiles 1-3.** The Female/Male ratios of arsenic quartiles 1-3 for urine were divided by those for blood. The percentual deviation was calculated as shown in the abscissa labeling. Values less than 0 indicate a higher female/male blood ratio than urine and vice versa. The smaller the deviation from zero, the higher the agreement between blood and urine.

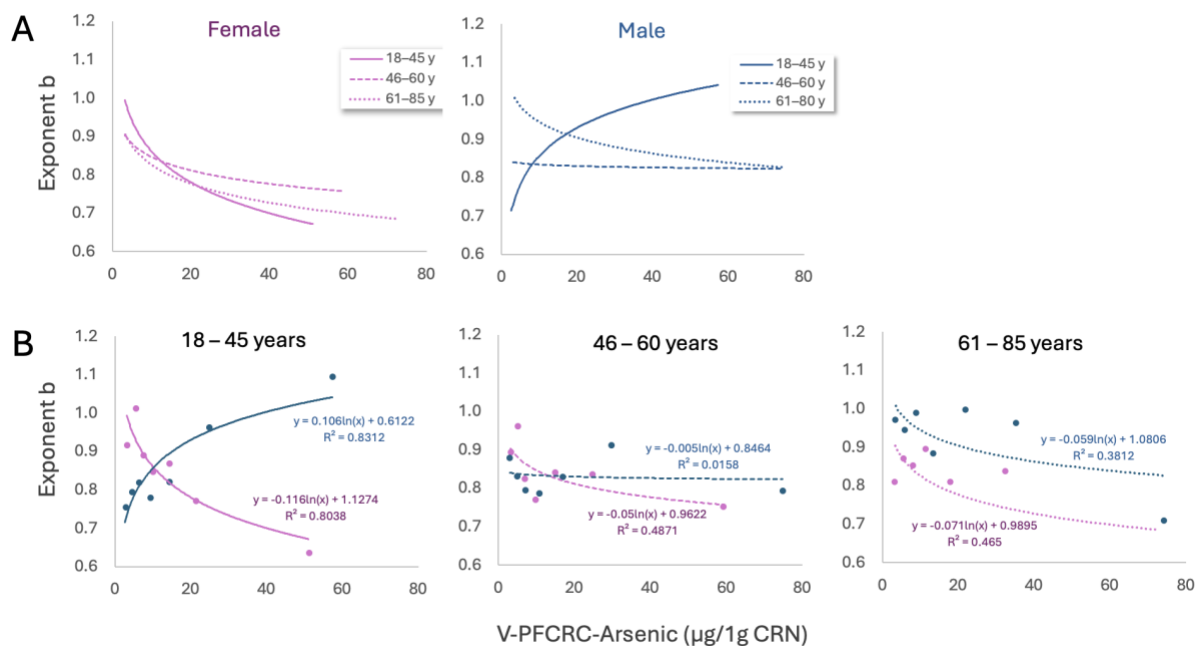
These urine findings correspond to the narrow female dominance in the median, gender neutrality in quartile 3, and converse male dominance in quartile 1 of blood arsenic observed in this age group. This suggests a gender paradoxical handling of arsenic limited to younger age groups and more pronounced in medium to higher arsenic exposures. Since hormonal differences are most apparent in this age group, a potential connection with endocrine factors is evident.

Figure 5 illustrates the percentage deviations of urinary from blood sex ratios of arsenic in Quartiles 1-3. The most minor deviations between blood and urine are found in uncorrected urine, while the most considerable deviations occur in CCRC. Compared to CCRC, the analysis indicates that V-PFCRC provides a better match for all quartiles and age groups, except for the 1st quartile in the 66-80 age group, where CCRC has a slight advantage. The most pronounced deviations are seen in the youngest group's 1st quartile of CCRC and V-PFCRC, where urinary female/male ratios are significantly higher than those in blood. This suggests that young women may excrete arsenic more effectively in urine than men, possibly due to their greater efficiency of arsenic methylation related to estrogen.

It is important to note that while these ratios can indicate the reliability of the dilution adjustment method, differences between blood and urine measurements may not necessarily stem from errors in the measurement process. Instead, they may reflect genuine physiological differences in how males and females metabolize and process arsenic. Potential spurious influences can create a misleadingly better match between blood and urine. This is particularly relevant for uncorrected urine, which generally shows good agreement with blood/sex ratios. This agreement, however, is strongly affected by the gender discrepancies of urinary dilution, artificially widening the gap between female and male arsenic in uncorrected urine and spuriously narrowing it in CCRC mode. This counteracts any physiological deviations in sex ratios due to more effective female urinary arsenic methylation and excretion. As a result, aligning uncorrected urine with blood may be achieved without accurately reflecting the true efficacy of dilution adjustment.

### 3.5. Effects of Age and Sex on V-PFCRC Equations

To explore the effects of age and sex on the normalization equation, samples were categorized into three age groups. For each group, the log relationship between V-PFCRC normalized arsenic and exponent b was calculated separately for both sexes.



**Figure 6: Age- and Sex-differentiated log-linear relationships between Exponents b and V-PFCRC normalized arsenic to 1 g/L CRN. Curves are sorted by either sex (A) or age group (B).**

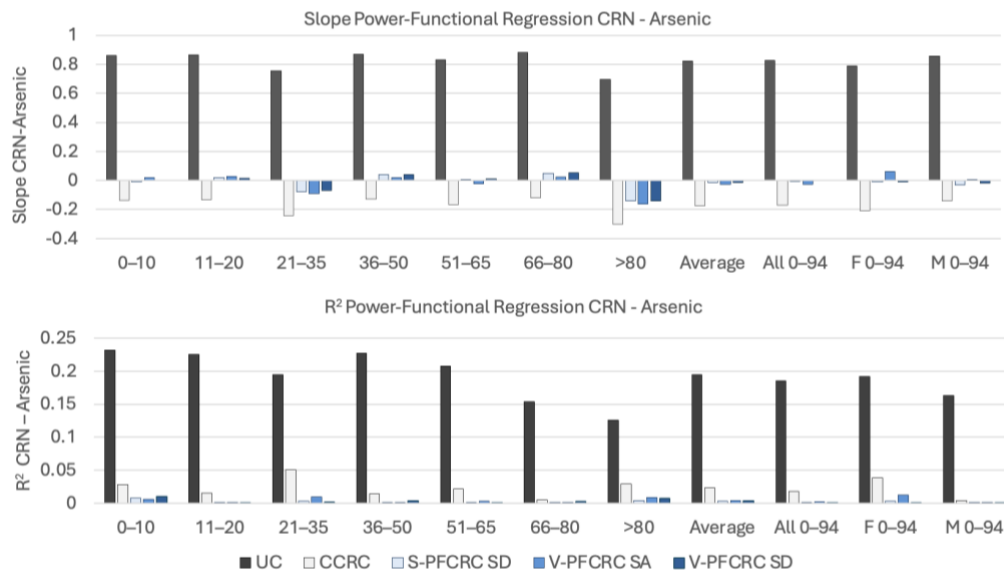
Figure 6 shows the most pronounced differences in curve characteristics observed in the 18-45 age group. Younger men exhibit positive slopes in the log-linear curves, with increasing exponents b for higher arsenic exposures. At the same time, women show substantially negative slopes, with exponents b declining as arsenic levels rise.

In the middle age group, male b-values experience a significant drop and a flattening of the logarithmic component, marked by a now minimal, negative slope c. In contrast, the female curves for the younger and middle-aged groups differ only slightly, resulting in a broad alignment of the curves for both sexes in middle age.

At older ages, the female curve level decreases while the male curve level rises, both entailing a renewed age difference. However, this difference is much less noticeable in the youngest group. In addition, the curves for both sexes now run mostly parallel due to similar negative slopes, as illustrated in Figure 6b.

### 3.6. Validation of V-PFCRC by Age- and Sex-Stratified Power Functional Regression Analysis

To evaluate the relevance of apparent sex- and age-related differences in V-PFCRC functions for the validity of uniform normalization across various sex- and age-specific subgroups, samples from Set 1 were subdivided into six sex-aggregated age groups and comprehensive sex-aggregated and sex-differentiated cross-age groups. The residual bias between CRN and arsenic was determined for each group using power-functional regression analysis. Arsenic levels in all groups were standardized using the CCRC, V-PFCRC, and S-PFCRC methods outlined in Section 2.5, with identical coefficients and exponents b as detailed in Table 3.



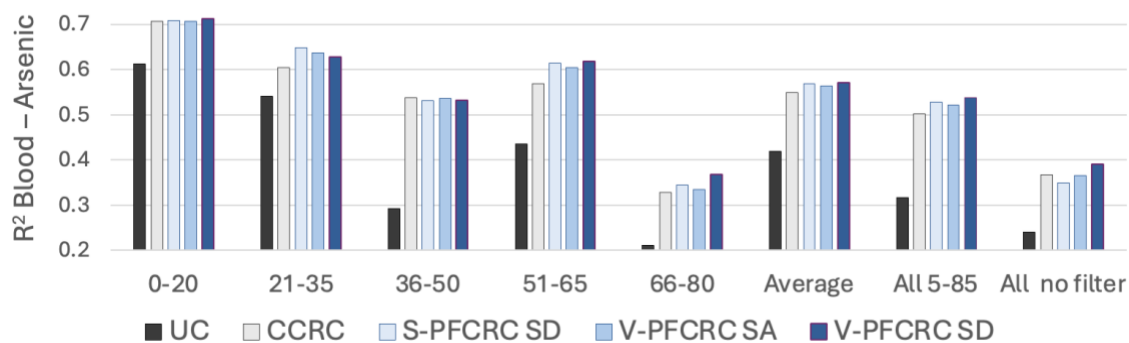
**Figure 7: Sex- and age-differentiated efficacy of standardization determined by residual dependence of Arsenic on CRN in various age and sex groups of Set 1.** Residual dependence was analyzed based on slopes and  $R^2$  of power-functional regression analysis of each subset.

Figure 7 summarizes the slopes and coefficient of determination ( $R^2$ ) for each group's five urinary result modes. In all subgroups, residual dependence was highest in uncorrected urine, followed by CCRC. All three power-functional result modes performed substantially better than the first two, with only minor differences in both slopes and  $R^2$  among them. This indicates that applying the sex-differentiated CRN-asymmetry compensated V-PFCRC normalization formulas, determined for sexes between 14 and 82 years,<sup>3</sup> has significantly mitigated the systemic dilution adjustment error (SDAE) in all studied subgroups.

Similar power-functional regression analyses were performed for the association of the five urinary arsenic modes with blood arsenic in Set 2. In all subgroups shown in Figure 8, the coefficient of determination ( $R^2$ ) between blood and urinary arsenic improves with CRN correction, whether conventional, simple-, or variable power functional. Following correlation results in entire data sets of previous work,<sup>3</sup> also the differences in  $R^2$  values within the CRN corrections are comparatively small and vary between individual subgroups. However, in the overall cross-age analysis, as in previous studies, this analysis also shows a lead for sex-differentiated V-PFCRC SD.

Considering the best alignment of sex ratios in Figure 5 for quartile 3 and the previous promising Spearman correlation results with trimmed datasets, excluding values below the median, it is evident that V-PFCRC offers significant advantages over other urinary arsenic result modes, especially at higher and methodologically more reliable blood levels.<sup>3</sup> As demonstrated previously, This advantage arises from the relatively weak resolution and broad scatter observed in lower blood arsenic levels.<sup>3</sup>





**Figure 8: Sex- and age-differentiated associations between arsenic in blood and urine in various subgroups of Set 2.** Dependence was analyzed based on  $R^2$  of power-functional regression analysis of each subset.

## 4. Discussion and Conclusion

### 4.1. Sex- and Age-related Differences in Arsenic Excretion and V-PFCRC Formulae

The results of this and the previous study strongly suggest that V-PFCRC represents a significant advancement in accurately correcting urinary biomarkers for dilution effects. The method addresses non-linear interactions and biases associated with differential diuresis dependencies through variable power-functional adjustments. The implications of the novel V-PFCRC method extend to various medical and research applications, including the diagnosis and monitoring of diseases, environmental exposure assessments, and forensic investigations. The improved accuracy of urinary biomarker correction can lead to better patient outcomes and more informed public health decisions.

Apart from the significant biases addressed by V-PFCRC, various factors affecting urinary creatinine and arsenic still need to be considered in assessing exposure, even after adjusting for dilution by V-PFCRC. The most critical interconnected factors are lean muscle mass, sex, and age.<sup>50,118,119</sup> While no direct data was available for lean muscle mass, this study systematically investigates the complex interplay of physiological and biochemical factors influencing urinary arsenic levels, considering age and sex as critical variables. Using an extensive cohort of urinary total weight arsenic samples (Set 1) and a smaller cohort of total weight EDTA blood samples analyzed in parallel (Set 2), the effects of age and sex on arsenic levels across various traditional and power-functional dilution adjustment modes were compared.

The findings reveal significant differences in arsenic excretion patterns in all investigated urinary result modes, blood levels, and V-PFCRC formulae related to age and sex. Estimating the need for further adjustments to these formulae or reference ranges will depend on a deeper understanding of the underlying causes of these differences and their epidemiological significance. Variations in urinary arsenic due to age and sex may result from a range of interconnected factors, summarized in Supplements 1-7. A crucial question is whether the observed sex- and age-related variations in urinary arsenic reflect actual changes in internal or external exposure or if they are driven by age- and sex-related factors affecting the metabolism of arsenic and CRN, fluid regulation, or urine production. After summarizing the key findings of this study, the following section will delve into their intricate biochemical and physiological underpinnings, providing a foundation for further refinement of the V-PFCRC method.

## 4.2. Summary of Key Findings

### 4.2.1. Impact of Age and Sex on Creatinine Levels

In agreement with existing literature, both sexes exhibited an age-dependent rise in creatinine (CRN) levels, peaking in early adulthood and then continuously declining.<sup>50</sup> Males generally maintained higher CRN levels than females across most age groups, aligning with the expected physiological differences influenced by muscle mass and hormonal factors.<sup>50,51</sup>

### 4.2.2. Impact of Age and Sex on Urine Arsenic Levels

Increased urinary arsenic levels were observed with age for both sexes, though the rise in uncorrected arsenic values was more pronounced in males. While CCRC diminished or even reversed this sex difference, it is still noticeable in S-PFCRC and V-PFCRC results and blood arsenic.

### 4.2.3. Comparison of Urinary and Blood Arsenic Levels

EDTA blood arsenic levels were consistently lower than urinary arsenic levels across all ages, and blood arsenic exhibits marked age increases, especially in males. Age increases in arsenic were more pronounced in blood than in urine, suggesting differential metabolic and excretion dynamics that require further exploration. Sex-differentiated V-PFCRC-SD arsenic concentrations and sex-age dynamics showed more substantial alignment with blood arsenic than conventional CCRC, emphasizing the robustness of V-PFCRC in reflecting accurate arsenic exposure.

### 4.2.4. Age and Sex-Specific V-PFCRC Equations

Age and sex significantly influenced the log-linear relationships between normalized arsenic and the exponent  $b$ , being fundamental to corrective V-PFCRC equations. Younger males exhibited increasing exponents with higher arsenic exposures, while females showed declining exponents. Due to a substantial drop in the male curve level, these differences became less pronounced in middle-aged groups, where both sexes showed more aligned curves. Sex differences re-emerged to a lesser extent in older age groups.

### 4.2.5. Further Validation of V-PFCRC

The uniform application of the sex-differentiated V-PFCRC formulae, determined initially for a wide age band from 14 to 82 years,<sup>3</sup> also consistently reduced the residual dependence of arsenic levels on CRN across all age and sex subgroups, demonstrating superior standardization efficacy than conventional correction methods even without further adjustment to sex and age.

Regression analyses of urinary arsenic modes with blood arsenic provided additional evidence of V-PFCRC presenting the most accurate reflection of actual arsenic exposure, supporting its use in diverse demographic settings.

In summary, S-PFCRC and V-PFCRC significantly reduce the substantial CRN bias found in uncorrected urine and the considerable residual CRN bias in CCRC urine. This is demonstrated in the age-aggregated entire sets 1 and 2 by the lack of significant, low Spearman correlations between arsenic and CRN, as summarized in Tables 4 and 5.

Although the age factor considerably impacts corrective V-PFCRC formulae, it only has a minor influence on bias removal by V-PFCRC, as clearly shown in the validation results. Broad bias reduction is a universal effect of V-PFCRC that applies to each age group. The differences among age groups are minimal compared to the significant improvements in CRN-bias removal by V-PFCRC from UC or CCRC arsenic.

### 4.3. Physiological, Hormonal, and Toxicokinetic Considerations

#### 4.3.1. Sex Differences in Urine and Blood

The general male increases in urinary concentration in this study indicate a near-synchronous male dominance of CRN and uncorrected arsenic, suggesting extensive commonalities between these two analytes concerning the hydration-dependency of their renal excretory mechanisms. The generally higher male urinary concentration is primarily due to the more substantial impacts of the Renin-Angiotensin-Aldosterone System and Vasopressin (AVP), along with the weaker influence of AVP-attenuating renal prostaglandins and NT-proBNP in men, as summarized in Supplements 1 and 2. Additionally, joint tubular transporters, such as MATE-1, may further synchronize the excretion of CRN and arsenic.<sup>10,14-16,120</sup>

The sex difference in uncorrected urinary arsenic, however, does not seem to be solely caused by general sex differences in urinary dilution, as the analysis of Set 2 revealed a significant age-related increase in male dominance of blood arsenic levels. While CCRC adjustments neutralized the sex difference in arsenic to insignificance in Sets 1 and 2, V-PFCRC in both sets maintained a partly significant male bias, aligning better with the concurrent higher blood arsenic levels in males in Set 2. The lower levels of arsenic found in the blood and urine of females in the older three age groups of Set 2 may indicate reduced exposure to arsenic, possibly due to consuming fewer arsenic-containing foods or absorbing less through the intestines. Alternatively, arsenic exposure and daily weight-adjusted excretion through urine might be less gender-dissimilar or female-dominant, with lower urinary arsenic levels in females resulting from their higher daily urine per weight production.<sup>7,9,121</sup>

The gender inversion of arsenic medians and upper quartiles in blood and urine among 21-35-year-olds in Set 2 (Figure 4) and 21-30-year-olds in Set 1 (Supplementary Excel File), with higher female values, suggests an influence of sex hormones, which are most abundant in this age group. In contrast, lower arsenic values (quartile 1) do not show this inversion, implying that the effect might be limited to moderate and higher arsenic exposure rather than background levels. As explained in section 1.3, estrogens inhibit the reabsorption of inorganic arsenate in the proximal tubule by downregulating the Na-iPT-II transporter. Additionally, estrogens promote the methylation of inorganic arsenic to DMA, enhancing renal excretion.<sup>34,35</sup> This could explain the higher urinary arsenic levels with higher inorganic content in younger women and the more effective methylation leading to better clearance from the liver and other organs into the blood.<sup>122,123</sup> Consequently, this presumed reduced tissue storage of arsenic in young women might result in identical or even insignificantly increased blood arsenic levels alongside higher urine levels. With estrogen declining during menopause, these effects weaken, resulting in a male bias in blood and urine arsenic levels in middle and old age, as shown in Figure 4. In this context, the less pronounced late-life urinary arsenic flush of older women in Figures 1 and 2 reflects a smaller female total body burden due to the mentioned methylation advantages, especially at younger, more estrogenic ages. The better alignment of sex ratios of urinary to blood arsenic (Figures 1 and 2), the significant differences in V-PFCRC formulas, especially at a younger age (Figure 6), and the closer agreement to blood in V-PFCRC SD compared to V-PFCRC SA results in previous research,<sup>3</sup> show the advantages of differentiating by sex when generating V-PFCRC formulas. The comparison of dilution adjustment efficiencies between the two correction modes in Figures 7 and 8 did not reveal any substantial benefits of using sex-differentiated (V-PFCRC SD) versus sex-aggregated (V-PFCRC SA) formulas when tested on entire collectives, where systemic adjustment errors tend to average out. However, for optimizing exposure assessments in intra- and interindividual comparisons, the potential benefits of

further modifying sex-differentiated formulas by age are evident based on this analysis and will be discussed below.

#### 4.3.2. Influence of Age

##### 4.3.2.1 Variations in Arsenic Levels in Urine and Blood

In both data sets and across sexes, a strong positive correlation between CRN and uncorrected arsenic is evident, as shown in Tables 4 and 5). However, age appears to affect these parameters in opposing ways, as illustrated in Figure 1. CRN levels decrease steadily from peak levels in young adulthood, whereas urinary arsenic in Set 1 exhibits a consistent upward trend with age across all result modes and sexes. Set 2 confirms this trend in males, while females show a late-life rise preceded by declines in urinary arsenic. Due to the smaller sample size of Set 2, these observations might be less representative than those in Set 1. Notably, the age increase of urinary arsenic, like that of blood arsenic, is consistently more pronounced in men in both sets (Figures 1 and 2).

The systemic computational error from dividing by smaller CRN denominators due to age contributes to the apparent age increments in corrected results. However, this is only one of the factors since increases are seen in uncorrected urine and blood, too. A plausible explanation for elevated blood and urine arsenic in older adults could be higher external and internal exposure. Age-related bone degradation, a long-term storage site for arsenic, may lead to more arsenic being released into circulation,<sup>115,124-126</sup> while increased intestinal permeability in older adults due to factors such as dysbiosis, medication, and nutrient deficiencies may lead to higher absorption rates of external arsenic, too.<sup>127</sup>

As depicted in Figure 3, arsenic concentrations in blood increase markedly with age, surpassing the proportional rise in urine, particularly in the oldest age groups (66-80). This pattern may be attributed to several factors: reduced renal clearance of arsenic, leading to its accumulation in the blood due to progressive renal insufficiency in older adults;<sup>4</sup> additional arsenic exposure in advanced age, potentially from the mobilization and redistribution of arsenic from degrading bones and soft tissues;<sup>124-126</sup> and increased intestinal permeability and absorption of arsenic.<sup>127</sup>

The V-PFCRC formulas also show significant variations with age, particularly in the atypical curve of the younger group of men, as depicted in Figure 6. This indicates a potential to improve the V-PFCRC method using age-stratified correction formulas. Generating and implementing these would be straightforward, provided sufficient large data sets are available. While adopting age-stratified V-PFCRC formulas could yield even more accurate exposure estimates, bias in larger cohorts is not expected to be reduced significantly. Despite more substantial deviations of the analyte-specific coefficients  $c$  and  $d$  across various ages, as shown in Figure 6, the use of uniform sex-differentiated V-PFCRC formulas generated from data on 14-82-year-olds still substantially mitigated residual biases across the various age groups tested separately (Figure 7). As mentioned, the benefits of age-stratified V-PFCRC formulas over CCRC and S-PFCRC are generally more significant in intra- and interindividual comparisons than in more extensive studies.

##### 4.3.2.2 Role of Common Tubular Transport for Opposing Age Trends of CRN and Arsenic

The inverse age-dependent trends of CRN and urinary arsenic may appear contradictory to a joint transport mechanism initially, but they may support it.<sup>4</sup> As age advances, lean muscle mass and metabolic turnover decline, reducing the production of nitrogenous waste products like CRN, which are excreted by the kidneys. This reduction in creatinine excretion may lead to enhanced tubular secretion of arsenic in middle-aged and older individuals. This is because common tubular transporters, such as MATE1, may become more available for

this purpose, provided the glomerular filtration rate is not significantly impaired, and the tubular excretion of creatinine is not overly strained. The increased methylation capacity with age may further enhance the excretion of total weight arsenic, resulting in higher proportions of more soluble and easily excreted arsenic species.<sup>34,88,128,129</sup> The increased methylation at higher ages could also be biochemically linked to the declining biosynthesis of creatine and phosphatidylcholine attributable to the lower lean muscle mass. Together, these two compounds require about 80% of the available SAMe, the essential methyl donor in arsenic metabolism.<sup>4</sup>

#### 4.3.2.3 Variation of Urinary Species Proportions with Age

Previous studies have reported significant age-related increases in total arsenic, arsenobetaine, and, to a lesser extent, MMA and DMA, with tendential reductions in inorganic arsenic.<sup>34,39,55,88</sup> In this study, only total arsenic was measured. However, based on previous findings, it is expected that methylated arsenic components, more abundant in urine, are the main contributors to the age-related rise in arsenic.<sup>39,42,43,88</sup> A mechanistic link could be the age-increased baseline actions of Arginine Vasopressin (AVP) on the V1-Receptor and the Renin-Angiotensin-Aldosterone-System, both of which inhibit m-KL and enhance tubular reabsorption of  $\text{PO}_4^-$  and arsenate.<sup>130-133</sup> Additionally, both hormonal factors limit renal plasma flow and, to a lesser degree, glomerular filtration rate, possibly contributing to increased urinary total weight arsenic in older adults by the mechanisms proposed in Section 5.3.

#### 4.3.2.4 Need for Further Age-Adjustment in Assessment of Arsenic Exposure

Age is a significant confounding factor for urinary arsenic, independent of the dilution adjustment method adopted. Unlike the dilution-based differences between sexes, which sex-differentiated V-PFCRC formulas can better adjust, the impact of age is not compensated by these methods. It should be considered in norm establishment or inclusion in covariate models.<sup>1,34,44</sup>

The epidemiological parameters, including total body burden or exposure periods represented by urine concentrations of metals and other biomarkers, can vary considerably with age. While in older individuals, blood and urine levels may broadly reflect an accumulated metal body burden over many years due to redistribution from degraded bone, the levels of the identical biomarker in younger individuals might indicate rather acute exposure fluctuations.<sup>115,124-126</sup> An interesting example is the age-specific interpretation of urinary cadmium levels. In healthy, younger kidneys, urinary cadmium reflects total body cadmium burden due to the constant renal cumulation and excretion proportional to cumulated renal loads. Impaired kidneys yet excrete higher amounts as cadmium passes from deteriorating tubular cells into the urine. Similar mechanisms may also apply to arsenic stored in bones and kidneys, explaining its age-related increase.<sup>115</sup>

Given these shifts, accurately assessing acute arsenic exposure necessitates age-related adjustments. This applies to both inter-/intra-individual comparisons and cohort studies with asymmetric age distributions. Since the age increases are real, adjustments are essential for all dilution modes, regardless of age-variable V-PFCRC formulas. This can be achieved by integrating age into multilinear covariate models, using age-adjusted reference ranges, or normalizing values to a specific age. Notably, adopting age-adjusted V-PFCRC formulas will not adjust for age variation in internal or external exposure. As mentioned earlier, this will only serve to address errors in systemic dilution adjustments more accurately, enhancing the precision of biomarkers, especially in comparisons within and between individuals or studies demonstrating significant variations in urinary dilution and creatinine production among different study groups.

#### 4.4. Variations of V-PFCRC Formulae Related to Age and Sex

As shown in Figure 6, significant sex and age differences exist in the log relations between V-PFCRC standardized arsenic and the calculated exponent  $b$ . These differences are most pronounced in young individuals, with young men showing a log-linear rise in exponent  $b$  with arsenic exposure, contrasted by a log-linear decline in young women. In middle and older ages, sex differences diminish primarily due to changes in male characteristics. In older age, the curves for men increase and for women decrease, reopening a moderate gap between sexes. However, this gap is narrower than in the youngest group (18-45), with the two log-linear equations having similar slopes and running essentially parallel. These complex variations are influenced by the multiple sex- and age-specific renal fluid regulatory factors summarized in Supplements 1-7.

##### 4.4.1. Pivotal Role of Osmoregulation in Age- and Sex-Variations of V-PFCRC Functions

Evidence in the literature suggests that differences in osmoregulation based on age and sex may be linked to the variations described above. Previous studies have shown that the age-sex dynamics of urinary osmolality exhibit characteristics similar to the relations between V-PFCRC arsenic and exponent  $b$ , illustrated in Figure 6.<sup>7</sup> Young men exhibited a higher estimated urinary osmolality (uOsm) than young women, with these differences diminishing in middle age due to a decrease in male uOsm.<sup>7</sup> This male-dominant difference in uOsm re-emerges in older age. The hypothesized sex and age modifications in osmolality set points and their primary actuators, RAAS (ATII) and AVP (Supplements 1 and 2), likely result in similar alterations in the relationship between V-PFCRC arsenic and exponent  $b$ . This concept aligns with mitigating age-related arsenic increases observed following intravenous fluid administration, suppressing AVP/ATII before sample collection (data to be published).

There are parallels between the slopes and exponents  $b$  in Figure 6 and the age- and sex-variable renal actions of ATII/AVP. The actions of these hormones are generally more pronounced in males, as they are stimulated by androgens and attenuated by estrogen.<sup>7,8,10,17-29</sup> This corresponds to the higher sex discrepancy in  $b$ -values at younger ages. The decline in sex hormone activity towards middle age, more significant in menopausal women, results in gender alignment of AVP/RAAS activities and uOsm. In older age groups, a minor inconsistency between  $b$ -values and uOsm for males consists of a tendential drop in uOsm, which does not correspond to the rising trend of  $b$ -values.

Conversely, there is good alignment in women as both uOsm and the exponents decrease. This inconsistency in men could be due to different age group distributions in the studies or intrinsic renal aging mechanisms, which are more pronounced in men and cause fluid homeostasis inelasticity, such as declining renal prostaglandin levels and tubular dysfunction.<sup>134-139</sup> While ATII/AVP activities increase with age, the paradoxical urinary concentrating ability deficit in seniors is likely due to these intrinsic renal causes.<sup>135,140</sup> In conclusion, the age- and sex-specific variations of exponent  $b$  consistently reflect the renal baseline actions of ATII/AVP, influenced by sex hormones in the young and renodegenerative changes in the elderly, irrespective of the age-related decline in renal concentrating capacity.

##### 4.4.2. Mechanistic Explanation of ATII/AVP-Mediated Effects on the Exponent $b$

As exponent  $b$  approaches 1, the mass ratios between arsenic and CRN remain constant across varying hydration/urinary flow rates. Arsenic exponent  $b$ -values are typically  $<1$ , indicating reduced arsenic/CRN mass ratios at higher urinary concentrations and enhanced ATII/AVP activities.<sup>3</sup> Therefore, enhanced actions of ATII will either increase net TWuAs

excretion, decrease net CRN excretion, or exert any summative effect on both analytes, resulting in relatively higher excretion of TWuAs than CRN in dehydrated states. Increases in  $b$  approximate the exponent to 1, indicating a better balance of arsenic and CRN secretions across the urinary dilution range.

Creatinine and most urinary components are freely glomerularly filtered, so their hydration-dependent excretion discrepancy will be predominantly due to their differential tubular handling.<sup>141-144</sup> Any relative restriction of tubular function about glomerular filtration rate might thus align the excretion behaviors of CRN and TWuAs, translating into an approximation of  $b$  to 1. Age-related tubular renal damage progresses faster in males than in females,<sup>136-139</sup> which could conclusively explain the reemerging male-dominant age gap in exponents  $b$  at higher ages, as illustrated in Figure 6.

Apart from kidney damage, higher ATII/AVP activities in males and at higher ages can limit tubular function relative to glomerular function.<sup>139,145,146</sup> Angiotensin II (ATII) preferentially constricts efferent arterioles, increasing glomerular filtration pressure but reducing renal and peritubular capillary flow, affecting tubular function. Arginine Vasopressin (AVP), primarily involved in water reabsorption in the collecting ducts, also contributes to renal vasoconstriction. Together, these hormones can exacerbate tubular hypoxia and injury, enhancing glomerular at the expense of tubular function.<sup>70,147,148</sup>

The effects of ATII and AVP on CRN excretion are twofold. Prolonged or excessive ATII/AVP activity, like in advanced volume loss or dehydration, lowers GFR, increasing tubular CRN secretion.<sup>111,146</sup> Conversely, the more common moderate ATII/AVP activity primarily increases the glomerular capillary hydrostatic pressure (GCHP) and enhances GFR, reducing the tubular excretion of CRN.<sup>70,149,150</sup> This might explain the generally increased exponent  $b$  in men, as their higher baseline ATII/AVP activities can enhance GFR, reduce the relative contribution of the tubules in CRN excretion, and thus counterbalance the existing discrepancies in the tubular handling of arsenic.

For arsenic, there is evidence of a dependence of tubular excretion on urine flow rate and corresponding ATII/AVP activity, which contrasts with that of CRN. With a significant knowledge gap on the tubular handling of various arsenic species, at least the reabsorption of inorganic arsenate (iAsV) appears favored by the slower urinary flow.<sup>4,151</sup> More dehydrated states associated with higher ATII and AVP activities signify higher tubular reabsorption and lower net secretion of arsenate. Combined with the increased excretion of creatinine (CRN), a shift in the mass ratio between CRN and arsenic in favor of CRN in more dehydrated states associated with elevated ATII/AVP activities could plausibly explain the exponents of arsenic generally taking values smaller than 1.

Contradicting this explanation is the association of higher inorganic arsenate (iAsV) reabsorption with higher methylation and total weight arsenic, which is the relevant parameter for this study.<sup>34,38,39,55</sup> The methylation process of arsenate and its increasing effect on TWuAs may lag the reabsorption of arsenate and, therefore, not immediately affect urinary TWuAs.

The restraining effects of prolonged ATII/AVP elevation on membrane protein Klotho (m-KL) expression further complicate these mechanisms. Lower m-KL levels increase arsenate (iAsV) reabsorption and favor its methylation, leading to higher proportions of easily excreted methylated TWuAs components and increased TWuAs, as outlined in Sections 1.4 and 1.5.

There is empirical evidence of opposing ATII/AVP effects on net tubular excretion of iAs (inhibitory) and TWuAs (stimulatory), which can explain lower %iAs and higher TWuAs in seniors and gender-identical TWuAs excretion in males despite female methylation advantages.<sup>4,34</sup> Males could thus compensate for methylation drawbacks with enhanced TWuAs excretion-promoting effects of ATII/AVP.

In summary, prolonged states of lower m-KL expression associated with higher ATII/AVP activities, such as in males and older age, generally seem to increase exponents  $b$  and thus reduce the systemic dilution correction error (SDAE).

The increasing exponents  $b$  in young men with rising arsenic levels, contrasted by opposite trends in other groups, require additional explanation. This might be due to the high CRN production in young men, which may cause faster saturations of tubular CRN transporters in dehydrated states, shifting TWuAs/CRN mass ratios in dehydration towards arsenic, entailing higher exponents  $b$ . Higher arsenic exposure could intensify this effect through additional competition and impairment of common tubular transporters, explaining the positive slope of coefficient  $c$  as detailed in Section 1.1 and preliminary work.<sup>3</sup>

Additionally, the sex-differentiated methylation capacity of arsenic could play a role. Interestingly, at lower arsenic levels, which in the present study population generally can be assumed to have higher proportions of inorganic arsenic, the exponent  $b$  of young women is higher than that of men and much closer to 1. The female methylation advantage could be noticeable here, as higher proportions of methylated arsenic can be better excreted in urine and behave more similarly to CRN in the tubule. This effect diminishes at higher arsenic levels, where mostly organic loads with predominantly methylated arsenic are present. At higher arsenic exposures, the advantage of female tubular CRN secretion over arsenobetaine in the dehydrated state may become more significant, causing a relatively steep negative slope (coefficient  $c$ ) in young women.

These theoretical considerations rationalize sex-age-specific differences in the corrective formulas (Figure 6). Yet further research is needed to validate these findings and to elucidate the tubular handling of the individual arsenic species.<sup>4,151</sup>

#### 4.5. Validation, Advantages, and Limitations of V-PFCRC

The apparent age and sex differences in the V-PFCRC equations only marginalize the standardization quality within individual subgroups, as shown in Figures 7 and 8. This corroborates the significantly improved precision and comparability of V-PFCRC results across all age groups and sexes compared to uncorrected and CCRC arsenic. The improvements of sex-differentiated V-PFCRC SD over alternative power functional corrections tested in this study (sex aggregated V-PFCRC SA, sex-differentiated simple S-PFCRC) were relatively narrow. The benefits of V-PFCRC SD are more evident in comparisons within separate analyte levels rather than in entire collectives tested in this study. This is attributed to adequate compensation of non-linear, exposure-differentiated skews, including complex metabolic and excretory interactions between analytes and CRN. By correctly assuming power-functional rather than linear relationships between  $uAs_{UC}$  and CRN, a significant source of error in dilution adjustment in extensive cohort studies can be neutralized despite remaining biases unaccounted for by V-PFCRC. Compared to uncorrected and CCRC values, simple power-functional corrections have significantly improved correlations of standardized total urinary arsenic (TuAs) with drinking water exposures.<sup>2</sup>

While the advantages of V-PFCRC over CCRC and S-PFCRC are evident, how does it compare with more elaborated covariate-adjusted standardizations, which reportedly improved results over classical models? In general, the V-PFCRC method corrects a substantial bias brought about by erroneously assumed linearity in factually non-linear physiological relations. In covariate-adjusted models, this notable misconception is either symptomatically addressed by restricting CRN ranges or ignored within accepted limits.<sup>1,3,34,152</sup> This confers on V-PFCRC the advantage of dispensing with CRN range restrictions and associated sample rejects. At the same time, more reliable, dilution-independent standardized values are achieved in intraindividual and, with minor limitations, interindividual comparisons. Fewer sample rejects imply resource savings and the disposal of



more valid samples, increasing the power of any epidemiological study involving urinary biomarkers.

Despite the mathematical adjustment of this significant bias by V-PFCRC, residual inaccuracies may result from the unaccounted impact of other biasing factors on CRN and the analyte, primarily age and lean muscle mass (BMI) and, to a lesser extent, comorbidities, ethnicity, exercise, nutrition, and the time of sample collection.<sup>1,34,152</sup> The combined spurious influence of these biases on CRN production, secretion, and any CRN correction will average out in comparable cohorts with sufficient subject numbers. Various factors can also influence CRN in opposite directions, thus moderating the summative distorting effect on corrected results, particularly in larger cohorts. The results in this study on arsenic and iodine in the previous study demonstrated better correlations of all conventional and power-functional CRN-corrected arsenic and iodine modes with EDTA blood (arsenic) or serum (iodine).<sup>3</sup> There is evidence that cumulative biases on CRN production might be less relevant for accuracy than the systemic dilution adjustment error addressed in this paper and previous work.<sup>2</sup> They may still cause considerable misinterpretation in exposure analyses of smaller groups and comparative studies of dissimilar individuals or collectives concerning covariates influencing creatine formation and CRN. In pursuing optimized precision, it can be worthwhile to accommodate these factors additionally.

While a sex-differentiated, age-adjusted variable power-functional correction (V-PFCRC) or a similar adjustment by SG or uOsm is expected to yield sufficiently reliable results for most clinical, forensic, and epidemiological scenarios, thereby reducing sample rejections, it may be necessary to use more complex covariate-adjusted models or even integrate V-PFCRC into them, depending on the study design. A promising future approach could synthesize advanced covariate-adjusted standardization plus creatinine covariate adjustment with the V-PFCRC presented in this study.<sup>1,34</sup> Ideally, three sequential standardization steps should be adopted in a more sophisticated correction procedure:

1. Standardization of CRN (SG, or uOsm) for age, BMI, sex, and other factors by multiple regression covariate adjustment.
2. Calculating covariate-CRN adjusted V-PFCRC values for analytes (here, all TWuAs species separately) using V-PFCRC formulas determined with covariate-adjusted CRN.
3. Standardization of the obtained V-PFCRC values for age (e.g., 50 years).

#### 4.5. Conclusions

The V-PFCRC method significantly advances accurately correcting urinary biomarkers for dilution effects. This method effectively addresses non-linear interactions and biases associated with differential diuresis dependencies by incorporating variable power-functional adjustments. In clinical and epidemiological contexts, adopting V-PFCRC can lead to more reliable assessments of urinary biomarkers, ultimately improving the diagnosis, monitoring, and research of various medical conditions and environmental exposures.

The findings confirm the significant improvements of the novel V-PFCRC method over uncorrected and conventionally CRN-corrected urine in rigorous age- and sex-stratified analysis and, in comparison with blood arsenic detected in parallel.

Based on age-sex-stratified formula generation and literature review, sex-age-kinetics of P-VFCRC corrective formulae were shown to align well with urinary osmolality, predominantly determined by the activities of the Renin-Angiotensin-Aldosterone System (RAAS) and Arginine Vasopressin (AVP).

While the novel sex-differentiated V-PFCRC method largely accounted for sex biases, the presented results underscore the potential for further refinement of V-PFCRC formulae according to age, as it proved to significantly affect both arsenic exposure and the most common default dilution correctors, such as CRN, osmolality, and specific gravity.<sup>2,3</sup>

Future research should expand on the physiological and biochemical underpinnings of these differences, mainly focusing on hormonal influences and metabolic pathways. Moreover, validation across broader populations and with additional biomarkers will enhance the accuracy, generalizability, and applicability of the V-PFCRC method.

## 5. Acknowledgements

Dr. Katrin Huesker, department manager of Special Immunology, IMD Berlin, is thanked for providing anonymized spot urine data.

## 6. Author contribution

TCC conceptualized and designed the work, reviewed the literature, prepared, evaluated, interpreted, and illustrated the data, developed the corrective S-PFCRC and V-PFCRC formulae, drafted, substantially revised, and submitted the paper. KH procured the anonymized data sets from IMD and made them available as an Excel file.

## 7. Conflict of Interest

No conflict of interest is known to me.

## 8. Ethics

The study was exempt from ethical approval by the Ethics Committee of Northwest and Central Switzerland (EKNZ), 4056 Basel, based on retrospective analysis of anonymized data without clinical information other than urinary creatinine/TWuAs, age in years, sex, and exam date. The purpose was methodological quality improvement only. There was no pharmacological or other medical intervention, risk for physical or psychological harm, identifiability, or breach of confidentiality for any subject involved.

## 9. Funding

The study was not funded.

## 10. References

- 1) O'Brien KM, Upson K, Cook NR, Weinberg CR. Environmental Chemicals in Urine and Blood: Improving Methods for Creatinine and Lipid Adjustment. *Environ Health Perspect*. 2016 Feb;124(2):220-7. doi: 10.1289/ehp.1509693. Epub 2015 Jul 24. PMID: 26219104; PMCID: PMC4749084. Covariate-adjusted standardization method available in: <http://www.niehs.nih.gov/research/resources/software/biostatistics/covariate/index.cfm>
- 2) Middleton DRS, Watts MJ, Polya DA. A comparative assessment of dilution correction methods for spot urinary analyte concentrations in a UK population exposed to arsenic in drinking water. *Environ Int*. 2019 Sep; **130**: 104721. doi: 10.1016/j.envint.2019.03.069. Epub 2019 Jun 14. PMID: 31207477; PMCID: PMC6686075.
- 3) Carmine TC. Variable Power Functional Dilution Adjustment of Spot Urine. medRxiv [Preprint]. 2024. doi: 10.1101/2023.02.09.23285582.
- 4) Peters BA, Hall MN, Liu X, Neugut YD, Pilsner JR, Levy D, et al. (2014) Creatinine, Arsenic Metabolism, and Renal Function in an Arsenic-Exposed Population in Bangladesh. *PLoS ONE* 9(12): e113760. <https://doi.org/10.1371/journal.pone.0113760>.
- 5) Liu J, Chen H, Miller DS, Saavedra JE, Keefer LK, Johnson DR, Klaassen CD, Waalkes MP. Overexpression of glutathione S-transferase II and multidrug resistance transport proteins is associated with acquired tolerance to inorganic arsenic. *Mol Pharmacol*. 2001 Aug;60(2):302-9. doi: 10.1124/mol.60.2.302. PMID: 11455017.
- 6) Nishizawa K, Yoda N, Morokado F, Komori H, Nakanishi T, Tamai I. Changes of drug pharmacokinetics mediated by downregulation of kidney organic cation transporters *Mate1* and *Oct2* in a rat model of hyperuricemia. *PLoS One*. 2019 Apr 5;14(4):e0214862. doi: 10.1371/journal.pone.0214862. PMID: 30951542; PMCID: PMC6450621.
- 7) Perucca J, Bouby N, Valeix P, Bankir L. Sex difference in urine concentration across differing ages, sodium intake, and level of kidney disease. *Am J Physiol Regul Integr Comp Physiol*. 2007 Feb;292(2):R700-5. doi: 10.1152/ajpregu.00500.2006. Epub 2006 Sep 21. PMID: 16990487.
- 8) Claybaugh JR, Sato AK, Crosswhite LK, Hassell LH. Effects of time of day, gender, and menstrual cycle phase on the human response to a water load. *Am J Physiol Regul Integr Comp Physiol*. 2000 Sep;279(3):R966-73. doi: 10.1152/ajpregu.2000.279.3.R966. PMID: 10956255.
- 9) Schoen T, Blum J, Paccaud F, Burnier M, Bochud M, Conen D; Swiss Survey on Salt investigators. Factors associated with 24-hour urinary volume: the Swiss salt survey. *BMC Nephrol*. 2013 Nov 7;14:246. doi: 10.1186/1471-2369-14-246. PMID: 24199987; PMCID: PMC4226251.
- 10) Sabolić I, Asif AR, Budach WE, Wanke C, Bahn A, Burckhardt G. Gender differences in kidney function. *Pflugers Arch*. 2007 Dec;455(3):397-429. doi: 10.1007/s00424-007-0308-1. Epub 2007 Jul 19. PMID: 17638010.

- 11) Ozdemir S, Sears CG, Harrington JM, Poulsen AH, Buckley J, Howe CJ, James KA, Tjonneland A, Wellenius GA, Raaschou-Nielsen O, Meliker J. Relationship between Urine Creatinine and Urine Osmolality in Spot Samples among Men and Women in the Danish Diet Cancer and Health Cohort. *Toxics*. 2021 Nov 1;9(11):282. doi: 10.3390/toxics9110282. PMID: 34822673; PMCID: PMC8625939.
- 12) Bankir L, Perucca J, Weinberger MH. Ethnic differences in urine concentration: possible relationship to blood pressure. *Clin J Am Soc Nephrol*. 2007 Mar;2(2):304-12. doi: 10.2215/CJN.03401006. Epub 2007 Jan 10. PMID: 17699429.
- 13) Brosnan JT, da Silva RP, Brosnan ME. The metabolic burden of creatine synthesis. *Amino Acids*. 2011 May;40(5):1325-31. doi: 10.1007/s00726-011-0853-y. Epub 2011 Mar 9. PMID: 21387089.
- 14) Ligen A, Dandan Z, Wolin H, Junxi L, Junling T, Huijuan L, Taishan Z, Fang L. Gonadal hormone regulates the expression MATE1 and OCT2 in type 2 diabetes mice. *Endocrine Abstracts* (2015) **37** EP376 | DOI: 10.1530/endoabs.37.EP376.
- 15) He R, Ai L, Zhang D, Wan L, Zheng T, Yin J, Lu H, Lu J, Lu F, Liu F, Jia W. Different effect of testosterone and oestrogen on urinary excretion of metformin via regulating OCTs and MATEs expression in the kidney of mice. *J Cell Mol Med*. 2016 Dec;20(12):2309-2317. doi: 10.1111/jcmm.12922. Epub 2016 Jul 29. PMID: 27469532; PMCID: PMC5134372.
- 16) Lepist EI, Zhang X, Hao J, Huang J, Kosaka A, Birkus G, Murray BP, Bannister R, Cihlar T, Huang Y, Ray AS. Contribution of the organic anion transporter OAT2 to the renal active tubular secretion of creatinine and mechanism for serum creatinine elevations caused by cobicistat. *Kidney Int*. 2014 Aug;86(2):350-7. doi: 10.1038/ki.2014.66. Epub 2014 Mar 19. PMID: 24646860; PMCID: PMC4120670.
- 17) Medina D, Mehay D, Arnold AC. Sex differences in cardiovascular actions of the renin-angiotensin system. *Clin Auton Res*. 2020 Oct;30(5):393-408. doi: 10.1007/s10286-020-00720-2. Epub 2020 Aug 29. PMID: 32860555; PMCID: PMC7572792.
- 18) Komukai K, Mochizuki S, Yoshimura M. Gender and the renin-angiotensin-aldosterone system. *Fundam Clin Pharmacol*. 2010 Dec;24(6):687-98. doi: 10.1111/j.1472-8206.2010.00854.x. PMID: 20608988.
- 19) Toering TJ, Gant CM, Visser FW, van der Graaf AM, Laverman GD, Danser AHJ, Faas MM, Navis G, Lely AT. Sex differences in renin-angiotensin-aldosterone system affect extracellular volume in healthy subjects. *Am J Physiol Renal Physiol*. 2018 May 1;314(5):F873-F878. doi: 10.1152/ajprenal.00109.2017. Epub 2017 Jun 7. PMID: 28592435.
- 20) Stachenfeld NS. Sex hormone effects on body fluid regulation. *Exerc Sport Sci Rev*. 2008 Jul;36(3):152-9. doi:10.1097/JES.0b013e31817be928. PMID: 18580296; PMCID: PMC2849969.
- 21) Stachenfeld NS, Splenser AE, Calzone WL, Taylor MP, Keefe DL. Sex differences in osmotic regulation of AVP and renal sodium handling. *J Appl Physiol* (1985). 2001 Oct; 91(4):1893-901. doi: 10.1152/jappl.2001.91.4.1893. PMID: 11568177.

- 22) Grikinienė J, Volbekas V, Stakisaitis D. Gender differences of sodium metabolism and hyponatremia as an adverse drug effect. *Medicina (Kaunas)*. 2004;40(10):935-42. PMID: 15516815.
- 23) De Vries GJ, Wang Z, Bullock NA, Numan S. Sex differences in the effects of testosterone and its metabolites on vasopressin messenger RNA levels in the bed nucleus of the stria terminalis of rats. *J Neurosci*. 1994 Mar;14(3 Pt 2):1789-94. doi: 10.1523/JNEUROSCI.14-03-01789.1994. PMID: 8126571; PMCID: PMC6577591.
- 24) Stachenfeld NS, DiPietro L, Palter SF, Nadel ER. Estrogen influences osmotic secretion of AVP and body water balance in postmenopausal women. *Am J Physiol*. 1998 Jan; 274(1): R187-95. doi: 10.1152/ajpregu.1998.274.1.R187. PMID: 9458917.
- 25) Nishimura K, Yoshino K, Sanada K, Beppu H, Akiyama Y, Nishimura H, Tanaka K, Sonoda S, Ueno H, Yoshimura M, Maruyama T, Ozawa H, Ueta Y. Effect of oestrogen-dependent vasopressin on HPA axis in the median eminence of female rats. *Sci Rep*. 2019 Mar 26; 9(1):5153. doi: 10.1038/s41598-019-41714-z. PMID: 30914732; PMCID: PMC6435644.
- 26) Herzberg NH, Goudsmit E, Kruisbrink J, Boer GJ. Testosterone treatment restores reduced vasopressin-binding sites in the kidney of the ageing rat. *J Endocrinol*. 1989 Oct; 123(1):59-63. doi: 10.1677/joe.0.1230059. PMID: 2809490.
- 27) Pávó I, Varga C, Szücs M, László F, Szécsi M, Gardi J, László FA. Effects of testosterone on the rat renal medullary vasopressin receptor concentration and the antidiuretic response. *Life Sci*. 1995;56(14):1215-22. doi: 10.1016/0024-3205(95)00061-a. PMID: 7475899.
- 28) Chang AY, Abdullah SM, Jain T, Stanek HG, Das SR, McGuire DK, Auchus RJ, de Lemos JA. Associations among androgens, estrogens, and natriuretic peptides in young women: observations from the Dallas Heart Study. *J Am Coll Cardiol*. 2007 Jan 2;49(1):109-16. doi: 10.1016/j.jacc.2006.10.040. Epub 2006 Nov 13. PMID: 17207730.
- 29) Glisic M, Rojas LZ, Asllanaj E, Vargas KG, Kavousi M, Ikram MA, Fauser BCJM, Laven JSE, Muka T, Franco OH. Sex steroids, sex hormone-binding globulin and N-terminal pro-brain natriuretic postmenopausal women. *Int J Cardiol*. 2018 Jun 15;261:189-195. doi: 10.1016/j.ijcard.2018.03.008. Epub 2018 Mar 6. PMID: 29551255.
- 30) Oparil S, Ehrlich EN, Lindheimer MD. Effect of progesterone on renal sodium handling in man: relation to aldosterone excretion and plasma renin activity. *Clin Sci Mol Med*. 1975 Aug;49(2):139-47. doi: 10.1042/cs0490139. PMID: 1149405.
- 31) Franz S, Skopp G, Musshoff F. The effect of creatine ingestion on urinary creatinine concentration: Does supplementation mask a heavy dilution? *Drug Test Anal*. 2022 Jan;14(1):162-168. doi: 10.1002/dta.3165. Epub 2021 Oct 18. PMID: 34559477.
- 32) Stachenfeld NS, Taylor HS. Effects of estrogen and progesterone administration on extracellular fluid. *J Appl Physiol* (1985). 2004 Mar;96(3):1011-8. doi: 10.1152/jappphysiol.01032.2003. Epub 2003 Dec 5. PMID: 14660504.

- 33) Johannsson G, Gibney J, Wolthers T, Leung KC, Ho KK. Independent and combined effects of testosterone and growth hormone on extracellular water in hypopituitary men. *J Clin Endocrinol Metab.* 2005 Jul;90(7):3989-94. doi: 10.1210/jc.2005-0553. Epub 2005 Apr 12. PMID: 15827107.
- 34) Choi JW, Song YC, Cheong NY, Lee K, Kim S, Lee KM, Ji K, Shin MY, Kim S. Concentrations of blood and urinary arsenic species and their characteristics in general Korean population. *Environ Res.* 2022 Nov;214(Pt 2):113846. doi: 10.1016/j.envres.2022.113846. Epub 2022 Jul 9. PMID: 35820651.
- 35) Fischer LM, da Costa KA, Kwock L, Galanko J, Zeisel SH. Dietary choline requirements of women: effects of estrogen and genetic variation. *Am J Clin Nutr.* 2010 Nov;92(5):1113-9. doi: 10.3945/ajcn.2010.30064. Epub 2010 Sep 22. PMID: 20861172; PMCID: PMC2954445.
- 36) Muhetaer M, Yang M, Xia R, Lai Y, Wu J. Gender difference in arsenic biotransformation is an important metabolic basis for arsenic toxicity. *BMC Pharmacol Toxicol.* 2022 Feb 28;23(1):15. doi: 10.1186/s40360-022-00554-w. PMID: 35227329; PMCID: PMC8883647.
- 37) Dubey RK, Jackson EK. Estrogen-induced cardiorenal protection: potential cellular, biochemical, and molecular mechanisms. *Am J Physiol Renal Physiol.* 2001 Mar;280(3):365-88. doi: 10.1152/ajprenal.2001.280.3.F365. PMID: 11181399.
- 38) Monti DM, De Simone G, Langella E, Supuran CT, Di Fiore A, Monti SM. Insights into the role of reactive sulfhydryl groups of Carbonic Anhydrase III and VII during oxidative damage. *J Enzyme Inhib Med Chem.* 2017 Dec;32(1):5-12. doi: 10.1080/14756366.2016.1225046. Epub 2016 Oct 21. PMID: 27766895; PMCID: PMC6010095.
- 39) Hopenhayn-Rich C, Biggs ML, Smith AH, Kalman DA, Moore LE. Methylation study of a population environmentally exposed to arsenic in drinking water. *Environ Health Perspect.* 1996 Jun;104(6):620-28. doi: 10.1289/ehp.96104620. PMID: 8793350; PMCID: PMC1469390.
- 40) García-Alvarado FJ, Neri-Meléndez H, Pérez Armendáriz L, Rivera Guillen M. Polimorfismos del gen Arsénico 3 Metiltransferasa (As3MT) y la eficiencia urinaria del metabolismo del arsénico en una población del norte de México [Polymorphisms of the Arsenite Methyltransferase (As3MT) gene and urinary efficiency of arsenic metabolism in a population in northern Mexico]. *Rev Peru Med Exp Salud Publica.* 2018 Jan-Mar;35(1):72-76. Spanish. doi: 10.17843/rpmesp.2018.351.3565. PMID: 29924282.
- 41) Torres-Sánchez L, López-Carrillo L, Rosado JL, Rodríguez VM, Vera-Aguilar E, Kordas K, García-Vargas GG, Cebrian ME. Sex differences in the reduction of arsenic methylation capacity as a function of urinary total and inorganic arsenic in Mexican children. *Environ Res.* 2016 Nov;151:38-43. doi: 10.1016/j.envres.2016.07.020. Epub 2016 Jul 21. PMID: 27450997.
- 42) Hsueh YM, Huang YL, Huang CC, Wu WL, Chen HM, Yang MH, Lue LC, Chen CJ. Urinary levels of inorganic and organic arsenic metabolites among residents in an arseniasis-hyperendemic area in Taiwan. *J Toxicol Environ Health A.* 1998 Jul 24;54(6):431-44. doi: 10.1080/009841098158728. PMID: 9661909.
- 43) Loffredo CA, Aposhian HV, Cebrian ME, Yamauchi H, Silbergeld EK. Variability in human metabolism of arsenic. *Environ Res.* 2003 Jun;92(2):85-91. doi: 10.1016/s0013-9351(02)00081-6. PMID: 12854687.

44) Bulka CM, Mabila SL, Lash JP, Turyk ME, Argos M. Arsenic and Obesity: A Comparison of Urine Dilution Adjustment Methods. *Environ Health Perspect.* 2017 Aug 28;125(8):087020. doi: 10.1289/EHP1202. PMID: 28858828; PMCID: PMC5783631.

45) Veiras LC, Girardi ACC, Curry J, Pei L, Ralph DL, et.al. Sexual Dimorphic Pattern of Renal Transporters and Electrolyte Homeostasis. *J Am Soc Nephrol.* 2017 Dec;28(12):3504-3517. doi: 10.1681/ASN.2017030295. Epub 2017 Aug 3. PMID: 28774999; PMCID: PMC5698077.

46) Prasad N, Bhadauria D. Renal phosphate handling: Physiology. *Indian J Endocrinol Metab.* 2013 Jul;17(4):620-7. doi: 10.4103/2230-8210.113752. PMID: 23961477; PMCID: PMC3743361.

47) Hughes MF. Arsenic toxicity and potential mechanisms of action. *Toxicol Lett.* 2002 Jul 7;133(1):1-16. doi: 10.1016/s0378-4274(02)00084-x. PMID: 12076506.

48) Rosen BP, Liu Z. Transport pathways for arsenic and selenium: a minireview. *Environ Int.* 2009 Apr;35(3):512-5. doi: 10.1016/j.envint.2008.07.023. Epub 2008 Sep 11. PMID: 18789529; PMCID: PMC2719050.

49) Roswall N, Hvidtfeldt UA, Harrington J, Levine KE, Sørensen M, Tjønneland A, Meliker JR, Raaschou-Nielsen O. Predictors of Urinary Arsenic Levels among Postmenopausal Danish Women. *Int J Environ Res Public Health.* 2018;15(7):1340. doi: 10.3390/ijerph15071340.

50) Sumien N, Shetty RA, Gonzales EB. Creatine, creatine kinase, and aging. In: Harris J, Korolchuk V, editors. *Biochemistry and cell biology of ageing: Part I biomedical science.* Subcell Biochem. 2018;90:145-168. doi: 10.1007/978-981-13-2835-0\_6.

51) James GD, Sealey JE, Alderman M, Ljungman S, Mueller FB, Pecker MS, Laragh JH. A longitudinal study of urinary creatinine and creatinine clearance in normal subjects. Race, sex, and age differences. *Am J Hypertens.* 1988 Apr;1(2):124-31. doi: 10.1093/ajh/1.2.124. PMID: 3401350.

52) Ehlert AM, Wilson PB. The associations between body mass index, estimated lean body mass, and urinary hydration markers at the population level. *Meas Phys Educ Exerc Sci.* 2020;25(2):163-170. doi: 10.1080/1091367X.2020.1858300.

53) Koek WNH, Campos-Obando N, van der Eerden BCJ, et.al. Age-dependent sex differences in calcium and phosphate homeostasis. *Endocr Connect.* 2021 Mar;10(3):273-282. doi: 10.1530/EC-20-0509. PMID: 33543729; PMCID: PMC8052581.

54) Cirillo M, Bilancio G, Marcarelli F. Ageing and changes in phosphate transport: clinical implications. *J Nephrol.* 2010 Nov-Dec;23 Suppl 16:S152-7. PMID: 21170873.

55) Hudgens EE, Drobna Z, He B, Le XC, Styblo M, Rogers J, Thomas DJ. Biological and behavioral factors modify urinary arsenic metabolic profiles in a U.S. population. *Environ Health.* 2016 May 26;15(1):62. doi: 10.1186/s12940-016-0144-x. PMID: 27230915; PMCID: PMC4880853.

- 56) Buchanan S, Combet E, Stenvinkel P, Shiels PG. Klotho, Aging, and the Failing Kidney. *Front Endocrinol (Lausanne)*. 2020 Aug 27;11:560. doi: 10.3389/fendo.2020.00560. PMID: 32982966; PMCID: PMC7481361.
- 57) Charbonneau A, Leclerc M, Brunette MG. Effect of angiotensin II on calcium reabsorption by the luminal membranes of the nephron. *Am J Physiol Endocrinol Metab*. 2001 Jun;280(6):E928-36. doi: 10.1152/ajpendo.2001.280.6.E928. PMID: 11350774.
- 58) Hanouna G, Haymann JP, Baud L, Letavernier E. Vasopressin regulates renal calcium excretion in humans. *Physiol Rep*. 2015 Nov;3(11):e12562. doi: 10.14814/phy2.12562. PMID: 26620256; PMCID: PMC4673622.
- 59) Orr SE, Bridges CC. Chronic Kidney Disease and Exposure to Nephrotoxic Metals. *International Journal of Molecular Sciences*. 2017; 18(5):1039. <https://doi.org/10.3390/ijms18051039>.
- 60) Peters BA, Hall MN, Liu X, Slavkovich V, Ilievski V, Alam S, Siddique AB, Islam T, Graziano JH, Gamble MV. Renal function is associated with indicators of arsenic methylation capacity in Bangladeshi adults. *Environ Res*. 2015 Nov;143(Pt A):123-30. doi: 10.1016/j.envres.2015.10.001. Epub 2015 Oct 19. PMID: 26476787; PMCID: PMC4740972.
- 61) Zheng LY, Umans JG, Yeh F, Francesconi KA, Goessler W, Silbergeld EK, Bandeen-Roche K, Guallar E, Howard BV, Weaver VM, Navas-Acien A. The association of urine arsenic with prevalent and incident chronic kidney disease: evidence from the Strong Heart Study. *Epidemiology*. 2015 Jul;26(4):601-12. doi: 10.1097/EDE.0000000000000313. PMID: 25929811; PMCID: PMC4844343.
- 62) Zheng L, Kuo CC, Fadrowski J, Agnew J, Weaver VM, Navas-Acien A. Arsenic and Chronic Kidney Disease: A Systematic Review. *Curr Environ Health Rep*. 2014 Sep 1;1(3):192-207. doi: 10.1007/s40572-014-0024-x. PMID: 25221743; PMCID: PMC4159179.
- 63) Hsueh YM, Chung CJ, Shiue HS, et al. Urinary arsenic species and CKD in a Taiwanese population: a case-control study. *Am J Kidney Dis*. 2009 Nov;54(5):859-70. doi: 10.1053/j.ajkd.2009.06.016. Epub 2009 Aug 14. PMID: 19682779.
- 64) Meng J, Ohlsson C, Laughlin GA, Chonchol M, Wassel CL, Ljunggren O, Karlsson MK, Mellstrom D, Orwoll ES, Barrett-Connor E, Ix JH; Osteoporotic Fractures in Men (MrOs) Study Group. Associations of estradiol and testosterone with serum phosphorus in older men: the Osteoporotic Fractures in Men study. *Kidney Int*. 2010 Aug;78(4):415-22. doi: 10.1038/ki.2010.161. Epub 2010 Jun 9. PMID: 20531458; PMCID: PMC3787687.
- 65) Rowe JW, Andres R, Tobin JD, Norris AH, Shock NW. The effect of age on creatinine clearance in men: a cross-sectional and longitudinal study. *J Gerontol*. 1976 Mar;31(2):155-63. doi: 10.1093/geronj/31.2.155. PMID: 1249404.
- 66) Weinstein JR, Anderson S. The aging kidney: physiological changes. *Adv Chronic Kidney Dis*. 2010 Jul;17(4):302-7. doi: 10.1053/j.ackd.2010.05.002. PMID: 20610357; PMCID: PMC2901622.



- 67) Schmitt R, Melk A. Molecular mechanisms of renal aging. *Kidney Int.* 2017 Sep;92(3):569-579. doi: 10.1016/j.kint.2017.02.036. Epub 2017 Jul 18. PMID: 28729036.
- 68) Glasscock RJ, Rule AD. The implications of anatomical and functional changes of the aging kidney: with an emphasis on the glomeruli. *Kidney Int.* 2012 Aug;82(3):270-7. doi: 10.1038/ki.2012.65. Epub 2012 Mar 21. PMID: 22437416; PMCID: PMC3513938.
- 69) Martin JE, Sheaff MT. Renal ageing. *J Pathol.* 2007 Jan;211(2):198-205. doi: 10.1002/path.2111. PMID: 17200944.
- 70) Torres VE. Vasopressin in chronic kidney disease: an elephant in the room? *Kidney Int.* 2009 Nov;76(9):925-8. doi: 10.1038/ki.2009.325. PMID: 19829311; PMCID: PMC2925670.
- 71) Melsom T, Norvik JV, Enoksen IT, Stefansson V, Mathisen UD, Fuskevåg OM, Jenssen TG, Solbu MD, Eriksen BO. Sex Differences in Age-Related Loss of Kidney Function. *J Am Soc Nephrol.* 2022 Oct;33(10):1891-1902. doi: 10.1681/ASN.2022030323. Epub 2022 Aug 17. PMID: 35977806; PMCID: PMC9528336.
- 72) Hoang K, Tan JC, Derby G, Blouch KL, Masek M, Ma I, Lemley KV, Myers BD. Determinants of glomerular hypofiltration in aging humans. *Kidney Int.* 2003 Oct;64(4):1417-24. doi: 10.1046/j.1523-1755.2003.00207.x. PMID: 12969161.
- 73) Maas AH, Appelman YE. Gender differences in coronary heart disease. *Neth Heart J.* 2010 Dec;18(12):598-602. doi: 10.1007/s12471-010-0841-y. PMID: 21301622; PMCID: PMC3018605.
- 74) Towfighi A, Zheng L, Ovbiagele B. Sex-specific trends in midlife coronary heart disease risk and prevalence. *Arch Intern Med.* 2009 Oct 26;169(19):1762-6. doi: 10.1001/archinternmed.2009.318. PMID: 19858433.
- 75) Man JJ, Beckman JA, Jaffe IZ. Sex as a Biological Variable in Atherosclerosis. *Circ Res.* 2020 Apr 24;126(9):1297-1319. doi: 10.1161/CIRCRESAHA.120.315930. Epub 2020 Apr 23. PMID: 32324497; PMCID: PMC7185045.
- 76) Vakhtangadze T, Singh Tak R, Singh U, Baig MS, Bezsonov E. Gender Differences in Atherosclerotic Vascular Disease: From Lipids to Clinical Outcomes. *Front Cardiovasc Med.* 2021 Jun 28;8:707889. doi: 10.3389/fcvm.2021.707889. PMID: 34262956; PMCID: PMC8273377.
- 77) Berg UB. Differences in decline in GFR with age between males and females. Reference data on clearances of inulin and PAH in potential kidney donors. *Nephrol Dial Transplant.* 2006 Sep;21(9):2577-82. doi: 10.1093/ndt/gfl227. Epub 2006 May 23. PMID: 16720595.
- 78) Melsom T, Norvik JV, Enoksen IT, Stefansson V, Mathisen UD, Fuskevåg OM, Jenssen TG, Solbu MD, Eriksen BO. Sex Differences in Age-Related Loss of Kidney Function. *J Am Soc Nephrol.* 2022 Oct;33(10):1891-1902. doi: 10.1681/ASN.2022030323. Epub 2022 Aug 17. PMID: 35977806; PMCID: PMC9528336.

79) Wiggins JE, Goyal M, Sanden SK, Wharram BL, Shedden KA, Misesk DE, Kuick RD, Wiggins RC. Podocyte hypertrophy, "adaptation," and "decompensation" associated with glomerular enlargement and glomerulosclerosis in the aging rat: prevention by calorie restriction. *J Am Soc Nephrol*. 2005 Oct;16(10):2953-66. doi: 10.1681/ASN.2005050488. Epub 2005 Aug 24. PMID: 16120818.

80) Musso CG, Macías-Núñez JF. Dysfunction of the thick loop of Henle and senescence: from molecular biology to clinical geriatrics. *Int Urol Nephrol*. 2011 Mar;43(1):249-52. doi: 10.1007/s11255-010-9783-y. Epub 2010 Nov 12. PMID: 21072593.

81) O'Sullivan ED, Hughes J, Ferenbach DA. Renal Aging: Causes and Consequences. *J Am Soc Nephrol*. 2017 Feb;28(2):407-20. doi: 10.1681/ASN.2015121308. Epub 2016 Nov 15. PMID: 28143966; PMCID: PMC5280008.

82) Chade AR. Renal vascular structure and rarefaction. *Compr Physiol*. 2013 Apr;3(2):817-31. doi: 10.1002/cphy.c120012. PMID: 23720331; PMCID: PMC3936257.

83) Usberti M, Federico S, Di Minno G, Ungaro B, Ardillo G, Pecoraro C, Cianciaruso B, Cerbone AM, Cirillo F, Pannain M, et al. Effects of angiotensin II on plasma ADH, prostaglandin synthesis, and water excretion in normal humans. *Am J Physiol*. 1985 Feb;248(2 Pt 2):254-59. doi: 10.1152/ajprenal.1985.248.2.F254. PMID: 3881995.

84) Clark CM, Monahan KD, Drew RC. Aging augments renal vasoconstrictor response to orthostatic stress in humans. *Am J Physiol Regul Integr Comp Physiol*. 2015 Dec 15;309(12):R1474-8. doi: 10.1152/ajpregu.00291.2015. Epub 2015 Oct 14. PMID: 26468259; PMCID: PMC4698412.

85) Patel HM, Mast JL, Sinoway LI, Muller MD. Effect of healthy aging on renal vascular responses to local cooling and apnea. *J Appl Physiol* (1985). 2013 Jul 1;115(1):90-6. doi: 10.1152/jappphysiol.00089.2013. Epub 2013 May 2. PMID: 23640587; PMCID: PMC3727011.

86) Baylis C. Sexual dimorphism in the aging kidney: differences in the nitric oxide system. *Nat Rev Nephrol*. 2009 Jul;5(7):384-96. doi: 10.1038/nrneph.2009.90. Epub 2009 Jun 2. PMID: 19488070.

87) Rule AD, Bailey KR, Lieske JC, Peyser PA, Turner ST. Estimating the glomerular filtration rate from serum creatinine is better than from cystatin C for evaluating risk factors associated with chronic kidney disease. *Kidney Int*. 2013 Jun;83(6):1169-76. doi: 10.1038/ki.2013.7. Epub 2013 Feb 20. Erratum in: *Kidney Int*. 2013 Aug;84(2):419. PMID: 23423253; PMCID: PMC3661736.

88) Kile ML, Hoffman E, Hsueh Y-M, Afroz S, Quamruzzaman Q, Rahman M, Mahiuddin G, Ryan LM, and Christiani DC. Variability in Biomarkers of Arsenic Exposure and Metabolism in Adults over Time. *Environmental Health Perspectives* 117 (2009):455-60. DOI:10.1289/ehp.11251. PMID: 15577230.

- 89) Chowdhury UK, Rahman MM, Sengupta MK, Lodh D, Chanda CR, Roy S, Quamruzzaman Q, Tokunaga H, Ando M, Chakraborti D. Pattern of excretion of arsenic compounds [arsenite, arsenate, MMA(V), DMA(V)] in urine of children compared to adults from an arsenic exposed area in Bangladesh. *J Environ Sci Health A Tox Hazard Subst Environ Eng*. 2003 Jan;38(1):87-113. doi: 10.1081/ese-120016883. PMID: 12635821.
- 90) Bae HS, Ryu DY, Choi BS, Park JD. Urinary Arsenic Concentrations and their Associated Factors in Korean Adults. *Toxicol. Res*. 2013;29(2): 137-42. doi: 10.5487/TR.2013.29.2.137.
- 91) Moriguchi J, Ezaki T, Tsukahara T, Furuki K, Fukui Y, Okamoto S, Ukai H, Sakurai H, Shimbo S, Ikeda M. Comparative evaluation of four urinary tubular dysfunction markers, with special references to the effects of aging and correction for creatinine concentration. *Toxicol Lett*. 2003 Aug 28;143(3):279-90. doi: 10.1016/s0378-4274(03)00181-4. PMID: 12849688.
- 92) Tan SJ, Smith ER, Hewitson TD, Holt SG, Toussaint ND. The importance of klotho in phosphate metabolism and kidney disease. *Nephrology (Carlton)*. 2014 Aug;19(8):439-49. doi: 10.1111/nep.12268. PMID: 24750549.
- 93) Torres PA, De Brauwere DP. Three feedback loops precisely regulating serum phosphate concentration. *Kidney Int*. 2011 Sep;80(5):443-5. doi: 10.1038/ki.2011.146. PMID: 21841832.
- 94) Behringer V, Stevens JMG, Deschner T, Sonnweber R, Hohmann G. Aging and sex affect soluble alpha klotho levels in bonobos and chimpanzees. *Front Zool*. 2018 Sep 19;15:35. doi: 10.1186/s12983-018-0282-9. PMID: 30250491; PMCID: PMC6146871.
- 95) Pedersen L, Pedersen SM, Brasen CL, Rasmussen LM. Soluble serum Klotho levels in healthy subjects. Comparison of two different immunoassays. *Clin Biochem*. 2013 Aug;46(12):1079-1083. doi: 10.1016/j.clinbiochem.2013.05.046. Epub 2013 May 23. PMID: 23707222.
- 96) Gkentzi D, Efthymiadou A, Kritikou D, Chrysis D. Fibroblast growth factor 23 and Klotho serum levels in healthy children. *Bone*. 2014 Sep;66:8-14. doi: 10.1016/j.bone.2014.05.012. Epub 2014 May 29. PMID: 24880094.
- 97) Zhang Z, Qiu S, Huang X, Jin K, Zhou X, Lin T, Zou X, Yang Q, Yang L, Wei Q. Association between testosterone and serum soluble  $\alpha$ -klotho in U.S. males: a cross-sectional study. *BMC Geriatr*. 2022 Jul 11;22(1):570. doi: 10.1186/s12877-022-03265-3. PMID: 35820842; PMCID: PMC9275159.
- 98) Ix JH, Chonchol M, Laughlin GA, Shlipak MG, Whooley MA. Relation of sex and estrogen therapy to serum fibroblast growth factor 23, serum phosphorus, and urine phosphorus: the Heart and Soul Study. *Am J Kidney Dis*. 2011 Nov;58(5):737-45. doi: 10.1053/j.ajkd.2011.06.011. Epub 2011 Aug 19. PMID: 21855188; PMCID: PMC3199317.
- 99) Chen K, Sun Z. Estrogen inhibits renal Na-Pi Co-transporters and improves klotho deficiency-induced acute heart failure. *Redox Biol*. 2021 Nov;47:102173. doi: 10.1016/j.redox.2021.102173. Epub 2021 Oct 18. PMID: 34678656; PMCID: PMC8577443.

100) Chen JW, Chen HY, Li WF, Liou SH, Chen CJ, Wu JH, Wang SL. The association between total urinary arsenic concentration and renal dysfunction in a community-based population from central Taiwan. *Chemosphere*. 2011 Jun;84(1):17-24. doi: 10.1016/j.chemosphere.2011.02.091. Epub 2011 Apr 1. PMID: 21458841.

101) Poręba R, Gać P, Poręba M, Antonowicz-Juchniewicz J, Andrzejak R. Relation between occupational exposure to lead, cadmium, arsenic and concentration of cystatin C. *Toxicology*. 2011 May 10;283(2-3):88-95. doi: 10.1016/j.tox.2011.02.008. Epub 2011 Feb 26. PMID: 21356263.

102) Meliker JR, Wahl RL, Cameron LL, Nriagu JO. Arsenic in drinking water and cerebrovascular disease, diabetes mellitus, and kidney disease in Michigan: a standardized mortality ratio analysis. *Environ Health*. 2007 Feb 2;6:4. doi: 10.1186/1476-069X-6-4. PMID: 17274811; PMCID: PMC1797014.

103) Tsai SM, Wang TN, Ko YC. Mortality for certain diseases in areas with high levels of arsenic in drinking water. *Arch Environ Health*. 1999 May-Jun;54(3):186-93. doi: 10.1080/00039899909602258. PMID: 10444040.

104) Zou D, Wu W, He Y, Ma S, Gao J. The role of klotho in chronic kidney disease. *BMC Nephrol*. 2018 Oct 22;19(1):285. doi: 10.1186/s12882-018-1094-z. PMID: 30348110; PMCID: PMC6198535.

105) Yoon HE, Ghee JY, Piao S, Song JH, Han DH, Kim S, Ohashi N, Kobori H, Kuro-o M, Yang CW. Angiotensin II blockade upregulates the expression of Klotho, the anti-ageing gene, in an experimental model of chronic cyclosporine nephropathy. *Nephrol Dial Transplant*. 2011 Mar;26(3):800-13. doi: 10.1093/ndt/gfq537. Epub 2010 Sep 2. PMID: 20813770; PMCID: PMC3108350.

106) Laffer CL, Elijovich F, Sahinoz M, Pitzer A, Kirabo A. New Insights Into the Renin-Angiotensin System in Chronic Kidney Disease. *Circ Res*. 2020 Aug 14;127(5):607-609. doi: 10.1161/CIRCRESAHA.120.317624. Epub 2020 Aug 13. PMID: 32790525; PMCID: PMC7430039.

107) Petrick JS, Ayala-Fierro F, Cullen WR, Carter DE, Vasken Aposhian H. Monomethylarsonous acid (MMA(III)) is more toxic than arsenite in Chang human hepatocytes. *Toxicol Appl Pharmacol*. 2000 Mar 1;163(2):203-7. doi: 10.1006/taap.1999.8872. PMID: 10698679.

108) Vahter M, Concha G. Role of Metabolism in Arsenic Toxicity. *Pharmacology & Toxicology*. 2001;89:1-5. <https://doi.org/10.1111/j.1600-0773.2001.890101.x>.

109) Stýblo M, Drobná Z, Jaspers I, Lin S, Thomas DJ. The role of biomethylation in toxicity and carcinogenicity of arsenic: a research update. *Environ Health Perspect*. 2002 Oct;110 Suppl 5(Suppl 5):767-71. doi: 10.1289/ehp.110-1241242. PMID: 12426129; PMCID: PMC1241242.

110) Steinmaus C, Yuan Y, Kalman D, Rey OA, Skibola CF, Dauphine D, Basu A, Porter KE, Hubbard A, Bates MN, Smith MT, Smith AH. Individual differences in arsenic metabolism and lung cancer in a case-control study in Cordoba, Argentina. *Toxicol Appl Pharmacol*. 2010 Sep 1;247(2):138-45. doi: 10.1016/j.taap.2010.06.006. Epub 2010 Jun 17. PMID: 20600216; PMCID: PMC3849353.

111) Drinking Water (Trinkwasser) from the website of Swiss Federal Food Safety and Veterinary Office (Bundesamt für Lebensmittelsicherheit und Veterinärwesen) <https://www.blv.admin.ch/blv/de/home/lebensmittel-und-ernaehrung/Lebensmittelsicherheit/verantwortlichkeiten/sicheres-trinkwasser.html>

112) Metals in groundwater in Austria– Maps and explanations (Metalle im Grundwasser in Österreich, Karten und Erläuterungen) from the website of the Austrian Ministry of Life (Lebensministerium.at) [https://info.bml.gv.at/dam/jcr:24b11c8f-fa52-4629-beac-f042da4db709/Metalle\\_im\\_Grundwasser\\_Karten\\_und\\_Erl%C3%A4uterungen.pdf](https://info.bml.gv.at/dam/jcr:24b11c8f-fa52-4629-beac-f042da4db709/Metalle_im_Grundwasser_Karten_und_Erl%C3%A4uterungen.pdf)

113) Ordinance on the quality of water intended for human consumption, Drinking Water Ordinance - TrinkwV (Verordnung über die Qualität von Wasser für den menschlichen Gebrauch, Trinkwasserverordnung - TrinkwV) from the website of the German Federal Office of Justice (Bundesamt für Justiz), [https://www.gesetze-im-internet.de/trinkwv\\_2023/anlage\\_2.html](https://www.gesetze-im-internet.de/trinkwv_2023/anlage_2.html)

114) National Research Council (US) Subcommittee on Arsenic in Drinking Water. Arsenic in Drinking Water. Washington (DC): National Academies Press (US); 1999. 6, Biomarkers of Arsenic Exposure. Available from: <https://www.ncbi.nlm.nih.gov/books/NBK230898/>

115) Nordberg GF, Fowler BA, Nordberg M, editors. Handbook on the Toxicology of Metals. 5th ed. Vol 2. Burlington, MA: Academic Press; 2022. ISBN: 9780128229460. <https://doi.org/10.1016/B978-0-12-822946-0.00037-4>.

116) Ellingsen DG, Weinbruch S, Sallsten G, Berlinger B, Barregard L. The variability of arsenic in blood and urine of humans. *J Trace Elem Med Biol*. 2023 Jul;78:127179. doi: 10.1016/j.jtemb.2023.127179. Epub 2023 May 3. PMID: 37148695.

117) National Research Council (US) Subcommittee on Arsenic in Drinking Water. Arsenic in Drinking Water. Washington (DC): National Academies Press (US); 1999. 6, Biomarkers of Arsenic Exposure. Available from: <https://www.ncbi.nlm.nih.gov/books/NBK230898/>

118) Lee DH, Keum N, Hu FB, Orav EJ, Rimm EB, Sun Q, Willett WC, Giovannucci EL. Development and validation of anthropometric prediction equations for lean body mass, fat mass and percent fat in adults using the National Health and Nutrition Examination Survey (NHANES) 1999-2006. *Br J Nutr*. 2017 Nov;118(10):858-866. doi: 10.1017/S0007114517002665. Epub 2017 Nov 7. PMID: 29110742.

119) Forni Ognà V, Ognà A, Vuistiner P, Pruijm M, Ponte B, Ackermann D, Gabutti L, Vakilzadeh N, Mohaupt M, Martin PY, Guessous I, Péchère-Bertschi A, Paccaud F, Bochud M, Burnier M; Swiss Survey on Salt Group. New anthropometry-based age- and sex-specific reference values for urinary 24-hour creatinine excretion based on the adult Swiss population. *BMC Med*. 2015 Feb 27;13:40. doi: 10.1186/s12916-015-0275-x. PMID: 25858764; PMCID: PMC4354997.

- 120) Orr SE, Bridges CC. Chronic Kidney Disease and Exposure to Nephrotoxic Metals. *International Journal of Molecular Sciences*. 2017; 18(5):1039. <https://doi.org/10.3390/ijms18051039>
- 121) Schäppi J, Stringhini S, Guessous I, Staub K, Matthes KL. Body height in adult women and men in a cross-sectional population-based survey in Geneva: temporal trends, association with general health status and height loss after age 50. *BMJ Open*. 2022 Jul 8;12(7):e059568. doi: 10.1136/bmjopen-2021-059568. PMID: 35803618; PMCID: PMC9272122.
- 122) Shen H, Niu Q, Xu M, Rui D, Xu S, Feng G, Ding Y, Li S, Jing M. Factors Affecting Arsenic Methylation in Arsenic-Exposed Humans: A Systematic Review and Meta-Analysis. *Int J Environ Res Public Health*. 2016 Feb 6;13(2):205. doi: 10.3390/ijerph13020205. PMID: 26861378; PMCID: PMC4772225.
- 123) Pandey R, Garg A, Gupta K, Shukla P, Mandrah K, Roy S, Chattopadhyay N, Bandyopadhyay S. Arsenic Induces Differential Neurotoxicity in Male, Female, and E2-Deficient Females: Comparative Effects on Hippocampal Neurons and Cognition in Adult Rats. *Mol Neurobiol*. 2022 May;59(5):2729-2744. doi: 10.1007/s12035-022-02770-1. Epub 2022 Feb 17. PMID: 35175559.
- 124) Chang LZ, Sheng S, Zhe Z, Xiaoxiao S, Qing J. Study on the relationship between age and the concentrations of heavy metal elements in human bone. *Ann Transl Med*. 2018;6(16):320. doi: 10.21037/atm.2018.08.09. PMCID: PMC6186975; PMID: 30363972.
- 125) Ayla Akbal, Hınç Yılmaz & Engin Tutkun (2014) Arsenic exposure associated with decreased bone mineralization in male, *The Aging Male*, 17:4, 256-258. doi: 10.3109/13685538.2013.819326.
- 126) Chang LZ, Sheng S, Zhe Z, Xiaoxiao S, Qing J. Study on the relationship between age and the concentrations of heavy metal elements in human bone. *Ann Transl Med*. 2018;6(16):320. doi: 10.21037/atm.2018.08.09. PMCID: PMC6186975; PMID: 30363972.
- 127) Qi Y, Goel R, Kim S, Richards EM, Carter CS, Pepine CJ, Raizada MK, Buford TW. Intestinal Permeability Biomarker Zonulin is Elevated in Healthy Aging. *J Am Med Dir Assoc*. 2017 Sep 1;18(9):810.e1-810.e4. doi: 10.1016/j.jamda.2017.05.018. Epub 2017 Jul 1. PMID: 28676292; PMCID: PMC5581307.
- 128) Jansen RJ, Argos M, Tong L, Li J, Rakibuz-Zaman M, Islam MT, Slavkovich V, Ahmed A, Navas-Acien A, Parvez F, Chen Y, Gamble MV, Graziano JH, Pierce BL, Ahsan H. Determinants and Consequences of Arsenic Metabolism Efficiency among 4,794 Individuals: Demographics, Lifestyle, Genetics, and Toxicity. *Cancer Epidemiol Biomarkers Prev*. 2016 Feb;25(2):381-90. doi:10.1158/1055-9965.EPI-15-0718. Epub 2015 Dec 16. PMID: 26677206; PMCID: PMC4767610.
- 129) Tseng CH. A review on environmental factors regulating arsenic methylation in humans. *Toxicol Appl Pharmacol*. 2009 Mar 15;235(3):338-50. doi: 10.1016/j.taap.2008.12.016. Epub 2008 Dec 30. PMID: 19168087.

- 130) Mavani GP, DeVita MV, Michelis MF. A review of the nonpressor and nonantidiuretic actions of the hormone vasopressin. *Front Med (Lausanne)*. 2015 Mar 24;2:19. doi: 10.3389/fmed.2015.00019. PMID: 25853137; PMCID: PMC4371647.
- 131) Tang C, Pathare G, Michael D, Fajol A, Eichenmüller M, Lang F. Downregulation of *klotho* expression by dehydration. *Am J Physiol Renal Physiol*. 2011; 301(4):F745–50. doi: 10.1152/ajprenal.00037.2011.
- 132) Kale A, Sankrityayan H, Anders HJ, Gaikwad AB. *Klotho* in kidney diseases: a crosstalk between the renin-angiotensin system and endoplasmic reticulum stress. *Nephrol Dial Transplant*. 2023 Mar 31;38(4):819-825. doi: 10.1093/ndt/gfab340. PMID: 34850136.
- 133) Johnson AG, Crawford GA, Kelly D, Nguyen TV, Gyory AZ. Arginine vasopressin and osmolality in the elderly. *J Am Geriatr Soc*. 1994 Apr;42(4):399-404. doi: 10.1111/j.1532-5415.1994.tb07488.x. PMID: 8144825.
- 134) Yoon HE, Choi BS. The renin-angiotensin system and aging in the kidney. *Korean J Intern Med*. 2014 May;29(3):291-5. doi: 10.3904/kjim.2014.29.3.291. Epub 2014 Apr 29. PMID: 24851061; PMCID: PMC4028516.
- 135) Phillips PA, Rolls BJ, Ledingham JG, Forsling ML, Morton JJ, Crowe MJ, Wollner L. Reduced thirst after water deprivation in healthy elderly men. *N Engl J Med*. 1984 Sep 20;311(12):753-9. doi: 10.1056/NEJM198409203111202. PMID: 6472364.
- 136) Ansari A, Walton SL, Denton KM. Sex- and age-related differences in renal and cardiac injury and senescence in stroke-prone spontaneously hypertensive rats. *Biol Sex Differ*. 2023 May 22;14(1):33. doi: 10.1186/s13293-023-00519-6. PMID: 37217968; PMCID: PMC10201739.
- 137) Menendez-Castro C, Cordasic N, Fahlbusch FB, Woelfle J, Hilgers KF, Hartner A. Sex differences in long-term kidney fibrosis following neonatal nephron loss during ongoing nephrogenesis. *Mol Cell Pediatr*. 2023 Aug 25;10(1):8. doi: 10.1186/s40348-023-00164-4. PMID: 37624430; PMCID: PMC10457250.
- 138) Garate-Carrillo A, Gonzalez J, Ceballos G, Ramirez-Sanchez I, Villarreal F. Sex related differences in the pathogenesis of organ fibrosis. *Transl Res*. 2020 Aug;222:41-55. doi: 10.1016/j.trsl.2020.03.008. Epub 2020 Mar 16. PMID: 32289256; PMCID: PMC7721117.
- 139) Bajwa S, Luebbe A, Vo NDN, Piskor EM, Kosan C, Wolf G, Loeffler I. RAGE is a critical factor of sex-based differences in age-induced kidney damage. *Front Physiol*. 2023 Mar 29;14:1154551. doi: 10.3389/fphys.2023.1154551. PMID: 37064891; PMCID: PMC10090518.
- 140) Birder LA, Wolf-Johnston AS, Jackson EK, Wein AJ, Dmochowski R. Aging increases the expression of vasopressin receptors in both the kidney and urinary bladder. *Neurourol Urodyn*. 2019 Jan;38(1):393-397. doi: 10.1002/nau.23830. Epub 2018 Oct 12. PMID: 30311671; PMCID: PMC9839378.
- 141) Smith HW, Finkelstein RP. The renal clearances of substances contained in blood. *J Biol Chem*. 1940;133:1-16.

- 142) Kaise T, Fukui S. The chemical form and acute toxicity of arsenic compounds in marine organisms. *Applied Organometallic Chemistry*. 1992; 6(2):155-160. doi: 10.1002/aoc.590060209.
- 143) Tchounwou PB, Centeno JA, Patlolla AK. Arsenic toxicity, mutagenesis, and carcinogenesis—a health risk assessment and management approach. *Mol Cell Biochem*. 2004 Jan;255(1-2):47-55. doi: 10.1023/b:mcbi.0000007260.32981.b9. PMID: 14971645.
- 144) Le XC, Cullen WR, Reimer KJ. Human urinary arsenic excretion after one-time ingestion of seaweed, crab, and shrimp. *Clin Chem*. 1994 Apr;40(4):617-24. PMID: 8149620.
- 145) Sica DA. Sodium and water retention in heart failure and diuretic therapy: basic mechanisms. *Cleve Clin J Med*. 2006 Jun;73 Suppl 2:S2-7; discussion S30-3. doi: 10.3949/ccjm.73.suppl\_2.s2. PMID: 16786906.
- 146) Wang P, Ouyang J, Jia Z, Zhang A, Yang Y. Roles of DNA damage in renal tubular epithelial cells injury. *Front Physiol*. 2023 Apr 6;14:1162546. doi: 10.3389/fphys.2023.1162546. PMID: 37089416; PMCID: PMC10117683.
- 147) Dalal R, Bruss ZS, Sehdev JS. Physiology, Renal Blood Flow and Filtration. [Updated 2022 Jul 25]. In: StatPearls [Internet]. Treasure Island (FL): StatPearls Publishing; 2023 Jan. Available from: <https://www.ncbi.nlm.nih.gov/books/NBK482248/>.
- 148) Denton KM, Fennessy PA, Alcorn D, Anderson WP. Morphometric analysis of the actions of angiotensin II on renal arterioles and glomeruli. *Am J Physiol*. 1992 Mar; 262(3 Pt 2):F367-72. doi: 10.1152/ajprenal.1992.262.3.F367. PMID: 1558155.
- 149) Shemesh O, Golbetz H, Kriss JP, Myers BD. Limitations of creatinine as a filtration marker in glomerulopathic patients. *Kidney Int*. 1985 Nov;28(5):830-8. doi: 10.1038/ki.1985.205. PMID: 2418254.
- 150) Tsuda A, Ishimura E, Machiba Y, Uedono H, Nakatani S, Mori K, Uchida J, Emoto M: Increased Glomerular Hydrostatic Pressure is Associated with Tubular Creatinine Reabsorption in Healthy Subjects. *Kidney Blood Press Res* 2020;45:996-1008. doi:10.1159/000510838.
- 151) Ginsburg JM. The renal mechanism for excretion and transformation of arsenic in the dog. *Am J Physiol*. 1965 May;208:832-40. doi: 10.1152/ajplegacy.1965.208.5.832. PMID: 14286849.
- 152) Barr DB, Wilder LC, Caudill SP, Gonzalez AJ, Needham LL, Pirkle JL. Urinary creatinine concentrations in the U.S. population: implications for urinary biologic monitoring measurements. *Environmental health perspectives*. 2005;113:192-200. doi: 10.1289/ehp.7337.
- 153) Worcester EM, Bergsland KJ, Gillen DL, Coe FL. Mechanism for higher urine pH in normal women compared with men. *Am J Physiol Renal Physiol*. 2018 Apr 1;314(4):F623-F629. doi: 10.1152/ajprenal.00494.2017. Epub 2017 Dec 20. PMID: 29357436; PMCID: PMC5966764.



- 154) Menezes CJ, Worcester EM, Coe FL, Asplin J, Bergsland KJ, Ko B. Mechanisms for falling urine pH with age in stone formers. *Am J Physiol Renal Physiol*. 2019 Jul 1;317(7):F65-F72. doi: 10.1152/ajprenal.00066.2019. Epub 2019 Apr 24. PMID: 31017011; PMCID: PMC6692718.
- 155) Suzuki S, Yoshida J, Takahashi T. Effect of testosterone on carbonic anhydrase and MG(2+)-dependent HCO<sub>3</sub>-stimulated ATPase activities in rat kidney: comparison with estradiol effect. *Comp Biochem Physiol C Pharmacol Toxicol Endocrinol*. 1996 Jun; 114(2):105-12. doi: 10.1016/0742-8413(96)00021-7. PMID: 8760605.
- 156) Toering TJ, van der Graaf AM, Visser FW, Buikema H, Navis G, Faas MM, Lely AT. Gender differences in response to acute and chronic angiotensin II infusion: a translational approach. *Physiol Rep*. 2015 Jul;3(7):e12434. doi: 10.14814/phy2.12434. PMID: 26149279; PMCID: PMC4552520.
- 157) Eloy L, Grünfeld JP, Bayle F, Bankir L, Ramos-Frendo B, Trinh-Trang-Tan MM. Papillary plasma flow in rats. II. Hormonal control. *Pflugers Arch*. 1983 Aug;398(3):253-8. doi: 10.1007/BF00657161. PMID: 6356035.
- 158) Lote CJ. Renal prostaglandins and sodium excretion. *Q J Exp Physiol*. 1982 Jul;67(3):377-85. doi: 10.1113/expphysiol.1982.sp002652. PMID: 7051084.
- 159) Parekh N, Zou AP, Jüngling I, Endlich K, Sadowski J, Steinhausen M. Sex differences in control of renal outer medullary circulation in rats: role of prostaglandins. *Am J Physiol*. 1993 Apr;264(4 Pt 2): F629-36. doi: 10.1152/ajprenal.1993.264.4.F629. PMID: 8476076.
- 160) Ho LL, Kench JG, Handelsman DJ, Scheffer GL, Stricker PD, Grygiel JG, Sutherland RL, Henshall SM, Allen JD, Horvath LG. Androgen regulation of multidrug resistance-associated protein 4 (MRP4/ABCC4) in prostate cancer. *Prostate*. 2008 Sep 15;68(13):1421-9. doi: 10.1002/pros.20809. PMID: 18615486.
- 161) Huang YT, Zhou J, Shi S, Xu HY, Qu F, Zhang D, Chen YD, Yang J, Huang HF, Sheng JZ. Identification of Estrogen Response Element in Aquaporin-3 Gene that Mediates Estrogen-induced Cell Migration and Invasion in Estrogen Receptor-positive Breast Cancer. *Sci Rep*. 2015 Jul 29;5:12484. doi: 10.1038/srep12484. PMID: 26219409; PMCID: PMC4518221.
- 162) Dibas AI, Mia AJ, Yorio T. Aquaporins (water channels): role in vasopressin-activated water transport. *Proc Soc Exp Biol Med*. 1998 Dec;219(3):183-99. doi: 10.3181/00379727-219-44332. PMID: 9824541.
- 163) Hilliard LM, Nematbakhsh M, Kett MM, Teichman E, Sampson AK, Widdop RE, Evans RG, Denton KM. Gender differences in pressure-natriuresis and renal autoregulation: role of the Angiotensin type 2 receptor. *Hypertension*. 2011 Feb;57(2):275-82. doi: 10.1161/HYPERTENSIONAHA.110.166827. Epub 2010 Dec 28. PMID: 21189402.
- 164) Oelkers WKH, Effects of estrogens and progestogens on the renin-aldosterone system and blood pressure, *Steroids*, Volume 61, Issue 4, 1996, Pages 166-171, ISSN 0039-128X, [https://doi.org/10.1016/0039-128X\(96\)00007-4](https://doi.org/10.1016/0039-128X(96)00007-4).

165) Mishra JS, More AS, Gopalakrishnan K, Kumar S. Testosterone plays a permissive role in angiotensin II-induced hypertension and cardiac hypertrophy in male rats. *Biol Reprod.* 2019 Jan 1;100(1):139-148. doi: 10.1093/biolre/iory179. PMID: 30102356; PMCID: PMC6335213.

166) Zhang D, Maalouf NM, Adams-Huet B, Moe OW, Sakhaee K. Effects of sex and postmenopausal estrogen use on serum phosphorus levels: a cross-sectional study of the National Health and Nutrition Examination Survey (NHANES) 2003-2006. *Am J Kidney Dis.* 2014 Feb;63(2):198-205. doi: 10.1053/j.ajkd.2013.07.012. Epub 2013 Sep 17. PMID: 24051078.

167) Hamm LL, Simon EE. Roles and mechanisms of urinary buffer excretion. *Am J Physiol.* 1987 Oct;253(4 Pt 2): F595-605. doi: 10.1152/ajprenal.1987.253.4.F595. PMID: 3310662.

168) Elalouf JM, Roinel N, de Rouffignac C. Effects of antidiuretic hormone on electrolyte reabsorption and secretion in distal tubules of rat kidney. *Pflugers Arch.* 1984 Jun; 401(2): 167-73. doi: 10.1007/BF00583877. PMID: 6473069.

169) Faroqui S, Levi M, Soleimani M, Amlal H. Estrogen downregulates the proximal tubule type IIa sodium phosphate cotransporter causing phosphate wasting and hypophosphatemia. *Kidney Int.* 2008 May;73(10):1141-50. doi: 10.1038/ki.2008.33. Epub 2008 Feb 27. PMID: 18305465; PMCID: PMC2738940.

170) Everitt AV. The Urinary Excretion of Chloride, Phosphate, and Pigment in Ageing Male Rats. *Gerontologia* 1958;2:123–135.doi:10.1159/000210732.

171) de Borst MH, Vervloet MG, ter Wee PM, Navis G. Cross talk between the renin-angiotensin-aldosterone system and vitamin D-FGF-23-klotho in chronic kidney disease. *J Am Soc Nephrol.* 2011 Sep;22(9):1603-9. doi: 10.1681/ASN.2010121251. Epub 2011 Aug 18. PMID: 21852584; PMCID: PMC3171931.

172) Macova M, Armando I, Zhou J, Baiardi G, Tyurmin D, Larrayoz-Roldan IM, Saavedra JM. Estrogen reduces aldosterone, upregulates adrenal angiotensin II AT2 receptors and normalizes adrenomedullary Fra-2 in ovariectomized rats. *Neuroendocrinology.* 2008;88(4):276-86. doi: 10.1159/000150977. Epub 2008 Aug 4. PMID: 18679017; PMCID: PMC2677380.

173) Usberti M, Federico S, Di Minno G, et al. Effects of angiotensin II on plasma ADH, prostaglandin synthesis, and water excretion in normal humans. *Am J Physiol.* 1985 Feb;248(2 Pt 2):F254-9. doi: 10.1152/ajprenal.1985.248.2.F254. PMID: 3881995.

174) Maranduca MA, Clim A, Pinzariu AC, Statescu C, Sascau RA, Tanase DM, Serban DN, Branisteanu DC, Branisteanu DE, Huzum B, Serban IL. Role of arterial hypertension and angiotensin II in chronic kidney disease (Review). *Exp Ther Med.* 2023 Feb 16;25(4):153. doi: 10.3892/etm.2023.11852. PMID: 36911375; PMCID: PMC9996360.

175) Qadri F, Culman J, Veltmar A, Maas K, Rascher W, Unger T. Angiotensin II-induced vasopressin release is mediated through alpha-1 adrenoceptors and angiotensin II AT1 receptors in the supraoptic nucleus. *J Pharmacol Exp Ther.* 1993 Nov;267(2):567-74. PMID: 8246129.

176) Navar LG. Intrarenal renin-angiotensin system in regulation of glomerular function. *Curr Opin Nephrol Hypertens*. 2014 Jan;23(1):38-45. doi: 10.1097/01.mnh.0000436544.86508.f1. PMID: 24275770; PMCID: PMC3982859.

177) Torres-Pinzon DL, Ralph DL, Veiras LC, McDonough AA. Sex-specific adaptations to high-salt diet preserve electrolyte homeostasis with distinct sodium transporter profiles. *Am J Physiol Cell Physiol*. 2021 Nov 1;321(5):C897-C909. doi: 10.1152/ajpcell.00282.2021. Epub 2021 Oct 6. PMID: 34613843; PMCID: PMC8616593.

178) Pan PP, Zhan QT, Le F, Zheng YM, Jin F. Angiotensin-converting enzymes play a dominant role in fertility. *Int J Mol Sci*. 2013 Oct 21;14(10):21071-86. doi: 10.3390/ijms141021071. PMID: 24152441; PMCID: PMC3821659.

179) Wang K, Kestenbaum B. Proximal Tubular Secretory Clearance: A Neglected Partner of Kidney Function. *Clin J Am Soc Nephrol*. 2018 Aug 7;13(8):1291-1296. doi: 10.2215/CJN.12001017. Epub 2018 Feb 28. PMID: 29490976; PMCID: PMC6086711.

180) Cowen LE, Hodak SP, Verbalis JG. Age-associated abnormalities of water homeostasis. *Endocrinol Metab Clin North Am*. 2013 Jun;42(2):349-70. doi: 10.1016/j.ecl.2013.02.005. Epub 2013 Apr 17. PMID: 23702406; PMCID: PMC3682932.

181) Kuro-O M. Phosphate and Klotho. *Kidney Int Suppl*. 2011 Apr;79(121):S20-3. doi: 10.1038/ki.2011.26. Epub 2011 Feb 23. PMID: 21346722; PMCID: PMC3260960.

182) Bachmann KN, Huang S, Lee H, Dichtel LE, Gupta DK, Burnett JC Jr, Miller KK, Wang TJ, Finkelstein JS. Effect of Testosterone on Natriuretic Peptide Levels. *J Am Coll Cardiol*. 2019 Mar 26;73(11):1288-1296. doi: 10.1016/j.jacc.2018.12.062. PMID: 30898204; PMCID: PMC6588352.

183) Carrivick SJ, Walsh JP, Brown SJ, Wardrop R, Hadlow NC. Brief report: Does PTH increase with age, independent of 25-hydroxyvitamin D, phosphate, renal function, and ionized calcium? *J Clin Endocrinol Metab*. 2015 May;100(5):2131-4. doi: 10.1210/jc.2014-4370. Epub 2015 Mar 9. PMID: 25751107.

184) Need AG, O'Loughlin PD, Morris HA, Horowitz M, Nordin BEC. The Effects of Age and Other Variables on Serum Parathyroid Hormone in Postmenopausal Women Attending an Osteoporosis Center. *The Journal of Clinical Endocrinology & Metabolism*. 2004 April 1;89(4):1646-49. doi.org/10.1210/jc.2003-031539.

185) Sharma S, Katz R, Dubin RF, Drew DA, Gutierrez OM, Shlipak MG, Sarnak MJ, Ix JH. FGF23 and Cause-Specific Mortality in Community-Living Individuals-The Health, Aging, and Body Composition Study. *J Am Geriatr Soc*. 2021 Mar;69(3):711-717. doi: 10.1111/jgs.16910. Epub 2020 Nov 10. PMID: 33170519; PMCID: PMC8175094.

186) Laffer CL, Eljovich F, Sahinoz M, Pitzer A, Kirabo A. New Insights into the Renin-Angiotensin System in Chronic Kidney Disease. *Circ Res*. 2020 Aug 14;127(5):607-609. doi: 10.1161/CIRCRESAHA.120.317624. Epub 2020 Aug 13. PMID: 32790525; PMCID: PMC7430039.

187) Tank JE, Vora JP, Houghton DC, Anderson S. Altered renal vascular responses in the aging rat kidney. *Am J Physiol.* 1994 Jun;266(6 Pt2):F942-8. doi: 10.1152/ajprenal.1994.266.6.F942. PMID: 8023973.

188) Perucca J, Bichet DG, Bardoux P, Bouby N, Bankir L. Sodium excretion in response to vasopressin and selective vasopressin receptor antagonists. *J Am Soc Nephrol.* 2008 Sep;19(9):1721-31. doi: 10.1681/ASN.2008010021. Epub 2008 Jul 2. PMID: 18596120; PMCID: PMC2518442.

189) Arruda JA, Stipanuk S, Walter R, Kurtzman NA. Effect of vasopressin administration on sodium excretion and plasma phosphate concentration. *Proc Soc Exp Biol Med.* 1977 Jul;155(3):308-13. doi: 10.3181/00379727-155-39796. PMID: 877126.

190) Tozuka K, Hara Y, Moriguchi H, Kikuchi T, Tokue A. [The role of urine pH in the occurrence of phosphaturia]. *Hinyokika Kiyo.* 1989 Sep;35(9):1475-8. Japanese. PMID: 2816612.

191) Sachse A, Wolf G. Angiotensin II-induced reactive oxygen species and the kidney. *J Am Soc Nephrol.* 2007 Sep;18(9):2439-46. doi: 10.1681/ASN.2007020149. Epub 2007 Aug 8. PMID: 17687073.

## 11. Supplementary Material

RENIN-ANGIOTENSIN-ALDOSTERONE SYSTEM (RAAS)	Female	Estrogen (E) / Progesterone (P) Effects	Male	Androgen Effects	References
Plasma Renin	↓	E ↓ P indirect (↑) via natriuresis	↑	↑	17, 18
Plasma Angiotensinogen	↑	↑	↑	?	17, 18
ACE Activity	ACE ↓, ACE2 ↑	E ACE ↓, ACE2 ↑ P (↑) Natriuresis	ACE ↑, ACE2 ↓	ACE ↑, ACE2 ↓	17, 18
Plasma Angiotensin II (ATII)	Physiological ↓ oral E/Anticonception: ↑	E ↓ (angiotensin (1-7) ↑) P ↑ indirect via Natriuresis <sup>a</sup>	↑	Angiotensin (1-7) ↓	17
Plasma Aldosterone (ALD)	high Na+ diet: ↓ low Na+ diet: —	endogenous E ↓ oral E ↑	high Na+ diet: ↑ low Na+ diet: —		18, 19
Adrenal ALD response to exogenous ATII	↑		↓		19
Angiotensin-Receptor AT1R/AT2R	E ↓ P ↑ (but no effect on BP)	E: Density AT1R ↓, AT2R ↑ P: AT1R-Density ↑	↑	AT2R-density ↓	17, 18, 156, 163, 165
Overall RAS activity	↓		↑	Renin ↑, ACE ↑	17, 18, 172
Effects of aging on RAAS	Plasma Renin ↓, ALD ↓, ATII ↓ → Na <sup>-</sup> conservation ↓ and urinary concentration ability ↓ → Hyponatremia, Hyperkalemia, Fluid imbalances Disruption of renal RAAS activity and responsiveness: hypersensitivity to Ang II → GFR ↓, RPF ↓, GCHP ↑, m-KL ↓ → Glomerular/Tubular damage/CKD SIRT1 in aging ↓ → AT1R expression in smooth muscle cells ↑ → Vasopressor Effects of ATII ↑ / Vascular remodelling/ Mitochondrial damage <b>Systemic:</b> Thirst/fluid intake ↑, RBF ↓, sympathetic activity ↑, systemic ABP ↑				134
Role of ATII / RAAS in CKD	<b>Glomerular:</b> 1) Initial stages of CKD: Vasoconstriction of afferent < efferent glomerular arteriole → GCHP ↑ → Hyperfiltration 2) Mesangial proliferation, podocyte impairment via AT1R activation by local Ang II → Proteinuria ↑, Glomerulosclerosis ↑ 3) Advanced stages of CKD: Chronic conditions like arterial hypertension, diabetes, CKD, CHD, toxic built up → Oxidative stress ↑ → ATII effect on afferent arteriole constriction ↑ → GFR ↓ <b>Tubular:</b> Na <sup>-</sup> /H <sub>2</sub> O-retention ↑ (mediated by ALD and modulated by hemodynamic changes in peritubular capillaries), uOsm ↓, induces Tubular cell hypertrophy, Oxidative stress, and Apoptosis. <b>Hormonal / Regulatory:</b> Klotho ↓, AVP release from HPA ↑, ALD ↑ <b>Pro-sclerotic/-oxidative/-inflammatory:</b> proinflammatory and profibrotic cytokine-like actions. Synergistic profibrotic effects of Renin and ALD → (TGF-β ↑); Ang II + TGF-β → Oxidative stress → Extracellular matrix synthesis ↑ / Matrix degradation ↓				105, 148, 173–176

<sup>a</sup> Ang II can conversely produce dose- and time-dependent stimulatory effects on progesterone secretion in human granulosa cells,<sup>17</sup> as ACEs and the RAAS in general play a pivotal role in fertility.<sup>177</sup>

### Supplement 1: Sex-differential hormonal regulation of osmo- and fluid balance by the Renin-Angiotensin-Aldosterone-System (RAAS).

VASOPRESSIN (AVP, ADH)/ NT-proBNP	Female	Estrogen/Progesterone Effects	Male	Androgen Effects	References
Osmotic threshold for AVP Release and thirst Homeostatic setpoint	Osmotic threshold ↓ → AVP release starts at lower pOsm		Osmotic threshold ↑ → AVP release starts at higher pOsm	?	8, 20–22, 25
Plasma AVP Slope (pAVP/pOsm ratio)	↓ lower AVP release on hyperosmolar stimulus	E: direct effect on pituitary/hypothalamus <sup>a</sup>	↑ higher AVP release on hyperosmolar stimulus	<b>direct:</b> steroid-responsive, AVP-immunoreactive neurons in limbic system ↑ <b>indirect:</b> BNP ↓ → AVP-Inhibition ↓	8, 21, 23, 24
Basal Plasma AVP	↓		↑		7, 10
Urine AVP	↓		↑		10
Renal AVP Responsiveness, AVP-induced antidiuresis	↓	E direct ↓: urine flow ↑, uOsm ↓ E indirect ↓: PG ↑, AT2R ↑, AQP ↓ P indirekt: competitive inhibition of ALD	↑ AVP-stimulation of cAMP ↑ Density of V2-Receptors (V2R) in CKD ↑	T increases renal AVP-Binding-sites (young-middle-aged)	7, 10, 22, 26, 27, 178
AVP V2 Receptor (V2R) density collecting duct	↓		↑		10
Renal AVP Clearance	↓		↑		10
Effect of aging on plasma AVP	↑ (↓) (inconclusive)		↑ (↓) (inconclusive)		179, 180
Effect of aging on renal AVP sensitivity	↓		↓		27, 180
Deleterious effects of AVP in CKD	AVP ↑ aggravates CKD by: 1. Vasoconstriction of afferent arterioles (V1a) + Na <sup>-</sup> /H <sub>2</sub> O-Retention (V2) → ABP ↑ → Glomerular damage & sclerosis ↑ 2. AVP → V2-R-stimulation ↑ (direct) + Na <sup>-</sup> -load to macula densa ↓ (indirect) → Renin ↑ → RAAS ↑ → Proteinuria + ABP ↑ 3. RAAS ↑ → Constriction of efferent arteriole → initial hyperfiltration (GFR ↑) → glomerular damage → Proteinuria + GFR ↓ 4. AVP ↑ (direct and indirect via ALD ↑) → Klotho ↓ → Vitamin 1,25D production ↑ → serum PO4 ↑ → Vascular calcification ↑ → Life span ↓				130, 131, 181
Plasma NT-proBNP	↑	E activates BNP, but T inhibition is crucial (also in women)	↓ (-40%)	Inhibit release	18, 28, 29, 182

<sup>a</sup> Estrogen elevates the number of AVP granules in the eminencia mediana<sup>25</sup> at the hypothalamus base whilst shifting body water regulation to lower pOsm-operating points.<sup>20</sup>

### Supplement 2: Sex-specific hormonal regulation of osmotic and fluid balance by Arginine Vasopressin (AVP) / Antidiuretic Hormone (ADH) and its antagonist N-terminal pro-B-type Natriuretic Peptide (NT-proBNP).

REGULATORY FACTORS FOR RENAL SECRETION OF PHOSPHATE (PO <sub>4</sub> )	NaPT-IIa and -c activity / tubular reabsorption of PO <sub>4</sub> (and IAs <sub>v</sub> )	Renal PO <sub>4</sub> - Secretion	Aging-Effect on Factor <sup>d</sup>	Aging-Effect on renal PO <sub>4</sub> -Secretion	References
Parathormone (PTH)	↓	↑	↑	↑	183, 184
Fibroblast Growth Factor 23 (FGF23)	m-Klotho (m-KL) acts as essential cofactor for FGF23 <sup>a</sup>	↑	↑ <sup>b</sup>	↓ <sup>b</sup>	92, 93, 185
Transmembrane Klotho (m-KL)	↓	↑	↓ <sup>b</sup>	↓ <sup>b</sup>	56, 92, 93
Angiotensin II (ATII) - elevated in dehydration, volume depletion, Na <sup>+</sup> ↓, Cl <sup>-</sup> ↓, blood pressure ↓, CKD, a.o.	↑ ATII blocks m-KL and induces FGF23 resistance <sup>b</sup>	↓	plasma ATII ↓ GFR and RPF response to ATII ↑	(↑)	134, 171, 186, 187
Vasopressin (AVP, ADH) lower, physiological concentrations - prevalent Osmoreceptor stimulation - renal V1aR < V2R receptor stimulation - Na <sup>+</sup> reabsorption ↑, Na <sup>+</sup> - excretion ↓	no significant effect on Pi reabsorption/excretion in rats	-	plasma AVP ↑ renal AVP sensitivity ↓	-	168, 188
Vasopressin (AVP, ADH) very high concentrations, dehydration - Baro- and Osmoreceptor stimulation - renal V1aR > V2R receptor stimulation - Na <sup>+</sup> reabsorption ↓, Na <sup>+</sup> - excretion ↑	↑(?) massive increase in plasma PO <sub>4</sub> independent of PTH	↓(?)		↑(?)	188, 189
Calcitriol (1α,25(OH) <sub>2</sub> / Vitamin D <sub>3</sub> )	↑(↓) <sup>c</sup> direct and indirect via PTH↓↑ indirect via FGF23↑: ↓	direct ↓ (indirect ↓↑)	direct ↓ (indirect ↓↑)	direct ↑ (indirect ↓↑)	93
Chronic kidney disease (CKD)	↑ due to initial m-KL↓	↓	↑	Serum PO <sub>4</sub> ↑ in endstage CKD	104
Urinary acidity (pH ↓)	↓ <sup>e</sup>	↑	↓	↑	154, 190
Oxidative Stress	↑ toxic, antioxidative exhaust, inflammatory, aging, ATII-mediated <sup>f</sup>	↓	↑	↓	171, 191

<sup>a</sup> Membrane Klotho acts as a coreceptor to enhance the binding of the endocrine FGF23 to FGF receptors (FGFRs) through formation of a Klotho/FGFR/FGF23 complex, with subsequent activation of FGF signal transduction, inactivation of NaPT-II and thus enhancement of renal PO<sub>4</sub>-secretion.<sup>53</sup>

<sup>b</sup> Renal FGF23 resistance due to age- or CKD-related deficiency of m-Klotho leads to elevated FGF23 levels with concomitantly reduced renal phosphate excretion.<sup>124</sup> FGF23 is mortality -and morbidity associated.<sup>184</sup>

<sup>c</sup> Vitamin D can increase or decrease serum phosphate concentration depending on its balanced effect on parathyroid glands, bone, and intestine.<sup>93</sup>

<sup>d</sup> Urinary excretion of PO<sub>4</sub> in old age was found to be diminished in an old study.<sup>170</sup>

<sup>e</sup> PO<sub>4</sub> acts as main urinary buffer and higher urinary acidity (pH ↓) reduces tubular PO<sub>4</sub>-reabsorption.

<sup>f</sup> ATII increases oxidative stress via intracellular formation of reactive oxygen species (ROS) such as the superoxide anion and hydrogen peroxide. It activates several subunits of the membrane-bound multicomponent NAD(P)H oxidase and increases mitochondrial ROS formation.<sup>191</sup>

### Supplement 3: Effects of aging on hormonal and pathological factors affecting renal excretion of Phosphate (PO<sub>4</sub>) and inorganic Arsenate (iAs).

RENAL TRANSPORTERS	Female	Estrogen/Progesterone Effects	Male	Androgen Effects	References
Pool size of transporters in proximal tubules (PT)	(NaPi2, NHE3, cldn2, a.o.)	direct / indirect	(NaPi2, NHE3, cldn2, a.o.)	direct / indirect	10
Pool size of transporters in distal tubules (DT)	(NCC, NKCC2, SPAK, AQP2, cldn7)	direct / indirect	(NCC, NKCC2, SPAK, AQP2, cldn7)	direct / indirect	10
Upregulation of OATs and OCTs (Organic Anion- and Cation Transporters) - mainly in S3-segment of PT	OAT2, OAT5, SGLT1, MRP3	OAT2, OAT5	OAT1, OAT3, OCT2, OATP1, OATP1a1, OATP3a1, MRP4, MATE1, PG1/MDR1, MDR1a, URAT1, BCRP, CLDN-1, -2, -11, -16	OAT1, OAT3, OCT2, OATP1a1, OATP3a1, URAT1, MRP4, MATE1	10, 160
Downregulation of OATs and OCTs - mainly in S3-segment of PT	OAT1, OAT3, OCT2, OATP1, URAT1, MATE1, MRP4, PGY1/MDR1, MDR1a, OATP1a1, OATP3a1, BCRP, CLDN-1, -2, -11, -16	OAT1, OAT3, OCT2, BCRP, MATE1	OAT2, OAT5, SGLT1	OAT2, OAT5, SGLT1	10
Aquaporins (AQP) - only AQP2 is responsive to AVP	AQP1↓, AQ2↓, AQP3↑	AQP1↓, AQ2↓, AQP3↑	AQP1↑, AQ2↑, AQ3↓	AQ3↓	10, 161, 162
Sex Hormone receptors (humans)	ERβ (IST, CD, PT) PgR B (Glo, DT, IST) AR (DT) ↓		ERα (IST, CD) ERβ (IST, CD, PT) PgR B (Glo, DT, IST) AR (DT) ↑		10

### Supplement 4: Sex-specific influence of sex hormones on renal membrane transporters.

URINE PARAMETERS	Female	Estrogen/Progesterone Effects	Male	Androgen Effects	References
24h Urine volume	Inconsistent (↑)		in 4/9 studies: 10-14% ↓ in 5/9 studies: ± 5%, not significant		7
Urine concentration	↓	indirect	↑	indirect	7
Water turnover / -excretion	↑		↓		8
Natriuresis (Sodium excretion)	↑	P: direct (Prox. & Dist. Tubule) ↓ P: indirect (ALD-Antagonist) ↑ E: ↓	↓	5α-DHT → ATII mediated NHE3↑ T → ENaC mRNA↑ T → ADH-effects ↑ → reabsorption Na <sup>+</sup> , HCO <sub>3</sub> , fluid↑	10, 30, 31
Urine osmolality	↓	indirect	↑ (+21-39%)	indirect	7, 10, 11
Urine osmolality - effect of aging	decline > 50 years		decline > 40 years		7
Urinary excreted total osmotic load	↓		↑		7
Urine Creatinine	↓	indirect: lean muscle ↓ OCT2 ↓ MATE ↓	↑	direct stimulation indirect: lean muscle ↑ ADH ↑, OCT2 ↑, MATE1 ↑	7, 10, 11, 12
Urine pH → pH ↓ with aging	↑ Crucial GI anion uptake ↑		↓		153
Tubular H <sup>+</sup> , Cl <sup>-</sup> and HCO <sub>3</sub> <sup>-</sup> - Transport	AE1/Band 3, NHE1, NHE2, Pendrin ↑	E: Cytosolic carbonic anhydrase ↑	CLDN-1, -2, -11, -16 ↑	Cytosolic carbonic anhydrase ↓	10, 153, 154, 155

### Supplement 5: Physiological sex differences and influence of sex hormones on basic urinary parameters.

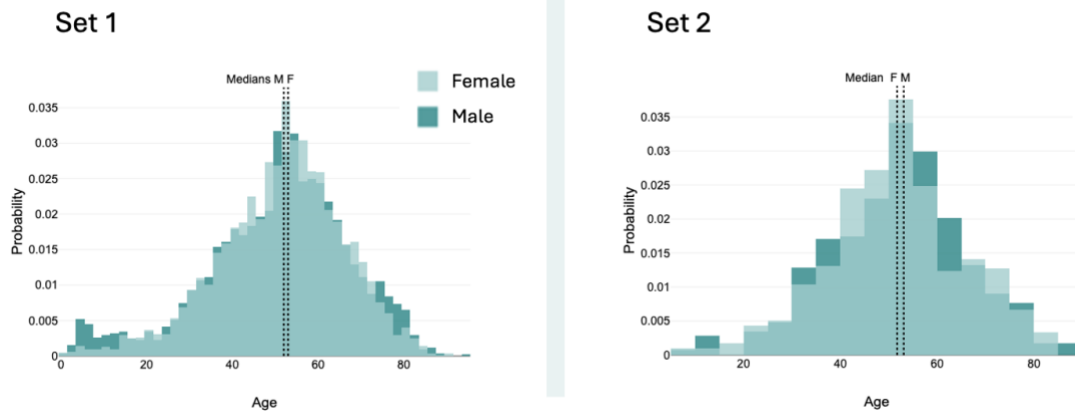
KIDNEY PARAMETERS	Female	Estrogen/Progesterone Effects	Male	Androgen Effects	References
Renal mass	↓		↑	anabolic action on PT cells	10
Number of nephrons/kidneys	no sex-difference		no sex-difference		10
GFR - Glomerular Filtration Rate	↓		↑		10
GFR response to ATII	↓↓		↓		156
ERPF - Effective renal plasma flow (ml/min/1.73m <sup>2</sup> )	↓ (-20%)		↑		10, 156
ERPF response to ATII	↓		↓↓		156
PPF - Papillary Plasma Flow	↑	E indirect: vasodilator PG↑	↓	T (+ATII) ↓	157
Renal antioxidative capacity / antioxidative enzyme expression	↑ eNOS, Metallothionein, MnSOD, Carbonic Anhydrase	E: ROS↓, Endothelin↓, NO↑	↓ eNOS, Metallothionein, MnSOD, Carbonic Anhydrase	NO ↓ renal ROS ↑	10,37,38
Renal methylation capacity	↑	E: PEMT/Choline↑	↓		34,35
GFR Decline > 50 years (Renal injury susceptibility)	↓	Antioxidative Protection↑ Cholinesynthesis / Methylation↑	↑	AR-mediated Apoptosis of PT cells; Telomere shortening	10, 77
Tubular dysfunction / Excretion of low MW Proteins	↓		α- and β-Microglobulins, Angiotensinogen ↑		10
Renal Prostaglandines → Antagonism to AVP/ AQ2 action (Cellular Ca-uptake ↓/ Adenylatcyclase↓) → Natriuresis / Waterdiuresis ↑ → Ionic Permeability ↑ → Corticomedullary Solute Gradient ↓ Cortex: Renin/RPF/GFR ↑ Medulla: PG regulate papillary osmolality → PG production (Phospholipase A2) is activated by high extracellular osmolality, Kinins, AVP, ATII → PG production inhibited by corticosteroids	↑ (Vasodilator PGs, attenuating ATII-effects on medullary flow)		↓		7, 158, 159

### Supplement 6: Influence of sex hormones on basic renal parameters.

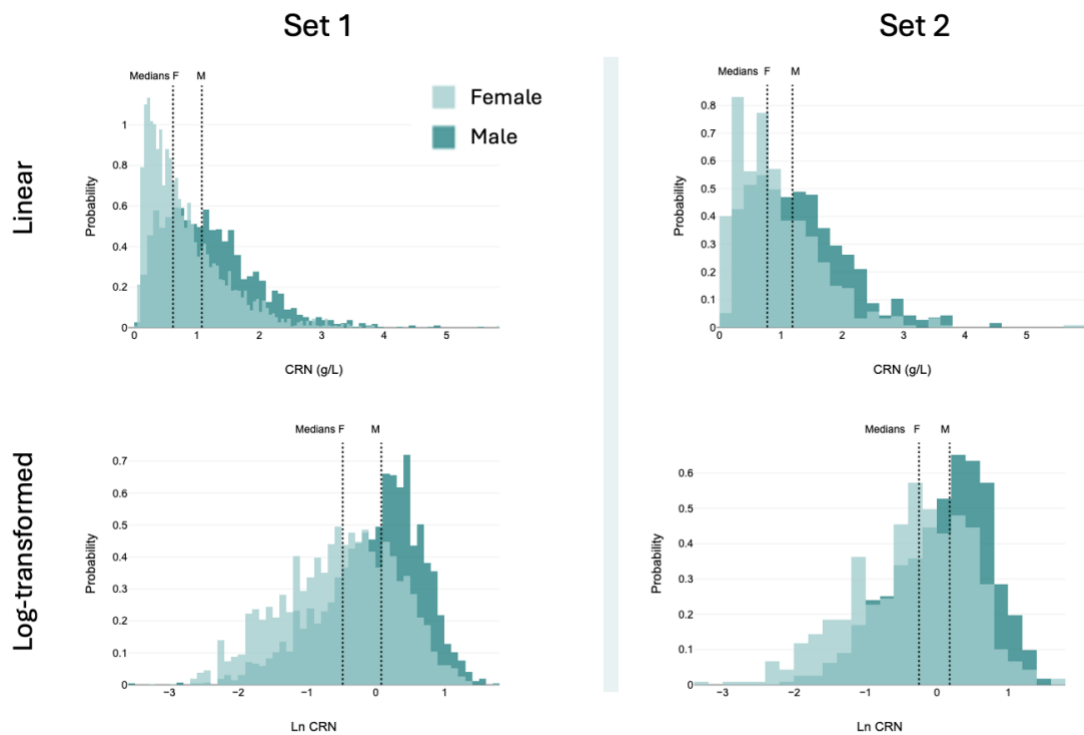
SYSTEMIC PARAMETERS	Female	Estrogen/Progesterone Effects	Male	Androgen Effects	References
Blood Pressure	Physiological and transdermal E2: ↓	E Vasodilatation, NO↑, AT2R↑ P Na+-Excretion ↑ via ALD-Antagonism <sup>a</sup>	↑	permissive on ATII AT1R/AT2R Ratio↑	17, 19, 163, 164, 165
	High dose/oral E2, Gestagens: ↑	plasma ALD↑			
NO/Vasodilation	↑	E ↑ crosstalk with MasR P ↑↓ (situative)	↓	NO ↓	10, 17, 37
Extracellular Volume	↓ (F < M)	E/P direct ↑ E indirect (RAS↑, ADH↑)	↑	direct ↑: Na <sup>+</sup> - retention at proximal tubules indirect ↑: - permissive effect on HGH-induced Na <sup>+</sup> - retention - BNP↓ → AVP-Inhibition ↓	19, 20, 32, 33
Plasma Volume	65 ml/kg	E ↑ (TER-Albumin ↓) P ↓	70 ml/kg	?	20, 32
Serum Phosphate (PO <sub>4</sub> , sP)	Progressive decline until 45 years <45 years: no sex difference >45 years: ↑	E ↓, NaPT-IIa ↓, Ca-reabsorption↑	Progressive decline until 45 years <45 years: no sex difference >45 years: ↓	T ↓ (?)	53, 98, 104, 166-171
Whole body metabolic rate	↓		↑		10
Nitrogenous waste products (Creatinine, Urea, Uric acid)	↓		↑		10

<sup>a</sup> Despite potentially elevating Ang II and AT1R levels, progesterone does not appear to raise blood pressure in response to ATII in women.<sup>40</sup>

### Supplement 7: Influence of sex hormones on systemic fluid distribution.

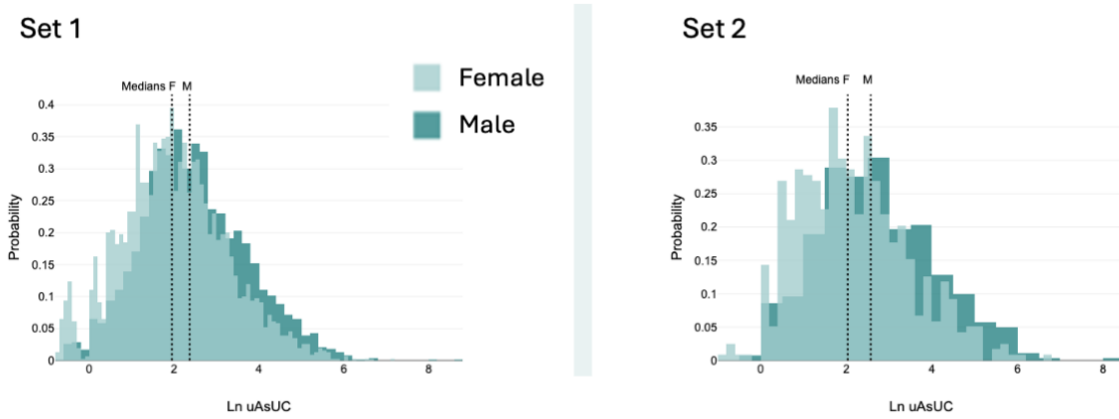


**Supplement 8: Sex-specific age distribution of sets 1 and 2.** Age is presented in years as linear data.



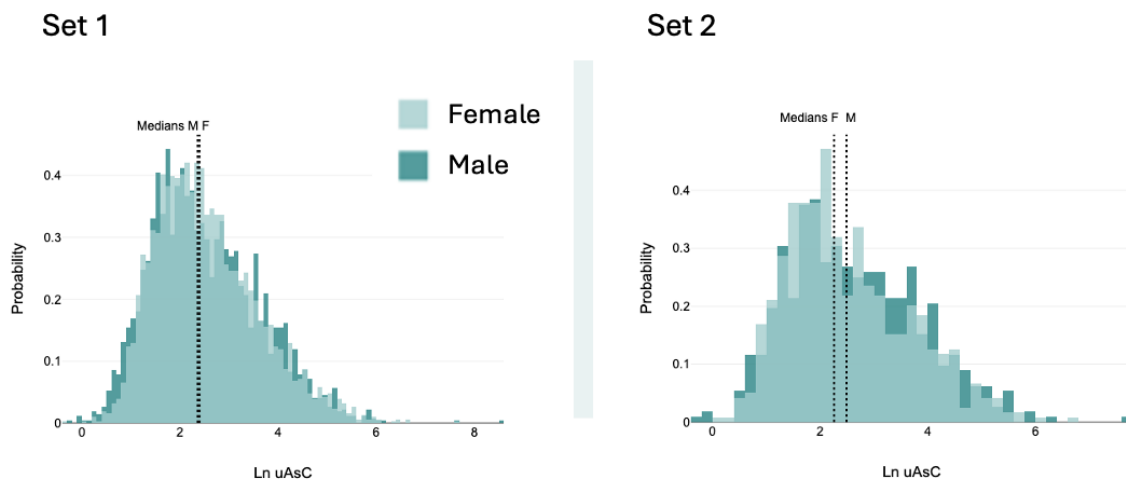
**Supplement 9: Sex-specific CRN distribution of sets 1 and 2.** CRN data in g/L is presented in linear and log-transformed form. Linear data are left skewed, log data are right skewed yet closer to normal distribution.



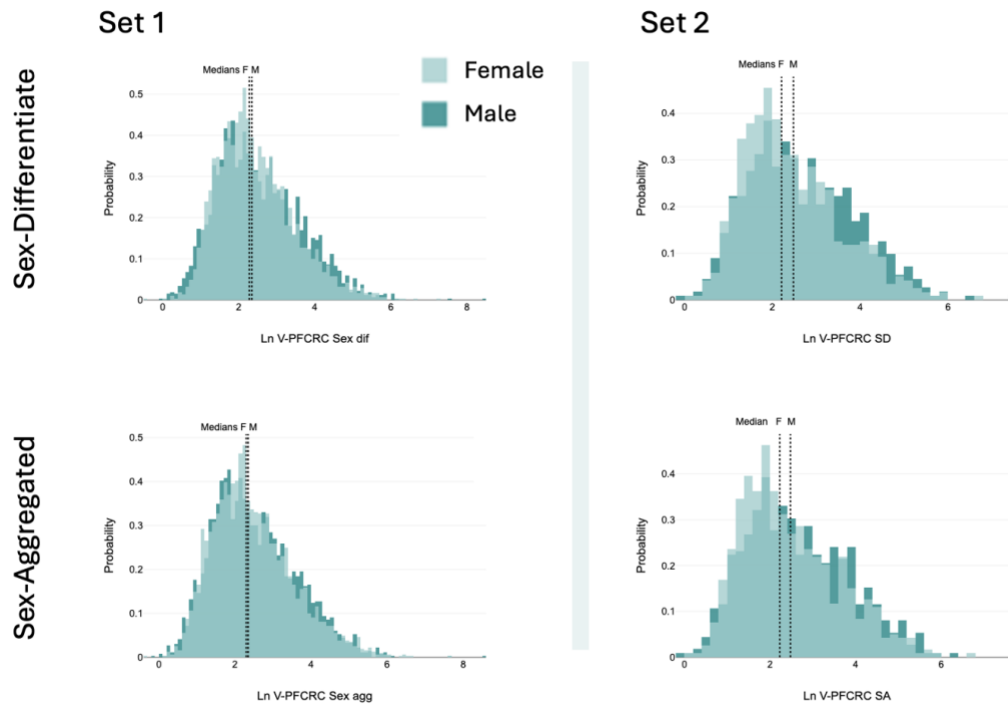


**Supplement 10: Sex-specific uncorrected urinary arsenic (uAs<sub>UC</sub>) distribution of sets 1 and 2.**

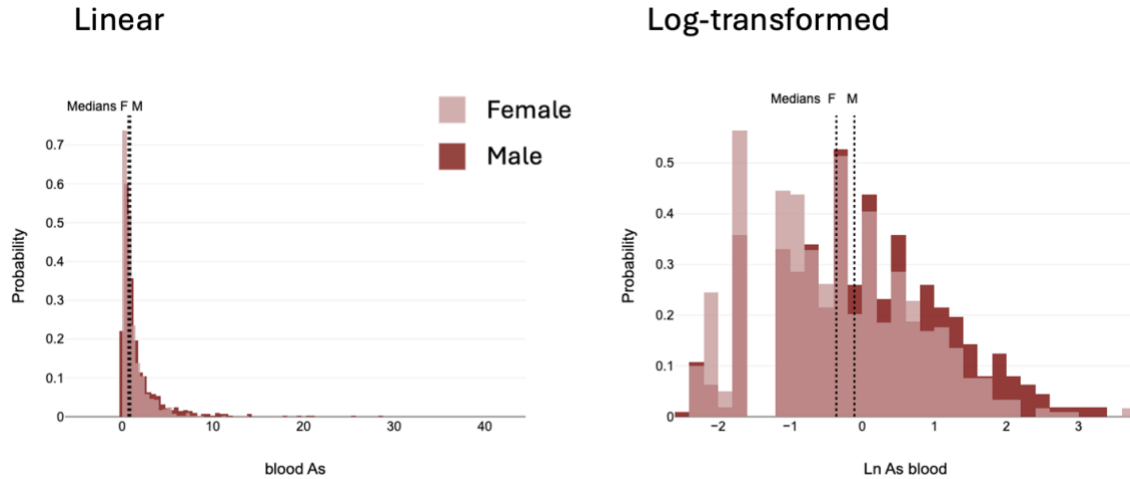
Uncorrected Arsenic in  $\mu\text{g/L}$  is presented in log-transformed form. Linear data are strongly left-skewed, while log data show a near-normal distribution in both sets.



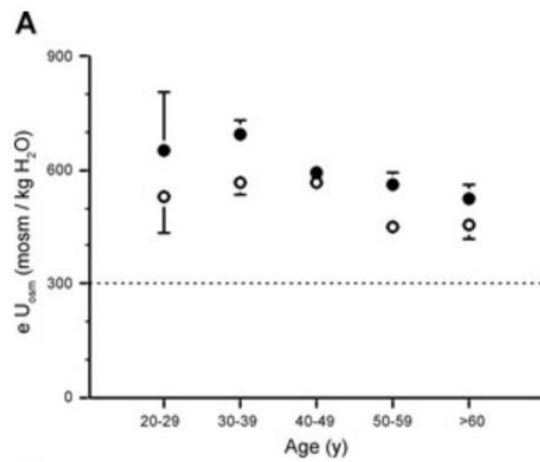
**Supplement 11: Sex-specific CCRC arsenic (uAs<sub>C</sub>) distribution of sets 1 and 2.** CCRC Arsenic in  $\mu\text{g/g}$  CRN in log-transformed form. Linear data are strongly left-skewed, while log data show a less pronounced left skew in both sets.



**Supplement 12: Sex-specific V-PFCRC arsenic ( $\mu\text{As}_N$ ) distribution of sets 1 and 2.** V-PFCRC Arsenic in  $\mu\text{g}/1\text{g}$  CRN in log-transformed form is given for sex-aggregated and -differentiated corrective formulae. Linear data are strongly left-skewed, while log data of both sets are less pronounced left-skewed in both sets.



**Supplement 13: Sex-specific blood arsenic distribution of sets 2.** Blood Arsenic in  $\mu\text{g}/\text{L}$  in linear and log-transformed mode. Linear data are strongly left-skewed, while log data of both sexes are nearly normally distributed.



" $U_{osm}$  in men and women in the different age categories in subjects of study D during the run-in period. B:  $U_{osm}$  in men and women in study S according to the different classes of CKD (I to V). Means  $\pm$  SE for men (•) and women (○). Dashed lines indicate isoosmolality to plasma. Relatively large SEs in the first age and CKD classes are probably due to the small number of subjects of each sex in these classes. When SEs are not visible, they are smaller than the symbols. Comparison by two-way ANOVA (sex and CKD, or sex and age). The sex difference was significant in both cases."<sup>7</sup>

**Supplement 14: Effect of age on sex-differentiated urine osmolality (Perucca J et al., 2006).**

Reproduction of original Figure 2 A of "Sex difference in urine concentration across differing ages, sodium intake, and level of kidney disease," Perucca J, et al. (2006).<sup>7</sup>