

Effect of face-covering use on adherence to other COVID-19 protective behaviours: a systematic review

Authors:

Adam Millest^{1*}, Sidra Saeed¹, Charles Symons¹, Holly Carter¹

¹Behavioural Science and Insights Unit (BSIU), UKHSA, London, United Kingdom

*Corresponding author

Email: behaviouralscience@ukhsa.gov.uk

1 Abstract

2 During the COVID-19 pandemic, concerns were raised that face covering use may elicit risk compensation;
3 a false sense of security resulting in reduced adherence to other protective behaviours such as physical
4 distancing. This systematic review aimed to investigate the effect of face covering use on adherence to
5 other COVID-19 related protective behaviours. Medline, Embase, PsychInfo, EmCare, medRxiv preprints,
6 Research Square and WHO COVID-19 Research Database were searched. All primary research studies
7 published from 1 January 2020 to 17th May 2022 which investigated the effect of face covering use on
8 adherence to other protective behaviours in public settings during the COVID-19 pandemic were included.
9 Papers were selected and screened in accordance with the PRISMA framework. Backwards and forwards
10 citation searches of included papers were also conducted on 16th September 2022, with eligible papers
11 published between 1st January 2020 and that date being included. A quality appraisal including risk of bias
12 was assessed using the Academy of Nutrition and Dietetics' Quality Criteria Checklist. This review is
13 registered on PROSPERO, number CRD42022331961. 47 papers were included, with quality ranging from
14 low to high. These papers investigated the effects of face covering use and face covering policies on
15 adherence to six categories of behaviour: physical distancing; mobility; face-touching; hand hygiene; close
16 contacts; and generalised protective behaviour. Results reveal no consistent evidence for or against risk
17 compensation, with findings varying according to behaviour and across study types. There is a suggestion
18 that face covering use might reduce face-touching and face covering mandates might increase mobility,
19 though the lack of robust evidence means these are tentative claims. Evidence on the other protective
20 behaviours is largely inconsistent, and therefore confident conclusions cannot be made in these areas.
21 Any policy decisions related to face coverings must consider the inconsistencies and caveats in this
22 evidence base.

23

Effect of face covering use on adherence to other COVID-19 protective behaviours

24 **1. Introduction**

25 The COVID-19 pandemic highlighted the important role that public behaviour can play in the control of
26 infectious disease. Prior to the introduction of vaccination, Prior to the introduction of vaccination,
27 measures to control the spread of COVID-19 consisted primarily of non-pharmaceutical interventions
28 (NPIs), e.g. hand cleaning, reducing contact with others, and wearing a face covering to effectively reduce
29 the spread and mortality rate of COVID-19 (1). The extent to which populations effectively undertook these
30 behaviours was therefore crucial to controlling the spread of COVID-19.

31 A key behaviour which was used to control the spread of COVID-19 was the use of face coverings, with
32 over 160 governments mandating or recommending the use of face coverings during the COVID-19
33 pandemic (2). Many previous systematic reviews have been carried out on the transmission reduction
34 efficacy of face coverings and other NPIs (e.g.,3, 4). This review aims to explore how face-covering use
35 impacts on and interacts with other COVID-19 protective behaviours.

36 At the onset of the pandemic, concerns were raised that the use of face coverings may provide a false
37 sense of security, leading to lower adherence to other protective measures such as hand hygiene and
38 physical distancing; a phenomenon known as 'risk compensation' (5). Arguments exist both for and against
39 the existence of risk compensation (6, 7), and one review was carried out early in the pandemic to examine
40 the extent to which risk compensation may affect public behaviour (8). However, given the paucity of
41 research into COVID-19 specifically, this review necessarily relied on research into risk compensation in
42 other contexts.

43 More recently, the concern about the potential impact of face coverings on other protective behaviours has
44 prompted several studies examining this in the context of COVID-19, and there is now a substantial body
45 of research that can contribute to discussions around risk compensation in this context. Given the
46 widespread recommendation and mandation of face coverings during the COVID-19 pandemic, it is
47 essential to consider all available evidence in order to understand the potential impact of face covering
48 use on adherence to other types of protective behaviours in the context of COVID-19.

Effect of face covering use on adherence to other COVID-19 protective behaviours

49 The aims of this systematic review were therefore to: identify and summarise the findings from studies
50 examining the effect of face covering use on other protective behaviours in the context of COVID-19;
51 assess available evidence relating to the effect of face covering use on adherence to other COVID-19
52 protective behaviours. This aim was achieved and findings will help to inform decisions regarding if and
53 when it is appropriate to recommend or mandate face covering use during future infectious disease
54 outbreaks.

55

56 **2. Methods**

57 Details of the the protocol for this systematic review were registered on PROSPERO before screening
58 took place. The protocol's number is CRD42022331961 and can be accessed at
59 https://www.crd.york.ac.uk/PROSPERO/display_record.php?RecordID=331961 (9). As can be seen in
60 the online record, the protocol was amended on 20th May 2022; these amendmends comprised edits to
61 address inconsistencies with the regards to the decision to use the term 'face-covering' or 'face mask'
62 throughout the protocol. Further amendments were made on 5th September 2022, 21st September 2022,
63 1st November 2022, and 3rd January 2023; these comprised updating the estimated completion date and
64 also updating which stages of the project had been completed (e.g., data extraction, data analysis).

65 **2.1 Eligibility criteria**

66 Studies were eligible if they reported primary quantitative or qualitative research relating to the impact of
67 face covering use on adherence to other protective behaviours during the COVID-19 pandemic. Protective
68 behaviours of interest included but were not limited to: COVID-19 physical/social distancing, hygiene (e.g.,
69 avoidance of face-touching, regular handwashing), staying at home, and reducing travel. Studies which
70 examined the effectiveness and/or efficacy of wearing face coverings or factors related to adherence to
71 face covering use were excluded. Published research and pre-publication articles were included. Reviews,
72 position/discussion papers, conference abstracts, protocol papers, modelling studies, case reports and
73 studies published in languages other than English were excluded (see Table 1).

Effect of face covering use on adherence to other COVID-19 protective behaviours

74 **Table 1 Inclusion criteria**

Inclusion Criteria	Exclusion Criteria
<ul style="list-style-type: none"> • Papers published from 1 January 2020 to present day at time of search (17th May 2022) • All populations and all public settings other than healthcare settings • Quantitative or qualitative research relating to the impact of face covering use on adherence to other protective behaviours during the COVID-19 pandemic • Face covering use: <i>i.</i> All types of face covering, including (but not limited to) handmade and commercial cloth coverings (cloth, cotton, gauze, etc), and medical coverings such as surgical face masks. <i>ii.</i> Face covering mandate. • Experimental studies, observational studies, qualitative studies, laboratory studies, any other primary data, secondary data analyses. • Published research and pre-publication articles 	<ul style="list-style-type: none"> • Healthcare settings • Papers not in English • Systematic reviews, narrative reviews, guidelines, position/discussion papers, conference abstracts, protocol papers, modelling studies and case reports. • Studies which examined the effectiveness and/or efficacy of wearing face coverings or factors related to adherence to face covering use

75 **2.2 Search strategy**

76 A systematic search was conducted by UKHSA researchers on 17th May 2022 for papers from January
77 2020 until the date of searches. Sources searched included Ovid Medline, Ovid Embase, Ovid PsychInfo,
78 Ovid EmCare, medRxiv preprints, Research Square and WHO COVID-19 Research Database. Search
79 terms included terms related to COVID-19 (e.g. COVID-19, coronavirus, Sars-COV2), face coverings (e.g.

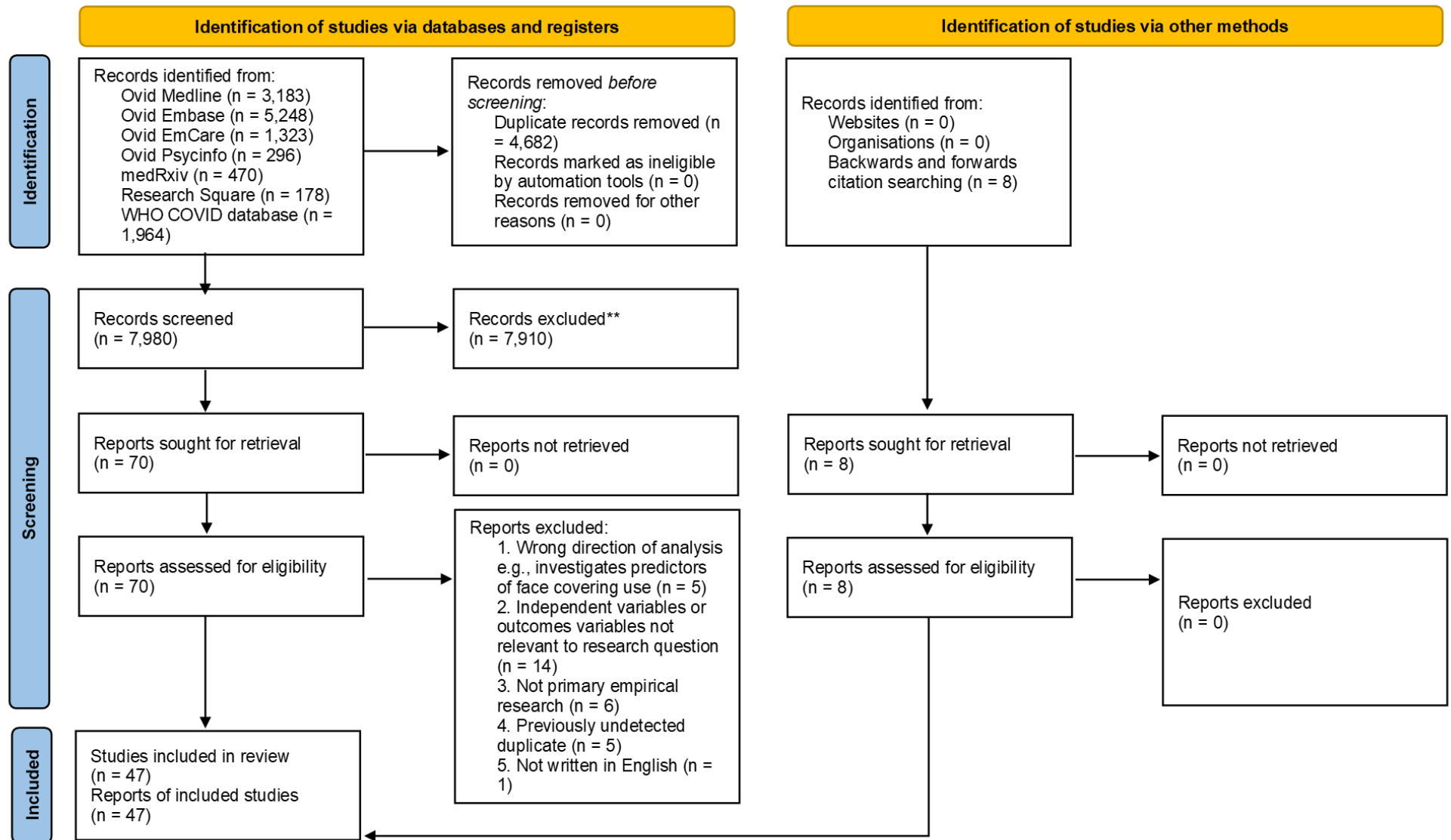
Effect of face covering use on adherence to other COVID-19 protective behaviours

80 mask, face cover, mouth covers) and protective behaviours (e.g., social distancing, handwashing, face-
81 touching). A complete list of search terms is available in S1 Appendix. Forward and citation searches of
82 included papers were also conducted on September 16th 2022, and eligible papers from January 1 2020
83 to that date were also included.

84 **2.3 Study identification**

85 Selection and screening of papers followed a systematic search method following a Preferred Reporting
86 Items for Systematic Reviews and Meta-Analyses (PRISMA) framework (10) . The study identification
87 process is detailed in Figure 1 and contains full details of studies included and excluded at each stage. In
88 the first stage of title and abstract screening, 10% of records were assessed in duplicate by two reviewers,
89 and disagreements were resolved by discussion and consensus. In the second stage of title and abstract
90 screening one reviewer assessed the remaining 90% of records. The screening tool Rayyan (11) was used
91 for both these first and second stages. All relevant records were then screened by full text by one reviewer
92 and checked by a second. There were five reasons for exclusion: (i) The direction of analysis was incorrect
93 e.g., the study investigated behavioural predictors of face-covering use rather than vice versa (n = 5), (ii)
94 the independent variables or outcome variables were not relevant to the research question (n = 14), (iii) the
95 study did not comprise primary empirical research (n = 6), (iv) the paper was a previously undetected
96 duplicate (n = 5), and (v) the paper was not written in English (n = 1).. By the end of this process, 47 papers
97 were deemed eligible and included in the review.

98



99

100 Fig. 1. PRISMA 2020 flow diagram of the identification of studies process

101 **2.4 Data extraction and synthesis**

102 Data was sought for any relevant COVID-19 protective behaviour outcomes; at the completion of
103 extraction, these comprised the following behavioural outcomes: physical distancing, mobility, face-
104 touching, hand hygiene, close contacts and generalised measures of protective behaviour. All results that
105 were compatible with each of these outcomes were included. The following information was then collated
106 for each study: country, publication status, population and sample size, methods, key outcome variables
107 and main results. This was initially collated into one table which included an outcome variable column.
108 This table was then divided by outcome variable into six smaller data extraction tables, and a narrative
109 summary of results was produced, structured by these six outcome variable categories.

110 Data extraction was completed for each included study by one reviewer and independently checked by a
111 second reviewer, with discrepancies resolved by discussion. Any evidence that was not directly relevant
112 to the review question was not extracted.

113 **2.5 Quality assessment**

114 Quality including risk of bias was evaluated by one reviewer using the Quality Criteria Checklist (QCC) tool
115 which can be used to assess the methodological quality of a study (12). Using the QCC, studies were
116 characterised as high, medium or low quality.

117 This checklist tool is composed of 10 questions, four of which are considered critical (questions on
118 selection bias, group comparability, description of exposure/assessment of transmission routes, and
119 validity of outcome measurements); full details can be seen in S2 Appendix. A study was rated as high
120 methodological quality if the answers were yes to the four critical questions plus at least one of the
121 remaining questions. A study was rated as low methodological quality if answers were no to >50% of the
122 10 questions. Otherwise, the study was rated as medium methodological quality. In line with a systematic
123 review which found that self-report methods of capturing adherence to protective behaviours can over-
124 estimate objectively observed adherence by up to a factor of five (13), any studies which employed a self-
125 report methodology were deemed not to satisfy the validity of outcome criterion, and so were necessarily

Effect of face covering use on adherence to other COVID-19 protective behaviours

126 limited to a quality score of medium or below. An additional reviewer independently assessed five of the
127 studies, and conflicting findings were discussed. Following discussions, a potential source of bias was
128 identified in the first reviewer's application of one of the tool's questions, and all studies were subsequently
129 re-evaluated to correct for this bias.

131 **3. Results**

132 **3.1 Overview of search results**

133 The initial searches generated 12,662 articles. After de-duplication, 7,980 records remained, and title and
134 abstract screening resulted in 70 papers being accepted for full text screening. Following full text
135 screening, 39 papers were accepted for inclusion in the review. Backwards and forwards citation searches
136 were conducted which yielded a further 8 papers for inclusion, meaning the total number of papers included
137 in the review was 47. Quality appraisal of the articles revealed that nine were of a high quality, 33 of a
138 medium quality, and five of a low quality. Finally, of the papers included nine were pre-prints, 35 were
139 peer-reviewed publications, and three were published conference papers.

140 Note that in the paragraph that follows, frequency of studies are described for each of several categories,
141 e.g., methodology employed, face-covering intervention investigated, protective behaviour investigated,
142 and means of measurement employed (objective or self-report). The total of the n's in each category
143 always exceeds the total number of papers included (47). This is because some papers included more
144 than one study, more than one methodology, or were concerned with more than one face-covering
145 intervention or protective behaviour.

146 All studies included used quantitative methods, and none used qualitative methods. These included field
147 experiments (n = 7), natural experiments (n = 14), lab experiments (n = 14), observational studies (n = 10)
148 and cross-sectional studies (n = 9). Of these, 30 studies measured behaviour through observation, and 22
149 measured behaviour through self-report. Of the self-report studies, 10 were concerned with current or
150 previous behaviour, and 12 with expected or intended behaviour. Though all included papers necessarily
151 investigated the effect of face covering use on protective behaviours, the exact intervention of focus in

Effect of face covering use on adherence to other COVID-19 protective behaviours

152 each case was varied and fit into one of 5 categories: face covering use (self) i.e., the act of wearing a
153 face covering oneself (n = 21); face covering use (other) i.e., in some way interacting with someone else
154 wearing a face covering (n = 18); face covering use (self and other) i.e., face covering wearing on behalf
155 of oneself and another person with whom one is interacting or is in proximity to (n = 1); face covering policy
156 i.e., the implementation of a face covering mandate (n = 19); and face covering intervention package i.e.,
157 a community programme designed to increase uptake of face covering usage (n = 1). The protective
158 behaviour(s) in each case also varied, and in each case fit into one of 6 categories: physical distancing
159 i.e., interpersonal distance (n = 30); mobility i.e., the extent to which people leave their home and visit
160 public or residential spaces (n = 13); face-touching (n = 7); hand hygiene e.g., hand washing, avoidance
161 of handshakes (n = 5); close contacts i.e., the extent to which people have close and extended interactions
162 with people outside of their household (n = 4); and generalised protective behaviour i.e., a single measure
163 to encapsulate two or more COVID-19 protective behaviours other than face-covering use, e.g, hand-
164 washing, physical distancing and staying at home (n = 2). Full details on each paper can be seen in the
165 data extraction tables in S3 Appendix.

166 Some studies initially appeared to meet the inclusion criteria but were ultimately excluded. For example,
167 one study investigated how face covering use affected *perceptions* of physical distance between oneself
168 and another person, however, since it did not investigate how face covering use affected distancing
169 *behaviour*, it was not deemed to be eligible for inclusion (14). Similarly, another study investigated
170 participants' judgements on how face covering use moderates the relationship between a given physical
171 distance and transmission risk was not included since, although its focus was related to the review's
172 objectives, it did not directly address it, in that it did not investigate how face covering use directly impacted
173 adherence to protective behaviours (15).

174 The section below presents findings in relation to each of these six behaviours and describes the extracted
175 data in terms of the effect that face covering use has on each type of behaviour, also exploring any patterns
176 with regards to how the effect of face covering use varies by the type of intervention, and the type of study
177 design.

Effect of face covering use on adherence to other COVID-19 protective behaviours

178 **3.2 Physical distancing (see table 2a in S3 Appendix for full** 179 **details)**

180 Outcomes were mixed and varied depending on the type of study. Findings from the majority of lab
181 experiments (10 of 13) indicated that physical distancing was lower in conditions where a face covering
182 was used by another person compared with conditions where it was not (16-23), (24: two studies), and
183 two of these studies also found that physical distancing was lower when a face covering was used by the
184 self (24: two studies). Additionally, one of these studies investigated how physical distancing in conditions
185 with and without face covering use compared with a baseline measure (that is, physical distancing outside
186 the context of face covering use) (16). It was found that physical distancing was significantly greater than
187 the baseline in conditions without face covering use, but not significantly different in conditions with face
188 covering use, potentially suggesting that differences between conditions is driven by participants moving
189 away from people without face coverings (relative to where they would normally position themselves),
190 rather than *towards* people with face coverings. Of the remaining three studies, one found that physical
191 distancing was lower in conditions of face covering use (other), but that this effect was conditional on
192 situational factors such as effort required to maintain physical distance, and age of the other person (25),
193 and two found that distancing was greater in the case of face covering use (other) (26), (27: Study 2).

194 In contrast, the majority of field experiments (5 of 6) found that physical distancing was either greater or
195 not significantly different in conditions where face coverings were used, compared to conditions where
196 they were not. Two studies found that physical distancing was greater in conditions where face coverings
197 (self or other) were used compared to when they were not (28), (27: Study 1), with a third study finding
198 that physical distancing was greater in areas where a face covering intervention package had been
199 implemented compared to those where it had not (29). One study found mixed effects, finding that face
200 covering use (self) had no effect on distancing, but that distancing was greater in conditions of face
201 covering use (other) (30), while another study found no differences in distancing between conditions of
202 face covering use (self and other) and conditions without face covering use (31). A minority of field
203 experiments (1 of 6) found that physical distancing was lower in conditions of face covering use (other),

Effect of face covering use on adherence to other COVID-19 protective behaviours

204 but that this effect was conditional on gender of participant, race and social status of confederate, and face
205 covering policy implemented at the time (32). Additionally, two of the above studies also investigated
206 whether the effect of face covering use on physical distancing differed between different time periods which
207 varied by the face mask policy implemented at the time; one found that a distance-reducing effect of face
208 covering use was stronger when a face covering use was mandated (but only for females) (32), whilst a
209 second did not find a significant interaction between face mask policy and face covering use (30).

210 The four natural experiments explored the impact of face covering policy on physical distancing. Three of
211 these found that physical distancing did not significantly differ according to whether face covering wearing
212 was voluntary or mandatory (33: Study 2), (24: Study 2), (30), while a third found that the impact of face
213 covering policy on physical distancing was dependent on context; attention given to physical distancing
214 decreased when a face covering mandate was introduced on public transport, but increased when the
215 mandate was expanded to bars and restaurants, and again when expanded to all public spaces (34).

216 The four observational studies found either a positive or a neutral relationship between face covering use
217 or face covering policy and physical distancing. Three observational studies found no significant
218 relationship between face covering use (self) or face covering policy and physical distancing (33: two
219 studies), (35), while the fourth observational study found that physical distancing was greater in those who
220 wore face coverings, and also that it was greater when a face covering mandate was implemented (36).

221 Four of the six correlational studies found that as self-reported face covering use (self or other) increased,
222 so did self-reported physical distancing (37-40). One study showed mixed results for the relationship
223 between face covering use and physical distancing, finding that those who reported wearing face
224 coverings all the time were more likely to report adherence to physical distancing compared with those
225 who reported never doing so, but those who reported wearing face coverings sometimes were more likely
226 to report having reduced distancing with people than those who reported never doing so (41). The final
227 correlational study found no relationship between face covering use (self) and physical distancing (42).

Effect of face covering use on adherence to other COVID-19 protective behaviours

228 **3.3 Mobility (see table 2b in S3 Appendix for full details)**

229 Of the 10 natural experiments, 5 found that when face covering policies were in place mobility increased
230 (i.e., people were less likely to stay at home) (43-47), 4 found that mobility was unchanged, (48-51) and
231 one found that mobility decreased (i.e., people were more likely to stay at home) (52). The lab experiment
232 found that mobility is likely to increase when policies are in place, as participants reported being more
233 willing to use the London Underground when a face covering mandate was in operation (53).

234 Of the two cross-sectional studies, one found that self-reported adherence to personal protective
235 behaviours, which included face covering use (self) predicted self-reported frequency of going out in public,
236 and that this relationship was mediated by belief in 'substitution myths'; the belief that one protective
237 behaviour can be substituted for another, with risk staying constant (42). The second cross-sectional study
238 found that those who reported always wearing a face covering outside their home were less likely to report
239 visiting a friend, neighbour, bar or club (40).

240 **3.4 Face-touching (see table 2c in S3 Appendix for full details)**

241 The field experiment found that face covering use (self) resulted in less face-touching; there was a
242 significant increase in the number of individuals who touched their eyes or hair when they were not wearing
243 a face covering, and, when investigating areas not covered by a face covering (hair, forehead, eyes and
244 ears) the absolute number of total touches was significantly higher in those not wearing one (54). Two of
245 the six observational studies found similar results; those who wore face coverings were less likely to touch
246 their face (55, 56). Two more observational studies found that results were dependent on the
247 operationalisation of face-touching; when face-touching was defined as making contact with any part of
248 the face (including touches to the mask), there was no significant relationship between face covering use
249 (self) and face-touching, but when it was defined as making contact with specific parts of the face (not
250 including touches to the mask), those who wore face coverings touched their faces less frequently (57:
251 two studies). A minority of observational studies (one of 6) found a greater frequency of face-touching in
252 those who wore coverings compared with those who did not (58). The final observational study found that

Effect of face covering use on adherence to other COVID-19 protective behaviours

253 face covering policy had no impact on face-touching; there was no statistically significant association
254 between the face covering policy in operation and frequency of face-touching (59).

255 **3.5 Hand hygiene (see table 2d in S3 Appendix for full details)**

256 The natural experiment found that face covering policy had no impact on hand hygiene; attention paid to
257 hygiene practices was not significantly different according to the implementation of different face covering
258 policies (34). The three cross-sectional studies found that those who reported wearing face coverings more
259 often were more likely to report also adhering to hand hygiene practices (37, 40, 41).

260 **3.6 Close contacts (see table 2e in S3 Appendix for full details)**

261 One of the two natural experiments found that number of close contacts was significantly lower when a
262 face covering mandate was expanded from public transport to include restaurants and bars, and lower
263 again when expanded to all public spaces (34). The other natural experiment found that a face covering
264 mandate did not affect whether participants cancelled or postponed personal or social activities (51).

265 One of the three cross-sectional studies found that the relationship between face covering use (self) and
266 number of close contacts was mixed; those who reported wearing face coverings all the time were more
267 likely to report spending less than 15 minutes in close contact with someone compared with those who
268 reported never wearing face coverings, while those who reported sometimes wearing face coverings were
269 more likely to report spending over 60 minutes in close contact with someone compared with those who
270 reported never doing so (41). The second cross-sectional study found that those who did not always wear
271 face coverings outside work were more likely to have close contact with people they do not live with (40),
272 whilst the final cross-sectional study found that self-reported face covering use outside of work significantly
273 predicted a greater number of self-reported daily contacts (60).

Effect of face covering use on adherence to other COVID-19 protective behaviours

274 **3.7 Generalised protective behaviour (see table 2f in S3**

275 **Appendix for full details)**

276 The term ‘generalised protective behaviour’ was used to categorise any studies whose outcome variable
277 was a single measure which encapsulated two or more other COVID-19 protective behaviours besides
278 face covering use e.g., hand washing, physical distancing and staying at home. Both studies found that
279 self-reported face covering use (self) was associated with self-reported behaviours that are likely to reduce
280 the spread of COVID-19. In one study the majority of participants reported that their adherence to other
281 protective behaviours was either unchanged or greater when they wore a face covering compared with
282 when they did not (61), while the other study found that self-reported face covering use (self) was
283 associated with self-reported reduced engagement with COVID-19 related risky behaviour (62).

284

285 **4. Discussion**

286 Although face coverings have been found to reduce the transmission of airborne diseases, concerns have
287 been raised as to the effect that their use may have on adherence to other COVID-19 protective
288 behaviours. While several studies which explore this issue have been conducted, they had not previously
289 been brought together in a review. This systematic review has identified and summarised the findings of
290 47 papers which collectively investigate the effect of face covering use on other COVID-19-related
291 protective behaviours, namely, physical distancing, mobility, face-touching, hand hygiene, close contacts
292 and generalised protective behaviour. Findings showed that results varied considerably, and that the
293 nature of the variation often depended upon the specific behaviour investigated and the type of study
294 employed to investigate it. The sections below, organised by behaviour, summarise and discuss the
295 findings.

296 **4.1 Physical distancing**

297 One of the clearest patterns emerging from the studies relating to physical distancing was the distinction
298 between the respective findings of lab experiments and field experiments. The majority of lab experiments

Effect of face covering use on adherence to other COVID-19 protective behaviours

299 found that physical distancing was lower in conditions of face covering use (compared with conditions
300 without face covering use), whereas the majority of field experiments found that physical distancing was
301 either greater or unchanged in conditions of face covering use.

302 A number of considerations should be made when interpreting these results, starting with the respective
303 merits of field and lab experiments. There are three main advantages of lab experiments. First, the majority
304 of the lab experiments employed a within-subjects design, meaning that individual differences which may
305 impact on physical distancing (e.g., age, gender, risk perception, conscientiousness) are essentially
306 controlled for in a way that cannot be done with field experiments (although estimations of such variables
307 e.g., age was in some cases recorded and controlled for in the field experiments). Second, lab experiments
308 allow for more precision in data collection. The lab experiments typically used an on-screen slider for
309 participants to indicate their preferred distances, or a virtual reality environment in which computers
310 captured the distances participants maintained from virtual agents. In contrast, some of the field
311 experiments employed human judgement to determine whether a physical distancing guideline had been
312 violated, increasing the risk of bias. However, four of the six field experiments used some form of electronic
313 sensor to collect data (all of which found that physical distancing was greater or unchanged in conditions
314 of face covering use). Third, lab experiments are able to examine the impact of face covering use on
315 physical distancing in a context which is agnostic of face covering policy (mandatory vs voluntary), in
316 contrast to field experiments which are necessarily conducted under periods of either mandatory or
317 voluntary face covering wear. The impact of face covering use on other protective behaviours may be
318 related to whether face covering use is mandatory or voluntary. For example, during periods of voluntary
319 face covering wear the wearing of a face covering may act as a social cue to keep a greater distance (8);
320 however, face covering wear may not act as the same social cue during periods of mandatory face
321 covering wear (since all will be wearing face coverings). The ability to examine behaviour in a context
322 which is agnostic of face covering policy may therefore be an advantage.

323 However, whilst field experiments are less controlled than lab experiments, they are more ecologically
324 valid. A key advantage of field experiments compared to lab experiments is that the disease transmission
325 risk is real, not hypothetical; therefore a person's approach to physical distancing has a real impact on

Effect of face covering use on adherence to other COVID-19 protective behaviours

326 their own risk and on others' risk of contracting and spreading COVID-19. In all but one of the six field
327 experiments not only were participants blinded to the experimental condition they were assigned to, but
328 they were also unaware that they were taking part in an experiment at all, and so responses were unlikely
329 to be biased by, for example, demand characteristics. Behaviour captured in field experiments may therefore
330 be more representative of and generalisable to wider populations than that collected during lab
331 experiments, in which participants could second-guess research objectives, potentially causing demand
332 characteristics. Additionally, in the majority of lab experiments, rather than being measured for actual
333 behaviour, participants were asked to indicate distances they would prefer from the avatars or characters,
334 allowing them to make a conscious decision which may or may not be indicative of how they might behave
335 in real-life scenarios.

336 In addition to the lab and field experiments, the effect of face covering use on physical distancing was also
337 investigated through a number of different methodologies; the majority of natural and observational studies
338 tended not to find any significant associations between face covering use (or face covering policy) and
339 physical distancing, and cross-sectional studies tended to find positive associations between self-reported
340 face covering-wearing and physical distancing. These different study types also have their respective
341 strengths and weaknesses which should be considered when interpreting the results. The observational
342 studies are necessarily high in ecological validity, however are less controlled. As such, the means of
343 measurement (human judgement) may be lacking in precision and subject to bias, and furthermore, only
344 claims of association (and not causality) can be made. For example it is likely that relationships between
345 face covering-wearing and physical distancing are driven by confounding variables (e.g., risk perception,
346 age, conscientiousness) impacting on both behaviours. The natural experiments, though again high in
347 validity, are types of observational studies and so are subject to the same qualifications. Cross-sectional
348 studies are also unable to draw claims of causality due to the likely impact of confounding variables, and
349 may also be limited in their precision since measures are self-reported and not necessarily indicative of
350 real-life behaviour.

351 A final consideration that should be made when interpreting the results is to consider the nature of the
352 intervention in each case. Specifically, consideration should be given to: whether the independent variable

Effect of face covering use on adherence to other COVID-19 protective behaviours

353 (IV) is face covering condition of the self, face covering condition of another person, face covering policy,
354 or some combination of any of the three; and the way in which physical distancing is operationalised in
355 each case. Whilst there is no clear pattern with regards to how these different interventions and
356 operationalisations of distancing impact outcomes, it is important to consider such differences when
357 interpreting findings. Overall, it is clear that there is no consensus in relation to the impact of face covering
358 use on physical distancing and that further research is required to bring the merits of different study types
359 together and capture more reliable, and perhaps more consistent findings with regards to the effect of face
360 covering use on physical distancing.

361 **4.2 Mobility**

362 The findings on mobility are also inconclusive, although there is more evidence to suggest that face
363 covering policies increase mobility than there is to suggest that they decrease mobility. Natural
364 experiments tended to compare changes in mobility from a baseline between areas and periods of time
365 that varied according to the face covering policy implemented. The findings arising from such studies are
366 therefore likely to be confounded by any number of other variables which are likely to impact upon mobility
367 (e.g., other COVID-19 public health measures, rate of infection at time/area of data collection) and claims
368 of causality must be made with caution. Generally speaking, however, these studies employ rich data
369 sources and complex statistical models to account for these variables as far as is possible, and so
370 conclusions made from these studies can be arrived at with a certain level of confidence. If it is the case
371 that implementing face covering policies increases mobility, a plausible explanation may be that a mandate
372 instils confidence in people that if they are to leave home others are more likely to wear a face covering,
373 leading to a greater sense of security. Further qualitative work could be conducted to investigate how face
374 covering policies impact upon people's decision to leave home and move around their communities.

375 Two cross-sectional self-report studies which investigated how face covering use by the self impacted on
376 mobility were inconclusive, with relationships found in both directions (40, 42). Interestingly however, in
377 one case it was found that a positive relationship between self-reported adherence to personal protective
378 behaviour (including wearing a face covering) and going out in public with people outside ones' household

Effect of face covering use on adherence to other COVID-19 protective behaviours

379 was mediated by a belief that one protective behaviour can be safely substituted for another (42), providing
380 evidence in favour of the risk compensation hypothesis.

381 **4.3 Face-touching**

382 The impact of face covering use on face-touching was the most consistent of all the behavioural outcomes,
383 with a general trend for face-touching to be lower in conditions of face covering use than in conditions
384 without. This was found in a field experiment (54) and four of six observational studies investigating the
385 relationship between face covering use by the self and face-touching (55, 56), (57: two studies). Whilst
386 observational studies are subject to the same caveats described in the physical distancing subsection the
387 general pattern of a negative relationship between face touching and face covering use suggests that even
388 if risk compensation is at play, it is not strong enough to result in a positive relationship. Furthermore, that
389 this pattern is corroborated by the experimental study boosts the claim that face covering use might reduce
390 face touching behaviour. It should however be noted that different operationalisations of face-touching
391 were employed across these studies, and that in cases where significant effects or associations were
392 found, they did not always apply to all parts of the face. Further research using experimental designs is
393 required in this area, but on the basis of the studies reviewed to date, it seems reasonable to conclude
394 that face covering use reduces instances of face-touching.

395 **4.4 Hand hygiene**

396 Across four studies (one natural experiment and three cross-sectional studies), three studies found a
397 positive relationship between either face covering use or face covering policy and hand hygiene practices
398 and a fourth found no significant relationship. The three studies which found positive relationships were
399 cross-sectional (37, 40, 41) and based on self-report surveys; findings therefore show that those who
400 report wearing face coverings are more likely to also report practicing good hand hygiene, but the cross-
401 sectional nature of the studies means a causal relationship cannot be established. Furthermore, these
402 studies can only inform us on how the isolated practices of wearing a face covering and practising hand
403 hygiene relate to one another and cannot tell us whether hand hygiene is affected *whilst wearing* a face
404 covering. The natural experiment (34), which employed face covering policies as an IV and found no

Effect of face covering use on adherence to other COVID-19 protective behaviours

405 significant effect on self-reported attention paid to hygiene practices may be more informative, suggesting
406 that implementing a face covering mandate has no ‘collateral’ effect on hand hygiene practices. It should
407 be noted however that this study is also subject to the caveats around accuracy associated with self-report
408 data. In summary, the literature on the effect of face covering use on hand hygiene is limited and relies on
409 self-report data, possibly because hand hygiene is a relatively private practice that is difficult to investigate
410 using an experimental or observational design. On the basis of the literature reviewed however, it can be
411 said that there is no evidence thus far to suggest that face covering use causes a reduction in hand hygiene
412 practices.

413 **4.5 Close contacts**

414 There was little consensus in the literature on close contacts. Across two natural experiments, it was found
415 that face covering mandates either had no effect on close contacts, or that they reduced them (34, 51).
416 Across three cross-sectional studies the results were mixed with both positive and negative relationships
417 found (40, 41, 60). It is therefore difficult to draw robust conclusions about the impact of face covering use
418 on close contacts.

419 **4.6 Generalised protective behaviour**

420 Two cross-sectional studies (61, 62) investigated the relationship between face covering use by the self
421 and generalised adherence to other protective behaviours and found a relationship between face covering
422 use and increased adherence to other protective behaviours (or reduced undertaking of risky behaviours).
423 As previously discussed, cross-sectional studies do not allow for claims of causality to be made, and
424 confounding variables are likely to influence any relationships.

425 **4.7 Limitations**

426 This review is novel in drawing together current literature on the impact of face covering use on other
427 protective behaviours during the COVID-19 pandemic, and contributing to an understanding of risk
428 compensation in this context. However, some limitations should be acknowledged when considering this
429 review’s findings. First, despite every attempt to apply the inclusion and exclusion criteria systematically

Effect of face covering use on adherence to other COVID-19 protective behaviours

430 and objectively, it is likely that some level of subjectivity may have impacted on paper screening and
431 selection. To mitigate against this, 10% of the title and abstract screening was undertaken by two
432 researchers, and any disagreements resolved by discussion and consensus. The full-text screening was
433 also checked by a second researcher. Second, due to resource constraints (namely, the linguistic
434 limitations of the researchers), only papers published in English were included in the review, inevitably
435 creating a geographical bias. For example, 32 of the 47 papers described studies carried out in the UK,
436 Western Europe, Canada, North America or Australia.

437 **4.8 Conclusion**

438 Overall, findings relating to the impact of face covering use or policy on other protective behaviours are
439 inconsistent, varying both according to the particular behaviour in question, and by study type. Evidence
440 relating to the potential impact of risk compensation is also inconsistent; while some studies suggest risk
441 compensation may play a role in shaping behaviour, others suggest it has no impact. Findings are
442 particularly inconsistent in relation to physical distancing, with considerable discrepancy found between
443 study types. Whilst assessments of behaviour in real-life settings tend to find that face covering use either
444 increases or has no impact upon physical distancing, lab experiments tend to suggest that physical
445 distancing decreases in conditions of face covering use. There is some suggestion that the impact of face
446 covering use on physical distancing could be affected by whether or not mandatory face covering policies
447 are in effect (which would indicate that conclusions drawn from a voluntary context should not be directly
448 applied to a mandatory context and vice versa) but findings in this area are mixed and further assessment
449 of this moderating effect is warranted. Of the other behaviours, findings (though mixed) tend to suggest
450 that face covering mandates may increase mobility and that face covering use may decrease face
451 touching. While some studies suggest a relationship between face covering use and increased hand
452 hygiene practices and adherence to other protective behaviours, these studies are predominately cross-
453 sectional and rely on self-report measures, and do not allow conclusions to be drawn about the impact of
454 face covering use on adherence to these behaviours. Findings relating to the impact of face covering use
455 on close contacts is mixed, and further research is needed.

Effect of face covering use on adherence to other COVID-19 protective behaviours

456 Overall, this review highlights that there is no clear consensus in the literature as to whether face covering
457 use improves adherence to other protective behaviours, reduces adherence to other protective
458 behaviours, or has no impact. There are two key recommendations which can be made from this review:
459 1) further research, using more robust research designs, is needed to establish whether face covering use
460 affects different types of protective behaviours; and 2) any policy decisions made in relation to
461 recommended or mandatory face covering use must take into account the inconsistencies and caveats in
462 the evidence base, recognising that current evidence does not allow firm conclusions to be drawn about
463 the potential impact of face covering use on adherence to other protective behaviours. Recommendations
464 for future research are summarised below.

465 **4.8.1 Recommendations for future research**

- 466 • Further field experiments (or more ecologically valid lab experiments) investigating the effect of
467 face covering use on physical distancing. Such studies might make a particular focus of
468 investigating:
 - 469 ○ Differing effects of face covering use by the self and face covering use by another person
 - 470 ○ How different face covering policies might moderate the relationship between face covering
471 use and physical distancing . For example, a field experiment could be conducted whereby
472 two manipulations occur; one whereby the setting varies according to the face covering
473 policy implemented (mandatory or voluntary), and one whereby a confederate appears
474 either wearing or not wearing a face covering. Physical distancing from the confederate
475 would then be measured. This would allow for the direct comparison between the
476 moderating effects of voluntary and mandatory settings with more control over extraneous
477 factors.
 - 478 ○ How effects might vary according to the operationalisation of distancing; for example,
479 whether the absolute distance is measured, or whether a binary variable capturing whether
480 or not a particular distance or guideline is adhered to is captured
- 481 • Lab experiments replicating those cited in this review, but which vary by the framing of physical
482 distancing (i.e., self-protective or prosocial)

Effect of face covering use on adherence to other COVID-19 protective behaviours

- 483 • Qualitative research investigating how differing face covering policies affect attitudes towards
484 leaving the home and moving around the community
- 485 • Experimental studies investigating the effect of face covering use and face covering policies on
486 face-touching, hand hygiene and close contacts

487

488 **5. Acknowledgements**

489 The authors thank Dr Joanna Milward for contributing to the development of the protocol and search
490 terms, Nicola Pearce-Smith for creating the search strategies and running the searches themselves, as
491 well as providing guidance on screening, and Megan Phillips for contributing to the quality appraisal as a
492 second reviewer.

493

494

495

496 **6. References**

- 497 1. Ayouni I, Maatoug J, Dhouib W, Zammit N, Fredj SB, Ghammam R, et al. Effective public health
498 measures to mitigate the spread of COVID-19: a systematic review. *BMC Public Health*. 2021;21:1-14.
- 499 2. The Royal Society and the British Academy. Face masks and coverings for the general public:
500 behavioural knowledge, effectiveness of cloth coverings and public messaging. London, UK: The Royal
501 Society; 2020.
- 502 3. Jefferson T, Dooley L, Ferroni E, Al-Ansary L, van Driel M, Bawazeer G, et al. Physical
503 interventions to interrupt or reduce the spread of respiratory viruses. *Cochrane Database of Systematic
504 Reviews*. 2023(1):CD006207.
- 505 4. Li Y, Liang M, Gao L, Ahmed M, Uy J, Cheng C, et al. Face masks to prevent transmission of
506 COVID-19: a systematic review and meta-analysis. *American Journal of Infection Control*.
507 2021;49(7):900-6.

Effect of face covering use on adherence to other COVID-19 protective behaviours

- 508 5. World Health Organization. Advice on the use of masks in the context of covid-19: interim
509 guidance. 2020. pp 1-5. [https://apps.who.int/iris/bitstream/handle/10665/331693/WHO-2019-nCov-](https://apps.who.int/iris/bitstream/handle/10665/331693/WHO-2019-nCov-IPC_Masks-2020.3-eng.pdf?sequence=1&isAllowed=y)
510 [IPC_Masks-2020.3-eng.pdf?sequence=1&isAllowed=y](https://apps.who.int/iris/bitstream/handle/10665/331693/WHO-2019-nCov-IPC_Masks-2020.3-eng.pdf?sequence=1&isAllowed=y)
- 511 6. Greenhalgh T. Face coverings for the public: laying straw men to rest. *Journal of Evaluation in*
512 *Clinical Practice*. 2020;26(4):1070-7.
- 513 7. Martin G, Hanna E, Dingwall R. Urgency and uncertainty: covid-19, face masks, and evidence
514 informed policy. *BMJ*. 2020;369:m2017.
- 515 8. Mantzari E, Rubin G, Marteau T. Is risk compensation threatening public health in the covid-19
516 pandemic? *BMJ*. 2020;370:m2913.
- 517 9. Millest A, Carter H. Effect of face-covering use on adherence to other Covid-19 protective
518 behaviours. PROSPERO 2022 CRD42022331961 2022 [Available from:
519 https://www.crd.york.ac.uk/prospero/display_record.php?ID=CRD42022331961].
- 520 10. Page MJ, McKenzie JE, Bossuyt PM, Boutron I, Hoffmann TC, Mulrow CD, et al. The PRISMA
521 2020 statement: an updated guideline for reporting systematic reviews. *BMJ*. 2021;371:n71
- 522 11. Ouzzani M, Hammady H, Fedorowicz Z, Elmagarmid A. Rayyan—a web and mobile app for
523 systematic reviews. *Systematic Reviews*. 2016;5(1):210.
- 524 12. Academy of Nutrition and Dietetics. Evidence analysis manual: steps in the academy evidence
525 analysis process. 2016. [cited 2023 Mar 03]. Available from [https://www.andeal.org/evidence-analysis-](https://www.andeal.org/evidence-analysis-manual)
526 [manual](https://www.andeal.org/evidence-analysis-manual).
- 527 13. Davies R, Mowbray F, Martin A, Smith L, Rubin G. A systematic review of observational methods
528 used to quantify personal protective behaviours among members of the public during the COVID-19
529 pandemic, and the concordance between observational and self-report measures in infectious disease
530 health protection. *BMC Public Health*. 2022;22(1):1436.
- 531 14. Chakraborty S, Stefanucci J, Creem-Regehr S, Bodenheimer B. Distance estimation with social
532 distancing: a mobile augmented reality study. In 2021 IEEE International Symposium on Mixed and
533 Augmented Reality Adjunct (ISMAR-Adjunct); 2021 October 04-08; Bari, Italy. IEE; 2021. p. 87-91.
- 534 15. Svenson O. People underestimate the change of airborne corona virus exposure when changing
535 distance to an infected person: on interpersonal distance, exposure time, face masks and perceived

Effect of face covering use on adherence to other COVID-19 protective behaviours

- 536 virus exposure. medRxiv [Preprint]. 2022 [cited 2023 Mar 03]. Available from
537 <http://medrxiv.org/content/early/2022/03/15/2022.03.14.22272341.abstract>.
- 538 16. Biggio M, Bisio A, Bruno V, Garbarini F, Bove M. Wearing a mask shapes interpersonal space
539 during COVID-19 pandemic. *Brain Sciences*. 2022;12(5):682.
- 540 17. Cartaud A, Quesque F, Coello Y. Wearing a face mask against Covid-19 results in a reduction of
541 social distancing. *PLoS ONE*. 2020;15(12):e0243023.
- 542 18. Gulbetekin E. Effects of mask use and race on face perception, emotion recognition, and social
543 distancing during the COVID-19 pandemic. *Research Square* [Preprint]. 2021 [cited 2023 Mar 03].
544 Available from [https://assets.researchsquare.com/files/rs-692591/v1/1cab9894-2761-4622-b8b9-
545 6d829c3d4343.pdf?c=1631886459](https://assets.researchsquare.com/files/rs-692591/v1/1cab9894-2761-4622-b8b9-6d829c3d4343.pdf?c=1631886459).
- 546 19. Iachini T, Frassinetti F, Ruotolo F, Sbordone F, Ferrara A, Arioli M, et al. Psychological and
547 situational effects on social distancing and well-being during the COVID-19 pandemic: not a question of
548 real risk. *PsyArXiv* [Preprint]. 2020 [cited 2023 Mar 03]. Available from <https://psyarxiv.com/r7usv/>.
- 549 20. Lee Y, Chen Y. Influence of wearing surgical mask on interpersonal space perception between
550 mainland Chinese and Taiwanese people. *Frontiers in Psychology*. 2021;12:692404.
- 551 21. Lisi MP, Scattolin M, Fusaro M, Aglioti SM. A Bayesian approach to reveal the key role of mask
552 wearing in modulating projected interpersonal distance during the first COVID-19 outbreak. *PLoS ONE*.
553 2021;16(8):e0255598.
- 554 22. Xiong W, Wang, C., & Yu, X. The effect of face mask and approach pattern on interpersonal
555 distance in COVID-19 pandemic using VR technology. In: Long S, Dhillon BS, editors. *International
556 Conference on Man-Machine-Environment System Engineering*; 2022 Oct 21-23; Beijing, China.
557 Singapore: Springer; 2022. p. 92-8.
- 558 23. Wang M, Lee Y-C. Investigating the effects of face Mask and gender on interpersonal distance
559 judgments. In: Long S, Dhillon BS, editors. *Man-Machine-Environment System Engineering:
560 Proceedings of the 21st International Conference on MMESE*; 2021 Oct 23-25; Beijing, China.
561 Singapore: Springer; 2022. p. 40-5.

Effect of face covering use on adherence to other COVID-19 protective behaviours

- 562 24. Luckman A, Zeitoun H, Isoni A, Loomes G, Vlaev I, Powdthavee N, et al. Risk compensation
563 during COVID-19: The impact of face mask usage on social distancing. *Journal of Experimental*
564 *Psychology: Applied*. 2021;27(4):722-38.
- 565 25. Kroczeck LOH, Bohme S, Muhlberger A. Face masks reduce interpersonal distance in virtual
566 reality. *Scientific Reports*. 2022;12(1):2213.
- 567 26. Bühler MA, Lynch SD, Bhojwani T, Zidan A, Fiset F, McFadyen BJ, et al. Stay out of the blast
568 radius: influence of surgical masks on virtual pedestrian interactions. *Research Square Research Square*
569 [Preprint]. 2021 [cited 2023 Mar 03]. Available from [https://assets.researchsquare.com/files/rs-](https://assets.researchsquare.com/files/rs-852079/v1/3e95f3ec-8eaf-46db-85df-e5283756a6ca.pdf?c=1638763153)
570 [852079/v1/3e95f3ec-8eaf-46db-85df-e5283756a6ca.pdf?c=1638763153](https://assets.researchsquare.com/files/rs-852079/v1/3e95f3ec-8eaf-46db-85df-e5283756a6ca.pdf?c=1638763153)
- 571 27. Seres G, Balleyer AH, Cerutti N, Danilov A, Friedrichsen J, Liu YM, et al. Face masks increase
572 compliance with physical distancing recommendations during the COVID-19 pandemic. *Journal of the*
573 *Economic Science Association*. 2021 Nov 13;7:139-58.
- 574 28. Marchiori M. COVID-19 and the social distancing paradox: dangers and solutions. *arXiv*
575 [Preprint]. 2020 [cited 2023 Mar 03]. Available from
576 [https://arxiv.org/pdf/2005.12446.pdf?fbclid=IwAR3edT8vzdd_Rt8ykeVC8Y0RQ1hLs4A9Buny6d3hYc2TZ](https://arxiv.org/pdf/2005.12446.pdf?fbclid=IwAR3edT8vzdd_Rt8ykeVC8Y0RQ1hLs4A9Buny6d3hYc2TZqD5huEg5J478U4)
577 [qD5huEg5J478U4](https://arxiv.org/pdf/2005.12446.pdf?fbclid=IwAR3edT8vzdd_Rt8ykeVC8Y0RQ1hLs4A9Buny6d3hYc2TZqD5huEg5J478U4)
- 578 29. Abaluck J, Kwong LH, Styczynski A, Haque A, Kabir MA, Bates-Jefferys E, et al.. Normalizing
579 community mask-wearing: a cluster randomized trial in Bangladesh. *National Bureau of Economic*
580 *Research*;2021 Apr. Report No.: 28734.
- 581 30. Seres G, Balleyer A, Cerutti N, Friedrichsen J, Suer M. Face mask use and physical distancing
582 before and after mandatory masking: No evidence on risk compensation in public waiting lines. *Journal*
583 *of Economic Behavior & Organization*. 2021;192:765-81.
- 584 31. Blanken TF, Tanis CC, Nauta FH, Dablander F, Zijlstra BJH, Bouten RRM, et al. Promoting
585 physical distancing during COVID-19: a systematic approach to compare behavioral interventions.
586 *Scientific Reports*. 2021;11:19463.
- 587 32. Aranguren M. Face mask use conditionally decreases compliance with physical distancing rules
588 against COVID-19: gender differences in risk compensation pattern. *Annals of Behavioral Medicine*.
589 2022;56:332-46.

Effect of face covering use on adherence to other COVID-19 protective behaviours

- 590 33. Liebst LS, Ejbye-Ernst P, de Bruin M, Thomas J, Lindegaard MR. No evidence that mask-
591 wearing in public places elicits risk compensation behavior during the COVID-19 pandemic. *Scientific*
592 *Reports*. 2022;12:1511.
- 593 34. Jørgensen F, Lindholt MF, Bor A, Petersen MB. Does face mask use elicit risk-compensation?
594 Quasi-experimental evidence from Denmark during the SARS-CoV-2 pandemic. *European Journal of*
595 *Public Health*. 2021;31(6):1259-65.
- 596 35. Puttock EJ, Marquez J, Young DR, Shirley AM, Han B, McKenzie TL, et al. Association of
597 masking policies with mask adherence and distancing during the SARS-COV-2 Pandemic. *American*
598 *Journal of Infection Control*. 2022;50:969-74.
- 599 36. Atzema CL, Mostarac I, Button D, Austin PC, Javidan AP, Wintraub L, et al. Assessing effective
600 mask use by the public in two countries: an observational study. *BMJ Open*. 2021;11:e049389.
- 601 37. Betsch C, Korn L, Sprengholz P, Felgendreff L, Eitze S, Schmid P, et al. Social and behavioral
602 consequences of mask policies during the COVID-19 pandemic. *Proceedings of the National Academy*
603 *of Sciences of the United States of America*. 2020;117(36):21851-3.
- 604 38. Lama Y, Budenz A, Gaysynsky A, Iles IA, Chou WYS. Factors associated with COVID-19
605 behavioral intentions: findings from an online survey. *American Journal of Health Promotion*.
606 2022;36(7);1183-92.
- 607 39. Li M, Colby H. Association between actual and perceived U.S. COVID-19 policies and preventive
608 behavior. *Annals of Behavioral Medicine*. 2021;55:369-75.
- 609 40. Sheehan MM, Pfoh E, Speaker SL, Rothberg M. Changes in social behavior over time during the
610 COVID-19 pandemic. *Cureus*. 2020 Oct 01;12(10):e10754.
- 611 41. Doung Ngern P, Suphanchaimat R, Panjangampatthana A, Janekrongtham C, Ruampoom D,
612 Daochaeng N, et al. Associations between wearing masks, washing hands, and social distancing
613 practices, and risk of COVID-19 infection in public: a cohort-based case-control study in Thailand.
614 medRxiv [Preprint]. 2020 [cited 2023 March 03]. Available from
615 <https://www.medrxiv.org/content/10.1101/2020.06.11.20128900v4>

Effect of face covering use on adherence to other COVID-19 protective behaviours

- 616 42. Griggs A, Weaver J, Alvarado J. Masking our risky behavior: how licensing and fear reduction
617 reduce social distancing behavior. *Journal of Social Psychology*. 2022 Sep 3;162(5):607-20. Epub 2021
618 Jul 27.
- 619 43. Fracalossi de Moraes R, Russell LB, Santos da Silva LL, Toscano CM. Effects of non-
620 pharmaceutical interventions on social distancing during the COVID-19 pandemic: evidence from the 27
621 Brazilian states. *PLoS ONE*. 2022;17(3):e0265346.
- 622 44. Hosseini MS, Gittler AM. Factors influencing human mobility during the COVID-19 pandemic in
623 selected countries of Europe and North America. 2020 IEEE International Conference Big Data (Big
624 Data); 2020 Dec 10-13; Atlanta, GA, USA. IEE; 2021. p. 4866-72.
- 625 45. Wadud Z, Rahman SM, Enam A. Face mask mandates and risk compensation: an analysis of
626 mobility data during the COVID-19 pandemic in Bangladesh. *BMJ Global Health*. 2022;7:e006803.
- 627 46. Wang F, Ge, X, Huang D. Government intervention, human mobility, and COVID-19: a causal
628 pathway analysis from 121 countries. *Sustainability*. 2022;14:3694.
- 629 47. Yan Y, Bayham J, Richter A, Fenichel EP. Risk compensation and face mask mandates during
630 the COVID-19 pandemic. *Scientific Reports*. 2021;11:3174.
- 631 48. Barros V, Manes I, Akinwande V, Cintas C, Bar-Shira O, Ozery-Flato M, et al. A causal inference
632 approach for estimating effects of non-pharmaceutical interventions during Covid-19 pandemic. medRxiv
633 [Preprint]. 2022 [cited 2023 Mar 03]. Available from
634 <https://www.medrxiv.org/content/10.1101/2022.02.28.22271671v1>
- 635 49. Chernozhukov V, Kasahara H, Schrimpf P. Causal impact of masks, policies, behavior on early
636 covid-19 pandemic in the U.S. *Journal of Econometrics*. 2021;220:23-62.
- 637 50. Kovacs R, Dunaiski, M, Tukiainen J. Compulsory face mask policies do not affect community
638 mobility in Germany. SSRN [Preprint]. 2020 [cited 2023 Mar 03]. Available from
639 https://papers.ssrn.com/sol3/papers.cfm?abstract_id=3620070
- 640 51. Shin SH, Ji H, Lim H. Heterogeneity in preventive behaviors during COVID-19: health risk,
641 economic insecurity, and slanted information. *Social Science & Medicine*. 2021;278:113944.

Effect of face covering use on adherence to other COVID-19 protective behaviours

- 642 52. Zhao N, Yao S, Thomadsen R, Wang CB. The impact of social Distancing and masking on
643 COVID-19 spread and consumer spending. SSRN [Preprint]. 2022 [cited 2023 Mar 03]. Available from
644 https://papers.ssrn.com/sol3/papers.cfm?abstract_id=3725711
- 645 53. Bansal P, Kessels R, Krueger R, Graham DJ. Preferences for using the London Underground
646 during the COVID-19 pandemic. *Transportation Research Part A*. 2022;160:45-60.
- 647 54. de Freitas AVC, Magalhães AM, Carricondo PC, Shinzato AA, Hida RY. Face masks can reduce
648 the frequency of face touching: an observational crossover study. *International Journal of Infectious*
649 *Diseases*. 2022;123:54-7.
- 650 55. Chen YJ, Qin G, Chen J, Xu JL, Feng DY, Wu XY, et al. Comparison of face-touching behaviors
651 before and during the coronavirus disease 2019 pandemic. *JAMA Network Open*. 2020;3(7):e2016924.
- 652 56. Shiraly R, Shayan Z, McLaws ML. Face touching in the time of COVID-19 in Shiraz, Iran.
653 *American Journal of Infection Control*. 2020;48:1559-61.
- 654 57. Liebst LS, Ejbye-Ernst P, de Bruin M, Thomas J, Lindegaard MR. Face-touching behaviour as a
655 possible correlate of mask-wearing: a video observational study of public place incidents during the
656 COVID-19 pandemic. *Transboundary and Emerging Diseases*. 2022;69:1319-25.
- 657 58. Kungurova Y, Mera R, Brewster E, Ali K, Fakoya AOJ. Covid-19 and face mask use: a St. Kitts
658 case study. *Open Access Macedonian Journal of Medical Sciences*. 2020 Oct 26;8(T1):346-52.
- 659 59. Tao ZY, Dong J, Culleton R. The use of facemasks may not lead to an increase in hand-face
660 contact. *Transboundary and Emerging Diseases*. 2020;67:3038-40.
- 661 60. van den Broek-Altenburg EM, Atherly AJ, Diehl SA, Gleason KM, Hart VC, MacLean CD, et al.
662 Jobs, housing, and mask wearing: cross-sectional study of risk factors for COVID-19. *JMIR Public Health*
663 *and Surveillance*. 2021;7(1):e24320.
- 664 61. MacIntyre CR, Nguyen PY, Chughtai AA, Trent M, Gerber B, Steinhofel K, et al. Mask use, risk-
665 mitigation behaviours and pandemic fatigue during the COVID-19 pandemic in five cities in Australia, the
666 UK and USA: a cross-sectional survey. *International Journal of Infectious Diseases*. 2021;106:199-207.
- 667 62. Guenther B, Galizzi MM, Sanders JG. Heterogeneity in risk-taking during the COVID-19
668 pandemic: evidence from the UK lockdown. *Frontiers in Psychology*. 2021 Apr 01;12:643653.
- 669

Effect of face covering use on adherence to other COVID-19 protective behaviours

670

671

672

673

Effect of face covering use on adherence to other COVID-19 protective behaviours

674 **7. Supporting information captions**

675 **S1 Appendix. Search strategies**

676 **S2 Appendix. Quality criteria checklist**

677 **S3 Appendix. Data extraction tables**

678 **S4 Appendix. PRISMA 2020 checklist**

679 **S5 Appendix. PRISMA 2020 abstract checklist**

680 **S6 Appendix. Protocol**