

1 **Research Article**

2

3 **Factors associated with differential seropositivity to *Leptospira interrogans* and**

4 ***Leptospira kirschneri* in a high transmission urban setting for leptospirosis in**

5 **Brazil**

6

7 **Running Title: Seropositivity of two *Leptospira* serogroups in urban residents**

8

9 Daiana de Oliveira^{1,2}, Hussein Khalil³, Fabiana Almerinda G. Palma¹, Roberta Santana¹,

10 Nivison Nery Jr^{1,2}, Juan C. Quintero-Vélez^{4,5,6}, Caio Graco Zeppelini⁷, Gielson Almeida

11 do Sacramento², Jaqueline Cruz², Ricardo Lustosa¹, Igor Santana Ferreira¹, Ticiana

12 Carvalho-Pereira¹, Peter J Diggle⁸, Elsie A. Wunder Jr^{2,9}, Albert I. Ko^{2,9}, Yeimi Alzate

13 Lopez¹, Mike Begon¹⁰, Mitermayer G. Reis^{2,9,11}, Federico Costa^{1,2,9}.

14

15 ¹ Instituto da Saúde Coletiva, Universidade Federal da Bahia, Rua Basílio da Gama,

16 316, Canela, CEP 40110-040, Salvador, Bahia, Brasil

17 ² Instituto Gonçalo Moniz, Fundação Oswaldo Cruz, Ministério da Saúde, Rua

18 Waldemar Falcão, 121, Candeal, CEP 40296-710, Salvador, Bahia, Brasil

19 ³ Department of Wildlife, Fish, and Environmental Studies, Swedish University of

20 Agricultural Sciences, Umeå, Sweden

21 ⁴ Grupo de Ciencias Veterinarias - Centauro, Facultad de Ciencias Agrarias,

22 Universidad de Antioquia, Medellín, Colombia

23 ⁵ Grupo de Investigación Microbiología Básica y Aplicada, Universidad de Antioquia,

24 Medellín, Colombia

25 ⁶ Grupo de Epidemiología, Universidad de Antioquia, Medellín, Colombia

NOTE: This preprint reports new research that has not been certified by peer review and should not be used to guide clinical practice.

26 ⁷ Programa de Pós-Graduação em Ecologia: Teoria, Aplicações e Valores, Universidade
27 Federal da Bahia, Brazil.

28 ⁸ Centre for Health Informatics, Computing, and Statistics, Lancaster University, UK

29 ⁹ Department of Epidemiology of Microbial Diseases, Yale School of Public Health, 60
30 College St, New Haven, Connecticut, 06510, USA

31 ¹⁰ Institute of Integrative Biology, University of Liverpool, UK

32 ¹¹ Faculdade de Medicina, Universidade Federal da Bahia, Praça XV de novembro, s/n -
33 Largo do Terreiro de Jesus, CEP 40026-010, Salvador, Bahia, Brasil

34

35 **Keywords:** leptospirosis, determinants, seroprevalence, co-circulation.

36 [&]**Correspondence author:** Federico Costa (federico.costa@ufba.br)

37

38 **Funding source:**

39 The study was funded by Medical Research Council (UK). Grant number: MR/
40 P024084/1 to MB, Fundação de Amparo à Pesquisa do Estado da Bahia (BR) Grant
41 number: 10206/2015, Wellcome Trust (UK) Grant number:102330/Z/13/Z and National
42 Institutes of Health (US) Grant numbers: R01TW009504 and R01AI121207.

43

44 **Conflicts of Interest:** The authors declare that there is no conflict of interest.

45

46 **Abstract**

47 **Background**

48 Leptospirosis is a zoonosis caused by pathogenic species of bacteria belonging to the
49 genus *Leptospira*. Most studies infer the epidemiological patterns of a single serogroup
50 or aggregate all serogroups to estimate overall seropositivity, thus not exploring the
51 risks of exposure to distinct serogroups. The present study aims to delineate the
52 demographic, socioeconomic and environmental factors associated with seropositivity
53 of *Leptospira* serogroup Icterohaemorrhagiae and serogroup Cynopteri in an urban high
54 transmission setting for leptospirosis in Brazil.

55 **Methods/Principal Findings**

56 We performed a cross-sectional serological study in five urban informal communities in
57 the city of Salvador, Brazil. During the years 2018, 2020 2021, we recruited 2.808
58 residents and collected blood samples for serological analysis using microagglutination
59 assays. We used a mixed-effect multinomial logistic regression model to identify risk
60 factors associated with seropositivity for each serogroup. Seropositivity to Cynopteri
61 increased with age in years (OR 1.03; 95% CI 1.01-1.06) and was higher in those living
62 in houses with unplaster walls (exposed brick) (OR 1.68; 95% CI 1.09-2.59) and where
63 cats were present near the household (OR 2.00; 95% CI 1.03-3.88). Seropositivity to
64 Icterohaemorrhagiae also increased with age in years (OR 1.02; 95% CI 1.01-1.03) but
65 was higher in males (OR 1.51; 95% CI 1.09-2.10), in those with work-related exposures
66 (OR 1.71; 95% CI 1.10-2.66) or who had contact with sewage (OR 1.42; 95% CI 1.00-
67 2.03). Spatial analysis showed differences in distribution of seropositivity to serogroups
68 Icterohaemorrhagiae and Cynopteri within the five districts where study communities
69 were situated.

70 **Conclusions/Significance**

71 Our data suggests distinct epidemiological patterns associated with serogroups
72 Icterohaemorrhagiae and Cynopteri within the high-risk urban environment for
73 leptospirosis and with differences of spatial niches. Future studies must identify the
74 different pathogenic serogroups circulating in low-income areas, and further evaluate
75 the potential role of cats in the transmission of the serogroup Cynopteri in urban
76 settings.
77

78 **Introduction**

79 Leptospirosis is a potentially severe infectious disease that affects animals (both
80 domestic and wild) and humans [1]. The disease is caused by pathogenic species of the
81 genus *Leptospira* that causes a wide array of clinical manifestations in humans [2].
82 Symptoms can range from asymptomatic infection and light fever to severe
83 manifestations with risk of death [3]. Over a million cases occur globally every year,
84 causing over 60 thousand deaths [4]. The majority of the disease burden occurs in
85 developing nations that lack adequate infrastructure and health services [5]. Human
86 infection occurs through direct contact with urine or contaminated secretions from
87 infected animals, or indirectly through contact with contaminated soil and water [1,6].

88 The genus *Leptospira* comprises 69 species and over 300 serovars, classified in
89 more than 20 serogroups [7–9]. The microscopic agglutination test (MAT) is the golden
90 standard serodiagnosis for leptospirosis and can indicate the presumptive infecting
91 serogroup [10]. However, isolation or specific laboratory techniques like DNA sequence
92 analysis are needed for definitive serotyping [11]. Some serovars can infect multiple
93 animal species while others are more adapted to specific animal hosts [2]. This host
94 preference might explain why some serovars/serogroups are more frequent in certain
95 geographic areas. The diversity of reservoirs, serovars and serogroups, together with
96 environmental and socio-behavioral determinants, pose a challenge to the
97 characterization of the epidemiologic patterns of leptospirosis. These factors can
98 influence the risk of transmission, and consequently, increase incidence and cause
99 outbreaks [12].

100 Historically, tropical and subtropical nations have seasonal leptospirosis
101 incidence peaks associated with heavy rainfall and flooding events during the rainy
102 season [12–15]. The informal accelerated expansion of large urban centers, coupled

103 with inadequate housing and sanitation, has resulted in environmental and social
104 conditions highly favorable to disease hosts and pathogen transmission [16]. Over 33%
105 of the world population live in urban poor communities [17], a figure around 28% in
106 Brazil [18], where, because of the deep social inequalities, there is a direct correlation
107 between vulnerable environments, disaster risks and public health problems [19,20].
108 Historically, in the city of Salvador, where most of the population is of black and mixed
109 races, people with lower income to live in the peripheral areas of cities without access to
110 basic rights, and where the prevalence of health problems such as leptospirosis is greater
111 than in other areas of the city.

112 Studies performed in the past two decades in Salvador, Brazil, reported
113 *Leptospira interrogans* serogroup Icterohaemorrhagiae serovar Copenhageni (strain
114 Fiocruz L1-130) as the serogroup responsible for over 95% of the clinical cases
115 recorded throughout the city [12], as well as asymptomatic infections in residents of the
116 urban community of Pau da Lima within Salvador [21,22]. The animal reservoir of the
117 serovar Copenhageni and serogroup Icterohaemorrhagiae is the brown rat (*Rattus*
118 *norvegicus*), as shown by previous studies in the same community [23,24]. These
119 studies identified the seroincidence of *Leptospira kirschneri* serogroup Cynopteri (strain
120 3522C) as the second highest in residents of urban communities [25]. However, the
121 animal reservoir of this serogroups and the determinants of its transmission, remain
122 unknown.

123 Thus, investigating the *Leptospira* serologic profile of the residents in urban
124 communities, accounting for serogroup-specific risk factors, will contribute to a better
125 understanding of the risk determinants of urban infection and inform the development
126 of more specific control measures. The present study aims to identify demographic,
127 socioeconomic, and environmental factors associated with seropositivity of *Leptospira*

128 *interrogans* Icterohaemorrhagiae (strain Fiocruz L1-130) and *Leptospira kirschneri*
129 Cynopteri (strain 3522C) in residents of five urban low-income communities in
130 Salvador, Brazil.

131

132 **METHODS**

133

134 *Ethics statement*

135 The study was approved by the Ethics Committee of Fundação Oswaldo Cruz, Instituto
136 Gonçalo Moniz (CAAE 45217415.4.0000.0040), the Ethics Committee for Research of
137 Instituto de Saúde Coletiva (UFBA, 041 / 17-2.245.914.17-2.245.914) and the
138 Institutional Review Board of Yale University (no. 2000031554).

139

140 *Study design*

141 We performed a cross-sectional study in five urban poor communities (Pau da
142 Lima (PL), Alto do Cabrito (AdC), Marechal Rondon (MR), Nova Constituinte (NC)
143 and Rio Sena (RS) in the city of Salvador, Bahia, Brazil (Figure 1). In PL, we collected
144 samples during the period of November 2020 to February 2021. Previous studies in the
145 area indicated an annual leptospiral incidence of 37.8 infections per thousand [21]. In
146 the four other communities, namely: AdC, MR, NC and RS, sampling occurred from
147 April to September 2018. The communities are considered low-income, with precarious
148 sanitation and infrastructure.

149 Eligible individuals were recruited, and those willing to participate signed a free
150 consent form and had a small blood sample drawn by a field professional. We applied a
151 structured questionnaire to provide information on individual characteristics of the
152 participant, domestic and peri-domestic environmental characteristics, exposure to

153 sources of environmental contamination, and the presence of potential animal
154 reservoirs.

155 Serological analysis was performed using the Microscopic Agglutination Test
156 (MAT), the gold standard for human leptospirosis detection, as previously described
157 [16]. MAT is based on dark-field microscopy detection of serum agglutination samples
158 from an individual (antibodies) with live *Leptospira* antibodies. We performed
159 association analysis only for serogroups Icterohaemorrhagiae strain Fiocruz L1-130 and
160 Cynopteri strain 3522C, which were the most prevalent strains in the regions, according
161 to our analyses.

162

163 ***Outcomes, exposures, and covariates***

164 The outcome of seropositive for leptospirosis was defined as seropositivity
165 against serogroups Cynopteri and/or Icterohaemorrhagiae. A result was considered
166 positive if 50% or more leptospire were agglutinated by MAT with a titer of $\geq 1:50$.
167 When agglutination was observed at a dilution of 1:100, the sample was titrated in serial
168 two-fold dilutions to determine the highest positive titer [25].

169 The main explanatory variables were at the individual-level: age in years (as a
170 quantitative variable), gender, ethnicity, highest education level achieved, receiving the
171 Federal government stimulus program (Bolsa Família), employment status, work
172 involving contact with sewer/garbage/construction materials, use of protective boots,
173 contact with mud in the last 12 months, walking barefoot outside, and cleaning sewer
174 canals in the last 12 months. In addition, environmental explanatory variables included
175 proximity of the household to open sewers, paved access to the household, household
176 with a backyard, plastered walls (proxy for quality of construction), garbage

177 accumulation near the household, and presence of domestic animals (cats, dogs, and
178 chickens).

179

180 *Spatial descriptive analysis*

181 QGIS version 2.18.20 was used to construct a georeferenced database from
182 satellite image WorldView-3 May 2017, at 31 cm resolution. The study team identified
183 households within the study site and marked their positions onto hard copy 1:1,500
184 scale maps. The image WorldView-3 was acquired by the research project / Institute
185 Gonçalo de Moniz - IGM - Fiocruz Bahia from the company Stamap, with disclosure
186 permitted referencing the Copyrights of DigitalGlobe images. Kernel Density
187 Estimation analysis (KDE) [26], with standard expression for two-dimensional spatial
188 context: $\hat{f}(x) = \frac{1}{n \cdot h^2} \sum k\{(x-x_i)/h\}$, where $k(u)$ is the kernel function (a bivariate
189 probability density), x_1, \dots, x_n are the data-points and h is the bandwidth, was
190 performed to complementary analyses to evaluated possible territorial difference of
191 niches between serogroups Icterohaemorrhagiae and Cynopteri with no overlapping
192 patters territorial concentration. The study evaluates smoothed spatial distributions of
193 sites with positive human cases of serogroups Icterohaemorrhagiae and Cynopteri,
194 considering as a weight factor in the analysis the total number of cases in the household
195 with distance matrix by 30 meters. The 30-meter distance matrix considered the average
196 distance traveled by rats per day [27] as a possible exposure factor of households to
197 serogroups, aiming to compare patterns of the Kernel analysis suitable for the scale of
198 the maps in the evaluated areas. To determine the smoothed population-adjusted risk
199 distribution we calculated the ratio of the KDE for positive cases of households to all
200 households evaluated with residents tested by leptospirosis cases of serogroups
201 Icterohaemorrhagiae and Cynopteri.

202 *Statistical Analysis*

203 We performed a descriptive analysis using relative and absolute frequencies for
204 qualitative variables and median and interquartile range for quantitative variables.
205 A mixed-effect multinomial logistic regression model was used to estimate potential
206 factors associated to seropositivity for both Icterohaemorrhagiae and Cynopteri
207 serogroups. Variables included in the multivariate analysis were those with $p < 0.15$ in
208 the bivariate analysis. The multivariable analyses were performed using the stepwise
209 method based on the purposeful selection of variables, including both statistical and
210 research criteria (biological plausibility) [21,28]. Also, “area” (five urban low-income
211 communities) was include in the final model as a fixed effect. We checked for high
212 levels of correlation among the predictor models that were selected to be included in the
213 final model using Variance Inflation Factor (VIF), but VIF values were <5 and thus no
214 variables were excluded. The best model that explained the outcome was selected
215 according to Akaike’s Information Criteria (AIC). The linearity assumption was
216 confirmed before the inclusion of quantitative variables in bivariate and multivariate
217 models. The seroprevalence are presented with their 95% confidence intervals adjusted
218 by random effects (neighborhood). All statistical procedures were performed in R
219 studio, using tidyverse, lme4 and nmet packages [29–32]

220

221 **Results**

222 The study included 2,808 residents of five neighborhoods located in Salvador, Brazil
223 (Fig 1); of which 1,512 were from Pau da Lima, 332 from Marechal Rondon, 367 from
224 Alto do Cabrito, 304 from Nova Constituinte and 293 from Rio Sena (Table 1). In
225 general, the population studied was predominantly female (58%; 1,620/2,808) and self-
226 declared black (51%; 1,422/2,808) (Table 1).

227 Table 1. Descriptive statistics for demography and socioenvironmental variables by area.

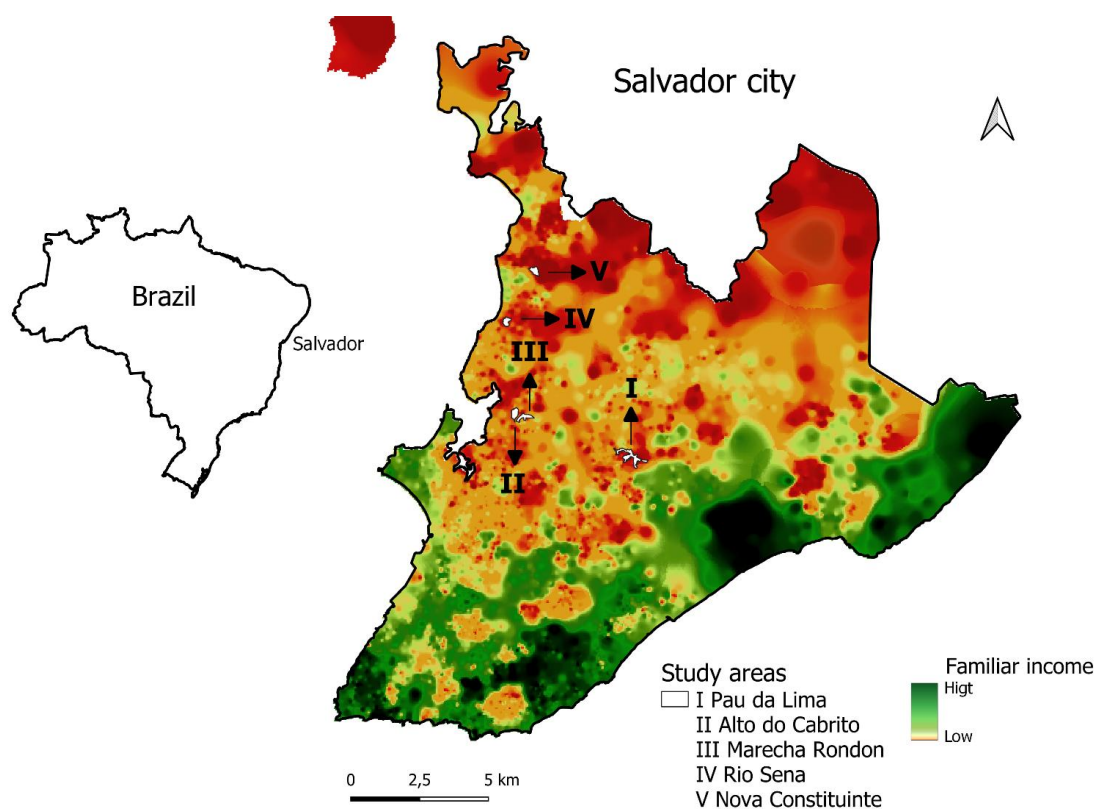
Characteristic	Overall N = 2,808¹	Alto do Cabrito N = 367¹	Marechal Rondon N = 332¹	Nova Constituinte N = 304¹	Pau da Lima N = 1,512¹	Rio Sena N = 293¹
Age (years), n (%)						
0 to 16	666 (23.7%)	59 (16.1%)	48 (14.5%)	72 (23.7%)	395 (26.1%)	92 (31.4%)
17 to 29	708 (25.2%)	102 (27.8%)	74 (22.3%)	74 (24.3%)	386 (25.5%)	72 (24.6%)
30 to 44	721 (25.7%)	97 (26.4%)	84 (25.3%)	87 (28.6%)	388 (25.7%)	65 (22.2%)
> 45	713 (25.4%)	109 (29.7%)	126 (38.0%)	71 (23.4%)	343 (22.7%)	64 (21.8%)
Sex, n (%)						
Male	1,188 (42.3%)	159 (43.3%)	134 (40.4%)	130 (42.8%)	639 (42.3%)	126 (43.0%)
Female	1,620 (57.7%)	208 (56.7%)	198 (59.6%)	174 (57.2%)	873 (57.7%)	167 (57.0%)
Ethnicity, n (%)						
Brown	1,171 (42.3%)	146 (41.4%)	148 (46.2%)	115 (38.5%)	635 (42.0%)	127 (44.7%)
Black	1,422 (51.4%)	191 (54.1%)	151 (47.2%)	169 (56.5%)	781 (51.7%)	130 (45.8%)
White	155 (5.6%)	16 (4.5%)	21 (6.6%)	15 (5.0%)	76 (5.0%)	27 (9.5%)
Others	20 (0.7%)	0 (0.0%)	0 (0.0%)	0 (0.0%)	20 (1.3%)	0 (0.0%)
Education, n (%)						
5 or less	769 (27.4%)	87 (23.7%)	84 (25.3%)	80 (26.3%)	430 (28.4%)	88 (30.0%)
5 to 9	919 (32.7%)	94 (25.6%)	103 (31.0%)	87 (28.6%)	515 (34.1%)	120 (41.0%)
10 to 12	945 (33.7%)	159 (43.3%)	121 (36.4%)	116 (38.2%)	479 (31.7%)	70 (23.9%)
Higher Education	61 (2.2%)	17 (4.6%)	7 (2.1%)	10 (3.3%)	25 (1.7%)	2 (0.7%)
Never studied	114 (4.1%)	10 (2.7%)	17 (5.1%)	11 (3.6%)	63 (4.2%)	13 (4.4%)
Employment, n (%)						
No	1,826 (65.0%)	240 (65.4%)	227 (68.4%)	206 (67.8%)	944 (62.4%)	209 (71.3%)
Yes	982 (35.0%)	127 (34.6%)	105 (31.6%)	98 (32.2%)	568 (37.6%)	84 (28.7%)
Risk occupation, n (%)						

No	2,593 (92.3%)	343 (93.5%)	295 (88.9%)	289 (95.1%)	1,391 (92.0%)	275 (93.9%)
Yes	215 (7.7%)	24 (6.5%)	37 (11.1%)	15 (4.9%)	121 (8.0%)	18 (6.1%)
Walk barefoot, n (%)						
No	1,761 (62.7%)	226 (61.6%)	227 (68.4%)	203 (66.8%)	950 (62.9%)	155 (52.9%)
Yes	1,046 (37.3%)	141 (38.4%)	105 (31.6%)	101 (33.2%)	561 (37.1%)	138 (47.1%)
Use of boots, n (%)						
No	2,246 (80.1%)	307 (83.7%)	271 (82.1%)	246 (80.9%)	1,170 (77.4%)	252 (86.0%)
Yes	559 (19.9%)	60 (16.3%)	59 (17.9%)	58 (19.1%)	341 (22.6%)	41 (14.0%)
Cleaned sewage, n (%)						
No	2,238 (89.8%)	304 (91.8%)	260 (85.8%)	229 (85.1%)	1,223 (91.5%)	222 (88.1%)
Yes	253 (10.2%)	27 (8.2%)	43 (14.2%)	40 (14.9%)	113 (8.5%)	30 (11.9%)
Sewage contact, n (%)						
No	2,207 (78.6%)	319 (86.9%)	235 (70.8%)	248 (81.6%)	1,179 (78.0%)	226 (77.1%)
Yes	600 (21.4%)	48 (13.1%)	97 (29.2%)	56 (18.4%)	332 (22.0%)	67 (22.9%)
Open sewer, n (%)						
No	1,851 (66.0%)	291 (79.7%)	201 (60.5%)	207 (68.1%)	973 (64.4%)	179 (61.1%)
Yes	955 (34.0%)	74 (20.3%)	131 (39.5%)	97 (31.9%)	539 (35.6%)	114 (38.9%)
Access to the house is paved?, n (%)						
No	701 (25.0%)	42 (11.4%)	73 (22.0%)	65 (21.4%)	391 (25.9%)	130 (44.4%)
Yes	2,107 (75.0%)	325 (88.6%)	259 (78.0%)	239 (78.6%)	1,121 (74.1%)	163 (55.6%)
Wall material?, n (%)						

No	2,511 (89.4%)	348 (94.8%)	292 (88.0%)	285 (93.8%)	1,367 (90.4%)	219 (74.7%)
Yes	297 (10.6%)	19 (5.2%)	40 (12.0%)	19 (6.2%)	145 (9.6%)	74 (25.3%)
Presence of Cats, n (%)						
No	2,115 (75.3%)	285 (77.7%)	253 (76.2%)	229 (75.3%)	1,122 (74.2%)	226 (77.1%)
Yes	693 (24.7%)	82 (22.3%)	79 (23.8%)	75 (24.7%)	390 (25.8%)	67 (22.9%)
Presence of Dogs, n (%)						
No	1,716 (61.1%)	213 (58.0%)	224 (67.5%)	164 (53.9%)	968 (64.0%)	147 (50.2%)
Yes	1,092 (38.9%)	154 (42.0%)	108 (32.5%)	140 (46.1%)	544 (36.0%)	146 (49.8%)
Presence of Chickens, n (%)						
No	2,670 (95.1%)	338 (92.1%)	318 (95.8%)	268 (88.2%)	1,471 (97.3%)	275 (93.9%)
Yes	138 (4.9%)	29 (7.9%)	14 (4.2%)	36 (11.8%)	41 (2.7%)	18 (6.1%)
<i>Leptospira</i> seropositivity, n (%)						
Icterohaemorrhagiae	208 (7.4%)	24 (6.5%)	24 (7.2%)	23 (7.6%)	114 (7.5%)	23 (7.8%)
Cynopteri	45 (1.6%)	6 (1.6%)	7 (2.1%)	3 (1.0%)	23 (1.5%)	6 (2.0%)
No infection	2,555 (91.0%)	337 (91.8%)	301 (90.7%)	278 (91.4%)	1,375 (90.9%)	264 (90.1%)

¹Mean (SD) or Frequency (%)

229

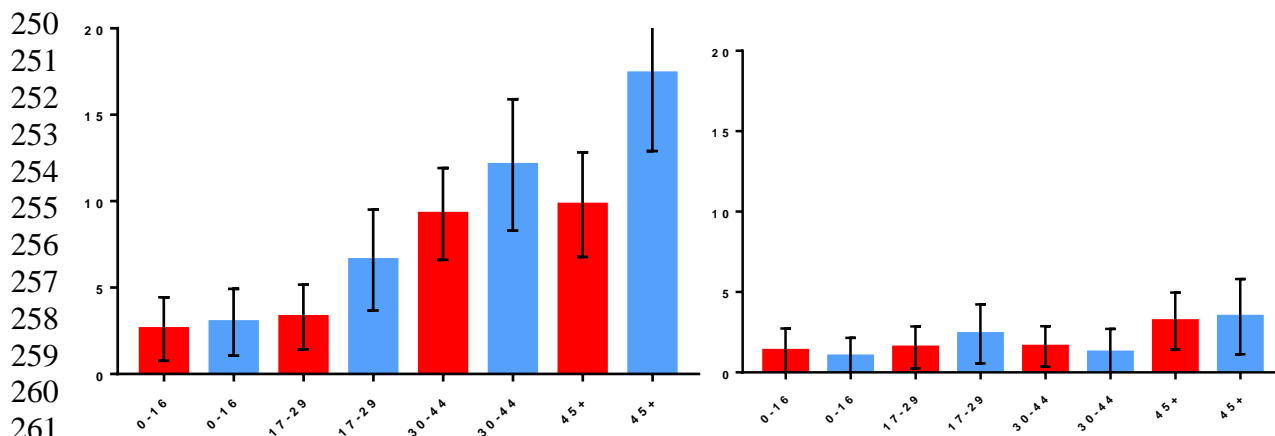


230
231 Figure 1. Urban communities in the city of Salvador, Brazil. Location of study sites (white)
232 within the city. Distribution of family income, high (green) and low (orange).
233
234

235 The overall unadjusted seroprevalence was 9% (253/2,808) (95% CI 8.0% -
236 10.1%). Of the 253 infected, 18% (45/253) were seropositive to serogroup Cynopteri
237 and 82% (208/253) were seropositive to serogroup Icterohaemorrhagiae. Regarding the
238 distribution of titers, 190/208 (91%) of the samples had titers of 50 to 400, followed by
239 18/208 (9%) of the samples reacted to titers of 800 and 1600 for serogroup
240 Icterohaemorrhagiae. For the Cynopteri serogroup, 43/45 (96%) of the samples had
241 titers of 50 to 400 followed by 2/45 (4%) of the samples reacted to titers of 800 and
242 6400. Stratifying seroprevalence per area, the seropositivity to serogroup
243 Icterohaemorrhagiae was lowest in AdC (6.5%) and was highest in RS (7.8%).
244 Seroprevalence of Cynopteri ranged between 1.0% in NC and 2.1% in MR (Table 1).
245 Seroprevalence of Icterohaemorrhagiae increased with age group (Fig 2), and females

246 showed less chance to be infected than males (OR 0.69; 95% CI 0.52 – 0.91). This
247 pattern was not observed for serogroup Cynopteri, which presented higher
248 seroprevalence in the age group >45 years (Fig 2).

249



261
262 Figure 2. Infection rate for *Leptospira interrogans* Icterohaemorrhagiae (A) and *Leptospira*
263 *kirschneri* Cynopteri (B) by gender and age. Red bars: female. Blue bars: males. Whiskers: 95%
264 CI.

265

266 The final multivariable multinomial analysis (Table 2) which includes data for
267 residents > 18 years of age to investigate work-related exposures (n=2,009), identified
268 the following variables as significantly associated with the serogroup Cynopteri: age in
269 years (as a quantitative variable) (OR 1.03; 95% CI 1.01-1.06), lives in house with
270 unplaster walls (exposed brick) (OR 1.68; 95% CI 1.09-2.59) and presence of cats near
271 the household (OR 2.00; 95% CI 1.03-3.88). In addition, gender (males>females (OR
272 1.51; 95% CI 1.09-2.10), age in years (OR 1.02; 95% CI 1.01-1.03), work-related
273 exposures (OR 1.71; 95% CI 1.10-2.66) and contact with sewage (OR 1.42; 95% CI
274 1.00-2.03) were factors associated to seropositivity against Icterohaemorrhagiae.

275

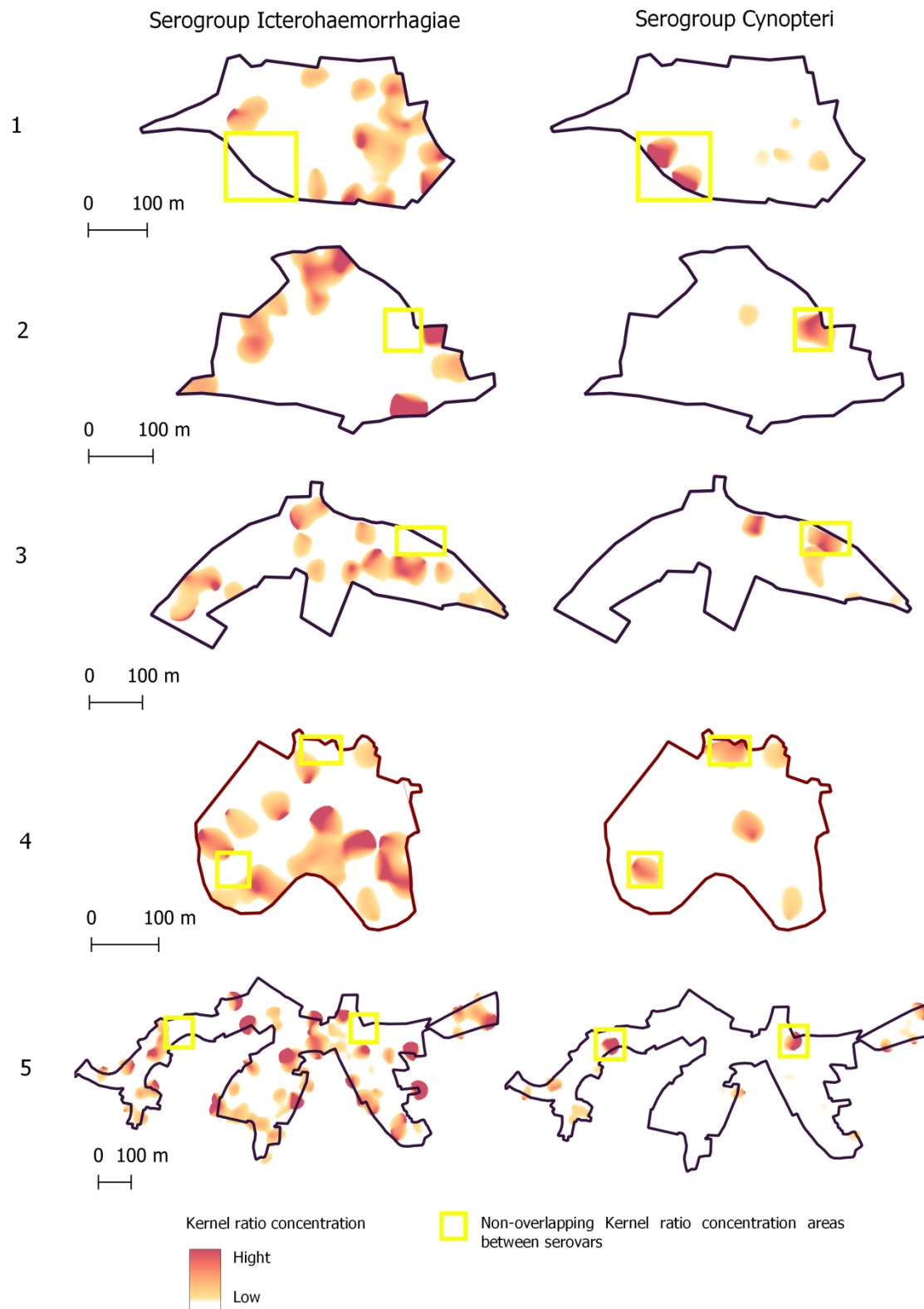
276 Table 2. Multivariate multinomial regression of seropositivity for *Leptospira kirschneri*
 277 *Cynopteri* (3522C) and *Leptospira interrogans* Icterohaemorrhagiae (Fiocruz L1-130), n=
 278 2,009). Note that there were no differences in seropositivity among neighborhoods.
 279

Characteristics	Cynopteri (3522C)		Icterohaemorrhagiae (Fiocruz L1-130)	
	OR 95 % CI			
Gender (male)	-	-	1.51	1.09-2.10
Age (years)	1.03	1.01-1.06	1.02	1.01-1.03
Work-related exposures	-	-	1.71	1.10-2.66
Contact with sewage	-	-	1.42	1.00-2.03
Lives in house with unplaster walls (exposed brick)	1.68	1.09-2.59	-	-
Neighborhood				
Alto do Cabrito (reference)				
Marechal Rondon	0.79	0.42-1.47	1.54	0.43-5.46
Nova Constituinte	0.98	0.51-1.88	0.97	0.21-4.44
Pau da Lima	1.19	0.74-1.90	1.39	0.46-4.15
Rio Sena	1.30	0.69-2.45	2.46	0.67-9.10
Cats near the household	2.00	1.03-3.88	-	-

280 Acronyms: OR, odds ratio; 95% IC, Confidence intervals.

281

282 Figure 3 shows differences in spatial patterns of seropositivity between
 283 serogroups Icterohaemorrhagiae and *Cynopteri* (yellow rectangle indicate Non-
 284 overlapping Kernel ratio concentration areas between serogroups). The objective of this
 285 complementary analysis was to verify possible overlaps in the occurrence of spatial
 286 patterns between serogroups in the territory.



287
288
289
290
291
292

Figure 3. Spatial patterns of seropositivity to serogroups' Icterohaemorrhagiae and Cynopteri (yellow rectangle) on five neighborhoods of Salvador, Bahia, Brazil. The light red-to- hard red gradient represents increasing density in smoothing analyses which used 30 meters as the bandwidth.

293

294 **Discussion**

295 Here, we found that of *L. interrogans* serogroup Icterohaemorrhagiae was the
296 main serogroup responsible for leptospirosis cases in Salvador [12,33]. However, we
297 also found evidence of local exposure to *L. kirschneri* serogroup Cynopteri in residents
298 of all communities studied. Prevalence of *L. kirschneri* serogroup Cynopteri, a
299 serogroup considered pathogenic and for which the reservoir in an urban environment is
300 not known, was lower than that of *L. interrogans* serogroup Icterohaemorrhagiae.

301 We identified differences in the demographic and socioenvironmental factors
302 that affect seropositivity for each serogroup. Residents exposed to serogroup Cynopteri
303 had a distinct demographic profile compared to that of serogroup Icterohaemorrhagiae.
304 We observed higher seroprevalence for serogroup Cynopteri in ages >45 years for both
305 genders, suggesting that behavioral differences between men and women do not affect
306 exposure. However, for serogroup Icterohaemorrhagiae, we found that seropositivity
307 increased with age, and males were more likely to be seropositive. This relationship
308 between age and exposure to Icterohaemorrhagiae is similar to that observed in previous
309 studies [16].

310 Occupation-related factors were associated with exposure to serogroup
311 Icterohaemorrhagiae. Individuals who engaged in activities involving solid waste
312 management, or contact with mud, floodwaters and/or sewage, were more likely to be
313 seropositive. This is in line with previous results from these and similar communities,
314 where leptospirosis is associated to work-related exposures, including occupations like
315 subsistence farming [3]. Further, inhabitants of low-income communities are commonly
316 enrolled in informal employment, often close to their households, highlighting the role
317 of the environment as an important source for transmission. Interestingly, we did not
318 detect any independent associations between work-related risk exposures and serogroup

319 Cynopteri, maybe because have a lower number of individuals seropositive for
320 Cynopteri.

321 Little is known about the animal and environmental reservoirs for serogroup
322 Cynopteri. In our final model, we detected a positive association of individuals between
323 anti-Cynopteri antibodies and the presence of cats in the household. Although there is a
324 report on the occurrence of this serogroup in wild animals such as bats [34], there are
325 also indications that cats can be exposed to *Leptospira* and higher seroprevalence of
326 serogroup Cynopteri has been found in cats from Spain compared to other serogroups
327 studied [35].

328 Among the domestic and peri-domiciliary variables, the presence of open
329 sewage near the home was associated with greater seropositivity for serogroup
330 Icterohaemorrhagiae. This result is consistent with a previous study [19] in which
331 “living near an open sewer” was a factor associated with seropositivity. This further
332 suggests that environmental exposure is an important route of indirect transmission, and
333 it should be noted that animals other than rats can release leptospires through urine into
334 the environment. This association has also been reported in other epidemiological
335 studies [31,32]. In a previous study, in the same study area, it was identified that, in
336 addition to sewage, the presence of pond water on the ground, from rainwater
337 accumulations, can be a source of pathogenic *Leptospira* [36].

338 Infrastructure deficiencies in homes, for example, living in a house with
339 unplaster walls (exposed brick), has also been considered a source of transmission for
340 repeated exposures to *Leptospira* [19]. This may mean that risk factors for peri-
341 domiciliary exposure may also be important for infection by serogroup Cynopteri. We
342 believe that the structural precariousness in the household could be an indicator of low
343 socioeconomic status, as suggested in another study [24].

344 It is possible that different spatial niches of reservoirs occur for serogroups
345 Icterohaemorrhagiae and Cynopteri in urban areas, as a difference in spatial
346 concentration patterns was observed in the analysis of the Kernel ratio (Figure 3) for the
347 occurrence of these serogroups in the five neighborhoods evaluated. There was low
348 overlap in human case concentration patterns for the serogroups, possibly because
349 serogroup Icterohaemorrhagiae is associated with proximity to sewers and Cynopteri
350 with the presence of cats, as demonstrated by statistical analysis. However, these
351 investigations are limited by the fact that MAT is the standard test used in prevalence
352 surveys, but this serological analysis does not actually indicate that the individual has
353 acute disease. Additionally, we had a low prevalence of Cynopteri, which might not be
354 possible to understand the true epidemiological pattern. Future studies may deepen to
355 evaluate spatial correlations between the occurrence of serogroups and the abundance
356 and mobility of rodents or felines and proximity by households.

357

358 **Conclusion**

359 Our data show different exposure risk for different serogroups, with possible
360 different spatial territorial niches of reservoirs, which can potentially indicate different
361 epidemiology or transmission pathways. Further, our findings indicate cats were
362 associated to seropositivity for serogroup Cynopteri in residents of the communities
363 studied. Our results can serve as base for future studies in One Health approach that can
364 elucidate the role of synanthropic, wild animals, and environment in the transmission of
365 serogroup Cynopteri in urban areas, in addition to contributing to the orientation of
366 public health measures to prevent future infections.

367

368 **Acknowledgments**

369 The authors would like to thank the individuals from the communities who participated
370 in this study.

371

372 **Author Contributions**

373 Conceived and designed the experiments: FC, DO, HK, MB, AIK, MGR, YAL.

374 Performed the experiments: FC, DO, HK, FAGP, RS, GAS, JC, FAGP, EAWJ.

375 Analyzed the data: DO, HK, JCQ, NNJ, CGZ, ISF. Contributed

376 reagents/materials/analysis tools: FC, DO, AIK, HK, MGR, MB, PJD, EAWJ, YAL, R,

377 NNJ. Wrote the paper: DO, FC, MGR, HK, EAWJ, CGZ, JC, YAL, NNJ, RL, AIK,

378 MB, FAGP, TCP.

379

380 **References**

381

382 1. Ko AI, Goarant C, Picardeau M. *Leptospira*: the dawn of the molecular genetics

383 era for an emerging zoonotic pathogen. *Nat Rev Microbiol.* 2009;7: 736–747.

384 doi:10.1038/nrmicro2208

385 2. Bharti AR, Nally JE, Ricaldi JN, Matthias MA, Diaz MM, Lovett MA, et al.

386 *Leptospirosis*: A zoonotic disease of global importance. *Lancet Infect Dis.*

387 2003;3: 757–771. doi:10.1016/S1473-3099(03)00830-2

388 3. McBride AJA, Athanazio DA, Reis MG, Ko AI. *Leptospirosis*. *Trop Travel Dis.*

389 2005;18: 376–386.

390 4. Costa F, Hagan JE, Calcagno J, Kane M, Torgerson P, Martinez-Silveira MS, et

391 al. Global morbidity and mortality of leptospirosis: a systematic review. *PLoS*

392 *Negl Trop Dis.* 2015; 1–19. doi:10.1371/journal.pntd.0003898

393 5. Goarant C. *Leptospirosis*: risk factors and management challenges in developing

394 countries. *Res Rep Trop Med.* 2016;Volume 7: 49–62. doi:10.2147/rrtm.s102543

395 6. Bierque E, Thibeaux R, Girault D, Soupé-Gilbert ME, Goarant C. A systematic

396 review of *Leptospira* in water and soil environments. *PLoS One.* 2020;15: 1–22.

397 doi:10.1371/journal.pone.0227055

398 7. Picardeau M. Virulence of the zoonotic agent of leptospirosis: Still terra

399 incognita? *Nat Rev Microbiol.* 2017;15: 297–307. doi:10.1038/nrmicro.2017.5

400 8. Vincent AT, Schiettekatte O, Goarant C, Neela VK, Bernet E, Thibeaux R, et al.

401 Revisiting the taxonomy and evolution of pathogenicity of the genus *Leptospira*

402 through the prism of genomics. *PLoS Negl Trop Dis.* 2019;13: e0007270.

403 doi:10.1371/journal.pntd.0007270

404 9. Casanovas-Massana A, Hamond C, Santos LA, de Oliveira D, Hacker KP,

405 Balassiano I, et al. *Leptospira yasudae* sp. Nov. and *Leptospira stimsonii* sp. nov.,

- 406 two new species of the pathogenic group isolated from environmental sources.
- 407 Int J Syst Evol Microbiol. 2019;70: 1450–1456. doi:10.1099/ijsem.0.003480
- 408 10. Picardeau M. Diagnosis and epidemiology of leptospirosis. *Médecine Mal Infect.*
- 409 2013;43: 1–9. doi:10.1016/S0992-5945(17)30102-2
- 410 11. Faine S, Adler B, Bolin C, Perolat P. *Leptospira and Leptospirosis*. 2^a ed.
- 411 MediSci. Melbourne, Australia; 1999.
- 412 12. Ko AI, Reis MG, Dourado CMR, Johnson Jr WD, Riley LW. Urban epidemic of
- 413 severe leptospirosis in Brazil. *Lancet.* 1999;354: 820–825. Available:
- 414 <http://www.ncbi.nlm.nih.gov/pubmed/10485724>
- 415 13. Hacker KP, Sacramento GA, Cruz JS, De Oliveira D, Nery N, Lindow JC, et al.
- 416 Influence of rainfall on leptospira infection and disease in a tropical urban
- 417 setting, Brazil. *Emerg Infect Dis.* 2020;26: 311–314.
- 418 doi:10.3201/eid2602.190102
- 419 14. Trevejo RT, Rigau-Pérez JG, Ashford DA, McClure EM, Jarquín-González C,
- 420 Amador JJ, et al. Epidemic Leptospirosis Associated with Pulmonary
- 421 Hemorrhage—Nicaragua, 1995. *J Infect Dis.* 1998;178: 1457–1463.
- 422 doi:10.1086/314424
- 423 15. Amilasan AST, Ujiie M, Suzuki M, Salva E, Belo MCP, Koizumi N, et al.
- 424 Outbreak of leptospirosis after flood, the Philippines, 2009. *Emerg Infect Dis.*
- 425 2012;18: 91–94. doi:10.3201/eid1801.101892
- 426 16. Reis RB, Ribeiro GS, Felzemburgh RDM, Santana FS, Mohr S, Melendez
- 427 AXTO, et al. Impact of environment and social gradient on *Leptospira* infection
- 428 in urban slums. *PLoS Negl Trop Dis.* 2008;2: 11–18.
- 429 doi:10.1371/journal.pntd.0000228
- 430 17. UN-HABITAT. Streets as public spaces and drivers of urban prosperity. 2013.

- 431 18. UN-HABITAT. State of the World's Cities 2010/2011: Bridging The Urban
432 Divide. In: Earthscan, GB. 2010 p. 224.
- 433 19. SANTOS M. A urbanização brasileira. Ed. Hucite. São Paulo; 1993.
- 434 20. SPINK MJP. Viver em áreas de risco: reflexões sobre vulnerabilidades
435 socioambientais. EDUC: Terc. São Paulo; 2018.
- 436 21. Felzemburgh RDM, Ribeiro GS, Costa F, Reis RB, Hagan JE, Melendez AXTO,
437 et al. Prospective Study of Leptospirosis Transmission in an Urban Slum
438 Community: Role of Poor Environment in Repeated Exposures to the Leptospira
439 Agent. PLoS Negl Trop Dis. 2014;8: 1–9. doi:10.1371/journal.pntd.0002927
- 440 22. Hagan JE, Moraga P, Costa F, Capian N, Ribeiro GS, Wunder EA, et al.
441 Spatiotemporal determinants of urban leptospirosis transmission: Four-year
442 prospective cohort study of slum residents in Brazil. PLoS Negl Trop Dis.
443 2016;10: 1–16. doi:doi:10.1371/journal.pntd.0004275
- 444 23. Costa F, Porter FH, Rodrigues G, Farias H, de Faria MT, Wunder E a, et al.
445 Infections by *Leptospira interrogans*, Seoul virus, and *Bartonella* spp. among
446 Norway rats (*Rattus norvegicus*) from the urban slum environment in Brazil.
447 Vector borne zoonotic Dis. 2014;14: 33–40. doi:10.1089/vbz.2013.1378
- 448 24. Costa F, Ribeiro GS, Felzemburgh RDM, Santos N, Reis RB, Santos AC, et al.
449 Influence of Household Rat Infestation on *Leptospira* Transmission in the Urban
450 Slum Environment. PLoS Negl Trop Dis. 2014;8: 1–8.
451 doi:10.1371/journal.pntd.0003338
- 452 25. Khalil H, Santana R, de Oliveira D, Palma F, Lustosa R, Eyre MT, et al. Poverty,
453 sanitation, and leptospira transmission pathways in residents from four Brazilian
454 slums. PLoS Negl Trop Dis. 2021;15: 1–15. doi:10.1371/journal.pntd.0009256
- 455 26. Silverman B. Estimativa de densidade para estatísticas e análise de dados.

- 456 Chapman & Hall, Londres; 1986.
- 457 27. Gómez Villafaña IE, Muschetto E, Busch M. Movements of Norway rats (*Rattus*
458 *norvegicus*) in two poultry farms, Exaltación de la Cruz, Buenos Aires,
459 Argentina. *Mastozoología Neotrop.* 2008;15: 203–208.
- 460 28. Hagan JE, Moraga P, Costa F, Capian N, Ribeiro GS, Wunder EA, et al.
461 Spatiotemporal Determinants of Urban Leptospirosis Transmission: Four-Year
462 Prospective Cohort Study of Slum Residents in Brazil. *PLoS Negl Trop Dis.*
463 2016;10: 1–16. doi:10.1371/journal.pntd.0004275
- 464 29. RStudio: Integrated Development for R. RStudio, PBC, Boston M. RStudio
465 Team. 2020. Available: <http://www.rstudio.com/>
- 466 30. Team RC. R: A language and environment for statistical computing. Foundation
467 for Statistical Computing. Vienna, Austria; 2019. Available: [https://www.r-](https://www.r-project.org/)
468 [project.org/](https://www.r-project.org/)
- 469 31. Venables W, Ripley B. *Modern Applied Statistics with S.* New York; 2002.
470 Available: <https://www.stats.ox.ac.uk/pub/MASS4/>
- 471 32. D B, M M, B B, S W. Fitting Linear Mixed-Effects Models Using lme4. *J Stat*
472 *Softw.* 2015;67: 1–48. doi:10.18637/jss.v067.i01
- 473 33. Barocchi MA, Ko AI, Ferrer SR, Faria MT, Reis MG, Riley LW. Identification of
474 New Repetitive Element in *Leptospira interrogans* Serovar Copenhageni and Its
475 Application to PCR-Based Differentiation of *Leptospira* Serogroups. *Clin*
476 *Microbiol.* 2001;39: 191–195. doi:10.1128/JCM.39.1.191
- 477 34. Matthias MA, Campos KJ, Calderon M, Willig MR, Pacheco V, Gotuzzo E, et al.
478 Diversity of bat-associated *Leptospira* in the peruvian amazon inferred by
479 bayesian phylogenetic analysis of 16s ribosomal DNA sequences. *Am Soc Trop*
480 *Med Hyg Divers.* 2005;73: 964–974.

- 481 35. Murillo A, Cuenca R, Serrano E, Marga G, Ahmed A, Cervantes S, et al.
482 Leptospira detection in cats in Spain by serology and molecular techniques. Int J
483 Environ Res Public Health. 2020;17. doi:10.3390/ijerph17051600
- 484 36. Casanovas-Massana A, Costa F, Riediger IN, Cunha M, Oliveira D de, Mota DC,
485 et al. Spatial and temporal dynamics of pathogenic Leptospira in surface waters
486 from the urban slum environment. Water Res. 2018;130: 176–184.
487 doi:10.1016/j.watres.2017.11.068
- 488
- 489

490 Table S1. Bivariate models for seroprevalence of *Leptospira kirschneri* Cynopteri (3522C) and
 491 *Leptospira interrogans* Icterohaemorrhagiae (Fiocruz L1-130).
 492

Characteristic	Cynopteri (3522C)			Icterohaemorrhagiae (Fiocruz L1-130)		
	N	OR ¹	95% CI ¹	N	OR ¹	95% CI ¹
Individual						
Median Age (years)	2,600	1.03	1.02, 1.05	2,763	1.03	1.02, 1.04
Sex	2,600			2,763		
Male		—	—		—	—
Female		1.07	0.59, 1.99		0.69	0.52, 0.91
Ethnicity	2,562			2,724		
Brown		—	—		—	—
Black		0.86	0.47, 1.58		0.97	0.72, 1.30
White		0.36	0.02, 1.75		1.21	0.64, 2.11
Others		0			0	
Education	2,600			2,763		
5 or less		—	—		—	—
5 to 9		0.6	0.26, 1.34		1.09	0.76, 1.57
10 to 12		0.75	0.35, 1.61		0.95	0.66, 1.38
Higher Education		0.86	0.05, 4.40		0.43	0.07, 1.43
Never studied		3.64	1.35, 8.98		1.43	0.69, 2.73
Employment	2,600			2,763		
No		—	—		—	—
Yes		0.87	0.45, 1.62		1.73	1.30, 2.29
Risk occupation	2,600			2,763		
No		—	—		—	—
Yes		0.96	0.23, 2.67		2.72	1.81, 3.99
Risk exposures						
Walk barefoot	2,599			2,762		
No		—	—		—	—
Yes		0.75	0.39, 1.39		0.88	0.65, 1.18
Use of boots	2,597			2,760		
No		—	—		—	—
Yes		0.75	0.30, 1.58		1.22	0.86, 1.69
Cleaned sewage	2,286			2,448		
No		—	—		—	—
Yes		1.3	0.44, 3.05		2.55	1.75, 3.65
Sewage contact	2,599			2,762		
No		—	—		—	—
Yes		1.38	0.68, 2.62		1.4	1.01, 1.92
Open sewer	2,598			2,761		
No		—	—		—	—
Yes		1.32	0.71, 2.40		1.26	0.94, 1.69

Access to the house is paved?	2,600			2,763		
No		—	—		—	—
Yes		1.03	0.54, 2.14		1.03	0.74, 1.44
Wall material?	2,600			2,763		
No		—	—		—	—
Yes		1.1	0.38, 2.57		1.6	1.06, 2.36
Presence of animals in the household						
Presence of Cats	2,600			2,763		
No		—	—		—	—
Yes		1.89	1.01, 3.44		1.09	0.78, 1.50
Presence of Dogs	2,600			2,763		
No		—	—		—	—
Yes		0.86	0.45, 1.57		0.94	0.70, 1.25
Presence of Chickens	2,600			2,763		
No		—	—		—	—
Yes		1.46	0.35, 4.09		1.71	0.96, 2.85

¹OR = Odds Ratio, CI = Confidence Interval