

1 **Continuous non-invasive hemodynamic monitoring in early onset severe preeclampsia**

2

3 Christina M Ackerman-Banks MD¹

4 Jasjit Bhinder MD²

5 Maxwell Eder MD³

6 Paul Heerdt MD, PhD⁴

7 Lissa Sugeng MD, MPH²

8 Jeffrey Testani MD, MTR³

9 Aymen Alian MD⁴

10 Heather Lipkind MD, MS⁵

11 Eric Velazquez MD³

12 Uma Reddy MD, MPH⁶

13 Josephine C Chou MD, MS⁷

14 ¹Department of Obstetrics and Gynecology, Baylor College of Medicine, Houston, TX.

15 U246381@bcm.edu

16 ²Department of Cardiology, Northwell Health, Manhasset, NY

17 jbhinder@northwell.edu, Lsugeng@northwell.edu

18 ³Department of Cardiology, Yale School of Medicine, New Haven, CT

19 maxwell.eder@yale.edu

20 ⁴Department of Anesthesiology, Yale School of Medicine, New Haven, CT

21 paul.heerdt@yale.edu

22 ⁵Department of Obstetrics and Gynecology, Weill Cornell Medical College, New York City, NY

23 hlipkind@med.cornell.edu

24 ⁶Department of Obstetrics and Gynecology, Columbia University College of Physicians and

25 Surgeons, New York City, NY

26 Ur2137@cumc.columbia.edu

27 ⁷Department of Cardiology, University of Colorado, Aurora, CO

28 Word Count: Manuscript: 2909

29

30 **Corresponding author:**

31 Josephine Chou, MD, MS

32 Josephine.chou@cuanschutz.edu

33 12401 East 17th Ave

34 Mailstop B130

35 Aurora, CO 80045

36

37

38

39 **Abstract**

40 **Objectives:**

41 Continuous hemodynamic monitoring offers the opportunity to individualize management in
42 severe preeclampsia (PEC). We compared cardiac output (CO) and systemic vascular resistance
43 (SVR) measured by bioreactance (NICOM), Clearsite™ Fingercuff [CS], and 3D-echocardiography
44 (3DE).

45 **Study Design:**

46 This prospective observational study included 12 pregnant patients with early PEC. CO and SVR
47 were measured simultaneously by NICOM, CS, and 3DE antepartum and 1-2 days postpartum.
48 Using 3DE as the standard, CS and NICOM interchangeability, precision, accuracy, and
49 correlation were assessed.

50 **Results:**

51 Compared to 3DE-CO, CS-CO was highly correlated ($R^2=0.70$, $p<0.0001$) with low percentage
52 error (PE 29%) which met criteria for interchangeability. CS-SVR had strong correlation ($R^2=0.81$,
53 $p<0.0001$) and low PE (29%). While CS tended to slightly overestimate CO (bias $+2.05 \pm 1.18$
54 L/min, limit of agreement (LOA) $-0.20-4.31$) and underestimate SVR (bias -279 ± 156
55 dyes/sec/cm⁵; LOA $-580-18.4$) these differences were unlikely to be clinically significant. Thus
56 CS could be interchangeable with 3DE for CO and SVR. NICOM-CO had only moderate
57 correlation with 3DE-CO ($R^2=0.29$, $p=0.01$) with high PE (52%) above threshold for
58 interchangeability. NICOM-CO had low mean bias (-1.2 ± 1.68 L/min) but wide 95% LOA (-4.41
59 $- 2.14$) suggesting adequate accuracy but low precision in relation to 3DE-CO. NICOM-SVR had
60 poor correlation with 3DE-SVR ($R^2=0.32$, $p=0.001$) with high PE (67%), relatively low mean bias

61 (238 +/-256), and wide 95% LOA (– 655–1131). NICOM did not meet the criteria for
62 interchangeable with 3DE for CO and SVR.

63 **Conclusions:**

64 Clearsite Fingercuff, but not NICOM, has potential to be clinically useful for CO and SVR
65 monitoring in severe preeclampsia.

66 **KEYWORDS:**

67 Noninvasive hemodynamic monitoring, severe preeclampsia, cardiac output

68 **FUNDING:**

69 The research reported in this publication was supported by the Bahn endowment fund from
70 Yale University School of Medicine and the Garite Mini-Sabbatical Grant from the Society for
71 Maternal Fetal Medicine.

72 **ABBREVIATIONS:**¹

¹ PEC=severe preeclampsia
CO=cardiac output
SVR=systemic vascular resistance
CS=Clearsite Fingercuff
NICOM=non-invasive cardiac monitoring with bioreactance
3DE3=3D-echocardiography
PE=percentage error
LOA=limit of agreement
HDP=hypertensive disorders of pregnancy
SBP=systolic blood pressure
DBP=diastolic blood pressure
MAP=mean arterial pressures
SV=stroke volume
CVP=central venous pressure
LV=left ventricular
EF=ejection fraction
BP=blood pressure
GLS=global longitudinal strain

73 **Introduction:**

74 Hypertensive disorders of pregnancy (HDP) affect 2-8% of all pregnancies and have been
75 increasing in frequency by up to 25% over the past two decades.^{1,2} It is a major contributor to
76 maternal and neonatal severe morbidity and mortality with up to 16% of maternal deaths due
77 to HDP.³ Early onset preeclampsia with severe features (PEC) is new hypertension with
78 evidence of end-organ damage prior to 34 weeks gestation.⁴ It accounts for 20% of all cases of
79 preeclampsia and is associated with more severe maternal and neonatal disease.⁵ Early onset
80 PEC also has a distinct hemodynamic profile which manifests as lower cardiac output (CO) and
81 higher systemic vascular resistance (SVR) as compared to both mild PEC and normal
82 pregnancy.⁶ These abnormal hemodynamics may be predictive of maternal and fetal
83 complications, such as severe hypertension, fetal growth restriction and fetal death.⁵
84 Continuous hemodynamic monitoring in severe PEC offers the potential to tailor
85 antihypertensive therapy based on hemodynamic profiles, identify disease earlier, and
86 ultimately improve maternal and fetal outcomes.^{6,7} However, hemodynamic assessment in
87 pregnancy has traditionally been difficult. Measuring invasive hemodynamics by Swan-Ganz
88 catheter in pregnancy is neither feasible nor safe. Thus, non-invasive hemodynamics have
89 usually been obtained with echocardiography. Unfortunately, this modality is time-consuming,
90 operator dependent, and only available in discrete time intervals. Newer methods of
91 continuous non-invasive hemodynamics through bioactance (NICOM, Baxter Medical) or
92 finger cuff pressure (Clearsite™[CS], Edwards) have been validated against invasive and non-
93 invasive hemodynamics in other clinical settings, including normal pregnancy.⁸⁻¹⁰ But neither
94 have been validated in pregnant patients with cardiac disease, including severe PEC. We sought

95 to validate CO derived from NICOM (NICOM-CS) and ClearSite (CO-CS) against 3D
96 echocardiography (3DE) derived CO (3DE-CO) in early onset severe PEC.

97 **Methods:**

98 Study population:

99 The Yale School of Medicine Human Investigation Committee approved this study. All
100 patients signed an informed consent prior to enrollment. We prospectively enrolled 12
101 pregnant patients admitted with early onset PEC with severe features at a single center from
102 December 2020 to October 2021. PEC with severe features was diagnosed clinically in
103 accordance with diagnostic criteria by the American College of Obstetricians and
104 Gynecologists.⁴ Inclusion criteria were singleton gestations with PEC with severe features
105 diagnosed between 20 and 34 weeks gestation. Exclusion criteria included chronic hypertension
106 requiring medications, age less than 18 years, and non-English primary language. Chronic
107 hypertension was defined as systolic blood pressure(SBP) \geq 140 mmHg and/or a diastolic blood
108 pressure (DBP) \geq 90 mmHg prior to 20 weeks gestation, as defined by the American College of
109 Obstetricians and Gynecologists.¹¹

110 ClearSite FingerCuff (Edwards):

111 The CS Finger Cuff uses the Edwards EV1000 clinical platform which monitors
112 hemodynamic parameters derived from continuous noninvasive measurement of the arterial
113 pressure waveform. The finger cuff has a built in plethysmograph sensor to noninvasively
114 measure the continuous finger arterial blood pressure using an inflatable cuff around the
115 middle phalange of the finger. The brachial arterial pressure waveform is then reconstructed
116 from the measured finger blood pressure pulsations to monitor systolic, diastolic, and mean

117 arterial pressures (MAP). Hemodynamic parameters including CO, stroke volume (SV), and
118 heart rate are calculated using a pulse contour method via the ClearSite Algorithm. SVR is
119 calculated after the user manually entered a central venous pressure (CVP) value. These
120 hemodynamic values are reported as 20 second averages on the monitor. The Heart Reference
121 Sensor is used to compensate for hydrostatic pressure differences due to changes in height of
122 the finger relative to the heart, with one end placed at the level of the patient's finger and the
123 other at heart level.¹²

124 Noninvasive Cardiac Output Monitor (NICOM, Cheetah):

125 The Cheetah NICOM system is a noninvasive cardiac output monitoring device based on
126 bioreactance technology which analyzes relative phase shifts of oscillating currents that occur
127 when current traverses the thoracic cavity. Blood exiting the left ventricle to the aorta creates
128 differences in the sensed current (time delay or phase shift), which NICOM measured to
129 calculate the stroke volume. The sensors also contain an electrocardiogram element which
130 measures heart rate and calculates CO which is reported as a 50 second average.¹³ The NICOM
131 monitor is attached to a sphygmomanometer cuff which measured blood pressure at 10 minute
132 intervals and allows for calculation of intermittent SVR.

133 3-dimensional transthoracic echocardiography (3DE):

134 Echocardiography-derived CO has been validated against the gold standard swan ganz
135 thermodilution in pregnancy, and has been suggested as a reference for the validation of other
136 CO techniques in pregnancy.¹⁴ Transthoracic echo was performed by qualified adult
137 sonographers using Phillips iE33. Patients were scanned in the left lateral decubitus position. A
138 three-lead electrocardiogram was used to enable image gating and record heart rate. Left

139 ventricular (LV) ejection fraction (EF) was measured by 3D, which was reconstructed from apical
140 three-, four-, and five-chamber views. CO was calculated directly by the Phillips machine on
141 post-processing. Other measurements obtained included LV global strain and standard 2D and
142 3D measurements. (Table 3) 2D echocardiogram CO has inherent limitations due to angle-
143 dependency of pulse wave Doppler and inaccuracies in left ventricular outflow tract size due to
144 measurement inaccuracies and assumption of uniform morphology.¹⁵ 3DE eliminates these
145 velocity and geometric assumptions, and also reconstructs CO over 7-14 cardiac cycles as
146 opposed to a single beat which offers a broader view of flow quantification. Therefore, 3DE was
147 chosen as the hemodynamic standard in this study. Kortakoff blood pressure (BP) obtained by a
148 standard sphygmomanometer cuff was used as the reference standard for MAP.

149 Data collection:

150 Patients underwent 60 minute monitoring sessions with NICOM and CS at 2 timepoints:
151 antepartum admission and postpartum day 1 or 2. Simultaneous 3DE was performed at the
152 same time as NICOM and CS monitoring. Sphygmomanometer BP measurements were
153 obtained at 10 min intervals.

154 Statistics and Data Analysis:

155 The primary outcome was CO (L/min). 3DE images for CO processing were acquired over
156 a 10 minute period. Concomitant NICOM-CO and CS-CO during the same 10 minute interval of
157 3DE-CO image acquisition were averaged and used for comparison.

158 The secondary outcome was SVR (dynes*sec*cm⁻⁵). Using the same 10 minute time
159 period as for the aforementioned CO measurements, concomitant average NICOM-SVR and CS-
160 SVR were compared to 3DE-SVR. CS-SVR was measured directly by the device. For NICOM and

161 3DE SVR, the following equation was used: $[(MAP - CVP)/CO] \times 80$. For NICOM-SVR, NICOM-
162 MAP and NICOM-CO were used in the equation. For 3DE, 3DE-CO and either NICOM-MAP or CS-
163 MAP were used, and then compared to the same respective modality. CVP was derived from
164 the echocardiographic estimate based on inferior vena cava diameter and respiratory variation.

165 Other hemodynamic parameters including SV (mL), HR (bpm), and (MAP) mmHg) were
166 measured. For hemodynamic trend analysis, NICOM and CS data were averaged for each
167 monitoring day. Echocardiographic measurements included LV EF, LV structure (wall thickness,
168 systolic and diastolic volumes) and LV global longitudinal strain (GLS, %).

169 Data analysis was conducted utilizing IBM SPSS (version 20.0.0.0; 2021). Descriptive
170 statistics were performed for the baseline demographics using frequency or median with
171 interquartile range. With 3DE being considered the reference CO, we assessed for
172 interchangeability with NICOM-CO and CS-CO. Interchangeability was assessed by correlation,
173 accuracy (bias), and precision (95% limits of agreement [LOA]), and percentage error (PE).
174 Correlation was measured by simple linear regression and Pearson's coefficient (R^2), with 2
175 methods being considered interchangeable if $R^2 \geq 0.6$. Bias and LOA were calculated with
176 Bland-Altman analysis, and PE defined as 2 times the standard deviation of the bias over the
177 mean.¹⁶ Two methods may be used interchangeably if the difference in bias is not clinically
178 relevant and $PE \leq 30\%$.¹⁷ For example, the average CO in normal pregnancy is 7.9 L/min by
179 invasive monitoring¹⁸, so difference of up to 2L/min may be considered small and not clinically
180 significant.

181 **Results:**

182 Study population:

183 Twelve patients were enrolled. Data from one patient was excluded due to poor
184 echocardiographic acoustic windows. Therefore, eleven patients were analyzed and yielded 22
185 data sets.

186 From a maternal perspective, the median age was 33.5 years [29.5-35.3] and the
187 median BMI at delivery was 35.5 kg/m² [31.8-40.3]. At the time of enrollment, the median
188 gestational age was 30 weeks [27.8-31.3] with median SBP 172 [167.3-181.8] and median DBP
189 98 [95.8-99.3]. Eight of the 12 patients required acute antihypertensive therapy for severe
190 hypertension. Most commonly, patients received labetalol IV as the preferred therapy for acute
191 severe BP management. From a fetal perspective, the median gestational age at delivery was
192 32 weeks [29.5-34]. Over half of the pregnancies were complicated by fetal growth restriction
193 (66.7%) and nearly all neonates required neonatal intensive care unit admission (91.6%). There
194 was one intrauterine fetal demise and no neonatal demises. (Table 1).

195 Cardiac Output (Figure 1)

196 Pearson correlation coefficient comparing CS-CO with 3DE-CO showed strong correlation
197 ($R^2=0.70$, $p<0.001$). Bland Altman analysis comparing CS-CO with 3DE-CO showed a mean bias
198 +/- SD of 2.05 +/- 1.18 L/min, 95% LOA -0.20-4.31, and PE 29% error. Antepartum and
199 postpartum CS calculations were similar. Postpartum CS-CO bias +2.1 +/-1.1 L/min with PE 28%
200 and $R^2=0.72$ ($p = 0.002$) versus antepartum CS-CO bias 1.9 +/- 1.2 L/min with PE 30% and $R^2=$
201 0.69 ($p=0.002$).

202 In contrast, Pearson correlation coefficient comparing NICOM-CO with 3DE-CO showed
203 moderate correlation ($R^2=0.29$, $p=0.01$). Bland Altman analysis comparing NICOM-CO with 3DE-
204 CO showed a mean bias +/- SD of -1.2 +/- 1.68 L/min, 95% LOA -4.41 – 2.14, and PE 52%. High

205 PE driven primarily by 2 outliers in the antepartum group. Comparing antepartum to
206 postpartum NICOM measurements suggested better correlation and accuracy postpartum.
207 Postpartum NICOM-CO bias -0.7 ± 1.74 L/min with PE 29% and $R^2=0.86$ ($p < 0.001$) versus
208 antepartum NICOM-CO bias 1.18 ± 4.18 L/min with PE 69% and $R^2= 0.27$ ($p=0.12$).

209 Systemic Vascular Resistance (Figure 2)

210 Pearson co-efficient comparing CS-SVR to 3DE-SVR showed strong correlation ($R^2=0.81$,
211 $p < 0.0001$). Bland Altman comparing CS-SVR to 3DE-SVR showed a bias \pm SD -279 ± 156
212 dyes/sec/cm⁵, 95% LOA $-580 - 18,4$, and PE 28%.

213 Pearson co-efficient comparing NICOM-SVR to 3DE-SVR showed poorer correlation ($R^2=0.32$,
214 $p=0.001$). Bland-Altman comparing NICOM-SVR and 3DE-SVR CO showed a bias \pm SD $238 \pm$
215 256 , 95% LOA $- 655 - 1131$, and PE 67%.

216 Mean Arterial Pressure

217 Pearson correlation coefficient comparing CS-MAP with sphygmomanometer BP showed strong
218 correlation ($R^2=0.73$, $p < 0.01$). Bland Altman analysis comparing CS-MAP with
219 sphygmomanometer BP showed a mean bias \pm SD of 2.33 ± 9.9 mmHg, 95% LOA $-17 - 21.7$,
220 and PE 19%.

221 Hemodynamic Trends (Table 2)

222 There was no significant difference between antepartum and postpartum CO, SVR, and MAP
223 according to both modalities. However patient population was small, and these trends were not
224 statistically significant.

225 Echocardiographic Parameters (Table 3)

226 Between the antepartum and postpartum periods, there were no significant changes in left
227 ventricular function or structure. The average EF was 63% antepartum and 62% postpartum.
228 GLS was slightly lower postpartum (21.5% vs 20.2%), however this difference was not
229 statistically significant, and both values were within normal limits.

230 **Discussion:**

231 We performed a prospective observational study in 12 patients with early onset severe
232 preeclampsia to evaluate CO derived from the Clearsite Fingercuff and NICOM against 3DE-CO.
233 To our knowledge, this is the first study evaluating both of these methods in the preeclampsia
234 population. We found that CS-CO showed strong correlation and sufficiently low PE to be
235 considered interchangeable with 3DE measurements. CS tended to over-estimate CO as
236 compared to 3DE (bias +2.05 L/min). As previously described, two measurement methods may
237 be considered interchangeably if the difference in bias is not clinically relevant and PE $\leq 30\%$.¹⁷
238 Given that the average CO in normal pregnancy¹⁸ is 7.9 L/min by invasive monitoring, our
239 observed difference of approximately 2L/min may be considered small and not clinically
240 significant. Furthermore CS-CO demonstrated strong correlation with 3DE-CO, with the
241 difference between CS and 3DE rising as CO rises. This suggests that if needed for concordance,
242 there is a systematic, linear offset for CS-CO that can be compensated for by applying a
243 regression equation. CS-MAP correlated strongly and could be considered interchangeable with
244 sphygmomanometer BP, which is consistent to prior studies.¹⁹ CS-SVR also had strong
245 correlation and sufficiently low PE to be considered interchangeable with 3DE measurements.
246 CS tended to under-estimate SVR as compared to 3DE (mean bias -293 dynes/sec/cm⁵), but may
247 be considered small compared with the average pregnancy SVR of 980 dynes/sec/cm⁵.

248 Therefore while CS tends to slightly overestimate CO and underestimate SVR, these differences
249 were small and not clinically significant. Therefore CS could be considered clinically
250 interchangeable with 3DE for CO and SVR. These findings support Clearsite Fingercuff as a
251 potential clinically useful modality for real-time hemodynamic monitoring in severe
252 preeclampsia.

253 Our results differ from a prior study evaluating CS from 2DE TTE in 3rd trimester
254 pregnancy which showed an unacceptable agreement for CO measurements between these 2
255 modalities.²⁰ This may be due to our use of 3DE as the reference standard, as opposed to 2DE.
256 However given these contrasting findings, further studies to clarify the validity of CS in the
257 preeclamptic population are warranted.

258 In contrast, NICOM- CO measurements showed only moderate correlation with 3DE-CO.
259 Additionally, calculated PE was too high to meet criteria for interchangeability.¹⁶ NICOM-CO
260 tended to under-estimate CO as compared to 3DE. While the lower bias suggests that NICOM-
261 CO may be more accurate compared to CS-CO, the wider LOA suggests it is less precise.
262 Similarly, NICOM-SVR had poor correlation and a calculated PE too high to meet criteria for
263 interchangeability. These findings suggest that NICOM would not be clinically useful for
264 continuous hemodynamic monitoring in severe preeclampsia. Prior studies showed that NICOM
265 CO assessment had acceptable correlation with echocardiogram-derived CO in normal
266 pregnancy.^{10,21} Differences in our results could be explained by differences in body habitus –
267 NICOM accuracy is limited by obesity, and the majority of our patients had BMI >30 kg/m² at
268 the time of delivery. This is in contrast to prior study cohorts with an average third trimester
269 BMI of 26 kg/m².²¹ The different hemodynamic profile in severe preeclampsia (lower CO and

270 higher SVR as compared to normal pregnancy) may also be a factor, as Doherty et al found
271 lower NICOM accuracy at lower CO.¹⁰

272 Interestingly, when comparing antepartum and postpartum NICOM-CO measurements
273 against 3DE, NICOM demonstrated better accuracy and precision and lower PE in the
274 postpartum period. It is also notable that the most outlying data points for NICOM-CO occurred
275 during antepartum measurements. Thus NICOM inaccuracies in the antepartum period may be
276 driven primarily by the gravid uterus elevating the diaphragm and altering thoracic anatomy. A
277 prior study showed that upper abdominal surgical procedures reduced NICOM reliability
278 compared to echocardiogram. Postulated reasons included upper diaphragm displacement
279 which alter electrical flux through the thorax and changes in shape and position of the heart.
280 Similar physiologic changes occur during pregnancy, which would affect NICOM accuracy
281 antepartum but resolve postpartum. Our findings suggest that while NICOM could be used for
282 hemodynamic monitoring in the postpartum period, it cannot be considered clinically useful in
283 the pregnant population at this time.

284 Our study showed no significant differences between antepartum and postpartum CO,
285 SVR, and MAP for both the NICOM and CS modalities. These trends did not reach statistical
286 significance due to the small study population; however, they are still hypothesis generating.
287 After normal pregnancy, CO drops and SVR rises in the immediate postpartum period.²² The
288 lack of change in CO and SVR in our severe preeclampsia population may be due to the effects
289 of antihypertensive treatment. Since the majority of our patients received labetalol, this raises
290 the possibility that CO may be higher in the postpartum preeclampsia population as compared
291 to antepartum. Further studies are needed to clarify the hemodynamic effects of

292 antihypertensives in severe preeclampsia, and if adjusting medical treatment based on
293 hemodynamics can improve blood pressure control, hemodynamics, and maternal/fetal clinical
294 outcomes.

295 There are several limitations to our study because it was performed at a single center
296 with small sample size limited by disease selection and funding. First, meaningful concordance
297 analysis was not feasible due to small sample size and limitation of one hemodynamic set per
298 3DE study. However correlation analysis suggests that CS-CO bias can be corrected with a
299 regression equation, though this would not be feasible with NICOM-CO. Second, outlying data
300 points, such as those seen in NICOM-CO, may have a more prominent effect on
301 interchangeability analysis due to the small sample size. Larger studies in a similar patient
302 population would help clarify the extent to which NICOM-CO accuracy is affected by anatomic
303 limitations as described above, particularly in the antepartum period. Third, we utilized a
304 reference method of 3DE for hemodynamics because invasive hemodynamics with a swan-ganz
305 catheter was not feasible or safe in a pregnant population. Best efforts were made to ensure
306 good acoustic windows and accurate hemodynamic values, but there still may be some
307 discrepancy from invasive hemodynamic values. Lastly our study population represents a
308 subset of the pregnant population, Therefore, applicability to other HDP populations, such as
309 preeclampsia without severe features and gestational hypertension, requires further
310 confirmation.

311 In summary, CS-CO and SVR could be considered be interchangeable with 3DE-CO and
312 3DE-SVR, respectively. CS tends to slightly overestimate CO and underestimate SVR, these
313 differences were small and unlikely clinically relevant. Therefore, CS could be considered

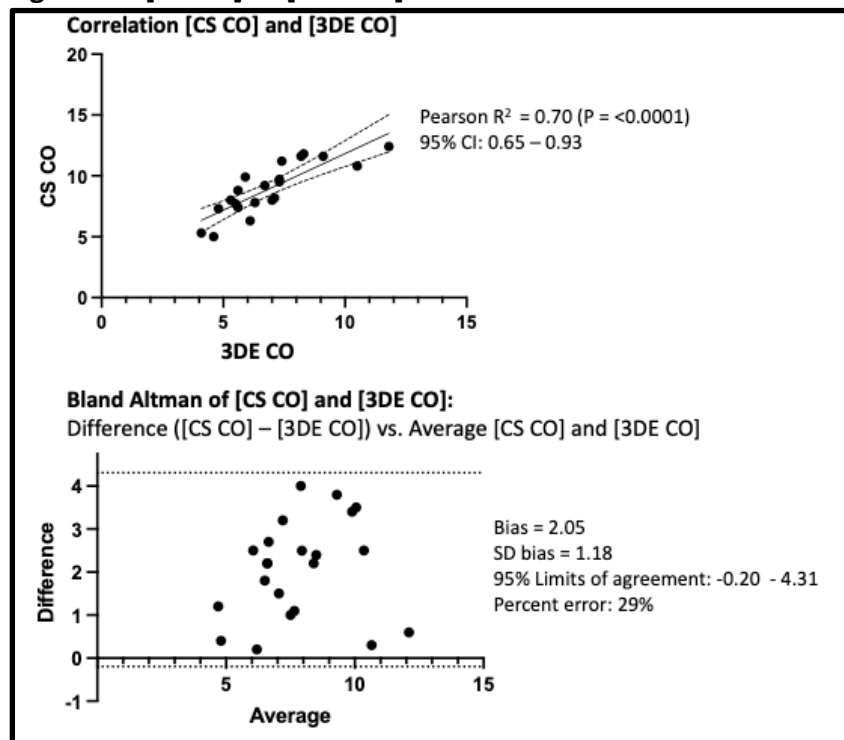
314 clinically interchangeable with 3DE for CO and SVR. In contrast, NICOM-CO and NICOM-SVR
315 showed poorer correlation with less precision, and could not be considered interchangeable
316 with 3DE-CO and 3DE-SVR, particularly in the antepartum period. These findings suggest that
317 the CS fingercuff, but not NICOM, has potential to be clinically useful for real-time CO and SVR
318 monitoring in patients with preeclampsia with severe features. Further studies in a larger
319 sample size and in other hypertensive disorders of pregnancy are needed to confirm our
320 findings and inform applications to clinical care.

321

322 Figures:

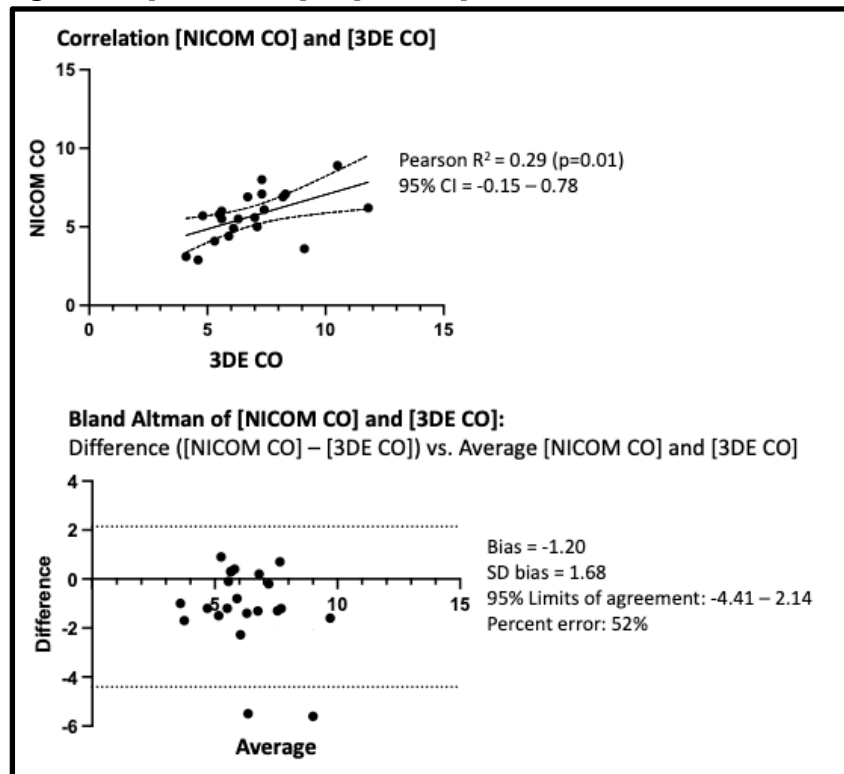
323 Figure 1: Cardiac Output: Correlation and Bland-Altman

324 Figure 1a: [CS CO] vs [3DE CO]



325

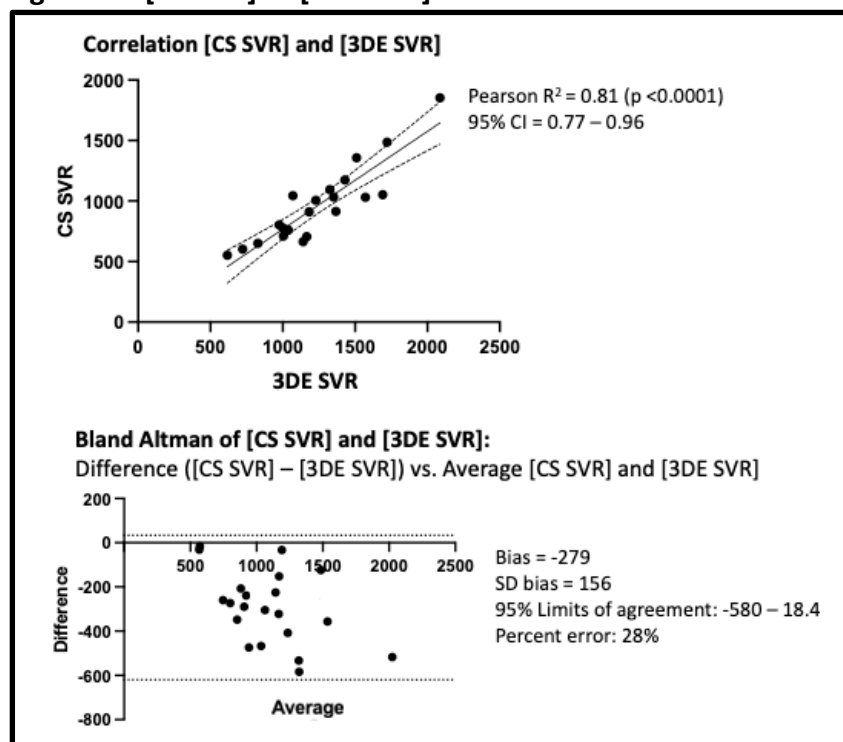
326 Figure 1b: [NICOM CO] vs [3DE CO]



327

328 Figure 2: Systemic Vascular Resistance: Correlation and Bland-Altman

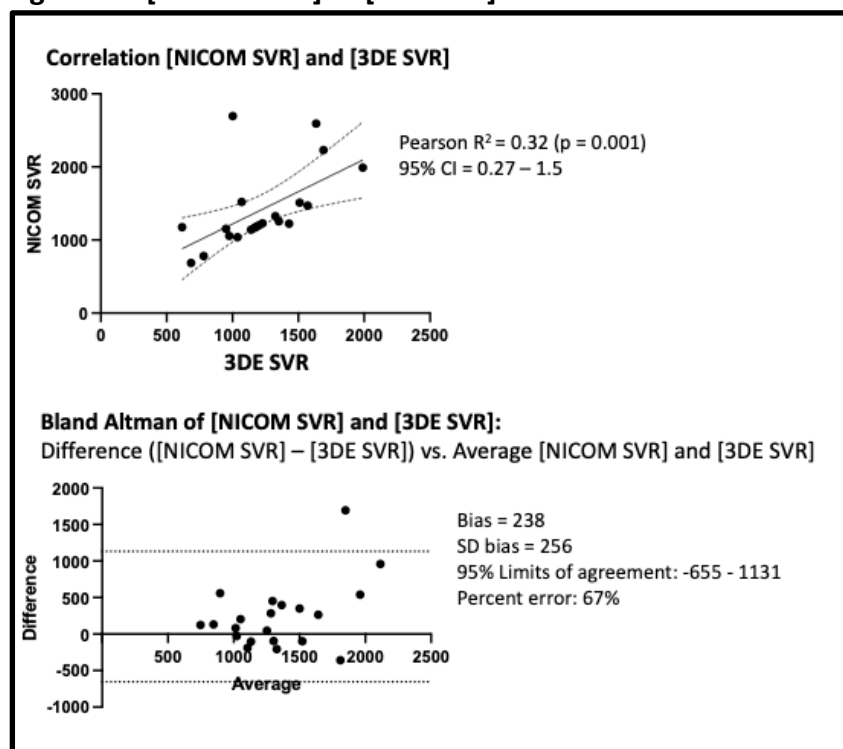
329 **Figure 2a: [CS SVR] vs [3DE SVR]**



330

331

332 **Figure 2b: [NICOM SVR] vs [3DE SVR]**



333

334

335

336

337 **Tables:**

338

339 **Table 1: Baseline characteristics of study population**

340

	N=12 (%)
Maternal Age (y), median [IQR]	33.5 [29.5-35.3]
Ethnicity	
Hispanic	2 (16.6)
Non-hispanic	10 (83.3)
Race	
White	8 (66.7)
Black	1 (8.3)
Asian	1 (8.3)
Other	2 (16.6)
Insurance	
Private	9 (75)
Medicaid	3 (25)
Nulliparity	5 (41.6)
BMI at delivery (kg/m²), median [IQR]	35.5 [31.8-40.3]
<25	1 (8.3)
25-29.9	1 (8.3)
30 to 34.9	3 (25)
35-39.9	3 (25)
>40	4 (33.3)
Pre-pregnancy BMI (kg/m²), median [IQR]	31 [27.8-34.5]
<25	1 (8.3)
25-29.9	4 (33.3)
30 to 34.9	4 (33.3)
35-39.9	2 (16.6)
>40	1 (8.3)
Gestational diabetes	1 (8.3)
Smoking	2 (16.6)
Chronic hypertension not requiring medications	1 (8.3)
Gestational age at enrollment (weeks), median[IQR]	30 [27.8-31.3]
Systolic blood pressure at enrollment (mmHg), median [IQR]	172 [167.3-181.8]
Diastolic blood pressure at enrollment (mmHg), median [IQR]	98 [95.8-99.3]
Antihypertensive management for severe hypertension	
Labetalol IV	6 (50)
Nifedipine IR	1 (8.3)
Hydralazine IV	1 (8.3)
HELLP syndrome	3 (25)
Laboratory values upon hospital admission	

Urine protein: creatinine ratio, median [IQR]	0.93 [0.3-4.6]
AST (U/L), median [IQR]	32.5 [21.3-42.3]
ALT (U/L), median [IQR]	21 [13-25.5]
Platelets (x1,000/microL), median [IQR]	250 [174-272.8]
Creatinine (mg/dl), median [IQR]	0.64 [0.6-0.7]
Mode of delivery	
Vaginal delivery	1 (8.3)
Cesarean delivery	10 (83.3)
Dilation & evacuation	1 (8.3)
Gestational age at delivery (weeks), median [IQR]	32 [29.5-34]
Fetal growth restriction	8 (66.7)
NICU admission	11 (91.6)
Neonatal death	0
Fetal death	1 (8.3)
Birth-weight (g), median [IQR]	1300 [1110-1915]
Apgar score at 1 minute of life, median [IQR]	6 [4-7.3]
Apgar score at 5 minutes of life, median [IQR]	9 [8-9]
Antihypertensive regimen upon hospital discharge	
None	4 (33.3)
Labetalol	1 (8.3)
Nifedipine	4 (33.3)
Both nifedipine and labetalol	3 (25)

341

342

343 **Table 2: Average hemodynamics ante- and post-partum by modality: CS and NICOM**

344 **Table 2a: CS ante- and post-partum average hemodynamics**

CS	Antepartum	Postpartum	P value
CO L/min	8.8	8.4	0.50
SVR dynes*sec*cm-5	1017	1032	0.90
MAP	107	105	0.70
HR	81	76	
SV mL	108	111	

345

346 **Table 2b: NICOM ante- and post-partum average hemodynamics**

NICOM	Antepartum	Postpartum	P value
CO (L/min)	5.4	5.7	0.61
SVR (dynes*sec*cm-5)	1562	1344	0.37
MAP	105	102	0.46
HR bpm	81	78	
SV mL	67	73	

347

348

349

350 **Table 3: Echocardiographic Parameters ante- and post-partum**

	Antepartum	Postpartum	
Parameter	Mean (SD)	Mean (SD)	P-value (two sided)
CO (L/min)	7.4	7.1	
SV (mL)	92	88	
Left ventricular Ejection Fraction (%)	63 (3)	62 (5)	0.68
Global Longitudinal Strain (%)	-21.5 (1.5)	-20.2 (2.0)	0.20
Left ventricular End Diastolic Volume (ml)	143 (41)	159 (45)	0.17
Left ventricular End Systolic Volume (ml)	53 (15)	60 (19)	0.14
Interventricular Septal Diameter (cm)	0.9 (0.2)	0.9 (0.2)	0.85
Left ventricular posterior wall diameter (cm)	1.0 (0.2)	0.9 (0.2)	0.53
E/E' Average (cm/sec)	8.2 (2.0)	7.4 (2.0)	0.58

351

352

353 **References:**

- 354 1. Steegers EA, von Dadelszen P, Duvekot JJ, Pijnenborg R. Pre-eclampsia. *Lancet*. Aug 21
355 2010;376(9741):631-44. doi:10.1016/s0140-6736(10)60279-6
- 356 2. Wallis AB, Saftlas AF, Hsia J, Atrash HK. Secular trends in the rates of preeclampsia,
357 eclampsia, and gestational hypertension, United States, 1987-2004. *Am J Hypertens*. May
358 2008;21(5):521-6. doi:10.1038/ajh.2008.20
- 359 3. Khan KS, Wojdyla D, Say L, Gülmezoglu AM, Van Look PF. WHO analysis of causes of
360 maternal death: a systematic review. *Lancet*. Apr 1 2006;367(9516):1066-1074.
361 doi:10.1016/s0140-6736(06)68397-9
- 362 4. ACOG Practice Bulletin No. 202: Gestational Hypertension and Preeclampsia. *Obstet*
363 *Gynecol*. Jan 2019;133(1):1. doi:10.1097/aog.0000000000003018
- 364 5. Huppertz B. Placental origins of preeclampsia: challenging the current hypothesis.
365 *Hypertension*. Apr 2008;51(4):970-5. doi:10.1161/hypertensionaha.107.107607
- 366 6. Masini G, Foo LF, Tay J, et al. Preeclampsia has two phenotypes which require different
367 treatment strategies. *Am J Obstet Gynecol*. Feb 2022;226(2s):S1006-s1018.
368 doi:10.1016/j.ajog.2020.10.052
- 369 7. Thilaganathan B, Kalafat E. Cardiovascular System in Preeclampsia and Beyond.
370 *Hypertension*. Mar 2019;73(3):522-531. doi:10.1161/hypertensionaha.118.11191
- 371 8. Akkermans J, Diepeveen M, Ganzevoort W, van Montfrans GA, Westerhof BE, Wolf H.
372 Continuous non-invasive blood pressure monitoring, a validation study of Nexfin in a pregnant
373 population. *Hypertens Pregnancy*. May 2009;28(2):230-42. doi:10.1080/10641950802601260
- 374 9. Doherty A, Carvalho JC, Drewlo S, et al. Altered hemodynamics and hyperuricemia
375 accompany an elevated sFlt-1/PIGF ratio before the onset of early severe preeclampsia. *J*
376 *Obstet Gynaecol Can*. Aug 2014;36(8):692-700. doi:10.1016/s1701-2163(15)30511-9
- 377 10. Doherty A, El-Khuffash A, Monteith C, et al. Comparison of bioreactance and
378 echocardiographic non-invasive cardiac output monitoring and myocardial function assessment
379 in primigravida women. *Br J Anaesth*. Apr 1 2017;118(4):527-532. doi:10.1093/bja/aex045
- 380 11. ACOG Practice Bulletin No. 203: Chronic Hypertension in Pregnancy. *Obstet Gynecol*. Jan
381 2019;133(1):e26-e50. doi:10.1097/aog.0000000000003020
- 382 12. Clearsite Finger Cuff Operator Manual. [https://www.edwards.com/healthcare-
383 professionals/products-services/predictive-monitoring/acumen-iq-
384 cuff?utm_source=google&utm_medium=cpc&utm_campaign=14737934628&utm_content=14
385 2368364297&utm_term=clearsight%20finger%20cuff&creative=641674311826&placement=&
386 matchtype=p&gclid=Cj0KCQiA5NSdBhDfARIsALzs2EBiUmCLmPQqmJE6KKPW02XFWcp9zoS8BG
387 7E3TPYFMlzZRwBLvrBgfMaAk6dEALw_wcB#disclaimer](https://www.edwards.com/healthcare-professionals/products-services/predictive-monitoring/acumen-iq-cuff?utm_source=google&utm_medium=cpc&utm_campaign=14737934628&utm_content=142368364297&utm_term=clearsight%20finger%20cuff&creative=641674311826&placement=&matchtype=p&gclid=Cj0KCQiA5NSdBhDfARIsALzs2EBiUmCLmPQqmJE6KKPW02XFWcp9zoS8BG7E3TPYFMlzZRwBLvrBgfMaAk6dEALw_wcB#disclaimer)
- 388 13. Marik PE. Noninvasive cardiac output monitors: a state-of-the-art review. *J Cardiothorac*
389 *Vasc Anesth*. Feb 2013;27(1):121-34. doi:10.1053/j.jvca.2012.03.022
- 390 14. Cornette J, Laker S, Jeffery B, et al. Validation of maternal cardiac output assessed by
391 transthoracic echocardiography against pulmonary artery catheterization in severely ill
392 pregnant women: prospective comparative study and systematic review. *Ultrasound Obstet*
393 *Gynecol*. Jan 2017;49(1):25-31. doi:10.1002/uog.16015
- 394 15. Kusumoto F, Venet T, Schiller NB, Sebastian A, Foster E. Measurement of aortic blood
395 flow by Doppler echocardiography: temporal, technician, and reader variability in normal

- 396 subjects and the application of generalizability theory in clinical research. *J Am Soc*
397 *Echocardiogr.* Sep-Oct 1995;8(5 Pt 1):647-53. doi:10.1016/s0894-7317(05)80378-5
- 398 16. Critchley LA, Critchley JA. A meta-analysis of studies using bias and precision statistics to
399 compare cardiac output measurement techniques. *J Clin Monit Comput.* Feb 1999;15(2):85-91.
400 doi:10.1023/a:1009982611386
- 401 17. Cecconi M, Rhodes A, Poloniecki J, Della Rocca G, Grounds RM. Bench-to-bedside
402 review: the importance of the precision of the reference technique in method comparison
403 studies--with specific reference to the measurement of cardiac output. *Crit Care.*
404 2009;13(1):201. doi:10.1186/cc7129
- 405 18. Belfort MA, Rokey R, Saade GR, Moise KJ, Jr. Rapid echocardiographic assessment of left
406 and right heart hemodynamics in critically ill obstetric patients. *Am J Obstet Gynecol.* Oct
407 1994;171(4):884-92. doi:10.1016/s0002-9378(94)70055-9
- 408 19. Eeftinck Schattenkerk DW, van Lieshout JJ, van den Meiracker AH, et al. Nexfin
409 noninvasive continuous blood pressure validated against Riva-Rocci/Korotkoff. *Am J Hypertens.*
410 Apr 2009;22(4):378-83. doi:10.1038/ajh.2008.368
- 411 20. Duclos G, Hili A, Resseguier N, et al. ClearSight™ use for haemodynamic monitoring
412 during the third trimester of pregnancy - a validation study. *Int J Obstet Anesth.* Nov
413 2018;36:85-95. doi:10.1016/j.ijoa.2018.04.009
- 414 21. Vinayagam D, Patey O, Thilaganathan B, Khalil A. Cardiac output assessment in
415 pregnancy: comparison of two automated monitors with echocardiography. *Ultrasound Obstet*
416 *Gynecol.* Jan 2017;49(1):32-38. doi:10.1002/uog.15915
- 417 22. Ouzounian JG, Elkayam U. Physiologic changes during normal pregnancy and delivery.
418 *Cardiol Clin.* Aug 2012;30(3):317-29. doi:10.1016/j.ccl.2012.05.004

419

420