

1 **Title: Effectiveness of mHealth Interventions for Blood Pressure**

2 **Control among Vulnerable Populations: A Systematic Review**

3 Kristen M.J. Azar, RN, MSN/MPH,^{1,2} Yael Zoken, BS,³ Rhonda M. Cooper-DeHoff,
4 Pharm.D, MS,⁴ Valy Fontil, MD, MAS, MPH,⁵ Madelaine, F. Modrow,⁵ Catherine Nasrallah,
5 MPH, CHES,⁶ Mark J. Pletcher, MD, MPH⁵

6 ¹Sutter Health-Center for Health Systems Research (CHSR)

7 ²Sutter Health- Institute for Advancing Health Equity (IAHE)

8 ³Sackler School of Medicine, New York

9 ⁴University of Florida, College of Pharmacy

10 ⁵University of California, San Francisco, School of Medicine (UCSF)

11 ⁶University of California, San Francisco, Department of Medicine (UCSF)

12 Corresponding author: Kristen M.J. Azar, RN, MSN/MPH; azark@sutterhealth.org

13

14 **Word Count:** 4,253

15 **Abstract**

16 Social determinants of health and sociodemographic differences place some individuals at
17 higher risk for hypertension leading to persisting disparities. While mobile health (mHealth)
18 offers a promising approach to facilitate blood pressure (BP) management, it remains unclear
19 which interventions are most effective for addressing disparities in hypertension control. We
20 reviewed the current literature to examine whether mHealth interventions for BP control are
21 effective in improving BP control in populations vulnerable to disparities in hypertension.
22 We conducted a systematic review using multiple databases from January 1, 2009 through
23 December 31, 2020. For inclusion, participants must have elevated blood pressure and belong
24 to a sociodemographic group with known disparities in hypertension. We also tracked
25 specific characteristics of each intervention. Out of the eight articles that met our eligibility
26 criteria for inclusion, five were published in 2018 to 2020. Only four demonstrated a
27 significant reduction in BP and all those interventions incorporated care teams. Despite some
28 evidence of the effectiveness of mHealth interventions for improving BP control among
29 vulnerable groups, more effective interventions are needed, and the quality of studies is
30 overall low. Further research is needed to find the most effective ways to engage diverse
31 communities with mHealth solutions to improve BP control.

32 **Keywords**

33 Hypertension, disparities, health IT, mHealth, public health, blood pressure, cardiovascular
34 disease

35 **Funding Details**

36 The research reported in this publication was supported by Patient-Centered Outcomes
37 Research Institute (PCORI) [PaCR-2017C2-8153]. The content is solely the responsibility of
38 the authors and does not necessarily represent the official views of BPTrack/PCORI

39 **Competing Interests**

40 Mark J. Pletcher, MD, MPH has received research grants from the Patient-Centered
41 Outcomes Research Institute (PCORI). All the other authors declare that there is no conflict
42 of interest regarding the publication of this paper.

43 **Data Availability**

44 The data used to support the findings of this study are available from the corresponding
45 author upon request.

46 **Introduction**

47 Uncontrolled blood pressure (BP) causes over 450,000 deaths per year in the United States
48 (US), making it a leading preventable cause of death.^{1,2} While national data indicate that BP
49 control rates in the U.S. have improved over time, from approximately 30% in the early
50 1990's to 50% in more recent years,^{3,4} a recent study published in the Journal of the
51 American Medical Association revealed that HTN control has declined to 43.7% in 2017-
52 2019, and further among minoritized groups.³ Further, race/ethnic and socioeconomic

53 disparities exist, with African American (AA) individuals and those with low-income status
54 being at higher risk for uncontrolled HTN.⁵ In communities with low socioeconomic and
55 resource, the adverse cardiovascular outcomes of HTN and challenges of self-management
56 are more severe due to social determinants such as low health literacy, lack of access to
57 quality health care, and lack of trust in health care professionals and institutions.⁶

58 A growing body of evidence supports the use of mobile health (mHealth) interventions for
59 health promotion, behavior change, diagnosis, and self-management of risk factors for
60 chronic HTN. MHealth can be defined as “medical and public health practice supported by
61 mobile devices such as mobile phones, patient monitoring devices, personal digital assistants,
62 and other wireless devices”.^{7,8} It is estimated that more than 90% of U.S. adults own a mobile
63 phone, including 83% AA and 76% of individuals with a low with low-income status, and
64 approximately 85% have a smartphone.⁹ The use of mHealth interventions is increasing
65 substantially in the general population given the near ubiquity of smartphone and mobile
66 health technologies in all segments of society.¹⁰ The integration of mHealth technology (i.e.
67 home BP monitoring devices and smartphone apps) with electronic health record (EHR) data
68 has the potential to provide a major mechanism for interventions for BP management. It is
69 becoming increasingly feasible to help patients self-manage their HTN remotely, allow
70 patients to engage and benefit from the comfort of their home environments and
71 communities. Self-management tools are designed to facilitate autonomy in self-
72 management, augment patient/clinician collaboration, and to enhance patient
73 empowerment.¹¹

74 While mHealth has been shown to be effective in reducing CVD risk for affluent and well-
75 resourced patient populations^{12,13}, it is unclear how effective these interventions are among
76 underserved and socioeconomically vulnerable populations, given existing health and
77 healthcare disparities. Several studies provide evidence of the positive impact of mHealth on
78 patient adherence with HTN medication regimens.¹⁴ and there is limited evidence to support
79 the potential for mHealth to improve HTN outcomes among vulnerable populations, albeit
80 the evidence is limited in part to a dearth of interventions specifically targeted to these
81 populations. The objective of this study is to describe the characteristics of mHealth
82 interventions and to examine whether these interventions are effective for reducing systolic
83 and/ or diastolic blood pressure for socioeconomically vulnerable populations (e.g.
84 socioeconomic or race/ethnic groups shown to have higher prevalence of hypertension).

85 **Materials and Methods**

86 **Review Design and Study Selection**

87 We conducted a systematic review to assess effectiveness of mHealth interventions for BP
88 management among individuals with elevated BP in socioeconomically vulnerable
89 populations. This review was registered in advance on PROSPERO under study number
90 CRD42020169115.¹⁵ We followed the Preferred Reporting Items for Systematic Reviews and
91 Meta-Analyses (PRISMA) guidelines for conducting and reporting items for systematic
92 reviews.¹⁶

93 We used the PICOS terminology to frame this work. Participants are those with suboptimal
94 BP who belong to a socioeconomic group with known disparities in hypertension.
95 Interventions of interest are experimental or quasi-experimental mHealth intervention studies

96 to reduce BP. The main comparators are usual care or other non-mHealth interventions for
97 BP management. The primary outcome of interest is reduction in systolic and/or diastolic BP.

98 **Search Strategy**

99 We searched the following databases for primary studies: MEDLINE® via PubMed,
100 PsychInfo, CINAHL® and EMBASE from January 1, 2009, through December 31, 2020. We
101 limited the search to studies occurring after 2009 given the significant advances in mHealth
102 technology over the past decade. We developed a search strategy for MEDLINE, accessed
103 via PubMed®, based on medical subject headings (MeSH®) terms and text words of key
104 articles that we identified a priori (Appendix 1). Our basic search concepts were “mHealth
105 AND hypertension”. We first identified potentially eligible studies based on title and abstract.
106 One reviewer (KMJA) reviewed the titles and abstracts based on pre-specified
107 inclusion/exclusion criteria. Two reviewers (KMJA and YL) independently reviewed the
108 papers identified for full text review using a standardized data extraction form electronically
109 entered into a web-based survey tool (Appendix 2). The full text of the final studies were then
110 reviewed by a third researcher (MP). All discrepancies were resolved by consensus.

111 **Study Selection**

112 Study Characteristics. We included interventions that assessed BP self-management using
113 mHealth in the U.S., Canada, Western Europe or Australia for hypertension management in
114 our target population as defined below. Studies were included if they were of experimental or
115 quasi-experimental design, assessed the primary outcome of reduction in systolic and/or
116 diastolic BP at least 3 months post-baseline and were published in English. Studies were
117 excluded if the primary outcome was specifically related to ocular hypertension or pulmonary
118 hypertension. Studies with a primary outcome of medication adherence were excluded.
119 Studies that were non-experimental in design were excluded, as were studies published only
120 as abstracts.

121 Target population. Adults (age 18+) with evidence of elevated BP at baseline (i.e.
122 documented evidence of systolic BP \geq 130 mmHg and/or diastolic BP \geq 80 mmHg) and
123 meeting criteria for socioeconomic and racial/ethnic vulnerability relative to bearing
124 disproportionate risk for uncontrolled HTN.¹⁷ Studies were included if study participants had
125 < 50% non-Hispanic White, with > 50% high school education or less, with > 50% Medicaid
126 or > 50% annual household income \leq \$50K, and/or a primarily and explicitly defined rural
127 population. Studies were excluded if the patient population included individuals with a life-
128 threatening co-morbid illness (i.e. cancer diagnosis, end stage renal or liver disease) or
129 pregnant women.

130 Intervention Inclusion/Exclusion. We include technology-enabled or enhanced interventions
131 that specifically utilize mHealth. The Global Observatory for eHealth of the World Health
132 Organization defines mHealth as “medical and public health practice supported by mobile
133 devices, such as mobile phones, patient monitoring devices, personal digital assistants, and
134 other wireless devices”,¹⁸ or the use of these technologies for health services and
135 information.¹⁹ Given this definition, eligible interventions must include wearables and/or
136 devices connected to an app, mobile site and/or mobile internet via wireless connection (e.g.
137 Wi-Fi, blue tooth etc.). The intervention must be intended to reduce systolic and/or diastolic
138 BP as the primary outcome of interest. Additionally, the intervention must be remote (i.e.
139 used outside of the clinic setting) and patient-facing (i.e. patient interfaces and uses the

140 technology outside of the clinic setting), but may include a clinic-based component. We also
141 excluded studies with interventions requiring a surgical or invasive component (i.e. implanted
142 or internal BP monitor).

143 **Data Extraction and Quality (Risk of Bias) Assessment**

144 Data were systematically extracted and summarized. We reported study characteristics and
145 intervention characteristics, using categories to describe components of included studies to
146 facilitate cross-study comparisons. Primary outcomes were reported for all studies.
147 Secondary outcomes (i.e. medication adherence) were reported for studies that included these
148 outcomes using the metric utilized by the original study.

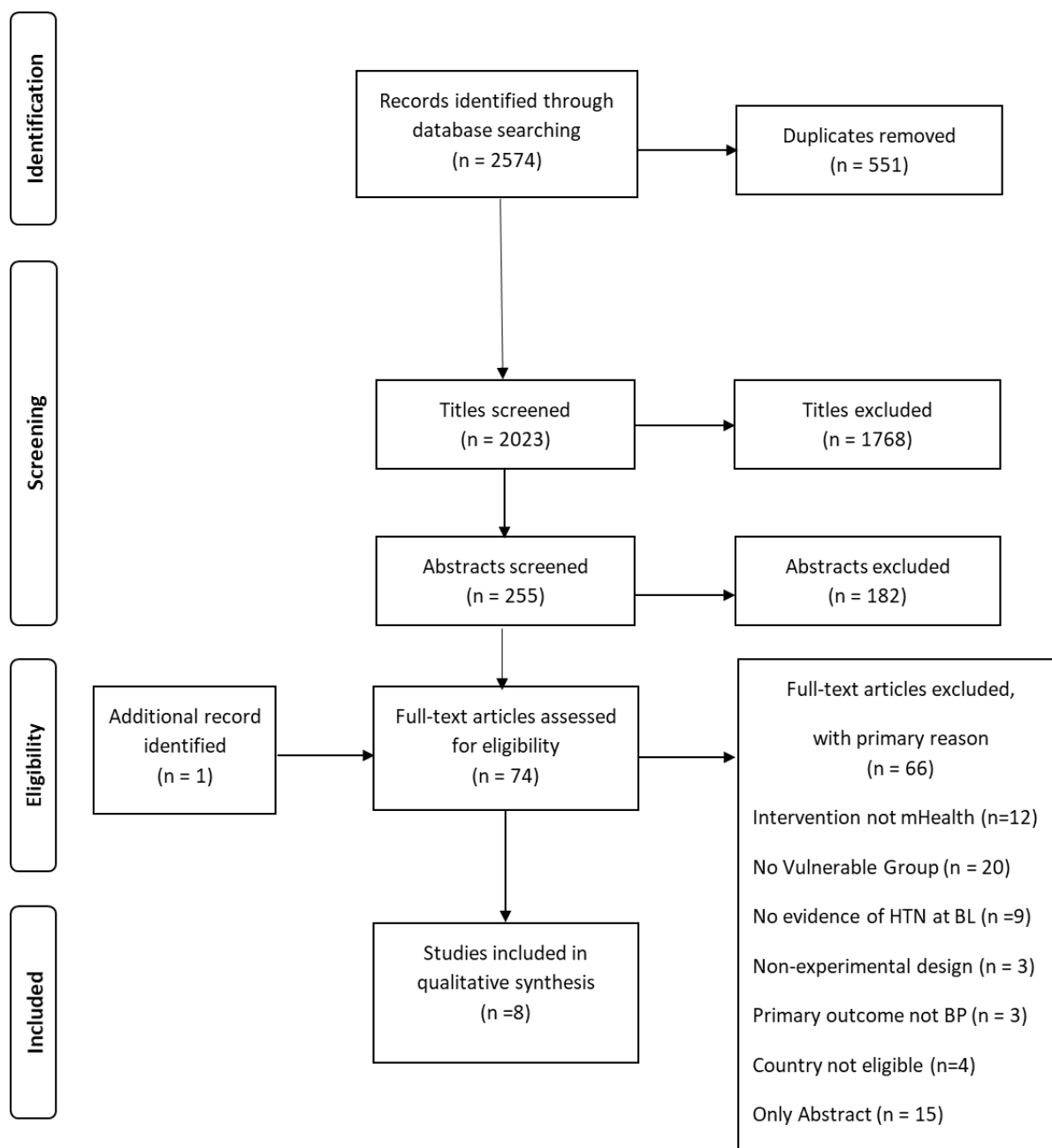
149 All three researchers (KMJA, YL and MP) independently assessed the risk of bias of the
150 eight included studies using the Cochrane Risk of Bias tool. The specific domains include
151 random sequence generation, allocation concealment, blinding, incomplete outcome data,
152 selective reporting, and other source of bias. Any disagreement will be resolved by discussion
153 between the three reviewers.

154 **Results**

155 **Identification of Studies and Study Selection**

156 We identified 2,574 articles through the literature search. After excluding duplicates, 2,023
157 articles were screened for inclusion based on title and abstract. Of these, 255 abstracts were
158 review by one research (KJA) to identify manuscripts requiring a full text review. Two
159 researchers (KJA & YFZ) independently assessed 74 full-text papers for eligibility and both
160 authors agreed to exclude 66 articles based on the established protocol and criteria. The
161 remaining 8 articles were identified as meeting the eligibility criteria for inclusion and were
162 then reviewed by a third researcher (MP) for confirmation. Reasons for exclusion of the 66
163 full-text articles are indicated by the PRISMA diagram (Figure 1).

164



165

166

Figure 1: PRISMA Diagram

167 Study Characteristics, Design and Setting

168 Characteristics of the eight studies are presented in Table 1. Of the eight studies identified for
 169 inclusion, six were published since 2017, six were conducted in the United States, one in the
 170 United Kingdom²⁰ and one in Canada.²¹ All eight studies were randomized control trials with
 171 follow-up ranging from 3 to 12 months. Half of the studies compared the mHealth
 172 intervention to usual care^{20,22-24}, three used an enhanced usual/standard care group and one
 173 involved a passive intervention as the comparison group.²¹

Table 1: Study Design, Quality, and Participant Characteristics

Author and Year	Location	Duration	Design	Sample size (N)	Age (mean)	Racial/Ethnic Minority (%)	Sex	SES	Baseline BP
Schroeder et al. 2020	Albuquerque, New Mexico	12-mo	RCT Arm 1 (n=148): IVR-T Arm 2 (n=147): Usual Care	295	53.4 ± 11.3	25.1% AI/AN 4.8% Non-Hispanic Black 51.9% Hispanic 14.6% Non-Hispanic White 3.7% Other 100% AA	40.3% Male	60.3% Annual Household Income <\$25K/Year 28.1% Unemployed 33.6% food insecurity 48.3% Enrolled in SNAP 53.6% Not enough money for utilities 51.7% unemployed	SBP: 133.6 (19.5) mmHg DBP: 81.5 (12.6) mmHg
Still et al, 2020	Cleveland, Ohio	3-mo	RCT Arm 1 (n = 30): COACHMAN intervention Arm 2 (n = 30): Enhanced Usual Care (EUC)	60	59.5 ± 8.9		25% Male		Intervention: SBP: 156.7 ± 9.5 mmHg DBP: 90.5 ± 14.7 mmHg Control: SBP: 152.2 ± 12.2 mmHg DBP: 88.1 ± 13 mmHg
Chandler et al, 2019	South Carolina	9-mo	RCT Arm 1 (n=26): Smartphone Med Adherence Stops Hypertension (SMASH) Intervention Arm 2 (n=28): Enhanced standard Care (ESC)	54	46.5 ± 9.9	100% Hispanic	61% male	72% High School or less 91% Income ≤\$50k/year	SBP: 151.5 mmHg DBP: 85.7 mmHg
**									
Skolarus et al, 2018	Flint, Michigan	6-mo	RCT Arm 1 (n=46): Usual Care Arm 2 (n=48): Text messages	94	58 ± 9.8	97% African American 3% Other	3% Male	29% Medicaid or Uninsured 19% Low health literacy 46% food insecurity	Intervention: SBP: 160.7 (23.6) DBP: 99.0 (11.8) Control: SBP: 162.2 (20.5) DBP: 99.2 (17.8)
Tobe et al, 2018	6 different communities in 3 provinces of Canada.	12-mo	RCT Arm 1 (n=71): Active intervention Arm 2 (n=71): Passive intervention	142	48.7 ± 12.8 (Active) and 49.1 ± 13.1 (Passive)	100% Canadian Indigenous	51% male	First Nations populations living on reservations in six different communities in three provinces of Canada	Active Intervention: SBP: 143 ± 12 mmHg DBP: 84 ± 12 mmHg Passive Intervention SBP: 145 ± 16 mmHg DBP: 86 ± 10 mmHg
Frias et al, 2017	California and Colorado	12-WK	RCT Arm 1 (n = 40): Digital Medicine Offering (DMO) - 4 weeks	109	57.8 (SE 1.1; Combined DMO) and 61.6 (SE 1.7; UC)	15.6% African American 46.8% Hispanic 66% Caucasian	50% Male	31% High School or less 57% Income ≤\$20k/year	Combined DMO SBP: 149.3 (1.5) DBP: 86.2 (3.2) Usual Care
**									

			Arm 2 (n = 40): DMO-12 weeks			13.8% Asian			SBP: 155.4 DBP: 83.9
Davidson et al, 2015 **	South Carolina	6-mo	Arm 3 (n = 29): Usual Care RCT	38	47.5 ± 11.8	52.6 % African American	40% Male	58% High School or less	SBP: ~ 156 mmHg (Fig 1)
			Arm 1 (n = 18): Smartphone Med Adherence Stops Hypertension (SMASH) Intervention		48.45 ± 11.32 (ESC)	47.4% Hispanic		68% Income ≤\$50k/year	DBP: ~ 89mmHg (Fig 2)
			Arm 2 (n = 20): Enhanced Standard Care (ESC)					21% Unemployed	
McManus et al, 2010 **	24 general practices in the UK	12-mo	RCT	480	66.4 ± 9	96% White	47% Male	Subgroup analysis for low vs high Index of multiple deprivation (IMD) 2007 score	Intervention SBP: 152.1 (150.6 to 153.6) DBP: 85.0 (83.9 to 86.1)
			Arm 1 (n = 234): Self-management intervention			1.5% Black			Control SBP: 151.8 (150.3 to 153.3) DBP: 84.5 (83.3 to 85.7)
			Arm 2 (n = 246): Usual Care			2% Asian			
						0.5% Other			

176 **Participant characteristics.** The number of participants in a given study ranged between 38
177 and 480 individuals. For three studies, at least 50% of participants were male. Among the
178 studies, three^{23,25,26} had more than 50% Non-Hispanic Black participants. One study included
179 only Hispanic participants²⁷ and another included only Canadian Indigenous groups.²¹ In
180 four studies^{22,24,25,27} at least half of the participants had an annual income of \leq \$50K. One
181 study²⁰ conducted an a priori secondary analysis for low vs high scores for the Index of
182 Multiple Deprivation. All but one study²⁴ included participants with a baseline BP in the
183 Hypertension Stage 2 range (SBP \geq 140 mmHg and/or diastolic DBP \geq 90 mmHg).¹⁷

184 **Intervention Characteristics**

185 We examined mHealth intervention characteristics across the eight included studies (Table
186 2). The eight studies included seven unique interventions, given that two studies^{25,27} tested
187 the same intervention (i.e. Smartphone Medication Adherence Stops Hypertension
188 [SMASH]). Five interventions were developed with direct involvement from members of a
189 targeted vulnerable community.^{21,23-27} More than half (n = 4; 57%) of the interventions
190 involved the use of a smartphone and/or smartphone application (app).^{21,22,25-27} Five
191 interventions (71%) required remote self-monitoring with an automated sphygmomanometer
192 (arm cuff).^{20,21,23,25-27} While one study²⁴ did not require use of an automated
193 sphygmomanometer, the option was offered and 98% of participants did use one. One study²²
194 utilized an ingestible sensor placed in a pill, with a wearable sensor patch intended to
195 promote medication adherence. Three interventions offered educational content.^{21,24,26} Three
196 interventions used SMS and text messaging^{21,23,25,27} to deliver tailored motivational messages,
197 educational content and /or adherence reminders via mobile phone. Three offered
198 visualizations for self-monitored BP metrics and longitudinal trends, adherence and tracking
199 of other health behaviors.^{20,22,25,27} Most interventions (n = 5; 71%)^{20-22,25-27} involved a
200 clinical care team, which received transmission of data and/or provided supplemental
201 counseling.²⁶

202 **Intervention Effectiveness / Results of Individual Studies**

203 Four studies^{20,22,25,27} (including three different interventions) demonstrated a significant
204 reduction in mean SBP and/or DBP for treatment vs comparison group participants (Table 1).
205 Davidson et al (2015) and Chandler et al (2019) tested the SMASH intervention whereby
206 adult participant were randomly assigned to either the SMASH group or the Enhanced
207 standard care (ESC) group. The intervention was tested in two randomized controlled trials,
208 one largely composed of low socioeconomic status (SES) Hispanic adults (n = 54)²⁷ and the
209 other with low SES Hispanic and AA adults (n = 38, 53% AA and 47% Hispanic).²⁵ The
210 intervention led to a reduction of the SBP in the SMASH group. The SMASH program
211 involves a smartphone app to improve BP medication adherence as well as Bluetooth-enabled
212 automated BP device. Participants were asked to measure their BP using the device and app
213 every three days. It also facilitates timely patient-provider communication and included
214 tailored reinforcement/motivational messages via SMS. The development of the intervention
215 was guided by Self Determination Theory^{28,29} and aimed to increase autonomous motivation
216 by linking participants' behavioral changes to their values, beliefs and goals. Messages are
217 based upon participant responses to a branch logic questionnaire that identified individual
218 values, beliefs and short/long-term goals. The 600+ messages were developed using
219 formative research methods among the target population (i.e. Hispanic adults with
220 hypertension). The intervention also utilized the global systems for mobile electronic tray

221 Maya (MedMinder, Inc., Newton, MA, USA), which provided a series of reminder signals to
222 take medications. The data was shared with the care team to inform clinical care.

Table 2: . Intervention Features and Components

Study	Control	Tech Platform	Intervention Component							
			HTN Edu	BP monitoring	Med reminder	Equipment provision	Technology Training	Lifestyle advice	Human Coaching	Other
Schroeder et al. 2020	Usual Care	Phone: SMS or IVT-T	X	X	X	X 98% received an optional Automated BP sphygmomanometer (arm cuff) – no data transmission		X	X	X
Still et al, 2020	Enhanced Usual Care: - Printed educational materials on HTN management - Access to one web-based education session on self-monitoring BP Automated BP sphygmomanometer (arm cuff) – no data transmission	Web-based App	X	X	X	X Bluetooth-enabled Automated BP sphygmomanometer (arm cuff) – no data transmission			X	
Chandler et al. 2019	Enhanced standard Care (ESC): participants received text messages including links to PDFs and brief video clips containing healthy lifestyle tips for attention control	App	X	X		X Bluetooth-enabled automated BP sphygmomanometer (arm cuff)	X	X	X	X
Skolarus et al. 2018	Usual Care	SMS		X		X Automated BP sphygmomanometer (arm cuff)	X		X	
Tobe et al. 2018	Passive Intervention Health behaviors SMS alone (not HTN specific)	SMS	X	X		X Bluetooth-enabled automated BP sphygmomanometer (arm cuff)			X	X
Frias et al. 2017	Usual Care	App		X	X	X -Wearable sensor patch -Ingestible sensor in a placebo pill				X
Davidson et al. 2015	Enhanced standard Care (ESC): participants received text messages including links to PDFs and brief video clips containing healthy lifestyle tips for attention control	Web Portal App	X	X		X Bluetooth-enabled automated BP sphygmomanometer (arm cuff)	X	X	X	X
McManus et al. 2010	Usual Care	Web Based		X		X Automated BP sphygmomanometer (arm cuff)	X			
I-Modem for data transmission										

225 Frias et al (2017) conducted a three-arm randomized controlled trial to test the effectiveness
226 of a digital medicine offering (DMO) among low SES adults with both type 2 diabetes and
227 hypertension (n = 109) and found at 4 weeks compared to usual care. The intervention
228 consisted of the use of an ingestible sensor co-capsulated with antihypertensive medication
229 and transmitting data to an external sensor patch for medication adherence tracking.
230 Participants used DMO (includes digital medicines, the wearable sensor patch, and the
231 mobile device app) for 4 or 12 weeks (treatment groups 1 and 2 respectively) or received
232 usual care (treatment group 3). DMO reports were provided to clinicians to guide decision
233 making for medication titration. While the trial was 12-weeks, the primary outcome was
234 mean change in SBP at 4 weeks and was found to be significantly reduced in both treatment
235 arms compared to usual care (Table 1) and maintained at 12 weeks. Also of note, providers
236 taking care of a patient who was randomized to DMO intervention made approximately 3
237 times more medical decisions per participant compared to usual care.

238 McManus et al (2010) RCT (n = 480) tested the telemonitoring and self-management in the
239 Control of Hypertension (TASMINH2) intervention and found change in mean SBP between
240 baseline 6 and 12 months (SBP decreased by 17.6 mm Hg in the self-management group and
241 by 12.2 mm Hg in the control group). The TASMINH2 intervention combined self-
242 management of BP, self-titration of antihypertensive medications combined with
243 telemonitoring of home BP measurements by the care team. Monthly summaries of the self-
244 management data were sent to the clinical team for review and use in informing clinical care.
245 While the intervention was web-based, it involved the passive transmission of data from the
246 automated sphygmomanometer via i-Modem, inserted into a home electrical outlet. The
247 analysis included a priori-defined subgroup analysis among those with low vs high Index of
248 multiple deprivation (IMD) 2007 score. The overall reduction in SBP was greater for
249 participants with low IMD compared with participants with high IMD 2007 at both 6 and 12
250 months (-0.4 mm Hg; 95% CI -5.9 to 5.2, p=0.05 and 1.6 mm Hg; 95% CI -4.4 to 7.6,
251 p=0.08 respectively). The remaining four studies^{21,23,24,26} did not demonstrate a significant
252 reduction in SBP and/or DBP for the treatment vs comparison group participants. Schroeder
253 et al (2020), tested the impact of an interactive voice response and text message (IVR-T)
254 based intervention, compared with usual care, to deliver automated appointment and
255 medication refill reminders as well as weekly culturally tailored (i.e. AI/NA) motivational
256 messages to encourage self-management. The authors speculate that the null findings may in
257 part be due to study design and a large proportion of participants with hypertension being in
258 control at baseline. Both the Skolarus et al (2018) and Still et al (2020) interventions were
259 developed in collaboration with direct involvement from members of the African American
260 community, using the principles of community-based participatory research. One
261 intervention²³ consisted of prompted remote BP self-monitoring, tailored text-messages that
262 are responsive to monitored data as well as both tailored and generic automated text-
263 messages to promote healthy behaviors. The authors speculate that small sample size and
264 low-intensity of the intervention may have contributed to null results. The other
265 intervention³⁰ combined self-directed web-based hypertension education, remote self-
266 monitoring and app-supported medication management along with up to 4 patient-initiated,
267 informal nurse counseling. They speculate that the provision of home BP self-monitoring
268 devices to both groups could have resulted in greater awareness and behavior change for all
269 study participants. Finally, Tobe et al (2019) tested a SMS text-based intervention among
270 members of the Canadian Indigenous Groups community with hypertension. The intervention
271 consisted of “active” messages to promote BP self-management with “passive” messages to
272 promote generic healthy lifestyle behaviors, compared to passive alone.

273 **Strength of Body of Evidence, Risk of Bias and Quality of Studies**

274 A summary of study quality, assessed via the Cochrane Risk of Bias Tool, is presented in
 275 Table 4. No studies that met the inclusion criteria were excluded from the review on the basis
 276 of quality. One²¹ of the 8 studies was rated high risk for both incomplete outcome data and
 277 selective outcome reporting. The risk of bias for these domains for the other studies was
 278 either unknown^{23,26} or low^{20,22,24,27,31}. There was high or unknown risk of bias due to blinding
 279 participants & personnel for all of the studies.

280 **Table 4: Study Quality Assessment via Cochrane Risk of Bias Tool**

Study Information	Random Sequence Generation	Allocation Concealment	Blinding Participants & Personnel	Blinded outcome assessment	Incomplete Outcome Data	Selective Reporting	Other Source of Bias
Schroeder et al, 2020	Unknown	Unknown	High	Low	Low	Low	Low
Still et al, 2020	Low	Unknown	High	High	Unknown	Low	Low
Chandler et al, 2019	Unknown	Unknown	Unknown	Unknown	Low	Low	Unknown
Skolarus et al, 2018	Low	Unknown	High	Low	Unknown	Unknown	Unknown
Tobe et al, 2018	Low	Low	High	High	High	High	Unknown
Frias et al, 2017	Low	Low	High	High	Low	Low	Unknown
Davidson et al, 2015	Unknown	Unknown	Unknown	Unknown	Low	Low	Unknown
McManus et al, 2010	Low	High	High	High	Low	Low	Unknown

281

282 **Discussion**

283 In this systematic review we focused on mHealth interventions for BP reduction among
 284 individuals with hypertension and belonging to socioeconomically vulnerable and high-risk
 285 populations. We identified eight trials that met our eligibility criteria for inclusion. Four of
 286 these studies, which incorporated care team impact, demonstrated a statistically significant
 287 reduction in systolic BP.

288 While there have been several related systematic reviews conducted in recent years³²⁻³⁹, our
 289 review includes relatively recent literature, where five of the eight studies included were
 290 published in 2018 to 2020. One other recent review by Khoong et al.⁴⁰ examined the impact
 291 of mobile health strategies for BP self-management on BP outcomes but the search was
 292 limited to studies conducted prior to July 2019 and, thus, does not include several of those we
 293 have identified.^{21,22,24,26,27} Among the main findings was a need for increased diversity in
 294 clinical research studies as well as the use of implementation science frameworks to facilitate
 295 comparison between different multi-modal studies. Given the rapidly evolving technology,
 296 frequent updates to reviews are justified to keep pace with these advancements. Our review
 297 intentionally uses a broader definition of mHealth interventions for BP, where prior reviews
 298 have limited focus only on smartphone apps^{32,36} and/or SMS interventions³⁴ Despite

299 persistent disparities, there remains limited evidence to identify effective mHealth strategies
300 that will benefit groups that bear a disproportionate burden of hypertension risk and its
301 related sequelae.⁴¹

302 Overall, prior systematic reviews found mixed evidence for the effectiveness of mHealth
303 interventions for hypertension management. A recent systematic review and meta-analysis by
304 Li et al. (2020) aimed to measure the effectiveness of mHealth in improving the self-
305 management of hypertension for adults and found a greater reduction in both SBP and DBP
306 in the mHealth intervention groups compared with control groups, -3.78 mm Hg ($P < .001$;
307 95% CI -4.67 to -2.89) and -1.57 mm Hg ($P < .001$; 95% CI -2.28 to -0.86), respectively.
308 They found that high intensity of medication reminders, user-driven designs with customized
309 2-way communication between patients and physicians and multifaceted functions (i.e. SMS
310 text messaging, linking BP monitoring devices to a Web-based system, apps etc.) were
311 associated with effectiveness. In a meta-analysis of randomized controlled trials testing
312 interactive mHealth interventions for BP management in adults (total $n = 4271$ participants),
313 Lu et al (2019) found that the interventions were associated with significant changes in
314 systolic BP and diastolic BP of -3.85 mmHg and -2.19 mm Hg respectively. While they
315 found evidence of effectiveness, there was no reporting of sociodemographic characteristics
316 of participants and only one study included²² was also included in the present review.

317 Consistent with prior reviews, a common element among the effective interventions in our
318 review seemed to be intentional involvement and communication with the care team, aimed
319 at informing clinical decision making and medication titration. The four interventions with
320 null results did not include a formal mechanism for information sharing with the care team
321 and were, in general, lower intensity (i.e. no care team involvement; passive engagement) in
322 comparison to the SMASH, DMO and TASMING2 interventions. Some early studies in
323 home-based telemonitoring of BP, where remote self-monitored data was shared with the
324 care team, resulted in under treatment and worse outcomes.⁴²⁻⁴⁴ More recent evidence
325 suggests benefit when clinical guidelines are adjusted to recommend lower targets for home
326 readings.^{45,46} The SMASH intervention^{25,27} involved the generation of a biweekly report from
327 self-monitored BP data that was used to inform clinical care and incorporated commonly
328 available, nearly ubiquitous technologies. It is especially promising given that the results
329 were replicated in a second study, though both studies were small ($n < 100$) and potential for
330 scalability is unclear. The Frias et al (2017) intervention used an ingestible sensor co-
331 capsulated with antihypertensive medication, which is not a commonly available or widely
332 used technology. The authors did not report cost data and it is unclear how feasible it would
333 be to scale up the intervention. Additionally, the authors reported some incidence of
334 gastrointestinal related adverse events, raising questions of safety and acceptability in a
335 broader context. It is important to note that the TASMING2 study was conducted only in the
336 United Kingdom and was found effective among a group identified as low SES but in the
337 context of socialized medicine. Given this, there may be differences when deploying among
338 socioeconomically disadvantaged groups in the U.S.

339 While health information technology has been recognized as a potentially powerful tool in
340 addressing racial/ethnic disparities among Black communities, it is recognized that high
341 quality research to improve the scalability and sustainability of culturally appropriate
342 interventions is needed.⁴⁷ Further, deficiencies in existing interventions that do not promote
343 equitable outcomes must be identified and mitigated.⁴⁸ While community-based approaches,
344 such as barbershop and faith-based programs, have shown promise^{47,49}, both studies in our
345 review^{23,30} which incorporated these types of approaches were not effective for reducing BP.

346 This could in part be due to limitations in study design (i.e. insufficient power) and also due
347 to the low intensity of the mHealth interventions themselves.

348 Several other studies exploring mHealth interventions specifically among socioeconomically
349 vulnerable adults were identified in our review or prior systematic reviews but did not meet
350 our inclusion criteria and are worth noting. Buis et al (2017)¹⁴ tested daily, automated text
351 reminders sent at individually tailored times, among Black adults with uncontrolled
352 hypertension and did not find significant differences in BP outcomes. This study was
353 excluded due to limited follow-up. Lewinski et al (2019)⁵⁰ recruited patients of low
354 socioeconomic status from a federally qualified health center with both diabetes and
355 uncontrolled hypertension. The intervention consisted of app and text messages and did not
356 result in improved hypertension control and did not include a comparison group. Neither of
357 these studies involved the care team or incorporated medication management. Taber et al
358 (2018)⁵¹ aimed to assess the efficacy of a pharmacist-led, technology-aided, educational
359 intervention and found modest systolic BP reduction among Black participants (−0.86 mmHg
360 per month, $p=0.026$), which was not evident in non-Blacks (−0.13 mmHg per month,
361 $p=0.865$). This study was excluded due to a lack of comparison group. The findings in these
362 studies are consistent with the potential importance of care team involvement for
363 interventions aimed at reducing disparities in hypertension.

364 **Conclusions**

365 These findings compel the crucial and critical need for innovation and for the development of
366 more effective interventions specifically to improve outcomes among those at the highest risk
367 and in the most need. These findings also compel the urgent need for those developing
368 mHealth interventions for hypertension control to engage high-risk and disproportionately
369 burdened populations. Additionally, the evidence suggests that mHealth innovations should
370 include more clinical decision support as opposed to self-management alone.

371 **Acknowledgments**

372 We would like to thank Evans Whitaker, MD, MLIS, and academic librarian for UCSF
373 Health Science Library.

374 **Supplementary Materials**

375 Supplemental Material #1

Section/topic	#	Checklist item	Reported on page #
TITLE			
Title	1	Identify the report as a systematic review, meta-analysis, or both.	1
ABSTRACT			
Structured summary	2	Provide a structured summary including, as applicable: background; objectives; data sources; study eligibility criteria, participants, and interventions; study appraisal and synthesis methods; results; limitations; conclusions and implications of key findings; systematic review registration number.	3
INTRODUCTION			
Rationale	3	Describe the rationale for the review in the context of what is already known.	6-7
Objectives	4	Provide an explicit statement of questions being addressed with reference to participants, interventions, comparisons, outcomes, and study design (PICOS).	6-7
METHODS			
Protocol and registration	5	Indicate if a review protocol exists, if and where it can be accessed (e.g., Web address), and, if available, provide registration information including registration number.	N/A
Eligibility criteria	6	Specify study characteristics (e.g., PICOS, length of follow-up) and report characteristics (e.g., years considered, language, publication status) used as criteria for eligibility, giving rationale.	4-5
Information sources	7	Describe all information sources (e.g., databases with dates of coverage, contact with study authors to identify additional studies) in the search and date last searched.	8-10
Search	8	Present full electronic search strategy for at least one database, including any limits used, such that it could be repeated.	8 and Appendix 1
Study selection	9	State the process for selecting studies (i.e., screening, eligibility, included in systematic review, and, if applicable, included in the meta-analysis).	9 and Figure 1
Data collection process	10	Describe method of data extraction from reports (e.g., piloted forms, independently, in duplicate) and any processes for obtaining and confirming data from investigators.	10
Data items	11	List and define all variables for which data were sought (e.g., PICOS, funding sources) and any assumptions and simplifications made.	10

Section/topic	#	Checklist item	Reported on page #
Risk of bias in individual studies	12	Describe methods used for assessing risk of bias of individual studies (including specification of whether this was done at the study or outcome level), and how this information is to be used in any data synthesis.	10
Summary measures	13	State the principal summary measures (e.g., risk ratio, difference in means).	n/a
Synthesis of results	14	Describe the methods of handling data and combining results of studies, if done, including measures of consistency (e.g., I ²) for each meta-analysis.	11
Risk of bias across studies	15	Specify any assessment of risk of bias that may affect the cumulative evidence (e.g., publication bias, selective reporting within studies).	10
Additional analyses	16	Describe methods of additional analyses (e.g., sensitivity or subgroup analyses, meta-regression), if done, indicating which were pre-specified.	n/a
RESULTS			
Study selection	17	Give numbers of studies screened, assessed for eligibility, and included in the review, with reasons for exclusions at each stage, ideally with a flow diagram.	9-10
Study characteristics	18	For each study, present characteristics for which data were extracted (e.g., study size, PICOS, follow-up period) and provide the citations.	8 and Table 1 and Table 2
Risk of bias within studies	19	Present data on risk of bias of each study and, if available, any outcome level assessment (see item 12).	10-11
Results of individual studies	20	For all outcomes considered (benefits or harms), present, for each study: (a) simple summary data for each intervention group (b) effect estimates and confidence intervals, ideally with a forest plot.	7-8 and table 3
Synthesis of results	21	Present results of each meta-analysis done, including confidence intervals and measures of consistency.	11
Risk of bias across studies	22	Present results of any assessment of risk of bias across studies (see Item 15).	16
Additional analysis	23	Give results of additional analyses, if done (e.g., sensitivity or subgroup analyses, meta-regression [see Item 16]).	14, 17 and Table 4
DISCUSSION			
Summary of evidence	24	Summarize the main findings including the strength of evidence for each main outcome; consider their relevance to key groups (e.g., healthcare providers, users, and policy makers).	16
Limitations	25	Discuss limitations at study and outcome level (e.g., risk of bias), and at review-level (e.g., incomplete retrieval of identified research, reporting bias).	18-19
Conclusions	26	Provide a general interpretation of the results in the context of other evidence, and implications for future	19-20

Section/topic	#	Checklist item	Reported on page #
		research.	
FUNDING			
Funding	27	Describe sources of funding for the systematic review and other support (e.g., supply of data); role of funders for the systematic review.	n/a

376 Preferred Reporting Items for Systematic reviews and Meta-Analyses (PRISMA) Checklist

377 **Supplemental Material #3**

378 RedCap survey: <https://redcap.ucsf.edu/surveys/?s=FR93D3Y8K9>

379 **Supplemental Material #3**

Database	Search strategy
MEDLINE® via PubMed	(High blood pressure [tiab] OR Hypertension [tiab] OR Uncontrolled blood pressure [tiab] OR Elevated blood pressure [tiab]) AND (mHealth [tiab] OR smartphone [mh] OR wearable [tiab] OR mobile device [tiab] OR Bluetooth [tiab] OR Wireless [tiab] OR technology [tiab] OR telehealth [tiab] OR telemedicine/methods [mh] OR eHealth [tiab] OR mobile applications*[mh])
CINAHL®	High blood pressure OR Hypertension OR Uncontrolled blood pressure OR Elevated blood pressure [ABSTRACT] AND mHealth OR smartphone [mh] OR wearable OR mobile device OR Bluetooth OR Wireless OR technology OR telehealth OR telemedicine/methods [mh] OR eHealth OR mobile applications*[mh] [ABSTRACT]
PsychInfo	High blood pressure OR Hypertension OR Uncontrolled blood pressure OR Elevated blood pressure [ABSTRACT] AND mHealth OR smartphone [mh] OR wearable OR mobile device OR Bluetooth OR Wireless OR technology OR telehealth OR telemedicine/methods [mh] OR eHealth OR mobile applications*[mh] [ABSTRACT]
EMBASE	High blood pressure OR Hypertension OR Uncontrolled blood pressure OR Elevated blood pressure [TITLE or ABSTRACT] AND mHealth OR smartphone [mh] OR wearable OR mobile device OR Bluetooth OR Wireless OR technology OR telehealth OR telemedicine/methods [mh] OR eHealth OR mobile applications*[mh][TITLE or ABSTRACT]

380 Preferred Reporting Items for Systematic reviews and Meta-Analyses (PRISMA) Checklist

381 **Supplemental Material #4**

Table 3: Study Outcomes and Effects.

Study	Outcomes	Effects
Schroeder et al, 2020	Change in mean SBP at 12 months	No significant differences were found for change in SBP at 12 months
Still et al, 2020	Change in mean SBP and DBP at 3 months	No significant differences were found for change in SBP or DBP at 3 months
Chandler et al, 2019	Change in mean SBP at 6 months	Mean SBP was significantly lower in the SMASH (121.8mmHg) vs ESC groups at 9 months (145.7mmHg) ($P < 0.01$).
Skolarus et al, 2018	Change in mean SBP and DBP at 6 months	Mean SBP and DBP are not significantly lower in the control group (162.2 ± 20.5 , 99.2 ± 17.8) vs intervention group (160.7 ± 23.6 , 99.0 ± 11.8) at 6 months
Tobe et al, 2018	Change in mean SBP and DBP from BL to last 2 months of measurement	No significant differences were found for change in SBP or DBP from BL to final measurement
Frias et al, 2017	Change in mean SBP at week 4	At week 4, combined DMO had a mean change in SBP from baseline of -21.8 (SE 1.5) mm Hg compared to -12.7 (SE 2.8) mm Hg for usual care (combined DMO–usual care: mean -9.1 , SE 2.9, 95% CI -14.8 to -3.3 mm Hg; ICC=0; adjusted difference: mean -10.0 , SE 3.1, 95% CI -16.1 to -3.9 mm Hg; effect size=0.69
Davidson et al, 2015	Change in mean SBP and DBP at 3 and at 6 months	Mean SBP and DBP are significantly lower in the SMASH group (SBP: 120 ± 5 ; DBP: 71 ± 5) vs ESC group (SBP: 145 ± 5 ; DBP: 84 ± 5) at 3 months and 6 months ($P < 0.001$).
McManus et al, 2010	Change in mean SBP at 6 months and 12 months	Overall difference in mean SBP reduction between self-management and usual care was 3.7 mm Hg (95% CI 0.8–6.6; $p=0.013$) at 6 mo and 5.4 mmHg (95% CI 2.4–8.5; $p=0.0004$) at 12 mo Difference in mean SBP reduction for low IMD 2007 score (5.3 mm Hg, 95% CI 1.9–8.8, at 6 mo; 7.0 mm Hg, 3.5–10.6, at 12 mo) vs high IMD 2007 score (-0.4 mm Hg, -5.9 to 5.2 , at 6 mo; 1.6 mm Hg, -4.4 to 7.6 , at 12 mo; $p=0.05$ and $p=0.08$)

384 References

- 385 1. Collaborators GBDRF. Global, regional, and national comparative risk assessment of 79 behavioural, environmental and
386 occupational, and metabolic risks or clusters of risks, 1990-2015: a systematic analysis for the Global Burden of Disease Study
387 2015. *Lancet*. 2016;388(10053):1659-1724.
- 388 2. Danaei G, Ding EL, Mozaffarian D, et al. The preventable causes of death in the United States: comparative risk assessment of
389 dietary, lifestyle, and metabolic risk factors. *PLoS Med*. 2009;6(4):e1000058.
- 390 3. Muntner P, Carey RM, Gidding S, et al. Potential US Population Impact of the 2017 ACC/AHA High Blood Pressure Guideline.
391 *Circulation*. 2018;137(2):109-118.
- 392 4. Whelton PK, Carey RM, Aronow WS, et al. 2017 ACC/AHA/AAPA/ABC/ACPM/AGS/APhA/ASH/ASPC/NMA/PCNA
393 Guideline for the Prevention, Detection, Evaluation, and Management of High Blood Pressure in Adults: Executive Summary: A
394 Report of the American College of Cardiology/American Heart Association Task Force on Clinical Practice Guidelines.
395 *Circulation*. 2018;138(17):e426-e483.
- 396 5. Fryar CD, Ostchega Y, Hales CM, Zhang G, Kruszon-Moran D. Hypertension Prevalence and Control Among Adults: United
397 States, 2015-2016. *NCHS Data Brief*. 2017(289):1-8.
- 398 6. Zha P, Qureshi R, Porter S, et al. Utilizing a Mobile Health Intervention to Manage Hypertension in an Underserved Community.
399 *West J Nurs Res*. 2020;42(3):201-209.
- 400 7. Abebe NA, Capozza KL, Des Jardins TR, et al. Considerations for community-based mHealth initiatives: insights from three
401 Beacon Communities. *J Med Internet Res*. 2013;15(10):e221.
- 402 8. WHO Global Observatory for eHealth, & World Health Organization. *MHealth: New horizons for health through mobile
403 technologies*. Geneva: World Health Organization;2011.
- 404 9. Mobile Fact Sheet. <https://www.pewresearch.org/internet/fact-sheet/mobile/>. Pew Research Center. 2021. Accessed May 22,
405 2021.
- 406 10. Kelli HM, Witbrodt B, Shah A. The Future of Mobile Health Applications and Devices in Cardiovascular Health. *Euro Med J
407 Innov*. 2017;2017:92-97.
- 408 11. Boulos MN, Brewer AC, Karimkhani C, Buller DB, Dellavalle RP. Mobile medical and health apps: state of the art, concerns,
409 regulatory control and certification. *Online J Public Health Inform*. 2014;5(3):229.
- 410 12. Li R, Liang N, Bu F, Hesketh T. The Effectiveness of Self-Management of Hypertension in Adults Using Mobile Health:
411 Systematic Review and Meta-Analysis. *JMIR Mhealth Uhealth*. 2020;8(3):e17776.
- 412 13. Lu X, Yang H, Xia X, et al. Interactive Mobile Health Intervention and Blood Pressure Management in Adults. *Hypertension*.
413 2019;74(3):697-704.
- 414 14. Buis L, Hirzel L, Dawood RM, et al. Text Messaging to Improve Hypertension Medication Adherence in African Americans
415 From Primary Care and Emergency Department Settings: Results From Two Randomized Feasibility Studies. *JMIR Mhealth
416 Uhealth*. 2017;5(2):e9.
- 417 15. Azar K, Pletcher M, Fontil V, Faulkner M. Effectiveness of mHealth Interventions for Blood Pressure Control Among
418 Vulnerable Populations: A Systematic Review. *PROSPERO*.
419 https://www.crd.york.ac.uk/prospero/display_record.php?ID=CRD42020169115. Accessed May 22, 2021.
- 420 16. Moher D, Liberati A, Tetzlaff J, Altman DG, Group P. Preferred reporting items for systematic reviews and meta-analyses: the
421 PRISMA statement. *J Clin Epidemiol*. 2009;62(10):1006-1012.
- 422 17. Whelton PK, Carey RM, Aronow WS, et al. 2017 ACC/AHA/AAPA/ABC/ACPM/AGS/APhA/ASH/ASPC/NMA/PCNA
423 Guideline for the Prevention, Detection, Evaluation, and Management of High Blood Pressure in Adults: A Report of the
424 American College of Cardiology/American Heart Association Task Force on Clinical Practice Guidelines. *J Am Coll Cardiol*.
425 2018;71(19):e127-e248.
- 426 18. World Health Organization. *mHealth: new horizons for health through mobile technologies* Geneva, Switzerland 2011. - add
427 website & date accessed (Organization site reference - e.g., ISSN International Centre: The ISSN register. <http://www.issn.org>
428 (2006). Accessed 20 Feb 2007.

- 429 19. Burke LE, Ma J, Azar KM, et al. Current Science on Consumer Use of Mobile Health for Cardiovascular Disease Prevention: A
430 Scientific Statement From the American Heart Association. *Circulation*. 2015;132(12):1157-1213.
- 431 20. McManus RJ, Mant J, Bray EP, et al. Telemonitoring and self-management in the control of hypertension (TASMINH2): a
432 randomised controlled trial. *Lancet*. 2010;376(9736):163-172.
- 433 21. Tobe SW, Yeates K, Campbell NRC, et al. Diagnosing hypertension in Indigenous Canadians (DREAM-GLOBAL): A
434 randomized controlled trial to compare the effectiveness of short message service messaging for management of hypertension:
435 Main results. *J Clin Hypertens (Greenwich)*. 2019;21(1):29-36.
- 436 22. Frias J, Virdi N, Raja P, Kim Y, Savage G, Osterberg L. Effectiveness of Digital Medicines to Improve Clinical Outcomes in
437 Patients with Uncontrolled Hypertension and Type 2 Diabetes: Prospective, Open-Label, Cluster-Randomized Pilot Clinical
438 Trial. *J Med Internet Res*. 2017;19(7):e246.
- 439 23. Skolarus LE, Cowdery J, Dome M, et al. Reach Out Churches: A Community-Based Participatory Research Pilot Trial to Assess
440 the Feasibility of a Mobile Health Technology Intervention to Reduce Blood Pressure Among African Americans. *Health
441 promotion practice*. 2018;19(4):495-505.
- 442 24. Schroeder EB, Moore KR, Manson SM, et al. A randomized clinical trial of an interactive voice response and text message
443 intervention for individuals with hypertension. *Journal of Clinical Hypertension*. 2020;22(7):1228-1238.
- 444 25. Davidson TM, McGillicuddy J, Mueller M, et al. Evaluation of an mHealth Medication Regimen Self-Management Program for
445 African American and Hispanic Uncontrolled Hypertensives. *J Pers Med*. 2015;5(4):389-405.
- 446 26. Still CH, Margevicius S, Harwell C, et al. A Community and Technology-Based Approach for Hypertension Self-Management
447 (COACHMAN) to Improve Blood Pressure Control in African Americans: Results from a Pilot Study. *Patient Prefer Adherence*.
448 2020;14:2301-2313.
- 449 27. Chandler J, Sox L, Kellam K, Feder L, Nemeth L, Treiber F. Impact of a Culturally Tailored mHealth Medication Regimen Self-
450 Management Program upon Blood Pressure among Hypertensive Hispanic Adults. *Int J Environ Res Public Health*. 2019;16(7).
- 451 28. Ng JY, Ntoumanis N, Thøgersen-Ntoumani C, et al. Self-Determination Theory Applied to Health Contexts: A Meta-Analysis.
452 *Perspect Psychol Sci*. 2012;7(4):325-340.
- 453 29. Deci EL, Koestner R, Ryan RM. A meta-analytic review of experiments examining the effects of extrinsic rewards on intrinsic
454 motivation. *Psychol Bull*. 1999;125(6):627-668; discussion 692-700.
- 455 30. Still CH, Margevicius S, Harwell C, et al. A community and technology-based approach for hypertension self-management
456 (Coachman) to improve blood pressure control in african americans: Results from a pilot study. *Patient Preference and
457 Adherence*. 2020;14:2301-2313.
- 458 31. Davidson TM, McGillicuddy J, Mueller M, et al. Evaluation of an mHealth Medication Regimen Self-Management Program for
459 African American and Hispanic Uncontrolled Hypertensives. *Journal of Personalized Medicine*. 2015;5(4):389-405.
- 460 32. Alessa T, Abdi S, Hawley MS, de Witte L. Mobile Apps to Support the Self-Management of Hypertension: Systematic Review
461 of Effectiveness, Usability, and User Satisfaction. *JMIR Mhealth Uhealth*. 2018;6(7):e10723.
- 462 33. Xiong S, Berkhouse H, Schooler M, et al. Effectiveness of mHealth Interventions in Improving Medication Adherence Among
463 People with Hypertension: a Systematic Review. *Curr Hypertens Rep*. 2018;20(10):86.
- 464 34. Vargas G, Cajita MI, Whitehouse E, Han HR. Use of Short Messaging Service for Hypertension Management: A Systematic
465 Review. *J Cardiovasc Nurs*. 2017;32(3):260-270.
- 466 35. McLean G, Band R, Saunderson K, et al. Digital interventions to promote self-management in adults with hypertension
467 systematic review and meta-analysis. *J Hypertens*. 2016;34(4):600-612.
- 468 36. Mohammadi R, Ayatollahi Tafti M, Hoveidamanesh S, Ghanavati R, Pournik O. Reflection on Mobile Applications for Blood
469 Pressure Management: A Systematic Review on Potential Effects and Initiatives. *Stud Health Technol Inform*. 2018;247:306-
470 310.
- 471 37. Andre N, Wibawanti R, Siswanto BB. Mobile Phone-Based Intervention in Hypertension Management. *Int J Hypertens*.
472 2019;2019:9021017.
- 473 38. Mileski M, Kruse CS, Catalani J, Haderer T. Adopting Telemedicine for the Self-Management of Hypertension: Systematic
474 Review. *JMIR Med Inform*. 2017;5(4):e41.

- 475 39. Li R, Liang N, Bu F, Hesketh T. The Effectiveness of Self-Management of Hypertension in Adults Using Mobile Health: Systematic Review and Meta-Analysis. *JMIR mHealth and uHealth*. 2020;8(3):e17776.
476
- 477 40. Khoong EC, Olazo K, Rivadeneira NA, et al. Mobile health strategies for blood pressure self-management in urban populations with digital barriers: systematic review and meta-analyses. *NPJ Digit Med*. 2021;4(1):114.
478
- 479 41. Doshi R, Aseltine RH, Sabina AB, Graham GN. Interventions to Improve Management of Chronic Conditions Among Racial and Ethnic Minorities. *J Racial Ethn Health Disparities*. 2017;4(6):1033-1041.
480
- 481 42. Staessen JA, Den Hond E, Celis H, et al. Antihypertensive treatment based on blood pressure measurement at home or in the physician's office: a randomized controlled trial. *JAMA*. 2004;291(8):955-964.
482
- 483 43. Verberk WJ, Kroon AA, Lenders JW, et al. Self-measurement of blood pressure at home reduces the need for antihypertensive drugs: a randomized, controlled trial. *Hypertension*. 2007;50(6):1019-1025.
484
- 485 44. McManus RJ, Mant J, Franssen M, et al. Efficacy of self-monitored blood pressure, with or without telemonitoring, for titration of antihypertensive medication (TASMINH4): an unmasked randomised controlled trial. *Lancet*. 2018;391(10124):949-959.
486
- 487 45. Stoddart A, Hanley J, Wild S, et al. Telemonitoring-based service redesign for the management of uncontrolled hypertension (HITS): cost and cost-effectiveness analysis of a randomised controlled trial. *BMJ Open*. 2013;3(5).
488
- 489 46. Bray EP, Holder R, Mant J, McManus RJ. Does self-monitoring reduce blood pressure? Meta-analysis with meta-regression of randomized controlled trials. *Ann Med*. 2010;42(5):371-386.
490
- 491 47. Ferdinand DP, Nedunchezian S, Ferdinand KC. Hypertension in African Americans: Advances in community outreach and public health approaches. *Prog Cardiovasc Dis*. 2020;63(1):40-45.
492
- 493 48. Zhang X, Hailu B, Tabor DC, et al. Role of Health Information Technology in Addressing Health Disparities: Patient, Clinician, and System Perspectives. *Med Care*. 2019;57 Suppl 6 Suppl 2:S115-S120.
494
- 495 49. Brewer LC, Hayes SN, Caron AR, et al. Promoting cardiovascular health and wellness among African-Americans: Community participatory approach to design an innovative mobile-health intervention. *PLoS One*. 2019;14(8):e0218724.
496
- 497 50. Lewinski AA, Patel UD, Diamantidis CJ, et al. Addressing Diabetes and Poorly Controlled Hypertension: Pragmatic mHealth Self-Management Intervention. *J Med Internet Res*. 2019;21(4):e12541.
498
- 499 51. Taber DJ, Gebregziabher M, Posadas A, Schaffner C, Egede LE, Baliga PK. Pharmacist-Led, Technology-Assisted Study to Improve Medication Safety, Cardiovascular Risk Factor Control, and Racial Disparities in Kidney Transplant Recipients. *J Am Coll Clin Pharm*. 2018;1(2):81-88.
500
501