

1

2

3

4 Self-help digital psychosocial intervention for older adults with subthreshold depressive symptoms in  
5 primary care in Brazil (PRODIGITAL): Protocol for an individually randomised controlled trial

6

7 Thiago Vinicius Nadaletto Didone<sup>1,2</sup>, Carina Akemi Nakamura<sup>1</sup>, Nadine Seward<sup>3</sup>, Felipe Azevedo Moretti<sup>1</sup>,  
8 Monica Souza dos Santos<sup>1</sup>, Mariana Mendes de Sá Martins<sup>1</sup>, Luara Aragoni Pereira<sup>4</sup>, Evelyn da Silva  
9 Bitencourt<sup>5</sup>, Marcelo Oliveira da Costa<sup>1</sup>, Caio Hudson Queiroz de Souza<sup>1</sup>, Gabriel Macias de Oliveira<sup>1</sup>,  
10 Marcelo Machado<sup>6</sup>, Jamie Murdoch<sup>7</sup>, Pepijn Van de Ven<sup>8</sup>, William Hollingworth<sup>9</sup>, Tim J. Peters<sup>10</sup>, Ricardo  
11 Araya<sup>3</sup>, Marcia Scazufca<sup>1,4\*</sup>

12

13

14

15 <sup>1</sup> Departamento de Psiquiatria, Faculdade de Medicina FMUSP, Universidade de Sao Paulo, Sao Paulo, SP,  
16 Brazil

17 <sup>2</sup> Departamento de Saúde Coletiva, Centro de Ciências da Saúde, Universidade Estadual de Londrina,  
18 Londrina, PR, Brazil

19 <sup>3</sup> Health Service and Population Research, Institute of Psychiatry, Psychology and Neuroscience, King's  
20 College London, London, United Kingdom

21 <sup>4</sup> Instituto de Psiquiatria, Hospital das Clinicas HCFMUSP, Faculdade de Medicina, Universidade de Sao  
22 Paulo, Sao Paulo, SP, Brazil

23 <sup>5</sup> Faculdade de Arquitetura e Urbanismo FAU, Universidade de Sao Paulo, Sao Paulo, SP, Brazil

24 <sup>6</sup> Debasé Audiovisual, Sao Paulo, SP, Brazil

25 <sup>7</sup> Department of Population Health Sciences, King's College London, London, United Kingdom

26 <sup>8</sup> Health Research Institute, University of Limerick, Limerick, Ireland

27 <sup>9</sup> Health Economics Bristol, Population Health Sciences, Bristol Medical School, University of Bristol, Bristol,  
28 United Kingdom

29 <sup>10</sup> Population Health Sciences, Bristol Medical School, and Bristol Dental School, University of Bristol, Bristol,  
30 United Kingdom

31

32

33 \* Corresponding author

34 E-mail: scazufca@gmail.com (MS)

## 1 **Abstract**

2 Subthreshold depression is a substantial risk factor for the development of major depression. It is  
3 associated with poorer health, functional disabilities, and reduced quality of life in older adults. There is a  
4 paucity of cost-effective psychosocial interventions for this population in primary care worldwide,  
5 particularly in low- and middle-income countries. We present a protocol for evaluating the effectiveness  
6 and cost-effectiveness of the Viva Vida programme, a 6-week self-help digital psychosocial intervention for  
7 treating older adults with subthreshold depressive symptoms in primary care with a two-arm, individually  
8 randomised controlled trial with a 1:1 allocation ratio with integrated economic and process evaluations.  
9 We will include 450 individuals 60 years and older with subthreshold depressive symptoms (score between  
10 five and below 10 on the 9-item Patient Health Questionnaire (PHQ-9)), registered with one of the 46  
11 primary care clinics in Guarulhos, Brazil. The Viva Vida programme will be delivered via automated audio  
12 and visual WhatsApp messages, with psychoeducation and behavioural activation content. It involves 48  
13 messages, delivered twice daily, four days a week. Participants in the control arm will receive a single  
14 message with general information about depression. The primary outcome is the depressive symptoms at  
15 the three-month follow-up as measured by PHQ-9, which will be compared between study arms. The cost-  
16 effectiveness of the intervention will be assessed at five months. A detailed process evaluation will explore  
17 context and implementation outcomes. The Viva Vida programme is an innovative digital psychosocial  
18 intervention delivered via WhatsApp messaging without the participation of health professionals. The  
19 evaluation of the Viva Vida programme will contribute to the development of simple and cost-effective  
20 models of remote self-help interventions for reducing depressive symptoms among older adults with  
21 subthreshold depression in primary care. The protocol is registered with Registro Brasileiro de Ensaios  
22 Clínicos (ReBEC) (RBR-6c7ghfd).

## 23 **Introduction**

24 The development of simple and effective treatments for older adults with subthreshold depression is  
25 an important public health issue and has been identified as a neglected area of research [1–3]. The

26 definition and diagnostic criteria of subthreshold depression (also known as subsyndromal depression,  
27 subclinical depression or minor depression) are heterogeneous [1]. Broadly speaking, subthreshold  
28 depression requires the presence of at least one core symptom of depression (depressed mood or  
29 anhedonia), while the severity of symptoms does not meet the criteria for a diagnosis of depression [4,5].

30 The negative impact of subthreshold depression on the health of older people and healthcare systems  
31 is well known. Subthreshold depression is associated with functional disability, reduced quality of life,  
32 loneliness, suicide attempts, mortality and increased healthcare utilisation [1,6–8]. Furthermore, the high  
33 prevalence of subthreshold depression among older adults in the community, the persistence of symptoms  
34 over time, and the progression to moderate and severe forms of depression in many cases highlight the  
35 public health challenge of addressing this condition [3].

36 A review of trials conducted in the 2000s to reduce depressive symptoms in older, community-  
37 dwelling adults with subthreshold depression recommended the use of psychotherapy [9]. This review  
38 showed that psychotherapeutic approaches (i.e. cognitive behavioural therapy, problem solving therapy,  
39 physical activation and behavioural activation) were safe and effective in reducing depressive symptoms in  
40 primary care settings [10–13]. However, only one study in this review evaluated the effectiveness of a  
41 remote intervention method using a web-based self-administered cognitive behavioural therapy [11]. More  
42 recently, the UK Casper trial provided evidence of the effectiveness of a collaborative care programme,  
43 delivered mainly remotely, in reducing depressive symptoms and progression to moderate and severe  
44 symptoms in older adults with subthreshold depression in primary care [14]. The Casper programme has  
45 innovative components. Nursing assistants delivered a rapid and relatively inexpensive behavioural  
46 activation programme over the telephone, improving access to treatment.

47 The availability of remote mental health interventions has recently increased [15], driven by the  
48 COVID-19 pandemic. A recent umbrella review of 38 systematic reviews showed that the restrictions on  
49 social contact between people imposed by COVID-19 measures have impacted how mental health services  
50 are provided. Synchronous tools (e.g. video conferencing) and, to a lesser extent, asynchronous tools (e.g.  
51 mobile applications) have been used to provide remote mental health care to patients, particularly in high-

52 income countries [16]. However, the scarcity of evidence of research in primary care settings worldwide  
53 does not allow us to determine which forms of synchronous or asynchronous self-help telepsychosocial  
54 approaches are effective for older adults with subthreshold depression. Identifying cost-effective  
55 psychosocial treatments and the older adults who are most likely to benefit from them is urgent in low- and  
56 middle-income countries (LMICs), where primary care is struggling to meet the physical and mental health  
57 needs of a rapidly growing older population.

58 We will conduct a randomised controlled trial to evaluate the effectiveness and cost-effectiveness of  
59 the Viva Vida programme (PRODIGITAL), a 6-week digital psychosocial intervention delivered via automated  
60 audio and visual WhatsApp messages for the treatment of older adults with subthreshold depressive  
61 symptoms in primary care in Guarulhos, Brazil. A process evaluation using qualitative methodology will  
62 examine the implementation outcomes (acceptability, appropriateness, fidelity, and feasibility) of the  
63 intervention, the contextual barriers and facilitators to implementing this programme.

## 64 **Methods**

65 We present the protocol of a two-arm (1:1 allocation ratio) randomised controlled trial (RCT) with  
66 integrated economic and process evaluations.

### 67 **Study setting**

68 The study will recruit individuals registered at 46 primary care clinics in underprivileged areas of  
69 Guarulhos, known as Unidades Básicas de Saúde (UBSs). All primary care clinics have Family Health Teams  
70 (FHTs) and care is based on the Family Health Strategy model. Guarulhos has a population of approximately  
71 1.4 million. The average per capita household income is BRL 791 reais (approximately USD 159 dollars in  
72 2023) [17]. In Guarulhos, 13.8% of the population is 60 years or older , of which 55.7% are women [18], and  
73 14.6% are illiterate [19]. In the Southeast region of Brazil, where Guarulhos is located, 75.7% of older adults  
74 have a mobile phone [20] and 64.9% have connected to the Internet in the last three months [21].

## 75 **Participants**

### 76 **Inclusion criteria**

- 77 (a) Individuals aged 60 years or over registered with one of the 46 participating UBSs;
- 78 (b) Individuals able to receive and listen to WhatsApp messages;
- 79 (c) Individuals screening positive for subthreshold depressive symptoms assessed with the 9-item Patient  
80 Health Questionnaire (PHQ-9), defined as a score of at least 1 on the PHQ-2, which includes the first two  
81 questions of the PHQ-9 (depressed mood and anhedonia), and a PHQ-9 total score of at least five and less  
82 than 10 [4,22,23].

### 83 **Exclusion criteria**

- 84 (a) Individuals with communication problems (e.g., non-Portuguese speaking or cognitive impairment to  
85 the extent that these interfere with study assessments or to participate in the intervention);
- 86 (b) Individuals with visual or hearing impairments to the extent that they interfere with study assessments  
87 or to participate in the intervention;
- 88 (c) Individuals who are unable to participate in the study for five months;
- 89 (d) Individuals identified as being at acute suicide risk (i.e. a suicide attempt in the two weeks before the  
90 screening assessment) using the Immediate Suicide Risk Protocol [24];
- 91 (e) Individuals living in the same household as another study participant;
- 92 (f) Individuals who participated in the PROACTIVE trial [25].

## 93 **Interventions**

94 Participants in the intervention arm will receive a self-help digital psychosocial intervention delivered  
95 via audio and visual WhatsApp messages. The control arm will receive a single audio message. The research  
96 team will not interfere with the health care that participants may receive during and after their  
97 participation in the trial.

## 98 **Digital psychosocial intervention**

99       The Viva Vida programme was adapted from the short, animated videos shown by community health  
100 workers to older adults with depressive symptomatology in the RCT testing the PROACTIVE intervention  
101 [24,25] and grounded in the theories of psychoeducation [26] and behavioural activation [27]. Behavioural  
102 activation is an approach in mental healthcare that aims to promote behaviours that activate positive  
103 emotions, as well as avoid those that worsen depressive symptoms, and integrate them into one's routine  
104 [27]. The programme consists of 48 messages that will be sent to participants via WhatsApp over six weeks,  
105 four days per week. Each day, they will receive one message in the morning and one in the afternoon. No  
106 support of health professionals will be provided as part of the intervention.

107       There are two types of messages: audio messages and images with short texts. Audio messages last,  
108 on average, three minutes and are based on the storytelling technique, a communication tool that can  
109 attract attention, arouse emotions and engage listeners to influence their attitudes and beliefs [28]. We  
110 chose audio messages because of the low level of education and income of the older adults living in  
111 disadvantaged areas of Guarulhos. The audio messages are short to make Viva Vida viable for older people  
112 with mobile phones with low storage capacity. Through the audio messages, two fictitious characters (Mrs.  
113 Zuzu and Mr. Zé) share experiences as if they had participated in the Viva Vida programme. These  
114 characters share what they have learned about depression (psychoeducation), how they have felt, and  
115 what kind of pleasant and meaningful activities they have done, and the ones they have avoided to  
116 increase positive interactions with people and the environment (behavioural activation). The messages also  
117 include health promotion tips, such as information on diet, physical activity, the importance of other health  
118 treatments, and relapse prevention. The audio and visual messages advise participants to contact health  
119 services if they feel that their depressive symptoms are not improving or are getting worse. The characters  
120 use language, vocabulary, tone and manner appropriate to the target audience. They are realistic to create  
121 empathy for the study participants when listening to the messages. The content of the Viva Vida  
122 programme follows with the WHO recommendations for digital interventions for depression [29] and the  
123 theoretical basis of interactive health communication applications [30,31]. It also follows guidelines

124 suggesting that patients should be educated about depression and encouraged to self-manage their  
125 symptoms [32,33].

126 To show how behavioural activation technique is embedded into the Viva Vida programme, we  
127 present an example of one of the audio messages in which Mrs. Zuzu practises what she has learned during  
128 the Viva Vida programme. She shares with the listener her experience of doing an activity she enjoys has  
129 helped to improve her mood.

130 *(Mrs. Zuzu, message 11, week 2) "I want to tell you something that happened to me the other day.*  
131 *I woke up upset, feeling down, and I thought to myself I have to get up and do something. I have a little*  
132 *garden here at home and I love to plant and take care of the plants. At first, I felt discouraged, but*  
133 *there I was, watering the lettuce, and working the soil. You know, after a while I got so distracted that I*  
134 *didn't even realise I was feeling discouraged. It was really cool. That was when I realised that doing*  
135 *something we like, something we care about, changes our mood. It works. And if it works for me, it will*  
136 *work for you too. Give it a try!"*

137 As part of the programme, participants will receive one extra message at the end of each week, using  
138 the WhatsApp quick reply tool, with questions about their experience of participating in Viva Vida. These  
139 questions will investigate whether the messages helped them understand the signs of depression, if they  
140 could choose and do activities that may help them feel better, whether the Viva Vida programme is helping  
141 them to feel better, and whether they liked being part of the programme. The WhatsApp quick reply tool  
142 allows participants to answer the question by selecting one pre-defined answer, for example, *yes, more or*  
143 *less, or no*. After replying, participants will receive an automated pre-recorded audio response. These  
144 messages will also invite participants to share further comments about the programme by sending  
145 spontaneous WhatsApp messages.

## 146 **Single message**

147 Participants allocated to the control arm will receive a single audio message of approximately six  
148 minutes via WhatsApp. This message informs them about the main signs of depression, simple ways to

149 improve their mood, and advises them to contact health professionals for further support if they do not  
150 feel better or need additional care.

## 151 **System to deliver the messages**

152 The technical research team will coordinate the delivery of the messages. We will use a web system  
153 integrated with the WhatsApp Business Application Programming Interface (API), which is managed by an  
154 intermediary company. This system is hosted on a cloud service where access is restricted by both  
155 authentication and authorisation processes. Data flowing to and from browsers is also protected through  
156 the use of encryption. The WhatsApp Business API allows the research team to capture the date and time  
157 (timestamp) when messages are sent, delivered and opened, replies to the quick reply tool, and the  
158 content of spontaneous messages. The API enables customised messages (e.g. messages with the  
159 recipient's name) and the attachment of audio and image files. Messages will be scheduled weekly and  
160 delivered using a job scheduler on the server.

161 During the first two weeks of the programme, a member of the technical support team (who does not  
162 take part in the other activities of the study) will contact participants who are not receiving or opening the  
163 messages to check if they are experiencing any technical problem. We will identify these participants  
164 through the Viva Vida web dashboard, which will show the status of messages as *sent to intermediary*  
165 *company platform, sent to participant, delivered to participant, or opened by the participant*. During the  
166 remaining four weeks of the Viva Vida programme, participants will be able to contact the technical  
167 support team if they are not receiving the messages.

168 We will remove participants who block their mobile phones from receiving the Viva Vida messages to  
169 comply with the WhatsApp policy and keep our system functional. These participants will not receive new  
170 intervention messages, but will be contacted again during follow-up evaluations unless they contact us to  
171 withdraw their consent to participate in the study.



## 172 **Outcomes**

173 Follow-up assessments will take place three and five months after sending the first message  
174 (intervention arm) or the single message (control arm).

### 175 **Primary outcome**

176 The primary outcome will be the (continuous) PHQ-9 score as a measure of depressive symptoms at  
177 the three-month follow-up, which will be compared between study arms as allocated.

### 178 **Secondary outcomes**

179 Depressive symptoms(mean PHQ-9 score) at five months. Other secondary measures assessed at three  
180 and five months will be the proportion of participants with clinically significant depressive symptomatology  
181 (PHQ-9 $\geq$ 10), change in anxiety symptomatology as measured by the 7-item Generalised Anxiety Disorder  
182 (GAD-7) [34], loneliness as measured by the 3-item University of California, Los Angeles (UCLA) Loneliness  
183 scale (3-item UCLA) [35], quality of life measured by the European Quality of Life five-dimensional  
184 questionnaire, five-level version (EQ-5D-5L) [36], and capability well-being measured by the ICEpop  
185 CAPability measure for Older people (ICECAP-O) [37]. The cost-effectiveness of the Viva Vida programme  
186 will be assessed at the five-month follow-up.

### 187 **Sample size**

188 To detect what we consider to be a relevant clinical difference between the two randomised arms of  
189 0.33 standard deviations [14], 142 to 162 individuals in each arm gives 80% to 85% power at a two-sided  
190 5% significance level. Data from our PROACTIVE pilot study [38] (PHQ-9 means of 5.9 and 6.4 with a  
191 standard deviation of 1.5; data not published) suggest that this effect size is feasible for this kind of  
192 intervention. We anticipate 25% attrition and therefore plan to recruit 225 individuals in each arm, for a  
193 total sample size of 450.

## 194 **Recruitment**

195       The Guarulhos Health Secretariat will provide a list with contact details of all individuals aged 59 years  
196 or older who are registered in the participating UBSs (the slightly lower age limit compared to the relevant  
197 inclusion criterion is so that we include individuals who would be 60 years old during the recruitment  
198 period). Names duplicated on the list, individuals without a mobile phone number, and participants from  
199 our previous RCT conducted in Guarulhos [24] will be excluded. The remaining individuals (alphabetical  
200 ordered) on the list will receive a random ID number. The recruitment will follow the ID number in  
201 ascending order. This new list will be used to simultaneously recruit participants for two RCTs evaluating a  
202 digital intervention for older adults with depressive symptoms being conducted by our research group [39].  
203 These two studies will use the same protocol to recruit participants; only the inclusion criterion for the  
204 severity of depressive symptoms will be different. In the present study, we will recruit older adults with  
205 subthreshold symptoms of depression as defined above.

206       The research team will contact via WhatsApp message individuals who have at least one mobile phone  
207 number. This message will briefly describe the study and inform these individuals that a research assistant  
208 will contact them by phone. Only those whose WhatsApp message is successfully delivered (i.e. an active  
209 WhatsApp number) will be contacted by phone and invited to start the recruitment interview. This  
210 interview will consist of three stages:

211 (a) Screening assessment: will assess inclusion criteria (age, WhatsApp use and assessment of depressive  
212 symptoms) and exclusion criteria (communication and engagement problems, acute suicide risk, and health  
213 conditions that prevent participation in the trial);

214 (b) Baseline assessment: participants screened positive for subthreshold depressive symptoms and with  
215 no exclusion criteria will be assessed for anxiety, loneliness, quality of life, capability well-being,  
216 socioeconomic profile (marital status, race, education level, living arrangement, and personal and  
217 household income), and alcohol and tobacco use;

218 (c) Invitation to participate in the study.

219 Whenever possible, the screening and baseline assessments will be carried out consecutively during  
 220 the same telephone call. Eligible participants will then be invited to participate in the study. If the  
 221 participant is unable to complete all three stages of the interview in the same phone call, the research  
 222 assistants will arrange another time to complete recruitment no more than 28 days after the PHQ-9  
 223 screening. Before screening and inviting individuals to participate in the study, we will inform them about  
 224 the study and obtain their consent. The full study timeline is shown in Fig 1, and a detailed diagram of the  
 225 study procedures is shown in Fig 2.

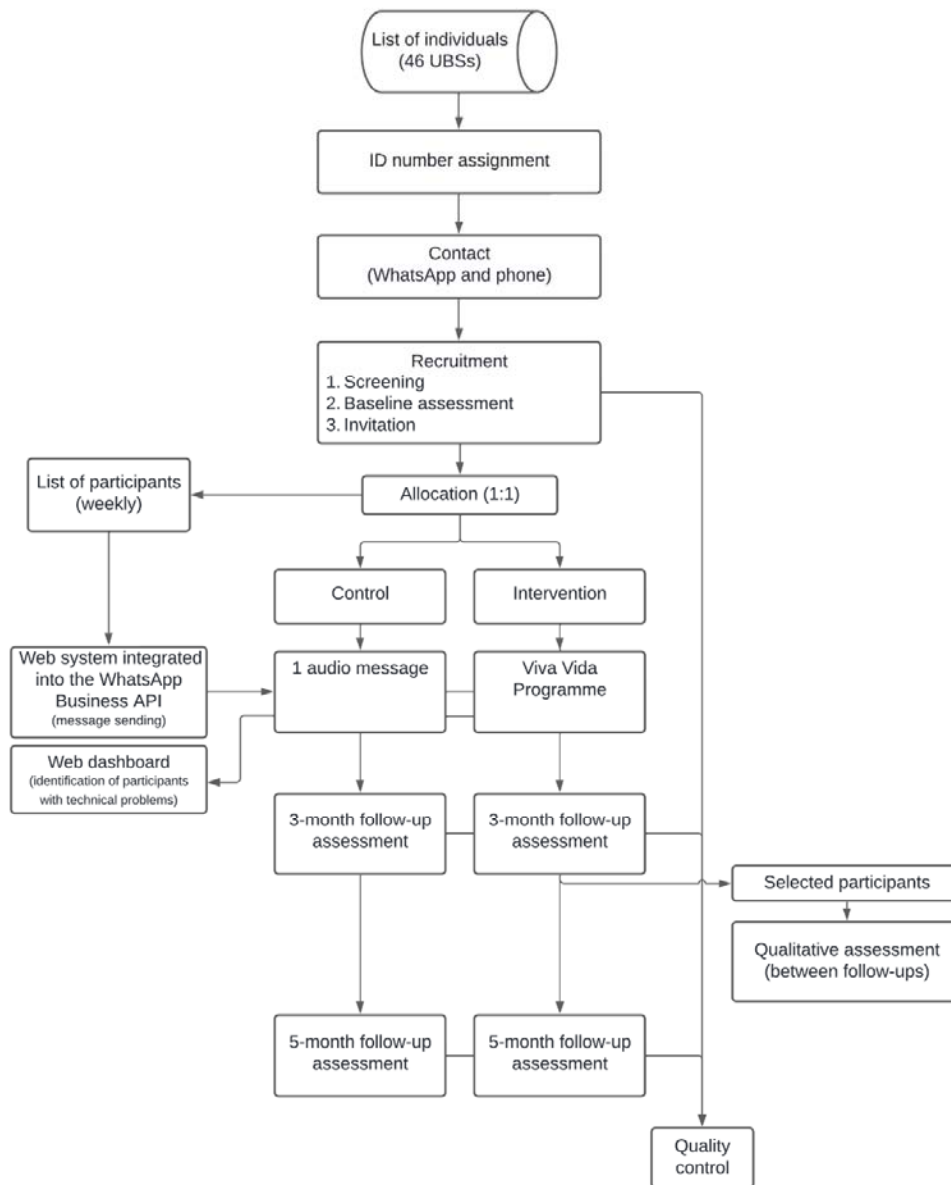
226

TIMEPOINT (in weeks)	STUDY PERIOD							
	Screening/ baseline	Invitation	Randomisation	Intervention		Follow-up		
				0	6	3-month 12-16	Qualitative 13-20	5-month 20-24
		-t <sub>1</sub>						
<b>ENROLMENT:</b>								
Eligibility screen	X							
Informed consent	X	X						
Individual randomisation			X					
<b>INTERVENTION:</b>								
Digital psychosocial intervention				↔				
Single message				X				
<b>ASSESSMENTS:</b>								
Socioeconomic profile	X							
Health conditions	X							
PHQ-9 (primary outcome)	X					X		X
GAD-7	X					X		X
3-item UCLA	X					X		X
EQ-5D-5L	X					X		X
ICECAP-O	X					X		X
Alcohol/tobacco use	X					X		X
Need of care, work productivity loss						X		X
Medication use						X		X
Serious adverse events						X		X
Health appointments, hospitalisations						X		X
Qualitative interview							X	

227

228 **Fig 1. SPIRIT schedule of enrolment, interventions and assessments.** 3-item UCLA, 3-item University of

229 California, Los Angeles (UCLA) loneliness scale; EQ-5D-5L, European Quality of Life five-dimensional  
 230 questionnaire, five-level version; GAD-7, 7-item Generalised Anxiety Disorder; ICECAP-O, ICEpop CAPability  
 231 measure for Older people; PHQ-9, 9-item Patient Health Questionnaire. The qualitative interview will be  
 232 conducted with 24 purposely selected participants from the intervention arm.



233

234 **Fig 2. Diagram of the main procedures of the trial.** Trained research assistants will contact individuals  
235 registered in 46 UBSSs from Guarulhos, São Paulo, Brazil. After a three-step recruitment interview,  
236 participants will be allocated (1:1) to control (one audio message) or intervention (Viva Vida programme)  
237 arms. A web system will send messages to both arms, and a web dashboard will identify technical  
238 problems. Follow-up assessments at three and five months will be conducted. Qualitative assessments will  
239 be made in selected participants between follow-up assessments. Quality control will be performed in a

240 sample of baseline and follow-up assessments. API, Application Programming Interface; UBS, primary care  
241 clinics known as Unidades Básicas de Saúde.

## 242 **Allocation**

243 Once individuals have been recruited, they will be randomly allocated in a 1:1 ratio to either the  
244 intervention or control arm and placed on a list to receive their allocated intervention, which will be sent  
245 out within a 10-day window. Therefore, each list will contain participants recruited in the previous week.

246 Two members of the research team not directly involved in the recruitment (CAN and TJP) will  
247 generate the randomisation allocation sequence using Microsoft Excel, using random permuted blocks with  
248 random block sizes. Stratification will be based on gender (women/men), age groups (60-69/70-79/ $\geq$ 80  
249 years) and type of primary care clinic model (Family Health Strategy or mixed model – Family Health  
250 Strategy and traditional primary care). Only participants seen by Family Health Strategy teams will be  
251 included in the mixed model clinics. The allocation sequence will be concealed in the randomisation  
252 module of the Research Electronic Data Capture (REDCap) software [40,41].

## 253 **Blinding**

254 Given the differences in the number and content of the messages received by the intervention and  
255 control groups, blinding of participants will not be feasible. The team of researchers responsible for  
256 recruitment and follow-up assessments and the team responsible for the intervention will work  
257 independently. Research assistants conducting recruitment and follow-up assessments will be blinded to  
258 group allocation. Whenever possible, the same research assistant will not conduct more than one interview  
259 (recruitment or follow-up) with the same participant. The risk of contamination is therefore very low.  
260 Messages sent to participants in both arms of the study will be delivered remotely, and participants will not  
261 be informed about other people enrolled in the RCT.

## 262 **Data collection and management**

263 Data will be collected and managed using the REDCap software, hosted at the Hospital das Clínicas da  
264 Faculdade de Medicina da Universidade de Sao Paulo [40,41]. REDCap is a secure, web-based software  
265 platform designed to support data capture for research studies, providing: 1) an intuitive interface for  
266 validated data capture; 2) audit trails for tracking data manipulation and export procedures; 3) automated  
267 export procedures for seamless data downloads to standard statistical packages; and 4) procedures for  
268 data integration and interoperability with external sources. Recruitment and follow-up will be conducted by  
269 telephone by independent research assistants. Research assistants will be trained in the correct use of  
270 research questionnaires and data entry into the REDCap software. They will obtain permission from  
271 participants to record the interviews. The recorded interviews will be used to assess the quality of data  
272 collection.

273 Assessments of depressive symptomatology (PHQ-9), anxiety symptomatology (GAD-7), loneliness (3-  
274 item UCLA), health-related quality of life (EQ-5D-5L), capability well-being (ICECAP-O), alcohol and tobacco  
275 use will be administered at recruitment and repeated at three- and five-month follow-up. We will also ask  
276 participants if they need help with activities of daily living, recent time lost from work, consultations with  
277 health professionals (including mental health professionals), hospital admissions, and ongoing treatment  
278 for depression during the follow-up period. Severe adverse events associated with trial participation, such  
279 as suicide attempts, hospitalisation and death will be assessed for all participants in both follow-up  
280 assessments. At the end of both follow-up assessments, participants allocated to the intervention arm will  
281 be asked about their experience with the Viva Vida programme. We will collect data from the electronic  
282 health system's records on psychotropic medication use and consultations with general practitioners and  
283 nurses for all participants during the five months they were enrolled in the RCT. This will be done shortly  
284 after the end of the last follow-up.

285 An independent researcher, who will not conduct interviews with participants, will carry out quality  
286 control of the recruitment and follow-up assessments. A sample of the recorded interviews will be  
287 reviewed to ensure adherence to the script and the quality of data collected.

288 We will leave a 4-week window for the follow-up assessments to minimise attrition. The three-month  
289 follow-up will take place between the 12<sup>th</sup> and 16<sup>th</sup> week, and the five-month follow-up between the 20<sup>th</sup>  
290 and 24<sup>th</sup> week after sending the first message (intervention arm) or the single messages (control arm). If the  
291 research assistants have difficulty contacting participants by phone during the follow-up window, then they  
292 will send an audio and/or a text message via WhatsApp to try to remind participants of the interview. If  
293 there is no response, the UBSs managers will be contacted to assist in reaching the participant. As a last  
294 resort, after three weeks of unanswered contact attempts, a research assistant will visit the participant at  
295 home to conduct a face-to-face assessment.

## 296 **Statistical methods**

297 The analysis of the primary (depressive symptoms at three months) and secondary (depressive  
298 symptoms at five months, proportion of clinically significant depressive symptomatology - PHQ-9 $\geq$ 10, and  
299 anxiety, loneliness, quality of life and capability well-being at three and five months) outcomes will follow  
300 the intention-to-treat (ITT) principle, i.e. participants will be analysed in the arm to which they were  
301 allocated (regardless of adherence to the intervention), and will follow the Consolidated Standards of  
302 Reporting Trials (CONSORT) guidelines for randomised trials [42]. No interim analyses are planned.  
303 Descriptive statistics will compare differences in baseline demographics and clinical characteristics between  
304 the intervention and control arms to identify any imbalances. Linear regression models adjusted for  
305 stratification and the relevant baseline score will be used to examine the primary and secondary  
306 continuous outcomes. For the binary outcome, logistic regression and Poisson regression models will be  
307 used to generate relative risks. For secondary analyses, models will include any baseline variables that are  
308 not balanced between arms.

309 Exploratory subgroup analyses will include the Wald test for interaction terms between the relevant  
310 baseline variable and trial allocation in the above regression models to examine whether baseline PHQ-9  
311 scores, gender, age, education level, and comorbid physical illness (diabetes, hypertension, and both)  
312 modify the effect of the intervention on PHQ-9 scores at both follow-ups. The results of these analyses will  
313 need to be interpreted with caution due to the limited power to detect such interactions and the paucity of

314 evidence on the theoretical basis for these hypotheses.

315 Additional analyses will include a Complier Average Causal Effect (CACE) analysis [43] using an  
316 instrumental variable estimator and imputed data to determine the effect of the number of messages  
317 listened to, on the reduction in depressive symptom severity at both three and five months. At the three-  
318 month follow-up, participants randomised to the intervention arm will be asked at the end of the  
319 assessment how many messages they listened to from start to finish, with the following options: *none, a*  
320 *few, at least half, most or all*. The CACE analysis will consider listening to at least *most* of the messages  
321 received as the threshold, as we hypothesise that this is the minimum number of messages that  
322 participants need to listen to in order to have a therapeutic effect. Alternative analyses will be conducted  
323 using the thresholds of (a) listening to at least half of the messages and (b) listening to all of the messages.  
324 We will also consider using the number of messages opened (as recorded by the system) as a continuous  
325 variable (if assumptions of linear relationships are met).

326 If we find any marked differences in missing data between the intervention and control arms, or a  
327 proportion of missing data greater than 10%, then we will impute missing data separately for each arm for  
328 all analyses described above. We will use multiple imputations by chained equations (MICE models),  
329 assuming data are missing at random (MAR) [44]. MICE models will include variables from the original  
330 analyses (outcomes, stratification and gender) and any other variables that predict missingness [45,46]. The  
331 selection model approach will be used to conduct sensitivity analyses testing for modest departures from  
332 the MAR assumption for primary outcomes only [47–49].

333 The cost-effectiveness analysis will compare the costs and effects of the Viva Vida programme against  
334 a single message from the health system’s perspective. The first analysis will estimate the incremental cost-  
335 effectiveness using (a) the primary clinical outcome measure (cost per patient recovered), and (b) the  
336 quality adjusted life years (QALYs) calculated using the EQ-5D-5L [36,50]. Incremental cost-effectiveness  
337 ratios and cost-effectiveness acceptability curves will be presented to show the probability of the  
338 intervention being cost-effective at a range of willingness-to-pay thresholds [36,50]. The second analysis  
339 will be the Net Monetary Benefit (NMB) statistic; it will be calculated at the WHO recommended threshold



340 for LMICs using the difference in costs and the difference in QALYs between the two arms. The EQ-5D-5L  
341 responses will be converted to utility scores using the most appropriate population tariff for the Brazilian  
342 population available at the time of the analysis. QALYs will be estimated using utility scores adjusted for  
343 baseline values. We will use national, where available, or local unit costs to value resource use.

## 344 **Process evaluation and analysis**

345 Qualitative interviews will be conducted to gain insight into participants' reasons, motivations, modes  
346 and contextual barriers and enablers that may affect the clinical and implementation outcomes of the  
347 intervention (acceptability, appropriateness, feasibility and fidelity). We will also explore the detailed  
348 process and content perspectives of how participants received the intervention. Approximately 24  
349 purposively selected participants from the intervention arm, balanced by gender (women/men), age (60-  
350 69/ $\geq 70$ ), and PHQ-9 score at first follow-up (0-4, 5-9,  $\geq 10$ ), will be interviewed individually by telephone 1-4  
351 weeks after the three-month follow-up. Trained research assistants, blinded to participant age and PHQ-9  
352 score at inclusion and follow-up, will conduct these interviews using interview guides previously developed  
353 and tested by the research group. The interviews will cover the following topics related to participants and  
354 their perceptions of the programme: emotional state before and after the programme; experience of  
355 receiving and responding to messages; appropriateness, acceptability, engagement and fidelity of  
356 programme delivery; and the role of the participant's support network. Interviews will last approximately  
357 30 to 60 minutes.

358 Interviews will be transcribed verbatim. Transcriptions will be analysed in ATLAS.ti (version 23.0.0)  
359 using both deductive (using pre-established categories of acceptability, appropriateness, feasibility, and  
360 fidelity) and inductive (for other relevant categories that emerge from the analysis) approaches [51,52]. In-  
361 depth exploration of participants' experiences will allow us to generate hypotheses about the relationship  
362 between clinical and implementation outcomes. Results will be reported according to the Consolidated  
363 Criteria for Reporting Qualitative Research (COREQ) [53].

## 364 **Dissemination policy**

365 We expect to publish and present the results of this trial in relevant scientific journals and  
366 conferences. The results will also be presented to stakeholders once data collection has been completed.  
367 Access to anonymous participant data and statistical coding will be made available to the public upon  
368 request 24 months after publication of the effectiveness results. Each request should be accompanied by a  
369 research proposal with defined objectives and a statistical analysis plan, which will be evaluated by the  
370 joint principal investigators.

## 371 **Ethics**

372 This study was authorised by the Secretaria da Saúde do Município de Guarulhos and approved by the  
373 Ethics Committee of the Hospital das Clínicas da Faculdade de Medicina da Universidade de Sao Paulo –  
374 HCFMUSP (CAPPesq, ref: 4.144.603, first approval 9 July 2020). This is the protocol version 6.0, 24 March  
375 2023. The statistical analysis plan can be found at <https://figshare.com/s/33a83a1ad01751dcf38c>. The  
376 trial was registered in the Registro Brasileiro de Ensaios Clínicos (ReBEC, [ensaiosclinicos.gov.br](https://ensaiosclinicos.gov.br)) on 21  
377 October 2021 (submitted on 03 August 2021), RBR-6c7ghfd. Recruitment of participants started in  
378 September 2021.

379 Verbal informed consent will be obtained by research assistants at two points before the start of the  
380 screening assessment and during the invitation to participate in the trial. Informed consent will also be  
381 obtained from participants invited to the process evaluation interview. The ethics committee has approved  
382 the use of verbal consent. Participants will be informed prior to verbal consent that non-identifiable data  
383 will be used for publication. Verbal consent and subsequent interviews will be audio recorded if  
384 participants agree.

385 Anonymity will be guaranteed during data management and analysis. A member of the research team  
386 (GMO) will be responsible for extracting information on individuals from the list provided by the Guarulhos  
387 Health Secretariat and assigning random ID numbers to each one of them. The same number will identify  
388 the participants in the REDCap platform and the system developed to deliver the messages. The files

389 containing the audio recordings of the interviews will be named with the corresponding ID number and the  
390 initials of the participants and stored in a secure online platform. Access to these systems (REDCap,  
391 message delivery system and audio file storage system) will be password protected and restricted  
392 according to the roles and permissions assigned to the research team members. Only one member of the  
393 research team (CAN) will have access to information that could identify individual participants during or  
394 after data collection. We will not keep paper records.

395 The risk of harm associated with the RCT and the intervention is considered to be minimal. We will not  
396 interfere with any pharmacological or non-pharmacological treatment that participants may be receiving  
397 during the trial. No relevant concomitant treatment will be prohibited during the trial. Acute suicide risk  
398 will be assessed using a standardised protocol whenever the ninth question of the PHQ-9 is scored 1 or  
399 higher at baseline or follow-up assessments. This protocol was successfully used in our previous RCT  
400 (PROACTIVE study) [24]. Once participants at acute suicide risk are identified, the research team will  
401 contact the UBS and, if possible, a family member.

## 402 **Oversight and monitoring**

403 The Coordinating Centre and the composition of the Trial Steering Committee (TSC) are provided in S2  
404 File. The TSC will discuss any relevant protocol modifications, and the Guarulhos health system managers  
405 and coordinators will be consulted as necessary. Changes to the study protocol will be submitted to the  
406 Ethics Committee (CAPPesq) for approval. The TSC will be informed about the progress of the trial. They will  
407 receive reports indicating whether the two arms are reasonably well balanced.

## 408 **Discussion**

409 The prevention of depression is an important public health issue worldwide. One of the goals of  
410 prevention of major depression is to reduce depressive symptoms in older adults with subthreshold  
411 depression [54]. However, evidence of feasible, simple, low-cost psychosocial interventions for this  
412 population in primary care is lacking [9,55]. There is also a paucity of evidence on how best to deliver self-  
413 help interventions to this population. A recent review of eight trials that evaluated self-help interventions

414 for subthreshold depression found that this strategy significantly reduced depressive symptoms [55].  
415 Nevertheless, none of these trials used a fully automated messaging system, without the involvement of  
416 health professionals, to deliver the psychosocial intervention. We are aware of only two trials of fully  
417 automated digital interventions for subthreshold depression in adults. They found small to moderate  
418 effectiveness, but included also younger adults and different approaches and contents compared to  
419 PRODIGITAL, and were conducted in high-income countries [56,57]. The Viva Vida programme therefore  
420 aims to address some of these gaps in this area of research. Viva Vida's automated delivery method via  
421 WhatsApp was chosen because it can facilitate the provision of care in settings where there is little or no  
422 availability of mental health services for vulnerable and isolated older people. It can also be useful at times  
423 when social distancing is required, such as during the COVID-19 pandemic, when people should limit social  
424 contact and stay at home. Additionally, WhatsApp is the most widely used messaging system in Brazil [58].  
425 The remote delivery and the use of the storytelling technique allow older adults to participate regardless of  
426 literacy level and mobility ability, barriers to treatment that are common among older adults in LMICs.  
427 Finally, we plan to conduct economic and process evaluation analyses to provide evidence on the cost-  
428 effectiveness, acceptability, and feasibility of self-help digital psychosocial interventions for older adults  
429 with subthreshold depressive symptoms. If this evidence shows that the Viva Vida programme is low-cost,  
430 acceptable and effective for older adults with subthreshold depressive symptomatology in primary care  
431 settings, it could be implemented in the Brazilian Unified Health System.

## 432 **Acknowledgements**

433 We would like to acknowledge the contribution of the staff of the UBSs in Guarulhos, Maria de Jesus  
434 Assis Ribeiro, Marcelo Bueno da Silva and other members of the Escola SUS-Guarulhos and the Guarulhos  
435 Health Secretariat who supported the development of the study. We would also like to thank Prof. David  
436 Ekers for his support in the development of the intervention.

437 This study was funded by the São Paulo Research Foundation (process number 2017/50094–2) and the  
438 Joint Global Health Trials initiative, jointly funded by the Department of Health and Social Care (DHSC), the  
439 Foreign, Commonwealth & Development Office (FCDO), the Medical Research Council (MRC) and Wellcome

440 (process number MR/R006229/1). MS is supported by the CNPq-Brazil (307579/2019-0). FAPESP supported  
441 CAN (2018/19343-9 and 2022/05107-7), TVND (2021/04493-8), FAM (2020/02272-1), MOC (2020/14768-1),  
442 CHQS (2020/14504-4), GMO (2021/04230-7), MSS (2021/10148-1 and 2022/08668-0) and MMSM  
443 (2021/03849-3).

444

## 445 **References**

- 446 [1] Meeks T, Vahia I, Lavretsky H, Kulkarni G, Jeste D. A tune in “a minor” can “b major”: A review of  
447 epidemiology, illness course, and public health implications of subthreshold depression in older adults.  
448 *J Affect Disord.* 2011;129: 126–142. doi:10.1016/j.jad.2010.09.015.
- 449 [2] Cherubini A, Nisticò G, Rozzini R, Liperoti R, Di Bari M, Zampi E, et al. Subthreshold depression in older  
450 subjects: an unmet therapeutic need. *J Nutr Health Aging.* 2012;16: 909–913. doi:10.1007/s12603-012-  
451 0373-9.
- 452 [3] Kroenke K. When and how to treat subthreshold depression. *JAMA.* 2017;317: 702–704.  
453 doi:10.1001/jama.2017.0130.
- 454 [4] Rodríguez MR, Nuevo R, Chatterji S, Ayuso-Mateos JL. Definitions and factors associated with  
455 subthreshold depressive conditions: a systematic review. *BMC Psychiatry.* 2012;12: 181.  
456 doi:10.1186/1471-244X-12-181.
- 457 [5] Kroenke K. Minor depression: midway between major depression and euthymia. *Ann Intern Med.*  
458 2006;144: 528–530. doi:10.7326/0003-4819-144-7-200604040-00013.
- 459 [6] Ludvigsson M, Marcusson J, Wressle E, Milberg A. Morbidity and mortality in very old individuals with  
460 subsyndromal depression: an 8-year prospective study. *Int Psychogeriatr.* 2019;31: 1569–1579.  
461 doi:10.1017/S1041610219001480.
- 462 [7] Wiktorsson S, Runeson B, Skoog I, Östling S, Waern M. Attempted suicide in the elderly: characteristics  
463 of suicide attempters 70 years and older and a general population comparison group. *Am J Geriatr*  
464 *Psychiatry.* 2010;18: 57–67. doi:10.1097/JGP.0b013e3181bd1c13.
- 465 [8] Cuijpers P, Vogelzangs N, Twisk J, Kleiboer A, Li J, Penninx BW. Differential mortality rates in major and

- 466 subthreshold depression: meta-analysis of studies that measured both. *Br J Psychiatry*. 2013;202: 22–  
467 27. doi:10.1192/bjp.bp.112.112169.
- 468 [9] Lee SY, Franchetti MK, Imanbayev A, Gallo JJ, Spira AP, Lee HB. Non-pharmacological prevention of  
469 major depression among community-dwelling older adults: a systematic review of the efficacy of  
470 psychotherapy interventions. *Arch Gerontol Geriatr*. 2012;55: 522–529.  
471 doi:10.1016/j.archger.2012.03.003.
- 472 [10] van't Veer-Tazelaar PJ, van Marwijk HWJ, van Oppen P, van Hout HPJ, van der Horst HE, Cuijpers P, et  
473 al. Stepped-care prevention of anxiety and depression in late life: a randomized controlled trial. *Arch*  
474 *Gen Psychiatry*. 2009;66: 297–304. doi:10.1001/archgenpsychiatry.2008.555.
- 475 [11] Spek V, Cuijpers P, Nyklíček I, Smits N, Riper H, Keyzer J, et al. One-year follow-up results of a  
476 randomized controlled clinical trial on internet-based cognitive behavioural therapy for subthreshold  
477 depression in people over 50 years. *Psychol Med*. 2008;38: 635–639.  
478 doi:10.1017/S0033291707002590.
- 479 [12] Ciechanowski P, Wagner E, Schmaling K, Schwartz S, Williams B, Diehr P, et al. Community-integrated  
480 home-based depression treatment in older adults: a randomized controlled trial. *JAMA*. 2004;291:  
481 1569–1577. doi:10.1001/jama.291.13.1569.
- 482 [13] Williams JW, Barrett J, Oxman T, Frank E, Katon W, Sullivan M, et al. Treatment of dysthymia and  
483 minor depression in primary care: a randomized controlled trial in older adults. *JAMA*. 2000;284:  
484 1519–1526. doi:10.1001/jama.284.12.1519.
- 485 [14] Gilbody S, Lewis H, Adamson J, Atherton K, Bailey D, Birtwistle J, et al. Effect of collaborative care vs  
486 usual care on depressive symptoms in older adults with subthreshold depression: The CASPER  
487 randomized clinical trial. *JAMA*. 2017;317: 728–737. doi:10.1001/jama.2017.0130.
- 488 [15] Riadi I, Kervin L, Dhillon S, Teo K, Churchill R, Card KG, et al. Digital interventions for depression and  
489 anxiety in older adults: a systematic review of randomised controlled trials. *Lancet Healthy Longev*.  
490 2022;3: e558–e571. doi:10.1016/S2666-7568(22)00121-0.
- 491 [16] Witteveen AB, Young S, Cuijpers P, Ayuso-Mateos JL, Barbui C, Bertolini F, et al. Remote mental health  
492 care interventions during the COVID-19 pandemic: An umbrella review. *Behaviour Research and*

- 493 Therapy. 2022;159. doi:10.1016/j.brat.2022.104226.
- 494 [17] Brasil, Ministério da Saúde. Renda média domiciliar per capita. In: DATASUS [Internet]. 2010 [cited 5  
495 Nov 2023]. Available: <https://datasus.saude.gov.br/trabalho-e-renda-censos-1991-2000-e-2010>.
- 496 [18] Brasil, Instituto Brasileiro de Geografia e Estatística (IBGE). Guarulhos. In: Panorama Censo [Internet].  
497 2022 [cited 26 Nov 2023]. Available: <https://censo2022.ibge.gov.br/panorama/>.
- 498 [19] Brasil, Ministério da Saúde. Taxa de analfabetismo. In: DATASUS [Internet]. 2010 [cited 22 Mar 2023].  
499 Available: <https://datasus.saude.gov.br/educacao-censos-1991-2000-e-2010>.
- 500 [20] Brasil, Instituto Brasileiro de Geografia e Estatística (IBGE). Percentual de pessoas que tinham telefone  
501 móvel celular para uso pessoal na população de 10 anos ou mais de idade, por sexo e grupo de idade.  
502 In: SIDRA [Internet]. 2021 [cited 5 Nov 2023]. Available: <https://sidra.ibge.gov.br/tabela/7361>.
- 503 [21] Brasil, Instituto Brasileiro de Geografia e Estatística (IBGE). Percentual de pessoas que utilizaram a  
504 Internet no período de referência dos últimos três meses na população de 10 anos ou mais de idade,  
505 por grupo de idade. In: SIDRA [Internet]. 2021 [cited 5 Nov 2023]. Available:  
506 <https://sidra.ibge.gov.br/tabela/7334>.
- 507 [22] Kroenke K, Spitzer RL, Williams JBW. The PHQ-9: validity of a brief depression severity measure. *J Gen  
508 Intern Med.* 2001;16: 606–613. doi:10.1046/j.1525-1497.2001.016009606.x.
- 509 [23] Nakamura CA, Scazufca M, Peters TJ, Fajersztajn L, Van de Ven P, Hollingworth W, et al. Depressive and  
510 subthreshold depressive symptomatology among older adults in a socioeconomically deprived area in  
511 Brazil. *Int J Geriatr Psychiatry.* 2022;37. doi:10.1002/gps.5665.
- 512 [24] Scazufca M, Nakamura CA, Peters TJ, Henrique MG, Seabra A, La Rotta EG, et al. A collaborative care  
513 psychosocial intervention to improve late life depression in socioeconomically deprived areas of  
514 Guarulhos, Brazil: the PROACTIVE cluster randomised controlled trial protocol. *Trials.* 2020;21: 914.  
515 doi:10.1186/s13063-020-04826-w.
- 516 [25] Scazufca M, Nakamura CA, Seward N, Moreno-Agostino D, Van de Ven P, Hollingworth W, et al. A task-  
517 shared, collaborative care psychosocial intervention for improving depressive symptomatology among  
518 older adults in a socioeconomically deprived area of Brazil (PROACTIVE): a pragmatic, two-arm,  
519 parallel-group, cluster-randomised controlled trial. *Lancet Healthy Longev.* 2022;3: e690–e702.

- 520 doi:10.1016/S2666-7568(22)00194-5.
- 521 [26] Schotte CKW, Van Den Bossche B, De Doncker D, Claes S, Cosyns P. A biopsychosocial model as a guide  
522 for psychoeducation and treatment of depression. *Depress Anxiety*. 2006;23: 312–324.  
523 doi:10.1002/da.20177.
- 524 [27] Kanter JW, Manos RC, Bowe WM, Baruch DE, Busch AM, Rusch LC. What is behavioral activation? A  
525 review of the empirical literature. *Clin Psychol Rev*. 2010;30: 608–620. doi:10.1016/j.cpr.2010.04.001
- 526 [28] Krause RJ, Rucker DD. Strategic storytelling: when narratives help versus hurt the persuasive power of  
527 facts. *Pers Soc Psychol Bull*. 2020;46: 216–227. doi:10.1177/0146167219853845.
- 528 [29] Carswell K, Harper-Shehadeh M, Watts S, Van't Hof E, Ramia JA, Heim E, et al. Step-by-Step: a new  
529 WHO digital mental health intervention for depression. *Mhealth*. 2018;4: 34.  
530 doi:10.21037/mhealth.2018.08.01.
- 531 [30] Mehrotra S, Tripathi R. Recent developments in the use of smartphone interventions for mental  
532 health. *Curr Opin Psychiatry*. 2018;31: 379–388. doi:10.1097/YCO.0000000000000439.
- 533 [31] Chen YRR, Schulz PJ. The effect of information communication technology interventions on reducing  
534 social isolation in the elderly: a systematic review. *J Med Internet Res*. 2016;18: e18.  
535 doi:10.2196/jmir.4596.
- 536 [32] National Institute for Health and Care Excellence. Depression in adults: treatment and management.  
537 29 Jun 2022 [cited 22 Mar 2023]. Available:  
538 [https://www.nice.org.uk/guidance/ng222/resources/depression-in-adults-treatment-and-](https://www.nice.org.uk/guidance/ng222/resources/depression-in-adults-treatment-and-management-pdf-66143832307909)  
539 [management-pdf-66143832307909](https://www.nice.org.uk/guidance/ng222/resources/depression-in-adults-treatment-and-management-pdf-66143832307909).
- 540 [33] Gelenberg AJ, Freeman MP, Markowitz JC, Rosenbaum JF, Thase ME, Trivedi MH, et al. Practice  
541 guideline for the treatment of patients with major depressive disorder. American Psychiatric  
542 Association; 2010. Available:  
543 [https://psychiatryonline.org/pb/assets/raw/sitewide/practice\\_guidelines/guidelines/mdd-](https://psychiatryonline.org/pb/assets/raw/sitewide/practice_guidelines/guidelines/mdd-1410197717630.pdf)  
544 [1410197717630.pdf](https://psychiatryonline.org/pb/assets/raw/sitewide/practice_guidelines/guidelines/mdd-1410197717630.pdf).
- 545 [34] Spitzer RL, Kroenke K, Williams JB, Löwe B. A brief measure for assessing generalized anxiety disorder:  
546 the GAD-7. *Arch Intern Med*. 2006;166: 1092–1097. doi:10.1001/archinte.166.10.1092.



- 547 [35] Hughes ME, Waite LJ, Hawkey LC, Cacioppo JT. A short scale for measuring loneliness in large surveys:  
548 results from two population-based studies. *Res Aging*. 2004;26: 655–672.  
549 doi:10.1177/0164027504268574.
- 550 [36] Devlin NJ, Krabbe PF. The development of new research methods for the valuation of EQ-5D-5L. *Eur J*  
551 *Health Econ*. 2013;14: S1–S3. doi:10.1007/s10198-013-0502-3.
- 552 [37] Grewal I, Lewis J, Flynn T, Brown J, Bond J, Coast J. Developing attributes for a generic quality of life  
553 measure for older people: preferences or capabilities? *Soc Sci Med*. 2006;62: 1891–1901.  
554 doi:10.1016/j.socscimed.2005.08.023.
- 555 [38] Scazufca M, Couto MCP de P, Henrique MG, Mendes AV, Matijasevich A, Pereda PC, et al. Pilot study of  
556 a two-arm non-randomized controlled cluster trial of a psychosocial intervention to improve late life  
557 depression in socioeconomically deprived areas of São Paulo, Brazil (PROACTIVE): feasibility study of a  
558 psychosocial intervention for late life depression in São Paulo. *BMC Public Health*. 2019;19: 1152.  
559 doi:10.1186/s12889-019-7495-5.
- 560 [39] Nakamura CA, Scazufca M, Moretti FA, Didone TVN, Martins MM de S, Pereira LA, et al. Digital  
561 psychosocial intervention for depression among older adults in socioeconomically deprived areas in  
562 Brazil (PRODIGITAL-D): protocol for an individually randomised controlled trial. *Trials*. 2022;23: 761.  
563 doi:10.1186/s13063-022-06623-z.
- 564 [40] Harris PA, Taylor R, Thielke R, Payne J, Gonzalez N, Conde JG. Research electronic data capture  
565 (REDCap)--a metadata-driven methodology and workflow process for providing translational research  
566 informatics support. *J Biomed Inform*. 2009;42: 377–381. doi:10.1016/j.jbi.2008.08.010.
- 567 [41] Harris PA, Taylor R, Minor BL, Elliott V, Fernandez M, O’Neal L, et al. The REDCap consortium: building  
568 an international community of software platform partners. *J Biomed Inform*. 2019;95: 103208.  
569 doi:10.1016/j.jbi.2019.103208.
- 570 [42] Schulz KF, Altman DG, Moher D, CONSORT Group. CONSORT 2010 statement: updated guidelines for  
571 reporting parallel group randomised trials. *PLoS Med*. 2010;7: e1000251.  
572 doi:10.1371/journal.pmed.1000251.
- 573 [43] Peugh JL, Strotman D, McGrady M, Rausch J, Kashikar-Zuck S. Beyond intent to treat (ITT): A complier

- 574 average causal effect (CACE) estimation primer. *J Sch Psychol.* 2017;60: 7–24.  
575 doi:10.1016/j.jsp.2015.12.006.
- 576 [44] Lee KJ, Carlin JB. Multiple imputation for missing data: fully conditional specification versus  
577 multivariate normal imputation. *Am J Epidemiol.* 2010;171: 624–632. doi:10.1093/aje/kwp425.
- 578 [45] Sterne JA, White IR, Carlin JB, Spratt M, Royston P, Kenward MG, et al. Multiple imputation for missing  
579 data in epidemiological and clinical research: potential and pitfalls. *BMJ.* 2009;338: b2393.  
580 doi:10.1136/bmj.b2393.
- 581 [46] Rubin D. *Multiple Imputation for Nonresponse in Surveys.* Wiley Series in Probability and Statistics.  
582 New York: John Wiley & Sons, Inc.; 1987.
- 583 [47] Carpenter JR, Kenward MG, White IR. Sensitivity analysis after multiple imputation under missing at  
584 random: A weighting approach. *Stat Methods Med Res.* 2007;16: 259–275.  
585 doi:10.1177/0962280206075303.
- 586 [48] Carpenter J, Pocock S, Lamm CJ. Coping with missing data in clinical trials: a model-based approach  
587 applied to asthma trials. *Stat Med.* 2002;21: 1043–1066. doi:10.1002/sim.1065.
- 588 [49] Héraud-Bousquet V, Larsen C, Carpenter J, Desenclos J-C, Le Strat Y. Practical considerations for  
589 sensitivity analysis after multiple imputation applied to epidemiological studies with incomplete data.  
590 *BMC Med Res Methodol.* 2012;12: 73. doi:10.1186/1471-2288-12-73.
- 591 [50] Williams A, Kind P. The present state of play about QALYs. In: Hopkins A, editor. *Measures of the*  
592 *quality of life and the uses to which such measures may be put.* London: RCP Publications; 1992.
- 593 [51] Braun V, Clarke V. Using thematic analysis in psychology. *Qual Res Psychol.* 2006;3: 77–101.  
594 doi:10.1191/1478088706qp063oa.
- 595 [52] Green J, Thorogood N. *Qualitative Methods for Health Research.* 4th ed. Sage; 2004.
- 596 [53] Tong A, Sainsbury P, Craig J. Consolidated criteria for reporting qualitative research (COREQ): a 32-item  
597 checklist for interviews and focus groups. *Int J Qual Health Care.* 2007;19: 349–357.  
598 doi:10.1093/intqhc/mzm042.
- 599 [54] Cuijpers P, Smit F, Van Straten A. Psychological treatments of subthreshold depression: a meta-analytic  
600 review. *Acta Psychiatr Scand.* 2007;115: 434–441. doi:10.1111/j.1600-0447.2007.00998.x.

- 601 [55] Corpas J, Gilbody S, McMillan D. Cognitive, behavioural or cognitive-behavioural self-help interventions  
602 for subclinical depression in older adults: a systematic review and meta-analysis. *J Affect Disord.*  
603 2022;308: 384–390. doi:10.1016/j.jad.2022.04.085.
- 604 [56] Spek V, Nyklíček I, Smits N, Cuijpers P, Riper H, Keyzer J, et al. Internet-based cognitive behavioural  
605 therapy for subthreshold depression in people over 50 years old: A randomized controlled clinical trial.  
606 *Psychol Med.* 2007;37: 1797–1806. doi:10.1017/S0033291707000542.
- 607 [57] Morgan AJ, Jorm AF, Mackinnon AJ. Email-based promotion of self-help for subthreshold depression:  
608 Mood Memos randomised controlled trial. *British Journal of Psychiatry.* 2012;200: 412–418.  
609 doi:10.1192/bjp.bp.111.101394.
- 610 [58] Newman N, Fletcher R, Robertson CT, Eddy K, Kleis Nielsen R. Reuters Institute Digital News Report  
611 2022. Reuters Institute for the Study of Journalism; 2022. Available:  
612 [https://reutersinstitute.politics.ox.ac.uk/sites/default/files/2022-06/Digital\\_News-Report\\_2022.pdf](https://reutersinstitute.politics.ox.ac.uk/sites/default/files/2022-06/Digital_News-Report_2022.pdf).

## 613 **Supporting information**

- 614 **S1 File. SPIRIT checklist.** (DOCX)
- 615 **S2 File. Administrative information according to the SPIRIT checklist.** (DOCX)
- 616 **S3 File. Protocol that was approved by the ethics committee, in Brazilian Portuguese (original).** (DOCX)
- 617 **S4 File. Protocol that was approved by the ethics committee, in English (translation).** (DOCX)
- 618 **S5 File. Content of the messages of the Viva Vida programme.** (DOCX)