

1 **Identification of a specific inflammatory protein biosignature in coronary and**  
2 **peripheral blood associated with increased risk of future cardiovascular events**

3

4 Diane Proudfoot Ph.D<sup>1</sup>, Bruna Gigante, MD, Ph.D<sup>2</sup>, Nick E.J. West M.D.<sup>1,3</sup>, Stephen P. Hoole  
5 D.M.<sup>3</sup>, Rona J. Strawbridge Ph.D<sup>4</sup>, Elena Tremoli PhD<sup>5</sup>, Damiano Baldassarre Ph.D<sup>6</sup>, and  
6 Simon Williams MBBS.<sup>1</sup>

7

8 *Short title: Inflammatory signature in coronary and peripheral blood*

9

- 10 1. PlaqueTec Limited, Babraham Research Campus, Maia Building, Cambridge CB22  
11 3AT, U.K.  
12 2. Division of Cardiovascular Medicine, Dept of Medicine, Karolinska Institutet, Solna,  
13 Sweden.  
14 3. Royal Papworth Hospital NHS Foundation Trust, Papworth Road, Cambridge CB2  
15 0AY, U.K.  
16 4. Institute of Health and Wellbeing, University of Glasgow, Glasgow, United Kingdom;  
17 Cardiovascular Medicine Unit, Department of Medicine Solna, Karolinska Institutet,  
18 Stockholm, Sweden; Health Data Research, UK.  
19 5. Maria Cecilia Hospital, Cotignola (RA), Italy.  
20 6. Centro Cardiologico Monzino, IRCCS, Milan, Italy and Department of Medical  
21 Biotechnology and Translational Medicine, Università Degli Studi di Milano, Milan,  
22 Italy

23

24 \*Corresponding author:

25

26 Diane Proudfoot  
27 PlaqueTec Limited  
28 Maia Building (B270)  
29 Babraham Research Campus  
30 Cambridge  
31 CB22 3AT  
32 United Kingdom

33 Email: [diane@plaquetec.com](mailto:diane@plaquetec.com)

34

35

36

37

38

1 **Abstract**

2 Background and rationale

3 As an adjunct to coronary intervention, the Liquid Biopsy System (LBS, PlaqueTec, UK)  
4 enables accurate intracoronary blood sampling as previously documented. Here we  
5 investigate variation between local coronary and remote (peripheral) levels of certain  
6 proteins and how this might relate to cardiovascular risk assessment.

7 Methods and Results

8 Coronary artery blood samples were collected from 12 patients with obstructive coronary  
9 plaques before percutaneous coronary intervention (PCI), using the LBS. Peripheral blood  
10 samples were also collected, before and after PCI. Protein levels in coronary and peripheral  
11 plasma samples were analysed by proximity extension assay (PEA, Olink) and results were  
12 compared with blood samples from healthy controls and reference cohorts.

13 Before PCI, 10/12 patients showed elevations in hepatocyte growth factor (HGF),  
14 pappalysin-1 (PAPPA) and spondin-1 (SPON1), in some cases >10-fold greater in coronary  
15 compared with peripheral samples. Following PCI, involving iatrogenic plaque rupture prior  
16 to stenting, peripheral levels of these proteins were elevated to a similar degree as coronary  
17 levels. In the other 2 patients, peripheral elevations for HGF, PAPPA and SPON1 (all >90<sup>th</sup>  
18 centile) were observed prior to PCI. This protein biosignature was absent in healthy controls  
19 but was detected in a minority of individuals in reference cohorts and associated with the  
20 occurrence of major adverse cardiovascular events (MACE) and mortality.

21 Conclusions

22 From investigation of coronary and peripheral blood samples, we identified a molecular  
23 signature, which when present in peripheral blood appears to portend worse outcomes.  
24 Measurement of these proteins could therefore aid identification of individuals at high risk of  
25 cardiovascular events.

1 (see Graphical Abstract in Supplementary Figures)

2

### 3 **Translational Perspective**

4 Through sampling of local coronary blood, we discovered a novel protein biosignature  
5 consisting of a combination of elevated levels of HGF, PAPP A and SPON1. When this  
6 biosignature was assessed in peripheral samples from reference cardiovascular and Covid  
7 cohorts they associated with the occurrence of MACE and mortality. The biosignature  
8 protein levels correlated with markers of mast cell and neutrophil activity but not with CRP,  
9 possibly indicating a specific inflammatory status. Early detection of this protein signal has  
10 potential clinical utility to identify specific patients at increased risk of poor outcomes.

11

### 12 **Introduction**

13 Despite current primary and secondary prevention strategies, coronary artery disease  
14 remains a major cause of death and disability worldwide, indicating much is still to be  
15 understood about the mechanisms underlying residual cardiovascular risk<sup>1,2</sup>. Genetic insights  
16 have suggested numerous proteins, lipids, and metabolites as identifiers of increased risk<sup>3-6</sup>  
17 and several studies have identified circulating biomolecules associated with risk of major  
18 adverse coronary events (MACE). Principally, these studies analysed systemic venous  
19 biomolecule levels and correlated with measures of disease severity<sup>7</sup> or retrospective  
20 analysis of outcomes<sup>8,9</sup>.

21 Inflammation is known to contribute to atherosclerotic disease progression, destabilising  
22 plaques and promoting thrombosis; however, the specific causal components of these  
23 inflammatory pathways and their links to other factors such as shear stress, wall strain and  
24 flow disturbance are only beginning to be understood<sup>10</sup>. Assessment of systemic  
25 inflammation by measuring C-reactive protein (CRP) levels (an acute phase reactant) has

1 been linked with increased risk of myocardial infarction<sup>11</sup>, and may be useful in stratifying  
2 patients most likely to benefit from targeted anti-inflammatory treatments<sup>12</sup>, but this remains a  
3 somewhat nonspecific marker and is unlikely to be causally involved in acute vascular  
4 events. Encouragingly, large-scale randomised trials of both colchicine<sup>13</sup> and canakinumab<sup>14</sup>,  
5 an inhibitor of the inflammatory mediator IL-1 $\beta$ , have now demonstrated a reduction in  
6 cardiovascular events vs placebo in patients with a history of myocardial infarction,  
7 demonstrating that modulating inflammation can have manifest effects on risk of clinically  
8 important outcomes in atherosclerotic vascular disease.

9 Systemic venous blood sampling reflects biomolecules derived from multiple organ systems  
10 and vascular beds, making the identification of specific plaque-released factors problematic.  
11 Methods used to address this have included *ex vivo* sampling of atherosclerotic plaques<sup>15,16</sup>  
12 and coronary thrombi<sup>17,18</sup> or use of aspiration or guide catheters to sample blood directly from  
13 the coronary artery<sup>19-21</sup>. Samples collected from the coronary sinus, a venous reservoir  
14 receiving drainage from the majority of the coronary circulation, have been compared to  
15 blood sampled from the coronary ostium to identify transmural gradients of certain  
16 proteins, potentially reflecting coronary disease status more accurately than analysis solely  
17 of systemic proteins sampled remotely<sup>22</sup>.

18 In the present study, intracoronary samples were collected using the PlaqueTec Liquid  
19 Biopsy System (LBS)<sup>23</sup>. We discovered not only specific elevated signals in the coronary  
20 samples but also, in a minority of individuals, in peripheral samples from a baseline blood  
21 draw. We then searched other published cohorts for patients exhibiting this peripheral  
22 biosignature to assess prevalence and possible links to clinical outcomes.

23

24

## 1 **Materials and Methods**

### 2 Coronary artery blood sample collection

3 As part of a proof of concept clinical trial of the LBS device (Clinical Study 1 – CS1, Clinical  
4 Trials.gov: NCT02119767), intracoronary samples were obtained via sampling ports  
5 positioned either side of an identified plaque<sup>23</sup>. However, only blood from the proximal port, in  
6 close proximity to the lesion, was considered in this analysis. Peripheral blood samples were  
7 taken prior to heparin administration, and also after the PCI procedure. LBS-derived and  
8 peripheral samples were mixed with EDTA, and plasma isolated by centrifugation to  
9 generate platelet-poor plasma and stored at -80 °C until analysis.

10 Plasma samples were analysed by Proximity Extension Assay (PEA; Olink, Uppsala,  
11 Sweden), initially using the CVD1 panel (currently discontinued) as described previously<sup>23</sup>.  
12 Separately, plasma samples were assayed using the Cardiovascular 3 (CVD3) and  
13 Inflammation panels, each containing 92 proteins. The full list of proteins included in the  
14 analysis are detailed in the Supplementary materials (File S1). Results are presented as  
15 normalised protein expression (NPX) units, and log<sub>2</sub> NPX values were converted into linear  
16 scale (using  $2^{\text{NPX}} = \text{linear NPX}$ ). Assay characteristics with detection limits, validations and  
17 explanations of NPX units are available from the manufacturer (<http://www.olink.com>). Age-  
18 and sex-matched healthy control systemic blood samples (BioIVT, Westbury, NY, USA) were  
19 analysed on the CVD3 and Inflammation panels. CRP levels were analysed by high  
20 sensitivity CRP (hsCRP) ELISA (Invitron, cat # IV3-105E) at Eurofins (Abingdon, UK) and  
21 results provided in mg/L.

22

### 23 Reference populations

24 To investigate prevalence of the biosignature identified in CS1, other published studies  
25 where the same proteins have been measured by PEA (Olink) were investigated.

1 PACIFIC cohort

2 Plasma protein data from a study by Bom et al<sup>7</sup> was accessed from the journal website. This  
3 study included 196 participants from the PACIFIC cohort with suspected cardiovascular  
4 disease (CVD) who underwent coronary computed tomography angiography (CCTA).  
5 Proteins were measured by PEA (Olink) using the CVD2, CVD3 and Inflammation panels.

6 Healthy control cohort (Olink)

7 Data on normal ranges of plasma proteins measured by PEA using Olink Explore 3072 for  
8 300 healthy individuals was accessed at Olink ([https://insight.olink.com/data-stories/normal-](https://insight.olink.com/data-stories/normal-ranges)  
9 [ranges](https://insight.olink.com/data-stories/normal-ranges)). Data was in the form of interquartile ranges (IQR), which included outliers in the  
10 calculations.

11 IMPROVE cohort

12 To investigate the importance of the identified biosignature, larger existing cohorts with  
13 outcome data were used as reference populations.

14 The IMPROVE cohort recruited 3711 participants with at least 3 established CVD risk factors  
15 (men, post-menopausal women, dyslipidaemia, hypertension, diabetes, smoking and family  
16 history of CVD)<sup>24,25</sup>. Proteomic analysis of plasma was previously measured in IMPROVE  
17 using the CVD1 panel (Olink Proteomics, Uppsala, Sweden)<sup>26</sup>, and data on levels of  
18 hepatocyte growth factor (HGF), Pappalysin-1 (PAPPA) and Spondin-1 (SPON1) were  
19 extracted. Carotid-intima media thickness (c-IMT) was measured as previously described<sup>25</sup>  
20 and carotid plaques, defined as c-IMT $\geq$ 1.5mm; all subjects were followed to 3 years and  
21 major adverse events recorded. Because of changing rules at some institutions 491  
22 individuals from one center in Finland have been excluded from the analysis. After quality  
23 control, 2901 participants had baseline protein and carotid measurements included in the  
24 analysis and followed up after 3 years. 171 cardiovascular events were recorded at 3-year

1 follow-up, defined as myocardial infarction, ischemic stroke, peripheral artery disease or  
2 revascularization procedures.

### 3 Respiratory disease/COVID-19 cohort

4 384 patients enrolled in the emergency department during the COVID-19 peak between  
5 March and April 2020 from Boston MGH had plasma samples analysed on the Olink Explore  
6 1536 protein panel<sup>27</sup>. Protein data and patient outcomes for this study were accessed via the  
7 Olink website (Olink.com).

### 8 ESKD/COVID-19 cohorts

9 An Imperial College study of end-stage kidney disease (ESKD) subcohort A where 55  
10 patients tested positive and 51 tested negative for COVID-19, and from subcohort B where  
11 46 patients tested positive and 11 tested negative for COVID-19<sup>28</sup> had plasma or serum  
12 samples analysed using PEA (Olink) assays on Inflammation, Immune Response,  
13 Cardiometabolic, Cardiovascular 2, and Cardiovascular 3 panels. Protein data and patient  
14 outcomes for this study were accessed via the journal website and personal communication  
15 with the authors.

### 16 Statistical analysis

17 To test for statistical significance between proteins levels in plasma sampled at different  
18 locations and timing (peripheral v coronary, and pre- and post-PCI), a one-way ANOVA  
19 mixed-effects model, followed by a pairwise Holm-Sidak's multiple comparison's test was  
20 used (with an alpha of 0.05). Pairwise correlation coefficients between proteins were  
21 calculated by Spearman (rho coefficient) performed in GraphPad (version 9.0). In the  
22 respiratory disease COVID-19 cohort, survival analysis, Kaplan-Meier curves and statistics  
23 were created in GraphPad (version 9.0).

24 For the IMPROVE cohort, continuous variables are expressed as median and interquartile  
25 range, categorical variables as number and percentages. HGF, PAPPa and (SPON1) data

1 have been standardized using the z-score. The correlation coefficient between the three  
2 biomarkers (pairwise) and of each one of the three biomarkers with CRP (mg/L) is estimated  
3 by Spearman (rho coefficient). The data were combined in a score including all three  
4 biomarkers categorized as “0” if HGF, PAPP A and SPON1 were all <90th centile and “1” if  
5 HGF, PAPP A and SPON1 were all ≥90th centile. Kruskal Wallis and chi square tests were  
6 used to analyze differences across groups. A linear logistic regression analysis was  
7 performed using as dependent variable the log transformed measures of c-IMT and the  
8 single biomarker or the biomarker score as independent variables. Data were adjusted by  
9 latitude (main determinant of c-IMT in the IMPROVE), age, gender and analytical batch.  
10 Estimates expressed as  $\beta$  coefficient and standard error (SE). All analyses were performed  
11 in STATA v14.

12



## 1 **Results**

2 We enrolled 12 patients (45-74 years, all male, Table 1), who underwent blood sampling  
3 prior to any balloon dilatation of an obstructive coronary plaque as part of a proof-of-concept  
4 clinical trial of the LBS<sup>23</sup>; 11 of the 12 subsequently underwent PCI.

### 5 Identification of protein biosignature in coronary and peripheral blood samples

6 Using the CVD1 protein panel, levels of HGF and PAPP A were identified at much higher  
7 levels (>10-fold) in the coronary samples compared with peripheral samples for 10/12  
8 individuals. SPON1 levels were also higher in coronary samples compared with periphery in  
9 the same 10 patients but to a lesser extent than HGF and PAPP A (Figure 1A). The  
10 remaining 2 patients were found to have elevated levels of HGF, PAPP A and SPON1 in  
11 peripheral *as well as* coronary samples (Figure 1B, C and D), despite no differences in  
12 demographics or sample location that may have explained these differences (Table 1). Other  
13 coronary/peripheral protein peaks (Figure 1A) were not explored further as they did not have  
14 the distinct patient pattern observed with absolute levels of HGF, PAPP A and SPON1.

15 In post-PCI samples, the majority of patients had higher levels of HGF, PAPP A and SPON1  
16 peripherally (Figure 1E) compared with pre-PCI samples, suggesting that the conditions of  
17 the PCI, including iatrogenic plaque rupture and resultant response to injury - inflammation  
18 and release of plaque constituents – caused a systemic elevation of these proteins.

### 19 Confirmation of protein biosignature in coronary and peripheral blood samples

20 Initially considered outliers, samples from the 2 patients with high peripheral levels of HGF,  
21 PAPP A and SPON1 prior to PCI were re-tested using the 'Inflammation' and 'CVD3' panels  
22 (Olink), which include HGF and SPON1 from the now-discontinued CVD1 panel but do not  
23 include PAPP A. Plasma samples from the 10 individuals with low baseline but elevated post-  
24 PCI biosignature and from 12 healthy individuals (age- and sex-matched) as a control series  
25 were also included in these assays for comparison.

1 Repeat testing of both HGF and SPON1 demonstrated consistent results (Figure 2A and B).  
2 The 10 patients with low HGF and SPON1 in the peripheral samples prior to PCI had similar  
3 levels to healthy controls, indicating that the elevated levels seen in 2 patients were well  
4 above 'normal'. Of note, some differences between absolute NPX values measured on CVD1  
5 and CVD3/Inflammation panels were seen, most likely attributed to the different dilutions and  
6 dynamic ranges of the newer panel assays. Analysis of coronary/peripheral protein ratios  
7 using the two new panels revealed 5 further proteins with distinctly higher levels in the  
8 coronary plasma compared with peripheral plasma; C-X-C motif chemokine 9 (CXCL9), C-C  
9 motif chemokine ligand 28 (CCL28), TNF-related weak inducer of apoptosis (TNFSF12 or  
10 TWEAK) (Figure 2C), tissue factor pathway inhibitor (TFPI) and azurocidin-1 (AZU1) (Figure  
11 2D).

12 When comparing absolute coronary and peripheral protein values a distinct pattern was seen  
13 for HGF, which to varying extent was mirrored by the 7 other proteins. AZU1 displayed the  
14 least consistent pattern with one patient having higher peripheral than coronary AZU1 levels  
15 (Figure 3A). Healthy control levels for this set of proteins were generally in line with the low  
16 peripheral sample levels, although CXCL9 was relatively high in some. The peripheral  
17 biosignature pattern appeared to be most consistent for 6 proteins: HGF, PAPP, SPON1,  
18 CCL28, TFPI and TWEAK.

#### 19 Analysis of C-Reactive Protein (CRP) levels

20 To investigate whether the peripheral biosignature pattern seen in 2 patients could be  
21 explained by acute-phase systemic inflammation, CRP levels were measured using a high-  
22 sensitivity assay (hsCRP). Levels were uniformly low (<5mg/L), and CRP did not correlate  
23 with HGF levels (Figure 3B), suggesting systemic inflammation was not a factor.

#### 24 Investigating the peripheral biosignature in healthy individuals

25 To further investigate the biosignature in healthy cohorts, data available from Olink on  
26 variability (IQR) of 2943 proteins in a healthy cohort of 300 individuals, the 6 biosignature

1 proteins had relatively low IQR values (Supplement Figure S1, [https://insight.olink.com/data-](https://insight.olink.com/data-stories/normal-ranges)  
2 [stories/normal-ranges](https://insight.olink.com/data-stories/normal-ranges)). If a minority of participants had unusually high levels of the 6  
3 proteins, this would raise IQR values relative to the other proteins measured. Observing  
4 relatively low IQRs for the 6 proteins in this cohort suggests it was unlikely that any of the  
5 participants had the biosignature.

6 Investigating the peripheral biosignature pattern in patients with suspected coronary artery  
7 disease: PACIFIC cohort

8 A study by Bom et al<sup>7</sup> represents a 196-patient subset of the PACIFIC cohort with suspected  
9 coronary artery disease. Two of the 196 patients displayed clearly raised levels of all six  
10 biosignature proteins (Figure 4). To allow comparisons across different cohorts, a  
11 biosignature definition of >90<sup>th</sup> centile for HGF and also PAPP A and SPON1 was used,  
12 which identified three participants with the biosignature, all with low CRP levels  
13 (hsCRP<2.5mg/L). None of the demographic variables provided clues to differentiate the  
14 biosignature-displaying subjects from the rest of the cohort.

15 Investigating the peripheral biosignature pattern in patients with multiple CVD risk factors:  
16 IMPROVE cohort

17 In the IMPROVE population, three of the biosignature proteins were measured: HGF, PAPP A  
18 and SPON1. 39 subjects were identified with the biosignature defined as >90<sup>th</sup> centile levels  
19 for HGF, and also PAPP A and SPON1. This was a small minority (1.3%) of the cohort that  
20 comprised 26 men and 13 women (Table 2A). The signature proteins associated with a  
21 thicker c-IMT<sub>max</sub> (P=0.033) (Table 2B). The biosignature proteins displayed a positive and  
22 significant correlation with each other (Table 2C). No correlation was observed between  
23 biosignature proteins and CRP levels, except for HGF. However, the biosignature group had  
24 higher CRP levels compared with the remaining cohort (Table 2A). During the 3-year follow-  
25 up, 20.5% (8 of 39) of the patients with the biosignature suffered a cardiovascular event,  
26 compared with 5.7% (163 of 2862) in the remaining cohort. Using a Cox regression model,

1 participants with the biosignature had a significantly increased risk of future cardiovascular  
2 events; HR 3.16 (95%CI:1.55-6.45),  $p=0.002$ . Additionally, when applying a 90<sup>th</sup> percentile  
3 definition for identification of participants with the highest levels of individual proteins and  
4 analysing event rates for HGF (15 of 171, 8.8%), PAPP A (17 of 171, 9.9%) or SPON1 alone  
5 (20 of 171, 11.7%), suggested that the biosignature combination of proteins performs better  
6 at predicting MACE compared with each protein analysed independently. Furthermore, for  
7 participants with CRP above the 90<sup>th</sup> percentile, 28/171 had an event (16.4%) which  
8 suggests that the biosignature is also better than CRP at detecting the occurrence of MACE.

#### 9 Investigating the peripheral biosignature pattern in patients with respiratory disease: COVID- 10 19 cohort

11 The biosignature was also investigated in raw data available from the MGH Boston COVID-  
12 19 cohort<sup>27</sup> using the same biosignature definition to identify individuals with >90<sup>th</sup> percentile  
13 values for HGF, and also PAPP A and SPON1. Analysis of protein levels at day 0 (first  
14 sample collected from 358 individuals) identified 11/358 patients (3.1%) with the  
15 biosignature, a slightly higher prevalence compared with IMPROVE (Supplement Figure S2  
16 and Summary results in Table 3). For individuals identified with the biosignature, 7 of the 11  
17 (63.6%) died within 28 days of admission to hospital, while 42 of the 373 (11.3%) remaining  
18 patients died. For the 4 surviving subjects with the biosignature, 2 were 'intubated, ventilated  
19 and survived to 28 days' and 2 were 'hospitalized, supplementary O<sub>2</sub> required'. Survival  
20 analysis indicated a significant statistical difference in probability of survival between those  
21 with and without the biosignature ( $P<0.001$ , Supplement Figure S3). Individuals with the  
22 biosignature had higher rates of cardiac events within the first 72 hours of presentation (5/11,  
23 45%), compared with those without the biosignature (29/373, 8%). Participants with the  
24 biosignature also had higher rates of pre-existing kidney disease (5/11, 45%) compared with  
25 participants without the biosignature (56/373, 15%) and had similar CRP ranges to those  
26 without the biosignature (Supplement Figure S4 and Summary results in Table 3 and Table  
27 4).

1 Investigating the peripheral biosignature pattern in patients with multiple CVD risk factors:

2 ESKD COVID-19 cohort

3 The biosignature was then investigated in an Imperial College study of 2 end-stage kidney  
4 disease (ESKD) cohorts: subcohort A and B<sup>28</sup>. Of the patients that tested positive for COVID-  
5 19, 2/55 patients (3.6%) in subcohort A and 2/46 patients (4.3%) in subcohort B were  
6 identified with the biosignature in first samples collected (Supplement Figure S5 and  
7 Summarised in Table 3). In subcohort A, both patients with the biosignature died during the  
8 study, while in subcohort B both patients survived and were classed as having 'severe' or  
9 'moderate' disease. In subcohort A, CRP correlated with HGF levels but not with the other  
10 biosignature proteins<sup>28</sup>. Participants had wide ranges of CRP levels and no statistical  
11 differences were found between groups (Supplement Figure S6 and Table 4).

12

13 Biosignature association with Tryptase, MPO, and Syndecan-1 levels

14 The biosignature pattern in plasma could possibly be induced via endogenous heparin  
15 release from mast cells, and/or neutrophil activity and glycocalyx damage. To test if this  
16 notion is consistent with proteins known to be linked with these processes, correlation  
17 analysis was performed between the biosignature proteins and tryptase, myeloperoxidase  
18 (MPO), and syndecan-1. Significant positive correlations were found between some or all of  
19 the biosignature proteins with tryptase, MPO, and syndecan-1 levels in cohorts where this  
20 data was available (Table 4, and Supplement File S1).

21

## 1 **Discussion**

2 Analysis of coronary and peripheral proteins from patients with coronary artery disease  
3 undergoing PCI revealed a novel biosignature, which prompted investigation of the  
4 peripheral protein pattern in other cohorts. Using the definition of >90<sup>th</sup> centile levels for HGF,  
5 and also PAPP A and SPON1, the biosignature was found in a minority of patients from a  
6 cohort of individuals with suspected coronary disease (PACIFIC cohort), and in a cohort with  
7 known CVD risk factors (IMPROVE). The biosignature was also detected in a minority of  
8 individuals in two COVID-19 cohorts but appeared absent in healthy cohorts and in healthy  
9 control plasma, which raised the question as to whether this biosignature might reflect an  
10 unstable, higher-risk cardiovascular state.

11 The known functions of the biosignature proteins are summarised in Table 5. All have direct  
12 or indirect roles in inflammation and endothelial function and some have been associated  
13 with risk of adverse events. For example, elevated HGF levels have been linked with worse  
14 outcomes in dialysis patients<sup>29</sup> and also more recently in COVID-19 cohorts, with neutrophil  
15 activation suggested as a possible source of the high HGF levels preceding critical illness<sup>30</sup>.  
16 In a genome-wide meta-analysis of 85 proteins in over 30,000 individuals (SCALLOP study)  
17 several proteins were identified as causative in disease and included HGF (positively  
18 associated with high triglyceride levels), SPON1 (positively associated with atrial fibrillation)  
19 and PAPP A (positively associated with type 2 diabetes)<sup>31</sup>. Interestingly, in the Imperial  
20 College study of ESKD and COVID-19 patients, SPON1 and CCL28 elevated levels were  
21 linked with increased risk of death, while increased levels of TWEAK were associated with  
22 reduced risk of death<sup>28</sup>. TWEAK plays a role in inflammation and repair in several diseases  
23 and is thought to promote the development of atherosclerosis, but lower circulating levels  
24 have been linked to higher cardiovascular risk<sup>32</sup>. Furthermore, 18 proteins found to be  
25 independently associated with cardiovascular death included HGF and SPON1<sup>9</sup>. However,  
26 the combination of specific proteins at raised levels described here has not been reported  
27 previously.

1 The raised levels of biosignature proteins in the periphery may be due to local changes  
2 causing release of proteins from the endothelial glycocalyx, activated/damaged cells or  
3 activated neutrophils or mast cells, or inflammation-driven increased de novo synthesis. Of  
4 particular relevance, mast cells contain heparin<sup>33</sup> and mast cell activation leading to the  
5 release of endogenous heparin could increase blood levels of the biosignature proteins via  
6 release from the endothelial glycocalyx. Increased mast cell activity, as measured by serum  
7 tryptase levels, was reported as an indicator of poor CVD outcomes and tryptase levels did  
8 not correlate with CRP levels in that study, suggesting CRP is not a surrogate marker for  
9 mast cell activity<sup>34</sup>. In the present study, individuals with the biosignature in the CVD cohorts  
10 had low-mid CRP levels (<5mg/L) which indicates a low to moderate mortality risk<sup>35</sup>. The  
11 biosignature protein levels did not correlate with CRP levels, except in the IMPROVE and  
12 ESKD/COVID-19 cohorts where CRP correlated positively and significantly with one  
13 biosignature protein, HGF<sup>28</sup>. However, it should be noted that all patients in the CS1 study  
14 were taking statins, which may have impacted CRP levels. In cohorts where tryptase data  
15 was available, positive correlations between biosignature proteins and tryptase were  
16 detected, suggesting there may be a link with mast cell activity. Additionally, the biosignature  
17 also appeared to be linked with neutrophil activity (MPO levels) and glycocalyx damage  
18 (Syndecan-1 levels).

19 To understand if an elevation in biosignature proteins is relevant to patient outcomes, we  
20 explored its presence in the IMPROVE study population of individuals at high cardiovascular  
21 risk. The biosignature group had a significant association with the risk of cardiovascular  
22 events and the biosignature protein combination appeared to be better at predicting MACE  
23 than the individual proteins or CRP. In the MGH study of patients hospitalised due to COVID-  
24 19-related symptoms<sup>27</sup>, patients that exhibited the biosignature had higher death rates  
25 compared to patients without the biosignature. A similar observation was made in a cohort of  
26 patients with ESKD and COVID-19 (subcohort A)<sup>28</sup>, where higher mortality rates occurred in  
27 those with the biosignature, compared with patients without the biosignature. However, in a

1 second small ESKD COVID-19 cohort (subcohort B)<sup>28</sup> those with the biosignature had severe  
2 or moderate disease and survived. Some differences between cohort A and B might help to  
3 explain dissimilar results related to the biosignature, although equally the results could  
4 indicate that the biosignature may not be a reliable risk indicator for more severely ill ESKD  
5 patients.

6 The biosignature appears to be present in a minority of individuals, which perhaps explains  
7 why it is has not previously been described. Also, it might have been overlooked in other  
8 studies if unusually high protein levels were considered as outliers. Furthermore, since the  
9 biosignature was discovered by comparing coronary and peripheral protein levels, the LBS  
10 sampling technology and study design may have provided a unique opportunity to make  
11 accurate coronary measurements for comparison with the periphery.

## 12 **Limitations**

13 Although the a priori sample size for this investigation was small, the confirmation of  
14 elements of the inflammatory biosignature in much larger and well-characterised populations,  
15 particularly when correlated with increased risk of future events, is compelling. Initially, timing  
16 of sample collection and the presence of heparin had potential to explain the pre- and post-  
17 PCI disparity, however sequential comparison with other cohorts confirmed this was not the  
18 case. Although its observation in reference cohorts strengthens the validity of the  
19 biosignature, comparison of unequal groups with and without the biosignature results in wide  
20 confidence intervals. The choice of threshold of >90<sup>th</sup> centile for HGF, PAPP A and SPON1  
21 was arbitrary but aided the identification of participants with the highest NPX values for all of  
22 these proteins within a cohort and allowed comparisons across cohorts. For future  
23 applications, it would be desirable to optimise threshold selection and to measure proteins  
24 using standard concentration units (pg/ml). Nevertheless, our findings should be considered  
25 hypothesis-generating, and prospective studies on larger at-risk populations are warranted,



1 with a focus on mechanisms underpinning the abnormally-elevated biomolecules and their  
2 role in the aetiology of cardiovascular risk.

3

#### 4 **Conclusions**

5 A biosignature was detected in individuals with known CVD, suspected CVD or with CVD risk  
6 factors. The biosignature associated with a higher rate of MACE, and in COVID-19 cohorts it  
7 appeared to be associated with increased risk of death. The biosignature has the potential to  
8 be developed as a non-invasive blood test indicative of a specific type of vascular  
9 inflammation and we can speculate its use as a warning signal, especially in cases where  
10 CRP levels raise no concern, and where alternative anti-inflammatory therapies may be  
11 required. An upcoming 300 patient study using the same intracoronary sampling device will  
12 enable this finding and the underlying mechanisms to be further investigated on a larger  
13 scale.

14

15

1     **Acknowledgments**

2     We would like to thank participants in the clinical trials detailed in this manuscript, and to the  
3     hospital staff involved in blood sample collection and processing.

4     We are grateful for the open access to raw data from the PACIFIC, MGH Boston and  
5     Imperial cohorts and to James Peters and Jack Gisby (Imperial College London) for  
6     additional data on subcohort B and personal communication.

7     This study was funded by PlaqueTec Ltd. Collaborative work on IMPROVE with BG was  
8     funded by Stiftelsen Sigurd & Elsa Goljes minne (LA2022-0133), Stiftelsen Professor Nanna  
9     Swartz fond (2022-00472) and Hjärt-Lungfonden (20210472). IMPROVE was funded by the  
10    V<sup>th</sup> European Union (EU) program.

11

12    **Disclosures**

13    DP and SW are employees of PlaqueTec. NEJW was employed by PlaqueTec at the time  
14    that this work was performed but is now an employee of Abbott Vascular. SPH is a  
15    consultant to PlaqueTec. Part of the work is published in “International Patent Application No.  
16    PCT/GB2022/051281, published as WO 2022/243703 A1”.

## 1 References

- 2 1 Baigent, C. *et al.* Efficacy and safety of cholesterol-lowering treatment: prospective  
3 meta-analysis of data from 90,056 participants in 14 randomised trials of statins.  
4 *Lancet* **366**, 1267-1278, doi:10.1016/S0140-6736(05)67394-1 (2005).
- 5 2 Virani, S. S. *et al.* Heart Disease and Stroke Statistics-2021 Update: A Report From  
6 the American Heart Association. *Circulation* **143**, e254-e743,  
7 doi:10.1161/cir.0000000000000950 (2021).
- 8 3 Yao, C. *et al.* Genome-wide mapping of plasma protein QTLs identifies putatively  
9 causal genes and pathways for cardiovascular disease. *Nat Commun* **9**, 3268,  
10 doi:10.1038/s41467-018-05512-x (2018).
- 11 4 Klarin, D. *et al.* Genetics of blood lipids among ~300,000 multi-ethnic participants of  
12 the Million Veteran Program. *Nat Genet* **50**, 1514-1523, doi:10.1038/s41588-018-  
13 0222-9 (2018).
- 14 5 Kraus, W. E. *et al.* Metabolomic Quantitative Trait Loci (mQTL) Mapping Implicates  
15 the Ubiquitin Proteasome System in Cardiovascular Disease Pathogenesis. *PLoS*  
16 *Genet* **11**, e1005553, doi:10.1371/journal.pgen.1005553 (2015).
- 17 6 Libby, P. & Ebert, B. L. CHIP (Clonal Hematopoiesis of Indeterminate Potential):  
18 Potent and Newly Recognized Contributor to Cardiovascular Risk. *Circulation* **138**,  
19 666-668, doi:10.1161/CIRCULATIONAHA.118.034392 (2018).
- 20 7 Bom, M. J. *et al.* Predictive value of targeted proteomics for coronary plaque  
21 morphology in patients with suspected coronary artery disease. *EBioMedicine* **39**,  
22 109-117, doi:10.1016/j.ebiom.2018.12.033 (2019).
- 23 8 Lepojarvi, E. S. *et al.* Usefulness of Highly Sensitive Troponin as a Predictor of Short-  
24 Term Outcome in Patients With Diabetes Mellitus and Stable Coronary Artery  
25 Disease (from the ARTEMIS Study). *Am J Cardiol* **117**, 515-521,  
26 doi:10.1016/j.amjcard.2015.11.038 (2016).
- 27 9 Wallentin, L. *et al.* Plasma proteins associated with cardiovascular death in patients  
28 with chronic coronary heart disease: A retrospective study. *PLoS Med* **18**, e1003513,  
29 doi:10.1371/journal.pmed.1003513 (2021).
- 30 10 Engelen, S. E., Robinson, A. J. B., Zurke, Y.-X. & Monaco, C. Therapeutic strategies  
31 targeting inflammation and immunity in atherosclerosis: how to proceed? *Nature*  
32 *Reviews Cardiology* **19**, 522-542, doi:10.1038/s41569-021-00668-4 (2022).
- 33 11 Aday, A. W. & Ridker, P. M. Targeting Residual Inflammatory Risk: A Shifting  
34 Paradigm for Atherosclerotic Disease. *Front Cardiovasc Med* **6**, 16,  
35 doi:10.3389/fcvm.2019.00016 (2019).
- 36 12 Ridker, P. M. *et al.* Relationship of C-reactive protein reduction to cardiovascular  
37 event reduction following treatment with canakinumab: a secondary analysis from the  
38 CANTOS randomised controlled trial. *Lancet* **391**, 319-328, doi:10.1016/S0140-  
39 6736(17)32814-3 (2018).
- 40 13 Tardif, J. C. *et al.* Efficacy and Safety of Low-Dose Colchicine after Myocardial  
41 Infarction. *N Engl J Med* **381**, 2497-2505, doi:10.1056/NEJMoa1912388 (2019).
- 42 14 Ridker, P. M. *et al.* Antiinflammatory Therapy with Canakinumab for Atherosclerotic  
43 Disease. *New England Journal of Medicine* **377**, 1119-1131,  
44 doi:10.1056/NEJMoa1707914 (2017).
- 45 15 de Kleijn, D. P. *et al.* Local atherosclerotic plaques are a source of prognostic  
46 biomarkers for adverse cardiovascular events. *Arterioscler Thromb Vasc Biol* **30**,  
47 612-619, doi:10.1161/ATVBAHA.109.194944 (2010).
- 48 16 Lee, R. *et al.* A novel workflow combining plaque imaging, plaque and plasma  
49 proteomics identifies biomarkers of human coronary atherosclerotic plaque  
50 disruption. *Clin Proteomics* **14**, 22, doi:10.1186/s12014-017-9157-x (2017).
- 51 17 Alonso-Orgaz, S. *et al.* Proteomic characterization of human coronary thrombus in  
52 patients with ST-segment elevation acute myocardial infarction. *Journal of*  
53 *proteomics* **109**, 368-381, doi:10.1016/j.jprot.2014.07.016 (2014).

- 1 18 Ramaiola, I. *et al.* Changes in thrombus composition and profilin-1 release in acute  
2 myocardial infarction. *Eur Heart J* **36**, 965-975, doi:10.1093/eurheartj/ehu356 (2015).
- 3 19 Funayama, H. *et al.* Increases in interleukin-6 and matrix metalloproteinase-9 in the  
4 infarct-related coronary artery of acute myocardial infarction. *Circ J* **68**, 451-454,  
5 doi:10.1253/Circj.68.451 (2004).
- 6 20 Yong, A. S. *et al.* Intracoronary shear-related up-regulation of platelet P-selectin and  
7 platelet-monocyte aggregation despite the use of aspirin and clopidogrel. *Blood* **117**,  
8 11-20, doi:10.1182/blood-2010-04-278812 (2011).
- 9 21 Chandran, S. *et al.* Inflammatory Differences in Plaque Erosion and Rupture in  
10 Patients With ST-Segment Elevation Myocardial Infarction. *J Am Heart Assoc* **6**,  
11 doi:10.1161/JAHA.117.005868 (2017).
- 12 22 Bambrough, P. *et al.* Trans-Myocardial Blood Interleukin-6 Levels Relate to  
13 Intracoronary Imaging-Defined Features of Plaque Vulnerability and Predict  
14 Procedure-Induced Myocardial Infarction. *Cardiovasc Revasc Med* **39**, 6-11,  
15 doi:10.1016/j.carrev.2021.10.006 (2022).
- 16 23 West, N. E. J. *et al.* Percutaneous Sampling of Local Biomolecule Gradients Across  
17 Coronary Artery Atherosclerotic Plaques. *JACC: Basic to Translational Science* **2**,  
18 646-654, doi:10.1016/j.jacbts.2017.07.007 (2017).
- 19 24 Baldassarre, D. *et al.* Cross-sectional analysis of baseline data to identify the major  
20 determinants of carotid intima-media thickness in a European population: the  
21 IMPROVE study. *Eur Heart J* **31**, 614-622, doi:10.1093/eurheartj/ehp496 (2010).
- 22 25 Baldassarre, D. *et al.* Measurements of carotid intima-media thickness and of  
23 interadventitia common carotid diameter improve prediction of cardiovascular events:  
24 results of the IMPROVE (Carotid Intima Media Thickness [IMT] and IMT-Progression  
25 as Predictors of Vascular Events in a High Risk European Population) study. *J Am*  
26 *Coll Cardiol* **60**, 1489-1499, doi:10.1016/j.jacc.2012.06.034 (2012).
- 27 26 Folkersen, L. *et al.* Mapping of 79 loci for 83 plasma protein biomarkers in  
28 cardiovascular disease. *PLoS Genet* **13**, e1006706,  
29 doi:10.1371/journal.pgen.1006706 (2017).
- 30 27 Filbin, M. R. *et al.* Longitudinal proteomic analysis of severe COVID-19 reveals  
31 survival-associated signatures, tissue-specific cell death, and cell-cell interactions.  
32 *Cell Rep Med* **2**, 100287, doi:10.1016/j.xcrm.2021.100287 (2021).
- 33 28 Gisby, J. *et al.* Longitudinal proteomic profiling of dialysis patients with COVID-19  
34 reveals markers of severity and predictors of death. *Elife* **10**, doi:10.7554/eLife.64827  
35 (2021).
- 36 29 Malatino, L. S. *et al.* Hepatocyte growth factor predicts survival and relates to  
37 inflammation and intima media thickness in end-stage renal disease. *Am J Kidney*  
38 *Dis* **36**, 945-952, doi:10.1053/ajkd.2000.19087 (2000).
- 39 30 Meizlish, M. L. *et al.* A neutrophil activation signature predicts critical illness and  
40 mortality in COVID-19. *Blood Advances* **5**, 1164-1177,  
41 doi:10.1182/bloodadvances.2020003568 (2021).
- 42 31 Folkersen, L. *et al.* Genomic and drug target evaluation of 90 cardiovascular proteins  
43 in 30,931 individuals. *Nature Metabolism* **2**, 1135-1148, doi:10.1038/s42255-020-  
44 00287-2 (2020).
- 45 32 Diaz-Lopez, A. *et al.* Reduced circulating sTWEAK levels are associated with  
46 metabolic syndrome in elderly individuals at high cardiovascular risk. *Cardiovasc*  
47 *Diabetol* **13**, 51, doi:10.1186/1475-2840-13-51 (2014).
- 48 33 da Silva, E. Z. M., Jamur, M. C. & Oliver, C. Mast Cell Function: A New Vision of an  
49 Old Cell. *Journal of Histochemistry & Cytochemistry* **62**, 698-738,  
50 doi:10.1369/0022155414545334 (2014).
- 51 34 Morici, N. *et al.* Mast cells and acute coronary syndromes: relationship between  
52 serum tryptase, clinical outcome and severity of coronary artery disease. *Open Heart*  
53 **3**, e000472, doi:10.1136/openhrt-2016-000472 (2016).

- 1 35 Kaura, A. *et al.* Mortality risk prediction of high-sensitivity C-reactive protein in  
2 suspected acute coronary syndrome: A cohort study. *PLoS Med* **19**, e1003911,  
3 doi:10.1371/journal.pmed.1003911 (2022).
- 4 36 Decker, P. A. *et al.* Increased hepatocyte growth factor levels over 2 years are  
5 associated with coronary heart disease: the Multi-Ethnic Study of Atherosclerosis  
6 (MESA). *American heart journal* **213**, 30-34, doi:10.1016/j.ahj.2019.03.018 (2019).
- 7 37 Haljasmägi, L. *et al.* Longitudinal proteomic profiling reveals increased early  
8 inflammation and sustained apoptosis proteins in severe COVID-19. *Scientific*  
9 *Reports* **10**, 20533, doi:10.1038/s41598-020-77525-w (2020).
- 10 38 Nilsson, E. *et al.* Pregnancy Associated Plasma Protein-A as a Cardiovascular Risk  
11 Marker in Patients with Stable Coronary Heart Disease During 10 Years Follow-Up-A  
12 CLARICOR Trial Sub-Study. *Journal of clinical medicine* **9**, doi:10.3390/jcm9010265  
13 (2020).
- 14 39 Klimczak-Tomaniak, D. *et al.* Temporal patterns of macrophage- and neutrophil-  
15 related markers are associated with clinical outcome in heart failure patients. *ESC*  
16 *Heart Failure* **7**, 1190-1200, doi:<https://doi.org/10.1002/ehf2.12678> (2020).
- 17 40 Bernardi, S. *et al.* TRAIL, OPG, and TWEAK in kidney disease: biomarkers or  
18 therapeutic targets? *Clin Sci (Lond)* **133**, 1145-1166, doi:10.1042/CS20181116  
19 (2019).
- 20 41 McMahon, M. *et al.* A panel of biomarkers is associated with increased risk of the  
21 presence and progression of atherosclerosis in women with systemic lupus  
22 erythematosus. *Arthritis Rheumatol* **66**, 130-139, doi:10.1002/art.38204 (2014).
- 23 42 Winckers, K. *et al.* Increased tissue factor pathway inhibitor activity is associated with  
24 myocardial infarction in young women: results from the RATIO study. *J Thromb*  
25 *Haemost* **9**, 2243-2250, doi:10.1111/j.1538-7836.2011.04497.x (2011).

26

27

28

29

30

31

32

33

34

35

36

37

38

39

40

1 **TABLES**

2

3

Patient ID	Sex	BMI	Smoking	Diabetes	Cardiac status	Statin	Peripheral Sample location
<b>07</b>	Male	41	NA	No	Stable angina	Atorvastatin	Sheath
<b>09</b>	Male	32	Former	No	Stable angina	Simvastatin	Sheath
<b>10</b>	Male	38	Former	Non-IDDM	Stable angina	Simvastatin	Sheath
<b>22</b>	Male	27	Former	No	Stable angina	Simvastatin	Guide catheter
<b>27</b>	<b>Male</b>	<b>44</b>	<b>Current</b>	<b>No</b>	<b>Stable angina</b>	<b>Simvastatin</b>	<b>Cubital vein</b>
<b>43</b>	Male	26	Current	No	Stable angina	Atorvastatin	Cubital vein
<b>44</b>	Male	31	Never	No	Stable angina	Atorvastatin	Sheath
<b>45</b>	Male	42	Former	Non-IDDM	Stable angina	Simvastatin	Cubital vein
<b>53</b>	Male	26	Former	No	Unstable angina	Atorvastatin	Sheath
<b>54</b>	Male	28	Former	No	Stable angina	Atorvastatin	Sheath
<b>58</b>	<b>Male</b>	<b>28</b>	<b>Former</b>	<b>Non-IDDM</b>	<b>Stable angina</b>	<b>Simvastatin</b>	<b>Sheath</b>
<b>65</b>	Male	20	Current	No	NSTEMI	Simvastatin	Sheath

4

5

**Table 1. Demographic characteristics for the PlaqueTec CS1 trial.**

6

All patients with blood samples collected before PCI are listed. Locations of the blood sample taken peripherally, prior to heparin infusion. Note details for the 2 patients with the biosignature at baseline, 27 and 58, are displayed in bold. Abbreviations: insulin-dependent diabetes, IDDM; Non-ST-elevation myocardial infarction, NSTEMI.

7

8

9

10

11

12

13

14

15

16

17

18

19

20

21

22

23

24

25

26

27

28

29

30

31

32

33

34

35

36

37

38

39

40

41

1  
2

**A**

	<b>Biomarker score 0 (n=2862)</b>	<b>Biomarker score 1 (n=39)</b>
<b>Age (y)</b>	65 (60-67)	65 (62-70)
<b>Gender (M/F)</b>	1314/1548	26/13
<b>Cardiovascular risk factors n (%)</b>		
<b>Family History CHD</b>	1660 (58)	25 (66)
<b>Smoking</b>	401 (14)	5 (13)
<b>Diabetes</b>	789 (28)	13 (33)
<b>Hypertension</b>	2216 (77)	35 (90)
<b>BMI (kg/m<sup>2</sup>)</b>	27 (24-29)	28 (25-31)
<b>Biochemistry</b>		
<b>LDL-cholesterol (mmol/L)</b>	3.5 (2.9-4.3)	3.7 (2.8-4.3)
<b>HDL-cholesterol (mmol/L)</b>	1.20 (1.01-1.46)	1.13 (0.94-1.29)
<b>Triglycerides (mmol/L)</b>	1.34 (0.96-1.95)	1.87 (1.28-2.67)
<b>CRP (mg/L)</b>	1.92 (0.82-3.67)	3.2 (2.49-4.63)
<b>Drugs</b>		
<b>Statin</b>	1348 (40)	10 (24)
<b>Antiplatelet</b>	566 (17)	0
<b>Ultrasonographic Measures</b>		
<b>C-IMT<sub>mean</sub> (mm)</b>	0.83 (0.73-0.98)	0.91 (0.82-1.06)
<b>C-IMT<sub>max</sub> (mm)</b>	1.84 (1.39-2.41)	2.22 (1.64 -2.71)
<b>C-IMT<sub>mean-max</sub> (mm)</b>	1.17 (1.02-1.37)	1.29 (1.15-1.55)
<b>Presence of plaque (n) (%)</b>	1898 (66)	31 (79)

3  
4

**B**

		<b>N</b>	<b>b (SE)</b>	<b>p</b>
<b>Biomarker score</b>	c-IMT <sub>mean</sub>	2900	.039 (.29)	0.178
	c-IMT <sub>max</sub>	2900	.026 (.012)	0.033
	c-IMT <sub>mean-max</sub>	2901	.0106 (.042)	0.158

5  
6

**C**

	<b>HGF</b>	<b>PAPPA</b>	<b>SPON1</b>
<b>HGF</b>	1		
<b>PAPPA</b>	0.37*	1	
<b>SPON1</b>	0.55*	0.38*	1
<b>CRP</b>	0.2275*	-0.1030	0.0391

7  
8

**Table 2. IMPROVE cohort and biosignature**

- 9 A. Demographic characteristics for IMPROVE according to the plasma levels for HGF, and also  
10 PAPPA and SPON1 included in the biomarker score categorized as below (0) and over (1) the 90<sup>th</sup>  
11 percentile for all three proteins. Continuous variables are reported as median (interquartile range)  
12 and categorical variables as number (percentages); CHD: coronary heart disease; Presence of  
13 plaque: number of study participants where a plaque has been recorded.
- 14 B. Association of the biomarker score 1 (> 90<sup>th</sup> percentile) with measures of c-IMT mean or maximum  
15 (max) after adjustment by age, gender and latitude by linear regression. (Note that latitude is highly  
16 correlated with c-IMT and plaque).
- 17 C. Pairwise correlation between the biomarkers in analysis expressed by Spearman rho coefficient,  
18 \*  $p < 0.0001$

19  
20  
21  
22

1

Cohort	Biosignature (n)	No biosignature (n)	Biosignature prevalence (%)	Biosignature CV event (%)	No biosignature CV event (%)	Biosignature mortality (%)	No biosignature mortality (%)
PlaqueTec CS1 - CVD patients undergoing PCI procedure	2	10	16.7	NA	NA	NA	NA
PACIFIC - participants with suspected CVD undergoing CCTA <sup>7</sup>	3	193	1.5	NA	NA	NA	NA
IMPROVE - participants with >3 risk factors for CVD, 3 year follow up for CVD events	39	2862	1.3	20.5	6	NA	NA
MGH Boston cohort - majority COVID-19 positive, n=358 day 0 samples <sup>27</sup>	11	347	3.1	45.5	7.7	63.6	11.3
Imperial College ESKD subcohort A COVID-19 positive, first samples <sup>28</sup>	2	53	3.6	NA	NA	100	13.2
Imperial College ESKD subcohort B COVID-19 positive, serum <sup>28</sup>	2	44	4.3	NA	NA	0	21.7
Imperial College ESKD subcohort A COVID-19 <sup>28</sup> negative	1	50	2.0	NA	NA	NA	NA
Imperial College ESKD subcohort B COVID-19 <sup>28</sup> negative, serum	0	11	0	NA	NA	NA	NA

2

3

**Table 3. Summary of biosignature prevalence and outcomes in different cohorts**

4

The table displays comparisons of biosignature prevalence and outcomes between cardiovascular disease cohorts, a respiratory disease/COVID-19 cohort and an ESKD/Covid-19 cohort. To identify participants with the biosignature a definition of >90th centile for HGF, and also >90th centile for PAPPa and SPON1 levels was used. Individuals identified with the biosignature were in the minority, but a had higher incidence of cardiovascular events in IMPROVE and the respiratory disease/COVID-19 cohort, and a higher mortality in the respiratory disease/COVID-19 cohort and the ESKD/COVID-19 subcohort A compared with individuals without the biosignature. Abbreviations: CV, cardiovascular; CVD, cardiovascular disease; CCTA, coronary computed tomography angiography; ESKD, end-stage kidney disease; NA, not available.

12

13

14

15

16

17

18

19

20

21

22

23

24

25

26

27

28



1

Cohort	Biosignature CRP (mg/L)	No biosignature CRP (mg/L)	CRP higher in Biosignature group?	Biosignature proteins correlate with CRP	Biosignature proteins correlating positively with MPO	Biosignature proteins correlating positively with tryptase	Biosignature proteins correlating positively with syndecan-1
<b>CVD PlaqueTec CS1</b>	3.4 (2.1-4.7)	12.8 (0.7-15)	no	no	HGF, TFPI, CCL28	NA	NA
<b>CVD PACIFIC<sup>7</sup></b>	<2.5	<2.5 n=159 >2.5 n=33	no	NA	HGF, PAPP, SPON1, TWEAK, TFPI	NA	NA
<b>CVD IMPROVE</b>	3.2 (2.49-4.63)	1.92 (0.82-3.67)	Yes	HGF	HGF, PAPP, SPON1	NA	NA
<b>Covid-19<sup>27</sup></b>	0-180+ (Category 1-5)	0-180+ (Category 1-5)	no	NA	NA	HGF, PAPP, SPON1, TWEAK, TFPI, CCL28	HGF, PAPP, SPON1, TFPI, CCL28
<b>ESKD subcohort A<sup>28</sup></b>	220.7 (163.5-278)	79.9 (0.6-386.1)	no	HGF	HGF, PAPP, SPON1, TWEAK, TFPI, CCL28	HGF	NA
<b>ESKD subcohort B<sup>28</sup></b>	197.6 (34.4-360.7)	155.6 (18.3-405.6)	no	NA	none	TWEAK, CCL28	NA

2

3

4

5

6

7

8

9

10

11

12

13

14

15

16

17

18

19

20

21

22

23

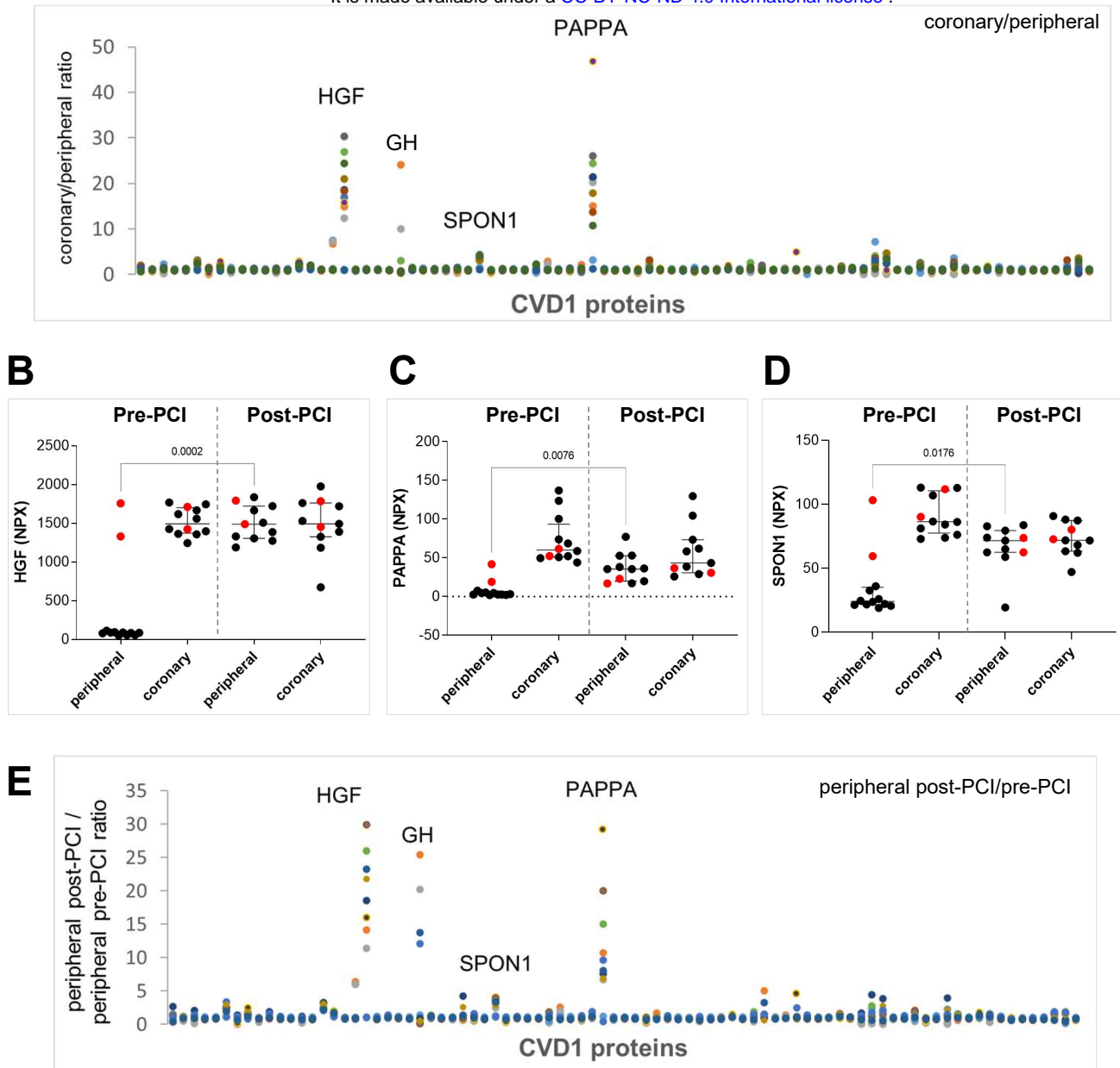
**Table 4. Comparison of biosignature CRP levels and correlations with MPO, tryptase and syndecan-1 in different cohorts**

For CRP levels, medians (range) are shown. For correlations, proteins with a positive and significant ( $p < 0.05$ ) Spearman pairwise correlation are shown. Results of correlation analysis are detailed in the Supplement File S1. NA, not available.

<b>Protein (Uniprot ID)</b>	<b>Function</b>	<b>Plasma levels and CVD outcomes</b>
<b>HGF</b> (P14210)	Protective role in atherosclerosis: anti-apoptotic, anti-fibrotic, pro-angiogenic, anti-inflammatory. Linked with unstable carotid atherosclerosis. Causal role in elevated triglyceride levels.	High levels linked with CVD risk and mortality <sup>9,36</sup> Causal role in raised triglyceride levels <sup>31</sup> Increased risk of death in COVID cohort <sup>37</sup>
<b>PAPPA</b> (Q13219)	Metalloprotease that cleaves IGF binding proteins, allowing IGF to bind to its receptor, which can have several effects on vascular cells including release of inflammatory cytokines. High levels linked unstable plaques/erosions. Causal role in type 2 diabetes	High levels linked with CVD risk <sup>38</sup> Causal role in Type 2 diabetes <sup>31</sup>
<b>SPON1</b> (Q9HCB6)	Inhibitor of calcification in bone. Regulated by fibroblast growth factor 2 (FGF2), retinoic acid, IGF and Toll-like Receptor-4 agonists. Upregulated in osteoarthritis. Inhibitor of vascular smooth muscle cell proliferation and migration. Causal in atrial fibrillation.	Higher levels linked with adverse events in CHD cohort <sup>39</sup> and mortality <sup>9</sup> Causal role in AF <sup>31</sup> Increased risk of death in COVID cohort <sup>28</sup>
<b>TWEAK</b> (O43508)	Also called TNFSF12. Binds to TWEAKR inducing apoptosis, proliferation and migration of endothelial cells. Stimulates cytokine secretion and chemokine IL-8, via NFkB activation. Proinflammatory. Linked with endothelial dysfunction.	Low levels linked with higher CVD risk <sup>40</sup> Higher levels with higher CVD risk in SLE and controls <sup>41</sup> Higher levels with lower death rates in COVID cohort <sup>28</sup>
<b>TFPI</b> (P10646)	Tissue factor pathway inhibitor. Binds factor X and interacts with lipoproteins. Anti-thrombotic action. Associated with inflammation and endothelial dysfunction.	High levels linked with CV damage and MI <sup>42</sup>
<b>CCL28</b> (Q9NRJ3)	Chemokine that binds receptors CCR10 and CCR3 and exerts chemotaxis in T, B cells and eosinophils. Induced by pro-inflammatory cytokines and bacteria.	CVD not directly tested Predictor of death in a COVID cohort <sup>28</sup>

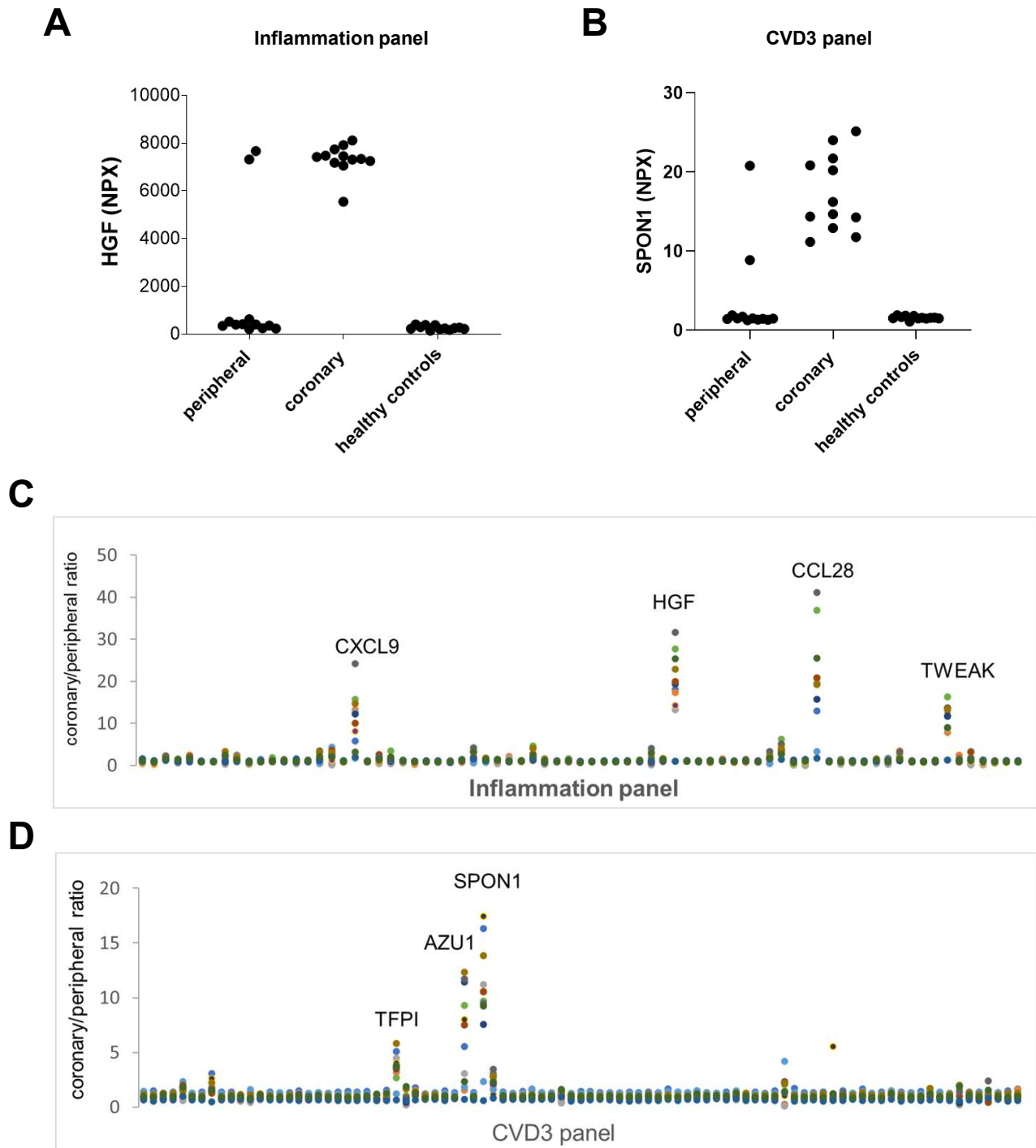
1  
2  
3  
4  
5  
6

**Table 5. Summary of functions of the biosignature proteins**



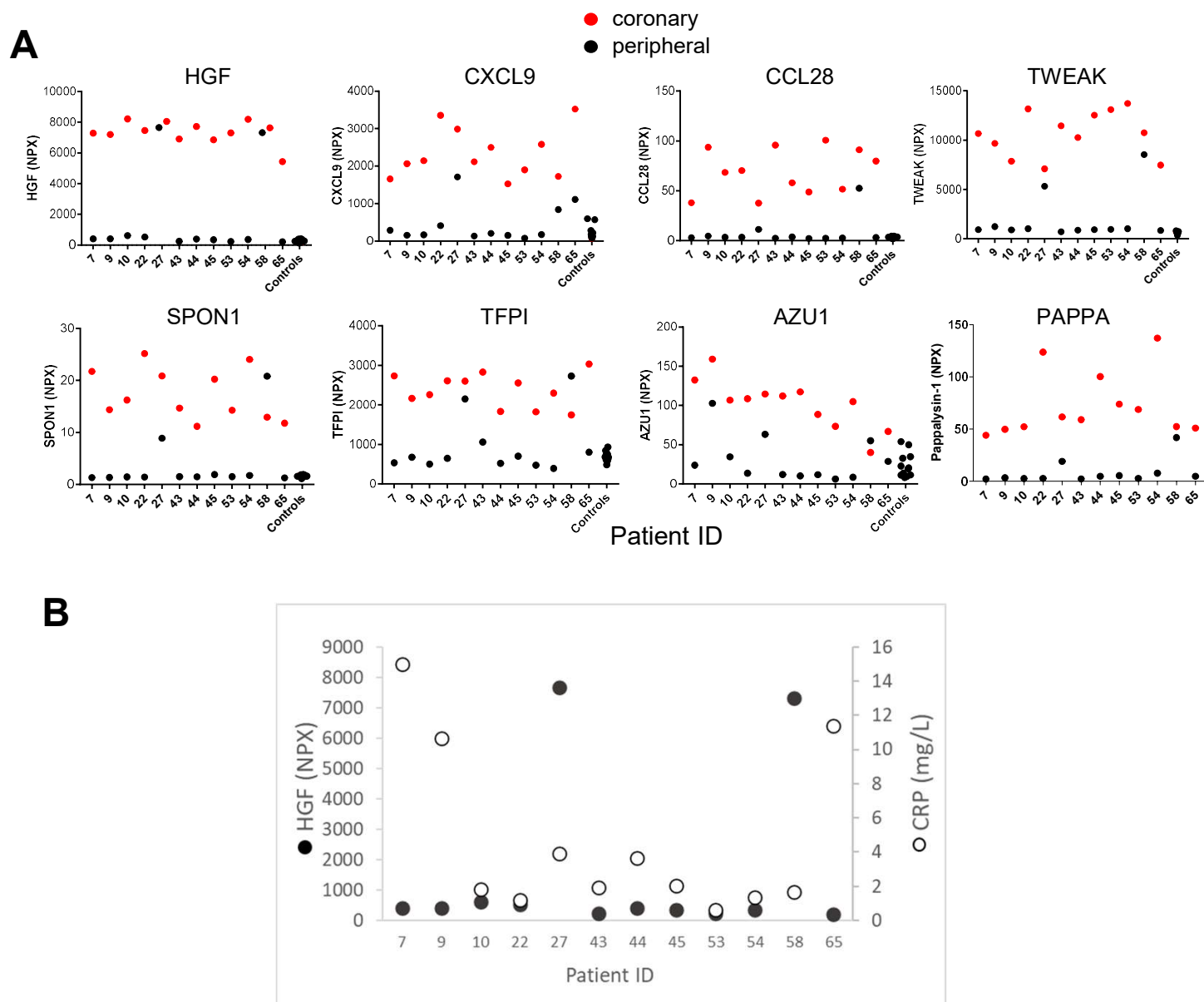
**Figure 1. Comparison of coronary and peripheral protein levels – CVD1 protein panel**

- Protein levels in plasma samples from 12 patients from the CS1 cohort, expressed as ratio of coronary/peripheral levels (CVD1 panel proteins on x-axis). Each datapoint represents an individual patient, with each patient displayed by a different colour. Note 3 proteins indicated have high coronary/peripheral protein ratios for 10 of the 12 patients.
- HGF absolute protein levels (NPX units) in coronary and peripheral plasma, pre- (n=12) and post-PCI procedure (n=11). Each datapoint represents an individual patient. Note that 2 patients had much higher levels of HGF (shown in red) in peripheral samples prior to PCI compared with the other 10 patients.
- As for B with absolute levels of PAPP A (NPX units). Note that 2 patients had much higher levels of PAPP A (shown in red) in peripheral samples prior to PCI compared with the other 10 patients.
- As for C with absolute levels of SPON1 (NPX units). Note that 2 patients had much higher levels of SPON1 (shown in red) in peripheral samples prior to PCI compared with the other 10 patients.
- Post-PCI/pre-PCI ratio of systemic samples (CVD1 panel). Growth Hormone (GH). Note similar patterns to A, indicating that for 10 of the 12 patients, conditions of the PCI procedure raised the peripheral levels of these specific proteins. For 2 patients, these proteins were already at high levels peripherally at baseline, before the procedure.



**Figure 2. Comparison of coronary and peripheral protein levels repeat analysis of CS1 plasma in CVD3 and Inflammation protein panels**

- Repeatability measurements of CS1 coronary and peripheral samples for HGF in Inflammation panel and comparison with healthy controls (age- and sex-matched for the CS1 cohort).
- As for A with but with SPON1 using the CVD3 panel. (Note that patterns for HGF and SPON1 measured on the CVD1 panels in Fig 1B and D were similar, but NPX values differed between the 2 panels due to different dilution factors and dynamic ranges of the assays).
- Coronary:peripheral protein ratios, Inflammation panel. Comparing with Figure 1A, a similar HGF pattern was observed. Further proteins with similar patterns were identified: CXCL9, CCL28 and TWEAK.
- Coronary:peripheral protein level ratios, CVD3 panel. Comparing with Figure 1A, a similar but more distinct SPON1 pattern was observed. Further proteins with similar patterns were identified: TFPI and AZU1.



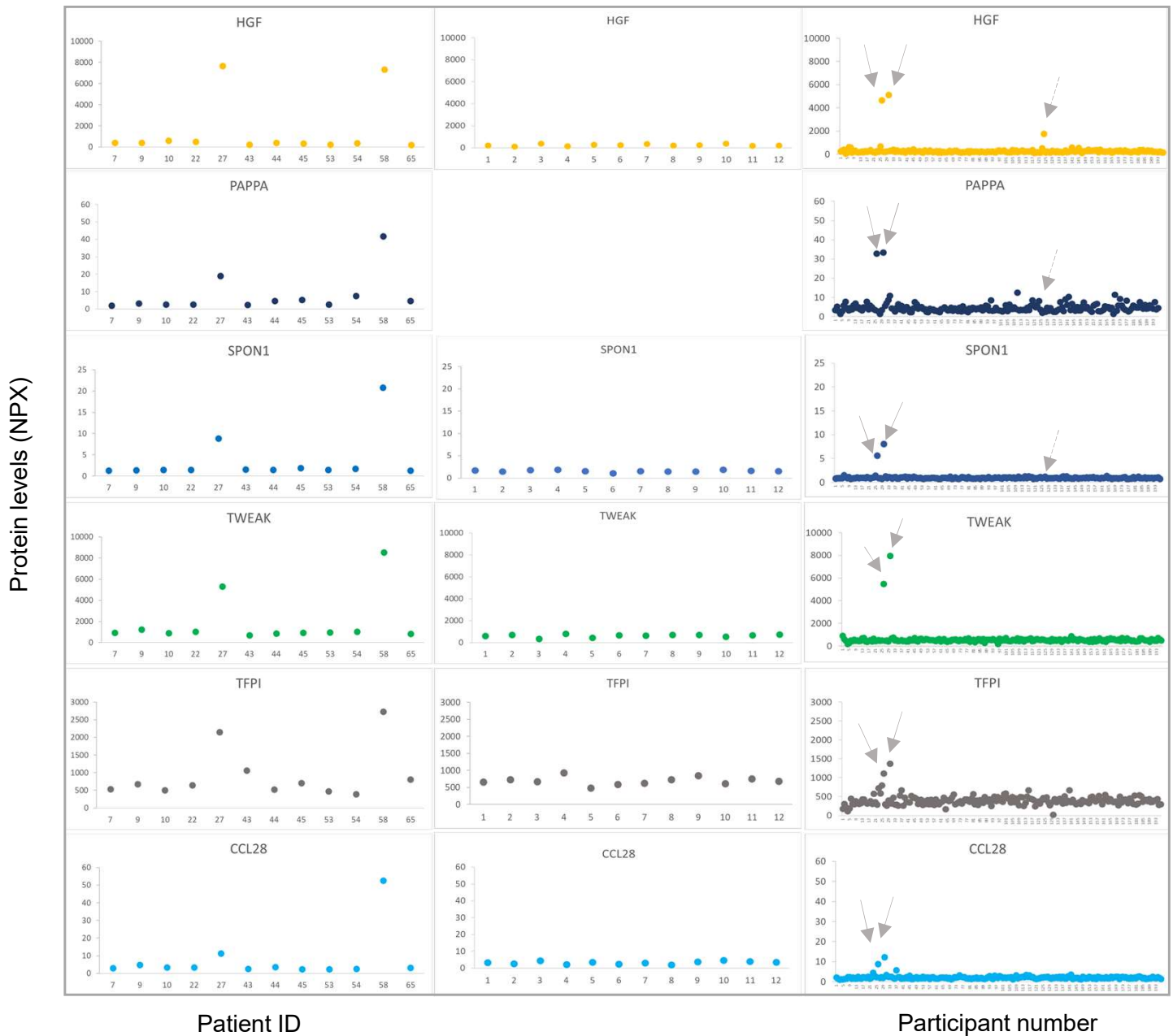
**Figure 3. CS1 patient and healthy control peripheral proteins levels**

**A.** Individual patient absolute levels (NPX) for selected proteins (both coronary and peripheral), and comparing with 12 healthy, age- and sex-matched control plasma samples, data from the CVD3 and Inflammation panels. These raw data plots revealed that levels of these proteins in coronary arteries of patients are clearly higher than healthy, age- and sex-matched control peripheral levels ( $n=12$ ). This effect was less pronounced for AZU1 and CXCL9. PAPPAsin-1 control levels were not determined as PAPPAsin-1 is not included on the CVD3 and Inflammation panels. Thus 2 patients had a clear systemic pattern of elevated HGF, SPON1, TFPI, CCL28, TWEAK and PAPPAsin-1. **B.** No correlation of hsCRP with HGF levels Spearman  $R = -0.01$  ( $P = 0.99$ ).

CS1 cohort

CS1 age-matched healthy

PACIFIC cohort

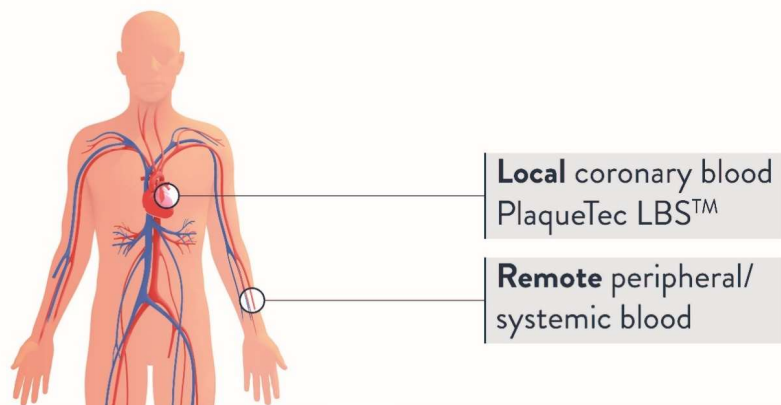


#### Figure 4. Comparison of CS1 with PACIFIC cohort

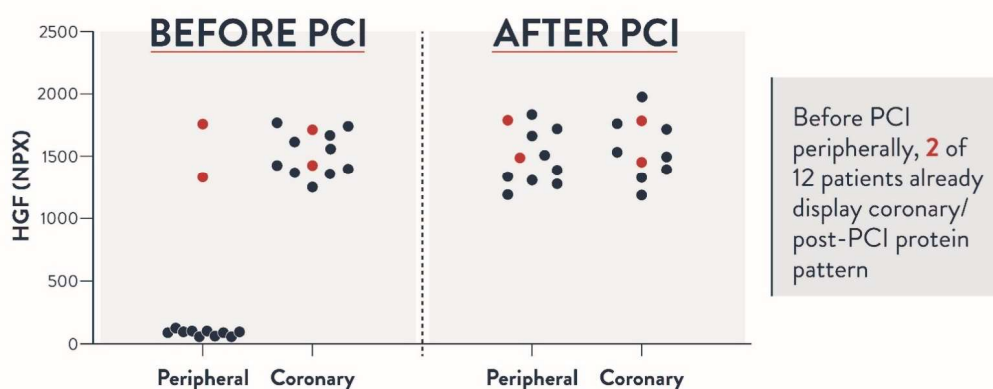
Absolute levels for peripheral proteins are displayed for CS1 cohort (left) and data was downloaded from Bom et al<sup>7</sup>, PACIFIC cohort (right). Age-matched control levels can be compared with CS1 cohort as they were analysed together. NPX levels between CS1 and PACIFIC cohorts cannot be compared directly, but patterns can be identified, displaying similarities in the expression levels of the 6 proteins. 2 participants in the PACIFIC cohort displayed distinctly higher levels of the 6 proteins compared with the majority of participants (indicated by arrows). Using a definition of >90<sup>th</sup> centile for HGF and also PAPP and SPON1 identified 1 additional participant (dashed arrows).

## Supplementary Figures

### Coronary artery and peripheral blood sampling



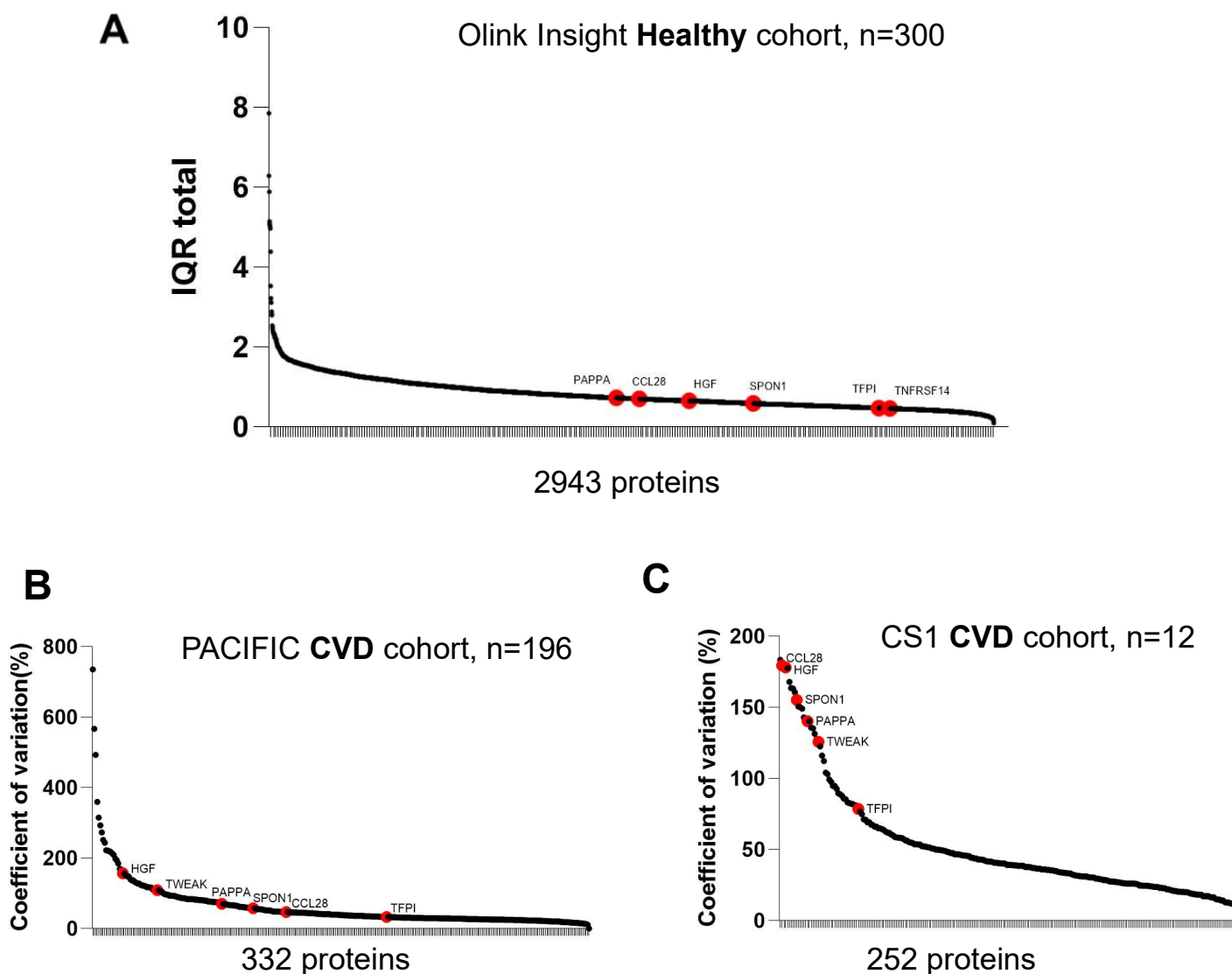
### Analysis of multiple protein levels by proximity extension assay



### Biosignature identification and potential diagnostic

Individuals with **combination** of high levels of **HGF**, **PAPP** and **SPON1** (>90th centile) linked with **increased risk of MACE and death** in reference cohorts

## Supplementary Figures

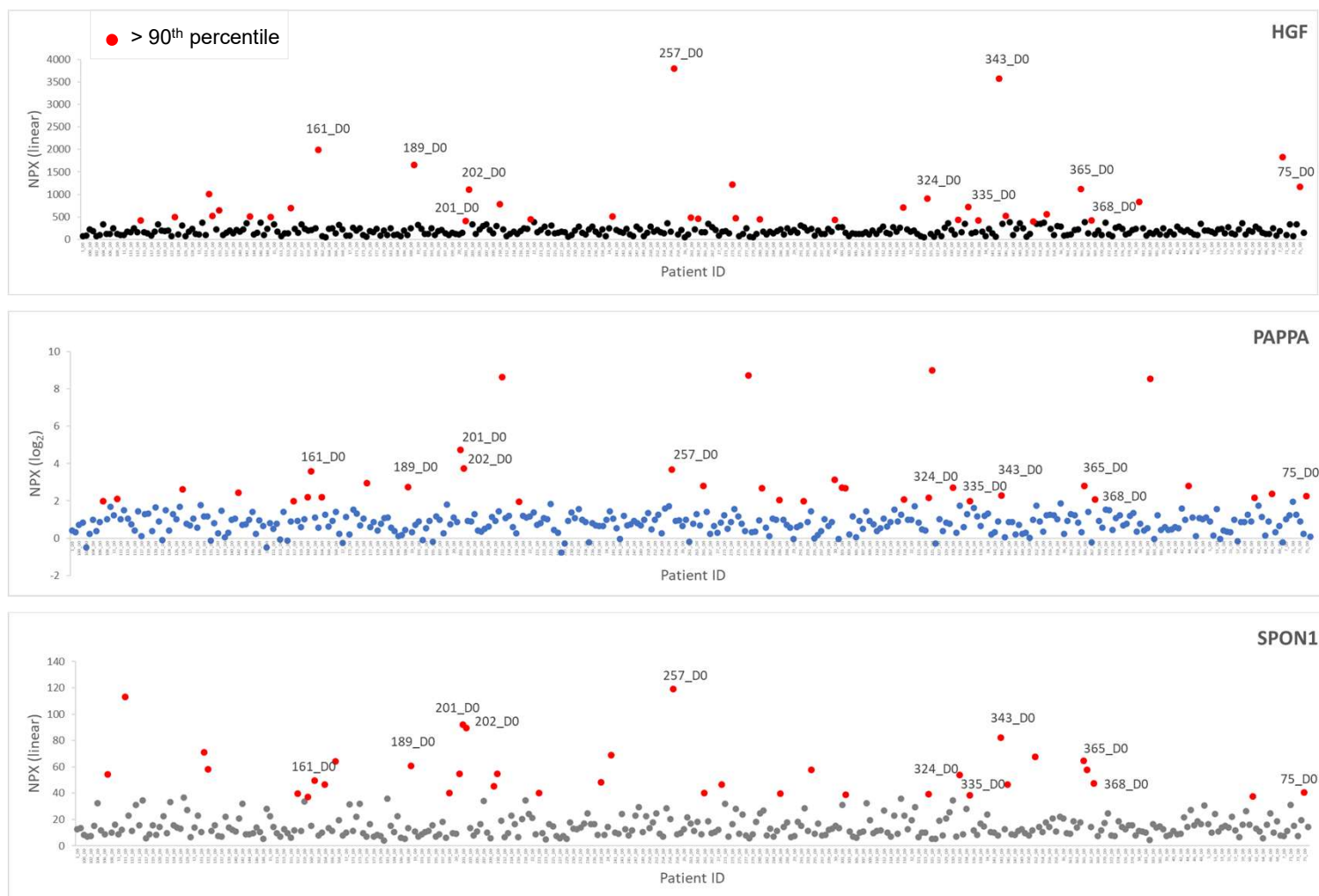


### Supplement Figure S1. Variability of proteins measured by IQR or coefficient of variation.

- Centred interquartile range (IQR) values downloaded from <https://insight.olink.com/data-stories/normal-ranges> for 2943 proteins. IQR values for biosignature proteins are highlighted in red are relatively low, i.e. this healthy cohort is unlikely to have a minority of participants with very different/high levels compared with the other participants.
- Coefficient of variation in protein levels in the PACIFIC cohort where biosignature proteins are among the more variable proteins.
- Coefficient of variation in protein levels in the CS1 cohort where biosignature proteins are among the more variable proteins.



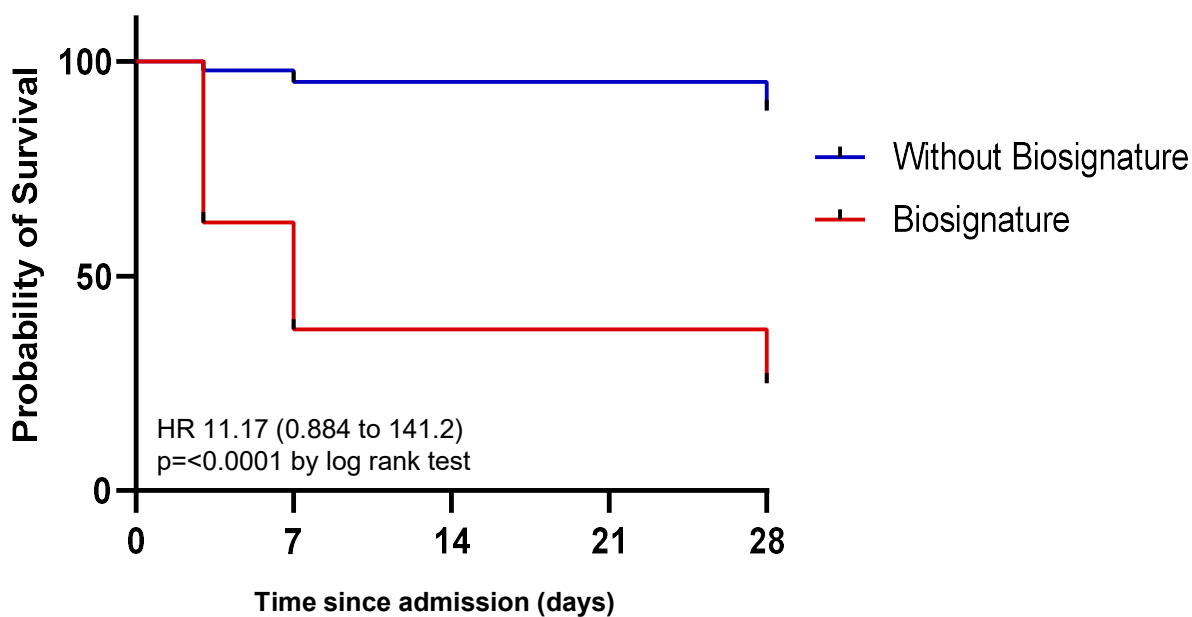
## Supplementary Figures



### Supplement Figure S2 . Identification of participants with the biosignature in the MGH COVID-19 study

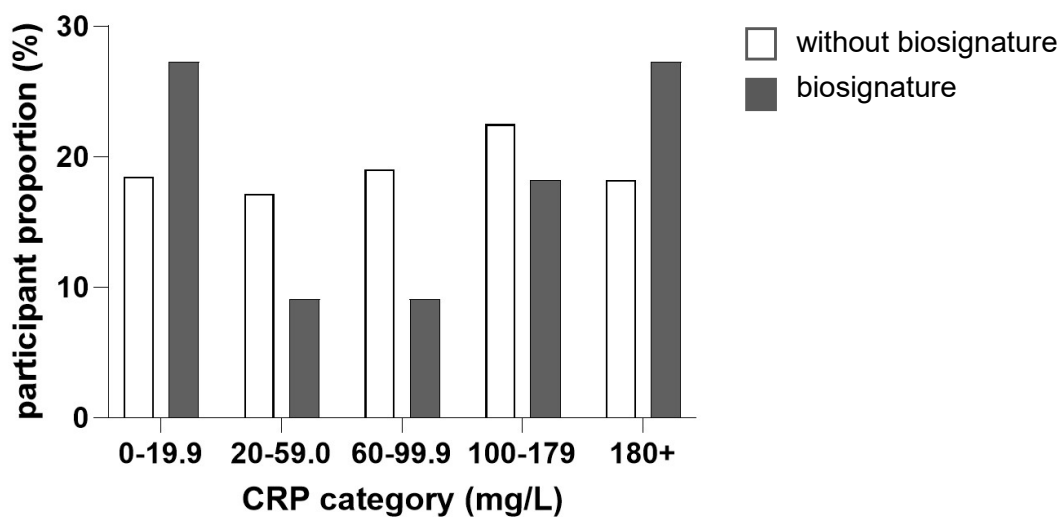
Data was downloaded from Filbin et al<sup>27</sup> and levels of HGF, PAPP A and SPON1 in plasma from participants at day 0 were used to identify participants with the biosignature. Participants with levels in the 90<sup>th</sup> percentile are displayed in red, while those below the 90<sup>th</sup> percentile are displayed in black (HGF), blue (PAPP A) and grey (SPON1). The 11 participants with plasma levels in the 90<sup>th</sup> percentile for HGF, PAPP A and also SPON1 are indicated by their ID number on the graph. Note that the MGH Boston COVID-19 NPX levels are 3 times higher than those in their reported dataset and in the graphs, this is taking into account the statement in the methods section that blood samples were diluted by a factor of 3 prior to analysis.

## Supplementary Figures



**Supplement Figure S3. Survival outcomes for patients with the biosignature in the MGH (COVID-19) cohort**  
Kaplan-Meier curve displaying probability of survival (%) in MGH patients with the biosignature (11 patients) or without the biosignature (remaining 373 individuals). Shown are hazard ratios (HR, 95% CI and p value calculated by log rank test. Note that confidence intervals are large, due to the unbalanced groups and relatively small number of individuals in the biosignature group.

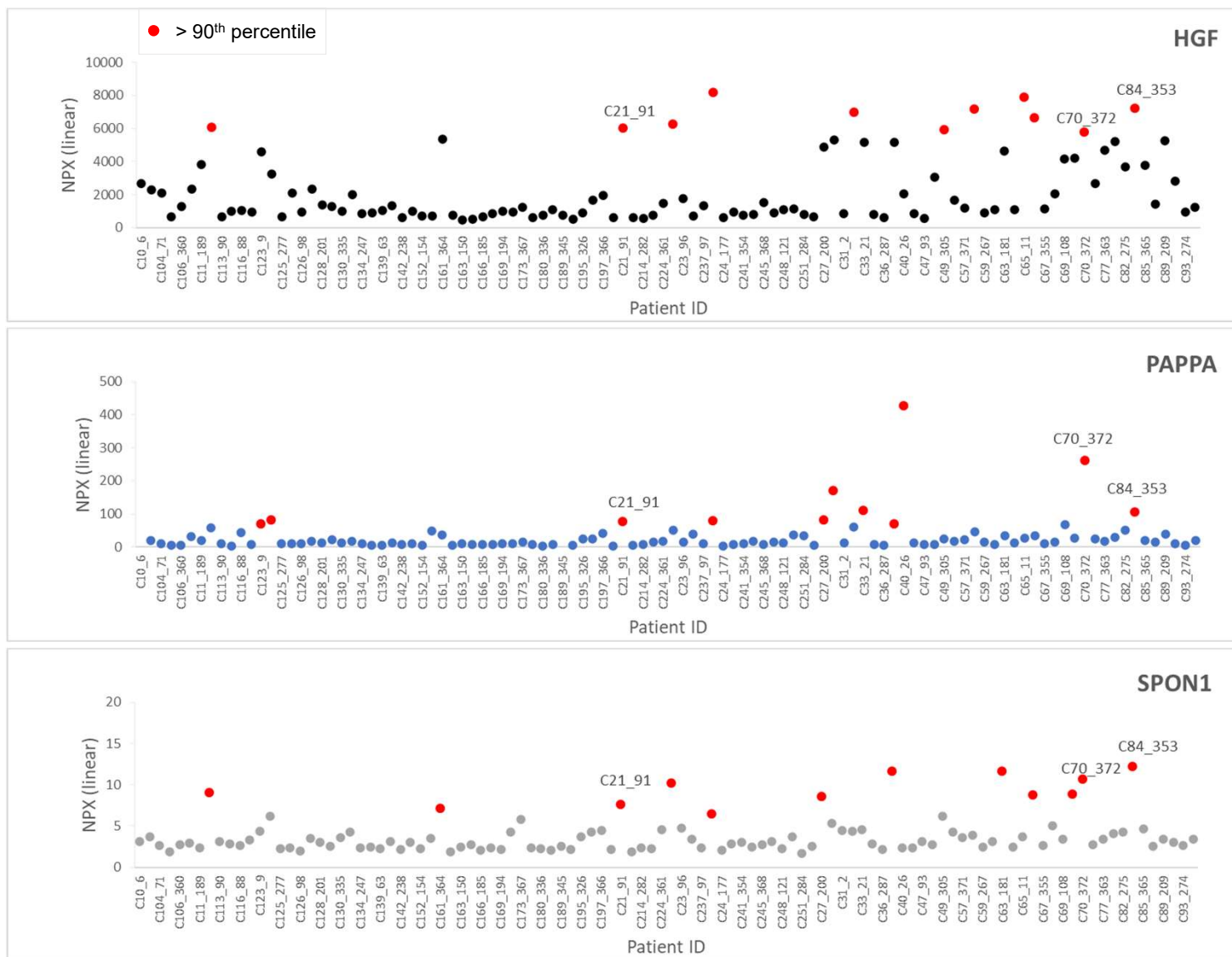
## Supplementary Figures



### Supplement Figure S4. CRP ranges in the MGH (COVID-19) cohort

Proportions of participants in the different CRP categories, with or without the biosignature are displayed. Note that ranges of CRP levels were similar across the ranges, particularly at the lowest and highest ranges.

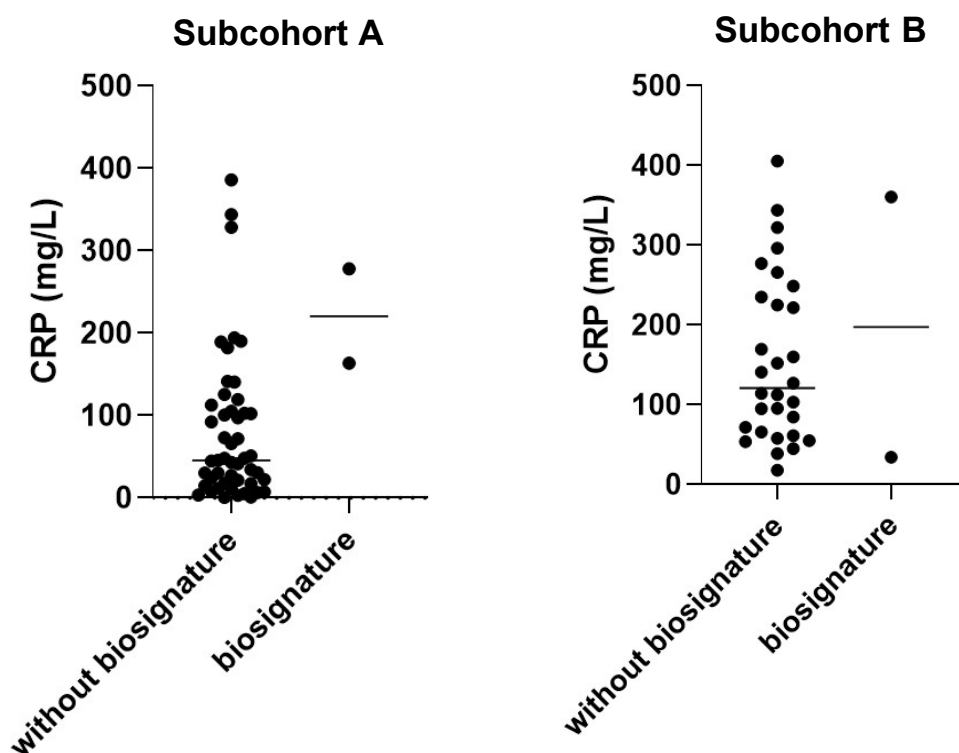
## Supplementary Figures



### Supplement Figure S5. Identification of participants with the biosignature in the Imperial College ESKD COVID-19 study

Data was downloaded from Gisby et al<sup>28</sup> and levels of HGF, PAPP A and SPON1 in plasma were used to identify participants with the biosignature in subcohort A (first sample collected) are shown. Participants with levels in the 90<sup>th</sup> percentile are displayed in red, while those below the 90<sup>th</sup> percentile are displayed in black (HGF), blue (PAPP A) and grey (SPON1). The 3 participants with plasma levels in the 90<sup>th</sup> percentile for HGF, PAPP A and also SPON1 are indicated by their ID number on the graph. 2 of the participants with the biosignature tested positive for COVID-19 (C21 and C84) and 1 tested negative (C70).

## Supplementary Figures



### Supplement Figure S6. CRP levels in the ESKD COVID-19 positive cohorts

Levels of CRP in participants in subcohort A and subcohort B, with or without the biosignature are displayed. Note that participants with the biosignature (2 in each case) fall within the ranges of the whole cohort.

### Supplementary File S1 (Excel file attachment): List of proteins included in analysis and biosignature protein correlations with MPO, tryptase and syndecan-1

Different cohorts and correlations between HGF, PAPP A, SPON1, CCL28, TFPI and TWEAK and mast cell (tryptase), neutrophil (MPO) and glyocalyx (syndecan-1) markers, where data is available on these protein levels. These are a series of tables showing the Spearman R and p values for each pairwise correlations.