

1 Income-based differences in health care utilization in relation to mortality: Trends in the Swedish
2 population between 2004-2017

3

4 *Pär Flodin¹, Peter Allebeck¹, Ester Gubi¹, Bo Burström¹, Emilie E. Agardh¹

5

6 ¹Department of Global Public Health, Karolinska Institutet, Stockholm, Sweden

7

8

9 *Corresponding author

10 Pär Flodin, PhD

11 E-mail: par.flodin@ki.se

NOTE: This preprint reports new research that has not been certified by peer review and should not be used to guide clinical practice.

12 Abstract

13 **Background:** Despite universal health care, socioeconomic differences in health care utilization (HCU) persist in
14 modern welfare states. The aim of this study is to assess income-based differences in utilization of primary- and
15 specialized care in relation to mortality for the Swedish general population (>15 years old) between 2004 and
16 2017.

17 **Methods and Findings:** Using a repeated cross-sectional register-based study design, data on utilization of i)
18 primary- ii) specialized outpatient- and iii) inpatient care, as well as iv) cause of death, were linked to family
19 income and sociodemographic control variables. HCU and mortality for all-disease as well as for the five disease
20 groups causing most deaths were compared for the lowest (Q1) and highest (Q5) income quintile using logistic
21 regression. We also analysed income-related differences in the number of health care encounters ≤ 5 years
22 prior to death.

23 In 2017, for all diseases combined, Q1 utilized marginally more primary- and specialized
24 outpatient care than Q5 (adjusted odds ratio [OR] =1.07, 95% CI: 1.07, 1.08; OR 1.04, 95% CI: 1.04, 1.05,
25 respectively), and considerably more inpatient care (OR=1.44, 95% CI: 1.43, 1.45). The largest relative
26 inequality was observed for mortality (OR 1.78, 95% CI: 1.74, 1.82). This pattern was broadly reproduced for
27 each of the five diseases.

28 Time trends in HCU inequality varied by level of care. Each year, Q1 (vs. Q5) used more
29 inpatient care and suffered increasing mortality rates. However, usage of primary- and specialized outpatient
30 care increased more among Q5 than in Q1. Finally, Q1 and Q5 had similar number of encounters in primary-
31 and inpatient care ≤ 5 years prior to death, but Q1 had significantly fewer outpatient encounters.

32 **Conclusions:** Income-related differences in the utilization of primary and specialized outpatient care were
33 considerably smaller than for mortality, and this discrepancy widened with time. Facilitating motivated use of
34 primary- and outpatient care among low-income groups could help mitigate the growing health inequalities.

35

36 **Keywords:** *health care utilization, vertical equity, cause specific mortality, Swedish population registers, time*
37 *trends*
38
39 **Abbreviations:** *HCU: Health care utilization; SES: Socioeconomic status; Q1: Lowest income quintile; Q5:*
40 *Highest income quintile*

41 **Introduction**

42

43 Low socioeconomic status (SES) is associated with higher mortality rates, and more years lived with disability
44 and disease (1). Despite universal health care, socioeconomic differences in health care utilization (HCU) persist
45 in modern welfare states (2). Reducing avoidable socioeconomic inequalities is a high priority in public health,
46 and provision of health care in proportion to need is one cardinal strategy. In Sweden, as in many countries, the
47 law ordains that "...those who have the greatest need for care must be given priority" (3). However, the degree
48 to which this has been accomplished is not conclusively determined.

49 In a recent systematic review of 57 studies from high income countries, Lueckmann et al. (2) report that in the
50 majority of studies, higher SES was associated with higher utilization of specialized outpatient care for a given
51 self-reported health status. The findings of primary care utilization were more heterogeneous, and the authors
52 concluded that inequities were more common in specialized outpatient care compared to primary care. Hence,
53 Lueckmann et al. (2) pointed out that "... a distinction of medical appointments between primary and
54 specialized [outpatient] care is necessary when analysing socioeconomic inequalities in physician visits,
55 because the results differed greatly according to the type of doctor and the type of service."

56 To evaluate the effects of public policy and health care reforms on inequality in HCU and mortality, analysis of
57 time trends are informative (4). Although Sweden was successful in reducing inequalities e.g., by providing
58 universal health care and free education, relative inequalities in mortality have increased since 1990 (5). The
59 Swedish health care system has during the same period undergone major changes, such as the marketization of
60 primary care (spurred by the Primary Health Care Choice Reform in 2010) and a recent increase in virtualization
61 of primary care. Although previous research indicates that marketisation increased inequalities in HCU (6) the
62 evidence is sparse and incomplete (7). Similarly, studies of trends in inequalities in utilization of specialized care
63 show mixed results (8,9), and updated, large scale studies are lacking. Importantly, to what extent trends in
64 socioeconomic difference in HCU relates to mortality inequalities is not well studied.

65 The Scandinavian health registers provide unique opportunities to investigate this. In Sweden, national
66 population health care registers are regularly updated (10), and microdata on HCU and death can be linked to

67 social databases through civic registration numbers. This enables analysis of socioeconomic differences and
68 utilization of primary- and specialized outpatient and inpatient care as well as mortality for the general
69 population over time.

70 The aim of this study is to assess time trends of income-related differences in use of different levels of health
71 care in relation to mortality between the years 2004 and 2017. To do this we compared the lowest (Q1) with
72 the highest income quintile (Q5) with regard to mortality and the utilization of primary care, specialized
73 outpatient care, and inpatient care, respectively. We studied each of the five disease groups that account for
74 the largest number of deaths in Sweden 2017 (cardiovascular disease, neoplasms, neurological disease, chronic
75 respiratory disease, and diabetes), as well as all-disease. Specifically, we addressed the following questions: 1)
76 How do low- and high-income groups differ with regard to HCU and mortality in 2017 and over time? 2) To
77 what extent do income-related differences in HCU and mortality vary across disease groups? 3) How do the
78 low- and high-income groups differ in numbers of health care encounters ≤ 5 years prior to death?

79 **Methods**

80 **Study population and data sources**

81 The study population comprised all individuals 16 years and older living in Sweden any year between 2014 and
82 2017, that were registered in the Longitudinal Integrated Database for Health Insurance and Labour market
83 Studies (11) by Statistics Sweden (Table 1). Data on specialized out- and inpatient HCU (from the National
84 Patient Register, NPR) and mortality (from the Cause of Death Register, CDR) were obtained from the Swedish
85 National Board of Health and Welfare (NBHW). Since primary care data is not available at the national level, we
86 contacted the 21 Swedish counties maintaining electronic records of diagnoses in primary care. Seventeen
87 counties provided time series covering one or more years (S1 Table). Whereas the national health registers
88 provided by NBHW have well documented and high population coverage (10), primary care data lacked
89 estimates of coverage rates, which likely vary by region and over time. Hence, crude rates of primary care
90 utilization could partly be affected by increasing coverage rates and should be interpreted with caution.

91 For disease-specific analyses, we selected the five disease categories causing the highest number of
 92 deaths in Sweden in 2017, which together were responsible for 84% of all deaths (12). The disease groups were
 93 (with percentage of the total number of deaths in parenthesis): cardiovascular disease (38%), neoplasm (28%),
 94 neurological disease (8%), chronic respiratory disease (5%) and diabetes and chronic kidney disease (4%).
 95 Diseases were classified using tenth version of the WHO International Classification of Diseases (ICD-10)
 96 codes in accordance with the disease groups defined by the Global Burden of Disease project (S2 Table).
 97 Whereas NBHW define specialized care and underlying cause of death by ICD-10, diagnoses in primary care
 98 were classified using ICD-10-P which we mapped to ICD-10. Since ICD-10-P is less detailed than the ICD-10,
 99 certain disease groups in the primary care contain marginally broader disease categories than the GBD target
 100 groups.

101 Data on HCU and mortality were individually linked to register based data on family income, sex, birth
 102 year, residence county, country of origin, and civil status, as provided by Statistics Sweden.

103

Type of register	Year(s)	Total population: N	Total population: Age (std)	Q1: N	Q1: Age (std)	Q5: N	Q5: Age (std)
NBHW (specialized care and cause of death)	All years	105 343 853	48.49 (19.41)	21075466	48.49 (19.41)	21063689	48.49 (19.41)
	2017	8001909	48.74 (19.62)	1600742	48.74 (19.63)	1600073	48.74 (19.62)
	2011	7625859	48.12 (19.62)	1525750	48.12 (19.62)	1524841	48.12 (19.62)
	2004	7086141	48.49 (19.05)	1417981	48.49 (19.05)	1416834	48.49 (19.05)
Primary care	All years	77812350	48.16 (19.36)	15598476	47.87 (19.20)	16678951	48.20 (19.33)
	2017	7142796	48.63 (19.59)	1436285	48.64 (19.55)	1456728	48.57 (19.56)
	2011	5841894	47.82 (19.53)	1178215	47.61 (19.41)	1239690	47.85 (19.50)
	2004	4101156	47.83 (18.91)	803496	46.94 (18.51)	962576	48.02 (18.92)

104 **Table 1. Study population.** By type of register (national health registers from NBHW, or primary care data),
 105 time period, and income group (total population, Q1, and Q5).

106

107 Income Measures

108 The study population was grouped by income ranks based on equivalised disposable family income. Family
109 income referred to wages, capital returns, self-employment, pensions, and social benefit, after taxes were
110 deducted (11). For each studied year, an individual's family income was averaged across the 1-5 preceding
111 years, and the resulting variable was subsequently used for income ranking. Individuals with a family income of
112 zero or below (<2% of the population) were excluded from analysis due to the heterogeneity of this group (13).
113 SES groups were defined as quintiles of time averaged family income, stratified by sex and birth year. Thus, at a
114 given year, each income quintile contained approximately the same number of individuals and were balanced
115 with regard to sex and age compositions.

116 **Statistical analysis**

117 Crude rates of HCU per 100 000 person / year were calculated for each disease group and for each of the three
118 levels of care. Only main diagnoses were considered. Mortality rates were based on underlying cause of death.
119 For main analyses, we used the number of unique individuals, where an individual was counted once per
120 disease group, calendar year and type of data source (i.e., primary care, outpatient, inpatient or death). Given
121 the varying coverage rate of primary care register data, the counties contributing to the population
122 denominator varied across the years, why it ranged from 4.1 million individuals in 2004, to 7.1 million in 2017.
123 The population denominator used for the national health register data ranged from 7.1 million individuals in
124 2004 to 8.0 million in 2017 (Table 1).

125
126 We conducted multiple logistic regressions to calculate adjusted odds ratios (OR) of HCU or death, comparing
127 the lowest (Q1) and highest (Q5) income quintiles. The model adjusted for country of origin, civil status, sex,
128 age and age squared.

129
130 To infer time trends in ORs, we regressed log transformed OR on time. To account for uncertainty of the OR, we
131 conducted bootstrapping analysis by simulating new time series (1000 resamples with replacements) drawn
132 from a normal distribution with mean and standard deviation equal to the log transformed ORs. For each
133 simulated time series, we performed linear regressions (GLM), and inferred 95% CI from the sampling
134 distribution of the estimated beta coefficients.

135

136 Finally, we investigated whether the income groups differed regarding the number of health care visits during a
137 five-year period prior to death. More specifically, for each year and each disease group, we specified a linear
138 regression model of health care encounters by level of care, using income quintiles as independent variables
139 with Q5 as the reference. We controlled for age, sex, county, and country of origin.

140 Analyses were carried out in SAS 9.4 and in Python 3.6 using standard data science packages such as
141 *statsmodels*. All code is available at <https://github.com/parflo/TrendsInMortalityHCUInequality.git>.

142 The study was approved by the Regional Ethical Review Board, Stockholm, Sweden (DNR: 2018/1339-
143 31/5, 2018/2292-32, 2019-02185, 2021-00657 and 2022-03111-02).

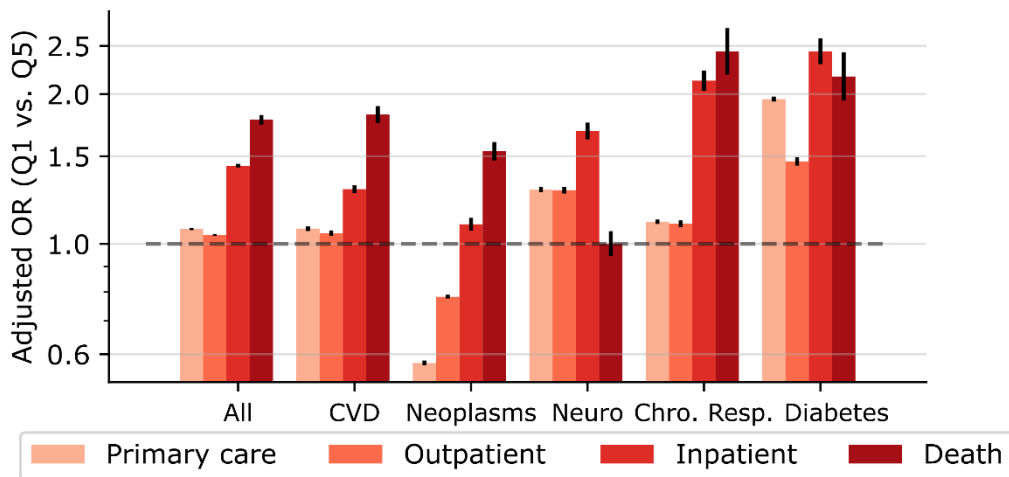
144 Results

145 For the analyses of mortality and utilization of inpatient and outpatient care, we investigated 105.3 million
146 person-years at risk. For primary care, we had access to data on 77.8 million person-years at risk. Outcomes in
147 the cohort amounted to 1.3 million deaths, 9.9 million year-unique individuals in inpatient care, 38.4 million in
148 outpatient care, and 45.9 million in primary care (Table 1).

149

150 Fig 1 shows OR for utilization of primary care, outpatient care, inpatient care, and mortality for each of the
151 disease categories in 2017. Considering all-disease, those with lowest income (Q1) utilized slightly more
152 primary care (OR =1.07, 95% CI: 1.07, 1.08) and outpatient care (OR=1.04, 95% CI:1.04-1.05) compared to those
153 with the highest income (Q5). However, Q1 utilized considerably more inpatient care (OR=1.44, 95% CI: 1.43,
154 1.45) and had even higher death rates (OR= 1.78, 95% CI: 1.74, 1.82) (Fig 1, S4 Table).

155



156

157

158 **Fig 1. Adjusted odds ratios of HCU and mortality comparing the lowest with the highest income**

159 **quintile, in year 2017. All:** any ICD-10 code; **CVD:** cardiovascular disease; **Neuro:** neurological disease;

160 **Chro. Resp.:** Chronic respiratory disease; **Diabetes:** Diabetes and kidney disease.

161 Similar patterns of income-related HCU and mortality were observed for each investigated disease.

162 For both cardiovascular disease and neoplasm, ORs were lowest for utilization of primary and outpatient care

163 and were considerably larger for inpatient care. The largest relative difference was found for mortality.

164 Interestingly, use of primary and outpatient care due to neoplasms were lower in Q1 compared to Q5 (primary

165 care: OR = 0.58, 95% CI 0.57- 0.58; outpatient care: OR = 0.78, 95% CI 0.78-0.79) (Fig 1, S4 Table).

166

167 Fig 2 shows time series of rates of HCU and mortality for Q1, Q5, and for the total study population. For all the

168 six disease categories, the yearly rates of unique individuals in primary and outpatient care are increasing.

169 Rates of inpatient care plateaued around 2012 for most disease categories and decreased by the end of the

170 study period. All-disease mortality rates for Q5 and the total population declined throughout the study period

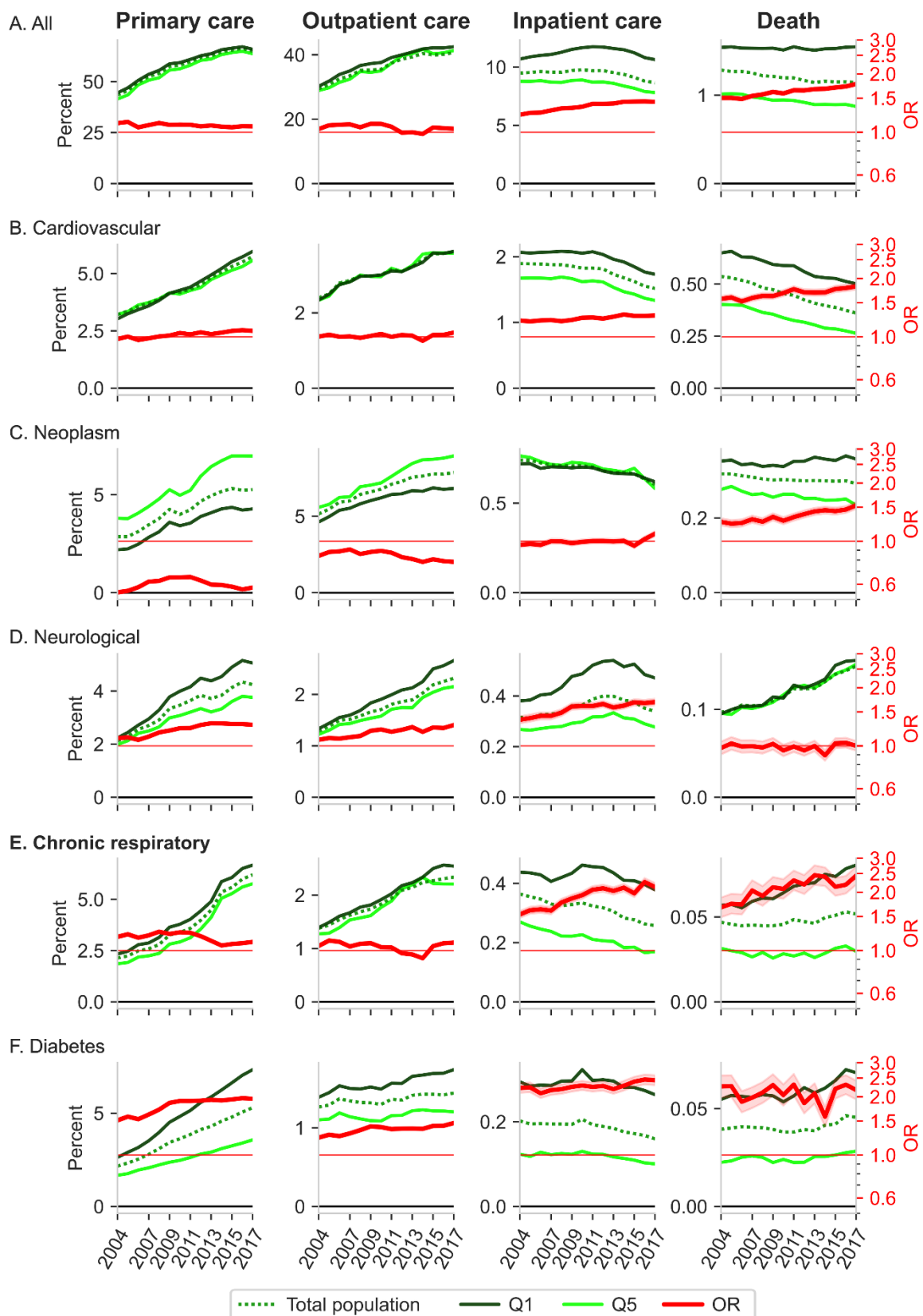
171 but stayed relatively unchanged for Q1. Cardiovascular disease contributed most to decreasing mortality rates

172 in the total population (S3 Table).

173 Fig 2 also shows time series of adjusted OR comparing Q1 with Q5. We observe an overall

174 pattern of slightly decreasing ORs in primary- and outpatient care, but increasing ORs in inpatient care and

175 mortality, for most disease categories.



176

177 **Fig 2. Time courses (2004-2017) of rates and adjusted odds ratios of HCU and mortality.** HCU (yearly rates of

178 unique individuals) and mortality rates, by income group and for the total study population (green colors). Rates

179 are presented in percentages for display purposes. Adjusted ORs (95% CI) comparing Q1 with Q5 are in red.

180 Numerical values of rates per 100 000 are found in S3 Table.

181

182

183 Zooming in on the time-trends of OR, Fig 3 displays the beta estimates (i.e., the slope) of log transformed ORs

184 regressed on time, which denotes the rate of change in the relative differences between Q1 and Q5. Time

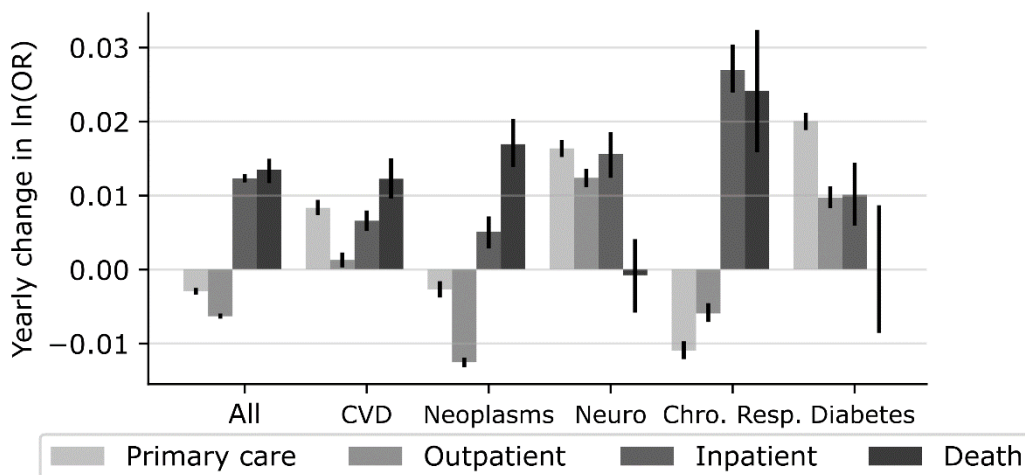
185 trends of ORs for all-disease followed a similar pattern as the one observed for 2017. Thus, for each year, Q1

186 (relative to Q5) displayed increasing rates of inpatient care, and even larger increase in mortality rates, but

187 decreasing rates of primary- and especially outpatient care. For most of the specific disease categories,

188 including cardiovascular disease and neoplasms, we observed a similar pattern of HCU and mortality trends (Fig

189 3, S4 Table).



190

191 **Fig 3. Yearly change in log OR.** Bars show the beta-coefficients (i.e., rates of change or “slopes”) estimated by

192 linear regression of the log transformed time-series of OR regressed on years (2004-2017). Error bars denotes

193 95% CI. For numerical values, see S4 Table.

194

195

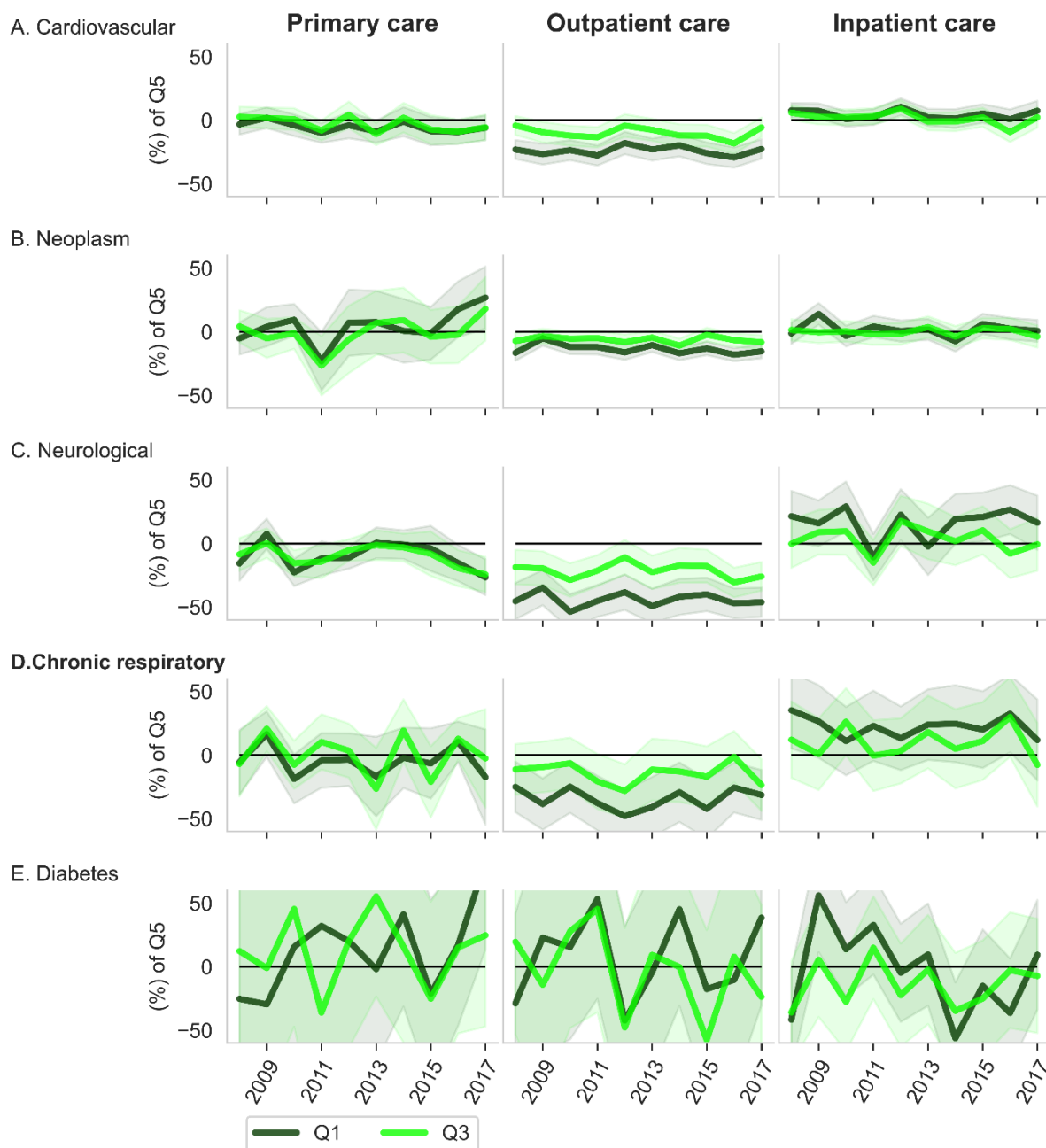
196 Fig 4 shows income-related difference in number of disease specific health care encounters five years prior to

197 death. In four of the five disease categories, Q5 had significantly more visits in outpatient care compared to Q1

198 and Q3 (Fig 4, S5 Table). For cardiovascular disease, Q1 had -23.9% (-32.1%, -15.7%) fewer outpatient

199 encounters relative to Q5, and for neoplasm -13.5% (-19.1%, -7.8%) fewer. We also observed similar but

200 smaller and more variable effects of income-related differences in number of primary care encounters.
 201 Estimates for respiratory disease and diabetes were associated with wider confidence intervals due to fewer
 202 deaths. Finally, income-related differences in inpatient care were small and largely non-significant for most of
 203 the disease groups most of the years.
 204



205
 206 **Fig 4. HCU before death.** Income-related group differences in number of cause specific health care visits within
 207 5 years prior to death, for death occurring during the period 2008-2017. Encounters of the lowest income

208 *quintile (Q1) and the middle-income quintile (Q3) are presented as percentages of the number of encounters by*
209 *Q5.*
210

211 **Discussion**

212 In this study we analysed time trends of income stratified HCU and mortality. For all diseases combined, the
213 more “severe” the outcome, the larger the inequalities. Compared to the highest income quintile, the lowest
214 income quintile had 7 % higher odds of utilizing primary care, 4 % higher odds of utilizing specialized outpatient
215 care, 44 % increased odds of hospitalization, and 78 % higher odds of dying, in year 2017. If HCU were in
216 proportion to need, we would expect higher HCU among those in the lowest income quintile. In other words,
217 the large inequality in mortality rates were not reflected in correspondingly large group differences in HCU, and
218 the discrepancy between large inequality in mortality and lower in HCU was further widened each year.
219

220 **Trends in HCU inequalities**

221 Our findings of income-based HCU inequalities are in line with previous survey studies. In Italy, Petrelli et al.
222 found that high income earners utilized both more primary and specialized outpatient care, but less inpatient
223 care, compared to low-income earners (14). This pattern is well documented in a wide range of high income
224 countries (2,15,16), although there are a few older studies that only partly confirmed this (17,18).

225 Analogous to our findings, a longitudinal Norwegian survey study showed that socioeconomic
226 differences in primary care utilization diminished with time between 1986 and 2006 (19). Moreover, high SES
227 groups were more prone to utilize outpatient care, after adjustment of self-reported need. Finally, the income-
228 based ratio of inpatient care was stable through the period, with considerably higher rates among low-income
229 groups (19). Similarly, in a Swedish sample from year 1996/1997, Burström found an inverse income gradient
230 related to having the need, but not seeking medical care (8).

231 It is noteworthy that the association between SES and HCU in part depends on the operationalization
232 of HCU. Lueckmann et al. found that studies that defined HCU in terms of the probability of having visited a

233 physician (“yes or no”), reported larger inequalities in favour of high SES groups, than studies reporting on
234 frequencies (i.e., the number of health care encounters), or more rarely, conditional frequencies (meaning the
235 number of encounters given the individual had visited a physician at least once). Hence Lueckmann et al.
236 suggested that HCU inequalities would best be tackled by removing barriers in initial access to specialized
237 outpatient care for deprived groups (2).

238 The importance of adjusting for need when analysing socioeconomic differences in HCU is widely
239 acknowledged (20). “Need” may be conceptualized as the capacity to benefit from care. Need is commonly
240 measured either as self-reported general health status, or as self-reported presence of disease. Among the
241 studies listed by Lueckmann, the majority employed the former. However, for population wide register data,
242 measures of subjective health are typically absent (as in [6]), which is also the case in our study. Instead, we
243 compared income-related differences in HCU with group differences in mortality. Thus, the income-related
244 HCU differences detected in the current study are likely due to a combination of differences in prevalence,
245 access to care, and in care seeking behaviour independent of prevalence. The relative importance of each of
246 these mechanisms is however unknown to us. This could hamper comparisons with previous findings of HCU
247 inequalities.

248

249 Taken together, studies on HCU inequalities in high income countries mainly report higher HCU of
250 specialized outpatient care among high SES groups, and higher rates of hospital admission among low SES
251 groups. Results of primary care utilization have been more ambiguous, but our findings show that high income
252 earners utilize primary care almost to the same extent as Q5, despite their substantially lower utilization of
253 inpatient care and odds of dying. Although more updated analyses of trends are rare, the available evidence
254 suggests that our findings of increasing use of outpatient care among high SES is not unique for Sweden.

255

256 **Trends in mortality inequalities**

257 Overall, previous studies of income-based inequalities in mortality rates have reported trends comparable to
258 our findings. Kondo et al. measured the income (Q1 vs Q5) ratio in mortality rates of the Swedish working age
259 population between 1994 and 2004 and reported a yearly widening of mortality rates of 11% (5), and a more

260 recent study report similarly (21). In Norway, Kinge et al. (22) observed an increasing income-related gap in life
261 expectancy from 2005 to 2015 among individuals aged 60 to 69 years. Comparing four Scandinavian countries,
262 Brønnum-Hansenfi concluded that the “Nordic countries displays the same overall pattern of increasing gap
263 between income quartiles in mortality [between 1997 and 2017]” (23).

264 In this study, we observed that the largest inequalities in mortality were for chronic respiratory
265 disease, followed by diabetes and cardiovascular disease. No income-related differences in neurological
266 mortality rates were observed, in line with previous findings of larger health inequalities for more
267 “preventable” diseases (1). If using the population attributable fractions (i.e., the percentage of disease burden
268 that are explained by avoidable risk factors) provided by GBD (12) as a proxy for “preventability”, we observe a
269 clear (albeit not perfect) relationship to inequality magnitudes: in Sweden in 2017, the population attributable
270 fraction in mortality were 99.9% for diabetes, 81% for cardiovascular disease, 66% for chronic respiratory
271 disease, 40% for neoplasm and 23% for neurological disorders.

272 Relative inequalities in mortality tend to increase as the overall mortality rates in the population
273 declines (1). This is also what we found. Between 2004 -2017, all-disease mortality decreased from 1285 per
274 100 000 to 1143 per 100 000 in the general population. Although both Q1 and Q5 displayed decrease in all-
275 disease mortality rates, the relative inequality increased from OR=1.50 to OR=1.74. However, increased relative
276 inequalities are probably due to a combination of many factors, including social drift, socioeconomic
277 differences in lifestyle, exposures to risk factors, and HCU.

278

279 **HCU and possible explanations for increased inequality in** 280 **mortality**

281 From a public health perspective, understanding the causal factors driving health inequalities is important since
282 these provide potential targets for interventions. However, explaining the origin of the observed increase in
283 mortality inequalities is challenging, and differences in HCU likely only play a partial role.

284

285 Income-related differences in utilization of primary- and outpatient care could be due to differences in both
286 prevalence and care seeking behaviour, and here we cannot confidently disentangle the two. In contrast,
287 income-related differences in inpatient care are likely driven almost exclusively by differences in prevalence of
288 the conditions requiring hospital admission, a claim that is further substantiated by the observed
289 corresponding magnitudes of mortality differences. It is tempting to speculate that given perfect horizontal
290 equity (i.e., equal treatment for equal need), any relative group differences in utilization rates of primary- and
291 outpatient care should be of similar magnitude as differences in inpatient use and mortality. However, the fact
292 that we found substantially larger OR for mortality and inpatient care could possibly be due to many reasons.
293 For instance, if low SES individuals would be more prone to more severe conditions (e.g., comorbidities) for
294 which primary- and outpatient care are not a primary point of entry, one would expect larger relative group
295 differences in inpatient care and death. To better determine this, future studies should use proper control for
296 group differences in medical need.

297

298 **Health care availability**

299 Although financial barriers to access to care have been largely removed in modern welfare states, the so-called
300 *inverse care law* suggests that “availability of good medical care tends to vary inversely with the need of the
301 population served” ([1] p 459, Hart 1971). An increasing number of private health providers and the free right
302 to establish care centres in any location has in recent years reduced the number of child and maternal care
303 units in poorer areas where the need is greater (24). In addition, availability is further skewed in favour of high
304 SES HCU due to the increase in private insurances and out of pocket health care spending. However, since our
305 study is based on records of publicly financed health care usage, privately paid care is omitted from our
306 analyses. If anything, including it would likely further accentuate the observed discrepancy between income-
307 based differences in HCU and mortality.

308

309 **The fundamental cause theory**

310 The *fundamental cause theory* states that “SES embodies an array of resources, such as money, knowledge,
311 prestige, power, and beneficial social connections that protect health no matter what mechanisms are relevant
312 at any given time” (25 p28). HCU is one important mechanism by which people can protect and promote their

313 health. It is well documented that high SES is associated with higher adherence to a range of preventive health
314 programs, e.g. cervical cancer screenings (26) and vaccinations (27). Taken together, the current study adds to
315 the growing body of evidence of an inverse care law (28), where the healthy and wealthy utilize primary and
316 special care more than the low-income earners, adjusting for differences in need (either inferred from self-
317 reports, or as in this study, - indicated by mortality).

318 **Strengths and limitations**

319 To our knowledge, this is the first study to present time trajectories of inequalities both in mortality rates and
320 health care utilization, covering the Swedish adult population for more than a decade. This was possible due to
321 a unique, comprehensive database of linked microdata on socio demographics, cause of death, and health care
322 utilization in specialized care, as well as on primary care in a majority of the Swedish counties.

323 Most previous studies on SES differences in HCU rely on survey data. Although these provide
324 valuable information on self-reported need of care, survey studies are typically based on just a small fraction of
325 the general population, interviewed at only a few time points. National population registers, on the other hand,
326 provide (near) full population coverage, and enables unbiased definitions of income groups. Finally, the
327 continuously recorded HCU register data enabled detection of time trends with high precision.

328
329 This study presents a bird's-eye view of inequalities in HCU and mortality over time at the expense of a more
330 fine-grained description of patterns of group differences in HCU, which would be valuable when attempting to
331 intervene the mechanisms causing avoidable health inequalities. For instance, pooling relatively heterogeneous
332 diseases into broad disease categories masks the more extreme and possibly preventable income-related
333 differences in HCU. Further, our metrics of HCU (i.e., yearly health care prevalence) tells little about inequalities
334 in the treatments provided.

335 Another limitation is the unknown and time dependent coverage of primary care data. Coverage is
336 likely higher in the more population dense counties, which typically also coincide with higher income gradients
337 and higher concentrations of high-income individuals. If true, this could partly explain the relatively high
338 primary care utilization among high income earners. However, similar patterns of high HCU among high income
339 earners are also observed in the outpatient care, for which data coverage has been consistently high (29).

340

341 **Future studies**

342 Further studies should investigate socioeconomic differences in HCU patterns with higher resolution in terms of
343 disease categories, treatments, and patient flows (30). Our study indicates that a promising target for reducing
344 health(care) inequalities is to facilitate access to primary- and outpatient care for low-income groups. Increased
345 knowledge on how to promote care seeking related to neoplasms, cardiovascular disease, and chronic
346 respiratory disease in low SES groups would be particularly valuable, considering their high prevalence and the
347 large discrepancies between income-related differences in HCU and income-related differences in mortality for
348 these disease categories.

349

350 **Conclusion**

351 In this study we found major discrepancies between income-related differences in health care utilization and
352 income-related differences in mortality, which widened with time. While high income earners utilized an
353 increasing share of primary and outpatient care, inequality in mortality increased each year. This was especially
354 noticeable for neoplasms. The relative underutilization of primary and outpatient care among low-income
355 earners should be addressed to mitigate the trend of increasing health inequalities.

356

357 **Acknowledgments**

358 We are grateful to all providers of register data, and in particularly to the providers of regional primary care
359 data. We also thank Hugo Sjöqvist, Lode Van Der Velde and Dorien Beeres for valuable discussions on the data
360 analyses, and Kasra Zarei for language proofreading.

361

362 References

- 363 1. Mackenbach J P. Health inequalities: Persistence and change in modern welfare states. Oxford
364 University Press, USA; 2019 Aug 29
- 365 2. Lueckmann SL, Hoebel J, Roick J, Markert J, Spallek J, von dem Knesebeck O, et al. Socioeconomic
366 inequalities in primary-care and specialist physician visits: a systematic review. *Int J Equity Health*.
367 2021;20(1):1–19.
- 368 3. Hälso- och sjukvårdslag (2017:30) Svensk författningssamling 2017:2017:30 t.o.m. SFS 2022:1255 -
369 Riksdagen [Internet]. [cited 2023 Jan 4]. Available from: [https://www.riksdagen.se/sv/dokument-](https://www.riksdagen.se/sv/dokument-lagar/dokument/svensk-forfattningssamling/halso--och-sjukvardslag-201730_sfs-2017-30)
370 [lagar/dokument/svensk-forfattningssamling/halso--och-sjukvardslag-201730_sfs-2017-30](https://www.riksdagen.se/sv/dokument-lagar/dokument/svensk-forfattningssamling/halso--och-sjukvardslag-201730_sfs-2017-30)
- 371 4. Gelormino E, Bambra C, Spadea T, Bellini S, Costa G. The effects of health care reforms on health
372 inequalities: A review and analysis of the european evidence base. *Int J Heal Serv*. 2011;41(2):209–30.
- 373 5. Kondo N, Rostila M, Yngwe MÅ. Rising inequality in mortality among working-age men and women in
374 Sweden: A national registrybased repeated cohort study, 1990–2007. *J Epidemiol Community Health*.
375 2014;68(12):1145–50.
- 376 6. Beckman A, Anell A. Changes in health care utilisation following a reform involving choice and
377 privatisation in Swedish primary care: A five-year follow-up of GP-visits. *BMC Health Serv Res*.
378 2013;13(1).
- 379 7. Burström B, Burström K, Nilsson G, Tomson G, Whitehead M, Winblad U. Equity aspects of the
380 Primary Health Care Choice Reform in Sweden - A scoping review. *Int J Equity Health*. 2017;16(1):1–
381 10.
- 382 8. Burström B. Increasing inequalities in health care utilisation across income groups in Sweden during the
383 1990s? *Health Policy (New York)*. 2002;62(2):117–29.
- 384 9. Wagenius CM, San Sebastián M, Gustafsson PE, Goicolea I. Access for all? Assessing vertical and
385 horizontal inequities in healthcare utilization among young people in northern Sweden. *Scand J Public*
386 *Health*. 2019;47(1):1–8.
- 387 10. Ludvigsson JF, Almqvist C, Bonamy AKE, Ljung R, Michaëlsson K, Neovius M, et al. Registers of the
388 Swedish total population and their use in medical research. *Eur J Epidemiol*. 2016;31(2):125–36.
- 389 11. Sweden S. Longitudinell integrationsdatabas för Sjukförsäkrings-och Arbetsmarknadsstudier (LISA)
390 1990–2009. Sweden: Statistics Sweden. 2011.
- 391 12. VizHub - GBD Compare [Internet]. [cited 2023 Mar 9]. Available from:
392 <https://vizhub.healthdata.org/gbd-compare/#>
- 393 13. Sweden S. Longitudinell integrationsdatabas för Sjukförsäkrings-och Arbetsmarknadsstudier (LISA)
394 1990–2009. Sweden: Statistics Sweden. 2011.
- 395 14. Petrelli A, Di Napoli A, Demuru E, Ventura M, Gnani R, Di Minco L, et al. Socioeconomic and
396 citizenship inequalities in hospitalisation of the adult population in Italy. *PLoS One* [Internet].

- 397 2020;15(4):1–11. Available from: <http://dx.doi.org/10.1371/journal.pone.0231564>
- 398 15. Hamada S, Takahashi H, Sakata N, Jeon B, Mori T, Iijima K, et al. Household income relationship with
399 health services utilization and healthcare expenditures in people aged 75 years or older in Japan: A
400 population-based study using medical and long-term care insurance claims data. *J Epidemiol.*
401 2019;29(10):377–83.
- 402 16. Fjaer EL, Balaj M, Stornes P, Todd A, McNamara CL, Eikemo TA. Exploring the differences in general
403 practitioner and health care specialist utilization according to education, occupation, income and social
404 networks across Europe: Findings from the European social survey (2014) special module on the social
405 determinant. *Eur J Public Health.* 2017;27:73–81.
- 406 17. Terraneo M. Inequities in health care utilization by people aged 50+: Evidence from 12 European
407 countries. *Soc Sci Med [Internet].* 2015;126:154–63. Available from:
408 <http://dx.doi.org/10.1016/j.socscimed.2014.12.028>
- 409 18. Gundgaard J. Income-related inequality in utilization of health services in Denmark: Evidence from
410 Funen County. *Scand J Public Health.* 2006;34(5):462–71.
- 411 19. Vikum E, Bjørngaard JH, Westin S, Krokstad S. Socio-economic inequalities in Norwegian health care
412 utilization over 3 decades: The HUNT Study. *Eur J Public Health.* 2013;23(6):1003–10.
- 413 20. Agerholm J, Bruce D, Burström B, Ponce Leon A. Socioeconomic differences in healthcare utilization,
414 with and without adjustment for need: An example from Stockholm, Sweden. *Scand J Public Health*
415 *[Internet].* 2013;41(3):318–25. Available from: <https://doi.org/10.1177/1403494812473205>
- 416 21. Rehnberg J, Östergren O, Fors S, Fritzell J. Trends in the shape of the income-mortality association in
417 Sweden between 1995 and 2017: a repeated cross-sectional population register study. *BMJ Open.*
418 2022;12(3):e054507.
- 419 22. Kinge JM, Modalsli JH, Øverland S, Gjessing HK, Tollånes MC, Knudsen AK, et al. Association of
420 Household Income with Life Expectancy and Cause-Specific Mortality in Norway, 2005-2015. *JAMA -*
421 *J Am Med Assoc.* 2019;321(19):1916–25.
- 422 23. Brønnum-Hansen H, Östergren O, Tarkiainen L, Hermansen Å, Martikainen P, van der Wel KA, et al.
423 Changes in life expectancy and lifespan variability by income quartiles in four Nordic countries: a study
424 based on nationwide register data. *BMJ Open.* 2021;11(6):e048192.
- 425 24. Agerholm J, Bruce D, De Leon AP, Burström B. Equity impact of a choice reform and change in
426 reimbursement system in primary care in Stockholm County Council. *BMC Health Serv Res.*
427 2015;15(1).
- 428 25. Phelan JC, Link BG, Tehranifar P. Social Conditions as Fundamental Causes of Health Inequalities:
429 Theory, Evidence, and Policy Implications. *J Health Soc Behav.* 2010;51(1_suppl):S28–40.
- 430 26. Limmer K, LoBiondo-Wood G, Dains J. Predictors of Cervical Cancer Screening Adherence in the
431 United States: A Systematic Review. *J Adv Pract Oncol [Internet].* 2014 Jan [cited 2023 Mar
432 11];5(1):31. Available from: [/pmc/articles/PMC4093462/](https://pubmed.ncbi.nlm.nih.gov/2493462/)

- 433 27. Falagas ME, Zarkadoulia E. Factors associated with suboptimal compliance to vaccinations in children
434 in developed countries: A systematic review. *Curr Med Res Opin.* 2008;24(6):1719–41.
- 435 28. Dryden R, Williams B, McCowan C, Themessl-Huber M. What do we know about who does and does
436 not attend general health checks? Findings from a narrative scoping review. *BMC Public Health*
437 [Internet]. 2012;12(1):1. Available from: BMC Public Health
- 438 29. Ludvigsson JF, Andersson E, Ekbom A, Feychting M, Kim JL, Reuterwall C, et al. External review and
439 validation of the Swedish national inpatient register. *BMC Public Health.* 2011;11.
- 440 30. Gubi E. Mental health service use among refugee children, other migrant children, and children born in
441 Sweden : what are the differences and why does it differ? [Internet]. Thesis. 2022 [cited 2023 Jan 4].
442 Available from: <https://openarchive.ki.se/xmlui/handle/10616/48245>

443

444

445 **Supporting information**

446 **S1 Table. The year from which primary care data is available from each county.**

County	Inclusive start year
01	2004
03	2010
05	1999
06	2012
08	2011
09	2013
10	2010
12	2004
14	2000
17	2014
18	2002
19	2017
20	2005
21	2010
22	2011

23	2010
25	2012

447 **S2 Table. ICD definitions of disease groups.**

<i>Disease group</i>	<i>ICD-10 codes</i>
All-disease	* (all ICD codes)
Cardovascular disease	B33.2-B33.24, D86.85, G45-G46.8, I01-I01.9, I02.0, I05-I09.9, I11-I11.2, I11.9, I20-I21.6, I21.9-I27.0, I27.2-I28.9, I30-I38.0, I39-I41.8, I42-I43.8, I44-I44.8, I45-I52.8, I60-I64, I64.1, I65-I83.93, I86-I89.0, I89.9, I95.0-I95.1, I98, I98.8-I99.9, K75.1, R00-R01.2, Z01.3-Z01.31, Z03.4-Z03.5, Z13.6, Z52.7, Z82.3-Z82.49, Z86.7-Z86.79, Z94.1-Z94.3, Z95-Z95.9
Neoplasms	C00-C07, C08-C19.0, C20, C21-C21.8, C22-C22.4, C22.7-C23, C24-C26.1, C26.8-C26.9, C30-C30.1, C31-C33, C34-C34.92, C37-C37.0, C38-C39.9, C40-C41.4, C41.8-C41.9, C43-C45.2, C45.7, C45.9, C47-C4A, C50-C50.629, C50.8-C52, C53-C54.3, C54.8-C56.2, C56.9-C58.0, C60-C64.2, C64.9-C69.92, C70-C70.1, C70.9-C73, C74-C75.5, C75.8-C79.9, C80-C81.49, C81.7-C81.79, C81.9-C85.29, C85.7-C86.6, C88-C90.32, C91-C93.7, C93.9-C95.2, C95.7-C97.9, D00-D24.9, D26.0-D39.9, D4-D49.9, E34.0, K51.4-K51.419, K62.0-K62.3, K63.5, N60-N60.99, N84.0-N84.1, N87-N87.9, Z03.1, Z08-Z09.9, Z12-Z12.9, Z80-Z80.9, Z85-Z85.9, Z86.0-Z86.03
Neurological disorders	F00-F02.0, F02.2-F02.3, F02.8-F03.91, F06.2, G10-G10.0, G11-G13.8, G20-G21, G21.2-G24, G24.1-G25.0, G25.2-G25.3, G25.5, G25.8-G26.0, G30-G31.1, G31.8-G32.89, G35-G35.0, G36-G37.9, G40-G41.9, G43-G44.89, G50-G54.1, G54.5-G62, G62.2-G65.2, G70-G71.19, G71.3-G72, G72.1-G73.7, G80-G83.9, G89-G93.6, G93.8-G95.29, G95.8-G96, G96.1, G96.12-G96.9, G98-G99.8, M33-M33.99, M60-M60.19, M60.8-M60.9, M79.7, R25-R27.9, R29-R29.91, R41-R42.0, R56-R56.9, R90-R90.89, Z03.3, Z13.85, Z13.858, Z82.0, Z86.6-Z86.69
Chronic respiratory disease	189D86-D86.2, D86.9, G47.3-G47.39, J30-J35.9, J37-J39.9, J41-J42.4, J43-J46.0, J47-J47.9, J60-J68.9, J70.8-J70.9, J80-J80.9, J82, J84-J84.9, J90-J90.0, J91, J91.8-J93.12, J93.8-J94.9, J96-J96.92, J98-J99.8, R05.0-R06.9, R09-R09.89, R84-R84.9, R91-R91.8, Z82.5
Diabetes and kidney disease	D63.1, E08-E08.9, E10-E14.9, I12-I13.9, N00-N08.8, N15.0, N17-N19, Q60-Q63.2, Q63.8-Q63.9, Q64.2-Q64.9, R73-R73.9, Z13.1, Z49-Z49.32, Z52.4, Z83.3, Z99.2

448

449 **S3 Table. Rates (per 100 000) of deaths and diagnosed unique individuals by disease group, type of data,**
 450 **year, for the total sample and for each income group (Q1 and Q5).** (Since socioeconomic data were available
 451 only for fully survived calendar years, dates of death are projected to the previous year, hence rendering
 452 systematic underestimation of true age of death).

<i>Disease group</i>	<i>Type of data</i>	<i>Year(s)</i>	<i>Full population, N</i>	<i>Full population, age (std)</i>	<i>Q1, N</i>	<i>Q1, age (std)</i>	<i>Q5, N</i>	<i>Q5, age (std)</i>
All	Death	All years	1199	79.13 (13.26)	1532	76.30 (14.04)	940	81.18 (12.50)

		2017	1143	79.51 (13.27)	1547	76.31 (13.96)	872	81.98 (12.35)
		2011	1195	79.39 (13.22)	1548	76.62 (13.97)	940	81.36 (12.67)
		2004	1284	78.48 (13.11)	1541	76.05 (13.90)	1012	80.21 (12.50)
	Inpatient care	All years	9429	56.60 (21.37)	11244	55.36 (20.71)	8550	56.54 (21.70)
		2017	8670	56.87 (21.65)	10641	55.45 (20.88)	7818	56.92 (21.96)
		2011	9692	56.33 (21.44)	11748	55.06 (20.72)	8703	56.46 (21.76)
		2004	9483	56.69 (20.98)	10693	55.78 (20.46)	8784	56.34 (21.34)
	Outpatient care	All years	36490	52.60 (19.94)	38088	51.41 (19.44)	36483	53.45 (20.15)
		2017	40727	52.92 (20.29)	42504	52.01 (19.70)	41338	53.62 (20.40)
		2011	37428	52.30 (20.11)	39166	51.06 (19.59)	37370	53.23 (20.31)
		2004	29466	52.22 (19.13)	30213	50.87 (18.72)	28901	53.08 (19.45)
	Primary care	All years	58959	50.94 (20.01)	60049	50.31 (19.49)	57040	51.20 (20.30)
		2017	64984	51.86 (20.12)	65896	51.58 (19.76)	63737	51.94 (20.35)
		2011	59862	50.29 (20.15)	60928	49.79 (19.65)	58095	50.46 (20.45)
		2004	43424	51.20 (19.76)	44509	49.50 (18.92)	41505	51.96 (20.20)
	Cardiovascular	Death	All years	448	82.35 (10.76)	578	79.66 (11.81)	333
2017			361	82.57 (11.03)	502	79.37 (12.09)	263	84.98 (9.88)
2011			446	82.63 (10.80)	588	79.97 (11.84)	325	84.68 (9.77)
2004			536	81.62 (10.45)	650	79.52 (11.25)	402	83.38 (9.45)
Inpatient care		All years	1771	71.19 (14.40)	1983	69.93 (14.29)	1571	72.03 (14.46)
		2017	1518	71.63 (14.34)	1733	70.14 (14.22)	1336	72.55 (14.35)
		2011	1828	71.00 (14.64)	2076	69.74 (14.52)	1632	71.88 (14.66)
		2004	1895	70.97 (14.06)	2067	69.92 (13.99)	1673	71.81 (14.17)
Outpatient care		All years	3098	64.92 (15.94)	3080	63.88 (15.68)	3098	66.02 (16.02)
		2017	3621	66.11 (16.31)	3634	65.32 (15.88)	3586	66.65 (16.54)
		2011	3151	64.54 (16.09)	3111	63.52 (15.73)	3181	65.67 (16.11)
		2004	2400	63.17 (14.95)	2341	61.89 (14.82)	2333	64.45 (15.12)
Primary care		All years	4534	68.50 (16.67)	4609	66.93 (16.41)	4422	69.47 (16.83)
		2017	5750	68.63 (16.62)	5975	67.45 (16.24)	5584	69.36 (16.95)
		2011	4317	68.54 (16.74)	4413	66.93 (16.56)	4265	69.47 (16.91)
		2004	3212	68.98 (15.86)	3024	66.35 (16.16)	3215	70.23 (15.83)
Neoplasm	Death	All years	304	74.28 (12.06)	351	72.94 (12.01)	259	75.24 (12.13)
		2017	292	75.17 (11.76)	358	73.63 (11.64)	234	76.28 (11.94)
		2011	301	74.34 (12.22)	352	73.05 (12.14)	263	75.82 (12.29)
		2004	318	73.39 (12.10)	352	72.22 (12.24)	276	74.36 (12.19)
	Inpatient care	All years	690	65.43 (15.02)	683	64.84 (14.97)	699	65.74 (15.09)
		2017	605	66.28 (14.78)	620	65.58 (14.70)	582	66.53 (14.85)

		2011	702	65.34 (15.06)	698	64.79 (14.82)	714	65.89 (15.16)	
		2004	742	64.91 (15.16)	720	64.28 (15.23)	764	65.48 (15.10)	
	Outpatient care	All years	6833	58.93 (18.75)	6106	58.72 (18.43)	7488	59.13 (18.95)	
		2017	7837	59.37 (18.81)	6811	59.54 (18.33)	8939	59.21 (19.04)	
		2011	7086	58.89 (18.95)	6417	58.63 (18.64)	7601	59.23 (19.18)	
		2004	5144	58.01 (18.11)	4620	57.27 (17.96)	5576	58.76 (18.14)	
	Primary care	All years	4387	53.59 (19.68)	3604	52.40 (18.82)	5620	54.79 (19.88)	
		2017	5257	54.64 (19.47)	4274	54.10 (18.75)	6976	55.46 (19.61)	
		2011	4228	53.10 (20.04)	3549	52.24 (19.18)	5221	54.30 (20.29)	
		2004	2863	56.08 (19.44)	2192	52.71 (18.51)	3799	57.85 (19.54)	
Neurological	Death	All years	120	83.87 (9.83)	123	81.94 (11.19)	120	85.02 (8.91)	
		2017	149	84.42 (9.38)	156	82.27 (10.72)	151	85.96 (8.02)	
		2011	123	83.98 (9.74)	128	82.10 (11.04)	125	85.04 (9.25)	
		2004	97	82.93 (10.20)	95	80.80 (11.77)	96	84.29 (9.15)	
	Inpatient care	All years	356	61.80 (20.67)	471	59.36 (19.31)	294	64.61 (21.29)	
		2017	339	62.48 (20.78)	471	59.51 (19.40)	277	65.46 (21.21)	
		2011	388	60.89 (21.03)	521	58.52 (19.64)	318	63.06 (21.93)	
		2004	316	62.75 (20.01)	380	60.32 (19.17)	268	65.54 (20.45)	
	Outpatient care	All years	1796	55.74 (19.49)	1982	53.55 (18.26)	1685	58.57 (20.39)	
		2017	2315	57.22 (20.02)	2661	55.10 (18.81)	2152	59.88 (20.68)	
		2011	1807	55.28 (19.60)	1994	53.11 (18.25)	1711	57.99 (20.63)	
		2004	1290	53.59 (18.38)	1333	51.47 (17.37)	1225	56.31 (19.52)	
	Primary care	All years	3498	58.34 (20.96)	4044	55.64 (19.71)	3079	60.86 (21.59)	
		2017	4241	60.09 (21.03)	5056	57.63 (19.72)	3760	62.59 (21.73)	
		2011	3641	57.75 (21.10)	4158	55.12 (20.01)	3207	60.06 (21.76)	
		2004	2120	57.27 (20.47)	2235	53.14 (19.30)	1984	60.35 (20.94)	
	Chronic respiratory	Death	All years	48	79.08 (9.64)	67	75.51 (10.27)	29	82.14 (8.57)
			2017	52	79.45 (9.53)	81	75.99 (9.79)	30	82.93 (8.89)
			2011	49	79.20 (9.63)	68	74.99 (10.46)	27	81.34 (8.76)
			2004	47	78.37 (9.69)	57	75.17 (10.51)	31	80.45 (8.76)
Inpatient care		All years	314	62.62 (20.41)	426	62.46 (18.16)	214	61.84 (22.40)	
		2017	258	66.87 (19.04)	379	66.36 (16.39)	169	66.44 (21.51)	
		2011	324	62.32 (20.94)	456	62.39 (18.21)	211	61.69 (22.98)	
		2004	364	59.59 (20.42)	438	59.42 (18.87)	270	59.02 (21.91)	
Outpatient care		All years	1912	51.67 (20.02)	2019	52.07 (18.90)	1845	51.40 (20.67)	
		2017	2339	54.36 (21.15)	2546	55.64 (19.74)	2210	53.03 (21.72)	
		2011	1949	50.52 (20.06)	2026	50.73 (18.85)	1890	50.63 (20.72)	

		2004	1379	50.37 (18.34)	1393	50.03 (17.42)	1273	50.48 (19.04)
	Primary care	All years	4123	53.04 (20.28)	4534	53.15 (18.96)	3685	52.42 (21.06)
		2017	6202	55.01 (20.13)	6674	55.50 (18.90)	5763	54.29 (20.90)
		2011	3587	52.19 (20.57)	4028	52.46 (19.26)	3128	51.38 (21.38)
		2004	2139	52.45 (20.18)	2335	50.89 (18.58)	1862	52.68 (21.19)
Diabetes and kidney disease	Death	All years	41	80.63 (11.30)	59	77.26 (12.21)	25	83.57 (9.81)
		2017	46	81.82 (11.09)	68	77.34 (12.49)	28	85.32 (8.48)
		2011	38	80.39 (11.61)	57	77.09 (12.23)	22	83.47 (10.63)
		2004	40	79.40 (11.55)	55	76.74 (11.92)	23	81.92 (9.76)
	Inpatient care	All years	187	62.62 (19.22)	290	61.47 (17.29)	118	63.97 (20.79)
		2017	160	63.66 (19.44)	264	61.86 (17.42)	101	65.96 (21.03)
		2011	193	62.07 (19.66)	298	60.96 (17.49)	124	63.53 (21.22)
		2004	202	62.28 (18.58)	295	61.78 (16.68)	124	63.11 (19.96)
	Outpatient care	All years	1362	57.89 (18.23)	1572	59.26 (16.48)	1160	56.99 (19.22)
		2017	1442	58.37 (18.93)	1739	59.96 (16.82)	1203	57.23 (20.21)
		2011	1363	57.53 (18.55)	1566	58.99 (16.78)	1155	56.55 (19.54)
		2004	1265	56.66 (16.98)	1388	57.71 (15.56)	1101	55.62 (17.78)
	Primary care	All years	3906	66.64 (13.72)	5254	64.88 (13.25)	2673	67.07 (14.94)
		2017	5300	67.59 (13.44)	7341	65.61 (13.17)	3572	68.42 (14.52)
		2011	3861	66.40 (13.79)	5148	64.80 (13.32)	2627	66.75 (15.04)
		2004	2165	64.65 (14.64)	2635	63.01 (13.71)	1671	64.25 (16.19)

453

454 **S4 Table. Adjusted OR (Q1/Q5) in 2017 and yearly change of log transformed OR.**

Disease category	Type of data	OR (95% CI), 2004	OR (95% CI), 2017	Yearly change in OR (95% CI)
All	Death	1.504 (1.471,1.538)	1.776 (1.737,1.816)	0.013 (0.012,0.015)
	Inpatient care	1.231 (1.221,1.241)	1.436 (1.425,1.448)	0.012 (0.012,0.013)
	Outpatient care	1.038 (1.033,1.044)	1.042 (1.037,1.047)	-0.006 (-0.007,-0.006)
	PC_Primary careu	1.113 (1.106,1.120)	1.071 (1.065,1.077)	-0.003 (-0.003,-0.002)
Cardiovascular	Death	1.570 (1.517,1.625)	1.820 (1.751,1.892)	0.012 (0.010,0.015)
	Inpatient care	1.213 (1.191,1.235)	1.288 (1.264,1.313)	0.007 (0.005,0.008)
	Outpatient care	1.001 (0.986,1.017)	1.051 (1.038,1.064)	0.001 (0.000,0.002)
	Primary care	0.974 (0.957,0.992)	1.073 (1.061,1.084)	0.008 (0.007,0.009)
Neoplasm	Death	1.261 (1.208,1.316)	1.536 (1.471,1.603)	0.017 (0.014,0.020)
	Inpatient care	0.959 (0.932,0.986)	1.095 (1.063,1.128)	0.005 (0.003,0.007)
	Outpatient care	0.840 (0.831,0.850)	0.783 (0.777,0.790)	-0.013 (-0.013,-0.012)
	Primary care	0.545 (0.534,0.555)	0.576 (0.570,0.583)	-0.003 (-0.004,-0.002)

Neurological	Death	0.974 (0.902,1.052)	1.001 (0.945,1.061)	-0.001 (-0.006,0.004)
	Inpatient care	1.364 (1.307,1.423)	1.687 (1.622,1.753)	0.016 (0.012,0.019)
	Outpatient care	1.076 (1.054,1.099)	1.282 (1.263,1.302)	0.012 (0.011,0.014)
	Primary care	1.097 (1.073,1.121)	1.286 (1.271,1.302)	0.016 (0.015,0.018)
Chronic respiratory	Death	1.670 (1.485,1.877)	2.438 (2.190,2.715)	0.024 (0.016,0.032)
	Inpatient care	1.537 (1.475,1.601)	2.129 (2.032,2.232)	0.027 (0.024,0.030)
	Outpatient care	1.055 (1.033,1.077)	1.098 (1.081,1.115)	-0.006 (-0.007,-0.005)
	Primary care	1.178 (1.153,1.203)	1.108 (1.096,1.119)	-0.011 (-0.012,-0.010)
Diabetes and kidney disease	Death	2.262 (1.984,2.580)	2.170 (1.940,2.426)	0.000 (-0.009,0.009)
	Inpatient care	2.223 (2.100,2.353)	2.439 (2.298,2.589)	0.010 (0.006,0.014)
	Outpatient care	1.231 (1.204,1.258)	1.465 (1.437,1.494)	0.010 (0.008,0.011)
	Primary care	1.512 (1.480,1.545)	1.954 (1.932,1.977)	0.020 (0.019,0.021)

455 **S5 Table. Health care visits within 5 years prior to death, by income.** Differences in the number of health care
 456 encounters related to the cause of death. Differences are expressed as percentage change of the number of
 457 encounters in the highest income quintile.

Disease group	Level of care	Time period	Q1	Q3
Cardiovascular	Primary care	All years	-5.24 (-14.58,4.09)	-2.90 (-12.36,6.57)
		2017	-5.87 (-15.59,3.85)	-5.56 (-15.56,4.44)
		2012	-3.87 (-14.23,6.48)	4.24 (-6.22,14.71)
		2008	-3.17 (-11.26,4.91)	2.67 (-5.45,10.79)
	Outpatient care	All years	-23.91 (-32.07,-15.74)	-9.85 (-18.13,-1.58)
		2017	-22.56 (-30.07,-15.05)	-5.65 (-13.38,2.08)
		2012	-17.89 (-26.73,-9.05)	-4.13 (-13.07,4.80)
		2008	-22.96 (-30.39,-15.53)	-4.05 (-11.51,3.40)
	Inpatient care	All years	4.68 (-2.10,11.46)	1.67 (-5.21,8.54)
		2017	7.47 (-0.38,15.32)	2.37 (-5.70,10.45)
		2012	10.56 (3.86,17.27)	9.06 (2.28,15.84)
		2008	7.89 (2.12,13.66)	6.02 (0.23,11.81)
Neoplasm	Primary care	All years	4.50 (-16.14,25.13)	-0.55 (-21.52,20.41)
		2017	26.98 (2.58,51.39)	18.15 (-6.85,43.16)
		2012	7.23 (-18.87,33.33)	-5.90 (-32.43,20.63)
		2008	-5.20 (-17.83,7.43)	4.37 (-8.28,17.03)
	Outpatient care	All years	-13.50 (-19.14,-7.86)	-6.10 (-11.82,-0.39)
		2017	-15.32 (-20.82,-9.83)	-8.15 (-13.78,-2.52)

		2012	-16.16 (-22.04,-10.28)	-8.07 (-14.05,-2.09)	
		2008	-16.46 (-22.72,-10.19)	-7.17 (-13.45,-0.89)	
	Inpatient care	All years	1.89 (-6.43,10.21)	0.02 (-8.41,8.46)	
		2017	0.84 (-7.71,9.40)	-3.60 (-12.37,5.16)	
		2012	0.68 (-7.73,9.10)	-1.50 (-10.06,7.05)	
		2008	-1.20 (-9.54,7.14)	1.57 (-6.79,9.93)	
Neurological	Primary care	All years	-9.96 (-22.74,2.82)	-9.91 (-22.35,2.53)	
		2017	-26.55 (-40.64,-12.45)	-24.32 (-38.08,-10.56)	
		2012	-11.19 (-19.82,-2.55)	-5.14 (-13.61,3.34)	
		2008	-15.65 (-29.23,-2.07)	-8.51 (-21.41,4.39)	
	Outpatient care	All years	-44.16 (-57.45,-30.87)	-21.29 (-34.20,-8.38)	
		2017	-46.22 (-57.77,-34.67)	-25.87 (-37.15,-14.60)	
		2012	-38.29 (-52.23,-24.36)	-10.78 (-24.45,2.90)	
		2008	-45.37 (-59.70,-31.03)	-18.59 (-32.22,-4.96)	
	Inpatient care	All years	15.97 (-3.84,35.78)	3.44 (-15.82,22.70)	
		2017	16.41 (-4.87,37.69)	-0.59 (-21.37,20.18)	
		2012	22.69 (2.55,42.83)	17.82 (-1.95,37.59)	
		2008	21.46 (1.46,41.45)	-0.16 (-19.17,18.85)	
	Chronic respiratory	Primary care	All years	-4.77 (-28.88,19.33)	0.26 (-24.23,24.76)
			2017	-17.30 (-54.81,20.22)	-2.53 (-41.28,36.22)
			2012	-3.54 (-24.32,17.24)	3.54 (-17.71,24.79)
			2008	-5.55 (-30.97,19.87)	-6.91 (-32.46,18.64)
Outpatient care		All years	-34.29 (-55.55,-13.03)	-14.15 (-35.72,7.41)	
		2017	-31.31 (-50.97,-11.65)	-23.48 (-43.80,-3.17)	
		2012	-47.94 (-68.43,-27.45)	-28.15 (-49.10,-7.19)	
		2008	-24.97 (-44.85,-5.09)	-11.19 (-31.17,8.79)	
Inpatient care		All years	22.26 (-6.61,51.14)	9.90 (-19.40,39.19)	
		2017	11.90 (-19.90,43.71)	-7.64 (-40.49,25.21)	
		2012	13.32 (-11.72,38.36)	3.32 (-22.29,28.94)	
		2008	35.30 (5.36,65.25)	12.19 (-17.91,42.29)	
Diabetes and kidney disease	Primary care	All years	13.10 (-69.18,95.39)	12.69 (-72.80,98.19)	
		2017	82.39 (13.53,151.26)	24.75 (-47.05,96.56)	
		2012	20.18 (-59.97,100.34)	20.26 (-63.91,104.43)	
		2008	-25.21 (-122.56,72.14)	12.34 (-87.71,112.39)	
	Outpatient care	All years	7.24 (-70.61,85.09)	-3.31 (-84.28,77.67)	

		2017	38.65 (-30.52,107.81)	-23.59 (-95.71,48.52)
		2012	-42.26 (-116.70,32.18)	-47.72 (-125.89,30.45)
		2008	-28.73 (-99.49,42.04)	19.60 (-53.14,92.33)
	Inpatient care	All years	-3.20 (-44.55,38.15)	-13.70 (-56.72,29.31)
		2017	9.43 (-33.63,52.50)	-7.21 (-52.11,37.69)
		2012	-4.73 (-43.36,33.89)	-22.33 (-62.89,18.22)
		2008	-41.64 (-80.90,-2.37)	-35.88 (-76.24,4.48)

458