

1 **External validation of a risk score model for predicting major clinical events in adults**
2 **after atrial switch operation for transposition of the great arteries.**

3

4 Mathieu Albertini (1), Beatrice Santens (2), Flavia Fusco (3), Berardo Sarubbi (3), Pastora
5 Gallego (4), Maria-Jose Rodriguez-Puras (4), Katja Prokselj (5), Martijn Kauling (6), Jolien
6 Roos-Hesselink (6), Fabien Labombarda (7), Alexander Van De Bruaene (2), Werner Budts
7 (2), Laurence Iserin (1), Odilia Woudstra (8), Berto Bouma (8), Magalie Ladouceur (1)

8

9 (1) Centre de référence des Malformations Cardiaques Congénitales Complexes, M3C.
10 Adult Congenital Heart Disease Unit, Hôpital Européen Georges Pompidou, APHP, Paris
11 Descartes University. Centre de Recherche Cardiovasculaire de Paris, INSERM U970,
12 Paris, France.

13 (2) Division of Congenital and Structural Cardiology, University Hospitals Leuven, and
14 Department of Cardiovascular Sciences, Catholic University Leuven, Leuven, Belgium.

15 (3) Adult Congenital Heart Disease Unit, AORN dei Colli - Monaldi Hospital, Naples,
16 Italy.

17 (4) Adult Congenital Heart Disease Unit, Hospital Universitario Virgen del Rocío, Sevilla,
18 Spain; European Reference Network for Rare, Low Prevalence and Complex Diseases of
19 the Heart-ERN GUARD Heart, Spain.

20 (5) Department of Cardiology, University Medical Centre Ljubljana, Slovenia. Faculty of
21 Medicine, University of Ljubljana, Slovenia.

22 (6) Department of Cardiology, Thoraxcenter, ErasmusMC, University Medical Center
23 Rotterdam, Rotterdam, the Netherlands. European Reference Network for Rare, Low
24 Prevalence and Complex Diseases of the Heart-ERN GUARD Heart, Netherlands.

1 (7) Cardiology Department, CHU de Caen, France. UNICAEN, UR PSIR 4650, Caen,
2 France.

3 (8) Department of Clinical and Experimental Cardiology, Heart Center, Amsterdam
4 Cardiovascular Sciences, Amsterdam University Medical Center, University of Amsterdam,
5 the Netherlands.

6 **Corresponding author:**

7 Magalie LADOUCEUR, M.D, PhD.

8 Adult Congenital Heart Disease Unit

9 Hôpital Européen Georges Pompidou, 20 rue Leblanc, 75015 Paris

10 Phone: +33156093043; E-Mail : magalie.ladouceur@aphp.fr

11

12 **Word Count: 4546**

13

14

15

16

17

18

19

20

21

22

23

24

25

1 **Abstract:**

2 **Background:** A risk model has been proposed to provide a patient individualized estimation
3 of risk for major clinical events (heart failure, ventricular arrhythmia, all-cause mortality) in
4 patients with transposition of the great arteries (D-TGA) repaired by an atrial switch
5 operation. The aim of this study was to externally validate the model.

6 **Methods:** A retrospective, multicentric, longitudinal cohort of 417 patients with D-TGA
7 (median age 24 years at baseline [interquartile range 18-30], 63% male) independent of the
8 model development and internal validation cohort was studied. Data on risk model predictors
9 (age >30 years, prior ventricular arrhythmia, age >1 year at atrial switch, moderate or severe
10 right ventricular dysfunction, severe tricuspid regurgitation and at least mild left ventricular
11 (LV) dysfunction) were collected from the time of baseline clinical evaluation. The
12 performance of the prediction model in predicting risk at 5 years was assessed.

13 **Results:** Twenty-five patients (5.9%) met the major clinical events endpoint within 5 years.
14 Model validation showed a good discrimination between high and low 5-year risk patients
15 (Harrell's C-index of 0.73 (95% CI 0.65–0.81)) but tended to overestimate this risk
16 (calibration slope of 0.20 (95% CI 0.03–0.36)). We separately evaluated predictors of major
17 clinical events in our cohort. History of heart failure and at least mildly impaired sub
18 pulmonary LV function remained the strongest predictors of major clinical events in this
19 population.

20 **Conclusions:** We reported the first external validation of a major clinical events risk model in
21 a large D-TGA patient population. Although a good discrimination, the model tends to
22 overestimate the absolute 5-year risk. Subpulmonary LV dysfunction appears to be a key
23 marker in the prognosis of patients with Senning and Mustard. Further optimizing risk models
24 are needed to individualize risk predictions in D-TGA patients.

25

1 **Keywords:** Risk score; Heart failure; Transposition of great arteries; Atrial switch

2

3

4

5

6

7

8

9

10

11

12

13

14

15

16

17

18

19

20

21

22

23

24

25

1 **Clinical Perspective:**

2 **What is new?** This is the first external validation of a risk model for major clinical events in
3 D-TGA patients after atrial switch and the largest study emphasizing the importance of
4 assessing subpulmonary left ventricle (LV) function in these patients.

5

6 **What are clinical implications?**

7 - Risk model for major clinical events can be used to discriminate patients at low from
8 those at intermediate and high risk. This tool helps determine follow-up intensity, and
9 support management decisions specifically for intermediate- and high-risk patients
10 with a history of heart failure and at least mild sub pulmonary left ventricle (LV)
11 dysfunction.

12 - Sub-pulmonary LV, which can be the “forgotten chamber” in these patients with a
13 systemic right ventricle, should be carefully and regularly surveyed.

14 - Patients from the intermediate/high-risk group with history of heart failure, and
15 subpulmonary LV dysfunction have a poor prognosis and should be referred for
16 consideration of advanced therapies

17

18

19

20

21

22

23

24

25

1 **Non-standard Abbreviations and Acronyms:**

2 D-TGA: Transposition of the great arteries.

3 AtrS: Atrial switch.

4 sRV: Systemic right ventricular.

5 CHD: Congenital heart disease.

6 LVOT: Left ventricle outflow tract

7 VSD: Ventricular septal defect

8

9

10

11

12

13

14

15

16

17

18

19

20

21

22

23

24

25

1 **Introduction:**

2 The survival of patients with transposition of the great arteries (D-TGA) has improved
3 dramatically after introduction of the atrial switch (AtrS) procedures by Ake Senning and
4 William Mustard from the mid-1960s to the mid-1980s, when the use of the atrial switch
5 procedure became commonplace. Atrial switch procedures involve redirection of the blood
6 flow in the atria, consequently the morphological right ventricle supports the systemic
7 circulation, whereas the left ventricle (LV) supports the pulmonary circulation. Although
8 these procedures led to a significant improvement in survival during the first two decades of
9 life¹, late complications are frequently encountered including systemic right ventricular (sRV)
10 dysfunction, arrhythmias, heart failure (HF) and sudden cardiac death^{2 3 4}. The survival at 40
11 years is estimated to be between 70 to 80%^{5 6 2}. Nowadays most of patients are approaching
12 middle age.

13 Assessing the prognosis of these patients has become essential to identify patients at risk for
14 major clinical events (HF, ventricular arrhythmia, death). This approach would allow a
15 tailored risk prediction to support decisions for follow-up interval and therapeutic
16 management. Patients in the category of high risk would likely benefit from referral to a
17 quaternary center, where issues of cardiac support and heart transplantation would be
18 discussed, considering the hardly proven effectiveness of the drug treatments in congenital
19 heart disease (CHD) with a sRV^{7 8 9}.

20 Recently, Woudstra et al provided a clinical risk model that estimates the risks of major
21 events during the clinical course of patients with D-TGA and atrial switch. The model gave a
22 practical risk score based on 6 criteria (age >30 years, repair at >1 year, prior ventricular
23 arrhythmia, moderate or severe RV dysfunction, severe tricuspid regurgitation and at least
24 mild left ventricular dysfunction) stratifying patients into low, intermediate, and high-risk
25 groups of HF, ventricular tachycardia, and death at 5 and 10 years¹⁰. Although this prediction

1 model showed a good discriminatory ability on internal validation analysis, an external
2 validation in an independent population has not yet been performed. The aim of the current
3 study was to validate this predictive score in a large, independent, multi-center patient
4 population.

5

6 **Methods:**

7 Patients:

8 The study cohort comprised adult patients (>16 years old) with a D-TGA and atrial switch
9 from 7 European participating centres in the MARES registry (NCT03833843) ⁴ (Hôpital
10 Européen Georges Pompidou, Paris - Erasmus Medical Center, Rotterdam – University
11 Hospital Leuven, Leuven - Monaldi Hospital, Naples - Hospital Virgen del Rocio, Seville -
12 University Medical Center Ljubljana, Ljubljana - Centre Hospitalo-Universitaire de Caen,
13 Caen). The study complies with the Declaration of Helsinki and ethical or research committee
14 approval was obtained in each contributing centre.

15 Included patients were evaluated between January 2000 and December 2018. We excluded
16 patients with missing data for calculation of the major clinical event score and those with less
17 than 3 years of follow-up. This cohort was independent of the major clinical event score
18 development cohort ¹⁰.

19

20 Patients were followed up from the first hospital visit until December 2019 or the date of
21 primary outcome. The patients' medical records were reviewed to collect demographic
22 information, medical and surgical details.

23 The potential risk factors of clinical events in TGA after AtrS corresponded to those retained
24 in the risk prediction score developed by Woudstra et al¹⁰ and are listed in Table 1. Moreover,
25 additional predictors selected on the basis of a literature review were assessed (in

1 supplemental data Table S1^{2,4,6,10-26}). Complex TGA was defined as TGA associated with
2 ventricular septal defect (VSD), left ventricular outflow tract (LVOT) obstruction and/or
3 aortic coarctation. Associated pulmonary arterial hypertension was noted in the presence of
4 Eisenmenger syndrome or when pre-capillary pulmonary hypertension was invasively
5 confirmed according to the ESC guidelines²⁷. Atrial arrhythmia history encompassed all the
6 types of supraventricular arrhythmia including ectopic atrial tachycardia, atrioventricular
7 nodal reentrant tachycardia, atrioventricular reciprocating tachycardia, intra-atrial re-entry
8 tachycardia, atrial flutter, and atrial fibrillation. Holter and pacemaker/ICD monitoring, and
9 electrophysiological studies were obtained from medical records just before or at baseline.
10 Rhythm abnormalities recorded by Holter or pacemaker/ICD monitoring were classified into
11 sustained (≥ 30 s) and non-sustained (< 30 s) atrial or ventricular arrhythmias, and conduction
12 abnormalities with sinus node dysfunction and complete heart block.

13 Baseline was determined as the first visit at the adult congenital heart disease (ACHD) center
14 during the study period including clinical examination and 12-lead electrocardiography.
15 Baseline data included clinical data, brain natriuretic peptide, 12-lead electrocardiography,
16 imaging (echocardiography, cardiovascular magnetic resonance) and exercise testing
17 performed during routine follow-up. Additional predictor variables were recorded at the time
18 of, or just prior to baseline evaluation: specifically, unexplained syncope and episode of
19 sustained (≥ 30 s) atrial arrhythmia. Echocardiography was considered if it was performed
20 within the year before or after the baseline visit by an experienced operator.
21 Echocardiographic sRV function was visually graded by cardiologists at each participating
22 center as normal or mildly, moderately, or severely impaired²⁸. Tricuspid regurgitation (TR)
23 severity was graded, according to the European guidelines, from absent/trivial to severe TR²⁸
24²⁹. Left ventricle outflow tract obstruction (LVOT) was considered at least moderate when
25 maximum LVOT gradient > 36 mmHg or Doppler maximum velocity > 3 m/s. Subpulmonary

1 LV function was assessed from several parameters (visually estimated LV ejection fraction,
2 fractional area change, and MAPSE) and divided into 4 groups (normal, mildly, moderately,
3 or severely impaired) based on at least 2 parameters¹⁹. Brain natriuretic peptide (BNP) and
4 cardiopulmonary exercise testing (CPET) were considered when carried out within the 3 years
5 preceding or following the date of inclusion. Data were collected independently at
6 participating centres and data integrity was guaranteed by each participating author.

7

8 Study outcome:

9 Primary endpoints were major clinical events defined by Woudstra et al. They included (1)
10 HF events, defined as hospitalizations for HF, heart transplantation, ventricular assist device
11 implantation, or HF as cause of death; (2) VAs, defined as symptomatic non-sustained VA,
12 sustained VA, and sudden death; and (3) all-cause mortality.

13

14 All events occurring after patient inclusion were managed as time-dependent variables. The
15 latest follow-up data was obtained by reviewing clinical medical records or by telephone
16 contact and/or consultation with the patient.

17

18 Statistical methods:

19 Variables are described as mean \pm SD, median [interquartile range (IQR)], and numbers or
20 percentages as appropriate. Group comparisons were performed using the Student's t-test,
21 Mann–Whitney, or χ^2 test where applicable. Follow-up time was calculated from the time of
22 baseline evaluation to the date of reaching the study endpoint. The Kaplan–Meier method was
23 used to estimate the incidence of reaching the study endpoint.

24

1 *Missing data:* predictive variables used in the risk score model were all available. Other data
2 were no more missing than 1%, except for BNP, peak VO₂, and predicted VO₂, that were not
3 evaluated as predictors.

4

5 *Validation of risk prediction score of major clinical events:*

6 Follow-up was censored at 5 years and the estimated 5-year risk of major events was
7 calculated for each individual patient using the following equation

8
$$P(\text{major clinical events at 5-years}) = 1 - 0.96559^{\exp(\text{prognostic index})}$$

9 where prognostic index = score x 0.9841.

10

11 The C-index (Harrell's) was used to measure how well the model discriminated between
12 high- intermediate- and low-risk patients (a value of 1 indicates perfect discrimination, while
13 a value of 0.5 indicates no discrimination)^{30, 31}. Bootstrapping was used to calculate the
14 confidence intervals (CIs). The calibration slope was used to assess the degree of agreement
15 between the observed and predicted risk of major clinical events (a value close to 1 suggests
16 good overall agreement)³². Model calibration was described graphically by stratifying patients
17 into the three risk groups identified in Woudstra et al's study¹⁰.

18

19 Association of predictors with clinical events was further assessed using Cox proportional
20 hazards method. Proportionality of hazards was confirmed in each case by assessing the
21 correlation between the scaled Schoenfeld residuals and time. All predictors with a univariate
22 value <0.05 were included into a multivariate model, after which stepwise backward selection
23 based on Akaike Information Criterion (AIC) allowed to determine the best-fit model. A
24 separate analysis was done in patients with a reduced anatomic LV function. P < 0.05 was

1 considered statistically significant. Analyses were performed using SAS statistical software
2 (Version 9.4, Cary, NC) and MedCalc (MedCalc Software, Mariakerke, Belgium).

3

4 Ethics

5 This study complies with the Declaration of Helsinki. Local ethical approval was given for
6 each collaborating center with waiver of informed consent for retrospective, anonymized data
7 (NCT03833843).

8

9

10 **Results**

11 Baseline clinical characteristics:

12 Among 512 adult patients with AtrS, 417 fulfilled inclusion criteria and constituted our study
13 population (figure 1). Baseline characteristics are shown in Table 2. Compared to the Dutch
14 cohort, the European cohort was younger at baseline evaluation (median age 24 years
15 [interquartile range 18-30] vs 28 [IQR, 24–36], $p<0.01$), patients were more frequently
16 operated before 1 year of age (72% vs 47%, $p<0.01$), and sRV function was more commonly
17 impaired (49% vs 23%, $p<0.01$). Differences in baseline characteristics are summarized
18 in Table 2.

19

20 Clinical outcomes:

21 The validation study cohort had a median total follow-up of 11 years (IQR 8–16; range 3–19
22 years). Seventy-three patients reached the primary endpoint (17.5%) during the study period:
23 53 patients (13%) developed HF, 10 underwent heart transplantation (2%), 21 experienced
24 ventricular arrhythmia (5%) and 15 died (4%). No patients were implanted with a ventricular
25 assist device as destination therapy. Causes of death were HF (7), sudden cardiac death (4),

1 non-cardiac death (2) and unknown (2). Median event-free survival of event-naive patients
2 surviving into adulthood was 50 years (95% CI 48-52), and median survival until death or
3 heart transplantation of adults with TGA after atrial switch was 53years (95% CI 51-54). The
4 annual and 5-year cumulative incidence rates of major clinical events was 96.8% (95%CI
5 97.6-99.8) and 94.0% (95%CI 91.7-96.3) respectively (Figure 2A).

6
7 According to the risk prediction model (Table 1), 298 patients had a low (71%), 92 an
8 intermediate (22%) and 27 high (6%) risk of a major clinical events. Figure 2B shows the
9 Kaplan-Meier event-free survival plotted and compared between low, intermediate, and high-
10 risk group. Freedom from major clinical event survival was significantly reduced in the high-
11 and intermediate-risk group compared to the low-risk group (log rank test, $p < 0.001$). A
12 significant 95% CI overlapping was observed between the intermediate and high-risk group
13 survivals and risk of major clinical events was not significantly different between these 2
14 groups in the external validation population (Figure 2B, Figure 3).

15 Analyses were focused on the 25 patients who had major clinical events within 5 years of
16 follow-up (Figure 4). Baseline characteristics in those with and without a clinical event are
17 shown in (Table 3).

18

19 Major clinical event score model validation

20 The performance of the major clinical event score model in predicting risk at 5 years was
21 assessed in 417 patients with 25 events. Harrell's C-index was 0.73 (95% CI 0.65–0.81). The
22 calibration slope was 0.20 (95% CI 0.03–0.36). Figure 4 illustrates the agreement between
23 predicted and observed 5-year cumulative proportion of major clinical event for each group of
24 predicted risk.

25

1 Predictors of major clinical events

2 We separately performed an evaluation of predictors of major clinical events during study
3 follow-up. Predictors independently associated with major clinical events are shown in Table
4 3. Those with a significant ($p < 0.05$) univariate linear relationship with the primary outcome
5 were fitted into a multivariate model. After stepwise backward selection based on AIC, the 7
6 factors included in the model were age at baseline, repair after 1 year age, history of atrial
7 arrhythmia, history of HF, NYHA >1 , at least moderately sRV dysfunction and at least mild
8 subpulmonary LV dysfunction. History of HF (HR=33.19; 95%CI 9.7-113.5; $p<0.01$) and at
9 least mildly impaired sub pulmonary LV function (HR=2.96; 95%CI 1.31-6.70; $p<0.01$)
10 remained the strongest predictors of major clinical events in patients with D-TGA and atrial
11 switch.

12
13 Patients with subpulmonary LV dysfunction had more severe sRV dysfunction compared to
14 patients without LV dysfunction (OR= 8,45; 95%CI 3,38-20,63; $p<0,01$). Moreover,
15 symptoms, elevated BNP, and pulmonary hypertension were also significantly more common
16 in patients with subpulmonary LV dysfunction ($p<0.01$) (Table 4).

17

18

19 **Discussion:**

20 This is the first study that reports on the external validation of a major clinical event risk score
21 in patients followed after atrial switch operation from a large, multicenter, independent
22 European cohort. This score, developed by Woudstra et al in 2021¹⁰, allowed to stratify the
23 risk of composite outcomes including HF, ventricular tachycardia, sudden death, and death.
24 This information on individual absolute risk could help determine follow-up intensity, and
25 support management decisions on prevention and treatment of the prevailing complications.

1 From our externally validated cohort, we showed that this score discriminated well between
2 high/intermediate and low-risk patients at 5 years but tended to overestimate the absolute risk
3 of major events. Such as in Woudstra et al' study ¹⁰ , our results underscored the strong
4 prognostic value of subpulmonary LV function in patients with a sRV.

5

6 Fewer major clinical events were observed in our cohort compared with Dutch study¹⁰. This
7 may be explained by significant differences between our two populations. In our cohort, most
8 patients had undergone surgery before the age of 1 year and patients were younger at study
9 entry, which could explain our lower major clinical event rate. Even though the incidence of
10 HF did not differ between the 2 populations (14% in the European registry vs 18% in the
11 Dutch study), moderate to severe sRV dysfunction was more prevalent at baseline in the
12 external validation population. This results should be cautiously interpreted because sRV
13 function was qualitatively assessed by echocardiography, which is known to have a poor
14 interobserver reproducibility^{33 28}. However, all echocardiography exams were performed by
15 experienced cardiologists specialized in ACHD, and the multicenter aspect of our study may
16 have averaged the variability in the assessment of sRV function. Moreover, sRV dysfunction
17 rate was similar to previously reported in a large cohort of 1 168 patients with AtrS operation
18 for D-TGA¹¹. It seems that unlike LV dysfunction in acquired heart disease, sRV dysfunction
19 is far from sufficient to predict the unfavorable evolution of patient with D-TGA and atrial
20 switch. A large number of patients have sRV dysfunction for several years without an episode
21 of HF ³⁴.

22 We found that the prognostic factors most associated with the occurrence of major clinical
23 events are history of HF and subpulmonary LV dysfunction. Recently, several studies have
24 demonstrated that adverse subpulmonary LV remodeling and systolic dysfunction were
25 associated with worse clinical outcome in patients with a sRV ^{19,22}. Subpulmonary left

1 ventricular dysfunction is relatively common in patients with atrial switch and severe
2 systemic right ventricular dysfunction; in our cohort, one third of patients with severe
3 systemic right ventricular dysfunction have subpulmonary left ventricular dysfunction. Our
4 results suggest that LV dysfunction is a sensitive sign of failing sRV circulation and
5 underscore the importance of its evaluation in the routine assessment of patients with a sRV
6 ¹⁹.

7 The most obvious etiologies for subpulmonary LV dysfunction appear to be RV/LV
8 interdependence and pulmonary arterial hypertension (Table 4). Precapillary pulmonary
9 hypertension appears to be a cause of subpulmonary LV dysfunction and is a recognized
10 complication after atrial switch, with an estimated prevalence of 6-7% ³⁵. Postcapillary
11 pulmonary hypertension is related to atrial stiffness and dysfunction secondary to the atrial
12 switch, tricuspid regurgitation and sRV failure³⁶. Particular attention should be paid to the
13 subpulmonary LV after atrial switch.

14

15 Our findings are complementary of those from Woudstra et al 'study¹⁰. Indeed, the risk model
16 allows to identify patients with high risk of major adverse events, who will require a close
17 monitoring in tertiary centers proposing therapeutic options for advanced HF like mechanical
18 circulatory support and heart transplantation. This approach should mainly concern patients
19 with intermediate or high-risk score, and even more when history of HF or at least mildly
20 impaired subpulmonary LV function are reported. The use of prognostic scores seems
21 essential to stratify the risk of events, particularly HF. Indeed, depending on the risk of HF,
22 these patients may benefit from regular monitoring, cardiac rehabilitation programs, early
23 detection and treatment of supraventricular rhythm disorders, and early HF treatment when
24 the patient starts to be symptomatic²⁷. Although medical therapy has failed to show preventive
25 efficacy on heart failure events and death in several studies, screening of high risk patients

1 will, maybe, allow to show some benefit in this cohort in future studies^{7,8}. However, the
2 present score models evaluate a composite endpoint, and predictors may vary according to the
3 event assessed, even if several factors overlap the risk of HF and sudden cardiac death in
4 patients with a sRV. Recently, a sudden death prediction score was developed for sRV (D-
5 TGA after atrial switch and congenitally corrected transposition), based on different criteria:
6 age, HF, syncope, severe right ventricular dysfunction, moderate pulmonary stenosis and
7 QRS width⁴. Currently, there is no specific prognostic score for HF in this population,
8 although it is the main cause of death in adults with D-TGA and AtrS¹².

9

10 The main limitation of our study is the retrospective design, supported by the low incidence of
11 events in a rare cardiac condition. By conducting a large multicentric study, bias inherent to
12 retrospective design could be easier managed. No predictors included in the risk predictive
13 model were missing in the external validation dataset. However, some factors known to be
14 strong prognostic markers for clinical outcomes in sRV, such as BNP or peak VO₂
15 measurements, were missing for more than 25% of cases and were not included in
16 multivariable analysis. Further risk prediction models should be developed by including these
17 markers. sRV function was not retained in multivariate analysis; however cardiac magnetic
18 resonance imaging measurements of sRV function might show a stronger relationship with
19 worse outcomes.

20

21 We reported the first external validation of a major clinical events risk model in a large D-
22 TGA patient population. Although a good discrimination, the model tends to overestimate the
23 5-year risk of major clinical events. HF remains associated with poor outcome in this cardiac
24 defect. Subpulmonary LV dysfunction appears to be a key marker in the prognosis of patients
25 with Senning and Mustard. The development or optimizing new risk models is required,

1 particularly to predict HF and individualize the management of subgroups of patients with D-

2 TGA after AtrS.

3

4

5

6

7

8

9

10

11

12

13

14

15

16

17

18

19

20

21

22

23

1 **Acknowledgements:** We thank Mrs Anissa Boubrit, a French research technician from the
2 reference center of complex congenital heart disease M3C, who helped with recording of data
3 from the Paris.

4

5 **Sources of funding:** This work was supported by the Fédération Française de Cardiologie
6 and the Assistance Publique des Hôpitaux de Paris.

7

8 **Disclosure:** The Authors declare that there is no conflict of interest.

9

10 **Supplemental Material:**

11 Table S1

12

13

14

15

16

17

18

19

20

21

22

23

24

25

1 **Bibliographie :**

- 2 1. Rooshesselink J. Decline in ventricular function and clinical condition after mustard
3 repair for transposition of the great arteries (a prospective study of 22?29 years)*1. *Eur Heart*
4 *J.* 2004;25(14):1264-1270. doi:10.1016/j.ehj.2004.03.009
- 5 2. Cuypers JAAE, Eindhoven JA, Slager MA, et al. The natural and unnatural history of
6 the Mustard procedure: long-term outcome up to 40 years. *Eur Heart J.* 2014;35(25):1666-
7 1674. doi:10.1093/eurheartj/ehu102
- 8 3. Vejlstrop N, Sørensen K, Mattsson E, et al. Long-Term Outcome of Mustard/Senning
9 Correction for Transposition of the Great Arteries in Sweden and Denmark. *Circulation.*
10 2015;132(8):633-638. doi:10.1161/CIRCULATIONAHA.114.010770
- 11 4. Ladouceur M, Van De Bruaene A, Kauling R, et al. A new score for life-threatening
12 ventricular arrhythmias and sudden cardiac death in adults with transposition of the great
13 arteries and a systemic right ventricle. *Eur Heart J.* Published online June 8, 2022:ehac288.
14 doi:10.1093/eurheartj/ehac288
- 15 5. Couperus LE, Vliegen HW, Zandstra TE, et al. Long-term outcome after atrial
16 correction for transposition of the great arteries. *Heart.* 2019;105(10):790-796.
17 doi:10.1136/heartjnl-2018-313647
- 18 6. Dennis M, Kotchetkova I, Cordina R, Celermajer DS. Long-Term Follow-up of Adults
19 Following the Atrial Switch Operation for Transposition of the Great Arteries – A
20 Contemporary Cohort. *Heart Lung Circ.* 2018;27(8):1011-1017.
21 doi:10.1016/j.hlc.2017.10.008
- 22 7. Ladouceur M, Segura de la Cal T, Gaye B, et al. Effect of medical treatment on heart
23 failure incidence in patients with a systemic right ventricle. *Heart.* 2021;107(17):1384-1389.
24 doi:10.1136/heartjnl-2020-318787
- 25 8. Zaragoza-Macias E, Zaidi AN, Dendukuri N, Marelli A. Medical Therapy for

- 1 Systemic Right Ventricles: A Systematic Review (Part 1) for the 2018 AHA/ACC Guideline
2 for the Management of Adults With Congenital Heart Disease: A Report of the American
3 College of Cardiology/American Heart Association Task Force on Clinical Practice
4 Guidelines. *Circulation*. 2019;139(14). doi:10.1161/CIR.0000000000000604
- 5 9. VanderPluym CJ, Cedars A, Eghtesady P, et al. Outcomes following implantation of
6 mechanical circulatory support in adults with congenital heart disease: An analysis of the
7 Interagency Registry for Mechanically Assisted Circulatory Support (INTERMACS). *J Heart
8 Lung Transplant*. 2018;37(1):89-99. doi:10.1016/j.healun.2017.03.005
- 9 10. Woudstra OI, Zandstra TE, Vogel RF, et al. Clinical Course Long After Atrial Switch:
10 A Novel Risk Score for Major Clinical Events. *J Am Heart Assoc*. 2021;10(5).
11 doi:10.1161/JAHA.120.018565
- 12 11. Broberg CS, van Dissel A, Minnier J, et al. Long-Term Outcomes After Atrial Switch
13 Operation for Transposition of the Great Arteries. *J Am Coll Cardiol*. 2022;80(10):951-963.
14 doi:10.1016/j.jacc.2022.06.020
- 15 12. Jensen AS, Jørgensen TH, Christersson C, et al. Cause-Specific Mortality in Patients
16 During Long-Term Follow-Up After Atrial Switch for Transposition of the Great Arteries. *J
17 Am Heart Assoc*. 2022;11(14):e023921. doi:10.1161/JAHA.121.023921
- 18 13. Venkatesh P, Evans AT, Maw AM, et al. Predictors of Late Mortality in D-
19 Transposition of the Great Arteries After Atrial Switch Repair: Systematic Review and Meta-
20 Analysis. *J Am Heart Assoc*. 2019;8(21):e012932. doi:10.1161/JAHA.119.012932
- 21 14. Schwerzmann M, Salehian O, Harris L, et al. Ventricular arrhythmias and sudden
22 death in adults after a Mustard operation for transposition of the great arteries. *Eur Heart J*.
23 2009;30(15):1873-1879. doi:10.1093/eurheartj/ehp179
- 24 15. Wheeler M, Grigg L, Zentner D. Can we predict sudden cardiac death in long-term
25 survivors of atrial switch surgery for transposition of the great arteries? *Congenit Heart Dis*.

- 1 2014;9(4):326-332. doi:10.1111/chd.12145
- 2 16. Kammeraad JAE, van Deurzen CHM, Sreeram N, et al. Predictors of sudden cardiac
3 death after Mustard or Senning repair for transposition of the great arteries. *J Am Coll*
4 *Cardiol.* 2004;44(5):1095-1102. doi:10.1016/j.jacc.2004.05.073
- 5 17. McCombe A, Touma F, Jackson D, et al. Sudden cardiac death in adults with
6 congenitally corrected transposition of the great arteries. *Open Heart.* 2016;3(2):e000407.
7 doi:10.1136/openhrt-2016-000407
- 8 18. Khairy P, Harris L, Landzberg MJ, et al. Sudden death and defibrillators in
9 transposition of the great arteries with intra-atrial baffles: a multicenter study. *Circ Arrhythm*
10 *Electrophysiol.* 2008;1(4):250-257. doi:10.1161/CIRCEP.108.776120
- 11 19. Surkova E, Segura T, Dimopoulos K, et al. Systolic dysfunction of the subpulmonary
12 left ventricle is associated with the severity of heart failure in patients with a systemic right
13 ventricle. *Int J Cardiol.* 2021;324:66-71. doi:10.1016/j.ijcard.2020.09.051
- 14 20. Lewis MJ, Van Dissel A, Kochav J, et al. Cardiac MRI predictors of adverse outcomes
15 in adults with a systemic right ventricle. *ESC Heart Fail.* 2022;9(2):834-841.
16 doi:10.1002/ehf2.13745
- 17 21. van der Bom T, Winter MM, Groenink M, et al. Right ventricular end-diastolic
18 volume combined with peak systolic blood pressure during exercise identifies patients at risk
19 for complications in adults with a systemic right ventricle. *J Am Coll Cardiol.*
20 2013;62(10):926-936. doi:10.1016/j.jacc.2013.06.026
- 21 22. Santens B, Helsen F, Van De Bruaene A, et al. Adverse remodeling of the
22 subpulmonary left ventricle in patient with systemic right ventricle is associated with clinical
23 outcome. *Eur Heart J - Cardiovasc Imaging.* 2021;22(Supplement_2):jeab090.118.
24 doi:10.1093/ehjci/jeab090.118
- 25 23. Babu-Narayan SV, Goktekin O, Moon JC, et al. Late gadolinium enhancement

- 1 cardiovascular magnetic resonance of the systemic right ventricle in adults with previous
2 atrial redirection surgery for transposition of the great arteries. *Circulation*.
3 2005;111(16):2091-2098. doi:10.1161/01.CIR.0000162463.61626.3B
- 4 24. Rydman R, Gatzoulis MA, Ho SY, et al. Systemic right ventricular fibrosis detected
5 by cardiovascular magnetic resonance is associated with clinical outcome, mainly new-onset
6 atrial arrhythmia, in patients after atrial redirection surgery for transposition of the great
7 arteries. *Circ Cardiovasc Imaging*. 2015;8(5):e002628.
8 doi:10.1161/CIRCIMAGING.114.002628
- 9 25. Geenen LW, van Grootel RWJ, Akman K, et al. Exploring the Prognostic Value of
10 Novel Markers in Adults With a Systemic Right Ventricle. *J Am Heart Assoc*.
11 2019;8(17):e013745. doi:10.1161/JAHA.119.013745
- 12 26. Habegger S, Hauser M, Braun SL, et al. Prognostic Value of Plasma B-Type
13 Natriuretic Peptide in the Long-Term Follow-up of Patients With Transposition of the Great
14 Arteries With Morphologic Right Systemic Ventricle After Atrial Switch Operation. *Circ J*
15 *Off J Jpn Circ Soc*. 2015;79(12):2677-2681. doi:10.1253/circj.CJ-15-0348
- 16 27. Backer JD, Babu-Narayan SV, Budts W, et al. The Task Force for the management of
17 adult congenital heart disease of the European Society of Cardiology (ESC). :83.
- 18 28. Li W, West C, McGhie J, et al. Consensus recommendations for echocardiography in
19 adults with congenital heart defects from the International Society of Adult Congenital Heart
20 Disease (ISACHD). *Int J Cardiol*. 2018;272:77-83. doi:10.1016/j.ijcard.2018.07.058
- 21 29. Rudski LG, Lai WW, Afilalo J, et al. Guidelines for the Echocardiographic
22 Assessment of the Right Heart in Adults: A Report from the American Society of
23 Echocardiography. *J Am Soc Echocardiogr*. 2010;23(7):685-713.
24 doi:10.1016/j.echo.2010.05.010
- 25 30. Rahman MS, Ambler G, Choodari-Oskooei B, Omar RZ. Review and evaluation of

1 performance measures for survival prediction models in external validation settings. *BMC*
2 *Med Res Methodol.* 2017;17(1):60. doi:10.1186/s12874-017-0336-2

3 31. Harrell FE, Califf RM, Pryor DB, Lee KL, Rosati RA. Evaluating the yield of medical
4 tests. *JAMA.* 1982;247(18):2543-2546.

5 32. Steyerberg EW. *Clinical Prediction Models.* Springer New York; 2009.
6 doi:10.1007/978-0-387-77244-8

7 33. Chaix MA, Dore A, Marcotte F, et al. Variability in the Echocardiographic Evaluation
8 of the Systemic Right Ventricle. *Can J Cardiol.* 2019;35(2):178-184.
9 doi:10.1016/j.cjca.2018.11.021

10 34. Andrade L, Carazo M, Wu F, Kim Y, Wilson W. Mechanisms for heart failure in
11 systemic right ventricle. *Heart Fail Rev.* 2020;25(4):599-607. doi:10.1007/s10741-019-
12 09902-1

13 35. Ebenroth ES, Hurwitz RA, Cordes TM. Late onset of pulmonary hypertension after
14 successful mustard surgery for d-transposition of the great arteries. *Am J Cardiol.*
15 2000;85(1):127-130. doi:10.1016/S0002-9149(99)00625-6

16 36. Chaix M, Dore A, Mercier L, et al. Late Onset Postcapillary Pulmonary Hypertension
17 in Patients With Transposition of the Great Arteries and Mustard or Senning Baffles. *J Am*
18 *Heart Assoc.* 2017;6(10):e006481. doi:10.1161/JAHA.117.006481

19

20

21

22

23

24

25

1 **TABLE:**

2

Criteria	Score points
Age > 30 years	1 4
Repair at > 1 year	1,5
Prior ventricular arrhythmia	1 5
≥ Moderate RV dysfunction	1
Severe tricuspid regurgitation	1,5 6
≥ Mild LV dysfunction	1,5

7 **Table 1**, Major clinical event score developed by Woudstra et al¹⁰. A risk score between 0-2
8 corresponded to the low-risk group with a predicted 5-year risk <5%, a score between 2.5-3.5
9 to the intermediate-risk group with a predicted risk of 5-20%, and a score between 4-7.5 to the
10 high-risk group with a predicted risk >20%.

11

12

13

14

15

16

17

18

19

20

21

22

23

24

25

Characteristics	Validation cohort (N= 417)	Dutch cohort (N= 167)	P Value
Age	24 (18-29)	28 (24–36)	<0.01
Aged>30 y	102 (24%)	74 (44%)	<0.01
Gender, male	261 (63%)	104 (62%)	0.86
Senning procedure	212 (51%)	66 (40%)	0.12
Complex TGA	112 (27%)	51 (31%)	0.60
Repair > 1 year	115 (28%)	89 (53%)	<0.01
Subsequent interventions after atrial switch surgery	108 (26%)	32 (19%)	0.41
Supraventricular tachycardia	140 (36%)	58 (35%)	0.88
Complete pregnancy	73 (18%)	NA	NA
Pulmonary arterial hypertension	26 (6%)	NA	NA
Prior heart failure	18 (4%)	8 (5%)	0.83
Prior ventricular tachycardia	38 (9%)	13 (8%)	0.91
NYHA I	304 (73%)	128 (77%)	0.39
NYHA ≥ II	112 (27%)	39 (25%)	0.80
Moderate or severe impairment of RV function	205 (49%)	38 (23%)	<0.01
Severe tricuspid regurgitation	22 (5%)	12 (8%)	0.73
Mild or greater impairment of LV function	35 (8%)	8 (5%)	0.77
Severe mitral regurgitation	1 (0,2%)	NA	NA
Moderate pulmonary stenosis	55 (13%)	NA	NA
Cardiac treatment	155 (37%)	NA	NA
Beta-blockers	74 (18%)	28 (17%)	0.91

Diuretics	31 (7%)	14 (8%)	0.91
ACEi/ARA 2	107 (26%)	45 (27%)	0.90
Pacemaker	93 (22%)	41 (25%)	0.70
ICD for primary prevention	29 (7%)	5 (3%)	0.74

1 **Table 2. Baseline Characteristics and comparison with Dutch cohort.** ACEi,
2 Angiotensin-converting enzyme inhibitor; ARA 2, Angiotensin II receptor antagonist; ICD,
3 implantable cardioverter-defibrillator; LV, left ventricle; NYHA, New-York Heart
4 Association; TGA, Transposition of the Great Arteries.

5
6
7
8
9
10
11
12
13
14
15
16
17
18
19
20
21
22

Clinical characteristic	Composite end-point (n = 73)	No composite endpoint (n = 344)	Hazard ratio (95% CI)	P-value
Age	27 (20-32)	23 (18-29)	1.09 (1.05 - 1.12)	<0.01
Gender (male)	46 (63%)	215 (62%)	1.00 (0.62 - 1.61)	0.96
Aged >30y	25 (34%)	77 (22%)	2.58 (1.57 – 4.23)	<0.01
Aged >1 y at AtrS	33 (45%)	82 (24%)	2.41 (1.52 - 3.82)	<0.01
Mustard procedure	44 (60%)	161 (46%)	1.22 (0.86 – 1.96)	0.40
Complex anatomy	32 (44%)	80 (23%)	0.92 (0.49 – 1.72)	0.81
Symptoms (NYHA>1)	30 (41%)	83 (24%)	2.71 (1.68 – 4.34)	<0.01
Prior HF	56 (77%)	16 (5%)	30.51 (17.40 – 53.30)	<0.01
Prior VA	12 (16%)	26 (8%)	1.76 0.94 - 3.26)	0.07
Prior atrial arrhythmia	46 (63%)	94 (27%)	3.52 (2.18 – 5.66)	<0.01
PAH	13 (18%)	13 (4%)	3.43 (1.88 – 6.26)	<0.01
Pacemaker	31 (42%)	62 (18%)	2.94 (1.84 – 4.68)	<0.01
Moderate or greater RV dysfunction	53 (73%)	198 (56%)	1.76 (1.05 – 2.95)	<0.03
Severe tricuspid regurgitation	11 (15%)	11 (3%)	3.47 (1.83 – 6.61)	<0.01
LVOT obstruction	16 (22%)	39 (11%)	1.71 (0.98 – 2.97)	0.06
Mild or greater LV dysfunction	18 (25%)	17 (5%)	4.88 (2.85 – 8.33)	<0.001
Moderate or severe mitral regurgitation	3 (4)	2 (0.6%)	4.78 (1.15 – 19.86)	0.03
BNP (pg/mL)	371 (223-1007)	130 (68-236)	1.00 (1.00 - 1.00)	<0.01
Peak VO2 (ml/mn/kg)	19.2 (15.7-22.5)	23.6 (17.5-27.5)	0.92 (0.88 – 0.97)	<0.01
VO2 predicted (%)	47.0 (35.0-53.0)	61.0 47.7-68.3)	0.97 (0.94 – 0.99)	0.01

1 **Table 3. Baseline characteristics of patients with and without major clinical events.** AtrS,
2 atrial switch; HF, Heart Failure; LV, left ventricle; NYHA, New-York Heart Association;
3 PAH, Pulmonary Arterial Hypertension.

4

5

6

7

8

9

10

11

12

13

14

15

16

17

18

19

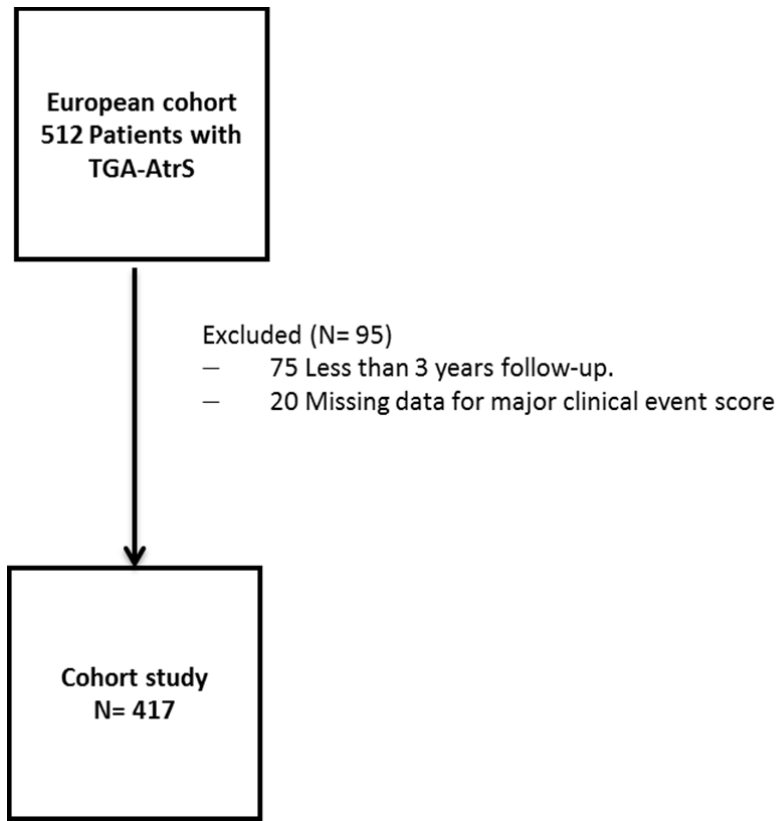
20

Variable	Patient with Mild or greater impairment of LV function (N = 35)	Patient without impairment of LV function (N= 382)	Odds Ratio (IC 95%)	P Value
Normal RV function	0	46 (12%)	0,21 (0,01-1,32)	0,210
Mild impairment of sRV function	12 (34%)	154 (40%)	0,77 (0,34-1,67)	0,589
Moderate impairment of sRV function	11 (31%)	160 (42%)	0,64 (0,27-1,40)	0,282
Severe impairment of sRV function	12 (34%)	22 (6%)	8,45 (3,38-20,63)	<0,01
PAH	10 (29%)	16 (4%)	9,05 (3,32-23,90)	<0,01
NYHA 2-4	18 (51%)	94 (25%)	3,23 (1,50-6,98)	<0,01
BNP (N=265)	1584 (659,25-7278)	139,8 (78-259)	1,00 (1,00-1,00)	0,012

1 **Table 4. Comparison in univariate analysis of patients with and without subpulmonary**
2 **left ventricular dysfunction.** BNP, Brain Natriuretic Peptide; LV, left ventricle; NYHA,
3 New-York Heart Association; PAH, Pulmonary Arterial Hypertension; sRV: systemic Right
4 Ventricle.

5
6
7
8
9
10
11
12
13
14
15
16
17

1 **FIGURES :**



2

3

4 **Figure 1. Flowchart study.**

5

6

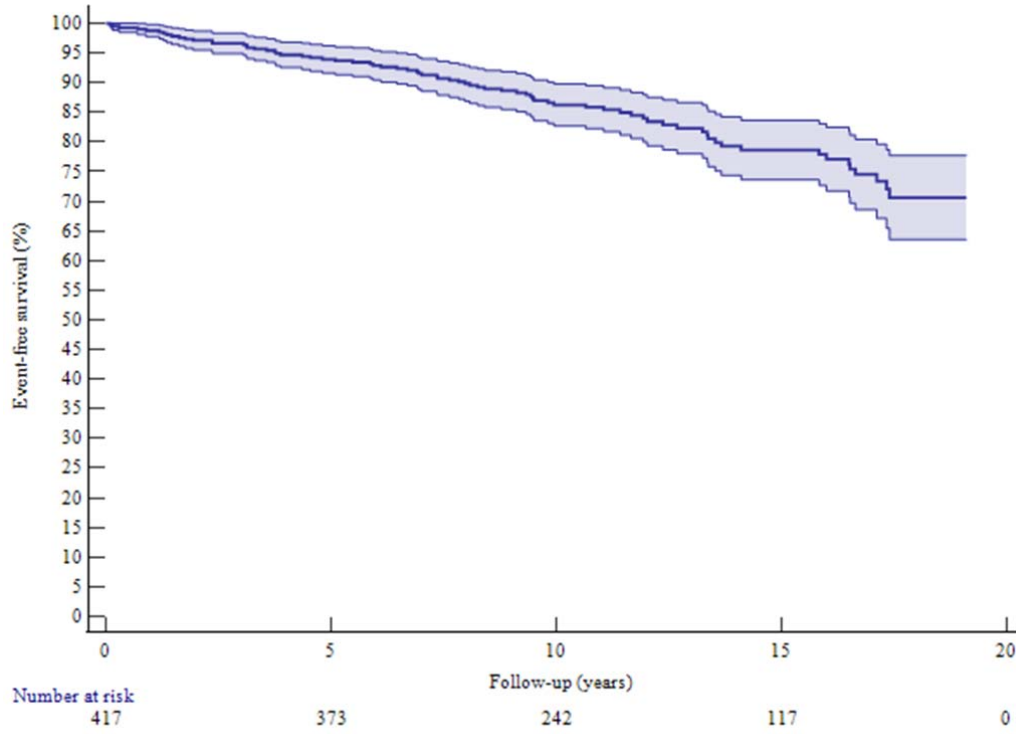
7

8

9

10

11

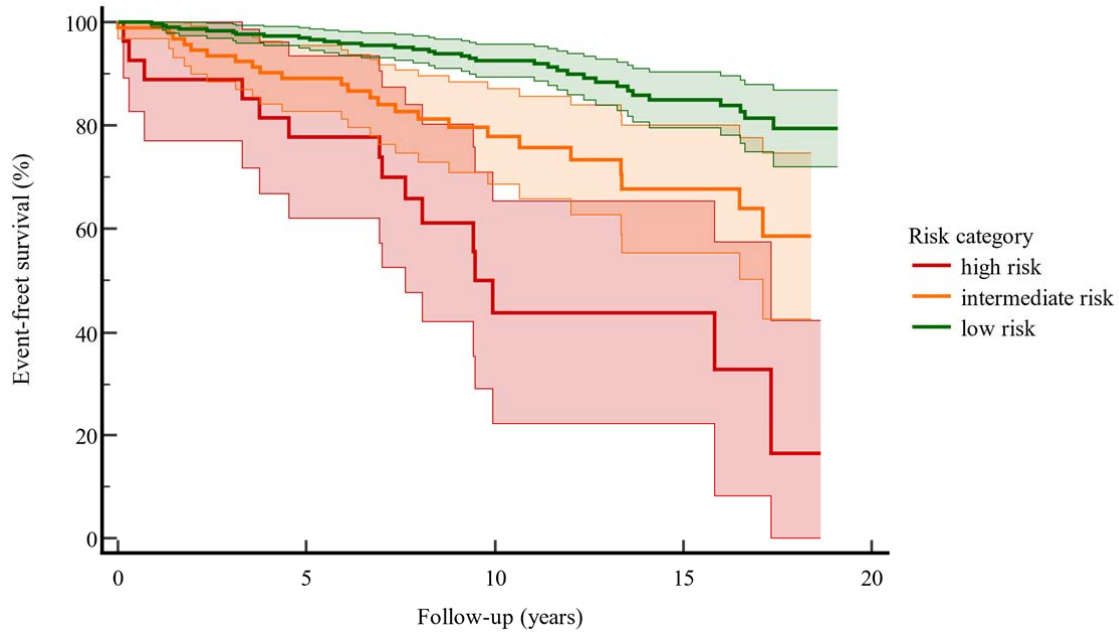


1

2 **Figure 2A. Kaplan–Meier curve showing event-free survival of the whole external**
3 **validation population. Shaded area corresponds to 95% confidence interval.**

4

5



Number at risk					
Group: high risk	0	5	10	15	20
Group: high risk	27	21	7	5	0
Group: intermediate risk	91	77	44	20	0
Group: low risk	298	275	191	92	0

1

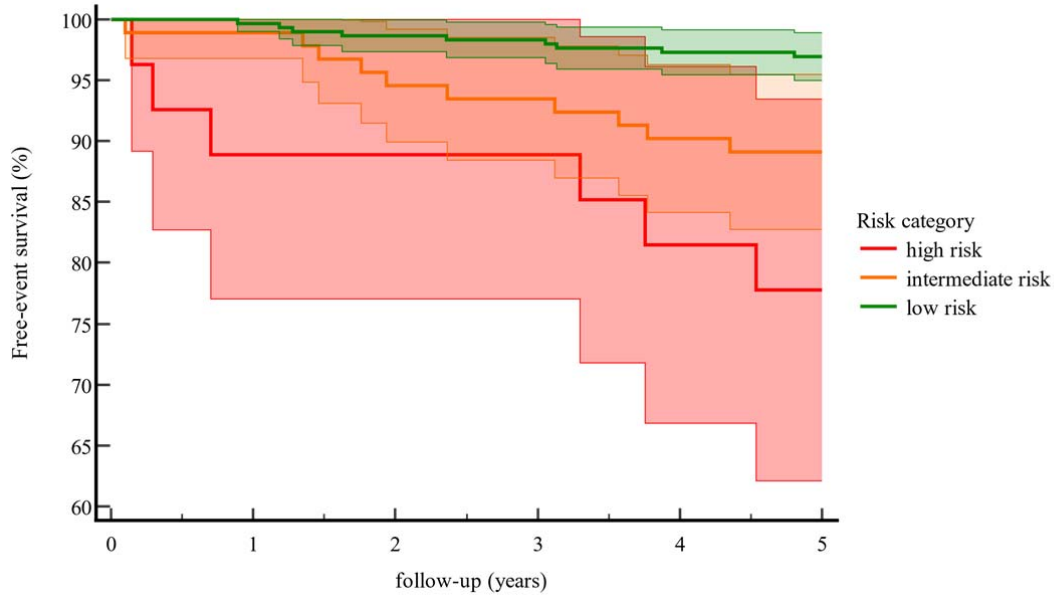
2 **Figure 2B. Kaplan–Meier curve showing event-free survival of the external validation**
 3 **cohort by risk category. Shaded areas correspond to 95% confidence intervals.**

4

5

6

7



Number at risk						
Group: high risk	0	1	2	3	4	5
Group: high risk	27	24	24	24	22	0
Group: intermediate risk	92	91	87	86	83	0
Group: low risk	298	297	294	293	281	0

1

2 **Figure 3. Kaplan–Meier curves showing event-free survival by risk category at 5 years.**

3 **Shaded areas correspond to 95% confidence intervals.**

4

5

6

7

8

9

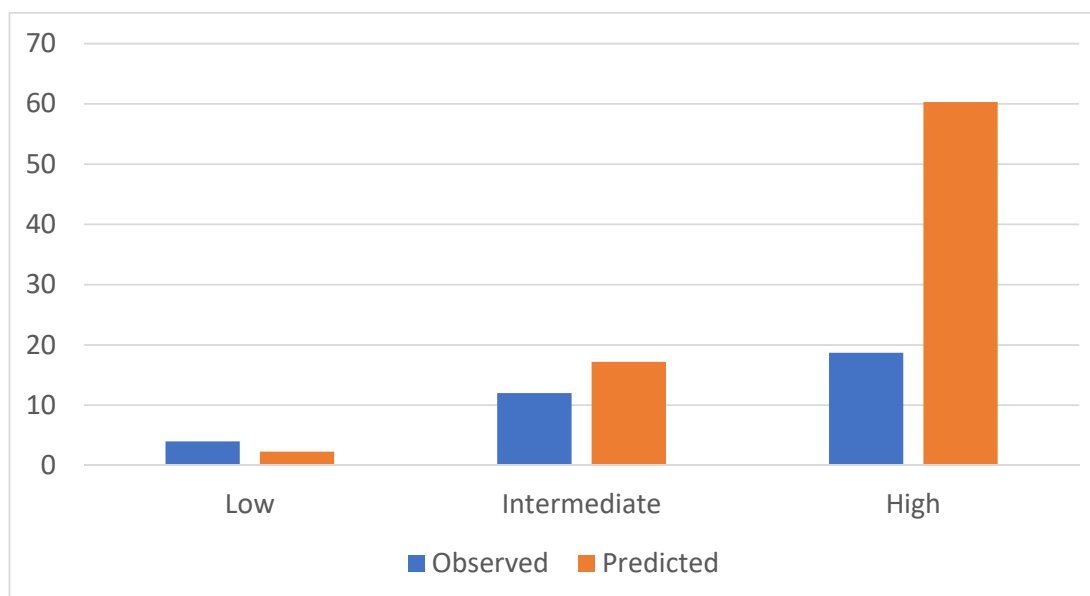
10

11

12

13

14



1

2 **Figure 4. Comparison of observed and predicted risk by risk group of the major clinical**
3 **events proposed risk model. Vertical bars represent model-based predicted (orange) and**
4 **observed (blue) probability of events at 5 years. The low-risk group corresponds to a**
5 **predicted 5-year risk <5%, the intermediate-risk group to a predicted risk of 5 - 20%,**
6 **and the high-risk group to a predicted risk >20%.**

7

8