

1 **The Role of Sacubitril/Valsartan and Gliflozins in Heart Failure with Reduced Ejection**

2 **Fraction after Cardiac Resynchronization Therapy**

3 **Short Title:** ARNi and SGLT2i in CRT

4 **Authors**

5 Celeste Fonderico*, MD, Valerio Pergola*, MD, Daniele Faccenda, MD, Gianluigi

6 Comparone, MD, Aldo Marrese, MD, Alfonsomaria Salucci, MD, Giuseppe Ammirati, MD,

7 Luigi Cocchiara, MD, Alfonso Varriale, BS, Giovanni Esposito, MD, PhD, Antonio

8 Rapacciuolo, MD, PhD, Teresa Strisciuglio, MD, PhD.

9 * These authors equally contributed

10 **Affiliation**

11 Division of Cardiology, Department of Advanced Biomedical Sciences, Federico II University

12 of Naples, Naples, Italy.

13 All authors take responsibility for all aspects of the reliability and freedom from bias of the

14 data presented and their discussed interpretation.

15 **Total word count:** 11197 words

16 **Corresponding Author Contact Information:**

17 Antonio Rapacciuolo, MD, PhD

18 Department of Advanced Biomedical Sciences, Federico II University of Naples

19 Via S. Pansini, 5 - 80121 Naples - Italy

20 Tel: +39-081-7462221 Fax: +39-081-7462221

21 Email address: antonio.rapacciuolo@unina.it

1 **ABSTRACT**

2 **BACKGROUND.** The angiotensin receptor-neprilysin inhibitor (ARNi) and the sodium-
3 glucose co-transporter 2 inhibitors (SGLT2i) have improved the outcome of patients with heart
4 failure and reduced ejection fraction (HFrEF). However, data characterizing their effectiveness
5 after cardiac resynchronization therapy (CRT) implant are relatively scarce. This study
6 investigated the impact of ARNi and SGLT2i treatment 1) on CRT response at 12 months 2)
7 on the cardiac function and the clinical functional status (NYHA class) at mid- and long-term
8 follow-up 3) on the cardiac and overall survival at long-term follow-up.

9 **METHODS AND RESULTS.** HFrEF patients referred for CRT implant were enrolled in the
10 study and were grouped by the ARNi/SGLT2i therapy. A first analysis investigated the
11 synergistic impact of these drugs started at implant on 1-year CRT response and included all
12 172 patients enrolled. In order to evaluate whether the time of ARNi/SGLT2i initiation after
13 CRT response assessment is meaningful, a second analysis considered 100 patients with a
14 follow-up ≥ 24 months. The median follow-up was 63.1 (confidence interval [CI] 95%, 52.7 -
15 73.8) months.

16 At 1-year follow-up, 40 of 51 (78.4%) patients in ARNi or SGLT2i group and 66 of 121
17 (54.5%) in the no treatment group were classified as responders ($p = 0.006$). In multivariable
18 analysis, ARNi/SGLT2i use was an independent predictor of CRT response (odds ratio, 5.38;
19 CI 95%, 2-16.2; $p = 0.001$). At mid-term follow-up (median time [interquartile range, IQR]
20 40.6 [25.2; 58.3] months), 61 patients started to assume these drugs. NYHA functional class
21 improved in 23 (37.7%) patients and decreased in only 2 (3.3%) in ARNi/SGLT2i patients vs
22 13 (33.3%) in no treatment group ($p < 0.001$). ARNi and SGLT2i improved significantly also
23 the Δ LVEF, with a median [IQR] increase of 4 [2; 8] % compared to the no treatment group -
24 1.8 [-4; 0.2] % ($p < 0.001$) and were independently associated with a NYHA functional class

1 II or I at long-term (hazard ratio [HR], 3.67; CI 95%, 1.37-10.2; $p < 0.001$). Their estimated
2 effectiveness was consistent over the entire follow-up period (Schoenfeld residuals test, $p =$
3 0.10), although without reaching statistical significance effects on cardiovascular survival (HR,
4 0.61; CI 95%, 0.25-1.50; $p = 0.22$).

5 **CONCLUSIONS.** The ARNi and SGLT2i treatment in CRT patients improves the clinical and
6 echocardiographic response at 12-month and long-term follow-up, independently from the time
7 of initiation. These drugs also confer benefit on survival, however further studies are needed
8 to confirm these data.

9 **Keywords**

10 Cardiac resynchronization therapy; Heart failure with reduced ejection fraction; Angiotensin
11 receptor-neprilysin inhibitor; Sodium-glucose co-transporter 2 inhibitors.

12 **Non-standard Abbreviation and Acronyms**

13	ARNi	Angiotensin receptor-neprilysin inhibitor
14	COPD	Chronic obstructive pulmonary disease
15	CRT	Cardiac resynchronization therapy
16	HF	Heart failure
17	HFrEF	Heart failure and reduced ejection fraction
18	ICM	Ischemic cardiomyopathy
19	LVEF	Left ventricular ejection fraction
20	LVESV	Left ventricular end-systolic volume
21	NICM	Non-ischemic cardiomyopathy
22	SGLT2i	Sodium-glucose co-transporter 2 inhibitors

23

1 INTRODUCTION

2 Heart failure (HF) is one of the greatest public health burdens worldwide ¹. Since recent studies
3 have demonstrated that angiotensin receptor-neprilysin inhibitor (ARNi or sacubitril/valsartan,
4 S/V) and sodium-glucose co-transporter 2 inhibitors (SGLT2i or gliflozins) reduce the risk of
5 cardiovascular mortality and worsening of heart failure in patients with reduced ejection
6 fraction (HFrEF) ²⁻⁴, the current European guidelines recommend in class I as key first-line
7 treatment the angiotensin-converting enzyme inhibitor (ACE-i) or ARNi and gliflozins on top
8 of beta-blockers and mineralocorticoid receptor antagonist ⁵. Furthermore, the cardiac
9 resynchronization therapy (CRT) is an established treatment for therapy-refractory mild to
10 severe HFrEF patients with left ventricular conduction delay and is recommended for
11 symptomatic patients despite optimal medical therapy for at least 3 months ⁶. The clinical
12 benefit of ARNi and SGLT2i initiation is net in non-device-bearing patients ^{7,8}, however in
13 large multicentric trials only a minority of patients were already implanted with a cardiac
14 resynchronization therapy with defibrillator (CRTD), and in a real-world setting a significant
15 gap in their prescription exists ⁹. Thus, it is less clear whether CRTD carriers may further
16 benefit of the treatment with ARNi and SGLT2i even when starting them after the device
17 implantation.

18 The present study aims to evaluate in a cohort of CRTD patients 1) the impact of ARNi and
19 SGLT2i treatment on CRT response at 12 months after implantation 2) their impact at mid-
20 term and long-term follow-up on cardiac function and clinical functional status (NYHA class)
21 3) the effects of these drugs on cardiac and overall survival 4) whether the time of initiation of
22 these drugs influences the clinical response.

23 METHODS

24 Study population

1 This was a single-center observational retrospective study including all HFrEF symptomatic
2 patients consecutively referred for CRTD implantation at the Department of Cardiology of
3 Federico II University of Naples, from January 2015 to January 2022. All patients received
4 CRTD according to the guidelines of the European Society of Cardiology¹⁰ and were included
5 in the local clinical database. Each patient signed the informed consent for data collection and
6 for inclusion in the database.

7 In order to avoid possible confounding factors and make our population homogeneous, we
8 included only ischemic (ICM) and non-ischemic (NICM) patients excluding other reversible
9 causes of HF (such as acute viral myocarditis, alcohol-induced heart disease and tachycardia-
10 related cardiomyopathy), valvular diseases¹¹, chemotherapy-induced cardiomyopathy¹² and
11 dilated-phase hypertrophic cardiomyopathy¹³. Other exclusion criteria were age below 18, lack
12 of complete echocardiography or medical therapy data at 12-months follow-up and patients in
13 ARNi or SGLT2i treatment > 3 months before CRTD implant.

14 Patients were divided into the following categories based on the pharmacological therapy at
15 implantation time, and subsequently after CRT response assessment: 1) not in ARNi and
16 SGLT2i 2) in ARNi and/or SGLT2i treatment.

17 The study protocol conforms to the ethical guidelines of the 1975 Declaration of Helsinki and
18 was approved by the Institutional Ethics Committee.

19 **Baseline characteristics and follow-up data**

20 Data retrieved from the local database included demographic variables, cardiovascular risk
21 factors, pharmacological therapy, underlying heart disease, New York Heart Association
22 (NYHA) functional class, echo- and electrocardiographic parameters.

23 Following implantation, patients underwent ambulatory visits scheduled at 1, 6 and 12 months.

24 After 12 months, the time of visit and of echocardiography was at the discretion of the care

1 provider. Device interrogation was performed within 2 months from the implant and at 12
2 months, with evaluation of biventricular pacing and optimization protocol. Any adjustment in
3 therapy, particularly for ARNi and gliflozins use, was recorded. For the analysis, we considered
4 the last dose of ARNi if changed < 2 months from the CRT implant, otherwise the dose taken
5 for most of the time during the first year. 3 patients discontinued ARNi <1 month after CRT
6 due to side effects and were considered in the no ARNi/SGLT2i group.

7 During follow-up visits, clinical data (including class NYHA) were collected and all clinical
8 events, including HF and non-cardiac rehospitalizations, were recorded. Data on overall
9 mortality were assessed on the basis of hospital records or from telephonic interviews with
10 caregivers.

11 **Echocardiography Data and Heart Failure etiology definition**

12 A standard echocardiographic examination was performed in all patients prior to CRT
13 implantation and at least twice in the first year of follow-up. Chamber quantification was
14 realized conforming to current recommendations. LV volume was assessed using Simpson's
15 biplane method and indexed to body surface area. Ejection Fraction was calculated from LV
16 volumes according to clinical practice guidelines.

17 Pre-CRT, 12 months after device therapy and long-term (until the last follow-up)
18 echocardiography data were collected by expert cardiologist. Left ventricular structural and
19 functional alterations were assessed by absolute change in left ventricular ejection fraction
20 (LVEF) and percentage change in left ventricular end-systolic volume (LVESV).

21 Before CRTD implantation, all patients without a known coronary artery assessment
22 underwent to coronarography at our center. Patients were classified as ICM if they had a
23 documented history of myocardial infarction or of a coronary revascularization procedure
24 (prior coronary artery bypass graft surgeries or percutaneous balloon and/or stent angioplasty)

1 or a significant coronary artery disease at coronarography with angina pectoris or other
2 coronary-related symptoms. NICM was defined in the absence of each of the above criteria of
3 ICM, implying a systolic dysfunction leading to HF not due to coronary disease or other
4 recognized cause (such as primary valvular disease, reversible cause of HF, hypertrophic
5 cardiomyopathy).

6 **Definition of clinical and echocardiographic response to CRT**

7 Clinical response was evaluated at 12 months after CRT implant using the Clinical Response
8 (CR) definition ¹⁴, considering a hierarchical composite criterion comprising live status, HF
9 hospitalization occurrence and variation in NYHA functional class. In details, a positive
10 response was assigned to patients who remained alive without any HF hospitalization during
11 the first year and experienced an improvement of almost 1 NYHA class or remained in NYHA
12 class I or II. On the other hand, patients who died or were hospitalized for HF or showed
13 worsening of their NYHA class or not improvement from NYHA class III and IV were
14 classified as non-responders.

15 Furthermore, patients were classified as echocardiographic CRT responders if they had LV
16 reverse remodeling at 12 months, evaluated as a LVEF improvement $\geq 5\%$ or a LVESV
17 reduction $\geq 15\%$.

18 **End Points**

19 In the first analysis (Figure 2), patients were divided in two groups, ARNi/SGLT2i group and
20 no ARNi/SGLT2i group, according to whether they started or not the drugs at the time of CRT
21 implant. The primary endpoint of this analysis was the evaluation of the clinical (CR and class
22 NYHA) and echocardiographic response to CRT at 12 months. The second analysis included
23 patients who initiated these drugs ≥ 12 months after the CRT implant (mid-term initiation
24 ARNi/SGLT2i group) and with a minimum follow-up of 24 months. For those patients who

1 never started these drugs (no ARNi/SGLT2i group), the mid-term follow-up was considered as
2 the visit closest to the median follow-up of the ARNi/SGLT2i group. The primary endpoint of
3 the second analysis was the clinical and echocardiographic response at long-term follow-up
4 (last available visit) and the secondary endpoints were the composite of total cardiovascular
5 deaths and separately cardiac or non-cardiac deaths. The patients were censored at the outcome
6 events or at the end of the follow-up period (Jan 2023). Importantly, patients included in this
7 second analysis had a follow-up > 6 months after drugs prescription, otherwise were considered
8 in the no ARNi/SGLT2i group.

9 The study protocol is summarized in Figure S1 (in the Supplement).

10 **Statistical Analysis**

11 Demographic and clinical data referred to the baseline were summarized using standard
12 descriptive statistics. Data distribution was assessed through visual analysis of the boxplot for
13 each variable. Continuous variables were expressed as mean \pm Standard Deviation (SE) if
14 normally distributed or as median [inter-quartile range (IQR)] in the case of skewed distribution
15 and compared between groups by means of a t-test for unpaired samples or Wilcoxon-Mann-
16 Whitney non-parametric test, respectively; categorical variables were reported as absolute and
17 relative frequencies and comparisons between groups were performed with χ^2 test. Pairwise
18 testing with the Holm correction was applied to account for multiple comparisons ¹⁵. The
19 Analysis of Variance (one-way ANOVA) was used to test all factorial covariates with more
20 than two levels.

21 For the primary outcome, to identify the potential predictors of clinical response to CRT, we
22 used a stepwise logistic regression: first we applied a univariable logistic regression model to
23 test the relationship between our primary endpoint (dependent variable) and all the clinical
24 findings, including the use of ARNi and SGLT2i (independent variable). Characteristics

1 significantly ($p < 0.05$) or nearly significantly ($p < 0.10$) associated with the outcome in the
2 univariable analysis were first entered as candidate variables in a multivariable logistic
3 regression analysis. The included independent variables were tested for collinearity to exclude
4 possible confounders. The final multivariable model was selected using a backward-
5 elimination algorithm after testing residual deviance with ANOVA. In a similar way, we ran a
6 multivariable linear regression model to evaluate the correlation between the covariates and
7 the change in LVEF. Results of these models were expressed as odds ratios (ORs) and mean
8 differences with the corresponding 95% confidence intervals (CIs).

9 Regarding the co-primary outcome, to assess the clinical main endpoint of NYHA class
10 improvement or remained in I or II and to solve the possible differences in time between mid-
11 and long-term follow-up, a multivariable Cox proportional hazard regression model was
12 performed by using hazard ratios (HRs) and 95 % CIs. In addition, to test the assumption of
13 proportional hazard particularly regarding the ARNi/SGLT2i treatment, we constructed
14 another Cox regression model considering the follow-up time from CRT implant and used the
15 quantitative test of Schoenfeld residuals, with a p value < 0.05 allowed to reject the null
16 hypothesis of proportionality; we finally plotted the graphic shown the Schoenfeld residuals
17 and the ARNi/SGLT2i-related coefficient arising from the multivariable Cox regression model
18 and accounting the entire follow-up period ¹⁶.

19 To analyze the impact of ARNi, SGLT2i or both treatments and the different ARNi doses tested
20 individually, we limited only to a descriptive analysis due to the low sample size after dividing
21 in the subgroups, without inferential statistics.

22 Furthermore, in order to analyze the risk of experiencing the secondary outcomes, we used
23 Kaplan-Meier curves to estimate the outcomes-free survival function stratified by assumption
24 of S/V and gliflozins. Finally, the Cox proportional hazards regression analysis was used to

1 quantify the association with the main covariates. Analogous to the previous description, from
2 a univariable model we constructed the multivariable analysis with a stepwise selection.

3 Importantly, in all Cox regression analysis ARNi and SGLT2i treatment was considered a time-
4 dependent covariate to account for patients who stopped or started the therapy during the
5 follow-up¹⁷. We also tested the linearity (for continuous variables) and proportional hazard
6 (for all the covariates) assumptions computing restricted cubic spline bases and Schoenfeld
7 residuals, respectively, to assess the best fit of all proportional hazard analysis^{16,18,19}.

8 Clinically relevant interactions with the main covariate were tested in all models.

9 All tests were two tailed, and values of $p < 0.05$ were considered significant. Statistical analysis
10 was performed using R version 4.2.1 (R foundation, Vienna, Austria).

11 The data that support the findings of this study are available from the corresponding author
12 upon reasonable request.

13 **RESULTS**

14 **Study population**

15 Overall, 240 patients underwent CRTD implant, of these 172 were included in our study
16 population (Figure 1). During the first-year, 51 (29.7 %) patients were assuming ARNi and/or
17 SGLT2i treatment (ARNi/SGLT2i group) and 121 (70.3 %) weren't (No ARNi/SGLT2i
18 group). In the ARNi/SGLT2i group, timing and doses of these drugs varied among patients as
19 evidenced in supplementary Figure S2.

20 Baseline characteristics are shown in Table 1. The baseline QRS duration was similar (157.5
21 (± 8.9) vs 158 (± 12.9), $p = 0.303$) with most patients in sinus rhythm at implantation (79.3 %
22 vs 88.3 %, $p = 0.242$). Most patients were on optimal medical therapy, with a large proportion
23 treated with a renin–angiotensin–aldosterone system inhibitor and a β -blocker. However, only

1 the 45% and 46% were taking β -blocker at the target dose in ARNi/SGLT2i group and in the
2 no ARNi/SGLT2i group, respectively.

3 Compared with the no ARNi/SGLT2i group, patients in ARNi/SLGT2i treatment were less
4 likely to have chronic obstructive pulmonary disease (COPD) (19.6 % vs 33.9 %, $p = 0.025$)
5 and Loop Diuretic medication (72 % vs 88.4 %, $p = 0.019$).

6 **Twelve-months clinical response to CRT**

7 During the first 12-month follow-up, 10 patients (5.8 %) died, all because of acute heart failure
8 decompensation and were considered not clinical responder. Of these, only 1 patient was in
9 therapy with low dose of ARNi (male, NYHA class IV, suffered from ICM).

10 Based on the CR definition, 78.4 % of patients in the ARNi/SGLT2i and 54.5 % of patients in
11 the no ARNi/SGLT2i group were classified as responders ($P = 0.006$, Figure 2A). Univariable
12 logistic regression tests disclosed a significant relationship between ARNi/SGLT2i treatment
13 and clinical response [$p = 0.04$, OR 3.03 (CI 1.46 - 6.71)] (Table 2). In the multivariable
14 analysis, ARNi/SGLT2i use was confirmed as a strong predictor [$p = 0.001$, OR 5.38 (CI 2 –
15 16.2)]. History of atrial fibrillation, a lower biventricular pacing percentage and right bundle
16 branch block (RBBB) patients were negatively associated with the outcome.

17 Importantly, the only significant interaction in the multivariable model was between
18 ARNi/SGLT2i treatment and heart failure etiology (p of interaction = 0.028). In the subsequent
19 analysis of sub-groups divided according to heart failure etiology, we observed that only in
20 ICM patients ARNi/SGLT2i use was a strong predictor of clinical response [$p < 0.001$, OR
21 10.7 (CI 2.98 – 48.84)] (Table 2, model 2 and 3).

22 Considering ICM patients, 29 of 36 (80.5 %) in the ARNi/SGLT2i group vs 34 of 72 (47.2 %)
23 in the no ARNi/SGLT2i group were considered clinical responder ($p = 0.002$), against 11 of
24 15 (73.3 %) vs 32 of 49 (65.3 %) in NICM patients ($p = 0.775$, Figure 2B).

1 As for the NYHA functional class, it decreased by at least 1 class in the ARNi/SGLT2i vs No
2 ARNi/SGLT2i group in 60 % vs 42.8 % ($P = 0,041$, Figure 2C), and decreased by 2 classes in
3 8 % vs 2.67 %, $P = 0.237$). Once again, a greater benefit of the ARNi/SGLT2i therapy was
4 significantly confirmed only in the ICM group: 60 % vs 33.3 % ($P = 0,033$, Figure 2C). The
5 only 2 patients in NYHA class IV in the ARNi/SGLT2i group did not improve their clinical
6 status.

7 Figure S3 in the supplement details the CRT response rate and NYHA functional class change
8 according to ARNi, SGLT2i or both treatment and ARNi doses. Clinical benefits were found
9 in all treatment groups, slightly more in both ARNi and SGLT2i recipients, whereas the 24/26
10 mg ARNi dose use appeared to have a lower effectiveness.

11 **Twelve-months echocardiographic CRT response**

12 At 12-months, there were more CRT responders in the ARNi/SGLT2i group than in the no
13 ARNi/SGLT2i group (76 % vs 50 %, respectively; $p = 0.003$, Fig. 3A). Table S1 in the
14 supplement materials details the predictors of echocardiographic CRT response based on
15 univariable and multivariable logistic regression analysis. Although the interaction between
16 HF etiology and ARNi/SGLT2i treatment was not significant ($p = 0.263$), in NICM 9 of 11
17 ARNi/SGLT2i patients (81 %) and 29 of 50 (58 %) in the other group were considered CRT
18 responders, without reaching statistical significance ($p = 0.118$).

19 The Δ LVEF increased of 6 % [IQR 5; 9.75 %] in ARNi/SGLT2i group vs 4.5 % [IQR 0 %; 8
20 %] in the no ARNi/SGLT2i group ($p = 0.0112$) (Fig. 3B).

21 Based on the linear regression analysis (Table 3), ARNi/SGLT2i treatment was significantly
22 associated with a Δ LVEF 2.43 % average increase higher than no ARNi/SGLT2i group [$p =$
23 0.018, Estimate Coefficient = 2.43 (0.41 – 4.44)], confirmed in the multivariable model [$p =$
24 0.007, Estimate Coefficient = 2.5 (0.69 – 4.30)]. Indeed, COPD, RBBB and atrial fibrillation

1 remained significant negatively and adequate biventricular pacing positively associated with Δ
2 LVEF improvement; instead, ICM was not a negative predictor of Δ LVEF increase.

3 Specifically, in the ARNi/SGLT2i group compared to no ARNi/SGLT2i group, Δ LVEF
4 improved in both NICM [6.5 % (IQR 5; 11.5 %) vs 5 % (IQR 0; 8.5 %); $p=0.048$] and ICM
5 patients [5.5 % (IQR 2 %; 8.25 %) vs 1.5 % (IQR -1; 6 %), $p=0.005$, Figure 3C].

6 The supplementary Figure S4 details the percentages of patients with different 1-year LVEF
7 changes based on ARNi/SGLT2i treatment. Among non-responders, less patients in the
8 ARNi/SGLT2i group than in the no ARNi/SGLT2i group had no increase or a reduction of
9 LVEF (Δ LVEF $<0\%$) (6 % vs 24.1 %, $p=0.004$). No significant differences were found
10 among groups in the rate of super-responders (LVEF improvement $\geq 10\%$).

11 **Impact of ARNi/SGLT2i on long-term follow-up**

12 Overall, 94 patients were not taking ARNi and/or SGLT2i at the time of CRTD implant, of
13 these 55 patients started to assume these drugs; 4 and 2 patients already assumed ARNi and
14 SGLT2i before CRT, respectively, and subsequently started the second drug. Thus, 100
15 patients were divided into groups according to ARNi and/or SGLT2i treatment after CRT.

16 In the supplemental material, Figure S5 summarizes the time of ARNi and SGLT2i start from
17 CRT implant for each patient and Table S2 shows baseline characteristics and the average
18 follow-up of the 2 groups.

19 Patients in the no ARNi/SGLT2i group were significantly older, more likely to have a low
20 glomerular filtration rate.

21 The detailed distribution and changes in clinical and echocardiographic measurements are
22 shown in Figures 4 and 5. NYHA functional class improved in 23 (37.7 %) patients and,
23 importantly, decreased in only 2 (3.3 %) in ARNi/SGLT2i group vs 13 (33.3 %) in no

1 ARNi/SGLT2i recipients ($p < 0.001$, Figure 4A). At mid-term follow-up 9 patients were in
2 NYHA class I (mean LVEF 43.3 ± 5.12 , all responders to CRT) with no indication to
3 ARNi/SGLT2i prescription; all 4 patients in NYHA class IV (2 in ARNi/SGLT2i) had no
4 clinical improvement. The highest benefits from ARNi/SGLT2i were found in NYHA class III
5 where 19 (31 %) patients improved (Figure 4B). Of interest, ARNi and SGLT2i prescription
6 had a similar impact on clinical improvement in both ICM (12, 35.3 %) and NICM (11, 40.7
7 %) patients ($p = 0.75$, Figure 4C). The ARNi/SGLT2i treatment improved significantly also
8 the Δ LVEF, with a median increase of 4 % [IQR 2 %; 8 %] compared to the no treatment
9 group -1.8 [0-2;-4] % ($p < 0.001$), without differences between ICM (Δ LVEF of 4 % [IQR
10 0.5-8 %]) and NICM (Δ LVEF of 4.5 % [IQR 2-6 %], $p = 0.18$, Figure 5A), nor with regard
11 the mid-term LVEF (Figure 5B, $p = 0.26$). Figure 5C shows that patients in ARNi/SGLT2i
12 group experienced consistent echocardiographic improvement: 23 (37.7 %) and 7 (11.5 %) of
13 5-9 % and > 10 % Δ LVEF increase, respectively.

14 In addition, no significant differences have been found in clinical neither echocardiographic
15 benefit dividing patients according to previous CRT response (See Figure S6 in the Supplement
16 for details).

17 Finally, accounting the different time of mid-term to long-term follow-up between the 2 arms,
18 Cox proportional hazards model shown in Table 4 assessed significant association of
19 ARNi/SGLT2i initiation with the main clinical outcome of NYHA functional class II or I at
20 long-term follow-up [Time-dependent ARNi/SGLT2i HR = 2.91, CI (1.23 – 6.9), $p = 0.015$].
21 After adjusting for confounders, ARNi/SGLT2i remained a strong positive predictor [Time-
22 dependent ARNi/SGLT2i, HR = 3.67, CI (1.37, 10.2), $p < 0.001$]. Importantly, the graphic in
23 Figure 6 plots the ARNi/SGLT2i estimate coefficient of the hazard ratio, resulting from a
24 multivariable cox hazard proportional model adjusted for the same covariates as in the previous
25 analysis but considering the entire period of follow-up: although the curve had a slight

1 downward trend, the homogeneity of treatment effect according to the time period was
2 respected [Time-dependent ARNi/SGLT2i, HR = 7.8 (3.4 – 14.71), Coefficient = 1.95, p for
3 Schoenfeld residuals test = 0.102, Global Schoenfeld residuals test for the entire model, p =
4 0.158].

5 In Figure S7 (in the supplement) we described the main clinical and echocardiographic findings
6 at long-term follow-up based on ARNi, SGLT2i or both treatments and ARNi doses. Once
7 again, the effectiveness of S/V and gliflozins was confirmed in all subgroups analysis, but to a
8 lesser degree in the lowest S/V dose.

9 Plot in Figure 7 summarizes the main clinical findings of our study, showing the mean LVEF
10 and the percentage of NYHA class I or II patients before CRT implant, at 12 months, mid- and
11 long-term follow-up. Interestingly, pre-CRT ARNi/SGLT2i patients compared to post-CRT
12 ARNi/SGLT2i and no treatments groups, displayed after 24 months from implant a greater
13 clinical status (76.1 % in NYHA class I or II vs 69.1 % and 42,8 %) and a higher mean LVEF
14 [36 ± 3 % vs 33.2 ± 2.9 (p = 0.042) and 30.1 ± 4.8 (p = 0.022), respectively]. Moreover, LVEF
15 was also significant greater in post-CRT ARNi/SGLT2i vs no drugs patients (p = 0.048).

16 **Overall survival**

17 During a median follow-up of 63.1 (CI 95 %, 52.7 - 73.8) months, 52 (30.2 %) patients died,
18 39 (22.7 %) due to cardiovascular HF-related death.

19 Kaplan-Meier estimates of HF and all-cause-death in the two study groups are shown in Figure
20 8. The curves diverged within the first 12 months and continue their separate paths thereafter
21 (p < 0.001 in both survival functions). Nevertheless, patients who started the treatments in
22 different time point have not been considered in this analysis.

23 In Table 5 are shown the number of cardiovascular deaths, the average follow-up times, and
24 the hazard ratios for patients stratified according to the main clinical features. At univariable

1 analysis, the effect size of ARNi/SGLT2i, considered as time-dependent variable, did not reach
2 statistically significant reduction in HF death [p = 0.067, HR 0.48 (0.21 – 1.05)], confirmed
3 after multivariable adjustment [p = 0.221, HR 0.61 (0.25 – 1.50)] (Table 5, model 1). Of note,
4 clinical CRT response was the strongest predictors. Regarding overall mortality (Table 5,
5 model 2), ARNi/SGLT2i treatment was a significant positive predictor only in univariable
6 analysis [p = 0.032, HR 0.46 (0.22 – 0.93)] but not after adjusting for confounders [p = 0.180,
7 HR 0.58 (0.26 – 1.28)].

8 **DISCUSSION**

9 The main findings of our study are the following: 1) ARNi and SGLT2i increase clinical
10 response rate to CRT and improve the cardiac function at 12-month follow-up; 2) their synergic
11 benefits along with CRT are especially tangible in ICM patients; 3) an add-on ARNi and
12 SGLT2i therapy is very effective on long-term echocardiographic and clinical status, regardless
13 of HF etiology and of time of initiation from CRT implant; 4) their benefits on survival remain
14 to be assessed, especially for the relatively limited follow-up period after ARNi and SGLT2i
15 introduction in our study.

16 The CRT non-responsiveness constitutes a burning challenge, with around 30-50 % of patients
17 not experiencing significant benefits²⁰; many efforts have been made for optimizing response,
18 including the introduction of novel therapies. Among these, ARNi and SGLT2i have proven
19 an overwhelming benefit in HF patients²¹. However, in our best knowledge, no studies have
20 evaluated their potential synergy with the contemporary CRT, and very few data have
21 examined an add-on strategy with S/V and especially gliflozins administered in CRT patients.
22 Indeed, in the 2021 ESC guidelines for HF, ARNi and SGLT2i are a class I indication in
23 patients NYHA class II-IV heart failure with LVEF \leq 40 % to reduce the risk of HF

1 hospitalization and death ⁵, but precise indications on a late combination with CRT are
2 currently lacking.

3 **Impact of ARNi and SGLT2i in clinical and echocardiographic CRT response**

4 To date in literature, little is known about the clinical and echocardiography impact of add-on
5 ARNi/SGLT2i therapy among HFREF patients with CRT during periprocedural period. The
6 main trials that contributed to study the impact of ARNi/SGLT2i on outcomes in patients with
7 HFREF have only a little proportion of patients with CRT. As for the ARNi, in the
8 PARADIGM-HF only 7% of the angiotensin-receptor-neprylisin inhibitor group had CRT ²,
9 whereas in the PROVE-HF the 15,4% of the study group had it ²². As for the gliflozins, the
10 DAPA-HF analyzed a population with only 8% of patients with CRT ²³, whereas EMPEROR-
11 Reduced with 11.8% ²⁴. These trials didn't analyze the impact of SGLT2i on these CRT
12 patients.

13 In our cohort of 172 patients, approximately 75 % of ARNi and SGLT2i recipients experienced
14 clinical and echocardiographic benefits 12-months after CRT implant and were classified as
15 CRT responders. This rate was higher than in no ARNi/SGLT2i group, however it reached
16 statistical significance only in ICM patients. Previous studies reported that CRT reduced all-
17 cause mortality similarly in both ICM and NICM patients ²⁵, however sub-analysis of
18 randomized studies demonstrated the occurrence of more favorable reverse remodeling in
19 NICM compared to ICM ²⁶⁻²⁹. In the REVERSE study, 50-59 % in ICM vs 74-83 % in NICM
20 group (based on different response criteria) were considered CRT responders after 1-year
21 follow-up ²⁷, percentages similar to those of our no ARNi/SGLT2i group. By contrast, in our
22 study the effectiveness of CRT in ARNi and SGLT2i group was consistent regardless HF
23 etiology, but especially in ICM patients that least responded to the CRT. Interestingly, the other

1 well-known negatively predictors of CRT clinical outcomes (such as atrial fibrillation, RBBB,
2 biventricular pacing) were confirmed in our analysis ³⁰⁻³².

3 Considering only echocardiographic parameters, our data proved that the effect of ARNi and
4 SGLT2i was consistent in both ICM and NICM patients, with a greater Δ LVEF increase
5 compared to only CRT group. In a meta-analysis of over 10.000 patients, S/V was associated
6 with a mean LVEF increase of +5,11 % compared to patients treated with ACEI/ARB therapy
7 and a similar effect was confirmed in the prospective PROVE-HF study ^{22,33}. Regarding
8 SGLT2i, likewise the two recent SUGAR-DM-HF and EMPA-TROPISM trials suggested
9 favorable reverse remodeling in term of LVESV reduction and both LVESV reduction and
10 LVEF improvement, respectively ^{34,35}. Our data are concordant with these literature findings
11 and assume a potential synergistic role of S/V and gliflozins in addition to CRT.

12 **ARNi and SGLT2i effectiveness in long-term follow-up**

13 Based on current evidence, about 40 % of CRT recipients are potentially indicated for medical
14 therapy optimization with S/V and gliflozins ^{9,36,37}. Furthermore, it is essential to determine the
15 effectiveness of ARNi and SGLT2i in patients with CIED and in particular CRT.

16 The TAROT-HF study demonstrated that the effectiveness of S/V was greater in non-CRT-
17 eligible patients based on QRS morphology; in fact, the improvements of LVEF and LVESV
18 were more significant in this group compared to bundle branch block and a QRS > 130 msec
19 ³⁸.

20 In a recent study, Russo et al. analyzed the impact of ARNi in 190 CRTD non-responder
21 patients, with a median follow-up of 20 months from device implant; about 20 % of their
22 population improved cardiac function and were classified as additional responders ³⁹.

23 In our analysis, ARNi and SGLT2i initiation after CRT implant was associated with
24 improvement of cardiac function and a probability about 3-fold higher to be in class NYHA I

1 or II at long-term follow-up, compared to no treatment patients, and only few patients
2 experienced clinical deterioration. In addition, our population had a long follow-up, and the
3 benefits of the treatment were confirmed along the entire period. Although CRT is an essential
4 treatment for heart failure at any stage, HF is a progressive disease, and it does not cure the
5 underlying disease. Considering the natural course of disease, many patients initially
6 responders could clinically deteriorate. In our population, the effectiveness of ARNi and
7 SGLT2i was confirmed both in responder and non-responder patients, and many patients
8 initially responders have worsened their clinical status at long-term follow-up, or despite an
9 improvement after CRT implant, remained symptomatic and needed medical optimization.

10 Finally, there is a lack of data about gliflozins effectiveness in these setting of patients.
11 Although in our study we considered ARNi and SGLT2i together for analysis, from our data it
12 appears that both had a significant impact in clinical and echocardiographic function. Further
13 studies have to confirm the role of gliflozins in CRT recipients.

14 **ARNi and SGLT2 impact on survival**

15 Sacubitril/valsartan and gliflozins were shown to reduce mortality and hospitalization rate in
16 HFrEF patients. An indirect comparison of ARNi vs placebo using data from PARADIGM-HF
17 and CHARM-Alternative studies demonstrated a 48 % reduction in HF death and
18 hospitalization in S/V group⁴⁰. Among 8474 patients enrolled in DAPA-HF and EMPEROR-
19 Reduced trial, the estimated gliflozins treatment effect was a significant 26 % relative reduction
20 in the combined cardiovascular death and first HF hospitalization⁷. Regarding patients with
21 cardiac implantable electronic devices, a post hoc analysis of PARADIGM-HF analyzed the
22 subgroup of patients with ICD or CRT-D and S/V was confirmed superior to enalapril
23 regarding the primary endpoint of a composite of HF death and hospitalization⁸. Moreover, a
24 recent sub-analysis of DAPA-HF showed no significant interaction between gliflozins and

1 CRT⁴¹. In addition, S/V significantly reduced Sudden cardiac death (SCD) in patients eligible
2 to implantable defibrillator therapy but without ICD⁴², but this effect was more pronounced
3 after the first months of therapy⁴³. The effectiveness of S/V on SCD reduction was confirmed
4 in a meta-analysis of Liu et al.⁴⁴. These findings suggested that the underlying mechanism for
5 the prevention of SCD is different from that of an ICD, probably related to the reverse
6 remodeling. Indeed, Martens et al. confirmed that in 110 HFrEF patients with ICD or CRT,
7 those who manifested an improvement in LVEF had a more pronounced reduction in premature
8 ventricular contractions and non-sustained ventricular tachycardia burden⁴⁵. Regarding
9 gliflozins, in a further post hoc analysis of DAPA-HF, during a median follow-up of 18 months,
10 dapagliflozin reduced the risk of the primary endpoint of any serious ventricular arrhythmia,
11 cardiac arrest or SCD and the effectiveness appeared to be more substantial in patients without
12 a defibrillating device, although the interaction with dapagliflozin was not significant; as
13 authors discussed, the device subgroup was of modest size with relatively few events, but above
14 all ICD and CRT recipients were considered together not allowing to evaluate the possible
15 synergic effect of CRT and dapagliflozin on cardiac remodeling and life-threatening
16 arrhythmic events⁴⁶. Conversely, a meta-analysis of Sfairopoulos et al. failed to demonstrate
17 a significant association of SGLT2i and the risk of SCD or ventricular arrhythmias⁴⁷. Further
18 research is needed to better elucidate the effectiveness of these drugs on SCD reduction and
19 the possible different underlying mechanism between ARNi and SGLT2i regarding their
20 benefits in HF patients. As for only CRT patients, in a retrospective study of 50 patients who
21 were CRT non responders, S/V treatment was associated with a lower risk of cardiac death,
22 heart transplantation and left ventricular assist device ($p = 0.029$ using Kaplan-Meier method)
23⁴⁸. In our survival analysis, Kaplan-Meier curves showed a similar trend in the estimate of
24 survival free of heart failure according to treatment. Nevertheless, S/V and gliflozins are time
25 dependent covariates: patients who received the treatments had to live long enough to receive

1 those treatments, also it is worthwhile to consider that most patients could not take these drugs
2 during the first follow-up years when their benefits were not yet well known and before the
3 2021 ESC HF recommendation. Accordingly, in the analysis when considering ARNi and
4 SGLT2i as time dependent covariates, their effect size has not been shown to reduce the HF-
5 related death risk in the framework of Cox proportional hazards models. On the other hand, the
6 follow-up after their introduction was considerably shorter than the entire period of patients
7 without or before starting the treatments and this may have limited the power of our analysis.
8 Further studies are needed to assess the impact of S/V and gliflozins on survival in this setting
9 of patients.

10 This study has several limitations, that are the following. First, the retrospective nature of our
11 study made the data collection and complete retrieval of information challenging.

12 Furthermore, we relied on hospital records and/or on trans-telephonic interviews with patients
13 or caregivers to determine mortality.

14 Second, we don't have data regarding 6-minute walk test, B-type natriuretic peptide and N-
15 terminal pro B-type natriuretic peptide, and all of these may be a surrogate of reverse
16 remodeling as shown in previous studies.

17 Third, the clinical and echocardiographic changes seen after 12 months from CRT implant were
18 attributed exclusively to the assumption of ARNi/SGLT2i, however several studies in literature
19 have demonstrated that a late-onset response to CRT is possible^{49,50}. However, in these studies,
20 post-CRT improvement is greater in first-year post-implantation and mainly far beyond 60
21 months which corresponds to our median follow-up.

22 Fourth, our analysis has the weakness to consider both gliflozins and S/V in the analysis, due
23 to the low sample after dividing for subgroups: thus, we only briefly described the individual
24 effectiveness.

1 Finally, although our study had a relatively small sample size, to our knowledge this is the first
2 study analyzing clinical and echocardiographic CRT response in patients with ARNi and
3 SGLT2i, and we also provided a long-term follow-up to analyze their effectiveness after CRT
4 implant. Therefore, our study fills a gap in current knowledge and may, despite its limitations,
5 encourage future prospective well sampled studies to assess the synergistic impact of ARNi
6 and SGLT2i (also considered individually).

7 **CONCLUSION**

8 The ARNi and SGLT2i treatment in CRT patients improves the clinical and echocardiographic
9 response at 12 months follow-up and at long-term follow-up, independently from the time of
10 initiation. These drugs also have benefit on survival, however further studies are needed to
11 confirm these data.

12 **ACKNOWLEDGMENTS**

13 None.

14 **SOURCES OF FUNDING**

15 Dr. Giuseppe Ammirati received a grant from the CardioPath Ph.D. programme.

16 **DISCLOSURE**

17 None.

18 **Supplemental Material**

19 Tables S1-S2

20 Figures S1-S7

21 **REFERENCES**

- 1 1. Murphy SP, Ibrahim NE, Januzzi JL, Jr. Heart Failure With Reduced Ejection Fraction:
2 A Review. *Jama*. 2020;324:488-504. doi: 10.1001/jama.2020.10262
- 3 2. Desai AS, McMurray JJ, Packer M, Swedberg K, Rouleau JL, Chen F, Gong J, Rizkala
4 AR, Brahimi A, Claggett B, et al. Effect of the angiotensin-receptor-neprilysin inhibitor
5 LCZ696 compared with enalapril on mode of death in heart failure patients. *Eur Heart*
6 *J*. 2015;36:1990-1997. doi: 10.1093/eurheartj/ehv186
- 7 3. McMurray JJV, Solomon SD, Inzucchi SE, Køber L, Kosiborod MN, Martinez FA,
8 Ponikowski P, Sabatine MS, Anand IS, Bělohávek J, et al. Dapagliflozin in Patients
9 with Heart Failure and Reduced Ejection Fraction. *N Engl J Med*. 2019;381:1995-2008.
10 doi: 10.1056/NEJMoa1911303
- 11 4. Anker SD, Butler J, Filippatos G, Ferreira JP, Bocchi E, Böhm M, Brunner-La Rocca
12 HP, Choi DJ, Chopra V, Chuquiure-Valenzuela E, et al. Empagliflozin in Heart Failure
13 with a Preserved Ejection Fraction. *N Engl J Med*. 2021;385:1451-1461. doi:
14 10.1056/NEJMoa2107038
- 15 5. McDonagh TA, Metra M, Adamo M, Gardner RS, Baumbach A, Böhm M, Burri H,
16 Butler J, Čelutkienė J, Chioncel O, et al. 2021 ESC Guidelines for the diagnosis and
17 treatment of acute and chronic heart failure. *Eur Heart J*. 2021;42:3599-3726. doi:
18 10.1093/eurheartj/ehab368
- 19 6. Glikson M, Nielsen JC, Kronborg MB, Michowitz Y, Auricchio A, Barbash IM,
20 Barrabés JA, Boriani G, Braunschweig F, Brignole M, et al. 2021 ESC Guidelines on
21 cardiac pacing and cardiac resynchronization therapy. *Eur Heart J*. 2021;42:3427-
22 3520. doi: 10.1093/eurheartj/ehab364
- 23 7. Zannad F, Ferreira JP, Pocock SJ, Anker SD, Butler J, Filippatos G, Brueckmann M,
24 Ofstad AP, Pfarr E, Jamal W, et al. SGLT2 inhibitors in patients with heart failure with

- 1 reduced ejection fraction: a meta-analysis of the EMPEROR-Reduced and DAPA-HF
2 trials. *Lancet*. 2020;396:819-829. doi: 10.1016/s0140-6736(20)31824-9
- 3 8. Okumura N, Jhund PS, Gong J, Lefkowitz MP, Rizkala AR, Rouleau JL, Shi VC,
4 Swedberg K, Zile MR, Solomon SD, et al. Effects of Sacubitril/Valsartan in the
5 PARADIGM-HF Trial (Prospective Comparison of ARNI with ACEI to Determine
6 Impact on Global Mortality and Morbidity in Heart Failure) According to Background
7 Therapy. *Circ Heart Fail*. 2016;9. doi: 10.1161/circheartfailure.116.003212
- 8 9. Salimian S, Moghaddam N, Deyell MW, Virani SA, Bennett MT, Krahn AD, Andrade
9 JG, Hawkins NM. Defining the gap in heart failure treatment in patients with cardiac
10 implantable electronic devices. *Clin Res Cardiol*. 2023;112:158-166. doi:
11 10.1007/s00392-022-02123-x
- 12 10. Dan GA. 2021 ESC Guidelines on Cardiac Pacing and Cardiac Resynchronisation
13 Therapy. *Eur Cardiol*. 2021;16:e55. doi: 10.15420/ecr.2021.51
- 14 11. Boriani G, Gasparini M, Landolina M, Lunati M, Biffi M, Santini M, Padeletti L, Molon
15 G, Botto G, De Santo T, et al. Effectiveness of cardiac resynchronization therapy in
16 heart failure patients with valvular heart disease: comparison with patients affected by
17 ischaemic heart disease or dilated cardiomyopathy. The InSync/InSync ICD Italian
18 Registry. *Eur Heart J*. 2009;30:2275-2283. doi: 10.1093/eurheartj/ehp226
- 19 12. Patel D, Kumar A, Moennich LA, Trulock K, Nemer DM, Donnellan E, Il'Giovine ZJ,
20 Martyn T, Callahan TD, Hussein AA, et al. Cardiac resynchronisation therapy in
21 anthracycline-induced cardiomyopathy. *Heart*. 2022;108:274-278. doi:
22 10.1136/heartjnl-2020-318333
- 23 13. Radu AD, Cojocaru C, Onciul S, Scarlatescu A, Zlibut A, Nastasa A, Dorobantu M.
24 Cardiac Resynchronization Therapy and Hypertrophic Cardiomyopathy: A
25 Comprehensive Review. *Biomedicines*. 2023;11. doi: 10.3390/biomedicines11020350

- 1 14. Bertaglia E, Arena G, Pecora D, Reggiani A, D'Onofrio A, Palmisano P, De Simone A,
2 Caico SI, Marini M, Maglia G, et al. The VALID-CRT risk score reliably predicts
3 response and outcome of cardiac resynchronization therapy in a real-world population.
4 *Clin Cardiol.* 2019;42:919-924. doi: 10.1002/clc.23229

- 5 15. Fu G, Saunders G, Stevens J. Holm multiple correction for large-scale gene-shape
6 association mapping. *BMC Genet.* 2014;15 Suppl 1:S5. doi: 10.1186/1471-2156-15-s1-
7 s5

- 8 16. Schoenfeld D. Partial Residuals for The Proportional Hazards Regression Model.
9 *Biometrika.* 1982;69. doi: 10.1093/biomet/69.1.239

- 10 17. Zhang Z, Reinikainen J, Adeleke KA, Pieterse ME, Groothuis-Oudshoorn CGM. Time-
11 varying covariates and coefficients in Cox regression models. *Ann Transl Med.*
12 2018;6:121. doi: 10.21037/atm.2018.02.12

- 13 18. Gandy A, Jensen U. Model checks for Cox-type regression models based on optimally
14 weighted martingale residuals. *Lifetime Data Anal.* 2009;15:534-557. doi:
15 10.1007/s10985-009-9121-9

- 16 19. Ambrogi F, Biganzoli E, Boracchi P. Model-based estimation of measures of
17 association for time-to-event outcomes. *BMC Med Res Methodol.* 2014;14:97. doi:
18 10.1186/1471-2288-14-97

- 19 20. Birnie DH, Tang AS. The problem of non-response to cardiac resynchronization
20 therapy. *Curr Opin Cardiol.* 2006;21:20-26. doi:
21 10.1097/01.hco.0000198983.93755.99

- 22 21. Sharma A, Verma S, Bhatt DL, Connelly KA, Swiggum E, Vaduganathan M, Zieroth
23 S, Butler J. Optimizing Foundational Therapies in Patients With HFREF: How Do We
24 Translate These Findings Into Clinical Care? *JACC Basic Transl Sci.* 2022;7:504-517.
25 doi: 10.1016/j.jacbts.2021.10.018

- 1 22. Januzzi JL, Jr., Prescott MF, Butler J, Felker GM, Maisel AS, McCague K, Camacho
2 A, Piña IL, Rocha RA, Shah AM, et al. Association of Change in N-Terminal Pro-B-
3 Type Natriuretic Peptide Following Initiation of Sacubitril-Valsartan Treatment With
4 Cardiac Structure and Function in Patients With Heart Failure With Reduced Ejection
5 Fraction. *Jama*. 2019;322:1085-1095. doi: 10.1001/jama.2019.12821
- 6 23. Solomon SD, Jhund PS, Claggett BL, Dewan P, Køber L, Kosiborod MN, Martinez
7 FA, Ponikowski P, Sabatine MS, Inzucchi SE, et al. Effect of Dapagliflozin in Patients
8 With HFrEF Treated With Sacubitril/Valsartan: The DAPA-HF Trial. *JACC Heart
9 Fail*. 2020;8:811-818. doi: 10.1016/j.jchf.2020.04.008
- 10 24. Packer M, Anker SD, Butler J, Filippatos G, Ferreira JP, Pocock SJ, Carson P, Anand
11 I, Doehner W, Haass M, et al. Effect of Empagliflozin on the Clinical Stability of
12 Patients With Heart Failure and a Reduced Ejection Fraction: The EMPEROR-Reduced
13 Trial. *Circulation*. 2021;143:326-336. doi: 10.1161/circulationaha.120.051783
- 14 25. Cleland JG, Daubert JC, Erdmann E, Freemantle N, Gras D, Kappenberger L, Tavazzi
15 L. The effect of cardiac resynchronization on morbidity and mortality in heart failure.
16 *N Engl J Med*. 2005;352:1539-1549. doi: 10.1056/NEJMoa050496
- 17 26. Sutton MG, Plappert T, Hilpisch KE, Abraham WT, Hayes DL, Chinchoy E. Sustained
18 reverse left ventricular structural remodeling with cardiac resynchronization at one year
19 is a function of etiology: quantitative Doppler echocardiographic evidence from the
20 Multicenter InSync Randomized Clinical Evaluation (MIRACLE). *Circulation*.
21 2006;113:266-272. doi: 10.1161/circulationaha.104.520817
- 22 27. St John Sutton M, Ghio S, Plappert T, Tavazzi L, Scelsi L, Daubert C, Abraham WT,
23 Gold MR, Hassager C, Herre JM, et al. Cardiac resynchronization induces major
24 structural and functional reverse remodeling in patients with New York Heart

- 1 Association class I/II heart failure. *Circulation*. 2009;120:1858-1865. doi:
2 10.1161/circulationaha.108.818724
- 3 28. Wikstrom G, Blomström-Lundqvist C, Andren B, Lönnerholm S, Blomström P,
4 Freemantle N, Remp T, Cleland JG. The effects of aetiology on outcome in patients
5 treated with cardiac resynchronization therapy in the CARE-HF trial. *Eur Heart J*.
6 2009;30:782-788. doi: 10.1093/eurheartj/ehn577
- 7 29. Barsheshet A, Goldenberg I, Moss AJ, Eldar M, Huang DT, McNitt S, Klein HU, Hall
8 WJ, Brown MW, Goldberger JJ, et al. Response to preventive cardiac resynchronization
9 therapy in patients with ischaemic and nonischaemic cardiomyopathy in MADIT-CRT.
10 *Eur Heart J*. 2011;32:1622-1630. doi: 10.1093/eurheartj/ehq407
- 11 30. Goldenberg I, Moss AJ, Hall WJ, Foster E, Goldberger JJ, Santucci P, Shinn T,
12 Solomon S, Steinberg JS, Wilber D, et al. Predictors of response to cardiac
13 resynchronization therapy in the Multicenter Automatic Defibrillator Implantation Trial
14 with Cardiac Resynchronization Therapy (MADIT-CRT). *Circulation*. 2011;124:1527-
15 1536. doi: 10.1161/circulationaha.110.014324
- 16 31. Rapacciuolo A, Iacopino S, D'Onofrio A, Curnis A, Pisanò EC, Biffi M, Della Bella P,
17 Dello Russo A, Caravati F, Zanon G, et al. Cardiac resynchronization therapy
18 defibrillators in patients with permanent atrial fibrillation. *ESC Heart Fail*.
19 2021;8:5204-5212. doi: 10.1002/ehf2.13599
- 20 32. Kloosterman M, Maass AH, Rienstra M, Van Gelder IC. Atrial Fibrillation During
21 Cardiac Resynchronization Therapy. *Card Electrophysiol Clin*. 2015;7:735-748. doi:
22 10.1016/j.ccep.2015.08.005
- 23 33. Wang Y, Zhou R, Lu C, Chen Q, Xu T, Li D. Effects of the Angiotensin-Receptor
24 Nprilysin Inhibitor on Cardiac Reverse Remodeling: Meta-Analysis. *J Am Heart*
25 *Assoc*. 2019;8:e012272. doi: 10.1161/jaha.119.012272

- 1 34. Lee MMY, Brooksbank KJM, Wetherall K, Mangion K, Roditi G, Campbell RT, Berry
2 C, Chong V, Coyle L, Docherty KF, et al. Effect of Empagliflozin on Left Ventricular
3 Volumes in Patients With Type 2 Diabetes, or Prediabetes, and Heart Failure With
4 Reduced Ejection Fraction (SUGAR-DM-HF). *Circulation*. 2021;143:516-525. doi:
5 10.1161/circulationaha.120.052186
- 6 35. Santos-Gallego CG, Vargas-Delgado AP, Requena-Ibanez JA, Garcia-Ropero A,
7 Mancini D, Pinney S, Macaluso F, Sartori S, Roque M, Sabatel-Perez F, et al.
8 Randomized Trial of Empagliflozin in Nondiabetic Patients With Heart Failure and
9 Reduced Ejection Fraction. *J Am Coll Cardiol*. 2021;77:243-255. doi:
10 10.1016/j.jacc.2020.11.008
- 11 36. Jorsal A, Pryds K, McMurray JJV, Wiggers H, Sommer A, Nielsen JC, Nielsen RR.
12 Optimizing heart failure treatment following cardiac resynchronization therapy. *Clin
13 Res Cardiol*. 2020;109:638-645. doi: 10.1007/s00392-019-01553-4
- 14 37. Savarese G, Kishi T, Vardeny O, Adamsson Eryd S, Bodegård J, Lund LH, Thuresson
15 M, Bozkurt B. Heart Failure Drug Treatment-Inertia, Titration, and Discontinuation: A
16 Multinational Observational Study (EVOLUTION HF). *JACC Heart Fail*. 2023;11:1-
17 14. doi: 10.1016/j.jchf.2022.08.009
- 18 38. Huang HT, Huang JL, Lin PL, Lee YH, Hsu CY, Chung FP, Liao CT, Chiou WR, Lin
19 WY, Liang HW, et al. Clinical impacts of sacubitril/valsartan on patients eligible for
20 cardiac resynchronization therapy. *ESC Heart Fail*. 2022;9:3825-3835. doi:
21 10.1002/ehf2.14107
- 22 39. Russo V, Ammendola E, Gasperetti A, Bottino R, Schiavone M, Masarone D, Pacileo
23 G, Nigro G, Golino P, Lip GYH, et al. Add-on Therapy With Sacubitril/Valsartan and
24 Clinical Outcomes in CRT-D Nonresponder Patients. *J Cardiovasc Pharmacol*.
25 2022;79:472-478. doi: 10.1097/fjc.0000000000001202

- 1 40. Vaduganathan M, Jhund PS, Claggett BL, Packer M, Widimský J, Seferovic P, Rizkala
2 A, Lefkowitz M, Shi V, McMurray JJV, et al. A putative placebo analysis of the effects
3 of sacubitril/valsartan in heart failure across the full range of ejection fraction. *Eur*
4 *Heart J.* 2020;41:2356-2362. doi: 10.1093/eurheartj/ehaa184
- 5 41. Docherty KF, Jhund PS, Inzucchi SE, Køber L, Kosiborod MN, Martinez FA,
6 Ponikowski P, DeMets DL, Sabatine MS, Bengtsson O, et al. Effects of dapagliflozin
7 in DAPA-HF according to background heart failure therapy. *Eur Heart J.*
8 2020;41:2379-2392. doi: 10.1093/eurheartj/ehaa183
- 9 42. Rohde LE, Chatterjee NA, Vaduganathan M, Claggett B, Packer M, Desai AS, Zile M,
10 Rouleau J, Swedberg K, Lefkowitz M, et al. Sacubitril/Valsartan and Sudden Cardiac
11 Death According to Implantable Cardioverter-Defibrillator Use and Heart Failure
12 Cause: A PARADIGM-HF Analysis. *JACC Heart Fail.* 2020;8:844-855. doi:
13 10.1016/j.jchf.2020.06.015
- 14 43. Gatti M, Antonazzo IC, Diemberger I, De Ponti F, Raschi E. Adverse events with
15 sacubitril/valsartan in the real world: emerging signals to target preventive strategies
16 from the FDA adverse event reporting system. *Eur J Prev Cardiol.* 2021;28:983-989.
17 doi: 10.1177/2047487320915663
- 18 44. Liu XH, Wang GL, Xu Q, Zhang L, Liu HJ. Effect of sacubitril/valsartan on the
19 occurrence of cardiac arrhythmias and the risk of sudden cardiac death in heart failure:
20 A meta-analysis of randomized controlled trials. *Front Cardiovasc Med.*
21 2022;9:943377. doi: 10.3389/fcvm.2022.943377
- 22 45. Martens P, Nuyens D, Rivero-Ayerza M, Van Herendael H, Vercammen J, Ceysens
23 W, Luwel E, Dupont M, Mullens W. Sacubitril/valsartan reduces ventricular
24 arrhythmias in parallel with left ventricular reverse remodeling in heart failure with

- 1 reduced ejection fraction. *Clin Res Cardiol.* 2019;108:1074-1082. doi:
2 10.1007/s00392-019-01440-y
- 3 46. Curtain JP, Docherty KF, Jhund PS, Petrie MC, Inzucchi SE, Køber L, Kosiborod MN,
4 Martinez FA, Ponikowski P, Sabatine MS, et al. Effect of dapagliflozin on ventricular
5 arrhythmias, resuscitated cardiac arrest, or sudden death in DAPA-HF. *Eur Heart J.*
6 2021;42:3727-3738. doi: 10.1093/eurheartj/ehab560
- 7 47. Sfairopoulos D, Zhang N, Wang Y, Chen Z, Letsas KP, Tse G, Li G, Lip GYH, Liu T,
8 Korantzopoulos P. Association between sodium-glucose cotransporter-2 inhibitors and
9 risk of sudden cardiac death or ventricular arrhythmias: a meta-analysis of randomized
10 controlled trials. *Europace.* 2022;24:20-30. doi: 10.1093/europace/euab177
- 11 48. Chun KH, Oh J, Yu HT, Lee CJ, Kim TH, Uhm JS, Pak HN, Lee MH, Joung B, Kang
12 SM. The role of sacubitril/valsartan in the management of cardiac resynchronization
13 therapy non-responders: a retrospective analysis. *ESC Heart Fail.* 2020;7:4404-4407.
14 doi: 10.1002/ehf2.12988
- 15 49. Alvarez-Alvarez B, García-Seara J, Martínez-Sande JL, Rodríguez-Mañero M,
16 Fernández López XA, González-Melchor L, Iglesias-Alvarez D, Gude F, Díaz-Louzao
17 C, González-Juanatey JR. Long-term cardiac reverse remodeling after cardiac
18 resynchronization therapy. *J Arrhythm.* 2021;37:653-659. doi: 10.1002/joa3.12527
- 19 50. Burns KV, Gage RM, Curtin AE, Bank AJ. Long-Term Echocardiographic Response
20 to Cardiac Resynchronization Therapy in Initial Nonresponders. *JACC Heart Fail.*
21 2015;3:990-997. doi: 10.1016/j.jchf.2015.09.006

22 TABLES

1 **TABLE 1. Clinical characteristics of the overall population and dividing by ARNi and**
 2 **SGLT2i treatments.**

Variable	Overall population	No ARNi/SGLT2i	ARNi/SGLT2i	p value
Age - years	67.7 [60.9; 75.7]	67.2 [59.7; 75]	69.1 [63.3; 76.5]	0.334
Male sex - no. (%)	138 (80.2)	93 (76.9)	45 (88.2)	0.133
CRT-D upgrade - no. (%)	40 (23.2)	28 (22.6)	12 (23.5)	1
Etiology - no. (%)				0.229
NICM	64 (37.2)	49 (40.5)	15 (29.4)	
ICM	108 (62.7)	72 (59.5)	36 (70.6)	
NYHA Class - no. (%)				0.621
II	50 (28.6)	33 (26.6)	17 (33.3)	
III	108 (62.8)	77 (63.6)	31 (60.8)	
IV	14 (8.1)	11 (9.1)	3 (5.9)	
Cardiac risk factors - no. (%)				
Treatment for Hypertension	145 (84.3)	100 (82.6)	45 (88.2)	0.489
Atrial Fibrillation	56 (32.6)	40 (33.1)	16 (31.4)	0.970
Dyslipidemia	118 (68.6)	78 (64.5)	40 (78.4)	0.105
Diabetes Mellitus	76 (44.2)	54 (44.6)	22 (43.1)	0.991
Other Comorbidities				
COPD - no. (%)	51 (29.7)	41 (33.9)	10 (19.6)	0.025
Glomerular filtration rate	61.2 (±24.1)	59.6 (± 25.5)	64.9 (± 20.2)	0.150
Previous stroke or TIA - no.	14 (8)	8 (6.6)	6 (11.8)	0.410
Echocardiographic findings				
LVESV - ml	187 (± 43)	188 (±69)	181 (± 77)	0.124
LVEF - %	27.7 (± 4.9)	27.4 (± 5.1)	28.7 (± 4.5)	0.104
Electrocardiographic findings				
Left bundle-branch block - no.	116 (67.4)	82 (67.7)	34 (66.6)	0.278
Baseline QRS duration	156.1 (± 10.4)	157.5 (± 8.9)	158 (± 12.9)	0.303
Sinus rhythm at implantation -	141 (81.9)	96 (79.3)	45 (88.3)	0.242
Biventricular pacing, %	97.5 [96; 99]	97 [96; 99]	98 [96; 100]	0.206
Medications - no. (%)				
Beta-blocker	159 (92.4)	113 (93.4)	46 (90.2)	0.651
ACEi/ARB (excluding ARNi)	114 (66.3)	112 (92.5)	2 (3.9)	-
Amiodarone	24 (13.9)	13 (10.7)	11 (21.6)	0.103
Loop Diuretic	144 (83.7)	107 (88.4)	37 (72)	0.019
MRA	87 (50.5)	65 (53.7)	22 (43.1)	0.271
Ivabradine	6 (3.5)	5 (4.1)	1 (1.9)	0.799
Digitalis	5 (2.9)	3 (2.4)	2 (3.9)	0.921
Lipid-lowering treatment	142 (82.5)	97 (80.2)	45 (88.2)	0.225
Anticoagulants	56 (32.6)	39 (32.2)	17 (33.3)	1
ARNi - no. (%)	-	-	47 (92.2)	na
SGLT2i - no. (%)	-	-	15 (29.4)	na
ARNi and SGLT2i - no. (%)	-	-	11 (21.5)	na

1 Baseline characteristics and treatments in overall population (n =172) and dividing by no
2 ARNi/SGLT2i (n = 121) and ARNi/SGLT2i (n =51) groups. Data are expressed as number
3 (%), mean \pm standard deviation or median (25th; 75th percentile). In bold are reported
4 significant values. Biventricular pacing refers to the 1-year finding. Glomerular filtration rate
5 was calculated in ml/min/1.73m², baseline QRS duration in milliseconds. NICM = Non-
6 Ischemic Cardiomyopathy; ICM = Ischemic Cardiomyopathy; COPD = Chronic Obstructive
7 Pulmonary Disease; TIA = Transient Ischemic Attack; LVESV = Left Ventricular End-Systolic
8 volume; LVEF = Left Ventricular Ejection Fraction; ACE-I/ARB = Angiotensin Converting
9 Enzyme Inhibitors/Angiotensin II Receptor Blockers; MRA = Mineralocorticoid Receptor
10 Antagonist. Statistics: t-student, Wilcoxon-Mann-Whitney and χ^2 tests; one-way ANOVA.

1 **TABLE 2. Predictors of clinical CRT response in overall population and divided by HF**
 2 **etiology.**

Variables	A. Overall population		Model 1	
	Odds Ratios (95% CIs)	p value	Odds Ratios (95% CIs)	p value
	Univariable Analysis		Multivariable Analysis	
ARNI/SGLT2i Treatment	3.03 (1.46 – 6.71)	0.004	5.38 (2.00 - 16.2)	0.001
Age (Years)	1.00 (0.98 – 1.04)	0.606	-	-
Gender - Male	0.70 (0.33 – 1.49)	0.360	-	-
Upgrade Procedure	1.21 (0.59 – 2.47)	0.597	-	-
NICM	Reference	na	Reference	na
ICM	0.52 (0.25 – 1.08)	0.087	0.59 (0.24 – 1.41)	0.245
Baseline NYHA Class – II/III	Reference	na	-	-
IV	0.31 (0.10 – 0.95)	0.046	0.61 (0.1 – 0.98)	0.048
Treatment for Hypertension	0.73 (0.31 – 1.65)	0.448	-	-
Atrial Fibrillation	0.58 (0.38 – 0.87)	0.009	0.46 (0.21 – 0.95)	0.026
Dyslipidemia	1.16 (0.60 – 2.22)	0.652	-	-
Diabetes mellitus	0.90 (0.49 – 1.64)	0.732	-	-
COPD	0.42 (0.22 – 0.82)	0.012	0.69 (0.29 – 1.58)	0.375
Glomerular filtration rate	0.99 (0.98 – 1.01)	0.951	-	-
Previous Stroke or TIA	0.78 (0.24 – 1.93)	0.506	-	-
Baseline LVESV, ml	0.98 (0.92 – 1.06)	0.637	-	-
Baseline LVEF, %	1.02 (0.96 – 1.08)	0.591	-	-
LBBB	Reference	na	Reference	na
RBBB	0.42 (0.21 – 0.81)	0.010	0.44 (0.19 – 0.98)	0.047
Baseline QRS Duration	1.03 (1.006 – 1.07)	0.043	1.01 (0.98 – 1.03)	0.165
Rhythm at implant (AF)	0.41 (0.18 – 0.98)	0.024	-	-
Biventricular pacing, %	1.43 (1.25 – 1.68)	<0.001	1.44 (1.22 – 1.74)	<0.001
Beta-Blocker	1.98 (0.63 – 6.41)	0.240	-	-
Amiodarone	0.47 (0.19 – 1.12)	0.091	0.36 (0.11 – 1.15)	0.088
Loop Diuretic	1.12 (0.49 – 2.55)	0.781	-	-
MRA	0.87 (0.48 – 1.58)	0.650	-	-
Lipid-Lowering Treatment	1.26 (0.59 – 2.72)	0.542	-	-
	B. Sub-group			
	Univariable Analysis	p value	Multivariable Analysis	p value
	ICM (108 patients)		Model 2	
ARNi/SGLT2i Treatment	4.63 (1.88 – 12.73)	0.001	10.70 (2.98 – 48.84)	<0.001
	NICM (64 patients)		Model 3	
ARNi/SGLT2i Treatment	0.89 (0.17 – 3.05)	0.603	0.67 (0.44 – 3.80)	0.339

1 Predictors of clinical CRT response based on logistic regression analysis, **A.** Univariable and
2 multivariable (Model 1) logistic regression analysis in overall population. In bold are reported
3 significant values and the covariates entered in the multivariable analysis. After multiple
4 logistic regression model testing residual deviance with ANOVA, we excluded from the
5 multivariable analysis the covariate Sinus Rhythm at implant due to correlation with Atrial
6 Fibrillation. Only one subgroup interaction was identified, between the main covariate
7 ARNi/SGLT2i treatment and heart failure etiology ($p = 0.028$). All other interactions exceeded
8 0.10. **B.** Univariable and multivariable logistic regression analysis dividing by heart failure
9 etiology. Model 2 and Model 3 were adjusted for the same covariates of Model 1, except for
10 Heart failure Etiology. Biventricular pacing rate refers to the 1-year finding. Glomerular
11 filtration rate was calculated in ml/min/1.73 m², baseline QRS duration in milliseconds. NICM
12 = Non-Ischemic Cardiomyopathy; ICM = Ischemic Cardiomyopathy; COPD = Chronic
13 Obstructive Pulmonary Disease; TIA = Transient Ischemic Attack; LVESV = Left Ventricular
14 End-Systolic volume, in milliliters; LVEF = Left Ventricular Ejection Fraction; LBBB = Left
15 Bundle-Branch Block; RBBB = Right Bundle-Branch Block; AF = Atrial fibrillation; MRA =
16 Mineralocorticoid Receptor Antagonist.

1 **TABLE 3. Univariable and multivariable linear regression analysis assessed predictors**
 2 **associated with 12-month Δ LVEF improvement.**

Variables	β Regression Coefficients (95% CIs)	p value	β Regression Coefficients (95% CIs)	p value
	Univariable Analysis		Multivariable Analysis	
ARNI/SGLT2i Treatment	2.43 (0.41; 4.44)	0.0185	2.5 (0.69; 4.30)	0.007
Age (Years)	0.02 (-0.06; 0.11)	0.592	-	-
Gender - Male	0.80 (-1.54; 3.14)	0.502	-	-
Upgrade Procedure	0.92 (-1.35; 3.19)	0.425	-	-
NICM	Reference	na	Reference	na
ICM	-1.59 (-3.53; 0.33)	0.10	-1.16 (-2.89; 0.57)	0.186
Baseline NYHA Class II	Reference	na	-	-
III	-1.36 (-3.43; 0.69)	0.193	-	-
IV	-1.71 (-5.8; 2.43)	0.415	-	-
Treatment for Hypertension	0.62 (-1.95; 3.20)	0.633	-	-
Atrial Fibrillation	-1.73 (-2.98; -0.47)	0.007	-0.98 (-2.13; 0.160)	0.090
Dyslipidemia	0.66 (-1.37; 2.69)	0.522	-	-
Diabetes mellitus	-0.36 (-2.26; 1.54)	0.709	-	-
COPD	-2.72 (-4.78; -0.67)	0.009	-1.92 (-3.77; -0.06)	<0.001
Glomerular filtration rate	-0.01 (-0.05; 0.03)	0.710	-	-
Previous Stroke or TIA	0.70 (-2.62; 4.03)	0.675	-	-
Baseline LVESV, ml	0.09 (-0.04; 0.12)	0.460	-	-
Baseline LVEF, %	-0.03 (-0.23; 0.125)	0.712	-	-
LBBB	Reference	na	Reference	na
RBBB	-3.66 (-5.62; -1.71)	<0.001	-3.67 (-5.44; -1.90)	<0.001
Baseline QRS Duration	0.10 (0.01; 0.19)	0.024	0.02 (-0.05; 0.10)	0.530
Rhythm at implant- AF	-2.22 (-4.78; 0.32)	0.08	-	-
Biventricular pacing, %	0.47 (0.30; 0.63)	<0.001	0.37 (0.20; 0.54)	<0.001
Beta-Blocker	0.96 (-2.64; 5.57)	0.598	-	-
Amiodarone	-0.75 (-3.51; 2.01)	0.59	-	-
Loop Diuretic	-0.24 (-2.77; 2.30)	0.854	-	-
MRA	-0.74 (-2.63; 1.15)	0.441	-	-
Lipid-Lowering Treatment	0.42 (-1.89; 2.72)	0.772	-	-

3 Linear regression analysis assessed predictors associated with 12-month Δ LVEF improvement
 4 in 162 patients alive at 1-year follow-up. In bold are reported significant values and the
 5 covariates entered in the multivariable analysis. The covariate Sinus Rhythm at implant was
 6 excluded from the multivariable due to correlation with Atrial fibrillation. All interactions were

1 not significant. Biventricular pacing refers to the 1-year finding. Glomerular filtration rate was
2 calculated in $\text{ml}/\text{min}/1.73 \text{ m}^2$, baseline QRS duration in milliseconds. NICM = Non-Ischemic
3 Cardiomyopathy; ICM = Ischemic Cardiomyopathy; COPD = Chronic Obstructive Pulmonary
4 Disease; TIA = Transient Ischemic Attack; LVESV = Left Ventricular End-Systolic volume,
5 in milliliters; LVEF = Left Ventricular Ejection Fraction; LBBB = Left Bundle-Branch Block;
6 RBBB = Right Bundle-Branch Block; AF = Atrial fibrillation; MRA = Mineralocorticoid
7 Receptor Antagonist.

1 **TABLE 4. Factors associated with NYHA functional class I or II status at long-term**
 2 **compared to mid-term follow-up.**

Variables	Hazard Ratios	p value	Hazard Ratios	p value
	(95 % CIs)		(95 % CIs)	
	Univariable analysis		Multivariable analysis	
ARNi/SGLT2i Treatment (Time-dependent)	2.91 (1.23 – 6.9)	0.015	3.67 (1.37 – 10.2)	0.013
Age (years)	0.99 (0.97 – 1.03)	0.92	-	-
Atrial fibrillation at mid-term	1.09 (0.76 – 1.55)	0.93	-	-
LVEF at mid-term, %	1.07 (1.01 – 1.13)	0.013	ns*	ns*
LVESV at mid-term, ml	0.95 (0.89 – 0.99)	0.042	-	-
NICM	Reference	na	-	-
ICM	1.18 (0.66 – 2.11)	0.572	-	-
COPD	0.55 (0.29 – 1.05)	0.067	0.35 (0.17 – 0.75)	0.006
Glomerular filtration rate	1.01 (0.99 – 1.02)	0.28	1.01 (0.99 – 1.03)	0.220
Clinical CRT response	1.88 (0.97 – 3.62)	0.059	1.22 (0.57 – 2.61)	0.591

3 Cox regression analysis in 100 long-term patients. In bold are reported significant values and
 4 the covariates entered in the multivariable analysis. ARNi and SGLT2i treatment was
 5 considered as time-dependent covariate. Linearity assumption for continuous covariates was
 6 tested with the Restricted cubic splines and ANOVA test in all continuous covariates and as
 7 for LVEF and LVESV resulted not respected ($p = 0.02$ and 0.031 , respectively). In the
 8 multivariable model we have inserted LVEF due to a stronger association at univariable
 9 analysis compared to LVESV. * LVEF was included in multivariable model as restricted cubic
 10 spline to minimize residual confounding accounting the best fit of the model; consequently,
 11 Hazard Ratios and p values referring to the 4 different matrices of the transforming covariate,
 12 however not statistically significant, have not been reported. All the interactions exceeded 0.10
 13 and Schoenfeld Residual tests resulted not significant (Global Schoenfeld Residual test, $p =$
 14 0.212). Glomerular filtration rate was calculated in ml/min/1.73 m². NICM = Non-Ischemic
 15 Cardiomyopathy; ICM = Ischemic Cardiomyopathy; COPD = Chronic Obstructive Pulmonary

- 1 Disease; LVESV = Left Ventricular End-Systolic volume, in milliliters; LVEF = Left
- 2 Ventricular Ejection Fraction.

- 1 **TABLE 5. Factors associated with the occurrence of cardiovascular death and overall**
- 2 **mortality according to univariable and multivariable Cox Regression analysis.**

Model 1 – Cardiovascular mortality						
Variables	No. of patients	No. of events per person-year	Hazard Ratios (95 % CIs)	p value	Hazard Ratios (95 % CIs)	p value
				Univariable analysis	Multivariable analysis	
ARNi/SGLT2i Treatment (Time-dependent)						
no	66	31/460 *	Reference	na	Reference	na
yes	106	8/237 †	0.48 (0.21–1.05)	0.067	0.61 (0.25–1.50)	0.221
Age (years)	-	-	1.07 (1.03–1.1)	<0.001	1.05 (1.02–1.10)	0.003
Atrial fibrillation						
no	86	12/340	Reference	na	Reference	na
yes	86	27/358	1.52 (1.04–2.22)	0.028	0.98 (0.65–1.47)	0.938
Baseline LVEF, %	-	-	0.92 (0.87–0.98)	0.016	0.94 (0.88–1.01)	0.109
Baseline LVESV, ml	-	-	1.06 (1.02–1.10)	0.023	-	-
Heart Etiology						
NICM	64	13/302	Reference	na	-	-
ICM	108	26/396	1.54 (0.79–3.01)	0.202	-	-
COPD						
no	121	17/478	Reference	na	Reference	na
yes	51	22/220	2.77 (1.47–5.22)	0.001	1.76 (0.87–3.58)	0.114
Glomerular filtration rate	-	-	0.98 (0.96–0.99)	0.010	0.98 (0.96–1.01)	0.068
Clinical CRT response						
no	66	30/244	Reference	na	Reference	na
yes	106	9/455	0.16 (0.07–0.34)	<0.001	0.22 (0.14–0.28)	<0.001

Average follow-up (in months):

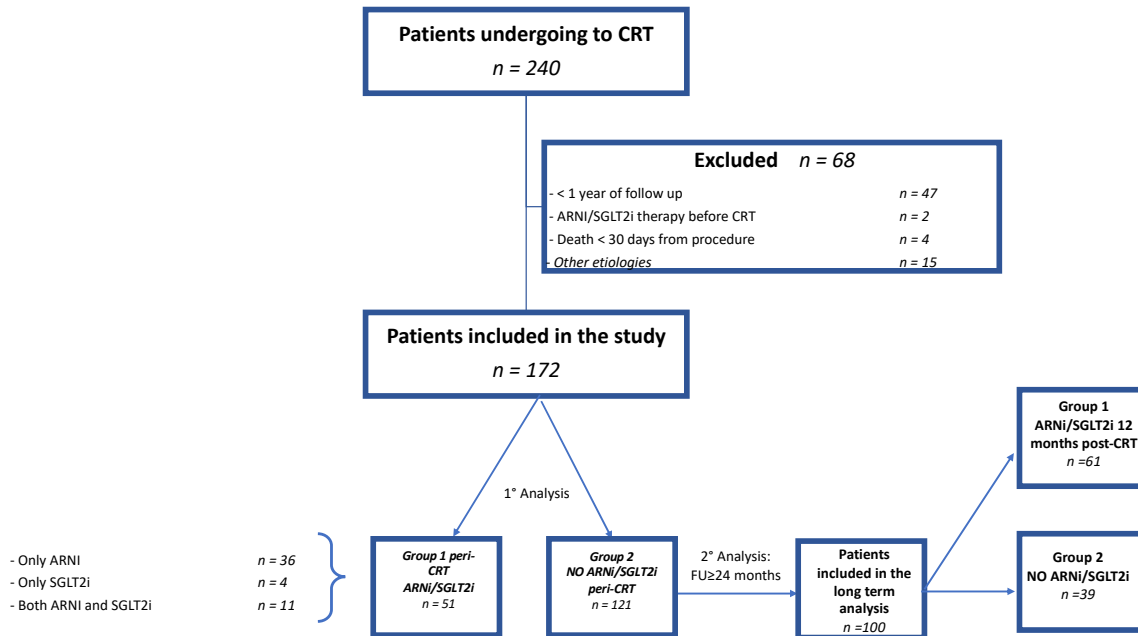
From CRT implant to ARNi and SGLT2i prescriptions: 44.8 [16.4; 58.1]
 Total follow-up in no drug patients: 42.3 [20.8; 70.4]
 From ARNi and SGLT2i prescriptions to last follow-up: 28.1 [14.1; 51.7]

Model 2 – Overall mortality					
		Univariable analysis		Multivariable analysis	
		Hazard Ratios (95 % CIs)	p value	Hazard Ratios (95 % CIs)	p value
ARNi/SGLT2i Treatment (Time-dependent)		0.46 (0.22–0.93)	0.032	0.58 (0.26–1.28)	0.180
Age (years)		1.07 (1.03–1.10)	<0.001	1.06 (1.02–1.09)	<0.001

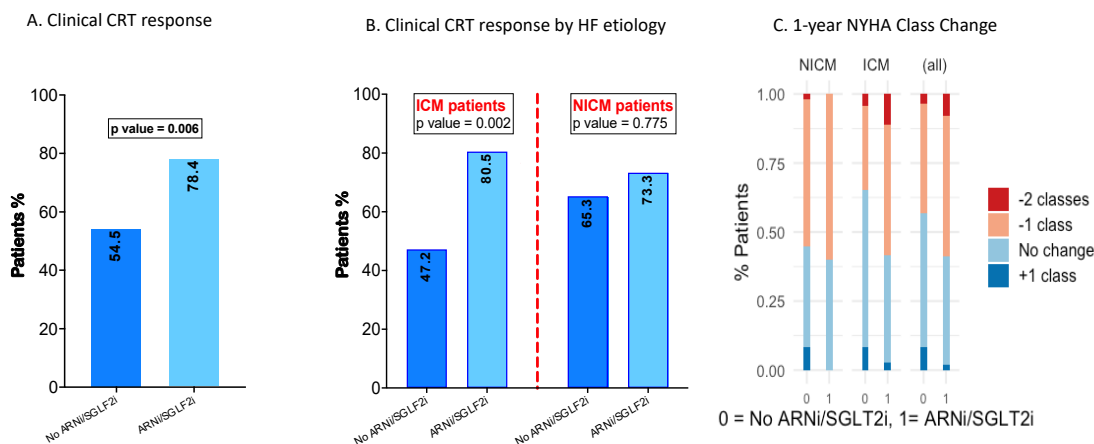
Atrial Fibrillation	1.32 (0.91-1.64)	0.067	0.90 (0.62–1.30)	0.577
Baseline LVEF, %	0.94 (0.89–1.001)	0.055	0.96 (0.91–1.02)	0.297
COPD	2.31 (1.31–4.08)	0.003	1.68 (1.21–2.77)	0.042
Glomerular filtration rate	0.98 (0.96–0.99)	0.002	0.98 (0.97–0.99)	0.033
Clinical CRT response	0.19 (0.10–0.37)	<0.001	0.23 (0.16–0.34)	<0.001

1 Model 1 refers to factors associated with HF-related death, Model 2 to all-cause mortality. In
2 model 2 are shown only covariates considered in the multivariable analysis. In bold are reported
3 significant values and the covariates entered in the multivariable analysis. LVEF has been
4 included in the multivariable models due to significant correlation and a stronger association
5 at univariable analysis compared to LVESV. All the interactions with the main covariate were
6 not significant. * 460 years were considered including the time of ARNi/SGLT2i patients
7 follow-up before starting the treatments. † 237 years refer only to the period in ARNi/SGLT2i
8 therapy. Glomerular filtration rate was calculated in ml/min/1.73 m². NICM = Non-Ischemic
9 Cardiomyopathy; ICM = Ischemic Cardiomyopathy; COPD = Chronic Obstructive Pulmonary
10 Disease; LVESV = Left Ventricular End-Systolic volume, in milliliters; LVEF = Left
11 Ventricular Ejection Fraction.

1 FIGURES

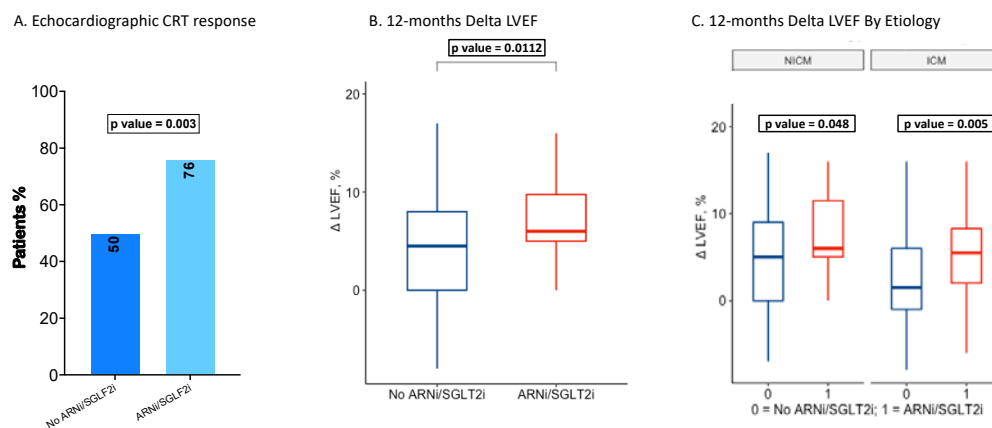


2 **FIGURE 1. Flow chart of the recruitment process:** 240 consecutive CRT-D patients were
 3 initially enrolled meeting the inclusion criteria of HF diagnosis with $EF \leq 35\%$. Of these, 42
 4 (19.6 %) were missing 1-year clinical or echocardiogram follow-up, 5 due to cardiovascular
 5 implantable electronic device infections requiring extraction, 15 (6.3 %) had other HF etiology,
 6 2 (0.8 %) were already in treatment with ARNi (5 and 10 months before implant procedures)
 7 and an additional 3 (1.2 %) patients died < 3 months after implantation (none of them was in
 8 ARNi/SGLT2i treatment) and were all excluded.



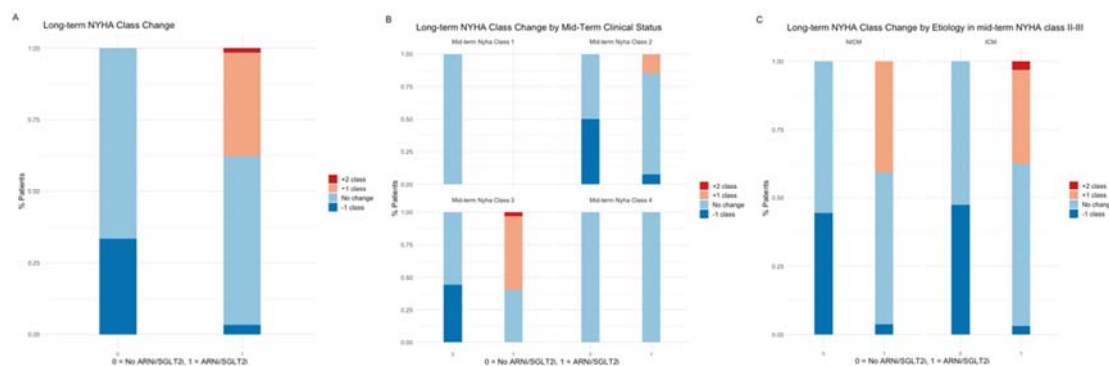
1 **FIGURE 2. Clinical response to CRT and functional status at 1-year.**

- 2 One-year clinical response to CRT in no ARNi/SGLT2i and ARNi/SGLT2i groups in overall
3 population (A) and based on HF etiology (B). Effectiveness of ARNi and SGLT2i treatment in
4 NYHA functional class change at 1-year follow-up compared to baseline in overall population
5 and dividing by HF etiology (C). NICM refers to Non-Ischemic Cardiomyopathy, ICM to
6 Ischemic Cardiomyopathy patients. Statistics: χ^2 test.



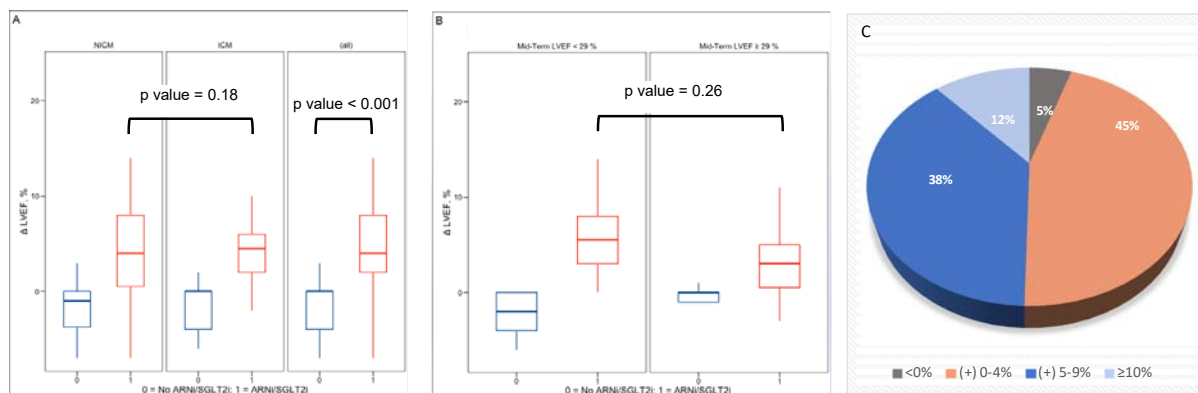
1 **FIGURE 3. Echocardiographic assessment at 1-year follow-up.**

2 One-year rates of echocardiographic CRT response (evaluated as an improvement of 5% of
3 LVEF or a reduction of 15% of LVESV) in 162 alive patients according to ARNi and SGLT2i
4 treatment (A). Impact of ARNi and SGLT2i therapy on Delta LVEF change at 12-month
5 echocardiographic evaluation in overall 162 patients (B) and dividing by HF etiology (C).
6 Boxplots show the median (central mark) with the 25th and 75th percentiles (box edges), and
7 minimum and maximum values (whiskers). NICM refers to Non-Ischemic Cardiomyopathy,
8 ICM to Ischemic Cardiomyopathy patients. Statistics: χ^2 and Wilcoxon-Mann-Whitney tests.

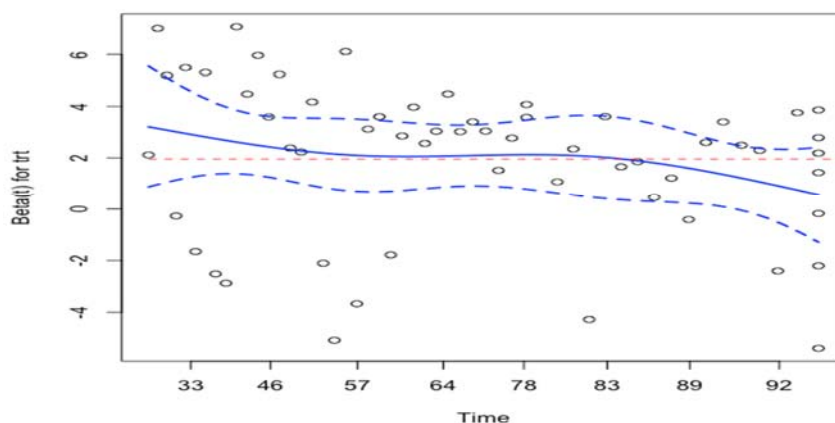


1 **FIGURE 4. NYHA class change at long-term follow-up.**

2 ARNi/SGLT2i effectiveness on NYHA class change at long-term compared to mid-term
3 follow-up in the entire population (N=100 patients with at least 24 months follow-up) (A),
4 divided according to mid-term NYHA class status (B) and to HF etiology (C). At mid-term
5 follow-up 9 patients were in NYHA class with no indication to ARNi/SGLT2i prescription;
6 the highest benefits from ARNi/SGLT2i were found in NYHA class III. ARNi/SGLT2
7 prescription had a significant impact on clinical improvement regardless HF etiology (p value
8 between ICM and NICM = 0.75). NICM refers to Non-Ischemic Cardiomyopathy, ICM to
9 Ischemic Cardiomyopathy patients. Statistics: χ^2 test.

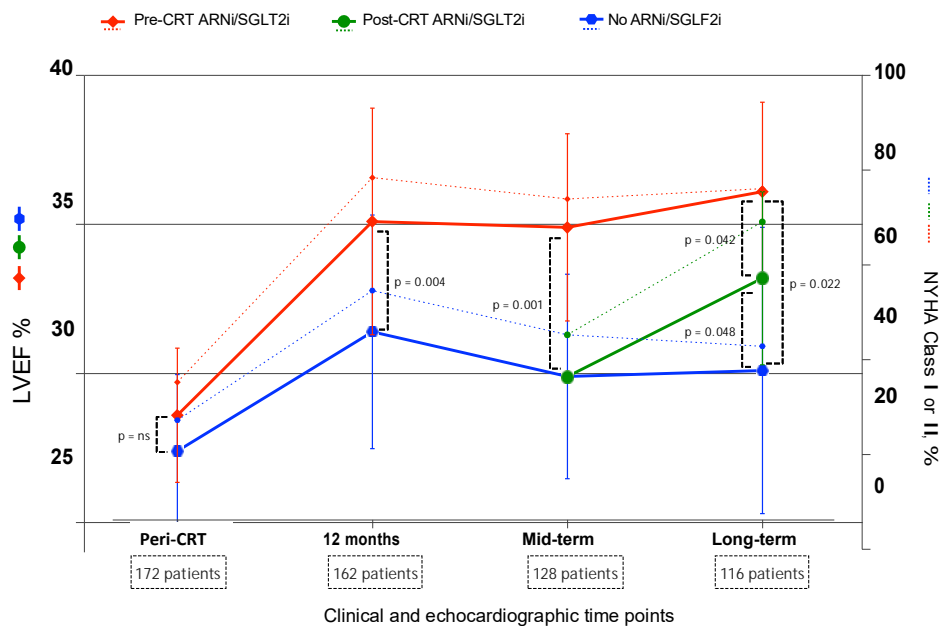


- 1 **FIGURE 5. LVEF change in long-term analysis.**
- 2 Boxplots showing the ARNi/SGLT2i impact on Delta LVEF change at long-term compared to
- 3 mid-term follow-up in all 100 patients and dividing by HF etiology (A) and mid-term median
- 4 LVEF (B). The advantages of ARNi/SGLT2i treatment were confirmed in both ICM and
- 5 NICM patients and regardless to mid-term LVEF. In (B) patients were divided according to
- 6 the median of mid-term LVEF (= 29%). The pie chart (C) shows the LVEF changes at long-
- 7 term follow-up in the 61 ARNi/SGLT2i patients. 30 patients experienced consistent
- 8 echocardiographic improvement: 23 of 5-9 % and 7 $>$ 10 % Δ LVEF increase, respectively.
- 9 NICM refers to Non-Ischemic Cardiomyopathy, ICM to Ischemic Cardiomyopathy patients.
- 10 Statistics: Wilcoxon-Mann-Whitney test.



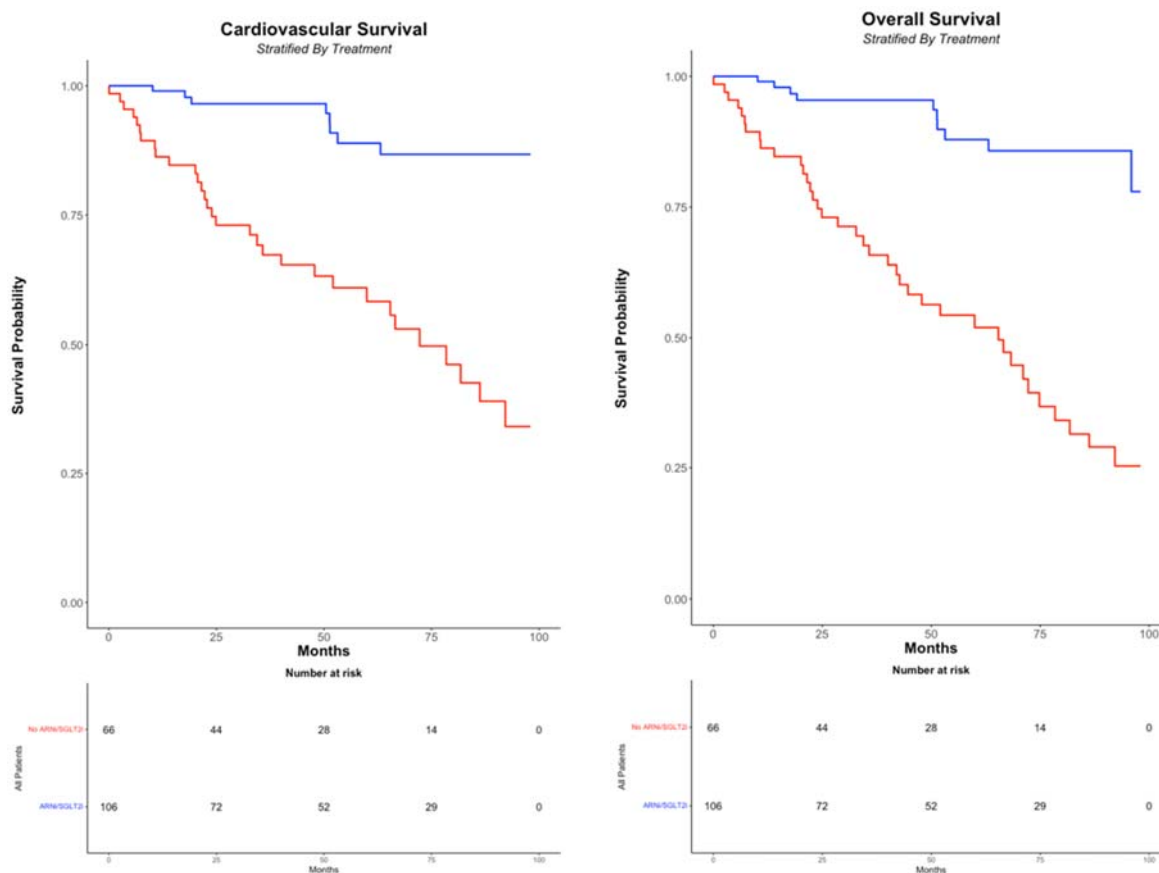
6 **FIGURE 6. Effectiveness of ARNi and SGLT2i treatment in patients with long-term**
7 **follow-up during the entire follow-up period.**

8 The plot shows proportional hazard assessment of ARNi/SGLT2i treatment in the
9 multivariable Cox Regression analysis adjusted for the same covariates showed in Table 5 but
10 accounting the entire follow-up period (from CRT implant). The dotted line in red refers to the
11 coefficient of ARNi/SGLT2i time dependent covariate hazard ratio (plotted on the Y axis)
12 derived from the model (Estimate coefficient = 1.95). The shape of the smoothed curve (in
13 continuous blue line) is an estimate of the difference parameter as a function of time and
14 appears to be constant through the time (in months, on the X axis), with a slightly decline only
15 in the latter part. Dotted blue lines represent the 95 % confidence band for the smooth curve,
16 the points the partial Schoenfeld residuals indicating the differences between the observed and
17 the expected value of the covariate at each event time based on all those at risk at that time.
18 Schoenfeld residuals test ($p = 0.102$) demonstrated that the proportional hazard assumption is
19 satisfied and the effectiveness of ARNi/SGLT2i treatment is consistent through the entire
20 period (Global Schoenfeld Residual test of the model, $p = 0.158$). “Trt” refers to ARNi and
21 SGLT2i treatments.



1 **FIGURE 7. Median change of LVEF and the percentage of patients in NYHA class I or II.**

2 Plots showing the mean LVEF and the percentage of patients in NYHA class I or II before
 3 CRT implant, at 12 months, mid- and long-term follow-up in overall population study. Solid
 4 lines refer to LVEF (plotted on left Y axis), dotted lines to NYHA class I or II patients as
 5 percentage (plotted on right Y axis). For each follow-up points are reported the number of
 6 patients analyzed according to alive status and availability of long-term follow-up. Pre-CRT
 7 ARNi/SGLT2i patients displayed a greater LVEF and a better functional clinical status at 12-
 8 month follow-up and the benefit extended in all the assessments. ARNi and SGLT2i initiation
 9 at mid-term was associated again with a greater LVEF and a better functional clinical status at
 10 long-term compared to no drugs patients. At peri-CRT time point, no patients were in NYHA
 11 class I. Statistics: t-student test and pairwise test with the Holm correction for multiple
 12 comparison at long-term.



1 **FIGURE 8. Kaplan-Meier estimates of the probability of survival free of heart failure**
2 **and all-cause death.**

3 There were significant differences in the estimate of survival free of heart failure-related
4 (graphic on the left) and all-cause death (graphic on the right) between the group that received
5 ARNi or SGLT2i treatment during the entire follow-up and the no drugs patients (unadjusted
6 $p < 0.001$ in both the analysis). Statistics: log-rank test.