

1 **Cognitive Intervention Effects Vary as a Function of Plasma**  
2 **Neurofilament Light Chain Levels: A PICMOR Randomized**  
3 **Controlled Trial**

4  
5 Mihoko Otake-Matsuura<sup>a,\*</sup>, Hikaru Sugimoto<sup>a</sup>, Takuya Sekiguchi<sup>a</sup>, Masato S. Abe<sup>a,b</sup>, Kumi  
6 W. Miura<sup>a,c</sup>, Seiki Tokunaga<sup>a</sup>, Shoshin Akamine<sup>e</sup>, Taishiro Kishimoto<sup>a,d</sup>, Takashi Kudo<sup>a,e</sup>

7  
8 <sup>a</sup> *Center for Advanced Intelligence Project, RIKEN, Tokyo, Japan*

9 <sup>b</sup> *Faculty of Culture and Information Science, Doshisha University, Kyoto, Japan*

10 <sup>c</sup> *Japan Society for the Promotion of Science, Tokyo, Japan*

11 <sup>d</sup> *Department of Neuropsychiatry, Keio University School of Medicine, Tokyo, Japan*

12 <sup>e</sup> *Department of Psychiatry, Osaka University Graduate School of Medicine, Osaka, Japan*

13

14 \*Correspondence to: Mihoko Otake-Matsuura, PhD, Team Leader, Center for Advanced  
15 Intelligence Project, RIKEN, Nihonbashi 1-chome Mitsui Building, 15th floor, 1-4-1  
16 Nihonbashi, Chuo-ku, Tokyo 103-0027, Japan. E-mail: [mihoko.otake@riken.jp](mailto:mihoko.otake@riken.jp)

17

18 **Running title**

19 A PICMOR Effect Varies with Plasma NfL Levels

20

1 **Abstract**

2 **Background:** There is a difference in the neuronal state of individuals. However, this has  
3 not been taken into consideration in most intervention studies. Recent advances in  
4 analytical technologies in hematological examination enabled us to evaluate neuronal  
5 states in a relatively convenient manner.

6 **Objective:** Using these advanced technologies, we aimed to investigate whether cognitive  
7 intervention effects vary as a function of levels of blood-based biomarkers, such as  
8 neurofilament light chain (NfL), since plasma NfL could be a biomarker of  
9 neurodegenerative diseases including Alzheimer's disease.

10 **Methods:** In this study, we employed a group conversation-based intervention  
11 methodology named Photo-Integrated Conversation Moderated by Robots (PICMOR),  
12 which has been shown to improve verbal fluency in older adults. To examine the possibility  
13 of varying effects of this intervention method according to the neuronal state of each  
14 individual, we conducted a randomized controlled trial (UMIN Clinical Trials Registry  
15 number: UMIN000036599) and investigated how longitudinal changes in cognitive  
16 performance, such as verbal fluency, vary with the NfL level measured at the baseline.

17 **Results:** As the main result, positive intervention effects of PICMOR on verbal fluency  
18 were observed in individuals with lower level of NfL, which indicate a relatively intact  
19 neuronal state, whereas negative intervention effects were identified in individuals with  
20 higher NfL level.

21 **Conclusion:** Our findings suggest that cognitive intervention effects vary depending on  
22 level of NfL in the plasma. Thus, future intervention studies should take into account the  
23 neuronal status of the participants to examine intervention effects.

- 1 Keywords: neurofilament light chain, plasma, Alzheimer's disease, PICMOR, verbal
- 2 fluency, conversations

## 1 INTRODUCTION

2 Dementia is one of the major issues in an aging global population, and its  
3 prevention would yield great social benefits. The number of people living with dementia  
4 has rapidly increased to 50 million, particularly because of aging populations in low and  
5 middle-income countries [1]. Alzheimer’s disease (AD) is the most common form of  
6 dementia, and its pathology progresses for a long time before symptoms appear. AD  
7 continuously encompasses several phases: a phase in which pathology is present despite  
8 cognitive normality [2], a mild cognitive impairment (MCI) phase [3], and, a dementia  
9 phase [4]. Since the development of therapeutic agents has not been successful because of  
10 the progressive nature of AD, prevention of AD attracts much more attention to delay the  
11 progress of pathology or cognitive decline at the normal, preclinical, or MCI phase. Based  
12 on the mechanism, cognitively normal older adults are diverse in terms of neuronal state  
13 related to AD. Some may have neuronal degeneration, some may be at higher risk of  
14 neuronal degeneration, and others may not. Therefore, it is possible that there is an  
15 individual difference in the degree of the effect of interventions on cognitive functions  
16 according to the neuronal state of each person.

17 Previously, the assessment of neuronal state was difficult since the measurement of  
18 pathology required positron emission tomography (PET) scanning or collection of  
19 cerebrospinal fluid (CSF). Recently, however, cutting-edge analytical technologies in  
20 hematological examination have enabled us to estimate neuronal state relatively easily. In  
21 this method, the plasma is separated from the blood, and the concentration of neurofilament  
22 light chain (NfL), a subunit of neurofilaments, in the plasma is measured, which indicates  
23 axonal degeneration. NfL is a neuronal cytoplasmic protein [that is](#) highly expressed in

1 large-caliber myelinated axons [5]. In neurodegenerative diseases, such as AD, the  
2 disruption of the axonal membrane causes a sharply increased release of NfL into the  
3 interstitial fluid, followed by its release into CSF and blood [6]. Even in normal populations,  
4 NfL is constantly released from axons, and the release level is increased with advancing  
5 age [7, 8]. Thus, the concentration of this protein in CSF and blood can be considered as  
6 an indicator of axonal injury. In recent studies, blood-based NfL measurement has been  
7 widely adopted because of the following reasons: it is less invasive and more convenient  
8 relative to the CSF-based method; NfL levels measured by the two methods are correlated  
9 [9-12]; and a more sensitive assay, called single-molecule array (Simoa), has been  
10 developed [13]. In the present study, we used blood-based method to measure NfL levels  
11 and regarded NfL levels as a reliable index of neuronal state, as it has been hypothesized  
12 to be a nonspecific marker of neurodegeneration [9-12, 14]. In addition, we employed other  
13 blood-based biomarkers as references for comparisons: amyloid- $\beta$  (A $\beta$ ) (A $\beta$ 40 and A $\beta$ 42)  
14 in extracellular vesicles (EV).

15         The aim of this study was to examine whether cognitive intervention effects in  
16 healthy older adults vary according to their neuronal state. We employed conversational  
17 interventions to accumulate evidence on the effects of interventions based on social  
18 activities, which is still limited in available literature [15]. One of the reasons that social  
19 activity-based intervention is scarce is that social activities, such as conversations, occur  
20 spontaneously, and it is difficult to regulate their qualities and quantities. To address this  
21 issue, we previously developed a cognitive intervention program that utilizes group  
22 conversations named Photo Integrated Conversation Moderated by Robots (PICMOR) [16].  
23 By using a robot system, controlling the quantity of conversation is enabled. The system

1 contains two key features: (i) a robot moderator that controls the turn-taking so that all  
2 participants speak and listen for the same length of time, and (ii) photos taken by the  
3 participants are shown and discussed sequentially with the announcement of a robotic  
4 moderator. These features are important for exercising executive functions and episodic  
5 memory because the participants have to speak within a designated period of time and have  
6 to ask and answer questions with flexibility; thus, they would be trained to organize their  
7 thoughts and produce them as words. The participants are required to recall their  
8 autobiographical memories using the photos, and therefore, their ability to recall from  
9 memory would be also exercised. Indeed, we previously identified the beneficial effects of  
10 the PICMOR program on verbal fluency in older adults [16].

11 In the present study, we investigated whether the effect of the conversation-based  
12 intervention on cognitive functions differs depending on the neuronal state of each  
13 participant estimated from blood biomarkers. To do this, we conducted a randomized  
14 controlled trial (RCT) on healthy older adults, assuming that the degree to which sub-  
15 domains of cognitive functions involved in conversations were enhanced by the PICMOR  
16 program would vary from individual to individual as a function of the blood levels of NfL.  
17 More specifically, individuals with lower levels of NfL, which imply a relatively intact  
18 neuronal state, would show larger improvement in cognitive performance, such as verbal  
19 fluency [16, 17]. This is because the intact neural basis can play its role and enjoy the  
20 benefits of cognitive training.

## 1    **METHODS**

### 2    *Study design and procedure*

3            The study was a randomized control trial conducted between May and September  
4    2019 (UMIN Clinical Trials Registry number: UMIN000036599). Figure 1 describes the  
5    CONSORT diagram showing an overview of the current study. First, 70 participants were  
6    assessed for eligibility by medical interview, cognitive tests, and radiologic interpretations.  
7    Eighteen participants were excluded under our exclusion criteria and one participant  
8    withdrew their consent. Therefore, 51 participants were included in the randomization.  
9    After baseline assessment, block stratified randomization was performed according to  
10   scores of the Japanese version of the Mini-Mental State Examination (MMSE-J) [18] and  
11   the Montreal Cognitive Assessment (MoCA-J) [19], and randomly assigned participants to  
12   either the intervention ( $n = 24$ ) or control group ( $n = 27$ ). We divided participants in the  
13   intervention group into six subgroups of four. The intervention group was given 30-minute  
14   weekly intervention session, followed by 30-minute explanation of the intervention. The  
15   control group visited the office weekly as an active control session. During the intervention  
16   period, two participants were lost to follow-up, with one individual belonging to the  
17   intervention group and the other from the control group. Subsequent to the 12-week  
18   intervention period, post-assessment was carried out for 49 subjects (intervention:  $n = 23$ ,  
19   control:  $n = 26$ ). This study was approved by the Institutional Review Board. Written  
20   informed consent was obtained from all participants.

### 21   *Participants*

22            The participants were older adults over 65 years in community living who were  
23   enrolled from Silver Human Resources Center, Japan. The exclusion criteria of the current

1 study were the following: participants with a score of MMSE-J less than 24, neurological  
2 impairment, dementia, and any medical condition or medication with a known effect on  
3 the central nervous system. Radiological findings assessed by a medical doctor using  
4 multiple magnetic resonance imaging (MRI) data, including T1-weighted, T2-weighted,  
5 and FLAIR images, were also used as exclusion criteria: cerebral infarctions, meningeal  
6 tumors, hemorrhage, or abnormal signals probably caused by metal artifacts.

### 7 *Neuropsychological examination*

8 Outcome measurements of cognitive performance in the current study were  
9 conducted using MoCA-J, MMSE-J, semantic verbal fluency test [20], subtests of the  
10 Wechsler Memory Scale-Revised (WMS-R) [21], including logical memory I and II,  
11 subtests of the Wechsler Adult Intelligence Scale- Fourth Edition (WAIS-IV), including  
12 the digit symbol coding and digit span forward and backward tests [22], and Trail Making  
13 Test (TMT) [23].

14 MoCA-J and MMSE-J are brief cognitive screening tools composed of multiple  
15 domains of cognitive function. In this study, the total score in each test was calculated.

16 Verbal fluency was evaluated by two distinct tests: the phonological verbal (or letter)  
17 fluency test from MoCA-J and semantic verbal (or category) fluency test. In the letter  
18 fluency test, we instructed to participants to generate as many words as possible in 1 min,  
19 with each word being started by the Japanese character ‘ka’. In the category fluency test,  
20 participants were required to speak as many words as they could belonging to the category  
21 of animals in 1 min. The two types of verbal fluency tasks differ in whether words are  
22 generated in a phonologically or semantically driven way. The overall count of words  
23 produced was recorded in each test.



1 Logical memory I and II are measure of narrative episodic memory that assess both  
2 immediate and delayed verbal memory. After reading a brief story, the examiner instructed  
3 the participants to reproduce the story's content immediately and again after a duration of  
4 30 minutes. Scores were calculated by the sum of the number of elements that were recalled.  
5 To avoid learning effects, we used different test stories at the baseline assessment and post-  
6 assessment in this study.

7 The processing speed and working memory are assessed by the digit symbol coding  
8 test. In this test, the participants were instructed to transcribe as many of the corresponding  
9 symbol as possible, followed by a list of digits. Simple memory span and working memory  
10 capacity are measured by the digit span forward and backward tests, respectively. The  
11 examiner told the sequence of numbers and required participants to recall the sequence  
12 forward and backward.

13 TMT assesses attention and executive function of individuals. In this study, TMT  
14 was conducted using a PC. In TMT-A, a series of circles, numbered consecutively from 1  
15 to 25, were randomly dispersed throughout the visual display, and the participants were  
16 asked to click the cursor on each circle in numerical order. In TMT-B, a series of circles  
17 included not only numbers ranging from 1 to 13, but also the initial 12 Japanese Hiragana  
18 character. We instructed to click on numbers and letters alternatively. The time to perform  
19 these tasks was recorded.

## 20 ***Blood sampling and separation of plasma***

21 Blood was collected in EDTA tubes in the Advanced Imaging Center (AIC) Yaesu  
22 Clinic, Tokyo, Japan. The blood was centrifuged at 2,500 g for 15 min at room temperature,  
23 18 °C, within 24 h after sampling, and stored at -80 °C for future analyses and transported

1 to Osaka University. The following procedures, isolation of neuron-derived extracellular  
2 vesicles (EV) (NDE) fraction from plasma, measurements of A $\beta$ 40, A $\beta$ 42 in plasma-  
3 derived NDE fraction, and measurements of serum NfL were conducted at Osaka  
4 University, Osaka, Japan.

### 5 *Measurements of serum NfL*

6 We measured Plasma NfL concentration twice with the Simoa platform, using Simoa  
7 NF-Light Advantage kits on a Simoa HD-1 Analyzer instrument (Quanterix Corporation)  
8 [24]. We set 0.466 pg/mL as the lower limit for NfL concentration. We excluded samples  
9 with either fatal measurement errors or coefficients of variance (CV) > 20 %. In all batches,  
10 we measured two types of quality-control samples provided in the kit twice, in order to  
11 ensure measurement validity. The mean CV of duplicates was 4.4 %.

### 12 *Isolation of NDE fraction from plasma*

13 NDE fractions were isolated from plasma using the previous method reported by  
14 Goetzl and Kapogiannis group [25-27] with some modifications. 7.5  $\mu$ L thrombin  
15 (Thrombin Plasma prep #TMEXO-1; System Bioscience, CA, USA) was added to 250  $\mu$ L  
16 plasma and incubated for 30 min at room temperature to remove fibrin by clot formation.  
17 After the addition of 242.5  $\mu$ L of Dulbecco's phosphate-buffered saline with no calcium  
18 and magnesium ion (D-PBS(-)) (#14249-95; Nacalai Tesque, Kyoto, Japan), tubes were  
19 gently mixed by inverting three times, and centrifuged at 4,000 g for 20 min at 4 °C.  
20 Supernatants were transferred to fresh tubes and added 126  $\mu$ L of ExoQuick solution  
21 (#EXOQ5A-1; System Bioscience, CA, USA), and gently mixed by inverting three times.  
22 Tubes were incubated for 60 min at 4 °C and centrifuged at 1,500 g for 20 min at 4 °C.

1 Supernatants were discarded after centrifugation, and the pellet was resuspended in 250  $\mu$ L  
2 of deionized water. The solution was incubated overnight at 4 °C with rotation for complete  
3 resuspension. To isolate NDE fraction from total plasma-EVs, 2  $\mu$ g of biotinylated anti-  
4 L1CAM antibody (#13-1719-82; eBioscience, CA, USA) in 21  $\mu$ L of 3 % bovine serum  
5 albumin (BSA) (Blocker BSA, #37525; Thermo Fisher Scientific, MA, USA) diluted with  
6 D-PBS(-) was added and incubated for 60 min at 4 °C with rotation, followed by addition  
7 of 7.5  $\mu$ L of streptavidin-agarose resin (Pierce Streptavidin Plus UltraLink Resin, #53116;  
8 Thermo Fisher Scientific, MA, USA) and 12.5  $\mu$ L of 3 % BSA. The solution was further  
9 incubated for 30 min at 4 °C with rotation, centrifuged at 200 g for 10 min at 4 °C, then the  
10 supernatant was carefully removed. NDE fraction was eluted by 100  $\mu$ L of 0.1 M glycine-  
11 HCl (pH 3.0), the resin was removed by centrifugation at 4,500 g for 10 min at 4 °C,  
12 followed by neutralization with 7.5  $\mu$ L of 1 M Tris-HCl (pH 8.0) and 7.5  $\mu$ L of 10 % BSA.  
13 EVs were lysed by adding 135  $\mu$ L of M-PER (#78501; Thermo Fisher Scientific, MA,  
14 USA) and two freeze-thaw cycles.

15 All D-PBS(-), deionized water, and M-PER were supplemented with protease  
16 inhibitor cocktail (cOmplete Protease Inhibitor Cocktail, #04693116001; Sigma-Aldrich,  
17 MO, USA) and phosphatase inhibitor cocktail (PhosSTOP, #4906847001; Sigma-Aldrich,  
18 MO, USA) to three times the concentration recommended by the manufacturer, before use.

### 19 ***Measurements of A $\beta$ 40, A $\beta$ 42 in plasma-derived NDE fraction***

20 We measured Plasma-derived NDE A $\beta$ 40/A $\beta$ 42 concentration twice with the  
21 ultrasensitive Simoa platform, using Simoa Neurology 3-Plex A Advantage kits on a Simoa  
22 HD-1 Analyzer instrument (Quanterix Corporation) [24]. We diluted samples 4-fold with  
23 sample diluent reagent in the instrument during measurement. The lower limit of

1 quantification for A $\beta$ 40 and was 0.675 pg/mL and that of A $\beta$ 42 was and 0.142 pg/mL. We  
2 excluded samples with either fatal measurement errors or CV > 20 % from the analysis. In  
3 all batches, we measured two types of quality-control samples provided in the kit twice, in  
4 order to ensure measurement validity. The mean CV of duplicates was 4.4 % and 3.5 %,   
5 respectively.

6

### 7 *MRI data acquisition and preprocessing*

8 Anatomical brain structures were scanned using a high-resolution T1-weighted  
9 image. The scan parameters were as follows: repetition time = 6.41 ms, echo time = 3.00  
10 ms, field of view = 24.0 cm  $\times$  24.0 cm, matrix size = 256  $\times$  256, slice thickness/gap = 1.2/0  
11 mm, and 170 sagittal slices. The participant's head was fixed with a belt and foam pads  
12 during the scan. Resting-state functional images and diffusion tensor images were also  
13 collected and used for other purposes. All MRI data were acquired using a Philips Achieva  
14 3T MRI scanner at the AIC Yaesu Clinic. The T1-weighted images were preprocessed  
15 using Statistical Parametric Mapping (SPM) 12. The images were segmented into  
16 intracranial parts of gray matter (GM), white matter (WM), CSF, and other non-brain  
17 structures using the standard unified segmentation module [28]. From the segmented  
18 images, individual GM, WM, and CSF volumes were calculated for analysis. Total brain  
19 volumes (TBVs) and total intracranial volumes (TIVs) were defined as the sum of GM and  
20 WM and the sum of the three parts (GM + WM + CSF), respectively.

## 1 ***Covariates***

2 Age, sex, educational level, family structure, competency, depressive tendency, and  
3 quality of life were assessed as covariates. Competency was assessed by the Tokyo  
4 Metropolitan Institute of Gerontology-Index of Competence (TMIG-IC) [29], and the  
5 subject's depressive tendency was evaluated by the Geriatric Depression Scale short form  
6 (GDS-15) [30]. World Health Organization quality of life questionnaire 26 was used to  
7 evaluate the quality of life of the participants [31].

## 8 ***Statistical analysis: Intervention effects***

9 To estimate the intervention effect, we performed the linear mixed models with  
10 random intercepts for outcome measures (scores of cognitive tests, brain volumes, and  
11 levels of blood biomarkers) by using the R package 'lme4' [32]. The models included the  
12 group assignment factor (the intervention group was coded as 1 and the control group was  
13 coded as 0), the time factor (pre-experiment was coded as 1 and post-experiment was coded  
14 as 0), and their interaction term as independent variables. We reported the interaction term  
15 as the intervention effect.

## 16 ***Statistical analysis: Intervention effects depending on levels of blood biomarkers***

17 To observe at which biomarker level the time effect and the intervention effect on  
18 cognitive test scores conditional on the biomarker level were significant, we constructed  
19 the linear mixed models with random-intercepts, which included the group factor, the time  
20 factor, the biomarker levels, and all the possible interaction terms. We then applied the  
21 simple slope analysis to those models, in which we subtracted specific values from the raw  
22 values of biomarker levels and then conducted the same models again.

1 We reported ranges of biomarker levels where the time effects within the  
2 intervention and control groups and the intervention effect on the outcomes were  
3 significant at levels of 0.05.

## 4 **RESULTS**

### 5 *Baseline characteristics of participants*

6 Table 1 compares the baseline characteristics of study participants in the  
7 intervention and control groups.

### 8 *Intervention effects in cognitive test scores, brain volumes, and blood biomarkers*

9 Table S3 compares the cognitive test scores and brain volumes measured at pre-  
10 and post-experiment between the intervention and control groups. No statistically  
11 significant intervention effects were observed for any of the scores and brain volumes.

12 Table S4 compares the levels of blood biomarkers pre- and post-experiment  
13 between the intervention and control groups. There were no significant intervention effects  
14 observed on levels of any biomarkers.

### 15 *Intervention effects depending on levels of blood biomarkers*

16 For lower (higher) levels of NfL, a significantly positive (negative) intervention  
17 effect on category fluency was observed (Fig. 2).

18 For a higher level of NfL, significantly negative intervention effects on logical  
19 memories I and II were observed (Fig. S1A and B), and for a level of NfL close to the  
20 median, a significantly negative intervention effect on Digit span backward was observed  
21 (Fig. S1C).

1 For a lower (higher) level of A $\beta$ 40, a significantly positive (negative) intervention  
2 effect on digit span forward was observed (Fig. S1D).

3 For a level of A $\beta$ 40 close to the median, a significantly negative intervention effect  
4 on digit span backward was observed (Fig. S1E). For a higher level of A $\beta$ 42, a significantly  
5 negative intervention effect on the volume of white matter was observed (Fig. S1F).

6 Figure S2 shows that the time effects on cognitive test scores within the intervention  
7 and control groups were not negative. By contrast, the time effects on brain volumes were  
8 negative in many cases.

## 9 **DISCUSSION**

10 In this study, we examined whether cognitive intervention effects vary as a function of  
11 levels of blood-based biomarkers, assuming that individuals with lower levels of NfL  
12 would show a larger enhancement in verbal fluency. Although we did not find significant  
13 intervention effects in any task scores when the blood-based biomarkers were not taken  
14 into consideration, we successfully identified differential intervention effects on  
15 performance in one of two verbal fluency tasks when individuals were categorized by the  
16 level of NfL.

17 Our previous RCT employed a letter fluency task and identified a significant  
18 intervention effect of PICMOR on this task score [16], whereas the present RCT used a  
19 category fluency task as well as the letter one and found no significant intervention effects  
20 on both task scores (see Table S3). This difference could be explained by a difference in  
21 the baseline level of task performance between the previous and present RCT participants.  
22 In this study, both the intervention and control groups scored 14 on average in the letter  
23 fluency test, which are significantly higher than the previous participants who scored 11

1 on average [16]. Considering that normative data regarding this task performance show  
2 that people aged 60 and 70 years score 7 on average [33], the baseline level of participants  
3 in this study is extremely high, and hence it is possible that there was a smaller room for  
4 growth in the task performance compared to the previous RCT participants. Similarly, the  
5 current participants scored 17 on average at baseline in the category fluency test, which is  
6 extremely higher than normative data of people aged 60 and 70 years scoring the 14 and  
7 11 on average, respectively [33]. Nevertheless, when considering NfL levels, we found a  
8 significantly positive intervention effect in the semantic verbal fluency task for individuals  
9 with lower levels of NfL (see Fig. 1A). In contrast, no significant effects were observed in  
10 the phonological one, even when the NfL was taken into consideration. This difference  
11 may be reasonable because the phonological one is more difficult to perform than the  
12 semantic one [33]. The present findings suggest that even in populations with high level  
13 performance, there is an individual difference in the neuronal state and cognitive  
14 intervention effects are prominent for individuals with a relatively intact neuronal status.  
15 On the other hand, a negative intervention effect was observed in those who had higher  
16 levels of NfL. Thus, the finding of no significant intervention effects on verbal fluency  
17 unless NfL levels are not taken into account could be also explained by the possibility that  
18 the effects were counterbalanced between individuals with lower and higher NfL levels.  
19 Taken together, our findings suggest that cognitive intervention effects vary as a function  
20 of NfL levels.

21 This study showed an advantage of using plasma NfL levels in intervention studies.  
22 Recently, there has been a growing interest in blood-based NfL as a biomarker of  
23 neurodegenerative diseases [9-12, 14]. In addition, several studies have attempted to use it



1 as a measure of treatment for diseases [9]. In aging research, the NfL levels have been  
2 shown to increase with normal aging [7, 8]. This index has also been used in cohort and  
3 RCT studies for healthy older adults [34, 35]. For example, Desai et al. (2022) utilized the  
4 NfL levels to classify the participants and investigated the association between physical  
5 activity levels and cognitive decline [34]. Our study proposed a new usage of the NfL by  
6 employing it for the classification of participants to examine a cognitive intervention effect  
7 among healthy older populations. This is informative for other intervention studies because  
8 the effects of any intervention methods vary as a function of NfL levels. In contrast, we  
9 could not identify a similar pattern when using A $\beta$  levels for classification. This is  
10 presumably because the measurement may not reflect only A $\beta$  levels measured from  
11 neuron-derived exosomes. We originally used L1CAM as a marker of brain neuronal EV  
12 and collected exosomes with L1CAM to measure A $\beta$  levels in neural cells. However, the  
13 utility of L1CAM as a marker of brain neuronal EVs has been questioned recently because  
14 some of L1CAM is expressed in other organs, such as the kidneys, and most of L1CAM in  
15 the blood is truncated, lacking the transmembrane region which anchors L1CAM to the  
16 membrane of EVs [36-38]. Thus, it is important to develop a new technology to distinguish  
17 neuron-derived exosomes from those that came out of other organs. Taken together, the  
18 plasma NfL measured in this study could be considered as purely reflecting neuronal state.

19 In this study, significant negative intervention effects were observed on logical  
20 memory task scores (I and II) (Fig. S1) as well as the categorical verbal fluency task score  
21 among participants with higher levels of NfL (see Fig. 2). In addition, participants with  
22 middle levels of NfL showed significant negative intervention effects in the digit span  
23 backward test (see Fig. S1). These findings suggest that individuals with high or medium

1 levels of NfL do not benefit from cognitive intervention due a relatively vulnerable neural  
2 basis. From the results, we can at least derive a practical implication that an appropriate  
3 intervention program should be designed according to the levels of biomarkers. Future  
4 research needs to investigate how strong the intervention strength should be to improve  
5 their cognitive performance by changing the frequency or duration of interventions or the  
6 cognitive load demanded in interventions. A cohort study reported that even in individuals  
7 with higher levels of NfL, those who have high or medium levels of physical activity  
8 showed reduced cognitive decline relative to those who have low physical activity levels  
9 [34]. Considering that the PICMOR method has various variables that can be changed, such  
10 as the number of topics to be provided, it may be effective to increase the cognitive  
11 demands during the intervention as well as to increase the frequency or duration of  
12 interventions for individuals with lower levels of NfL.

13 The PICMOR-based conversation is designed to train cognitive functions, such as  
14 executive functions and episodic memory [16]. In this structured group conversation,  
15 participants were required to make a presentation on recently encountered events within a  
16 limited time, ask and answer questions among group members, and refrain from making a  
17 comment when other members were talking. To provide topics, they had to recall their  
18 autobiographical memory and explain it in a concise manner. To ask questions, they had to  
19 temporarily retain information in working memory and understand what others meant and  
20 what was unclear with reference to one's knowledge. As expected, our series of RCTs  
21 provided consistent evidence that the verbal fluency ability, which is based on executive  
22 control and verbal abilities [39], can be improved by engaging in the PICMOR-based  
23 conversation. However, it remains unclear what components in this structured conversation

1 are responsible for the enhancement of verbal fluency [40]. Further research is needed to  
2 address this issue by investigating whether repeated training specialized in each component  
3 of conversations, such as asking questions, results in the improvement of cognitive abilities.  
4 Furthermore, considering the pandemic of COVID-19, it is important to develop more  
5 easily available methods for people in isolation or those who cannot go out, which do not  
6 require an on-site conversation, such as tablet-based or application-based conversations.

7 In conclusion, we found that cognitive intervention effects vary as a function of levels  
8 of blood-based biomarkers. Importantly, we demonstrated that the beneficial effects of our  
9 recently developed intervention program on verbal fluency are prominent in individuals  
10 with lower levels of NfL. From these findings, we can suggest for future intervention  
11 studies that it is important to estimate the neuronal state of participants when determining  
12 the effectiveness of intervention methodologies.

### 13 **ACKNOWLEDGMENTS**

14 We thank the staff of the AIC Yaesu Clinic for their technical assistance in the MRI  
15 scanning and blood sampling. This work was supported by JSPS KAKENHI (Grant  
16 Numbers: JP18KT0035, JP19H01138, JP19K14489, JP20H05022, JP20H05574,  
17 JP20K19471, JP22H04872, JP22H00544) and the Japan Science and Technology Agency  
18 (Grant Numbers: JPMJCR20G1, JPMJPF2101, and JPMJMS2237).

### 19 **Conflict of Interest/Disclosure Statement**

20 The authors have no conflict of interest to report.

### **REFERENCES**

21 [1] Livingston G, Sommerlad A, Orgeta V, Costafreda SG, Huntley J, Ames D, et al.  
22 (2017) Dementia prevention, intervention, and care. *Lancet* **390**, 2673-2734.

- 1 [2] Sperling RA, Aisen PS, Beckett LA, Bennett DA, Craft S, Fagan AM, Iwatsubo  
2 T, Jack CR, Jr., Kaye J, Montine TJ, Park DC, Reiman EM, Rowe CC, Siemers E,  
3 Stern Y, Yaffe K, Carrillo MC, Thies B, Morrison-Bogorad M, Wagster MV,  
4 Phelps CH (2011) Toward defining the preclinical stages of Alzheimer's disease:  
5 Recommendations from the National Institute on Aging-Alzheimer's Association  
6 workgroups on diagnostic guidelines for Alzheimer's disease. *Alzheimers Dement*  
7 *7*, 280-292.
- 8 [3] Albert MS, DeKosky ST, Dickson D, Dubois B, Feldman HH, Fox NC, Gamst A,  
9 Holtzman DM, Jagust WJ, Petersen RC, Snyder PJ, Carrillo MC, Thies B, Phelps  
10 CH (2011) The diagnosis of mild cognitive impairment due to Alzheimer's  
11 disease: recommendations from the National Institute on Aging-Alzheimer's  
12 Association workgroups on diagnostic guidelines for Alzheimer's disease.  
13 *Alzheimers Dement* *7*, 270-279.
- 14 [4] McKhann GM, Knopman DS, Chertkow H, Hyman BT, Jack CR, Jr., Kawas CH,  
15 Klunk WE, Koroshetz WJ, Manly JJ, Mayeux R, Mohs RC, Morris JC, Rossor  
16 MN, Scheltens P, Carrillo MC, Thies B, Weintraub S, Phelps CH (2011) The  
17 diagnosis of dementia due to Alzheimer's disease: Recommendations from the  
18 National Institute on Aging-Alzheimer's Association workgroups on diagnostic  
19 guidelines for Alzheimer's disease. *Alzheimers Dement* *7*, 263-269.
- 20 [5] Zetterberg H (2016) Neurofilament light: A dynamic cross-disease fluid  
21 biomarker for neurodegeneration. *Neuron* **91**, 1-3.
- 22 [6] Gaiottino J, Norgren N, Dobson R, Topping J, Nissim A, Malaspina A, Bestwick  
23 JP, Monsch AU, Regeniter A, Lindberg RL, Kappos L, Leppert D, Petzold A,

- 1           Giovannoni G, Kuhle J (2013) Increased neurofilament light chain blood levels in  
2           neurodegenerative neurological diseases. *PLoS One* **8**, e75091.
- 3   [7]    Khalil M, Pirpamer L, Hofer E, Voortman MM, Barro C, Leppert D, Benkert P,  
4           Ropele S, Enzinger C, Fazekas F, Schmidt R, Kuhle J (2020) Serum  
5           neurofilament light levels in normal aging and their association with morphologic  
6           brain changes. *Nat Commun* **11**, 812.
- 7   [8]    Ladang A, Kovacs S, Lengele L, Locquet M, Reginster JY, Bruyere O, Cavalier E  
8           (2022) Neurofilament light chain concentration in an aging population. *Aging Clin*  
9           *Exp Res* **34**, 331-339.
- 10 [9]    Gaetani L, Blennow K, Calabresi P, Di Filippo M, Parnetti L, Zetterberg H (2019)  
11          Neurofilament light chain as a biomarker in neurological disorders. *J Neurol*  
12          *Neurosurg Psychiatry* **90**, 870-881.
- 13 [10]   Khalil M, Teunissen CE, Otto M, Piehl F, Sormani MP, Gattringer T, Barro C,  
14          Kappos L, Comabella M, Fazekas F, Petzold A, Blennow K, Zetterberg H, Kuhle  
15          J (2018) Neurofilaments as biomarkers in neurological disorders. *Nat Rev Neurol*  
16          **14**, 577-589.
- 17 [11]   Wang SY, Chen W, Xu W, Li JQ, Hou XH, Ou YN, Yu JT, Tan L (2019)  
18          Neurofilament light chain in cerebrospinal fluid and blood as a biomarker for  
19          neurodegenerative diseases: A systematic review and meta-analysis. *J Alzheimers*  
20          *Dis* **72**, 1353-1361.
- 21 [12]   Xiong YL, Meng T, Luo J, Zhang H (2021) The potential of neurofilament light  
22          as a biomarker in Alzheimer's disease. *Eur Neurol* **84**, 6-15.

- 1 [13] Kuhle J, Barro C, Andreasson U, Derfuss T, Lindberg R, Sandelius A, Liman V,  
2 Norgren N, Blennow K, Zetterberg H (2016) Comparison of three analytical  
3 platforms for quantification of the neurofilament light chain in blood samples:  
4 ELISA, electrochemiluminescence immunoassay and Simoa. *Clin Chem Lab Med*  
5 **54**, 1655-1661.
- 6 [14] Zhao Y, Xin Y, Meng S, He Z, Hu W (2019) Neurofilament light chain protein in  
7 neurodegenerative dementia: A systematic review and network meta-analysis.  
8 *Neurosci Biobehav Rev* **102**, 123-138.
- 9 [15] World Health Organization (2019) *Risk reduction of cognitive decline and*  
10 *dementia: WHO guidelines*,  
11 <https://www.who.int/publications/i/item/9789241550543>.
- 12 [16] Otake-Matsuura M, Tokunaga S, Watanabe K, Abe MS, Sekiguchi T, Sugimoto  
13 H, Kishimoto T, Kudo T (2021) Cognitive intervention through Photo-Integrated  
14 Conversation Moderated by Robots (PICMOR) program: A randomized  
15 controlled trial. *Front Robot AI* **8**, 633076.
- 16 [17] Dodge HH, Zhu J, Mattek N, Bowman M, Ybarra O, Wild K, Loewenstein DA,  
17 Kaye JA (2015) Web-enabled conversational interactions as a means to improve  
18 cognitive functions: Results of a 6-week randomized controlled trial. *Alzheimers*  
19 *Dement (N Y)* **1**, 1-12.
- 20 [18] Sugishita M, Koshizuka Y, Sudou S, Sugishita K, Hemmi I, Karasawa H, Ihara  
21 M, Takashi A, Mihara B (2018) The validity and reliability of the Japanese  
22 version of the Mini-Mental State Examination (MMSE-J) with the original

- 1 procedure of the Attention and Calculation Task (2001). *Japanese J Cogn*  
2 *Neurosci* **20**, 91-110.
- 3 [19] Fujiwara Y, Suzuki H, Yasunaga M, Sugiyama M, Ijuin M, Sakuma N, Inagaki H,  
4 Iwasa H, Ura C, Yatomi N, Ishii K, Tokumaru AM, Homma A, Nasreddine Z,  
5 Shinkai S (2010) Brief screening tool for mild cognitive impairment in older  
6 Japanese: validation of the Japanese version of the Montreal Cognitive  
7 Assessment. *Geriatr Gerontol Int* **10**, 225-232.
- 8 [20] Lezak MD, Howieson DB, Bigler ED, Tranel D (2012) *Neuropsychological*  
9 *Assessment*, Oxford University Press, New York.
- 10 [21] Wechsler D (1987) *Wechsler Memory Scale-Revised*, Pearson, San Antonio.
- 11 [22] Wechsler D (2008) *Wechsler Adult Intelligence Scale—Fourth Edition*, Pearson,  
12 San Antonio.
- 13 [23] Mizuno K, Watanabe Y (2008) Utility of an advanced trail making test as a  
14 neuropsychological tool for an objective evaluation of work efficiency during  
15 mental fatigue In *Fatigue Science for Human Health*, Watanabe Y, Evengård B,  
16 Natelson BH, Jason LA, Kuratsune H, eds. Springer, Tokyo, pp. 47-54.
- 17 [24] Akamine S, Marutani N, Kanayama D, Gotoh S, Maruyama R, Yanagida K,  
18 Sakagami Y, Mori K, Adachi H, Kozawa J, Maeda N, Otsuki M, Matsuoka T,  
19 Iwahashi H, Shimomura I, Ikeda M, Kudo T (2020) Renal function is associated  
20 with blood neurofilament light chain level in older adults. *Sci Rep.* **10(1)**, 20350.
- 21 [25] Fiandaca MS, Kapogiannis D, Mapstone M, Boxer A, Eitan E, Schwartz JB,  
22 Abner EL, Petersen RC, Federoff HJ, Miller BL, Goetzl EJ (2015) Identification  
23 of preclinical Alzheimer's disease by a profile of pathogenic proteins in neurally

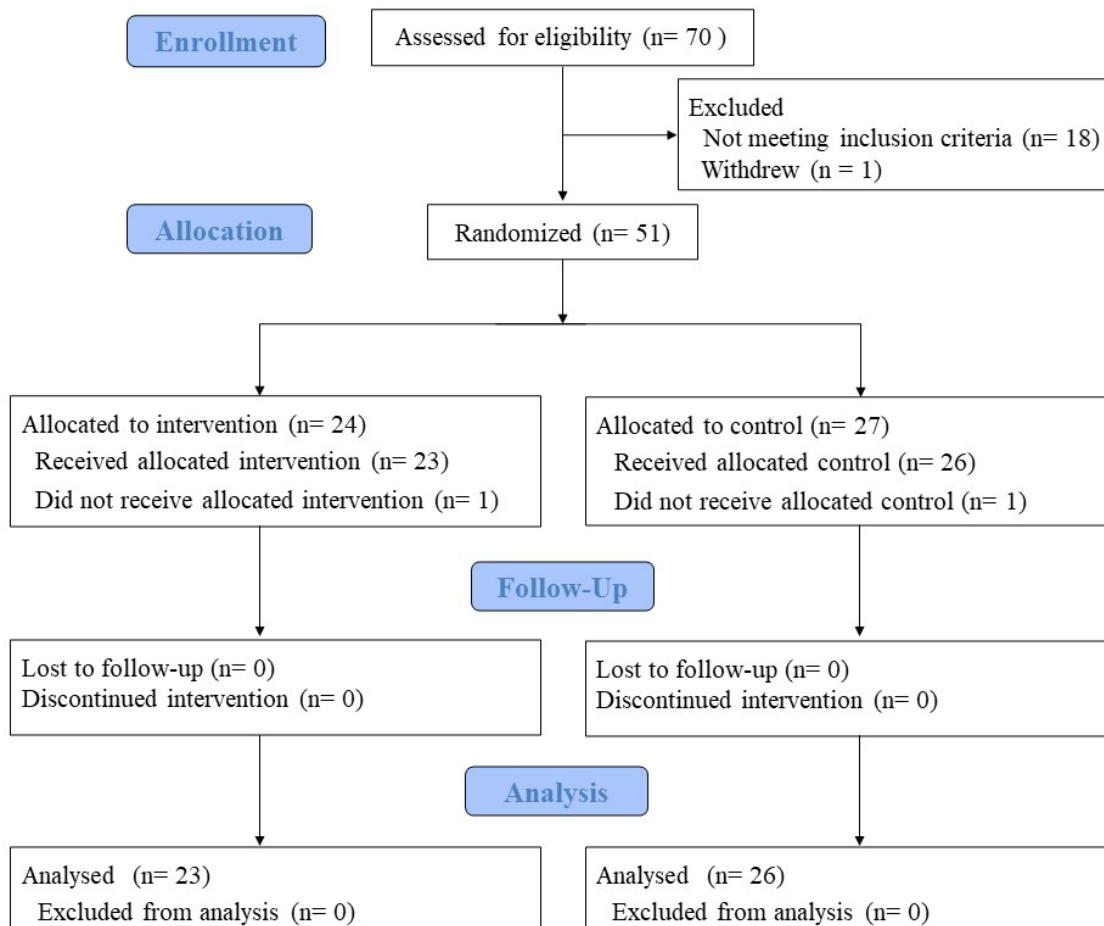
- 1 derived blood exosomes: A case-control study. *Alzheimers Dement* **11**, 600-607  
2 e601.
- 3 [26] Guix FX, Corbett GT, Cha DJ, Mustapic M, Liu W, Mengel D, Chen Z, Aikawa  
4 E, Young-Pearse T, Kapogiannis D, Selkoe DJ, Walsh DM (2018) Detection of  
5 aggregation-competent tau in neuron-derived extracellular vesicles. *Int J Mol Sci*  
6 **19**.
- 7 [27] Mustapic M, Eitan E, Werner JK, Jr., Berkowitz ST, Lazaropoulos MP, Tran J,  
8 Goetzl EJ, Kapogiannis D (2017) Plasma extracellular vesicles enriched for  
9 neuronal origin: A potential window into brain pathologic processes. *Front*  
10 *Neurosci* **11**, 278.
- 11 [28] Ashburner J, Friston KJ (2005) Unified segmentation. *Neuroimage* **26**, 839-851.
- 12 [29] Koyano W, Shibata H, Nakazato K, Haga H, Suyama Y (1991) Measurement of  
13 competence: reliability and validity of the TMIG Index of Competence. *Arch*  
14 *Gerontol Geriatr* **13**, 103-116.
- 15 [30] Sugishita K, Sugishita M, Hemmi I, Asada T, Tanigawa T (2017) A validity and  
16 reliability study of the Japanese version of the Geriatric Depression Scale 15  
17 (GDS-15-J). *Clin Gerontol* **40**, 233-240.
- 18 [31] Tazaki M, Nakane Y (1997) *WHO QOL26 Japanese version manual*, Kaneko  
19 Shobo, Tokyo.
- 20 [32] Bates D, Mächler M, Bolker B, Walker S (2015) Fitting linear mixed-effects  
21 models using lme4. *J Stat Softw* **67**, 1-48.



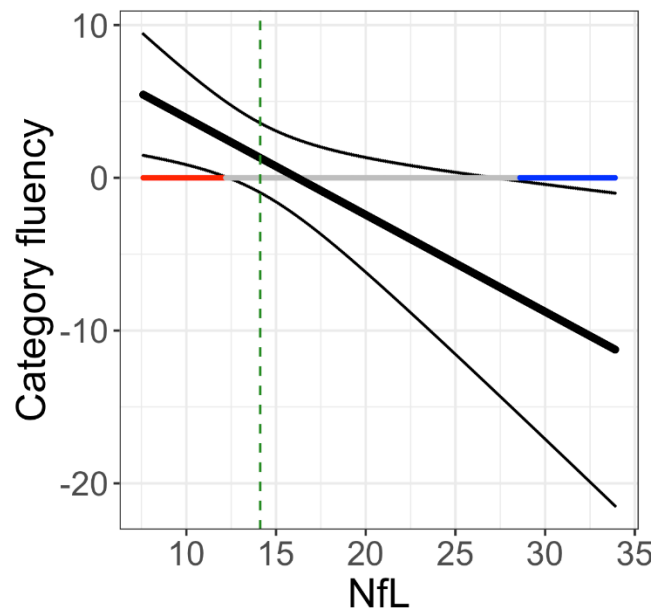
- 1 [33] Ito E, Hatta T, Ito Y, Kogure T, Watanabe H (2004) Performance of verbal  
2 fluency tasks in Japanese healthy adults: Effect of gender, age and education on  
3 the performance. *Japanese J Neuropsychology* **20**, 254-263.
- 4 [34] Desai P, Dhana K, DeCarli C, Wilson RS, McAninch EA, Evans DA, Rajan KB  
5 (2022) Examination of neurofilament light chain serum concentrations, physical  
6 activity, and cognitive decline in older adults. *JAMA Netw Open* **5**, e223596.
- 7 [35] He L, de Souto Barreto P, Aggarwal G, Nguyen AD, Morley JE, Li Y, Bateman  
8 RJ, Vellas B, Group MD (2020) Plasma Abeta and neurofilament light chain are  
9 associated with cognitive and physical function decline in non-dementia older  
10 adults. *Alzheimers Res Ther* **12**, 128.
- 11 [36] Gomes DE, Witwer KW (2022) L1CAM-associated extracellular vesicles: A  
12 systematic review of nomenclature, sources, separation, and characterization. *J*  
13 *Extracell Biol* **1**.
- 14 [37] Hill AF (2019) Extracellular vesicles and neurodegenerative diseases. *J Neurosci*  
15 **39**, 9269-9273.
- 16 [38] Norman M, Ter-Ovanesyan D, Trieu W, Lazarovits R, Kowal EJK, Lee JH, Chen-  
17 Plotkin AS, Regev A, Church GM, Walt DR (2021) L1CAM is not associated  
18 with extracellular vesicles in human cerebrospinal fluid or plasma. *Nat Methods*  
19 **18**, 631-634.
- 20 [39] Shao Z, Janse E, Visser K, Meyer AS (2014) What do verbal fluency tasks  
21 measure? Predictors of verbal fluency performance in older adults. *Front Psychol*  
22 **5**, 772.

- 1 [40] Sugimoto H, Kawagoe T, Otake-Matsuura M (2020) Characteristics of resting-
- 2 state functional connectivity in older adults after the PICMOR intervention
- 3 program: A preliminary report. *BMC Geriatr* **20**, 486.

## Figures and Tables



**Fig. 1. The CONSORT diagram of the current study**

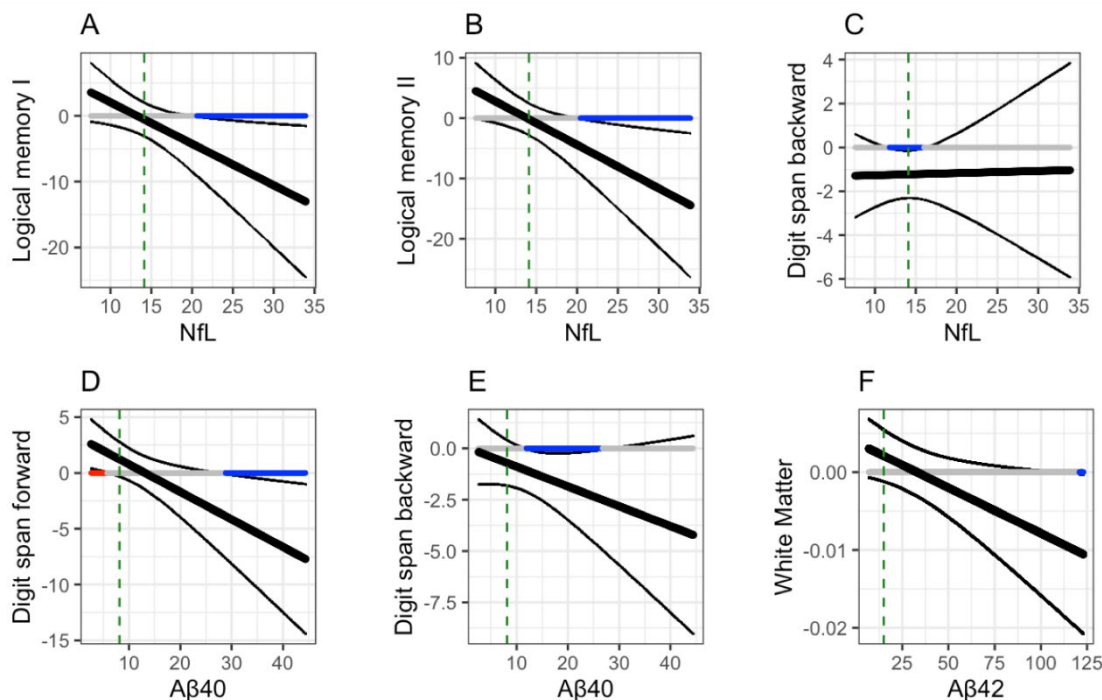


**Fig. 2. The intervention effects on the scores of category fluency tests for varying levels of NfL.** The black thick line indicates the estimated intervention effect, and the black thin lines indicate the upper and lower bounds of the associated 95 % confidence interval. On the horizontal line at  $y = 0$ , the red region shows the region of the biomarker level in which the intervention effect was positively significant at the 5 % level, and the blue region shows the region of the biomarker level in which the intervention effect was negatively significant at the 5 % level. The gray region shows the region of non-significance for the intervention effect. The range of the horizontal axis is truncated to the observed ranges. The vertical dashed green line indicates the median of the observed level of the biomarker.

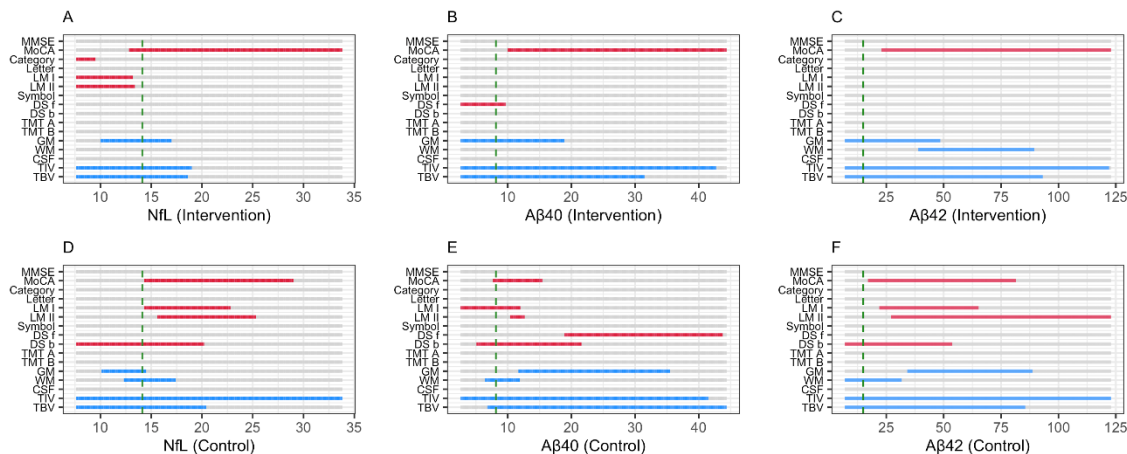
**Table 1. Baseline characteristic between intervention and control group**

	Intervention	Control
	( <i>n</i> = 23)	( <i>n</i> = 26)
Age (Mean ± SD)	72.30 ± 4.15	72.04 ± 4.05
Gender (Female; <i>n</i> , %)	13 (56.5 %)	17 (65.4 %)
Education (≥ 13 years; <i>n</i> , %)	16 (69.6 %)	21 (80.8 %)
MMSE (Mean ± SD)	28.17 ± 1.75	28.19 ± 1.70
GDS-15 (Mean ± SD)	1.57 ± 1.65	2.65 ± 3.07
TMIG-IC		
Total score (Mean ± SD)	12.2 ± 0.96	11.88 ± 1.53
Instrumental activity of daily living (Mean ± SD)	4.83 ± 0.49	4.88 ± 0.33
Intellectual activity (Mean ± SD)	3.74 ± 0.54	3.62 ± 0.64
Social role (Mean ± SD)	3.70 ± 0.47	3.38 ± 0.90

## SUPPLEMENTARY MATERIAL



**Fig. S1 The intervention effects on the scores of the cognitive tests and brain volumes for varying levels of biomarkers.** The black thick line indicates the estimated intervention effect, and the black thin lines indicate the upper and lower bounds of the associated 95 % confidence interval. On the horizontal line at  $y = 0$ , the red region shows the region of the biomarker level in which the intervention effect was positively significant at the 5 % level, and the blue region shows the region of the biomarker level in which the intervention effect was negatively significant at the 5 % level. The gray region shows the region of non-significance for the intervention effect. The range of the horizontal axis is truncated to the observed ranges. The vertical dashed green line indicates the median of the observed level of the biomarker.



**Fig. S2. The time effects on the scores of the cognitive tests and brain volumes for varying levels of biomarkers. (A-C) show the results within the intervention group, and (D-F) show those within the control group. On each horizontal bar, the red (blue) region shows the region of the biomarker level in which the time effect was positively (negatively) significant at the 5 % level. Gray region shows the region of non-significance for the time effect. The range of the horizontal axis is truncated to the observed ranges. The vertical dashed green line indicates the median of the observed level of the biomarker.**

**Table S3. Comparison of cognitive test scores and brain volumes at pre- and post-experiments between the intervention and control groups**

	Intervention		Control		Estimates		
	Pre Mean (SD)	Post Mean (SD)	Pre Mean (SD)	Post Mean (SD)	Time (SE, <i>p</i> )	Group (SE, <i>p</i> )	Time × Group (SE, <i>p</i> )
<b>Cognitive test scores</b>							
MMSE-J	28.174 (1.749)	28.261 (1.322)	28.192 (1.698)	28.308 (1.408)	0.115 (0.284, 0.686)	-0.018 (0.445, 0.967)	-0.028 (0.414, 0.946)
MoCA-J	25.087 (2.745)	26.391 (2.231)	24.654 (3.261)	25.885 (3.051)	1.231 (0.526, 0.024)	0.433 (0.821, 0.600)	0.074 (0.767, 0.924)
Category fluency	17.478 (3.764)	18.043 (5.555)	17.846 (4.730)	17.115 (4.412)	-0.731 (0.797, 0.364)	-0.368 (1.332, 0.783)	1.296 (1.164, 0.271)
Letter fluency	14.130 (4.159)	14.478 (5.846)	14.808 (3.555)	14.462 (3.765)	-0.346 (0.642, 0.592)	-0.677 (1.254, 0.591)	0.694 (0.937, 0.462)
Logical memory I (immediate)	10.000 (4.852)	11.696 (3.971)	10.346 (4.039)	12.346 (4.354)	2.000 (0.888, 0.029)	-0.346 (1.234, 0.780)	-0.304 (1.296, 0.815)
Logical memory II (delayed)	7.826 (4.783)	9.696 (4.028)	9.500 (4.150)	11.423 (5.085)	1.923 (0.927, 0.044)	-1.674 (1.299, 0.202)	-0.054 (1.353, 0.969)
Symbol	67.130 (14.169)	68.000 (15.886)	68.115 (13.840)	69.000 (13.291)	0.885 (1.181, 0.457)	-0.985 (4.088, 0.811)	-0.015 (1.723, 0.993)
Digit span forward	9.478 (1.855)	10.391 (3.461)	9.846 (2.738)	10.269 (2.808)	0.423 (0.523, 0.423)	-0.368 (0.794, 0.645)	0.490 (0.763, 0.524)
Digit span backward	7.739 (2.179)	7.870 (1.984)	7.577 (1.748)	8.731 (2.409)	1.154 (0.364, 0.003)	0.162 (0.600, 0.788)	-1.023 (0.531, 0.060)
TMT-A	4.402 (0.514)	4.497 (0.538)	4.267 (0.504)	4.213 (0.287)	-0.054 (0.089, 0.550)	0.135 (0.134, 0.317)	0.149 (0.130, 0.259)
TMT-B	4.881 (0.595)	4.856 (0.602)	4.745 (0.559)	4.740 (0.523)	-0.004 (0.101, 0.966)	0.137 (0.163, 0.404)	-0.021 (0.148, 0.886)
<b>Brain volumes (ℓ)</b>							
GM	0.567 (0.048)	0.561 (0.049)	0.560 (0.051)	0.556 (0.048)	-0.004 (0.002, 0.079)	0.007 (0.014, 0.599)	-0.002 (0.003, 0.412)
WM	0.393 (0.043)	0.392 (0.045)	0.391 (0.036)	0.389 (0.035)	-0.002 (0.001, 0.037)	0.002 (0.011, 0.834)	0.001 (0.002, 0.726)



CSF	0.475 (0.075)	0.478 (0.073)	0.453 (0.074)	0.452 (0.074)	-0.001 (0.002, 0.728)	0.022 (0.021, 0.296)	0.003 (0.003, 0.325)
TBV	0.961 (0.077)	0.953 (0.078)	0.951 (0.078)	0.945 (0.074)	-0.006 (0.002, 0.001)	0.010 (0.022, 0.658)	-0.002 (0.003, 0.474)
TIV	1.436 (0.129)	1.431 (0.127)	1.404 (0.120)	1.397 (0.122)	-0.007 (0.001, 0.000)	0.032 (0.036, 0.370)	0.002 (0.002, 0.369)

*Note.* Scores of TMT-A and -B were logarithmic transformed.

**Table S4. Comparison of levels of biomarkers at pre- and post-experiment between the intervention and control groups**

	Intervention		Control		Estimates		
	Pre Mean (SD)	Post Mean (SD)	Pre Mean (SD)	Post Mean (SD)	Time (SE, <i>p</i> )	Group (SE, <i>p</i> )	Time × Group (SE, <i>p</i> )
NfL	13.384 (3.705)	16.131 (5.473)	16.312 (6.231)	18.346 (4.824)	2.034 (0.729, 0.008)	-2.928 (1.480, 0.052)	0.714 (1.064, 0.506)
Aβ40	11.607 (9.379)	11.059 (6.599)	10.760 (6.275)	38.976 (102.496)	28.215 (14.534, 0.058)	0.847 (14.194, 0.953)	-28.764 (20.851, 0.174)
Aβ42	27.544 (29.835)	20.950 (20.180)	28.323 (30.963)	17.917 (25.217)	-10.781 (6.533, 0.106)	-0.779 (7.745, 0.920)	3.986 (9.477, 0.676)
log(NfL)	2.556 (0.284)	2.734 (0.306)	2.732 (0.341)	2.876 (0.268)	0.143 (0.035, 0.000)	-0.176 (0.086, 0.046)	0.035 (0.051, 0.500)
log(Aβ40)	2.199 (0.719)	2.208 (0.689)	2.221 (0.564)	2.143 (1.485)	-0.084 (0.247, 0.735)	-0.023 (0.262, 0.931)	0.088 (0.354, 0.806)
log(Aβ42)	2.949 (0.780)	2.702 (0.837)	2.908 (0.896)	2.271 (1.156)	-0.651 (0.202, 0.002)	0.042 (0.266, 0.876)	0.395 (0.293, 0.185)

*Note.* For Aβ40, two participants and five ones were excluded from the intervention and control groups at the endpoint due to lower levels than the lower limit of the measurable range. For Aβ42, one participant was excluded from the intervention group at the endpoint due to the level lower than the measurable range, and one participant and another participant in the control group were excluded due to levels lower and higher than the measurable range.