

# Efficacy and feasibility of Pharmacoscopy-guided treatment for acute myeloid leukemia patients that exhausted all registered therapeutic options.

<sup>1</sup>Jonas Andreas Schmid<sup>+</sup>, <sup>2</sup>Yasmin Festl<sup>+</sup>, <sup>2</sup>Yannik Severin<sup>+</sup>, <sup>3</sup>Ulrike Bacher, <sup>4</sup>Marie-Noëlle Kronig, <sup>2</sup>Berend Snijder<sup>\*§</sup>, <sup>4</sup>Thomas Pabst<sup>§</sup>

<sup>1</sup> Faculty of Medicine University of Bern, Bern, Switzerland;

<sup>2</sup> Department of Biology, Institute of Molecular Systems Biology, ETH Zürich, Zürich, Switzerland;

<sup>3</sup> Department of Hematology; Inselspital, University Hospital Bern, University of Bern, Bern, Switzerland;

<sup>4</sup> Department of Medical Oncology; Inselspital, University Hospital Bern, University of Bern, Bern, Switzerland;

<sup>+</sup> Shared first authors

<sup>§</sup> Shared last authors;

<sup>\*</sup> Correspondence: Berend Snijder, Prof. Dr.; Assistant Professor; Department of Biology, Institute of Molecular Systems Biology, ETH Zürich, 8093 Zürich, Switzerland; [snijder@imsb.biol.ethz.ch](mailto:snijder@imsb.biol.ethz.ch), +41446337149

B.S. was a scientific co-founder of Allcyte GmbH, which has been acquired by Exscientia. B.S. is a shareholder of Exscientia and a co-inventor on U.S. patent application 15/514,045 relevant to the study. B.S. declares research funding from Roche and speaker fees from Novartis, GSK, and AbbVie. All other authors declare no potential conflicts of interest.

**Abstract:** Elderly or unfit patients with relapsed acute myeloid leukemia (AML) face a poor prognosis and are likely to rapidly exhaust all registered treatment options. Pharmacoscopy, an image-based *ex vivo* drug screening platform, has previously been suggested as a tool for treatment selection in AML. We used pharmacoscopy to generate personalized treatment recommendations for 30 relapse settings of 24 AML patients which exhausted all standard therapeutic options. We evaluated whether pharmacoscopy can be employed within the narrow timeframe available under an AML relapse setting, how often recommended regimens could be started and whether they provided durable clinical benefits. 17 of 30 screens (56.7%) resulted in patients receiving a recommended therapy, leading to promising trends in clinical response and survival. A drug regimen's integrated pharmacoscopy score proved to be an excellent predictor of clinical response: Patients receiving a regimen with above-median scores showed significantly higher rates of complete remission (OR 3.01,  $p < 0.0005$ ) and significantly longer overall survival (ratio 3.39,  $p < 0.006$ ). We conclude that pharmacoscopy is an efficient and valuable tool for therapy selection in AML at relapse and propose concrete measures to further improve clinical implementation.

**Keywords:** Acute myeloid leukemia (AML), DARTT-1, *ex vivo* drug screen, personalized treatment, elderly patients, pharmacoscopy, functional precision medicine.

## 1. Introduction

Presently, the standard curative treatment strategy for acute myeloid leukemia (AML) is comprised of intensive induction chemotherapy followed by consolidation treatment and allogeneic hematopoietic stem cell transplantation<sup>1</sup>. However, a significant amount of AML patients are unable to undergo such intensive treatment, owing to their advanced age, comorbidities and/or poor performance status<sup>2</sup>. These limitations are even more pronounced in AML patients at relapse due to increased morbidity related to previous treatment attempts, leading to a particularly poor prognosis. Only a few licensed and standardly reimbursed protocols are currently available for AML patients at relapse unable to undergo intensive re-induction protocols and these tend to be quickly exhausted. The situation is aggravated by the rapidly progressive nature of AML at relapse which severely restricts the timeframe to select an optimal therapy regimen<sup>3</sup>. Thus, there is a substantial unmet medical need in this patient group.

**NOTE:** This preprint reports new research that has not been certified by peer review and should not be used to guide clinical practice.

44 The rapid expansion of gene sequencing technology has allowed for the development of molecularly targeted  
45 therapy approaches both in newly diagnosed and relapsed AML (e.g., with FLT3 or IDH1/IDH2 mutations).  
46 However, such strategies have provided modest clinical benefits and are only open to a relatively small subset of  
47 patients at relapse<sup>4,5</sup>. Hence, there currently is a lack of reliable means to select personalized treatment regimens  
48 for AML patients at relapse, a challenge that also extends to other cancer entities<sup>6</sup>. Recent studies have  
49 demonstrated the effectiveness of an image-based *ex vivo* drug screening platform called pharmacoscopy to  
50 retrospectively predict the clinical treatment response in AML patients<sup>7,8</sup>. Furthermore, pharmacoscopy has been  
51 shown to provide valuable guidance when selecting targeted therapies in patients with a range of aggressive  
52 hematological malignancies lacking standard treatment protocols<sup>9</sup>. Prior studies have tried to integrate *ex vivo*  
53 drug screening approaches into the clinical management of AML<sup>7,9,10</sup> but so far none has focused exclusively on  
54 AML patients at relapse that had exhausted all standard therapeutic options, which pose an exceptional challenge  
55 due to the severely restricted timeframe available for therapy selection at this stage. Furthermore, previous studies  
56 have not addressed the issue of obtaining financial coverage for therapies selected in this way, an issue that is  
57 inherent to all currently available drug screening approaches.

58 In this prospective, non-randomized, single-center observational study, we primarily aim to establish whether  
59 pharmacoscopy can be successfully integrated into the clinical decision-making process when selecting  
60 individualized treatment protocols for AML patients at relapse that have exhausted all standard therapy options.  
61 We evaluated whether the suggested therapies can be made available to the patients within a clinically tolerable  
62 time frame and with adequate financial coverage. In addition, we assessed if pharmacoscopy-based therapy  
63 recommendations can provide a measurable and lasting clinical benefit in our heavily pretreated and frail study  
64 group.

## 65 2. Materials and Methods

66 In our prospective, non-randomized, single-center observational study (DARTT-1; NCT05732688; BASEC-ID:  
67 2021-01294, Department of Medical Oncology, University Hospital Bern, Switzerland), we enrolled adult AML  
68 patients at relapse who were unable to undergo intensive re-introduction treatments and had exhausted standard  
69 treatment options. We excluded patients who had not yet undergone previous treatment attempts or still had other  
70 treatment options available. We used an image-based *ex vivo* drug screening platform, called pharmacoscopy, to  
71 generate personalized treatment recommendations for each patient based on samples of peripheral blood, bone  
72 marrow, or skin/subcutaneous biopsies. The drug screens were performed at the laboratory of Prof. Berend  
73 Snijder, Institute of Molecular Systems Biology, at the ETH Zurich. This group has recently developed and  
74 validated a pioneering image-based *ex vivo* drug screening platform for patients with aggressive hematological  
75 malignancies, called pharmacoscopy (Figure 1), and all screens were conducted as previously described<sup>7-9</sup>. The  
76 results of the drug screen were communicated to the treating oncologist in the form of a short list of top-scoring  
77 drugs recommended for the treatment of the respective patient, combined with reports on the screening results for  
78 all tested compounds. If the recommended compounds could not be made available with adequate financial  
79 coverage within a clinically reasonable time frame, the treating oncologist provided the patient with a therapy  
80 regimen based on their medical history and previously established in-house guidelines at our department. If the  
81 patient chose not to undergo further treatment, they were provided with best supportive care.

82 We enrolled 24 patients who were screened at least once, and an additional 5 patients were screened a second or  
83 third time after relapsing. A total of 30 screening events with subsequent treatment and follow-up were included  
84 in our intention to treat population (Figure 2). We obtained signed informed consent from all patients and the  
85 study was carried out in accordance with good clinical practice and approved by relevant institutional review  
86 boards and regulatory agencies. Screening instance and Patient IDs are not known to anyone besides the authors.

87 To assess response rates and outcome metrics, we monitored patients using clinical assessments, regular blood  
88 testing, and bone marrow aspirations during routine follow-up visits after the start of a newly chosen treatment.  
89 We evaluated each screening instance as an individual event and calculated the blast reduction capacity (PCY  
90 score, see more detail in supplementary) of a patient's given therapy regimen by summing up the PCY scores of

91 the individual compounds. Using this metric, we divided patients into two groups based on their therapy regimen's  
92 *ex vivo* blast reduction capacity (above or below the median of the study population). The primary endpoints of  
93 the study were the frequency of patients realizing a complete remission (CR) in the bone marrow, overall survival  
94 (OS), and event-free survival (EFS). We assessed these endpoints by comparing patients who received an  
95 officially recommended therapy versus those who received a therapy that had not been mentioned in the screening  
96 report summary sent to the treating physician. Further details on enrollment, drug screening, statistical analyses  
97 and data availability can be found in the extended methods.

### 98 **3 Data availability statement**

99 The data required to reproduce our results are included in the tables and supplementary tables. Additional data  
100 generated in this study are not publicly available due to information that could compromise patient privacy or  
101 consent but are available upon reasonable request from the corresponding author.

## 102 **4. Results**

### 103 **4.1. Patient characteristics**

104 24 patients were enrolled in the study and screened at least once. All patients were pre-treated with a median of 2  
105 previous treatment lines (interquartile range 1-3) and had exhausted all standard therapeutic options for relapsed  
106 AML, including all marker-based therapy options. Five out of 24 patients (20.8%) had undergone previous high-  
107 dose chemotherapy. The median age of the study population was 68.5 years (interquartile range 66-73) and the  
108 gender distribution was 62.5% male vs 37.5% female. According to ELN risk category<sup>1</sup> 12.5% of the patients  
109 were classified as favorable, 37.5% intermediate and 50.0% adverse. The median time from diagnosis to entry  
110 into the study was 12.5 months with an interquartile range of 4.5-24.8 months. Demographics and the number of  
111 previous treatment lines for these 24 patients are listed in **Table 1**. A more detailed overview of the study  
112 population can further be found in **Supplementary Table S2**, listing patient characteristics at the time of first  
113 diagnosis.

114 In the following subsections, we divided our study population according to two stratification strategies. Namely,  
115 by whether or not the patient received a therapy regimen recommended by the pharmacoscopy screen and by the  
116 *ex vivo* blast reduction capacity of their chosen therapy regimen (i-PCY score of the chosen regimen). Neither of  
117 the two patient stratification strategies differed significantly in their patient characteristics (see **Supplementary**  
118 **Table S3**). However, when looking at the number of previous treatment lines, the difference between patients  
119 receiving a recommended therapy and those that did not, borders on significance (p 0.0528), with the patients  
120 receiving a recommended therapy having a slightly higher median number of previous therapy lines (3 vs 2). In  
121 addition to the first pharmacoscopy screen of each patient, five of the 24 patients were screened a second time  
122 after a confirmed relapse or progression of the AML under their initially chosen treatment protocol. One of the  
123 doubly screened patients was screened a third time after a further relapse, resulting in a total of 30 separate  
124 screening events with subsequent therapy choices and clinical follow-up. These 30 screening instances constitute  
125 our intention to treat population. Of note, one of the patients presented with a subcutaneous relapse of a bi-specific  
126 AML (patient ID 11) for which we screened a skin biopsy, and confirmed the absence of toxicity of the  
127 recommended treatments based on an additional screen on a matched bone marrow biopsy that was confirmed  
128 AML negative by clinic diagnostics (**Supplementary Figure S1**). See **Supplementary Table S1** for details on  
129 each test, including markers used per patient and the pharmacoscopy results for each of the 30 screening instances.  
130 All screens were performed during the period between April, 1<sup>st</sup> 2021 and June, 30<sup>th</sup>, 2022. For the following  
131 statistical analyses, each screening event will be treated as a separate data point.

132

#### 133 4.2. Screening results and treatment choice

134 **Table 2** lists a summary of the *ex vivo* drug screening results, waiting times, characteristics of treatment choice  
135 and duration of therapy administration. The median waiting time for the screening results was 5.0 days  
136 (interquartile range 4.0-6.0). A median of 5.5 drugs per patient (interquartile range 4.3-8.8), ranked by their  
137 predicted efficacy for the respective patient, were mentioned as official recommendations in the reports sent to  
138 the treating physicians. Reports also regularly contained suggestions for potential combinations of the  
139 recommended compounds based on the results for the individual components. In 17 (56.7%) instances the drug  
140 screen resulted in the patient receiving at least one of the recommended therapy options (either a single drug or a  
141 combination, depending on the recommendations of the screen), while no recommended drug was administered  
142 in 13 (43.3%) instances. Of these 13 instances, 9 (30.0% of all screening instances) resulted in patients receiving  
143 an AML-specific therapy not explicitly recommended by the screen. Four patients did not start another AML-  
144 specific therapy due to their rapidly deteriorating condition or refusal of further therapy attempts and were  
145 therefore switched to best supportive care (see **Figure 2**). The duration from receiving the drug recommendations  
146 to the start of a new therapy regimen was a median of 11 days (IQR 6-24). The median duration of therapy  
147 administration was 65.5 days (IQR 26.5-183.8) for all patients receiving an AML specific therapy (recommended  
148 and non-recommended). When looking only at patients receiving a regimen recommended by the screen, the  
149 median duration of therapy administration was 69.0 days (IQR 21.0-171.0) versus 47.0 days (40.0-214.0) for  
150 patients receiving a non-recommended therapy. Out of the 166 single compounds or combinations of compounds  
151 in the library used for the *ex vivo* drug screen 59 were recommended (as single compounds and/or in specific  
152 combination regimens) at least once in the screening reports (pharmacoscopy reports) sent to the treating  
153 oncologist. Out of these, 17 compounds were recommended five times or more. **Table 3** lists the top six most  
154 recommended drugs, which were the BCL-2 Inhibitors navitoclax and venetoclax, the alkaloid omacetaxine  
155 (formerly named homoharringtonine), the purine analogue cladribine, the proteasome inhibitor carfilzomib and  
156 the HDAC-Inhibitor panobinostat. Despite having been among the most frequently recommended drugs, both  
157 omacetaxine and panobinostat were never administered to patients in the study due to the difficulty of obtaining  
158 financial coverage for their use in AML therapy. Eight individual compounds that had been recommended in a  
159 screening report were administered at least once to the respective patient. These include venetoclax, cladribine,  
160 cytarabine, azacytidine, navitoclax, carfilzomib, bortezomib and pomalidomide. All the recommended and  
161 administered drugs can also be found in the bar plots in **Supplementary Figure S2**.

#### 162 4.3. Response

163 During the study period the overall response to the chosen therapy regimen in the bone marrow could be assessed  
164 in 25 screening instances. The results of this analysis are depicted in **Table 4** and **Supplementary Figure S3**. We  
165 found that a significantly higher percentage (45.5% vs 21.4%) of patients receiving a drug combination with an  
166 above-median *ex vivo* blast reduction capacity (i-PCY score of the chosen regimen) achieved a CR than patients  
167 receiving a regimen with a low blast reduction capacity (i-PCY score of the chosen regimen below the median)  
168 (OR 3.078,  $p$  0.0005). Conversely, patients that achieved a complete remission tended to receive treatment  
169 regimens with a higher *ex vivo* blast reduction capacity (mean i-PCY score 0.278) than patients that did not achieve  
170 a CR (mean i-PCY score 0.155) (**Supplementary Figure S4** and **Supplementary Table S4**). When comparing  
171 patients receiving a recommended therapy with patients receiving a regimen that had not been officially  
172 recommended the difference in the relative number of complete responders is also present albeit less pronounced  
173 (35.3% vs 25.0%, OR 1.615,  $p$  0.1646).

#### 174 4.4 Outcome

175 The durability of response to the chosen treatment was evaluated by two different outcome measures consisting  
176 of event-free survival (EFS) and overall survival (OS) as defined by standard outcome definitions in AML<sup>1</sup>.  
177 Looking at these two outcome measures we found that patients receiving a recommended therapy had a median  
178 OS of 18.0 weeks versus 8.0 weeks in the patients not receiving a recommended therapy (ratio 2.250, 95% CI of  
179 ratio 1.021 to 4.958) (**Figure 3a**). Median EFS was 11.1 weeks in patients receiving a recommended therapy  
180 compared to 6.3 weeks in the group not receiving a recommended regimen (ratio 1.773, 95% CI of ratio 0.805 to

181 3.906) (**Figure 3b**). When stratifying the intention to treat population by the *ex vivo* blast reduction capacity of  
182 their therapy regimen (i-PCY score of the individual regimens) we found that patients receiving a regimen with a  
183 blast reduction capacity above the median of the study population showed a median OS of 28.6 weeks as opposed  
184 to 8.4 weeks in patients receiving a regimen with low *ex vivo* blast reduction capacity (i-PCY score below the  
185 median) (ratio 3.390, 95% CI of ratio 1.506 to 7.632, p 0.006) (**Figure 3c**). Median EFS for patients receiving a  
186 regimen with a blast reduction capacity above the median was 12.4 in comparison to 6.4 weeks for the patients  
187 treated with a regimen that had a blast reduction capacity below the median (ratio 1.933, 95% CI of ratio 0.859 to  
188 4.353, p 0.0446) (**Figure 3d**). Stratifying only the patients that received an AML-specific therapy by the *ex vivo*  
189 blast reduction capacity of their treatment regimen, we found that regimens with an above-median blast reduction  
190 capacity led to a median OS of 28.6 weeks versus 11.0 weeks in patients with a treatment regimen scoring below  
191 the median (ratio 2.597, 95% CI of ratio 1.062 to 6.354, p 0.0167) (**Figure 3e**). Looking at EFS for the same  
192 subgroups we found a median EFS of 12.4 weeks in patients receiving a regimen with an *ex vivo* blast reduction  
193 capacity above the median in comparison to 8.1 weeks in patients with a regimen that had a blast reduction  
194 capacity below the median (ratio 1.540, 95% CI of ratio 0.629 to 3.767) (**Figure 3f**).

## 195 5. Discussion

196 Despite the expansion of targeted therapies for AML patients, as well as other approaches such as post-transplant  
197 maintenance therapy, relapse of AML remains the main cause of mortality in patients with this entity. The  
198 exceptionally poor prognosis in this patient group is aggravated further by the very limited availability of  
199 registered therapy options at this stage and the rapidly progressive nature of their disease<sup>3</sup>. Thus, improving the  
200 prognosis of patients at relapse of AML that have exhausted all registered therapy options remains a critical  
201 unsolved issue.

202 We here evaluated a novel approach, basing treatment decisions in this patient group on a selection of treatments  
203 following the recommendations of pharmacoscopy, an automated imaging-based *ex vivo* drug screening platform.  
204 Using this platform, we tested chemo-, targeted, and immunotherapeutic drugs for their capacity to selectively  
205 eradicate leukemic blasts in patient derived peripheral blood, bone marrow samples or skin/subcutaneous biopsies.  
206 In this prospective, non-randomized, single-center observational study, we could demonstrate that the integration  
207 of pharmacoscopy into the clinical decision-making for the treatment of AML patients at relapse is technically  
208 feasible within the narrow timeframe available and proves beneficial to the patients.

209 Patients do not have to undergo strenuous diagnostic tests, as all the material required for the screen can be gained  
210 from routine bone marrow punctures, blood draws or skin/subcutaneous biopsies performed during clinical  
211 follow-up visits with their treating oncologist. We found that the screening procedure is fast, taking a median of  
212 only 5 days to deliver the necessary results and new therapy protocols could be administered within a median of  
213 11 days after receiving the pharmacoscopy results. Thus the procedure does not significantly slow down clinical  
214 decision-making, which is a key concern in a rapidly progressing disease such as AML at relapse<sup>1,3</sup>.

215 In our study cohort, a majority of the intention-to-treat population (56.7%) received a therapy regimen guided by  
216 the screening results (either a single drug or a combination, depending on the recommendations of the screen).  
217 Patients receiving a regimen recommended by the screen had a median duration of therapy administration of 69.0  
218 days (IQR 21.0-171.0) compared to only 47.0 days (40.0-214.0) for patients receiving a non-recommended  
219 therapy. This shows that pharmacoscopy helps direct the choice of therapy regimen and that comprehensive  
220 financial coverage could be obtained for the majority of treatment plans derived in this way. Treatments based on  
221 official recommendations from the screen appear to be effective, as the rate of CR is higher in patients receiving  
222 a recommended therapy, 35.3% versus 25.0% in patients receiving a non-recommended therapy, leading to an  
223 odds ratio of 1.615 for a complete remission. This difference in response appears durable with patients receiving  
224 a recommended therapy having a 2.3 fold longer OS (95% CI 1.021 to 4.958) and 1.8 fold longer EFS (95% CI  
225 0.805 to 3.906) than those not receiving a recommended regimen. However, we found that the *ex vivo* blast  
226 reduction capacity (i-PCY score of a patient's treatment regimen) is a better ex-post predictor of response and  
227 overall outcome than whether the chosen treatment is based on the median 5.5 compounds listed as recommended

228 in the pharmacoscopy reports sent to the treating physician. We found that patients receiving a therapy regimen  
229 with an *ex vivo* blast reduction capacity above the median of the study population showed significantly higher  
230 relative rates of complete remission in the bone marrow than those receiving a regimen with a blast reduction  
231 capacity below that median (OR 3.078, p fisher test 0.0005). Patients receiving regimens with a high *ex vivo* blast  
232 reduction capacity (above the population median) also showed significantly longer OS (28.6 weeks vs 8.4 weeks)  
233 and EFS (12.4 weeks vs 6.4 weeks). The significant effect of the *ex vivo* blast reduction capacity in a treatment  
234 regimen on OS was even present when only looking at patients receiving an AML-specific therapy. Thus, a key  
235 takeaway from our study is that when using pharmacoscopy for clinical decision-making, oncologists should base  
236 their choice of treatment regimen on the i-PCY score of the respective regimen rather than relying only on the  
237 shortlist of recommended compounds. A further finding that strengthens this point is that only a relatively small  
238 number of different compounds used in the *ex vivo* drug screen were included in the final treatment regimens of  
239 the individual patients. Only eight compounds out of 166 in the screening library were administered to patients at  
240 least once after having officially been recommended in the screening reports. These prominently include  
241 compounds that have already been established in the treatment of AML such as azacytidine and the BCL-2  
242 inhibitor venetoclax<sup>12</sup> or cladribine and cytarabine<sup>13</sup>. This skew towards more established treatment regimens is  
243 probably owed to their better availability, with health insurance companies being more open to providing financial  
244 coverage for more conventional therapy plans. This is an inherent challenge for any drug screening approach using  
245 large libraries, since it is not feasible to establish financial coverage for all substances and for every single patient  
246 before the actual screens have been run. We, therefore, suggest that future screening reports from pharmacoscopy  
247 should always highlight a performance measure of drugs commonly used in the treatment of AML patients. This  
248 would allow the treating oncologist to prioritize between readily available standard therapy options even when  
249 the highest scoring compounds indicated by the drug screen prove unavailable within a reasonable time frame.

250 Our study also highlights a number of drugs that have so far not been introduced into standard treatment protocols  
251 for AML at relapse but might be promising therapeutic options in the future. The most frequently recommended  
252 drug in our screen was the BCL-2 inhibitor navitoclax, a compound that is currently employed in early phase  
253 clinical studies for the treatment of solid tumours as well as acute lymphocytic leukemia<sup>14</sup>. The protein translation  
254 inhibitor omacetaxine was the third most frequently recommended drug in our screen (behind navitoclax and  
255 venetoclax). Omacetaxine has been approved for the treatment of chronic myelogenous leukemia<sup>15</sup> and has shown  
256 promising results in pre-clinical studies on AML treatment<sup>16</sup>. Other frequently recommended drugs include  
257 carfilzomib, a drug standardly used in the treatment of multiple myeloma<sup>17</sup>, as well as the HDAC-inhibitor  
258 panobinostat which has shown mixed results in both preclinical and early phase clinical studies on AML  
259 treatment<sup>18</sup>.

260 Previous studies have tried to integrate *ex vivo* drug screening into the process of therapy selection in AML  
261 patients<sup>9,10</sup>. Malani et al.<sup>10</sup> reported that 17 out of 29 (58.6%) treated AML patients in their study achieved a PR  
262 or better. And, in Kornauth et al.<sup>9</sup>, 6 out of the 14 (42.8%) treated AML patients achieved a PR or better. In  
263 comparison with our results, with 8 out of 17 (47.1%) AML patients achieving a PR or better, these prior findings  
264 are on par with our results. However, direct comparisons are complicated, as both previous studies included some  
265 patients for whom more standard treatment options were available, and considered molecular profiling in parallel  
266 to the drug response profiling. In contrast, our patients were all unfit to undergo intensive re-introduction  
267 treatments with subsequent hematopoietic stem cell transplantation and had exhausted all available standard  
268 treatment protocols, meaning marker-based therapy options were no longer open to our patient cohort. Hence, in  
269 contrast to Kornauth et al.<sup>9</sup> and Malani et al.<sup>10</sup>, we had to rely solely on *ex vivo* drug screening results for therapy  
270 selection, making the observed 47.1% PR+CR rate an encouraging signal. Furthermore, in contrast to Malani et  
271 al.<sup>10</sup>, we provide a control group consisting of patients for whom a pharmacoscopy guided therapy protocol could  
272 not be obtained. And we go beyond these previous studies by addressing the problem of obtaining cost coverage  
273 for AML therapy protocols selected on the basis of *ex vivo* drug screens, which is a key issue in the clinical setting.

274 A major limitation of our study is the lack of randomization of patients into different treatment groups. This flaw  
275 is inherent to our study design where it cannot be known whether recommended treatments would prove available  
276 for the patient before the screen has been run. However, the significant stratification of the intention-to-treat  
277 population by the *ex vivo* blast reduction capacity of their treatment regimen (i-PCY score of the chosen regimen)

278 suggests an efficient design for future randomized trials. Patients could be randomized into an intervention group,  
279 which would receive a treatment regimen optimized by the *ex vivo* blast reduction capacity, and into a control  
280 group, which would be treated with a regimen according to the physicians choice or in house guidelines.

281 In conclusion, we can state that pharmacoscopy can rapidly provide valuable decision-making cues for physicians  
282 when trying to choose the optimal therapy for AML patients at relapse. The *ex vivo* blast reduction capacity  
283 (indicated by a therapy regimens i-PCY score) is a metric that is simple to interpret with the i-PCY score being a  
284 numerical value resembling standard laboratory results that physicians interpret on a daily basis. It can readily be  
285 used as an indicator to choose between already established treatment protocols or to design novel therapy plans  
286 for patients that would otherwise have few suitable treatment options. We suggest that image-based *ex vivo* drug  
287 screening may standardly be employed in AML patients at relapse to provide them with optimized treatment plans  
288 and further refine the metrics on which physicians base their choice of therapy regimens.

## 289 **Contributions**

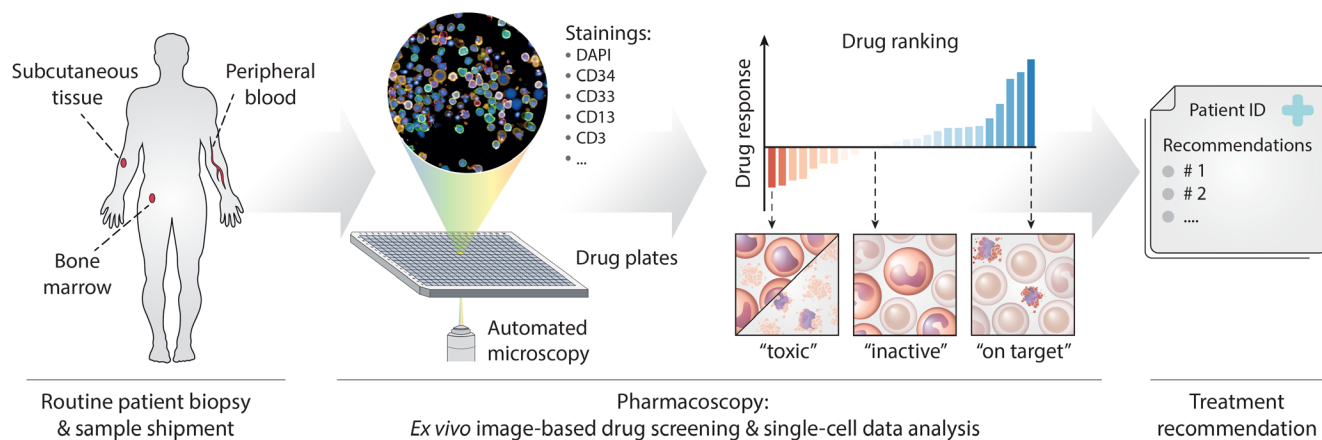
290 JAS recorded clinical response, carried out statistical analysis, assisted in the enrolment of the patients and wrote  
291 the initial draft of the manuscript. YF & YS performed all pharmacoscopy experiments and the associated  
292 computational analysis, helped write the final manuscript, and, together with BS, provided treatment  
293 recommendations. MNK recruited and enrolled the patients. UB Assisted in conceptualizing the study and writing  
294 of the manuscript. BS & TB conceived, supervised, and funded the study, advised on experimental design, data  
295 interpretation and helped writing the manuscript. All authors read and approved the final version of the  
296 manuscript.

## 297 **References**

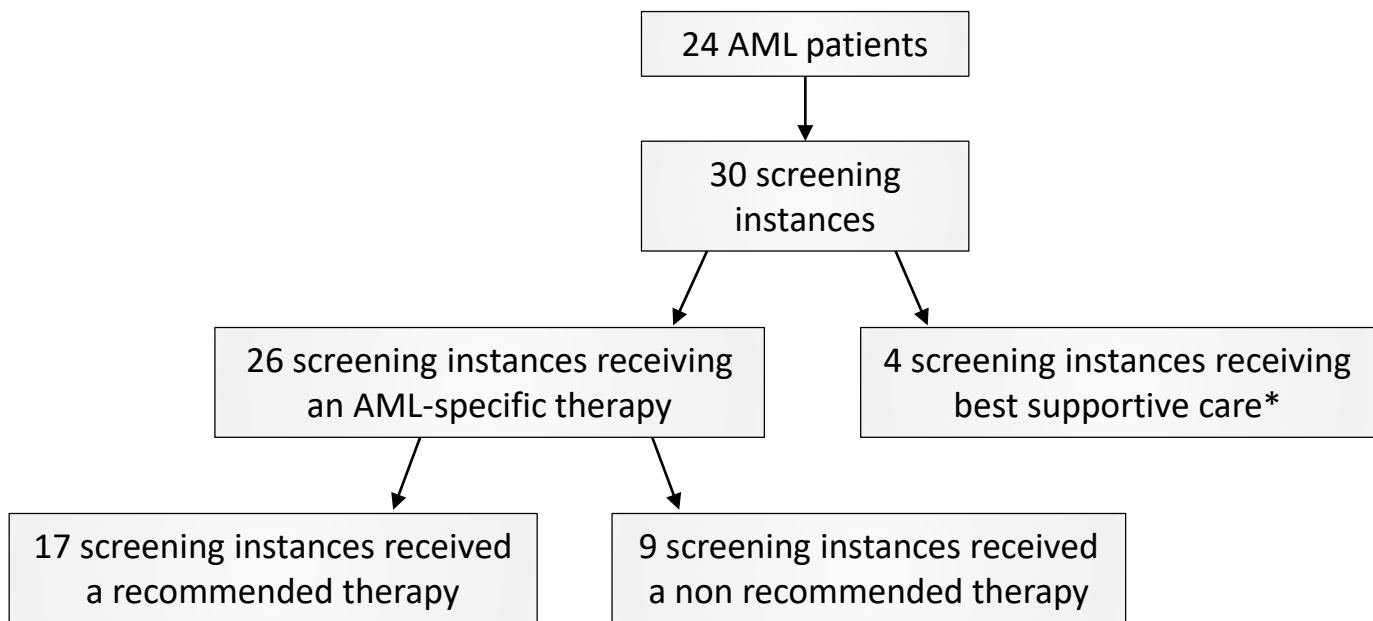
- 298 1. Döhner H, Estey E, Grimwade D, et al. Diagnosis and management of AML in adults: 2017 ELN  
299 recommendations from an international expert panel. *Blood*. 2017;129(4):424-447. doi:10.1182/blood-  
300 2016-08-733196
- 301 2. Laribi K, Sobh M, Ghez D, Baugier de Materre A. Impact of age, functional status, and comorbidities on  
302 quality of life and outcomes in elderly patients with AML: review. *Ann Hematol*. 2021;100(6):1359-1376.  
303 doi:10.1007/s00277-020-04375-x
- 304 3. Webster JA, Luznik L, Gojo I. Treatment of AML Relapse After Allo-HCT. *Front Oncol*.  
305 2021;11(December):1-16. doi:10.3389/fonc.2021.812207
- 306 4. Megías-Vericat JE, Ballesta-López O, Barragán E, Martínez-Cuadrón D, Montesinos P. Tyrosine kinase  
307 inhibitors for acute myeloid leukemia: A step toward disease control? *Blood Rev*.  
308 2020;44(March):100675. doi:10.1016/j.blre.2020.100675
- 309 5. Ma J, Ge Z. Recent advances of targeted therapy in relapsed/ refractory acute myeloid leukemia. *Bosn J*  
310 *Basic Med Sci*. 2021;21(4):409-421. doi:10.17305/bjbms.2020.5485
- 311 6. Letai A. Functional precision cancer medicine-moving beyond pure genomics. *Nat Med*.  
312 2017;23(9):1028-1035. doi:10.1038/nm.4389
- 313 7. Snijder B, Vladimer GI, Krall N, et al. Image-based ex-vivo drug screening for patients with aggressive  
314 haematological malignancies: interim results from a single-arm, open-label, pilot study. *Lancet Haematol*.  
315 2017;4(12):e595-e606. doi:10.1016/S2352-3026(17)30208-9
- 316 8. Heinemann T, Kornauth C, Severin Y, et al. Deep Morphology Learning Enhances Ex Vivo Drug  
317 Profiling-Based Precision Medicine . *Blood Cancer Discov*. 2022;3(6):502-515. doi:10.1158/2643-  
318 3230.bcd-21-0219
- 319 9. Kornauth C, Pemovska T, Vladimer GI, et al. Functional Precision Medicine Provides Clinical Benefit in

- 320 Advanced Aggressive Hematologic Cancers and Identifies Exceptional Responders. *Cancer Discov.*  
321 2022;12(2):372-387. doi:10.1158/2159-8290.CD-21-0538
- 322 10. Malani D, Kumar A, Brück O, et al. Implementing a Functional Precision Medicine Tumor Board for  
323 Acute Myeloid Leukemia. *Cancer Discov.* 2022;12(2):388-401. doi:10.1158/2159-8290.CD-21-0410
- 324 11. Severin Y, Hale BD, Mena J, Goslings D, Frey BM, Snijder B. Multiplexed high-throughput immune cell  
325 imaging reveals molecular health-associated phenotypes. *Sci Adv.* 2022;8(44):eabn5631.  
326 doi:10.1126/sciadv.abn5631
- 327 12. DiNardo CD, Jonas BA, Pullarkat V, et al. Azacitidine and Venetoclax in Previously Untreated Acute  
328 Myeloid Leukemia. *N Engl J Med.* 2020;383(7):617-629. doi:10.1056/nejmoa2012971
- 329 13. Budziszewska BK, Salomon-Perzyński A, Pruszczyk K, et al. Cladribine combined with low-dose  
330 cytarabine as frontline treatment for unfit elderly acute myeloid leukemia patients: Results from a  
331 prospective multicenter study of polish adult leukemia group (palg). *Cancers (Basel).* 2021;13(16).  
332 doi:10.3390/cancers13164189
- 333 14. Mohamad Anuar NN, Nor Hisam NS, Liew SL, Ugasman A. Clinical Review: Navitoclax as a Pro-  
334 Apoptotic and Anti-Fibrotic Agent. *Front Pharmacol.* 2020;11(November):1-16.  
335 doi:10.3389/fphar.2020.564108
- 336 15. Gandhi V, Plunkett W, Cortes JE. Omacetaxine: A protein translation inhibitor for treatment of chronic  
337 myelogenous leukemia. *Clin Cancer Res.* 2014;20(7):1735-1740. doi:10.1158/1078-0432.CCR-13-1283
- 338 16. Mill CP, Fiskus W, DiNardo CD, et al. Effective therapy for AML with RUNX1 mutation by cotreatment  
339 with inhibitors of protein translation and BCL2. *Blood.* 2022;139(6):907-921.  
340 doi:10.1182/blood.2021013156
- 341 17. Muchtar E, Gertz MA, Magen H. A practical review on carfilzomib in multiple myeloma. *Eur J Haematol.*  
342 2016;96(6):564-577. doi:10.1111/ejh.12749
- 343 18. José-Enériz ES, Gimenez-Camino N, Agirre X, Prosper F. HDAC inhibitors in acute myeloid leukemia.  
344 *Cancers (Basel).* 2019;11(11):1-24. doi:10.3390/cancers11111794

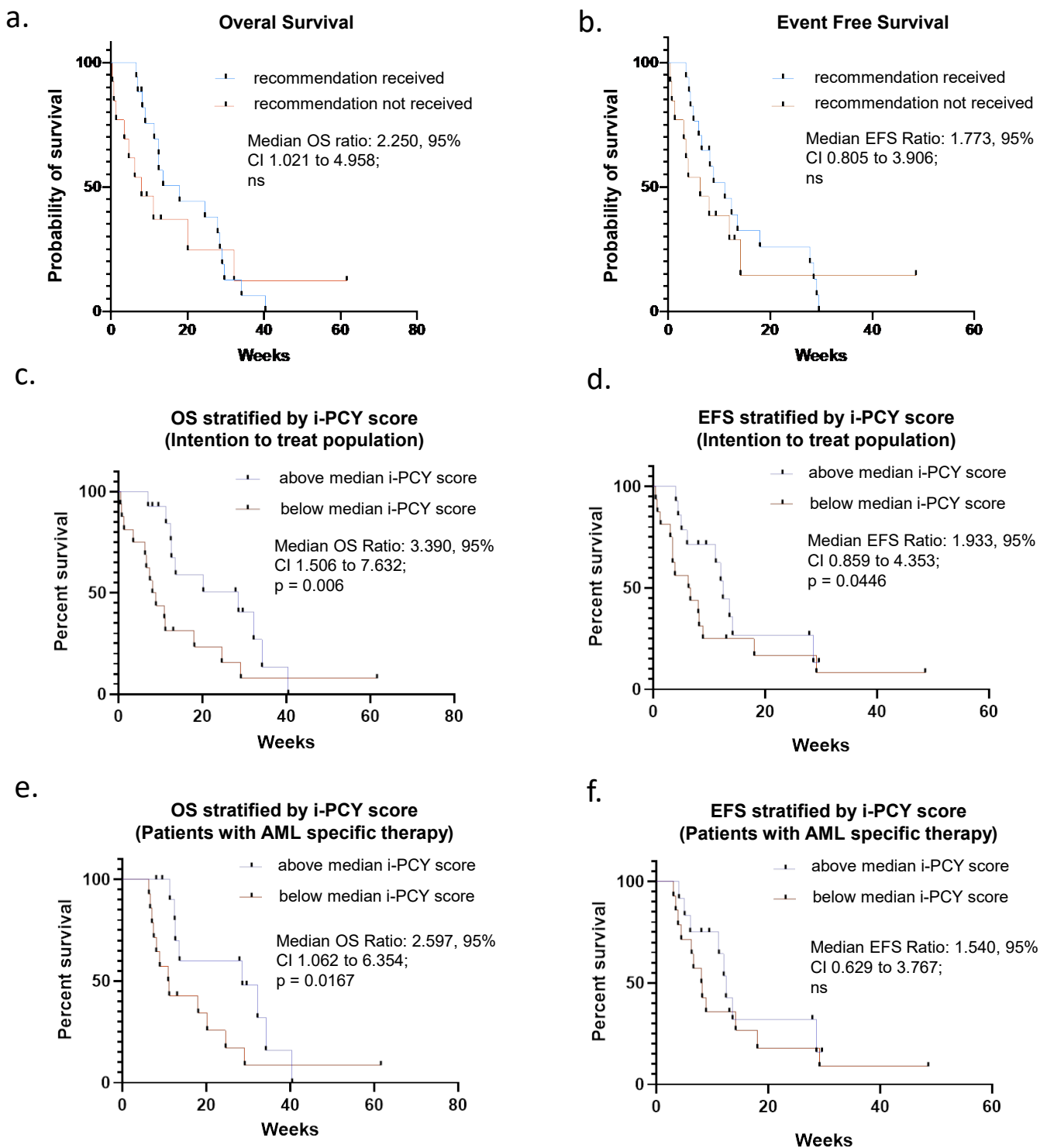




**Figure 1. Pharmacoscopy workflow for AML at relapse:** Patient samples (bone marrow draws, peripheral blood, or subcutaneous/skin samples) were shipped by courier to the pharmacoscopy lab. There, the cells from the samples were processed by either density centrifugation (blood and bone marrow) or tissue dissociation (skin) and seeded into 384-well imaging plates, with each well containing a chemo- or immunotherapeutic compound from our test library. The plates were then incubated overnight. Immunofluorescence stainings against specific surface antigen characteristics of the patient's leukemic cells were used to distinguish between healthy cells and malignant blasts. The cells were then subjected to automated confocal microscopy (Opera Phenix, Perkin Elmer) and image analysis using nuclear morphology to quantify the death of malignant and healthy cells, respectively. Based on this readout, the ex-vivo blast reduction capacity (PCY score) was calculated for each compound. Pharmacoscopy reports were provided to the treating oncologists in the form of a short list of top-scoring drugs ranked by their predicted efficacy, as well as complete drug response profiles. The selection of treatment regimens was subsequently based on the pharmacoscopy report and the availability of compounds listed therein. If none of the listed compounds could be made available within a reasonable time frame, therapy regimens were chosen based on previously established in-house guidelines at our department.



**Figure 2. Trial profile:** Diagram of study patients. \* Patients were switched to best supportive care either because they refused further treatment, or due to their rapidly deteriorating health prohibiting additional AML-specific therapy attempts.



**Figure 3. Outcome:** **a.** Kaplan-Meier estimates of overall survival in the intention to treat population stratified by whether patients received an officially recommended therapy regimen (17 screening instances) or not (13 screening instances). **b.** Kaplan-Meier estimates of event free survival in the intention to treat population stratified by whether patients received an officially recommended therapy regimen or not (17 vs 13 screening instances). **c.** Kaplan-Meier estimates of overall survival in the intention to treat population stratified by the ex-vivo blast reduction capacity of their respective treatment regimen (i-PCY score) (14 screening instances above median i-PCY score and 16 below). **d.** Kaplan-Meier estimates of event free survival in the intention to treat population stratified by the ex-vivo blast reduction capacity of their respective treatment regimen (14 vs 16 screening instances). **e.** Kaplan-Meier estimates of overall survival in patients receiving an AML specific therapy stratified by the ex-vivo blast reduction capacity of their respective treatment regimen (12 screening instances above median i-PCY score and 14 below). **f.** Kaplan-Meier estimates of event free survival in patients receiving an AML specific therapy stratified by the ex-vivo blast reduction capacity of their respective treatment regimen (12 vs 14 screening instances). (OS: Overall survival, EFS: Event free survival). All P values calculated by Gehan-Breslow-Wilcoxon Test.

Age at start of the study (years)	
Median (IQR)	68.5 (66-73)
Sex (No. and share of Patients)	
Female	9.0 (37.5%)
Male	15.0 (62.5%)
ELN Risk Category (No. and share of Patients)	
favorable	3.0 (12.5%)
intermediate	9.0 (37.5%)
adverse	12.0 (50.0%)
Time from diagnosis to study (months)	
Median (IQR)	12.5 (4.5-24.8)
Number of previous therapy lines	
Median (IQR)	2.0 (1.0-3.0)
No. and Share of patients with previous high dose chemotherapy	5.0 (20.8%)

**Table 1: Summary of study group**

IQR: Interquartile range. No.: Number

Waiting time for results, days	
Median (IQR)	5.0 (4.0-6.0)
No. of recommended compounds per patient	
Median (IQR)	5.5 (4.3-8.8)
Therapy choice per patient (No. of patients and share of intention to treat population)	
Recommendation received	17.0 (56.7%)
Recommendation not received	13.0 (43.3%)
AML specific therapy	9.0 (30.0%)
Best supportive care	4.0 (13.3%)
Duration from recommendation to administration of therapy (days)	
Median (IQR)	11.0 (6.0-24.0)
Duration of therapy administration (days, all patients)	
Median (IQR)	65.5 (26.5-183.8)
Duration of therapy administration (days, recommended therapy)	69.0 (21.0-171.0)
Median (IQR)	
Duration of therapy administration (days, other AML specific therapy)	47.0 (40.0-214.0)
Median (IQR)	
No. of compounds recommended at least once	59.0
No. of compounds recommended 5 times or more	17.0
No. of recommended compounds administered to patients at least once	8.0

**Table 2: Overview of *ex vivo* drug screen and treatment choice**

IQR: Interquartile range, No.: Numbers

Compound	Times recommended	Times administered
1. Navitoclax	14	1
2. Venetoclax	13	11
3. Omacetaxine	12	0
4. Cladribine	10	6
5. Carfilzomib	9	1
6. Panobinostat	9	0

**Table 3: Most frequently recommended drugs**

The table lists the 6 most frequently recommended drugs in the screening reports during our study. Despite their frequent recommendation, some of these drugs were never administered to patients due to difficulties in obtaining financial coverage for their use in the treatment of AML patients.

Subgroup	No. of screening instances with a known response in the bone marrow (n=25)	Response			
		CR	PR	SD	R
Treatment recommended	17	6 (35.3%)	2 (11.8%)	2 (11.8%)	7 (41.2%)
Treatment not recommended	8	2 (25.0%)	0 (0.0%)	1 (12.5%)	5 (62.5%)
i-PCY score of regimen > median	11	5 (45.5%)	1 (9.1%)	2 (18.2%)	3 (27.3%)
i-PCY score of regimen < median	14	3 (21.4%)	1 (7.1%)	1 (7.1%)	9 (64.3%)

**Table 4: Overall response by subgroups**

CR: Complete remission, PR: Partial remission, SD: Stable disease, R: Refractory, No.: Number