

## Long-term psychological outcomes following stroke: The OX-CHRONIC study

Andrea Kusec<sup>1</sup>, Elise Milosevich<sup>1</sup>, Owen A. Williams<sup>1</sup>, Evangeline G. Chiu<sup>1</sup>, Pippa Watson<sup>1</sup>, Chloe Carrick<sup>1</sup>, Bogna A. Drozdowska<sup>2</sup>, Avril Dillon<sup>3</sup>, Trevor Jennings<sup>a</sup>, Bloo Anderson<sup>a</sup>, Helen Dawes<sup>4</sup>, Shirley Thomas<sup>5</sup>, Annapoorna Kuppaswamy<sup>6</sup>, Sarah T. Pendlebury<sup>7</sup>, Terence J. Quinn<sup>2</sup>, & Nele Demeyere<sup>\*1,7</sup>

<sup>1</sup>Department of Experimental Psychology, University of Oxford, Anna Watts Building, Radcliffe Observatory Quarter, Oxford, OX2 6GG

<sup>2</sup>School of Cardiovascular & Metabolic Health, University of Glasgow, Glasgow, G4 0SF

<sup>3</sup>Department of Health and Life Sciences, Oxford Brookes University, Oxford, OX3 0BP

<sup>4</sup>College of Medicine & Health, Medical School Building, St Luke's Campus, Magdalen Road, University of Exeter, Exeter, EX1 2LU

<sup>5</sup>School of Medicine, Queen's Medical Centre, University of Nottingham, Nottingham, NG7 2UH

<sup>6</sup>Institute of Neurology Department of Clinical and Movement Neurosciences, 33 Queen Square, University College London, London, WC1N 3BG

<sup>7</sup>Wolfson Centre for Prevention of Stroke and Dementia, Nuffield Department of Clinical Neurosciences, University of Oxford, John Radcliffe Hospital, Oxford, OX3 9DU

<sup>a</sup>Patient and Public Involvement Representative

\*Corresponding Author Address: Nuffield Department of Clinical Neurosciences, University of Oxford, John Radcliffe Hospital, Oxford, OX3 9DU, UK Email: [nele.demeyere@ndcn.ox.ac.uk](mailto:nele.demeyere@ndcn.ox.ac.uk)

Word Count: 4371

Number of Tables: 4

Number of Figures: 2

### Declarations

#### *Ethical Approval and Consent to Participate*

This study received ethical approval from the Health Research Authority - South Central Berkshire Research Ethics Committee approved this study (REC Reference: 19/SC/0520)

#### *Consent for Publication*

Participants provided informed consent for their data to be used for publication purposes.

#### *Availability of Data and Materials*

The dataset supporting the conclusions of this article is available in the study-specific Open Science Framework repository: [osf.io/y2mev](https://osf.io/y2mev)

#### *Competing Interests*

ND is a developer of the Oxford Cognitive Screen but does not receive any remuneration from its use. TJQ chairs the DMC for a vascular cognitive impairment trial supported by NovoNordisk; TJQ has provided outcomes assessment and advisory board input for trials in cognition for Novartis, NovoNordisk.

### ***Funding***

This study was funded by a Priority Programme Grant from the Stroke Association (SA PPA 18/100032). ND (Advanced Fellowship NIHR302224) is funded by the National Institute for Health Research (NIHR). The project was supported by the National Institute for Health Research (NIHR) Oxford Health BRC. The views expressed in this publication are those of the author(s) and not necessarily those of the NIHR, NHS or the UK Department of Health and Social Care.

### ***Authors Contributions***

ND, EM, TJQ, STP, A Kuppuswamy, ST, HD conceptualised the study and contributed to securing funding. ND, OAW, EM, EGC, HD, STP, A Kuppuswamy, and TJQ contributed to protocol development. ND, OAW, and EM contributed to gaining ethical approval. ND, OAW, A Kusec and EGC contribute to study methodology. AK, CC, PW, EGC, EM, BD, and AD contributed to patient recruitment and data curation. ND, A Kusec and OAW conducted project administration. ND, TJQ, STP, A Kuppuswamy, ST, HD, TJ, and BA provided study supervision and management. A Kusec conducted all analyses and wrote the first manuscript draft. All authors reviewed and edited the manuscript and approved the final version of the manuscript.

### ***Acknowledgements***

The authors would like to thank Audrey Bowen (chair), Avril Drummond, Richard Francis, Anna Volkmer, and Jeremy Dearling for providing study oversight as part of the OX-CHRONIC steering committee.

### ***List of Abbreviations***

AES – Apathy Evaluation Scale

CSI – Caregiver Strain Index

HADS – Hospital Anxiety and Depression Scale

ICECAP – ICEpop Capability Measure for Adults

IQ-CODE – Informant Questionnaire on Cognitive Decline in the Elderly

EQ-5D-5L – EuroQol 5-Dimensions 5-Levels

FDR – False Discovery Rate

FSS – Fatigue Severity Scale

GDS – Geriatric Depression Scale

MCID – Minimal Clinically Important Difference

MoCA – Montreal Cognitive Assessment

MMSE – Mini-Mental State Examination

NIHSS – National Institutes of Health Stroke Scale

OCS – Oxford Cognitive Screen

SCI – Sleep Condition Indicator

SF-SIS – Stroke Impact Scale Short Form

WHOQOL-BREF – World Health Organization Quality of Life Brief Version

## Abstract

**Background:** Stroke survivors rate longer-term (>2 years) psychological recovery as their top priority, but data on how frequently psychological consequences occur is lacking.

Prevalence of cognitive impairment, depression/anxiety, fatigue, apathy and related psychological outcomes, and whether rates are stable in long-term stroke, is unknown.

**Methods:**  $N = 105$  long-term stroke survivors ( $M$  [ $SD$ ] age = 72.92 [13.01];  $M$  [ $SD$ ] acute NIH Stroke Severity Score = 7.39 [6.25]; 59.0% Male;  $M$  [ $SD$ ] years post-stroke = 4.57 [2.12]) were recruited (potential  $N = 208$ ). Participants completed 3 remote assessments, including a comprehensive neuropsychological battery, and questionnaires on emotional distress, fatigue, apathy and other psychological outcomes. Ninety participants were re-assessed one year later. Stability of outcomes was assessed by Cohen's  $d$  effect size estimates and percent Minimal Clinically Important Difference changes between time points.

**Results:** On the Montreal Cognitive Assessment 65.3% scored <26. On the Oxford Cognitive Screen 45.9% had at least one cognitive impairment. Attention (27.1%) and executive function (40%) were most frequently impaired. 23.5% and 22.5% had elevated depression/anxiety respectively. Fatigue (51.4%) and apathy (40.5%) rates were high. Attention ( $d = -0.12$ ; 85.8% stable) and depression ( $d = 0.09$ , 77.1% stable) were the most stable outcomes. Following alpha-adjustments, only perceptuomotor abilities ( $d = 0.69$ ; 40.4% decline) and fatigue ( $d = -0.33$ ; 37.2% decline) worsened over one year. Cognitive impairment, depression/anxiety, fatigue and apathy all correlated with worse quality of life.

**Conclusion:** Nearly half of participants >2 years post-event exhibited psychological difficulties, which impact long-term quality of life. Stroke is a chronic condition requiring long-term psychological support.

**Word Count:** 255

**Keywords:** stroke, psychological outcomes, long-term stroke, cognition, mood, fatigue, apathy

## Introduction

Globally, stroke is the second highest cause of mortality and is known to increase risk of chronic disability, sustained physical and cognitive impairment, and poorer quality of life that affects both the stroke survivor and carers<sup>1-3</sup>. The typical profile of long-term psychological outcomes post-stroke is not well-characterized, despite the increased likelihood of long-term impairments due to higher survival rates<sup>4,5</sup>. In a systematic review of unmet care needs of stroke survivors<sup>6</sup> managing psychological outcomes was the most frequently reported unmet need. Psychological information needs were shown to increase from 6 months (22.4%) to 2 years post-stroke (81.4%)<sup>6</sup> due to requiring further information when initial recovery is made or receiving irrelevant information in early stroke.

Psychological outcomes of stroke can include poor attention, memory, executive function, perceptuomotor and language abilities<sup>7</sup>, mental health difficulties such as depression and anxiety<sup>8,9</sup>, and extended outcomes such as fatigue and apathy<sup>10,11</sup>. Difficulties in any of these in early stroke are known to contribute to poorer quality of life, and may reduce daily activity participation<sup>12,13</sup> and increase need for carer support<sup>4</sup>. However, despite the recognized long-term importance of psychological outcomes<sup>14-16</sup>, research has been mainly limited to the first year post-stroke<sup>13,17,18</sup>.

Longitudinal assessment of cognitive function after stroke has been predominantly completed with brief global screening tools such as the Mini-Mental State Examination (MMSE)<sup>19,20</sup>. Though choice of tool will depend on the desired cognitive information, post-stroke cognitive impairment often includes deficits in a variety of domains<sup>21</sup>, and an in-depth neuropsychological assessment is more feasible outside of the acute window. Mild cognitive impairments are thought to be common in chronic stroke<sup>22</sup> and sensitive neuropsychological assessment is therefore warranted in long-term follow-up to detect these often more subtle domain-specific impairments that can still impact quality of life<sup>23</sup>.

Emotional distress after stroke is also common, with post-stroke depression and anxiety estimated to affect 31.0% and 24.2% of stroke survivors respectively<sup>8,9</sup>. These are frequently accompanied by additional outcomes that can have psychological causes, including fatigue<sup>10</sup>, apathy<sup>11</sup> and poor sleep quality<sup>24,25</sup>. Though evidence suggests these extended outcomes are more common in acute stroke, prevalence rates remain stable at 1-year<sup>26,27</sup>. Cognitive impairment has been shown to double the risk for emotional distress and extended outcomes in the first-year post-stroke<sup>28-30</sup> and strongly relates to long-term participation<sup>31</sup>. This emphasizes the need to understand the psychological consequences in a wide variety of areas and considered holistically with regards to their collective impact on post-stroke quality of life.

The temporal nature of these various psychological outcomes in chronic stroke is not well-described. Variability in emotional distress<sup>32</sup> and cognitive functioning (heterogeneous patterns of improvement and decline<sup>33</sup>) has been examined in early stroke. However, research in long-term stroke has focused mainly on cognitive decline and dementia diagnoses<sup>17</sup>. A more complete and improved understanding of the prevalence and nature of various long-term psychological outcomes is essential to tailoring community stroke services to the needs of stroke survivors.

## **Study Aims and Objectives**

The OX-CHRONIC study aimed to characterize the psychological profiles of long-term stroke (at least 2 years post-stroke). The primary objective was to identify the long-term prevalence of clinical impairment in six specific cognitive domains (language abilities, number processing, apraxia, memory, spatial attention, and executive function), and extended psychological consequences including depression, anxiety, fatigue, and apathy. Stability of

psychological outcomes within a year's time, and the impact of these psychological consequences on quality of life, was also examined.

## Methods

All participants provided informed consent to take part. The study was approved by NRES ethics committee (REC Reference: 19/SC/0520).

### *Participants*

Participants were recruited from the Oxford Cognitive Screening programme, a stroke cohort that had been consecutively recruited from the acute stroke ward within the John Radcliffe Hospital, UK between 2012 and 2020 (see protocol; Demeyere et al<sup>34</sup>). Participants who consented to future studies with the research team following a 6-month post-stroke assessment and who were at least 2 years post-stroke ( $N = 208$ ) were contacted for participation in OX-CHRONIC. Participants consenting to OX-CHRONIC completed a battery of self-report and neuropsychological measures across two time points one year apart (termed Wave 1 and Wave 2), and optionally wore an activity monitor for one week following assessment<sup>1</sup>. With stroke participant consent, their carers were approached about participation, and carers consenting to participation completed self-report questionnaires. Due to the COVID-19 pandemic, all OX-CHRONIC assessments took place remotely either over the telephone or via videoconferencing in up to 3 separate sessions per time point. A detailed description of the full study protocol is reported elsewhere<sup>34</sup>.

### *Study Measures*

Neuropsychological assessments selected were based on their wide-range use in stroke settings and covered a wide range of possible cognitive domain impairments. This included domain-general cognition (MoCA<sup>35</sup>), stroke-specific cognition (Oxford Cognitive Screen

---

<sup>1</sup> Activity monitor data will be reported elsewhere.

[OCS]<sup>21</sup>) language (Cookie Theft Task<sup>36</sup>; Boston Naming Test<sup>37</sup>; Letter and Category Fluency<sup>38</sup>), executive function (Trail Making Test A & B<sup>38</sup>; Hayling Sentence Completion Test<sup>39</sup>; OCS-Plus Mixed Trails<sup>40</sup>), memory (Digit Span Forwards & Backwards<sup>41</sup>; Logical Memory Test<sup>41</sup>; Picture Memory Test<sup>40</sup>), attention (Star Cancellation Test<sup>42</sup>), and perceptuomotor abilities (OCS-Plus Figure Copy Test<sup>40</sup>; Rey-Osterrieth Complex Figure Copy Test<sup>43</sup>).

Self-report questionnaires were similarly selected across a range of psychological outcomes (e.g., subjective cognition, emotional distress) and functional information (e.g., activities of daily living). This included measures of cognitive abilities (Cognitive Failures Questionnaire<sup>44</sup>; Cognitive Reserve Index<sup>45</sup>), daily function (Telephone Modified Rankin Scale<sup>46</sup>; Nottingham Extended Activities of Daily Living Scale<sup>47</sup>; 3-item Barthel Index<sup>48</sup>), emotional distress (Hospital Anxiety and Depression Scale [HADS]<sup>49</sup>; Geriatric Depression Scale [GDS]<sup>50</sup>), extended outcomes such as fatigue (Fatigue Severity Scale [FSS]<sup>51</sup>), apathy (Apathy Evaluation Scale [AES]<sup>52</sup>) and sleep quality (Sleep Condition Indicator-8 [SCI-8]<sup>53</sup>), and quality of life measures (EQ-5D-5L<sup>54</sup>; Stroke Impact Scale-Short Form [SF-SIS]<sup>55</sup>; World Health Organization Quality of Life Scale<sup>56</sup>; ICEpop Capability Measure for Adults<sup>57</sup>). Carer measures included the Caregiver Strain Index<sup>58</sup>, the Informant-GDS<sup>59</sup>, and the Informant Questionnaire for Cognitive Decline in the Elderly (IQ-CODE)<sup>60</sup>. An overview of study measures is in *Supplementary Table 1* and in the study protocol<sup>34</sup>.

### *Statistical Analyses*

Analyses were performed using R version 4.2.1<sup>61</sup>. The datasets analysed and code for the current study are available at [osf.io/y2mev](https://osf.io/y2mev)

Descriptive statistics of Wave 1 and Wave 2 study variables were calculated. Where available per measure, validated cut scores (binarized as yes/no) were used to determine percentage of participants with cognitive impairment (for neuropsychological assessments)



and scores that indicate elevated symptoms/functional difficulties warranting clinical attention (collectively termed “clinically significant” within the manuscript; for self-report questionnaires only). For study measures, cut scores were developed based on comparison to normative data in healthy adults or based on sensitivity/specificity analyses. Cut scores used in the present study are shown in *Supplementary Table 1*. 95% confidence intervals for percent estimates were calculated using the below formula:

$$Proportion \pm 1.96 * \frac{\sqrt{Proportion(1 - Proportion)}}{n}$$

To account for potential risk or increased rates of impairment across the large number of more sensitive in-depth neuropsychological measures, chi-square tests with false discovery rate corrections were used to determine whether the proportion of those impaired versus not impaired at each time point differed (see *Supplementary Materials*). Additionally, we do not present data on the proportion of participants with any impairment on the in-depth neuropsychological assessments to further reduce this risk.

To determine stability of psychological outcomes, paired t-tests (for parametric data) and Wilcoxon rank-sum tests (for non-parametric data) were used to determine whether a statistically significant change occurred on study measures (instead of proportion of those meeting cut score criteria above) between Wave 1 and Wave 2. Family-wise alpha corrections across neuropsychological assessments and self-report measures were alpha-adjusted using false discovery rate (FDR) corrections to balance between risk of Type I and Type II errors. Cohen’s *d* was additionally estimated to measure effect size differences. As a comparator, distribution-based Minimal Clinically Important Difference (MCID) estimates (i.e., 0.5 standard deviation change) were used to determine the percentage of participants whose scores were of clinical relevance from Wave 1 to Wave 2. This approach was taken given that some OX-CHRONIC measures do not have published MCIDs in stroke (e.g.,

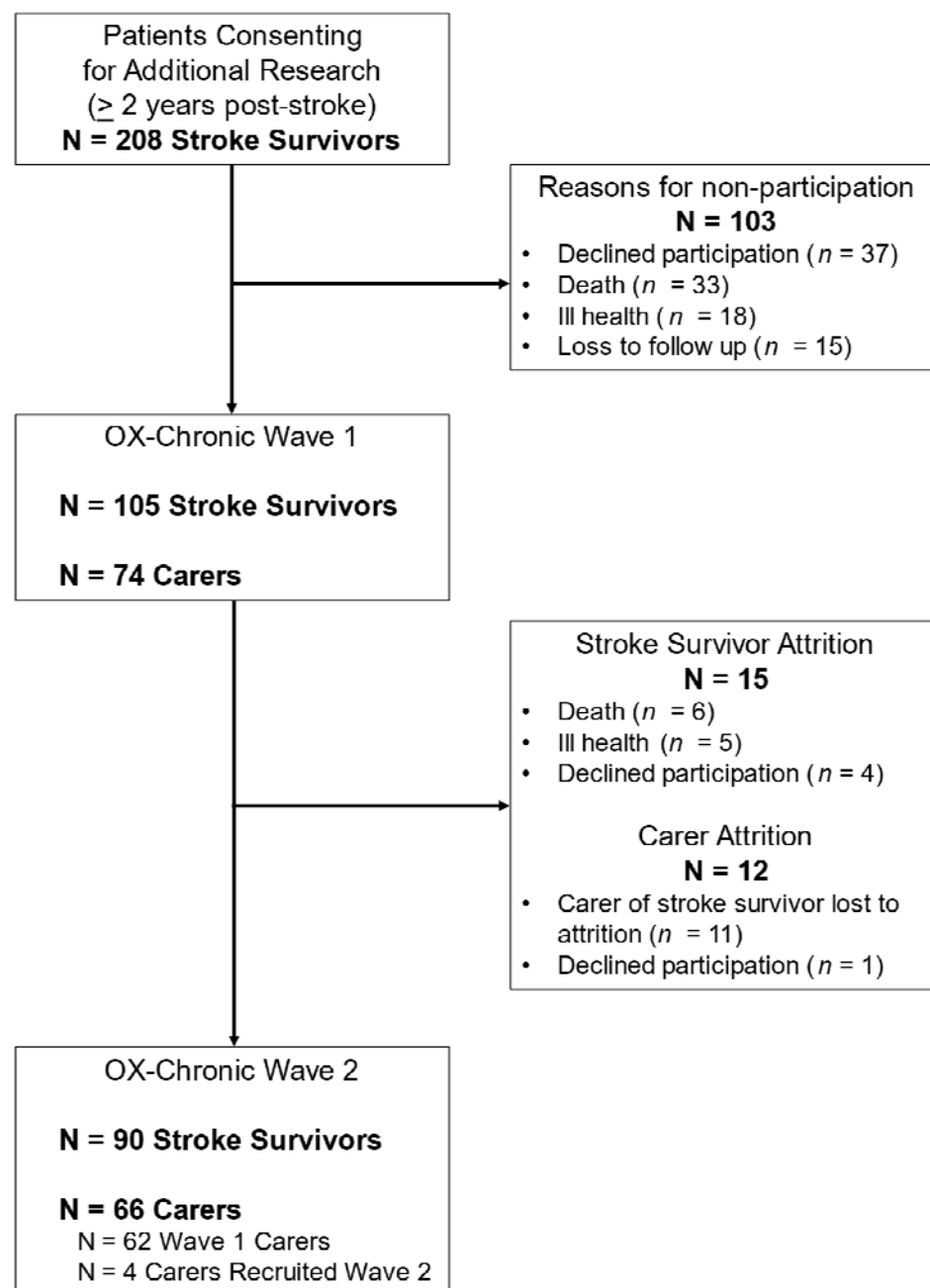
Hayling Sentence Completion Test). Where available in the literature per measure, anchor-based MCIDs were additionally used to determine clinically relevant change.

To examine whether potential differences existed at Wave 1 from those retained versus those lost to attrition at Wave 2, independent t-tests were conducted comparing demographics (age, sex, handedness, years of education, stroke type, stroke severity, years post-stroke), cognitive impairment (OCS language, memory, attention, number processing, and executive function impairments), and stroke related quality of life scores (SF-SIS stroke recovery score, hand function, arm function, mobility, activities of daily living, emotions, communication, memory and participation). Results are in the *Supplementary Materials*.

To explore the impact of psychological outcomes on quality of life, Spearman rank correlations were conducted between cognition (MoCA), depression/anxiety (HADS), fatigue (FSS) and apathy (AES) to EQ-5D-5L health rating scores and SF-SIS scores at Wave 1.

## Results

A total of 105 stroke participants completed OX-CHRONIC Wave 1, with 90 completing reassessment at Wave 2 one year later. Seventy-four carers participated in Wave 1, and 66 in Wave 2. A recruitment flow chart is shown in Figure 1 (see study protocol for further details on study sample eligibility<sup>34</sup>)



**Figure 1.** Participant recruitment flowchart to OX-CHRONIC at Wave 1 and Wave 2.

Participant demographics are presented in Table 1. Our cohort included a high proportion of individuals with left hemisphere stroke (40.00%) and moderate stroke severity scores (median NIHSS = 5).

<b>Participants (N = 105)</b>		Min - Max
<b>Sex – n (%)</b>		
Male	62 (59.05%)	
Female	43 (40.95%)	
<b>Age – Mean (SD)</b>	72.92 (13.01)	21 – 96
<b>Years Post-Stroke – Mean (SD)</b>	4.57 (2.12)	2 – 9.38
<b>Years of Education – Mean (SD)</b>	13.94 (3.67)	9 – 23
<b>Stroke Type – n (%)</b>		
Ischaemic	88 (83.80%)	
Haemorrhagic	17 (16.20%)	
<b>Lesion Hemisphere – n (%)</b>		
Left	42 (40.00%)	
Right	41 (39.05%)	
Bilateral	8 (7.60%)	
Undetermined from scan	14 (13.35%)	
<b>First or Recurrent Stroke – n (%)</b>		
First	70 (66.67%)	
Recurrent	35 (33.33%)	
<b>Acute NIHSS Score – Mean (SD)</b>	7.39 (6.25)	0 – 27
<b>Carers (N = 74)</b>		
<b>Sex – n (%)</b>		
Male	27 (36.50%)	
Female	47 (63.50%)	
<b>Relationship to Participant – n (%)</b>		
Wife	35 (47.30%)	
Husband	24 (32.40%)	
Daughter/Son	7 (9.40%)	
Parent	5 (6.80%)	
Other	3 (4.10%)	

**Table 1.** Participant Characteristics.  
NIHSS = National Institute of Health Stroke Severity

### ***Participant Attrition and Study Outcomes***

Differences in demographics and study measures between those retained ( $N = 90$ ) and those lost to attrition at Wave 2 ( $N = 15$ ) are reported in *Supplementary Table 2*. Overall, there were no significant differences in demographics or cognition. However, participants lost to attrition self-reported worse overall SF-SIS functioning, lower levels of activities of daily

living (ADLs), and worse emotional distress at Wave 1. When comparing those lost to attrition not due to death ( $N = 9$ ) and those retained, there were no statistically significant difference in any variables examined.

### ***Chronic Cognitive Impairment***

Full details of impairment frequency per neuropsychological measure, per domain, is shown in Table 2. Detailed descriptive statistics (i.e., minimum and maximum scores, task times) are in *Supplementary Tables 3 and 4*.

At Wave 1, the majority of participants (65.3%) were classified as having a domain-general cognitive impairment on the MoCA (score  $< 26$ ). When using a stroke-specific, multidomain cognitive impairment cutoff score of 22<sup>62</sup>, prevalence of impairment was one-third of the sample at both time points (30.6% Wave 1; 34.1% Wave 2).

At Wave 1, 45.9% ( $N = 45$ ) of participants were impaired on at least one of the 10 OCS subtasks (i.e., scored below normative performance of healthy controls<sup>21</sup>). At Wave 2, 47.0% ( $N = 40$ ) of participants were impaired in at least one subtask. There was no significant difference between Wave 1 and Wave 2 in presence of any OCS domain impairment ( $\chi^2 = 0.24$ ,  $p = 0.88$ ), and average number of OCS subtasks impaired ( $F_{1,181} = 0.20$ ,  $p = 0.66$ ).

DOMAIN	WAVE 1 (N = 98)		WAVE 2 (N = 85)	
	Mean (SD)	Impairment Status N (% [95% CI])	Mean (SD)	Impairment Status N (% [95% CI])
<b>Domain-General Cognition</b>				
<i>OCS Tasks Impaired</i>	0.90 (1.40)	45 (45.92 [36.1 – 55.8])	0.99 (1.33)	40 (47.06 [36.5 – 57.7])
MoCA (<26)	23.56 (4.16)	64 (65.31 [55.9 – 74.7])	22.98 (4.51)	57 (67.06 [57.1 – 77.1])
MoCA (<22)	--	30 (30.61 [21.5 – 39.7])	--	29 (34.12 [24.0 – 44.2])
<b>Language</b>				
<i>OCS Picture Naming</i>	3.65 (0.59)	4 (4.1 [0.2 – 7.9])	3.71 (0.53)	3 (3.5 [-0.4 – 7.5])
<i>OCS Semantics</i>	3 (0)	0 (0.0 [0 – 0])	2.99 (0.11)	1 (1.2 [-1.1 – 3.5])
<i>OCS Sentence Reading</i>	14.62 (1.56)	7 (7.1 [2.0 – 12.2])	14.59 (1.19)	9 (10.6 [4.0 – 17.1])
Cookie Theft Complexity	0.81 (0.23)	1 (1.0 [-0.9 – 3.1])	1.22 (0.24)	1 (1.2 [-1.1 – 3.5])
Boston Naming Test	13.89 (1.79)	4 (4.1 [0.2 – 7.9])	--	--
Letter Fluency Total	32.53 (14.94)	14 (14.3 [7.4 – 21.2])	32.69 (14.88)	9 (10.7 [4.1 – 17.3])
Category Fluency Total	31.64 (10.00)	8 (8.2 [2.7 – 13.6])	32.51 (11.09)	7 (8.3 [2.5 – 14.2])
<b>Executive Function</b>				
<i>OCS Mixed Trails</i>	10.78 (3.64)	14 (14.3 [7.4 – 21.2])	11.61 (2.17)	4 (4.7 [0.2 – 9.2])
Trails A Accuracy	23.81 (0.63)	11 (11.3 [5.1 – 17.6])	23.48 (1.89)	8 (9.4 [3.2 – 15.6])
Trails B Accuracy	18.54 (6.00)	28 (28.9 [19.9 – 37.8])	18.04 (5.55)	34 (40.0 [29.6 – 50.4])
Hayling Test Total	12.03 (3.65)	30 (30.6 [21.5 – 39.7])	13.60 (3.93)	20 (23.5 [14.5 – 32.6])
OCS-Plus Mixed Trails	10.55 (4.16)	15 (15.5 [8.3 – 22.6])	10.61 (3.76)	23 (27.1 [17.6 – 36.5])
<b>Memory</b>				
<i>Orientation</i>	3.93 (0.39)	4 (4.1 [0.2 – 7.9])	3.91 (0.40)	5 (5.9 [0.9 – 10.9])
<i>Recall</i>	2.57 (1.32)	--	2.74 (1.14)	--
<i>Recall + Recognition</i>	3.71 (0.70)	5 (5.1 [0.8 – 9.5])	3.76 (0.55)	3 (3.5 [-0.4 – 7.5])
<i>Episodic Recognition</i>	3.84 (0.40)	1 (1.0 [-0.9 – 3.0])	3.79 (0.41)	0 (0.0 [0 – 0])
Digit Span Forwards	7.49 (2.33)	9 (9.3 [3.5 – 15.0])	7.25 (2.57)	7 (8.2 [2.4 – 14.1])
Digit Span Backwards	5.90 (2.14)	4 (4.1 [0.2 – 7.9])	5.89 (2.36)	5 (5.8 [0.8 – 10.9])
Logical Memory I	12.37 (4.46)	3 (3.1 [-0.3 – 6.5])	12.24 (4.50)	2 (2.4 [-0.8 – 5.6])
Logical Memory II	10.67 (5.19)	9 (9.3 [3.5 – 15.0])	10.73 (4.96)	6 (7.1 [1.6 – 12.5])
Picture Memory Test	9.93 (2.73)	26 (26.5 [17.8 – 35.3])	--	--
<b>Visuospatial Attention</b>				
<i>Broken Hearts Accuracy</i>	43.53 (7.88)	21 (21.4 [13.3 – 29.6])	43.76 (6.57)	23 (27.1 [17.6 – 36.5])
<i>Broken Hearts Time</i>	126.73 (38.31)	--	130.33 (37.05)	--
<i>Egocentric Neglect</i>	--	8 (8.2 [2.7 – 13.6])	--	7 (8.2 [2.4 – 14.1])
<i>Allocentric Neglect</i>	--	8 (8.2 [2.7 – 13.6])	--	7 (8.2 [2.4 – 14.1])
Star Cancellation Total	52.19 (5.70)	18 (18.6 [10.9 – 26.3])	52.76 (2.26)	14 (16.5 [8.6 – 24.4])
<b>Number Processing</b>				
<i>OCS Number Writing</i>	2.85 (0.41)	12 (12.2 [5.8 – 18.7])	2.79 (0.56)	14 (16.5 [8.6 – 24.4])
<i>OCS Calculation</i>	3.77 (0.49)	3 (3.1 [-0.4 – 6.5])	3.69 (0.51)	4 (4.7 [0.2 – 9.2])
<b>Perceptuomotor Abilities</b>				
OCS-Plus Figure Copy	54.99 (5.85)	6 (6.1 [1.4 – 10.9])	54.07 (5.19)	5 (5.9 [0.9 – 10.9])
OCS-Plus Figure Recall	41.46 (10.57)	6 (6.1 [1.4 – 10.9])	39.81 (9.65)	9 (10.6 [4.1 – 17.1])
ROCF Copy	26.68 (6.38)	10 (10.2 [4.2 – 16.2])	24.04 (6.35)	17 (20.2 [11.7 – 28.8])
ROCF Recall	12.79 (7.35)	8 (8.3 [2.9 – 13.8])	12.42 (6.61)	4 (9.4 [3.2 – 15.6])

**Table 2.** Descriptive statistics and percent prevalence of impairment status on the stroke-specific Oxford Cognitive Screen subtasks (italicized) and in-depth neuropsychological assessments per domain at Wave 1 (N = 98) and Wave 2 (N = 85) with 95% confidence intervals. Impairment scores are determined based on comparison to normative data in healthy adults.

OCS: Oxford Cognitive Screen; MoCA: Montreal Cognitive Assessment; WMS: Wechsler Memory Scale; BIT: Behavioural Inattention Test; ROCF: Rey-Osterrieth Complex Figure

Across assessment timepoints, attention impairments, particularly in selective visual attention rather than visuospatial neglect, were the most frequently observed using the OCS (Wave 1 21.4% [95% CI 13.3 – 29.6]). When using in-depth neuropsychological measures executive function impairments were most prevalent (Wave 1 30.6% [95% CI 21.5 – 39.7]). Participants were least likely to have expressive language deficits (as low as 1.0% on discourse language on the Cookie Theft task). Notably, participants performed well on verbal working memory and verbal episodic recall tasks (e.g., Digit Span Backward, Logical Memory Immediate Recall; impairment rates of 4.1% and 5.1% respectively), while a comparatively high proportion were impaired on the Picture Memory Test (26.5%). In investigating whether proportion of those impaired changed across time points, we find that proportion of impairment stayed stable (see *Supplementary Table 5*).

### ***Self-reported Emotional Distress, Extended Outcomes, and Quality of Life in Chronic Stroke***

Descriptive statistics of questionnaire data are shown in Table 3. Detailed descriptive statistics (i.e., subscale scores, ranges) are shown in *Supplementary Table 6*.

Domain	N	Mean (SD)	Clinically Significant – N (% [95% CI])
<b>Post-Stroke Abilities</b>			
Modified Rankin Scale Score <sup>1</sup>	100	1.79 (1.27)	30 (28.6 [19.7 – 37.4])
Barthel-3 Item Short Form Total <sup>1</sup>	99	6.93 (1.58)	--
Nottingham Extended ADL <sup>1</sup>	100	47.77 (16.26)	--
<b>Quality of Life</b>			
SIS-Short Form Scaled Total <sup>1</sup>	102	72.66 (20.12)	--
SIS-Long Form Stroke Recovery Score <sup>2</sup>	88	71.91 (21.63)	--
WHO-QoL-BREF Overall Score <sup>2</sup>	83	7.22 (1.65)	--
ICECAP-A Total <sup>1</sup>	101	15.65 (2.90)	--
EQ5D-5L Health Rating <sup>1</sup>	99	68.61 (18.83)	--
<b>Cognitive Ability</b>			
CFQ Total <sup>2</sup>	88	33.60 (17.93)	29 (32.2 [22.5 – 41.9])
Cognitive Reserve Index <sup>2</sup>	84	128.42 (19.68)	--
<b>Emotional Distress</b>			
HADS-Depression Total <sup>1</sup>	98	4.97 (3.98)	23 (23.5 [15.1 – 31.9])
HADS-Anxiety Total <sup>1</sup>	98	5.23 (4.02)	22 (22.5 [14.2 – 30.7])
GDS Total <sup>1</sup>	101	4.22 (4.10)	34 (33.7 [24.4 – 42.9])
<b>Extended Outcomes</b>			
Apathy Evaluation Scale <sup>1</sup>	101	32.36 (10.21)	41 (40.6 [31.0 – 50.2])
Fatigue Severity Scale <sup>1</sup>	101	35.56 (15.34)	52 (51.5 [41.7 – 61.2])
Sleep Condition Indicator <sup>1</sup>	100	23.29 (8.04)	21 (21.0 [13.0 – 28.9])
<b>Carer Measures</b>			
CSI Total Score <sup>1</sup>	68	2.76 (3.12)	9 (13.2 [5.2 – 21.2])
Informant-GDS Total <sup>1</sup>	70	5.18 (4.30)	35 (50.0 [38.2 – 61.7])
IQ-CODE <sup>1</sup>	74	3.23 (0.63)	29 (39.2 [28.1 – 50.3])

**Table 3.** Descriptive statistics and proportion of sample with clinically elevated scores on self-reported questionnaires for participants and carer-reported measures with 95% confidence intervals. Cut scores used were taken from each scales' published psychometric analysis were used to indicate percent of participants with elevated symptoms or scores warranting clinical attention (termed "clinically significant" within the table).

SIS: Stroke Impact Scale; WHO-QoL-BREF: World Health Organization Quality of Life Scale – Abbreviated; ADL: Activities of Daily Living; ICECAP-A: ICEpop Capability Measure for Adults; EQ5D-5L: EuroQol-5 Dimensions-5 Levels; CFQ: Cognitive Failures Questionnaire; HADS: Hospital Anxiety and Depression Scale; GDS: Geriatric Depression Scale; CSI: Caregiver Strain Index; IQ-CODE: Informant Questionnaire for Cognitive Decline in the Elderly

<sup>1</sup>Data presented from Wave 1

<sup>2</sup>Data presented from Wave 2

Though 30.0% reported at least a moderate disability on the Modified Rankin Scale (score >3), 55% had a slight disability that affected performance on daily activities (score >2). Prevalence of self-reported cognitive difficulties were overall lower than that observed using objective neuropsychological measures, with 32.2% reporting clinically significant levels of cognitive failures in everyday life. However, 40% of carers rated their stroke survivor relative at risk of cognitive decline. Prevalence rates for emotional distress varied by



measure – 23.5% and 22.5% of stroke survivors reported mild depression and mild anxiety respectively on the HADS, lower than GDS rates (33.4%). Further, 50% of carers rated their relative as having at least mild depression on the informant GDS<sup>38</sup>. Extended outcomes were more frequently endorsed, with clinically significant rates of fatigue observed in 51.5% of participants, and high rates of apathy (40.6%). Significant sleep difficulties were the least frequently reported outcome by stroke survivors (21.0%).

Despite moderate levels of emotional distress and extended outcomes, EQ-5D-5L quality of life scores were comparable to healthy population norms in a similar age bracket<sup>63</sup>, and stroke-related quality of life was moderate. Significant carer strain was also low (13.2%).

### ***Stability of Psychological Outcomes between Wave 1 and Wave 2***

An overview of whether change in outcomes was statistically and/or clinically meaningful between time points is in Table 4. Detailed information of stability (e.g., comparison to anchor-based MCIDs; test statistics) is shown in *Supplementary Table 7*.

From a statistical perspective, domain-general cognition remained stable between years as measured by number of OCS subtasks impaired (Wilcoxon's  $V = 403.50$ ,  $p = 0.39$ , Cohen's  $d = -0.10$ ) and MoCA scores ( $t = 2.57$ ,  $p = 0.053$ ,  $d = 0.28$ ). However, when considering anchor-based MCID change, 42.3% of stroke survivors showed decline on the MoCA (vs. 28.2% distribution-based). In an exploratory analysis, visuospatial scores were the only MoCA subtests to decline ( $t = 2.52$ ,  $p = 0.01$ ).

Memory ( $ds = 0.03 - 0.12$ ) and visuospatial attention tasks ( $d = -0.12$ ) had negligible effect size differences between Wave 1 and Wave 2, though we note 49.4% of participants showed MCID decline on verbal memory on the Digit Span forwards. Discourse language ( $d = -1.33$ ; 83.1% MCID improvement) and executive function tasks ( $d = -0.49$ , 60.2% MCID improvement) demonstrated moderate to large improvements between years, though complex figure copy abilities showed moderate decline ( $d = 0.69$ ; 40.4% MCID decline).

Regarding self-report and carer questionnaires, there were negligible effect size differences across all domains; with emotional distress measures remaining the most stable ( $d$ s = -0.10 – 0.09; MCID no change = 49.5% – 81.8%). However overall perceptions of health (EQ-5D-5L Health Ratings) improved between years ( $d$  = -0.29, MCID improvement = 37.2%), while fatigue worsened over time ( $d$  = -0.33, MCID decline = 37.2%).

Notably, even in this long-term stroke cohort, some measures showed MCID improvement between years – for example, 36.9% had improved executive function abilities and 24.7% had improved depression.

Domain	Cohen's $d$	MCID (0.5 SD)	Distribution MCID		
			Improve	Decline	No Change
<b>Domain-General Cognition</b>					
OCS Tasks Impaired	-0.10	0.69	21.2%	24.7%	54.1%
Montreal Cognitive Assessment	0.28	2.07	11.7%	28.2%	60.1%
<b>Language</b>					
Cookie Theft Complexity	<b>-1.33***</b>	0.12	<b>83.1%</b>	3.6%	13.3%
Letter Fluency Total	0.17	7.46	8.2%	17.6%	74.2%
Category Fluency Total	-0.04	5.00	16.4%	15.3%	68.3%
<b>Executive Function</b>					
Trail Making Test A Accuracy	0.17	0.32	7.1%	15.4%	77.5%
Trail Making Test B Accuracy	0.14	2.99	20.2%	27.3%	52.5%
Hayling A Response Time	<b>0.46***</b>	14.52	<b>32.1%</b>	4.7%	63.2%
Hayling B Response Time	0.28	23.98	36.9%	8.3%	54.8%
Hayling B Errors	-0.04	5.67	24.1%	28.9%	47.0%
Hayling Test Total	<b>-0.49***</b>	0.92	<b>60.2%</b>	25.3%	14.5%
OCS-Plus Mixed Accuracy	0.01	2.08	17.8%	21.4%	60.8%
<b>Memory</b>					
Digit Span Forwards	0.12	1.16	3.5%	49.4%	47.1%
Digit Span Backwards	0.04	1.07	18.8%	20.0%	61.2%
Logical Memory Immediate	0.09	2.23	23.5%	30.9%	45.6%
Logical Memory Recall	0.03	2.59	23.8%	29.7%	46.5%
<b>Visuospatial Attention</b>					
Star Cancellation Task Total	-0.12	2.85	9.5%	4.7%	85.8%
<b>Perceptuomotor Abilities</b>					
OCS-Plus Figure Copy	0.17	2.92	12.9%	31.7%	55.4%
OCS-Plus Figure Recall	0.22	5.28	17.6%	31.7%	50.7%
ROCF – Copy	<b>0.69***</b>	3.19	3.5%	<b>40.4%</b>	56.1%
ROCF – Recall	0.17	3.67	19.2%	22.8%	58.0%
<b>Post-Stroke Abilities</b>					
Modified Rankin Scale Score	-0.23	0.63	16.4%	29.4%	54.2%
Barthel-3 item Total	-0.12	0.79	24.7%	14.1%	61.2%

<b>Quality of Life</b>					
SIS-Short Form Scaled Total	-0.05	10.05	1.1%	1.1%	97.8%
EQ5D-5L Health Rating	<b>-0.29*</b>	9.41	<b>37.2%</b>	16.2%	46.6%
<b>Emotional Distress</b>					
HADS-Depression Total	-0.08	1.99	24.7%	25.8%	49.5%
HADS-Anxiety Total	-0.13	2.01	12.9%	21.1%	66.0%
GDS Total	0.09	2.04	16.1%	6.9%	77.1%
<b>Extended Outcomes</b>					
Apathy Evaluation Scale	0.06	5.10	12.7%	14.9%	72.4%
Fatigue Severity Scale	<b>-0.33*</b>	7.66	15.1%	<b>37.2%</b>	47.7%
Sleep Condition Indicator	0.07	4.02	11.6%	12.7%	75.7%
<b>Carer Measures</b>					
Informant-GDS Total	-0.10	2.15	9.1%	9.1%	81.8%
IQ-CODE	0.34	0.31	15.5%	5.1%	79.4%

**Table 4.** Stability results of neuropsychological assessment, self-report, and carer measures per domain between Wave 1 and Wave 2 including Cohen's *d* effect size estimates. Statistical tests were alpha-adjusted using family-wise false discovery rate (FDR) corrections. Distribution-based MCIDs were estimated by calculating percentage of individuals whose difference in scores per measure between Wave 1 and Wave 2 were 0.5 standard deviations (SDs) above or below the mean of each measure at Wave 1.

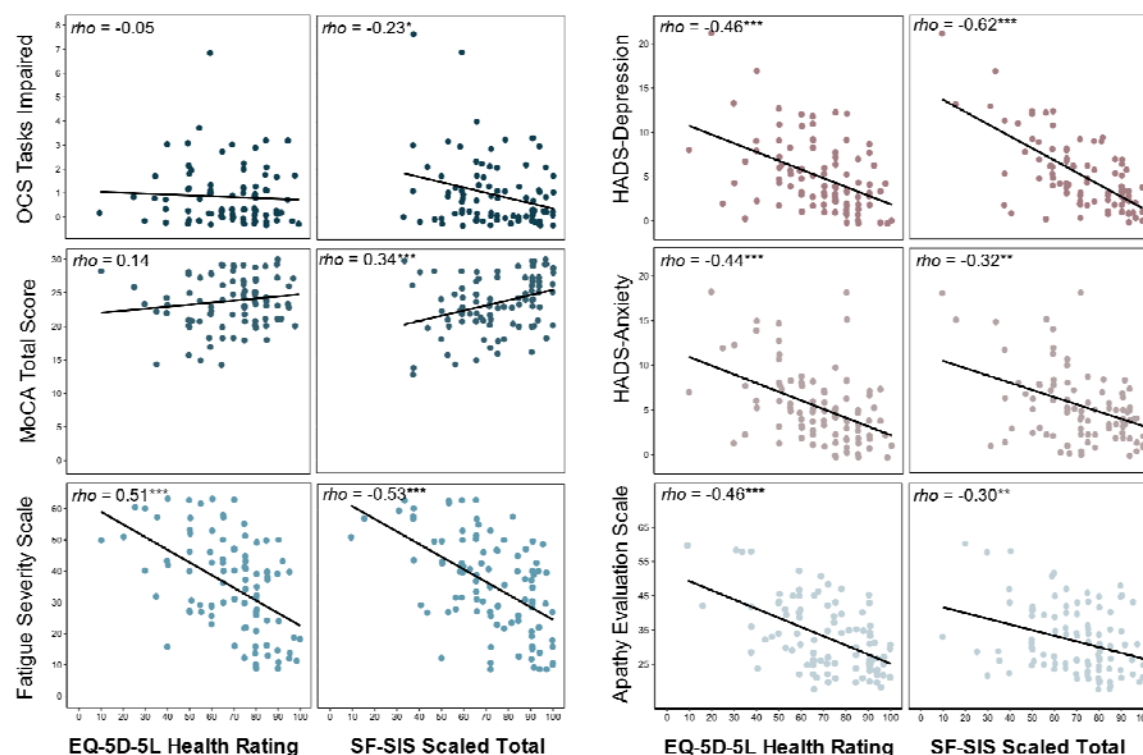
MCID: Minimal Clinically Important Difference; OCS: Oxford Cognitive Screen; ROCF: Rey-Osterrieth Complex Figure Copy; SIS: Stroke Impact Scale; EQ5D-5L: EuroQol-5 Dimensions-5 Levels; HADS: Hospital Anxiety and Depression Scale; GDS: Geriatric Depression Scale; IQ-CODE: Informant Questionnaire for Cognitive Decline in the Elderly

\*  $p < 0.05$ , \*\*  $p < 0.01$ , \*\*\*  $p < 0.001$  following family-wise FDR corrections.

### ***Impact of Psychological Outcomes on Quality of Life***

Median participant scores were moderate across all SIS domains, though considerable variation was present (see *Supplementary Figure 1*). Scaled scores were highest in communication (median = 89.29) and lowest in emotions (median = 72.22).

Scatter plots of cognition, depression, anxiety, fatigue and apathy to long-term OX-CHRONIC quality of life measures is shown in Figure 2. Domain-general cognition as measured by the OCS and MoCA did not seem to impact on overall quality of life as measured by the EQ-5D-5L ( $\rho$ s = -0.05 and 0.14 respectively); however worse cognitive outcomes correlated with worse stroke-specific quality of life ( $\rho$ s = -0.23 and 0.34). In contrast, greater fatigue, depression, anxiety, and apathy all significantly correlated with worse overall quality of life on the EQ-5D-5L and the stroke-specific SF-SIS.



**Figure 2.** Scatter plots of measures of cognition (OCS, MoCA), depression (HADS-Depression), anxiety (HADS-Anxiety), fatigue (Fatigue Severity Scale) and apathy (Apathy Evaluation Scale) to overall quality of life and stroke-related quality of life using Wave 1 data.

EQ-5D-5L: EuroQoL 5D-5L; SF-SIS: Short Form Stroke Impact Scale; OCS: Oxford Cognitive Screen; MoCA: Montreal Cognitive Assessment; HADS: Hospital Anxiety and Depression Scale

\*  $p < 0.05$ , \*\*  $p < 0.01$ , \*\*\*  $p < 0.001$

## Discussion

This study is one of the first in-depth examinations of psychological outcomes in chronic stroke, including addressing long-term cognition, emotional distress, fatigue, and apathy. At an average of 4.5 years post-event, cognitive impairments were present in nearly half of all chronic stroke survivors. Mild to severe levels of depression and anxiety were present in 20% - 50% of stroke survivors. Of all outcomes, clinically significant fatigue was the most prevalent, occurring in just over half of participants. Over a one-year period, only perceptuomotor abilities and fatigue statistically worsened in this chronic sample, while all outcomes showed some clinically meaningful improvement. Lastly, improved psychological outcomes significantly correlated with better perceived quality of life.

### *Prevalence of Domain-General Cognitive Impairment*

Domain-general impairments, as measured by two brief screening tools, ranged from 30% (MoCA <22<sup>62</sup>) to 45% (OCS) to 65% (MoCA <26). Previous research has similarly highlighted wide-ranging estimates of domain-general cognitive impairment. In a London registry study 22% were estimated to have mild cognitive impairment at 5-years post-stroke on the MMSE<sup>71</sup>, whilst other studies report 84% to have mild cognitive impairment at 4 years post-stroke<sup>72</sup> (MoCA <26). Other MoCA prevalence estimates have ranged from ~79% at 3 years post-stroke<sup>73</sup>, ~46% at 5 years post-stroke<sup>74</sup>, to ~61% at 10 years post-stroke<sup>75</sup>. Over a one-year period in the present chronic stroke sample, prevalence rates of domain-general impairments were found to be fairly stable on the OCS (47%) and MoCA (<26; 67%). In meta-analyses of chronic post-stroke cognitive impairment, it would be valuable to assess whether the differences in reported prevalence rates is due to measurement error, stroke-specific vs generic screens, or demographic and clinical factors in the sample. Notably, self-report and carer measures estimated differing rates of cognitive impairment (32% and 39% respectively), demonstrating discrepancies between observed and perceived, subjective cognitive impairments. These are also valuable to consider in prevalence rates of domain-general cognition.

### *Prevalence of Domain-Specific Cognitive Impairment*

Domain-specific impairment rates in this cohort are similar to previous cohorts<sup>76-78</sup>. Estimates of domain-specific cognitive impairments varied between OCS brief screening tasks and in-depth neuropsychological assessments. Executive function impairments were the most prevalent using in-depth, sensitive neuropsychological assessments, whereas visuospatial attention impairments were the most prevalent on the OCS (21%), though not notably higher than the in-depth visuospatial assessment (19%). Verbal memory impairments were

comparable across brief and in-depth assessments (range 4% - 9%). Visual memory impairments were observed in 27% of participants (higher than previous estimates of ~5% at 2 years post-stroke<sup>78</sup> and ~10% at 7 months post-stroke<sup>79</sup>). Low rates of language impairment were observed in both brief and in-depth assessments (0% - 7%). Language fluency tests had higher rates of impairment (8% – 14%), possibly reflecting the additional executive demands needed for fluency tests. This difference between brief tests and in-depth assessments confirms that unless more sensitive neuropsychological tests are used, these more subtle impairments are likely to be missed in typical post-stroke care. Collectively, findings show executive function abilities, visual memory, and visuospatial attention may be particularly important to monitor in long-term stroke.

### *Prevalence of Emotional Distress and Extended Outcomes*

Depression and anxiety rates in this cohort (~25%) are similar to reported estimates in early stroke of up to 12 months (22% anxiety<sup>8</sup>; 31% depression<sup>9</sup>), and in other chronic samples estimating depression at 15 years post-stroke (31%<sup>80</sup>). Notably, depression prevalence was higher when rated by carers (50%), replicating previous research highlighting discrepancies in early stroke survivor-proxy reports.<sup>81</sup> Individuals may feel stigmatized about endorsing depression and minimize emotional impact of the stroke itself, thus carer responses may be more representative. However, carer ratings of participant depression may indicate concern for the stroke survivor, or reflect carer mood, thus stroke survivor reports may be more accurate.

Clinically significant fatigue was reported by 51% of participants, consistent with community-based stroke survivors estimates (range 38% - 68%<sup>82</sup>), meta-analyses (50%<sup>10</sup>), and early stroke fatigue rates (50%<sup>83</sup>). Our cohort had higher levels of apathy (41%) compared to a systematic review<sup>84</sup> pooled prevalence estimate (35%) and milder stroke

cohorts (~36%<sup>85</sup>). Long-term stroke survivors may require improved intervention and support in these areas; however, fatigue and apathy may be more resistant to change relative to depression and anxiety<sup>77</sup>. Sleep difficulties in this cohort (21%) were less prevalent than meta-analytic estimates (38%<sup>86</sup>). Increases in daytime sleepiness are associated with greater time post-stroke, rather than difficulties falling or staying sleep<sup>86</sup> and thus exploring how different sleep difficulties categorizations relate to function would be valuable.

Despite the high frequency of depression, anxiety, apathy, fatigue and sleep disturbances, significant carer strain was relatively low in this cohort (13.2%). Previous work has reported approximately 30% of carers experience significant strain at 6 months post-stroke<sup>87</sup> and 42% at 12 months<sup>88</sup>. Beyond 12 months, carers may become more adept at coping with care responsibilities, or perhaps stroke survivors continue to restore capabilities and require less care. Further research could explore how carer strain changes in relation to care competency and functional capability of the stroke survivor beyond 12 months. Irrespective of carer strain, a systematic review of long-term unmet needs of carers (up to 4 years post-stroke) showed the need for continued psychological information and support to be provided to carers in the long-term after stroke<sup>89</sup>.

### *Stability of Psychological Outcomes in Long Term Stroke*

Domain-general cognitive impairment on the OCS and MoCA were found to be statistically stable. However, when considering MCID change using an anchor-based estimate for the MoCA, 42% of participants declined and 20% improved. Discourse language, executive function and perceptuomotor abilities were statistically most variable across timepoints. The discourse language task was based on visual stimuli, and practice effects<sup>90</sup> are likely to have contributed to variability. Similarly, executive function measured by the Hayling test improved over one year. However, only response initiation time decreased, suggesting

participants improved in response speed only. This may partially explain why 60% demonstrated MCID improvements. Attention and memory abilities were statistically stable, consistent with previous findings<sup>91,92</sup>. However, 20% - 49% demonstrated decline on memory tasks using MCID metrics. Exploring whether MCID changes in either direction are genuine or simply measurement error requires further research. Although we observed mean shifts in scores, impairment status was found to be stable over time. This could indicate that while improvement can occur in the long-term, individuals may not reach a status of “recovery.”

Self- and carer-reported depression and anxiety showed no statistically significant change over time. Emotional outcomes >2 years post-stroke may therefore be particularly stable. Participants may report higher distress in early stroke regardless of risk for chronic distress. Reviews note declines in depression and anxiety cases in the first year post-stroke<sup>32</sup>, however beyond one-year estimates remain stable<sup>9</sup>. Apathy and sleep levels also did not statistically change, aligning with previous work<sup>32,93</sup>. Similarly, across these measures 50% - 77% showed no MCID change. Thus, much like emotional outcomes, apathy and sleep are long-term targets for intervention. Though stroke-related quality of life (98% no MCID change) and functional abilities (54% - 61%) were highly consistent between assessment timepoints, there were improvements on the EQ-5D-5L (37% MCID improvement), suggesting that regardless of persistent symptoms, some individuals may experience improvements in the very long-term.<sup>94</sup>

The only self-reported outcome to decline over the period of one year was fatigue. Investigating causes of worsening fatigue is a top unmet need reported by both stroke survivors and clinicians<sup>16</sup>. While fatigue levels are not thought to be affected by time post-stroke<sup>86</sup>, these data suggest there may be an eventual worsening of fatigue in the very long-term. Whilst replication is warranted, exploring factors relating to fatigue and intervention development is necessary. Likely, there are differing prevalence rates of fatigue subtypes



(e.g., physical, emotional, and mental). Establishing the degree to which different subtypes of fatigue impact daily function, and how each subtype relates to outcomes, would be an asset in long-term fatigue management post-stroke.

## **Clinical Implications**

### *Frequency vs Impact on Quality of Life*

Whilst services should anticipate which psychological outcomes are most likely to need clinical attention, adequate time and effort should also go towards supporting those with less prevalent outcomes that may also affect quality of life. For example, though sleep difficulties were one of the least prevalent outcomes here, this does not presume that it has no impact on day-to-day functioning. Similarly, although clinically significant fatigue rates were double that of depression, depression more strongly correlated with stroke-related quality of life. Further, the ways in which quality of life is affected by psychological outcomes is important to understand – greater cognitive impairment was only correlated with stroke-specific quality of life rather than general quality of life, indicating there may be aspects of quality of life that may not be strongly impacted by cognition.

### *Right Treatments at the Right Time*

Findings suggest that the majority of long-term outcomes will remain stable relative to early stroke<sup>33</sup>. However, some stroke survivors demonstrated improvement, contradicting the notion that improvements only occur in the first-year post-stroke. This is further supported by the recent findings of long-term improvement with physical interventions in chronic stroke<sup>95</sup>. This sends a strong positive message that conducting interventions within chronic stroke may be as valuable as interventions in early stroke. Further, we found evidence of significant

worsening of fatigue indicating that interventions in chronic stroke may also be valuable to prevent longer-term decline.

### *Impact of Participant Attrition*

Neither demographic variables, nor nature or severity of cognitive impairment differed between those lost to attrition and those retained. In combination with reasons for attrition (death, poor health, too busy to take part), attrition was likely not due to study-related factors making participation for stroke survivors difficult. However, as individuals lost to attrition self-reported overall poorer SF-SIS functioning, worse ADLs, and greater emotional distress, prevalence in these measures may be less representative.

### **Limitations**

Due to the COVID-19 pandemic, all assessments in OX-CHRONIC were conducted remotely. Though remote administration of the OCS (Tele-OCS) has been validated<sup>96</sup>, this format did not allow for apraxia impairments assessment. Though evidence suggests remote assessment of neuropsychological tests are comparable to in-person<sup>97</sup>, time-based metrics may be especially more variable via remote assessment. While time post-stroke did not correlate with key outcomes, OX-CHRONIC comprised a wide range of participants from 2 to 9 years post-acute event. As data collection was conducted during the pandemic, it is possible that this experience affected performance on study measures in unknown ways.

### **Conclusions**

Cognitive impairment was present in 45% of chronic stroke survivors. Domain-specific impairments in attention and executive function were the most common in this chronic sample. Memory impairments were the most stable, while discourse language abilities were more variable. There were high rates of depression, anxiety, fatigue, and apathy, and these

outcomes correlated with worse quality of life in long-term stroke. This study elucidates the frequency of an array of psychological outcomes in chronic stroke survivors. These findings highlight that psychological consequences of stroke are prevalent and warrant attention in community-based stroke care.

## References

1. Van De Port IGL, Kwakkel G, Van Wijk I, et al. Susceptibility to deterioration of mobility long-term after stroke: a prospective cohort study. *Stroke* 2006; 37(1): 167–171.
2. Jaillard A, Naegele B, Trabucco-Miguel S, et al. Hidden dysfunctioning in subacute stroke. *Stroke* 2009; 40(7): 2473–2479.
3. Nys GM, Van Zandvoort MJ, De Kort PL, et al. Cognitive disorders in acute stroke: prevalence and clinical determinants. *Cerebrovasc Dis* 2007; 23(5–6): 408–416.
4. Seminog OO, Scarborough P, Wright FL, Rayner M, Goldacre MJ. Determinants of the decline in mortality from acute stroke in England: linked national database study of 795 869 adults. *Bmj*. 2019 May 22;365.
5. Johnson CO, Nguyen M, Roth GA, Nichols E, Alam T, Abate D, Abd-Allah F, Abdelalim A, Abraha HN, Abu-Rmeileh NM, Adebayo OM. Global, regional, and national burden of stroke, 1990–2016: a systematic analysis for the Global Burden of Disease Study 2016. *The Lancet Neurology*. 2019 May 1;18(5):439-58.
6. Lin BL, Mei YX, Wang WN, Wang SS, Li YS, Xu MY, Zhang ZX, Tong Y. Unmet care needs of community-dwelling stroke survivors: a systematic review of quantitative studies. *BMJ open*. 2021 Apr 1;11(4):e045560.
7. Lo JW, Crawford JD, Desmond DW, Godefroy O, Jokinen H, Mahinrad S, Bae HJ, Lim JS, Köhler S, Douven E, Staals J. Profile of and risk factors for poststroke cognitive impairment in diverse ethnoregional groups. *Neurology*. 2019 Dec 10;93(24):e2257-71.
8. Knapp P, Dunn-Roberts A, Sahib N, Cook L, Astin F, Kontou E, Thomas SA. Frequency of anxiety after stroke: an updated systematic review and meta-analysis of observational studies. *International Journal of Stroke*. 2020 Apr;15(3):244-55.  
[DOI:10.1177/1747493019896958](https://doi.org/10.1177/1747493019896958)
9. Hackett ML, Pickles K. Part I: frequency of depression after stroke: an updated systematic review and meta-analysis of observational studies. *International Journal of Stroke*. 2014 Dec;9(8):1017-25. [DOI:10.1111/ijss.12357](https://doi.org/10.1111/ijss.12357)
10. Cumming TB, Packer M, Kramer SF, English C. The prevalence of fatigue after stroke: a systematic review and meta-analysis. *International Journal of stroke*. 2016 Dec;11(9):968-77. doi:10.1177/1747493016669861
11. Tay J, Morris RG, Markus HS. Apathy after stroke: Diagnosis, mechanisms, consequences, and treatment. *International Journal of Stroke*. 2021 Jul;16(5):510-8.
12. Mole JA, Demeyere N. The relationship between early post-stroke cognition and longer term activities and participation: A systematic review. *Neuropsychological rehabilitation*. 2020 Feb 7;30(2):346-70.
13. Stolwyk, R.J., Mihaljcic, T., Wong, D.K., Chapman, J.E., Rogers, J.M., 2021. Poststroke Cognitive Impairment Negatively Impacts Activity and Participation Outcomes: A Systematic Review and Meta-Analysis. *Stroke* Jan;52(2):748-760.  
doi:10.1161/STROKEAHA.120.032215
14. Andrew NE, Kilkenny M, Naylor R, Purvis T, Lalor E, Moloczij N, Cadilhac DA, National Stroke Foundation. Understanding long-term unmet needs in Australian survivors of stroke. *International Journal of Stroke*. 2014 Oct;9:106-12.
15. Abrahamson V, Wilson PM. How unmet are unmet needs post-stroke? A policy analysis of the six-month review. *BMC Health Services Research*. 2019 Dec;19:1-9.

16. Hill G, Regan S, Francis R, Mead G, Thomas S, Salman RA, Roffe C, Pollock A, Davenport S, Kontou E, Chadd K. Research priorities to improve stroke outcomes. *The Lancet Neurology*. 2022 Apr 1;21(4):312-3. doi:10.1016/S1474-4422(22)00044-8
17. Lo JW, Crawford JD, Desmond DW, Bae HJ, Lim JS, Godefroy O, Roussel M, Kang Y, Jahng S, Köhler S, Staals J. Long-term cognitive decline after stroke: An individual participant data meta-analysis. *Stroke*. 2022 Apr;53(4):1318-27. doi:10.1161/STROKEAHA.121.035796.
18. Sexton E, McLoughlin A, Williams DJ, Merriman NA, Donnelly N, Rohde D, Hickey A, Wren MA, Bennett K. Systematic review and meta-analysis of the prevalence of cognitive impairment no dementia in the first year post-stroke. *European stroke journal*. 2019 Jun;4(2):160-71. doi:10.1177/2396987318825484
19. Tang EY, Amiesimaka O, Harrison SL, Green E, Price C, Robinson L, Siervo M, Stephan BC. Longitudinal effect of stroke on cognition: a systematic review. *Journal of the American Heart Association*. 2018 Jan 15;7(2):e006443.
20. Saa JP, Tse T, Baum C, Cumming T, Josman N, Rose M, Carey L. Longitudinal evaluation of cognition after stroke - A systematic scoping review. *PLoS One*. 2019 Aug 29;14(8):e0221735. doi:10.1371/journal.pone.0221735.
21. Demeyere N, Riddoch MJ, Slavkova ED, Bickerton WL, Humphreys GW. The Oxford Cognitive Screen (OCS): validation of a stroke-specific short cognitive screening tool. *Psychological assessment*. 2015 Sep;27(3):883.
22. Rebchuk AD, Kuzmuk LE, Deptuck HM, Silverberg ND, Field TS. Evaluating high-functioning young stroke survivors with cognitive complaints. *Canadian Journal of Neurological Sciences*. 2022 May;49(3):368-72. doi:10.1017/cjn.2021.137
23. Lee PH, Yeh TT, Yen HY, Hsu WL, Chiu VJ, Lee SC. Impacts of stroke and cognitive impairment on activities of daily living in the Taiwan longitudinal study on aging. *Scientific Reports*. 2021 Jun 9;11(1):1-9. doi:10.1038/s41598-021-91838-4
24. Baylan S, Griffiths S, Grant N, Broomfield NM, Evans JJ, Gardani M. Incidence and prevalence of post-stroke insomnia: a systematic review and meta-analysis. *Sleep medicine reviews*. 2020 Feb 1;49:101222.
25. Fulk GD, Boyne P, Hauger M, Ghosh R, Romano S, Thomas J, Slutzky A, Klingman K. The impact of sleep disorders on functional recovery and participation following stroke: A systematic review and meta-analysis. *Neurorehabilitation and neural repair*. 2020 Nov;34(11):1050-61.
26. Caeiro L, Ferro JM, e Melo TP, Canhão P, Figueira ML. Post-stroke apathy: an exploratory longitudinal study. *Cerebrovascular Diseases*. 2013;35(6):507-13.
27. Alghamdi I, Ariti C, Williams A, Wood E, Hewitt J. Prevalence of fatigue after stroke: a systematic review and meta-analysis. *European stroke journal*. 2021 Dec;6(4):319-32. doi:10.1177/23969873211047681
28. Williams OA, Demeyere N. Association of depression and anxiety with cognitive impairment 6 months after stroke. *Neurology*. 2021 Apr 13;96(15):e1966-74.
29. Falck RS, Best JR, Davis JC, Eng JJ, Middleton LE, Hall PA, Liu-Ambrose T. Sleep and cognitive function in chronic stroke: a comparative cross-sectional study. *Sleep*. 2019 May;42(5):zsz040. doi:10.1093/sleep/zsz040
30. Skogestad IJ, Kirkevold M, Larsson P, Borge CR, Indredavik B, Gay CL, Lerdal A. Post-stroke fatigue: an exploratory study with patients and health professionals to develop a

- patient-reported outcome measure. *Journal of Patient-Reported Outcomes*. 2021 Dec;5(1):1-1.
31. Ezekiel L, Collett J, Mayo NE, Pang L, Field L, Dawes H. Factors associated with participation in life situations for adults with stroke: a systematic review. *Archives of physical medicine and rehabilitation*. 2019 May 1;100(5):945-55.
  32. Carnes-Vendrell A, Deus J, Molina-Seguin J, Pifarré J, Purroy F. Depression and apathy after transient ischemic attack or minor stroke: prevalence, evolution and predictors. *Scientific reports*. 2019 Nov 7;9(1):16248.
  33. Demeyere N, Sun S, Milosevich E, Vancleef K. Post-stroke cognition with the Oxford Cognitive Screen vs Montreal Cognitive Assessment: a multi-site randomized controlled study (OCS-CARE). *AMRC Open Research*. 2019 Aug 13;1:12.
  34. Demeyere N, Williams OA, Milosevich E, et al. Long-term psychological consequences of stroke (OX-CHRONIC): A longitudinal study of cognition in relation to mood and fatigue after stroke: Protocol. *European Stroke Journal*. 2021;6(4):428-437. doi:10.1177/23969873211046120
  35. Nasreddine ZS, Phillips NA, BÃ©dirian V, et al. The Montreal cognitive assessment, MoCA: a brief screening tool for mild cognitive impairment. *J Am Geriatr Soc* 2005; 53(4): 695–699.
  36. Kaplan E. *The Assessment of Aphasia and Related Disorders*. Philadelphia: Lippincott Williams & Wilkins, 1983.
  37. Mack WJ, Freed DM, Williams BW, et al. Boston naming test: shortened versions for use in Alzheimer's disease. *J Gerontol* 1992; 47(3): P154–P158.
  38. Delis DC, Kaplan E, Kramer JH. *Delis-Kaplan executive function system*. Assessment. 2001.
  39. Burgess P, Shallice T. *The Hayling and Brixton tests*. Thurston Suffolk. Thames Valley Company. 1997.
  40. Demeyere N, Haupt M, Webb SS, et al. Introducing the tablet-based Oxford Cognitive Screen-Plus (OCS-Plus) as an assessment tool for subtle cognitive impairments. *Scientific Reports* 2021; 11(1): 8000.
  41. Wechsler D, Edition WM. *Wechsler Memory Scale-III*. The Psychological Corporation: San Antonio. TX, USA. 1997;14.
  42. Wilson B, Cockburn J, Halligan PW. *Behavioural inattention test thames valley test company*: Titchfield. Hampshire, UK. 1987.
  43. Osterrieth PA. Le test de copie d'une figure complexe; contribution a l'etude de la perception et de la memoire. *Archives de psychologie*. 1944.
  44. Broadbent DE, Cooper PF, FitzGerald P, Parkes KR. The cognitive failures questionnaire (CFQ) and its correlates. *British journal of clinical psychology*. 1982 Feb;21(1):1-6.
  45. Nucci M, Mapelli D, Mondini S. Cognitive Reserve Index questionnaire (CRIq): a new instrument for measuring cognitive reserve. *Aging clinical and experimental research*. 2012 Jun;24:218-26.
  46. Van Swieten JC, Koudstaal PJ, Visser MC, Schouten HJ, Van Gijn J. Interobserver agreement for the assessment of handicap in stroke patients. *stroke*. 1988 May;19(5):604-7.
  47. Nouri FM, Lincoln NB. An extended activities of daily living scale for stroke patients. *Clinical rehabilitation*. 1987 Nov;1(4):301-5.

48. Ellul J, Watkins C, BARer D. Estimating total Barthel scores from just three items: the European Stroke Database ‘minimum dataset’ for assessing functional status at discharge from hospital. *Age and ageing*. 1998 Mar 1;27(2):115-22.
49. Zigmond AS, Snaith RP. The hospital anxiety and depression scale. *Acta psychiatrica scandinavica*. 1983 Jun;67(6):361-70.
50. Yesavage JA. Geriatric depression scale. *Psychopharmacol bull*. 1988 Jan 1;24(4):709-11.
51. Krupp LB, LaRocca NG, Muir-Nash J, Steinberg AD. The fatigue severity scale: application to patients with multiple sclerosis and systemic lupus erythematosus. *Archives of neurology*. 1989 Oct 1;46(10):1121-3.
52. Marin RS, Biedrzycki RC, Firinciogullari S. Reliability and validity of the Apathy Evaluation Scale. *Psychiatry research*. 1991 Aug 1;38(2):143-62.
53. Espie CA, Kyle SD, Hames P, et al. The sleep condition indicator: a clinical screening tool to evaluate insomnia disorder. *BMJ Open* 2014; 4(3): e004183.
54. Herdman M, Gudex C, Lloyd A, et al. Development and preliminary testing of the new five-level version of EQ-5D (EQ-5D-5L). *Qual Life Res* 2011; 20(10): 1727–1736.
55. Jenkinson C, Fitzpatrick R, Crocker H, Peters M. The Stroke Impact Scale: validation in a UK setting and development of a SIS short form and SIS index. *Stroke*. 2013 Sep;44(9):2532-5.
56. Whoqol Group. Development of the World Health Organization WHOQOL-BREF quality of life assessment. *Psychological medicine*. 1998 May;28(3):551-8.
57. Al-Janabi H, N Flynn T, Coast J. Development of a self-report measure of capability wellbeing for adults: the ICECAP-A. *Quality of life research*. 2012 Feb;21:167-76.
58. Robinson BC. Validation of a caregiver strain index. *J Gerontol* 1983; 38(3): 344–348.
59. Jorm AF and Jacomb PA. The informant questionnaire on cognitive decline in the elderly (IQCODE): sociodemographic correlates, reliability, validity and some norms. *Psychol Med* 1989; 19(4): 1015–1022.
60. Brown LM and Schinka JA. Development and initial validation of a 15-item informant version of the geriatric depression scale. *Int J Geriatr Psychiatry* 2005; 20(10): 911–918
61. R Core Team. R: A Language and Environment for Statistical Computing [Internet]. Vienna, Austria; 2021. Available from: <https://www.R-project.org/>
62. Shi D, Chen X, Li Z. Diagnostic test accuracy of the Montreal Cognitive Assessment in the detection of post-stroke cognitive impairment under different stages and cutoffs: a systematic review and meta-analysis. *Neurological Sciences*. 2018 Apr;39:705-16.
63. Janssen MF, Pickard AS, Shaw JW. General population normative data for the EQ-5D-3L in the five largest European economies. *The European Journal of Health Economics*. 2021 Dec;22(9):1467-75.
64. Wu CY, Hung SJ, Lin KC, Chen KH, Chen P, Tsay PK. Responsiveness, minimal clinically important difference, and validity of the MoCA in stroke rehabilitation. *Occupational Therapy International*. 2019 Oct;2019.
65. Dromerick AW, Edwards DF, Diringer MN. Sensitivity to changes in disability after stroke: A comparison of. *Journal of rehabilitation research and development*. 2003;40(1-4):1-8.
66. Chen P, Lin KC, Liing RJ, Wu CY, Chen CL, Chang KC. Validity, responsiveness, and minimal clinically important difference of EQ-5D-5L in stroke patients undergoing rehabilitation. *Quality of life research*. 2016 Jun;25:1585-96.



67. Lemay KR, Tulloch HE, Pipe AL, Reed JL. Establishing the minimal clinically important difference for the hospital anxiety and depression scale in patients with cardiovascular disease. *Journal of cardiopulmonary rehabilitation and prevention*. 2019 Nov 1;39(6):E6-11.
68. Vinkers DJ, Gussekloo J, Stek ML, Westendorp RG, Van Der Mast RC. The 15-item Geriatric Depression Scale (GDS-15) detects changes in depressive symptoms after a major negative life event. The Leiden 85-plus Study. *International journal of geriatric psychiatry*. 2004 Jan;19(1):80-4.
69. Rooney S, McFadyen A, Wood L, Moffat F, Paul L. Minimally important difference of the fatigue severity scale and modified fatigue impact scale in people with multiple sclerosis. *Multiple sclerosis and related disorders*. 2019 Oct 1;35:158-63.
70. Espie CA, Farias Machado P, Carl JR, Kyle SD, Cape J, Siriwardena AN, Luik AI. The Sleep Condition Indicator: reference values derived from a sample of 200 000 adults. *Journal of sleep research*. 2018 Jun;27(3):e12643.
71. Douiri A, Rudd AG, Wolfe CD. Prevalence of poststroke cognitive impairment: South London stroke register 1995–2010. *Stroke*. 2013 Jan;44(1):138-45.
72. Mahon S, Parmar P, Barker-Collo S, Krishnamurthi R, Jones K, Theadom A, Feigin V. Determinants, prevalence, and trajectory of long-term post-stroke cognitive impairment: results from a 4-year follow-up of the ARCOS-IV study. *Neuroepidemiology*. 2017;49(3-4):129-34.
73. Sensenbrenner B, Rouaud O, Graule-Petot A, Guillemin S, Piver A, Giroud M, Béjot Y, Jacquin-Piques A. High prevalence of social cognition disorders and mild cognitive impairment long term after stroke. *Alzheimer Disease & Associated Disorders*. 2020 Jan 13;34(1):72-8.
74. Rohde D, Gaynor E, Large M, Mellon L, Bennett K, Williams DJ, Brewer L, Hall P, Callaly E, Dolan E, Hickey A. Cognitive impairment and medication adherence post-stroke: A five-year follow-up of the ASPIRE-S cohort. *PloS one*. 2019 Oct 17;14(10):e0223997.
75. Delavaran H, Jönsson AC, Lökvist H, Iwarsson S, Elmståhl S, Norrving B, Lindgren A. Cognitive function in stroke survivors: a 10-year follow-up study. *Acta Neurologica Scandinavica*. 2017 Sep;136(3):187-94.
76. Barker-Collo S, Starkey N, Lawes CM, Feigin V, Senior H, Parag V. Neuropsychological profiles of 5-year ischemic stroke survivors by Oxfordshire stroke classification and hemisphere of lesion. *Stroke*. 2012 Jan;43(1):50-5.
77. Schaapsmeeders P, Maaijwee NA, van Dijk EJ, Rutten-Jacobs LC, Arntz RM, Schoonderwaldt HC, Dorresteyn LD, Kessels RP, de Leeuw FE. Long-term cognitive impairment after first-ever ischemic stroke in young adults. *Stroke*. 2013 Jun;44(6):1621-8.
78. Turunen KE, Laari SP, Kauranen TV, Uimonen J, Mustanoja S, Tatlisumak T, Poutiainen E. Domain-specific cognitive recovery after first-ever stroke: a 2-year follow-up. *Journal of the International Neuropsychological Society*. 2018 Feb;24(2):117-27.
79. Nys GM, Van Zandvoort MJ, De Kort PL, Jansen BP, Van der Worp HB, Kappelle LJ, De Haan EH. Domain-specific cognitive recovery after first-ever stroke: a follow-up study of 111 cases. *Journal of the International Neuropsychological Society*. 2005 Nov;11(7):795-806.



80. Ayerbe L, Ayis S, Crichton S, Wolfe CD, Rudd AG. The natural history of depression up to 15 years after stroke: the South London Stroke Register. *Stroke*. 2013 Apr;44(4):1105-10.
81. Lapin BR, Thompson NR, Schuster A, Katzan IL. Magnitude and variability of stroke patient-proxy disagreement across multiple health domains. *Archives of Physical medicine and rehabilitation*. 2021 Mar 1;102(3):440-7.
82. Winward C, Sackley C, Metha Z, Rothwell PM. A population-based study of the prevalence of fatigue after transient ischemic attack and minor stroke. *Stroke*. 2009 Mar 1;40(3):757-61. doi:10.1161/STROKEAHA.108.527101
83. Hinkle JL, Becker KJ, Kim JS, Choi-Kwon S, Saban KL, McNair N, Mead GE. Poststroke fatigue: emerging evidence and approaches to management: a scientific statement for healthcare professionals from the American Heart Association. *Stroke*. 2017 Jul;48(7):e159-70.
84. Van Dalen JW, van Charante EP, Nederkoorn PJ, van Gool WA, Richard E. Poststroke apathy. *Stroke*. 2013 Mar;44(3):851-60. doi:10.1161/STROKEAHA.112.674614
85. Sagen-Vik U, Finset A, Moum T, Vik TG, Dammen T. The longitudinal course of anxiety, depression and apathy through two years after stroke. *Journal of Psychosomatic Research*. 2022 Nov 1;162:111016. doi:10.1016/j.jpsychores.2022.111016
86. Baylor C, Yorkston KM, Jensen MP, Truitt AR, Molton IR. Scoping review of common secondary conditions after stroke and their associations with age and time post stroke. *Topics in stroke rehabilitation*. 2014 Sep 1;21(5):371-82.
87. Ilse IB, Feys H, De Wit L, Putman K, De Weerd W. Stroke caregivers' strain: prevalence and determinants in the first six months after stroke. *Disability and Rehabilitation*. 2008 Jan 1;30(7):523-30.
88. Rigby H, Gubitz G, Phillips S. A systematic review of caregiver burden following stroke. *International Journal of Stroke*. 2009 Aug;4(4):285-92.
89. Denham AM, Wynne O, Baker AL, Spratt NJ, Loh M, Turner A, Magin P, Bonevski B. The long-term unmet needs of informal carers of stroke survivors at home: a systematic review of qualitative and quantitative studies. *Disability and Rehabilitation*. 2022 Jan 1;44(1):1-2.
90. Calamia M, Markon K, Tranel D. Scoring higher the second time around: meta-analyses of practice effects in neuropsychological assessment. *The Clinical Neuropsychologist*. 2012 May 1;26(4):543-70
91. Hurford R, Charidimou A, Fox Z, Cipolotti L, Werring DJ. Domain-specific trends in cognitive impairment after acute ischaemic stroke. *Journal of neurology*. 2013 Jan;260:237-41. doi:10.1007/s00415-012-6625-0.
92. Lugtmeijer S, Lammers NA, de Haan EH, de Leeuw FE, Kessels RP. Post-stroke working memory dysfunction: A meta-analysis and systematic review. *Neuropsychology review*. 2021 Mar;31:202-19.
93. Lammers NA, Van Wanrooij LL, van Dalen JW, van Gool WA, Schmand B, Moll van Charante EP, de Haan EH, Van de Beek D, Nederkoorn PJ, Richard E. The course of post-stroke apathy in relation to cognitive functioning: a prospective longitudinal cohort study. *Aging, Neuropsychology, and Cognition*. 2021 Oct 23:1-2.
94. Skoglund E, Westerlind E, Persson HC, Sunnerhagen KS. Self-perceived impact of stroke: a longitudinal comparison between one and five years post-stroke. *J Rehabil Med*. 2019 Oct 4;51(9):660-4. doi:10.2340/16501977-2595

95. Ward NS, Brander F, Kelly K. Intensive upper limb neurorehabilitation in chronic stroke: outcomes from the Queen Square programme. *Journal of Neurology, Neurosurgery & Psychiatry*. 2019 May 1;90(5):498-506.
96. Webb SS, Carrick C, Kusec A, Demeyere N. Introducing the Tele-OCS: A validated remotely administered version of The Oxford Cognitive Screen. *Health Open Research*. 2023 Feb 13;5(8):8.
97. Chapman JE, Gardner B, Ponsford J, Cadilhac DA, Stolwyk RJ. Comparing performance across in-person and videoconference-based administrations of common neuropsychological measures in community-based survivors of stroke. *Journal of the International Neuropsychological Society*. 2021 Aug;27(7):697-710.