

1 (Poly)phenols in Human Breast Milk and their health

2 benefits for the newborn

3 Diogo Carregosa¹, Inês P. Silva¹, Carolina Teixeira¹, Mariana Baltazar¹, Rocio García-Villalba², Filipa
4 Soares Vieira³, Mónica Marçal^{1,3}, Madalena Tuna^{3,4}, Cláudia N. Santos¹

5 ¹ iNOVA4Health, NOVA Medical School | Faculdade de Ciências Médicas, Universidade NOVA de
6 Lisboa, Campo dos Mártires da Pátria, 1169-056 Lisboa, Portugal.

7 ² Laboratory of Food & Health, Research Group on Quality, Safety, and Bioactivity of Plant Foods,
8 CEBAS-CSIC, Murcia, Spain.

9 ³ Hospital de São Francisco Xavier - Centro Hospitalar de Lisboa ocidental E.P.E.

10 ⁴ CHRC, NOVA Medical School | Faculdade de Ciências Médicas, Universidade NOVA de Lisboa,
11 Campo dos Mártires da Pátria, 1169-056 Lisboa, Portugal.

12

13 Corresponding author: claudia.nunes.santos@nms.unl.pt

14

15 **Abbreviations used:** BM, breast milk; BSID, Bayley Scales of Infant Development; DOPAC, 2-(3,4-
16 dihydroxyphenyl)acetic acid; EHC, enterohepatic circulation; FRAP, ferric reducing antioxidant
17 power; LMW, low molecular weight; MDI, Mental Developmental Index; OAT, organic acid
18 transporter; ORAC, oxygen radical absorbance capacity; PDI, Psychomotor Development Index; PLS-
19 3, Preschool Language Scale-3; SC, systemic circulation; SPE, solid phase extraction; TEAC, trolox
20 equivalent antioxidant capacity; TRAP, total reactive antioxidant potential

21

22

23

24

25 **Abstract**

26 Human breast milk is the first food source available to newborns and is responsible for
27 healthy growth and development during the first months of life. Human breast milk contains
28 vitamins, hormones, cytokines, microbiota, and immune cells that are responsible for such
29 healthy conditions. Nonetheless, knowledge of the vast array of molecules present in human
30 breast milk and their potential health effects is still lacking. The effects of mothers' diets on
31 the molecules present in human breast milk are also generally unknown. The health benefits
32 of (poly)phenols have been largely increasing but their presence in breast milk has been put
33 largely aside. The impact of the mother's diet in the presence and quantification of these
34 molecules in milk has also been overlooked. Above all, the potential benefits of
35 (poly)phenols for newborns are just a vast emptiness of what is known about (poly)phenol
36 research.

37 **Keywords:** Polyphenols, Breast Milk, Newborn, Metabolites, Concentrations

38

39 **1. Introduction**

40 Human breast milk is produced by the mammary gland and is essential for the healthy
41 growth and development of newborns. Human breast milk is characterized by a huge
42 complexity and diversity of components, including nutrients, such as proteins,
43 carbohydrates, and lipids (1); bioactive components, such as immunoglobulins, stem cells,
44 cytokines, hormones, growth factors, and phytochemicals (2); and a vast array of bacteria,
45 such as *Staphylococcus*, *Streptococcus*, *Bifidobacterium*, *Lactobacillus*, and *Clostridium*
46 cluster XIVA–XIVb (3). This chemical and biological diversity of agents in its composition
47 provides the infant with well-balanced nutrition and protection against potential infectious
48 pathogens as the infant immune system develops (4). For these reasons and for optimal
49 health and growth, the World Health Organization (5) recommends that infants be
50 exclusively breastfed for the first six months of life, and that breastfeeding continues to be an

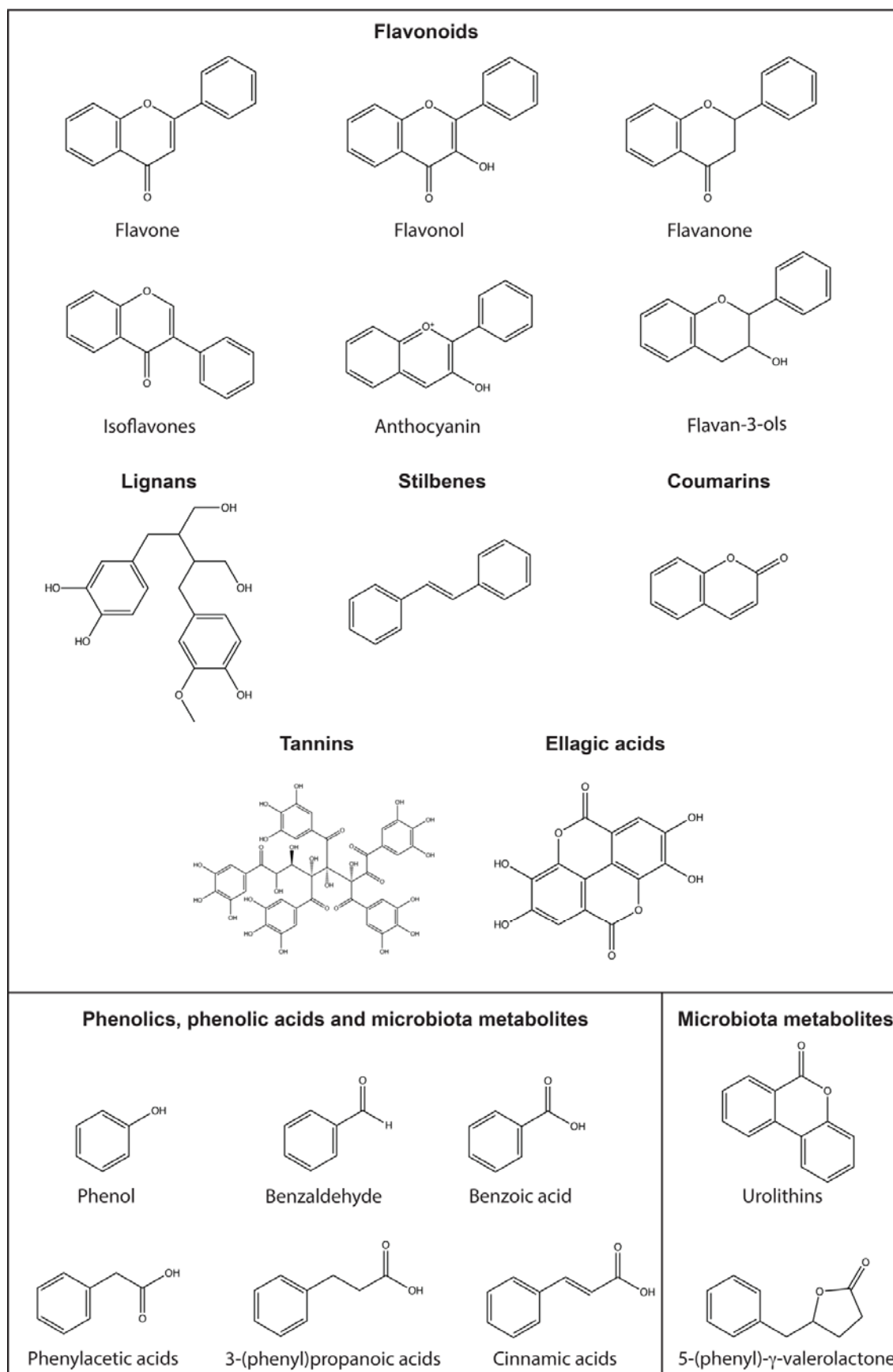
51 important part of the diet until the infant is at least two years old. In addition to nutrients,
52 vitamins, cells, and other compounds beneficial for health, it is not surprising that breast milk
53 also contains some undesirable molecules, for example xenobiotics. Environmental
54 xenobiotics in air, water and soil are absorbed by organisms through ingestion, inhalation or
55 dermal absorption and enter the human food chain and often can be found in milk samples
56 (6).

57 Human breast milk is a dynamic fluid that arises from the lactation process and develops to
58 the different newborn needs. Breast milk can be classified into different stages based on its
59 chemical composition. The first stage is pre-colostrum. This occurs as result of the process
60 of lactogenesis that starts as early as the second trimester of pregnancy, the 16th week of
61 pregnancy, due to the increased levels of estrogen and progesterone in the circulation (7).
62 From day 5 up until day 7 after birth, colostrum is secreted and has a sticky consistency of
63 yellow color given by the presence of carotenes from dietary intake. Colostrum is
64 characterized by its nutritional, immunological and growth functions. The third stage is the
65 transition milk produced between days 4 and 15 after childbirth, which shows a white color
66 due to the emulsification of fats and the strong presence of calcium caseinate (7). Finally,
67 mature milk, is produced from the 15th postpartum day looking like a thinner and diluted milk
68 (8). During the different maturation stages of human breast milk, a high degree of
69 interindividual differences can be expected in milk that may arise from differences in milk
70 production and possible differences in transport of the molecules and other milk components
71 like cells from blood to milk. Moreover, these differences are expected to be at least partially
72 explained by a different dietary intake of the mother. However, we still lack knowledge on
73 how diets like the Mediterranean diet, or vegetarian diets, rich in phytochemicals, might
74 influence on the content of these compounds or their metabolites in human breast milk and
75 how these might impact the health and development of the newborn.

76 Thousands of different dietary phytochemicals have been identified in human breast milk,
77 of which carotenoids and (poly)phenols (9), represent by far the largest groups (10,11). In

78 this study, we focused on the role of (poly)phenols such as phenolic acids, flavonoids,
79 stilbenes, coumarins, lignans, and tannins (Figure 1) and their host and microbial
80 metabolites for their well-documented protective and health-promoting properties, which
81 are less understood compared to carotenoids (12).

82 (Poly)phenols, a class of phytochemicals containing at least one phenolic ring, that are
83 present in large quantities in fruits and vegetables like soybeans, cocoa beans, oranges and
84 berries, as well as tea and coffee (13). They are believed to have health benefits, including
85 protection against oxidative stress and inflammation, and may decrease the risk of chronic
86 and degenerative diseases such as neurodegenerative disorders, obesity, cancer, and
87 diabetes (14–18). They are classified in flavonoids and non-flavonoids where the latter
88 include lignans, stilbenes, coumarins, tannins and simple phenolics/phenolic acids (Figure
89 1). Flavonoids represent the vast majority of (poly)phenols present in a fruit- and vegetable-
90 rich diet, and include different subclasses such as: flavones, isoflavones, flavan-3-ols,
91 flavonols, flavanones and anthocyanins. These (poly)phenols have demonstrated biological
92 activities, including antioxidant and anti-inflammatory activities, consistent with the promotion
93 of vascular health, bone health, and cognitive function (14,16,19). It has been demonstrated
94 that the biological activities of all these phenolic compounds may be mediated by their
95 metabolites which are produced *in vivo* (host and microbial metabolites), as in the case of
96 urolithins, the ellagic acid microbial metabolites (20) and phenolic acids, the flavonoid
97 microbial metabolites (16,21).



99 Figure 1 – Chemical structures of common dietary (poly)phenols and microbiota metabolites.
100 In the figure are represented common dietary (poly)phenols like: flavonoids, lignans,
101 stilbenes, coumarins, tannins and ellagic acids. Furthermore, phenolics and phenolic acids
102 are present in diet and can also result from the microbiota. Meanwhile, some molecules are
103 only generated from the microbiota like urolithins from ellagic acids and 5-(phenyl)- γ -
104 valerolactones from flavan-3-ols.

105 **2. Absorption, metabolism, and distribution of (poly)phenols**

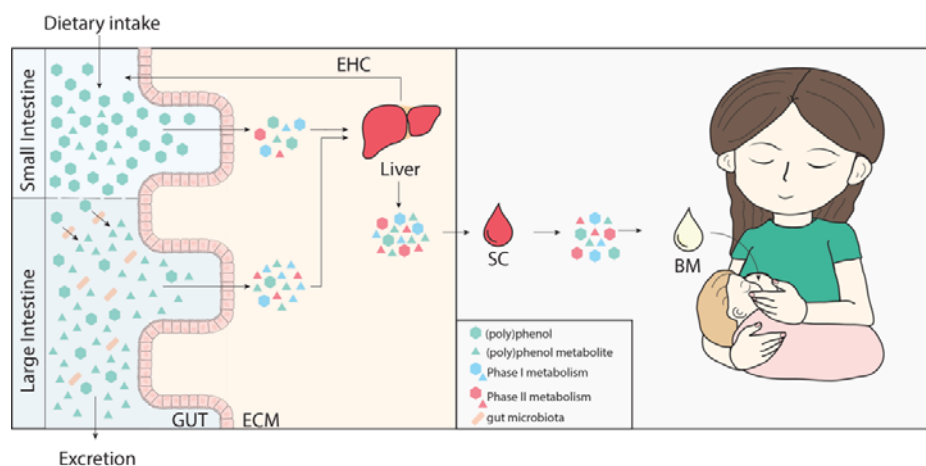
106 Owing the wide variety of (poly)phenols, like flavonoids, phenolic acids, ellagic acids, among
107 others, bioavailability varies a lot from one family to another. Some flavonoids like
108 anthocyanins, isoflavones such as genistein and daidzein and the flavanol quercetin can be
109 partially absorbed as early as in the stomach(22–25). However, most flavonoids are found in
110 foods conjugated with sugars, esterified with organic acids, and polymerized, which
111 decreases their absorption in the stomach, reaching the small intestine. In the intestine intact
112 glycosides may undergo the action of lactase phloridzin hydrolase or cytosolic β -glucosidase
113 breaking the sugar bond and releasing the respective aglycones which are subsequently
114 absorbed. (Poly)phenols that are not absorbed in the small intestine reach the colon where
115 they are transformed by the gut microbiota (Figure 2). In the case of flavonoids, they
116 undergo catabolic reaction by the gut microbiota producing the low molecular weight
117 phenolic metabolites also known by simple phenolics and phenolic acids, some of which
118 common to those found in plants and already absorbed in initial phases of digestion, like
119 benzoic acids (13,26). In fact, simple phenolics and phenolic acids present in the gut might
120 result from two distinct pathways i) directly from the intake of fruits and vegetables or ii) the
121 result of gut microbiota catabolism of flavonoids. Meanwhile, several (poly)phenols
122 metabolites can only be produced by gut microbiota. This is the case of equol, produced
123 exclusively by gut microbiota catabolism of the isoflavone daidzein, enterodiol and
124 enterolactone, produced by catabolism of lignans, 5-(phenyl)- γ -valerolactones characteristic
125 microbial metabolites of flavan-3-ols or urolithins the gut microbiota metabolites of

126 ellagitannins and ellagic acid (27–29). In the case of equol and urolithins the presence of
127 specific bacteria in the microbiota of the volunteers allowed to classify them in different
128 metabotypes (20). For equol the two metabotypes differentiate equol-producers and equol-
129 non producers. Meanwhile for urolithins three different urolithin metabotypes exist according
130 to the capability of gut microbiota of the host to catabolize ellagic acid. These are
131 metabotype A: producers of urolithin A; metabotype B: producers of urolithin A and also
132 isourolithin A and/or urolithin B, and metabotype 0: non producers of urolithins (20,30).

133 Directly after their absorption in the small intestine or in the colon, (poly)phenols and their
134 gut microbiota catabolites are extensively metabolized at both the intestinal and hepatic
135 levels. Independently of the type of (poly)phenol, all undergo phase I and II metabolic
136 reactions mediated by sulfotransferases, methyltransferases and glucuronyltransferases.
137 Once in portal circulation, (poly)phenols metabolites travel into the liver where they undergo
138 further phase I and II metabolic reactions. From the liver, (poly)phenols or their metabolites
139 may reenter the intestine through bile salts and the enterohepatic circulation (EHC) or enter
140 systemic circulation (Figure 2). In circulation, (poly)phenols metabolites spread across the
141 different organs and tissues to exert their potential biological effects or are retrained in the
142 kidneys and eliminated through urine. Importantly, several phenolic metabolites resulting
143 from dietary intake or gut microbiota catabolism of flavonoids are also produced by some
144 endogenous pathways. Some examples of molecules shared between pathways may
145 include hippuric acid, homovanillic acid and 3',4'-dihydroxyphenylacetic acid.

146 In lactating women, different (poly)phenols and their metabolites, mainly flavonoids, phenolic
147 acids and ellagic acid and urolithin metabolites, have been detected in breast milk, as will be
148 discussed ahead. These are expected to travel from blood circulation reaching the mammary
149 glands (Figure 2), although the mechanism of transport has not been fully characterized.
150 (Poly)phenols or their metabolites present in breast milk will start a new cycle of digestion as
151 they will be ingested by the newborn infant. Importantly due to early stages of gut microbiota
152 development in the infant, the amount of (poly)phenol metabolism expected in the infant is

153 limited in comparison with the mother, but much about the infant microbiota capability to
154 metabolize (poly)phenols is still unknown.



156 Figure 2- (Poly)phenol journey from dietary intake to breast milk in mothers and delivery the
157 infant. (Poly)phenols are up taken from the diet reaching the gut. In the mother's gut these
158 (poly)phenols are absorbed and potentially modified by phase I and II metabolic reactions.
159 Meanwhile (poly)phenols may be catabolized by gut microbiota into low molecular weight
160 phenolics that are also up taken and undergo phase I and II metabolic reactions. All these
161 compounds reach the liver and are released into circulation where they may reach breast
162 milk. EHC – enterohepatic circulation; SC – systemic circulation; BM – breast milk.

163

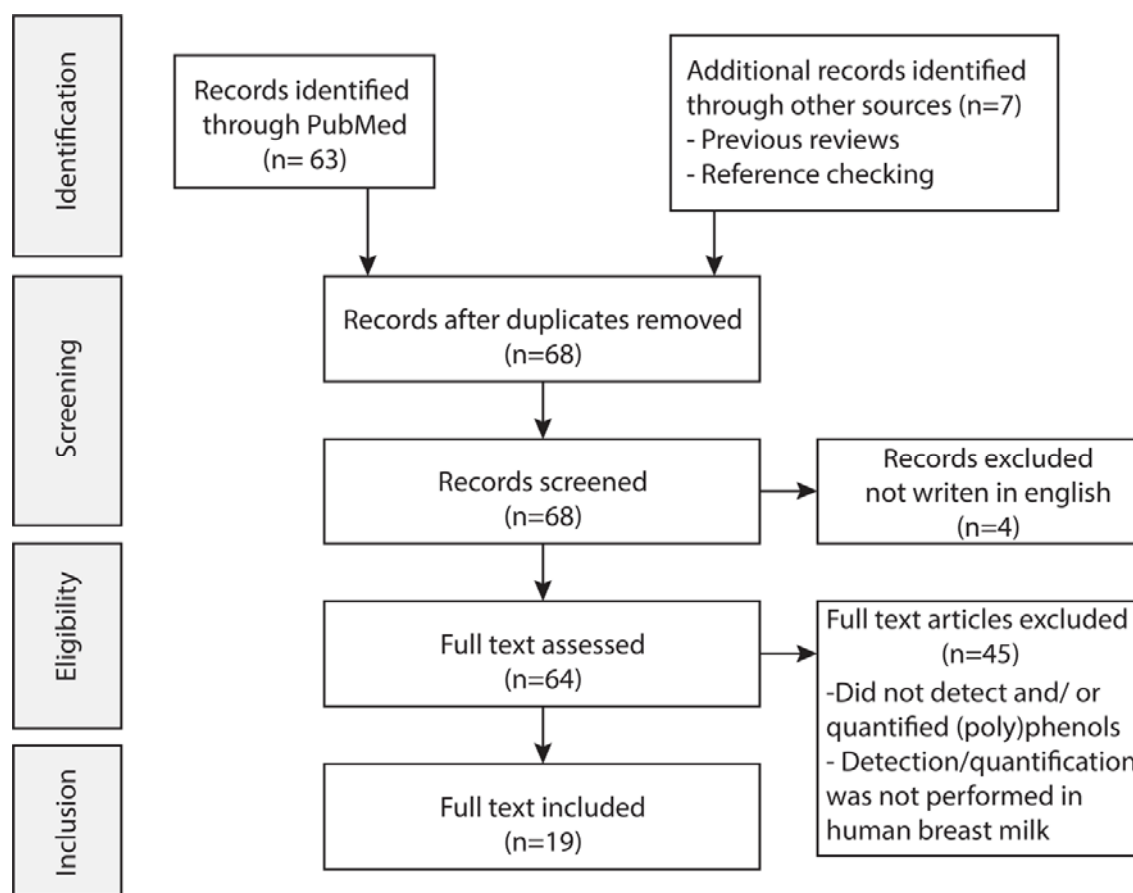
164 3. (Poly)phenolic content in Human Breast Milk

165 3.1 Search strategy

166 First, we searched the most well-known metabolomic and/or (poly)phenolic databases
167 regarding presence of (poly)phenols in breast milk, e.g., HMDB, phenol-explorer, phyto-hub,
168 metabolomics workbench, among others(31–33). Overall, only HMDB reported detection and
169 quantification of (poly)phenols in human breast milk (34). A total of 122 metabolites have
170 been detected in human breast milk according to HMDB, mainly including amino acids,
171 short-chain-fatty acids, sugars, and carotenoids. From this list the only (poly)phenol

172 metabolite reported was hippuric acid (34). Unfortunately, hippuric acid is also common to
173 endogenous pathways and is difficult to pinpoint its origin (endogenous versus dietary).

174 Afterwards, we searched PubMed for articles containing the words: “human milk” or “human
175 breast milk” and “polyphenol” or “flavonoid”. In total, we found 63 articles of which 2 were
176 excluded due to duplication. Furthermore, 7 additional records were added since were found
177 through other meanings (e.g., through in-text citing references). From the 68 records, 4 have
178 been excluded since were not available in English. Furthermore, 45 articles have been
179 excluded since they did not perform detection and/or quantification of (poly)phenols or
180 human breast milk has not been used. (Figure 3).



181

182 Figure 3. Search strategy for the literature review and revision process

183 3.2 Records reporting (poly)phenol quantification

184 From the list of records found, 19 have detected and quantified dietary (poly)phenols and/or
185 metabolites in human breast milk. Of these, 12 have quantified (poly)phenols and/or
186 metabolites from dietary intervention studies (Table 1) while 7 have quantified (poly)phenols
187 and/or metabolites in free-living subjects (Table 2). Meanwhile, 15 of these 19 studies have
188 quantified flavonoids, 4 have quantified ellagic acid or urolithins metabolites, and 6 studies
189 have reported the quantification of low molecular weight phenolics (phenolic acids or simple
190 phenols), see Table 1 and Table 2. Noteworthy 4 of the 7 studies quantifying (poly)phenols
191 and/or metabolites in free-living subjects have included food-frequency questionnaires to the
192 participants of the study to monitor their diet.

193 Several studies have shown the presence of isoflavones, mainly daidzein and genistein in
194 human breast milk after dietary interventions using isoflavone rich foods like soybean milk
195 (35,36), and roasted soybean (37–39). Meanwhile other flavonoids like flavan-3-ols and their
196 microbial metabolites, 5-(phenyl)- γ -valerolactones were quantified in human breast milk after
197 consumption of dark chocolate (40). Meanwhile, flavanones were detected after consumption
198 of grapefruit juice (41), flavonols after onion soup intake (42) and the ellagitannin microbial
199 metabolites, urolithins, after nuts and pomegranate consumption (20,43). In other studies,
200 several (poly)phenol compounds, including different families of flavonoids, microbial
201 metabolites, and phenolic acids, were tentatively identified in breast milk after consumption
202 of red raspberry (44), and several in free-living conditions summarized in Table 2.

203 As previously described, breast milk composition evolves over time while the newborn
204 matures. Most studies have only used matured milk as the sample to detect and quantify
205 (poly)phenols and/or metabolites (Table 1 and Table 2). Meanwhile, transition milk has only
206 been used in four studies and colostrum in three studies, all with free-living mothers.
207 Notably, the three studies reporting (poly)phenol and/or metabolites quantification in
208 colostrum have also used transitional milk and mature milk as samples.

209 Khymenets *et al.* was able to quantify some epicatechin phase II conjugates (epicatechin-4-
210 glucuronide, epicatechin-2-sulfate and epicatechin-3-sulfate) and several gut microbiota

211 derived metabolites like 5-(3',4'-dihydroxyphenyl)- γ -valerolactone-sulfate and glucuronide
212 conjugates (40). In this study, participants were in a free-living diet condition and answer to
213 24-hour dietary recall and food frequency questionnaires showing that the total (poly)phenol
214 consumption through the diet did not significantly change during the different lactation
215 periods. However, concentrations of the detected metabolites were very sporadic and varied
216 significantly only being detected in a limited number of samples across the different lactation
217 phases. For this reason, the authors were unable to compare the changes in concentrations
218 amongst the different lactation stages.

219 Meanwhile, Sánchez-Hernández *et al.*, showed differences in the average amount of total
220 (poly)phenols present in colostrum, transitional and matured milk, 661, 773 and 652 $\mu\text{g}/100$
221 mL respectively, of free-living individuals in comparison with infant formula, 375 $\mu\text{g}/100$ mL,
222 (9). Noteworthy, this reflects in general on a 2-fold increase in total (poly)phenol content in
223 human breast milk in comparison with formula milk (only 375 $\mu\text{g}/100$ mL), reflecting that
224 formula milk does not recapitulate complete human breast milk concerning (poly)phenol
225 content. Regarding the different stages of human breast milk, despite being a non-static fluid
226 that changes with time, no difference in total (poly)phenol content or antioxidant capacity
227 was observed among the three different types of milk.

228 In a different study Song *et al.*, was able to quantify several flavan-3-ols (epicatechin,
229 epicatechin-gallate and epigallocatechin gallate), flavonols (quercetin and kaempferol) and
230 flavanones (naringenin and hesperitin) in breast milk samples from free-living mothers at
231 weeks 1, 4 and 13 postpartum (14). The concentrations of the those (poly)phenols did not
232 seem to change, independently of the timepoint of collection (week 1, 4 or 13), with the only
233 exception being kaempferol that significantly increased at week 13. The authors point out
234 that the levels of flavonoids during the three periods suggest that (poly)phenols in human
235 milk are generally not affected by lactation stage. Unfortunately, in this study the food intake
236 of the mothers was not evaluated and thus the estimation of (poly)phenol intake for each
237 mother was not performed. For this reason, it is possible that some of the variability in

238 kaempferol concentrations might be due to the food intake of the mother. In fact, from the list
239 of studies identified, the study by Lu *et al.* was the only that fully characterized and stratified
240 samples according to the food intake (2). For that maternal intake of plant-based foods and
241 (poly)phenols was estimated through 3-day dietary records and the use of Phenol-Explorer
242 database. The study concluded that the intake of plant-based foods significantly affected
243 phenolic composition in breast milk.

244 Meanwhile Romasko *et al.* showed that the amount of naringenin in breast milk in free living
245 mothers with their everyday diet, resulted in an average naringenin concentration in breast
246 milk of 823.24 nmol/L (41). Upon consumption of red grapefruit juice, rich in naringenin and
247 naringin (naringenin-7-glucoside) this concentration did not significantly increase at 4 or 12
248 hours, 908.25 nmol/L \pm 676.84 nmol/L, and 868.96 nmol/l \pm 665.54 nmol/L, respectively. In
249 this case, the consumption of a glass of grapefruit juice did not significantly affect naringenin
250 levels in milk. Eventually the concentrations of naringenin decreased after 48 hours to
251 673.89 nmol/L. Meanwhile in a study by Jochum *et al.* two different interventions were used
252 and compared against a control (300 mL water) drink: i) 250 mL of soy drink or ii) 300mL of
253 decaffeinated black tea (36). Unfortunately, no flavonol was detected before or after the
254 intervention with black tea. Yet, in the soy drink group, genistein and daidzein were detected,
255 but only after the intervention.

256 The changes in values across these studies may be related to several factors. One of the
257 most important is dietary exposure to different amounts of (poly)phenols and/or foods
258 containing different/specific (poly)phenols. Dissimilarities in the dietary habits among
259 different populations could lead to high variability in the results obtained. It is very important
260 to define dietary habits during lactation to fully understand how these changes in
261 (poly)phenol and/or metabolites quantification is dependent on the mother's diet. However,
262 there is still limited information on the relationship between maternal dietary intake and
263 phenolic content in breast milk. Besides, although the concentration of the compounds is
264 dependent on the dose ingested by the mother, other regular components of the matrix such

265 as proteins, lipids and carbohydrates could affect the extraction and detection of these
266 compounds.

267 Other important factors that could influence the detection and quantification of (poly)phenols
268 and/or metabolites in human breast milk could be the kinetic of deposition in milk,
269 interindividual differences in the metabolism and genetic/physiological factors and/or stability
270 of (poly)phenols and/or metabolites in breast milk matrix. Although with the available studies,
271 the time of milk collection has not been demonstrated to be a crucial factor, more studies
272 with large population are needed to confirm these results. The methodology for the collection
273 of breast milk samples could also be another critical point. Most of the time the volume of
274 the milk produced by the mammary glands of the mothers is not measured, so the data
275 obtained from the milk analysis only provide concentrations and not the total amount
276 produced, what makes more difficult to compare among studies. Number of volunteers
277 across the 19 studies herein reported has also shown a significant pitfall on the data
278 available to researchers and clinicians. Until now only one study has used a sample size
279 equal to 50 volunteers, while most studies have used sample sizes below 30 volunteers, with
280 a significant number of studies with a sample size below 10 and some proof-of-concept/case
281 studies with sample sizes of just one or two individuals. Such sample size, together with the
282 normal interindividual variability detected in (poly)phenol bioavailability (26,45) clearly makes
283 it difficult to understand the dynamics of (poly)phenols metabolites in breast milk. Larger
284 populations are necessary to obtain final conclusions about concentrations of metabolites in
285 breast milk and factors affecting.

286 Differences in the methodologies used for the extraction and analysis (identification and
287 quantification) of these compounds in breast milk also hamper the comparison among
288 studies.

289 The complexity of the milk matrix partly explains why the determination of (poly)phenol-
290 derived metabolites in breast milk has hardly been investigated. Most of the methodologies
291 are not optimized and validated and the recovery percentages of (poly)phenol metabolites

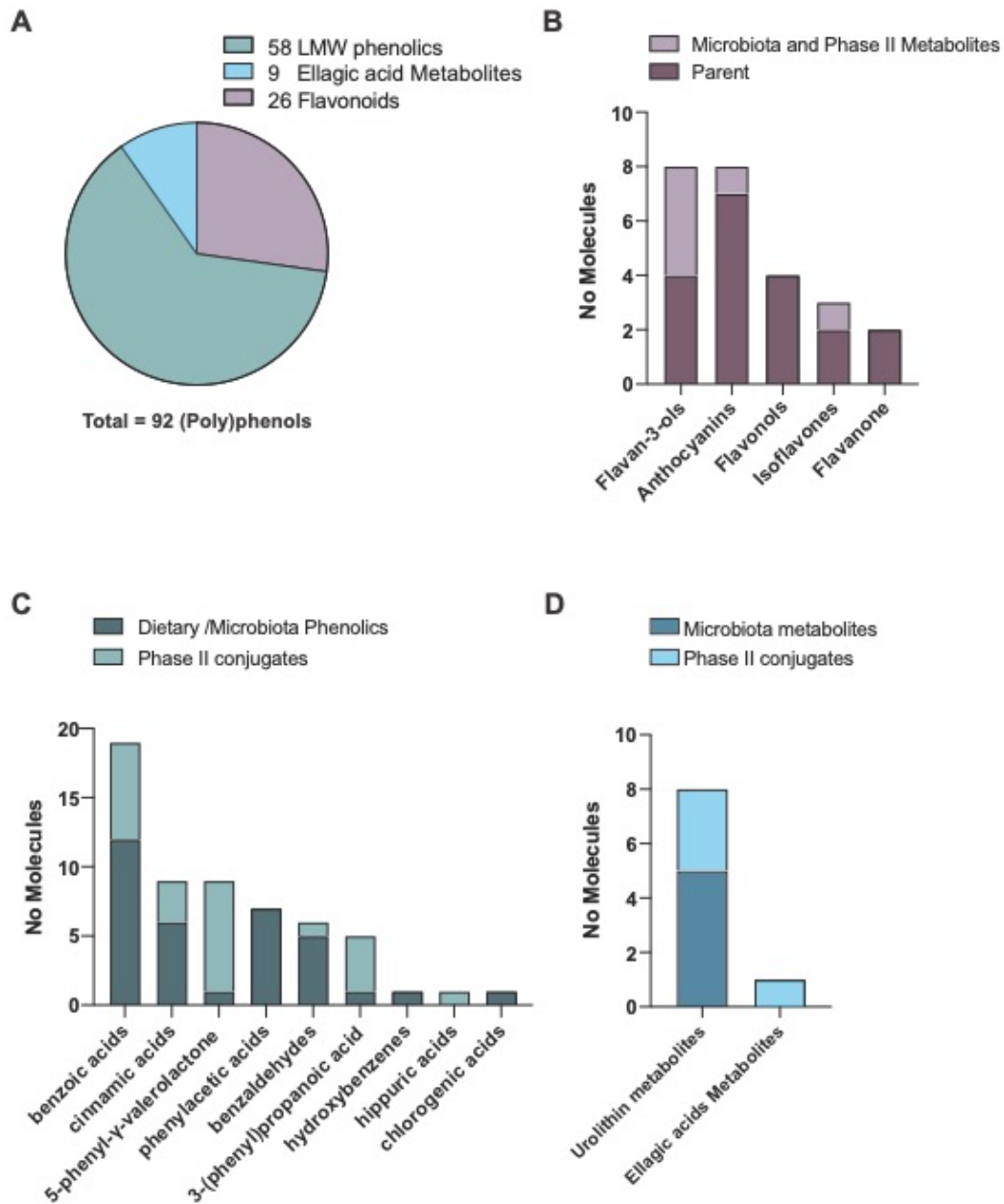
292 are usually unknown for the different extraction protocols. Most previous studies have
293 determined (poly)phenols in human milk after enzymatic hydrolysis (β -glucuronidase and
294 sulfatase) and subsequent extraction with ethyl acetate (see Table 1 and Table 2). The
295 enzymatic hydrolysis simplifies the separation and quantification of the major compounds
296 and provides an idea of the total amount of a specific aglycone (free compound plus
297 conjugated) but information about the nature of the metabolites available and the amount of
298 individual conjugated metabolites is lost. Only 5 studies provide information about naturally
299 occurring metabolites (glucuronides and sulfates) present in breast milk (40,43,44,46,47).
300 Protein precipitation with acetonitrile or methanol and solid phase extraction (SPE) were also
301 applied for the extraction of these compounds with and without previous enzymatic
302 hydrolysis. In some cases, a previous clean up with hexane was applied to defat the
303 samples and other methods to remove proteins were also used (hydrolysis with pepsin,
304 salting-out assisted liquid-liquid extraction, precipitation with organic solvents, etc.).
305 However, little information about recoveries and validation parameters was provided to
306 evaluate the results and identify the best extraction protocol for each family of compounds.
307 Only two studies have shown a comprehensive test between the different extraction
308 methodologies (46,48). The data showed that acetonitrile: formic acid (95:1)
309 extraction/protein precipitation method was the most effective method to obtain ellagic acid
310 metabolites in comparison to methanol, hexane and SPE (46). Meanwhile Edyta Nalewajko-
311 Sieliwoniuk showed that hexane defat followed by acidification and ethyl acetate: acetonitrile
312 extraction was the most effective method for the extraction of several flavonoids and
313 phenolic acids (48). Unfortunately, this protocol includes the use of β -glucuronidase and
314 sulfatases. In general, it seems that ethyl acetate, which is frequently used for isolation of
315 dietary phenolic compounds, is a good solvent for the extraction of aglycones after
316 enzymatic hydrolysis. However, when more polar compounds such as glucuronide and
317 sulfate conjugates are extracted, the recoveries are low and other protocols based of
318 precipitation of protein with organic solvents or solid phase extraction should be used.

319 Another question that could affect the extraction and analysis of compounds in the different
320 studies is the nature of the milk (content of protein and lipids) that could affect the extraction
321 protocol with the formation of gel aggregates or the precipitation of some compounds.

322 Besides, the way of quantification is another important question that could influence the
323 results in the different studies. In most cases the absence of commercial standards forces to
324 quantify using other available standards, obtaining inaccurate results not comparable among
325 studies.

326 **3.3 Detected and quantified (poly)phenols in human breast milk**

327 Across the 19 records reporting (poly)phenols and metabolites in human breast milk a total
328 of 25 flavonoids, 58 low molecular weight phenolics and 9 ellagic acid metabolites were
329 detected (Figure 4, Table 3-5). The list of flavonoids included the most representative
330 subfamilies of flavonoids: anthocyanins, flavonols, flavan-3-ols, isoflavones and flavanones
331 (Table 3, Figure 4). Interestingly besides sulfate and glucuronide conjugates some flavonoid
332 glycoside conjugates have been found in human breast milk (Table 3). From the 9 ellagic
333 acid metabolites, urolithin A, isourolithin A and urolithin B and respective sulfate and
334 glucuronide metabolites were reported together with dimethyl ellagic acid-glucuronide, but
335 not ellagic acid (Table 4, Figure 4). Regarding the low molecular weight phenolics detected,
336 these ranged from benzoic acids, benzaldehydes, phenylacetic acids, 3-(phenyl)propanoic
337 acids, cinnamic acids, 5-(phenyl)- γ -valerolactones, hippuric acids and chlorogenic acid
338 (Table 5, Figure 4). Anthocyanins, isoflavones, flavanones and ellagic acid metabolites have
339 not been detected in all types of milk, by contrast with the remaining (poly)phenolic classes
340 that have been detected across all the different types of milk (colostrum, transitional and
341 mature). It is however important to note that most studies have used one type of milk only,
342 mature milk, thus explaining why several (poly)phenols have been detected in only one milk
343 type.



345 Figure 4- Ninety-two (poly)phenols and metabolites have been identified and/or quantified in
346 human breast milk samples across the 19 reports identified. (A) From the overall list of compounds
347 58 were low molecular weight (LMW) phenolics, 9 ellagic acid metabolites, and 25 flavonoids. (B)
348 The 25 flavonoids spread across flavan-3-ols, anthocyanins, flavonols, isoflavones and flavanones. (C)
349 The low molecular weight phenolics and their phase II conjugates are divided into benzoic acids,
350 cinnamic acids, 5-phenyl- γ -valerolactones, phenylacetic acids, benzaldehydes, 3-(phenyl)propanoic
351 acids, hydroxybenzenes, hippuric acids and chlorogenic acid. (D) The 9 ellagic acids and/or
352 metabolites and their phase II conjugates are divided into 8 urolithin metabolites and 1 ellagic acid
353 metabolites. Individual concentrations for each (poly)phenol are reported in tables 3, 4, and 5.

354

355 Among the flavan-3-ols, commonly found in chocolate(49), epigallocatechin-gallate was the
356 molecule detected at highest concentrations in breast milk, ranging from 0.67 to 1.12 μ M
357 (Figure 5A, Table 3). In previously reported intervention studies, reviewed in (50), this
358 molecule was detected in plasma, on average, at much lower concentrations, ranging from
359 0.03 to 0.38 μ M(50). Meanwhile, a more recent review shown higher plasma concentrations
360 with a mean C_{max} across several studies of 0.87 \pm 1.33 μ M, on par with breast milk
361 concentrations(51). By contrast, other flavan-3-ols like (epi)catechin, was detected at higher
362 concentration in plasma ranging from 0.09 to 1.10 μ M, in comparison to breast milk of 0.03 to
363 0.24 μ M(50). Meanwhile, quercetin was the flavonol detected in highest concentrations in
364 human breast milk ranging from 0.05 to 0.15 μ M (Figure 5B, Table 3). Remarkably in the
365 study performed by Zhang et al. 2018 measuring quercetin in both breast milk and plasma of
366 the mothers, it was shown that quercetin was more abundant in breast milk and urine in
367 comparison with plasma(44).

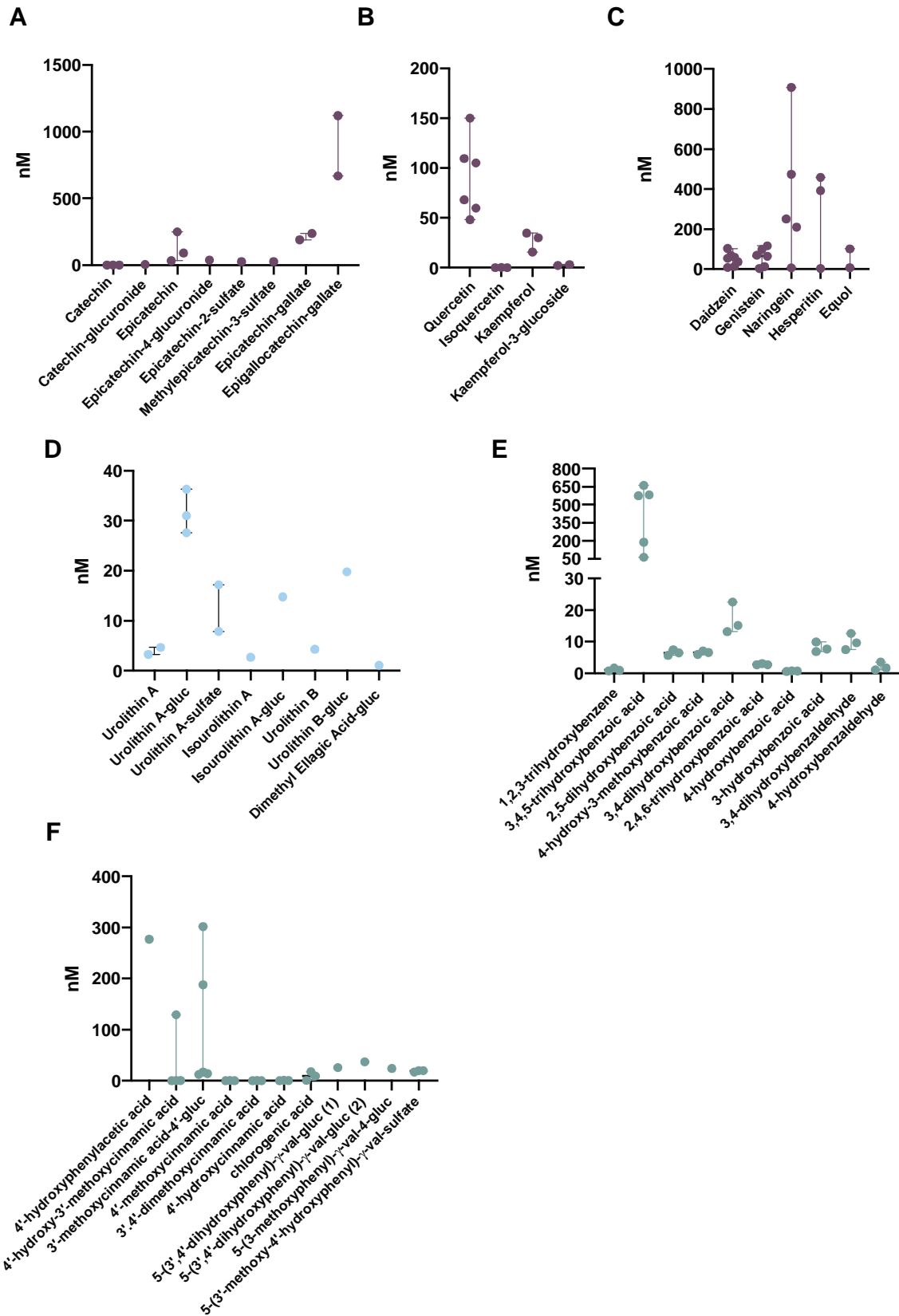
368 Regarding the flavanones naringenin and hesperidin, commonly found in citric fruits(49),
369 have been detected in plasma at concentrations ranging from 0.13 to 1.50 μ M and 0.21 to
370 0.87 μ M respectively (Figure 5C, Table 3). Meanwhile, in breast milk both flavanones have

371 been detected at lower concentrations ranging between 0.01 to 0.91 μ M for naringenin and
372 from 0.004 to 0.46 μ M for hesperidin (Table 3). Regarding isoflavones, daidzein and
373 genistein have been found in plasma ranging from 0.76 to 3.00 μ M and 1.26 to 4.50 μ M,
374 respectively(50). Meanwhile, in breast milk these two isoflavonoids have been found in much
375 lower concentrations ranging from 0.009 to 0.10 μ M and 0.005 to 0.12 μ M respectively
376 (Figure 5C, Table 3).

377 The urolithin metabolites urolithin A-glucuronide and urolithin B-glucuronide were the two
378 most abundant ellagic acid metabolites found in breast milk at 0.03 μ M and 0.02 μ M
379 respectively (Figure 5D, Table 4). In plasma these two metabolites have been found at
380 identical concentrations of 0.02 μ M, similar to those of breast milk(52). On the opposite
381 direction, urolithin A-sulfate detected in breast milk ranging from 0.008 to 0.02 μ M (Figure 5,
382 Table 4), was detected at much higher concentrations in plasma of 0.45 μ M(52).

383 Meanwhile, a recent literature review revealed the full list of low molecular weight phenolic
384 metabolites present in human blood(26). From this list of 137 phenolic metabolites detected
385 in human blood, only 58 have been detected and or quantified in human breast milk (Table
386 5). Most of these metabolites have been found in significantly higher concentrations in
387 human plasma in comparison with human breast milk. For example, regarding the phenolic
388 acid 3,4-dihydroxybenzoic acid and benzaldehyde 3,4-dihydroxybenzaldehyde, these have
389 been found in breast milk at concentrations ranging from 0.01 to 0.02 μ M and 0.009 to
390 0.01 μ M (Figure 5E, Table 5). While in plasma, these metabolites have been found up to
391 16 μ M and 0.03 μ M respectively. Meanwhile, 4-hydroxyphenyl acetic acid, 4-hydroxy-3-
392 methoxycinnamic acid (ferulic acid) and 3-methoxycinnamic acid-4-glucuronide (ferulic acid-
393 glucuronide) have been found in breast milk up to 0.27 μ M, 0.13 μ M and 0.3 μ M respectively
394 (Figure 5F and Table 5). Whereas in plasma these have been found at 2.6 μ M, 0.42 μ M and
395 0.36 μ M respectively. Noteworthy, the metabolite detected at higher concentrations in human
396 breast milk was 3,4,5-trihydroxybenzoic acid with a range of 0.06 to 0.66 μ M (Figure 5E,
397 Table 5) detected to a lesser extent in plasma 0.12 \pm 0.032 μ M, reviewed in (26).

398



399

400 Figure 5 – Range of concentrations of (poly)phenols detected in human breast milk. (A) flavan-3-ols,
401 (B) flavonols, (C) flavanones and isoflavones, (D) ellagic acid metabolites, (E) benzoic acids and
402 benzaldehydes, (F) phenylacetic, cinnamic acids, chlorogenic acids and phenyl- γ -valerolactones.
403 Each dot represents the different concentrations reported in Tables 3, 4 and 5. Val – valeric acid; gluc
404 – glucuronide.

405

406 Interestingly several classes of low molecular weight phenolics have not been detected in
407 human breast milk. This may be related with the lack of standards and/or a target analysis
408 excluding quantification of several metabolites, or the complete absence of this metabolites
409 in human breast milk. Examples of such metabolites not detected in human breast milk are :
410 2-(phenyl)propanoic acid, mandelic acid, cinnamoylglycine, 4-hydroxy-5-(phenyl)valeric acid,
411 5-(phenyl)valeric acid, (phenyl)ethanol or 4-ethylbenzenes. Regarding ellagic acid
412 metabolites, besides the 9 ellagic acid metabolites found in human breast milk and found in
413 blood, others have been found in human blood but not in human breast milk, namely urolithin
414 C, urolithin C glucuronide and urolithin C sulfate (34).

415 Overall, several reasons might explain the discrepancy between the number of (poly)phenols
416 detected in blood versus human breast milk. Noteworthy the data obtained for plasma and
417 breast milk samples have been obtained from different populations with probably differences
418 in the dietary exposure of (poly)phenols and in the absorption and metabolism of these
419 compounds. A particular relevant question is the possible changes on the metabolism of
420 (poly)phenols of recent post-partum volunteer. Large studies quantifying (poly)phenols in
421 both plasma and breast milk of the same volunteer are required comparing concentrations in
422 both fluids and addressing this possibility. In the paper of Zhang *et al.*, most of the identified
423 metabolites were detected in the three biological samples (plasma and urine of two
424 volunteers and breast milk of another volunteer) and some were present in urine and breast
425 milk but not in plasma. This may reflect some intrinsic physical chemical property of each
426 compound to either stay in plasma or being rapidly eliminated from blood and accumulate in

427 urine and breast milk. Other factors could be i) their absence from human breast milk due to
428 the lack of specific transporters impairing their path through the mammary tissue, ii) the
429 timepoints used for the sampling and further quantification of the (poly)phenols metabolites
430 in the milk iii) lower concentrations in human breast milk (below limit of quantification) in
431 comparison with the already reported in circulation, iv) the fact these (poly)phenols
432 metabolites have never been searched in human breast milk due to the lack of available
433 standards, v) the extraction method is not fully compatible to all (poly)phenol metabolites.

434 One unsolved question that its understanding can shed light to some of these questions is
435 the mechanism of transport allowing (poly)phenols and/or metabolites to reach human
436 breast milk. The transport and delivery of (poly)phenols to the mammary glands is still
437 unknown and may result from passive diffusion, active transport, or carrier mediated
438 transport. For flavonoids, several methods of transport have been proposed to cross several
439 tissues like the gut from passive diffusion to mediated transport, especially by ATP-binding
440 cassette transporter (ABC transporters) and organic acid transporters (OAT), reviewed in
441 (53). For phenolic metabolites it is hypothesized that passive transport might be the main
442 route of transport across the tissue, although some transporters have already been
443 described. These include gallic acid through OAT3 (54) and homovanillic acid through
444 rOAT3 (55). Interestingly homovanillic acid is both an endogenous molecule, a metabolite of
445 dopamine and a phenolic metabolite result of microbiota catabolism of flavonoids. Other
446 phenolic metabolites that also result from endogenous pathways like hippuric acid and 2-
447 (3,4-dihydroxyphenyl)acetic acid (DOPAC) that might benefit from the endogenous routes of
448 transport. Furthermore, it also offers the possibility that structurally similar phenolics might
449 share the same routes.

450

451

452 **4 The potential health benefits of (poly)phenols and phenolic metabolites in human**
453 **breast milk**

454 Although multiple studies have reported the protective effects of (poly)phenols against
455 inflammation, oxidative stress and cardiometabolic stress, and the potential of isoflavones as
456 phytoestrogens, the full spectrum of effects of (poly)phenols in human breast milk, both from
457 the mother and the newborn perspective, has not been fully explored. Across the different
458 studies reported in the literature the evaluation of the impact of (poly)phenols detected in
459 human breast milk have been rather limited to the anti-oxidative properties of milk or the
460 quantification of phytoestrogens and its impact on the newborn development.

461 Regarding the anti-oxidative properties of (poly)phenols in human breast milk Poniedzialek
462 *et al.*, showed that an increase in total (poly)phenols in human breast milk associated with a
463 higher total antioxidant capacity that were positively correlated with vegetable consumption
464 (56). Total (poly)phenols also correlated negatively with malondialdehyde content.
465 Noteworthy it is important to bring attention to the high degree of variability of samples
466 collected. Li *et al.*, compared the total (poly)phenol content in samples from breast milk and
467 infant formula. In this case no significant change was detected as the variability within breast
468 milk and infant formulas was significant (422 – 751 mg/kg and 329 – 797 mg/kg of ferulic
469 acid equivalents respectively) (57).

470 A different study by Silberstein *et al.*, showed that the (poly)phenolic content in breast milk
471 seems to be influenced by maternal health status (58). The study has shown that the breast
472 milk composition of preeclampsia women presents a 33% increase in total (poly)phenol
473 content in comparison with healthy women (58). The increase in total (poly)phenols in
474 mothers with preeclampsia was associated with a reduction in about 20% the levels of lipid
475 oxidation in colostrum in comparison with healthy women (58). Unfortunately, the authors
476 only measured the total amount of (poly)phenols and did not investigate the presence or
477 effects of specific (poly)phenols or their metabolites.

478 Concerning isoflavones, these have been classified as phytoestrogen for their chemical
479 similarity with estradiol and the capability to induce estrogenic or anti-estrogenic effects
480 depending on the dose (59). Isoflavones as phytoestrogens bind to estrogen receptors alpha
481 and beta (59). Isoflavones are present across several fruits and legumes with significant
482 relevance in soybeans and soy-based produces like soy milk and tofu. For their capability to
483 act as phytoestrogens, soy and soy-based products have been used in infant formulas in the
484 last century and their effects analyzed.

485 Setchell et al., compared the presence of isoflavones in 4-month-old infant blood samples
486 consuming human breast milk, soy-based infant formulas, and cow-based milk formulas
487 (60). The concentration of isoflavones circulating in babies fed with human breast milk was
488 on average 4.7 ug/L in comparison with the 9.4 ug/L of cow-based infant formula and the
489 979.7 ug/L of soy-based formula. This high plasma isoflavones concentrations in infants
490 consuming soy-based formula are however much higher than the normal estradiol
491 concentrations for infants of this age. One phenomenon detected was the lack of isoflavones
492 metabolites, namely equol and its metabolites, from soy-based infant formula since the
493 formation of this metabolites are largely dependent on the gut microbiota of the mother (60).

494 Meanwhile, Rosa et al. also showed a significant difference on the urinary phenolic
495 metabolites of 3-month-old infants feed with breast milk, cow-based infant formula, and soy-
496 based infant formula (61). In this study the overall quantity of phenolic metabolites excreted
497 in infant urine was 2-fold higher for some metabolites, namely 3'-hydroxyphenylacetic acid
498 and 4'-hydroxyphenylacetic acid in infants feed with soy-based infant formula in comparison
499 with human breast milk feed infants (61).

500 Although the evidence suggests an increase of isoflavones levels in infants fed with soy-
501 based formulas there is no clear evidence of a health benefit. In fact, a meta-analysis could
502 not find any negative effects of a high isoflavone intake from soy formulas, but also no
503 benefits, on endocrine and other physiological functions of breastfeeding (62). The authors

504 speculated that most isoflavones detectable in the plasma of soy fed infants are conjugated
505 to sugars, which cannot link to isoflavone receptors.

506 Regarding the cognitive developmental status of infants, Andres *et al.*, 2012 evaluated 1
507 year old infants consuming breast milk, cow-based milk formula or soy-based milk formula.
508 In this study infants were assessed using Bayley Scales of Infant Development (BSID), from
509 which the Mental Developmental Index (MDI) and Psychomotor Development Index (PDI)
510 were derived (63). Small but statistically significant effects of the diet on the MDI scores
511 were seen for infants 6 months or older. Breastfed infants had significantly higher scores
512 than soy fed infants at ages 6, 9, and 12 months and significantly higher scores than cow-
513 based milk fed infants at ages 9 and 12 months. Although these effects reached statistical
514 significance, the MDI scores were within the expected normal range, and the differences
515 were very small. Significant effects of the diet on the PDI scores were transient. Soy fed
516 infants had significantly lower PDI scores, although small, compared with breastfed infants,
517 and seen only at 6 months. Furthermore, infants were also assessed with the Preschool
518 Language Scale-3 (PLS-3) by using the expressive communication and auditory
519 comprehension subscales. In PLS-3, only cow-based milk fed infants had significantly lower
520 scores compared with breastfed infants at ages 3 and 6 months, but again all groups were
521 inside the normal range (63).

522 Ostrom *et al.*, also observed the immune status of infants fed with soy-based formulas and
523 human milk/infant formula feed infants (64,65). In this study infants were immunized against
524 *Haemophilus influenzae* type b polysaccharide, diphtheria toxoid, tetanus toxoid, and oral
525 poliovirus of children and their responses evaluated at 6, 7 and 12 months of age. Antibodies
526 against *H. influenzae* type b at 7 and 12 months were higher significantly higher in infants
527 fed with soy-based milk (65). In contrast, human milk/infant formula fed infants had higher
528 poliovirus neutralizing antibodies at 12 months of age. Serum IgG and IgA levels were
529 similar between groups as well as morbidity through the first year of life. Only physician-
530 reported diarrhea was different between groups fed with human milk/infant formula having

531 less cases than the soy group (65). Latter Cordle et al., with the same cohort showed that
532 the number and percentage of B, T and NK lymphocytes were within age-related normal
533 ranges with minor differences between soy formula and human milk/infant formula fed
534 infants (64) . Overall, no differences were detected between the two groups due to soy-
535 based formulas consumption suggesting normal immune system development.

536

537 **5. Conclusions and future perspectives**

538 In this literature search we have listed the (poly)phenols and their metabolites, namely
539 flavonoids, ellagic acids and phenolics detected in human breast milk. Nonetheless, the
540 information available in the literature about the presence of (poly)phenols and/or their
541 metabolites reported in human breast milk is still in its infancy and requires further studies.
542 Many (poly)phenols and their metabolites have been detected in human circulation (26), yet
543 their presence in human milk have not been fully explored, due to several factors mentioned
544 before. Meanwhile, several nuances in the design of the studies performed may be hindering
545 the identification and their quantification in breast milk such as the timepoint of collection,
546 volume, extraction and method of quantification that may still require further optimizations.

547 Concentrations of some (poly)phenol and their metabolites in human breast milk may be
548 dependent on the diet of the mother, demonstrated by some intervention studies using
549 (poly)phenols rich foods or the stratification of volunteers. This type of pattern has also been
550 observed, with an increase in sugar and fat in human breast milk after mother ingested
551 sugar and fat enriched diets (66). The type of milk (colostrum, transitional or mature) did not
552 seem to make an impact in the quantification of some (poly)phenols. Several factors may still
553 require further investigation such as mother's interindividual differences (genetic, metabolic,
554 microbiota) or even variations caused by the circadian rhythm on breast milk composition
555 (66). In fact, most studies have not reported the time of collection and volume of breast milk,
556 which may be a big limitation, as milk production and composition may vary according to the

557 mothers and child dietary needs across the day. Some of the mentioned studies have
558 managed this issue by assuring the collection of the full content of breast milk, choosing a
559 specific time of the day for collection of all volunteers. Notwithstanding, information on how
560 (poly)phenol composition varies on breast milk during the day is still nonexistent.
561 Additionally, most studies have used small sample sizes that may overlook interindividual
562 differences. Further studies addressing these issues may give a better insight on the
563 presence of (poly)phenols and/or their metabolites in human breast milk and the impact of
564 diets like the Mediterranean diet, vegetarian diet or vegan diets on the compounds present in
565 human milk.

566 The studies on the potential health benefits to the infant of mother's (poly)phenols
567 consumption and their presence in breast milk have been limited. The anti-oxidative
568 properties of breast milk as function of total (poly)phenols have been performed, yet these
569 should be looked has rather rough indicators. Measurement of general markers of
570 antioxidant status, such as ORAC, TRAP, FRAP and TEAC are inappropriate methods for
571 clinical studies because of the broad range of compounds (e.g., uric acid, albumin) that may
572 interfere with the results of these analyses (67,68). More suitable markers for the increased
573 cellular antioxidant potential may include nuclear Nrf-2 DNA binding capacity and NQO1
574 protein levels, which were observed to increase following (poly)phenol intake and not
575 following a challenge meal alone (69).

576 The presence of phytoestrogens like isoflavones in human breast milk has been studied due
577 to their potential to mimic estrogens. Several studies have focused on the comparison
578 between human breast milk and soy-based infant formulas rich in isoflavones. Nonetheless,
579 no clear conclusion has been reached about the potential health benefit of soy-based milk.
580 Although (poly)phenols have been known for their anti-inflammatory properties, until now
581 only one study has focused on the immunity of the infant and the presence of (poly)phenols
582 in the breast milk (64). Newborns and especially pre-term infants can suffer from severe
583 inflammatory conditions yet our knowledge of (poly)phenols impact in these conditions is

584 lacking as this study has never been addressed. Overall, there are clear gaps in our current
585 knowledge concerning what metabolites from dietary (poly)phenols appear in human breast
586 milk and their quantification. Moreover, this hampers our understanding of their potential
587 health benefits for the infant. At the present date the scientific data on the health potential of
588 (poly)phenols in adults is vast, yet very little is known about their effect in infants that
589 received them through milk. It will be important to design studies that make it possible to
590 relate the milk composition in (poly)phenol metabolites with infant's health outcomes. Our
591 understanding of the potential health benefits of mother's diets rich in (poly)phenols for the
592 newborn have a huge potential to help clinicians to deal with such a fragile phase of life of
593 infants with health complications. This will open a new way for the mothers to provide the
594 conditions for a strong and healthy growth of their child.

595

596 **6. Acknowledgments**

597 The authors gratefully acknowledge the support given by Doctor Teresa Costa regarding the
598 literature search process. This work has received funding from the European Research
599 Council (ERC) under the European Union's Horizon 2020 research and innovation program
600 under grant agreement No 804229. INOVA4Health Research Unit (LISBOA-01-0145-
601 FEDER-007344). Authors would also like to acknowledge FCT for financial support of D.C.
602 (2020.04630.BD).

603

604 **7. Author contributions**

605 **Diogo Carregosa:** Conceptualization; Data curation; Formal analysis; Investigation;
606 Methodology; Resources; Software; Visualization; Writing – original draft. **Inês P. Silva:**
607 Data curation; Formal analysis; Investigation; Methodology; Resources; Software;
608 Visualization; Writing – original draft. **Carolina Teixeira:** Data curation; Formal analysis;
609 Investigation; Methodology; Resources; Software; Visualization; Writing – original draft.

610 **Mariana Baltazar**: Data curation; Formal analysis; Investigation; Methodology; Resources;
611 Software; Visualization; Writing – original draft. **Rocio García-Villalba**: Formal analysis;
612 Supervision; Validation; Visualization; Writing – original draft; Writing – review & editing.
613 **Filipa Soares Vieira**: Validation; Visualization; Writing – review & editing. **Mónica Marçal**:
614 Validation; Visualization; Writing – review & editing. **Madalena Tuna**: Formal analysis;
615 Supervision; Validation; Visualization; Writing – original draft; Writing – review &
616 editing. **Cláudia Nunes dos Santos**: Conceptualization; Data curation; Formal analysis;
617 Project administration; Supervision; Writing – review & editing

618

619 **8. References**

- 620 1. Cortez MV, Soria EA. The Effect of Freeze-Drying on the Nutrient, Polyphenol, and
621 Oxidant Levels of Breast Milk. *Breastfeeding Medicine*. Mary Ann Liebert Inc.; 2016. p.
622 551–4.
- 623 2. Lu Z, Chan Y-T, Lo KK-H, Wong VW-S, Ng Y-F, Li S-Y, Ho W-W, Wong M-S, Zhao D.
624 Levels of polyphenols and phenolic metabolites in breast milk and their association
625 with plant-based food intake in Hong Kong lactating women. *Food Funct*
626 2021;12:12683–95.
- 627 3. Collado MC, Delgado S, Maldonado A, Rodríguez JM. Assessment of the bacterial
628 diversity of breast milk of healthy women by quantitative real-time PCR. *Lett Appl*
629 *Microbiol* 2009;48:523–8.
- 630 4. Valls-Bellés V, Abad C, Hernández-Aguilar MT, Nacher A, Guerrero C, Baliño P, Romero
631 FJ, Muriach M. Human Milk Antioxidative Modifications in Mastitis: Further Beneficial
632 Effects of Cranberry Supplementation. *Antioxidants* 2021;11:51.

- 633 5. Geneva: World Health Organization. Guideline: Counselling of women to improve
634 breastfeeding practices . Licence: CC BY-NC-SA 30 IGO 2018;
- 635 6. Lorenzetti S, Plösch T, Teller IC. Antioxidative Molecules in Human Milk and
636 Environmental Contaminants. *Antioxidants* 2021;10:550.
- 637 7. Pillay J, Davis TJ. *Physiology, Lactation*. 2022.
- 638 8. Ríos J, Valero-Jara V, Thomas-Valdés S. Phytochemicals in breast milk and their
639 benefits for infants. *Critical Reviews in Food Science and Nutrition*. Bellwether
640 Publishing, Ltd.; 2021.
- 641 9. Sánchez-Hernández S, Esteban-Muñoz A, Samaniego-Sánchez C, Giménez-Martínez R,
642 Miralles B, Olalla-Herrera M. Study of the phenolic compound profile and antioxidant
643 activity of human milk from Spanish women at different stages of lactation: A
644 comparison with infant formulas. *Food Research International* 2021;141:110149.
- 645 10. Ríos J, Valero-Jara V, Thomas-Valdés S. Phytochemicals in breast milk and their
646 benefits for infants. *Crit Rev Food Sci Nutr* 2022;62:6821–36.
- 647 11. Tsoomo A. Phytochemicals in Human Milk and Their Potential Antioxidative
648 Protection. *Antioxidants* 2018;7:32.
- 649 12. Slavin JL. Phytoestrogens in breast milk--another advantage of breast-feeding? *Clin*
650 *Chem* 1996;42:841–2.
- 651 13. del Rio D, Rodriguez-Mateos A, Spencer JPE, Tognolini M, Borges G, Crozier A. Dietary
652 (Poly)phenolics in Human Health: Structures, Bioavailability, and Evidence of
653 Protective Effects Against Chronic Diseases. *Antioxid Redox Signal* [Internet] Mary Ann
654 Liebert Inc; 2013;18:1818–92. Available from:
655 <http://www.liebertpub.com/doi/10.1089/ars.2012.4581>

- 656 14. Song BJ, Jouni ZE, Ferruzzi MG. Assessment of phytochemical content in human milk
657 during different stages of lactation. *Nutrition* 2013;29:195–202.
- 658 15. Hussain T, Tan B, Yin Y, Blachier F, Tossou MCB, Rahu N. Oxidative Stress and
659 Inflammation: What Polyphenols Can Do for Us? *Oxid Med Cell Longev* 2016;2016:1–
660 9.
- 661 16. Carregosa D, Mota S, Ferreira S, Alves-Dias B, Loncarevic-Vasiljkovic N, Crespo CL,
662 Menezes R, Teodoro R, Santos CN dos. Overview of Beneficial Effects of (Poly)phenol
663 Metabolites in the Context of Neurodegenerative Diseases on Model Organisms.
664 *Nutrients* 2021;13:2940.
- 665 17. Raimundo AF, Félix F, Andrade R, García-Conesa M-T, González-Sarrías A, Gilsa-Lopes
666 J, do Ó D, Raimundo A, Ribeiro R, Rodriguez-Mateos A, et al. Combined effect of
667 interventions with pure or enriched mixtures of (poly)phenols and anti-diabetic
668 medication in type 2 diabetes management: a meta-analysis of randomized controlled
669 human trials. *Eur J Nutr* 2020;59:1329–43.
- 670 18. Zhou Y, Zheng J, Li Y, Xu D-P, Li S, Chen Y-M, Li H-B. Natural Polyphenols for Prevention
671 and Treatment of Cancer. *Nutrients* 2016;8:515.
- 672 19. Santos CN, Gomes A, Oudot C, Dias-Pedroso D, Rodriguez-Mateos A, Vieira HLA,
673 Brenner C. Pure Polyphenols Applications for Cardiac Health and Disease. *Curr Pharm*
674 *Des* 2018;24:2137–56.
- 675 20. García-Villalba R, Giménez-Bastida JA, Cortés-Martín A, Ávila-Gálvez MÁ,
676 Tomás-Barberán FA, Selma MV, Espín JC, González-Sarrías A. Urolithins: a
677 Comprehensive Update on their Metabolism, Bioactivity, and Associated Gut
678 Microbiota. *Mol Nutr Food Res* 2022;66:2101019.

- 679 21. Carregosa D, Carecho RM, Figueira I, Santos CN. Low molecular weight metabolites
680 from polyphenols as effectors for attenuating neuroinflammation. *J Agric Food Chem*
681 [Internet] 2019;acs.jafc.9b02155. Available from:
682 <http://pubs.acs.org/doi/10.1021/acs.jafc.9b02155>
- 683 22. Crespy V, Morand C, Besson C, Manach C, Demigne C, Remesy C. Quercetin, but not Its
684 Glycosides, Is Absorbed from the Rat Stomach. *J Agric Food Chem* 2002;50:618–21.
- 685 23. Passamonti S, Vrhovsek U, Vanzo A, Mattivi F. The stomach as a site for anthocyanins
686 absorption from food ¹. *FEBS Lett* 2003;544:210–3.
- 687 24. Talavéra S, Felgines C, Texier O, Besson C, Lamaison J-L, Rémésy C. Anthocyanins Are
688 Efficiently Absorbed from the Stomach in Anesthetized Rats. *J Nutr* 2003;133:4178–82.
- 689 25. Piskula MK, Yamakoshi J, Iwai Y. Daidzein and genistein but not their glucosides are
690 absorbed from the rat stomach. *FEBS Lett* 1999;447:287–91.
- 691 26. Carregosa D, Pinto C, Ávila-Gálvez MÁ, Bastos P, Berry D, Santos CN. A look beyond
692 dietary (poly)phenols: The low molecular weight phenolic metabolites and their
693 concentrations in human circulation. *Compr Rev Food Sci Food Saf* 2022;21:3931–62.
- 694 27. Tomás-Barberán FA, García-Villalba R, González-Sarrías A, Selma M v., Espín JC. Ellagic
695 Acid Metabolism by Human Gut Microbiota: Consistent Observation of Three Urolithin
696 Phenotypes in Intervention Trials, Independent of Food Source, Age, and Health
697 Status. *J Agric Food Chem* 2014;62:6535–8.
- 698 28. Mena P, Bresciani L, Brindani N, Ludwig IA, Pereira-Caro G, Angelino D, Llorach R,
699 Calani L, Brighenti F, Clifford MN, et al. Phenyl- γ -valerolactones and phenylvaleric
700 acids, the main colonic metabolites of flavan-3-ols: synthesis, analysis, bioavailability,
701 and bioactivity. *Nat Prod Rep* [Internet] Royal Society of Chemistry ({RSC}); 2019;
702 Available from: <http://xlink.rsc.org/?DOI=C8NP00062J>

- 703 29. Heinonen S-M, Hoikkala A, Wähälä K, Adlercreutz H. Metabolism of the soy
704 isoflavones daidzein, genistein and glycitein in human subjects. *J Steroid Biochem Mol*
705 *Biol* [Internet] Elsevier {BV}; 2003;87:285–99. Available from:
706 <https://linkinghub.elsevier.com/retrieve/pii/S096007600300414X>
- 707 30. Tomás-Barberán FA, González-Sarrías A, García-Villalba R, Núñez-Sánchez MA, Selma
708 M v., García-Conesa MT, Espín JC. Urolithins, the rescue of “old” metabolites to
709 understand a “new” concept: Metabotypes as a nexus among phenolic metabolism,
710 microbiota dysbiosis, and host health status. *Mol Nutr Food Res* 2017;61:1500901.
- 711 31. Rothwell JA, Perez-Jimenez J, Neveu V, Medina-Remon A, M’Hiri N, Garcia-Lobato P, Manach
712 C, Knox C, Eisner R, Wishart DS, et al. Phenol-Explorer 3.0: a major update of the Phenol-
713 Explorer database to incorporate data on the effects of food processing on polyphenol
714 content. *Database* [Internet] Oxford University Press ({OUP}); 2013;2013. Available from:
715 <https://academic.oup.com/database/article-lookup/doi/10.1093/database/bat070>
- 716 32. da Silva A, Giacomoni F, Pavot B, Fillâtre Y, Rothwell JA, Sualdea BB, Veyrat C, Garcia-Villalba
717 R, Gladine C, Kopec R, et al. PhytoHub V1. 4: A new release for the online database dedicated
718 to food phytochemicals and their human metabolites. *Proceedings of the 1st International*
719 *Conference on Food Bioactivities & Health, Norwich, UK. 2016. p. 13–5.*
- 720 33. Sud M, Fahy E, Cotter D, Azam K, Vadivelu I, Burant C, Edison A, Fiehn O, Higashi R, Nair KS, et
721 al. Metabolomics Workbench: An international repository for metabolomics data and
722 metadata, metabolite standards, protocols, tutorials and training, and analysis tools. *Nucleic*
723 *Acids Res* 2016;44:D463–70.
- 724 34. Wishart DS, Guo A, Oler E, Wang F, Anjum A, Peters H, Dizon R, Sayeeda Z, Tian S, Lee BL, et
725 al. HMDB 5.0: the Human Metabolome Database for 2022. *Nucleic Acids Res* 2022;50:D622–
726 31.

- 727 35. Zhou W, Wu H, Wang Q, Zhou X, Zhang Y, Wu W, Wang Y, Ren Z, Li H, Ling Y, et al.
728 Simultaneous determination of formononetin, biochanin A and their active metabolites in
729 human breast milk, saliva and urine using salting-out assisted liquid-liquid extraction and
730 ultra high performance liquid chromatography-electrospray ionization tandem mass
731 spectrum. *Journal of Chromatography B* 2020;1145:122108.
- 732 36. Jochum F, Alteheld B, Meinardus P, Dahlinger N, Nomayo A, Stehle P. Mothers' Consumption
733 of Soy Drink But Not Black Tea Increases the Flavonoid Content of Term Breast Milk: A Pilot
734 Randomized, Controlled Intervention Study. *Ann Nutr Metab* 2017;70:147–53.
- 735 37. Franke AA, Custer LJ. Daidzein and genistein concentrations in human milk after soy
736 consumption. *Clin Chem* 1996;42:955–64.
- 737 38. Franke AA, Custer LJ, Tanaka Y. Isoflavones in human breast milk and other biological fluids.
738 *Am J Clin Nutr* 1998;68:1466S-1473S.
- 739 39. Franke AA, Custer LJ, Wang W, Shi CY. HPLC Analysis of Isoflavonoids and Other Phenolic
740 Agents from Foods and from Human Fluids. *Exp Biol Med* 1998;217:263–73.
- 741 40. Khymenets O, Rabassa M, Rodríguez-Palmero M, Rivero-Urgell M, Urpi-Sarda M, Tulipani S,
742 Brandi P, Campoy C, Santos-Buelga C, Andres-Lacueva C. Dietary Epicatechin Is Available to
743 Breastfed Infants through Human Breast Milk in the Form of Host and Microbial Metabolites.
744 *J Agric Food Chem* 2016;64:5354–60.
- 745 41. Romaszko E, Marzec-Wróblewska U, Badura A, Buciński A. Does consumption of red
746 grapefruit juice alter naringenin concentrations in milk produced by breastfeeding mothers?
747 *PLoS One* 2017;12:e0185954.
- 748 42. Romaszko E, Wiczowski W, Romaszko J, Honke J, Piskula MK. Exposure of breastfed infants
749 to quercetin after consumption of a single meal rich in quercetin by their mothers. *Mol Nutr*
750 *Food Res* 2014;58:221–8.

- 751 43. Henning SM, Yang J, Lee R-P, Huang J, Thames G, Korn M, Ben-Nissan D, Heber D, Li Z.
752 Pomegranate juice alters the microbiota in breast milk and infant stool: a pilot study. *Food*
753 *Funct* 2022;13:5680–9.
- 754 44. Zhang X, Sandhu A, Edirisinghe I, Burton-Freeman B. An exploratory study of red raspberry (*Rubus idaeus* L.) (poly)phenols/metabolites in human biological samples. *Food Funct*
755 2018;9:806–18.
- 757 45. Feliciano RP, Boeres A, Massaccesi L, Istaş G, Ventura MR, Nunes dos Santos C, Heiss C,
758 Rodriguez-Mateos A. Identification and quantification of novel cranberry-derived plasma and
759 urinary (poly)phenols. *Arch Biochem Biophys* [Internet] Elsevier {BV}; 2016;599:31–41.
760 Available from: <https://linkinghub.elsevier.com/retrieve/pii/S0003986116300145>
- 761 46. Cortés-Martín A, García-Villalba R, García-Mantrana I, Rodríguez-Varela A, Romo-Vaquero M,
762 Collado MC, Tomás-Barberán FA, Espín JC, Selma MV. Urolithins in Human Breast Milk after
763 Walnut Intake and Kinetics of *Gordonibacter* Colonization in Newly Born: The Role of
764 Mothers' Urolithin Metabotypes. *J Agric Food Chem* 2020;68:12606–16.
- 765 47. Henning SM, Wallenstein MB, Weigel N, Johnson C, Yang J, Lee R-P. Appearance of Ellagic
766 Acid Metabolites from Pomegranate Juice in Breast Milk: A Case Report. *Ann Clin Case Rep*
767 2019;4:1738.
- 768 48. Nalewajko-Sieliwoniuk E, Hryniewicka M, Jankowska D, Kojło A, Kamianowska M, Szczepański
769 M. Dispersive liquid–liquid microextraction coupled to liquid chromatography tandem mass
770 spectrometry for the determination of phenolic compounds in human milk. *Food Chem*
771 2020;327:126996.
- 772 49. Pinto P, Santos CN. Worldwide (poly)phenol intake: assessment methods and identified gaps.
773 *Eur J Nutr* 2017;56:1393–408.

- 774 50. Williamson G, Manach C. Bioavailability and bioefficacy of polyphenols in humans. II. Review
775 of 93 intervention studies. *Am J Clin Nutr* [Internet] Oxford University Press (OUP);
776 2005;81:243S-255S. Available from:
777 <https://academic.oup.com/ajcn/article/81/1/243S/4607529>
- 778 51. di Pede G, Mena P, Bresciani L, Achour M, Lamuela-Raventós RM, Estruch R, Landberg R,
779 Kulling SE, Wishart D, Rodriguez-Mateos A, et al. Revisiting the bioavailability of flavan-3-ols
780 in humans: A systematic review and comprehensive data analysis. *Mol Aspects Med*
781 2023;89:101146.
- 782 52. Ludwig IA, Mena P, Calani L, Borges G, Pereira-Caro G, Bresciani L, del Rio D, Lean MEJ,
783 Crozier A. New insights into the bioavailability of red raspberry anthocyanins and
784 ellagitannins. *Free Radic Biol Med* 2015;89:758–69.
- 785 53. Williamson G, Kay CD, Crozier A. The Bioavailability, Transport, and Bioactivity of Dietary
786 Flavonoids: A Review from a Historical Perspective. *Compr Rev Food Sci Food Saf*
787 2018;17:1054–112.
- 788 54. Wang L, Halquist MS, Sweet DH. Simultaneous determination of gallic acid and gentisic acid in
789 organic anion transporter expressing cells by liquid chromatography–tandem mass
790 spectrometry. *Journal of Chromatography B* 2013;937:91–6.
- 791 55. Mori S, Takanaga H, Ohtsuki S, Deguchi T, Kang Y-S, Hosoya K, Terasaki T. Rat Organic Anion
792 Transporter 3 (rOAT3) is Responsible for Brain-to-Blood Efflux of Homovanillic Acid at the
793 Abluminal Membrane of Brain Capillary Endothelial Cells. *Journal of Cerebral Blood Flow &*
794 *Metabolism* 2003;23:432–40.
- 795 56. Poniedziałek B, Rzymiski P, Pięt M, Gąsecka M, Stroińska A, Niedzielski P, Mleczek M, Rzymiski
796 P, Wilczak M. Relation between polyphenols, malondialdehyde, antioxidant capacity, lactate

- 797 dehydrogenase and toxic elements in human colostrum milk. *Chemosphere* 2018;191:548–
798 54.
- 799 57. Li W, Hosseinian FS, Tsopmo A, Friel JK, Beta T. Evaluation of antioxidant capacity and aroma
800 quality of breast milk. *Nutrition* 2009;25:105–14.
- 801 58. Silberstein T, Hamou B, Cervil S, Barak T, Burg A, Saphier O. Colostrum of Preeclamptic
802 Women Has a High Level of Polyphenols and Better Resistance to Oxidative Stress in
803 Comparison to That of Healthy Women. *Oxid Med Cell Longev* 2019;2019:1–5.
- 804 59. Vitale DC, Piazza C, Melilli B, Drago F, Salomone S. Isoflavones: estrogenic activity, biological
805 effect and bioavailability. *Eur J Drug Metab Pharmacokinet* 2013;38:15–25.
- 806 60. Setchell KD, Zimmer-Nechemias L, Cai J, Heubi JE. Isoflavone content of infant formulas and
807 the metabolic fate of these phytoestrogens in early life. *Am J Clin Nutr* 1998;68:1453S-1461S.
- 808 61. Rosa F, Mercer KE, Lin H, Sims CR, Pack LM, Goode G, Badger T, Andres A, Yeruva L. Early
809 Infant Formula Feeding Impacts Urinary Metabolite Profile at 3 Months of Age. *Nutrients*
810 2020;12:3552.
- 811 62. Vandenplas Y, Castrellon PG, Rivas R, Gutiérrez CJ, Garcia LD, Jimenez JE, Anzo A, Hegar B,
812 Alarcon P. Safety of soya-based infant formulas in children. *British Journal of Nutrition*
813 2014;111:1340–60.
- 814 63. Andres A, Cleves MA, Bellando JB, Pivik RT, Casey PH, Badger TM. Developmental Status of 1-
815 Year-Old Infants Fed Breast Milk, Cow’s Milk Formula, or Soy Formula. *Pediatrics*
816 2012;129:1134–40.
- 817 64. Cordle CT;, Winship TR;, Schaller JP;, Thomas DJ*;, Buck RH;, Ostrom KM;, Jacobs JR;, Blatter
818 MM;, Cho S, Gooch WMI, et al. Immune Status of Infants Fed Soy-Based Formulas With or
819 Without Added Nucleotides for 1 Year: Part 2: Immune Cell Populations. *J Pediatr*
820 *Gastroenterol Nutr* 2002;34:145–53.

- 821 65. Ostrom KM, Cordle CT, Schaller JP, Winship TR, Thomas DJ, Jacobs JR, Blatter MM, Cho S,
822 Gooch WM, Granoff DM, et al. Immune Status of Infants Fed Soy-Based Formulas With or
823 Without Added Nucleotides for 1 Year: Part 1: Vaccine Responses, and Morbidity. *J Pediatr*
824 *Gastroenterol Nutr* 2002;34:137–44.
- 825 66. Ward E, Yang N, Muhlhausler BS, Leghi GE, Netting MJ, Elmes MJ, Langley-Evans SC. Acute
826 changes to breast milk composition following consumption of high-fat and high-sugar meals.
827 *Matern Child Nutr* 2021;17.
- 828 67. Williamson G. Reporting of plasma antioxidant activities in human intervention studies in the
829 *British Journal of Nutrition*. *British Journal of Nutrition* 2019;122:721–2.
- 830 68. Harnly J. Antioxidant methods. *Journal of Food Composition and Analysis* 2017;64:145–6.
- 831 69. Ghanim H, Sia CL, Korzeniewski K, Lohano T, Abuaysheh S, Marumganti A, Chaudhuri A,
832 Dandona P. A Resveratrol and Polyphenol Preparation Suppresses Oxidative and
833 Inflammatory Stress Response to a High-Fat, High-Carbohydrate Meal. *J Clin Endocrinol*
834 *Metab* 2011;96:1409–14.
- 835 70. Min J, Wang Z, Liang C, Li W, Shao J, Zhu K, Zhou L, Cheng J, Luo S, Yu L, et al.
836 Detection of Phytoestrogen Metabolites in Breastfed Infants' Urine and the
837 Corresponding Breast Milk by Liquid Chromatography–Tandem Mass Spectrometry. *J*
838 *Agric Food Chem* 2020;68:3485–94.
- 839
- 840

841 Table 1 – Characteristics of studies detecting and quantifying (poly)phenols in human breast milk samples of mothers undergoing dietary interventions.

842

Diet/ Intervention	Duration of intervention	Sample type	N	Dietary recommendations and intake	Samples collected during intervention	Time of collection	Sample Treatment	Method of detection	(Poly)phenol detected	Reference
Dark chocolate	Single dose	M	2	No ingestion of other coca-based products	0, 2, 4, 6, 8, 10 and 12h	Whole BM content, upon pre- defined timepoint for collection.	Acidification with PO ₄ H ₃ followed by SPE	UPLC- QQQ	Flavan-3-ols (epicatechin derivatives) Phenyl- γ -valerolactones	(40)
125g of red raspberry	1 week	M	1	-	0h and 2h on day 1 and day 7	-	SPE	UPLC- QTOF UPLC- QQQ	Anthocyanins Flavan-3-ols Flavonols Urolithins Phenyl- γ -valerolactones Phenolic acids	(44)
30g of peeled walnut	3 days	M	11 <hr/> 27	Avoid ellagitannin containing foods during the week before starting the intervention	0, 24, 48, and 72h <hr/> 72h	Entire BM content at the pre- defined timepoint: Morning collection.	ACN/formic acid (99:1) extraction	UPLC- QTOF	Urolithins	(46)
500 mL soybean milk	Single dose	M	6	Isoflavones restriction	0.5, 3, 6, 9, 12 and 24h	Unknown amount of BM at the pre-defined timepoint for collection	Glucuronidase and sulfatase ACN	UPLC- Qtrap	Isoflavones (genistein/daidzein)	(35)
250 mL of red grapefruit juice	Single dose	M	14	No supplement usage Avoid fruits rich in naringenin	0, 1, 2, 3, 4, 5, 6, 12, 18, 24 and 36h	Entire BM content at the pre- defined timepoint for collection	Hexane Pepsin in HCl NaOH and glucuronidase and sulfatase Ethyl acetate extraction	HPLC-UV HPLC- Q	Flavanones (naringenin)	(41)

5, 10 or 20g of roasted soybeans	Day 0 day 1 and day 3 respectively	M	1	No alcohol Maintained regular diet	a	Unknown amount of BM at the pre-defined timepoint for collection	Glucuronidase and sulfatase Ethyl acetate extraction	HPLC-UV HPLC-ECD	Isoflavones (genistein/daidzein)	(39)
								HPLC-UV GC-MS	Isoflavones (genistein/daidzein)	(37)
5, 10, and 20 g roasted soybeans	day 1 and day 3 respectively	M, IF	1	No alcohol Maintained regular diet	a	Unknown amount of BM at the pre-defined timepoint for collection	Glucuronidase and sulfatase Ethyl acetate extraction	HPLC-UV	Isoflavones (genistein/daidzein)	(38)
250mL soy drink	Daily (in the morning) for 6 days	M	18	No consumption of flavonoid-rich beverages and foods	Day before intervention. Day 3, 6 of intervention. Day after intervention	5 min after breastfeeding starts (collected in the evening at 10h a.m)	Glucuronidase and sulfatase SPE	HPLC-ECD	Isoflavones (genistein/daidzein)	(36)
300mL black tea		M	18							
300mL water		M	8							
Onion soup	Single dose	M	11	5-day low quercetin diet	0, 3, 6, 12, 18, 24, 36, and 48 h	Unknown amount of BM at the pre-defined timepoint of collection	Hexane Glucuronidase and sulfatase Ethyl acetate extraction	HPLC-PDA-MS	Flavonols (Quercetin/ isorhamnetin)	(42)
227g of pomegranate juice	Daily for 2 weeks	M	2	2 weeks washout period of low (poly)phenol diet	Collection at day 0 and day 14 at 6 and 24 h post intake.	10mL of BM at the pre-defined timepoint of collection	ACN SPE	LC-MS/MS	Urolithins (Uro A glucuronide/ Dimethyl ellagic acid glucuronide)	(47)
227g of pomegranate juice	Daily for 2 weeks	M	12	2 weeks washout period of low (poly)phenol diet	Collection at day 0 and day 14 at 6 and 24 h after intake.	Unknown amount of BM at the pre-defined timepoint of collection	ACN SPE	LC-MS/MS	Urolithins (Uro A glucuronide/ Dimethyl ellagic acid glucuronide)	(43)

843 BM- Breast Milk, C- Colostrum, T- Transitional Milk, M- Mature Milk, IF- infant formula, ACN-acetonitrile, SPE- solid phase extraction, LC- Liquid
844 chromatography, HPLC- High performance liquid chromatography, UPLC/UHPLC- Ultra performance liquid chromatography, PDA- photodiode array
845 detector, ECD- electrochemical detector, UV- ultraviolet, GC- Gas chromatography, PO₄H₃ – phosphoric acid
846 ^a The three articles mentioned share the same experimental design. Exact sampling timepoints are not mentioned in text yet are shown in graph.
847 Notwithstanding, exact timepoint of collection could not be extracted from the graphs.
848

849

850

851

852

853

854

855

856

857

858

859 Table 2- Characteristics of studies detecting and quantifying (poly)phenols in human breast milk samples of free-living mothers.

Criteria for participation	Dietary recall or FFQ	Sample type	No volunteers	Samples collected during intervention	Time of collection	Sample Treatment	Method of detection	(poly)phenol detected	Reference
Adherence to Mediterranean Diet. (based on FFQ)	FFQ	C, T, M, IF	C: 7 ^a T: 7 ^a M: 7 ^a IF: 7	C: up to 5 th day T: 6 th - 15 th day M: > 15 th day	Beginning of each feeding	NaOH hydrolysis Hexane lipid precipitation Ethyl acetate extraction	UPLC-MS/MS	Phenolic acids Flavan-3-ols Flavonols	(9)
-	FFQ and 24h recall questionnaire in the day of sampling	C, T, M	C: 3 T: 11 M: 10	C: 1 st - 5 th day T: 6 th - 15 th day M: > 15 th day	30-50mL of BM in the morning or through the day	Acidification with PO ₄ H ₃ SPE	UPLC-MS/MS	Flavan-3-ols Phenolic acids	(40)
-	-	C, T, M, IF (non-differentiated)	6	-	Pool of different timepoints	NaOH hydrolysis Hexane lipid precipitation Ethyl acetate extraction	HPLC-UV	Phenolic acids	(57)
-	Volunteers divided in three groups according to FFQ: Low, medium, and higher (poly)phenol intake	M	30 volunteers for high and medium intake and 29 for low intake	Between 2 and 24 months	Entire BM content. All participant sample at the same time of the day	Hexane Acidified and treated with glucuronidase Ethyl acetate extraction	UHPLC-MS/MS	Flavan-3-ols Flavonols Flavanones Isoflavones	(2)
Free living	-	T, M	T: 17 M: 17	1, 4 13 weeks after infant birth	Morning between 10h and 13h	Hexane Pepsin in HCl NaOH and glucuronidase and sulfatase Ethyl acetate extraction	HPLC-MS/MS	Flavan-3-ols Flavanones Flavonols	(14)
Free living	-	C	13	-	-	Hexane (NH ₄) ₂ SO ₄ and ascorbic acid Glucuronidase and sulfatase	LC-ESI-MS/MS	Flavanones Isoflavones Phenolic	(48)

						treatment Ethyl acetate and acetonitrile extraction		acids	
Free living	FFQ and 24h dietary recall	-	50	-	>30 mL of BM in the morning after fasting	Ethyl acetate extraction Glucuronidase and sulfatase treatment Ethyl acetate extraction	LC- MS/MS	Isoflavones	(70)

860 BM- Breast Milk, C- Colostrum, T- Transitional Milk, M- Mature Milk, IF- infant formula, ACN-acetonitrile, SPE- solid phase extraction, LC- Liquid
861 chromatography, HPLC- High performance liquid chromatography, UPLC/UHPLC- Ultra performance liquid chromatography, PO₄H₃ – phosphoric acid.
862 ^a Eighteen volunteers were included in each group, yet (poly)phenol quantifications were only performed to 7 of the 18 volunteers per group.
863

864 Table 3- Dietary Flavonoids and metabolites detected in human breast milk, and their
 865 concentrations.

Flavonoids	Milk Type	Concentration (range) in nmol/L^a	Reference
Anthocyanins			
Cyanidin-3-sophoroside	M	R.Q.	(44)
Cyanidin-3-2G-glucosylrutinoside	M	R.Q.	(44)
Cyanidin-3-glucoside	M	R.Q.	(44)
Pelargonidin-3-sophoroside	M	R.Q.	(44)
Cyanidin-3-rutinoside	M	R.Q.	(44)
Cyanidin-3-glucuronide	M	R.Q.	(44)
Methylcyanidin-3-sophoroside	M	R.Q.	(44)
Peonidin-3-glucoside	M	R.Q.	(44)
Flavonols			
Quercetin	M	150 ^c	(2) ^f
	T	48.1 (40.0-77.6)	(14) ^f
	M	59.8 (33.1-108.6) ^e	
	M	68 ^b	(42) ^f
	C	105.22 (100.59 – 109.52) ^d	(48) ^f
Isoquercetin	C	0.11 (0.06-0.15)	(9)
	T	0.19 (0.08-0.21)	
	M	0.16 (0.06-0.25)	
Kaempferol	M	30 ^c	(2) ^f
	T	15.7 (7.8-34)	(14) ^f
Kaempferol-3-glucoside	M	34.8 (17.7-71.4) ^e	
	C	2.36 (0-7.08)	(9)
	T	3.02 (0.01-5.24)	
	M	-	
Flavan-3-ols			
Catechin	C	0.04 (0.02-0.05)	(9)
	T	0.02 (0.01-0.03)	
	M	0.29 (0.08-0.42)	
Catechin-glucuronide	M	R.Q.	(44)
Epicatechin	M	5.4 ^c	(2) ^f
	M	33 ^c	(2) ^f
	T	90.5 (68.3-120.5)	(14)
	M	249.2(63.7-828.5) ^e	
Epicatechin-4-glucuronide	C, T	38 ^b	(40)
Epicatechin-2-sulfate	T, M	26 ^b	(40)
Methylepicatechin-3-sulfate	C, T, M	26 ^b	(40)
Epicatechin-gallate	T	189.5 (55.7-609)	(14) ^f
	M	236.6 (62.2-646) ^e	
Epigallocatechin-gallate	T	1119 (426-2365)	(14) ^f
	M	667 (215-1684) ^e	
Isoflavones			
Daidzein	M	68 ^c	(2) ^f
	M	104 ^b	(35) ^f
	M	60 ^{b,d}	(38) ^f
	M	9.3 ^b	(36)
	M	55 ^{b,d}	(37) ^f
	C	14.20 (0.83-79.46) ^d	(48) ^f
		37 (20-54)	(70) ^f

Genistein	M	99 ^b	(35) ^f
	M	65 ^{b, d}	(38) ^f
	M	4.5 ^b	(36)
	M	70 ^{b, d}	(37) ^f
	C	13.43 (0.93- 44.77) _d	(48) ^f
-	117 (105-130)	(70) ^f	
Flavanone			
Naringenin	M	474 ^c	(2) ^f
	T	252 (83-543)	(14) ^f
	M	210 (98-722) ^e	
	M	908 ^b	(41) ^f
	C	6.69 (1.41-22.30) ^d	(48) ^f
Hesperitin	T	459 (107-1272)	(14) ^f
	M	393 (80-1603) ^e	
	C	4.11 (0.79-16.21) ^d	(48) ^f
Flavonoid metabolite			
Equol	M	102 ^c	(2) ^f
	-	8.000 (0.001-0.028)	(70) ^f

866 C- Colostrum, T- transitional milk, M- Mature Milk, R.Q.- Relative quantification

867

868 ^a The concentrations listed are the highest concentrations reported in each study or a range when
 869 more than one concentration is presented . Studies reporting only relative quantification are
 870 referred as R.Q (relative quantification).

871 ^b Studies reporting a Cmax values from a kinetic study.

872 ^c Highest reported concentration between the three experimental groups in the study (low, medium
 873 and high (poly)phenol consumers).

874 ^d Approximate values extrapolated from the graph.

875 ^e Highest reported concentration between week 4 and 13 postpartum.

876 ^f This study reported the use of deconjugation enzymes that may impact the absolute value
 877 reported.

878 Table 4 – Ellagic acid metabolites detected and quantified in human breast milk, and their
 879 concentrations.

Ellagic acid metabolites	Milk Type	Quantification Cmax (range) in nmol/L	Reference	880
Dimethyl Ellagic Acid-glucuronide	M	1.12 ^c	(47)	883
Urolithin A	M	4.7 (4-5) ^a 3.3 (1.4-7.8) ^b	(46)	884 885
Urolithin A-glucuronide	M	27.6 (9-78) ^a 31 (10-90) ^b	(46)	886 887
	M	36.28 ^c	(43)	888
Urolithin A-sulfate	M	7.9 (7-9) ^a 17.2 (7-40) ^b	(46)	889
Isourolithin A	M	2.7 (2-5) ^b	(46)	890
Isourolithin A-glucuronide	M	14.8 (6-23) ^b	(46)	891
Urolithin B	M	4.3 ^b	(46)	892
Urolithin B-glucuronide	M	19.8 (5-52) ^b	(46)	893
Urolithin B-sulfate	M	D.Q	(46)	894

895

896 M- Mature Milk, D.Q- Detected not quantified

897 ^a Detected in Metabotype A

898 ^b Detected in Metabotype B

899 ^c Maximal reported Cmax between the two participants and day 1, 7 and 14 after beginning of the
 900 intervention.

901

902 Table 5- Low molecular weight phenolics detected in human breast milk, and their concentrations.

Phenolic Metabolite	Milk Type	Concentration (range) in nmol/L ^a	Reference
Benzenes			
1,2,3-trihydroxybenzene (pyrogallol)	C	0.75 (0.34-1.73)	(9)
	T	0.95 (0.28-2.13)	
	M	1.66 (1.41-3.91)	
Benzoic acids			
3,4,5-trihydroxybenzoic acid (gallic acid)	C	582 (375–721)	(9)
	T	661 (434–816)	
	M	575 (434–816)	
	M	61 ^c	(2) ^f
	M	R.Q.	(44)
	C	186.92 (178.70-194.57) ^d	(48) ^f
2,3-dihydroxybenzoic acid	M	R.Q.	(44)
2,5-dihydroxybenzoic acid	C	5.61 (4-8)	(9) ^f
	T	7.41 (3-15)	
	M	6.43 (0.29-11)	
2,6-dihydroxybenzoic acid		R.Q.	(44)
4-hydroxy-3-methoxybenzoic acid (vanillic acid)	C	5.96 (6-7)	(9) ^f
	T	7.05 (6-8)	
	M	6.56 (4-10)	
	M	R.Q.	(44)
3-methoxybenzoic acid-4-sulfate (vanillic acid-sulfate)	M	R.Q.	(44)
3-methoxybenzoic acid-4-glucuronide (vanillic acid-glucuronide)	M	R.Q.	(44)
4-methoxy-3-hydroxybenzoic acid (Isovanillic acid)	M	R.Q.	(44)
4-methoxy-benzoic acid-3-sulfate (Isovanillic acid-sulfate)	M	R.Q.	(44)
3,4-dihydroxybenzoic acid (protocatechuic acid)	C	15.16 (5-31)	(9) ^f
	T	22.55 (9-27)	
	M	13.16 (3-20)	
	M	770 ^c	(2) ^f
	M	R.Q.	(44)
3,4-dihydroxybenzoic acid-sulfate ^b (protocatechuic acid-sulfate)	M	R.Q.	(44)
2,4,6-trihydroxybenzoic acid	C	2.71 (1-6)	(9)
	T	2.68 (1-4)	
	M	3.08 (0.25-6)	
4-hydroxybenzoic acid	C	0.54 (0.24-0.90)	(9)
	T	0.67 (0.44-0.94)	
	M	0.72 (0.26-1.9)	
	M	R.Q.	(44)
	C, T, M	(4445-4598) ^d	(57)
benzoic acid-4-glucuronide	M	R.Q.	(44)
benzoic acid-4-sulfate	M	R.Q.	(44)
3-hydroxybenzoic acid	C	7.66 (3-14)	(9)
	T	9.94 (6-12)	
	M	6.85 (3-8)	
benzoic acid-3-glucuronide	M	R.Q.	(44)
methyl 4-hydroxybenzoate	M	R.Q.	(44)
methyl 3,4-dihydroxybenzoate	M	R.Q.	(44)

Benzaldehydes			
3,4-dihydroxybenzaldehyde (protocatechualdehyde)	C	9.63 (3-17)	(9)
	T	12.56 (7-16)	
	M	7.46 (3-10)	
	M	R.Q.	(44)
4-hydroxybenzaldehyde (p-hydroxybenzaldehyde)	M	R.Q.	(44)
	C	1.09 (1-6)	(9)
	T	3.54 (1-5)	
	M	1.62 (0.41-3)	
benzaldehyde-4-glucuronide (4-hydroxybenzaldehyde-glucuronide)	M	R.Q.	(44)
4-hydroxy-3-methoxybenzaldehyde (vanillin)	C	5.84 (3-9)	(9)
	T	7.83 (7-10)	
	M	5.56 (2-10)	
2-hydroxy-3-methoxybenzaldehyde (o-vanillin)	C	1.61 (1.41-1.62)	(9)
	T	6.06 (6-7)	
	M	12.22 (0.30-32)	
2,4,6-trihydroxybenzaldehyde (phloroglucinaldehyde)	M	R.Q.	(44)
Cinnamic Acids			
cinnamic acid (coumaric acid)	M	R.Q.	(44)
4'-hydroxy-3'-methoxycinnamic acid (ferulic acid)	C	0.62 (0.06-1.23)	(9)
	T	0.71 (0.12-1.53)	
	M	0.34 (0.14-0.57)	
	M	129 ^c	(2) ^f
	M	R.Q.	(44)
	C, T, M	(7339-7673) ^d	(57)
3'-methoxycinnamic acid-4'-glucuronide (ferulic acid-glucuronide)	M	R.Q.	(44)
3',4'-dihydroxycinnamic acid (caffeic acid)	C	14.15 (4-17)	(9)
	T	17.28 (4-30)	
	M	12.32 (1-24)	
	M	188 ^c	(2) ^f
	C	301.95 (129.32- 654.97) ^d	(48) ^f
3',4'-dihydroxycinnamic acid-sulfate ^b (caffeic acid-sulfate)	M	R.Q.	(44)
4'-methoxycinnamic acid	C	0.24 (0.02-0.67)	(9)
	T	0.30 (0.14-0.48)	
	M	0.91 (0.06-2.42)	
3',4'-dimethoxycinnamic acid (dimethylcinnamic acid)	C	0.14 (0.13-0.28)	(9)
	T	0.56 (0.15-0.25)	
	M	0.18 (0.13-0.24)	
4'-hydroxycinnamic acid (p-coumaric acid)	C	0.44 (0.24-0.59)	(9)
	T	1.20 (0.27-2.31)	
	M	0.29 (0.15-0.49)	
	C, T, M	(8474-8797) ^d	(57)
cinnamic acid-4'-sulfate (p-coumaric acid-sulfate)	M	R.Q.	(44)
3-(phenyl)propanoic acids			

3-(3'-methoxyphenyl)propanoic acid-4'-glucuronide (dihydroferulic acid-glucuronide)	M	R.Q.	(44)
3'-methoxycinnamic acid-4'-sulfate (dihydroferulic acid-sulfate)	M	R.Q.	(44)
3-(3',4'-dihydroxyphenyl)propanoic acid-sulfate ^b (dihydrocaffeic acid-sulfate)	M	R.Q.	(44)
3-(3'-hydroxyphenyl)propanoic acid	M	R.Q.	(44)
3-(phenyl)propanoic acid-3'-sulfate (3-(3-hydroxyphenyl)propanoic acid-sulfate)	M	R.Q.	(44)
Phenylacetic acids			
2'-hydroxyphenylacetic acid	M	R.Q.	(44)
3'-hydroxyphenylacetic acid	M	R.Q.	(44)
4'-hydroxyphenylacetic acid	M	R.Q.	(44)
4'-hydroxyphenylacetic acid (<i>p</i> -hydroxyphenylacetic acid)	C T M	0.27 (0.05-0.53) 0.41 (0.35-0.52) 0.40 (0.07-0.93)	(9)
3',4'-dihydroxyphenylacetic acid (dopac)	M	277 ^c	(2) ^f
	M	R.Q.	(44)
4'-hydroxy-3'-methoxyphenylacetic acid (homovanillic acid)	M	R.Q.	(44)
3'-hydroxy-4'-methoxyphenylacetic acid (Isohomovanillic acid)	M	R.Q.	(44)
5-(phenyl)-γ-valerolactone			
5-(3',4'-dihydroxyphenyl)- γ -valerolactone-glucuronide (isomer 1) ^b	M	26	(40)
5-(3',4'-dihydroxyphenyl)- γ -valerolactone-glucuronide (isomer 2) ^b	C T M	37 (22-39) (19-39)	(40)
5-(3',4'-dihydroxyphenyl)- γ -valerolactone-sulfate	C T M	(165-781) (24-1909) (20-435)	(40)
5-(3'-methoxyphenyl)- γ -valerolactone-4'-glucuronide	M	24	(40)
5-(3'-methoxy-4'-hydroxyphenyl)- γ -valerolactone-sulfate ^e	T M	(14-26) (17-20)	(40)
5-(3'-methoxy-4'-hydroxyphenyl)- γ -valerolactone-sulfate ^e	C T M	20 20 17 (16.9-17.2)	(40)
5-(3',4',5'-trihydroxyphenyl)- γ -valerolactone	M	R.Q.	(44)
5-(4'-hydroxyphenyl)- γ -valerolactone-3'-glucuronide	M	R.Q.	(44)
5-(3',4'-dihydroxyphenyl)- γ -valerolactone-sulfate ^b	M	R.Q.	(44)
Hippuric Acids			
hippuric Acid	M	R.Q.	(44)
Chlorogenic acids			

chlorogenic acid	C	9.43 (0.57-26.82)	(9)
	T	17.72 (2.39-40.02)	
	M	1.03 (0.01-2.61)	

903 C- Colostrum, T- transitional milk, M- Mature Milk, R.Q.- Relative quantification

904 ^a The concentrations listed are the highest concentrations reported in each study or a range when
905 more than one concentration is presented. Studies reporting only relative quantification are referred
906 as R.Q (relative quantification).^b The concentration reflects the sum of two possible isomers;

907 ^c Highest reported concentration between the three experimental groups in the study (low, medium,
908 and high (poly)phenol consumers);

909 ^d Converted from $\mu\text{g/L}$ to nmol/L ;

910 ^e The original manuscript states two sulfate isomers for “5-(3-methoxy-4-hydroxyphenyl)- γ -
911 valerolactone-sulfate”. However, this molecule only has one hydroxyl group available for sulfation.
912 For this reason, it is possible that the isomers mentioned in the original manuscript are 5-(3-
913 methoxyphenyl)- γ -valerolactone-4-sulfate and 5-(4-methoxyphenyl)- γ -valerolactone-3-sulfate.

914

915

916

917

918

919

920

921

922