

1 **Seroprevalence of Dengue, Chikungunya and Zika at the epicenter of the congenital**  
2 **microcephaly epidemic in Northeast Brazil: a population-based survey**

3

4 Cynthia Braga<sup>1§</sup>; Celina M.T. Martelli<sup>2</sup>, Wayner V. Souza<sup>2</sup>; Carlos F. Luna<sup>2</sup>; Maria de  
5 Fatima P.M. Albuquerque<sup>2</sup>; Carolline A. Mariz<sup>1</sup>; Clarice N.L. Morais<sup>3</sup>; Carlos A.A. Brito<sup>4</sup>;  
6 Carlos Frederico C.A. Melo<sup>5</sup>, Roberto D. Lins<sup>3</sup>; Jan Felix Drexler<sup>6,7</sup>, Thomas Jaenisch<sup>8,9,10</sup>;  
7 Ernesto T.A. Marques<sup>3,11§</sup>; Isabelle, F.T. Viana<sup>3</sup>.

8

9 <sup>1</sup>Department of Parasitology, Aggeu Magalhães Institute, Oswaldo Cruz Foundation,  
10 Recife, Pernambuco, Brazil

11 <sup>2</sup>Department of Public Health, Aggeu Magalhães Institute, Oswaldo Cruz Foundation,  
12 Recife, Pernambuco, Brazil

13 <sup>3</sup>Department of Virology and Experimental Therapeutics, Aggeu Magalhães Institute,  
14 Oswaldo Cruz Foundation, Recife, Pernambuco, Brazil

15 <sup>4</sup>Department of Clinical Medicine, Federal University of Pernambuco, Recife,  
16 Pernambuco, Brazil

17 <sup>5</sup>Pan American Health Organization, Brasília, Federal District, Brazil

18 <sup>6</sup>Charité—Universitätsmedizin Berlin, Corporate Member of Freie Universität Berlin  
19 and Humboldt-Universität zu Berlin, Institute of Virology, Berlin, Germany

20 <sup>7</sup>German Centre for Infection Research (DZIF), associated partner site Charité, Berlin,  
21 Germany

22 <sup>8</sup>Section Clinical Tropical Medicine, Department of Infectious Diseases, Heidelberg  
23 University Hospital, Germany

24 <sup>9</sup>German Centre for Infection Research (DZIF), Heidelberg Site, Heidelberg, Germany

NOTE: This preprint reports new research that has not been certified by peer review and should not be used to guide clinical practice.

25 <sup>10</sup>Center for Global Health, Colorado School of Public Health, Aurora, Colorado, USA

26 <sup>11</sup>Department of Infectious Diseases and Microbiology, University of Pittsburgh,

27 Pittsburgh, PA, USA

28

29 **<sup>§</sup>Corresponding authors:**

30 Ernesto T. A. Marques

31 ORCID: 0000-0003-3826-9358

32 E-mail: [marques@pitt.edu](mailto:marques@pitt.edu) (ETAM)

33

34 Cynthia Braga

35 ORCID: 0000-0002-7862-6455

36 E-mail: [cynthia.braga@fiocruz.br](mailto:cynthia.braga@fiocruz.br) (CB)

37

38 Short title: Seroprevalence of Dengue, Chikungunya and Zika in Northeast Brazil

39

40 Keywords: Zika virus infection, Chikungunya virus infection, Dengue,

41 Seroepidemiological Study, Risk Factor

42 Word count: 5,743

43 Abstract: 356

44 Author summary: 180 Words

45 Tables: 4

46 Figures: 4

47 Supporting information: 4

48

49 **Conflicts of interest**

50 We declare no conflict of interest.

51

52 **Abstract**

53 **Background**

54 The Dengue viruses (DENV) serotypes 1, 2, 3 and 4 were re-introduced in the  
55 Northeast Brazil from the 1980's until 2010's. Zika (ZIKV) and Chikungunya (CHIKV)  
56 viruses were introduced around 2014 and caused large outbreaks in 2015 and 2016.  
57 However, the true extent of the ZIKV and CHIKV outbreaks and the risk factors  
58 associated with exposure remain vague.

59 **Methods**

60 We conducted a stratified multistage household serosurvey among residents aged  
61 between 5 and 65 years in the city of Recife, Northeastern Brazil, from August 2018 to  
62 February 2019. The city neighborhoods were stratified according to high, intermediate,  
63 and low socioeconomic strata (SES). Previous ZIKV, DENV and CHIKV infections were  
64 detected by IgG based enzyme linked immunosorbent assays (ELISA) . Recent ZIKV and  
65 CHIKV infections were assessed through IgG3 and IgM ELISA, respectively. Design-  
66 adjusted seroprevalence were estimated by age group, sex, and SES. The ZIKV  
67 seroprevalence was adjusted to account for the cross-reactivity with dengue.  
68 Individual and household-related risk factors were analyzed through regression models  
69 to calculate the force of infection. Odds Ratio (OR) were estimated as measure of  
70 effect.

71 **Principal findings**

72 A total of 2,070 residents were investigated. The forces of infection for high SES were  
73 lower for all three viruses as compared to low SES. Overall, DENV seroprevalence was  
74 88.7% (CI95%:87.0-90.4), (81.2% (CI95%:76.9-85.6) in the high SES and 90.7%  
75 (CI95%:88.3-93.2) in the low). The overall adjusted ZIKV seroprevalence was 34.6%

76 (CI95%:20.0-50.9), (47.4% (CI95%:31.8-61.5) in the low SES and 23.4% (CI95%:12.2-  
77 33.8) in the high). CHIKV seroprevalence was 35.7% (CI95%:32.6-38.9), (38.6%  
78 (CI95%:33.6-43.6) in the low SES and 22.3% (CI95%:15.8-28.8) in the high). ZIKV  
79 seroprevalence increased with age while CHIKV seroprevalence was almost constant  
80 through age. The serological markers of recent infections for ZIKV and CHIKV were  
81 1.5% (CI95%:0.1-3.7) and 3.5% (CI95%:2.7-4.2) respectively.

## 82 **Conclusions**

83 Our results confirmed continued DENV transmission and intense ZIKV and CHIKV  
84 transmission during the 2015/2016 epidemics followed by ongoing low-level  
85 transmission. The study also highlights that a significant proportion of the population is  
86 likely still susceptible to be infected by ZIKV and CHIKV, raising questions on herd  
87 immunity and antibody detection thresholds and the reasons underlying cease of the  
88 ZIKV epidemic in 2017/18.

89

90 **Keywords:** Zika Infection, Chikungunya Virus Infection, Dengue, Seroepidemiological  
91 Study, Risk Factor, Brazil, ZIKV, CHIKV, DENV, Seroprevalence.

92

93 **Author summary**

94           The extent and population burden of the Zika and Chikungunya epidemics in  
95 Northeast Brazil remains speculative since seroprevalence studies have often been  
96 restricted to specific populations and limited by ZIKV and DENV antibody cross-  
97 reactivity. Here we conducted a seroepidemiologicla study in the city of Recife, a  
98 metropolitan area in Northeastern Brazil using a design stratified by socio-economic  
99 status (SES). We also determined the sensitivity and specificity of the assays used and  
100 selected optimum cut-offs, which were and later confirmed by selecting a subset of  
101 samples to on which more specific virus neutralizations tests were performed. The  
102 result indicated that 89% of the population (older than 5 years of age) had previous  
103 dengue infection, compatible with our previous serosurvey. The assay sensitivity and  
104 specificity seroprevalences for ZIKV was 34.6% and CHIKV 35.7%, indicating high  
105 transmission during the outbreaks (2015/2016). Interestingly, the age distribution  
106 profiles of ZIKV and CHIKV seroprevalence were remarkably different. These differences  
107 cannot be explained by differences in mosquito exposure alone. Future research will  
108 need to be conducted to better explain the differences we found for the age  
109 distributions.

## 110 **Introduction**

111           Arthropod-borne diseases, especially dengue, chikungunya and Zika, have  
112 presented a major public health problem in the Americas [1]. Brazil has been  
113 responsible for more than 90% of the reported cases of these arboviruses in this region  
114 in the last decades [2].

115           The recent introduction of Zika virus (ZIKV, genus *Flavivirus*, family *Flaviviridae*)  
116 in the Northeast Region of Brazil, between 2013 and 2015, was followed by its rapid  
117 spread to other regions causing significant increase in the number of cases of Guillain-  
118 Barré syndrome in adults and congenital microcephaly secondary to maternal ZIKV  
119 infection during pregnancy [3, 4]. The Zika outbreak was followed by an outbreak of  
120 the chikungunya virus (CHIKV, genus *Alphavirus*, family *Togaviridae*) in 2016 [5]. Data  
121 from the Brazilian Ministry of Health show that the states of Bahia, Ceara and  
122 Pernambuco, all in the Northeast region, were the most affected in Brazil [6, 7].

123           Population-based seroprevalence surveys stratified by age and geographic  
124 areas have been considered one of the current research priorities, due to their ability  
125 to estimate variations in the level of exposure of the population according to time,  
126 age, and environment [8, 9]. These studies provide much anticipated granular data  
127 that will allow to infer more precisely the susceptibility and level of immunity in a  
128 given population [8].

129           In Brazil, the true magnitude of the ZIKV and CHIKV outbreaks and the extent of  
130 the ensuing low-level transmission is still not well known [10]. The city of Recife, a  
131 large urban center marked by profound social inequalities in the northeast region of  
132 Brazil, has been affected by successive arbovirus epidemics since the introduction of  
133 the dengue virus (DENV) in the 1980s [11]. A dengue serosurvey conducted between

134 2005 and 2006 in three socioeconomically distinct neighborhoods of Recife estimated  
135 an overall prevalence above 80% [12], and showed an inverse association between the  
136 force of infection and socioeconomic status (SES). Between 2015 and 2016, with the  
137 emergence of ZIKV and CHIKV in Brazil, more than 50,000 cases of dengue, Zika and  
138 chikungunya were registered in this city [13, 14], which also accounted for around 90%  
139 of the cases of microcephaly attributed to ZIKV in Brazil [15, 16], of which 97% occurred  
140 in babies of mothers with low SES. The reason for this disproportional distribution  
141 remains unclear, and one hypothesis is that pregnant women of high SES were much  
142 less exposed to Zika. We now carried out a detailed population-based survey in the  
143 whole city to determine the levels of exposure to ZIKV, DENV and CHIK by age and SES  
144 using validated serological tests.  
145



146 **Methods**

147 Ethical Statement

148           The research project was reviewed and approved by the Research Ethics  
149 Committee of the Aggeu Magalhães Institute (Fiocruz, Pernambuco) (CAEE:  
150 79605717.9.0000.5190, report number 2.734.481). Data collection was conducted  
151 after the participants or their legal guardians (if under 18 years old) were informed  
152 about the objectives of the study, read, and sign the consent form. Participants aged 5  
153 to 18 years provided oral and/or written assent. All participants had access to the  
154 results of the laboratory tests. Personal information was removed prior to data  
155 analysis.

156

157 Study design, population, and settings

158           The seroprevalence survey was conducted using a stratified multistage cluster  
159 sampling design involving residents aged between 5 and 65 years old, from August  
160 2018 to February 2019. Recife, the capital city of Pernambuco state, has a territorial  
161 area of 218.8 km<sup>2</sup> (divided in 94 neighborhoods), and an estimated population of  
162 approximately 1.6 million inhabitants and a demographic density of 7,037.6  
163 inhabitants/km<sup>2</sup>. The city is classified as the 12th most densely populated urban area  
164 in Brazil. Around 40% of its population lives in poverty, with a monthly income of up to  
165 ½ minimum wage and 30% of households are in areas with inadequate sanitation [17].

166

167 Sampling

168           The city's neighborhoods were stratified in three economic strata based on the  
169 information of the family's head income per census tract obtained in 2010

170 Demographic Census. The census tract (CT) is the smallest territorial unit for obtaining  
171 population data and has approximately 300 households or approximately 1,000  
172 inhabitants [18].

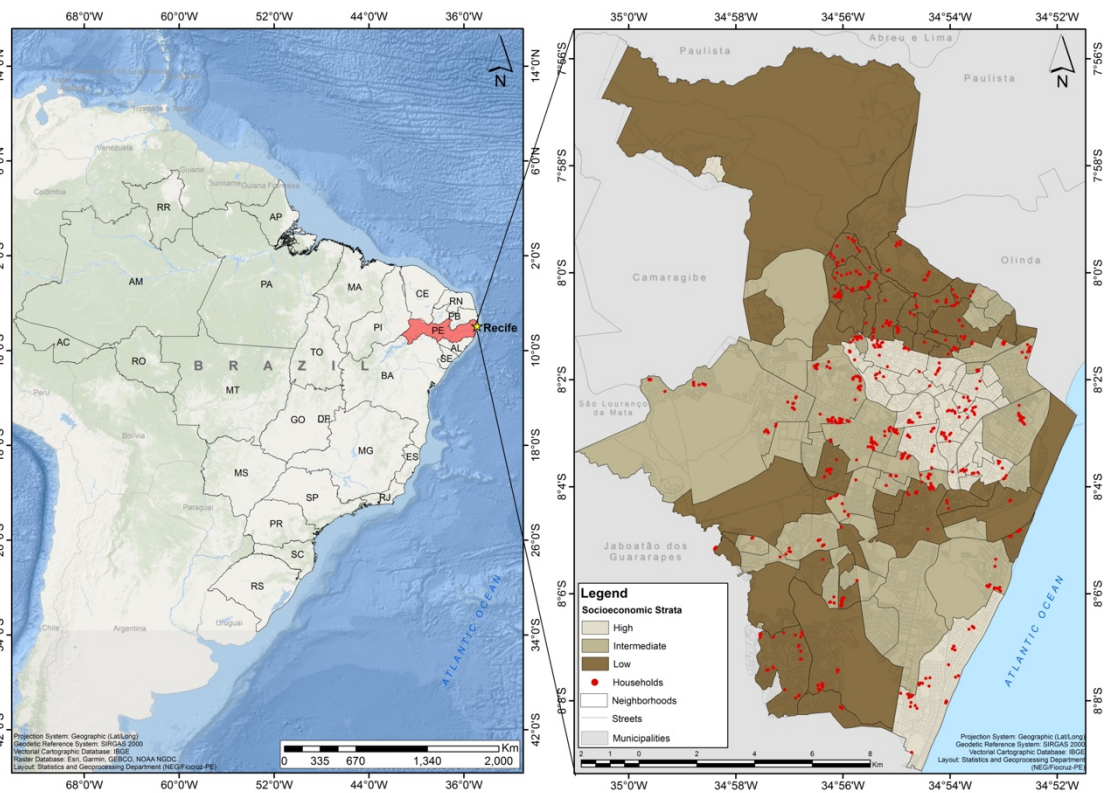
173 Briefly, the division of the city's territory at neighborhood level was performed  
174 by initially calculating the percentage of households with family's heads without  
175 income or with monthly income <2 minimum wage (MW) per CT. Subsequently, these  
176 CT were aggregated at neighborhood level which were classified into four clusters  
177 relatively homogeneous with respect to socioeconomic status, using the k-means  
178 clustering technique and ANOVA test [19]. Further details on the methodology for  
179 stratifying the city's territory were described elsewhere [20]. In this study, the high  
180 socioeconomic stratum was formed by merging the two clusters of neighborhoods  
181 with the highest household income (Clusters 1 and 2), due to the small population size  
182 in both clusters. The 3rd and 4th clusters were classified as intermediate and low  
183 socioeconomic strata, respectively.

184 The population sample size in each stratum was calculated considering an  
185 expected seroprevalence of 30% in the high socioeconomic strata and of 40% in the  
186 intermediate and low socioeconomic strata, respectively; absolute error of 4%; design  
187 effect = 1.5 and, 95% confidence level, yielding a sample of 2,500 participants: 760  
188 residents in the high socioeconomic stratum, and 870 in both the intermediate and  
189 low strata.

190 The number of CT (primary sampling units) to be selected in each stratum was  
191 determined considering an estimated prevalence of arbovirus infected individuals  
192 (60%, in the high stratum; and 80%, in both intermediate and low strata) per CT,  
193 yielding a sample of 40 CT in the high socioeconomic stratum and 30 CT in the

194 intermediate and low strata, respectively, which represents a total of 100 CT across  
195 the city.

196 The number of households to be selected in each CT was determined based on  
197 the estimate of 3.5 inhabitants per household eligible for the study, obtaining a sample  
198 of 716 households: 218 households, in the high socioeconomic stratum, and 249, in  
199 the intermediate and low strata. The selection of the participants was conducted in  
200 two stages. First, we randomly selected the CT (sampling units) in the strata (first  
201 stage) and next (second stage), the households (including all residents in the study age  
202 group) within the CT using the free R [21] package Amostra Brasil for household  
203 sampling (with their respective geographic coordinates) in Brazilian municipalities from  
204 the IBGE database [22]. Fig 1 shows the spatial distribution of the household sampled  
205 by socioeconomic strata in the city.



206

207 **Figure 1.** Spatial distribution of the selected households according to socioeconomic  
208 strata. Recife, Brazil.

209

210 Data collection

211 The field team, comprised of interviewers and phlebotomists, was trained to

212 ensure standardization and data quality. Home visits were initially performed to

213 inform the head of the family about the objectives of the study and to invite the

214 eligible residents to participate. Individual and household information were collected

215 using standardized questionnaires (S1 Supplemental Material). After the interview, a

216 venous blood samples of the participants (8 mL of adults and 5 mL of the children aged

217 up to 9 years) was collected to perform the serological tests. Samples were collected in

218 vacuum tubes with clot activator for 30 minutes at room temp and then placed in a

219 container at 4°C. Urine and hair samples were also collected from the participants that

220 showed signs of recent infection and transported to the Department of Virology at the

221 Aggeu Magalhães Institute - FIOCRUZ, where they were processed and stored at -70°C

222 until use.

223

224 Laboratorial procedures

225 Anti-CHIKV IgG and IgM antibodies were detected through commercial ELISA

226 kits (Euroimmun, Lubeck, Germany). The results of both tests were interpreted

227 according to the manufacturer instructions (CHIKV IgG or IgM absorbance at 450

228 nm/calibrator ratios were considered negative at <0.8, indeterminate at ≥0.8 to <1.1,

229 and positive at ≥1.1). All samples with indetermined results were retested using the

230 same commercial kits, and the obtained results were considered as final.

231 The anti-ZIKV immune response was assessed by detecting IgG through a

232 commercial ELISA kit (Euroimmun, Lubeck, Germany) [23]. Aiming to overcome the

233 possible cross-reactivity between anti-DENV and anti-ZIKV immune responses, the cut-

234 off of this test was redefined using a panel of 140 well-characterized serum samples  
235 from acute and convalescent samples of PCR confirmed DENV infection cases collected  
236 years prior to the Zika outbreak and samples from PCR confirmed cases of ZIKV  
237 infections. Results were interpreted as positive for ZIKV IgG when the sample  
238 absorbance at 450nm/calibrator ratio  $\geq 1.35$ . Based on this cut-off point, the estimated  
239 sensitivity and specificity of this test were 86 % (95%CI: 72-95%) and 72% (95%CI: 65-  
240 79%), respectively (S2 – Supplemental Material).

241         Recent ZIKV infections were determined by detecting IgG3 against the ZIKV NS1  
242 protein through an in-house ELISA [24-26]. Results were interpreted as positive for  
243 ZIKV IgG3 when the sample absorbance at 450nm/DENV recent infection control ratio  
244  $\geq 1.14$ . According to this cut-off, the estimated sensitivity and specificity of this test  
245 were 81% (95CI%: 60%-95%) and 93% (95%CI: 88%-96%), respectively (S2-  
246 Supplemental Material). The IgG3 ELISA detailed protocol is described in the  
247 Supporting Information (S2 Supplemental Material). The choice of this test over the  
248 commercially available ZIKV IgM kit (Euroimmun, Lubeck, Germany) was due to the  
249 lower sensitivity of the latter in our analysis using a well-characterized serum panel,  
250 where the lower sensitivity of this test in a scenario of flavivirus co-circulation has  
251 been documented [27, 28].

252         The accuracy of the ZIKV serology results was validated by performing a blind  
253 plaque reduction neutralization test (PRNT) of a subset of 156 randomly selected  
254 serum samples and compared with the other serological tests. The PRNT was  
255 performed following a modified protocol described in detail elsewhere [29] and  
256 neutralization was assessed against the ZIKV local strain (BR-PE243/2015). The cut-off  
257 for PRNT positivity was defined based on a 50% reduction in plaque counts (PRNT50),

258 and ZIKV-specific antibody titers were estimated using a four-parameter non-linear  
259 regression. Samples were considered positive when the PRNT50s were  $\geq 1:100$  for ZIKV  
260 (S2 Supplemental Material) corroborating sensitivity and specificity data. The duration  
261 of Zika binding and neutralization antibodies two years after infection have been also  
262 evaluated in a previous study that showed significant decay of antibody levels but very  
263 few seroreversions [30].

264 Previous exposure to DENV was assessed by detecting IgG against the DENV 1-4  
265 NS1 proteins through an in-house indirect ELISA, as described elsewhere [31]. Samples  
266 were considered positive for DENV 1-4 IgG when sample absorbance at  
267 450nm/positive control ratio  $\geq 3.62$ , corresponding to a sensitivity of 96% (95% CI:90-  
268 99%) and specificity of 71% (95% CI: 58-82%) (S2 Supplemental Material).

269

270 Laboratorial classification of samples

271 Serological and/or neutralization positive samples for ZIKV or only for CHIKV  
272 were classified as ZIKV+ and CHIKV+, respectively. Negative samples for ZIKV and  
273 CHIKV tests and positive for DENV 1-4 ELISA test were classified as ZIKV-/CHIKV-  
274 /DENV+. Samples that were negative for all arbovirus tested were classified as ZIKV-  
275 /CHIKV-/DENV-.

276

277 Exposure variables

278 We considered exposure variables on household level as well as on individual  
279 level. Household level: residents per bedroom, type of household, sewerage  
280 destination, water supply, frequency of water supply, garbage collection,  
281 sociodemographic characteristics of the head of the family. Individual level: age (in

282 years), age group (5-14, 15-24, 25-34, 35-44, 45-54, 55-65), gender, self-reported skin  
283 color, schooling ( $\geq 13$  years old), previous dengue infection, use of repellent, previous  
284 dengue exposure, vaccination for Yellow fever virus or DENV. Participants who  
285 reported fever or skin rash in the 30 days prior to the interview were asked about  
286 other clinical manifestations suggestive of arbovirus infection (dengue, chikungunya or  
287 Zika) and collected urine and hair samples (S1 Supplementary Material and Table 1).

288

289 Statistical analysis

290 Double data entry and data consistency analysis were performed using REDCap  
291 electronic data capture tools [32] hosted at Heidelberg University, Germany. The  
292 analyzes were performed using the software R version 4.0.27 [21].

293

294 Seroprevalence estimates.

295 The seroprevalence of dengue (IgG), Zika (IgG and/or IgG3) and chikungunya  
296 (IgG and/or IgM) and their respective 95% confidence intervals (95%CI) were  
297 estimated according to age group and sex for each socioeconomic stratum (high,  
298 intermediate, and low). These estimates were weighted by the effect of the sample  
299 design using the “survey” package, version 4.1-1 ([http://r-survey.r-forge.r-](http://r-survey.r-forge.r-project.org/survey/)  
300 [project.org/survey/](http://r-survey.r-forge.r-project.org/survey/)) (S3 Supplementary Material). Considering the low accuracy of the  
301 Zika serological tests (due to the cross reactivity with anti-DENV antibodies) in areas of  
302 cocirculation of DENV and ZIKV, we estimated the prevalence of anti-ZIKV IgG and IgG3  
303 through a Bayesian method for estimation of true prevalence from apparent  
304 prevalence obtained by testing individual samples [33, 34]. The library prevalence  
305 (which provides frequentist and Bayesian methods useful in prevalence assessment



306 studies) was used assuming a uniform range of sensitivity and specificity between  
307 using a range corresponding to the 95% CI of the sensitivities and specificities  
308 calculated for the Zika IgG and IgG3 tests. The beta distribution was defined based on a  
309 priori distribution of the true prevalence. According to these estimates, 10,000 first  
310 iterations were discarded and the average of the remaining 20,000, together with their  
311 respective standard deviations, were used to estimate the true prevalence of Zika by  
312 socioeconomic stratum, sex, and age group. The analysis of the convergence of  
313 estimates was performed through the Multivariate BGR statistic proposed by Gelman  
314 and Rubin [35] and improved by Brooks and Gelman [36]. We used the Pearson's Chi-  
315 square test with Rao-Scott correction [37] to compare the prevalence of Dengue, Zika  
316 and Chikungunya within and between socioeconomic strata and the *t*-Student or  
317 ANOVA tests to compare the means of the true prevalence of Zika estimated by the  
318 Bayesian method. This method proposes an adjustment of the seroprevalence  
319 estimates taking the imprecision of the calculated sensitivity and specificity. In this  
320 case we used the 95% CI of tests used

321       The force of dengue, Zika and chikungunya infection was estimated in each  
322 socioeconomic stratum assuming a constant risk of arbovirus exposure in the study  
323 population with permanent seroconversion. The model was fitted by the effect of the  
324 sample design from a generalized linear model (GLM) with serostatus as the outcome  
325 variable (anti-ZIKV IgG and/or IgG3 positive; anti-DENV IgG; anti-CHIKV IgM and/or  
326 IgG), a quasibinomial distribution family, complementary logit link function, and the  
327 age as exposure variable [38].

328

329 Risk factor analysis for Zika and Chikungunya



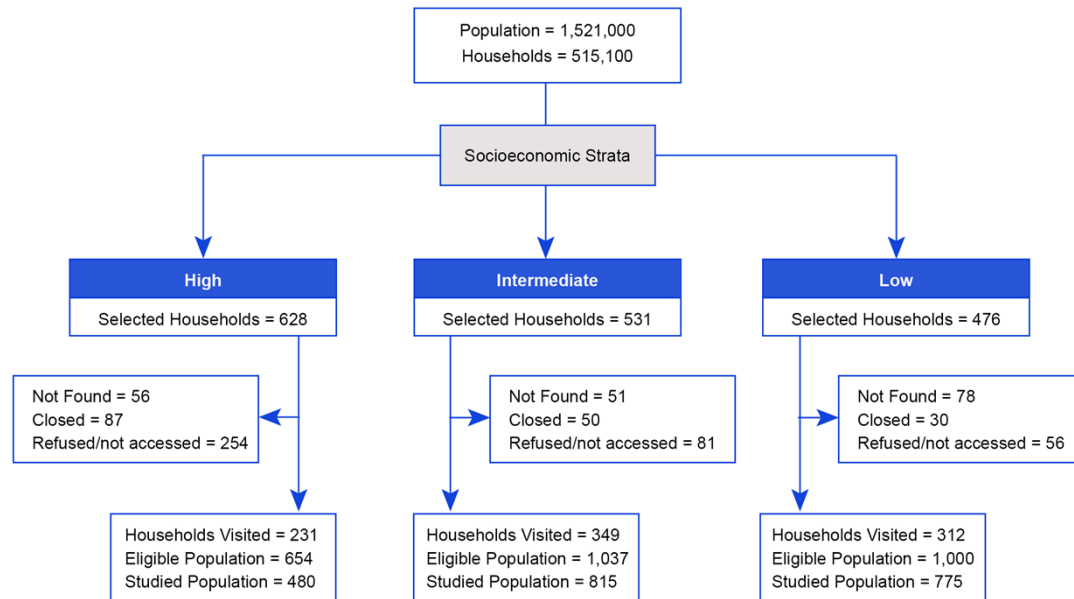
330 The associations of the exposure variables with the seropositivity of  
331 Chikungunya and Zika were analyzed through hierarchical multiple regression analysis.  
332 Initially, univariate analysis was performed, calculating the crude odds ratio (OR) and  
333 their respective 95% CI for each block of variables (individual and household  
334 characteristics). The independent variables associated with the outcome at a  
335 significance level of  $p < 0.25$  were included in the multivariate logistic regression model  
336 for their respective block. The variables which remained that showed a statistically  
337 significant association with the outcome in the multiple regression models, within each  
338 block, were brought together in a new multivariate model to obtain the final model.  
339 The selection method of variables used in each model regression was based in the  
340 Akaike Information Criterion (AIC).

341

## 342 **Results**

### 343 Characterization of the study population

344 A total of 2,691 residents of the visited households were eligible: 654 in the  
345 high; 1,037 in the intermediate; and 1,000 in the low SES stratum. Reasons for  
346 households not to participate included the difficulty in accessing the household (in  
347 general, an apartment) or(ii)refusals, which were more frequent in the high SES (52.4%)  
348 compared to the intermediate (18.8%) and low strata (13.6%). Among the eligible  
349 residents interviewed and consented for venous blood collection, 480 (73.3%) were  
350 from the high stratum; 815 (78.6%) from intermediate; and 775 (77.5%) from the low  
351 stratum (Fig 2)



352  
 353 **Figure 2.** Population, census tracts and calculated samples by socioeconomic strata.  
 354 Recife, Brazil, 2018-2019.  
 355

356 Table 1 shows the main characteristics of the studied households according to  
 357 SES. We observed a gradient in the average number of residents per bedroom that  
 358 increased from the high SES ( $1.61 \pm 0.03$ ) to the low stratum ( $1.75 \pm 0.04$ ). About 60% of  
 359 the households in the high SES lived-in high-rise apartments, while most households in  
 360 the low stratum were ground level houses. Almost half of the households had no  
 361 access to public sewage, with a higher proportion among those in the low stratum  
 362 (62.3%). More than half of the households had irregular water supply in the low  
 363 stratum (41.8%). Near 30% of the households were supplied by artesian well in the  
 364 high stratum. Heads of family from the high stratum had a high level of education and  
 365 income compared to those from the intermediate and low strata.

366  
 367  
 368

369 Table 1: Characteristics of the selected households according to socioeconomic strata  
370 of the city of Recife, 2018-2019.

Characteristics	Total	Socioeconomic Strata			p-value
		High	Intermediate	Low	
<b>Studied households. n (%)</b>	892 (100.0)	231 (25.9)	349 (39.1)	312 (35.0)	
<b>Residents per bedroom, mean (se)</b>	1.61 (0.03)	1.36 (0.04)	1.65 (0.04)	1.75 (0.04)	<0.001
<b>Type of household, n (%)</b>					
Apartment	202 (22.8)	146 (63.5)	67 (19.4)	12 (3.8)	<0.001
House	682 (77.2)	84 (36.5)	279 (80.6)	300 (96.2)	
<b>Sewerage, n (%)*</b>					
Public network	474 (56.0)	157 (75.9)	204 (60.7)	116 (37.7)	
Other waste destinations	373 (44.0)	49 (24.1)	132 (39.3)	192 (62.3)	<0.001
<b>Water supply, n (%)</b>					
Public network	755 (85.0)	157 (68.3)	319 (92.0)	379 (89.4)	
Other sources (well, others)	133 (15.0)	73 (31.7)	27 (7.8)	33 (10.6)	<0.001
<b>Regular water supply, n (%)**</b>	667 (75.2)	157 (89.1)	281 (81.2)	181 (58.2)	<0.001
<b>Household garbage collection. n (%)</b>	832 (93.7)	227 (98.7)	316 (91.3)	289 (92.6)	<0.001
<b>Characteristics of the head of the family, n (%)</b>					
<b>Sex</b>					
Female	484 (54.7)	98 (49.4)	178 (57.3)	208 (55.4)	
Male	401 (45.3)	101 (50.6)	133 (42.7)	167 (44.6)	0.298
<b>Self-reported race/skin color</b>					
Mixed race (Brown)	451 (50.6)	92 (39.8)	164 (47.0)	195 (62.5)	
Black	125 (14.0)	20 (8.7)	50 (14.3)	55 (17.6)	
White	283 (31.7)	107 (46.3)	122 (35.0)	54 (17.3)	
Others/not informed/ignored	33 (3.7)	12 (5.2)	13 (3.7)	8 (2.6)	0.001
<b>Monthly income in minimum wages</b>					
≤ 2	550 (62.4)	57 (28.7)	181 (58.7)	312 (85.3)	
2-4	185 (21.0)	45 (22.6)	84 (27.2)	56 (15.1)	
4-20	146 (16.6)	97 (48.7)	44 (14.2)	6 (1.6)	0.001
<b>Schooling</b>					
University	238 (27.0)	133 (67.2)	86 (27.6)	19 (5.1)	
High school	299 (33.9)	36 (18.3)	112 (35.9)	151 (40.5)	
Fundamental	345 (39.1)	28 (14.4)	113 (36.5)	203 (54.3)	0.001

371  
372  
373  
374  
375  
376

377 Seroprevalence of Dengue, Zika and Chikungunya

378 Of 2,070 participants, 1,837 had serological markers of previous DENV infection  
379 (anti-NS1 IgG-ELISA), that corresponded to an overall weighted prevalence of 88.7%  
380 (95%CI: 87.0%-90.4%), consistent with the seroprevalence levels determined in 2005/6  
381 [12, 39]. Dengue seroprevalence ranged from 81.2% (95% CI: 76.9%-85.6%), in the high  
382 SES, to 90.7% (95%CI: 88.3%-93.2%), in the low SES (Fig 3, Table 2).

383 A total of 1,043 participants had previous ZIKV infection (anti-ZIKV IgG-ELISA),  
384 yielding an overall weighted seroprevalence of 50.4% (95%CI: 47.2%-53.6%) (Table 2,  
385 Fig 3) and a sensitivity and specificity adjusted prevalence of ZIKV infection (anti-ZIKV  
386 NS-1 IgG and/or IgG3) of 38.6% (95%CI: 22.8%-54.2%) (Table 3). According to  
387 socioeconomic strata, the weighted Zika seroprevalence (IgG-ELISA) was statistically  
388 significantly lower in the high SES when compared to the intermediate and low strata,  
389 (Table 2, Fig 3). The weighted seroprevalence of recent ZIKV infection (anti-ZIKV IgG3)  
390 was 5.0% (95% CI: 3.9%-6.2%); with small variations from 4.0% to 6.9% in the different  
391 age groups (Table 2). The sensitivity and specificity adjusted seroprevalence of recent  
392 infection (anti ZIKV-IgG3) was 1.5% (95% CI: 0.1 % -3,7%) (Table 3).

393 In the female population of reproductive age, the seroprevalence of Zika  
394 corrected by the design effect was 52.8% (95%CI: 48.5%-57.1%). The seroprevalence of  
395 Zika (anti-ZIKV NS-1 IgG and/or IgG3) adjusted by the test accuracy was 44.8% (95%CI:  
396 29.5%-59.2%).

397 The weighted seroprevalence for ZIKV among the children (<15 years old) was  
398 24.6% (95%CI:18.4-30.9%); which is significantly lower than that for young adults (14-  
399 24 years) with 45.3% (95%CI:38.8-51.9%) (Table 2).

400           A total of 770 participants had markers of previous CHIKV infection (anti-CHIKV  
401   IgG and/or IgM), resulting in an overall weighted seroprevalence of 37.2% (95% CI:  
402   34.0% - 40.4%) (data not shown on the tables). The prevalence of previous CHIKV  
403   infection (anti-CHIKV IgG) was significantly lower in the high SES when compared to  
404   the intermediate and low strata. The prevalence of recent CHIKV (anti-CHIKV IgM)  
405   infection was 3.5% (95%CI: 2.7%-4.2%), with no difference between strata (Table 2, Fig  
406   3). Females and males had similar markers of past and recent infection for dengue,  
407   Zika and chikungunya. Unlike to what was observed with chikungunya, the  
408   seroprevalence of dengue and Zika increased significantly with age (Table 2 and 3)  
409

410

411

412

**Table 2** – Weighted seroprevalence of Dengue (anti-DENV IgG-ELISA), Zika (Anti-ZIKV IgG e Anti-ZIKV IgG3) and Chikungunya (Anti-CHIKV Ig G e Anti-CHIKV Ig M) according to socioeconomic strata, sex and age group. Recife, Northeast of Brazil, 2018-2019.

	Examined	Dengue		Zika				Chikungunya			
		IgG-ELISA <sup>1</sup> (in house)		Anti-ZIKV IgG <sup>1</sup>		Anti-ZIKV IgG3 <sup>1</sup>		Anti-CHIKV IgG <sup>1</sup>		Anti-CHIKV IgM <sup>1</sup>	
		Pos	Prev (CI95%)	Pos	Prev (CI95%)	Pos	Prev (CI95%)	Pos	Prev (CI95%)	Pos	Prev (CI95%)
<b>Overall</b>	2,070	1,837	88.7 (87.0-90.4)	1,043	50.4 (47.2-53.6)	104	5.0 (3.9-6.2)	740	35.7 (32.6-38.9)	72	3.5 (2.7-4.2)
<b>Socioeconomic strata</b>											
High	416	338	81.2 (76.9-85.6)	149	35.8 (28.3-43.3)	25	6.0 (3.4-8.7)	93	22.3 (15.8-28.8)	11	2.7 (1.4-4.0)
Intermediate	726	657	90.4 (87.7-93.2)	385	53.0 (47.7-58.4)	41	5.6 (3.6-7.7)	289	39.8 (34.5-45.0)	29	3.9 (2.8-5.1)
Low	928	842	90.7 (88.3-93.2)	509	54.8 (50.2-59.5)	38	4.1 (2.4-5.8)	358	38.6 (33.6-43.6)	32	3.5 (2.2-4.8)
<b>Sex</b>											
Female	1,212	1,099	90.7 (88.6-92.7)	616	50.8 (47.3-54.4)	61	5.1 (3.7-6.4)	439	36.2 (32.8-39.7)	51	4.2 (3.0-5.4)
Male	858	738	86.0 (83.1-88.8)	427	49.7 (45.8-53.6)	43	5.0 (3.3-6.7)	301	35.0 (31.0-39.0)	21	2.5 (1.5-3.5)
<b>Age Group (in years)</b>											
5-14	264	140	52.9 (45.8-60.1)	65	24.6 (18.4-30.9)	11	4.4 (1.7-7.0)	80	30.5 (24.4-36.6)	8	3.2 (1.1-5.2)
15-24	357	319	89.3 (85.3-93.2)	162	45.3 (38.8-51.9)	14	4.0 (1.7-6.3)	121	34.0 (28.7-39.3)	16	4.5 (2.3-6.7)
25-34	323	300	92.9 (90.1-95.8)	160	49.7 (42.9-56.4)	13	4.0 (1.7-6.3)	118	36.6 (31.3-41.9)	13	4.0 (2.2-5.9)
35-44	375	360	96.0 (93.8-98.1)	205	54.8 (49.1-60.6)	26	6.9 (4.1-9.8)	126	33.5 (27.9-39.1)	14	3.8 (2.1-5.5)
45-54	387	373	96.4 (94.5-98.2)	235	60.6 (55.1-66.0)	19	4.9 (2.8-7.0)	148	38.2 (33.2-43.3)	10	2.5 (0.9-4.1)
55-65	364	345	94.8 (92.5-97.0)	215	59.2 (53.1-65.3)	21	5.7 (3.0-8.4)	145	40.0 (33.1-46.9)	11	2.9 (1.3-4.6)

413

414

<sup>1</sup>All estimates corrected for sampling design effect

415 **Table 3** – Sensitivity and specificity adjusted seroprevalence of Zika according to socioeconomic strata, gender and age groups. Recife, Northeast of Brazil, 2018-2019.

	Total tested	Zika					
		IgG-ELISA <sup>1</sup>		Anti-ZIKV IgG <sup>2</sup>		Anti-ZIKV IgG and/or IgG <sup>3</sup>	
		Pos	Prev (CI95%)	Pos	Prev (CI95%)	Pos	Prev (CI95%)
<b>Overall</b>	2,070	1,043	34.6 (20.0-50.9)	104	1.5 (0.1-3.7)	1,073	38.6 (22.8- 54.2)
<b>Socioeconomic strata</b>							
High	416	149	23.4 (12.8-33.8)	25	6.8 (3.2-11.3)	158	26.3 (14.9-37.1)
Intermediate	726	385	44.8 (28.9-59.1)	41	5.3 (2.6-8.5)	399	47.5 (31.4-61.9)
Low	928	509	47.4 (31.8-61.5)	38	3.3 (1.5-5.6)	516	48.2 (33.1-62.6)
<b>Sex</b>							
Female	1,212	616	36.5 (20.6-52.4)	61	1.6 (0.1-4.0)	633	38.6 (22.9-55.3)
Male	858	427	33.9 (18.2-50.3)	43	1.7 (0.1-4.4)	440	36.6 (20.8-53.2)
<b>Age Group (in years)</b>							
5-14	264	65	13.2 (6.3-21.7)	11	6.4 (2.7-11.3)	71	15.3 (7.7-24.3)
15-24	357	162	35.5 (20.6-49.1)	14	5.1 (2.2-9.2)	168	37.3 (22.2-51.0)
25-34	323	160	40.6 (24.9-55.3)	13	5.6 (2.4-9.8)	163	41.9 (26.0-57.2)
35-44	375	205	47.5 (31.3-63.1)	26	8.2 (4.0-13.3)	213	50.6 (34.3-66.2)
45-54	387	235	55.5 (39.1-72.2)	19	5.8 (2.7-10.0)	240	57.9 (41.3-74.7)
55-65	364	215	53.8 (37.1-70.1)	21	6.9 (3.3-11.6)	220	55.8 (39.5-71.9)

416 <sup>1</sup> Corrected by the effect of sensitivity assuming uniform variation between 75% and 100% and uniform specificity between 60%-80%.

417 <sup>2</sup> Corrected by the effect of sensitivity assuming uniform variation between 60% and 95% and uniform specificity between 88%-97%.

418 All estimates corrected for the effect of the sample design.

419

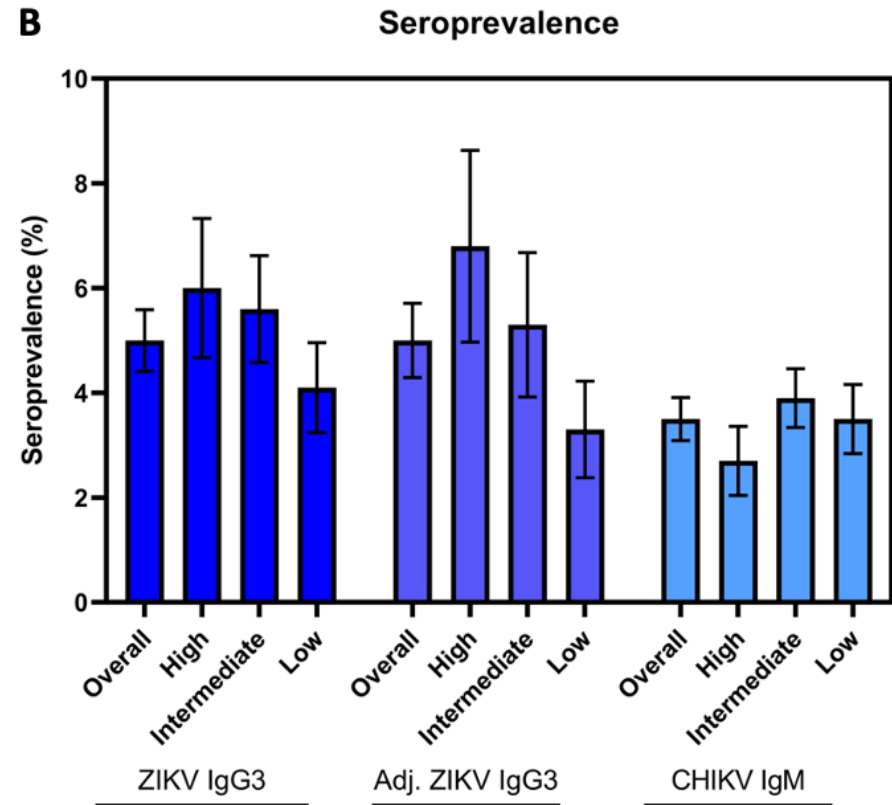
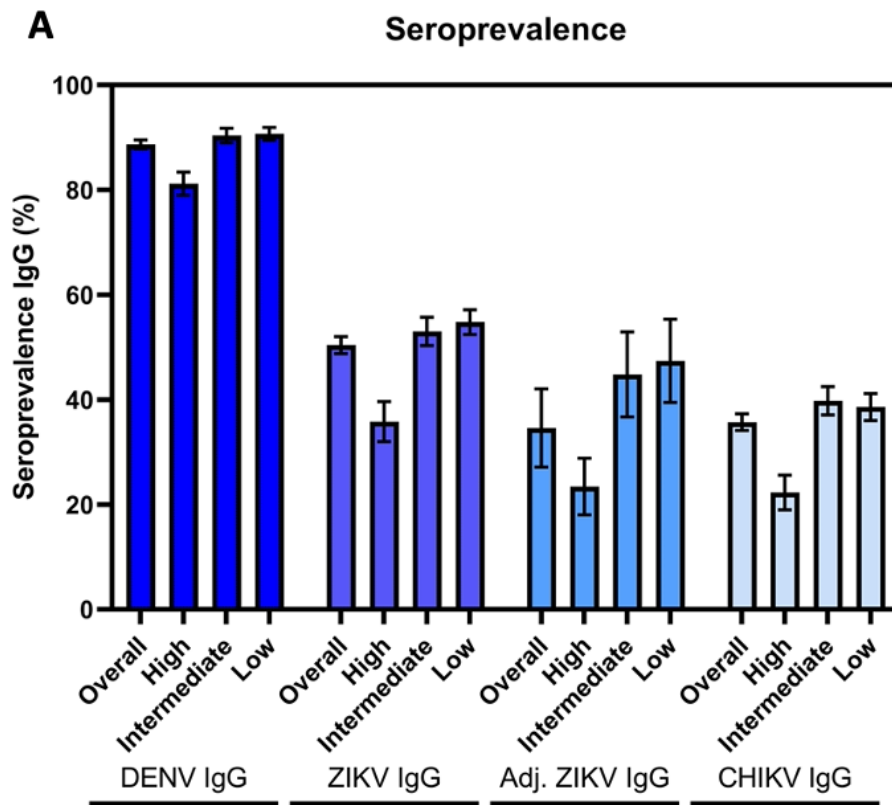
420

421

422

423

424



425  
426  
427  
428  
429  
430  
431

**Figure 3:** (A) Weighted IgG seroprevalence of Chikungunya Zika and Dengue including adjusted seroprevalence of ZIKA and (B) weighted seroprevalence of Chikungunya and Zika markers of recent infection (IgG3 and IgM) according to socioeconomic strata. Recife, Brazil, 2018-2019. Error bars indicate the standard deviations.



432 Force of infection of dengue, Zika and chikungunya

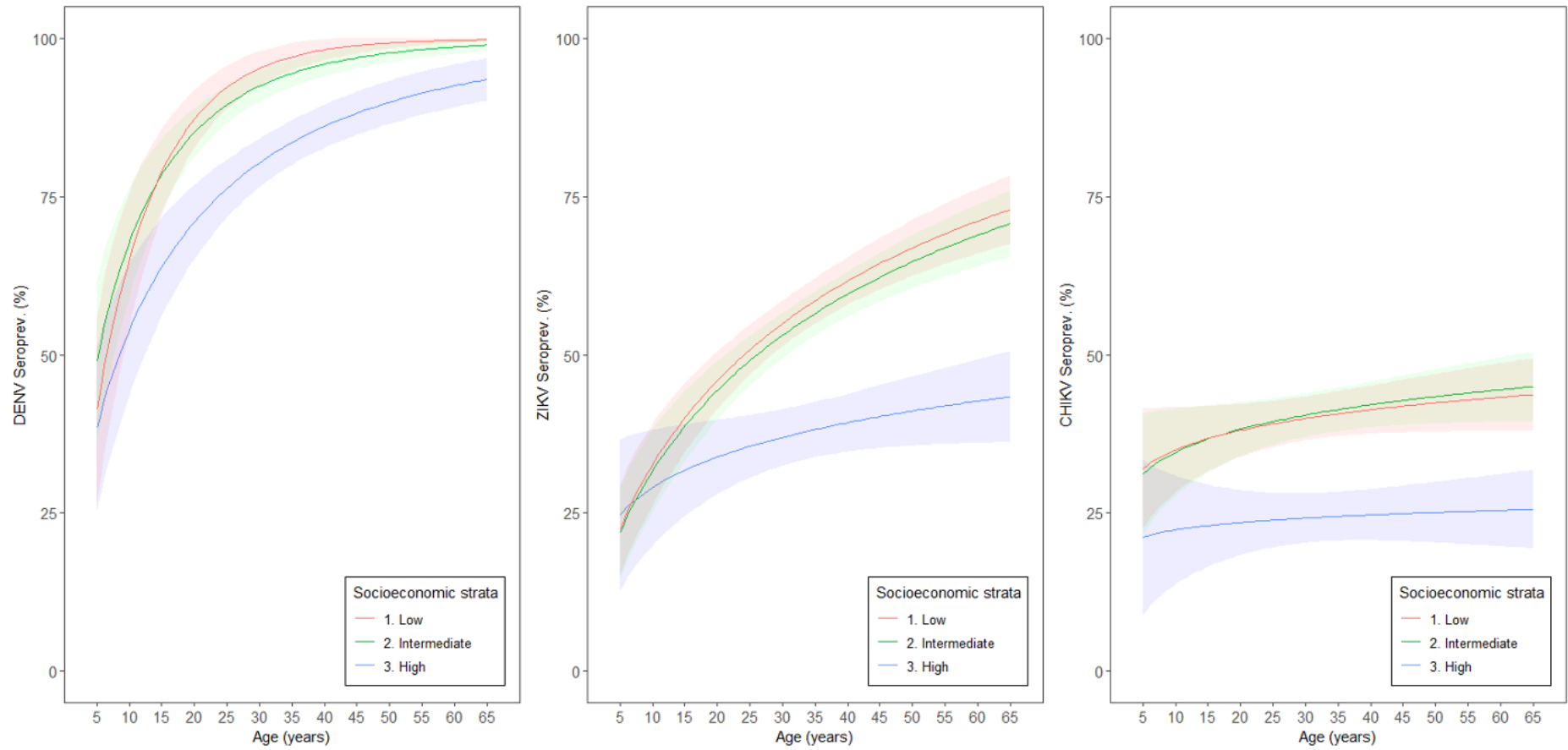
433 Fig 4 and Table 4 show the age-related force of DENV, ZIKV and CHIKV  
434 infections estimated through generalized linear models (GLM) according to SES and  
435 using the serostatus (recent and/or previous infection) as the outcome variable. The  
436 seroprevalence of dengue, Zika and chikungunya showed non-linear associations with  
437 age in the three SES. Differently from what was observed in the seroprevalence of  
438 dengue and Zika, there was no statistically significant association of chikungunya  
439 seroprevalence with age.

440 The seroprevalence of dengue, which had been circulating for 4 decades in the  
441 city, ranged from about 50% at 5 years of age and reached levels close to 100% in the  
442 low socioeconomic stratum - and these levels have been stable for more than 10 years.  
443 We observed that the seroprevalence curve in the high socioeconomic stratum or  
444 areas? reached a plateau at around 50 years of age, while in the intermediate and low  
445 SES, the plateau already occurred at around 30 years of age. The estimated force of  
446 infection was estimated to be 1.4 times higher in the low SES compared to the high  
447 SES.

448 Similarly, for ZIKV infection, the estimated force of infection was 2.4 times  
449 greater in the low socioeconomic strata when compared to the high strata. The  
450 seroprevalence of infection in the high SES, which was 30.2% at 5 years of age, reached  
451 a level of 44.6% at 65 years of age. In the intermediate and low SES, respectively, ZIKV  
452 seroprevalence, which was 33.9% and 32.5% at 5 years of age, reached levels of 73.0%  
453 and 76.8% at 65 years of age. This data suggests that high ZIKV herd immunity in adults  
454 living in the low SES might be the main factor contributing to the cessation of the ZIKV  
455 epidemic and not by the whole population average.

456           The seroprevalence of chikungunya was 21.6% at 5 years of age and increased  
457   to 26.8% at 65 years of age in the high SES. In the intermediate and low SES, the  
458   seroprevalence was around 35% at 5 years, and reached up to approximately 45% at  
459   65 years in both strata (Fig 4)

460 **Figure 4** – Force of infection of Zika, Dengue and Chikungunya by according to socioeconomic strata. Recife, Brazil.2018-2019.



461  
462  
463

464 Table 4. Force of dengue, Zika and chikungunya infection (fitted by the effect of the  
465 sample design) through a generalized linear model (GLAM).  
466

	High		Intermediate		Low	
	Estimate	p-value	Estimate	p-value	Estimate	p-value
<b>Dengue</b>						
Intercept	-1.8102	<0.001	-1.6031	<0.001	-2.1936	<0.001
Log(age)	0.6753	<0.001	0.7506	<0.001	0.9736	<0.001
<b>Zika</b>						
Intercept	-1.6993	0.004	-2.4131	<0.001	-2.4040	<0.001
Log(age)	0.2720	0.078	0.6274	<0.001	0.6402	<0.001
<b>Chikungunya</b>						
Intercept	-1.5682	0.003	-1.2781	<0.001	-1.2011	0.003
Log(age)	0.0835	0.508	0.1828	0.079	0.1551	0.133

467

468 Associated risk factors for ZIKV and CHIKV infection.

469 The supplementary Tables 5 to 10 (S4 supporting information) show the results  
470 of the crude and adjusted analysis of the association of individual and household  
471 characteristics with ZIKV and CHIKV infection in the distinct SES.

472 Regarding ZIKV infection, older age and living in a house were independent risk  
473 factors for infection in the three socioeconomic strata. A dose-response gradient of  
474 the risk of exposure to ZIKV with increasing age was observed in the intermediate and  
475 low SES. Living in a house represented a 2-fold increased risk of infection in the three  
476 SES. Presence of anti-dengue antibodies represented a 3-fold increased risk for ZIKV  
477 infection among participants from the high socioeconomic stratum. Low education was  
478 a risk factor for infection at the individual level in the high and intermediate strata,  
479 although with weak strength of association. Higher individual and head of household  
480 income were a protective factor against ZIKV infection in the intermediate SES (Table 7  
481 – S4 supporting information).

482 Tables 8 to 10 (S4 supporting information) show the results of crude and  
483 adjusted analyzes of the association of household and individual factors with CHIKV  
484 infection. The risk of CHIKV infection was approximately three times higher among  
485 those living in a house compared to those individuals living in apartments in the high  
486 (adjusted OR 2.64; 95%CI: 1.34-5.17) and intermediate (adjusted OR 3.23; 95% CI:  
487 1.80-5.50) SES. Most of the participants in the low SES lived in households (96.8%), and  
488 no CHIKV positive was detected among those who lived in an apartment in this area.

489 Considering the household-related characteristics associated with CHIKV  
490 infection, lack of access to the public sewage system and the lower level of schooling  
491 of the head of the household were risk factors for infection in the high SES. There was  
492 a negative association between the head of the family's income and risk of CHIKV  
493 infection in the low stratum (Table 10 – S4 supporting information).

494 In the intermediate SES, the presence of serological marker of DENV infection  
495 represented a risk of CHIKV infection twice as high when compared to those without  
496 infection (adjusted OR 1.97; 95%CI: 1.28-3.02).

497 In the high SES, participants with fundamental/illiterate level of education had  
498 higher risk of CHIKV infection when compared to those with university level. The  
499 report of daily use of repellent was a protective factor in relation to those who did not  
500 use it (adjusted OR 0.22; 95%CI: 0.05-0.87). This use of repellent was not associated  
501 with infection in the other strata (Table 10 – S4 supplementary material).

502

503 **Discussion**

504           This population-based survey estimated dengue, Zika, and chikungunya  
505 seroprevalence in a hyperendemic urban area of dengue and the epicenter of the Zika-  
506 related microcephaly epidemic in Brazil. The study, conducted after nearly three  
507 decades of DENV circulation and two years after the introduction of ZIKV and CHIKV,  
508 confirmed the intense transmission of arboviruses in this setting. After the first  
509 epidemic wave of ZIKV and CHIKV, about 50% and 30% of the population residing in  
510 the city, had exposure markers to these arboviruses, respectively, demonstrating the  
511 high vulnerability of this population to diseases transmitted by *Aedes aegypti*. The  
512 study also provided evidence of the persistence of (low-level?) co-circulation of ZIKV  
513 and CHIKV, measured by serological markers of recent infection (anti-ZIKV IgG3 and  
514 anti-CHIKV IgM), during an interepidemic period as reported case for both diseases,  
515 according to the official surveillance system in this setting [40].

516           Our study has some limitations inherent of serosurveys in large urban settings.  
517 First, children below five years of age were not eligible due to the difficulty of  
518 obtaining blood specimens during household visits. As expected in large urban areas,  
519 some dwellings could not be accessed and/or we experienced a rate of refusal in the  
520 high socio-economic stratum compared to the other strata. Nevertheless, the data  
521 presented are based on a population-based study using a probabilistic sampling  
522 design. The serologic tests of Zika were optimized and calibrated using a validated  
523 panel of well characterized dengue and Zika samples to correlate PRNT data with  
524 antibody binding data and determination of cut-off levels. We further adjusted the  
525 prevalence of Zika for a Bayesian model to account for the sensitivity and specificity of  
526 the Elisa test.

527           In a previous population-based survey in the city of Recife around 15 years ago  
528   (2006), we estimated that almost the entire population had DENV IgG antibodies for  
529   one or more DENV serotypes [12, 28]. A small hospital-based study in pregnant women  
530   found similar levels of almost 100% of DENV exposure in 2010 in this population [41].  
531   This level of seroprevalence could be classified as one of the highest DENV  
532   seroprevalence rates worldwide; only comparable to other highly endemic countries in  
533   America, such as Trinidad, French Caribbean, Ecuador, and Suriname [42, 43].

534           In this population-based survey conducted in 2018-2019, the overall ZIKV  
535   seroprevalence (50.4%) suggests an intense virus exposure during the first wave of  
536   ZIKV epidemic in 2015-2016 in the municipality of Recife, Northeast Brazil. This  
537   prevalence may be considered high even when adjusting for the non-optimal accuracy  
538   of the serological test performed (38.6%). We highlight that the adjusted  
539   seroprevalence for women at reproductive age reached close to 45% of ZIKV infection  
540   in this population. This high level of ZIKV exposure may explain one of the highest  
541   prevalence of adverse outcome of pregnancy such as microcephalic cases reported  
542   during the first wave of epidemic in this setting [15]. The results of different studies  
543   may not be comparable due to the distinct laboratory tests applied and/or study  
544   designs. In our setting, a case-control study found 57.2% of seroprevalence of ZIKV  
545   virus by PRNT among pregnant women with non-adverse outcomes (control sample)  
546   during the peak of the epidemic [44]. Netto and al [45] reported high ZIKV  
547   seroprevalence (63%) using Elisa and PRNT tests among a convenience sample in  
548   Salvador, Bahia, estimating a reproduction number of 2.1 during the outbreak.

549           The levels of ZIKV seroprevalence found in our study are in line with results  
550   reported in the adult population in large urban center of Nicaragua after 2016

551 epidemic wave. Other international surveys post epidemic peak pointed out to higher  
552 seroprevalence levels such as the results reported after outbreaks in Yap Island [46],  
553 Pacific Region and French Polynesia, Micronesia [47]. Interestingly, we found at least  
554 1.5% prevalence of recent marker of infection (IgG3) suggesting the persistence of  
555 ZIKV circulation in our setting after the 2015/2016 epidemic. This finding is  
556 corroborated by the report of the Pan American Health Organization of almost 30,000  
557 cases in 2022. However, the incidence of ZIKV viremia using molecular tests was  
558 undetectable among blood donors in the same setting and period of our study [48].  
559 The likely explanation may be the short duration of viremia in a self-selected healthy  
560 population as blood donors. However, our results support that ZIKV has been  
561 circulating at lower levels even after a large epidemic. ZIKV circulation after a large  
562 outbreak has been a matter of discussion in the recent literature [49] and deserves  
563 further population-based studies.

564         In our densely urbanized setting with high infestation of *Aedes aegypti*, the  
565 CHIKV displaced ZIKV outbreak (2015-2016) [5]. The current survey showed high  
566 prevalence of CHIKV infection (35.7%), with little variation among age groups as  
567 expected considering a recently introduced virus. This level of infection was not  
568 sufficient to avoid the occurrence of another CHIKV epidemic detected (2021) by the  
569 official surveillance, approximately one year after our survey [50]. In a meta-analysis of  
570 CHIKV seroprevalence studies conducted in Brazil, the estimated overall prevalence  
571 was 24% including only three studies [43].

572         Another interesting finding was 3.5% prevalence of recent CHIKV infection and  
573 the simultaneous co-circulation of CHIKV and ZIKV in our setting. Concurrently to this  
574 survey, we also described the co-circulation of ZIKV and CHIKV among pregnant



575 women in a maternity-based study conducted in this same city [51]. In fact, the  
576 circulation of CHIKV during ZIKV (2015-2017) outbreak was previously documented  
577 among pregnant women with rash notified by the official surveillance system in our  
578 setting [52].

579 The introduction of CHIKV in the Northeast of Brazil is quite recent compared to  
580 other regions such as Southeast Asia where this virus has been circulating for several  
581 decades [53]. Our study showed evidence that one third of the population, i.e., around  
582 544 thousand people living in the city had been exposed to CHIKV since the first  
583 epidemic wave (2016) [54]. This figure is 45-fold higher than the 11,984 accumulated  
584 reported CHIKV suspected cases reported by the surveillance system since 2015[50],  
585 until the end of the current survey (Feb. 2019). This estimated ratio between CHIKV  
586 infection and notified cases suggests substantial case underreporting and/or high  
587 frequency of subclinical/inapparent infections.

588 We did not find statistical differences between the sexes regarding the  
589 seroprevalence of the three arboviruses surveyed. This result is in accordance with  
590 previous population surveys conducted in this setting [12], in other Brazilian states [10,  
591 55] and other countries in the region [56]. Conversely, population-based studies  
592 conducted in the Americas reported higher seroprevalence of ZIKV and CHIKV in males  
593 compared to females [57, 58]. This difference can be explained by local characteristics  
594 of the population or by methodological differences across the studies.

595 Interestingly, our analysis showed different age-related infection curves for dengue,  
596 Zika or chikungunya. At 5 years of age, approximately 50% of the children had markers  
597 of previous DENV infection and that more than 90% of the adult population had been  
598 infected. These findings are in consonance with the intense circulation of the virus in

599 this population for four decades. A similar age-related pattern for dengue infection  
600 was also documented by our research team in this setting in 2006 [12, 29]. In addition,  
601 we observed a steady increase in the force of ZIKV infection from 25% of prevalence at  
602 the age of 5 years to 70% at the age of 65, confirmed by the results of the regression  
603 model (Table 4 and Supplementary Material S1). This finding was consistent with the  
604 results of the multiple regression analysis, which, unlike that observed for CHIKV  
605 infection, showed a higher risk of infection in the population aged 15 years and older  
606 when compared to the population below this age range. Although this finding seems  
607 unexpected for a recent introduced virus, it is in line with results from Nicaragua [57]  
608 and Puerto Rico [58]. The significant increase in the seroprevalence between children  
609 and young adults may suggest that anti-dengue antibodies or sexual transmission may  
610 have influenced the transmission of Zika. Seroprevalence levels around 60-70% which  
611 suggest herd immunity are only found in (older) adults of low SES, suggesting this  
612 group as the major driver for population immunity. In addition, higher levels of anti-  
613 dengue antibodies that is found in adults after multiple dengue exposures can provide  
614 partial protection against ZIKV also contributing to the overall herd immunity. Other  
615 studies have reported a significant role of sexual transmission of Zika [59-61], which  
616 could also contribute to the higher seroprevalence in (older) adults. Another  
617 population survey conducted in French Guiana did not show evidence of increased  
618 seroprevalence with age [56], and it still controversial if sexual transmission plays a  
619 significant role for ZIKV epidemiology[61, 62]. In contrast, the age-related curve of  
620 infection for CHIKV was estimated almost as a straight line that is compatible with the  
621 recent introduction virus in this region.

622           The weighted seroprevalence of dengue, zika and chikungunya was higher in  
623 areas classified as low and intermediate socioeconomic levels when compared to the  
624 high socioeconomic strata which have greater coverage of sanitation, regular water  
625 supply and where most of the population live in apartment buildings. In general, our  
626 data also reinforce the role of unplanned urbanization and poverty as one of the  
627 factors that influence the incidence and expansion of arboviruses [63, 64].

628           The analysis of the association between individual and household  
629 characteristics and dengue, ZIKV and CHIV infection showed different patterns. ZIKV  
630 and CHIKV infections were associated with lower educational levels as an indicator of  
631 health inequities and an independent risk factor for infection in almost all  
632 socioeconomic strata. In addition, living in a household instead of an apartment  
633 yielded a three-fold increased risk of exposure to CHIKV or to ZIKV infection. We also  
634 found that living in a house compared to high rise flat was a risk factor for DENV  
635 infection in the previous survey (2005/2006) in the city of Recife [12]. These findings  
636 are in line with results from other surveys in localities in southeastern Brazil [65, 66]  
637 and in the city of Singapore in Asia [67, 68]. In our setting, the greater risk of exposure  
638 to these arbovirus infections among residents of houses (one-story dwellings) can be  
639 explained by the fact that, unlike the areas of the high stratum, most of the  
640 households located in the intermediate and low socioeconomic strata consist of this  
641 type of residence (more than 80%). These densely populated areas, with less  
642 sanitation coverage and irregular water supply, provide the most favorable  
643 environmental conditions for the proliferation of *Aedes* breeding sites [63]. Another  
644 possible explanation would be the greater proximity to *Aedes* breeding sites in a  
645 household compared to high rise flats located above the ground floor.

646            In conclusion, our household-survey highlights the high vulnerability of these  
647 urban population to *Aedes*-borne arbovirus infections in the Northeast region of Brazil.  
648 Also, our results provide evidence of the persistence of the co-circulation of ZIKV and  
649 CHIKV in this highly urbanized setting, three years after the peak of ZIKV epidemic.  
650 Considering the large proportion of susceptible population for ZIKV and CHIKV  
651 infection, it should be an alert for future outbreaks. There is an urgent need of new  
652 approaches to *Aedes* surveillance and control, besides the development and efficacy  
653 trials of vaccines against these arboviruses. The planning and implementation of  
654 intersectoral and integrated interventions for the control of diseases transmitted by  
655 *Aedes* in poor urban setting should be crucial to reduce the burden of arbovirus  
656 disease and mortality in endemic countries.

657

658 **Acknowledgments**

659            We thank Andre Sá de Oliveira for generating the figure 1. We also thank Dylan  
660 Tuttle and Dr. Priscila M. Castanha for reviewing the text and making figures 2 and 3.

661

662

## 663 **References**

- 664 1. Espinal MA, Andrus JK, Jauregui B, Waterman SH, Morens DM, Santos JI, et al.  
665 Emerging and Reemerging Aedes-Transmitted Arbovirus Infections in the Region  
666 of the Americas: Implications for Health Policy. *Am J Public Health*.  
667 2019;109(3):387-92. Epub 20190124. doi: 10.2105/AJPH.2018.304849 PMID:  
668 30676796.
- 669 2. PLISA Plataforma de Información en Salud para las Américas [Internet].  
670 PAHO/WHO. 2022 [cited 25/03/2022]. Available at:  
671 <https://www3.paho.org/data/index.php/es/>
- 672 3. Microcephaly Epidemic Research Group. Microcephaly in Infants, Pernambuco  
673 State, Brazil, 2015. *Emerg Infect Dis*. 2016;22(6):1090-3. Epub 2016/04/14. doi:  
674 10.3201/eid2206.160062 PMID: 27071041.
- 675 4. Barreto FKDA, Alencar CH, Araújo FMDC, Oliveira RDMAB, Cavalcante JW, Lemos  
676 DRQ, et al. Seroprevalence, spatial dispersion and factors associated with  
677 flavivirus and chikungunya infection in a risk area: a population-based  
678 seroprevalence study in Brazil. *BMC Infect. Dis*. 2020;20(1). doi: 10.1186/s12879-  
679 020-05611-5. PMID: 33234110.
- 680 5. Magalhaes T, Braga C, Cordeiro MT, Oliveira ALS, Castanha PMS, Maciel APR, et  
681 al. Zika virus displacement by a chikungunya outbreak in Recife, Brazil. *PLOS*  
682 *Negl. Trop. Dis*. 2017;11(11):e0006055. doi: 10.1371/journal.pntd.0006055  
683 PMID: 29108009.
- 684 6. Silva NM, Teixeira, R.A.G. , Cardoso, C.G. , Siqueira Junior, J. B. , Coelho, G.E. ,  
685 Oliveira, E.S. F. Chikungunya surveillance in Brazil: challenges in the context of

- 686 Public Health. Epidemiol Serv Saude. 2018;27(3). doi: 10.5123/S1679-  
687 49742018000300003 PMID: 30183867.
- 688 7. Donalisio MR, Freitas ARR, Zuben A. Arboviruses emerging in Brazil: challenges  
689 for clinic and implications for public health. Rev Saude Publica. 2017; 51:30. Epub  
690 20170410. doi: 10.1590/S1518-8787.2017051006889 PMID: 28423140.
- 691 8. Metcalf CJ, Farrar J, Cutts FT, Basta NE, Graham AL, Lessler J, et al. Use of  
692 serological surveys to generate key insights into the changing global landscape of  
693 infectious disease. Lancet. 2016;388(10045):728-30. Epub 2016/04/10. doi:  
694 10.1016/S0140-6736(16)30164-7 PMID: 27059886.
- 695 9. Ferguson NM, Donnelly CA, Anderson RM. Transmission dynamics and  
696 epidemiology of dengue: insights from age-stratified sero-prevalence surveys.  
697 Philos Trans R Soc Lond B Biol Sci. 1999;354(1384):757-68. Epub 1999/06/12. doi:  
698 10.1098/rstb.1999.0428 PMID: 10365401.
- 699 10. Périssé ARS, Souza-Santos R, Duarte R, Santos F, De Andrade CR, Rodrigues NCP,  
700 et al. Zika, dengue and chikungunya population prevalence in Rio de Janeiro city,  
701 Brazil, and the importance of seroprevalence studies to estimate the real  
702 number of infected individuals. PLoS One. 2020;15(12):e0243239. doi:  
703 10.1371/journal.pone.0243239 PMID: 33332373.
- 704 11. Cordeiro MT, Schatzmayr, H. G., Nogueira, R. M. R., de Oliveira, V.F. , de Melo,  
705 W. T., Carvalho, E. F. Dengue and dengue hemorrhagic fever in the State of  
706 Pernambuco, 1995-2006. Rev. Soc. Bras. Med. Trop. 2007;40(6):605-11. Doi:  
707 10.1590/s0037-86822007000600001 PMID: 18200409.
- 708 12. Braga C, Luna CF, Martelli CM, de Souza WV, Cordeiro MT, Alexander N, et al.  
709 Seroprevalence and risk factors for dengue infection in socio-economically

- 710 distinct areas of Recife, Brazil. *Acta Tropica*. 2010;113(3):234-40. doi:  
711 10.1016/j.actatropica.2009.10.021. PMID: 19896921.
- 712 13. Secretaria de Saúde do Recife. Boletim Epidemiológico - Arboviroses transmitidas  
713 pelo *Aedes aegypti*. In: Gerência de Vigilância Epidemiológica [internet]. Recife,  
714 Brazil: Secretaria de Saúde do Recife, Secretaria Executiva de Vigilância à Saúde;  
715 2016 [cited 07/07/2022]. Available at:  
716 [https://cievsrecife.files.wordpress.com/2012/08/boletim-de-arboviroses-se-52-](https://cievsrecife.files.wordpress.com/2012/08/boletim-de-arboviroses-se-52-1.pdf)  
717 [1.pdf](https://cievsrecife.files.wordpress.com/2012/08/boletim-de-arboviroses-se-52-1.pdf).
- 718 14. Secretaria de Saúde do Recife. Boletim Epidemiológico - Arboviroses transmitidas  
719 pelo *Aedes aegypti*. In: Gerência de Vigilância Epidemiológica [internet]. Recife,  
720 Brazil: Secretaria de Saúde do Recife, Secretaria Executiva de Vigilância à Saúde;  
721 2015[cited 07/07/2022]. Available at:  
722 [https://cievsrecife.files.wordpress.com/2012/08/boletim-de-arboviroses-se-50-](https://cievsrecife.files.wordpress.com/2012/08/boletim-de-arboviroses-se-50-30-12-15.pdf)  
723 [30-12-15.pdf](https://cievsrecife.files.wordpress.com/2012/08/boletim-de-arboviroses-se-50-30-12-15.pdf)
- 724 15. Teixeira MG, Da Conceição N. Costa M, De Oliveira WK, Nunes ML, Rodrigues LC.  
725 The Epidemic of Zika Virus–Related Microcephaly in Brazil: Detection, Control,  
726 Etiology, and Future Scenarios. *Am. J. Public Health*. 2016;106(4):601-5. doi:  
727 10.2105/ajph.2016.303113 PMID: 26959259.
- 728 16. Franca GV, Schuler-Faccini L, Oliveira WK, Henriques CM, Carmo EH, Pedi VD, et  
729 al. Congenital Zika virus syndrome in Brazil: a case series of the first 1501  
730 livebirths with complete investigation. *Lancet*. 2016;388(10047):891-7. Epub  
731 20160629. doi: 10.1016/S0140-6736(16)30902-3 PMID: 27372398.
- 732 17. Brazilian National Institute of Geography and Statistics -IBGE. Cidades [internet].  
733 IBGE; 2010. Available at: <https://cidades.ibge.gov.br/brasil/pe/recife/panorama> .

- 734 18. Brazilian National Institute of Geography and Statistics -IBGE. Sinopse do Censo  
735 Demográfico 2010 [internet] Available at:  
736 <https://censo2010.ibge.gov.br/sinopse/index.php?uf=00&dados=1>
- 737 19. Kodinariya TM, Makwana P.R. Review on determining number of Cluster in K-  
738 Means Clustering. Int. j. adv. res. comput. sci. manag. stud. 2013;1(6): 90-5. ISSN:  
739 2321-7782 (Online)
- 740 20. Souza WV, Albuquerque M, Vazquez E, Bezerra LCA, Mendes A, Lyra TM, et al.  
741 Microcephaly epidemic related to the Zika virus and living conditions in Recife,  
742 Northeast Brazil. BMC Public Health. 2018;18(1):130. Epub 20180112. doi:  
743 [10.1186/s12889-018-5039-z](https://doi.org/10.1186/s12889-018-5039-z) PMID: 29329574.
- 744 21. Team RC. A language and environment for statistical computing. R Foundation  
745 for Statistical Computing. Vienna, Austria: R Core Team R; 2020.
- 746 22. Cordeiro R, Stephan C, Donalisio MR. [AmostraBrasil: an R package for household  
747 sampling in Brazilian municipalities]. Cad Saude Publica. 2016;32(11):e00069516.  
748 Epub 2016/12/17. doi: [10.1590/0102-311X00069516](https://doi.org/10.1590/0102-311X00069516) PMID: 27982285.
- 749 23. Fischer C, Jo WK, Haage V, Moreira-Soto A, de Oliveira Filho EF, Drexler JF.  
750 Challenges towards serologic diagnostics of emerging arboviruses. Clin Microbiol  
751 Infect. 2021;27(9):1221-9. Epub 20210607. doi: [10.1016/j.cmi.2021.05.047](https://doi.org/10.1016/j.cmi.2021.05.047).  
752 PubMed PMID: 34111589.
- 753 24. Rodriguez-Barraquer I, Costa F, Nascimento EJM, Nery NJ, Castanha PMS,  
754 Sacramento GA, et al. Impact of preexisting dengue immunity on Zika virus  
755 emergence in a dengue endemic region. Science. 2019;363(6427):607-10. doi:  
756 [10.1126/science.aav6618](https://doi.org/10.1126/science.aav6618) PMID: 30733412.



- 757 25. Nascimento EJM, Huleatt JW, Cordeiro MT, Castanha PMS, George JK, Grebe E,  
758 et al. Development of antibody biomarkers of long term and recent dengue virus  
759 infections. *J Virol Methods*. 2018; 257:62-8. Epub 20180421. doi:  
760 10.1016/j.jviromet.2018.04.009 PMID: 29684416.
- 761 26. Viana IFT, Coelho DF, Palma ML, Nascimento EJM, Gu G, Lima LFO, et al.  
762 Detection of IgG3 antibodies specific to the human immunodeficiency virus type  
763 1 (HIV-1) p24 protein as marker for recently acquired infection. *Epidemiol Infect*.  
764 2018;146(10):1293-300. Epub 20180621. doi: 10.1017/S0950268818001218.  
765 PMID: 29925445.
- 766 27. L'Huillier AG, Hamid-Allie A, Kristjanson E, Papageorgiou L, Hung S, Wong CF, et  
767 al. Evaluation of Euroimmun Anti-Zika Virus IgM and IgG Enzyme-Linked  
768 Immunosorbent Assays for Zika Virus Serologic Testing. *J Clin Microbiol*.  
769 2017;55(8):2462-71. Epub 2017/06/02. doi: 10.1128/JCM.00442-17 PMID:  
770 28566316.
- 771 28. Basile AJ, Goodman C, Horiuchi K, Sloan A, Johnson BW, Kosoy O, et al. Multi-  
772 laboratory comparison of three commercially available Zika IgM enzyme-linked  
773 immunosorbent assays. *J Virol Methods*. 2018;260:26-33. Epub 2018/07/03. doi:  
774 10.1016/j.jviromet.2018.06.018. PMID: 29964076.
- 775 29. Castanha PMS, Cordeiro MT, Martelli CMT, Souza WV, Marques ETA, Braga C.  
776 Force of infection of dengue serotypes in a population-based study in the  
777 northeast of Brazil. *Epidemiol. Infect*. 2013;141(5):1080-8. doi:  
778 10.1017/S0950268812001367 PMID: 22800513.
- 779 30. Magalhaes T, Morais CNL, Azevedo EAN, Jacques I, Castanha PMS, Cordeiro MT,  
780 et al. Two-year Decay of Zika Virus Neutralizing Antibodies in People Living in an

- 781 Endemic Region in Brazil. *Am J Trop Med Hyg.* 2022;107(1):186-9. Epub  
782 20220606. doi: 10.4269/ajtmh.21-1279. PMID: 35895363.
- 783 31. Nascimento EJM, George JK, Velasco M, Bonaparte MI, Zheng L, DiazGranados  
784 CA, et al. Development of an anti-dengue NS1 IgG ELISA to evaluate exposure to  
785 dengue virus. *J Virol Methods.* 2018; 257:48-57. Epub 2018/03/24. doi:  
786 10.1016/j.jviromet.2018.03.007. PMID: 29567514.
- 787 32. Harris PA, Taylor R, Thielke R, Payne J, Gonzalez N, Conde JG. Research electronic  
788 data capture (REDCap)--a metadata-driven methodology and workflow process  
789 for providing translational research informatics support. *J Biomed Inform.*  
790 2009;42(2):377-81. Epub 2008/10/22. doi: 10.1016/j.jbi.2008.08.010 PMID:  
791 18929686.
- 792 33. Gelman A. Bayesian data analysis. 2nd ed. Boca Raton, Fla.: Chapman &  
793 Hall/CRC; 2004. xxv, 668 p. p.
- 794 34. Lewis FI, Torgerson PR. A tutorial in estimating the prevalence of disease in  
795 humans and animals in the absence of a gold standard diagnostic. *Emerg Themes*  
796 *Epidemiol.* 2012;9(1):9. Epub 2012/12/29. doi: 10.1186/1742-7622-9-9 PMID:  
797 23270542.
- 798 35. Gelman A, Rubin DB. Inference from Iterative Simulation Using Multiple  
799 Sequences. *Statistical Science.* 1992;7(4):457-72. doi: 10.1214/ss/1177011136.
- 800 36. Brooks SP, Gelman A. General Methods for Monitoring Convergence of Iterative  
801 Simulations. *J. Comput. Graph. Stat.* 1998;7(4):434-55. doi:  
802 10.1080/10618600.1998.10474787.
- 803 37. Lumley T. Analysis of complex survey samples. *J. Stat. Softw.* 2004;9(8). doi:  
804 10.18637/jss.v009.i08.

- 805 38. Massad E, S.M. R, Silveira ASB. A continuous function model for the age-related  
806 force of infection. *Math Comput Model.* 1990;13(4):101-12.  
807 [https://doi.org/10.1016/0895-7177\(90\)90057-T](https://doi.org/10.1016/0895-7177(90)90057-T).
- 808 39. Rodriguez-Barraquer I, Cordeiro MT, Braga C, de Souza WV, Marques ET,  
809 Cummings DAT. From Re-Emergence to Hyperendemicity: The Natural History of  
810 the Dengue Epidemic in Brazil. *PLOS Negl. Trop. Dis.* 2011;5(1). doi:  
811 [10.1371/journal.pntd.0000935](https://doi.org/10.1371/journal.pntd.0000935) PMID: 21245922.
- 812 40. Secretaria de Saúde do Recife. Boletim Epidemiológico - Arboviroses transmitidas  
813 pelo *Aedes aegypti*. In: Gerência de Vigilância Epidemiológica [internet]. Recife,  
814 Brazil: Secretaria de Saúde do Recife, Secretaria Executiva de Vigilância à Saúde;  
815 2019 [cited 8/23/2022]. Available at:  
816 <https://cievsrecife.files.wordpress.com/2020/02/boletim-arbovirose-se-52.pdf>
- 817 41. Leite RC, Souza AI, Castanha PMS, Cordeiro MT, Martelli CT, Ferreira ALG, et al.  
818 Dengue infection in pregnancy and transplacental transfer of anti-dengue  
819 antibodies in Northeast, Brazil. *J. Clin. Virol.* 2014;60(1):16-21. doi:  
820 [10.1016/J.JCV.2014.02.009](https://doi.org/10.1016/J.JCV.2014.02.009) PMID: 24657101.
- 821 42. Chis Ster I, Rodriguez A, Romero NC, Lopez A, Chico M, Montgomery J, et al. Age-  
822 dependent seroprevalence of dengue and chikungunya: inference from a cross-  
823 sectional analysis in Esmeraldas Province in coastal Ecuador. *BMJ Open.*  
824 2020;10(10):e040735. doi: [10.1136/bmjopen-2020-040735](https://doi.org/10.1136/bmjopen-2020-040735). PMID: 33067302.
- 825 43. Li Z, Wang J, Cheng X, Hu H, Guo C, Huang J, et al. The worldwide seroprevalence  
826 of DENV, CHIKV and ZIKV infection: A systematic review and meta-analysis. *PLOS*  
827 *Negl. Trop. Dis.* 2021;15(4):e0009337. doi: [10.1371/journal.pntd.0009337](https://doi.org/10.1371/journal.pntd.0009337) PMID:  
828 33909610.

- 829 44. Castanha PMS, Souza WV, Braga C, Araújo TVBD, Ximenes RAA, Albuquerque  
830 MDFPM, et al. Perinatal analyses of Zika- and dengue virus-specific neutralizing  
831 antibodies: A microcephaly case-control study in an area of high dengue  
832 endemicity in Brazil. *PLOS Negl. Trop. Dis.* 2019;13(3):e0007246. doi:  
833 10.1371/journal.pntd.0007246 PMID: 30856223.
- 834 45. Netto EM, Moreira-Soto A, Pedroso C, Höser C, Funk S, Kucharski AJ, et al. High  
835 Zika Virus Seroprevalence in Salvador, Northeastern Brazil Limits the Potential  
836 for Further Outbreaks. *mBio.* 2017;8(6). doi: 10.1128/mbio.01390-17 PMID:  
837 29138300.
- 838 46. Duffy MR, Chen TH, Hancock WT, Powers AM, Kool JL, Lanciotti RS, et al. Zika  
839 virus outbreak on Yap Island, Federated States of Micronesia. *N Engl J Med.*  
840 2009;360(24):2536-43. Epub 2009/06/12. doi: 10.1056/NEJMoa0805715 PMID:  
841 19516034.
- 842 47. Aubry M, Teissier A, Huart M, Merceron S, Vanhomwegen J, Roche C, et al. Zika  
843 Virus Seroprevalence, French Polynesia, 2014–2015. *Emerg. Infect. Dis.*  
844 2017;23(4):669-72. doi: 10.3201/eid2304.161549 PMID: 28084987.
- 845 48. Custer B, Grebe E, Buccheri R, Bakkour S, Stone M, Capuani L, et al. Surveillance  
846 for Zika, chikungunya and dengue virus incidence and RNAemia in blood donors  
847 at four Brazilian blood centers during 2016-2019. *J Infect Dis.* 2022. Epub  
848 20220611. doi: 10.1093/infdis/jiac173 PMID: 35687888.
- 849 49. Ruchusatsawat K, Wongjaroen P, Posanacharoen A, Rodriguez-Barraquer I,  
850 Sangkitporn S, Cummings DAT, et al. Long-term circulation of Zika virus in  
851 Thailand: an observational study. *Lancet Infect. Dis.* 2019;19(4):439-46. doi:  
852 10.1016/s1473-3099(18)30718-7 PMID: 30826189.

- 853 50. Secretaria de Saúde do Recife. Boletim Epidemiológico - Arboviroses transmitidas  
854 pelo *Aedes aegypti*. In: Gerência de Vigilância Epidemiológica [internet]. Recife,  
855 Brazil: Secretaria de Saúde do Recife, Secretaria Executiva de Vigilância à Saúde;  
856 2022 [cited 8/23/2022]. Available at:  
857 [https://cievsrecife.files.wordpress.com/2022/01/boletim-arboviroses-](https://cievsrecife.files.wordpress.com/2022/01/boletim-arboviroses-recife_2021_se52.pdf)  
858 [recife\\_2021\\_se52.pdf](https://cievsrecife.files.wordpress.com/2022/01/boletim-arboviroses-recife_2021_se52.pdf)
- 859 51. Jacques I, Katz L, Sena MA, Guimaraes ABG, Silva YL, Albuquerque GDM, et al.  
860 High Incidence of Zika or Chikungunya Infection among Pregnant Women  
861 Hospitalized Due to Obstetrical Complications in Northeastern Brazil-Implications  
862 for Laboratory Screening in Arbovirus Endemic Area. *Viruses*. 2021;13(5). Epub  
863 2021/05/01. doi: 10.3390/v13050744 PMID: 33922819.
- 864 52. Lobkowicz L, Miranda-Filho DDB, Montarroyos UR, Martelli CMT, De Araújo TVB,  
865 De Souza WV, et al. Co-circulation of Chikungunya Virus during the 2015–2017  
866 Zika Virus Outbreak in Pernambuco, Brazil: An Analysis of the Microcephaly  
867 Epidemic Research Group Pregnancy Cohort. *Am. J. Trop. Med Hyg.*  
868 2022;106(6):1711-20. doi: 10.4269/ajtmh.21-0449 PMID: 35405646
- 869 53. Translational Research Consortia for Chikungunya Virus. Current Status of  
870 Chikungunya in India. *Front Microbiol.* 2021;12:695173. Epub 20210624. doi:  
871 10.3389/fmicb.2021.695173 PMID: 34262552.
- 872 54. Brito CAAT, M. G. Increased number of deaths during a chikungunya epidemic in  
873 Pernambuco, Brazil. *Mem Inst Oswaldo Cruz.* 2017;112(9):650-1. doi:  
874 10.1590/0074-02760170124. PMID: 28902292.

- 875 55. Anjos RO, Mugabe VA, Moreira PSS, Carvalho CX, Portilho MM, Khouri R, et al.  
876 Transmission of Chikungunya Virus in an Urban Slum, Brazil. *Emerg. Infect. Dis.*  
877 2020;26(7):1364-73. doi: 10.3201/eid2607.190846 PMID: 32568045.
- 878 56. Flamand C, Bailly S, Fritzell C, Berthelot L, Vanhomwegen J, Salje H, et al. Impact  
879 of Zika Virus Emergence in French Guiana: A Large General Population  
880 Seroprevalence Survey. *J Infect Dis.* 2019;220(12):1915-25. Epub 2019/08/17.  
881 doi: 10.1093/infdis/jiz396 PMID: 31418012.
- 882 57. Zambrana JV, Bustos Carrillo F, Burger-Calderon R, Collado D, Sanchez N, Ojeda S,  
883 et al. Seroprevalence, risk factor, and spatial analyses of Zika virus infection after  
884 the 2016 epidemic in Managua, Nicaragua. *Proc Natl Acad Sci U S A.*  
885 2018;115(37):9294-9. Epub 20180827. doi: 10.1073/pnas.1804672115 PMID:  
886 30150394.
- 887 58. Adams LE, Sánchez-González L, Rodriguez DM, Ryff K, Major C, Lorenzi O, et al.  
888 Risk factors for infection with chikungunya and Zika viruses in southern Puerto  
889 Rico: A community-based cross-sectional seroprevalence survey. *PLOS Negl.*  
890 *Trop. Dis.* 2022;16(6):e0010416. doi: 10.1371/journal.pntd.0010416 PMID:  
891 35696355.
- 892 59. Magalhaes T, Morais CNL, Jacques I, Azevedo EAN, Brito AM, Lima PV, et al.  
893 Follow-Up Household Serosurvey in Northeast Brazil for Zika Virus: Sexual  
894 Contacts of Index Patients Have the Highest Risk for Seropositivity. *J Infect Dis.*  
895 2021;223(4):673-85. doi: 10.1093/infdis/jiaa563 PMID: 32888023.
- 896 60. Aguilar Ticona JP, Baig H, Nery N, Doss-Gollin S, Sacramento GA, Adhikarla H, et  
897 al. Risk of Sexually Transmitted Zika Virus in a Cohort of Economically

- 898 Disadvantaged Urban Residents. *J Infect Dis.* 2021;224(5):860-4. doi:  
899 10.1093/infdis/jiab001 PMID: 33395487.
- 900 61. Blitvich BJ, Magalhaes T, Laredo-Tiscareño SV, Foy BD. Sexual Transmission of  
901 Arboviruses: A Systematic Review. *Viruses.* 2020;12(9):933. doi:  
902 10.3390/v12090933 PMID: 32854298.
- 903 62. Dénes A, Ibrahim MA, Oluoch L, Tekeli M, Tekeli T. Impact of weather seasonality  
904 and sexual transmission on the spread of Zika fever. *Sci. Rep.* 2019;9(1). doi:  
905 10.1038/s41598-019-53062-z PMID: 31745123.
- 906 63. Gubler DJ. Dengue, Urbanization and Globalization: The Unholy Trinity of the  
907 21(st) Century. *Trop Med Health.* 2011;39(4 Suppl):3-11. Epub 20110825. doi:  
908 10.2149/tmh.2011-S05 PMID: 22500131.
- 909 64. Power GM, Vaughan AM, Qiao L, Sanchez Clemente N, Pescarini JM, Paixao ES, et  
910 al. Socioeconomic risk markers of arthropod-borne virus (arbovirus) infections: a  
911 systematic literature review and meta-analysis. *BMJ Glob Health.* 2022;7(4). doi:  
912 10.1136/bmjgh-2021-007735 PMID: 35428678.
- 913 65. Pessanha JE, Caiaffa WT, Kroon EG, Proietti FA. [Dengue fever in three sanitary  
914 districts in the city of Belo Horizonte, Brazil: a population-based  
915 seroepidemiological survey, 2006 to 2007]. *Rev Panam Salud Publica.*  
916 2010;27(4):252-8. doi: 10.1590/s1020-49892010000400003 PMID: 20512227.
- 917 66. Chiaravalloti-Neto F, Da Silva RA, Zini N, Da Silva GCD, Da Silva NS, Parra MCP, et  
918 al. Seroprevalence for dengue virus in a hyperendemic area and associated  
919 socioeconomic and demographic factors using a cross-sectional design and a  
920 geostatistical approach, state of São Paulo, Brazil. *BMC Infect. Dis.* 2019;19(1).  
921 doi: 10.1186/s12879-019-4074-4 PMID: 31109295.

- 922 67. Ang LW, Kam YW, Lin C, Krishnan PU, Tay J, Ng LC, et al. Seroprevalence of  
923 antibodies against chikungunya virus in Singapore resident adult population.  
924 PLOS Negl. Trop. Dis. 2017;11(12):e0006163. doi: 10.1371/journal.pntd.0006163  
925 PMID: 29281644.
- 926 68. Koh BK, Ng LC, Kita Y, Tang CS, Ang LW, Wong KY, et al. The 2005 dengue  
927 epidemic in Singapore: epidemiology, prevention and control. Ann Acad Med  
928 Singap. 2008;37(7):538-45 PMID: 18695764.
- 929



931 **Supporting information**

932 S1 Laboratory procedures

933 S2 Table. Exposure variable list

934 S3 Packages for Prevalence Data Analysis using R Programme

935 S4 Table 5 to 10- Univariate and adjusted analysis of the association between

936 household and individual characteristics with ZIKV and CHIKV infection. Recife, Brazil,

937 2018-2019.

938

939 **Author contributions**

940 Conceptualization: CB, WVS, MFPMA, CFCAM, TJ, ETAM, CMTM

941 Data curation: CB, RDL, WVS, CFL, CAM, IFTV

942 Formal analysis: CB, RDL, WVS, CFL, CMTM, IFTV

943 Funding acquisition: CB, ETAM, TJ, IFTV

944 Investigation: CB, CAM, CNLM, CAAB, CFCAM, ETAM, IFTV, JFD

945 Methodology: CB, WVS, CFL, CFCAM, ETAM, CMTM, IFTV

946 Project administration: CB, RDL, TJ, JFD, IFTV

947 Supervision: CB, RDL, CAM, CNLM, IFTV

948 Validation: IFTV

949 Writing – Original Draft Preparation: CB, WVS, CFL, MFPMA, CAM, RDL, TJ, CMTM,

950 IFTV, JFD

951 Writing – Review & Editing: CB, MFPMA, CNLM, CAAB, CFCAM, RDL, TJ, ETAM, CMTM,

952 IFTV.