

1 **Longitudinal wastewater surveillance addressed public health priorities during the**
2 **transition from “dynamic COVID-zero” to “opening up” in China: a population-based study**

3

4 **Authors:** Yinghui Li^{1, #}, Chen Du^{1, #}, Ziquan Lv^{1, #}, Fuxiang Wang^{2, #}, Liping Zhou³, Yuejing Peng⁴,
5 Wending Li¹, Yulin Fu¹, Jiangteng Song⁵, Chunyan Jia⁵, Xin Zhang⁵, Mujun Liu⁶, Zimiao Wang⁶,
6 Bin Liu⁶, Shulan Yan⁷, Yuxiang Yang⁷, Xueyun Li⁸, Yong Zhang⁸, Jianhui Yuan⁹, Shikuan Xu⁹,
7 Miaoling Chen¹, Xiaolu Shi¹, Bo Peng¹, Qiongcheng Chen¹, Yaqun Qiu¹, Shuang Wu¹, Min Jiang¹,
8 Miaomei Chen¹, Jinzhen Tang¹, Lei Wang¹, Lulu Hu¹, Chengsong Wan⁴, Hongzhou Lu^{2, *}, Tong
9 Zhang^{10, *}, Songzhe Fu^{11, *}, Xuan Zou^{1, *}, Qinghua Hu^{1, *}

10

11 ¹ Shenzhen Center for Disease Control and Prevention, Shenzhen, China;

12 ² Department of Infectious Diseases, Shenzhen Third People’s Hospital, Second Hospital Affiliated
13 to Southern University of Science and Technology, Shenzhen, China;

14 ³ Health Commission of Shenzhen Municipality, Shenzhen, China;

15 ⁴ BSL-3 Laboratory (Guangdong), Guangdong Provincial Key Laboratory of Tropical Disease
16 Research, School of Public Health, Southern Medical University, Guangzhou, China;

17 ⁵ Water Ecology and Environment Division, Shenzhen Ecology and Environment Bureau,
18 Shenzhen, China;

19 ⁶ Futian District Water Authority, Shenzhen, China;

20 ⁷ Nanshan District Water Authority, Shenzhen, China;

21 ⁸ Futian District Center for Disease Control and Prevention, Shenzhen, China;

22 ⁹ Nanshan District Center for Disease Control and Prevention, Shenzhen, China;

23 ¹⁰ Environmental Microbiome Engineering and Biotechnology Laboratory, Center for
24 Environmental Engineering Research, Department of Civil Engineering, The University of Hong
25 Kong, Hong Kong, China;

26 ¹¹ Key Laboratory of Environment Controlled Aquaculture (Dalian Ocean University) Ministry of
27 Education, China.

28

29 # These authors contributed equally to the article

30 * Corresponding authors:

31 Hongzhou Lu: luhongzhou@fudan.edu.cn, Tong Zhang: zhangt@hku.hk, Songzhe Fu:
32 fusongzhe@dlou.edu.cn, Xuan Zou: zoux@szcdc.net, Qinghua Hu: huqinghua03@163.com

33

34 **Summary**

35 **Background** Wastewater surveillance provides real-time, cost-effective monitoring of
36 SARS-CoV-2 transmission. We developed the first city-level wastewater warning system in
37 mainland China, located in Shenzhen. Our study aimed to reveal cryptic transmissions under the
38 “dynamic COVID-zero” policy and characterize the dynamics of the infected population and
39 variant prevalence, and then guide the allocation of medical resources during the transition to
40 “opening up” in China.

41

42 **Methods** In this population-based study, a total of 1,204 COVID-19 cases were enrolled to
43 evaluate the contribution of Omicron variant-specific faecal shedding rates in wastewater. After
44 that, wastewater samples from up to 334 sites distributed in communities and port areas in two
45 districts of Shenzhen covering 1.74 million people were tested daily to evaluate the sensitivity and
46 specificity of this approach, and were validated against daily SARS-CoV-2 screening. After the
47 public health policy was switched to “opening up” in December 7, 2022, we conducted
48 wastewater surveillance at wastewater treatment plants and pump stations covering 3.55 million
49 people to estimate infected populations using model prediction and detect the relative abundance
50 of SARS-CoV-2 lineages using wastewater sequencing.

51

52 **Findings** In total, 82.4% of SARS-CoV-2 Omicron cases tested positive for faecal viral RNA
53 within the first four days after the diagnosis, which was far more than the proportion of the
54 ancestral variant. A total of 27,759 wastewater samples were detected from July 26 to November
55 30 in 2022, showing a sensitivity of 73.8% and a specificity of 99.8%. We further found that
56 wastewater surveillance played roles in providing early warnings and revealing cryptic
57 transmissions in two communities. Based on the above results, we employed a prediction model to
58 monitor the daily number of infected individuals in Shenzhen during the transition to “opening up”
59 in China, with over 80% of the population infected in both Futian District and Nanshan District.
60 Notably, the prediction of the daily number of hospital admission was consistent with the actual
61 number. Further sequencing revealed that the Omicron subvariant BA.5.2.48 accounted for the
62 most abundant SARS-CoV-2 RNA in wastewater, and BF.7.14 and BA.5.2.49 ranked second and
63 third, respectively, which was consistent with the clinical sequencing.

64

65 **Interpretation** This study provides a scalable solution for wastewater surveillance of SARS-CoV-2
66 to provide real-time monitoring of the new variants, infected populations and facilitate the precise
67 prediction of hospital admission. This novel framework could be a One Health system for the
68 surveillance of other infectious and emerging pathogens with faecal shedding and antibiotic
69 resistance genes in the future.

70

71 **Funding** Sanming Project of Medicine in Shenzhen, Shenzhen Key Medical Discipline
72 Construction Fund.

73 **Research in context**

74 **Evidence before this study**

75 We searched PubMed for articles published from December 1, 2019, to February 28, 2023,
76 without any language restrictions, using the search terms “wastewater surveillance”,
77 “SARS-CoV-2 shedding rate”, and “China”. After checking abstracts and full texts of the search
78 results, we found that the field of wastewater-based epidemiology (WBE) has been considered as a
79 powerful, rapid, and inexpensive tool to monitor SARS-CoV-2 transmission in recent years.
80 Researchers realized that SARS-CoV-2 RNA in wastewater is mainly from the faecal virus
81 shedding of infected individuals, and the number of infected individuals can be estimated using a
82 prediction model based on the viral RNA load in wastewater and the faecal viral shedding rate.
83 However, there are no published clinical data regarding the faecal shedding rates of the pandemic
84 variant Omicron. In particular, no previous studies have reported the size of China’s SARS-CoV-2
85 infection after the public health policy was switched to “opening up” in December 7, 2022.

86

87 **Added value of this study**

88 This study highlights pioneering work in the use of wastewater surveillance of SARS-CoV-2
89 conducted during the transition from “dynamic COVID-zero” to “opening up” in China. The study
90 reported first about the high proportion of faecal viral shedding of SARS-CoV-2 Omicron cases,
91 showcasing the generality of wastewater surveillance for tracking Omicron prevalence. On the one
92 hand, wastewater surveillance can play roles in providing early warnings and revealing cryptic
93 transmissions and has the potential to replace city-wide nucleic acid screening under stringent
94 control measures. On the flip side, wastewater surveillance allows for robust predictions of the
95 number of infected individuals, the relative abundance of SARS-CoV-2 lineages, and the rate of
96 hospital admission after the public health policy was switched to relaxed COVID-19 restrictions.

97

98 **Implications of all the available evidence**

99 Governments are in urgent need of a paradigm to shorten the time lag observed between
100 recognition of a new emerging pathogen with the potential to cause the next pandemic (e.g.,
101 SARS-CoV-2) and the development of public health response (e.g., early warning, management
102 and control of the communities, allocation of medical resources). Our findings suggest that the
103 system developed in this study is not only a valuable epidemiological tool to accurately monitor
104 the infection trend but also transforms wastewater surveillance into a public health management
105 framework, which could be a One Health system for the surveillance of other infectious and
106 emerging pathogens with faecal shedding and antibiotic resistance genes.

107

108 **Introduction**

109 The limited population-based testing capacity of the SARS-CoV-2 pandemic triggered the
110 wastewater-based epidemiology (WBE) method to assess COVID-19 prevalence. The theoretical
111 basis of wastewater surveillance is that SARS-CoV-2 RNA in wastewater is mainly from the
112 faecal virus shedding of infected persons.¹⁻⁷ To date, at least 72 countries and 288 universities and
113 research institutes have carried out wastewater surveillance for SARS-CoV-2, which has played
114 crucial roles in monitoring the infection trend and emerging variants, providing early warning
115 signals for public health interventions.⁸⁻¹³

116 Recent studies have also shown the additional value of wastewater surveillance for the
117 prediction of infected populations to guide public health actions. For instance, Ahmed et al.
118 established a model to estimate the number of infected individuals based on the concentration of
119 SARS-CoV-2 RNA, which was in agreement with clinical observations.¹⁴ Fu et al. further
120 considered the decay rate of SARS-CoV-2 RNA in the sewer system and proposed a revised model
121 to reach an accurate perdition of infected persons.¹⁵ The results from McMahan et al. also
122 suggested that a modified susceptible-exposed-infectious-recovered (SEIR) model based on daily
123 viral RNA load in wastewater provided rapid prevalence assessments of COVID-19 cases.¹⁶

124 Since 2020, the “dynamic COVID-zero” strategy has been adopted in China for nearly three
125 years.¹⁷ The core of this strategy is to take timely measures to lockdown the communities for 7-14
126 days and quickly cut off the COVID-19 transmission chain. However, as the Omicron variant has
127 become the dominant variant in the majority of countries in 2022 with a higher transmission
128 capacity, the implementation of the “dynamic COVID-zero” strategy became unfeasible for most
129 cities. Whether WBE would be a feasible solution to replace nucleic acid testing to monitor the
130 infected population remains unknown. To this end, we first studied the faecal viral shedding rate
131 of 1,204 COVID-19 cases in a designated hospital to evaluate the feasibility of wastewater
132 surveillance for Omicron, and then we established a surveillance network in the Nanshan and
133 Futian districts of Shenzhen City to evaluate the sensitivity and specificity of this approach.
134 Afterward, since December 3, we conducted wastewater surveillance in wastewater treatment
135 plants (WWTPs) and pump stations to monitor the dynamics of virus concentration and
136 composition of variants. Finally, we adopted a predictive model to predict the number of infected
137 persons during the transition from “dynamic COVID-zero” to “opening up”,¹⁴ which provided
138 timely information for policy makers and guided the allocation of medical resources to address
139 this pandemic.

140

141 **Methods**

142 **Study of faecal viral shedding of the Omicron variant**

143 From August 9 to October 30, 2022, 1,204 infected individuals hospitalized in the Third People’s
144 Hospital of Shenzhen, a designated hospital for COVID-19 cases in Shenzhen, were included in
145 the study, and the hospital admission data were collected from electronic medical records of the
146 hospital. Faecal samples were collected daily using sterilized cotton swabs and placed in
147 SARS-CoV-2 inactivated sampling tubes. The GeneRotex96 automatic nucleic acid extraction
148 platform (TIANLONG, China) was used to extract nucleic acids from samples, and the novel
149 coronavirus 2019-nCoV nucleic acid detection kit (HybriBio, China) and ABI Prism7500 real-time
150 PCR instrument (HybriBio, China) were used to perform RT-qPCR detection of SARS-CoV-2
151 RNA according to the manufacturer’s instructions. A positive faecal sample indicated that at least

152 one target gene (*ORF1ab* or *N*) had a signal under the cut-off cycle threshold (Ct) value of 40. To
153 unify the standard of quantification, the final viral concentration in faecal samples was calculated
154 using the standard curve of *N*-carrying plasmids. Details about the quantitative analysis of viral
155 loads in faeces are provided in the appendix.1 (p 1). Ethical approval for this study was provided
156 by the ethical review board of Shenzhen CDC.

157

158 **Wastewater surveillance in port areas**

159 Tentative wastewater surveillance was conducted in the districts of Futian and Nanshan of
160 Shenzhen City. From July 26 to November 30, up to 334 sampling sites covering 1.74 million
161 people were selected according to the potential risk of the infected persons imported from Hong
162 Kong.¹⁸ The average population covered by each sampling site was approximately 5,200
163 (50-70,000). Since December 3, we have conducted wastewater surveillance only at six WWTPs
164 and nine pump stations in Futian District and Nanshan District. The population covered by each
165 WWTP was approximately 592,000 (65,000-850,000), the population covered by each pump
166 station was approximately 150,000 (10,000-572,000), and the total population was estimated to be
167 approximately 3.55 million. Details about quantity changes, location, cover area, population and
168 sewage flow of sampling sites are provided in the appendix.3-5 (pp 2-4).

169 From July 26 to November 30, wastewater was collected continuously from 8-11 am or 10-12
170 am based on the peak water consumption at each sampling point with 250 mL collected every 15
171 minutes, and 3 L of wastewater was collected in total. Since December 3, 2022, wastewater was
172 collected continuously in 24 hours at each WWTP or pump station with 125 mL collected every
173 hour, and 3 L of wastewater was collected in total. Wastewater samples were inactivated by a
174 water bath at 60°C for 30 minutes and then enriched and concentrated by a modified “PEG
175 precipitation method”.¹⁹ Nucleic acid extraction was performed using automatic nucleic acid
176 extraction platform HBNP-9601A (HybriBio, China) or GENEDIAN EB1000 (DIAN
177 Biotechnology, China). RT-qPCR detection and quantification were conducted as mentioned above.
178 Details about the quantitative analysis of viral loads in wastewater are provided in the appendix.2
179 (p 1).

180

181 **Sequencing and analysis**

182 Wastewater sequencing was performed on the BGI sequencing platform. Reverse transcription and
183 amplification were performed using the ATOplex RNA Multiplex PCR Amplification Kit V3.1
184 before library construction. DNA libraries were prepared using the MGIEasy Fast PCR-FREE
185 digestion Library Preparation kit. Sequencing was completed on the DNBSEQ-G99 sequencing
186 platform using the single-end sequencing 100 bp+ double-end barcode (SE100+10+10) strategy.
187 The MGI MetargetCOVID software was used to complete the parametric assembly of
188 SARS-CoV-2 sequences, and then the mutation branches and mutation sites of SARS-CoV-2
189 sequences were obtained using nextclade and Pangolin analysis websites. Single-nucleotide
190 polymorphisms (SNPs) were identified using Snippy (<https://github.com/tseemann/snippy>) by
191 mapping sequencing reads to the reference genome (MN908947.3, Wuhan-Hu-1). SNP distances
192 between viral genomes were calculated based on concatenated SNPs using snp-dists
193 (<https://github.com/tseemann/snp-dists>).²⁰

194 To determine SARS-CoV-2 lineage abundance in wastewater, we first performed quality
195 control, alignment and primer sequence trimming using MGI MetargetCOVID software. In brief,

196 sequencing reads were aligned to the reference sequence (MN908947.3) with BWA mem, and
197 reads with hard or soft clips >10 were filtered using the SAMclip method. The resulting bam files
198 were used to calculate the sequencing depth and coverage by samtools, where samples with less
199 than 60% genome coverage were excluded. We used the Freyja tool (v1.3.12) to recover the
200 relative abundances of SARS-CoV-2 lineages from wastewater samples using lineage-defining
201 mutational “barcodes” derived from the USHER global phylogenetic tree (as of January 29, 2023).
202 ²¹ Lineages were excluded if they either had overall low abundance (<1%) or showed low minor
203 allele frequency (<1%) or sequencing depth (<10X) in their defining mutations.

204 Clinical sequencing data of 478 human oropharyngeal swab samples were collected from
205 “dynamic COVID-zero” case report before December 6 and COVID-19 integrated surveillance
206 system after December 7, which were published by Health Commission of Shenzhen Municipality.
207

208 **Prediction of infected persons based on WBE**

209 We first calculated the decay rate of SARS-CoV-2 RNA in a wastewater pipeline by the following
210 equation:

$$211 \quad \log\left(\frac{C_d}{C_0}\right) = -k * d \quad (1)$$

212 where C_0 and C_d are the SARS-CoV-2 RNA concentrations in the wastewater at travel distances of
213 0 and d km, respectively. d is the distance from a community to a WWTP, and k is the decay rate
214 constant, which is 0.12 in winter, as suggested by our previous study.¹⁵ As C_d was obtained by
215 qPCR assay in the WWTP, we then used Eq. (1) to obtain C_0 , which is the corrected SARS-CoV-2
216 RNA concentration.

217 Afterwards, the daily number of actively infected persons in the catchment of a WWTP can
218 be estimated on the basis of the number of virus copies present in sewage (numerator) and the
219 amount of virus shedding per person per day (denominator) by the following equations (2):

$$220 \quad \text{Infected persons} = \frac{C_0 * \left(\frac{\text{liters wastewater}}{\text{day}}\right)}{\left(\frac{\text{g feces}}{\text{person-day}}\right) * \left(\frac{\text{RNA copies}}{\text{g feces}}\right) * 0.824} \quad (2)$$

221 where 0.824 is the shedding rate of the infected population as determined by the previous section.

222 In the above equation, the amount of SARS-CoV-2 RNA copies/g in feces per person was
223 modelled as a log-uniform distribution ranging from 4.2 to 9.67 \log_{10} copies/g as determined by
224 the previous section. The amount of faecal production per person was set at 128 g per day. Based
225 on Equation (2), the Monte Carlo simulation was conducted with ModelRisk version 6.0. The
226 number of iterations per simulation was 10,000. The predicted infection cases are reported as the
227 median and 95% confidence interval (CI) determined by bootstrapping the model with 100
228 experiments.

229

230 **Hospitalization data collection in Nanshan district**

231 We obtained medical records and compiled data for hospitalized patients with
232 laboratory-confirmed COVID-19 in Nanshan district, as reported to the Health Commission of
233 Shenzhen Municipality between December 12, 2022, and January 10, 2023.

234

235 **Data analysis**

236 The collection and testing of faecal and wastewater samples were recorded using Microsoft Excel
237 version 2210. Significance analysis of faecal viral shedding proportion and load between

238 participants were analysed using IBM SPSS Statistics 27. Wastewater data were plotted and
239 statistically analysed using GraphPad Prism version 8.4.0 (GraphPad Software, La Jolla, CA,
240 USA).

241

242 **Role of the funding source**

243 The funders of the study had no role in study design, data collection, data analysis, data
244 interpretation, or writing of the report.

245

246 **Results**

247 **Faecal viral shedding dynamics of SARS-CoV-2 Omicron cases**

248 A total of 1,204 COVID-19 cases were enrolled to analyse the dynamics of faecal viral shedding.
249 Viral variants were identified in 80.2% of participants and were all classified as Omicron, mainly
250 including BA.5.2, BF.7 and BA.5.2.1 (Table 1). As shown in the appendix.6 (p 5), 63.6% (171/269)
251 of participants tested positive for faecal SARS-CoV-2 RNA on day 1 (the next day after the
252 diagnosis), and the faecal viral shedding proportion gradually increased to 71.5% (447/625) on
253 day 4 and then gradually declined to 52.4% (98/187) on day 7, 21.8% (212/973) in the second
254 week and 10.3% (23/223) in the third week. As the faecal viral shedding proportion peaked on day
255 4, the period from day 0 to day 4 was defined as the acute period of faecal viral shedding, and
256 82.4% (833/1,011) of participants tested positive for faecal SARS-CoV-2 RNA during the acute
257 period, indicating the utility of wastewater surveillance in reflecting the majority of the infected
258 population. A decline in faecal viral RNA concentration was observed since enrolment in the study,
259 particularly obvious from day 4 to day 7 (appendix.6 p 5). The faecal viral loads of participants
260 during the acute period ranged from 1.6×10^4 to 4.1×10^{10} copies/g with a mean value of 6.7×10^7
261 copies/g.

262 We also analysed factors influencing faecal viral shedding during the acute period, including
263 subvariant of Omicron, sex, age, symptom and vaccination (appendix.7 p 6). The faecal viral
264 shedding proportion of Omicron subvariant BA.2.76 (100%, 29/29) was higher than that of
265 BA.5.2 (85.8%, 503/586), BA.5.2.1 (83.6%, 51/61) and BF.7 (75.4%, 46/61), while there was no
266 significant difference between their faecal viral loads ($p=0.2744$). The faecal viral shedding
267 proportion gradually increased with age. Notably, the proportion and viral load of faecal viral
268 shedding of people aged 60 years and older was significantly greater than that of children under 9
269 years old ($p=0.000914$, $p=0.0094$, respectively). No significant difference ($p>0.05$) in the
270 proportion and viral load of faecal viral shedding was found between females and males, between
271 mild cases and asymptomatic carriers, or between participants inoculated with inactivated vaccine
272 and participants unvaccinated, suggesting the generality of wastewater surveillance for different
273 population groups.

274

275 **Tentative wastewater surveillance during the “dynamic COVID-zero” period**

276 As faecal shedding occurred in the majority of the population, we conducted tentative wastewater
277 surveillance in the Nanshan and Futian districts of Shenzhen City with up to 334 wastewater
278 sampling sites to evaluate sensitivity and specificity and evaluate whether wastewater surveillance
279 can help nucleic acid tests find missed infected persons (figure 1A). Measures including early
280 warning, building-level tracing and wastewater sequencing were adopted after SARS-CoV-2 RNA
281 was detected in wastewater (appendix.8 p 7).

282 From July 26 to November 30, 2022, 27,759 wastewater samples were collected, of which
283 239 tested positive. Very good agreement was observed between the number of positive sites
284 detected by both wastewater surveillance and daily city-wide nucleic acid screening (figure 2A).
285 Associated cases could be found in the coverage area of 77.8% (186/239) of sampling sites that
286 tested positive, indicating that wastewater surveillance allows early warning of new cases in the
287 coverage area. However, 26.2% (66/252) of the sampling sites that tested positive by daily
288 city-wide nucleic acid screening were missed by wastewater surveillance, indicating that there was
289 a certain proportion of missing inspection in wastewater surveillance, which might be caused by
290 the fact that a fraction of infected individuals did not shed virus or shed virus beyond the time of
291 wastewater sampling. Wastewater surveillance had a sensitivity of 73.8% and a specificity of
292 99.8% (figure 2B).

293 Next, we found two cryptic transmission events that were missed by daily city-wide nucleic
294 acid screening (appendix.9 p 8). From August 9 to September 21, 2022, routine wastewater
295 surveillance did not detect SARS-CoV-2 circulation in the Badeng community until SARS-CoV-2
296 RNA was identified continuously in wastewater from September 22 to 24. Then, nucleic acid
297 screening found two infected individuals on September 24th, with negative results on September
298 22nd and 23rd. Analysis of viral genomes revealed only one SNP difference between two infected
299 individuals and the 23rd wastewater sample with a coverage of 93%, indicating that SARS-CoV-2
300 RNA in wastewater was from these two infected individuals. In another case, two outbreaks,
301 NS1013 caused by Omicron subvariant BF.7 and NS1029 caused by BA.5.2.1, occurred in
302 Nanshan community in October 2022, both of which were provided early warning through routine
303 wastewater surveillance. However, SARS-CoV-2 RNA continued to be detected in wastewater in
304 November and December, but no new infected individuals were found in the coverage area. These
305 results demonstrate that wastewater surveillance has played roles in early warnings and revealing
306 cryptic transmissions, suggesting that wastewater surveillance is an alternative to nucleic acid
307 testing under stringent control measures.

308

309 **Wastewater surveillance during the transition to “opening up”**

310 On December 7, 2022, authorities switched the public health policy from “dynamic COVID-Zero”
311 to “opening up”. After that, we conducted wastewater surveillance only at the WWTP and pump
312 station to assess the impact of policy change on the epidemic situation of COVID-19 in Shenzhen
313 (figure 1B). Measured concentrations of SARS-CoV-2 RNA showed two waves of the COVID-19
314 pandemic on approximately December 20 and 27, respectively, and peaked on December 27 in
315 both Futian and Nanshan districts (figure 3), suggesting that the COVID-19 pandemic in Shenzhen
316 reached its peak on December 27.

317 Based on the concentration of SARS-CoV-2 RNA in wastewater and the average faecal viral
318 shedding rate of Omicron for individuals, we first adopted Ahmed’s model to predict the daily
319 number of existing infected individuals and cumulative infection rates in the Futian and Nanshan
320 districts of Shenzhen from December 3, 2022, to January 20, 2023. Initially, we compared the
321 prediction results based on wastewater data from a WWTP in Futian District (WWTP-FT03) with
322 the infected persons detected by city-wide nucleic acid screening from December 3rd to 7th of 2022
323 (appendix.10 p 9). The results showed that the number of predicted persons was in line with the
324 ones obtained from nucleic acid screening except for the data from December 7th (city-wide
325 nucleic acid screening was only partially implemented on that day). In Futian District, the first

326 wave of the COVID-19 pandemic occurred on approximately December 20, 2022, when 291,395
327 cases were predicted. The second wave appeared around December 27, 2022, with 977,524 cases
328 estimated (figure 4A). Likewise, the first wave in Nanshan District was also observed around
329 December 20, which recorded 362,264 cases. The second wave was witnessed on December 28,
330 with 411,785 predicted cases (figure 4B). On January 20, 2023, the cumulative rate of infections
331 in Futian district was as high as 93·8%, while the cumulative rate of infections in Nanshan district
332 was approximately 81·6%.

333 Furthermore, we adopted the research results from Jassat et al. and Nyberg et al. and
334 estimated that 2·2% of elderly infected persons (age >65), 1% of children aged below 5 and
335 0·05% of remaining infected persons required hospital admission.^{22,23} Thus, we calculated the
336 daily number of hospital admissions based on wastewater data. Relative to the actual number of
337 hospital admissions in Nanshan district, the prediction of hospital admission was slightly higher
338 than the actual number with no significant difference, with a total of 2,815 predicted inpatients
339 (figure 4C). In addition, the predicted peak of hospital admission was 1-2 days earlier than the
340 actual peak, indicating the value of prediction for early warning and preparedness of medical
341 resources.

342 To monitor the relative abundance of variants in wastewater, we selected 37 representative
343 wastewater samples collected from December 13, 2022, to January 17, 2023, for sequencing. For
344 comparison, we also analysed the clinical sequencing data of 478 human oropharyngeal swab
345 samples collected from December 1, 2022, to January 13, 2023 (appendix.11 p 10). Wastewater
346 sequencing revealed that 36 subvariants existed in wastewater, BA.5.2.48 accounted for the vast
347 majority (62·4%), and BF.7.14 (24·6%) and BA.5.2.49 (5·6%) ranked second and third,
348 respectively, which was consistent with clinical sequencing (figure 5). These subvariants were
349 branches of BA.5.2 and BF.7, which were first detected in travelers from Hong Kong in July and
350 October 2022, indicating the tremendous input risk of the port areas in Shenzhen adjacent to Hong
351 Kong. Additionally, we found extra 29 variants with low abundance compared to clinical
352 sequencing, indicating a low level of cryptic transmissions in Shenzhen. These results suggested a
353 low degree of virus variation in the COVID-19 pandemic in Shenzhen during the transition from
354 “dynamic COVID-zero” to “opening up” in China. No new emerging SARS-CoV-2 variants with
355 the potential to cause the next pandemic (e.g., BQ.1.1, XBB.1.5 and CH.1.1) have been found by
356 either wastewater sequencing or clinical sequencing efforts.

357

358 **Discussion**

359 In this study, we first demonstrated that faecal viral shedding occurred in the majority of
360 SARS-CoV-2 Omicron cases regardless of sex, symptoms and inoculation of inactivated vaccine,
361 suggesting the generality of wastewater surveillance for tracking Omicron prevalence. After that,
362 we employed WBE to monitor SARS-CoV-2 in up to 334 sampling sites and found that
363 wastewater surveillance had a sensitivity of 73·8% and a specificity of 99·8%, contributing to the
364 potential to replace nucleic acid tests. Based on the above findings, we adopted daily wastewater
365 surveillance in 15 WWTP or pump station sites in two districts, which showed the robustness of
366 wastewater surveillance in reflecting the infected population and the relative abundance of
367 SARS-CoV-2 lineages after the switch of policy transmitted to “opening up”.

368 The previous studies on faecal viral shedding of COVID-19 cases mainly focused on the
369 ancestral variant, and the proportion of faecal viral shedding of the ancestral variant was 21% to

370 59%.²⁴⁻³⁰ We conducted the study with a sample size of over 1,000 infected cases, which provided
371 valuable information for the utility of wastewater surveillance. In total, 82.4% (n=1,011) of
372 participants had samples collected during the acute period, indicating that wastewater surveillance
373 by Omicron was a reliable approach to monitor infection trends. The range of faecal viral load of
374 participants during the acute period was 1.6×10^4 to 4.1×10^{10} copies/g with a mean value of
375 6.7×10^7 copies/g, which was consistent with previous studies^{1,31-33}, indicating little difference
376 between SARS-CoV-2 variants.

377 City-wide SARS-CoV-2 nucleic acid screening has been an efficient tool in China to estimate
378 the prevalence of infection, which could inform pandemic management.³⁴ However, the cost and
379 its considerable inconvenience on people's daily life and social functioning are unaffordable. In
380 our study, relative to daily city-wide nucleic acid screening, wastewater surveillance provided a
381 robust and affordable method for estimating the prevalence of infected persons in Shenzhen. It had
382 a sensitivity of 73.8% and a specificity of 99.8% compared to daily city-wide nucleic acid
383 screening, demonstrating the replaceability of this approach in reflecting the overall infection
384 trends. Moreover, wastewater surveillance has played roles in early warning and revealing cryptic
385 transmission in communities in Shenzhen. Therefore, wastewater surveillance could be used as an
386 alternative method of population-based nucleic acid screening to produce actionable data for
387 public health interventions for new emerging pathogens, such as SARS-CoV-2.

388 In this study, for any given sewershed, the numbers of infected cases were calculated and
389 modelled by using the daily sewage flow rate multiplied by the virus RNA concentration divided
390 by the RNA copies per person per day. The results showed that over 80% of the population was
391 infected in both Futian District and Nanshan District. This is consistent with the public health data
392 of Guangdong Province.³⁵ This approach has been widely used in previous studies with great
393 success.^{14-16,36} With the data of predicted infected cases and hospital admissions, policy makers
394 now have a new valuable tool to tailor policy and make some critical decisions. For instance, the
395 increase in predicted infected cases can serve as a leading indicator implying that active
396 transmission is underway, even before new cases do not visit the hospitals. In particular, if a rapid
397 increase in predicted cases is observed, public health authorities can predict hospital admission in
398 the next few days and can be better prepared to arrange hospital beds and allocate medical
399 resources. Additionally, once RNA levels decline sufficiently, wastewater surveillance can once
400 again be used as a critical indicator of a resurgence of transmission.

401 Our study has three limitations. First, there was a lack of continuous faecal samples collected
402 during the study of faecal viral shedding. Only faecal samples of 92 participants were collected
403 daily from day 1 to day 4, and 93.5% of them tested positive for faecal SARS-CoV-2 RNA during
404 the acute period. In addition, we conducted wastewater surveillance on December 12 in Nanshan
405 District, which was five days later than December 7 (opening day) and might underestimate the
406 infection rate in the first wave of the COVID-19 pandemic. Finally, the model predictions rely on
407 several key parameters with considerable variations, including the distribution of shedding rates,
408 temperature of the sewage, and decay rate of the RNA in the sewer system, resulting in high
409 variability of the modelling results. Furthermore, this study did not encompass the effect of
410 variants, which might slightly alter the model inputs. Further investigations are needed to improve
411 this proposal. However, given the reliability of the modelling approach validated by previous
412 studies,¹⁴⁻¹⁶ we can safely reach the conclusion that SARS-CoV-2 quickly infected the majority of
413 populations in the studied regions.

414 This study provided the first study of faecal viral shedding dynamics of Omicron, and
415 tentative wastewater surveillance also demonstrated that wastewater surveillance has high
416 sensitivity and specificity to replace nucleic acid tests for monitoring SARS-CoV-2. Based on
417 these findings, we conducted wastewater surveillance in WWTPs and pump stations, monitored
418 the infection trends and estimated the dynamics of populations in two border districts in Shenzhen.
419 This is the first epidemiological description during the transition from “dynamic COVID-zero” to
420 “opening up” in China. Predicted COVID-19 cases based on wastewater surveillance
421 demonstrated that the majority of persons in the studied regions were infected, indicating a huge
422 impact of policy change on the transmission of COVID-19. Our findings suggest that
423 SARS-CoV-2 in wastewater also transforms wastewater epidemiology into a public health
424 management framework, which could be a One Health system for the surveillance of other
425 emerging pathogens with faecal viral shedding and antibiotic resistance genes in the future.

426

427 **Contributors**

428 QH, YL, XZ, SF, TZ, HL, LZ designed, initiated and coordinated the study. YL, CD and ZL wrote
429 the first draft. FW organized the collection of faecal samples. CD, ZL, SF, YP, WL and YF
430 accessed and verified the data and made the tables and figures. JS, CJ, XZ, ML, ZW, BL, SY and
431 YY contributed to wastewater sampling point layout and sample collection. XL, JY and SX
432 contributed to epidemiological investigation. YZ, MLC, XS, BP, QC, YQ, SW, MJ, MMC, JT, LW
433 and LH contributed to sample testing and data acquisition. QH, XZ, SF, TZ, HL and CW reviewed
434 and revised the manuscript. All authors approved the final version. All authors had full access to
435 all the data in the study and had final responsibility for the decision to submit for publication.

436

437 **Declaration of interests**

438 We declare no competing interests.

439

440 **Data sharing**

441 All data needed to evaluate the conclusions in the Article are present in the main Article text and
442 in the appendix. All raw sequencing data are available via the NCBI Sequence Read Archive under
443 the BioProject ID PRJNA937922.

444

445 **Acknowledgments**

446 This work was supported by the Sanming Project of Medicine in Shenzhen (SZSM201811071)
447 and Shenzhen Key Medical Discipline Construction Fund (SZXK064). We thank the professors of
448 Jianguo Xu, Zijian Feng, Ruifu Yang, Biao Kan, Wenbo Xu, Song Tang, Lan Zhang, and Jianfeng
449 He from Chinese Center for Disease Control and Prevention (JX, BK, WX, ST and LZ), Chinese
450 Preventive Medicine Association (ZF), Academy of Military Medical Sciences (RY) and
451 Guangdong Provincial Center for Disease Control and Prevention (JH) for their professional
452 advising on the establishment of wastewater surveillance system in Shenzhen. We thank Prof.
453 Chao Yang for his guidance on sequencing analysis. We also thank the teams of Shenzhen
454 HybriBio Medical Laboratory and ShenZhen DiAn HuXin Medical Laboratory for their
455 contributions on sample testing.

456

457 **Reference**

- 458 1. Crank K, Chen W, Bivins A, Lowry S, Bibby K. Contribution of SARS-CoV-2 RNA
459 shedding routes to RNA loads in wastewater. *Sci Total Environ* 2022; **806**(Pt 2): 150376.
- 460 2. Wannigama DL, Amarasiri M, Hurst C, et al. Tracking COVID-19 with wastewater to
461 understand asymptomatic transmission. *Int J Infect Dis* 2021; **108**: 296-9.
- 462 3. Lodder W, de Roda Husman AM. SARS-CoV-2 in wastewater: potential health risk, but also
463 data source. *Lancet Gastroenterol Hepatol* 2020; **5**(6): 533-4.
- 464 4. Peccia J, Zulli A, Brackney DE, et al. Measurement of SARS-CoV-2 RNA in wastewater
465 tracks community infection dynamics. *Nat Biotechnol* 2020; **38**(10): 1164-7.
- 466 5. Wu F, Zhang J, Xiao A, et al. SARS-CoV-2 Titers in Wastewater Are Higher than Expected
467 from Clinically Confirmed Cases. *mSystems* 2020; **5**(4).
- 468 6. Medema G, Heijnen L, Elsinga G, Italiaander R, Brouwer A. Presence of
469 SARS-Coronavirus-2 RNA in Sewage and Correlation with Reported COVID-19 Prevalence in
470 the Early Stage of the Epidemic in The Netherlands. *Environmental Science & Technology Letters*
471 2020; **7**(7): 511-6.
- 472 7. Guo M, Tao W, Flavell RA, Zhu S. Potential intestinal infection and faecal-oral transmission
473 of SARS-CoV-2. *Nat Rev Gastroenterol Hepatol* 2021; **18**(4): 269-83.
- 474 8. Daughton CG. Wastewater surveillance for population-wide Covid-19: The present and
475 future. *Sci Total Environ* 2020; **736**: 139631.
- 476 9. COVIDPoops19 Summary of Global SARS-CoV-2 Wastewater Monitoring Efforts by UC
477 Merced Researchers. 2023.
478 [https://ucmerced.maps.arcgis.com/apps/opsdashboard/index.html#/c778145ea5bb4daeb58d31afee](https://ucmerced.maps.arcgis.com/apps/opsdashboard/index.html#/c778145ea5bb4daeb58d31afee389082)
479 [389082](https://ucmerced.maps.arcgis.com/apps/opsdashboard/index.html#/c778145ea5bb4daeb58d31afee389082) (accessed Feb 28 2023).
- 480 10. Bowes DA, Driver EM, Kraberger S, et al. Leveraging an established neighbourhood-level,
481 open access wastewater monitoring network to address public health priorities: a population-based
482 study. *Lancet Microbe* 2023; **4**(1): e29-e37.
- 483 11. Monthly statistics for the Environmental Monitoring for Health Protection (EMHP)
484 wastewater programme (England). 2023.
485 [https://www.gov.uk/government/collections/monthly-statistics-for-the-environmental-monitoring-f](https://www.gov.uk/government/collections/monthly-statistics-for-the-environmental-monitoring-for-health-protection-emhp-wastewater-program-england)
486 [or-health-protection-emhp-wastewater-program-england](https://www.gov.uk/government/collections/monthly-statistics-for-the-environmental-monitoring-for-health-protection-emhp-wastewater-program-england) (accessed Feb 28 2023).
- 487 12. Jahn K, Dreifuss D, Topolsky I, et al. Early detection and surveillance of SARS-CoV-2
488 genomic variants in wastewater using COJAC. *Nat Microbiol* 2022; **7**(8): 1151-60.
- 489 13. Xu X, Zheng X, Li S, et al. The first case study of wastewater-based epidemiology of
490 COVID-19 in Hong Kong. *Sci Total Environ* 2021; **790**: 148000.
- 491 14. Ahmed W, Angel N, Edson J, et al. First confirmed detection of SARS-CoV-2 in untreated
492 wastewater in Australia: A proof of concept for the wastewater surveillance of COVID-19 in the
493 community. *Sci Total Environ* 2020; **728**: 138764.
- 494 15. Fu S, He F, Wang R, et al. Development of quantitative wastewater surveillance models
495 facilitated the precise epidemic management of COVID-19. *Sci Total Environ* 2023; **857**(Pt 1):
496 159357.
- 497 16. McMahan CS, Self S, Rennert L, et al. COVID-19 wastewater epidemiology: a model to
498 estimate infected populations. *Lancet Planet Health* 2021; **5**(12): e874-e81.
- 499 17. Liu J, Liu M, Liang W. The Dynamic COVID-Zero Strategy in China. *China CDC Wkly*
500 2022; **4**(4): 74-5.
- 501 18. Deng Y, Zheng X, Xu X, et al. Use of Sewage Surveillance for COVID-19: A Large-Scale

- 502 Evidence-Based Program in Hong Kong. *Environ Health Perspect* 2022; **130**(5): 57008.
- 503 19. Zheng X, Wang M, Deng Y, et al. A rapid, high-throughput, and sensitive PEG-precipitation
504 method for SARS-CoV-2 wastewater surveillance. *Water Res* 2023; **230**: 119560.
- 505 20. Yang C, Li Y, Jiang M, et al. Outbreak dynamics of foodborne pathogen *Vibrio*
506 *parahaemolyticus* over a seventeen year period implies hidden reservoirs. *Nat Microbiol* 2022;
507 **7**(8): 1221-9.
- 508 21. Karthikeyan S, Levy JI, De Hoff P, et al. Wastewater sequencing reveals early cryptic
509 SARS-CoV-2 variant transmission. *Nature* 2022; **609**(7925): 101-8.
- 510 22. Jassat W, Abdool Karim SS, Ozougwu L, et al. Trends in Cases, Hospitalization and
511 Mortality Related to the Omicron BA.4/BA.5 Sub-Variants in South Africa. *Clin Infect Dis* 2022.
- 512 23. Nyberg T, Ferguson NM, Nash SG, et al. Comparative analysis of the risks of hospitalisation
513 and death associated with SARS-CoV-2 omicron (B.1.1.529) and delta (B.1.617.2) variants in
514 England: a cohort study. *Lancet* 2022; **399**(10332): 1303-12.
- 515 24. Zhou JQ, Liu GX, Huang XL, Gan HT. The importance of fecal nucleic acid detection in
516 patients with coronavirus disease (COVID-19): A systematic review and meta-analysis. *J Med*
517 *Virol* 2022; **94**(6): 2317-30.
- 518 25. Gupta S, Parker J, Smits S, Underwood J, Dolwani S. Persistent viral shedding of
519 SARS-CoV-2 in faeces - a rapid review. *Colorectal Dis* 2020; **22**(6): 611-20.
- 520 26. Natarajan A, Zlitni S, Brooks EF, et al. Gastrointestinal symptoms and fecal shedding of
521 SARS-CoV-2 RNA suggest prolonged gastrointestinal infection. *Med (N Y)* 2022; **3**(6): 371-87 e9.
- 522 27. Zheng S, Fan J, Yu F, et al. Viral load dynamics and disease severity in patients infected with
523 SARS-CoV-2 in Zhejiang province, China, January-March 2020: retrospective cohort study. *BMJ*
524 2020; **369**: m1443.
- 525 28. Wang W, Xu Y, Gao R, et al. Detection of SARS-CoV-2 in Different Types of Clinical
526 Specimens. *JAMA* 2020; **323**(18): 1843-4.
- 527 29. Lin W, Xie Z, Li Y, et al. Association between detectable SARS-COV-2 RNA in anal swabs
528 and disease severity in patients with coronavirus disease 2019. *J Med Virol* 2021; **93**(2): 794-802.
- 529 30. Parasa S, Desai M, Thoguluva Chandrasekar V, et al. Prevalence of Gastrointestinal
530 Symptoms and Fecal Viral Shedding in Patients With Coronavirus Disease 2019: A Systematic
531 Review and Meta-analysis. *JAMA Netw Open* 2020; **3**(6): e2011335.
- 532 31. Wolfel R, Corman VM, Guggemos W, et al. Virological assessment of hospitalized patients
533 with COVID-2019. *Nature* 2020; **581**(7809): 465-9.
- 534 32. Han MS, Seong MW, Kim N, et al. Viral RNA Load in Mildly Symptomatic and
535 Asymptomatic Children with COVID-19, Seoul, South Korea. *Emerg Infect Dis* 2020; **26**(10):
536 2497-9.
- 537 33. Lescure FX, Bouadma L, Nguyen D, et al. Clinical and virological data of the first cases of
538 COVID-19 in Europe: a case series. *Lancet Infect Dis* 2020; **20**(6): 697-706.
- 539 34. Cao S, Gan Y, Wang C, et al. Post-lockdown SARS-CoV-2 nucleic acid screening in nearly
540 ten million residents of Wuhan, China. *Nat Commun* 2020; **11**(1): 5917.
- 541 35. Guangzhou: over 85% of the population infected with SARS-CoV-2. 2023.
542 https://www.cnr.cn/gd/guangdongyaowen/20230118/t20230118_526130010.shtml (accessed Feb
543 28, 2023).
- 544 36. Prasek SM, Pepper IL, Innes GK, et al. Variant-specific SARS-CoV-2 shedding rates in
545 wastewater. *Sci Total Environ* 2023; **857**(Pt 1): 159165.

Participants (n=1204)	
Sex	
Male	636 (52.8%)
Female	568 (47.2%)
Age, years	
0-9	78 (6.5%)
10-19	83 (6.9%)
20-29	209 (17.4%)
30-39	297 (24.7%)
40-49	247 (20.5%)
50-59	203 (16.9%)
60-69	66 (5.5%)
70-79	15 (1.2%)
80-91	6 (0.5%)
Subvariant of the virus	
Omicron BA.5.2	710 (59.0%)
Omicron BF.7	70 (5.8%)
Omicron BA.5.2.1	69 (5.7%)
Omicron BA.2.2	37 (3.1%)
Omicron BA.2.76	29 (2.4%)
Omicron BF.15	18 (1.5%)
Omicron BA.5.1	10 (0.8%)
Omicron BA.5.6	8 (0.7%)
Omicron BA.2.12.1	5 (0.4%)
Omicron BA.4.1	5 (0.4%)
Omicron BA.2.3.11	1 (0.1%)
Omicron BA.2.36	1 (0.1%)
Omicron BA.5	1 (0.1%)
Omicron BA.5.3.1	1 (0.1%)
Omicron BE.3	1 (0.1%)
Non-sequencing	238 (19.8%)
Clinical Symptom Category	
Patients with mild symptoms	733 (60.9%)
Asymptomatic cases	471 (39.1%)
COVID-19 Vaccine Dose	
0	96 (8.0%)
1	22 (1.8%)
2	278 (23.1%)
3	774 (64.3%)
4	6 (0.5%)
Information loss	28 (2.3%)
COVID-19 Vaccine Type	
Inactivated vaccine	1020 (84.7%)
Recombinant protein vaccine	12 (1.0%)
Adenovirus vector vaccine	11 (0.9%)
mRNA vaccine	18 (1.5%)
Mix And match	20 (1.7%)
Not vaccinated	96 (8.0%)
Information loss	27 (2.2%)
Hospital Day(HOD)	
3-7	25 (2.1%)
8-14	665 (55.2%)
15-21	452 (37.5%)
22-28	25 (2.1%)
>28	6 (0.5%)
Information loss	31 (2.6%)
Source Of Case	
Domestically transmitted case	1061 (88.1%)
Imported case	131 (10.9%)
Information loss	12 (1.0%)

Data are mean (SD) or n (%).

Table 1: Characteristics of participants included between August 9 and October 30, 2022

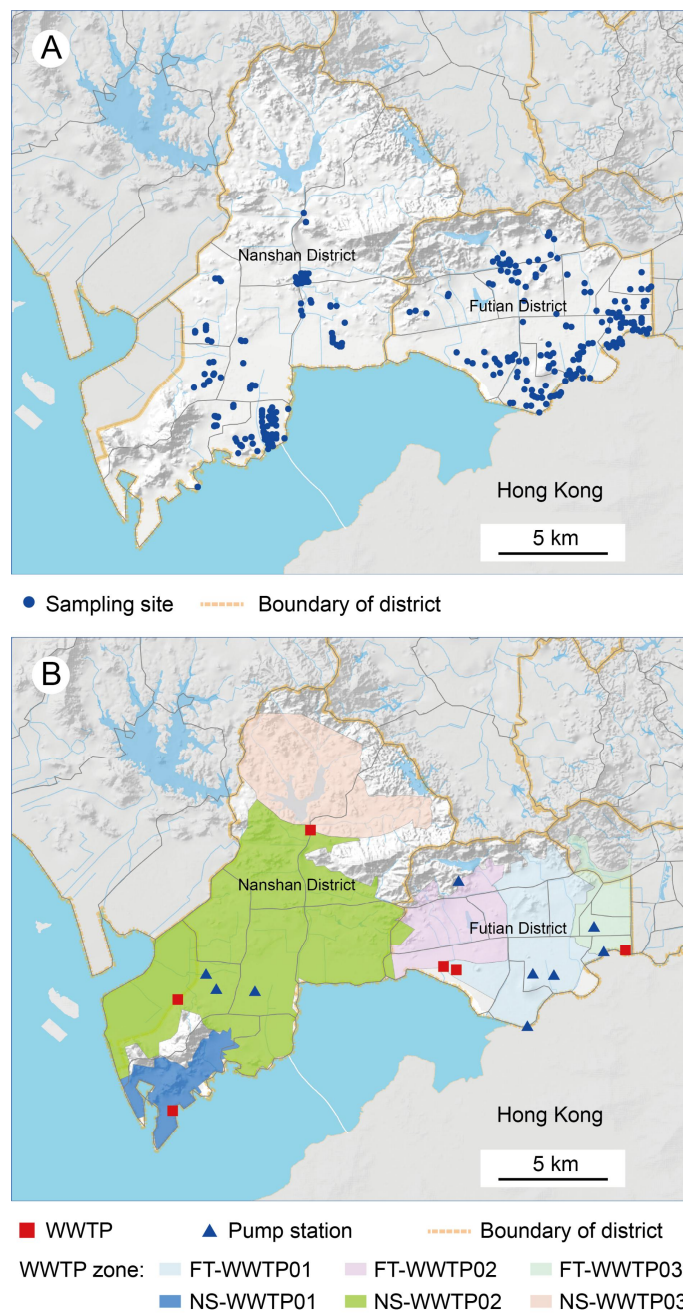


Figure 1: Location of sampling sites for SARS-CoV-2 detection

(A) During the “dynamic COVID-zero” period, from July 26 to November 30, 2022, up to 334 sampling sites were distributed in Futian District and Nanshan District. (B) After the switch of policy transmitted to “open-up”, from December 3, 2022 to January 20, 2023, wastewater surveillance was only conducted at 6 WWTPs and 9 pump stations in Futian District and Nanshan District.

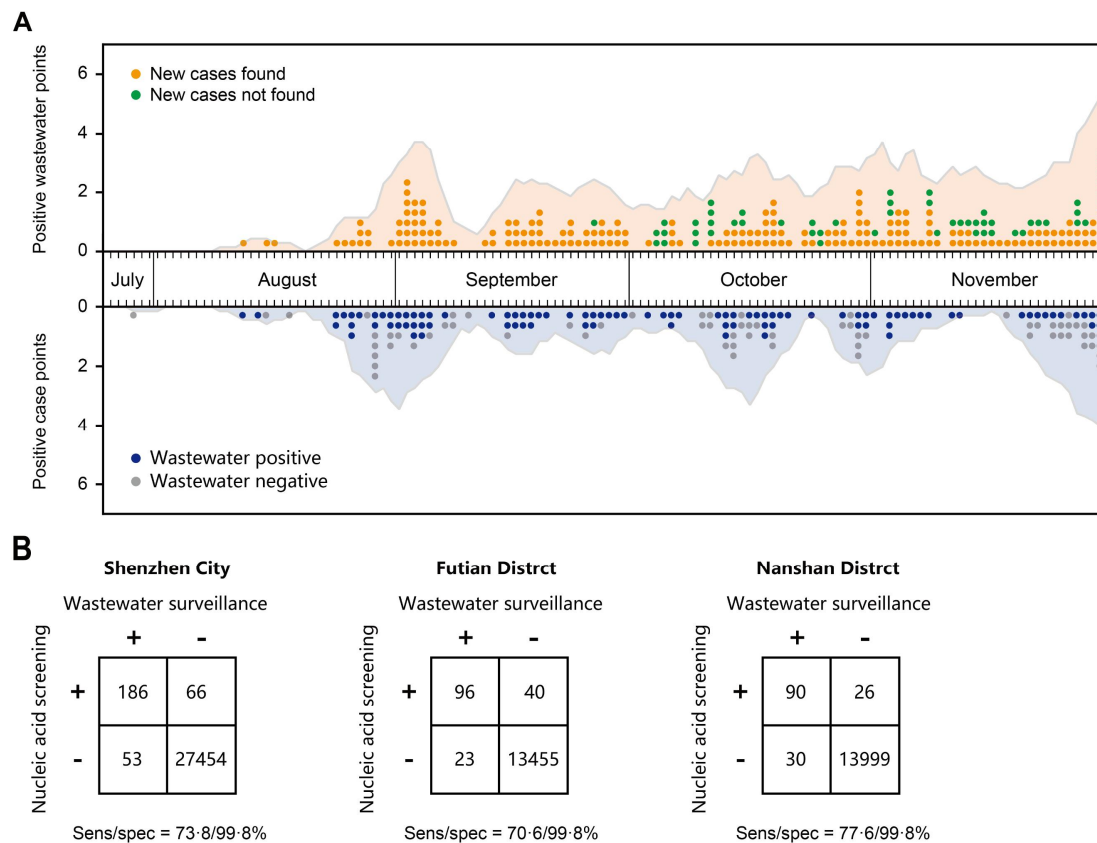


Figure 2: Wastewater surveillance compared with daily city-wide SARS-CoV-2 nucleic acid screening

(A) Reported number of positive sites found by wastewater surveillance and daily nucleic acid screening in Futian District and Nanshan District, and a 7-day trailing average (outline of the light yellow and light blue zone). (B) Contingency tables for wastewater surveillance and daily city-wide SARS-CoV-2 nucleic acid screening validation sets in Shenzhen City, Futian District, and Nanshan District, respectively.

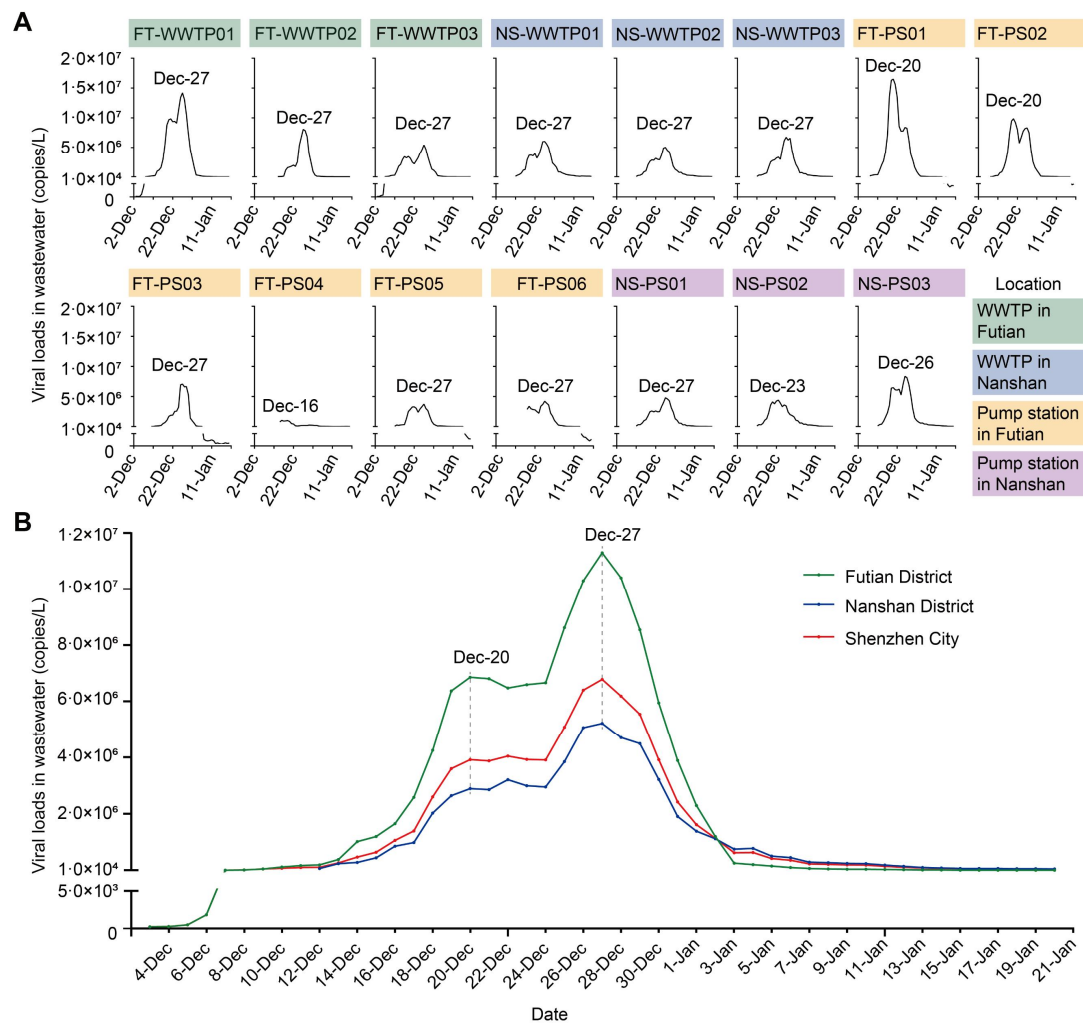


Figure 3: Wastewater-derived viral loads of SARS-CoV-2 in Shenzhen after the public health policy was switched to “open-up”

(A) Viral loads of SARS-CoV-2 in wastewater (a 5-day trailing average) in 6 WWTPs and 9 pump stations in Futian District and Nanshan District. (B) Viral loads in wastewater (a weighted average of WWTPs) in Futian District, Nanshan District, and Shenzhen City (a weighted average of two districts).

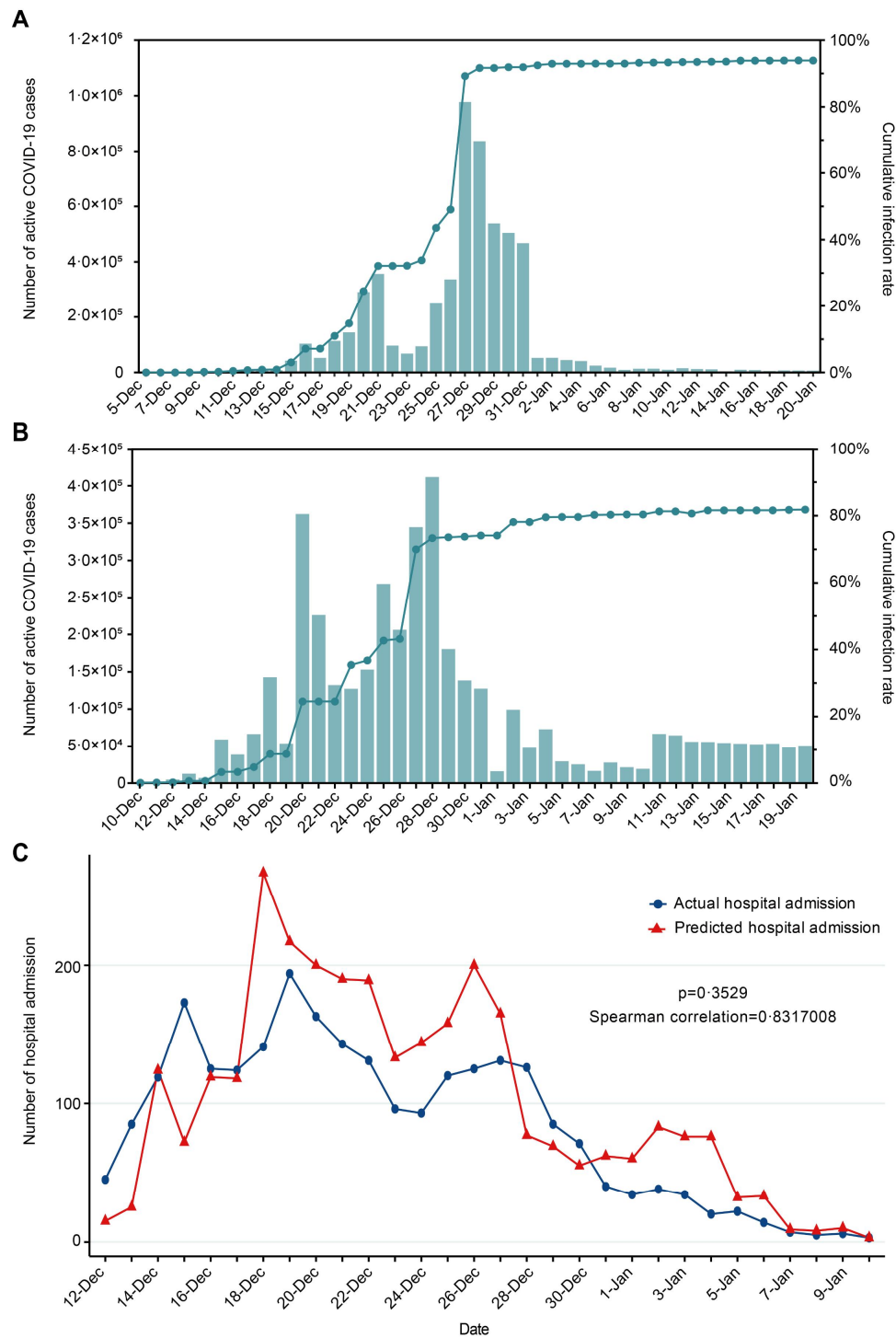


Figure 4: Daily predicted active COVID-19 cases in two districts and predicted number of daily hospital admission in Nanshan District.

Daily predicted COVID-19 cases and cumulative infection rate in Futian (A) and Nanshan District (B) based on wastewater data in Shenzhen, China (Dec 2022 - Jan 2023). Predicted values represented the median values of Monte Carol Simulation. 95% CI is not shown for clarity. (C) The predicted daily number of hospital admission vs actual daily number of hospital admission.

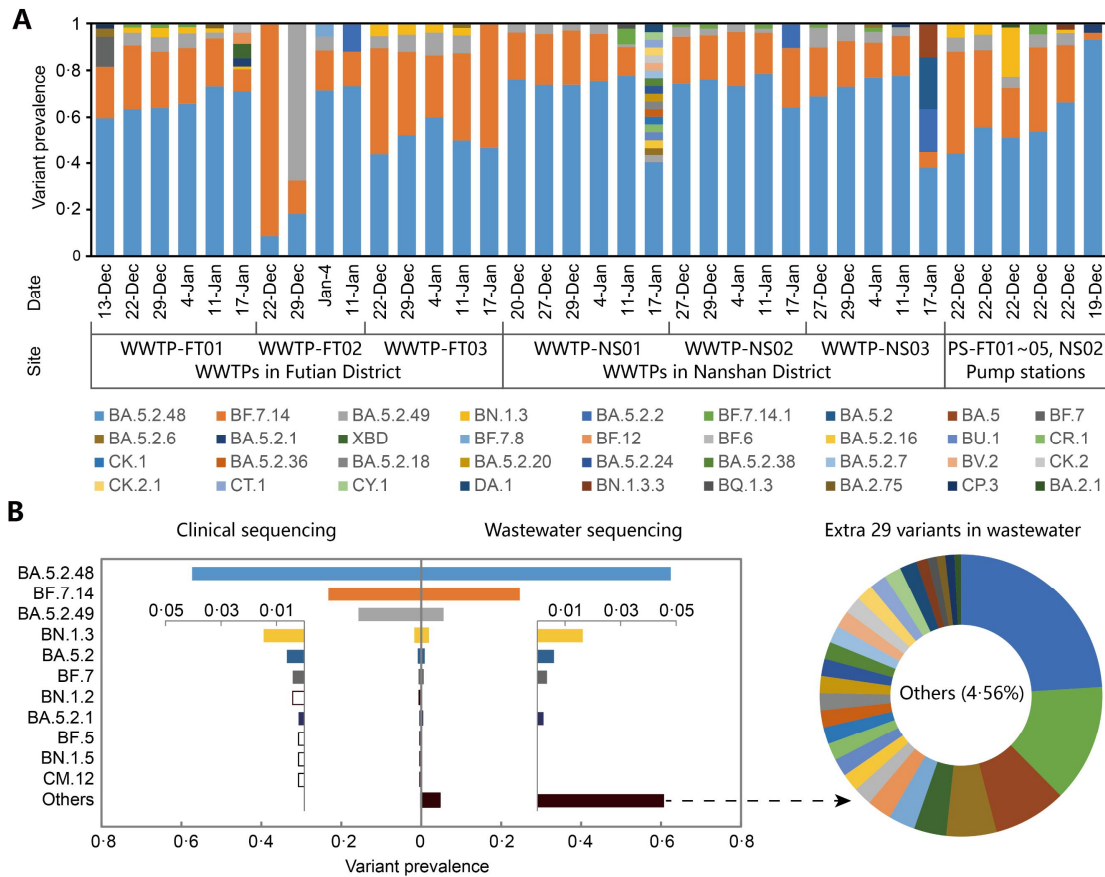


Figure 5: Variant prevalence of representative wastewater samples and human oropharyngeal swab samples.

(A) Variant prevalence of representative wastewater samples (n=37). (B) Comparison of variant prevalence between wastewater samples and human oropharyngeal swab samples (n=478). Solid bars indicated variants that could be identified in wastewater and hollow bars indicated that variants were not be identified in wastewater but identified by clinical sequencing.