

1 **Initiation of Warfarin is associated with Decreased Mortality in Patients with Infective**  
2 **Endocarditis: A Population-Based Cohort Study**

3 Teddy Tai Loy Lee<sup>1,2</sup>, Sunny Ching Long Chan<sup>1</sup>, Oscar Hou In Chou MSc<sup>2,3</sup>, Sharen Lee  
4 MBChB<sup>2</sup>, Jeffrey Shi Kai Chan MBChB MPH<sup>2</sup>, Tong Liu MD PhD<sup>4</sup>, Carlin Chang  
5 MBChB MPhil<sup>5</sup>, Wing Tak Wong PhD<sup>6</sup>, Gregory Y. H. Lip MD<sup>7,8</sup>, Bernard Man Yung  
6 Cheung MBBChir PhD<sup>3</sup>, Abraham Ka-Chung Wai MBChB<sup>1</sup>, Gary Tse MD PhD<sup>4,9,10</sup>  
7

- 8 1. Department of Emergency Medicine, School of Clinical Medicine, The University of  
9 Hong Kong, Hong Kong, China  
10 2. Cardiovascular Analytics Group, China-UK Collaboration, Hong Kong, China  
11 3. Division of Clinical Pharmacology, School of Clinical Medicine, The University of  
12 Hong Kong Hong Kong, China  
13 4. Tianjin Institute of Cardiology, The Second Hospital of Tianjin Medical University,  
14 Tianjin 300211, China  
15 5. Division of Neurology, Department of Medicine, Queen Mary Hospital and The  
16 University of Hong Kong Hong Kong, China  
17 6. State Key Laboratory of Agrobiotechnology (CUHK), School of Life Sciences, The  
18 Chinese University of Hong Kong, Hong Kong, China  
19 7. Liverpool Centre for Cardiovascular Science at University of Liverpool, Liverpool  
20 John Moores University and Liverpool Heart & Chest Hospital, Liverpool, United  
21 Kingdom  
22 8. Department of Clinical Medicine, Aalborg University, Aalborg, Denmark  
23 9. Kent and Medway Medical School, University of Kent and Canterbury Christ Church  
24 University, Canterbury, United Kingdom  
25 10. School of Nursing and Health Studies, Hong Kong Metropolitan University, Hong  
26 Kong, China  
27

28 Correspondence to:

29 Dr. Abraham Ka-Chung Wai, MBChB, FRCER, FRCP  
30 Department of Emergency Medicine, School of Clinical Medicine, The University of Hong  
31 Kong, Hong Kong, China  
32 Email: [awai@hku.hk](mailto:awai@hku.hk)  
33

34 Prof. Gary Tse, MD, PhD, FRCP, FFPH  
35 Kent and Medway Medical School, University of Kent and Canterbury Christ Church  
36 University, Canterbury, United Kingdom  
37 Tianjin Institute of Cardiology, The Second Hospital of Tianjin Medical University, Tianjin  
38 300211, China  
39 School of Nursing and Health Studies, Hong Kong Metropolitan University, Hong Kong,  
40 China  
41 Email: [gary.tse@kmms.ac.uk](mailto:gary.tse@kmms.ac.uk)  
42

43 Word count: 3617

NOTE: This preprint reports new research that has not been certified by peer review and should not be used to guide clinical practice.

44 **Abstract**

45 **Importance:** The use of warfarin as an anticoagulant to prevent thromboembolism in patients  
46 with infective endocarditis (IE) remains controversial due to potentially increased bleeding  
47 risks.

48 **Objective:** This study compared the risks of ischemic stroke, death and bleeding in patients  
49 with IE with and without warfarin use.

50 **Design:** Prospective cohort study.

51 **Setting:** Population-based.

52 **Participants:** Patients aged 18 or older and diagnosed with IE in Hong Kong between January  
53 1<sup>st</sup> 1997 and August 31<sup>st</sup> 2020 were included. Patients with use of any anticoagulant 30 days  
54 before IE diagnosis were excluded. Patients initiated on warfarin within 14 days of IE diagnosis  
55 and patients without warfarin use were matched for baseline characteristics using 1:1  
56 propensity score matching.

57 **Exposure:** Warfarin use within 14 days of IE diagnosis.

58 **Main outcomes and measures:** Patients were followed up to 90 days for the outcomes of  
59 ischemic stroke, all-cause mortality, intracranial hemorrhage, and gastrointestinal bleeding.  
60 Cox regression was used to determine hazard ratios (HRs) [95% confidence intervals (CIs)]  
61 between treatment groups. Fine-Gray competing risk regression with all-cause mortality as the  
62 competing event was performed as a sensitivity analysis. In addition to 90-day analyses,  
63 landmark analyses were performed at 30 days of follow-up.

64 **Results:** The matched cohort consisted of 675 warfarin users (57.0% male, age 59±16 years)  
65 and 675 warfarin non-users (53.5% male, age 61±19 years). From Cox regression, warfarin  
66 users had a 50% decreased 90-day risk in all-cause mortality (HR: 0.50 [0.39-0.65]), without

67 significantly different 90-day risks of ischemic stroke (HR: 1.04 [0.70-1.53]), intracranial  
68 haemorrhage (HR: 1.25 [0.77-2.04]), and gastrointestinal bleeding (HR: 1.04 [0.60-1.78]).  
69 Thirty-day landmark analysis showed similar results. Competing risk regression showed  
70 significantly higher 30-day cumulative incidence of intracranial haemorrhage in warfarin users  
71 (sub-HR: 3.34 [1.34-8.31]), but not at 90-day (sub-HR: 1.63 [0.95-2.81]). Results from Fine-  
72 Gray regression were otherwise congruent with those from Cox regression.

73 **Conclusions and relevance:** In patients with IE, warfarin use initiated within 14 days of IE  
74 diagnosis may be associated with significantly decreased risks of mortality but higher risks of  
75 intracranial haemorrhage, with similar risks of ischemic stroke and gastrointestinal bleeding,  
76 compared with non-use of warfarin with 14 days of IE diagnosis.

77

78 **Key points**

79 **Question:** Is warfarin, initiated within 14 days of a diagnosis of infective endocarditis (IE),  
80 efficacious and safe?

81 **Findings:** In this propensity score-matched, population-based, prospective cohort study from  
82 Hong Kong, warfarin use within 14 days of IE diagnosis was associated with a 50% decrease  
83 in the risk of all-cause mortality, albeit with higher risk of intracranial haemorrhage, and  
84 without significant differences in the risk of ischaemic stroke and gastrointestinal bleeding.

85 **Meaning:** In patients with IE, warfarin use within 14 days of diagnosis may have mortality  
86 benefits, despite increased risks of intracranial haemorrhage.

87

88 **Non-standard Abbreviations and Acronyms**

89 **ACE:** Angiotensin-converting enzyme

90 **CDARS:** Clinical data analysis and reporting system

91 **CI:** Confidence interval

92 **DOAC:** Direct oral anticoagulant

93 **HACEK:** Hemophilus species, Aggregatibacter actinomycetemcomitans, Cardiobacterium  
94 hominis, Eikenella corrodens, Kingella kingae

95 **HR:** Hazard ratio

96 **H2RA:** Histamine type 2 receptor antagonist

97 **ICD-9:** International Classification of Diseases, Ninth Revision

98 **INR:** International normalized ratio

99 **IE:** Infective endocarditis

100 **NSAID:** Nonsteroidal anti-inflammatory drug

101 **OR:** Odds ratio

102 **PPI:** Proton pump inhibitor

103 **SD:** Standard deviation

104 **SHR:** Sub-hazard ratio

105 **SMD:** Standardized mean difference

106 **VR:** Variance ratio

107

## 108 **Introduction**

109           Infective endocarditis (IE) is an acute infection of the cardiac endothelium,  
110 characterized by adherence of platelets and fibrin to the endocardial wall in response to injury,  
111 forming a vegetation inducing cardiac damage and development of thromboembolic  
112 complications. Despite being a rare condition with an annual incidence of 3-10 cases per  
113 100,000 people <sup>1,2</sup>, IE is a challenging condition associated with a high mortality and morbidity,  
114 with a reported mortality rate of 30% at 30 days <sup>3</sup>. Without proper treatment, further platelet  
115 aggregation and microbial proliferation allows IE vegetations to grow in size <sup>4</sup>, subsequently  
116 leading to increased risk of septic embolization <sup>5</sup>. Ischemic stroke, a common and disabling  
117 neurological complication caused by an embolized vegetation, has a prevalence of 16.9% <sup>6</sup> and  
118 is a leading cause of death in IE <sup>7,8</sup>.

119           Though fibrin constitutes the main component in vegetations <sup>9,10</sup>, the current 2015  
120 European Society of Cardiology guidelines do not suggest IE per se as an indication for  
121 initiating anticoagulation <sup>11</sup>. However, preclinical studies have shown that anticoagulant use is  
122 associated with reduced vegetation size, bacterial load, and inflammation in IE <sup>12,13</sup> and may  
123 have a role in long-term IE prophylaxis <sup>14</sup>. Indeed, the role of anticoagulation therapy in IE  
124 management is highly controversial due to the associated bleeding risks. Warfarin is a Vitamin  
125 K antagonist which inhibits Vitamin K epoxide production of clotting factors and has  
126 previously been used to treat valvular vegetations and as prophylaxis against embolic stroke <sup>15-</sup>  
127 <sup>17</sup>. However, the benefits of prophylaxis must be balanced against bleeding risks, notably  
128 intracranial hemorrhage <sup>18</sup>.

129           Current data on the efficacy and safety of warfarin therapy in IE are limited, and  
130 published clinical studies often have a small numbers of patients. Owing to the lack of evidence,  
131 surgical treatment and antibiotics remain the preferred option for reducing the risk of ischemic

132 stroke. Therefore, the present study examined the efficacy in terms of stroke risk reduction,  
133 and safety in terms of bleeding risks of warfarin use in a large population-based cohort of  
134 patients with IE.

135

## 136 **Methods**

137 This study was been approved by The Chinese University of Hong Kong-New  
138 Territories East Cluster Clinical Research Ethics Committee and The University of Hong  
139 Kong/Hospital Authority Hong Kong West Cluster Institutional Review Board. The need for  
140 informed consent was waived owing to the retrospective use of deidentified patient data in this  
141 study. Patient data was obtained through the Clinical Data Analysis and Reporting System  
142 (CDARS), a territory-wide electronic healthcare database managed by the Hong Kong Hospital  
143 Authority, which serves an estimated 90% of the population in Hong Kong. CDARS has  
144 previously been used extensively to conduct large population-based studies <sup>19, 20</sup>, including  
145 those on anticoagulation use <sup>21, 22</sup>.

### 146 *Study Cohort*

147 All patients aged 18 or above with a diagnosis of IE who attended any public hospitals  
148 between January 1<sup>st</sup>, 1997 to August 31<sup>st</sup>, 2020 were identified from CDARS. The date of first  
149 diagnosis of IE was defined as the index date. Patients who received warfarin prescriptions  
150 within 14 days since the index date were considered warfarin users. To select new users only,  
151 patients who received warfarin or other anticoagulant medications (rivaroxaban, dabigatran,  
152 apixaban, edoxaban, enoxaparin, fondaparinux or heparin) within an entry period 30 days prior  
153 to the index date were excluded.

### 154 *Outcomes*

155 To study the efficacy and safety of warfarin use, study outcomes included 90-day risks  
156 of embolic stroke and all-cause mortality (efficacy), and intracranial hemorrhage and  
157 gastrointestinal bleeding (safety). An *a priori* landmark analysis was done at 30 days to  
158 compare the 30-day risks. Details of International Classification of Diseases, Ninth Revision  
159 (ICD-9) codes used to define outcomes are described in **Supplementary Table 1**. Outcomes  
160 were followed up until the occurrence of outcome, death, or until 90 days after IE diagnosis,  
161 whichever earlier.

### 162 *Covariates*

163 We traced patient records on CDARS prior to the index date and collected patient  
164 information including age at index date, sex, comorbidities (hypertension, atrial fibrillation,  
165 heart failure, diabetes mellitus, ischemic heart disease, chronic kidney disease, vascular  
166 disease), history of valvular replacement, and recent medication use, including drugs related to  
167 bleeding risk (ACE inhibitors, angiotensin receptor blockers, beta blockers, nonsteroidal anti-  
168 inflammatory drugs [NSAIDs], histamine type 2 receptor antagonists [H2RAs], proton pump  
169 inhibitors [PPIs], selective serotonin reuptake inhibitors [SSRIs]), and pathogens identified  
170 from blood culture (staphylococci, streptococci, enterococci, HACEK group) taken during IE  
171 admission. We also traced the number of patients who received direct oral anticoagulants  
172 (DOACs), heparin (fondaparinux, enoxaparin, heparin), and cardiac surgery (ICD-9-CM  
173 Procedure codes 35-39) within 14 days since the index date. ICD-9 codes used to identify  
174 comorbidities are described in **Supplementary Table 1**.

### 175 *Statistical Analysis*

176 This study tested the hypothesis that when compared to non-usage, warfarin usage is  
177 associated with different risks of efficacy and safety study outcomes of ischemic stroke, all-  
178 cause mortality, intracranial hemorrhage and gastrointestinal bleeding. To account for



179 differences between groups in baseline characteristics due to a lack of randomization, we used  
180 propensity score matching on a 1:1 ratio using the nearest-neighbour matching algorithm to  
181 match warfarin users with non-users by the aforementioned covariates. A caliper width of 0.2  
182 was chosen as it is considered optimal for propensity score matching<sup>23</sup>. Standardized mean  
183 differences (SMD), the differences in means over the pooled standard deviation (SD) assessed  
184 balance of categorical covariates; the variance ratio (VR), which is the ratio of variance  
185 between the treatment and control groups assessed balance of both categorical and continuous  
186 covariates. Characteristics with an SMD of <0.1 or VR between the range of 0.5 and 2.0 were  
187 considered balanced. Descriptive statistics were expressed as mean  $\pm$  SD and count (percentage  
188 [%]) as appropriate.

189 Result estimates were expressed in terms of hazard ratios (HRs) with 95% confidence  
190 intervals (CIs) using a univariate Cox proportional hazards model. The proportional hazards  
191 assumption of the model was tested by performing the Schoenfeld proportionality test; the  
192 results indicated that the assumption was met. Kaplan-Meier curves were plotted against the  
193 time-to-event, beginning from the date of IE diagnosis stratified by either warfarin use or no  
194 warfarin use for the main results, and beginning from the date of warfarin initiation and  
195 stratified by either early or late initiation of warfarin for analysis of warfarin timing. The log-  
196 rank test was performed to investigate the statistical significance of differences in survival  
197 between comparator groups.

198 An *a priori* subgroup analysis was performed: 90-day risks of the efficacy outcomes in  
199 patients who were initiated on warfarin early ( $\leq 7$  days) were compared to those with late  
200 initiation (within 8 to 14 days) to explore the effect of initiation timing within warfarin users;  
201 in this analysis, the start date of follow-up was defined as the date of warfarin initiation instead  
202 of date of IE diagnosis. As there were substantial imbalances between treatment arms in the  
203 respective proportions of patients who received cardiac surgery and heparin within 14 days of

204 the index day, two *post hoc* subgroup analyses were added, where patients who received  
205 cardiac surgery and heparin were excluded separately. Furthermore, two *a priori* sensitivity  
206 analyses were conducted. First, the period in which warfarin was initiated was restricted from  
207 within 14 days to within 7 days of the index date. Second, a competing risk regression was  
208 performed for ischaemic stroke, intracranial haemorrhage, and gastrointestinal bleeding using  
209 the Fine and Gray sub-distribution model, with all-cause mortality as the competing event, and  
210 with sub-hazard ratios (SHRs) and the corresponding 95% CIs as summary statistics. Aalen-  
211 Johansen cause-specific cumulative incidence curves were additionally plotted for these  
212 outcomes to account for competing risks.

213 All analyses were conducted using R (version 1.4.1717) or Stata (version 16.1). All p-  
214 values were two-tailed and considered statistically significant when  $P < 0.05$ .

215

## 216 **Results**

### 217 *Patient characteristics*

218 The patient flow is shown in **Figure 1**. In total, 7,054 patients with a diagnosis of IE  
219 were identified from CDARS. After excluding patients with previous anticoagulant use, under  
220 18 years old, and those with use of warfarin after 14 days since IE diagnosis, the study cohort  
221 consisted of 5,477 patients, where 734 patients received warfarin (56.7% male, mean baseline  
222 age:  $60 \pm 16$  years old) and 4743 without warfarin use (66.5% male, mean baseline age:  $58 \pm 20$   
223 years old). All patients completed 90-day follow up or had 90-day mortality.

224 After 1:1 propensity score matching, the final study cohort consisted of 675 warfarin  
225 users and 675 without warfarin use. The baseline characteristics of the study population are  
226 shown in **Table 1**. A Love plot summarizing covariate balance before and after propensity  
227 score matching is shown in **Supplementary Figure 1**. All SMD values were  $< 0.1$  and VR

228 values within 0.5-2.0, indicating good balance between warfarin users and those without  
229 warfarin use; the only exception being age, which had a SMD of 0.13. After matching, 13  
230 (1.9%) warfarin users and 23 (3.4%) patients without warfarin use received DOACs, while 435  
231 (64.4%) warfarin users 68 (10.1%) patients without warfarin use received heparin. 162 (24.0%)  
232 warfarin users compared to 59 (8.7%) patients without warfarin use received cardiac surgery  
233 within 14 days of IE diagnosis.

234 The ten most common causes of death were described in **Supplementary Table 2**. The  
235 most common causes of death in warfarin users were IE (7.0%), followed by pneumonia (2.2%),  
236 sepsis (1.2%), heart failure (0.9%), and rheumatic heart disease (0.6%); while in patients  
237 without warfarin use, the most common causes of death were IE (2.5%), followed by  
238 pneumonia (1.2%), stroke (0.9%), rheumatic heart disease (0.6%), and intracranial hemorrhage  
239 (0.6%). 2 (0.3%) patients without warfarin use and 6 (0.9%) patients with warfarin use died of  
240 stroke, while 6 (0.8%) patients without warfarin use and 7 (1.0%) patients with warfarin use  
241 died of intracranial, intracerebral or subarachnoid hemorrhage (**Supplementary Table 3**).

#### 242 *Main 90- and 30-day analytic results*

243 The main analytic results are presented in **Table 2**, and Kaplan-Meier plots are shown  
244 in **Figure 2**. While warfarin use was not associated with a significantly different 90-day risk  
245 of ischemic stroke (HR: 1.04 [95% CI, 0.70-1.53], log-rank p=0.86), it was associated with a  
246 50% decrease in the 90-day risk of all-cause mortality (HR: 0.50 [0.39-0.65], log-rank  
247 p<0.0001). For the safety outcomes, warfarin use was not associated with significantly  
248 different 90-day risks of gastrointestinal bleeding (HR 1.04 [0.60-1.78], log-rank p=0.90),  
249 although a nonsignificant trend for intracranial hemorrhage (HR: 1.25 [0.77-2.04]; log-rank  
250 p=0.37) may be present.

251 Results of the 30-day landmark analysis for ischemic stroke (HR: 0.87 [0.53-1.43]), all-  
252 cause mortality (HR: 0.41 [0.28-0.58]), intracranial hemorrhage (HR: 1.57 [0.80-3.07]) and  
253 gastrointestinal bleeding (HR: 0.86 [0.41-1.81]) were consistent with those of the main, 90-day  
254 analysis.

#### 255 *Subgroup analysis*

256 Results of subgroup analyses are shown in **Table 2** as well. In the *a priori* subgroup  
257 analysis exploring the effects of the timing of warfarin initiation, warfarin initiation between  
258 8-14 days of IE diagnosis (delayed use; N=152) was not associated with significantly different  
259 90-day risks of ischemic stroke (HR: 1.53 [0.82-2.86]) or all-cause mortality (HR: 1.29 [0.78-  
260 2.14]) compared with early use (warfarin initiation within the seven days of IE diagnosis;  
261 N=523; **Figure 3**). Landmark analysis at 30 days showed consistent results (**Supplementary**  
262 **Table 4**).

263 In the first *post hoc* subgroup analysis excluding patients who received heparin within  
264 14 days of IE diagnosis, warfarin use was associated with significantly lower 90-day risk of  
265 all-cause mortality (HR: 0.59 [0.40-0.86]), but also significantly higher 90-day risk of  
266 intracranial haemorrhage (HR: 2.56 [1.13-5.81]; **Supplementary Figure 2**); the 90-day risk of  
267 intracranial haemorrhage and gastrointestinal bleeding were not significantly different between  
268 treatment arms. Landmark analysis at 30 days showed largely consistent results, except for the  
269 nonsignificant trend in the 30-day risk of intracranial haemorrhage between treatment arms  
270 (HR: 2.54 [0.98-6.54]).

271 In the second *post hoc* subgroup analysis excluding patients who received cardiac  
272 surgery within 14 days of IE diagnosis, warfarin use was again associated with significantly  
273 lower 90-day risk of all-cause mortality (HR: 0.47 [0.35-0.64]), but also significantly higher  
274 90-day risk of intracranial haemorrhage (HR: 1.89 [1.01-3.53]; **Supplementary Figure 3**); the

275 90-day risk of intracranial haemorrhage and gastrointestinal bleeding were not significantly  
276 different between treatment arms. Landmark analysis at 30 days showed largely consistent  
277 results, except the 30-day risk of intracranial haemorrhage was not significantly different  
278 between treatment arms (HR: 1.71 [0.78-3.73]).

### 279 *Sensitivity analysis*

280 Results of sensitivity analyses were summarized in **Table 3**. When only patients with  
281 warfarin use within seven days of IE diagnosis were included in the warfarin arm (N=523),  
282 warfarin use was associated with significantly lower 90-day risk of all-cause mortality (HR:  
283 0.51 [0.38-0.67]), but not significantly different 90-day risks of ischemic stroke (HR: 0.81  
284 [0.54-1.23]), intracranial hemorrhage (HR: 0.75 [0.45-1.26]), nor gastrointestinal bleeding (HR:  
285 0.56 [0.30-1.03]).

286 In the Fine and Gray competing risk regression with all-cause mortality as competing  
287 events, warfarin users had significantly higher 30-day cumulative incidence of intracranial  
288 haemorrhage (SHR 3.34 [1.34-8.31]; **Supplementary Figure 4**), but the 90-day cumulative  
289 incidence was not significantly different between groups (SHR 1.63 [0.95-2.81]). The  
290 cumulative incidences of ischaemic stroke (**Supplementary Figure 5**) and gastrointestinal  
291 bleeding (**Supplementary Figure 6**) were not significantly different between groups at both  
292 30 and 90 days.

293

### 294 **Discussion**

295 To the best of the authors' knowledge, this is the first population-based study on  
296 warfarin use in IE patients. In this study, warfarin use in patients with IE was associated with  
297 a significantly lower risk of mortality, without significantly different risks of ischemic stroke.

298 However, warfarin use may be associated with significantly higher risk of intracranial  
299 haemorrhage, despite a lack of significant differences in the risk of other bleeding events.

300 The most important finding of this study was that in patients with IE, warfarin use was  
301 associated with lower mortality risks at both 30 and 90 days. The reduction of clotting factors  
302 and reduced platelet aggregation through warfarin use may slow the local proliferation of  
303 vegetation, reducing valvular destruction and the extent of the infection, leading to improved  
304 prognosis. Clinically, these properties of warfarin are most leveraged for ischaemic stroke  
305 prevention. In this study, however, the mortality benefit observed for warfarin use was clearly  
306 not driven by ischaemic stroke risk reduction, as warfarin use was not associated with  
307 significantly different risk of ischaemic stroke. This contrasts with two studies focused on left-  
308 sided staphylococcus aureus IE, where anticoagulation was found to reduce stroke risk <sup>24, 25</sup>.  
309 For example, Rasmussen and colleagues described in a study of 175 IE patients that  
310 anticoagulant use, defined as use of either coumadin or high-dose low molecular weight  
311 heparin, was associated with a fourfold decrease in stroke risk (adjusted odds ratio [aOR]: 0.27),  
312 but most patients who received anticoagulants had prosthetic valves (73%) compared to those  
313 without anticoagulant use (8%) <sup>24</sup>. In another cohort study of 587 IE episodes, warfarin use  
314 was associated with a lower risk of cerebrovascular complications (aOR: 0.26 [95% CI, 0.07-  
315 0.94]), where 38% of patients with warfarin use and 12% patients without warfarin use had  
316 atrial fibrillation on admission <sup>25</sup>. Nonetheless, both studies included patients who already had  
317 continuous use of anticoagulants prior to IE admission. As patients already on treatment may  
318 have stably reached the therapeutic international normalized ratio (INR) range, the baseline  
319 risk for stroke of the anticoagulant group may be lower at the time of IE diagnosis. Instead, to  
320 ensure a new-user design, we excluded patients with prior use of any anticoagulant within 30  
321 days before IE diagnosis, and balanced the coagulability status of treatment groups by matching

322 with medications that influence coagulability, which may explain the lack of significant benefit  
323 among new users in reducing ischemic stroke risk compared to previous studies.

324 The mortality benefit may be driven by a reduction in the size of vegetation, as  
325 suggested by previous studies <sup>15, 24</sup>. As echocardiography data were not available, this could  
326 not be verified in our study. It is also unclear whether effects on the size of vegetation was  
327 affected by the causative organism. Another potential driver of the observed associations may  
328 be differences in the risks of thromboembolic complications such as septic pulmonary  
329 embolism <sup>26</sup>. Septic pulmonary emboli pose high risk to patients as it can cause subsequent  
330 respiratory failure requiring mechanical ventilation and prolonging hospital stay <sup>27</sup>. Though  
331 anticoagulation has a well-established role for prophylaxis of noninfective pulmonary  
332 embolism <sup>28</sup>, it is not used for active treatment of septic pulmonary emboli due to the increased  
333 bleeding risk in area of the infected emboli <sup>5</sup>. Nevertheless, treatment of septic pulmonary  
334 emboli using anticoagulation has been described in small cohort studies <sup>29, 30</sup>. Further research  
335 on the potential effects of warfarin on vegetation size and thromboembolic complications and  
336 the prognostic implications of any such effect is warranted.

337 The use of antiplatelet therapy in reducing mortality or embolic risk in IE is similarly  
338 controversial. In a retrospective cohort study of 600 IE patients, patients with prior use of  
339 aspirin, dipyridamole, clopidogrel or ticlopidine had a lower risk of stroke compared to control,  
340 but not significantly different mortality <sup>31</sup>. In a randomized controlled trial of 115 IE patients,  
341 treatment with aspirin 325mg/day did not significantly reduce the risk of embolic stroke nor  
342 in-hospital mortality, instead increasing the risk of bleeding <sup>32</sup>; also, this trial excluded patients  
343 with previous antiplatelet use, similar to our study. Interestingly, low-dose aspirin, compared  
344 to high-dose aspirin, was more effective at reducing bacterial density and vegetation weight <sup>33</sup>.  
345 Furthermore, a recent cohort study involving 34 IE patients compared long term use of  
346 antiplatelets or anticoagulants and patients without the use of either medication class. Embolic

347 events occurred in 30% of patients receiving treatment and 7.1% not receiving treatment, with  
348 similar mortality risk between both groups<sup>34</sup>. The study found a lower number of bleeding  
349 events in the group without antiplatelet/anticoagulant use, in agreement with the subgroup  
350 analysis in the current study where patients who received heparin within 14 days of IE  
351 diagnosis were excluded. In local clinical practice, the vast majority of admitted IE patients are  
352 started on warfarin instead of DOACs due to valvular nature of the disease; therefore, it was  
353 not possible to conduct separate analyses investigating DOAC use on the study outcomes. It  
354 remains to be elucidated whether or not DOACs are similarly associated with a decreased risk  
355 of mortality in the context of IE. Overall, there is a lack of consensus on the role of  
356 antithrombotics in general in the management of IE, be it anticoagulants or antiplatelets, and  
357 the use of systemic antibiotics remains the preferred strategy to reduce the risks of mortality  
358 and septic embolization<sup>11, 35, 36</sup>.

359 Previous evidence on anticoagulation in IE is mostly based on case reports or non-  
360 representative observational studies, which were limited by small sample sizes and sampling  
361 bias. Nonetheless, a placebo-controlled trial on this study topic is difficult to organize given  
362 the potential risk of bleeding in warfarin use. The present study attempted to minimize  
363 indication bias for warfarin prescription by propensity score matching with potential  
364 confounders such as prosthetic valve replacement, CHA<sub>2</sub>DS<sub>2</sub>-VASc score and atrial fibrillation.  
365 The population-based nature of the study also meant that the results are widely generalizable,  
366 at least to other developed Asian cities. Moreover, we performed a number of subgroup and  
367 sensitivity analyses to ensure robustness of our analyses, observing mostly consistent findings  
368 in patients who did not receive cardiac surgery or heparin, and in both patients with early and  
369 late warfarin use. The subgroup analysis of patients who did not receive cardiac surgery was  
370 especially important, as the implantation of mechanical prosthetic valves could have been the  
371 primary indication of warfarin in some patients. By demonstrating consistent results in patients



372 who did not receive cardiac surgery, the associations between warfarin use and lower mortality  
373 risk was likely to be explained by factors other than warfarin being a surrogate for surgical  
374 treatment. Nonetheless, it must be stressed that clinicians should be aware that warfarin use  
375 was likely associated with higher risk of intracranial haemorrhage, as shown in the two *post*  
376 *hoc* subgroup analyses of patients and in the competing risk regression. Although mortality  
377 benefit was shown despite such detrimental associations with bleeding risks, more work is  
378 needed to carefully delineate the risk-benefit balance in using warfarin in patients with IE,  
379 especially with the consideration of morbidity in addition to mortality, before more definitive  
380 recommendations can be made for clinical practice.

381

### 382 *Limitations*

383 The present study has several limitations. First, there was incomplete baseline INR data  
384 of patients within the treatment group and the coagulability status of study patients before  
385 initiation on warfarin is unknown. This was addressed by excluding patients with use of  
386 anticoagulants within 30 days before IE diagnosis in both treatment groups. Second, this study  
387 did not account for the treatment duration, interruption or discontinuation of therapy in warfarin  
388 users, which may influence ischemic stroke or mortality risk. Major bleeding events such as  
389 intracranial hemorrhage and gastrointestinal bleeding may prompt interruption of anticoagulant  
390 therapy <sup>11</sup>, which, if abrupt, may lead to a sharp drop in INR <sup>37</sup>, in turn increasing the risk of  
391 ischemic stroke. Third, this was an observational study; owing to limitations of the CDARS  
392 database, echocardiographic findings such as the size of vegetation, valvular destruction, and  
393 perivalvar abscesses were not coded in the system and therefore could not be explored. Fourth,  
394 although a number of baseline characteristics were used for propensity score matching, the  
395 observational nature of this study meant that unobserved and residual confounders cannot be

396 completely eliminated. Nonetheless, we believe the baseline characteristics considered should  
397 be pragmatically sufficient as a representation of the overall comorbid status of the included  
398 patients. Lastly, as all diagnoses and outcomes were ascertained using ICD codes, miscoding  
399 may be possible. Nonetheless, CDARS and the linked Hong Kong Death Registry have been  
400 used extensively in peer-reviewed studies<sup>38-40</sup>, and all coding were performed by clinicians  
401 independent of the authors.

402

### 403 **Conclusions**

404 In patients with IE, warfarin use may be associated with decreased risks of mortality  
405 compared with non-use of warfarin, with a non-significant difference in the risk of ischaemic  
406 stroke and a higher risk of intracranial haemorrhage. Larger studies are warranted to confirm  
407 these findings and delineate the underlying mechanisms.

408

409

410 **Acknowledgements:** None.

411 **Sources of Funding:** None.

412 **Disclosures:** None.

413

### 414 **Supplemental Material**

415 Tables S1-S3

416 Figures S1-S6

## 417 **References**

- 418 1. Rajani R, Klein JL. Infective endocarditis: A contemporary update. *Clin Med*  
419 (*Lond*). 2020;20:31-35
- 420 2. Duval X, Delahaye F, Alla F, Tattevin P, Obadia JF, Le Moing V, et al. Temporal  
421 trends in infective endocarditis in the context of prophylaxis guideline  
422 modifications: Three successive population-based surveys. *J Am Coll Cardiol*.  
423 2012;59:1968-1976
- 424 3. Mostaghim AS, Lo HYA, Khardori N. A retrospective epidemiologic study to  
425 define risk factors, microbiology, and clinical outcomes of infective endocarditis  
426 in a large tertiary-care teaching hospital. *SAGE Open Med*.  
427 2017;5:2050312117741772
- 428 4. Hu W, Wang X, Su G. Infective endocarditis complicated by embolic events:  
429 Pathogenesis and predictors. *Clin Cardiol*. 2021;44:307-315
- 430 5. Mohananey D, Mohadjer A, Pettersson G, Navia J, Gordon S, Shrestha N, et al.  
431 Association of vegetation size with embolic risk in patients with infective  
432 endocarditis: A systematic review and meta-analysis. *JAMA Intern Med*.  
433 2018;178:502-510
- 434 6. Murdoch DR, Corey GR, Hoen B, Miro JM, Fowler VG, Jr., Bayer AS, et al.  
435 Clinical presentation, etiology, and outcome of infective endocarditis in the 21st  
436 century: The international collaboration on endocarditis-prospective cohort study.  
437 *Arch Intern Med*. 2009;169:463-473
- 438 7. Garcia-Cabrera E, Fernandez-Hidalgo N, Almirante B, Ivanova-Georgieva R,  
439 Nouredine M, Plata A, et al. Neurological complications of infective  
440 endocarditis: Risk factors, outcome, and impact of cardiac surgery: A multicenter  
441 observational study. *Circulation*. 2013;127:2272-2284

- 442 8. Heiro M, Nikoskelainen J, Engblom E, Kotilainen E, Marttila R, Kotilainen P.  
443 Neurologic manifestations of infective endocarditis: A 17-year experience in a  
444 teaching hospital in finland. *Arch Intern Med.* 2000;160:2781-2787
- 445 9. Thiene G, Basso C. Pathology and pathogenesis of infective endocarditis in native  
446 heart valves. *Cardiovasc Pathol.* 2006;15:256-263
- 447 10. Holland TL, Baddour LM, Bayer AS, Hoen B, Miro JM, Fowler VG, Jr. Infective  
448 endocarditis. *Nat Rev Dis Primers.* 2016;2:16059
- 449 11. Habib G, Lancellotti P, Antunes MJ, Bongiorni MG, Casalta JP, Del Zotti F, et al.  
450 2015 esc guidelines for the management of infective endocarditis: The task force  
451 for the management of infective endocarditis of the european society of  
452 cardiology (esc). Endorsed by: European association for cardio-thoracic surgery  
453 (eacts), the european association of nuclear medicine (eanm). *Eur Heart J.*  
454 2015;36:3075-3128
- 455 12. Lerche CJ, Christophersen LJ, Goetze JP, Nielsen PR, Thomsen K, Enevold C, et  
456 al. Adjunctive dabigatran therapy improves outcome of experimental left-sided  
457 staphylococcus aureus endocarditis. *PLoS One.* 2019;14:e0215333
- 458 13. Hook EW, 3rd, Sande MA. Role of the vegetation in experimental streptococcus  
459 viridans endocarditis. *Infect Immun.* 1974;10:1433-1438
- 460 14. Veloso TR, Que YA, Chaouch A, Giddey M, Vouillamoz J, Rousson V, et al.  
461 Prophylaxis of experimental endocarditis with antiplatelet and antithrombin  
462 agents: A role for long-term prevention of infective endocarditis in humans? *J*  
463 *Infect Dis.* 2015;211:72-79
- 464 15. Slivka AP, Agriesti JE, Orsinelli DA. Natural history of nonbacterial thrombotic  
465 endocarditis treated with warfarin. *Int J Stroke.* 2021;16:519-525

- 466 16. Lee SJ, Oh SS, Lim DS, Hong SK, Choi RK, Park JS. Usefulness of anticoagulant  
467 therapy in the prevention of embolic complications in patients with acute infective  
468 endocarditis. *Biomed Res Int*. 2014;2014:254187
- 469 17. Sawant AC, Kumar A, McCray W, Tetewsky S, Parone L, Sridhara S, et al.  
470 Superior safety of direct oral anticoagulants compared to warfarin in patients with  
471 atrial fibrillation and underlying cancer: A national veterans affairs database  
472 study. *J Geriatr Cardiol*. 2019;16:706-709
- 473 18. Salaun E, Touil A, Hubert S, Casalta JP, Gouriet F, Robinet-Borgomano E, et al.  
474 Intracranial haemorrhage in infective endocarditis. *Arch Cardiovasc Dis*.  
475 2018;111:712-721
- 476 19. Wai AK, Chan CY, Cheung AW, Wang K, Chan SC, Lee TT, et al. Association of  
477 molnupiravir and nirmatrelvir-ritonavir with preventable mortality, hospital  
478 admissions and related avoidable healthcare system cost among high-risk patients  
479 with mild to moderate covid-19. *Lancet Reg Health West Pac*. 2023;30:100602
- 480 20. Lee TTL, Hui JMH, Lee YHA, Satti DI, Shum YKL, Kiu PTH, et al. Sulfonylurea  
481 is associated with higher risks of ventricular arrhythmia or sudden cardiac death  
482 compared with metformin: A population-based cohort study. *J Am Heart Assoc*.  
483 2022;11:e026289
- 484 21. Zhou J, Lee S, Liu X, Iltaf Satti D, Tai Loy Lee T, Hou In Chou O, et al. Hip  
485 fractures risks in edoxaban versus warfarin users: A propensity score-matched  
486 population-based cohort study with competing risk analyses. *Bone*.  
487 2022;156:116303
- 488 22. Zhou J, Leung KSK, Kong D, Lee S, Liu T, Wai AKC, et al. Low rates of liver  
489 injury in edoxaban users: Evidence from a territory-wide observational cohort  
490 study. *Clin Cardiol*. 2021;44:886-889

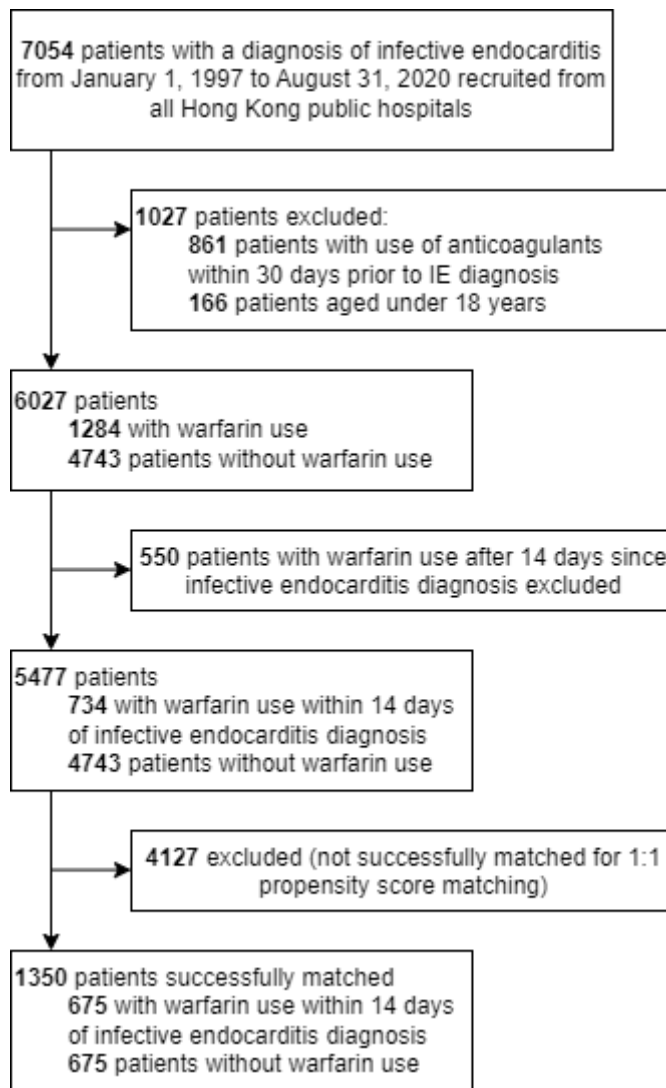
- 491 23. Austin PC. Optimal caliper widths for propensity-score matching when estimating  
492 differences in means and differences in proportions in observational studies.  
493 *Pharm Stat.* 2011;10:150-161
- 494 24. Snygg-Martin U, Rasmussen RV, Hassager C, Bruun NE, Andersson R, Olaison  
495 L. Warfarin therapy and incidence of cerebrovascular complications in left-sided  
496 native valve endocarditis. *Eur J Clin Microbiol Infect Dis.* 2011;30:151-157
- 497 25. Rasmussen RV, Snygg-Martin U, Olaison L, Buchholtz K, Larsen CT, Hassager  
498 C, et al. Major cerebral events in staphylococcus aureus infective endocarditis: Is  
499 anticoagulant therapy safe? *Cardiology.* 2009;114:284-291
- 500 26. Galzerano D, Pergola V, Kinsara AJ, Vriza O, Elmahi I, Al Sergani A, et al. Right-  
501 sided infective endocarditis and pulmonary embolism: A multicenter study.  
502 *Monaldi Arch Chest Dis.* 2022;92
- 503 27. Elsaghir H, Al Khalili Y. Septic emboli. *Statpearls.* Treasure Island (FL); 2022.
- 504 28. Freund Y, Cohen-Aubart F, Bloom B. Acute pulmonary embolism: A review.  
505 *JAMA.* 2022;328:1336-1345
- 506 29. Song XY, Li S, Cao J, Xu K, Huang H, Xu ZJ. Cardiac septic pulmonary  
507 embolism: A retrospective analysis of 20 cases in a chinese population. *Medicine*  
508 *(Baltimore).* 2016;95:e3846
- 509 30. Goswami U, Brenes JA, Punjabi GV, LeClaire MM, Williams DN. Associations  
510 and outcomes of septic pulmonary embolism. *Open Respir Med J.* 2014;8:28-33
- 511 31. Anavekar NS, Tleyjeh IM, Anavekar NS, Mirzoyev Z, Steckelberg JM, Haddad  
512 C, et al. Impact of prior antiplatelet therapy on risk of embolism in infective  
513 endocarditis. *Clin Infect Dis.* 2007;44:1180-1186

- 514 32. Chan KL, Dumesnil JG, Cujec B, Sanfilippo AJ, Jue J, Turek MA, et al. A  
515 randomized trial of aspirin on the risk of embolic events in patients with infective  
516 endocarditis. *J Am Coll Cardiol*. 2003;42:775-780
- 517 33. Nicolau DP, Freeman CD, Nightingale CH, Quintiliani R, Coe CJ, Maderazo EG,  
518 et al. Reduction of bacterial titers by low-dose aspirin in experimental aortic valve  
519 endocarditis. *Infect Immun*. 1993;61:1593-1595
- 520 34. Dickerman SA, Abrutyn E, Barsic B, Bouza E, Cecchi E, Moreno A, et al. The  
521 relationship between the initiation of antimicrobial therapy and the incidence of  
522 stroke in infective endocarditis: An analysis from the ice prospective cohort study  
523 (ice-pcs). *Am Heart J*. 2007;154:1086-1094
- 524 35. Pathickal SM, Park TE, Sharma R. Clinical outcomes associated with the use of  
525 anticoagulant and antiplatelet agents in patients undergoing treatment for infective  
526 endocarditis: A pilot study. *Clin Ther*. 2020;42:1828-1838
- 527 36. Davenport J, Hart RG. Prosthetic valve endocarditis 1976-1987. Antibiotics,  
528 anticoagulation, and stroke. *Stroke*. 1990;21:993-999
- 529 37. White RH, McKittrick T, Hutchinson R, Twitchell J. Temporary discontinuation  
530 of warfarin therapy: Changes in the international normalized ratio. *Ann Intern*  
531 *Med*. 1995;122:40-42
- 532 38. Chan JSK, Lakhani I, Lee TTL, Chou OHI, Lee YHA, Cheung YM, Yeung HW,  
533 Tang P, Ng K, Dee EC, Liu T, Wong WT, Tse G, Leung FP. Cardiovascular  
534 outcomes and hospitalizations in Asian patients receiving immune checkpoint  
535 inhibitors: a population-based study. *Curr Probl Cardiol*. 2023; 48(1): 101380.
- 536 39. Li X, Chan JSK, Guan B, Peng S, Wu X, Lu X, Zhou J, Hui JMH, Lee YHA, Satti  
537 DI, Tsang SL, Wu S, Chen S, Tse G, Liu S. Triglyceride-glucose index and the

538 risk of heart failure: evidence from two large cohorts and a Mendelian  
539 randomization analysis. *Cardiovasc Diabetol.* 2022; 21(1): 229.  
540 40. Lee YHA, Zhou J, Hui JMH, Liu X, Lee TTL, Hui K, Chan JSK, Wai AKC,  
541 Wong WT, Liu T, Ng K, Lee S, Dee EC, Zhang Q, Tse G. Risk of new-onset  
542 prostate cancer for metformin versus sulphonylurea use in type 2 diabetes  
543 mellitus: a propensity score-matched study. *J Natl Compr Cancer Netw.* 2022;  
544 20(6): 674-682.e15.  
545



546 **Figure 1: Study flow chart**



547

548 **Table 1: Characteristics of patients with infective endocarditis before and after 1:1**  
549 **propensity score matching**

550

Characteristics	Before matching		After matching			
	Warfarin use (N=734)	No warfarin use (N=4743)	Warfarin use (N=675)	No warfarin use (N=675)	SMD	VR
<b>Demographics</b>						
Male, N (%)	416 (56.7)	3156 (66.5)	385 (57.0)	361 (53.5)	0.04	-
Baseline age, years	59.63±15.89	58.12±19.64	59.36±16.25	61.45±18.74	0.13	0.75
<b>Comorbidities</b>						
Charlson Comorbidity Index	2.44±2.27	2.08±2.39	2.37±2.29	2.51±2.38	0.06	0.93
Hypertension, N (%)	137 (18.7)	828 (17.5)	126 (18.7)	137 (20.3)	0.02	-
Atrial fibrillation, N (%)	253 (34.5)	329 (6.9)	206 (30.5)	213 (31.6)	0.01	-
Heart failure, N(%)	229 (31.2)	522 (11.0)	187 (27.7)	202 (29.9)	0.02	-
Diabetes mellitus, N (%)	83 (11.3)	545 (11.5)	78 (11.6)	85 (12.6)	0.01	-
Intracranial hemorrhage, N (%)	25 (3.4)	108 (2.3)	21 (3.1)	24 (3.6)	<0.01	-
Chronic kidney disease, N (%)	28 (3.8)	295 (6.2)	28 (4.1)	25 (3.7)	<0.01	-
Vascular disease, N (%)	8 (1.1)	36 (0.8)	6 (0.9)	7 (1.0)	<0.01	-
Valvular replacement, N (%)	107 (14.6)	43 (0.9)	52 (7.7)	39 (5.8)	0.02	-
<b>Medications</b>						
ACE inhibitors, N (%)	151 (20.6)	473 (10.0)	130 (19.3)	147 (21.8)	0.02	-
Angiotensin receptor blockers, N (%)	38 (5.2)	124 (2.6)	33 (4.9)	32 (4.7)	<0.01	-
Beta blockers, N (%)	149 (20.3)	510 (10.8)	132 (19.6)	135 (20.0)	<0.01	-
NSAIDs, N (%)	168 (22.9)	847 (17.9)	157 (23.3)	170 (25.2)	0.02	-
H2 receptor antagonists, N (%)	147 (20.0)	664 (14.0)	131 (19.4)	138 (20.4)	0.01	-
Proton pump inhibitors, N (%)	136 (18.5)	600 (12.7)	116 (17.2)	118 (17.5)	<0.01	-
Selective serotonin reuptake inhibitors, N (%)	8 (1.1)	47 (1.0)	8 (1.2)	6 (0.9)	<0.01	-
<b>Blood culture results</b>						
Staphylococci, N (%)	87 (11.9)	1023 (21.6)	73 (10.8)	69 (10.2)	<0.01	-
Streptococci, N (%)	68 (9.3)	681 (14.4)	58 (8.6)	52 (7.7)	<0.01	-
Enterococci, N (%)	12 (1.6)	112 (2.4)	8 (1.2)	11 (1.6)	<0.01	-
HACEK group, N (%)	1 (0.1)	33 (0.7)	1 (0.1)	3 (0.4)	<0.01	-
<b>Outcomes</b>						
Ischemic stroke, N (%)	57 (7.8)	314 (6.6)	52 (7.7)	50 (7.4)	-	-
All-cause mortality, N (%)	93 (12.7)	1246 (26.3)	83 (12.3)	193 (28.6)	-	-

Intracranial hemorrhage, N (%)	39 (5.3)	184 (3.9)	36 (5.3)	29 (4.3)	-	-
Gastrointestinal bleeding, N (%)	30 (4.1)	146 (3.1)	27 (4.0)	26 (3.9)	-	-
<b><i>Treatments received within 14 days after IE diagnosis</i></b>						
Direct oral anticoagulants, N (%)	13 (1.8)	47 (1.0)	13 (1.9)	23 (3.4)	-	-
Heparin, N (%)	466 (63.5)	368 (7.8)	435 (64.4)	68 (10.1)	-	-
Cardiac surgery, N (%)	171 (23.3)	453 (9.6)	162 (24.0)	59 (8.7)	-	-

551 Continuous variables were expressed as mean  $\pm$  standard deviation. SMD and VR were only displayed for  
552 variables considered in propensity score matching. SMD <0.1 / VR >0.5 & 2.0 indicated good balance in  
553 matching.

554 ACE, Angiotensin-converting enzyme; IE: Infective endocarditis; NSAID: Nonsteroidal anti-inflammatory  
555 drugs; SMD: Standardized mean difference; VR: Variance ratio.

556 **Table 2: Main and subgroup analyses of study outcomes**

Patient group	Outcomes	30-day risk Hazard ratio (95% CI)	90-day risk Hazard ratio (95% CI)
All patients	Ischemic stroke	0.87 (0.53-1.43)	1.04 (0.70-1.53) <sup>557</sup>
	All-cause mortality	0.41 (0.28-0.58)	0.50 (0.39-0.65) <sup>558</sup>
	Intracranial hemorrhage	1.57 (0.80-3.07)	1.25 (0.77-2.04) <sup>559</sup>
	Gastrointestinal bleeding	0.86 (0.41-1.81)	1.04 (0.60-1.78) <sup>560</sup>
Patients who did not receive heparin within 14 days of infective endocarditis diagnosis	Ischemic stroke	0.89 (0.36-2.20)	1.28 (0.64-2.58) <sup>561</sup>
	All-cause mortality	0.52 (0.32-0.84)	0.59 (0.40-0.86) <sup>562</sup>
	Intracranial hemorrhage	2.54 (0.98-6.54)	2.56 (1.13-5.84) <sup>563</sup>
Patients who did not receive cardiac surgery within 14 days of infective endocarditis diagnosis	Gastrointestinal bleeding	1.67 (0.40-6.98)	0.90 (0.37-2.23) <sup>564</sup>
	Ischemic stroke	1.37 (0.76-2.48)	1.61 (1.00-2.61) <sup>565</sup>
	All-cause mortality	0.35 (0.22-0.54)	0.47 (0.35-0.64) <sup>566</sup>
	Intracranial hemorrhage	1.71 (0.78-3.73)	1.89 (1.01-3.53) <sup>567</sup>
	Gastrointestinal bleeding	1.22 (0.51-2.95)	1.34 (0.73-2.47) <sup>568</sup>

573 CI: Confidence interval. HR: Hazard ratio.

574 **Table 3: Results of sensitivity analyses**

Analysis done	Outcomes	30-day	90-day	
	Ischemic stroke	0.64 (0.37-1.11) <sup>1</sup>	0.81 (0.54-1.25) <sup>1</sup>	575
Restricting to patients who had warfarin initiated within seven days of infective endocarditis diagnosis	All-cause mortality	0.48 (0.33-0.71) <sup>1</sup>	0.51 (0.38-0.67) <sup>1</sup>	577
	Intracranial hemorrhage	1.00 (0.51-1.96) <sup>1</sup>	0.75 (0.45-1.26) <sup>1</sup>	578
	Gastrointestinal bleeding	0.52 (0.22-1.23) <sup>1</sup>	0.56 (0.30-1.03) <sup>1</sup>	579
	Ischemic stroke	0.95 (0.55-1.65) <sup>2</sup>	1.11 (0.74-1.68) <sup>2</sup>	580
Fine-Gray competing risk regression with all-cause mortality as competing event	Intracranial hemorrhage	3.34 (1.34-8.31) <sup>2</sup>	1.63 (0.95-2.81) <sup>2</sup>	581
	Gastrointestinal bleeding	0.99 (0.41-2.39) <sup>2</sup>	1.14 (0.63-2.05) <sup>2</sup>	582
				583
				584

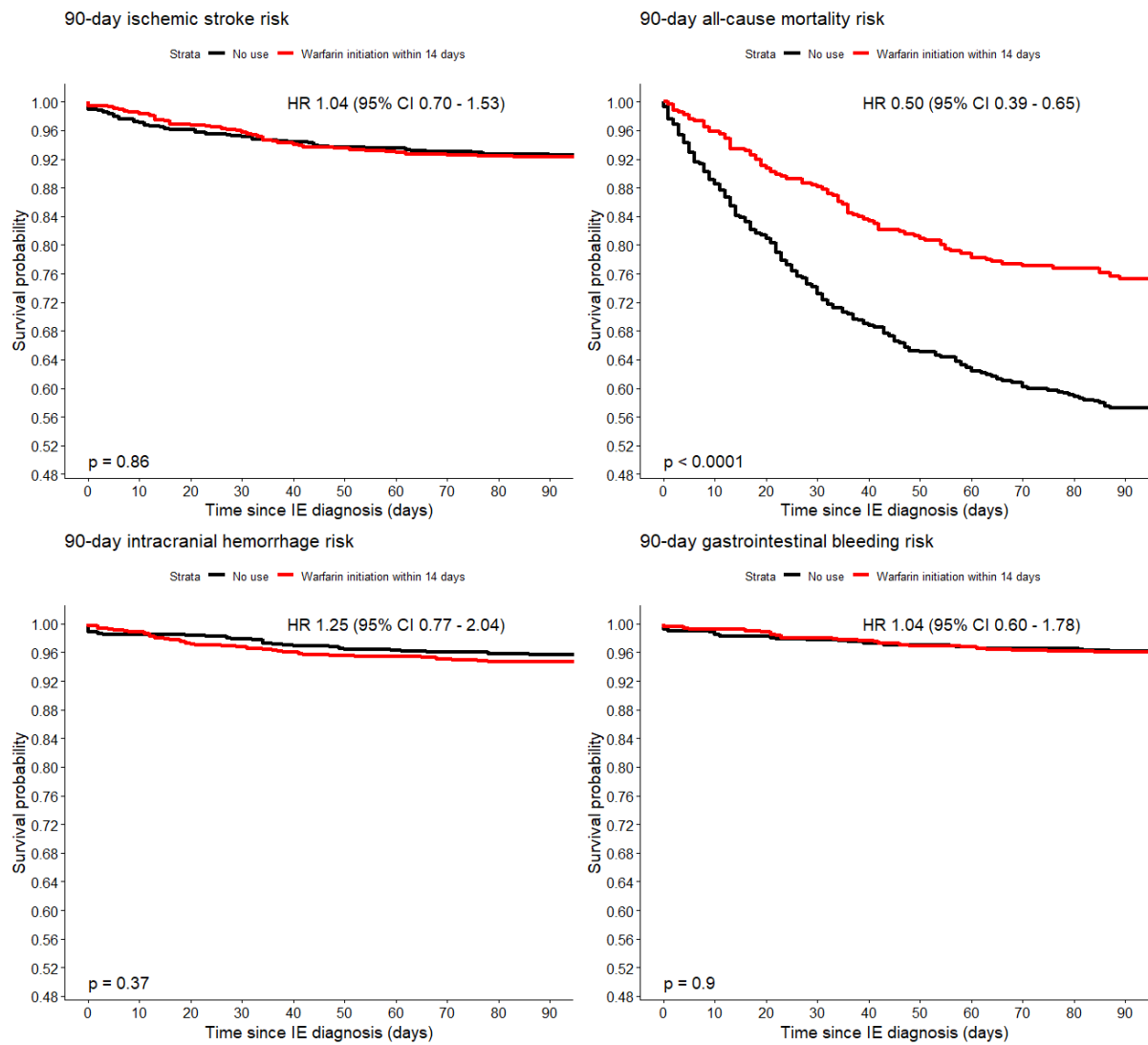
585 <sup>1</sup> Hazard ratio and 95% confidence intervals

586 <sup>2</sup> Sub-hazard ratio and 95% confidence intervals

587

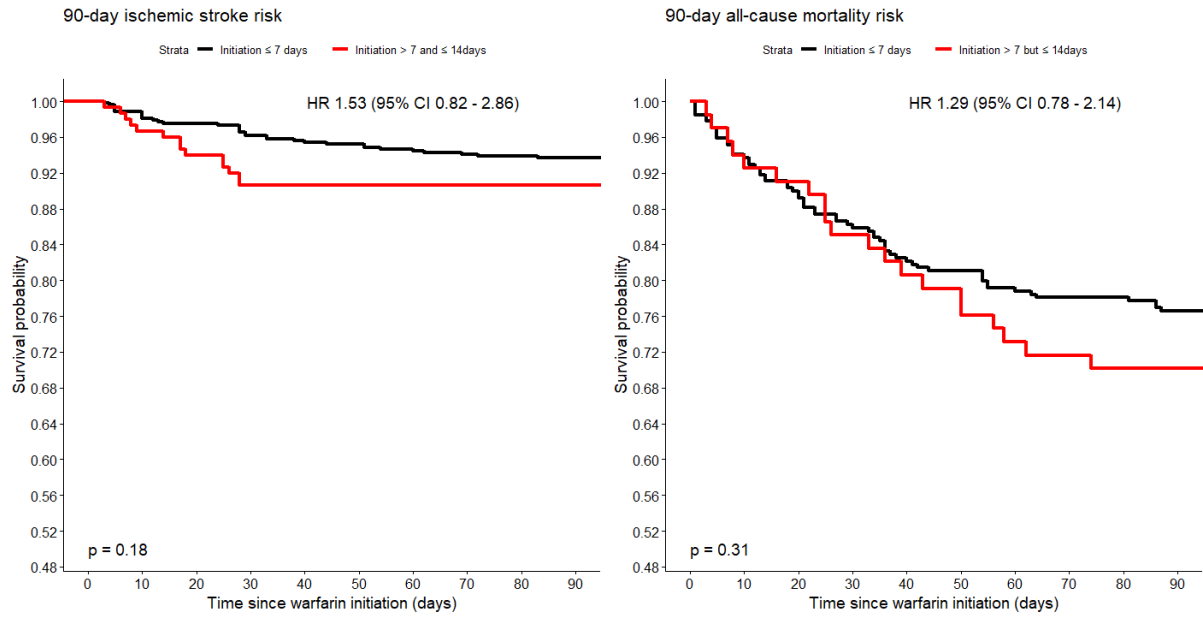
588 **Figure 2: Kaplan-Meier curves of cumulative freedom from the study outcomes,**  
589 **stratified by warfarin use. CI, confidence interval. HR, hazard ratio**

590



591

592 **Figure 3: Kaplan-Meier survival curves of study outcomes, stratified by the timing of**  
593 **warfarin initiation. CI, confidence interval. HR, hazard ratio.**



594

595