

# Correlates of Risk for Disinhibited Behaviors in the Million Veteran Program Cohort

Peter B. Barr <sup>\*1-4</sup>, Tim B. Bigdeli <sup>\*1-4</sup>, Jacquelyn L. Meyers <sup>1-4</sup>, Roseann E. Peterson <sup>1-3</sup>,  
Sandra Sanchez-Roige <sup>5,6</sup>, Travis T. Mallard <sup>7,8</sup>, Danielle M. Dick <sup>9,10</sup>, K. Paige Harden <sup>11,12</sup>,  
Anna Wilkinson <sup>13,14,15</sup>, David P. Graham <sup>13,16</sup>, David A. Nielsen <sup>13,16</sup>, Alan Swann <sup>13,16</sup>,  
Rachele K. Lipsky <sup>13,16</sup>, Thomas Kosten <sup>13,16</sup>, Mihaela Aslan <sup>17,18</sup>,  
Philip D. Harvey <sup>†19,20</sup>, Nathan A. Kimbrel <sup>†21-23</sup>, and Jean C. Beckham <sup>†21-23</sup>,  
on behalf of the Million Veteran Program (MVP) and Cooperative Studies Program (CSP) #572

1. VA New York Harbor Healthcare System, Brooklyn, NY
2. Department of Psychiatry and Behavioral Sciences, SUNY Downstate Health Sciences University, Brooklyn, NY
3. Institute for Genomics in Health (IGH), SUNY Downstate Health Sciences University, Brooklyn, NY
4. Department of Epidemiology and Biostatistics, School of Public Health, SUNY Downstate Health Sciences University, Brooklyn, NY
5. Department of Psychiatry, University of California San Diego, La Jolla, CA, USA
6. Division of Genetic Medicine, Vanderbilt University Medical Center, Nashville, TN, USA
7. Psychiatric and Neurodevelopmental Genetics Unit, Center for Genomic Medicine, Massachusetts General Hospital, Boston, MA, USA
8. Department of Psychiatry, Harvard Medical School, Boston, MA, USA
9. Department of Psychiatry, Robert Wood Johnson Medical School, Rutgers University, Piscataway, NJ
10. Rutgers Addiction Research Center, Rutgers University, Piscataway, NJ
11. Department of Psychology, University of Texas at Austin, Austin, TX
12. Population Research Center, University of Texas at Austin, Austin, TX
13. Michael E. DeBakey VA Medical Center, Houston, TX
14. UTHealth Houston School of Public Health, The University of Texas Health Science Center at Houston, Houston, TX
15. Michael and Susan Dell Center for Healthy Living, The University of Texas Health Science Center at Houston, Houston, TX
16. Department of Psychiatry, Neuroscience, Pharmacology, and Immunology and Rheumatology, Baylor College of Medicine, Houston, TX
17. Clinical Epidemiology Research Center (CERC), VA Connecticut Healthcare System, West Haven, CT
18. Yale University School of Medicine, New Haven, CT
19. Research Service, Bruce W. Carter Miami Veterans Affairs (VA) Medical Center, Miami, FL
20. University of Miami Miller School of Medicine, Miami, FL
21. Durham VA Health Care System, Durham, NC
22. VA Mid-Atlantic Mental Illness Research, Education and Clinical Center, Durham, NC
23. Department of Psychiatry and Behavioral Sciences, Duke University School of Medicine, Durham, NC

\* These authors contributed equally to this work; † These authors jointly supervised this work

Corresponding author: Peter B. Barr

450 Clarkson Ave, MSC 1203, Brooklyn, NY 11203

e-mail: [peter.barr@downstate.edu](mailto:peter.barr@downstate.edu).

Running Header: Correlates of Externalizing Risk in Veterans

Word count abstract: 306; Word count text body: 3,897; Figures and Tables: 4 Figures

47 **ABSTRACT**

48 **Background:** Many psychiatric outcomes are thought to share a common etiological pathway reflecting  
49 behavioral disinhibition, generally referred to as externalizing disorders (EXT). Recent genome-wide  
50 association studies (GWAS) have demonstrated the overlap between EXT and important aspects of  
51 veterans' health, such as suicide-related behaviors, substance use disorders, and other medical  
52 conditions.

53 **Methods** We conducted a series of phenome-wide association studies (PheWAS) of polygenic scores  
54 (PGS) for EXT, and comorbid psychiatric problems (depression, schizophrenia, and suicide attempt) in  
55 an ancestrally diverse cohort of U.S. veterans ( $N = 560,824$ ), using diagnostic codes from electronic  
56 health records. We conducted ancestry-specific PheWASs of EXT PGS in the European, African, and  
57 Hispanic/Latin American ancestries. To determine if associations were driven by risk for other comorbid  
58 problems, we performed a conditional PheWAS, covarying for comorbid psychiatric problems  
59 (European ancestries only). Lastly, to adjust for unmeasured confounders we performed a within-family  
60 analysis of significant associations from the main PheWAS in full-siblings ( $N = 12,127$ , European  
61 ancestries only).

62 **Results:** The EXT PGS was associated with 619 outcomes across all bodily systems, of which, 188  
63 were independent of risk for comorbid problems of PGS. Effect sizes ranged from  $OR = 1.02$  (95% CI =  
64  $1.01, 1.03$ ) for overweight/obesity to  $OR = 1.44$  (95% CI =  $1.42, 1.47$ ) for viral hepatitis C. Of the  
65 significant outcomes 73 (11.9%) and 26 (4.5%) were significant in the African and Hispanic/Latin  
66 American results, respectively. Within-family analyses uncovered robust associations between EXT and  
67 consequences of substance use disorders, including liver disease, chronic airway obstruction, and viral  
68 hepatitis C.

69 **Conclusion:** Our results demonstrate a shared polygenic basis of EXT across populations of diverse  
70 ancestries and independent of risk for other psychiatric problems. The strongest associations with EXT  
71 were for diagnoses related to substance use disorders and their sequelae. Overall, we highlight the  
72 potential negative consequences of EXT for health and functioning in the US veteran population.

73

## 74 INTRODUCTION

75 Psychiatric disorders have far-reaching consequences for affected individuals, their families,  
76 communities, and the broader society<sup>1-4</sup>. Many of these disorders are strongly co-morbid and share, at  
77 least in part, a common etiology<sup>5</sup>. Disorders related to behavioral disinhibition, such as substance use  
78 disorders (SUD), conduct disorder, and antisocial personality disorder, have been labeled as  
79 externalizing disorders<sup>6,7</sup>. Twin and family studies suggest that the common liability towards  
80 externalizing disorders is highly heritable (~80%)<sup>8-10</sup>. Recent multivariate genome wide association  
81 studies (GWAS) have found robust evidence for a latent genomic factor for externalizing disorders<sup>11,12</sup>,  
82 composed of input GWAS related to substance use disorders, risky sexual behaviors, personality  
83 characteristics, and neurodevelopmental disorders. Importantly, genetic liability for externalizing  
84 disorders overlaps with other phenotypes of public health relevance, such as suicidal thoughts and  
85 behaviors<sup>11,13-15</sup>, SUDs<sup>11,16-18</sup>, and a range of other medical conditions (e.g., ischemic heart disease,  
86 liver disease, viral hepatitis)<sup>11</sup>. The widespread impact of risk for externalizing disorders makes it a  
87 potential target for early intervention and prevention.

88 The proliferation of large-scale biobanks – such as All of Us<sup>19</sup>, the UK Biobank<sup>20</sup>, FinnGen<sup>21</sup>,  
89 and Biobank Japan<sup>22</sup> – linking individual-level genomic data with electronic health records (EHRs)  
90 presents opportunities to further explore the relationships between genetic liability for a given disorder  
91 (typically in the form of polygenic scores, or PGS), and a wide range of clinical phenotypes. This  
92 hypothesis free approach, referred to as a phenome-wide association study (PheWAS)<sup>23</sup>, can aid in  
93 identifying novel trait associations and understanding pleiotropic effects. Recent PheWAS using PGS  
94 for other psychiatric problems (e.g., schizophrenia, bipolar disorder, and depression) have identified  
95 widespread associations between PGS and a host of psychiatric and other medical diagnoses<sup>24,25</sup>.

96 In the current analysis, we applied a PheWAS of a PGS derived from a multivariate GWAS of  
97 externalizing disorders/problems (EXT)<sup>11</sup> to the EHRs of the Department of Veterans Affairs Million

98 Veterans Program Cohort (MVP) <sup>26</sup>. A previous PheWAS of the EXT PGS in the Vanderbilt University  
99 Medical Center Biobank (BioVU) <sup>27</sup> identified over 250 associations with EHR derived medical  
100 conditions <sup>11</sup>, but was limited to individuals of European ancestries. We extend the PheWAS of the EXT  
101 PGS all veterans of European, African, and Hispanic/Latin American ancestries. We further compared  
102 results from our primary PheWAS of EXT to analogously derived results for PGSs of schizophrenia  
103 (SCZ) <sup>28</sup>, depression (DEP) <sup>29</sup>, and suicide attempt <sup>13</sup>, including joint modeling of these PGS. Finally, we  
104 attempted to replicate the findings from the primary PheWAS in a holdout sample of related veterans  
105 (full siblings). Genetic differences between siblings are random; therefore, within sibship associations  
106 between the EXT PGS and health outcomes cannot be attributed to between-family sources of  
107 confounding, such as environmental exposures that are correlated with population stratification.

## 108 **METHODS**

### 109 *The Million Veterans Program Cohort (MVP)*

110 Launched in 2010, MVP is a landmark endeavor that links genomic laboratory testing, survey-  
111 based self-report data, and EHRs, with the goal of creating a “mega-biobank” and evidence base for  
112 precision medicine initiatives <sup>26</sup>. The 850,000 enrolled participants reflect the population that utilizes the  
113 Veterans Health Administration (VHA), with over-representation of older and male individuals, as well  
114 as higher rates of multiple morbidities and chronic conditions related to externalizing compared to the  
115 general population <sup>30,31</sup>. Participants are active users of the VHA healthcare system and were recruited  
116 through invitational mailings or by MVP staff while receiving clinical care. Informed consent and  
117 authorization per the Health Insurance Portability and Accountability Act (HIPAA) were the only other  
118 inclusion criteria. Once enrolled, participants EHR data are linked, including diagnostic codes, routine  
119 laboratory results, and medications. The current analysis uses Release 4 of MVP data, as collection is  
120 ongoing. The present analyses were approved by the VA Central Institutional Review Board (IRB), and  
121 all participants provided written informed consent.

122 *Genotyping*

123 MVP participants were genotyped on the MVP 1.0 Axiom array<sup>32</sup>. Genetic ancestries of  
124 participants were classified using the HARE (harmonized ancestry and race-ethnicity) method<sup>33</sup>, which  
125 harmonizes the closest ancestral population with self-identified race and ethnicity. Genotypic data were  
126 imputed to the Trans-Omics for Precision Medicine (TOPMed) reference panel<sup>34</sup>, which specifically  
127 improves imputation quality in non-European and admixed ancestries<sup>35</sup>. As of Release 4, there are  
128 467,101 veterans of predominantly European ancestries (EUR), 124,717 veterans of predominantly  
129 African ancestries (AFR), 52,416 veterans of predominantly Hispanic/Latin American ancestries (HIS),  
130 and 8,362 veterans of predominantly Asian ancestries (ASN) with available genotypic and electronic  
131 health record data. In the current analysis, we included data from the EUR, AFR, and HIS groups, as  
132 these had sufficient statistical power for the number of associations tested. Within each of these HARE  
133 categories, we restricted analyses to unrelated individuals, excluding all those who were second-  
134 degree relatives or closer (KING coefficient  $\leq 0.177$ ) and limited to those whose primary self-identified  
135 race-ethnicity matched their HARE classification, so as to not introduce potential confounding driven by  
136 well-characterized health disparities related to racism and racial discrimination<sup>36,37</sup>.

137 *Electronic health records (EHRs)*

138 Our main outcomes for the analyses were phecodes, which are clusters of ICD-9/10-CM codes in  
139 the EHR<sup>38,39</sup> and have been validated previously<sup>40,41</sup>. We considered individuals as having a diagnosis  
140 for any given phecode if there were two or more occurrences of that phecode in their EHR. Prior  
141 analyses have shown that 2 or more phecodes as a good predictor diagnosis<sup>24,25</sup>. Phecodes are  
142 grouped into 17 categories: infectious diseases, neoplasms, endocrine/metabolic, hematopoietic,  
143 mental disorders, neurological, sense organs, circulatory system, respiratory, digestive, genitourinary,  
144 pregnancy complications, dermatologic, musculoskeletal, congenital anomalies, symptoms, and injuries  
145 & poisonings. We excluded phecodes for which there were fewer than 100 cases with the diagnosis. In  
146 total, there were 1,652 phecodes, 1,436 phecodes, and 1,125 phecodes with  $N \geq 100$  diagnoses  
147 available for EUR, AFR, and HIS veterans, respectively.

148 *Polygenic scores (PGS)*

149 We estimated PGSs derived from four large-scale GWASs: externalizing problems (EXT,  
150  $N_{\text{effective}} = 1,492,085$ )<sup>11</sup>, depression (DEP,  $N_{\text{effective}} = 449,856$ )<sup>29</sup>, schizophrenia (SCZ,  $N_{\text{effective}} = 117,498$ )  
151 <sup>28</sup>, and suicide attempt (SUI,  $N_{\text{effective}} = 91,230$ )<sup>13</sup>. We focus on these additional PGS because: 1)  
152 internalizing (e.g., depression) and thought (e.g., schizophrenia) disorders are genetically correlated  
153 with EXT<sup>11</sup> and could confound associations between EXT and phenotypes of interest. 2) We included  
154 the SUI PGS, specifically, to explore the possibility of suicide risk related to impulsivity and behavioral  
155 disinhibition, independent of risk for specific to SUI or related to DEP. While PheWAS is an agnostic  
156 approach, included the additional measures of genetic liability to explore the robustness of potential  
157 associations with phenotypes of particular public health relevance to the veteran population (e.g.,  
158 suicidal behaviors).

159 In EUR ancestries, we created PGS using PRS-CS<sup>42</sup>, a Bayesian regression and continuous  
160 shrinkage method that uses an external reference panel (e.g., 1000 Genomes Phase III European  
161 subsample) to estimate the posterior effect sizes for each SNP in a given set of GWAS summary  
162 statistics. In the AFR and HIS ancestries, we used a different approach. PGS accuracy decays  
163 continuously as target samples differ in ancestry from the discovery GWAS, even within relatively  
164 homogenous genetic clusters<sup>43</sup> and we lacked ancestry-matched GWAS for EXT to use methods that  
165 boost power of PGS in underpowered samples, such as PRS-CSx<sup>44</sup>. Therefore, in the AFR and HIS  
166 ancestries, we created EXT PGS using the 579 loci reported in the externalizing GWAS, as using  
167 genome wide significant variants is more robust to population stratification<sup>45</sup>. We standardized all PGS  
168 to Z-scores.

169 *Analytic plan*

170 We first conducted a phenome-wide association study (PheWAS) to examine the association  
171 between the EXT PGS and 1,652 phecodes within EUR ancestries, using logistic regression and  
172 covarying for age, sex, and twenty ancestry principal components (PCs). We also conducted the same  
173 PheWAS for the DEP, SCZ, and SUI PGSs to compare the overlap of significant associations from the

174 four independent PheWAS. Next, we attempted to replicate any phenome-wide significant associations  
175 within AFR and HIS ancestries. Third, we performed a conditional PheWAS, including all PGS in the  
176 same model, to test whether associations between EXT remained while controlling for DEP, SCZ, and  
177 SUI PGSs. We also co-varied for total comorbidity burden, created by tabulating the number of unique  
178 phecode terms for which an individual met criteria for the 600 top parent codes, and then transforming  
179 this count using an inverse normal transformation<sup>25</sup>. Lastly, to control for additional confounders, we  
180 used a subset of full siblings ( $N = 12,127$ ) identified through genetic data, to test for associations  
181 between EXT and phecodes within-family. For within-family models, we used a linear probability model  
182 as opposed to logistic regression, as the fixed effects logistic regression can provide biased estimates  
183 when the number of observations per group is small<sup>46</sup>. We applied a multiple testing correction for  
184 1,652 tests across the 4 PGS included in the analyses for EUR ancestries ( $p < .05/6608 = p < 7.57 \times 10^{-4}$ ).  
185 We used a less conservative approach to multiple testing in the AFR and HIS ancestries given the  
186 expected reduction in predictive power of PGS, applying a false discovery rate (FDR)<sup>47</sup> of 5%.

## 187 **RESULTS**

### 188 *Main PheWAS of EXT PGS*

189 Of the 467,101 veterans of broadly European ancestries (EUR), we filtered down to a sample of  
190 438,384 unrelated individuals. After removing those with any missing information, those without  
191 available EHR data, and retaining those whose primary identity was Non-Hispanic White,  $N = 406,254$   
192 participants were available for the initial PheWAS in EUR (mean age = 69.8, SD = 14.1; 92.8% male).  
193 We performed a similar process for veterans of African (AFR,  $N = 112,390$ , mean age = 63.5, SD =  
194 12.6; 86.3% male) and Hispanic/Latin American (HIS,  $N = 42,179$ , mean age = 60.5, SD = 16.2; 90.4%  
195 male) ancestries. eTable 1 presents all demographic statistics.

196 Of the 1,652 total phecodes we tested, 619 (37.5%) were significantly associated with EXT PGS  
197 after correcting for multiple testing. We observed significant associations for EXT PGS across all  
198 virtually all bodily systems, with the strongest positive associations being between EXT PGS and *viral*

199 *hepatitis C* (OR = 1.49; 95% CI = 1.46, 1.51), *substance addiction and disorders* (OR = 1.39; 95% CI =  
200 1.37, 1.40), *embolism/thrombosis of the abdominal aorta* (OR = 1.36; 95% CI = 1.22, 1.51), *tobacco*  
201 *use disorders* (OR = 1.35; 95% CI = 1.34, 1.36), and *cancer of the mouth* (OR = 1.33; 95% CI = 1.17,  
202 1.50). We also observed robust negative associations with *autism* (OR = 0.76; 95% CI = 0.68, 0.86),  
203 *intestinal infection* (OR = 0.85; 95% CI = 0.80, 0.90), *disorders of bilirubin excretion* (OR = 0.90; 95% CI  
204 = 0.86, 0.94), and *prostate cancer* (OR = 0.97; 95% CI = 0.95, 0.98).

205 Figure 1, Panel A presents the distribution in EXT effect sizes (odds ratios, ORs) for all 619  
206 significant PheWAS associations by phecode domain. Across domain, there is a general enrichment for  
207 positive associations with EXT: the median effect sizes are generally above one and greater levels of  
208 EXT risk are generally associated with increased risk of diagnoses. The one exception is pregnancy  
209 complications, which had no significant associations and is not unexpected given the predominantly  
210 male composition of this study sample. While there was variation in effect sizes across groupings of  
211 phecodes, the largest associations, on average, were for phecodes related to respiratory issues, mental  
212 disorders, injuries & poisonings, and infectious diseases (median ORs = 1.12 – 1.14).

213 Lastly Panel B presents the breakdown of independent phenome-wide significant associations  
214 across the EXT, DEP, SCZ and SUI PGS<sup>48,49</sup>. Across all the 6,608 tests (4 PGS with 1,652 phecodes),  
215 779 (11.78%) of the associations had p-values below the Bonferroni corrected threshold ( $p < 7.58 \times 10^{-4}$ ).  
216 The majority of these associations (56.1 %, N = 437) involved three of the four PGSs, and over 70%  
217 (N = 561) involved two or more of the PGSs. The full results are in eTable 2.

#### 218 *Multi-Ancestry Verification of EXT PGS*

219 We next examined whether EXT PGS associations that were significant in the main EUR  
220 analyses were comparable in the AFR and HIS MVP participants. Among the 619 significant  
221 associations in veterans of EUR ancestries, 614 were available ( $N_{DX} \geq 100$ ) and 73 (11.9%) were  
222 significant in veterans of AFR ancestries, 584 were available and 26 (4.5%) were significant in veterans  
223 of HIS ancestries after correcting for multiple testing. Panel A in Figure 2 presents the proportion of  
224 significant association identified in the EUR PheWAS that replicated in either AFR or HIS ancestries, by



225 phecode domain. Of all the domains, phecodes related to *mental disorders* had the highest of  
226 proportion of associations that replicated across ancestry (~25%). Panel B includes a subset of these  
227 replicated associations, which included SUDs (alcohol, tobacco, and other substances), viral hepatitis,  
228 and problems related to the respiratory system (e.g., cancer, chronic airway obstruction, and respiratory  
229 failure). As expected, while these associations were significant, there was a large attenuation in effect  
230 sizes, consistent with using PGS derived from ancestries that differ from the target sample<sup>44,45</sup> (full  
231 results in eTable 3).

### 232 *Joint PheWAS of EXT, DEP, SCZ, and SUI PGSs*

233 Next, we investigated whether the 619 phecodes associated with EXT PGS remained  
234 associated in models after conditioning on the DEP, SCZ, and SUI PGS. Of the 619 associations with  
235 EXT, 494 (79.8%) remained associated after conditioning on the other PGS and correcting for multiple  
236 testing ( $p < .05/619 = p < 8.08 \times 10^{-5}$ ). Effect sizes ranged from 1.02 for overweight/obesity (phecode =  
237 278; 95% CI = 1.01, 1.03) to 1.44 for viral hepatitis C (phecode 070.3; 95% CI = 1.42, 1.47) for traits  
238 positively related to the EXT PGS. Effect sizes for negative associations ranged from 0.74 for a  
239 diagnosis of autism (phecode = 313.3; 95% CI = 0.65, 0.84) to 0.97 for melanomas of the skin  
240 (phecode = 172.1; 95% CI = 0.96, 0.99). Associations that were no longer significant spanned all bodily  
241 systems, and included schizophrenia, rheumatoid arthritis, and chronic sinusitis, among many others.  
242 The median OR for the EXT PGS dropped from 1.10 in the marginal associations with these phecodes  
243 to 1.08 after conditioning on the other PGSs. Figure 2B presents a subset of the larger associations  
244 (OR >1.15, full results in Supplementary Table 4). While there was attenuation in effect sizes, EXT  
245 remained associated with the various phecodes independent of risk for DEP, SCZ, or SUI.

246 To examine whether EXT was associated with any of the 619 outcomes due to the increased  
247 number of comorbidities associated with higher levels of externalizing, we ran the PheWAS including a  
248 covariate for total comorbidity burden in veterans of European ancestries. Figure 3, Panel B includes  
249 box plots for the main PheWAS (EXT PGS only), the conditional PheWAS (EXT, DEP, SCZ, and SUI  
250 PGSs), and the model with all PGSs and the comorbidity score. There is an attenuation in median

251 effect size across each set of analyses. Of the 619 significant associations identified in the main  
252 PheWAS, 188 remained associated with EXT after adjusting for total comorbidity burden and the  
253 additional PGSs, with the top associations remaining those for viral hepatitis, substance use disorders,  
254 and complications from smoking (full results in eTable 5). Of these 188 scores, 181 (96%) were not  
255 phenotypes directly related to EXT (e.g., SUDs) and 165 (88%) were outside the domain of *mental*  
256 *disorders*.

### 257 *Within-family replication of Main PheWAS Results*

258 Finally, we investigated the 494 phecodes that remained significantly associated with EXT in the  
259 conditional PheWAS using a sample of full siblings from the broader MVP ( $N = 12,127$ ). Of these 494  
260 phecodes, 439 had available information in the subset of related veterans. Within these remaining 439  
261 associations, 77 were marginally significant ( $p < .05$ ) but only 13 of these associations remained after  
262 correcting for multiple testing using a false discovery rate (FDR) of 5%. Though many of the SUD  
263 phecodes were strongly associated in the main PheWAS and marginally significant in the within-family  
264 associations, only the tobacco use disorders association survived corrections for multiple testing ( $\beta_{within}$   
265  $= 0.049$ ,  $p < 1.28 \times 10^{-7}$ , see eTable 6 for full results).

266 Interestingly, the associations that remained significant within-family were overwhelmingly  
267 related to downstream consequences of various forms of substance use, including viral hepatitis C,  
268 chronic liver disease and cirrhosis, chronic airway obstruction, and ischemic heart disease. Figure 3  
269 shows the relative effect sizes from the linear probability models with (ordinary least squares, or OLS)  
270 and without (within-family) family fixed-effects. For some of the associations we see a marked decrease  
271 in effect size. Therefore, a non-trivial portion of the association between the EXT PGS and these  
272 phenotypes may be due to some type of confounding. However, for viral hepatitis C, tobacco use  
273 disorder, and chronic airway obstruction, there is little or no attenuation, and these estimates could  
274 reflect some type of causal pathway between underlying risk and disease state.

## 275 **DISCUSSION**

276 Problems related to behavioral disinhibition, commonly referred to as externalizing, may have  
277 detrimental consequences for health and well-being. We and others have shown that risk for EXT  
278 disorders overlaps with a variety of key public health outcomes at both the genetic and phenotypic level  
279 <sup>11,13–18,50</sup>. In the current analysis, we leveraged these recent, novel insights into the underlying genetic  
280 basis of EXT, extended analyses to multiple ancestries, and evaluated their correlates in the largest  
281 integrated healthcare system in the US.

282 As expected, some of the strongest associations across all of the model specifications were in  
283 the phecode domain of *mental disorders*. Specifically, substance use disorders (alcohol, tobacco, and  
284 other substances) were among the strongest associations, though other psychiatric problems, including  
285 conduct disorder, personality disorders, and attention deficit/hyperactivity disorder (ADHD) were also  
286 associated. Some components, specifically problematic alcohol use, smoking, and ADHD, contributed  
287 to the multivariate GWAS used for creating the EXT PGS <sup>11</sup>, but analyses in the original EXT paper  
288 showed that the latent factor was not driven by any single indicator, so it is unlikely that associations  
289 are driven any indicator-outcome similarity. Overall, these associations help to validate the EXT PGS  
290 within MVP and further demonstrate the utility of focusing on shared risk across psychiatric conditions<sup>7</sup>.

291 Results from the main PheWAS also replicated the diversity of bodily systems that were  
292 associated with risk for externalizing disorders <sup>11</sup>. For example, the EXT PGS remained associated  
293 with suicide-related phecodes (suicidal ideation, suicide attempt, and self-harm) even when  
294 conditioning on the suicide PGS and other comorbidities, suggesting that the association between  
295 externalizing and suicidal behaviors is independent of risk for the other forms of psychiatric problems  
296 (e.g., depression), supporting the role of impulsivity in suicide risk <sup>51</sup>. In total, 181 (~96%) of the  
297 associations that survived correction for multiple testing and covarying for other PGS and comorbidities  
298 were phenotypes traditionally used to measure externalizing (e.g., ADHD, SUDs). Overall, these results  
299 point to a robust pathway between risk for externalizing disorders and numerous medical conditions

300 that: 1) replicated across ancestry, 2) was not explained by risk for other common forms of psychiatric  
301 problems, and 3) could not be fully explained by documented comorbidities.

302 The EXT PGS was associated with *reduced* risk for 6 phecodes: prostate cancer, melanoma,  
303 disorders of bilirubin excretion, autism, celiac disease, and flat foot. While associations may reflect a  
304 true reduced risk, the negative associations may also reflect our use of lifetime diagnosis. Because  
305 several of these diseases are strongly age-graded, supposedly protective associations may reflect bias  
306 due to mortality selection. Future work can leverage the longitudinal EHR data in MVP to characterize  
307 the association between and early mortality to determine whether there is any true protective effect.

308 The expansive MVP cohort allowed us the opportunity to explore the possibility of confounding  
309 influences via a *novel* approach: leveraging an appreciable number of full-siblings that comprise less  
310 than 2% of the overall cohort. The within-family analyses presented an additional test of whether EXT is  
311 simply a correlate or potentially causally related to various phecodes. In the holdout sample of full  
312 siblings, only a portion of the associations (13/439, 3.0%) remained associated after correcting for  
313 multiple testing. While suicide ideation, attempt and self-harm was one of the stronger associations in  
314 the PheWAS, it did not replicate on a within-family basis. This may have been due to the relatively few  
315 cases of suicidal ideation, attempt or self-harm in the EHR of the smaller within-family sample (n = 205,  
316 1.7%). In terms of SUDs, only tobacco use disorders remained significant after multiple testing  
317 correction, though alcohol related disorders (phecode 317) was marginally significant. There was  
318 insufficient within-family variation to include substance and addiction disorders (phecode 316) in the  
319 within-family models. Moreover, many of the associations that replicated within-family were likely  
320 *consequences* of SUDs. These included chronic airway obstruction (smoking-related), chronic liver  
321 disease and cirrhosis (alcohol-related), and viral hepatitis C (intravenous drug use related). The within-  
322 family associations point to the potential causal impact of risk for externalizing on these medical  
323 conditions, likely mediated through SUDs. It is important to note that even though within-family  
324 associations are robust to confounding, they can be biased in the presence of genetic nurture and  
325 sibling effects<sup>52</sup>.

326 It is important to note that even though we detected a large number of significant associations  
327 with the EXT polygenic score, many of the effect sizes are too small to be clinically relevant. The utility  
328 of polygenic scores in clinical settings is an ongoing discussion<sup>53,54</sup>. Recent work in substance use  
329 disorders has shown that PGS are not sufficiently powered to meaningfully identify individuals at  
330 increased risk of developing SUDs<sup>55</sup>, especially when well-known social or clinical risk factors are  
331 included in the same model<sup>50</sup>.

332 Our analysis has several important limitations. First, although we included large samples of  
333 multiple ancestries, PGS were derived from a GWAS of primarily European ancestries. Consistent with  
334 recent observations of other PGS in MVP<sup>25</sup>, the EXT PGS was associated with many of the traits within  
335 the AFR and HIS samples, but the effect sizes were highly attenuated. Large-scale discovery GWAS in  
336 diverse cohorts are vital to ensuring that PGS perform as well in these groups and that any benefit of  
337 precision medicine is shared equitably across the population<sup>56</sup>. Second, results from this sample may  
338 not be generalizable to the broader U.S. population. While generally representative of the VA, MVP is  
339 still a selected subset comprising primarily male individuals. Additional work is needed to ensure that  
340 the study results generalize beyond the VA. Third, we did not examine PGS in conjunction with social  
341 and environmental factors. Both polygenic and environmental risk factors are important for  
342 understanding key outcomes in veterans' health, including substance use disorders<sup>50</sup>, major  
343 depressive disorder<sup>57</sup>, and other mental health problems<sup>58</sup>. Many veterans are at risk for adverse  
344 environmental experiences due to poverty, minority status, and physical and psychiatric challenges<sup>59</sup>.  
345 Future work should endeavor to move beyond the focus on genetic or environmental risk in isolation  
346 and towards integrated approaches. Lastly, while our results are largely robust to additional confounds  
347 and replicate within-family, we cannot completely rule out non-causal reasons for the observed  
348 associations.

349 Risk for externalizing disorders is correlated to many outcomes of serious public health concern.  
350 A predisposition towards greater levels of externalizing is associated with increased risk of substance  
351 use disorders, suicide related behaviors, and other chronic medical conditions. Our analysis

352 demonstrated that externalizing risk is equally important among the US veteran population who receive  
353 their healthcare within the VA system. Intervention and prevention efforts that identify ways to target  
354 and monitor the behavioral manifestations of externalizing risk (e.g., improving impulse control) could  
355 substantially improve morbidity and mortality outcomes.

356

## 357 **ACKNOWLEDGEMENTS**

358 The views expressed in this article are those of the authors, and do not necessarily reflect the position  
359 or policy of the Department of Veterans Affairs (VA). The Million Veteran Program (MVP) is funded by  
360 grant #MVP000 from the VA Office of Research and Development (ORD). This work was also funded  
361 by grant #1I01CX001729 from the Clinical Services Research & Development (CSRD) Service of VA  
362 ORD to Drs. Beckham and Kimbrel, by the MVP CHAMPION program, which is a collaboration  
363 between the VA and the Department of Energy (DoE), and by a CSRD Senior Research Scientist  
364 award (IK6BX003777) to Dr. Beckham. Drs. Barr, Bigdeli, Aslan, and Harvey are supported by VA  
365 Cooperative Studies Program (CSP) #572. Drs. Peterson, Bigdeli, and Meyers are supported by the  
366 National Institute of Mental Health (R01MH125938). Dr. Peterson is also supported by the National  
367 Institute on Alcohol Abuse and Alcoholism (P50AA022537) and the Brain Behavior Research  
368 Foundation NARSAD grant 28632 PS Fund. Drs. Barr and Dick are also supported by the National  
369 Institute of Drug Abuse (R01DA050721) and the National Institute of Alcohol Abuse and Alcoholism  
370 (R01AA015416). Dr. Sanchez-Roige was supported by funds from the California Tobacco-Related  
371 Disease Research Program (TRDRP; Grant Number T29KT0526 and T32IR5226) and the National  
372 Institute on Drug Abuse (DP1DA054394). Dr. Mallard is supported by funds from NIH T32HG010464.  
373 The content is solely the responsibility of the authors and does not necessarily represent the official  
374 views of the National Institutes of Health. Dr. Barr had full access to all the data in the study and takes  
375 responsibility for the integrity of the data and the accuracy of the data analysis.

376

377 We would also like to thank The Externalizing Consortium for sharing the GWAS summary statistics of  
378 externalizing. The Externalizing Consortium: Principal Investigators: Danielle M. Dick, Philipp  
379 Koellinger, K. Paige Harden, Abraham A. Palmer. Lead Analysts: Richard Karlsson Linnér, Travis T.  
380 Mallard, Peter B. Barr, Sandra Sanchez-Roige. Significant Contributors: Irwin D. Waldman. The  
381 Externalizing Consortium has been supported by the National Institute on Alcohol Abuse and  
382 Alcoholism (R01AA015416 -administrative supplement), and the National Institute on Drug Abuse

383 (R01DA050721). Additional funding for investigator effort has been provided by K02AA018755,  
384 U10AA008401, P50AA022537, as well as a European Research Council Consolidator Grant (647648  
385 EdGe to Koellinger). The content is solely the responsibility of the authors and does not necessarily  
386 represent the official views of the above funding bodies. The Externalizing Consortium would like to  
387 thank the following groups for making the research possible: 23andMe Inc., Add Health, Vanderbilt  
388 University Medical Center's BioVU, Collaborative Study on the Genetics of Alcoholism (COGA), the  
389 Psychiatric Genomics Consortium's Substance Use Disorders working group, UK10K Consortium, UK  
390 Biobank, and Philadelphia Neurodevelopmental Cohort. We would like to thank the many studies that  
391 made these consortia possible, the researchers involved, and the participants in those studies, without  
392 whom this effort would not be possible. We would also like to thank the research participants and  
393 employees of 23andMe.

394

395 Most importantly, we would like to thank the U.S. Veteran participants in MVP for their service, and for  
396 their time, samples, and continued participation in VA research. Without them, this work would not be  
397 possible.

398

399



400 **REFERENCES**

- 401 1. Ferrari A. Global, regional, and national burden of 12 mental disorders in 204 countries and  
402 territories, 1990–2019: a systematic analysis for the Global Burden of Disease Study 2019.  
403 *Lancet Psychiatry*. 2022;9(2):137-150. doi:10.1016/S2215-0366(21)00395-3
- 404 2. Murray CJL, Mokdad AH, Ballestros K, et al. The state of US health, 1990-2016: Burden of  
405 diseases, injuries, and risk factors among US states. *JAMA - Journal of the American Medical*  
406 *Association*. 2018;319(14):1444-1472. doi:10.1001/jama.2018.0158
- 407 3. Reitsma MB, Fullman N, Ng M, et al. Smoking prevalence and attributable disease burden in 195  
408 countries and territories, 1990–2015: a systematic analysis from the Global Burden of Disease  
409 Study 2015. *The Lancet*. 2017;389(10082):1885-1906. doi:[https://doi.org/10.1016/S0140-](https://doi.org/10.1016/S0140-6736(17)30819-X)  
410 [6736\(17\)30819-X](https://doi.org/10.1016/S0140-6736(17)30819-X)
- 411 4. Degenhardt L, Charlson F, Ferrari A, et al. The global burden of disease attributable to alcohol  
412 and drug use in 195 countries and territories, 1990–2016: a systematic analysis for the Global  
413 Burden of Disease Study 2016. *Lancet Psychiatry*. 2018;5(12):987-1012. doi:10.1016/S2215-  
414 0366(18)30337-7
- 415 5. Anttila V, Bulik-Sullivan B, Finucane HK, et al. Analysis of shared heritability in common  
416 disorders of the brain. *Science (1979)*. 2018;360(6395):eaap8757. doi:10.1126/science.aap8757
- 417 6. Achenbach TM. The classification of children's psychiatric symptoms: a factor-analytic study.  
418 *Psychol Monogr*. 1966;80(7):1-37. doi:10.1037/H0093906
- 419 7. Kotov R, Cicero DC, Conway CC, et al. The Hierarchical Taxonomy of Psychopathology (HiTOP)  
420 in psychiatric practice and research. *Psychol Med*. 2022;52(9):1666-1678.  
421 doi:10.1017/S0033291722001301
- 422 8. Hicks BM, Krueger RF, Iacono WG, McGue M, Patrick CJ. Family transmission and heritability of  
423 externalizing disorders: A Twin-Family Study. *Arch Gen Psychiatry*. 2004;61(9):922-928.  
424 doi:10.1001/archpsyc.61.9.922

- 425 9. Krueger RF, Hicks BM, Patrick CJ, Carlson SR, Iacono WG, McGue M. Etiological  
426 connections among substance dependence, antisocial behavior and personality: Modeling the  
427 externalizing spectrum. *J Abnorm Psychol.* 2002;111(3):411-424. doi:10.1037//0021-  
428 843x.111.3.411
- 429 10. Barr PB, Dick DM. The Genetics of Externalizing Problems. *Curr Top Behav Neurosci.*  
430 2020;47:93-112. doi:10.1007/7854\_2019\_120
- 431 11. Karlsson Linnér R, Mallard TT, Barr PB, et al. Multivariate analysis of 1.5 million people identifies  
432 genetic associations with traits related to self-regulation and addiction. *Nat Neurosci.* Published  
433 online 2021:1-10. doi:10.1038/s41593-021-00908-3
- 434 12. Baselmans B, Hammerschlag AR, Noordijk S, et al. The Genetic and Neural Substrates of  
435 Externalizing Behavior. *Biological Psychiatry Global Open Science.* 2022;2(4):389-399.  
436 doi:10.1016/j.bpsgos.2021.09.007
- 437 13. Mullins N, Kang JE, Campos AI, et al. Dissecting the Shared Genetic Architecture of Suicide  
438 Attempt, Psychiatric Disorders, and Known Risk Factors. *Biol Psychiatry.* 2022;91(3):313-327.  
439 doi:10.1016/j.biopsych.2021.05.029
- 440 14. Johnson EC, Aliev F, Meyers JL, et al. Associations between Suicidal Thoughts and Behaviors  
441 and Genetic Liability for Cognitive Performance, Depression, and Risk-Taking in a High-Risk  
442 Sample. *Complex Psychiatry.* 2021;7(1-2):34-44. doi:10.1159/000517169
- 443 15. Bigdeli T, Barr PB, Rajeevan N, et al. Correlates of suicidal behaviors and genetic risk among  
444 United States veterans with schizophrenia or bipolar I disorder. *medRxiv.* Published online  
445 March 8, 2023:2023.03.06.23286866. doi:10.1101/2023.03.06.23286866
- 446 16. Kranzler HR, Zhou H, Kember RL, et al. Genome-wide association study of alcohol consumption  
447 and use disorder in 274,424 individuals from multiple populations. *Nat Commun.*  
448 2019;10(1):1499. doi:10.1038/s41467-019-09480-8

- 449 17. Demontis D, Rajagopal VM, Thorgeirsson TE, et al. Genome-wide association study implicates  
450 CHRNA2 in cannabis use disorder. *Nat Neurosci.* 2019;22(7):1066-1074. doi:10.1038/s41593-  
451 019-0416-1
- 452 18. Deak JD, Clark DA, Liu M, et al. Alcohol and nicotine polygenic scores are associated with the  
453 development of alcohol and nicotine use problems from adolescence to young adulthood.  
454 *Addiction.* 2022;117(4):1117-1127. doi:10.1111/add.15697
- 455 19. The All of Us Research Program Investigators. The “All of Us” Research Program. *New England*  
456 *Journal of Medicine.* 2019;381(7):668-676. doi:10.1056/nejmsr1809937
- 457 20. Bycroft C, Freeman C, Petkova D, et al. The UK Biobank resource with deep phenotyping and  
458 genomic data. *Nature.* 2018;562(7726):203-209. doi:10.1038/s41586-018-0579-z
- 459 21. Kurki MI, Karjalainen J, Palta P, et al. FinnGen provides genetic insights from a well-phenotyped  
460 isolated population. *Nature 2023 613:7944.* 2023;613(7944):508-518. doi:10.1038/s41586-022-  
461 05473-8
- 462 22. Nagai A, Hirata M, Kamatani Y, et al. Overview of the BioBank Japan Project: Study design and  
463 profile. *J Epidemiol.* 2017;27(3):S2-S8. doi:10.1016/j.je.2016.12.005
- 464 23. Denny JC, Ritchie MD, Basford MA, et al. PheWAS: Demonstrating the feasibility of a phenome-  
465 wide scan to discover gene-disease associations. *Bioinformatics.* 2010;26(9):1205-1210.  
466 doi:10.1093/bioinformatics/btq126
- 467 24. Zheutlin AB, Dennis J, Linnér RK, et al. Penetrance and pleiotropy of polygenic risk scores for  
468 schizophrenia in 106,160 patients across four health care systems. *American Journal of*  
469 *Psychiatry.* 2019;176(10):846-855. doi:10.1176/appi.ajp.2019.18091085
- 470 25. Bigdeli TB, Voloudakis G, Barr PB, et al. Penetrance and Pleiotropy of Polygenic Risk Scores for  
471 Schizophrenia, Bipolar Disorder, and Depression among Adults in the US Veterans Affairs  
472 Health Care System. *JAMA Psychiatry.* 2022;79(11):1092-1101.  
473 doi:10.1001/jamapsychiatry.2022.2742

- 474 26. Gaziano JM, Concato J, Brophy M, et al. Million Veteran Program: A mega-biobank to study  
475 genetic influences on health and disease. *J Clin Epidemiol.* 2016;70:214-223.  
476 doi:10.1016/j.jclinepi.2015.09.016
- 477 27. Davis L. Psychiatric Genomics, Phenomics, and Ethics Research In A 270,000-Person Biobank  
478 (BioVU). *European Neuropsychopharmacology.* 2019;29:S739-S740.  
479 doi:10.1016/J.EURONEURO.2017.06.069
- 480 28. Trubetsky V, Pardiñas AF, Qi T, et al. Mapping genomic loci implicates genes and synaptic  
481 biology in schizophrenia. *Nature.* 2022;604(7906):502-508. doi:10.1038/s41586-022-04434-5
- 482 29. Howard DM, Adams MJ, Clarke TK, et al. Genome-wide meta-analysis of depression identifies  
483 102 independent variants and highlights the importance of the prefrontal brain regions. *Nat*  
484 *Neurosci.* 2019;22(3):343-352. doi:10.1038/s41593-018-0326-7
- 485 30. Kramarow EA, Pastor PN. The health of male veterans and nonveterans aged 25-64: United  
486 States, 2007-2010. *NCHS Data Brief.* 2012;(101):1-8.
- 487 31. Boersma P, Cohen RA, Zelaya CE, Moy E. Multiple Chronic Conditions Among Veterans and  
488 Nonveterans: United States, 2015-2018. *Natl Health Stat Report.* 2021;(153):1-13. Accessed  
489 March 28, 2022. <https://europaepmc.org/article/med/33663648>
- 490 32. Hunter-Zinck H, Shi Y, Li M, et al. Genotyping Array Design and Data Quality Control in the  
491 Million Veteran Program. *Am J Hum Genet.* 2020;106(4):535-548.  
492 doi:10.1016/j.ajhg.2020.03.004
- 493 33. Fang H, Hui Q, Lynch J, et al. Harmonizing Genetic Ancestry and Self-identified Race/Ethnicity in  
494 Genome-wide Association Studies. *Am J Hum Genet.* 2019;105(4):763-772.  
495 doi:10.1016/j.ajhg.2019.08.012
- 496 34. Taliun D, Harris DN, Kessler MD, et al. Sequencing of 53,831 diverse genomes from the NHLBI  
497 TOPMed Program. *Nature.* 2021;590(7845):290-299. doi:10.1038/s41586-021-03205-y
- 498 35. Kowalski MH, Qian H, Hou Z, et al. Use of >100,000 NHLBI Trans-Omics for Precision Medicine  
499 (TOPMed) Consortium whole genome sequences improves imputation quality and detection of

- 500 rare variant associations in admixed African and Hispanic/Latino populations. *PLoS Genet.*  
501 2019;15(12):e1008500. doi:10.1371/journal.pgen.1008500
- 502 36. Williams DR, Sternthal M. Understanding racial-ethnic disparities in health: sociological  
503 contributions. *J Health Soc Behav.* 2010;51 Suppl(1 suppl):S15-27.  
504 doi:10.1177/0022146510383838
- 505 37. Williams DR, Mohammed SA. Discrimination and racial disparities in health: evidence and  
506 needed research. *J Behav Med.* 2009;32(1):20-47. doi:10.1007/s10865-008-9185-0
- 507 38. Denny JC, Bastarache L, Ritchie MD, et al. Systematic comparison of phenome-wide association  
508 study of electronic medical record data and genome-wide association study data. *Nat Biotechnol.*  
509 2013;31(12):1102-1110. doi:10.1038/nbt.2749
- 510 39. Wu P, Gifford A, Meng X, et al. Mapping ICD-10 and ICD-10-CM codes to phecodes: Workflow  
511 development and initial evaluation. *J Med Internet Res.* 2019;21(11):1-13. doi:10.2196/14325
- 512 40. Wei WQ, Teixeira PL, Mo H, Cronin RM, Warner JL, Denny JC. Combining billing codes, clinical  
513 notes, and medications from electronic health records provides superior phenotyping  
514 performance. *Journal of the American Medical Informatics Association.* 2016;23(e1):20-27.  
515 doi:10.1093/jamia/ocv130
- 516 41. Wei WQ, Bastarache LA, Carroll RJ, et al. Evaluating phecodes, clinical classification software,  
517 and ICD-9-CM codes for phenome-wide association studies in the electronic health record. *PLoS*  
518 *One.* 2017;12(7):e0175508.
- 519 42. Ge T, Chen CY, Ni Y, Feng YCA, Smoller JW. Polygenic prediction via Bayesian regression and  
520 continuous shrinkage priors. *Nat Commun.* 2019;10(1):1776. doi:10.1038/s41467-019-09718-5
- 521 43. Ding Y, Hou K, Xu Z, et al. Polygenic scoring accuracy varies across the genetic ancestry  
522 continuum. *Nature* 2023. Published online May 17, 2023:1-8. doi:10.1038/s41586-023-06079-4
- 523 44. Ruan Y, Lin YF, Feng YCA, et al. Improving polygenic prediction in ancestrally diverse  
524 populations. *Nat Genet.* 2022;54(5):573-580. doi:10.1038/s41588-022-01054-7

- 525 45. Sohail M, Maier RM, Ganna A, et al. Polygenic adaptation on height is overestimated due to  
526 uncorrected stratification in genome-wide association studies. *Elife*. 2019;8.  
527 doi:10.7554/eLife.39702
- 528 46. Stammann A, Heiss F, McFadden D. Estimating Fixed Effects Logit Models with Large Panel  
529 Data. In: *Beiträge Zur Jahrestagung Des Vereins Für Socialpolitik 2016: Demographischer*  
530 *Wandel - Session: Microeconometrics, No. G01-V3*. Beiträge zur Jahrestagung des Vereins für  
531 Socialpolitik 2016: Demographischer Wandel - Session: Microeconometrics. ZBW - Deutsche  
532 Zentralbibliothek für Wirtschaftswissenschaften, Leibniz-Informationszentrum Wirtschaft; 2016:1-  
533 40. <http://hdl.handle.net/10419/145837>
- 534 47. Benjamini Y, Hochberg Y. Controlling the False Discovery Rate: A Practical and Powerful  
535 Approach to Multiple Testing. *Journal of the Royal Statistical Society Series B (Methodological)*.  
536 1995;57(1):289-300. <http://www.jstor.org/stable/2346101>
- 537 48. Conway JR, Lex A, Gehlenborg N. UpSetR: an R package for the visualization of intersecting  
538 sets and their properties. *Bioinformatics*. 2017;33(18):2938-2940.  
539 doi:10.1093/BIOINFORMATICS/BTX364
- 540 49. Lex A, Gehlenborg N, Strobel H, Vuillemot R, Pfister H. UpSet: Visualization of Intersecting  
541 Sets. *IEEE Trans Vis Comput Graph*. 2014;20(12):1983-1992. doi:10.1109/TVCG.2014.2346248
- 542 50. Barr PB, Driver MN, Kuo SIC, et al. Clinical, environmental, and genetic risk factors for  
543 substance use disorders: characterizing combined effects across multiple cohorts. *Mol*  
544 *Psychiatry*. 2022;27(11):4633-4641. doi:10.1038/s41380-022-01801-6
- 545 51. Gvion Y, Levi-Belz Y, Hadlaczky G, Apter A. On the role of impulsivity and decision-making in  
546 suicidal behavior. *World J Psychiatry*. 2015;5(3):255. doi:10.5498/WJP.V5.I3.255
- 547 52. Fletcher J, Wu Y, Li T, Lu Q. Interpreting Polygenic Score Effects in Sibling Analysis. *bioRxiv*.  
548 Published online July 17, 2021:2021.07.16.452740. doi:10.1101/2021.07.16.452740
- 549 53. Lewis CM, Vassos E. Polygenic risk scores: From research tools to clinical instruments. *Genome*  
550 *Med*. 2020;12(1):1-11. doi:10.1186/s13073-020-00742-5

- 551 54. Wray NR, Lin T, Austin J, et al. From Basic Science to Clinical Application of Polygenic Risk  
552 Scores: A Primer. *JAMA Psychiatry*. 2021;78(1):101-109. doi:10.1001/jamapsychiatry.2020.3049
- 553 55. Barr PB, Ksinan A, Su J, et al. Using polygenic scores for identifying individuals at increased risk  
554 of substance use disorders in clinical and population samples. *Transl Psychiatry*.  
555 2020;10(1):196. doi:10.1038/s41398-020-00865-8
- 556 56. Martin AR, Kanai M, Kamatani Y, Okada Y, Neale BM, Daly MJ. Clinical use of current polygenic  
557 risk scores may exacerbate health disparities. *Nat Genet*. 2019;51(4):584-591.  
558 doi:10.1038/s41588-019-0379-x
- 559 57. Coleman JRI, Peyrot WJ, Purves KL, et al. Genome-wide gene-environment analyses of major  
560 depressive disorder and reported lifetime traumatic experiences in UK Biobank. *Mol Psychiatry*.  
561 2020;25(7):1430-1446. doi:10.1038/s41380-019-0546-6
- 562 58. Choi KW, Wilson M, Ge T, et al. Integrative analysis of genomic and exposomic influences on  
563 youth mental health. *J Child Psychol Psychiatry*. 2022;63(10):1196-1205.  
564 doi:10.1111/jcpp.13664
- 565 59. Meffert BN, Morabito DM, Sawicki DA, et al. US Veterans Who Do and Do Not Utilize Veterans  
566 Affairs Health Care Services: Demographic, Military, Medical, and Psychosocial Characteristics.  
567 *Prim Care Companion CNS Disord*. 2019;21(1):26992. doi:10.4088/PCC.18m02350  
568  
569

570 **FIGURE CAPTIONS**

571 **Figure 1: PheWAS of Externalizing Polygenic Risk in MVP.** PheWAS associations with EXT PGS in  
572 veterans of the primarily European ancestries (N = 406, 254). Panel A presents the box plots of effect  
573 sizes (odds ratios, OR) for the 619 (out of 1,652) significant PheWAS associations below the Bonferroni  
574 corrected p-value threshold ( $p < 7.57 \times 10^{-6}$ ). Panel B presents an upset plot of overlap between  
575 phenome wide significant associations ( $p < 7.57 \times 10^{-6}$ ) across all four PGS (EXT, DEP, SCZ, and SUI).

576

577 **Figure 2: Multi-Ancestry Results for Externalizing Polygenic Risk in MVP.** Overlap in associations  
578 across European (EUR), African (AFR), and Hispanic/Latin American (HIS) ancestries. Panel A present  
579 the proportion of PGS identified in EUR ancestries that were significant in the AFR and HIS groupings,  
580 by phecode domain. Numbers in parentheses represent the total number of significant associations in  
581 EUR, per phecode domain. Panel B presents selected associations and corresponding effect sizes  
582 (odds ratios, OR) of EXT PGS associations that replicated in either African or Hispanic/Latin American  
583 ancestry groups.

584

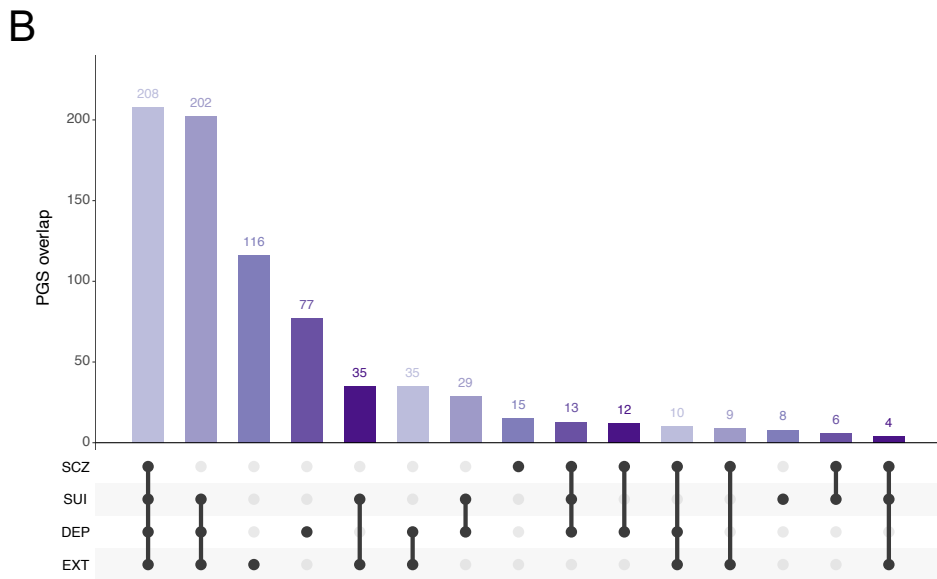
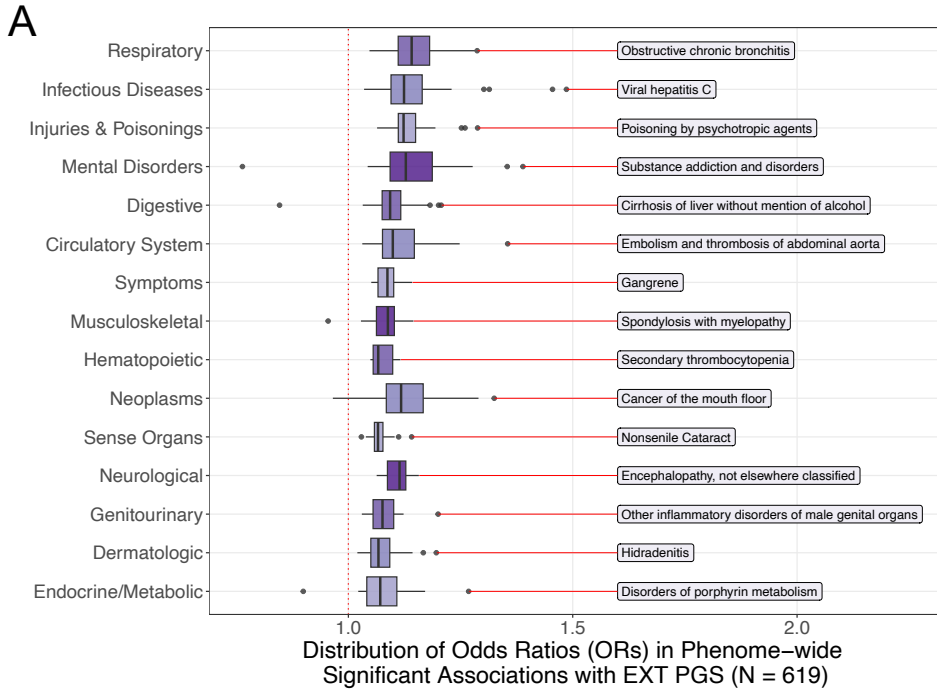
585 **Figure 3: Associations between EXT PGS and Selected Phecodes Accounting for DEP, SCZ, and**  
586 **SUI PGS.** Panel A presents selected associations and their corresponding effect sizes from conditional  
587 PheWAS (EXT + DEP, SCZ, and SUI PGS) in veterans of primarily European ancestries (N = 406, 254)  
588 compared to models with the EXT PGS only (marginal). Panel B presents box plots for the effect sizes  
589 from the 619 significant associations identified in the main PheWAS in: 1) the PheWAS of EXT PGS  
590 only; 2) the PheWAS of EXT and other PGSs; and 3) the PheWAS of EXT, other PGSs, and the total  
591 comorbidity score.

592

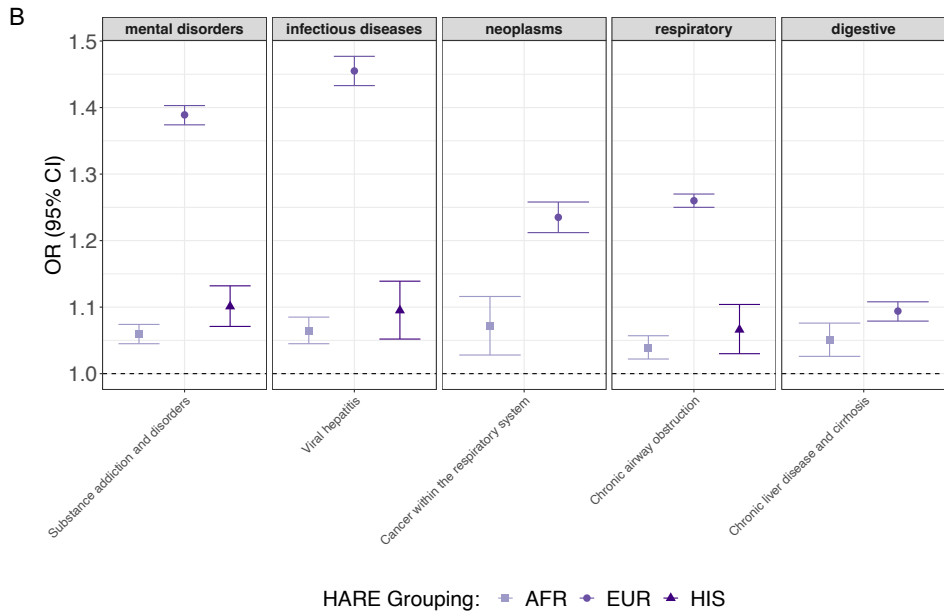
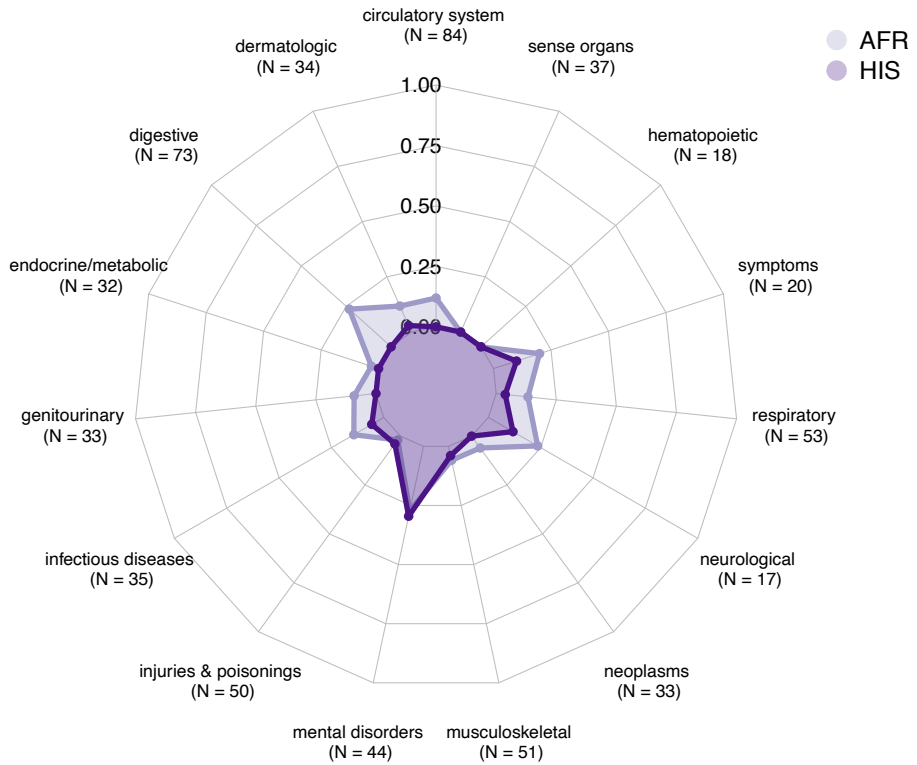
593 **Figure 4: Change in Effect Sizes for EXT PGS in Within-family Models.** Change in effect sizes for  
594 significant associations in a sample of related veterans of primarily European ancestries (N = 12,127).  
595 Estimates represent the change between ordinary least squares models (with clustered standard

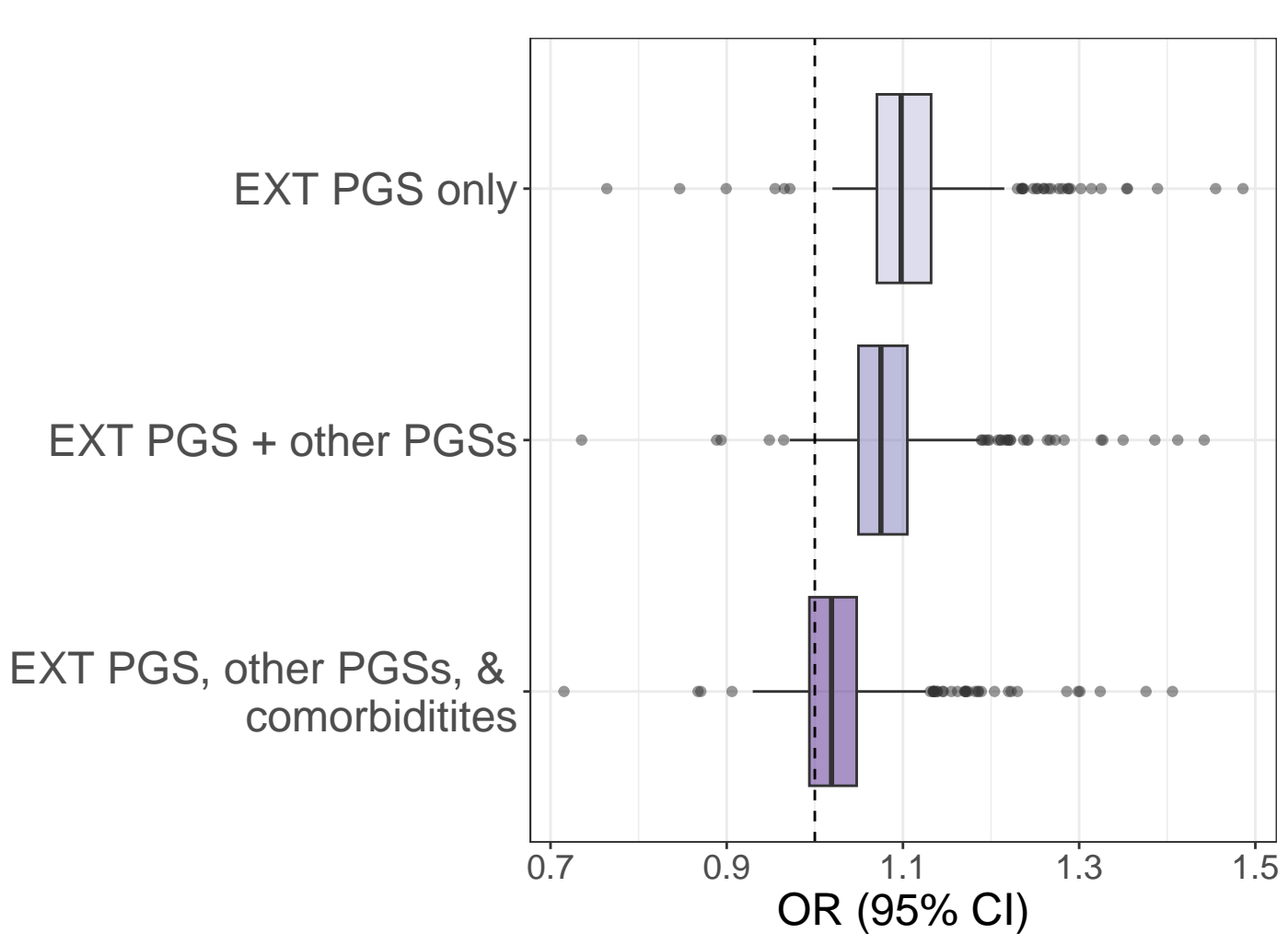
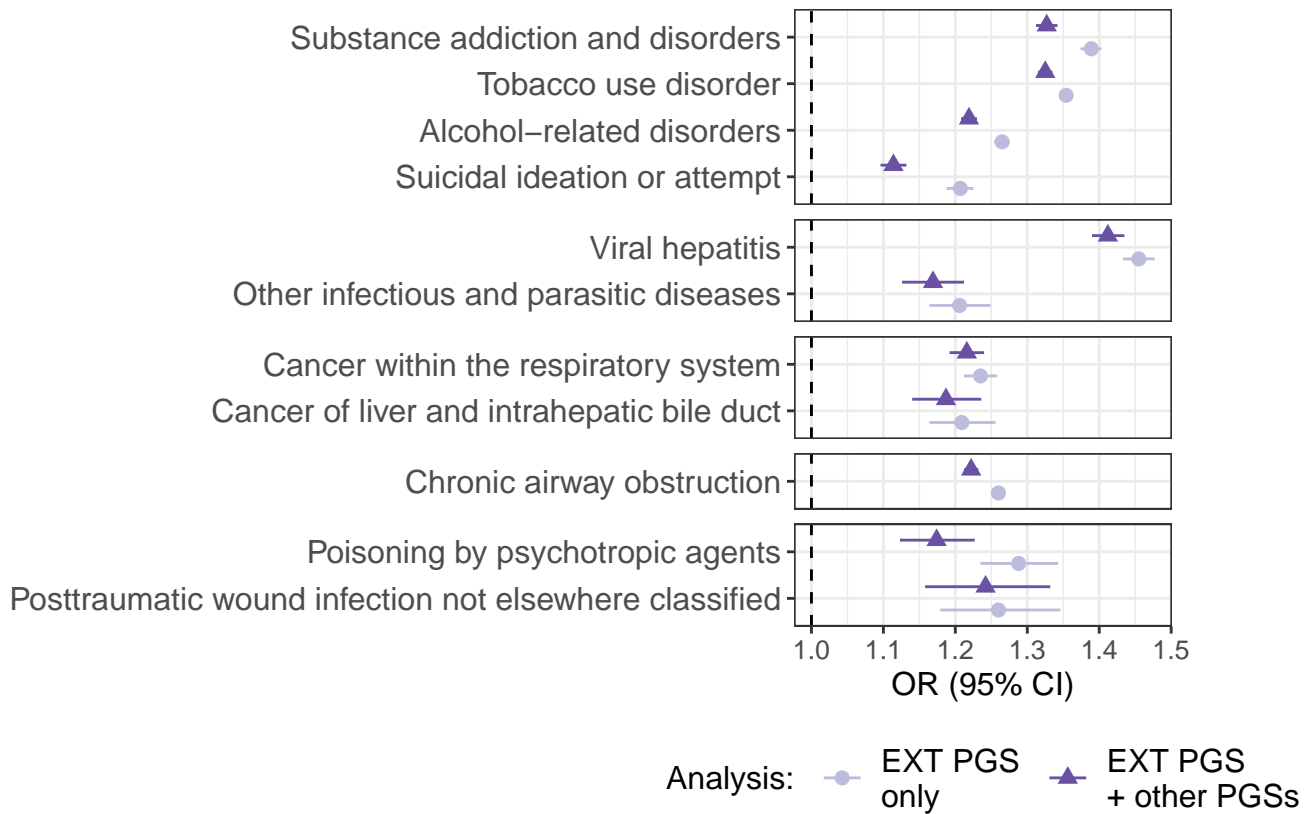


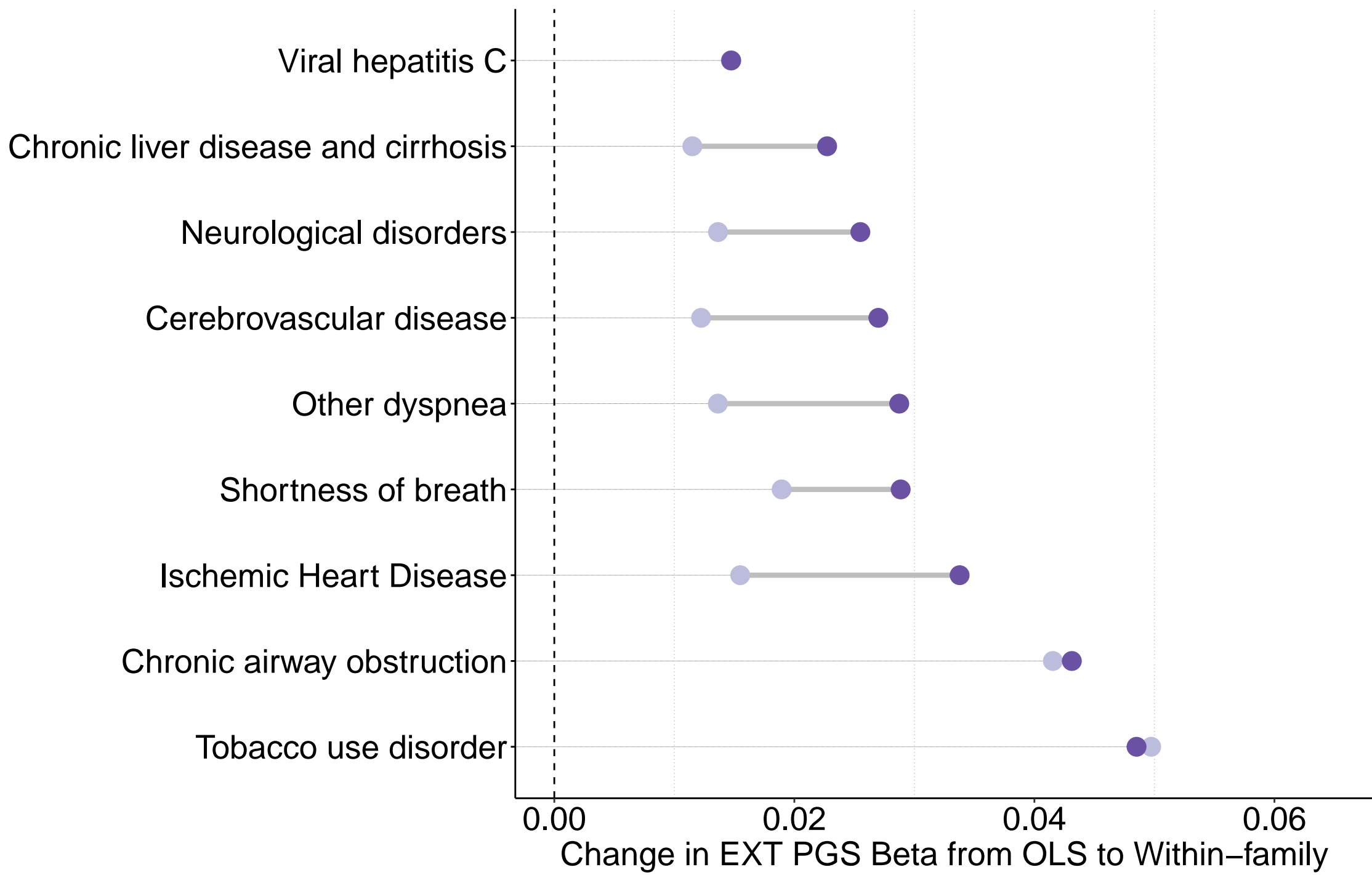
596 errors) and family fixed effects models. All associations significant after correcting for a false discovery  
597 rate (FDR) of 5%.



**A Proportion of Overlap with Phenomewide Significant Associations by Domain (N = 619)**







Model: ● Within-family ● OLS