

1 **Dysbiosis of Gut microbiota in patients with Large-Artery Atherosclerotic**  
2 **Stroke: a pilot study**

3 Chatpol Samuthpongton, MD<sup>1</sup>; Abhinbhen W. Saraya, MD, M.Sc.<sup>2,3</sup>; Yutthana

4 Joyjinda, M.Sc.<sup>3,4</sup>; Apaporn Rodpan, M.Sc.<sup>3,5</sup>; Nijasri C. Suwanwela, MD<sup>6</sup>

5 <sup>1</sup> Faculty of Medicine, Chulalongkorn University, Bangkok, Thailand

6 <sup>2</sup> Division of Neurology, Department of Medicine, King Chulalongkorn Memorial

7 Hospital, Bangkok, Thailand

8 <sup>3</sup> Thai Red Cross Emerging Infectious Diseases - Health Science Centre and WHO

9 Collaborating Centre for Research and Training on Viral Zoonoses, King

10 Chulalongkorn Memorial Hospital, Faculty of Medicine, Chulalongkorn University,

11 Bangkok, Thailand

12 <sup>4</sup> WHO-CC for Research and Training on Viral Zoonoses, Faculty of Medicine,

13 Chulalongkorn University, Bangkok, Thailand

14 <sup>5</sup> Program in Biotechnology, Faculty of Science, Chulalongkorn University, Bangkok,

15 Thailand

16 <sup>6</sup> Division of Neurology, Department of Medicine, Chulalongkorn Comprehensive

17 Stroke Center, King Chulalongkorn Memorial Hospital, Bangkok, Thailand

18 **Short title: Gut Dysbiosis in LAA Stroke**

19 **Corresponding Author:**

20 Nijasri C. Suwanwela

21 E-mail: [Nijasris@yahoo.com](mailto:Nijasris@yahoo.com)

22 Division of Neurology, Department of Medicine, Chulalongkorn Comprehensive

23 Stroke Center, King Chulalongkorn Memorial Hospital, Bangkok, Thailand

24 ORCID ID: <https://orcid.org/0000-0001-6393-110X>

25 **Total word count: 5,175 words**

26 **Abstract**

27 **Introduction:** Increasing data demonstrate an association between gut microbiome  
28 in brain diseases via the gut-brain axis. However, few studies have evaluated the  
29 association between gut microbiome and large-artery atherosclerotic ischemic  
30 stroke patients.

31 **Method:** A cross-sectional pilot study was conducted among 15 patients with large-  
32 artery atherosclerotic ischemic stroke and 15 asymptomatic persons. Large-artery  
33 atherosclerotic stroke were diagnosed using TOAST classification. The control group  
34 was selected based on age- and sex-match with the patient group. Participants  
35 provided a stool sample profiled by 16S- ribosomal gene-specific methods Next-  
36 generation sequencing. The Mann-Whitney U test was used to compare the  
37 differences in gut microbiota profile between stroke and control groups. Alpha  
38 (Shannon diversity index) and beta diversity (Bray-Curtis dissimilarity) were used to  
39 evaluate gut microbial diversity. Generalized linear mixed effects models were used  
40 to relate gut microbial genus and stroke which were adjusted for age, BMI, underlying  
41 disease (diabetes, hypertension and dyslipidemia), and alcohol use.

42 **Result:** The average age of stroke patients was  $61.1 \pm 7.1$  and  $59.2 \pm 8.2$  in the control  
43 group. Beta-diversity (Bray-Curtis dissimilarity) of the gut microbiome was statistically  
44 significant in order, family and genus level (P-value=0.017, 0.011 and 0.003,  
45 respectively) between stroke and control groups; however, there was no statistically  
46 significant difference in alpha-diversity (Shannon diversity index; P-value=0.852). The  
47 relative abundance of *Class Bacteroidia* increased in stroke group. Using generalized  
48 linear mix effect model, we found 6 genera was significantly associated with stroke  
49 after multivariate adjustment. *Ruminococcus spp.*(P-value=0.017), *Streptococcus*  
50 *spp.*(P-value=0.019), *Actinomyces spp.*(P-value=0.02) and *Dorea spp.*(P-

51 value=0.021) showed positive association while *Bifidobacterium spp.*(P-value=0.04)  
52 and *Faecalibacterium spp.*(P-value=0.041) showed negatively association with  
53 stroke.

54 **Conclusion:** Patients with large-artery atherosclerotic stroke had a  
55 decreased microbiome beta-diversity and certain gut microbiota genera may be  
56 related to large-artery atherosclerotic stroke. Future implications of this study could  
57 include the development of targeted interventions to modulate gut microbiota in order  
58 to improve outcomes for patients with large-artery atherosclerotic stroke.

59

60 **Keywords:** Stroke, Large-artery atherosclerosis, Gut microbiota, Dysbiosis

61

62

63

64

65

66

67

68

69

70

71

72

73

74

75

## 76 Introduction

77 Stroke is the leading cause of disability, morbidity, disability adjusted life  
78 years (DALYs) lost and mortality for both women and men in Thailand and worldwide.  
79 In 2014, the prevalence of stroke among adults 45 years and older was estimated at  
80 1.88%. The average age at which a stroke occurs was 65, which approximately  
81 50,000 people die annually from a stroke<sup>1</sup>. There are two most common types of  
82 stroke; ischemic stroke, which accounts for approximately 80% and hemorrhagic  
83 stroke, accounting for the remaining 20% of stroke cases in Thailand<sup>2</sup>. In 2010,  
84 DALYs lost from hemorrhagic stroke and ischemic stroke were around 62.8 million  
85 and 39.4 million, respectively<sup>3</sup>. In 2013, cerebrovascular disease(CVD) was the  
86 leading cause of DALYs lost in females and the third leading cause in males<sup>3</sup>.

87 Large-artery atherosclerotic (LAA) stroke is the most prevalent subtype of  
88 ischemic stroke, notably in the Asian population, where it accounts for around 33%.  
89 Furthermore, LAA is the subtype with the highest yearly growth rate, at 5.7%<sup>4</sup>. There  
90 are several risk factors that are related to LAA stroke occurrence. Traditional risk  
91 factors include age, sex, hypertension, diabetes mellitus, dyslipidemia, family history  
92 of cardiovascular diseases, current smoking, binge alcohol consumption, and  
93 obesity<sup>5,6</sup>. In addition, a number of recently emerging risk factors include the gut  
94 microbiome and gut microbiota-metabolites<sup>5,7</sup>. Emerging evidence suggests that gut  
95 microbiome, their metabolites and immune response play a crucial role in the  
96 pathogenesis of LAA stroke and may become a therapeutic target for its treatment<sup>7,8</sup>.

97 Gut microbiota, including bacteria, fungus and virus, are microorganisms  
98 that inhabit numerous areas of the body, primarily the gastrointestinal tract. The  
99 number of human microbiota is about  $10^{13}$  -  $10^{14}$  microbial cells. The proportion of  
100 microbial cells and human cells are around  $1^{9,10}$ . Firmicutes, Bacteroidetes,

101 Actinobacteria, and Proteobacteria are the most prevalent bacterial phyla in the  
102 human gastrointestinal system; with approximately 90% being *Firmicutes* and  
103 *Bacteroides*. The *Firmicutes* include various genera such as *Lactobacillus* and  
104 *Ruminococcus*. *Bacteroidetes* are mainly represented by genera *Bacteroides* and  
105 *Prevotella*. The most abundant genus in phylum *Actinobacteria* are *Bifidobacterium*<sup>11</sup>.

106 The link of gut microbiota and stroke has not been previously elucidated.  
107 However, many researchers hypothesized that bacteria residing in the colon may be  
108 associated with stroke under the model of the Gut Microbiota-Brain Axis<sup>12-14</sup>. A  
109 previous cohort study examined how ischemic stroke altered the abundance of gut  
110 microbiota independent of age, type 2 DM and hypertension<sup>8</sup>. In top-down signaling,  
111 *Lactobacillus ruminis* increased accordingly with markers of inflammation in stroke  
112 patients and SCFAs (Short-Chain Fatty Acids) were decreased. Furthermore, in  
113 animal model, occlusion of the MCA for 60 minutes increased intestinal permeability  
114 and produced gut dysbiosis<sup>12,13</sup>. However, the etiopathogenesis between gut  
115 microbiota and stroke is unclear as well as there are limited clinical studies focusing on  
116 this association. Therefore, the purpose of our study is to establish an association  
117 between the changes in gut microbiota and ischemic stroke patients, with a particular  
118 emphasis on LAA subtypes due to their high prevalence, in order to shed light on  
119 how gut microbiota may be a potential therapeutic target for ischemic stroke.

## 120 **Methods**

121 A cross-sectional pilot study was conducted among 15 patients with LAA  
122 who were admitted at the stroke unit and 15 asymptomatic persons who presented at  
123 an outpatient clinic at the King Chulalongkorn Memorial hospital between year 2019  
124 and 2020. At enrollment, participants were required to provide information on multiple  
125 lifestyle variables and medical history. Inclusion criteria were acute ischemic stroke

126 patients aged over 45 years who were admitted to the Stroke Unit at King  
127 Chulalongkorn Memorial Hospital (KCMH), diagnosed as stroke caused by large  
128 artery atherosclerosis by neurologist using the TOAST classification system with  
129 symptom onset within 48 hours. Exclusion criteria were patients who received  
130 antibiotics within 1 month before stool collection, patients who had underlying  
131 diseases including metastatic cancer, autoimmune diseases, immunodeficiency,  
132 renal failure, chronic heart failure and Parkinson's disease. For the control group,  
133 inclusion criteria were volunteers who were age and sex-matched with the stroke  
134 group. The exclusion criteria for the control group were the same as for the stroke  
135 group. Overall, 29 patients participated in the study, 14 in the stroke group and 15 in  
136 the control group. The study was approved by the Institutional Review Board of the  
137 Faculty of Medicine, Chulalongkorn University (IRB 029/62). All findings were  
138 reported in accordance with the STROBE guidelines (Strengthening the Reporting of  
139 Observational Studies in Epidemiology) for cross-sectional studies<sup>15</sup>.

#### 140 **Baseline assessment**

141 All participants underwent a comprehensive assessment that measured the  
142 followings: (1) demographic characteristics including age, sex, BMI; (2) potential risk  
143 factors for ischemic stroke, such as hypertension, dyslipidemia, diabetes mellitus,  
144 atrial fibrillation, ischemic heart disease, a smoking habit, a history of stroke, a family  
145 history of ischemic heart disease/ischemic stroke and alcohol consumption; (3)  
146 NIHSS score to assess severity of ischemic stroke (4) onset of acute ischemic stroke  
147 (5) laboratory variables, including lipid profile, HbA1C, creatinine, uric acid; (6) brain  
148 imaging and vascular imaging including computed tomography (CT) scan and  
149 computed tomography angiography (CTA); and (7) assessment of current

150 medications (antibiotic, anti-hypertensive drugs, statins, proton pump inhibitors/H2  
151 blockers, anti-thrombotic drugs

## 152 **Assessment of acute ischemic stroke**

153 We categorized patients with acute ischemic stroke depending on TOAST  
154 classification which include Large-artery atherosclerosis (LAA), Cardioembolism,  
155 Small vessel occlusion, Stroke of other determined etiology and Stroke of  
156 undetermined etiology<sup>16</sup>. We only included LAA patients with clinical and brain  
157 imaging findings of either substantial (>50%) stenosis of a the major cerebral artery,  
158 presumedly related to atherosclerosis.<sup>16</sup>.

## 159 **Biochemical assays**

160 Blood samples were obtained from patients with stroke at the time of admission  
161 and from control subjects during the outpatient clinic visit. Serum levels of glycated  
162 hemoglobin (HbA1c), high-density lipoprotein (HDL) cholesterol, low-density  
163 lipoprotein (LDL) cholesterol, triglyceride (TG), glucose, blood urea nitrogen,  
164 creatinine and uric acid were measured.

## 165 **Gut microbiome**

166 Fecal samples of all stroke participants were collected within 1 days after  
167 admission and stored in -80 C within 60 minutes at the Thai Red Cross Emerging  
168 Infectious Disease Health Science Center laboratory by research assistants. Also,  
169 fecal samples from healthy individuals were collected at outpatient clinics and were  
170 sent by the same process. DNA extraction from stool samples were carried out,  
171 amplified and sequenced.

## 172 **Bacterial DNA extraction**

173 Approximately 200 mg of stool samples were resuspended in 1 ml of InhibitEx  
174 buffer, incubated at 70°C for 5 minutes, and centrifuged at 20,000xg for 1 minute.

175 The QIAamp fast DNA stool mini kit (QIAGEN) was used to extract bacterial DNA  
176 from 200 microliters of aqueous phase per the manufacturer's instructions. All of the  
177 extracted DNA was quantified using the Qubit dsDNA HS test kit on a Qubit 4  
178 Fluorometer (Life Technologies).

#### 179 **16S rRNA (V3-4) amplification and sequencing**

180 The PCR products were separated on agarose gel electrophoresis, followed by  
181 gel extraction and purification using NucleoSpin gel and a PCR clean up kit  
182 (Macherey-Nagel). The indices of Illumina were applied to both ends of PCR  
183 products so that samples could be multiplexed. The indexed PCR products were then  
184 purified using Agencourt AMPure XP beads (Beckman Coulter, Inc.) and  
185 concentration was measured with a Qubit dsDNA HS test kit (Life Technologies).  
186 Prior to library pooling and sequencing, the accurate size of indexed libraries was  
187 determined through QIAxcel capillary electrophoresis (QIAGEN) utilizing paired-end  
188 (2x301 bp) sequencing on Illumina MiSeq with Illumina V3 reagent kit.

189

#### 190 **Diversity Calculations**

191 The sample-taxa frequency table was re-summarized at the phylum and genus  
192 levels by summing read counts belonging to the same phylum or genus together.  
193 Operational taxonomic units (OTUs) with unassigned phylum or genus were  
194 discarded from further analyses at the respective levels. Shannon alpha-diversity  
195 indices was calculated for each sample based on their mathematical definitions using  
196 vegan R package [27]. We used taxonomic data at the genus, family and order level  
197 to conduct a principle coordinates analysis based on Bray-Curtis dissimilarity using  
198 the Phyloseq R package. PERMANOVA (Adonis) was used to test for differences in  
199 Bray-Curtis beta diversity by stroke diagnosis. To evaluate beta-diversity structure, a



200 phylogenetic tree containing all identified taxa was reconstructed using the phylogeny  
201 module in QIIME2.

202

### 203 **Statistical Analysis**

204 Descriptive data analysis was performed using SPSS Statistics version 21  
205 (SPSS Inc., Chicago, IL, USA). Categorical data were expressed as numbers and  
206 percentages. Normally distributed continuous data were presented as means with  
207 SD, while non-normally distributed continuous data were reported as medians with  
208 inter-quartiles range. A P value of less than 0.05 was considered as statistically  
209 significant.

210 We examined the association between each gut microbial genus and acute  
211 ischemic stroke using generalized linear mix effect model with multivariate  
212 adjustment for underlying disease including diabetes mellitus, hypertension and  
213 dyslipidemia, lifestyle variables including age, BMI, and alcohol intake. Analyses  
214 were performed using R version 4.0.1:

215

216 `Glm (stroke ~ microbial genus + age + BMI + diabetes + hypertension + dyslipidemia`  
217 `+ alcohol intake, family=binomial)`

218

219 The circular phylogenetic tree was generated using GraPhIAn in Python  
220 version 3.6.4 to illustrate the relationship between each microbial species and stroke  
221 diagnosis.

222

### 223 **Results**

224           There were 29 patients in the study. The average age of the stroke group  
225   being  $61.1 \pm 7.1$  and that of the control group being  $59.2 \pm 8.2$ . Twelve out of 14  
226   stroke patients (85.7%) and 12 out of 15 control group (80%) were male.  
227   Hypertension and dyslipidemia were the most prevalent traditional risk factors for  
228   ischemic stroke in both groups, accounting for 18 out of 29 participants (62%).  
229   Baseline characteristics of the patients were shown in **Table 1**.

230           The majority of intestinal bacteria discovered in both patient and control groups  
231   were Clostridia class, which belong to the phylum Firmicutes, according to taxonomic  
232   classification at the class level (**Figure 1**). A significant difference in Bacteroidia was  
233   found in approximately 7% of the stroke group but only 2% of the control group  
234   (Mann Whitney U test; P 0.014). (**Supplementary figure 1**).

235           Stool samples were underwent 16S rRNA sequencing and analyses. We found  
236   no significant differences between stroke and control groups in alpha-diversity index  
237   (Shannon) (P-value 0.852) (**Supplementary figure 2**). Beta-diversity evaluation  
238   using PCoA showed significant differences at the order family and genus levels  
239   between strokes and controls (P-value 0.017, P-value 0.011 and P-value 0.003,  
240   respectively) (**Figure 2**).

241           Using generalized linear mix effect models, we found that 6 genera were  
242   significantly associated with stroke after multivariate adjustment (P-value <0.05) (4  
243   positive association and 2 negative association). *Ruminococcus spp.* (Beta 18.70, P-  
244   value 0.017), *Streptococcus spp.* (Beta 9.25, P-value 0.019) and *Actinomyces*  
245   *spp.* (Beta 63.37, P-value 0.02) And *Dorea spp.* (Beta 46.10, P-value 0.021) showed  
246   positive association while *Bifidobacterium spp.* (Beta -4.4, P-value 0.04) and

247 *Faecalibacterium* spp. (Beta -7.16, P-value 0.041) showed negatively association  
248 with stroke (**Figure 3**).

249

## 250 **Discussion**

251 In this study, a correlation was found between large-artery atherosclerotic  
252 stroke and gut microbiome diversity and as well as specific microbial genus. Bray–  
253 Curtis dissimilarity was decreased in gut microbial community structures at the order,  
254 family and genus in stroke group. Although the underlying mechanism remains  
255 unclear, it was hypothesized that communication from gut-microbiota to acute  
256 ischemic stroke or from acute ischemic stroke to gut-microbiota or both may be  
257 involved<sup>12,13</sup>. Regarding gut-microbiota to stroke communication, low-diversity  
258 dysbiosis may modify the metabolic flow of bacteria and their direct interactions with  
259 the host immune system<sup>17</sup>. Due to low microbial diversity, many anaerobes in a  
260 healthy gut convert complex carbohydrates to short chain fatty acids (SCFAs)<sup>17</sup>.  
261 Owing to the anti-inflammatory and cholesterol-blocking effects of SCFAs<sup>18</sup>, patients  
262 with reduced microbial diversity are more susceptible to LAA stroke than the control  
263 group. Regarding the latter hypothesis that stroke leads to gut microbial dysbiosis, a  
264 recent study on mice revealed that ischemic stroke affects the gut microbiome,  
265 reduces microbial diversity, and boosts the immune system<sup>19</sup>. Also, In an another  
266 mice study, reduced microbiome diversity was also found as a characteristic of post-  
267 stroke dysbiosis, which was related with decreased intestinal motility<sup>8</sup>. This  
268 finding was supported by some hypotheses, the first of which is that the autonomic  
269 nerve system mediates the effect of stroke on dysbiosis. Houlden et al. determined  
270 that stroke affected the composition of cecal microbiota which these microbiome

271 changes were mediated by the release of noradrenaline from the autonomic nervous  
272 system, affecting the synthesis of cecal mucoproteins and the quantity of goblet  
273 cells<sup>20</sup>. In addition, it was hypothesized that the post-stroke stress response  
274 increases intestinal permeability via the production of corticotropin-releasing and  
275 glucocorticoid hormones, resulting in enhanced bacterial translocation in the gut<sup>21,22</sup>.

276 We found a negative association between *Bifidobacterium* spp. and stroke.  
277 *Bifidobacterium* spp. has been commonly referred to as beneficial bacteria that  
278 perform necessary functions in the human colon<sup>23</sup> and was developed as a widely  
279 used probiotics.<sup>24</sup> Nowadays, *Bifidobacterium* spp. probiotics are now commonly  
280 used to treat irritable bowel syndrome and ulcerative colitis by altering the  
281 composition of the microbiota in the gut.<sup>25</sup> Decreased numbers of these species in  
282 the colon have been linked to numerous diseases, such as antibiotic-associated  
283 diarrhea, irritable bowel syndrome, inflammatory bowel disease, obesity, allergies,  
284 and regressive autism. *Bifidobacteria* spp. has served multiple purposes, including  
285 the development of the immune system in early life, maintenance of the intestinal  
286 barrier, and protection against pathogens<sup>26</sup>.

287 Regarding *Bifidobacterium* spp. and stroke, a number of research have  
288 demonstrated that *Bifidobacterium* treatment can effectively enhance the long-term  
289 rehabilitation of mice with cerebral ischemia<sup>27</sup>. It was hypothesized, while the  
290 mechanism remained unknown, that *Bifidobacterium* spp. generated metabolites of  
291 short-chain fatty acid (SCFA), which can decrease inflammation and improve stroke  
292 recovery<sup>28,29</sup>. Also, *Bifidobacterium*-treated mice exhibited an upsurge in a range of  
293 metabolites, including prostaglandin B1, which may promote stroke recovery<sup>30,31</sup>.

294 *Faecalibacterium spp.* abundance were lower in the stroke group than in the  
295 control group, according to our findings. *Faecalibacterium prausnitzii* is one of the  
296 most essential gut microbiota components in the human colon, which has been  
297 considered a bioindicator of human health<sup>32</sup>. Changes in the abundance of *F.*  
298 *prausnitzii* have been linked to dysbiosis in a variety of human disorders.<sup>33-35</sup> As a  
299 Butyrate-producing bacteria, it was found to be reduced in cardiovascular disease  
300 and metabolic syndrome. Butyrate is an essential fatty acid with a short chain that  
301 promotes intestinal health<sup>36</sup>. In addition, this microbe possesses a variety of anti-  
302 inflammatory and metabolic properties, which give it an important role in human  
303 health<sup>37</sup>. Butyrate protects the intestinal lining, thereby preventing infections from  
304 entering the body via the gastrointestinal tract. It stimulates the growth of villi and the  
305 production of mucin, a protective gel that coats the digestive tract lining<sup>38</sup>.  
306 Concerning stroke, studies on mice have demonstrated a correlation. In a previous  
307 mice study from China, for instance, *Faecalibacterium* was used for transplantation.  
308<sup>39</sup> These bacteria decreased post-stroke neurological deficits and inflammation and  
309 increased SCFA concentrations in the stomach, brain, and plasma of aged mice with  
310 stroke.<sup>39</sup> The majority of studies have shown an association between *F. prausnitzii*  
311 and stroke; however, our study only analyzed genus data but not species data due to  
312 16S NGS analysis. Therefore, future studies should conduct 16S metagenomic  
313 analysis in order to determine the link between *F. prausnitzii* and stroke.

314 Our findings indicated that four microbial genera (*Ruminococcus spp.*,  
315 *Streptococcus spp.*, *Actinomyces spp.*, and *Dorea spp.*) were positively correlated  
316 with stroke group. The relationship between these microbial genera and stroke has  
317 been demonstrated in a small number of studies. *Ruminococcus spp.* and  
318 *Streptococcus spp.* have been associated with metabolic syndrome and

319 cardiovascular disease in certain research. First, Kurilshikov et al. discovered the  
320 association between the *Ruminococcus* species and the onset of cardiovascular  
321 diseases<sup>40</sup>. The production of L-methionine by *Ruminococcus* species is associated  
322 with cardiovascular characteristics in obese people<sup>41</sup>. Second, *Streptococcus spp.*, a  
323 morbid oral bacterium species, has also been shown to be raised in hypertension<sup>42</sup>,  
324 and atherosclerotic cardiovascular disease<sup>43,44</sup>. Finally, *Actinomyces spp.* was  
325 discovered to be prevalent in obese adolescents<sup>45,46</sup>, and a positive association was  
326 also identified between *Dorea spp.* and BMI and blood lipids<sup>40</sup>. Consequently, these  
327 four genera may have an impact on LAA stroke via the cardiovascular disease  
328 pathway, thereby contributing to the development of stroke. Even while no studies  
329 showed the potential mechanism of these microbial genera, future research should  
330 investigate the relationship between these microbial genera and large-artery  
331 atherosclerotic stroke.

332           Our study had some limitations. First, our study had small sample size  
333 which may affect our results. Second, we have no metabolomic data in our  
334 databases and the causality between this association have not been conducted due  
335 to the cross-sectional design of the study. For future research to clarify the  
336 relationship between gut microbiota, its metabolites, and stroke, cohort studies with a  
337 metabolomic profile should be implemented. Finally, our research is based on the  
338 results of 16S rRNA sequencing within the limitations of resolution. A subsequent  
339 study is planned to compare these findings, which should broaden our understanding  
340 through functional microbiome analysis. The long-term objective of this research is to  
341 develop metatranscriptomic and metatranscriptomic analysis between gut  
342 microbiome and large-artery atherosclerotic stroke.

## 343 **Conclusion**

344 Our findings suggests that patients with large-artery atherosclerotic stroke had  
345 a decreased beta-microbiome diversity, and certain gut microbiota genera may be  
346 related to large-artery atherosclerotic stroke. Future implications of this study could  
347 include the development of targeted interventions to modulate gut microbiota in order  
348 to improve outcomes for patients with large-artery atherosclerotic stroke.

## 349 **Abbreviation**

350 BMI: Body mass index

351 CT: Computed tomography

352 CTA: Computed tomography angiography

353 LAA : Large-artery atherosclerosis

354 NIHSS: National Institute of Health Stroke Scale

355 PCR: Polymerase Chain Reaction

356 SD: Standard deviation

357 TOAST: Trial of Org 10,172 in Acute Stroke Treatment

## 358 **Statements**

359 The study was approved by the Institutional Review Board of the Faculty of Medicine,  
360 Chulalongkorn University (IRB 029/62).

## 361 **Statement of Ethics**

362 All participants provided written informed consent at the time of data collection. The  
363 study was approved by the Institutional Review Board of the Faculty of Medicine,  
364 Chulalongkorn University (IRB 029/62) and adheres to the tenets of the Declaration  
365 of Helsinki. All participants' data were fully anonymized.

366 **Conflict of Interest Statement**

367 The authors have no conflicts of interest to declare.

368 **Funding Sources**

369 Our project was supported by Pink Diamond Project, Faculty of Medicine,  
370 Chulalongkorn university, Bangkok, Thailand (Grant number 1543/2562).

371 **Author Contributions**

372 Chatpol Samuthpongton: data gathering, interpretation of data, draft writing, editing,  
373 and revision of manuscript.

374 Abhinbhen W. Saraya: study conception, supervision, editing, and revision of  
375 manuscript.

376 Yutthana Joyjinda: interpretation of data

377 Apaporn Rodpan: interpretation of data

378 Nijasri C. Suwanwela: study conception, interpretation of data, supervision, editing,  
379 and revision of manuscript.

380 **Acknowledgments**

381 None

382 **Data Availability Statement**

383 All data generated or analysed during this study are included in this article. Further  
384 enquiries can be directed to the corresponding author.

385 **Supplemental Material**

386 Figures S1–S2



## 387 References

- 388 1. Suwanwela N. Stroke epidemiology in Thailand. *Journal of stroke*. 2014;16:1-7. doi:  
389 10.5853/jos.2014.16.1.1
- 390 2. Abbott A, Silvestrini M, Topakian R, Golledge J, Brunser A, de Borst G, Harbaugh R,  
391 Doubal F, Rundek T, Thapar A, et al. Optimizing the Definitions of Stroke, Transient  
392 Ischemic Attack, and Infarction for Research and Application in Clinical Practice.  
393 *Frontiers in neurology*. 2017;8:537. doi: 10.3389/fneur.2017.00537
- 394 3. Krishnamurthi R, Feigin V, Forouzanfar M, Mensah G, Connor M, Bennett D, Moran A,  
395 Sacco R, Anderson L, Truelsen T, et al. Global and regional burden of first-ever  
396 ischaemic and haemorrhagic stroke during 1990-2010: findings from the Global Burden  
397 of Disease Study 2010. *The Lancet Global health*. 2013;1:e259-281. doi:  
398 10.1016/s2214-109x(13)70089-5
- 399 4. Wu Q, Cui J, Xie Y, Wang M, Zhang H, Hu X, Jiang F. Outcomes of Ischemic Stroke and  
400 Associated Factors Among Elderly Patients With Large-Artery Atherosclerosis: A  
401 Hospital-Based Follow-Up Study in China. *Frontiers in neurology*. 2021;12.
- 402 5. Kim B, Kim J. Ischemic stroke subtype classification: an asian viewpoint. *Journal of*  
403 *stroke*. 2014;16:8-17. doi: 10.5853/jos.2014.16.1.8
- 404 6. Boehme A, Esenwa C, Elkind M. Stroke Risk Factors, Genetics, and Prevention.  
405 *Circulation research*. 2017;120:472-495. doi: 10.1161/circresaha.116.308398
- 406 7. Torres-Aguila N, Carrera C, Muiño E, Cullell N, Cárcel-Márquez J, Gallego-Fabrega C,  
407 González-Sánchez J, Bustamante A, Delgado P, Ibañez L, et al. Clinical Variables and  
408 Genetic Risk Factors Associated with the Acute Outcome of Ischemic Stroke: A  
409 Systematic Review. *Journal of stroke*. 2019;21:276-289. doi: 10.5853/jos.2019.01522
- 410 8. Yamashiro K, Tanaka R, Urabe T, Ueno Y, Yamashiro Y, Nomoto K, Takahashi T, Tsuji  
411 H, Asahara T, Hattori N. Gut dysbiosis is associated with metabolism and systemic  
412 inflammation in patients with ischemic stroke. *PloS one*. 2017;12:e0171521. doi:  
413 10.1371/journal.pone.0171521
- 414 9. Kim B, Jeon Y, Chun J. Current status and future promise of the human microbiome.  
415 *Pediatric gastroenterology, hepatology & nutrition*. 2013;16:71-79. doi:  
416 10.5223/pghn.2013.16.2.71
- 417 10. Kho Z, Lal S. The Human Gut Microbiome - A Potential Controller of Wellness and  
418 Disease. *Frontiers in microbiology*. 2018;9:1835. doi: 10.3389/fmicb.2018.01835
- 419 11. Rinninella E, Raoul P, Cintoni M, Franceschi F, Miggiano G, Gasbarrini A, Mele M. What  
420 is the Healthy Gut Microbiota Composition? A Changing Ecosystem across Age,  
421 Environment, Diet, and Diseases. *Microorganisms*. 2019;7. doi:  
422 10.3390/microorganisms7010014
- 423 12. Arya A, Hu B. Brain-gut axis after stroke. *Brain circulation*. 2018;4:165-173. doi:  
424 10.4103/bc.bc\_32\_18
- 425 13. Durgan D, Lee J, McCullough L, Bryan R. Examining the Role of the Microbiota-Gut-  
426 Brain Axis in Stroke. *Stroke*. 2019;50:2270-2277. doi: 10.1161/strokeaha.119.025140
- 427 14. Wang H, Wang Y. Gut Microbiota-brain Axis. *Chinese medical journal*. 2016;129:2373-  
428 2380. doi: 10.4103/0366-6999.190667
- 429 15. Vandembroucke JP, von Elm E, Altman DG, Gøtzsche PC, Mulrow CD, Pocock SJ,  
430 Poole C, Schlesselman JJ, Egger M, for the SI. Strengthening the Reporting of  
431 Observational Studies in Epidemiology (STROBE): Explanation and Elaboration. *PLOS*  
432 *Medicine*. 2007;4:e297. doi: 10.1371/journal.pmed.0040297
- 433 16. Adams HP, Biller J. Classification of Subtypes of Ischemic Stroke. *Stroke*.  
434 2015;46:e114-e117. doi: 10.1161/STROKEAHA.114.007773

- 435 17. Kriss M, Hazleton KZ, Nusbacher NM, Martin CG, Lozupone CA. Low diversity gut  
436 microbiota dysbiosis: drivers, functional implications and recovery. *Current Opinion in*  
437 *Microbiology*. 2018;44:34-40. doi: <https://doi.org/10.1016/j.mib.2018.07.003>
- 438 18. Bartolomaeus H, Balogh A, Yakoub M, Homann S, Markó L, Höges S, Tsvetkov D,  
439 Krannich A, Wundersitz S, Avery EG, et al. Short-Chain Fatty Acid Propionate Protects  
440 From Hypertensive Cardiovascular Damage. *Circulation*. 2019;139:1407-1421. doi:  
441 10.1161/CIRCULATIONAHA.118.036652
- 442 19. Xiang L, Lou Y, Liu L, Liu Y, Zhang W, Deng J, Guan Y, She M, You X, Liu M, et al. Gut  
443 Microbiotic Features Aiding the Diagnosis of Acute Ischemic Stroke.
- 444 20. Houlden A, Goldrick M, Brough D, Vizi ES, Lénárt N, Martinecz B, Roberts IS, Denes A.  
445 Brain injury induces specific changes in the caecal microbiota of mice via altered  
446 autonomic activity and mucoprotein production.
- 447 21. Tan BYQ, Paliwal PR, Sharma VK. Gut Microbiota and Stroke.
- 448 22. Caso JR, Hurtado O Fau - Pereira MP, Pereira Mp Fau - García-Bueno B, García-Bueno  
449 B Fau - Menchén L, Menchén L Fau - Alou L, Alou L Fau - Gómez-Lus ML, Gómez-Lus  
450 MI Fau - Moro MA, Moro Ma Fau - Lizasoain I, Lizasoain I Fau - Leza JC, Leza JC.  
451 Colonic bacterial translocation as a possible factor in stress-worsening experimental  
452 stroke outcome.
- 453 23. Leahy S, Higgins D, Fitzgerald G, van Sinderen D. Getting better with bifidobacteria.  
454 *Journal of Applied Microbiology*. 2005;98:1303-1315. doi: [https://doi.org/10.1111/j.1365-](https://doi.org/10.1111/j.1365-2672.2005.02600.x)  
455 [2672.2005.02600.x](https://doi.org/10.1111/j.1365-2672.2005.02600.x)
- 456 24. Nguyen J. Bifidobacterium vs. Lactobacillus probiotics: what's the difference?  
457 <https://www.mygenefood.com/blog/bifidobacterium-vs-lactobacillus-strains/>. 2020.
- 458 25. Multum C. Bifidobacterium and lactobacillus.  
459 <https://www.drugs.com/mtm/bifidobacterium-and-lactobacillus.html>. 2020.
- 460 26. Rivière A, Selak M, Lantin D, Leroy F, De Vuyst L. Bifidobacteria and Butyrate-  
461 Producing Colon Bacteria: Importance and Strategies for Their Stimulation in the Human  
462 Gut. *Frontiers in microbiology*. 2016;7:979.
- 463 27. Zhang C, Li S, Yang L, Huang P, Li W, Wang S, Zhao G, Zhang M, Pang X, Yan Z, et al.  
464 Structural modulation of gut microbiota in life-long calorie-restricted mice. *Nature*  
465 *Communications*. 2013;4:2163. doi: 10.1038/ncomms3163
- 466 28. Lee J, d'Aigle J, Atadja L, Quaicoe V, Honarpisheh P, Ganesh BP, Hassan A, Graf J,  
467 Petrosino J, Putluri N, et al. Gut Microbiota–Derived Short-Chain Fatty Acids Promote  
468 Poststroke Recovery in Aged Mice. *Circulation research*. 2020;127:453-465. doi:  
469 10.1161/CIRCRESAHA.119.316448
- 470 29. Chen R, Xu Y, Wu P, Zhou H, Lasanajak Y, Fang Y, Tang L, Ye L, Li X, Cai Z, et al.  
471 Transplantation of fecal microbiota rich in short chain fatty acids and butyric acid treat  
472 cerebral ischemic stroke by regulating gut microbiota. *Pharmacological Research*.  
473 2019;148:104403. doi: <https://doi.org/10.1016/j.phrs.2019.104403>
- 474 30. Rosenthal MD, Franson RC. Oligomers of prostaglandin B1 inhibit arachidonic acid  
475 mobilization in human neutrophils and endothelial cells. *Biochimica et Biophysica Acta*  
476 *(BBA) - Lipids and Lipid Metabolism*. 1989;1006:278-286. doi:  
477 [https://doi.org/10.1016/0005-2760\(89\)90014-3](https://doi.org/10.1016/0005-2760(89)90014-3)
- 478 31. Huang J-T, Mao Y-Q, Han B, Zhang Z-Y, Chen H-L, Li Z-M, Kong C-Y, Xu J-Q, Cai P-R,  
479 Zeng Y-P, et al. Calorie restriction conferred improvement effect on long-term  
480 rehabilitation of ischemic stroke via gut microbiota. *Pharmacological Research*.  
481 2021;170:105726. doi: <https://doi.org/10.1016/j.phrs.2021.105726>

- 482 32. Ferreira-Halder CV, Faria AVdS, Andrade SS. Action and function of *Faecalibacterium*  
483 *prausnitzii* in health and disease. *Best Practice & Research Clinical Gastroenterology*.  
484 2017;31:643-648. doi: <https://doi.org/10.1016/j.bpg.2017.09.011>
- 485 33. Hao Z, Wang W, Guo R, Liu H. *Faecalibacterium prausnitzii* (ATCC 27766) has  
486 preventive and therapeutic effects on chronic unpredictable mild stress-induced  
487 depression-like and anxiety-like behavior in rats. *Psychoneuroendocrinology*.  
488 2019;104:132-142. doi: <https://doi.org/10.1016/j.psyneuen.2019.02.025>
- 489 34. Jiang H, Ling Z, Zhang Y, Mao H, Ma Z, Yin Y, Wang W, Tang W, Tan Z, Shi J, et al.  
490 Altered fecal microbiota composition in patients with major depressive disorder. *Brain*,  
491 *Behavior, and Immunity*. 2015;48:186-194. doi: <https://doi.org/10.1016/j.bbi.2015.03.016>
- 492 35. Munukka E, Rintala A, Toivonen R, Nylund M, Yang B, Takanen A, Hänninen A, Vuopio  
493 J, Huovinen P, Jalkanen S, et al. *Faecalibacterium prausnitzii* treatment improves  
494 hepatic health and reduces adipose tissue inflammation in high-fat fed mice. *The ISME*  
495 *Journal*. 2017;11:1667-1679. doi: 10.1038/ismej.2017.24
- 496 36. Liu H, Wang J, He T, Becker S, Zhang G, Li D, Ma X. Butyrate: A Double-Edged Sword  
497 for Health?
- 498 37. Lenoir M, Martín R, Torres-Maravilla E, Chadi S, González-Dávila PA-O, Sokol HA-O,  
499 Langella P, Chain F, Bermúdez-Humarán LA-O. Butyrate mediates anti-inflammatory  
500 effects of *Faecalibacterium prausnitzii* in intestinal epithelial cells through Dact3.
- 501 38. Khan MT, van Dijk JM, Harmsen HJM. Antioxidants Keep the Potentially Probiotic but  
502 Highly Oxygen-Sensitive Human Gut Bacterium *Faecalibacterium prausnitzii* Alive at  
503 Ambient Air. *PLoS one*. 2014;9:e96097. doi: 10.1371/journal.pone.0096097
- 504 39. Arora T, Bäckhed F. The gut microbiota and metabolic disease: current understanding  
505 and future perspectives. *Journal of internal medicine*. 2016;280:339-349. doi:  
506 10.1111/joim.12508
- 507 40. Falalyeyeva T, Chornenka N, Cherkasova L, Tsyryuk O, Molchek N, Kovalchuk O,  
508 Kyriachenko Y, Ostapchenko L, Kobyljak N. 2.18 - Gut Microbiota Interactions With  
509 Obesity. In: Glibetic M, ed. *Comprehensive Gut Microbiota*. Oxford: Elsevier; 2022:201-  
510 219.
- 511 41. Kurilshikov A, van den Munckhof ICL, Chen L, Bonder MJ, Schraa K, Rutten JHW,  
512 Riksen NP, de Graaf J, Oosting M, Sanna S, et al. Gut Microbial Associations to Plasma  
513 Metabolites Linked to Cardiovascular Phenotypes and Risk. *Circulation research*.  
514 2019;124:1808-1820. doi: 10.1161/CIRCRESAHA.118.314642
- 515 42. Li J, Zhao F, Wang Y, Chen J, Tao J, Tian G, Wu S, Liu W, Cui Q, Geng B, et al. Gut  
516 microbiota dysbiosis contributes to the development of hypertension.
- 517 43. Zuo K, Li J, Li K, Hu C, Gao Y, Chen M, Hu R, Liu Y, Chi H, Wang H, et al. Disordered  
518 gut microbiota and alterations in metabolic patterns are associated with atrial fibrillation.  
519 LID - 10.1093/gigascience/giz058 [doi] LID - giz058.
- 520 44. Hurst JR, Kasper KJ, Sule AN, McCormick JK. Streptococcal pharyngitis and rheumatic  
521 heart disease: the superantigen hypothesis revisited.
- 522 45. Del Chierico F, Abbatini F, Russo A, Quagliariello A, Reddel S, Capoccia D, Caccamo R,  
523 Corradini SG, Nobili V, De Peppo F, et al. Gut microbiota markers in obese adolescent  
524 and adult patients: Age-dependent differential patterns. *Frontiers in microbiology*.  
525 2018;9. doi: 10.3389/fmicb.2018.01210
- 526 46. Zeng Q, Li D, He Y, Li Y, Yang Z, Zhao X, Liu Y, Wang Y, Sun J, Feng X, et al.  
527 Discrepant gut microbiota markers for the classification of obesity-related metabolic  
528 abnormalities. *Scientific Reports*. 2019;9. doi: 10.1038/s41598-019-49462-w
- 529

530 **Table 1.** Baseline characteristics of included participants

Characteristic	Stroke patients N= 14	Control N=15	P-value
Male: n (%)	12 (85.7)	12 (80)	1.000
Age (mean±SD)	61.1± 7.1	59.2± 8.2	0.720
Risk factors: n (%)			
History of diabetes mellitus	1 (7.1)	2 (13.3)	0.543
History of hypertension	5 (35.7)	4 (26.7)	0.690
History of dyslipidemia	4 (28.6)	5 (33.3)	0.690
Smoking	2 (14.3)	0 (0)	0.143
Previous stroke	1 (7.1)	0 (0)	0.390
Lab investigation (mean±SD)			
Total cholesterol	181.9±42.9	179.3±28.2	0.842
HDL	38.1±10.4	46.1±17.2	0.145
LDL	115.9±40.1	109.4±25.5	0.948
TG	139.9±38.6	119.0±33.2	0.941
HbA1c	5.7±0.3	5.9±0.7	0.416
NIHSS on admission (mean±SD)	1.28±1.09	-	-

531

532

533

534

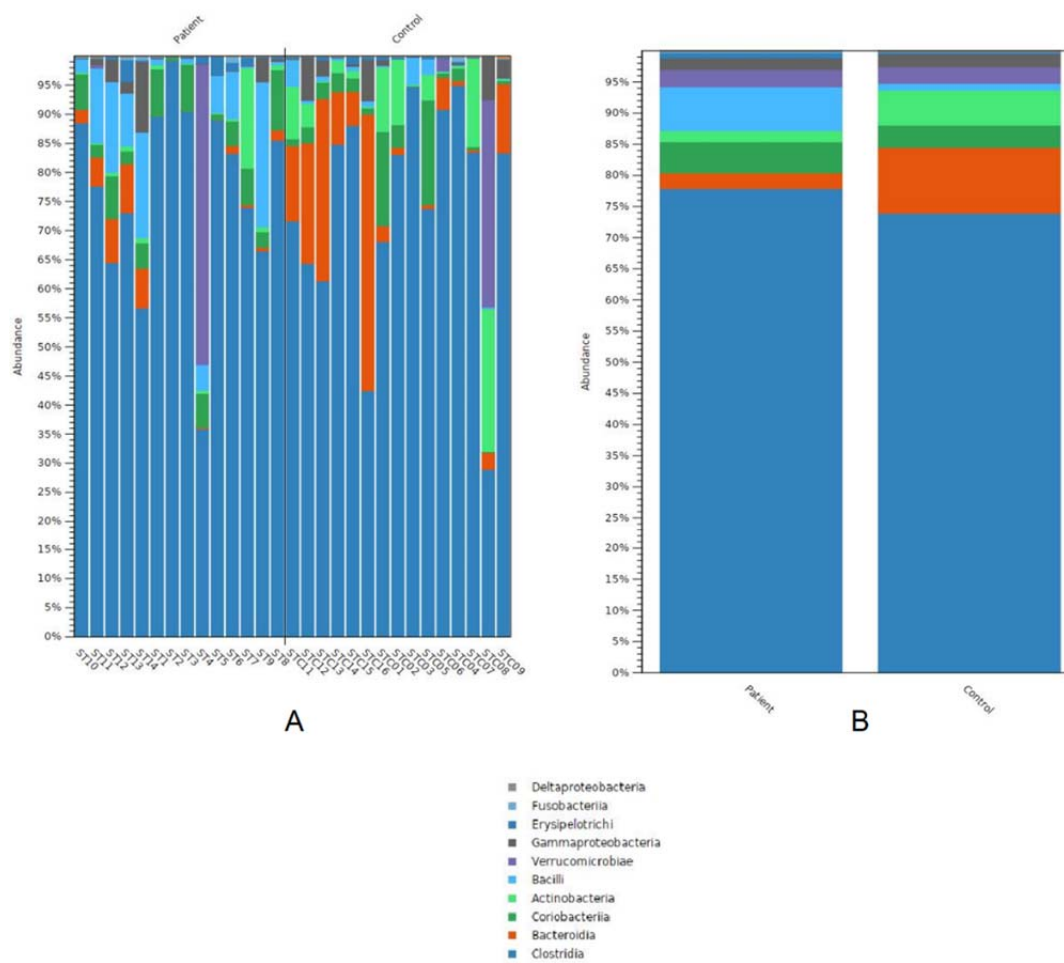
535

536

537 **Figure 1: Class-level taxonomic overview of the gut microbiota**

538 (A) Summary of gut microbiota in each specimen

539 (B) Summary of gut microbiota between stroke and control group



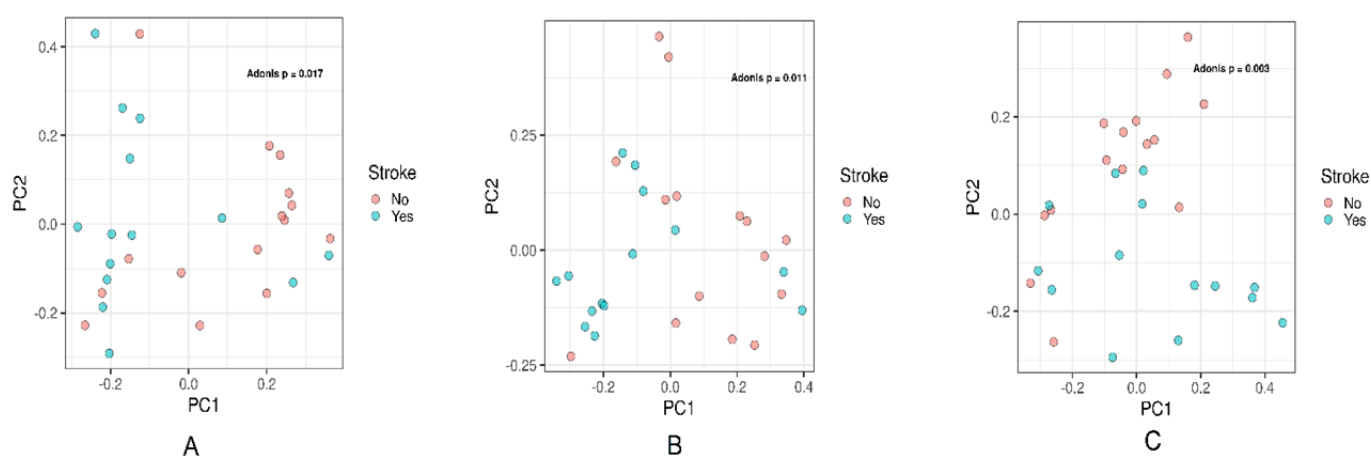
540  
541

542

543

544

545 **Figure 2:** Beta-diversity of bacterial order (A), family (B), and genus (C) in stroke and  
546 control group. PCoA based on Bray–Curtis dissimilarity was performed with the  
547 significant differences in gut microbial community structure at the order (P-value 0.017),  
548 family (P-value 0.011) and genus levels (P-value 0.003) between stroke and control  
549 group.



550

551

552

553

554

555

556

557

558

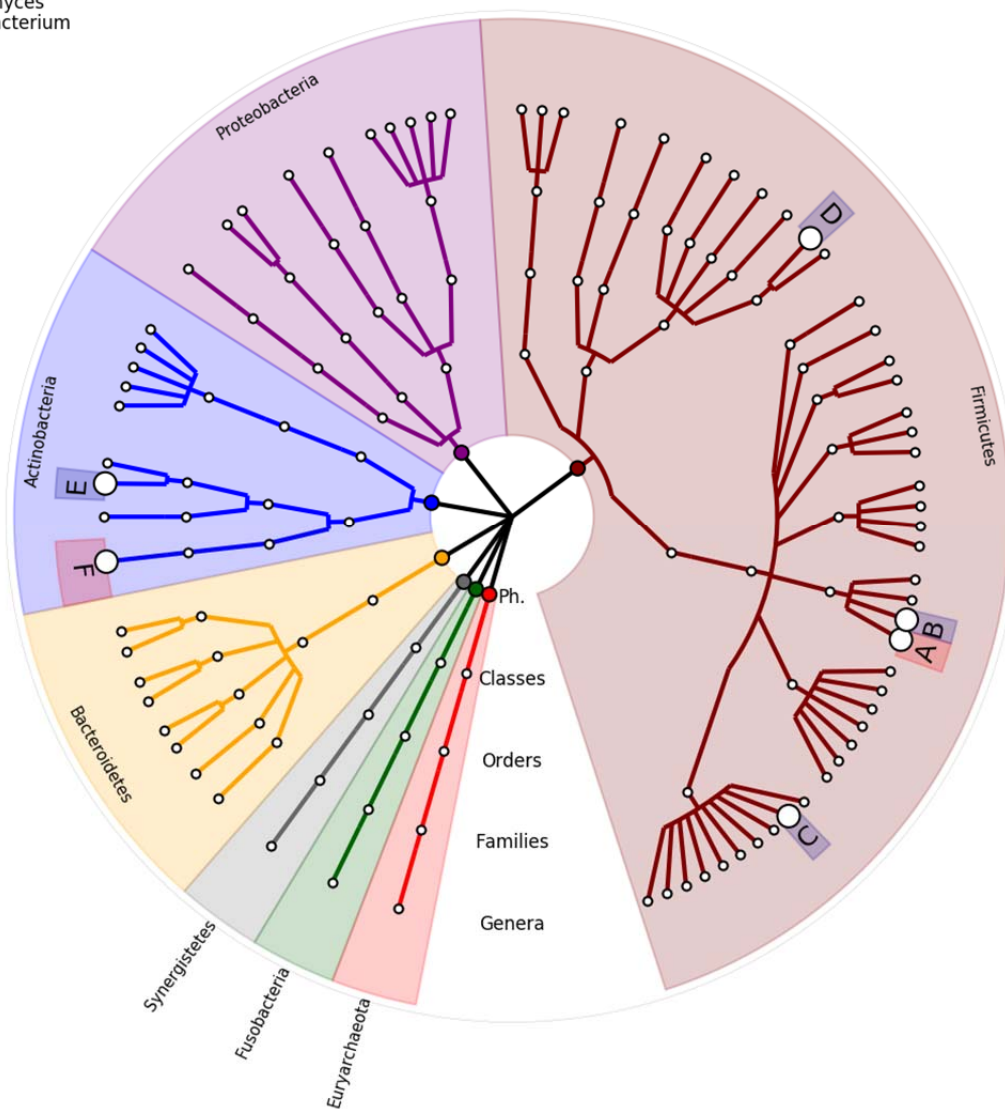
559

560 **Figure 3:** GraPhlAn visualization of the annotated phylogenies and taxonomies  
561 compared between stroke and control group.

562

A: Faecalibacterium  
B: Ruminococcus  
C: Dorea  
D: Streptococcus  
E: Actinomyces  
F: Bifidobacterium

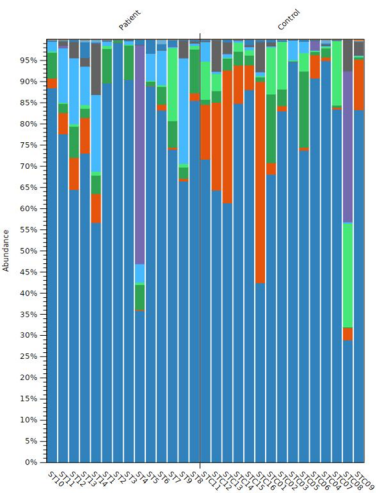
● Negative association  
● Positive association



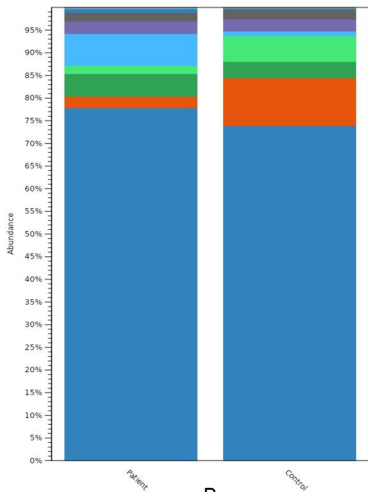
563

564

565



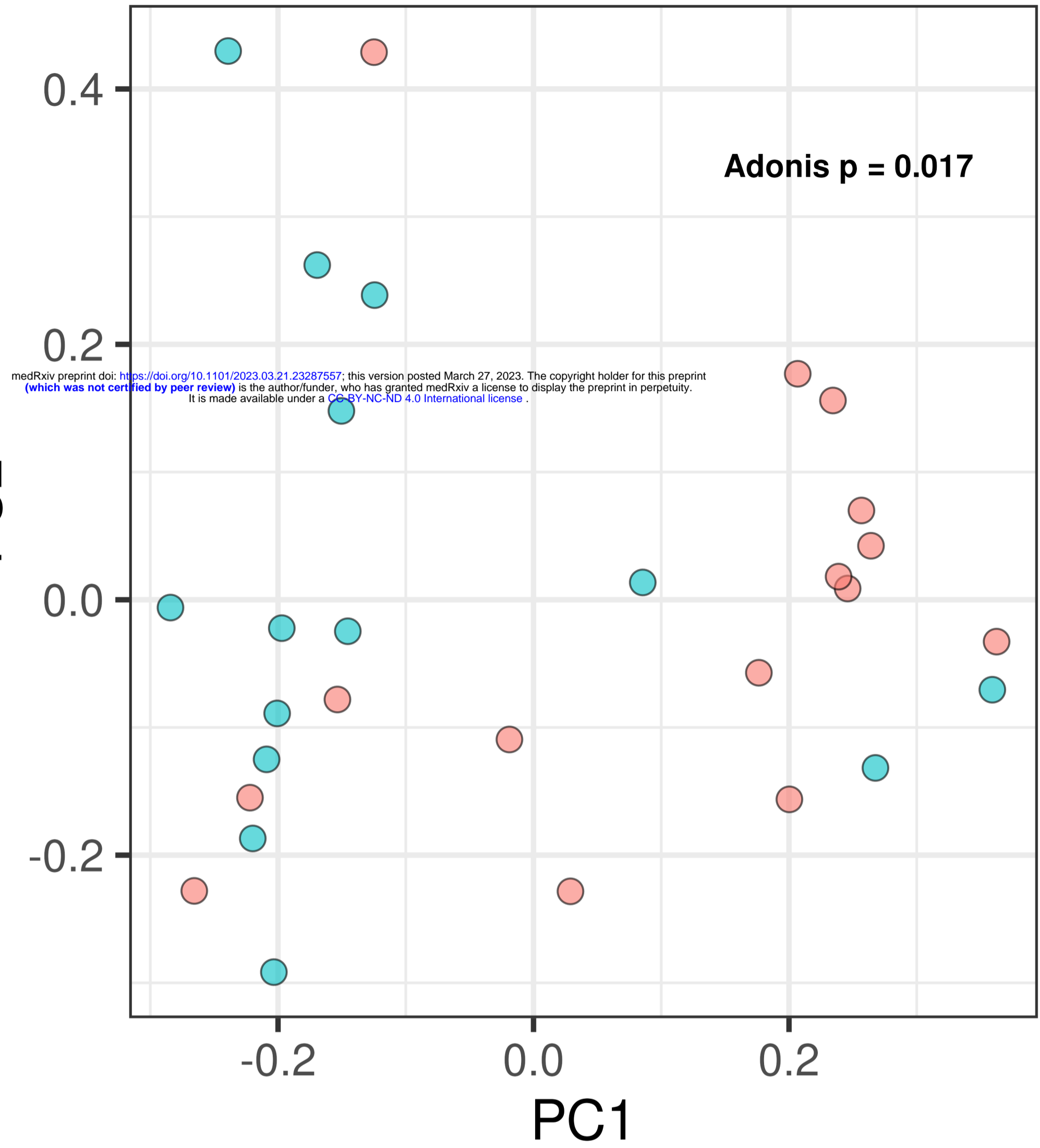
A



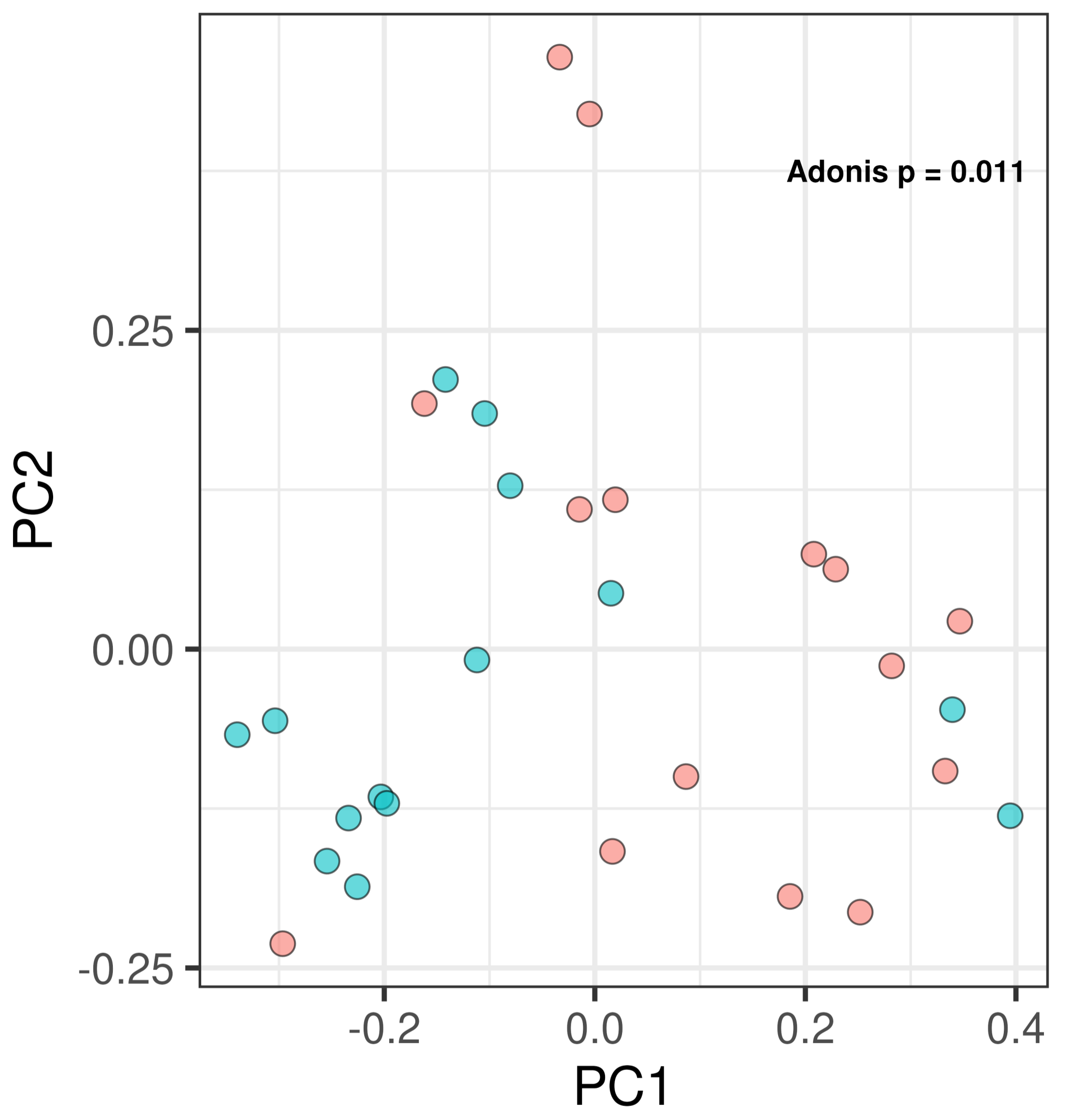
B

- Deltaproteobacteria
- Fusobacteria
- Erysipelotrichi
- Gammaproteobacteria
- Verrucomicrobiae
- Bacilli
- Actinobacteria
- Coriobacteria
- Bacteroidia
- Clostridia

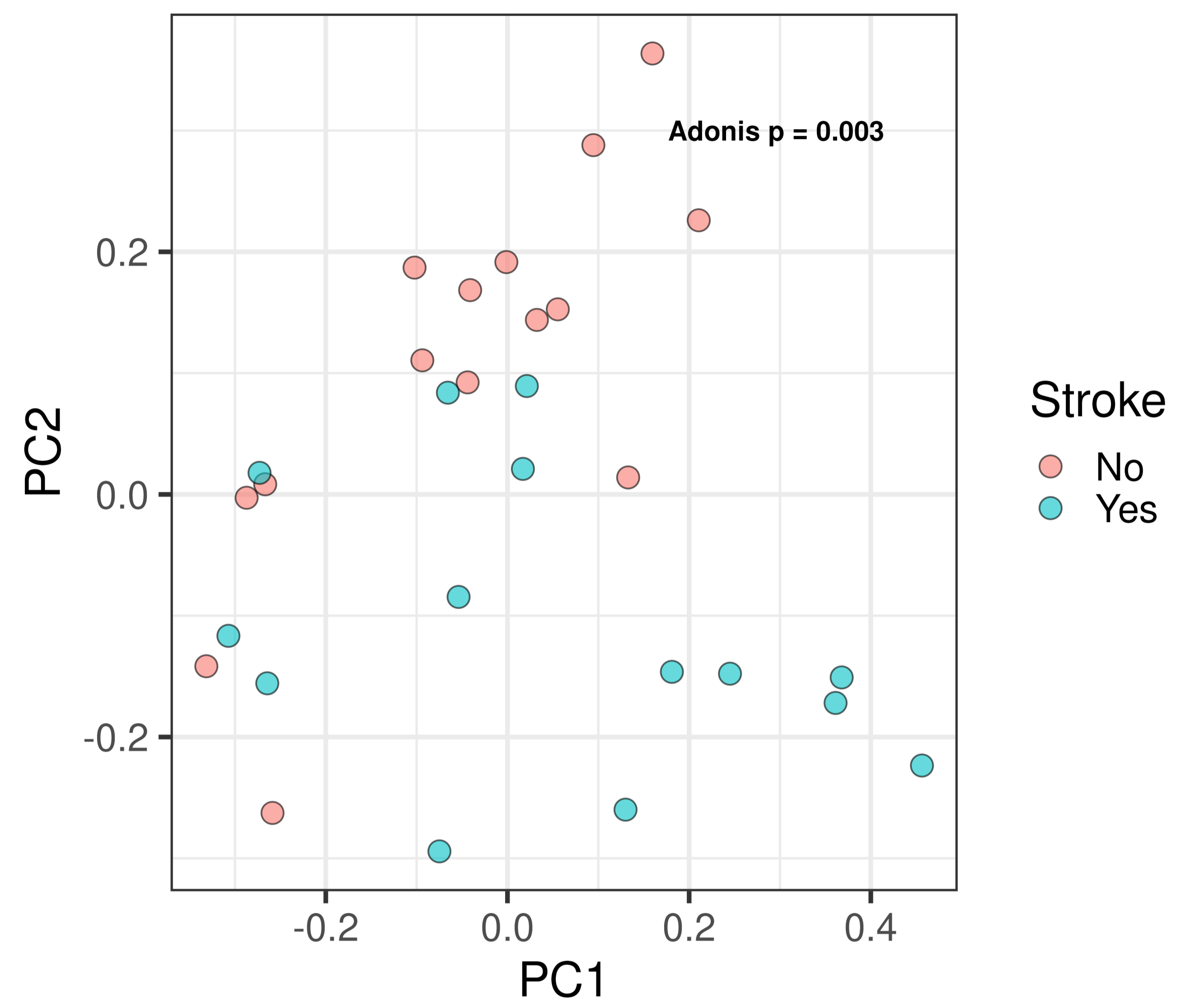




**A**



**B**



**C**

A: Faecalibacterium  
B: Ruminococcus  
C: Dorea  
D: Streptococcus  
E: Actinomyces  
F: Bifidobacterium

● Negative association  
● Positive association

