

1 **TEMPORAL TRENDS AND TRANSMISSION DYNAMICS OF PRE-TREATMENT HIV-1**  
2 **DRUG RESISTANCE WITHIN AND BETWEEN RISK GROUPS IN KENYA, 1986-2020.**

3

4 George M. Nduva<sup>1,2\*</sup>, Frederick Otieno<sup>3</sup>, Joshua Kimani<sup>4,5</sup>, Yiakon Sein<sup>2</sup>, Dawit A. Arimide<sup>1</sup>, Lyle R.  
5 McKinnon<sup>4,5,6</sup>, Francois Cholette<sup>5,7</sup>, Morris K. Lawrence<sup>8</sup>, Maxwell Majiwa<sup>9</sup>, Moses Masika<sup>10</sup>,  
6 Gaudensia Mutua<sup>10</sup>, Omu Anzala<sup>10</sup>, Susan M. Graham<sup>2,11</sup>, Larry Gelmon<sup>4,5</sup>, Matt A. Price<sup>12,13</sup>, Adrian  
7 D. Smith<sup>15</sup>, Robert C. Bailey<sup>3,13</sup>, Patrik Medstrand<sup>1</sup>, Eduard J. Sanders<sup>2,15#</sup>, Joakim Esbjörnsson<sup>1,15#</sup>,  
8 and Amin S. Hassan<sup>1,2#\*</sup>.

9

10 #Equal contribution as senior authors

11

12 <sup>1</sup>Lund University, Lund, Sweden; <sup>2</sup>KEMRI/Wellcome Trust Research Programme, Kilifi, Kenya;  
13 <sup>3</sup>Nyanza Reproductive Health Society, Kisumu, Kenya; <sup>4</sup>University of Nairobi, Nairobi, Kenya;  
14 <sup>5</sup>University of Manitoba, Winnipeg, Canada; <sup>6</sup>Centre for the AIDS Programme of Research in South  
15 Africa (CAPRISA), South Africa; <sup>7</sup>National Microbiology Laboratory at the JC Wilt Infectious  
16 Diseases Research Centre, Public Health Agency of Canada, Winnipeg, Canada; <sup>8</sup>Pwani University,  
17 Kilifi, Kenya; <sup>9</sup>KEMRI/Center for Global Health Research, Kisumu, Kenya; <sup>10</sup>KAVI Institute of  
18 Clinical Research, University of Nairobi, Nairobi, Kenya; <sup>11</sup>University of Washington, Seattle, USA;  
19 <sup>12</sup>IAVI, New York, USA; <sup>13</sup>University of California, San Francisco, USA; <sup>14</sup>University of Illinois at  
20 Chicago, USA; and <sup>15</sup>University of Oxford, Oxford, United Kingdom.

21

22 **\*Corresponding Authors:**

Amin S. Hassan

George Makau Nduva

KEMRI/Wellcome Trust Research Programme

Systems Virology, Lund University

P.O Box 230-80108, Kilifi, Kenya

BMC B13, 221 84 Lund, Sweden

E-mail: [AHassan@kemri-wellcome.org](mailto:AHassan@kemri-wellcome.org)

E-mail: [george.nduva@med.lu.se](mailto:george.nduva@med.lu.se)

1

2 **Short title:** Pre-treatment HIV-1 drug resistance in Kenya

1 **Summary:**

2 Compared to the heterosexual population, key populations had higher levels of pre-treatment  
3 HIV-1 drug resistance (HIVDR). Propagation of HIVDR was risk-group exclusive.  
4 Introduction of integrase inhibitors abrogated propagation of reverse transcriptase inhibitors  
5 mutations among the heterosexual, but not key populations.

6

7 **Keywords:** HIV-1, pre-treatment drug resistance; transmission clusters; risk groups; Kenya.

8

1 **ABSTRACT**

2

3 **Background:** Evidence on the distribution of pre-treatment HIV-1 drug resistance (HIVDR) by risk  
4 groups is limited in Africa. We assessed prevalence, trends, and transmission dynamics of pre-  
5 treatment HIVDR within-and-between men who have sex with men (MSM), people who inject drugs  
6 (PWID), female sex workers (FSW), heterosexuals (HET), and children infected perinatally in Kenya.

7 **Methods:** HIV-1 partial *pol* sequences from antiretroviral- naïve samples collected between 1986-  
8 2020 were used. Pre-treatment RTI, PI and INSTI mutations were assessed using the Stanford  
9 HIVDR database. Phylogenetics methods were used to determine and date transmission clusters.

10 **Results:** Of 3567 sequences analysed, 550 (15.4%, 95% CI: 14.2-16.6) had at least one pre-treatment  
11 HIVDR mutation, which was most prevalent amongst children (41.3%), followed by PWID (31.0%),  
12 MSM (19.9%), FSW (15.1%) and HET (13.9%). No INSTI resistance mutations were detected.  
13 Among HET, pre-treatment HIVDR increased from 6.6% in 1986-2005 to 20.2% in 2011-2015 but  
14 dropped to 6.5% in 2016-2020. Overall, 22 clusters with shared pre-treatment HIVDR mutations were  
15 identified. The largest was a K103N mutation cluster involving 16 MSM sequences sampled between  
16 2010-2017, with an estimated tMRCA of 2005 (HPD, 2000-2008). This lineage had a growth  
17 rate=0.1/year and  $R_0=1.1$ , indicating propagation over 12 years among ART-naïve MSM in Kenya.

18 **Conclusions:** Compared to HET, children and key populations had higher levels of pre-treatment  
19 HIVDR. Introduction of INSTIs after 2016 may have reversed the increase in pre-treatment RTI  
20 mutations in Kenya. Continued surveillance of HIVDR, with a particular focus on children and key  
21 populations, is warranted to inform treatment strategies in Kenya.

## 1 INTRODUCTION

2

3 By the end of 2020, an estimated 30 million individuals were receiving antiretroviral therapy (ART)  
4 globally<sup>1</sup>. The scale-up of ART has substantially reduced new HIV-1 infections, vertical  
5 transmissions, HIV-1 related mortality, and improved life expectancy for millions of people with HIV  
6 (PWHIV)<sup>1-3</sup>. However, widespread use of ART at the population-level has been associated with the  
7 emergence of HIV-1 drug resistance (HIVDR), and the transmission of drug resistant viruses that can  
8 compromise therapy outcomes<sup>4-9</sup>.

9 The World Health Organization (WHO) recommends routine nationally representative HIVDR  
10 surveys to inform treatment strategies<sup>10,11</sup>. Increasing levels of pre-treatment HIVDR to non-  
11 nucleoside reverse transcriptase inhibitors (NNRTIs) has been recognized as a problem for many  
12 years, especially in low and middle-income countries (LMIC) where virologic monitoring of patients  
13 on ART is sub-optimal<sup>12-15</sup>. Out of concern for treatment failure in the setting of increasing NNRTI  
14 resistance and poor tolerability of PIs, WHO has prompted a switch to INSTIs with a high genetic  
15 barrier as first-line regimens in LMIC settings – and Dolutegravir (DTG) is now widely adopted in  
16 first-line regimen both for treatment naïve and experienced PWHIV<sup>16,17</sup>. However, it is not clear if the  
17 switch to DTG-based regimens, which came into effect in LMIC settings in 2016, may have impacted  
18 emergence and circulation of NNRTI resistant strains and this warrants further evaluation.

19 Further, key populations including men who have sex with men (MSM), people who inject drugs  
20 (PWID), female sex workers (FSW), transgender people, and people in prisons, are disproportionately  
21 impacted by HIV-1 in Sub-Saharan Africa. Transmission from key population individuals is thought  
22 to contribute disproportionately to Africa's generalized HIV-1 epidemic<sup>18,19</sup>. We previously  
23 demonstrated that the majority of HIV-1 transmissions in Kenya occur within distinct risk groups,<sup>20-22</sup>  
24 and, although infrequent, HIV-1 transmission from HET to key populations is more common than  
25 vice-versa<sup>22</sup>. However, it remains unknown whether there is differential transmission of HIVDR  
26 mutations within and between HET and key populations in Kenya. This study aimed to describe  
27 prevalence, temporal trends, and transmission linkages of pre-treatment HIVDR mutations within and  
28 between risk groups in Kenya.

## 1     **METHODS**

2

### 3     **Study population**

4     HIV-1 partial *pol* sequences from Kenya were either newly generated from archived plasma samples  
5     (henceforth referred as newly generated) or retrieved from the Los Alamos HIV-1 sequence database  
6     (henceforth referred as published sequences)<sup>23</sup>. The newly generated HIV-1 *pol* sequences  
7     (approximately 1020 nucleotides, HXB2 [K03455] positions 2267-3287) were processed from blood  
8     plasma as previously described<sup>24</sup>. These samples were obtained through the MSM Health Research  
9     Consortium – a multi-site collaboration between the KEMRI-Wellcome Trust Research programme  
10    (KWTRP) in Coastal Kenya<sup>25,26</sup>, Nyanza Reproductive Health Society (NRHS) in Western Kenya<sup>27</sup>,  
11    Sex Workers Outreach Program (SWOP) clinics in Nairobi, Kenya and the TRANSFORM MSM  
12    cohort from Nairobi, Kenya<sup>28</sup>, and from the national HIV-1 reference laboratory at the KEMRI-  
13    CGHR in Kisumu, Kenya. Samples identified between 2006-2011 were collected under IAVI’s  
14    Protocol C, a study of incident HIV infection among higher risk persons; this included teams in  
15    Nairobi and KWRTP<sup>29</sup>. The published Kenyan HIV-1 *pol* sequences (corresponding to the HXB2 -  
16    K03455, *protease* and *reverse transcriptase* nucleotide positions 2000-4800 and *integrase* positions  
17    4230-5093) were retrieved from the Los Alamos HIV database on March 20<sup>th</sup> 2022<sup>23</sup>.  
18    Newly generated and published sequences were annotated with sampling date, sampling location  
19    (county and province), ART status (whether treatment naïve or experienced), age, sex, and risk group  
20    (MSM; PWID; FSW; children, and HET). Where demographic data were missing for published  
21    sequences, information was obtained from reviewing associated literature or through direct  
22    communication with study authors. Sequences from ART-experienced individuals were excluded  
23    from this analysis.

24

### 25    **HIV-1 subtype determination**

26    Newly generated and published partial *pol* sequences from Kenya were aligned with the HIV-1 Group  
27    M (subtypes A-K + Recombinants) subtype reference sequences (<http://www.hiv.lanl.gov>) using the  
28    MAFFT algorithm in Geneious Prime 2019<sup>23</sup>. Subtypes were determined by maximum-likelihood

1 (ML) phylogenetic analysis in PhyML using the general time-reversible substitution model with a  
2 gamma-distributed rate variation and proportion of invariant sites (GTR+ $\Gamma$ 4+I)<sup>30</sup>. Branch support was  
3 determined using the approximate likelihood ratio test with the Shimodaira-Hasegawa-like procedure  
4 (aLRT-SH) in PhyML and aLRT-SH  $\geq 0.90$  was considered significant. The phylogeny was visualized  
5 using FigTree v1.4.4 (<https://github.com/rambaut/figtree/releases>). Unique recombinant forms (URFs)  
6 were characterised by boot-scan analysis in SimPlot<sup>31-33</sup>. Subtype assignment was also compared with  
7 results from the REGA subtyping tool (version 3.0).

8

### 9 **Characterisation of pre-treatment HIV-1 drug resistance**

10 All sequences from treatment-naïve individuals were submitted to the Stanford HIV database (HIVdb  
11 Algorithm, version 8.8) for determination and interpretation of HIVDR mutations. The Calibrated  
12 Population Resistance tool was used to identify pre-treatment drug resistance mutations, and the  
13 results cross-referenced with the WHO list of mutations for the surveillance of transmitted  
14 HIVDR<sup>34,35</sup>. Mutations were grouped and presented based on drug class as follows: nucleoside reverse  
15 transcriptase inhibitors (NRTI), non-nucleoside reverse transcriptase inhibitors (NNRTI), protease  
16 inhibitors (PI) and integrase strand transfer inhibitors (INSTI) mutations.

17

### 18 **Phylogenetic determination of clusters and Bayesian inference**

19 HIV-1 sequences from ART-naïve individuals were grouped into the main HIV-1 subtypes observed  
20 (A1, C and D). For each subtype-specific dataset, a search for related sequences was done separately  
21 using the NCBI GenBank BLAST tool, with results limited to a threshold of 10 similar hits per  
22 individual-specific sequence, as previously described<sup>21,36,37</sup>. Reference sequences and sequences in the  
23 Kenyan dataset with pre-treatment HIVDR mutations were compiled into subtype-specific  
24 alignments, excluding codon positions associated with drug resistance mutations. ML phylogenies  
25 were generated in PhyML using the GTR+ $\Gamma$ 4+I model<sup>30</sup> and phylogenetic trees were annotated based  
26 on the most dominant mutations per drug class i.e. K103N/S, Y181C/I/V, and G190A/S/E for NNRTI  
27 resistance and M184V/I and T215 revs for NRTI resistance. Kenyan HIV-1 clusters were defined by  
28 aLRT-SH support  $\geq 0.9$  and having  $\geq 80\%$  Kenyan sequences, and then further classified by number of

1 sequences into dyads (2 sequences), networks (3-14) sequences, and large clusters (>14  
2 sequences)<sup>21,36,37</sup>.

3 Dating of clusters were performed in BEAST (version 1.10.4) using the GTR+ $\Gamma$ 4+I substitution  
4 model, an uncorrelated lognormal relaxed clock under a Skygrid coalescent tree prior, and specifying  
5 a hierarchical phylogenetic model (HPM) to enhance precision in estimating evolutionary  
6 parameters<sup>38,39</sup>. Cluster growth rates were inferred under a logistic growth model<sup>40-42</sup>. BEAST runs of  
7 300 million generations were computed, sampling every 30,000<sup>th</sup> iteration, and discarding the first  
8 10% as chain burn-in. Convergence was determined in Tracer v.1.7.0 (defined as effective sample  
9 sizes (ESS)  $\geq 100$ )<sup>38</sup>. Maximum clade credibility (MCC) trees were summarized from the posterior  
10 tree distribution using Tree-Annotator v1.10.4 (BEAST suite) and visualized using Figtree (v1.4.4,  
11 available at: <https://github.com/rambaut/figtree/releases>). The basic reproductive number ( $R_0$ , defined  
12 as the number of secondary infections that arise from a typical primary case in a completely  
13 susceptible population) per cluster was estimated based on the respective cluster growth rate ( $r$ ) using  
14 the formula  $R_0 = rD + 1$  (where  $D$  represents the average duration of infectiousness for individuals)  
15 <sup>40-42</sup>. In the absence of empiric data on the duration of infectiousness in our setting, we assumed  $D$  to  
16 be one year.

17

## 18 **Statistical analysis**

19 Sequences were categorized by year of sampling and calendar period collapsed into five-year intervals  
20 to reflect major changes in treatment guidelines in Kenya as follows: before 2005 (before introduction  
21 of combination ART [cART]), 2005-2010 (introduction of cART), 2011-2015 (scale up of cART),  
22 and 2016-2020 (introduction of INSTI-based regimen). Categorical data were compared with the  $\chi^2$   
23 test and continuous data with the Kruskal-Wallis test where appropriate. Overall, drug-class-specific,  
24 and mutation-specific HIVDR prevalence estimates and 95% confidence interval (CI) were presented.  
25 HIVDR temporal trends were assessed using *nptrends*, a nonparametric extension of the Wilcoxon  
26 rank-sum test<sup>43</sup>. Multivariable logistic regression models were used to determine associations between  
27 risk groups, geographic locations, sampling period and pre-treatment HIVDR. All statistical tests were

1 2-tailed ( $P < 0.05$ ). Data analysis and summary plots were done using Stata 15 (StataCorp LLC,  
2 College Station, Texas, USA) and RStudio (version 1.2.5001) with the *ggplot2* package<sup>44</sup>.

3

#### 4 **Nucleotide sequence accession numbers**

5 Newly generated nucleotide sequences are available from GenBank under the accession numbers  
6 OM109695-OM110282.

7

#### 8 **Ethical consideration**

9 For the newly generated sequences, informed consent for use of data and samples for research studies  
10 was obtained from participants under respective study protocols. Since published sequences were  
11 obtained from an open access repository, informed consent was not retrospectively obtained. Instead,  
12 science and ethics approval were obtained from the Kenya Medical Research Institute (KEMRI)  
13 Scientific and Ethics Review Unit (SERU 3547). All newly generated and published sequences were  
14 de-identified at source before inclusion in the current analysis.



## 1 RESULTS

2

### 3 Study population

4 Overall, 5572 HIV-1 *pol* sequences (n=755 newly generated, and n=4817 published) sampled  
5 between 1986-2020 were considered. Sequences from ART-experienced individuals (n=1778) and  
6 those with unverified treatment status (n=227) were excluded from the analysis (Figure 1). The  
7 analysed dataset comprised 3567 HIV-1 sequences from ART-naïve individuals covering the reverse  
8 transcriptase (n=3567, 100.0%), protease (n=2491, 69.8%) and integrase (n=106, 3.0%) coding  
9 regions. Most sequences were from the HET population (n=2947, 82.1%) and from the former  
10 Nairobi (n=1479, 41.5%) and Coast (n=1027, 28.8%) provinces (Table 1). The most common  
11 circulating strain was HIV-1 sub-subtype A1 (n=2282, 64.0%), followed by subtype D (n=509,  
12 14.3%), unique recombinant forms (URFs, n=413, 11.6%), and subtype C (n=282, 7.9%), with this  
13 distribution being mostly similar across risk groups (Table 2).

14

### 15 Prevalence of pre-treatment HIV-1 drug resistance

16 Of 3567 sequences from ART-naïve individuals, 550 (15.4%, 95% CI: 14.2–16.6) had at least one  
17 pre-treatment HIVDR mutation. NNRTI resistance mutations were most common (n=453, 12.7%  
18 [95% CI: 11.6–13.8]), followed by NRTI (n=232, 6.5% [95% CI: 5.7–7.4]) and PIs (n=23, 0.9% [95%  
19 CI: 0.6–1.4]). There were no INSTI resistance mutations observed over the analysis period, although  
20 the number of sequences analysed were also limited (n=106) (Figure 2a, and Table S1).

21 Pre-treatment HIVDR mutations were most common amongst children (n=31, 41.3%), followed by  
22 PWID (n=18, 31.0%), MSM (n=68, 20.0%), FSW (n=22, 15.1%) and HET (n=411, 13.9%).  
23 Compared to other risk groups, children had higher pre-treatment NNRTI resistance mutations (n=29,  
24 38.7%) while PWID had higher pre-treatment NRTI resistance mutations (n=18, 31.0%). Pre-  
25 treatment PI resistance mutations were <1.0% in HET, FSW, and MSM. Pre-treatment PI mutations  
26 were not observed in children and PWID although few sequences from these groups were analysed in  
27 this study (Figure 2b, and Table S1).

1 Overall, the most common pre-treatment NNRTI, NRTI and PI drug resistance mutations were the  
2 K103N/S (n=210, 5.9% of all sequences with any pre-treatment HIVDR), M184V (n=130, 3.6%) and  
3 M46I/L (n=12, 0.5%), respectively (Figure 2c, and Table S2). Whilst K103N/S was the most common  
4 NNRTI mutation amongst MSM, HET, FSW and PWID, the Y181C/I/V mutation was the most  
5 common amongst children. The T215revs were the most common NRTI mutations amongst PWID,  
6 whilst M184V/I was the most common NRTI mutation amongst children, FSW, HET and MSM  
7 (Figure 2d, and Table S2).

8

### 9 **Temporal trends in pre-treatment HIV-1 drug resistance**

10 Overall, there was an increase in pre-treatment HIVDR from 6.9% (before 2005) to 24.2% (2016-  
11 2020,  $p < 0.001$ ). Pre-treatment NNRTI resistance increased from 3.8% (before 2005) to 22.9%  
12 (2016-2020,  $p < 0.001$ ) while pre-treatment NRTI resistance increased from 4.2% (before 2005) to  
13 8.1% (2016-2020,  $p = 0.061$ ). Pre-treatment PI resistance remained stable and below 2% throughout  
14 the calendar periods ( $p = 0.298$ ) (Figure 3, and Table S3).

15 Amongst the HET population, overall pre-treatment HIVDR increased from 6.6% (before 2005) to  
16 20.2% (2011-2015) – followed by a significant decline to 6.5% (2016-2020,  $p < 0.001$ , LBL).

17 Levels of pre-treatment NNRTI and NRTI resistance also increased from 3.7% and 4.0% (before  
18 2005) to 17.7% and 8.1% (2011-2015), followed by a decline to 6.5% and 3.2% (2016-2020,  
19  $p < 0.001$ , and  $p = 0.079$ , LBL respectively). Pre-treatment PI resistance remained low at 0.0%  
20 (before 2005), 1.0% (2011-2015) and 3.2% (2016-2020,  $p = 0.839$ ), though this was based on few  
21 sequences and hence overlapping binomial confidence intervals.

22 Among MSM there was an overall increase in NNRTI and NRTI resistance between 2006-2010 and  
23 2015-2020, though this did not achieve statistical significance ( $p = 0.399$ , and  $p = 0.241$ , LBL  
24 respectively). Likewise, among FSW, NNRTI resistance also increased between 2006-2010 and 2015-  
25 2020 ( $p = 0.001$ , LBL). Data on PWID and children fell within one calendar year grouping (2006-2010  
26 and 2011-2015, respectively), and were therefore excluded from trend analysis (Table S3).

27

## 1 **Phylogenetic clustering of sequences with shared pre-treatment HIV-1 drug resistance** 2 **mutations**

3 Overall, 491 sequences with pre-treatment HIVDR mutations were analysed, of which 377 were  
4 subtype A1, subtype C (n=31), and subtype D (n=83). Cluster analysis revealed 32 clusters (size range  
5 2-16) with the shared HIV-1 pre-treatment mutations K103N (n=14, 43.6% of all clusters), Y181C  
6 (n=6, 18.9%), M184V (n=5, 15.6%), G190A/S (n=3, 9.4%), and T215revs (n=4, 12.5%, Table S4).  
7 The clusters were dyads (n=26, 84.5%), networks (n=4, 12.5%), and large clusters (n=1, 3.0%).  
8 Clusters were either risk-group exclusive i.e., HET only (n=24, 75.0%), MSM only (n=2, 6.3%), and  
9 PWID only (n=1, 3.1%), or mixed clusters including HET/MSM (n=2, 6.3%), HET/FSW (n=1, 3.1%),  
10 and HET/Children (n=2, 6.3%) (Table 3).

11 Bayesian dating was performed for clusters with  $\geq 3$  sequences with shared pre-treatment HIVDR  
12 mutations – and included four subtype A1 clusters and one subtype D cluster (Table 4). The largest of  
13 these comprised 16 MSM having the K103N mutation. This cluster had an estimated tMRCA of 2005  
14 (HPD, 2000 – 2008) where the most recent sample was collected in 2017, suggesting that this lineage  
15 had persisted over 12 years (growth rate = 0.1/year and  $R_0=1.1$ ) among ART naïve MSM in Kenya.  
16 Another long-standing pre-treatment HIVDR cluster involved 11 PWID having the T215rev mutation  
17 with an estimated tMRCA of 1999 (HPD, 1998 – 2001) where the most recent sample was collected  
18 in 2010 – indicating that this lineage had persisted (growth rate = 0.38/year,  $R_0=1.38$ ) over 11 years  
19 among ART-naïve PWID in Kenya. Overall, all except one pre-treatment HIVDR clusters had basic  
20 reproductive number,  $R_0 > 1$ , indicative of onward propagation of pre-treatment HIVDR mutations  
21 among untreated individuals in Kenya (Table 4).

## 1 **DISCUSSION**

2

3 We used HIV-1 *pol* sequence data from Kenya and spanning a period of more than three decades to  
4 assess the prevalence, temporal trends, and transmission of HIV-1 pre-treatment drug resistance  
5 among different risk groups in Kenya. Overall pre-treatment HIVDR prevalence was high (15.4%) –  
6 and these estimates were largely a reflection of the high levels of pre-treatment NNRTI drug  
7 resistance mutations. Notably, there was comparatively lower (<10%) pre-treatment NRTI drug  
8 resistance and no pre-treatment INSTI resistance in the study population (based on a limited number  
9 of HIV-1 *integrase* gene sequences), justifying the retention of two NRTIs – and a switch to a  
10 dolutegravir based-regimen for HIV-1 treatment in Kenya<sup>45</sup>.

11 We observed an increasing trend in pre-treatment HIVDR at a countrywide level, which was largely  
12 driven by NNRTI resistance, an observation that is consistent with previous sub-national data from  
13 Kenya and data from elsewhere in the global context<sup>12-15,46</sup>. NNRTIs have a low genetic barrier which  
14 permits outgrowth of resistant variants under sub-optimal drug pressure, and mutations may persist  
15 for long durations, facilitating their onward transmission<sup>47,48</sup>. Of interest, pre-treatment NNRTI and  
16 NRTI resistance among HET (by far the largest risk group in this study) increased between 2005 and  
17 2015 but declined between 2015 and 2020. This coincides with the nationwide transition from NNRTI  
18 to INSTI-based ART regimens<sup>45</sup> – and suggests that the reduction of the use of NNRTI-based  
19 regimens and the replacement with dolutegravir-based regimen may have abrogated emergence and  
20 circulation of pre-treatment NNRTI and NRTI resistance mutations. In contrast to trends among HET,  
21 pre-treatment HIVDR among FSW and MSM increased consistently through to 2015-2020.  
22 Remarkably, as of 2020, ART coverage was lower among key populations: 73% in FSW, 68% in  
23 PWID, and 63% in MSM, compared to 86% in the general HET population<sup>49</sup>. This may explain the  
24 higher resistance levels observed in key populations compared to HET, and requires further  
25 investigation. Enhanced monitoring of INSTI resistance using contemporary sequences from both  
26 HET and key populations would be prudent to inform future treatment strategies.

27 The high levels of K103N (in addition to Y181C, and G190A) mutations in this study likely reflect  
28 extensive selection of these mutations in persons receiving NVP and EFV – both of which comprised

1 the main NNRTI options for first-line triple therapy regime historically in Kenya<sup>50-53</sup>. Also, we  
2 observed several HIV-1 clusters with shared mutations spanning more than 10 years, indicating  
3 onward propagation of HIVDR among treatment naïve individuals as new infections<sup>54</sup>. There was  
4 more frequent HIV-1 clustering of K103N strains. The largest cluster also comprised the K103N  
5 mutation, indicating extensive transmission of this pre-treatment mutation in Kenya, possibly dating  
6 back to the single-dose nevirapine era, as has been reported in other settings<sup>55,56</sup>. All except one of the  
7 clusters had a basic reproductive number of more than one, suggesting persistent NRTI and NNRTI  
8 HIVDR transmissions. Assessment of these trends over the next few years is needed to determine  
9 whether roll out of the more efficacious INSTI as a first line regimen will terminate circulation of  
10 NNRTI resistance mutations in Kenya. Also, all clusters were risk-group specific, consistent with  
11 previous reports that HIV-1 transmission in Kenya occurs mostly within risk groups, where HIV-1  
12 mixing between risk groups is rare<sup>21,22</sup>.

13 The main strength of our study was the near-national level coverage and the ability to assess for  
14 temporal trends, dynamics, and transmission linkages spanning over three decades. However, the  
15 main limitation relates to the distribution of sequence data across time periods and by risk group, with  
16 some groups and time periods severely limited with very sparse sampling. Thus, temporal trends from  
17 drug-class estimates (more so for PI and INSTI mutations) and risk-group estimates (more so for  
18 children and PWID) should be interpreted with caution.

19 In conclusion, we demonstrated an increase in pre-treatment HIVDR over the last two decades, which  
20 justifies the switch to INSTI-based therapy in Kenya. We also report long-standing propagation of  
21 pre-treatment HIVDR mutations, but this might have been mitigated by the introduction of INSTI-  
22 based regimens. The switch to INSTI-based regimens may also have resulted in the abrogation of  
23 NRTI and NNRTI mutations, as observed in the general HET population. Our study further  
24 underscores the challenges with access to care and treatment for key populations as demonstrated with  
25 increasing pre-treatment HIVDR in MSM and FSW – despite the broad nationwide introduction of  
26 INSTI-based regimens. Taken together, our findings advocate for interventions for key populations  
27 towards equitable access to care and treatment, and continued vigilance for pre-treatment HIVDR  
28 surveillance to include INSTIs towards informing treatment options in Kenya.

1 **Acknowledgements**

2 We thank the staff affiliated with the MSM Health Research Consortium (MHRC) and the  
3 International AIDS Vaccine Initiative (IAVI) for supporting studies involving key populations in  
4 Kenya. This manuscript was submitted for publication with the permission from the Director of the  
5 Kenya Medical Research Institute (KEMRI).

6  
7 **Author contributions**

8 A.S.H., J.E and E.J.S. conceptualized, designed and provided funding for the study. E.J.S., S.M.G.,  
9 J.K, L.M, F.C, M.M, K.M, G.M, M.M, O.A, L.G, A.D.S, and R.B provided samples from which new  
10 sequences used in the study were generated. G.N.M and Y.S performed lab work. G.M.N performed  
11 inferential analyses and produced figures and tables. M.K helped with producing figures and tables.  
12 D.A, and P.M helped with data analysis. G.N.M wrote the original draft manuscript and all the  
13 authors reviewed and edited the manuscript before submission.

14  
15 **Competing Interests**

16 The authors declare no competing interests.

17  
18 **Funding information**

19 This work was supported through the Sub-Saharan African Network for TB/HIV Research Excellence  
20 (SANTHE), a DELTAS Africa Initiative [grant #DEL-15-006]. The DELTAS Africa Initiative is an  
21 independent funding scheme of the African Academy of Sciences (AAS)'s Alliance for Accelerating  
22 Excellence in Science in Africa (AESAs) and supported by the New Partnership for Africa's  
23 Development Planning and Coordinating Agency (NEPAD Agency) with funding from the Wellcome  
24 Trust [grant #107752/Z/15/Z, and #209294/Z/17/Z] and the UK government. This work was also  
25 supported in part by funding from the Swedish Research Council (grants #2016-01417, and #2020-  
26 06262) and the Swedish Society for Medical Research (grant #SA-2016). The views expressed in this  
27 publication are those of the author(s) and not necessarily those of AAS, NEPAD Agency, Wellcome  
28 Trust, IAVI, Swedish Research Council, or the UK government.

## 1   **REFERENCES**

2

3   1    UNAIDS. *Global HIV & AIDS statistics 2021*, <Available at  
4    <https://www.unaids.org/en/resources/fact-sheet>> (2021).

5   2    Sutcliffe, C. G., van Dijk, J. H., Bolton, C., Persaud, D. & Moss, W. J. Effectiveness of  
6    antiretroviral therapy among HIV-infected children in sub-Saharan Africa. *The Lancet*  
7    *infectious diseases* **8**, 477-489 (2008).

8   3    Palella Jr, F. J. *et al.* Declining morbidity and mortality among patients with advanced human  
9    immunodeficiency virus infection. *New England Journal of Medicine* **338**, 853-860 (1998).

10  4    Beyrer, C. & Pozniak, A. HIV drug resistance—an emerging threat to epidemic control. *New*  
11  *England Journal of Medicine* **377**, 1605-1607 (2017).

12  5    Frentz, D. *et al.* Patterns of transmitted HIV drug resistance in Europe vary by risk group.  
13  *PloS one* **9**, e94495 (2014).

14  6    Kassaye, S. G. *et al.* Transmitted HIV drug resistance is high and longstanding in metropolitan  
15  Washington, DC. *Clinical Infectious Diseases* **63**, 836-843 (2016).

16  7    Hassan, A. S. *et al.* Presence, persistence and effects of pre-treatment HIV-1 drug resistance  
17  variants detected using next generation sequencing: A Retrospective longitudinal study from  
18  rural coastal Kenya. *PloS one* **14**, e0210559 (2019).

19  8    Drescher, S. M. *et al.* Treatment-naive individuals are the major source of transmitted HIV-1  
20  drug resistance in men who have sex with men in the Swiss HIV Cohort Study. *Clinical*  
21  *infectious diseases : an official publication of the Infectious Diseases Society of America* **58**,  
22  285-294, doi:10.1093/cid/cit694 (2014).

23  9    Rhee, S. Y. *et al.* HIV-1 transmitted drug resistance surveillance: shifting trends in study  
24  design and prevalence estimates. *Journal of the International AIDS Society* **23**, e25611,  
25  doi:10.1002/jia2.25611 (2020).

- 1 10 Macdonald, V. *et al.* Prevalence of pretreatment HIV drug resistance in key populations: a  
2 systematic review and meta-analysis. *Journal of the International AIDS Society* **23**, e25656  
3 (2020).
- 4 11 Pham, Q. D., Wilson, D. P., Law, M. G., Kelleher, A. D. & Zhang, L. Global burden of  
5 transmitted HIV drug resistance and HIV-exposure categories: a systematic review and meta-  
6 analysis. *AIDS* **28**, 2751-2762, doi:10.1097/qad.000000000000494 (2014).
- 7 12 Gupta, R. K. *et al.* HIV-1 drug resistance before initiation or re-initiation of first-line  
8 antiretroviral therapy in low-income and middle-income countries: a systematic review and  
9 meta-regression analysis. *The Lancet infectious diseases* **18**, 346-355 (2018).
- 10 13 World Health Organization. *HIV Drug Resistance Report 2019*. Geneva, Switzerland,  
11 <<https://www.who.int/hiv/pub/drugresistance/hivdr-report-2019/en/>> (2019).
- 12 14 Hamers, R. L., Sigaloff, K. C. E., Kityo, C., Mugenyi, P. & de Wit, T. F. R. Emerging HIV-1 drug  
13 resistance after roll-out of antiretroviral therapy in sub-Saharan Africa. *Current Opinion in*  
14 *HIV and AIDS* **8**, 19-26, doi:10.1097/COH.0b013e32835b7f94 (2013).
- 15 15 Rhee, S. Y. *et al.* HIV-1 transmitted drug resistance surveillance: shifting trends in study  
16 design and prevalence estimates. *Journal of the International AIDS Society* **23**, e25611  
17 (2020).
- 18 16 Organization, W. H. Progress report 2016: prevent HIV, test and treat all: WHO support for  
19 country impact. (World Health Organization, 2016).
- 20 17 Organization, W. H. Updated recommendations on first-line and second-line antiretroviral  
21 regimens and post-exposure prophylaxis and recommendations on early infant diagnosis of  
22 HIV: interim guidelines: supplement to the 2016 consolidated guidelines on the use of  
23 antiretroviral drugs for treating and preventing HIV infection. (World Health Organization,  
24 2018).



- 1 18 Nduva, G. M., Nazziwa, J., Hassan, A. S., Sanders, E. J. & Esbjörnsson, J. The Role of  
2 Phylogenetics in Discerning HIV-1 Mixing among Vulnerable Populations and Geographic  
3 Regions in Sub-Saharan Africa: A Systematic Review. *Viruses* **13**, 1174 (2021).
- 4 19 Joint United Nations Programme on HIV/AIDS. *UNAIDS DATA 2020*,  
5 [<https://aids2020.unaids.org/report/>](https://aids2020.unaids.org/report/) (2020).
- 6 20 Bezemer, D. *et al.* HIV Type 1 transmission networks among men having sex with men and  
7 heterosexuals in Kenya. *AIDS research and human retroviruses* **30**, 118-126 (2014).
- 8 21 Nduva, G. M. *et al.* HIV-1 Transmission Patterns Within and Between Risk Groups in Coastal  
9 Kenya. *Sci Rep* **10**, 6775, doi:10.1038/s41598-020-63731-z (2020).
- 10 22 Nduva, G. M. *et al.* Quantifying rates of HIV-1 flow between risk groups and geographic  
11 locations in Kenya: A country-wide phylogenetic study. *Virus evolution* **8**, veac016 (2022).
- 12 23 Los Alamos National Library. *HIV-1 database at the Los Alamos National Laboratory*,  
13 [<http://www.hiv.lanl.gov/>](http://www.hiv.lanl.gov/) (2019).
- 14 24 Esbjörnsson, J. *et al.* Frequent CXCR4 tropism of HIV-1 subtype A and CRF02\_AG during late-  
15 stage disease-indication of an evolving epidemic in West Africa. *Retrovirology* **7**, 23 (2010).
- 16 25 Graham, S. M. *et al.* A Novel HIV-1 RNA Testing Intervention to Detect Acute and Prevalent  
17 HIV Infection in Young Adults and Reduce HIV Transmission in Kenya: Protocol for a  
18 Randomized Controlled Trial. *JMIR research protocols* **9**, e16198, doi:10.2196/16198 (2020).
- 19 26 Sanders, E. J. *et al.* High HIV-1 incidence, correlates of HIV-1 acquisition, and high viral loads  
20 following seroconversion among MSM. *AIDS* **27**, 437-446,  
21 doi:10.1097/QAD.0b013e32835b0f81 (2013).
- 22 27 Kunzweiler, C. P. *et al.* Depressive Symptoms, Alcohol and Drug Use, and Physical and Sexual  
23 Abuse Among Men Who Have Sex with Men in Kisumu, Kenya: The Anza Mapema Study.  
24 *AIDS and behavior* **22**, 1517-1529, doi:10.1007/s10461-017-1941-0 (2018).

- 1 28 Smith, A. D. *et al.* HIV burden and correlates of infection among transfeminine people and  
2 cisgender men who have sex with men in Nairobi, Kenya: an observational study. *The lancet.*  
3 *HIV*, doi:10.1016/s2352-3018(20)30310-6 (2021).
- 4 29 Price, M. A. *et al.* Cohort Profile: IAVI's HIV epidemiology and early infection cohort studies  
5 in Africa to support vaccine discovery. *International Journal of Epidemiology* **50**, 29-30  
6 (2021).
- 7 30 Guindon, S. *et al.* New algorithms and methods to estimate maximum-likelihood  
8 phylogenies: assessing the performance of PhyML 3.0. *Systematic biology* **59**, 307-321  
9 (2010).
- 10 31 Lole, K. S. *et al.* Full-length human immunodeficiency virus type 1 genomes from subtype C-  
11 infected seroconverters in India, with evidence of intersubtype recombination. *Journal of*  
12 *virology* **73**, 152-160 (1999).
- 13 32 Struck, D., Lawyer, G., Ternes, A.-M., Schmit, J.-C. & Bercoff, D. P. COMET: adaptive context-  
14 based modeling for ultrafast HIV-1 subtype identification. *Nucleic acids research* **42**, e144-  
15 e144 (2014).
- 16 33 Pineda-Peña, A.-C. *et al.* Automated subtyping of HIV-1 genetic sequences for clinical and  
17 surveillance purposes: performance evaluation of the new REGA version 3 and seven other  
18 tools. *Infection, genetics and evolution* **19**, 337-348 (2013).
- 19 34 Stanford University. *HIVdb version 9.0*, <Available at: <https://hivdb.stanford.edu/hivdb/>>  
20 (2021).
- 21 35 Bennett, D. E. *et al.* Drug resistance mutations for surveillance of transmitted HIV-1 drug-  
22 resistance: 2009 update. *PloS one* **4**, e4724 (2009).
- 23 36 Esbjörnsson, J. *et al.* HIV-1 transmission between MSM and heterosexuals, and increasing  
24 proportions of circulating recombinant forms in the Nordic Countries. *Virus evolution* **2**,  
25 vew010 (2016).

- 1 37 Hassan, A. S., Pybus, O. G., Sanders, E. J., Albert, J. & Esbjörnsson, J. Defining HIV-1  
2 transmission clusters based on sequence data. *AIDS (London, England)* **31**, 1211 (2017).
- 3 38 Suchard, M. A. *et al.* Bayesian phylogenetic and phylodynamic data integration using BEAST  
4 1.10. *Virus evolution* **4**, vey016 (2018).
- 5 39 Drummond, A. J., Rambaut, A., Shapiro, B. & Pybus, O. G. Bayesian coalescent inference of  
6 past population dynamics from molecular sequences. *Molecular biology and evolution* **22**,  
7 1185-1192 (2005).
- 8 40 Pybus, O. G. *et al.* The Epidemic Behavior of the Hepatitis C Virus. *Science* **292**, 2323-2325,  
9 doi:10.1126/science.1058321 (2001).
- 10 41 Stadler, T. *et al.* Estimating the basic reproductive number from viral sequence data.  
11 *Molecular biology and evolution* **29**, 347-357 (2012).
- 12 42 Faria, N. R. *et al.* Distinct rates and patterns of spread of the major HIV-1 subtypes in Central  
13 and East Africa. *PLOS Pathogens* **15**, e1007976, doi:10.1371/journal.ppat.1007976 (2019).
- 14 43 Cuzick, J. A Wilcoxon-type test for trend. *Statistics in medicine* **4**, 87-90 (1985).
- 15 44 Wickham, H. ggplot2. *Wiley Interdisciplinary Reviews: Computational Statistics* **3**, 180-185  
16 (2011).
- 17 45 National AIDS & STI Control Program, M. o. H. K. *Guidelines on Use of Antiretroviral Drugs for*  
18 *Treating and Preventing HIV Infection in Kenya – 2018 Edition*,  
19 <<https://www.nascop.or.ke/new-guidelines>> (2018).
- 20 46 Chung, M. H. *et al.* Increasing HIV-1 pretreatment drug resistance among antiretroviral-naïve  
21 adults initiating treatment between 2006 and 2014 in Nairobi, Kenya. *Aids* **30**, 1680-1682,  
22 doi:10.1097/qad.0000000000001110 (2016).
- 23 47 Richman, D. D. *et al.* Nevirapine resistance mutations of human immunodeficiency virus type  
24 1 selected during therapy. *Journal of virology* **68**, 1660-1666 (1994).
- 25 48 Little, S. J. *et al.* Persistence of transmitted drug resistance among subjects with primary  
26 human immunodeficiency virus infection. *Journal of virology* **82**, 5510-5518 (2008).

- 1 49 (UNAIDS), J. U. N. P. o. H. A. *UNAIDS DATA 2021*,  
2 <[https://www.unaids.org/sites/default/files/media\\_asset/JC3032\\_AIDS\\_Data\\_book\\_2021\\_En.pdf](https://www.unaids.org/sites/default/files/media_asset/JC3032_AIDS_Data_book_2021_En.pdf)> (2021).  
3
- 4 50 du Plessis, E. *et al.* Prevention of mother-to-child transmission of HIV in Kenya: challenges to  
5 implementation. *BMC Health Services Research* **14**, 1-9 (2014).
- 6 51 Beck, I. A. *et al.* Pre-treatment HIV-drug resistance associated with virologic outcome of first-  
7 line NNRTI-antiretroviral therapy: a cohort study in Kenya. *EClinicalMedicine* **18**, 100239  
8 (2020).
- 9 52 Sigaloff, K. C. *et al.* High prevalence of transmitted antiretroviral drug resistance among  
10 newly HIV type 1 diagnosed adults in Mombasa, Kenya. *AIDS research and human*  
11 *retroviruses* **28**, 1033-1037 (2012).
- 12 53 Hassan, A. S. *et al.* Low prevalence of transmitted HIV type 1 drug resistance among  
13 antiretroviral-naive adults in a rural HIV clinic in Kenya. *AIDS research and human*  
14 *retroviruses* **29**, 129-135 (2013).
- 15 54 Mbisa, J. L. *et al.* Evidence of self-sustaining drug resistant HIV-1 lineages among untreated  
16 patients in the United Kingdom. *Clinical Infectious Diseases* **61**, 829-836 (2015).
- 17 55 Rhee, S.-Y., Tzou, P. L. & Shafer, R. W. Temporal trends in HIV-1 mutations used for the  
18 surveillance of transmitted drug resistance. *Viruses* **13**, 879 (2021).
- 19 56 McClung, R. P. *et al.* Transmitted Drug Resistance Among Human Immunodeficiency Virus  
20 (HIV)-1 Diagnoses in the United States, 2014–2018. *Clinical Infectious Diseases* **74**, 1055-  
21 1062 (2022).

22

## TABLES

**Table 1.** Distribution of newly generated and published HIV-1 *pol* sequences from antiretroviral therapy-naïve individuals in Kenya (n=3567, 1986-2020).

Characteristics		Newly generated n=396 (%)	Published N=3,171 (%)	Total N=3,567 (%)
Risk group	HET	78 (19.7%)	2869 (90.5%)	2947 (82.6%)
	MSM	190 (48.0%)	151 (4.8%)	341 (9.6%)
	PWID	0 (0.0%)	58 (1.8%)	58 (1.6%)
	FSW	128 (32.3%)	18 (0.6%)	146 (4.1%)
	Children	0 (0.0%)	75 (2.4%)	75 (2.1%)
Year (range)	Before 2005	18 (4.5%)	433 (13.7%)	451 (12.6%)
	2006-2010	110 (27.8%)	1887 (59.5%)	1997 (56.0%)
	2011-2015	41 (10.4%)	842 (26.6%)	883 (24.8%)
	2016-2020	227 (57.3%)	9 (0.3%)	236 (6.6%)
Province	Nairobi	150 (37.9%)	1329 (41.9%)	1479 (41.5%)
	Coast	175 (44.2%)	852 (26.9%)	1027 (28.8%)
	Nyanza	71 (17.9%)	662 (20.9%)	733 (20.5%)
	Rift Valley	0 (0.0%)	294 (9.3%)	294 (8.2%)
	Central	0 (0.0%)	33 (1.0%)	33 (0.9%)
	North-Eastern	0 (0.0%)	1 (0.0%)	1 (0.0%)

*Abbreviations: ART, combined antiretroviral therapy; HET, presumed heterosexual i.e., men and women not reporting sex work or male same-sex behaviour; MSM, men who have sex with men; PWID, people who inject drugs; FSW, female sex worker.*

**Table 2.** HIV-1 subtypes distribution within-and-between risk groups in Kenya (n=3567, 1986-2020).

<b>Subtype</b>	<b>HET</b> n=2,947 (%)	<b>MSM</b> n=341 (%)	<b>FSW</b> n=146 (%)	<b>PWID</b> n=58 (%)	<b>Children</b> n=75 (%)	<b>Total</b> n=3,567 (%)
A1	1840 (62.4%)	250 (73.3%)	94 (64.4%)	51 (87.9%)	47 (62.7%)	2282 (64.0%)
D	431 (14.6%)	42 (12.3%)	20 (13.7%)	3 (5.2%)	13 (17.3%)	509 (14.3%)
URF	362 (12.3%)	31 (9.1%)	14 (9.6%)	1 (1.7%)	5 (6.7%)	413 (11.6%)
C	245 (8.3%)	16 (4.7%)	13 (8.9%)	2 (3.5%)	6 (8.0%)	282 (7.9%)
16_A2D	25 (0.9%)	0 (0.0%)	4 (2.7%)	0 (0.0%)	1 (1.3%)	30 (0.8%)
G	24 (0.8%)	1 (0.3%)	1 (0.7%)	0 (0.0%)	1 (1.3%)	27 (0.8%)
21_A2D	6 (0.2%)	0 (0.0%)	0 (0%)	1 (1.7%)	1 (1.3%)	8 (0.2%)
10_CD	6 (0.2%)	0 (0.0%)	0 (0.0%)	0 (0.0%)	0 (0.0%)	6 (0.2%)
02_AG	3 (0.1%)	0 (0.0%)	0 (0.0%)	0 (0.0%)	1 (1.3%)	4 (0.1%)
B	3 (0.1%)	1 (0.3%)	0 (0.0%)	0 (0.0%)	0 (0.0%)	4 (0.1%)
A2	2 (0.1%)	0 (0.0%)	0 (0.0%)	0 (0.0%)	0 (0.0%)	2 (0.1%)

*Abbreviations: MSM, men who have sex with men; PWID, people who inject drugs; FSW, female sex worker; HET, presumed heterosexual i.e., men and women not reporting sex work or male same-sex behaviour; URF, unique recombinant forms; CRF, circulating recombinant form; ART, anti-retroviral therapy.*

**Table 3.** Characteristics of clusters (n=32) with shared pre-treatment HIVDR mutations and distributed into subtypes and risk group.

HIVDR mutation	Cluster number	subtype	Number of tips (n)	Risk group
G190ASE	#1	A1	2	HET/Children
	#2	A1	2	HET
	#3	A1	2	HET/FSW
K103NS	#4	A1	2	HET
	#5	A1	2	HET
	#6	A1	2	HET
	#7	A1	2	HET
	#8	A1	2	HET/MSM
	#9	A1	2	HET/MSM
	#10	A1	3	HET
	#11	A1	3	MSM
	#12	A1	16	MSM
	#13	D	2	HET
	#14	D	2	HET
	#15	D	2	HET
	#16	D	2	HET
	#17	D	2	HET
M184VI	#18	A1	2	HET
	#19	A1	2	HET
	#20	A1	2	HET
	#21	D	2	HET
	#22	D	2	HET
T215revs	#23	A1	2	HET
	#24	A1	2	HET
	#25	A1	11	PWID
	#26	D	2	HET/Children
Y181CIV	#27	A1	2	HET
	#28	A1	2	HET
	#29	A1	2	HET
	#30	D	6	HET
	#31	D	2	HET
	#32	D	2	HET

*Number of clusters with the most dominant pre-treatment HIVDR mutations per drug class – i.e., NNRTI (K103N/S, Y181C/I/V, and G190A/S/E) and NRTI (M184V/I, and T215 revs). Abbreviations: MSM, men who have sex with men; PWID, people who inject drugs; FSW, female sex worker; HET, at-risk men and women who did not report sex work or male same-sex behaviour.*

**Table 4.** Characteristics of clusters having  $\geq 3$  sequences (n=5) with shared pre-treatment HIVDR mutations.

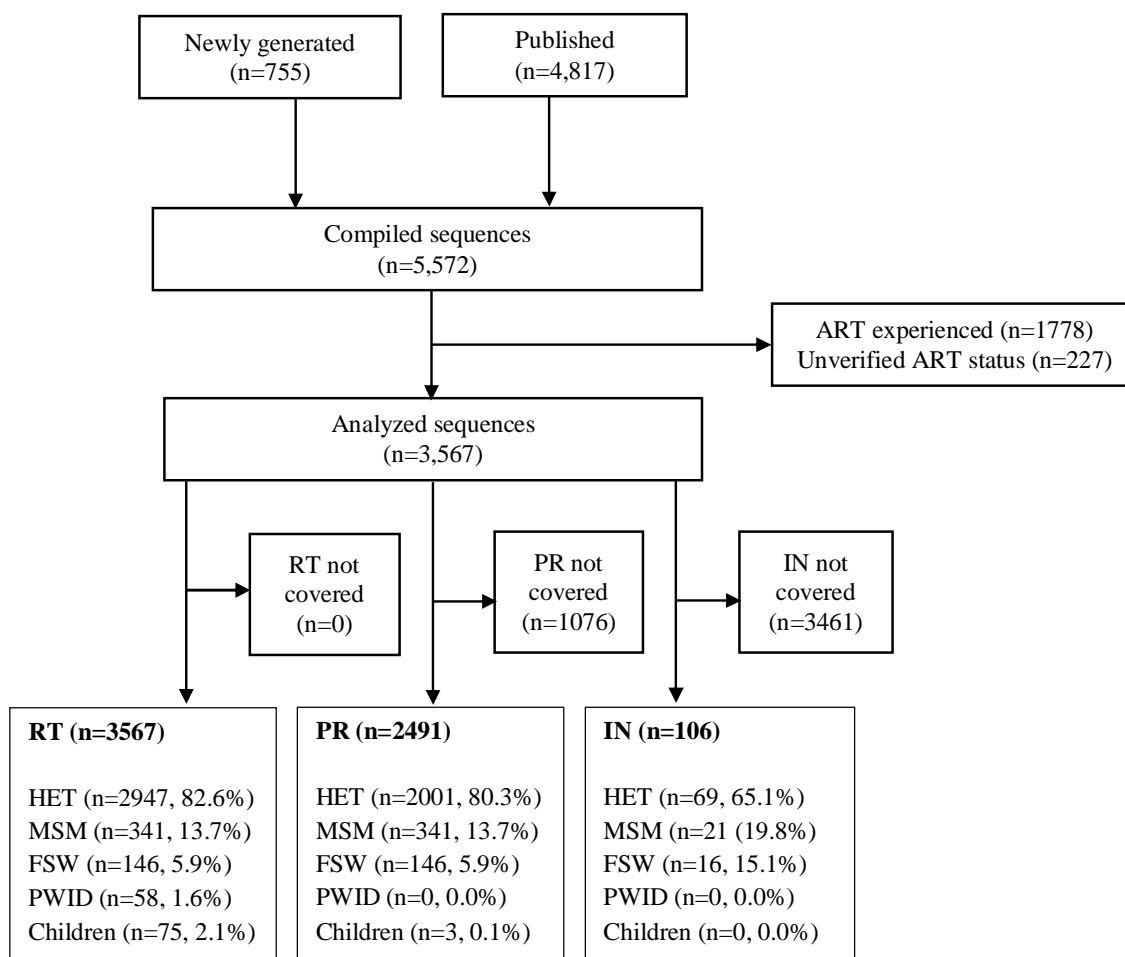
Cluster	HIVDR mutation	Subtype	Tips (N)	TMRCAs (95% HPD)	Sampling period	Growth rate	R <sub>0</sub> (where D=1)	Risk group
#12.A1	K103N	A1	16	2005 (2000 - 2008)	2010-2017	0.10	1.10	MSM
#30.D	Y181C	D	6	2003 (1995 – 2006)	2007-2013	0.00	1.00	HET
#10.A1	K103N	A1	3	2007 (2002 – 2010)	2011-2015	0.94	1.94	HET
#11.A1	K103N	A1	3	2006 (2000 – 2006)	2006-2007	-0.06	0.94	MSM
#25.A1	T215revs	A1	11	1999 (1998 – 2001)	2010	0.38	1.38	PWID

*Bayesian dating was restricted to 5 clusters having  $\geq 3$  sequences and with the three most dominant pre-treatment HIVDR mutation per drug class – i.e., NNRTI (K103N/S, Y181C/I/V, and G190A/S/E) and NRTI pre-treatment HIVDR mutations (M184V/I, T215 revs, and K70R/E). Abbreviations: MSM (men who have sex with men); PWID (people who inject drugs); FSW (female sex workers); HET (at-risk men and women who did not report sex work or male same-sex behaviour); TMRCAs (time to the most recent common ancestor); and HPD (higher posterior density interval).*

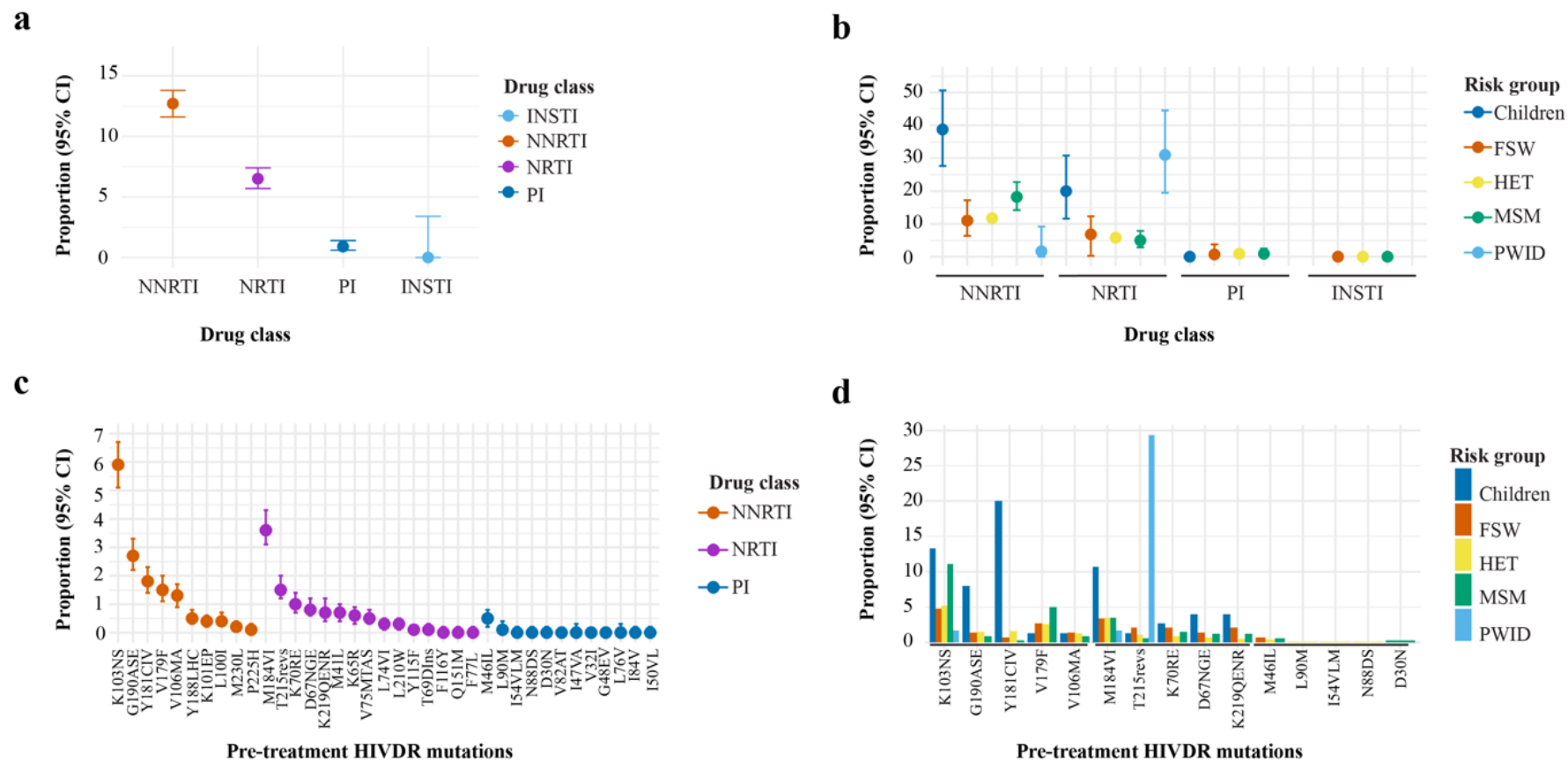


## FIGURES

**Figure 1.** A flowchart summarising the number of HIV-1 pol sequences (1986-2020) analysed in this study. Abbreviations: ART, antiretroviral therapy; RTI, reverse-transcriptase inhibitors; PI, protease inhibitors; INSTI integrase inhibitors; MSM, men who have sex with men; PWID, people who inject drugs; FSW, female sex worker; HET, at-risk men and women who did not report sex work or male same-sex behaviour.



**Figure 2.** Distribution of pre-treatment HIV-1 drug resistance by (a) Proportion (95% CI) of ART- naive individuals with at least one HIV drug resistance mutations distributed by drug-class (for INSTI, CI is one-sided); (b) Distributed by drug class and risk group; (c) specific pre-treatment HIVDR mutations distributed by drug class; and (d) the five most prevalent pre-treatment HIVDR mutations per drug class distributed by risk groups, in Kenya (n=3567, 1986-2020).



**Figure 3. Temporal trends in pre-treatment HIV-1 drug resistance in different risk groups in Kenya (1986-2020).** Overall trends and risk-group specific trends in pre-treatment HIV-1 drug resistance among (a) ART-naïve heterosexuals in the general population (HET), (b) men who have sex with men (MSM), and (c) female sex workers (FSW) in Kenya.

